

(19)



(11)

**EP 2 410 315 A2**

(12)

**EUROPEAN PATENT APPLICATION**

(43) Date of publication:

**25.01.2012 Bulletin 2012/04**

(51) Int Cl.:

**G01N 21/47 (2006.01)**

**A61B 5/00 (2006.01)**

(21) Application number: **11182730.9**

(22) Date of filing: **04.06.2003**

(84) Designated Contracting States:

**AT BE BG CH CY CZ DE DK EE ES FI FR GB GR HU IE IT LI LU MC NL PT RO SE SI SK TR**

- **Ntziachristos, Vasilis**  
**Cambridge, MA 02139 (US)**
- **Madden, Karen N**  
**Sudbury, MA 01776 (US)**

(30) Priority: **04.06.2002 US 385931 P**

(62) Document number(s) of the earlier application(s) in accordance with Art. 76 EPC:

**03734381.1 / 1 514 093**

(74) Representative: **Gambell, Derek et al**

**Graham Watt & Co LLP**  
**St Botolph's House**  
**7-9 St Botolph's Road**  
**Sevenoaks**  
**Kent TN13 3AJ (GB)**

(71) Applicant: **Visen Medical, Inc.**

**Waltham MA 02451 (US)**

(72) Inventors:

- **Ripoll, Jorge**  
**GR-701 00 Herakion (GR)**

Remarks:

This application was filed on 26-09-2011 as a divisional application to the application mentioned under INID code 62.

**(54) Imaging Volumes with Arbitrary Geometries in Contact and Non-Contact Tomography**

(57) A method for tomographic imaging of diffuse medium includes directing waves into a diffusive medium, solving a surface-bounded inversion problem by forward field calculations through decomposition of contributions from the multiple reflections from an arbitrary surface within the diffusive medium or outside the diffusive medium into a sum of different orders of reflection up to an arbitrary order, and using contact or non-contact measurements of waves outside said diffusive medium to generate a tomographic image.

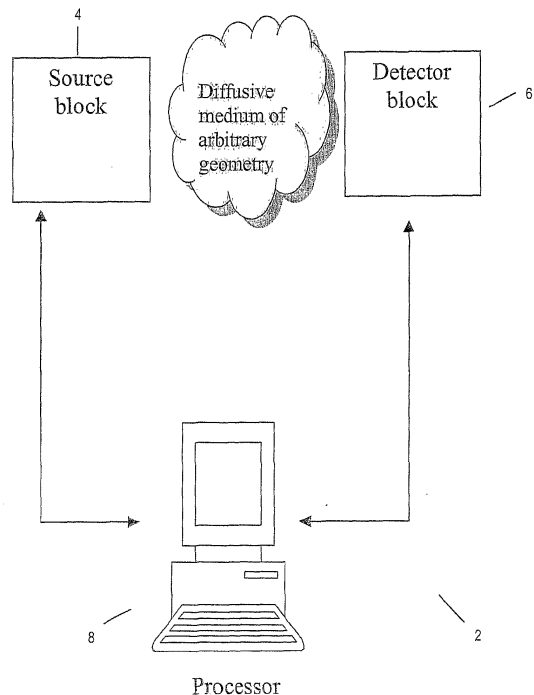


FIG. 1

**EP 2 410 315 A2**

**Description**

## RELATED APPLICATIONS

5 [0001] This application claims the benefit of U.S. Provisional Application No. 60/385,931 filed June 4, 2002. The entire teachings of the above application are incorporated herein by reference.

## BACKGROUND OF THE INVENTION

10 [0002] Optical imaging is an evolving clinical imaging modality that uses penetrating light rays to create images of both intrinsic and extrinsic biological scatterers. Light offers unique contrast mechanisms that can be based on absorption, e.g., probing of hemoglobin concentration or blood saturation, and/or fluorescence, e.g., probing for weak auto-fluorescence, or exogenously administered fluorescent probes (Neri et al., Nat. Biotech. 15:1271-1275, 1997; Ballou et al., Cancer Immunol. Immunother. 41:257-63, 1995; and Weissleder, et al., Nat. Biotech. 17:375-178, 1999). Preferably, light in the red and near infrared range (600-1200 nm) is used to maximize tissue penetration and minimize absorption from natural biological absorbers such as hemoglobin and water. (Wyatt, Phil. Trans. R. Soc. London B 352:701-706, 1997; Tromberg, et al., Phil. Trans. R. Soc. London B 352:661-667, 1997).

15 [0003] Diffuse optical tomography (DOT) is one type of optical tomography that has been used for quantitative, three-dimensional imaging of biological tissue, based on intrinsic absorption and scattering. (Ntzichristos et al., Proc. Natl. Acad. Sci. USA, 97:2767-72, 2000; Benaron et al., J. Cerebral Blood Flow Metabol. 20:469-77, 2000) A typical DOT imaging system uses narrow-band light sources so that specific extrinsic and/or intrinsic fluorophores are targeted. Light, customarily generated by laser diodes, is usually directed to and from the target tissue using fiber guides, since (1) it enables flexibility in the geometrical set-up used, (2) reduces signal loss, and (3) simplifies the theoretical modeling of contact measurements. The use of fiber guides, however, has significant disadvantages. The most significant is that only a limited number of detector channels can be implemented since scaling up requires a large number of fibers (usually fiber bundles) that have to be coupled to the tissue, which in many cases is not practical. In addition, it is also very difficult to control or measure the exact coupling conditions of each individual fiber or fiber bundle, which can vary quite significantly from fiber to fiber. An alternative to fibers is to use a compression plate and/or an optical matching fluid. For example, it is common to compress the tissue of investigation into a fixed geometry such as a slab or circle and to use an optical matching fluid to eliminate possible air-tissue interfaces. In either case, the use of fiber guides and/or optical matching fluids and fixed geometries impedes the experimental practicality and severely limits the tomographic capacity of the imaging system. These constraints result in significant limitations to the use of these systems either in research or in the clinic. To date, non-contact systems and methods for tomography of biological tissue and other diffuse and diffuse-like medium with arbitrary boundaries have not been developed or reported.

25 [0004] Currently, optical tomography utilizes either numerical or analytical methods for solving the equations governing propagation of light through biological tissue. Numerical methods, such as the finite element method (FEM), finite differences (FD) or the boundary element method (BEM), are used for complex geometries of air/tissue boundaries and are extremely computationally costly and therefore are currently non-viable in a real-time three-dimensional research and clinical setting. (For example, reported numerical-based reconstruction times for a simulated typical 3D breast-imaging problem on state of the art single processor computers range from 6 to 36 hours.) Analytical methods are much faster (for example, an analytical-based 3D reconstruction case of the breast ranges between 2-15 minutes), but are available only for simple geometries of air/tissue boundary such as a slab, a cylinder or a sphere, and often lack adequate accuracy for imaging complex objects such as a human breast.

30 [0005] An alternative method to perform tomography of diffuse or diffuse-like medium with complex geometries is by means of an analytical approach called the Kirchhoff Approximation (KA). This method uses the angular spectrum representation of the propagating average intensity and employs the reflection coefficients for light waves to calculate the light intensity inside any arbitrary geometry. Although in contact imaging applications the KA can achieve relatively good computational efficiency (Ripoll et al., Opt. Lett. 27:333-335, 2002), it has several significant limitations that would restrict its use in real research and clinical settings. Specifically, the KA is limited to geometries such as a cylinder or ellipse, i.e. geometries that do not include shadow regions. Furthermore, the KA method generally works for larger volumes (e.g., diameters >3cm), and for highly absorbing medium (e.g., typically the absorption coefficient must be 10-100 times higher than that of water).

## SUMMARY OF THE INVENTION

35 [0006] There is a need for fast computational methods for real-time optical tomographic diagnostics and other research and clinical uses that can deal with arbitrary sizes, shapes and boundaries that (1) attain the computational simplicity and efficiency of analytical methods while (2) retaining the accuracy and capacity of numerical methods to model arbitrary

shapes and boundaries, and (3) can be applied both to contact and non-contact measurements of diffuse and diffuse-like medium.

[0007] The invention is directed to an imaging system and a method for imaging volumes or subjects containing interfaces such as diffuse and non-diffuse tissue interfaces or other interfaces using analytical methods.

5 [0008] In one embodiment, the present invention is a method for tomographic imaging of diffuse medium comprising directing waves into a medium having a boundary S, detecting an intensity of waves emitted from the medium by using contact or non-contact measurements of waves outside the medium, and processing the detected intensity to generate a tomographic image.

10 [0009] In another embodiment, the present invention is a method of obtaining a tomographic image of a target region within an object, the method comprising directing light waves from multiple points into an object, detecting light waves emitted from multiple points from the object, wherein the light is emitted from an intrinsic absorber, fluorochrome, or scatterer, processing the detected light by representing the contribution of each wave into the detected intensity as a sum of an arbitrary number N of terms in a series and wherein each term in the series is an intensity of a wave reflected from an arbitrary surface within or outside a diffusive medium, and forming a tomographic image that corresponds to a three-dimensional target region within said object and to a quantity of intrinsic absorber, fluorochrome, or scatterer in the target region.

15 [0010] In another embodiment, the present invention is a method of obtaining a tomographic image of a target region within an object comprising administering to an object a fluorescent imaging probe, directing light waves from multiple points into the object, detecting fluorescent light emitted from multiple points from the object, processing the detected light by representing the contribution of each wave into the detected intensity as a sum of an arbitrary number N of terms in a series and wherein each term in the series is an intensity of a wave reflected from an arbitrary surface within or outside a diffusive medium, and forming a tomographic image that corresponds to a three-dimensional target region within the object and to a quantity of fluorescent imaging probe in the target region.

20 [0011] In another embodiment, the present invention is a tomographic imaging system comprising a wave source block to direct waves into an object, a wave detector block to detect the intensity of waves emitted from the object and to convert the intensity of the waves into a digital signal representing waves emitted from the object, a processor to control the detector block and, optionally, the source block and to process the digital signal representing waves emitted from the object into a tomographic image on an output device, wherein the processor is programmed to process the digital signal by representing the contribution of each wave into the detected intensity as a sum of an arbitrary integer number N of terms in a series and wherein each term in the series is an intensity of a wave reflected from an arbitrary surface within or outside a medium.

25 [0012] In another embodiment, the present invention is an apparatus comprising machine executable code for a method of tomographic imaging of medium including directing waves into a medium having a boundary S, detecting an intensity of waves emitted from the medium by using contact or non-contact measurements of waves outside the medium, processing the detected intensity to generate a tomographic image by representing the contribution of each wave into the detected intensity as a sum of an arbitrary integer number N of terms in a series and wherein each term in the series is an intensity of a wave reflected from an arbitrary surface within or outside the medium.

30 [0013] The approach described herein provide several advantages over the existing art, including (1) the ability to image volumes with 2D or 3D geometries of arbitrary size, shape and boundaries using fast and accurate analytical methods, and (2) the application of these new methods for both contact and non-contact tomography of diffuse and diffuse-like medium. These new imaging methods can have broad applications in a wide variety of areas in research and clinical imaging. Importantly, these methods significantly improve existing tomographic imaging techniques and make possible the use of these imaging techniques in real-time animal and human subject imaging and clinical medical diagnostics by allowing the implementation of practical systems with unprecedented capacity for data collection.

35 [0014] Furthermore, the approach described herein can be applied both to contact and non-contact measurements, as well as for any diffuse and non-diffuse interfaces as related to tomography, including optical tomography, fluorescence-mediated tomography, near-field optical tomography, tomography with thermal waves and generally any surface-bound inversion problems of tissues and other diffuse or diffuse-like medium.

#### 50 BRIEF DESCRIPTION OF THE DRAWINGS

[0015] The foregoing and other objects, features and advantages of the invention will be apparent from the following more particular description of preferred embodiments of the invention, as illustrated in the accompanying drawings. The drawings are not necessarily to scale, emphasis instead being placed upon illustrating the principles of the invention.

55 FIG. 1 is a block-diagram of a preferred embodiment of a system of the present invention.

FIG. 2 shows a surface-bounded volume of arbitrary geometry. An optically diffuse volume V is surrounded by a boundary surface S of arbitrary two-dimensional or three-dimensional shape. The volume is illuminated at position

$r_{\text{source}}$

FIG. 3 (a) shows a vector representation at the surface detail as described by the KA method.

FIG. 3 (b) shows KA representation in the coordinates of the tangent plane.

FIG. 4 is a plot of computation time of the KA method versus an exact solution using more rigorous methods.

FIG. 5 (a) — (d) demonstrates the shadow effect for the KA, method and for the infinite case for a cylinder.

FIG. 6 (a) and (b) are plots depicting error in the KA vs. absorption coefficient for different radii and scattering coefficients for a smooth cylinder with no shadowing effect.

FIG. 7 is a plot showing computation times achieved with the KA and DRBM method for different N-orders.

FIG. 8 is a plot showing computation time achieved with acceleration of the DRBM.

FIG. 9 depicts reconstruction of the simulated geometry in (a) using the ET method, (b) the 2<sup>nd</sup> order DRBM for exact geometry, (c) 2<sup>nd</sup> order DRBM for an approximate boundary indicated by the ellipsoid solid line and (d) transmittance geometry using the expression of a slab.

FIG. 10 depicts reconstruction of simulated geometry in FIG. 9(a) using the KA method for the exact geometry. The image demonstrates the inefficiency of the KA method to image small dimensions.

FIG. 11 is a schematic of a geometrical scheme assumed for non-contact measurements from diffusive medium.

FIGs. 12A-12C is a flow diagram depicting the operation of a tomographic imaging system implementing the method of the present invention.

## DETAILED DESCRIPTION OF THE INVENTION

**[0016]** The purpose of optical tomography is to recover the optical properties, location, and shape of objects buried deep inside a specific volume by solving equations that describe light propagation through diffuse medium, such as biological tissue. As used herein, the terms "diffuse medium" or "diffusive medium" are used interchangeably and are defined to mean media where waves suffer multiple scattering events with small particles (the scatterers) within an otherwise homogeneous medium, randomizing their phase; in this case it is the average wave intensity that is studied. The average wave intensity will follow the diffusion equation, behaving in itself as a "diffuse wave" and interacting with surfaces and boundaries. The terms "non-diffuse medium" or "non-diffusive medium" are used interchangeably and are defined to mean media where waves do not suffer multiple scattering events with scatterers within the medium and maintain their phase; within these media, waves will interact and suffer multiple scattering events with surfaces and boundaries. Analytical solutions are available only for a small number of simple geometries of the air/tissue boundaries, such as cylinders, spheres, and slabs. Due to the lack of an appropriate theoretical method for more complex boundaries, numerical methods need to be used. Numerical methods offer practical simplicity but also significant computational burden, especially when large three-dimensional reconstructions are involved. Such methods include the finite element method (FEM), finite differences (FD), and the extinction theorem (ET) or Boundary Element Method (BEM).

**[0017]** Generally, optical tomographic analysis is divided into two steps. The first step is solving the "forward problem," in which a solution of the wave transport or "diffusion" equation, is used to describe the wave propagation through a medium with assumed optical or other wave-transmitting properties, e.g., tissue, and is used to predict the intensity of light detected emerging from this medium. In a preferred embodiment, the "diffusion equation" is

$$\nabla\{D\nabla U\} + \frac{1}{c} \frac{\partial U}{\partial t} - \mu_a U = S,$$

where D is the diffusion coefficient which may be time, frequency, absorption, scattering and/or spatially-dependent, c is the speed of light in the medium, U is the average intensity or the energy density,  $\mu_a$  is the absorption coefficient, and S is the source function which represents the intensity and flux distribution within the medium. As used herein, the terms "average intensity" and "energy density" can be used interchangeably, as can be the terms "flux" and "fluence". The second step is solving the "inverse problem," in which the optical or other wave-transmitting properties of the medium are updated to minimize the errors observed between the predicted and measured fields.

**[0018]** There are several ways to solve the forward problem (by obtaining analytical and numerical solutions of the diffusion equation) and inverse problem (direct inversion,  $x^2$ -based fits, and algebraic reconstruction techniques).

**[0019]** An embodiment of the invention is a tomographic imaging system 2 depicted in FIG. 1. The tomographic imaging system includes a wave source block 4 to direct waves into an object; a wave detector block 6 to detect the intensity of waves emitted from the object and to convert the intensity of the waves into a digital signal representing waves emitted from the object; and a processor 8 to control the detector block and, optionally, the source block and to process the digital signal representing waves emitted from the object into a tomographic image on an output device. The processor is programmed to process the digital signal by representing the contribution of each wave into the detected intensity as

a sum of an arbitrary integer number  $N$  of terms in a series and wherein each term in the series is an intensity of a wave reflected from an arbitrary surface within or outside the medium.

[0020] In another embodiment, the present invention is an apparatus comprising machine executable code for a method of tomographic imaging of medium including the steps of directing waves into a medium having a boundary  $S$ ; detecting an intensity of waves emitted from the medium by using contact or non-contact measurements of waves outside the medium; and processing the detected intensity to generate a tomographic image by representing the contribution of each wave into the detected intensity as a sum of an arbitrary integer number  $N$  of terms in a series and wherein each term in the series is an intensity of a wave reflected from an arbitrary surface within or outside the medium.

[0021] Without being limited to any particular theory, it is believed that the physical foundation of the method of the present invention is as set forth below.

### Green's Function

[0022] FIG. 2 illustrates a general imaging model where there is a diffusive volume  $V$  delimited by surface  $S$ , which can be imaged. This diffusive medium is characterized by its absorption coefficient  $\mu_o$ , the diffusion coefficient  $D$ , and the refractive index  $n_{in}$  and is surrounded by a non-diffusive medium of refractive index  $n_{out}$ . Generally, any time-dependent fluctuation of the average intensity  $U$  at any point in space  $\mathbf{r}$  can be expressed in terms of its frequency components through its Fourier transform as:

$$U(\mathbf{r}, t) = \int_{-\infty}^{+\infty} U(\mathbf{r}, \omega) \exp[-i\omega t] d\omega \quad (1)$$

[0023] If in such a medium the light source is modulated at a single frequency  $\omega$ , the average intensity is:

$$U(\mathbf{r}, t) = U(\mathbf{r}, \omega) \exp[-i\omega t] \quad (2)$$

[0024] Function  $U(\mathbf{r}, t)$  in Eq. (2) and the functions  $U(\mathbf{r}, \omega)$  in Eq. (1) represent diffuse photon density waves (DPDW) (Boas et al, (1995) Phys. Rev. Lett. 75:1855-1858, the entire teachings of which are incorporated herein by reference) and obeys the Helmholtz equation with a wave number  $\kappa = (-\mu_o / D + i\omega / cD)^{1/2}$ , where  $c$  is the speed of light in the medium. The unknown function  $U(\mathbf{r}, t)$  can be obtained if a so-called Green function that models light propagation within the medium from a point source to a point detector is known. Since all regimes: CW, frequency domain, and time-domain, can be expressed in terms of Eq. (1), all expressions will be derived in the frequency domain without loss of generality, and in most cases a time or frequency dependence will be assumed and not included implicitly.

[0025] In an infinite geometry (no air/time boundary), the so-called homogenous Green's function  $g(\mathbf{r})$  is obtained by solving Eq. (3):

$$\nabla^2 g(\kappa | \mathbf{r}_s - \mathbf{r}_d |) + \kappa^2 g(\kappa | \mathbf{r}_s - \mathbf{r}_d |) = -\frac{4\pi}{D} \delta(\mathbf{r}_s - \mathbf{r}_d), \quad (3)$$

written here in the frequency domain (omitting time- and/or frequency dependent terms).  $\mathbf{r}_s$  is the position of the source,

$\mathbf{r}_d$  is the position of the detector,  $\nabla^2$  denotes the Laplacian operator  $\nabla^2 = \frac{\partial^2}{\partial x^2} + \frac{\partial^2}{\partial y^2} + \frac{\partial^2}{\partial z^2}$ , and  $\delta(\mathbf{r}_s - \mathbf{r}_d)$  is the Dirac's

delta-function (G. B. Arfken and H. J. Weber, Mathematical Methods for Physicists (Academic Press, New York, 1995). The solution of (3) in 3D is given by Eq. (4):

$$g(\kappa | \mathbf{r}_s - \mathbf{r}_d |) = \frac{\exp[i\kappa | \mathbf{r}_s - \mathbf{r}_d |]}{D | \mathbf{r}_s - \mathbf{r}_d |}. \quad (4)$$

[0026] Considering the geometry of the problem, a complete Green's function  $G(\mathbf{r}_s, \mathbf{r}_d)$  can be defined, which models propagation of the diffuse photon waves from a point source to a point detector inside an arbitrarily shaped diffusive volume taking into account all boundaries present. By means of this complete Green's function the average intensity at a point  $\mathbf{r}_d$  inside the medium is defined as:

5

$$U(\mathbf{r}_d) = \frac{1}{4\pi V} \int_V S(\mathbf{r}') G(\mathbf{r}', \mathbf{r}_d) d\mathbf{r}', \quad \mathbf{r}_d \in V \quad (5)$$

10

where  $S(\mathbf{r}')$  is the source term (i.e., the strength of the light source at position  $\mathbf{r}'$  given in units of energy density), and  $V$  is the volume occupied by the diffusive medium.

15

[0027] In infinite space the equation is  $G(\mathbf{r}_s, \mathbf{r}_d) = g(\kappa |\mathbf{r}_s - \mathbf{r}_d|)$ . Preferably, the source and detector are both inside the volume  $V$ .

20

[0028] For a homogeneous diffusive volume limited by surface  $S$ , i.e., a volume of spatially invariant absorption and scattering coefficients inside  $S$ , the solution to Eq. (5) for arbitrary geometries of  $S$  can be expressed in terms of a surface integral by means of Green's Theorem (Ripoll et al, J. Opt. Soc. Am. A 17:1671-1681, 2000 the entire teachings of which are incorporated herein by reference) as:

25

$$G(\mathbf{r}_s, \mathbf{r}_d) = g(\kappa |\mathbf{r}_s - \mathbf{r}_d|) - \frac{1}{4\pi} \int_S \left[ G(\mathbf{r}_s, \mathbf{r}') \frac{\partial g(\kappa |\mathbf{r}' - \mathbf{r}_d|)}{\partial \mathbf{n}'} - g(\kappa |\mathbf{r}' - \mathbf{r}_d|) \frac{\partial G(\mathbf{r}_s, \mathbf{r}')}{\partial \mathbf{n}'} \right] dS', \quad (6)$$

30

where  $\mathbf{n}$  is the surface normal pointing into the non-diffusive medium. The boundary condition between the diffusive and non-diffusive medium (Aronson, J. Opt. Soc. Am. A 16 (5): 1066-1071, 1999; Aronson R, J. Opt. Soc. Am. A 12, 2532 1995; Ishimaru A., Wave Propagation and Scattering in Random Media, New York: IEEE press 1997) is:

35

$$G(\mathbf{r}_s, \mathbf{r}')|_S = -C_{nd} D \mathbf{n} \cdot \nabla G(\mathbf{r}_s, \mathbf{r}')|_S, \quad \mathbf{r}' \in S \quad (7)$$

[0029] Introducing Eq. (7) into Eq. (6) we obtain:

40

$$G(\mathbf{r}_s, \mathbf{r}_d) = g(\kappa |\mathbf{r}_s - \mathbf{r}_d|) + \frac{1}{4\pi} \int_S \left[ C_{nd} D \frac{\partial g(\kappa |\mathbf{r}' - \mathbf{r}_d|)}{\partial \hat{\mathbf{n}}'} + g(\kappa |\mathbf{r}' - \mathbf{r}_d|) \right] \frac{\partial G(\mathbf{r}_s, \mathbf{r}')}{\partial \hat{\mathbf{n}}'} dS'$$

45

(8)

where  $C_{nd}$  is a total reflectivity of the boundary surface  $S$ , integrated over all angles, and expressed through the Fresnel reflection coefficients  $r$  as:

50

$$C_{nd} = \frac{2 - R_j^{1 \rightarrow 0} - R_j^{0 \rightarrow 1}}{R_j^{0 \rightarrow 1}}$$

55

where

$$R_J^{1 \rightarrow 0} = \int_0^1 [1 - |r_{10}(\mu)|^2] \mu^2 d\mu$$

5

$$R_J^{0 \rightarrow 1} = \int_0^1 [1 - |r_{01}(\mu)|^2] \mu d\mu$$

10

$$R_U^{0 \rightarrow 1} = \int_0^1 [1 - |r_{01}(\mu)|^2] \mu^2 d\mu$$

15 and where  $\mu = \cos \theta$  for an incidence angle  $\theta$ ,  $r_{01}$  and  $r_{10}$  represent the reflection coefficients when the incident wave comes from the inner, diffusive medium having an index of refraction  $n_{in}$ , or outer, non-diffusive medium having an index of refraction  $n_{out}$ , respectively, and are defined in terms of the parallel and perpendicular polarization components as:

$$20 \quad |r|^2 = \frac{1}{2} (|r_{\perp}|^2 + |r_{\parallel}|^2), \quad r_{\parallel} = \frac{n_{in} \cos \theta_t - n_{out} \cos \theta_i}{n_{in} \cos \theta_t + n_{out} \cos \theta_i}, \quad r_{\perp} = \frac{n_{in} \cos \theta_t - n_{out} \cos \theta_i}{n_{in} \cos \theta_t + n_{out} \cos \theta_i},$$

25 and where  $\cos \theta_t$  is the cosine of the transmitted angle, which is found from Snell's law  $n_{out} \sin \theta_t = n_{in} \sin \theta_i$ . In Eq. (8)  $D$  is the medium's diffusion coefficient, where  $\mathbf{n}$  is the unity vector normal to surface  $S$  and pointing into the non-diffusive medium, and  $\kappa$ ,  $r_s$ , and  $r_d$  are defined above for Eq. (4). Eq. (8) is an integral equation that defines the complete Green function  $G(r_s, r_d)$ . Substituting a known function  $G(r_s, r_d)$  into Eq. (5) allows the average intensity at a point  $r_d$  inside the medium  $U(r_d)$  to be calculated for a given frequency  $\omega$ , which, in turn, allows the value of the average intensity of light at point  $r$  at time  $t$ ,  $U(r, t)$  represented by Eq. (1) to be calculated.

30

### Kirchhoff Approximation and its Application to Solving the Forward Problem

35 **[0030]** When many solutions to a forward problem need to be generated, such as in iterative reconstruction schemes, a first-order approximation to Eq. (8), applicable to arbitrary geometries in 3D is needed, both for the sake of computing time and memory. One such approximation applicable to arbitrary geometries is the Kirchhoff Approximation (KA), sometimes also known as the physical-optics or the tangent-plane method (Ogilvy, London, IOP publishing, 1991; Nieto-Vesperinas, Pergamon, New York, 1996 the entire teachings of which are incorporated herein by reference), so long as the curvature of the surface under study is larger than the wavelength. The KA therefore only considers first order reflections at an interface decomposed into planar components and in the case of a planar surface yields exact solutions.

40 **[0031]** For diffusive point sources, the Kirchhoff Approximation (KA) assumes that the surface is replaced at each point by its tangent plane. Referring to FIG. 3(a), where  $R_S$  is the position of the source and  $r_p$  is an arbitrary point on the surface, the total average intensity  $U$  at any point  $r_p$  of the surface  $S$  is given by the sum of the homogeneous incident intensity  $U^{inc}$  and that of the wave reflected from the local plane of normal  $\mathbf{n}(r_p)$ . In terms of the Green's function this is expressed as:

45

$$G^{KA}(r_s, r_p) = g(\kappa |r_s - r_p|) * [1 + R_{ND}], \quad (9)$$

50

where  $*$  denotes convolution:

55

$$g(r_s, r_p) * [1 + R_{ND}(r_p)] = \int_{-\infty}^{+\infty} [\delta(r' - r_p) + R_{ND}(r' - r_p)] g(r, r') dr'$$

and  $R_{ND}$  is the reflection coefficient for diffusive waves defined in Fourier space as (J. Ripoll et al, J. Opt. Soc. Am. A 18, 2001):

$$R_{ND}(\mathbf{K}) = \frac{iC_{nd}D\sqrt{\kappa^2 - \mathbf{K}^2} + 1}{iC_{nd}D\sqrt{\kappa^2 - \mathbf{K}^2} - 1}. \quad (10)$$

$g(\kappa |\mathbf{r}_s - \mathbf{r}_d|)$  is defined by equation (4),  $\kappa$ ,  $\mathbf{r}_s$ , and  $\mathbf{r}_d$  are defined above for Eq. (3),  $C_{nd}$  is defined above for Eq. (7) and (8), and  $\mathbf{K}$  is the spatial variable in the  $\mathbf{R}=(x,y)$  plane in the Fourier domain (spatial frequency):

$$R_{ND}(\mathbf{K}) = \int_{-\infty}^{+\infty} R_{ND}(\mathbf{R}) \exp[i\mathbf{K} \cdot \mathbf{R}] d\mathbf{R}.$$

**[0032]** Taking into consideration the different propagation directions of the incident and reflected wave with respect to the local plane, the gradient of the Green's function is:

$$\frac{\partial G^{KA}(\mathbf{r}_s, \mathbf{r}_p)}{\partial \hat{\mathbf{n}}_p} = \frac{\partial g(\kappa |\mathbf{r}_s - \mathbf{r}_p|)}{\partial \hat{\mathbf{n}}_p} * [1 - R_{ND}], \quad (11)$$

**[0033]** Eqs. (9) and (11) are directly expressed in Fourier space as:

$$\begin{aligned} G^{KA}(\mathbf{r}_s, \mathbf{r}_p) &= \int_{-\infty}^{+\infty} [1 + R_{ND}(\mathbf{K})] \tilde{g}(\mathbf{K}, \bar{\mathbf{Z}}) \exp[i\mathbf{K} \cdot \bar{\mathbf{R}}] d\mathbf{K}, \\ \frac{\partial G^{KA}(\mathbf{r}_s, \mathbf{r}_p)}{\partial \hat{\mathbf{n}}_p} &= \int_{-\infty}^{+\infty} [1 - R_{ND}(\mathbf{K})] \frac{\partial \tilde{g}(\mathbf{K}, \bar{\mathbf{Z}})}{\partial \bar{\mathbf{Z}}} \exp[i\mathbf{K} \cdot \bar{\mathbf{R}}] d\mathbf{K}, \end{aligned} \quad (12)$$

where  $(\bar{\mathbf{R}}, \bar{\mathbf{Z}})$  are the coordinates of  $|\mathbf{r}_s - \mathbf{r}_p|$  with respect to the plane defined by  $\hat{\mathbf{n}}(\mathbf{r}_p)$  as shown in FIG. 3 (b),

$$\begin{aligned} \bar{\mathbf{Z}} &= (\mathbf{r}_s - \mathbf{r}_p) \cdot [-\hat{\mathbf{n}}(\mathbf{r}_p)], \\ \bar{\mathbf{R}} &= \bar{\mathbf{Z}} - (\mathbf{r}_s - \mathbf{r}_p). \end{aligned} \quad (13)$$

**[0034]** In Eq. (12) the Fourier transform of the 3D homogeneous Green's function  $g$  is given by (Goodman JW, Introduction to Fourier Optics. New York: McGraw Hill 1968):

$$\begin{aligned} \tilde{g}(\mathbf{K}, \bar{\mathbf{Z}}) &= \frac{i}{2\pi D} \frac{\exp[i\sqrt{\kappa^2 - \mathbf{K}^2} |\bar{\mathbf{Z}}|]}{\sqrt{\kappa^2 - \mathbf{K}^2}}, \\ \frac{\partial \tilde{g}(\mathbf{K}, \bar{\mathbf{Z}})}{\partial \bar{\mathbf{Z}}} &= \frac{1}{2\pi D} \exp[i\sqrt{\kappa^2 - \mathbf{K}^2} |\bar{\mathbf{Z}}|]. \end{aligned} \quad (14)$$

where vector  $\mathbf{K}$  is defined above for Eq. (10). (It should be noted, that a similar expression can be reached for diffusive/diffusive interfaces, by means of the corresponding reflection and transmission coefficients (Ripoll et al., Opt. Lett. 24: 796-798, 1999)).

**N-Order Diffuse Reflection Boundary Method (DRBM)**

[0035] In most practical cases a more accurate solution of Eq. (8) than the one given by the KA is needed. Thus, this invention describes and teaches the use of an iterative approach that uses an arbitrary number of multiple reflections from the boundary. This approach, called the N-order Diffuse Reflection Boundary Method (DRBM), solves the exact integral Eq. (8) by iteratively decomposing each reflecting event into a sum of the series. Each term in a series is referred herein as an order of reflection. The series can be truncated when the sum meets convergence criteria defined below. Thus, the DRBM method finds the solution of the exact surface integral equation Eq. (8) by representing the solution as a sum of different orders of reflection. In this manner, one can obtain fast solutions to any degree of accuracy by adding orders of reflection. This approach takes into account the shadowing effect due to the higher reflection orders (i.e., the effect caused at those areas where the source is not directly visible due to the presence of the interface), and the high reflectivities at the interfaces (i.e., high values of the reflection coefficient Eq. (10) that introduce multiple scattering interactions at the boundary) can be modeled up to any degree of accuracy. The set of N iterations can be performed without steps of matrix inversion or solving a system of equations. Hence, the computation time of the DRBM is extremely low when compared to a rigorous numerical method such as the ET or BEM, whereas the accuracy is greatly enhanced compared to the KA.

[0036] In practice, the number of DRBM orders needed may not exceed two, due to the fact that DPDWs are highly damped (i.e., suffer from strong absorption on propagation) so that multiple scattering of DPDWs along the boundary rarely takes place. About one or two first orders of the DRBM are crucial for Eq. (8) in the case of non-convex surfaces that create shadowing. This is because the 1<sup>st</sup> or at most 2<sup>nd</sup> order scattering with the convex interface models for the local illumination of the shadowed region from a secondary source reflected from the interface.

[0037] To develop the DRBM method, Eq. (8) is written in an iterative manner by using the Euler method with an evolution step  $\tau$  (C. Macaskill and B. J. Kachoyan, Applied Optics 32, 2839-2847, 1993), and the assumption that the detectors are located at each of the surface points:

$$G_{DRBM}^{(N)}(\mathbf{r}_s, \mathbf{r}_p) \Big|_{\mathbf{r} \in S} = G_{DRBM}^{(N-1)}(\mathbf{r}_s, \mathbf{r}_p) \Big|_{\mathbf{r} \in S} - \tau g(\kappa | \mathbf{r}_s - \mathbf{r}_p |) + \tau \frac{1}{4\pi} \int_S \left[ \frac{\partial g(\kappa | \mathbf{r}' - \mathbf{r}_p |)}{\partial \mathbf{n}'} + \frac{1}{C_{nd} D} g(\kappa | \mathbf{r}' - \mathbf{r}_p |) \right] G_{DRBM}^{(N-1)}(\mathbf{r}_s, \mathbf{r}') dS'.$$

(DRBM.1)

where  $G^{(N)}_{DRBM}(\mathbf{r}_p)$  is the N-order Green function in the DRBM approximation. Equation (DRBM.1) is the main expression for the N-order DRBM. In order to find the solution to the integral in Eq. (DRBM.1) care must be taken when approaching values  $\mathbf{r}' \rightarrow \mathbf{r}_p$  where the Green function diverges. In this case, the Green function at  $\mathbf{r}' \rightarrow \mathbf{r}_p$  should be replaced by so-called self-induction values.

[0038] These values are well known and are dependent on the medium and surface discretization area (Yaghjian, Proc. of the IEEE 2:248-263 (1980), the entire teachings of which are herein incorporated by reference). The 0<sup>th</sup>-order  $G_{DRBM}$  term is calculated by solving Eq. (8) using the KA method; all subsequent orders are calculated using equation (DRBM.1) in an iterative manner. The choice of the evolution step  $\tau$  will affect the speed of convergence and may be

optimized. A possible optimized value of  $\tau$  is  $\tau = 2 \text{imag}\{\kappa\} / \sqrt{W} + 1$ , where  $W$  is mean diameter of the volume. Other values of  $\tau$  may also be found, for example by using matrix pre-conditioners (C. Macaskill and B. J. Kachoyan, Applied Optics 32, 2839-2847 (1993), the teachings of which are incorporated here in their entirety).

[0039] Once the expression at the boundary for the N-th approximation is obtained through Eq. (DRBM.1), the intensity  $U_{DRBM}$  anywhere inside the diffusive volume can be found through:

$$G_{DRBM}^{(N)}(\mathbf{r}_s, \mathbf{r}_d) = g(\kappa | \mathbf{r}_s - \mathbf{r}_d |) + \frac{1}{4\pi} \int_S \left[ \frac{\partial g(\kappa | \mathbf{r}' - \mathbf{r}_d |)}{\partial \mathbf{n}'} + \frac{1}{C_{nd} D} g(\kappa | \mathbf{r}' - \mathbf{r}_d |) \right] G_{DRBM}^{(N)}(\mathbf{r}_s, \mathbf{r}') dS'.$$

$$U_{DRBM}^{(N)}(\mathbf{r}_d) = \int_V S(\mathbf{r}') G_{DRBM}^{(N)}(\mathbf{r}', \mathbf{r}_d) d\mathbf{r}'$$

(DRBM.2)

[0040] It is worth noting that a direct relation between computing times for different orders can easily be found by:

$$Time\{DRBM(N>2)\} = (N-1) * [Time\{DRBM(2)\} - Time\{DRBM(1)\}]$$

[0041] In the following paragraphs, preferred embodiments of the invention are described that further accelerate the computation of  $U_{DRBM}^{(N)}(\mathbf{r}_p)$  using equation (DRBM.1).

**Adaptive-DRBM**

[0042] In a preferred embodiment of the invention, the DRBM can adaptively adjust the number of N-order reflections. In one embodiment, the adaptive adjustment can be achieved by detecting complex boundaries, i.e., surfaces with high spatial variation, by monitoring the gradient of the boundary and automatically increasing the density of local surface discretization i.e., the number of discretization areas that define surface S at that local point, and the number of orders of reflections to include in the DRBM calculations. (It is worth noting that in the case of a plane interface, the 0<sup>th</sup> order DRBM yields an exact solution.) As used herein the spatial variation is high if substantial spatial changes occur in a range shorter than the decay length ( $L_d$ ) of the diffusive wave. Therefore higher numbers of discretization areas need to be included for those regions where  $|\nabla S| \cdot L_d > 1$ , increasing proportionally with  $|\nabla S|$ . The decay length depends on the optical properties of the medium and the modulation frequency (with CW illumination is in the order of a few cm in the Near-infrared for tissue) and is defined as the inverse of the imaginary component of the complex wave number  $\kappa$ ,  $L_d = 1/\text{Im}\{\kappa\}$  where  $\kappa = (-\mu_o / D + i\omega / cD)^{1/2}$ .

[0043] In another embodiment, the adaptive adjustment can be achieved by monitoring the relative change in value of the calculated intensity added by each iteration step and stopping the number of iterations based on a convergence criterion. Typical criteria include limits on the relative change in a value of a function after each iterated step and limits on new contributions of the new iteration step to the overall value of the intensity. For example, the iterative process can be stopped when the relative change in the value of intensity falls below about 0.1 % to about 10%, preferably below 1%. In another example, the iterative process can be stopped when a new contribution falls under a certain threshold value  $\xi$ . The threshold value can be selected, for example, to be about twice the value of noise.

[0044] Additionally, since the DRBM is based on a surface integral equation (DRBM.1) for waves in an absorbing medium, not all surface points contribute equally to the intensity at a certain detector point since the distances between each surface point and the detector vary. Therefore, contribution from surface points further away from the detector will suffer higher attenuation on propagation than points nearer to the detector. Therefore, in another embodiment of the invention, a threshold value that determines which surface points and their corresponding surface values  $G_{DRBM}(\mathbf{r}_s, \mathbf{r})|_{\mathbf{r} \in S}$  are taken or discarded in the surface integral equation (DRBM.1) can be selected so that only surface points that satisfy the condition:

$$i_{thresh} \equiv g(\mathbf{r}_s, \mathbf{r}_p)|_{\mathbf{r}_p \in S} > thresh$$

$$S \rightarrow S(i_{thresh})$$

where  $i_{thresh}$  is an index of a surface point, will be considered when modeling the total intensity at the detector. Here  $S(i_{thresh})$  is the total surface considered in Eqs. (DRBM. 1) and (DRBM.2), and  $g(r)$  is defined above by Eq. (4).

**Increasing Time Efficiency**

[0045] In another embodiment of the invention, a convenient approximation to the solution of Eq. (8) may be found by the method of images. The method of images is applied by taking into account the boundary condition at a diffusive/non-diffusive interface given by Eq (7), which can be approximated to:

$$G(\mathbf{r}_s, \mathbf{r}) \sim G(\mathbf{r}_s, \mathbf{r}[z = 0]) \exp(-C_{nd} D \cdot z), z > 0 \quad (17)$$

where  $C_{nd}$  and  $D$  are defined above for Eqs.(3) and (8) and  $z$  is a coordinate along the direction normal to the local tangent plane and pointing into the non-diffusive medium ( $U$  or  $G$  is defined at the interface, i.e.,  $U$  approached from inside or from outside must be equivalent and  $z$  must be non-negative). For convenience a planar interface is assumed at  $z=0$  in Eq. (17). Using Eq. (17), the boundary condition (7) can be approximated to one that makes the diffuse intensity  $U$  equal to zero at a fictitious boundary at  $z_{ext} = C_{nd}D$  such that:

$$G(\mathbf{r}_s, \mathbf{r}[z = C_{nd}D]) = 0.$$

[0046] In this way, the boundary values for the 0<sup>th</sup> order DRBM can be found as:

$$G_{DRBM}^{(0)}(\mathbf{r}_s, \mathbf{r}_p) = [g(\mathbf{R}, \bar{Z}) - g(\mathbf{R}, \bar{Z} + C_{nd}D)]. \quad (DRBM.3)$$

where  $\mathbf{r}_p$  is a point at the surface  $S$  and  $g$  is the infinite homogenous Green function defined by Eq. (4),  $(\bar{\mathbf{R}}, \bar{Z})$  are defined above by Eq. (13),  $C_{nd}$  and  $D$  are defined above for Eqs. (3) and (8), and their product represents a fictitious distance  $z_{ext}$  from the real boundary at which the intensity is approximately zero.

[0047] With this expression, the 1<sup>st</sup> order DRBM can be calculated assuming a source at  $\mathbf{r}_s$ , and a detector at  $\mathbf{r}_d$ , both inside the diffusive volume, as a summation over  $N$  locally planar discrete areas  $\Delta S$  as:

$$G_{DRBM}^{(1)}(\mathbf{r}_s, \mathbf{r}_d) = g(\mathbf{r}_s - \mathbf{r}_d) - \frac{1}{4\pi} \sum_{p=1}^N \left[ \frac{\partial g(\kappa | \mathbf{r}_p - \mathbf{r}_d)}{\partial \mathbf{n}_p} + \frac{1}{C_{nd}D} g(\kappa | \mathbf{r}_p - \mathbf{r}_d) \right] \Delta S(\mathbf{r}_p) \times \\ \times [g(\bar{\mathbf{R}}, \bar{Z}) - g(\bar{\mathbf{R}}, \bar{Z} + C_{nd}D)]$$

$$(DRBM.4)$$

[0048] Here the infinite space Green function  $g$  is defined above,  $\Delta S(\mathbf{r}_p)$  is defined as the discretized surface area at point  $\mathbf{r}_p$ ,  $C_{nd}$  and  $D$  are defined above for Eqs. (3) and (8) and  $\mathbf{R}$  and  $Z$  are defined above for Eq. (13). Using this new expression, computation times are greatly diminished, since it is an analytical approach and may not involve any Fourier transforms.

**Application to Non-Contact Measurements**

[0049] The method of the instant invention can be applied both to contact and non-contact measurements, as well as for any diffuse and non-diffuse interfaces as related to forming a tomographic image using waves and including. As used herein, the term "contact measurement" means measurement that takes place with the detector in contact with the surface or at a distance of less than about 1mm from the surface. The term "non-contact measurement" refers to measurements that take place with the detector at a distance of greater than 1mm from the surface. The contemplated

waves include light waves, infra-red waves, waves of temperature, acoustic waves and the like. Contemplated modes of tomography include optical tomography, fluorescence-mediated tomography, near-field optical tomography, tomography with temperature waves and generally any surface-bounded inversion problems of tissues and other diffuse or diffuse-like or highly scattering medium.

5 **[0050]** The application of DRBM to performing non-contact measurements will now be described. Referring to the geometrical scheme described in FIG. 11 and by using Eq. (20) below, the flux  $J_n$  at any point of the boundary between the diffusive and non-diffusive medium can be found as:

$$10 \quad J_n(\mathbf{r}_p) = -D \frac{\partial U(\mathbf{r}_p)}{\partial \hat{\mathbf{n}}_p} = \frac{1}{C_{nd}} U(\mathbf{r}_p) \quad (20)$$

15 where  $U(\mathbf{r}_p)$  is defined as the average intensity at the surface point  $\mathbf{r}_p$ ,  $C_{nd}$  and  $D$  are defined above for Eqs. (3) and (8),  $\mathbf{r}_p$  is a point on the boundary,  $\mathbf{n}_p$  is a unity vector normal to the boundary at point  $\mathbf{r}_p$  and directed towards the non-diffusive medium. As used herein, the term flux is defined as the power flowing through a surface  $S$  within an interval of time  $t$  and has units of power per area per second in the time-domain and units of power per area in the frequency or CW domain. The flux detected at any point  $\mathbf{r}$  in the non-scattering (i.e., non-diffusive) medium, can be represented as:

$$20 \quad J(\mathbf{r}) = \frac{1}{\pi_s} \int J_n(\mathbf{r}_p) \Gamma(\mathbf{r}_p - \mathbf{r}) d\mathbf{r}_p \quad (21)$$

25 where  $\Gamma(\mathbf{r}_p - \mathbf{r})$  is a function defined in Eq. (22), which maps surface values  $\mathbf{r}_p$  at  $S$  onto a non-contact detector at  $\mathbf{r}$ , and the integration is performed over all the surface points.

30 **[0051]** The expression for  $\Gamma$  in Eq. (21) is given by:

$$35 \quad \Gamma(\mathbf{r}_p - \mathbf{r}) = \frac{\exp\left(i \frac{\omega}{c} |\mathbf{r}_p - \mathbf{r}|\right)}{|\mathbf{r}_p - \mathbf{r}|^2} \xi(\mathbf{r}_p - \mathbf{r}) \cos \theta_p \cos \theta, \\ \cos \theta_p = \mathbf{n}_p \cdot \frac{(\mathbf{r} - \mathbf{r}_p)}{|\mathbf{r} - \mathbf{r}_p|}, \cos \theta = \mathbf{n} \cdot \frac{(\mathbf{r}_p - \mathbf{r})}{|\mathbf{r}_p - \mathbf{r}|}, \quad (22)$$

40 where  $\omega$  is the light wave frequency,  $c$  is the speed of light,  $\mathbf{r}_p$  and  $\mathbf{r}$  are defined above for Eqs. (20) and (21),  $\xi$  is the visibility factor, which is either unity, if both points  $\mathbf{r}_p$  and  $\mathbf{r}$  can be joined by a straight line without intersecting the surface interface, i.e., when they are visible to each other, or zero otherwise. In Eq. (22),  $\mathbf{n}$  is a unity vector normal to the surface of the detector or detector plane at point  $\mathbf{r}$  of the non-scattering medium where the flux  $J$  is measured. The numerical aperture ( $NA$ ) of the detector, maybe represented by a general function  $f$  which models light detection at different angles at the detector position  $\mathbf{r}$ . Including function  $f$ , Eq. (22) can be rewritten as:

$$50 \quad \Gamma(\mathbf{r}_p - \mathbf{r}) = f(NA, \sin \theta) \frac{\exp\left(i \frac{\omega}{c} |\mathbf{r}_p - \mathbf{r}|\right)}{|\mathbf{r}_p - \mathbf{r}|^2} \xi(\mathbf{r}_p - \mathbf{r}) \cos \theta_p \cos \theta, \\ \cos \theta_p = \mathbf{n}_p \cdot \frac{(\mathbf{r} - \mathbf{r}_p)}{|\mathbf{r} - \mathbf{r}_p|}, \cos \theta = \mathbf{n} \cdot \frac{(\mathbf{r}_p - \mathbf{r})}{|\mathbf{r}_p - \mathbf{r}|}, \quad (23)$$

[0052] An example of a function  $f$  which represents the NA of the detector would be a Gaussian function with full width at half-maximum equivalent to the NA:

$$f = \exp(-\sin^2 \theta / NA^2).$$

[0053] Upon discretization of surfaces called for by the DRBM, Eq. (21) can be rewritten as:

$$J^{DRBM}(\mathbf{r}) = \frac{1}{\pi} \sum_p J_p^{DRBM}(\mathbf{r}_p) \Gamma(\mathbf{r}_p - \mathbf{r}) \Delta S(\mathbf{r}_p) \quad (24)$$

[0054] In order to find the average intensity  $U$  at the detector, we will approximate it by  $U(r) = C_{nd} J(r)$ , where now  $C_{nd}$  is defined for the detector/non-diffusive medium interface according to Eq. (8).

[0055] The expression Eq. (24) for non-contact detectors is independent of the sources. In order to obtain an expression for non-contact sources, the same formulation can be used, due to the source-detector invariance.

[0056] It is to be understood that while the invention has been described in conjunction with the detailed description thereof, the foregoing description is intended to illustrate and not limit the scope of the invention, which is defined by the scope of the appended claims.

#### Preferred Embodiments of the Invention

[0057] In a preferred embodiment, the present invention is a method for tomographic imaging of medium comprising directing waves into a medium having a boundary  $S$ ; detecting an intensity of waves emitted from the medium by using contact or non-contact measurements of waves outside the medium; and processing the detected intensity to generate a tomographic image. The medium is diffusive or non-diffusive. Preferably, the medium is a diffusive medium. In one preferred embodiment, the medium fills an object of volume  $V$ , at least partially bounded by the boundary surface  $S$ .

[0058] The waves are directed into the medium by a source. The waves directed into the medium to be imaged can be waves of temperature, waves of light or acoustic waves. Light is preferred. Near-infrared light is most preferred.

[0059] The light source of the imaging system of the instant invention can be one or more sources specific to different chromophores, fluorophores or fluorescent imaging probes. Laser diodes can be used as light sources since they produce adequate power, are within the FDA class I and class II limits, and are stable, wavelength-specific and economical. Alternatively, filtered light can also be used.

[0060] The processing step includes representing the contribution of each wave into the detected intensity as a sum of an arbitrary integer number  $N$  of terms in a series. Each term in the series is an intensity of a wave reflected from an arbitrary surface within or outside the medium.

[0061] In a preferred embodiment, the processing step includes solving the equation (DRBM.1) for an unknown function  $G_{DRBM}^{(N)}$ , where  $G^{(N)}_{DRBM}(r_p)$  is the  $N$ -order Green function in the DRBM approximation,  $C_{nd}$  is as previously defined in Eq. (8),  $D$  is the diffusion coefficient inside the diffusive medium,  $\mathbf{n}$  is a unity vector normal to boundary surface  $S$  and

pointing into the non-diffusive medium,  $\kappa$  is a diffusive wave number  $\kappa = \sqrt{-\mu_a / D + i\omega / c}$ , for a modulation frequency  $\omega$ ,  $c$  is a speed of light in the medium,  $\mu_a$  is an absorption coefficient,  $\tau$  is an evolution step, and  $\mathbf{r}_s$  and  $\mathbf{r}_p$  are source and detector positions respectively, and wherein the detector is located at the surface, and where  $g$  is the Green's function for an infinite homogeneous diffusive medium with a wave number  $\kappa$ . given by formula  $g(\kappa|\mathbf{r}-\mathbf{r}'|) = \exp[i\kappa|\mathbf{r}-\mathbf{r}'|]/D|\mathbf{r}-\mathbf{r}'|$ , and  $N$  is an arbitrary integer not smaller than 1.

[0062] In another preferred embodiment, the processing step includes solving the equation (DRBM.2) for an unknown function  $G_{DRBM}^{(N)}$ , where  $G^{(N)}_{DRBM}(r_p)$  is the  $N$ -order Green function in the DRBM approximation,  $C_{nd}$  is as previously defined in Eq. (8),  $D$  is the diffusion coefficient inside the diffusive medium,  $\mathbf{n}$  is a unity vector normal to boundary surface

$S$  and pointing into the non-diffusive medium,  $\kappa$  is a diffusive wave number  $\kappa = \sqrt{-\mu_a / D + i\omega / c}$ , for a modulation frequency  $\omega$ ,  $c$  is a speed of light in the medium,  $\mu_a$  is an absorption coefficient,  $\tau$  is an evolution step, and  $\mathbf{r}_s$  and  $\mathbf{r}_p$  are source and detector positions respectively, and wherein the detector is located at the surface, and where  $g$  is the Green's function for an infinite homogeneous diffusive medium with a wave number  $\kappa$ . Given by formula  $g(\kappa|\mathbf{r}-\mathbf{r}'|) =$

$\exp[ik|r-r'|]/D|r-r'|$ ,  $N$  is an arbitrary integer not smaller than 1,  $U_{\text{DRBM}}^{(N)}(r_d)$  is a wave intensity at point  $r_d$ , and  $S(r')$  is the strength of the light source at position  $r'$  expressed in units of energy density.

**[0063]** The processing step can further include monitoring a gradient of the boundary surface to detect complex boundaries and automatically increasing a density of local surface discretization and the number  $N$  of terms in a series, if the boundary is complex. Alternatively, the processing step includes monitoring relative change in a value of the calculated intensity added by each term of the series and truncating the series by selecting a finite number  $N$  of terms in a series, when the relative change in a value of the calculated intensity meets convergence criteria. In a preferred embodiment, the processing step comprises monitoring the gradient of a surface boundary to detect complex boundaries, automatically increasing a density of local surface discretization and the number  $N$  of terms in a series, if the boundary is complex, and optimizing an evolution step  $a$  by assigning a value, of about  $\tau = 2 \operatorname{imag}\{k\} / \sqrt{W} + 1$ , wherein  $W$  is a mean diameter of the diffusive medium.

**[0064]** Preferably, the medium being imaged is filling a volume  $V$  of arbitrary geometry. Alternatively, the volume or object has a fixed geometry whose surface is defined in terms of a continuous function  $f[z(x,y)]$  in cartesian, polar or cylindrical coordinates. Arbitrary geometry is preferred. The object can be a sample of a biological tissue or an animal, including a human. The object may also be non-mammalian, i.e., *C. elegans*, *drosophila*, etc.

**[0065]** Three different source-detection technologies exist. Any combination of them can be used for tomography applications as described herein. The simplest is continuous wave (CW) imaging. This technique uses light of constant intensity and measures either (1) the signal due to a distribution of excited fluorophores or (2) the attenuation of light (due to tissue absorption and scattering) employing multiple source-detector pairs. The technique is technically relatively simple and usually offers the best signal-to-noise (SNR) characteristics. However, it is not best suited for imaging of intrinsic tissue contrast since it usually introduces significant crosstalk between the calculations and imaging of absorption and scattering coefficients. On the other hand, if the background optical properties are known, the method is well-suited for imaging fluorophore concentration in the steady-state. A more elaborate approach is to use intensity modulated (IM) light at a single or at multiple frequencies. With this method, modulated light attenuation and phase shifts, relative to the incident light, can be measured for multiple source-detector pairs. Compared to a CW measurement, which yields intensity attenuation, the IM technique offers two pieces of information, i.e., intensity attenuation and phase shift per source-detector pair. Amplitude and phase are usually uncorrelated measurements and can more efficiently resolve the absorption and scattering coefficient of intrinsic contrast. In the fluorescence mode, the technique can image two sets of information, fluorophore concentration and fluorescence lifetime.

**[0066]** The third approach, the time-resolved (TR) technique uses short pulses of light injected into the tissue. The technique resolves the distribution of times that the detected photons travel into the medium for multiple source-detector pairs. Time-resolved methods contain the highest information content per source-detector pair, comparable only to the IM method performed simultaneously at multiple frequencies. This can be easily explained when one considers that the Fourier transform of the time-resolved data yields information at multiple frequencies up to 1 GHz, including the continuous wave components ( $f=0$  MHz) used by the previous two methods. Therefore, the time-resolved method offers a CW component for direct comparison with the CW system, but also intensity attenuation and phase-shift measurements at multiple-frequencies (via the Fourier transform) that can image intrinsic absorption and scattering, and also fluorophore concentration and fluorescence lifetime.

**[0067]** The step of detection can be accomplished by either contact or non-contact measurements of emitted wave intensity. In one embodiment, contact measurements are made using optical guides, fiber guides, optical matching fluids, lenses or any combination thereof. In another embodiment non-contact measurements are made using a system of lenses, pinholes, apertures or any combination thereof. Non-contact measurements are preferred.

**[0068]** The method of the present invention can further include selecting a tomographic imaging method. The tomographic imaging method can be selected from the group consisting of diffuse optical tomography, fluorescence-mediated tomography, near-field optical tomography and thermal tomography.

**[0069]** The preferred intrinsic absorbers, fluorochrome, or scatterer is selected from the group comprising hemoglobin, water, lipid, myoglobin, tissue chromophores and organelles.

**[0070]** These steps can also be repeated at predetermined intervals thereby allowing for the evaluation of emitted light in an object over time.

**[0071]** Preferred fluorescent imaging probes that can be used with the present invention include, but are not limited to (1) probes that become activated after target interaction (Weissleder, et al., *Nature Biotech*, 17:375-378, 1999; Bremer, et al., *Nature Med.*, 7:743-748, 2001), (2) wavelength shifting beacons (Tyagi et al., *Nat. Biotechnol.*, 18:1191-1196, 2000), (3) multicolor fluorescence probes (Tyagi et al., *Nat. Biotechnol.*, 16:49-53, 1998), or (4) probes that have high binding affinity to targets, i.e., that remain within a target region while non-specific probes are cleared from the body (Achilefu et al., *Invest. Radiol.*, 35:479-485, 2000; Becker, et al., *Nature Biotech* 19:327-331, 2001; Bujai et al., *J. Biomed. Opt.* 6:122-133, 2001; Ballou et al., *Biotechnol. Prog.* 13:649-658, 1997; Neri et al., *Nature Biotech* 15:1271-1275, 1997.),

(5) or probes that by themselves that preferentially accumulate in diseased tissue at a different rate compared to normal tissue (Reynolds, et al., Photochem Photobiol 70:87-94, 1999; Becker et al., Photochem Photobiol 72:234-241, 2000).

**[0072]** The methods of the invention can be used to determine a number of indicia, including tracking the localization of the fluorescent imaging probe in an object over time or assessing changes or alterations in the metabolism and/or excretion of the fluorescent imaging probe in the subject over time. The methods can also be used to follow therapy for such diseases by imaging molecular events and biological pathways modulated by such therapy, including but not limited to determining efficacy, optimal timing, optimal dosing levels (including for individual patients or test subjects), and synergistic effects of combinations of therapy.

**[0073]** The invention can be used to help a physician or surgeon to identify and characterize areas of disease, such as arthritis, cancers and specifically colon polyps, or vulnerable plaque, to distinguish diseased and normal tissue, such as detecting tumor margins that are difficult to detect using an ordinary operating microscope, e.g., in brain surgery, help dictate a therapeutic or surgical intervention, e.g., by determining whether a lesion is cancerous and should be removed or non-cancerous and left alone, or in surgically staging a disease, e.g., intraoperative lymph node staging.

**[0074]** The methods of the invention can also be used in the detection, characterization and/or determination of the localization of a disease, especially early disease, the severity of a disease or a disease-associated condition, the staging of a disease, and monitoring and guiding various therapeutic interventions, such as surgical procedures, and monitoring drug therapy, including cell based therapies. Examples of such disease or disease conditions include inflammation (e.g., inflammation caused by arthritis, for example, rheumatoid arthritis), all types of cancer (e.g., detection, assessing treatment efficacy, prognosis, characterization), cardiovascular disease (e.g., atherosclerosis and inflammatory conditions of blood vessels, ischemia, stroke, thrombosis), dermatologic disease (e.g., Kaposi's Sarcoma, psoriasis), ophthalmic disease (e.g., macular degeneration, diabetic retinopathy), infectious disease (e.g., bacterial, viral, fungal and parasitic infections), immunologic disease (e.g., Acquired Immunodeficiency Syndrome, lymphoma, multiple sclerosis, rheumatoid arthritis, diabetes mellitus), central nervous system disease (e.g., Parkinson's disease, Alzheimer's disease), and bone-related disease (e.g., osteoporosis, primary and metastatic bone tumors, osteoarthritis). The methods of the invention can therefore be used, for example, to determine the presence of tumor cells and localization of tumor cells, the presence and localization of inflammation, including the presence of activated macrophages, for instance in atherosclerosis or arthritis, the presence and localization of vascular disease including areas at risk for acute occlusion (i.e., vulnerable plaques) in coronary and peripheral arteries, regions of expanding aneurysms, unstable plaque in carotid arteries, and ischemic areas. The methods and compositions of the invention can also be used in identification and evaluation of apoptosis, necrosis, hypoxia and angiogenesis.

**[0075]** Importantly, the methods of the present invention may be used in combination with other imaging compositions and methods. For example, the methods of the present invention may be used in combination with other traditional imaging modalities such as X-ray, CT, PET, SPECT, and MRI. For instance, the methods of the present invention may be used in combination with CT and MRI to obtain both anatomical and molecular information simultaneously, for instance by co-registration of a tomographic image with an image generated by another imaging modality. In particular, the combination with MRI or CT is preferable given the high spatial resolution of these imaging techniques. DOT imaging (absorption only) has already been combined with MRI imaging (Ntziachristos et al., Proc. Natl. Acad. Sci., USA, 97: 2767-72, 1999) while one of the examples in this application teaches how to combine FMT imaging with MRI.

#### EXEMPLIFICATION

**[0076]** The invention is further described in the following examples, which do not limit the scope of the invention described in the claims.

##### Example 1 KA is Several Orders of Magnitude Faster Than More Rigorous Numerical Methods Such as FD or ET.

**[0077]** Referring to FIG. 4, the computing times achieved by using the KA as defined by equation (12) is compared to the extinction theorem (ET) and finite-differences solution (FD). While both ET and FD methods have a strong non-linear dependence as the area of the surface and the volume investigated increases, the KA method scales linearly with the size of the problem and more importantly it is faster than the ET and FD methods by almost three-orders of magnitude.

**[0078]** By way of a practical example, the number of discretization points for a sphere of radius 2 cm needed in order to maintain a one transport mean free path ( $1\tau=D/3$ ) distance between points ( $N\sim 5000$ ) was used to compare the speed of the KA and ET methods. In this case, it takes the KA methods 70 seconds and the ET method 50 minutes to solve the problem, indicating that the KA is approximately 40 times faster than the ET method. A more realistic surface such as the adult head, would imply an equivalent radius of at least 4cm, and thus  $N\sim 20000$ . In this case, the KA takes on the order of 90 seconds, whereas the ET takes on the order of 45 hours for only one forward solution. In this more realistic case, the KA is 1800 times faster. Similar conclusions can be reached for the FD method. Also, due to its linearity, large numbers of surface points are possible with the KA, namely  $N\sim 10E+6$ , whereas with the ET, such large

matrices are impossible to solve at the present time.

**[0079]** These results indicate that utilizing KA allows fast, real-time application of optical tomographic techniques.

#### Example 2 The Errors of The KA Due to Shadowing Effect

**[0080]** So-called shadowing effect appears when certain surface areas are blocked from the source by the geometry of the interface. Since the KA only considers first order reflections at the interface, errors appear in the proximities of the shadow regions of a source. Furthermore, since these shadow areas are not taken into account in the KA, it predicts higher values of the intensity for these areas.

**[0081]** Referring to FIGs. 5 (a) - (d), the shadow effect is demonstration of for the KA method and for the infinite case for a cylinder of  $R=2.5$  cm with a sine profile in the boundary of amplitude 0.5 cm, and period  $\pi/4$ . The error is plotted as a percentage of the absolute photon field strength at each point. Error committed for different source locations using the KA are shown in (a) and (c) and using the homogeneous Crreen's function in (b) and (d). The following source locations were considered: ( $\rho = 2.3\text{cm}, \theta = 0$ ) for (a) and (b), and ( $\rho = 1.5\text{cm}, \theta = 0$ ) for (c) and (d). In all  $\mu_s' = 10\text{cm}^{-1}, \mu_o = 0.1\text{cm}^{-1}$ .

**[0082]** In general, it had been demonstrated that the KA calculates the average intensity with errors that are less than 5% inside the volume (see FIG. 5 (a) and (c)), but in the shadow regions near the interface, errors approach 20% or more. The errors in these regions are especially significant since they are at the boundary interfaces where the light sources and detectors would be likely located.

#### Example 3 The Errors of the KA When Imaging Small Volumes With Weak Absorption

**[0083]** A comparison of the intensity generated by a point source in a cylindrical geometry using the KA versus the exact solution, (ET) with different several radius and optical properties is shown in FIG. 6. Error in the KA were plotted against absorption coefficient for different radii and scattering coefficients for a case of a smooth cylinder (i.e., no shadowing effect).

**[0084]** The smaller the dimensions of the geometry and the smaller the absorption coefficient the larger the error committed by the KA method. As seen in this figure, the error increases as the volume of the medium or the absorption decreases. From FIG. 6(a), it can be concluded that in order to make practical use of the KA (assuming a minimum of 5% accuracy), either large volumes and therefore small curvatures need to be present ( $R > 2.5\text{cm}$ ), or very large absorption coefficients are needed ( $\mu_a > 0.11/\text{cm}$ ).

#### Example 4: Computation Times of the DRBM

**[0085]** Computation times of the first four orders of the DRBM are shown in FIG. 7. As can be seen, the computation time is still linear even when dealing with N-order approximations. While the computation time increases the linear dependence with the number of surface points remains since there is not matrix inversion involved in the DRBM method. The computations times achieved by the different orders are very close and orders of magnitude lower than numerical methods shown in FIG. 4.

#### Example 5: Increasing Time Efficiency

**[0086]** Computation times using equation (DRBM.4) for the 1<sup>st</sup> order DRBM are shown in FIG. 8. As shown, the 1<sup>st</sup>-order DRBM with image sources is 3 orders of magnitude faster than the KA method with Fourier transforms. When compared with rigorous numerical solutions such as ET or FD, the DRBM is 5-6 orders of magnitude ( $10^5$ - $10^6$ ) faster. Higher DRBM orders impose only a slight increase in computation time as evident in FIG. 7.

#### Example 6: Imaging Demonstration of the DRBM

**[0087]** To demonstrate the efficiency of the DRBM to image small volumes with complex boundaries, simulations were performed using an exact forward solver to evaluate its performance when a) the boundary is not exactly known and b) when an approximation to the forward model is used, i.e., when one approximates the actual arbitrary boundary with a generic boundary such as an ellipse or a slab. The DRBM method was also compared to an exact solution (ET method) and to the KA method. FIG. 9 depicts reconstruction of the simulated geometry in (a) using the ET method, (b) the 2<sup>nd</sup> order DRBM for exact geometry, (c) 2<sup>nd</sup> order DRBM for an approximate boundary indicated by the ellipsoid solid line and (d) transmittance geometry using the expression of a slab. FIG. 9 demonstrates the effect of using geometrically accurate or geometrically approximate forward models in modeling complex boundaries and FIG. 10 depicts reconstruction of simulated geometry in FIG. 9(a) using the KA method for the exact geometry. The image demonstrates the

inefficiency of the KA method to image small dimensions. In this simulation, two fluorescing objects (200nm) are contained within a complex boundary that approximates the outline of a mouse in two dimensions. In FIG. 9(a), the forward field has been calculated analytically using an exact solution (Extinction Theorem). FIG. 9(b) depicts the reconstruction obtained using the 2<sup>nd</sup> order DRBM. FIG. 9(c) depicts the image reconstruction using an elliptical outline also using the 2<sup>nd</sup> order DRBM and in FIG. 9(d) shows the reconstruction obtained assuming an infinite slab with the method of image sources. It is evident that an exact knowledge of the boundary is necessary in order to obtain a high fidelity reconstruction of the underlying geometry and that our newly developed DRBM method is very efficient in doing so. For reference, FIG. 10 illustrates the results obtained when using the KA method. As can be seen from FIG. 10, the KA is not capable of reconstructing the objects accurately in this case due to the convex complex boundary and the relatively small dimensions of the problem. In fact, the results are similar to those of the slab inversion (FIG. 9(d)).

### Data Collection and Processing

[0088] Referring to FIGs. 12A-12C, a data flow chart and a control diagram 10 is provided depicting the operation of the system and method of the present invention. Given that the waves are generated at a total of  $N_{src}$  sources and detected by to a total of  $N_{det}$  detectors, the method of the present invention generates data that can be processed into a tomographic image by a system of FIG. 1.

[0089] In step 20, the description of a boundary surface S of a volume V to be imaged is provided as either a collection of points or an equation. The surface S of the volume V under study that contains the target object, i.e. the object we wish to image and characterize, must be known *a priori*. This information may be obtained either through MRI information or any other method that gives surface information. In some cases the surface under study may be modeled through a high order polynomial of the spatial variables x and y.

[0090] In step 22, the surface S is discretized. If necessary, the number of discrete areas in those regions where the surface gradient is higher or as it is most convenient is increased to improve computation time and accuracy.

[0091] In step 24 a check is made to determine whether all sources contributed into the computed intensity. If all sources contributed, then step 48 is performed. If there are sources whose contribution was not counted, step 26 is performed.

[0092] In step 26, a source number  $isrc$  is selected and wave corresponding to the selected source are directed into the volume V. The source term distribution S(r) for source  $isrc$  is generated numerically as defined for Eq. (5). S(r) may be approximated to a point source located one transport mean free path,  $l_{tr}=1/\mu_s'$ , where  $\mu_s'$  is the reduced scattering coefficient within the tissue, or to a line source that decays exponentially in the direction normal to the boundary surface at the point of incidence. Alternatively, the non-contact formulation presented above by Eqs. (20) - (24) can be used to find flux and intensity at the boundary S generated by the selected source.

[0093] In step 28, a check is made to determine whether all the detectors from the total number of  $N_{det}$  were used to detect the signal generated by the detector selected in step 26. If all detectors were used, control is passed back to step 24. If there are detectors that were not used to detect the selected source, step 30 is performed.

[0094] In step 30, a detector number  $i_{det}$  is selected. A threshold value  $thresh$  is selected such that a contribution of a point  $\mathbf{r}_p$  on the boundary S into the intensity at the detector will be considered if  $i_{thresh} \equiv g(\mathbf{r}_s, \mathbf{r}_p)|_{\mathbf{r}_p \in S} > thresh$  and where  $g(\mathbf{r}_s, \mathbf{r}_p)$  is defined by Eq. (4). The zero-th order Green function of Eq.(DRBM.3) is found at each point of boundary that satisfies the above condition.

[0095] In step 32, Green's function  $G_{DRBM}^{(N)}$  is iteratively generated using Eq.(DRBM.1) for the desired order N. Alternatively, all orders N are generated until such order that  $(G_{DRBM}^{(N)} - G_{DRBM}^{(N-1)}) / G_{DRBM}^{(N)}$  is less than a selected value.

[0096] In step 34, a determination is made of whether contact measurements are used. If contact measurements are used, step 36 is performed. If non-contact measurements are used, step 38 is performed.

[0097] In step 36, the average intensity  $U(\mathbf{r}_d)$  is computed using Eq.(DRBM.2) for each point  $\mathbf{r}_d$  where  $g(\mathbf{r}_s, \mathbf{r}_d)|_{\mathbf{r}_d \in S} > thresh$ . Then, the control is passed back to step 28.

[0098] In step 38, a function  $f$  is selected that models the numerical aperture of the non-contact detector and function  $\Gamma$  is computed by using Eq.(23).

[0099] In step 40, intensity  $U(\mathbf{r}_p)$  is computed using Eq.(DRBM.1) at each point  $\mathbf{r}_p$  of the surface S where  $g(\mathbf{r}_s, \mathbf{r}_p)|_{\mathbf{r}_p \in S} > thresh$ .

[0100] In step 42, the surface flux values  $J_n(r_p)$  are computed by means of Eq. (20).

[0101] In step 44, the flux  $J$  at non-contact detectors is computed using the surface flux values  $J_n(r_p)$  in Eq. (23) and (24).

[0102] In step 46, intensity  $U(r_d)$  is computed at non-contact detectors by using  $U(r_d) = C_{nd} J(r_d)$ , where now  $C_{nd}$  is defined for the detector/non-diffusive medium interface according to Eq. (8). Then the control is passed back to step 28.

5 [0103] When all  $N_{det}$  detectors were used for each of  $N_{src}$  sources, control is passed to step 48. In step 48, values of the average intensity  $U(r_s, r_d)$  for all  $N_{src}$  sources and  $N_{det}$  detectors is provided to a processor, programmed to process intensity values into a tomographic image and output the image to an I/O device.

[0104] It will be appreciated by one skilled in the art that the computational methods of the present invention can be applied both to contact and non-contact measurements of any diffuse or diffuse-like medium from many different optical tomographic imaging system configurations.

[0105] While this invention has been particularly shown and described with references to preferred embodiments thereof, it will be understood by those skilled in the art that various changes in form and details may be made therein without departing from the scope of the invention encompassed by the appended claims.

15 [0106] It will be apparent to those of ordinary skill in the art that methods disclosed herein may be embodied in a computer program product that includes a computer usable medium. For example, such a computer usable medium can include a readable memory device, such as a hard drive device, a CD-ROM, a DVD-ROM, or a computer diskette, having computer readable program code segments stored thereon. The computer readable medium can also include a communications or transmission medium, such as a bus or a communications link, either optical, wired, or wireless, having program code segments carried thereon as digital or analog data signals.

20 [0107] This application is a divisional application of European patent application 03734381.1 (the parent application).

[0108] The parent application describes a method for tomographic imaging of medium comprising: (a) directing waves into a medium having a boundary  $S$ ; (b) detecting an intensity of waves emitted from the medium by using contact or non-contact measurements of waves outside the medium; and (c) processing the detected intensity to generate a tomographic image.

25 [0109] The medium may be diffusive or non-diffusive.

[0110] The medium in an embodiment fills an object of volume  $V$ , at least partially bounded by the boundary surface  $S$ . The volume  $V$  may be of arbitrary geometry.

[0111] Step (c) may include representing the contribution of each wave into the detected intensity as a sum of an arbitrary integer number  $N$  of terms in a series. Each term in the series may be an intensity of a wave reflected from an arbitrary surface within or outside the medium. In an embodiment, step (c) includes determining  $G_{DRBM}^{(N)}$  according to:

$$35 \quad G_{DRBM}^{(N)}(\mathbf{r}_s, \mathbf{r}_p) \Big|_{\mathbf{r} \in S} = G_{DRBM}^{(N-1)}(\mathbf{r}_s, \mathbf{r}_p) \Big|_{\mathbf{r} \in S} - \tau g(\kappa |\mathbf{r}_s - \mathbf{r}_p|) + \tau \frac{1}{4\pi} \int_S \left[ \frac{\partial g(\kappa |\mathbf{r}' - \mathbf{r}_p|)}{\partial \mathbf{n}'} + \frac{1}{C_{nd} D} g(\kappa |\mathbf{r}' - \mathbf{r}_p|) \right] G_{DRBM}^{(N-1)}(\mathbf{r}_s, \mathbf{r}') dS'$$

40 where  $G_{DRBM}^{(N)}(\mathbf{r}_p)$  is the  $N$ -order Green function in the DRBM approximation,  $D$  is the diffusion coefficient inside the diffusive medium,  $\mathbf{n}$  is a unity vector normal to boundary surface  $S$  and pointing into the non-diffusive medium,  $\kappa$  is a

diffusive wave number  $\kappa = \sqrt{-\mu_a / D + i\omega / c}$ , for a modulation frequency  $\omega$ ,  $c$  is a speed of light in the medium,  $\mu_a$  is an absorption coefficient,  $\tau$  is an evolution step, and  $\mathbf{r}_s$ , and  $\mathbf{r}_p$  are source and detector positions respectively, and wherein the detector is located at the surface, and where  $g$  is the Green's function for an infinite homogeneous diffusive medium with a wave number  $\kappa$ , given by formula  $g(\kappa |\mathbf{r} - \mathbf{r}'|) = \exp[i\kappa |\mathbf{r} - \mathbf{r}'|] / D |\mathbf{r} - \mathbf{r}'|$ , and  $N$  is an arbitrary integer not smaller than 1, and

45 where  $C_{nd}$  is a total reflectivity of the boundary surface  $S$ , integrated over all angles, and expressed through the Fresnel reflection coefficients  $\gamma$  as:

$$50 \quad C_{nd} = \frac{2 - R_J^{1 \rightarrow 0} - R_J^{0 \rightarrow 1}}{R_J^{0 \rightarrow 1}}$$

55 where

$$R_J^{1 \rightarrow 0} = \int_0^1 [1 - |r_{10}(\mu)|^2] \mu^2 d\mu$$

5

$$R_J^{0 \rightarrow 1} = \int_0^1 [1 - |r_{01}(\mu)|^2] \mu d\mu$$

10

$$R_U^{0 \rightarrow 1} = \int_0^1 [1 - |r_{01}(\mu)|^2] \mu^2 d\mu$$

15 and where  $\mu = \cos\theta$  for an incidence angle  $\theta$ ,  $r_{01}$  and  $r_{10}$  represent the reflection coefficients when the incident wave comes from the inner, diffusive medium having an index of refraction  $n_{in}$ , or outer, non-diffusive medium having an index of refraction  $n_{out}$ , respectively, and are defined in terms of the parallel and perpendicular polarization components as:

20

$$|r|^2 = \frac{1}{2} (|r_{\perp}|^2 + |r_{\parallel}|^2), \quad r_{\parallel} = \frac{n_{in} \cos \theta_t - n_{out} \cos \theta_i}{n_{in} \cos \theta_t + n_{out} \cos \theta_i}, \quad r_{\perp} = \frac{n_{in} \cos \theta_i - n_{out} \cos \theta_t}{n_{in} \cos \theta_i + n_{out} \cos \theta_t},$$

25 and where  $\cos\theta_t$  is the cosine of the transmitted angle, which is found from Snell's law  $n_{out} \sin\theta_t = n_{in} \sin\theta_i$ .

**[0112]** In an embodiment, step (c) includes determining  $G_{DRBM}^{(N)}$  and  $U_{DRBM}^{(N)}$  according to:

30

$$G_{DRBM}^{(N)}(\mathbf{r}_s, \mathbf{r}_d) = g(\kappa |\mathbf{r}_s - \mathbf{r}_d|) + \frac{1}{4\pi} \int_S \left[ \frac{\partial g(\kappa |\mathbf{r}' - \mathbf{r}_d|)}{\partial \mathbf{n}'} + \frac{1}{C_{nd} D} g(\kappa |\mathbf{r}' - \mathbf{r}_d|) \right] G_{DRBM}^{(N)}(\mathbf{r}_s, \mathbf{r}') dS',$$

35

$$U_{DRBM}^{(N)}(\mathbf{r}_d) = \int_V S(\mathbf{r}') G_{DRBM}^{(N)}(\mathbf{r}', \mathbf{r}_d) d\mathbf{r}'$$

40 where  $G_{DRBM}^{(N)}(\mathbf{r}_p)$  is the N-order Green function in the DRBM approximation, D is the diffusion coefficient inside the diffusive medium,  $\mathbf{n}$  is a unity vector normal to boundary surface S and pointing into the non-diffusive medium,  $\kappa$  is a diffusive wave number  $\kappa = \sqrt{-\mu_a / D + i\omega / c}$ , for a modulation frequency  $\omega$ , c is a speed of light in the medium,  $\mu_a$  is an absorption coefficient,  $\tau$  is an evolution step, and  $\mathbf{r}_s$  and  $\mathbf{r}_p$  are source and detector positions respectively, and wherein the detector is located at the surface, and where g is the Green's function for an infinite homogeneous diffusive medium with a wave number  $\kappa$  given by formula

50

$$g(\kappa |\mathbf{r} - \mathbf{r}'|) = \exp[i\kappa |\mathbf{r} - \mathbf{r}'|] / D |\mathbf{r} - \mathbf{r}'|,$$

N is an arbitrary integer not smaller than 1,  $U_{DRBM}^{(N)}(\mathbf{r}_d)$  is a wave intensity at point  $\mathbf{r}_d$ , and  $S(\mathbf{r}')$  is the strength of the light source at position  $\mathbf{r}'$  expressed in units of energy density, and where  $C_{nd}$  is a total reflectivity of the boundary surface S, integrated over all angles, and expressed through the Fresnel reflection coefficients r as:

55

$$C_{nd} = \frac{2 - R_J^{1 \rightarrow 0} - R_J^{0 \rightarrow 1}}{R_V^{0 \rightarrow 1}}$$

5

where

10

$$R_J^{1 \rightarrow 0} = \int_0^1 [1 - |r_{10}(\mu)|^2] \mu^2 d\mu$$

15

$$R_J^{0 \rightarrow 1} = \int_0^1 [1 - |r_{01}(\mu)|^2] \mu d\mu$$

20

$$R_V^{0 \rightarrow 1} = \int_0^1 [1 - |r_{01}(\mu)|^2] \mu^2 d\mu$$

and where  $\mu = \cos\theta$  for an incidence angle  $\theta$ ,  $r_{01}$  and  $r_{10}$  represent the reflection coefficients when the incident wave comes from the inner, diffusive medium having an index of refraction  $n_m$  or outer, non-diffusive medium having an index of refraction  $n_{out}$ , respectively, and are defined in terms of the parallel and perpendicular polarization components as:

25

$$|r|^2 = \frac{1}{2} (|r_{\perp}|^2 + |r_{\parallel}|^2), \quad r_{\parallel} = \frac{n_m \cos \theta_t - n_{out} \cos \theta_i}{n_m \cos \theta_i + n_{out} \cos \theta_t}, \quad r_{\perp} = \frac{n_m \cos \theta_i - n_{out} \cos \theta_t}{n_m \cos \theta_i + n_{out} \cos \theta_t},$$

30

and where  $\cos\theta_t$  is the cosine of the transmitted angle, which is found from Snell's law  $n_{out} \sin \theta_t = n_m \sin \theta_i$ .

**[0113]** In an embodiment step (c) further comprises : monitoring a gradient of the boundary surface to detect complex boundaries; and automatically increasing a density of local surface discretization and the number N of terms in a series, if the boundary may be complex.

35

**[0114]** In an embodiment step (c) further comprises : monitoring relative change in a value of the calculated intensity added by each term of the series; and truncating the series by selecting a finite number N of terms in a series, when the relative change in a value of the calculated intensity meets convergence criteria.

**[0115]** In an embodiment step (c) further comprises:

40

monitoring the gradient of a surface boundary to detect complex boundaries;  
automatically increasing a density of local surface discretization and the number N of terms in a series, if the boundary is complex; and

45

optimizing an evolution step  $\tau$  by assigning a value, of about  $\tau = 2 \text{imag}\{\kappa\} / \sqrt{W} + 1$ , wherein W is a mean diameter of the diffusive medium.

**[0116]** Where the volume V is of arbitrary geometry, the volume or object may have a fixed geometry whose surface may be defined in terms of a continuous function  $f[z(x, y)]$  in cartesian, polar or cylindrical coordinates. The object may be an animal or a human.

50

**[0117]** The method may further include a step of selecting a tomographic imaging method. The tomographic imaging method may be selected from the group consisting of diffuse optical tomography, fluorescence-mediated tomography, near-field optical tomography and thermal tomography.

**[0118]** The medium may be biological tissue.

55

**[0119]** In an embodiment the waves are waves of temperature.

**[0120]** In an embodiment the waves are light.

**[0121]** The wave may be continuous wave (CW), time- resolved (TR), intensity modulated (IM) or a combination

thereof. The light may be near-infrared or infrared light. Light may be continuous wave (CW), time- resolved (TR) light, intensity modulated (IM) light or any combination thereof.

[0122] In an embodiment contact measurements are made using optical guides, fiber guides, optical matching fluids, lenses or any combination thereof.

5 [0123] Non-contact measurements may be made using a system of lenses, pinholes, apertures or any combination thereof.

[0124] The parent application also describes a method of obtaining a tomographic image of a target region within an object, the method comprising: (a) directing light waves from multiple points into an object; (b) detecting light waves emitted from multiple points from the object, wherein the light is emitted from an intrinsic absorber, fluorochrome, or scatterer; (c) processing the detected light by representing the contribution of each wave into the detected intensity as a sum of an arbitrary number N of terms in a series and wherein each term in the series is an intensity of a wave reflected from an arbitrary surface within or outside a diffusive medium; and (d) forming a tomographic image that corresponds to a three-dimensional target region within said object and to a quantity of intrinsic absorber, fluorochrome, or scatterer in the target region.

15 [0125] The intrinsic absorber, fluorochrome, or scatterer may be selected from the group consisting of hemoglobin, water, lipid, myoglobin, tissue chromophores and organelles.

[0126] The parent application also describes a method of obtaining a tomographic image of a target region within an object, the method comprising: (a) administering to an object a fluorescent imaging probe; (b) directing light waves from multiple points into the object; (c) detecting fluorescent light emitted from multiple points from the object ; (d) processing the detected light by representing the contribution of each wave into the detected intensity as a sum of an arbitrary number N of terms in a series and wherein each term in the series may be an intensity of a wave reflected from an arbitrary surface within or outside a diffusive medium; and (e) forming a tomographic image that corresponds to a three-dimensional target region within the object and to a quantity of fluorescent imaging probe in the target region.

20 [0127] Steps (a) - (e) may be repeated at predetermined intervals thereby allowing for evaluation of emitted signal of the fluorescent imaging probe in the object over time. The presence, absence or level of fluorescent signal emitted by the fluorescent imaging probe may be indicative of a disease. The method may be used in the early detection, or staging of a disease. The method may be used to assess the effect of one or more pharmacological therapies on a disease. The disease may be selected from the group consisting of cancer, cardiovascular diseases, neurodegenerative diseases, immunologic diseases, autoimmune diseases, infectious diseases, dermatologic diseases, and bone diseases. The tomographic image may be co-registered with an image obtained by another imaging modality.

30 [0128] The parent application also describes a tomographic imaging system comprising:

(a) a wave source block to direct waves into an object; (b) a wave detector block to detect the intensity of waves emitted from the object and to convert the intensity of the waves into a digital signal representing waves emitted from the object ; (c) a processor to control the detector block and, optionally, the source block and to process the digital signal representing waves emitted from the object into a tomographic image on an output device, wherein the processor may be programmed to process the digital signal by representing the contribution of each wave into the detected intensity as a sum of an arbitrary integer number N of terms in a series and wherein each term in the series may be an intensity of a wave reflected from an arbitrary surface within or outside a medium.

40 [0129] The processor may be programmed to determine  $G_{DRBM}^{(N)}$  according to:

$$45 \quad G_{DRBM}^{(N)}(\mathbf{r}_s, \mathbf{r}_p) \Big|_{\mathbf{r}_e \in S} = G_{DRBM}^{(N-1)}(\mathbf{r}_s, \mathbf{r}_p) \Big|_{\mathbf{r}_e \in S} - \tau g(\kappa |\mathbf{r}_s - \mathbf{r}_p|) + \tau \frac{1}{4\pi} \int_S \left[ \frac{\partial g(\kappa |\mathbf{r}' - \mathbf{r}_p|)}{\partial \mathbf{n}'} + \frac{1}{C_{nd} D} g(\kappa |\mathbf{r}' - \mathbf{r}_p|) \right] G_{DRBM}^{(N-1)}(\mathbf{r}_s, \mathbf{r}') dS'$$

50 where  $G_{DRBM}^{(N)}(\mathbf{r}_p)$  is the N-order Green function in the DRBM approximation, D is the diffusion coefficient inside the diffusive medium,  $\mathbf{n}$  is a unity vector normal to boundary surface S and pointing into the non-diffusive medium,  $\kappa$  is a diffusive wave number  $\kappa = \sqrt{-\mu_a / D + i\omega / c}$ , for a modulation frequency  $\omega$ , c is a speed of light in the medium,  $\mu_a$  is an absorption coefficient,  $\tau$  is an evolution step, and  $\mathbf{r}_s$  and  $\mathbf{r}_p$  are source and detector positions respectively, and wherein the detector is located at the surface, and where g is the Green's function for an infinite homogeneous diffusive medium with a wave number  $\kappa$  given by formula  $g(\kappa |\mathbf{r} - \mathbf{r}'|) = \exp[i\kappa |\mathbf{r} - \mathbf{r}'|] / D |\mathbf{r} - \mathbf{r}'|$ , and N is an arbitrary integer not smaller than 1, and

where  $C_{nd}$  is a total reflectivity of the boundary surface S, integrated over all angles, and expressed through the Fresnel reflection coefficients  $r$  as:

$$C_{nd} = \frac{2 - R_J^{1 \rightarrow 0} - R_J^{0 \rightarrow 1}}{R_V^{0 \rightarrow 1}}$$

where

$$R_J^{1 \rightarrow 0} = \int_0^1 [1 - |r_{10}(\mu)|^2] \mu^2 d\mu$$

$$R_J^{0 \rightarrow 1} = \int_0^1 [1 - |r_{01}(\mu)|^2] \mu d\mu$$

$$R_V^{0 \rightarrow 1} = \int_0^1 [1 - |r_{01}(\mu)|^2] \mu^2 d\mu$$

and where  $\mu = \cos\theta$  for an incidence angle  $\theta$ ,  $r_{01}$  and  $r_{10}$  represent the reflection coefficients when the incident wave comes from the inner, diffusive medium having an index of refraction  $n_{in}$ , or outer, non-diffusive medium having an index of refraction  $n_{out}$ , respectively, and are defined in terms of the parallel and perpendicular polarization components as:

$$|r|^2 = \frac{1}{2} (|r_{\perp}|^2 + |r_{\parallel}|^2), \quad r_{\parallel} = \frac{n_{in} \cos\theta_t - n_{out} \cos\theta_i}{n_{in} \cos\theta_t + n_{out} \cos\theta_i}, \quad r_{\perp} = \frac{n_{in} \cos\theta_t - n_{out} \cos\theta_i}{n_{in} \cos\theta_t + n_{out} \cos\theta_i},$$

and where  $\cos\theta_t$  is the cosine of the transmitted angle, which is found from Snell's law  $n_{out} \sin\theta_t = n_{in} \sin\theta_i$ .

**[0130]** The processor may be programmed to determine  $G_{DRBM}^{(N)}$  and  $U_{DRBM}^{(N)}$  according to:

$$G_{DRBM}^{(N)}(\mathbf{r}_s, \mathbf{r}_d) = g(\kappa |\mathbf{r}_s - \mathbf{r}_d|) + \frac{1}{4\pi} \int_S \left[ \frac{\partial g(\kappa |\mathbf{r}' - \mathbf{r}_d|)}{\partial \mathbf{n}'} + \frac{1}{C_{nd} D} g(\kappa |\mathbf{r}' - \mathbf{r}_d|) \right] G_{DRBM}^{(N)}(\mathbf{r}_s, \mathbf{r}') dS'$$

$$U_{DRBM}^{(N)}(\mathbf{r}_d) = \int_V S(\mathbf{r}') G_{DRBM}^{(N)}(\mathbf{r}', \mathbf{r}_d) d\mathbf{r}'$$

wherein where  $G_{DRBM}^{(N)}(\mathbf{r}_p)$  is the N-order Green function in the DRBM approximation, D is the diffusion coefficient inside the diffusive medium,  $\mathbf{n}$  is a unity vector normal to boundary surface S and pointing into the non-diffusive medium,

$\kappa$  is a diffusive wave number  $\kappa = \sqrt{-\mu_a / D + i\omega / c}$ , for a modulation frequency  $\omega$ , c is a speed of light in the medium,

$\mu_a$  is an absorption coefficient,  $\tau$  is an evolution step, and  $\mathbf{r}_s$ , and  $\mathbf{r}_p$  are source and detector positions respectively, and wherein the detector is located at the surface, and where  $g$  is the Green's function for an infinite homogeneous diffusive medium with a wave number  $\kappa$  given by formula  $g(\kappa |\mathbf{r} - \mathbf{r}'|) = \exp[i\kappa |\mathbf{r} - \mathbf{r}'|] / D |\mathbf{r} - \mathbf{r}'|$ , N is an arbitrary integer not smaller than 1,  $U_{DRBM}^{(N)}(\mathbf{r}_d)$  is a wave intensity at point  $\mathbf{r}_d$ , and  $S(\mathbf{r}')$  is the strength of the light source at position  $\mathbf{r}'$  expressed in units

of energy density, and where  $C_{nd}$  is a total reflectivity of the boundary surface S, integrated over all angles, and expressed through the Fresnel reflection coefficients  $r$  as:

5

$$C_{nd} = \frac{2 - R_J^{1 \rightarrow 0} - R_J^{0 \rightarrow 1}}{R_U^{0 \rightarrow 1}}$$

10

where

15

$$R_J^{1 \rightarrow 0} = \int_0^1 [1 - |r_{10}(\mu)|^2] \mu^2 d\mu$$

20

$$R_J^{0 \rightarrow 1} = \int_0^1 [1 - |r_{01}(\mu)|^2] \mu d\mu$$

25

and where  $\mu = \cos\theta$  for an incidence angle  $\theta$ ,  $r_{01}$  and  $r_{10}$  represent the reflection coefficients when the incident wave comes from the inner, diffusive medium having an index of refraction  $n_{in}$ , or outer, non-diffusive medium having an index of refraction  $n_{out}$ , respectively, and are defined in terms of the parallel and perpendicular polarization components as:

30

$$|r|^2 = \frac{1}{2} (|r_{\perp}|^2 + |r_{\parallel}|^2), \quad r_{\parallel} = \frac{n_{in} \cos \theta_i - n_{out} \cos \theta_t}{n_{in} \cos \theta_i + n_{out} \cos \theta_t}, \quad r_{\perp} = \frac{n_{in} \cos \theta_i - n_{out} \cos \theta_t}{n_{in} \cos \theta_i + n_{out} \cos \theta_t},$$

35

and where  $\cos \theta_t$  is the cosine of the transmitted angle, which is found from Snell's law  $n_{out} \sin \theta_t = n_{in} \sin \theta_i$ .

**[0131]** The waves may be selected from the group consisting of waves of light, waves of sound and waves of temperature.

40

**[0132]** The parent application also describes an apparatus comprising : a machine executable code for a method of tomographic imaging of medium including the steps of : (a) directing waves into a medium having a boundary S ; (b) detecting an intensity of waves emitted from the medium by using contact or non-contact measurements of waves outside the medium; (c) processing the detected intensity to generate a tomographic image by representing the contribution of each wave into the detected intensity as a sum of an arbitrary integer number N of terms in a series and wherein each term in the series may be an intensity of a wave reflected from, an arbitrary surface within or outside the medium.

45

**Claims**

1. A tomographic imaging system comprising:

50

- (a) a wave source block to direct waves into a medium having a boundary S;
- (b) a wave detector block to detect an intensity of waves emitted from the medium by using non-contact measurements of waves outside the medium; and
- (c) a processor to process the detected intensity to generate a tomographic image.

55

2. The tomographic imaging system of claim 1, wherein the medium is biological tissue.

3. The tomographic imaging system of claim 1, comprising a system of lenses, pinholes, apertures or any combination

thereof to make the non-contact measurements.

4. The tomographic imaging system of claim 1, wherein the waves are selected from the group consisting of waves of light, waves of sound and waves of temperature.

5

5. The tomographic imaging system of claim 1, wherein the waves are waves of light.

6. The tomographic imaging system of claim 5, wherein the wave source block directs near-infrared light.

10 7. The tomographic imaging system of claim 1, wherein the wave is a continuous wave (CW), time-resolved (TR), intensity modulated (IM) or a combination thereof.

15 8. The tomographic imaging system of claim 5, wherein the wave detector block detects light emitted from a fluorescent imaging probe within the medium.

9. The tomographic imaging system of claim 8, wherein the presence, absence or level of fluorescent signal emitted by the fluorescent imaging probe is indicative of a disease.

20 10. The tomographic imaging system of claim 8, wherein the wave detector block detects an intensity of waves at predetermined intervals thereby allowing for evaluation of emitted signal of the fluorescent imaging probe over time.

11. The tomographic imaging system of claim 1, wherein the processor generates the tomographic image by co-registering with an image obtained by another imaging modality.

25 12. A method for generating a tomographic image of a diffusive medium, the method comprising:

- (a) directing light waves into a diffusive medium having a boundary S;
- (b) detecting an intensity of light waves emitted from the medium by using non-contact measurements of light waves outside the medium; and
- (c) processing the detected intensity to generate a tomographic image.

30

35

40

45

50

55

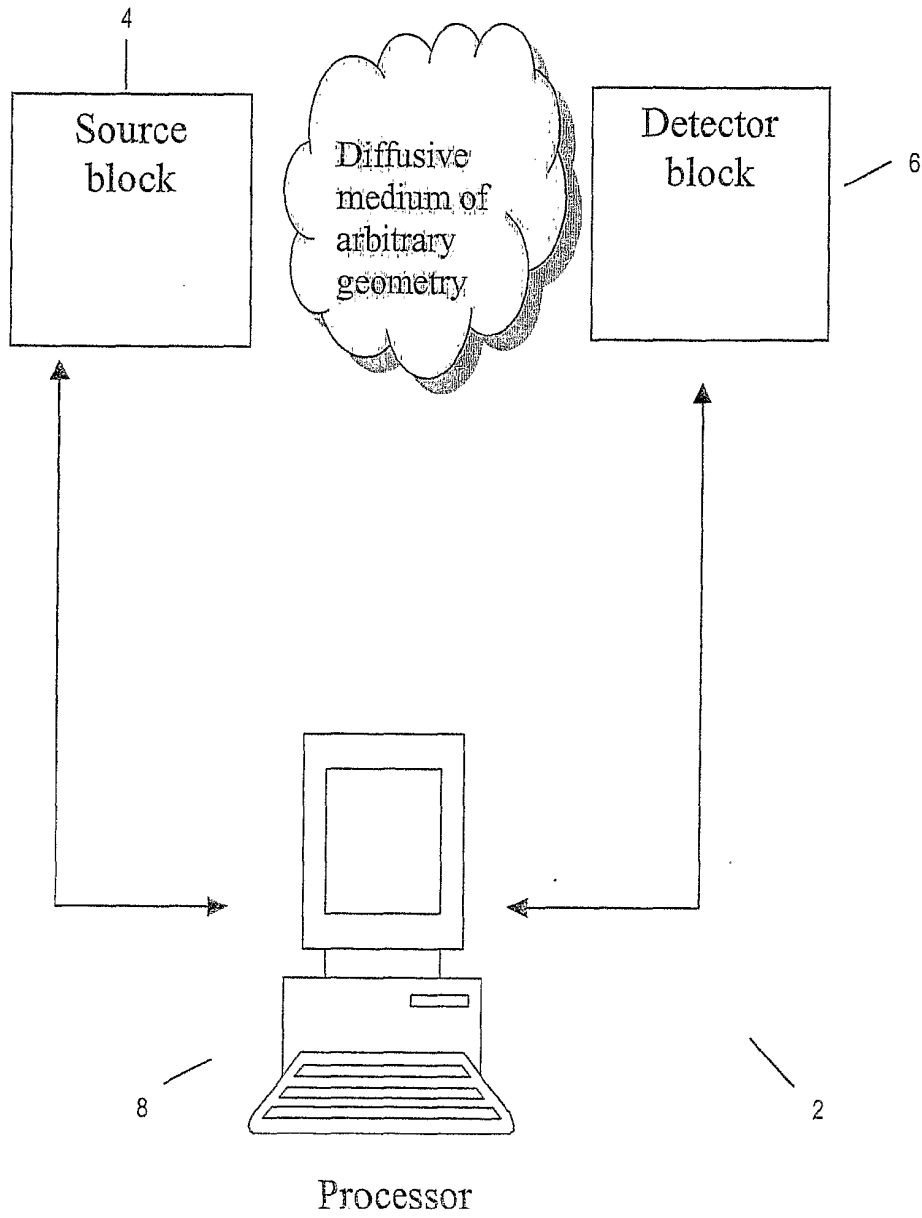


FIG. 1

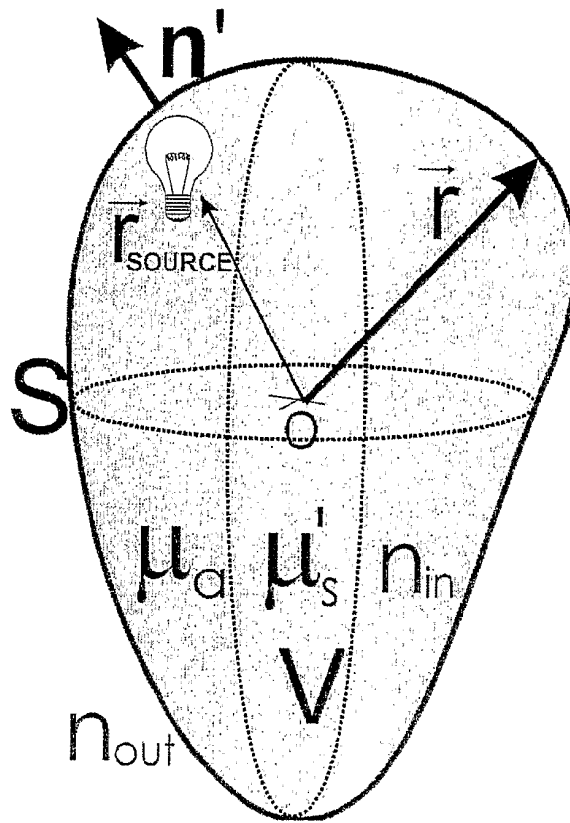


FIG. 2

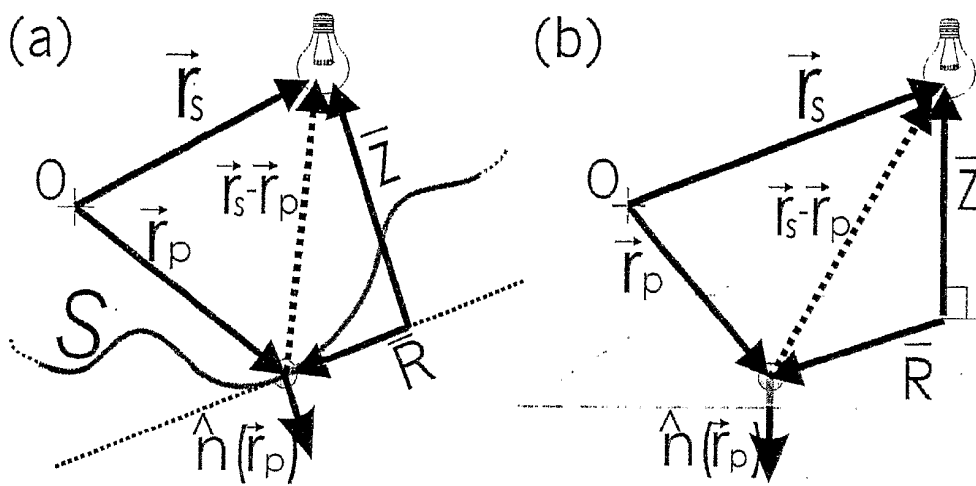


FIG. 3

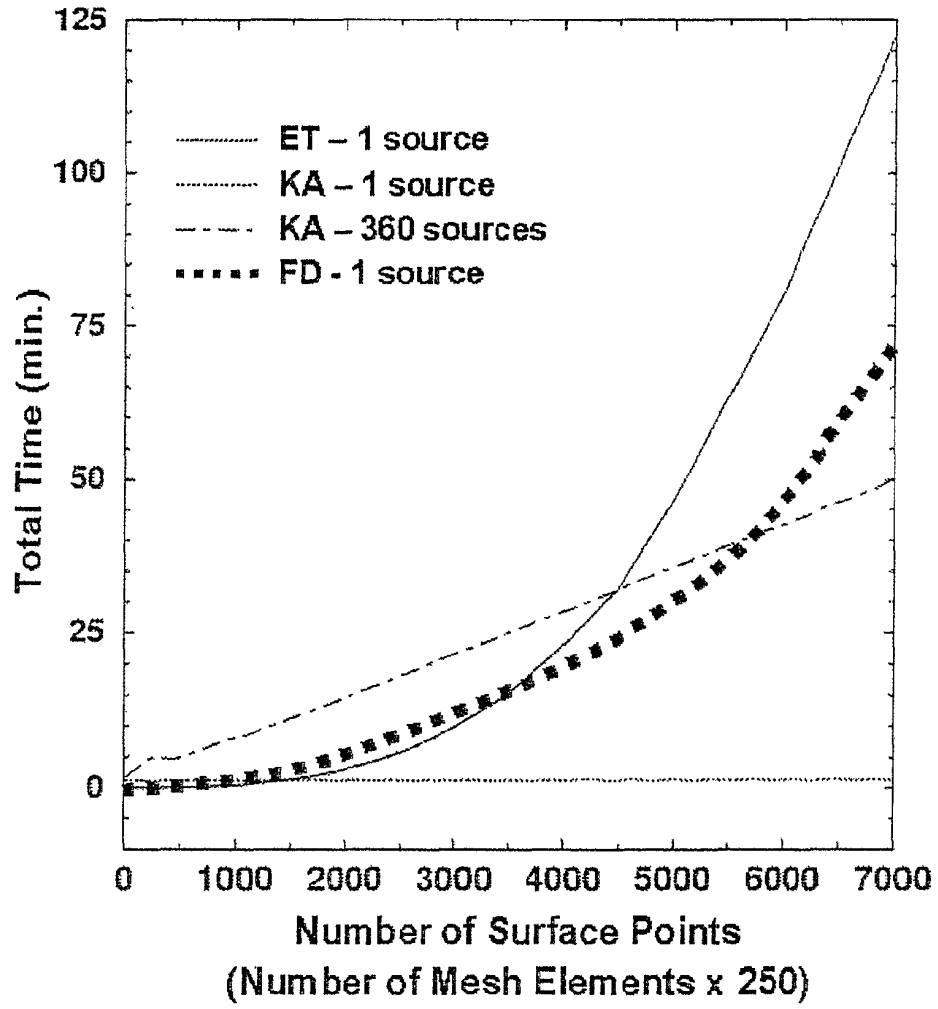


FIG. 4

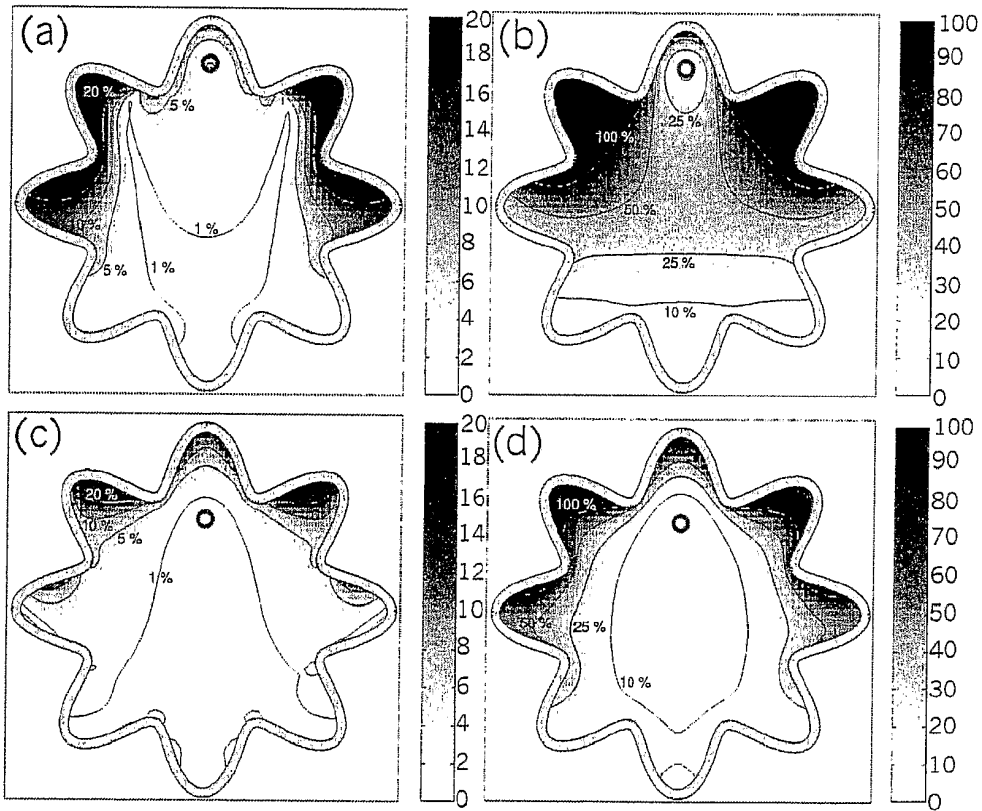


FIG. 5

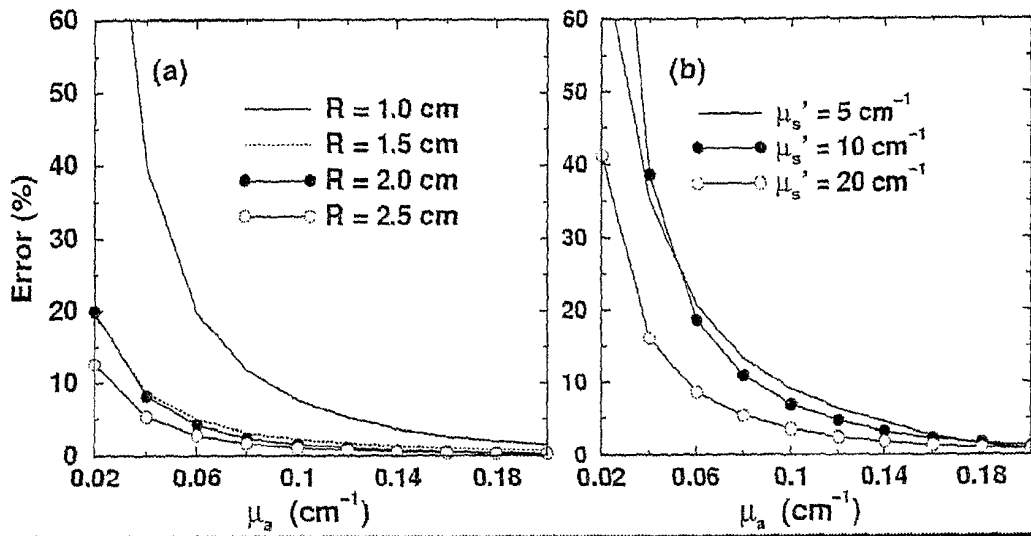


FIG. 6

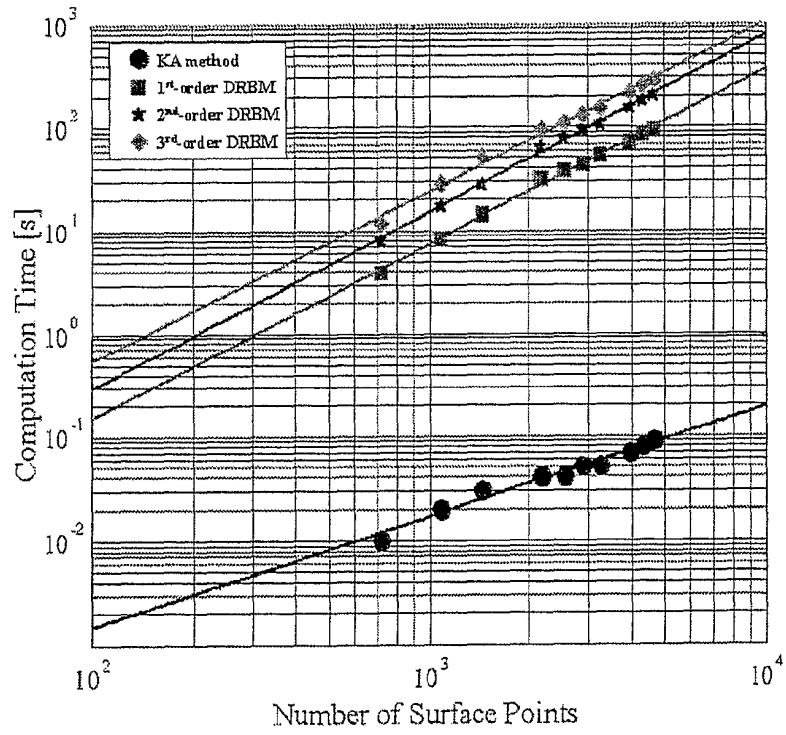


FIG. 7

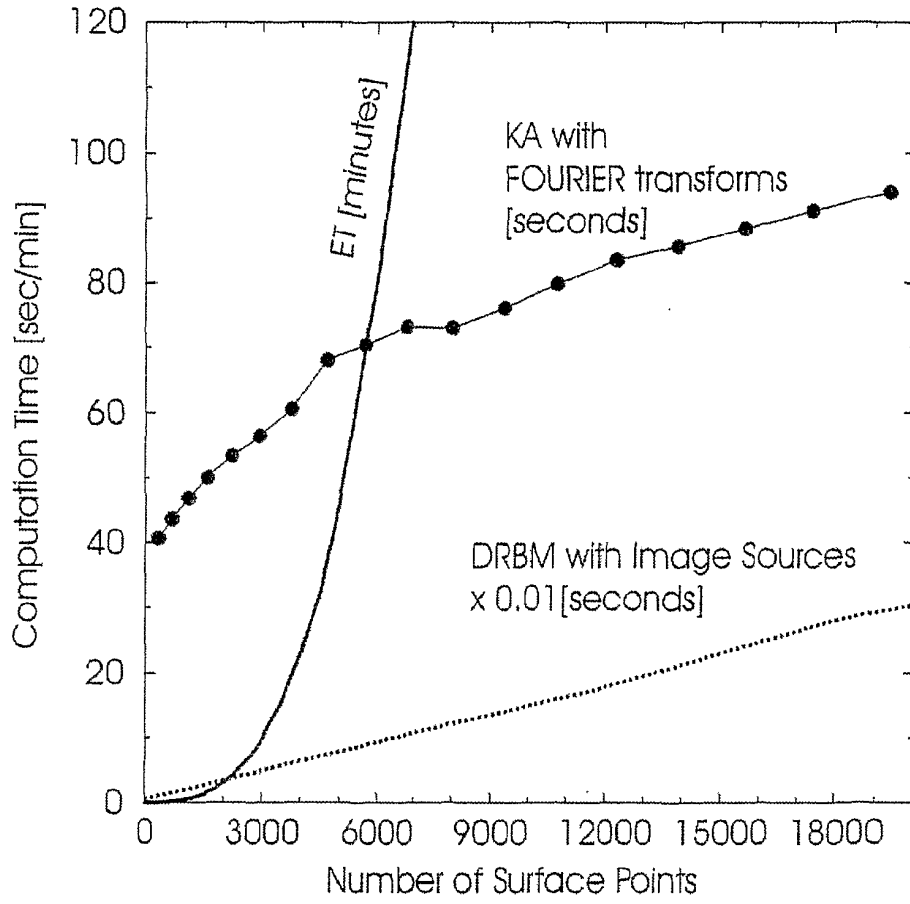


FIG. 8

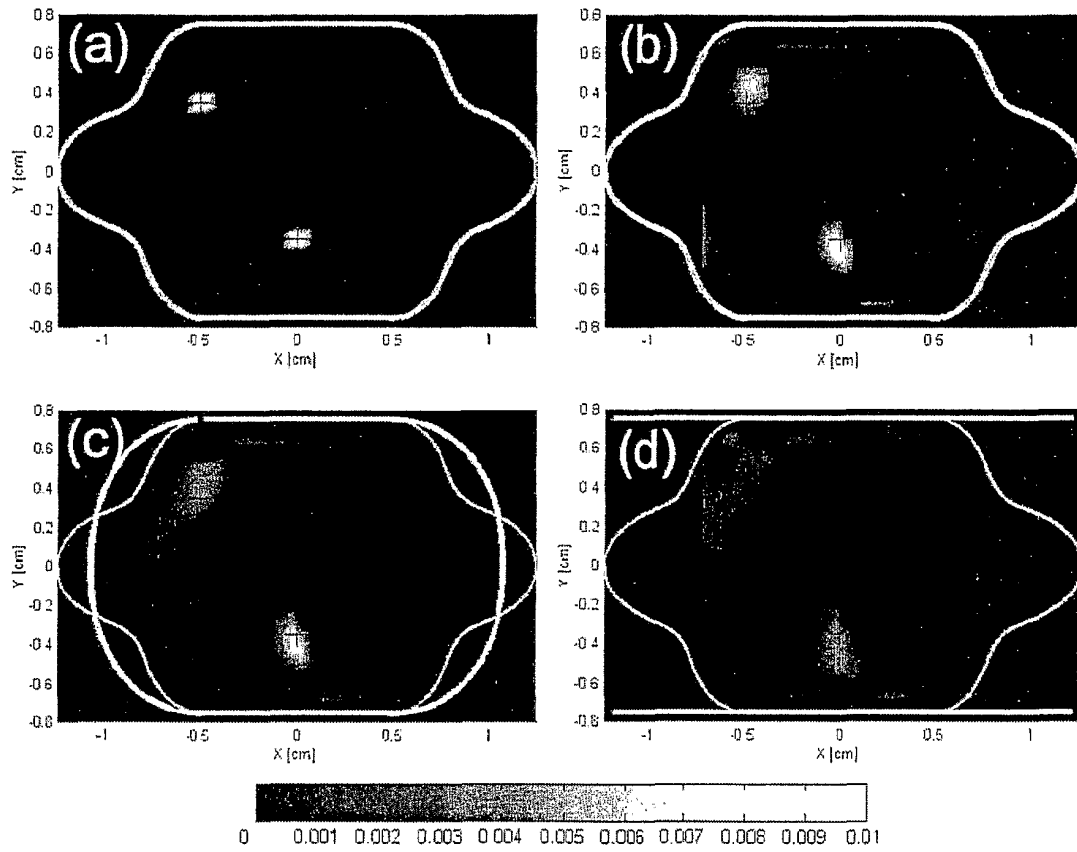


FIG. 9

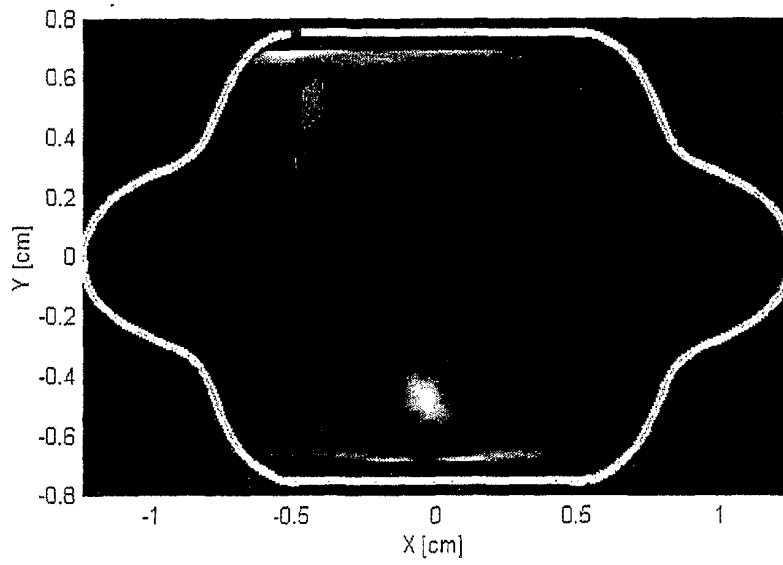


FIG. 10

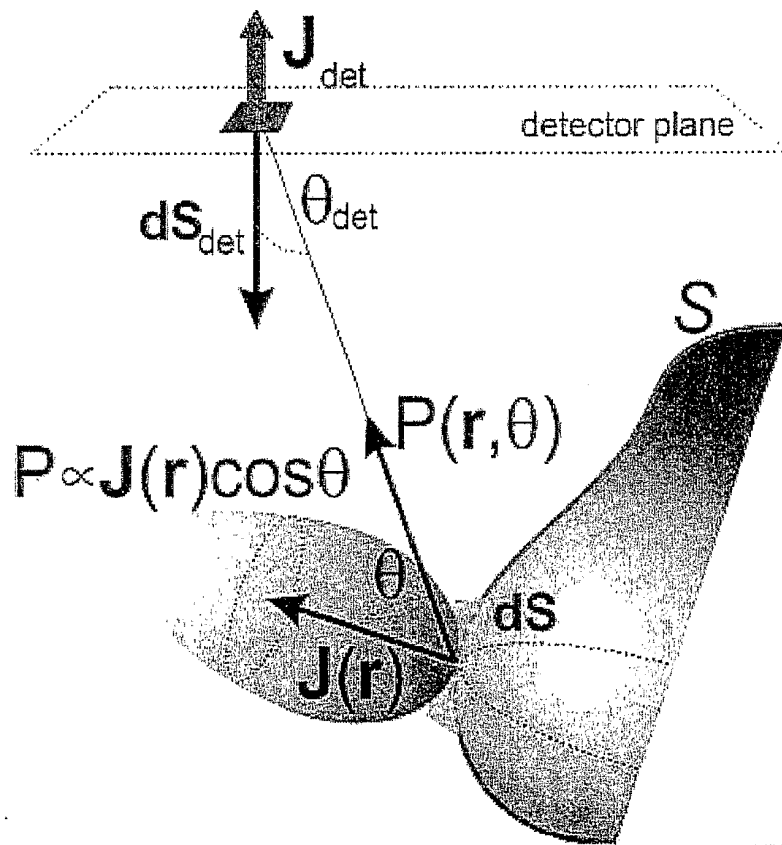


FIG. 11

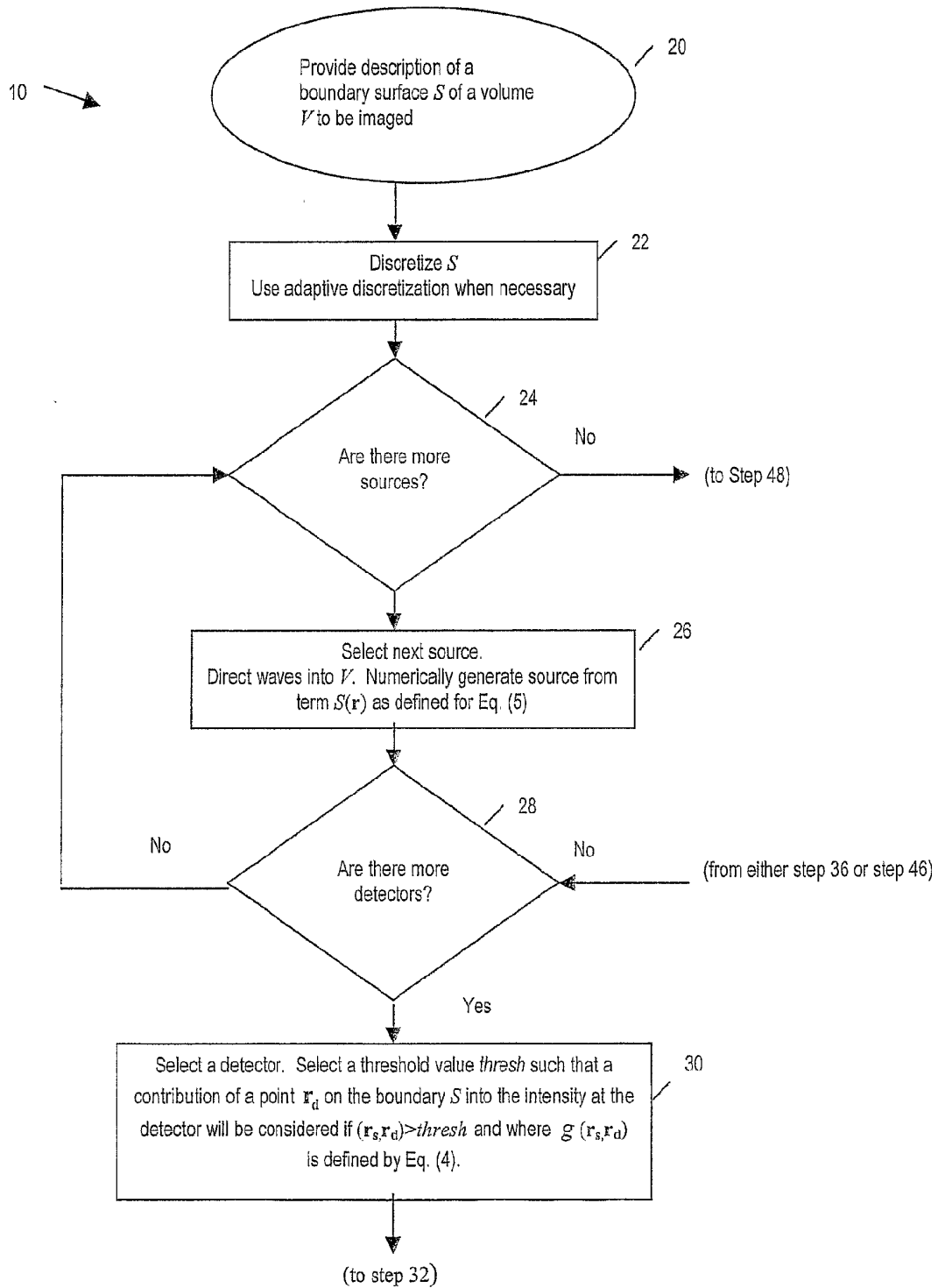


FIG. 12A

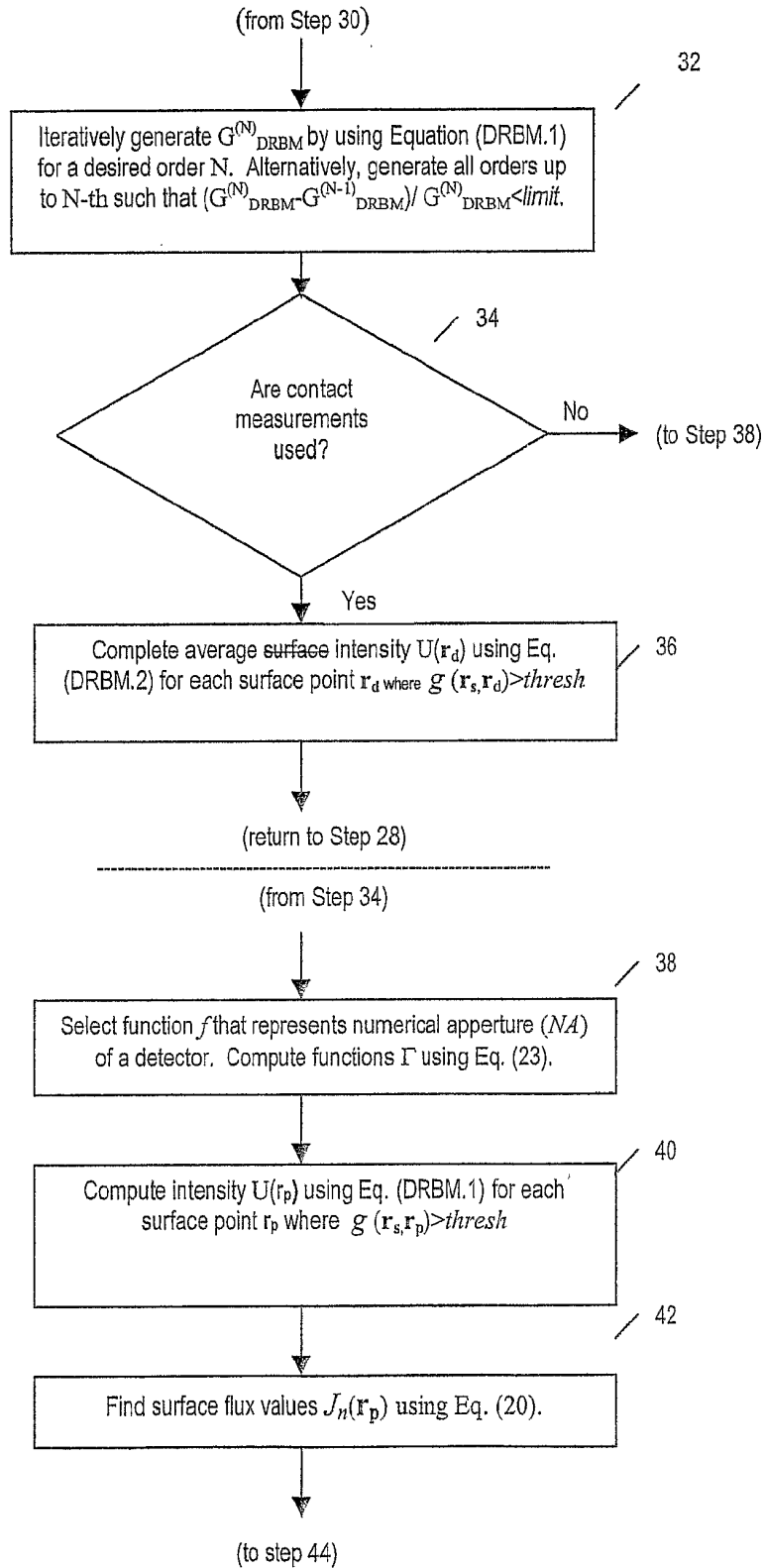


FIG. 12B

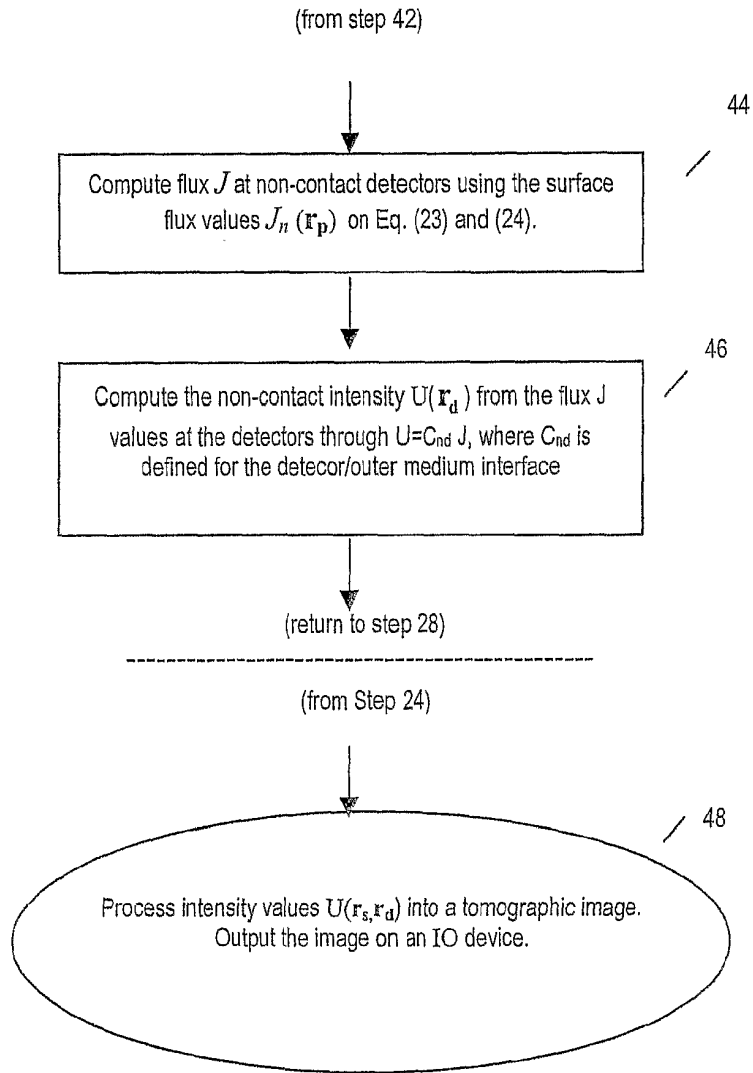


FIG. 12C

## REFERENCES CITED IN THE DESCRIPTION

This list of references cited by the applicant is for the reader's convenience only. It does not form part of the European patent document. Even though great care has been taken in compiling the references, errors or omissions cannot be excluded and the EPO disclaims all liability in this regard.

## Patent documents cited in the description

- US 38593102 P [0001]
- EP 03734381 A [0107]

## Non-patent literature cited in the description

- **NERI et al.** *Nat. Biotech.*, 1997, vol. 15, 1271-1275 [0002]
- **BALLOU et al.** *Cancer Immunol. Immunother.*, 1995, vol. 41, 257-63 [0002]
- **WEISSLEDER et al.** *Nat. Biotech.*, 1999, vol. 17, 375-178 [0002]
- **WYATT.** *Phil. Trans. R. Soc. London B*, 1997, vol. 352, 701-706 [0002]
- **TROMBERG et al.** *Phil. Trans. R. Soc. London B*, 1997, vol. 352, 661-667 [0002]
- **NTZIACHRISTOS et al.** *Proc. Natl. Acad. Sci. USA*, 2000, vol. 97, 2767-72 [0003]
- **BENARON et al.** *J. Cerebral Blood Flow Metabol.*, 2000, vol. 20, 469-77 [0003]
- **RIPOLL et al.** *Opt. Lett.*, 2002, vol. 27, 333-335 [0005]
- **BOAS et al.** *Phys. Rev. Lett.*, 1995, vol. 75, 1855-1858 [0024]
- **G. B..ARFKEN ; H. J. WEBER.** *Mathematical Methods for Physicists.* Academic Press, 1995 [0025]
- **RIPOLL et al.** *J. Opt. Soc. Am. A*, 2000, vol. 17, 1671-1681 [0028]
- **ARONSON.** *J. Opt. Soc. Am. A*, 1999, vol. 16 (5), 1066-1071 [0028]
- **ARONSON R.** *J. Opt. Soc. Am. A*, 1995, vol. 12, 2532 [0028]
- **ISHIMARU A.** *Wave Propagation and Scattering in Random Media.* IEEE press, 1997 [0028]
- **Ogilvy.** IOP publishing, 1991 [0030]
- **Nieto-Vesperinas.** Pergamon, 1996 [0030]
- **J. RIPOLL et al.** *J. Opt. Soc. Am. A*, 2001, vol. 18 [0031]
- **GOODMAN JW.** *Introduction to Fourier Optics.* McGraw Hill, 1968 [0034]
- **RIPOLL et al.** *Opt. Lett.*, 1999, vol. 24, 796-798 [0034]
- **C. MACASKILL ; B. J. KACHOYAN.** *Applied Optics*, 1993, vol. 32, 2839-2847 [0037] [0038]
- **YAGHJIAN.** *Proc. of the IEEE*, 1980, vol. 2, 248-263 [0038]
- **WEISSLEDER et al.** *Nature Biotech*, 1999, vol. 17, 375-378 [0071]
- **BREMER et al.** *Nature Med.*, 2001, vol. 7, 743-748 [0071]
- **TYAGI et al.** *Nat. Biotechnol.*, 2000, vol. 18, 1191-1196 [0071]
- **TYAGI et al.** *Nat. Biotechnol.*, 1998, vol. 16, 49-53 [0071]
- **ACHILEFU et al.** *Invest. Radiol.*, 2000, vol. 35, 479-485 [0071]
- **BECKER et al.** *Nature Biotech*, 2001, vol. 19, 327-331 [0071]
- **BUJAI et al.** *J. Biomed. Opt.*, 2001, vol. 6, 122-133 [0071]
- **BALLOU et al.** *Biotechnol. Prog.*, 1997, vol. 13, 649-658 [0071]
- **NERI et al.** *Nature Biotech*, 1997, vol. 15, 1271-1275 [0071]
- **REYNOLDS et al.** *Photochem Photobiol*, 1999, vol. 70, 87-94 [0071]
- **BECKER et al.** *Photochem Photobiol*, 2000, vol. 72, 234-241 [0071]
- **NTZIACHRISTOS et al.** *Proc. Natl. Acad. Sci., USA*, 1999, vol. 97, 2767-72 [0075]

专利名称(译)	在接触和非接触式断层扫描中具有任意几何的成像体积		
公开(公告)号	<a href="#">EP2410315A2</a>	公开(公告)日	2012-01-25
申请号	EP2011182730	申请日	2003-06-04
[标]申请(专利权)人(译)	文森医学公司		
申请(专利权)人(译)	VISEN MEDICAL , INC.		
当前申请(专利权)人(译)	VISEN MEDICAL , INC.		
[标]发明人	RIPOLL JORGE NTZIACHRISTOS VASILIS MADDEN KAREN N		
发明人	RIPOLL, JORGE NTZIACHRISTOS, VASILIS MADDEN, KAREN N		
IPC分类号	G01N21/47 A61B5/00 A61B5/05		
CPC分类号	A61B5/0059 A61B5/0073 A61B5/415 A61B5/418 A61B5/4504 A61B5/4528 G01N21/4795 A61B5/0071 A61B5/4887 G01N33/49		
优先权	60/385931 2002-06-04 US PCT/US2003/017558 2003-06-04 WO		
其他公开文献	EP2410315B1 EP2410315A3		
外部链接	<a href="#">Espacenet</a>		

摘要(译)

用于漫射介质的层析成像的方法包括将波引导到漫射介质中，通过前向场计算计算通过分解来自漫射介质内或漫射介质外的任意表面的多次反射的贡献来解决表面有界反转问题。反射直到任意顺序的不同反射次序的总和，并且使用所述漫射介质外部的波的接触或非接触测量来生成断层图像。

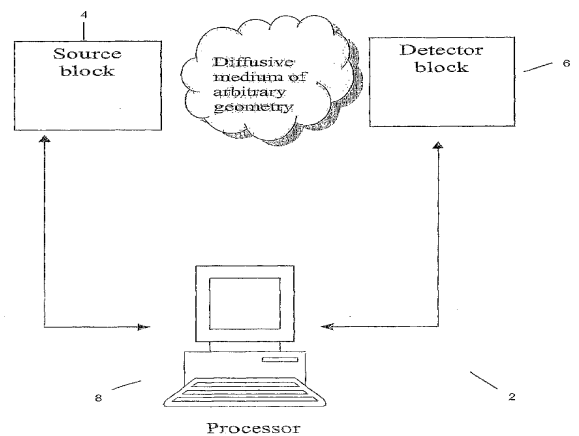


FIG. 1