

(19) World Intellectual Property Organization
International Bureau



(43) International Publication Date
5 August 2010 (05.08.2010)

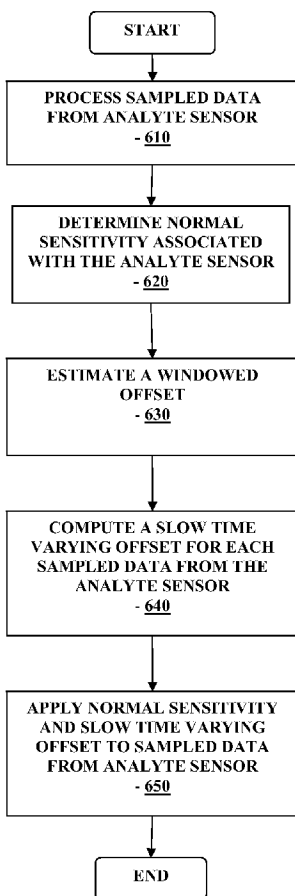
PCT

(10) International Publication Number
WO 2010/088569 A1

- (51) International Patent Classification: A61B 5/00 (2006.01)
- (21) International Application Number: PCT/US2010/022669
- (22) International Filing Date: 29 January 2010 (29.01.2010)
- (25) Filing Language: English
- (26) Publication Language: English
- (30) Priority Data: 12/362,479 29 January 2009 (29.01.2009) US
- (71) Applicant (for all designated States except US): **ABBOTT DIABETES CARE INC.** [US/US]; 1360 South Loop Road, Alameda, CA 94502 (US).
- (72) Inventor; and
- (75) Inventor/Applicant (for US only): **BUDIMAN, Erwin, Satrya** [ID/US]; 4675 Rousillon Avenue, Fremont, CA 94555 (US).
- (74) Agent: **OH, Seong-kun**; Jackson & Co., LLP, 6114 La Salle Ave., #507, Oakland, CA 94611 (US).
- (81) Designated States (unless otherwise indicated, for every kind of national protection available): AE, AG, AL, AM, AO, AT, AU, AZ, BA, BB, BG, BH, BR, BW, BY, BZ, CA, CH, CL, CN, CO, CR, CU, CZ, DE, DK, DM, DO, DZ, EC, EE, EG, ES, FI, GB, GD, GE, GH, GM, GT, HN, HR, HU, ID, IL, IN, IS, JP, KE, KG, KM, KN, KP, KR, KZ, LA, LC, LK, LR, LS, LT, LU, LY, MA, MD, ME, MG, MK, MN, MW, MX, MY, MZ, NA, NG, NI, NO, NZ, OM, PE, PG, PH, PL, PT, RO, RS, RU, SC, SD,

[Continued on next page]

(54) Title: METHOD AND DEVICE FOR PROVIDING OFFSET MODEL BASED CALIBRATION FOR ANALYTE SENSOR



(57) Abstract: Methods and devices to detect analyte in body fluid are provided. Embodiments include processing sampled data from analyte sensor, determining a single, fixed, normal sensitivity value associated with the analyte sensor, estimating a windowed offset value associated with the analyte sensor for each available sampled data cluster, computing a time varying offset based on the estimated windowed offset value, and applying the time varying offset and the determined normal sensitivity value to the processed sampled data to estimate an analyte level for the sensor.

FIGURE 6

WO 2010/088569 A1



SE, SG, SK, SL, SM, ST, SV, SY, TH, TJ, TM, TN, TR,
TT, TZ, UA, UG, US, UZ, VC, VN, ZA, ZM, ZW.

ES, FI, FR, GB, GR, HR, HU, IE, IS, IT, LT, LU, LV,
MC, MK, MT, NL, NO, PL, PT, RO, SE, SI, SK, SM,
TR), OAPI (BF, BJ, CF, CG, CI, CM, GA, GN, GQ, GW,
ML, MR, NE, SN, TD, TG).

(84) Designated States (*unless otherwise indicated, for every kind of regional protection available*): ARIPO (BW, GH, GM, KE, LS, MW, MZ, NA, SD, SL, SZ, TZ, UG, ZM, ZW), Eurasian (AM, AZ, BY, KG, KZ, MD, RU, TJ, TM), European (AT, BE, BG, CH, CY, CZ, DE, DK, EE,

Published:

— *with international search report (Art. 21(3))*

with the analyte sensor for each available sampled data cluster, computing a time varying offset based on the estimated windowed offset value, and applying the time varying offset and the determined normal sensitivity value to the processed sampled data to estimate an analyte level for the sensor.

5 Also provided are systems, computer program products, and kits.

BRIEF DESCRIPTION OF THE DRAWINGS

FIG. 1 shows a block diagram of an embodiment of a data monitoring and management system according to the present disclosure;

10 FIG. 2 shows a block diagram of an embodiment of the transmitter unit of the data monitoring and management system of FIG. 1;

FIG. 3 shows a block diagram of an embodiment of the receiver/monitor unit of the data monitoring and management system of FIG. 1;

15 FIG. 4 shows a schematic diagram of an embodiment of an analyte sensor according to the present disclosure;

FIGS. 5A-5B show a perspective view and a cross sectional view, respectively of an embodiment the analyte sensor of FIG. 4;

FIG. 6 is a flowchart illustrating the offset model based analyte sensor data calibration in accordance with one aspect of the present disclosure; and

20 FIG. 7 is a flowchart illustrating the normal sensitivity determination routine of FIG. 6 associated with the analyte sensor in accordance with one embodiment of the present disclosure.

DETAILED DESCRIPTION

25 Before the present disclosure is described in additional detail, it is to be understood that this disclosure is not limited to particular embodiments described, as such may, of course, vary. It is also to be understood that the terminology used herein is for the purpose of describing particular embodiments only, and is not intended to be limiting, since the scope of the present disclosure will be limited only by the
30 appended claims.

Where a range of values is provided, it is understood that each intervening value, to the tenth of the unit of the lower limit unless the context clearly dictates otherwise, between the upper and lower limit of that range and any other stated or

intervening value in that stated range, is encompassed within the disclosure. The upper and lower limits of these smaller ranges may independently be included in the smaller ranges is also encompassed within the disclosure, subject to any specifically excluded limit in the stated range. Where the stated range includes one or both of the limits, ranges excluding either or both of those included limits are also included in the disclosure.

Unless defined otherwise, all technical and scientific terms used herein have the same meaning as commonly understood by one of ordinary skill in the art to which this disclosure belongs. Although any methods and materials similar or equivalent to those described herein can also be used in the practice or testing of the present disclosure, the preferred methods and materials are now described. All publications mentioned herein are incorporated herein by reference to disclose and describe the methods and/or materials in connection with which the publications are cited.

It must be noted that as used herein and in the appended claims, the singular forms “a”, “an”, and “the” include plural referents unless the context clearly dictates otherwise.

The publications discussed herein are provided solely for their disclosure prior to the filing date of the present application. Nothing herein is to be construed as an admission that the present disclosure is not entitled to antedate such publication by virtue of prior disclosure. Further, the dates of publication provided may be different from the actual publication dates which may need to be independently confirmed.

As will be apparent to those of skill in the art upon reading this disclosure, each of the individual embodiments described and illustrated herein has discrete components and features which may be readily separated from or combined with the features of any of the other several embodiments without departing from the scope or spirit of the present disclosure.

The figures shown herein are not necessarily drawn to scale, with some components and features being exaggerated for clarity.

Generally, embodiments of the present disclosure relate to methods and devices for detecting at least one analyte such as glucose in body fluid. In certain embodiments, the present disclosure relates to the continuous and/or automatic in vivo monitoring of the level of an analyte using an analyte sensor.

Accordingly, embodiments include analyte monitoring devices and systems that include an analyte sensor- at least a portion of which is positionable beneath the skin of the user - for the *in vivo* detection, of an analyte, such as glucose, lactate, and the like, in a body fluid. Embodiments include wholly implantable analyte sensors and analyte sensors in which only a portion of the sensor is positioned under the skin and a portion of the sensor resides above the skin, e.g., for contact to a transmitter, receiver, transceiver, processor, etc. The sensor may be, for example, subcutaneously positionable in a patient for the continuous or periodic monitoring of a level of an analyte in a patient's interstitial fluid. For the purposes of this description, continuous monitoring and periodic monitoring will be used interchangeably, unless noted otherwise. The analyte level may be correlated and/or converted to analyte levels in blood or other fluids. In certain embodiments, an analyte sensor may be positioned in contact with interstitial fluid to detect the level of glucose, which detected glucose may be used to infer the glucose level in the patient's bloodstream. Analyte sensors may be insertable into a vein, artery, or other portion of the body containing fluid. Embodiments of the analyte sensors of the subject disclosure may be configured for monitoring the level of the analyte over a time period which may range from minutes, hours, days, weeks, or longer.

Of interest are analyte sensors, such as glucose sensors, that are capable of *in vivo* detection of an analyte for about one hour or more, e.g., about a few hours or more, e.g., about a few days or more, e.g., about three or more days, e.g., about five days or more, e.g., about seven days or more, e.g., about several weeks or at least one month. Future analyte levels may be predicted based on information obtained, e.g., the current analyte level at time t_0 , the rate of change of the analyte, etc. Predictive alarms may notify the user of predicted analyte levels that may be of concern prior in advance of the analyte level reaching the future level. This enables the user an opportunity to take corrective action.

FIG. 1 shows a data monitoring and management system such as, for example, an analyte (e.g., glucose) monitoring system 100 in accordance with certain embodiments. Embodiments of the subject disclosure are further described primarily with respect to glucose monitoring devices and systems, and methods of glucose detection, for convenience only and such description is in no way intended to limit the

scope of the disclosure. It is to be understood that the analyte monitoring system may be configured to monitor a variety of analytes at the same time or at different times.

Analytes that may be monitored include, but are not limited to, acetyl choline, amylase, bilirubin, cholesterol, chorionic gonadotropin, creatine kinase (e.g., CK-
5 MB), creatine, DNA, fructosamine, glucose, glutamine, growth hormones, hormones, ketones, lactate, peroxide, prostate-specific antigen, prothrombin, RNA, thyroid stimulating hormone, and troponin. The concentration of drugs, such as, for example, antibiotics (e.g., gentamicin, vancomycin, and the like), digitoxin, digoxin, drugs of abuse, theophylline, and warfarin, may also be monitored. In those embodiments that
10 monitor more than one analyte, the analytes may be monitored at the same or different times.

The analyte monitoring system 100 includes a sensor 101, a data processing unit 102 connectable to the sensor 101, and a primary receiver unit 104 which is configured to communicate with the data processing unit 102 via a communication
15 link 103. In certain embodiments, the primary receiver unit 104 may be further configured to transmit data to a data processing terminal 105 to evaluate or otherwise process or format data received by the primary receiver unit 104. The data processing terminal 105 may be configured to receive data directly from the data processing unit 102 via a communication link which may optionally be configured for bi-directional
20 communication. Further, the data processing unit 102 may include a transmitter or a transceiver to transmit and/or receive data to and/or from the primary receiver unit 104, the data processing terminal 105 or optionally the secondary receiver unit 106.

Also shown in FIG. 1 is an optional secondary receiver unit 106 which is operatively coupled to the communication link and configured to receive data
25 transmitted from the data processing unit 102. The secondary receiver unit 106 may be configured to communicate with the primary receiver unit 104, as well as the data processing terminal 105. The secondary receiver unit 106 may be configured for bi-directional wireless communication with each of the primary receiver unit 104 and the data processing terminal 105. As discussed in further detail below, in certain
30 embodiments the secondary receiver unit 106 may be a de-featured receiver as compared to the primary receiver, i.e., the secondary receiver may include a limited or minimal number of functions and features as compared with the primary receiver unit 104. As such, the secondary receiver unit 106 may include a smaller (in one or more,

including all, dimensions), compact housing or embodied in a device such as a wrist watch, arm band, etc., for example. Alternatively, the secondary receiver unit 106 may be configured with the same or substantially similar functions and features as the primary receiver unit 104. The secondary receiver unit 106 may include a docking portion to be mated with a docking cradle unit for placement by, e.g., the bedside for night time monitoring, and/or bi-directional communication device.

Only one sensor 101, data processing unit 102 and data processing terminal 105 are shown in the embodiment of the analyte monitoring system 100 illustrated in FIG. 1. However, it will be appreciated by one of ordinary skill in the art that the analyte monitoring system 100 may include more than one sensor 101 and/or more than one data processing unit 102, and/or more than one data processing terminal 105. Multiple sensors may be positioned in a patient for analyte monitoring at the same or different times. In certain embodiments, analyte information obtained by a first positioned sensor may be employed as a comparison to analyte information obtained by a second sensor. This may be useful to confirm or validate analyte information obtained from one or both of the sensors. Such redundancy may be useful if analyte information is contemplated in critical therapy-related decisions. In certain embodiments, a first sensor may be used to calibrate a second sensor.

The analyte monitoring system 100 may be a continuous monitoring system, or semi-continuous, or a discrete monitoring system. In a multi-component environment, each component may be configured to be uniquely identified by one or more of the other components in the system so that communication conflict may be readily resolved between the various components within the analyte monitoring system 100. For example, unique IDs, communication channels, and the like, may be used.

In certain embodiments, the sensor 101 is physically positioned in or on the body of a user whose analyte level is being monitored. The sensor 101 may be configured to at least periodically sample the analyte level of the user and convert the sampled analyte level into a corresponding signal for transmission by the data processing unit 102. The data processing unit 102 is coupleable to the sensor 101 so that both devices are positioned in or on the user's body, with at least a portion of the analyte sensor 101 positioned transcutaneously. The data processing unit 102 performs data processing functions, where such functions may include but are not

limited to, filtering and encoding of data signals, each of which corresponds to a sampled analyte level of the user, for transmission to the primary receiver unit 104 via the communication link 103. In one embodiment, the sensor 101 or the data processing unit 102 or a combined sensor/data processing unit may be wholly
5 implantable under the skin layer of the user.

In one aspect, the primary receiver unit 104 may include an analog interface section including an RF receiver and an antenna that is configured to communicate with the data processing unit 102 via the communication link 103, data processing unit 102 and a data processing section for processing the received data from the data
10 processing unit 102 such as data decoding, error detection and correction, data clock generation, and/or data bit recovery.

In operation, the primary receiver unit 104 in certain embodiments is configured to synchronize with the data processing unit 102 to uniquely identify the data processing unit 102, based on, for example, an identification information of the
15 data processing unit 102, and thereafter, to periodically receive signals transmitted from the data processing unit 102 associated with the monitored analyte levels detected by the sensor 101.

Referring again to FIG. 1, the data processing terminal 105 may include a personal computer, a portable computer such as a laptop or a handheld device (e.g.,
20 personal digital assistants (PDAs), telephone such as a cellular phone (e.g., a multimedia and Internet-enabled mobile phone such as an iPhone or similar phone), mp3 player, pager, and the like), drug delivery device, each of which may be configured for data communication with the receiver via a wired or a wireless connection. Additionally, the data processing terminal 105 may further be connected
25 to a data network (not shown) for storing, retrieving, updating, and/or analyzing data corresponding to the detected analyte level of the user.

The data processing terminal 105 may include an infusion device such as an insulin infusion pump or the like, which may be configured to administer insulin to patients, and which may be configured to communicate with the primary receiver unit
30 104 for receiving, among others, the measured analyte level. Alternatively, the primary receiver unit 104 may be configured to integrate an infusion device therein so that the primary receiver unit 104 is configured to administer insulin (or other appropriate drug) therapy to patients, for example, for administering and modifying

basal profiles, as well as for determining appropriate boluses for administration based on, among others, the detected analyte levels received from the data processing unit 102. An infusion device may be an external device or an internal device (wholly implantable in a user).

5 In particular embodiments, the data processing terminal 105, which may include an insulin pump, may be configured to receive the analyte signals from the data processing unit 102, and thus, incorporate the functions of the primary receiver unit 104 including data processing for managing the patient's insulin therapy and analyte monitoring. In certain embodiments, the communication link 103 as well as
10 one or more of the other communication interfaces shown in FIG. 1 may use one or more of an RF communication protocol, an infrared communication protocol, a Bluetooth enabled communication protocol, an 802.11x wireless communication protocol, or an equivalent wireless communication protocol which would allow secure, wireless communication of several units (for example, per HIPPA
15 requirements) while avoiding potential data collision and interference.

FIG. 2 is a block diagram of the data processing unit of the data monitoring and detection system shown in FIG. 1 in accordance with certain embodiments. The data processing unit 102 thus may include one or more of an analog interface 201 configured to communicate with the sensor 101 (FIG. 1), a user input 202, and a
20 temperature detection section 203, each of which is operatively coupled to a transmitter processor 204 such as a central processing unit (CPU). The transmitter may include user input and/or interface components or may be free of user input and/or interface components.

Further shown in FIG. 2 are serial communication section 205 and an RF
25 transmitter 206, each of which is also operatively coupled to the transmitter processor 204. Moreover, a power supply 207, such as a battery, may also be provided in the data processing unit 102 to provide the necessary power for the data processing unit 102. Additionally, as can be seen from the Figure, clock 208 may be provided to, among others, supply real time information to the transmitter processor 204.

30 As can be seen in the embodiment of FIG. 2, the sensor unit 101 (FIG. 1) includes four contacts, three of which are electrodes - work electrode (W) 210, guard contact (G) 211, reference electrode (R) 212, and counter electrode (C) 213, each operatively coupled to the analog interface 201 of the data processing unit 102. In

certain embodiments, each of the work electrode (W) 210, guard contact (G) 211, reference electrode (R) 212, and counter electrode (C) 213 may be made using a conductive material that may be applied by, e.g., chemical vapor deposition (CVD), physical vapor deposition, sputtering, reactive sputtering, printing, coating, ablating (e.g., laser ablation), painting, dip coating, etching, and the like. Materials include but are not limited to aluminum, carbon (such as graphite), cobalt, copper, gallium, gold, indium, iridium, iron, lead, magnesium, mercury (as an amalgam), nickel, niobium, osmium, palladium, platinum, rhenium, rhodium, selenium, silicon (e.g., doped polycrystalline silicon), silver, tantalum, tin, titanium, tungsten, uranium, vanadium, zinc, zirconium, mixtures thereof, and alloys, oxides, or metallic compounds of these elements.

The processor 204 may be configured to generate and/or process control signals to the various sections of the data processing unit 102 during the operation of the data processing unit 102. In certain embodiments, the processor 204 also includes memory (not shown) for storing data such as the identification information for the data processing unit 102, as well as the data associated with signals received from the sensor 101. The stored information may be retrieved and processed for transmission to the primary receiver unit 104 under the control of the processor 204. Furthermore, the power supply 207 may include a commercially available battery.

In certain embodiments, a manufacturing process of the data processing unit 102 may place the data processing unit 102 in the lower power, non-operating state (i.e., post-manufacture sleep mode). In this manner, the shelf life of the data processing unit 102 may be significantly improved. Moreover, as shown in FIG. 2, while the power supply unit 207 is shown as coupled to the processor 204, and as such, the processor 204 is configured to provide control of the power supply unit 207, it should be noted that within the scope of the present disclosure, the power supply unit 207 is configured to provide the necessary power to each of the components of the data processing unit 102 shown in FIG. 2.

Referring back to FIG. 2, the power supply section 207 of the data processing unit 102 in one embodiment may include a rechargeable battery unit that may be recharged by a separate power supply recharging unit (for example, provided in the receiver unit 104) so that the data processing unit 102 may be powered for a longer period of usage time. In certain embodiments, the data processing unit 102 may be

configured without a battery in the power supply section 207, in which case the data processing unit 102 may be configured to receive power from an external power supply source (for example, a battery, electrical outlet, etc.) as discussed in further detail below.

5 Referring yet again to FIG. 2, a temperature detection section 203 of the data processing unit 102 is configured to monitor the temperature of the skin near the sensor insertion site. The temperature reading may be used to adjust the analyte readings obtained from the analog interface 201. Also shown is a leak detection circuit 214 coupled to the guard trace (G) 211 and the processor 204 in the data
10 processing unit 102 of the data monitoring and management system 100. The leak detection circuit 214 may be configured to detect leakage current in the sensor 101 to determine whether the measured sensor data are corrupt or whether the measured data from the sensor 101 is accurate. Such detection may trigger a notification to the user.

FIG. 3 is a block diagram of the receiver/monitor unit such as the primary
15 receiver unit 104 of the data monitoring and management system shown in FIG. 1 in accordance with certain embodiments. The primary receiver unit 104 includes one or more of: a blood glucose test strip interface 301, an RF receiver 302, an input 303, a temperature detection section 304, and a clock 305, each of which is operatively coupled to a processing and storage section 307. The primary receiver unit 104 also
20 includes a power supply 306 operatively coupled to a power conversion and monitoring section 308. Further, the power conversion and monitoring section 308 is also coupled to the receiver processor 307. Moreover, also shown are a receiver serial communication section 309, and an output 310, each operatively coupled to the processing and storage unit 307. The receiver may include user input and/or interface
25 components or may be free of user input and/or interface components.

In certain embodiments, the test strip interface 301 includes a glucose level testing portion to receive a blood (or other body fluid sample) glucose test or information related thereto. For example, the interface may include a test strip port to receive a glucose test strip. The device may determine the glucose level of the test
30 strip, and optionally display (or otherwise notice) the glucose level on the output 310 of the primary receiver unit 104. Any suitable test strip may be employed, e.g., test strips that only require a very small amount (e.g., one microliter or less, e.g., 0.5 microliter or less, e.g., 0.1 microliter or less), of applied sample to the strip in order to

obtain accurate glucose information, e.g. FreeStyle® blood glucose test strips from Abbott Diabetes Care Inc. Glucose information obtained by the *in vitro* glucose testing device may be used for a variety of purposes, computations, etc. For example, the information may be used to calibrate sensor 101, confirm results of the sensor 101 to increase the confidence thereof (e.g., in instances in which information obtained by sensor 101 is employed in therapy related decisions), etc.

In one aspect, the RF receiver 302 is configured to communicate, via the communication link 103 (FIG. 1) with the RF transmitter 206 of the data processing unit 102, to receive encoded data from the data processing unit 102 for, among others, signal mixing, demodulation, and other data processing. The input 303 of the primary receiver unit 104 is configured to allow the user to enter information into the primary receiver unit 104 as needed. In one aspect, the input 303 may include keys of a keypad, a touch-sensitive screen, and/or a voice-activated input command unit, and the like. The temperature monitor section 304 may be configured to provide temperature information of the primary receiver unit 104 to the processing and control section 307, while the clock 305 provides, among others, real time or clock information to the processing and storage section 307.

Each of the various components of the primary receiver unit 104 shown in FIG. 3 is powered by the power supply 306 (or other power supply) which, in certain embodiments, includes a battery. Furthermore, the power conversion and monitoring section 308 is configured to monitor the power usage by the various components in the primary receiver unit 104 for effective power management and may alert the user, for example, in the event of power usage which renders the primary receiver unit 104 in sub-optimal operating conditions. The serial communication section 309 in the primary receiver unit 104 is configured to provide a bi-directional communication path from the testing and/or manufacturing equipment for, among others, initialization, testing, and configuration of the primary receiver unit 104. Serial communication section 104 can also be used to upload data to a computer, such as time-stamped blood glucose data. The communication link with an external device (not shown) can be made, for example, by cable (such as USB or serial cable), infrared (IR) or RF link. The output/display 310 of the primary receiver unit 104 is configured to provide, among others, a graphical user interface (GUI), and may include a liquid crystal display (LCD) for displaying information. Additionally, the

output/display 310 may also include an integrated speaker for outputting audible signals as well as to provide vibration output as commonly found in handheld electronic devices, such as mobile telephones, pagers, etc. In certain embodiments, the primary receiver unit 104 also includes an electro-luminescent lamp configured to provide backlighting to the output 310 for output visual display in dark ambient surroundings.

Referring back to FIG. 3, the primary receiver unit 104 may also include a storage section such as a programmable, non-volatile memory device as part of the processor 307, or provided separately in the primary receiver unit 104, operatively coupled to the processor 307. The processor 307 may be configured to perform Manchester decoding (or other protocol(s)) as well as error detection and correction upon the encoded data received from the data processing unit 102 via the communication link 103.

In further embodiments, the data processing unit 102 and/or the primary receiver unit 104 and/or the secondary receiver unit 105, and/or the data processing terminal/infusion section 105 may be configured to receive the blood glucose value wirelessly over a communication link from, for example, a blood glucose meter. In further embodiments, a user manipulating or using the analyte monitoring system 100 (FIG. 1) may manually input the blood glucose value using, for example, a user interface (for example, a keyboard, keypad, voice commands, and the like) incorporated in the one or more of the data processing unit 102, the primary receiver unit 104, secondary receiver unit 105, or the data processing terminal/infusion section 105.

Additional detailed descriptions of embodiments of the continuous analyte monitoring system, embodiments of its various components are provided in U.S. Patent No. 6,175,752 issued January 16, 2001 entitled "Analyte Monitoring Device and Methods of Use", and in application No. 10/745,878 filed December 26, 2003 entitled "Continuous Glucose Monitoring System and Methods of Use", each assigned to the Assignee of the present application, and the disclosure of each of which are incorporated herein by reference for all purposes.

FIG. 4 schematically shows an embodiment of an analyte sensor in accordance with the present disclosure. The sensor 400 includes electrodes 401, 402 and 403 on a base 404. The sensor may be wholly implantable in a user or may be configured so

that only a portion is positioned within (internal) a user and another portion outside (external) a user. For example, the sensor 400 may include a portion positionable above a surface of the skin 410, and a portion positioned below the skin. In such embodiments, the external portion may include contacts (connected to respective electrodes of the second portion by traces) to connect to another device also external to the user such as a transmitter unit. While the embodiment of FIG. 4 shows three electrodes side-by-side on the same surface of base 404, other configurations are contemplated, e.g., fewer or greater electrodes, some or all electrodes on different surfaces of the base or present on another base, some or all electrodes stacked together, electrodes of differing materials and dimensions, etc.

FIG. 5A shows a perspective view of an embodiment of an electrochemical analyte sensor 500 having a first portion (which in this embodiment may be characterized as a major portion) positionable above a surface of the skin 510, and a second portion (which in this embodiment may be characterized as a minor portion) that includes an insertion tip 530 positionable below the skin, e.g., penetrating through the skin and into, e.g., the subcutaneous space 520, in contact with the user's biofluid such as interstitial fluid. Contact portions of a working electrode 501, a reference electrode 502, and a counter electrode 503 are positioned on the portion of the sensor 500 situated above the skin surface 510. Working electrode 501, a reference electrode 502, and a counter electrode 503 are shown at the second section and particularly at the insertion tip 530. Traces may be provided from the electrode at the tip to the contact, as shown in FIG. 5A. It is to be understood that greater or fewer electrodes may be provided on a sensor. For example, a sensor may include more than one working electrode and/or the counter and reference electrodes may be a single counter/reference electrode, etc.

FIG. 5B shows a cross sectional view of a portion of the sensor 500 of FIG. 5A. The electrodes 510, 502 and 503, of the sensor 500 as well as the substrate and the dielectric layers are provided in a layered configuration or construction. For example, as shown in FIG. 5B, in one aspect, the sensor 500 (such as the sensor unit 101 FIG. 1), includes a substrate layer 504, and a first conducting layer 501 such as carbon, gold, etc., disposed on at least a portion of the substrate layer 504, and which may provide the working electrode. Also shown disposed on at least a portion of the first conducting layer 501 is a sensing layer 508.

Referring back to FIG. 5B, a first insulation layer such as a first dielectric layer 505 is disposed or layered on at least a portion of the first conducting layer 501, and further, a second conducting layer 509 may be disposed or stacked on top of at least a portion of the first insulation layer (or dielectric layer) 505. As shown in FIG. 5B, the second conducting layer 509 may provide the reference electrode 502, and in one aspect, may include a layer of silver/silver chloride (Ag/AgCl), gold, etc.

Referring still again to FIG. 5B, a second insulation layer 506 such as a dielectric layer in one embodiment may be disposed or layered on at least a portion of the second conducting layer 509. Further, a third conducting layer 503 may provide the counter electrode 503. It may be disposed on at least a portion of the second insulation layer 506. Finally, a third insulation layer may be disposed or layered on at least a portion of the third conducting layer 503. In this manner, the sensor 500 may be layered such that at least a portion of each of the conducting layers is separated by a respective insulation layer (for example, a dielectric layer).

The embodiment of FIGS. 5A and 5B show the layers having different lengths. Some or all of the layers may have the same or different lengths and/or widths.

In certain embodiments, some or all of the electrodes 501, 502, 503 may be provided on the same side of the substrate 504 in the layered construction as described above, or alternatively, may be provided in a co-planar manner such that two or more electrodes may be positioned on the same plane (e.g., side-by side (e.g., parallel) or angled relative to each other) on the substrate 504. For example, co-planar electrodes may include a suitable spacing there between and/or include dielectric material or insulation material disposed between the conducting layers/electrodes. Furthermore, in certain embodiments one or more of the electrodes 501, 502, 503 may be disposed on opposing sides of the substrate 504. In such embodiments, contact pads may be on the same or different sides of the substrate. For example, an electrode may be on a first side and its respective contact may be on a second side, e.g., a trace connecting the electrode and the contact may traverse through the substrate.

In certain embodiments, the data processing unit 102 may be configured to perform sensor insertion detection and data quality analysis, information pertaining to which may also be transmitted to the primary receiver unit 104 periodically at the predetermined time interval. In turn, the receiver unit 104 may be configured to

perform, for example, skin temperature compensation/correction as well as calibration of the sensor data received from the data processing unit 102.

As noted above, analyte sensors may include an analyte-responsive enzyme in a sensing layer. Some analytes, such as oxygen, can be directly electrooxidized or electroreduced on a sensor, and more specifically at least on a working electrode of a sensor. Other analytes, such as glucose and lactate, require the presence of at least one electron transfer agent and/or at least one catalyst to facilitate the electrooxidation or electroreduction of the analyte. Catalysts may also be used for those analyte, such as oxygen, that can be directly electrooxidized or electroreduced on the working electrode. For these analytes, each working electrode includes a sensing layer (see for example sensing layer 508 of FIG. 5B) formed proximate to or on a surface of a working electrode. In many embodiments, a sensing layer is formed near or on only a small portion of at least a working electrode.

A variety of different sensing layer configurations may be used. In certain embodiments, the sensing layer is deposited on the conductive material of a working electrode. The sensing layer may extend beyond the conductive material of the working electrode. In some cases, the sensing layer may also extend over other electrodes, e.g., over the counter electrode and/or reference electrode (or counter/reference is provided). The sensing layer may be integral with the material of an electrode.

A sensing layer that is in direct contact with the working electrode may contain an electron transfer agent to transfer electrons directly or indirectly between the analyte and the working electrode, and/or a catalyst to facilitate a reaction of the analyte.

A sensing layer that is not in direct contact with the working electrode may include a catalyst that facilitates a reaction of the analyte. However, such sensing layers may not include an electron transfer agent that transfers electrons directly from the working electrode to the analyte, as the sensing layer is spaced apart from the working electrode. One example of this type of sensor is a glucose or lactate sensor which includes an enzyme (e.g., glucose oxidase, glucose dehydrogenase, lactate oxidase, and the like) in the sensing layer. The glucose or lactate may react with a second compound in the presence of the enzyme. The second compound may then be electrooxidized or electroreduced at the electrode. Changes in the signal at the

electrode indicate changes in the level of the second compound in the fluid and are proportional to changes in glucose or lactate level and, thus, correlate to the analyte level.

In certain embodiments which include more than one working electrode, one or more of the working electrodes do not have a corresponding sensing layer, or have a sensing layer which does not contain one or more components (e.g., an electron transfer agent and/or catalyst) needed to electrolyze the analyte. Thus, the signal at this working electrode corresponds to background signal which may be removed from the analyte signal obtained from one or more other working electrodes that are associated with fully-functional sensing layers by, for example, subtracting the signal.

In certain embodiments, the sensing layer includes one or more electron transfer agents. Electron transfer agents that may be employed are electroreducible and electrooxidizable ions or molecules having redox potentials that are a few hundred millivolts above or below the redox potential of the standard calomel electrode (SCE). The electron transfer agent may be organic, organometallic, or inorganic.

In certain embodiments, electron transfer agents have structures or charges which prevent or substantially reduce the diffusional loss of the electron transfer agent during the period of time that the sample is being analyzed. For example, electron transfer agents include but are not limited to a redox species, e.g., bound to a polymer which can in turn be disposed on or near the working electrode. The bond between the redox species and the polymer may be covalent, coordinative, or ionic. Although any organic or organometallic redox species may be bound to a polymer and used as an electron transfer agent, in certain embodiments the redox species is a transition metal compound or complex, e.g., osmium, ruthenium, iron, and cobalt compounds or complexes. It will be recognized that many redox species described for use with a polymeric component may also be used, without a polymeric component.

One type of polymeric electron transfer agent contains a redox species covalently bound in a polymeric composition. An example of this type of mediator is poly(vinylferrocene). Another type of electron transfer agent contains an ionically-bound redox species. This type of mediator may include a charged polymer coupled to an oppositely charged redox species. Examples of this type of mediator include a negatively charged polymer coupled to a positively charged redox species such as an

osmium or ruthenium polypyridyl cation. Another example of an ionically-bound mediator is a positively charged polymer such as quaternized poly(4-vinyl pyridine) or poly(1-vinyl imidazole) coupled to a negatively charged redox species such as ferricyanide or ferrocyanide. In other embodiments, electron transfer agents include a redox species coordinatively bound to a polymer. For example, the mediator may be formed by coordination of an osmium or cobalt 2,2'-bipyridyl complex to poly(1-vinyl imidazole) or poly(4-vinyl pyridine).

Suitable electron transfer agents are osmium transition metal complexes with one or more ligands, each ligand having a nitrogen-containing heterocycle such as 2,2'-bipyridine, 1,10-phenanthroline, or derivatives thereof. The electron transfer agents may also have one or more ligands covalently bound in a polymer, each ligand having at least one nitrogen-containing heterocycle, such as pyridine, imidazole, or derivatives thereof. The present disclosure may employ electron transfer agents have a redox potential ranging from about -100 mV to about +150 mV versus the standard calomel electrode (SCE), e.g., ranges from about -100 mV to about +150 mV, e.g., ranges from about -50 mV to about +50 mV, e.g., electron transfer agents have osmium redox centers and a redox potential ranging from +50 mV to -150 mV versus SCE.

The sensing layer may also include a catalyst which is capable of catalyzing a reaction of the analyte. The catalyst may also, in some embodiments, act as an electron transfer agent. One example of a suitable catalyst is an enzyme which catalyzes a reaction of the analyte. For example, a catalyst, such as a glucose oxidase, glucose dehydrogenase (e.g., pyrroloquinoline quinone glucose dehydrogenase (PQQ)), or oligosaccharide dehydrogenase), may be used when the analyte of interest is glucose. A lactate oxidase or lactate dehydrogenase may be used when the analyte of interest is lactate. Laccase may be used when the analyte of interest is oxygen or when oxygen is generated or consumed in response to a reaction of the analyte. In certain embodiments, a catalyst may be attached to a polymer, cross linking the catalyst with another electron transfer agent (which, as described above, may be polymeric. A second catalyst may also be used in certain embodiments. This second catalyst may be used to catalyze a reaction of a product compound resulting from the catalyzed reaction of the analyte. The second catalyst may operate with an electron transfer agent to electrolyze the product compound to generate a signal at the working

electrode. Alternatively, a second catalyst may be provided in an interferent-eliminating layer to catalyze reactions that remove interferents.

Certain embodiments include a Wired Enzyme™ sensing layer that works at a gentle oxidizing potential, e.g., a potential of about +40 mV. This sensing layer uses an osmium (Os) -based mediator designed for low potential operation and is stably anchored in a polymeric layer. Accordingly, in certain embodiments the sensing element is redox active component that includes (1) Osmium-based mediator molecules attached by stable (bidentate) ligands anchored to a polymeric backbone, and (2) glucose oxidase enzyme molecules. These two constituents are crosslinked together.

A mass transport limiting layer (not shown), e.g., an analyte flux modulating layer, may be included with the sensor to act as a diffusion-limiting barrier to reduce the rate of mass transport of the analyte, for example, glucose or lactate, into the region around the working electrodes. The mass transport limiting layers are useful in limiting the flux of an analyte to a working electrode in an electrochemical sensor so that the sensor is linearly responsive over a large range of analyte concentrations and is easily calibrated. Mass transport limiting layers may include polymers and may be biocompatible. A mass transport limiting layer may serve many functions, e.g., functionalities of a biocompatible layer and/or interferent-eliminating layer may be provided by the mass transport limiting layer.

In certain embodiments, a mass transport limiting layer is a membrane composed of crosslinked polymers containing heterocyclic nitrogen groups, such as polymers of polyvinylpyridine and polyvinylimidazole. Electrochemical sensors equipped with such membranes have considerable sensitivity and stability, and a large signal-to-noise ratio, in a variety of conditions.

According certain embodiments, a membrane is formed by crosslinking in situ a polymer, modified with a zwitterionic moiety, a non-pyridine copolymer component, and optionally another moiety that is either hydrophilic or hydrophobic, and/or has other desirable properties, in an alcohol-buffer solution. The modified polymer may be made from a precursor polymer containing heterocyclic nitrogen groups. Optionally, hydrophilic or hydrophobic modifiers may be used to "fine-tune" the permeability of the resulting membrane to an analyte of interest. Optional hydrophilic modifiers, such as poly(ethylene glycol), hydroxyl or polyhydroxyl

modifiers, may be used to enhance the biocompatibility of the polymer or the resulting membrane.

A biocompatible layer (not shown) may be provided over at least that portion of the sensor which is subcutaneously inserted into the patient. The biocompatible layer may be incorporated in the interferent-eliminating layer or in the mass transport limiting layer or may be a separate layer. The layer may prevent the penetration of large biomolecules into the electrodes. The biocompatible layer may also prevent protein adhesion to the sensor, formation of blood clots, and other undesirable interactions between the sensor and body. For example, a sensor may be completely or partially covered on its exterior with a biocompatible coating.

An interferent-eliminating layer (not shown) may be included in the sensor. The interferent-eliminating layer may be incorporated in the biocompatible layer or in the mass transport limiting layer or may be a separate layer. Interferents are molecules or other species that are electroreduced or electrooxidized at the electrode, either directly or via an electron transfer agent, to produce a false signal. In one embodiment, a film or membrane prevents the penetration of one or more interferents into the region around the working electrode. In many embodiments, this type of interferent-eliminating layer is much less permeable to one or more of the interferents than to the analyte. An interferent-eliminating layer may include ionic components to reduce the permeability of the interferent-eliminating layer to ionic interferents having the same charge as the ionic components. Another example of an interferent-eliminating layer includes a catalyst for catalyzing a reaction which removes interferents.

A sensor may also include an active agent such as an anticlotting and/or antiglycolytic agent(s) disposed on at least a portion a sensor that is positioned in a user. An anticlotting agent may reduce or eliminate the clotting of blood or other body fluid around the sensor, particularly after insertion of the sensor. Blood clots may foul the sensor or irreproducibly reduce the amount of analyte which diffuses into the sensor. Examples of useful anticlotting agents include heparin and tissue plasminogen activator (TPA), as well as other known anticlotting agents. Embodiments may include an antiglycolytic agent or precursor thereof. The term "antiglycolytic" is used broadly herein to include any substance that at least retards glucose consumption of living cells.

Sensors described herein may be configured to require no system calibration or no user calibration. For example, a sensor may be factory calibrated and need not require further calibrating. In certain embodiments, calibration may be required, but may be done without user intervention, i.e., may be automatic. In those embodiments
5 in which calibration by the user is required, the calibration may be according to a predetermined schedule or may be dynamic, i.e., the time for which may be determined by the system on a real-time basis according to various factors.

Calibration may be accomplished using an in vitro test strip or other calibrator, e.g., a small sample test strip such as a test strip that requires less than about 1 microliter of
10 sample (for example FreeStyle® blood glucose monitoring test strips from Abbott Diabetes Care). For example, test strips that require less than about 1 nanoliter of sample may be used. In certain embodiments, a sensor may be calibrated using only one sample of body fluid per calibration event. For example, a user using need only lance a body part one time to obtain sample for a calibration event (e.g., for a test
15 strip), or may lance more than one time within a short period of time if an insufficient volume of sample is obtained firstly. Embodiments include obtaining and using multiple samples of body fluid for a given calibration event, where glucose values of each sample are substantially similar. Data obtained from a given calibration event may be used independently to calibrate or combined with data obtained from previous
20 calibration events, e.g., averaged including weighted averaged, filtered and the like, to calibrate.

An analyte system may include an optional alarm system that, e.g., based on information from a processor, warns the patient of a potentially detrimental condition of the analyte. For example, if glucose is the analyte, an alarm system may warn a
25 user of conditions such as hypoglycemia and/or hyperglycemia and/or impending hypoglycemia, and/or impending hyperglycemia. An alarm system may be triggered when analyte levels reach or exceed a threshold value. An alarm system may also, or alternatively, be activated when the rate of change or acceleration of the rate of change in analyte level increase or decrease reaches or exceeds a threshold rate or
30 acceleration. For example, in the case of a glucose monitoring system, an alarm system may be activated if the rate of change in glucose concentration exceeds a threshold value which might indicate that a hyperglycemic or hypoglycemic condition is likely to occur. A system may also include system alarms that notify a user of

system information such as battery condition, calibration, sensor dislodgment, sensor malfunction, etc. Alarms may be, for example, auditory and/or visual. Other sensory-stimulating alarm systems may be used including alarm systems which heat, cool, vibrate, or produce a mild electrical shock when activated.

5 The subject disclosure also includes sensors used in sensor-based drug delivery systems. The system may provide a drug to counteract the high or low level of the analyte in response to the signals from one or more sensors. Alternatively, the system may monitor the drug concentration to ensure that the drug remains within a desired therapeutic range. The drug delivery system may include one or more (e.g.,
10 two or more) sensors, a transmitter, a receiver/display unit, and a drug administration system. In some cases, some or all components may be integrated in a single unit. The sensor-based drug delivery system may use data from the one or more sensors to provide necessary input for a control algorithm/mechanism to adjust the administration of drugs, e.g., automatically or semi-automatically. As an example, a
15 glucose sensor could be used to control and adjust the administration of insulin from an external or implanted insulin pump.

As discussed in further detail below, in accordance with aspects of the present disclosure an offset based model for improving the accuracy of the analyte sensor signals to address abnormal sensor sensitivity event including, for example, early
20 signal attenuation is provided. More specifically, in accordance with aspects of the present disclosure, when an analyte sensor is experiencing signal attenuation, it is assumed that the associated sensor sensitivity remains constant, and rather, a predetermined signal offset results. Accordingly, determination of the offset and applying the determined offset to analyte sensor signals provide improved accuracy in
25 the monitored analyte levels from the sensor, even in the case where the analyte sensor is experiencing abnormal sensitivity event such as, for example, early signal attenuation.

In this manner, in one aspect, there is provided a procedure to retrospectively (or in real time) determine a glucose estimate based on sensor signals and available
30 reference measurements from, for example, in vitro testing that maximizes both the optimal accuracy and precision, while minimally susceptible to errors that may be caused by outlier reference value and/or momentary sensor signal degradation sources such as early signal attenuation.

In providing the best glucose estimate, it is found that the simplest transformation from a raw sensor current signal in an arbitrary hardware units to a glucose signal in proper glucose concentration units, is a linear scaling operation without any offset. The scaling factor is commonly referred to as sensitivity, in which a raw sensor current signal can be translated into glucose concentration units by dividing the signal's value by the sensitivity value. As a result, the nominal aspect of calibration involves using a reasonable amount of information to infer the most accurate and precise estimate of sensitivity.

While this is the case under normal operating conditions, there are several exceptions in which the sensor response to the analyte may be contaminated by other artifacts. An example is during the presence of early signal attenuation (ESA) condition, where, while the sensor has been properly calibrated using its true sensitivity, the resulting glucose values is lower than that determined by other means or an identical sensor that is not subject to ESA condition.

In such non-normal operating conditions, the best glucose estimate from the sensor may be determined by retaining the same best estimate of sensitivity as in the nominal case, and in addition, determining the best estimate of a slow time varying offset. This may be defined as the offset based model. In one aspect, the offset based model assumes that the true gain or sensitivity of the system remains the same throughout the sensor's life, and that non-normal operating conditions such as ESA condition is best represented by a nonzero, slow time varying offset.

Referring now to the Figures, FIG. 6 is a flowchart illustrating the offset model based analyte sensor data calibration in accordance with one aspect of the present disclosure. In one aspect, sampled data from an analyte sensor is processed (610). For example, in one embodiment, the raw signal (such as raw current signal) received from the analyte sensor is retrospectively lag corrected, and/or filtered or smoothed in addition to temperature corrected or compensated. Thereafter, a normal sensitivity associated with the analyte sensor is determined (620) as described in further detail below in conjunction with FIG. 7.

Referring again to FIG. 6, a windowed offset is thereafter estimated using each available paired points (of sensor data and time corresponding reference blood glucose measurement, for example) within a valid window (630). As discussed above, the effective sensitivity associated with the analyte sensor is, in one

embodiment, held constant at the determined normal sensitivity discussed above. Using this normal sensitivity S_n , each pairable sensor signal is scaled into glucose concentrations. For purpose of signal pairing, the sensor signal G_r can either be the raw signal itself, lag corrected, and/or filtered or smoothed in addition to temperature corrected or compensated. The scaled sensor signal G_s at any time k is then described as follows:

$$G_s(k) = G_r(k) / S_n$$

where S_n is the normal sensitivity previously computed. For each pairable scaled sensor signal G_s and reference blood glucose measurement (BG) in a window, a difference value (DGs) may be determined as follows:

$$DG_s(k) = G_s(k) - BG(k)$$

where k denotes the time index of a pair.

The difference value (DGs) between each pairable scaled sensor signal G_s to its corresponding reference blood glucose (BG) measurement pair is a reflection of the latest offset. In one aspect, the plurality of these computed offset within this window of reference blood glucose measurement – sensor pairs determine the windowed offset in this window. An example of obtaining a windowed offset using the available data in a window is averaging the difference value (DGs). Yet another example is to take the median value of the difference value (DGs). Under normal operating conditions, the windowed offset is zero.

Referring still again to FIG. 6, thereafter, the estimated offset may be used to obtain a slow time varying offset $G_o(k)$ at every minute k (640). For retrospective application, interpolating offset values obtained around clusters of reference blood glucose measurement – sensor pairs may be used in place of a slow time varying offset $G_o(k)$. For a real-time application, prior knowledge of how offsets change over time given other known circumstances or parameters may be used to determine a slow time varying offset $G_o(k)$. For example, when ESA condition is suspected, a time evolution of the offset based on the available offset data may be inferred by fitting the offset data to an ESA offset model whose architecture may have been determined a priori.

Finally, for each one minute sampled analyte data (or any other periodically sampled analyte data from the sensor), the slow time varying estimated offset $Go(k)$ and the best estimate of the constant Sn are applied to the sampled analyte data to estimate the corresponding glucose value (650). That is, for example, for each of the one minute sampled analyte sensor data $Gr(k)$ which has been lag corrected, temperature compensated, and/or smoothed or filtered, the slow time varying offset $Go(k)$ is applied with the previously determined normal sensitivity Sn to determine the corresponding estimated glucose value $Gf(k)$ based on the following relationship:

$$Gf(k) = [Gr(k) / Sn] - Go(k)$$

FIG. 7 is a flowchart illustrating the normal sensitivity Sn determination routine of FIG. 6 associated with the analyte sensor in accordance with one embodiment of the present disclosure. Referring to the Figure, to determine the normal sensitivity associated with the analyte sensor (620) (FIG. 6), given the available paired data points of analyte sensor signals and the time corresponding reference measurements (for example, the in vitro blood glucose measurements taken, for example, at a given time intervals (periodic or otherwise)), the immediate sensitivity (Si) for each paired data points are determined (710). That is, in one embodiment, for each paired sensor data and reference blood glucose measurement, the sensor data is lag corrected and smoothed or filtered, based on a nominal time constant (for example, 10 minutes or any other suitable time period), and a ratio of the lag corrected and smoothed data $Gr(k)$ over the reference blood glucose measurement BG is taken to determine the corresponding immediate sensitivity (Si).

$$Si(k) = Gr(k) / BG$$

Referring back to FIG. 7, with the determined immediate sensitivity (Si), for each time window (which may be preset or variable), the latest sensitivity ($S0$) associated with the analyte sensor is estimated based on the determined immediate sensitivity (Si) values within that time window (720). That is, a time window such as, for example, a five hour window (or any other suitable time window) is defined with a center that shifts or advances through the sensor's life (as a measure of time) in an

increment of, for example, one hour. Thereafter, within the time window, the determined immediate sensitivity (S_i) is collected as well as the associated rate of change of the sensor signals.

In one embodiment, a least squares fit line is calculated for the sensor rate of change as a function of the corresponding immediate sensitivity (S_i) within the time window. The vertical difference between each immediate sensitivity (S_i) and the calculated least squares fit line corresponds to a lag residual compensated sensitivity. Furthermore, the intercept at the zero rate of change of this least squares fit line corresponds to the estimate of the latest sensitivity (S_0) in the corresponding time window.

It is to be noted that the standard error associated with the least squares fit line may correspond to how the available data fits the lag correction model as well as how much variance is introduced from the zero mean sensitivity error sources. In this context, the zero mean sensitivity error sources are factors that could increase the variance of the sensitivity calculation error without significantly biasing the result in any direction. Examples of such zero mean sensitivity error sources include random sensor error and/or noise, random reference blood glucose error, and insufficient lag correction. Insufficient lag correction may result from using a time constant that is smaller or larger than the actual value, or from using a model that is not sufficiently robust to capture all the transient behavior between blood glucose level to interstitial glucose levels.

Also, referring back to FIG. 7, using the available lag residual compensated sensitivity values, along with their associated timestamps, in one embodiment, the least squares fit line may be determined based on time as a function of the lag residual compensated sensitivity values to estimate the sensitivity rate of change for each time window. In this manner, as discussed above, for each time window, the latest sensitivity (S_0) based on the determined immediate sensitivity (S_i) is calculated. Referring still to FIG, 7, given the multiple time windows, a subset of the time windows is selected based on the determined latest sensitivity, the immediate sensitivity (S_i) as well as the lag residual compensated sensitivity values. In this manner, in one aspect, the latest sensitivity values (S_0) that are taken during non-normal operation modes such as during ESA condition are discounted. In these cases, the latest sensitivity values (S_0) tend to be lower than the true/accurate value. For

example, in one embodiment, the time windows are selected for latest sensitivity values (S0) that are in the upper 50th percentile of the entire time window population.

Also, the subset of time windows are additionally identified for those with a suitable or sufficient least squares fit line of the sensor rate of change versus
5 immediate sensitivity (Si). The better the fit, the more likely a given window will produce a reliable latest sensitivity value (S0). In one embodiment, the latest sensitivity values (S0) retained are those where the standard sensitivity error (Sse) based on the determined least squares fit line in the lower quartile of the entire time window population.

10 Additionally, the subset of time windows may further be narrowed to those associated with a relatively low immediate sensitivity (Si) rate of change value. A window with a relatively high immediate sensitivity (Si) rate of change value may indicate a region of poor sensor stability, or a consistent bias in the reference blood
15 glucose values due to unknown circumstances. For example, in one embodiment, only latest sensitivity values (S0) whose rate of change magnitude is in the lower quartile of the entire time window population may be retained. Referring still to FIG. 7, based on the one or more criteria described above, the subset of eligible latest sensitivities (S0) are filtered or identified from all latest sensitivity values (S0) (730). It is to be noted that the threshold for inclusion within the subset of time windows may be
20 varied and include other thresholds or criteria including, for example, selecting those time windows associated with the latest sensitivity in the upper 75th percentile of the entire population (or some other suitable threshold), selecting those time windows associated with preferred elapsed time ranges since the start of a sensor insertion, or selecting those time windows associated with preferred ranges of times of days.
25 Indeed, the numerical examples described herein are intended to provide exemplary embodiments and the scope of the present disclosure are not in any manner intended to be limited to such examples.

Referring back to FIG. 7, as shown, weighted averaging function is applied to the subset of eligible latest sensitivity values (S0) to determine the estimate of the
30 normal sensitivity (740). For example, in one embodiment, each latest sensitivity value (S0) may be weighted by $(1/Sse)^2$. In another embodiment, each latest sensitivity value(S0) may be weighted by $(S0/Sse)^2$. In yet another embodiment,

other measures of fit such as the absolute value of immediate sensitivity (S_i) rate of change of each window can be included into the weighting.

Thereafter, the estimated normal sensitivity determined is confirmed by, for example, comparing it to the median sensitivity computed from all eligible latest sensitivity values (S_0) and ensuring that the estimated normal sensitivity no smaller than the median sensitivity (750). Since numerical determination may incur a certain degree of uncertainty, it is possible that the normal sensitivity candidate may be lower than some clusters of latest sensitivity values (S_0) that may be a better candidate for the normal sensitivity estimate. As long as the bottom end of the uncertainty of the latest sensitivity values (S_0) is still below the candidate normal sensitivity value, no adjustment may be needed. Otherwise, the normal sensitivity may be adjusted further up to that bottom end limit. An example of computing the bottom end of latest sensitivity values (S_0) may include subtracting each latest sensitivity value (S_0) with three times (or any other suitable factor) the corresponding standard sensitivity error (S_{se}) value. When the mean of this lower bound is higher than the candidate normal sensitivity value, the normal sensitivity should be adjusted to this bound.

In this manner, in accordance with embodiments of the present disclosure, improved real time or retrospective determination of glucose estimate is provided based on analyte sensor data and associated time corresponding reference measurement values (for example, in vitro test results providing associated blood glucose measurements) which improves accuracy and is less prone to abnormal sensor sensitivity events such as, for example, early signal attenuation.

Furthermore, in aspects of the present disclosure, it is contemplated that the highest sustainable in vivo steady state sensitivity associated with an analyte sensor occurs when the sensor is in normal condition. Also, sensitivities determined during reduced or increased mean sensitivity events may be deemed poor or inaccurate representatives of normal sensitivity. Additionally, zero mean sensitivity error sources are not considered to bias the normal sensitivity, and further, lag correction (retrospective or real time) of the analyte sensor raw signal removes most of the rate of change associated sensitivity errors. Moreover, it is considered, in some aspects of the present disclosure, that within a relatively short time window, a single "latest sensitivity" is an accurate representation of the temporal sensitivity – for example, in

a five hour time window as in the exemplary discussion set forth above, the “latest sensitivity” may be considered sufficiently representative.

In addition, in a five hour time window, a single effective time constant may be applicable for all available paired points. While different time windows may have different associated time constants, in a steady state condition where other parameters or variables are the same, the time window that has an effective time constant which is close to an assumed nominal value may have a latest sensitivity value that is more suitable for the normal sensitivity. Finally, in a time window with sufficient number of paired points, the determined sensitivity slope over time may indicate the relative stability of the sensitivity in that time window. As such, again assuming a steady state condition where other parameters or variables are considered to be the same, a time window with a flatter sensitivity slope over time may be a more suitable candidate for the normal sensitivity.

Accordingly, a method in one embodiment includes processing sampled data from analyte sensor, determining a single, fixed, normal sensitivity value associated with the analyte sensor, estimating a windowed offset value associated with the analyte sensor for each available sampled data cluster, computing a time varying offset based on the estimated windowed offset value, and applying the time varying offset and the determined normal sensitivity value to the processed sampled data to estimate an analyte level for the sensor.

Processing the sampled data may include performing retrospective lag correction of the sampled data. Further, processing the sampled data may include smoothing the sampled data from the analyte sensor. In addition, processing the sampled data may include performing temperature correction to the sampled data.

In one aspect, determining the normal sensitivity may include pairing the sampled data from the analyte sensor with one or more time corresponding reference measurement values, where the one or more reference measurement values may include a blood glucose measurement.

A further aspect may include determining an immediate sensitivity value for each paired sampled data and the one or more time corresponding reference measurement values, and also, estimating a latest sensitivity based on the determined immediate sensitivity for each time window.

Yet a further aspect may include defining a subset of the estimated latest sensitivities associated with a subset of the total available time windows corresponding to the respective paired sampled data and the one or more time corresponding reference measurement values.

5 Additionally, still a further aspect may include weighted averaging the subset of estimated latest sensitivities to determine the normal sensitivity associated with the analyte sensor.

10 Also, another aspect may include confirming the determined normal sensitivity, where confirming the determined normal sensitivity may include comparing the determined normal sensitivity to a predetermined value, and further, where predetermined value may include a median sensitivity value determined based on the immediate sensitivity associated with each time window.

15 Also, estimating a windowed offset value in an eligible cluster of data may include collecting one or more pairs of reference measurement value and normal sensitivity adjusted sensor signal to determine the offset of each pair.

The windowed offset value of each pair in a window may be collected to determine a windowed offset value that is most representative of that window.

20 Additionally, determining a windowed offset value that is most representative of that window may include taking the median of the offset values of each pair in a window, taking the mean of the offset values of each pair in a window, taking a weighted mean of the offset values of each pair in a window, or other means of estimating the most representative offset value given the population of offset values in a window.

25 Moreover, slow time varying offset may be determined based on any available windowed offset values using interpolation between windowed offset values.

30 In addition, a slow time varying offset may be determined by fitting a predetermined mathematical model using any available windowed offset values. One example is a mathematical model similar to the impulse response of a second order model, with the time constants, amplitude, and the start of the response determined by fitting any available windowed offset values.

The estimate of an analyte level for the sensor may be obtained by dividing the latest unscaled value by the normal sensitivity, and then subtracting the result with the latest slow time varying offset.

An apparatus in accordance with another aspect of the present disclosure includes a data communication interface, one or more processors operatively coupled to the data communication interface and a memory for storing instructions which, when executed by the one or more processors, causes the one or more processors to process sampled data from analyte sensor, determine a single, fixed, normal sensitivity value associated with the analyte sensor, estimate a windowed offset value associated with the analyte sensor for each available sampled data cluster, compute a time varying offset based on the estimated windowed offset value, and apply the time varying offset and the determined normal sensitivity value to the processed sampled data to estimate an analyte level for the sensor.

One or more storage devices having processor readable code embodied thereon, said processor readable code for programming one or more processors to estimate analyte level in accordance with a further aspect of the present disclosure includes processing sampled data from analyte sensor, determining a single, fixed, normal sensitivity value associated with the analyte sensor, estimating a windowed offset value associated with the analyte sensor for each available sampled data cluster, computing a time varying offset based on the estimated windowed offset value, and applying the time varying offset and the determined normal sensitivity value to the processed sampled data to estimate an analyte level for the sensor.

The various processes described above including the processes performed by the data processing unit 102, receiver unit 104/106 or the data processing terminal/infusion section 105 (FIG. 1) in the software application execution environment in the analyte monitoring system 100 including the processes and routines described in conjunction with FIGS. 6-7, may be embodied as computer programs developed using an object oriented language that allows the modeling of complex systems with modular objects to create abstractions that are representative of real world, physical objects and their interrelationships. The software required to carry out the inventive process, which may be stored in the memory or storage device (not shown) of the data processing unit 102, receiver unit 104/106 or the data processing terminal/infusion section 105, may be developed by a person of ordinary skill in the art and may include one or more computer program products.

Various other modifications and alterations in the structure and method of operation of this disclosure will be apparent to those skilled in the art without

departing from the scope and spirit of the embodiments of the present disclosure. Although the present disclosure has been described in connection with particular embodiments, it should be understood that the present disclosure as claimed should not be unduly limited to such particular embodiments. It is intended that the following claims define the scope of the present disclosure and that structures and methods within the scope of these claims and their equivalents be covered thereby.

WHAT IS CLAIMED IS:

1. A method, comprising:
processing sampled data from analyte sensor;
determining a single, fixed, normal sensitivity value associated with the
5 analyte sensor;
estimating a windowed offset value associated with the analyte sensor for each
available sampled data cluster;
computing a time varying offset based on the estimated windowed offset
value; and
10 applying the time varying offset and the determined normal sensitivity value
to the processed sampled data to estimate an analyte level for the sensor.
2. The method of claim 1 wherein processing the sampled data includes
performing retrospective lag correction of the sampled data.
- 15 3. The method of claim 1 wherein processing the sampled data includes
smoothing the sampled data from the analyte sensor.
4. The method of claim 1 wherein processing the sampled data includes
20 performing temperature correction to the sampled data.
5. The method of claim 1 wherein determining the normal sensitivity includes
pairing the sampled data from the analyte sensor with one or more time corresponding
reference measurement values.
- 25 6. The method of claim 5 wherein the one or more reference measurement values
includes a blood glucose measurement.
7. The method of claim 5 including determining an immediate sensitivity value
30 for each paired sampled data and the one or more time corresponding reference
measurement values.

8. The method of claim 7 including estimating a latest sensitivity based on the determined immediate sensitivity for each time window.

9. The method of claim 8 including defining a subset of the estimated latest sensitivities associated with a subset of the total available time windows
5 corresponding to the respective paired sampled data and the one or more time corresponding reference measurement values.

10. The method of claim 9 including weighted averaging the subset of estimated latest sensitivities to determine the normal sensitivity associated with the analyte
10 sensor.

11. The method of claim 10 including confirming the determined normal sensitivity.

12. The method of claim 11 wherein confirming the determined normal sensitivity includes comparing the determined normal sensitivity to a predetermined value.

13. The method of claim 12 wherein the predetermined value includes a median sensitivity value determined based on the immediate sensitivity associated with each
20 time window.

14. An apparatus, comprising:

a data communication interface;

25 one or more processors operatively coupled to the data communication interface; and

a memory for storing instructions which, when executed by the one or more processors, causes the one or more processors to process sampled data from analyte sensor, determine a single, fixed, normal sensitivity value associated with the analyte
30 sensor, estimate a windowed offset value associated with the analyte sensor for each available sampled data cluster, compute a time varying offset based on the estimated windowed offset value, and apply the time varying offset and the determined normal

sensitivity value to the processed sampled data to estimate an analyte level for the sensor.

5 15. The apparatus of claim 14 wherein the memory for storing instructions which, when executed by the one or more processors, causes the one or more processors to perform retrospective lag correction of the sampled data.

10 16. The apparatus of claim 14 wherein the memory for storing instructions which, when executed by the one or more processors, causes the one or more processors to smooth the sampled data from the analyte sensor.

15 17. The apparatus of claim 14 wherein the memory for storing instructions which, when executed by the one or more processors, causes the one or more processors to perform temperature correction for the sampled data.

20 18. The apparatus of claim 14 wherein the memory for storing instructions which, when executed by the one or more processors, causes the one or more processors to pair the sampled data from the analyte sensor with one or more time corresponding reference measurement values.

25 19. The apparatus of claim 18 wherein the one or more reference measurement values includes a blood glucose measurement.

30 20. The apparatus of claim 18 wherein the memory for storing instructions which, when executed by the one or more processors, causes the one or more processors to determine an immediate sensitivity value for each paired sampled data and the one or more time corresponding reference measurement values.

35 21. The apparatus of claim 20 wherein the memory for storing instructions which, when executed by the one or more processors, causes the one or more processors to estimate a latest sensitivity based on the determined immediate sensitivity for each time window.

22. The apparatus of claim 21 wherein the memory for storing instructions which, when executed by the one or more processors, causes the one or more processors to define a subset of the estimated latest sensitivities associated with a subset of the total available time windows corresponding to the respective paired sampled data and the one or more time corresponding reference measurement values.

23. The apparatus of claim 22 wherein the memory for storing instructions which, when executed by the one or more processors, causes the one or more processors to perform weighted averaging of the subset of estimated latest sensitivities to determine the normal sensitivity associated with the analyte sensor.

24. The apparatus of claim 23 wherein the memory for storing instructions which, when executed by the one or more processors, causes the one or more processors to confirm the determined normal sensitivity.

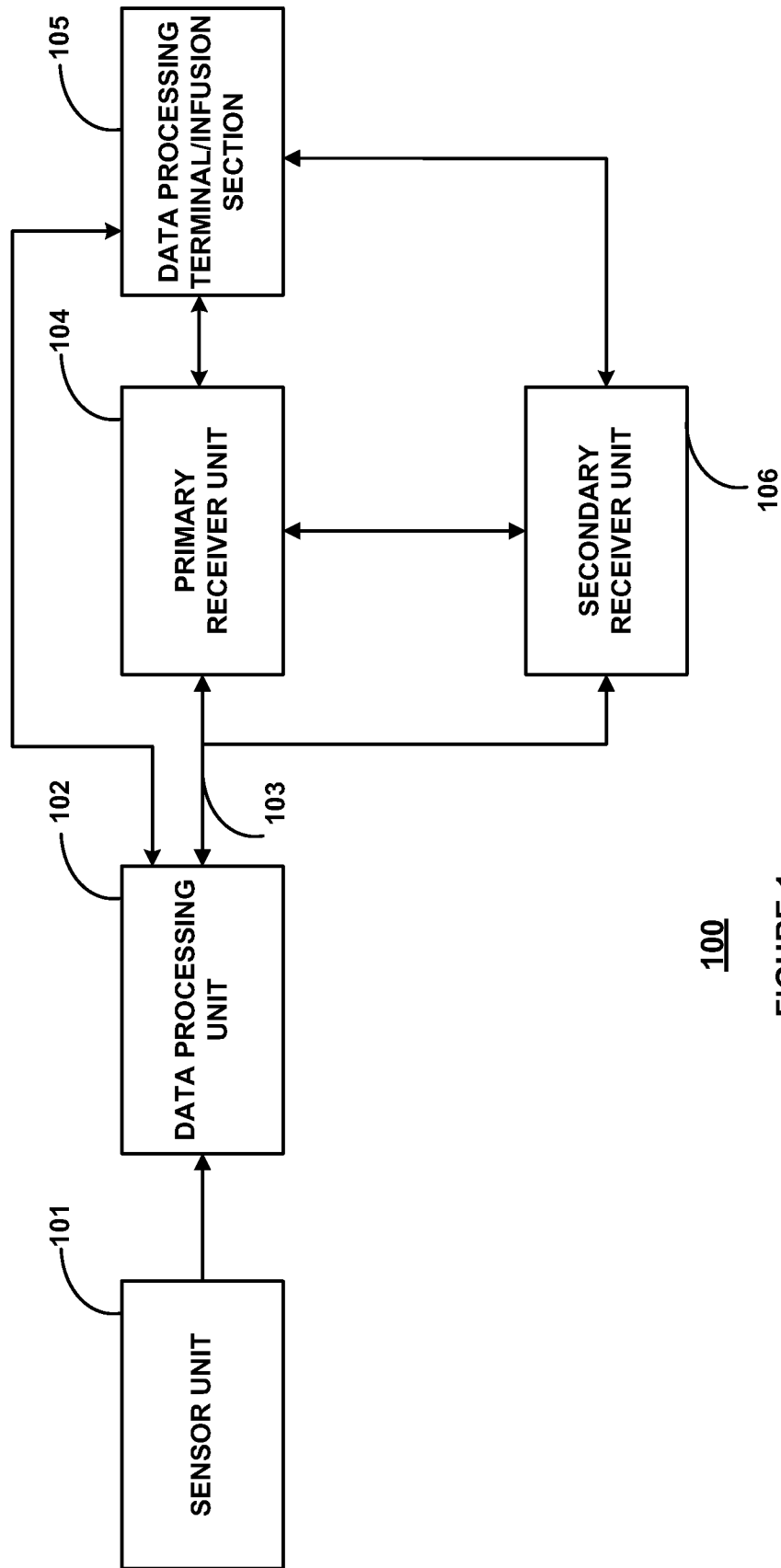
25. The apparatus of claim 24 wherein the memory for storing instructions which, when executed by the one or more processors, causes the one or more processors to compare the determined normal sensitivity to a predetermined value.

26. The apparatus of claim 25 wherein the predetermined value includes a median sensitivity value determined based on the immediate sensitivity associated with each time window.

27. One or more storage devices having processor readable code embodied thereon, said processor readable code for programming one or more processors to estimate analyte level, comprising:

- processing sampled data from analyte sensor;
- determining a single, fixed, normal sensitivity value associated with the analyte sensor;
- estimating a windowed offset value associated with the analyte sensor for each available sampled data cluster;
- computing a time varying offset based on the estimated windowed offset value; and

applying the time varying offset and the determined normal sensitivity value to the processed sampled data to estimate an analyte level for the sensor.



100
FIGURE 1

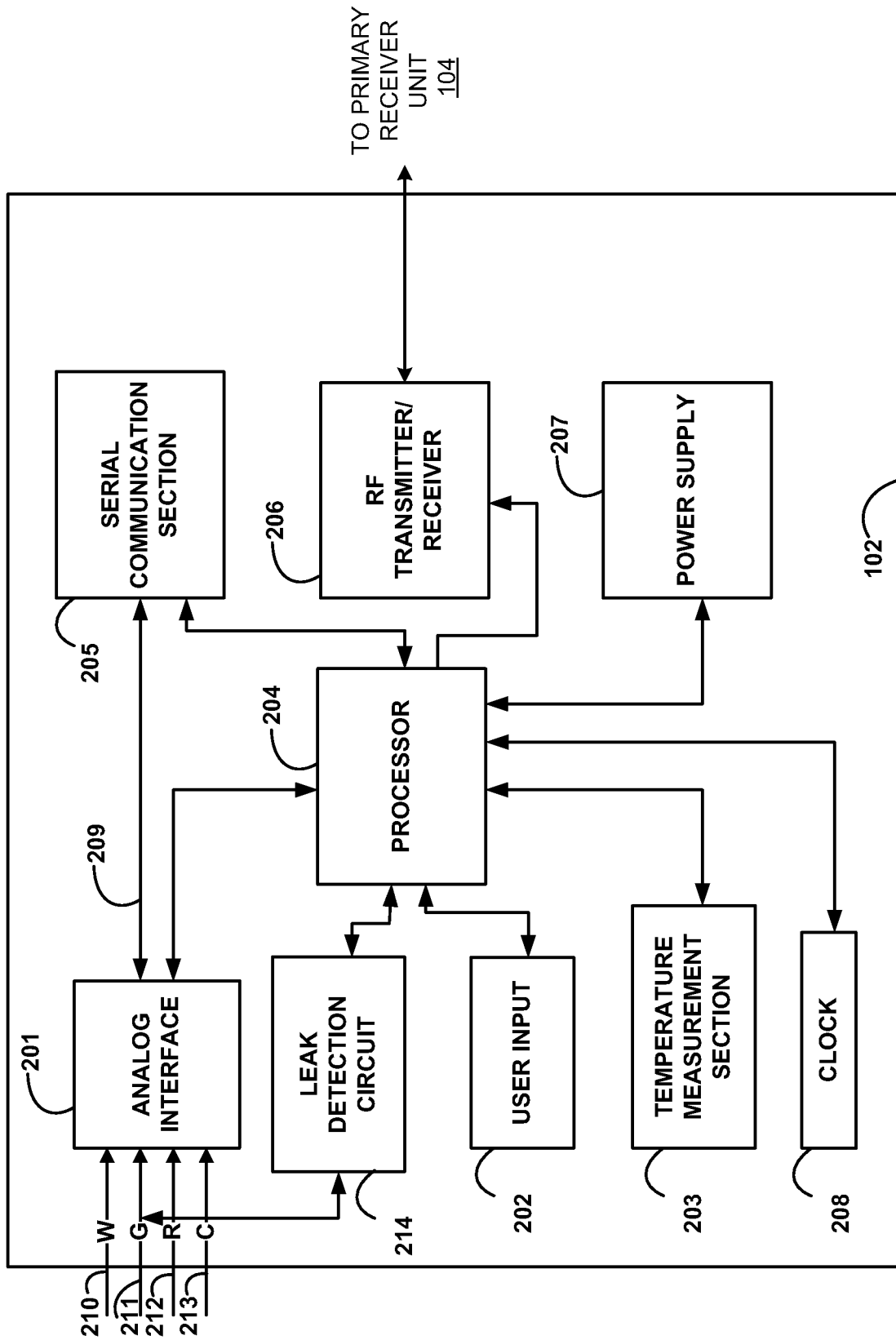


FIGURE 2

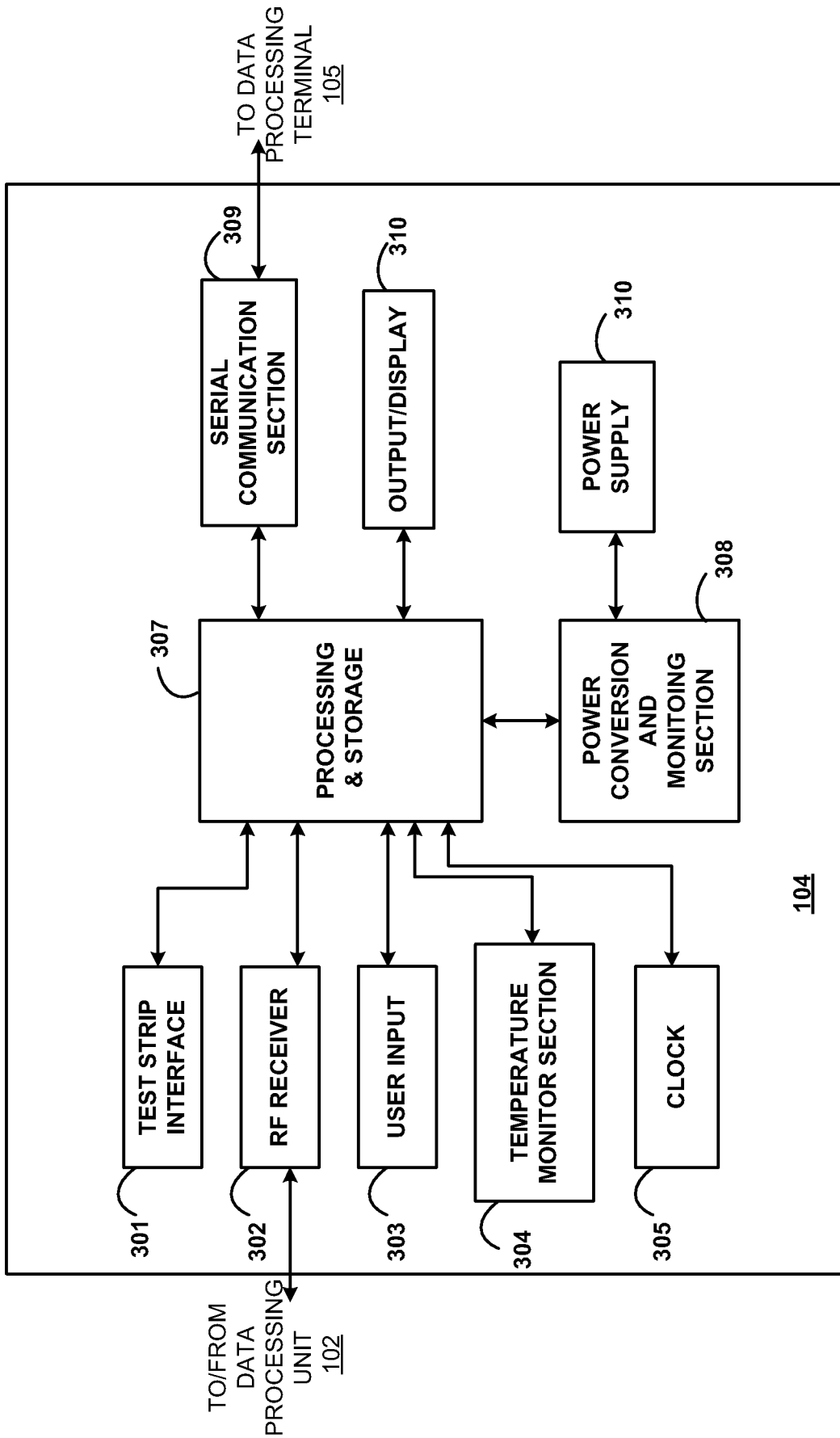


FIGURE 3

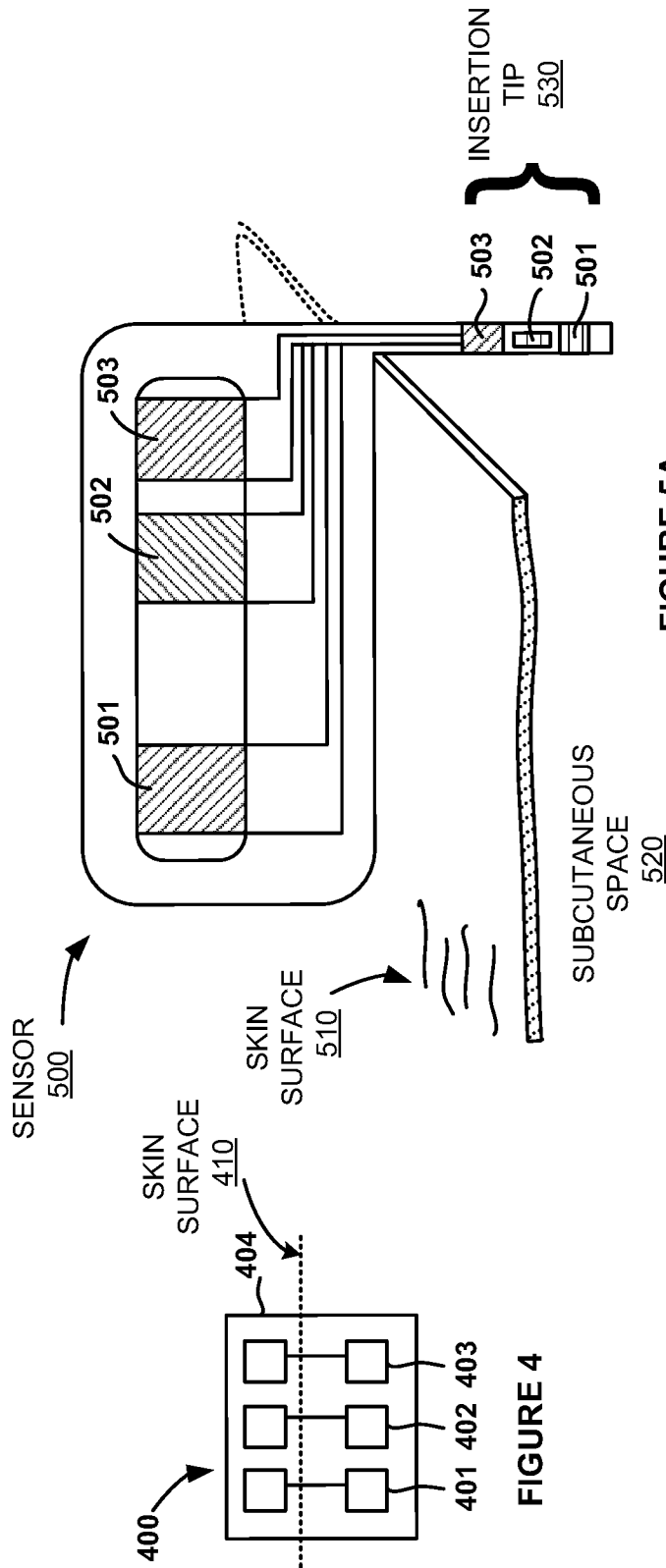


FIGURE 5A

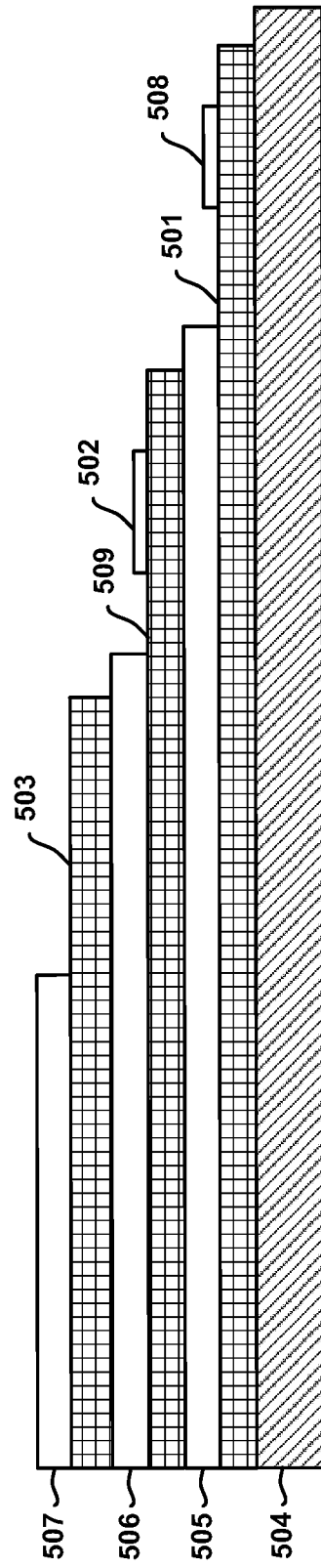


FIGURE 5B

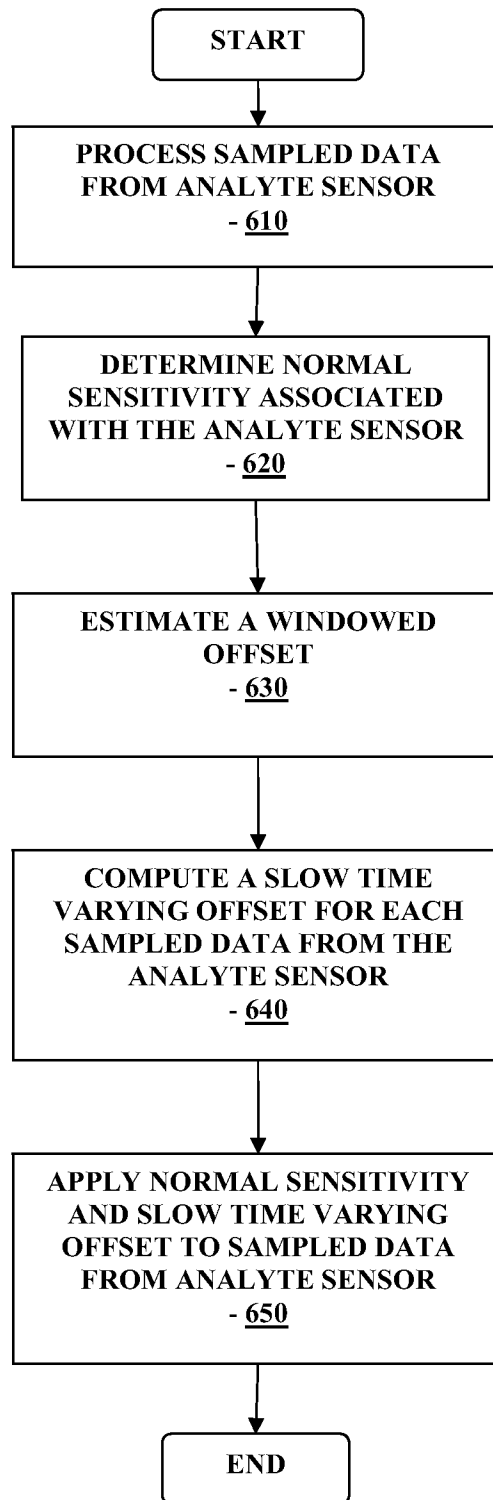


FIGURE 6

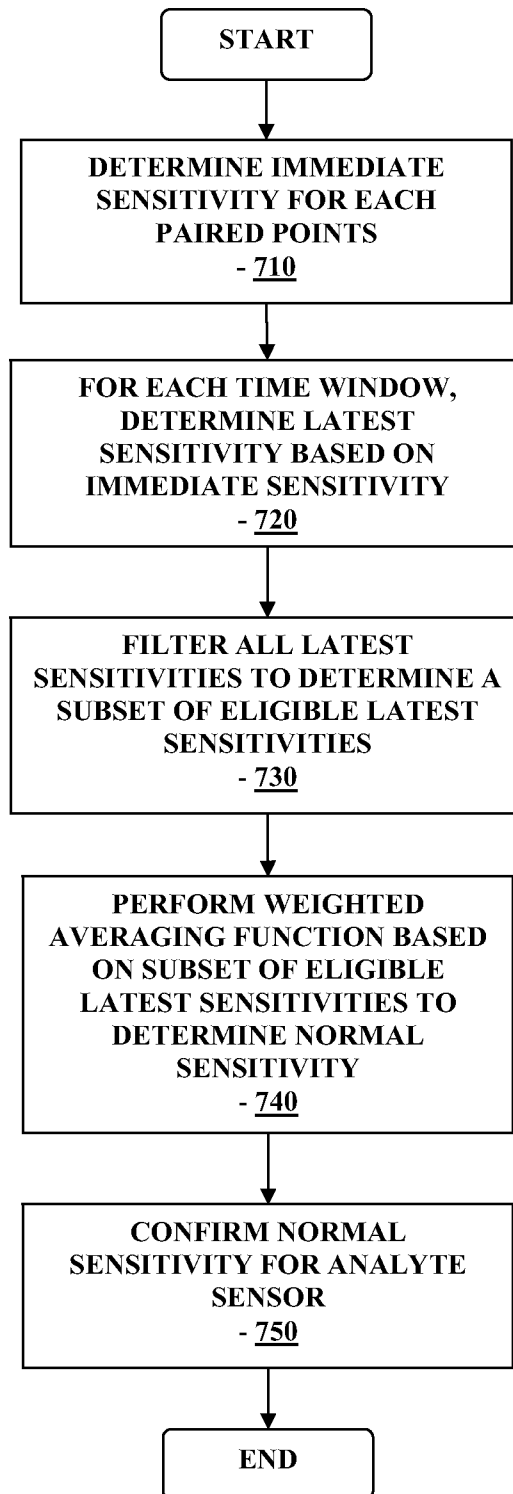


FIGURE 7

INTERNATIONAL SEARCH REPORT

International application No.

PCT/US2010/022669

A. CLASSIFICATION OF SUBJECT MATTER IPC(8) - A61B 5/00 (2010.01) USPC - 600/316 According to International Patent Classification (IPC) or to both national classification and IPC		
B. FIELDS SEARCHED Minimum documentation searched (classification system followed by classification symbols) IPC(8) - A61B 5/00 (2010.01) USPC - 600/316 Documentation searched other than minimum documentation to the extent that such documents are included in the fields searched Electronic data base consulted during the international search (name of data base and, where practicable, search terms used) MicroPatent		
C. DOCUMENTS CONSIDERED TO BE RELEVANT		
Category*	Citation of document, with indication, where appropriate, of the relevant passages	Relevant to claim No.
Y	US 2008/0172205 A1 (BRETON et al) 17 July 2008 (17.07.2008) entire document	1-27
Y	US 6,931,327 B2 (GOODE JR et al) 16 August 2005 (16.08.2005) entire document	1-27
A	US 5,568,400 A (STARK et al) 22 October 1996 (22.10.1996) entire document	1-27
A	US 7,317,938 B2 (LORENZ et al) 08 January 2008 (08.01.2008) entire document	1-27
<input type="checkbox"/> Further documents are listed in the continuation of Box C. <input type="checkbox"/>		
* Special categories of cited documents: "A" document defining the general state of the art which is not considered to be of particular relevance "E" earlier application or patent but published on or after the international filing date "L" document which may throw doubts on priority claim(s) or which is cited to establish the publication date of another citation or other special reason (as specified) "O" document referring to an oral disclosure, use, exhibition or other means "P" document published prior to the international filing date but later than the priority date claimed "T" later document published after the international filing date or priority date and not in conflict with the application but cited to understand the principle or theory underlying the invention "X" document of particular relevance; the claimed invention cannot be considered novel or cannot be considered to involve an inventive step when the document is taken alone "Y" document of particular relevance; the claimed invention cannot be considered to involve an inventive step when the document is combined with one or more other such documents, such combination being obvious to a person skilled in the art "&" document member of the same patent family		
Date of the actual completion of the international search 11 March 2010		Date of mailing of the international search report 23 MAR 2010
Name and mailing address of the ISA/US Mail Stop PCT, Attn: ISA/US, Commissioner for Patents P.O. Box 1450, Alexandria, Virginia 22313-1450 Facsimile No. 571-273-3201		Authorized officer: Blaine R. Copenheaver PCT Helpdesk: 571-272-4300 PCT OSP: 571-272-7774

专利名称(译)	用于为分析物传感器提供基于偏移模型的校准的方法和设备		
公开(公告)号	EP2381838A1	公开(公告)日	2011-11-02
申请号	EP2010736506	申请日	2010-01-29
[标]申请(专利权)人(译)	雅培糖尿病护理公司		
申请(专利权)人(译)	雅培糖尿病INC.		
当前申请(专利权)人(译)	雅培糖尿病INC.		
[标]发明人	BUDIMAN ERWIN SATRYA		
发明人	BUDIMAN, ERWIN, SATRYA		
IPC分类号	A61B5/00 A61B5/145 A61B5/1486 A61B5/1495		
CPC分类号	A61B5/14532 A61B5/14865 A61B5/1495 A61B2560/0223 G16H40/63 Y10T436/144444 G06F19/36 G16H10/20 G16H10/40		
优先权	12/362479 2009-01-29 US		
其他公开文献	EP2381838A4		
外部链接	Espacenet		

摘要(译)

提供了用于检测体液中的分析物的方法和装置。实施例包括处理来自分析物传感器的采样数据，确定与分析物传感器相关联的单个固定正常灵敏度值，估计与每个可用采样数据聚类的分析物传感器相关联的加窗偏移值，基于估计值计算时变偏移加窗的偏移值，并将时变偏移和确定的正常灵敏度值应用于处理的采样数据，以估计传感器的分析物水平。