



(11) **EP 3 487 154 A1**

(12) **EUROPEAN PATENT APPLICATION**

(43) Date of publication:  
**22.05.2019 Bulletin 2019/21**

(51) Int Cl.:  
**H04L 29/08 (2006.01) A61B 5/11 (2006.01)**  
**A61B 5/00 (2006.01) H04W 4/70 (2018.01)**

(21) Application number: **18248202.6**

(22) Date of filing: **18.06.2014**

(84) Designated Contracting States:  
**AL AT BE BG CH CY CZ DE DK EE ES FI FR GB GR HR HU IE IS IT LI LT LU LV MC MK MT NL NO PL PT RO RS SE SI SK SM TR**

- **KYROLA, Aapo**  
**Menlo Park, CA California 94025 (US)**
- **PARTANEN, Jukka**  
**Menlo Park, CA California 94025 (US)**

(30) Priority: **28.06.2013 US 201313930347**  
**28.06.2013 US 201313930321**

(74) Representative: **Schröer, Gernot H.**  
**Meissner Bolte Patentanwälte**  
**Rechtsanwälte Partnerschaft mbB**  
**Bankgasse 3**  
**90402 Nürnberg (DE)**

(62) Document number(s) of the earlier application(s) in accordance with Art. 76 EPC:  
**14817172.1 / 3 014 905**

(71) Applicant: **Facebook, Inc.**  
**Menlo Park, CA 94025 (US)**

Remarks:  
This application was filed on 28.12.18 as a divisional application to the application mentioned under INID code 62.

(72) Inventors:  
• **PENNANEN, Juho**  
**Menlo Park, CA California 94025 (US)**

(54) **USER ACTIVITY TRACKING SYSTEM AND DEVICE**

(57) The present disclosure provides a method comprising by a computing device, determining one or more sensor signals detected by one or more sensors of the computing device, the sensor signals being indicative of motion of the computing device; by the computing device, selecting one of a plurality of activity categories that corresponds to a portion of the sensor signals, wherein each of the activity categories comprises one or more activity types and is characterized by a motion that the activity types in the selected activity category have in common; by the computing device, determining one of the activity types in the selected activity category by: analyzing the sensor signals with respect to each of the activity types in the selected activity category; and calculating a probability of each of the activity types based on the analysis; and by the computing device, displaying the determined activity type on a display of the computing device.

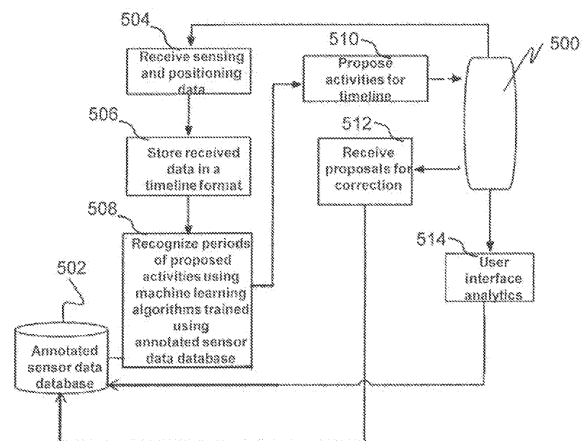


Fig. 5

**EP 3 487 154 A1**

**Description****TECHNICAL FIELD**

[0001] The present disclosure generally relates to tracking, recording and analyzing user activities, and more specifically to systems and associated methods for identifying user activities based on sensor data collected by a mobile communication device of a user. Moreover, aspects of the disclosure are also directed to software products recorded on non-transitory machine-readable data storage media, wherein such software products are executable upon computing hardware, to implement the methods of the disclosure.

**BACKGROUND**

[0002] Tracking devices exist that sense and track user activities, especially sports activities. An example of a known activity tracking device is a wearable wristwatch device with a GPS receiver for tracking and analyzing 'running' activity of an associated user. Another example is a mobile application that utilizes GPS system of a respective mobile phone for recording movement of users while they exercise. Another example is a step counter used in shoes or attached to the user's clothes to collect the number of steps taken by the user. However, none of the existing tracking devices automatically sense, record, analyze and identify all types of user activities such as walking, running, jogging, cycling, rowing, driving with car, moving with bus, moving with train, walking stairs, running stairs, jumping, swimming, playing football, and skiing.

[0003] Nowadays, smartphones are equipped with an increasing number of sensors such as Global Positioning System (GPS) receivers, accelerometers, and proximity sensors, and smartphone users may find it interesting to have mobile applications that can automatically record, sense, analyze, and identify their activities. However, one of the key challenges in the automatic tracking of users' movements for the purpose of analyzing the type of activity is the classification of activity types. For example walking vs running activity may have only small difference in respect to the collected sensor data. Moreover, for the same activity, the sensor data may vary depending on how the smart phone is carried by the user. For example, the smartphone may be carried by the user in his/her hand, or in a pocket or in a backpack.

[0004] Hence, there exists a need for an activity tracking solution that accurately senses and analyzes all kinds of user activities and that addresses the limitations of existing activity tracking solutions.

**SUMMARY OF PARTICULAR EMBODIMENTS**

[0005] The present disclosure seeks to provide a system for tracking and recording movements of a mobile communication device and a method of the using the

same.

[0006] In one aspect, embodiments of the present disclosure provide a system for tracking and recording movements of a mobile communication device that includes one or more movement sensors and a wireless interface. The system includes a communication network for communicating with the mobile communication device and computing hardware for processing data supplied in operation from the mobile communication device. The mobile communication device communicates sensor signals, for example in a form of sensor data, to the system, wherein the sensor signals are indicative of motion associated with activities to which the mobile communication device is exposed by its user.

[0007] In particular embodiments, the computing hardware executes software products for analyzing the sensor signals to classify them into one or more temporal zones, and for analyzing the signals within each given temporal zone to determine one or more most likely activity types associated with the given temporal zone. The computing hardware further sends information indicating the most likely activity types associated with the temporal zones to the mobile communication device. The mobile communication device then requests its user to provide a confirmation whether or not the information indicating the most likely activity types associated with a temporal zone represents a correct analysis, and then communicates the confirmation back to the computing hardware for amending parameters and/or algorithms employed in the software products, which execute analysis of the sensor signals to improve their accuracy.

[0008] In particular embodiments, the computing hardware executes software products for analyzing the sensor signals to pre-classify the sensor signals to generate intermediate data. The intermediate data is thereafter processed in one or more processors to generate indications of likely activities associated with the sensor signals. The computing hardware further computes an aggregate of the indications to provide an analysis of one or more activities associated with the sensor signals, and then sends information indicating most likely activity types to the mobile communication device.

[0009] The processors are configured to process the sensor signals substantially in parallel, wherein the processors are mutually specialized in identifying characteristics of the signals corresponding to activities to which the processors are dedicated.

[0010] The system generates a temporal log of activities experienced by the mobile communication device, and presents the activities on a graphical user interface of a user in a timeline format.

[0011] The mobile communication device is implemented by way of at least one of: a portable computer such as laptop, a smartphone, a wrist-worn phone, a phablet, a mobile telephone, a tablet computer, a portable media device or any other computing device that can be worn by the user and is capable of processing and displaying data. Further, one or more sensors of the mo-

mobile communication device are implemented using at least one of: a gyroscopic angular sensor, an accelerometer, a GPS position sensor, cellular positioning sensor, a magnetometer, a microphone, a camera, a temperature sensor. The term cellular positioning sensor can refer to determining the location and movement of the mobile communication device can be derived/analyzed/measured using information related to a cellular network and information related to radio base stations and their signals.

**[0012]** When executed on the computing hardware, the software products are operable to implement supervised or semisupervised classification algorithms such as neural networks, decision forest, and support vector machines, for analysis of information included in the sensor signals. As input, the supervised or semisupervised classification algorithms can use, for instance, the amplitudes of the frequency components of the information included in the one or more sensor signals, and the output of the classification algorithms are estimated probabilities of different activities, conditional on the sensor signals.

**[0013]** In another aspect, the mobile communication device includes a data processor for executing a mobile software application thereat, wherein the mobile software application is operable when executed to cause a graphical user interface of the mobile communication device to present analyzed activity results provided from the computing hardware in a form of a timeline, wherein different analyzed activities are represented by mutually different symbols in respect of the timeline.

**[0014]** In yet another aspect, embodiments of the present disclosure provide a method of using the system for tracking and recording the movements of the mobile communication device.

**[0015]** In yet another aspect, embodiments of the present disclosure provide a mobile communication device for implementing the system for tracking and recording movements of the user.

**[0016]** In yet another aspect, embodiments of the present disclosure provide a software product recorded on a non-transitory machine-readable data storage media, such that the software product is executable upon computing hardware for implementing the method of using the system for tracking and recording movements of the mobile communication device. The software product is downloadable from a software application store to the mobile communication device.

**[0017]** Embodiments of the present disclosure sense, analyze and identify all types of user activities by analyzing the data collected from one or more sensors of a mobile communication device of a user. The sensor data is processed by a set of independent instances of classification algorithms and each instance is optionally dedicated to identify a specific type of activity. The output of the set of classification algorithm instances is aggregated and analyzed to generate most likely user activities associated with the mobile communication device. The

identified activities are displayed on a graphical user interface of the mobile communication device in a timeline format. If the user disagrees/agrees with an identified activity, then they may provide their feedback and the feedback may be used to improve the analysis and identification of the activities for the next time. Thus, the accuracy of the analysis and identification of the user activities is optimized over time.

**[0018]** Alternatively embodiments of the present disclosure accurately sense, analyze and identify user activities by analyzing data collected from one or more sensors of a mobile communication device of a user. The sensor data is processed by a set of parallel processors, wherein the parallel processors are parallel instances of classification algorithms and each processor is optionally dedicated to identify a specific type of activity. The output of the set of parallel processors is aggregated and analyzed to generate most likely user activities associated with the mobile communication device. The identified activities are then displayed on a graphical user interface of the mobile communication device in a timeline format. In current disclosure parallel processors can refer to implementation architecture where part of the software is executed in different central processing units (i.e. microprocessors) and/or parallel instances of classification algorithms i.e. in parallel software processes. Parallel can refer to calculation processes executed substantially at the same time but is not limited to such a method. Executing of instances can take place one by one or as a combination of some processes executed substantially at the same time and some processes executed one by one.

**[0019]** Additional aspects, advantages, features and objects of the present disclosure would be made apparent from the drawings and the detailed description of the illustrative embodiments construed in conjunction with the appended claims that follow.

**[0020]** It will be appreciated that features of the invention are susceptible to being combined in various combinations without departing from the scope of the invention as defined by the appended claims.

**[0021]** Embodiments according to the invention are in particular disclosed in the attached claims directed to a method, a storage medium and a system, wherein any feature mentioned in one claim category, e.g. method, can be claimed in another claim category, e.g. system, as well. The dependencies or references back in the attached claims are chosen for formal reasons only. However any subject matter resulting from a deliberate reference back to any previous claims (in particular multiple dependencies) can be claimed as well, so that any combination of claims and the features thereof is disclosed and can be claimed regardless of the dependencies chosen in the attached claims.

**[0022]** In an embodiment according to the invention a method of using a system for tracking and recording movements of at least one mobile communication device including one or more movement sensors and a wireless

interface, wherein the system includes a communication network for communicating with the at least one mobile communication device and computing hardware for processing data supplied in operation from the at least one mobile communication device, characterized in that the method includes:

- operating the at least one mobile communication device to communicate one or more sensor signals to the system, wherein the one or more sensor signals are indicative of motion associated with activities to which the at least one mobile communication device is exposed by its user;
- operating the computing hardware of the system to execute one or more software products for analyzing the one or more sensor signals, wherein the computing hardware is operable to pre-classify the one or more sensor signals to generate intermediate data, and the intermediate data is thereafter processed in one or more processors to generate one or more indications of likely activities associated with the one or more sensor signals, and the computing hardware is operable to compute an aggregate of the one or more indications to provide an analysis of one or more activities associated with the one or more signals; and
- operating the computing hardware to send information indicating one or more most likely activity types to the at least one mobile communication device.

**[0023]** In an embodiment according to the invention, a method is provided, in particular of using a system or a device for tracking and recording movements of at least one mobile communication device including one or more movement sensors and a wireless interface, wherein the or a system in particular includes a communication network for communicating with the at least one mobile communication device and computing hardware for processing data supplied in operation from the at least one mobile communication device, wherein the method includes at least one or more of the following features:

- operating the at least one mobile communication device to communicate one or more sensor signals to the system, wherein the one or more sensor signals are indicative of motion associated with activities to which the at least one mobile communication device is exposed by its user;
- operating the device or the computing hardware of the system to execute one or more software products for analyzing the one or more sensor signals, wherein the device or the computing hardware is operable to pre-classify the one or more sensor signals to generate intermediate data, and the intermediate data is thereafter processed in one or more processors to generate one or more indications of likely activities associated with the one or more sensor signals, and the device or the computing hardware is operable to

compute an aggregate of the one or more indications to provide an analysis of one or more activities associated with the one or more signals; and operating the device or the computing hardware to send or display information indicating one or more most likely activity types to or at the at least one mobile communication device.

**[0024]** In an embodiment according to the invention, a method comprises at least one or more of the following features: by a computing device, determining one or more sensor signals detected by one or more sensors of the computing device, the sensor signals being indicative of motion of the computing device; by the computing device, selecting one of a plurality of activity categories that corresponds to a portion of the sensor signals, wherein each of the activity categories comprises one or more activity types and is characterized by a motion that the activity types in the selected activity category have in common; by the computing device, determining one of the activity types in the selected activity category by: analyzing the sensor signals with respect to each of the activity types in the selected activity category; and calculating a probability of each of the activity types based on the analysis; and by the computing device, displaying the determined activity type on a display of the computing device.

**[0025]** In an embodiment according to the invention, a method of using a computing device is provided, in particular a mobile communication device, for tracking and recording movements of the or a mobile communication device including one or more movement sensors and a wireless interface, wherein in particular the computing device is operated in a system including a communication network for communicating with the mobile communication device and computing hardware for processing data supplied in operation from the mobile communication device, wherein the method includes at least one or more of the following features:

- operating the mobile communication device to communicate one or more sensor signals to the system and/or to determine one or more sensor signals detected by one or more sensors of the computing device, wherein the one or more sensor signals are indicative of motion associated with activities to which the mobile communication device is exposed by its user;
- operating the computing hardware of the system or the computing device to execute one or more software products for analyzing the one or more sensor signals, wherein the computing hardware or computing device is operable to pre-classify the one or more sensor signals to generate intermediate data, and the intermediate data is thereafter processed in one or more processors to generate one or more indications of likely activities associated with the one or more sensor signals, and the computing hardware

or computing device is operable to compute an aggregate of the one or more indications to provide an analysis of one or more activities associated with the one or more signals; and  
operating the computing hardware or computing device to send information indicating one or more most likely activity types to the mobile communication device and/or to display information indicating one or more most likely activity types, in particular on a display of the computing device.

**[0026]** In an embodiment according to the invention, the step of determining one of the activity types in the selected activity category or of operating the computing device to execute one or more software products for analyzing the one or more sensor signals comprises at least one or more of the following features:

process the intermediate data in one or more processors to generate one or more indications of likely activity types associated with the one or more sensor signals;  
compute an aggregate of the one or more indications to provide an analysis of one or more activity types associated with the one or more signals;  
analyze the one or more sensor signals to classifying them into one or more activity periods, and analyzing the one or more sensor signals within each given activity period to determine a most likely activity type associated with the given activity period;  
recognize one or more stationary segments based on the location data, when the mobile communication device is stationary and no activity is performed therein;  
determine whether two or more of the activity periods should be replaced with a single activity period based on a heuristics-type analysis based on the determined activity types and a length of time of corresponding activity periods, and, if so, generating at least one activity period replacing the two or more of the activity periods;  
the heuristic type analysis being based on rules, whereas, according to a rule, if a recognized stationary segment has a period of no recognized activity shorter than a first predetermined number of seconds, and the neighboring activity periods have a duration greater than a second predetermined number of seconds, the stationary segment is replaced with an activity period labeling it with the neighboring activities;  
send or display information indicating the most likely activity types, and corresponding activity periods and/or replacement activity periods to the at least one mobile communication device;  
at the at least one mobile communication device, a graphical user interface, GUI, displaying a summary of activities of the user received from the system in a time line format;

the system comprising classifier nodes, each classifier node including a processor that is dedicated to identifying characteristics of the sensor data corresponding to a predefined activity.

5  
**[0027]** In an embodiment according to the invention, the sensor signals are analyzed substantially in parallel by one or more processors of the computing device, each of the processors being specialized in identifying characteristics of the sensor signals corresponding to a predefined activity type.

10  
**[0028]** In an embodiment according to the invention, determining the activity types comprises generating a temporal log of activity types experienced by the mobile device.

15  
**[0029]** In an embodiment according to the invention, the sensor signals further comprise an estimated speed of the computing device based on location data of the computing device.

20  
**[0030]** In an embodiment according to the invention, the one or more sensors comprise a gyroscopic angular sensor, an accelerometer, a GPS position sensor, a cellular positioning sensor, a magnetometer, a microphone, a camera, or a temperature sensor.

25  
**[0031]** In an embodiment according to the invention, the analysis of the sensor signals comprises a supervised or semisupervised classification analysis; or a heuristic analysis.

30  
**[0032]** In an embodiment according to the invention, the supervised or semisupervised classification analysis comprises classification algorithms that use as input the amplitudes of the frequency components of the information included in the sensor signals, and the output of the classification algorithms are estimated probabilities of different activity types based at least in part on the sensor signals.

35  
**[0033]** In an embodiment according to the invention, displaying the determined activity type comprises displaying analyzed activity results on a graphical user interface of a software application of the computing device, wherein the displayed analyzed activity results comprise a timeline comprising a plurality of mutually different symbols representing different activity types.

40  
**[0034]** In an embodiment according to the invention, a system comprises:

one or more processors;  
a display;

45  
one or more sensors;  
a memory coupled to the processors comprising instructions executable by the processors, the processors being operable when executing the instructions to:

50  
perform a method according to the invention or to  
determine one or more sensor signals detected by the one or more sensors, the sensor signals

being indicative of motion of the system;  
 select one of a plurality of activity categories that corresponds to a portion of the sensor signals, wherein each of the activity categories comprises one or more activity types and is characterized by a motion that the activity types in the selected activity category have in common;  
 determine one of the activity types in the selected activity category by:

analyzing the sensor signals with respect to each of the activity types in the selected activity category;  
 calculating a probability of each of the activity types based on the analysis;  
 display the determined activity type on the display.

**[0035]** In an embodiment according to the invention, the sensor signals are analyzed substantially in parallel by one or more processors of the computing device, each of the processors being specialized in identifying characteristics of the sensor signals corresponding to a predefined activity type.

**[0036]** In an embodiment according to the invention, determining the activity type comprises generating a temporal log of activity types experienced by the mobile device.

**[0037]** In an embodiment according to the invention, the sensor signals further comprise an estimated speed of the computing device based on location data of the computing device. wherein the one or more sensors comprise a gyroscopic angular sensor, an accelerometer, a GPS position sensor, a cellular positioning sensor, a magnetometer, a microphone, a camera, or a temperature sensor.

**[0038]** In an embodiment according to the invention, the analysis of the sensor signals comprises a supervised or semisupervised classification analysis; or a heuristic analysis.

**[0039]** In an embodiment according to the invention, the supervised or semisupervised classification analysis comprises classification algorithms that use as input the amplitudes of the frequency components of the information included in the sensor signals, and the output of the classification algorithms are estimated probabilities of different activity types based at least in part on the sensor signals.

**[0040]** In an embodiment according to the invention, displaying the activity type comprises sending analyzed activity results to the mobile device for display on a graphical user interface of a software application of the mobile device, wherein the displayed analyzed activity results comprise a timeline comprising a plurality of mutually different symbols representing different activity types.

**[0041]** In an embodiment according to the invention, one or more computer-readable non-transitory storage media embodying software that is operable when exe-

cuted to:

perform a method according to the invention or to determine one or more sensor signals detected by one or more sensors of a computing device, the sensor signals being indicative of motion of the computing device;

select one of a plurality of activity categories that corresponds to a portion of the sensor signals, wherein each of the activity categories comprises one or more activity types and is characterized by a motion that the activity types in the selected activity category have in common;

determine one of the activity types in the selected activity category by:

analyzing the sensor signals with respect to each of the activity types in the selected activity category;

calculating a probability of each of the activity types based on the analysis;

display the activity type on a display of the computing device.

**[0042]** In an embodiment according to the invention, the sensor signals are analyzed substantially in parallel by one or more processors of the computing device, each of the processors being specialized in identifying characteristics of the sensor signals corresponding to a predefined activity type; wherein the analysis of the sensor signals comprises a supervised or semisupervised classification analysis; or a heuristic analysis.

**[0043]** In an embodiment according to the invention, the supervised or semisupervised classification analysis comprises classification algorithms that use as input the amplitudes of the frequency components of the information included in the sensor signals, and the output of the classification algorithms are estimated probabilities of different activity types based at least in part on the sensor signals.

**[0044]** In a further embodiment according to the invention, the method can be characterized in that the method further includes:

operating the computing hardware of the system to execute one or more software products for analyzing the one or more sensor signals to classifying them into one or more temporal zones, and for analyzing the one or more sensor signals within each given temporal zone to determine a most likely activity type associated with the given temporal zone;

operating the computing hardware to send information indicating one or more most likely activity types associated with the one or more temporal zones to the at least one mobile communication device; and operating the at least one mobile communication device to request its user to provide a confirmation whether or not the information indicating the one or

more most likely activity types associated with the one or more temporal zones represent a correct analysis, and to communicate the confirmation back to the computing hardware for amending parameters and/or algorithms employed in the one or more software products which execute analysis of the one or more sensor signals to improve their accuracy.

**[0045]** In a further embodiment according to the invention, the method can be characterized in that the method includes configuring the one or more processors to process the one or more sensor signals substantially in parallel, wherein the one or more processors are mutually specialized in identifying characteristics of the one or more signals corresponding to one or more activities to which the one or more processors are dedicated.

**[0046]** In a further embodiment according to the invention, the method can be characterized in that the method includes operating the system to generate a temporal log of activities experienced by the at least one mobile communication device.

**[0047]** In a further embodiment according to the invention, the method can be characterized in that the method includes implementing at least one mobile communication device by way of at least one of: a personal computer, a portable media device, a smart phone, a wrist-worn phone, a phablet, a mobile telephone, a tablet computer.

**[0048]** In a further embodiment according to the invention, the method can be characterized in that the method includes implementing the one or more sensors of the at least mobile communication device using at least one of: a gyroscopic angular sensor, an accelerometer, a GPS position sensor, a cellular position sensor, a magnetometer, a microphone, a camera, a temperature sensor.

**[0049]** In a further embodiment according to the invention, the method can be characterized in that the one or more software products are operable to implement when executed on the computing hardware at least one of:

a supervised or semisupervised classification analysis of information included in the one or sensor signals; and

a heuristics analysis of information included in the one or more sensor signals.

**[0050]** In a further embodiment according to the invention, the method can be characterized in that the supervised or semisupervised classification algorithms can use as input the amplitudes of the frequency components of the information included in the one or more sensor signals, and the output of the classification algorithms are estimated probabilities of different activities, conditional on the sensor signals.

**[0051]** In a further embodiment according to the invention, the method can be characterized in that the method includes arranging for the at least one mobile communication device to include a data processor for executing at least one mobile software application thereat, wherein

the at least one mobile software application is operable to cause a graphical user interface of the at least one mobile communication device to present analyzed activity results provided from the computing hardware in a form of at least one timeline, wherein different analyzed activities are represented by a plurality of mutually different symbols in respect of the at least one time line.

**[0052]** In a further embodiment according to the invention, which can be claimed as well, a system for tracking and recording movements of at least one mobile communication device including one or more movement sensors and a wireless interface, wherein the system includes a communication network for communicating with the at least one mobile communication device and computing hardware for processing data supplied in operation from the at least one mobile communication device, can be characterized in that

the at least one mobile communication device is operable to communicate one or more sensor signals to the system, wherein the one or more sensor signals are indicative of motion associated with activities to which the at least one mobile communication device is exposed by its user;

the computing hardware of the system is operable to execute one or more software products for analyzing the one or more sensor signals, wherein the computing hardware is operable to pre-classify the one or more sensor signals to generate intermediate data, and the intermediate data is thereafter processed in one or more processors to generate one or more indications of likely activities associated with the one or more sensor signals, and the computing hardware is operable to compute an aggregate of the one or more indications to provide an analysis of one or more activities associated with the one or more signals; and the computing hardware is operable to send information indicating one or more most likely activity types to the at least one mobile communication device.

**[0053]** In a further embodiment according to the invention, a system can further be characterized in that the computing hardware of the system is operable to execute one or more software products for analyzing the one or more sensor signals to classifying them into one or more temporal zones, and for analyzing the one or more sensor signals within each given temporal zone to determine a most likely activity type associated with the given temporal zone;

the computing hardware is operable to send information indicating one or more most likely activity types associated with the one or more temporal zones to the at least one mobile communication device; and

the at least one mobile communication device is operable to request its user to provide a confirmation whether or not the information indicating the one or more most likely activity types associated with the one or more temporal zones represent a correct analysis, and to communicate the confirmation back to the computing hardware for amending parameters and/or algorithms employed in the

one or more software products which execute analysis of the one or more sensor signals to improve their accuracy.

**[0054]** In a further embodiment according to the invention, a system can further be characterized in that the one or more processors are configured to process the one or more sensor signals substantially in parallel, wherein the one or more processors are mutually specialized in identifying characteristics of the one or more signals corresponding to one or more activities to which the one or more processors are dedicated.

**[0055]** In a further embodiment according to the invention, a system can further be characterized in that the system is operable to generate a temporal log of activities experienced by the at least one mobile communication device.

**[0056]** In a further embodiment according to the invention, a system can further be characterized in that the at least one mobile communication device is implemented by way of at least one of: a personal computer, a portable media device, a smart phone, a wrist-worn phone, a phablet, a mobile telephone, a tablet computer.

**[0057]** In a further embodiment according to the invention, a system can further be characterized in that one or more sensors of the at least mobile communication device are implemented using at least one of: a gyroscopic angular sensor, an accelerometer, a GPS position sensor, cellular positioning sensor, a magnetometer, a microphone, a camera, a temperature sensor.

**[0058]** In a further embodiment according to the invention, a system can further be characterized in that the one or more software products are operable to implement when executed on the computing hardware at least one of:

- a supervised or semisupervised classification analysis of information included in the one or sensor signals; and
- a heuristic analysis of information included in the one or more sensor signals.

**[0059]** In a further embodiment according to the invention, a system can further be characterized in that the supervised or semisupervised classification algorithms can use as input the amplitudes of the frequency components of the information included in the one or more sensor signals, and the output of the classification algorithms are estimated probabilities of different activities, conditional on the sensor signals.

**[0060]** In a further embodiment according to the invention, a system can further be characterized in that the at least one mobile communication device includes a data processor for executing at least one mobile software application thereat, wherein the at least one mobile software application is operable to cause a graphical user interface of the at least one mobile communication device to present analyzed activity results provided from the computing hardware in a form of at least one timeline, wherein

different analyzed activities are represented by a plurality of mutually different symbols in respect of the at least one timeline.

**[0061]** In a further embodiment according to the invention, which can be claimed as well, a software product stored on non-transitory machine-readable data storage media, can be characterized in that the software product is executable upon computing hardware of a mobile communication device for implementing a method according to the invention or any of the above mentioned embodiments.

**[0062]** In a further embodiment according to the invention, a software product can be characterized in that the software product is downloadable from a software application store to a mobile communication device.

**[0063]** A further embodiment according to the invention, which can be claimed as well, can be a mobile communication device for use when implementing the system as according to the invention or any of the above mentioned embodiments.

**[0064]** A further embodiment according to the invention can be a mobile communication configured to be implemented in the system as mentioned above and in use for executing a method as mentioned above.

**[0065]** In a further embodiment according to the invention, one or more computer-readable non-transitory storage media embody software that is operable when executed to perform a method according to the invention or any of the above mentioned embodiments.

**[0066]** In a further embodiment according to the invention, a system for tracking and recording movements of at least one mobile communication device including one or more movement sensors and a wireless interface, wherein the system includes a communication network for communicating with the at least one mobile communication device and computing hardware for processing data supplied in operation from the at least one mobile communication device, comprises: one or more processors; and at least one memory coupled to the processors and comprising instructions executable by the processors, the processors operable when executing the instructions to perform a method according to the invention or any of the above mentioned embodiments.

#### **BRIEF DESCRIPTION OF THE DRAWINGS**

**[0067]** The summary above, as well as the following detailed description of illustrative embodiments, is better understood when read in conjunction with the appended drawings. For the purpose of illustrating the present disclosure, exemplary constructions of the disclosure are shown in the drawings. However, the invention is not limited to specific methods and instrumentalities disclosed herein. Moreover, those in the art will understand that the drawings are not to scale. Wherever possible, like elements have been indicated by identical numbers.

Fig. 1 is an illustration of a high-level architecture of

a system that is suitable for practicing various implementations of the present disclosure;

Fig. 2 is an illustration of an exchange of information between a mobile communication device and a computing hardware of Fig. 1, in accordance with the present disclosure;

Fig. 3 is an illustration of a graphical user interface (GUI) of the mobile communication device, in accordance with the present disclosure;

Fig. 4 is an illustration of an alternative layout of the GUI of the mobile communication device, in accordance with the present disclosure;

Fig. 5 is an illustration of steps of a method of determining activities of a user of a mobile communication device, in accordance with the present disclosure; and

Fig. 6 is an illustration of steps of using a system for tracking and recording movements of the mobile communication device, in accordance with the present disclosure.

### DESCRIPTION OF EXAMPLE EMBODIMENTS

**[0068]** The following detailed description illustrates embodiments of the disclosure and ways in which it can be implemented. Although the best mode of carrying out the invention has been disclosed, those in the art would recognize that other embodiments for carrying out or practicing the invention are also possible.

**[0069]** The present disclosure provides a system for tracking and recording movements of a mobile communication device that includes one or more movement sensors and a wireless interface. The system includes a communication network for communicating with the mobile communication device and computing hardware for processing data supplied in operation from the mobile communication device. The mobile communication device communicates one or more sensor signals to the system, wherein the sensor signals are indicative of motion associated with activities to which the mobile communication device is exposed by its user.

**[0070]** The computing hardware executes one or more software products for analyzing the sensor signals to classify them into one or more temporal zones, and for analyzing the signals within each given temporal zone to determine the most likely activity type associated with the given temporal zone. The computing hardware further sends information indicating the most likely activity types associated with the temporal zones to the mobile communication device. The mobile communication device then requests its user to provide a confirmation whether or not the information indicating the most likely activity types associated with the temporal zones represent a correct analysis, and then communicates the confirmation back to the computing hardware for amending parameters and/or algorithms employed in the software products that execute analysis of the sensor signals to improve their accuracy.

**[0071]** The computing hardware executes one or more software products for analyzing the sensor signals to pre-classify the sensor signals to generate intermediate data, and the intermediate data is thereafter processed in one or more processors to generate one or more indications of likely activities associated with the sensor signals. The computing hardware further computes an aggregate of the indications to provide an analysis of one or more activities associated with the sensor signals, and sends information indicating most likely activity types to the mobile communication device.

**[0072]** Referring now to the drawings, particularly by their reference numbers, **Fig. 1** is an illustration of a high-level architecture of a system **100** that is suitable for practicing various implementations of the present disclosure.

**[0073]** The system **100** includes a mobile communication device **102**, and a server system **104** coupled in communication to the mobile communication device **102** by way of a communication network **106**. The mobile communication device **102** is a handheld device of a user, and examples of the mobile communication device **102**, include, but are not limited to, a smart phone, a wrist-worn phone, a phablet, a mobile telephone, a tablet computer executing operating systems such as Android, Windows, and iOS. The server system **104** includes a computing hardware that executes one or more software products for processing data supplied in operation from the mobile communication device **102**. The server system **104** can be arranged as a cloud service or as dedicated servers located in a single site or at a plurality of mutually spatially distributed sites. Moreover, examples of the communication network **106** include, but are not limited to, a telecommunication network, and a WIFI network.

**[0074]** The mobile communication device **102** includes one or more sensors **108** and one or more positioning systems **110** to determine the position, movement, acceleration and/or environment of the mobile communication device **102**, when a corresponding user performs one or more activities while carrying the device **102**. Examples of such one or more activities, include, but are not limited to, walking, running, jogging, cycling, rowing, driving a car, moving with bus, moving with train, walking stairs, running stairs, jumping, swimming, playing football, and skiing. An example of the sensor **108** includes a motion sensor configured to measure the acceleration of the mobile communication device **102** in xyz-directions of a Cartesian co-ordinate system. Further examples of the sensor **108** include a gyroscopic angular sensor, a magnetometer, a microphone, a camera, and a temperature sensor. The positioning systems **110** are configured to determine the position of the mobile communication device **102** by implementing at least one of GPS positioning system, cell tower information for cellular networks, indoor positioning systems, WIFI fingerprinting and proximal WiFi networks. In an embodiment of the present invention, the mobile communication device **102** may periodically send the information collected by the

sensors **108** and the positioning systems **110** to the server system **104** via the communication network **106**.

**[0075]** The server system **104** includes a receiving module **112**, a first processing module **114**, a second processing module **116**, and an output module **118**. The receiving module **112** receives sensor and positioning data from the mobile communication device **102**. The first processing module **114** executes a first process to analyze sensor data collected from the sensors **108**, and the second processing module **116** executes a second process to analyze positioning data collected from the positioning systems **110**. In an embodiment of the present disclosure, the first and second processes are parallel processes that might communicate with each other and also exchange data for analysis purposes. Based on the sensor data, the first processing module **114** generates an activity type of the user, and based on the positioning data, the second processing module **116** generates location and movement information pertaining to the activity. The output module **118** processes the activity type information and movement/location information of the activity to generate a summary/schedule of activities of the user. The output module **118** then sends the summary of activities to the mobile communication device **102** over the communication network **106**.

**[0076]** The mobile communication device **102** includes a data processor (not shown) for executing a mobile software application thereat, wherein the mobile software application is operable when executed to cause a graphical user interface (GUI) of the mobile communication device to present summary of activities provided from the server system **104** in a timeline format. The user may send their positive/negative feedback on the summary of activities to the server system **104** and the server system **104** may receive, store and implement the feedback for improving their activity analysis.

**[0077]** In an embodiment of the present invention, some or all of the steps/analysis in the server system **104** may be implemented in the mobile communication device **102** based on the computing resources available in the mobile communication device **102**.

**[0078]** Fig. 1 is merely an example, which should not unduly limit the scope of the claims herein. One of ordinary skill in the art would recognize many variations, alternatives, and modifications of embodiments herein.

**[0079]** Fig. 2 is an illustration of an exchange of information between a mobile communication device **202**, and a server system **204** for tracking and analyzing activities of a user of the mobile communication device **202**, in accordance with the present disclosure. The mobile communication device **202** and the server system **204** are examples of the mobile communication device **102** and the server system **104** respectively, and have been explained in conjunction with Fig. 1. A step **206a** takes place at the mobile communication device **202**, where the corresponding sensors and positioning systems measure sensor and positioning data when a corresponding user performs an activity. A step **206b** repre-

sents transfer of sensor and positioning data from the mobile communication device **202** to the server system **204** for analysis of the user activity. In an embodiment, the mobile communication device **202** may send the sensor and positioning data continuously or in a buffered format. In another embodiment, the mobile communication device **202** may send the sensor and positioning data to the server system **204** in a raw format. In yet another embodiment, the mobile communication device **202** may process sensor and positioning data before sending to the server system **204**. A step **206c** takes place at the server system **204**, where the server system **204** analyzes the sensor and positioning data received from the device **202**. In an embodiment of the present invention, the server system **204** may perform analysis based on a supervised classification and/or other machine learning algorithms and form a summary of activities of the user. A step **206d** represents communication of summary of activities from the server system **204** to the mobile communication device **202**. A step **206e** takes place at the mobile communication device **202**, where the summary of activities is displayed on a graphical user interface (GUI) of the mobile communication device **202**. A step **206f** represents a transfer of positive/negative feedback of the user on the summary of activities to the server system **204**. Lastly, a step **206g** represents implementation of the feedback by the server system **204** by modifying parameters and/or to selecting training data for the machine learning algorithms for providing a more accurate summary of activities in future. Examples of machine learning algorithms, for activity monitoring include, but are not limited to, supervised or semisupervised classification algorithms such as neural networks, decision forest, and support vector machines. The feedback is provided as an input to the machine learning algorithms and is used to modify parameters and select training data for the machine learning algorithms.

**[0080]** Fig. 2 is merely an example, which should not unduly limit the scope of the claims herein. One of ordinary skill in the art would recognize many variations, alternatives, and modifications of embodiments herein.

**[0081]** Fig. 3 is an illustration of a graphical user interface (GUI) **302** of the mobile communication device **200**, in accordance with the present disclosure, and has been explained in conjunction with Fig. 2.

**[0082]** The GUI **302** displays the summary of activities of a user (received from the server system **204** at the step **206d**) in a time line format. In an exemplary embodiment, the GUI **302** displays location of the user by three location symbols, i.e. a restaurant symbol **304**, a cafeteria symbol **306** and a home symbol **308**, indicating that the user has visited the restaurant, cafeteria and home one after the other. The locations represented by the graphical symbols **304**, **306** and **308** are identified based on the GPS system of the mobile communication device **202**, cell tower information for cellular networks, indoor positioning systems, proximal WiFi, and/or WiFi fingerprinting. The GUI **302** further displays activities per-

formed by the user by respective graphical symbols. In an example, a 'walking' activity symbol **310** is displayed between the restaurant **304** and cafeteria **306** to indicate that the user has walked from the restaurant to cafeteria. Further, a 'cycling' activity symbol **312** is displayed between the cafeteria **306** and the home **308** to indicate that the user has cycled from the cafeteria to home.

**[0083]** The story line display **302** may be a touch screen display and may be configured in a manner such that when a user touches or points an activity indication symbol such as the 'cycling' activity symbol **312**, or a line above or an area close to the symbol **312**, a pop-up menu **314** is presented. The pop-up menu **314** includes a text field **316** for enabling the user to modify the activity and a symbol field **318** for enabling the user to modify the graphical symbol pertaining to the activity. Similarly when a user touches or points a location symbol such as the 'restaurant' symbol **304**, or a line above or an area close to the symbol **304**, a pop-up menu (not shown) may be presented to modify the location. The modification of location/activity symbol by the user is communicated to the server system **204** as a feedback (step **206f**).

**[0084]** Fig. 3 is merely an example, which should not unduly limit the scope of the claims herein. One of ordinary skill in the art would recognize many variations, alternatives, and modifications of embodiments herein.

**[0085]** Fig. 4 is an illustration of a graphical user interface (GUI) **402** of a mobile communication device **400**, which is an example of the mobile communication device **200**, and has been explained in conjunction with Figs. 2 and 3. The GUI **402** is an alternate layout of the GUI **302**. The GUI **402** displays a time line **404** that is divided into 'activity' zones/periods **406a**, **406b**, **406c**, **406d** and **406e**, hereinafter collectively referred to as activity zones **406**, based on start and end time of one or more activities. Each activity zone **406** illustrates an activity and corresponding location of the activity. Further, each activity zone **406** may be illustrated by a graphical symbol **408** or a text description **410** of the corresponding activity.

**[0086]** In an exemplary embodiment, the timeline **404** indicates that at 13:00 pm, a 'cycling' activity of user ends and he/she is stationed at a 'workplace' until 17:10 pm; at 17:10 pm, the user starts a 'walking' activity towards home; at 17:30 pm, the user reaches home and is at home until 18:30 pm; at 18:30 pm, the user starts a 'driving' activity.

**[0087]** Fig. 4 is merely an example, which should not unduly limit the scope of the claims herein. One of ordinary skill in the art would recognize many variations, alternatives, and modifications of embodiments herein.

**[0088]** Fig. 5 is an illustration of steps of a method of determining activities of a user of a mobile communication device **500**, in accordance with the present disclosure. The user activities are determined by an analysis logic module (not shown) which is supplied with the sensor and positioning data generated in operation by the mobile communication device **500**, and an annotated sensor data database **502**. The analysis logic module is

communicatively coupled to the annotated sensor data database **502**. In an embodiment of the present invention, the analysis logic module and the annotated sensor data database **502** may be present inside a remote server system. In another embodiment of the present invention, the analysis logic module and the annotated sensor data database **502** may be present inside the mobile communication device **500** itself.

**[0089]** At a step **504**, the analysis logic module receives sensor and positioning data of the user from sensor and positioning systems of the mobile communication device **500**. At a step **506**, the analysis logic module stores the sensor and positioning data in a time line format in the annotated sensor data database **502**, i.e. the sensor and positioning data is time stamped to record time and date of each or some of the collected data items. The annotated sensor data database **502** includes sensor and positioning data received from the mobile communication device **500**, annotated with the information from user feedback on corresponding previously identified activities.

**[0090]** At a step **508**, the analysis logic module analyzes the time line and delineates one or more activity periods and recognizes user activities in each activity period using different types of machine learning algorithms, which are trained using the data stored in the annotated sensor data database **502**. For accurately identifying the activities, the analysis logic module may classify the annotated sensor and positioning data based on type of user, type of mobile device, type of user group, type of mobile device group, and demographic factors, etc. to take into account of environments and individual characteristics of the users. For example, acceleration data sensed by an accelerometer of the mobile communication device **500** for an active athletics specialized in long distance running may be different from the acceleration data sensed for a casual runner running very seldom. The active athletics may have longer steps with more predictable frequency between steps with lower variation of the frequency, than the casual runners. Therefore, for similar sensed data, the activity type may differ based on type of user group. Further, some mobile communication devices might have higher accuracy than others, therefore, for similar sensed data, the activity type may differ based on type of mobile communication device. The demographic classification may refer to segmenting users based on their gender, age, place of living etc, as the sensor data for a same activity might vary from person to person. The analysis logic module may further weigh the classified sensor data to take into consideration user specific features i.e. data could have weighted element consisting of average data from all users and user specific element from certain user based on the usage history.

**[0091]** At a step **510**, the analysis logic module may use the classified sensor data to make a time line of the user activities, and communicate the time line to the mobile communication device **500**. The mobile communica-

tion device **500** may display the time line on a user interface of the device **500**. At a step **512**, the analysis logic module may receive proposals for correcting one or more user activities in the timeline, from the mobile communication device **500**. The proposals for correcting the user activities may be provided to the annotated sensor data database **502** for training of the machine learning algorithms.

**[0092]** At a step **514**, the mobile communication device **500** may monitor whether or not the proposed time line has been viewed by the user using user interface analytics. If the user has viewed the proposed time line but not provided any correction in any activity of the timeline, then no feedback may be considered as positive feedback and is updated in the annotated sensor data database **502** that the analysis of one or more activities was correct and may be used as a training data for the algorithms. Further, if the user has viewed a storyline/timeline of a certain day and has been active in making corrections, one can conclude that that the recognized activities, which the user has not changed in the storyline, are probably considered to be correct and may be used as a training data for the algorithms. Further, it can be concluded that the recognized activities, which the user has changed in the storyline, are probably not correct. The amount of corrections made by users to certain activity can be used as a measure of recognition accuracy in regard to that activity. In the annotated sensor data database **502**, the sensor data may be labeled, with a certain confidence of the labeling, based on the annotations containing information about user feedback on the corresponding proposed activities.

**[0093]** In an embodiment of the present invention, the analysis logic module may implement a first machine learning algorithm for determining user activities based on the sensor and positioning data, and newly introduce a second machine learning algorithm. However, if the data analyzed based on the second algorithm is more accurate than the data analyzed by the first algorithm, then the second algorithm may be determined to be priority algorithm over the first algorithm. This feature enables to test different setups and get "votes" on the capability of a machine learning algorithm.

**[0094]** It should be noted here that the steps **504 to 514** are only illustrative and other alternatives can also be provided where one or more steps are added, one or more steps are removed, or one or more steps are provided in a different sequence without departing from the scope of the claims herein.

**[0095]** **Fig. 6** is an illustration of steps of using the system **100** for tracking and recording movements of the mobile communication device **102**, in accordance with the present disclosure, and has been explained in conjunction with Figs. 1 and 2. The method is depicted as a collection of steps in a logical flow diagram, which represents a sequence of steps that can be implemented in hardware, software, or a combination thereof.

**[0096]** At a step **602**, the mobile communication device

**102** is operable to communicate one or more sensor signals to the server system **104**, wherein the sensor signals are indicative of motion associated with activities to which the mobile communication device **102** is exposed by its user. The sensor signals are output of one or more sensors of the mobile communication device **102**.

**[0097]** At a step **604**, the computing hardware of the server system **104** is operable to execute one or more software products for analyzing the sensor signals to classify them into one or more temporal zones, hereinafter referred to as activity zone, and for analyzing the sensor signals within each activity zone to determine a most likely activity type associated with the activity zone.

**[0098]** At a step **606**, the computing hardware is operated to send information indicating one or more most likely activity types associated with the one or more activity zones to the mobile communication device **102**.

**[0099]** At a step **608**, the mobile communication device **102** is operable to request its user to provide a confirmation whether or not the information indicating the most likely activity types represent a correct analysis, and to communicate the confirmation back to the computing hardware for amending parameters and/or algorithms employed in the software products which execute analysis of the sensor signals to improve their accuracy.

**[0100]** It should be noted here that the steps **602 to 608** are only illustrative and other alternatives can also be provided where one or more steps are added, one or more steps are removed, or one or more steps are provided in a different sequence without departing from the scope of the claims herein.

**[0101]** **Fig. 7** is an illustration of a graphical user interface (GUI) **702** of a mobile communication device **700**, which is an example of the mobile communication device **102**, and has been explained in conjunction with Fig. 1. The embodiment illustrated in Fig. 7 is similar to the embodiment illustrated in Fig. 4. The GUI **702** displays a time-line **704** that is divided into 'activity' zones/periods **706a, 706b, 706c, 706d** and **706e**, hereinafter collectively referred to as activity zones **706**, based on start and end times of one or more activities. Each activity zone **706** illustrates an activity and corresponding location of the activity. Moreover, each activity zone **706** may be illustrated by a graphical symbol **708** or a text description **710** of the corresponding activity.

**[0102]** In an exemplary embodiment, the timeline **704** indicates that at a time 13:00 pm, a 'cycling' activity of the user ends and he/she is stationed at a 'workplace' until a time 17:10 pm; at the time 17:10 pm, the user starts a 'walking' activity towards home; at a time 17:30 pm, the user reaches home and is at home until a time 18:30 pm; at the time 18:30 pm, the user starts a 'driving' activity.

**[0103]** **Fig. 7** is merely an example, which should not unduly limit the scope of the claims herein. One of ordinary skill in the art would recognize many variations, alternatives, and modifications of embodiments herein.

**[0104]** **Fig. 8** is an illustration of an activity analysis

system **800**, explained in conjunction with Fig. 1, in accordance with the present disclosure. The activity analysis system **800** identify user activities based on sensor and positioning data of corresponding mobile communication device, and history, profile, demographics, and activity type of user.

[0105] In an embodiment of the present invention, the activity analysis system **800** may be present inside a remote server system **104**. In another embodiment of the present invention, the activity analysis system **800** may be present, at least in part, inside the mobile communication device **102** itself.

[0106] The activity analysis system **800** includes a receiving module **802**, a pre-processing module **804**, a pre-classification module **806**, a first through nth classifier nodes **808a** till **808n**, hereinafter referred to as classifier nodes **808**, an activity determination module **810**, and an output module **812**. The receiving module **802** collects raw data, i.e. unprocessed data from the sensors **108** and positioning systems **110** of the mobile communication device **102**. The pre-processing module **804** pre-processes the raw data collected by the receiving module **802**. Examples of pre-processing the data include, but are not limited to, filtering the data, performing domain transitions such as time to frequency domain conversion using Fast Fourier Transformation (FFT), classifying the data, averaging the data and combining the data, performing correlations with one or more predetermined data sets representative of various types of user activities.

[0107] The pre-classification module **806** receives the pre-processed data from the pre-processing module **804** and pre-classifies it into one or more broad categories. For example, the sensor data received from a motion sensor of the mobile communication device **102** is compared with a predetermined speed value to differentiate between slow motion, i.e. walking and running stairs, and fast motion i.e. running and cycling, and classify the motion data into broad categories such as 'slow motion' and 'fast motion'. In an embodiment, the pre-classification module **806** includes rule sets and/or predefined deterministic algorithms for pre-classifying the pre-processed data.

[0108] Each classifier node **808** includes a processor that is dedicated to identifying characteristics of the sensor data corresponding to a predefined activity. For example, the first classifier node N1 **808a** may be specialized in identifying characteristics of the sensor data pertaining to 'cycling' activity, the second classifier node N2 **808b** may be specialized in identifying 'walking activity', the third classifier node N3 **808c** may be specialized in identifying 'running' activity, and so on.

[0109] The classifier nodes **808** are configured to process the pre-classified data substantially in parallel, where each classifier node **808** generates a likelihood of the corresponding predefined activity for the pre-classified data. In an exemplary embodiment, the first classifier node N1 **808a** dedicated to identification of 'cycling' activity may generate a probability value '1', the second

classifier node N2 **808b** may generate a probability value '0.3' and the third classifier node N3 **808c** may generate a probability value '0.8', when the user performs a 'cycling' activity.

5 [0110] The activity determination module **810** may aggregate the probability values generated by the classifier nodes **808** to determine an 'activity type' corresponding to the sensor and positioning data collected by the receiving module **802**. In addition to aggregating the probabilities of the classifier nodes **808**, the activity determination module **810** may employ deterministic rules such as transition windows to determine the 'activity type'. The transition window may set inertia to activities in order not to toggle activities too often. For example, it is unlikely that an activity type would change from 'cycling' to 'walking' and back to 'cycling' very fast. The deterministic rules such as transition windows may be implemented using models such as hidden Markov models (HMM) and more complex models based on HMMs.

10 [0111] The output module **812** provides one or more 'activity types' determined by the activity determination module **810** to the mobile communication device **102**. In an embodiment, the output module **812** may display the determined activity types on a graphical user interface (GUI) of the mobile communication device **102** in a timeline format.

15 [0112] Fig. 8 is merely an example, which should not unduly limit the scope of the claims herein. One of ordinary skill in the art would recognize many variations, alternatives, and modifications of embodiments herein.

20 [0113] Fig. 9 is an illustration of steps of a method for identifying a 'cycling' activity of a user based on the sensor and positioning data of the corresponding mobile communication device, in accordance with an embodiment of the present disclosure.

25 [0114] In an embodiment of the present invention, the steps of the method for identifying the 'cycling' activity of a user may be executed by the activity analysis system **800** of Fig. 8. The activity analysis system **800** may be present inside a remote server system **104** or may be present, at least in part, inside the mobile communication device **102** of user itself.

30 [0115] At a step **900**, a set of acceleration data is received from an accelerometer sensor of the mobile communication device **102**. The set of acceleration data is in raw format, i.e. unprocessed, and may be collected every 30 seconds by the accelerometer sensor. In an exemplary embodiment, the set of acceleration data has a duration of 3 seconds and includes acceleration samples collected every 1/20 seconds. Thus, each 3 second data set includes total 60 acceleration samples and each acceleration sample includes acceleration of the mobile communication device **102** in x, y, and z directions, in a coordinate system oriented with the mobile communication device **102**. Thus, each acceleration sample includes three values and the three second data set includes total 180 (3X60) values.

35 [0116] At a step **901**, a set of location data is received

from a positioning system of the mobile communication device 102. The positioning data may include timestamps, location coordinates, and estimated horizontal accuracy from mobile location services. In an exemplary embodiment, the location data is received at intervals ranging from few seconds to few minutes.

[0117] At a step 902, the set of acceleration data undergoes gravity transformation, in which, for each acceleration sample, a new transformed sample is calculated, where corresponding z-component is oriented along a mean value of the acceleration vector. In another embodiment, the set of acceleration data may undergo a principal component analysis (PCA) transformation, in which, for each acceleration sample, a new transformed sample is calculated, where corresponding z-coordinate remains same, but the corresponding x and y components are transformed so that they are oriented along the principal components of the acceleration sample, when only x and y components are included.

[0118] At a step 904, the location data may be pre-processed, where examples of pre-processing the data includes, but are not limited to, filtering the data, performing domain transitions such as time to frequency domain conversion using Fast Fourier Transformation (FFT), classifying the data, averaging the data, performing one or more correlations on the data, and combining the data. At a step 906, a coarse speed of the mobile communication device 102 may be estimated based on the pre-processed location data. For example, the coarse speed may be estimated based on distance between consecutive location co-ordinates and time difference between the consecutive location co-ordinates.

[0119] At a step 908, one or more features of sensor and location data are estimated based on the transformed acceleration samples and the estimated course speed, where each 'feature' has a numeric value. Examples of features include means, variances, minimums and maximums for each of the (x, y, z) components of the transformed acceleration samples, components of Fourier transformed versions of the x, y, or z components of the acceleration sample, and so forth.

[0120] The user activity corresponding to data obtained at the step 908 may be recognized based on a first classification at a step 910 using a first classifier and a second classification at a step 912 using a second classifier. In an embodiment, the first and second classifiers may be similar to classifier nodes 808 of Fig. 8. Although two classifiers are illustrated herein, it would be apparent to a person skilled in the art, that more than two classifiers can be used for recognizing the user activity.

[0121] The first and second classifiers at the steps 910 and 912 use standard supervised classification algorithms such as neural network, decision forest or support vector machine for classification. The first classifier is a binary classifier that is trained on a large training data set with training samples classified as 'cycling' or 'non-cycling', and generates an activity label 'cycling' or 'non-cycling' for the data sample obtained at the step 908. The

second classifier is a multiclass classifier that is trained on a smaller set of more accurately labeled data, and generates an activity label from one of 'cycling', 'running', 'car', 'train', 'walking' and 'other' for the data sample obtained at the step 908.

[0122] In an embodiment, the user activity is recognized as 'cycling' if both the first and second classifiers generate activity label as 'cycling' for the data sample obtained at the step 908. In another embodiment, the user activity is recognized based on the activity label generated by the second classifier when the first classifier generates an activity label as 'not cycling'. In yet another embodiment, the user activity is recognized as 'other', when the first classifier generates an activity label as 'not cycling' and the second classifier generates an activity label as 'cycling'. In yet another embodiment, the first classifier may generate a probability that the user activity is 'not cycling'. When the probability of 'not cycling' is high, then other classifier results indicating 'cycling' as activity might be omitted.

[0123] At a step 913, the step counts of the user are calculated, and at a step 914, a meta-classifier utilizes the step count data and the data generated by the first and second classifiers to combine activities recognized at the steps 910 and 912 to form one or more activity periods. In an embodiment, when there are N consecutive acceleration samples, such that 1st and last of them are labeled with a given activity, and the majority (or at least x % of them) belong to that activity, the whole period of N consecutive samples is identified as an activity period.

[0124] At a step 916, one or more activity periods may be associated with respective locations based on location data and Bayesian 'interactive multiple models' smoothing algorithm. At a step 918, one or more stationary segments may be recognized based on the location data, when the mobile communication device 102 is stationary and no activity is performed therein.

[0125] At a step 920, final activity heuristics-type analysis takes place based on the processed location and acceleration data. The heuristics are rules, and an example of a rule is: if a stationary segment recognized at the step 918 has a period of no recognized activity shorter than x seconds, and the neighboring activity periods have a duration greater than y seconds, the stationary segment is replaced with an activity period labeling it with the neighboring activity/activities. For example, if in a 10 minutes cycling activity, the user appears to have stopped for 1 minute in between, then the 1 minute stationary segment is ignored, and the whole 10 minutes are associated with cycling activity. Moreover, if in a 10 minutes period, there are consecutive cycling and transport activities, and there is no stopping of at least n minutes in between and no walking activity, then the whole 10 minutes period is labeled with the activity that has happened for majority of the time. However, if there is at least one detected walking sample between transport and cycling activities, then the cycling and transport ac-

tivities form two different activity periods.

[0126] At a step 922, distance and step calculations are performed, and at a step 924 place matching is performed to optimize the accuracy of user activities recognized at the step 920. Finally, at a step 926, a storyline is created which includes various user activities in a timeline format.

[0127] Fig. 9 is merely an example, which should not unduly limit the scope of the claims herein. One of ordinary skill in the art would recognize many variations, alternatives, and modifications of embodiments herein.

[0128] Fig. 10 is an illustration of steps of using the system 100 for tracking and recording movements of the mobile communication device 102, in accordance with the present disclosure, and has been explained in conjunction with Figs. 1 and 2. The method is depicted as a collection of steps in a logical flow diagram, which represents a sequence of steps that can be implemented in hardware, software, or a combination thereof.

[0129] At a step 1002, the mobile communication device 102 is operable to communicate one or more sensor signals, or sensor data corresponding thereto, to the server system 104, wherein the sensor signals are indicative of motion associated with activities to which the mobile communication device 102 is exposed by its user. The sensor signals, or the corresponding sensor data, are outputs of one or more sensors of the mobile communication device 102.

[0130] At a step 1004, the computing hardware of the server system 104 is operable to execute one or more software products for analyzing the sensor signals and corresponding sensor data, wherein the computing hardware is operable to pre-classify the sensor signals to generate intermediate data, and the intermediate data is thereafter processed in one or more processors to generate one or more indications of likely activities associated with the sensor signals. The computing hardware is further operable to compute an aggregate of the one or more indications to provide an analysis of activities associated with the sensor signals.

[0131] At a step 1006, the computing hardware is operable to send information indicating most likely activity types associated with the one or more temporal zones to the mobile communication device 102.

[0132] It should be noted here that the steps 1002 to 1006 are only illustrative and other alternatives can also be provided where one or more steps are added, one or more steps are removed, or one or more steps are provided in a different sequence without departing from the scope of the claims herein.

[0133] Although embodiments of the present invention have been described comprehensively in the foregoing, in considerable detail to elucidate the possible aspects, those skilled in the art would recognize that other versions of the invention are also possible. Embodiments of the present invention are susceptible to being employed for monitoring prisoners in prisons, for monitoring patients in home for elderly people, in hospitals and such like.

Claims

1. A method comprising:

5 by a computing device, determining one or more sensor signals detected by one or more sensors of the computing device, the sensor signals being indicative of motion of the computing device;
10 by the computing device, selecting one of a plurality of activity categories that corresponds to a portion of the sensor signals, wherein each of the activity categories comprises one or more activity types and is characterized by a motion that the activity types in the selected activity category have in common;
15 by the computing device, determining one of the activity types in the selected activity category by:
analyzing the sensor signals with respect to each of the activity types in the selected activity category; and
calculating a probability of each of the activity types based on the analysis; and
20 by the computing device, displaying the determined activity type on a display of the computing device.

2. A method, in particular according to claim 1, of using a computing device, in particular a mobile communication device, for tracking and recording movements of the or a mobile communication device including one or more movement sensors and a wireless interface, wherein in particular the computing device is operated in a system including a communication network for communicating with the mobile communication device and computing hardware for processing data supplied in operation from the mobile communication device, characterized in that the method includes:

operating the mobile communication device to communicate one or more sensor signals to the system and/or to determine one or more sensor signals detected by one or more sensors of the computing device, wherein the one or more sensor signals are indicative of motion associated with activities to which the mobile communication device is exposed by its user;
operating the computing device to execute one or more software products for analyzing the one or more sensor signals, wherein the computing device is operable to pre-classify the one or more sensor signals to generate intermediate data, and the intermediate data is thereafter processed in one or more processors to generate one or more indications of likely activities associated with the one or more sensor signals,

and the computing device is operable to compute an aggregate of the one or more indications to provide an analysis of one or more activities associated with the one or more signals; and operating the computing device to send information indicating one or more most likely activity types to the mobile communication device and/or to display information indicating one or more most likely activity types, in particular on a display of the computing device.

- 3. The method of one of the preceding claims, wherein the step of determining one of the activity types in the selected activity category and/or of operating the computing device to execute one or more software products for analyzing the one or more sensor signals comprises at least one or more of the following features:

process the intermediate data in one or more processors to generate one or more indications of likely activity types associated with the one or more sensor signals and/or compute an aggregate of the one or more indications to provide an analysis of one or more activity types associated with the one or more signals and/or analyze the one or more sensor signals to classifying them into one or more activity periods, and analyzing the one or more sensor signals within each given activity period to determine a most likely activity type associated with the given activity period and/or recognize (918) one or more stationary segments based on the location data, when the mobile communication device (102) is stationary and no activity is performed therein and/or determine whether two or more of the activity periods should be replaced with a single activity period based on a heuristics-type analysis based on the determined activity types and a length of time of corresponding activity periods, and, if so, generating at least one activity period replacing the two or more of the activity periods; and/or the heuristic type analysis being based on rules, whereas, according to a rule, if a recognized stationary segment has a period of no recognized activity shorter than a first predetermined number of seconds, and the neighboring activity periods have a duration greater than a second predetermined number of seconds, the stationary segment is replaced with an activity period labeling it with the neighboring activities and/or send or display information indicating the most likely activity types, and corresponding activity periods and/or replacement activity periods to the at least one mobile communication device

and/or at the at least one mobile communication device, a graphical user interface, GUI (302), displaying a summary of activities of the user received from the system (204) in a time line format and/or the system comprising classifier nodes, each classifier node (808) including a processor that is dedicated to identifying characteristics of the sensor data corresponding to a predefined activity.

- 4. The method of one of the preceding claims, wherein the sensor signals are analyzed substantially in parallel by one or more processors of the computing device, each of the processors being specialized in identifying characteristics of the sensor signals corresponding to a predefined activity type.
- 5. The method of one of the preceding claims, wherein determining the activity types comprises generating a temporal log of activity types experienced by the mobile device.
- 6. The method of one of the preceding claims, wherein the sensor signals further comprise an estimated speed of the computing device based on location data of the computing device.
- 7. The method of one of the preceding claims, wherein the one or more sensors comprise a gyroscopic angular sensor, an accelerometer, a GPS position sensor, a cellular positioning sensor, a magnetometer, a microphone, a camera, or a temperature sensor.
- 8. The method of one of the preceding claims, wherein the analysis of the sensor signals comprises:
  - a supervised or semisupervised classification analysis; or a heuristic analysis, in particular wherein the supervised or semisupervised classification analysis comprises classification algorithms that use as input the amplitudes of the frequency components of the information included in the sensor signals, and the output of the classification algorithms are estimated probabilities of different activity types based at least in part on the sensor signals.
- 9. The method of one of the preceding claims, wherein displaying the determined activity type comprises displaying analyzed activity results on a graphical user interface of a software application of the computing device, wherein the displayed analyzed activity results comprise a timeline comprising a plurality of mutually different symbols representing different activity types.
- 10. A system comprising:

one or more processors;  
 a display;  
 one or more sensors; and  
 a memory coupled to the processors comprising instructions executable by the processors, the processors being operable when executing the instructions to:

perform a method according to one of the preceding claims and/or  
 determine one or more sensor signals detected by the one or more sensors, the sensor signals being indicative of motion of the system;  
 select one of a plurality of activity categories that corresponds to a portion of the sensor signals, wherein each of the activity categories comprises one or more activity types and is **characterized by** a motion that the activity types in the selected activity category have in common;  
 determine one of the activity types in the selected activity category by:

analyzing the sensor signals with respect to each of the activity types in the selected activity category; and  
 calculating a probability of each of the activity types based on the analysis; and

display the determined activity type on the display.

11. The system of Claim 10,  
 wherein the sensor signals are analyzed substantially in parallel by one or more processors of the computing device, each of the processors being specialized in identifying characteristics of the sensor signals corresponding to a predefined activity type and/or  
 wherein determining the activity type comprises generating a temporal log of activity types experienced by the mobile device and/or  
 wherein the sensor signals further comprise an estimated speed of the computing device based on location data of the computing device and/or  
 wherein the one or more sensors comprise a gyroscopic angular sensor, an accelerometer, a GPS position sensor, a cellular positioning sensor, a magnetometer, a microphone, a camera, or a temperature sensor.

12. The system of Claim 10,  
 wherein the analysis of the sensor signals comprises a supervised or semisupervised classification analysis; or a heuristic analysis,  
 in particular wherein the supervised or semisupervised classification analysis comprises classification algorithms that use as input the amplitudes of the frequency components of the information included in the sensor signals, and the output of the classifi-

cation algorithms are estimated probabilities of different activity types based at least in part on the sensor signals.

5 13. The system of Claim 10, wherein displaying the activity type comprises sending analyzed activity results to the mobile device for display on a graphical user interface of a software application of the mobile device, wherein the displayed analyzed activity results comprise a timeline comprising a plurality of mutually different symbols representing different activity types.

14. One or more computer-readable non-transitory storage media embodying software that is operable when executed to:

perform a method according to one of the preceding claims and/or  
 determine one or more sensor signals detected by one or more sensors of a computing device, the sensor signals being indicative of motion of the computing device;  
 select one of a plurality of activity categories that corresponds to a portion of the sensor signals, wherein each of the activity categories comprises one or more activity types and is **characterized by** a motion that the activity types in the selected activity category have in common;  
 determine one of the activity types in the selected activity category by:

analyzing the sensor signals with respect to each of the activity types in the selected activity category; and  
 calculating a probability of each of the activity types based on the analysis; and

display the activity type on a display of the computing device.

15. The media of Claim 14,  
 wherein the sensor signals are analyzed substantially in parallel by one or more processors of the computing device, each of the processors being specialized in identifying characteristics of the sensor signals corresponding to a predefined activity type and/or  
 wherein the analysis of the sensor signals comprises:

a supervised or semisupervised classification analysis; or  
 a heuristic analysis,  
 in particular wherein the supervised or semisupervised classification analysis comprises classification algorithms that use as input the amplitudes of the frequency components of the infor-

mation included in the sensor signals, and the output of the classification algorithms are estimated probabilities of different activity types based at least in part on the sensor signals.

5

10

15

20

25

30

35

40

45

50

55

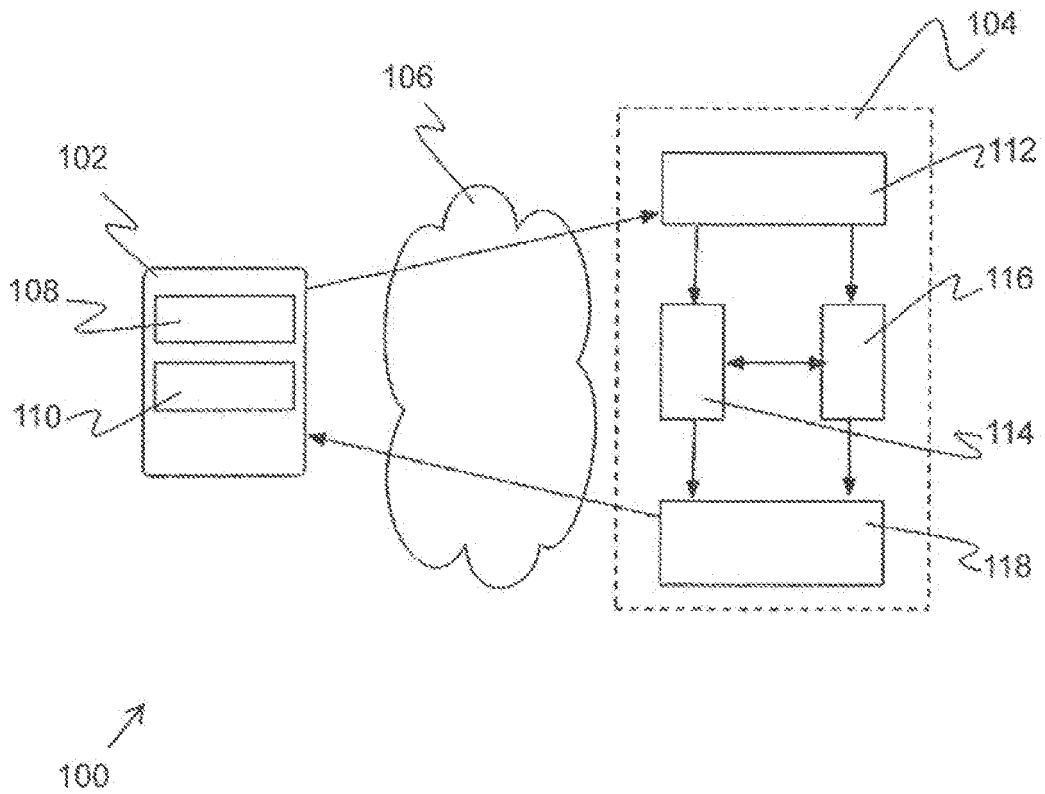


Fig. 1

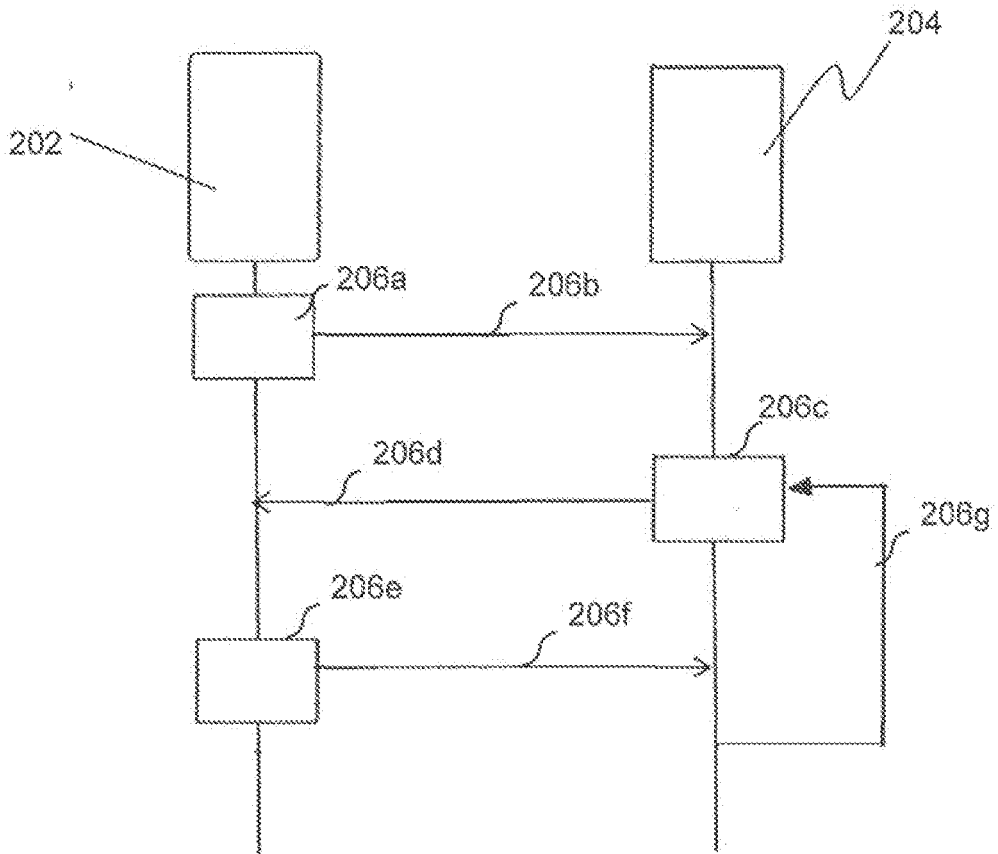


Fig. 2

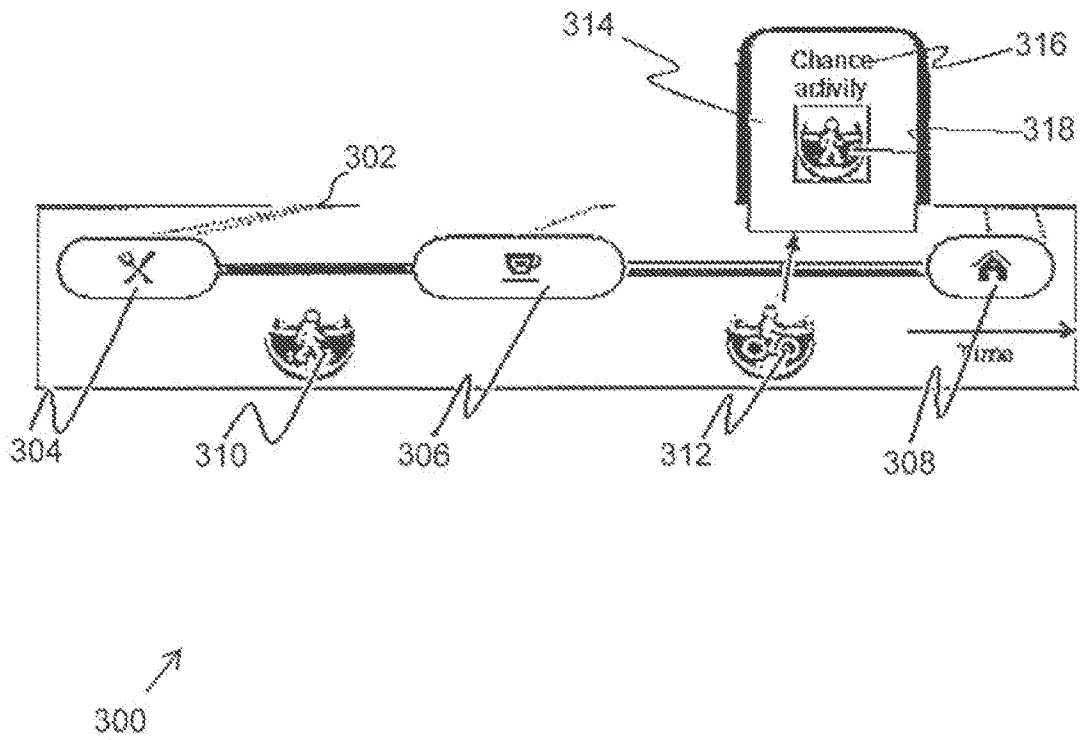


Fig. 3

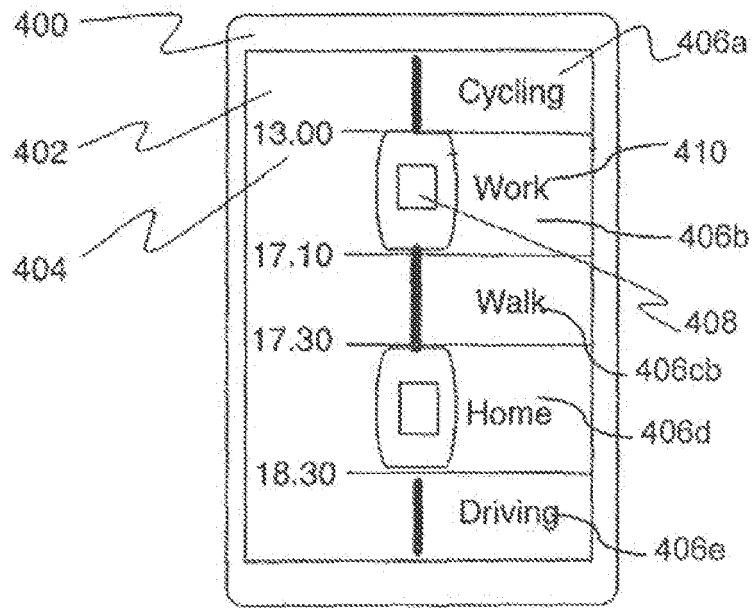


Fig. 4

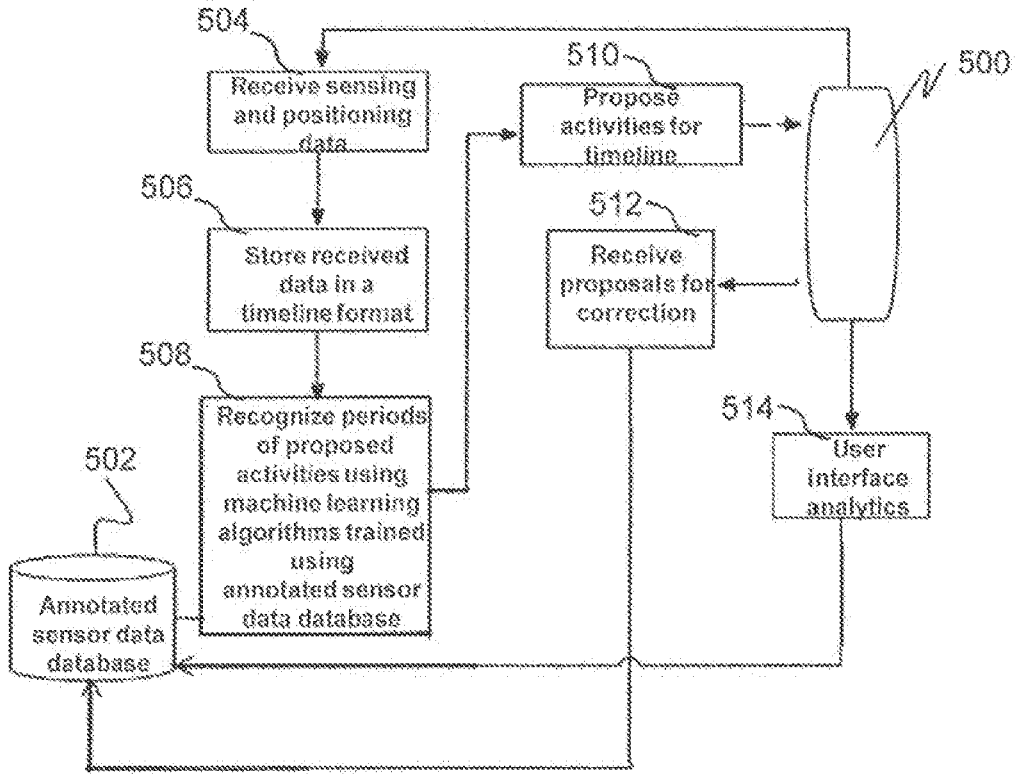


Fig. 5

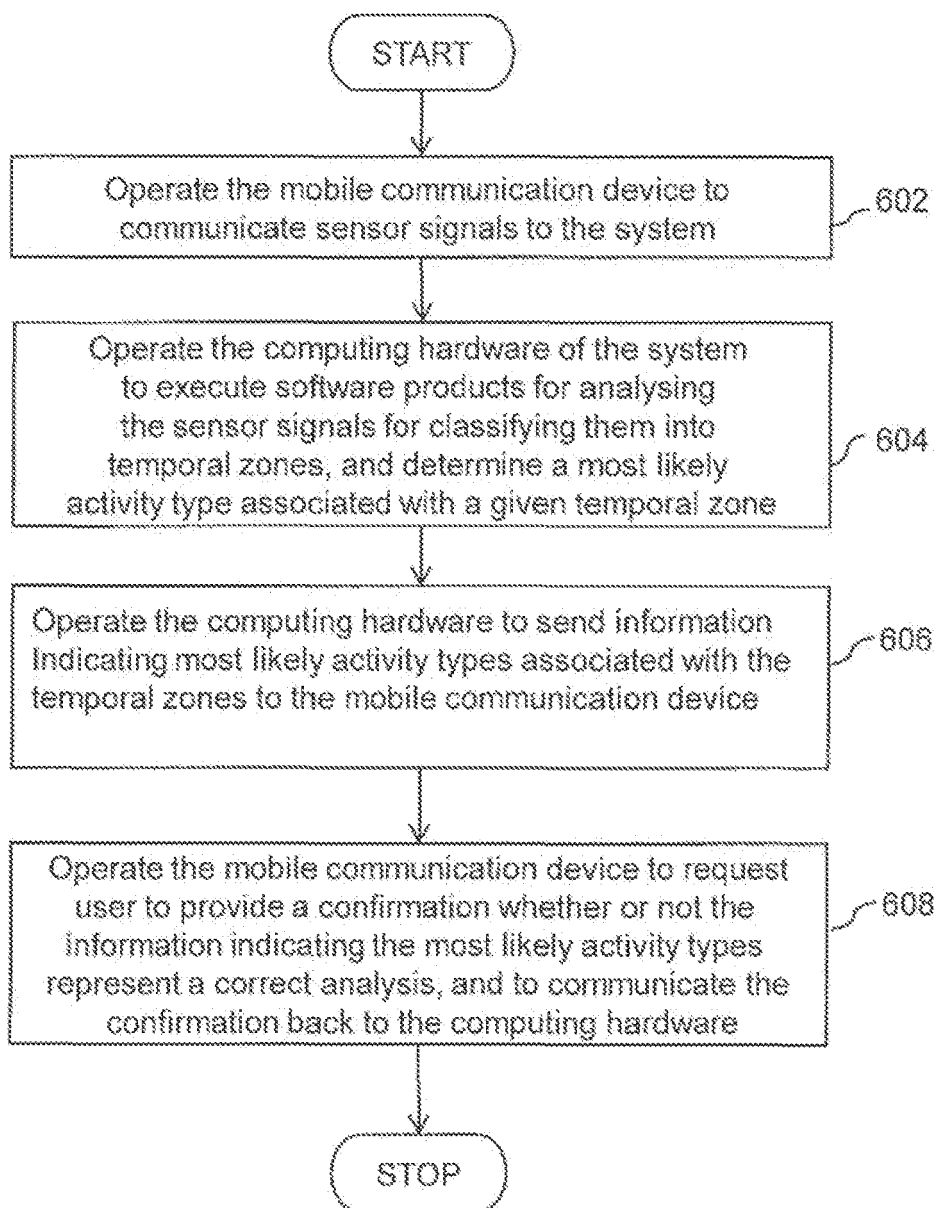


Fig.6

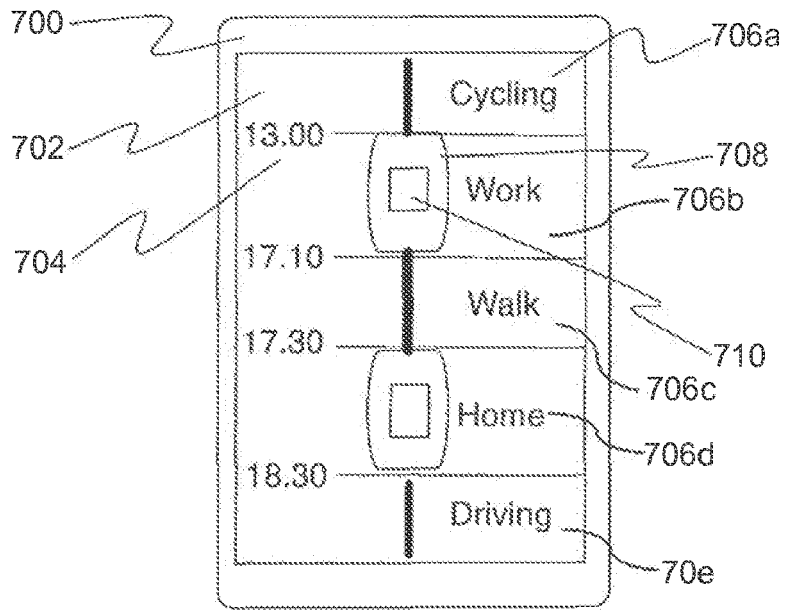


Fig. 7

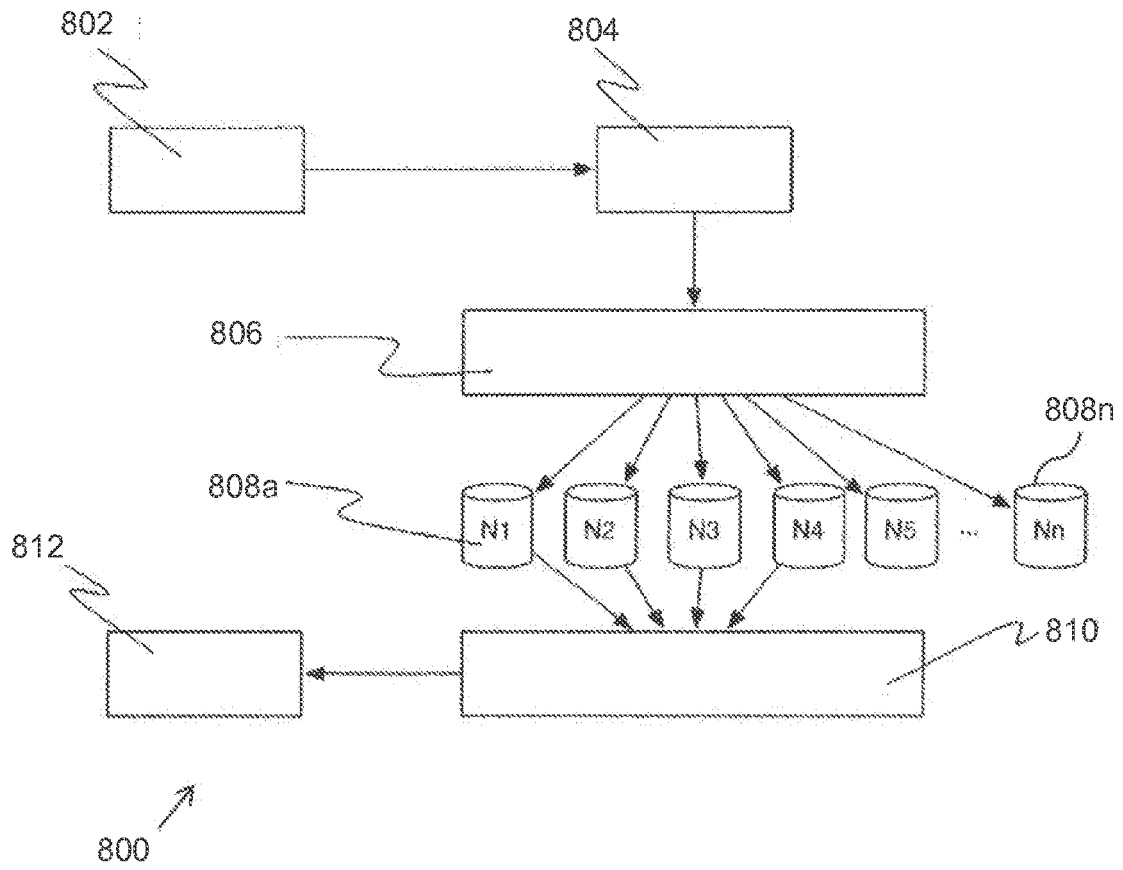


Fig. 8

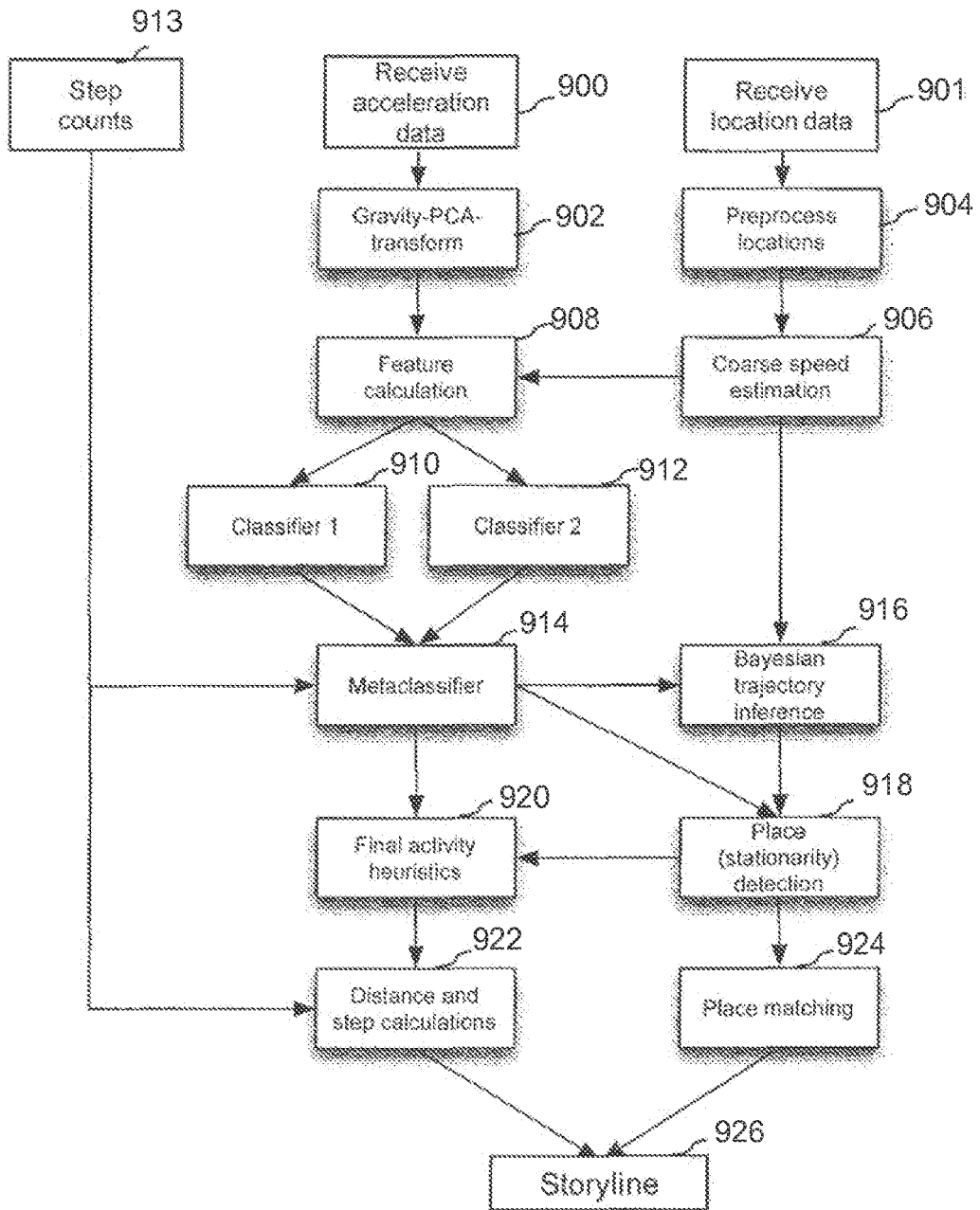


Fig. 9

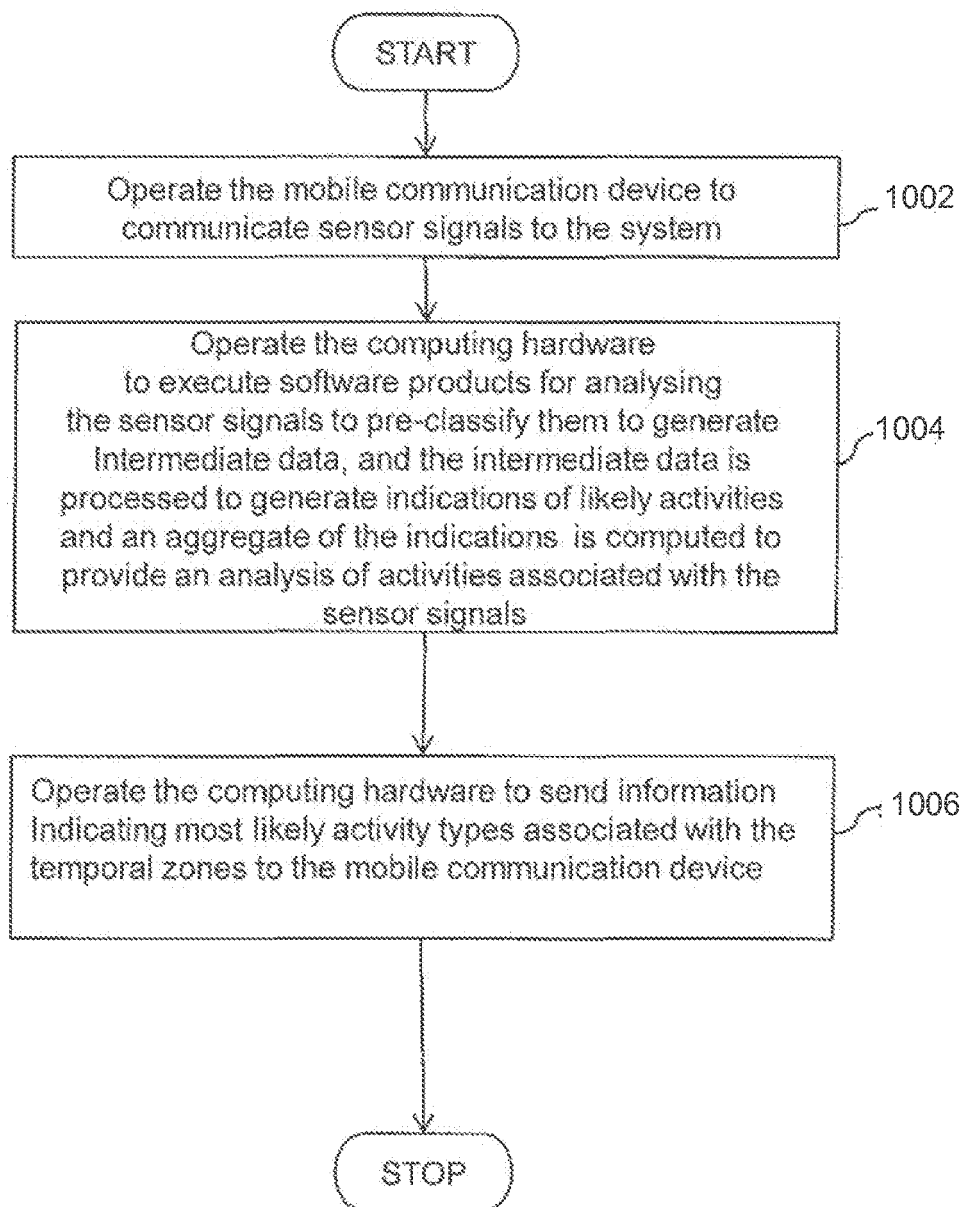


Fig. 10



EUROPEAN SEARCH REPORT

Application Number  
EP 18 24 8202

5

10

15

20

25

30

35

40

45

50

55

DOCUMENTS CONSIDERED TO BE RELEVANT			
Category	Citation of document with indication, where appropriate, of relevant passages	Relevant to claim	CLASSIFICATION OF THE APPLICATION (IPC)
Y	WO 2012/134797 A1 (QUALCOMM INC [US]; GROKOP LEONARD HENRY [US]; SARAH ANTHONY [US]; NAND) 4 October 2012 (2012-10-04) * paragraph [0004] - paragraph [0005] * * paragraph [0006] - paragraph [0009] * * paragraph [0016] - paragraph [0050]; figures 2-3 * * paragraph [0059] - paragraph [0060] *	1-15	INV. H04L29/08 A61B5/11 A61B5/00 H04W4/70
Y	WO 2012/021507 A2 (NIKE INTERNATIONAL LTD [US]; HOFFMAN MICHAEL T [US]; CRANKSON KWAMINA) 16 February 2012 (2012-02-16) * paragraph [0222]; figure 35C *	1-15	
Y	US 2012/083714 A1 (YUEN ET AL) 5 April 2012 (2012-04-05) * paragraph [0005] * * paragraph [0013] * * paragraph [0019] * * paragraph [0036]; figures 4K, 4L * * paragraph [0042]; figures 9A-9D * * paragraph [0059] * * paragraph [0129] - paragraph [0152]; figures 4K, 4L * * paragraph [0175] - paragraph [0179] * * paragraph [0231] * * paragraph [0250] - paragraph [0253] * * paragraph [0255] - paragraph [0256] * * paragraph [0257] - paragraph [0264] *	1-15	
			TECHNICAL FIELDS SEARCHED (IPC)
			H04L A61B
The present search report has been drawn up for all claims			
Place of search <b>Munich</b>		Date of completion of the search <b>24 January 2019</b>	Examiner <b>Yanai, Yoav</b>
CATEGORY OF CITED DOCUMENTS X : particularly relevant if taken alone Y : particularly relevant if combined with another document of the same category A : technological background O : non-written disclosure P : intermediate document		T : theory or principle underlying the invention E : earlier patent document, but published on, or after the filing date D : document cited in the application L : document cited for other reasons & : member of the same patent family, corresponding document	

EPO FORM 1503 03/02 (P04C01)

ANNEX TO THE EUROPEAN SEARCH REPORT  
ON EUROPEAN PATENT APPLICATION NO.

EP 18 24 8202

5 This annex lists the patent family members relating to the patent documents cited in the above-mentioned European search report.  
The members are as contained in the European Patent Office EDP file on  
The European Patent Office is in no way liable for these particulars which are merely given for the purpose of information.

24-01-2019

Patent document cited in search report	Publication date	Patent family member(s)	Publication date
WO 2012134797 A1	04-10-2012	CN 103460722 A	18-12-2013
		EP 2692156 A1	05-02-2014
		JP 5756561 B2	29-07-2015
		JP 2014512045 A	19-05-2014
		KR 20130139356 A	20-12-2013
		KR 20160006236 A	18-01-2016
		US 2013035893 A1	07-02-2013
		WO 2012134797 A1	04-10-2012
		-----	-----
WO 2012021507 A2	16-02-2012	BR 112013003183 A2	17-05-2016
		CA 2807938 A1	16-02-2012
		CN 103154954 A	12-06-2013
		CN 108509038 A	07-09-2018
		EP 2603870 A2	19-06-2013
		JP 5718465 B2	13-05-2015
		JP 6144710 B2	07-06-2017
		JP 2013543156 A	28-11-2013
		JP 2015133145 A	23-07-2015
		JP 2017142819 A	17-08-2017
		KR 20130045382 A	03-05-2013
		KR 20150043531 A	22-04-2015
		KR 20170091771 A	09-08-2017
		TW 201212978 A	01-04-2012
		US 2012116550 A1	10-05-2012
		US 2014228988 A1	14-08-2014
		US 2015251053 A1	10-09-2015
		US 2015258380 A1	17-09-2015
		US 2016107064 A1	21-04-2016
		US 2017036064 A1	09-02-2017
		US 2017056727 A1	02-03-2017
		US 2017333753 A1	23-11-2017
		US 2018093132 A1	05-04-2018
US 2018111022 A1	26-04-2018		
WO 2012021507 A2	16-02-2012		
-----	-----	-----	-----
US 2012083714 A1	05-04-2012	US 2012083705 A1	05-04-2012
		US 2012083714 A1	05-04-2012
		US 2012083715 A1	05-04-2012
		US 2012083716 A1	05-04-2012
		US 2012084053 A1	05-04-2012
		US 2012084054 A1	05-04-2012
		US 2012226471 A1	06-09-2012
		US 2012226472 A1	06-09-2012
		US 2013073254 A1	21-03-2013
		US 2013073255 A1	21-03-2013
		US 2013080113 A1	28-03-2013

EPO FORM P0459

For more details about this annex : see Official Journal of the European Patent Office, No. 12/82

55

**ANNEX TO THE EUROPEAN SEARCH REPORT  
ON EUROPEAN PATENT APPLICATION NO.**

EP 18 24 8202

5 This annex lists the patent family members relating to the patent documents cited in the above-mentioned European search report.  
The members are as contained in the European Patent Office EDP file on  
The European Patent Office is in no way liable for these particulars which are merely given for the purpose of information.

24-01-2019

10

15

20

25

30

35

40

45

50

55

Patent document cited in search report	Publication date	Patent family member(s)	Publication date
		US 2013096843 A1	18-04-2013
		US 2013151196 A1	13-06-2013
		US 2013158369 A1	20-06-2013
		US 2013268236 A1	10-10-2013
		US 2013297220 A1	07-11-2013
		US 2014067278 A1	06-03-2014
		US 2014343867 A1	20-11-2014
		US 2015134268 A1	14-05-2015
		US 2016166156 A1	16-06-2016
		US 2018055376 A1	01-03-2018
-----			

EPO FORM P0459

For more details about this annex : see Official Journal of the European Patent Office, No. 12/82

专利名称(译)	用户活动跟踪系统和设备		
公开(公告)号	<a href="#">EP3487154A1</a>	公开(公告)日	2019-05-22
申请号	EP2018248202	申请日	2014-06-18
[标]申请(专利权)人(译)	菲丝博克公司		
申请(专利权)人(译)	FACEBOOK , INC.		
当前申请(专利权)人(译)	FACEBOOK , INC.		
[标]发明人	PENNANEN JUHO KYROLA AAPO PARTANEN JUKKA		
发明人	PENNANEN, JUHO KYROLA, AAPO PARTANEN, JUKKA		
IPC分类号	H04L29/08 A61B5/11 A61B5/00 H04W4/70		
CPC分类号	A61B5/0002 A61B5/103 A61B5/1118 H04L67/22 H04W4/029 H04W4/70 A63B24/0062 G06N20/00 A61B5/0022 G01S19/19 H04L67/12 H04M1/72569 H04M1/72572		
优先权	13/930347 2013-06-28 US 13/930321 2013-06-28 US PCT/US2014/042839 2014-06-18 WO		
外部链接	<a href="#">Espacenet</a>		

摘要(译)

本公开提供了一种方法，包括由计算设备确定由计算设备的一个或多个传感器检测到的一个或多个传感器信号，该传感器信号指示计算设备的运动；通过计算设备，选择对应于传感器信号的一部分的多个活动类别中的一个，其中每个活动类别包括一个或多个活动类型，并且特征在于活动在所选活动类别中键入的动作有共同点；通过计算设备，通过以下方式确定所选活动类别中的活动类型之一：关于所选活动类别中的每个活动类型分析传感器信号；并根据分析计算每种活动类型的概率；并且由计算设备在计算设备的显示器上显示所确定的活动类型。

