

(19) World Intellectual Property Organization
International Bureau



(43) International Publication Date
23 January 2003 (23.01.2003)

PCT

(10) International Publication Number
WO 03/005905 A1

(51) International Patent Classification⁷: **A61B 5/15**, 5/00

(21) International Application Number: PCT/IB02/03004

(22) International Filing Date: 10 July 2002 (10.07.2002)

(25) Filing Language: English

(26) Publication Language: English

(30) Priority Data:
01116592.5 10 July 2001 (10.07.2001) EP

(71) Applicant (for all designated States except US): **KONINKLIJKE PHILIPS ELECTRONICS N.V.** [NL/NL];
Groenewoudseweg 1, NL-5621 BA Eindhoven (NL).

(72) Inventors; and

(75) Inventors/Applicants (for US only): **BOOS, Andreas**
[DE/NL]; Prof. Holstlaan 6, NL-5656 AA Eindhoven

(NL). **BACHER, Johannes** [DE/NL]; Prof. Holstlaan 6, NL-5656 AA Eindhoven (NL). **PROSS, Gerhard** [DE/NL]; Prof. Holstlaan 6, NL-5656 AA Eindhoven (NL). **SEHER, Jens-Peter** [DE/NL]; Prof. Holstlaan 6, NL-5656 AA Eindhoven (NL).

(74) Agent: **VOLMER, Georg**; Internationaal Octrooibureau B.V., Prof. Holstlaan 6, NL-5656 AA Eindhoven (NL).

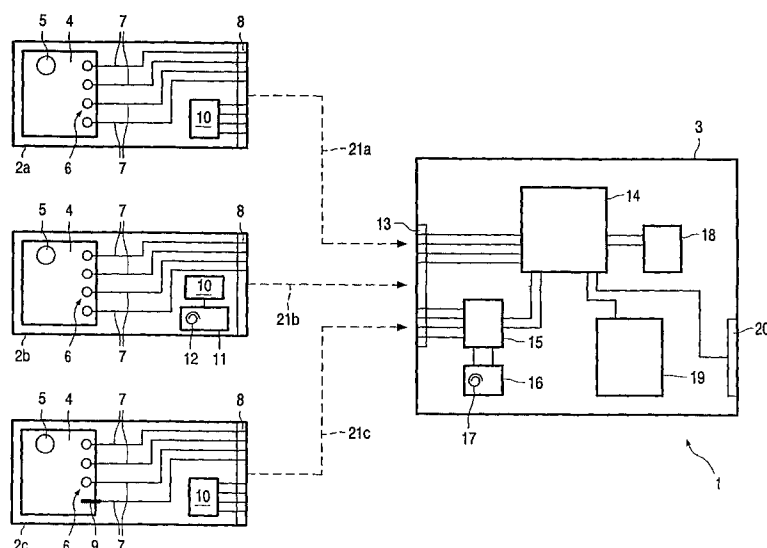
(81) Designated States (*national*): CN, JP, US.

(84) Designated States (*regional*): European patent (AT, BE, BG, CH, CY, CZ, DE, DK, EE, ES, FI, FR, GB, GR, IE, IT, LU, MC, NL, PT, SE, SK, TR).

Published:
— with international search report

For two-letter codes and other abbreviations, refer to the "Guidance Notes on Codes and Abbreviations" appearing at the beginning of each regular issue of the PCT Gazette.

(54) Title: SYSTEM FOR POINT OF CARE DIAGNOSIS AND/OR ANALYSIS



(57) Abstract: The present invention relates to a system for point of care diagnosis and/or analysis of body fluids of a patient, comprising: - a cartridge (2), - a diagnosis and/or analysis apparatus (3), - means (6) for measurement of the concentration of at least one specific component of a sample of the body fluids, - connecting means (8, 13) providing communication for electrical and/or optical values between the cartridge (2) and the diagnosis and/or analysis apparatus (3), wherein said values correlate with at least one of the respective concentrations, - diagnosing and/or analyzing means (14) measuring the respective concentration value via the connecting means (8, 13), - storage means (10) for storing cartridge specific data and/or information, - reading means (15) for reading the data and/or information out of the storage means (10), - wherein the diagnosing and/or analyzing means (14) evaluate the respective concentration values in accordance to the cartridge specific data and/or information.



WO 03/005905 A1

System for point of care diagnosis and/or analysis

The present invention relates to a system for point of care diagnosis and/or analysis, and to a cartridge and to an apparatus thereof. Such a system could be a bench analyzer, a STAT lab or a POC diagnosis system.

Over the last years point of care diagnosis and analysis has become more and more accepted. With this technology, body fluids analysis and in particular blood analysis is performed at the patient bed side, e.g. in hospitals, outpatient centers or at home, within a few minutes without the need to send a sample of the body fluids to a central lab.

The system comprises a small cartridge having a sample receiving room or volume for receiving a sample of the body fluids to be analysed and/or diagnosed. For example a blood sample is injected into the cartridge which contains means for measuring the concentration of one or more specific components of the respective sample. In particular the measuring means comprise chemistry to detect the components, e.g. specific ions, proteins, antibodies etc, in the blood sample under test (some kind of a 'mini' lab). The cartridge further comprises electrical or optical connecting means at which an electric and/or optical value or signal is measurable correlating with the concentration of the respective components. This connecting means e.g. comprise electrodes exposed to the sample.

This cartridge will be connected to a diagnosis and/or analysis apparatus of the system measuring the respective concentration values or signals via said connecting means. For example the diagnosis and/or analysis apparatus is provided as a small analyzer (handheld or small benchtop) in which the cartridge can be inserted. This apparatus comprises means for diagnosing and/or analysing which e.g. qualify and quantify the chemical or biochemical reactions on the cartridges. The apparatus usually displays the measurement results, stores or prints them out and/or sends them to a central station or data management system.

The chemistry, process technology and measurement technique used for the above described cartridges unfortunately show large variations between manufacturing lots. To ensure high measurement reliability, accuracy and repeatability when determining the concentrations of the different substances, each manufacturing lot has to be characterised after production and lot specific calibration and characterisation data must be supplied

together with the final cartridges. These calibration and characterisation data must be entered into the diagnosis and/or analysis apparatus which use these data to map the measured data to real concentration levels, i.e. the real concentration of the respective components will be determined in accordance to these data.

5 Different technologies are used today to transfer the calibration and characterisation data into the diagnosis and/or analysis apparatus. For example these data will be typed in as alphanumeric codes by hand, i.e. reading the codes from the cartridge package or the shipping containers and enter them into the apparatus by hand typing. This method is cheap but time consuming and very inconvenient for the medical staff. In addition it's a
10 potential source for errors. Typing errors may lead to wrong measurement results and thus lead to critical safety problems.

It is also usual to provide a package, in which the cartridge is stored, with a barcode which will be scanned in with a barcode reader. This method requires a barcode reader as part of the apparatus. Problems may occur if the barcode on the cartridge package is
15 illegible, e.g. not well printed, cracked, smeared, dirty etc. The user also needs to adjust the distance to the barcode reader and the scanning speed to get valid results.

Another solution prefers a memory chip, storing all required data. This memory chip will be placed into each shipping container. The chip must be plugged into the apparatus which then reads the calibration and characterisation data. This method does not
20 allow to use more than one apparatus per shipping container, because per shipping container there is only one chip available. There exists also the danger that cartridges from different containers with different manufacturing lots may be mixed up resulting in wrong measurement results. Loosing the chip renders all the remaining cartridges of that shipping container unusable.

25 It is also possible to perform an individual 'wet' calibration for each shipping container. Individual calibrations for each shipping container are performed by the end user by means of measuring and correcting the measurement results from well known reference samples. This method is very inconvenient and time consuming since the user must supply 'gold standards' with adequate precision for each possible measurement. Forgetting to
30 perform this tedious calibration will result in measurement errors.

It is therefore an object of the present invention to improve the correlation between a cartridge and cartridge specific data and/or information and to make the handling process easier. The object is solved by the independent claims. Preferred embodiments are shown by the dependent claims.

According to the invention each cartridge will be provided with storage means for storing cartridge specific data and/or information readable for the diagnosis and/or analysis apparatus. According to the invention the corresponding diagnosis and/or analysis apparatus will be provided with reading means for reading these cartridge specific data and/or information stored in the storage means of the cartridge. This diagnosis and/or analysis apparatus also will be provided with diagnosing and/or analysing means performing the measurement and/or the evaluation of the respective concentration values in accordance to the cartridge specific data and/or information. By adding permanent storage means to each individual cartridge, the cartridge itself contains all required data and/or information. The invention provides an inseparable combination between the cartridge and its specific data and/or information. It is now possible to provide mixed batches of different cartridges, i.e. cartridges of different manufacturing lots and/or of different type. Therefore the invention helps to avoid the drawbacks of all previously mentioned methods for data transfer.

Preferably the reading of the cartridge specific data and/or information will be performed automatically each time a cartridge is inserted into the apparatus. Therefore a manual interaction is no longer required. This leads to a reliable data transfer and time saving.

According to a preferred embodiment the cartridge specific data and/or information comprises at least one of the following data and/or information:

- Calibration and/or characterisation data relating to the respective cartridge and/or manufacturing lot data relating to the lot, to which the respective cartridge belongs. With this information wrong combinations of cartridges and characterising data will be avoided.

- Production date of the respective cartridge and/or shelf life information or expiration date of the respective cartridge. With this information it is possible to prevent usage of expired cartridges. This control previously had to be checked manually.

- Cartridge type information. There may be provided different types of cartridges provided for different diagnosis and/or analysis tasks. To perform a proper measurement or evaluation it is important for the apparatus to know the specific type of inserted cartridge. With this information wrong usage leading to measurement errors will be avoided.

- Unique serial number of the respective cartridge. With this information it will be possible to perform a reliable quality management tracking. In case of manufacturing

errors it is also possible to suspend specific serial numbers to prevent usage of faulty cartridges.

Some types of cartridges require precise temperature measurements, e.g. gas concentrations are highly dependent on the sample temperature. According to another advantageous embodiment the cartridge will comprise means for temperature measurement, wherein an electrical value correlating with the temperature of the sample is measurable at the connecting means, wherein the cartridge specific data and/or information comprises calibration data of the temperature measurement means. Having a memory on the cartridge allows using low precision temperature measurement sensors on the cartridge in conjunction with stored calibration data, i.e. temperature measurement correction coefficients. Previously, the temperature measurement sensors, when part of the cartridge, have been expensive due to the need for high accuracy or selected versions.

According to a further embodiment the storage means will be provided to be writable and at least one of the following additional data and/or information will be storable or alterable in the storage means:

In case of a single use cartridge it will be stored, whether it is used or not. Therefore accidental reuse of a used single use cartridge can be prevented reliably.

In case of a multiple use cartridge it will be stored, how often and/or since when is in use. With this information counting errors and therefore inadmissible usage can be avoided.

The results of each diagnosis and/or analysis relating to the respective cartridge will be stored. It is therefore possible to transfer data sets to a data management system, e.g. by plugging the used cartridge into a special reader. Additionally it will be stored a patient identification information and/or an operator identification information and/or an identification information relating to the diagnosis and/or analysis apparatus and/or the date of the diagnosis and/or analysis. With this useful information there will be prevented a faulty mixing of the measurement results with the respective patient.

According to another embodiment there will be provided electric, electronic, magnetic and/or optical data transfer means for reading and/or writing and/or altering data and/or information stored in the storage means. These data transfer means support an automatic, time saving and error free data transfer between each cartridge and the apparatus.

Relating to a preferred embodiment the data transfer means comprise the respective connecting means of the cartridge and/or radio frequency transfer means. Using the connecting means leads to a relative simple design. Using radio frequency or optical

transfer means has the advantage that the storage means can easily be read and/or programmed and/or altered without contact even when the cartridge is sealed in its package. E.g. it is possible to write on the storage means after the cartridge is sterilised. With radio frequency transfer means it is also possible to transmit the required power.

5 According to a special embodiment the storage means will comprise an electrical memory member, e.g. EEPROM, FRAM, PROM or battery backed RAM, readable and/or writable via electric or electronic data transfer means, or at least one magnetic stripe or an optical memory or a two dimensional barcode.

10

Other objects and many of the attendant advantages of the present invention will be readily appreciated and become better understood by reference to the following detailed description when considered in connection with the accompanying drawing. Features that are substantially or functionally equal or similar will be referred to with the same
15 reference sign(s).

Fig. 1 depicts a schematic view of a system according to the invention.

Referring to Fig. 1 a system 1 for point of care diagnosis and/or analysis of
20 body fluids of a patient according to the invention comprises at least one cartridge 2. In fig. 1 are shown three different embodiments of this cartridge 2 indicated with 2a, 2b and 2c. The system 1 also comprises at least one diagnosis and/or analysis apparatus 3.

Each cartridge 2 has a sample receiving room 4 to receive a sample of the body fluids, e.g. blood or urine, that has to be diagnosed and/or analysed. The cartridge 2
25 comprises a filler socket 5 through which the sample can be filled in the sample receiving room 4. Each cartridge 2 comprises measuring means 6 provided for measuring the concentration of at least one specific component or substance of the sample. These measuring means 6 may comprise chemistry performing specific chemical and/or biochemical reactions with the respective body fluids. The measuring means 6 also enclose e.g. electrodes 7 which
30 are connected with electric connecting means 8 of the cartridge 2 and provide electrical values or signals correlating with the concentration of the respective components. These concentration values are therefore measurable at the connecting means 8.

In contrast to the cartridges 2a and 2b the cartridge 2c additionally comprises temperature measurement means 9 provided for measuring the temperature of the sample.

These temperature measuring means 9 are also connected with the connecting means 8 to provide there electrical values or signals correlating with the temperature of the sample.

Each cartridge 2 comprises storage means 10 which can be provided as an electrical memory member, e.g. a memory chip, in particular EEPROM, FRAM, PROM or battery backed RAM. This storage means 10 are designed as permanent memory and are readable with appropriate reading means. It is also possible to use writable and alterable memory. In the cartridges 2a and 2c the storage means 10 are connected with the connecting means 8 of the respective cartridge 2.

Cartridge 2b shows a special embodiment having radio frequency data transfer means 11 symbolised with an antenna 12. These radio frequency data transfer means 11 communicate with the storage means 10 and will be provided additionally or instead of the connection with the connecting means 8.

In the storage means 10 are stored cartridge specific data and/or information, e.g. calibration and/or characterisation data relating to the respective cartridge 2, and/or manufacturing lot data relating to the lot, to which the respective cartridge 2 belongs, and/or a production date of the respective cartridge 2, and/or shelf life information or an expiration date of the respective cartridge 2, and/or cartridge type information, and/or a unique serial number of the respective cartridge 2. This list is only an example and is in particular not complete.

The diagnosis and/or analysis apparatus 3 comprises electrical connecting means 13 corresponding to the connecting means 8 of the cartridges 2. The apparatus 3, which can be a handheld or benchtop, further comprises diagnosing and/or analysing means 14, which can be represented by a programmed or programmable microprocessor. This diagnosing and/or analysing means 14 are connected with the connecting means 13 of the apparatus 3. The apparatus 3 also comprises reading means 15 connected with the connecting means 13. These reading means 15 are provided for reading the data and/or information stored in the storing means 10 of any cartridge 2 connected to the apparatus 3.

These reading means 15 additionally may be provided with radio frequency data transfer means 16 symbolised with an antenna 17. These radio frequency data transfer means 16 and the radio frequency data transfer means 11 of the cartridges 2 are provided to perform a communication between the storage means 10 of the respective cartridge 2 and the diagnosing and/or analysing means 14. Therefore the diagnosing and/or analysing means 14 can read in and/or write on the storage means 10 via the reading means 15.

The apparatus 3 also comprises a storage or memory member 18 storing e.g. coefficients and/or algorithms and/or parameters which will be required for evaluating the measured values or signals. There may be provided display means 19 to indicate the results of the diagnosis and/or analysis, and an interface 20 with which the apparatus 3 can communicate with peripheral equipment, e.g. a printer, or with a data management system.

The system 1 according to the invention works as follows:

Each manufacturing lot of cartridges 2 has its own lot data leading to specific calibration and characterisation data for the cartridges 2 of this lot. These specific calibration and characterisation data and preferably a number of other useful cartridge specific data and/or information are stored in the storage means 10 of each cartridge 2. Therefore every cartridge 2 is inseparably combined with this information. The storing of the data and/or information can be realised via the connecting means 8 or via the radio frequency data transfer means 11. The latter has the advantage of storing the data after sterilisation and packaging the cartridge 2.

After filling a sample of body fluids, e.g. a blood sample, into the sample receiving room 4, the respective cartridge 2 is inserted into the diagnosis and/or analysis apparatus 3 to provide a communication between the connecting means 8 of the cartridge 2 and the connecting means 13 of the apparatus 3. This insertion is indicated with broken lines 21a, 21b and 21c.

The reading means 15 can automatically read the stored cartridge specific data and/or information, especially the calibration and characterisation data of the inserted cartridge 2 via the connecting means 13 and/or via the radio frequency data transfer means 16. Since the cartridge specific data and/or information comprise cartridge type information, the diagnosing and/or analysing means 14 will select appropriate measurement and/or evaluation routines.

Via the connecting means 8 and 13 the diagnosing and/or analysing means 14 will measure the electric values correlating with the concentration of the specific components and - in case of cartridge 2b - also values correlating with the temperature of the sample. Before this measurement is performed or before an evaluation of this values takes place the diagnosing and/or analysing means 14 will perform some routines like the following:

According to the cartridge specific data and information the diagnosing and/or analysing means 14 will compare the expiration date of the connected cartridge 2 with the current date, and perform the measuring and/or evaluation of the concentration and/or temperature values, only if the expiration date is not exceeded.

Alternatively or additionally the diagnosing and/or analysing means 14 compare the serial number of the connected cartridge 2 with invalid serial numbers stored in the memory member 18 of the diagnosis and/or analysis apparatus 3, and perform the measuring and/or evaluation of the respective values, only if the serial number of the connected cartridge 2 is not invalid.

In case of a connected single use cartridge 2 the diagnosing and/or analysing means 14 alternatively or additionally check, whether this cartridge 2 is used or not and perform the measuring and/or evaluation of the respective values, only if the cartridge 2 is unused.

In case of a connected multiple use cartridge 2 the diagnosing and/or analysing means 14 alternatively or additionally check, how often and/or since when this cartridge 2 is used and perform the measuring and/or evaluating of the respective values, only if the cartridge 2 is still usable.

Since these routines have valid results the diagnosing and/or analysing means 14 will perform an evaluation of the measured values. This evaluation has to be performed with appropriate coefficients and/or parameters and/or algorithms for determining the real component concentration and the real sample temperature, respectively. In accordance with the automatically read calibration and characterisation data the diagnosing and/or analysing means 14 select the appropriate coefficients and/or parameters and/or algorithms which are stored in the memory member 18. In case of an evaluation which requires precise temperature measurements the diagnosing and/or analysing means 14 evaluate the respective concentration value in accordance to the probe temperature.

The results of this evaluation and/or administrative data can be stored in the storage means 10 of the respective cartridge 2, in particular in case of a multiple use cartridge 2. To this aim the apparatus 3 comprises writing means which preferably are incorporated in the reading means 15. There also may be provided processing means for controlling the data transfer, in particular storing and/or altering of data. This processing means preferably will be incorporated in the diagnosis and/or analysing means 14. E.g. in case of a single use cartridge 2 a used signal or stamp is stored on its storage means 10. In case of a multiple use cartridge 2 a usage counter is increased. For multiple use cartridges 2 it is also possible to store the results of each measurement together with the patient and/or operator identification codes and a time or date signal or stamp. Therefore a set of data is provided which finally can be transferred to a data management system, e.g. by plugging the used cartridge 2 into a special reader.

LIST OF REFERENCES

1. system for point of care diagnosis and/or analysis
2. cartridge
3. diagnosis and/or analysis apparatus
4. sample receiving room
- 5 5. filler socket
6. concentration measuring means
7. electrode
8. connecting means of 2
9. temperature measurement means
- 10 10. storage means
11. radio frequency transfer means of 2
12. antenna of 11
13. connecting means of 3
14. diagnosing and/or analysing means
- 15 15. reading means
16. radio frequency transfer means of 3
17. antenna of 16
18. memory member of 3
19. display means
- 20 20. interface
21. connecting between 2 and 3

CLAIMS:

1. A cartridge of a system for point of care diagnosis and/or analysis of body fluids of a patient, comprising:
- a sample receiving room (4) for receiving a calibration fluid and/or a sample
5 of the body fluids to be diagnosed and/or analysed,
 - means (6) for measuring the concentration of at least one specific component of the sample,
 - electric or optical connecting means (8), with which the cartridge (2) is connectable to a diagnosis and/or analysis apparatus (3), and at which an electric or optic
10 value is measurable correlating with the concentration of the respective component,
 - storage means (10) for storing cartridge specific data and/or information readable for the diagnosis and/or analysis apparatus (3).
2. The cartridge of claim 1, wherein the cartridge specific data and/or
15 information comprises at least one of the following data and/or information:
- calibration and/or characterisation data relating to the respective cartridge (2),
 - manufacturing lot data relating to the lot, to which the respective cartridge (2) belongs,
 - production date of the respective cartridge (2),
20 - shelf life information or expiry date of the respective cartridge (2),
- cartridge type information like single / multi use, number and type of measurement parameters,
- unique serial number of the respective cartridge (2).
- 25 3. The cartridge of claim 1 or 2, wherein the cartridge (2) comprises means (9) for temperature measurement, wherein an electrical value correlating with the temperature of the sample is measurable at the connecting means (8), wherein the cartridge specific data and/or information comprises calibration data of the temperature measurement means.

4. The cartridge according to any one of the claims 1 to 3, wherein the storage means (10) are provided to be writable and wherein at least one of the following additional data and/or information is storable or alterable in the storage means (10):

- in case of a single use cartridge (2) it is stored, whether it is used or not,
- 5 - in case of a multiple use cartridge (2) it is stored, how often and/or since when it is used,
- the results of each diagnosis and/or analysis relating to the respective cartridge (2) are stored, wherein a patient identification information and/or an operator identification information and/or an identification information relating to the diagnosis and/or analysis
- 10 apparatus (3) and/or the date of the diagnosis and/or analysis may be stored additionally.

5. The cartridge according to any one of the claims 1 to 4, wherein electric, electronic, and/or optical data transfer means (8, 11) are provided for reading and/or writing and/or altering data and/or information stored in the storage means (10).

6. The cartridge according to claim 5, wherein the data transfer means comprise the respective connecting means (8) of the cartridge and/or radio frequency transfer means (11).

7. The cartridge according to any one of the claims 1 to 6, wherein the storage means (10) comprise an electrical, magnetical or optical memory member, e.g. EEPROM, FRAM, PROM or battery backed RAM, readable and/or writable via electric or electronic data transfer means or at least one magnetic stripe or an optical memory or a two dimensional barcode.

8. A diagnosis and/or analysis apparatus of a system for point of care diagnosis and/or analysis of body fluids of a patient, comprising:

- electric connecting means (13) connectable to connecting means (8) of a cartridge (2), wherein at least one electrical value each correlating with the concentration of a
- 30 component of a sample of the patients body fluids to be diagnosed and/or analysed is measurable at the connecting means (8) of the cartridge (2),
- diagnosing and/or analysing means (14) for measuring the respective concentration values via the connecting means (8, 13) and evaluating them for determining the concentration of the respective component,

- reading means (15) for reading cartridge specific data and/or information stored in storage means (10) of the cartridge (2),
- wherein the diagnosing and/or analysing means (14) perform the measurement and/or the evaluation of the respective concentration values in accordance to the cartridge specific data and/or information.

9. The diagnosis and/or analysis apparatus of claim 8, wherein the diagnosing and/or analysing means (14) evaluate the respective concentration values by use of appropriate coefficients and/or parameters and/or algorithms for determining the concentration of the respective component, and wherein the diagnosing and/or analysing means (14) select the appropriate coefficients and/or parameters and/or algorithms in accordance to the cartridge specific data and/or information.

10. The diagnosis and/or analysis apparatus according to claim 8 or 9, wherein the cartridge specific data and/or information comprises at least one of the following data and/or information:

- calibration and/or characterisation data relating to the respective cartridge (2),
- manufacturing lot data relating to the lot, to which the respective cartridge (2) belongs,
- production date of the respective cartridge (2),
- shelf life information or expiry date of the respective cartridge (2),
- cartridge type information,
- unique serial number of the respective cartridge (2).

11. The diagnosis and/or analysis apparatus according to any one of the claims 8 to 10, wherein the diagnosis and/or analysis apparatus (3) is provided for use with a cartridge (2) having means (9) for measurement of the temperature of the sample, wherein an electrical value correlating to the temperature of the probe is measurable at the connecting means (8) of the cartridge (2), wherein the diagnosing and/or analysing means (14) additionally measure the respective temperature value via the connecting means (8, 13), wherein the cartridge specific data and/or information comprise calibration data of the respective temperature measurement means (9), wherein the diagnosing and/or analysing means (14) evaluate the respective temperature value by use of appropriate coefficients for determining the probe temperature, wherein the diagnosing and/or analysing means (14) select the appropriate

coefficients in accordance to the respective calibration data, and wherein the diagnosing and/or analysing means (14) evaluate the respective concentration value in accordance to the probe temperature.

- 5 12. The diagnosis and/or analysis apparatus according to any one of the claims 8 to 11, wherein writing means are provided for writing to the storage means (10) of the cartridge (2), wherein processing means are provided for controlling the storing and/or altering of following additional data and/or information:
- in case of a single use cartridge (2) it is stored, whether it is used or not,
 - 10 - in case of a multiple use cartridge (2) it is stored, how often and/or since when it is used,
 - the results of each diagnosis and/or analysis relating to the respective cartridge (2) are stored, wherein a patient identification information and/or an operator identification information and/or an identification information relating to the diagnosis and/or analysis
 - 15 apparatus (3) and/or the date of the diagnosis and/or analysis may be stored additionally.

13. The diagnosis and/or analysis apparatus according to any one of the claims 8 to 12, wherein the reading means (15) and/or the writing means cooperate with the storage means (10) via the respective connecting means (8, 13) or via radio frequency transfer means
- 20 (11, 16), for reading and/or storing and/or altering the data and/or information in the storing means (10).

14. The diagnosis and/or analysis apparatus according to any one of the claims 8 to 13, wherein the reading means (15) and/or the writing means are provided for reading
- 25 and/or writing on and/or altering storage means (10) comprising an electrical memory member, e.g. EEPROM, FRAM, PROM or battery backed RAM, readable and/or writable via electric or electronic data transfer means, or at least one magnetic stripe or an optical memory or a two dimensional barcode.

- 30 15. The diagnosis and/or analysis apparatus according to any one of the claims 8 to 14, wherein the diagnosing and/or analyzing means (14) compare the expiry date of the connected cartridge (2) with the current date, and perform the measuring and/or evaluating of the respective values, only if the expiry date is not exceeded.

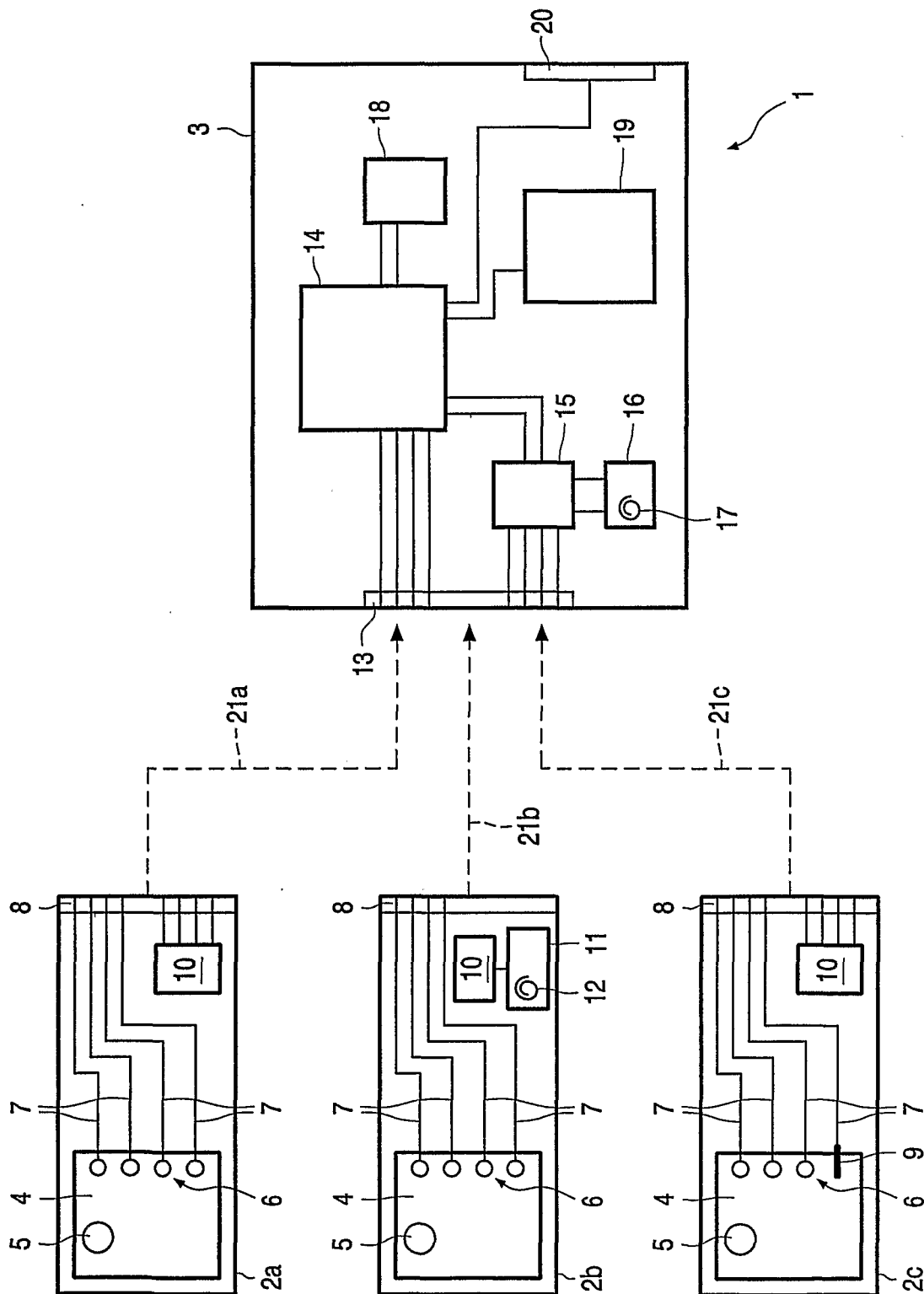
16. The diagnosis and/or analysis apparatus according to any one of the claims 8 to 15, wherein the diagnosing and/or analyzing means (14) compare the serial number of the connected cartridge (2) with invalid serial numbers stored in a memory member (18) of the diagnosis and/or analysis apparatus (3), and perform the measuring and/or evaluating of the
5 respective values, only if the serial number of the connected cartridge (2) is not invalid.

17. The diagnosis and/or analysis apparatus according to any one of the claims 8 to 16, wherein the diagnosing and/or analyzing means (14) in case of a connected single use cartridge (2) check, whether it is used, and in case of a connected multiple use cartridge (2)
10 check, how often and/or since when it is used, and perform the measuring and/or evaluating of the respective values, only if the connected cartridge (2) is still usable.

18. System for point of care diagnosis and/or analysis of body fluids of a patient, comprising:

- 15 - a cartridge (2), in particular according to any one of the claims 1 to 7,
- a diagnosis and/or analysis apparatus (3), in particular according to any one of the claims 8 to 17,
- means (6) for measurement the concentration of at least one specific component of a sample of the body fluids,
- 20 - connecting means (8, 13) providing communication for electrical values between the cartridge (2) and the diagnosis and/or analysis apparatus (3), wherein said values correlate with at least one of the respective concentrations,
- diagnosing and/or analyzing means (14) measuring the respective concentration value via the connecting means (8, 13),
- 25 - storage means (10) for storing cartridge specific data and/or information,
- reading means (15) for reading the data and/or information out of the storage means (10),
- wherein the diagnosing and/or analyzing means (14) evaluate the respective concentration values in accordance to the cartridge specific data and/or information.

1/1



INTERNATIONAL SEARCH REPORT

Inter Application No

PCT/IB 02/03004

A. CLASSIFICATION OF SUBJECT MATTER

IPC 7 A61B5/15 A61B5/00

According to International Patent Classification (IPC) or to both national classification and IPC

B. FIELDS SEARCHED

Minimum documentation searched (classification system followed by classification symbols)

IPC 7 A61B

Documentation searched other than minimum documentation to the extent that such documents are included in the fields searched

Electronic data base consulted during the international search (name of data base and, where practical, search terms used)

EPO-Internal, WPI Data, PAJ

C. DOCUMENTS CONSIDERED TO BE RELEVANT

Category *	Citation of document, with indication, where appropriate, of the relevant passages	Relevant to claim No.
Y	WO 01 28414 A (CHO OK KYUNG ;KAUFMANN KIM YUN OAK (DE)) 26 April 2001 (2001-04-26) abstract page 6, line 31 -page 17, line 26 ---	1-3,5-7
Y	US 5 048 539 A (SCHINDELE GARY M) 17 September 1991 (1991-09-17) column 4, line 19 -column 6, line 54; tables 1-4 ---	1-3,5-7
X	US 5 405 510 A (BETTS RONALD E ET AL) 11 April 1995 (1995-04-11) abstract ---	8-11
A	column 5, line 16 -column 19, line 30; tables 1-11 --- -/--	1-6, 12-18

☒ Further documents are listed in the continuation of box C.☒ Patent family members are listed in annex.

* Special categories of cited documents:

- *A* document defining the general state of the art which is not considered to be of particular relevance
- *E* earlier document but published on or after the international filing date
- *L* document which may throw doubts on priority claim(s) or which is cited to establish the publication date of another citation or other special reason (as specified)
- *O* document referring to an oral disclosure, use, exhibition or other means
- *P* document published prior to the international filing date but later than the priority date claimed

T later document published after the international filing date or priority date and not in conflict with the application but cited to understand the principle or theory underlying the invention

X document of particular relevance; the claimed invention cannot be considered novel or cannot be considered to involve an inventive step when the document is taken alone

Y document of particular relevance; the claimed invention cannot be considered to involve an inventive step when the document is combined with one or more other such documents, such combination being obvious to a person skilled in the art.

& document member of the same patent family

Date of the actual completion of the international search

23 September 2002

Date of mailing of the international search report

30/09/2002

Name and mailing address of the ISA

European Patent Office, P.B. 5818 Patentlaan 2
NL - 2280 HV Rijswijk
Tel. (+31-70) 340-2040, Tx. 31 651 epo nl,
Fax: (+31-70) 340-3016

Authorized officer

Weihs, J

INTERNATIONAL SEARCH REPORT

International Application No
PCT/IB 02/03004

C.(Continuation) DOCUMENTS CONSIDERED TO BE RELEVANT

Category *	Citation of document, with indication, where appropriate, of the relevant passages	Relevant to claim No.
A	WO 00 19887 A (MINIMED INC) 13 April 2000 (2000-04-13) abstract page 2, line 30 -page 4, line 5 - page 6, line 6 - line 24 - page 20, line 23 -page 22, line 2; tables 1,2,10 -----	1,4,12, 16

INTERNATIONAL SEARCH REPORT

Information on patent family members

International Application No

PCT/IB 02/03004

Patent document cited in search report		Publication date	Patent family member(s)	Publication date
WO 0128414	A	26-04-2001	WO 0128414 A2	26-04-2001
US 5048539	A	17-09-1991	US 5025798 A	25-06-1991
US 5405510	A	11-04-1995	BR 9206198 A	29-11-1994
			CA 2072311 A1	27-12-1992
			DE 69216485 D1	20-02-1997
			DE 69216485 T2	17-07-1997
			EP 0520443 A2	30-12-1992
			ES 2099182 T3	16-05-1997
			JP 2607001 B2	07-05-1997
			JP 6201638 A	22-07-1994
			MX 9203532 A1	01-11-1993
			WO 9300582 A1	07-01-1993
WO 0019887	A	13-04-2000	AU 6255699 A	26-04-2000
			EP 1119285 A1	01-08-2001
			WO 0019887 A1	13-04-2000
			US 2002002326 A1	03-01-2002

专利名称(译)	用于护理点诊断和/或分析的系统		
公开(公告)号	EP1487340A1	公开(公告)日	2004-12-22
申请号	EP2002755408	申请日	2002-07-10
[标]申请(专利权)人(译)	皇家飞利浦电子股份有限公司		
申请(专利权)人(译)	皇家飞利浦电子N.V.		
当前申请(专利权)人(译)	皇家飞利浦电子N.V.		
[标]发明人	BOOS ANDREAS BACHER JOHANNES PROSS GERHARD SEHER JENS PETER		
发明人	BOOS, ANDREAS BACHER, JOHANNES PROSS, GERHARD SEHER, JENS-PETER		
IPC分类号	G01N33/48 A61B5/00 A61B5/145 A61B5/1455 A61B5/1468 A61B5/15 A61B5/157		
CPC分类号	A61B5/157 A61B5/0002 A61B5/150022 A61B5/150786 A61B5/15087		
优先权	2001116592 2001-07-10 EP		
其他公开文献	EP1487340B1		
外部链接	Espacenet		

摘要(译)

本发明涉及一种用于患者体液的护理点诊断和/或分析的系统，包括： - 盒（2）， - 诊断和/或分析装置（3）， - 用于的装置（6）测量体液样本的至少一种特定成分的浓度， - 连接装置（8,13），用于在盒（2）和诊断和/或分析装置之间提供电和/或光学值的通信（3），其中所述值与各自浓度中的至少一个相关， - 诊断和/或分析装置（14）通过连接装置（8,13）测量各自的浓度值， - 用于存储盒的存储装置（10）特定数据和/或信息， - 用于从存储装置（10）读取数据和/或信息的读取装置（15）， - 其中诊断和/或分析装置（14）根据相应的浓度值评估相应的浓度值。墨盒特定数据和/或信息。