

(19)



(11)

EP 3 308 706 A1

(12)

EUROPEAN PATENT APPLICATION
published in accordance with Art. 153(4) EPC

(43) Date of publication:

18.04.2018 Bulletin 2018/16

(21) Application number: **16807744.4**

(22) Date of filing: **03.06.2016**

(51) Int Cl.:

A61B 5/145 <small>(2006.01)</small>	A61B 5/00 <small>(2006.01)</small>
G01N 27/327 <small>(2006.01)</small>	G01N 27/48 <small>(2006.01)</small>
G01N 33/53 <small>(2006.01)</small>	G01N 33/66 <small>(2006.01)</small>
H01L 51/00 <small>(2006.01)</small>	G01N 27/30 <small>(2006.01)</small>

(86) International application number:

PCT/KR2016/005949

(87) International publication number:

WO 2016/200104 (15.12.2016 Gazette 2016/50)

(84) Designated Contracting States:

**AL AT BE BG CH CY CZ DE DK EE ES FI FR GB
GR HR HU IE IS IT LI LT LU LV MC MK MT NL NO
PL PT RO RS SE SI SK SM TR**

Designated Extension States:

BA ME

Designated Validation States:

MA MD

(30) Priority: **12.06.2015 KR 20150083611**

12.06.2015 KR 20150083637

21.03.2016 KR 20160033648

21.03.2016 KR 20160033652

(71) Applicants:

- **Seoul National University R&DB Foundation
Seoul 08826 (KR)**
- **Institute for Basic Science
Daejeon 34047 (KR)**

(72) Inventors:

- **KIM, Daehyeong
Incheon 21986 (KR)**
- **HYEON, Taeghwan
Seoul 06277 (KR)**
- **CHOI, Seunghong
Seoul 07995 (KR)**
- **LEE, Hyunjae
Incheon 21594 (KR)**
- **CHOI, Taekyu
Chuncheon-si
Gangwon-do 24414 (KR)**

(74) Representative: **Ter Meer Steinmeister & Partner**

**Patentanwälte mbB
Nymphenburger Straße 4
80335 München (DE)**

(54) **BIOSENSOR AND METHOD FOR FORMING SAME AND GLUCOSE CONTROL SYSTEM, METHOD FOR FORMING THE GLUCOSE CONTROL SYSTEM, AND METHOD FOR CONTROLLING GLUCOSE THEREBY**

(57) Provided are a biosensor and a method for forming the same, a glucose control system, a method for forming the glucose control system, and a method for controlling glucose using the glucose control system. The biosensor comprises at least one sensor comprising a sensing unit, a bridge unit connected to the sensing unit, and an electrode unit connected to the bridge unit, wherein the sensing unit comprises a graphene layer. The method for forming the biosensor that comprises at least one sensor comprising a sensing unit, a bridge unit connected to the sensing unit and an electrode unit connected to the bridge unit, comprises forming a lower insulation layer, forming a conductive electrode layer on the lower insulation layer, forming a graphene layer on the conduc-

tive electrode layer and forming a reaction layer on the graphene layer.

The glucose control system comprises a sensor unit comprising a glucose sensor, a glucose regulation unit regulating glucose concentration in a body of a user and a control unit controlling the sensor unit and the glucose regulation unit. The method for forming a glucose control system comprises forming a sensor unit comprising a glucose sensor, forming a glucose regulation unit and packaging the sensor unit and the glucose regulation unit.

EP 3 308 706 A1

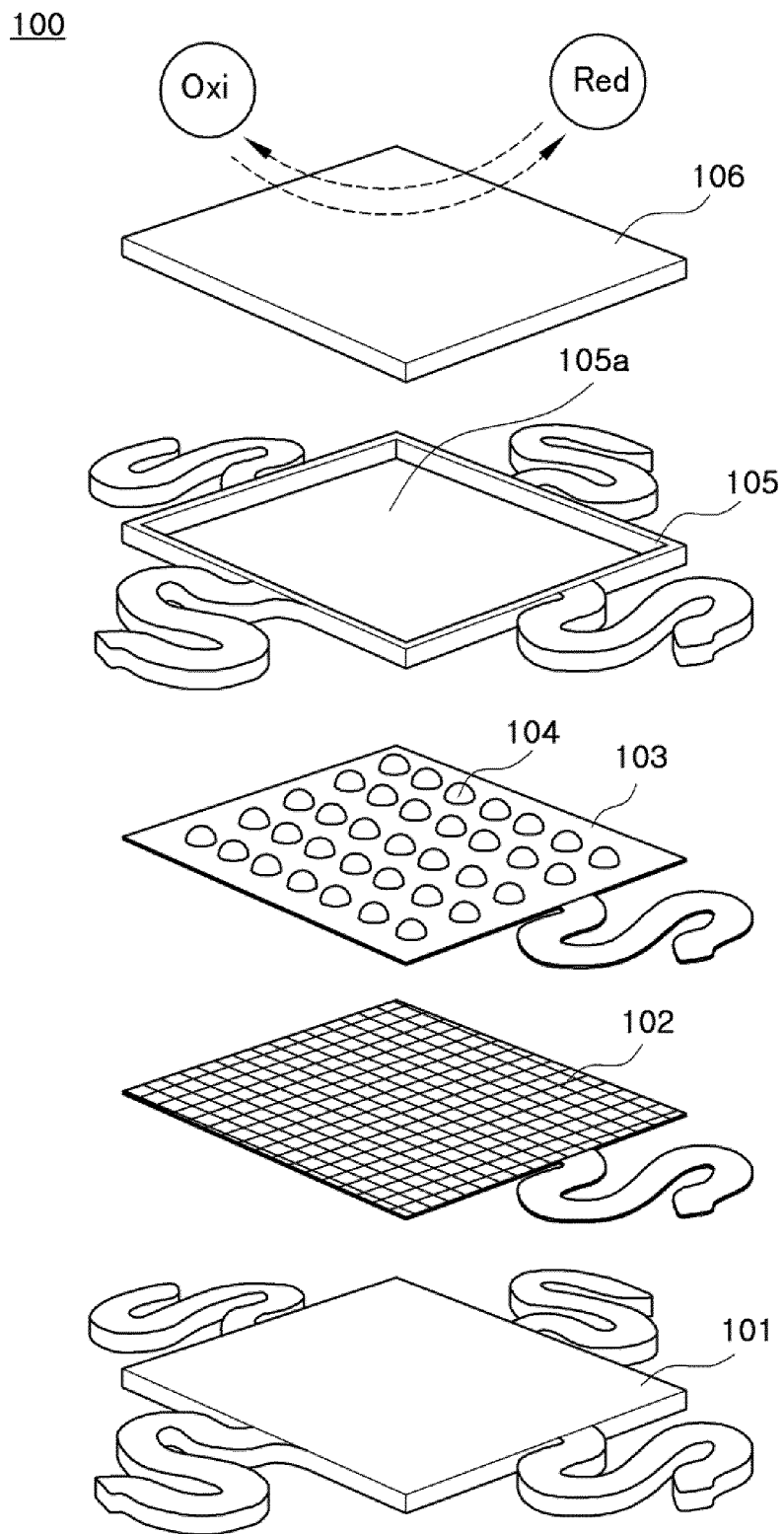


Fig. 4

Description

Technical Field

[0001] The present invention relates to a biosensor and a method for forming the same, a glucose control system, a method for forming the glucose control system, and a method for controlling glucose using the glucose control system.

Background Art

[0002] An electrochemical based biosensor is to combine the analytical ability that an electrochemical method has and the specificity of biological recognition. That is, biological recognition phenomena can be detected as the change of electric current or potential by holding or including a biospecific reagent such as enzyme, antigen, antibody, biochemical substance and the like at the surface of an electrode. In this electrochemical based biosensor, the resistance of the electrode itself and the feature of the interface where an electrochemical reaction occurs are very important.

[0003] Graphene is attracting attention as one of the nanomaterials capable of manufacturing an electrochemical based biosensor with improved performance. However, since graphene is chemically inert, it is difficult to make use of graphene to realize an electrochemical based biosensor. Therefore, the surface activation of graphene is needed in order to manufacture an electrochemical based biosensor using graphene. In addition, since graphene oxide was mainly used in conventional biosensors using graphene and the graphene oxide is based on a solution process, there was a difficulty in the manufacturing process.

[0004] The above mentioned example is disclosed in Korean Patent No.10-1355933 (Title: Method for adsorption of various biomaterials on chemically modified graphene). Concretely, in order to adsorb a hydrophilic biomaterial on graphene that basically has a hydrophilic property, a modification process where reduction and nitrogen doping are carried out at the same time is needed. Herein, the reduction is for restoring the electrical properties of graphene oxide produced by oxidizing the graphite, and the nitrogen doping is for adsorbing the hydrophilic biomaterial. Since the biomaterial is selectively adsorbed only on the modified graphene through the modification process, the Korean Patent provides a method for producing a composite substrate comprising a patterned graphene layer that selectively adsorbs the biomaterial.

[0005] Meanwhile, a diabetes prevalence rate is increasing due to aging society and westernized lifestyle. Diabetes can lead to complications in major organs of the body if there is no proper blood sugar control in the long term. Therefore, it is very important to maintain blood sugar normally.

[0006] Accurate blood sugar measurement is very im-

portant for proper blood sugar control. However, most of conventional blood sugar monitoring devices have a disadvantage of causing pain and inconvenience to patients because the blood sugar is measured by taking blood in an invasive manner. Therefore, the development of a noninvasive blood sugar monitoring device capable of measuring the blood sugar without drawing blood is under study.

[0007] In addition, the importance of blood sugar monitoring devices is growing bigger and bigger because hypoglycemia resulting from insulin treatment frequently occurs in diabetic patients. Therefore, it is necessary to develop a measurement and control device for blood sugar that is capable of not only measuring blood sugar concentration accurately but also controlling blood sugar simultaneously.

[0008] In this regard, Korean Patent No.10-0553801 (Title: The closed loop type realtime insulin pump by using of skin contacted glucose detection sensor in blood) provides a real-time insulin pump that is a close loop type and uses a blood sugar detection sensor of skin contact type. According to the real-time insulin pump, it is safe and accurate by using the blood sugar detection sensor of skin contact type, the blood sugar can be detected in real time, the measurement of blood sugar and the injection of insulin can be controlled in real time by applying an insulin pump controlling a precise insulin injection in open loop type, and thus it is possible to regulate the most accurate blood sugar level for patients.

Disclosure

Technical Problem

[0009] In order to solve the above mentioned problems, the present invention provides a biosensor exhibiting excellent reliability.

[0010] The present invention provides a biosensor exhibiting excellent flexibility and stretchability.

[0011] The present invention provides a biosensor including various sensors on one platform.

[0012] The present invention provides a method for forming the biosensor.

[0013] The present invention provides a glucose control system that can measure glucose concentration in a noninvasive manner.

[0014] The present invention provides a glucose control system that can control glucose concentration in a body of a user.

[0015] The present invention provides a glucose control system exhibiting excellent flexibility and stretchability.

[0016] The present invention provides a method for forming the glucose control system.

[0017] The present invention provides a method for controlling glucose using the glucose control system.

[0018] The other objects of the present invention will be clearly understood by reference to the following de-

tailed description and the accompanying drawings.

Technical Solution

[0019] A biosensor according to embodiments of the present invention comprises at least one sensor comprising a sensing unit, a bridge unit connected to the sensing unit and an electrode unit connected to the bridge unit, and the sensing unit comprises a graphene layer.

[0020] The graphene layer may comprise a doped conductive substance. The conductive substance may comprise at least one selected from metal nanoparticles and metal nanowires.

[0021] The sensing unit may further comprise a conductive electrode layer disposed under the graphene layer and a reaction layer disposed on the graphene layer. The conductive electrode layer may comprise net patterns or mesh patterns.

[0022] The sensing unit may further comprise an upper insulation layer disposed on the graphene layer and the upper insulation layer may have an opening part exposing the graphene layer. The reaction layer may be in contact with the graphene layer through the opening part.

[0023] The reaction layer may be formed of different substances depending on a type of the sensor. The reaction layer may be formed of silver/silver chloride or PEDOT. A surface of the reaction layer may be treated by at least one substance selected from polyaniline, prussian blue and glucose oxidase.

[0024] The bridge unit may have a multiply-bent shape.

[0025] The sensor may comprise at least one sensor selected from a humidity sensor, a pH sensor, a glucose sensor and a strain gauge.

[0026] The biosensor may further comprise an electric source unit providing an electric source to the electrode unit and a processing unit that receives any one signal of electric current, voltage or impedance from the electrode unit to convert the signal.

[0027] In a method for forming a biosensor according to embodiments of the present invention, the biosensor comprises at least one sensor comprising a sensing unit, a bridge unit connected to the sensing unit and an electrode unit connected to the bridge unit, and the method comprises forming a lower insulation layer, forming a conductive electrode layer on the lower insulation layer, forming a graphene layer on the conductive electrode layer and forming a reaction layer on the graphene layer.

[0028] The method for forming a biosensor may further comprise forming an upper insulation layer on the graphene layer wherein the upper insulation layer has an opening part that exposes the graphene layer, and doping a conductive substance at the graphene layer through the opening part before forming the reaction layer.

[0029] The conductive substance may comprise at least one selected from metal nanoparticles and metal nanowires.

[0030] The reaction layer may be formed on the graphene layer through the opening part.

[0031] The conductive electrode layer may comprise net patterns or mesh patterns. The conductive electrode layer may be formed of a substance comprising at least one selected from gold, aluminum, platinum, nickel, graphene, silver nanowire film, metal grid and indium tin oxide.

[0032] The reaction layer may be formed of different substances depending on a type of the sensor.

[0033] The sensing unit, the bridge unit and the electrode unit may be formed together by a same process.

[0034] The sensor may comprise at least one sensor selected from a humidity sensor, a pH sensor, a glucose sensor and a strain gauge.

[0035] A glucose control system according to embodiments of the present invention comprises a sensor unit comprising a glucose sensor, a glucose regulation unit regulating glucose concentration in a body of a user and a control unit controlling the sensor unit and the glucose regulation unit.

[0036] The sensor unit may further comprise at least one selected from a humidity sensor, a pH sensor and a strain gauge.

[0037] The control unit may receive signals from the glucose sensor to measure glucose concentration in sweat of the user, receive signals from the pH sensor to measure pH value, and amend the measured glucose concentration based on the pH value.

[0038] The control unit may receive signals from the humidity sensor to measure humidity, receive signals from the strain gauge to measure strain, and amend the measured glucose concentration based on the pH value, the humidity and the strain.

[0039] The control unit may receive signals from the humidity sensor to measure humidity, and receive signals from the glucose sensor to measure the glucose concentration in sweat of the user when the humidity is equal to or more than a predetermined value.

[0040] The control unit may diagnose a blood sugar state in the body of the user based on the amended glucose concentration. The control unit may control the glucose regulation unit in order to inject a glucose regulation drug into the user based on the diagnosed blood sugar state in the body of the user.

[0041] The control unit may receive signals from the strain gauge to measure strain, and diagnose a blood sugar state in the body of the user as a low blood sugar state based on the strain.

[0042] The glucose regulation unit may comprise a drug delivery part that comprises a fine needle comprising a glucose regulation drug and a heating part that is disposed on the drug delivery part and heats the drug delivery part to increase a temperature of the drug delivery part, a surface of the drug delivery part may be coated with a phase change material whose phase is changed at critical temperature or more, and the glucose regulation drug may be released from the fine needle by heating the heating part.

[0043] The drug delivery part may inject the glucose

regulation drug through the user's skin by the fine needle, and the glucose regulation drug may comprise blood sugar depressing agents.

[0044] The heating part may comprise a first heating part, a second heating part adjacent to the first heating part, and a temperature sensor that is disposed between the first and second heating parts and measures temperature of the first and second heating parts. The control unit may control temperature of the first and second heating parts when the temperature measured by the temperature sensor is equal to or more than a predetermined temperature. The heating part may comprise multiply-bent patterns.

[0045] The sensor unit may comprise a sensing unit, a bridge unit connected to the sensing unit and an electrode unit connected to the bridge unit, and the sensing unit may comprise a graphene layer.

[0046] The graphene layer may comprise a doped conductive substance, and the conductive substance may comprise at least one selected from metal nanoparticles and metal nanowires.

[0047] The sensing unit may further comprise a conductive electrode layer disposed under the graphene layer and a reaction layer disposed on the graphene layer, the conductive electrode layer may comprise net patterns or mesh patterns, and the reaction layer may be formed of different substances depending on a type of the sensing unit.

[0048] The bridge unit may have a multiply-bent shape.

[0049] The glucose control system may further comprise a network transmission and reception unit. The network transmission and reception unit may send the blood sugar state in the body of the user diagnosed by the control unit to a user terminal interacting with the glucose control system.

[0050] A method for forming a glucose control system according to embodiments of the present invention comprises forming a sensor unit comprising a glucose sensor, forming a glucose regulation unit and packaging the sensor unit and the glucose regulation unit.

[0051] The step of forming a glucose regulation unit may comprise forming a heating part, forming a drug delivery part that comprises a fine needle comprising a glucose drug, combining the heating part and the drug delivery part, and coating the surface of the drug delivery part with a phase change material.

[0052] The sensor unit may comprise at least one sensor comprising a sensing unit, a bridge unit connected to the sensing unit and an electrode unit connected to the bridge unit, and the step of forming the sensor unit may comprise forming a lower insulation layer, forming a conductive electrode layer on the lower insulation layer, forming a graphene layer on the conductive electrode layer, and forming a reaction layer on the graphene layer.

[0053] The method for forming a glucose control system may further comprise forming an upper insulation layer on the graphene layer wherein the upper insulation layer has an opening part that exposes the graphene

layer, and doping a conductive substance at the graphene layer through the opening part before forming the reaction layer wherein the conductive substance comprises at least one selected from metal nanoparticles and metal nanowires.

[0054] The reaction layer may be formed on the graphene layer through the opening part, and the reaction layer may be formed of different substances depending on a type of the sensor.

[0055] A method for controlling glucose according to embodiments of the present invention, uses a glucose control system that comprises a sensor unit comprising a glucose sensor and a pH sensor, a glucose regulation unit regulating glucose concentration in a body of a user, and a control unit controlling the sensor unit and the glucose regulation unit, and comprises receiving signals from the glucose sensor to measure glucose concentration in sweat of the user, receiving signals from the pH sensor to measure pH value and amending the measured glucose concentration based on the pH value.

[0056] The sensor unit may further comprise at least one selected from a humidity sensor and a strain gauge, the method for controlling glucose may further comprise receiving signals from the humidity sensor to measure humidity and receiving signals from the strain gauge to measure strain, and the measured glucose concentration may be amended based on the pH value, the humidity and the strain.

[0057] The method for controlling glucose may further comprise diagnosing a blood sugar state in the body of the user based on the amended glucose concentration.

[0058] The method for controlling glucose may further comprise injecting a glucose regulation drug into the user by the glucose regulation unit based on the diagnosed blood sugar state in the body of the user.

[0059] The sensor unit may further comprise a humidity sensor, the method for controlling glucose may further comprise receiving signals from the humidity sensor to measure humidity, and signals may be received from the glucose sensor and the glucose concentration in sweat of the user may be measured when the humidity is equal to or more than a predetermined value.

[0060] The method for controlling glucose may further comprise receiving signals from the strain gauge to measure strain, and a blood sugar state in the body of the user may be diagnosed as a low blood sugar state based on the strain.

Advantageous Effects

[0061] A biosensor according to embodiments of the present invention can have excellent reliability since various features such as the feature of the interface are improved. The biosensor can be easily and variously applied to a wearable apparatus that is used in the state of being attached to the body since it can have excellent flexibility and stretchability. The biosensor can include various sensors on one platform so that various sub-

stances can be detected simultaneously. In the biosensor, it is not necessary to prepare a reference electrode separately since reference electrode and working electrode can be formed together in one platform. The biosensor may include one or more sensors, and the one or more sensors may be easily formed by a simple process.

[0062] The glucose control system according to embodiments of the present invention can measure glucose concentration in a noninvasive manner. The glucose control system can accurately measure glucose concentration in the user's body by amending the measured glucose concentration with reference to pH value, humidity, strain, etc. The glucose control system can control the glucose concentration in the user's body while measuring the glucose concentration in real time. The glucose control system can have excellent flexibility and stretchability so that it can be easily used in the state of being attached to a body.

Description of Drawings

[0063]

Fig. 1 is a schematic view of a biosensor according to an embodiment of the present invention.

Fig. 2 shows the constitution of a biosensor according to an embodiment of the present invention.

Fig. 3 is a view for explaining the constitution of a biosensor according to an embodiment of the present invention.

Fig. 4 is a view for explaining a sensing unit of a biosensor according to an embodiment of the present invention.

Fig. 5 is an enlarged view for a conductive electrode layer formed on the upper part of a lower insulation layer of a bridge unit of a biosensor according to the present invention.

Fig. 6 is a flowchart for explaining a method of forming a biosensor according to an embodiment of the present invention.

Fig. 7 is a view for explaining a method of forming a biosensor according to an embodiment of the present invention.

Fig. 8 schematically shows a process of forming a biosensor according to an embodiment of the present invention.

Fig. 9 is a view for explaining a process of treating the surface of a biosensor according to an embodiment of the present invention.

Fig. 10 is an image of a biosensor formed according to a embodiment of the present invention.

Fig. 11 shows deposition results of polyethylenedioxythiophene depending on electrode structures composing a biosensor according to an embodiment of the present invention.

Fig. 12 is graphs analyzing the feature of electrodes related to deposition results of polyethylenedioxythi-

ophene depending on electrode structures composing a biosensor according to an embodiment of the present invention.

Fig. 13 is graphs analyzing the electrochemical feature depending on electrode structures composing a biosensor according to an embodiment of the present invention.

Fig. 14 is graphs analyzing operational features of a biosensor according to an embodiment of the present invention.

Fig. 15 shows the stretchability of a biosensor according to an embodiment of the present invention. Fig. 16 shows the constitution of a glucose control system according to an embodiment of the present invention.

Fig. 17 shows a regulation unit of a glucose control system according to an embodiment of the present invention.

Fig. 18 is an image of a heating part according to an embodiment of the present invention.

Fig. 19 is a sectional view of a heating part of a glucose control system according to an embodiment of the present invention.

Fig. 20 shows a drug delivery part in a glucose control system according to an embodiment of the present invention.

Fig. 21 shows a fine needle of a drug delivery part in a glucose control system according to an embodiment of the present invention.

Fig. 22 is a flowchart for explaining a method for forming a glucose control system according to an embodiment of the present invention.

Fig. 23 is a flowchart for explaining a method for forming a glucose regulation unit according to an embodiment of the present invention.

Fig. 24 is a flowchart for explaining a method for forming a heating part of a glucose regulation unit according to an embodiment of the present invention.

Fig. 25 is a view for explaining a formation of a drug delivery part and a method of combining a drug delivery part and a heating part according to an embodiment of the present invention.

Fig. 26 is an image of a sensor unit and a glucose regulation unit formed according to an embodiment of the present invention.

Fig. 27 is an image of a glucose control system formed according to an embodiment of the present invention.

Fig. 28 is a flowchart for explaining a method for controlling glucose using a glucose control system according to an embodiment of the present invention.

Fig. 29 is a view for explaining an operation of a sensor unit in a glucose control system according to an embodiment of the present invention.

Fig. 30 is a view for explaining an operation of a glucose regulation unit in a glucose control system according to an embodiment of the present invention.

Best Mode

[0064] Hereinafter, a detailed description will be given of the present invention with reference to the following embodiments. The purposes, features, and advantages of the present invention will be easily understood through the following embodiments. The present invention is not limited to such embodiments, but may be modified in other forms. The embodiments to be described below are nothing but the ones provided to bring the disclosure of the present invention to perfection and assist those skilled in the art to completely understand the present invention. Therefore, the following embodiments are not to be construed as limiting the present invention.

[0065] It will be understood that, although the terms first, second, third etc. may be used herein to describe various elements, components, regions, layers and/or sections, these elements, components, regions, layers and/or sections should not be limited by these terms. These terms are only used to distinguish one element, component, region, layer or section from another element, component, region, layer or section. Thus, a first element, component, region, layer or section discussed below could be termed a second element, component, region, layer or section without departing from the teachings of the present invention.

[0066] It will be understood that when an element is referred to as being "on" another element, it can be directly on the other element or intervening elements may be present therebetween. In contrast, when an element is referred to as being "directly on" another element, there are no intervening elements present.

[0067] The size of the element or the relative sizes between elements in the drawings may be shown to be exaggerated for more clear understanding of the present invention. In addition, the shape of the elements shown in the drawings may be somewhat changed by variation of the manufacturing process or the like. Accordingly, the embodiments disclosed herein are not to be limited to the shapes shown in the drawings unless otherwise stated, and it is to be understood to include a certain amount of variation.

[0068] It will be understood that when an element is referred to as being "connected" with another element, the element can be directly connected with another element or they can be connected with intervening elements present therebetween. In addition, when an element is referred to as "including" another element, it means that the element can include further element(s) as well as another element unless specifically stated to the contrary.

[0069] Fig. 1 is a schematic view of a biosensor according to an embodiment of the present invention, Fig. 2 shows the constitution of a biosensor according to an embodiment of the present invention, and Fig. 3 is a view for explaining the constitution of a biosensor according to an embodiment of the present invention.

[0070] Referring to Figs. 1 to 3, a biosensor 10 includes

a sensing unit 100, a bridge unit 200 and an electrode unit 300.

[0071] The sensing unit 100 may include a plurality of sensing units disposed in arbitrary patterns. The sensing unit 100 may include a first sensing unit 110, a second sensing unit 120, a third sensing unit 130 and a fourth sensing unit 140. The first sensing unit 110 may be a humidity sensing unit that can measure the humidity, the second sensing unit 120 may be a pH sensing unit that can measure the pH, the third sensing unit 130 may be a glucose sensing unit that can measure the glucose, and the fourth sensing unit 140 may be a strain gauge that can measure the strain. One of each or two or more of the first sensing unit 110, the second sensing unit 120, the third sensing unit 130 and the fourth sensing unit 140 may be disposed.

[0072] The biosensor 10 may include a first sensor 11, a second sensor 12, a third sensor 13 and a fourth sensor 14. The first sensor 11 may be a humidity sensor, the second sensor 12 may be a pH sensor, the third sensor 13 may be a glucose sensor, and the fourth sensor 14 may be a strain gauge. The first sensor 11 may include the first sensing unit 110, a first bridge unit 210 and a first electrode unit 310. The second sensor 12 may include the second sensing unit 120, a second bridge unit 220 and a second electrode unit 320. The third sensor 13 may include the third sensing unit 130, a third bridge unit 230 and a third electrode unit 330. The fourth sensor 14 may include the fourth sensing unit 140, a fourth bridge unit 240 and a fourth electrode unit 340.

[0073] The bridge unit 200 connects the sensing unit 100 and the electrode unit. The electrode unit 300 can provide voltage or receive signals such as measured potential difference, electric current, impedance and the like from the sensing unit 100. The electrode unit 300 may include two or three electrode patterns in order to receive the signals.

[0074] Even though not shown in drawings, the biosensor 10 may further include an electric source unit that provides the electric source and a processing unit that converts the signals such as potential difference, electric current, impedance and the like collected by the electrode unit 300 to the ion change amount or the concentration change amount of chemical substances by oxidation-reduction reaction. The electric source unit can provide the electric power to the electrode unit 300 using an electric power cable, a rechargeable battery or a disposable battery.

[0075] Fig. 4 is a view for explaining a sensing unit of a biosensor according to an embodiment of the present invention.

[0076] Referring to Fig. 4, the sensing unit 100 may include a lower insulation layer 101, a conductive electrode layer 102, a graphene layer 103, an upper insulation layer 105 and a reaction layer 106.

[0077] The lower insulation layer 101 may be formed of a high molecular substance that is transparent and nonconductive. For example, the high molecular sub-

stance may be photosensitive polymer. In addition, for example, the high molecular substance may be epoxy resin, polyimide, parylene.

[0078] The conductive electrode layer 102 is disposed on the lower insulation layer 101. The external shape of the conductive electrode layer 102 may be identical to the lower insulation layer 101, but its internal shape may include net patterns or mesh patterns. The conductive electrode layer 102 may be formed of a conductive substance where the electrical current can flow. The conductive substance may include at least one selected from metal such as Au, Al, Pt, Ni, graphene, silver nanowire film, metal grid and metal oxide such as indium tin oxide (ITO).

[0079] The graphene layer 103 is disposed on the conductive electrode layer 102. The graphene layer 103 may include graphene, carbonaceous material such as graphene, carbon nanotube (CNT), etc. Conductive substances 104 may be doped in the graphene layer 103. The conductive substances 104 may be disposed on the entire region or some areas of the graphene layer 103 in the form of metal nanoparticles or metal nanowires. For example, the conductive substances 104 may include Au nanoparticles, and the conductivity of the graphene layer 103 can be improved by the doped conductive substances 104.

[0080] The upper insulation layer 105 is disposed on the graphene layer 103. The upper insulation layer 105 may have an opening part 105a that expose some portion of the graphene layer 103.

[0081] The reaction layer 106 is disposed on the graphene layer 103 exposed by the opening part 105a. The reaction layer 106 may be formed by depositing Ag/AgCl or Poly(3,4-ethylenedioxythiophene) (PEDOT) in order to be used as a reference electrode of the glucose sensor or measure the humidity.

[0082] At least one reaction layer of the reaction layers 106 may be formed by depositing a substance for forming a counter electrode. Therefore, in an electrochemical based biosensor according to another embodiment of the present invention, a plurality of sensing units 100 are formed on one platform and the reaction layer 106 of each sensing unit 100 detects a substance different from a substance detected by another reaction layer so that various substances can be detected. In addition, a separate commercialized reference electrode should be prepared in the conventional electrochemical sensor, but reference electrode and working electrode can be formed simultaneously in one platform in the present invention.

[0083] The surface of the reaction layer 106 may be treated by polyaniline in order to measure acidity (pH). In addition, the surface of the reaction layer 106 may be treated by glucose oxidase, prussian blue and the like in order to measure glucose in sweat. Herein, the glucose oxidase is a breakdown enzyme of glucose, and the prussian blue functions as a catalyst in the breakdown of peroxide that is the product of the breakdown of glucose. Substances for the reaction layer 106 may be different

from each other depending on an object to be detected by the sensing unit 100.

[0084] The sensing unit 100 may include the reaction layer 106 for detecting different substances on one platform, and thus a plurality of sensors 11 to 14 detecting various substances can be realized. In addition, a separate commercialized reference electrode is not needed by forming reference electrode and working electrode together in one platform.

[0085] Even though not shown in drawings, the bridge unit 200 may include a lower insulation layer, a conductive electrode layer, a graphene layer and an upper insulation layer. The electrode unit 300 may include a lower insulation layer and a conductive electrode layer. The electrode unit 300 may include an upper insulation layer on the conductive electrode, and the upper insulation layer includes an opening part like the upper insulation layer 105 of the sensing unit 100. The electric source of the electric source unit can be provided to the electrode unit 300 through the opening part. The lower insulation layer, the conductive electrode layer, the graphene layer and the upper insulation layer of the bridge unit 200 may be formed of the same material and by the same process as the lower insulation layer 101, the conductive electrode layer 102, the graphene layer 103 and the upper insulation layer 105 of the sensing unit 100, respectively. It does not matter even if a conductive substance is not doped on the graphene layer of the bridge unit 200.

[0086] The biosensor 10 includes a plurality of sensing units 100 in one platform so that each sensing unit 100 can detect a substance different from a substance detected by another sensing unit. The lower insulation layer composing the sensing unit 100, the bridge unit 200 and the electrode unit 300 may be interconnected, even though the interconnected lower insulation layer belongs to different sensors. However, the conductive electrode layer composing the sensing unit 100, the bridge unit 200 and the electrode unit 300 may be electrically divided per each sensor in order that the sensing unit, the bridge unit and the electrode unit are connected to operate as one sensor. The sensing unit, the bridge unit and the electrode unit can be connected to operate as one sensor and receive signals individually.

[0087] Fig. 5 is an enlarged view for a conductive electrode layer formed on the upper part of a lower insulation layer of a bridge unit of a biosensor according to the present invention.

[0088] Referring to Fig. 5, the lower insulation layer belonging to the bridge unit 200 may include patterns multiply bent in the up/down or left/right direction. In addition, the conductive electrode layer disposed on the lower insulation layer of the bridge unit 200 may be formed in net patterns or mesh patterns along the shape of the multiply-bent lower insulation layer.

[0089] Since the bridge unit 200 connecting the sensing unit 100 and the electrode unit 300 is formed in multiply-bent patterns, the biosensor can have stretchability. As a result, it does not cause any inconvenience to users

when being worn by them so that it can be easily applied to a wearable apparatus that is used in the state of being worn in the body.

[0090] Fig. 6 is a flowchart for explaining a method of forming a biosensor according to an embodiment of the present invention, and Fig. 7 is a view for explaining a method of forming a biosensor according to an embodiment of the present invention.

[0091] Referring to Figs. 6 and 7, a method for forming a biosensor may include step S110 of forming a lower insulation layer 101, step S120 of forming a conductive electrode layer 102 on the lower insulation layer 101, step S130 of forming a graphene layer 103 on the conductive electrode layer 102, step S140 of forming an upper insulation layer 105 on the graphene layer 103, step S150 of forming an opening part 105a in the upper insulation layer 105 of the sensing unit and the electrode unit, step S160 of doping a conductive substance 104 at the graphene layer 103 exposed by the opening part 105a formed at the sensing unit, and step S170 of forming a reaction layer 106 on the graphene layer 103 where the conductive substance was doped.

[0092] In step S110, the lower insulation layer 101 is formed on a sacrifice substrate 400. Glass substrate, quartz substrate, silicone substrate, germanium substrate and the like may be used as the sacrifice substrate. A sacrifice layer 410 for separating the biosensor from the substrate may be formed before forming the lower insulation layer 101 on the sacrifice substrate 400. For example, the sacrifice layer 410 is formed of metals such as Ni, Cu, Al or PMMA (poly(methyl methacrylate), etc.

[0093] The lower insulation layer 101 can be formed by coating photosensitive polymer substance on the sacrifice substrate 400 and carrying out photolithography or e-beam lithography process. The polymer substance may include at least one selected from epoxy resin, polyimide and parylene.

[0094] The lower insulation layer 101 disposed at the sensing unit 100, the lower insulation layer 101 disposed at the bridge unit 200 and the lower insulation layer 101 disposed at the electrode unit 300 may be formed in different patterns. However, in order to facilitate the fabrication process, it is possible to pattern the lower insulation layer 101 belonging to the sensing unit 100, the bridge unit 200 and the electrode unit 300 so as to be interconnected.

[0095] In step S120, the conductive electrode layer 102 is formed on the lower insulation layer 101. The conductive electrode layer 102 can be formed by depositing a conductive substance on the lower insulation layer 101 and carrying out photolithography or e-beam lithography. The conductive substance may include at least one selected from metals such as Au, Al, Pt, Ni and the like, graphene, silver nanowire film, metal grid and metal oxide such as indium tin oxide (ITO), etc.

[0096] Each conductive electrode layer 102 belonging to a plurality of the sensing unit 100, the bridge unit 200 and the electrode unit 300 can be formed together

through a single process. The conductive electrode layer 102 formed in the sensing unit 100 and the bridge unit 200 may be formed in net patterns or mesh patterns. The patterns of each conductive electrode layer 102 belonging to the sensing unit 100, the bridge unit 200 and the electrode unit 300 that compose one sensor are interconnected. However, the conductive electrode layer 102 can make each sensor electrically insulated.

[0097] Even though the lower insulation layer 101 belonging to a plurality of sensors is interconnected, each sensor can independently measure and receive signals since each sensor is electrically divided by the conductive electrode layer 102.

[0098] In step S130, the graphene layer 103 is formed on the conductive electrode layer 102. Graphene 103a may be grown by chemical vapor deposition (CVD) to be transferred onto the conductive electrode layer 102. The graphene 103a may be formed in a single layer or in two or more layers, and may be grown directly on the conductive electrode layer 102. The graphene layer 103 can be formed on the sensing unit 100 and the bridge unit 200 by patterning the graphene 103a in the same shape as the conductive electrode layer 102 except for the electrode unit 300.

[0099] In step S140, the upper insulation layer 105 is formed on the graphene layer 103. The upper insulation layer 105 can be formed by coating a nonconductive photosensitive high molecular substance on the graphene layer 103 of the sensing unit 100 and the bridge unit 200 and on the conductive electrode layer 102 of the electrode unit 300 and patterning the coated substance in the same shape as the lower insulation layer 101. Since the method for forming the upper insulation layer 105 is the same as the method for forming the lower insulation layer 101 that was previously explained, the detailed explanation is not made here.

[0100] In step S150, the opening part is formed in the upper insulation layer of the sensing unit 100 and the electrode unit 300. The upper insulation layer 105 of the sensing unit 100 and the electrode unit 300 can be removed by using a photolithography or e-beam lithography process. The upper insulation layer 105 existing on the sensing unit 100 and the electrode unit 300 is removed, and the graphene layer 103 of the sensing unit 100 and the conductive electrode layer 102 of the electrode unit 300 can be exposed through the opening part 105a.

[0101] Step 140 of forming the upper insulation layer 105 and step 150 of forming the opening part 105a in the upper insulation layer 105 of the sensing unit 100 and the electrode unit 300 can be carried out simultaneously in a single process using one mask.

[0102] In step S160, the conductive substance 104 is doped at the graphene layer 103 exposed by the opening part 105a formed in the upper insulation layer 105. The conductive substance 104 may include at least one selected from metal nanoparticles and metal nanowires. For example, the conductive substance 104 may include

gold nanoparticles. For example, gold nanoparticles can be doped in the graphene layer 103 by carrying out a drop casting of a gold chloride solution to the exposed graphene layer 103.

[0103] In step S170, the reaction layer 106 is formed on the graphene layer 103 where the conductive substance is doped. The reaction layer 106 capable of detecting a specific substance can be formed in the graphene layer exposed by the opening part 105a.

[0104] Even though not shown in drawings, the method of forming the biosensor may further include a step of treating a surface of the reaction layer 106 with organic molecules that selectively react with a specific substance. For example, the surface of the reaction layer 106 may be treated with materials such as polyaniline, glucose oxidase, prussian blue, etc.

[0105] In order to realize various sensors in one platform, the reaction layer 106 belonging to the sensing unit 100 can be formed of different substances depending on the sensor or the surface of the reaction layer 106 can be treated with different substances.

[0106] The reaction layer 106 can be selectively formed by providing an electronic source to the electrode unit 300 connected with the sensing unit 100 where the reaction layer 106 will be formed to flow electric currents through the conductive electrode layer 102 of the sensing unit 100. By this, each reaction layer 106 belonging to the sensing unit 100 can be formed of different substances depending on the sensor. That is, by providing the electrical source to the electrode unit 300 connected with the sensing unit 100 where the reaction layer 106 will be formed, the reaction layer 106 can be selectively formed on only a specific graphene layer 103 of a plurality of graphene layers 103 exposed by the opening part 105a. Herein, the specific graphene layer 103 exists on the conductive electrode layer 102 where electric currents are flowing. The reaction layer 106 can be formed by carrying out electroplating.

[0107] The surface of the reaction layer 106 may be treated with organic molecules or specific chemical materials that selectively react with a specific substance. The surface treatment of the reaction layer 106 can be selectively performed by connecting the electrical source with the electrode unit 300 that is connected with the conductive electrode layer 102 disposed under the reaction layer 106 whose surface will be treated and flowing electric currents.

[0108] When forming the reaction layer 106 and treating the surface of the reaction layer 106, in order to minimize cross contamination that may occur between substances forming the reaction layer 106 or chemical substances formed on the surface of the reaction layer 106, starting from a process where materials with the lowest reactivity are used, overall processes may be carried out in order.

[0109] As shown in (f) and (g) of fig. 7, the method for forming a biosensor may further include a step of transferring a structure where the upper insulation layer is

formed onto a silicone patch 300 by the use of a PDMS stamp 500 before step S160 of doping the conductive substance at the graphene layer 103 exposed by the opening part formed in the upper insulation layer of the sensing unit 100.

[0110] The reference electrode can be formed by transferring the structure where the upper insulation layer 105 is formed to the silicon patch 600, providing an electrical source to the electrode unit 300 connected with the conductive electrode layer 102 disposed under a specific graphene layer 103 of a plurality of graphene layers 103 exposed by the opening part 105a to flow electric currents in the conductive electrode layer 102 of the sensing unit 100, and carrying out electroplating to deposit Ag/AgCl. Herein, the specific graphene layer 103 means the graphene layer on which the reaction layer 106 will be formed. Subsequently, the humidity sensor can be formed by depositing PEDOT (poly(3,4-ethylenedioxythiophene)) in the same way as described above. For example, in the humidity sensor, first and second electrodes may be comb-shaped, and a groove of the first electrode and a groove of the second electrode may cross each other. After using polyaniline to form the pH sensor, the glucose sensor can be formed by treating prussian blue, glucose oxidase and Nafion® in order. Herein, the prussian blue functions as a catalyst in the breakdown of peroxide that is the product of the breakdown of glucose, and the glucose oxidase is a breakdown enzyme of glucose. As above, the biosensor having the humidity sensor, the pH sensor and the glucose sensor in one platform can be formed.

[0111] Fig. 8 schematically shows a process of forming a biosensor according to an embodiment of the present invention.

[0112] Referring to Fig. 8, a nickel layer (Ni) falling under the sacrifice layer is formed by depositing a nickel metal on the silicon substrate (Si). The lower insulation layer (Bottom epoxy) is formed by carrying out a spin coating of epoxy resin on the nickel layer (Ni) and carrying out photolithography.

[0113] After carrying out thermal evaporation to deposit chrome (Cr) 7nm and gold (Au) 70nm, the conductive electrode layer (Au mesh) is formed by carrying out photolithography. In the sensing unit and the bridge unit, the conductive electrode layer (Au mesh) may be formed in net patterns or mesh patterns.

[0114] The graphene is transferred onto the conductive electrode layer (Au mesh). The graphene layer (GP) is formed by patterning the graphene in the same shape as the conductive electrode layer.

[0115] The upper insulation layer (Top epoxy) having the same patterns as the lower insulation layer (Bottom epoxy) is formed by carrying out a spin coating of epoxy resin on the graphene layer (GP) and carrying out photolithography. At this time, the upper insulation layer of the sensing unit and the electrode unit is removed so that the opening part is formed. The structure is transferred onto the silicone patch (Silicone patch) using the PDMS

stamp.

[0116] Au nanoparticles are doped at the graphene layer of the sensing unit by carrying out a drop casting of a solution of 20mM AuCl_3 to the graphene layer of the sensing unit exposed by the opening part and producing a reaction for about 5 minutes.

[0117] The reaction layer belonging to each sensing unit is formed and the surface of each reaction layer is treated so that various sensors are formed in one platform.

[0118] Fig. 9 is a view for explaining a process of treating the surface of a biosensor according to an embodiment of the present invention. In this biosensor, in order to detect humidity, acidity, glucose and the like, a plurality of reaction layers including working electrode, reference electrode and the like may be formed on the graphene layer where gold nanoparticles are doped. At this time, in order to minimize cross contamination, a reaction layer consisting of materials with the lowest reactivity may be formed in the first place.

[0119] Referring to Fig. 9, by transferring the structure with the upper insulation layer formed thereon to the silicone patch (See (a) of Fig. 9), flowing electric currents in the conductive electrode layer of the sensing unit by providing an electronic source to the electrode unit connected with the conductive electrode layer disposed under the graphene layer where the reaction layer 106 will be formed, and carrying out electroplating to deposit silver/silver chloride (Ag/AgCl), the reference electrode 130a is formed (See (b) of Fig. 9).

[0120] In the same way as described above, the humidity sensing unit 110 is formed by depositing PEDOT (poly(3,4-ethylenedioxythiophene)) (See (c) of Fig. 9). At this time, in the humidity sensing unit 110, first and second electrodes may be comb-shaped, and grooves of the first and second electrodes may cross each other.

[0121] Subsequently, the pH sensing unit 120 is formed using polyaniline (See (d) of Fig. 9), and the glucose sensing unit 130b are formed by treating prussian blue, glucose oxidase and Nafion® in order (See (e) ~ (f) of Fig. 9). Herein, the prussian blue functions as a catalyst in the breakdown of peroxide that is the product of the breakdown of glucose, and the glucose oxidase is a breakdown enzyme of glucose. The reference electrode 130a of the glucose sensing unit also functions as a reference electrode of the pH sensing unit 120. By this, the biosensor with the humidity sensor, the pH sensor and the glucose sensor in one platform can be formed.

[0122] Fig. 10 is an image of a biosensor formed according to an embodiment of the present invention.

[0123] Referring to Fig. 10, in the biosensor, the conductive electrode with mesh patterns and the graphene layer with gold doped thereat function as a working electrode, and there is an active layer formed of prussian blue on the graphene layer. Moreover, the active layer is encapsulated with glucose oxidase and a substance called as Nafion.

[0124] If there is glucose in sweat, the glucose oxidase

makes a reaction to generate peroxide, electrons are generated owing to the prussian blue's function as a catalyst in the breakdown of peroxide, and the working electrode captures the electrons. That is, it is possible to electrically measure the change of glucose in sweat.

[0125] Fig. 11 shows deposition results of polyethylenedioxythiophene depending on electrode structures composing a biosensor according to an embodiment of the present invention, and Fig. 12 is graphs analyzing the feature of electrodes related to deposition results of polyethylenedioxythiophene depending on electrode structures composing a biosensor according to an embodiment of the present invention.

[0126] Referring to Figs. 11 and 12, in order to analyze an electrode feature of the biosensor, an electrode consisting of a gold film only (Au film), a gold electrode with mesh patterns (Au mesh), and a graphene hybrid electrode according to an embodiment of the present invention that includes a gold electrode with mesh patterns and a graphene layer with gold nanoparticles doped thereat (GP hybrid) are compared and analyzed. Especially, when comparing and analyzing the deposition result of PEDOT for measuring the humidity, in case of the electrode of the gold film, PEDOT is deposited on the entire electrode since electric currents flow in the entire area of the electrode. In case of the gold electrode with mesh patterns, there are areas associated with the mesh patterns where PEDOT was not deposited. In case of the hybrid electrode of the present invention, PEDOT is deposited on the entire electrode.

[0127] Fig. 13 is graphs analyzing the electrochemical feature depending on electrode structures composing a biosensor according to an embodiment of the present invention.

[0128] Referring to Fig. 13, the electrochemical feature of the graphene hybrid electrode formed according to an embodiment of the present invention is superior to that of the electrode of the gold film, and the surface treatment is also improved in the graphene hybrid electrode of the present invention. This is due to the result that the surface feature of the electrode is improved by the graphene. In addition, the electrochemical activity of the graphene hybrid electrode formed according to an embodiment of the present invention is higher. Herein, the electrochemical activity means how many electrons subjects to be measured can give and take at the same area.

[0129] Fig. 14 is graphs analyzing operational features of a biosensor according to an embodiment of the present invention.

[0130] As shown in Fig. 14, the biosensor shows a very stable performance as a sensor even though the humidity sensor, the glucose sensor and the pH sensor are formed in one platform.

[0131] Fig. 15 shows the stretchability of a biosensor according to an embodiment of the present invention.

[0132] Referring to Fig. 15, the biosensor formed according to an embodiment of the present invention can have excellent stretchability due to the bridge unit with

the multiply-bent shape. Accordingly, when testing the sensor's performance under the contracted or expanded state by about 30%, there is no falloff in the biosensor's feature. Since the biosensor according to an embodiment of the present invention is very flexible and has excellent stretchability, it can be easily adjusted to wearable devices.

[0133] Fig. 16 shows the constitution of a glucose control system according to an embodiment of the present invention.

[0134] Referring to Fig. 16, the glucose control system 1 may include a sensor unit 10, a glucose regulation unit 20, a control unit 30 and a network transmission and reception unit 40. Since the sensor unit 10 is the same as above described biosensor, the repeated explanation is not made here.

[0135] Fig. 17 shows a regulation unit of a glucose control system according to an embodiment of the present invention.

[0136] Referring to Fig. 17, the glucose regulation unit 20 may include a heating part 21 and a drug delivery part 23 disposed under the heating part 21.

[0137] Fig. 18 is an image of a heating part according to an embodiment of the present invention, and Fig. 19 is a sectional view of a heating part of a glucose control system according to an embodiment of the present invention.

[0138] Referring to Figs. 18 and 19, the heating part 21 may include a first heating part 21A, a second heating part 21B and a temperature sensor 22. The first and second heating parts 21A, 21B can regulate a dose of a drug injected into a skin by stages. The temperature sensor 22 can measure and regulate the temperature of the first and second heating parts 21A, 21B so that the temperature of the first and second heating parts 21A, 21B does not rise beyond a predetermined value.

[0139] The first and second heating parts 21A, 21B may include net or mesh patterns. The first and second heating parts 21A, 21B have a plurality of horizontal linear patterns formed in a horizontal direction and a plurality of vertical linear patterns formed in a vertical direction. There are intersecting points formed by crossing the horizontal linear patterns and vertical linear patterns. Horizontal linear pattern or vertical linear pattern between each intersecting point may multiply bent in the up/down or left/right direction and include the intersecting point. Therefore, the length of the horizontal linear pattern or vertical linear pattern may be longer than the length between each intersecting point. As above, the horizontal linear patterns or vertical linear patterns are multiply bent and longer than the length between each intersecting point so that the heating part 21 can exhibit an excellent heating effect.

[0140] The heating part 21 may include a lower insulation layer 21a, a conductive electrode layer 21b, a graphene layer 21c and an upper insulation layer 21d that are accumulated in order.

[0141] Fig. 20 shows a drug delivery part in a glucose

control system according to an embodiment of the present invention, and Fig. 21 shows a fine needle of a drug delivery part in a glucose control system according to an embodiment of the present invention.

[0142] Referring to Figs. 20 and 21, the drug delivery part may include micro-sized fine needles 24 that are spaced apart from each other in a predetermined distance. The fine needle 24 may be formed of a high molecular substance, for example vinyl pyrrolidone. The fine needle 24 may include a coating layer 24a formed of a phase change material (PCM) on its exterior face, and contain a glucose regulation drug 55 therein. The phase change material's phase is changed at predetermined temperature or more. For example, the phase change material may be tridecanoic acid. If temperature becomes critical temperature (T_c) or more, a phase change to a liquid state occurs at the coating layer 24a of the fine needle 24 so that the glucose regulation drug 55 inside the fine needle 24 flows out to permeate into a skin.

[0143] Even though not shown in drawings, the glucose control system 1 may further include an electric source device that provides an electric source to the sensor unit 10 and the heating part 21. The electric source device can provide the electric power to the sensor unit 10 and the heating part 21 using an electric power cable, a rechargeable battery or a disposable battery. If the electric power is provided to the sensor unit 10 and/or the heating part 21 of the glucose control system 1 by the electric source device, electric currents flow in the sensor unit 10 and/or the heating part 21.

[0144] Referring again to Figs. 2 and 16, the control unit 30 receives signals from the sensors 11, 12, 13, 14 included in the sensor unit 10. The control unit 30 receives humidity signals from the humidity sensor 11 to measure the humidity. The control unit 30 receives signals from the glucose sensor to measure the glucose concentration in sweat of the user when the humidity is equal to or more than a predetermined value. The control unit 30 receives signals from the pH sensor 12 to measure the pH value. The control unit 30 receives signals from the strain gauge 14 to measure the strain. The control unit 30 amends the measured glucose concentration. In an enzyme based electrochemical sensor, if the pH becomes low, signals could be distorted and thus measurement errors could occur. The control unit 30 can amend the measured glucose concentration based on the measured pH value. Signals could be also distorted by the humidity change resulting from the amount of sweat, the strain change resulting from the movement, and the like. The control unit 30 can amend the glucose concentration more precisely based on the measured humidity and strain along with the measured pH value. When the glucose concentration of the user is high, the control unit 30 makes electric currents flow in the heating part 21 of the glucose regulation unit 20 to increase the temperature of the heating part 21. By this, when the temperature is a predetermined value or more, the phase change of the high molecular substance of the fine needle

24 of the drug delivery part 23 occurs and thus the glucose regulation drug 55 inside the fine needle 24 is injected into the skin. If the injected amount of the drug is too much, user's hand tremors are measured through the strain gauge 14 included in the sensor unit 10 and a blood sugar state is diagnosed as a low blood sugar state.

[0145] The network transmission and reception unit 40 can receive the diagnosed result from the control unit 30 to send it to the user's wireless terminal, the user's family, certain hospital or a service provider interacting with the glucose control system 1. The network means a connection structure that can exchange data between wire-wireless terminals and servers, and can be realized as a wire-wireless communication network such as a local area network (LAN), a wide area network (WAN), a value added network (VAN), a mobile radio communication network, a satellite communication network, etc.

[0146] The wireless terminal may include a portable terminal and/or a computer. The portable terminal is a wireless communication device guaranteeing portability and mobility, and may include PCS (personal communication system), GSM (global system for mobile communications), PDC (personal digital cellular), PHS (personal handyphone system), PDA (personal digital assistant), IMT-2000 (international mobile telecommunication-2000), CDMA-2000 (code division multiple access-2000), W-CDMA (W-code division multiple access), Wi-Bro (wireless broadband internet) terminal, smart phone, smart pad, etc. The computer may include desktop, laptop, tablet PC, and the like with WEB browser installed therein.

[0147] Fig. 22 is a flowchart for explaining a method for forming a glucose control system according to an embodiment of the present invention.

[0148] Referring to Fig. 22, the method for forming a glucose control system includes step S100 of forming a sensor unit, step S200 of forming a glucose regulation unit and step S300 of packaging the sensor unit and the glucose regulation unit. The forming order may be changed. Since the step of forming a sensor unit was explained in the embodiment previously described with reference to Fig. 6, the detailed explanation is not made here.

[0149] Fig. 23 is a flowchart for explaining a method for forming a glucose regulation unit according to an embodiment of the present invention, and Fig. 24 is a flowchart for explaining a method for forming a heating part of a glucose regulation unit according to an embodiment of the present invention.

[0150] Referring to Figs. 23 and 24, step S200 of forming a glucose regulation unit includes step S210 of forming a heating part, step 220 of forming a drug delivery part, step S230 of combining the heating part and the drug delivery part, and step S240 of coating the surface of the drug delivery part with phase change material.

[0151] Step S210 of forming a heating part includes step S211 of forming a lower insulation layer, step S212 of forming a conductive electrode layer on the lower in-

5 insulation layer, step S213 of forming a graphene layer and step S214 of forming an upper insulation layer.

[0152] Referring again to Figs. 18, 19, 23 and 24, in step S210 of forming a heating part, a sacrifice substrate may be used in order to make the process easy. Glass substrate, quartz substrate, silicone substrate, germanium substrate and the like may be used as the sacrifice substrate. A sacrifice layer for separating the glucose regulation unit from the substrate may be formed on the sacrifice substrate. For example, the sacrifice layer may be formed of metals such as Ni, Cu, Al or PMMA (poly(methyl methacrylate), etc.

[0153] In step S211, the lower insulation layer 21a is formed on the sacrifice substrate. The lower insulation layer 21a can be formed by carrying out a spin coating of a nonconductive high molecular substance on the sacrifice substrate where the sacrifice layer is formed. The high molecular substance may include photosensitive polymer. For example, the high molecular substance may include epoxy resin, polyimide, parylene, etc. For example, the lower insulation layer 21a can be formed by coating the photosensitive polymer substance on the sacrifice substrate and carrying out photolithography or e-beam lithography process. By this, at the lower insulation layer 21a, there may be a plurality of horizontal linear patterns extending in a horizontal direction, a plurality of vertical linear patterns extending in a vertical direction and intersecting points located at sites where the horizontal linear patterns and vertical linear patterns cross each other.

[0154] In step S212, a conductive electrode layer 21b is formed on the lower insulation layer 21a. The conductive electrode layer 21b can be formed by depositing a conductive substance on the lower insulation layer 21a and carrying out photolithography or e-beam lithography process to pattern it in the same shape as the lower insulation layer 21a. The conductive electrode layer 21b may be formed in a net shape or a mesh shape in order to decrease the entire resistance of the heating part 21.

[0155] In step S213, a graphene layer 21c is formed on the conductive electrode layer 21b. The graphene layer 21c can be formed by transferring graphene grown by chemical vapor deposition onto the conductive electrode layer 21b and patterning the graphene in the same shape as the conductive electrode layer 21b. The graphene layer may be formed in a single layer or in two or more layers, and may be grown directly on the conductive electrode layer 21b.

[0156] In step S214, an upper insulation layer 21d is formed on the graphene layer 21c. The upper insulation layer 21d can be formed by coating a nonconductive photosensitive high molecular substance on the graphene layer 21c and patterning the coated substance in the same shape as the lower insulation layer 21a.

[0157] When forming the conductive electrode layer 21b and/or the graphene layer 21c, the temperature sensor 22 can be formed together between the first and second heating parts 21A, 21B. The temperature sensor 22 may include only the graphene layer 21c without the con-

ductive electrode layer 21b.

[0158] Fig. 25 is a view for explaining a formation of a drug delivery part and a method of combining a drug delivery part and a heating part according to an embodiment of the present invention.

[0159] Referring to Figs. 23 and 25, in step S220, the drug delivery part 23 is formed by a mold 80. A process for forming the drug delivery part 23 can be simplified without any complicated step by using the mold 80. The drug delivery part 23 where micro-sized fine needles are spaced apart from each other in a predetermined distance can be formed by pouring a mixed solution 50 of a high molecular substance and a drug into the mold 80 and hardening it. The mold 80 has a concave portion corresponding to the fine needle. The concave portion may have about 250 μ m diameter and about 1mm height as an example. The mixed solution 50 may include a commercialized blood sugar depressing agent, a high molecule, a hardening agent, etc. For example, the mixed solution 50 may comprise metformin, vinyl pyrrolidone and azobisisobutyronitrile.

[0160] In step S230, the drug delivery part 23 and the heating part 21 are combined. The heating part 21 can be combined at one side of the drug delivery part 23 by disposing the heating part 21 at one side of the drug delivery part 23, carrying out a dry process within a vacuum chamber of room temperature and shedding UV light for about 30 minutes. The structure where the heating part 21 and the drug delivery part 23 are combined is separated from the mold 80.

[0161] In step S240, the phase change material is coated on the surface of the fine needle of the drug delivery part 23. The surface of the fine needle 24 can be coated with the phase change material 24a by the process such as spray coating, dip coating, drop casting, etc. For example, the phase change material may be tridecanoic acid.

[0162] Referring again to Fig. 22, in step S300, the sensor unit 10 and the glucose regulation unit 20 are packaged in one patch. The patch may be formed of a transparent high molecular substance with excellent adhesive property on skin. The sensor unit 10 and the glucose regulation unit 20 may be encircled by a transparent patch with excellent adhesive property on skin. The patch may include separate films that can control sweat. As a result, the glucose control system can minimize water evaporation by the patch.

[0163] Fig. 26 is an image of a sensor unit and a glucose regulation unit formed according to an embodiment of the present invention.

[0164] Referring to Fig. 26, the sensor unit 10 and the glucose regulation unit 20 of the glucose control system can be packaged into one by a transparent patch, and are flexible and have excellent stretchability.

[0165] Fig. 27 is an image of a glucose control system formed according to an embodiment of the present invention.

[0166] Referring to Fig. 27, the sensor unit and the glu-

cose regulation unit are formed on one patch in the glucose system, and the glucose control system can be attached to a skin. The control unit of the glucose control system can diagnose a blood sugar state as a low blood sugar state or a high blood sugar state based on the glucose concentration in the body of the user, and wirelessly send the diagnosed result to the user's terminal interacting with the glucose control system. By this, the user can control the glucose concentration in his or her own body in real time.

[0167] Fig. 28 is a flowchart for explaining a method for controlling glucose using a glucose control system according to an embodiment of the present invention.

[0168] Referring to Fig. 28, the method for controlling glucose may include step S410 of receiving signals from the humidity sensor of the sensor unit to measure the humidity, step S420 of receiving signals from the glucose sensor to measure the glucose concentration in sweat, step S430 of receiving signals from the pH sensor to measure the pH value, step S440 of receiving signals from the strain gauge to measure the strain, step S450 of amending the measured glucose concentration, step S460 of diagnosing the blood sugar state in the body of the user based on the amended glucose concentration, step S470 of increasing the temperature of the heating part to inject the drug based on the blood sugar state in the body of the user and step S480 of sending the diagnosed result to the user's terminal, etc.

[0169] Fig. 29 is a view for explaining an operation of a sensor unit in a glucose control system according to an embodiment of the present invention, and Fig. 30 is a view for explaining an operation of a glucose regulation unit in a glucose control system according to an embodiment of the present invention.

[0170] Referring again to Figs. 2, 16, 28, 29 and 30, the glucose control system 1 may include the sensor unit 10 for measuring the glucose concentration and the glucose regulation unit 20 for regulating the glucose concentration in the body in one package. The sensor unit 10 may include the humidity sensor 11, the pH sensor 12, the glucose sensor 13 and the strain gauge 14.

[0171] If the glucose control system is attached to the skin, sweat is captured by a sweat capturing layer (P) existing in the patch of the glucose control system. In step S410, the control unit 30 receives signals from the humidity sensor 11 to measure the humidity in order to check whether the captured sweat reaches a certain level before analyzing the glucose concentration in the body.

[0172] In step S420, when the measured humidity is equal to or more than the certain level, the control unit 30 receives signals from sensing units 130a and 130b of the glucose sensor 13 to measure the glucose concentration in sweat. The glucose sensor 13 is an electrochemical based sensor, and a conductive electrode layer with mesh patterns and a graphene layer with gold doped thereon operate as a working electrode. An active layer that is formed of prussian blue is disposed on the graphene layer, and the active layer may be encapsulated with

glucose oxidase and a substance called as Nafion.

[0173] If there is glucose (G) in sweat (S), the glucose oxidase makes a reaction to generate peroxide, electrons are generated owing to the prussian blue's function as a catalyst in the breakdown of peroxide, and the working electrode captures the electrons. The control unit 30 can receive signals from the glucose sensor 13 to measure the glucose concentration in sweat when the humidity is equal to or more than a predetermined value.

[0174] In step S430, the control unit 30 receives signals from the pH sensor 12 to measure the pH value. The pH change resulting from lactic acid included in sweat can be measured.

[0175] In step S440, the control unit 30 receives signals from the strain gauge 14 to measure the strain. The strain change resulting from a factor such as movement and the like can be measured.

[0176] In step S450, the control unit 30 amends the measured glucose concentration. In an enzyme based electrochemical sensor, if the pH becomes low, signals could be distorted and thus measurement errors could occur. The control unit 30 can amend the measured glucose concentration based on the measured pH value. Signals could be also distorted by the humidity change resulting from the amount of sweat, the strain change resulting from the movement and the like. The control unit 30 can amend the glucose concentration more precisely based on the measured humidity and strain along with the measured pH value.

[0177] In step S460, the control unit 30 diagnoses a blood sugar state in the body as a low blood sugar state or a high blood sugar state based on the measured glucose concentration.

[0178] In step S470, the control unit 30 increases the temperature of the heating parts 21A, 21B to inject a drug based on the diagnosed blood sugar state in the body of the user. When the user's state is diagnosed as a high blood sugar state, the control unit 30 increases the temperature of the heating parts 21A, 21B by providing the electrical source to the glucose regulation unit 20 to make electrical currents flow in the heating parts 21A, 21B. When the temperature of the heating parts 21A, 21B increase to reach about 41 ~ 42°C, the drug delivery part 43 is heated by the heating parts 21A, 21B so that the phase change of the phase change material coated at the surface of the fine needle 24 occurs. As a result, the glucose regulation drug 55 encircled by the phase change material permeates into the skin and the glucose concentration in the body can be controlled.

[0179] The heating parts 21A, 21B are divided into a first heating part 21A and a second heating part 21B, and thus the amount of the drug injected into the skin can be regulated by stages. For example, the control unit 30 can periodically diagnose the user's state, and increase the temperature of the first heating part 21A to inject the drug included in the fine needle 24 of the drug delivery part 23 disposed under the first heating part 21A into the user when the user's state is diagnosed as the high blood

sugar state at a first period. After that, when the user's state is diagnosed as the high blood sugar state at a second period, the control unit 30 can increase the temperature of the second heating part 21B to inject the drug included in the fine needle 24 of the drug delivery part 23 disposed under the second heating part 21B into the user. The drug delivery part 23 may be replaceable. The glucose control system 1 can be used consistently by replacing the drug delivery part 23.

[0180] In order for the temperature of the first and second heating parts 21A, 21B not to rise to a predetermined value or more, the amount of the electric currents flowing in the first and second heating parts 21A, 21B can be controlled by disposing the temperature sensor 22 between the first and second heating parts 21A, 21B to measure temperature in real time.

[0181] In addition, the control unit 30 can measure the user's movement in real time to diagnose the user's state as a low blood sugar state when there are user's hand tremors.

[0182] In step S480, the control unit 30 sends the diagnosed state of the user to the user's wireless terminal, the user's family, certain hospital or a service provider interacting with the glucose control system through the network transmission and reception unit 40.

[0183] The control unit 30 can be materialized as a record medium containing commands executable in a computer, for example, a program module executed by a computer. The computer readable medium may be any usable medium that is accessible by the computer, and include volatile and non-volatile medium and/or separation type and non-separation type medium. The computer readable medium may include computer storage medium and communication medium.

[0184] Although the embodiments of the present invention have been disclosed for illustrative purposes, those skilled in the art will appreciate that the present invention may be embodied in other specific ways without changing the technical spirit or essential features thereof. Therefore, the embodiments disclosed in the present invention are not restrictive but are illustrative. The scope of the present invention is given by the claims, rather than the specification, and also contains all modifications within the meaning and range equivalent to the claims.

Industrial Applicability

[0185] A biosensor according to embodiments of the present invention can have excellent reliability since various features such as the feature of the interface are improved. The biosensor can be easily and variously applied to a wearable apparatus that is used in the state of being attached to the body since it can have excellent flexibility and stretchability. The biosensor can include various sensors on one platform so that various substances can be detected simultaneously. In the biosensor, it is not necessary to prepare a reference electrode separately since reference electrode and working elec-

trode can be formed together in one platform. The biosensor may include one or more sensors, and the one or more sensors may be easily formed by a simple process.

[0186] The glucose control system according to embodiments of the present invention can measure glucose concentration in a noninvasive manner. The glucose control system can accurately measure glucose concentration in the user's body by amending the measured glucose concentration with reference to pH value, humidity, strain, etc. The glucose control system can control the glucose concentration in the user's body while measuring the glucose concentration in real time. The glucose control system can have excellent flexibility and stretchability so that it can be easily used in the state of being attached to a body.

Claims

1. A biosensor comprising at least one sensor comprising:
 - a sensing unit;
 - a bridge unit connected to the sensing unit; and
 - an electrode unit connected to the bridge unit,
 wherein the sensing unit comprises a graphene layer.
2. The biosensor of claim 1, wherein the graphene layer comprises a doped conductive substance.
3. The biosensor of claim 2, wherein the conductive substance comprises at least one selected from metal nanoparticles and metal nanowires.
4. The biosensor of claim 1, wherein the sensing unit further comprises a conductive electrode layer disposed under the graphene layer and a reaction layer disposed on the graphene layer.
5. The biosensor of claim 4, wherein the conductive electrode layer comprises net patterns or mesh patterns.
6. The biosensor of claim 4, wherein the sensing unit further comprises an upper insulation layer disposed on the graphene layer, the upper insulation layer has an opening part exposing the graphene layer, and the reaction layer is in contact with the graphene layer through the opening part.
7. The biosensor of claim 4, wherein the reaction layer is formed of different substances depending on a type of the sensor.
8. The biosensor of claim 4, wherein the reaction layer is formed of silver/silver chloride or PEDOT (poly(3,4-ethylenedioxythiophene)).
9. The biosensor of claim 4, wherein a surface of the reaction layer is treated by at least one substance selected from polyaniline, prussian blue and glucose oxidase.
10. The biosensor of claim 1, wherein the bridge unit has a multiply-bent shape.
11. The biosensor of claim 1, wherein the sensor comprises at least one sensor selected from a humidity sensor, a pH sensor, a glucose sensor and a strain gauge.
12. The biosensor of claim 1, further comprising:
 - an electric source unit providing an electric source to the electrode unit, and
 - a processing unit that receives any one signal of electric current, voltage or impedance from the electrode unit to convert the signal.
13. A method for forming a biosensor that comprises at least one sensor comprising a sensing unit, a bridge unit connected to the sensing unit and an electrode unit connected to the bridge unit, comprising:
 - forming a lower insulation layer;
 - forming a conductive electrode layer on the lower insulation layer;
 - forming a graphene layer on the conductive electrode layer; and
 - forming a reaction layer on the graphene layer.
14. The method for forming a biosensor of claim 13, further comprising:
 - forming an upper insulation layer on the graphene layer, the upper insulation layer having an opening part that exposes the graphene layer, and
 - doping a conductive substance at the graphene layer through the opening part before forming the reaction layer.
15. The method for forming a biosensor of claim 14, wherein the conductive substance comprises at least one selected from metal nanoparticles and metal nanowires.
16. The method for forming a biosensor of claim 14, wherein the reaction layer is formed on the graphene layer through the opening part.
17. The method for forming a biosensor of claim 13, wherein the conductive electrode layer comprises

net patterns or mesh patterns.

18. The method for forming a biosensor of claim 13, wherein the conductive electrode layer is formed of a substance comprising at least one selected from gold, aluminum, platinum, nickel, graphene, silver nanowire film, metal grid and indium tin oxide. 5
19. The method for forming a biosensor of claim 13, wherein the reaction layer is formed of different substances depending on a type of the sensor. 10
20. The method for forming a biosensor of claim 13, wherein the sensing unit, the bridge unit and the electrode unit are formed together by a same process. 15
21. The method for forming a biosensor of claim 13, wherein the sensor comprises at least one sensor selected from a humidity sensor, a pH sensor, a glucose sensor and a strain gauge. 20
22. A glucose control system comprising:
 a sensor unit comprising a glucose sensor;
 a glucose regulation unit regulating glucose concentration in a body of a user; and
 a control unit controlling the sensor unit and the glucose regulation unit. 25
23. The glucose control system of claim 22, wherein the sensor unit further comprises at least one selected from a humidity sensor, a pH sensor and a strain gauge. 30
24. The glucose control system of claim 23, wherein the control unit receives signals from the glucose sensor to measure glucose concentration in sweat of the user, receives signals from the pH sensor to measure pH value, and amends the measured glucose concentration based on the pH value. 35 40
25. The glucose control system of claim 24, wherein the control unit receives signals from the humidity sensor to measure humidity, receives signals from the strain gauge to measure strain, and amends the measured glucose concentration based on the pH value, the humidity and the strain. 45
26. The glucose control system of claim 24, wherein the control unit receives signals from the humidity sensor to measure humidity, and receives signals from the glucose sensor to measure the glucose concentration in sweat of the user when the humidity is equal to or more than a predetermined value. 50
27. The glucose control system of claim 24, wherein the control unit diagnoses a blood sugar state in the body of the user based on the amended glucose concentration. 55
28. The glucose control system of claim 27, wherein the control unit controls the glucose regulation unit in order to inject a glucose regulation drug into the user based on the diagnosed blood sugar state in the body of the user.
29. The glucose control system of claim 23, wherein the control unit receives signals from the strain gauge to measure strain, and diagnoses a blood sugar state in the body of the user as a low blood sugar state based on the strain.
30. The glucose control system of claim 22, wherein the glucose regulation unit comprises a drug delivery part that comprises a fine needle comprising a glucose regulation drug and a heating part that is disposed on the drug delivery part and heats the drug delivery part to increase a temperature of the drug delivery part, a surface of the drug delivery part is coated with a phase change material whose phase is changed at critical temperature or more, and the glucose regulation drug is released from the fine needle by heating the heating part.
31. The glucose control system of claim 30, wherein the drug delivery part injects the glucose regulation drug through the user's skin by the fine needle, and the glucose regulation drug comprises blood sugar depressing agents.
32. The glucose control system of claim 30, wherein the heating part comprises a first heating part, a second heating part adjacent to the first heating part, and a temperature sensor that is disposed between the first and second heating parts and measures temperature of the first and second heating parts, and further wherein the control unit controls temperature of the first and second heating parts when the temperature measured by the temperature sensor is equal to or more than a predetermined temperature.
33. The glucose control system of claim 30, wherein the heating part comprises multiply-bent patterns.
34. The glucose control system of claim 22, wherein the sensor unit comprises a sensing unit, a bridge unit connected to the sensing unit and an electrode unit connected to the bridge unit, and the sensing unit comprises a graphene layer.
35. The glucose control system of claim 34, wherein the graphene layer comprises a doped conductive substance, and the conductive substance comprises at least one selected from metal nanoparticles and metal nanowires.

36. The glucose control system of claim 34, wherein the sensing unit further comprises a conductive electrode layer disposed under the graphene layer and a reaction layer disposed on the graphene layer, the conductive electrode layer comprises net patterns or mesh patterns, and the reaction layer is formed of different substances depending on a type of the sensing unit.
37. The glucose control system of claim 34, wherein the bridge unit has a multiply-bent shape.
38. The glucose control system of claim 22, further comprising a network transmission and reception unit that sends the blood sugar state in the body of the user diagnosed by the control unit to a user terminal interacting with the glucose control system.
39. A method for forming a glucose control system comprising:
- forming a sensor unit comprising a glucose sensor;
 - forming a glucose regulation unit; and
 - packaging the sensor unit and the glucose regulation unit.
40. The method for forming a glucose control system of claim 39, wherein the step of forming a glucose regulation unit comprises
- forming a heating part,
 - forming a drug delivery part that comprises a fine needle comprising a glucose drug,
 - combining the heating part and the drug delivery part, and
 - coating the surface of the drug delivery part with a phase change material.
41. The method for forming a glucose control system of claim 39, wherein the sensor unit comprises at least one sensor comprising a sensing unit, a bridge unit connected to the sensing unit and an electrode unit connected to the bridge unit, and the step of forming the sensor unit comprises
- forming a lower insulation layer,
 - forming a conductive electrode layer on the lower insulation layer,
 - forming a graphene layer on the conductive electrode layer, and
 - forming a reaction layer on the graphene layer.
42. The method for forming a glucose control system of claim 41, further comprising
- forming an upper insulation layer on the graphene layer, the upper insulation layer having an opening part that exposes the graphene layer, and
 - doping a conductive substance at the graphene layer through the opening part before forming the reaction layer, the conductive substance comprising at least one selected from metal nanoparticles and metal nanowires.
43. The method for forming a glucose control system of claim 42, wherein the reaction layer is formed on the graphene layer through the opening part, and the reaction layer is formed of different substances depending on a type of the sensor.
44. A method for controlling glucose using a glucose control system that comprises a sensor unit comprising a glucose sensor and a pH sensor, a glucose regulation unit regulating glucose concentration in a body of a user, and a control unit controlling the sensor unit and the glucose regulation unit, comprising:
- receiving signals from the glucose sensor to measure glucose concentration in sweat of the user;
 - receiving signals from the pH sensor to measure pH value; and
 - amending the measured glucose concentration based on the pH value.
45. The method for controlling glucose of claim 44, wherein the sensor unit further comprises at least one selected from a humidity sensor and a strain gauge, the method further comprising receiving signals from the humidity sensor to measure humidity and receiving signals from the strain gauge to measure strain, and further wherein the measured glucose concentration is amended based on the pH value, the humidity and the strain.
46. The method for controlling glucose of claim 45, further comprising diagnosing a blood sugar state in the body of the user based on the amended glucose concentration.
47. The method for controlling glucose of claim 46, further comprising injecting a glucose regulation drug into the user by the glucose regulation unit based on the diagnosed blood sugar state in the body of the user.
48. The method for controlling glucose of claim 44, wherein the sensor unit further comprises a humidity sensor, the method further comprising receiving signals from the humidity sensor to measure humidity, and further wherein signals are received from the glucose sensor and the glucose concentration in sweat of the user is measured when the humidity is equal to or more than a predetermined value.
49. The method for controlling glucose of claim 44, further comprising receiving signals from the strain gauge to measure strain, wherein a blood sugar state

in the body of the user is diagnosed as a low blood sugar state based on the strain.

5

10

15

20

25

30

35

40

45

50

55

10

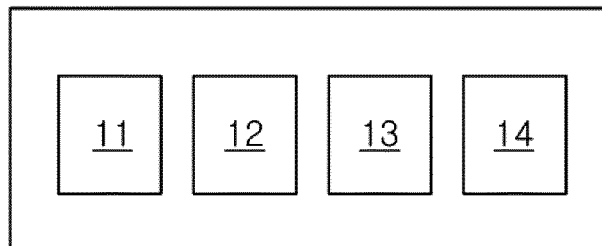


Fig. 2

10

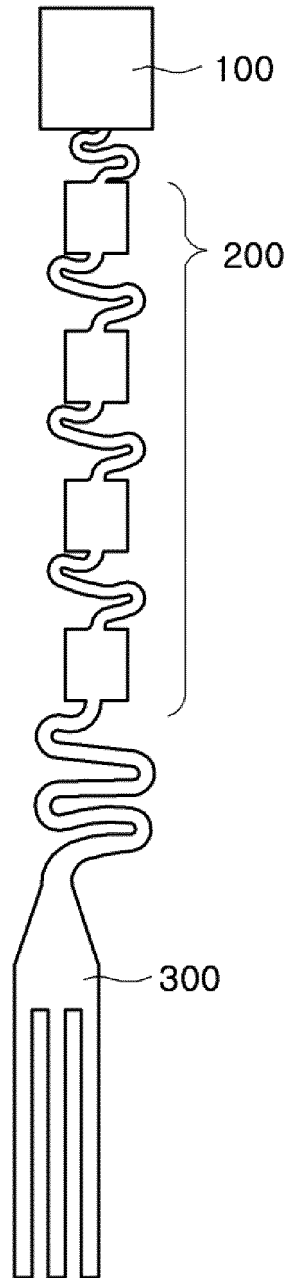


Fig. 3

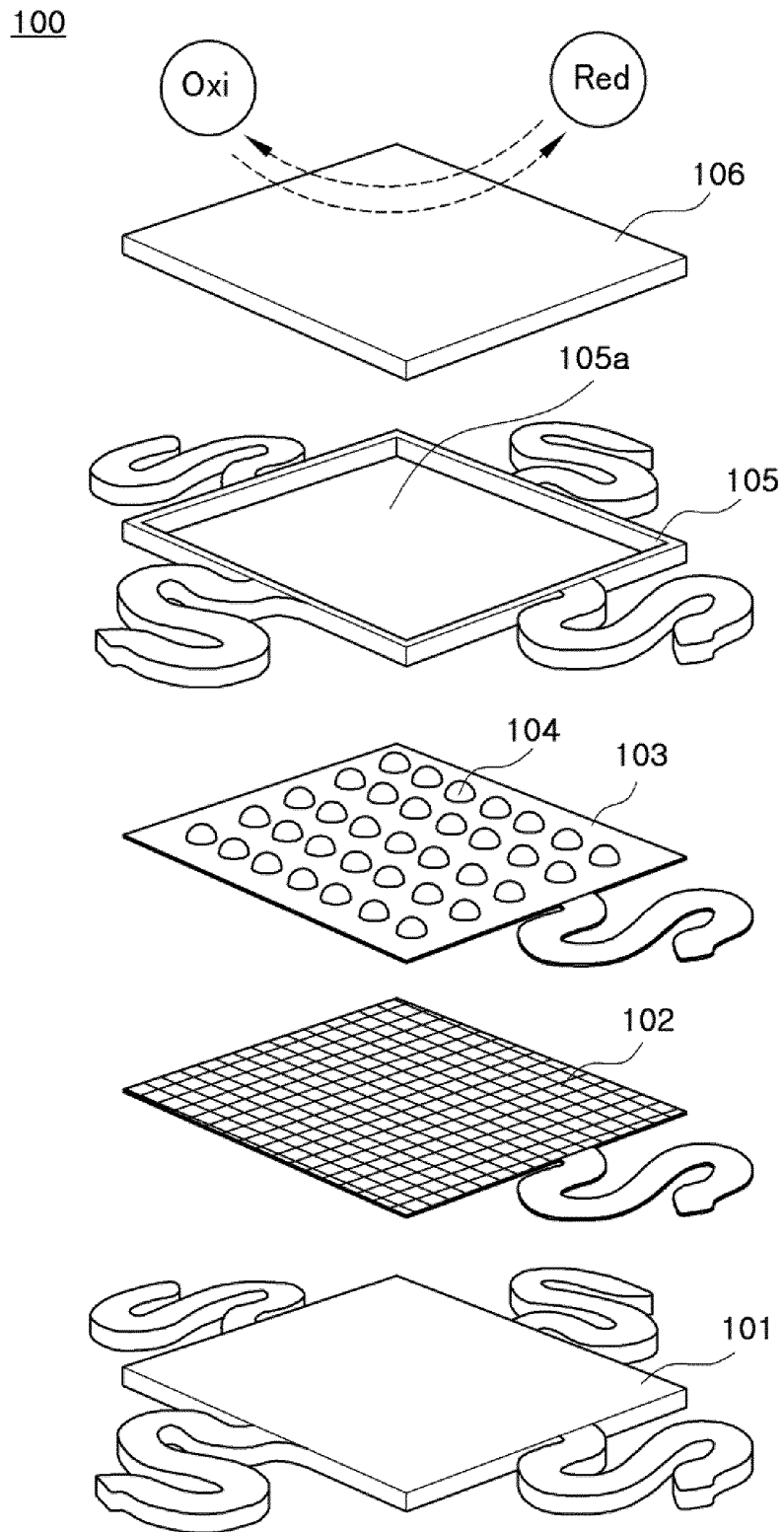


Fig. 4

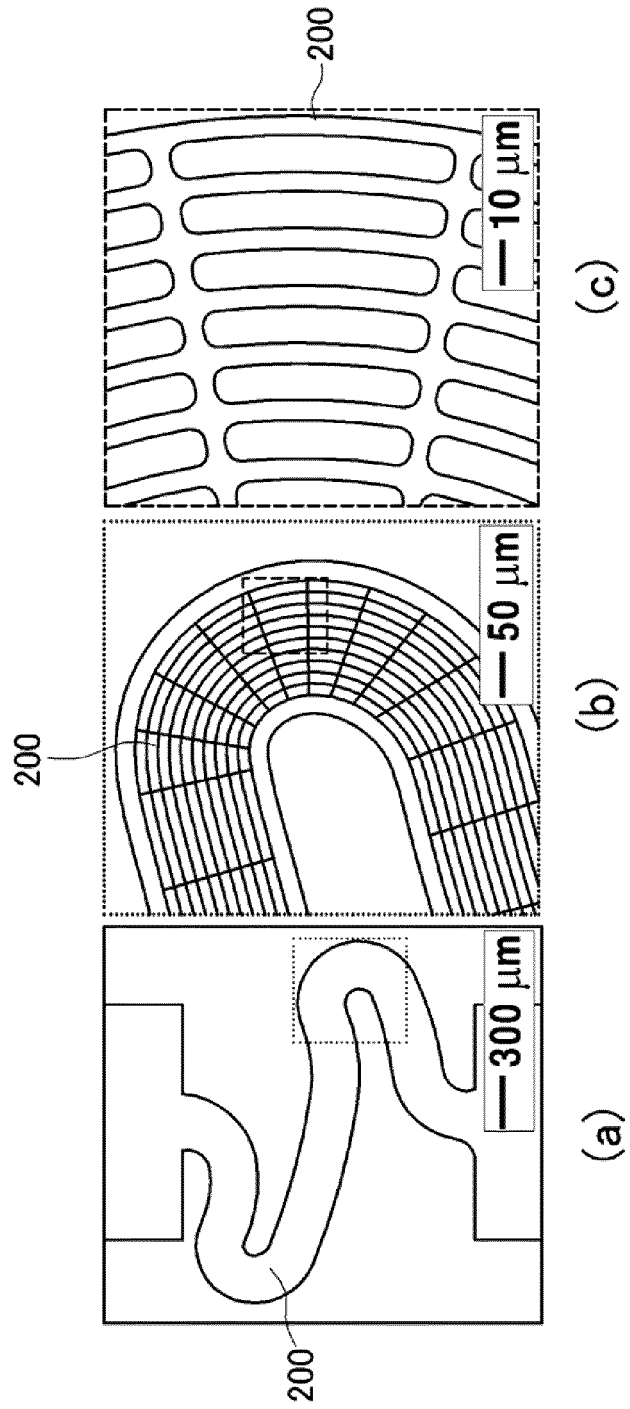


Fig. 5

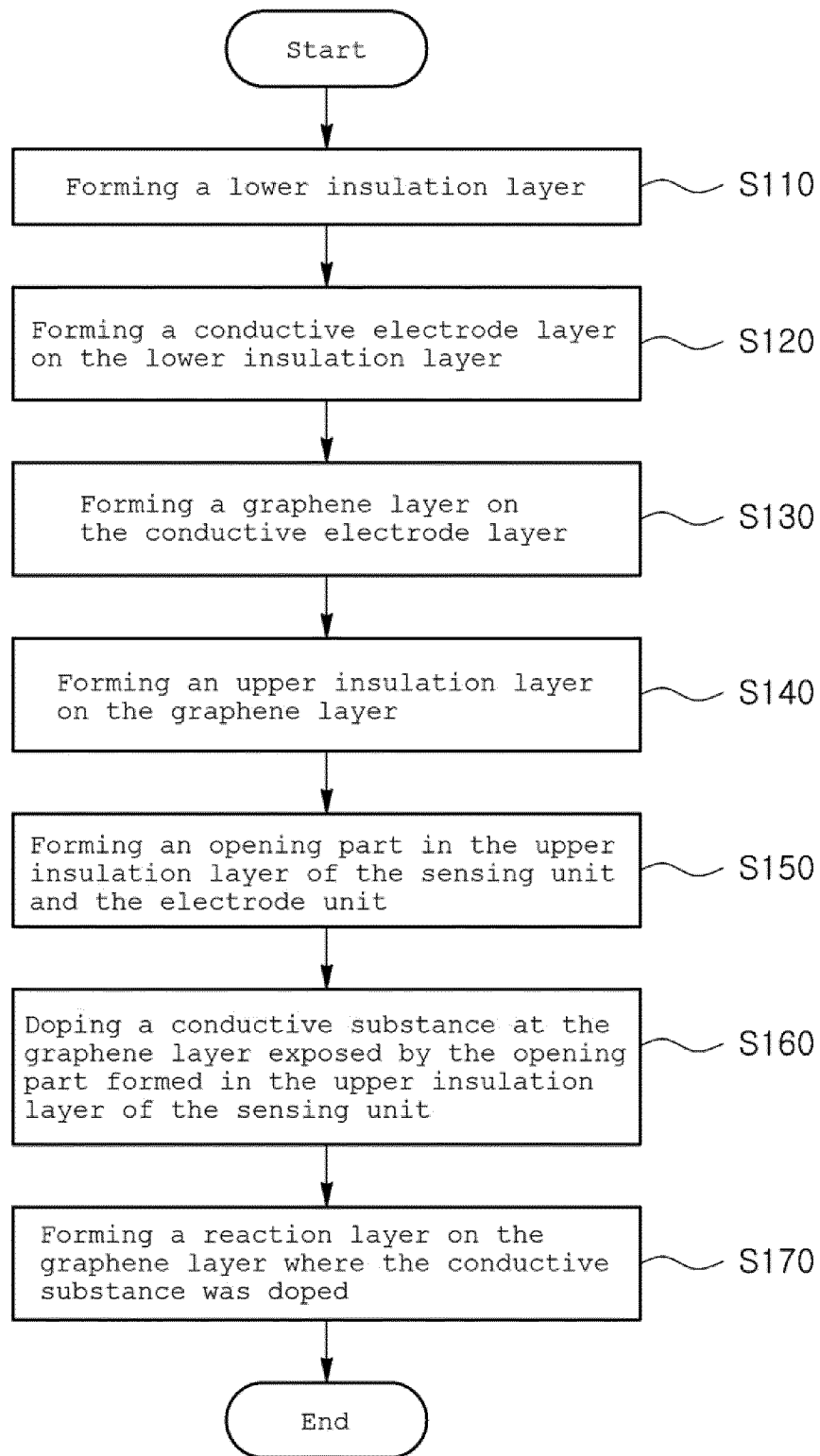


Fig. 6

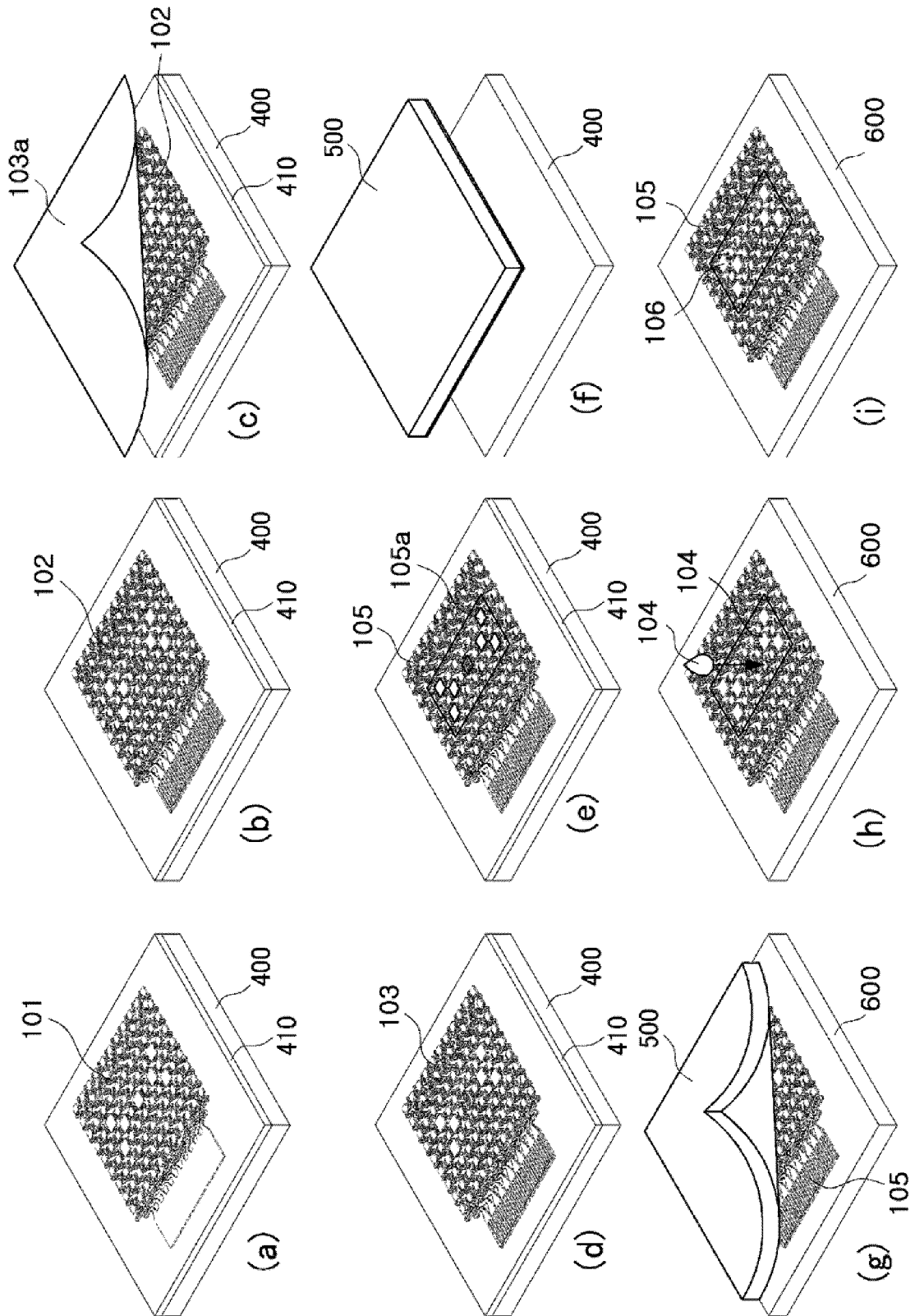


Fig. 7

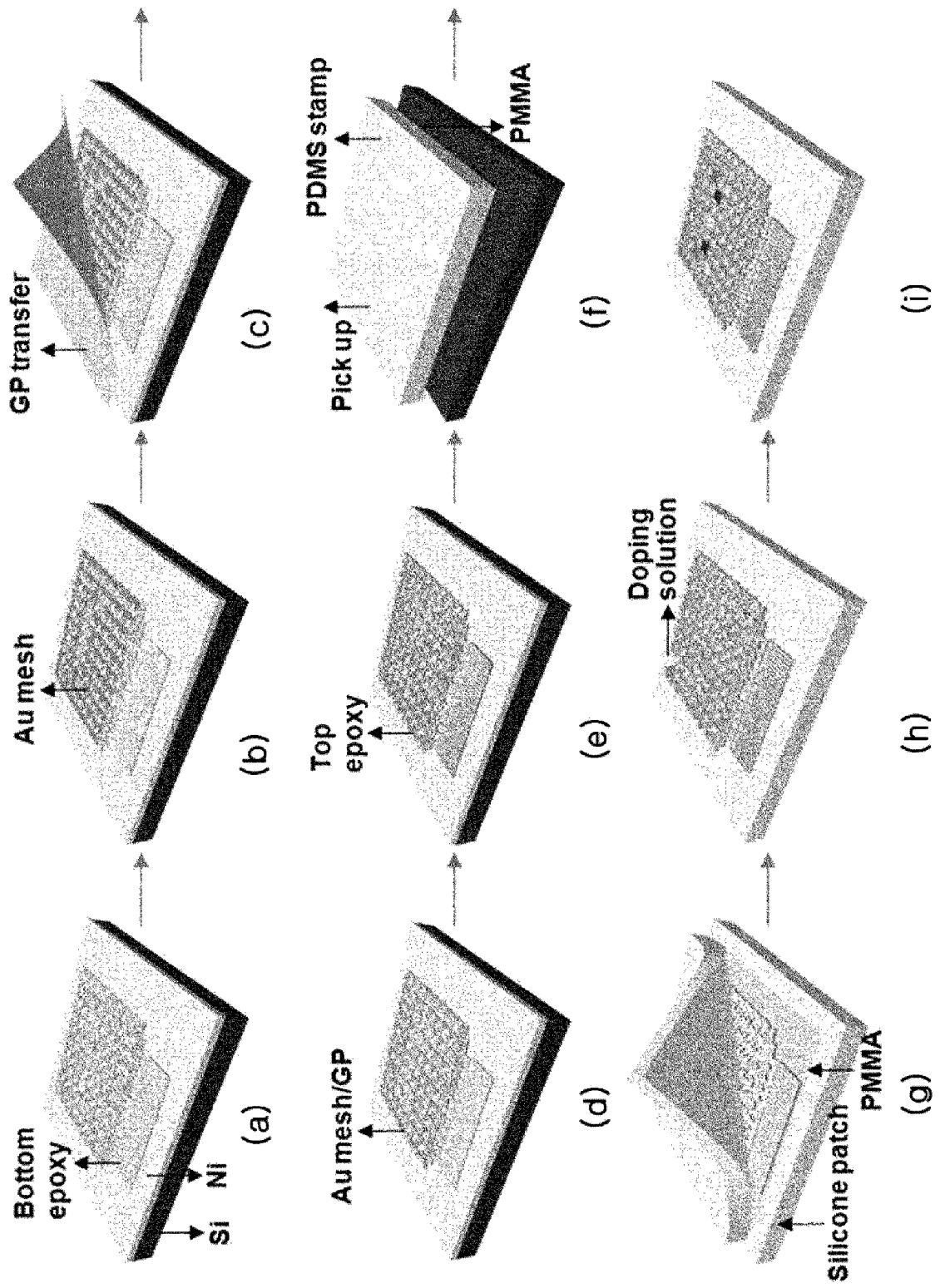


Fig. 8

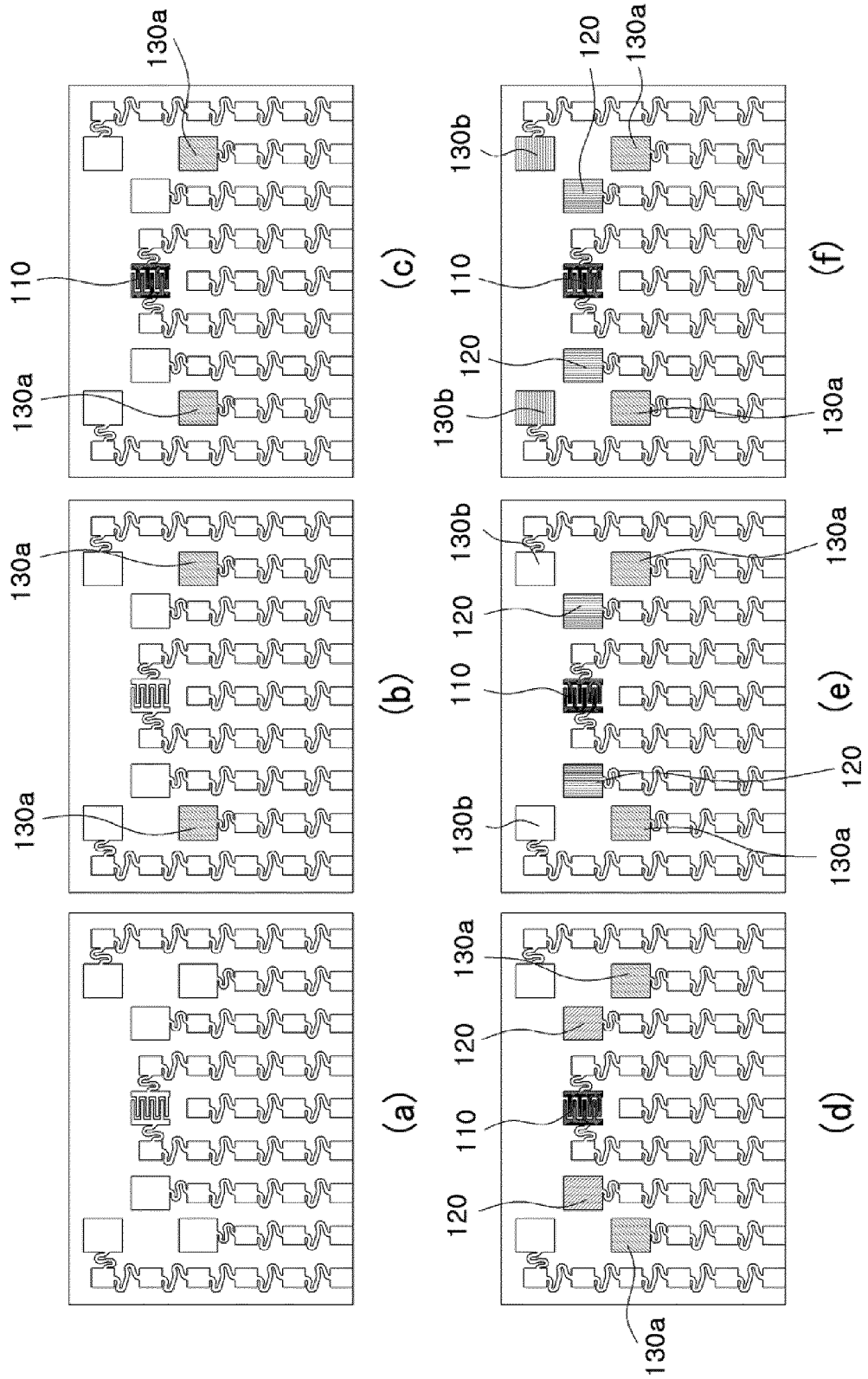


Fig. 9

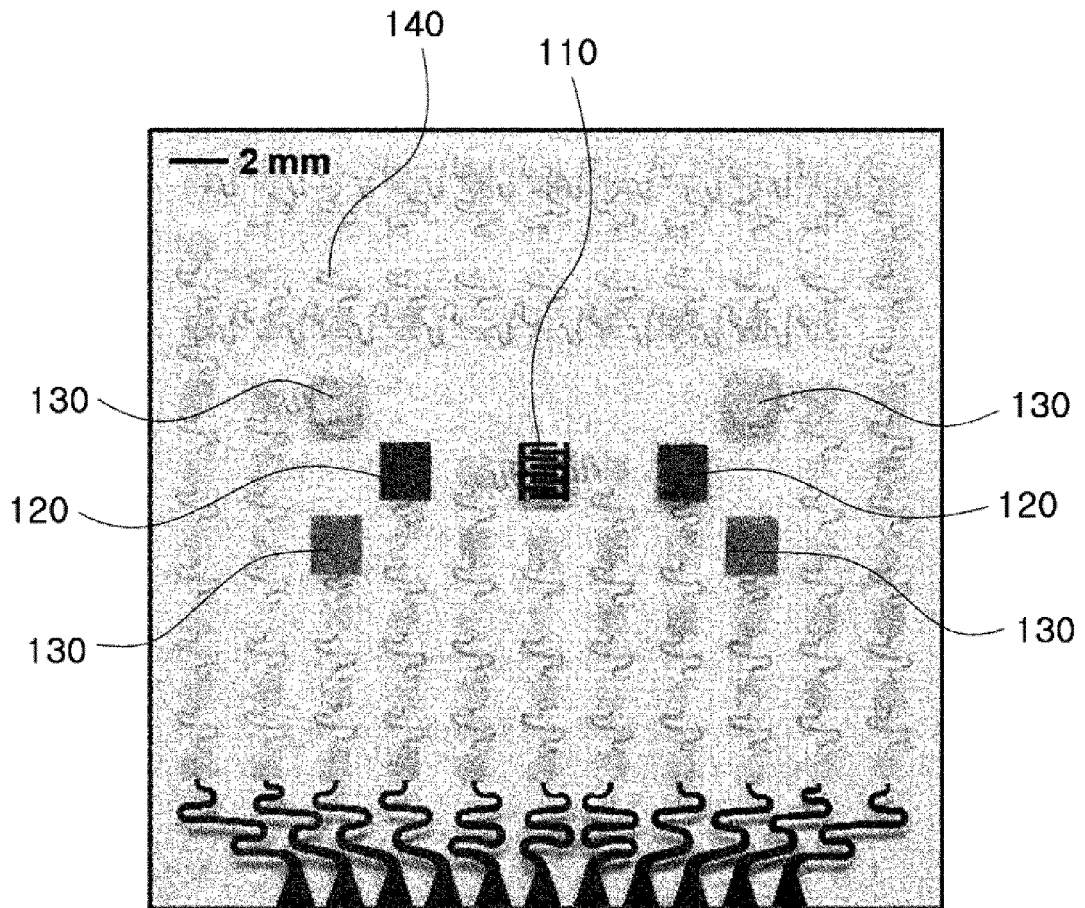
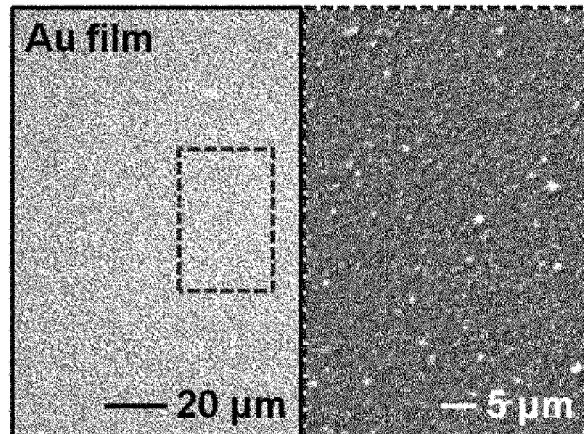
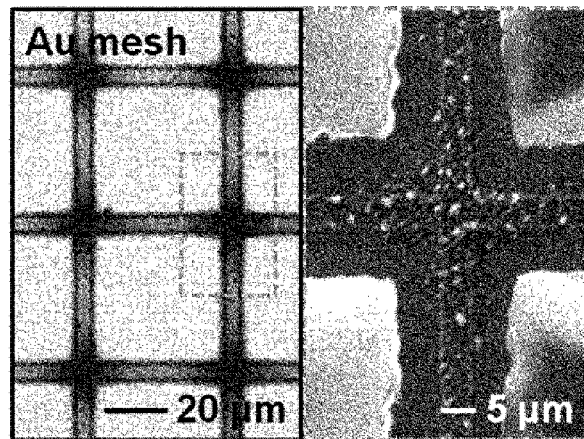


Fig. 10

(a)



(b)



(c)

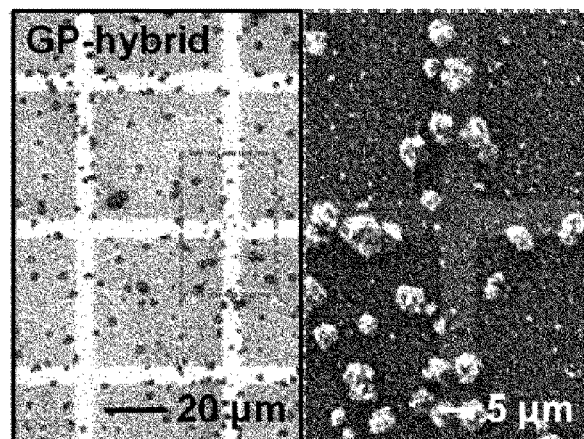


Fig. 11

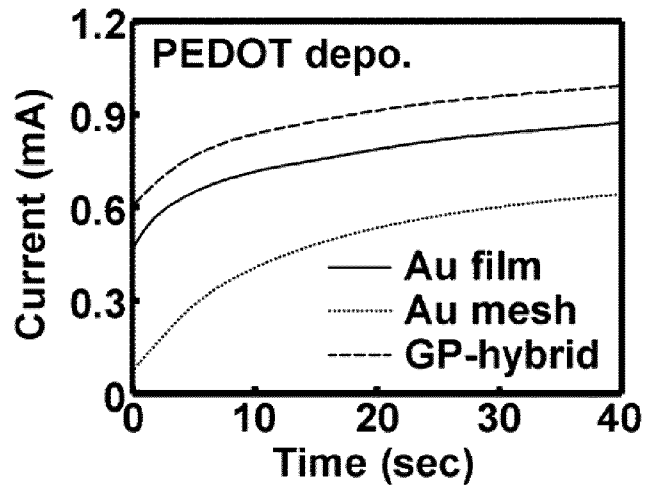


Fig. 12

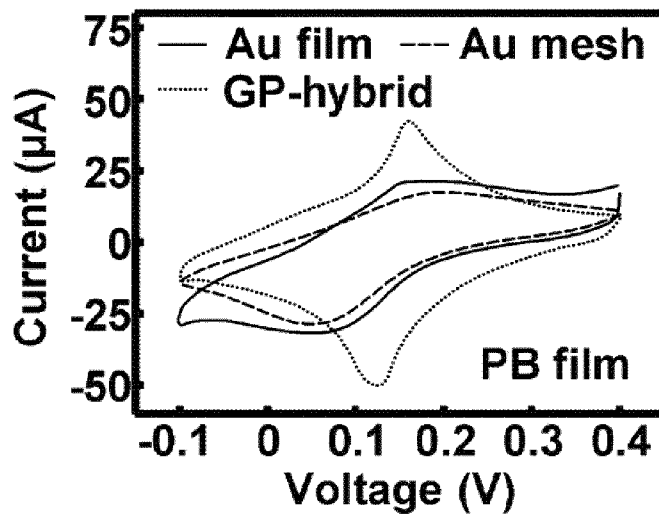


Fig. 13

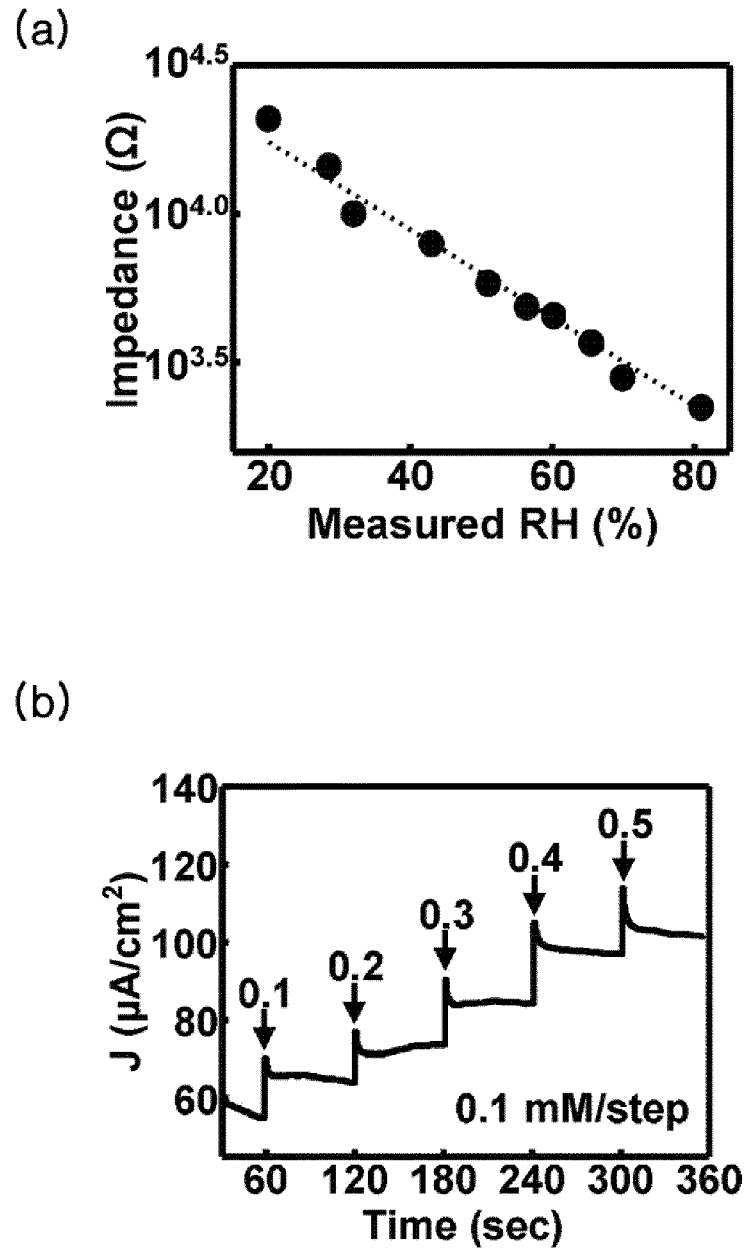


Fig. 14

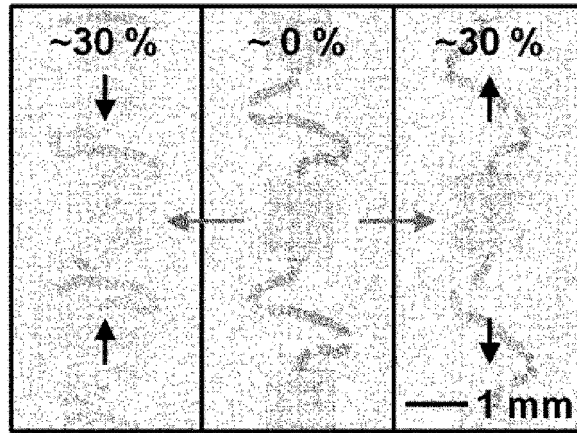


Fig. 15

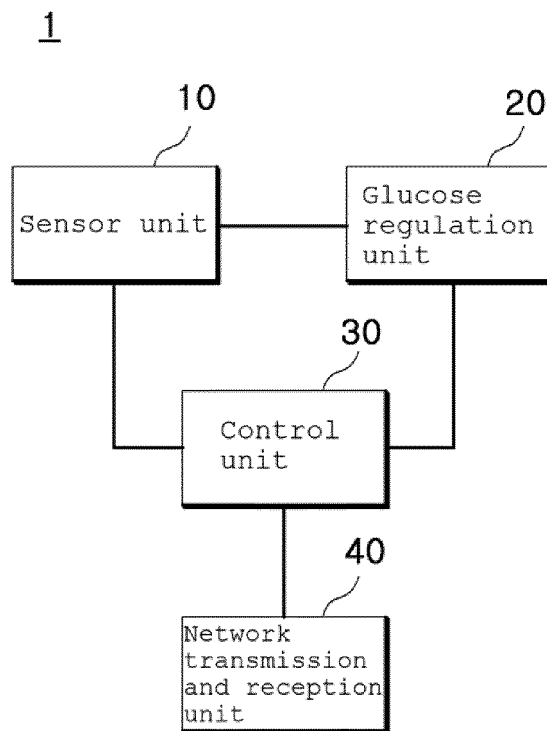


Fig. 16

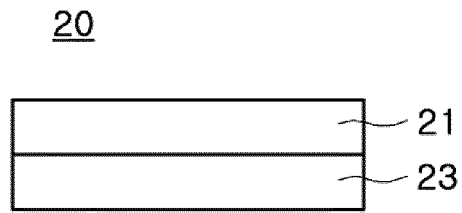


Fig. 17

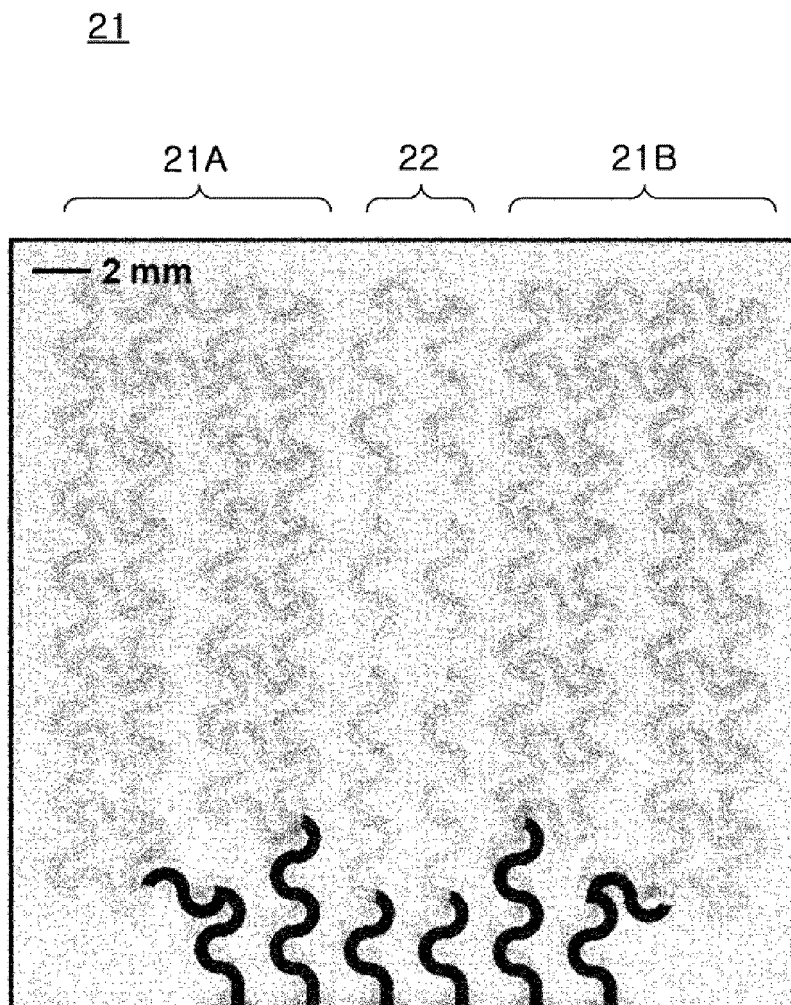


Fig. 18

21

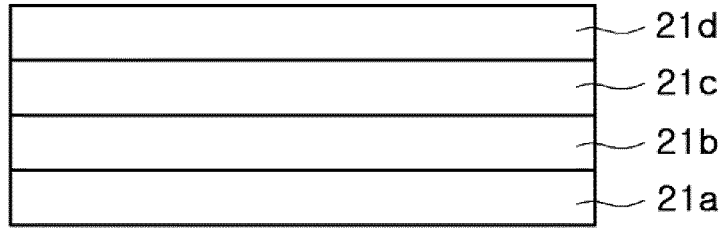


Fig. 19

23

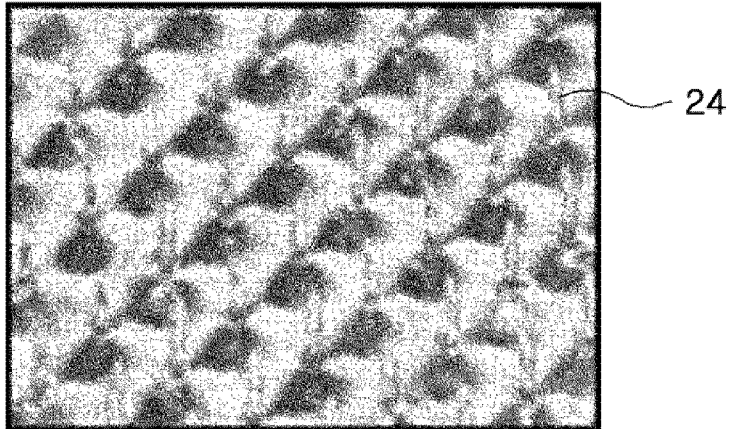


Fig. 20

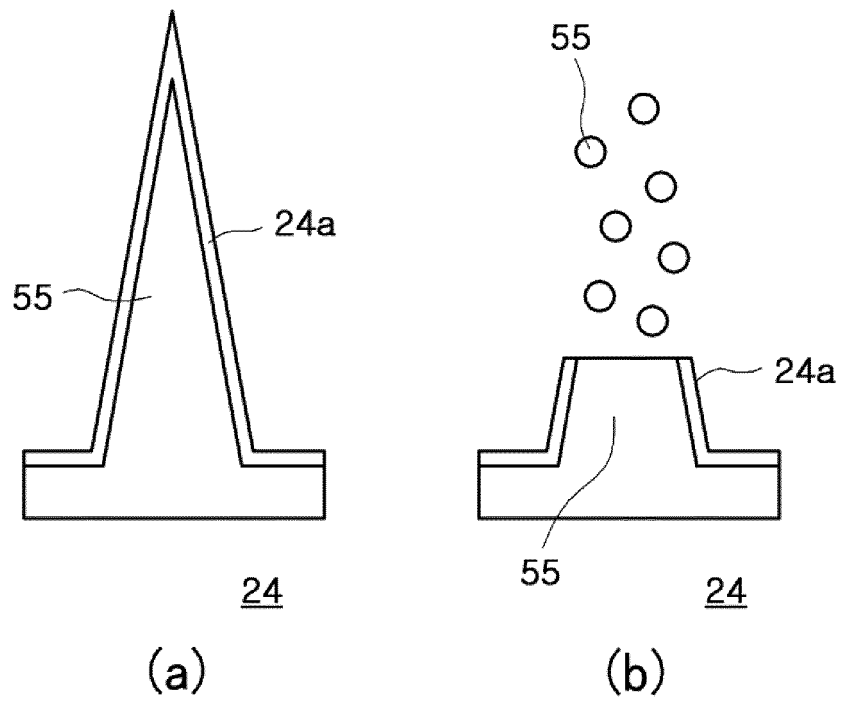


Fig. 21

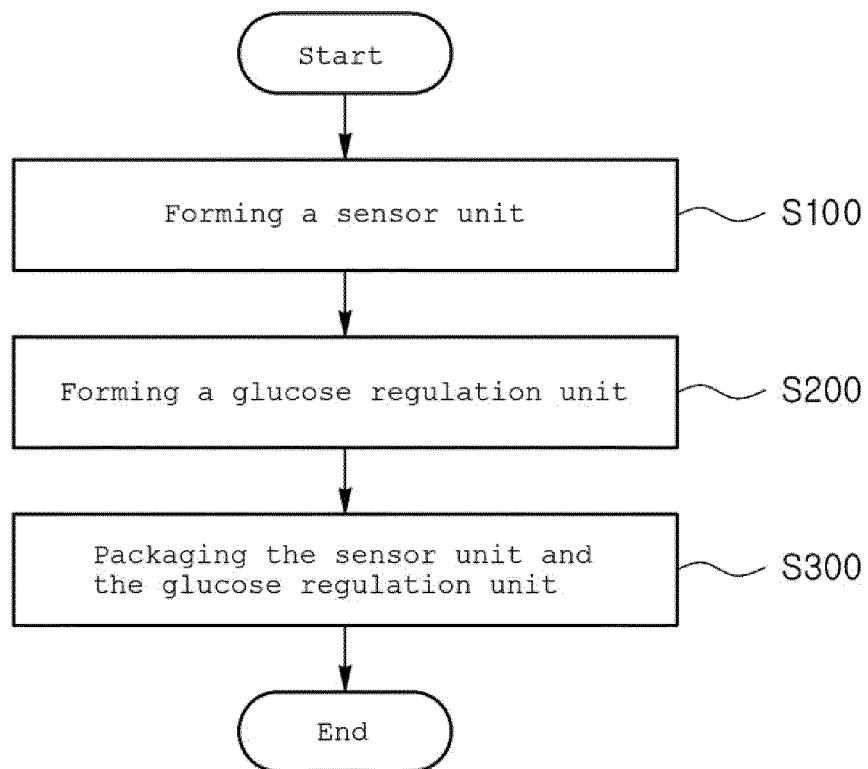


Fig. 22

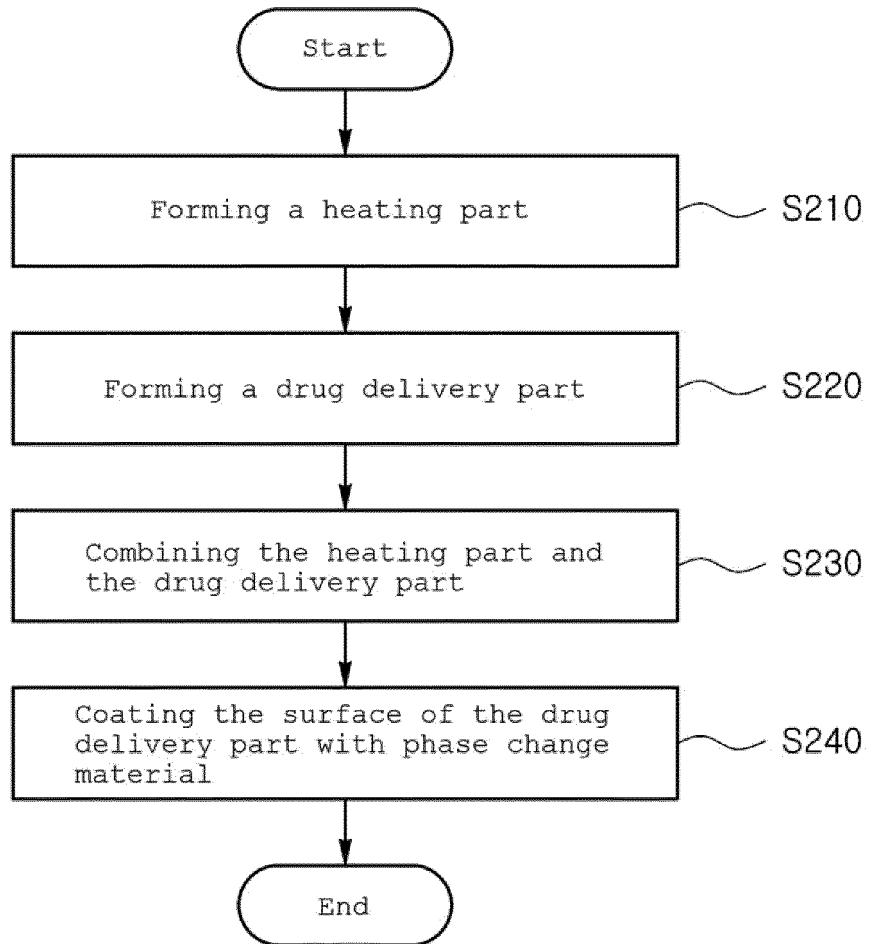


Fig. 23

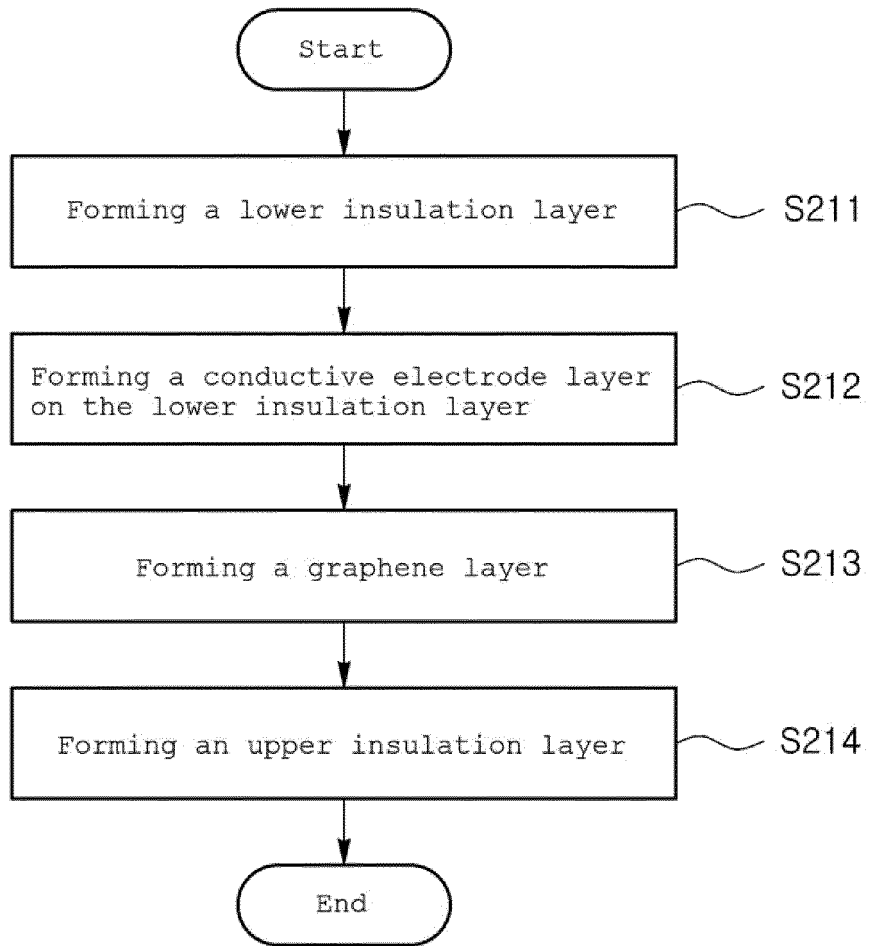


Fig. 24

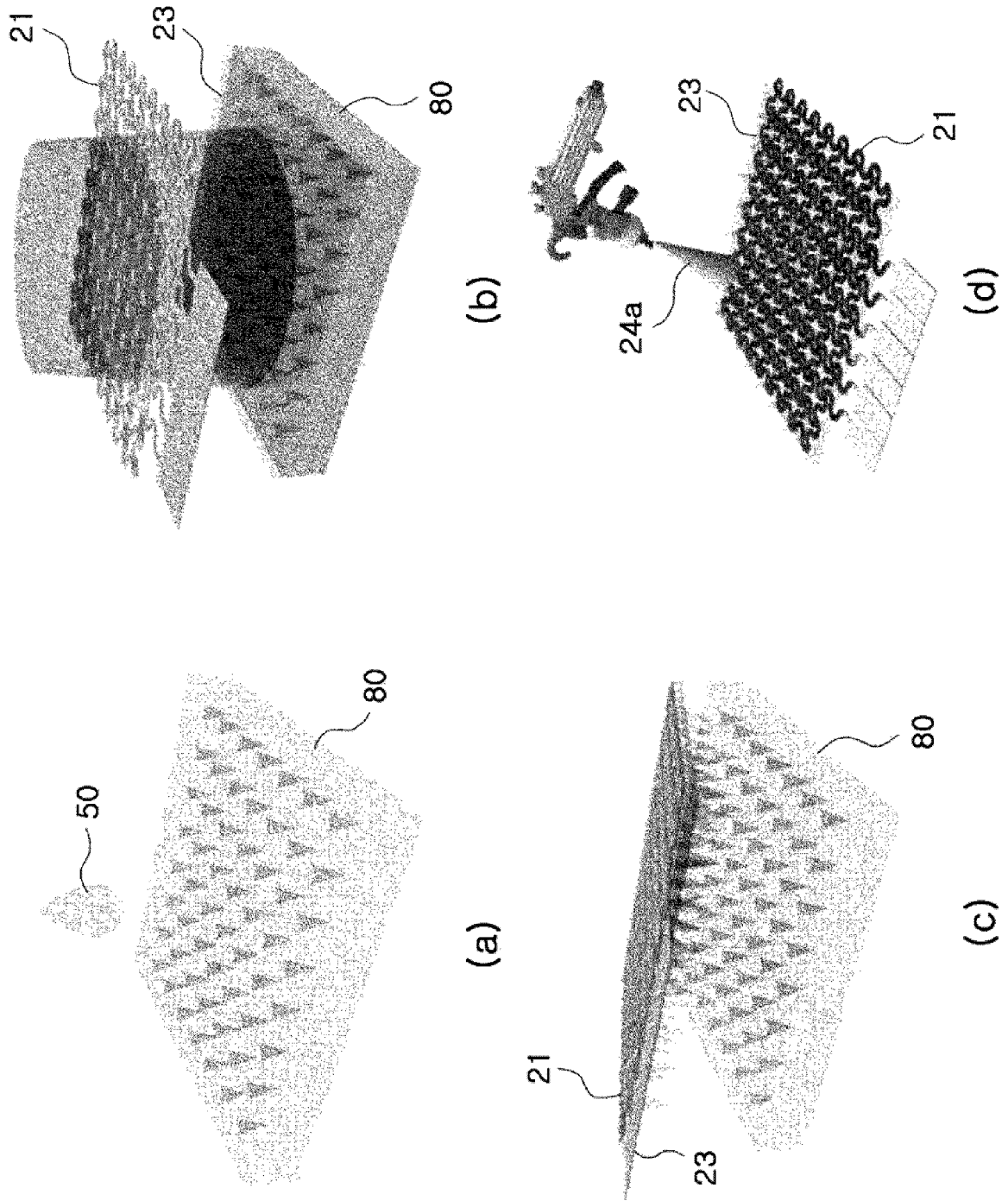
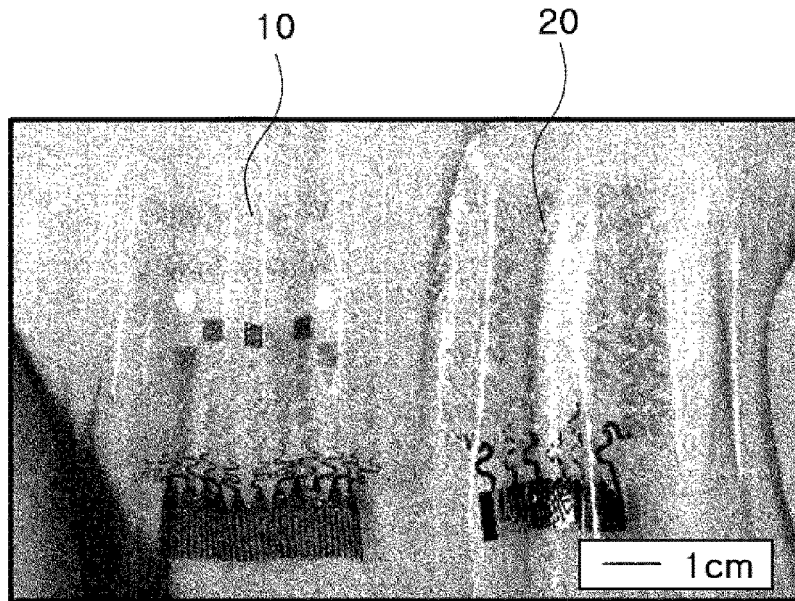


Fig. 25

(a)



(b)

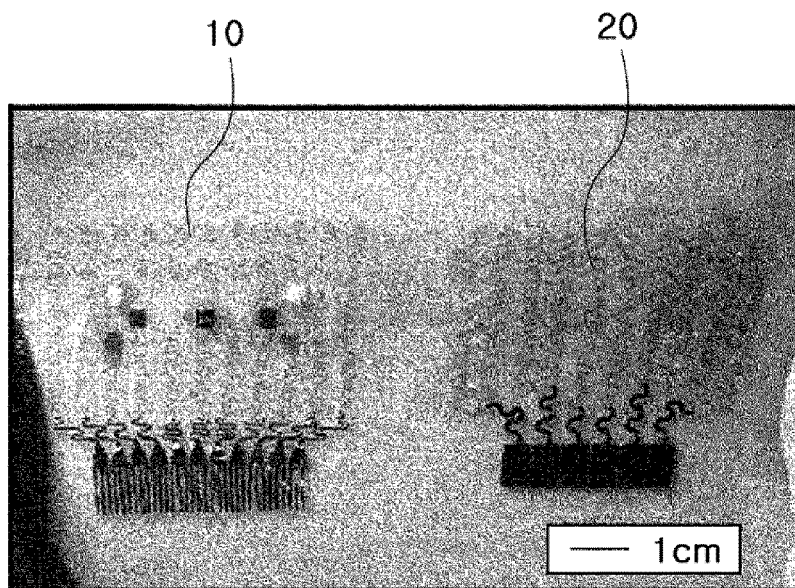


Fig. 26

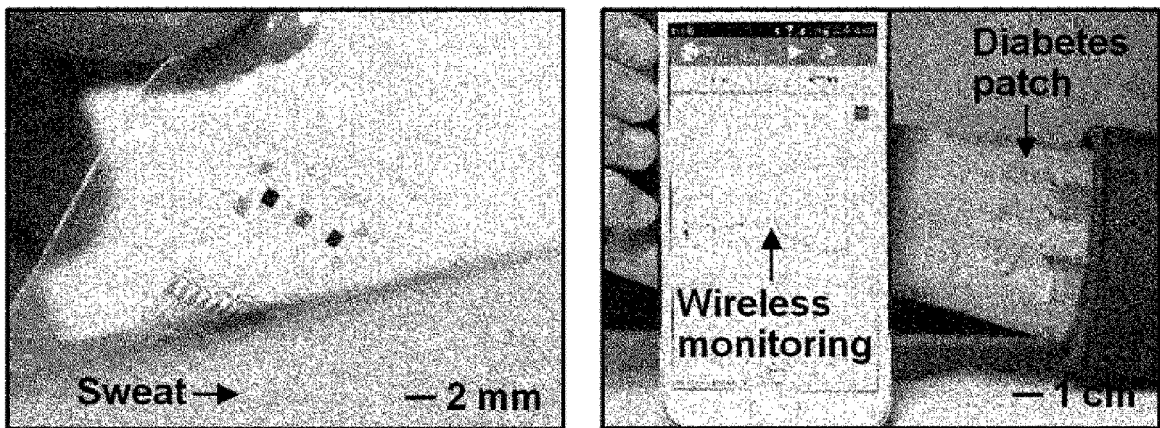
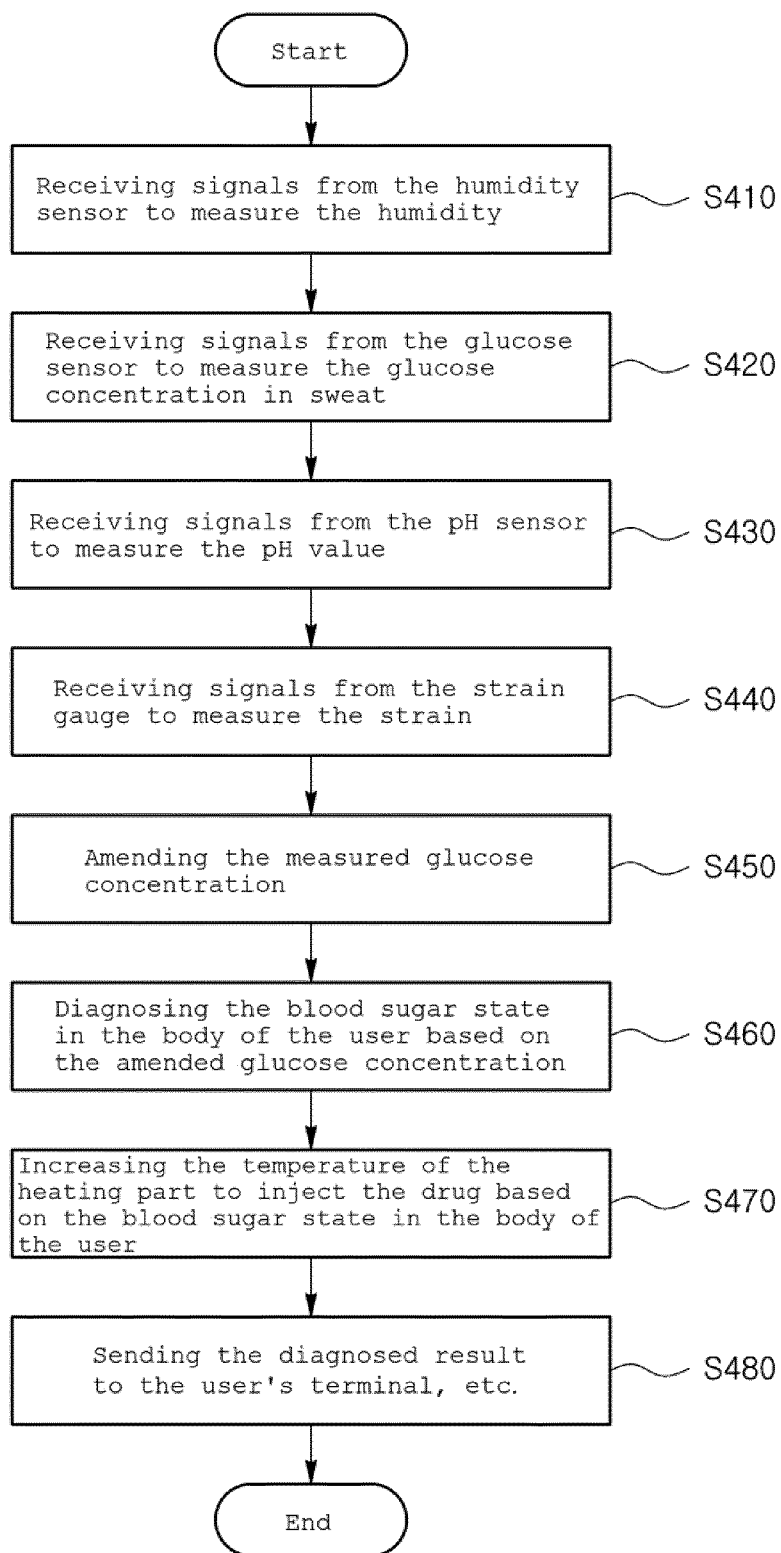


Fig. 27

**Fig. 28**

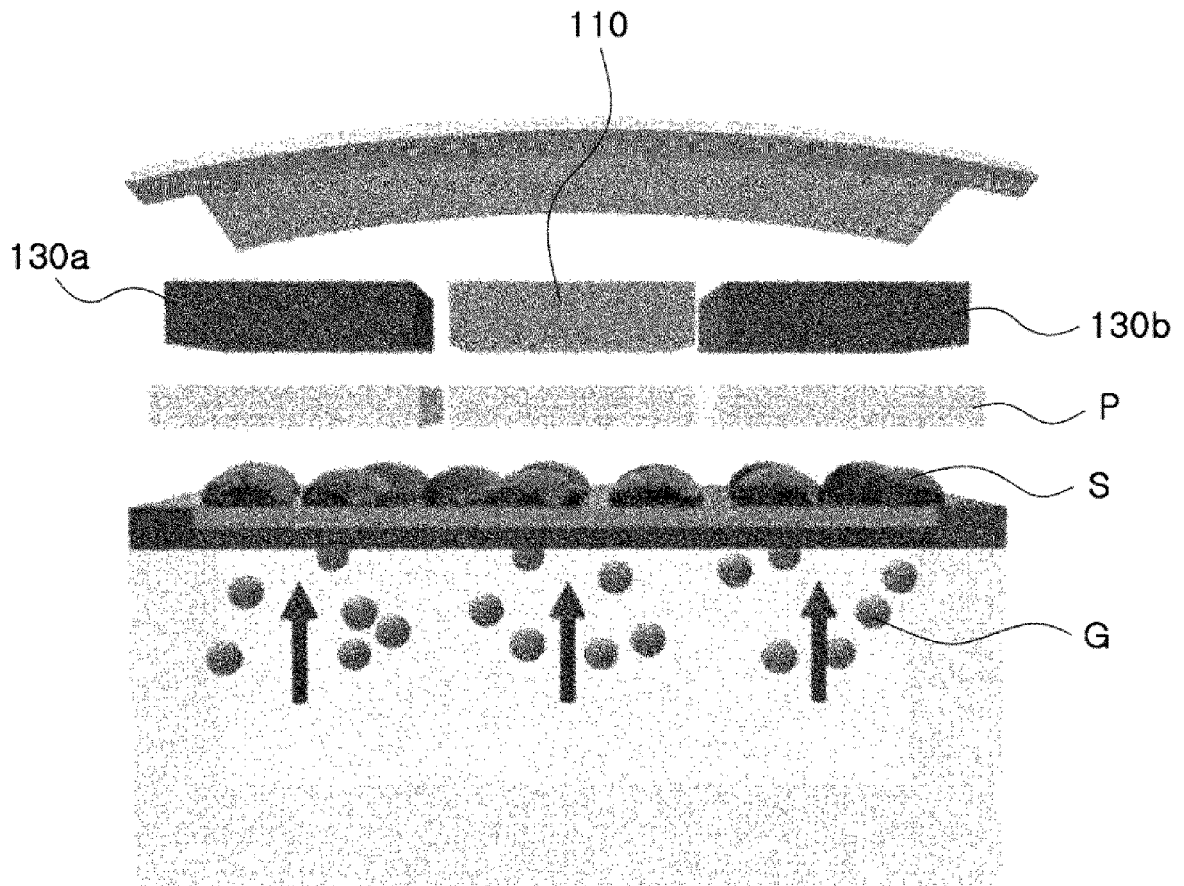


Fig. 29

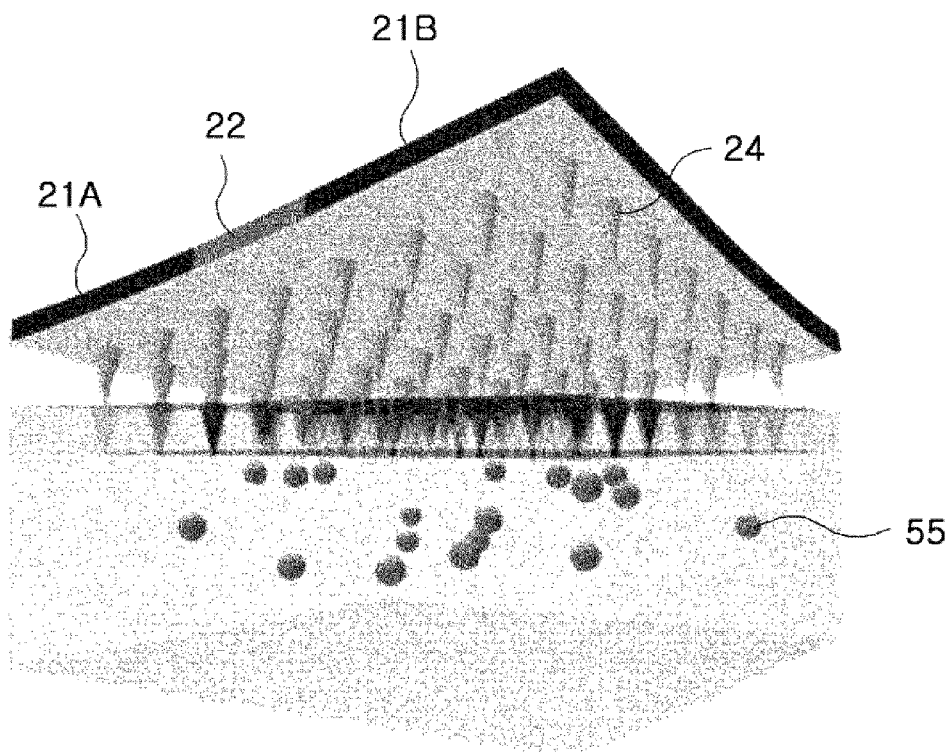



Fig. 30

INTERNATIONAL SEARCH REPORT

International application No.

PCT/KR2016/005949

5	A. CLASSIFICATION OF SUBJECT MATTER <i>A61B 5/145(2006.01)i, A61B 5/00(2006.01)i, G01N 27/327(2006.01)i, G01N 27/48(2006.01)i, G01N 33/53(2006.01)i, G01N 33/66(2006.01)i, H01L 51/00(2006.01)i, G01N 27/30(2006.01)i</i> According to International Patent Classification (IPC) or to both national classification and IPC		
	B. FIELDS SEARCHED		
10	Minimum documentation searched (classification system followed by classification symbols) A61B 5/145; A61B 5/1459; A61B 5/01; G01N 33/66; G01N 27/30; G01N 27/327; A61B 5/1455; A61B 5/1477; G01N 27/407; A61B 5/1473; A61M 5/315; G01N 27/416; A61B 5/00; G01N 27/48; G01N 33/53; H01L 51/00		
	Documentation searched other than minimum documentation to the extent that such documents are included in the fields searched Korean Utility models and applications for Utility models: IPC as above Japanese Utility models and applications for Utility models: IPC as above		
15	Electronic data base consulted during the international search (name of data base and, where practicable, search terms used) eKOMPASS (KIPO internal) & Keywords: sensor, graphene, nano, glucose, pH, humidity, strain, compensation		
	C. DOCUMENTS CONSIDERED TO BE RELEVANT		
20	Category*	Citation of document, with indication, where appropriate, of the relevant passages	
		Relevant to claim No.	
	X	KR 10-2011-0129528 A (KOREA UNIVERSITY RESEARCH AND BUSINESS FOUNDATION) 02 December 2011 See abstract, paragraphs [3], [20]-[43] and figures 1-3.	1-4,7,9-13,18-21
25	Y		5,6,8,14-17,34-37,41-43
	A		22-33,38-40
	Y	WO 2015-018973 A1 (NOKIA CORPORATION) 12 February 2015 See abstract, page 5, line 28-page 6, line 33, claim 11 and figure 2.	5,17,36
30	Y	JP 2011-224381 A (DEXCOM INC.) 10 November 2011 See abstract and claims 46, 53.	6,8,14-16,42,43
	X	JP 5631215 B2 (GLUMETRICS, INC.) 26 November 2014 See paragraphs [104], [168], claims 1, 19 and figure 1.	22-24,27,28,38,39
	Y		25,26,29-37,40-43
35	Y	US 2009-0312615 A1 (CADUFF et al.) 17 December 2009 See abstract and paragraphs [67], [100].	25,26
	Y	DE 102010044341 A1 (DEUTSCHES ZENTRUM FUER LUFT- UND RAUMFAHRT E.V. et al.) 08 March 2012 See abstract and claim 1.	29
40	<input checked="" type="checkbox"/> Further documents are listed in the continuation of Box C.		<input checked="" type="checkbox"/> See patent family annex.
	* Special categories of cited documents:		"I" later document published after the international filing date or priority date and not in conflict with the application but cited to understand the principle or theory underlying the invention
45	"A" document defining the general state of the art which is not considered to be of particular relevance	"E" earlier application or patent but published on or after the international filing date	"X" document of particular relevance; the claimed invention cannot be considered novel or cannot be considered to involve an inventive step when the document is taken alone
	"L" document which may throw doubts on priority claim(s) or which is cited to establish the publication date of another citation or other special reason (as specified)	"O" document referring to an oral disclosure, use, exhibition or other means	"Y" document of particular relevance; the claimed invention cannot be considered to involve an inventive step when the document is combined with one or more other such documents, such combination being obvious to a person skilled in the art
	"P" document published prior to the international filing date but later than the priority date claimed	"&" document member of the same patent family	
50	Date of the actual completion of the international search 20 OCTOBER 2016 (20.10.2016)	Date of mailing of the international search report 20 OCTOBER 2016 (20.10.2016)	
55	Name and mailing address of the ISA/KR  Korean Intellectual Property Office Government Complex-Daejeon, 159 Seonsa-ro, Daejeon 302-701, Republic of Korea Facsimile No. 82-42-472-7140	Authorized officer	Telephone No.

INTERNATIONAL SEARCH REPORT

International application No.

PCT/KR2016/005949

Box No. II Observations where certain claims were found unsearchable (Continuation of item 2 of first sheet)

This international search report has not been established in respect of certain claims under Article 17(2)(a) for the following reasons:

1. Claims Nos.: **44-49**
because they relate to subject matter not required to be searched by this Authority, namely:
Claims 44-49 pertain to a method for diagnosis of the human body, and thus pertain to subject matter on which the International Searching Authority is not required to carry out an international search under the provisions of PCT Article 17(2)(a)(i) and PCT Rule 39.1(iv).
2. Claims Nos.:
because they relate to parts of the international application that do not comply with the prescribed requirements to such an extent that no meaningful international search can be carried out, specifically:
3. Claims Nos.:
because they are dependent claims and are not drafted in accordance with the second and third sentences of Rule 6.4(a).

Box No. III Observations where unity of invention is lacking (Continuation of item 3 of first sheet)

This International Searching Authority found multiple inventions in this international application, as follows:

The invention of group 1: claims 1-21 pertain to a biosensor and a formation method.
The invention of group 2: claims 22-43 pertain to a glucose regulating system and a formation method.

1. As all required additional search fees were timely paid by the applicant, this international search report covers all searchable claims.
2. As all searchable claims could be searched without effort justifying additional fees, this Authority did not invite payment of additional fees.
3. As only some of the required additional search fees were timely paid by the applicant, this international search report covers only those claims for which fees were paid, specifically claims Nos.:
4. No required additional search fees were timely paid by the applicant. Consequently, this international search report is restricted to the invention first mentioned in the claims; it is covered by claims Nos.:

- Remark on Protest**
- The additional search fees were accompanied by the applicant's protest and, where applicable, the payment of a protest fee.
 - The additional search fees were accompanied by the applicant's protest but the applicable protest fee was not paid within the time limit specified in the invitation.
 - No protest accompanied the payment of additional search fees.

INTERNATIONAL SEARCH REPORT

International application No.
PCT/KR2016/005949

5
10
15
20
25
30
35
40
45
50
55

C (Continuation). DOCUMENTS CONSIDERED TO BE RELEVANT		
Category*	Citation of document, with indication, where appropriate, of the relevant passages	Relevant to claim No.
Y	US 2008-0021413 A1 (SANTOS, Dos et al.) 24 January 2008 See abstract, paragraphs [35]-[48] and figure 4.	30-33,40

Form PCT/ISA/210 (continuation of second sheet) (January 2015)

EP 3 308 706 A1

INTERNATIONAL SEARCH REPORT
Information on patent family members

International application No.

PCT/KR2016/005949

5
10
15
20
25
30
35
40
45
50
55

Patent document cited in search report	Publication date	Patent family member	Publication date
KR 10-2011-0129528 A	02/12/2011	KR 10-1188172 B1	05/10/2012
WO 2015-018973 A1	12/02/2015	CN 105612419 A	25/05/2016
		EP 3030892 A1	15/06/2016
		GB 2516932 A	11/02/2015
		US 2016-0187286 A1	30/06/2016
JP 2011-224381 A	10/11/2011	AT 548971 T	15/03/2012
		AU 2001-80886 A1	25/02/2002
		AU 2004-292229 A1	02/06/2005
		AU 2004-292229 B2	17/04/2008
		AU 2006-236319 A1	26/10/2006
		AU 2007-303239 A1	10/04/2008
		AU 2007-305002 A1	10/04/2008
		AU 2007-305002 B2	10/10/2013
		AU 2008-230832 A1	02/10/2008
		AU 2008-266162 A1	24/12/2008
		AU 2008-316630 A1	30/04/2009
		CA 2546072 A1	02/06/2005
		CA 2546072 C	15/01/2013
		CA 2606770 A1	26/10/2006
		CA 2664426 A1	10/04/2008
		CA 2664528 A1	10/04/2008
		CA 2681412 A1	02/10/2008
		CA 2687980 A1	24/12/2008
		CA 2702799 A1	30/04/2009
		CN 100589003 C	10/02/2010
		CN 101163998 A	16/04/2008
		CN 101547633 A	30/09/2009
		CN 101923195 A	22/12/2010
		CN 101923195 B	24/09/2014
		CN 1922525 A	28/02/2007
		EP 1011425 A1	28/06/2000
		EP 1011425 B1	02/05/2007
		EP 1624907 A2	15/02/2006
EP 1624908 A2	15/02/2006		
EP 1624908 B1	05/01/2011		
EP 1624908 B8	15/06/2011		
EP 1648293 A1	26/04/2006		
EP 1648298 A2	26/04/2006		
EP 1692556 A2	23/08/2006		
EP 1711789 A2	18/10/2006		
EP 1711790 A2	18/10/2006		
EP 1711790 B1	08/09/2010		
EP 1711791 A2	18/10/2006		
EP 1711791 B1	15/10/2014		
EP 1711802 A2	18/10/2006		
EP 1711802 B1	14/07/2010		
EP 1718350 A1	08/11/2006		

INTERNATIONAL SEARCH REPORT
Information on patent family members

International application No.

PCT/KR2016/005949

5

10

15

20

25

30

35

40

45

50

55

Patent document cited in search report	Publication date	Patent family member	Publication date
		EP 1718350 B1	01/05/2013
		EP 1742568 A2	17/01/2007
		EP 1776036 A1	25/04/2007
		EP 1776036 B1	01/05/2013
		EP 1804650 A1	11/07/2007
		EP 1804650 B1	14/03/2012
		EP 1875285 A2	09/01/2008
		EP 1893084 A2	05/03/2008
		EP 1914578 A2	23/04/2008
		EP 1914578 A3	30/04/2008
		EP 1991110 A2	19/11/2008
		EP 2004796 A2	24/12/2008
		EP 2004796 B1	08/04/2015
		EP 2069772 A2	17/06/2009
		EP 2069772 B1	21/05/2014
		EP 2091409 A2	26/08/2009
		EP 2091409 B1	27/08/2014
		EP 2129285 A1	09/12/2009
		EP 2129285 B1	23/07/2014
		EP 2155045 A1	24/02/2010
		EP 2203741 A1	07/07/2010
		EP 2223710 A1	01/09/2010
		EP 2226086 A1	08/09/2010
		EP 2228642 A1	15/09/2010
		EP 2239566 A2	13/10/2010
		EP 2239566 A3	17/11/2010
		EP 2239566 B1	23/04/2014
		EP 2239567 A2	13/10/2010
		EP 2239567 A3	17/11/2010
		EP 2239567 B1	02/09/2015
		EP 2256493 A1	01/12/2010
		EP 2256493 B1	26/02/2014
		EP 2264499 A2	22/12/2010
		EP 2264499 A3	05/01/2011
		EP 2264499 B1	19/03/2014
		EP 2264500 A2	22/12/2010
		EP 2264500 A3	05/01/2011
		EP 2264501 A2	22/12/2010
		EP 2264501 A3	05/01/2011
		EP 2264501 B1	25/07/2012
		EP 2301428 A1	30/03/2011
		EP 2316331 A1	04/05/2011
		EP 2316331 B1	29/06/2016
		EP 2322094 A1	18/05/2011
		EP 2322094 B1	05/03/2014
		EP 2327362 A1	01/06/2011
		EP 2327362 B1	13/11/2013
		EP 2327984 A2	01/06/2011
		EP 2327984 A3	07/09/2011
		EP 2327984 B1	25/02/2015

Form PCT/ISA/210 (patent family annex) (January 2015)

EP 3 308 706 A1

INTERNATIONAL SEARCH REPORT
Information on patent family members

International application No.

PCT/KR2016/005949

5
10
15
20
25
30
35
40
45
50
55

Patent document cited in search report	Publication date	Patent family member	Publication date
		EP 2327984 B8	22/04/2015
		EP 2329763 A1	08/06/2011
		EP 2329770 A1	08/06/2011
		EP 2329770 B1	10/09/2014
		EP 2329771 A2	08/06/2011
		EP 2329771 A3	22/06/2011
		EP 2332466 A1	15/06/2011
		EP 2332466 B1	09/04/2014
		EP 2335581 A1	22/06/2011
		EP 2335582 A1	22/06/2011
		EP 2335582 B1	03/09/2014
		EP 2335583 A2	22/06/2011
		EP 2335583 A3	31/08/2011
		EP 2335583 B1	18/03/2015
		EP 2335584 A2	22/06/2011
		EP 2335584 A3	31/08/2011
		EP 2335584 B1	17/06/2015
		EP 2335585 A2	22/06/2011
		EP 2335585 A3	31/08/2011
		EP 2335585 B1	07/09/2016
		EP 2335586 A1	22/06/2011
		EP 2335586 B1	19/02/2014
		EP 2335587 A2	22/06/2011
		EP 2335587 A3	07/09/2011
		EP 2335587 B1	19/02/2014
		EP 2433563 A2	28/03/2012
		EP 2433563 A3	15/05/2013
		EP 2448485 A2	09/05/2012
		EP 2448486 A2	09/05/2012
		EP 2494921 A2	05/09/2012
		EP 2494921 A3	05/12/2012
		EP 2494921 B1	14/09/2016
		EP 2494922 A2	05/09/2012
		EP 2494922 A3	31/10/2012
		EP 2497415 A1	12/09/2012
		EP 2497420 A1	12/09/2012
		EP 2497420 B1	14/09/2016
		EP 2497421 A1	12/09/2012
		EP 2499969 A1	19/09/2012
		EP 2499969 B1	04/06/2014
		EP 2508129 A1	10/10/2012
		EP 2517623 A1	31/10/2012
		EP 2517623 B1	02/03/2016
		EP 2532302 A1	12/12/2012
		EP 2532302 B1	18/11/2015
		EP 2767826 A1	20/08/2014
		EP 2767826 B1	29/04/2015
		EP 2796090 A1	29/10/2014
		EP 2796093 A1	29/10/2014
		EP 3001952 A1	06/04/2016

INTERNATIONAL SEARCH REPORT
Information on patent family members

International application No.

PCT/KR2016/005949

5

10

15

20

25

30

35

40

45

50

55

Patent document cited in search report	Publication date	Patent family member	Publication date
		JP 2001-510382 A	31/07/2001
		JP 2006-525853 A	16/11/2006
		JP 2007-501028 A	25/01/2007
		JP 2007-501684 A	01/02/2007
		JP 2007-511737 A	10/05/2007
		JP 2007-514964 A	07/06/2007
		JP 2007-525276 A	06/09/2007
		JP 2007-535991 A	13/12/2007
		JP 2008-096448 A	24/04/2008
		JP 2008-506468 A	06/03/2008
		JP 2008-506469 A	06/03/2008
		JP 2008-538424 A	23/10/2008
		JP 2010-505534 A	25/02/2010
		JP 2012-016597 A	26/01/2012
		JP 2012-110730 A	14/06/2012
		JP 2012-213654 A	08/11/2012
		JP 2013-099553 A	23/05/2013
		JP 2014-158970 A	04/09/2014
		JP 4124827 B2	23/07/2008
		JP 4708342 B2	22/06/2011
		JP 4728249 B2	20/07/2011
		JP 4786653 B2	05/10/2011
		JP 4870075 B2	08/02/2012
		JP 5037128 B2	26/09/2012
		JP 5138819 B2	06/02/2013
		JP 5161341 B2	13/03/2013
		JP 5306521 B2	02/10/2013
		JP 5646659 B2	24/12/2014
		JP 5960192 B2	02/08/2016
		KR 10-1205756 B1	29/11/2012
		KR 10-1249602 B1	01/04/2013
		KR 10-2008-0005432 A	11/01/2008
		US 6001067 A	14/12/1999
		US 6435708 B1	20/08/2002
		US 6558321 B1	06/05/2003
		US 6741877 B1	25/05/2004
		US 6862465 B2	01/03/2005
		US 6931327 B2	16/08/2005
		US 6983095 B2	03/01/2006
		US 7088899 B2	08/08/2006
		US 7103255 B2	05/09/2006
		US 7110803 B2	19/09/2006
		US 7136689 B2	14/11/2006
		US 7146089 B2	05/12/2006
		US 7171102 B2	30/01/2007
		US 7192450 B2	20/03/2007
		US 7200317 B2	03/04/2007
		US 7276029 B2	02/10/2007
		US 7310544 B2	18/12/2007
		US 7366556 B2	29/04/2008

Form PCT/ISA/210 (patent family annex) (January 2015)

EP 3 308 706 A1

INTERNATIONAL SEARCH REPORT
Information on patent family members

International application No.

PCT/KR2016/005949

5

10

15

20

25

30

35

40

45

50

55

Patent document cited in search report	Publication date	Patent family member	Publication date
		US 7369741 B2	06/05/2008
		US 7379765 B2	27/05/2008
		US 7400816 B2	15/07/2008
		US 7424318 B2	09/09/2008
		US 7460898 B2	02/12/2008
		US 7467003 B2	16/12/2008
		US 7471869 B2	30/12/2008
		US 7494465 B2	24/02/2009
		US 7497827 B2	03/03/2009
		US 7519408 B2	14/04/2009
		US 7583990 B2	01/09/2009
		US 7591801 B2	22/09/2009
		US 7599726 B2	06/10/2009
		US 7613491 B2	03/11/2009
		US 7615007 B2	10/11/2009
		US 7640048 B2	29/12/2009
		US 7646958 B1	12/01/2010
		US 7651596 B2	26/01/2010
		US 7654956 B2	02/02/2010
		US 7657297 B2	02/02/2010
		US 7711402 B2	04/05/2010
		US 7713574 B2	11/05/2010
		US 7715893 B2	11/05/2010
		US 7761130 B2	20/07/2010
		US 7771352 B2	10/08/2010
		US 7774145 B2	10/08/2010
		US 7775975 B2	17/08/2010
		US 7778680 B2	17/08/2010
		US 7783333 B2	24/08/2010
		US 7792562 B2	07/09/2010
		US 7797028 B2	14/09/2010
		US 7809232 B2	05/10/2010
		US 7809235 B2	05/10/2010
		US 7826981 B2	02/11/2010
		US 7828728 B2	09/11/2010
JP 5631215 B2	26/11/2014	EP 2217316 A1	18/08/2010
		EP 2217316 A4	16/01/2013
		JP 2011-504399 A	10/02/2011
		US 2009-0177143 A1	09/07/2009
		US 2012-0116191 A1	10/05/2012
		US 2014-0018646 A1	16/01/2014
		US 8088097 B2	03/01/2012
		US 8535262 B2	17/09/2013
		US 8979790 B2	17/03/2015
		WO 2009-067626 A1	28/05/2009
US 2009-0312615 A1	17/12/2009	EP 1954175 A1	13/08/2008
		EP 1954175 B1	13/07/2016
		EP 2329764 A2	08/06/2011

Form PCT/ISA/210 (patent family annex) (January 2015)

INTERNATIONAL SEARCH REPORT
Information on patent family members

International application No.

PCT/KR2016/005949

5

10

15

20

25

30

35

40

45

50

55

Patent document cited in search report	Publication date	Patent family member	Publication date
		EP 2329764 A3	19/10/2011
		JP 2009-514619 A	09/04/2009
		JP 4947440 B2	06/06/2012
		WO 2007-053963 A1	18/05/2007
DE 102010044341 A1	08/03/2012	NONE	
US 2008-0021413 A1	24/01/2008	AR 061002 A1	30/07/2008
		AU 2007-202216 A1	06/12/2007
		AU 2007-347666 A1	04/09/2008
		AU 2007-347668 A1	04/09/2008
		AU 2007-347668 B2	02/05/2013
		AU 2007-347669 A1	04/09/2008
		AU 2007-347736 A1	04/09/2008
		AU 2007-347737 A1	04/09/2008
		AU 2007-347739 A1	04/09/2008
		AU 2007-348610 A1	12/09/2008
		AU 2007-348610 B2	28/06/2012
		AU 2007-348611 A1	12/09/2008
		AU 2007-348948 A1	18/09/2008
		AU 2007-349203 A1	25/09/2008
		AU 2007-349204 A1	25/09/2008
		AU 2007-349204 B2	23/08/2012
		AU 2007-353378 A1	20/11/2008
		BR P10702340 A	15/01/2008
		CA 2588519 A1	17/11/2007
		CA 2663524 A1	04/09/2008
		CA 2663524 C	12/08/2014
		CA 2664160 A1	12/09/2008
		CA 2664477 A1	04/09/2008
		CA 2664635 A1	18/09/2008
		CA 2665163 A1	04/09/2008
		CA 2665167 A1	04/09/2008
		CA 2665172 A1	04/09/2008
		CA 2665172 C	28/01/2014
		CA 2665175 A1	25/09/2008
		CA 2665377 A1	20/11/2008
		CA 2666924 A1	12/09/2008
		CA 2666924 C	16/06/2015
		CA 2666945 A1	04/09/2008
		CA 2666948 A1	25/09/2008
		CA 2666948 C	05/07/2016
		CN 101073682 A	21/11/2007
		CN 101522144 A	02/09/2009
		CN 101522144 B	13/04/2011
		CN 101528284 A	09/09/2009
		CN 101528284 B	11/09/2013
		CN 101534758 A	16/09/2009
		CN 101534759 A	16/09/2009
		CN 101534759 B	08/06/2011

Form PCT/ISA/210 (patent family annex) (January 2015)

INTERNATIONAL SEARCH REPORT
Information on patent family members

International application No.

PCT/KR2016/005949

5

10

15

20

25

30

35

40

45

50

55

Patent document cited in search report	Publication date	Patent family member	Publication date
		CN 101605516 A	16/12/2009
		CN 102014987 A	13/04/2011
		EP 1857130 A1	21/11/2007
		EP 2063827 A2	03/06/2009
		EP 2063828 A2	03/06/2009
		EP 2063829 A2	03/06/2009
		EP 2063829 B1	08/12/2010
		EP 2063933 A2	03/06/2009
		EP 2066276 A2	10/06/2009
		EP 2066276 B1	18/11/2015
		EP 2068792 A2	17/06/2009
		EP 2077809 A2	15/07/2009
		EP 2077810 A2	15/07/2009
		EP 2077810 B1	30/09/2015
		EP 2081632 A2	29/07/2009
		EP 2081633 A2	29/07/2009
		EP 2088975 A2	19/08/2009
		EP 2197398 A2	23/06/2010
		EP 2197398 B1	26/11/2014
		IL 183295 D0	03/12/2007
		JP 2007-307376 A	29/11/2007
		JP 2010-506671 A	04/03/2010
		JP 2010-506673 A	04/03/2010
		JP 2010-506674 A	04/03/2010
		JP 2010-506675 A	04/03/2010
		JP 2010-506676 A	04/03/2010
		JP 2010-506678 A	04/03/2010
		JP 2010-506679 A	04/03/2010
		JP 2010-506680 A	04/03/2010
		JP 2010-506681 A	04/03/2010
		JP 2010-535039 A	18/11/2010
		JP 2010-535040 A	18/11/2010
		JP 2011-501973 A	20/01/2011
		JP 5155326 B2	06/03/2013
		JP 5215313 B2	19/06/2013
		JP 5260532 B2	14/08/2013
		KR 10-2007-0111394 A	21/11/2007
		KR 10-2009-0067218 A	24/06/2009
		KR 10-2009-0080975 A	27/07/2009
		KR 10-2009-0080983 A	27/07/2009
		KR 10-2009-0081402 A	28/07/2009
		KR 10-2009-0091132 A	26/08/2009
		KR 10-2009-0091133 A	26/08/2009
		KR 10-2009-0091714 A	28/08/2009
		KR 10-2009-0115848 A	09/11/2009
		MX 2007005846 A	01/12/2008
		TW 200824662 A	16/06/2008
		TW 200824664 A	16/06/2008
		TW 200824736 A	16/06/2008
		TW 200824738 A	16/06/2008

Form PCT/ISA/210 (patent family annex) (January 2015)

INTERNATIONAL SEARCH REPORT
Information on patent family members

International application No.

PCT/KR2016/005949

5

10

15

20

25

30

35

40

45

50

55

Patent document cited in search report	Publication date	Patent family member	Publication date
		TW 200824739 A	16/06/2008
		TW 200824740 A	16/06/2008
		TW 200826907 A	01/07/2008
		TW 200826908 A	01/07/2008
		TW 200826909 A	01/07/2008
		TW 200826910 A	01/07/2008
		TW 200826986 A	01/07/2008
		TW 200826987 A	01/07/2008
		TW 200826988 A	01/07/2008
		TW 200833382 A	16/08/2008
		US 2007-0268340 A1	22/11/2007
		US 2007-0270744 A1	22/11/2007
		US 2007-0270748 A1	22/11/2007
		US 2007-0270750 A1	22/11/2007
		US 2007-0270760 A1	22/11/2007
		US 2007-0270768 A1	22/11/2007
		US 2007-0270777 A1	22/11/2007
		US 2007-0293820 A1	20/12/2007
		US 2008-0015545 A1	17/01/2008
		US 2008-0021412 A1	24/01/2008
		US 2008-0021419 A1	24/01/2008
		US 2008-0021438 A1	24/01/2008
		US 2008-0097311 A1	24/04/2008
		US 2008-0197035 A1	21/08/2008
		US 2008-0234625 A1	25/09/2008
		US 2009-0036846 A1	05/02/2009
		US 2009-0036868 A1	05/02/2009
		US 2009-0287150 A1	19/11/2009
		US 2010-0030136 A1	04/02/2010
		US 2010-0057003 A1	04/03/2010
		US 2010-0069842 A1	18/03/2010
		US 2010-0106083 A1	29/04/2010
		US 2010-0106089 A1	29/04/2010
		US 2010-0211044 A1	19/08/2010
		US 7674243 B2	09/03/2010
		US 7740619 B2	22/06/2010
		US 7762981 B2	27/07/2010
		US 7811252 B2	12/10/2010
		US 7815603 B2	19/10/2010
		US 7862540 B2	04/01/2011
		US 7871399 B2	18/01/2011
		US 7887517 B2	15/02/2011
		US 7887521 B2	15/02/2011
		US 8118790 B2	21/02/2012
		US 8821440 B2	02/09/2014
		US 9022970 B2	05/05/2015
		WO 2008-105951 A2	04/09/2008
		WO 2008-105951 A3	04/12/2008
		WO 2008-105952 A2	04/09/2008
		WO 2008-105952 A3	07/05/2009

Form PCT/ISA/210 (patent family annex) (January 2015)

INTERNATIONAL SEARCH REPORT
Information on patent family members

International application No.
PCT/KR2016/005949

5
10
15
20
25
30
35
40
45
50
55

Patent document cited in search report	Publication date	Patent family member	Publication date
		WO 2008-105954 A2	04/09/2008
		WO 2008-105954 A3	19/03/2009
		WO 2008-105955 A2	04/09/2008
		WO 2008-105955 A3	04/06/2009
		WO 2008-105956 A2	04/09/2008
		WO 2008-105957 A2	04/09/2008
		WO 2008-105957 A3	14/05/2009
		WO 2008-105958 A2	04/09/2008
		WO 2008-105958 A3	15/01/2009
		WO 2008-108886 A2	12/09/2008
		WO 2008-108886 A3	20/11/2008
		WO 2008-108887 A2	12/09/2008
		WO 2008-112011 A2	18/09/2008
		WO 2008-112011 A3	29/01/2009
		WO 2008-115269 A2	25/09/2008
		WO 2008-115269 A3	04/12/2008
		WO 2008-115270 A2	25/09/2008
		WO 2008-115270 A3	16/04/2009
		WO 2008-140546 A2	20/11/2008

REFERENCES CITED IN THE DESCRIPTION

This list of references cited by the applicant is for the reader's convenience only. It does not form part of the European patent document. Even though great care has been taken in compiling the references, errors or omissions cannot be excluded and the EPO disclaims all liability in this regard.

Patent documents cited in the description

- KR 101355933 [0004]
- KR 100553801 [0008]

专利名称(译)	生物传感器及其形成方法和葡萄糖控制系统，形成葡萄糖控制系统的方法，以及由此控制葡萄糖的方法		
公开(公告)号	EP3308706A4	公开(公告)日	2018-11-14
申请号	EP2016807744	申请日	2016-06-03
[标]申请(专利权)人(译)	首尔大学校产学协力团 基础科学研究院		
申请(专利权)人(译)	首尔国立大学R & DB基金会 机构基础科学		
当前申请(专利权)人(译)	首尔国立大学研究基金会		
[标]发明人	KIM DAEHYEONG HYEON TAEGHWAN CHOI SEUNGHONG LEE HYUNJAE CHOI TAEKYU		
发明人	KIM, DAEHYEONG HYEON, TAEGHWAN CHOI, SEUNGHONG LEE, HYUNJAE CHOI, TAEKYU		
IPC分类号	A61B5/145 A61B5/00 G01N27/327 G01N27/48 G01N33/53 G01N33/66 H01L51/00 G01N27/30		
CPC分类号	A61M5/1723 A61B5/00 A61B5/145 A61B5/14532 A61B5/1477 A61B5/1486 A61B5/4266 A61B2562 /0261 A61B2562/12 A61M5/00 A61M37/0015 A61M2205/3368 A61M2205/3569 A61M2205/36 A61M2230/201 A61M2230/208 C12Q1/006 G01N27/3271 G01N27/3278 G01N33/66 G01N33/84		
优先权	1020150083611 2015-06-12 KR 1020150083637 2015-06-12 KR 1020160033648 2016-03-21 KR 1020160033652 2016-03-21 KR		
其他公开文献	EP3308706A1		
外部链接	Espacenet		

摘要(译)

本发明提供一种生物传感器及其形成方法，葡萄糖控制系统，形成葡萄糖控制系统的方法，以及使用该葡萄糖控制系统控制葡萄糖的方法。该生物传感器包括至少一个传感器，该传感器包括传感单元，连接到传感单元的桥接单元，以及连接到桥接单元的电极单元，其中传感单元包括石墨烯层。用于形成生物传感器的方法包括至少一个传感器，该传感器包括传感单元，连接到传感单元的桥接单元和连接到桥接单元的电极单元，包括形成下绝缘层，在下部形成导电电极层绝缘层，在导电电极层上形成石墨烯层，在石墨烯层上形成反应层。葡萄糖控制系统包括传感器单元，该传感器单元包括葡萄糖传感器，调节用户体内葡萄糖浓度的葡萄糖调节单元和控制传感器单元和葡萄糖调节单元的控制单元。用于形成葡萄糖控制系统的方法包括形成包括葡萄糖传感器的传感器单元，形成葡萄糖调节单元并包装传感器单元和葡萄糖调节单元。