



(12) **EUROPEAN PATENT APPLICATION**  
 published in accordance with Art. 158(3) EPC

(43) Date of publication:  
**21.04.2004 Bulletin 2004/17**

(51) Int Cl.7: **G01N 27/327**

(21) Application number: **02745986.6**

(86) International application number:  
**PCT/JP2002/007077**

(22) Date of filing: **11.07.2002**

(87) International publication number:  
**WO 2003/006980 (23.01.2003 Gazette 2003/04)**

(84) Designated Contracting States:  
**AT BE BG CH CY CZ DE DK EE ES FI FR GB GR  
 IE IT LI LU MC NL PT SE SK TR**  
 Designated Extension States:  
**AL LT LV MK RO SI**

- **SAKATA, Tetsuya, ARKRAY, Inc.**  
 Kyoto-shi, Kyoto 601-8045 (JP)
- **KUSAKA, Yasuhide, ARKRAY, Inc.**  
 Kyoto-shi, Kyoto 601-8045 (JP)

(30) Priority: **13.07.2001 JP 2001213050**

(74) Representative: **Pluckrose, Anthony William et al**  
**BOULT WADE TENNANT,**  
**Verulam Gardens**  
**70 Gray's Inn Road**  
**London WC1X 8BT (GB)**

(71) Applicant: **ARKRAY, Inc.**  
**Kyoto 691-8045 (JP)**

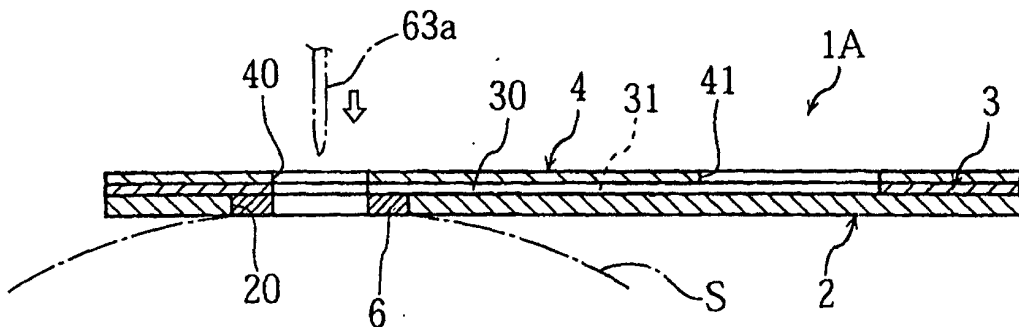
(72) Inventors:  
 • **KATSUKI, Koji, ARKRAY, Inc.**  
**Kyoto-shi, Kyoto 601-8045 (JP)**

(54) **ANALYZING APPARATUS, PIERCING ELEMENT INTEGRALLY INSTALLED BODY FOR TEMPERATURE MEASURING DEVICE WITH ANALYZING APPARATUS, AND BODY FLUID SAMPLING APPARATUS**

(57) The present invention relates to an analyzing instrument (1A) which includes a capillary (31), a fluid feed port (20) for introducing a sample liquid to the capillary (31), and a fluid feed promoter (6) for promoting the introduction of the sample liquid into the feed port

(20). The capillary (31) of the analyzer (1A) maybe formed on a substrate (2) for example. The fluid feed promoter (6) may include at least one of a water-absorbing layer having a higher water-absorbing capacity than the substrate (2) and an adhesive layer having a greater adhesion to the skin than the substrate (2).

FIG.2



## Description

### TECHNICAL FIELD

[0001] The present invention relates to an analyzing instrument used for measuring the concentration (e.g. glucose level) of a specific component in a sample liquid. The invention also relates to a lancet-integrated attachment, which, in use, is attached to a concentration measuring device, and which includes an analyzing instrument and a lancet.

### BACKGROUND ART

[0002] Simple blood-sugar measuring devices have been in practical use for conveniently measuring the blood-sugar level at or away from home.

[0003] A blood-sugar measuring device is known wherein an attachment including a biosensor and a lancing needle is mounted to a tip portion of the measuring device for performing concentration measurement with respect to body fluid, as disclosed in JP-A 2000-231 for example. While a fluid feed port of the biosensor is pressed against the skin, the lancing needle of the blood-sugar measuring device is caused to protrude beyond the biosensor into the skin for bleeding. The blood bleeding from the skin is supplied to a reacting portion via a capillary of the biosensor to form a liquid phase reaction system. The blood-sugar measuring device calculates the blood-sugar level based on the value of a response current measured when a voltage is applied across the liquid phase reaction system.

[0004] However, the attachment incorporating the biosensor may fail to properly introduce blood via the sample feed port because if the skin contacts the biosensor improperly to create a gap between the biosensor and the skin, the blood may flow out along the biosensor and/or the skin via the gap. As a result, the reacting portion may fail to be supplied with an enough amount of blood needed for proper measurement.

[0005] Proposals have been made to solve the above problem by applying a water-repellent coating around the fluid feed port of the biosensor for blood leakage prevention or by arranging the feed port near the reacting portion. However, these countermeasures have turned out still insufficient for preventing blood leakage on lancing.

### DISCLOSURE OF THE INVENTION

[0006] An object of the present invention is to enable concentration measurement which utilizes a capillary analyzing instrument and wherein it is possible to reliably supply the capillary with an enough amount of sample liquid needed for sample analysis.

[0007] An analyzing instrument according to a first aspect of the present invention comprises a capillary, a fluid feed port for introducing a sample liquid into the cap-

illary, and a fluid feed promoter for promoting the introduction of the sample liquid through the fluid feed port.

[0008] The capillary of the analyzing instrument may be formed on a substrate for example. In this case, the fluid feed promoter may preferably include at least one of a water-absorbing layer having higher water-absorbing capacity than the substrate and an adhesive layer that has greater adhesion to a skin than the substrate. Further, the fluid feed promoter may preferably have higher elasticity than the substrate.

[0009] The analyzing instrument may further comprise a substrate on which a cover plate is laminated via a spacer, and a through-hole may penetrate thicknesswise through the substrate, the spacer, and the cover board. In this case, the fluid feed port may comprise the through-hole, and the fluid feed promoter may be fitted in the fluid feed port. The fluid feed promoter may be disposed around the fluid feed port. In other words, the fluid feed promoter may be preferably arranged near the fluid feed port for assisting the introduction of the sample liquid into the fluid feed port. The fluid feed promoter may preferably comprise a ring, but it may also be arcuate or otherwise shaped.

[0010] The substrate may be provided with a notch which is open at a side of the substrate for holding the body fluid feed promoter. In this case, the fluid feed port may be preferably open at said side. Again, the fluid feed promoter may include at least one of a water-absorbing layer having higher water-absorbing capacity than the substrate and an adhesive layer having greater adhesion to skin than the substrate.

[0011] A second aspect of the present invention provides a lancet-integrated attachment which comprises a lancet and an analyzing instrument for use as mounted to a concentration measuring device. The analyzing instrument comprises a capillary, a fluid feed port for introducing a sample liquid into the capillary, and a fluid feed promoter for promoting the introduction of the sample liquid through the fluid feed port.

[0012] The capillary of the analyzing instrument according to this aspect may be formed on a substrate for example. In this case, the fluid feed promoter may preferably include at least one of a water-absorbing layer having higher water-absorbing capacity than the substrate and an adhesive layer that has greater adhesion to a skin than the substrate. Further, the fluid feed promoter may have higher elasticity than the substrate.

[0013] The analyzing instrument according to this aspect may further comprise a substrate on which a cover plate is laminated via a spacer, and a through-hole may penetrate thicknesswise through the substrate, the spacer, and the cover board for allowing insertion of the lancet. In this case, the fluid feed port may comprise the through-hole, and the fluid feed promoter may be fitted in the fluid feed port. The fluid feed promoter may preferably comprise a ring. The fluid feed promoter may be disposed around the fluid feed port.

[0014] A third aspect of the present invention provides

a body fluid sampling instrument which comprises a capillary, a fluid feed port for introducing body fluid into the capillary, and a fluid feed promoter for promoting the introduction of the body fluid through the fluid feed port.

**[0015]** The body fluid sampling instrument according to this aspect is used for sampling blood bleeding from skin. For blood sampling, the fluid feed promoter is brought into contact with a target bleeding portion of the skin

**[0016]** The capillary of the blood sampling tool may be formed on a substrate for example. In this case, the fluid feed promoter may preferably include at least one of a water-absorbing layer having higher water-absorbing capacity than the substrate and an adhesive layer that has greater adhesion to a skin than the substrate. Further, the fluid feed promoter may preferably have higher elasticity than the substrate.

#### BRIEF DESCRIPTION OF THE DRAWINGS

##### **[0017]**

Fig. 1 is an overall perspective view of a biosensor according to a first embodiment.

Fig. 2 is a sectional view taken along lines II-II in Fig. 1.

Fig. 3 is an overall perspective view of the biosensor shown in Fig. 1 as seen from the rear side.

Fig. 4 is an exploded perspective view of the biosensor shown in Fig. 1.

Fig. 5 is a perspective view of a ring as partially cut away.

Fig. 6 is an overall perspective view of a blood-sugar measuring device.

Fig. 7 is a sectional view taken along lines VII-VII of Fig. 6.

Fig. 8 is a sectional view similar to Fig. 7 with a lancet advanced to a protruding position.

Fig. 9 is a sectional view showing a principal part of the biosensor according to a second embodiment.

Fig. 10 is an overall perspective view of a biosensor according to a third embodiment.

Fig. 11 is a sectional view taken along lines XI-XI of Fig. 10.

Fig. 12 is an exploded perspective view of the biosensor shown in Fig. 10.

#### BEST MODE FOR CARRYING OUT THE INVENTION

**[0018]** An analyzer according to the present invention is described below taking a biosensor used for measuring blood-sugar level as an example.

**[0019]** A biosensor according to a first embodiment is described referring to Figs. 1 through 4.

**[0020]** A biosensor 1A includes a substrate 2, a spacer 3, and a cover plate 4. In use, the biosensor 1A is attached to a blood-sugar measuring device 5 (refer to Figs. 7 and 8) that is described below.

**[0021]** The substrate 2 is rectangular and has a blood feed port 20. The blood feed port 20 is fitted with a ring 6 for helping to introduce blood.

**[0022]** The ring 6 has a thickness of e.g. about 70 $\mu$ m which is nearly equal to the thickness of the substrate 2. As shown in Fig. 5, the ring 6 includes a water-absorbing layer 60 sandwiched between a pair of adhesive layers 61a, 61b. The water-absorbing layer 60 is a membrane which is about 50 $\mu$ m in thickness formed of non-woven fabric or the like to have a water-absorbing capacity of 2-3g/g. The adhesive layers 61a, 61b provide suitable adhesion to the skin. The adhesive layers 61a, 61b are preferably formed of a blood-permeable material.

**[0023]** As shown in Fig. 4, the substrate 2 has an upper surface 21 formed with a working electrode 22, a counter electrode 23, and a reacting portion 24. The working electrode 22 and the counter electrode 23 have L-bent front terminals 22a, 23a. The reacting portion 24 is a solid part containing a redox enzyme and an electron carrier for example. The redox enzyme may be glucose oxydase or glucose dehydrogenase for example. The electron carrier may be potassium ferricyanide for example.

**[0024]** As shown in Figs. 1 through 4, the spacer 3 and the cover plate 4 which are laminated on the substrate 2 are rectangular but shorter than the substrate 2 for exposing the rear terminals 22b, 23b of the working electrode 22 and the counter electrode 23.

**[0025]** The spacer 3 is formed with a slit 30 communicating with the blood feed port 20. The slit 30 functions as a capillary 31 when the spacer 3 and the cover plate 4 are laminated on the upper surface 21 of the substrate 2. The slit 30 has an end disposed right over the blood feed port 20. The width of the slit 30 is smaller than the inner diameter of the blood feed port 20. As seen from Figs. 2 and 5, the ring 6 is adhered to the spacer 3 via the adhesive layer 61a when fitted into the blood feed port 20. Such adhesive fixation of the ring 6 can be performed easily only by inserting the ring 6 into the blood feed port 20.

**[0026]** The cover plate 4 is formed with a lancing needle insertion port 40 and an air vent hole 41. As shown in Fig. 2, the lancing needle insertion port 40 is arranged right over the blood feed port 20 for inserting a lancing needle 63a of the blood-sugar measuring device 5 (refer to Figs. 7 and 8). Consequently, the biosensor 1A is formed with a space that extends through the substrate 2, the spacer 3, and the cover plate 4 so that the lancing needle 63a can pass through the biosensor 1A. On the other hand, the air vent hole 41 communicates with the blood feed port 20 via the capillary 31. Thus, the blood introduced from the blood feed port 20 proceeds toward the air vent hole 41 in the capillary 31 due to the capillary phenomenon. In the course of such process, the blood dissolves the reacting portion 24, whereby the redox enzyme oxidizes the glucose in the blood while reducing the electron carrier.

**[0027]** The biosensor 1A described above may be a part of an attachment to be mounted to a blood-sugar measuring device for use in measuring the blood-sugar level.

**[0028]** As shown in Fig. 6, the blood-sugar measuring device 5 includes a main body 50, a mount 51, and a presser 52. The main body 50 is provided with a display 50a. The display 50a includes an LCD or the like for displaying the measurement. The mount 51, to which an attachment 6 is mounted, extends from the main body 50. The presser 52 is used for advancing the lancing needle 63a (refer to Figs. 7 and 8).

**[0029]** As shown in Fig. 7, the attachment 6 includes a cylinder 60 and a bottom wall 61. The cylinder 60 is fitted around the tip end of the mount 51. The bottom wall 61 is provided with an upwardly concave recess 62. The recess 62 holds a lancet 63 and has a mouth closed by the biosensor 1A that is affixed to the bottom wall 61. The lancet 63 includes, besides the lancing needle 63a, a flange 63b and a head 63c. The recess 62 receives a coil spring 64 biased between the flange 63b and the biosensor 1A.

**[0030]** The blood-sugar measuring device 5 is further provided with a pressing rod 53 and a pair of connector pins 54. The pressing rod 53 is driven toward the tip end of the blood-sugar measuring device by operating the presser 52. The pressing rod 53 is driven, for example, by a known latch mechanism or electromagnetic drive mechanism. The pair of connector pins 54 are connected to a non-illustrated electrical circuit while being held in contact with the rear terminals 22b, 23b of the biosensor 1 when the attachment 6 is mounted to the blood-sugar measuring device 5.

**[0031]** In measuring the blood-sugar level, the attachment is attached to the mount 51 of the blood-sugar measuring device 5. In this state, as shown in Fig. 2, the lancing needle 63a is disposed right over the lancing needle insertion port 40 of the biosensor 1A, while the connector pins 54 contact the rear terminals 22b, 23b of the biosensor 1A.

**[0032]** Next, the tip end of the blood-sugar measuring device is pressed against the skin S of an examinee so that the skin S intimately contacts the ring 6 of the biosensor 1A (refer to Fig. 2). In this state, as seen in Figs. 2 and 5, the skin S sticks intimately to the ring 6 of the biosensor 1A due to the adhesive layer 61b at the surface of the ring 6.

**[0033]** Subsequently, the presser 52 is operated for lancing. As shown in Fig. 8, the operation of the presser 52 causes the pressing rod 53 to move toward the tip end of the mount 51, whereby the pressing rod 53 contacts the head 63c of the attachment 6. As a result, the lancet 63 is pushed forward. Since the lancing needle insertion port 40, the slit 30, and the blood feed port 20 of the biosensor 1A communicate with each other to provide a penetrating path thicknesswise of the biosensor 1A, the movement of the lancet 63 causes the lancing needle 63a to pass through the biosensor 1A. As a re-

sult, the tip end of the lancing needle 63a protrudes beyond the biosensor 1A, so that the lancing needle 63a lances the skin S to promote bleeding out of the skin S. Due to the through-hole of the ring 6, the movement of the lancing needle 63a is not hindered by the ring 6 during this lancing operation even if the ring 6 is fitted in the blood feed port 20.

**[0034]** After the lancing operation, the pressing rod 53 of the blood-sugar measuring device 5 is preferably spaced from the lancet 63 due to the elastic force of a spring or the like. Thus, the lancet 63 returns to the position shown in Fig. 7 under the elastic force of the coil spring 64. As a result, the lancing needle 63a is prevented from pushing into the skin S for a needlessly long time, thereby reducing pain to the examinee.

**[0035]** When the blood from the skin S is introduced to the blood feed port 20, most of the blood is retained in the water-absorbing layer 60 of the ring 6. Since the ring 6 sticks intimately to the skin S, the blood once introduced to the blood feedport 20 is prevented from leaking outside. Further, the absorption provided by the water-absorbing layer 60 also contributes to the prevention of blood leakage from the blood feed port 20. Even if the ring 6 fails to stick intimately to the skin S while the blood is pooled temporarily in the ring 6, it is expected that the blood in a gap between the ring 6 and the skin S is exposed to the air to clot, thereby clogging the gap. Thus, blood leakage may also be prevented in this way. On the other hand, the blood absorption provided by the water-absorbing layer 60 promotes bleeding from the skin S. As a result, enough blood for measurement can be sampled by the promotion of bleeding from the skin S as well as by the prevention of the blood leakage.

**[0036]** The blood introduced into the blood feed port 20 moves through the capillary 31 due to the capillary phenomenon for desolving the reacting portion 24 to create a liquid phase reaction system. The blood feed port 20 first pools an amount of blood before feeding to the capillary 31. As described above, an enough quantity of blood is retained in the biosensor 1A due to the prevention of blood leakage. Thus, an enough quantity of blood is reliably supplied to the capillary 31 and to the reacting portion 24.

**[0037]** A voltage is applied across the liquid phase reaction system through the connector pin 54, the working electrode 22, and the counter electrode 23. The quantity of electrons flowing between the liquid phase reaction system and the working electrode 22 is measured as an electric current at the electric circuit of the blood-sugar measuring device 5. The electric circuit determines the blood-sugar level based on the measured electric current.

**[0038]** Next, a biosensor according to a second embodiment is described below referring to Fig. 9. In Fig. 9, members and elements identical or similar to those in the biosensor 1A described already are given the same reference numbers, and duplicated description will be omitted.

**[0039]** The biosensor 1B shown in Fig. 9 includes a blood feed port 20B having an open mouth 20Ba surrounded by a ring 6B. The ring 6B includes a water-absorbing layer sandwiched between a pair of adhesive layers for example. The ring 6B may dispense with either

**[0040]** The biosensor 1B provides the same advantages as the biosensor 1A that is previously described.

**[0041]** The biosensors 1A, 1B according to the first and second embodiments are not limited by the description and figures above but may be variously modified.

**[0042]** For example, the ring may dispense with either of the water-absorbing layer and the adhesive layers. Even in this case, blood leakage is prevented, and bleeding is promoted for reliably introducing blood into the capillary.

**[0043]** Further, the ring may be elastic. Due to the elasticity, the ring may provide more intimate contact with the skin when pressed against the examinee's skin, thereby preventing blood leakage more reliably. This advantage may be obtained even if dust or hairs exist between the ring and the skin.

**[0044]** The ring may be made elastic by adopting a highly elastic material for the water-absorbing layer and/or the adhesive layers, or by providing a highly elastic layer in addition to the water-absorbing layer and the adhesive layer. Examples of highly elastic materials include elastomers (silicone resin, acrylic resin, rubber, or the like) and gels.

**[0045]** The ring may be replaced with a non-perforated fluid feed promoter fitted in the blood feed port. In this case, the fluid feed promoter should have at least a needle-piercing portion which is made of a readily penetrable material or is otherwise designed to facilitate needle lancing. For example, the fluid feed promoter may include a first member provided with a through-hole and a second member to be fitted in the through-hole, or maybe a sheet made from a single material. Further, the fluid feed promoter may be arcuate. Thus, the configuration and the material of the fluid feed promoter are not limitative as long as the above-described functions and advantages can be obtained.

**[0046]** Next, a biosensor according to a third embodiment is described referring to Figs. 10 through 12. In these figures, members and elements identical or similar to those in the previously described biosensors are given the same reference numbers, and duplicated description will be omitted.

**[0047]** The biosensor 1C does not form a part of the attachment shown in Fig. 7 for mounting to the blood-sugar measuring device. Instead, the biosensor 1C is mounted alone for use in the blood-sugar measuring device.

**[0048]** The biosensor 1C includes a slit 30C which is open at a side to form a blood feed port 20C. As shown in Fig. 11, the thus designed biosensor 1C introduces blood when the blood feed port 1C is pressed against the bleeding skin S.

**[0049]** Similarly, a board 2 is formed with a notch 29 which is open at a side, and a fluid feed promoter 6C is fitted in the notch 29. The fluid feed promoter 6C has a bottom surface 6Ca and a side surface 6Cb both of which are exposed. The fluid feed promoter 6C is water-absorptive, whereas the side surface 6Cb may be adherent.

**[0050]** The biosensor 1C also prevents blood leakage upon blood introduction while promoting bleeding from the skin S for reliable blood introduction.

**[0051]** Though the first through third embodiments have been described taking a biosensor as an example in, the idea of the present invention may be also applied to a body fluid sampling tool used only for sampling body fluid (e.g. blood). An example of such a body fluid sampling tool may have the same structure as the biosensor shown in Figs. 1 through 4 except that the working electrode 22, the counter electrode 23, and the reacting portion 24 are omitted.

## Claims

1. An analyzing instrument comprising:
  - a capillary,
  - a fluid feed port for introducing a sample liquid into the capillary, and
  - a fluid feed promoter for promoting the introduction of the sample liquid through the fluid feed port.
2. The analyzing instrument according to claim 1, wherein the capillary is formed on a substrate, the fluid feed promoter including a water-absorbing layer having higher water-absorbing capacity than the substrate.
3. The analyzing instrument according to claim 1, wherein the capillary is formed on a substrate, the fluid feed promoter including an adhesive layer having greater adhesion to a skin than the substrate.
4. The analyzing instrument according to claim 1, wherein the capillary is formed on a substrate, the fluid feed promoter having higher elasticity than the substrate.
5. The analyzing instrument according to claim 1, further comprising a substrate on which a cover plate is laminated via a spacer, wherein a through-hole penetrates thicknesswise through the substrate, the spacer, and the cover board.
6. The analyzing instrument according to claim 5, wherein the fluid feed port is formed in the board and comprises the through-hole.

7. The analyzing instrument according to claim 6, wherein the fluid feed promoter is fitted in the fluid feed port.
8. The analyzing instrument according to claim 7, wherein the fluid feed promoter comprises a ring.
9. The analyzing instrument according to claim 6, wherein the fluid feed promoter is disposed around the fluid feed port.
10. The analyzing instrument according to claim 1, further comprising a substrate on which a cover plate is laminated via a spacer, wherein the substrate is provided with a notch which is open at a side of the substrate, the notch holding the body fluid feed promoter.
11. The analyzing instrument according to claim 10, wherein the capillary is formed on the substrate, the fluid feed promoter including at least one of a water-absorbing layer having higher water-absorbing capacity than the substrate and an adhesive layer having greater adhesion to skin than the substrate.
12. A lancet-integrated attachment comprising a lancet and an analyzing instrument for use as mounted to a concentration measuring device,  
 wherein the analyzing instrument comprises a capillary, a fluid feed port for introducing a sample liquid into the capillary, and a fluid feed promoter for promoting the introduction of the sample liquid through the fluid feed port.
13. The lancet-integrated attachment according to claim 12, wherein the capillary is formed on the substrate, the fluid feed promoter including at least one of a water-absorbing layer having higher water-absorbing capacity than the substrate and an adhesive layer having greater adhesion to skin than the substrate.
14. The lancet-integrated attachment according to claim 13, further comprising a substrate on which a cover plate is laminated via a spacer, wherein a through-hole penetrates thicknesswise through the substrate, the spacer, and the cover board for allowing insertion of the lancet.
15. The lancet-integrated attachment according to claim 14, wherein the fluid feed port is formed in the substrate and comprises the through-hole.
16. The lancet-integrated attachment according to claim 15, wherein the fluid feed promoter comprises a ring.
17. A body fluid sampling instrument comprising:  
 a capillary,  
 a fluid feed port for introducing body fluid into the capillary, and  
 a fluid feed promoter for promoting the introduction of the body fluid through the fluid feed port.
18. The body fluid sampling instrument according to claim 17, which is used for sampling blood bleeding from skin, wherein the fluid feed promoter is brought into contact with a target bleeding portion of the skin for blood sampling.

FIG.1

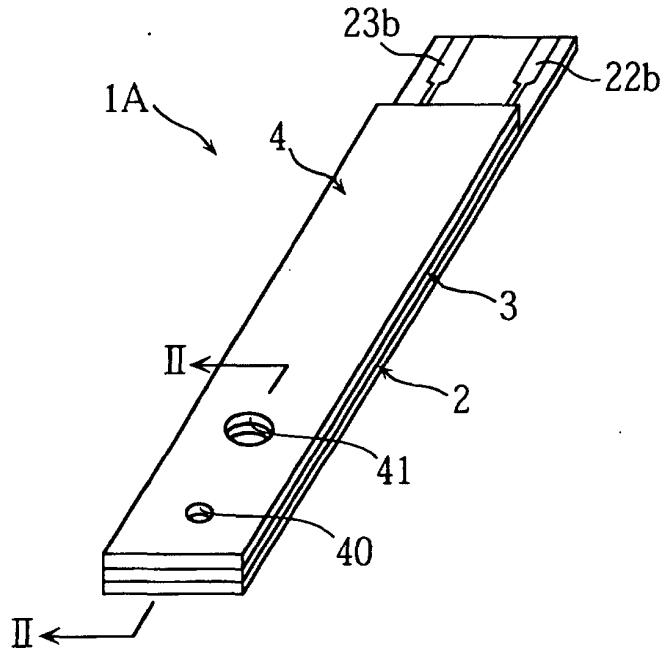


FIG.2

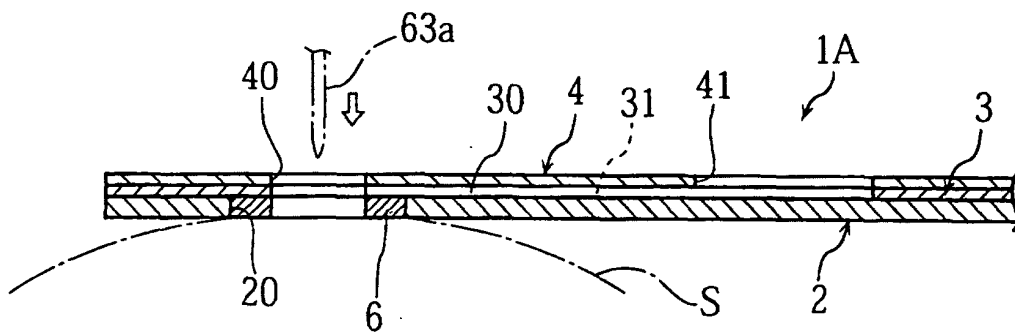


FIG.3

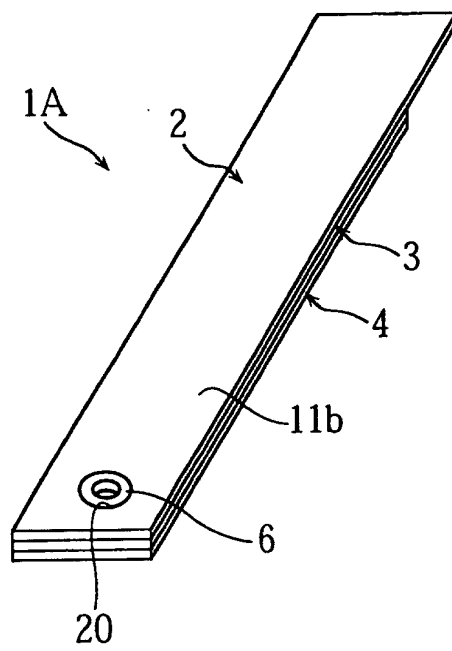


FIG. 4

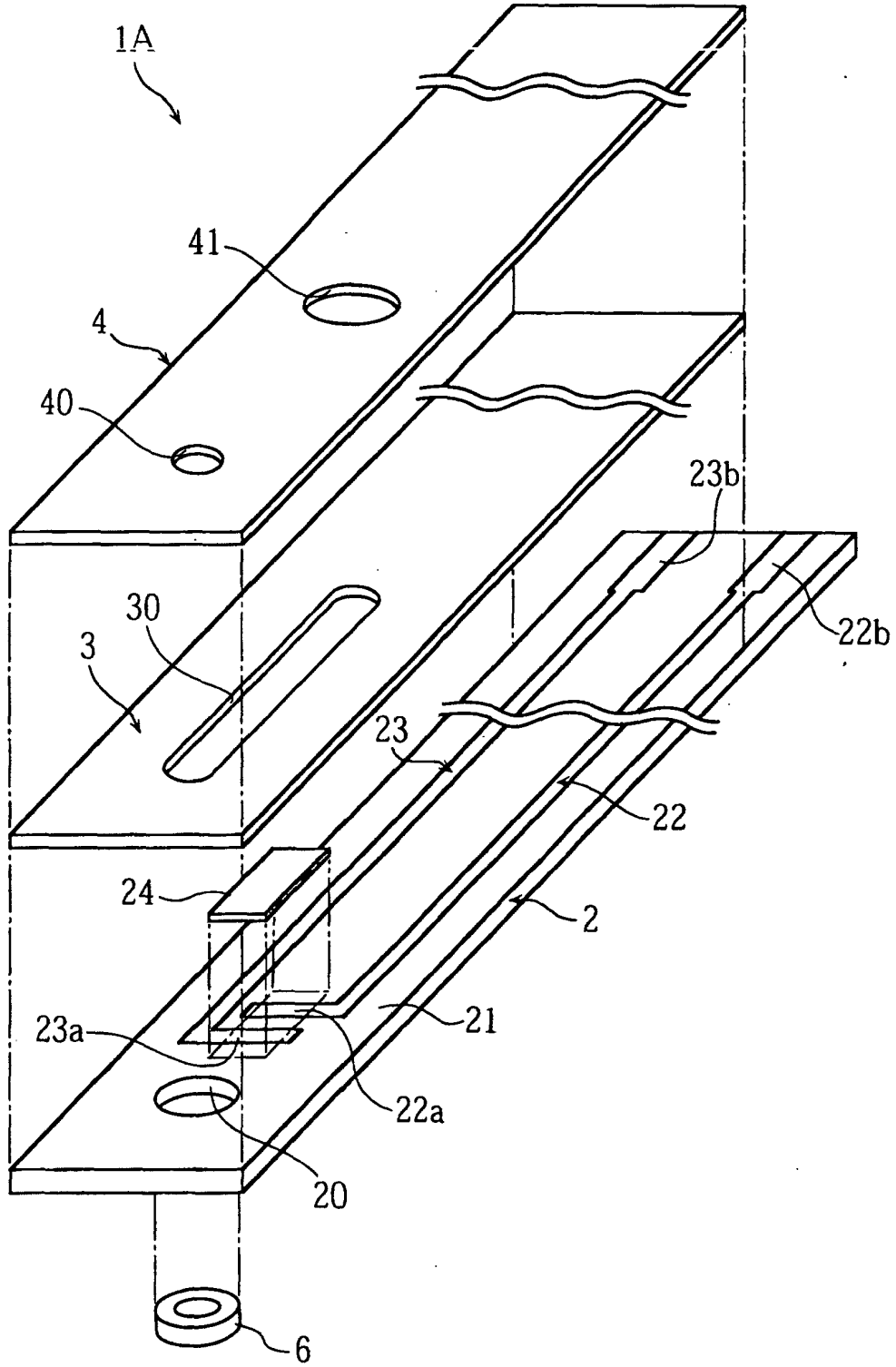


FIG.5

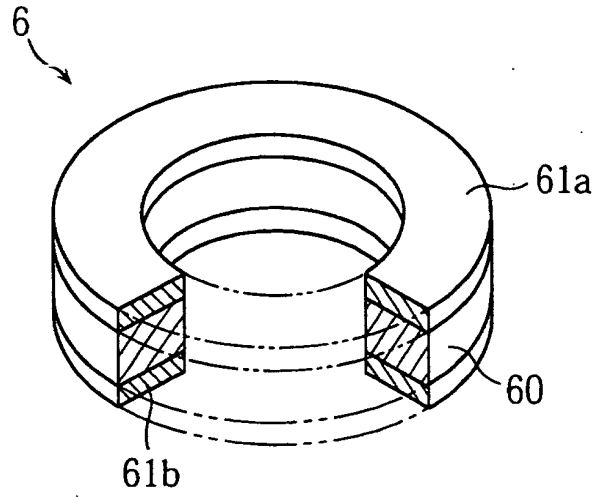


FIG.6

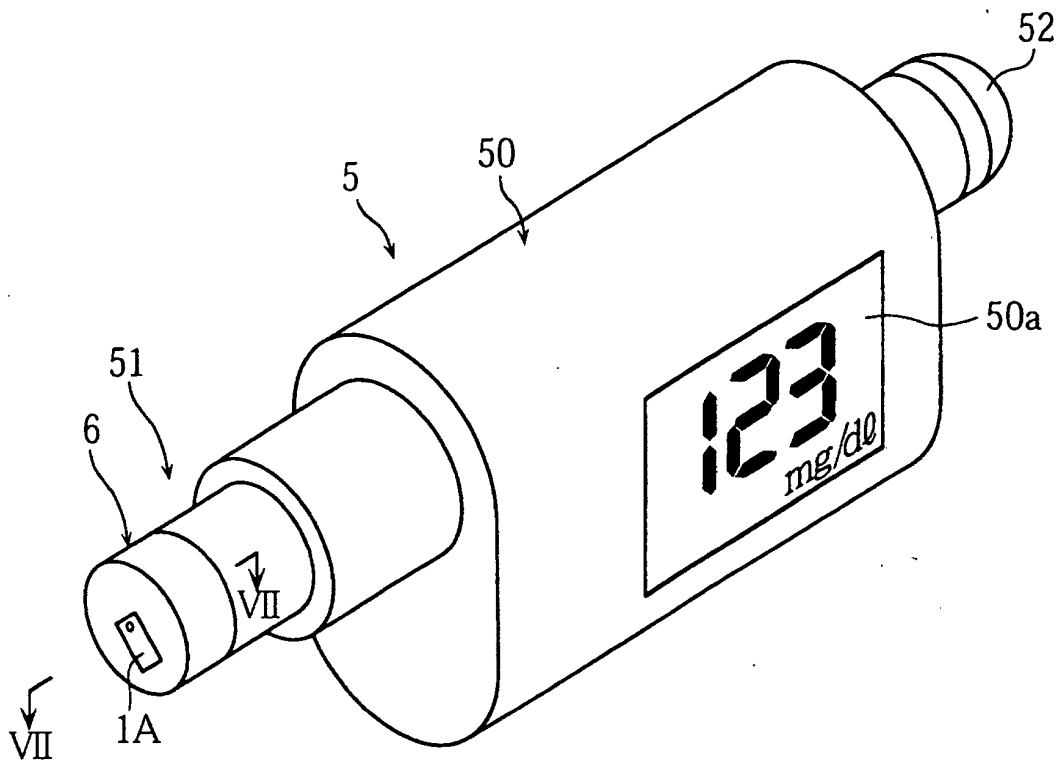


FIG.7

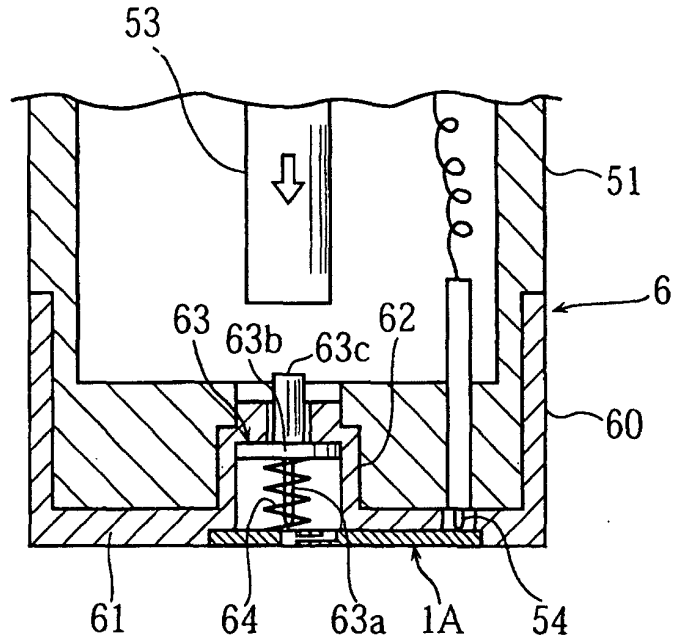


FIG.8

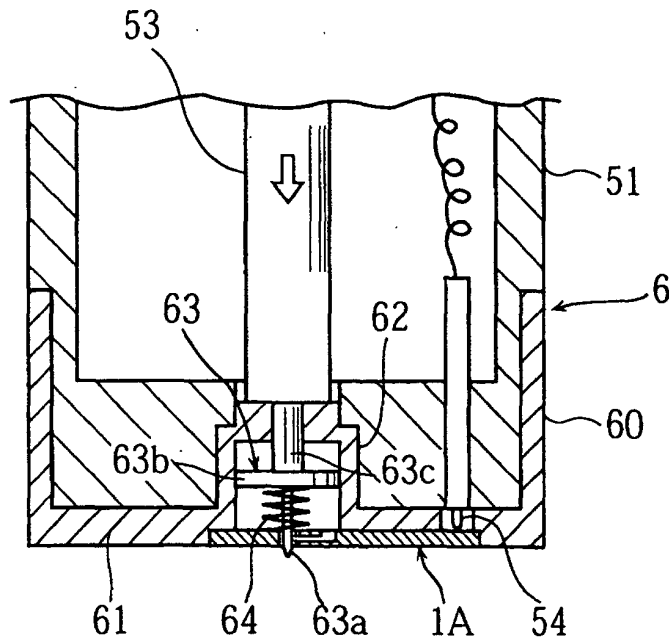
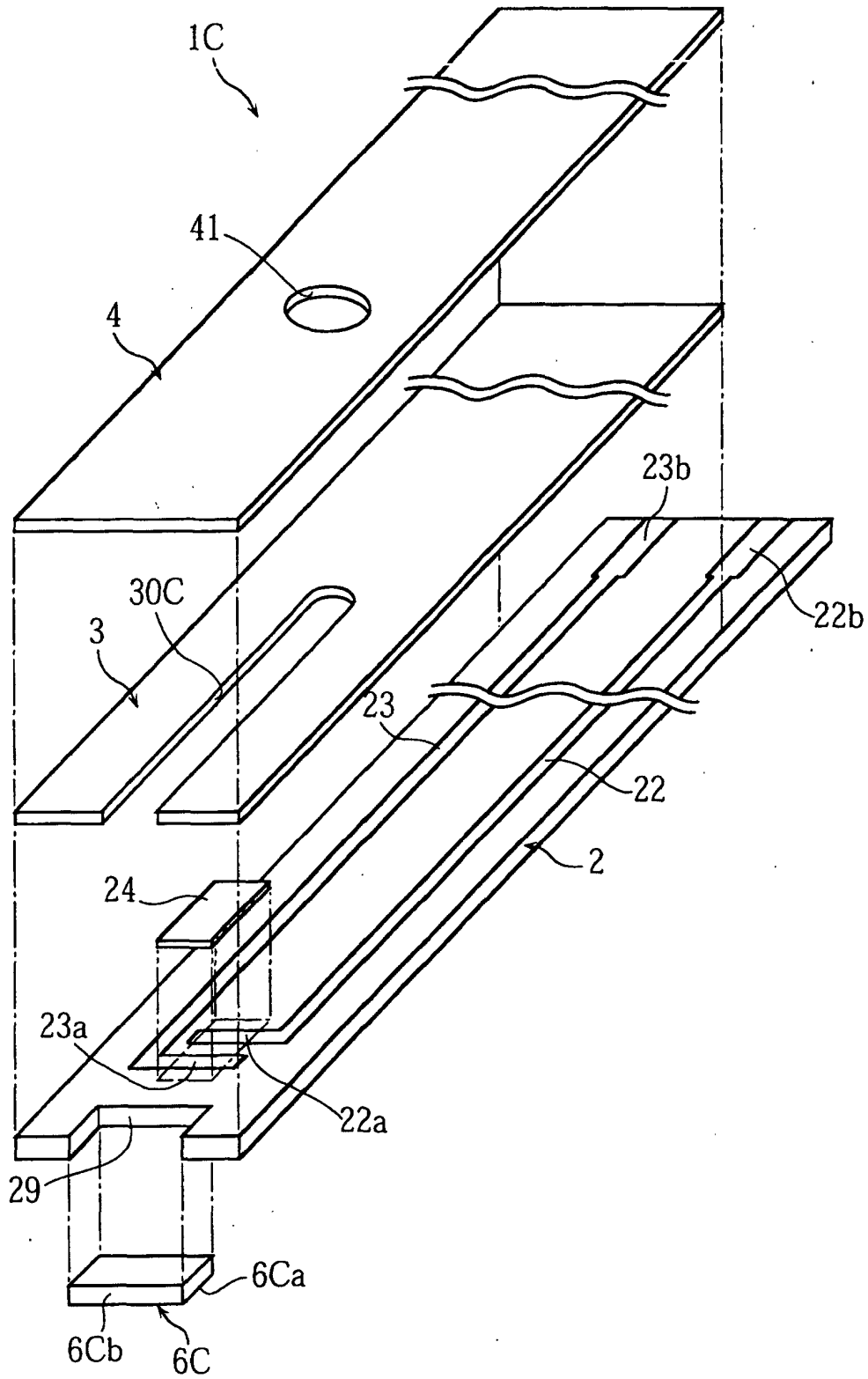




FIG.12



## INTERNATIONAL SEARCH REPORT

International application No.

PCT/JP02/07077

A. CLASSIFICATION OF SUBJECT MATTER Int.Cl <sup>7</sup> G01N27/327		
According to International Patent Classification (IPC) or to both national classification and IPC		
B. FIELDS SEARCHED		
Minimum documentation searched (classification system followed by classification symbols) Int.Cl <sup>7</sup> G01N27/327, A61B5/145, 5/15		
Documentation searched other than minimum documentation to the extent that such documents are included in the fields searched Jitsuyo Shinan Koho 1922-1996 Toroku Jitsuyo Shinan Koho 1994-2002 Kokai Jitsuyo Shinan Koho 1971-2002 Jitsuyo Shinan Toroku Koho 1996-2002		
Electronic data base consulted during the international search (name of data base and, where practicable, search terms used)		
C. DOCUMENTS CONSIDERED TO BE RELEVANT		
Category*	Citation of document, with indication, where appropriate, of the relevant passages	Relevant to claim No.
Y	JP 2000-232973 A (Arkray, Inc.), 29 August, 2000 (29.08.00), Par. Nos. [0012] to [0020]; Figs. 2, 3, 5 (Family: none)	1-9, 12-18
Y	JP 9-168530 A (Dainippon Printing Co., Ltd.), 30 June, 1997 (30.06.97), Par. Nos. [0018] to [0020], [0055]; Fig. 22 (Family: none)	1, 2, 5-18
Y	JP 2-95352 A (Kabushiki Kaisha Advance), 06 April, 1990 (06.04.90), Page 2, upper left column, lines 15 to 17; Fig. 1 (Family: none)	3
<input checked="" type="checkbox"/> Further documents are listed in the continuation of Box C. <input type="checkbox"/> See patent family annex.		
* Special categories of cited documents:		
"A"	document defining the general state of the art which is not considered to be of particular relevance	"T" later document published after the international filing date or priority date and not in conflict with the application but cited to understand the principle or theory underlying the invention
"E"	earlier document but published on or after the international filing date	"X" document of particular relevance; the claimed invention cannot be considered novel or cannot be considered to involve an inventive step when the document is taken alone
"L"	document which may throw doubts on priority claim(s) or which is cited to establish the publication date of another citation or other special reason (as specified)	"Y" document of particular relevance; the claimed invention cannot be considered to involve an inventive step when the document is combined with one or more other such documents, such combination being obvious to a person skilled in the art
"O"	document referring to an oral disclosure, use, exhibition or other means	"&" document member of the same patent family
"P"	document published prior to the international filing date but later than the priority date claimed	
Date of the actual completion of the international search 16 October, 2002 (16.10.02)		Date of mailing of the international search report 29 October, 2002 (29.10.02)
Name and mailing address of the ISA/ Japanese Patent Office		Authorized officer
Facsimile No.		Telephone No.

Form PCT/ISA/210 (second sheet) (July 1998)

INTERNATIONAL SEARCH REPORT

International application No.

PCT/JP02/07077

C (Continuation). DOCUMENTS CONSIDERED TO BE RELEVANT		
Category*	Citation of document, with indication, where appropriate, of the relevant passages	Relevant to claim No.
Y	JP 3-60645 A (Safety Diagnostics Inc.), 15 March, 1991 (15.03.91), Page 4, upper right column, lines 3 to 6 (Family: none)	4
Y	JP 11-304748 A (Omron Corp.), 05 November, 1999 (05.11.99), Par. Nos. [0103], [0104]; Fig. 10 (Family: none)	10, 11

Form PCT/ISA/210 (continuation of second sheet) (July 1998)

专利名称(译)	分析装置，穿刺元件，用于具有分析装置的温度测量装置的整体安装体，以及体液采样装置		
公开(公告)号	<a href="#">EP1411352A4</a>	公开(公告)日	2007-11-07
申请号	EP2002745986	申请日	2002-07-11
[标]申请(专利权)人(译)	爱科来株式会社		
申请(专利权)人(译)	ARKRAY, INC.		
当前申请(专利权)人(译)	ARKRAY, INC.		
[标]发明人	KATSUKI KOJI ARKRAY INC SAKATA TETSUYA ARKRAY INC KUSAKA YASUhide ARKRAY INC		
发明人	KATSUKI, KOJI, ARKRAY, INC. SAKATA, TETSUYA, ARKRAY, INC. KUSAKA, YASUhide, ARKRAY, INC.		
IPC分类号	A61B5/1486 A61B5/00 G01N33/487 G01N27/327		
CPC分类号	A61B5/1486 A61B5/14532 A61B5/150022 A61B5/150213 A61B5/150412 A61B5/150503 A61B5/15117 A61B5/15123 A61B5/1519 A61B5/15194 A61B5/157 A61B2562/0295 G01N27/3271		
优先权	2001213050 2001-07-13 JP		
其他公开文献	EP1411352B1 EP1411352A1		
外部链接	<a href="#">Espacenet</a>		

#### 摘要(译)

包括毛细管，用于将液体引入毛细管的液体入口和用于液体引入的促进装置的分析装置是新的。还包括以下独立权利要求：(1) 包括刺穿元件和分析装置的集成穿孔产品，其中液体引入促进装置具有吸水层，该吸水层具有比基底或粘合层更高的吸水能力。对皮肤的亲和力高于底物；(2) 使用该分析装置的体液采集装置。