



(51) International Patent Classification:

A61B 5/00 (2006.01) *A61B 5/0476* (2006.01)
A61B 5/04 (2006.01) *A61B 5/0478* (2006.01)
A61B 5/0408 (2006.01) *A61B 5/0488* (2006.01)

(21) International Application Number:

PCT/US2018/018570

(22) International Filing Date:

18 February 2018 (18.02.2018)

(25) Filing Language:

English

(26) Publication Language:

English

(30) Priority Data:

62/462,282 22 February 2017 (22.02.2017) US

(71) Applicant: **MEMORY MD, INC.** [US/US]; 205 E 42nd Street, #1448, New York, New York 10017 (US).

(72) Inventors: **GOLDSTEIN, Boris**; 205 E 42nd Street, 14th Floor, New York, New York 10017 (US). **PRILUTSKIY, Dmitriy**; 533-81 Zelenograd, Moscow, 124498 (RU). **ZABODAEV, Stanislav**; 18-127 Leningradskaja, Solnechnogorsk, 141503 (RU).

(74) Agent: **GLATZEL, Khanh**; Premium IP Services, P.C., 1501 India Street, #103-158, San Diego, California 920101 (US).

(81) Designated States (*unless otherwise indicated, for every kind of national protection available*): AE, AG, AL, AM, AO, AT, AU, AZ, BA, BB, BG, BH, BN, BR, BW, BY, BZ, CA, CH, CL, CN, CO, CR, CU, CZ, DE, DJ, DK, DM, DO, DZ, EC, EE, EG, ES, FI, GB, GD, GE, GH, GM, GT, HN, HR, HU, ID, IL, IN, IR, IS, JO, JP, KE, KG, KH, KN, KP, KR, KW, KZ, LA, LC, LK, LR, LS, LU, LY, MA, MD, ME, MG, MK, MN, MW, MX, MY, MZ, NA, NG, NI, NO, NZ, OM, PA, PE, PG, PH, PL, PT, QA, RO, RS, RU, RW, SA, SC, SD, SE, SG, SK, SL, SM, ST, SV, SY, TH, TJ, TM, TN, TR, TT, TZ, UA, UG, US, UZ, VC, VN, ZA, ZM, ZW.

(84) Designated States (*unless otherwise indicated, for every kind of regional protection available*): ARIPO (BW, GH, GM, KE, LR, LS, MW, MZ, NA, RW, SD, SL, ST, SZ, TZ, UG, ZM, ZW), Eurasian (AM, AZ, BY, KG, KZ, RU, TJ, TM), European (AL, AT, BE, BG, CH, CY, CZ, DE, DK, EE, ES, FI, FR, GB, GR, HR, HU, IE, IS, IT, LT, LU, LV, MC, MK, MT, NL, NO, PL, PT, RO, RS, SE, SI, SK, SM, TR), OAPI (BF, BJ, CF, CG, CI, CM, GA, GN, GQ, GW, KM, ML, MR, NE, SN, TD, TG).

(54) Title: APPARATUS AND METHOD FOR CONDUCTING ELECTROENCEPHALOGRAPHY

(57) Abstract: A disposable apparatus for electroencephalography measurement on a human subject is provided. The disposable apparatus for electroencephalography measurement may be securely attached to the subject's head without attachment gel contacting the subject's scalp. A transparent body is provided for easy placement of electrodes. Methods to use the apparatus for electroencephalography measurement are also provided.

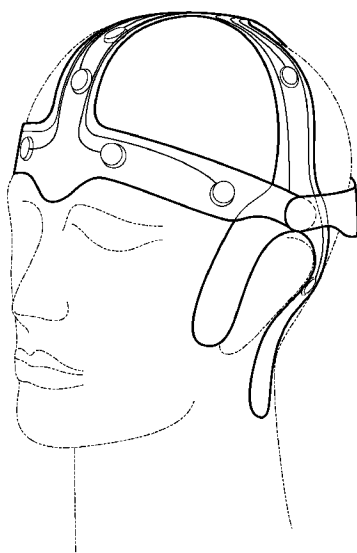


FIG. 3



Published:

— *with international search report (Art. 21(3))*

APPARATUS AND METHOD FOR CONDUCTING ELECTROENCEPHALOGRAPHY

CROSS-REFERENCE TO RELATED APPLICATIONS

[001] This application claims the benefit of U.S. Provisional Application No. 62/462,282, filed Feb 22, 2017. Each of the above-referenced patent applications is incorporated by reference in its entirety.

BACKGROUND OF THE INVENTION

Field of the Invention

[002] This invention relates to an apparatus used in electroencephalography and a method to perform electroencephalography using this apparatus. The apparatus is disposable and may be applied to a human subject's head in many settings.

Description of the Related Technology

[003] Electroencephalography (EEG) is the recording of electrical signals along the scalp. Brains' neural activities generate electrical voltage fluctuations, whose signals may be measured by EEG. EEG measurements are useful for medical diagnosis and behavioral therapy. Other medical techniques involving the recording of bio-potential signals are electrocardiograms (ECG) and electromyograms (EMG).

[004] Electroencephalography is particularly useful in diagnosis of conditions relating to brain injuries, such as seizure, stroke, brain tumors, Alzheimer's disease, or certain psychoses. Neural activities generate bio-potentials, which are collected by electrodes situated by a cap or by application of each electrode on certain head regions and conducted through electrical connections to a process hub.

[005] EEG measurements typically require application of electrodes to the subject's head by either a cap application or placement of each electrode. Placement of each electrode is time consuming and requires a trained technician. Moreover, reusable caps and electrodes require cleaning and adding of gel, which may be time consuming and a means for germ transmission.

SUMMARY

[006] According to embodiments of the present invention, there is provided an apparatus for performing electroencephalography on a human subject. The apparatus comprises a mid sheet extending from the forehead anchor to the connector point; a frontal portion with a front left wing and a front right wing extending from the mid sheet at the forehead anchor to the left and right, respectively; a coronal portion with a coronal left side wing and a coronal right side wing extending from the middle of the mid sheet to the left and right, respectively; a lateral portion with a rear left side wing and a right left side wing extending from the rear of the mid sheet, respectively; a plurality of circuitry connecting a plurality of electrodes to a connector point situated at the end of the mid sheet. On the apparatus are electrodes situated at positions F_z , C_z , P_z , F_7 , F_{p1} , F_8 , F_{p2} , C_3 , T_3 , A_1 , C_4 , T_4 , A_2 , T_5 , O_1 , T_6 , and O_2 .

[007] There is provided an apparatus for conducting electroencephalography, the apparatus comprising:

- a mid sheet extending from the forehead anchor to the connector point, comprising a plurality of embedded electrodes at positions F_z , C_z and P_z of the International Standard 10-20 System for electrode placement and a ground electrode;

- a frontal portion comprising:

- a front left wing extending from the mid sheet at the forehead anchor at an angle and comprising a plurality of embedded electrodes at positions F_7 and F_{p1} of the International Standard 10-20 System for electrode placement and an attachment point at the distal end;

- a front right wing extending from the mid sheet at the forehead anchor at an angle and in the opposite direction of the front left wing, comprising a plurality of embedded electrodes at positions F_8 and F_{p2} of the International Standard 10-20 System for electrode placement and an attachment point at the distal end;

- a forehead anchor between the front left wing and the front right wing; and

- a coronal portion comprising:

- a coronal left side wing extending from the middle of the mid sheet at an angle and comprising a body and two extensions, a first extension extending

from the body to one side at an angle less than 90 degrees taken between the body and the first extension in the clockwise position, a second extension extending from the body to the opposite side at an angle less than 90 degrees taken between the body and the second extension in the anti-clockwise position, with embedded electrodes at positions C₃ and T₃ in the body, and an embedded electrode at position A₁ on the first extension, the electrode positions are according to the International Standard 10-20 System for electrode placement, and an attachment point at the distal end of the body;

a coronal right side wing extending from the middle of the mid sheet at an angle and in the opposite direction of the front left wing, comprising a body and two extensions, a first extension extending from the body to one side at an angle less than 90 degrees taken between the body and the first extension in the clockwise position, and a second extension extending from the body to the opposite side at an angle less than 90 degrees taken between the body and the second extension in the anti-clockwise position, with embedded electrodes at positions C₄ and T₄ in the body, and an embedded electrode at position A₂ on the second extension, the electrode positions are according to the International Standard 10-20 System for electrode placement, and an attachment point at the distal end of the body;

a lateral portion comprising:

a rear left side wing extending at an angle from the rear end of the mid sheet comprising a plurality of embedded electrodes at positions T₅ and O₁ of the International Standard 10-20 System for electrode placement and an attachment point at the distal end of the rear left wing;

a rear right side wing extending at an opposing angle from the mid sheet comprising a plurality of embedded electrodes at positions T₆ and O₂ of the International Standard 10-20 System for electrode placement and an attachment point at the distal end of the rear right wing; and

a plurality of circuitry connecting the plurality of electrodes to a common connector point situated at the end of the mid sheet, wherein the mid sheet ends at a connector point with embedded circuitry,

wherein the mid sheet, the frontal portion, the coronal portion, and the lateral portion comprise the apparatus body, and

wherein the apparatus body comprises a base layer.

[0008] There is provided an EEG apparatus for EEG measurement as above and the EEG apparatus may have a transparent or seen-through base layer.

[0009] There is provided an EEG apparatus for EEG measurement as above and the circuitry in the EEG apparatus may be imprinted and made of silver and/or silver chloride.

[0010] There is provided an EEG apparatus for EEG measurement as above and the electrodes within the EEG apparatus may be imprinted and made of silver and/or silver chloride.

[0011] There is provided an EEG apparatus for EEG measurement as above and the circuitry and electrodes may be printed in one stage.

[0012] There is provided an EEG apparatus for EEG measurement as above and the plurality of electrodes may extend from the apparatus and expose outside the base layer and with a conductive gel layer present on the base layer.

[0013] There is provided an EEG apparatus for EEG measurement as above and the plurality of electrodes may have sponges covering the conductive gel layer, and the sponges may be soaked with conductive gel.

[0014] There is provided an EEG apparatus for EEG measurement as above and the apparatus further comprises a holder in which the apparatus is placed.

[0015] There is provided an EEG apparatus for EEG measurement as above and the attachment points comprise gel spots covered by a thin film.

[0016] There is provided an EEG apparatus for EEG measurement as above and the attachment points comprise Velcro surfaces.

[0017] Further, there is provided a method for conducting electroencephalograph using the above provided apparatus, the method comprising:

providing an apparatus for performing electroencephalography on a human subject, the apparatus comprising:

a mid sheet extending from the forehead anchor to the connector point, comprising a plurality of embedded electrodes at positions F_z , C_z and P_z of the International Standard 10-20 System for electrode placement and a ground electrode;

a frontal portion comprising:

a front left wing extending from the mid sheet at the forehead anchor at an angle and comprising a plurality of embedded electrodes at positions F₇ and F_{p1} of the International Standard 10-20 System for electrode placement and an attachment point at the distal end;

a front right wing extending from the mid sheet at the forehead anchor at an angle and in the opposite direction of the front left wing, comprising a plurality of embedded electrodes at positions F₈ and F_{p2} of the International Standard 10-20 System for electrode placement and an attachment point at the distal end;

a forehead anchor between the front left wing and the front right wing; and

a coronal portion comprising:

a coronal left side wing extending from the middle of the mid sheet at an angle and comprising a body and two extensions, a first extension extending from the body to one side at an angle less than 90 degrees taken between the body and the first extension in the clockwise position, a second extension extending from the body to the opposite side at an angle less than 90 degrees taken between the body and the second extension in the anti-clockwise position, with embedded electrodes at positions C₃ and T₃ in the body, and an embedded electrode at position A₁ on the first extension, the electrode positions are according to the International Standard 10-20 System for electrode placement, and an attachment point at the distal end of the body;

a coronal right side wing extending from the middle of the mid sheet at an angle and in the opposite direction of the front left wing, comprising a body and two extensions, a first extension extending from the body to one side at an angle less than 90 degrees taken between the body and the first extension in the clockwise position, and a second extension extending from the body to the opposite side at an angle less than 90 degrees taken between the body and the second extension in the anti-clockwise position, with embedded electrodes at positions C₄ and T₄ in the body, and an embedded electrode at position A₂ on the second extension, the electrode positions are according to the International Standard 10-20 System for electrode placement, and an attachment point at the distal end of the body;

a lateral portion comprising:

a rear left side wing extending at an angle from the rear end of the mid sheet comprising a plurality of embedded electrodes at positions T₅ and O₁ of the International Standard 10-20 System for electrode placement and an attachment point at the distal end of the rear left wing;

a rear right side wing extending at an opposing angle from the mid sheet comprising a plurality of embedded electrodes at positions T₆ and O₂ of the International Standard 10-20 System for electrode placement and an attachment point at the distal end of the rear right wing; and

a plurality of circuitry connecting the plurality of electrodes to a common connector point situated at the end of the mid sheet,

wherein the mid sheet ends at a connector point with embedded circuitry,

wherein the mid sheet, the frontal portion, the coronal portion, and the lateral portion comprise the apparatus body, and

wherein the apparatus body comprises a base layer;

affixing the apparatus to the patient by affixing the frontal portion to the forehead of the patient, affixing the front portion of the mid sheet from the forehead anchor to the junction between the mid sheet and the coronal elements along the sagittal line of the patient's head, affixing the coronal elements along the coronal line of the human subject's head, affixing the extensions around the left ear and right ear of the patient, securing the front left and right wings to the coronal attachment points, affixing the middle part of the mid sheet from the C_z location to the junction between lateral portion and mid sheet along the sagittal line of the human subject's head, affixing the lateral portion to the human subject's scalp and securing the rear left and right wings to the coronal attachment points, affixing the rear portion of the mid sheet to the patient's scalp; and

connecting the connector point to an electroencephalography cable,

wherein affixing the apparatus further comprises contacting the conductive gel to adhere the electrodes to the human subject's scalp.

[0018] There is also provided a method to diagnose a neurological condition or disease, the method comprises:

selecting a subject potentially having a neurological condition or disease; and

performing electroencephalography on the subject using an electroencephalography apparatus as in a method above to produce an electroencephalogram.

[0019] There is provided a method above, further comprising diagnosing the neurological condition or disease by interpreting the electroencephalogram

[0020] There is provided a method above, further comprising treating the neurological condition or disease diagnosed, and the neurological condition or disease is epilepsy or a stroke.

ABBREVIATIONS

EEG: Electroencephalography

DIN: Deutsches Institut Für Normung

EMG: Electromyograms

BRIEF DESCRIPTION OF THE DRAWINGS

[0021] FIG. 1 depicts the top view of the EEG apparatus according to embodiments.

[0022] FIG. 2 depicts the cross sectional view of the EEG apparatus at a point where an electrode is present.

[0023] FIG. 3 depicts a perspective view of the EEG apparatus upon affixing to a human head.

[0024] FIG. 4 depicts the top view of the EEG apparatus upon affixing to a human head.

[0025] FIG. 5 depicts another perspective view of the EEG apparatus upon affixing to a human head and connected to an EEG cable.

[0026] FIG. 6 illustrates the International Standard electrode placement system.

DETAILED DESCRIPTION OF CERTAIN INVENTIVE EMBODIMENTS

[0027] As used herein, the word "wiredly" means a connection by physical means, such as by a continuous body of metal or conductive material.

[0028] As used herein, the word "attachment point" means a point at which an attachment means is located and capable of attaching to another physical object.

[0029] As used herein, the International Standard electrode placement system, or the 10-20 system refers to the International 10-20 system to describe and apply the location of scalp electrodes in the context of an EEG test or experiment.

[0030] As used herein, the directional term “left” refers to the left side of the human subject upon which this EEG apparatus is affixed. The directional term “right” refers to the right side of the human subject upon which this EEG apparatus is affixed.

[0031] The terms “International Standard electrode placement system”, “International Standard 10-20 electrode placement system”, and “International Standard 10-20 System” are used interchangeably and refer to the International Standard 10-20 electrode placement system, which is illustrated in FIG. 6.

[0032] The terms “human subject” and “subject” are used interchangeably to refer to a human whose head is affixed with the EEG apparatus herein during use.

[0033] All dimensions specified in this specification are by way of example only and not intended to be limiting. Drawings are not necessarily drawn to scale. The actual size of the EEG apparatus herein may be chosen or modified for intended use, including use in adults with different head sizes, in children and/or infants. The actual size may also be tailored to the specific human subject who may use this EEG apparatus. Generally, the EEG apparatus herein has three sizes: large, medium, and small. Other sizes and dimensions are contemplated.

[0034] The EEG apparatus disclosed herein and its components may be made by any suitable material for the intended purpose of the electroencephalography apparatus. Specific materials may be discussed herein but only for illustration purposed only, and will not be understood as limiting in anyway.

[0035] The EEG apparatus herein provides EEG channels to collect the patient’s brain signal and thereafter brain activity may be interpreted, such that any conditions can be identified and treated, if necessary. This EEG apparatus may be disposable, such that it can be discarded after each use, therefore preventing accumulation of microbials on EEG apparatuses. The EEG apparatus disclosed herein may be easily stored and transported and therefore is suitable for use both in clinic settings and at non-clinical settings, such as in battlefields or accident scenes. The EEG apparatus may be used for medical treatment and research purposes or other purposes, such as training and sleep studies. Other uses may be possible, depending on the need determined by the users.

[0036] Embodiments of this application relate to a disposable EEG apparatus embedded with electrodes for use in electroencephalography. The apparatus may be generally transparent or seen-through for ease of application and connection. All electrodes may be wiredly connected to a main outlet connector, which is connected to an outside processor. The EEG apparatus may utilize the International Standard 10-20 electrode positioning system and including at least one ground electrode and at least one reference electrode. The locations and number of electrodes on the EEG apparatus may be chosen to ensure adequate recording of EEG signal.

[0037] The EEG apparatus may provide adequate electrodes to channel brain neural activities as detected in a human subject, thereby facilitating interpretation of the EEG signal. The EEG apparatus according to embodiments herein may be easily applied and disposed of after one use. Flat electrodes embedded into EEG the apparatus may provide increased comfort to human subjects. Applications for the EEG apparatus may include neural brain measurement in clinical settings or in field settings such as in battlefields or accident scenes.

[0038] According to embodiments of this invention, there is provided an EEG apparatus **100** comprising a frontal portion **128**, a coronal portion **121**, and a lateral portion **129** integrally connected by a mid sheet **118**. The mid sheet **118** may comprise the front portion **106**, the middle portion **107**, and the rear portion, **108**. The EEG apparatus **100** is depicted in FIG. 1. The EEG apparatus **100** may be made of elastic and pliable materials to allow for proper positioning on the human subject's head. This material may also provide electrical insulation for electrodes and wires and/or connection inside. The EEG apparatus **100** may be transparent or clear, allowing electrodes to be seen, which may facilitate proper positioning.

[0039] The frontal portion **128** of the EEG apparatus **100** may comprise a forehead anchor **102** positioned as an extension towards the front of the mid sheet **118** of the EEG apparatus **100** and two opposing left front wing **103** and right front wing **101** forming the forehead wing. The mid sheet **118** of the EEG apparatus **100** may be shaped as a straight, narrow sheet extending from the base of the skull to the middle of the forehead of the human subject upon application, with wings extending from the front **106**, the middle **107**, and the rear of portion the mid sheet **108**. The coronal portion **121** may comprise the coronal right and left wings **112**, **113** and the middle part of mid sheet **107**. The lateral portion **129** of the EEG apparatus **100** may comprise the rear part of the mid sheet **108** and the two (2) rear side wings **110**, **111**.

[0040] The frontal portion **104** may comprise a forehead anchor **102**, which may improve placement of the EEG apparatus **100** on the human subject. The forehead anchor **102** may be affixed to the subject's forehead during use. The lower surface of the forehead anchor **102** may have a layer of attachment gel covered by another layer of plastic and/or paper. The frontal portion **104** may comprise two (2) wings, with the front left wing **103** extending from the left side of the front mid sheet **106** at the forehead anchor and the front right wing **101** extending from the right side of the front mid sheet **106**. Positioned on the front left wing **103** may be a plurality of electrodes, which may be two (2) electrodes at positions F_{p1} and F_7 of the International Standard 10-20 System. Electrodes are connected by imprinted circuitry **120**, **207** and routed to the connector point **119**. Positioned on the front right wing **101** may be a plurality of electrodes, which may be two (2) electrodes at position F_{p2} and F_8 of the International Standard 10-20 System, which are also connected by imprinted circuitry **120**, **207**. Electrode positions are confirmed upon application to the subject's scalp. The front part of mid sheet **106** extends from the forehead anchor **102** towards the coronal portion **121**.

[0041] At the distal end of each of the front left and right wing **103**, **101** may be a frontal attachment point **122**, **123**. The frontal attachment points **122**, **123** may comprise an attachment gel spot covered by a thin film, which may be peeled off for attachment to the attachment points on the coronal left and right side wings **125**, **124**. Alternatively, the frontal attachment points **122**, **123** may comprise a Velcro - like attachment mechanism to mate with a corresponding Velcro surface at the attachment points on the coronal left and right side wings **125**, **124**, or other attachment means.

[0042] The front part of the mid sheet **106** may extend from the middle of the forehead wing **104** at the forehead anchor **102** towards the base of the neck along the sagittal line. The front part of the mid sheet **106** may have an electrode situated at position F_z according to the International Standard 10-20 System and a ground electrode.

[0043] At approximately the middle of the mid sheet **118**, corresponding to the top of the subject's head at the coronal line may be a coronal portion **121** with two coronal side wings **112**, **113**. The coronal left side wing **113**, upon application to the subject's head, may extend from the subject's top of the head to the subject's left ear. The coronal right side wing **112**, upon application to the subject's head, may extend from the subject's top of the head to the subject's right ear.

[0044] On each of the coronal left and right side wing **113, 112**, above the point at which extensions extend from each of the left and right side wing **113, 112** may be an attachment point **124, 125**. The attachment points **124, 125** may mate with the front attachment points **123, 122** to secure the EEG apparatus **100** in place. The attachment points **124, 125** may be a flat surface on which attachment gel from the front attachment points **123, 122** may be applied, or may be a Velcro surface to mate with another Velcro surface present on the front attachment points **122, 123**.

[0045] Positioned on the coronal left side wing **113** may be a plurality of electrodes, which may be two (2) electrodes at positions C₃ and T₃ in the International Standard 10-20 System. The coronal left side wing **113** may comprise an extending body which may branch into two (2) extensions **116, 117**. The angle at which the first extension **116** may extend from the extending body may be less than 90 degrees taken between the extending body and the first extension in clockwise position. The angle at which the second extension **117** may extend from the extending body may be less than 90 degrees taken between the extending body and the second extension in anti-clockwise position. An embedded electrode may be situated at position A₁ on the first extension **116** and may act as the reference electrode. The lower surface of each of the two extensions **116, 117** may be a layer of attachment gel covered by a thin film.

[0046] Positioned on the coronal right side wing **112**, which extends from the middle portion of the mid sheet **107** to an opposing side of the coronal left side wing, may be a plurality of electrodes, which may be two (2) electrodes at positions C₄ and T₄ in the International Standard 10-20 System. The coronal right side wing **112** may comprise an extending body which may branch into two (2) extensions **114, 115**. The angle at which the first extension **115** may extend from the extending body may be less than 90 degrees taken between the extending body and the first extensions in clockwise position. The angle at which the second extension **114** may extend from the extending body may be less than 90 degrees taken between the extending body and the second extension in anti-clockwise position. An electrode may be situated at position A₂ according to the International Standard 10-20 System for electrode placement on the second extension **114** and may act as a reference electrode.

[0047] The lower surface of each of the two extensions **114, 115** on the coronal right wing may be a layer of attachment gel covered by a thin film. The middle part of the mid sheet **107** may extend backward from the middle of the coronal portion **121** to the back of the

subject's head. The middle part of the mid sheet **107** may comprise a plurality of electrodes, which may be two (2) electrodes at positions P_z and C_z in the International Standard 10-20 System for electrode placement.

[0048] The lateral portion **129** of the EEG apparatus may comprise the rear portion of the mid sheet **108** and two opposing rear wings **110**, **111**. The rear left side wing **111** may extend from the mid sheet **118** at an angle which may be approximately perpendicular to the mid sheet **118** and to the left of the mid sheet **118**, but other angles are contemplated. Positioned on the rear left side wing **111** may be a plurality of electrodes, which may be two (2) electrodes at positions T_5 and O_1 in the International Standard 10-20 System. The rear right side wing **110** may extend from the mid sheet **118** at an angle which may be approximately perpendicular to the mid sheet **118** and to the right of the mid sheet **118**, but other angles are contemplated. Positioned on the right side rear wing **110** may be a plurality of electrodes, which may be two (2) electrodes at position T_6 and O_2 in the International Standard 10-20 System.

[0049] At the distal end of each of the rear left and right wing **110**, **111** may be a rear attachment point **126**, **127**. The rear attachment points **126**, **127** may comprise an attachment gel spot covered by a thin film, which may be peeled off for attachment to the attachment point on the coronal left and right side wings **124**, **125**, or on the frontal attachment points **123**, **122** on the frontal left **103** and right wing **101**. Alternatively, the rear attachment points **126**, **127** may comprise a Velcro - like attachment mechanism to mate with a corresponding Velcro surface on the coronal left and right side wings **124**, **125**, or to mate with a corresponding Velcro surface attachment points on the front left and right side wings **123**, **122**. Other attachment means are contemplated.

[0050] The mid sheet **118**, upon affixing to the subject's head, may extend towards the subject's neck and end in a connector point **119** forming the rear portion of the mid sheet **108**, and together with the rear left wing **110** and rear right wing **111**, may form the lateral portion **129**. The mid sheet **118** may have embedded circuitry **120**, which may end at the bottom of the mid sheet **118** at the connector point **119**. The total length of the mid sheet **118** may be 30 - 70 cm. Other lengths are contemplated.

[0051] Electrodes **105** may be present on the EEG apparatus **100** at specified locations in the International Standard 10-20 System. The locations shown in FIG. 1 and discussed specifically herein are exemplary only. Other electrode locations may be contemplated in

embodiments. Electrodes may be connected by circuitry **120**, which are ultimately connected to the connector **119**.

[0052] The cross section of the EEG apparatus at an electrode in an exemplary embodiment of the invention may be depicted in FIG. 2. The EEG apparatus **100** according to embodiments may comprise a base layer **201**, which may provide structural support for the EEG apparatus **100**. The base layer may be 0.1 - 0.3 mm, preferably 0.125 mm, in thickness, and 15 - 45 mm in width. Suitable materials for the EEG apparatus **100** base layer **201** may be polycarbonate plastic or polyester. The base layer **201** may be transparent or seen-through material for proper placement of the electrodes. Circuitry **207** may be embedded into the base layer **201** by printing. Electrodes **202** may be placed at certain positions corresponding to electrode positions in the International Standard 10-20 System. Electrodes **202** may be in electrical contact with circuitry **207** by printing. Electrodes **202** may be integrated with circuitry **207** by one-stage printing using the same material.

[0053] Circuitry **207** may be included in the EEG apparatus **100**. Circuitry may be imprinted, such as by silver or silver - silver chloride composition, or may be wire embedded into the EEG apparatus **100**. Other materials for the circuitry are contemplated. Circuitry **207** thickness may be 0.005 - 0.030 mm, preferably at 0.015 mm. A plurality of electrodes **202** may be positioned on the EEG apparatus **100**, such that each electrode may be in contact with and conductively connected to the circuitry **207**. All circuitry may be routed and may end at a connector point **119**, where a plug or outside connector may be connected to transmit collected signals to a processor. The connector **119** is configured to mate with corresponding outside connectors, which may be connected to a standard EEG recording system.

[0054] Circuitry **207** may be covered by a dielectric layer for insulation, in addition to the base layer. The dielectric layer may be a polymer composition. Other suitable materials for the dielectric layer may be used.

[0055] FIG. 5 illustrates the EEG apparatus **100** affixed on a subject's head and connected to an outlet cable **130, 501**. The corresponding outlet cable **130, 501** may be a transformer outlet cable. The transformer outlet cable **130, 501** may have an electrical socket contacting the connector point **119, 502** wherein conductive surfaces present on the electrical socket conductively contact printed circuitry present at the connector point **119, 502**. The electrical socket may be integrated into a nonconductive clamp **503**. Upon connection between the electrical

socket on the outlet cable **130** and the EEG apparatus **100** at the connector point, the clamp **503** may hold the EEG apparatus connector point **119** in place, thereby facilitating the connection between the EEG apparatus **100** and the outlet cable **130, 501**.

[0056] The electrode **202** may be embedded into the base layer **201** by imprint. In some embodiments, the electrode **202** may fit snugly into the base layer **201**, wherein the surface of the electrode **202** at the scalp contact point does not extend beyond the base layer **201**; or it may extend by a thickness from the base layer **201**. This eliminates the need for crimp or a snap-on mechanism to hold the electrodes in place. The electrode **202** may separate into two portions: the embedded portion contained within the base layer **201** and the extended portion **203** extending from the base layer. A conductive gel layer **204** may be present at the electrode **202** contact surface. The electrode **202** may be by silver - silver chloride composition. The electrode **202** thickness may be 0.005 - 0.030 mm, preferably at 0.015 mm.

[0057] A layer of conductive gel **204** may be present on the surface of electrodes **202**. Conductive gel **204** may be potassium chloride (KCl) or hydrogel. Conductive gel **204** may be pre-applied to electrodes' **202** contact surfaces and spread for even distribution. On top of the conductive gel layer **204** may be a sponge **208** to keep the gel in place and preventing gel dry-out. Additional conductive gel **204** may be placed inside the sponge **208**, such that the sponge **208** is soaked with conductive gel.

[0058] The lower surface of the EEG apparatus **100** may be covered by a holder. The cross section of the holder may be depicted in FIG. 2 as **205**. This holder may hold the EEG apparatus **100** in place and also cover the entire lower surface of the EEG apparatus **100** to prevent dust gathering on the lower surface. At use time, the EEG apparatus **100** may be removed from the holder **205**. The sponges **208** may be removed prior to applying the electrodes **105, 202** to the subject's scalp.

[0059] Each electrode may be in contact with the corresponding circuitry **120** and integrated into the circuitry by means of silver/silver chloride paint. Electrodes **105, 202** according to embodiments do not require additional crimps to connect with the circuitry. Electrodes **105, 202** may be integrally connected to the EEG apparatus **100** to improve comfort during application to the subject's scalp.

[0060] According to embodiments, the EEG apparatus **100** may be disposable, such that no EEG apparatus **100** may be used twice. This may prevent discomfort in attaching electrodes to subjects, and may prevent transmission of bacteria and/or virus between users.

[0061] According to other embodiments of the present invention, there is provided a method for performing electroencephalography. In embodiments, the method may comprise providing an EEG apparatus **100** according to embodiments in the present invention. Examples of this method may be shown in FIG. 3 and FIG. 4. FIG. 3 is the front perspective view of the EEG apparatus **100** as placed on the subject's head. FIG. 4 is a top perspective view showing placement of the EEG apparatus **100** of FIG. 1 on the subject's head. FIG. 5 is the lateral view showing the placement of the EEG apparatus **100** of FIG. 1 on the subject's head with the EEG apparatus **100** connected to an outside cable through the connector **119**, **502**.

[0062] In embodiments, a subject may be selected for EEG measurement. The subject may be suspected to or have a brain disease, such as epilepsy, stroke, or other diseases identifiable or diagnosable by EEG measurement. Human subjects without suspected or known medical conditions may also be selected for EEG measurement for other purposes, such as measuring brainwaves.

[0063] The subject's forehead may be cleaned and dried before placement of the EEG apparatus **100**, such as by wiping with alcohol or water and drying by a gauze pad. The subject's hair may also be parted along the sagittal line to expose the scalp. Parting hair may be by an applicator, such as a cotton-tipped applicator.

[0064] The EEG apparatus **100** may be removed from the holder **205**, exposing the lower surface of the EEG apparatus **100**, wherein electrodes **105**, **202** with conductive gel may be present. Sponges **208** present on the electrodes **105**, **202** may be removed to expose the conductive gel layer.

[0065] The EEG apparatus **100** may be placed onto the subject's head by first peeling off the thin film covering the attachment gel spot on the forehead anchor **102**. The forehead anchor **102** may be positioned at the middle of the subject's forehead, such that the anchor **102** touches the forehead near the upper region of the nose. The attachment gel may hold the forehead anchor **102** in place.

[0066] The front portion **104** of the EEG apparatus **100** may be placed by lining the front portion **104** to the subject's forehead. Conductive gel coming in contact with the subject's

skin may provide attachment. Additionally, the attachment points **122, 123** at the end of each front left wing **103** and front right wing **101** may be attached to the corresponding attachment points **124, 125** located on the coronal left and right wings. The attachment points **122, 123** may be left hanging for pending attachment to the attachment points on the coronal left and right wings. The EEG apparatus **100** as shown in FIG. 1 may have electrodes present at positions F₇ and F_{p1} on the left side wing **103** of the front portion **104**, while the right side wing **101** may have electrodes present at positions F₈ and F_{p2} upon attachment.

[0067] The front mid sheet **106** of the EEG apparatus **100** may be attached to the subject's scalp by gently compressing the front mid sheet **106** into place along the sagittal line. Electrodes **105** present on the front mid sheet **106** may attach to the scalp by conductive gel, thereby enabling EEG measurement. The EEG apparatus **100** as shown in FIG. 1 may have an electrode present at positions F_z and a ground electrode along the sagittal line on the front mid sheet **106** upon attachment.

[0068] In the next step, the subject's hair may be parted along the coronal line. The coronal left side wing **113** of the coronal portion **121** may be placed from the subject's head top along the coronal line to the ear. Film cover on top of the attachment gel spots on the coronal left and right side wings **113, 112** extensions **116, 117, 114, 115** may be removed to expose the attachment gel spots. The coronal left side wing's **113** first extension **116** may be placed such that it surrounds the subject's left ear on the front side without touching the ear, while the second extension **117** may be placed such that it surrounds the subject's left ear on the back side without touching the ear. The right side wing **112** of the coronal portion **121** may be placed from the subject's head top along the coronal line to the ear. The coronal right side wing **112** second extension **114** may be placed such that it surrounds the subject's right ear on the front side without touching the ear, while the first extension **115** may be placed such that it surrounds the subject's right ear on the back side without touching the ear.

[0069] The coronal left side wing **113** upon application may have electrodes at position C₃, position T₃, and position A₁ on the second extension **117**. The coronal right side portion **112** upon application may have electrodes at position C₄, position T₄, and position A₂ on the first extension **115**.

[0070] Upon affixing the coronal portion **121** to the subjects' ears, the attachment points **122, 123** on the frontal portion **104** may be affixed to the attachment points **124, 125** on the

coronal portion **121**, respectively. The middle mid sheet **107** may then be affixed to the scalp along the sagittal line by gentle compressing. The middle mid sheet **107** electrodes may be at positions C_z and P_z .

[0071] The lateral portion **129** of the EEG apparatus **100** may be attached to the subject's scalp by gentle compressing of the lateral portion **129** into place. The rear left side wing **111** and right side wing **110** may be compressed to the left and right side of the subject's head, respectively. Electrodes **105** present on the lateral portion **129** may attach to the scalp by conductive gel. Additionally, attachment points **126**, **127** at the end of each rear left wing **111** and rear right wing **110** may be attached to the corresponding attachment points **124**, **125** located on the coronal left and right wings. The EEG apparatus **100** as shown in FIG. 1 may have electrodes present at positions T_5 and O_1 on the rear left side wing **111**, while the rear right side wing **110** may have electrodes present at positions T_6 and O_2 upon attachment.

[0072] The method according to embodiments may further comprise connecting the connection point **119** with a reusable EEG cable for use with an EEG measurement system according to techniques known in the art. For example, the EEG cable may be connected to a 10-20 labeled touch-proof DIN connectors at the terminal end of an EEG interface cable into an EEG head box locations.

[0073] The method may comprise using the EEG apparatus **100** to obtain EEG measurement of the subject's brain function. EEG measurement readings may be collected by the EEG measurement system.

[0074] Upon completion of EEG measurement, the EEG apparatus **100** may be removed from the subject's head. The lateral portion **129** may be removed by first removing the rear left side wing **111** then the right side wing **110** by gentle peeling. Removal may start by peeling from the attachment points **126**, **127** on each side of the rear wings **110**, **111**, before the rear left side wing **111** and the rear right side wing **110** may be removed. The back of the sagittal portion or the rear mid sheet **108** may be removed by peeling off gently, then the middle mid sheet **107** may be peeled off.

[0075] The frontal portion **106** may be first removed by removing the front left side wing **103** and front right side wing **101** from the attachment points **124**, **125** by peeling off the front attachment points **122**, **123**. Then gentle peeling at the forehead anchor **102**, then peeling the

front left side wing **103**, before peeling the front right side wing **101** may be conducted. Then, peeling along the sagittal line to the coronal portion **121** may remove the front portion **106**.

[0076] The coronal portion **121** may be peeled off starting at the second extension **117** on the left side wing **113**, then the first extension on the left side wing **116** before the left side wing **113** may be completely peeled off. The right side wing **112** may be removed in similar manner, with the first extension **115** of the right side wing **112** being peeled off, then the second extension **114** of the right side wing **112** may be peeled off. The right side wing **112** may be completely peeled off along the coronal line. Upon removal of the EEG apparatus **100**, the EEG apparatus **100** may be disposed of.

[0077] In another embodiment, there may be provided a method for treating a disease or condition which may be may be diagnosed by EEG measurement. A subject potentially having a neurological condition or disease may be selected, and EEG measurement may be performed on the subject using the EEG apparatus **100**. The method may comprise measuring the subject's brainwave using the EEG apparatus **100** according to embodiments. The disease may be diagnosed by the EEG measurement results and treated by appropriate treatment means as determined by medical professionals. The disease may be epilepsy, stroke, or other brain disease diagnosable by EEG measurement.

[0078] While the present invention has been discussed in detail with reference to certain embodiments, other embodiments are possible. Therefore, the scope of the appended claims should not be limited to the description of the preferred embodiments contained in this disclosure. All references cited herein are incorporated by reference in their entirety.

WHAT IS CLAIMED IS:

1. An apparatus for electroencephalography measurement on a human subject, the apparatus comprising:

a mid sheet extending from the forehead anchor to the connector point, comprising a plurality of embedded electrodes at positions F_z , C_z and P_z of the International Standard 10-20 System for electrode placement and a ground electrode;

a frontal portion comprising:

a front left wing extending from the mid sheet at the forehead anchor at an angle and comprising a plurality of embedded electrodes at positions F_7 and F_{p1} of the International Standard 10-20 System for electrode placement and an attachment point at the distal end;

a front right wing extending from the mid sheet at the forehead anchor at an angle and in the opposite direction of the front left wing, comprising a plurality of embedded electrodes at positions F_8 and F_{p2} of the International Standard 10-20 System for electrode placement and an attachment point at the distal end;

a forehead anchor between the front left wing and the front right wing; and

a coronal portion comprising:

a coronal left side wing extending from the middle of the mid sheet at an angle and comprising a body and two extensions, a first extension extending from the body to one side at an angle less than 90 degrees taken between the body and the first extension in the clockwise position, a second extension extending from the body to the opposite side at an angle less than 90 degrees taken between the body and the second extension in the anti-clockwise position, with embedded electrodes at positions C_3 and T_3 in the body, and an embedded electrode at position A_1 on the first extension, the electrode positions are according to the International Standard 10-20 System for electrode placement, and an attachment point at the distal end of the body;

a coronal right side wing extending from the middle of the mid sheet at an angle and in the opposite direction of the front left wing, comprising a body and two extensions, a first extension extending from the body to one side at an angle less than 90 degrees taken between the body and the first extension in the clockwise position, and a second extension extending from the body to the opposite side at an angle less than 90

degrees taken between the body and the second extension in the anti-clockwise position, with embedded electrodes at positions C₄ and T₄ in the body, and an embedded electrode at position A₂ on the second extension, the electrode positions are according to the International Standard 10-20 System for electrode placement, and an attachment point at the distal end of the body;

a lateral portion comprising:

a rear left side wing extending at an angle from the rear end of the mid sheet comprising a plurality of embedded electrodes at positions T₅ and O₁ of the International Standard 10-20 System for electrode placement and an attachment point at the distal end of the rear left wing;

a rear right side wing extending at an opposing angle from the mid sheet comprising a plurality of embedded electrodes at positions T₆ and O₂ of the International Standard 10-20 System for electrode placement and an attachment point at the distal end of the rear right wing; and

a plurality of circuitry connecting the plurality of electrodes to a common connector point situated at the end of the mid sheet,

wherein the mid sheet ends at a connector point with embedded circuitry,

wherein the mid sheet, the frontal portion, the coronal portion, and the lateral portion comprise the apparatus body, and

wherein the apparatus body comprises a base layer.

2. The apparatus of Claim 1, wherein the base layer is transparent or seen-through.
3. The apparatus of Claim 1, wherein the circuitry is printed within the apparatus.
4. The apparatus of Claim 1, wherein the plurality of electrodes are imprinted silver or silver chloride electrodes.
5. The apparatus of Claim 1, wherein the circuitry and the plurality of electrodes are printed in one stage.

6. The apparatus of Claim 1, wherein the plurality of electrodes extend from the apparatus and are exposed outside the base layer.
7. The apparatus of Claim 6, wherein the plurality of electrodes are covered with a conductive gel at surfaces exposed outside the base layer.
8. The apparatus of Claim 1, further comprising sponges covering the plurality of electrodes conductive gel surface.
9. The apparatus of Claim 8, wherein the sponges are soaked in conductive gel.
10. The apparatus of Claim 9, further comprising a holder in which the apparatus is placed.
11. The apparatus of Claim 1, wherein the attachment points comprise gel spots covered by a thin film.
12. The apparatus of Claim 1, wherein the attachment points comprise Velcro surfaces.
13. A method of performing electroencephalography on a human subject, the method comprising:
 - providing an apparatus for performing electroencephalography on a human subject, the apparatus comprising:
 - a mid sheet extending from the forehead anchor to the connector point, comprising a plurality of embedded electrodes at positions F_z , C_z and P_z of the International Standard 10-20 System for electrode placement and a ground electrode;
 - a frontal portion comprising:
 - a front left wing extending from the mid sheet at the forehead anchor at an angle and comprising a plurality of embedded electrodes at positions F_7 and F_{p1} of the International Standard 10-20 System for electrode placement and an attachment point at the distal end;

a front right wing extending from the mid sheet at the forehead anchor at an angle and in the opposite direction of the front left wing, comprising a plurality of embedded electrodes at positions F₈ and F_{p2} of the International Standard 10-20 System for electrode placement and an attachment point at the distal end;

a forehead anchor between the front left wing and the front right wing; and
a coronal portion comprising:

a coronal left side wing extending from the middle of the mid sheet at an angle and comprising a body and two extensions, a first extension extending from the body to one side at an angle less than 90 degrees taken between the body and the first extension in the clockwise position, a second extension extending from the body to the opposite side at an angle less than 90 degrees taken between the body and the second extension in the anti-clockwise position, with embedded electrodes at positions C₃ and T₃ in the body, and an embedded electrode at position A₁ on the first extension, the electrode positions are according to the International Standard 10-20 System for electrode placement, and an attachment point at the distal end of the body;

a coronal right side wing extending from the middle of the mid sheet at an angle and in the opposite direction of the front left wing, comprising a body and two extensions, a first extension extending from the body to one side at an angle less than 90 degrees taken between the body and the first extension in the clockwise position, and a second extension extending from the body to the opposite side at an angle less than 90 degrees taken between the body and the second extension in the anti-clockwise position, with embedded electrodes at positions C₄ and T₄ in the body, and an embedded electrode at position A₂ on the second extension, the electrode positions are according to the International Standard 10-20 System for electrode placement, and an attachment point at the distal end of the body;

a lateral portion comprising:

a rear left side wing extending at an angle from the rear end of the mid sheet comprising a plurality of embedded electrodes at positions T₅ and O₁ of the International Standard 10-20 System for electrode placement and an attachment point at the distal end of the rear left wing;

a rear right side wing extending at an opposing angle from the mid sheet comprising a plurality of embedded electrodes at positions T₆ and O₂ of the International Standard 10-20 System for electrode placement and an attachment point at the distal end of the rear right wing; and

a plurality of circuitry connecting the plurality of electrodes to a common connector point situated at the end of the mid sheet,

wherein the mid sheet ends at a connector point with embedded circuitry,

wherein the mid sheet, the frontal portion, the coronal portion, and the lateral portion comprise the apparatus body, and

wherein the apparatus body comprises a base layer;

affixing the apparatus to the patient by affixing the frontal portion to the forehead of the patient, affixing the front portion of the mid sheet from the forehead anchor to the junction between the mid sheet and the coronal elements along the sagittal line of the patient's head, affixing the coronal elements along the coronal line of the human subject's head, affixing the extensions around the left ear and right ear of the patient, securing the front left and right wings to the coronal attachment points, affixing the middle part of the mid sheet from the C_z location to the junction between lateral portion and mid sheet along the sagittal line of the human subject's head, affixing the lateral portion to the human subject's scalp and securing the rear left and right wings to the coronal attachment points, affixing the rear portion of the mid sheet to the patient's scalp; and

connecting the connector point to an electroencephalography cable,

wherein affixing the apparatus further comprises contacting the conductive gel to adhere the electrodes to the human subject's scalp.

14. A method of diagnosing a neurological condition or disease, the method comprising:

selecting a patient potentially having a neurological condition or disease; and

performing electroencephalography on the patient using the method of Claim 13 to produce an electroencephalogram.

15. The method of Claim 14, further comprising diagnosing the neurological condition or disease by interpreting the electroencephalogram.

16. The method of Claim 15, further comprising treating the neurological condition or disease diagnosed.

17. The method of Claim 16, wherein the neurological condition or disease is epilepsy.

18. The method of Claim 16, wherein the neurological condition or disease is a stroke.

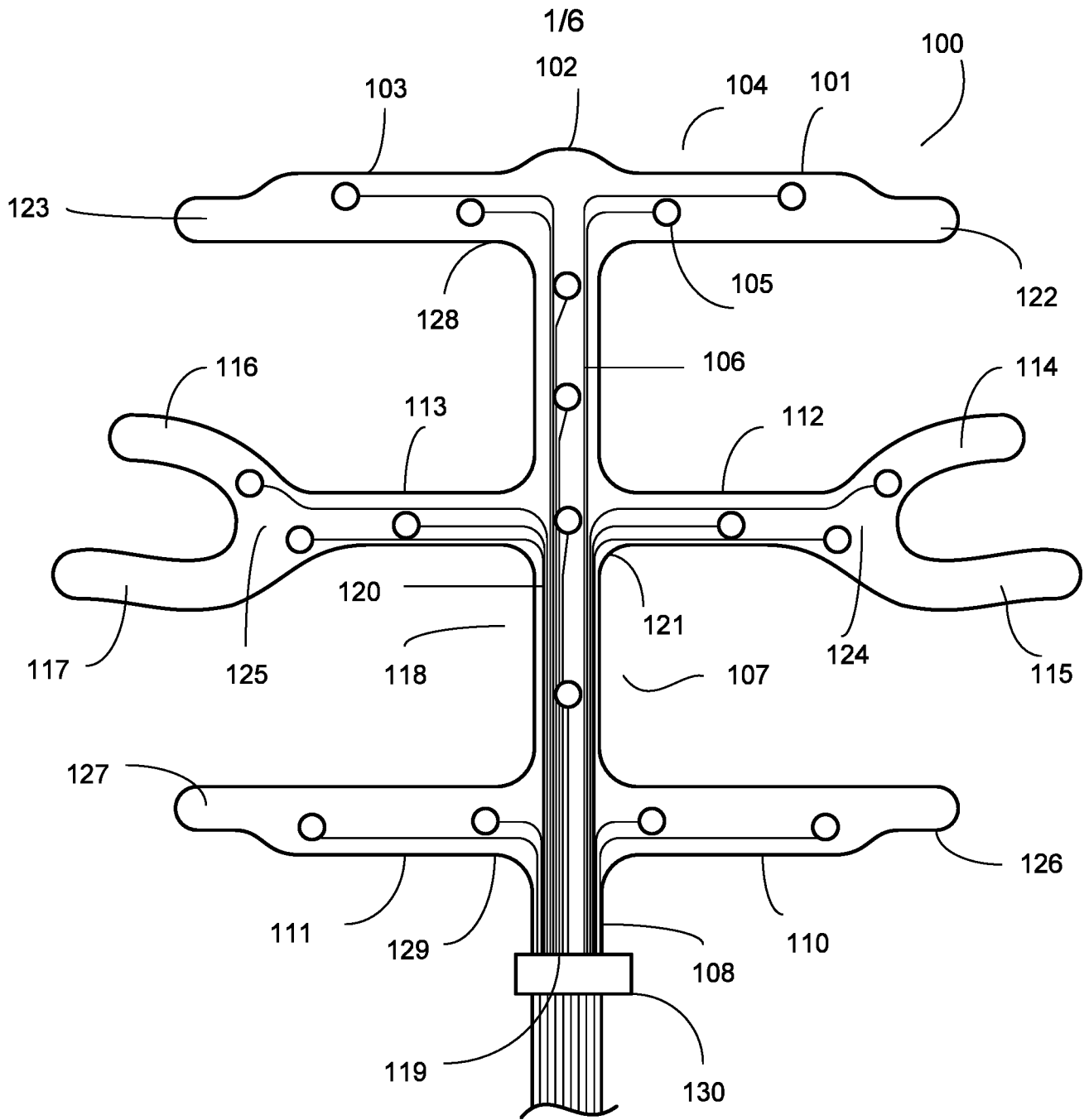


FIG. 1

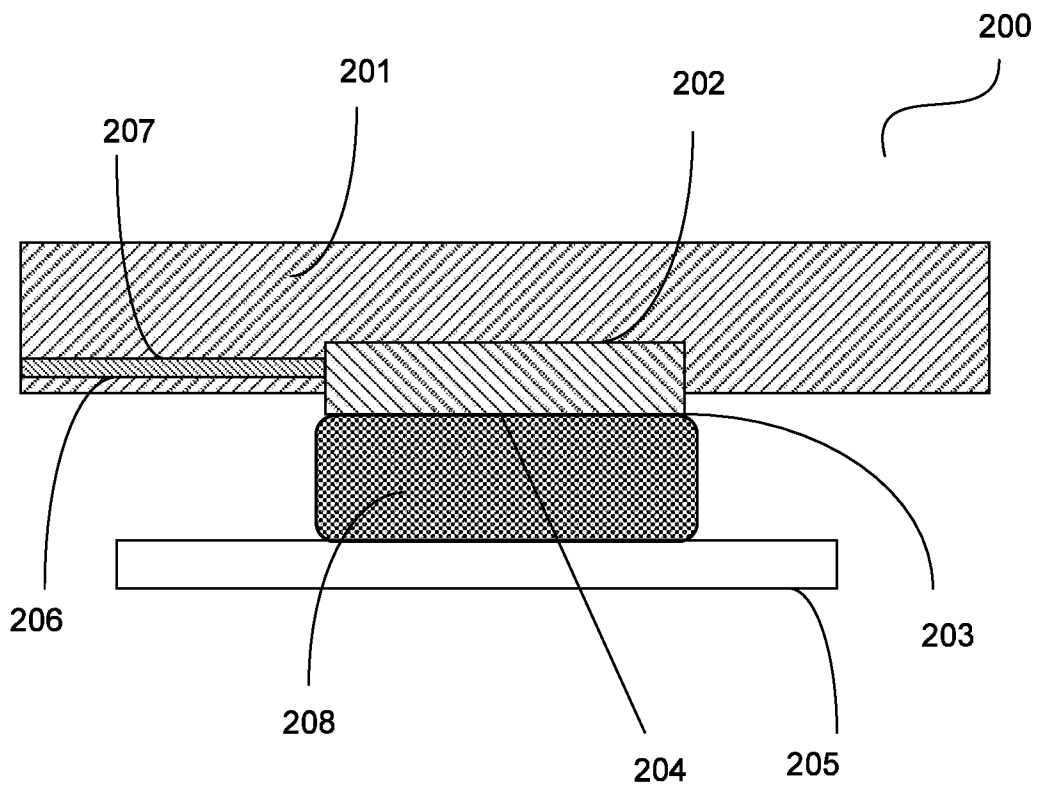


FIG. 2

3/6

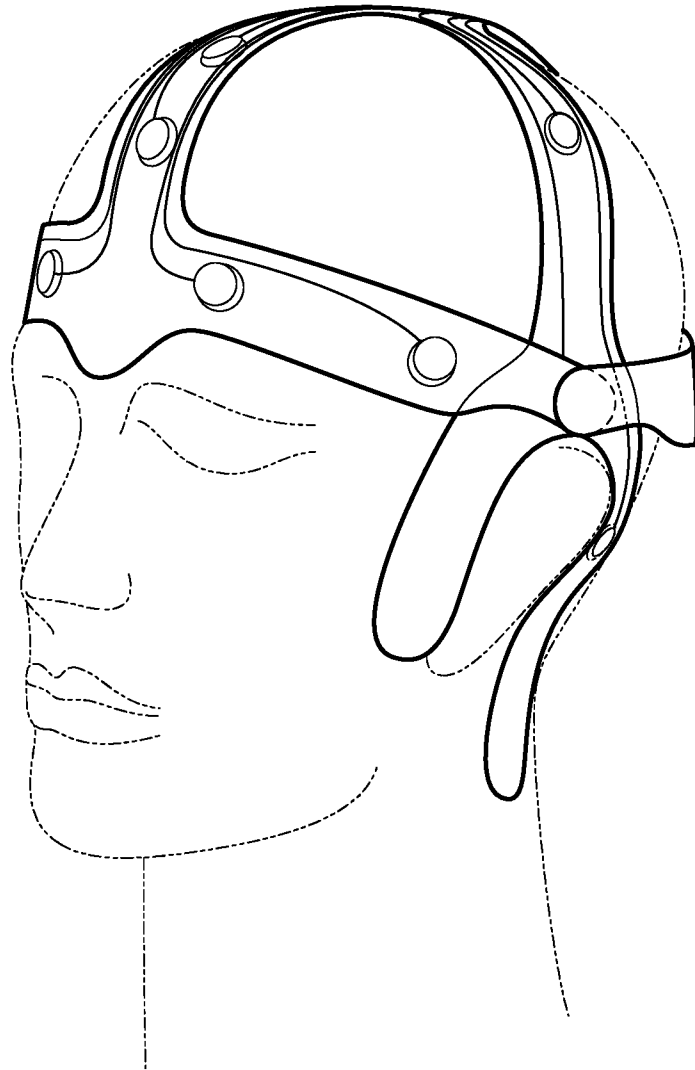


FIG. 3

4/6

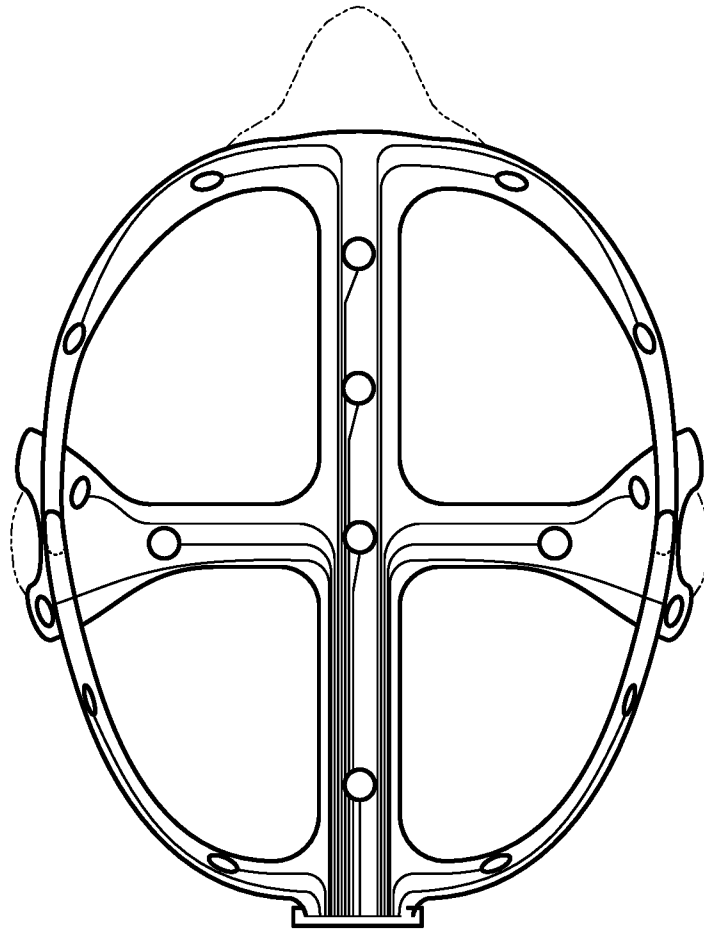


FIG. 4

5/6

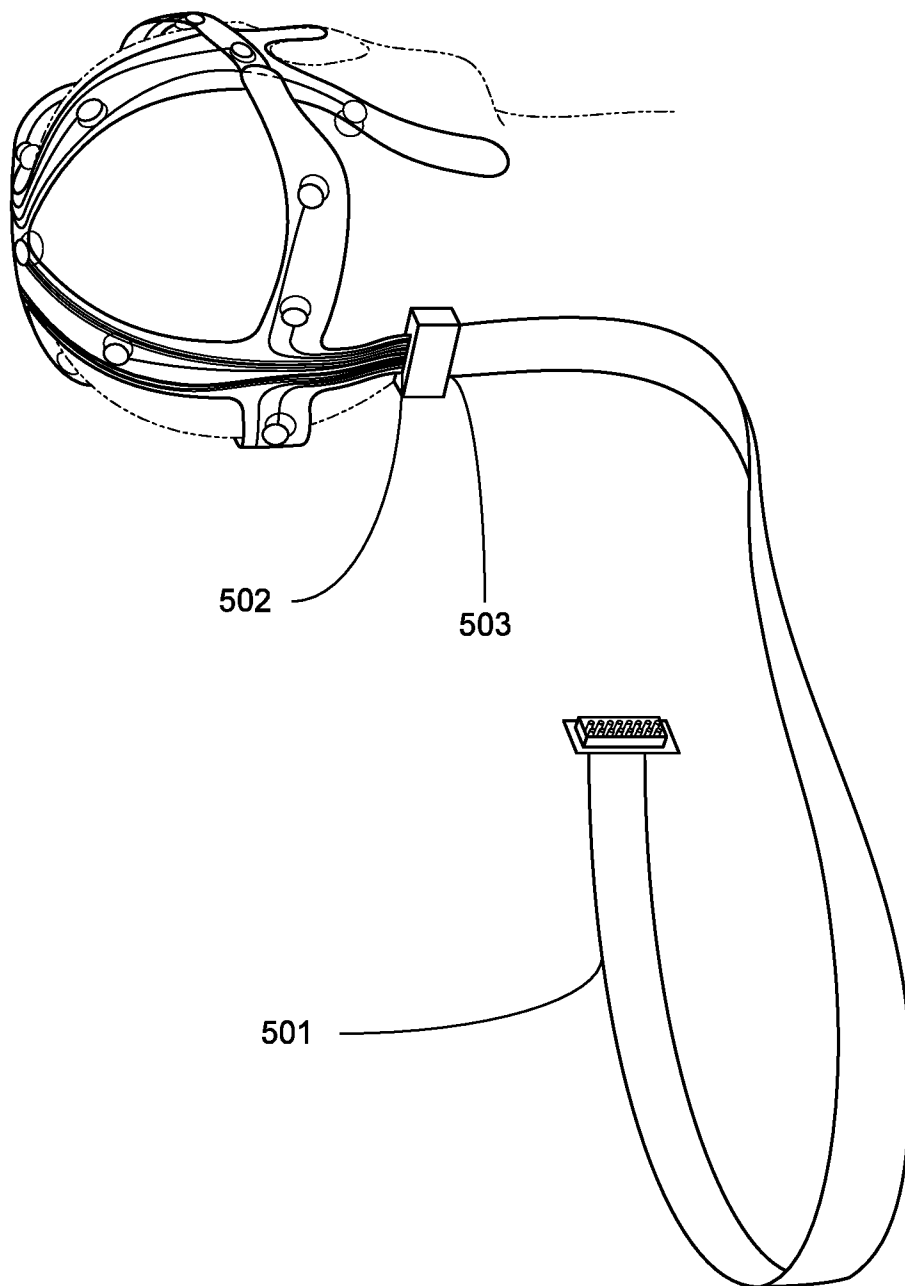


FIG. 5

6/6

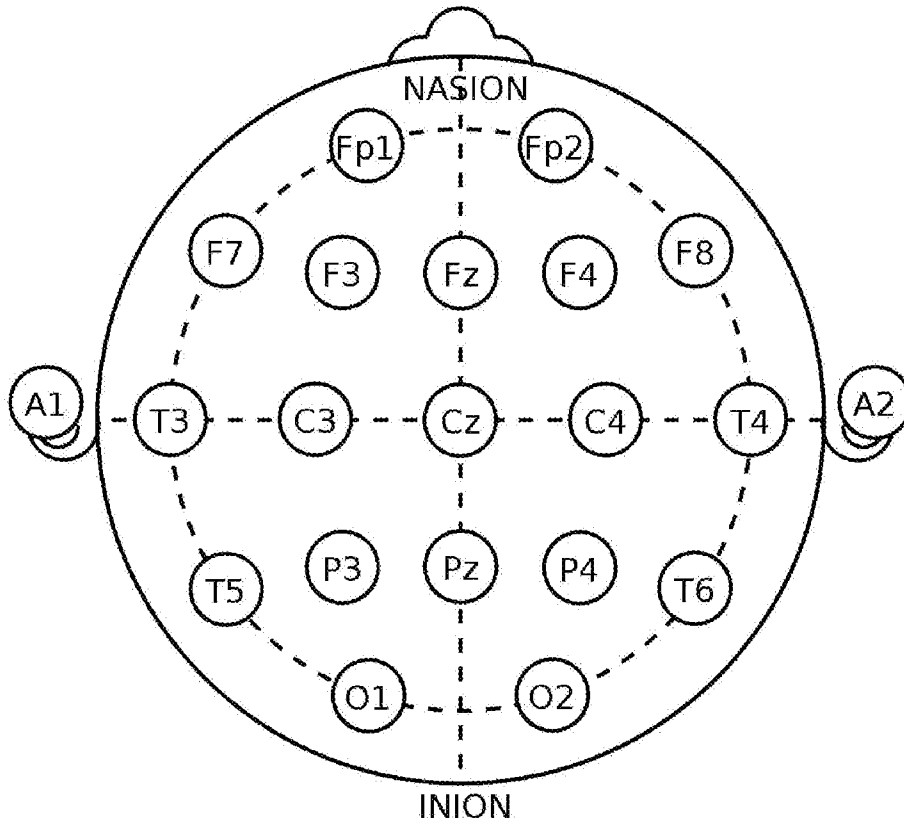


FIG. 6

INTERNATIONAL SEARCH REPORT

International application No.
PCT/US2018/018570

A. CLASSIFICATION OF SUBJECT MATTER
 IPC(8) - A61B 5/00; A61B 5/04; A61B 5/0408; A61B 5/0476; A61B 5/0478; A61B 5/0488 (2018.01)
 CPC - A61B 5/0006; A61B 5/0476; A61B 5/0478; A61B 5/6803; A61B 5/6814; A61B 5/6831; A61B 2560/0468; A61B 2562/0209; A61B 2562/046; A61B 2562/164 (2018.02)

According to International Patent Classification (IPC) or to both national classification and IPC

B. FIELDS SEARCHED

Minimum documentation searched (classification system followed by classification symbols)
 See Search History document

Documentation searched other than minimum documentation to the extent that such documents are included in the fields searched
 USPC - 434/236; 600/383; 600/393; 600/544 (keyword delimited)

Electronic data base consulted during the international search (name of data base and, where practicable, search terms used)
 See Search History document

C. DOCUMENTS CONSIDERED TO BE RELEVANT

Category*	Citation of document, with indication, where appropriate, of the relevant passages	Relevant to claim No.
X ---	US 2013/0172721 A1 (HYDRODOT INC) 04 July 2013 (04.07.2013) entire document	1-9, 11, 13-18 ---
Y		10, 12
Y	US 2015/0257674 A1 (JORDAN NEUROSCIENCE INC) 17 September 2015 (17.09.2015) entire document	10, 12
A	US 2015/0011857 A1 (BIO-SIGNAL GROUP CORP) 08 January 2015 (08.01.2015) entire document	1-18
A	US 2010/0125190 A1 (FADEM) 20 May 2010 (20.05.2010) entire document	1-18
A	US 2015/0282760 A1 (THE NIELSEN COMPANY (US) LLC) 08 October 2015 (08.10.2015) entire document	1-18

Further documents are listed in the continuation of Box C. See patent family annex.

* Special categories of cited documents:

"A" document defining the general state of the art which is not considered to be of particular relevance	"T" later document published after the international filing date or priority date and not in conflict with the application but cited to understand the principle or theory underlying the invention
"E" earlier application or patent but published on or after the international filing date	"X" document of particular relevance; the claimed invention cannot be considered novel or cannot be considered to involve an inventive step when the document is taken alone
"L" document which may throw doubts on priority claim(s) or which is cited to establish the publication date of another citation or other special reason (as specified)	"Y" document of particular relevance; the claimed invention cannot be considered to involve an inventive step when the document is combined with one or more other such documents, such combination being obvious to a person skilled in the art
"O" document referring to an oral disclosure, use, exhibition or other means	"&" document member of the same patent family
"P" document published prior to the international filing date but later than the priority date claimed	

Date of the actual completion of the international search 29 March 2018	Date of mailing of the international search report 23 APR 2018
--	--

Name and mailing address of the ISA/US Mail Stop PCT, Attn: ISA/US, Commissioner for Patents P.O. Box 1450, Alexandria, VA 22313-1450 Facsimile No. 571-273-8300	Authorized officer Blaine R. Copenheaver PCT Helpdesk: 571-272-4300 PCT OSP: 571-272-7774
---	--

专利名称(译)	实施电子照相术的装置和方法		
公开(公告)号	EP3585255A1	公开(公告)日	2020-01-01
申请号	EP2018757492	申请日	2018-02-18
[标]发明人	GOLDSTEIN BORIS PRILUTSKIY DMITRIY ZABODAEV STANISLAV		
发明人	GOLDSTEIN, BORIS PRILUTSKIY, DMITRIY ZABODAEV, STANISLAV		
IPC分类号	A61B5/00 A61B5/04 A61B5/0408 A61B5/0476 A61B5/0478 A61B5/0488		
CPC分类号	A61B5/0478 A61B5/6803 A61B5/6843 A61B5/04012 A61B5/0476 A61B5/6814		
代理机构(译)	NEDERLANDSCH OCTROOIBUREAU		
优先权	62/462282 2017-02-22 US		
外部链接	Espacenet		

摘要(译)

提供一种用于在人类对象上进行脑电图测量的一次性设备。用于脑电图测量的一次性设备可以牢固地连接到受试者的头部，而没有附着凝胶接触受试者的头皮。提供透明的主体，以便于放置电极。还提供了使用该设备进行脑电图测量的方法。