



(51) International Patent Classification:

A61B 5/046 (2006.01) A61B 5/0472 (2006.01)  
A61B 5/024 (2006.01) A61B 5/00 (2006.01)  
G06F 19/00 (2011.01)

(21) International Application Number:

PCT/US2015/045042

(22) International Filing Date:

13 August 2015 (13.08.2015)

(25) Filing Language:

English

(26) Publication Language:

English

(30) Priority Data:

62/037,348 14 August 2014 (14.08.2014) US

(71) Applicant: **CARDIAC PACEMAKERS, INC.** [US/US];  
4100 Hamline Avenue North, St. Paul, Minnesota 55112-  
5798 (US).

(72) Inventors: **KRUEGER, Jonathan Walter**; 807 165th  
Ave., New Richmond, Wisconsin 54017 (US). **MA-  
HAJAN, Deepa**; 326 Heritage Trail, Circle Pines, Min-  
nesota 55014 (US). **PERSCHBACHER, David L.**; 1986 -  
128th Avenue NW, Coon Rapids, Minnesota 55448 (US).

(74) Agents: **ARORA, Suneel**, et al.; Schwegman, Lundberg &  
Woessner, P.A., P.O. Box 2938, Minneapolis, Minnesota  
55402 (US).

(81) Designated States (unless otherwise indicated, for every  
kind of national protection available): AE, AG, AL, AM,  
AO, AT, AU, AZ, BA, BB, BG, BH, BN, BR, BW, BY,  
BZ, CA, CH, CL, CN, CO, CR, CU, CZ, DE, DK, DM,  
DO, DZ, EC, EE, EG, ES, FI, GB, GD, GE, GH, GM, GT,  
HN, HR, HU, ID, IL, IN, IR, IS, JP, KE, KG, KN, KP, KR,  
KZ, LA, LC, LK, LR, LS, LU, LY, MA, MD, ME, MG,  
MK, MN, MW, MX, MY, MZ, NA, NG, NI, NO, NZ, OM,  
PA, PE, PG, PH, PL, PT, QA, RO, RS, RU, RW, SA, SC,  
SD, SE, SG, SK, SL, SM, ST, SV, SY, TH, TJ, TM, TN,  
TR, TT, TZ, UA, UG, US, UZ, VC, VN, ZA, ZM, ZW.

(84) Designated States (unless otherwise indicated, for every  
kind of regional protection available): ARIPO (BW, GH,  
GM, KE, LR, LS, MW, MZ, NA, RW, SD, SL, ST, SZ,  
TZ, UG, ZM, ZW), Eurasian (AM, AZ, BY, KG, KZ, RU,  
TJ, TM), European (AL, AT, BE, BG, CH, CY, CZ, DE,  
DK, EE, ES, FI, FR, GB, GR, HR, HU, IE, IS, IT, LT, LU,  
LV, MC, MK, MT, NL, NO, PL, PT, RO, RS, SE, SI, SK,

[Continued on next page]

(54) Title: ATRIAL FIBRILLATION DETECTION USING VENTRICULAR RATE VARIABILITY

(57) Abstract: Atrial fibrillation information can be  
determined from ventricular information or a  
ventricular location, such as using ventricular rate  
variability. An ambulatory medical device can re-  
ceive indications of pairs of first and second  
ventricular rate changes of three temporally adjacent  
ventricular heart beats. A first count of instances of  
the pairs meeting a combined rate change magnitude  
characteristic and a second count of instances of the  
pairs in which both of the first and second ventricu-  
lar rate changes are negative can be used to provide  
atrial fibrillation information.

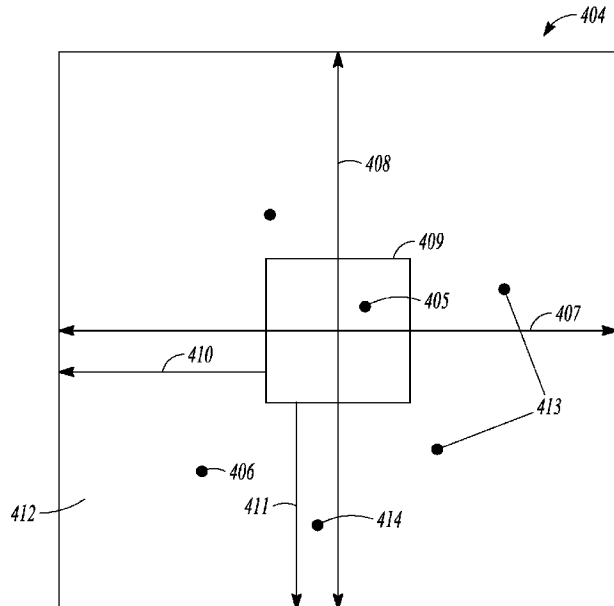


FIG. 4B

WO 2016/025704 A1

SM, TR), OAPI (BF, BJ, CF, CG, CI, CM, GA, GN, GQ, **Published:**  
GW, KM, ML, MR, NE, SN, TD, TG).

— *with international search report (Art. 21(3))*

## ATRIAL FIBRILLATION DETECTION USING VENTRICULAR RATE VARIABILITY

5

### CLAIM OF PRIORITY

[0001] This application claims the benefit of priority under 35 U.S.C. § 119(e) of U.S. Provisional Patent Application Serial Number 62/037,348, filed on August 14, 2014, which is herein incorporated by reference in its entirety.

10

### BACKGROUND

[0002] Atrial fibrillation (AF) is a common cardiac arrhythmia. AF is a disorganized atrial tachyarrhythmia in which a normal regular sinus rhythm is overwhelmed by uncoordinated electrical pulses originating from regions in or near an atrium. This can lead to irregular conductions to ventricles, thereby causing inappropriately fast and irregular heart rates. Paroxysmal AF may last from minutes to days before self-terminating. Persistent AF may last for over a week and may need medication, cardioversion, or other treatment to revert to normal sinus rhythm. Permanent AF generally cannot be restored with treatment. Persistent AF may become more frequent and may evolve into permanent AF. AF can be symptomatic or asymptomatic. Some consequences of AF may include palpitations, increased risk of thromboembolism (AF is associated with over 120,000 strokes per year), and development or progression of congestive heart failure (CHF).

[0003] CHF (also referred to as “heart failure” or “HF”) affects over five million people in the United States alone. CHF may reduce the pumping power of the heart. This may result in the inability to deliver enough blood to meet the demands of peripheral tissue. A CHF patient may have an enlarged heart with weakened cardiac muscles, which may result in reduced cardiac muscle contractility and poor cardiac output of blood. CHF may affect the left side, right side, or both sides of the heart, which may result in non-simultaneous contractions of the left and right ventricles, referred to as dyssynchrony. This dyssynchrony may decrease the pumping efficiency of the heart.

[0004] There is a pathophysiological relationship between AF and CHF. Many CHF patients may experience AF or other types of atrial tachyarrhythmias. CHF can increase the risk for developing AF. Increased severity of CHF in patients may result in increased prevalence of AF.

5

#### OVERVIEW

[0005] Ambulatory medical devices (AMDs) can be used for monitoring cardiac activity in a patient and detect cardiac conditions. Examples of AMDs can include subcutaneous and other implantable medical devices (IMDs), and external medical devices. The implantable or other ambulatory medical devices can include one or more physiologic or other sensors, such as can be configured to sense cardiac activity, or one or more other characteristics such as can be associated with a subject's cardiac condition.

[0006] The present inventors have recognized, among other things, that a problem to be solved can include detecting AF using ventricular information or from a ventricular location, such as using ventricular rate variability. The present subject matter can help provide a solution to this problem, such as can include determining first and second indications of AF from ventricular information or from a ventricular location, such as to provide information about atrial fibrillation of a patient.

[0007] This Overview is an overview of some of the teachings of the present application and not intended to be an exclusive or exhaustive treatment of the present subject matter. Further details about the present subject matter are found in the detailed description and appended claims. Other aspects of the invention will be apparent to persons skilled in the art upon reading and understanding the following detailed description and viewing the drawings that form a part thereof, each of which are not to be taken in a limiting sense. The scope of the present invention is defined by the appended claims and their legal equivalents.

20  
25  
30

#### BRIEF DESCRIPTION OF THE DRAWINGS

[0008] In the drawings, which are not necessarily drawn to scale, like numerals may describe similar components in different views. Like numerals having different letter suffixes may represent different instances of similar

components. The drawings illustrate generally, by way of example, but not by way of limitation, various embodiments discussed in the present document. Such embodiments are demonstrative and not intended to be exhaustive or exclusive embodiments of the present apparatuses, systems, or methods.

5 [0009] FIG. 1 illustrates an example of portions of an example of a system that can include an implantable medical device (IMD) or other ambulatory medical device.

[0010] FIG. 2 illustrates an example of an atrial fibrillation detection processor circuit.

10 [0011] FIG. 3A is a pictorial example of an indication of a QRS complex of a cardiac cycle.

[0012] FIG. 3B is a pictorial example of an indication of a heart rhythm and heart rhythm parameters.

[0013] FIG. 3C illustrates an example of windows such as can be used  
15 with an indication of a heart rhythm.

[0014] FIG. 4A illustrates an example of heart rhythm parameters.

[0015] FIG. 4B illustrates an example of various regions on a rate-based scatter plot.

[0016] FIG. 5 illustrates an example of detecting atrial fibrillation

20 [0017] FIG. 6 illustrates an example of detecting atrial fibrillation using windows of heart beats.

[0018] FIG. 7 illustrates pictorial examples of heart rhythm information and corresponding scatter plots.

## 25 DETAILED DESCRIPTION

[0019] Disclosed herein are apparatuses, systems, and methods such as can be used for detecting atrial fibrillation (AF), such as can include (or consist of) using ventricular information or information obtained from a ventricular location. By monitoring a patient's ventricular heart rhythm activity such as  
30 described herein, atrial fibrillation information can be detected and monitored.

[0020] FIG. 1 illustrates an example of portions of a system **100**. The system **100** can include an ambulatory medical device, such as an implantable medical device **101**. The implantable medical device **101** can be coupled, such as by one or more leads **102**, to a desired location such as a heart **103**. The heart

**I03** includes a right atrium **I04**, a left atrium **I05**, a right ventricle **I06**, and a left ventricle **I07**. The lead **I02** can include one or more electrodes (e.g., electrical contacts, such as a tip electrode **I08** or a coil electrode **I09**) that can be sized, shaped, spaced, or otherwise configured to be located in or in association with a ventricle **I06**, **I07** of the heart **I03**. The implantable medical device **I01** can be configured to communicate to a monitoring device or multiple monitoring devices (e.g., a local monitoring device **I10** or a remote monitoring device **I12**). This can include using one or more communication links (e.g., communication links **I11** or **I13**). The communication links can include wired or wireless transmitter, receiver, or transceiver circuits, such as at each end of the communication link.

[0021] The system **I00** can additionally or alternatively include an ambulatory (e.g., a wearable or implantable) or a non-ambulatory device (e.g., a stationary electrocardiogram monitoring device) that can include a physiologic sensor circuit. The physiologic sensor circuit can be configured to sense at least one physiological signal of a patient (e.g., intrinsic electrical cardiac signal, heart sound, pressure, temperature, mechanical indications of heart beats, or other physiologic information). In addition to (or as alternative to) the transvenous lead **I02**, the system **I00** can include a subcutaneous electrode or electrode array. The subcutaneous electrode or electrode array can be located on the implantable or other ambulatory medical device, or on a lead extending from the implantable or other ambulatory medical device.

[0022] The local monitoring device **I10** or remote monitoring device **I12** can be configured to include one or more circuits that perform at least some portion of the techniques described herein. The system **I00** can be configured to operate in real time or off-line such as operating on previously collected and stored data.

[0023] FIG. 2 illustrates an example of an AF detection processor circuit **201**, such as can be included in the ambulatory or other implantable medical device **101** or elsewhere in the system **100**. One or more portions of the AF detection processor circuit **201** can be included in an external system, such as in an ambulatory or other patient monitor, such as can be configured to provide patient arrhythmic information to an end-user. Such patient arrhythmic

information can include information to indicate a relative amount of AF occurring during a period of time.

5 [0024] The AF detection processor circuit 201 can include an application-specific integrated circuit (ASIC) constructed to perform one or more particular functions, or can include a hardware circuit that can be programmed to perform such one or more functions. Such a programmed hardware circuit can include a microprocessor, a microcontroller, or a programmable logic circuit, or a portion of one or more of these. In an example, the AF detection processor circuit 201 can include a ventricular heart beat input 10 202, a first counter circuit 203, a second counter circuit 204, an AF indication output 205, a detector circuit 206 that can be configured to detect valid windows, a window determiner circuit 207 that can be configured to declare windows to be valid, and a heart beat sensing circuit 208 that can be configured to declare beats to valid.

15 [0025] The AF detection processor circuit 201 can be coupled to a physiological sensor 209. The physiological sensor 209 can be configured to sense cardiac information indicative of a heart rate of the patient. The physiological sensor 209 can include one or more implantable sensors, wearable sensors, or other ambulatory cardiac activity sensors that can be configured to 20 sense cardiac activity. The physiological sensor 209 can be configured to sense the heart rate information based on electrical, mechanical, or electromechanical cardiac activity, such as pressure, impedance, acoustics, or any combination thereof. In an example, the physiological sensor can include or be coupled to the tip electrode 108.

25 [0026] FIG. 3A is a pictorial example of a QRS complex 303 of an intrinsic electrical cardiac signal 301. An electrocardiogram (EKG or ECG) represents an intrinsic electrical cardiac signal, which includes atrial and ventricular depolarizations. The ECG can include recurring cardiac cycles that can respectively include a P-wave, the QRS complex 303, the R-wave 302, and a 30 T wave.

[0027] The AF detection processor circuit 201 can include or be coupled to a timer circuit. The timer circuit can be configured to measure time interval duration between detected paced or sensed events. An example of such a measured time interval can be an R-R interval between successive (e.g.,

temporally adjacent) sensed QRS complexes **303** associated with respective successive ventricular depolarizations associated with respective ventricular heart beats. Another example of such a measured time interval can be a window, e.g., beginning with and concluding with a ventricular depolarization but including more than two successive (e.g., temporally adjacent) ventricular heart beats. The AF detection processor circuit can include or be coupled to a memory circuit, a communication circuit, or a signal processor circuit that can be configured to perform digital or other signal processing or to analyze information from one or more physiological signals such as from one or more sensors.

[0028] FIG. 3B is a pictorial example of an indication of a heart rhythm **305** and heart rhythm parameters. The QRS complex **303** occurs recurrently in the heart rhythm **305** with each cardiac cycle. An R-wave **304** can be used as a fiducial marker to represent a time of occurrence of a ventricular heart beat. Temporally adjacent R-waves **304** can be used to define the length of an R-R interval **306**. The R-R interval **306** duration can vary during exercise and even when the patient is at rest during normal sinus rhythm of the heart, and can also vary during a cardiac arrhythmia.

[0029] A representative time line **307** of the heart rhythm **305** can be used to illustrate conceptually how the AF detection processor circuit can be used to analyze heart activity. A ventricular heart rate,  $R_i$ , **309** can represent the then-current heart rate at R-waves **304**. The ventricular heart rate can be calculated using the R-R interval **306** duration by Equation 1.

[0030]  $\text{Rate}_{\text{ventricle}}$  (in beats per minute) =  $60,000/(\text{R-R interval, in milliseconds})$

(Eq. 1)

[0031] A ventricular rate change **310-312** can be determined for two temporally adjacent ventricular heart beats, and can be assigned to one of these two adjacent ventricular heart beats. For example, an R-R interval **308** that begins with  $R_{i+2}$  and ends with  $R_{i+3}$  can correspond to the ventricular rate change,  $\Delta R_{i+2,i+3}$ , **312**. The representative time line **307** depicts two pairs of ventricular rate changes. A first pair,  $(\Delta R_{i,i+1}, \Delta R_{i+1,i+2})$  **310-311** corresponds to three temporally adjacent heart beats,  $R_i$  through  $R_{i+2}$ . A second pair,  $(\Delta R_{j+1,j+2},$

$\Delta R_{i+2,i+3}$ ) **311-312** corresponds to three temporally adjacent heart beats  $R_{i+1}$  through  $R_{i+3}$ .

[0032] FIG. 3C illustrates an example of windows including respective indications of a heart rhythm. A window timeline **313** can be used to illustrate how the AF detection circuit can be used to analyze heart activity. The window timeline **313** can include multiple windows **314-317**. An individual window **314-317** can include multiple temporally adjacent ventricular heart beats (e.g., a first ventricular heart beat **318** through a last ventricular heart beat **319**). In an example, the windows **314-317** can be temporally non-overlapping, and the individual windows can each include the same number,  $N$ , of temporally adjacent ventricular beats (e.g.,  $N$  can be 100 adjacent cycles, 192 adjacent cycles, or another value). In an example, the windows **314-317** can each be the same duration such as measured in time (e.g., 120 seconds or another time value). For example, the first ventricular heart beat **318** in the window,  $W_j$  **314**, can be the first beat upon which a pair of ventricular rate changes is based, and the last ventricular heart beat **319** can be the  $N$ th beat upon which a pair of ventricular rate changes is based. In an example, the ventricular heart beats **318-319** in the individual windows **314-317** can provide information about ventricular heart rate and information about ventricular rate changes of three temporally adjacent heart beats. Thus, a window of  $N$  ventricular heart beats can correspond to  $N-1$  ventricular rate changes. For example, three temporally adjacent ventricular heart beats can correspond to one pair of ventricular rate changes. Similarly, four temporally adjacent ventricular heart beats can correspond to two pairs of ventricular rate changes. The window determiner circuit **207** can be configured to determine such rate change information about multiple temporally adjacent ventricular heart beats corresponding to individual windows **314-317**.

[0033] FIG. 4A illustrates examples of heart rhythm parameters in a table **401** representing conceptual (not real data) information about ventricular rate change information. In an example, columns of the table **401** can list examples of the ventricular rate changes **310-312**. In an example, rows of the table **401** can list examples of representations of pairs of ventricular rate changes as an abscissa and as an ordinate. In a first row **402**, the ordinate representing the second ventricular rate change of a pair can correspond to the abscissa of a

second row 403. The table 401 can be an optional way of conceptualizing the techniques discussed in this document, and the techniques discussed in this document can be carried out without the need to use tables such as the table 401.

[0034] FIG. 4B illustrates an example of various regions on a rate-based scatter plot 404, which can be referred to as a Lorenz plot, such as can represent the ventricular rate change information such as described above. The rate-based scatter plot 404 can optionally be used to conceptualize the techniques discussed in this document, and the techniques discussed in this document can be carried out without the need to use two-dimensional or other plots, such as the rate-based scatter plot 404. A horizontal axis 407 of the scatter plot 404 can represent one ventricular rate change of a pair, and a vertical axis 408 of the scatter plot 404 can represent the other ventricular rate change of a pair. The horizontal axis 407 and vertical axis 408 can be measured in units of beats per minute (bpm). The information of the first row 402 can be represented as a point on the scatter plot 404, such that  $X_1$  represents the abscissa and  $Y_1$  represents the ordinate. The points 405-406, 413 represent conceptual (not real data) information about ventricular rate change information. One or more regions can be defined on the scatter plot 404, such as to impose one or more criteria on the points on the scatter plot 404, such as by counting those points that fall within a particular region, which can be further processed to provide useful information about AF, such as described further below.

[0035] A first region 409 can impose a "magnitude" criterion within the context of the scatter plot 404. Such a magnitude criterion can be represented on the scatter plot 404 so as to include and be centered at the origin of the scatter plot 404. For example, a "radial magnitude" criterion can be implemented using a first region 409 that can be represented as a circle on the scatter plot 404, such as centered at and including the origin of the scatter plot 404. A "component axis magnitude" criterion can be implemented using a first region 409 that can be represented as a square on the scatter plot 404, such as centered at and including the origin of the scatter plot 404. The "component axis magnitude" criterion need not impose an equal magnitude criterion on each component axis. For example, the "component axis magnitude" criterion can be implemented using a first region 409 that can be represented as a rectangle on the scatter plot 404, such as centered at and including the origin of the scatter plot 404. The first

region 409 that can impose the “radial magnitude,” the “component axis magnitude,” or other “magnitude” criterion can include portions represented in all four quadrants of the scatter plot 404. A first point 405 can represent a pair of ventricular rate changes that occurs in the first region 409.

5 [0036] Magnitude criteria values of the first region 409 can be measured in units of beats per minute. For example, the “radial” magnitude criterion can take on a radius value, such as 4.5 bpm, or 5 bpm. The “component axis magnitude” criterion of the first region 409 can take on a side length value, such as 4.5 bpm or 2.8 bpm, and can be represented as a square (e.g., an equal  
10 magnitude value imposed on each component axis) or as a rectangle (e.g., different magnitude values are imposed opposite sides of the rectangle) on the scatter plot 404.

[0037] A second region 412 can impose a “double decrement” criterion within the context of the scatter plot 404, such that points on the scatter plot 404  
15 that fall within the second region 412 can represent a pair of consecutive decreases in ventricular heart rate. The “double decrement” second region 412 can be represented entirely in the third quadrant of the scatter plot 404. The second region 412 can be defined so as to exclude the space on the scatter plot 404 within the first region 409, such that the second region 412 does not overlap  
20 with the first region 409 on the scatter plot 404. The second region 412 on the scatter plot 404 can include “component axis” limits, such as to define “noise margins” by which the second region 412 is separated from the axes of the scatter plot 404. For example, the second region 412 can include a vertical first limit 410 (e.g., a horizontal line occurring below the horizontal axis 407) on the  
25 scatter plot 404 and a horizontal second limit 411 (e.g., a vertical line occurring left of the vertical axis 408). The vertical first limit 410 and the horizontal second limit 411 can occur at the same distance from the axes 407-408 of the scatter plot 404 or can occur at different distances from the axes 407-408 (e.g., values such as 2.1 bpm, 3 bpm, or 3.5 bpm from the axes) of the scatter plot 404.  
30 A double-negative (e.g., third quadrant) point 406 can represent a pair of consecutive ventricular rate changes in which both the first ventricular rate change and the second ventricular rate change of the pair are negative. A double-negative point 406 can occur in the second region 412 on the scatter plot 404, or it can occur in the third quadrant but outside of the second region 412, or

it can occur in the third quadrant but outside of both the second region 412 and the first region 409. Other points 413, 414 can fall on the scatter plot 404 outside of the first region 409 and outside the second region 412. The points on scatter plot 404 are illustrative, and are not based on real data.

5 [0038] The first counter circuit 203 can be configured to determine a first count of instances of pairs of first and second ventricular rate changes of three temporally adjacent ventricular heart beats that fall within the first region 409 (e.g., meeting the “magnitude” criterion). The second counter circuit 204 can be configured to determine a second count of instances of the pairs that fall within  
10 the second region 412 (e.g., meeting the “double-decrement” and “noise margin” criteria). The first and second counter circuits 203, 204 can determine the first and second counts, respectively, for individual windows 314-317, such that the AF detection processor circuit 201 can provide first or second count or other AF information for individual windows 314-317.

15 [0039] FIG. 5 illustrates an example of detecting AF. At 501, the AF detection processor circuit 201 can receive indications of heart activity from the physiological sensor 209, such as via a ventricular heart beat input 202 that can be coupled to a heart beat sensing circuit 208 that can be configured to receive indications of heart activity from the physiological sensor 209.

20 [0040] At 502, the window determiner circuit 207 can declare windows of ventricular heart beats to be valid based on whether the number of valid ventricular heart beats exceeds a specified minimum number of valid ventricular heart beats for that individual window. The window determiner circuit 207 can be configured to receive information about whether individual ventricular heart  
25 beats are valid from the heart beat sensing circuit 208 or the physiological sensor 209, either or both of which can be configured to declare whether individual ventricular heart beats are valid.

[0041] FIG. 6 illustrates an example of detecting AF using windows of heart beats. At 601, the heart beat sensing circuit 208 can receive indications of  
30 ventricular heart beats.

[0042] At 602 the heart beat sensing circuit 208 can determine whether the ventricular heart beat indications meet a specified signal noise criterion. For example, the heart beat sensing circuit 208 can declare a ventricular heart beat to

be invalid when a cardiac signal contains noise exceeding the specified signal noise criterion.

[0043] At 603 the heart beat sensing circuit 208 can determine whether the ventricular heart rate is less than a threshold rate. For example, the heart beat  
5 sensing circuit 208 can declare a ventricular heart beat invalid when the ventricular heart rate of the ventricular heart beat exceeds a specified “maximum rate” threshold rate (e.g., 170 bpm or 185 bpm).

[0044] At 604 the heart beat sensing circuit 208 can determine whether the ventricular heart beat meets a signal morphological criterion. For example,  
10 the heart beat sensing circuit 208 can declare a ventricular heart beat invalid when the ventricular heart beat does not sufficiently fit a template ventricular heart beat template. The fit can be based on one or more morphological characteristics such as signal amplitude, width, and shape of the QRS complex associated with the ventricular heart beat and that of the ventricular heart beat  
15 template.

[0045] The first and second counter circuits 203, 204 can be configured to count instances of pairs of consecutive ventricular rate changes for valid ventricular heart beats. For example, at 602-604, the heart beat sensing circuit 208 can determine whether ventricular heart beats are valid for use in the first  
20 and second counts that are associated with the first region 409 and the second region 412, respectively. If any criterion of 602-604 is not met, the ventricular heart beat can be declared invalid at 608 such as by the heart beat sensing circuit 208.

[0046] At 610, the end of the window can be determined such as by  
25 using the window determiner circuit 207. The end of the window can be determined such as by using a window end criterion (e.g., a specified number of temporally adjacent heart beats or a specified time value, such as described above).

[0047] At 605, the window determiner circuit 207 can determine the  
30 number of valid beats in a window when the individual ventricular heart beats in a window have been processed by the heart beat sensing circuit 208 to make its initial determination of whether heart beats are valid or invalid, such as described above.

[0048] At 606, the window determiner circuit 207 can determine whether the number of valid ventricular heart beats for the individual window exceeds a specified minimum number of valid ventricular heart beats for the individual window (e.g., a minimum value, such as 40 beat or 60 beats). When the  
 5 specified minimum is exceeded, the window determiner circuit 207 can declare the individual window to be valid.

[0049] At 609 the window determiner circuit 207 can determine that the specified minimum number of valid ventricular heart beats for the particular window has not been met or exceeded, and the detector circuit 206 can be  
 10 configured to declare the window to be invalid.

[0050] The AF detection processor circuit 201 can be configured to determine AF information. This can include determining one or more indications of AF (e.g., a count of windows that indicate AF for a given time period, or a total amount of time that AF has been deemed to have occurred for a  
 15 given time period), for valid windows 503, 607. For example, at 504, the first counter circuit 203 can determine whether a first indication of AF is satisfied. This can include using the first count provided by the first counter circuit 203 to count instances of the pairs of ventricular rate changes that fall within the first region 409 (e.g., meet a “magnitude” criterion) over a window. Then, the first  
 20 count,  $a$ , can be further processed, such as to determine an indication of the first count relative to the total number of instances of pairs in a window over which the first and second counts are determined,  $T$ , less the first count. The indication of the first count can be calculated using Equation 2.

[0051] First Indication =  $a/(T - a)$  (Eq.  
 25 2)

[0052] At 505, the second counter circuit 204 can determine whether a second indication of AF is satisfied. The second indication of AF can be determined using the second count provided by the second counter circuit 204 to count instances of the pairs of ventricular rate changes that fall within the second  
 30 region 412 over a window. Then, the second count,  $b$ , can be further processed, such as to determine an indication of the second count relative to the total number of instances of pairs in a window over which the first and second counts are determined,  $T$ . The indication of the second count can be calculated using Equation 3.

[0053] Second Indication =  $b/T$  (Eq. 3)

[0054] The first count, the second count, the first indication, and the second indication can be determined computationally without actually  
5 generating the scatter plot 404 and without needing to physically draw or plot the points on the scatter plot 404.

[0055] At 506, AF is indicated for a valid window when the first and second indications are satisfied, such as by using the AF indication output 205. For example, when a window is not declared valid at 503, 609, the AF indication  
10 output 205 will not indicate AF for the invalid window.

[0056] FIG. 7 illustrates pictorial examples of heart rhythm information 700 and corresponding scatter plots. Four scatter plot signature examples are shown: a normal sinus rhythm (NSR) with premature ventricular contractions (PVCs) signature 701, an atrial flutter (Afl) with 2:1 conduction signature 702,  
15 an atrial fibrillation (AF or Afib) signature 703, and a normal sinus rhythm (NSR) signature 704.

[0057] A potential advantage of the present technique can include detecting atrial activity using ventricular information or from a ventricular location. For example, AF can be detected using only one ventricular lead, such  
20 as the lead 102. Parameters used with the present technique can be adjusted to ignore short bursts of AF, such as AF events lasting less than 50 cardiac cycles. The parameters can be configured to discriminate between cardiac rhythms, such as to discriminate atrial flutter with consistent conduction from AF. The present technique can be used to discriminate AF from one or more other cardiac  
25 rhythms, such as bigeminy and other premature ventricular contraction patterns. The parameters can be adjusted to accommodate pediatric rhythms, for example, such as by providing larger noise margins for the double-decrement criterion described above, such as to account for larger resting heart rate variability that can occur among pediatric populations.

30

#### Additional Notes

[0058] The above detailed description includes references to the accompanying drawings, which form a part of the detailed description. The drawings show, by way of illustration, specific embodiments in which the

invention can be practiced. These embodiments are also referred to herein as “examples.” Such examples can include elements in addition to those shown or described. However, the present inventors also contemplate examples in which only those elements shown or described are provided.

5 [0059] Example 1 can include subject matter (such as a system, a method, a means for performing acts, or a machine-readable medium including instructions that, when performed by the machine, cause the machine to perform acts, etc.) that can include an apparatus to detect atrial fibrillation. The apparatus can include a processor circuit. The processor circuit can include: (1)  
10 an input that can receive indications of pairs of first and second ventricular rate (or corresponding heart rate interval) changes of three temporally adjacent ventricular heart beats; (2) a first counter circuit, that can determine a first count of instances of the pairs in which a combined rate (or corresponding heart rate interval) change magnitude characteristic is less than at least one first criterion;  
15 (3) a second counter circuit, that can determine a second count of instances of the pairs in which both of the first and second ventricular rate (or corresponding heart rate interval) changes can be negative; and (4) an output to provide atrial fibrillation information using the first and second counts.

[0060] In Example 2, the subject matter of Example 1 can optionally be  
20 configured such that the second counter circuit can exclude instances of the pairs counted by the first counter circuit.

[0061] In Example 3, the subject matter of any one or any combination of Examples 1-2 can optionally be configured such that the second counter circuit can exclude instances of pairs of the first and second ventricular rate (or  
25 corresponding heart rate interval) changes wherein (1) a magnitude of the first ventricular rate (or corresponding heart rate interval) change can be less than a specified first threshold rate (or corresponding heart rate interval) change amount and (2) a magnitude of the second ventricular rate (or corresponding heart rate interval) change can be less than a specified second threshold rate (or  
30 corresponding heart rate interval) change amount.

[0062] In Example 4, the subject matter of one or any combination of Examples 1-3 can optionally be configured such that the input to receive indications of the pairs can receive the indications of the pairs over multiple

windows, individual windows can comprise multiple temporally adjacent ventricular heart beats.

[0063] In Example 5, the subject matter of one or any combination of Examples 1-4 can optionally be configured such that the output can provide  
5 respective atrial fibrillation information for respective windows.

[0064] In Example 6, the subject matter of one or any combination of Examples 1-5 can optionally be configured such that the windows can be temporally non-overlapping and the individual windows can comprise the same duration.

10 [0065] In Example 7, the subject matter of one or any combination of Examples 1-6 can optionally be configured such that the processor circuit can declare ventricular beats to be valid based on occurrences of the ventricular heart beats at less than a specified threshold heart rate (or corresponding heart rate interval).

15 [0066] In Example 8, the subject matter of one or any combination of Examples 1-7 can optionally be configured such that the processor circuit can declare ventricular heart beats to be valid based on a specified signal noise criterion.

[0067] In Example 9, the subject matter of one or any combination of  
20 Examples 1-8 can optionally be configured such that the processor circuit can declare ventricular heart beats to be valid based on a dynamically determined signal morphological criterion.

[0068] In Example 10, the subject matter of one or any combination of  
25 Examples 1-9 can optionally be configured such that the input can receive the indications of the pairs over multiple windows, individual windows can comprise multiple temporally adjacent ventricular heart beats, and wherein the processor circuit can declare a window to be valid based on whether a number of the valid ventricular beats within the window exceeds a specified minimum number of valid ventricular beats; and the output can provide the atrial  
30 fibrillation information by determining the first and second counts using only windows that have been declared valid.

[0069] In Example 11, the subject matter of one or any combination of Examples 1-10 can optionally be configured such that the input can receive indications of pairs over multiple windows, individual windows can comprise

multiple temporally adjacent ventricular heart beats, and wherein the output can provide the atrial fibrillation information using a first indication of the first count relative to: (1) a total number of instances of pairs in a window over which the first and second counts can be determined, less (2) the first count.

5 [0070] In Example 12, the subject matter of one or any combination of Examples 1-11 can optionally be configured such that the input can receive indications of pairs over multiple windows, individual windows can comprise multiple temporally adjacent ventricular heart beats, and wherein the output can provide the atrial fibrillation information using a second indication of the second  
10 count relative to the total number of instances of pairs in a window over which the first and second counts can be determined.

[0071] In Example 13, the subject matter of one or any combination of Examples 1-12 can optionally be configured such that the input can receive indications of pairs over multiple windows, individual windows can comprise  
15 multiple temporally adjacent ventricular heart beats, and wherein the processor circuit can determine the atrial fibrillation information using: a first indication of the first count relative to: (1) a total number of instances of pairs in a window over which the first and second counts can be determined, less (2) the first count; and a second indication of the second count relative to the total number of  
20 instances of pairs in a window over which the first and second counts can be determined.

[0072] Example 14 can include, or can be combined with the subject matter of one or any combination of Examples 1-13 to optionally include, subject matter (such as an apparatus, a method, a means for performing acts, or a  
25 machine-readable medium including instructions that, when performed by the machine, cause the machine to perform acts) that can comprise: receiving, at a processor circuit, indications of pairs of first and second ventricular rate (or corresponding heart rate interval) changes of three temporally adjacent ventricular heart beats; determining, using the processor circuit, a first count of  
30 instances of the pairs in which a combined rate (or corresponding heart rate interval) change magnitude characteristic can be less than at least one first criterion; determining, using the processor circuit, a second count of instances of the pairs in which both of the first and second ventricular rate (or corresponding

heart rate interval) changes can be negative; and determining, using the processor circuit, atrial fibrillation information using the first and second counts.

**[0073]** In Example 15, the subject matter of one or any combination of Examples 1-14 can optionally be configured such that the receiving the indications of the pairs comprises receiving the indications of the pairs over multiple windows, individual windows can comprise multiple temporally adjacent ventricular heart beats; and wherein, the determining the atrial fibrillation information includes determining respective atrial fibrillation information for respective windows; and wherein the determining the atrial fibrillation information includes: a first indication of the first count relative to: (1) a total number of instances of pairs in a window over which the first and second counts can be determined, less (2) the first count; and a second indication of the second count relative to the total number of instances of pairs in a window over which the first and second counts can be determined.

**[0074]** Example 16 can include, or can be combined with the subject matter of one or any combination of Examples 1-15 to optionally include, subject matter (such as an apparatus, a method, a means for performing acts, or a machine-readable medium including instructions that, when performed by the machine, cause the machine to perform acts) that can include an apparatus to detect atrial fibrillation. The apparatus can include a processor circuit. The processor circuit can include: (1) an input that can receive indications of pairs of first and second ventricular rate (or corresponding heart rate interval) changes of three temporally adjacent ventricular heart beats; (2) a first counter circuit that can determine a first count of instances of the pairs in which a combined rate (or corresponding heart rate interval) change magnitude characteristic can be less than at least one first criterion; (3) a second counter circuit that can determine a second count of instances of the pairs in which both of the first and second ventricular rate (or corresponding heart rate interval) changes can be negative; and (4) an output that can provide atrial fibrillation information using the first and second counts.

**[0075]** In Example 17, the subject matter of one or any combination of Examples 1-16 can optionally be configured such that the second counter circuit can exclude instances of the pairs counted by the first counter circuit.

[0076] In Example 18, the subject matter of one or any combination of Examples 1-17 can optionally be configured such that the second counter circuit can exclude instances of pairs of the first and second ventricular rate (or corresponding heart rate interval) changes wherein (1) a magnitude of the first  
5 ventricular rate (or corresponding heart rate interval) change can be less than a specified first threshold rate (or corresponding heart rate interval) change amount and (2) a magnitude of the second ventricular rate (or corresponding heart rate interval) change can be less than a specified second threshold rate (or corresponding heart rate interval) change amount.

10 [0077] In Example 19, the subject matter of one or any combination of Examples 1-18 can optionally be configured such that the input to receive indications of the pairs can receive the indications of the pairs over multiple windows, individual windows can comprise multiple temporally adjacent ventricular heart beats; and wherein the output can provide respective atrial  
15 fibrillation information for respective windows.

[0078] In Example 20, the subject matter of one or any combination of Examples 1-19 can optionally be configured such that the windows can be temporally non-overlapping and the individual windows can comprise the same duration.

20 [0079] In Example 21, the subject matter of one or any combination of Examples 1-20 can optionally be configured such that the processor circuit can: (1) declare ventricular heart beats to be valid based on: (i) occurrences of the ventricular heart beats at less than a specified threshold heart rate (or corresponding heart rate interval), (ii) a specified signal noise criterion, and (iii)  
25 a dynamically determined signal morphological criterion; (2) declare a window to be valid based on whether a number of the valid ventricular beats within the window exceeds a specified minimum number of valid ventricular beats; and (3) the output can provide the atrial fibrillation information by determining the first and second counts using only windows that have been declared valid.

30 [0080] In Example 22, the subject matter of one or any combination of Examples 1-21 can optionally be configured such that the processor circuit can determine the atrial fibrillation information using: a first indication of the first count relative to: (1) a total number of instances of pairs in a window over which the first and second counts can be determined, less (2) the first count; and

a second indication of the second count relative to the total number of instances of pairs in a window over which the first and second counts can be determined.

**[0081]** Example 23 can include, or can be combined with the subject matter of one or any combination of Examples 1-22 to optionally include, 5 subject matter (such as an apparatus, a method, a means for performing acts, or a machine-readable medium including instructions that, when performed by the machine, cause the machine to perform acts) that can include a medical system to detect atrial fibrillation. The system can include an ambulatory medical device (AMD) for use in a patient. The AMD can include an atrial fibrillation 10 detection processor circuit. The atrial fibrillation detection processor circuit can include: (1) a detector circuit, that can comprise: (i) a heart beat sensing circuit configured that can sense indications of ventricular heart beats of the patient; (ii) a window determinator that can receive the indications of the heart beats over multiple windows, individual windows can comprise multiple temporally 15 adjacent ventricular heart beats; (2) an input that can receive indications of pairs of first and second ventricular rate (or corresponding heart rate interval) changes of three temporally adjacent ventricular heart beats; (3) a first counter circuit that can determine a first count of instances of the pairs in which a combined rate (or corresponding heart rate interval) change magnitude characteristic can be less 20 than at least one first criterion; (4) a second counter circuit that can determine a second count of instances of the pairs in which both of the first and second ventricular rate (or corresponding heart rate interval) changes can be negative; and (5) an output that can provide atrial fibrillation information using the first and second counts.

**[0082]** In Example 24, the subject matter of one or any combination of Examples 1-23 can optionally be configured such that the heart beat sensing circuit can declare ventricular heart beats to be valid based on validity criteria including: (1) occurrences of the ventricular heart beats at less than a specified 25 threshold heart rate (or corresponding heart rate interval), (2) a specified signal noise criterion, and (3) a dynamically determined signal morphological criterion. 30

**[0083]** In Example 25, the subject matter of one or any combination of Examples 1-24 can optionally be configured such that the processor circuit can determine the atrial fibrillation information using: a first indication of the first count relative to: (1) a total number of instances of pairs in a window over

which the first and second counts can be determined, less (2) the first count; and a second indication of the second count relative to the total number of instances of pairs in a window over which the first and second counts can be determined

**[0084]** Example 26 can include, or can be combined with the subject matter of one or any combination of Examples 1-25 to optionally include, subject matter (such as an apparatus, a method, a means for performing acts, or a machine-readable medium including instructions that, when performed by the machine, cause the machine to perform acts) that can comprise receiving, at a processor circuit, indications of pairs of first and second ventricular rate (or corresponding heart rate interval) changes of three temporally adjacent ventricular heart beats; determining, using the processor circuit, a first count of instances of the pairs in which a combined rate (or corresponding heart rate interval) change magnitude characteristic can be less than at least one first criterion; determining, using the processor circuit, a second count of instances of the pairs in which both of the first and second ventricular rate (or corresponding heart rate interval) changes can be negative; and determining, using the processor circuit, atrial fibrillation information using the first and second counts.

**[0085]** In Example 27, the subject matter of one or any combination of Examples 1-26 can optionally be configured such that the determining the second count can exclude instances of the pairs included in the first count.

**[0086]** In Example 28, the subject matter of one or any combination of Examples 1-27 can optionally be configured such that the determining the second count can exclude instances of pairs of the first and second ventricular rate (or corresponding heart rate interval) changes wherein (1) a magnitude of the first ventricular rate (or corresponding heart rate interval) change can be less than a specified first threshold rate (or corresponding heart rate interval) change amount and (2) a magnitude of the second ventricular rate (or corresponding heart rate interval) change can be less than a specified second threshold rate (or corresponding heart rate interval) change amount.

**[0087]** In Example 29, the subject matter of one or any combination of Examples 1-28 can optionally be configured such that receiving the indications of the pairs can comprise receiving the indications of the pairs over multiple windows, individual windows can comprise multiple temporally adjacent ventricular heart beats; and wherein, the determining the atrial fibrillation

information can include determining respective atrial fibrillation information for respective windows.

[0088] In Example 30, the subject matter of one or any combination of Examples 1-29 can optionally be configured such that the windows can be  
5 temporally non-overlapping and the size of each of the non-overlapping windows can comprise the same duration.

[0089] In Example 31, the subject matter of one or any combination of Examples 1-30 can optionally be configured such that ventricular heart beats can be declared to be valid based on occurring at less than a specified threshold heart  
10 rate (or corresponding heart rate interval), a specified signal noise criterion, and a dynamically determined signal morphological criterion; a window can be declared to be valid when a number of the valid ventricular beats within the window exceeds a specified minimum number of valid ventricular beats; and the atrial fibrillation information can be determined by determining the first and  
15 second counts using only windows that have been declared valid.

[0090] In Example 32, the subject matter of one or any combination of Examples 1-31 can optionally be configured such that ventricular heart beats can be declared to be valid based on: (1) occurring at less than a specified threshold heart rate (or corresponding heart rate interval), (2) a specified signal noise  
20 criterion, and (3) a dynamically determined signal morphological criterion; and the atrial fibrillation information can be determined by determining the first and second counts using only beats that have been declared valid.

[0091] In Example 33, the subject matter of one or any combination of Examples 1-32 can optionally be configured such that the atrial fibrillation  
25 information can be determined using a first indication of the first count relative to: (1) a total number of instances of pairs in a window over which the first and second counts can be determined, less (2) the first count.

[0092] In Example 34, the subject matter of one or any combination of Examples 1-33 can optionally be configured such that the atrial fibrillation  
30 information can be determined using a second indication of the second count relative to the total number of instances of pairs in a window over which the first and second counts can be determined.

[0093] In Example 35, the subject matter of one or any combination of Examples 1-34 can optionally be configured such that the atrial fibrillation

information can be determined using: a first indication of the first count relative to: (1) a total number of instances of pairs in a window over which the first and second counts can be determined, less (2) the first count; and a second indication of the second count relative to the total number of instances of pairs in a window  
5 over which the first and second counts can be determined.

[0094] These examples can be combined in any permutation or combination.

[0095] Moreover, the present inventors also contemplate examples using any combination or permutation of those elements shown or described (or one or  
10 more aspects thereof), either with respect to a particular example (or one or more aspects thereof), or with respect to other examples (or one or more aspects thereof) shown or described herein.

[0096] Although certain examples and claims have been expressed in terms of heart “rate,” (e.g., in beats per minute) it is understood that a  
15 corresponding heart rate interval (e.g., in milliseconds) is an equivalent indication of heart rate and should be considered to fall within the scope of the term “rate” recited in the claims.

[0097] All publications, patents, and patent documents referred to in this document are incorporated by reference herein in their entirety, as though  
20 individually incorporated by reference. In the event of inconsistent usages between this document and those documents so incorporated by reference, the usage in the incorporated reference(s) should be considered supplementary to that of this document; for irreconcilable inconsistencies, the usage in this document controls.

[0098] In this document, the terms “a” or “an” are used, as is common in patent documents, to include one or more than one, independent of any other instances or usages of “at least one” or “one or more.” In this document, the term “or” is used to refer to a nonexclusive or, such that “A or B” includes “A but not B,” “B but not A,” and “A and B,” unless otherwise indicated. In this  
30 document, the terms “including” and “in which” are used as the plain-English equivalents of the respective terms “comprising” and “wherein.” Also, in the following claims, the terms “including” and “comprising” are open-ended, that is, an apparatus, system, device, article, composition, formulation, or process that includes elements in addition to those listed after such a term in a claim are

still deemed to fall within the scope of that claim. Moreover, in the following claims, the terms “first,” “second,” and “third,” etc. are used merely as labels, and are not intended to impose numerical requirements on their objects.

[0099] Method examples described herein can be machine or computer-  
5 implemented at least in part. Some examples can include a computer-readable medium or machine-readable medium encoded with instructions operable to configure an electronic device to perform methods as described in the above examples. An implementation of such methods can include code, such as microcode, assembly language code, a higher-level language code, or the like.  
10 Such code can include computer readable instructions for performing various methods. The code may form portions of computer program products. Further, in an example, the code can be tangibly stored on one or more volatile, non-transitory, or non-volatile tangible computer-readable media, such as during execution or at other times. Examples of these tangible computer-readable  
15 media can include, but are not limited to, hard disks, removable magnetic disks, removable optical disks (e.g., compact disks and digital video disks), magnetic cassettes, memory cards or sticks, random access memories (RAMs), read only memories (ROMs), and the like.

[00100] The above description is intended to be illustrative, and not  
20 restrictive. For example, the above-described examples (or one or more aspects thereof) may be used in combination with each other. Other embodiments can be used, such as by one of ordinary skill in the art upon reviewing the above description. The Abstract is provided to comply with 37 C.F.R. §1.72(b), to allow the reader to quickly ascertain the nature of the technical disclosure. It is  
25 submitted with the understanding that it will not be used to interpret or limit the scope or meaning of the claims. Also, in the above Detailed Description, various features may be grouped together to streamline the disclosure. This should not be interpreted as intending that an unclaimed disclosed feature is essential to any claim. Rather, inventive subject matter may lie in less than all  
30 features of a particular disclosed embodiment. Thus, the following claims are hereby incorporated into the Detailed Description as examples or embodiments, with each claim standing on its own as a separate embodiment, and it is contemplated that such embodiments can be combined with each other in various combinations or permutations. The scope of the invention should be determined

with reference to the appended claims, along with the full scope of equivalents to which such claims are entitled.

## WHAT IS CLAIMED IS:

1. An apparatus to detect atrial fibrillation, the apparatus comprising:  
a processor circuit, comprising:  
5 an input to receive indications of pairs of first and second  
ventricular rate changes of three temporally adjacent ventricular heart  
beats;  
a first counter circuit, to determine a first count of instances of the  
pairs in which a combined rate change magnitude characteristic is less  
10 than at least one first criterion;  
a second counter circuit, to determine a second count of instances  
of the pairs in which both of the first and second ventricular rate changes  
are negative; and  
an output to provide atrial fibrillation information using the first  
15 and second counts.
2. The apparatus of claim 1, wherein the second counter circuit is  
configured to exclude instances of the pairs counted by the first counter circuit.
- 20 3. The apparatus of any one of claims 1 or 2, wherein the second counter  
circuit is configured to exclude instances of pairs of the first and second  
ventricular rate changes wherein (1) a magnitude of the first ventricular rate  
change is less than a specified first threshold rate change amount and (2) a  
magnitude of the second ventricular rate change is less than a specified second  
25 threshold rate change amount.
4. The apparatus of any one of claims 1-3, wherein the input to receive  
indications of the pairs is configured to receive the indications of the pairs over  
multiple windows, individual windows comprising multiple temporally adjacent  
30 ventricular heart beats.
5. The apparatus of any one of claims 1-4, wherein the output is configured  
to provide respective atrial fibrillation information for respective windows.

6. The apparatus of any one of claims 4 or 5, wherein the windows are temporally non-overlapping and the individual windows comprise the same duration.
- 5 7. The apparatus of any one of claims 1-6, wherein the processor circuit is configured to declare ventricular heart beats to be valid based on occurrences of the ventricular heart beats at less than a specified threshold heart rate.
8. The apparatus of any one of claims 1-7, wherein the processor circuit is  
10 configured to declare ventricular heart beats to be valid based on a specified signal noise criterion.
9. The apparatus of any one of claims 1-8, wherein the processor circuit is  
15 configured to declare ventricular heart beats to be valid based on a dynamically determined signal morphological criterion.
10. The apparatus of at least one of claims 7-9, wherein the input is configured to receive the indications of the pairs over multiple windows, individual windows comprising multiple temporally adjacent ventricular heart  
20 beats, and wherein the processor circuit is configured to declare a window to be valid based on whether a number of the valid ventricular beats within the window exceeds a specified minimum number of valid ventricular beats; and  
the output is configured to provide the atrial fibrillation information by  
determining the first and second counts using only windows that have been  
25 declared valid.
11. The apparatus of any one of claims 1-10, wherein the input is configured to receive indications of pairs over multiple windows, individual windows comprising multiple temporally adjacent ventricular heart beats, and wherein the  
30 output is configured to provide the atrial fibrillation information using a first indication of the first count relative to: (1) a total number of instances of pairs in a window over which the first and second counts are determined, less (2) the first count.

12. The apparatus of any one of claims 1-11, wherein the input is configured to receive indications of pairs over multiple windows, individual windows comprising multiple temporally adjacent ventricular heart beats, and wherein the output is configured to provide the atrial fibrillation information using a second indication of the second count relative to the total number of instances of pairs in a window over which the first and second counts are determined.

13. The apparatus of any one of claims 1-12, wherein the input is configured to receive indications of pairs over multiple windows, individual windows comprising multiple temporally adjacent ventricular heart beats, and wherein the processor circuit is configured to determine the atrial fibrillation information using:

a first indication of the first count relative to: (1) a total number of instances of pairs in a window over which the first and second counts are determined, less (2) the first count; and

a second indication of the second count relative to the total number of instances of pairs in a window over which the first and second counts are determined.

14. A method comprising:

receiving, at a processor circuit, indications of pairs of first and second ventricular rate changes of three temporally adjacent ventricular heart beats;

determining, using the processor circuit, a first count of instances of the pairs in which a combined rate change magnitude characteristic is less than at least one first criterion;

determining, using the processor circuit, a second count of instances of the pairs in which both of the first and second ventricular rate changes are negative; and

determining, using the processor circuit, atrial fibrillation information using the first and second counts.

15. The method of claim 14, wherein the receiving the indications of the pairs comprises receiving the indications of the pairs over multiple windows,

individual windows comprising multiple temporally adjacent ventricular heart beats; and

wherein, the determining the atrial fibrillation information includes determining respective atrial fibrillation information for respective windows; and

5 wherein the determining the atrial fibrillation information includes:

a first indication of the first count relative to: (1) a total number of instances of pairs in a window over which the first and second counts are determined, less (2) the first count; and

10 a second indication of the second count relative to the total number of instances of pairs in a window over which the first and second counts are determined.

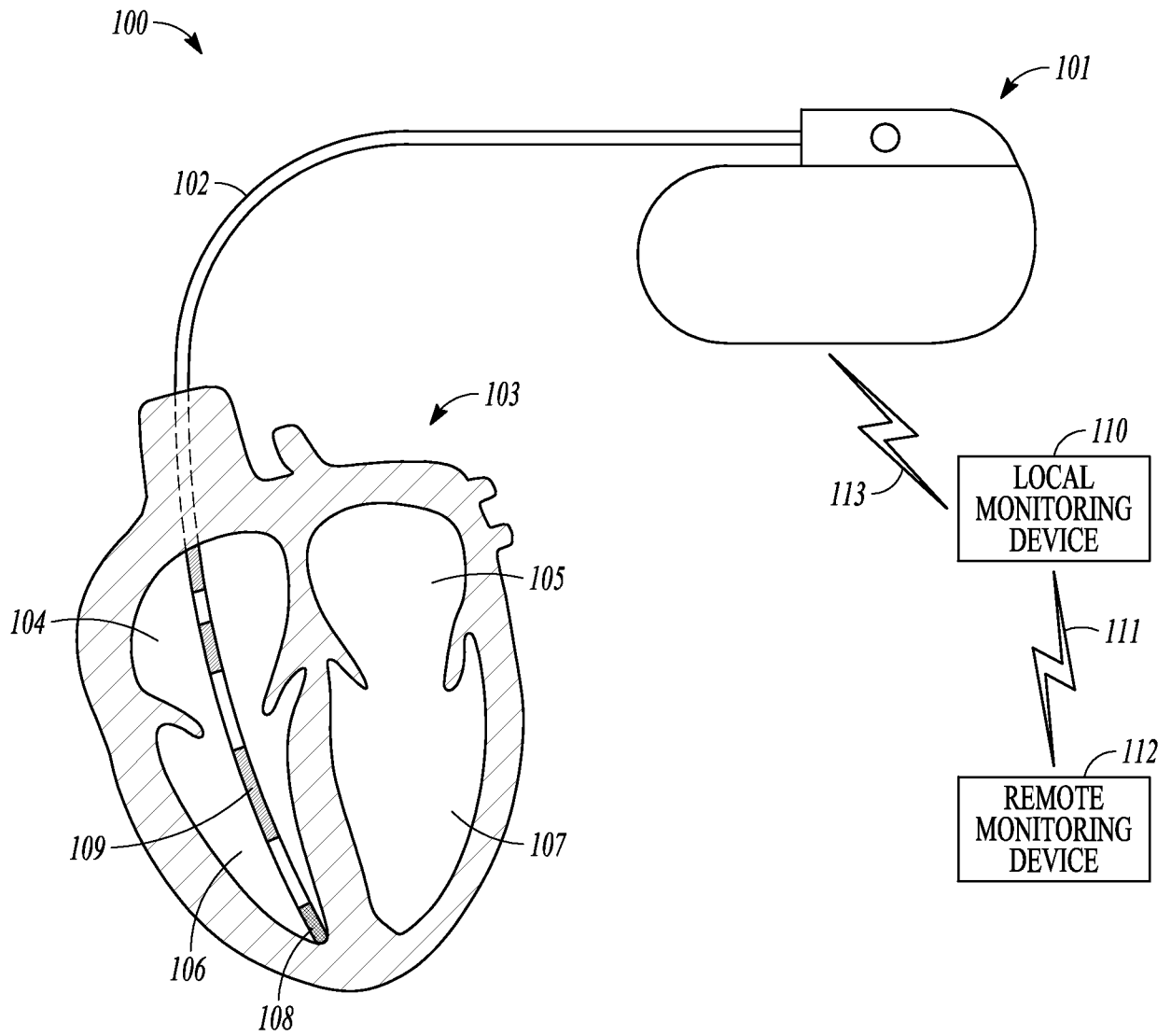


FIG. 1

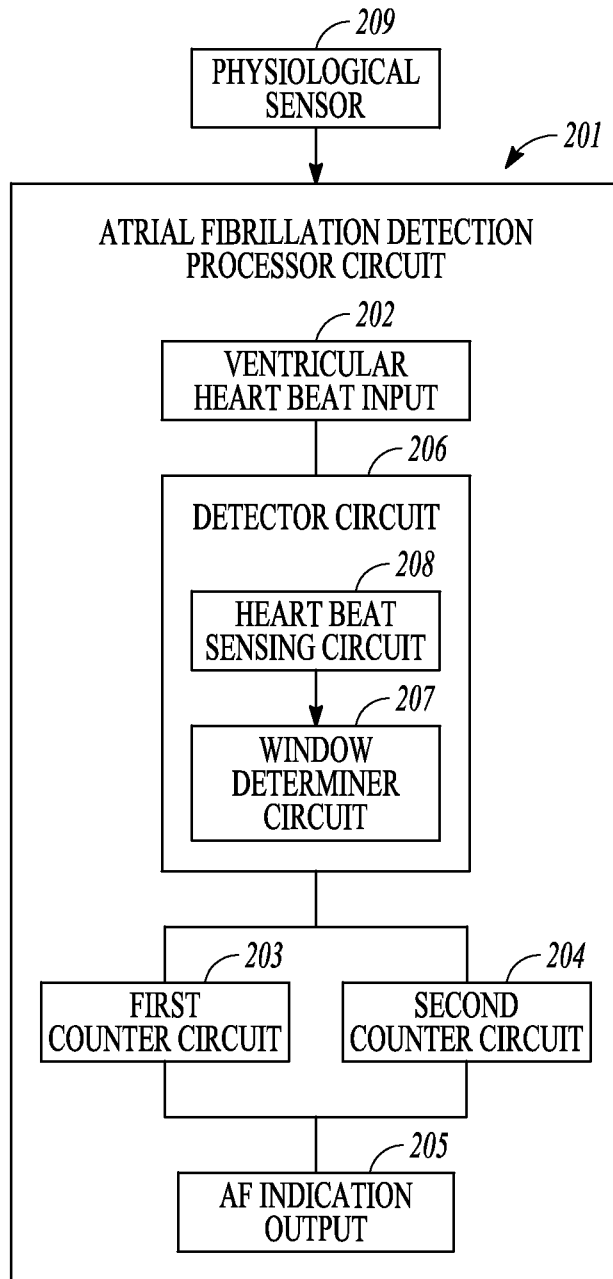


FIG. 2

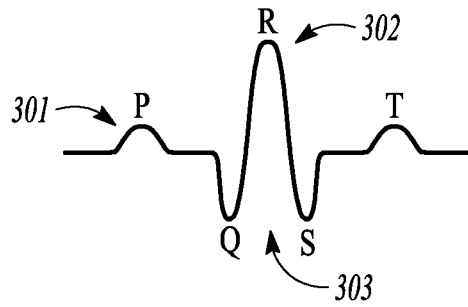


FIG. 3A

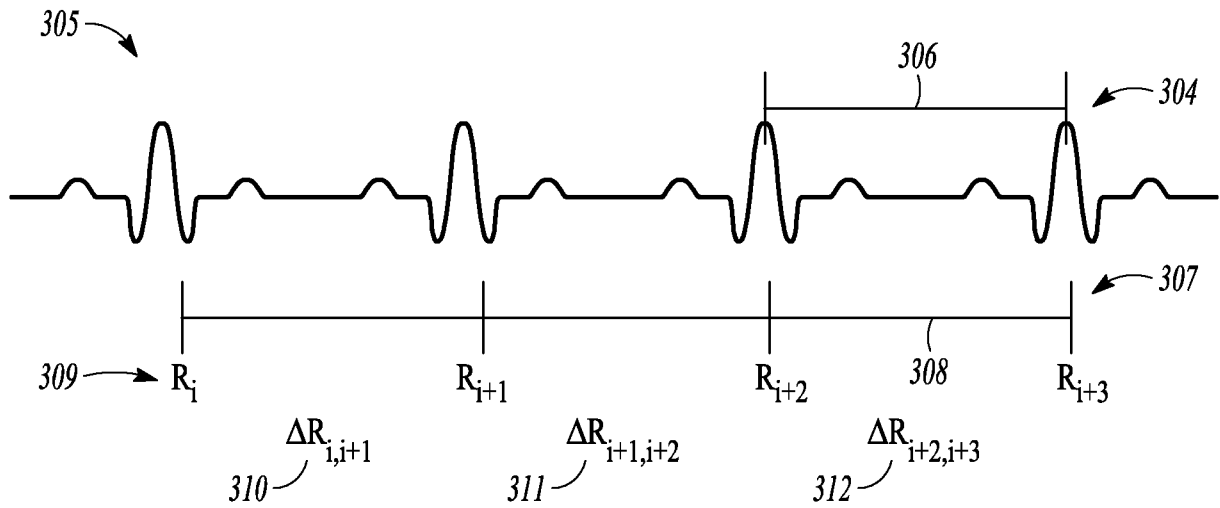


FIG. 3B

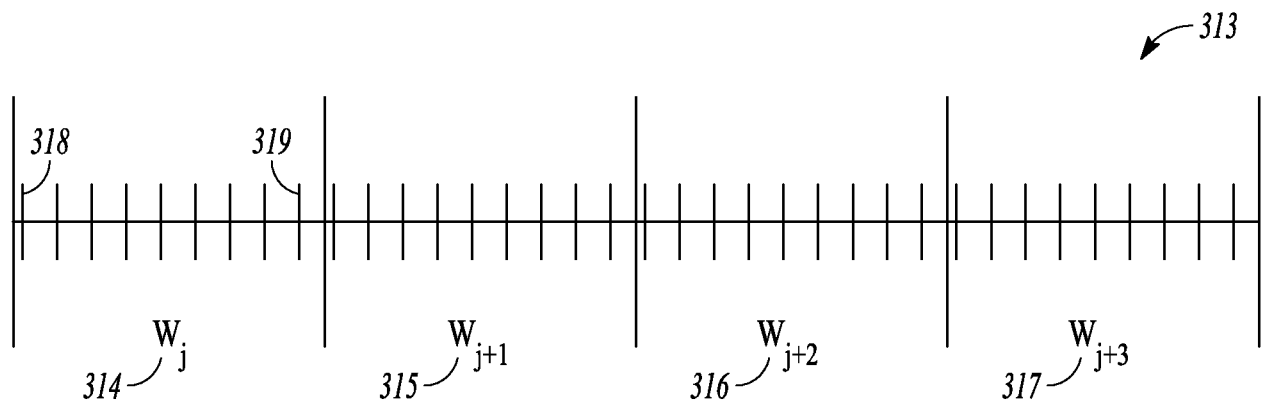


FIG. 3C

401 ↗

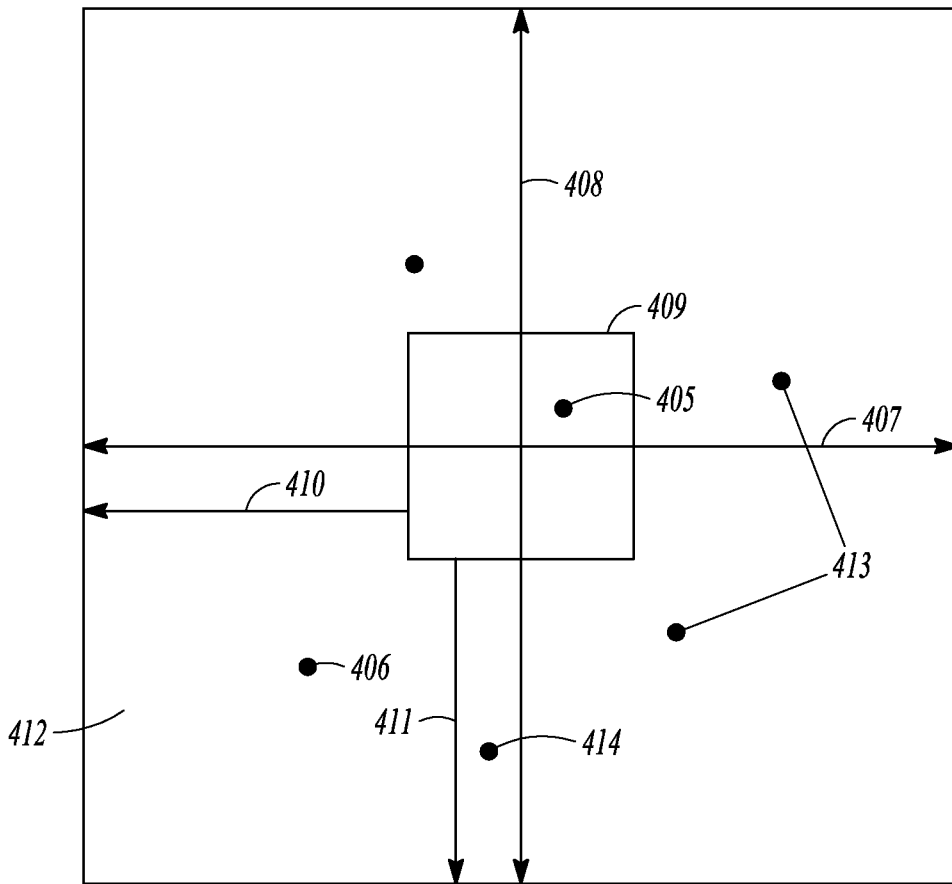
$\Delta R_{i,i+1}$	$\Delta R_{i+1,i+2}$	$\Delta R_{i+2,i+3}$	$\Delta R_{i+3,i+4}$
$X_1$	$Y_1$	-	-
-	$X_2$	$Y_2$	-
-	-	$X_3$	$Y_3$

402

403

**FIG. 4A**

↖ 404



**FIG. 4B**

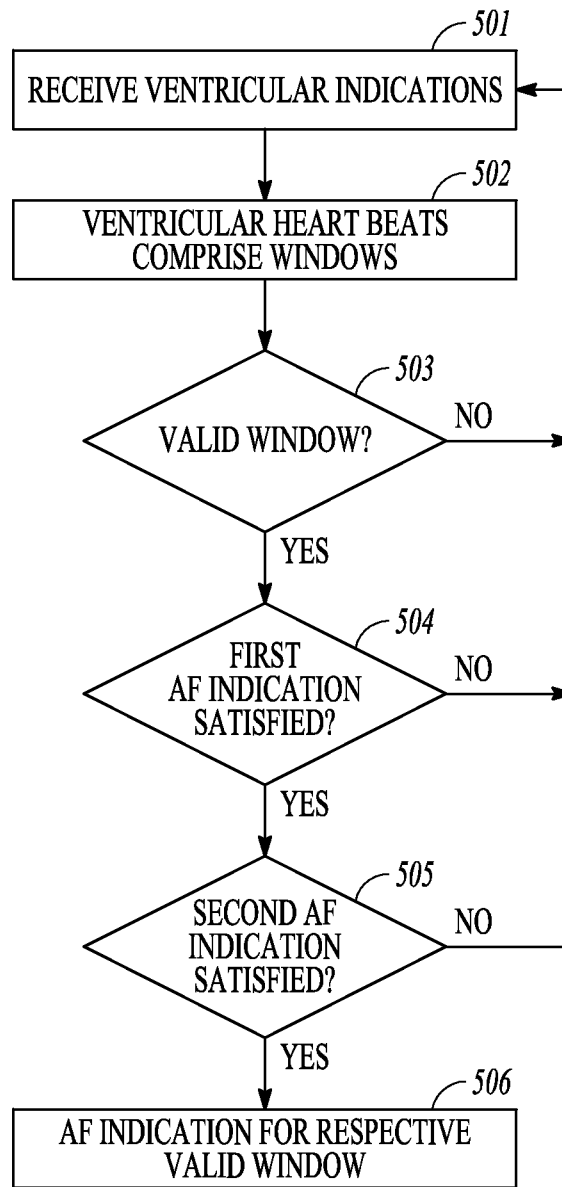


FIG. 5

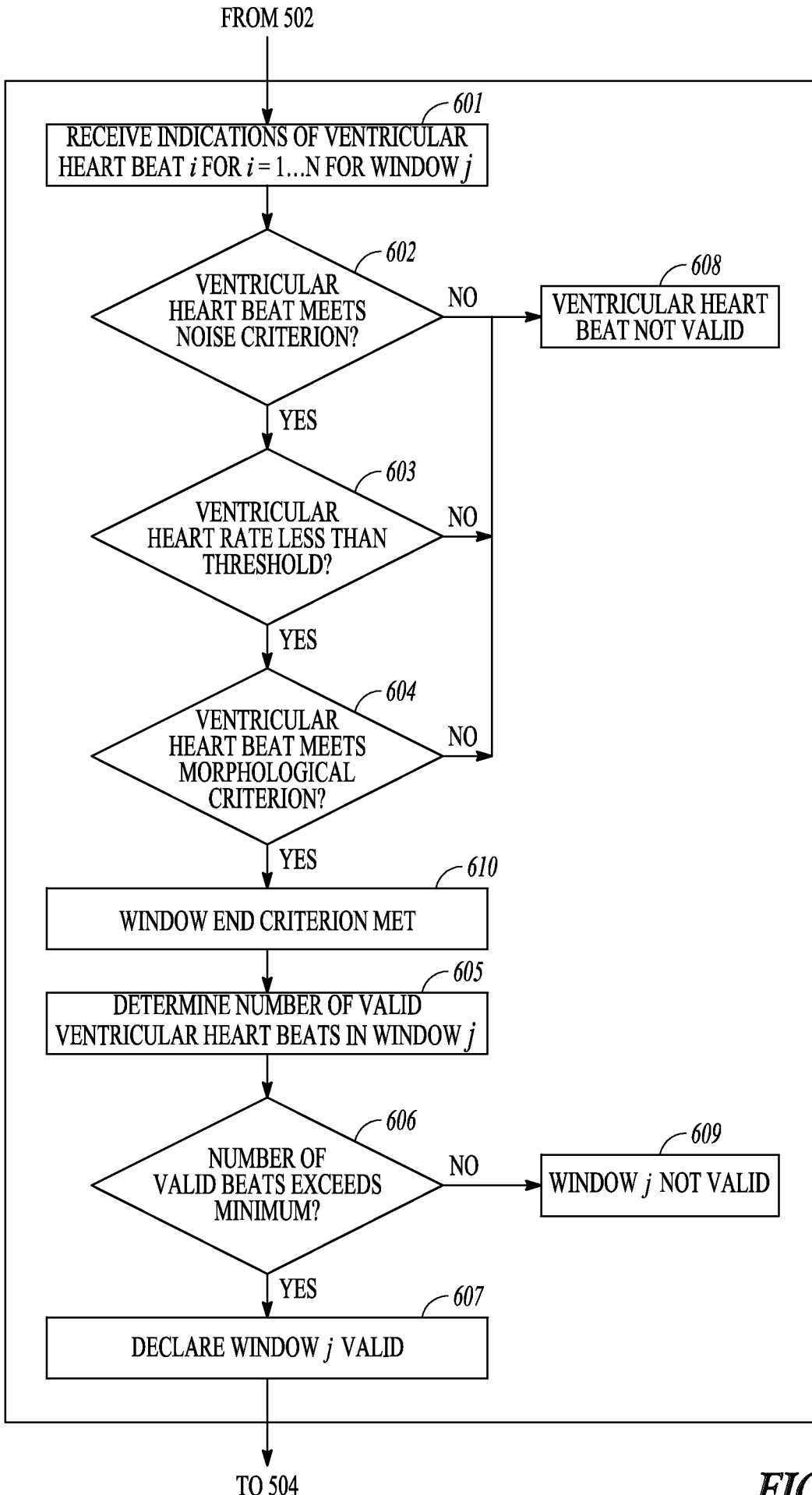


FIG. 6

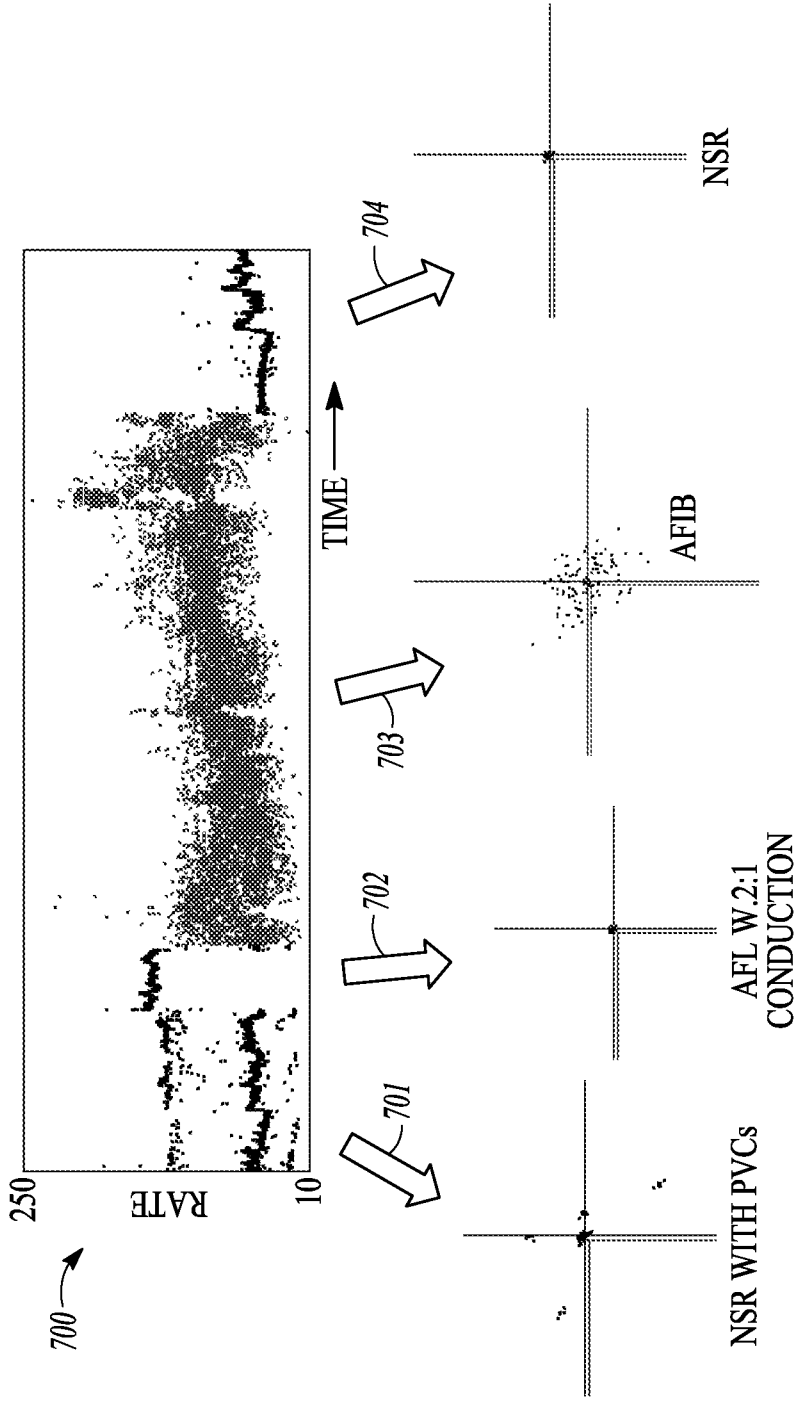


FIG. 7

**INTERNATIONAL SEARCH REPORT**

International application No PCT/US2015/045042
---

**A. CLASSIFICATION OF SUBJECT MATTER**  
 INV. A61B5/046 A61B5/024 G06F19/00  
 ADD. A61B5/0472 A61B5/00

According to International Patent Classification (IPC) or to both national classification and IPC

**B. FIELDS SEARCHED**

Minimum documentation searched (classification system followed by classification symbols)  
 A61B

Documentation searched other than minimum documentation to the extent that such documents are included in the fields searched

Electronic data base consulted during the international search (name of data base and, where practicable, search terms used)

EPO-Internal, WPI Data

**C. DOCUMENTS CONSIDERED TO BE RELEVANT**

Category*	Citation of document, with indication, where appropriate, of the relevant passages	Relevant to claim No.
X	WO 2006/118852 A2 (MEDTRONIC INC [US]; RITISCHER DAVID E [US]; SARKAR SHANTANU [US]) 9 November 2006 (2006-11-09) page 4, lines 18, 19, 29 page 4, line 32 - page 5, line 1 page 6, lines 8, 16, 17, 19 page 8, lines 18, 21, 30 page 9, lines 24, 25 page 13, line 30 page 18, line 30 page 23, lines 1, 4, 7, 14, 15 page 26, lines 6, 11 page 36, line 27  -----  -/--	1-13

Further documents are listed in the continuation of Box C.

See patent family annex.

\* Special categories of cited documents :

- "A" document defining the general state of the art which is not considered to be of particular relevance
- "E" earlier application or patent but published on or after the international filing date
- "L" document which may throw doubts on priority claim(s) or which is cited to establish the publication date of another citation or other special reason (as specified)
- "O" document referring to an oral disclosure, use, exhibition or other means
- "P" document published prior to the international filing date but later than the priority date claimed

- "T" later document published after the international filing date or priority date and not in conflict with the application but cited to understand the principle or theory underlying the invention
- "X" document of particular relevance; the claimed invention cannot be considered novel or cannot be considered to involve an inventive step when the document is taken alone
- "Y" document of particular relevance; the claimed invention cannot be considered to involve an inventive step when the document is combined with one or more other such documents, such combination being obvious to a person skilled in the art
- "&" document member of the same patent family

Date of the actual completion of the international search

20 October 2015

Date of mailing of the international search report

27/10/2015

Name and mailing address of the ISA/

European Patent Office, P.B. 5818 Patentlaan 2  
 NL - 2280 HV Rijswijk  
 Tel. (+31-70) 340-2040,  
 Fax: (+31-70) 340-3016

Authorized officer

Meyer, Wolfgang

## INTERNATIONAL SEARCH REPORT

International application No  
PCT/US2015/045042

C(Continuation). DOCUMENTS CONSIDERED TO BE RELEVANT

Category*	Citation of document, with indication, where appropriate, of the relevant passages	Relevant to claim No.
X	US 2012/101541 A1 (CORBUCCI GIORGIO [IT] ET AL) 26 April 2012 (2012-04-26) paragraphs [0099], [0100], [0106], [0108], [0110] figures 4, 9-12	1,7-13
A	----- US 2011/152957 A1 (SHAQUER CEM [US]) 23 June 2011 (2011-06-23) paragraph [0086]	7
A	----- EP 2 407 097 A1 (BIOTRONIK SE & CO KG [DE]) 18 January 2012 (2012-01-18) paragraphs [0009], [0010], [0102], [0103] figures 6, 7, 10, 14	8-10
A	----- TATENO K ET AL: "AUTOMATIC DETECTION OF ATRIAL FIBRILLATION USING THE COEFFICIENT OF VARIATION AND DENSITY HISTOGRAMS OF RR AND RR INTERVALS", MEDICAL AND BIOLOGICAL ENGINEERING AND COMPUTING, SPRINGER, HEILDELBERG, DE, vol. 39, no. 6, 1 November 2001 (2001-11-01), pages 664-671, XP008017887, ISSN: 0140-0118, DOI: 10.1007/BF02345439 figures 3, 4	11-13
A	----- US 2004/092836 A1 (RITSCHER DAVID E [US] ET AL) 13 May 2004 (2004-05-13) the whole document	1-13
A	----- BABAEIZADEH S ET AL: "Improvements in atrial fibrillation detection for real-time monitoring", JOURNAL OF ELECTROCARDIOLOGY, ELSEVIER SCIENCE, XX, vol. 42, no. 6, 1 November 2009 (2009-11-01), pages 522-526, XP026702878, ISSN: 0022-0736, DOI: 10.1016/J.JELECTROCARD.2009.06.006 [retrieved on 2009-07-15] the whole document	1-13
A	----- WO 2013/020710 A1 (APPLIED BIOMEDICAL SYSTEMS B V [NL]; HOUBEN RICHARD [BE]; LARIK VINCEN) 14 February 2013 (2013-02-14) the whole document	1-13
	-----	

## INTERNATIONAL SEARCH REPORT

International application No.  
PCT/US2015/045042

### Box No. II Observations where certain claims were found unsearchable (Continuation of item 2 of first sheet)

This international search report has not been established in respect of certain claims under Article 17(2)(a) for the following reasons:

1.  Claims Nos.: 14, 15  
because they relate to subject matter not required to be searched by this Authority, namely:  
see FURTHER INFORMATION sheet PCT/ISA/210
2.  Claims Nos.:  
because they relate to parts of the international application that do not comply with the prescribed requirements to such an extent that no meaningful international search can be carried out, specifically:
3.  Claims Nos.:  
because they are dependent claims and are not drafted in accordance with the second and third sentences of Rule 6.4(a).

### Box No. III Observations where unity of invention is lacking (Continuation of item 3 of first sheet)

This International Searching Authority found multiple inventions in this international application, as follows:

1.  As all required additional search fees were timely paid by the applicant, this international search report covers all searchable claims.
2.  As all searchable claims could be searched without effort justifying an additional fees, this Authority did not invite payment of additional fees.
3.  As only some of the required additional search fees were timely paid by the applicant, this international search report covers only those claims for which fees were paid, specifically claims Nos.:
4.  No required additional search fees were timely paid by the applicant. Consequently, this international search report is restricted to the invention first mentioned in the claims; it is covered by claims Nos.:

#### Remark on Protest

- The additional search fees were accompanied by the applicant's protest and, where applicable, the payment of a protest fee.
- The additional search fees were accompanied by the applicant's protest but the applicable protest fee was not paid within the time limit specified in the invitation.
- No protest accompanied the payment of additional search fees.

**FURTHER INFORMATION CONTINUED FROM PCT/ISA/ 210**

Continuation of Box II.1

Claims Nos.: 14, 15

No opinion was established on independent claim 14 and dependent claim 15 because their subject-matter relates to diagnostic methods that are not required to be searched according to Rule 39.1(iv) PCT. Particularly, the vague terms "atrial fibrillation information" and "indication" suggest the performance of a diagnosis.

# INTERNATIONAL SEARCH REPORT

Information on patent family members

International application No PCT/US2015/045042
---

Patent document cited in search report	A1/A2	Publication date		Patent family member(s)	Publication date
WO 2006118852	A2	09-11-2006	CA	2605511 A1	09-11-2006
			EP	1883346 A2	06-02-2008
			JP	2008539015 A	13-11-2008
			US	2006247548 A1	02-11-2006
			WO	2006118852 A2	09-11-2006
			WO	2009091348 A1	23-07-2009
-----					
US 2012101541	A1	26-04-2012	US	2012101541 A1	26-04-2012
			WO	2012057851 A2	03-05-2012
-----					
US 2011152957	A1	23-06-2011	NONE		
-----					
EP 2407097	A1	18-01-2012	EP	2407097 A1	18-01-2012
			US	2012016249 A1	19-01-2012
-----					
US 2004092836	A1	13-05-2004	US	2004092836 A1	13-05-2004
			WO	2004043538 A1	27-05-2004
-----					
WO 2013020710	A1	14-02-2013	CN	103997955 A	20-08-2014
			EP	2741662 A1	18-06-2014
			US	2013041273 A1	14-02-2013
			US	2014330149 A1	06-11-2014
			WO	2013020710 A1	14-02-2013
-----					

专利名称(译)	心房颤动检测使用心室率变异性		
公开(公告)号	<a href="#">EP3179910A1</a>	公开(公告)日	2017-06-21
申请号	EP2015757059	申请日	2015-08-13
[标]申请(专利权)人(译)	心脏起搏器股份公司		
申请(专利权)人(译)	心脏起搏器, INC.		
当前申请(专利权)人(译)	心脏起搏器, INC.		
[标]发明人	KRUEGER JONATHAN WALTER MAHAJAN DEEPA PERSCHBACHER DAVID L		
发明人	KRUEGER, JONATHAN WALTER MAHAJAN, DEEPA PERSCHBACHER, DAVID L.		
IPC分类号	A61B5/046 A61B5/024 G06F19/00 A61B5/0472 A61B5/00		
CPC分类号	A61B5/02405 A61B5/04012 A61B5/046 A61B5/0472 A61B5/7203 A61B5/7264 A61B5/7278 G16H50/20		
优先权	62/037348 2014-08-14 US		
外部链接	<a href="#">Espacenet</a>		

#### 摘要(译)

心房颤动信息可以从心室信息或心室位置确定, 例如使用心室率变异性。移动式医疗设备可以接收三个时间上相邻的心室心跳的第一和第二心室率变化对的指示。满足组合的速率变化幅度特征的对的第一实例计数和其中第一和第二心室速率变化都是负的对的实例的第二计数可以用于提供心房纤颤信息。