

(19) World Intellectual Property Organization  
International Bureau



(43) International Publication Date  
5 January 2012 (05.01.2012)

(10) International Publication Number  
**WO 2012/003081 A1**

- (51) **International Patent Classification:**  
A61M 16/00 (2006.01) A61B 5/00 (2006.01)  
G06F 19/00 (2011.01)
- (21) **International Application Number:**  
PCT/US2011/039899
- (22) **International Filing Date:**  
10 June 2011 (10.06.2011)
- (25) **Filing Language:** English
- (26) **Publication Language:** English
- (30) **Priority Data:**  
12/827,130 30 June 2010 (30.06.2010) US
- (71) **Applicant (for all designated States except US):** NELL-COR PURITAN BENNETT LLC [US/US]; 6135 Gunbarrel Avenue, Boulder, Colorado 80301 (US).
- (72) **Inventors; and**
- (75) **Inventors/Applicants (for US only):** MILNE, Gary [US/US]; 390 Spruce Circle, Louisville, Colorado 80027 (US). HENSLEY, Kirk [US/US]; 7105 Timberview Drive, Dublin, Ohio 43017 (US). DOYLE, Peter [US/US]; 1948 Casablanca Court, Vista, California 92081 (US). KIMM, Gardner [US/US]; 4319 Point Reyes Court, Carlsbad, California 92010 (US).

- (74) **Agent:** ANDERSON, Matthew; Attn IP Legal, 6135 Gunbarrel Avenue, Boulder, Colorado 80301 (US).
- (81) **Designated States (unless otherwise indicated, for every kind of national protection available):** AE, AG, AL, AM, AO, AT, AU, AZ, BA, BB, BG, BH, BR, BW, BY, BZ, CA, CH, CL, CN, CO, CR, CU, CZ, DE, DK, DM, DO, DZ, EC, EE, EG, ES, FI, GB, GD, GE, GH, GM, GT, HN, HR, HU, ID, IL, IN, IS, JP, KE, KG, KM, KN, KP, KR, KZ, LA, LC, LK, LR, LS, LT, LU, LY, MA, MD, ME, MG, MK, MN, MW, MX, MY, MZ, NA, NG, NI, NO, NZ, OM, PE, PG, PH, PL, PT, RO, RS, RU, SC, SD, SE, SG, SK, SL, SM, ST, SV, SY, TH, TJ, TM, TN, TR, TT, TZ, UA, UG, US, UZ, VC, VN, ZA, ZM, ZW.
- (84) **Designated States (unless otherwise indicated, for every kind of regional protection available):** ARIPO (BW, GH, GM, KE, LR, LS, MW, MZ, NA, SD, SL, SZ, TZ, UG, ZM, ZW), Eurasian (AM, AZ, BY, KG, KZ, MD, RU, TJ, TM), European (AL, AT, BE, BG, CH, CY, CZ, DE, DK, EE, ES, FI, FR, GB, GR, HR, HU, IE, IS, IT, LT, LU, LV, MC, MK, MT, NL, NO, PL, PT, RO, RS, SE, SI, SK, SM, TR), OAPI (BF, BJ, CF, CG, CI, CM, GA, GN, GQ, GW, ML, MR, NE, SN, TD, TG).

**Published:**  
— with international search report (Art. 21(3))

(54) **Title:** VENTILATOR-INITIATED PROMPT REGARDING AUTO-PEEP DETECTION DURING PRESSURE VENTILATION

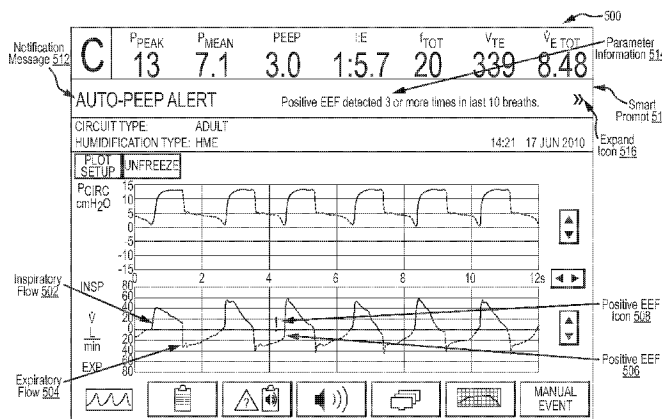


FIG. 5

(57) **Abstract:** This disclosure describes systems and methods for monitoring and evaluating ventilatory parameters, analyzing ventilatory data associated with those parameters, and providing useful notifications and/or recommendations to clinicians. Modern ventilators monitor, evaluate, and graphically represent a myriad of ventilatory parameters. However, many clinicians may not easily identify or recognize data patterns and correlations indicative of certain patient conditions, changes in patient condition, and/or effectiveness of ventilatory treatment. Further, clinicians may not readily determine appropriate ventilatory adjustments that may address certain patient conditions and/or the effectiveness of ventilatory treatment. Specifically, clinicians may not readily detect or recognize the presence of Auto-PEEP during various types of pressure ventilation. According to embodiments, a ventilator may be configured to monitor and evaluate diverse ventilatory parameters to detect Auto-PEEP and may issue suitable notifications and recommendations to the clinician when Auto-PEEP is implicated. The suitable notifications and recommendations may further be provided in a hierarchical format.

WO 2012/003081 A1

**VENTILATOR-INITIATED PROMPT REGARDING AUTO-PEEP DETECTION  
DURING PRESSURE VENTILATION**

**Introduction**

A ventilator is a device that mechanically helps patients breathe by replacing  
5 some or all of the muscular effort required to inflate and deflate the lungs. In recent  
years, there has been an accelerated trend towards an integrated clinical environment.  
That is, medical devices are becoming increasingly integrated with communication,  
computing, and control technologies. As a result, modern ventilatory equipment has  
become increasingly complex, providing for detection and evaluation of a myriad of  
10 ventilatory parameters. However, due to the sheer magnitude of available ventilatory  
data, many clinicians may not readily assess and evaluate the diverse ventilatory data to  
detect certain patient conditions and/or changes in patient condition. For example, Auto-  
PEEP is a dangerous condition associated with gas-trapping in the lungs that may be  
implicated by slight changes in a variety of different parameters. Although quite serious,  
15 Auto-PEEP is difficult to diagnose because it is not easily recognized or detected by  
clinicians during the ventilation of a patient.

Indeed, clinicians and patients may greatly benefit from ventilator notifications  
when evaluation of various ventilatory data is indicative of certain patient conditions,  
changes in patient condition, effectiveness of ventilatory therapy, or otherwise.

20 **Ventilator-Initiated Prompt Regarding Auto-PEEP Detection during Pressure  
Ventilation**

This disclosure describes systems and methods for monitoring and evaluating  
ventilatory parameters, analyzing ventilatory data associated with those parameters, and  
providing useful notifications and/or recommendations to clinicians. Modern ventilators  
25 monitor, evaluate, and graphically represent a myriad of ventilatory parameters.  
However, many clinicians may not easily identify or recognize data patterns and  
correlations indicative of certain patient conditions, changes in patient condition, and/or  
effectiveness of ventilatory treatment. Further, clinicians may not readily determine  
appropriate ventilatory adjustments that may address certain patient conditions and/or the  
30 effectiveness of ventilatory treatment. Specifically, clinicians may not readily detect or  
recognize the presence of Auto-PEEP during various types of pressure ventilation (e.g.,  
pressure-control ventilation (PCV), bi-level (BL) pressure ventilation, or volume-

targeted-pressure-controlled (VC+) ventilation). According to embodiments, a ventilator may be configured to monitor and evaluate diverse ventilatory parameters to detect Auto-PEEP and may issue suitable notifications and recommendations to the clinician when Auto-PEEP is implicated. The suitable notifications and recommendations may further  
5 be provided in a hierarchical format such that the clinician may selectively access summarized and/or detailed information regarding the presence of Auto-PEEP. In more automated systems, recommendations may be automatically implemented.

According to embodiments, a ventilator-implemented method for detecting Auto-PEEP during pressure ventilation may be provided. The method may include collecting  
10 data associated with ventilatory parameters and processing the collected ventilatory parameter data, wherein processing the collected ventilatory parameter data includes deriving ventilatory parameter data from the collected ventilatory parameter data. Further, the methods may involve analyzing the processed ventilatory parameter data, including receiving one or more predetermined thresholds associated with the processed  
15 ventilatory parameter data and detecting whether the processed ventilatory parameter data breaches the one or more predetermined thresholds. Upon detecting that the processed ventilatory data breaches the one or more predetermined thresholds, the methods may determine that Auto-PEEP is implicated. Upon determining that Auto-PEEP is implicated, a smart prompt may be issued.

According to further embodiments, a ventilatory system for issuing a smart prompt when Auto-PEEP is implicated during pressure ventilation may be provided. The ventilatory system may perform a method comprising detecting that Auto-PEEP is implicated. Upon detecting that Auto-PEEP is implicated, the methods may determine an appropriate notification message, determine an appropriate recommendation message,  
25 and display at least one of the appropriate notification message and the appropriate recommendation message.

According to further embodiments, a graphical user interface for displaying one or more smart prompts corresponding to a detected condition may be provided. The graphical user interface may further comprise at least one window and one or more  
30 elements within the at least one window comprising at least one smart prompt element for communicating information regarding the detected condition, wherein the detected condition is Auto-PEEP.

These and various other features as well as advantages which characterize the systems and methods described herein will be apparent from a reading of the following detailed description and a review of the associated drawings. Additional features are set forth in the description which follows, and in part will be apparent from the description, or may be learned by practice of the technology. The benefits and features of the technology will be realized and attained by the structure particularly pointed out in the written description and claims hereof as well as the appended drawings.

It is to be understood that both the foregoing general description and the following detailed description are exemplary and explanatory and are intended to provide further explanation of the claims.

### **Brief Description of the Drawings**

The following drawing figures, which form a part of this application, are illustrative of described technology and are not meant to limit the scope of the claims in any manner, which scope shall be based on the claims appended hereto.

FIG. 1 is a diagram illustrating an embodiment of an exemplary ventilator connected to a human patient.

FIG. 2 is a block-diagram illustrating an embodiment of a ventilatory system for monitoring and evaluating ventilatory parameters associated with Auto-PEEP.

FIG. 3 is a flow chart illustrating an embodiment of a method for detecting an implication of Auto-PEEP.

FIG. 4 is a flow chart illustrating an embodiment of a method for issuing a smart prompt upon detecting an implication of Auto-PEEP.

FIG. 5 is an illustration of an embodiment of a graphical user interface displaying a smart prompt having a notification message comprising an Auto-PEEP alert during pressure ventilation of a triggering patient.

FIG. 6 is an illustration of an embodiment of a graphical user interface displaying a smart prompt having a notification message comprising an Auto-PEEP alert during pressure ventilation of a non-triggering patient.

FIG. 7 is an illustration of an embodiment of a graphical user interface displaying an expanded smart prompt having a notification message and one or more recommendation messages for mitigating Auto-PEEP during pressure ventilation of a triggering patient.

FIG. 8 is an illustration of an embodiment of a graphical user interface displaying an expanded smart prompt having a notification message and one or more recommendation messages for mitigating Auto-PEEP during pressure ventilation of a non-triggering patient.

5

### Detailed Description

Although the techniques introduced above and discussed in detail below may be implemented for a variety of medical devices, the present disclosure will discuss the implementation of these techniques for use in a mechanical ventilator system. The reader will understand that the technology described in the context of a ventilator system could be adapted for use with other therapeutic equipment for alerting and advising clinicians regarding detected patient conditions.

This disclosure describes systems and methods for monitoring and evaluating ventilatory parameters, analyzing ventilatory data associated with those parameters, and providing useful notifications and/or recommendations to clinicians. Modern ventilators monitor, evaluate, and graphically represent a myriad of ventilatory parameters. However, many clinicians may not easily identify or recognize data patterns and correlations indicative of certain patient conditions, changes in patient condition, and/or effectiveness of ventilatory treatment. Further, clinicians may not readily determine appropriate ventilatory adjustments that may address certain patient conditions and/or the effectiveness of ventilatory treatment. Specifically, clinicians may not readily detect or recognize the presence of Auto-PEEP during pressure ventilation.

According to embodiments, a ventilator may be configured to monitor and evaluate diverse ventilatory parameters to detect Auto-PEEP and may issue suitable notifications and recommendations to the clinician when Auto-PEEP is implicated. The suitable notifications and recommendations may further be provided in a hierarchical format such that the clinician may selectively access summarized and/or detailed information regarding the presence of Auto-PEEP. In more automated systems, recommendations may be automatically implemented.

### Ventilator System

FIG. 1 is a diagram illustrating an embodiment of an exemplary ventilator **100** connected to a human patient **150**. Ventilator **100** includes a pneumatic system **102** (also referred to as a pressure generating system **102**) for circulating breathing gases to and

from patient **150** via the ventilation tubing system **130**, which couples the patient to the pneumatic system via an invasive (e.g., endotracheal tube, as shown) or a non-invasive (e.g., nasal mask) patient interface.

Ventilation tubing system **130** may be a two-limb (shown) or a one-limb circuit for carrying gases to and from the patient **150**. In a two-limb embodiment, a fitting, typically referred to as a “wye-fitting” **170**, may be provided to couple a patient interface **180** (as shown, an endotracheal tube) to an inspiratory limb **132** and an expiratory limb **134** of the ventilation tubing system **130**.

Pneumatic system **102** may be configured in a variety of ways. In the present example, system **102** includes an expiratory module **108** coupled with the expiratory limb **134** and an inspiratory module **104** coupled with the inspiratory limb **132**. Compressor **106** or other source(s) of pressurized gases (e.g., air, oxygen, and/or helium) is coupled with inspiratory module **104** to provide a gas source for ventilatory support via inspiratory limb **132**.

The pneumatic system **102** may include a variety of other components, including mixing modules, valves, sensors, tubing, accumulators, filters, etc. Controller **110** is operatively coupled with pneumatic system **102**, signal measurement and acquisition systems, and an operator interface **120** that may enable an operator to interact with the ventilator **100** (e.g., change ventilator settings, select operational modes, view monitored parameters, etc.). Controller **110** may include memory **112**, one or more processors **116**, storage **114**, and/or other components of the type commonly found in command and control computing devices. In the depicted example, operator interface **120** includes a display **122** that may be touch-sensitive and/or voice-activated, enabling the display to serve both as an input and output device.

The memory **112** includes non-transitory, computer-readable storage media that stores software that is executed by the processor **116** and which controls the operation of the ventilator **100**. In an embodiment, the memory **112** includes one or more solid-state storage devices such as flash memory chips. In an alternative embodiment, the memory **112** may be mass storage connected to the processor **116** through a mass storage controller (not shown) and a communications bus (not shown). Although the description of computer-readable media contained herein refers to a solid-state storage, it should be appreciated by those skilled in the art that computer-readable storage media can be any

available media that can be accessed by the processor 116. That is, computer-readable storage media includes non-transitory, volatile and non-volatile, removable and non-removable media implemented in any method or technology for storage of information such as computer-readable instructions, data structures, program modules or other data.

5 For example, computer-readable storage media includes RAM, ROM, EPROM, EEPROM, flash memory or other solid state memory technology, CD-ROM, DVD, or other optical storage, magnetic cassettes, magnetic tape, magnetic disk storage or other magnetic storage devices, or any other medium which can be used to store the desired information and which can be accessed by the computer.

10 Communication between components of the ventilatory system or between the ventilatory system and other therapeutic equipment and/or remote monitoring systems may be conducted over a distributed network, as described further herein, via wired or wireless means. Further, the present methods may be configured as a presentation layer built over the TCP/IP protocol. TCP/IP stands for "Transmission Control  
15 Protocol/Internet Protocol" and provides a basic communication language for many local networks (such as intra- or extranets) and is the primary communication language for the Internet. Specifically, TCP/IP is a bi-layer protocol that allows for the transmission of data over a network. The higher layer, or TCP layer, divides a message into smaller packets, which are reassembled by a receiving TCP layer into the original message. The  
20 lower layer, or IP layer, handles addressing and routing of packets so that they are properly received at a destination.

### Ventilator Components

FIG. 2 is a block-diagram illustrating an embodiment of a ventilatory system for monitoring and evaluating ventilatory parameters associated with Auto-PEEP.

25 Ventilatory system 200 includes ventilator 202 with its various modules and components. That is, ventilator 202 may further include, *inter alia*, memory 208, one or more processors 206, user interface 210, and ventilation module 212 (which may further include an inspiration module 214 and an expiration module 216). Memory 208 is defined as described above for memory 112. Similarly, the one or more processors 206  
30 are defined as described above for one or more processors 116. Processors 206 may further be configured with a clock whereby elapsed time may be monitored by the system 200.

The ventilatory system **200** may also include a display module **204** communicatively coupled to ventilator **202**. Display module **204** provides various input screens, for receiving clinician input, and various display screens, for presenting useful information to the clinician. The display module **204** is configured to communicate with user interface **210** and may include a graphical user interface (GUI). The GUI may be an interactive display, e.g., a touch-sensitive screen or otherwise, and may provide various windows and elements for receiving input and interface command operations. Alternatively, other suitable means of communication with the ventilator **202** may be provided, for instance by a wheel, keyboard, mouse, or other suitable interactive device. Thus, user interface **210** may accept commands and input through display module **204**. Display module **204** may also provide useful information in the form of various ventilatory data regarding the physical condition of a patient and/or a prescribed respiratory treatment. The useful information may be derived by the ventilator **202**, based on data collected by a data processing module **222**, and the useful information may be displayed to the clinician in the form of graphs, wave representations, pie graphs, or other suitable forms of graphic display. For example, one or more smart prompts may be displayed on the GUI and/or display module **204** upon detection of an implication of Auto-PEEP by the ventilator. Additionally or alternatively, one or more smart prompts may be communicated to a remote monitoring system coupled via any suitable means to the ventilatory system **200**.

#### Equation of Motion

Ventilation module **212** may oversee ventilation of a patient according to prescribed ventilatory settings. By way of general overview, the basic elements impacting ventilation may be described by the following ventilatory equation (also known as the Equation of Motion):

$$P_m + P_v = V_T/C + R * F$$

Here,  $P_m$  is a measure of muscular effort that is equivalent to the pressure generated by the muscles of a patient. If the patient's muscles are inactive, the  $P_m$  is equivalent to 0 cm H<sub>2</sub>O. During inspiration,  $P_v$  represents the positive pressure delivered by a ventilator (generally in cm H<sub>2</sub>O).  $V_T$  represents the tidal volume delivered based on the pressure supplied,  $C$  refers to the respiratory compliance,  $R$  represents the respiratory resistance,

and F represents the gas flow during inspiration (generally in liters per min (L/m)).  
 Alternatively, during expiration, the Equation of Motion may be represented as:

$$P_a + P_t = V_{TE}/C + R * F$$

5

Here,  $P_a$  represents the positive pressure existing in the lungs (generally in cm H<sub>2</sub>O),  $P_t$  represents the transairway pressure,  $V_{TE}$  represents the tidal volume exhaled, C refers to the respiratory compliance, R represents the respiratory resistance, and F represents the gas flow during expiration (generally in liters per min (L/m)).

10 **Pressure**

For positive pressure ventilation, pressure at the upper airway opening (e.g., in the patient's mouth) is positive relative to the pressure at the body's surface (i.e., relative to the ambient atmospheric pressure to which the patient's body surface is exposed, about 0 cm H<sub>2</sub>O). As such, when  $P_v$  is zero, i.e., no ventilatory pressure is being delivered, the upper airway opening pressure will be equal to the ambient pressure (i.e., about 0 cm H<sub>2</sub>O). However, when inspiratory pressure is applied (i.e., positive pressure), a pressure gradient is created that allows gases to flow into the airway and ultimately into the lungs of a patient during inspiration (or, inhalation) until the pressure is equalized. When an inspiratory volume (or  $V_T$ ) has been delivered to the lungs such that the inspiratory pressure is achieved and maintained, pressure is equalized and gases no longer flow into the lungs (i.e., zero flow).

According to embodiments, additional pressure measurements may be obtained and evaluated. For example, transairway pressure,  $P_t$ , which refers to the pressure differential or gradient between the upper airway opening and the alveoli, may also be determined.  $P_t$  may be represented mathematically as:

$$P_t = P_{awo} - P_a$$

Where  $P_{awo}$  refers to the pressure in the upper airway opening, or mouth, and  $P_a$  refers to the pressure within the alveolar space, or the lungs (as described above).  $P_t$  may also be represented as follows:

$$P_t = F * R$$

Where F refers to flow and R refers to respiratory resistance, as described below.

Additionally, lung pressure or alveolar pressure,  $P_a$ , may be measured or derived. For example,  $P_a$  may be measured via a distal pressure transducer or other sensor near the lungs and/or the diaphragm. Alternatively,  $P_a$  may be estimated by measuring the plateau pressure,  $P_{plat}$ , via a proximal pressure transducer or other sensor at or near the airway opening. Plateau pressure,  $P_{plat}$ , refers to a slight plateau in pressure that is observed at the end of inspiration when inspiration is held for a period of time, sometimes referred to as an inspiratory hold or pause maneuver, or a breath-hold maneuver. That is, when inspiration is held, pressure inside the alveoli and mouth are equal (i.e., no gas flow). However, as a result of muscular relaxation and elastance of the lungs during the hold period, forces are exerted on the inflated lungs that create a positive pressure. This positive pressure is observed as a plateau in the pressure waveform that is slightly below the peak inspiratory pressure,  $P_{peak}$ , prior to initiation of expiration. As may be appreciated, for accurate measurement of  $P_{plat}$ , the patient should be sedated or non-spontaneous (as muscular effort during the inspiratory pause may skew the pressure measurement). Upon determining  $P_{plat}$  based on the pressure waveform or otherwise,  $P_{plat}$  may be used as an estimate of  $P_a$  (alveolar pressure).

### **Flow and Volume**

Volume refers to the amount of gas delivered to a patient's lungs, usually in liters (L). Flow refers to a rate of change in volume over time ( $F = \Delta V / \Delta t$ ). Flow is generally expressed in liters per minute (L/m or lpm) and, depending on whether gases are flowing into or out of the lungs, flow may be referred to as inspiratory flow or expiratory flow, respectively. According to embodiments, the ventilator may control the rate of delivery of gases to the patient, i.e., inspiratory flow, and may control the rate of release of gases from the patient, i.e., expiratory flow.

As may be appreciated, volume and flow are closely related. That is, where flow is known or regulated, volume may be derived based on elapsed time. Indeed, volume may be derived by integrating the flow waveform. According to embodiments, a tidal volume,  $V_T$ , may be delivered upon reaching a set inspiratory time ( $T_I$ ) at set inspiratory flow. Alternatively, set  $V_T$  and set inspiratory flow may determine the amount of time required for inspiration, i.e.,  $T_I$ .

### Respiratory Compliance

Additional ventilatory parameters that may be measured and/or derived may include respiratory compliance and respiratory resistance, which refer to the load against which the patient and/or the ventilator must work to deliver gases to the lungs.

5 Respiratory compliance may be interchangeably referred to herein as compliance. Generally, compliance refers to a relative ease with which something distends and is the inverse of elastance, which refers to the tendency of something to return to its original form after being deformed. As related to ventilation, compliance refers to the lung volume achieved for a given amount of delivered pressure ( $C = \Delta V / \Delta P$ ). Increased  
10 compliance may be detected when the ventilator measures an increased volume relative to the given amount of delivered pressure. Some lung diseases (e.g., acute respiratory distress syndrome (ARDS)) may decrease compliance and, thus, require increased pressure to inflate the lungs. Alternatively, other lung diseases may increase compliance, e.g., emphysema, and may require less pressure to inflate the lungs.

15 Additionally or alternatively, static compliance and dynamic compliance may be calculated. Static compliance,  $C_s$ , represents compliance impacted by elastic recoil at zero flow (e.g., of the chest wall, patient circuit, and alveoli). As elastic recoil of the chest wall and patient circuit may remain relatively constant, static compliance may generally represent compliance as affected by elastic recoil of the alveoli. As described  
20 above,  $P_{plat}$  refers to a slight plateau in pressure that is observed after relaxation of pleural muscles and elastic recoil, i.e., representing pressure delivered to overcome elastic forces. As such,  $P_{plat}$  provides a basis for estimating  $C_s$  as follows:

$$C_s = V_T / (P_{plat} - EEP)$$

25 Where  $V_T$  refers to tidal volume,  $P_{plat}$  refers to plateau pressure, and EEP refers to end-expiratory pressure, or baseline pressure (including PEEP and/or Auto-PEEP), as discussed below. Note that proper calculation of  $C_s$  depends on accurate measurement of  $V_T$  and  $P_{plat}$ .

30 Dynamic compliance,  $C_D$ , is measured during airflow and, as such, is impacted by both elastic recoil and airway resistance. Peak inspiratory pressure,  $P_{peak}$ , which represents the highest pressure measured during inspiration, i.e., pressure delivered to

overcome both elastic and resistive forces to inflate the lungs, is used to calculate  $C_D$  as follows:

$$C_D = V_T / (P_{Peak} - EEP)$$

5

Where  $V_T$  refers to tidal volume,  $P_{Peak}$  refers to peak inspiratory pressure, and EEP refers to end-expiratory pressure. According to embodiments, ventilatory data may be more readily available for trending compliance of non-triggering patients than of triggering patients.

10 **Respiratory Resistance**

Respiratory resistance refers to frictional forces that resist airflow, e.g., due to synthetic structures (e.g., endotracheal tube, expiratory valve, etc.), anatomical structures (e.g., bronchial tree, esophagus, etc.), or viscous tissues of the lungs and adjacent organs. Respiratory resistance may be interchangeably referred to herein as resistance.

15

Resistance is highly dependant on the diameter of the airway. That is, a larger airway diameter entails less resistance and a higher concomitant flow. Alternatively, a smaller airway diameter entails higher resistance and a lower concomitant flow. In fact, decreasing the diameter of the airway results in an exponential increase in resistance (e.g., two-times reduction of diameter increases resistance by sixteen times). As may be appreciated, resistance may also increase due to a restriction of the airway that is the result of, *inter alia*, increased secretions, bronchial edema, mucous plugs, brochospasm, and/or kinking of the patient interface (e.g., invasive endotracheal or tracheostomy tubes).

20

Airway resistance may further be represented mathematically as:

25

$$R = P_t / F$$

Where  $P_t$  refers to the transairway pressure and  $F$  refers to the flow. That is,  $P_t$  refers to the pressure necessary to overcome resistive forces of the airway. Resistance may be expressed in centimeters of water per liter per second (i.e., cm H<sub>2</sub>O/L/s).

30

**Pulmonary Time Constant**

As discussed above, compliance refers to the lung volume achieved for a given amount of delivered pressure ( $C = \Delta V / \Delta P$ ). That is, stated differently, volume delivered is equivalent to the compliance multiplied by the delivered pressure ( $\Delta V =$

$C \cdot \Delta P$ ). However, as the lungs are not perfectly elastic, a period of time is needed to deliver the volume  $\Delta V$  at pressure  $\Delta P$ . A pulmonary time constant,  $\tau$ , may represent a time necessary to inflate or exhale a given percentage of the volume at delivered pressure  $\Delta P$ . The pulmonary time constant,  $\tau$ , may be calculated by multiplying the respiratory resistance by the respiratory compliance ( $\tau = R \cdot C$ ) for a given patient and  $\tau$  is generally represented in seconds, s. The pulmonary time constant associated with exhalation of the given percentage of volume may be termed an expiratory time constant and the pulmonary time constant associated with inhalation of the given percentage of volume may be termed an inspiratory time constant.

10 According to some embodiments, when expiratory resistance data is available, the pulmonary time constant may be calculated by multiplying expiratory resistance by compliance. According to alternative embodiments, the pulmonary time constant may be calculated based on inspiratory resistance and compliance. According to further embodiments, the expiratory time,  $T_E$ , should be equal to or greater than a predetermined number of pulmonary time constants (e.g., about three pulmonary time constants) to ensure adequate exhalation. The predetermined number of pulmonary time constants may be selected via any suitable means, e.g., a standard protocol, an institutional protocol, clinician input, etc. According to embodiments, for a triggering patient,  $T_E$  (e.g., determined by trending  $T_E$  or otherwise) should be equal to or greater than the predetermined number of pulmonary time constants. For a non-triggering patient, set RR should yield a  $T_E$  that is equal to or greater than the predetermined number of pulmonary time constants.

#### **Normal Resistance and Compliance**

25 According to embodiments, normal respiratory resistance and compliance may be determined based on a patient's predicted body weight (PBW) (or ideal body weight (IBW)). That is, according to a standardized protocol or otherwise, patient data may be compiled such that normal respiratory resistance and compliance values and/or ranges of values may be determined and provided to the ventilatory system. That is, a manufacturer, clinical facility, clinician, or otherwise, may configure the ventilator with normal respiratory resistance and compliance values and/or ranges of values based on PBWs (or IBWs) of a patient population. Thereafter, during ventilation of a particular patient, respiratory resistance and compliance data may be trended for the patient and

compared to normal values and/or ranges of values based on the particular patient's PBW (or IBW). According to embodiments, the ventilator may give an indication to the clinician regarding whether the trended respiratory resistance and compliance data of the particular patient falls into normal ranges. According to some embodiments, data may  
5 be more readily available for trending resistance and compliance for non-triggering patients than for triggering patients.

According to further embodiments, a predicted  $T_E$  may be determined based on a patient's PBW (or IBW). That is, according to a standardized protocol or otherwise, patient population data may be compiled such that predicted  $T_E$  values and/or ranges of  
10 values may be determined based on PBWs (or IBWs) of the patient population and provided to the ventilatory system. Actual (or trended)  $T_E$  for a particular patient may then be compared to the predicted  $T_E$ . As noted previously, increased resistance and/or compliance may result in an actual  $T_E$  that is longer than predicted  $T_E$ . However, when actual  $T_E$  is consistent with predicted  $T_E$ , this may indicate that resistance and  
15 compliance for the particular patient fall into normal ranges.

According to further embodiments, a normal pulmonary time constant,  $\tau$ , may be determined based on a patient's PBW (or IBW). That is, according to a standardized protocol or otherwise, patient data may be compiled such that normal  $\tau$  values and/or ranges of values may be determined based on PBWs (or IBWs) of a patient population  
20 and provided to the ventilatory system. A calculated  $\tau$  may be determined for a particular patient by multiplying resistance by compliance (as described above, resistance and compliance data may be more readily available for a non-triggering patient). As the product of resistance and compliance results in  $\tau$ , increased resistance and/or compliance may result in an elevated  $\tau$  value. However, when the calculated  $\tau$  value for the  
25 particular patient is consistent with the normal  $\tau$  value, this may indicate that the resistance and compliance of the particular patient fall into normal ranges.

### **I:E Ratio**

According to embodiments, an I:E ratio may be calculated (for a triggering patient) or set (for a non-triggering patient). According to embodiments, a normal  
30 patient (e.g., with a normal  $T_I$  and a normal RR for the patient's PBW) may have an I:E ratio of 1:2 to 1:3. That is, under normal conditions, it may be desirable for the  $T_E$  to be double or triple (or even greater) the set  $T_I$ . However, under some circumstances the

length of the  $T_E$  approaches  $T_I$ . For instance, if set RR is too high (for a non-triggering patient),  $T_E$  may be too short and may not allow for complete exhalation. Alternatively, when inspiratory pressure is too high (causing increased delivered volume),  $T_E$  may be too short and may not allow for complete exhalation of the increased delivered volume.

5 As described previously, when  $T_E$  is too short, gas-trapping may occur at the end of expiration causing Auto-PEEP. Thus, in cases where the I:E ratio is greater than 1:2 (i.e., approaching 1:1 or approaching an inverse ratio, e.g., 2:1) Auto-PEEP may be implicated.

### **Obstructive Component**

10 Some patients may exhibit an obstructive component due to various conditions and diseases, e.g., COPD, ARDS, etc. That is, an obstructive component may be associated with patients that exhibit chronic elevated resistance due to constricted airways, alveolar collapse, etc. In some cases, patients diagnosed with various conditions and diseases associated with an obstructive component may exhibit elevated  
15 resistance over many months or years. According to some embodiments, patients having these conditions may also exhibit elevated compliance.

According to embodiments described herein, a clinician may input a patient diagnosis, e.g., COPD, ARDS, emphysema, etc. The ventilator may associate the patient diagnosis with certain lung and airway characteristics. For example, if the ventilator  
20 receives a patient diagnosis of COPD, the ventilator may associate this patient diagnosis with elevated resistance. The ventilator may further associate this patient diagnosis with an obstructive component. Alternatively, if the ventilator receives a patient diagnosis of emphysema, the ventilator may associate this patient diagnosis with elevated  
compliance.

25 According to further embodiments, normal respiratory resistance and compliance may be determined based on a patient's PBW (or IBW), as described above. During ventilation of a specific patient, respiratory resistance and compliance data may be trended for the patient and compared to normal values and/or ranges of values based on the specific patient's PBW (or IBW). According to embodiments, the ventilator may  
30 alert the clinician when the trended respiratory resistance and/or compliance data of the particular patient fall outside normal ranges.

According to further embodiments, predicted  $T_E$  may be determined based on a patient's PBW (or IBW), as described above. Actual (or trended)  $T_E$  for a particular patient may then be compared to the predicted  $T_E$ . When actual  $T_E$  is greater than predicted  $T_E$ , this may indicate that resistance and/or compliance of the particular patient falls outside normal ranges. When compliance has not changed, an elevated  $T_E$  may be attributable to resistance and the ventilator may alert the clinician that the patient may have an obstructive component.

According to further embodiments, a normal pulmonary time constant,  $\tau$ , may be determined based on a patient's PBW (or IBW), as described above. A calculated  $\tau$  may be determined for a particular patient by multiplying resistance by compliance. When the calculated  $\tau$  value is greater than the normal  $\tau$  value, this may indicate that resistance and/or compliance for the particular patient fall outside normal ranges. When compliance has not changed, the elevated  $T_E$  may be attributable to resistance and the ventilator may alert the clinician that the patient may have an obstructive component.

According to embodiments, determination of Auto-PEEP and/or determination of appropriate recommendations for mitigating Auto-PEEP may vary for patients exhibiting an obstructive component. As such, the ventilator may be configured to detect an obstructive component, e.g. based on receiving an indication from the clinician that the patient has been diagnosed with an obstructive disease or condition. According to other embodiments, the ventilator may detect that the patient exhibits an obstructive component via other suitable means described herein. According to embodiments, when an obstructive component is detected, the ventilator may be configured with adjusted sensitivity to Auto-PEEP and/or may be configured to alter one or more recommendations for mitigating Auto-PEEP based on the detection of an obstructive component.

### **Inspiration**

Ventilation module **212** may further include an inspiration module **214** configured to deliver gases to the patient according to prescribed ventilatory settings. Specifically, inspiration module **214** may correspond to the inspiratory module **104** or may be otherwise coupled to source(s) of pressurized gases (e.g., air, oxygen, and/or helium), and may deliver gases to the patient. Inspiration module **214** may be configured

to provide ventilation according to various ventilatory modes, e.g., via volume-targeted, pressure-targeted, or via any other suitable mode of ventilation.

Volume ventilation refers to various forms of volume-targeted ventilation that regulate volume delivery to the patient. Different modes of volume ventilation are available depending on the specific implementation of volume regulation. For example, for volume-cycled ventilation, an end of inspiration is determined based on monitoring the volume delivered to the patient. Volume ventilation may include volume-control (VC), volume-assist, or volume assist/control ventilation. Volume ventilation may be accomplished by setting a target volume, or prescribed tidal volume,  $V_T$ , for delivery to the patient. According to embodiments, prescribed  $V_T$  and inspiratory time ( $T_I$ ) may be set during ventilation start-up, based on the patient's PBW (or IBW). In this case, flow will be dependent on the prescribed  $V_T$  and set  $T_I$ . Alternatively, prescribed  $V_T$  and flow may be set and  $T_I$  may result. According to some embodiments, a predicted  $T_E$  may be determined based on normal respiratory and compliance values or value ranges based on the patient's PBW (or IBW). Additionally, a respiratory rate (RR) setting, generally in breaths/min, may be determined and configured. For a non-triggering patient, the set RR controls the timing for each inspiration. For a triggering patient, the RR setting applies if the patient stops triggering for some reason and/or the patient's triggered RR drops below a threshold level.

According to embodiments, during volume ventilation, as volume and flow are regulated by the ventilator, delivered  $V_T$ , flow waveforms (or flow traces), and volume waveforms may be constant and may not be affected by variations in lung or airway characteristics (e.g., respiratory compliance and/or respiratory resistance). Alternatively, pressure readings may fluctuate based on lung or airway characteristics. According to some embodiments, the ventilator may control the inspiratory flow and then derive volume based on the inspiratory flow and elapsed time. For volume-cycled ventilation, when the derived volume is equal to the prescribed  $V_T$ , the ventilator may initiate expiration.

According to alternative embodiments, the inspiration module 214 may provide ventilation via a form of pressure ventilation. Pressure-targeted modes of ventilation may be provided by regulating the pressure delivered to the patient in various ways. For example, during pressure-cycled ventilation, an end of inspiration is determined based on

monitoring the pressure delivered to the patient. Pressure ventilation may include pressure-support ventilation (PSV) or pressure-control ventilation (PCV), for example. Pressure ventilation may also include various forms of bi-level (BL) pressure ventilation, i.e., pressure ventilation in which the inspiratory positive airway pressure (IPAP) is higher than the expiratory positive airway pressure (EPAP). Specifically, pressure ventilation may be accomplished by setting a target or prescribed inspiratory pressure for delivery to the patient. As for volume ventilation, predicted  $T_I$  may be determined based on normal respiratory and compliance values and on the patient's PBW (or IBW). According to some embodiments, a predicted  $T_E$  may be determined based on normal respiratory and compliance values and based on the patient's PBW (or IBW). A respiratory rate (RR) setting may also be determined and configured. For a non-triggering patient, the set RR controls the timing for each inspiration. For a triggering patient, the RR setting applies if the patient stops triggering for some reason and/or patient triggering drops below a threshold RR level.

According to embodiments, during pressure ventilation, the ventilator may maintain the same pressure waveform at the mouth,  $P_{aw}$ , regardless of variations in lung or airway characteristics, e.g., respiratory compliance and/or respiratory resistance. However, the volume and flow waveforms may fluctuate based on lung and airway characteristics. As noted above, pressure delivered to the upper airway creates a pressure gradient that enables gases to flow into a patient's lungs. The pressure from which a ventilator initiates inspiration is termed the end-expiratory pressure (EEP) or "baseline" pressure. This pressure may be atmospheric pressure (about 0 cm H<sub>2</sub>O), also referred to as zero end-expiratory pressure (ZEEP). However, commonly, the baseline pressure may be positive, termed positive end-expiratory pressure (PEEP). Among other things, PEEP may promote higher oxygenation saturation and/or may prevent alveolar collapse during expiration. Under pressure-cycled ventilation, upon delivering the inspiratory pressure the ventilator may initiate expiration.

According to still other embodiments, a combination of volume and pressure ventilation may be delivered to a patient, e.g., volume-targeted-pressure-controlled (VC+) ventilation. In particular, VC+ ventilation may provide benefits of setting a target  $V_T$ , while also allowing for monitoring variations in flow. As will be detailed further below, variations in flow may be indicative of various patient conditions.

### Expiration

Ventilation module 212 may further include an expiration module 216 configured to release gases from the patient's lungs according to prescribed ventilatory settings. Specifically, expiration module 216 may correspond to expiratory module 108 or may  
5 otherwise be associated with and/or controlling an expiratory valve for releasing gases from the patient. By way of general overview, a ventilator may initiate expiration based on lapse of an inspiratory time setting ( $T_I$ ) or other cycling criteria set by the clinician or derived from ventilator settings (e.g., detecting delivery of prescribed  $V_T$  or prescribed  
10 inspiratory pressure based on a reference trajectory). Upon initiating the expiratory phase, expiration module 216 may allow the patient to exhale by opening an expiratory valve. As such, expiration is passive, and the direction of airflow, as described above, is governed by the pressure gradient between the patient's lungs (higher pressure) and the ambient surface pressure (lower pressure). Although expiratory flow is passive, it may be regulated by the ventilator based on the size of the expiratory valve opening.

15 Expiratory time ( $T_E$ ) is the time from the end of inspiration until the patient triggers for a spontaneously breathing patient. For a non-triggering patient, it is the time from the end of inspiration until the next inspiration based on the set RR. In some cases, however, the time required to return to the functional residual capacity (FRC) or resting capacity of the lungs is longer than provided by  $T_E$  (e.g., because the patient triggers prior  
20 to fully exhaling or the set RR is too high for a non-triggering patient). According to embodiments, various ventilatory settings may be adjusted to better match the time to reach FRC with the time available to reach FRC. For example, decreasing set  $T_I$  to thereby increase the amount of time available to reach FRC. Alternatively, inspiratory pressure may be decreased (decreasing  $V_T$ ), resulting in less time required to reach FRC.

25 As may be further appreciated, at the point of transition between inspiration and expiration, the direction of airflow may abruptly change from flowing into the lungs to flowing out of the lungs or vice versa depending on the transition. Stated another way, inspiratory flow may be measurable in the ventilatory circuit until  $P_{Peak}$  is reached, at which point flow approximates zero. Thereafter, upon initiation of expiration, expiratory  
30 flow is measurable in the ventilatory circuit until the pressure gradient between the lungs and the body's surface reaches zero (again, resulting in zero flow). However, in some cases, as will be described further herein, expiratory flow may still be positive, i.e.,

measurable, at the end of expiration (termed positive end-expiratory flow or positive  
EEF). In this case, positive EEF is an indication that the pressure gradient has not  
reached zero or, similarly, that the patient has not completely exhaled. Although a single  
occurrence of premature inspiration may not warrant concern, repeated detection of  
5 positive EEF may be indicative of Auto-PEEP.

### **Ventilator Synchrony and Patient Triggering**

According to some embodiments, the inspiration module 214 and/or the  
expiration module 216 may be configured to synchronize ventilation with a  
spontaneously-breathing, or triggering, patient. That is, the ventilator may be configured  
10 to detect patient effort and may initiate a transition from expiration to inspiration (or  
from inspiration to expiration) in response. Triggering refers to the transition from  
expiration to inspiration in order to distinguish it from the transition from inspiration to  
expiration (referred to as cycling). Ventilation systems, depending on their mode of  
operation, may trigger and/or cycle automatically, or in response to a detection of patient  
15 effort, or both.

Specifically, the ventilator may detect patient effort via a pressure-monitoring  
method, a flow-monitoring method, direct or indirect measurement of nerve impulses, or  
any other suitable method. Sensing devices may be either internal or distributed and may  
include any suitable sensing device, as described further herein. In addition, the  
20 sensitivity of the ventilator to changes in pressure and/or flow may be adjusted such that  
the ventilator may properly detect the patient effort, i.e., the lower the pressure or flow  
change setting the more sensitive the ventilator may be to patient triggering.

According to embodiments, a pressure-triggering method may involve the  
ventilator monitoring the circuit pressure, as described above, and detecting a slight drop  
25 in circuit pressure. The slight drop in circuit pressure may indicate that the patient's  
respiratory muscles,  $P_m$ , are creating a slight negative pressure gradient between the  
patient's lungs and the airway opening in an effort to inspire. The ventilator may  
interpret the slight drop in circuit pressure as patient effort and may consequently initiate  
inspiration by delivering respiratory gases.

30 Alternatively, the ventilator may detect a flow-triggered event. Specifically, the  
ventilator may monitor the circuit flow, as described above. If the ventilator detects a  
slight drop in flow during exhalation, this may indicate, again, that the patient is

attempting to inspire. In this case, the ventilator is detecting a drop in bias flow (or baseline flow) attributable to a slight redirection of gases into the patient's lungs (in response to a slightly negative pressure gradient as discussed above). Bias flow refers to a constant flow existing in the circuit during exhalation that enables the ventilator to detect expiratory flow changes and patient triggering. For example, while gases are generally flowing out of the patient's lungs during expiration, a drop in flow may occur as some gas is redirected and flows into the lungs in response to the slightly negative pressure gradient between the patient's lungs and the body's surface. Thus, when the ventilator detects a slight drop in flow below the bias flow by a predetermined threshold amount (e.g., 2 L/min below bias flow), it may interpret the drop as a patient trigger and may consequently initiate inspiration by delivering respiratory gases.

### **Ventilator Sensory Devices**

The ventilatory system **200** may also include one or more distributed sensors **218** communicatively coupled to ventilator **202**. Distributed sensors **218** may communicate with various components of ventilator **202**, e.g., ventilation module **212**, internal sensors **220**, data processing module **222**, Auto-PEEP detection module **224**, and any other suitable components and/or modules. Distributed sensors **218** may detect changes in ventilatory parameters indicative of Auto-PEEP, for example. Distributed sensors **218** may be placed in any suitable location, e.g., within the ventilatory circuitry or other devices communicatively coupled to the ventilator. For example, sensors may be affixed to the ventilatory tubing or may be imbedded in the tubing itself. According to some embodiments, sensors may be provided at or near the lungs (or diaphragm) for detecting a pressure in the lungs. Additionally or alternatively, sensors may be affixed or imbedded in or near wye-fitting **170** and/or patient interface **180**, as described above.

Distributed sensors **218** may further include pressure transducers that may detect changes in circuit pressure (e.g., electromechanical transducers including piezoelectric, variable capacitance, or strain gauge). Distributed sensors **218** may further include various flowmeters for detecting airflow (e.g., differential pressure pneumotachometers). For example, some flowmeters may use obstructions to create a pressure decrease corresponding to the flow across the device (e.g., differential pressure pneumotachometers) and other flowmeters may use turbines such that flow may be determined based on the rate of turbine rotation (e.g., turbine flowmeters). Alternatively,

sensors may utilize optical or ultrasound techniques for measuring changes in ventilatory parameters. A patient's blood parameters or concentrations of expired gases may also be monitored by sensors to detect physiological changes that may be used as indicators to study physiological effects of ventilation, wherein the results of such studies may be used for diagnostic or therapeutic purposes. Indeed, any distributed sensory device useful for monitoring changes in measurable parameters during ventilatory treatment may be employed in accordance with embodiments described herein.

Ventilator **202** may further include one or more internal sensors **220**. Similar to distributed sensors **218**, internal sensors **220** may communicate with various components of ventilator **202**, e.g., ventilation module **212**, internal sensors **220**, data processing module **222**, Auto-PEEP detection module **224**, and any other suitable components and/or modules. Internal sensors **220** may employ any suitable sensory or derivative technique for monitoring one or more parameters associated with the ventilation of a patient. However, the one or more internal sensors **220** may be placed in any suitable internal location, such as, within the ventilatory circuitry or within components or modules of ventilator **202**. For example, sensors may be coupled to the inspiratory and/or expiratory modules for detecting changes in, for example, circuit pressure and/or flow. Specifically, internal sensors may include pressure transducers and flowmeters for measuring changes in circuit pressure and airflow. Additionally or alternatively, internal sensors may utilize optical or ultrasound techniques for measuring changes in ventilatory parameters. For example, a patient's expired gases may be monitored by internal sensors to detect physiological changes indicative of the patient's condition and/or treatment, for example. Indeed, internal sensors may employ any suitable mechanism for monitoring parameters of interest in accordance with embodiments described herein.

As should be appreciated, with reference to the Equation of Motion, ventilatory parameters are highly interrelated and, according to embodiments, may be either directly or indirectly monitored. That is, parameters may be directly monitored by one or more sensors, as described above, or may be indirectly monitored by derivation according to the Equation of Motion.

### **Ventilatory Data**

Ventilator **202** may further include a data processing module **222**. As noted above, distributed sensors **218** and internal sensors **220** may collect data regarding

various ventilatory parameters. A ventilatory parameter refers to any factor, characteristic, or measurement associated with the ventilation of a patient, whether monitored by the ventilator or by any other device. Sensors may further transmit collected data to the data processing module **222** and, according to embodiments, the data processing module may **222** be configured to collect data regarding some ventilatory parameters, to derive data regarding other ventilatory parameters, and to graphically represent collected and derived data to the clinician and/or other modules of the ventilatory system. Some collected, derived, and/or graphically represented data may be indicative of Auto-PEEP. For example, data regarding end-expiratory flow (EEF), data regarding alveolar pressure  $P_a$  (e.g., via a breath-hold maneuver, as described above),  $P_{Peak}$  data,  $P_{Plat}$  data, volume data, flow trace data, EEP data, etc., may be collected, derived, and/or graphically represented by data processing module **222**.

#### Flow Data

For example, according to embodiments, data processing module **222** may be configured to monitor inspiratory and expiratory flow. Flow may be measured by any appropriate, internal or distributed device or sensor within the ventilatory system. As described above, flowmeters may be employed by the ventilatory system to detect circuit flow. However, any suitable device either known or developed in the future may be used for detecting airflow in the ventilatory circuit.

Data processing module **222** may be further configured to plot monitored flow data graphically via any suitable means. For example, according to embodiments, flow data may be plotted versus time (flow waveform), versus volume (flow-volume loop), or versus any other suitable parameter as may be useful to a clinician. According to embodiments, flow may be plotted such that each breath may be independently identified. Further, flow may be plotted such that inspiratory flow and expiratory flow may be independently identified, e.g., inspiratory flow may be represented in one color and expiratory flow may be represented in another color. According to additional embodiments, flow waveforms and flow-volume loops, for example, may be represented alongside additional graphical representations, e.g., representations of volume, pressure, etc., such that clinicians may substantially simultaneously visualize a variety of ventilatory parameters associated with each breath.

As may be appreciated, flow decreases as resistance increases, making it more difficult to pass gases into and out of the lungs (i.e.,  $F = P_t / R$ ). For example, when a patient is intubated, i.e., having either an endotracheal or a tracheostomy tube in place, resistance may be increased as a result of the smaller diameter of the tube over a patient's natural airway. In addition, increased resistance may be observed in patients with obstructive disorders, such as COPD, asthma, etc. Higher resistance may necessitate, *inter alia*, a higher inspiratory time setting ( $T_I$ ) for delivering a prescribed pressure or volume of gases, a higher flow setting for delivering prescribed pressure or volume, a lower respiratory rate resulting in a higher expiratory time ( $T_E$ ) for complete exhalation of gases, etc.

Specifically, changes in flow may be detected by evaluating various flow data. For example, by evaluating FV loops, as described above, an increase in resistance may be detected over a number of breaths. That is, upon comparing consecutive FV loops, the expiratory plot for each FV loop may reflect a progressive reduction in expiratory flow (i.e., a smaller FV loop), indicative of increasing resistance. According to other embodiments, an evaluation of end-expiratory flow (EEF) may be used to detect Auto-PEEP, as described further herein. For example, if EEF has not reduced to zero before inspiration begins, this may indicate that gases may still be trapped in the lungs (e.g., insufficient  $T_E$  to return to FRC or elevated FRC).

#### 20 Pressure Data

According to embodiments, data processing module 222 may be configured to monitor pressure. Pressure may be measured by any appropriate, internal or distributed device or sensor within the ventilatory system. For example, pressure may be monitored by proximal electromechanical transducers connected near the airway opening (e.g., on the inspiratory limb, expiratory limb, at the patient interface, etc.). Alternatively, pressure may be monitored distally, at or near the lungs and/or diaphragm of the patient.

For example,  $P_{Peak}$  and/or  $P_{Plat}$  (estimating  $P_a$ ) may be measured proximally (e.g., at or near the airway opening) via single-point pressure measurements. According to embodiments,  $P_{Plat}$  (estimating  $P_a$ ) may be measured during an inspiratory pause maneuver (e.g., expiratory and inspiratory valves are closed briefly at the end of inspiration for measuring the  $P_{Plat}$  at zero flow). According to other embodiments, circuit pressure may be measured during an expiratory pause maneuver (e.g., expiratory

and inspiratory valves are closed briefly at the end of expiration for measuring EEP at zero flow). In this case, set PEEP may be subtracted from measured EEP for detecting Auto-PEEP. Alternatively,  $P_a$  may be distally measured (e.g., at or near the lungs and/or diaphragm) via multiple-point pressure measurements. This method may also be useful  
5 for detecting Auto-PEEP at the end of expiration. According to some embodiments, triggering patients may need to be sedated before taking some of the above-described pressure measurements.

Data processing module 222 may be further configured to plot monitored pressure data graphically via any suitable means. For example, according to  
10 embodiments, pressure data may be plotted versus time (pressure waveform), versus volume (pressure-volume loop or PV loop), or versus any other suitable parameter as may be useful to a clinician. According to embodiments, pressure may be plotted such that each breath may be independently identified. Further, pressure may be plotted such that inspiratory pressure and expiratory pressure may be independently identified, e.g.,  
15 inspiratory pressure may be represented in one color and expiratory pressure may be represented in another color. According to additional embodiments, pressure waveforms and PV loops, for example, may be represented alongside additional graphical representations, e.g., representations of volume, flow, etc., such that a clinician may substantially simultaneously visualize a variety of parameters associated with each  
20 breath.

According to embodiments, PV loops may provide useful clinical and diagnostic information to clinicians regarding the respiratory resistance or compliance of a patient. Specifically, upon comparing PV loops from successive breaths, an increase in resistance may be detected when successive PV loops shorten and widen over time. That is, at  
25 constant pressure, less volume is delivered to the lungs when resistance is increasing, resulting in a shorter, wider PV loop. According to alternative embodiments, a PV loop may provide a visual representation, in the area between the inspiratory plot of pressure vs. volume and the expiratory plot of pressure vs. volume, which is indicative of respiratory compliance. Further, PV loops may be compared to one another to determine  
30 whether compliance has changed. Additionally or alternatively, optimal compliance may be determined. That is, optimal compliance may correspond to the dynamic compliance determined from a PV loop during a recruitment maneuver, for example.

According to additional embodiments, PV curves may be used to compare  $C_S$  and  $C_D$  over a number of breaths. For example, a first PV curve may be plotted for  $C_S$  (based on  $P_{Plat}$  less EEP) and a second PV curve may be plotted for  $C_D$  (based on  $P_{Peak}$  less EEP). Under normal conditions,  $C_S$  and  $C_D$  curves may be very similar, with the  $C_D$  curve mimicking the  $C_S$  curve but shifted to the right (i.e., plotted at higher pressure). However, in some cases the  $C_D$  curve may flatten out and shift to the right relative to the  $C_S$  curve. This graphical representation may illustrate increasing  $P_t$ , and thus increasing  $R$ , which may be due to mucous plugging or bronchospasm, for example. In other cases, both the  $C_D$  curve and the  $C_S$  curves may flatten out and shift to the right. This graphical representation may illustrate an increase in  $P_{Peak}$  and  $P_{Plat}$ , without an increase in  $P_t$ , and thus may implicate a decrease in lung compliance, which may be due to tension pneumothorax, atelectasis, pulmonary edema, pneumonia, bronchial intubation, etc.

As may be further appreciated, relationships between resistance, static compliance, dynamic compliance, and various pressure readings may give indications of patient condition. For example, when  $C_S$  increases,  $C_D$  increases and, similarly, when  $R$  increases,  $C_D$  increases. Additionally, as discussed previously,  $P_t$  represents the difference in pressure attributable to resistive forces over elastic forces. Thus, where  $P_{Peak}$  and  $P_t$  are increasing with constant  $V_T$  delivery,  $R$  is increasing (i.e., where  $P_{Peak}$  is increasing without a concomitant increase in  $P_{Plat}$ ). Where  $P_t$  is roughly constant, but where  $P_{Peak}$  and  $P_{Plat}$  are increasing with a constant  $V_T$  delivery,  $C_S$  is increasing.

### Volume Data

According to embodiments, data processing module 222 may be configured to derive volume via any suitable means. For example, as described above, during volume ventilation, a prescribed  $V_T$  may be set for delivery to the patient. The actual volume delivered may be derived by monitoring the inspiratory flow over time (i.e.,  $V = F \cdot T$ ). Stated differently, integration of flow over time will yield volume. According to embodiments,  $V_T$  is completely delivered upon reaching  $T_I$ . Similarly, the expiratory flow may be monitored such that expired tidal volume ( $V_{TE}$ ) may be derived. That is, under ordinary conditions, upon reaching the  $T_E$ , the prescribed  $V_T$  delivered should be completely exhaled and FRC should be reached. However, under some conditions  $T_E$  is inadequate for complete exhalation and FRC is not reached.

Data processing module 222 may be further configured to plot derived volume data graphically via any suitable means. For example, according to embodiments, volume data may be plotted versus time (volume waveform), versus flow (flow-volume loop or FV loop), or versus any other suitable parameter as may be useful to a clinician.

5 According to embodiments, volume may be plotted such that each breath may be independently identified. Further, volume may be plotted such that prescribed  $V_T$  and  $V_{TE}$  may be independently identified, e.g., prescribed  $V_T$  may be represented in one color and  $V_{TE}$  may be represented in another color. According to additional embodiments, volume waveforms and FV loops, for example, may be represented alongside additional

10 graphical representations, e.g., representations of pressure, flow, etc., such that a clinician may substantially simultaneously visualize a variety of parameters associated with each breath.

#### **Auto-PEEP Detection**

Ventilator 202 may further include an Auto-PEEP detection module 224. As

15 described above, the pressure from which a ventilator initiates inspiration is termed the end-expiratory pressure (EEP) and, when EEP is positive, it is termed positive end-expiratory pressure (PEEP). PEEP may be prescribed by a clinician for various reasons. For example, for some patients (e.g., ARDS patients), PEEP may be prescribed for supporting oxygenation and preventing alveolar collapse at the end of expiration. PEEP

20 may also allow a reduction of  $F_{I}O_2$  (fraction inspired oxygen) to safe levels. However, in some cases, additional gases, i.e., in addition to the prescribed PEEP, may be trapped in the lungs at the end of expiration. This condition may be commonly referred to as Auto-PEEP, or intrinsic PEEP. That is, at the end of expiration, when PEEP is prescribed, EEP is equal to PEEP plus Auto-PEEP; and, where PEEP is not prescribed, EEP is equal

25 to Auto-PEEP.

More specifically, in some cases, Auto-PEEP may result when the lungs are not sufficiently emptied during expiration before inspiration is initiated. For example, during pressure ventilation of a non-triggering patient, the ventilator may regulate transitions between inspiration and expiration and between expiration and inspiration as

30 well as the respiratory rate (RR), inspiratory pressure (and consequently  $V_T$ ), etc. In this case, gas-trapping may result when set RR is too high, when inspiratory pressure (and consequently  $V_T$ ) is too high,  $T_I$  is too long and/or  $T_E$  is too short, etc. Alternatively,

during pressure ventilation of a triggering patient, the patient triggers the transition between expiration and inspiration, i.e., patient-regulated RR. In this case, gas-trapping may result when inspiration is triggered by the patient before expiration is complete, e.g., when inspiratory pressure (and consequently  $V_T$ ) is too high,  $T_I$  is too long (resulting in  $T_E$  being insufficient before patient-triggering occurs). Specifically, when incomplete exhalation occurs, gases may be trapped in the lungs, resulting in an increased FRC. Indeed, with each breath, additional gases may be trapped and, not surprisingly, Auto-PEEP has been linked to barotrauma and an increase in the work of breathing (WOB), among other conditions.

10 Barotrauma may result from the over-distension of alveoli, which may cause disruption of the alveolar epithelium. Further, as pressure in the alveoli increases, some alveoli may rupture, allowing gases to seep into the perivascular sheath and into the mediastinum. This condition may be referred to as pulmonary interstitial emphysema (PIE). Further complications associated with PIE may result in a pneumothorax (i.e.,  
15 partial to complete collapse of a lung due to gases collected in the pleural cavity). Additionally or alternatively, Auto-PEEP has been associated with impeded venous return, which may lead to reduced cardiac output. Patients suffering from acute respiratory distress syndrome (ARDS) or acute lung injury (ALI) may be especially susceptible to Auto-PEEP. The work of breathing (WOB) refers to the amount of energy  
20 required to inhale, i.e., against forces that oppose inspiration as described above. For spontaneously-breathing patients, an increased WOB may lead to exhaustion of the respiratory muscles. Indeed, an increased WOB may further damage and/or compromise a patient's ability to provide at least some muscular effort during respiration – potentially extending their time on ventilation.

25 According to embodiments, Auto-PEEP may occur as a result of various patient conditions and/or inappropriate ventilatory settings. Thus, according to embodiments, Auto-PEEP detection module **224** may evaluate various ventilatory parameter data based on one or more predetermined thresholds to detect the presence of Auto PEEP. For example, the Auto-PEEP detection module **224** may evaluate expiratory flow on a flow  
30 waveform, or flow trace, to determine whether EEF has reached zero before inspiration begins. That is, if EEF breaches a predetermined threshold (e.g., EEF exceeds about 5 L/m), the pressure gradient between the patient's lungs and the ambient surface pressure

has likely not reached zero. As such, it is likely that gases have not been completely exhaled. This condition may occur when inspiration is initiated automatically by the ventilator (e.g., for a non-triggering patient) or when inspiration is initiated via patient triggering (e.g., for a spontaneously-breathing patient). If this situation occurs over  
5 several breaths, it may implicate trapping of gases, or Auto-PEEP. Thus, when EEF is positive (i.e., breaches the predetermined threshold) for several consecutive or substantially consecutive breaths (e.g., positive EEF detected three or more times in ten consecutive breaths), the Auto-PEEP detection module 224 may detect an implication of Auto-PEEP. As may be appreciated, the threshold values disclosed herein are provided  
10 as examples only. Indeed, threshold values may be determined via any suitable standard protocol or otherwise. Alternatively, threshold values may be determined and configured for a specific patient according to a specific prescription or otherwise.

According to further embodiments, Auto-PEEP detection module 224 may evaluate expiratory flow on a flow trace to detect patient effort for a triggering patient.  
15 That is, by evaluating the slope of the expiratory flow curve, the Auto-PEEP detection module 224 may determine that the patient attempted to trigger while the patient was still actively exhaling. That is, if  $T_I$  is set too high,  $T_E$  may not be long enough for complete exhalation. Thereafter, a triggering patient may attempt to initiate another inspiration prior to complete exhalation of gases, potentially trapping gases in the lungs. Thus, when  
20 patient triggering is detected during active exhalation, the Auto-PEEP detection module 224 may detect an implication of Auto-PEEP.

According to further embodiments, Auto-PEEP detection module 224 may calculate an I:E ratio for a patient. According to embodiments, a normal patient (e.g., with a normal  $T_I$  and a normal RR for the patient's PBW) may have an I:E ratio of about  
25 1:2 to 1:3. That is, under normal conditions, it may be desirable for the  $T_E$  to be about double or triple (or greater) the set  $T_I$ . However, under some circumstances the length of the  $T_E$  approaches the set  $T_I$ . For instance, if set RR is too high (for a non-triggering patient),  $T_E$  may be too short and may not allow for complete exhalation. Alternatively, when inspiratory pressure is too high (causing increased delivered volume),  $T_E$  may be  
30 too short and may not allow for complete exhalation of the increased delivered volume. As described previously, when  $T_E$  is too short, gas-trapping may occur at the end of expiration causing Auto-PEEP. Thus, in cases where the I:E ratio is greater than 1:2

(i.e., approaching 1:1 or approaching an inverse ratio, e.g., 2:1) the Auto-PEEP detection module 224 may detect an implication of Auto-PEEP.

According to further embodiments, Auto-PEEP detection module 224 may utilize the flow waveform to evaluate inspiratory flow based on one or more predetermined thresholds. For example, if pressure exists in the lungs (e.g., due to Auto-PEEP), gases may not begin to flow into the lungs until the pressure in the mouth exceeds the lung pressure (i.e., until a pressure gradient is established). That is, inspiratory flow may be slowed at the beginning of inspiration if Auto-PEEP is present. As such, the Auto-PEEP detection module 224 may be configured to detect whether inspiratory flow fails to exceed a predetermined threshold within a certain amount of time after initiation of inspiration (e.g., as automatically initiated by the ventilator based on parameter settings for a non-triggering patient or initiated based on ventilator detection of patient effort and/or neural indications for a triggering patient). Thus, when inspiratory flow breaches a predetermined threshold at the beginning of inspiration, the Auto-PEEP detection module 224 may detect an implication of Auto-PEEP.

According to further embodiments, Auto-PEEP detection module 224 may evaluate various ventilatory parameters to determine whether respiratory resistance is increasing. As described previously, increased resistance may cause a decrease in flow. Consequently,  $T_E$  may not be adequate for complete exhalation to FRC. Resistance may increase for a number of reasons, as listed above, including ascites (fluid build-up in the peritoneal cavity surrounding the lungs that may increase viscous tissue resistance), chronic obstructive pulmonary disease (COPD), asthma, emphysema, mucous blockage, or otherwise. In some cases, a clinician may be aware of a patient's obstructive condition; however, it may be desirable for the ventilator to detect whether an obstructive disorder is worsening. Alternatively, it may be desirable for the ventilator to detect whether an obstructive disorder developing or whether resistance is increasing for some other reason.

For example, Auto-PEEP detection module 224 may monitor ventilatory data based on one or more predetermined thresholds to determine whether respiratory resistance is increasing. For example, where  $P_I$  is increasing with constant  $V_T$  delivery, resistance may be increasing. Further, where flow is decreasing with constant  $P_I$ , resistance may be increasing (i.e.,  $R = P_I / F$ ). For example, if resistance increases by a

predetermined threshold, Auto-PEEP may be implicated (e.g., resistance increases by about 5 cm H<sub>2</sub>O/L/s or more). As may be appreciated, the threshold values disclosed herein are provided as examples only. Indeed, threshold values may be determined via any suitable standard protocol or otherwise. Alternatively, threshold values may be  
5 determined and configured for a specific patient according to a specific prescription or otherwise.

Alternatively, the Auto-PEEP detection module 224 may evaluate PV curves to compare C<sub>S</sub> and C<sub>D</sub> over a number of breaths to detect whether resistance is increasing, as described above. That is, when the C<sub>D</sub> curve flattens out and shifts to the right  
10 relative to the C<sub>S</sub> curve, this may indicate that P<sub>t</sub> is increasing and, thus, that resistance is increasing. Generally, based on the above evaluations, an inspiratory resistance may be trended over a period of time. However, according to other embodiments, expiratory resistance may also be evaluated. For example, by comparing consecutive FV loops, an expiratory plot for each FV loop may reflect a progressive reduction in expiratory flow  
15 indicative of increasing resistance. Consequently, if T<sub>E</sub> is not long enough for complete exhalation at the decreased flow, gases may be trapped in the lungs.

Alternatively, the Auto-PEEP detection module 224 may evaluate PV loops from successive breaths to detect an increase in resistance. For example, increased resistance may be detected when successive PV loops shorten and widen over time. That is, at  
20 constant pressure, less volume is delivered to the lungs when resistance is increasing, resulting in a shorter, wider PV loop.

Alternatively, the Auto-PEEP detection module 224 may evaluate the expiratory limb resistance of the patient circuit to detect increased resistance. Where resistance of the expiratory limb breaches a predetermined threshold, the ventilator may recommend  
25 that the clinician check the exhalation filter for mucous or other obstruction that may be causing elevated expiratory limb resistance. According to further embodiments, as increased expiratory limb resistance may prevent complete exhalation, Auto-PEEP may be implicated.

As may be appreciated from the above examples, an increase in resistance may be  
30 detected by evaluating graphical data in the form of PV curves, PV loops and/or FV loops. That is, the ventilator may determine that resistance has increased by evaluating changes in the graphical data and/or changes in the underlying data corresponding to the

graphical data. Alternatively, an increase in resistance may be detected by calculation, e.g., by measuring flow and pressure and by calculating resistance (i.e., where compliance is constant). However, according to embodiments, when increased resistance is detected via any suitable method, the Auto-PEEP detection module 224 may  
5 detect an implication of Auto-PEEP.

According to further embodiments, Auto-PEEP detection module 224 may evaluate various ventilatory parameters to determine whether respiratory compliance is increasing. That is, when elastance decreases (e.g., forces opposing lung inflation), it may require less pressure to deliver a particular volume (i.e.,  $\Delta V = C \cdot \Delta P$ ).  
10 Consequently, additional volume may be delivered at constant pressure and may over-distend the lungs and/or result in gas-trapping. For example, Auto-PEEP detection module 224 may evaluate PV loops based on one or more predetermined thresholds to detect whether compliance is increasing, i.e., by comparing the area between the inspiratory plot of pressure vs. volume and the expiratory plot of pressure vs. volume  
15 over a number of breaths. According to alternative embodiments, Auto-PEEP detection module 224 may evaluate PV curves to compare  $C_S$  and  $C_D$  over a number of breaths, as described above. That is, where both the  $C_D$  curve and the  $C_S$  curve straighten and shift to the left (e.g., illustrating decreasing  $P_{Peak}$  and  $P_{Plat}$ ) compliance may be increasing. Alternatively, the ventilator may be configured with a predetermined threshold increase  
20 for compliance (e.g., an increase of about 10 mL/cmH<sub>2</sub>O or more), such that Auto-PEEP may be implicated when compliance breaches the predetermined threshold increase. That is, if compliance increases, less pressure may be required to deliver a prescribed  $V_T$  and/or lower  $T_I$  may be required to deliver the prescribed  $V_T$ . Thus, if adjustments are not made, Auto-PEEP may result.

25 As may be appreciated from the above examples, an increase in compliance may be detected by evaluating graphical data associated with PV loops or PV curves. That is, the ventilator may determine that compliance has increased by evaluating changes in the graphical data and/or changes in the underlying data corresponding to the graphical data. Alternatively, an increase in compliance may be calculated, e.g., by determining  $V_T$ ,  
30  $P_{Plat}$ , and EEP to calculate  $C_S$  or by determining  $V_T$ ,  $P_{Peak}$ , and EEP to calculate  $C_D$ . In either case, when increased compliance is detected, the Auto-PEEP detection module 224 may detect an implication of Auto-PEEP.

According to further embodiments, the Auto-PEEP detection module **224** may calculate the pulmonary time constant by multiplying resistance (e.g., expiratory resistance) by compliance for a particular patient. Additionally, the Auto-PEEP detection module **224** may trend  $T_E$  over multiple breaths. When  $T_E$  is less than a  
5 predetermined number of pulmonary time constants,  $T_E$  may not be adequate for complete exhalation and the Auto-PEEP detection module **224** may detect an implication of Auto-PEEP.

According to alternative embodiments, the Auto-PEEP detection module **224** may trend  $T_E$  over multiple breaths based on one or more predetermined thresholds to  
10 detect whether  $T_E$  is limited for a triggering patient. For example, if the patient-regulated respiratory rate (RR) is too high or  $T_I$  is too high, the  $T_E$  may be limited. That is, for a triggering patient,  $T_E$  may not be long enough to reach FRC before inspiration is triggered, potentially resulting in Auto-PEEP. For a non-triggering patient, the RR setting may be set too high such that  $T_E$  is not long enough to reach FRC before the  
15 ventilator initiates inspiration. According to embodiments, a time required to reach FRC may be calculated, e.g., based on inspiratory pressure (or  $V_T$ ) and resistance and compliance data. The time required to reach FRC may then be compared to  $T_E$  to determine whether the time required to reach FRC is greater than  $T_E$ . When the time required to reach FRC is greater than  $T_E$  by a predetermined threshold, for instance, it  
20 may be determined that  $T_E$  is limited. Further, when limited  $T_E$  is detected, the Auto-PEEP detection module **224** may detect an implication of Auto-PEEP.

According to further embodiments, the Auto-PEEP detection module **224** may evaluate data from an expiratory-pause maneuver. For example, an expiratory-pause maneuver may be conducted manually by a clinician or automatically at certain intervals  
25 during ventilation. During the expiratory-pause maneuver, expiratory and inspiratory valves may be momentarily shut at the end of expiration. For example, when the end-expiratory pressure (EEP) reading in the circuit exceeds set PEEP by a threshold amount (e.g., about 5 cm H<sub>2</sub>O above set PEEP), the presence of Auto-PEEP may be implicated. According to alternative embodiments, EEP readings may be taken by sensors at or near  
30 the patient's lungs and/or diaphragm to determine the presence of Auto-PEEP. Note that it is preferable that the patient be sedated or non-triggering for these measurements to be accurate. Thus, when EEP is greater than set PEEP at the end of expiration for a

threshold number of breaths (e.g., three or more times in ten consecutive breaths), the Auto-PEEP detection module **224** may determine that Auto-PEEP is implicated.

As may be appreciated, the threshold values disclosed herein are provided as examples only. Indeed, threshold values may be determined via any suitable standard  
5 protocol or otherwise. Alternatively, threshold values may be determined and configured for a specific patient according to a specific prescription or otherwise.

Further, as may be appreciated, an implication of Auto-PEEP may be detected by one or more of the above methods during pressure ventilation. That is, according to  
10 embodiments of the present disclosure, an implication of Auto-PEEP may be detected by one of the above methods, by a combination of two or more of the above methods, or by any other suitable means.

### **Smart-Prompt Generation**

Ventilator **202** may further include a smart prompt module **226**. As described above, the presence of Auto-PEEP may be very difficult for a clinician to detect. As may  
15 be appreciated, multiple ventilatory parameters may be monitored and evaluated in order to detect an implication of Auto-PEEP. In addition, when Auto-PEEP is implicated, many clinicians may not be aware of adjustments to ventilatory parameters that may reduce or eliminate Auto-PEEP. As such, upon detection of Auto-PEEP, the smart  
20 prompt module **226** may be configured to notify the clinician that Auto-PEEP is implicated and/or to provide recommendations to the clinician for mitigating Auto-PEEP. For example, smart prompt module **226** may be configured to notify the clinician by displaying a smart prompt on display monitor **204** and/or within a window of the  
GUI. According to additional embodiments, the smart prompt may be communicated to and/or displayed on a remote monitoring system communicatively coupled to ventilatory  
25 system **200**. Alternatively, in an automated embodiment, the smart prompt module **226** may communicate with a ventilator control system so that the recommendation may be automatically implemented to mitigate Auto-PEEP.

In order to accomplish the various aspects of the notification and/or recommendation message display, the smart prompt module **226** may communicate with  
30 various other components and/or modules. For instance, smart prompt module **226** may be in communication with data processing module **222**, Auto-PEEP detection module **224**, or any other suitable module or component of the ventilatory system **200**. That is,

smart prompt module 226 may receive an indication that Auto-PEEP has been implicated by any suitable means. In addition, smart prompt module 226 may receive information regarding one or more parameters that implicated the presence of Auto-PEEP and information regarding the patient's ventilatory settings and treatment. Further, according to some embodiments, the smart prompt module 226 may have access to a patient's diagnostic information (e.g., regarding whether the patient has ARDS, COPD, asthma, emphysema, or any other disease, disorder, or condition).

Smart prompt module 226 may further comprise additional modules for making notifications and/or recommendations to a clinician regarding the presence of Auto-PEEP. For example, according to embodiments, smart prompt module 226 may include a notification module 228 and a recommendation module 230. For instance, smart prompts may be provided according to a hierarchical structure such that a notification messages and/or a recommendation message may be initially presented in summarized form and, upon clinician selection, an additional detailed notification and/or recommendation message may be displayed. According to alternative embodiments, a notification message may be initially presented and, upon clinician selection, a recommendation message may be displayed. Alternatively or additionally, the notification message may be simultaneously displayed with the recommendation message in any suitable format or configuration.

Specifically, according to embodiments, the notification message may alert the clinician as to the detection of a patient condition, a change in patient condition, or an effectiveness of ventilatory treatment. For example, the notification message may alert the clinician that Auto-PEEP has been detected. The notification message may further alert the clinician regarding the particular ventilatory parameter(s) that implicated Auto-PEEP (e.g., positive EEF over the last  $n$  breaths, increased resistance, etc.)

Additionally, according to embodiments, the recommendation message may provide various suggestions to the clinician for addressing a detected condition. That is, if Auto-PEEP has been detected, the recommendation message may suggest that the clinician reduce inspiratory pressure (to lower delivered  $V_T$ ) such that  $T_E$  may be sufficient to completely exhale  $V_T$ , decrease set  $T_I$  to increase  $T_E$ , decrease set RR (for a non-triggering patient) to increase  $T_E$ , etc. Additionally or alternatively, the recommendation message may be based on the particular ventilatory parameter(s) that

implicated Auto-PEEP. Additionally or alternatively, the recommendation message may be based on current ventilatory settings such that suggestions are directed to a particular patient's treatment. Additionally or alternatively, the recommendation message may be based on a diagnosis and/or other patient attributes. Further still, the recommendation  
5 message may include a primary recommendation message and a secondary recommendation message.

As described above, smart prompt module **226** may also be configured with notification module **228** and recommendation module **230**. The notification module **228** may be in communication with data processing module **222**, Auto-PEEP detection  
10 module **224**, or any other suitable module to receive an indication that Auto-PEEP has been detected. Notification module **228** may be responsible for generating a notification message via any suitable means. For example, the notification message may be provided as a tab, banner, dialog box, or other similar type of display. Further, the notification messages may be provided along a border of the graphical user interface, near an alarm  
15 display or bar, or in any other suitable location. A shape and size of the notification message may further be optimized for easy viewing with minimal interference to other ventilatory displays. The notification message may be further configured with a combination of icons and text such that the clinician may readily identify the message as a notification message.

20 The recommendation module **230** may be responsible for generating one or more recommendation messages via any suitable means. The one or more recommendation messages may provide suggestions and information regarding addressing a detected condition and may be accessible from the notification message. For example, the one or more recommendation messages may identify the parameters that implicated the detected  
25 condition, may provide suggestions for adjusting one or more ventilatory parameters to address the detected condition, may provide suggestions for checking ventilatory equipment or patient position, or may provide other helpful information. Specifically, the one or more recommendation messages may provide suggestions and information regarding Auto-PEEP.

30 According to embodiments, based on the particular parameters that implicated Auto-PEEP, the recommendation module may provide suggestions for addressing Auto-PEEP. That is, if Auto-PEEP was implicated by positive EEF over several breaths, the

one or more recommendation messages may include suggestions for decreasing set  $T_I$  such that  $T_E$  may be increased, adjusting settings such that  $EEF$  approximates zero, decreasing set RR (for a non-triggering patient) such that  $T_E$  may be increased, lowering inspiratory pressure (to lower  $V_T$ ) such that  $T_E$  may be adequate, etc. Alternatively, if  
5 Auto-PEEP was implicated by increased resistance, the one or more recommendation messages may include suggestions for suctioning the patient interface, adjusting patient position, delivering a bronchodilator or other suitable medication, etc.

Alternately still, if Auto-PEEP was implicated by increased compliance, the recommendation module may provide one or more suggestions for addressing Auto-  
10 PEEP. For instance, as noted above, when compliance increases, less pressure is required to deliver a particular  $V_T$ . As such, when the ventilator detects that compliance is increasing, the one or more recommendation messages may suggest a corresponding decrease in inspiratory pressure to maintain  $V_T$ . Alternatively, when an increase in  $V_T$  is desirable for the patient having increased compliance, the one or more recommendation  
15 messages may suggest a corresponding decrease in set  $T_I$  (in order to increase  $T_E$ ) such that the increased  $V_T$  may be completely exhaled.

Additionally or alternatively, the one or more recommendation messages may also be based on current ventilatory settings for the patient. For example, upon detecting Auto-PEEP via any suitable means, the ventilator may also detect that the patient's  
20 current ventilatory settings include a relatively low  $T_I$  setting. In this case, according to an embodiment, the one or more recommendation messages may not suggest decreasing set  $T_I$ . Alternatively, upon detecting Auto-PEEP via any suitable means, the ventilator may also detect that a non-triggering patient's current ventilatory settings include a relatively low RR setting. In this case, according to an embodiment, the one or more  
25 recommendation messages may not suggest decreasing set RR. Indeed, the ventilator may evaluate settings for RR,  $T_I$ ,  $T_E$ , I:E ratio, etc., to determine whether these settings are within a range that may be appropriately changed, or not, in light of a detection of Auto-PEEP.

Additionally or alternatively, the one or more recommendation messages may be  
30 based on ventilatory parameters as monitored by the ventilator for the patient. According to an embodiment, when Auto-PEEP is implicated by any suitable means, the ventilator may also detect that the set  $T_I$  is longer than necessary for delivering  $V_T$ . In this case, an

inspiratory volume ( $V_T$ ) may be delivered that achieves and maintains the inspiratory pressure prior to the end of  $T_I$ . As a result, the ventilator may detect that flow is about zero prior to the end of  $T_I$  (i.e., pressure is equalized and gases are no longer flowing into the lungs). Further, the ventilator may determine an amount of time,  $t$  (e.g., in  
5 milliseconds, ms), from detection of about zero flow until  $T_I$  ends. In some embodiments, the one or more recommendation messages may suggest decreasing  $T_I$  by up to  $t$  such that  $T_E$  may be increased while maintaining  $V_T$ . In other embodiments, in cases where a clinician may desire to decrease  $T_I$  by more than  $t$ , the one or more recommendation messages may suggest a corresponding increase in inspiratory pressure  
10 to maintain  $V_T$  when  $T_I$  is decreased by more than  $t$ .

Additionally or alternatively, the one or more recommendation messages may be based on a patient's diagnosis or other clinical data. According to some embodiments, if a patient has been diagnosed with COPD, the ventilator may be configured with adjusted thresholds such that sensitivity to resistance is increased (i.e., a lower predetermined  
15 threshold) or decreased (i.e., a higher predetermined threshold) based on clinician input or otherwise. According to some embodiments, if a patient has been diagnosed with emphysema, the ventilator may be configured with adjusted thresholds such that sensitivity to compliance is increased (i.e., a lower predetermined threshold) or decreased (i.e., a higher predetermined threshold) based on clinician input or otherwise. According  
20 to other embodiments, if a patient has been diagnosed with ARDS, the ventilator may be aware that the patient is at higher risk for Auto-PEEP and may configured with increased sensitivity for detecting implications of Auto-PEEP. Alternatively, Auto-PEEP may be desirable for an ARDS patient (e.g., preventing alveolar collapse and increasing oxygenation) and the ventilator may be configured with decreased sensitivity for  
25 detecting implications of Auto-PEEP. When Auto-PEEP is detected, the one or more recommendation messages may include suggesting decreasing set RR (for a non-triggering patient) to increase  $T_E$ , decreasing set  $T_I$  to increase  $T_E$ , decreasing inspiratory pressure (to reduce delivered  $V_T$ ) such that  $T_E$  may be sufficient to completely exhale the delivered  $V_T$ , etc.

30 According to still other embodiments, the recommendation message may include a primary message and a secondary message. That is, a primary message may provide suggestions that are specifically targeted to the detected condition based on the particular

parameters that implicated the condition. Alternatively, the primary message may provide suggestions that may provide a higher likelihood of mitigating the detected condition. The secondary message may provide more general suggestions and/or information that may aid the clinician in further addressing and/or mitigating the detected condition. For example, the primary message may provide a specific suggestion for adjusting a particular parameter to mitigate the detected condition (e.g., consider decreasing  $T_I$ , consider adjusting settings such that  $EEF$  approximates zero). Alternatively, the secondary message may provide general suggestions for addressing the detected condition (e.g., consider other steps for providing adequate  $T_E$ , such as decreasing inspiratory pressure to decrease delivered  $V_T$  so that  $T_E$  may be adequate to completely exhale the delivered  $V_T$ ).

Smart prompt module 226 may also be configured such that notification and/or recommendation messages may be displayed in a partially transparent window or format. The transparency may allow for notification and/or recommendation messages to be displayed such that normal ventilator GUI and respiratory data may be visualized behind the messages. This feature may be particularly useful for displaying detailed messages. As described previously, notification and/or recommendation messages may be displayed in areas of the display screen that are either blank or that cause minimal distraction from the respiratory data and other graphical representations provided by the GUI. However, upon selective expansion of a message, respiratory data and graphs may be at least partially obscured. As a result, translucent display may provide the detailed message such that it is partially transparent. Thus, graphical and other data may be visible behind the detailed alarm message.

Additionally, notification and/or recommendation messages may provide immediate access to the display and/or settings screens associated with the detected condition. For example, an associated parameter settings screen may be accessed from a notification and/or a recommendation message via a hyperlink such that the clinician may address the detected condition as necessary. An associated parameter display screen may also be accessed such that the clinician may view clinical data associated with the detected condition in the form of charts, graphs, or otherwise. That is, according to embodiments, the clinician may access the ventilatory data that implicated the detected condition for verification purposes. For example, when Auto-PEEP has been implicated,

depending on the particular ventilatory parameters that implicated Auto-PEEP, the clinician may be able to access ventilatory settings for addressing Auto-PEEP (e.g., a settings screen for adjusting inspiratory pressure,  $T_I$ , etc.) and/or to view associated ventilatory parameters that implicated Auto-PEEP (e.g., a graphics screen displaying historical flow waveforms, volume waveforms, and/or pressure waveforms that gave rise to implications of Auto-PEEP).

According to embodiments, upon viewing the notification and/or recommendation messages, upon addressing the detected condition by adjusting one or more ventilatory settings or otherwise, or upon manual selection, the notification and/or recommendation messages may be cleared from the graphical user interface.

### **Auto-PEEP Detection during Pressure Ventilation**

FIG. 3 is a flow chart illustrating an embodiment of a method for detecting an implication of Auto-PEEP.

As should be appreciated, the particular steps and methods described herein are not exclusive and, as will be understood by those skilled in the art, the particular ordering of steps as described herein is not intended to limit the method, e.g., steps may be performed in differing order, additional steps may be performed, and disclosed steps may be excluded without departing from the spirit of the present methods.

The illustrated embodiment of the method **300** depicts a method for detecting Auto-PEEP during pressure ventilation. According to embodiments described herein, pressure ventilation may generally include pressure-control ventilation (PCV), bi-level (BL) pressure ventilation, or volume-targeted-pressure-controlled (VC+) ventilation.

Method **300** begins with an initiate ventilation setup operation **302**. Initiate ventilation setup operation **302** may further include various additional operations. For example, initiate ventilation setup operation **302** may include receiving one or more ventilatory settings associated with ventilation of a patient (e.g., at receive settings operation **304**). For example, the ventilator may be configured to provide pressure ventilation to a triggering patient. As such, the ventilatory settings and/or input received may include an inspiratory pressure (or target inspiratory pressure), predicted or ideal body weight (PBW or IBW), etc. According to alternative embodiments, the ventilator may be configured to provide pressure ventilation to a non-triggering patient. As such, the ventilatory settings and/or input received may include an inspiratory pressure, set RR,

predicted or ideal body weight (PBW or IBW), etc. According to some embodiments, a predicted  $T_E$  and a predicted  $T_I$  may be determined for either a triggering or a non-triggering patient based on normal respiratory and compliance values or value ranges based on the patient's PBW or IBW.

5           According to some embodiments, initiate ventilation setup operation **302** may further include receiving diagnostic information regarding the patient (e.g., at receive diagnosis operation **306**, represented with dashed lines to identify the operation as optional). For example, according to embodiments, the clinician may indicate that the patient has been diagnosed with ARDS, COPD, emphysema, asthma, etc. The ventilator  
10           may be further configured to associate a patient diagnosis with various conditions (e.g., increased resistance associated with COPD, increased likelihood of alveolar collapse associated with ARDS, etc.).

          At deliver ventilation operation **308**, the ventilator provides pressure ventilation to the patient, as described above. That is, according to embodiments, the ventilator  
15           provides ventilation based on an inspiratory pressure. For example, during an inspiratory phase, the ventilator may deliver gases to the patient by delivering a set inspiratory pressure at the mouth of the patient for a period of time, i.e., set inspiratory time ( $T_I$ ). As described above, upon delivering an inspiratory volume that achieves and maintains the inspiratory pressure, gases will no longer flow into the lungs. Thus, in some cases, when  
20           inspiratory volume is delivered prior to reaching the end of  $T_I$ , the ventilator may detect that flow is about zero. According to further embodiments, the ventilator may initiate an expiratory phase when  $T_I$  ends. For a triggering patient, the ventilator may detect patient effort during the expiratory phase via any suitable means. For example, the ventilator may detect a slight drop in flow and/or pressure that may be interpreted as a patient  
25           trigger and the ventilator may consequently initiate a next inspiratory phase by delivering gases to the patient. For a non-triggering patient, the ventilator may initiate a next inspiratory phase based on set RR, for example.

          While pressure ventilation is being delivered, the ventilator may conduct various data processing operations. For example, at data processing operation **310**, the ventilator  
30           may collect and/or derive various ventilatory parameter data associated with pressure ventilation of a patient. For example, as described above, the ventilator may collect data regarding flow and pressure parameters. Additionally, the ventilator may derive various

ventilatory parameter data based on the collected data, e.g., volume, pressure, respiratory resistance, respiratory compliance, etc. Additionally, the ventilator may generate various graphical representations of the collected and/or derived ventilatory parameter data, e.g., flow waveforms, pressure waveforms, pressure-volume loops, flow-volume loops, etc.

5           At analyze operation **312**, the ventilator may evaluate collected and/or derived data to determine whether a certain patient condition exists. For example, according to embodiments, the ventilator may evaluate the various collected and derived parameter data, including EEF,  $T_E$ , EEP, respiratory resistance and/or compliance,  $P_a$ , patient effort, etc., based on one or more predetermined thresholds. According to embodiments, the  
10 ventilator may further evaluate the ventilatory parameter data in light of the patient's specific parameter settings, including inspiratory pressure, set  $T_I$ , set RR (for a non-triggering patient), etc., and/or the patient's diagnostic information.

          According to some embodiments, at detect Auto-PEEP operation **314** the ventilator may determine whether Auto-PEEP is implicated based on evaluating EEF at  
15 analyze operation **312**. For example, according to embodiments, the ventilator may be configured with a threshold value for EEF. For example, if EEF is greater than or equal to about 5 L/m when inspiration is initiated, the threshold may be breached and positive EEF may be detected (e.g., when EEF is greater than or equal to 5 L/m). Further, according to embodiments, the ventilator may be configured with a threshold number of  
20 breaths, e.g., if positive EEF is detected three or more times in ten consecutive breaths the threshold may be breached. That is, when three or more of ten consecutive breaths exhibit positive EEF, it may be determined that Auto-PEEP is implicated. If Auto-PEEP is implicated, the operation may proceed to issue smart prompt operation **316**. If Auto-PEEP is not implicated, the operation may return to analyze operation **312**.

25           According to other embodiments, at detect Auto-PEEP operation **314** the ventilator may determine whether Auto-PEEP is implicated based on evaluating expiratory flow on a flow trace to detect patient effort for a triggering patient. That is, by evaluating the slope of the expiratory flow curve, the ventilator may determine that the patient attempted to trigger while the patient was still actively exhaling. When a  
30 triggering patient attempts to initiate inspiration prior to complete exhalation of gases, gas-trapping may occur due to premature triggering. According to embodiments, the ventilator may be configured with a threshold number of breaths, e.g., when premature

triggering is detected three or more times in ten consecutive breaths the threshold may be breached. That is, when three or more of ten consecutive breaths exhibit premature triggering, the ventilator may detect an implication of Auto-PEEP. If Auto-PEEP is implicated, the operation may proceed to issue smart prompt operation **316**. If Auto-PEEP is not implicated, the operation may return to analyze operation **312**.

According to further embodiments, at detect Auto-PEEP operation **314** the ventilator may calculate an I:E ratio for a patient. According to embodiments, a normal patient (e.g., with a normal  $T_I$  and a normal RR for the patient's PBW) may have an I:E ratio of 1:2 to 1:3. That is, under normal conditions, it may be desirable for the  $T_E$  to be double or triple (or greater) the set  $T_I$ . However, under some circumstances the length of the  $T_E$  may approach the set  $T_I$ . For instance, if set RR is too high (for a non-triggering patient),  $T_E$  may be too short and may not allow for complete exhalation. Alternatively, when inspiratory pressure is too high (causing increased delivered volume),  $T_E$  may be too short and may not allow for complete exhalation of the increased delivered volume. As described previously, when  $T_E$  is too short, gas-trapping may occur at the end of expiration causing Auto-PEEP. Thus, in cases where the I:E ratio is greater than 1:2 (i.e., approaching 1:1 or further approaching an inverse ratio, e.g., 2:1) Auto-PEEP may be implicated. If Auto-PEEP is implicated, the operation may proceed to issue smart prompt operation **316**. If Auto-PEEP is not implicated, the operation may return to analyze operation **312**.

According to still other embodiments, at detect Auto-PEEP operation **314** the ventilator may determine whether Auto-PEEP is implicated based on evaluating EEP at analyze operation **312**. According to embodiments, EEP may be measured distally via any suitable method (e.g., by one or more pressure transducers at or near the lungs and/or diaphragm). Alternatively, EEP may be measured proximally via any suitable method (e.g., during an expiratory hold maneuver). If EEP in excess of set PEEP (if any) is detected at the end of expiration, Auto-PEEP may be implicated. According to embodiments, the ventilator may be configured with a threshold value for EEP (e.g., about 5 cm H<sub>2</sub>O above set PEEP). Further, according to embodiments, the ventilator may be configured with a threshold number of breaths, e.g., excess pressure detected three or more times in ten consecutive breaths may breach the threshold. That is, when three or more of ten consecutive breaths exhibit excess pressure at the end of expiration,

it may be determined that Auto-PEEP is implicated. If Auto-PEEP is implicated, the operation may proceed to issue smart prompt operation 316. If Auto-PEEP is not implicated, the operation may return to analyze operation 312.

According to other embodiments, at detect Auto-PEEP operation 314 the ventilator may determine whether Auto-PEEP is implicated based on evaluating resistance and/or compliance at analyze operation 312. According to embodiments, the ventilator may be configured with a threshold increase for resistance. For example, if resistance increases by about 5 cm H<sub>2</sub>O/L/s or more, it may be determined that Auto-PEEP is implicated. Alternatively, the ventilator may be configured with a threshold increase for compliance. For example, if compliance increases by about 10 mL/cm H<sub>2</sub>O or more, it may be determined that Auto-PEEP is implicated. If Auto-PEEP is implicated, the operation may proceed to issue smart prompt operation 316. If Auto-PEEP is not implicated, the operation may return to analyze operation 312.

According to other embodiments, at detect Auto-PEEP operation 314 the ventilator may evaluate respiratory resistance data and respiratory compliance data to calculate a time required to reach functional residual capacity (FRC). Thereafter, the time required to reach FRC may be compared to the T<sub>E</sub>. According to embodiments, when the time required to reach FRC is greater than the T<sub>E</sub> by a predetermined threshold, it may be determined that Auto-PEEP is implicated. If Auto-PEEP is implicated, the operation may proceed to issue smart prompt operation 316. If Auto-PEEP is not implicated, the operation may return to analyze operation 312.

According to further embodiments, at detect Auto-PEEP operation 314 the ventilator may evaluate the pulmonary time constant and T<sub>E</sub>. That is, by multiplying resistance (e.g., expiratory resistance) by compliance the ventilator may calculate the pulmonary time constant. The ventilator may also trend T<sub>E</sub> over multiple breaths for the triggering patient. When T<sub>E</sub> is less than a predetermined number of pulmonary time constants (e.g., about three pulmonary time constants), T<sub>E</sub> may not be adequate for complete exhalation and the ventilator may detect an implication of Auto-PEEP. If Auto-PEEP is implicated, the operation may proceed to issue smart prompt operation 316. If Auto-PEEP is not implicated, the operation may return to analyze operation 312.

As may be appreciated, the ventilator may determine whether Auto-PEEP is implicated at detect Auto-PEEP operation 314 via any suitable means. Indeed, any of the

above described ventilatory parameters may be evaluated according to various thresholds for detecting Auto-PEEP. Further, the disclosure regarding specific ventilatory parameters as they may implicate Auto-PEEP is not intended to be limiting. In fact, any suitable ventilatory parameter may be monitored and evaluated for detecting Auto-PEEP within the spirit of the present disclosure. As such, if Auto-PEEP is implicated via any suitable means, the operation may proceed to issue smart prompt operation **316**. If Auto-PEEP is not implicated, the operation may return to analyze operation **312**.

At issue smart prompt operation **316**, the ventilator may alert the clinician via any suitable means that Auto-PEEP has been implicated. For example, according to embodiments, the ventilator may display a smart prompt including a notification message and/or a recommendation message regarding the detection of Auto-PEEP on the GUI. According to alternative embodiments, the ventilator may communicate the smart prompt, including the notification message and/or the recommendation message, to a remote monitoring system communicatively coupled to the ventilator.

According to embodiments, the notification message may alert the clinician that Auto-PEEP has been detected and, optionally, may provide information regarding the ventilatory parameter(s) that implicated Auto-PEEP. According to additional embodiments, the recommendation message may provide one or more suggestions for mitigating Auto-PEEP. According to further embodiments, the one or more suggestions may be based on the patient's particular ventilatory settings and/or diagnosis. According to further embodiments, the one or more suggestions may be based on whether the patient is triggering or non-triggering. According to some embodiments, the clinician may access one or more parameter setting and/or display screens from the smart prompt via a hyperlink or otherwise for addressing Auto-PEEP. According to additional or alternative embodiments, a clinician may remotely access one or more parameter and/or display screens from the smart prompt via a hyperlink or otherwise for remotely addressing Auto-PEEP.

#### **Smart Prompt Generation regarding Auto-PEEP Detection**

FIG. 4 is a flow chart illustrating an embodiment of a method for issuing a smart prompt upon detecting an implication of Auto-PEEP.

As should be appreciated, the particular steps and methods described herein are not exclusive and, as will be understood by those skilled in the art, the particular ordering

of steps as described herein is not intended to limit the method, e.g., steps may be performed in differing order, additional steps may be performed, and disclosed steps may be excluded without departing from the spirit of the present methods.

The illustrated embodiment of the method **400** depicts a method for issuing a smart prompt upon detecting Auto-PEEP during pressure ventilation of a triggering or a non-triggering patient. Method **400** begins with detect operation **402**, wherein the ventilator detects that Auto-PEEP is implicated, as described above in method **300**.

At identify ventilatory parameters operation **404**, the ventilator may identify one or more ventilatory parameters that implicated Auto-PEEP. For example, the ventilator may recognize that Auto-PEEP was implicated by positive EEF over several breaths. Alternatively, the ventilator may recognize that Auto-PEEP was implicated by excess EEP over PEEP. Alternatively, the ventilator may recognize that Auto-PEEP was implicated by increased resistance and/or compliance. Alternatively, the ventilator may recognize that Auto-PEEP was implicated by determining the time required to reach FRC is greater than  $T_E$ . Indeed, the ventilator may recognize that Auto-PEEP was implicated by one or more of the above methods, either individually or in combination, during pressure ventilation of a patient. As may be appreciated, the ventilator may use information regarding ventilatory parameters that implicated Auto-PEEP in determining an appropriate notification and/or recommendation message of the smart prompt.

At identify settings operation **406**, the ventilator may identify one or more current ventilatory settings associated with the ventilatory treatment of the patient. For example, current ventilatory settings may have been received upon initiating ventilation setup for the patient and may have been determined by the clinician or otherwise (e.g., by evaluating a patient diagnosis, oxygenation, PBW or IBW, disease conditions, etc.). For instance, current ventilatory settings associated with pressure ventilation for a triggering patient may include, *inter alia*, inspiratory pressure (IP), set  $T_I$ , etc. For instance, current ventilatory settings associated with pressure ventilation for a non-triggering patient may include, *inter alia*, inspiratory pressure (IP), set  $T_I$ , set RR, etc. In addition, a predicted  $T_E$  and/or a predicted  $T_I$  may be determined based on normal respiratory resistance and compliance values and the patient's PBW (or IBW). As may be appreciated, the ventilator may use information regarding current ventilatory settings in determining an appropriate notification and/or recommendation message of the smart prompt.

At identify patient diagnosis operation **408**, the ventilator may optionally identify patient diagnosis information received from a clinician (represented with dashed lines to identify the operation as optional). For example, according to embodiments, the clinician may indicate during ventilation initiation or otherwise that the patient was  
5 diagnosed with COPD, ARDS, emphysema, asthma, etc. As may be appreciated, the ventilator may use information regarding a patient's diagnosis in determining an appropriate notification and/or recommendation message of the smart prompt.

At determine operation **410**, the ventilator may determine an appropriate notification message. For example, the appropriate notification message may alert the  
10 clinician that Auto-PEEP has been implicated and, optionally, may provide information regarding the ventilatory parameter(s) that implicated Auto-PEEP. For example, the appropriate notification may alert the clinician that Auto-PEEP was implicated by positive EEF over several breaths, Auto-PEEP was implicated by excess EEP over several breaths, Auto-PEEP was implicated by increased resistance, etc.

At determine operation **412**, the ventilator may determine an appropriate primary  
15 recommendation message. The appropriate primary recommendation message may provide one or more specific suggestions for mitigating Auto-PEEP.

According to some embodiments, in determining the appropriate primary recommendation message, the ventilator may take into consideration whether the patient  
20 is triggering or non-triggering. According to further embodiments, in determining the appropriate primary recommendation message, the ventilator may take into consideration the one or more monitored ventilatory parameters that implicated Auto-PEEP. By way of example, for a triggering patient, if Auto-PEEP was implicated by positive EEF over several breaths, the appropriate primary recommendation messages may include:  
25 "Consider decreasing set  $T_I$ ; Adjust settings until EEF approximates zero," for example. Additionally or alternatively, for a triggering patient, if Auto-PEEP was implicated by patient triggering prior to complete exhalation, the appropriate primary recommendation messages may include: "Consider reasons for increased respiratory drive," for example. By way of an alternative example, for a non-triggering patient, if Auto-PEEP was  
30 implicated by positive EEF over several breaths, the appropriate primary recommendation messages may include: "Consider decreasing set RR and/or decreasing set  $T_I$ ; Adjust settings until EEF approximates zero," for example.

According to alternative embodiments, Auto-PEEP may be implicated by increased compliance. As noted above, when compliance increases, less pressure is required to deliver a particular  $V_T$ . As such, when compliance increases during ventilation, the inspiratory pressure setting may deliver an increasingly higher  $V_T$  such that Auto-PEEP may occur if  $T_E$  is insufficient for complete exhalation of the delivered  $V_T$ . As such, when the ventilator detects that Auto-PEEP was implicated by increased compliance, the appropriate primary recommendation message may suggest: "Consider decreasing inspiratory pressure (IP) to maintain  $V_T$ ." Alternatively, when an increase in  $V_T$  is desirable for the patient having increased compliance, a corresponding decrease in set  $T_I$  (in order to increase  $T_E$ ) may be suggested such that the increased  $V_T$  may be completely exhaled. As such, when the ventilator detects that compliance is increasing, the appropriate primary recommendation message may suggest: "Consider decreasing  $T_I$  to increase  $T_E$  such that increased  $V_T$  may be completely exhaled."

According to other embodiments, in determining an appropriate primary recommendation message the ventilator may take into consideration the patient's current ventilatory settings. That is, if set flow is already high, the ventilator may not suggest increasing the set flow. In this case, the primary recommendation message may rather suggest decreasing inspiratory pressure, or may provide another suitable specific suggestion. According to further embodiments, in determining the appropriate primary recommendation message the ventilator may take into consideration the patient's diagnosis. For example, if a triggering patient has been diagnosed with COPD, in determining an appropriate primary recommendation message, the ventilator may consider the patient's diagnosis and suggest "Consider increasing set PEEP."

According to other embodiments, in determining an appropriate primary recommendation message the ventilator may take into consideration the ventilatory parameters as monitored by the ventilator for the patient. According to an embodiment, when Auto-PEEP is implicated by any suitable means, the ventilator may also detect that the set  $T_I$  is longer than necessary for delivering  $V_T$ . That is, the inspiratory volume ( $V_T$ ) is delivered that achieves and maintains the inspiratory pressure prior to the end of  $T_I$ . In this case, the ventilator may detect that flow is about zero prior to reaching the end of  $T_I$  (i.e., pressure is equalized and gases are no longer flowing into the lungs). Further, the ventilator may determine an amount of time,  $t$ , from detection of about zero flow until  $T_I$

ends. In this case, the appropriate primary recommendation message may suggest:

“Consider decreasing  $T_I$  by up to  $t$  such that  $T_E$  may be increased while maintaining  $V_T$ .”

In other embodiments, in cases where a clinician may desire to decrease  $T_I$  by more than  $t$ , the ventilator may determine an increase in pressure,  $p$ , such that when  $T_I$  is decreased  
5 by more than  $t$  the inspiratory pressure may be increased by  $p$  to maintain  $V_T$ . In this case, the appropriate primary recommendation message may suggest: “Consider increasing inspiratory pressure by  $p$  to maintain  $V_T$  when  $T_I$  is decreased by more than  $t$ .”

At determine operation **414**, the ventilator may determine an appropriate secondary recommendation message. The secondary recommendation message may  
10 provide one or more additional suggestions for mitigating Auto-PEEP. For example, for a triggering or a non-triggering patient, the secondary recommendation message may include: “Consider other steps for providing adequate  $T_E$ , such as decreasing inspiratory pressure (to decrease delivered  $V_T$ ) so that  $T_E$  may be adequate to completely exhale delivered  $V_T$ .”

At issue smart prompt operation **416**, the ventilator may alert the clinician via any  
15 suitable means that Auto-PEEP has been implicated. For example, according to embodiments, a smart prompt may include an appropriate notification message and an appropriate recommendation message regarding the presence of Auto-PEEP. Additionally or alternatively, the smart prompt may include an appropriate notification  
20 message, an appropriate primary recommendation message, and an appropriate secondary recommendation message. The smart prompt may be displayed via any suitable means, e.g., on the ventilator GUI and/or at a remote monitoring station, such that the clinician is alerted as to the potential presence of Auto-PEEP and offered additional information and/or recommendations for mitigating the Auto-PEEP, as  
25 described herein.

### **Ventilator GUI Display of Initial Smart Prompt**

FIG. 5 is an illustration of an embodiment of a graphical user interface displaying a smart prompt having a notification message comprising an Auto-PEEP alert during pressure ventilation of a triggering patient.

30 Graphical user interface **500** may display various monitored and/or derived data to the clinician during ventilation of a patient. In addition, graphical user interface **500**

may display various messages to the clinician (e.g., alarm messages, etc.). Specifically, graphical user interface **500** may display a smart prompt as described herein.

According to embodiments, the ventilator may monitor and evaluate various ventilatory parameters based on one or more predetermined thresholds to detect Auto-PEEP. As illustrated, a flow waveform may be generated and displayed by the ventilator on graphical user interface **500**. As further illustrated, the flow waveform may be displayed such that inspiratory flow **502** is represented in a different color (e.g., green) than expiratory flow **504** (e.g., yellow). Although expiratory flow may preferably approximate zero at the end of expiration, in some instances EEF may not reach zero before inspiration begins, as illustrated by positive EEF **506**. According to further embodiments, positive EEF may be identified by a positive EEF icon **508**, or other identifier, such that a clinician may readily identify positive EEF on the flow waveform. Additionally or alternatively, the flow waveform may be frozen for a period of time such that the clinician may be alerted as to the position in time of the incidence of positive EEF along the flow waveform. Additionally or alternatively, positive EEF icon **508** may also include an informative text message indicating that positive EEF was detected.

That is, positive EEF may be detected if EEF breaches a predetermined threshold associated with EEF (e.g., if EEF exceeds about 5 L/m). According to embodiments, when positive EEF is detected in a threshold number of breaths, e.g., three or more times in ten consecutive breaths, the ventilator may determine that Auto-PEEP is implicated. According to other embodiments, when patient triggering is detected prior to complete exhalation in a threshold number of breaths, e.g., three or more times in ten consecutive breaths, the ventilator may determine that Auto-PEEP is implicated. According to other embodiments, when resistance increases by a predetermined threshold (e.g., about 5 cm H<sub>2</sub>O/L/s or more), the ventilator may determine that Auto-PEEP is implicated. According to further embodiments, when compliance increases by a predetermined threshold (e.g., about 10 mL/cm H<sub>2</sub>O or more), the ventilator may determine that Auto-PEEP is implicated. According to further embodiments, e.g., when EEF exceeds PEEP by a threshold amount for a threshold number of breaths (e.g., about 5 cm H<sub>2</sub>O above set PEEP detected in three or more of ten consecutive breaths), the ventilator may determine that Auto-PEEP is implicated. Upon a determination that Auto-PEEP is implicated, the graphical user interface **500** may display a smart prompt, e.g., smart prompt **510**.

According to embodiments, smart prompt **510** may be displayed in any suitable location such that a clinician may be alerted regarding a detected patient condition, but while allowing other ventilatory displays and data to be visualized substantially simultaneously. As illustrated, smart prompt **510** is presented as a bar or banner across an upper region of the graphical user interface **500**. However, as previously noted, smart prompt **510** may be displayed as a tab, icon, button, banner, bar, or any other suitable shape or form. Further, smart prompt **510** may be displayed in any suitable location within the graphical user interface **500**. For example, smart prompt **510** may be located along any border region of the graphical user interface **500** (e.g., top, bottom, or side borders) (not shown), across an upper region (shown), or in any other suitable location. Further, as described herein, smart prompt **510** may be partially transparent (not shown) such that ventilatory displays and data may be at least partially visible behind smart prompt **510**.

Specifically, smart prompt **510** may alert the clinician that Auto-PEEP has been detected, for example by notification message **512**. As described herein, notification message **512** may alert the clinician that Auto-PEEP is implicated via any suitable means, e.g., “Auto-PEEP Alert” (shown), “Auto-PEEP Detected” (not shown), or “Auto-PEEP Implicated” (not shown). Smart prompt **510** may further include information regarding ventilatory parameters that implicated Auto-PEEP. For example, if Auto-PEEP was detected based on a positive EEF over multiple breaths, this information may be provided to the clinician (e.g., “Positive EEF detected 3 or more times in last 10 breaths,” shown). According to the illustrated embodiment, parameter information **514** is provided along with the notification message **512** in a banner. According to alternative embodiments, in addition to the notification message **512** and the parameter information **514**, one or more recommendation messages may be provided in an initial smart prompt banner (not shown). According to other embodiments, rather than providing information regarding ventilatory parameters that implicated Auto-PEEP in the initial smart prompt, this information may be provided within an expanded portion (not shown) of smart prompt **510**.

According to embodiments, smart prompt **510** may be expanded to provide additional information and/or recommendations to the clinician regarding a detected patient condition. For example, an expand icon **516** may be provided within a suitable

area of the smart prompt **510**. According to embodiments, upon selection of the expand icon **516** via any suitable means, the clinician may optionally expand the smart prompt **510** to acquire additional information and/or recommendations for mitigating the detected patient condition. According to further embodiments, smart prompt **510** may include links (not shown) to additional settings and/or display screens of the graphical user interface **500** such that the clinician may easily and quickly mitigate and/or verify the detected condition.

As may be appreciated, the disclosed data, graphics, and smart prompt illustrated in graphical user interface **500** may be arranged in any suitable order or configuration such that information and alerts may be communicated to the clinician in an efficient and orderly manner. The disclosed data, graphics, and smart prompt are not to be understood as an exclusive array, as any number of similar suitable elements may be displayed for the clinician within the spirit of the present disclosure. Further, the disclosed data, graphics, and smart prompt are not to be understood as a necessary array, as any number of the disclosed elements may be appropriately replaced by other suitable elements without departing from the spirit of the present disclosure. The illustrated embodiment of the graphical user interface **500** is provided as an example only, including potentially useful information and alerts that may be provided to the clinician to facilitate communication of detected Auto-PEEP in an orderly and informative way, as described herein.

FIG. 6 is an illustration of an embodiment of a graphical user interface displaying a smart prompt having a notification message comprising an Auto-PEEP alert during pressure ventilation of a non-triggering patient.

Graphical user interface **600** may display various monitored and/or derived data to the clinician during ventilation of a patient. In addition, graphical user interface **600** may display various messages to the clinician (e.g., alarm messages, etc.). Specifically, graphical user interface **600** may display a smart prompt as described herein.

As described above with reference to FIG. 5, according to embodiments, the ventilator may monitor and evaluate various ventilatory parameters based on one or more predetermined thresholds to detect Auto-PEEP. As illustrated, a flow waveform may be generated and displayed by the ventilator on graphical user interface **600**. As further illustrated, the flow waveform may be displayed such that inspiratory flow **602** is

represented in a different color (e.g., green) than expiratory flow **604** (e.g., yellow). Although expiratory flow may preferably approximate zero at the end of expiration, in some instances EEF may not reach zero before inspiration begins, as illustrated by positive EEF **606**. According to further embodiments, positive EEF may be identified by  
5 a positive EEF icon **608**, or other identifier, such that a clinician may readily identify positive EEF on the flow waveform. Additionally or alternatively, the flow waveform may be frozen for a period of time such that the clinician may be alerted as to the position in time of the incidence of positive EEF along the flow waveform. Additionally or alternatively, positive EEF icon **608** may also include an informative text message  
10 indicating that positive EEF was detected.

As described above, an implication of Auto-PEEP may be detected based on evaluating a number of ventilatory parameters. Upon a determination that Auto-PEEP is implicated, the graphical user interface **600** may display a smart prompt, e.g., smart prompt **610**.

15 As described above, smart prompt **610** may be displayed in any suitable location such that a clinician may be alerted regarding a detected patient condition. Further, as described herein, smart prompt **610** may be partially transparent (not shown) such that ventilatory displays and data may be at least partially visible behind smart prompt **610**.

Specifically, smart prompt **610** may alert the clinician that Auto-PEEP has been  
20 detected, for example by notification message **612**. As described above, notification message **612** may alert the clinician that Auto-PEEP is implicated via any suitable means, e.g., "Auto-PEEP Alert" (shown). According to embodiments, smart prompt **610** may further include information regarding ventilatory parameters that implicated Auto-PEEP. For example, if Auto-PEEP was detected based on a positive EEF over multiple  
25 breaths, this information may be provided to the clinician (e.g., "Positive EEF detected 3 or more times in last 10 breaths," shown).

According to additional embodiments, smart prompt **610** may be expanded to provide additional information and/or recommendations to the clinician regarding a detected patient condition. For example, an expand icon **616** may be provided within any  
30 suitable area of the smart prompt **610**. According to embodiments, upon selection of the expand icon **616** via any suitable means, the clinician may optionally expand the smart prompt **610** to acquire additional information and/or recommendations for mitigating the

detected patient condition. According to further embodiments, smart prompt **610** may include links (not shown) to additional settings and/or display screens of the graphical user interface **600** such that the clinician may easily and quickly mitigate and/or verify the detected condition.

5           As may be appreciated, the disclosed data, graphics, and smart prompt illustrated in graphical user interface **600** may be arranged in any suitable order or configuration such that information and alerts may be communicated to the clinician in an efficient and orderly manner. The illustrated embodiment of the graphical user interface **600** is provided as an example only, including potentially useful information and alerts that may  
10 be provided to the clinician to facilitate communication of detected Auto-PEEP in an orderly and informative way, as described herein.

#### **Ventilator GUI Display of Expanded Smart Prompt**

FIG. 7 is an illustration of an embodiment of a graphical user interface displaying an expanded smart prompt having a notification message and one or more  
15 recommendation messages for mitigating Auto-PEEP during pressure ventilation of a triggering patient.

Graphical user interface **700** may display various monitored and/or derived data to the clinician during ventilation of a patient. In addition, graphical user interface **700** may display an expanded smart prompt including one or more recommendation messages  
20 as described herein.

According to embodiments, as described above, an expand icon **704** may be provided within a suitable area of smart prompt **702**. Upon selection of the expand icon **704**, the clinician may optionally expand smart prompt **702** to acquire additional information and/or recommendations for mitigating the detected patient condition. For  
25 example, expanded smart prompt **706** may be provided upon selection of expand icon **704**. As described above for smart prompt **510** and **610**, expanded smart prompt **706** may be displayed as a tab, icon, button, banner, bar, or any other suitable shape or form. Further, expanded smart prompt **706** may be displayed in any suitable location within the graphical user interface **700**. For example, expanded smart prompt **706** may be  
30 displayed below (shown) smart prompt **702**, to a side (not shown) of smart prompt **702**, or otherwise logically associated with smart prompt **702**. According to other embodiments, an initial smart prompt may be hidden (not shown) upon displaying

expanded smart prompt 706. Expanded smart prompt 706 may also be partially transparent (not shown) such that ventilatory displays and data may be at least partially visible behind expanded smart prompt 706.

According to embodiments, expanded smart prompt 706 may comprise additional  
5 information (not shown) and/or one or more recommendation messages 708 regarding detected Auto-PEEP. For example, the one or more recommendation messages 708 may include a primary recommendation message and a secondary recommendation message. The primary recommendation message may provide one or more specific suggestions for mitigating Auto-PEEP during pressure ventilation of a triggering patient. For example,  
10 if Auto-PEEP was implicated by positive EEF over several breaths, the one or more recommendation messages may include: "Consider decreasing set  $T_I$ ; Adjust settings until EEF approximates zero; Consider reasons for increased respiratory drive." According to other embodiments, when Auto-PEEP was implicated by increased compliance, the one or more recommendation messages may include: "Consider  
15 decreasing inspiratory pressure (IP) to maintain  $V_T$ " or "Consider decreasing  $T_I$  to increase  $T_E$  such that increased  $V_T$  may be completely exhaled."

According to still other embodiments, wherein Auto-PEEP is implicated via any suitable means and flow is detected at about zero before  $T_I$  ends (wherein  $t$  is the time  
20 from detection of about zero flow until  $T_I$  ends), the one or more recommendation messages may include: "Consider decreasing  $T_I$  by up to  $t$  such that  $T_E$  may be increased while maintaining  $V_T$ ." In other embodiments, the one or more recommendation messages may include: "Consider increasing inspiratory pressure (IP) by  $p$  to maintain  $V_T$  when  $T_I$  is decreased by more than  $t$ ."

The secondary recommendation message may provide one or more general  
25 suggestions for mitigating Auto-PEEP. For example, the secondary recommendation message may include: "Consider other steps for providing adequate  $T_E$ , such as decreasing inspiratory pressure (to decrease delivered  $V_T$ ) so that  $T_E$  may be adequate to completely exhale delivered  $V_T$ ."

According to embodiments, expanded smart prompt 706 may also include one or  
30 more hyperlinks 710, which may provide immediate access to the display and/or settings screens associated with detected Auto-PEEP. For example, associated parameter settings screens may be accessed from expanded smart prompt 706 via hyperlink 710 such that

the clinician may address detected Auto-PEEP by adjusting one or more parameter settings as necessary. Alternatively, associated parameter display screens may be accessed such that the clinician may view clinical data associated with Auto-PEEP in the form of charts, graphs, or otherwise. That is, according to embodiments, the clinician  
5 may access the ventilatory data that implicated Auto-PEEP for verification purposes. For example, when Auto-PEEP has been implicated, depending on the particular ventilatory parameters that implicated Auto-PEEP, the clinician may be able to access associated parameter settings screens for addressing Auto-PEEP (e.g., settings screens for adjusting  $V_T$ ,  $T_I$ , flow, etc.). Additionally or alternatively, the clinician may be able to access  
10 and/or view display screens associated with the ventilatory parameters that implicated Auto-PEEP (e.g., a graphics screen displaying historical flow waveforms, volume waveforms, and/or pressure waveforms that gave rise to implications of Auto-PEEP).

FIG. 8 is an illustration of an embodiment of a graphical user interface displaying an expanded smart prompt having a notification message and one or more  
15 recommendation messages for mitigating Auto-PEEP during pressure ventilation of a non-triggering patient.

As described above with reference to FIG. 7, graphical user interface **800** may display various monitored and/or derived data to the clinician during ventilation of a patient. In addition, graphical user interface **800** may display an expanded smart prompt  
20 including one or more recommendation messages as described herein.

According to embodiments, as described above, an expand icon **804** may be provided within a suitable area of smart prompt **802**. Upon selection of the expand icon **804**, the clinician may optionally expand smart prompt **802** to acquire additional information and/or recommendations for mitigating the detected patient condition. For  
25 example, expanded smart prompt **806** may be provided upon selection of expand icon **804**. As described above for smart prompts **510** and **610**, expanded smart prompt **806** may be displayed in any suitable shape or form in any suitable location within the graphical user interface **800**.

According to embodiments, expanded smart prompt **806** may comprise additional  
30 information (not shown) and/or one or more recommendation messages **808** regarding detected Auto-PEEP. For example, the one or more recommendation messages **808** may include a primary recommendation message and a secondary recommendation message.

The primary recommendation message may provide one or more specific suggestions for mitigating Auto-PEEP during pressure ventilation of a non-triggering patient. For example, if Auto-PEEP was implicated by positive EEF over several breaths, the one or more recommendation messages may include: “Consider decreasing set RR and/or  
5 decreasing set  $T_I$ ; Adjust settings until EEF approximates zero,” for example. According to other embodiments, when Auto-PEEP was implicated by increased compliance, the one or more recommendation messages may include: “Consider decreasing inspiratory pressure (IP) to maintain  $V_T$ ” or “Consider decreasing  $T_I$  to increase  $T_E$  such that increased  $V_T$  may be completely exhaled.”

10 According to still other embodiments, wherein Auto-PEEP is implicated via any suitable means and flow is detected at about zero before  $T_I$  ends (wherein  $t$  is the time from detection of about zero flow until  $T_I$  ends), the one or more recommendation messages may include: “Consider decreasing  $T_I$  by up to  $t$  such that  $T_E$  may be increased while maintaining  $V_T$ .” In other embodiments, the one or more recommendation  
15 messages may include: “Consider increasing inspiratory pressure (IP) by  $p$  to maintain  $V_T$  when  $T_I$  is decreased by more than  $t$ .”

The secondary recommendation message may provide one or more general suggestions for mitigating Auto-PEEP. For example, the secondary recommendation message may include: “Consider other steps for providing adequate  $T_E$ , such as  
20 decreasing inspiratory pressure (to decrease delivered  $V_T$ ) so that  $T_E$  may be adequate to completely exhale delivered  $V_T$ .”

As described above, according to embodiments, expanded smart prompt **806** may also include one or more hyperlinks **810**, which may provide immediate access to the display and/or settings screens associated with detected Auto-PEEP. For example,  
25 associated parameter settings screens may be accessed from expanded smart prompt **806** via hyperlink **810** such that the clinician may address detected Auto-PEEP by adjusting one or more parameter settings as necessary. Alternatively, associated parameter display screens may be accessed such that the clinician may view clinical data associated with Auto-PEEP in the form of charts, graphs, or otherwise.

30 As may be appreciated, the disclosed smart prompt and recommendation messages illustrated in graphical user interface **800** may be arranged in any suitable order or configuration such that information and alerts may be communicated to the clinician

in an efficient and orderly manner. Indeed, the illustrated embodiment of the graphical user interface 800 is provided as an example only, including potentially useful information and recommendations that may be provided to the clinician to facilitate communication of suggestions for mitigating detected Auto-PEEP in an orderly and  
5 informative way, as described herein.

Unless otherwise indicated, all numbers expressing measurements, dimensions, and so forth used in the specification and claims are to be understood as being modified in all instances by the term "about." Accordingly, unless indicated to the contrary, the numerical parameters set forth in the following specification and attached claims are  
10 approximations that may vary depending upon the desired properties sought to be obtained by the present disclosure. Further, unless otherwise stated, the term "about" shall expressly include "exactly," consistent with the discussions regarding ranges and numerical data. Concentrations, amounts, and other numerical data may be expressed or presented herein in a range format. It is to be understood that such a range format is used  
15 merely for convenience and brevity and thus should be interpreted flexibly to include not only the numerical values explicitly recited as the limits of the range, but also to include all the individual numerical values or sub-ranges encompassed within that range as if each numerical value and sub-range is explicitly recited. As an illustration, a numerical range of "about 4 percent to about 7 percent" should be interpreted to include not only  
20 the explicitly recited values of about 4 percent to about 7 percent, but also include individual values and sub-ranges within the indicated range. Thus, included in this numerical range are individual values such as 4.5, 5.25 and 6 and sub-ranges such as from 4-5, from 5-7, and from 5.5-6.5, etc. This same principle applies to ranges reciting only one numerical value. Furthermore, such an interpretation should apply regardless of  
25 the breadth of the range or the characteristics being described.

It will be clear that the systems and methods described herein are well adapted to attain the ends and advantages mentioned as well as those inherent therein. Those skilled in the art will recognize that the methods and systems within this specification may be implemented in many manners and as such is not to be limited by the foregoing  
30 exemplified embodiments and examples. In other words, functional elements being performed by a single or multiple components, in various combinations of hardware and software, and individual functions can be distributed among software applications at

either the client or server level. In this regard, any number of the features of the different embodiments described herein may be combined into one single embodiment and alternative embodiments having fewer than or more than all of the features herein described are possible.

5           While various embodiments have been described for purposes of this disclosure, various changes and modifications may be made which are well within the scope of the present disclosure. Numerous other changes may be made which will readily suggest themselves to those skilled in the art and which are encompassed in the spirit of the disclosure and as defined in the appended claims.

10

### Claims

What is claimed is:

1. A ventilator-implemented method for detecting Auto-PEEP during pressure ventilation, the method comprising:
  - 5 collecting data associated with ventilatory parameters;
  - processing the collected ventilatory parameter data, wherein processing the collected ventilatory parameter data includes deriving ventilatory parameter data from the collected ventilatory parameter data;
  - analyzing the processed ventilatory parameter data, wherein analyzing the  
10 processed ventilatory parameter data comprises:
    - receiving one or more predetermined thresholds associated with the processed ventilatory parameter data; and
    - detecting whether the processed ventilatory parameter data breaches the one or more predetermined thresholds;
    - 15 determining that Auto-PEEP is implicated upon detecting that the processed ventilatory data breaches the one or more predetermined thresholds; and
    - issuing a smart prompt when Auto-PEEP is implicated.
2. The method of claim 1, wherein the patient is a triggering patient.  
20
3. The method of claim 1, wherein the patient is a non-triggering patient.
4. The method of claim 1, wherein the processed ventilatory parameter data includes expiratory flow data, and wherein analyzing the processed ventilatory parameter  
25 data further comprises:
  - receiving one or more predetermined thresholds associated with end-expiratory flow (EEF);
  - detecting that EEF is positive when the EEF breaches the one or more predetermined thresholds; and
  - 30 determining that Auto-PEEP is implicated when EEF is positive for a predetermined number of breaths.

5. The method of claim 1, wherein the processed ventilatory parameter data includes an expiratory time ( $T_E$ ), and wherein analyzing the processed ventilatory parameter data further comprises:

- calculating a time required to reach functional residual capacity (FRC);
- 5 comparing the time required to reach FRC with  $T_E$ ; and
- determining that Auto-PEEP is implicated when the time required to reach FRC is greater than  $T_E$ .

6. The method of claim 1, wherein the processed ventilatory parameter data  
10 includes pressure data, and wherein analyzing the processed ventilatory parameter data further comprises:

- receiving a positive end-expiratory pressure (PEEP) setting, wherein the PEEP setting is about 0 cm H<sub>2</sub>O or greater;
- receiving one or more predetermined thresholds associated with end-expiratory  
15 pressure (EEP);
- detecting that the EEP breaches the one or more predetermined thresholds when the EEP minus the PEEP setting is greater than the one or more predetermined thresholds; and
- determining that Auto-PEEP is implicated when the EEP breaches the one or more  
20 predetermined thresholds.

7. The method of claim 1, wherein the processed ventilatory parameter data includes respiratory resistance data, and wherein analyzing the processed ventilatory parameter data further comprises:

- 25 receiving one or more predetermined thresholds associated with the respiratory resistance data;
- detecting that respiratory resistance has increased when the respiratory resistance data breaches the one or more predetermined thresholds; and
- determining that Auto-PEEP is implicated when the respiratory resistance has  
30 increased.

8. The method of claim 1, wherein the processed ventilatory parameter data includes a pulmonary time constant and an expiratory time ( $T_E$ ), and wherein analyzing the processed ventilatory parameter data further comprises:

- 5 comparing the pulmonary time constant to the  $T_E$ ; and  
determining that Auto-PEEP is implicated when the  $T_E$  is less than a predetermined number of pulmonary time constants.

9. A ventilatory system for issuing a smart prompt when Auto-PEEP is implicated during pressure ventilation, comprising:

- 10 at least one processor; and  
at least one memory, communicatively coupled to the at least one processor and containing instructions that, when executed by the at least one processor, perform a method comprising:
- 15 detecting that Auto-PEEP is implicated;  
determining an appropriate notification message;  
determining an appropriate recommendation message; and  
displaying at least one of the appropriate notification message and the appropriate recommendation message.

- 20 10. The ventilatory system of claim 9, further comprising:  
identifying processed ventilatory parameter data that implicated Auto-PEEP; and  
determining the appropriate notification message based at least in part on the processed ventilatory parameter data that implicated Auto-PEEP.

- 25 11. The ventilatory system of claim 10, wherein the appropriate notification message comprises an alert that Auto-PEEP is implicated and information regarding the processed ventilatory parameter data that implicated Auto-PEEP.

- 30 12. The ventilatory system of claim 9, wherein the appropriate recommendation message comprises a primary recommendation message and a secondary recommendation message.

13. The ventilatory system of claim 12, wherein the patient is a triggering patient, and wherein the primary recommendation message comprises one or more of:  
a suggestion to decrease inspiratory time ( $T_I$ );  
a suggestion to adjust ventilatory settings until end-expiratory flow (EEF) approximates zero; and  
a suggestion to investigate reasons for an elevated patient respiratory drive.

14. The ventilatory system of claim 12, wherein the patient is a non-triggering patient, and wherein the primary recommendation message comprises one or more of:  
a suggestion to decrease respiratory rate (RR);  
a suggestion to decrease inspiratory time ( $T_I$ ); and  
a suggestion to adjust ventilatory settings until end-expiratory flow (EEF) approximates zero.

15. The ventilatory system of claim 12, wherein the ventilator detects that flow is about zero during inspiration, and wherein the ventilator determines a time,  $t$ , from detection of about zero flow until set inspiratory time ( $T_I$ ) ends, the primary recommendation message comprising one or more of:

a suggestion to decrease  $T_I$  by up to  $t$  such that expiratory time ( $T_E$ ) may be increased while maintaining tidal volume ( $V_T$ ); and

a suggestion to decrease  $T_I$  by more than  $t$  such that  $T_E$  may be increased, wherein when  $T_I$  is decreased by more than  $t$ , the primary recommendation further comprises:

a suggestion to increase inspiratory pressure (IP) to maintain  $V_T$ .

16. The ventilatory system of claim 12, wherein the secondary recommendation message includes one or more suggestions for providing adequate expiratory time ( $T_E$ ) comprising a suggestion to decrease inspiratory pressure in order to decrease delivered tidal volume ( $V_T$ ) so that  $T_E$  may be adequate to completely exhale delivered  $V_T$ .

17. A graphical user interface for displaying one or more smart prompts corresponding to a detected condition, the ventilator configured with a computer having a

user interface including the graphical user interface for accepting commands and for displaying information, the graphical user interface comprising:

at least one window; and

- 5 one or more elements within the at least one window comprising at least one smart prompt element for communicating information regarding the detected condition, wherein the detected condition is Auto-PEEP.

18. The graphical user interface of claim 17, wherein the at least one smart prompt element further comprises at least one of a notification message and one or more  
10 recommendation messages, wherein the notification message comprises an alert associated with a detected implication of Auto-PEEP, and wherein the one or more recommendation messages comprise one or more suggestions for mitigating Auto-PEEP.

19. The graphical user interface of claim 18, wherein the patient is a  
15 triggering patient, and wherein the one or more recommendation messages comprise one or more of:

a suggestion to decrease inspiratory time ( $T_I$ );

a suggestion to adjust ventilatory settings until end-expiratory flow (EEF) approximates zero;

- 20 a suggestion to investigate reasons for an elevated patient respiratory drive; and  
a suggestion to decrease inspiratory pressure in order to decrease delivered tidal volume ( $V_T$ ) so that  $T_E$  may be adequate to completely exhale delivered  $V_T$ .

20. The graphical user interface of claim 18, wherein the patient is a non-  
25 triggering patient, and wherein the one or more recommendation messages comprise one or more of:

a suggestion to decrease respiratory rate (RR);

a suggestion to decrease inspiratory time ( $T_I$ );

- 30 a suggestion to adjust ventilatory settings until end-expiratory flow (EEF) approximates zero; and

a suggestion to decrease inspiratory pressure in order to decrease delivered tidal volume ( $V_T$ ) so that  $T_E$  may be adequate to completely exhale delivered  $V_T$ .

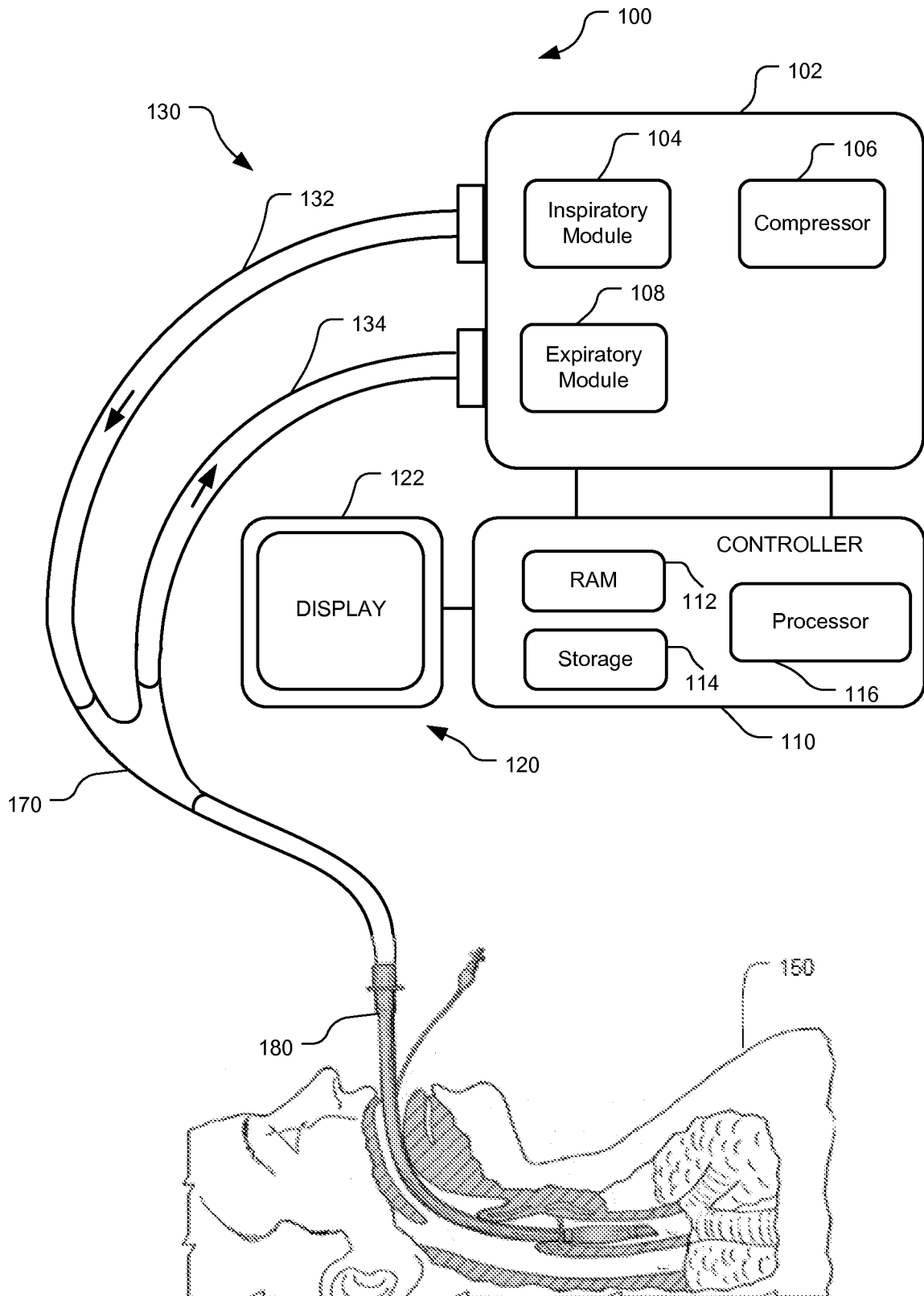


FIG. 1

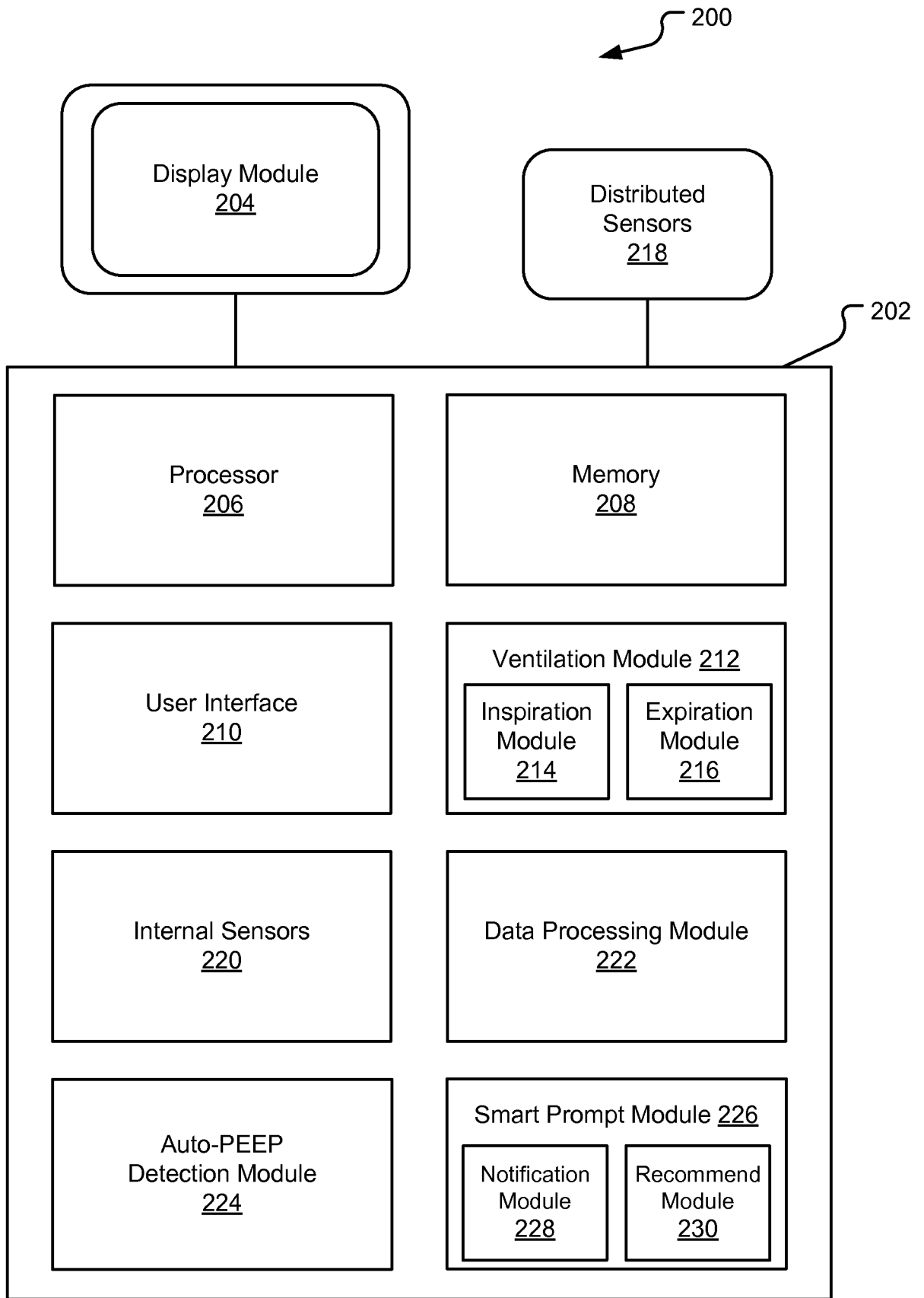


FIG. 2

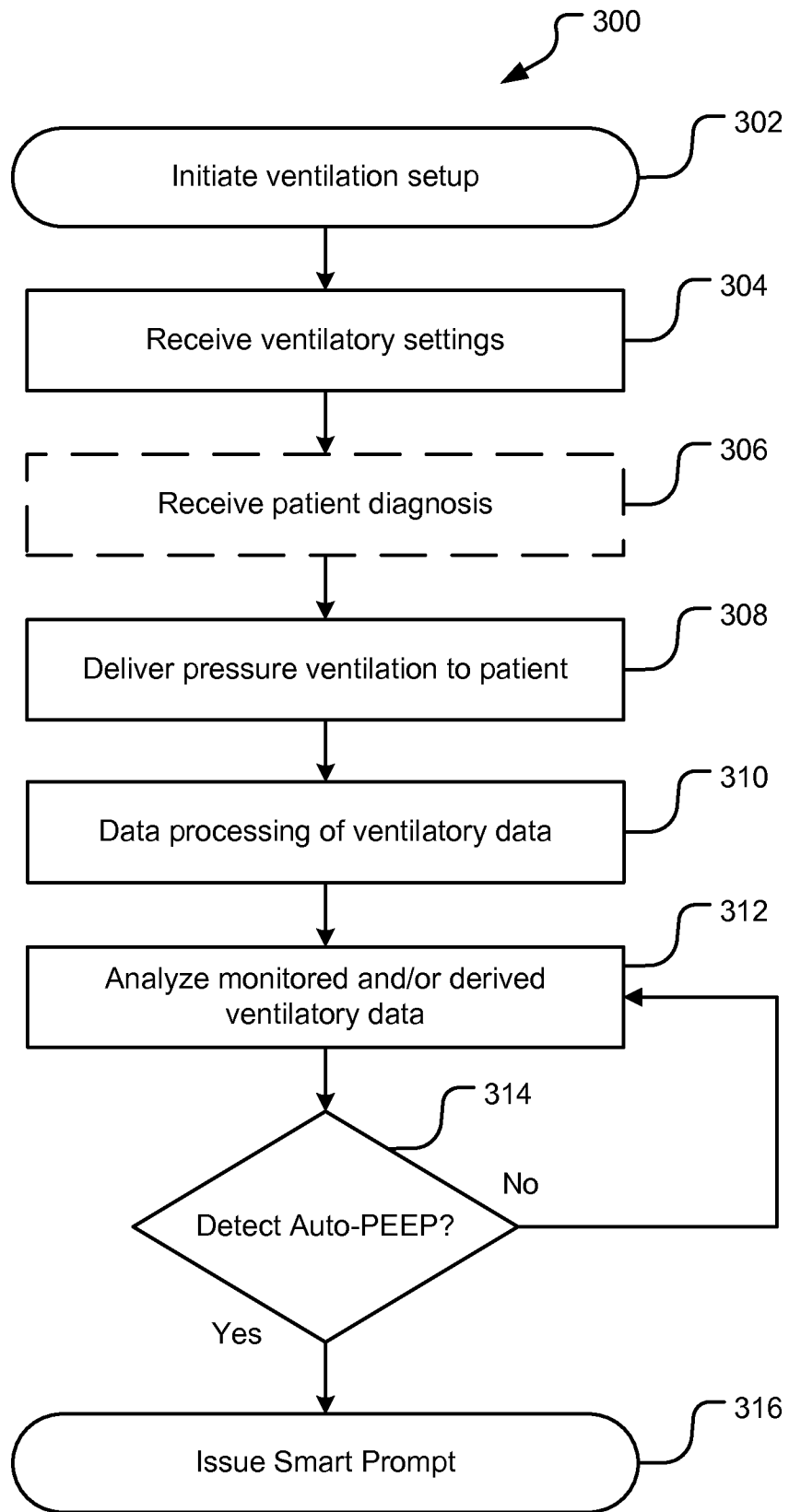


FIG. 3

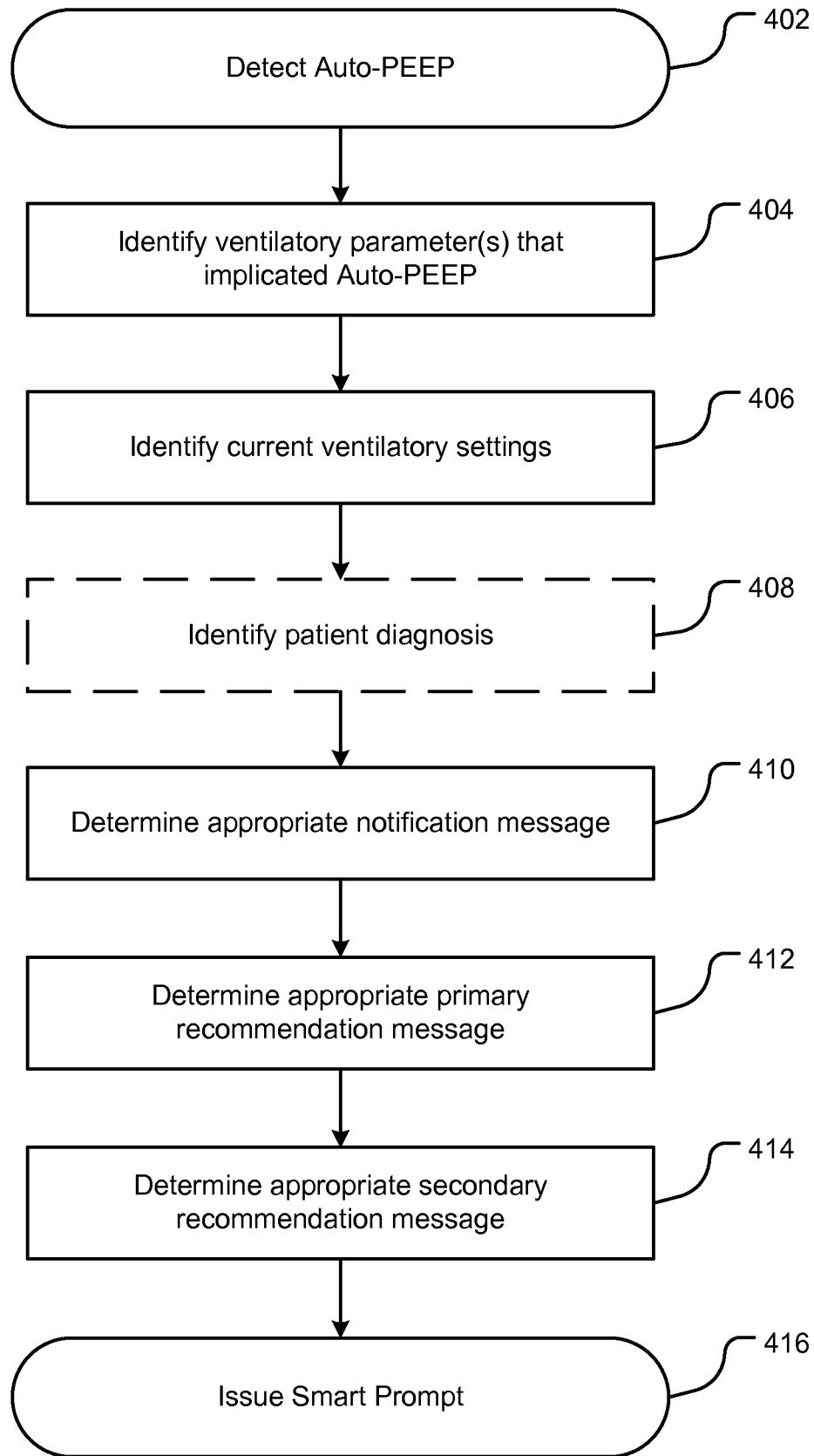


FIG. 4

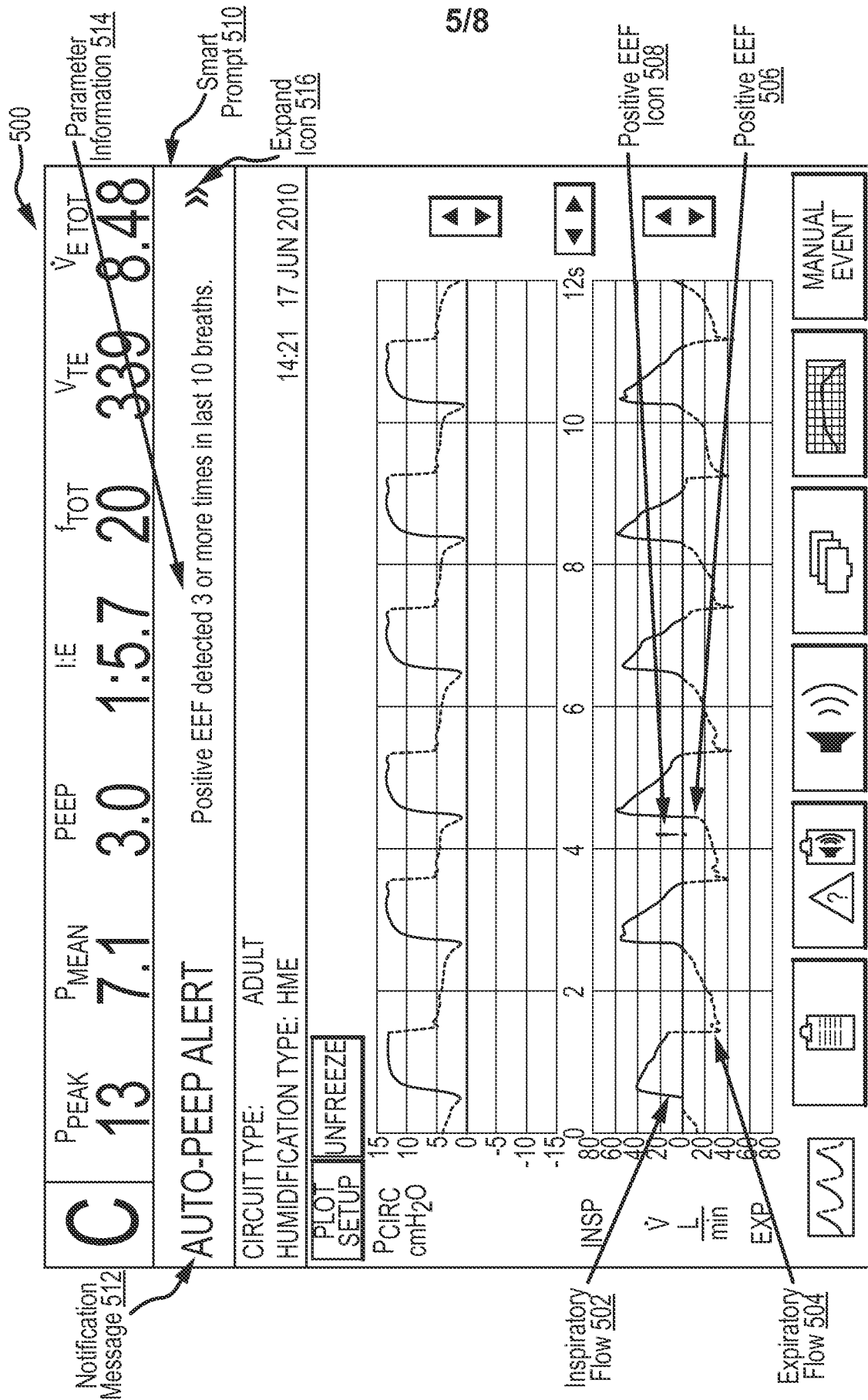


FIG.5

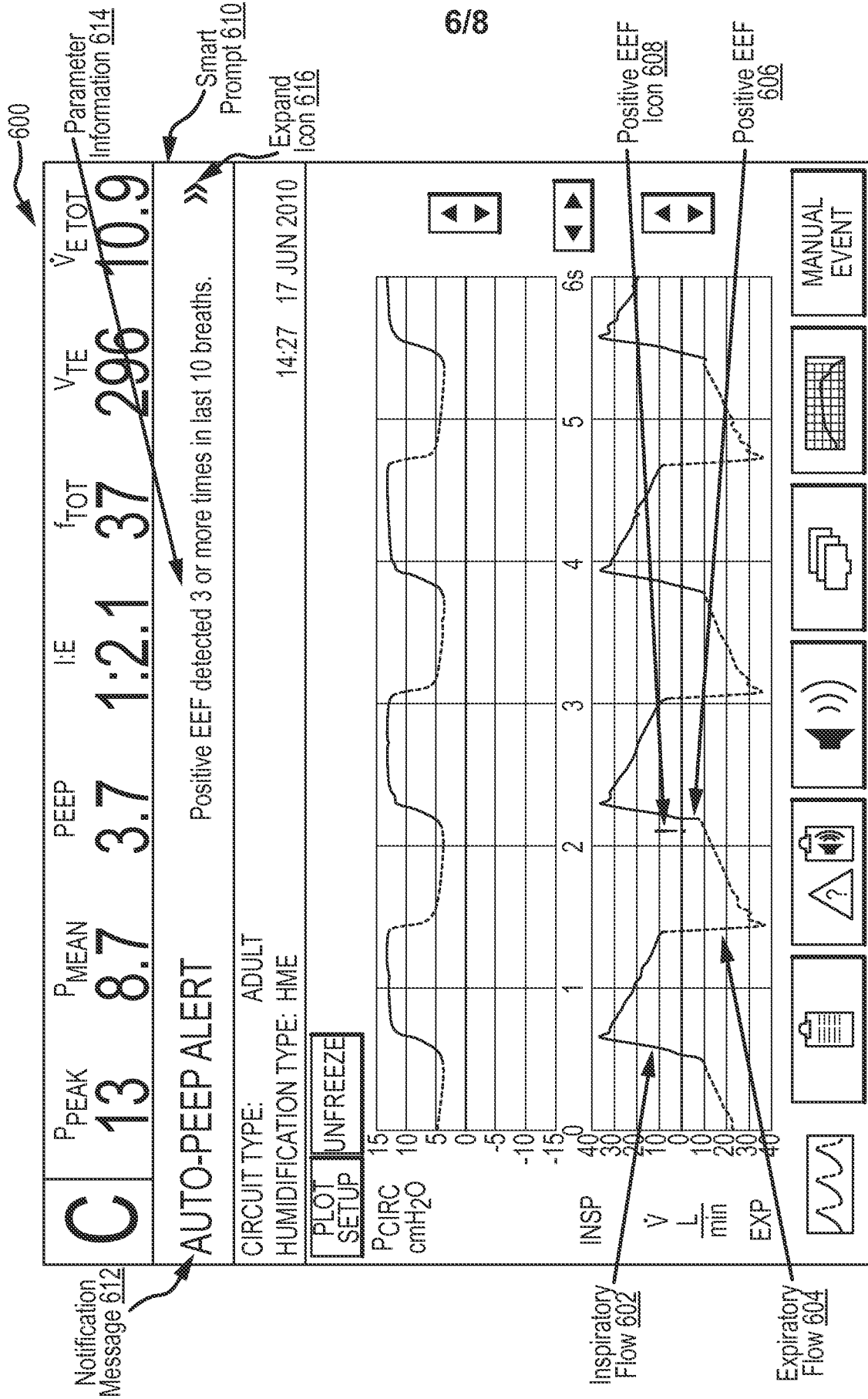


FIG.6

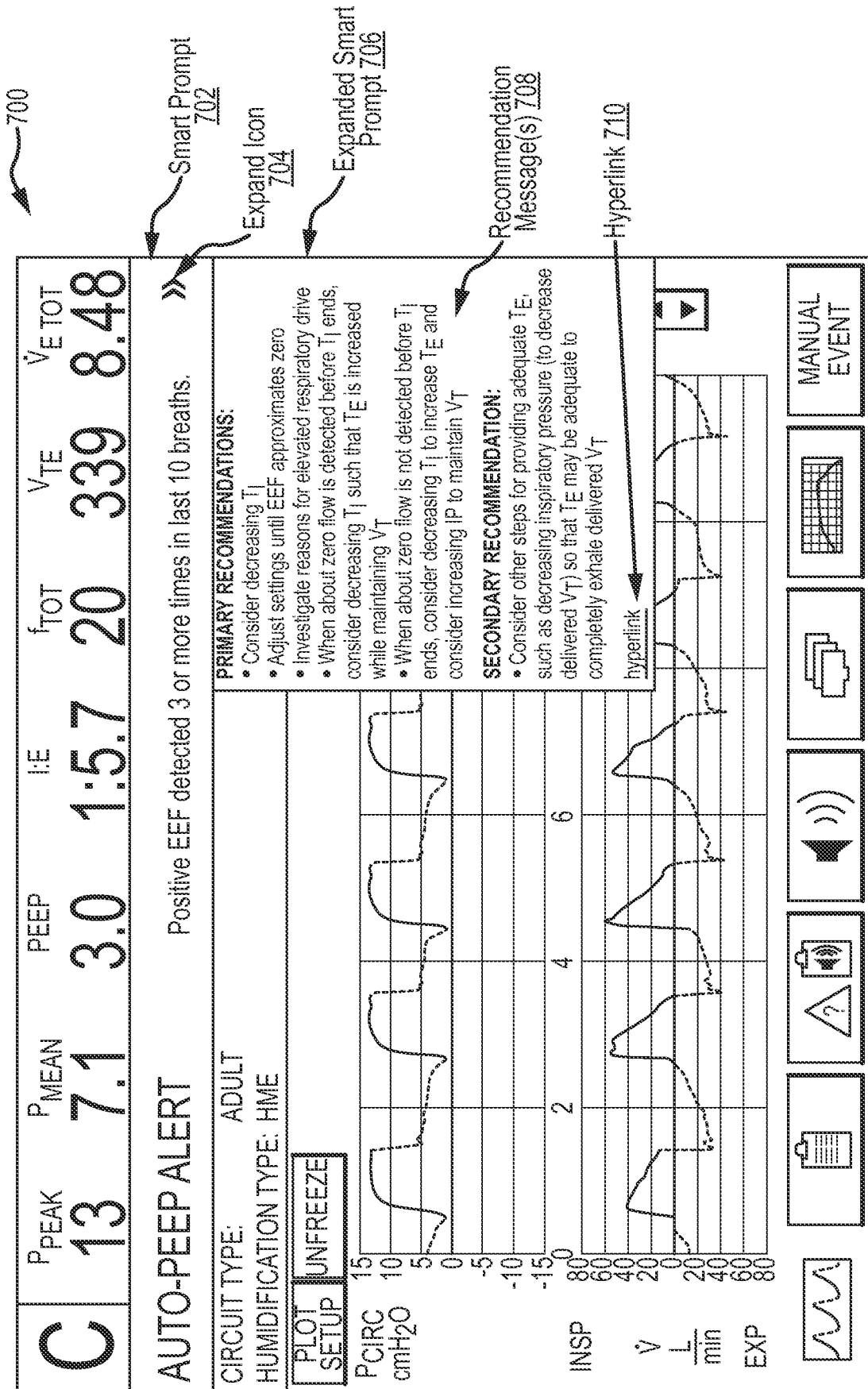


FIG. 7

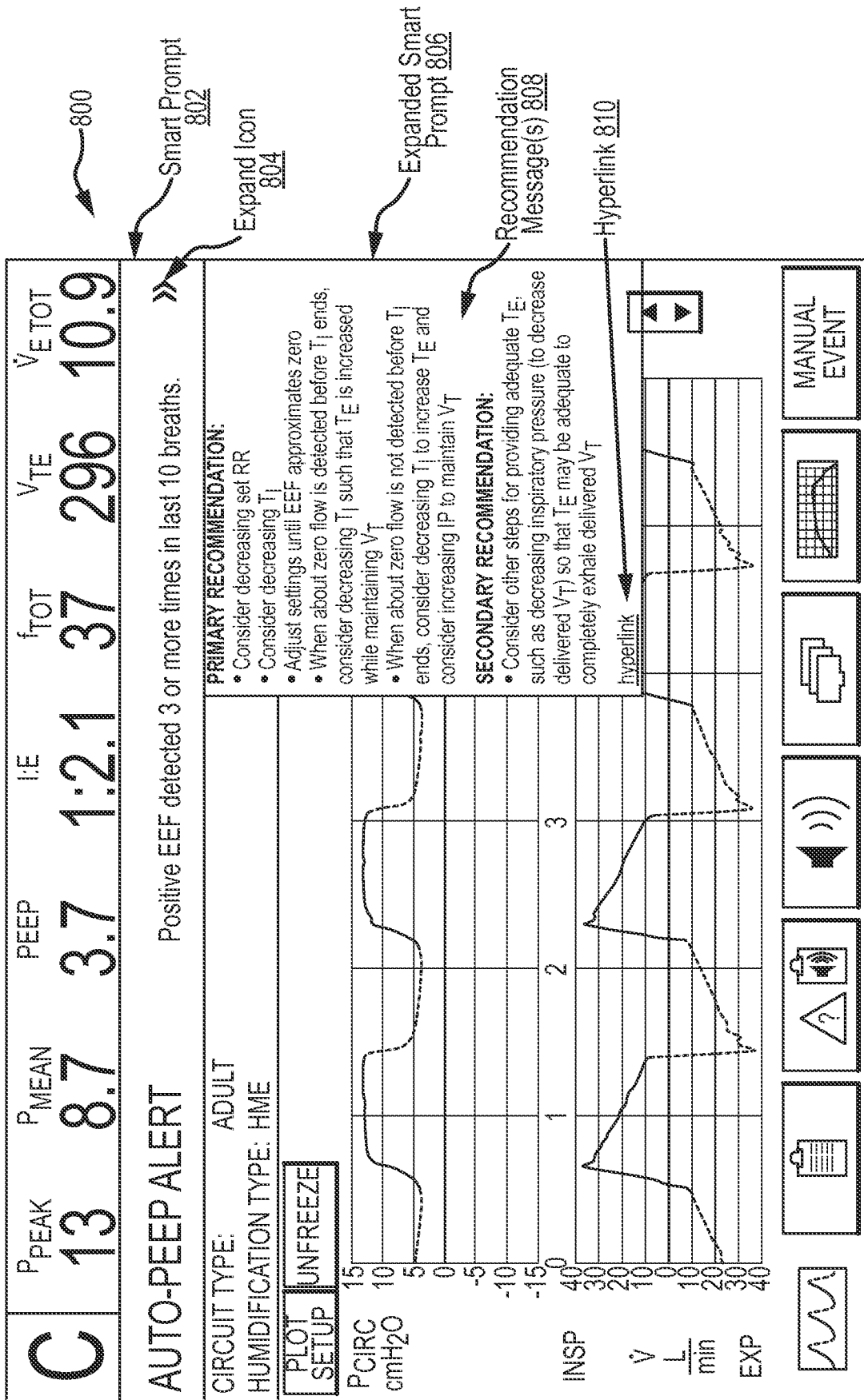


FIG.8

INTERNATIONAL SEARCH REPORT

International application No  
PCT/US2011/039899

A. CLASSIFICATION OF SUBJECT MATTER  
INV. A61M16/00 G06F19/00 A61B5/00  
ADD.  
According to International Patent Classification (IPC) or to both national classification and IPC

B. FIELDS SEARCHED  
Minimum documentation searched (classification system followed by classification symbols)  
A61M G06F A61B

Documentation searched other than minimum documentation to the extent that such documents are included in the fields searched

Electronic data base consulted during the international search (name of data base and, where practical, search terms used)  
EPO-Internal, WPI Data

C. DOCUMENTS CONSIDERED TO BE RELEVANT

Category*	Citation of document, with indication, where appropriate, of the relevant passages	Relevant to claim No.
A	EP 1 767 236 A2 (GEN ELECTRIC [US]) 28 March 2007 (2007-03-28) paragraph [0064] paragraph [0071] - paragraph [0076] -----	1-20
A	US 2008/236582 A1 (TEHRANI FLEUR T [US]) 2 October 2008 (2008-10-02) paragraph [0029] - paragraph [0030] paragraph [0067] -----	1-20
A	EP 1 060 755 A1 (LACHMANN BURKHARDT [DE]) LACHMANN BURKHARD PROF DR [DE] 20 December 2000 (2000-12-20) paragraph [0036] paragraph [0040] paragraph [0044] paragraph [0059] -----	1-20
	-/--	

Further documents are listed in the continuation of Box C.

See patent family annex.

\* Special categories of cited documents :

<p>"A" document defining the general state of the art which is not considered to be of particular relevance</p> <p>"E" earlier document but published on or after the international filing date</p> <p>"L" document which may throw doubts on priority claim(s) or which is cited to establish the publication date of another citation or other special reason (as specified)</p> <p>"O" document referring to an oral disclosure, use, exhibition or other means</p> <p>"P" document published prior to the international filing date but later than the priority date claimed</p>	<p>"T" later document published after the international filing date or priority date and not in conflict with the application but cited to understand the principle or theory underlying the invention</p> <p>"X" document of particular relevance; the claimed invention cannot be considered novel or cannot be considered to involve an inventive step when the document is taken alone</p> <p>"Y" document of particular relevance; the claimed invention cannot be considered to involve an inventive step when the document is combined with one or more other such documents, such combination being obvious to a person skilled in the art.</p> <p>"&amp;" document member of the same patent family</p>
--	--

Date of the actual completion of the international search  5 September 2011	Date of mailing of the international search report  20/09/2011
---	--

Name and mailing address of the ISA/ European Patent Office, P.B. 5818 Patentlaan 2 NL - 2280 HV Rijswijk Tel. (+31-70) 340-2040, Fax: (+31-70) 340-3016	Authorized officer  Valfort, Cyril
--	--

## INTERNATIONAL SEARCH REPORT

International application No  
PCT/US2011/039899

C(Continuation). DOCUMENTS CONSIDERED TO BE RELEVANT		
Category*	Citation of document, with indication, where appropriate, of the relevant passages	Relevant to claim No.
A	WO 2006/079152 A1 (RESMED LTD [AU]; MULQUEENY QESTRA CAMILLE [AU]; NAVA STEFANO [IT]) 3 August 2006 (2006-08-03) paragraph [0030] - paragraph [0035] paragraph [0016] - paragraph [0024] paragraph [0093] - paragraph [0094] -----	1-20

# INTERNATIONAL SEARCH REPORT

Information on patent family members

International application No PCT/US2011/039899
---

Patent document cited in search report	Publication date	Patent family member(s)	Publication date	
EP 1767236	A2	28-03-2007	JP 2007083031 A US 2007062533 A1	05-04-2007 22-03-2007
-----				
US 2008236582	A1	02-10-2008	NONE	
-----				
EP 1060755	A1	20-12-2000	NONE	
-----				
WO 2006079152	A1	03-08-2006	CN 101043913 A EP 1807139 A1 JP 2008516702 A US 2008110461 A1	26-09-2007 18-07-2007 22-05-2008 15-05-2008
-----				

专利名称(译)	关于压力通气期间自动窥视检测的呼吸机启动提示		
公开(公告)号	<a href="#">EP2588175A1</a>	公开(公告)日	2013-05-08
申请号	EP2011736212	申请日	2011-06-10
[标]申请(专利权)人(译)	内尔科尔普里坦贝内特公司		
申请(专利权)人(译)	NELLCOR PURITAN BENNETT LLC		
当前申请(专利权)人(译)	COVIDIEN LP		
[标]发明人	MILNE GARY HENSLEY KIRK DOYLE PETER KIMM GARDNER		
发明人	MILNE, GARY HENSLEY, KIRK DOYLE, PETER KIMM, GARDNER		
IPC分类号	A61M16/00 G06F19/00 A61B5/00		
CPC分类号	A61M16/0063 A61B5/08 A61M16/0051 A61M16/026 A61M16/0833 A61M2016/0021 A61M2016/0027 A61M2016/0036 A61M2205/502 A61M2205/505 A61M2205/584 A61M2210/1014 A61M2230/20 A61M2230/43 A61M2230/46 G16H40/63 G16H50/20		
代理机构(译)	拜尔, ANDREAS		
优先权	12/827130 2010-06-30 US		
其他公开文献	EP2588175B1		
外部链接	<a href="#">Espacenet</a>		

#### 摘要(译)

本公开描述了用于监测和评估通气参数，分析与那些参数相关联的通气数据，以及向临床医生提供有用的通知和/或推荐的系统和方法。现代呼吸机监测，评估和图形表示无数的通气参数。然而，许多临床医生可能不容易识别或识别指示某些患者状况，患者状况的变化和/或通气治疗的有效性的数据模式和相关性。此外，临床医生可能不容易确定适当的通气调节，其可以解决某些患者状况和/或通气治疗的有效性。具体而言，临床医生在各种类型的压力通气期间可能不容易检测或识别Auto-PEEP的存在。根据实施例，呼吸机可以被配置为监测和评估各种通气参数以检测自动PEEP，并且可以在涉及Auto-PEEP时向临床医生发出合适的通知和推荐。还可以以分层格式提供合适的通知和推荐。