

(19) World Intellectual Property Organization
International Bureau



(43) International Publication Date
26 November 2009 (26.11.2009)

(10) International Publication Number
WO 2009/142853 A1

- (51) International Patent Classification:
A61B 5/00 (2006.01)
- (21) International Application Number:
PCT/US2009/040942
- (22) International Filing Date:
17 April 2009 (17.04.2009)
- (25) Filing Language: English
- (26) Publication Language: English
- (30) Priority Data:
61/055,303 22 May 2008 (22.05.2008) US
61/089,152 15 August 2008 (15.08.2008) US
- (71) Applicant (for all designated States except US): THE
CURATORS OF THE UNIVERSITY OF MISSOURI
[US/US]; 341 Woods Hall, 1 University Boulevard, St.
Louis, MO 63121 (US).
- (72) Inventor; and
- (75) Inventor/Applicant (for US only): XU, Zhi [US/US];
139 Lindbergh Place Drive, St Louis, MO 63146 (US).
- (74) Agent: KERCHER, Kevin, M.; Thompson Coburn LLP,
One Us Bank Plaza, St. Louis, MO 63101 (US).

- (81) Designated States (unless otherwise indicated, for every
kind of national protection available): AE, AG, AL, AM,
AO, AT, AU, AZ, BA, BB, BG, BH, BR, BW, BY, BZ,
CA, CH, CN, CO, CR, CU, CZ, DE, DK, DM, DO, DZ,
EC, EE, EG, ES, FI, GB, GD, GE, GH, GM, GT, HN,
HR, HU, ID, IL, IN, IS, JP, KE, KG, KM, KN, KP, KR,
KZ, LA, LC, LK, LR, LS, LT, LU, LY, MA, MD, ME,
MG, MK, MN, MW, MX, MY, MZ, NA, NG, NI, NO,
NZ, OM, PG, PH, PL, PT, RO, RS, RU, SC, SD, SE, SG,
SK, SL, SM, ST, SV, SY, TJ, TM, TN, TR, TT, TZ, UA,
UG, US, UZ, VC, VN, ZA, ZM, ZW.
- (84) Designated States (unless otherwise indicated, for every
kind of regional protection available): ARIPO (BW, GH,
GM, KE, LS, MW, MZ, NA, SD, SL, SZ, TZ, UG, ZM,
ZW), Eurasian (AM, AZ, BY, KG, KZ, MD, RU, TJ,
TM), European (AT, BE, BG, CH, CY, CZ, DE, DK, EE,
ES, FI, FR, GB, GR, HR, HU, IE, IS, IT, LT, LU, LV,
MC, MK, MT, NL, NO, PL, PT, RO, SE, SI, SK, TR),
OAPI (BF, BJ, CF, CG, CI, CM, GA, GN, GQ, GW, ML,
MR, NE, SN, TD, TG).

Published:
— with international search report (Art. 21(3))

(54) Title: METHOD AND SYSTEM FOR NON-INVASIVE OPTICAL BLOOD GLUCOSE DETECTION UTILIZING SPECTRAL DATA ANALYSIS

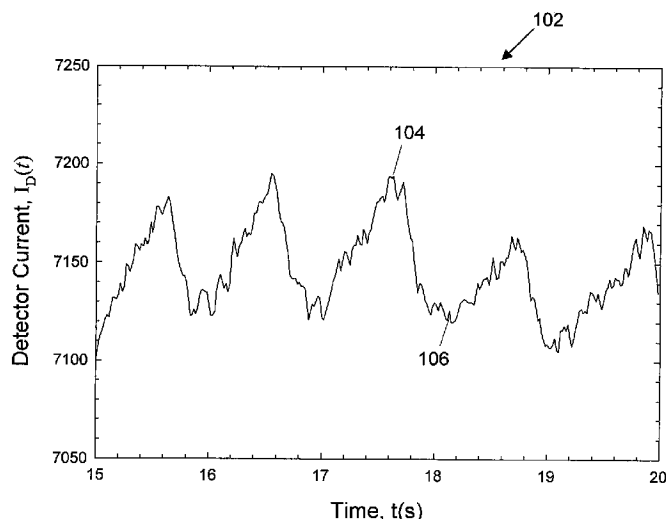


FIG. 1

(57) Abstract: Systems and methods are disclosed for non-invasively measuring blood glucose levels in a biological sample based on spectral data. A variety of techniques are disclosed for improving signal-to-noise ratio in the acquisition of spectral data and calculating attenuation of light attributable to blood in a sample. Disclosed techniques include (1) using a standard deviation operation in conjunction with the logarithm function, (2) using a normalization factor, (3) using a ratio factor, (4) accounting for the effect of temperature on various system components such as resistors, and (5) accounting for dark current in a light detector by performing a calibration.

WO 2009/142853 A1

**METHOD AND SYSTEM FOR NON-INVASIVE OPTICAL BLOOD
GLUCOSE DETECTION UTILIZING SPECTRAL DATA ANALYSIS**

CROSS-REFERENCE TO RELATED APPLICATION

[0001] This patent application claims priority to U.S. Provisional Patent Application Serial Number 61/055,303 filed on May 22, 2008, the disclosure of which is incorporated herein by reference, and also claims priority to U.S. Provisional Patent Application Serial Number 61/089,152 filed on August 15, 2008, the disclosure of which is incorporated herein by reference.

BACKGROUND OF THE INVENTION

[0002] Diabetes is a chronic disease that, when not controlled, over time leads to serious damage to many of the body's systems, including the nerves, blood vessels, eyes, kidneys and heart. The National Institute of Diabetes and Digestive and Kidney Diseases (NIDDK) estimates that 23.6 million people or 7.8 percent of the population in the United States had diabetes in 2007. Globally, the World Health Organization (WHO) estimates that more than 180 million people have diabetes, a number they expect to increase to 366 million by 2030, with 30.3 million in the United States. According to the WHO, an estimated 1.1 million people died from diabetes in 2005. They project that diabetes deaths will increase by more than 50% between 2006 and 2015 overall and by more than 80% in upper-middle income countries.

[0003] The economic burden from diabetes for individuals and society as a whole is substantial. According to the American Diabetes Association, the total annual economic cost of diabetes was estimated to be \$174 billion in the United States in 2007. This is an increase of \$42 billion since 2002. This 32% increase means the dollar amount has risen over \$8 billion more each year.

[0004] A vital element of diabetes management is the self-monitoring of blood glucose (SMBG) concentration by diabetics in the home environment. By testing blood glucose levels often, diabetics can better manage medication, diet, and exercise to maintain control and prevent the long-term negative health outcomes. In fact, the Diabetes Control and Complications Trial (DCCT), which followed 1,441 diabetics

for several years, showed that those following an intensive-control program with multiple blood sugar tests each day as compared with the standard-treatment group had only one-fourth as many people develop diabetic eye disease, half as many develop kidney disease, one-third as many develop nerve disease, and far fewer people who already had early forms of these three complications got worse.

[0005] However, current monitoring techniques discourage regular use due to the inconvenient and painful nature of drawing blood through the skin prior to analysis, which causes many diabetics to not be as diligent as they should be for good blood glucose control. As a result, non-invasive measurement of glucose concentration is a desirable and beneficial development for the management of diabetes. A non-invasive monitor will make testing multiple times each day pain-free and more palatable for children with diabetes. According to a study published in 2005 (J, Wagner, C. Malchoff, and G. Abbott, *Diabetes Technology & Therapeutics*, 7(4) 2005, 612 – 619), people with diabetes would perform SMBG more frequently and have improved quality of life with a non-invasive blood glucose monitoring device.

[0006] There exist a number of non-invasive approaches for blood glucose determination. One technique of non-invasive blood chemicals detection involves collecting and analyzing light spectra data.

[0007] Extracting information about blood characteristics such as glucose concentration from spectral or other data obtained from spectroscopy is a complex problem due to the presence of components (e.g., skin, fat, muscle, bone, interstitial fluid) other than blood in the area that is being sensed. Such other components can influence these signals in such a way as to alter the reading. In particular, the resulting signal may be much larger in magnitude than the portion of the signal that corresponds to blood, and therefore limits the ability to accurately extract blood characteristics information.

[0008] The present invention is directed to overcoming one or more of the problems set forth above.

SUMMARY OF INVENTION

[0009] In an aspect of the present invention, a system for detecting glucose in a biological sample is disclosed. This system includes at least one light source

configured to strike a target area of a sample, at least one light detector positioned to receive light from the at least one light source and to generate an output signal, having a time dependent current, which is indicative of the power of light detected, and a processor that receives the output signal from the at least one light detector and based on the received output signal, calculates the attenuation attributable to blood in a sample present in the target area with a signal-to-noise ratio of at least 20-to-1, and based on the calculated attenuation, determines a blood glucose level associated with a sample present in the target area.

[0010] In another aspect of the present invention, a system for detecting glucose in a biological sample is disclosed. The system includes at least one light source configured to strike a target area of a sample, at least one light detector positioned to receive light from the at least one light source and to generate an output signal, having a time dependent current, which is indicative of the power of light detected, and a processor that receives the output signal from the at least one light detector and based on the received output signal, calculates the attenuation attributable to blood in a sample present in the target area with a normalization factor, and based on the calculated attenuation, determines a blood glucose level associated with a sample present in the target area.

[0011] In yet another aspect of the present invention, a system for detecting glucose in a biological sample is disclosed. The system includes at least one light source configured to strike a target area of a sample, at least one light detector positioned to receive light from the at least one light source and to generate an output signal, having a time dependent current, which is indicative of the power of light detected, and a processor that receives the output signal from the at least one light detector and based on the received output signal, calculates the attenuation attributable to blood in a sample present in the target area with a ratio factor, and based on the calculated attenuation, determines a blood glucose level associated with a sample present in the target area.

[0012] In still another aspect of the present invention, a system for detecting glucose in a biological sample is disclosed. The system includes at least one light source configured to strike a target area of a sample, at least one light detector positioned to receive light from the at least one light source and to generate an output signal,

having a time dependent current, which is indicative of the power of light detected, and a processor that receives the output signal from the at least one light detector and based on the received output signal, calculates the attenuation attributable to blood in a sample present in the target area and eliminates effect of uncertainty caused by temperature dependent detector response of the at least one light detector, and based on the calculated attenuation, determines a blood glucose level associated with a sample present in the target area.

[0013] In still yet another aspect of the present invention, a system for detecting glucose in a biological sample is disclosed. The system includes at least one light source configured to strike a target area of a sample, at least one light detector, which includes a preamplifier having a feedback resistor, positioned to receive light from the at least one light source and to generate an output signal, having a time dependent current, which is indicative of the power of light detected, and a processor that receives the output signal from the at least one light detector and based on the received output signal, calculates the attenuation attributable to blood in a sample present in the target area and eliminates effect of uncertainty caused by temperature dependent detector response of the at least one light detector, and based on the calculated attenuation, determines a blood glucose level associated with a sample present in the target area.

[0014] In another aspect of the present invention, a system for detecting glucose in a biological sample is disclosed. The system includes at least one light detector having a preamplifier and a feedback resistor.

[0015] In yet another aspect of the present invention, a method for detecting glucose in a biological sample is disclosed. The method includes utilizing at least one light source configured to strike a target area of a sample, utilizing at least one light detector positioned to receive light from the at least one light source and to generate an output signal, having a time dependent current, which is indicative of the power of light detected, receiving the output signal from the at least one light detector with a processor and based on the received output signal, calculating the attenuation attributable to blood in a sample present in the target area with a signal-to-noise ratio of at least 20-to-1, and determining a blood glucose level associated with a sample present in the target area based on the calculated attenuation with the

processor.

[0016] In still another aspect of the present invention, a method for detecting glucose in a biological sample is disclosed. The method includes utilizing at least one light source configured to strike a target area of a sample, utilizing at least one light detector positioned to receive light from the at least one light source and to generate an output signal, having a time dependent current, which is indicative of the power of light detected, receiving the output signal from the at least one light detector with a processor and based on the received output signal, calculating the attenuation attributable to blood in a sample present in the target area with a normalization factor with the processor, and determining a blood glucose level associated with a sample present in the target area based on the calculated attenuation with the processor.

[0017] In yet another aspect of the present invention, a method for detecting glucose in a biological sample is disclosed. The method includes utilizing at least one light source configured to strike a target area of a sample, utilizing at least one light detector positioned to receive light from the at least one light source and to generate an output signal, having a time dependent current, which is indicative of the power of light detected, receiving the output signal from the at least one light detector with a processor, calculating the attenuation attributable to blood in a sample present in the target area with a ratio factor based on the received output signal with the processor, and determining a blood glucose level associated with a sample present in the target area based on the calculated attenuation with the processor.

[0018] In another aspect of the present invention, a method for detecting glucose in a biological sample is disclosed. The method includes utilizing at least one light source configured to strike a target area of a sample, utilizing at least one light detector positioned to receive light from the at least one light source and to generate an output signal, having a time dependent current, which is indicative of the power of light detected, receiving the output signal from the at least one light detector with a processor and based on the received output signal, calculating the attenuation attributable to blood in a sample present in the target area with a ratio factor with the processor, eliminating effect of uncertainty caused by temperature dependent detector response of the at least one light detector with the processor, and determining a blood glucose level associated with a sample present in the target area

with the processor based on the calculated attenuation with the processor.

[0019] These are merely some of the innumerable aspects of the present invention and should not be deemed an all-inclusive listing of the innumerable aspects associated with the present invention.

BRIEF DESCRIPTION OF THE DRAWINGS

[0020] For a better understanding of the present invention, reference may be made to accompanying drawings, in which:

[0021] FIG. 1 illustrates a plot of a pulse wave corresponding to light absorption of arterial blood, according to exemplary embodiments;

[0022] FIG. 2 illustrates an exemplary system for obtaining spectral data;

[0023] FIG. 3 illustrates a plot of $A(t)$, calculated according to Equation (9) using data in FIG. 1; and

[0024] FIG. 4 is a basic illustrative schematic of a preamplifier circuit that converts photocurrent into voltage prior to digitization.

DETAILED DESCRIPTION OF THE INVENTION

[0025] In the following detailed description, numerous exemplary specific details are set forth in order to provide a thorough understanding of the invention. However, it will be understood by those skilled in the art that the present invention may be practiced without these specific details, or with various modifications of the details. In other instances, well known methods, procedures, and components have not been described in detail so as not to obscure the present invention.

[0026] Optical spectroscopy can be used to determine the amount of light absorbed and scattered, i.e., attenuated, by a biological sample such as a human finger. By measuring the amount of light absorbed by the sample, it is possible to determine glucose, cholesterol, and hemoglobin levels of a subject non-invasively. Fingertip measurements are usually preferred because of the large concentration of capillaries in the fingertip and because of the conversion of arterial blood into venous blood that occurs in the fingertip. However, the techniques of the present invention are not limited to use with a fingertip. For example, the biological sample could be a human earlobe.

[0027] When light is transmitted through a biological sample, such as a human finger, the light is attenuated by various components of the finger including skin, muscle, bone, fat, interstitial fluid and blood. It has been observed, however, that light attenuation by a human finger exhibits a small cyclic pattern that corresponds to a heartbeat. It is believed that this cyclic pattern will be present in measurements of many other human body parts, the earlobe being one of many examples.

[0028] FIG. 1 depicts a plot 102 of a detector photocurrent, $I_D(t)$, that corresponds to the power of light received by a detector after the light has passed through a subject's finger. As can be seen, the detector photocurrent exhibits a cyclic pattern. This cyclic pattern is due to the subject's heartbeat, which cyclically increases and decreases the quantity of blood in the subject's capillaries (or other structures). Although the magnitude of the cyclic pattern is small in comparison to the total photocurrent generated by the detector, considerable information can be extracted from the cyclic pattern of the plot 102. For example, assuming that the person's heart rate is sixty beats per minute, the time between the start of any pulse beat and the end of that pulse beat is one second. During this one-second period, the photocurrent will have a maximum or peak reading 104 and minimum or valley reading 106. The peak reading 104 of the plot corresponds to when there is a minimum amount of blood in the capillaries, and the valley reading 106 corresponds to when there is a maximum amount of blood in the capillaries. By using information provided by the peak and valley of the cyclic plot, the optical absorption and scattering by major finger constituents that are not in the capillaries such as skin, fat, bones, muscle and interstitial fluids are excluded. These major constituents that are not in the capillaries are excluded because they are not likely to change during the time interval of one heartbeat. In other words, the light that is absorbed and scattered, i.e., attenuated, by the blood can be detected based on the peaks and valleys of the plot 102.

[0029] Assuming that the peak of the cyclic photocurrent generated by the light-sensing device is I_p , the adjacent valley of the cyclic photocurrent is I_v , and the photocurrent generated by the light-sensing device without a human finger is I_0 , the transmittances corresponding to the peak and valley photocurrents can be defined as:

$$T_V = \frac{I_V}{I_0} \quad (1)$$

and

$$T_P = \frac{I_P}{I_0} \quad (2)$$

[0030] The corresponding peak and valley absorbance are:

$$A_V = -\log(T_V) \quad (3)$$

and

$$A_P = -\log(T_P) \quad (4)$$

The difference between A_V and A_P represents the light absorption and scattering by the blood in the finger, excluding non-blood constituents:

$$\Delta A = A_V - A_P = \log\left(\frac{I_P}{I_V}\right) \quad (5)$$

[0031] As can be seen in the algorithm shown in Equation (5), ΔA does not depend on I_0 . Thus, calculating ΔA does not require a determination of the current generated by the light-sensing device without a sample. Monitoring the photocurrent corresponding to light power transmitted through a sample is sufficient to calculate ΔA .

[0032] FIG. 2 depicts a simplified block diagram of an exemplary apparatus for use in an exemplary embodiment. Optical measurement system, which is generally indicated by numeral 200, uses the "pulsatile" concept for determining an amount of light absorbed and scattered solely by the blood in a sample (a human finger in this exemplary embodiment). A power source 201, such as a battery, provides power to a light source 202 that generates a plurality of light beams 204, 206, 208, 210 that are directed toward the top of the finger of a subject. In an exemplary embodiment, each of the light beams 204, 206, 208, 210 have the same wavelength or a different wavelength range, typically within 800 nm to 1600 nm. Although the optical measurement system 200 is described herein as generating four (4) light beams, it is contemplated that the light source 202 can be altered to generate fewer light beams or additional light beams in other embodiments.

- [0033] A first aperture 212 ensures that the light beams 204, 206, 208, 210 strike a target area of the finger. A second aperture 214 ensures that the portion of the light beams that are transmitted through the finger strike a lens 216. Light beams 204, 206, 208, 210 are attenuated by the finger and components of the optical measurement system 200, and, thus, attenuated light beams 218, 220, 222, 224 are emitted from the finger. The attenuated light beams 218, 220, 222, 224 strike the lens 216, and the lens 216 collects the attenuated light beams 218, 220, 222, 224 so that they impinge more efficiently on a detector block 226.
- [0034] The detector block 226 is positioned directly under the lens 216 and comprises a plurality of light-sensing devices (LSD) 228, 230, 232, 234 such as an array of photodiodes. According to one aspect of the optical measurement system 200, each of the light-sensing devices 228, 230, 232, 234 detects a specific wavelength of light as defined by corresponding interference filters (IF) 236, 238, 240, 242, respectively. The interference filter transmits one or more spectral bands or lines of light, and blocks others.
- [0035] Each of the light-sensing devices 228, 230, 232, 234 generates a corresponding photocurrent signal that is proportional to the power of the light received by the particular light sensing device. The photocurrent signal generated by the photodiode can be converted to another form of signal, such as an analog voltage signal or a digital signal. A processor 243 is coupled to the detector block 226 and is configured to calculate the change of photocurrent signals 244, 246, 248, 250.
- [0036] According to one aspect, the processor 243 executes an algorithm such as shown in the Equation (5) to calculate the change in the light absorption (ΔA) solely caused by the blood in the finger. Thereafter, this quantitative calculation of light absorption of the blood can be used to determine a characteristic of the blood. For example, by comparing the calculated light absorption value to predetermined values corresponding to different glucose levels stored in a memory (not shown), a blood-glucose level of the subject can be determined.
- [0037] A difficulty associated with the finger based pulsatile detection methodology is low signal-to-noise (S/N) ratio, because the amplitude of cyclic pattern (i.e., the difference between peak and valley) is typically 1% - 2% of the total photocurrent generated by the light power transmitted through the finger. To obtain a S/N ratio of

100:1 in the determination of ΔA , the baseline noise of the device being used to measure the light absorption by the finger should not be larger than 3.0×10^{-5} in absorbance (peak to peak), within a 10 Hz bandwidth.

[0038] However, a 3.0×10^{-5} absorbance (peak to peak) baseline noise level within a 10 Hz bandwidth is difficult to obtain with the low light power levels that are used by some battery-powered hand held non-invasive blood chemicals measurement devices. One solution involves data averaging. To increase the S/N ratio, the averaged value of ΔA , as defined by the Equation below, is used in further calculation to extract blood glucose concentration:

$$\overline{\Delta A} = \sum_{j=1}^M \Delta A_j \quad (6)$$

[0039] In Equation (6), M is the number of heartbeats during the time interval of the pulsatile measurement. However, this approach requires long data acquisition time, due to the fact that the rate of heartbeat is in the order of one per second. For example, 25 seconds would be needed for increasing the S/N ratio by a factor of five, and 100 seconds would be needed for increasing the S/N ratio by a factor of ten. In comparison, current commercial blood drawing glucose meters can determine blood glucose level within 5 seconds. Furthermore, long detection time will significantly increase measurement errors due to finger movement, light power drift, device temperature change, etc. Thus, there is a need for new techniques to measure blood glucose levels quickly and accurately.

[0040] **Improving S/N Ratio by Standard Deviation**

The time dependent detector photocurrent output, $I_D(t)$, shown in FIG. 1 can be expressed as the sum of a small time dependent cyclic photocurrent $\Delta I(t)$, corresponding to the heartbeat, a noise current $n(t)$, and a constant baseline photocurrent I_B :

$$I_D(t) = I_B + \Delta I(t) + n(t) \quad (7)$$

[0041] The above Equation can be re-arranged as:

$$\frac{I_D(t)}{I_B} = 1 + \frac{\Delta I(t) + n(t)}{I_B} \quad (8)$$

[0042] Applying common logarithm to both side of the Equation (8), one obtains:

$$A(t) = \log \left[\frac{I_D(t)}{I_B} \right] = \log \left(1 + \frac{\Delta I(t) + n(t)}{I_B} \right) \quad (9)$$

[0043] FIG. 3, which is generally indicated by numeral 300, shows a typical $A(t)$ plot 302, calculated according Equation (9) using data in FIG. 1. For a pulse function $A(t)$ shown in FIG. 3, the following key relationship exists during the time interval of one heartbeat:

$$\sigma[A(t)] = k\Delta A \quad (10)$$

in which $\sigma[A(t)]$ is the Standard Deviation of $A(t)$, and k is a proportional constant.

[0044] Considering the fact that I_B is a constant and $\sigma^2(\log I_B) = 0$, one obtains:

$$\sigma[A(t)] = \sigma[\log I_D(t)] \quad (11)$$

[0045] Therefore, the peak-to-valley height of the $A(t)$ plot during the time interval of one heartbeat can be obtained directly from the standard deviation of the logarithm of $I_D(t)$:

$$\Delta A = \frac{\sigma[A(t)]}{k} = \frac{\sigma[\log I_D(t)]}{k} \quad (12)$$

A major advantage of Equation (12) is that high S/N ratio can be achieved within short data acquisition time (approximately one second), as explained below.

[0046] In a finger based pulsatile measurement depicted by FIG. 2, the value of the sum, $\Delta I(t) + n(t)$ is typically less than 2% of the large constant baseline photocurrent I_B . Therefore, Equation (9) can be approximated as:

$$A(t) = \log \left[\frac{I_D(t)}{I_B} \right] \approx \frac{1}{\ln 10} \frac{\Delta I(t) + n(t)}{I_B} \quad (13)$$

[0047] Similarly, the standard deviation of $A(t)$ can be approximated as:

$$\sigma[A(t)] \approx \frac{1}{\ln 10} \frac{\sqrt{\sigma^2[\Delta I(t)] + \sigma^2[n(t)]}}{I_B} \quad (14)$$

[0048] Equation (14) demonstrates great noise reduction power of Equation (12).

For example, for a relatively high baseline noise with the ratio $\rho = \frac{\sigma[n(t)]}{\sigma[\log \Delta I(t)]} = 0.1$ (or 10%), the contribution to $\sigma[A(t)]$ from the baseline noise $n(t)$ is estimated to be less than 0.005 (or 0.5%), corresponding to an increase in S/N ratio by a factor of

20 without increasing detection time. As such, dramatic noise reduction can be obtained without increasing the data acquisition time, and a finger based pulsatile measurement can be completed within the time interval of one heartbeat (which is approximately one second), and the requirement for the S/N ratio of 100 to 1 in determination of ΔA can be satisfied using an optical system with a baseline noise of about 6.0×10^{-4} absorbance (peak to peak) within a 10 Hz bandwidth. It should be pointed out that when the baseline noise of an optical system is dominated by shot noise due to low light illumination power, a noise reduction by a factor of 20 equals an increasing in light illumination power by a factor of $20^2 = 400$.

[0049] This ability of obtaining higher S/N ratio within the very short data acquisition time, e.g., less than one second, will significantly reduce detection error caused by factors such as finger movement, temperature change, and light power drift during the measurement, and therefore dramatically improve the accuracy and reproducibility of the pulsatile detection methodology.

[0050] Furthermore, the value of k does not change with wavelength, because transmitted lights at all wavelengths have identical pulse shape due to the heartbeat. As a result, the constant k will be cancelled in data normalization discussed in next section, and $\sigma[\log I_D(t)]$ will be used in further regression analysis to establish correlation between the optical measurement and blood glucose level. This will greatly simplify the data analysis process since $\sigma[\log I_D(t)]$ involves only two standard math functions available in most popular spreadsheet programs such as Microsoft EXCEL®. EXCEL® is a federally registered trademark of Microsoft Corporation, having a place of business at One Microsoft Way, Redmond, Washington 98052-6399.

[0051] **Normalization**

At each wavelength λ_i , the absorption $\Delta A(\lambda_i)$ is linked to the increase of amount of blood (ΔB) in the optical sensing area of the fingertip due to the heartbeat by the following Equation:

$$\Delta A(\lambda_i) = \varepsilon(C, \lambda_i, T) \Delta B \quad (15)$$

in which $\varepsilon(C, \lambda_i, T)$ is the absorption/scattering coefficient of blood at wavelength λ_i , finger temperature T , and blood glucose concentration C . It is well understood

that the variable ΔB differs from person to person, and may even change from day to day for the same person.

[0052] The uncertainty from the variable ΔB can be cancelled by introducing the normalization factor $Q_i(C, T)$ at each wavelength λ_i , as defined by the Equation below:

$$Q_i(C, T) = \frac{\Delta A(\lambda_i)}{\sum_{i=1}^N \Delta A(\lambda_i)} = \frac{\varepsilon(C, \lambda_i, T)}{\sum_{i=1}^N \varepsilon(C, \lambda_i, T)} \quad (16),$$

in which N is total number of wavelength employed. Preferably, N typically ranges from twenty to thirty.

[0053] Based on Equations (12) and (16), $Q_i(C, T)$ is linked to the detector photocurrent at each wavelength λ_i , $I_D(\lambda_i, t)$, by the following Equation:

$$Q_i(C, T) = \frac{\Delta A(\lambda_i)}{\sum_{i=1}^N \Delta A(\lambda_i)} = \frac{\sigma[\log I_D(\lambda_i, t)]/k}{\sum_{i=1}^N \sigma[\log I_D(\lambda_i, t)]/k} = \frac{\sigma[\log I_D(\lambda_i, t)]}{\sum_{i=1}^N \sigma[\log I_D(\lambda_i, t)]} \quad (17),$$

[0054] As shown by Equation (17), the constant k is cancelled and $\sigma[\log I_D(t)]$ will be used in further regression analysis to establish correlation between the optical measurement and blood glucose level. This is possible because data are taken simultaneously from all detection channels.

[0055] A correlation between optical measurement and blood glucose concentration can be established according to the following Equation:

$$C_{optical} = \sum_{i=1}^N a_i(T) Q_i(C, T) \quad (18)$$

in which $C_{optical}$ is the blood glucose concentration predicted by the optical measurement, $Q_i(C, T)$ is defined by Equations (16) and (17), and $a_i(T)$ is the temperature dependent regression coefficient corresponding to wavelength λ_i . The values of $a_i(T)$ can be extracted using proper statistics methods such as Partial Least Squares (PLS) regression.

[0056] Equation (18) represents ideal cases when large number of calibrations can be made at different finger temperatures. In reality, frequently only a limited number of calibrations can be made (e.g., 15 to 20), and each may be taken at a different finger

temperature. Under this condition, the finger temperature can be treated as an independent variable, and the above Equation can be approximated as:

$$C_{optical} = \sum_{i=1}^N b_i Q_i(C, T) + \eta T \quad (19)$$

in which b_i is the temperature independent regression coefficient corresponding to wavelength λ_i , and η is the regression coefficient for the finger temperature. The values of b_i and that of η can be extracted using proper statistics methods such as Partial Least Squares (PLS) regression.

[0057] **Ratio Methodology**

Alternatively, the uncertainty from the variable ΔB can be cancelled by introducing a ratio factor Y_{ij} at wavelength λ_i :

$$Y_{ij}(C, T) = \frac{\Delta A(\lambda_i)}{\Delta A(\lambda_j)} = \frac{\varepsilon(C, \lambda_i, T)}{\varepsilon(C, \lambda_j, T)} = \frac{\sigma[\log I_D(\lambda_i, t)]}{\sigma[\log I_D(\lambda_j, t)]} \quad (20),$$

in which j can be any number from 1 to N , assuming that the device collects signal at all N wavelengths.

[0058] Similar to the normalization algorithm discussed before, a correlation between optical measurement and blood glucose level can be established according to the following Equation:

$$C_{optical} = \sum_{i \neq j}^N f_i(T) Y_{ij}(C, T) \quad (21)$$

in which $C_{optical}$ is the blood glucose concentration predicted by the optical measurement, $Y_{ij}(C, T)$ is defined by Equation (20), and $f_i(T)$ is the temperature dependent regression coefficient corresponding to wavelength λ_i . The value of $f_i(T)$ can be obtained using statistics methods such as Partial Least Squares (PLS) regression.

[0059] Equation (21) represents ideal cases when large number of calibration can be made at different finger temperatures. In reality, frequently only limited number of calibration can be made (e.g., 15 to 20), and each may be taken at a different finger temperature. Under this condition, the finger temperature can be treated as an independent variable, and the above Equation can be approximated as:

$$C_{optical} = \sum_{i \neq j}^N h_i Y_{ij}(C, T) + \beta T \quad (22)$$

in which h_i is the temperature independent regression coefficient corresponding to wavelength λ_i , and β is the regression coefficient for the finger temperature. The values of h_i and that of β can be extracted using proper statistics methods such as Partial Least Squares (PLS) regression..

[0060] **Elimination of the Effect of Temperature Dependent Device Response**

It is well understood that the detector sensitivity of a silicon photodiode detector is a function of wavelength and temperature. For the device configuration shown in FIG. 2, which is generally indicated by numeral 200, the light power received by i th silicon diode detector, corresponding to wavelength λ_i , is converted into a photocurrent according to the following Equation:

$$I_D(\lambda_i, t) = P(\lambda_i, t) S_0(\lambda_i) [1 + \gamma(\lambda_i)(T_{Di}(t) - 25^\circ C)] \quad (23)$$

[0061] In the above Equation (23), $P(\lambda_i, t)$ is the light power received by the detector, $S_0(\lambda_i)$ is the photosensitivity of the detector at wavelength λ_i and $25^\circ C$, $\gamma(\lambda_i)$ is the temperature coefficient of the photosensitivity at wavelength λ_i , and $T_{Di}(t)$ is the temperature of i th photodiode detector. The temperature coefficient $\gamma(\lambda_i)$ varies with the wavelength. For example, for Hamamatsu S1337 series photodiode detectors, $\gamma(\lambda_i)$ ranges from near zero at 900 nm to over 1.0%/°C at 1100 nm. This imposes a potential problem for the device configuration show in FIG. 2, because it is very difficult to keep temperature of each individual diode detector constant in a handheld device used by a person with diabetes under a normal household/office environment.

[0062] This uncertainty due to the detector temperature $T_{Di}(t)$ can be eliminated using the algorithm shown by Equations (11) and (12). Applying common logarithm on both sides of the Equation (23), one obtains:

$$\log I_D(\lambda_i, t) = \log P(\lambda_i, t) + \log S_0(\lambda_i) + \log [1 + \gamma(\lambda_i)(T_{Di}(t) - 25^\circ C)] \quad (24)$$

[0063] Considering the fact that $S_0(\lambda_i)$ is a constant and that detector temperature $T_{Di}(t)$ remains almost constant during the very short data acquisition time interval of approximately one second, one obtains:

$$\sigma[\log I_D(\lambda_i, t)] = \sigma[\log P(\lambda_i, t)] \quad (25)$$

As such, the uncertainty caused by detector temperature $T_{Di}(t)$ is eliminated by the use of this standard deviation methodology.

[0064] **Voltage Detection Mode**

In the device configuration shown in FIG. 2, the photocurrent of i th photodiode detector $I_D(\lambda_i, t)$ is typically converted into a voltage using a preamplifier before digitization. FIG. 4 shows the schematic circuit diagram of a typical preamplifier, which is generally indicated by numeral 400.

[0065] The output voltage 412 of i th preamplifier 400, in coupling with i th photodiode detector 408, can be expressed as:

$$V_i(t) = R_i I_D(\lambda_i, t) = R_{0i} [1 + \chi_i (T_{Ri}(t) - 25^\circ C)] I_D(\lambda_i, t) \quad (26)$$

[0066] In the above Equation (26), R_{0i} is the resistance value of feedback resistor 402 for i th preamplifier at $25^\circ C$, χ_i is the temperature coefficient of the resistor, and $T_{Ri}(t)$ is the temperature of the resistor. Applying common logarithm to both side of the Equation (26), one obtains:

$$\log V_i(t) = \log R_{i0} + \log [1 + \chi_i (T_{Ri}(t) - 25^\circ C)] + \log I_D(\lambda_i, t) \quad (27)$$

[0067] Considering the fact that R_{0i} is a constant and that the resistor temperature $T_{Ri}(t)$ does not change during the very short data acquisition time interval of approximately one second, one obtains:

$$\sigma[\log V_i(t)] = \sigma[\log I_D(\lambda_i, t)] \quad (28)$$

[0068] Substituting Equation (25) into Equation (28), one obtains:

$$\sigma[\log V_i(t)] = \sigma[\log P(\lambda_i, t)] \quad (29)$$

As such, the uncertainty caused by resistor temperature $T_R(t)$ is eliminated.

[0069] Under the voltage detection mode, the normalization factor in Equation (17) can be expressed as:

$$Q_i(C, T) = \frac{\sigma[\log V_i(t)]}{\sum_{i=1}^N \sigma[\log V_i(t)]} \quad (30)$$

[0070] The mathematic correlation between optical measurement and blood glucose concentration can then be established according to Equation (18) or Equation (19), under corresponding calibration conditions.

[0071] Similarly, the ratio factor defined by Equation (20) can be expressed as:

$$Y_{ij}(C, T) = \frac{\sigma[\log V_i(t)]}{\sigma[\log V_j(t)]} \quad (31)$$

[0072] The mathematic correlation between optical measurement and blood glucose concentration can then be established according to Equation (21) or Equation (22), under corresponding calibration conditions. The schematic circuit diagram of a typical preamplifier 400 also includes a feedback capacitor 404, an operational amplifier 406, and a ground connection 410.

[0073] Digitization

The voltage output 412 from the preamplifier 400 is usually digitized using an analog-to-digital convertor (ADC). The digitized signal is then sent to a computer for data analysis. The output of *i*th ADC, in communication with *i*th preamplifier that is in coupling with *i*th photodiode 408 collecting light power at wavelength λ_i , can be expressed by the following Equation:

$$(ADC)_i = (ADC)_{0i} + G_i \{ I_D(\lambda_i, t) + I_{Dark,i} \} R_i + A_{0i} \quad (32)$$

[0074] In the above Equation (32), $(ADC)_{0i}$ is the offset of *i*th ADC, G_i is the nominal ADC Gain used during the detection, $I_D(\lambda_i, t)$ is the photocurrent of *i*th photodiode detector, $I_{Dark,i}$ is the dark current of *i*th photodiode detector, $R_i = R_{0i} [1 + \chi_i(T_{Ri}(t) - 25^\circ C)]$ is the resistance of feedback resistor of *i*th preamplifier, and A_{0i} is the offset of *i*th preamplifier.

[0075] The contribution of the three factors, $(ADC)_{0i}$, $I_{Dark,i}$, and A_{0i} can be removed by carrying out a dark measurement with the light source turned off right before or after the corresponding finger measurement. When the light source is turned off, the above Equation (32) becomes

$$(ADC)_{Dark,i} = (ADC)_{0i} + G_i(I_{Dark,i}R_i + A_{01}) \quad (33)$$

[0076] The difference between the two above Equations (32) and (33) reflects ADC output corresponding to the photocurrent:

$$\Delta(ADC)_i = (ADC)_i - (ADC)_{Dark,i} = G_i I_D(\lambda_i, t) R_i \quad (34)$$

[0077] Applying common logarithm to both side of the Equation (34), one obtains:

$$\log \Delta(ADC)_i = \log G_i + \log I_D(\lambda_i, t) + \log R_i \quad (35)$$

[0078] G_i and R_i can be considered as constants as long as the time interval between the finger measurement and the dark measurement is short. As such, one obtains:

$$\sigma[\log \Delta(ADC)_i] = \sigma[\log I_D(\lambda_i, t)] \quad (36)$$

Substituting Equation (25) into Equation (36), one further obtains:

$$\sigma[\log \Delta(ADC)_i] = \sigma[\log P(\lambda_i, t)] \quad (37)$$

[0079] Based on Equation (36), the normalization factor defined by Equation (17) can be expressed as:

$$Q_i(C, T) = \frac{\sigma[\log \Delta(ADC)_i]}{\sum_{i=1}^N \sigma[\log \Delta(ADC)_i]} \quad (38)$$

[0080] The mathematic correlation between optical measurement and blood glucose concentration can then be established according to Equation (18) or (19), under corresponding calibration conditions.

[0081] Similar to normalization, the ratio factor defined by Equation (20) can be expressed as:

$$Y_{ij}(C, T) = \frac{\sigma[\log \Delta(ADC)_i]}{\sigma[\log \Delta(ADC)_j]} \quad (39)$$

[0082] The correlation between optical measurement and blood glucose concentration can then be established according to Equations (21) or (22), under corresponding calibration conditions.

[0083] Thus, there has been shown and described several embodiments of a novel invention. As is evident from the foregoing description, certain aspects of the present invention are not limited by the particular details of the examples illustrated herein, and it is therefore contemplated that other modifications and applications, or equivalents thereof, will occur to those skilled in the art. The terms “have,”

“having,” “includes” and “including” and similar terms as used in the foregoing specification are used in the sense of “optional” or “may include” and not as “required.” Many changes, modifications, variations and other uses and applications of the present construction will, however, become apparent to those skilled in the art after considering the specification and the accompanying drawings. All such changes, modifications, variations and other uses and applications, which do not depart from the spirit and scope of the invention, are deemed to be covered by the invention, which is limited only by the claims that follow. It should be understood that the embodiments disclosed herein include any and all combinations of features described in any of the dependent claims.

CLAIMS

1. A system for detecting glucose in a biological sample, comprising:
at least one light source configured to strike a target area of a sample;
at least one light detector positioned to receive light from the at least one light source and to generate an output signal, having a time dependent current, which is indicative of the power of light detected; and
a processor that receives the output signal from the at least one light detector and based on the received output signal, calculates the attenuation attributable to blood in a sample present in the target area with a signal-to-noise ratio of at least 20-to-1, and based on the calculated attenuation, determines a blood glucose level associated with a sample present in the target area.
2. The system for detecting glucose in a biological sample according to Claim 1, wherein the time dependent output current is a function of a baseline current, a noise current and a time dependent cyclic current corresponding to a heartbeat.
3. The system for detecting glucose in a biological sample according to Claim 2, wherein the calculated attenuation is based at least in part on a standard deviation of a logarithm of the time dependent output current.
4. The system for detecting glucose in a biological sample according to Claim 2, wherein the calculated attenuation is based at least in part on an approximation of a standard deviation of a logarithm of the time dependent output current.
5. The system for detecting glucose in a biological sample according to Claim 1, further comprising a peak-to-valley height of the change in light absorption due to blood in the sample in relationship to time, which is calculated by the processor as a function of a standard deviation of a logarithm of the time dependent

output current divided by a proportionality constant: $\Delta A = \frac{\sigma[A(t)]}{k} = \frac{\sigma[\log I_D(t)]}{k}$,

where $A(t)$ is the change in light absorption due to blood in the sample as a function of time, ΔA is the peak to valley height of $A(t)$ plot during the time interval of one heartbeat, $I_D(t)$ is the time dependent detector current, $\log I_D(t)$ is the logarithm of the time dependent detector current, k is the proportionality constant, $\sigma[A(t)]$ is the standard deviation of $A(t)$, and $\sigma[\log I_D(t)]$ represents the standard deviation of $\log I_D(t)$.

6. A system for detecting glucose in a biological sample, comprising:
 at least one light source configured to strike a target area of a sample;
 at least one light detector positioned to receive light from the at least one light source and to generate an output signal, having a time dependent current, which is indicative of the power of light detected; and
 a processor that receives the output signal from the at least one light detector and based on the received output signal, calculates the attenuation attributable to blood in a sample present in the target area with a normalization factor, and based on the calculated attenuation, determines a blood glucose level associated with a sample present in the target area.

7. The system for detecting glucose in a biological sample according to Claim 6, wherein the processor is configured to calculate the normalization factor $Q_i(C, T)$ at a plurality of wavelengths, the i^{th} wavelength being represented by λ_i , based on the time dependent detector output signal $I_D(\lambda_i, t)$:

$$Q_i(C, T) = \frac{\sigma[\log I_D(\lambda_i, t)]}{\sum_{i=1}^N \sigma[\log I_D(\lambda_i, t)]}$$

where $\sigma[\log I_D(\lambda_i, t)]$ is standard deviation of the

logarithm of the time dependent detector output signal $I_D(\lambda_i, t)$, t is time, C is the concentration of blood glucose, T is the temperature of the biological sample, and N is the total number of wavelengths employed.

8. The system for detecting glucose in a biological sample according to Claim 7, wherein the processor is configured to calculate the blood glucose level $C_{optical}$, where $Q_i(C, T)$ is the normalization factor, $a_i(T)$ is the temperature dependent regression coefficient corresponding to wavelength λ_i , and N is number of wavelengths employed, according to the equation:
$$C_{optical} = \sum_{i=1}^N a_i(T) Q_i(C, T).$$

9. The system for detecting glucose in a biological sample according to Claim 8, wherein values of the temperature dependent regression coefficient $a_i(T)$ can be extracted using partial least squares regression with the processor.

10. The system for detecting glucose in a biological sample according to Claim 7, wherein the processor is configured to calculate the blood glucose level $C_{optical}$ based on the temperature independent regression coefficient, where $Q_i(C, T)$ is the normalization factor, b_i is a sample temperature independent regression coefficient, η is a regression coefficient for sample temperature, C is a blood glucose concentration, T is temperature of the biological sample, and N is number of wavelengths employed, according to the equation:

$$C_{optical} = \sum_{i=1}^N b_i Q_i(C, T) + \eta T.$$

11. The system for detecting glucose in a biological sample according to Claim 10, wherein values of the sample temperature independent regression coefficient b_i and the regression coefficient for sample temperature η can be extracted using partial least squares regression with the processor.

12. A system for detecting glucose in a biological sample, comprising:
 at least one light source configured to strike a target area of a sample;
 at least one light detector positioned to receive light from the at least one light source and to generate an output signal, having a time dependent current, which is indicative of the power of light detected; and

a processor that receives the output signal from the at least one light detector and based on the received output signal, calculates the attenuation attributable to blood in a sample present in the target area with a ratio factor, and based on the calculated attenuation, determines a blood glucose level associated with a sample present in the target area.

13. The system for detecting glucose in a biological sample according to Claim 12, wherein the processor is configured to calculate the ratio factor $Y_{ij}(C, T)$ at a plurality of wavelengths, the i^{th} wavelength being represented by λ_i , the j^{th} wavelength being represented by λ_j , C is a blood glucose concentration, T is temperature of the biological sample, $I_D(\lambda_i, t)$ is the time dependent output current, $\sigma[\log I_D(\lambda_i, t)]$ is standard deviation of the logarithm of the time dependent output current, and t is time, according to the equation: $Y_{ij}(C, T) = \frac{\sigma[\log I_D(\lambda_i, t)]}{\sigma[\log I_D(\lambda_j, t)]}$.

14. The system for detecting glucose in a biological sample according to Claim 13, wherein the processor is configured to calculate the blood glucose level C_{optical} based on the optical measurement, $Y_{ij}(C, T)$ and $f_i(T)$, which is the temperature dependent regression coefficient corresponding to wavelength λ_i according to the equation:

$$C_{\text{optical}} = \sum_{i \neq j}^N f_i(T) Y_{ij}(C, T).$$

15. The system for detecting glucose in a biological sample according to Claim 14, wherein values of the temperature dependent regression coefficient corresponding to wavelength λ_i , which is $f_i(T)$, can be extracted using partial least squares regression with the processor.

16. The system for detecting glucose in a biological sample according to Claim 13, wherein the processor is configured to calculate the blood glucose level

$C_{optical}$ based on a temperature independent regression coefficient h_i , a regression coefficient β for the temperature of the biological sample T , the ratio factor $Y_{ij}(C, T)$ for a number of wavelengths N according to the equation:

$$C_{optical} = \sum_{i \neq j}^N h_i Y_{ij}(C, T) + \beta T .$$

17. The system for detecting glucose in a biological sample according to Claim 16, wherein values of the temperature independent regression coefficient h_i and the regression coefficient β for the temperature of the biological sample T can be extracted using partial least squares regression with the processor.

18. A system for detecting glucose in a biological sample, comprising:
 at least one light source configured to strike a target area of a sample;
 at least one light detector positioned to receive light from the at least one light source and to generate an output signal, having a time dependent current, which is indicative of the power of light detected; and
 a processor that receives the output signal from the at least one light detector and based on the received output signal, calculates the attenuation attributable to blood in a sample present in the target area and eliminates effect of uncertainty caused by temperature dependent detector response of the at least one light detector, and based on the calculated attenuation, determines a blood glucose level associated with a sample present in the target area.

19. The system for detecting glucose in a biological sample according to Claim 18, wherein elimination of effect of uncertainty caused by temperature of the at least one light detector is accomplished by calculating the standard deviation of the logarithm of the time dependent current with the processor.

20. The system for detecting glucose in a biological sample according to Claim 19, wherein elimination of effect of uncertainty caused by temperature of the at least one light detector is accomplished by calculating the following equation with

the processor: $\sigma[\log I_D(\lambda_i, t)] = \sigma[\log P(\lambda_i, t)]$, where the i^{th} wavelength being represented by λ_i , based on the time dependent detector output current signal $I_D(\lambda_i, t)$ and the time dependent detector power signal $P(\lambda_i, t)$, where $\log I_D(\lambda_i, t)$ is the logarithm of the time dependent detector output current signal and $\log P(\lambda_i, t)$ is the logarithm of the time dependent light power received by the corresponding detector.

21. The system for detecting glucose in a biological sample according to Claim 18, wherein the at least one light detector includes a preamplifier having a feedback resistor.

22. A system for detecting glucose in a biological sample, comprising:
at least one light source configured to strike a target area of a sample;
at least one light detector, which includes a preamplifier having a feedback resistor, positioned to receive light from the at least one light source and to generate an output signal, having a time dependent current, which is indicative of the power of light detected; and

a processor that receives the output signal from the at least one light detector and based on the received output signal, calculates the attenuation attributable to blood in a sample present in the target area and eliminates effect of uncertainty caused by temperature dependent detector response of the at least one light detector, and based on the calculated attenuation, determines a blood glucose level associated with a sample present in the target area.

23. The system for detecting glucose in a biological sample according to Claim 22, wherein elimination of effect of uncertainty caused by temperature of the at least one light detector, which includes a preamplifier having a feedback resistor, is accomplished by calculating the standard deviation of the logarithm of the time dependent voltage signal with the processor.

24. The system for detecting glucose in a biological sample according to Claim 22, wherein the processor is configured to calculate a normalization factor $Q_i(C, T)$ based on the preamplifier output voltage $V_i(t)$ as a function of time and standard deviation σ according to the equation:

$$Q_i(C, T) = \frac{\sigma[\log V_i(t)]}{\sum_{i=1}^N \sigma[\log V_i(t)]}.$$

25. The system for detecting glucose in a biological sample according to Claim 22, wherein the processor is configured to calculate a ratio factor $Y_{ij}(C, T)$ based on the preamplifier output voltage $V_i(t)$ as a function of time and standard deviation σ according to the equation:

$$Y_{ij}(C, T) = \frac{\sigma[\log V_i(t)]}{\sigma[\log V_j(t)]}.$$

26. The system for detecting glucose in a biological sample according to Claim 22, further comprising an analog-to-digital convertor having a digitized voltage output.

27. The system for detecting glucose in a biological sample according to Claim 26, wherein the processor is configured to calculate a normalization factor $Q_i(C, T)$ based on the analog-to-digital convertor voltage output $\Delta(ADC)_i$, where σ is standard deviation according to the equation:

$$Q_i(C, T) = \frac{\sigma[\log \Delta(ADC)_i]}{\sum_{i=1}^N \sigma[\log \Delta(ADC)_i]}.$$

28. The system for detecting glucose in a biological sample according to Claim 26, wherein the processor is configured to calculate a ratio factor $Y_{ij}(C, T)$ based on the analog-to-digital convertor voltage output $\Delta(ADC)_i$, where σ is

standard deviation according to the equation: $Y_{ij}(C,T) = \frac{\sigma[\log \Delta(ADC)_i]}{\sigma[\log \Delta(ADC)_j]}$.

29. A method for detecting glucose in a biological sample, comprising:
utilizing at least one light source configured to strike a target area of a sample;

utilizing at least one light detector positioned to receive light from the at least one light source and to generate an output signal, having a time dependent current, which is indicative of the power of light detected;

receiving the output signal from the at least one light detector with a processor and based on the received output signal;

calculating the attenuation attributable to blood in a sample present in the target area with a signal-to-noise ratio of at least 20-to-1; and

determining a blood glucose level associated with a sample present in the target area based on the calculated attenuation with the processor.

30. The method for detecting glucose in a biological sample according to Claim 29, wherein the step of calculating the attenuation attributable to blood in a sample present in the target area is based at least in part on a standard deviation of a logarithm of the time dependent output current.

31. The method for detecting glucose in a biological sample according to Claim 29, further comprising calculating a peak-to-valley height of the change in light absorption due to blood in the sample in relationship to time with the processor, which is a function of a standard deviation of a logarithm of the time dependent

output current divided by a proportionality constant: $\Delta A = \frac{\sigma[A(t)]}{k} = \frac{\sigma[\log I_D(t)]}{k}$,

where $A(t)$ is the change in light absorption due to blood in the sample as a function of time, ΔA is the peak to valley height of $A(t)$ plot during the time interval of one heartbeat, $I_D(t)$ is the time dependent detector current, $\log I_D(t)$ is the logarithm of the time dependent detector current, k is the proportionality constant, $\sigma[A(t)]$ is the standard deviation of $A(t)$, and $\sigma[\log I_D(t)]$ represents the standard deviation of

$\log I_D(t)$.

32. A method for detecting glucose in a biological sample, comprising:
utilizing at least one light source configured to strike a target area of a sample;

utilizing at least one light detector positioned to receive light from the at least one light source and to generate an output signal, having a time dependent current, which is indicative of the power of light detected;

receiving the output signal from the at least one light detector with a processor and based on the received output signal;

calculating the attenuation attributable to blood in a sample present in the target area with a normalization factor with the processor; and

determining a blood glucose level associated with a sample present in the target area based on the calculated attenuation with the processor.

33. The method for detecting glucose in a biological sample according to Claim 32, further comprising calculating the normalization factor $Q_i(C, T)$ at a plurality of wavelengths with the processor, the i^{th} wavelength being represented by λ_i , based on the time dependent detector output signal $I_D(\lambda_i, t)$:

$$Q_i(C, T) = \frac{\sigma[\log I_D(\lambda_i, t)]}{\sum_{i=1}^N \sigma[\log I_D(\lambda_i, t)]}, \text{ where } \sigma[\log I_D(\lambda_i, t)] \text{ is standard deviation of the}$$

logarithm of the time dependent detector output signal $I_D(\lambda_i, t)$, t is time, C is the concentration of blood glucose, T is the temperature of the biological sample, and N is the total number of wavelengths employed.

34. The method for detecting glucose in a biological sample of Claim 33, further comprising calculating the blood glucose level C_{optical} with the processor, where $Q_i(C, T)$ is the normalization factor, $a_i(T)$ is the temperature dependent regression coefficient corresponding to wavelength λ_i , and N is number of

wavelengths employed, according to the equation: $C_{optical} = \sum_{i=1}^N a_i(T) Q_i(C, T)$.

35. The method for detecting glucose in a biological sample of Claim 34, further comprising extracting values of the temperature dependent regression coefficient $a_i(T)$ utilizing partial least squares regression with the processor.

36. The method for detecting glucose in a biological sample of Claim 33, further comprising calculating the blood glucose level $C_{optical}$ with the processor based on the temperature independent regression coefficient, where $Q_i(C, T)$ is the normalization factor, b_i is a sample temperature independent regression coefficient, η is a regression coefficient for sample temperature, C is a blood glucose concentration, T is temperature of the biological sample, and N is number of wavelengths employed, according to the equation: $C_{optical} = \sum_{i=1}^N b_i Q_i(C, T) + \eta T$.

37. The method for detecting glucose in a biological sample of Claim 36, further comprising extracting values of the sample temperature independent regression coefficient b_i and the regression coefficient for sample temperature η utilizing partial least squares regression with the processor.

38. A method for detecting glucose in a biological sample, comprising:
utilizing at least one light source configured to strike a target area of a sample;

utilizing at least one light detector positioned to receive light from the at least one light source and to generate an output signal, having a time dependent current, which is indicative of the power of light detected;

receiving the output signal from the at least one light detector with a processor;

calculating the attenuation attributable to blood in a sample present in the target area with a ratio factor based on the received output signal with the

processor; and

determining a blood glucose level associated with a sample present in the target area based on the calculated attenuation with the processor.

39. The method for detecting glucose in a biological sample according to Claim 38, further comprising calculating the ratio factor $Y_{ij}(C, T)$ at a plurality of wavelengths with the processor, where the i^{th} wavelength being represented by λ_i , the j^{th} wavelength being represented by λ_j , C is a blood glucose concentration, T is temperature of the biological sample, $I_D(\lambda_i, t)$ is the time dependent output current, $\sigma[\log I_D(\lambda_i, t)]$ is standard deviation of the logarithm of the time dependent output current, and t is time, according to the equation: $Y_{ij}(C, T) = \frac{\sigma[\log I_D(\lambda_i, t)]}{\sigma[\log I_D(\lambda_j, t)]}$.

40. The method for detecting glucose in a biological sample according to Claim 39, further comprising calculating the blood glucose level C_{optical} with the processor based on the optical measurement, $Y_{ij}(C, T)$ and $f_i(T)$, which is the temperature dependent regression coefficient corresponding to wavelength λ_i according to the equation:

$$C_{\text{optical}} = \sum_{i \neq j}^N f_i(T) Y_{ij}(C, T).$$

41. The method for detecting glucose in a biological sample according to Claim 40, further comprising extracting the values $f_i(T)$ of the temperature dependent regression coefficient corresponding to wavelength λ_i utilizing partial least squares regression with the processor.

42. The method for detecting glucose in a biological sample according to Claim 39, further comprising calculating blood glucose level C_{optical} with the

processor based on a temperature-independent regression coefficient h_i , a regression coefficient β for the temperature of the biological sample T , and the ratio factor $Y_{ij}(C, T)$ for a number of wavelengths N according to the equation:

$$C_{optical} = \sum_{i \neq j}^N h_i Y_{ij}(C, T) + \beta T .$$

43. The method for detecting glucose in a biological sample according to Claim 42, further comprising extracting values of the temperature-independent regression coefficient h_i and the regression coefficient β for the temperature of the biological sample T utilizing partial least squares regression with the processor.

44. A method for detecting glucose in a biological sample, comprising:
utilizing at least one light source configured to strike a target area of a sample;

utilizing at least one light detector positioned to receive light from the at least one light source and to generate an output signal, having a time dependent current, which is indicative of the power of light detected;

receiving the output signal from the at least one light detector with a processor and based on the received output signal;

calculating the attenuation attributable to blood in a sample present in the target area with a ratio factor with the processor;

eliminating effect of uncertainty caused by temperature dependent detector response of the at least one light detector with the processor; and

determining a blood glucose level associated with a sample present in the target area with the processor based on the calculated attenuation with the processor.

45. The method for detecting glucose in a biological sample according to Claim 44, wherein the eliminating effect of uncertainty caused by temperature dependent detector response of the at least one light detector with the processor further includes calculating the standard deviation of the logarithm of the time

dependent current with the processor.

46. The method for detecting glucose in a biological sample according to Claim 44, wherein the at least one light detector includes a preamplifier having a feedback resistor.

47. The method for detecting glucose in a biological sample according to Claim 46, further includes calculating at least one of a normalization factor $Q_i(C, T)$ based on the preamplifier output voltage $V_i(t)$ as a function of time and standard

deviation σ according to the equation: $Q_i(C, T) = \frac{\sigma[\log V_i(t)]}{\sum_{i=1}^N \sigma[\log V_i(t)]}$ or a ratio factor

$Y_{ij}(C, T)$ based on the preamplifier output voltage $V_i(t)$ as a function of time and standard deviation σ according to the equation:

$Y_{ij}(C, T) = \frac{\sigma[\log V_i(t)]}{\sigma[\log V_j(t)]}$ utilizing the processor.

48. The method for detecting glucose in a biological sample according to Claim 46, further comprising utilizing an analog-to-digital convertor having a digitized voltage output.

49. The method for detecting glucose in a biological sample according to Claim 48, further includes calculating at least one of a normalization factor $Q_i(C, T)$ based on the analog-to-digital convertor voltage output $\Delta(ADC)_i$, where σ is

standard deviation according to the equation: $Q_i(C, T) = \frac{\sigma[\log \Delta(ADC)_i]}{\sum_{i=1}^N \sigma[\log \Delta(ADC)_i]}$ or a

ratio factor $Y_{ij}(C, T)$ based on the analog-to-digital convertor voltage output

$\Delta(ADC)_i$, where σ is standard deviation according to the equation:

$$Y_{ij}(C, T) = \frac{\sigma[\log \Delta(ADC)_i]}{\sigma[\log \Delta(ADC)_j]} \text{ utilizing the processor.}$$

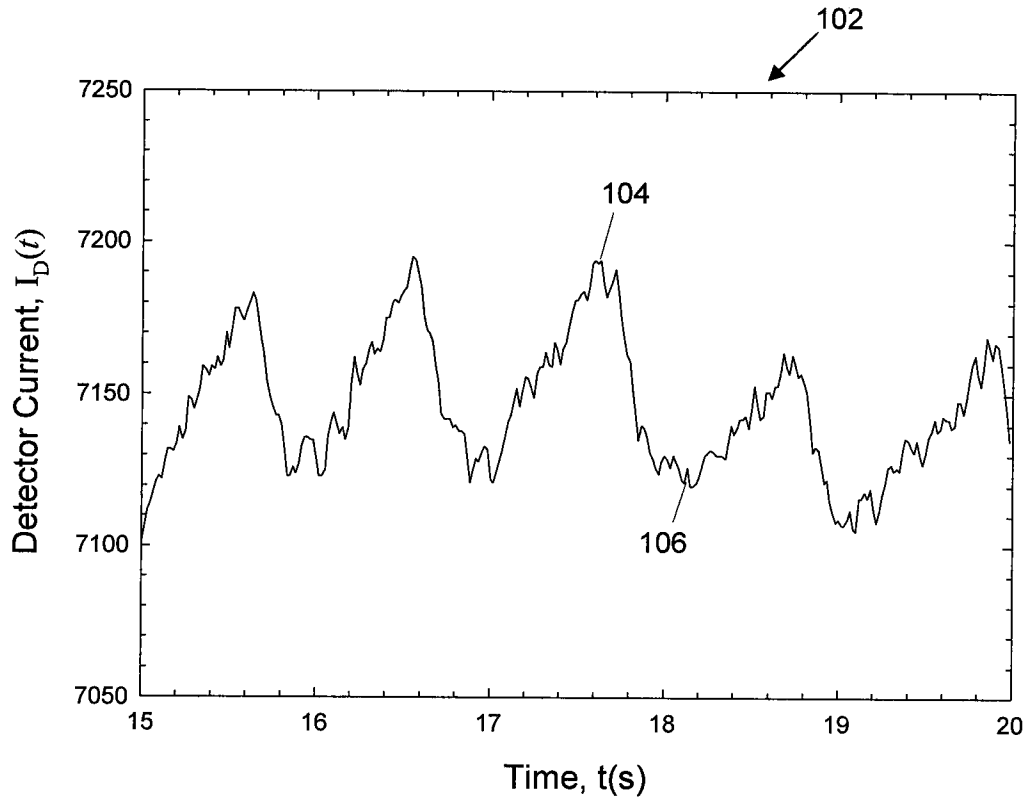
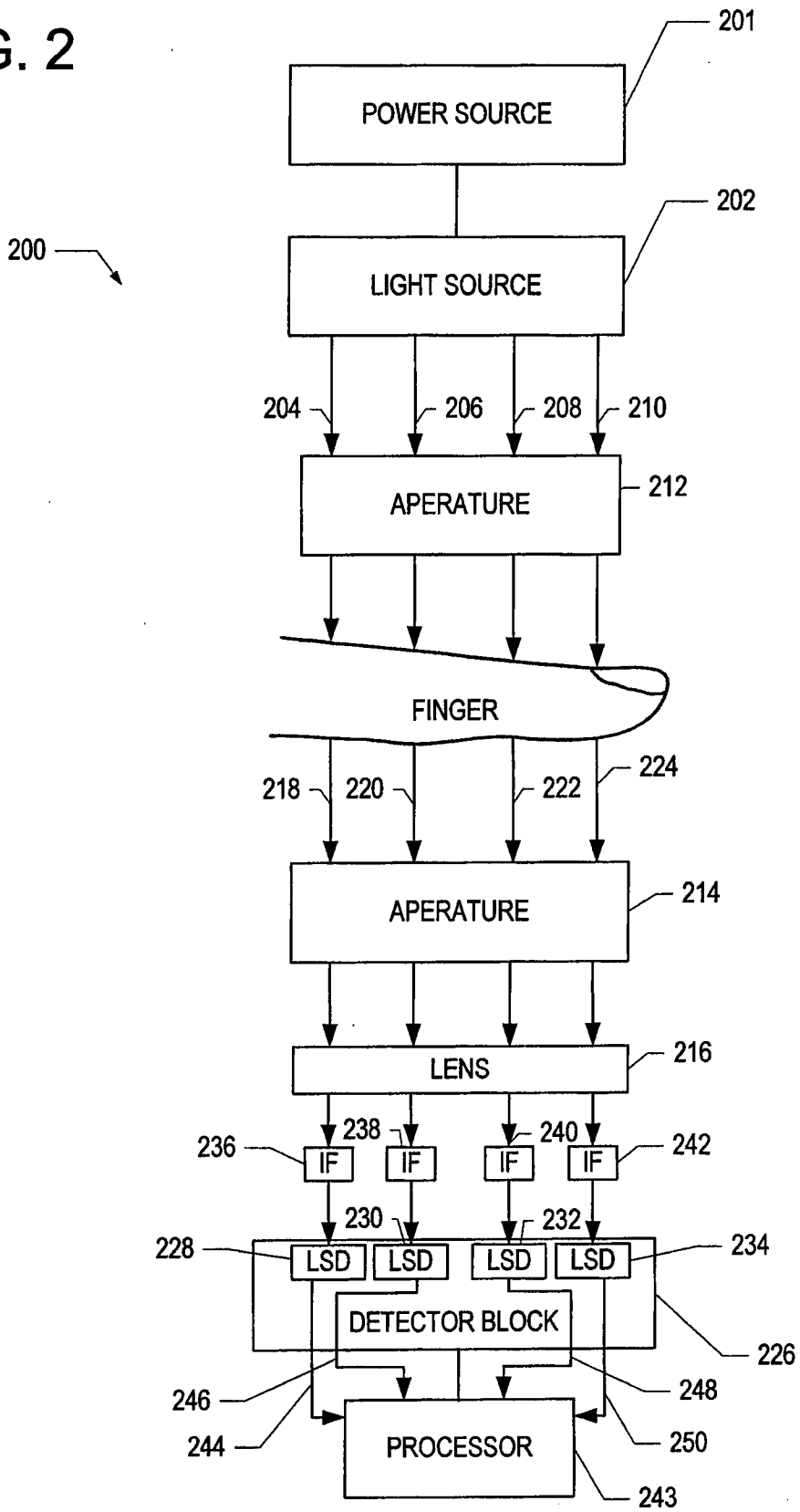


FIG. 1

FIG. 2



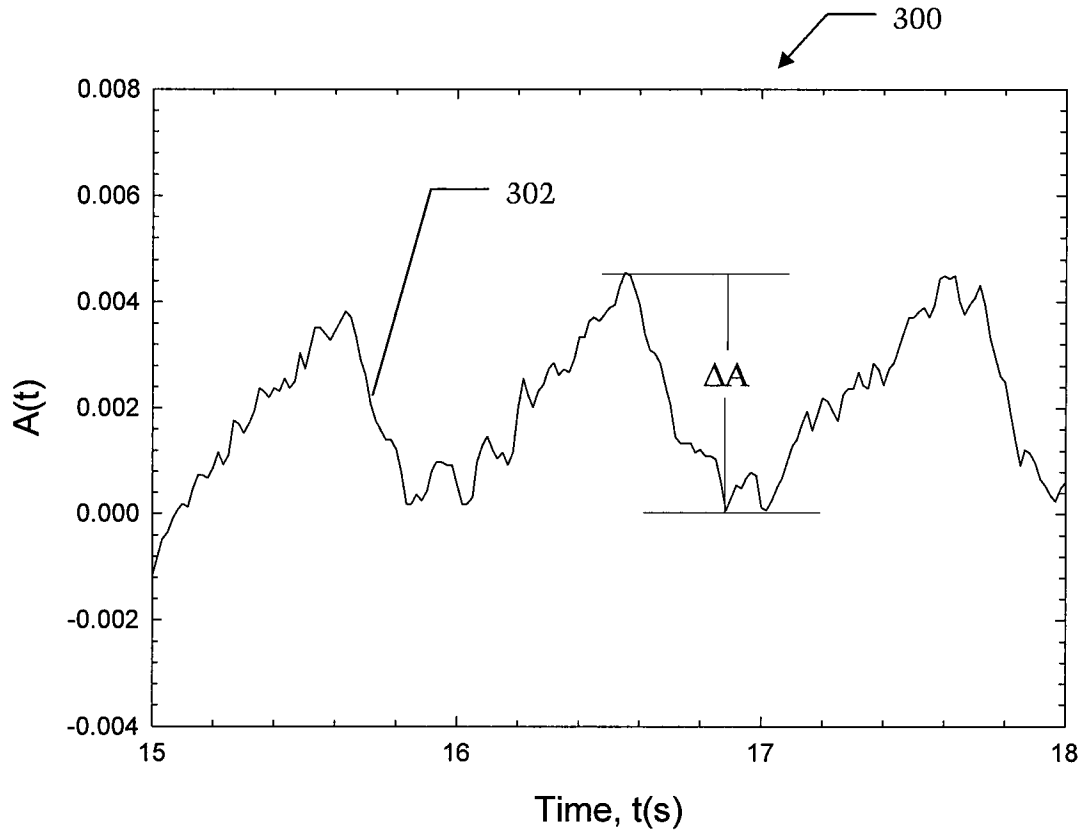


FIG. 3

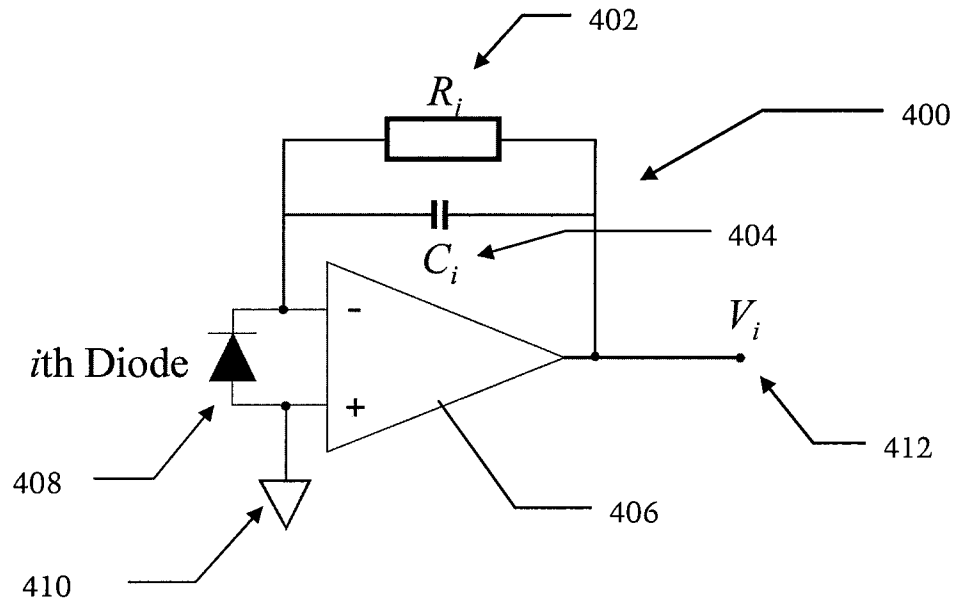


FIG. 4

INTERNATIONAL SEARCH REPORT

International application No.

PCT/US2009/040942

A. CLASSIFICATION OF SUBJECT MATTER IPC(8) - A61B 5/00 (2009.01) USPC - 600/322 According to International Patent Classification (IPC) or to both national classification and IPC		
B. FIELDS SEARCHED Minimum documentation searched (classification system followed by classification symbols) IPC(8) - A61B 5/00 (2009.01) USPC - 600/322 Documentation searched other than minimum documentation to the extent that such documents are included in the fields searched Electronic data base consulted during the international search (name of data base and, where practicable, search terms used) USPTO EAST System (US, USPG-PUB, EPO, DERWENT), MicroPatent		
C. DOCUMENTS CONSIDERED TO BE RELEVANT		
Category*	Citation of document, with indication, where appropriate, of the relevant passages	Relevant to claim No.
X -- Y	US 2005/0272987 A1 (KIANI-AZARBAYJANY et al) 08 December 2005 (08.12.2005) entire document	6, 12, 32, 38 ----- 1-5, 7-11, 13-31, 33-37, 39-49
Y	US 4,632,559 A (BRUNSTING) 30 December 1986 (30.12.1986) entire document	1-5, 29-31
Y	US 2002/0161289 A1 (HOPKINS II et al) 31 October 2002 (31.10.2002) entire document	18-28, 44-49
Y	US 2006/0058622 A1 (TEARNEY et al) 16 March 2006 (16.03.2006) entire document	3-5, 7-11, 13-17, 19, 20, 23-28, 30, 31, 33-37, 39-43, 45, 49
Y	US 4,781,195 A (MARTIN) 01 November 1988 (01.11.1988) entire document	18-28, 44-49
Y	US 6,337,564 B2 (MANZINI et al) 08 January 2002 (08.01.2002) entire document	24-28, 49
Y	WO 2008/039195 A1 (MILLS) 03 April 2008 (03.04.2008) entire document	5, 13-17, 31, 39-43
Y	WO 90/13092 A1 (GAUTHERIE et al) 01 November 1990 (01.11.1990) entire document	8-11, 14-17, 34-37, 40-43
Y	WO 93/06774 A1 (FOGT et al) 15 April 1993 (15.04.1993) entire document	7-11, 33-37
Y	US 2002/0010563 A1 (RATTEREE et al) 24 January 2002 (24.01.2002) entire document	10, 11, 16, 17, 36, 37, 42, 43
A	US 2004/0225206 A1 (KOUCHNIR) 11 November 2004 (11.11.2004) entire document	1-49
<input type="checkbox"/> Further documents are listed in the continuation of Box C. <input type="checkbox"/>		
* Special categories of cited documents: "A" document defining the general state of the art which is not considered to be of particular relevance "E" earlier application or patent but published on or after the international filing date "L" document which may throw doubts on priority claim(s) or which is cited to establish the publication date of another citation or other special reason (as specified) "O" document referring to an oral disclosure, use, exhibition or other means "P" document published prior to the international filing date but later than the priority date claimed "T" later document published after the international filing date or priority date and not in conflict with the application but cited to understand the principle or theory underlying the invention "X" document of particular relevance; the claimed invention cannot be considered novel or cannot be considered to involve an inventive step when the document is taken alone "Y" document of particular relevance; the claimed invention cannot be considered to involve an inventive step when the document is combined with one or more other such documents, such combination being obvious to a person skilled in the art "&" document member of the same patent family		
Date of the actual completion of the international search 03 June 2009		Date of mailing of the international search report 17 JUN 2009
Name and mailing address of the ISA/US Mail Stop PCT, Attn: ISA/US, Commissioner for Patents P.O. Box 1450, Alexandria, Virginia 22313-1450 Facsimile No. 571-273-3201		Authorized officer: Blaine R. Copenheaver PCT Helpdesk: 571-272-4300 PCT OSP: 571-272-7774

专利名称(译)	利用光谱数据分析进行非侵入式光学血糖检测的方法和系统		
公开(公告)号	EP2299900A1	公开(公告)日	2011-03-30
申请号	EP2009751083	申请日	2009-04-17
[标]申请(专利权)人(译)	密苏里大学		
申请(专利权)人(译)	密苏里大学的策展人		
当前申请(专利权)人(译)	密苏里大学的策展人		
[标]发明人	XU ZHI		
发明人	XU, ZHI		
IPC分类号	A61B5/00 A61B5/145 A61B5/1455		
CPC分类号	A61B5/14532 A61B5/1455 A61B5/6826 A61B5/6838 A61B5/7225 A61B2562/0238 A61B2576/00 G06F19/00		
优先权	61/055303 2008-05-22 US 61/089152 2008-08-15 US		
其他公开文献	EP2299900A4 EP2299900B1		
外部链接	Espacenet		

摘要(译)

公开了用于基于光谱数据非侵入地测量生物样品中的血糖水平的系统和方法。公开了多种技术用于改善光谱数据采集中的信噪比并计算可归因于样品中血液的光的衰减。所公开的技术包括 (1) 结合对数函数使用标准偏差运算, (2) 使用归一化因子, (3) 使用比率因子, (4) 考虑温度对各种系统组件 (例如电阻器) 的影响和 (5) 通过执行校准来考虑光检测器中的暗电流。