

(19) World Intellectual Property Organization
International Bureau



(43) International Publication Date
30 August 2001 (30.08.2001)

PCT

(10) International Publication Number
WO 01/62152 A1

(51) International Patent Classification⁷: A61B 7/04

(21) International Application Number: PCT/US01/06016

(22) International Filing Date: 23 February 2001 (23.02.2001)

(25) Filing Language: English

(26) Publication Language: English

(30) Priority Data:
60/184,375 23 February 2000 (23.02.2000) US

(71) Applicant (for all designated States except US): THE
JOHNS HOPKINS UNIVERSITY [US/US]; The Johns
Hopkins University, Applied Physics Laboratory, 11100
Johns Hopkins Road, Laurel, MD 20723-6099 (US).

(72) Inventors; and

(75) Inventors/Applicants (for US only): HAYEK, Carleton,

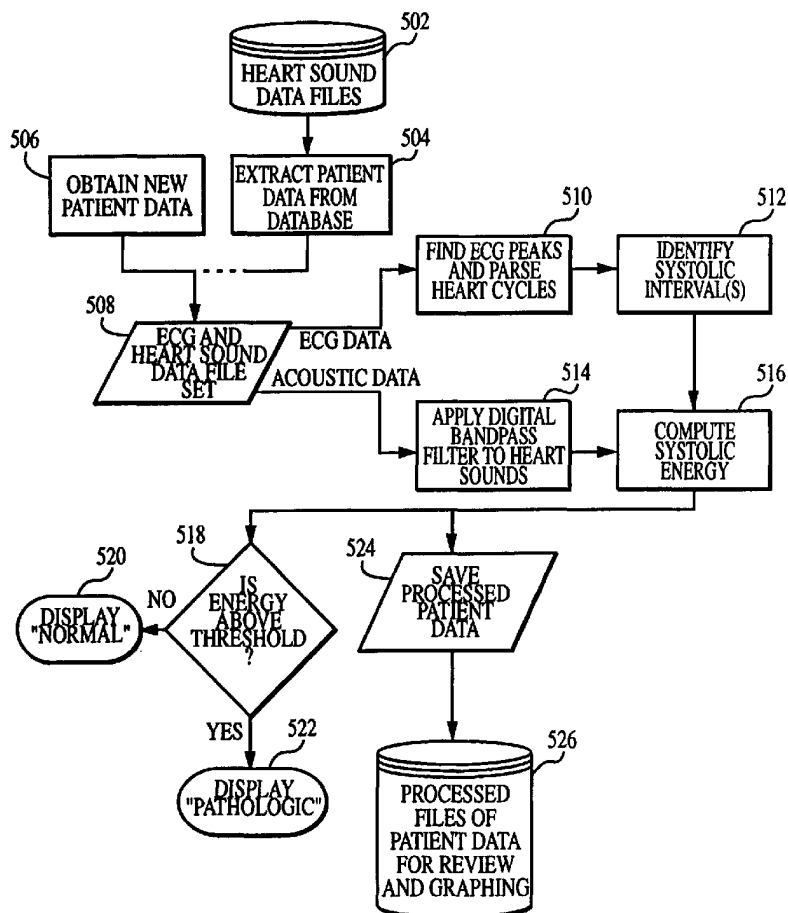
S. [US/US]; 3121 Evergreen Way, Ellicott City, MD 21043
(US). THOMPSON, W., Reid [US/US]; 707 Stoneleigh
Road, Baltimore, MD 21212 (US). LOMBARDO, Joseph,
S. [US/US]; 1080 Sun Valley Drive, Annapolis, MD 21401
(US). BLODGETT, Lisa, A. [US/US]; 4092 Arjay Circle,
Ellicott City, MD 21042 (US). COOPERMAN, Charles,
B. [US/US]; 13050 Deanmar Drive, Highland, MD 20777
(US).

(74) Agents: COOCH, Francis, A. et al.; The Johns Hopkins
University, Applied Physics Laboratory, 11100 Johns Hop-
kins Road, Laurel, MD 20723-6099 (US).

(81) Designated States (national): AE, AG, AL, AM, AT, AU,
AZ, BA, BB, BG, BR, BY, BZ, CA, CH, CN, CR, CU, CZ,
DE, DK, DM, DZ, EE, ES, FI, GB, GD, GE, GH, GM, HR,
HU, ID, IL, IN, IS, JP, KE, KG, KP, KR, KZ, LC, LK, LR,
LS, LT, LU, LV, MA, MD, MG, MK, MN, MW, MX, MZ,
NO, NZ, PL, PT, RO, RU, SD, SE, SG, SI, SK, SL, TJ, TM,
TR, TT, TZ, UA, UG, US, UZ, VN, YU, ZA, ZW.

[Continued on next page]

(54) Title: SYSTEM AND METHOD FOR DIAGNOSING PATHOLOGIC HEART CONDITIONS



(57) Abstract: A method of diagnosing pathologic heart conditions in which a time series of heart sounds is filtered and parsed into a sequence of individual heart cycles. A systolic interval as well as systolic sub-intervals are identified for each heart cycle. An energy value is computed for the systolic sub-interval of one or more heart cycles. The energy value computed is proportional to the energy level associated with the filtered series of heart sounds. A composite energy value is then computed for the systolic sub-intervals of one or more heart cycles and compared to a threshold level in order to distinguish between a normal heart and a pathologic heart. The system corresponding to the method is comprised of a portable computing device that manages data collection and stores data collected from new patients, and analyzes data.



WO 01/62152 A1



(84) Designated States (regional): ARIPO patent (GH, GM, KE, LS, MW, MZ, SD, SL, SZ, TZ, UG, ZW), Eurasian patent (AM, AZ, BY, KG, KZ, MD, RU, TJ, TM), European patent (AT, BE, CH, CY, DE, DK, ES, FI, FR, GB, GR, IE, IT, LU, MC, NL, PT, SE, TR), OAPI patent (BF, BJ, CF, CG, CI, CM, GA, GN, GW, ML, MR, NE, SN, TD, TG).

— *before the expiration of the time limit for amending the claims and to be republished in the event of receipt of amendments*

Published:

— *with international search report*

For two-letter codes and other abbreviations, refer to the "Guidance Notes on Codes and Abbreviations" appearing at the beginning of each regular issue of the PCT Gazette.

TITLE OF THE INVENTION

System and Method For Diagnosing Pathologic Heart Conditions

CROSS-REFERENCE TO RELATED APPLICATIONS

[0001] This application claims the benefit of prior filed co-pending U.S. Provisional Patent Application No. 60/184,375, filed on February 23, 2000.

BACKGROUND OF THE INVENTION

[0002] The present invention relates to a system and method for diagnosing pathologic heart conditions based upon heart sound data.

[0003] Studies have shown that primary care physicians frequently refer patients to cardiac specialists on the basis of suspicious heart sounds detected by traditional stethoscope auscultation, though a large percentage of these referrals are dismissed by cardiologists as having no pathologic condition. The costs, delays, worry, and administrative burden resulting from these needless referrals could be reduced if the cues that the specialist uses could be incorporated into an algorithm to automatically screen for pathologic heart sounds and murmurs.

[0004] Although attempts have been made to automate screening by auscultation, no device is currently available to fulfill this function. Multiple indicators of pathology are nonetheless available from heart sounds and can be elicited using certain signal processing techniques such as time-frequency analysis. At least one signal of pathology, the systolic murmur, can reliably be detected and classified as pathologic using a portable electrocardiogram and heart sound measurement unit combined with a time-frequency based algorithm. Time-frequency decomposition analysis holds promise for extending these results to detection and evaluation of other audible pathologic indicators.

[0005] In addition, an automatic screening algorithm would be useful for detecting pathologic heart murmurs in settings where a trained professional is not always available, such as pre sports participation physicals, and examinations performed in remote or underserved areas. Furthermore, automated analysis of digitized clinical information such as heart sounds could have major implications for health care delivery systems using telemedicine.

SUMMARY OF THE INVENTION

[0006] The present invention comprises a time-frequency murmur diagnostic device and method. The present invention combines a cardiologist's auscultation expertise, a large and growing set of comprehensive heart sound files, and digital signal processing algorithms.

[0007] A method of diagnosing pathologic heart conditions in which a time series of heart sounds is filtered and parsed into a sequence of individual heart cycles. A systolic interval as well as systolic sub-intervals are identified for each heart cycle. An energy value is computed for the systolic sub-interval of one or more heart cycles. The energy value computed is proportional to the energy level associated with the filtered series of heart sounds. A composite energy value is then computed for the systolic sub-intervals of one or more heart cycles and compared to a threshold level in order to distinguish between a normal heart and a pathologic heart.

[0008] The system for diagnosing pathologic heart conditions is comprised of a portable computing device that manages data collection and stores data collected from new patients, and analyzes data. Also included is a patient data collection unit, communicable with the portable computing device, for acquiring and digitizing electro-cardiogram (ECG) and heart sound data from a patient. The patient data collection unit is comprised of a pair of transducer contact microphones (primary and reference) for obtaining acoustic data. Also included is a pair of acoustic pre-amplifiers connected with the transducers. The pre-amplifiers have a passband of 20 Hz to 2 kHz and are used to condition acoustic data received from the contact microphones. Variable amplifiers connected with the acoustic pre-amplifiers variably amplify the conditioned acoustic data. Moreover, several electro-cardiogram (ECG) electrodes connected to an ECG amplifier record ECG data. The acoustic and the ECG data are passed to an analog to digital converter connected with the variable amplifiers and the ECG amplifier. The data is digitized and sent to the computing device for processing by a screening algorithm implemented by the steps described in the method above.

BRIEF DESCRIPTION OF THE DRAWINGS

[0009] **FIGURE 1** illustrates a plot of time-frequency analysis basis functions (wavelets) at various scales a .

[0010] FIGURE 2 illustrates a normal heart sound under time-frequency analysis.

[0011] FIGURE 3 illustrates a pathologic systolic heart murmur under time-frequency analysis.

[0012] FIGURE 4 illustrates a block diagram of system hardware.

[0013] FIGURE 5 illustrates a logic flow diagram of the processes used to diagnose pathologic heart conditions.

[0014] FIGURE 6 illustrates a logic flow diagram for optimizing the parameters of a time-frequency screening algorithm.

DESCRIPTION OF THE PREFERRED EMBODIMENTS

[0015] Before describing the present invention it is helpful to have a basis for the detection of pathological heart conditions. Analysis of a variety of heart sounds and corresponding diagnoses from the Johns Hopkins School of Medicine (JHU/SOM) has shown that time-frequency analysis is a versatile technique for detecting and classifying pathologic heart conditions. Of the available time-frequency techniques, wavelets are a useful method for representing heart sound frequency dynamics without creating cross term artifacts. Wavelet transforms can be computed for a continuous or discrete set of transform variables, depending on the priority for compactness (e.g., data compression applications) or ease of visual interpretation (e.g., pattern recognition applications), respectively. While compressibility is of interest for future applications, the relative ease of interpretation provided by continuous wavelet transforms (CWTs) suggested their use with the present invention. While wavelet transform analysis are illustrated herein as a preferred method for analyzing heart sound data, Fourier transform analysis may also be implemented by one of ordinary skill in the art in order to analyze heart sound data.

[0016] The CWT of a time series, $f(t)$, is defined as:

$$W(a,b) \equiv \int_{-\infty}^{\infty} f(t) \frac{1}{\sqrt{|a|}} \psi^* \left(\frac{t-b}{a} \right) dt \quad (\text{Equation 1})$$

where f and ψ are both square-integrable, a is a time scaling variable, and b is a time translation variable. This can also be written as a convolution:

$$W(a,b) = f(b) * \psi_{a,0}^*(-b)$$

where

$$\psi_{a,b}(t) \equiv \frac{1}{\sqrt{|a|}} \psi\left(\frac{t-b}{a}\right)$$

[0017] While it is possible to construct a ψ to yield an optimal peak (compact, high amplitude) in W for a given f , it would not be guaranteed to be optimal for a different time series g . Since the present invention is to be applied to a variety of heart sound signals, a custom wavelet was not implemented. Rather, the alternative was to draw ψ from a pool of wavelets designed to have various advantageous properties. Wavelet transformations known as second order “coiflets” were implemented with the present invention. It is important to note, however, that other wavelet transformations, including custom wavelets, may be implemented without departing from the spirit or scope of the present invention.

[0018] Coiflets of order 2 at various scales, a , are plotted in **FIGURE 1**. The frequency bandpass limits at each scale are given. Due to the equivalence of convolution in the time domain and multiplication in the frequency domain equation 1 shows that the Fourier transform of ψ will act as a bandpass filter of the signal f . The bandpass limits in **FIGURE 1** are the 6 dB passband frequency limits of the Fourier transform of φ .

Wavelets are constructed so as to maintain a constant ratio of center frequency to 3 dB bandwidth (Q), and have a finite duration. Their time-frequency resolution is inherent in their design and scale parameters. This is in contrast to Fourier decomposition, which uses the infinite time extent sine and cosine functions. Time resolution is not inherent in the Fourier transform, but is introduced by the user via windowing the data. Multiple Fourier transforms using distinct window intervals would be required to produce the constant Q decomposition offered by wavelets.

[0019] Example cases of a normal heart sound and a pathologic systolic heart murmur under wavelet transformation with coiflets are given in **FIGURES 2 and 3**. These figures demonstrate the clear relationship between an audio-based physician’s description used in auscultation and the visual presentation in time-frequency space. A “harsh pan-systolic murmur” is a diffuse area of broadscale (i.e., broadband) energy between S1 and S2. The broadband nature of the sound, which lasts throughout systole, is responsible for “harshness.” This straightforward representation of a pathologic indicator in time-scale space is a promising basis for pattern recognition.

[0020] Auscultation of pathologic murmurs is keyed to the following observations, according to a study of 222 consecutive patients referred to the Johns Hopkins Pediatric Cardiology clinic:

- a. pan-systolic nature of the murmur;
- b. intensity of the murmur > grade 3;
- c. point of maximal murmur intensity at the left upper sternal border (LUSB);
- d. harsh quality of the murmur;
- e. presence of an early or mid-systolic click; or, presence of an abnormal second heart sound.

[0021] The goal was to identify systolic murmurs that are indicative of heart defects, and exhibited one or more of the qualities (a)-(d) above. Algorithms may also be implemented to detect heart clicks, and split and abnormal S2 sounds for greater diagnostic utility.

[0022] A system block diagram of the present invention is illustrated in **FIGURE 4**. The system is comprised of two principal elements. One is a patient data collection unit **401**. The other is a computer processing device **420** including or having access to data storage devices. The patient data collection unit performs several functions including obtaining heart sound data via a set of contact microphones in the form of transducers. Two channels of acoustic data are obtained from a patient using a primary transducer **402** and a reference transducer **404**. In addition, a set of ECG electrodes **406** are used to obtain electro-cardiogram data from the patient.

[0023] The two contact microphones are each conditioned by a pre-amplifier **408** having a passband of 20 Hz to 2 kHz and variable gain amplification stage **410**. A set of headphones **412** connected to a headphone amplifier **414** can be used to listen to the acoustic data gathered from the primary transducer **402** and the reference transducer **404**. The ECG electrodes **406** feed into an ECG amplifier **416**. Outputs from the variable gain amplifiers **410** and the ECG amplifier **416** are fed to an analog-to-digital converter where the acoustic and ECG signals are digitized and recorded. A 12-bit National Instruments PCMCIA analog-to-digital converter is used, for instance, to collect and digitize data at a rate (e.g. 8.13 kHz) consistent with the highest data frequencies of interest.

[0024] Once the signals have been digitized and recorded, the patient data collection unit **401** forwards the data to a computer processing device **420**. The computer processing device **420** is typically a laptop computer (due to its compact transportable nature) having

adequate data storage capacity. However, the patient data collection unit **401** may be connected to other computer processing devices without departing from the spirit or scope of the present invention. A computer software program accesses heart sound data that has either been collected and forwarded by the patient data collection unit **401**, or is resident on the laptop computer **420**, or can be obtained from another source of heart sound data. The computer program applies a screening algorithm to the heart sound data in order to determine whether the heart sound data is to be classified as normal or pathologic. Each heart sound data file corresponds to a different patient. When the algorithm has operated on the heart sound data that has been input, the computer program will display the results on a display screen to the doctor, nurse, or technician operating the computer. Results indicating a pathologic condition will likely cause the patient to be referred to a cardiologist for further examination. Otherwise, a cardiologist referral can be deemed unnecessary.

[0025] **FIGURE 5** illustrates the flow of logic and processing that occurs in the various elements described in **FIGURE 4**. Digitized heart sound recordings were collected on patients in the Pediatric Cardiology Echocardiography Laboratory in the Johns Hopkins Outpatient Center. The recordings were stored in a Heart Sound database **502**. Recorded heart sounds could then be extracted **504** from the heart sound database **502** and placed into an ECG/heart sound data file set **508**. Alternatively, ECG and heart sound data could be obtained directly from a patient **506** and placed into the ECG/heart sound data file set **508**. The ECG/heart sound data file set **508** serves as the data to be fed to a screening algorithm. The purpose of the screening algorithm is to analyze the ECG data and heart sound data in order to detect any pathologic anomalies that may be present. Thus the system is to be used as a diagnostic aid. In order for the screening algorithm to be applied, the data set must first be manipulated. Initially, the ECG data and acoustic heart sound data are separated. The ECG data is used to parse the time series into a sequence of individual heart cycles via a process that identifies the ECG peaks **510**.

[0026] A systolic interval is then identified **512** for each heart cycle. The first and second heart sounds are identified either by reference to the heart cycle boundaries or acoustically using a passband of 25-140 Hz. In the acoustic method the times of the acoustic maxima define systole and diastole. Systole can then be divided into various sub-intervals including, but not limited to, the first half of the systolic interval, the total

systolic interval, the middle half of the systolic interval, and the last half of the systolic interval. A short interval to isolate the first and second heart sounds is factored in. Meanwhile, the acoustic heart sound data is passed through a digital bandpass filter 514, in this case a second order coiflet CWT transform. Next, a relative energy value (square of the wavelet coefficient expressed in dB) for a given wavelet scale and systolic subinterval is calculated 516.

[0027] A composite relative energy value across all included heart cycles is computed. The composite energy value can be computed in several manners. One way is to compute it as the median of the set of computed energy values for each systolic sub-interval of the included heart cycles. A second way is to compute it as the weighted average of the set of computed energy values for each systolic sub-interval of the included heart cycles. A third way is to compute it as the median relative energy across more than one of the heart cycle systolic sub-intervals. A fourth way is to compute it as the weighted average relative energy value across more than one of the heart cycle systolic sub-intervals. Those of ordinary skill in the art could readily devise other alternative ways in which to compute a composite energy value without departing from the spirit or scope of the present invention. The specific methods described herein are illustrative and not intended to limit the invention to a particular manner for computing a composite energy value.

[0028] A decision 518 between healthy 520 and pathologic 522 hearts is made on the basis of the calculated composite relative energy value being above or below a certain threshold. A patient's processed data is saved 524 for optional further technical analysis, and added to a database 526. Among the various uses of the database 526 are reviewing and improving the algorithm's performance.

[0029] FIGURE 6 illustrates a logic flow diagram for optimizing the parameters of a time-frequency screening algorithm. The diagnostic system and processes described above were applied to a set of heart sounds. A set of known pathologic heart sounds and a set of known normal heart sounds taken in the first half of each month over a period of time were extracted from the heart sound database 602. Files from the latter half of the months were preserved as "new" data to test algorithm performance after algorithm tuning. Each heart sound data file corresponds to a different patient. The screening algorithm is applied 604 to a patient's heart sound data file and the results are recorded 606. Performance of the screening algorithm over all tested patients for a given threshold

was measured by the ratio of called positives to true positives, within a universe of known positives (the “sensitivity”), paired with the ratio of called negatives to true negatives, within a universe of known negatives (the “specificity”). Sensitivity vs. specificity curves for a variety of thresholds and systolic intervals were plotted 607. These curves are called “Receiver Operating Characteristic” or “ROC” curves.

[0030] The test is then repeated 608 on the same heart sound data using a different set of wavelet parameters, specifically, the scale (a) and the systolic sub-interval (SsI) are varied. This is done for numerous combinations of scale and systolic sub-interval. Once the heart sound data for all patients has been subjected to the screening algorithm and results have been recorded for the numerous scale and systolic sub-interval variations, the program compares the ROC curves for each wavelet scale/systolic sub-interval combination 610. The area beneath each ROC curve is computed and the ROC curve having an area closest to “1” is deemed to have the best results. The parameters for that ROC curve are then chosen as the optimal parameters to use with the screening algorithm 612.

[0031] The ROC curves, in the test case, indicated that the most optimal algorithm settings used a wavelet scale, a , of 16 and was applied to the middle half systolic sub-interval. The best results were typically obtained using a systolic interval centered on systole meaning that the midpoint of the systolic interval and the midpoint of the systolic sub-interval are the same. Those of ordinary skill in the art could readily adjust the algorithm for different wavelet scales and systolic sub-intervals without departing from the spirit or scope of the present invention.

[0032] Using these optimum parameters, the algorithm was then applied to an expanded data set that included both half months plus additional data collected while the previously described analysis was in progress. Of 143 cases tested, 95 were from normal hearts (with and without innocent murmurs) and 48 were from hearts with pathology (i.e., murmur grade ≥ 2). Sensitivity and specificity ratios of 96% were achieved.

[0033] There are several advantages realized by the present invention. An automatic screening algorithm would be useful for detecting pathologic heart murmurs in settings where a trained professional is not always available, such as pre sports participation physicals, and examinations performed in remote or underserved areas. Furthermore,

automated analysis of digitized clinical information such as heart sounds could have major implications for health care delivery systems using telemedicine.

[0034] Automated analysis of heart sound data could also be used by cardiologists to quantitatively follow and document changes in severity of certain conditions such as aortic stenosis and mitral regurgitation, in which changes in murmur characteristics are known to correlate with changes in disease severity. In addition, since data for analysis could theoretically be collected using any electronic stethoscope, home care nurses or nurses aides could make inexpensive in-home bedside recordings that could be analyzed later to monitor changes in certain conditions as reflected in heart sounds.

[0035] It is to be understood that the present invention illustrated herein is readily implementable by those of ordinary skill in the art as a computer program product having a medium with computer program(s) embodied thereon. The computer program product is capable of being loaded and executed on the appropriate computer processing device(s) in order to carry out the method or process steps described. Appropriate computer program code in combination with hardware implements many of the elements of the present invention. This computer code is typically stored on removable storage media. This removable storage media includes, but is not limited to, a diskette, standard CD, pocket CD, zip disk, or mini zip disk. Additionally, the computer program code can be transferred to the appropriate hardware over some type of data network.

[0036] The present invention has been described, in part, with reference to flowcharts or logic flow diagrams. It will be understood that each block of the flowchart diagrams or logic flow diagrams, and combinations of blocks in the flowchart diagrams or logic flow diagrams, can be implemented by computer program instructions.

[0037] These computer program instructions may be loaded onto a general purpose computer, special purpose computer, or other programmable data processing apparatus to produce a machine, such that the instructions which execute on the computer or other programmable data processing apparatus create means for implementing the functions specified in the flowchart block or blocks or logic flow diagrams.

[0038] These computer program instructions may also be stored in a computer-readable memory that can direct a computer or other programmable data processing apparatus to function in a particular manner, such that the instructions stored in the computer-readable memory produce an article of manufacture including instruction means which implement

the function specified in the flowchart blocks or logic flow diagrams. The computer program instructions may also be loaded onto a computer or other programmable data processing apparatus to cause a series of operational steps to be performed on the computer or other programmable apparatus to produce a computer implemented process such that the instructions which execute on the computer or other programmable apparatus provide steps for implementing the functions specified in the flowchart blocks or logic flow diagrams.

[0039] Accordingly, block(s) of flowchart diagrams and/or logic flow diagrams support combinations of means for performing the specified functions, combinations of steps for performing the specified functions and program instruction means for performing the specified functions. It will also be understood that each block of flowchart diagrams and/or logic flow diagrams, and combinations of blocks in flowchart diagrams and/or logic flow diagrams can be implemented by special purpose hardware-based computer systems that perform the specified functions or steps, or combinations of special purpose hardware and computer instructions.

[0040] In the following claims, any means-plus-function clauses are intended to cover the structures described herein as performing the recited function and not only structural equivalents but also equivalent structures. Therefore, it is to be understood that the foregoing is illustrative of the present invention and is not to be construed as limited to the specific embodiments disclosed, and that modifications to the disclosed embodiments, as well as other embodiments, are intended to be included within the scope of the appended claims. The invention is defined by the following claims, with equivalents of the claims to be included therein.

CLAIMS:

- 1 1. A method of diagnosing pathologic heart conditions comprising:
2 identifying a systolic sub-interval of a systolic interval for a plurality of heart
3 cycles in a sequence of heart cycles;
4 computing an energy value for each systolic sub-interval;
5 computing a composite energy value using the computed energy values for each
6 systolic sub-interval; and
7 comparing the composite energy value to a threshold level in order to distinguish
8 between a normal heart and a pathologic heart.

- 1 2. A method of diagnosing pathologic heart conditions comprising:
2 filtering a time series of heart sounds;
3 parsing the time series of heart sounds into a sequence of individual heart cycles;
4 identifying a systolic interval for each heart cycle;
5 identifying a systolic sub-interval of the systolic interval for each heart cycle;
6 computing an energy value for the systolic sub-interval of one or more heart
7 cycles, said energy value being proportional to the energy level associated with the filtered
8 series of heart sounds;
9 computing a composite energy value for the systolic sub-intervals of one or more
10 heart cycles; and
11 comparing the composite energy value to a threshold level in order to distinguish
12 between a normal heart and a pathologic heart.

- 1 3. The method of claim 2 wherein said parsing step uses electro-cardiogram (ECG)
2 data in order to transform a time series of heart sounds into a sequence of individual heart
3 cycles.

- 1 4. The method of claim 2 wherein said parsing step uses acoustic heart sounds
2 obtained directly from a patient in order to transform a time series of heart sounds into a
3 sequence of individual heart cycles.

- 1 5. The method of claim 2 wherein identifying a systolic interval for each heart cycle
2 is achieved by identifying pulses on an electro-cardiogram (ECG).
- 1 6. The method of claim 2 wherein identifying a systolic interval for each heart cycle
2 is achieved by acoustically locating a first and a second heart sound using a bandpass
3 filter, said bandpass filter applied to the time series of heart sounds.
- 1 7. The method of claim 2 wherein filtering the time series of heart sounds is achieved
2 using a bandpass filter.
- 1 8. The method of claim 2 wherein filtering the time series of heart sounds is achieved
2 using time-frequency transforms.
- 1 9. The method of claim 8 wherein the time-frequency transform is a wavelet
2 transform.
- 1 10. The method of claim 8 wherein the time-frequency transform is a Fourier
2 transform.
- 1 11. The method of claim 2 wherein the systolic sub-interval is centered in systole.
- 1 12. The method of claim 2 wherein the systolic sub-interval is centered in systole and
2 is half of the systolic interval.
- 1 13. The method of claim 2 wherein the composite energy value is computed as the
2 median of the computed energy values for more than one of the systolic sub-intervals of
3 the heart cycles.
- 1 14. The method of claim 2 wherein the composite energy value is computed as the
2 weighted average of more than one of the computed energy values for the systolic sub-
3 intervals of the heart cycles.

1 15. The method of claim 2 wherein the composite energy value is computed as the
2 median across more than one of the heart cycle systolic sub-intervals of a quantity
3 proportional to energy.

1 16. The method of claim 2 wherein the composite energy value is computed as the
2 weighted average energy value across more than one of the heart cycle systolic sub-
3 intervals.

1 17. The method of claim 14 wherein the ratio of energies between systolic interval and
2 diastolic interval are also used to distinguish a normal heart from a pathologic heart by
3 prior statistical characterization of the ratio of energies between systolic interval and
4 diastolic interval for normal and pathologic hearts.

1 18. The method of claim 14 wherein the standard deviation of the energy in a systolic
2 interval is also used to distinguish a normal heart from a pathologic heart by prior
3 statistical characterization of the standard deviation of the energy in a systolic interval for
4 normal and pathologic hearts.

1 19. A system for diagnosing pathologic heart conditions comprising:
2 a portable computing device for:
3 managing data collection from new patients;
4 storing data; and
5 analyzing data,
6 and
7 a patient data collection unit for acquiring electro-cardiogram (ECG) and heart
8 sound data from a patient, said patient data collection unit operatively connected with said
9 portable computing device.

1 20. The system of claim 17 wherein the patient data collection unit comprises:
2 a contact microphone for obtaining acoustic data;

3 an acoustic pre-amplifier operatively connected with said contact microphone, said
4 pre-amplifier having a passband of 20 Hz to 2 kHz used to condition acoustic data
5 received from said contact microphone;
6 a variable amplifier operatively connected with said acoustic pre-amplifier for
7 variably amplifying the conditioned acoustic data;
8 an electro-cardiogram (ECG) electrode;
9 an ECG amplifier operatively connected with said electro-cardiogram (ECG)
10 electrode;
11 an analog to digital converter operatively connected with said variable amplifier
12 and said ECG amplifier, said analog to digital converter for digitizing acoustic data and
13 electro-cardiogram (ECG) data.

1 21. A method of optimizing a heart auscultation screening algorithm comprising:
2 applying a heart auscultation screening time-frequency transform algorithm to a set
3 of data, wherein:
4 said algorithm includes wavelets and bandpass filters;
5 said data includes heart sounds known to be normal and heart sounds known to
6 be pathologic;
7 said heart sounds being characterized by a systolic interval;
8 said systolic interval capable of being divided into systolic sub-intervals,
9 recording the results of said heart auscultation screening algorithm for a variety of
10 time-frequency transform parameters and systolic sub-intervals; and
11 determining an optimal combination of wavelet scale parameter and systolic sub-
12 interval for use with said heart auscultation screening wavelet algorithm based on
13 sensitivity and specificity measurements.

1 22. A computer readable medium whose contents cause a computer based system to
2 determine patient heart pathology by:
3 identifying a systolic sub-interval of a systolic interval for a plurality of heart
4 cycles in a sequence of heart cycles;
5 computing an energy value for each systolic sub-interval;

6 computing a composite energy value using the computed energy values for each
7 systolic sub-interval; and
8 comparing the composite energy value to a threshold level in order to distinguish
9 between a normal heart and a pathologic heart.

1 23. A computer readable medium whose contents cause a computer based system to
2 determine patient heart pathology by:

3 filtering a time series of heart sounds;

4 parsing the time series of heart sounds into a sequence of individual heart cycles;

5 identifying a systolic interval for each heart cycle;

6 identifying a systolic sub-interval of the systolic interval for each heart cycle;

7 computing an energy value for the systolic sub-interval of one or more heart

8 cycles, said energy value being proportional to the energy level associated with the filtered
9 series of heart sounds;

10 computing a composite energy value for the systolic sub-intervals of one or more
11 heart cycles; and

12 comparing the composite energy value to a threshold level in order to distinguish
13 between a normal heart and a pathologic heart.

1 24. A computer readable medium whose contents transform a computer based system
2 into a heart pathology detection system, comprising:

3 a patient data collection subsystem for acquiring electro-cardiogram (ECG) and
4 heart sound data from a patient;

5 a data management subsystem for managing electro-cardiogram (ECG) and heart
6 sound data;

7 a data analysis subsystem for processing and analyzing electro-cardiogram (ECG)
8 and heart sound data; and

9 a data storage subsystem for storing processed electro-cardiogram (ECG) and heart
10 sound data.

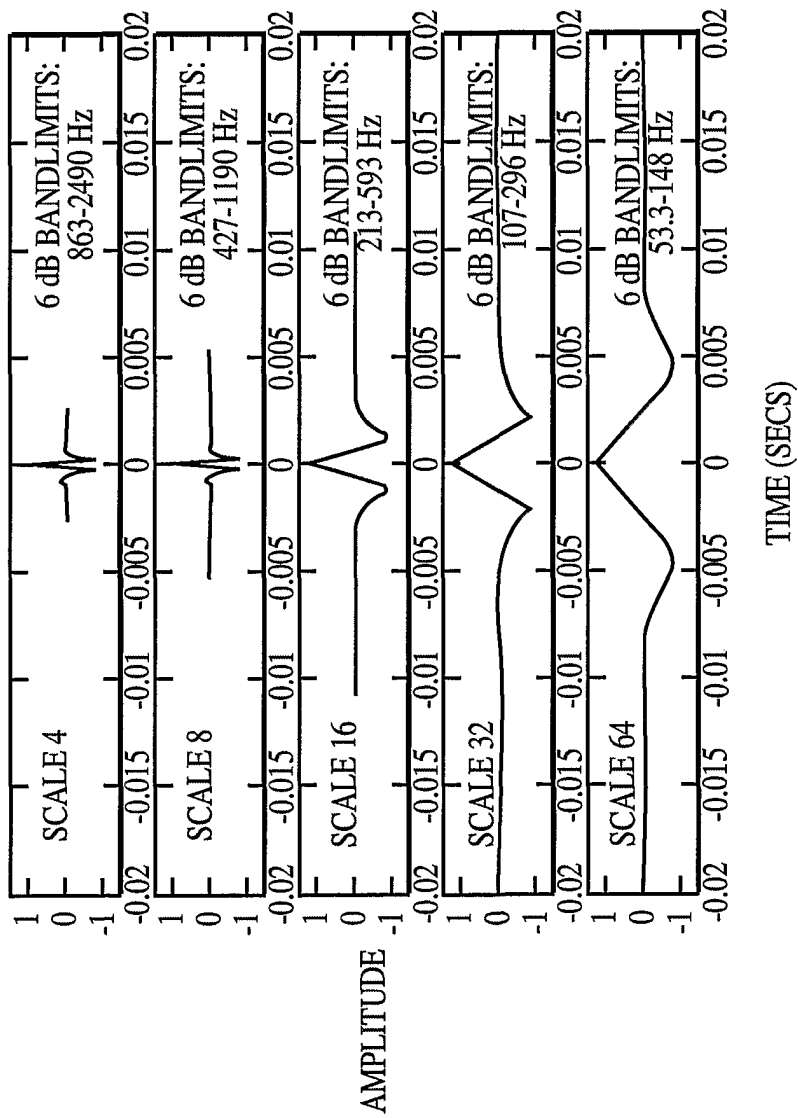
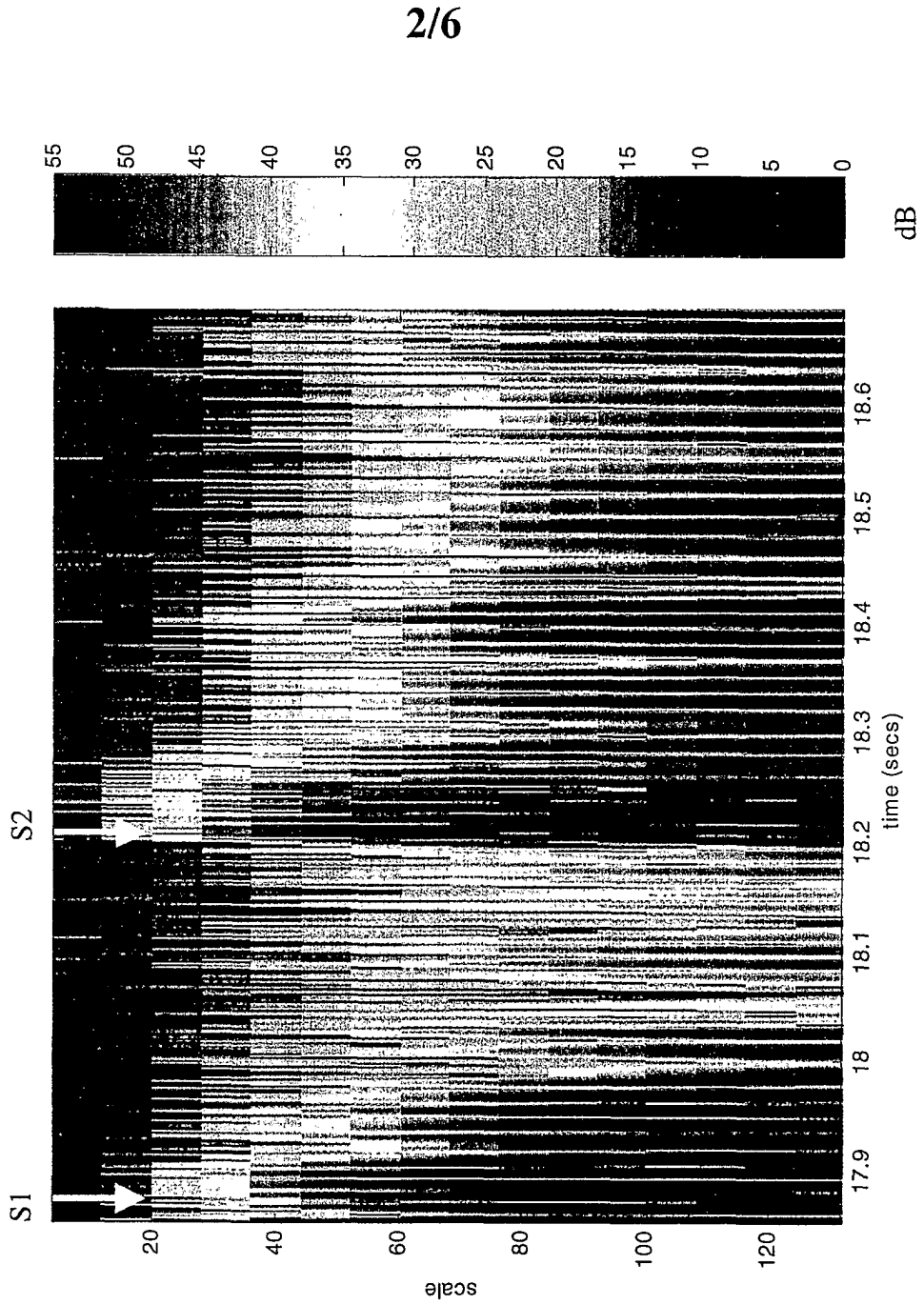


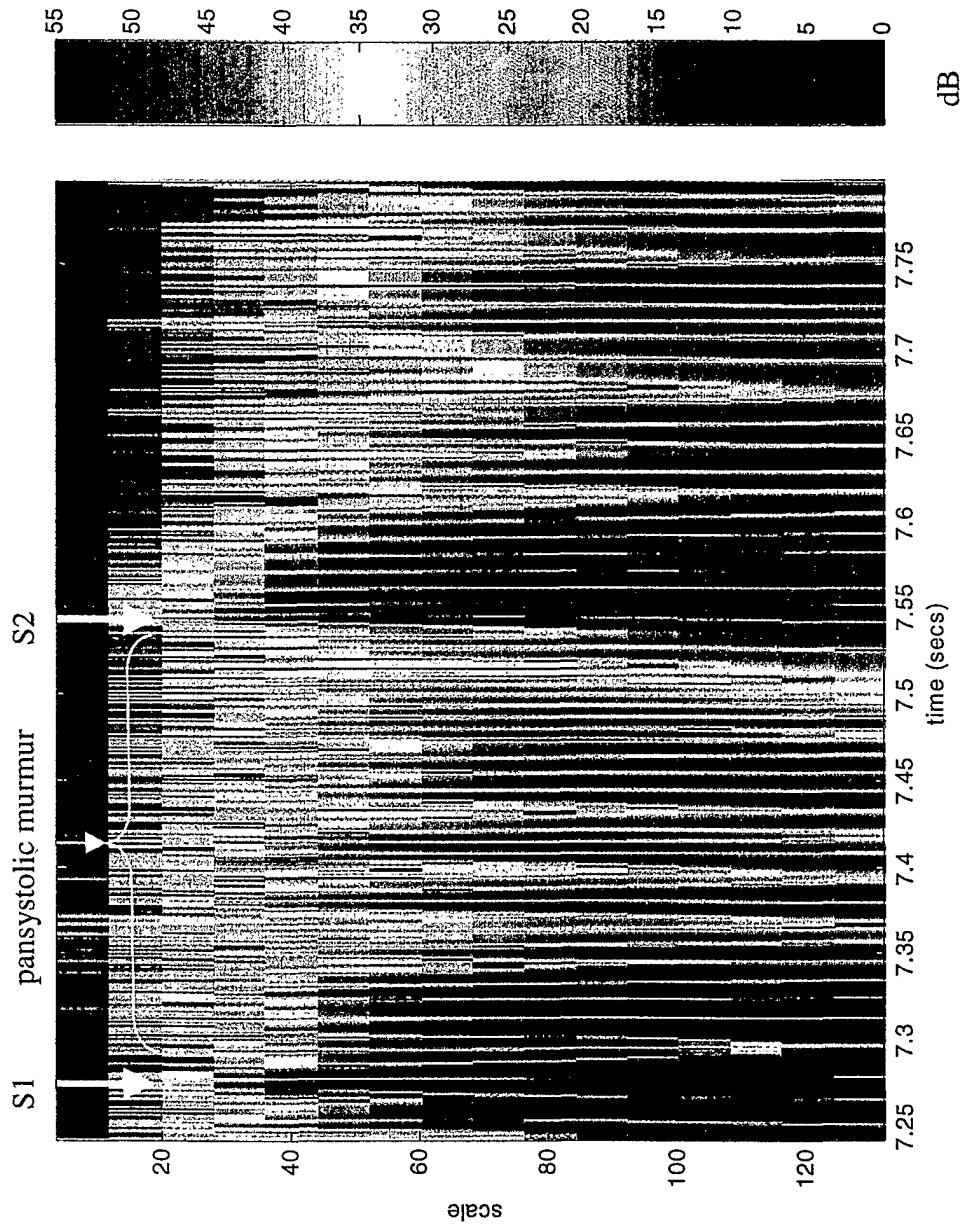
FIG. 1

FIG. 2



3/6

FIG. 3



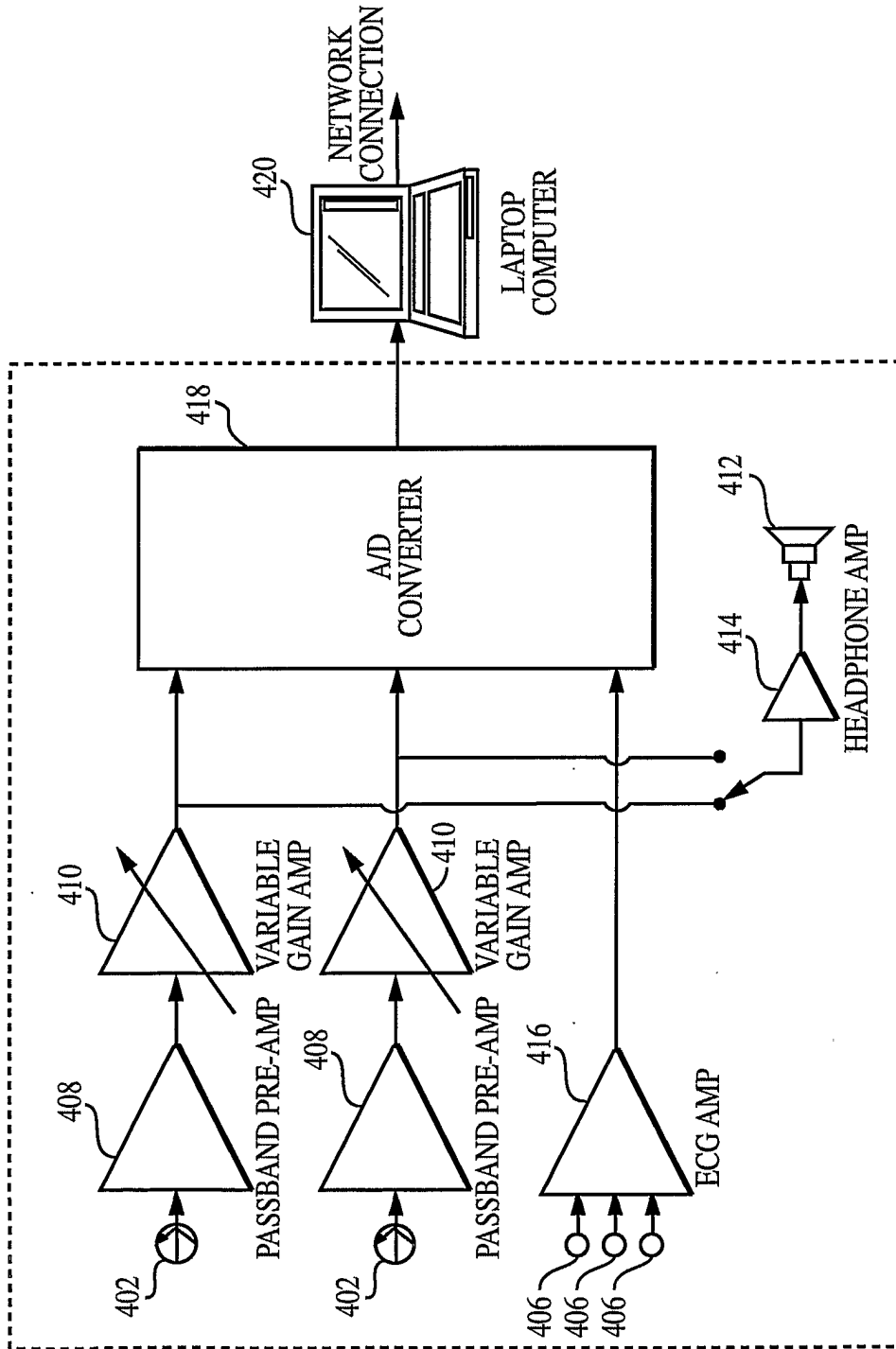


FIG. 4

5/6

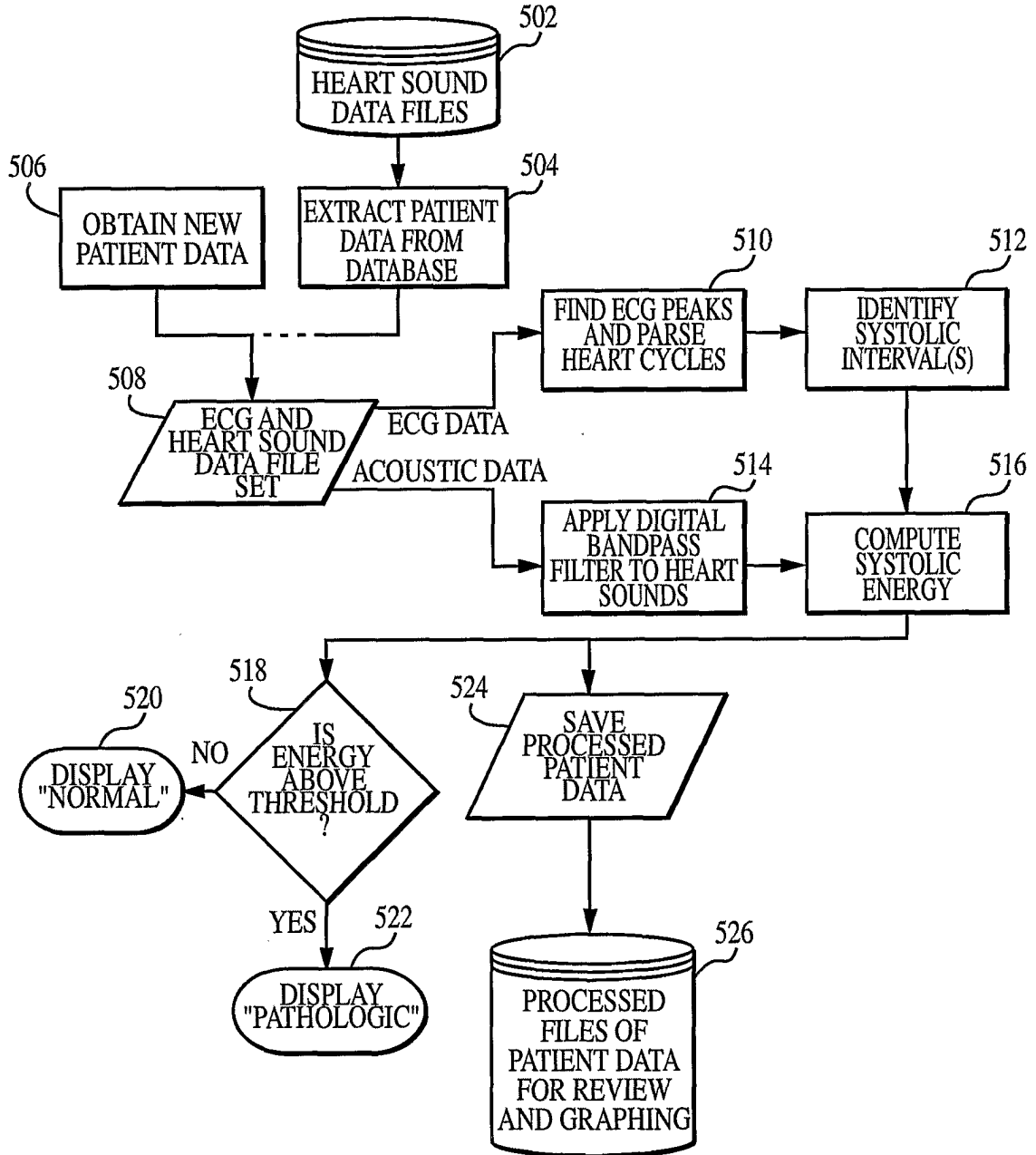


FIG. 5

6/6

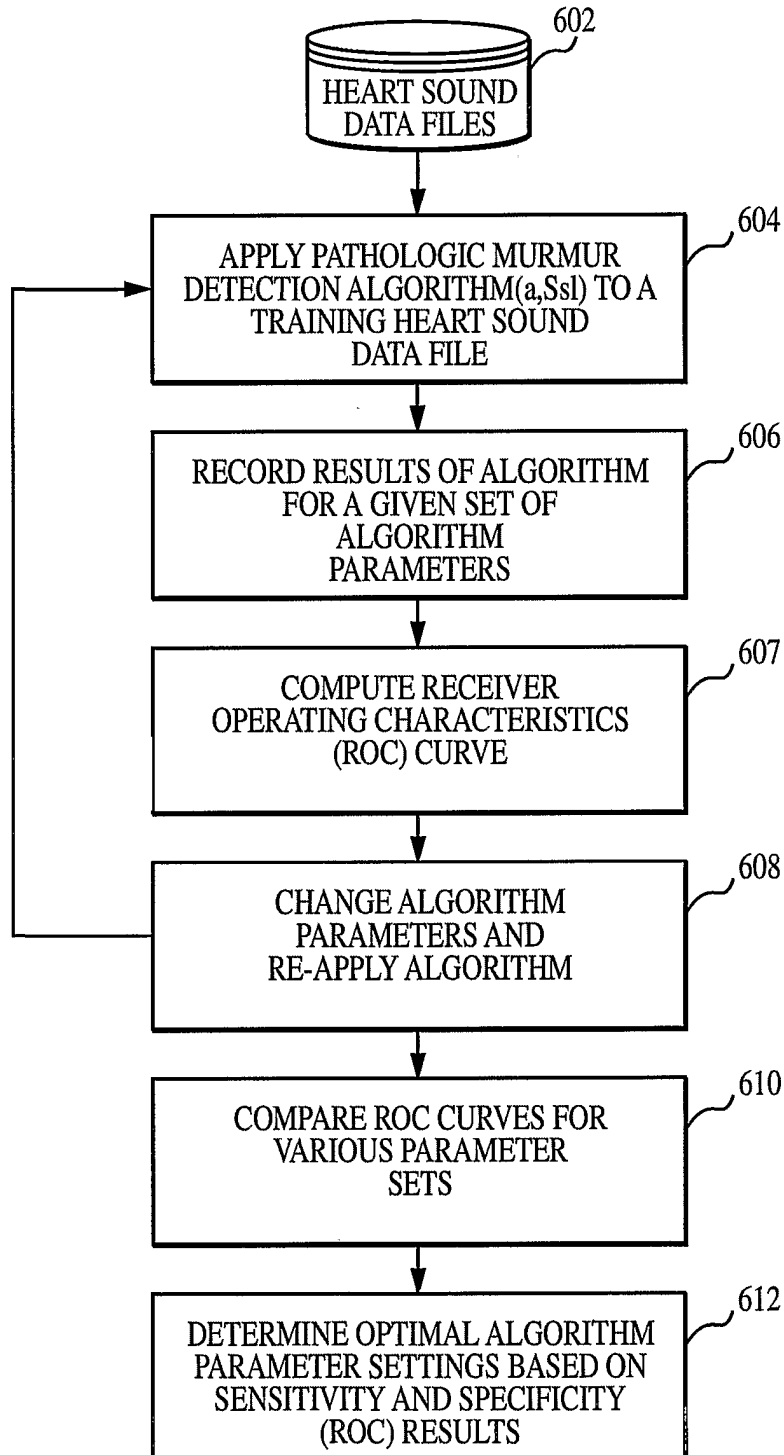


FIG. 6

INTERNATIONAL SEARCH REPORT

national Application No
PCT/US 01/06016

A. CLASSIFICATION OF SUBJECT MATTER
IPC 7 A61B7/04

According to International Patent Classification (IPC) or to both national classification and IPC

B. FIELDS SEARCHED

Minimum documentation searched (classification system followed by classification symbols)
IPC 7 A61B G06F

Documentation searched other than minimum documentation to the extent that such documents are included in the fields searched

Electronic data base consulted during the international search (name of data base and, where practical, search terms used)

EPO-Internal, WPI Data, PAJ

C. DOCUMENTS CONSIDERED TO BE RELEVANT

Category °	Citation of document, with indication, where appropriate, of the relevant passages	Relevant to claim No.
Y A	WO 98 20792 A (UNIV TECHNOLOGY CORP) 22 May 1998 (1998-05-22) page 1, line 4 -page 3, line 3 page 3, line 18 - line 31 page 4, line 22 -page 7, line 8; tables 1-7	1, 2, 19, 22 3-12, 18, 20-24
Y A	US 5 218 969 A (BREDESEN MARK S ET AL) 15 June 1993 (1993-06-15) abstract column 3, line 37 -column 4, line 43 column 11, line 16 -column 14, line 27; tables 2,5	1, 2, 19, 22 17, 18
	--- -/--	

Further documents are listed in the continuation of box C.

Patent family members are listed in annex.

° Special categories of cited documents :

- *A* document defining the general state of the art which is not considered to be of particular relevance
- *E* earlier document but published on or after the international filing date
- *L* document which may throw doubts on priority claim(s) or which is cited to establish the publication date of another citation or other special reason (as specified)
- *O* document referring to an oral disclosure, use, exhibition or other means
- *P* document published prior to the international filing date but later than the priority date claimed

- *T* later document published after the international filing date or priority date and not in conflict with the application but cited to understand the principle or theory underlying the invention
- *X* document of particular relevance; the claimed invention cannot be considered novel or cannot be considered to involve an inventive step when the document is taken alone
- *Y* document of particular relevance; the claimed invention cannot be considered to involve an inventive step when the document is combined with one or more other such documents, such combination being obvious to a person skilled in the art.
- *&* document member of the same patent family

Date of the actual completion of the international search

18 July 2001

Date of mailing of the international search report

24/07/2001

Name and mailing address of the ISA

European Patent Office, P.B. 5818 Patentlaan 2
NL - 2280 HV Rijswijk
Tel. (+31-70) 340-2040, Tx. 31 651 epo nl,
Fax: (+31-70) 340-3016

Authorized officer

Weih, J

INTERNATIONAL SEARCH REPORT

International Application No
PCT/US 01/06016

C.(Continuation) DOCUMENTS CONSIDERED TO BE RELEVANT		
Category *	Citation of document, with indication, where appropriate, of the relevant passages	Relevant to claim No.
A	<p>US 5 025 809 A (JOHNSON KEITH H ET AL) 25 June 1991 (1991-06-25) column 3, line 51 -column 4, line 65; tables 1-4</p> <p style="text-align: center;">-----</p>	<p>1-5, 19, 24</p>

INTERNATIONAL SEARCH REPORT

International Application No
PCT/US 01/06016

Information on patent family members

Patent document cited in search report	Publication date	Patent family member(s)	Publication date
WO 9820792 A	22-05-1998	US 5957866 A AU 5447998 A	28-09-1999 03-06-1998
US 5218969 A	15-06-1993	US 5010889 A WO 9409702 A AU 3126893 A US 5213108 A EP 0397787 A JP 3503962 T MX 170752 B WO 8906932 A	30-04-1991 11-05-1994 24-05-1994 25-05-1993 22-11-1990 05-09-1991 13-09-1993 10-08-1989
US 5025809 A	25-06-1991	NONE	

专利名称(译)	用于诊断病理性心脏病的系统和方法		
公开(公告)号	EP1257204A1	公开(公告)日	2002-11-20
申请号	EP2001916219	申请日	2001-02-23
[标]申请(专利权)人(译)	约翰霍普金斯大学		
申请(专利权)人(译)	约翰·霍普金斯大学		
当前申请(专利权)人(译)	约翰·霍普金斯大学		
[标]发明人	HAYEK CARLETON S THOMPSON W REID LOMBARDO JOSEPH S BLODGETT LISA A COOPERMAN CHARLES B		
发明人	HAYEK, CARLETON, S. THOMPSON, W., REID LOMBARDO, JOSEPH, S. BLODGETT, LISA, A. COOPERMAN, CHARLES, B.		
IPC分类号	A61B5/00 A61B5/0245 A61B7/04		
CPC分类号	A61B5/0245 A61B5/0002 A61B5/726 A61B7/04		
代理机构(译)	KNAPP , THOMAS		
优先权	60/184375 2000-02-23 US		
外部链接	Espacenet		

摘要(译)

一种诊断病理性心脏病的方法，其中心脏时间序列被过滤并解析成一系列单独的心脏周期。针对每个心动周期识别收缩期间隔以及收缩期子间隔。计算一个或多个心动周期的收缩期子间隔的能量值。计算的数值与过滤的一系列心音相关联的能量水平成比例。然后计算一个或多个心动周期的收缩子间隔的复合能量值，并与阈值水平进行比较，以便区分正常心脏和病理性心脏。对应于该方法的系统包括便携式计算设备，其管理数据收集并存储从新患者收集的数据，并分析数据。