

(19)



(11)

EP 3 366 200 A1

(12)

EUROPEAN PATENT APPLICATION

(43) Date of publication:

29.08.2018 Bulletin 2018/35

(51) Int Cl.:

A61B 5/00 <small>(2006.01)</small>	A61B 5/026 <small>(2006.01)</small>
A61B 17/28 <small>(2006.01)</small>	A61B 18/00 <small>(2006.01)</small>
A61B 34/30 <small>(2016.01)</small>	A61B 17/00 <small>(2006.01)</small>
A61B 5/022 <small>(2006.01)</small>	A61B 17/068 <small>(2006.01)</small>
A61B 17/29 <small>(2006.01)</small>	A61B 17/11 <small>(2006.01)</small>
A61B 5/1459 <small>(2006.01)</small>	A61B 90/00 <small>(2016.01)</small>

(21) Application number: **18157936.8**

(22) Date of filing: **21.02.2018**

(84) Designated Contracting States:

**AL AT BE BG CH CY CZ DE DK EE ES FI FR GB
GR HR HU IE IS IT LI LT LU LV MC MK MT NL NO
PL PT RO RS SE SI SK SM TR**

Designated Extension States:

BA ME

Designated Validation States:

MA MD TN

(71) Applicant: **Covidien LP**

Mansfield, MA 02048 (US)

(72) Inventor: **MOZDZIERZ, Patrick**

Glastonbury, Connecticut 06033 (US)

(74) Representative: **Maschio, Antonio**

**Maschio & Soames IP Limited
30 Carlton Crescent**

Southampton SO15 2EW (GB)

(30) Priority: **22.02.2017 US 201715439032**

(54) **APPARATUS FOR DETERMINING TISSUE VIABILITY**

(57) A method of performing a surgical procedure includes generating an infrared image of tissue using a thermographic camera, analyzing the infrared images to determine blood flow characteristics of the tissue, and resecting a portion of the tissue determined to have abnormal blood flow characteristics.

EP 3 366 200 A1

Description

BACKGROUND

1. *Technical Field*

[0001] The present disclosure relates to medical procedures and, more particularly, to procedures for determining and monitoring characteristics of tissue in preparation for performing various surgical procedures.

2. *Background of Related Art*

[0002] Colorectal surgery sometimes requires anastomosis, which involves resecting a piece of diseased bowel tissue and creating a new connection between two presumably healthy bowel segments. Typically, before performing the anastomosis, the amount of tissue to be resected is estimated using visual indicia of the bowel. The goal is to preserve as much healthy tissue as possible while at the same time removing all of the diseased tissue.

[0003] A risk involved in performing an anastomotic procedure is anastomotic leaks typically caused by a failure to resect all of the diseased tissue. Current methods used in estimating the amount of tissue to be resected during an anastomotic procedure are sometimes inadequate in preventing all anastomotic leaks. Additionally, the health and viability of colon and bowel sections may be compromised by excessive tension or insufficient blood flow in the newly attached sections.

[0004] Accordingly, a need exists for surgical instruments that can sense and visualize, either sequentially or simultaneously, a multitude of parameters and factors of the bowel tissue to aid a surgeon in performing a more successful anastomotic surgical procedure.

SUMMARY

[0005] In one aspect of the present disclosure, a method of performing a surgical procedure is provided and includes generating an infrared image of subject tissue using a thermographic camera, analyzing the infrared images to determine blood flow characteristics of the subject tissue, and resecting a portion of the subject tissue determined to have abnormal blood flow characteristics.

[0006] In some embodiments, the method may further include stapling the subject tissue upon determining that the subject tissue has normal blood flow characteristics.

[0007] In some embodiments, the method may further include comparing the infrared image of the subject tissue with an infrared image of healthy tissue to determine whether the subject tissue exhibits normal blood flow characteristics.

[0008] In some embodiments, the method may further include generating an infrared image of tissue known to be healthy using the thermographic camera, and comparing the infrared image of the tissue known to be

healthy to determine whether the subject tissue exhibits normal blood flow characteristics.

[0009] In some embodiments, the thermographic camera may be a thermographic endoscope.

5 [0010] In another aspect of the present disclosure, a method of performing a surgical procedure is provided and includes applying pressure to a subject tissue, removing the pressure applied to the subject tissue, generating an infrared image of the subject tissue using a thermographic camera after removing the pressure applied to the subject tissue, observing a rate at which the subject tissue increases in temperature using the infrared image, and determining whether the subject tissue increases in temperature at a rate associated with healthy tissue.

10 [0011] In some embodiments, the method may further include resecting a portion of the subject tissue that increases in temperature at a rate associated with unhealthy tissue.

15 [0012] In some embodiments, the method may further include stapling the subject tissue upon determining that the subject tissue increases in temperature at the rate associated with healthy tissue.

20 [0013] In some embodiments, the method may further include reducing a temperature of the subject tissue prior to generating the infrared image of the subject tissue. The pressure may be applied to the subject tissue using a tissue grasper and the temperature of the subject tissue is reduced by contacting the subject tissue with pre-chilled tissue-contacting surfaces of the tissue grasper.

25 [0014] In yet another aspect of the present disclosure, a method of performing a surgical procedure is provided and includes determining a local perfusion pressure of subject tissue of a patient, determining a systemic blood pressure of the patient, calculating a first index using the determined local perfusion pressure and the determined systemic blood pressure, generating an infrared image of the subject tissue using a thermographic camera, analyzing the infrared image to determine blood flow characteristics of the subject tissue, and determining viability of the subject tissue based on the first index and the determined blood flow characteristics of the subject tissue.

30 [0015] In some embodiments, the method may further include assigning a numerical value to the tissue based on the determined blood flow characteristics, and calculating a second index using the first index and the assigned numerical value to determine the viability of the subject tissue. The second index may be compared to a known index corresponding to viable tissue.

35 [0016] In some embodiments, determining the local perfusion pressure may include applying pressure to the tissue using a tissue grasper. The method may further include reducing a temperature of the subject tissue prior to generating the infrared image of the subject tissue. The temperature of the subject tissue may be reduced by contacting the subject tissue with pre-chilled tissue-contacting surfaces of the tissue grasper.

[0017] In some embodiments, the method may further include stapling the subject tissue upon determining that the subject tissue is viable.

[0018] In some embodiments, the method may further include observing a rate at which the subject tissue increases in temperature using the infrared image, and determining whether the subject tissue increases in temperature at a rate associated with healthy tissue.

[0019] In some embodiments, the method may further include comparing the infrared image of the subject tissue with an infrared image of healthy tissue to determine whether the subject tissue exhibits normal blood flow characteristics.

[0020] In some embodiments, the method may further include generating an infrared image of tissue known to be healthy using the thermographic camera, and comparing the infrared image of the tissue known to be healthy to determine whether the subject tissue exhibits normal blood flow characteristics.

[0021] These and other objects will be more clearly illustrated below by the description of the drawings and the detailed description of the preferred embodiments.

BRIEF DESCRIPTION OF THE DRAWINGS

[0022] The accompanying drawings, which are incorporated in and constitute a part of this specification, illustrate embodiments of the present disclosure and, together with the detailed description of the embodiments given below, serve to explain the principles of the disclosure.

FIG. 1 is a front, perspective view of a surgical system including a surgical instrument and a thermographic camera, in accordance with the present disclosure;

FIG. 2 is a flow chart depicting a method of using the thermographic camera of the surgical system of FIG. 1 to assess tissue viability;

FIG. 3 is a flow chart depicting another method of using the thermographic camera of the surgical system of FIG. 1 to assess tissue viability;

FIG. 4 is a flow chart depicting a method of using the thermographic camera in conjunction with the surgical instrument of the surgical system of FIG. 1 to assess tissue viability;

FIG. 5 is a rear, perspective view of the surgical instrument of the surgical system of FIG. 1;

FIG. 6 is an enlarged view of a handle portion of the surgical instrument of FIG. 5 illustrating a display of the surgical instrument;

FIG. 7 is an enlarged view of the display of the surgical instrument of FIG. 5;

FIG. 8 is an enlarged view of a jaw assembly of the surgical instrument of FIG. 5 illustrating sensors incorporated therein;

FIG. 9 is a top view of the surgical instrument of FIG. 5 illustrating the jaw assembly grasping tissue; and

FIG. 10 is a flow chart depicting another method of using the thermographic camera of FIG. 1 in conjunction with the surgical instrument of FIG. 5 to assess tissue viability.

DETAILED DESCRIPTION

[0023] Embodiments of the presently disclosed surgical systems and methods of use will now be described in detail with reference to the drawing figures wherein like reference numerals identify similar or identical elements. As used herein and as is traditional, the term "distal" will refer to that portion which is further from the clinician while the term "proximal" will refer to that portion which is closer to the clinician.

[0024] With reference to FIG. 1, a medical diagnostic system 1 is illustrated, which generally includes a thermographic camera for taking infrared images of a surgical site, and a surgical instrument, such as, for example, a tissue grasper 10 for grasping and sensing a multiplicity of biological parameters of grasped tissue to assist a surgeon in performing a surgical procedure, for example, an anastomotic surgical procedure. The thermographic camera may be a thermographic endoscope 2 capable of being used in a minimally invasive manner. A detailed description of an exemplary thermographic endoscope may be found in U.S. Patent No. 5,445,157, filed on February 20, 1992, the entire contents of which are incorporated by reference herein.

[0025] The thermographic endoscope 2 includes a shaft portion 4 and a display 6 in communication (e.g., electrical or wireless) with the shaft portion 4. The shaft portion 4 is dimensioned for insertion through a surgical incision in a patient and to be positioned adjacent the tissue to be imaged. Thermographic endoscope 2 also includes an infrared image forming device (not shown) disposed in a distal portion of the shaft 4 for forming an infrared image of the tissue to be visualized, and a device (not shown) for transmitting the infrared image formed by the infrared image forming device to a device (not shown) for converting the infrared image, which is transmitted by the infrared image transmitting device into a visible image for displaying the visible image on display 6. In some embodiments, rather than using a thermographic endoscope, the surgical system 1 may utilize a portable thermographic camera not intended for use in a minimally invasive manner.

[0026] Thermographic endoscope 2 is configured to produce an image of tissue under inspection by taking advantage of the differences in the amount of infrared radiation emitted from different areas of the tissue. Different parts of tissue may exhibit unique blood flow characteristics based on various parameters of the tissue, for example, the health of the tissue (e.g., healthy, diseased, or necrosed), the amount and type of vasculature in the tissue, and the particular type of tissue (e.g., colorectal tissue). The blood flow characteristics of tissue include the rate at which tissue recovers to a baseline tempera-

ture after having been cooled to a selected temperature below the baseline temperature, and the rate at which a normal blood flow returns to the tissue after having been blocked (i.e., a perfusion rate).

[0027] As can be appreciated, due to the heat carried by blood, the blood flow characteristics of a particular tissue are closely correlated with the thermal profile exhibited by the tissue. As such, the differences in blood flow characteristics of a selected portion of tissue may be visualized using infrared imaging techniques, for example, the thermographic endoscope 2 of surgical system 1. Providing a clinician with a visual image or a live feed of infrared images of tissue (e.g., colorectal tissue) indicative of the blood flow characteristics of the tissue prior to performing an anastomosis may assist the clinician in determining whether the selected tissue is viable, as will be described in detail below.

[0028] In operation, thermographic endoscope 2 may be used prior to, during, or after a surgical procedure, for example, an anastomotic surgical procedure, to provide a clinician with enhanced visual data about the subject tissue. In an anastomotic surgical procedure, unhealthy or diseased bowel tissue is resected and the ends of the remaining healthy segments of bowel are reconnected using one of a variety of anastomosis techniques, including, but not limited to, end to end stapler anastomosis, hand sewn anastomosis, and linear stapled anastomosis. Prior to reconnecting the ends of the separate bowel segments to one another using any of the above-noted anastomosis techniques, the viability of the ends of the separate bowel segments should be assessed in order to predict the likelihood of post-surgery anastomotic leaks or other adverse outcomes. To aid in making this viability assessment, a clinician may make use of thermographic endoscope 2 of the present disclosure.

[0029] With reference to FIG. 2, a use of thermographic endoscope 2 will be described. In use, each of the two ends of the presumably healthy bowel segments are imaged using the thermographic endoscope 2 by positioning the infrared image forming device (not shown) thereof adjacent the bowel segments. In step 102, the infrared image forming device forms an infrared image of the tissue, which is then converted and transmitted into a visible image or live feed of infrared images "IR" displayed on display 14. In step 104, the clinician analyzes the video feed of infrared images "IR" to determine whether the tissue exhibits normal heat distribution characteristics (e.g., a uniform heat profile throughout the imaged tissue). If the clinician determines that the tissue exhibits normal heat distribution characteristics, the clinician continues to step 106, which includes stapling the two ends of the bowel segments, thereby completing the anastomosis. Alternatively, if the clinician determines that the tissue exhibits abnormal heat distribution characteristics (e.g., a non-uniform heat profile throughout the imaged tissue), the clinician continues to step 108, which includes resecting a portion of the tissue exhibiting abnormal heat distribution characteristics. This process will

have to be repeated until all of the tissue is shown to exhibit normal heat distribution characteristics.

[0030] An experienced clinician may be able to determine whether the tissue is healthy based on the infrared images "IR" alone, as described with reference to the flow chart of FIG. 2. However, with reference to FIG. 3, additional steps may be taken to assist the clinician in determining whether the subject tissue exhibits normal heat distribution characteristics.

[0031] In particular, in step 202, tissue that is known to be healthy may be simultaneously imaged using the thermographic endoscope 2, or in some embodiments, any suitable thermographic camera, to display infrared images of the known-to-be healthy tissue on the display 14 in juxtaposed relation to the infrared images "IR" of the subject tissue. In this way, in step 204, the clinician may compare the infrared images of the known-to-be healthy tissue and the subject tissue to determine the degree of similarity between their heat profiles. In step 206, the clinician determines whether the subject tissue is healthy based on the visual comparison of the infrared images "IR" of the subject tissue with the infrared images of the known-to-be healthy tissue.

[0032] In one embodiment, upon assessing the infrared images "IR" of the subject tissue, the clinician may assign a numerical value to the subject tissue based on how close the heat distribution of the subject tissue corresponds to the heat distribution found in the known-to-be healthy tissue. For example, based on the infrared images "IR," the clinician may assign the tissue a numerical value ranging from 1 to 100, 1 to 50, 1 to 10, or 1 to 5, wherein the lowest numerical value (e.g., 1) equates to necrosed/diseased tissue, and the highest numerical value (e.g., 100) equates to ideally healthy/viable tissue. As such, a clinician can use this number, determined using the infrared images "IR" of the subject tissue, to make a determination on whether the two ends of the bowel segments are healthy enough to be reconnected or whether more tissue needs to be resected. If the clinician determines that the tissue exhibits normal heat distribution characteristics, the clinician continues to step 208, which includes reconnecting the two ends of the bowel segments, thereby completing the anastomosis. Alternatively, if the clinician determines that the tissue exhibits abnormal heat distribution characteristics compared to the known-to-be healthy tissue, the clinician continues to step 210, which includes resecting a portion of the tissue exhibiting abnormal heat distribution characteristics. This process will have to be repeated until all of the tissue is shown to exhibit normal heat distribution characteristics compared to the known-to-be healthy tissue.

[0033] With reference to FIG. 4, manipulation of the subject tissue prior to and/or during an analysis of the infrared images "IR" of the subject tissue may further assist the clinician in gathering information about the subject tissue. For example, the infrared images "IR" generated using the thermographic endoscope 2 may be taken

after performing a grasp-then-release method on the tissue to assess tissue perfusion. In particular, in step 302, the bowel segments may be grasped, either separately or together, using any suitable device (e.g., tissue grasper 10) capable of applying a clamping pressure on the tissue sufficient to prevent or substantially prevent blood from flowing through the grasped tissue. Clamping the tissue in this way removes a substantial amount of blood from each of the two ends of bowel segments, thereby bringing each portion of the subject tissue to the substantially same temperature, in effect calibrating the tissue. In step 304, in the instance where tissue grasper 10 is used to clamp the tissue, the tissue may be cooled by pre-chilling the tissue-contacting surfaces 54, 56 of tissue grasper 10 and grasping the tissue between the pre-chilled tissue contacting-surfaces 54, 56 of tissue grasper 10.

[0034] Upon the ceasing of blood flow through the grasped tissue and/or the cooling of the grasped tissue from the pre-chilled tissue-contacting surfaces 54, 56 of tissue grasper 10, thermographic endoscope 2 is positioned so that the infrared image forming device of thermographic endoscope 2 is facing the grasped tissue. In step 306, the clamping pressure on the tissue is removed to allow for blood flow to return to the tissue to gradually restore the temperature of the tissue to its initial value or baseline temperature. This grasp-and-release step allows for a more accurate determination of the heat profile of the subject tissue.

[0035] In step 308, a video feed of infrared images taken by thermographic endoscope 2 of the subject tissue will be displayed on display 14 beginning at the time the clamping pressure on the tissue is released. As the blood begins to return to the tissue, the amount of infrared radiation emitted by the tissue will increase at a rate correlated with the health of the tissue. For example, if the tissue is healthy, tissue perfusion should occur at a rate that is known for healthy tissue of the type being studied. Accordingly, the infrared images "IR" taken by thermographic endoscope 2 would indicate that the tissue increased in temperature (due to blood flowing therethrough) at a rate substantially similar or the same as that known for healthy tissue. Alternatively, if the tissue is not healthy or not viable, tissue perfusion should occur at a rate less than expected for otherwise healthy tissue of the particular type being studied. Accordingly, the infrared images "IR" taken by thermographic endoscope 2 would indicate that the tissue increased in temperature (due to blood flowing therethrough) at a rate less than that known for otherwise healthy tissue. As such, in step 310, the clinician visually observes the rate at which the subject tissue increases in temperature using the infrared images "IR" to determine whether the subject tissue increases in temperature at a normal rate.

[0036] An experienced clinician may be able to determine whether the tissue is healthy based solely on the rate of thermal change of the tissue visually observed from the infrared images "IR." However, to assist the cli-

nician in determining whether the subject tissue exhibits a normal rate of thermal change, a measurement may be taken of the time it takes for the tissue to return to its initial, baseline temperature. This measured time may be compared to an index containing a list of known times each corresponding to a different degree of viability of tissue of the type being studied. For example, if healthy bowel tissue is known to typically take approximately 5 seconds to warm up naturally to its baseline temperature after being chilled to 5 degrees Fahrenheit below its baseline temperature, and the bowel tissue being studied was measured to take approximately 10 seconds, this information can be used by the clinician to determine that the subject tissue may not be viable. As such, a clinician can use this information, determined using the infrared images "IR" of the subject tissue, to make a determination on whether the two ends of the bowel segments are healthy enough to be reconnected or whether more tissue needs to be resected. If the clinician determines that the tissue returns to its baseline temperature at a normal rate, the clinician continues to step 312, which includes stapling the two ends of the bowel segments, thereby completing the anastomosis. Alternatively, if the clinician determines that the tissue returns to its baseline temperature at an abnormal rate (e.g., faster or slower than that expected), the clinician continues to step 314, which includes resecting a portion of the tissue exhibiting an abnormal rate of thermal change. This process will have to be repeated until all of the tissue is shown to exhibit normal rates of thermal change.

[0037] As will be described below, the above-described methods of using thermographic imaging to assess tissue viability may be used in combination with other measurements taken of the patient, for example, a local perfusion pressure reading and/or a systemic blood pressure reading, to provide an even more accurate assessment of tissue viability.

[0038] With reference to FIGS. 1A and 5-10, surgical system 1 may further include tissue grasper 10, which is configured to grasp tissue and sense a multiplicity of biological parameters of the grasped tissue to assist a surgeon in performing a surgical procedure, for example, an anastomotic surgical procedure. The tissue grasper 10 generally includes a handle portion 12, an elongated shaft 30, and a jaw assembly 40.

[0039] The handle portion 12 of the tissue grasper 10 includes a stationary handle 14 and a pivoting or movable handle 16 pivotably coupled to the stationary handle 14. Manipulation of the pivoting handle 16 relative to the stationary handle 14 effects a closing of the jaw assembly 40 to grasp tissue. The handle portion 12 of the tissue grasper 10 includes a longitudinal body portion 18 formed with the stationary handle 14. The body portion 18 has a display 20, for example, an LED display or liquid-crystal display ("LCD") for displaying various tissue parameters measured by various sensors 42a-c, 44a-c of the tissue grasper 10.

[0040] With reference to FIGS. 6 and 7, the body por-

tion 18 of the handle portion 12 defines a longitudinal axis "X" that is coaxial with a longitudinal axis defined by the elongated shaft 30. The body portion 18 has a planar upper surface 22 on which the display 20 is situated. It is contemplated that the display 20 may be disposed at any suitable location of the body portion 18 or on any other component of the tissue grasper 10.

[0041] The display 20 may have multiple display sections, for example, three display sections 20a, 20b, 20c, arranged in a linear array along the longitudinal axis "X." It is contemplated that the display 20 may include more or less than three discrete display sections. A first display section 20a of the display 20 is configured to display a visual indication of a measured tissue perfusion of tissue grasped by the tissue grasper 10. A second display section 20b of the display 20 is configured to display a visual indication of a measured amount of pressure being applied to tissue grasped by the tissue grasper 10. A third display section 20c of the display 20 is configured to display a measured thickness of the tissue grasped by the tissue grasper 10.

[0042] The visual indication displayed by each of the display sections 20a, 20b, 20c includes a range of colors increasing in brightness from a proximal portion to a distal portion thereof. For example, when viewing each of the first and second display sections 20a, 20b in a proximal to distal direction, the first and second display sections 20a, 20b may each be green, yellow, orange, and then red, with each color portion gradually blending into the adjacent color portion. Other colors and color arrangements for the first and second display sections 20a, 20b are contemplated. The tissue grasper 10 may be configured such that when the green of the first display section 20a is lit, this may indicate a relatively high tissue perfusion being measured by the tissue grasper 10, whereas when the red of the first display section 20a is lit, this may indicate a relatively low tissue perfusion being measured by the tissue grasper 10. The information related to the tissue perfusion may be useful when making a determination on the viability of the tissue being grasped, as will be described in more detail below.

[0043] With reference to the second display section 20b of the display 20, when the green of the second display section 20b is lit, this may be indicative of a relatively low grasping or clamping pressure being applied to tissue by the tissue grasper 10, whereas when the red of the second display section 20b is lit, this may be indicative of a relatively high grasping or clamping pressure being applied to tissue by the tissue grasper 10. The clamping pressure measured by the tissue grasper 10 and displayed by the second display section 20b of the tissue grasper 10 is used in conjunction with the tissue perfusion displayed by the first display section 20a of the tissue grasper 10 to determine the perfusion pressure of the grasped tissue.

[0044] The perfusion pressure is measured by applying a sufficient amount of clamping pressure on the subject tissue until there is no perfusion (i.e., no blood flow)

through the tissue, and then slowly reducing the clamping pressure until perfusion through the grasped tissue restarts. The pressure at which the perfusion restarts is the tissue perfusion pressure. For a detailed description of a method of measuring surface perfusion pressure, reference may be made to U.S. Patent No. 7,618,376, the entire contents of which are incorporated by reference herein.

[0045] The information related to the amount of pressure being applied to tissue by the tissue grasper 10 may also be useful in preventing over-compression of tissue to prevent damage to healthy tissue.

[0046] In viewing the third display section 20c from a proximal to distal direction, the third display section 20c may be grey, brown, violet, and black. In some embodiments, third display section 20c may be grey, white, blue, purple, tan, green, and black. Other colors and color arrangements for the third display section 20c are contemplated. When the grey (proximal portion) of the third display section 20c is lit, this may be an indication that tissue grasped by the tissue grasper 10 has a relatively small thickness (i.e., the tissue is too thin to withstand being reconnected), whereas when the black (distal portion) of the third display section 20c is lit, this may be an indication that tissue grasped by the tissue grasper 10 has a relatively large thickness (i.e., the tissue is too thick to be reconnected). The information related to tissue thickness may be useful for making a determination on the type of reconnection technique to be used. Where stapling is selected, the information can be useful in selecting the size of the staples to be used when performing a surgical anastomosis on the grasped tissue.

[0047] In some embodiments, instead of display 20 utilizing ranges of colors or brightness to illustrate the measured tissue parameters (e.g., tissue perfusion, tissue compression, and tissue thickness), the display 20 may display ranges of numbers or various numeral outputs. In particular, the first, second, and third display sections 20a, 20b, 20c may display the number ranges 0 to 3, 0 to 5, 0 to 10, 0 to 100, or any other suitable range, to illustrate information about the tissue being grasped by the tissue grasper 10. For example, when the first display section 20a displays the number 0, this may be an indication that the grasped tissue has very little or no perfusion (i.e., no blood flow), whereas when the first display section 20a displays the number 100, this may be an indication that the grasped tissue has a high perfusion (i.e., ideal blood flow).

[0048] In some embodiments, the display 20 may illustrate information about grasped tissue utilizing any suitable indicia, for example, words such as poor, satisfactory, or good.

[0049] In some embodiments, tissue grasper 10 may not include display 20, and instead, tissue grasper 10 may be configured to be connected to or be in communication with another type of display, for example, display 6 of thermographic endoscope 2, a tablet, a cell phone, a computer monitor, a laptop, or any suitable display de-

vice. Tissue grasper 10 may be connected to any of the aforementioned display devices via USB wires, Wi-Fi, or the like.

[0050] With reference to FIGS. 1, 5, and 8, the elongated shaft 30 of tissue grasper 10 extends distally from the handle portion 12 and houses an actuation rod (not explicitly shown). The elongated shaft 30 may be rotatable with respect to the handle portion 12 to rotate the jaw assembly 40 about the longitudinal axis "X." The elongated shaft 30 has two prongs 32, 34 formed at its distal end 30b. A pivot pin 36 extends transversely through the prongs 32, 34 and the jaw assembly 40 to provide a point about which the jaw members 42, 44 of the jaw assembly 40 pivot. The actuation rod has a proximal end (not shown) operably coupled to the movable trigger 16 (FIGS. 1, 5), and a distal end (not shown) extending between the prongs 32, 34 and which is operably coupled to the jaw assembly 40.

[0051] With reference to FIGS. 8 and 9, the jaw assembly 40 includes first and second juxtaposed jaw members 42, 44, respectively, which are simultaneously movable between a substantially approximated position, in which the jaw members 42, 44 are in relatively close relation to one another, and a spaced position, in which the jaw members 42, 44 are separated at least a sufficient distance to receive tissue therebetween, for example, tissue "T." The jaw assembly 40 includes a first proximal portion or a first flange 46 extending proximally from the first jaw member 42, and a second proximal portion or a second flange 48 extending proximally from the second jaw member 44. The flanges 46, 48 each include an elongated angled cam slot 50, 52 defined therethrough configured to engage the distal end of the actuation rod (not explicitly shown) that drives the opening and closing of the jaw members 42, 44 as the actuation rod moves through the cam slots 50, 52. As such, manipulation of the pivoting handle 16 (FIGS. 1, 5) relative to the stationary handle 14 actuates the actuation rod to effect an opening or a closing of the jaw assembly 40 about tissue "T."

[0052] With continued reference to FIGS. 8 and 9, the jaw members 42, 44 each have a tissue contacting surface 54, 56 such that when the jaw assembly 40 is in the closed configuration, tissue "T" is grasped between the tissue contacting surfaces 54, 56. The jaw assembly 40 may be coupled to a cooling system (not shown) configured to pass coolant through jaw member 42, 44 to cool tissue contacting surfaces 54, 56 thereof. Alternatively, tissue contacting surfaces 54, 56 may include a thermoelectric cold plate for reducing the temperature of tissue contacting surfaces 54, 56. Tissue contacting surfaces 54, 56 are cooled so that when tissue contacting surfaces 54, 56 are applied to tissue, the tissue contacting surfaces 54, 56 reduce the temperature of the tissue, as will be described in detail below.

[0053] The jaw members 42, 44 each have a first sensor 42a, 44a, a second sensor 42b, 44b, and a third sensor 42c, 44c, disposed on respective tissue contacting

surfaces 54, 56. The sensors 42a-c, 44a-c are arranged on respective tissue contacting surfaces 54, 56 in a linear array along a longitudinal axis defined by respective jaw members 42, 44. In some embodiments, the sensors 42a-c, 44a-c may be arranged on respective tissue contacting surfaces 54, 56 in any suitable manner.

[0054] The first sensors 42a, 44a of the jaw assembly 40 are perfusion sensors, for example, Doppler flow sensors, configured to measure local perfusion (i.e., blood flow) through tissue grasped between the jaw members 42, 44. The first sensors 42a, 44a may measure perfusion of the grasped tissue on the basis of known techniques, such as Laser-Doppler Flowmetry ("LDF"), measuring light scattering, and/or measuring absorption of light from one or more LED's or other light sources. For a detailed description of LDF technology, reference may be made to U.S. Patent Nos. 4,109,647 and 4,862,894, the entire contents of each of which are incorporated by reference herein.

[0055] In some embodiments, only one of the tissue contacting surfaces 54, 56 of the jaw assembly 40 has a perfusion sensor. The first sensors 42a, 44a are in communication, via lead wires or wireless connection, with the first display section 20a of the display 20 such that upon the first sensors 42a, 44a measuring the perfusion in grasped tissue, the first sensors 42a, 44a transmit the measurement data to the first display section 20a, which displays the measurement in any of the manners described above with reference to FIGS. 2 and 3 (e.g., a range of colors, brightness levels, numbers, words.)

[0056] In some embodiments, the first sensors 42a, 44a may also be in communication, via lead wires or wireless connection, with a computing device or processor (not shown) such as a laser Doppler monitor, which processes the information collected by the first sensors 42a, 44a to calculate the tissue perfusion. The computing device may also be in communication, via lead wires or wireless connection, with the first display section 20a to send the processed information related to the tissue perfusion to the first display section 20a so that the first display section 20a can display the tissue perfusion in any of the manners described above with reference to FIGS. 6 and 7 (e.g., colors, brightness levels, numbers, words.)

[0057] With continued reference to FIGS. 8 and 9, the second sensors 42b, 44b of the jaw assembly 40 are pressure sensors or pressure measuring devices, for example, MEMS devices. For a detailed description of various MEMS devices, reference may be made to U.S. Patent No. 8,808,311, the entire contents of which are incorporated by reference herein. The second sensors 42b, 44b are configured to measure the amount of pressure applied by the tissue grasper 10 to the grasped tissue (i.e., the clamping pressure). In some embodiments, only one of the tissue contacting surfaces 54, 56 has a pressure sensor. The second sensors 42b, 44b are in electrical communication, via lead wires or wireless connection, with the second display section 20b of the display 20 such that upon the second sensors 42b, 44b meas-

uring the clamping pressure applied to the grasped tissue, the second sensors 42b, 44b transmit the measurement data to the second display section 20b, which displays the measurement in any of the manners described above with reference to FIGS. 6 and 7 (e.g., colors, brightness levels, numbers, words.) Additionally or alternately, the second sensors 42b, 44b may send the measured clamping pressure to the computing device for processing, which then sends the information to the display 20.

[0058] The third sensors 42c, 44c of the jaw assembly 40 are gap determination elements, for example, slide potentiometers, rotational potentiometers, devices used to measure impedance between the contacting surfaces 54, 56, or Linear Variable Differential Transformers ("LVDT"), configured to measure the thickness of the grasped tissue by measuring the gap distance between the jaw members 42, 44. For a detailed description of various sensors capable of measuring tissue thickness, reference may be made to U.S. Patent No. 8,002,795, the entire contents of which are incorporated by reference herein. In some embodiments, only one of the tissue contacting surfaces 54, 56 has a gap determination element. The third sensors 42c, 44c are in electrical communication, via wire leads or wireless connection, with the third display section 20c of the display 20 such that upon the third sensors 42c, 44c measuring the tissue thickness of the grasped tissue, the third sensors 42c, 44c transmit the measurement data to the third display section 20c, which displays the measurement in any of the manners described above with reference to FIGS. 6 and 7 (e.g., colors, brightness levels, numbers, words.) Additionally or alternately, the third sensors 42c, 44c may be in communication, via lead wires or wireless connection, to the computing device, which receives the tissue thickness measurements from the third sensors 42c, 44c, and processes the measurement data and then sends the information to the display 20.

[0059] In some embodiments, the display 20 may include a fourth display section (not shown) configured to display an index representative of the ratio of the surface perfusion pressure measured by first sensors 42a, 44a and second sensors 42b, 44b of the tissue grasper 10, and a systemic blood pressure measured by a blood pressure cuff (not shown), as will be described in detail below.

[0060] In operation, the tissue grasper 10 may be used prior to, during, or after a surgical procedure, for example, an anastomotic surgical procedure, to gather various data about the subject tissue. In an anastomotic surgical procedure, unhealthy or diseased bowel tissue is resected and the ends of the remaining healthy segments of bowel are reconnected. Prior to reconnecting the ends of the separate bowel segments to one another, the viability of the ends of the separate bowel segments should be assessed in order to predict the likelihood of post-surgery anastomotic leaks or other adverse outcomes. To aid in making this viability assessment, a surgeon may make use of the tissue grasper 10 in conjunction with the

thermographic endoscope 2 (FIG. 1).

[0061] In use of the tissue grasper 10, each of the two ends of the presumably healthy bowel segments are grasped, either separately or together, between the tissue contacting surfaces 54, 56 of the jaw assembly 40. While monitoring the perfusion reading (i.e., blood flow) displayed on the first display section 20a of the tissue grasper 10, the pivoting handle 16 is manipulated to gradually increase the clamping pressure until the perfusion reading indicates that no blood flow or virtually no blood flow is moving through the grasped tissue. While continuously monitoring both the first and second display sections 20a, 20b, the movable handle 16 of the tissue grasper 10 is manipulated to gradually reduce the amount of clamping pressure being applied to the tissue. The clamping pressure is reduced until first display section 20a displays a perfusion reading indicating that blood flow has returned to the grasped tissue. At the moment that the perfusion reading indicates that the blood flow is returned, the clamping pressure reading displayed by the second display section 20b is noted, which is the local perfusion pressure of the grasped tissue. The measured local perfusion pressure may be used to assess the viability of the grasped tissue. Additionally or alternately, the measured local perfusion pressure may be used in combination with other measurements and observations, for example, a systemic blood pressure reading and infrared images of the tissue, to aid in making the determination of the viability of the tissue.

[0062] The systemic blood pressure may be taken using any suitable device, for example, a blood pressure cuff, applied to any suitable body portion of the patient, for example, the arm of the patient. With reference to FIG. 10, in step 402, an index may be calculated by taking a ratio of the local perfusion pressure measured by the tissue grasper 10 and the systemic blood pressure taken using the blood pressure cuff. The index may be calculated by the computing device and displayed as a number on the display 20 of the tissue grasper 10. The calculated index is predictive of whether an anastomotic leak may occur and/or the grade of an anastomotic leak. As such, a surgeon can use the index to make a determination on whether the two ends of the presumed healthy bowel segments are healthy enough to be reconnected or whether more tissue needs to be resected. For a detailed description of a method of calculating a perfusion index, reference may be made to U.S. Patent No. 7,618,376, the entire contents of which were incorporated by reference above.

[0063] To provide a more precise assessment of tissue viability, the thermographic endoscope 2 may be used in conjunction with the measurements taken by the tissue grasper 10 and the blood pressure cuff. In step 404, infrared images of the subject tissue are generated using thermographic endoscope 2 and in step 406, the infrared images of the subject tissue are analyzed to observe the heat distribution characteristics of the subject tissue. In some embodiments, prior to step 404, tissue grasper 10

may be used to initiate the grasp-then-release steps 302, 304, 306 of FIG. 4. In step 408, the tissue may be assigned a numerical value by the clinician based on the heat distribution characteristics observed using the infrared images of the subject tissue displayed on display 6. In step 410, this numerical value may be compared with the local perfusion pressure/systemic blood pressure index to provide a second index. In step 412, this second index may be compared to a known index corresponding to viable tissue to determine whether the tissue is viable. If the calculated second index is the same or substantially the same as the known index corresponding to viable tissue, the clinician continues to step 414, which includes reconnecting the two ends of the bowel segments, thereby completing the anastomosis. Alternatively, if the calculated second index deviates a threshold amount from the known index corresponding to viable tissue, the clinician continues to step 416, which includes resecting more of the tissue. This process will have to be repeated until all of the tissue is determined to be viable.

[0064] In some embodiments, the tissue grasper 10 may be pre-programmed to clamp tissue at a predetermined clamping pressure that is known to result in perfusion through the grasped tissue to stop. The tissue grasper 10 may also be pre-programmed to reduce the clamping pressure at a predetermined rate and automatically send the pressure reading to the computing device at the moment when perfusion through the grasped tissue restarts. The perfusion pressure reading may also be displayed on the display 20. This automated process eliminates human error in operating the tissue grasper 10 by controlling the amount of clamping pressure being applied to the tissue instead of the surgeon.

[0065] The tissue grasper 10 may also be used to determine the size of the staples to be used in stapling the bowel segments together. The staple size may be determined by viewing the third display section 20c of the tissue grasper 10, which indicates the thickness of the grasped tissue. The leg height of the staples selected for the stapling procedure will correspond to the thickness of the tissue. It is contemplated that the tissue thickness measured by the third sensors 42c, 44c may be sent to the computing device, which has stored therein a look-up table that contains a staple size corresponding to each tissue thickness measurement.

[0066] In addition to the thermographic endoscope 2 and the tissue grasper 10 being used to ensure that the tissue is in condition for reconnecting (e.g., stapling) or acceptable for reconnecting, the thermographic endoscope 2 and the tissue grasper 10 may also be used as a check after the staples have been fired to ensure that the tissue is healthy (e.g., has good blood flow, is healing properly, etc.).

[0067] The thermographic endoscope 2 and the tissue grasper 10 may also be configured to be incorporated into a robotic surgical system (not shown). The robotic surgical system is powered locally or remotely, and has electronic control systems localized in a console or dis-

tributed within or throughout the robotic surgical system. The robotic surgical system permits a surgeon to remotely manipulate the thermographic endoscope 2 and the tissue grasper 10 to more precisely control the movement thereof. The surgical system 1 may be configured to send the infrared images generated by thermographic endoscope 2 and the measurements gathered by the sensors 42a-c, 44a-c of tissue grasper 10 to an interface of the robotic surgical system on which the images and measurements may be displayed for the surgeon to read.

[0068] Although the illustrative embodiments of the present disclosure have been described herein, it is understood that the disclosure is not limited to those precise embodiments, and that various other changes and modifications may be affected therein by one skilled in the art without departing from the scope or spirit of the disclosure. All such changes and modifications are intended to be included within the scope of the disclosure.

[0069] The invention may be described by reference to the following numbered paragraphs:-

1. A method of performing a surgical procedure, comprising:

generating an infrared image of subject tissue using a thermographic camera;
analyzing the infrared images to determine blood flow characteristics of the subject tissue;
and
resecting a portion of the subject tissue determined to have abnormal blood flow characteristics.

2. The method according to paragraph 1, further comprising stapling the subject tissue upon determining that the subject tissue has normal blood flow characteristics.

3. The method according to paragraph 1, further comprising comparing the infrared image of the subject tissue with an infrared image of healthy tissue to determine whether the subject tissue exhibits normal blood flow characteristics.

4. The method according to paragraph 1, further comprising:

generating an infrared image of tissue known to be healthy using the thermographic camera; and
comparing the infrared image of the tissue known to be healthy to determine whether the subject tissue exhibits normal blood flow characteristics.

5. The method according to paragraph 1, wherein the thermographic camera is a thermographic endoscope.

6. A method of performing a surgical procedure, comprising:

applying pressure to a subject tissue;
 removing the pressure applied to the subject tissue; 5
 generating an infrared image of the subject tissue using a thermographic camera after removing the pressure applied to the subject tissue; 10
 observing a rate at which the subject tissue increases in temperature using the infrared image; and
 determining whether the subject tissue increases in temperature at a rate associated with healthy tissue. 15

7. The method according to paragraph 6, further comprising resecting a portion of the subject tissue that increases in temperature at a rate associated with unhealthy tissue. 20

8. The method according to paragraph 6, further comprising stapling the subject tissue upon determining that the subject tissue increases in temperature at the rate associated with healthy tissue. 25

9. The method according to paragraph 6, further comprising reducing a temperature of the subject tissue prior to generating the infrared image of the subject tissue. 30

10. The method according to paragraph 9, wherein the pressure is applied to the subject tissue using a tissue grasper and the temperature of the subject tissue is reduced by contacting the subject tissue with pre-chilled tissue-contacting surfaces of the tissue grasper. 35

11. A method of performing a surgical procedure, comprising: 40

determining a local perfusion pressure of subject tissue of a patient;
 determining a systemic blood pressure of the patient; 45
 calculating a first index using the determined local perfusion pressure and the determined systemic blood pressure;
 generating an infrared image of the subject tissue using a thermographic camera; 50
 analyzing the infrared image to determine blood flow characteristics of the subject tissue; and
 determining viability of the subject tissue based on the first index and the determined blood flow characteristics of the subject tissue. 55

12. The method according to paragraph 11, further comprising:

assigning a numerical value to the tissue based on the determined blood flow characteristics; and
 calculating a second index using the first index and the assigned numerical value to determine the viability of the subject tissue.

13. The method according to paragraph 12, further comprising comparing the second index to a known index corresponding to viable tissue.

14. The method according to paragraph 11, wherein determining the local perfusion pressure includes applying pressure to the tissue using a tissue grasper.

15. The method according to paragraph 14, further comprising reducing a temperature of the subject tissue prior to generating the infrared image of the subject tissue.

16. The method according to paragraph 15, wherein the temperature of the subject tissue is reduced by contacting the subject tissue with pre-chilled tissue-contacting surfaces of the tissue grasper.

17. The method according to paragraph 11, further comprising stapling the subject tissue upon determining that the subject tissue is viable.

18. The method according to paragraph 11, further comprising:

observing a rate at which the subject tissue increases in temperature using the infrared image; and
 determining whether the subject tissue increases in temperature at a rate associated with healthy tissue.

19. The method according to paragraph 11, further comprising comparing the infrared image of the subject tissue with an infrared image of healthy tissue to determine whether the subject tissue exhibits normal blood flow characteristics.

20. The method according to paragraph 10, further comprising:

generating an infrared image of tissue known to be healthy using the thermographic camera; and
 comparing the infrared image of the tissue known to be healthy to determine whether the subject tissue exhibits normal blood flow characteristics.

Claims

1. An apparatus for determining tissue viability, comprising:

A display (5, 20) for displaying sensor measurements; and
a tissue grasper (10) configured to grasp tissue and sense one or more biological parameters of the grasped tissue, the tissue grasper comprising:

 - a handle portion (12);
 - an elongated shaft (30); and
 - a jaw assembly (40), comprising jaw members (42, 44), each jaw member comprising at least a first sensor (42a, 44a) disposed on respective tissue contacting surfaces (54, 56), wherein the first sensor (42a, 44a) on at least one jaw member (42, 44) is a perfusion sensor, and wherein the first sensors (42a, 44a) are in communication with the display (6, 20) such that upon measuring the perfusion in grasped tissue, the perfusion sensor (42a, 44a) transmits the measurement data to the display (6, 20).

2. An apparatus according to claim 1, wherein the handle portion (12) comprises a stationary handle (14) and a movable handle (16), manipulation of the moveable handle (16) relative to the stationary handle (16) effecting closure of the jaw assembly (40).

3. An apparatus according to claim 2, wherein the display (20) is situated on the body portion (18).

4. An apparatus according to any preceding claim, wherein the jaw assembly is coupled to a cooling system configured to pass coolant through jaw members (42, 44) to cool the tissue contacting surfaces (54, 56).

5. An apparatus according to any preceding claim, wherein the perfusion sensor (42a, 44a) is a doppler flow sensor.

6. An apparatus according to any preceding claim, wherein the jaw members (42, 44) comprise a pressure sensor (42b, 44b) in communication with the display (6, 20) and/or computing device.

7. An apparatus according to any preceding claim, wherein the jaw members (42, 44) comprise a gap determination element (42c, 44c), configured to measure the thickness of grasped tissue, and in communication with the display (6, 20) and/or computing device.

8. An apparatus according to any preceding claim, wherein the one or more sensors (42a-c, 44a-c) is in communication with a computing device which calculates the tissue perfusion, clamping pressure, or tissue thickness.

9. An apparatus according to claim 8, wherein the computing device is in communication with the display (6, 20) to send the calculated tissue perfusion, clamping pressure, or tissue thickness data to the display.

10. An apparatus according to any preceding claim, further comprising a thermographic camera (2) for taking infrared images of a surgical site, configured to transmit the infrared image to a device for converting the infrared image into a visible image for display on a display (6).

11. The apparatus according to claim 10, wherein the thermographic camera is a thermographic endoscope (2).

12. The apparatus according to claim 10 or 11, wherein the tissue grasper (10) is in communication with the display (6) of the thermographic camera.

13. The apparatus according to any of claims 6 to 12, further comprising a device for measuring systemic blood pressure which is in communication with a computing device, wherein the computing device calculates an index by taking a ratio of the local perfusion pressure measured by the tissue grasper (10) and the systemic blood pressure, and the index is displayed as a number on the display (20).

14. The apparatus according to any preceding claim, wherein one or more of the perfusion measurement, pressure measurement, tissue thickness measurement, perfusion pressure measurement, the infrared image, or the index of the local and systemic blood pressures indicates tissue viability, probability of anastomotic leak, or prediction of the grade of anastomotic leak in an anastomosis procedure performed on the grasped tissue.

15. A robotic surgical system comprising the apparatus according to any preceding claim.

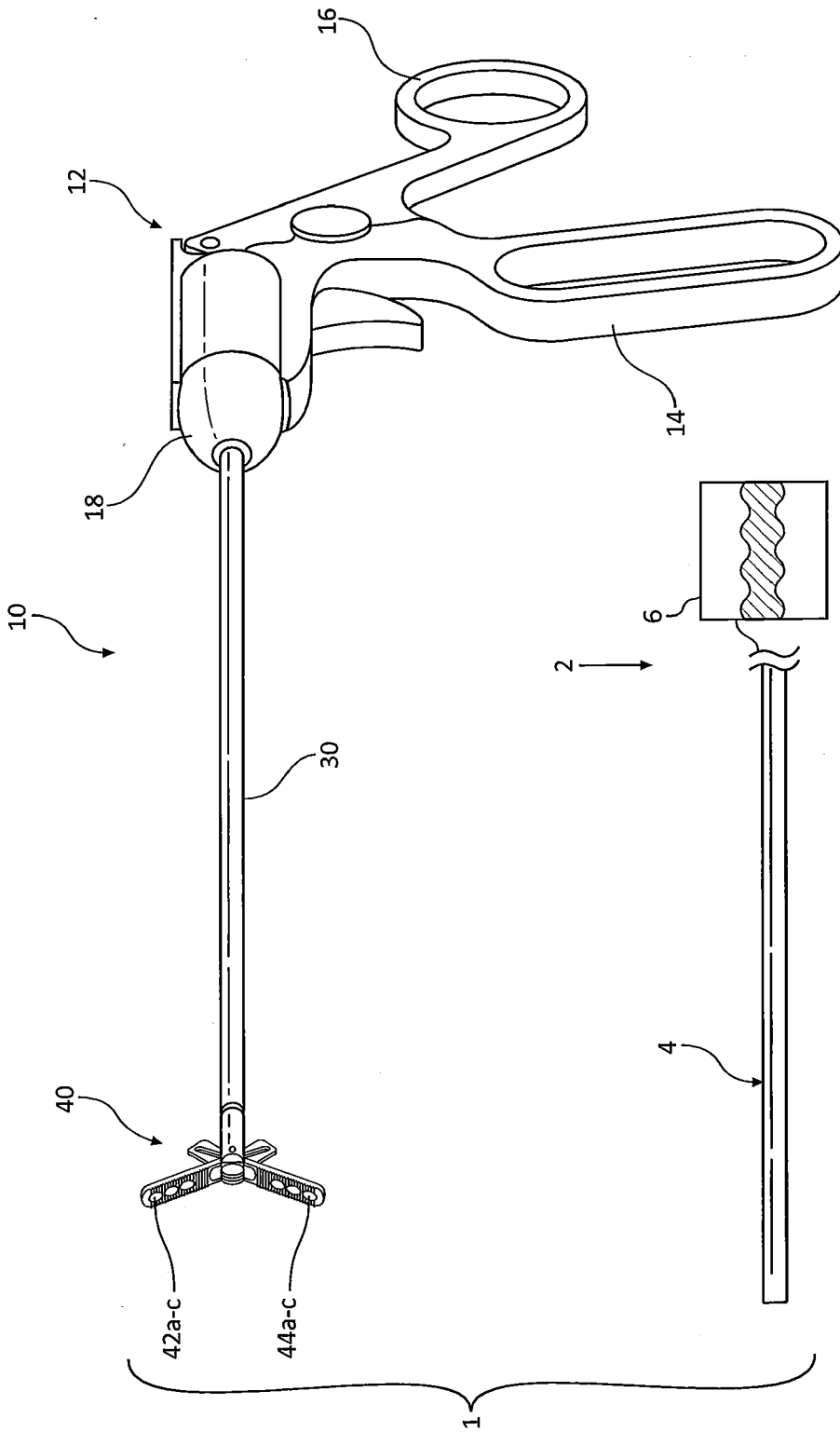


FIG. 1

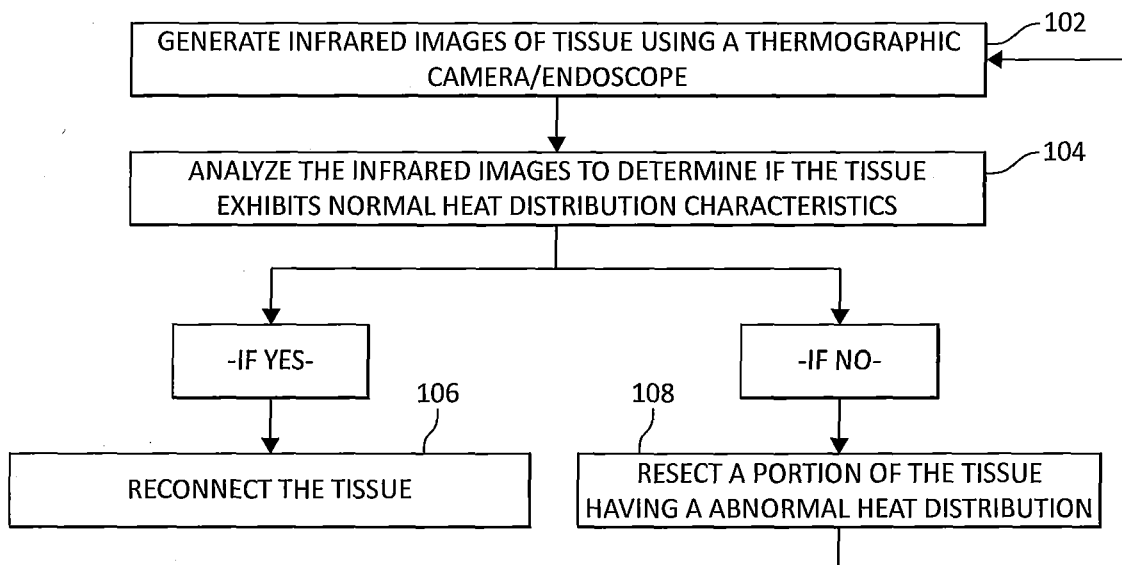


FIG. 2

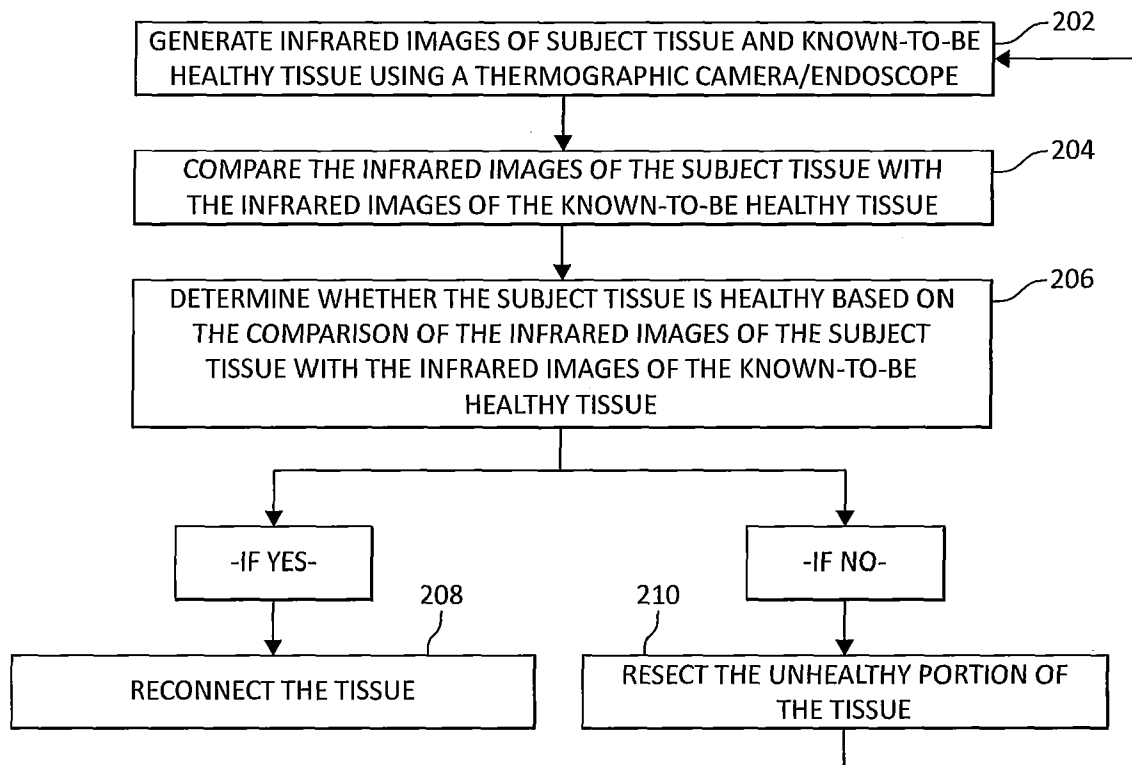


FIG. 3

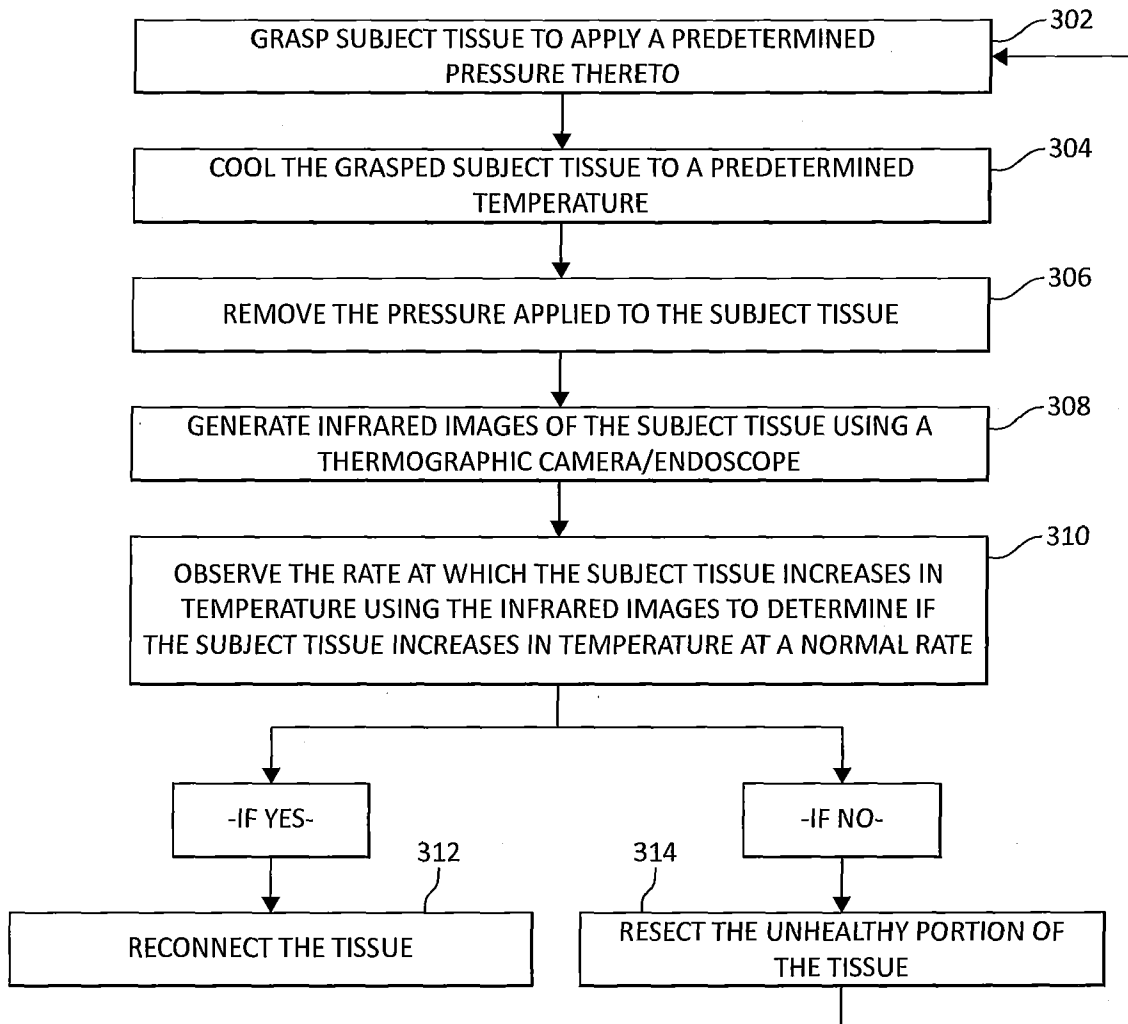


FIG. 4

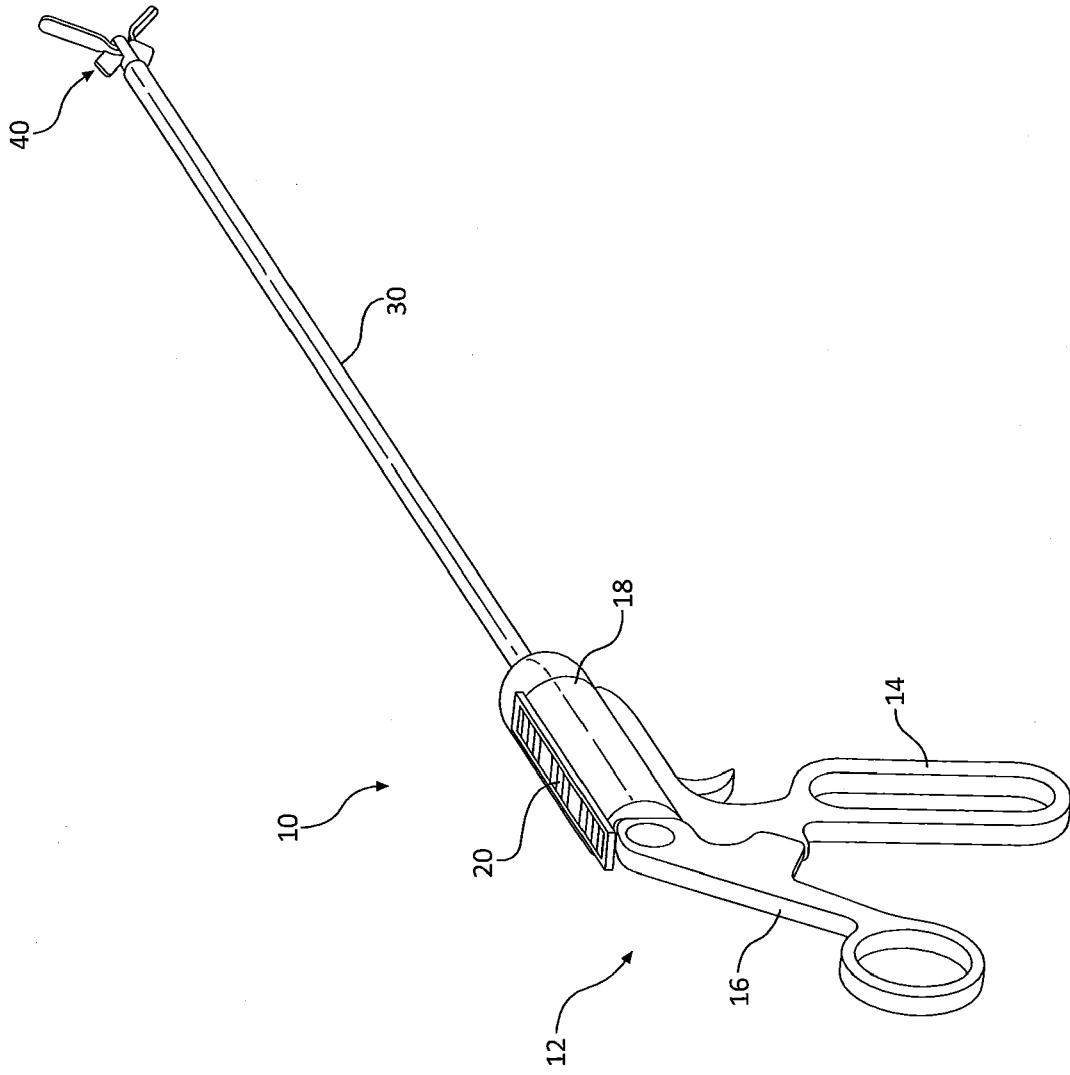


FIG. 5

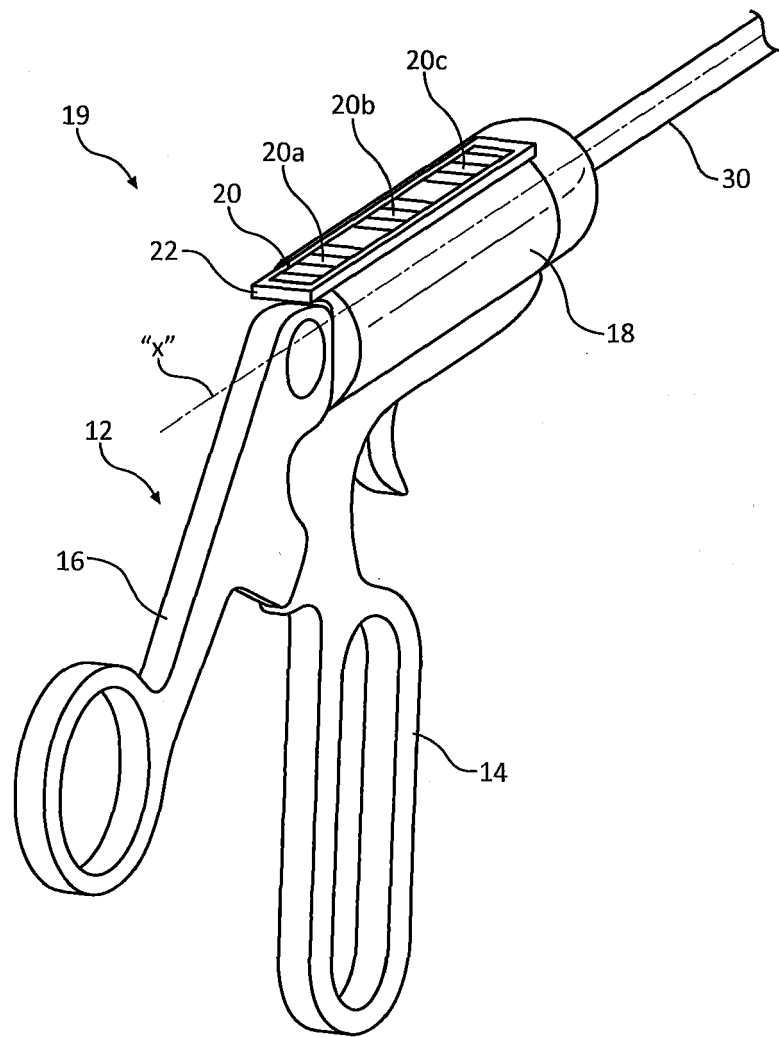


FIG. 6

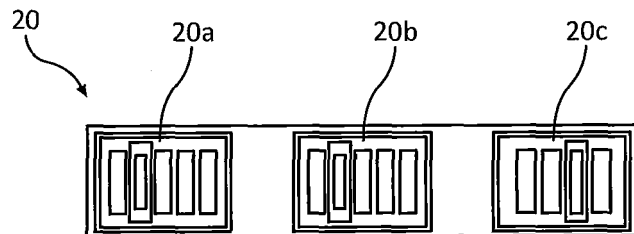


FIG. 7

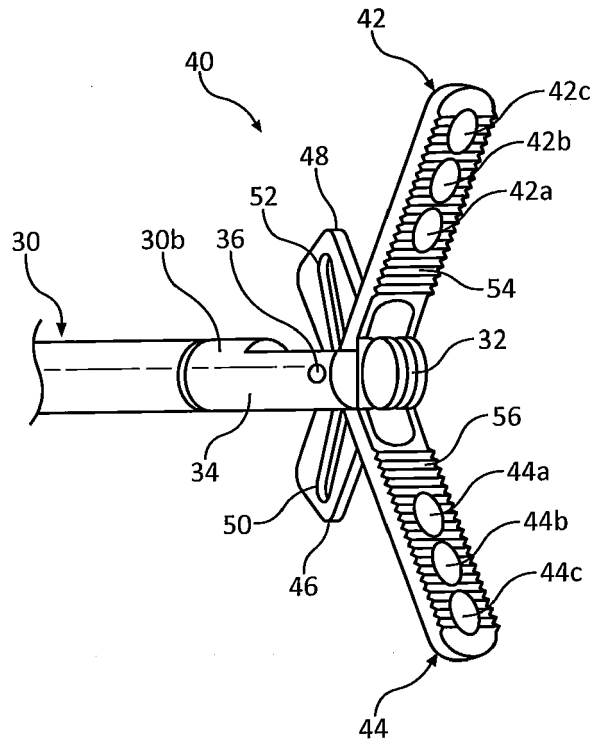


FIG. 8

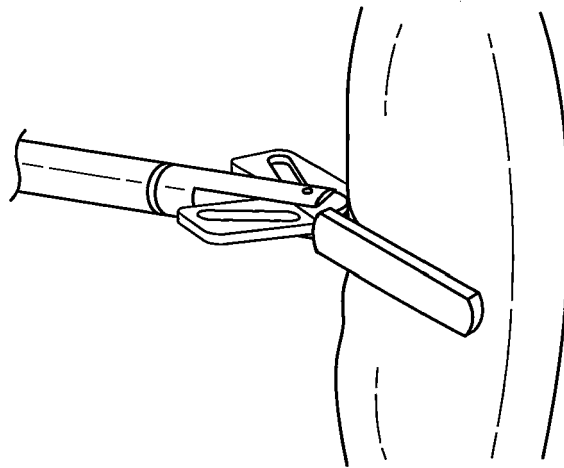


FIG. 9

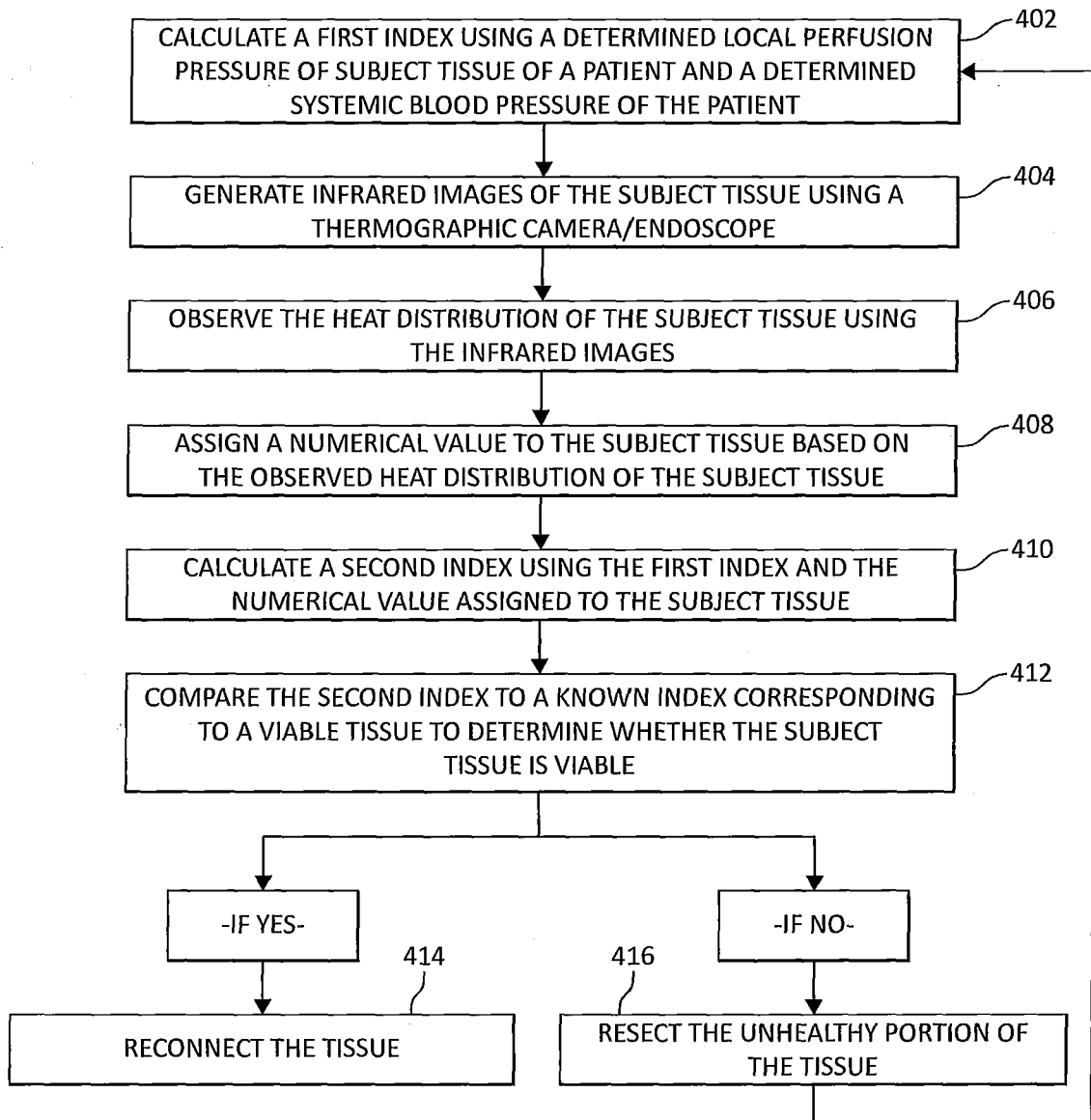


FIG. 10



EUROPEAN SEARCH REPORT

Application Number
EP 18 15 7936

5

10

15

20

25

30

35

40

45

DOCUMENTS CONSIDERED TO BE RELEVANT			
Category	Citation of document with indication, where appropriate, of relevant passages	Relevant to claim	CLASSIFICATION OF THE APPLICATION (IPC)
X	EP 3 047 805 A1 (COVIDIEN LP [US]) 27 July 2016 (2016-07-27) * abstract; figures 1-7 * * paragraphs [0004] - [0010], [0013] - [0039] *	1-15	INV. A61B5/00 A61B5/026 A61B17/28 A61B18/00 A61B34/30
X	US 2011/144640 A1 (HEINRICH RUSSELL [US] ET AL) 16 June 2011 (2011-06-16) * figures 2-3a, 10 * * paragraphs [0069] - [0073], [0082] - [0100], [0116], [0130] - [0146] *	1-15	A61B17/00 A61B5/022 A61B17/068 A61B17/29
X A	US 2007/038115 A1 (QUIGLEY DAVID P [US] ET AL) 15 February 2007 (2007-02-15) * figures 1-19 * * paragraphs [0028] - [0045], [0059] - [0069] *	1-12,14,15 13	ADD. A61B17/11 A61B5/1459 A61B90/00
X A	US 2016/073909 A1 (ZAND JASON MATTHEW [US] ET AL) 17 March 2016 (2016-03-17) * figures 1, 11c, 14 * * paragraphs [0053] - [0055], [0058] - [0059], [0106] - [0109] *	1-3,5-15 4	TECHNICAL FIELDS SEARCHED (IPC) A61B
X	US 2014/288386 A1 (ZAND JASON M [US] ET AL) 25 September 2014 (2014-09-25) * figures 1a,1b,11 * * paragraphs [0060] - [0063], [0068] - [0076], [0088] - [0093] *	1-15	
X,P	EP 3 181 040 A1 (COVIDIEN LP [US]) 21 June 2017 (2017-06-21) * abstract; figures 1-5 * * paragraphs [0006] - [0020], [0024] - [0051] *	1-15	
The present search report has been drawn up for all claims			
Place of search The Hague		Date of completion of the search 22 June 2018	Examiner Carta, Riccardo
CATEGORY OF CITED DOCUMENTS X : particularly relevant if taken alone Y : particularly relevant if combined with another document of the same category A : technological background O : non-written disclosure P : intermediate document T : theory or principle underlying the invention E : earlier patent document, but published on, or after the filing date D : document cited in the application L : document cited for other reasons & : member of the same patent family, corresponding document			

1
EPO FORM 1503 03 82 (P04C01)

50

55

ANNEX TO THE EUROPEAN SEARCH REPORT
ON EUROPEAN PATENT APPLICATION NO.

EP 18 15 7936

5 This annex lists the patent family members relating to the patent documents cited in the above-mentioned European search report.
The members are as contained in the European Patent Office EDP file on
The European Patent Office is in no way liable for these particulars which are merely given for the purpose of information.

22-06-2018

Patent document cited in search report	Publication date	Patent family member(s)	Publication date
EP 3047805 A1	27-07-2016	EP 3047805 A1	27-07-2016
		US 2016206336 A1	21-07-2016

US 2011144640 A1	16-06-2011	AU 2003245246 A1	10-11-2003
		AU 2009200903 A1	26-03-2009
		AU 2011201490 A1	28-04-2011
		CA 2483094 A1	06-11-2003
		EP 1496805 A2	19-01-2005
		ES 2377483 T3	28-03-2012
		JP 4431404 B2	17-03-2010
		JP 2005523105 A	04-08-2005
		US 2005131390 A1	16-06-2005
		US 2011144640 A1	16-06-2011
		US 2012016362 A1	19-01-2012
		US 2014336641 A1	13-11-2014
		US 2016030042 A1	04-02-2016
		US 2016256164 A1	08-09-2016
		US 2017128149 A1	11-05-2017
		WO 03090630 A2	06-11-2003

US 2007038115 A1	15-02-2007	US 2007038115 A1	15-02-2007
		WO 2007022032 A2	22-02-2007

US 2016073909 A1	17-03-2016	CA 2604563 A1	26-10-2006
		CN 101495025 A	29-07-2009
		CN 103622725 A	12-03-2014
		EP 1868485 A2	26-12-2007
		EP 3095379 A1	23-11-2016
		US 2009054908 A1	26-02-2009
		US 2016073909 A1	17-03-2016
		WO 2006113394 A2	26-10-2006

US 2014288386 A1	25-09-2014	EP 2976033 A1	27-01-2016
		JP 2016523576 A	12-08-2016
		US 2014288386 A1	25-09-2014
		US 2016310055 A1	27-10-2016
		WO 2014153428 A1	25-09-2014

EP 3181040 A1	21-06-2017	AU 2016273969 A1	06-07-2017
		CA 2952067 A1	18-06-2017
		CN 107019545 A	08-08-2017
		EP 3181040 A1	21-06-2017
		JP 2017113545 A	29-06-2017
		US 2017172550 A1	22-06-2017

EPO FORM P0459

For more details about this annex : see Official Journal of the European Patent Office, No. 12/82

REFERENCES CITED IN THE DESCRIPTION

This list of references cited by the applicant is for the reader's convenience only. It does not form part of the European patent document. Even though great care has been taken in compiling the references, errors or omissions cannot be excluded and the EPO disclaims all liability in this regard.

Patent documents cited in the description

- US 5445157 A [0024]
- US 7618376 B [0044] [0062]
- US 4109647 A [0054]
- US 4862894 A [0054]
- US 8808311 B [0057]
- US 8002795 B [0058]

专利名称(译)	用于确定组织生存能力的装置		
公开(公告)号	EP3366200A1	公开(公告)日	2018-08-29
申请号	EP2018157936	申请日	2018-02-21
[标]申请(专利权)人(译)	柯惠有限合伙公司		
申请(专利权)人(译)	COVIDIEN LP		
当前申请(专利权)人(译)	COVIDIEN LP		
[标]发明人	MOZDZIERZ PATRICK		
发明人	MOZDZIERZ, PATRICK		
IPC分类号	A61B5/00 A61B5/026 A61B17/28 A61B18/00 A61B34/30 A61B17/00 A61B5/022 A61B17/068 A61B17/29 A61B17/11 A61B5/1459 A61B90/00		
CPC分类号	A61B1/3132 A61B5/0053 A61B5/0059 A61B5/0084 A61B5/022 A61B5/026 A61B5/0261 A61B5/1459 A61B5/4836 A61B5/6843 A61B5/6847 A61B5/742 A61B17/29 A61B18/00 A61B34/30 A61B2017/00022 A61B2017/00057 A61B2017/00115 A61B2018/00005 A61B2018/00184 A61B2018/00494 A61B2018/005 A61B2018/00791 A61B2018/00863 A61B2018/00904 A61B2018/0091 A61B2018/00982 A61B2090/065 A61B2505/05 A61B2560/0462 A61B2562/063 A61B5/015 A61B5/02055 A61B5/7278		
代理机构(译)	MASCHIO , ANTONIO		
优先权	15/439032 2017-02-22 US		
外部链接	Espacenet		

摘要(译)

一种执行外科手术的方法包括使用热成像相机产生组织的红外图像，分析红外图像以确定组织的血流特性，以及切除被确定为具有异常血流特征的组织的一部分。

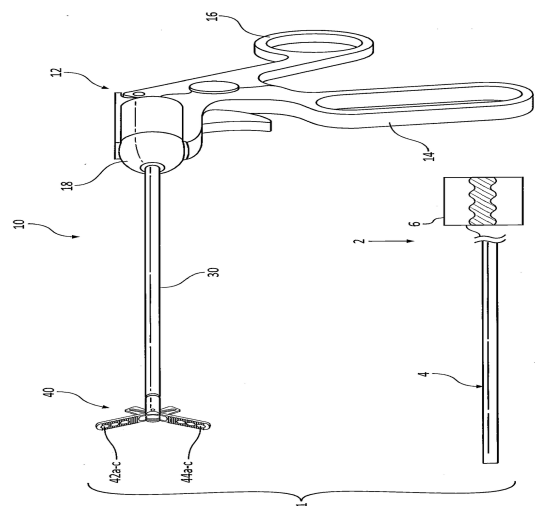


FIG. 1