

(19)



(11)

EP 1 928 545 B1

(12)

EUROPEAN PATENT SPECIFICATION

(45) Date of publication and mention of the grant of the patent:
02.01.2013 Bulletin 2013/01

(51) Int Cl.:
A61B 5/00 (2006.01) **A61N 1/37** (2006.01)
A61N 1/372 (2006.01)

(21) Application number: **06802446.2**

(86) International application number:
PCT/US2006/033459

(22) Date of filing: **25.08.2006**

(87) International publication number:
WO 2007/027570 (08.03.2007 Gazette 2007/10)

(54) **AUTOMATIC PARAMETER STATUS ON AN IMPLANTABLE MEDICAL DEVICE SYSTEM**

AUTOMATISCHER PARAMETER-STATUS AUF EINEM IMPLANTIERBAREN MEDIZINPRODUKT
STATUT DE PARAMETRE AUTOMATIQUE SUR UN SYSTEME DE DISPOSITIF MEDICAL IMPLANTABLE

(84) Designated Contracting States:
AT BE BG CH CY CZ DE DK EE ES FI FR GB GR HU IE IS IT LI LT LU LV MC NL PL PT RO SE SI SK TR

- **MCADAMS, Sean B.**
Minneapolis, Minnesota 55403 (US)
- **HOUSE, Chris T.**
Pine Island, MN 55963 (US)

(30) Priority: **31.08.2005 US 217028**

(74) Representative: **Hughes, Andrea Michelle Dehns**
St Bride's House
10 Salisbury Square
London EC4Y 8JD (GB)

(43) Date of publication of application:
11.06.2008 Bulletin 2008/24

(73) Proprietor: **Medtronic, Inc.**
Minneapolis, MN 55432-5604 (US)

(56) References cited:
WO-A2-01/97907 US-A- 5 404 877
US-A1- 2003 144 711 US-A1- 2004 117 204
US-B2- 6 599 250

(72) Inventors:
• **BALL, James J.**
St. Paul, MN 55116 (US)

EP 1 928 545 B1

Note: Within nine months of the publication of the mention of the grant of the European patent in the European Patent Bulletin, any person may give notice to the European Patent Office of opposition to that patent, in accordance with the Implementing Regulations. Notice of opposition shall not be deemed to have been filed until the opposition fee has been paid. (Art. 99(1) European Patent Convention).

DescriptionFIELD OF THE INVENTION

[0001] The present invention relates generally to implantable medical device systems and more particularly to an implantable medical device system and method for providing the status of a monitored parameter.

BACKGROUND OF THE INVENTION

[0002] A variety of implantable medical devices (IMDs) are commercially available for monitoring physiological signals. Such devices can be configured for delivering therapies, such as cardiac pacemakers and defibrillators, hemodynamic monitors, drug delivery devices, insulin monitors and pumps, neurostimulators, and muscle stimulators. These devices may detect clinically serious or life-threatening conditions related to physiological events or conditions. Such devices are also typically enabled to perform self-diagnostic tests or otherwise monitor device performance issues, such as battery life-expectancy, electrical lead impedance, frequency of delivered therapies, and so on. The advanced capabilities of IMDs in detecting physiological or device-related conditions that may warrant careful monitoring, clinical attention or even emergency care has motivated the addition of real time patient notification features to IMD systems.

[0003] Home monitors are external devices that can communicate with the IMD to retrieve data relating to device performance or physiological conditions. The use of home monitors for displaying or broadcasting a patient warning or notification has been proposed, such that the patient is aware of a condition that warrants further monitoring or attention. The home monitor is generally coupled to a communication network to transmit IMD data via the communication network to a remote patient management center. Health care professionals can thereby respond appropriately to the device-related and physiological data retrieved. Interrogation of the IMD by the home monitor and transfer of data to the remote patient management center can occur on a scheduled, periodic basis.

[0004] The IMD may be enabled to transmit data to the home monitor upon detecting a triggering event corresponding to a predetermined alert condition. A real-time warning alerts the patient that a condition requiring medical attention or warranting close monitoring or action by the patient has been detected. The home monitor may display a notification of the alert condition to the patient or other caregiver and/or transmit the data to the remote patient management center. However, further updates of the parameter causing the alert condition are generally not available. The patient or clinician is not notified if the alert condition persists for a period of time or if the alert condition is no longer present. Updated data may not be remotely retrieved from the IMD until another triggering event, the next scheduled interrogation session or until

a clinician manually schedules an interrogation.

BRIEF DESCRIPTION OF THE DRAWINGS

[0005] Aspects and features of the present invention will be readily appreciated as the same becomes better understood by reference to the following detailed description when considered in connection with the accompanying drawings, wherein:

10

FIG. 1 is a schematic diagram of an implantable medical device system including an external monitor for communicating with the implantable medical device, according to an embodiment of the present invention;

15

FIG. 2 is an exemplary block diagram of typical functional components of the implantable medical device of FIG. 1;

20

FIG. 3 is a functional block diagram of an external monitor.

20

FIG. 4 is flow chart of a method for providing an updated status of a parameter monitored by an implantable medical device according to an embodiment of the present invention; and

25

FIG. 5 is a flow chart of a method for providing an updated fluid status on an external monitor according to an embodiment of the present invention.

DETAILED DESCRIPTION

30

[0006] In the following description, references are made to illustrative embodiments for carrying out the invention. It is understood that other embodiments may be utilized without departing from the scope of the invention.

35

[0007] The present invention is directed toward providing an up-to-date status of a physiological parameter by an IMD. In the past, data stored by an IMD was generally retrieved only during an interrogation session during a clinical office visit. With the development of remote patient management systems, an IMD can be interrogated on a more frequent, scheduled basis according to an interrogation schedule programmed into the remote patient management system. An unscheduled data transmission may occur when the IMD detects a predefined alert level of a monitored physiological parameter. Since the transmission occurs once in response to an alert level detection, the duration that the monitored physiological parameter remains at an alert level and whether the monitored physiological parameter returns to a non-alert level may remain unknown until the next scheduled interrogation. The invention is directed toward scheduling additional IMD interrogations at predetermined time intervals by the external monitor so that updated physiological parameter values can be retrieved following detection of an alert level. According to the invention, retrieving the updated data comprises waking up the IMD telemetry circuit in response to expiration of previously set timers, and sending an interrogation command from the external monitor

40

45

50

55

to the IMD after the predetermined time interval. An up-to-date status of the monitored physiological parameter is thereby available for the patient and/or clinician, irrespective of any previously programmed interrogation session schedule stored within the remote patient management system.

[0008] The invention is further directed to canceling pending scheduled interrogation sessions if the monitored physiological parameter corresponds to a non-alert level.

[0009] US Patent Application Publication 2003/144711 A1 (Pless et al.), which is regarded as the closest prior art to the present invention, discloses an implantable medical device (IMD) capable of communicating with an external monitor. In case an alert level of a monitored parameter is detected, a follow-up interrogation session is scheduled, during which updated data is retrieved from the IMD.

[0010] International Patent Application Publication WO 01/97907 A2 (Medtronic Inc.) discloses a system similar to the system of Pless et al., also comprising an IMD and an external monitor, which is also capable of scheduling periodical interrogation sessions, with the additional capability of the IMD to transmit data in case of a significant event such as arrhythmia.

[0011] FIG. 1 illustrates an IMD system including an external monitor for communicating with the IMD. IMD 10 is shown implanted in a patient 12. The simplified illustration of IMD 10 may represent a variety of IMDs such as cardiac pacemakers, implantable cardioverter defibrillators, hemodynamic monitors, ECG recorders, drug delivery devices, insulin monitors or pumps, or neuromuscular stimulators. IMD 10 may be coupled to one or more leads or fluid delivery catheters. Leads may be used for carrying electrodes or physiological sensors used for monitoring one or more physiological conditions and delivering electrical stimulation therapies. IMD 10 may alternatively be embodied as a leadless device wherein sensors or electrodes are incorporated in or on the housing of IMD 10. Examples of lead less monitoring devices are generally disclosed in U.S. Pat. No. 5,404,877 issued to Nolan et al., and U.S. Pat. No. 5,987,352 issued to Klein et al.

[0012] IMD 10 is provided with an antenna and associated circuitry, as will be described below, for establishing a communication link 14 with external monitor 20. External monitor 20 may be embodied as a dedicated device for communicating with IMD 10 and performing patient alert functions as will be described herein. Alternatively, external monitor 20 may be implemented as a component of a home programmer or monitoring unit 26 which includes other IMD programming and interrogation functions. Programmer and home monitoring units for use with an IMD are known in the art.

[0013] As will be described in greater detail herein, patient alert information can be transferred to the external monitor 20 from IMD 10 through bi-directional communication link 14.

[0014] External monitor 20 may optionally be adapted to communicate with a central database 24 to allow transfer of patient alert data and any other physiological or device-related data received from IMD 10 to the central database 24. Central database 24, also referred to herein as "remote patient management database," may be an Internet-based or other networked database used for remote patient monitoring. External monitor 20 may transfer data via a communication link 22, which may be established via the Internet, a local area network, a wide area network, a telecommunications network or other appropriate communications network and may be a wireless communication link.

[0015] Examples of remote monitoring systems are generally disclosed in U.S. Pat. No. 6,599,250 issued to Webb et al., U.S. Pat. No. 6,442,433 issued to Linberg, and U.S. Pat. No. 6,574,511 issued to Lee, U.S. Pat. No. 6,480,745 issued to Nelson et al., U.S. Pat. No. 6,418,346 issued to Nelson et al., and U.S. Pat. No. 6,250,309 issued to Krichen et al. FIG. 2 is a block diagram of typical functional components of an IMD, such as IMD 10 shown in FIG. 1. IMD 10 generally includes timing and control circuitry 52 and an operating system that may employ microprocessor 54 or other operating system architecture such as a digital state machine for timing sensing and therapy delivery functions in accordance with a programmed operating mode. Microprocessor 54 and associated memory 56 are coupled to the various components of IMD 10 via a data/address bus 55. IMD 10 may include therapy delivery unit 50 for delivering a therapy, such as an electrical stimulation or drug therapy, under the control of timing and control 52. In the case of electrical stimulation therapies, such as cardiac stimulation therapies, therapy delivery unit 50 is typically coupled to two or more electrodes 68 via a switch matrix 58. Switch matrix 58 is used for selecting which electrodes and corresponding polarities are used for delivering electrical stimulation pulses.

[0016] Electrodes 68 may also be used for sensing electrical signals within the body, such as cardiac signals, or for measuring impedance. In the case of cardiac stimulation devices, cardiac electrical signals are sensed for determining when an electrical stimulation therapy is needed and in controlling the timing of stimulation pulses. In some embodiments, detection of an arrhythmia is a patient alert condition, causing IMD 10 to issue a patient alert signal.

[0017] Electrodes used for sensing and electrodes used for stimulation may be selected via switch matrix 58. When used for sensing, electrodes 68 are coupled to signal processing circuitry 60 via switch matrix 58. Signal processor 60 includes sense amplifiers and may include other signal conditioning circuitry and an analog to digital converter. Electrical signals may then be used by microprocessor 54 for detecting physiological events, such as detecting and discriminating cardiac arrhythmias. In other embodiments, electrodes 68 may be used for measuring impedance signals for monitoring edema,

respiration or heart chamber volume. Any of these signals may be used to detect a change or level indicating a worsening pathologic condition, which may trigger a patient alert signal. Impedance signals can also be used for monitoring lead performance and detecting lead-related problems as is known in the art.

[0018] IMD 10 may additionally or alternatively be coupled to one or more physiological sensors 70. Such sensors may include pressure sensors, accelerometers, flow sensors, blood chemistry sensors, activity sensors or other physiological sensors known for use with IMDs. Sensors 70 are coupled to IMD 10 via a sensor interface 62 which provides sensor signals to signal processing circuitry 60. Sensor signals are used by microprocessor 54 for detecting physiological events or conditions. For example, IMD 10 may monitor heart wall motion, blood pressure, blood chemistry, respiration, or patient activity. Monitored signals may be used for sensing the need for delivering a therapy under control of the operating system. Physiological events or changes in monitored physiological conditions may be defined as triggering conditions for a patient alert signal to be generated by IMD 10.

[0019] The operating system includes associated memory 56 for storing a variety of programmed-in operating mode and parameter values that are used by microprocessor 54.

[0020] The memory 56 may also be used for storing data compiled from sensed physiological signals and/or relating to device operating history for telemetry out on receipt of a retrieval or interrogation instruction. All of these functions and operations are known in the art, and generally employed to store operating commands and data for controlling device operation and for later retrieval to diagnose device function or patient condition. In accordance with one embodiment of the invention, parameter values, limits or ranges defining one or more alert trigger conditions may be stored in memory 56 and used by microprocessor 54 in detecting an alert level.

[0021] IMD 10 further includes telemetry circuitry 64 and antenna 65. Programming commands or data are transmitted during uplink or downlink telemetry between IMD telemetry circuitry 64 and external telemetry circuitry included in the external monitor.

[0022] Telemetry circuitry 64 and antenna 65 may correspond to telemetry systems known in the art. Upon detection of a predefined alert level of a physiological or device-related parameter, IMD 10 initiates a telemetry session with the external monitor. Data is transmitted to the external monitor corresponding to the monitored parameter causing the alert condition. Transmitted data may include any other available physiological or device-related data and time and date information.

[0023] Telemetry circuitry 64 is embodied as a long range telemetry system that allows alert data to be transferred automatically when it is available without intervention by the patient. Long-range telemetry systems are generally disclosed in U.S. Pat. No. 6,482,154 issued to Haubrich et al. In other embodiments, telemetry circuitry

may require patient intervention to initiate or enable transfer of patient alert data to an external monitor. For example, telemetry circuitry 64 may require the use of an external programming head containing an external antenna to be positioned over IMD 10 as generally disclosed in U.S. Pat. No. 5,354,319 issued to Wyborny et al. Telemetry circuitry 64 may require manual "waking up" by the patient to enable data transmission or may require the patient to be within a limited communication range from the external monitor. In such embodiments, IMD 10 includes a patient alarm 66 for notifying the patient that data is ready to be transmitted to the external monitor. IMD 10 may be equipped with patient alarm circuitry 66 for generating audible tones, a perceptible vibration, muscle stimulation or other sensory stimulation for notifying the patient that a patient alert condition has been detected by IMD 10 and a data transmission is pending. The patient is previously advised to initiate a communication session between the IMD 10 and the external monitor upon perceiving a sensory patient alarm. As such, in some embodiments, the generation of a patient alert signal upon detection of triggering condition causes IMD 10 to generate a sensory patient alarm by alarm 66 and prepare for or automatically initiate a patient alert data transmission via telemetry circuitry 64 to the external monitor.

[0024] A patient alert condition may be defined with regard to any of the monitoring functions provided by IMD 10. The operating system of IMD 10 performs a comparative analysis of sensed signals, or parameters derived there from, to determine if predefined alert triggering conditions are present. If a predefined trigger condition is detected, a patient alert trigger signal 92 is generated. In one embodiment, the patient alert trigger signal 92 causes IMD 10 to "wake up" telemetry circuitry 64 to automatically transfer patient alert data to external monitor 20 via telemetry link 14 (shown in FIG. 1).

[0025] Additionally, the patient alert trigger signal may cause patient alarm 66 to generate sensory stimulation to the patient. Alternatively, a patient alert trigger signal causes patient alarm 66 to generate sensory stimulation such that the patient initiates a patient alert data transfer to external monitor 20.

[0026] FIG. 3 is a functional block diagram of an external monitor 20. External monitor 20 will typically include a telemetry circuit 72 for receiving data from IMD 10. External monitor 20 may be a microprocessor-controlled device wherein microprocessor 74 operates with associated memory 78 for controlling monitor functions. In response to an alert condition data transmission received from IMD 10, microprocessor 74 will schedule subsequent interrogation sessions for retrieving data from IMD 10 at a future time. In this way, external monitor 20 retrieves updated values for the monitored parameter that triggered the alert condition.

[0027] In response to an alert data transmission from IMD 10 and any subsequent scheduled interrogation sessions, external monitor 20 may generate a message on

display 76. The message will contain information based on the alert data received from IMD 10 and updated monitor parameter values. External monitor 20 may further include a speaker 77 for generating audible sounds to notify the patient that a transmission has occurred and/or an alert message is being displayed. Display 76 may be a graphical screen allowing for textual or graphical displays. Alternatively display 76 may include LEDs for indicating the presence of an alert condition.

[0028] External monitor 20 may include a communications module 79, which may be embodied as a modem, to allow data transmission via a communication network. External monitor 20 may transmit data to a remote patient management database or place a telephone call or send electronic messages to notify the patient, caregivers or medical personnel of the presence of an alert condition and updated parameter values obtained during subsequently scheduled interrogation sessions.

[0029] In some embodiments, external monitor 20 includes a user interface 73 for entering commands or programming information if external monitor 20 is enabled to perform programming functions. User interface 73 may be used to manually trigger a data transmission to a communication network via communication module 79 and/or a data retrieval from IMD 10 via telemetry circuit 72.

[0030] FIG. 4 is flow chart summarizing a method for providing an updated status of a parameter monitored by an IMD according to an embodiment of the present invention. At step 105, the IMD detects a predefined alert level of a monitored parameter. Method 100 may be applied to any parameter monitored by the IMD, which may include device-related parameters and physiological parameters. An alert level may be a predefined value, range of values, or threshold crossing of the monitored parameter. Alert conditions may be defined for multiple parameters such that method 100 may be invoked by detecting an alert level of more than one monitored parameter and may be operating simultaneously for providing an updated status of multiple monitored parameters.

[0031] At step 110, the IMD responds to the detected alert level by transmitting data relating to the alert level detection to the external monitor. The transmitted data may be a signal indicating that an alert level has been detected and indicating the corresponding monitored parameter. In some embodiments, the transmitted data may include actual parameter values, a history of parameter values, other monitored parameter values, time and date information or any other relevant data.

[0032] At step 115, the external monitor may display alert data information to inform the patient or another caregiver of the alert condition. As described previously, the display may be an LED display indicating the presence of the alert condition. In various embodiments, the number or color of LEDs illuminated may be used to indicate the severity of the alert condition or the type of alert condition detected. In other embodiments the display may include graphical or textual display on a monitor and/or a broadcast audible sound or voiced message. It

is appreciated that numerous variations for displaying or broadcasting alert condition information to a patient or other caregiver may be implemented.

[0033] The external monitor may additionally or alternatively transfer alert condition data to a remote patient management database at step 115 via a communication network. Medical personnel may then respond appropriately to the alert condition.

[0034] At step 120, the external monitor responds to the alert condition data receipt by scheduling a future IMD interrogation. The IMD interrogation may be scheduled to occur at any time interval, for example after several minutes, several hours, one day, or one week. The appropriate time interval may depend on the type of monitored parameter for which the alert level detection was made. For example, an arrhythmia condition may change over the course of seconds or minutes but an edema condition may change over the course of a day. Some parameters may be monitored in a continuous manner by the IMD such that any time a follow-up interrogation is performed by the external monitor, an updated parameter value will be obtained. Other parameters may be monitored on a periodic basis by the IMD. A scheduled interrogation by the external monitor should therefore occur after the next periodic measurement is expected in order to obtain an updated parameter value. If the monitoring interval is unknown by the external monitor, interrogations may be repeated until an updated parameter value is obtained.

[0035] The time interval for scheduling follow-up interrogations for a particular monitored parameter may also be tailored according to individual patient need. Some patients may be at greater risk for requiring hospitalization or emergency care following an alert level. As such, frequent follow-up interrogations may be scheduled to closely monitor a parameter that has reached an alert level.

[0036] A patient may respond to the alert notification by taking or adjusting a medication, adjusting his/her activity level, adjusting fluid intake, or taking any other physician-directed action. The patient's response may resolve the condition that caused the alert level detection without requiring the patient to go to a clinic or other medical facility.

[0037] Scheduling follow-up interrogation sessions by the external monitor allow the patient or other caregiver to observe whether a patient's response to the alert have had a beneficial effect. By scheduling the interrogation sessions at an appropriate frequency, the patient can seek medical attention in a timely manner when the condition is not quickly resolved by the patient's own response to the alert notification. Hospitalization or other serious consequences may thereby be avoided.

[0038] In some embodiments, the alert data is transmitted to a remote patient management system and may not be displayed to notify the patient of the condition. Medical personnel may then advise the patient appropriately and continue to monitor the status of the condition

via the scheduled follow-up interrogation. Medical personnel can make informed decisions regarding the appropriate time to intervene based on an up-to-date status of the monitored parameter retrieved during scheduled follow-up interrogations.

[0039] In another embodiment, scheduling of a follow-up IMD interrogation session at step 120 may be performed through programming operations initiated by the remote patient management system. A programming request may be sent back to the external monitor in response to receiving the alert data by the remote patient management database. The external monitor responds by transferring the scheduled interrogation session data to the IMD.

[0040] At step 125, the scheduled interrogation is performed. The external monitor initiates the interrogation session by transferring an interrogation command to the IMD. As described previously, the scheduled interrogation session may not require patient intervention and occur automatically through a long-range telemetry system. The IMD will "wake up" the IMD telemetry circuitry upon the expiration of timers set according to the scheduled interrogation session and is thereby enabled to receive the interrogation request. In other embodiments, the patient or another caregiver may be required to intervene to ensure the IMD telemetry circuitry is enabled and the IMD is within telemetry range of the external monitor for a scheduled, follow-up interrogation.

[0041] During the follow-up interrogation, data corresponding to the monitored parameter that caused the previous alert level detection is uplinked to the external monitor. In particular, updated monitored parameter values and/or the status of the alert condition are retrieved. Other data, such as other device-related or physiological parameter data, time and data information, or other relevant data may optionally be retrieved.

[0042] At step 130, the updated monitored parameter data is displayed by the external monitor and/or transferred to a remote patient management center. At decision step 135, a determination is made whether the updated parameter value remains at an alert level. If so, another follow-up interrogation session is scheduled at step 120. If the parameter value has returned to a non-alert level, method 100 may be terminated at step 140. The patient and/or medical personnel have been notified at step 130 of the non-alert status of the monitored parameter and further follow-up interrogations are no longer needed.

[0043] Alternatively, one or more additional follow-up interrogations may be scheduled after detecting a non-alert level of the monitored parameter to ensure that the monitored parameter remains at a non-alert level for a predetermined interval of time.

[0044] FIG. 5 is a flow chart summarizing a method for providing an updated fluid status on an external monitor. Patients suffering from congestive heart failure can develop pulmonary edema. Such patients are often medicated with diuretics to manage the fluid level. Careful

monitoring of a patient's lung wetness can help in managing the diuretic therapy and prevent severe cases of pulmonary edema which would require hospitalization. As such, in one embodiment of the invention, an updated fluid status parameter is retrieved through scheduled follow-up interrogations following detection of an alert level of the fluid status. By providing an updated fluid status for the patient, the patient or clinician can take appropriate action to address an edemic or over-diuresed condition in a timely manner.

[0045] At step 155, a fluid status parameter is measured by the IMD. Generally, measurement of a fluid status parameter includes monitoring an impedance signal for detecting a change in thoracic impedance relating to a change in lung wetness, which may be discerned through evaluation of a change in respiration. Edema monitoring methods may be embodied as generally disclosed, for example, in U.S. Pat. No. 6,512,949 issued to Combs, et al. Other methods known for use in IMDs for detecting changes in lung wetness may be substituted.

[0046] At step 160, method 150 determines if the measured fluid status parameter value is at an alert level. An alert level may indicate a low fluid status which may be associated with an over-diruresed condition. Another alert level may indicate a high fluid status associated with an edemic condition. As such more than one alert level may be defined for any monitored parameter indicating different types of physiological conditions that can be indicated by the monitored parameter.

[0047] If the measured fluid status parameter value is not at an alert level, the IMD continues measuring the fluid status parameter at step 155 according to the programmed monitoring mode. If an alert level is detected at step 160, the IMD initiates a data transmission at step 170. The fluid status parameter data is transferred to the external monitor. At step 175 alert condition information may be displayed by the external monitor and/or transferred to a remote patient management database. In one embodiment, an LED display on the external monitor may indicate to the patient that the fluid status is at an alert level. One color of LED may be illuminated to indicate a low fluid status alert condition; a different color of LED may be illuminated to indicate a high fluid status condition. Other parameter data or information may optionally be displayed on a screen or broadcast by the external monitor.

[0048] The external monitor automatically responds to the receipt of a fluid status alert transmission by scheduling a future IMD interrogation at step 180. In some embodiments, a series of IMD interrogations may be scheduled occurring at an appropriate time interval.

[0049] For example, in order to provide an updated fluid status, the external monitor may schedule a series of daily IMD interrogations as indicated by step 180. The series of IMD interrogations may be scheduled to occur at a selected time interval for an indefinite period of time or a predetermined number of IMD interrogations may be scheduled.

[0050] At step 190, the scheduled, follow-up IMD interrogation is performed to retrieve a new fluid status parameter measurement that has been obtained at step 185, prior to the follow-up interrogation. Information relating to the new fluid status parameter value may be displayed or broadcast by the external monitor and/or transferred to a remote patient management database at step 193. At step 195, the external monitor determines if the fluid status parameter is at a non-alert level. The external monitor may further determine if the parameter has remained at a non-alert level for a predefined interval of time. For example, the external monitor may determine if the fluid status parameter has been at a non-alert level for at least 24 hours or for two successive follow-up interrogations. If not, the next scheduled interrogation is performed at step 190.

[0051] Once the fluid status is determined to be at a non-alert level, which may be required for a predefined interval of time or number of successive follow-up interrogations, any pending follow-up interrogations are cancelled at step 197. Method 150 returns to step 155 to continue IMD measurements of the fluid status parameter. In some cases, a scheduled series of follow-up interrogations may expire prior to the monitored parameter reaching a non-alert level at which time the patient and/or medical personnel may take appropriate action.

[0052] Some of the techniques described above may be embodied as a computer-readable medium comprising instructions for a programmable processor such as a microprocessor.

[0053] The programmable processor may include one or more individual processors, which may act independently or in concert. A "computer-readable medium" includes but is not limited to any type of computer memory such as floppy disks, conventional hard disks, CR-ROMS, Flash ROMS, nonvolatile ROMS, RAM and a magnetic or optical storage medium. The medium may include instructions for causing a processor to perform any of the features described above for initiating a session of the escape rate variation according to the present invention.

[0054] Thus an IMD system and associated method for providing an updated status of a monitored parameter have been presented in the foregoing description with reference to specific embodiments. It is appreciated that various modifications to the referenced embodiments may be made without departing from the scope of the invention as set forth in the following claims.

Claims

1. A method for providing status of a physiological parameter in an implantable medical device system, comprising:
 - monitoring the physiological parameter;
 - detecting an alert level of the monitored param-

eter;
 transmitting data corresponding to the detected alert level from the implanted medical device to an external monitor;
 scheduling, by said external monitor, a series of follow-up interrogation sessions to occur at predetermined time intervals in response to the alert level data transmission and setting timers according to the predetermined time intervals;
 retrieving updated data from the implanted medical device corresponding to the monitored physiological parameter during the follow-up interrogation sessions;
 determining, in said external monitor, if the retrieved updated data corresponding to the monitored physiological parameter corresponds to a non-alert level; and canceling any pending scheduled interrogation sessions of the scheduled series in response to the retrieved updated data being determined to correspond to a non-alert level, wherein retrieving the updated data during each of the follow-up interrogation sessions comprises waking up the implantable medical device telemetry circuit in response to expiration of the timers and sending an interrogation command from the external monitor to the implantable medical device after the predetermined time interval.

2. The method of claim 1, further comprising displaying information corresponding to the retrieved updated data on the external monitor.
3. The method of claim 1, further comprising transferring the retrieved updated data to a remote patient management database.
4. The method of claim 3, wherein scheduling a follow-up interrogation session comprises transferring a scheduling request from the remote patient management database to the external monitor.
5. The method of claim 1, further comprising determining if the updated data corresponding to the monitored parameter corresponds to a non-alert level for a predetermined interval of time.
6. The method of claim 1, wherein the physiological parameter monitored by the implanted medical device includes a fluid status.
7. An implantable medical device system, comprising:
 - an implantable medical device, comprising:
 - an implantable sensor (68) for sensing a signal corresponding to a physiological parameter;

a processor (54) coupled to the sensor for receiving the sensor signal and detecting an alert level of the physiological parameter based on the sensor signal;
 a device telemetry circuit (64) coupled to the processor for transmitting data corresponding to the physiological parameter in response to the processor detecting the alert level;

an external monitor (20), comprising:

an external telemetry circuit (72) adapted for communication with the device telemetry circuit for receiving the transmitted data; and
 an external control system (74), coupled to the external telemetry circuit, for scheduling a series of follow-up interrogation sessions to occur at predetermined time intervals, for retrieving an updated value from the processor corresponding to the physiological parameter via communication between the external telemetry circuit and the device telemetry circuit, said external control system determining if the retrieved updated data corresponding to the monitored physiological parameter corresponds to a non-alert level; and canceling any pending scheduled interrogation sessions of the scheduled series in response to the retrieved updated data being determined to correspond to a non-alert level, wherein retrieving the updated data during each of the follow-up interrogation sessions comprises sending an interrogation command from the external monitor to the implantable medical device after the predetermined time interval.

8. The implantable medical device system of claim 7, wherein said external monitor comprises an external display for displaying information corresponding to the physiological parameter.

9. The implantable medical device system of claim 7, further comprising:

a remote patient management database (24);
 a communication network (22); and
 an external communication module (26) coupled to the communication network for transferring information received by the external telemetry circuit corresponding to the monitored physiological parameter to the remote patient management database.

10. The system of claim 7, wherein the sensor comprises an impedance sensor for monitoring a fluid status.

11. A computer-readable medium having computer executable instructions which, when executed on the system of any of claims 7 to 10, cause said device to perform the method of any of claims 1 to 6 for providing status of a parameter in an implantable medical device system.

Patentansprüche

1. Verfahren zum Bereitstellen des Status eines physiologischen Parameters in einem System einer implantierbaren medizinischen Vorrichtung, das umfasst:

Überwachen des physiologischen Parameters;
 Detektieren eines Warnpegels des überwachten Parameters;

Senden von Daten, die dem detektierten Warnpegel entsprechen, von der implantierten medizinischen Vorrichtung zu einem externen Monitor;

zeitliches Planen durch den externen Monitor einer Reihe nachfolgender Abfragesitzungen, die in vorgegebenen Zeitintervallen auftreten sollen, als Antwort auf die Warnpegel-Datensendung und Einstellen von Zeitgebern in Übereinstimmung mit den vorgegebenen Zeitintervallen;

Wiedergewinnen aktualisierter Daten von der implantierten medizinischen Vorrichtung, die dem überwachten physiologischen Parameter entsprechen, während der nachfolgenden Abfragesitzungen;

Bestimmen in dem externen Monitor, ob die wiedergewonnenen aktualisierten Daten, die dem überwachten physiologischen Parameter entsprechen, einem Nichtwarnpegel entsprechen; und Beenden irgendwelcher anhängigen zeitlich geplanten Abfragesitzungen der zeitlich geplanten Reihe als Antwort auf die Bestimmung, dass die wiedergewonnenen aktualisierten Daten einem Nichtwarnpegel entsprechen, wobei das Wiedergewinnen der aktualisierten Daten während jeder der aufeinander folgenden Abfragesitzungen das Aufwecken der Telemetrie-schaltung der implantierbaren medizinischen Vorrichtung als Antwort auf den Ablauf der Zeitgeber und das Senden eines Abfragebefehls von dem externen Monitor zu der implantierbaren medizinischen Vorrichtung nach dem vorgegebenen Zeitintervall umfasst.

2. Verfahren nach Anspruch 1, das ferner das Anzeigen von Informationen, die den wiedergewonnenen aktualisierten Daten entsprechen, auf dem externen Monitor umfasst.

3. Verfahren nach Anspruch 1, das ferner das Übertragen der wiedergewonnenen aktualisierten Daten an eine entfernte Patientenmanagement-Datenbank umfasst.

5

4. Verfahren nach Anspruch 3, wobei das zeitliche Planen einer nachfolgenden Abfragesitzung das Übertragen einer zeitplanungsanforderung von der entfernten Patientenmanagement-Datenbank zu dem externen Monitor umfasst.

10

5. Verfahren nach Anspruch 1, das ferner das Bestimmen, ob die aktualisierten Daten, die dem überwachten Parameter entsprechen, für ein vorgegebenes Zeitintervall einem Nichtwarnpegel entsprechen, umfasst.

15

6. Verfahren nach Anspruch 1, wobei der durch die implantierte medizinische Vorrichtung überwachte physiologische Parameter einen Fluidstatus enthält.

20

7. System einer implantierbaren medizinischen Vorrichtung, mit:

einer implantierbaren medizinischen Vorrichtung, die enthält:

25

einen implantierbaren Sensor (68) zum Erfassen eines Signals, das einem physiologischen Parameter entspricht;

30

einen Prozessor (54), der mit dem Sensor gekoppelt ist, um das Sensorsignal zu empfangen und einen Warnpegel des physiologischen Parameters anhand des Sensorsignals zu detektieren;

35

eine Vorrichtungstelemetrieschaltung (64), die mit dem Prozessor gekoppelt ist, um Daten, die dem physiologischen Parameter entsprechen, als Antwort darauf, dass der Prozessor den Warnpegel detektiert, zu senden; und

40

einem externen Monitor (20), der enthält:

eine externe Telemetrieschaltung (72), die dafür ausgelegt ist, mit der Vorrichtungstelemetrieschaltung zu kommunizieren, um die gesendeten Daten zu empfangen; und ein externes Steuersystem (74), das mit der externen Telemetrieschaltung gekoppelt ist, um eine Reihe nachfolgender Abfragesitzungen zeitlich zu planen, damit sie in vorgegebenen Zeitintervallen auftreten, um einen aktualisierten Wert von dem Prozessor, der dem physiologischen Parameter entspricht, über eine Kommunikation zwischen der externen Telemetrieschaltung und der Vorrichtungstelemetrieschaltung

45

50

55

wiedergewinnen, wobei das externe Steuersystem bestimmt, ob die wiedergewonnenen aktualisierten Daten, die dem überwachten physiologischen Parameter entsprechen, einem Nichtwarnpegel entsprechen; und um irgendwelche anhängigen zeitlich geplanten Abfragesitzungen der zeitlich geplanten Reihe als Antwort darauf, dass für die wiedergewonnenen aktualisierten Daten bestimmt wird, dass sie einem Nichtwarnpegel entsprechen, zu beenden, wobei das Wiedergewinnen der aktualisierten Daten während jeder der aufeinander folgenden Abfragesitzungen dem Senden eines Abfragebefehls von dem externen Monitor zu der medizinischen Vorrichtung nach dem vorgegebenen Zeitintervall enthält.

8. System einer implantierbaren medizinischen Vorrichtung nach Anspruch 7, wobei der externe Monitor eine externe Anzeige enthält, um Informationen, die dem physiologischen Parameter entsprechen, anzuzeigen.

9. System einer implantierbaren medizinischen Vorrichtung nach Anspruch 7, ferner mit:

einer entfernten Patientenmanagement-Datenbank (24);
einem Kommunikationsnetz (22); und
einem externen Kommunikationsmodul (26), das mit dem Kommunikationsnetz gekoppelt ist, um Informationen, die von der externen Telemetrieschaltung empfangen werden und dem überwachten physiologischen Parameter entsprechen, an die entfernte Patientenmanagement-Datenbank zu übertragen.

10. System nach Anspruch 7, wobei der Sensor einen Impedanzsensor enthält, um einen Fluidstatus zu überwachen.

11. Computerlesbares Medium, das computerausführbare Befehle besitzt, die dann, wenn sie in dem System nach einem der Ansprüche 7 bis 10 ausgeführt werden, die Vorrichtung dazu veranlassen, das Verfahren nach einem der Ansprüche 1 bis 6 auszuführen, um den Status eines Parameters in einem System einer implantierbaren medizinischen Vorrichtung bereitzustellen.

Revendications

1. Procédé pour fournir l'état d'un paramètre physiologique dans un système de dispositif médical implantable, comportant les étapes consistant à :

- surveiller le paramètre physiologique ;
détecter un niveau d'alerte du paramètre surveillé ;
transmettre des données correspondant au niveau d'alerte détecté du dispositif médical implanté à un moniteur externe ;
programmer, par l'intermédiaire dudit moniteur externe, une série de sessions d'interrogation de suivi qui doivent avoir lieu à des intervalles de temps prédéterminés en réponse à la transmission de données de niveau d'alerte et régler des compteurs de durée en fonction des intervalles de temps prédéterminés ;
récupérer des données mises à jour à partir du dispositif médical implanté correspondant au paramètre physiologique surveillé pendant les sessions d'interrogation de suivi ;
déterminer, dans ledit moniteur externe, si les données mises à jour récupérées correspondent au paramètre physiologique surveillé correspondant à un niveau de non-alerte ; et annuler toutes les sessions d'interrogation programmées en attente de la série programmée en réponse aux données mises à jour récupérées déterminées comme correspondant à un niveau de non-alerte, dans lequel la récupération des données mises à jour pendant chacune des sessions d'interrogation de suivi comporte le réveil du circuit de télémessure du dispositif médical implantable en réponse à l'expiration des compteurs de durée et l'envoi d'une commande d'interrogation du moniteur externe au dispositif médical implantable après l'intervalle de temps prédéterminé.
2. Procédé selon la revendication 1, comportant en outre l'affichage d'informations correspondant aux données mises à jour récupérées, sur le moniteur externe.
3. Procédé selon la revendication 1, comportant également le transfert des données mises à jour récupérées à une base de données de gestion de patients à distance.
4. Procédé selon la revendication 3, dans lequel la programmation d'une session d'interrogation de suivi comporte le transfert d'une demande de programmation de la base de données de gestion de patients à distance au moniteur externe.
5. Procédé selon la revendication 1, comportant en outre l'étape consistant à déterminer si les données mises à jour correspondant au paramètre surveillé correspondent à un niveau de non-alerte pendant un intervalle de temps prédéterminé.
6. Procédé selon la revendication 1, dans lequel le pa-

ramètre physiologique surveillé par le dispositif médical implantée inclut un état de fluide.

7. Système de dispositif médical implantable, comportant :
- un dispositif médical implantable, comportant :
- un capteur implantable (68) pour détecter un signal correspondant à un paramètre physiologique ;
un processeur (54) couplé au capteur pour recevoir le signal de capteur et détecter un niveau d'alerte du paramètre physiologique sur la base du signal de capteur ;
un circuit de télémessure de dispositif (64) couplé au processeur pour transmettre des données correspondant au paramètre physiologique en réponse au processeur détectant le niveau d'alerte ;
- un moniteur externe (20), comportant :
- un circuit de télémessure externe (72) adapté pour une communication avec le circuit de télémessure de dispositif pour recevoir les données transmises ; et
un système de commande externe (74), couplé au circuit de télémessure externe, pour programmer une série de sessions d'interrogation de suivi qui doivent avoir lieu à des intervalles de temps prédéterminés, pour récupérer une valeur mise à jour à partir du processeur correspondant au paramètre physiologique via une communication entre le circuit de télémessure externe et le circuit de télémessure de dispositif, ledit système de commande externe déterminant si les données mises à jour récupérées correspondant au paramètre physiologique surveillé correspondent à un niveau de non-alerte ; et annuler toutes les sessions d'interrogation programmées en attente de la série programmée en réponse aux données mises à jour récupérées déterminées comme correspondant à un niveau de non-alerte, dans lequel la récupération des données mises à jour pendant chacune des sessions d'interrogation de suivi comporte l'envoi d'une commande d'interrogation du moniteur externe au dispositif médical implantable après l'intervalle de temps prédéterminé.
8. Système de dispositif médical implantable selon la revendication 7, dans lequel ledit moniteur externe comporte un affichage externe pour afficher des informations correspondant au paramètre physiologi-

que.

9. Système de dispositif médical implantable selon la revendication 7, comportant en outre :
- 5 une base de données de gestion de patients à distance (24) ;
 - un réseau de communication (22) ; et
 - un module de communication externe (26) couplé au réseau de communication pour transférer des informations reçues par le circuit de télémé-
 - 10 sure externe correspondant au paramètre physiologique surveillé, à la base de données de gestion de patients à distance.
- 15
10. Système selon la revendication 7, dans lequel le capteur comporte un capteur d'impédance pour surveiller un état de fluide.
- 20
11. Support lisible par ordinateur ayant des instructions exécutables sur ordinateur qui, lorsqu'elles sont exécutées sur le système selon l'une quelconque des revendications 7 à 10, amènent ledit dispositif à mettre en oeuvre le procédé selon l'une quelconque des revendications 1 à 6 pour fournir l'état d'un paramètre dans un système de dispositif médical implanta-
- 25
- 30
- 35
- 40
- 45
- 50
- 55

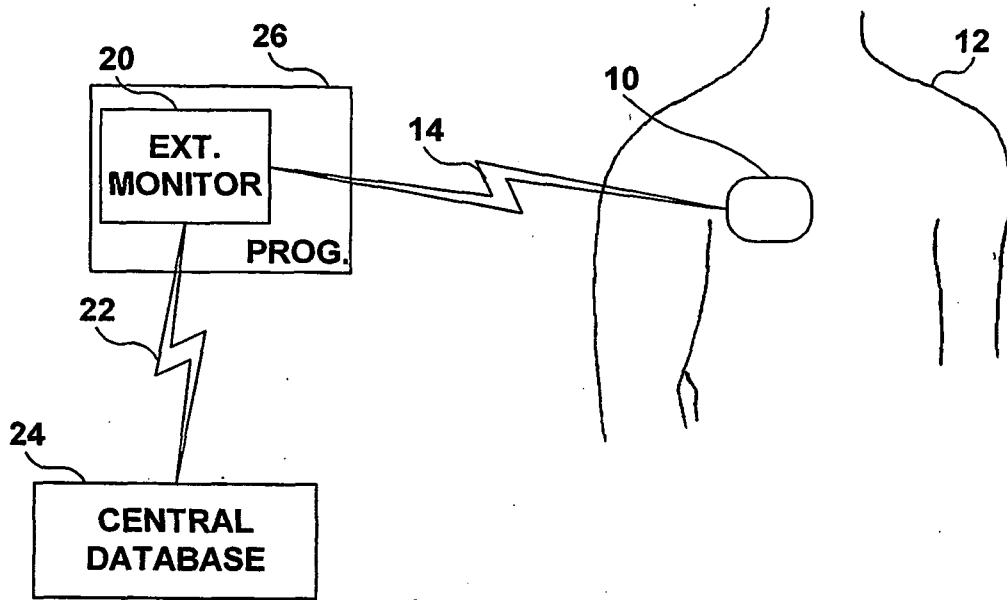


FIG. 1

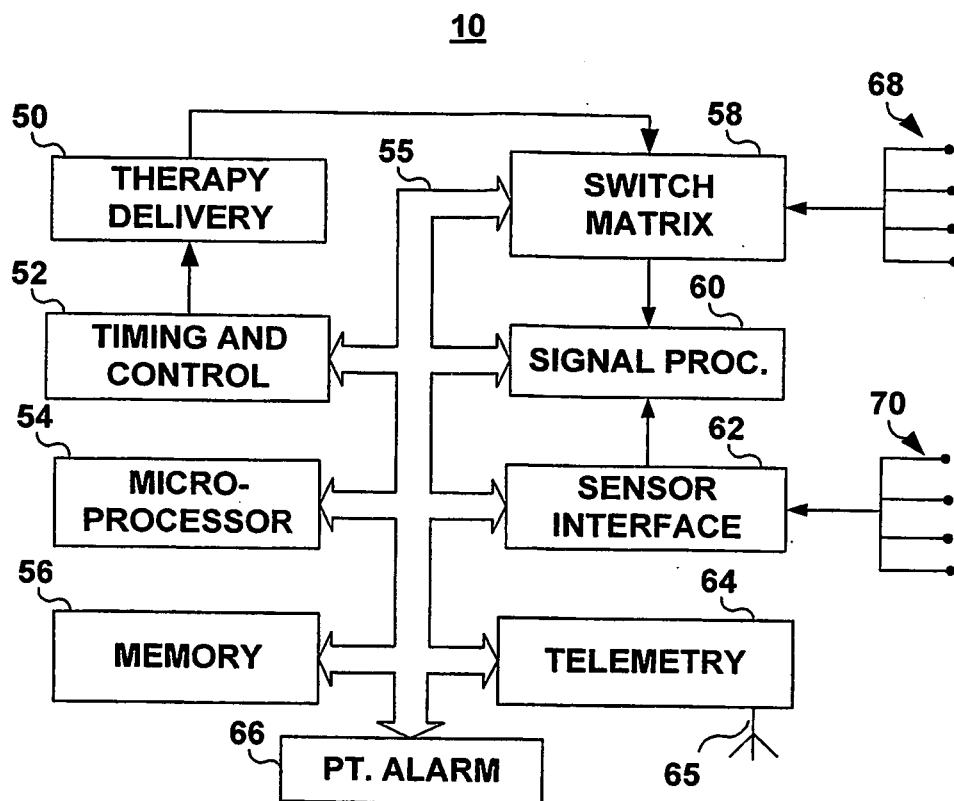


FIG. 2

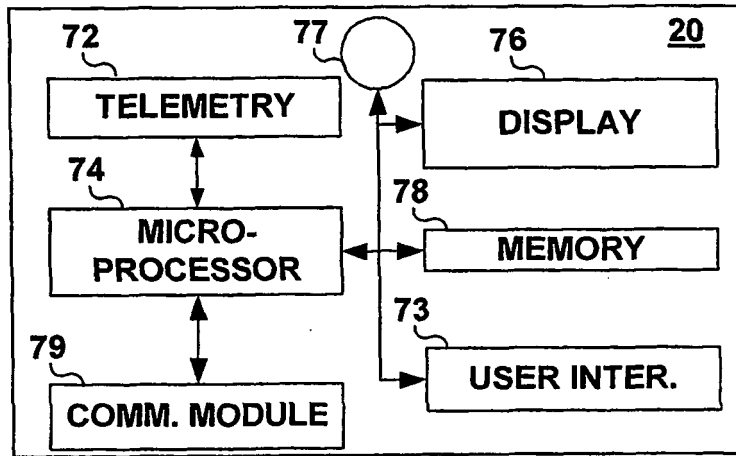


FIG. 3

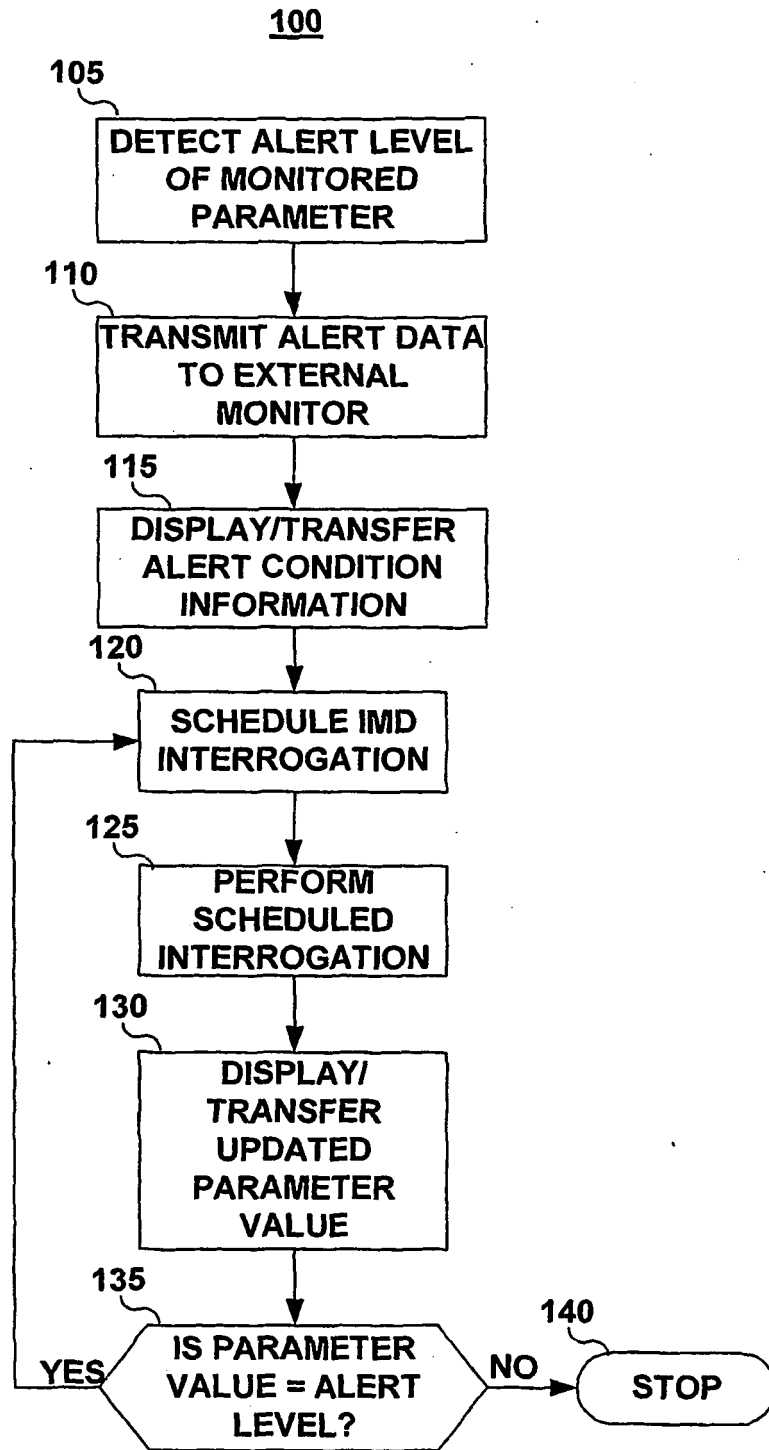


FIG. 4

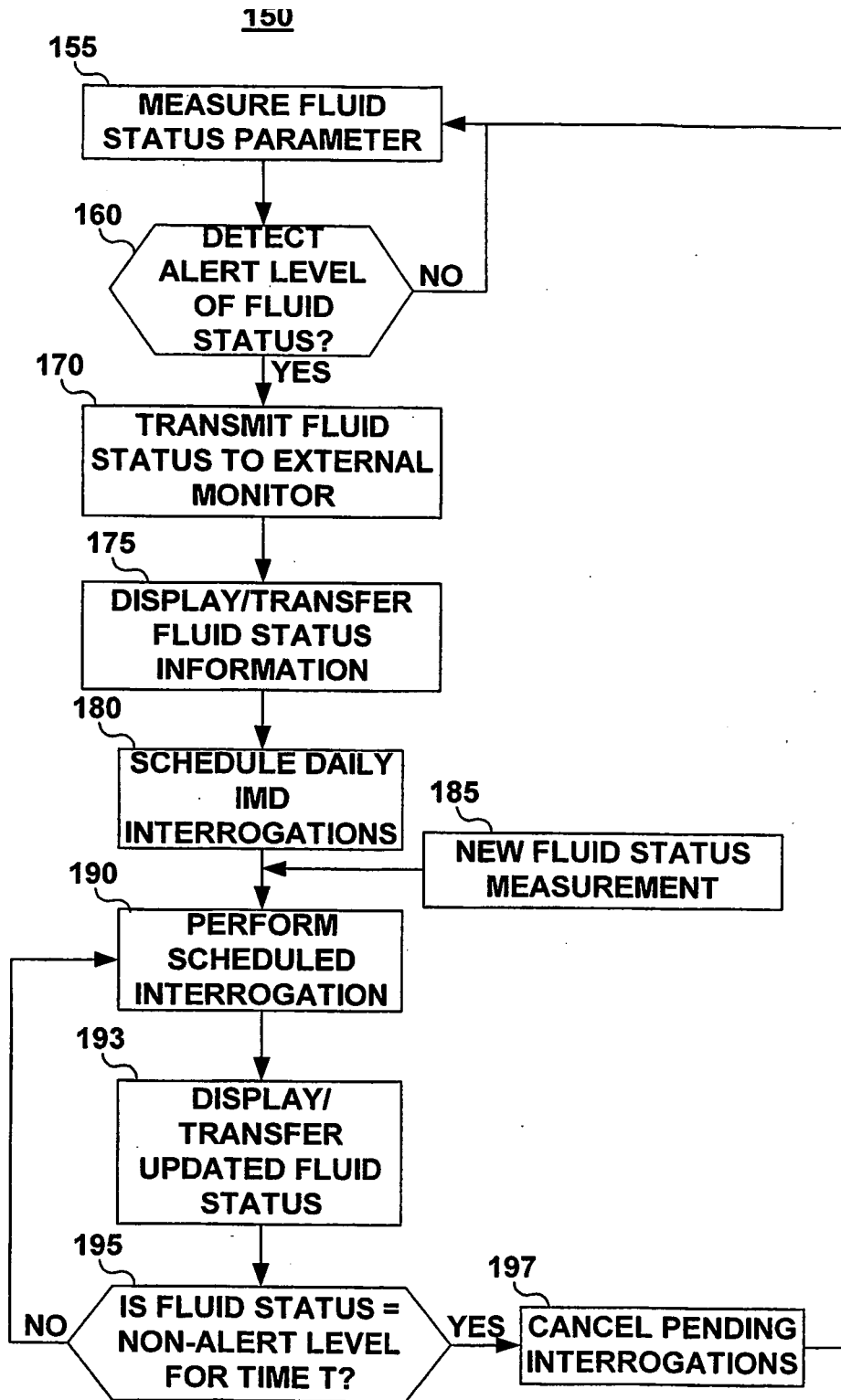


FIG. 5

REFERENCES CITED IN THE DESCRIPTION

This list of references cited by the applicant is for the reader's convenience only. It does not form part of the European patent document. Even though great care has been taken in compiling the references, errors or omissions cannot be excluded and the EPO disclaims all liability in this regard.

Patent documents cited in the description

- US 2003144711 A1, Pless [0009]
- WO 0197907 A2 [0010]
- US 5404877 A, Nolan [0011]
- US 5987352 A, Klein [0011]
- US 6599250 B, Webb [0015]
- US 6442433 B, Linberg [0015]
- US 6574511 B, Lee [0015]
- US 6480745 B, Nelson [0015]
- US 6418346 B, Nelson [0015]
- US 6250309 B, Krichen [0015]
- US 6482154 B, Haubrich [0023]
- US 5354319 A, Wyborny [0023]
- US 6512949 B, Combs [0045]

专利名称(译)	植入式医疗设备系统的自动参数状态		
公开(公告)号	EP1928545B1	公开(公告)日	2013-01-02
申请号	EP2006802446	申请日	2006-08-25
[标]申请(专利权)人(译)	美敦力公司		
申请(专利权)人(译)	美敦力公司, INC.		
当前申请(专利权)人(译)	美敦力公司, INC.		
[标]发明人	BALL JAMES J MCADAMS SEAN B HOUSE CHRIS T		
发明人	BALL, JAMES J. MCADAMS, SEAN B. HOUSE, CHRIS T.		
IPC分类号	A61B5/00 A61N1/37 A61N1/372		
CPC分类号	A61B5/0031 A61B5/4875 A61B5/746 A61N1/3702 A61N1/37254 G16H40/40 A61B5/0002 A61B5/686 A61B5/6869 G06F19/34 G06F19/3418 G08B21/0211		
优先权	11/217028 2005-08-31 US		
其他公开文献	EP1928545A1		
外部链接	Espacenet		

摘要(译)

一种用于提供参数状态的方法和设备，包括检测由植入的医疗设备监视的参数的警报级别，将与检测到的警报级别相对应的数据从植入的医疗设备发送到外部监视器，安排后续询问在接收到与检测到的警报级别相对应的发送数据之后，并且在后续询问会话期间从与所监视的参数相对应的植入医疗设备中检索更新数据。

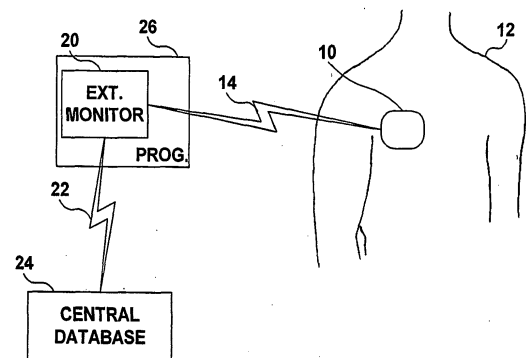


FIG. 1