



(11) **EP 1 492 441 B1**

(12) **EUROPEAN PATENT SPECIFICATION**

(45) Date of publication and mention
of the grant of the patent:
03.04.2013 Bulletin 2013/14

(51) Int Cl.:
H02J 7/00 ^(2006.01) **A61B 19/00** ^(2006.01)
A61B 5/00 ^(2006.01)

(21) Application number: **03733851.4**

(86) International application number:
PCT/US2003/011099

(22) Date of filing: **10.04.2003**

(87) International publication number:
WO 2003/087653 (23.10.2003 Gazette 2003/43)

(54) **APPARATUS AND METHOD FOR POWERING PORTABLE BATTERY OPERATED LIGHT SOURCES**

VORRICHTUNG UND VERFAHREN ZUM SPEISEN VON BATTERIEGESPEISTEN TRAGBAREN LICHTQUELLEN

APPAREIL ET PROCÉDÉ PERMETTANT D'ALIMENTER DES SOURCES LUMINEUSES À L'AIDE DE BATTERIES PORTABLES

(84) Designated Contracting States:
DE FR GB IT

(30) Priority: **10.04.2002 US 371556 P**

(43) Date of publication of application:
05.01.2005 Bulletin 2005/01

(73) Proprietor: **Karl Storz Endoscopy-America, Inc.**
El Segundo, CA 90245 (US)

(72) Inventor: **SOLINGEN, Simon**
Los Angeles, CA 90077 (US)

(74) Representative: **Heuckeroth, Volker et al**
Witte, Weller & Partner
Patentanwälte
Postfach 10 54 62
70047 Stuttgart (DE)

(56) References cited:
WO-A2-98/02085 DE-A1- 3 339 522
GB-A- 1 292 314 GB-A- 1 415 024
US-A- 4 959 755 US-A- 5 683 350
US-B1- 6 318 887 US-B1- 6 494 827

Note: Within nine months of the publication of the mention of the grant of the European patent in the European Patent Bulletin, any person may give notice to the European Patent Office of opposition to that patent, in accordance with the Implementing Regulations. Notice of opposition shall not be deemed to have been filed until the opposition fee has been paid. (Art. 99(1) European Patent Convention).

EP 1 492 441 B1

Description

[0001] The invention relates to an apparatus for providing illuminating light of a selected illumination level and color temperature utilized with a portable imaging device. The invention further relates to a method for providing illuminating light of a selected illumination level and color temperature and utilized with a portable imaging device.

[0002] The use of endoscopes has increasingly become important in many fields. For instance, endoscopes are widely used for many medical procedures providing significant advantages such as greatly enhancing a physician's ability to remotely view a body cavity. Not only have endoscopes been widely utilized for surgical procedures, but have also been utilized for assisting a physician to accurately place medical equipment into a body cavity, such as the placing of a laryngoscope in a trachea. Illumination levels and color temperature of the illuminating light is selected and must be maintained in these applications.

[0003] For instance, in a surgical procedure, it is absolutely critical that the physician have enough illuminating light in the cavity being operated on to perform the procedure accurately and in a timely manner. If the illumination level is poor, it is challenging for the physician to perform the procedure mistake-free. Additionally, if the illumination level is poor, this will have the effect of slowing the physician in performing the procedure which in turn will increase the length of time the patient will have to be under anesthesia, which is highly undesirable. Therefore, a selected minimum illumination level must be met and must also be maintained throughout the length of the procedure. It should also be noted that illumination levels are very important in applications where, for instance a medical device is being inserted into a body such as a laryngoscope. Without proper illumination, the physician may have difficulty inserting the laryngoscope properly without causing damage to for instance, the vocal cords.

[0004] Not only is it important to maintain the proper illumination level in medical applications, but it is also very important to maintain the proper color temperature of the illuminating light. For instance, in many surgical procedures, the physician must first inspect the area or cavity where a potential procedure is to take place and based upon what he observes, identify structures, and determine how to proceed. Being able to accurately differentiate between one type of tissue and the next based upon the color or look and texture is therefore critical to not only diagnosis, but also in performing the procedure mistake-free. Therefore, the color temperature of the illuminating light must be accurately supplied and maintained throughout the procedure.

[0005] Endoscopy is also becoming increasingly important for industrial applications. For instance, boroscopes having self contained light sources are utilized to illuminate and image small pipelines, cavities, and inter-

nal workings of machinery. Illumination levels and color temperature of the illuminating light must also be maintained for these applications.

[0006] For instance, where a boroscope is utilized for inspecting small pipelines, cavities, and internal workings of machinery, in many applications it is important that detailed images be obtained to determine if the equipment has been compromised or if failure is imminent. Failure to detect defects due to poor illumination levels or difficulty in perceiving the color of what is being observed could have catastrophic results. Therefore, maintaining effective illumination levels and accurate color temperature throughout the entire inspection is very important.

[0007] Portable, lightweight endoscopy systems for use in both medical and industrial applications are also increasingly being utilized. Traditionally, light sources for portable endoscopes, laryngoscopes, other portable medical illumination devices, and industrial boroscopes have comprised a light source that is powered by a battery source, and some means for connecting or disconnecting the light source to the battery. However, this simple means of providing a portable power source has some inherent problems that greatly limit its use.

[0008] Due to the nature of primary or secondary electrochemical power sources (batteries), discharge characteristics are such that their voltage decreases as the total available energy decreases. For some battery types, this is due to an increase in internal impedance, and for others, a combination of the latter and a general drop in open circuit voltage. For some secondary systems, battery age and use history also cause an increase in internal impedance, which in turn will result in unsatisfactory voltage decreases.

[0009] In a voltage versus discharge (use) time plot, the slope of the curve depends on the above, as well as the discharge current. Typically, the slope increases with larger currents. When powering a light source, such as is utilized with endoscopes, laryngoscopes, other portable medical illumination devices, and industrial boroscopes, this decrease in voltage causes the intensity of the light source output to decrease exponentially, and to decrease or shift in light color temperature, for instance, a shift towards the red. This is undesirable and in many instances is unacceptable for medical or technical illumination, given that the intensity and color temperature of the illuminating light are critical to the application.

[0010] In addition, when primary batteries are used, especially relatively small batteries for added portability and weight reduction, the quantity and quality of light output may become unacceptable due to a drop in circuit voltage, even though the battery may still have a relatively large amount of power remaining. Therefore, the useable lifespan of primary batteries has been greatly reduced when used to power a light source in these critical applications due to unsatisfactory voltage output.

A portable light source system is known from WO 98/02085 which is regarded as closest prior art as an

element of a handheld portable endoscopic camera and kit comprising power source means, lens means, light source means, and video camera means. The portable endoscopic camera is adaptable to a wide variety of systems and includes a low voltage light source means. The camera is self-contained. A kit is also provided, the kit having all of the components necessary for performing endoscopic procedures.

US 5 683 350 A discloses a portable hand-held transluminating wand, which includes a hand grip portion containing the power source and an illuminating source at a narrow terminating end. The illumination source is enclosed by a slide-on transparent cover which is shaped to permit insertion into a patient's mouth and placement against the roof of the mouth without discomfort. The translucent cover is tinted red to selectively provide light of a desired bandwidth beneficial to transillumination of human tissue. The cover is clear in the region to be placed in contact with the roof of the mouth so that the light emitted in this region is not diffused but remains directed toward the roof of the mouth to facilitate transillumination and frosted elsewhere to inhibit light leakage from the patient's mouth when disclosed about the device. The wand is constructed with a multi-position switch which permits the illumination source to be turned off and on through levels of illumination.

Furthermore, GB 1 415 024 A discloses a speculum instrument having rapid, easy coupling and releasing means for a disposable forward section, either sigmoidoscope or proctoscope and more particularly, a cordless speculum instrument having a contamination free lighting arrangement.

Moreover, US 6 318 887 B1 discloses a light source arrangement for a battery-powered light source unit of an endoscope which comprises an optically transparent base board, a single light emitting element such as a bare LED arranged at the center of and in close proximity to the back of the transparent base board or a plurality of light emitting elements such as bare LEDs arranged in close proximity to the back of the transparent base board at regular angular intervals and regular distances from the center of the transparent base board, and a reflector disposed behind the transparent base board so as to reflect light emanating backward from the light emitting element or elements toward the transparent base board.

[0011] Therefore, what is desired is a portable light source system such as is utilized with endoscopes, laryngoscopes, other medical devices, and industrial boroscopes, that will supply a light output that will not vary in intensity over the life of the battery.

[0012] It is also desired to provide a portable light source system, such as is utilized with endoscopes, laryngoscopes, other medical devices, and industrial boroscopes, that will supply a light output that will not shift in color temperature over the life of the battery.

[0013] It is further desired to provide a portable light source system, such as is utilized with endoscopes, laryngoscopes, other medical devices, and industrial bor-

oscopes, that will effectively utilize substantially all the energy stored in the battery as practicable for the use while still maintaining strict output requirements.

[0014] It is still further desired to provide a portable light source system, such as is utilized with endoscopes, laryngoscopes, other medical devices, and industrial boroscopes, with a minimized size, while still maintaining strict output requirements.

According to the invention, an apparatus for providing illuminating light of a selected illumination level and color temperature utilized with a portable imaging device according to claim 1 is provided.

Further, according to the invention, a method for providing illuminating light of a selected illumination level and color temperature and utilized with a portable imaging device according to claim 13 is provided.

[0015] The above-mentioned objectives are achieved by providing a system configuration in which a light source is connected to the output of a power conditioning circuit, which is in turn, connected to a battery. This configuration provides for a constant voltage level to be delivered to the light source, regardless of variations in battery condition. Providing a constant voltage level to the light source will thereby ensure a constant level of illumination and prevent a shift of the light source color.

[0016] The power conditioning circuit will also allow a much larger percentage of the energy stored in the battery to be utilized while still maintaining a determined substantially constant voltage output that will not cause a drop in light intensity or a shift in color. This increase in efficiency will have a positive impact on the "cost of use." The power conditioning circuit may comprise several forms such as, a step-up, step-down, or step-up/down voltage regulator with constant or adaptive output.

[0017] The configuration also allows for re-rating of the light source, in this case a tungsten filament bulb, so as to increase efficiency and color temperature of the light source, without causing premature filament burnout. A 10% increase in filament voltage results in approximately a 40% increase in light output, and a desirable higher color temperature, however, it also causes a 70% decrease in filament life. When re-rating a light bulb, this inverse exponential (twelfth power) relationship of filament life to applied voltage requires a tight control of the applied voltage. It is also contemplated that the present invention can further be configured as an adaptive device, to make use of light output feedback to control and stabilize the light source output.

[0018] In one advantageous embodiment an apparatus for providing illuminating light of a selected illumination level and color temperature utilized with a portable imaging device is provided comprising a battery, providing electrical power, and a light source. The apparatus further comprises a power conditioning circuit, connecting the battery with the light source and the power conditioning circuit modifies the electrical power based upon a selected threshold parameter representative of a desired illumination level and a desired color temperature

of the illuminating light. The apparatus further comprises a portable imaging device, generating an image. Finally the apparatus is provided such that the power conditioning circuit causes the light source to provide illuminating light of an illumination level and a substantially constant color temperature based upon the selected threshold parameter.

[0019] In another advantageous embodiment an apparatus for providing illuminating light of a selected illumination level and color temperature utilized with a portable imaging device is provided comprising a battery, providing electrical power, and a light source, having an illumination rating and a color temperature rating. The apparatus also comprises a power conditioning circuit that connects the battery with the light source, and the power conditioning circuit modifies the electrical power to re-rate the light source to, a selected illumination level different from the illumination rating or a selected color temperature different from the color temperature rating.

[0020] In still another advantageous embodiment an apparatus for providing illuminating light of a selected illumination level and color temperature utilized with a portable imaging device is provided comprising a battery, providing electrical power, and a light source, having an illumination rating and a color temperature rating. The apparatus also comprises a power conditioning circuit, that connects the battery with the light source, and the power conditioning circuit modifies the electrical power based upon a selected threshold parameter representative of a desired illumination level and a desired color temperature of the illuminating light. The power conditioning circuit also modifies the electrical power to re-rate the light source to, a selected illumination level different from the illumination rating or a selected color temperature different from the color temperature rating. The apparatus further comprises a portable imaging device, generating an image and the power conditioning circuit causes the light source to provide illuminating light of an illumination level and a substantially constant color temperature based upon the selected threshold parameter.

[0021] In yet another advantageous embodiment a method is supplied for providing illuminating light of a selected illumination level and color temperature and utilized with a portable imaging device comprising the steps of supplying electrical power with a battery, selecting a light source having an illumination rating and a color temperature rating, and connecting the battery with the light source through a power conditioning circuit. The method further comprises the steps of selecting a threshold parameter representative of a desired illumination level and a desired color temperature of the illuminating light, and modifying the electrical power with the power conditioning circuit based upon the selected threshold parameter. The method further comprises the steps of modifying the electrical power with the power conditioning circuit to re-rate the light source to, a selected illumination level different from the illumination rating or a selected color temperature different from the color temperature rating,

and supplying illuminating light of an illumination level and a substantially constant color temperature based upon the selected threshold parameter.

[0022] In still another advantageous embodiment a portable endoscopic imaging system is provided comprising a battery, providing electrical power, and a power conditioning circuit, conditioning the electrical power and having a voltage regulator, for maintaining a selected output voltage level. The apparatus further comprises a light source, having a selected illumination level and a selected color temperature, for providing illuminating light of a selected color temperature, and a portable imaging device, for viewing the image of an object illuminated by the illuminating light. In addition, the power conditioning circuit provides a substantially constant output voltage level based upon a selected threshold parameter and said light source provides a substantially constant illumination level and a substantially constant light color temperature based upon a selected threshold parameter.

[0023] In yet another advantageous embodiment a portable imaging system comprising a portable power source, a light source, having a selected illumination level and a selected color temperature, and a power conditioning circuit, that provides a constant voltage level based upon a selected threshold parameter. Furthermore, the light source is re-rated to provide a substantially constant illumination level and a substantially constant light color temperature that is higher than the selected illumination level and a color rating that is shifted toward ultra-violet from the selected color temperature.

[0024] The invention and its particular features and advantages will become more apparent from the following detailed description considered with reference to the accompanying drawings.

[0025] Figure 1 is a block diagram illustrating the prior art.

[0026] Figure 2 is a block diagram illustrating an advantageous embodiment of the present invention.

[0027] Figure 3 is a block diagram illustrating another advantageous embodiment of the present invention.

[0028] Figure 4 is a block diagram according to Figure 2, illustrating still another advantageous embodiment of the present invention.

[0029] Figure 5 is a block diagram according to Figure 2, illustrating yet another advantageous embodiment of the present invention.

[0030] Figure 6 is a schematic diagram depicting the circuit diagram of the embodiment illustrated in Figure 4.

[0031] Figure 7 is a schematic diagram depicting the circuit diagram of the embodiment illustrated in Figure 5.

[0032] A number of various configurations are known in the art for providing a portable light source for various applications. The most basic is illustrated in Figure 1. In Figure 1, a portable light source system 10 is illustrated, comprising generally, a power source 12, which may comprise for instance a battery, a switch 14, and a light source 16 for providing illuminating light.

[0033] Various types of portable power sources have

been utilized including batteries, which have been both rechargeable and nonrechargeable. In addition, various types of light sources have been selected and utilized, which vary based upon the application and desired illumination output.

[0034] The switch shown in Figure 1 has also comprised a number of differing types of switching devices, both manual and automatic. In addition, various devices have been utilized to maximize the amount of energy extracted from power source 12. Specifically, systems have been directed toward stepping up the power output by power source 12 to overcome what has been termed memory problems associated with, for instance, rechargeable nickel-cadmium and nickel-hydrogen batteries. However, in the prior art, the circuit voltage generated for use by light source 16 has not been conditioned and regulated such that a selected illumination level and a selected color temperature of the illuminating light may be maintained based upon a selected parameter, which is highly desirable for medical and industrial applications.

[0035] One advantageous embodiment of the present invention is illustrated in Figure 2. In Figure 2, a portable light source system 100 is illustrated comprising generally of a power source 112, a power switch 130, a power conditioning circuit 114, and a light source 116.

[0036] The power source 112 may comprise any suitable portable power source whether rechargeable or non-rechargeable. In addition, many differing types of batteries may be effectively utilized. In one preferred embodiment, single-cell rechargeable Lithium Ion battery has effectively been utilized as power source 112. Power conditioning circuit 114 will differ, depending upon the chemistry, output voltage, number of cells of the selected battery, and ratings and selected re-rating of the selected light source.

[0037] If non-rechargeable batteries are used, it is desirable to utilize as much of the available energy as practicable prior to disposal of the battery. This will operate as a cost saving because the system will utilize as much power as possible from the battery thereby extending the useable life, which will translate into a direct cost saving for the user.

[0038] Light source 116 may also comprise any of a number of differing light sources. Depending upon the application, light source 116 will be selected based upon a desired illumination level and/or a desired color temperature. The illumination level of light source 116 is critical to many applications involving medical procedures or industrial applications. It is important that a constant color temperature be maintained over the life of light source 116. Therefore, a light source should be selected that doesn't shift in color as it ages or is used.

[0039] In one advantageous embodiment light source 116 comprises a tungsten filament lamp, which is desirable due to its relatively small size, simplicity, and low cost. Tungsten filament lamps also provide excellent illumination levels and color resolution for their size. For purposes of clarity, in this application, "re-rating" of light

sources means the application of a voltage that is higher than the rated voltage listed for the light source. With tungsten filament light sources, the application of a higher voltage will not only increase the illuminating light level, but will also tend to shift the color of the illuminating light toward ultra-violet. Having an increased illuminating light level and shifting the color of the illuminating light towards ultra-violet is highly desirable as it translates into use of a smaller light source and better color resolution. Alternatively, the higher the voltage applied to a light source above the rated voltage, the shorter the life span of the light source. Therefore, benefits and cost savings (smaller size, increased light output and better color resolution, as opposed to shortened light source life) need to be analyzed based upon the application and intended use of the device.

[0040] Power conditioning circuit 114 is provided to regulate the voltage level supplied by power source 112 to light source 116. Although various systems have been utilized to maximize the usable power generated by a power source, the power conditioning circuit 114 of Figure 2 provides regulated power such that, the voltage output of the circuit may be selected based upon various criteria such as the illumination level desired, illumination color requirements, and the life of the tungsten filament light source. Power conditioning circuit 114 may be configured in a number of topologies, for instance but not limited to, fly-back, pulse-width-modulation with transformer coupling, transformerless pulse-frequency-modulation.

[0041] Another advantageous embodiment is illustrated in Figure 3. Portable light source system 100 is illustrated in Figure 3 and generally corresponds in functionality, to portable light source system 100 shown in Figure 2 with a number of additional features. Portable light source system 100 as illustrated in Figure 3 generally comprises power source 112, power conditioning circuit 114, light source 116, packaging 118, light source feedback 117, and video imaging device 120.

[0042] As power source 112, power conditioning circuit 114, and light source 116 generally correspond to their counterparts described in connection with Figure 2, their functioning will not be re-described here.

[0043] Light source feedback 117 is provided to supply illumination feedback information to power conditioning circuit 114. As it is critical in a number of differing applications to provide stable illumination levels and illuminating light having a precise color temperature, light source feedback 117 measures the actual light generated by light source 116 and feeds this information back to power conditioning circuit 114 such that automatic adjustments to the circuit voltage level are made based upon the actual measured light. Light source feedback 117 may comprise any suitable light sensing device for sensing illumination levels and/or illuminating color temperature.

[0044] Packaging 118 illustrated in Figure 3 encloses power source 112, power switch 130, power conditioning circuit 114, and light source 116 in a single, compact,

ergonomic, light weight protective container. Packaging 118 may comprise any suitable material, such as but not limited to a polycarbonate, a metal, a metal alloy or any combination thereof.

[0045] Also depicted in Figure 3 is imaging device 120. Imaging device 120 may comprise for instance an endoscope, a laryngoscope, other portable medical devices requiring illumination, or having a light guide to transmit and provide illumination to the area of interest in the object under observation, a boroscope, or any of the above incorporating a portable imaging video system. It is also advantageous if packaging 118 is designed to mate engagingly with imaging device 120 such that easy connection and disconnection of the two may easily be achieved. The connection means may comprise any number of varying mechanical connecting means that will firmly and securely couple the two together such as but is not limited to, friction fitting, mechanical interlocking by protrusions and indentations, rotatable interlocking, bayonet connections, threads, or ball detent connections. It is further conceived that any number of varying locking mechanisms may be effectively utilized to prevent accidental detachment of the two devices.

[0046] Imaging device 120 may also have a portable power source (not shown) and a video imaging display (not shown) to display the images picked up by imaging device 120. Many differing endoscopes, laryngoscopes, and boroscopes may be selected depending upon the particular procedure, anatomy of the patient, or the industrial application. It is contemplated then that packaging 118 will vary depending upon the application, so as to effectively mate with a selected imaging device 120.

[0047] Figure 4 is a block diagram illustrating another advantageous embodiment of portable light source system 100. As power source 112 and light source 116 have previously been described in connection with Figure 2, they will not be described again here. Also shown in Figure 4 are power switch 130, and a block diagram detail of power conditioning circuit 114. In this embodiment, power conditioning circuit 114 comprises Low Current, Switching, Step-Up Converter-Regulator 132, and Main High Current, Switching, Step-Up Converter-Regulator 134.

[0048] Switch 130 may comprise any power disconnecting switch suitable for handling the circuit power. Switch 130 may be a manual or an automatic switch depending upon which is desired.

[0049] Main High Current, Switching, Step-Up Converter-Regulator 134 is generally provided to step-up and regulate the output voltage level based upon a selected parameter. Main High Current, Switching, Step-Up Converter-Regulator 134 is connected to switch 130, Low Current, Switching, Step-Up Converter-Regulator 132, and to light source 116. Main High Current, Switching, Step-Up Converter-Regulator 134 utilizes a regulator, which may comprise for instance, an integrated circuit, to convert the electrical power received from power source 112 to the desired output voltage level. For in-

stance, in one example power source 112 may comprise a 3.7 volt single cell rechargeable Lithium Ion battery, light source 116 may comprise a Tungsten Filament lamp rated for 3.7 volts, and the desired output voltage level is selected to be 4.2 volts. In this example, Main High Current, Switching, Step-Up Converter-Regulator 134 converts the 3.7 volts supplied by power source 112 to the desired output voltage level of 4.2 volts and maintains that desired output voltage level. Re-rating of light source 116 in this example will provide approximately 50% more illuminating light than rated and the color of the light will be whiter (shifted towards ultra-violet). The re-rating of light source 116 in this manner will further provide the benefits as previously discussed in connection to Figure 2.

[0050] Low Current, Switching, Step-Up Converter-Regulator 132 is also illustrated in Figure 4. The sole purpose of Main Low Current, Switching, Step-Up Converter-Regulator 132 is to drive Main High Current, Switching, Step-Up Converter-Regulator 134. When the output voltage supplied to Main High Current, Switching, Step-Up Converter-Regulator 134 is relatively low, the circuit may have difficulty in functioning. To ensure proper functioning with a relatively low battery voltage, Low Current, Switching, Step-Up Converter-Regulator 132 is provided to power Main High Current, Switching, Step-Up Converter-Regulator 134.

[0051] Both Low Current, Switching, Step-Up Converter-Regulator 132 and Main High Current, Switching, Step-Up Converter-Regulator 134 may utilize regulators, which in turn, may comprise either integrated circuits or some other appropriate discrete configuration.

[0052] Figure 5 discloses still another advantageous embodiment of the present invention. Figure 5 comprises a block diagram of portable light source system 100, generally according to Figure 4, including power source 112, power switch 130, power conditioning circuit 114, and light source 116. Power conditioning circuit 114 is illustrated comprising Main High Current, Switching, Step-Up Converter-Regulator 134. Notably, Low Current, Switching, Step-Up Converter-Regulator 132 is not utilized in this particular embodiment. Where the voltage applied to circuit is high enough such that Main High Current, Switching, Step-Up Converter-Regulator 134 will reliably start up on its own, Low Current, Switching, Step-Up Converter-Regulator 132 is unnecessary. Specifically, in applications where multiple batteries are utilized or the battery supplies a higher voltage, the driving circuit may not be necessary. It should be noted that while portable light source system 100 is simplified in this embodiment, the corresponding size and weight of the entire system may increase with added power capacity. As the remaining elements shown in Figure 5 have previously been described in connection with Figure 4, they will not be described here.

[0053] Figure 6 is a schematic diagram of the embodiment according to Figure 4. Generally, portable light source system 100 as depicted in Figure 6 comprises a

[0059] Alternatively, resistor R₁ 144 is selected to have

[0064] Also illustrated in Figure 6 is Low Current, Switching, Step-Up Converter-Regulator 132 comprising Integrated Circuit Switching-Regulator 156 and inductor I_2 158. Again, although an integrated circuit is utilized here, any appropriate discrete configuration may effectively be utilized. Inductor I_2 158 operates in the same manner as described for inductor I_1 154. Inductor I_2 158 stores energy for use by Integrated Circuit Switching-Regulator 156 to drive Integrated Circuit Switching-Reg-

ulator 140. Integrated Circuit Switching-Regulator 156 is internally supplied with a Field Effect Transistor. Operation is similar to what was described above for converter regulator 134. The output of Integrated Circuit Switching-Regulator 156 is powered by power source 112. In addition, the output of Integrated Circuit Switching-Regulator 156 powers Integrated Circuit Switching-Regulator 140 to ensure reliable start-up under load when the voltage of the power source 112 is too low.

[0065] Figure 7 is a schematic diagram of the embodiment according to Figure 5. Generally, portable light source system 100 as depicted in Figure 7 comprises a power source 112, in this case a battery, switch 130, Main High Current, Switching, Step-Up Converter-Regulator 134, and light source 116.

[0066] As the functioning of these various elements are identical with the corresponding elements as described in Figure 6, with the exception that Low Current, Switching, Step-Up Converter-Regulator 132 for driving Main High Current, Switching, Step-Up Converter-Regulator 134 is removed because the circuit voltage is high enough to drive the integrated circuit regulator in the Main High Current, Switching, Step-Up Converter-Regulator 134, they will not be re-described.

[0067] Although the invention has been described with reference to a particular arrangement of parts, features and the like, these are not intended to exhaust all possible arrangements or features, and indeed many other modifications and variations will be ascertainable to those of skill in the art.

Claims

1. An apparatus for providing illuminating light of a selected illumination level and color temperature utilized with a portable imaging device comprising:

a battery (112), providing electrical power;
a light source (116);
a power conditioning circuit (114), connecting said battery (112) with said light source (116), said power conditioning circuit (114) modifying the electrical power based upon a selected threshold parameter representative of a desired illumination level and a desired color temperature of the illuminating light; and
a portable imaging device (120), generating an image;
wherein said power conditioning circuit (114) causes said light source (116) to provide illuminating light of an illumination level and a substantially constant color temperature based upon the selected threshold parameter, wherein said conditioning circuit (114) further comprises an illumination feedback device (117), said illumination feedback device (117) measuring the illumination level or the colour temperature of

the illuminating light, providing a light output that will not vary in intensity and/or shift in color temperature over the life of the battery.

2. The apparatus of claim 1, wherein said portable imaging device (120) is selected from the group consisting of endoscope, laryngoscope, industrial boroscope, video endoscope, video laryngoscope, or industrial video boroscope.
3. The apparatus of claim 1, wherein said light source (116) has an illumination rating and a color temperature rating.
4. The apparatus of claim 3, wherein said power conditioning circuit (114) modifies the electrical power to re-rate the light source to, a selected illumination level different from the illumination rating or a selected color temperature different from the color temperature rating.
5. The apparatus of claim 1, wherein said battery (112) is a rechargeable battery.
6. The apparatus of claim 1, wherein said battery (112) is a non-rechargeable battery.
7. The apparatus of claim 1, wherein said battery (112) is a Lithium Ion battery.
8. The apparatus of claim 1, wherein said power conditioning circuit (114) comprises a switching voltage regulator.
9. The apparatus of claim 1, wherein said light source (116) comprises a tungsten filament lamp.
10. The apparatus of claim 1, further comprising a video camera and display system for viewing the image generated by said portable imaging device.
11. The apparatus of claim 1, wherein said power conditioning circuit (114) includes a voltage regulator for maintaining a selected output voltage level, and wherein said power conditioning circuit (114) provides a substantially constant output voltage level based upon a selected threshold parameter.
12. The apparatus of claim 1, wherein said light source (116) has a selected illumination level and a selected color temperature and wherein said light source (116) is re-rated to provide a substantially constant illumination level and a substantially constant light color temperature that is higher than the selected illumination level and a color rating that is shifted toward ultra-violet from the selected color temperature.

13. A method for providing illuminating light of a selected illumination level and color temperature and utilized with a portable imaging device comprising the steps of:

supplying electrical power with a battery (112);
 selecting a light source (116) having an illumination rating and a color temperature rating;
 connecting the battery (112) with the light source (116) through a power conditioning circuit (114);
 selecting a threshold parameter representative of a desired illumination level and a desired color temperature of the illuminating light;
 modifying the electrical power with the power conditioning circuit (114) based upon the selected threshold parameter,
 measuring the illumination level or the color temperature of the illuminating light with an illumination feedback device (117);
 modifying the electrical power with the power conditioning circuit (114) to re-rate the light source (116) to, a selected illumination level different from the illumination rating or a selected color temperature different from the color temperature rating;
 supplying illuminating light of an illumination level and a substantially constant color temperature based upon the selected threshold parameter.

14. The method according to claim 13, further comprising the step of generating an image with a portable imaging device (120).
15. The method according to claim 14, further comprising the step of viewing the image generated by said portable imaging device (120) with a video camera and display system.

Patentansprüche

1. Vorrichtung zum Bereitstellen von Beleuchtungslicht einer ausgewählten Beleuchtungsstärke und Farbtemperatur zur Verwendung bei einem tragbaren Bildgebungsgerät, mit:

einer Batterie (112), die elektrische Leistung bereitstellt;
 einer Lichtquelle (116);
 einer Leistungskonditionierschaltung (114), die die Batterie (112) mit der Lichtquelle (116) verbindet, wobei die Leistungskonditionierschaltung (114) die elektrische Leistung auf der Basis eines ausgewählten Schwellwertparameters konditioniert, der für eine gewünschte Beleuchtungsstärke und eine gewünschte Farbtemperatur des Beleuchtungslichtes repräsentativ ist;

und
 einem tragbaren Bildgebungsgerät (120), das ein Bild erzeugt;
 wobei die Leistungskonditionierschaltung (114) bewirkt, dass die Lichtquelle (116) Beleuchtungslicht einer Beleuchtungsstärke und einer im Wesentlichen konstanten Farbtemperatur auf der Basis des ausgewählten Schwellwertparameters bereitstellt, wobei die Konditionierschaltung (114) weiterhin eine Beleuchtungsrückkopplungseinrichtung (117) aufweist, wobei die Beleuchtungsrückkopplungseinrichtung (117) die Beleuchtungsstärke oder die Farbtemperatur des Beleuchtungslichtes misst, um eine Lichtausgabe bereitzustellen, die über die Lebensdauer der Batterie in der Intensität nicht variiert und/oder sich in der Farbtemperatur nicht verschiebt.

2. Vorrichtung nach Anspruch 1, wobei das tragbare Bildgebungsgerät (120) ausgewählt ist aus der Gruppe, die aus Endoskop, Laryngoskop, technisches Boroskop, Videoendoskop, Videolaryngoskop oder technisches Videoboroskop besteht.
3. Vorrichtung nach Anspruch 1, wobei die Lichtquelle (116) eine Beleuchtungsdimensionierung und eine Farbtemperaturdimensionierung aufweist.
4. Vorrichtung nach Anspruch 3, wobei die Leistungskonditionierschaltung (114) die elektrische Leistung modifiziert, um die Lichtquelle auf eine ausgewählte Beleuchtungsstärke, die von der Beleuchtungsdimensionierung verschieden ist, oder auf eine ausgewählte Farbtemperatur neu zu dimensionieren, die von der Farbtemperaturdimensionierung verschieden ist.
5. Vorrichtung nach Anspruch 1, wobei die Batterie (112) eine wieder aufladbare Batterie ist.
6. Vorrichtung nach Anspruch 1, wobei die Batterie (112) eine nicht wieder aufladbare Batterie ist.
7. Vorrichtung nach Anspruch 1, wobei die Batterie (112) eine Lithium-Ionen-Batterie ist.
8. Vorrichtung nach Anspruch 1, wobei die Leistungskonditionierschaltung (114) einen Schaltspannungsregler aufweist.
9. Vorrichtung nach Anspruch 1, wobei die Lichtquelle (116) eine Lampe mit Wolframfaden aufweist.
10. Vorrichtung nach Anspruch 1, weiterhin mit einer Videokamera und einem Anzeigesystem zum Betrachten des durch das tragbare Bildgebungsgerät erzeugten Bildes.

11. Vorrichtung nach Anspruch 1, wobei die Leistungskonditionierschaltung (114) einen Spannungsregler zum Aufrechterhalten eines ausgewählten Ausgangsspannungspegels umfasst, und wobei die Leistungskonditionierschaltung (114) einen im Wesentlichen konstanten Ausgangsspannungspegel auf der Basis eines ausgewählten Schwellwertparameters bereitstellt.

12. Vorrichtung nach Anspruch 1, wobei die Lichtquelle (116) eine ausgewählte Beleuchtungsstärke und eine ausgewählte Farbtemperatur aufweist, und wobei die Lichtquelle (116) neu dimensioniert ist, um eine im Wesentlichen konstante Beleuchtungsstärke, die größer ist als die ausgewählte Beleuchtungsstärke, und eine im Wesentlichen konstante Lichtfarbtemperatur bereitzustellen, wobei eine Farbdimensionierung von der ausgewählten Farbtemperatur zum Ultraviolett hin verschoben ist.

13. Verfahren zum Bereitstellen von Beleuchtungslicht einer ausgewählten Beleuchtungsstärke und Farbtemperatur und zur Verwendung mit einem tragbaren Bildgebungsgerät, mit den Schritten:

Zuführen von elektrischer Leistung mittels einer Batterie (112);

Auswählen einer Lichtquelle (116), die eine Beleuchtungsdimensionierung und eine Farbtemperaturdimensionierung aufweist;

Verbinden der Batterie (112) mit der Lichtquelle (116) über eine Leistungskonditionierschaltung (114);

Auswählen eines Schwellwertparameters, der für eine gewünschte Beleuchtungsstärke und eine gewünschte Farbtemperatur des Beleuchtungslichts repräsentativ ist;

Modifizieren der elektrischen Leistung mit der Leistungskonditionierschaltung (114) auf der Basis des ausgewählten Schwellwertparameters,

Messen der Beleuchtungsstärke oder der Farbtemperatur des Beleuchtungslichtes mit einer Beleuchtungsrückkopplungseinrichtung (117);

Modifizieren der elektrischen Leistung mit der Leistungskonditionierschaltung (114), um die Lichtquelle (116) auf eine ausgewählte Beleuchtungsstärke, die von der Beleuchtungsdimensionierung verschieden ist, oder auf eine ausgewählte Farbtemperatur, die von der Farbtemperaturdimensionierung verschieden ist, neu zu dimensionieren;

Zuführen von Beleuchtungslicht einer Beleuchtungsstärke und einer im Wesentlichen konstanten Farbtemperatur auf der Basis des ausgewählten Schwellwertparameters.

14. Verfahren nach Anspruch 13, weiterhin mit dem

Schritt: Erzeugen eines Bildes mit einem tragbaren Bildgebungsgerät (120).

15. Verfahren nach Anspruch 14, weiterhin mit dem Schritt: Betrachten des von dem tragbaren Bildgebungsgerät (120) erzeugten Bildes mit einer Videokamera und einem Anzeigesystem.

Revendications

1. Appareil pour fournir une lumière d'éclairage d'un niveau d'éclairage sélectionné et une température de couleur utilisé avec un dispositif d'imagerie portable, comprenant :

une batterie (112), fournissant de l'énergie électrique ;

une source d'éclairage (116) ;

un circuit de conditionnement d'énergie (114), connectant ladite batterie (112) à ladite source d'éclairage (116), ledit circuit de conditionnement d'énergie (114) modifiant l'énergie électrique sur la base d'un paramètre seuil sélectionné représentatif d'un niveau d'éclairage souhaité et d'une température de couleur souhaitée de la lumière d'éclairage ; et

un dispositif d'imagerie portable (120), générant une image ;

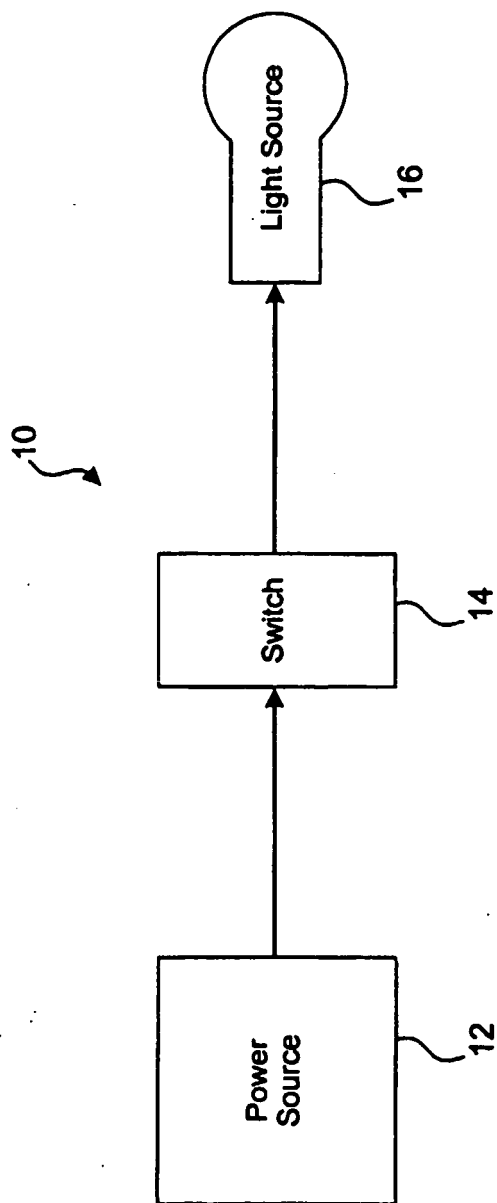
dans lequel ledit circuit de conditionnement d'énergie (114) conduit ladite source d'éclairage (116) à fournir une lumière d'éclairage d'un niveau d'éclairage et d'une température de couleur sensiblement constante sur la base du paramètre seuil sélectionné, dans lequel ledit circuit de conditionnement (114) comprend en outre un dispositif de détection d'éclairage (117), ledit dispositif de détection d'éclairage (117) mesurant le niveau d'éclairage ou la température de couleur de la lumière d'éclairage, fournissant une sortie lumineuse qui ne variera pas en intensité et/ou ne se décalera pas en température de couleur pendant la durée de vie de la batterie.

2. Appareil selon la revendication 1, dans lequel ledit dispositif d'imagerie portable (120) est sélectionné parmi le groupe constitué de l'endoscope, du laryngoscope, du boroscope industriel, de l'endoscope vidéo, du laryngoscope vidéo ou du boroscope vidéo industriel.

3. Appareil selon la revendication 1, dans lequel ladite source d'éclairage (116) a un indice d'éclairage et un indice de température de couleur.

4. Appareil selon la revendication 3, dans lequel ledit circuit de conditionnement d'énergie (114) modifie

- l'énergie électrique pour réajuster la source d'éclairage à un niveau d'éclairage sélectionné différent de l'indice d'éclairage ou une température de couleur sélectionnée différente de l'indice de température de couleur. 5
5. Appareil selon la revendication 1, dans lequel ladite batterie (112) est une batterie rechargeable.
6. Appareil selon la revendication 1, dans lequel ladite batterie (112) est une batterie non rechargeable. 10
7. Appareil selon la revendication 1, dans lequel ladite batterie (112) est une batterie à ions lithium. 15
8. Appareil selon la revendication 1, dans lequel ledit circuit de conditionnement d'énergie (114) comprend un régulateur de tension à découpage. 20
9. Appareil selon la revendication 1, dans lequel ladite source d'éclairage (116) comprend une lampe à filament de tungstène. 25
10. Appareil selon la revendication 1, comprenant en outre une caméra vidéo et un système d'affichage pour visualiser l'image générée par ledit dispositif d'imagerie portable. 30
11. Appareil selon la revendication 1, dans lequel ledit circuit de conditionnement d'énergie (114) inclut un régulateur de tension pour conserver un niveau sélectionné de tension de sortie, et dans lequel ledit circuit de conditionnement d'énergie (114) fournit un niveau sensiblement constant de tension de sortie sur la base d'un paramètre seuil sélectionné. 35
12. Appareil selon la revendication 1, dans lequel ladite source d'éclairage (116) a un niveau d'éclairage sélectionné et une température de couleur sélectionnée et dans lequel ladite source d'éclairage (116) réajustée pour fournir un niveau d'éclairage sensiblement constant et une température de couleur de la lumière sensiblement constante qui est supérieure au niveau d'éclairage sélectionné et un indice de couleur qui est décalé vers l'ultraviolet à partir de la température de couleur sélectionnée. 40 45
13. Procédé pour fournir une lumière d'éclairage d'un niveau d'éclairage et d'une température de couleur sélectionnés et utilisé avec un dispositif d'imagerie portable comprenant les étapes de : 50
- fourniture d'énergie électrique avec une batterie (112) ; 55
- sélection d'une source d'éclairage (116) ayant un indice d'éclairage et un indice de température de couleur ;
- connexion de la batterie (112) à la source d'éclairage (116) à travers un circuit de conditionnement d'énergie (114) ;
- sélection d'un paramètre seuil représentatif d'un niveau d'éclairage souhaité et d'une température de couleur souhaitée de la lumière d'éclairage ;
- modification de l'énergie électrique avec le circuit de conditionnement d'énergie (114) sur la base du paramètre seuil sélectionné, mesure du niveau d'éclairage ou de la température de couleur de la lumière d'éclairage avec un dispositif de détection d'éclairage (117) ;
- modification de l'énergie électrique avec le circuit de conditionnement d'énergie (114) pour réajuster la source d'éclairage (116) à un niveau d'éclairage sélectionné différent de l'indice d'éclairage ou d'une température de couleur sélectionnée différente de l'indice de température de couleur ;
- fourniture d'une lumière d'éclairage d'un niveau d'éclairage et d'une température de couleur sensiblement constante sur la base du paramètre seuil sélectionné.
14. Procédé selon la revendication 13, comprenant en outre l'étape de génération d'une image avec un dispositif d'imagerie portable (120).
15. Procédé selon la revendication 14, comprenant en outre l'étape de visualisation de l'image générée par ledit dispositif d'imagerie portable (120) avec une caméra vidéo et un système d'affichage.



Prior Art

Figure 1

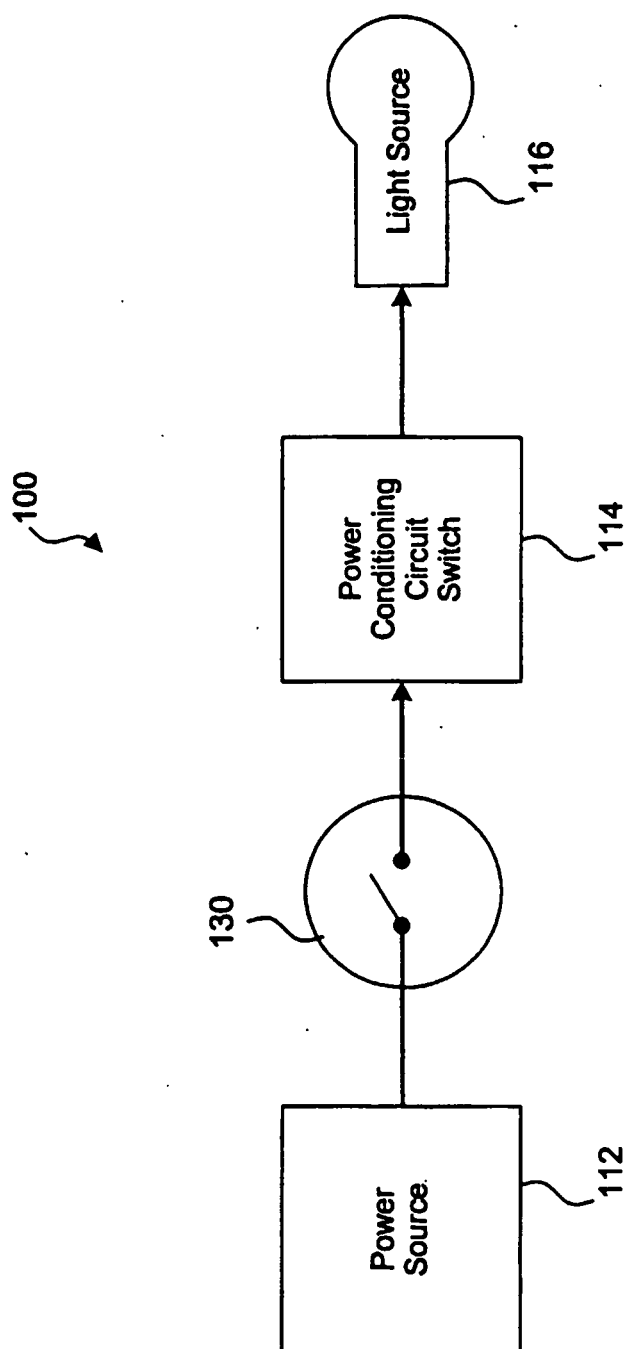


Figure 2

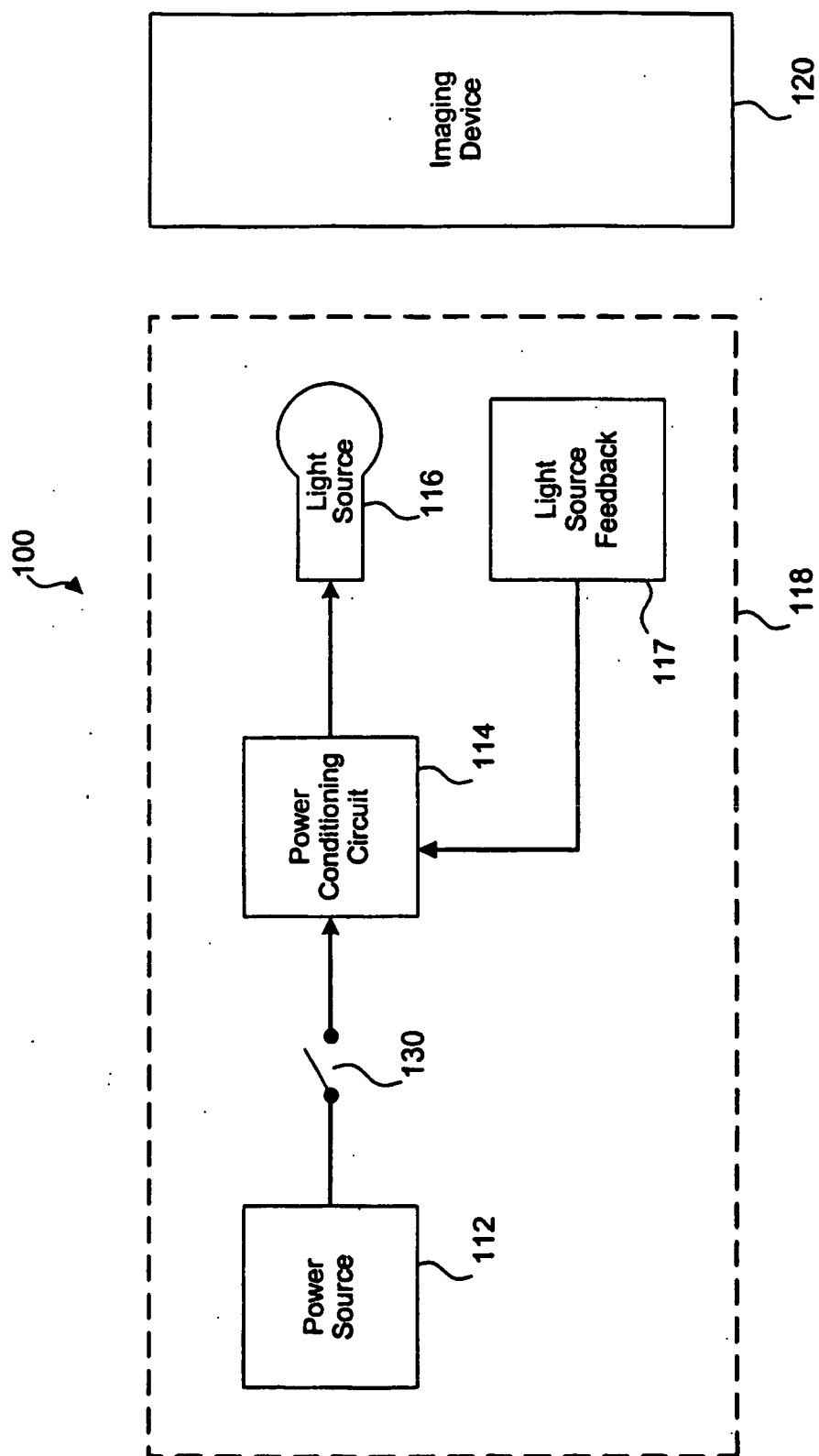
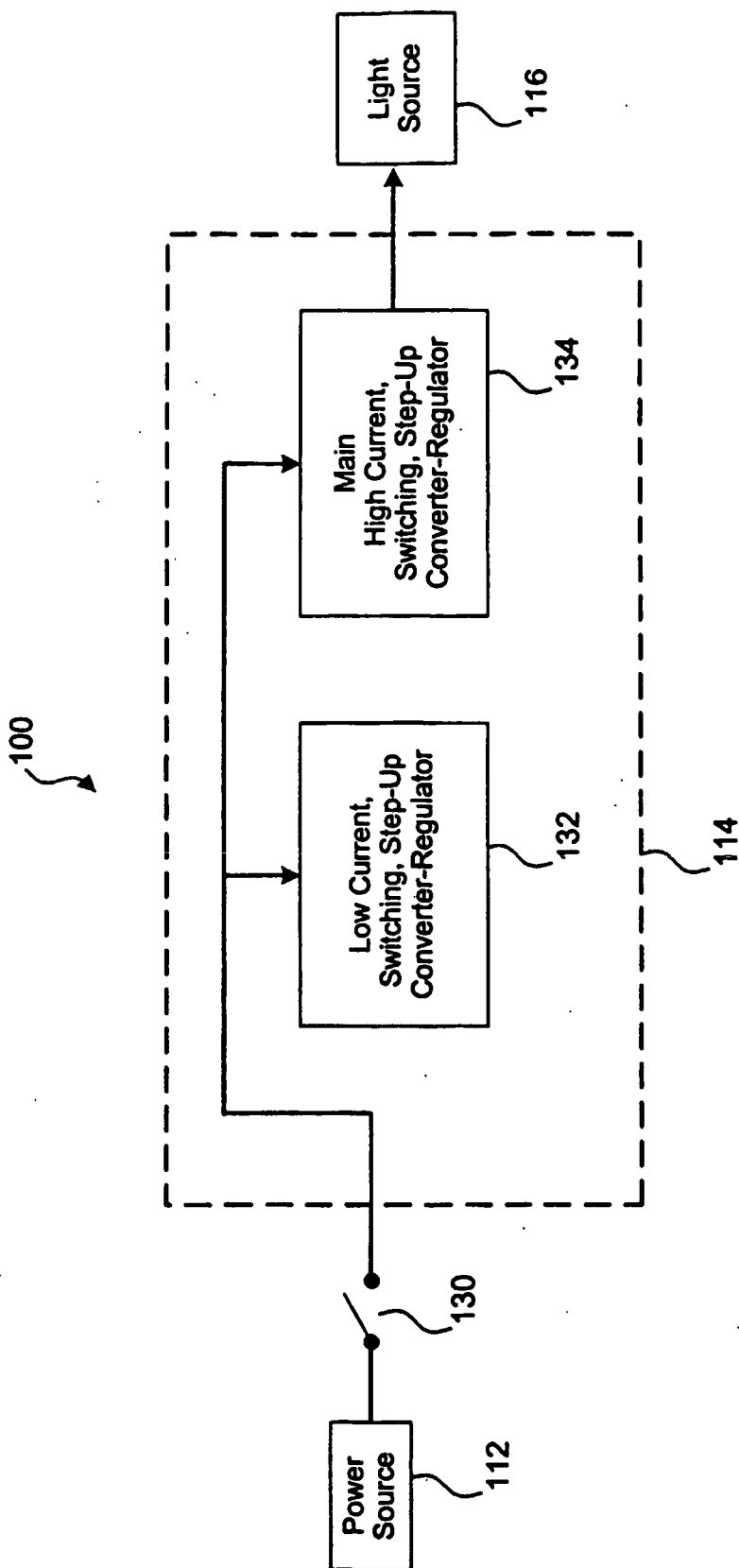


Figure 3

**Figure 4**

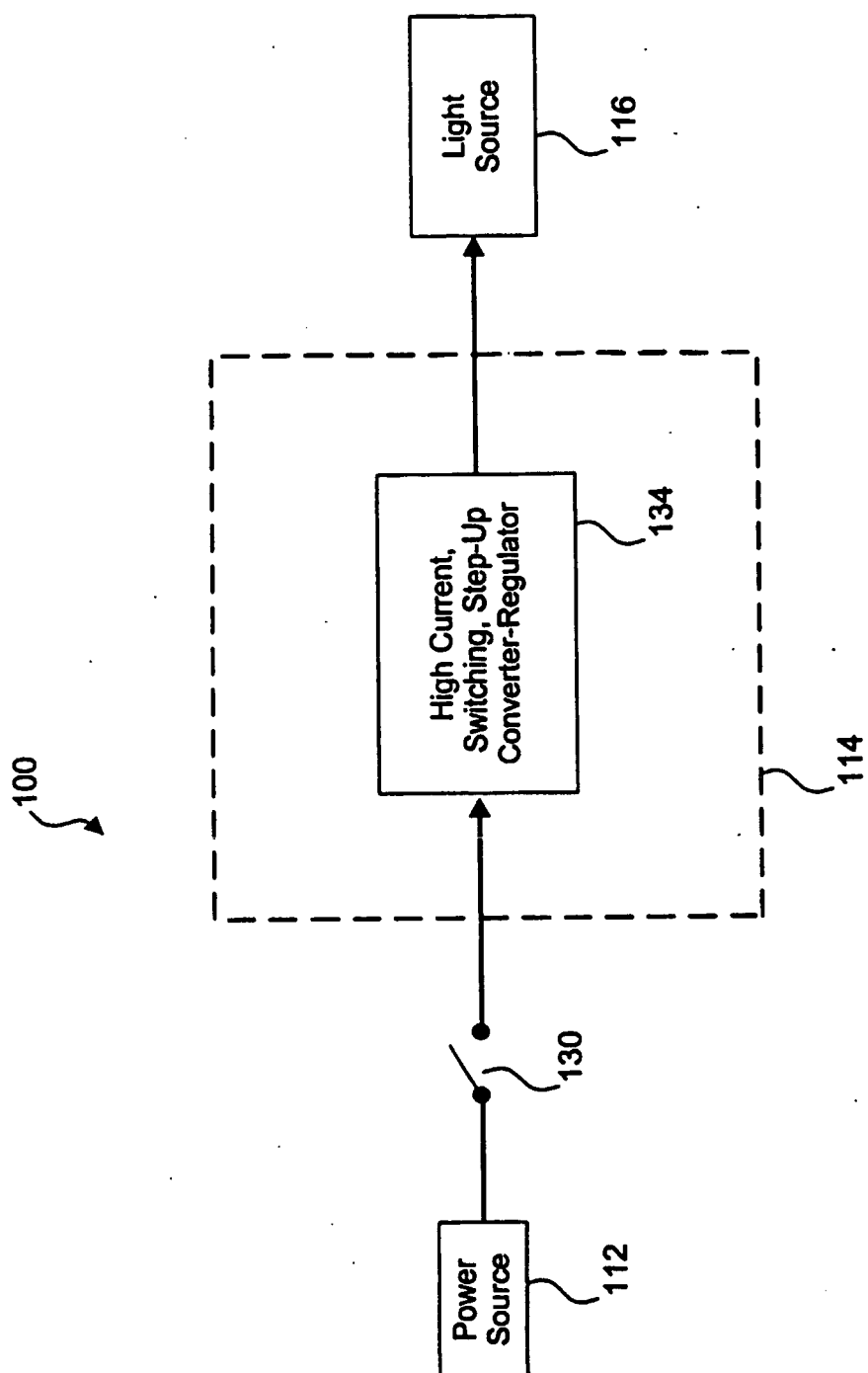


Figure 5

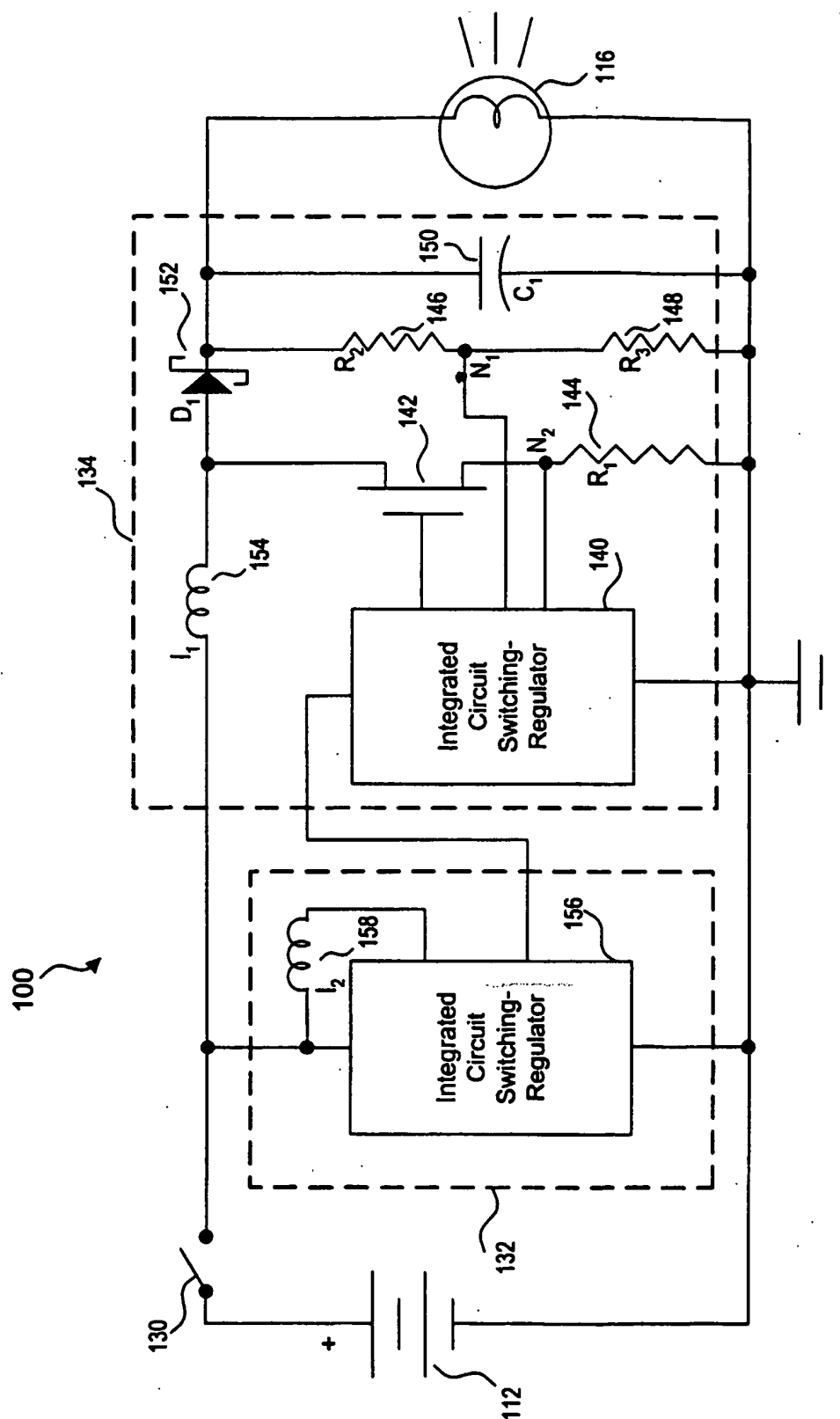


Figure 6

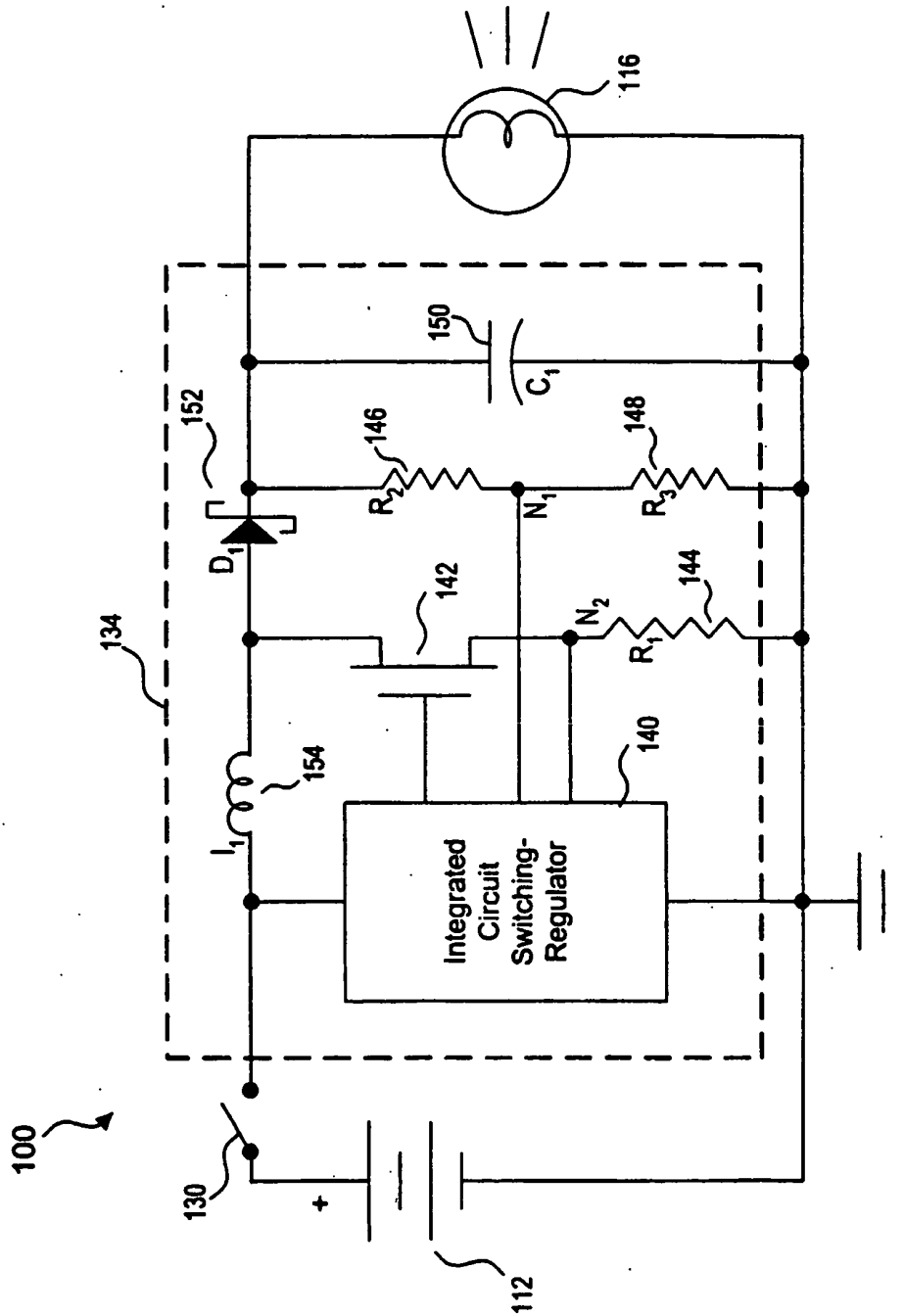


Figure 7

REFERENCES CITED IN THE DESCRIPTION

This list of references cited by the applicant is for the reader's convenience only. It does not form part of the European patent document. Even though great care has been taken in compiling the references, errors or omissions cannot be excluded and the EPO disclaims all liability in this regard.

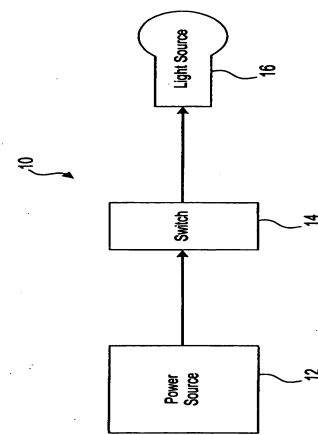
Patent documents cited in the description

- WO 9802085 A [0010]
- US 5683350 A [0010]
- GB 1415024 A [0010]
- US 6318887 B1 [0010]

专利名称(译)	用于为便携式电池供电的光源供电的装置和方法		
公开(公告)号	EP1492441B1	公开(公告)日	2013-04-03
申请号	EP2003733851	申请日	2003-04-10
[标]申请(专利权)人(译)	KARL STORZ内窥镜AMERICA		
申请(专利权)人(译)	KARL STORZ内窥镜-AMERICA , INC.		
当前申请(专利权)人(译)	KARL STORZ内窥镜-AMERICA , INC.		
[标]发明人	SOLINGEN SIMON		
发明人	SOLINGEN, SIMON		
IPC分类号	H02J7/00 A61B19/00 A61B5/00 F21S2/00 F21S9/02 F21W131/20 F21Y101/00 H05B37/02 H05B39/04		
CPC分类号	A61B1/06 A61B5/0059 A61B90/30 A61B90/361 A61B2017/00734 H02J2207/20		
优先权	60/371556 2002-04-10 US		
其他公开文献	EP1492441A2 EP1492441A4		
外部链接	Espacenet		

摘要(译)

一种便携式成像系统，其包括由电池供电的便携式光源，其输出被调节和调节以提供所选电平的输出电压，使得光源提供所选照明水平和所选色温的照明光，用于照明通过所述便携式成像系统观察其图像的物体的感兴趣区域。



Prior Art

Figure 1