



(51) International Patent Classification:

A61B 5/00 (2006.01) A61B 5/0452 (2006.01)  
A61B 5/042 (2006.01) A61B 5/046 (2006.01)

(21) International Application Number:

PCT/US20 13/046843

(22) International Filing Date:

20 June 2013 (20.06.2013)

(25) Filing Language:

English

(26) Publication Language:

English

(30) Priority Data:

61/662,252 20 June 2012 (20.06.2012) US

(71) Applicant: **BOSTON SCIENTIFIC SCIMED, INC.** [US/US]; One Scimed Place, Maple Grove, Minnesota 5531 1-1566 (US).

(72) Inventors: **THAKUR, Pramodsingh Hirasingh**; 1055 1 Kilbirnie Road, Woodbury, Minnesota 55 129 (US). **MASKARA, Barun**; 1062 101st Lane Northeast, Blaine, Minnesota 55434 (US). **SHUROS, Allan, C**; 1121 Colette

Place, St. Paul, Minnesota 55 116 (US). **SAHA, Sunipa**; 5666 Donegal Drive, Shoreview, Minnesota 55 126 (US). **SHOME, Shibaji**; 3538 Glenarden Road, Arden Hills, Minnesota 55 112 (US).

(74) Agents: **OBERST, Brian, W.** et al; 2200 Wells Fargo Center, 90 South Seventh Street, Minneapolis, Minnesota 55402-3901 (US).

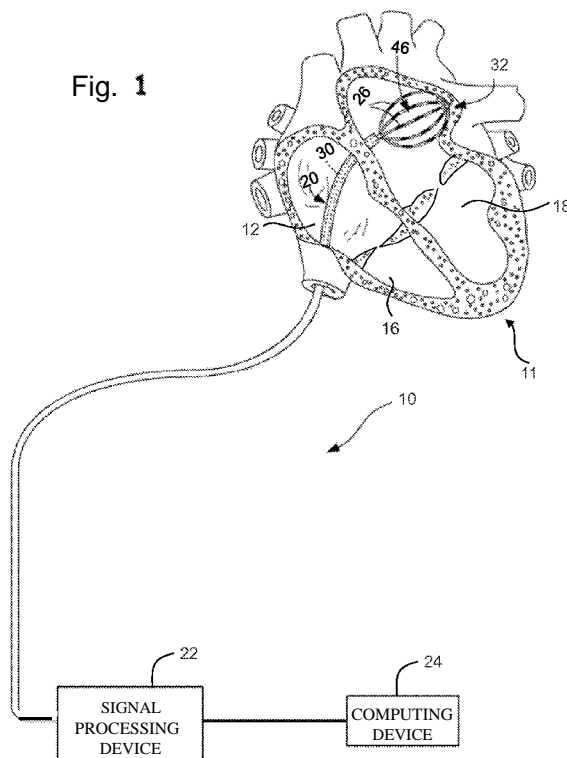
(81) Designated States (unless otherwise indicated, for every kind of national protection available): AE, AG, AL, AM, AO, AT, AU, AZ, BA, BB, BG, BH, BN, BR, BW, BY, BZ, CA, CH, CL, CN, CO, CR, CU, CZ, DE, DK, DM, DO, DZ, EC, EE, EG, ES, FI, GB, GD, GE, GH, GM, GT, HN, HR, HU, ID, IL, IN, IS, JP, KE, KG, KN, KP, KR, KZ, LA, LC, LK, LR, LS, LT, LU, LY, MA, MD, ME, MG, MK, MN, MW, MX, MY, MZ, NA, NG, NI, NO, NZ, OM, PA, PE, PG, PH, PL, PT, QA, RO, RS, RU, RW, SC, SD, SE, SG, SK, SL, SM, ST, SV, SY, TH, TJ, TM, TN, TR, TT, TZ, UA, UG, US, UZ, VC, VN, ZA, ZM, ZW.

(84) Designated States (unless otherwise indicated, for every kind of regional protection available): ARIPO (BW, GH, GM, KE, LR, LS, MW, MZ, NA, RW, SD, SL, SZ, TZ,

[Continued on nextpage]

(54) Title: FAR-FIELD VS LOCAL ACTIVATION DISCRIMINATION ON MULTI-ELECTRODE EGMS USING VECTOR ANALYSIS IN MULTI-DIMENSIONAL SIGNAL SPACE

Fig. 1



(57) Abstract: Electrical activity propagation along an electrode array within a cardiac chamber is reconstructed. Signals are sampled from the electrode array and the signals are plotted in multi-dimensional space with each axis corresponding to a channel in the electrode array. An excursion direction of global activation in the multi-dimensional space is estimated and a change in vectors of the sampled signals over time is determined. Signals with vectors that change over time in the excursion direction are suppressed.

WO 2014/058485 A1

UG, ZM, ZW), Eurasian (AM, AZ, BY, KG, KZ, RU, TJ, TM), European (AL, AT, BE, BG, CH, CY, CZ, DE, DK, EE, ES, FI, FR, GB, GR, HR, HU, IE, IS, IT, LT, LU, LV, MC, MK, MT, NL, NO, PL, PT, RO, RS, SE, SI, SK, SM, TR), OAPI (BF, BJ, CF, CG, CI, CM, GA, GN, GQ, GW, KM, ML, MR, NE, SN, TD, TG).

**Published:**

— *with international search report (Art. 21(3))*

**FAR-FIELD VS LOCAL ACTIVATION DISCRIMINATION ON MULTI-ELECTRODE EGMS USING VECTOR ANALYSIS IN MULTI-DIMENSIONAL SIGNAL SPACE**

TECHNICAL FIELD

**[0001]** The present disclosure relates to cardiac mapping systems. More particularly, the present disclosure relates to a cardiac mapping system configured to reconstruct electrical activity propagation along an electrode array within a cardiac chamber of interest by preserving local activity and suppressing far-field activity.

BACKGROUND

**[0002]** Diagnosing and treating heart rhythm disorders often involves the introduction of a catheter having a plurality of sensors/probes into the heart through the blood vessels of a patient. The sensors detect electric activity of the heart at sensor locations in the heart. The electric activity is generally processed into electrogram signals that represent the activation of the heart at the sensor locations.

**[0003]** In a simple heart rhythm disorder, the signal at each sensor location is generally consistent from beat to beat in timing and often in shape and number of its deflections, enabling identification of activation onsets at each sensor location. However, in a complex rhythm disorder, the signal at each sensor location from beat to beat may transition between one, several, and multiple deflections of various shapes. For instance, when a signal for a sensor location in AF includes 5, 7, 11 or more deflections, it is difficult if not impossible to identify which deflections in the signal are at or near the sensor location in the heart (i.e., local activation) versus a further removed location still sensed by the sensor in the heart (i.e., far-field activation) or simply noise from another part of the patient's heart, other anatomic structures, movement or motion of the sensor relative to the heart or external electronic systems.

## SUMMARY

**[0004]** Disclosed herein are various embodiments of a method for discriminating between local activation signals and far-field activity in a cardiac mapping system, as well as cardiac mapping systems employing such methods.

**[0005]** In Example 1, a method for reconstructing electrical activity propagation along an electrode array within a cardiac chamber includes sampling signals from the electrode array and plotting the signals in multi-dimensional space with each axis corresponding to a channel in the electrode array. The method also includes estimating an excursion direction of global activation in the multi-dimensional space and determining a change in vectors of the sampled signals over time. The method further includes suppressing signals with vectors that change over time in the excursion direction.

**[0006]** In Example 2, the method according to Example 1, wherein plotting the signals further includes shifting each sampled signal by an expected latency of a corresponding far-field signal sampled from the electrode array based on a reference signal.

**[0007]** In Example 3, the method according to either Example 1 or Example 2, wherein the estimating step comprises normalizing the sampled signals to match scales.

**[0008]** In Example 4, the method according to any of Examples 1-3, wherein the determining step comprises determining an absolute time derivative of the vectors.

**[0009]** In Example 5, the method according to any of Examples 1-4, wherein the estimating step comprises determining a maximum eigenvalue of a decomposition of the plotted signals.

**[0010]** In Example 6, the method according to any of Examples 1-5, wherein the estimating step further comprises blanking signals around significant excursions along each axis (local activation).

**[0011]** In Example 7, the method according to any of Examples 1-6, wherein sampling the signals comprises including channels designed or biased toward picking up global activity in the multi-dimensional space to enhance discrimination on other channels.

**[0012]** In Example 8, the method according to any of Examples 1-7, wherein sampling the signals comprises employing an extended bipolar configuration with the electrode array.

**[0013]** In Example 9, the method according to any of Examples 1-8, wherein employing an extended bipolar configuration comprises sampling signals from most opposed electrodes located on the electrode array.

**[0014]** In Example 10, a method for reconstructing electrical activity propagation along an electrode array within a cardiac chamber includes sampling signals from the electrode array and plotting the signals in multi-dimensional space with each axis corresponding to a channel in the electrode array. The method also includes determining a change in vectors of the sampled signals over time and comparing the time change in vectors of the sampled signals with unit vectors along each axis in the multi-dimensional space. The method further includes suppressing signals with vectors that do not correspond to the unit vector of one of the axes.

**[0015]** In Example 11, a mapping system including an electrode array is configured to reconstruct electrical activity propagation within a cardiac chamber according to the method of any of Examples 1-9.

**[0016]** In Example 12, a mapping system for reconstructing electrical activity propagation within a cardiac chamber includes an array of mapping electrodes configured to sample signals from a channel of interest, and a processing device associated with the plurality of mapping electrodes, the processing device configured to record the sampled signals and associate one of the plurality of mapping electrodes with each recorded signal, the mapping processor further configured to sampling signals from the array of mapping electrodes, plot the signals in multi-dimensional space with each axis corresponding to a channel in the array of mapping electrodes, estimate an excursion direction of global activation in the multi-dimensional space, determine a change in vectors of the sampled signals over time, and suppress signals with vectors that change over time in the excursion direction.

**[0017]** In Example 13, the mapping system according to Example 12, wherein to plot the signals further includes shifting each sampled signal by an

expected latency of a corresponding far-field signal sampled from the electrode array based on a reference signal.

**[0018]** In Example 14, the mapping system according to either Example 12 or Example 13, wherein to estimate an excursion direction, the processing device is further configured to normalize the sampled signals to match scales.

**[0019]** In Example 15, the mapping system according to any of Examples 12-14, wherein to determine a change in vectors, the processing system is further configured to determine an absolute time derivative of the vectors.

**[0020]** In Example 16, the mapping system according to any of Examples 12-15, wherein to estimate an excursion direction, the processing device is further configured to determine a maximum eigenvalue of a decomposition of the plotted signals.

**[0021]** In Example 17, the mapping system according to any of Examples 12-16, the processing device is further configured to blank signals around significant excursions along each axis (local activation).

**[0022]** In Example 18, the mapping system according to any of Examples 12-17, wherein to sample the signals, the processing system is further configured to bias a subset of channels towards picking up global activity in the multi-dimensional space to enhance discrimination on other channels.

**[0023]** In Example 19, the mapping system according to any of Examples 12-18, wherein to sample the signals, the processing device is further configured to employ an extended bipolar configuration on the array of mapping electrodes.

**[0024]** In Example 20, the mapping system according to any of Examples 12-19, wherein the processing device is further configured to employ the extended bipolar configuration at the most opposed electrodes located on the array of mapping electrodes.

**[0025]** While multiple embodiments are disclosed, still other embodiments of the present invention will become apparent to those skilled in the art from the following detailed description, which shows and describes illustrative embodiments of the invention. Accordingly, the drawings and detailed description are to be regarded as illustrative in nature and not restrictive.

## BRIEF DESCRIPTION OF THE DRAWINGS

- [0026]** FIG. 1 illustrates an embodiment of a cardiac activation reconstruction system according to the present disclosure.
- [0027]** FIG. 2 illustrates an embodiment of a mapping catheter having a basket functional element carrying structure.
- [0028]** FIGS. 3A illustrates an example of a plot of two channels from mapping elements of the basket functional element as a function of time.
- [0029]** FIG. 3B illustrates an example of a plot using signals of two channels in the array of mapping elements in two-dimensional space.
- [0030]** FIG. 4 illustrates a plot of a signal of a channel at times  $t$  and  $t+T$  with the resulting vector extending in parallel to the direction of global activations, indicating far-field activation of the channel.
- [0031]** FIG. 5 illustrates a plot of a signal of a channel at times  $t$  and  $t+T$  with the resulting vector extending non-parallel to the direction of global activations, indicating local activation of the channel.
- [0032]** While the invention is amenable to various modifications and alternative forms, specific embodiments have been shown by way of example in the drawings and are described in detail below. The intention, however, is not to limit the invention to the particular embodiments described. On the contrary, the invention is intended to cover all modifications, equivalents, and alternatives falling within the scope of the invention as defined by the appended claims.

## DETAILED DESCRIPTION

- [0033]** FIG. 1 illustrates an embodiment of a cardiac activation reconstruction system 10. The system 10 is configured to detect and reconstruct cardiac activation information collected/detected from a patient's heart 11 in connection with a heart rhythm disorder. The heart includes a right atrium 12, left atrium 14, right ventricle 16 and left ventricle 18.
- [0034]** The system 10 includes a catheter 20, a signal processing device 22, and a computing device 24. The catheter 20 is configured to detect cardiac activation information in the heart and to transmit the detected cardiac activation information to the signal processing device 22, either via a wireless or wired

connection. The distal end of the catheter 20 includes a plurality of sensors 26, which can be inserted into the heart through the patient's blood vessels.

**[0035]** In some embodiments, one or more of sensors are not inserted into the patient's heart. For example, some sensors may detect cardiac activation via the patient's surface (e.g., electrocardiogram) or remotely without contact with the patient (e.g., magnetocardiogram). As another example, some sensors may also derive cardiac activation information from cardiac motion of a non-electrical sensing device (e.g., echocardiogram). In various embodiments or aspects, these sensors can be used separately or in different combinations, and further these separate or different combinations can also be used in combination with sensors inserted into the patient's heart.

**[0036]** The sensors 26, which are positioned at sensor locations in the heart under consideration (e.g., the left atrium in the illustrated embodiment), can detect cardiac activation information at the sensor locations. In some embodiments, an integral ablation electrode or a separate ablation catheter may be used to deliver energy to ablate the heart at or proximate the sensor locations.

**[0037]** The signal processing device 22 is configured to process (e.g., clarify and amplify) the cardiac activation information detected by the sensors 26 at the sensor locations into electrogram signals and to provide the processed cardiac signals to the computing device 24 for analysis or processing in accordance with various methods, such as those disclosed herein.

**[0038]** FIG. 2 illustrates an embodiment of a mapping catheter 20 including sensors at the distal end suitable for use in the system 10 shown in FIG. 1. The mapping catheter 20 that has a flexible catheter body 30, the distal end of which carries a three dimensional structure 32 configured to carry a plurality of mapping elements or sensors 26. In some embodiments, a proximity element 34 is preferably located adjacent each mapping element 26. Alternatively, the mapping elements 26 can be used as the proximity elements 34. As will be described in further detail below, the mapping elements 26 sense electrical activity in the heart tissue, which sensed activity is then processed by the signal processing device 22 and computing device 24 to assist the physician in identifying the site or sites having a heart rhythm disorder. This process is commonly referred to as mapping.

This information can then be used to determine an appropriate location for applying appropriate therapy (e.g., ablation) to the identified sites.

**[0039]** The illustrated three dimensional structure 32 comprises a base member 40 and an end cap 42 between which flexible splines 44 generally extend in a circumferentially spaced relationship. As illustrated, the three dimensional structure 32 takes the form of a basket defining an open interior space 46. In some embodiments, the splines 44 are made of a resilient inert material, such as, e.g., Nitinol metal or silicone rubber, and are connected between the base member 40 and the end cap 42 in a resilient, pretensed condition, to bend and conform to the tissue surface they contact. In the illustrated embodiment, eight splines 44 form the three dimensional structure 32. Additional or fewer splines 44 could be used in other embodiments. As illustrated, each spline 44 carries eight mapping elements 26. Additional or fewer mapping elements 26 could be disposed on each spline 44 in other embodiments of the three dimensional structure 32. In the illustrated embodiment, the three dimensional structure 32 is relatively small (e.g., 40 mm or less in diameter). In alternative embodiments, the three dimensional structure 32 is larger (e.g., 40 mm in diameter or greater).

**[0040]** A slidable sheath 50 is movable along the major axis of the catheter body 30. Moving the sheath 50 forward (i.e., toward the distal end) causes the sheath 50 to move over the three dimensional structure 32, thereby collapsing the structure 32 into a compact, low profile condition suitable for introduction into an interior space, such as, for example, into the heart 12. In contrast, moving the sheath 19 rearward (i.e., toward the proximal end) frees the three dimensional structure 32, allowing the structure 32 to spring open and assume the pretensed position illustrated in FIG. 2. Further details of embodiments of the three dimensional structure 20 are disclosed in U.S. Pat. No. 5,647,870, entitled "Multiple Electrode Support Structures," the disclosure of which is expressly and fully incorporated by reference.

**[0041]** A signal wire (not shown) is electrically coupled to each mapping element 26. The wires extend through the body 30 of the mapping catheter 20 into a handle 54, in which they are coupled to an external connector 56, which may be a multiple pin connector. The connector 56 electrically couples the mapping

elements 26 to the signal processing device 22 and computing device 24. Further details on mapping systems and methods for processing signal generated by the mapping catheter are discussed in U.S. Patent No. 6,070,094, entitled "Systems and Methods for Guiding Movable Electrode Elements within Multiple-Electrode Structure," U.S. Patent No. 6,233,491, entitled "Cardiac Mapping and Ablation Systems," and U.S. Patent No. 6,735,465, entitled "Systems and Processes for Refining a Registered Map of a Body Cavity," the disclosures of which are expressly and fully incorporated herein by reference. In a similar manner, a signal wire electrically couples each proximity element 34 to the signal processing device 22 and computing device 24.

**[0042]** It is noted that other three dimensional structures could be deployed on the distal end. It is further noted that the multiple mapping elements 26 may be disposed on more than one structure rather than, for example, the single mapping catheter 20 illustrated in FIG. 2. For example, if mapping within the left atrium 14 with multiple mapping structures, an arrangement comprising a coronary sinus catheter carrying multiple mapping elements and a basket catheter carrying multiple mapping elements positioned in the left atrium 14 may be used. As another example, if mapping within the right atrium 12 with multiple mapping structures, an arrangement comprising a decapolar catheter carrying multiple mapping elements for positioning in the coronary sinus, and a loop catheter carrying multiple mapping elements for positioning around the tricuspid annulus may be used.

**[0043]** Additionally, although the mapping elements 26 have been described as being carried by mapping dedicated probes, such as mapping catheter 20, mapping elements can be carried on non-mapping dedicated probes. For example, an ablation catheter can be configured to include one or mapping elements disposed on the distal end of the catheter body and coupled to the signal processing device 22 and computing device 24. As another example, the ablation electrode at the distal end of the ablation catheter may be coupled to the signal processing device 22 and computing device 24 to also operate as a mapping electrode.

**[0044]** In various embodiments, signals sensed by mapping elements 26 can be plotted to generate a multi-dimensional representation of signals from multiple elements or channels. FIGS. 3A illustrates an example of a plot of two channels (S1, S2) from the mapping elements 26 as a function of time. For example, in the embodiment illustrated in FIG. 2, channels S1 and S2 may be signals from a selected two of the sixty-four mapping elements 26. FIG. 3B illustrates an example of a plot using signals from two channels in the array of mapping elements 26 in two-dimensional space, with signal samples at various points in time for channel S1 plotted along the vertical axis and signal samples at various points in time for channel S2 plotted along the horizontal axis. The signals from channel S1 at points in time A, B, and C shown in FIG. 3A are shown plotted in FIG. 3B along the vertical axis, the signals from channel S2 at points in time D and E in FIG. 3A are shown plotted in FIG. 3B along the horizontal axis. While two channels are shown, any number of channels may be plotted to generate a multi-dimensional (or, N-dimensional) representation of signals from a corresponding number of channels.

**[0045]** According to the present disclosure, the N-dimensional representation of signals can be processed by the signal processing device 22 and/or computing device 24 to suppress signals due to global activation (i.e., far-field activity) to enhance signals associated with local activation. In the N-dimensional representation, global activation may be characterized by excursions along certain directions in the N-dimensional space. To facilitate suppression of these signals, the direction of a unit vector  $UCM$  in the direction of the global activation excursions may be estimated. Then, the vector representation of signals on the channels S of the three dimensional structure 32 at time  $t$  can be defined as:

$$V(t) = [S1(t), S2(t), S3(t), \dots, SN(t)] \quad (\text{Equation 1})$$

Global activations will cause signal excursions along (i.e., parallel to)  $UCM$  such that  $V(t)$  will change along  $UCM$  in N-dimensional space. Thus, the signal processing device 22 and/or computing device 24 may take the time derivative of  $V(t)$  to characterize the time variation of the signal. This result may be projected onto  $UCM$  and compared to a predetermined threshold:

$$\frac{\frac{dV(t)^T}{dt} \cdot U_{CM}}{\left\| \frac{dV(t)}{dt} \right\|} > TH$$

**[0046]** In other words, if the derivative of  $V(t)$  substantially similar to the slope/direction  $U_{CM}$ , the change in the signal may be due to global activations, and the inequality above would be true. The equation stated above represents one way of comparing the direction of the excursion of signal vector change in multi-dimensional space with the direction of global activation ( $U_{CM}$ ). Other ways of comparison may include using the signal vector change ( $AV(t)$ ) rather than the derivative or calculating an angle between the two vectors in the N-dimensional space. FIG. 4 illustrates a vector 60 connecting a signal change between channels S1 and S2 at time t and time t+T, wherein the vector 60 is substantially parallel to the unit vector  $U_{CM}$ . Thus, the signal change between time t and t+T can be attributed to global activations. During processing, signal processing device 22 and/or computing device 24 may be configured to suppress these signals.

**[0047]** If the derivative of  $V(t)$  is not equal to the slope/direction  $U_{CM}$ , the change in the signal is likely due to local activations, and the inequality above would not be true. FIG. 5 illustrates a vector 62 connecting a signal change between channels S1 and S2 at time t and time t+T, wherein the vector 62 is not parallel to the unit vector  $U_{CM}$ . Rather, the vector 62 is substantially parallel to the axis S1, indicating that the change is due to a local activation at or near the channel S1.

**[0048]** In some instances, the far-field signal may not appear instantaneously on all channels, but may exhibit a characteristic delay or a latency associated with volume propagation characteristic of the far-field component propagating through tissue. In scenarios where latencies are identified and/or expected, both *Equation 1* and *Equation 2* can be modified to account for the latencies associated with various electrodes. For example, if far-field signals emerge at latencies of  $\omega_1, \omega_2, \dots, \omega_N$  over the  $N$  neighboring electrodes with

respect to a far-field reference signal such as a surface ECG, Equation 2 can be expressed as:

$$V(t) = [S_0(t) - S_1(t + \omega_1), S_0(t) - S_2(t + \omega_2), \dots, S_0(t) - S_N(t + \omega_N)]^T \quad (\text{Equation 3})$$

The latencies can be estimated by tracking the peaks or other characteristic features of the far-field signal on each channel with respect to the peaks or other characteristic feature of the corresponding R-wave sensed by the surface ECG. The estimated latencies can be averaged over multiple local heart beats.

**[0049]** Various approaches to estimating the unit vector  $U_{CM}$  and subsequently suppressing the global activations may be taken. For example, assume the unit vector  $U_{CM}$  of global activations can be represented as a unity slope line in N-dimensional space:

$$U_{CM} = \left[ \frac{1}{\sqrt{N}}, \frac{1}{\sqrt{N}}, \dots, \frac{1}{\sqrt{N}} \right]^T \quad (\text{Equation 2})$$

Equation 2 assumes that global activation has similar scales on all channels from the mapping elements 26. The scales of each channel may then be normalized with respect to each other:

$$V(t) = \left[ \frac{S_1(t)}{\|S_1\|}, \frac{S_2(t)}{\|S_2\|}, \dots, \frac{S_N(t)}{\|S_N\|} \right]^T \quad (\text{Equation 3})$$

Excursions are in-phase on all channels S1-SN. In some embodiments, the absolute derivative of  $V(t)$  may be considered instead of the inequality above:

$$\frac{\text{abs}\left(\frac{dV(t)}{dt}\right)^T \cdot U_{CM}}{\left\| \frac{dV(t)}{dt} \right\|} > TH$$

**[0050]** As another example,  $U_{CM}$  may be estimated by first blanking signals around significant excursions along each axis (i.e., local activations). The signal processing device 22 and/or computing device 24 may then process the data associated with the remainder data set to suppress the correlated data. In some embodiments, the signal processing device 22 and/or computing device 24 performs an eigenvector/eigenvalue decomposition of a covariance matrix of the remainder data set, which characterizes the variation/spread of the data in the two-dimensional space. The eigenvector corresponding to the largest eigenvalue

points to the direction of maximum elongation in the remainder data set, which is essentially *UCM*.

**[0051]** In some embodiments, the channels (e.g., channels S1 and S2) sampled may be selected to bias toward picking up global activity in the N-dimensional space to enhance discrimination on other channels. For example, mapping elements 26 distal from the tissue may be referenced to other elements that generate far field interference to help with discriminating between far-field and local activations. In some embodiments, the selected channels may be the most opposed electrodes located on the three dimensional structure 32 to assess global atrial activity (i.e., extended bipolar configuration).

**[0052]** An alternative approach to suppressing excursions due to global activation is to compare the derivative of  $V(t)$  to unit vectors along each axis in N-dimensional space. Since local activation is expected to cause a signal excursion along the axis corresponding to the locally activated channel, a signal vector extending in parallel to one of these unit vectors indicates local activation. Thus, if  $E_{Si}$  is a unit vector along channel S<sub>i</sub>, and  $E_{Sj}$  is the unit vector along channel S<sub>j</sub>, the following can be used to determine whether a signal vector is due to local or global activations:

$$\frac{\frac{dV(t)^T \cdot E_{Si}}{dt}}{\left| \frac{dV(t)}{dt} \right|} > TH1 \ \& \ \frac{\frac{dV(t)^T \cdot E_{Sj}}{dt}}{\left| \frac{dV(t)}{dt} \right|} < TH2 \ \vee \ |V| \neq 1$$

In this mathematical statement, the unit vectors  $E_{Si}$  and  $E_{Sj}$  are normalized with respect to the time derivative of  $V(t)$  and compared with thresholds TH1 and TH2. If this mathematical statement is satisfied, this indicates that an excursion along the axis associated with channel S<sub>i</sub>, which is indicative of local activation on channel S<sub>i</sub>. Corollary mathematical statements may be generated to indicate excursions along the axis associated with channel S<sub>j</sub>, and excursions due to global activations.

**[0053]** The method and system as described provides a flexible mathematical framework that can work with any number of channels on a mapping catheter (e.g., neighboring 8, neighboring 16, all at once, two groups of local and far-field). The ability to process information from any number of

channels provides a more faithful reconstruction of electrical activity propagation in the chamber of interest compared to conventional paired channel comparisons for discriminating far-field activity from local activity.

[0054] Various modifications and additions can be made to the exemplary embodiments discussed without departing from the scope of the present invention. For example, while the embodiments described above refer to particular features, the scope of this invention also includes embodiments having different combinations of features and embodiments that do not include all of the described features. Accordingly, the scope of the present invention is intended to embrace all such alternatives, modifications, and variations as fall within the scope of the claims, together with all equivalents thereof.

## CLAIMS

We claim:

1. A method for reconstructing electrical activity propagation along an electrode array within a cardiac chamber, the method comprising:
  - sampling signals from the electrode array;
  - plotting the signals in multi-dimensional space with each axis corresponding to a channel in the electrode array;
  - estimating an excursion direction of global activation in the multi-dimensional space;
  - determining a change in vectors of the sampled signals over time; and
  - suppressing signals with vectors that change over time in the excursion direction.
2. The method of claim 1, wherein plotting the signals further includes:
  - shifting each sampled signal by an expected latency of a corresponding far-field signal sampled from the electrode array based on a reference signal.
3. The method of either claim 1 or claim 2, wherein estimating an excursion direction further comprises:
  - normalizing the sampled signals to match scales.
4. The method of any of claims 1-3, wherein determining a change in vectors further comprises:
  - determining an absolute time derivative of the vectors.

5. The method of any of claims 1-4, wherein estimating an excursion direction further comprises:
  - determining a maximum eigenvalue of a decomposition of the plotted signals.
6. The method of any of claims 1-5, further comprising:
  - blanking signals around significant excursions along each axis (local activation).
7. The method of any of claims 1-6, wherein sampling the signals further comprises:
  - biasing a subset of channels towards picking up global activity in the multi-dimensional space to enhance discrimination on other channels.
8. The method of any of claims 1-7, wherein sampling the signals comprises employing an extended bipolar configuration with the electrode array.
9. The method of any of claims 1-8, wherein employing an extended bipolar configuration comprises sampling signals from most opposed electrodes located on the electrode array.
10. A method for reconstructing electrical activity propagation along an electrode array within a cardiac chamber, the method comprising:
  - sampling signals from the electrode array;
  - plotting the signals in multi-dimensional space with each axis corresponding to a channel in the electrode array;
  - determining a change in vectors of the sampled signals over time;

comparing the time change in vectors of the sampled signals with unit vectors along each axis in the multi-dimensional space; and

suppressing signals with vectors that do not correspond to the unit vector of one of the axes.

11. A mapping system including an electrode array configured to reconstruct electrical activity propagation within a cardiac chamber according to the method of any of claims claim 1-10.

12. A mapping system for reconstructing electrical activity propagation within a cardiac chamber, comprising:

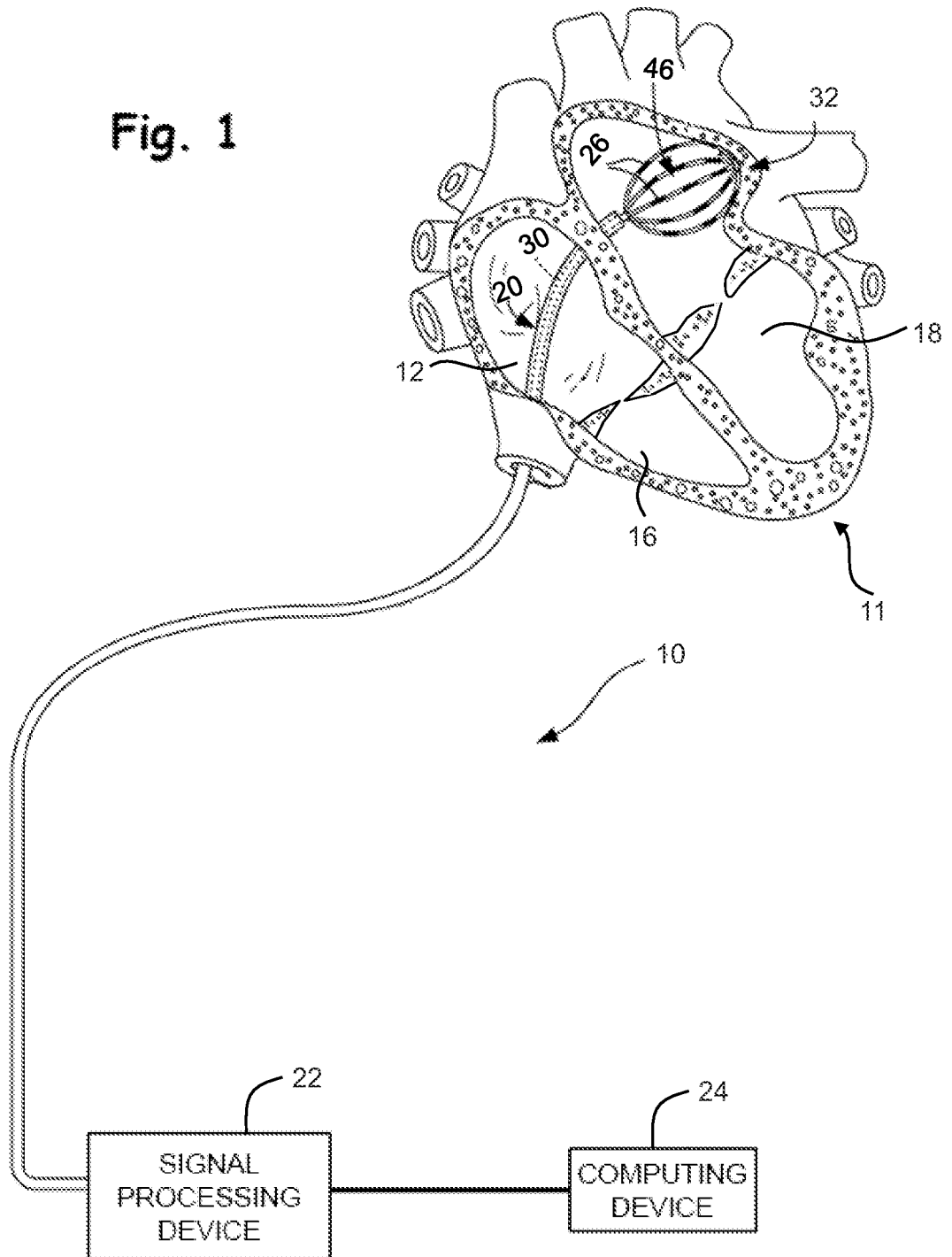
an array of mapping electrodes configured to sample signals from a channel of interest; and

a processing device associated with the plurality of mapping electrodes, the processing device configured to record the sampled signals and associate one of the plurality of mapping electrodes with each recorded signal, the mapping processor further configured to sampling signals from the array of mapping electrodes, plot the signals in multi-dimensional space with each axis corresponding to a channel in the array of mapping electrodes, estimate an excursion direction of global activation in the multi-dimensional space, determine a change in vectors of the sampled signals over time, and suppress signals with vectors that change over time in the excursion direction.

13. The mapping system of claim 12, wherein to plot the signals further includes shifting each sampled signal by an expected latency of a corresponding far-field signal sampled from the electrode array based on a reference signal.

14. The mapping system of either claim 12 or claim 13, wherein to estimate an excursion direction, the processing device is further configured to normalize the sampled signals to match scales.
15. The mapping system of any of claims 12-14, wherein to determine a change in vectors, the processing system is further configured to determine an absolute time derivative of the vectors.
16. The mapping system of any of claims 12-15, wherein to estimate an excursion direction, the processing device is further configured to determine a maximum eigenvalue of a decomposition of the plotted signals.
17. The mapping system of any of claims 12-16, wherein to estimate an excursion direction, the processing device is further configured to blank signals around significant excursions along each axis (local activation).
18. The mapping system of any of claims 12-17, wherein to sample the signals, the processing system is further configured to bias a subset of channels towards picking up global activity in the multi-dimensional space to enhance discrimination on other channels.
19. The mapping system of any of claims 12-18, wherein to sample the signals, the processing device is further configured to employ an extended bipolar configuration on the array of mapping electrodes.
20. The mapping system of any of claims 12-19, wherein the processing device is further configured to employ the extended bipolar configuration at the most opposed electrodes located on the array of mapping electrodes.

Fig. 1



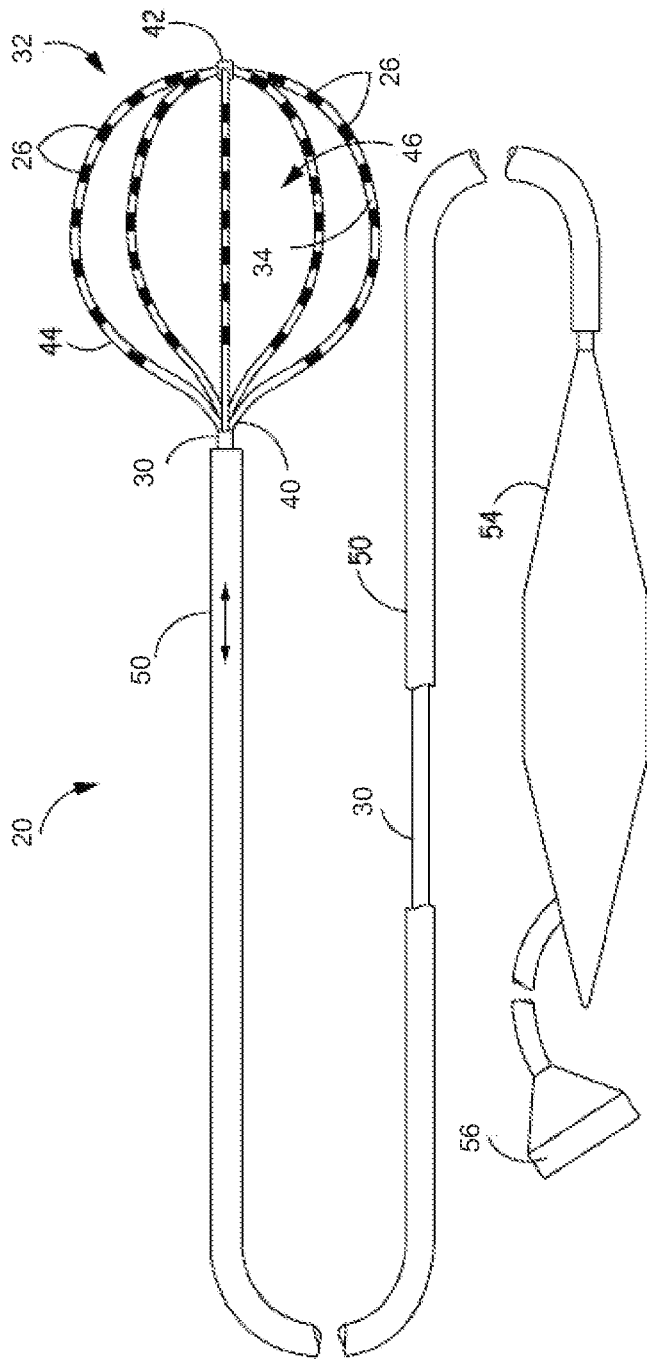
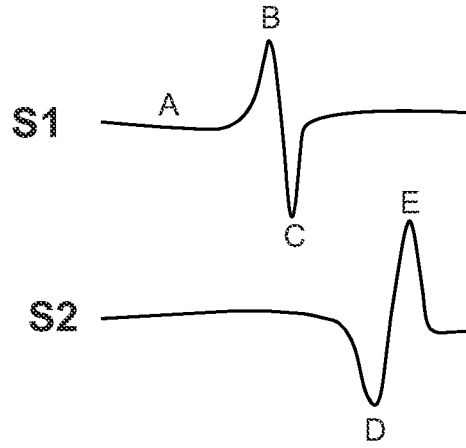
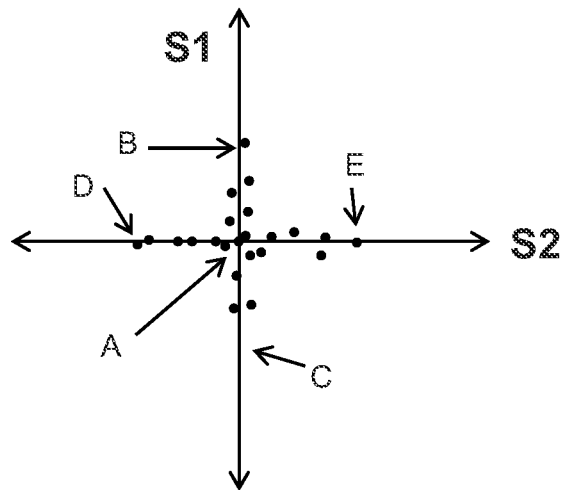


FIG. 2

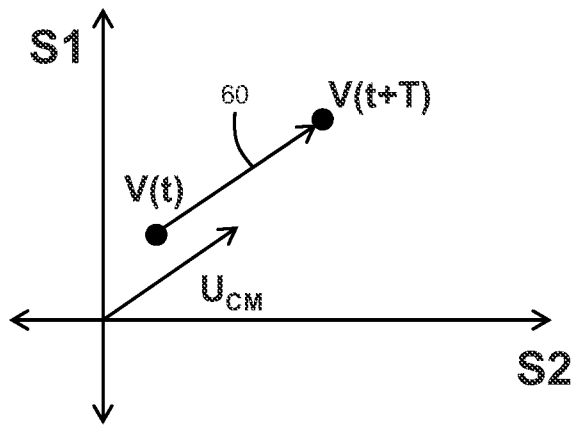


**FIG. 3A**

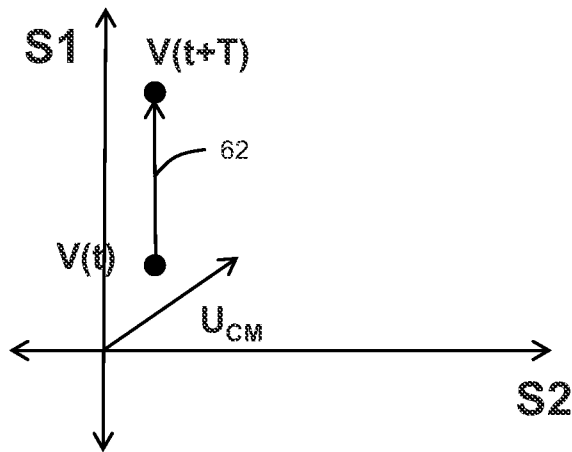


**FIG. 3B**

4 / 4



**FIG. 4**



**FIG. 5**

# INTERNATIONAL SEARCH REPORT

International application No <b>PCT/US2013/046843</b>
--

A. CLASSIFICATION OF SUBJECT MATTER  
**INV. A61B5/00 A61B5/042 A61B5/0452**  
**ADD. A61B5/046**

According to International Patent Classification (IPC) or to both national classification and IPC

B. FIELDS SEARCHED

Minimum documentation searched (classification system followed by classification symbols)  
**A61B A61N G06K G01V**

Documentation searched other than minimum documentation to the extent that such documents are included in the fields searched

Electronic data base consulted during the international search (name of data base and, where practicable, search terms used)  
**EPO-Internal , WPI Data, INSPEC**

C. DOCUMENTS CONSIDERED TO BE RELEVANT

Category*	Citation of document, with indication, where appropriate, of the relevant passages	Relevant to claim No.
X	US 2008/281369 AI (KENKNIGHT BRUCE [US] ET AL) 13 November 2008 (2008-11-13)	1,4, 7-12 , 15 , 18-20
Y	paragraphs [0033] , [0034] , [0048] , [0057] , [0060] , [0064] , [0067] , [0082] , [0084]	2 , 3 , 5 , 13 , 14 , 16
X	US 2009/240157 AI (LIAN JIE [US] ET AL) 24 September 2009 (2009-09-24) paragraphs [0019] - [0022] , [0037] , [0039] , [0040] , [0052] , [0184]	1,6, 10-12 , 17
Y	W0 2006/037172 AI (CUORETECH PTY LTD [AU] ; MADRY ANDREW JAMES [AU] ; THOMAS STUART PHILIP) 13 April 2006 (2006-04-13) page 3, lines 13, 26, 27	2 , 13
	----- -/- .	

Further documents are listed in the continuation of Box C.       See patent family annex.

\* Special categories of cited documents :

<p>"A" document defining the general state of the art which is not considered to be of particular relevance</p> <p>"E" earlier application or patent but published on or after the international filing date</p> <p>"L" document which may throw doubts on priority claim(s) or which is cited to establish the publication date of another citation or other special reason (as specified)</p> <p>"O" document referring to an oral disclosure, use, exhibition or other means</p> <p>"P" document published prior to the international filing date but later than the priority date claimed</p>	<p>"T" later document published after the international filing date or priority date and not in conflict with the application but cited to understand the principle or theory underlying the invention</p> <p>"X" document of particular relevance; the claimed invention cannot be considered novel or cannot be considered to involve an inventive step when the document is taken alone</p> <p>"Y" document of particular relevance; the claimed invention cannot be considered to involve an inventive step when the document is combined with one or more other such documents, such combination being obvious to a person skilled in the art</p> <p>"&amp;" document member of the same patent family</p>
---	---

Date of the actual completion of the international search <b>14 October 2013</b>	Date of mailing of the international search report <b>23/10/2013</b>
---	---

Name and mailing address of the ISA/ European Patent Office, P.B. 5818 Patentlaan 2 NL - 2280 HV Rijswijk Tel. (+31-70) 340-2040, Fax: (+31-70) 340-3016	Authorized officer  <b>Meyer, Wolfgang</b>
--	--

## INTERNATIONAL SEARCH REPORT

International application No

PCT/US2013/046843

C(Continuation). DOCUMENTS CONSIDERED TO BE RELEVANT

Category*	Citation of document, with indication, where appropriate, of the relevant passages	Relevant to claim No.
Y	wo 00/45700 AI (UNIV COLUMBIA [US] ; CIACCIO EDWARD J [US] ; WIT ANDREW L [US] ) 10 August 2000 (2000-08-10) page 80, line 15  -----	3, 14
Y	POTTER M ET AL: "Competi ng ICA techni ques i n bi omedi cal si gnal analysi s", ELECTRICAL AND COMPUTER ENGINEERING, 2001 . CANADIAN CONFERENCE ON MAY 13-16, 2001 , PISCATAWAY, NJ, USA, I EEE, vol . 2, 13 May 2001 (2001-05-13) , pages 987-992 , XP010550969 , DOI : 10. 1109/CCECE. 2001 .933577 ISBN : 978-0-7803-6715-9 the whol e document  -----	5, 16
A	YU ZHOU ET AL: "A New Uni ted Analysi s Method for Epi cardi al Mappi ng Si gnal s", BIOINFORMATICS AND BIOMEDICAL ENGINEERING, 2008. ICBBE 2008. THE 2ND INTERNATIONAL CONFERENCE ON, I EEE, PISCATAWAY, NJ, USA, 16 May 2008 (2008-05-16) , pages 636-639 , XP031267041 , ISBN : 978-1-4244-1747-6 the whol e document  -----	1-20

# INTERNATIONAL SEARCH REPORT

Information on patent family members

International application No

PCT/US2013/046843

Patent document cited in search report	Publication date	Patent family member(s)	Publication date
US 2008281369 A1	13-11-2008	US 2008281369 A1	13-11-2008
		US 2013238046 A1	12-09-2013
		WO 2008140866 A1	20-11-2008
-----			
US 2009240157 A1	24-09-2009	NONE	
-----			
WO 2006037172 A1	13-04-2006	EP 1809174 A1	25-07-2007
		JP 2008515493 A	15-05-2008
		US 2008194979 A1	14-08-2008
		WO 2006037172 A1	13-04-2006
-----			
WO 0045700 A1	10-08-2000	AU 2868800 A	25-08-2000
		US 6236883 B1	22-05-2001
		WO 0045700 A1	10-08-2000
-----			

专利名称(译)	多维信号空间中矢量分析的多电极EGMS远场VS局部激活判别		
公开(公告)号	<a href="#">EP2863793A1</a>	公开(公告)日	2015-04-29
申请号	EP2013735132	申请日	2013-06-20
[标]申请(专利权)人(译)	波士顿科学西美德公司		
申请(专利权)人(译)	BOSTON SCIENTIFIC SCIMED , INC.		
当前申请(专利权)人(译)	BOSTON SCIENTIFIC SCIMED , INC.		
[标]发明人	THAKUR PRAMODSINGH HIRASINGH MASKARA BARUN SHUROS ALLAN C SAHA SUNIPA SHOME SHIBAJI		
发明人	THAKUR, PRAMODSINGH HIRASINGH MASKARA, BARUN SHUROS, ALLAN, C. SAHA, SUNIPA SHOME, SHIBAJI		
IPC分类号	A61B5/00 A61B5/042 A61B5/0452 A61B5/046		
CPC分类号	A61B5/0422 A61B5/0044 A61B5/04007 A61B5/04012 A61B5/0402 A61B5/042 A61B5/6859 A61B18/1492		
优先权	61/662252 2012-06-20 US		
外部链接	<a href="#">Espacenet</a>		

#### 摘要(译)

重建沿心腔内的电极阵列的电活动传播。从电极阵列采样信号，并且在多维空间中绘制信号，每个轴对应于电极阵列中的通道。估计多维空间中的全局激活的偏移方向，并确定采样信号的矢量随时间的变化。具有在偏移方向上随时间变化的矢量的信号被抑制。