



(51) International Patent Classification:

A61B 5/00 (2006.01) A61B 5/0452 (2006.01)  
A61B 5/042 (2006.01) A61B 5/046 (2006.01)

(21) International Application Number:

PCT/US20 13/046841

(22) International Filing Date:

20 June 2013 (20.06.2013)

(25) Filing Language:

English

(26) Publication Language:

English

(30) Priority Data:

61/662,257 20 June 2012 (20.06.2012) US

(71) Applicant: **BOSTON SCIENTIFIC SCIMED, INC.** [US/US]; One Scimed Place, Maple Grove, Minnesota 5531 1-1566 (US).

(72) Inventors: **THAKUR, Pramodsingh Hirasingh**; 1055 1 Kilbirnie Road, Woodbury, Minnesota 55 129 (US). **MASKARA, Barun**; 1062 101st Lane Northeast, Blaine, Minnesota 55434 (US). **SHUROS, Allan, C**; 1121 Colette Place, St. Paul, Minnesota 55 116 (US). **SAHA, Sunipa**; 5666 Donegal Drive, Shoreview, Minnesota 55 126 (US). **SHOME, Shibaji**; 3538 Glenarden Road, Arden Hills, Minnesota 55 112 (US).

(74) Agents: **OBERST, Brian, W.** et al; 2200 Wells Fargo Center, 90 South Seventh Street, Minneapolis, Minnesota 55402-3901 (US).

(81) Designated States (unless otherwise indicated, for every kind of national protection available): AE, AG, AL, AM, AO, AT, AU, AZ, BA, BB, BG, BH, BN, BR, BW, BY, BZ, CA, CH, CL, CN, CO, CR, CU, CZ, DE, DK, DM, DO, DZ, EC, EE, EG, ES, FI, GB, GD, GE, GH, GM, GT, HN, HR, HU, ID, IL, IN, IS, JP, KE, KG, KN, KP, KR, KZ, LA, LC, LK, LR, LS, LT, LU, LY, MA, MD, ME, MG, MK, MN, MW, MX, MY, MZ, NA, NG, NI, NO, NZ, OM, PA, PE, PG, PH, PL, PT, QA, RO, RS, RU, RW, SC, SD, SE, SG, SK, SL, SM, ST, SV, SY, TH, TJ, TM, TN, TR, TT, TZ, UA, UG, US, UZ, VC, VN, ZA, ZM, ZW.

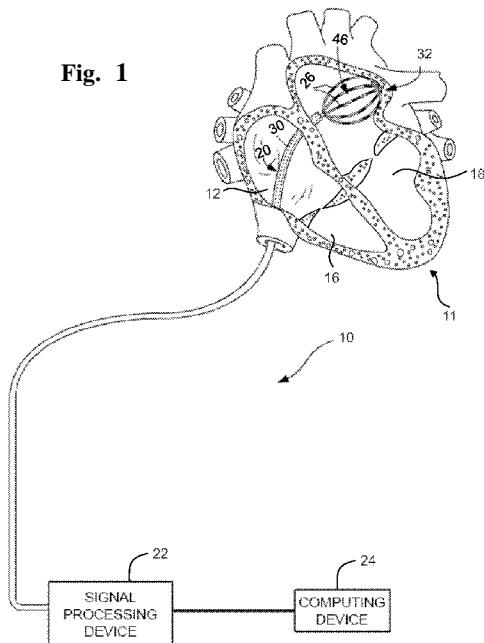
(84) Designated States (unless otherwise indicated, for every kind of regional protection available): ARIPO (BW, GH, GM, KE, LR, LS, MW, MZ, NA, RW, SD, SL, SZ, TZ, UG, ZM, ZW), Eurasian (AM, AZ, BY, KG, KZ, RU, TJ, TM), European (AL, AT, BE, BG, CH, CY, CZ, DE, DK, EE, ES, FI, FR, GB, GR, HR, HU, IE, IS, IT, LT, LU, LV, MC, MK, MT, NL, NO, PL, PT, RO, RS, SE, SI, SK, SM, TR), OAPI (BF, BJ, CF, CG, CI, CM, GA, GN, GQ, GW, KM, ML, MR, NE, SN, TD, TG).

Published:

— with international search report (Art. 21(3))

(54) Title: AUGMENTED SIGNAL VECTOR ANALYSIS TO SUPPRESS GLOBAL ACTIVATION DURING ELECTROPHYSIOLOGY MAPPING

Fig. 1



(57) Abstract: Electrical activity propagation along an electrode array within a cardiac chamber is reconstructed. Signals are sampled from the electrode array including signals from a channel of interest. An N-dimensional signal vector is then constructed using signals from N neighboring channels referenced to the channel of interest. A change in the N-dimensional signal vector over time is then determined and compared to a predetermined threshold to establish whether local activation has occurred on the channel of interest.

## AUGMENTED SIGNAL VECTOR ANALYSIS TO SUPPRESS GLOBAL ACTIVATION DURING ELECTROPHYSIOLOGY MAPPING

### TECHNICAL FIELD

**[0001]** The present disclosure relates to cardiac mapping systems. More particularly, the present disclosure relates to a cardiac mapping system configured to reconstruct electrical activity propagation along an electrode array within a cardiac chamber of interest by preserving local activity and suppressing far-field activity.

### BACKGROUND

**[0002]** Diagnosing and treating heart rhythm disorders often involves the introduction of a catheter having a plurality of sensors/probes into the heart through the blood vessels of a patient. The sensors detect electric activity of the heart at sensor locations in the heart. The electric activity is generally processed into electrogram signals that represent the activation of the heart at the sensor locations.

**[0003]** In a simple heart rhythm disorder, the signal at each sensor location is generally consistent from beat to beat in timing and often in shape and number of its deflections, enabling identification of activation onsets at each sensor location. However, in a complex rhythm disorder, the signal at each sensor location from beat to beat may transition between one, several, and multiple deflections of various shapes. For instance, when a signal for a sensor location in AF includes 5, 7, 11 or more deflections, it is difficult if not impossible to identify which deflections in the signal are at or near the sensor location in the heart (i.e., local activation) versus a further removed location still sensed by the sensor in the heart (i.e., far-field activation) or simply noise from another part of the patient's heart, other anatomic structures, movement or motion of the sensor relative to the heart or external electronic systems.

## SUMMARY

**[0004]** Disclosed herein are various embodiments of a method for discriminating between local activation signals and far-field activity in a cardiac mapping system, as well as cardiac mapping systems employing such methods.

**[0005]** In Example 1, a method for reconstructing electrical activity propagation along an electrode array within a cardiac chamber includes sampling signals from the electrode array including signals from a channel of interest and constructing an N-dimensional signal vector using signals from N neighboring channels referenced to the channel of interest. The method further includes determining a change in the N-dimensional signal vector over time and comparing the change to a predetermined threshold to establish whether local activation has occurred on the channel of interest.

**[0006]** In Example 2, the method according to Example 1, wherein constructing the N-dimensional signal vector comprises finding a difference between a signal on the channel of interest at a sampling time and a signal on each of the other channels at the sampling time.

**[0007]** In Example 3, the method according to either Example 1 or Example 2, wherein the difference is adjusted based on latencies of sampled far-field signals.

**[0008]** In Example 4, the method according to any of Examples 1-3, wherein constructing the N-dimensional signal vector further comprises weighting the difference between the signal on the channel of interest the signal on each of the other channels at the sampling time to account for scaling differences.

**[0009]** In Example 5, the method according to any of Examples 1-4, wherein sampling the signals comprises including channels designed or biased toward picking up global activity in the multi-dimensional space to enhance discrimination on other channels.

**[0010]** In Example 6, the method according to any of Examples 1-5, wherein sampling the signals comprises employing an extended bipolar configuration with the electrode array.

**[0011]** In Example 7, the method according to any of Examples 1-6, wherein employing an extended bipolar configuration comprises sampling signals from most opposed electrodes located on the electrode array.

**[0012]** In Example 8, a mapping system includes an electrode array configured to reconstruct electrical activity propagation within a cardiac chamber according to the method of claims 1-7.

**[0013]** In Example 9, a mapping system for reconstructing electrical activity propagation within a cardiac chamber includes an array of mapping electrodes configured to sample signals from a channel of interest, and a processing device associated with the plurality of mapping electrodes, the processing device configured to record the sampled signals and associate one of the plurality of mapping electrodes with each recorded signal, the mapping processor further configured to construct an N-dimensional signal vector using signals from N neighboring channels referenced to the channel of interest, determine a change in the N-dimensional signal vector over time, and comparing the change to a predetermined threshold to establish whether local activation has occurred on the channel of interest.

**[0014]** In Example 10, the mapping system of Example 9, wherein to construct the N-dimensional signal vector, the processing device is further configured to find a difference between a signal on the channel of interest at a sampling time and a signal on each of the other channels at the sampling time.

**[0015]** In Example 11, the mapping system of either Examples 9 or 10, wherein the difference is adjusted based on latencies of sampled far-field signals.

**[0016]** In Example 12, the mapping system of any of Examples 9-11, wherein to construct the N-dimensional signal vector, the processing device is further configured to weight the difference between the signal on the channel of interest the signal on each of the other channels at the sampling time to account for scaling differences.

**[0017]** In Example 13, the mapping system of any one of Examples 9-12, wherein to sampling the signals, the processing device is further configured to bias a subset of channels towards picking up global activity in the multi-dimensional space to enhance discrimination on other channels.

**[0018]** In Example 14, the mapping system of any one of Examples 9-13, wherein to sample the signals, the processing device is further configured to employ an extended bipolar configuration on the array of mapping electrodes.

**[0019]** In Example 15, the mapping system of Example 14, wherein the processing system is further configured to employ the extended bipolar configuration at the most opposed electrodes located on the array of mapping electrodes.

**[0020]** While multiple embodiments are disclosed, still other embodiments of the present invention will become apparent to those skilled in the art from the following detailed description, which shows and describes illustrative embodiments of the invention. Accordingly, the drawings and detailed description are to be regarded as illustrative in nature and not restrictive.

#### BRIEF DESCRIPTION OF THE DRAWINGS

**[0021]** FIG. 1 illustrates an embodiment of a cardiac activation reconstruction system according to the present disclosure.

**[0022]** FIG. 2 illustrates an embodiment of a mapping catheter having a basket functional element carrying structure.

**[0023]** FIGS. 3A illustrates an example of a plot of two channels from mapping elements of the basket functional element as a function of time.

**[0024]** FIG. 3B illustrates an example of a plot using signals of two channels in the array of mapping elements in two-dimensional space.

**[0025]** While the invention is amenable to various modifications and alternative forms, specific embodiments have been shown by way of example in the drawings and are described in detail below. The intention, however, is not to limit the invention to the particular embodiments described. On the contrary, the invention is intended to cover all modifications, equivalents, and alternatives falling within the scope of the invention as defined by the appended claims.

#### DETAILED DESCRIPTION

**[0026]** FIG. 1 illustrates an embodiment of a cardiac activation reconstruction system 10. The system 10 is configured to detect and reconstruct

cardiac activation information collected/detected from a patient's heart 11 in connection with a heart rhythm disorder. The heart includes a right atrium 12, left atrium 14, right ventricle 16 and left ventricle 18.

**[0027]** The system 10 includes a catheter 20, a signal processing device 22, and a computing device 24. The catheter 20 is configured to detect cardiac activation information in the heart and to transmit the detected cardiac activation information to the signal processing device 22, either via a wireless or wired connection. The distal end of the catheter 20 includes a plurality of sensors 26, which can be inserted into the heart through the patient's blood vessels.

**[0028]** In some embodiments, one or more of sensors are not inserted into the patient's heart. For example, some sensors may detect cardiac activation via the patient's surface (e.g., electrocardiogram) or remotely without contact with the patient (e.g., magnetocardiogram). As another example, some sensors may also derive cardiac activation information from cardiac motion of a non-electrical sensing device (e.g., echocardiogram). In various embodiments or aspects, these sensors can be used separately or in different combinations, and further these separate or different combinations can also be used in combination with sensors inserted into the patient's heart.

**[0029]** The sensors 26, which are positioned at sensor locations in the heart under consideration (e.g., the left atrium in the illustrated embodiment), can detect cardiac activation information at the sensor locations. In some embodiments, an integral ablation electrode or a separate ablation catheter may be used to deliver energy to ablate the heart at or proximate the sensor locations.

**[0030]** The signal processing device 22 is configured to process (e.g., clarify and amplify) the cardiac activation information detected by the sensors 26 at the sensor locations into electrogram signals and to provide the processed cardiac signals to the computing device 24 for analysis or processing in accordance with various methods, such as those disclosed herein.

**[0031]** FIG. 2 illustrates an embodiment of a mapping catheter 20 including sensors at the distal end suitable for use in the system 10 shown in FIG. 1. The mapping catheter 20 that has a flexible catheter body 30, the distal end of which carries a three dimensional structure 32 configured to carry a plurality of mapping

elements or sensors 26. In some embodiments, a proximity element 34 is preferably located adjacent each mapping element 26. Alternatively, the mapping elements 26 can be used as the proximity elements 34. As will be described in further detail below, the mapping elements 26 sense electrical activity in the heart tissue, which sensed activity is then processed by the signal processing device 22 and computing device 24 to assist the physician in identifying the site or sites having a heart rhythm disorder. This process is commonly referred to as mapping. This information can then be used to determine an appropriate location for applying appropriate therapy (e.g., ablation) to the identified sites.

**[0032]** The illustrated three dimensional structure 32 comprises a base member 40 and an end cap 42 between which flexible splines 44 generally extend in a circumferentially spaced relationship. As illustrated, the three dimensional structure 32 takes the form of a basket defining an open interior space 46. In some embodiments, the splines 44 are made of a resilient inert material, such as, e.g., Nitinol metal or silicone rubber, and are connected between the base member 40 and the end cap 42 in a resilient, pretensed condition, to bend and conform to the tissue surface they contact. In the illustrated embodiment, eight splines 44 form the three dimensional structure 32. Additional or fewer splines 44 could be used in other embodiments. As illustrated, each spline 44 carries eight mapping elements 26. Additional or fewer mapping elements 26 could be disposed on each spline 44 in other embodiments of the three dimensional structure 32. In the illustrated embodiment, the three dimensional structure 32 is relatively small (e.g., 40 mm or less in diameter). In alternative embodiments, the three dimensional structure 32 is larger (e.g., 40 mm in diameter or greater).

**[0033]** A slidable sheath 50 is movable along the major axis of the catheter body 30. Moving the sheath 50 forward (i.e., toward the distal end) causes the sheath 50 to move over the three dimensional structure 32, thereby collapsing the structure 32 into a compact, low profile condition suitable for introduction into an interior space, such as, for example, into the heart 12. In contrast, moving the sheath 19 rearward (i.e., toward the proximal end) frees the three dimensional structure 32, allowing the structure 32 to spring open and assume the pretensed position illustrated in FIG. 2. Further details of embodiments of the three

dimensional structure 20 are disclosed in U.S. Pat. No. 5,647,870, entitled "Multiple Electrode Support Structures," the disclosure of which is expressly and fully incorporated by reference.

**[0034]** A signal wire (not shown) is electrically coupled to each mapping element 26. The wires extend through the body 30 of the mapping catheter 20 into a handle 54, in which they are coupled to an external connector 56, which may be a multiple pin connector. The connector 56 electrically couples the mapping elements 26 to the signal processing device 22 and computing device 24. Further details on mapping systems and methods for processing signal generated by the mapping catheter are discussed in U.S. Patent No. 6,070,094, entitled "Systems and Methods for Guiding Movable Electrode Elements within Multiple-Electrode Structure," U.S. Patent No. 6,233,491, entitled "Cardiac Mapping and Ablation Systems," and U.S. Patent No. 6,735,465, entitled "Systems and Processes for Refining a Registered Map of a Body Cavity," the disclosures of which are expressly and fully incorporated herein by reference. In a similar manner, a signal wire electrically couples each proximity element 34 to the signal processing device 22 and computing device 24.

**[0035]** It is noted that other three dimensional structures could be deployed on the distal end. It is further noted that the multiple mapping elements 26 may be disposed on more than one structure rather than, for example, the single mapping catheter 20 illustrated in FIG. 2. For example, if mapping within the left atrium 14 with multiple mapping structures, an arrangement comprising a coronary sinus catheter carrying multiple mapping elements and a basket catheter carrying multiple mapping elements positioned in the left atrium 14 may be used. As another example, if mapping within the right atrium 12 with multiple mapping structures, an arrangement comprising a decapolar catheter carrying multiple mapping elements for positioning in the coronary sinus, and a loop catheter carrying multiple mapping elements for positioning around the tricuspid annulus may be used.

**[0036]** Additionally, although the mapping elements 26 have been described as being carried by mapping dedicated probes, such as mapping catheter 20, mapping elements can be carried on non-mapping dedicated probes.

For example, an ablation catheter can be configured to include one or mapping elements disposed on the distal end of the catheter body and coupled to the signal processing device 22 and computing device 24. As another example, the ablation electrode at the distal end of the ablation catheter may be coupled to the signal processing device 22 and computing device 24 to also operate as a mapping electrode.

**[0037]** In various embodiments, signals sensed by mapping elements 26 can be plotted to generate a multi-dimensional representation of signals from multiple elements or channels. FIGS. 3A illustrates an example of a plot of two channels (S1, S2) from the mapping elements 26 as a function of time. For example, in the embodiment illustrated in FIG. 2, channels S1 and S2 may be signals from a selected two of the sixty-four mapping elements 26. FIG. 3B illustrates an example of a plot using signals from two channels in the array of mapping elements 26 in two-dimensional space, with signal samples at various points in time for channel S1 plotted along the vertical axis and signal samples at various points in time for channel S2 plotted along the horizontal axis. The signals from channel S1 at points in time A, B, and C shown in FIG. 3A are shown plotted in FIG. 3B along the vertical axis, the signals from channel S2 at points in time D and E in FIG. 3A are shown plotted in FIG. 3B along the horizontal axis. While two channels are shown, any number of channels may be plotted to generate a multi-dimensional (or, N-dimensional) representation of signals from a corresponding number of channels.

**[0038]** According to the present disclosure, the N-dimensional representation of signals can be processed by the signal processing device 22 and/or computing device 24 to suppress signals due to global activation (i.e., far-field activity) to enhance signals associated with local activation. In some embodiments, signals are sampled across some or all of the channels (i.e., mapping electrodes 26) of the three-dimensional structure 32. Then, the signal processing device 22 and/or computing device 24 constructs an N-dimensional signal vector  $V(t)$  using signals from N neighboring channels referenced to a channel of interest. For example, in the case of unipolar EGMs, an array of bipolar is constructed using neighboring signals referenced to a central signal. If

$S_0$  is the channel of interest, the N-dimensional signal vector  $V(t)$  can be expressed as:

$$V(t) = [S_1(t) - S_0(t), S_2(t) - S_0(t), \dots, S_N(t) - S_0(t)] \quad (\text{Equation 1})$$

where  $S_0(t), \dots, S_N(t)$  is the signal value at time  $t$  for each of channels  $S_0-S_N$ . Alternatively, the N-dimensional signal vector  $V(t)$  can be expressed as:

$$V(t) = [S_1(t) - S_0(t), S_2(t) - S_0(t), \dots, S_N(t) - S_0(t)] \quad (\text{Equation 2})$$

**[0039]** To determine whether local activation has occurred on the channel  $S_0$ , the change in  $V(t)$  over time (i.e., the time derivative of  $V(t)$ ) is determined and compared to a threshold.

$$\left\| \frac{dV(t)}{dt} \right\| > TH$$

If the above inequality is true, then this is indicative that a local activation has occurred on channel  $S_0$ . In this approach, local activation is preserved, but global activation is decimated due to common mode with the neighboring N channels. The global activation is decimated by a factor of  $\sqrt{N}$ , so a greater number of neighboring channels results in a greater decimation of global activation signals. In some embodiments, the difference operations between signals to determine  $V(t)$  may be weighted to account for scaling differences between neighboring channels for a more extensive decimation of the global activation signals.

**[0040]** In some instances, the far-field signal may not appear instantaneously on all channels, but may exhibit a characteristic delay or a latency associated with volume propagation characteristic of the far-field component propagating through tissue. In scenarios where latencies are identified and/or expected, both *Equation 1* and *Equation 2* can be modified to account for the latencies associated with various electrodes. For example, if far-field signals emerge at latencies of  $\omega_1, \omega_2, \dots, \omega_N$  over the  $N$  neighboring electrodes with respect to a far-field reference signal such as a surface ECG, *Equation 2* can be expressed as:

$$V(t) = [S_0(t) - S_1(t + \omega_1), S_0(t) - S_2(t + \omega_2), \dots, S_0(t) - S_N(t + \omega_N)]^T \text{ (Equation 3)}$$

The latencies can be estimated by tracking the peaks or other characteristic features of the far-field signal on each channel with respect to the peaks or other characteristic feature of the corresponding R-wave sensed by the surface ECG. The estimated latencies can be averaged over multiple local heart beats.

**[0041]** In some embodiments, a subset of the channels (e.g., channels S1 and S2) sampled may be selected to bias toward picking up global activity in the N-dimensional space to enhance discrimination on other channels. For example, mapping elements 26 distal from the tissue may be referenced to other elements that generate far field interference to help with discriminating between far-field and local activations. In some embodiments, the selected channels may be the most opposed electrodes located on the three dimensional structure 32 to assess global atrial activity (i.e., extended bipolar configuration).

**[0042]** The method and system as described provides a flexible mathematical framework that can work with any number of channels on a mapping catheter (e.g., neighboring 8, neighboring 16, all at once, two groups of local and far-field). The ability to process information from any number of channels provides a more faithful reconstruction of electrical activity propagation in the chamber of interest compared to conventional paired channel comparisons for discriminating far-field activity from local activity.

**[0043]** Various modifications and additions can be made to the exemplary embodiments discussed without departing from the scope of the present invention. For example, while the embodiments described above refer to particular features, the scope of this invention also includes embodiments having different combinations of features and embodiments that do not include all of the described features. Accordingly, the scope of the present invention is intended to embrace all such alternatives, modifications, and variations as fall within the scope of the claims, together with all equivalents thereof.

## CLAIMS

We claim:

1. A method for reconstructing electrical activity propagation along an electrode array within a cardiac chamber, the method comprising:

sampling signals from the electrode array including signals from a channel of interest;

constructing an N-dimensional signal vector using signals from N neighboring channels referenced to the channel of interest;

determining a change in the N-dimensional signal vector over time; and

comparing the change to a predetermined threshold to establish whether local activation has occurred on the channel of interest.

2. The method of claim 1, wherein constructing the N-dimensional signal vector comprises:

finding a difference between a signal on the channel of interest at a sampling time and a signal on each of the other channels at the sampling time.

3. The method of either claim 1 or claim 2, wherein the difference is adjusted based on latencies of sampled far-field signals.

4. The method of any of claims 1-3, wherein constructing the N-dimensional signal vector further comprises:

weighting the difference between the signal on the channel of interest the signal on each of the other channels at the sampling time to account for scaling differences.

5. The method of any of claims 1-4, wherein sampling the signals comprises including a subset of channels designed or biased toward picking up global activity in the multi-dimensional space to enhance discrimination on other channels.
6. The method of any of claims 1-5, wherein sampling the signals comprises employing an extended bipolar configuration with the electrode array.
7. The method of any of claims 1-6, wherein employing an extended bipolar configuration comprises sampling signals from most opposed electrodes located on the electrode array.
8. A mapping system comprising an array of mapping electrodes coupled to processing system configured to reconstruct electrical activity propagation within a cardiac chamber according to the method of any of claims 1-7.
9. A mapping system for reconstructing electrical activity propagation within a cardiac chamber, comprising:
  - an array of mapping electrodes configured to sample signals from a channel of interest; and
  - a processing device associated with the plurality of mapping electrodes, the processing device configured to record the sampled signals and associate one of the plurality of mapping electrodes with each recorded signal, the mapping processor further configured to construct an N-dimensional signal vector using signals from N neighboring channels referenced to the channel of interest, determine a change in the N-dimensional signal vector over time, and comparing the change to a predetermined threshold to establish whether local activation has occurred on the channel of interest.
10. The mapping system of claim 9, wherein to construct the N-dimensional signal vector, the processing device is further configured to find a difference between a signal

on the channel of interest at a sampling time and a signal on each of the other channels at the sampling time.

11. The mapping system of either claim 9 or claim 10, wherein the difference is adjusted based on latencies of sampled far-field signals.

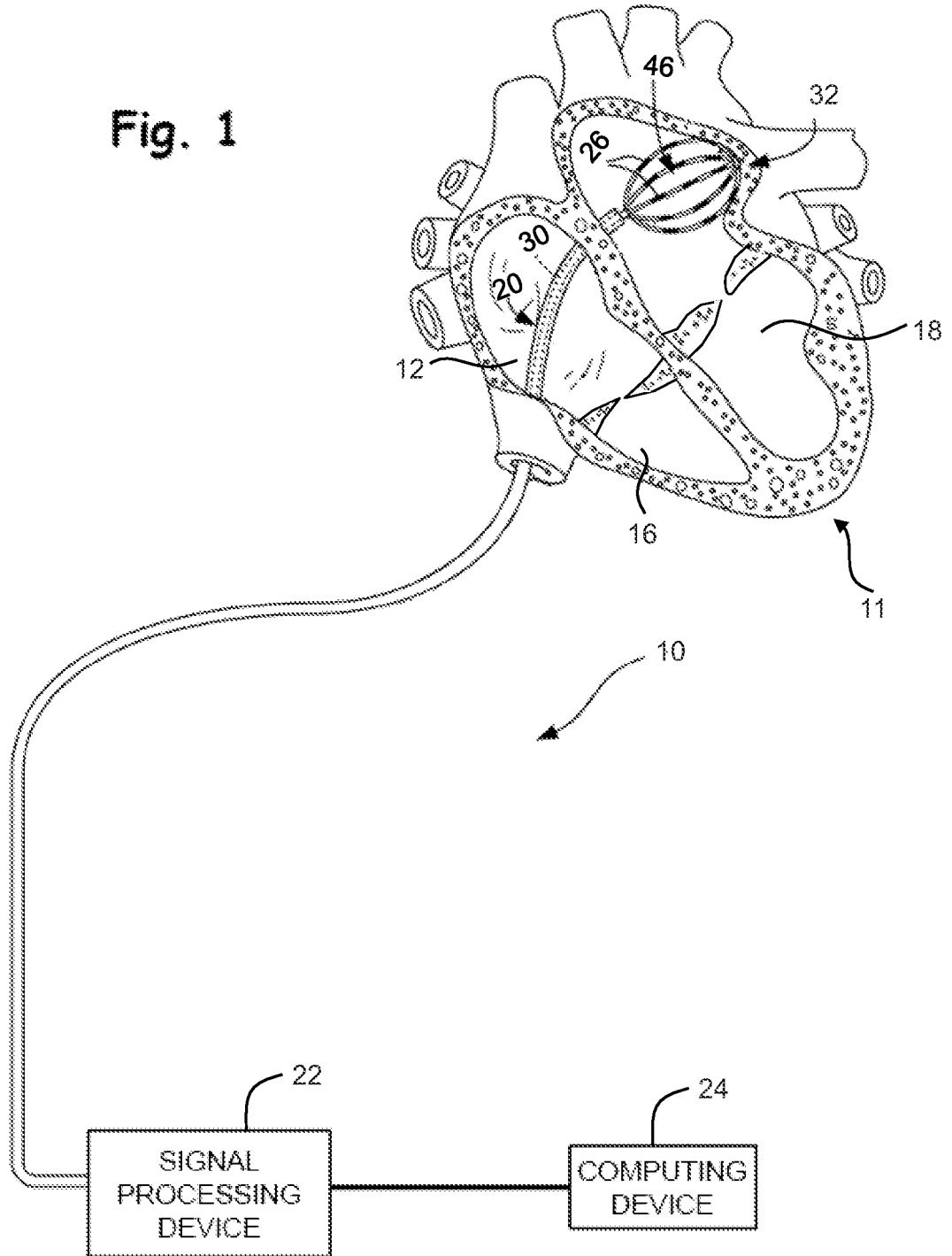
12. The mapping system of any of claims 9-11, wherein to construct the N-dimensional signal vector, the processing device further configured to weight the difference between the signal on the channel of interest the signal on each of the other channels at the sampling time to account for scaling differences.

13. The mapping system of any of claims 9-12, wherein to sampling the signals, the processing device is further configured to bias a subset of channels towards picking up global activity in the multi-dimensional space to enhance discrimination on other channels.

14. The mapping system of any of claims 9-13, wherein to sample the signals, the processing device is further configured to employ an extended bipolar configuration on the array of mapping electrodes.

15. The mapping system of any of claims 9-14, wherein the processing device is further configured to employ the extended bipolar configuration at the most opposed electrodes located on the array of mapping electrodes.

Fig. 1



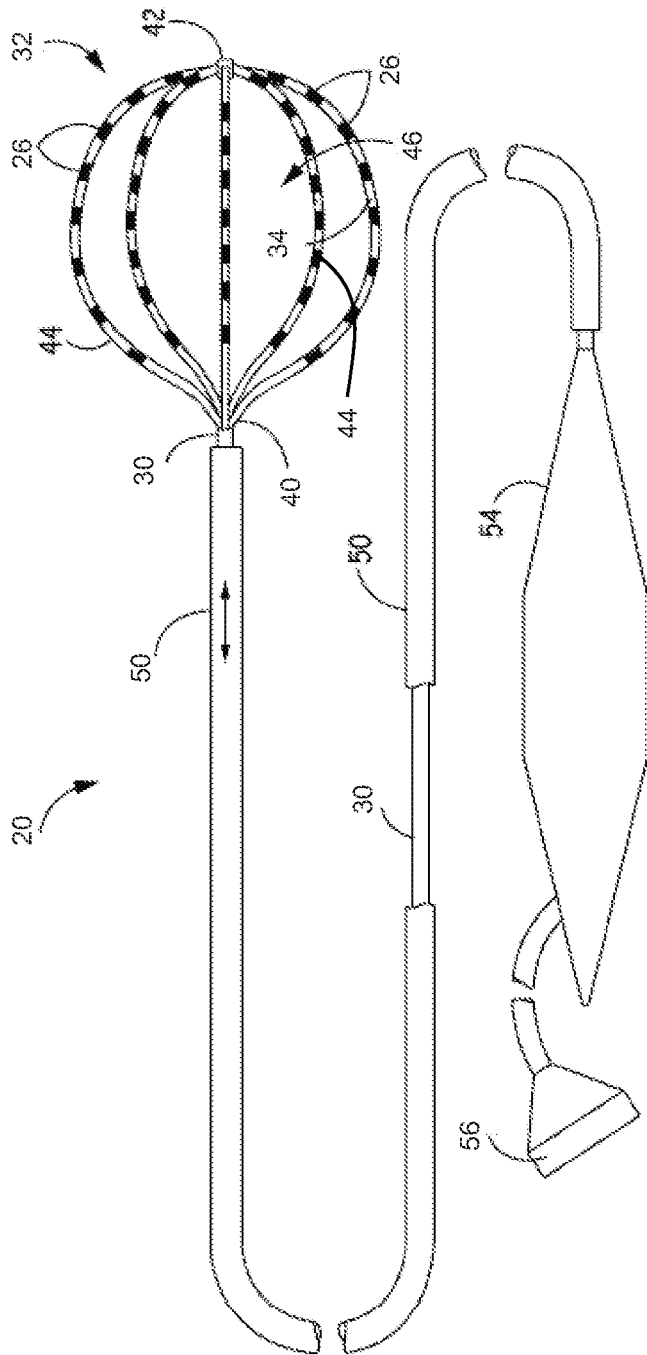
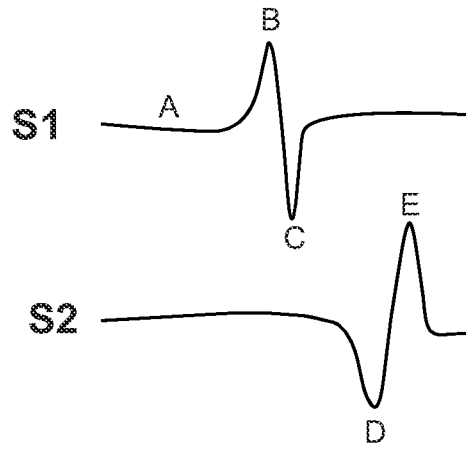
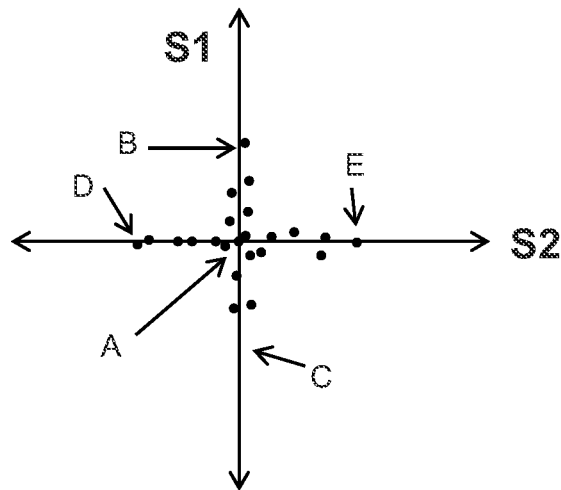


FIG. 2



**FIG.3A**



**FIG.3B**

**INTERNATIONAL SEARCH REPORT**

International application No  
PCT/US2013/046841

A. CLASSIFICATION OF SUBJECT MATTER  
**INV. A61B5/00 A61B5/042 A61B5/0452**  
**ADD. A61B5/046**

According to International Patent Classification (IPC) or to both national classification and IPC

B. FIELDS SEARCHED

Minimum documentation searched (classification system followed by classification symbols)  
**A61B A61N G06K G01V**

Documentation searched other than minimum documentation to the extent that such documents are included in the fields searched

Electronic data base consulted during the international search (name of data base and, where practicable, search terms used)  
**EPO-Internal , WPI Data**

C. DOCUMENTS CONSIDERED TO BE RELEVANT

Category*	Citation of document, with indication, where appropriate, of the relevant passages	Relevant to claim No.
X Y	US 8 165 666 B1 (BRIGGS CAREY ROBERT [US] ET AL) 24 April 2012 (2012-04-24) column 5, lines 63, 64 column 6, lines 24-27, 63-64 column 8, lines 20, 23, 56, 63-64 column 9, lines 18-19, 21-22, 28, 31 column 10, line 21 column 13, line 43 column 16, lines 28, 62 figures 1, 5	1, 2, 4, 8-10, 12 3, 5-7, 11, 13-15
X	US 2011/251505 A1 (NARAYAN SANJIV M [US] ET AL) 13 October 2011 (2011-10-13) paragraphs [0027], [0029], [0032], [0053], [0128] - [0130], [0132] - [0134], [0139], [0160], [0241] figures 1, 2, 12	1, 2, 4, 8-10, 12

Further documents are listed in the continuation of Box C.

See patent family annex.

\* Special categories of cited documents :

"A" document defining the general state of the art which is not considered to be of particular relevance

"E" earlier application or patent but published on or after the international filing date

"L" document which may throw doubts on priority claim(s) or which is cited to establish the publication date of another citation or other special reason (as specified)

"O" document referring to an oral disclosure, use, exhibition or other means

"P" document published prior to the international filing date but later than the priority date claimed

"T" later document published after the international filing date or priority date and not in conflict with the application but cited to understand the principle or theory underlying the invention

"X" document of particular relevance; the claimed invention cannot be considered novel or cannot be considered to involve an inventive step when the document is taken alone

"Y" document of particular relevance; the claimed invention cannot be considered to involve an inventive step when the document is combined with one or more other such documents, such combination being obvious to a person skilled in the art

"&" document member of the same patent family

Date of the actual completion of the international search <b>8 October 2013</b>	Date of mailing of the international search report <b>15/10/2013</b>
--	---

Name and mailing address of the ISA/ European Patent Office, P.B. 5818 Patentlaan 2 NL - 2280 HV Rijswijk Tel. (+31-70) 340-2040, Fax: (+31-70) 340-3016	Authorized officer <b>Meyer, Wolfgang</b>
--	--

## INTERNATIONAL SEARCH REPORT

International application No

PCT/US2013/046841

C(Continuation). DOCUMENTS CONSIDERED TO BE RELEVANT		
Category*	Citation of document, with indication, where appropriate, of the relevant passages	Relevant to claim No.
Y	wo 2006/037172 AI (CUORETECH PTY LTD [AU] ; MADRY ANDREW JAMES [AU] ; THOMAS STUART PHILIP) 13 April 2006 (2006-04-13) page 3, lines 13, 26-27 -----	3, 11
Y	wo 2008/118992 AI (BOSTON SCIENT SCIMED INC [US] ; KOBBLISH JOSEF V [US] ) 2 October 2008 (2008-10-02) page 23, line 4 - line 9 figures 7-9 -----	5-7 , 13-15
A	wo 00/47278 AI (CARDIAC PACEMAKERS INC [US] ) 17 August 2000 (2000-08-17) the whole document -----	1,8,9
A	US 2006/253044 AI (ZHANG YI [US] ET AL) 9 November 2006 (2006-11-09) the whole document -----	1,8,9
A	wo 00/45700 AI (UNIV COLUMBIA [US] ; CIACCIO EDWARD J [US] ; WIT ANDREW L [US] ) 10 August 2000 (2000-08-10) the whole document -----	1,8,9

## INTERNATIONAL SEARCH REPORT

Information on patent family members

International application No

PCT/US2013/046841

Patent document cited in search report	Publication date	Patent family member(s)	Publication date	
US 8165666	B1	24-04-2012	EP 2533687 A2	19-12-2012
			JP 2013533007 A	22-08-2013
			US 8165666 B1	24-04-2012
			US 2012283579 A1	08-11-2012
			US 2013226016 A1	29-08-2013
			WO 2012151008 A2	08-11-2012
-----				
US 2011251505	A1	13-10-2011	AU 2011237659 A1	08-11-2012
			AU 2011237661 A1	08-11-2012
			CA 2795767 A1	13-10-2011
			CA 2795770 A1	13-10-2011
			CN 102917637 A	06-02-2013
			CN 102917638 A	06-02-2013
			EP 2555673 A1	13-02-2013
			EP 2555674 A2	13-02-2013
			JP 2013523344 A	17-06-2013
			JP 2013523345 A	17-06-2013
			KR 20130057997 A	03-06-2013
			KR 20130057998 A	03-06-2013
			US 2011251505 A1	13-10-2011
			WO 2011127209 A1	13-10-2011
			WO 2011127211 A2	13-10-2011
-----				
WO 2006037172	A1	13-04-2006	EP 1809174 A1	25-07-2007
			JP 2008515493 A	15-05-2008
			US 2008194979 A1	14-08-2008
			WO 2006037172 A1	13-04-2006
-----				
WO 2008118992	A1	02-10-2008	CA 2682055 A1	02-10-2008
			EP 2136702 A1	30-12-2009
			JP 2010522623 A	08-07-2010
			KR 20100021401 A	24-02-2010
			US 2008243214 A1	02-10-2008
			WO 2008118992 A1	02-10-2008
-----				
WO 0047278	A1	17-08-2000	AU 3999800 A	29-08-2000
			US 6266554 B1	24-07-2001
			US 2002019593 A1	14-02-2002
			US 2002193696 A1	19-12-2002
			WO 0047278 A1	17-08-2000
-----				
us 2006253044	A1	09-11-2006	US 2006253044 A1	09-11-2006
			US 2011137192 A1	09-06-2011
-----				
wo 0045700	A1	10-08-2000	AU 2868800 A	25-08-2000
			US 6236883 B1	22-05-2001
			WO 0045700 A1	10-08-2000
-----				

专利名称(译)	增强信号矢量分析，以抑制电生理学映射过程中的全局激活		
公开(公告)号	<a href="#">EP2863792A1</a>	公开(公告)日	2015-04-29
申请号	EP2013735131	申请日	2013-06-20
[标]申请(专利权)人(译)	波士顿科学西美德公司		
申请(专利权)人(译)	BOSTON SCIENTIFIC SCIMED , INC.		
当前申请(专利权)人(译)	BOSTON SCIENTIFIC SCIMED , INC.		
[标]发明人	THAKUR PRAMODSINGH HIRASINGH MASKARA BARUN SHUROS ALLAN C SAHA SUNIPA SHOME SHIBAJI		
发明人	THAKUR, PRAMODSINGH HIRASINGH MASKARA, BARUN SHUROS, ALLAN, C. SAHA, SUNIPA SHOME, SHIBAJI		
IPC分类号	A61B5/00 A61B5/042 A61B5/0452 A61B5/046		
CPC分类号	A61B5/0422 A61B5/046 A61B5/6859 A61B18/1492		
优先权	61/662257 2012-06-20 US		
外部链接	<a href="#">Espacenet</a>		

#### 摘要(译)

重建沿心腔内的电极阵列的电活动传播。从电极阵列采样信号，包括来自感兴趣的信道的信号。然后使用来自参考感兴趣的信道的N个相邻信道的信号构建N维信号矢量。然后确定N维信号矢量随时间的变化并与预定阈值进行比较，以确定在感兴趣的信道上是否发生了局部激活。