



Europäisches Patentamt  
European Patent Office  
Office européen des brevets



(11) **EP 1 048 264 A1**

(12) **EUROPEAN PATENT APPLICATION**

(43) Date of publication:  
**02.11.2000 Bulletin 2000/44**

(51) Int. Cl.<sup>7</sup>: **A61B 5/00**

(21) Application number: **00107927.6**

(22) Date of filing: **14.04.2000**

(84) Designated Contracting States:  
**AT BE CH CY DE DK ES FI FR GB GR IE IT LI LU  
MC NL PT SE**  
Designated Extension States:  
**AL LT LV MK RO SI**

(30) Priority: **30.04.1999 US 302593**

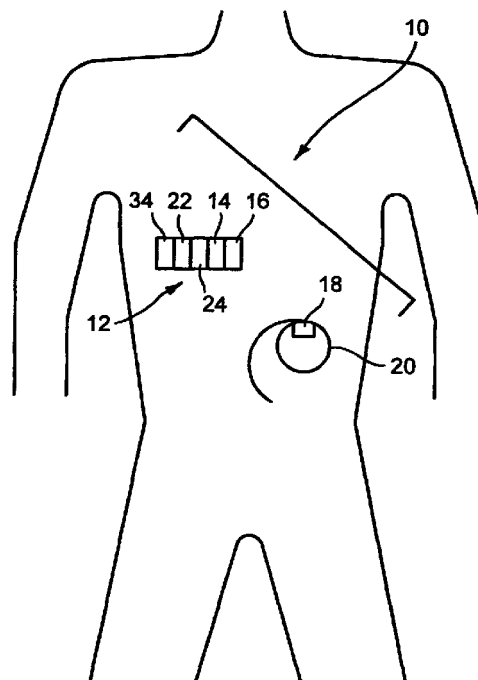
(71) Applicant: **MEDTRONIC, INC.**  
**Minneapolis, Minnesota 55432-3576 (US)**

(72) Inventor: **Thompson, David L.**  
**Fridley, MN 55432 (US)**

(74) Representative:  
**Hughes, Andrea Michelle**  
**Frank B. Dehn & Co.,**  
**European Patent Attorneys,**  
**179 Queen Victoria Street**  
**London EC4V 4EL (GB)**

(54) **Closed loop medicament pump**

(57) A device to determine the level of a substance of interest in a patient's body and provide a therapeutic amount of medicament is disclosed. The level of a substance of interest in the patient's body is determined by iontopheretically sampling the patient's blood and then analyzing the resulting sample to determine the level of the substance of interest. The information about the level of a substance of interest is transmitted to an implanted drug pump 20 in the patient's body. In the preferred embodiment, the substance of interest sensor 12 is an external sensor applied to the user's skin. In an alternative embodiment, the sensor may be implanted. The preferred method of transmitting information about the level of a substance of interest determined by the sensor is transmitted to an implanted drug pump in the patient's body is via a so called "body bus". The "body bus" is a telemetry system where the patient's own body provides the interconnection between the iontopheretic device and the implanted drug pump.



**FIG. 1**

**EP 1 048 264 A1**

## Description

**[0001]** The invention relates to a device for treating physiological conditions and more particularly relates to a device for treating diabetes or other physiological conditions through the use of a closed loop control device for sensing diabetic or other physiologic states and for delivering an appropriate amount of insulin or other appropriate medicament or drug, if required, from an implanted drug pump.

**[0002]** Diabetes is a disease where the body does not produce or properly use insulin, a hormone that is needed to convert carbohydrates such as sugar or starches into energy needed for daily life. It is not clear what causes diabetes, but both genetics and environmental factors such as obesity and lack of exercise seem to play roles.

**[0003]** There are two major types of diabetes: Insulin-Dependent (type I) and Non-Insulin-Dependent (type II). It is estimated that diabetes, in its various forms, affects 16 million people in the United States alone. In the United States, approximately 1,700 people are diagnosed with diabetes every day with about 625,000 people diagnosed in a year. Type II diabetes is the most common form of the disease accounting for about 90-95 percent of all diabetes cases. Type I diabetes accounts for 5-10 percent of all cases of diabetes.

**[0004]** Insulin-Dependent (type I) diabetes is an autoimmune disease where the body does not produce any insulin. This disease occurs most often in the first two decades of life but can develop up to about age 40. People with this type of diabetes must take daily insulin injections to stay alive.

**[0005]** Non-Insulin-Dependent (type II) diabetes is a metabolic disorder resulting from the body's inability to make enough of or properly use insulin. Environmental factors such as obesity and lack of exercise appear to play a large role in this type of diabetes. Because many American adults are overweight and don't exercise, type II diabetes is nearing epidemic proportions in the US. Non-Insulin Dependent diabetes usually gradually develops after about age 35.

**[0006]** Diabetes is the fourth-leading cause of death by disease in the United States. The American Diabetes Association estimates that more than 169,000 died from the disease and its related complications in 1997. Some of the complications associated with diabetes are blindness, kidney disease, nerve disease, amputations, heart disease and stroke.

**[0007]** Diabetes is the leading cause of new cases of blindness in people ages 20-74. Each year, it is estimated that from 12,000 to 24,000 people lose their sight because of diabetes. Ten to twenty-one percent of all people with diabetes develop kidney disease. In 1992, an estimated 19,800 people initiated treatment for end stage renal disease (kidney failure) because of diabetes.

**[0008]** In addition, about 60-70 percent of people with diabetes have mild to severe forms of diabetic nerve damage. In severe forms, this nerve damage can lead to lower limb amputations. Diabetes is the most frequent cause of non-traumatic lower limb amputations. The risk of a leg amputation due to nerve damage is 15-40 times greater for a person with diabetes than for a person without diabetes. Each year, an estimated 54,000 people lose their foot or leg to diabetes related amputations.

**[0009]** People with diabetes are two to four times more likely to have heart disease than those who don't have diabetes. Heart disease is present in 75 percent of diabetes-related deaths. Annually, diabetes related heart disease is estimated to cause more than 77,000 deaths. Further, people with diabetes are two to four times more likely to suffer a stroke than people without diabetes.

**[0010]** The American Diabetes Association estimates diabetes to be one of the most costly health problems in America. Health care and related costs for treatment, as well as the opportunity costs of lost productivity are estimated to be nearly \$92 billion annually.

**[0011]** US Patent No. 5,569,186, issued to Peter C. Lord and Fredric C. Coleman on October 29, 1996, entitled "Closed Loop Infusion Pump System with Removable Glucose Sensor" discloses an infusion pump system having a removable in vivo glucose sensor and an implantable infusion pump. The glucose sensor determines the concentration of glucose in the user's blood and then signals the implanted pump to deliver a selected amount of medication, such as insulin, to the user. Signaling is accomplished via a direct or telemetric connection between the sensor and the pump.

**[0012]** US Patent No. 5,279,543, issued to Glikfeld et al. on January 18, 1994, discloses an iontopheretic device to determine the level of glucose in a user's body combined with an insulin pump or iontopheretic delivery system and feedback to administer appropriate levels of insulin to diabetic patients.

**[0013]** It has been a goal of those developing medical devices to treat diabetes to produce a fully implantable system that mimics the body's own system for regulating glucose. Such a system would require a sensor to sense the level of glucose in the blood, a device to infuse insulin or similar hormone to control the level of glucose and means for relaying the results of the glucose sensed to the device to infuse insulin so that a closed loop is formed. In this way, the system would automatically react to different levels of glucose and provide an appropriate level of insulin.

**[0014]** Unfortunately, such a fully implantable system has not yet been created. Much work has been done to develop ChemFETs and other sensors that can detect the level of glucose in the blood. However, when implanted, these sensors only have a lifespan of a few days at best. To be practical, implantable sensors to detect the level of glucose in the blood need to have a

lifespan of at least several months.

**[0015]** According to the present invention, there is provided a closed loop medicament pump system for a patient for sampling and determining the concentration of a substance of interest through the patient's skin and for determining and delivering a responsive dose of an appropriate medicament to the patient comprising:

a sensor module for sampling and determining the concentration of a substance of interest in the patient;

a control system for determining an appropriate response the determined concentration of the substance of interest;

an implantable drug pump for dispensing an appropriate amount of a medicament to the patient;

means for communicating information from the sensor module to the control system; and,

means for communicating information from the control system to the implantable drug pump.

**[0016]** A device to determine the level of e. g. glucose in a patient's body and provide a therapeutic amount of insulin or a similar drug is thus disclosed. The level of glucose in the patient's body is determined by painlessly preferably iontopheretically sampling the patient's blood and then analyzing the resulting sample to determine the level of e. g. glucose. The information about the level of glucose is transmitted to an implanted drug pump in the patient's body. In the preferred embodiment, the glucose sensor is an external sensor applied to the user's skin. In an alternative embodiment, the sensor may be implanted. The preferred method of transmitting information about the level of glucose determined by the sensor to an implanted drug pump in the patient's body is via a so called "body bus". The "body bus" is a telemetry system where the patient's own body provides the interconnection between the iontopheretic device and the implanted drug pump.

**[0017]** It is therefore a primary object of the invention to provide a system that mimics the body's own system for administering an appropriate dose of insulin.

**[0018]** It is another object of one embodiment of the invention to provide a system that mimics the body's own system for administering an appropriate dose of insulin including an external sensor.

**[0019]** These and other objects of the invention will be clear from the description of preferred embodiments of the invention given herein, by way of example only, and particularly with reference to the attached drawings and the Detailed Description of the Invention. Throughout this description, like reference numbers refer to like elements.

Figure 1 is a perspective schematic view of the present invention in use on a patient's body.

Figure 2 is a block diagram of the preferred embodiment of the present invention.

Figure 3 is a block diagram of another embodiment of the present invention.

Figure 4 is a plan view of a sensor of the present invention.

Figure 5 is a side view of the sensor of Figure 4.

Figure 6 is a flow chart of the preferred operation of the control system of the present invention that corresponds the embodiment shown in Figure 2.

Figure 7 is a flow chart of an alternative operation of the control system of the present invention that corresponds the embodiment shown in Figure 3.

Figure 8 is a perspective schematic view of an alternative embodiment of the present invention in use in a patient's body.

**[0020]** Referring to Figure 1, the invention is shown generally labeled 10. The invention 10 includes a sensor module 12, a control system 14, a sensor telemetry system 16, a pump telemetry system 18 and an implantable drug pump 20.

**[0021]** In the preferred embodiment, the purpose of sensor module 12 is to non-invasively sample glucose from blood, determine the concentration of glucose in the blood, determine the appropriate dose of insulin to be administered to the user and communicate the determined dose to an implantable drug pump 20. Consequently, the glucose sampling and glucose concentration determining function of sensor module 12 is performed by two parts, a sampling system 22 and a concentration determining system 24. The non-invasive glucose sampling is preferably performed by sampling system 22 by iontopheretically removing glucose from blood through the skin. The preferred device for sampling system 22 is shown in US Patent No. 5,730,714 issued on March 28, 1998 to Richard Guy, Girish Rao, Peretz Glikfeld, Christopher Cullander and Robert S. Hinz entitled "Method for the Iontopheretic Non-Invasive Determination of the In Vivo Concentration of Glucose". Other examples of iontopheretic sampling parts 22 to remove glucose molecules through the skin that could be used in the present invention are disclosed in US Patent No. 4,406,658 issued on September 27, 1983 to Gary A. Lattin and Richard Spevak entitled "Iontopheretic Device with Reversible Polarity", US Patent. No. 5,279,543 issued on January 18, 1994 to Peretz Glikfeld, Christopher Cullander, Robert S. Hinz and Richard H. Guy entitled "Device for Iontopheretic Non-Invasive Sampling or Delivery of Substances" and US Patent No. 5,362,307 issued on November 8, 1994 to Richard Guy and Girish Rao entitled "Method for the Iontopheretic Non-Invasive Determination of the In Vivo Concentration Level of an Inorganic or Organic Substance".

**[0022]** The preferred device for the concentration determining system 24 is also shown in the herein above referenced '714 patent to Guy et al. Another device for the concentration determining system 24 is disclosed in an article by Joseph Black, Michael Wili-

ness, Platen Atanasov and Ebtisam Wiliness entitled "Integrated sensor-telemetry system for in vivo glucose monitoring" (Sensors and Actuators B 31 (1996) 147 - 153).

**[0023]** Sensor module 12 is preferably an external sensor that is placed on the skin of the patient. In the preferred embodiment, sensor module 12 is intended to be disposable. In this way, an "old" sensor module 12 can be conveniently and easily removed and replaced with a "new" sensor module 12, for example, daily. In another embodiment, the sensor module 12 may be reusable. In this embodiment, sensor module 12 would be capable of being cleaned in ways well known to those in the art such as by autoclaving.

**[0024]** Sensor module 12 is attached to a flexible substrate 26 (FIG. 4). Flexible substrate 26 has a patient contact side 28 and an instrumentation side 30. In particular, a pair of electrodes 32 that are part of the sampling system 22 are attached to the contact side 28 of flexible substrate 26 to come into contact with a user's skin. The contact side 28 has an adhesive that allows flexible substrate 26 to be removably attached to the skin of the user. The adhesive should be strong enough to cause the sensor module 12 to adhere to the skin of the patient but not so strong as to make it difficult to remove the sensor module 12 when desired as will be explained hereafter. The adhesive should also not be susceptible to iontophoresis. An example of such an adhesive is as substantially described in US Patent Nos. 5,489,624 and 5,536,768, both titled "Hydrophilic Pressure Sensitive Adhesives" issued February 6, 1996 and July 16, 1996, respectively to Steven S. Kentner, Nancy J. Rustad and James S. Stabely.

**[0025]** Flexible substrate 26 may have a size and shape similar to that of commercially available disposable bandages. In one embodiment, flexible substrate 26 has a width dimension ranging between approximately 12.5 mm (0.5") and approximately 7.5 cm (3"), and a length dimension ranging between approximately 18.75 mm (3/4") and approximately 12.5 cm (5"). Although the preferred embodiment of flexible substrate 26 is substantially rectangular, virtually any other shape for flexible substrate 26 is within the scope of the invention. For example, additional possible shapes for flexible substrate 26 include, but are not limited to, square, round and oval.

**[0026]** Instrumentation side 30 is on the opposite side of flexible substrate 26 than patient contact side 28. Instrumentation side 30 provides a surface for mounting the components of sensor module 12. In the embodiment illustrated in Figure 4, flexible substrate 26 may comprise a resilient material upon which several electronic and electrical components are mounted. Flexible substrate 26 may include an integral or separate interconnect pattern of electrical conductors that provide for interconnection between the various components disposed on flexible substrate 26. Suitable materials that may be used to fabricate flexible substrate 26 include

Mylar®, flexible foil, flex PC, Kapton® and polymer thick film (PTF).

**[0027]** The components mounted to instrumentation side 30 include, in the preferred embodiment, the sampling system 22 and concentration determining system 24 of sensor 12, a battery 34, the control system 14 and the sensor telemetry system 16. Shown surrounding the components mounted to the instrument side 30 is an antenna 40 which receives downlinked telemetry programming data transmitted by an external programmer (not shown). Battery 34 is preferably mounted to flexible substrate 26 and powers sensor module 12, control system 14 and sensor telemetry system 16. Battery 34 is preferably a flexible battery such as a lithium manganese oxide (e.g., LiMnO<sub>2</sub>) chemistry and may be of a sealed foil or plastic battery. In this way, battery 34 can bend with flexible substrate 26 as sensor module 12 is applied to the skin. Examples of such flexible batteries are disclosed in US Patent No. 5,558,957 issued to Madhav Datta and Ravindra V. Shenoy on September 24, 1996 entitled "Method for Making a Thin Flexible Primary Battery for Microelectronics Applications" and US Patent No. 5,326,652 issued to Rickie C. Lake on July 5, 1994 entitled "Battery Package and Method Using Flexible Polymer Films Having a Deposited Layer of an Inorganic Material".

**[0028]** Control system 14 is preferably a microprocessor such as a low cost PIC microcontroller from Microchip Technology of Chandler, Arizona. Control system 14 is connected to concentration determining system 24 to receive information about the concentration of glucose determined by the concentration determining system 24. Control system 14 processes information from the concentration determining system 24 and determines an appropriate response according to the process shown in the flow chart of FIG. 6 as will be explained below.

**[0029]** A protective cover 36 attaches to and covers the components of sensor module 12. The function of protective cover 36 is to cover and protect the components on flexible substrate 26. As such, protective cover is preferably also flexible to allow strip 26 to be conformably attached to the patient's skin.

**[0030]** As mentioned, the invention includes an implantable pump 20. Pump 20 stores and delivers insulin or other appropriate drug to the patient through a catheter 38 in response to the information provided from sensor module 12. Pump 20 is preferably a peristaltic pump such as that disclosed in US Patent No. 4,692,147, issued on September 8, 1987 to Stephen R. Duggan entitled "Drug Administration Device". Such a pump is the Synchron® Drug Pump, manufactured by Medtronic, Inc. of Minneapolis, Minnesota modified as described in the '897 patent to receive information from sensor module 12. Catheter 38 may be the models 8700A, 8700B, 8702 or 8770 manufactured by Medtronic, Inc. of Minneapolis, Minnesota.

**[0031]** Although a peristaltic drug pump is pre-

ferred, any type of implantable pump may be used and is within the scope of the invention. Examples of alternative types of pumps 200 are disclosed in US Patent No. 4,714,462, issued on December 22, 1987 to Robert A. DiDomenico and entitled "Positive Pressure Programmable Infusion Pump" and US Patent No. 4,838,887, issued on June 13, 1989 to Samir F. Idriss and entitled "Programmable Valve Pump".

**[0032]** In FIG. 6, information about the determined concentration of glucose by sensor 12 is presented to step 40. The program passes from step 40 to step 42. Step 42 periodically compares the concentration of glucose presented at step 40 to a predetermined limit. The predetermined limit may be preset or set by downloading a desired limit. If the determined concentration in step 40 exceeds the predetermined limit, the program passes to step 44. If the determined concentration in step 40 does not exceed the preset limit, no action is taken and step 42 proceeds to step 46 to wait for an appropriate period to expire before passing to step 42 to again compare a newly determined concentration of glucose to the predetermined limit.

**[0033]** In this embodiment, the determined concentration of glucose presented at step 40 is periodically compared to predetermined limit in step 42. The periodicity may be preset in the programming or may be programmable to any desired period. In addition, the comparison of the determined concentration of glucose may be accomplished on command as for example by activating the comparison of step 42 in response to a user command for example, based upon time or when about to consume food. Such a user command may take the form of activating a reed switch with a magnet, activating an electronic switch with a radio signal, mechanically actuating a switch by palpating the switch through the skin or many other forms that will occur to those skilled in the art; the key function of whatever action being to cause the step 42 to immediately compare the determined concentration of glucose presented at step 40 to a predetermined limit.

**[0034]** At step 44, the appropriate response to the high concentration of glucose is determined. The most likely appropriate response will be to activate the pump 20 to infuse an amount of insulin or other appropriate drug into the patient's blood stream. The amount of insulin to infuse may be determined by a formula or from a value retrieved in a look-up table prepared by the patient's physician. If the determined amount of insulin is determined by formula, the formula would include the variables of the determined concentration of glucose and the patient's weight as will be clear to those skilled in the art.

**[0035]** If the determined amount of insulin is determined from a look-up table, an appropriate responsive dose of insulin corresponding to a measured concentration of glucose and possible other variables such as the patient's weight, would be stored in the look-up table. Once the measured concentration of glucose were

determined, the responsive dose of insulin would be retrieved from the look-up table.

**[0036]** It is intended in this embodiment that control system 14 perform steps 42, 44 and 46.

**[0037]** Once the responsive dose of insulin has been determined from either a formula or a look-up table, the program passes to step 48. Step 48 communicates the responsive dose to the pump 20 and the program passes to step 50. The responsive dose values communicated to the pump 20 may be transmitted to the pump 20 and stored in internal RAM memory along with the related times of the determined doses for later uplink telemetry to a follow-up physician. Step 50 receives the responsive dose communicated from step 48 and passes it to the pump 20. The responsive dose is preferably communicated to the pump 20 by passing the appropriate responsive dose to the pump 20 through sensor telemetry module 22 (at step 48) and pump telemetry module 24 (at step 50).

**[0038]** Sensor telemetry module 22 is attached to flexible substrate 26. Sensor telemetry module 22 receives information about the appropriate amount of insulin to infuse into the user by pump 20 at step 44 and conveys it to pump telemetry module 24 where it is received at passed to the pump 20 at step 50. Pump 20 then infuses the appropriate amount of insulin to the patient at step 52. In the preferred embodiment, sensor telemetry module 22 and pump telemetry module 24 communicate using the body of the user itself to convey the information utilizing the electrode 32 of Figure 4. This type of communication is sometimes referred to a "body-bus" communication.

**[0039]** An example of such a "body-bus" communication system is given in US Patent Nos. 4,987,897 and 5,113,859, issued to Hermann D. Funke on January 29, 1991 and May 19, 1992, entitled "Body Bus Medical Device Communication System" and "Acoustic Body Bus Medical Device Communication System" respectively. Alternatively, a radio frequency telemetry approach as described in US Patent No. 5,683,432 to Goedeke may be used. In this alternative embodiment, antenna 40 would be used to communicate to pump 20.

**[0040]** At step 50, the appropriate dose information is received and passed to pump 20. The program passes to step 52 where the pump administers the appropriate dose to the user. From step 52, the program passes back to step 42 to compare the newly determined concentration of glucose presented at step 40 to the predetermined limit.

**[0041]** An alternative embodiment of the invention is shown in Figure 3, the operation of which is shown in Figure 7. In this embodiment, control system 14 is located with pump 20 instead of on flexible substrate 26. It is intended that control system 14 in this embodiment be part of the microprocessor or other control system that controls the operation of pump 20. However, it is also an alternative embodiment of this embodiment that the control system 14 may be a separate unit distinct

from the microprocessor or other control system that controls the operation of pump 20. The key here being that the control system 14 is located with the pump 20 instead of with the flexible substrate 26.

**[0042]** In operation, this alternative embodiment operates as described above beginning with step 40 where the concentration of glucose determined by the sensor module 12 is presented. The program passes to step 54 where the concentration of glucose is communicated to the pump 20 via sensor telemetry module 22. The glucose concentration values communicated to the pump 20 may be transmitted to the pump 20 and stored in internal RAM memory along with the time of the determined concentration for later uplink telemetry to a follow-up physician. The program passes to step 56. Step 56 receives the concentration of glucose communicated from step 54 by pump telemetry module 24 and passes it to control system 14. Here, as above, communication between the sensor module 12 and pump 20 is accomplished by the sensor telemetry module 22 and the pump telemetry module 24 as described above. The difference in this embodiment being only that the information conveyed between the sensor module 12 and the pump 20 here is the concentration of glucose determined by the sensor module 12 instead of the appropriate dosage of insulin to be administered to the patient.

**[0043]** From step 56, the program passes to step 58. Step 58, in similar fashion to step 42, periodically compares the concentration of glucose presented at step 56 to a predetermined limit. If the determined concentration in step 56 exceeds the predetermined limit, the program passes to step 60. If the determined concentration in step 56 does not exceed the preset limit, no action is taken and step 58 proceeds to step 62 to wait for the appropriate period to expire before passing to step 58 to again compare a newly determined concentration of glucose received from sensor module 12 to the predetermined limit.

**[0044]** In this embodiment as in the preferred embodiment described above, the determined concentration of glucose is periodically compared to predetermined limit. The periodicity may be preset in the programming or may be programmable to any desired period. In addition, the comparison of the determined concentration of glucose may be accomplished on command as for example by activating the comparison of step 42 in response to a user command. As above, such a user command may take the form of activating a reed switch with a magnet, activating an electronic switch with a radio signal, mechanically actuating a switch by palpating the switch through the skin or many other forms that will occur to those skilled in the art; the key function of whatever action being to cause the step 58 to immediately compare the determined concentration of glucose to a predetermined limit.

**[0045]** At step 60, the appropriate response to the high concentration of glucose is determined. The most likely appropriate response will be to activate the pump

20 to infuse an amount of insulin or other appropriate drug into the patient's blood stream. Again, the amount of insulin to infuse may be determined by a formula or from a value retrieved in a look-up table. If the determined amount of insulin is determined by formula, the formula would include the variables of the determined concentration of glucose and the user's weight as will be clear to those skilled in the art.

**[0046]** If the determined amount of insulin is determined from a look-up table, an appropriate responsive dose of insulin corresponding to a measured concentration of glucose would be stored in the look-up table. The appropriate responsive dose would be determined based on the person's weight or other factors which will occur to those skilled in the art. Once the measured concentration of glucose is determined, the responsive dose of insulin is retrieved from the look-up table.

**[0047]** Once the responsive dose of insulin has been determined from either a formula or a look-up table, the program passes to step 64. At step 64, the appropriate dose information is administered to the user by pump 20. From step 64, the program passes back to step 58.

**[0048]** In the preferred embodiment, sensor 12 is an external sensor applied to the skin of the user. In an alternative embodiment shown in Figure 8, sensor module 12 is implanted in the user as shown in the '186 patent issued to Peter C. Lord and Fredric C. Coleman discussed above.

**[0049]** In this embodiment, battery 34 may be used or may be replaced with a rechargeable battery or a "super-capacitor" to provide power to sensor module 12. Examples of appropriate rechargeable batteries include, but are not limited to lithium batteries, nickel-metal hydride, lithium polymer, nickel cadmium and rechargeable alkaline manganese dioxide. With respect to rechargeable batteries, the teaching of US Patent No. 5,661,393 issued on August 26, 1997 to Upal Sengupta entitled "Circuit and Method for Detecting and Indicating the State of Charge of a Cell or Battery". Examples of "super-capacitor" power providing systems are shown in US Patent Nos. 5,591,217 issued to Francisco J. Barreras on January 7, 1997 entitled "Implantable Stimulator with Replenishable High Value Capacitive Power Source and Method Therefor" and 5,733,313 issued to Francisco Jose Barreras, Sr. and Oscar Jimenez on Mar 31, 1998 entitled "RF Coupled Implantable Medical Device with Rechargeable Back-up Power Source".

**[0050]** The invention has been described primarily in connection with a device to detect glucose and deliver an appropriate response of insulin to the patient's body. It is also within the scope of the invention to detect other biological chemicals, enzymes, hormones, etc. and deliver an appropriate response of an appropriate therapeutic agent if needed. For example, the sampling system 22 and a concentration determining system 24 of the invention can also be used to sample and determine the concentration of the substances disclosed in Table 4

of the '714 Guy et al. patent. In this embodiment, a particular substance of interest is sampled and its concentration determined, thereby indicating the presence and severity of a particular condition or disease as for example is shown in Table 4 of the '714 Guy et al. patent. Thereafter, the present invention delivers, as described above, an appropriate amount of an appropriate medicament or drug to the patient according to sound medical judgment.

## Claims

1. A closed loop medicament pump system for a patient for sampling and determining the concentration of a substance of interest through the patient's skin and for determining and delivering a responsive dose of an appropriate medicament to the patient comprising:

a sensor module (12) for sampling and determining the concentration of a substance of interest in the patient;  
 a control system (14) for determining an appropriate response the determined concentration of the substance of interest;  
 an implantable drug pump (20) for dispensing an appropriate amount of a medicament to the patient;  
 means for communicating information from the sensor module (12) to the control system (14); and,  
 means (22, 24) for communicating information from the control system (14) to the implantable drug pump (20).

2. A closed loop medicament pump system topheretic sensor module (12), for determining a response to the sampled and determined concentration of a substance of interest; and wherein said means for communicating information from the control system to the implantable drug pump (20) comprises

a sensor telemetry system (22) for transmitting information regarding the response determined by the control system (14) through the patient's body;  
 a pump telemetry system (24) for receiving information regarding the response determined by the control system (14) through the patient's body and for communicating the information to an implantable drug pump (20); and wherein said implantable drug pump (20) acts in response to the information communicated to the implantable drug (20) pump from the pump telemetry system (24), to deliver a responsive dose of an appropriate medicament to the patient.

3. A closed loop medicament pump system as claimed in claim 1, wherein

said means for communicating information from the sensor module (12) to the control system (14) comprises  
 a sensor telemetry system (22) for transmitting information regarding the concentration of a substance of interest determined by the sensor module (12) through a patient's body;  
 a pump telemetry system (24) for receiving information regarding the concentration of a substance of interest determined by the sensor module (12) through the patient's body and for communicating the information to the control system (14); and wherein  
 the control system (14), responsive to the pump telemetry system (24), for determining a response to the sampled and determined concentration of a substance of interest and for communication the response to the implantable drug pump (20); and  
 the implantable drug pump (20) acts in response to the information communicated to the implantable drug pump (20) from the control system (14) to deliver a responsive dose of an appropriate medicament to the patient.

4. A closed loop medicament pump according to any preceding claim wherein the sensor module (12) comprises an iontopheretic sensor module (12).

5. A closed loop medicament pump according to any preceding claim wherein the sensor module (12) is an external sensor.

6. A closed loop medicament pump according to any preceding claim wherein the sensor module (12) is disposable.

7. A closed loop medicament pump according to any of claims 1 to 5 wherein the sensor module (12) is reusable.

8. A closed loop medicament pump according to any of claims 1 to 5 wherein the sensor module (12) is attached to a flexible substrate (26).

9. A closed loop medicament pump according to claim 8 wherein the flexible substrate (26) includes an adhesive to adhere the sensor module to skin of a patient.

10. A closed loop medicament pump according to any preceding claim wherein the control system (14) is a microprocessor.

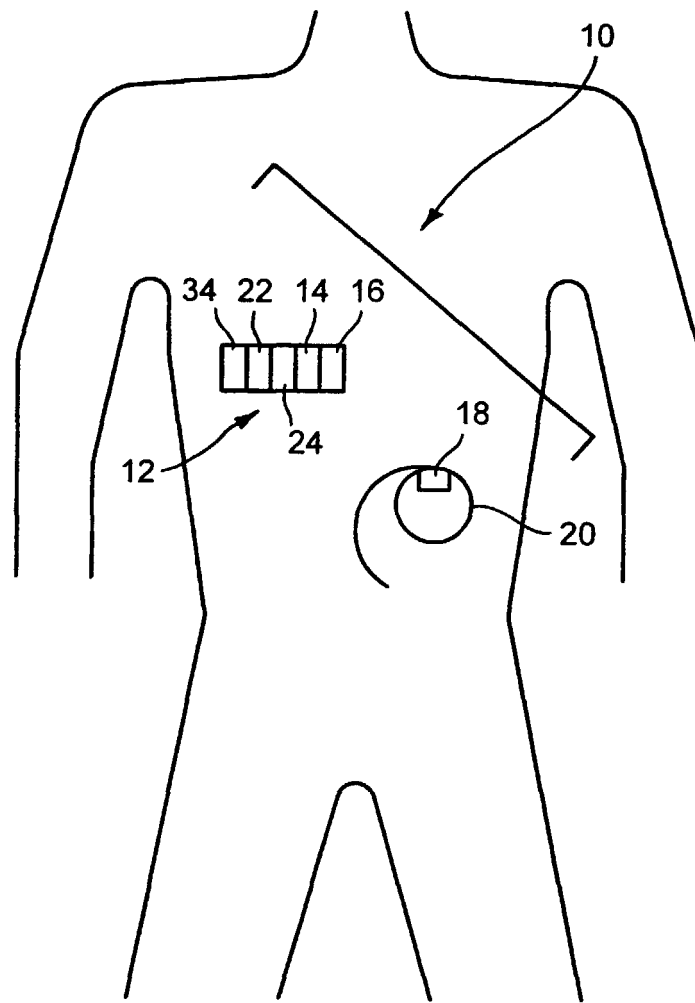


FIG. 1



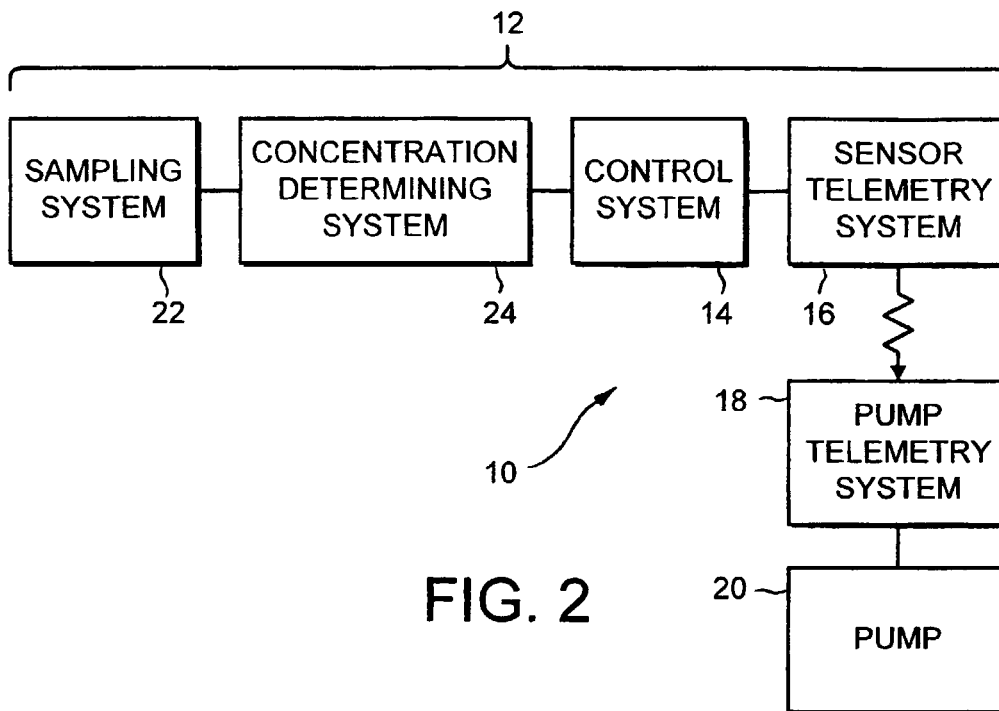


FIG. 2

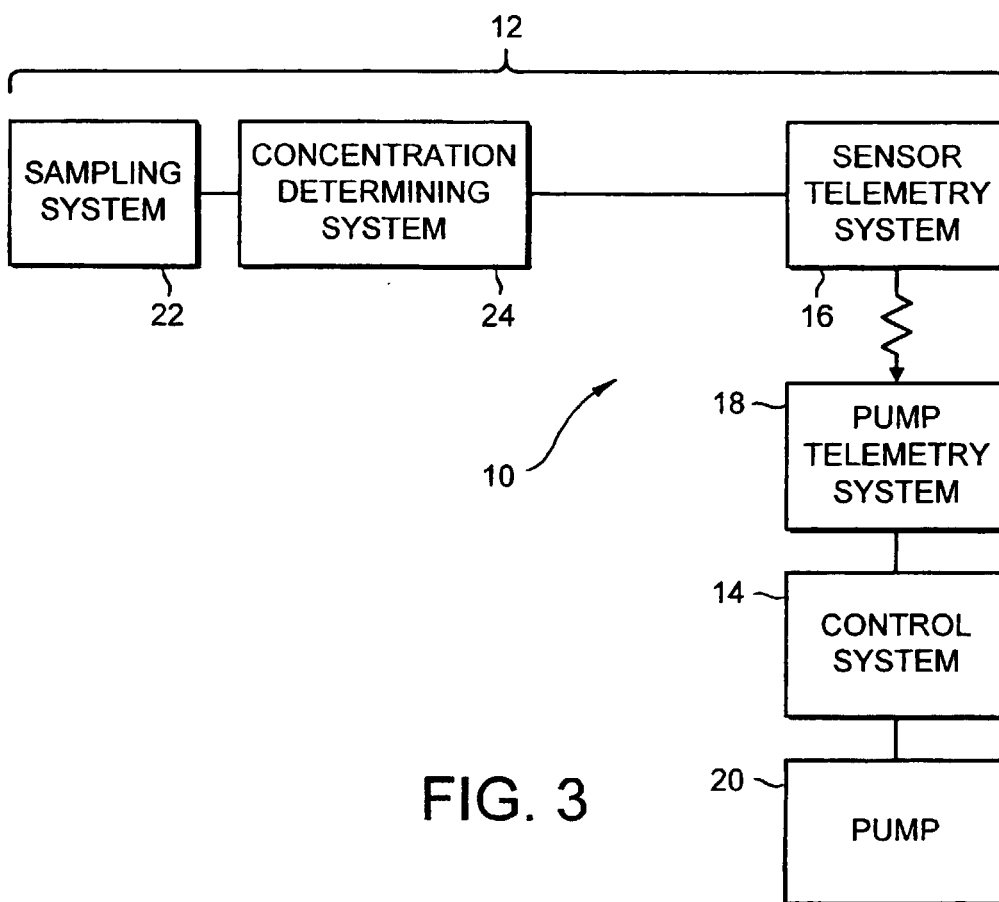


FIG. 3

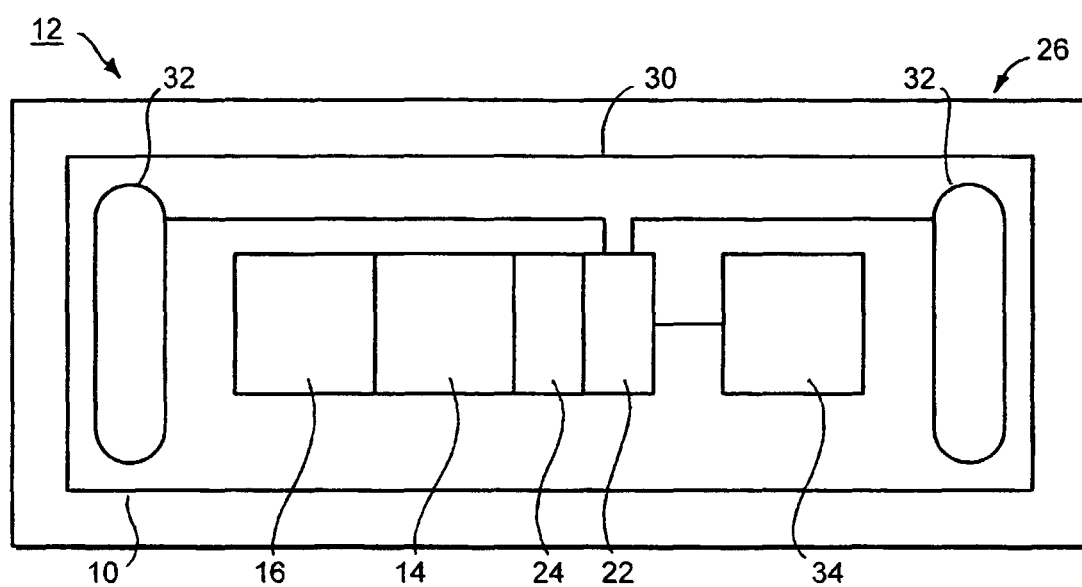


FIG. 4

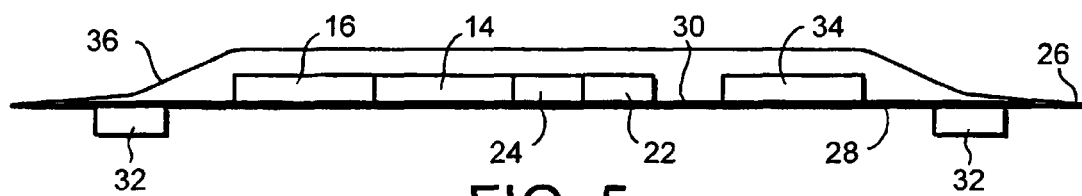


FIG. 5

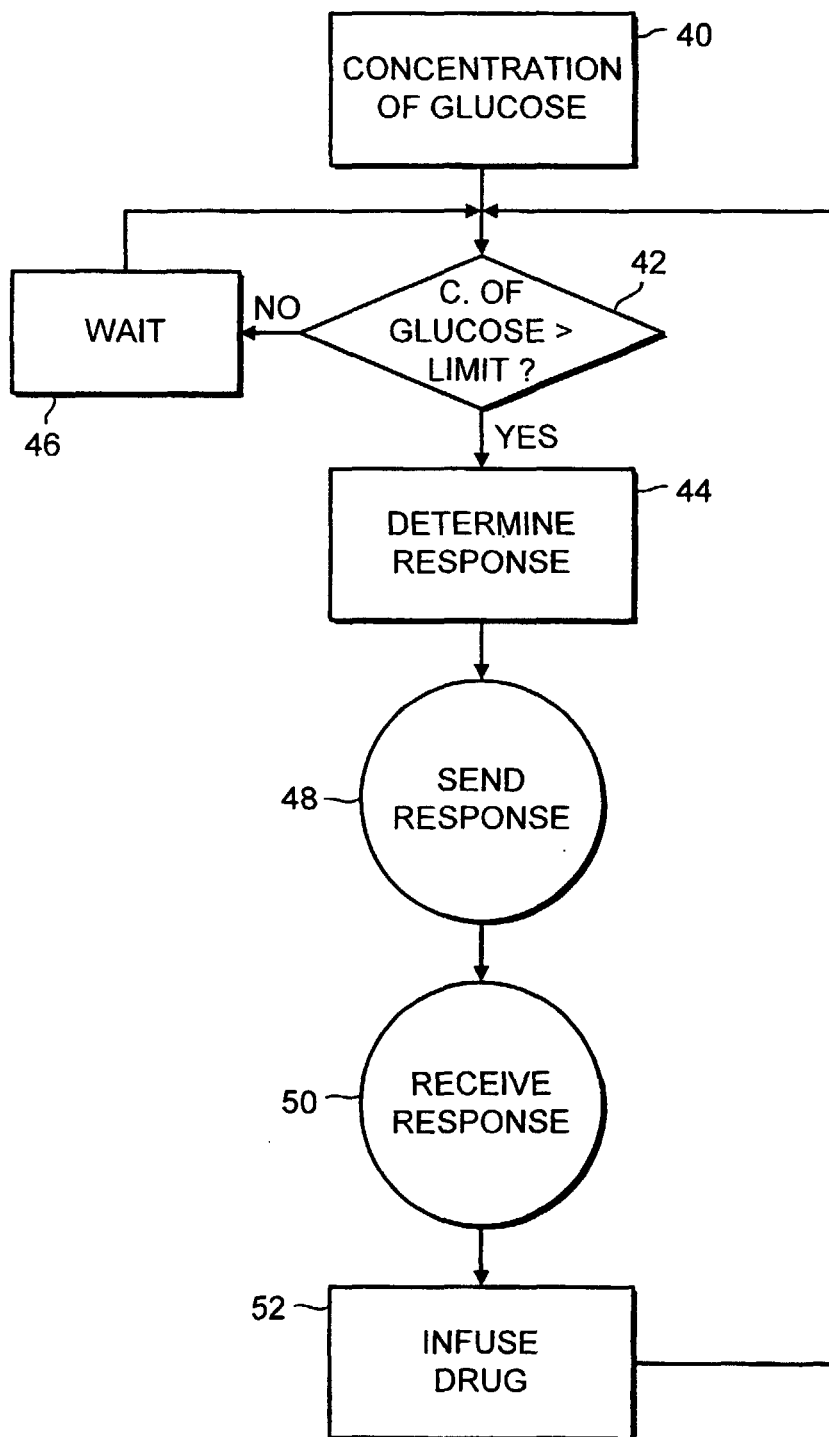


FIG. 6

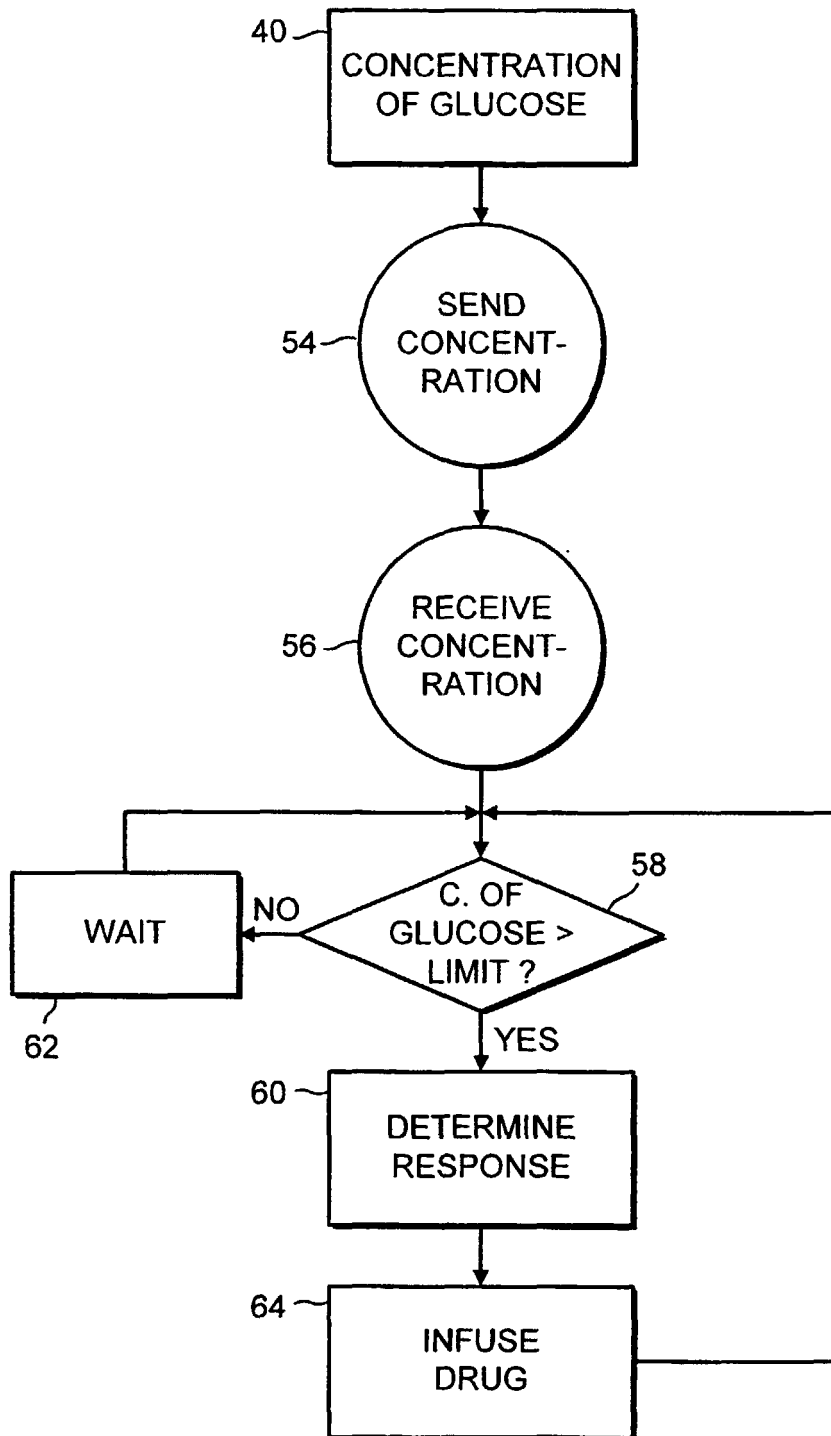


FIG. 7

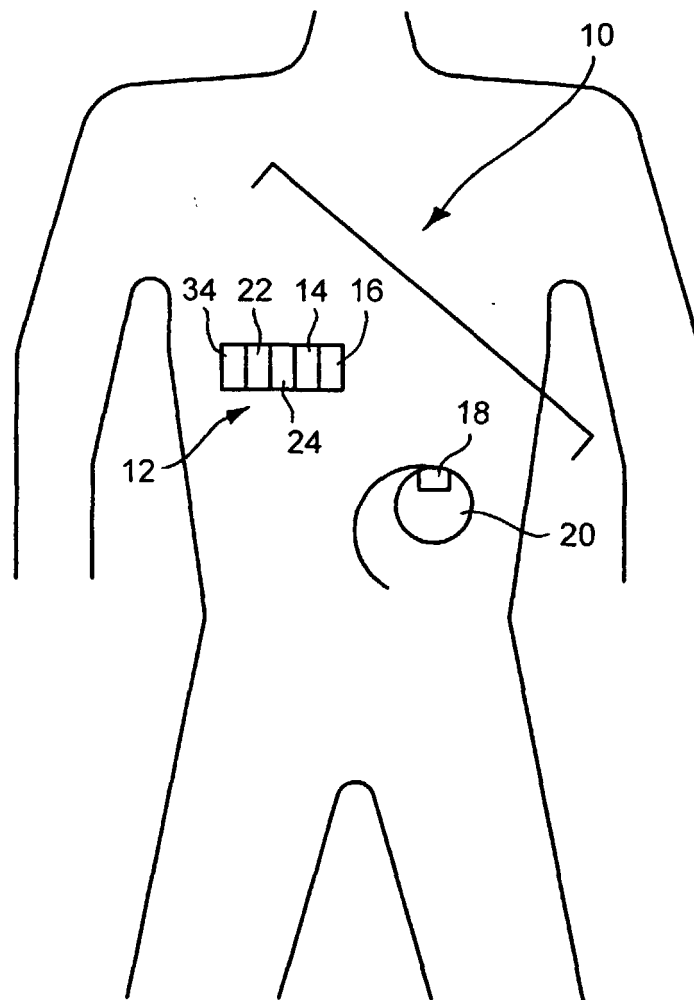


FIG. 8



European Patent  
Office

# EUROPEAN SEARCH REPORT

Application Number  
EP 00 10 7927

DOCUMENTS CONSIDERED TO BE RELEVANT			
Category	Citation of document with indication, where appropriate, of relevant passages	Relevant to claim	CLASSIFICATION OF THE APPLICATION (Int.Cl.7)
X	WO 91 01680 A (PALT) 21 February 1991 (1991-02-21) * page 9, line 14 - page 11, line 6 * * page 13, line 20 - page 18, line 28 * * page 19, line 12 - page 20, line 30 * * figures 1,7,8 *	1	A61B5/00
A	---	2,3,10	
X	US 4 494 950 A (FISCHELL) 22 January 1985 (1985-01-22) * column 3, line 55 - column 4, line 57 * * column 6, line 5 - column 8, line 42 * * figures 1,4 *	1	
Y	---	2	
A	---	3	
Y	WO 96 00110 A (CYGNUS THERAPEUTIC SYSTEMS) 4 January 1996 (1996-01-04) * page 13, line 15 - page 15, line 2 * * page 22, line 15 - page 27, line 26 * * page 29, line 33 - page 32, line 27 * * figures 1A,B,34-41 *	2	
A	---	1,4-9	TECHNICAL FIELDS SEARCHED (Int.Cl.7) A61B A61N A61M
A	US 5 140 985 A (SCHROEDER ET AL.) 25 August 1992 (1992-08-25) * column 4, line 49 - column 7, line 24 * * figures 1-5 *	5,6,8	
A	US 5 862 803 A (BESSON ET AL.) 26 January 1999 (1999-01-26) * column 3, line 44 - column 5, line 42 * * column 22, line 32 - column 23, line 31 * * figures 2A-F *	1-3,5, 8-10	
The present search report has been drawn up for all claims			
Place of search THE HAGUE		Date of completion of the search 22 August 2000	Examiner Chen, A
CATEGORY OF CITED DOCUMENTS X : particularly relevant if taken alone Y : particularly relevant if combined with another document of the same category A : technological background O : non-written disclosure P : intermediate document T : theory or principle underlying the invention E : earlier patent document, but published on, or after the filing date D : document cited in the application L : document cited for other reasons & : member of the same patent family, corresponding document			

EPO FORM 1503 03.82 (P4/C01)



European Patent  
Office

# EUROPEAN SEARCH REPORT

Application Number  
EP 00 10 7927

DOCUMENTS CONSIDERED TO BE RELEVANT			
Category	Citation of document with indication, where appropriate, of relevant passages	Relevant to claim	CLASSIFICATION OF THE APPLICATION (Int.Cl.7)
A	US 3 943 918 A (LEWIS) 16 March 1976 (1976-03-16) * column 2, line 57 - column 3, line 32 * * figures 1-3 * -----	5,6,8,9	
			TECHNICAL FIELDS SEARCHED (Int.Cl.7)
The present search report has been drawn up for all claims			
Place of search <b>THE HAGUE</b>		Date of completion of the search <b>22 August 2000</b>	Examiner <b>Chen, A</b>
CATEGORY OF CITED DOCUMENTS X : particularly relevant if taken alone Y : particularly relevant if combined with another document of the same category A : technological background O : non-written disclosure P : intermediate document T : theory or principle underlying the invention E : earlier patent document, but published on, or after the filing date D : document cited in the application L : document cited for other reasons & : member of the same patent family, corresponding document			

EPO FORM 1503 03 82 (P04C01)

**ANNEX TO THE EUROPEAN SEARCH REPORT  
ON EUROPEAN PATENT APPLICATION NO.**

EP 00 10 7927

This annex lists the patent family members relating to the patent documents cited in the above-mentioned European search report. The members are as contained in the European Patent Office EDP file on  
The European Patent Office is in no way liable for these particulars which are merely given for the purpose of information.

22-08-2000

Patent document cited in search report	Publication date	Patent family member(s)	Publication date
WO 9101680 A	21-02-1991	US 5101814 A	07-04-1992
		AT 134120 T	15-02-1996
		CA 2042373 A	12-02-1991
		DE 69025400 D	28-03-1996
		DE 69025400 T	19-09-1996
		EP 0461207 A	18-12-1991
		US 5368028 A	29-11-1994
		US 5190041 A	02-03-1993
US 4494950 A	22-01-1985	NONE	
WO 9600110 A	04-01-1996	AU 2944995 A	19-01-1996
		CA 2193885 A	04-01-1996
		EP 1016433 A	05-07-2000
		EP 0766578 A	09-04-1997
		JP 10506293 T	23-06-1998
US 5140985 A	25-08-1992	NONE	
US 5862803 A	26-01-1999	DE 4329898 A	06-04-1995
		DE 59403133 D	17-07-1997
		WO 9507048 A	16-03-1995
		EP 0719108 A	03-07-1996
		US 5957854 A	28-09-1999
US 3943918 A	16-03-1976	CA 1027181 A	28-02-1978



专利名称(译)	闭环药剂泵		
公开(公告)号	<a href="#">EP1048264A1</a>	公开(公告)日	2000-11-02
申请号	EP2000107927	申请日	2000-04-14
[标]申请(专利权)人(译)	美敦力公司		
申请(专利权)人(译)	美敦力公司，INC.		
当前申请(专利权)人(译)	美敦力公司，INC.		
[标]发明人	THOMPSON DAVID L		
发明人	THOMPSON, DAVID L.		
IPC分类号	A61B5/00		
CPC分类号	A61B5/4839 A61B5/0002 A61B5/0028 A61B5/14532		
优先权	09/302593 1999-04-30 US		
外部链接	<a href="#">Espacenet</a>		

#### 摘要(译)

公开了一种确定患者体内感兴趣物质水平并提供治疗量药物的装置。患者体内感兴趣物质的水平通过对患者血液进行离子电渗采样确定，然后分析所得样品以确定感兴趣物质的水平。关于感兴趣物质水平的信息被传输到患者体内的植入式药物泵20。在优选实施例中，感兴趣物质传感器12是应用于使用者皮肤的外部传感器。在替代实施例中，可以植入传感器。传输由传感器确定的感兴趣物质水平的信息的优选方法通过所谓的“身体总线”传输到患者体内的植入药物泵。“身体总线”是遥测系统，其中患者自己的身体提供离子电穿孔装置和植入的药物泵之间的互连。

