

(19)



(11)

EP 3 174 459 B1

(12)

EUROPEAN PATENT SPECIFICATION

(45) Date of publication and mention of the grant of the patent:

04.09.2019 Bulletin 2019/36

(51) Int Cl.:

A61N 1/362 ^(2006.01) **A61N 1/365** ^(2006.01)
A61B 5/0402 ^(2006.01) **A61B 5/0464** ^(2006.01)
A61B 5/00 ^(2006.01)

(21) Application number: **15826371.5**

(86) International application number:

PCT/US2015/042536

(22) Date of filing: **28.07.2015**

(87) International publication number:

WO 2016/018945 (04.02.2016 Gazette 2016/05)

(54) **SYSTEMS TO OPTIMIZE ANTI-TACHYCARDIAL PACING (ATP)**

SYSTEME ZUR OPTIMIERUNG VON ANTI-TACHYKARDIEN-STIMULATION (ATP)

SYSTÈMES POUR OPTIMISER LA STIMULATION ANTITACHYCARDIQUE (ATP)

(84) Designated Contracting States:

AL AT BE BG CH CY CZ DE DK EE ES FI FR GB GR HR HU IE IS IT LI LT LU LV MC MK MT NL NO PL PT RO RS SE SI SK SM TR

(74) Representative: **Boult Wade Tennant LLP**

**5th Floor, Salisbury Square House
8, Salisbury Square
London EC4Y 8AP (GB)**

(30) Priority: **29.07.2014 US 201462030520 P**

(56) References cited:

EP-B1- 2 004 284 **WO-A1-2006/039693**
US-A- 5 395 397 **US-A1- 2007 191 900**
US-A1- 2010 191 301 **US-A1- 2010 198 290**
US-A1- 2013 066 181 **US-B1- 6 654 639**
US-B1- 6 766 196 **US-B1- 6 766 196**

(43) Date of publication of application:

07.06.2017 Bulletin 2017/23

(73) Proprietor: **Cardioflow Technologies, LLC**

Nashville, TN 37215 (US)

(72) Inventor: **KAISER, Daniel Walter**

Palo Alto, CA 94306 (US)

EP 3 174 459 B1

Note: Within nine months of the publication of the mention of the grant of the European patent in the European Patent Bulletin, any person may give notice to the European Patent Office of opposition to that patent, in accordance with the Implementing Regulations. Notice of opposition shall not be deemed to have been filed until the opposition fee has been paid. (Art. 99(1) European Patent Convention).

DescriptionFIELD OF THE INVENTION:

5 [0001] This invention is in the field of devices to diagnose and treat cardiac arrhythmias.

BACKGROUND:

10 [0002] Abnormally fast heart rates are called tachycardias. When the tachycardia occurs in the top chambers of the heart (the atria), this is termed atrial tachycardia. When it occurs in the bottom chambers (the ventricles), this is termed ventricular tachycardia. These rhythms can be highly symptomatic in the case of atrial tachycardia or can be life-threatening in the case of ventricular tachycardia.

15 [0003] These rhythms are often due to diseased or dead myocardial tissue, which may form a scar. Under normal conditions, all myocardial cells conduct electrical activity. When a myocardial cell depolarizes, the ionic membrane potential changes; which as a result, can cause its neighbor myocardial cell to depolarize, and so on. Therefore, depolarizing cells result in a self-propagating mechanism, whereby depolarizing wavefronts travel through myocardial tissue. In certain settings, a propagating wavefront may travel around non-conducting tissue. If each cell along this reentrant pathway has enough time to repolarize the cell's membrane potential, the resulting wavefront can then get caught in a perpetual loop where the electrical signal in the myocardial tissue circles around a fixed point or central scar. The action potentials will continually propagate around the non-conducting tissue (such as a prior myocardial infarction) at a rate considerably faster than the heart's intrinsic rate. The reentrant circuit can be thought of as a conduction wavefront propagating along a tissue mass of approximately circular geometry.

20 [0004] Initially, these dangerous rhythms were treated with an external shock (defibrillation) that resets the myocardial tissue to regain normal sinus rhythm. As implanted devices became more complex, pacing modalities were created to attempt to pace-terminate the tachycardia. This is termed anti-tachycardia pacing (ATP). When ATP strategies fail, the device may then proceed with painful how powered shocks; which usually are very painful to the patient. ATP, on the other hand, is usually painless.

25 [0005] The rate at which myocardial tissue can allow a propagating wavefront to conduct through it has a limit. Once depolarized, the tissue must repolarize in order to conduct another propagating wavefront. If a wavefront approaches myocardial tissue which has not repolarized the tissue cannot conduct the wavefront and the electrical signal will terminate. Tissue that has not yet repolarized and cannot conduct an electrical signal is termed refractory.

30 [0006] To terminate an arrhythmic circuit, a pacing stimulus is provided at a time and location such that the resulting wave propagation fails to conduct down the pathway of the reentrant circuit. When pacing faster than the reentry tachycardia, the paced stimulation wavefront proceeds toward the arrhythmic circuit. This wavefront can approach both sides of the reentrant circuit (see figure 4 for clarity); such that the wavefront will collide with the wavefront leaving the reentrant circuit (termed the 'exit' site). With more pacing, the paced wavefront will reach the native tachycardia prior to the reentrant wavefront; resulting in an earlier depolarization of the reentrant circuit. With substantially continuous pacing, we can reach "entrainment," whereby the wavefront traveling towards the exit site, will collide with the wavefront from the prior wavefront within the arrhythmic circuit (in the retrograde direction). The paced wavefront will also proceed towards the entrance site of the reentrant tachycardia and proceed down the path of the arrhythmic circuit in the orthograde direction. If the pacing rate is accelerated, this orthodromic wavefront may reach a part of the arrhythmia circuit before it has repolarized and is therefore refractory. If this occurs, the wavefront may terminate and the arrhythmia will end. Accordingly, the probability of anti-tachycardia pacing (ATP) succeeding in terminating a tachycardia is related to the ability of the pacing stimulation wavefront to arrive at the location of the reentrant circuit in such a manner that the propagating signal in the reentrant circuit is modified, is unable to perpetuate the propagating signal, and the tachycardia is terminated.

35 [0007] Numerous different pacing modalities and algorithms have been created for the termination of tachycardia. These algorithms have been created for both atrial and ventricular tachycardias. These algorithms are programmed into implanted devices such as a pacemaker or implantable cardioverter-defibrillators (ICDs). These devices may deliver a high powered electrical shock which attempts to reset all cells involved in the reentrant tachycardia in order to terminate the tachycardia. These shocks are often painful and can cause harm to myocardial cells. Alternatively, the devices may deliver anti-tachycardia pacing (ATP), whereby paced wavefronts reach critical aspects of the reentrant circuit in such a manner that the tachycardia terminates. ATP is usually painless and therefore has advantages over high-powered cardioversions.

40 [0008] US 6,766,196 describes a method and device for performing anti-tachycardia pacing (ATP) to convert a ventricular tachycardia (VT) to normal sinus rhythm. Pacing/sensing electrodes are implanted in or on the left and right ventricles of a patient's heart. After a VT is detected a determination is made based on the shape of the electrogram signal of the VT. One of a plurality of time offsets for pacing pulses of the left and right ventricles is selected based on the signal shape and ATP is performed by pacing both the left and right ventricles with the time offset between pulses

in the respective ventricles.

[0009] US 2007/0191900 describes a method and device for delivering anti-tachycardia pacing (ATP) therapy that includes an electrode to sense cardiac signals and to deliver the therapy, sensing circuitry, electrically coupled to the electrode, to detect the tachycardia event in response to the sensed cardiac signals, and a processor to control delivery of the therapy. The processor determines a cause of the delivered first plurality of pacing pulses failing to terminate the tachycardia event as a result of one of a failure to capture the tachycardia event, a failure to complete peelback, and a failure to entrain a reentrant circuit associated with the tachycardia event, and adjusts delivery of a second plurality of pacing pulses subsequent to the delivery of the first plurality of pacing pulses in response to the determined cause.

[0010] ATP is not always successful at terminating the tachycardia. In this circumstance, the ATP is repeated at the same or different pacing algorithm in attempts to terminate the arrhythmic into a normal sinus rhythm. If ATP is unsuccessful, the patient may require high voltage cardioversion. ATP is unsuccessful in approximately 10-40% of ATP attempts. In addition, ATP sometimes accelerates the rhythm to a faster rate or may degenerate the rhythm into ventricular fibrillation, which is a chaotic rhythm that is not capable of sustaining life. Furthermore, the longer the patient is in ventricular tachycardia, the more likely the patient is to pass out (syncope) which is dangerous.

[0011] Thus, improved systems for increasing the success rate of ATP and for decreasing the time in tachyarrhythmia, which will reduce the need for painful 1CD shocks, are needed.

[0012] ATP often functions by entraining the tachycardia. Entraining is a process whereby paced beats (by a pacemaker lead, for example) accelerates the tachycardia. One or more stimulations are provided at a rate slightly faster than the tachycardia, such that the paced wavefronts enter and accelerate the tachycardia. The first paced stimulation that advances the reentrant tachycardia resets the tachycardia. The next pacing stimulation typically advances the tachycardia to the paced cycle length. Since myocardial tissue properties often change in response to shorter cycle lengths, several resetting stimulations may be needed to completely advance the tachycardia to the pacing cycle length. Each paced beat then 'resets' the tachycardia to the faster rate, termed entrainment. Ideally, the faster rate is too fast for the arrhythmic circuit, such that the tissue has not had enough time to repolarize. In this case, the wavefront terminates, and the patient returns to sinus rhythm.

[0013] Entrainment involves identifying a specific response of a reentrant arrhythmia to external pacing, including: (1) beat to beat interaction between the paced and tachycardia wavefront; (2) activation of all the tissue in the chamber where the circuit is located; and (3) persistence of the tachycardia after pacing, if the tachyarrhythmia does not self-terminate. If the self-sustaining tachyarrhythmia of the heart is thought of as an electrical circuit running in a circle, one can "entrain" that circuit by pacing slightly faster than the circuit was running on its own. This is known as resetting the circuit, as the tissue in the circuit will now be excited at the new, faster, paced rate, as compared to the pace at which the circuit ran on its own before entrainment. If the circuit can propagate at the faster rate, when this resetting is stopped, the pacing catheter electrode in the heart can then measure the time required for the last paced beat to create a wavefront, enter the arrhythmic circuit, propagate around a portion of the arrhythmic circuit, and then exit to the same electrode or catheter. This time is termed the post-pacing interval (PPI). The post-pacing interval has long been used as an indication of the proximity of the pacing site to the reentry circuit. (Stevenson, Khan et al. 1993) (Waldo 1997).

[0014] The efficacy of the delivery of anti-tachycardia pacing (ATP) through the right ventricular implantable cardioverter defibrillator (ICD) lead to terminate life-threatening fast ventricular tachycardia (FVT) was first published in 2001 by Wathen et al. In this study, the authors revealed that ATP could prevent ICD shock delivery in 3 of 4 episodes. Over the following years, ATP has become a valuable option to treat most VT episodes. Large-scale studies, including PainFree Rx II, EMPIRIC, PREPARE, or ATPonFastVT, have demonstrated the efficacy and safety of this approach. Moreover, delivering ATP instead of defibrillation has dramatically reduced the number of painful ICD shocks.

[0015] Typically, the ATP algorithm depends on the type (atrial versus ventricular) and rate of the tachycardia. For example, most device makers make a distinction between ventricular tachycardia (VT), fast ventricular tachycardia (FVT), and ventricular fibrillation (VF) based on the rate of the tachycardia. The tachycardia rate can be described in terms of beats per minute (BPM) or can be thought of as the time between heart beats (termed the RR interval). This time is also termed the tachycardia cycle length (TCL), and is often given in milliseconds. 60,000 divided by the heart rate provides the cycle length in milliseconds (ms). For example, a tachycardia of 200 BPM has a tachycardia cycle length of 300ms.

[0016] ATP can be a pacing train of a certain cycle length (burst pacing) or can shorten the cycle length with each additional paced beat (often termed ramp pacing). Ramp therapy consists of a decremental drive of a programmable number of pulses, starting at a rate proportional to the current tachycardial cycle length (TCL).

[0017] The current algorithms of ATP are well known and easily accessible. One example (described below) is by implantable device maker Medtronic, although all device makers have created similar pacing algorithms,

[0018] In Medtronic's PainFREE Rx II Trial, the first therapy in the FVT zone (188-250 BPM) was 2 ATP sequences (8-pulse burst pacing train at 88% of the FVT cycle length). If the first ATP sequence was unsuccessful, the second sequence was delivered at 88% of the FVT cycle length minus 10 ms. ATP therapies were delivered at maximum voltage and pulse duration. Programming of subsequent FVT therapies was left to the investigators' discretion and usually

involved ICD shocks.

[0019] A recent study by Martins et al published in Eurospace (2012) performed a study involving the major ICD device makers: Biotronik, Boston Scientific, Medtronic, St Jude Medical and Sorin Group companies. In this study, the ventricular ATP algorithm was as follows: Implantable cardioverter/defibrillators were programmed to deliver 10 ATP attempts for FVT cycle lengths (CLs) of 250-300 ms (200-240 BPM) before shock delivery (5 bursts, then 5 ramps; 8-10 extrastimuli at 81-88% FVT CL; minimal pacing CL 180 ms). A total of 1839 FVTs, 1713 of which were ATP-terminated (unadjusted efficacy 1/4 93.1%, adjusted 1/4 81.7%). Furthermore, over 20% of the patient experienced ATP that required more than two episodes of ATP.

[0020] Thus, there is room to improve the current ATP algorithms to reduce the time spent in tachycardia and prevent ICD shock.

[0021] The most advanced pacemakers feature atrial preventive pacing and atrial anti-tachycardia pacing (DDDRP), which may reduce atrial fibrillation occurrence and duration. The device automatically delivers ATP therapies when an episode is classified as atrial tachycardia and lasts longer than a programmable 'time to first therapy' (often 1 min). Often, ramp is programmed in order to deliver three series of ten sequences each, so that each patient could receive up to thirty termination attempts. Each series begins with a train of ten pulses. The first pulse of each of the three series is delivered at 91, 84, and 81% of the underlying atrial tachycardia cycle length (ATCL), respectively. In each series, subsequent pulses were delivered with a decrement in pacing coupling interval of 10ms each. If a previous train fails to terminate AT, an additional stimulus is added to the next train.

[0022] Burst+ therapy uses a drive of a programmable number of atrial pulses, the rate of which is proportional to the current ATCL, followed by up to two extrastimuli. Burst+ is programmed in order to deliver three series of ten sequences each; each sequence is made up of fifteen pulses followed by two extrastimuli. As in the Ramp programming, each patient can receive up to thirty termination attempts. The first scan of each series is released at 84% of the underlying ATCL. The first extrastimulus is delivered at 81% of the underlying ATCL; the second extrastimulus was delivered with an interval reduced by 20ms. In the event of failure, the ATP train coupling interval was decreased by 10ms for each subsequent scan.

[0023] For both therapies, the minimal pacing interval (MPI) was 150 ms, so that pulses programmed at a shorter pacing interval than the MPI were delivered at the MPI value. Atrial ATP was recently found to significantly reduce the progression of atrial tachycardia to permanent atrial fibrillation (61% relative risk reduction) over a 2 year follow-up.

[0024] Previous methods use similar strategies for all tachycardias. These strategies use a burst or a ramp strategy with variable number of beats. If this ATP attempt fails, another burst or ramp is delivered at shorter intervals (faster rates). We have devised unique pacing algorithms based on novel concepts to improve the ability of a device to terminate a tachycardia.

SUMMARY:

[0025] The invention is defined in claim 1. Further aspects and preferred embodiments are defined in the appended claims. Aspects, embodiments and examples of the present disclosure which do not fall under the scope of the appended claims do not form part of the invention and are merely provided for illustrative purposes. Furthermore, the methods presented in the present description are provided for illustrative purposes only and do not form part of the present invention.

[0026] The present invention is directed to systems for prevention and/or remediation of cardiac arrhythmias, e.g. optimizing anti-tachycardia pacing (ATP) algorithms. More particularly, the present invention is directed to implantable devices that measure and treat cardiac arrhythmias. By monitoring the ATP attempt from additional electrodes, far-field morphology analyses, and/or measuring the return interval from a failed ATP attempt; the present application describes examples where the device estimates the timing of entrainment, the amount of delay within the reentrant tachycardia, and/or tachycardia termination/acceleration. These variables and occurrences can be used to optimize the first and/or subsequent ATP attempts. Furthermore, other exemplary embodiments describe methods to integrate electrical restitution properties into the design of ATP pacing algorithms to facilitate tachycardia termination.

[0027] In one exemplary embodiment, the device may identify reentrant tachycardias based on timing intervals, far-field morphology, and/or the time differences between multiple electrodes. The device may also monitor for arrhythmia entrainment and/or termination during deliver of ATP to optimize the current and future ATP algorithms. By measuring dynamic responses occurring from overdrive pacing from far-field morphology and/or timing intervals of cardiac signals from additional electrode(s), other embodiments herein may estimate and record certain aspects of the ATP attempt, such as the total premature pacing time required to entrain the tachycardia ("the Time to Entrainment"), conduction delay occurring within the tachycardia circuit (the "Time Delay"), changes in the tachycardia (such as tachycardia acceleration), tachycardia termination, and the prior successfulness and failures of certain ATP strategies. As is described in the following text and figures, the device can use these measurements and occurrences to improve the probability of tachycardia termination by leveraging electrical restitution properties of myocardial tissue. Examples are described herein of organizing the initial pacing intervals to minimize partial tachycardia acceleration as well as the strategy of delivering

"priming" pacing pulses, or pulses delivered at longer intervals than typically seen in anti-tachycardia pacing attempts; in efforts to slow repolarization rates in critical aspects of the arrhythmic circuit. These methods will therefore improve the successfulness of ATP attempts, decrease the time the patient spends in dangerous tachyarrhythmias, and reduce the need for ICD shocks. Therefore, the following concepts are advantageous to programming and designing device ATP capabilities and algorithms.

[0028] Other aspects and features of the present invention will become apparent from consideration of the following description taken in conjunction with the accompanying drawings.

BRIEF DESCRIPTION OF THE DRAWINGS:

[0029] In general, examples disclosed herein are directed to treating tachyarrhythmias, such as ventricular tachycardia, by employing at least one electrode to deliver electrical stimulation to a patient's heart in a manner designed to terminate a tachyarrhythmia episode.

FIG. 1 reveals a schematic diagram of a pacemaker/implantable cardio-defibrillator (ICD) with specialized leads going into the heart in which the present invention may be usefully practiced.

FIG. 2 is a functional block diagram of the circuitry located in the implantable pacemaker/cardioverter/defibrillator of FIG. 1.

FIG. 3 is a graphical representation of overdrive pacing from one electrode while sensing electrical depolarizations from a second electrode. The Fig helps demonstrate how timing measurements can be performed to estimate the Time to Entrainment.

FIGS. 4A and 4B reveal an example of intracardiac and far-field morphologies which illustrate how far-field morphology analyses can be utilized to estimate the Time to Entrainment.

FIG. 5 is a simplified diagram of a reentrant tachycardia circuit within a heart and several pacing electrodes for sensing and/or delivering electrical stimulations according to an exemplary embodiment.

FIG. 6 reveals the relationship between the coupling intervals during a pacing drivetrain and the effective refractory period, also known as the electrical restitution curve.

FIG. 7 is a graphical representation explaining how the paced cycle length and number of stimulations affects the amount of tachycardia acceleration on the first entrained stimulation.

FIG. 8 reveals an example of utilizing intracardiac measurements and far-field morphology analyses to determine the Time to Entrainment and TIME Delay within the circuit taken from an ATP attempt from an epicardial electrode.

FIG. 9 is a flow diagram illustrating an exemplary process for applying an ATP therapy according to an exemplary embodiment utilizing prior ATP attempts, return cycle intervals (aka post-pacing intervals), far-field morphology analyses, and/or at least one additional electrode.

FIG. 10 is a flow diagram further illustrating an exemplary process for applying an ATP therapy according to an embodiment in the present invention utilizing prior ATP attempts, return cycle intervals (aka post-pacing intervals), and/or far-field morphology analyses.

FIG. 11 is a graphical representation of anti-tachycardia pacing (ATP) according to an exemplary embodiment.

DETAILED DESCRIPTION OF THE EXEMPLARY EMBODIMENTS:

[0030] Overdrive pacing is typically performed at a rate faster than the native tachycardia; therefore the paced cycle length is usually shorter than the tachycardia cycle length (PCL<TCL). Each paced stimulation 'gains' on the native tachycardia by the amount of pacing prematurity, or the difference between the tachycardia cycle length and overdrive pacing cycle length (TCL-PCL). Overdrive pacing continues to 'gain' on the native tachycardia until the paced wave front reaches and then accelerates the native tachycardia. Once overdrive pacing reaches the arrhythmic circuit, additional pacing stimulations continuously resets the native tachycardia to the PCL (entrainment). Therefore, the total amount of time overdrive pacing "gains" on the native tachycardia before pacing begins to accelerate/reset the native tachycardia can be calculated in **equation 1** based on the number of pacing simulations required to accelerate the tachycardia (n), the difference between the tachycardia cycle length and the paced cycle length (TCL-PCL) [which can be variable], minus the amount of tachycardia acceleration.

$$Time\ Gained = \sum_0^n (TCL - PCL) - tachycardia\ advancement \quad (1)$$

[0031] A distant electrode may be able to monitor the TCL during overdrive pacing and estimate the timing of tachycardia

entrainment and conduction delay within the reentrant tachycardia. The total amount of time overdrive pacing needs to gain on the native tachycardia in order to entrain the tachycardia can be approximated by the post-pacing interval minus the tachycardia cycle length (PPI-TCL). The postpacing interval (PPI) or the return interval (RI) is the return interval that occurs after an entrainment maneuver or a failed ATP attempt. This time is the time required for the paced signal to travel from the pacing location, around the reentrant circuit, and then back to the pacing electrode. The faster the overdrive pacing cycle length, or the faster the anti-tachycardia pacing cycle length, the return cycle will prolong due to conduction velocity slowing; primarily in the reentrant circuit.

[0032] The total amount of time overdrive pacing must overcome in order to attain entrainment can be mathematically determined. The return cycle of the compensatory pause is equal to the TCL plus the amount of pacing prematurity (TCL-PCL). With additional pacing stimulations, the return cycle of the compensatory pause continues to prolong with each paced stimulation (**equation 2**). Once pacing reaches the arrhythmic circuit, the paced wavefront accelerates the native tachycardia, and the return cycle is shorter than would, be predicted from a compensatory pause. Assuming minimal changes in conduction velocity, the return cycle of the first entrained beat, as well as all additional pacing stimulations, will be fixed at the PPI. In reality, there can be significant prolongations in the post-pacing interval secondary to changes in conduction velocity at a shorter cycle length. Generally, the uncorrected PPI can be determined by adding the tachycardia cycle length to the total amount of pacing prematurity, minus the amount of tachycardia advancement (equation 3).

Compensatory pause:

[0033]

$$Return\ interval = TCL + stim\ number(n) * (TCL - PCL) \quad (2)$$

At Entrainment:

[0034]

$$PPI = TCL + n * (TCL - PCL) - tachycardia\ advancement \quad (3)$$

[0035] As can be seen, by re-arranging equation 3, the total amount of time gained by overdrive pacing must be equal to the PPI-TCL, which is also equal to the entrainment time, as can be seen in **Equation 4**.

$$PPI - TCL = n * (TCL - PCL) - \frac{tachycardia}{advancement} = Entrainment\ Time \quad (4)$$

[0036] Finally, after adjusting for the slowing that occurs associated with the faster overdrive pacing (discussed in detail later), we can determine the corrected PPI, or PPI_c; as well as the amount of conduction delay (time delay). By knowing this measurement, we can determine the number of pacing stimulations required to reach and accelerate the tachycardia at any cycle length, as shown in **equation 5**.

$$\frac{PPI_c - TCL}{TCL - PCL} = \frac{number\ of\ pacing\ stimulations\ (n)\ required}{to\ advance\ a\ tachycardia\ at\ any\ given\ PCL} \quad (5)$$

[0037] The following pacing stimulation will entrain the tachycardia to the PCL. When the tachycardia has been entrained, all electrodes within the pacing chamber (whether the atria or ventricles) will accelerate to the paced cycle length. Therefore, by having an electrode in the myocardial tissue receiving the depolarized wavefront exiting the reentrant tachycardia, the timing of entrainment can be estimated. Furthermore, the amount of delay within the reentrant circuit can be estimated with this electrode. In some circumstances, the time to entrainment can be difficult to estimate, even with optimal locations of the distal electrodes. This error can occur because the first stimulation accelerating the native tachycardia can introduce significant conduction delay, which may not be fully appreciated. Therefore, in some circumstances, overdrive pacing from more than one location can be performed. In this scenario, the entrainment time for electrode B can be determined by **equation 6**, where the time differences between the electrodes during entrainment at more than one location are utilized to estimate the entrainment time for electrode B. This equation assumes the

overdrive pacing cycle length is similar for all entrainments.

$$\text{Entrain Time } B = \text{Stim}_{A \rightarrow B} + \text{Stim}_{B \rightarrow A} - \text{PPI}_{A \rightarrow A} \quad (6)$$

5

[0038] The PPI-TCL is equal to the sum of the pacing prematurity until entrainment is obtained. Furthermore, the PPI-TCL is also equal to the time difference between the pacing electrode and a distal electrode between an entrained tachycardia and the reentrant tachycardia. A similar method, which relies upon the post entrained stimulation (as opposed to the baseline interval) has been described by Stevenson as the N+1 rule (Friedman, 2001). Furthermore, because

10

conduction tissue may slow with shorter cycle lengths or persistent pacing, the amount of conduction delay can be estimated by the time difference between the first entrained stimulation and a stable conduction time with persistent pacing. The prolongation in this time from persistent pacing or shorter cycle lengths can be used to estimate the conduction delay within the reentrant circuit.

[0039] Additionally, far-field waveform morphology analyses can help determine when a tachycardia has been entrained and the amount of conduction delay within the reentrant circuit. This is because during entrainment, the far-field morphology is the fusion between the paced morphology and the reentrant morphology. The differences between the far-field paced morphology, baseline reentrant morphology, and the fusion morphology can be used to estimate the timing of entrainment and the amount of delay within the reentrant circuit. With persistent pacing at a cycle length shorter than the tachycardia cycle length, there is progressive fusion between the paced waveform and the tachycardia waveform.

15

20

25

30

When overdrive pacing results in a stable far-field morphology that is distinct with the far-field morphology that occurs with pacing from the pacing location, this finding identifies the tachycardia as entrained. Similar to a distal electrode analysis, the prematurity from each overdrive pacing pulse is aggregate until they sum to the entrainment time; at which point the pacing pulses accelerate the native tachycardia. The prematurity can be summed until the steady fusion morphology is obtained. Furthermore, by comparing the morphology between the far-field paced morphology at baseline, the baseline tachycardia morphology, and the fusion morphology of an entrained (and stable) tachycardia from the pacing electrode, the entrainment time can be estimated. Furthermore, if the morphology significantly changes to match the baseline paced morphology; this provides evidence of tachycardia termination. Furthermore, by comparing the

35

Entrainment time and fusion morphology over a series of pacing stimulation, the Time delay occurring within the tachycardia circuit can be estimated. These variables can be combined to determine the optimal initial pacing algorithm to minimize partial acceleration; in addition, these variables can be used to optimize the "priming" pulse, to facilitate tachycardia termination.

[0040] The difference in time between the electrodes during the reentrant tachycardia can be used to estimate the time to entrainment. This is because the entrainment pathway may involve certain aspects of the tachycardia reentrant tachycardia. Since the conduction times between the electrodes can be measured prior to any tachycardia, the prematurity required to reset/entrain the tachycardia can be estimated. Therefore, in some circumstances (such as a very fast tachycardia), only one ATP attempt can be delivered prior to proceeding with cardiac defibrillation. In these circumstances, the time differences between electrodes can be combined with the conduction times when not in tachycardia can be used to deliver a single ATP attempt with an increased probability of minimizing tachycardia partial acceleration.

40

45

[0041] Additionally, when entraining a tachycardia, the pacing electrode(s) may be far from the entrain site into areas of slow conduction. When the entrance site is far away from the pacing location(s), overdrive pacing may advance much of the myocardium prior to advancing the entrance site. In these circumstances, the sensing electrodes and far-field pacing morphology may not be helpful in identifying conduction slowing within critical aspects of the reentrant circuit. Therefore, in yet another embodiment, the pacing electrode is selected using the time intervals between electrodes during the tachycardia. In general, the latest occurring electrode can be chosen. However, baseline conduction times and far-field morphology can be measured and compared against tachycardia time intervals and far-field morphology to determine the optimal pacing electrode from which to pace. In yet another embodiment, ATP pulses can be delivered from both electrodes, and based on the far-field morphology (or additional non-pacing electrode) the electrode closest to the entrance site can be used for subsequent pacing stimulations.

50

[0042] Therefore, the timing of tachycardia entrainment and the amount of delay within the reentrant circuit can be estimated by 1) measuring post-pacing interval to failed ATP attempts 2) by analyzing the timing of intracardiac signals from a distal electrode within the chambers of interest, and/or 3) by far-field morphology analyses. Knowing this can be used to optimize the first and subsequent ATP attempts.

[0043] Once the entrainment time and conduction delay is determined at a certain catheter location, the timing of tachycardia acceleration (and entrainment) can be determined at any overdrive pacing cycle length. Our studies have revealed that after adjusting for decremental conduction, the timing of entrainment can be estimated within a few milliseconds. Therefore, the entrainment time from the first or prior failed ATP attempt can be used to optimize subsequent ATP attempts. By knowing exactly when overdrive pacing will entrain the native tachycardia, the number of pacing stimulations can be limited in order to minimize the possibility of tachycardia acceleration or fibrillation. Additional pacing

55

stimulations (after the tachycardia has been entrained and with stable conduction times) delay termination to the tachycardia, waste battery life, and significantly increase the risk of developing faster tachycardias and/or disintegration into fibrillation.

[0044] Secondly (and of much more clinical importance), electrical restitution properties change with overdrive pacing.

The first pacing stimulation that reaches the arrhythmic circuit will accelerate the native tachycardia by some fraction of time between the TCL and the PCL; which is dependent upon many factors, including the distance between the pacing stimulation location and the reentrant tachycardia. If the first stimulation that reaches the arrhythmic circuit only partially accelerates the tachycardia to the PCL, the electrical restitution curves dictate the critical aspects of the reentrant circuit are more likely to tolerate the tachycardia when accelerated to the PCL. The relationship between depolarization rates and repolarization times is known as the electrical restitution curve. Therefore, partial acceleration may prepare the tachycardia to tolerate the ATP at faster overdrive pacing cycle lengths. The ATP algorithm can be set up such that the first pacing stimulation to accelerate the native tachycardia completely accelerates the tachycardia to the PCL (or desired interval). Delivering premature stimulations that only partially accelerate the native circuit may accelerate repolarization rates and make the tachycardia more difficult to pace-terminate. Furthermore, by monitoring the tachycardia in terms of tachycardia changes (such as tachycardia acceleration) or tachycardia termination; an ATP attempt can deliver stimulations and measure the response. If the accelerating pulses do not terminate the tachycardia, the device can deliver one or more stimulation(s) at a longer cycle length (for example, based upon the tachycardia cycle length) followed by a paced cycle length at an even shorter cycle length. Again, the tachycardia can be monitored for changes or termination. Therefore, the device can continue pacing and adjusting the pulsing cycle length in order to facilitate tachycardia termination without stopping the ATP attempt. By delivering pulses near the tachycardia cycle length, electrical restitution properties are leveraged to optimize tachycardia termination.

[0045] Current strategies of ATP can be improved by determining the exact time of tachycardia acceleration from overdrive pacing. The first beat to reach the reentrant circuit will accelerate the native tachycardia. However, the amount of time the first beat accelerates the native tachycardia will affect the ability of the ATP attempt to terminate the tachycardia.

This is because the rate of cellular repolarization (the refractory period to the reentrant circuit) depends on the rate of depolarization. If the first stimulated wavefront to accelerate the tachycardia accelerates the native tachycardia by less than the difference between the tachycardia cycle length (TCL) and the overdrive pacing cycle length (PCL); the partially accelerated tachycardia will prepare the tachycardia to tolerate the overdrive pacing cycle length (PCL). Therefore, by determining the amount of time required in order to accelerate a tachycardia; the algorithm of overdrive pacing can be optimized to increase the successfulness of the ATP attempt. While conduction velocities may slow at shorter pacing cycle lengths and therefore serve to 'protect' critical aspects of the reentrant circuit; repolarization rates tend to be more sensitive than conduction velocities in response to shortening diastolic intervals. That is to say, premature stimulations rarely prolong conduction times across the critical isthmus, even in tachycardias with very circuitous and delayed conduction times. Therefore, minimizing "partial acceleration" will facilitate tachycardia termination, even with significant conduction velocity slowing associated with the shorter pacing cycle length.

[0046] For example, measuring how much time pacing was required to entrain the tachycardia (e.g. as measured by distant electrodes or by far field morphology changes), this time is the amount of time pacing must be advanced from a given catheter in order to reach the arrhythmia. By knowing the amount of time required to entrain the circuit, the anti-tachycardia pacing algorithm can be optimized. This can be used to determine how many paced beats to initiate and the pacing interval(s) to use. The pacing intervals can be adjusted such that the entrance site is activated at the same time the native arrhythmia meets the entrance site. The following stimulated wavefront can be delivered to excite the arrhythmia circuit at a shorter pacing interval. However, as previously mentioned, this tissue can be optimized by the prior pacing intervals to accept the shortest possible pacing interval. This interval can be mathematically calculated and then optimized based on the time required to entrain the tachycardia. This pacing interval after the initial entraining stimulations can then be gradually shortened until the tachycardia is terminated. Various stimulation morphologies and algorithms can also be used to optimize local capture.

[0047] Therefore, we have demonstrated that the timing of tachycardia entrainment can be used to optimize the initial overdrive pacing algorithm. Additionally, it is advantageous to improve the first ATP attempt. When entrainment has been obtained, the depolarized wavefronts from the pacing electrode are able to reach the reentrant circuit. A distal electrode and/or wavefront morphology analyses can often determine when entrainment has been obtained and also if the tachycardia has been terminated. This concept is discussed extensively in the supplemental figures.

[0048] After obtaining entrainment, the pacing electrode can deliver a single or multiple stimulations at the original tachycardia cycle length. If this occurs, the pacing wavefront will reach the reentrant circuit at approximately the same time as the native wavefront traveling in the reentrant circuit. Importantly, when pacing close to the tachycardia cycle length, the tachycardia cycle length determines the repolarization rates within the tachycardia circuit. Therefore, an ATP attempt can deliver stimulations at a slower cycle length (such as the original tachycardia cycle length) in order to delay the rate of repolarization. For example, an ATP attempt may deliver eight stimulations at PCL1. Far-field morphology and a distal electrode identify the tachycardia has been entrained. The ATP algorithm can now deliver one or several

5 pacing stimulations at the original tachycardia cycle length. This slower rate will delay the rate of tissue repolarization; however, pacing maintains access the pacing electrode has with the reentrant tachycardia. The ATP algorithm can then deliver a single or several stimulations at a shorter cycle length that rapidly and completely accelerates the tachycardia. Far-field morphology and the distal electrode can identify if the tachycardia has been terminated. If the tachycardia has not been terminated, the device can deliver a single or several stimulations at the tachycardia cycle length, followed by a single or several stimulations at an even shorter cycle length than the previous attempt. This pattern can be repeated at shorter and shorter cycle lengths until the tachycardia is terminated. In this manner, only a single ATP attempt is required to terminate the tachycardia and also improves the ability to terminate the tachycardia at any given paced cycle length.

10 **[0049]** Additionally, as previously discussed, the post-pacing interval, far-field morphology analyses, and timing of signals from a distal electrode in response to overdrive pacing can all be used alone or in combination with other methods to estimate the amount of conduction delay within the tachycardia circuit. This conduction delay can be added to the 'priming' stimulation, such that a single pacing stimulation at the tachycardia cycle length plus the amount of tachycardia delay is delivered after entrainment has been obtained. The priming stimulation slows the repolarization time within the tachycardia circuit while maintaining access for the pacing location to reach the reentrant circuit. After the priming stimulation, an additional pacing stimulation with a shorter pacing cycle length can then be delivered with a greater probability of tachycardia termination. Furthermore, tachycardia termination, entrainment, and conduction delay within the reentrant circuit can be estimated in order to deliver additional 'priming' stimulations followed by a shorter stimulation. In this manner, the ATP algorithm is reactive in the sense that responses from overdrive pacing are utilized in order to optimize the ATP attempt. This process can also be repeated to facilitate tachycardia termination. Sensing the timing of entrainment or tachycardia termination can sometimes be difficult when the sensed time falls near the stimulation time. By having numerous electrodes (such as a quadripolar left ventricular cardiac resynchronization lead), the various electrodes can increase the probability the appropriate window for tachycardia assessment (both entrainment and termination) will be present. By recording the success prior ATP attempts have had in terminating the defined tachycardia, repeating of a successful pacing algorithm can be performed; or, if unsuccessful, the paced cycle lengths can be shortened.

25 **[0050]** A distal electrode and far-field morphology may or may not identify entrainment and/or tachycardia termination. These abilities are dependent on a number of details specific to the tachycardia including spatial relationships between electrodes and the native tachycardia and conduction properties within the myocardium. Fortunately, bi-ventricular pacing systems usually incorporate two electrodes, which are distant from each other. Having two electrodes distant to each other across the myocardium increases the probability that these electrodes will be able to determine the timing of tachycardia entrainment, tachycardia termination, and the amount of time delay within the reentrant tachycardia.

30 **[0051]** One exemplary embodiment describes far-field morphologies, tachycardia rates, and timing differences between electrodes to identify various reentrant tachycardias a patient may have. By accurately identifying the varying reentrant tachycardias, prior ATP failures and attempts can be used to optimize subsequent ATP attempts.

35 **[0052]** In yet another embodiment, a second distal electrode within the heart can be used to monitor the ATP attempt. Time changes in the tachycardia cycle length during pacing are used to adjust the next stimulated pacing cycle length. Once entrainment has been verified, the ATP algorithm can deliver one or more stimulations close to the baseline tachycardia cycle length plus some percentage of the measured time delay within the circuit (or a function related to one or both measurements), followed by one or more stimulations at a shorter pacing cycle length. The long pacing cycle lengths serve to 'prime' the reentrant tachycardia to prolong repolarization times in order to facilitate tachycardia termination. With persistent pacing, the shorter cycle length may cause conduction delay within the reentrant tachycardia. The premature pacing gradually propagates through the areas of conduction decrement until all of the myocardium in the chambers of interest have the same interval. After delivery of the "priming" stimulation, the repolarization rates prolong throughout the myocardium. Delivery of a pacing cycle length at a shorter cycle length is therefore at increased probability to reach myocardial tissue that is refractory, particularly in areas critical to maintain the reentrant tachycardia. Many tachycardias will experience conduction slowing "time delay" within critical aspects of the reentrant tachycardia prior to tachycardia termination. Therefore, by careful monitoring of far-field morphology or additional electrodes not involved in pacing, the processor can monitor for conduction slowing within critical aspects of the tachycardia. The device can therefore monitor the time delay occurring within the tachycardia. As long as the time delay continues to prolong, the processor continues to deliver pacing pulses at largely the same pacing interval. However, if the time delay is stable within a specified interval, the device can proceed with next steps of the anti-tachycardia pacing algorithm (such as delivery of a shorter pacing cycle length or delivery of a 'priming' pacing pulse). We describe methods where tachycardia entrainment, conduction delay, and/or tachycardia termination are estimated and used to optimize subsequent pacing cycle lengths.

50 **[0053]** FIG. 1 reveals a schematic diagram of a pacemaker/implantable cardio-defibrillator (ICD) with specialized leads going into the heart in which the present invention may be usefully practiced. In the embodiment shown in FIG. 1, there is a controller 40 designed to be implanted into the body. The housing 42 of the device is connected to several leads

that are designed to be implanted into the patient's heart 90. The first lead 10 may include a proximal end 12 coupled to the housing 42 and a second end sized for introduction into the patient's heart 90, e.g., into the right atrium 92. The first lead may have a distal end 16 connected to a sensor and/or electrode 18 which can sense electrical activity (depolarizations) and pace the right atrium 92, as programmed. In addition, the distal end of the first lead 10 may include one or more features, e.g., a screw tip or other anchor (not shown) on the distal end for securing the distal end relative to the right atrium 92 or left atrium (not shown). One or more wires or other conductors may extend from the distal end to the proximal end to communicate the signals from the sensor 18 to the controller 40. Similarly, the second lead 20 may include a proximal end 22 coupled to the housing 42 and a second end sized for introduction into the patient's heart 90, e.g., into the right atrium 92, through the tricuspid valve 95 and into the right ventricle 96. The second lead 20 contains a distal end 26 which may contain an electrode and/or sensor 28 designed to sense electrical activity or deliver electrical energy to stimulate the right ventricle 96. Similar to the first lead 10, the second lead 20 may include one or more features, e.g., a screw tip or other anchor, on the distal tip to secure the distal end within the patient's heart 90, e.g., the wall of the heart 90 within the right ventricle 96, similar to pacing leads. Alternatively, the first and second leads may be provided on a single device with a branch distal end (not shown), similar to other embodiments herein. Additionally, there may be a third lead 30 with a proximal end 32 in order to couple the lead to the housing 42. The third lead may contain a second end sized for introduction into the patient's heart 90, e.g., into the right atrium 92, through the coronary sinus 97 or other vein of the heart 90. This lead may contain a sensor or electrode 34 designed to sense or deliver electrical activity. This sensor or electrode 34 may sense and/or deliver electrical activity to either the atrial or ventricular tissue. In addition, the third lead 30 may contain a distal end 36 coupled to an additional sensor or electrode 38 to sense and deliver electrical activity to a different location in the heart 90. Similar to the first lead 10 and second lead 20, the third lead 30 may include one or more features, e.g., a screw tip or other anchor, on the distal tip to secure the distal end within the patient's heart 90, e.g., within a distal vein of the coronary sinus 97, similar to typically used pacing leads. This lead may sense and pace electrical activity occurring in the left ventricle 98. In addition, if there is a tachycardia occurring within the right ventricle 96 or the left ventricle 98, the sensors or electrode 28, 34, or 38 may sense and/or deliver electrical activity in order to terminate the tachycardia. In addition, if there is a tachycardia occurring within the right atrium 94 or left atrium (not shown), the sensors or electrodes 18 or 34 may sense and/or deliver electrical activity to terminate the tachycardia. The electrodes 18, 28, 34, or 38 are used to illustrate the delivery of anti-tachycardia pacing (ATP) therapy throughout this description, although any number of electrodes are capable of sensing and delivering electrical energy to the heart 90. The ATP therapy may be used to treat ventricular as well as atrial tachyarrhythmias.

[0054] FIG. 2 shows a simplified functional block diagram of one embodiment of the components located within and connected to the controller 40. The components include a control processor 52 which receives input information from various components in order to determine the pacing algorithm in order to treat the patient. The control processor is connected to pacing circuitry 53, defibrillation circuitry 55, memory 52, and a telemetry interface 55. The pacing circuitry 53 and the defibrillation circuitry 55 connects to the first lead 10, second lead 20, and third lead 30; and ultimately connects to the electrodes, (for example, 18, 28, 34, and 38). These connections allow for multiple capacities to sense electrical activity (such as myocardial depolarizations), deliver pacing stimulations, and/or deliver defibrillation or cardioversion shocks. Based on the input received from the electrodes 18, 28, 34, and 38 through the pacing circuitry 53, the control processor 51 performs calculations to determine the proper course of action, which may include providing ATP therapy to one or more electrodes, providing defibrillation or cardioversion shocks to one or more electrodes through the defibrillation circuitry 55, or no therapy at all. The control processor 51 is connected to a telemetry interface 96. The telemetry interface can wirelessly send and receive data from an external programmer 62 which is coupled to a display module 64 in order to facilitate communication between the control processor 51 and other aspects of the system external to the patient. The control processor 51 may continue to sense electrical activity from one or more electrodes while deliver pacing stimulations to other electrodes. The control processor 51 may store selected data to memory 52, and retrieve stored data as necessary. For example, the control processor 51 may identify key aspects of a tachyarrhythmia in order to effectively differentiate the tachycardia and other key aspects of the tachyarrhythmia in order to optimize the best therapy in order to terminate the tachyarrhythmia.

[0055] FIG. 3 is a graphical representation of overdrive pacing from one electrode while sensing electrical depolarizations from a second electrode. The Fig helps demonstrate how timing measurements can be performed to estimate the Time to Entrainment. The time to entrainment is the total amount of time overdrive pacing must 'gain' on the native tachycardia in order to reach and then accelerate the tachycardia. Therefore, as demonstrated in FIG. 3, the time to entrainment can be estimated by measuring the timing of sensed electrical activity on a second, distal electrode. For example, if a tachyarrhythmia occurs between two electrodes inside of a heart, one electrode may deliver ATP. As soon as the delivered electrical activity creates a depolarizing wavefront that reaches and accelerates the native tachycardia, the second electrode can determine this event. In this event, for example, the time to entrainment can be estimated by adding the prematurity of each paced stimulation (TCL-PCL) minus the amount of tachycardia acceleration. Therefore, the time to entrainment can be estimated as the (TCL-PCL) times the number of pacing stimulations required to entrain the tachycardia minus the amount of tachycardia acceleration on the first entrained stimulation. There may be delay in

the tachycardia due to the shorter paced cycle length. This delay can be estimated by slowing the overdrive pacing cycle length, for example the paced cycle length can be prolonged to approximate the tachycardia cycle length. Another method to estimate the time to entrainment is by summing the difference in time between the paced stimulations and the sensed depolarizations. Again, conduction delay needs to be taken into account.

5 **[0056]** Another method involves measuring the difference in time before pacing and during entrainment (or the first entrainment) between the pacing electrode to the sensing electrode. This time difference is similar to the time described by the N+1 difference (Soejima et al, 2001).

10 **[0057]** In yet another embodiment, the time to entrainment can be estimated by the return cycle of a failed ATP attempt minus the tachycardia cycle length. The return cycle can also be measured by a specific pacing maneuver designed to determine the time to entrainment while minimizing conduction delay within the circuit. For example, the ATP pacing algorithm may deliver a number stimulations until entrainment would likely to have occurred or with evidence of entrainment; followed by deliver of pacing stimulations at a cycle length approximating the tachycardia cycle length. When pacing close to the tachycardia cycle length, the time delay between the stimulation to the sensed electrical depolarization (or far-field morphology analyses demonstrated in FIG. 4) can be used to estimate the time to entrainment. Alternatively, 15 ATP can be stopped; and the resulting post-pacing interval (PPI) or the return interval can be measured to estimate the entrainment time by calculating the PPI minus the tachycardia cycle length. As previously mentioned, the Time to Entrainment can also be estimated by two entrainment maneuvers by electrodes on opposite sides of the reentrant circuit. Of note, as demonstrated in FIG. 3, the third stimulation brings in the sensed depolarization sensed by the sensing electrode. The next interval seen on the sensing electrode has an interval equal to the PCL. This demonstrates that any delay that may have occurred in the paced stimulation on the first entrained stimulation was similar on the second entrained stimulation. However, if the interval measured on the sensing electrode were longer than the PCL, this delay would suggest conduction delay along the path between the pacing electrode and sensing electrode. This embodiment is discussed in more detail in FIG. 10; where this time delay may be utilized to adjust the pacing algorithm in order to facilitate tachycardia termination.

25 **[0058]** FIG. 4A and FIG. 4B reveal an example of intracardiac and far-field morphologies which illustrate how far-field morphology analyses can be utilized to estimate the Time to Entrainment. FIG. 4A reveals the far-field morphology occurring in three different scenarios. The first column demonstrates the far-field morphology occurring when pacing at baseline (when no underlying tachycardia is present). The second column reveals far-field morphology occurring during a tachycardia. In this figure, the timing of the sensed depolarization occurring on the electrogram can be determined in relation to the far-field morphology. In the third column, the entrained far-field morphology is shown. In FIG. 4B, the far-field morphologies are superimposed such that the waveforms overlap. Various computational algorithms and programs can be performed to determine the various off-set required to minimize the difference between waveforms. In yet another embodiment, the waveform analyses can determine the offset required such that the sum of the baseline paced morphology and the baseline tachycardia are arranged such that the sum of these waveforms approximate the entrained tachycardia. When this occurs, the time offset between the paced stimulation and the sensed depolarization on the 30 pacing electrode can be used to estimate the Time to Entrainment. As previously mentioned, this time can be used to optimize the pacing algorithm. Furthermore, with continued pacing, the off-set may prolong indicative of conduction delay occurring within the path of electrical conduction.

35 **[0059]** FIG. 5 a simplified diagram of a reentrant tachycardia circuit within a heart and several pacing electrodes for sensing and/or delivering electrical stimulations according to an embodiment of the present invention. This figure demonstrates a key concept in utilizing more than one electrode to optimize ATP algorithms. In this figure, the plane of the figure represents myocardial tissue capable of propagating depolarizing wavefronts. In this embodiment, there are three electrodes, E1, E2, and E3, each capable of sensing and delivering electrical activity. There is a scar between the electrodes that does not conduct electrical activity. Additionally, there is a an area of slow conduction, within the scar, that is able to conduct electrical activity, but slower than the other, healthier, myocardial tissue. In this example, a reentrant tachycardia can be created which is capable perpetual circular movement through the area of slow conduction and then around the scar. When an electrode obtains tachycardia entrainment, for example, electrode E1, the Time to Entrainment, is roughly the time it takes for the paced stimulation to leave the pacing location (Time $E1_O$) to the "entrance site," plus the time it takes for electrical activity to leave the native circuit from the "exit site" to the pacing location (Time $E1_R$), minus the time it takes to travel in the tachycardia circuit between the exit site and the entrance site (Time $E1_Y$). Therefore, the Entrainment Time for electrode E1 is roughly $E1_O + E1_R - E1_Y$. During pacing at an unchanging pacing cycle length, there will be fusion between the wavefront created from the pacing location and the wavefront created when leaving the tachycardia exit site. These wavefronts collide at various locations depending on circuit morphology, conduction velocities, and other variables. Prior to the tachycardia, the time it takes to conduct electrical signals from one electrode to the others can be measured. For example, pacing from electrode E1 will be sensed by electrodes E2 and E3; and the time delay between stimulation and sensing the depolarizations from these other electrodes can be measured. Given conduction velocities can be variable depending on the pacing cycle length; these time delay can be recorded at various cycle lengths and therefore not necessarily constant. When entrainment has been obtained, the 55

location of wavefront collision (aka fusion) is dependent on a number of variables including the tachycardia cycle length and the pacing cycle length. If entrainment is obtained but the wavefront from the stimulating electrode reaches the distal electrode, this electrode will not be able to determine the timing of entrainment or the Time Delay that may occur in the circuit. The system therefore can measure the baseline conduction time that is required to travel from the pacing electrode (E1) to any other electrode (EX): $\text{StimTime}_{E1 \rightarrow EX}$. In addition, during the tachycardia, the time delay between the sensed signals occurring between the electrode that will pace (E1) and any other electrode (EX) can be measured during the tachyarrhythmia: $\text{ReentrantTime}_{E1 \rightarrow EX}$. The ability of a distal electrode EX to determine the timing of entrainment (as well as Time Delay in the circuit), can be estimated by equation 7 below. The Reentrant Time is the difference in time to leave the exit site and travel to both the pacing electrode E1 and any other electrode EX.

Cannot verify entrainment if:

Time to entrainment – (TCL – PCL) – Time Delay

(7)

> Stim Time_{E1→EX} – Reentrant Time_{E1→EX}

[0060] Therefore, by having more than two electrodes, the probability of having an electrode capable of sensing entrainment is increased. Furthermore, even when the electrode satisfies equation 7; the timing of sensing local signals can be missed [blanked] if the sensing occurs simultaneously with the timing of pacing. Therefore, additional electrodes, even close in proximity, can augment the probability the timing of entrainment can be determined, as well as estimation of Time Delay within the circuit. Furthermore, if the pacing entrance site is close in proximity to the tachycardia exit site, far-field morphology analyses may be limited in its ability to estimate the Time to Entrainment and potential Time Delay. With one or more distal electrodes capable of measuring the entrained tachycardia, the system can estimate entrainment, time delays in the circuit, and tachycardia termination. By correctly measuring and/or estimating these components, ATP pacing algorithms do not need to stop pacing until the tachyarrhythmia is terminated. This describes another example in which ATP algorithms can be optimized to more rapidly and efficiently terminate tachyarrhythmias.

[0061] In yet another embodiment, the system may be able to design the initial anti-tachycardia pacing algorithm based on some measurements. For example, by recording the baseline conduction time from the pacing electrode to at least one additional electrode, and measuring the difference in time between these two electrodes during an episode of tachycardia, the Time to Entrainment may be estimated as the difference of these measurements. This method requires certain assumptions regarding the reentrant circuit and its relationship to the pacing electrodes; however, this method creates a rapid initial ATP algorithm that has a high probability of tachycardia termination. In yet another embodiment, having the device routinely measure conduction times between electrodes, the device may monitor and assess for ischemic episodes. This is because ischemia can change conduction times. Therefore, during a myocardial infarction, the conduction times may change. Therefore, monitoring conduction times may serve as an indicator of ischemia and can alert the patient or care-takers to take action.

[0062] FIG. 6 reveals the relationship between the coupling intervals during a pacing drivetrain and the effective refractory period, also known as the electrical restitution curve. FIG. 6 demonstrates a typical electrical restitution curve seen in ventricular myocardial tissue. In this figure, a pacing train was performed at two cycle lengths, 400ms and 600ms. Then, a coupling stimulation was delivered at various intervals (x-axis) which was followed by a second stimulation S2. The coupling interval predicts the interval of the second stimulus that fails to capture the myocardium (the effective refractory period or ERP). Note how significantly a single coupling interval dramatically affects the ERP of the second premature stimulus. For example, when deliver a pacing train at 400ms, a single stimulus at 230ms is refractory (does not conduct) in the majority of patients. However, if a pacing train is delivered at 400ms, followed by a coupling interval of 260ms, the stimulus at 230ms no longer is refractory for any of the patients in this study. In order to terminate the majority of patients, the second stimulus needs to shorten by over 40ms, and stimulate at less than 190ms in order to reach refractoriness. The electrical restitution curve reveals how dramatically repolarization rates are determined by the previous depolarization interval.

[0063] FIG. 7 is a graphical representation demonstrating the relationship between the pacing prematurity (TCL-PCL), the number of pacing stimulations, the Time to Entrainment, and the amount of tachycardia acceleration on the first entrained stimulation. This figure demonstrates the importance the electrical restitution curve in designing ATP algorithms. In order to 'gain' on the native tachycardia, ATP must pace faster than the TCL. Each paced stimulation gains on the tachycardia by the difference between the TCL and the PCL (the "pacing prematurity"). ATP or overdrive pacing begins to accelerate the tachycardia when the sum of the pacing prematurity is greater than the Time to Entrainment. The first stimulation that accelerates the tachycardia, however, can shorten the TCL by any amount between the TCL and the PCL. With perpetual pacing, the entire tachyarrhythmia will accelerate to the PCL; however, the first stimulation that entrains the tachycardia may only partially accelerate to the PCL. Since the goal of ATP is to reach electrical refractoriness within the reentrant circuit; this partial acceleration can prepare the tissue involved in the reentrant circuit to repolarize

more quickly. Based on mathematical modeling and empirical testing, the amount of acceleration on the first entrained stimulation will dramatically effect whether or not the tachyarrhythmia is terminated at any given PCL. With knowledge of the Time to Entrainment, the prematurity can be arranged such that the first stimulation that accelerates the tachycardia will accelerate the tachycardia to the desired PCL. This arrangement can minimize the partial acceleration occurring on the first entrained stimulation; and help optimize the probability of tachycardia termination.

[0064] FIG. 8 reveals an example of utilizing intracardiac measurements and far-field morphology analyses to determine the Time to Entrainment and Time Delay within the circuit taken from an ATP attempt from an epicardial electrode. In this example, two electrodes are located on roughly opposite sides of a reentrant tachycardia. Pacing is initiated, and the third stimulation reveals the signal was brought in on the distal electrode channel. As discussed previously in relation to FIG. 3, various measurements can be performed at this point to estimate the Time to Entrainment. Furthermore, far-field morphology analysis revealed (as previously discussed in FIG. 4) the overlapping time gain to accelerate by less than predicted by the difference between the TCL and PCL; and therefore the entrainment time can be estimated. Furthermore, as can be seen in the figure, the fourth stimulation also entrained the reentrant tachycardia, however, the stim to sense timing prolonged from 281ms to 290ms. On far-field morphology, the stim to far-field minimum also prolonged by 9ms. Therefore there was 9ms delay somewhere between the pacing electrode and the sensing electrode, usually in areas of slow conduction. These areas of slow conduction usually occur at critical aspects of the reentry tachycardia. In one embodiment (which may be programmable), the device can sense this delay in conduction and continue pacing as long as conduction delay continues to prolong from overdrive pacing (as evidenced from far-field morphology analyses or at least one additional electrode). The device can therefore estimate and record the Time Delay that is occurring.

[0065] FIG. 9 reveals a flow chart of one embodiment to determine the ATP therapy. In Step 1, the device assesses and records the baseline conduction times to various electrodes and pacing morphologies from one or more of the electrodes when the patient is not in tachycardia. These measurements are used for reference when determining if ATP therapies are able to determine entrainment from additional electrodes or far-field pacing morphology analyses.

[0066] In Step 2, the device is programmed to monitor for tachycardia. In Step 3, the device determines the patient is now in a tachyarrhythmia. The criteria of determining criteria for tachycardia have been previously described. In addition, using the timing differences between more than one electrode; and the timing differences between far-field morphology analyses and local activation can help identify and mathematically describe tachyarrhythmias. Additionally, these specific measurements can be recorded and used to identify and differentiate tachyarrhythmias. Later in the algorithm, the device can record the Time to Entrainment from one or additional electrodes and record the Time to Entrainment for a specific electrode for a specific tachyarrhythmia.

[0067] In Step 4, the device assesses whether the newly identified tachyarrhythmia has been previously identified. As mentioned, this is determined by comparing time differences and morphology analyses. If the tachycardia has not been previously identified, we move to Step 5, where the initial ATP algorithm is determined based on the tachycardia cycle length and timing differences between electrodes. For example, the ability to determine entrainment is related to the difference in time between the sensed local activation and the paced time delays between electrodes. The device could determine which electrodes have the greatest probability of being located on opposite sides of the reentrant circuit. In addition, the device may be programmed to deliver ATP from the latest (or earliest) local activation or in relation to baseline timing differences.

[0068] If the original tachycardia had been previously identified, we move from Step 4 to Step 6. In this Step, previously successful and unsuccessful ATP attempts can be incorporated into the device to determine the first ATP pacing algorithm. In addition, as previously discussed, recorded Time to Entrainments for this particular tachycardia can be used such that the pacing prematurity is arranged such that the first pacing stimulation to accelerate the native reentrant circuit fully accelerates the reentrant circuit by the difference between the TCL and the chosen PCL. In this manner, partial acceleration is minimized. The first stimulation that accelerates the tachycardia can be shortened if prior attempts failed to terminate on the first accelerating stimulation. In addition, if the first stimulation attempting to accelerate/terminate the tachyarrhythmia fails to capture, the pacing prematurity can be arranged to facilitate local capture. This can be done by gradually increasing the pacing prematurity as a way of 'priming' local myocardium to accept the shorter paced cycle length.

[0069] Regardless of the ATP pacing algorithm, both Step 5 and Step 6 move to Step 7 and deliver the ATP as programmed. Timing delays from distal electrodes, far-field analyses, and evoked potentials can be used to determine local capture. Additionally, the return cycle can be used to determine if the pacing stimulations captured the myocardium. Additionally, the exact stimulation which did not capture the myocardium can be identified and used to adjust the ATP pacing strategy.

[0070] FIG. 10 further reveals a flow chart of one embodiment that may occur once the device delivers ATP in Step 7. At Step 8, the device may monitor and/or perform far-field morphology analyses and the time measurement from the timing of stimulation to local capture measured from electrodes. Until entrainment occurs, these measured times should prolong by the pacing prematurity unless the stimulated wavefront time directly reaches the electrodes. This time meas-

urement, as previously described, is recorded prior to the patient going into the tachyarrhythmia. Therefore, the device can determine if the measured premature signal occurs from direct signal propagation versus the entrained wavefront from the native tachycardia. In Step 9, during an ATP attempt, the device is constantly assessing for evidence of tachycardia termination, a significant change in the tachyarrhythmia, or tachycardia acceleration. If either of these circumstances are met, the device may stop pacing and re-assess the rhythm as in Step 10. Tachyarrhythmia termination, change, or acceleration may be monitored by far-field morphology analyses and/or the rate and relationship among sensed signals from various electrodes.

[0071] In Step 11, once the ATP is stopped, the device will measure the return cycle length, determine if the patient remains in a tachyarrhythmia, categorize the most recent pacing strategy was successful or unsuccessful at terminating the tachyarrhythmia. If unsuccessful, the device may shorten the pacing cycle length (PCL) to be more aggressive or change the pacing location depending on the settings programmed into the device.

[0072] Now moving back to Step 8, the device may obtain evidence that the ATP attempt has successfully entrained the tachyarrhythmia as in Step 12. At this point, the device will estimate the Time to Entrainment for this identified tachyarrhythmia and use this measurement should this tachyarrhythmia be identified again and attempt to deliver therapy.

In one embodiment, the device proceeds to Step 13, where the device continues to deliver pacing stimulations as long as the device measures a prolonging Time Delay. The Time Delay is estimated by a prolongation of stimulation to sensed signal (either from a second electrode or from far-field morphology analyses). The amount of prolongation the device identifies as significant can be preprogrammed and adjustable. Often, however, persistent pacing at a constant cycle length will gradually slow in critical aspects of the arrhythmic circuit and then finally terminate the tachycardia. The first stimulation that does not conduct through the arrhythmic circuit in the orthograde direction can be detected by the device in terms of far-field morphology or a distal electrode as long as the conduction times satisfy equation 7 at which point the device may transition to Step 9.

[0073] Once the Time Delay is minimal or less than the programmed determined amount of time, in one embodiment, the device may deliver one or more stimulations at the TCL plus the amount of measured Time Delay as in Step 14. In another embodiment, the device may deliver this priming stimulation at an interval that is determined by the TCL and/or the Time Delay but not necessarily the TCL or the sum of the TCL plus the Time Delay. This priming stimulation prolongs the interval seen by critical aspects of the reentrant circuit while maintaining access to the arrhythmic circuit by the pacing electrode. After delivering one or more priming stimulations, the device can then deliver a pacing stimulation at a shorter pacing cycle length with an increased probability of tachycardia termination. This interval may be the same pacing cycle length (PCL) as the prior pacing stimulation(s) or may be adjusted based on programmable or algorithmic features.

[0074] If the tachyarrhythmia does not terminate on this stimulation the device may transition back to Step 13 and continue pacing at the PCL; or the device may proceed to Step 15, where the device may shorten the PCL after the priming stimulation. Alternatively, the device may deliver additional priming stimulations, change the pacing location, or stop pacing altogether. The decision tree can be adjustable based on the TCL and prior attempts. That is, with shorter TCL, the device may be more aggressive by shortening the PCL rapidly. Alternatively, if the tachyarrhythmia is prone to tachycardia acceleration or fibrillation, the device may shorten the PCL more gradually. Each of the steps S13, S14, and S15 are all working in tandem such that the device is delivering ATP while adjusting the ATP based on measured responses from other electrodes or far-field morphology analyses. Furthermore, the device may sense changes in the signals consisted with tachycardia termination (moving to Step 9) or lose the ability to identify termination, in which case the system moves to Step 10.

[0075] In Step 10, the timing relationships between electrodes do not satisfy equation 7; or the far-field morphology analyses reveals the pacing morphology (gradual fusion) to match the morphology with isolated pacing in the absence of an underlying tachycardia. This can occur when the tachycardia morphology is similar to the paced morphology from the pacing electrode or when the entrance and exit locations for the entrained tachycardia are close in proximity. In this situation, the device cannot definitively determine when the tachycardia has terminated or accelerated. Therefore, the device must occasionally stop delivery of ATP in order to assess the heart and the rhythm. In these circumstances, the device may move to Step 16, where ATP is driven by protocol. In addition, the device can deliver enough pacing stimulations sufficient to obtain entrainment.

[0076] In one embodiment, the device may deliver one or more stimulations close to the TCL ("priming stimulations") followed by one or more stimulations at a shorter cycle length. Alternatively, the device may simply stop ATP and (moving to Step 17), measure the return cycle (the post-pacing interval). This interval can be used to 1) verify the tachycardia was entrained and 2) determine the Time to Entrainment. When the tachycardia requires more than two attempts to pace terminate the tachyarrhythmia, the resulting return cycle length can be measured as well as any Time Delay associated with the shorter cycle lengths. In one embodiment, a priming stimulation utilizing the Time Delay can be delivered to facilitate tachycardia termination even when entrainment cannot be verified during pacing. Again, the Time to Entrainment can be used to arrange the initial pacing stimulations to minimize partial acceleration on the first accelerating pacing stimulation.

[0077] After delivering ATP and measuring the return interval, the device can return to Step 2 and assess the tach-

yarrhythmia. The device can identify if the prior ATP strategy was successful or unsuccessful and use this information to guide the ATP algorithm.

[0078] FIG. 11 is a graphical representation of deliver an anti-tachycardia pacing therapy according to one embodiment of the present invention. Depolarizations or signals sensed by the pacing channel electrode are labeled S1 and S2. The distal channel electrode has a line when it senses depolarizations or signals. ATP pulses are labeled with ATP1 being the first pacing stimulation and ATP9 is the last pacing stimulation. The time interval between the first and second sensed signals is the tachycardia cycle length (TCL). The TCL, the timing differences between electrodes, and the far-field morphology (not shown) can be used to identify the tachycardia ("Tachycardia Identifiers"). The sensed signals can alert the Control Processor of the tachycardia and determines the ATP pacing strategy. The device begins delivering ATP pulses. If the Time to Entrainment had previously been recorded for this tachycardia, the device would arrange the initial pacing prematurity such that the sum prematurity is equal to the Time to Entrainment. The following pacing stimulation would then completely accelerate the arrhythmic circuit by the pacing prematurity of that paced stimulation (TCL-PCL).

[0079] In FIG. 11, the third pacing stimulation brings in the sensed signal on the distal channel. Assuming this time is shorter than the previously recorded conduction time between these electrodes, this would suggest the tachycardia has been entrained, which may signal to the processor the tachycardia is now being advanced by the pacing stimulations. The pacing prematurities can be summed to the point of tachycardia advancement to estimate the Time to Entrainment; alternatively the difference in time from the Stim to sensed signal on the distal channel between the first entrained stimulation and the baseline tachycardia can be used to estimate the Time to Entrainment. In the graphical representation, note the fourth pacing stimulation should be completely entrained (advanced to the pacing cycle length), however, there is a prolongation in the stimulation to sensed time on the distal channel. This prolongation can be attributed to conduction delay within the myocardium and can be used to estimate the Time Delay (TD1). The fifth ATP pacing stimulation notes a stable Time Delay. Therefore, in one embodiment, the device delivers a "Priming" stimulation, by delivering a stimulation with the interval of the TCL plus the TD1 (or some percentage of the TCL plus the TD1). In yet another embodiment, the device may deliver one or more pacing stimulations at the original tachycardia cycle length or substantially similar to the tachycardia cycle length.

[0080] In other embodiments, this "priming" stimulation can deliver one or more pacing stimulations at or near the TCL. The device then delivers a pacing stimulation with a shorter interval. In this example, the tachycardia does not terminate (there is a sensed signal from ATP 7) and there was no measured conduction delay (the interval equals the PCL). Had the device measured a conduction delay, the device could have continued delivering ATP therapy at the same PCL. In the current embodiment, the device delivers a second "priming" stimulation, followed by a PCL at a shorter cycle length (PCL2). In this example, the sensed signal on the distal channel does not sense a signal (the amount of delay deemed significant can be programmed) and therefore can identify the tachycardia as terminated and pacing is stopped in order to assess the rhythm.

[0081] Sometimes, the Time Delay measured occurs from conduction changes or circuit changes at locations other than the arrhythmic circuit, for example, near the pacing electrode. In this scenario, delivering priming stimulations at the TCL plus the TD1 will result in loss of entrainment to the arrhythmic circuit. The time interval between the stimulation and the sensed signal on the distal channel can be used to identify and the ATP pacing algorithm can be adjusted to correct for this. In FIG. 11, note the sensed signals sometimes occur simultaneously with the ATP stimulations. When this occurs, crosstalk can prevent this signal from being measured. Therefore, as previously discussed, sensing from more than one sensing channels can help monitor the tachyarrhythmia during ATP therapy. Therefore, the multiple sensing electrodes can be used in combination (and in conjunction with far-field morphology analyses) to assess for entrainment, conduction delay, and changes in the tachyarrhythmia (such as termination or acceleration). Therefore, in one embodiment, catheters with two or more electrodes are described in order to sense cardiac depolarizations from more than one location in order to avoid sensing issues (blanking), which may occur when otherwise sensing from one location.

[0082] While the invention is susceptible to various modifications, and alternative forms, specific examples thereof have been shown in the drawings and are herein described in detail. It should be understood, however, that the invention is not to be limited to the particular forms disclosed, but to the contrary, the invention is to cover all modifications, equivalents and alternatives falling within the scope of the appended claims.

Claims

1. A system for delivering therapy to terminate a tachycardia event in a heart of a patient, comprising:

a pacing device configured to be implanted in the patient's body and comprising a processor (40, 51);
a plurality of electrodes (18, 28, 34) coupled to the processor and sized for implantation within the patient's body;
wherein the processor is configured to:

sense cardiac signals from the heart and detect a tachycardia event in response to the sensed cardiac signals;
 deliver one or more pacing pulses to the heart, via one or more pacing electrodes, the pacing pulses having one or more pacing cycle lengths;
 5 monitor cardiac signals during the delivery of the one or more pacing pulses to identify tachycardia termination/block within the reentrant circuit; and
 adjust the delivery of the one or more pacing pulses in response to the monitored cardiac signals, wherein the tachycardia termination/block within the reentrant circuit is identified by the processor by monitoring cardiac signals using one or more sensing electrodes other than the one or more pacing electrodes.
 10

2. The system of claim 1, wherein the processor is further configured to record one or more conduction intervals from the one or more pacing electrodes to the one or more sensing electrodes when not in a reentrant tachycardia when not in a reentrant tachycardia in order to assist in monitoring the reentrant tachycardia.

15 3. The system of claim 1, wherein the processor is configured to identify tachycardia termination/block within the reentrant circuit by measuring dynamic responses occurring from the timing intervals of cardiac signals from the one or more sensing electrodes other than the one or more pacing electrodes.

20 4. The system of claim 1, wherein monitoring cardiac signal(s) during the delivery of the one or more pacing pulses comprises measuring a time interval between sensed cardiac signals by the one or more sensing electrodes.

25 5. The system of claim 4, wherein the processor is configured to identify tachycardia termination/block within the reentrant circuit by monitoring changes in time intervals between sensed cardiac signals by the one or more sensing electrodes during the delivery of the one or more pacing pulses.

6. The system of claim 1, wherein monitoring cardiac signal(s) during the delivery of the one or more pacing pulses comprises measuring a time interval between stimulation by the one or more pacing electrodes and the sensed cardiac signals by the one or more sensing electrodes.

30 7. The system of claim 6, wherein the processor is configured to identify tachycardia termination/block within the reentrant circuit by monitoring changes in time intervals between the stimulation by the one or more pacing electrodes and the sensed cardiac signals by the one or more sensing electrodes during the delivery of the one or more pacing pulses.

35 8. The system of claim 2, wherein the processor is further configured to estimate when the tachycardia has been advanced/entrained by paced pulses, continue to deliver pacing pulses at cycle lengths substantially similar to the one or more pacing cycle lengths, and measure the time delay corresponding to conduction delay within and outside of the reentrant circuit by measuring interval changes between the one or more pacing electrodes and the at least one sensing electrode.

40 9. The system of claim 8, wherein the processor is further configured to continue to deliver pacing pulses at the same or similar pacing cycle length until the amount of measured time delay is unchanged for two consecutive pulses within a specified threshold.

45 10. The system of claim 9, wherein the processor is further configured to adjust the delivery of pacing pulses to include delivering one or more priming pulses with one or more priming pulse intervals longer than the one or more pacing cycle length used to advance/entrain the tachycardia via the one or more pacing electrodes, and, thereafter, delivering at least one accelerating pulse with one or more accelerating pulse intervals shorter than the one or more priming pacing pulse intervals to the heart via the one or more electrodes.

50 11. The system of claim 10, wherein the processor is further configured to determine the priming pulse cycle length at least in part by the measured time delay and the tachycardia cycle length.

55 12. The system of claim 11, wherein the processor is further configured such that, if processor does not identify the tachycardia as terminated nor loses the ability to identify tachycardia termination, the processor continues to alternate between delivery of at least one priming pulse with a longer pulse interval followed by at least one accelerating pulse at a shorter pulse interval; and wherein at least one accelerating pulse interval is shortened with each iteration such that the measured amount of time delay is unchanged for consecutive accelerating pacing pulses within a specified

threshold.

Patentansprüche

5

1. System zur Abgabe von Therapie zur Beendigung eines Tachykardieereignisses in einem Herzen eines Patienten, umfassend:

10

eine Schrittmachervorrichtung, die konfiguriert ist, um in den Körper des Patienten implantiert zu werden, und die einen Prozessor (40, 51) umfasst;
eine Vielzahl von Elektroden (18, 28, 34), die mit dem Prozessor gekoppelt und dimensioniert sind zur Implantation in den Körper des Patienten, wobei der Prozessor zu Folgendem konfiguriert ist:

15

Erfassen von Herzsignalen aus dem Herzen und Erkennen eines Tachykardieereignisses als Reaktion auf die erfassten Herzsignale;

Abgabe von einem oder mehreren Schrittmacherimpulsen über eine oder mehrere Schrittmacherelektroden an das Herz, wobei die Schrittmacherimpulse eine oder mehrere Schrittmacherzykluslängen aufweisen;

Überwachung von Herzsignalen während der Abgabe des einen oder der mehreren Schrittmacherimpulse, um die Beendigung/Blockierung einer Tachykardie innerhalb der ablaufinvarianten Schaltung zu erkennen;

20

und

Einstellen der Abgabe des einen oder der mehreren Schrittmacherimpulse als Reaktion auf die überwachten Herzsignale,

wobei die Tachykardie-Beendigung/-Blockierung innerhalb der ablaufinvarianten Schaltung durch den Prozessor durch Überwachen von Herzsignalen unter Verwendung einer oder mehrerer Sensorelektroden,

25

die anders sind als die eine oder die mehreren Schrittmacherelektroden, erkannt wird.

2. System nach Anspruch 1, wobei der Prozessor ferner konfiguriert ist, um ein oder mehrere Leitungsintervalle von der einen oder den mehreren Schrittmacherelektroden zu der einen oder den mehreren Sensorelektroden aufzuzeichnen, wenn nicht in einer ablaufinvarianten Tachykardie befindlich, um die Überwachung der ablaufinvarianten Tachykardie zu unterstützen.

30

3. System nach Anspruch 1, wobei der Prozessor konfiguriert ist, um die Beendigung/ Blockierung einer Tachykardie innerhalb der ablaufinvarianten Schaltung durch Messen dynamischer Reaktionen zu erkennen, die aus den Taktintervallen von Herzsignalen aus der einen oder den mehreren Sensorelektroden auftreten, die anders sind als die eine oder die mehreren Schrittmacherelektroden.

35

4. System nach Anspruch 1, wobei das Überwachen des/der Herzsignale(s) während der Abgabe des einen oder der mehreren Schrittmacherimpulse das Messen eines Zeitintervalls zwischen den erfassten Herzsignalen durch die eine oder die mehreren Messelektroden umfasst.

40

5. System nach Anspruch 4, wobei der Prozessor konfiguriert ist, um die Beendigung/ Blockierung einer Tachykardie innerhalb der ablaufinvarianten Schaltung durch Überwachung von Änderungen in Zeitintervallen zwischen den erfassten Herzsignalen durch die eine oder die mehreren Messelektroden während der Abgabe des einen oder der mehreren Schrittmacherimpulse zu erkennen.

45

6. System nach Anspruch 1, wobei das Überwachen von Herzsignal(en) während der Abgabe des einen oder der mehreren Schrittmacherimpulse das Messen eines Zeitintervalls zwischen der Stimulation durch die eine oder die mehreren Schrittmacherelektroden und den durch die eine oder die mehreren Sensorelektroden erfassten Herzsignalen umfasst.

50

7. System nach Anspruch 6, wobei der Prozessor konfiguriert ist, um die Beendigung/ Blockierung einer Tachykardie innerhalb der ablaufinvarianten Schaltung durch Überwachen von Änderungen in Zeitintervallen zwischen der Stimulation durch die eine oder die mehreren Schrittmacherelektroden und den durch die eine oder die mehreren Messelektroden erfassten Herzsignalen während der Abgabe des einen oder der mehreren Schrittmacherimpulse zu erkennen.

55

8. System nach Anspruch 2, wobei der Prozessor ferner konfiguriert ist, um abzuschätzen, wann die Tachykardie durch Schrittmacherimpulse vorangetrieben/weitergeführt wurde, weiterhin Schrittmacherimpulse bei Zykluslängen

abzugeben, die im Wesentlichen dem einen oder den mehreren Schrittmacherzykluslängen ähnlich sind, und die Zeitverzögerung, die einer Leitungsverzögerung innerhalb und außerhalb der ablaufinvarianten Schaltung entspricht, durch Messen von Intervalländerungen zwischen der einen oder den mehreren Schrittmacherelektroden und der mindestens einen Messelektrode zu messen.

- 5
9. System nach Anspruch 8, wobei der Prozessor ferner konfiguriert ist, um weiterhin Schrittmacherimpulse mit der gleichen oder ähnlichen Schrittmacherzykluslänge abzugeben, bis der Betrag der gemessenen Zeitverzögerung für zwei aufeinanderfolgende Impulse innerhalb eines bestimmten Schwellenwerts unverändert ist.
- 10
10. System nach Anspruch 9, wobei der Prozessor ferner konfiguriert ist, um die Abgabe von Schrittmacherimpulsen einzustellen, um einen oder mehrere Starterimpulse mit einem oder mehreren Starterimpulsintervallen einzuschließen, die länger sind als die eine oder die mehreren Schrittmacherzykluslängen, die verwendet werden, um die Tachykardie über die eine oder die mehreren Schrittmacherelektroden voranzutreiben/weiterzuführen, und danach Abgabe von mindestens einem Beschleunigungsimpuls mit einem oder mehreren Beschleunigungsimpulsintervallen, die kürzer sind als der eine oder die mehreren Starter-Schrittmacherimpulsintervalle, an das Herz über die eine oder die mehreren Elektroden.
- 15
11. System nach Anspruch 10, wobei der Prozessor ferner konfiguriert ist, um die Starterimpuls-Zykluslänge zumindest teilweise durch die gemessene Zeitverzögerung und die Tachykardie-Zykluslänge zu bestimmen.
- 20
12. System nach Anspruch 11, wobei der Prozessor ferner so konfiguriert ist, dass, wenn der Prozessor weder die Tachykardie als beendet erkennt noch die Fähigkeit verliert, die Beendigung der Tachykardie zu erkennen, der Prozessor weiterhin zwischen der Abgabe mindestens eines Starterimpulses mit einem längeren Impulsintervall gefolgt von mindestens einem Beschleunigungsimpuls bei einem kürzeren Impulsintervall wechselt; und wobei mindestens ein Beschleunigungsimpulsintervall mit jeder Iteration so verkürzt wird, dass der gemessene Zeitverzögerungsbetrag für aufeinanderfolgende Beschleunigungsschrittmacherimpulse innerhalb eines festgelegten Schwellenwerts unverändert ist.
- 25

30 **Revendications**

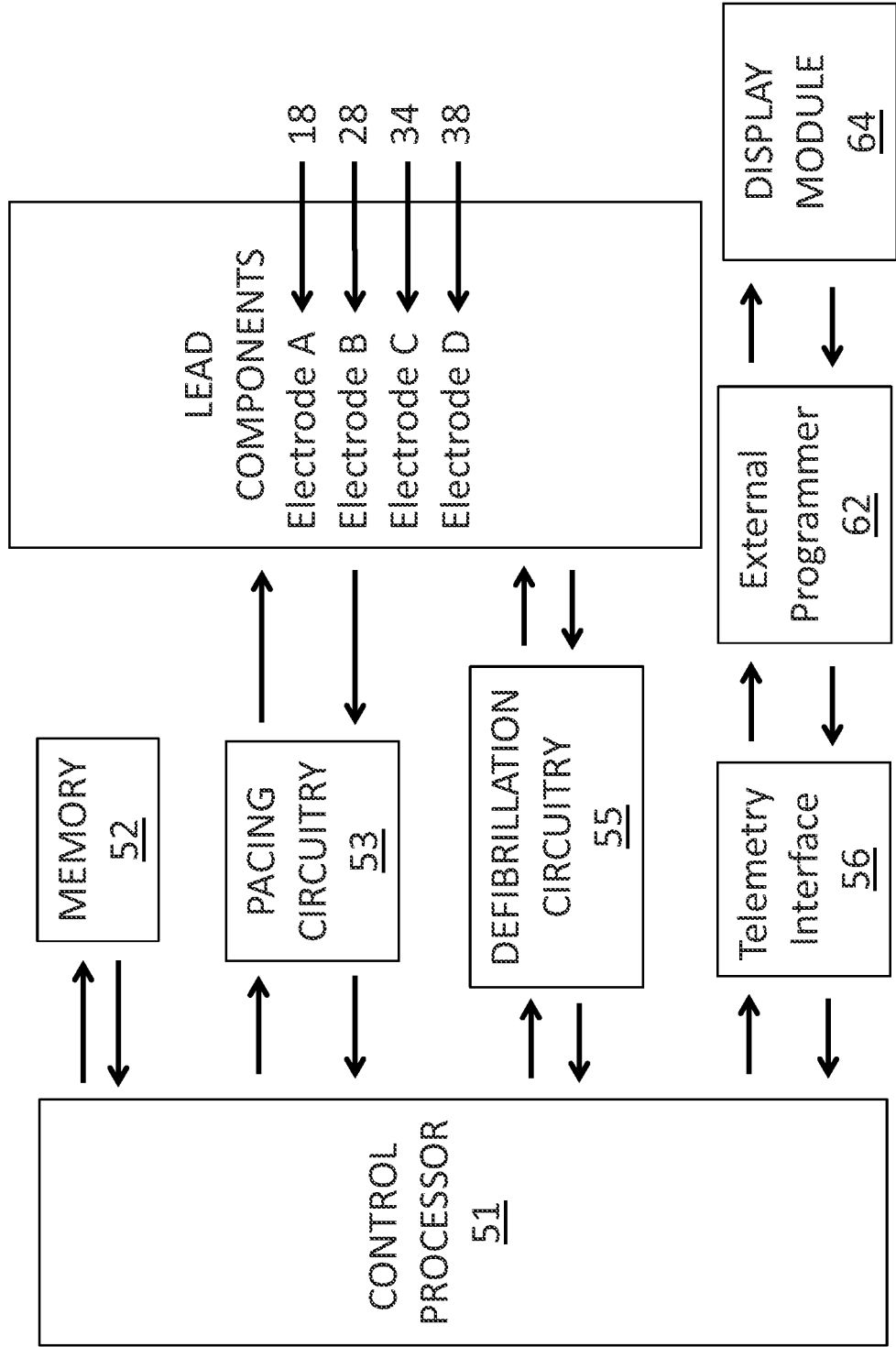
1. Système d'administration d'une thérapie pour mettre fin à un événement de tachycardie dans le coeur d'un patient, comprenant :
- 35 un dispositif de stimulation configuré pour être implanté dans le corps du patient et comprenant un processeur (40, 51) ;
 une pluralité d'électrodes (18, 28, 34) couplées au processeur et dimensionnées pour une implantation dans le corps du patient ;
 dans lequel le processeur est configuré pour :
- 40 détecter des signaux cardiaques provenant du coeur et détecter un événement de tachycardie en réponse aux signaux cardiaques détectés ;
 délivrer une ou plusieurs impulsions de stimulation au coeur, via une ou plusieurs électrodes de stimulation, les impulsions de stimulation ayant une ou plusieurs longueurs de cycle de stimulation ;
 45 surveiller des signaux cardiaques pendant l'administration des une ou plusieurs impulsions de stimulation pour identifier un arrêt/un blocage de la tachycardie dans le circuit réentrant ; et
 ajuster l'administration des une ou plusieurs impulsions de stimulation en réponse aux signaux cardiaques surveillés,
 dans lequel l'arrêt/le blocage de tachycardie à l'intérieur du circuit réentrant est identifié par le processeur
 50 en surveillant des signaux cardiaques en utilisant une ou plusieurs électrodes de détection autres que les une ou plusieurs électrodes de stimulation.
2. Système selon la revendication 1, dans lequel le processeur est en outre configuré pour enregistrer un ou plusieurs intervalles de conduction à partir des une ou plusieurs électrodes de stimulation vers les une ou plusieurs électrodes de détection lorsqu'il n'est pas dans une tachycardie réentrante afin d'aider à surveiller la tachycardie réentrante.
- 55
3. Système selon la revendication 1, dans lequel le processeur est configuré pour identifier un arrêt/un blocage de tachycardie dans le circuit réentrant en mesurant des réponses dynamiques se produisant à partir des intervalles

EP 3 174 459 B1

de synchronisation des signaux cardiaques provenant des une ou plusieurs électrodes de détection autres que les une ou plusieurs électrodes de stimulation.

- 5 4. Système selon la revendication 1, dans lequel la surveillance du ou des signaux cardiaques lors de l'administration des une ou plusieurs impulsions de stimulation comprend la mesure d'un intervalle de temps entre des signaux cardiaques détectés par les une ou plusieurs électrodes de détection.
- 10 5. Système selon la revendication 4, dans lequel le processeur est configuré pour identifier un arrêt/un blocage de tachycardie dans le circuit réentrant en surveillant des changements dans les intervalles de temps entre les signaux cardiaques détectés par les une ou plusieurs électrodes de détection pendant l'administration des une ou plusieurs impulsions de stimulation.
- 15 6. Système selon la revendication 1, dans lequel la surveillance du ou des signaux cardiaques lors de l'administration des une ou plusieurs impulsions de stimulation comprend la mesure d'un intervalle de temps entre une stimulation par les une ou plusieurs électrodes de stimulation et les signaux cardiaques détectés par les une ou plusieurs électrodes de détection.
- 20 7. Système selon la revendication 6, dans lequel le processeur est configuré pour identifier un arrêt/un blocage de tachycardie dans le circuit réentrant en surveillant des changements dans des intervalles de temps entre la stimulation par les une électrodes de stimulation et les signaux cardiaques détectés par le ou les capteurs de détection électrodes lors de la délivrance de la ou des impulsions de stimulation.
- 25 8. Système selon la revendication 2, dans lequel le processeur est en outre configuré pour estimer quand la tachycardie a été avancée/entraînée par des impulsions stimulées, continuer à administrer des impulsions de stimulation à des longueurs de cycle sensiblement similaires aux une ou plusieurs longueurs de cycle de stimulation, et mesurer le retard correspondant au retard de conduction à l'intérieur et à l'extérieur du circuit réentrant en mesurant des changements d'intervalle entre les une ou plusieurs électrodes de stimulation et la au moins une électrode de détection.
- 30 9. Système selon la revendication 8, dans lequel le processeur est en outre configuré pour continuer à administrer des impulsions de stimulation à une longueur de cycle de stimulation identique ou similaire, jusqu'à ce que la quantité de retard mesuré ne soit pas modifiée pour deux impulsions consécutives sous un seuil spécifié.
- 35 10. Système selon la revendication 9, dans lequel le processeur est en outre configuré pour ajuster l'administration d'impulsions de stimulation afin d'inclure l'administration d'une ou plusieurs impulsions d'amorçage avec un ou plusieurs intervalles d'impulsion d'amorçage plus longs que les une ou plusieurs longueurs de cycles de stimulation utilisés pour faire avancer/entraîner la tachycardie via les une ou plusieurs électrodes de stimulation et, ensuite, administrer au moins une impulsion d'accélération avec un ou plusieurs intervalles d'impulsion d'accélération plus courts que les un ou plusieurs intervalles d'impulsion de stimulation d'amorçage vers le coeur via les une ou plusieurs électrodes.
- 40 11. Système selon la revendication 10, dans lequel le processeur est en outre configuré pour déterminer la longueur de cycle d'impulsion d'amorçage au moins en partie par le retard mesuré et la longueur de cycle de tachycardie.
- 45 12. Système selon la revendication 11, dans lequel le processeur est en outre configuré de telle sorte que, si le processeur n'identifie pas la tachycardie comme étant terminée ni ne perd la capacité d'identifier l'arrêt de la tachycardie, le processeur continue d'alterner entre l'administration d'au moins une impulsion d'amorçage avec une intervalle d'impulsion plus long suivie d'au moins une impulsion d'accélération à un intervalle d'impulsion plus court ; et dans lequel au moins un intervalle d'impulsion d'accélération est raccourci à chaque itération, de sorte que la quantité de retard mesurée est inchangée pour des impulsions de stimulation accélérant consécutives sous un seuil spécifié.
- 50
- 55

FIGURE 2



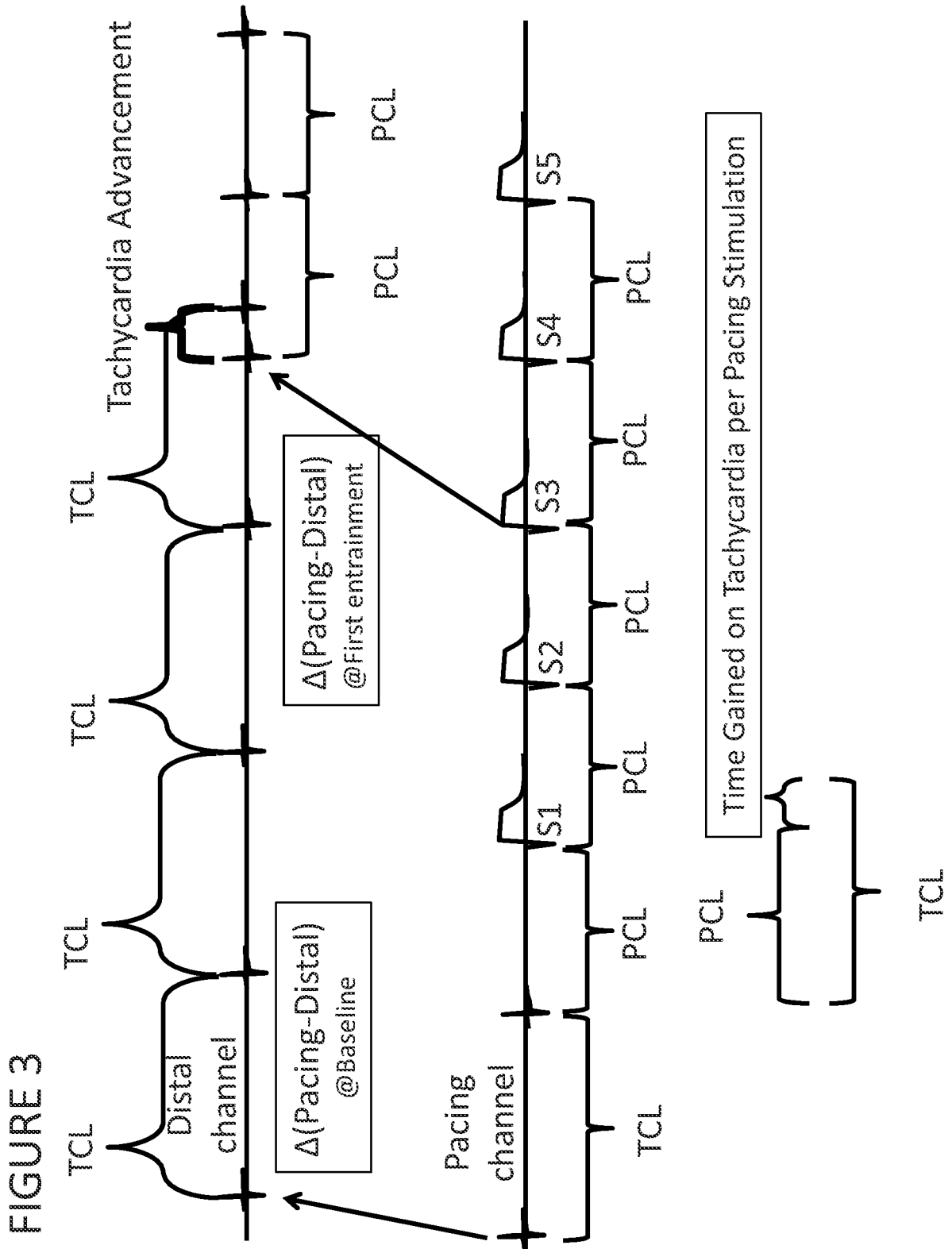
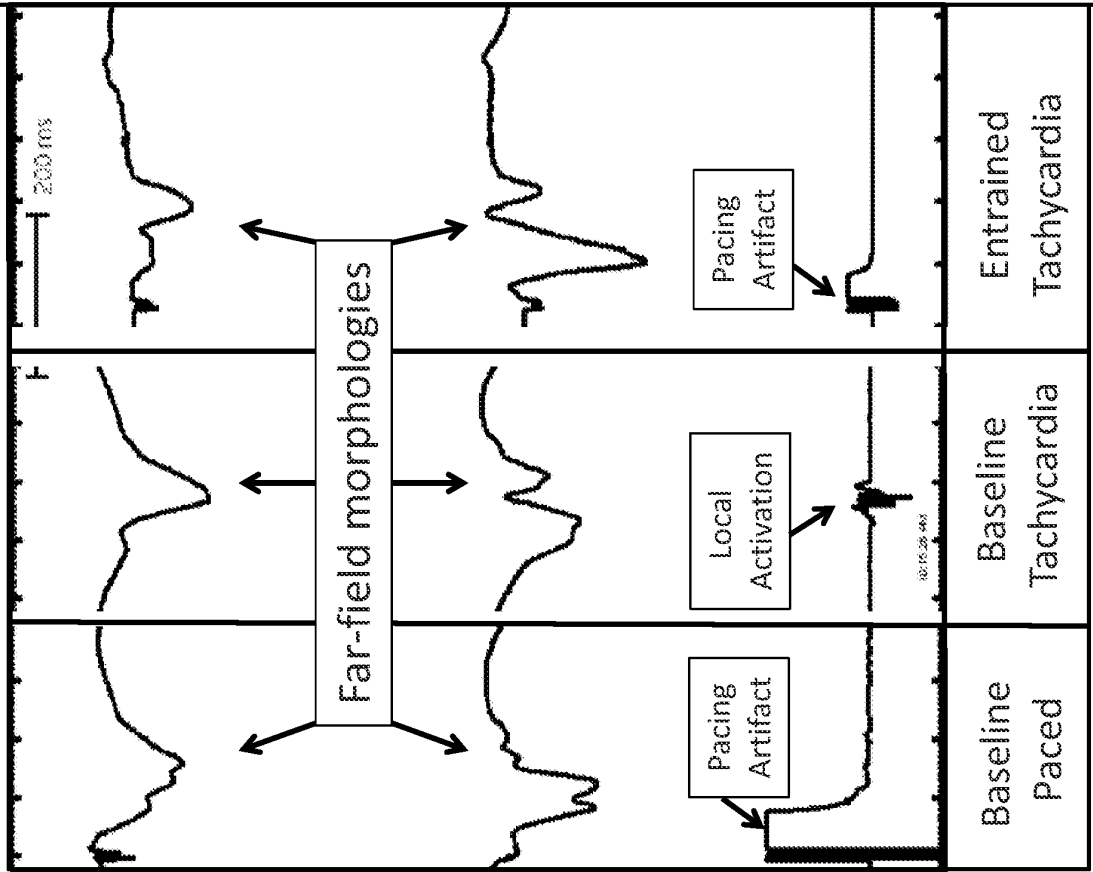


FIGURE 3

Figure 4
4A



4B

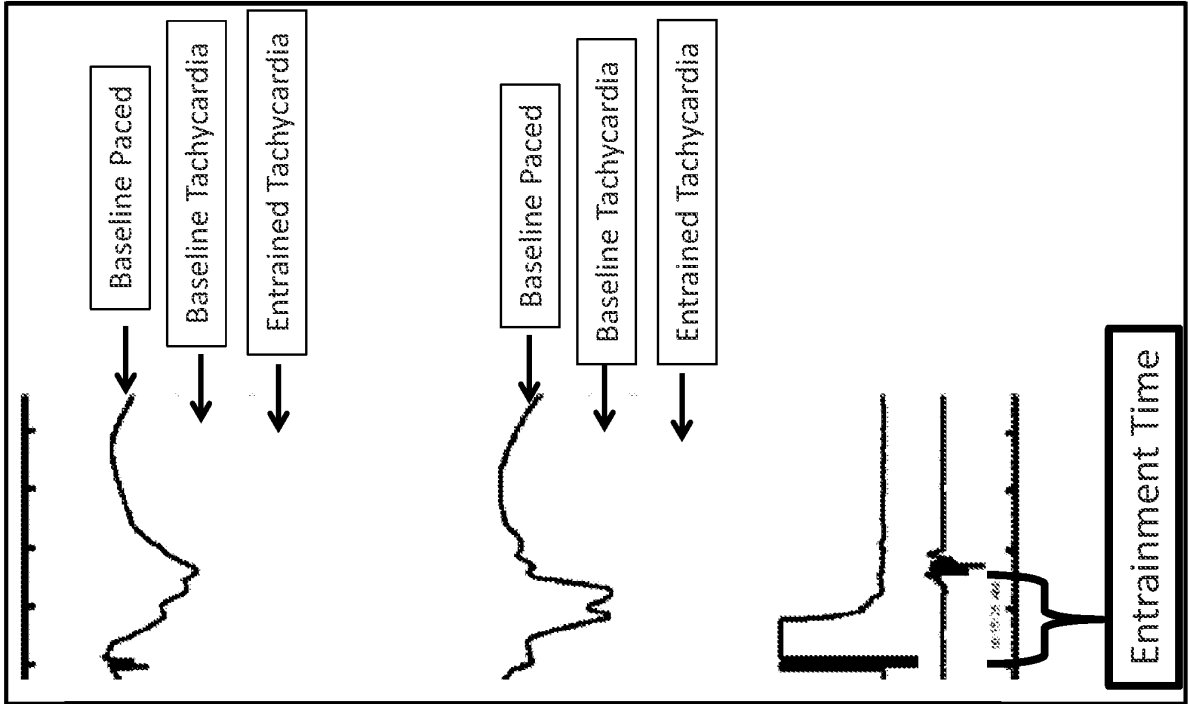


Figure 5

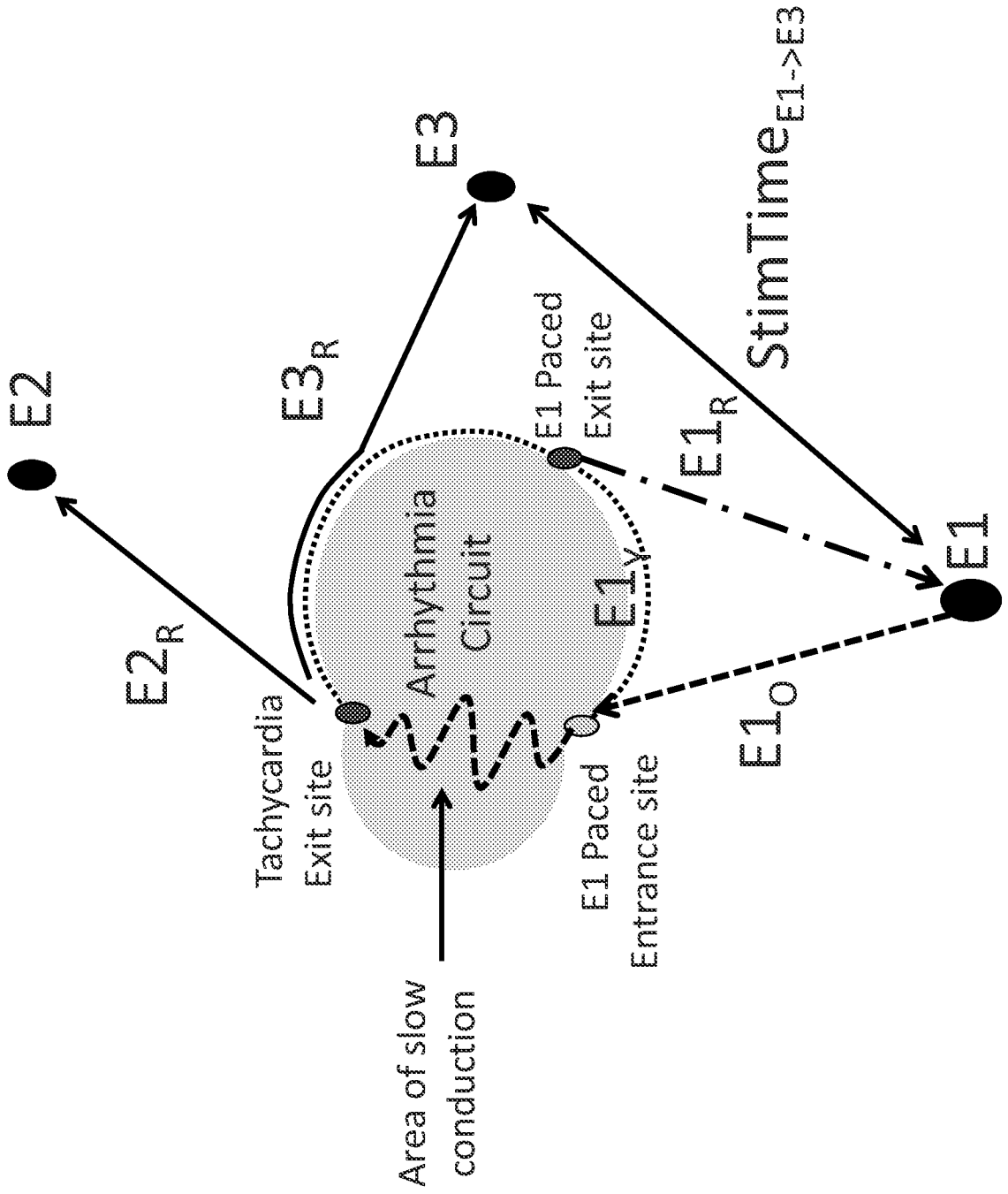


FIGURE 6

CHANGES IN VENTRICULAR EFFECTIVE REFRACTORY PERIOD AFTER EXTRASTIMULI

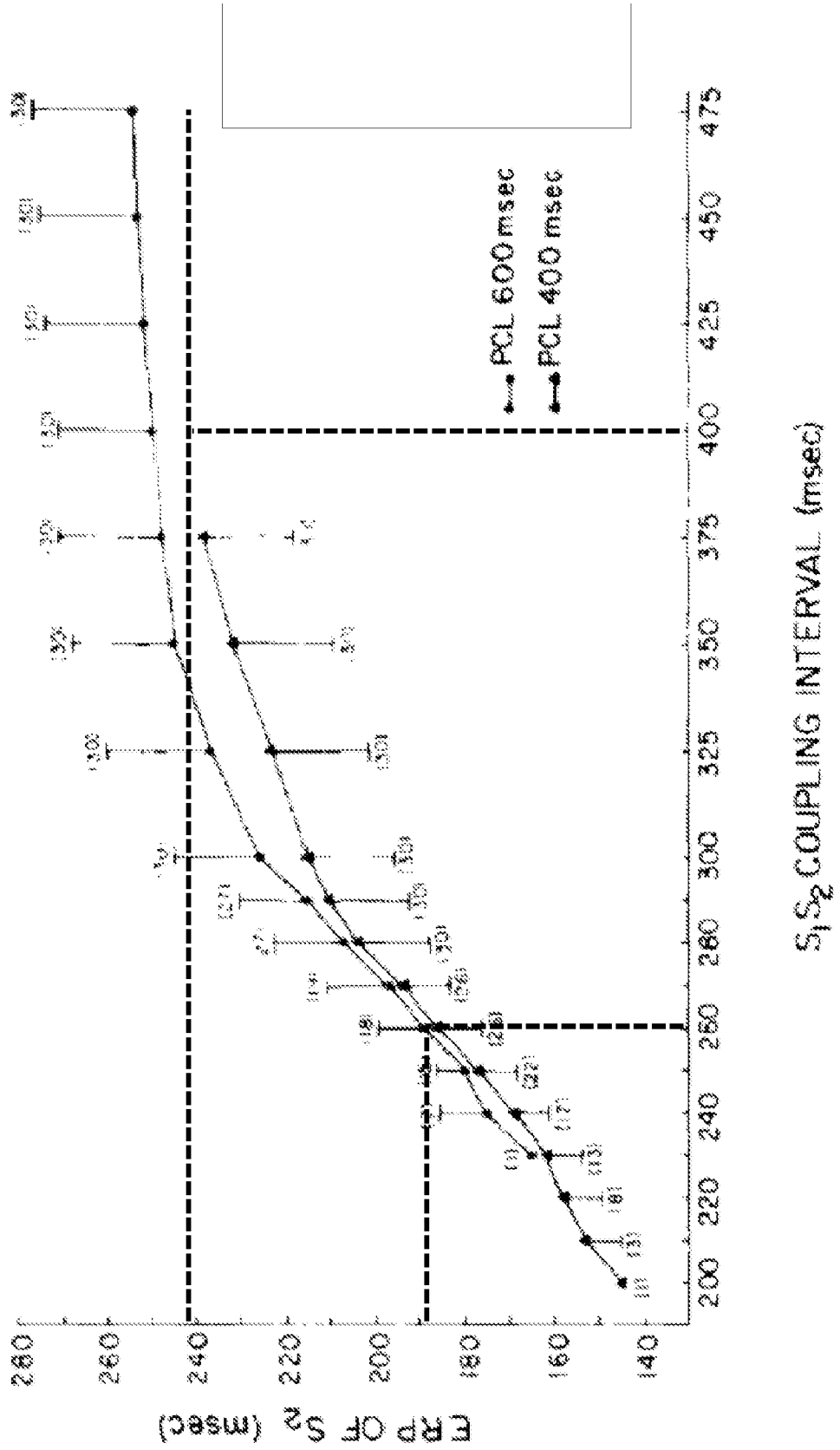


FIGURE 7 Initial pacing algorithm will affect tachycardia acceleration on the first entrained stimulation

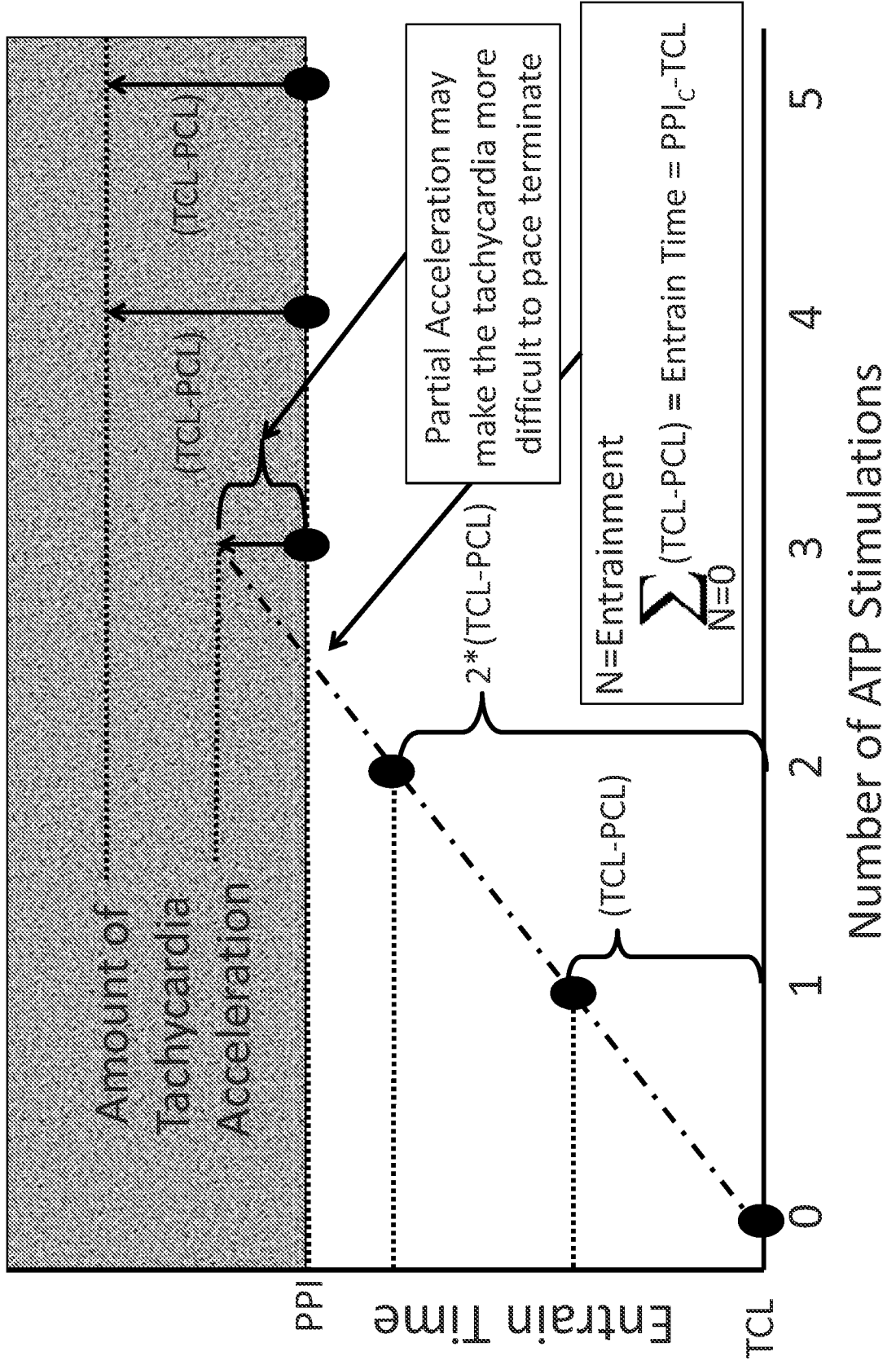


Figure 8

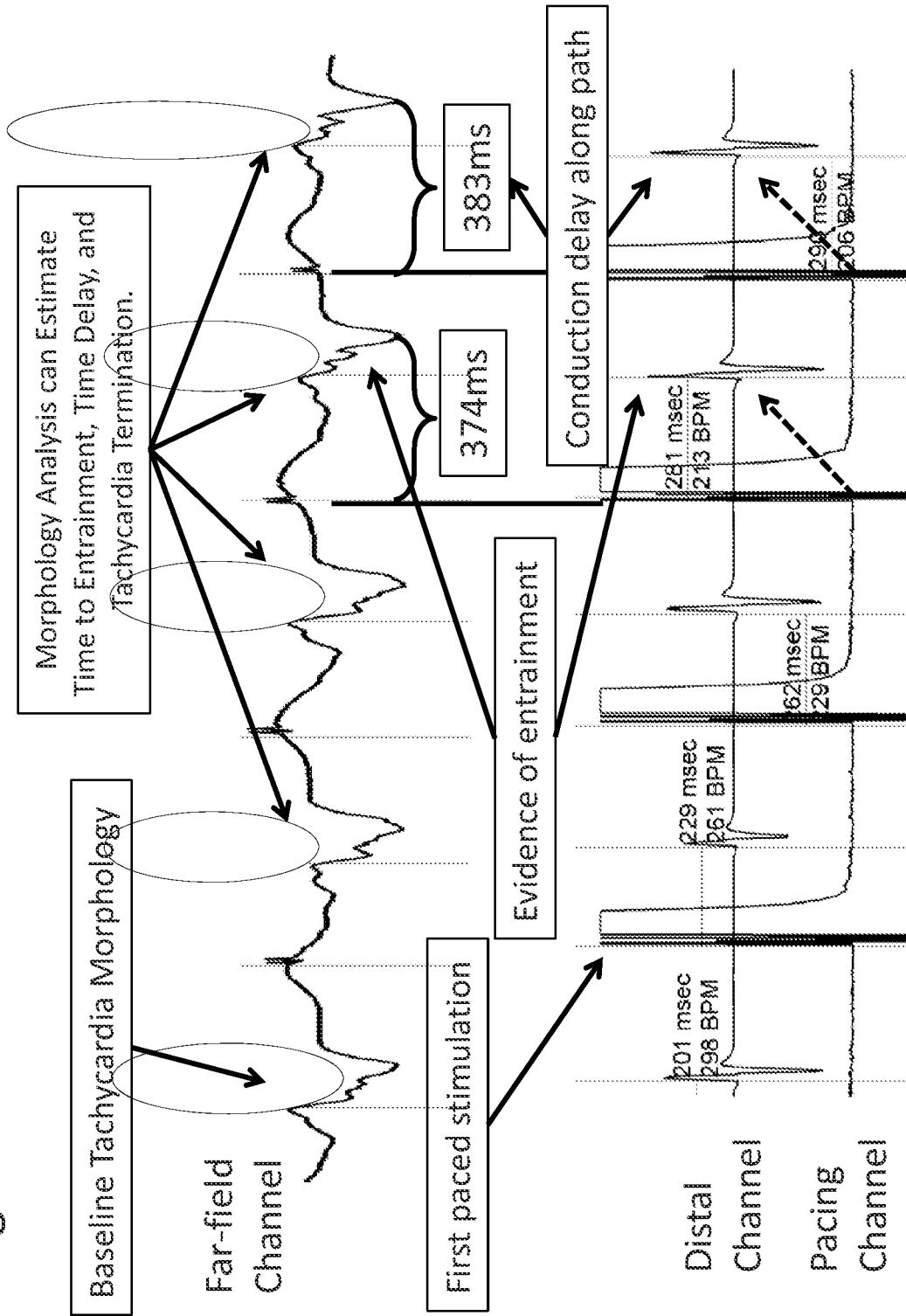


Figure 9

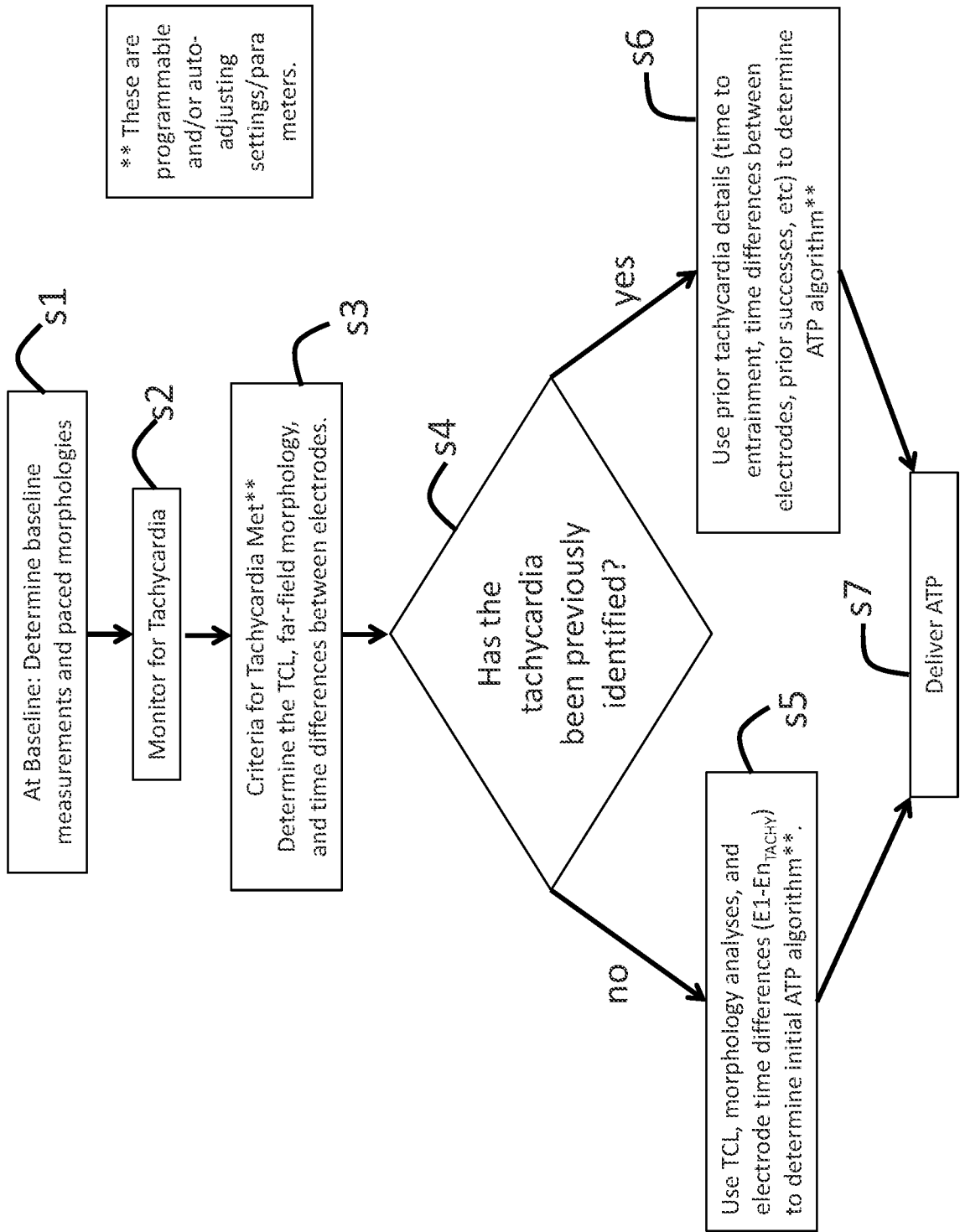
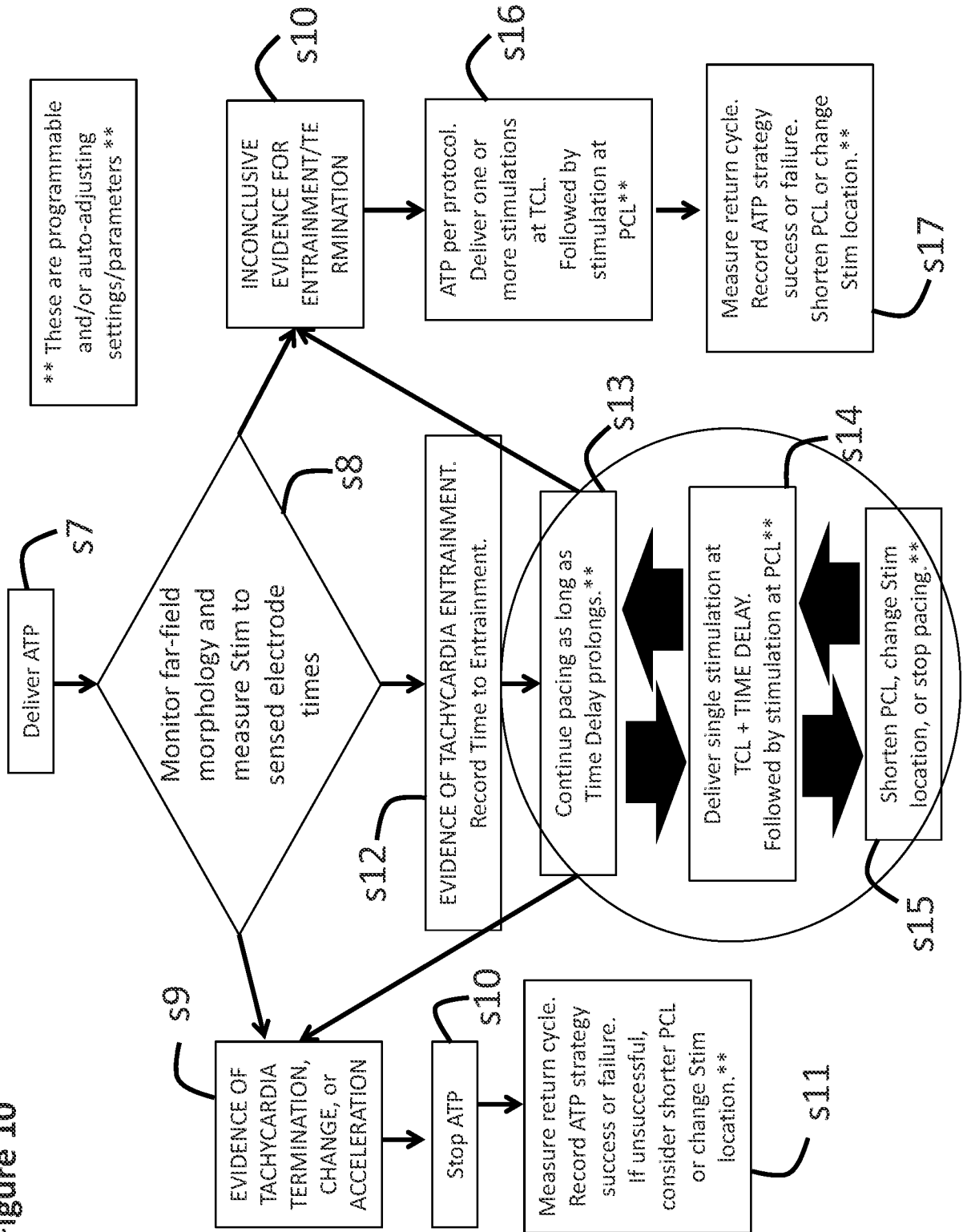


Figure 10



REFERENCES CITED IN THE DESCRIPTION

This list of references cited by the applicant is for the reader's convenience only. It does not form part of the European patent document. Even though great care has been taken in compiling the references, errors or omissions cannot be excluded and the EPO disclaims all liability in this regard.

Patent documents cited in the description

- US 6766196 B [0008]
- US 20070191900 A [0009]

专利名称(译)	优化抗心动过速起搏 (ATP) 的系统和方法		
公开(公告)号	EP3174459A1	公开(公告)日	2017-06-07
申请号	EP2015826371	申请日	2015-07-28
[标]申请(专利权)人(译)	CARDIOFLOW TECH		
申请(专利权)人(译)	CARDIOFLOW技术有限责任公司		
当前申请(专利权)人(译)	CARDIOFLOW技术有限责任公司		
[标]发明人	KAISER DANIEL WALTER		
发明人	KAISER, DANIEL WALTER		
IPC分类号	A61B5/0402 A61B5/00 A61N1/362 A61B5/0464 A61N1/365		
CPC分类号	A61B5/0464 A61B5/7282 A61N1/3622 A61N1/36514		
代理机构(译)	博尔特WADE TENNANT		
优先权	62/030520 2014-07-29 US		
其他公开文献	EP3174459B1 EP3174459A4		
外部链接	Espacenet		

摘要(译)

提供了用于预防和/或治疗心律失常的装置，系统和方法，例如心律失常。优化抗心动过速起搏 (ATP) 算法。更具体地，提供了可植入装置，其测量和治疗心律失常。通过监测来自附加电极的ATP尝试，远场形态分析，和/或测量失败的ATP尝试的返回间隔;装置可以估计何时发生夹带，重入性心动过速内的延迟量，和/或心动过速终止/加速。这些变量和事件可用于优化第一次和/或后续的ATP尝试。此外，其他示例性实施例描述了将电恢复特性整合到ATP起搏算法的设计中以促进心动过速终止的方法。