



(11) **EP 2 120 689 B1**

(12) **EUROPEAN PATENT SPECIFICATION**

(45) Date of publication and mention of the grant of the patent:  
**31.08.2016 Bulletin 2016/35**

(21) Application number: **08714585.0**

(22) Date of filing: **13.02.2008**

(51) Int Cl.:  
**A61B 5/0215** (2006.01) **A61B 5/00** (2006.01)  
**A61B 5/02** (2006.01) **A61B 5/021** (2006.01)  
**A61B 5/024** (2006.01) **A61B 5/026** (2006.01)  
**A61B 5/1455** (2006.01) **A61B 6/00** (2006.01)  
**A61B 5/0205** (2006.01) **A61B 5/029** (2006.01)

(86) International application number:  
**PCT/CA2008/000262**

(87) International publication number:  
**WO 2008/098353 (21.08.2008 Gazette 2008/34)**

(54) **METHOD AND DEVICE FOR MEASURING PARAMETERS OF CARDIAC FUNCTION**

VERFAHREN UND VORRICHTUNG ZUR MESSUNG VON PARAMETERN DER HERZFUNKTION

PROCÉDÉ ET DISPOSITIF DE MESURE DE PARAMÈTRES DE LA FONCTION CARDIAQUE

(84) Designated Contracting States:  
**AT BE BG CH CY CZ DE DK EE ES FI FR GB GR HR HU IE IS IT LI LT LU LV MC MT NL NO PL PT RO SE SI SK TR**

(30) Priority: **16.02.2007 US 707095**

(43) Date of publication of application:  
**25.11.2009 Bulletin 2009/48**

(73) Proprietor: **Mespere Lifesciences Inc.**  
**Waterloo, ON N2L 6R5 (CA)**

(72) Inventor: **CHENG, Xuefeng**  
**Waterloo, Ontario N2V 2R2 (CA)**

(74) Representative: **Gibson, Mark et al**  
**Sagittarius IP**  
**Three Globeside**  
**Fieldhouse Lane**  
**Marlow, Buckinghamshire SL7 1HZ (GB)**

(56) References cited:  
**WO-A1-2006/097910 JP-A- 11 244 268**  
**US-A- 5 269 310 US-A- 5 788 641**  
**US-A- 6 078 833 US-A- 6 151 518**  
**US-A1- 2006 224 053 US-B2- 6 587 703**  
**US-B2- 6 801 648**

**EP 2 120 689 B1**

Note: Within nine months of the publication of the mention of the grant of the European patent in the European Patent Bulletin, any person may give notice to the European Patent Office of opposition to that patent, in accordance with the Implementing Regulations. Notice of opposition shall not be deemed to have been filed until the opposition fee has been paid. (Art. 99(1) European Patent Convention).

**Description****FIELD OF THE INVENTION**

5 **[0001]** The present invention is related to techniques for monitoring vital functions of the human body, including cardiac functions such as cardiac output and central venous blood oxygenation. It relates, in particular, to an optical method and device for the non-invasive and continuous monitoring of cardiac parameters such as blood flow, blood volume and blood oxygen saturation.

**BACKGROUND OF THE INVENTION**

10 **[0002]** The evaluation of jugular venous pulse has been an integral part of cardiovascular examination and has important clinical diagnostic values [1-2]. Jugular venous pulse is produced by the changes in blood flow and pressure in central veins caused by right atrial and ventricular filling and contraction. The two main objectives of the bedside examination of jugular vein pulse include the estimation of central venous pressure and the inspection of the waveform. Because of its more direct route to the right atrium, the right internal jugular vein is superior for the purpose. Based upon these measurements, physicians can access hemodynamic events in the right atrium and thus diagnose heart diseases and abnormalities. For example, the most common cause of elevated jugular venous pressure is an increase in right ventricular pressure such as occurs in patients with pulmonary stenosis, pulmonary hypertension, or right ventricular failure secondary to right ventricular infarction. The venous pressure also is elevated when obstruction to right ventricular inflow occurs, such as with tricuspid stenosis or right atrial myxoma, or when constructive pericardial disease impedes right ventricular inflow. It may also result from vena caval obstruction and, at times, an increased blood volume. Patients with obstructive pulmonary disease may have an elevated venous pressure only during expiration.

15 **[0003]** The conventional technique for measuring venous pulse and waveform has been described in the literature [3]. The patient is examined at the optimum degree of trunk elevation for visualization of venous pulsations. The venous pressure is measured by a ruler as the vertical distance from the top of the oscillating venous column, to the level of the sternal angle plus vertical distance to the right atrium. Due to the fact that the venous pulse is in general very small, and due to complications with patients, this method is challenging for physicians to use and provides approximate values only.

20 **[0004]** Cardiac output is defined as the volume of blood circulated per minute. It is equal to the heart rate multiplied by the stroke volume (the amount ejected by the heart with each contraction). Cardiac output is of central importance in the monitoring of cardiovascular health [4]. Accurate clinical assessment of circulatory status is particularly desirable in critically ill patients in the ICU and patients undergoing cardiac, thoracic, or vascular interventions, and has proven valuable in long term follow-up of outpatient therapies. As a patient's hemodynamic status may change rapidly, continuous monitoring of cardiac output will provide information that allows rapid adjustment of therapy. Measurements of cardiac output and blood pressure can also be used to calculate peripheral resistance.

25 **[0005]** Jansen (J.R.C. Jansen, "Novel methods of invasive/non-invasive cardiac output monitoring", Abstracts of the 7th annual meeting of the European Society for Intravenous Anesthesia, Lisbon 2004) describes eight desirable characteristics for cardiac output monitoring techniques; accuracy, reproducibility or precision, fast response time, operator independency, ease of use, continuous use, cost effectiveness, and no increased mortality and morbidity.

30 **[0006]** ***Pulmonary artery catheter (PAC) thermodilution***, method is generally accepted as the clinical standard for monitoring cardiac output, to which all other methods are compared as discussed by Conway and Lund-Johansen [6]. As this technology is highly invasive, complicated, and expensive, many new methods have been developed in an attempt to replace it, but none have so far gained acceptance. A recent review of the various techniques for measuring cardiac output is given in Linton and Gilon [5]. This article lists both non/minimally invasive and invasive methods and compares the advantages and disadvantages of each. A brief description of some of these techniques follows.

35 **[0007]** ***Indicator dilution techniques***. There are several indicator dilution techniques including transpulmonary thermodilution (also known as PiCCO technology, Pulsion Medical Technologies of Munich, Germany), transpulmonary lithium dilution method

40 **[0008]** (LiDCO Group plc of London, UK), PAC based thermo-dilution and other methods (Vigilance, Baxter; Opti-Q, Abbott; and TruCCOMS, AorTech). Application of such techniques assumes three major conditions, namely, complete mixing of blood and indicator, no loss of indicator between place of injection and place of detection, and constant blood flow. The errors associated with indicator dilution techniques are primarily related to the violation of these conditions, as discussed by Lund-Johansen [7 - 8].

45 **[0009]** ***Fick principle***. The direct oxygen Fick approach is currently the standard reference technique for cardiac output measurement as discussed by Keinänen et al [9-10]. It is generally considered the most accurate method currently available. The NICO (Novametrix) system is a non-invasive device that applies Fick's principle and relies solely on airway gas measurement as described by Botero et al [11]. This method shows a lack of agreement between thermodilution

and CO<sub>2</sub>-rebreathing cardiac output as described in Nielsson et al [12], due to unknown ventilation/perfusion inequality in patients.

**[0010] Bio-Impedance and conduction techniques.** The bio-impedance method was developed as a simple, low-cost method that gives information about the cardiovascular system and/or (de)-hydration status of the body in a non-invasive way. Over the years, a diversity of thoracic impedance measurement systems have also been developed. These systems determine CO on a beat-to-beat time basis. Studies have been reported with mostly poor results, but in some exceptional cases, there was good correlation with a reference method. Many of these studies refer to the poor physical principles of the thoracic impedance method as described in Patterson "Fundamentals of impedance cardiography", IEEE Engineering in Medicine and Biology 1989; 35 to explain the discrepancies.

**[0011] Echo-Doppler ultrasound.** This technique uses ultrasound and the Doppler Effect to measure cardiac output. The blood velocity through the aorta causes a 'Doppler shift' in the frequency of the returning ultrasound waves. Echo-Doppler probes positioned inside the esophagus with their echo window on the thoracic aorta may be used for measuring aortic flow velocity, as discussed by Schmidlin et al [13]. Aortic cross sectional area is assumed in devices such as the CardioQ, made by Deltex Medical PLC, Chichester, UK, or measured simultaneously as, for example, in the HemoSonic device made by Arrow International. With these minimally invasive techniques what is measured is aortic blood flow, not cardiac output. A fixed relationship between aortic blood flow and cardiac output is assumed. Echo-Doppler ultrasound requires an above average level of skill on the part of the operator of the ultrasound machine to get accurate reliable results.

**[0012] Arterial pulse contour analysis.** The estimation of cardiac output based on pulse contour analysis is an indirect method, since cardiac output is not measured directly but is computed from a pressure pulsation on the basis of a criterion or model [14- 17]. Three pulse contour methods are currently available; PiCCO (Pulsion), PulseCO (LiDCO) and Modelflow (TNO/BMI). All three of these pulse contour methods use an invasively measured arterial blood pressure and they need to be calibrated. PiCCO is calibrated by transpulmonary thermodilution, LiDCO by transpulmonary lithium dilution and Modelflow by the mean of 3 or 4 conventional thermodilution measurements equally spread over the ventilatory cycle.

**[0013]** Near infrared spectroscopy has been used to non-invasively measure various physiological properties in animal and human subjects. The basic principle underlying near infrared spectroscopy is that a physiological medium such as tissues includes a variety of light-absorbing (chromophores) and light-scattering substances which can interact with transmitted low energy near infrared photons. For example, deoxygenated and oxygenated hemoglobins in human blood are the most dominant chromophores in the spectrum range of 400 nm to 1000 nm. Therefore, diffuse optical spectroscopy has been applied to non-invasively measure oxygen levels in the physiological medium in terms of tissue hemoglobin oxygen saturation. Technical background for diffuse optical spectroscopy has been discussed in, e.g., Neuman, M. R., Pulse Oximetry: Physical Principles, Technical Realization and Present Limitations, @ Adv. Exp. Med. Biol., vol. 220, p.135-144, 1987 and Severinghaus, J. W., History and Recent Developments in Pulse Oximetry, @ Scan. J. Clin. and Lab. Investigations, vol. 53, p.105-111, 1993.

**[0014]** Because of the highly scattering nature of tissue to the visible and near infrared light (400nm - 1000nm), it is difficult to apply diffuse optical spectroscopy non-invasively to select blood vessels within a tissue to calculate blood oxygenation. Thus, diffuse optical spectroscopy has only been used to measure the combined or average oxygenation of blood from arteries, veins, and capillaries within a tissue medium. However, in many clinical applications, it is desirable to know the blood oxygenation of particular blood vessels. To do so, various invasive methods have been developed which involve the use of catheters that must be inserted into a targeted blood vessel to make the measurement.

**[0015]** US 2006/224053 teaches an apparatus for detecting venous oxygen saturation or blood pH which utilizes an ultrasound transducer to modulate a target area to affect optical absorption at the target depending on the oxygenation or pH at the target. WO 2006/097910 describes a measurement system in which acoustic radiation is applied to an illuminated region in the body, with at least two different conditions of the radiation achieved by varying at least one characteristic of the acoustic radiation, and scattered light is detected and measured to determine tissue properties. US 5,788,641 teaches a device capable of providing non-invasive estimates of central venous pressure, in particular for use in patients suffering from cardiac disease.

**[0016]** None of the above-mentioned techniques of measuring cardiac output combines all of the eight "Jansen" criteria mentioned above and, thus, none can displace the conventional thermodilution technique as described by Jansen et al [18]. Although highly invasive, complicated and expensive, the conventional thermodilution method remains the method of choice for measuring cardiac output. Given the foregoing, it would be highly desirable to develop a non-invasive method for real-time monitoring of cardiac output in a clinical setting which is accurate, reliable, cost effective and easy to use.

## **SUMMARY OF THE INVENTION**

**[0017]** The present invention provides a system and a method to determine the central venous pressure as defined in claims 1 and 6.

**[0018]** In one aspect not forming part of the invention, a device for non-invasively measuring at least one parameter of a cardiac blood vessel in a patient is provided comprising:

5 at least one light source that emits light in the 400 nm to 1000 nm wavelength range;  
at least one photodetector adapted to receive light emitted by the light source and generate an output based on the received light, wherein said light is reflected from or transmitted through tissue of the patient, the output of said photodetector being correlated with a parameter of the blood vessel; and  
at least one probe for facilitating delivery of light from the light source to an external tissue site on the patient in the proximity of the cardiac blood vessel and receipt of light by the photodetector.  
10

**[0019]** In another aspect not forming part of the invention, a device useful to monitor a parameter of a cardiac blood vessel in a patient is provided comprising:

15 at least one light-emitting component adapted to emit light in the 400 nm to 1000 nm wavelength range;  
at least one light-receiving component adapted to receive light emitted by the light-emitting component and translate said light into a recordable output, wherein said light is reflected from or transmitted through tissue of the patient; and  
at least one probe which facilitates delivery of light from the light-emitting component to an external tissue site on the patient in the proximity of a cardiac blood vessel and receipt of light reflected from or transmitted through said patient site by the light-receiving component.  
20

**[0020]** In another aspect not forming part of the invention, a system useful to monitor a parameter of a cardiac blood vessel in a patient is provided comprising:

25 at least one light-emitting component adapted to emit light in the 400 nm to 1000 nm wavelength range;  
at least one light-receiving component adapted to receive light emitted by the light-emitting component and translate said light into a recordable output, wherein said light is reflected from or transmitted through tissue of the patient; and  
at least one probe which facilitates delivery of light from the light-emitting component to an external tissue site on the patient in the proximity of a cardiac blood vessel and receipt of light reflected from or transmitted through said patient site by the light-receiving component; and  
30 a signal-processing device adapted to translate the output from said light-receiving component to a visual form.

**[0021]** In another aspect not forming part of the invention, a method for determining a parameter of a cardiac blood vessel in a patient is provided comprising the steps of:

35 directing a beam of light having a wavelength in the range of 400 nm to 1000 nm to an external tissue site on the patient that is in the proximity of the blood vessel;  
detecting light reflected from the tissue site or transmitted through the tissue site;  
translating the detected light into an output signal against time; and  
calculating the parameter of the blood vessel using the output signal.  
40

**[0022]** In another aspect not forming part of the invention, a method for measuring the blood content of a chromophore in a patient is provided comprising:

45 directing a light beam having at least first and second selected wavelengths at an external tissue site on the patient that is in the proximity of a cardiac blood vessel, wherein said selected wavelengths are based on the absorption characteristics of the chromophore;  
detecting light reflected from the tissue or transmitted through the tissue at the selected wavelengths; and  
translating the detected light into an output current in order to determine the blood content of said chromophore according to modified Beer Lambert's law.  
50

**[0023]** In a further aspect not forming part of the invention, a method of determining blood oxygenation of a cardiac vessel in a patient is provided comprising:

55 directing a first light beam having a first wavelength of 780 nm and a second light beam having a second wavelength of 850 nm at an external tissue site on the patient that is in the proximity of a cardiac blood vessel;  
detecting light reflected from the tissue or transmitted through the tissue at the first and second wavelengths; and  
translating the detected light into an output current for the first and second wavelengths in order to calculate the blood oxygenation of the cardiac vessel according to modified Beer Lambert's law.

**[0024]** These and other aspects of the present invention will become apparent by reference to the detailed description that follows, and the drawings in which:

### **BRIEF DESCRIPTION OF THE DRAWINGS**

5

**[0025]**

Figure 1 illustrates a top view of a device (A) for monitoring cardiac output in accordance with an aspect of the invention and placement of the device relative to cardiac vessels (B);

10

Figure 2 illustrates a side view of a device as in Fig. 1;

Figure 3 illustrates a system incorporating the device of Fig. 1;

15

Figure 4 illustrates a signal or waveform produced using a device as in Fig. 1;

Figure 5 (A and B) is a block diagram of a system incorporating a device as in Fig. 1;

20

Figure 6 illustrates a top view of embodiments of the invention (A, B) comprising multiple light sources and photo-detectors;

Figure 7 is a block diagram of a system incorporating a device as in Fig. 6;

25

Figure 8 (A-C) illustrates a top view of embodiments of the invention comprising multiple photodetectors per light source;

Figure 9 illustrates a dual signal (waveform) generated by an embodiment of Fig. 8;

30

Figure 10 illustrates a top view of a cardiac monitoring device according to an embodiment of the invention comprising multiple sensor patches;

Figure 11 illustrates a waveform obtained using a device in accordance with the invention;

35

Figure 12 illustrates a top view of a device in accordance with a further aspect of the invention;

Figure 13 illustrates different source-detector configurations (A, B and C) of a device useful to measure blood pressure;

40

Figure 14 illustrates a waveform obtained using a device according to Fig. 12 (B) in three different positions (A); and

Figure 15 is a block diagram illustrating a system according to an aspect of the invention.

### **DETAILED DESCRIPTION OF THE INVENTION**

**[0026]** A device 10 for measuring a parameter of cardiac function in a patient is provided as shown in Fig. 1A, comprising a light source 20 that emits light in the 400 nm to 1000 nm wavelength range, e.g. visible and infra-red light, a photodetector 30 adapted to receive light from the light source 20 (as shown in Fig. 2) and translate the received light into an output signal and a patch probe 28 for placement on a patient at an external site in the vicinity of a cardiac blood vessel (as shown in Fig. 1B) which functions as the interface of the device between light source 20/photodetector 30 and a selected external patient site. Thus, the probe 28 permits/facilitates delivery of light emitted by the light source 20 to the selected patient site and transfer of light reflected from or transmitted through the patient site to the photodetector 30. To generate a visual signal, the device 10 may additionally comprise a signal-processing component 40 (Fig. 3) which communicates with the photodetector 30 to translate light received by the photodetector 30 into a recordable visual signal or waveform of the cardiac vessel (e.g. representative of a time course plot of a measurable characteristic or parameter of the blood vessel such as a pressure waveform or central venous pulse).

55

**[0027]** The light source 20 may be any suitable light source such as a laser diode (e.g. RLT7605G, 760 nm, 5 mW, sm, 9.0 mmh, or RLT8510MG, 850 nm, 10 mW, sm, 5.6 mm), a light emitting diode (LED) or a broadband light source emitting a selected wavelength in the range of 400nm to 1000nm, for example, a wavelength in the range of 780nm and

850nm. In an embodiment, the light source is adapted to emit light in two or more wavelengths, e.g. by association with a frequency oscillator. The light source 20 is powered by an appropriate power supply 18 such as a 12V DC power supply. Light from the light source 20 is directed to at least one external tissue site on the patient that is within close proximity to a cardiac blood vessel, such as the internal jugular vein, the external jugular vein and the carotid artery, while the internal jugular vein is preferred. The neck, for example, represents a suitable site for monitoring a cardiac parameter.

[0028] As shown in Fig. 5A/5B, in one embodiment, light from the light source 20 may be directed or focussed by an optical lens 22 into a transmitting means 24, such as transmitting optical fibre bundles, for transmission to the selected patient site. Receiving means 26, such as optical fibre bundles, may also be used to receive light that is reflected/transmitted from the patient site and convey this light to photodetector 30 (Fig. 5A). As one of skill in the art will appreciate, each fibre optic bundle will incorporate fibres manufactured of material appropriate for the transmission of the wavelength of the light emitted from the light source 20. For example, if the light source 20 emits in the visible wavelength range, both multiple mode plastic and glass optical fibres may be used. The number and diameter of the fibres in the fibre optic bundle is optimized empirically to provide the highest signal to noise ratio in a given application. In the embodiments shown in Fig. 5A/5B, the transmitting and receiving optical fibre bundles 24, 26 are set in the patch probe 28, either at distinct spaced sites or they may be combined together at a single site.

[0029] Optical mirrors may be utilized to direct or reflect light from the transmitting fibre bundle 24 into the tissue at the selected patient site, and to direct reflected or transmitted light from the patient site into the receiving fibre bundle 26. Alternatively, the light source 20 and photodetector 30 may be set directly in the patch probe 28 obviating the need for optical fibres. In yet another embodiment, a combination of the foregoing embodiments may be utilized in which the light source 20 is set directly in the probe 28 to deliver light to the patient site, while the reflected/transmitted light is received by optical fibres 26 for delivery to the photodetector 30. A converse embodiment may also be used in which the probe 28 comprises transmitting optical fibres 24 to deliver light from the light source to the patient site, and a photodetector 30 set directly in the probe 28 to receive the reflected/transmitted light. Accordingly, the light source 20 and photodetector 30 are each coupled to the probe 28 (e.g. attached to, integrally formed with or set directly in the probe 28).

[0030] The light source 20 or transmitting optical fibres 24 may be set in the same patch probe 28 as the photodetector 30 or receiving optical fibres 26, or in a separate patch probe 28 for placement at a distinct site on the patient that is within a suitable distance from the photodetector 30 or receiving optical fibres 26 to permit detection of reflected/transmitted light. The distance between the component delivering light to the patient site (light source or transmitting optical fibres) and the component receiving light from the patient site (photodetector or receiving optical fibres) may vary depending on the nature of each of the components, while a typical distance is generally between 2 and 4 cm, for example, 3 cm.

[0031] The patch probe 28 may be made out of any material suitable to support the electronic/optical components it houses, e.g. light source, photodetector, optical fibres or mirrors, and which is compatible for placement on the skin. An example of one such suitable material is medical rubber. The patch 28 may be held in position manually, may be held in position by adhesives (one side of the patch may be coated with a material that is adhesive to skin such as a hydro gel adhesive) or may be adapted to be held in place with straps that can be tied or otherwise secured. Opposing ends of the band may also include an adhesive material such as Velcro to facilitate their attachment and to hold the device in place.

[0032] The photodetector 30 translates received reflected/transmitted light into a recordable output such as current or voltage. An example of a suitable photodetector 30 for use in the present device is a silicon photo diode (e.g. Hamamatsu S8553). Condensor lenses may be incorporated, if required, to refocus the reflected or transmitted beam of light to be received by the photodetector 30. As will be understood by a person skilled in the art, silicon photodiodes are semiconductor light sensors that generate a current or voltage when the P-N junction in the semiconductor is illuminated by light. Accordingly, the photodetector 30 provides a current/voltage signal in response to the received light signal. Thus, the current/voltage signal output generated by the photodetector 30 is proportional to the instantaneous light intensity of the light signal received at the photodetector 30. Accordingly, the photodetector 30 provides a time-varying output (e.g. current/voltage as a function of time) which is dependent upon the received light and its characteristics.

[0033] In an aspect of the invention, a system is provided, for example as shown in Figures 5, 7 or 15, in which the photodetector 30 of device 10 is connected to a signal processing device 40. The signal processing device 40 is operable to receive the signal provided by the photodetector 30 (e.g. the time varying current/voltage signal) and translate the signal into a visual output such as a waveform. Thus, the signal processing device 40 is operable to digitize the output provided by the photodetector 30 into a recordable output for presenting on a display (e.g. 44).

[0034] Referring to Figure 5 or 7, a system is provided comprising at least one light source 20 for emitting light, a probe 28 for facilitating the delivery of light to an external tissue site on the patient, at least one photodetector 30 configured for receiving light emitted by the light source 20 (which is either reflected from or transmitted through the tissue site) and translating the light to a current/voltage signal in response thereto, a signal processing device 40 for

translating the signal from the photodetector 30 into a visual output such as a time-varying waveform. As will be described below, the signal processing device 40 may include a microprocessor (e.g. digital signal processor, Texas Instruments) or digital acquisition board 42 to digitize the signal (e.g. current/voltage) from the photodetector 30, and a display unit 44, such as a monitor, which is in communication with or connected to the microprocessor 42 (Fig. 5), and functions to display the signal as a waveform.

**[0035]** Alternatively, as will be understood by a person of skill in the art and as shown in Fig. 5B, the signal processing device 40 may be separate from the display unit 44, and in communication with an external display unit 44 for presenting the output of the signal processing device 40 thereon. For convenience, the monitor may be portable, and battery operated. According to another embodiment, the signal processing device 40 may further comprise an algorithm processing module 41 (e.g. illustrated in Figure 7) for receiving an indication of the desired cardiac parameter output (e.g. via a user interface or predefined selection of the desired cardiac parameter). The algorithm processing module 41 is operable to translate the signal received from the photodetector 30 into the desired cardiac parameter output (e.g. blood pressure waveform).

**[0036]** Referring to Figure 15, the signal processing device 40 can be implemented on one or more respective computing device(s) 101. The devices 101 in general can include a network connection interface 200, such as a network interface card or a modem, coupled via connection 218 to a device infrastructure 204. The connection interface 200 is connectable during operation of the device(s) 101 to a network 11 (e.g. an intranet and/or an extranet such as the Internet) which enables the device(s) 101 to communicate with each other as appropriate. The network 11 can, for example, support the communication of the output signal (e.g. current/voltage signal) provided by the photodetector 30 to the signal processing device 40.

**[0037]** The device(s) 101 may also have a user interface 202, as also shown in Fig. 15, coupled to the device infrastructure 204 by connection 222 to interact with a user. The user interface 202 can include one or more user input devices such as, but not limited to, a QWERTY keyboard, a keypad, a trackwheel, a stylus, a mouse, a microphone and a user output device such as an LCD screen display and/or a speaker. If the screen is touch sensitive, then the display can also be used as the user input device as controlled by the device infrastructure 204.

**[0038]** Operation of the device(s) 101 is facilitated by the device infrastructure 204. The device infrastructure 204 includes one or more computer processors 208 (e.g. a Digital Signal Processor) and can include an associated memory 210 (e.g. a random access memory). The computer processor 208 facilitates performance of the computing device 101 configured for the intended task through operation of the network interface 200, the user interface 202 and other application programs/hardware 207 of the computing device 101 by executing task-related instructions. These task-related instructions may be provided by an operating system and/or software applications 207 located in the memory 210, and/or by operability that is configured into the electronic/digital circuitry of the processor(s) 208 designed to perform the specific task(s). Further, it is recognized that the device infrastructure 204 may include a computer readable storage medium 212 coupled to the processor 208 for providing instructions to the processor 208. The computer readable medium 212 can include hardware and/or software such as, by way of example only, magnetic disks, magnetic tape, optically readable medium such as CD/DVD ROMS, and memory cards. In each case, the computer readable medium 212 may take the form of a small disk, floppy diskette, cassette, hard disk drive, solid-state memory card or RAM provided in the memory module 210. It should be noted that the above listed examples of computer readable media 212 may be used either alone or in combination. The device memory 210 and/or computer readable medium 212 may be used to store, for example, the desired output (e.g. pressure waveform) for use in processing of the signal received from the photodetector 30.

**[0039]** Further, it is recognized that the computing device(s) 101 may include executable applications 207 comprising code or machine readable instructions for implementing predetermined functions/operations including those of an operating system. The processor 208 as used herein is a configured device and/or set of machine-readable instructions for performing operations as described by example above. As used herein, the processor 208 may comprise any one or combination of, hardware, firmware, and/or software. The processor 208 acts upon information by manipulating, analyzing, modifying, converting or transmitting information for use by an executable procedure or an information device, and/or by routing the information with respect to an output device. The processor 208 may use or comprise the capabilities of a controller or microprocessor, for example. Accordingly, the functionality of the signal processing device 40 and/or the photodetector 30 may be implemented in hardware, software or a combination of both. Accordingly, the use of a processor 208 as a device and/or as a set of machine-readable instructions is hereafter referred to generically as a processor/module for the sake of simplicity.

**[0040]** It will be understood that the computing device(s) 101 may be, for example, personal computers, personal digital assistants, mobile phones, and content players. Further, it is recognised that each server computing device 101, although depicted as a single computer system, may be implemented as a network of computer processors, as desired.

**[0041]** Referring to Figure 7, the signal processing device 40 may execute an algorithm (e.g. via the algorithm processing module 41) to translate the signal received by the photodetector 30 to a waveform. The waveform is the time varying component of the optical signal associated with cardiac activities, which can be translated into dynamic information such

as blood flow, flow velocity, blood volume, blood pressure and blood content such as oxygenation or physical displacement of blood within the vessel.

[0042] In one embodiment, for example, the signal is translated into a pressure waveform. Since the central venous pressure waveform is proportional to the blood volume inside the jugular vein, and the amplitude of the received signal from the photodetector (e.g. the current/voltage signal) is inversely proportional to the blood volume, the central venous pressure waveform is constructed by an algorithm that inverts the signal received by the photodetector as follows:

$$P(t) \sim 1/S(t)$$

where P is the pressure waveform and S is the signal from photodetector (e.g. the current/voltage signal).

[0043] The absorbance values collected at regular user-determined intervals, for example, 10 data points/mm, are stored as a spreadsheet associated with a cardiac parameter or cardiac output. The display unit 44 functions in real-time to display the selected blood vessel waveform according to an executed algorithm (via the algorithm processing module 41) against time which can be used as described below to calculate, for example, a cardiac parameter or cardiac output.

[0044] A sample display of a waveform (e.g. generated based on a signal obtained by the photodetector and processed by a signal processing device 40) obtained using the present device is shown in Fig. 4. As can be seen, there is a time course variation in the signal detected by the photodetector 30 that results from a selected blood vessel pulse, changes in the blood volume and content (such as oxygen saturation) inside the blood vessel. The blood volume and content in the selected blood vessel affects the absorption of light, thereby resulting in a signal with varying amplitude. For example, as the jugular vein pulse increases and decreases the blood volume in the jugular vein, the amplitude of the detected optical signal (e.g. as received by photodetector 30) will decrease and increase, respectively. The time course plot of the amplitude of the recorded signal reflects the waveform of the jugular vein pulse.

[0045] In another embodiment not forming part of the present invention, a device 100, operable to measure blood content, such as the blood oxygen saturation of central venous blood, is provided. As the jugular vein, especially the right internal jugular vein, is directly connected to the superior vena cava as shown in Fig. 1, the jugular vein waveform is representative of the parameters of central venous blood.

[0046] For this utility, the device 100, as shown in Figs. 6 and 7, comprises at least two light sources 120, each emitting light of a different wavelength within the range of 400nm to 1000nm. The device also comprises a photodetector 130 for each light source 120 adapted to receive the transmitted or reflected light at a given wavelength. As set out above, each light transmitting component (e.g. light source 120 or transmitting optical fibres 124) and light receiving component (e.g. photodetector 130 or receiving optical fibres 126) is set in a patch probe 128, and may be arranged as shown in Fig. 6A or 6B; however, as one of skill in the art will appreciate, alternative arrangements of the light-transmitting components and light-receiving components exist which will not affect the function of the device 100. For example, the device 100 may comprise multiple patches probes 128, each of which includes a light-transmitting component and a light-receiving component. Alternatively, the device 100 may comprise a single patch 128 including multiple light-transmitting components and light-receiving components. In another alternative, the device 100 may comprise a first patch 128 with one or more light-transmitting components and light-receiving components, and a second patch with one or more light-transmitting components and corresponding light-receiving components. As set out above, regardless of the number of patches and arrangements thereof, the device may be incorporated within a system as described above comprising a signal receiving device 140 and to translate the output of the photodetector 130 into, for example, a desirable form.

[0047] The time course variation in the detected signal associated with a cardiac vessel pulse at different wavelengths may be used to calculate the blood content, such as blood oxygen saturation, and other parameters associated with the cardiac vessel pulse. There are various ways to calculate blood oxygen saturation as a function of variations in the detected signal caused by cardiac vessel pulse at multiple light wavelengths, e.g. at 780 nm and 850 nm. As one of skill in the art will appreciate, the selected wavelengths for use in blood content determination will vary with the blood parameter being determined. For example, wavelengths of 690nm and 830nm, may be used to obtain deoxygenated haemoglobin and oxygenated haemoglobin content, respectively. A wavelength of 950nm may be used to obtain water content of blood. Moreover, the blood parameter of interest may be determined through photon diffusion equations, photon transportation equations or Modified Beer Lambert's Law as will be described.

#### **Modified Beer Lambert's Law**

[0048] The detected signal (e.g. current) may be expressed as:

$$I_{\lambda_1} = I_{0,\lambda_1} e^{-B[\epsilon_{Hb,\lambda_1}(C_{Hb} + \Delta C_{Hb}) + \epsilon_{HbO,\lambda_1}(C_{HbO} + \Delta C_{HbO})]L+A} \quad (1)$$

$I_{\lambda_1}$  is the signal provided by the photodetector at wavelength  $\lambda_1$ ,

$I_{0,\lambda_1}$  is the signal from the light source at wavelength,  $\lambda_1$ ,

$C_{Hb}$ ,  $C_{HbO}$  are the concentrations of deoxygenated and oxygenated hemoglobin of steady tissue medium blood;

$\Delta C_{Hb}$ ,  $\Delta C_{HbO}$  are the changes in the concentrations of deoxygenated and oxygenated hemoglobin caused by the jugular vein pulse;

$\epsilon_{Hb,\lambda_1}$ ,  $\epsilon_{HbO,\lambda_1}$  are the absorption properties of deoxygenated and oxygenated hemoglobin at wavelength  $\lambda_1$  for the purposes of calculating blood oxygen saturation. Blood saturation of other chromophores can also be calculated by substituting into the equation the appropriate extinction coefficients ( $\epsilon$ ) for the selected chromophore including, for example, water, cytochromes such as cytochrome oxides, and cholesterol; and

A, B are constants determined by boundary conditions.

**[0049]** The relative change in signal from the signal emitted from the light source to the signal detected by the photodetector which is caused by the jugular vein pulse is represented for a first wavelength by:

$$\Delta I_{\lambda_1} = e^{-B[\epsilon_{Hb,\lambda_1}(\Delta C_{Hb}) + \epsilon_{HbO,\lambda_1}(\Delta C_{HbO})]L} \quad (2);$$

or as

$$OD_{\lambda_1} = \ln(\Delta I_{\lambda_1}) = -B(\epsilon_{Hb,\lambda_1} \cdot \Delta C_{Hb} + \epsilon_{HbO,\lambda_1} \cdot \Delta C_{HbO}) \quad (3).$$

**[0050]** Similarly, the change in signal between emitted and detected signal for a second light wavelength is represented by:

$$OD_{\lambda_2} = \ln(\Delta I_{\lambda_2}) = -B(\epsilon_{Hb,\lambda_2} \cdot \Delta C_{Hb} + \epsilon_{HbO,\lambda_2} \cdot \Delta C_{HbO}) \quad (4).$$

**[0051]** Blood oxygenation derived from jugular vein pulse is then determined using the following equation:

$$S_{jv}O_2 = \frac{\Delta C_{HbO}}{\Delta C_{Hb} + \Delta C_{HbO}} = \frac{\epsilon_{Hb,\lambda_1} \cdot OD_{\lambda_2} - \epsilon_{Hb,\lambda_2} \cdot OD_{\lambda_1}}{(\epsilon_{Hb,\lambda_1} - \epsilon_{HbO,\lambda_1}) \cdot OD_{\lambda_2} - (\epsilon_{Hb,\lambda_2} - \epsilon_{HbO,\lambda_2}) \cdot OD_{\lambda_1}} \quad (5).$$

**[0052]** In use, the patch probe 28 of device 10 comprising light source(s) 20 and photodetector(s) 30 is generally placed on the neck of the patient at a site near a selected blood vessel, for example, the internal jugular vein. It is desirable for the patient to be lying down at about a 30 degree incline from the horizontal. The patient maintains regular breathing during the process of measuring the pulse of the blood vessel. Light from the light source 20 is either reflected off of, or transmitted through, the target site on the patient's neck, and detected by the photodetector 30. The photodetector 30 translates the detected light into an output signal (e.g. current/voltage) that may be digitized for expression as amplitude as a function of time to result in a waveform of the selected blood vessel pulse. The amplitude of signals obtained using different wavelengths may be used according to Lambert's law as above to determine blood oxygenation.

**[0053]** In another embodiment, illustrated in Fig. 8 (A-C), a device 200 is provided comprising one or more light sources

220, each emitting selected wavelengths of light in the 400nm to 1000nm range. Each light source 220 is coupled with at least two photodetectors 230 each adapted to receive light emitted at a given frequency. As discussed above, the device 200 may optionally be incorporated within a system as illustrated in Fig. 5, for example.

5 [0054] The device 200 is useful to simultaneously measure multiple cardiac blood vessel pulses, such as jugular venous pulse as well as carotid arterial pulse, thereby generating a dual waveform as illustrated in Fig.9, and thus, has utility to simultaneously measure arterial blood oxygenation,  $S_aO_2$ , in addition to central venous oxygenation,  $S_{jv}O_2$ , as described above. As one of skill in the art will appreciate, in the case of multiple light sources 220, each light source is turned on in sequence, and the amplitude of light emitted from the light source(s) is modulated at a selected frequency, such as 10 kHz or 20kHz. Alternatively, light emitted by a single light source 220 can be sequentially modulated at two alternating frequencies, such as 10 kHz and 20 kHz. The output from the photodetectors (e.g. current/voltage) is filtered at a frequency selected to correlate with a given frequency emitted from a light source, for example, using a band pass filter which allows a selected frequency, such as a 10kHz or 20kHz signal, to pass through but blocks other frequency components in the signal.

10 [0055] In another embodiment, cardiac output may be measured or monitored. As the jugular vein pulse represents central venous blood and correlates well with mixed venous blood, the trend of cardiac output can be calculated through Fick's Law as follows:

$$20 \quad COI = \frac{OCR}{S_aO_2 - S_{jv}O_2} \quad (6)$$

25 where COI is the cardiac output index which is the cardiac output (CO) per unit body surface;

OCR is the oxygen consumption rate which is oxygen consumption (OC) per unit body surface;

$S_aO_2$  is the arterial blood oxygen saturation; and

30  $S_{jv}O_2$  is the venous blood oxygen saturation.

$S_aO_2$  and  $S_{jv}O_2$  may be determined as outlined above using a device in accordance with the invention.

35 [0056] The following equation depicts cardiac output (CO) as a whole rather than per unit body surface: Or:

$$40 \quad CO = \frac{OC}{S_aO_2 - S_{jv}O_2} \quad (7)$$

[0057] As the oxygen consumption or oxygen consumption rate are constant during many clinical procedures, the trend of cardiac output index or cardiac output can be reliably monitored.

45 [0058] In another embodiment according to the invention, a method of measuring central venous pressure is provided. Central venous pressure is the pressure at the vena cava close to the right atrium. Abnormally high central venous pressure is an early indication of right atrial heart failure. Currently, central venous pressure is measured through invasive catheters which are inserted through the internal jugular vein to the vena cava.

[0059] A method for measuring central venous blood pressure in a patient is provided that is based on the fact that the length of blood filled inside a jugular vein directly reflects the central venous pressure. A determination of the highest position along the jugular vein where there is a pressure wave provides information that may be used to calculate venous blood pressure. Thus, according to the invention, the method comprises the step of determining the highest position along the jugular vein to yield a waveform. The "highest position" is measured from the sternal angle. The sternal angle is the angle formed by the junction of the manubrium and the body of the sternum in the form of a secondary cartilaginous joint (symphysis). This is also called the manubriosternal joint or Angle of Louis.

55 [0060] A waveform is obtained by directing a beam of light having a wavelength in the range of 400 nm to 1000 nm at an external tissue site on the patient that is in the proximity of the jugular vein, detecting light reflected from the tissue site or transmitted through the tissue site and translating the detected light into an output signal against time to generate a waveform. The highest position along the jugular vein to yield a waveform is determined when the next highest position

does not yield a waveform.

**[0061]** According to an aspect of the invention, the mean central venous pressure (P) is calculated as follows:

$$P = (d + 5 \text{ cm}) \cdot \sin \theta - 5 \text{ cm}$$

wherein d is the distance from the sternal angle to the highest position that yields a waveform. The addition of 5 cm to d represents the distance from the sternal angle to the right atrium. The symbol,  $\theta$ , is the inclined angle of the upper body relative to the horizontal position.

**[0062]** Having obtained a waveform from a cardiac vein, the central blood pressure may be calculated as follows:

$$P = a + b \frac{T}{t}$$

wherein a is a constant that relates to the position of the sensor on the neck, and b is a constant which relates to the distance between the source and the photodetector of the sensor; and T is the pulse width and t is the average rise and fall time of the pulse.

**[0063]** In accordance with the method of measuring central venous pressure, a device 300 is provided. The device 300, as shown in Fig. 12, includes a series of light sources 320 located adjacent to one another along a length appropriate to measure the blood level in a cardiac vein, such as the internal or external jugular vein. The length will generally be about 1.5 to 10 cm. Each light source 320 emits light at a wavelength of from 600 nm to 900 nm and is associated with a corresponding photodetector 330 suitable to detect reflected or transmitted light from its corresponding light source 320. The device 300 additionally includes a patch probe 328 that functions as the interface between the light sources (320) and photodetectors (330) and is adapted for placement on a patient at a site in the vicinity of a selected cardiac blood vessel, such as a cardiac vein. The probe 328 may incorporate the light sources 320 and photodetectors 330 directly, or may instead incorporate light transmitting optical fibres and light receiving optical fibres connected to the light sources and photodetectors, respectively, or may include a combination of these, e.g. light sources and light receiving optical fibres, or light-transmitting optical fibres and photodetectors. In addition, the device 300 may be incorporated within a system as previously described including a signal-processing device to translate the output of the photodetectors into a desirable form.

**[0064]** In use, the device 300 is placed on the patient at an appropriate site in which a terminal light source in the series is lined up with the sternal angle. The light from each light source is detected by its corresponding photodetector. The signal (e.g. current/voltage) of each photodetector is monitored (or transmitted to a signal processing device for translation to an alternate form of output such as a visual waveform output which is monitored) to determine whether there is an output or not. According to the invention, the highest position (d) along the vein to yield an output, e.g. a waveform, is then determined based on the output from each photodetector in the sequence. The mean central venous pressure (P) may then be calculated as described above.

**[0065]** Figure 13 illustrates other embodiments of the device 300 that may also be useful to measure central venous pressure as described above. Each embodiment includes a different configuration of the light source(s) and photodetectors. For example, Fig. 13A illustrates a device including a single light source and an array of adjacent photodetectors that may be used to obtain an output, e.g. a waveform, sequentially along a vein to determine the highest position (d). Fig. 13B illustrates a device including sequential source-detector pairs in an alternating configuration (source-detector, source-detector, etc.) for placement along a vein as shown. Fig. 13C illustrates a device similar to that of Fig. 13B including multiple rows of alternating source-detector pairs. As one of skill in the art will appreciate, a device as shown in Fig. 1 may also be used to determine the highest position (d) along the vein to yield an output signal (e.g. a waveform) by obtaining waveform readings sequentially from the sternal angle upward along the vein. Further, as previously described, the device, regardless of its configuration may be incorporated within a system comprising a signal-processing device in order to translate the output of the photodetector into a visual output such as a pressure waveform.

**[0066]** The central venous pressure may also be determined utilizing pressure detection e.g. determination of a pressure waveform, as described above and an externally applied pressure. In this case, a pressure waveform is obtained, as described, and monitored via a display unit 44. An external pressure is then applied to the selected venous vessel from the skin surface while monitoring the pressure waveform (representative of baseline pressure). The externally applied pressure is increased until the pressure waveform disappears as determined by monitoring the display unit. The central venous pressure  $P_c$  is then determined as follows:

$$P_c = P_{ef} - P_{ei}$$

wherein  $p_{ef}$  is the value of the externally applied pressure at which the pressure waveform disappears and  $p_{ei}$  is the value of pressure at which the pressure waveform starts to change (or the amplitude of the waveform starts to decrease).

**[0067]** A device comprising two light source-detector pairs, or two patches each comprising a light source-detector pair may be used in accordance with the foregoing method.

**[0068]** Central venous blood flow velocity may also be measured using a device in accordance with the present invention. By measuring the rise or fall time of a pressure waveform ( $t$ ), or the mean of the rise and fall time, the central venous blood flow can be calculated as follows:

$$v = \frac{d}{t}$$

wherein  $d$  is the spacing between the source and photodetector; and  $t$  is the rise time of the pressure waveform (from the bottom to the peak).

**[0069]** The blood flow may be estimated according to:

$$F = v \times S$$

wherein  $S$  is the cross-sectional area of the blood vessel, which can be obtained through ultrasound imaging, and velocity ( $v$ ) is determined as indicated above.

**[0070]** In a further embodiment not forming part of the present invention, a device corresponding to the device of Fig. 1 is provided which is adapted to generate an output from a cardiac vein remotely. Accordingly, the device comprises a remote light source capable of delivering a light beam to a desired site on a patient, e.g. a site on the neck of the patient in close proximity to a cardiac vessel; and a remote photodetector, such as a CCD camera adapted to receive light from the source which is reflected off of the patient at the desired site. As described, the photodetector generates an output signal (e.g. current/voltage) that may be processed by a signal-processing device to generate a visual output (e.g. waveform) for display on a display unit.

**[0071]** Embodiments of the present invention are described by reference to the following specific examples which are not to be construed as limiting.

#### Example 1 - Measurement of venous pulse in a patient

**[0072]** The venous pulse of a human subject was obtained using a device as shown in Fig. 1. The patient lay on a chair at about a 30 degree recline. The sensor patch of the device was placed on the neck of the patient at a site over the internal jugular vein. While the subject maintained normal breathing, venous pulse was measured and recorded. Fig. 11 illustrates the waveform recorded. The amplitude of the detected signal is represented along the y-axis while the x-axis represents time.

#### Example 2 - Measurement of central venous pressure in a patient

**[0073]** The central venous pressure of a human subject was obtained using a device as shown in Fig. 12. The sensor patch of the device was placed on the neck of the patient at a site over the internal jugular vein such that the terminal source/detector of the device was at the sternal angle of the subject. While the subject maintained normal breathing, venous pressure was measured and recorded as a function of body position when the patient was lying flat (0 degree incline, e.g. horizontal), at a partial rise (45 degree incline from the horizontal) and sitting upright (90 degree incline from the horizontal) as shown in Fig. 14A. The measured pressure as depicted by the waveform illustrated in Fig. 14B is consistent with the expected central venous pressure in a healthy subject which decreases as body position rises from the horizontal position.

## References

**[0074]**

- 5 1. Naveen Greg et al, "Jugular Venous Pulse: An Appraisal", Journal, Indian Academy of Clinical Medicine, Vol 1, No. 3, Oct. - Dec.,2000
2. Reference: O'Rourke,R. A. and Others,General Examination of the Patient,Hurst's, The Heart,Eighth Edition,Pp.238-242
- 10 3. <http://depts.washington.edu/physdx/neck/tech2.html>
4. Conway "Clinical assessment of cardiac output", Eur. Heart J. 11, 148 - 150 (1990).
- 15 5. "Advances in non-invasive cardiac output monitoring", Annals of Cardiac Anaesthesia, 2002, volume 5, p 141 - 148.
6. "Thermodilution method for measuring cardiac output", Europ. Heart J. 11(Suppl 1), 17 - 20, 1990.
7. "The dye dilution method for measurement of cardiac output", Europ. Heart J. 11 (Suppl 1), 6 - 12 (1990))
- 20 8. de Leeuw and Birkenhager ("Some comments of the usefulness of measuring cardiac output by dye dilution", Europ. Heart J. 11 (Suppl 1), 13 - 16 (1990)).
9. "Continuous measurement of cardiac output by the Fick principle: Clinical validation in intensive care", Crit Care Med 20(3), 360 - 365 (1992)
- 25 10. Doi et al., "Frequently repeated Fick cardiac output measurements during anesthesia", J. Clin. Monit. 6, 107 - 112 (1990).
- 30 11. "Measurement of cardiac output before and after cardiopulmonary bypass: Comparison among aortic transit-time ultrasound, thermodilution, and noninvasive partial CO2 rebreathing", J. Cardiothoracic. Vasc. Anesth. 18(5) 563 - 572 (2004).
12. Nielsson et al. al "Lack of agreement between thermodilution and CO2-rebreathing cardiac output" Acta Anaesthesiol Scand 2001; 45:680.
- 35 13. Schmidlin et al, "Transoesophageal echocardiography in cardiac and vascular surgery: implications and observer variability", Brit. J. Anaesth. 86(4), 497 - 505 (2001).
- 40 14. Manning et al. "Validity and reliability of diastolic pulse contour analysis (Windkessel model) in humans", Hypertension. 2002 May; 39(5):963-8.
15. "Pulse contour analysis versus thermodilution in cardiac surgery", Acta Anaesthesiol Scand 2002; 46:424, Linton et al.
- 45 16. "Estimation of changes in cardiac output from arterial blood pressure waveform in the upper limb", Br J Anaesth 2001; 86:486 and Jansen et al.
17. "A comparison of cardiac output derived from the arterial pressure wave against thermodilution in cardiac surgery patients" Br J Anaesth 2001; 87:212.
- 50 18. Jansen et al. "An adequate strategy for the thermodilution technique in patients during mechanical ventilation", Intensive Care Med 1990; 16:422.

55

**Claims**

1. A system configured to determine central venous pressure in a patient by determining the highest position, along

a jugular vein, that yields an output waveform, the system being **characterized by**:

a light source (20, 320) adapted to emit light in the 600 nm to 900 nm wavelength range;  
 an array of adjacent photodetectors (30, 330) adapted to receive light emitted by the light source (20, 320) as  
 an output sequentially along the internal or external jugular vein and translate said light into a recordable output  
 wherein said light is reflected from or transmitted through tissue of the patient, and  
 at least one patch probe (28, 328) adapted as an interface between the light source (20, 320) and the photo-  
 detectors (30, 330), and adapted for placement, when in use, on a patient at a site in the vicinity of the internal  
 or external jugular vein;  
 a signal-processing device (40) in communication with the photodetectors (30, 330) adapted to translate the  
 output from each photodetector (30, 330) in the sequence into an output waveform against time (30) to determine  
 the highest position along the jugular vein, measured from the sternal angle, that yields an output waveform,  
 and to calculate therefrom central venous pressure.

2. A system as defined in claim 1, wherein the signal-processing device (40) executes an algorithm that inverts the  
 output from the photodetectors (30) in order to reflect variations in blood volume or blood flow in the vein and thereby  
 yield a pressure waveform.

3. A system as defined in claim 1, wherein said light source (20) and said photodetectors (30) are embedded in said  
 probe (28).

4. A system as defined in claim 1, comprising a plurality of light sources (20) and a plurality of photodetectors (30),  
 wherein each light source (20) emits light that is received by a corresponding photodetector (30).

5. A system as defined in claim 1, comprising a plurality of probes (28), wherein each probe (28) comprises at least  
 one light source (20) and at least one photodetector (30).

6. A method of determining central venous pressure in a patient by determining the highest position, along a jugular  
 vein, that yields an output waveform, the method being **characterized by**:

directing a beam of light having a wavelength in the range of 600 nm to 900 nm at a series of external tissue  
 sites on the patient's neck along the internal or external jugular vein starting from the sternal angle;  
 detecting light reflected from the tissue site or transmitted through each tissue site sequentially along said jugular  
 vein by an array of adjacent photodetectors;  
 translating the detected light into an output waveform against time to determine the highest position along the  
 jugular vein, measured from the sternal angle, that yields an output waveform; and calculating therefrom the  
 central venous pressure.

7. The method of claim 6, wherein a mean central venous pressure (P) is calculated according to the equation  $P = (d + 5 \text{ cm}) * \sin \theta$ , wherein  $\theta$  is the inclined body angle from horizontal of the patient and d is the distance from the  
 sternal angle to said highest position.

### Patentansprüche

1. System, das konfiguriert ist, um den zentralen Venendruck bei einem Patienten zu bestimmen, indem die höchste  
 Position entlang einer Drosselvene bestimmt wird, die eine Ausgangswellenform hervorbringt, wobei das System  
 durch Folgendes gekennzeichnet ist:

eine Lichtquelle (20, 320), die angepasst ist, um Licht in dem Wellenlängenbereich von 600 nm bis 900 nm  
 abzustrahlen;  
 ein Array angrenzender Photodetektoren (30, 330), das angepasst ist, um Licht, das von der Lichtquelle (20,  
 320) abgestrahlt wird, als eine Ausgabe sequenziell entlang der inneren oder der äußeren Drosselvene aufzu-  
 nehmen und das Licht in eine aufzeichenbare Ausgabe umzuwandeln, wobei das Licht von Gewebe des Pati-  
 enten reflektiert oder durch dieses übertragen wird und  
 mindestens eine Pflastersonde (28, 328), die als eine Schnittstelle zwischen der Lichtquelle (20, 320) und den  
 Photodetektoren (30, 330) angepasst ist und bei der Verwendung zum Platzieren auf einem Patienten an einer  
 Stelle in der Nähe der inneren oder äußeren Drosselvene angepasst ist;

eine Signalverarbeitungsvorrichtung (40) in Kommunikation mit den Photodetektoren (30, 330), die angepasst ist, um die Ausgabe von jedem Photodetektor (30, 330) in der Sequenz in eine Ausgangswellenform gegen die Zeit (30) umzuwandeln, um die höchste Position entlang der Drosselvene, gemessen von dem Brustbeinwinkel, zu bestimmen, die eine Ausgangswellenform hervorbringt und um daraus den zentralen Venendruck zu berechnen.

2. System nach Anspruch 1, wobei die Signalverarbeitungsvorrichtung (40) einen Algorithmus ausführt, der die Ausgabe von den Photodetektoren (30) umkehrt, um Abweichungen hinsichtlich des Blutvolumens oder des Blutstroms in der Vene widerzuspiegeln und dadurch eine Druckwellenform hervorzubringen.
3. System nach Anspruch 1, wobei die Lichtquelle (20) und die Photodetektoren (30) in der Sonde (28) eingebettet sind.
4. System nach Anspruch 1, umfassend eine Vielzahl von Lichtquellen (20) und eine Vielzahl von Photodetektoren (30), wobei jede Lichtquelle (20) Licht abstrahlt, das von einem entsprechenden Photodetektor (30) aufgenommen wird.
5. System nach Anspruch 1, umfassend eine Vielzahl von Sonden (28), wobei jede Sonde (28) mindestens eine Lichtquelle (20) und mindestens einen Photodetektor (30) umfasst.
6. Verfahren zum Bestimmen des zentralen Venendrucks bei einem Patienten, indem die höchste Position entlang einer Drosselvene bestimmt wird, die eine Ausgangswellenform hervorbringt, wobei das Verfahren durch Folgendes gekennzeichnet ist:

Richten eines Lichtstrahls, der eine Wellenlänge in dem Bereich von 600 nm bis 900 nm aufweist, auf eine Reihe von äußeren Gewebestellen am Hals des Patienten entlang der inneren oder äußeren Drosselvene, beginnend von dem Brustbeinwinkel;  
 Detektieren von Licht, das von der Gewebestelle reflektiert oder durch jede Gewebestelle sequenziell entlang der Drosselvene durch ein Array angrenzender Photodetektoren übertragen wird;  
 Umwandeln des detektierten Lichts in eine Ausgangswellenform gegen die Zeit, um die höchste Position entlang der Drosselvene, gemessen von dem Brustbeinwinkel, zu bestimmen, die eine Ausgangswellenform hervorbringt; und  
 daraus Berechnen des zentralen Venendrucks.

7. Verfahren nach Anspruch 6, wobei ein mittlerer zentraler Venendruck (P) gemäß der Gleichung  $P = (d + 5 \text{ cm}) * \sin\theta$  berechnet wird, wobei  $\theta$  dem geneigten Körperwinkel von der Horizontalen des Patienten entspricht und d dem Abstand von dem Brustbeinwinkel zu der höchsten Position entspricht.

## Revendications

1. Système configuré pour déterminer la pression veineuse centrale chez un patient en déterminant la position la plus haute, le long d'une veine jugulaire, qui produit une forme d'onde de sortie, le système étant **caractérisé par** :

une source de lumière (20, 320) adaptée pour émettre de la lumière dans la plage de longueurs d'onde de 600 nm à 900 nm ;  
 un réseau de photo-détecteurs adjacents (30, 330) adaptés pour recevoir la lumière émise par la source de lumière (20, 320) en tant que sortie séquentiellement le long de la veine jugulaire interne ou externe et traduire ladite lumière en une sortie enregistrable dans lequel ladite lumière est réfléchie depuis le tissu du patient ou transmise à travers celui-ci, et  
 au moins une sonde patch (28, 328) adaptée en tant qu'interface entre la source de lumière (20, 320) et les photo-détecteurs (30, 330), et adaptée pour mise en place, lors de l'utilisation, sur un patient au niveau d'un site à proximité de la veine jugulaire interne ou externe ;  
 un dispositif de traitement de signal (40) en communication avec les photo-détecteurs (30, 330) adapté pour traduire la sortie de chaque photo-détecteur (30, 330) de la séquence en une forme d'onde de sortie par rapport au temps (30) pour déterminer la position la plus haute le long de la veine jugulaire, mesurée à partir de l'angle sternal, qui produit une forme d'onde de sortie, et pour calculer la pression veineuse centrale à partir de celle-ci.

## EP 2 120 689 B1

2. Système selon la revendication 1, dans lequel le dispositif de traitement de signal (40) exécute un algorithme qui inverse la sortie des photo-détecteurs (30) afin de refléter les variations du volume sanguin ou du flux sanguin dans la veine et de produire ainsi une forme d'onde de pression.

5 3. Système selon la revendication 1, dans lequel ladite source de lumière (20) et lesdits photo-détecteurs (30) sont incorporés dans ladite sonde (28).

10 4. Système selon la revendication 1, comprenant une pluralité de sources de lumière (20) et une pluralité de photo-détecteurs (30), dans lequel chaque source de lumière (20) émet de la lumière qui est reçue par un photo-détecteur (30) correspondant.

5 5. Système selon la revendication 1, comprenant une pluralité de sondes (28), dans lequel chaque sonde (28) comprend au moins une source de lumière (20) et au moins un photo-détecteur (30).

15 6. Procédé de détermination de la pression veineuse centrale chez un patient en déterminant la position la plus haute, le long d'une veine jugulaire, qui produit une forme d'onde de sortie, le procédé étant **caractérisé par** :

20 le fait de diriger un faisceau de lumière ayant une longueur d'onde dans la plage de 600 nm à 900 nm au niveau d'une série de sites de tissu externe sur le cou du patient le long de la veine jugulaire interne ou externe en partant de l'angle sternal ;

la détection de la lumière réfléchie depuis le site de tissu ou transmise à travers chaque site de tissu séquentiellement le long de ladite veine jugulaire par un réseau de photo-détecteurs adjacents ;

la translation de la lumière détectée en une forme d'onde de sortie par rapport au temps afin de déterminer la position la plus haute le long de la veine jugulaire, mesurée à partir de l'angle sternal, qui produit une forme

25 d'onde de sortie ; et

le calcul, à partir de celle-ci, de la pression veineuse centrale.

30 7. Procédé selon la revendication 6, dans lequel une pression veineuse centrale moyenne (P) est calculée en fonction de l'équation  $P = (d + 5 \text{ cm}) \cdot \sin\theta$ , dans lequel  $\theta$  est l'angle de corps incliné par rapport à l'horizontale du patient et d est la distance de l'angle sternal à ladite position la plus haute.

35

40

45

50

55

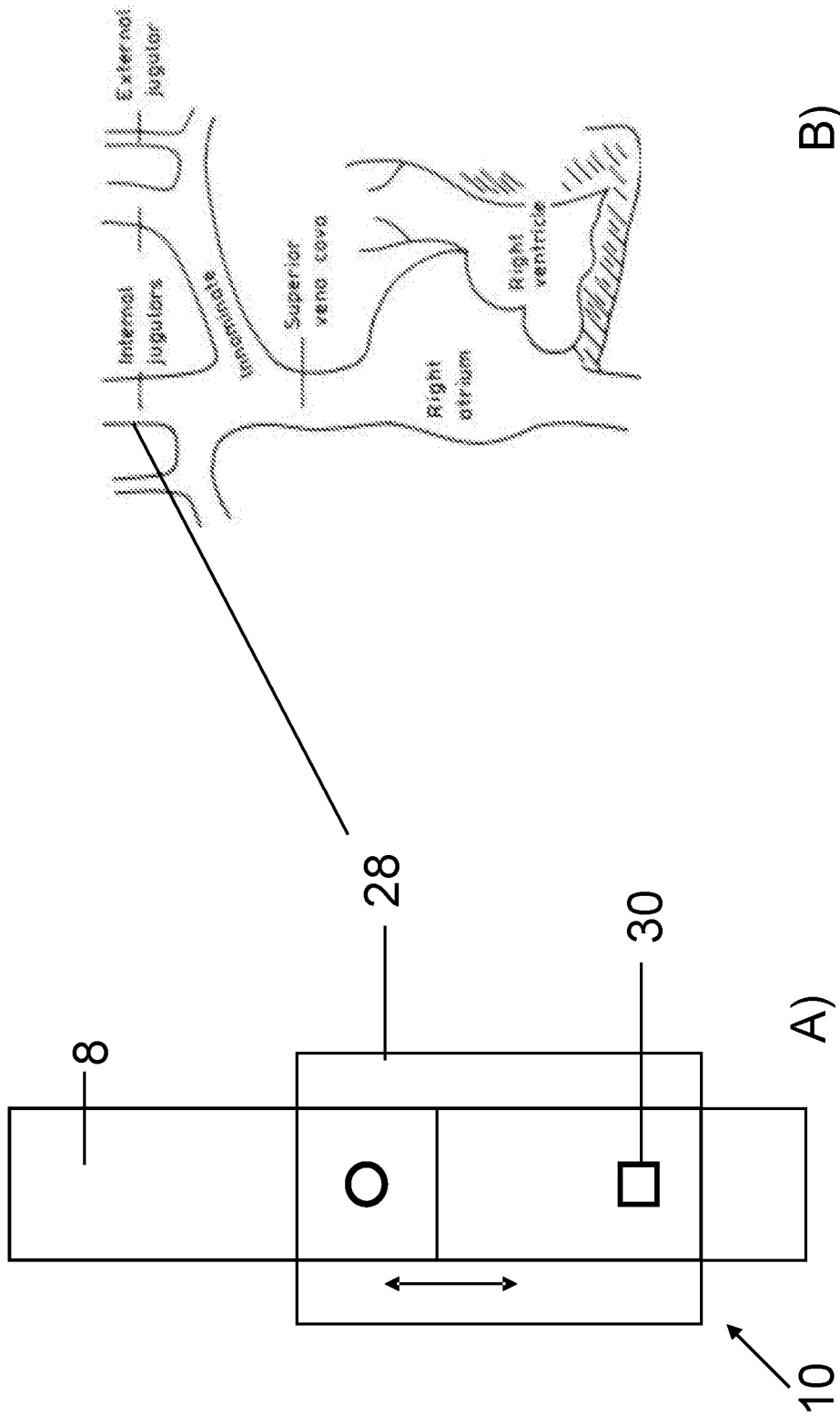


Figure 1

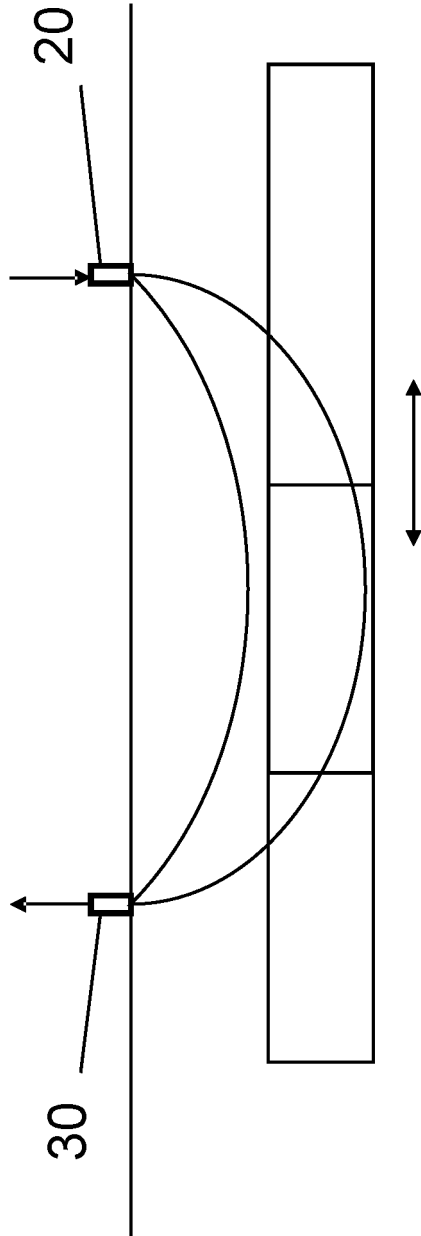


Figure 2

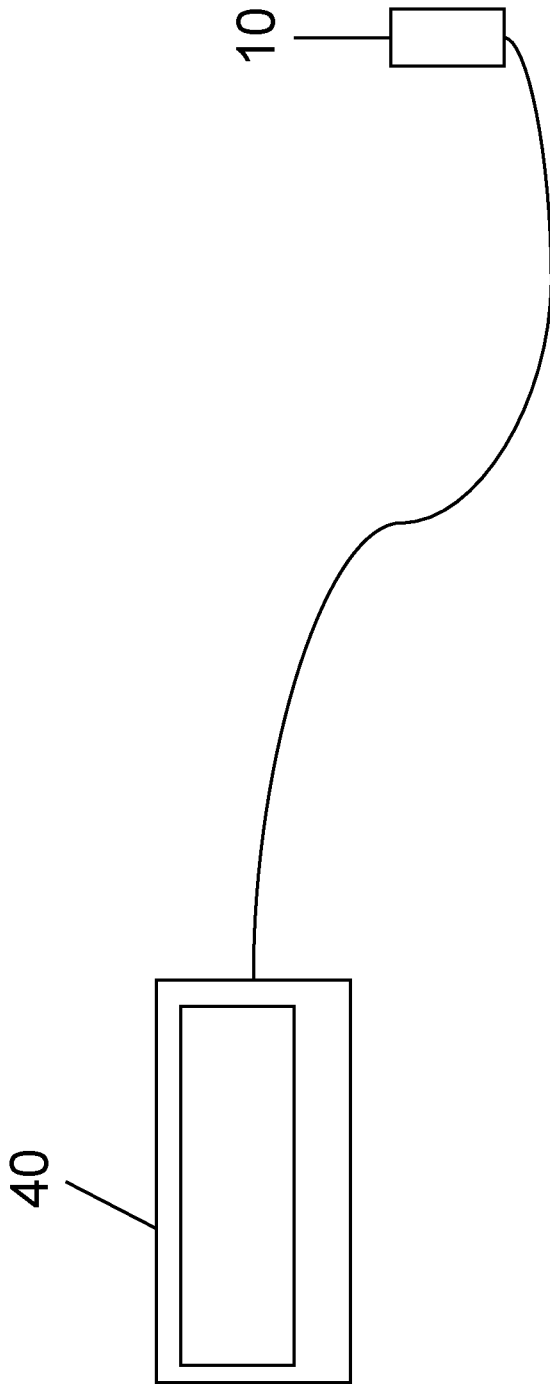
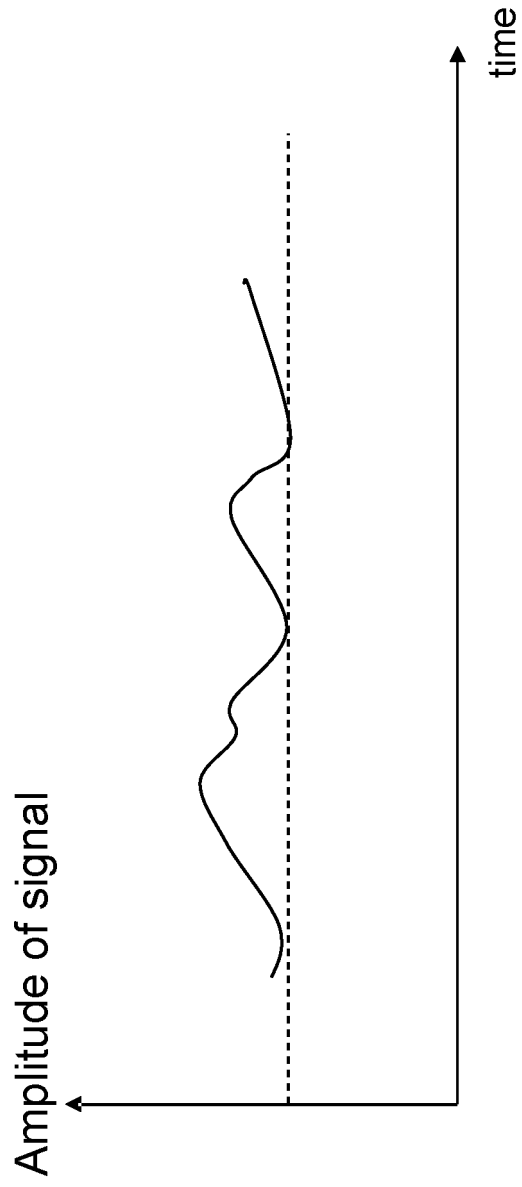


Figure 3



**Figure 4**

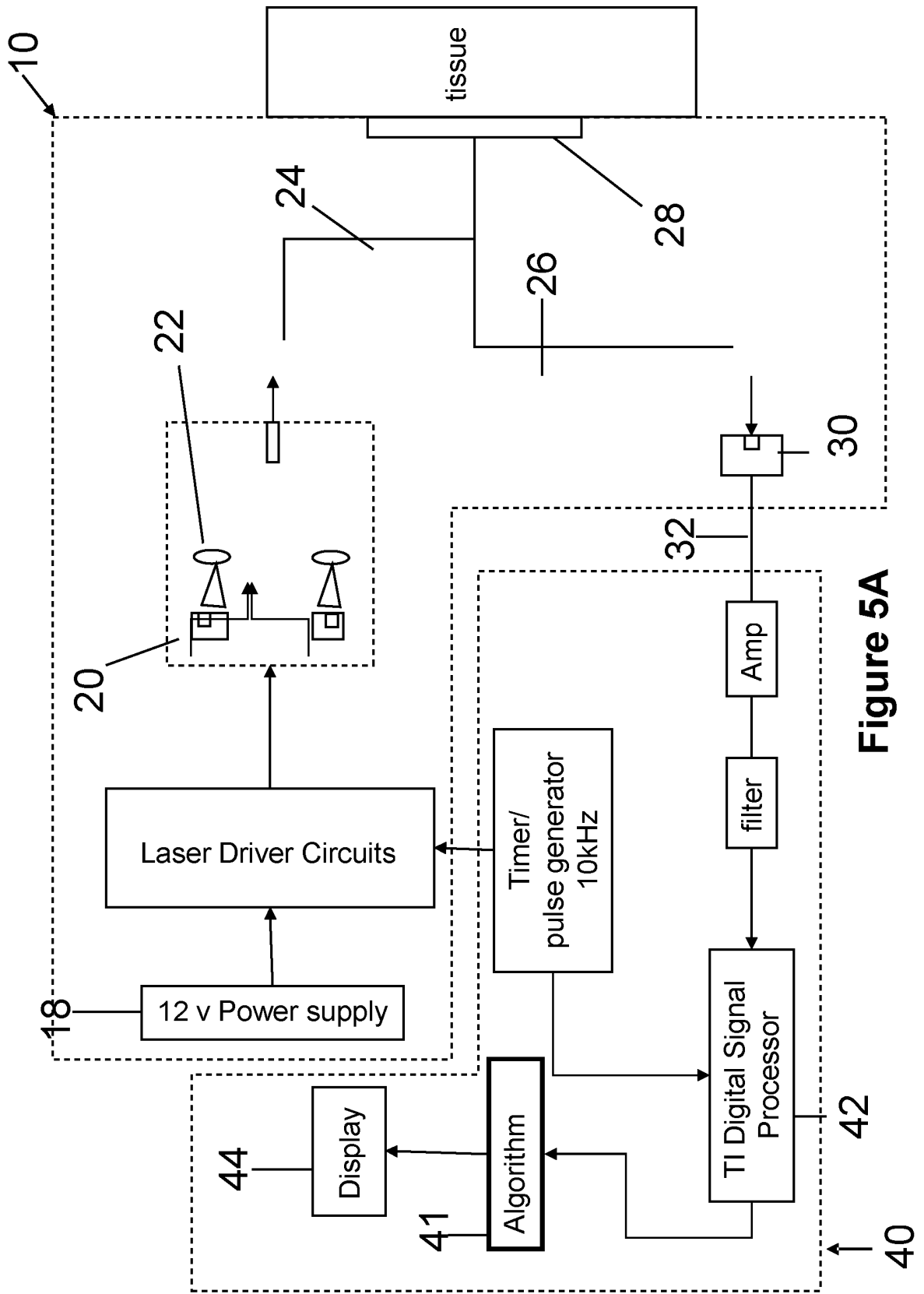


Figure 5A

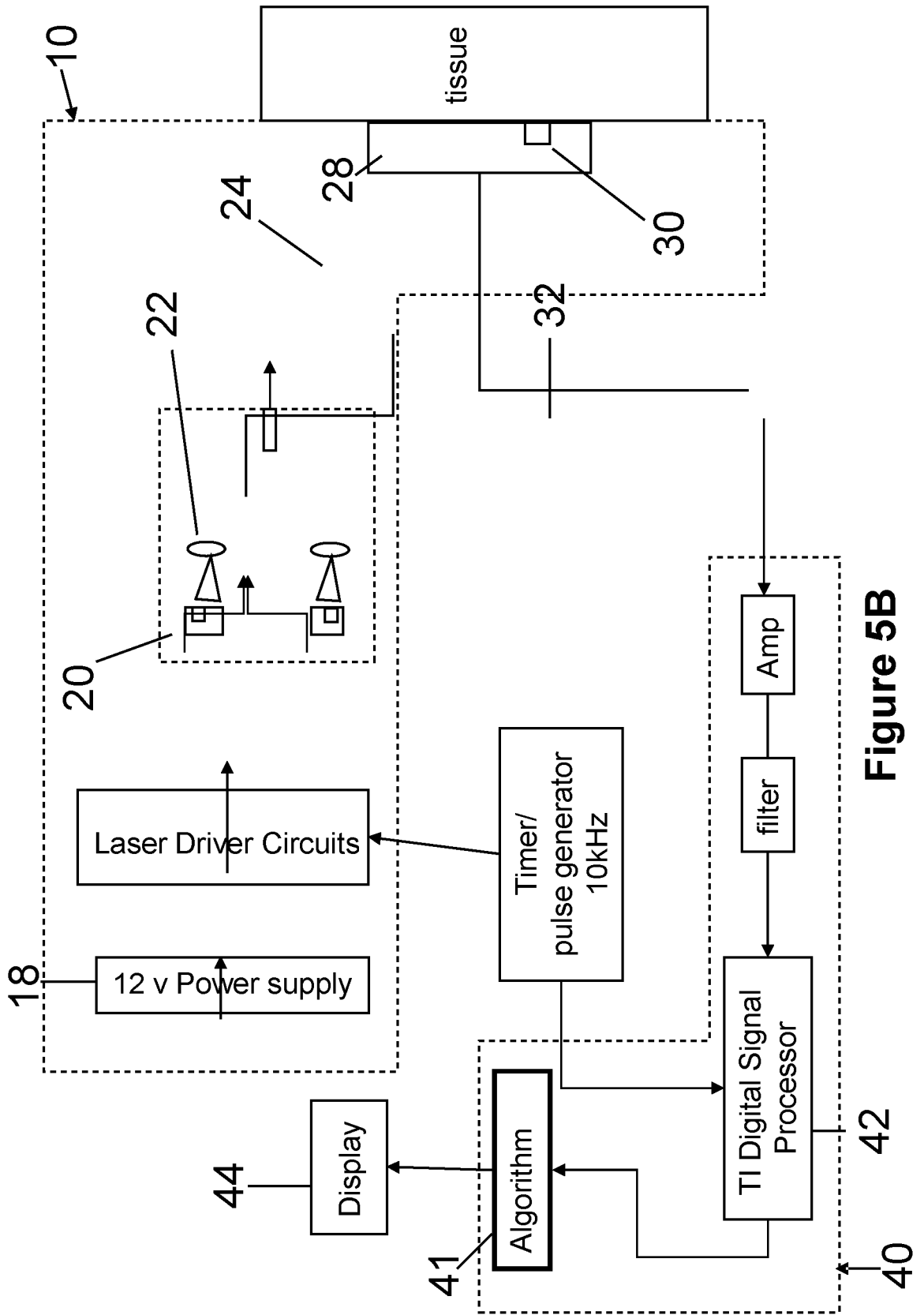


Figure 5B

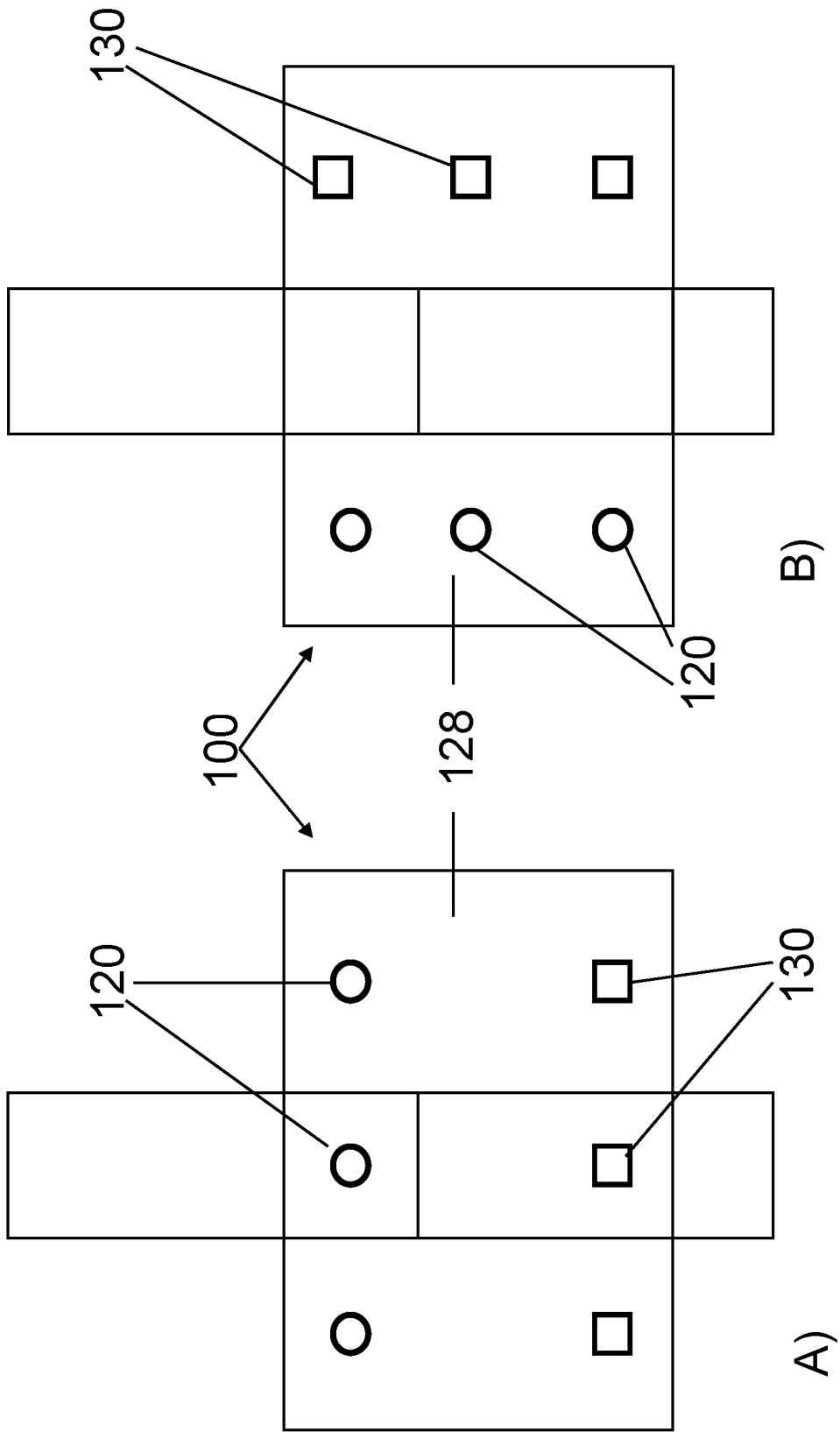


Figure 6

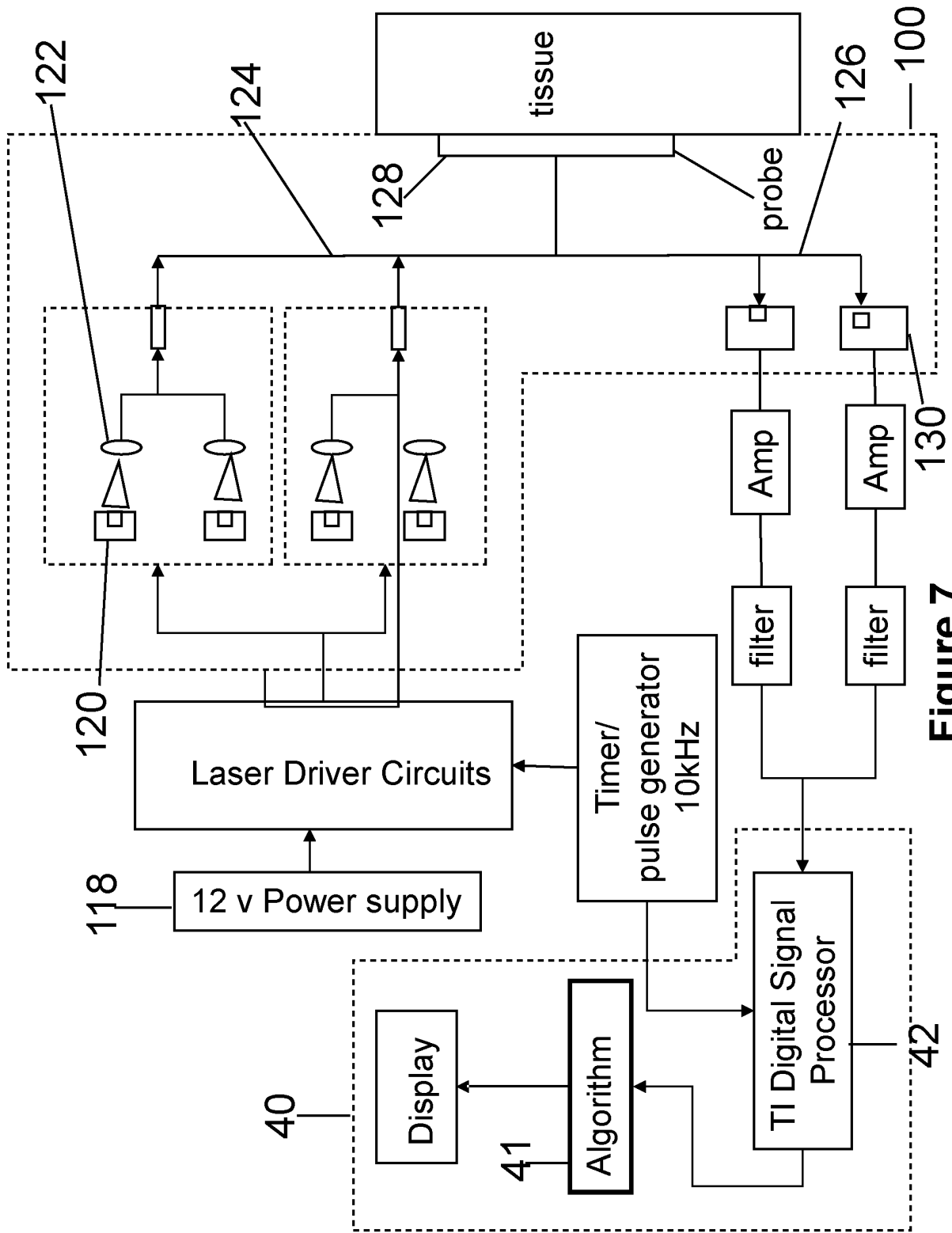


Figure 7

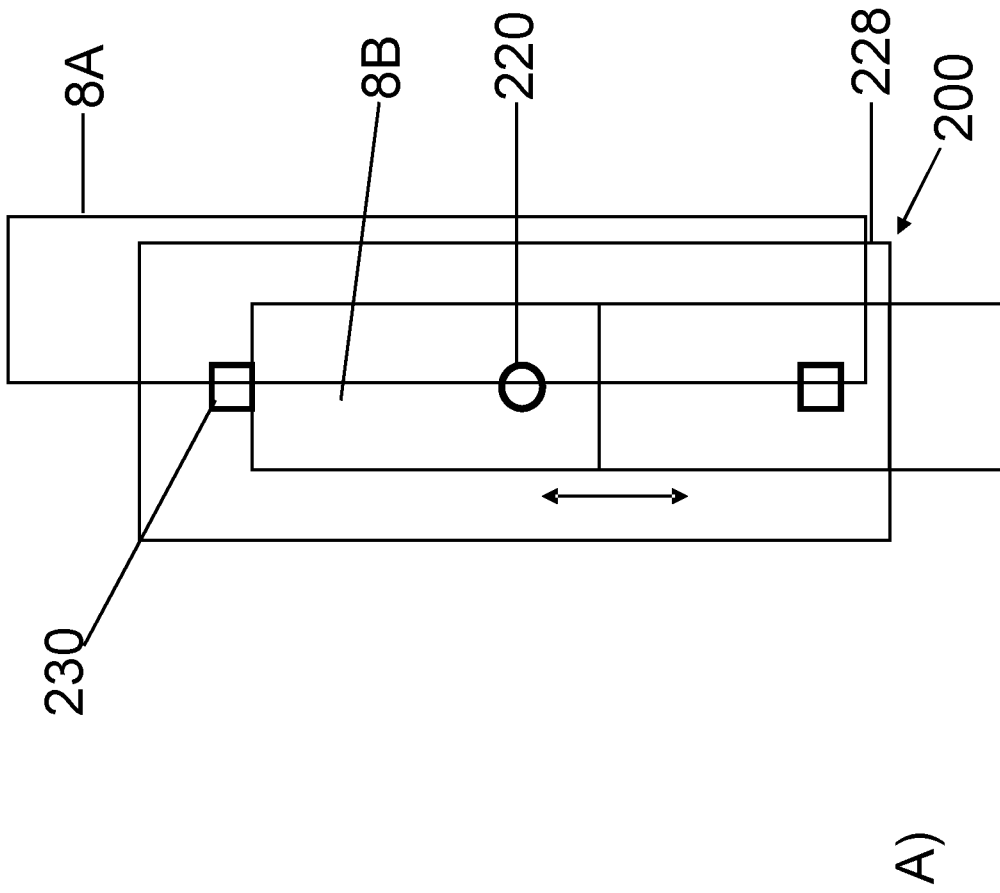


Figure 8

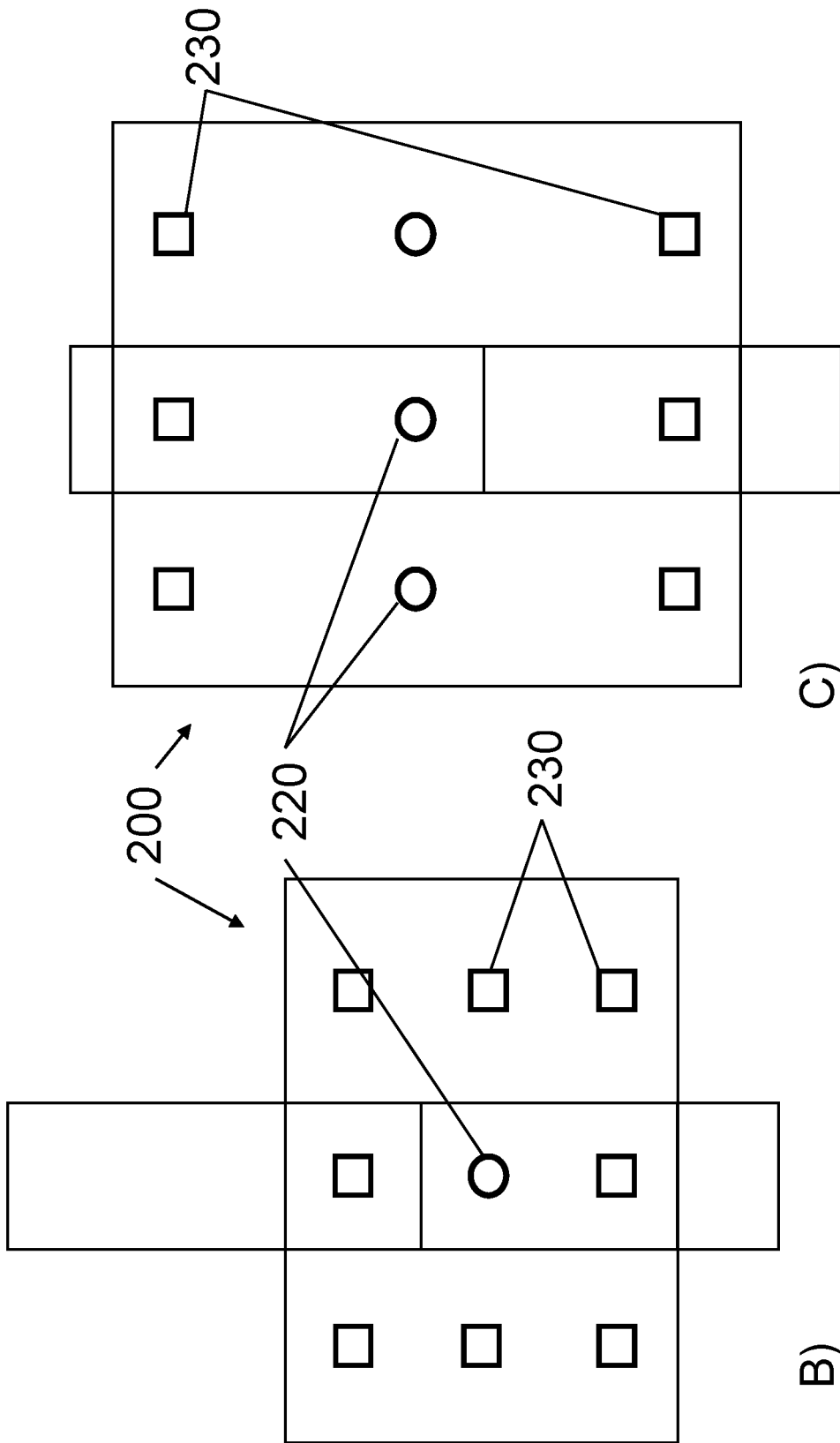
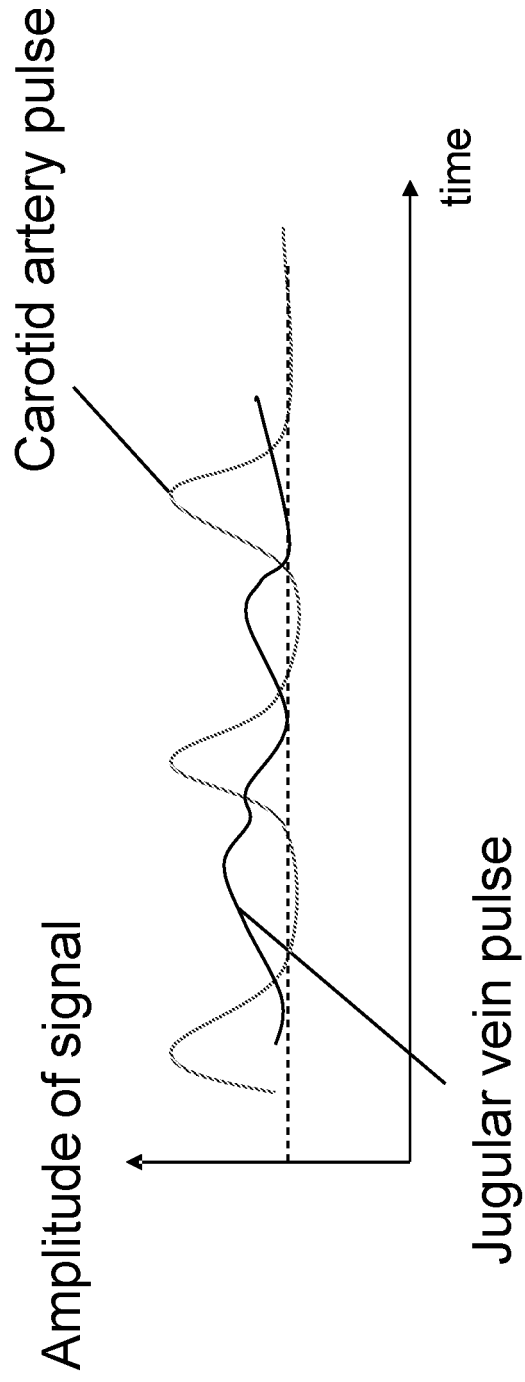


Figure 8



**Figure 9**

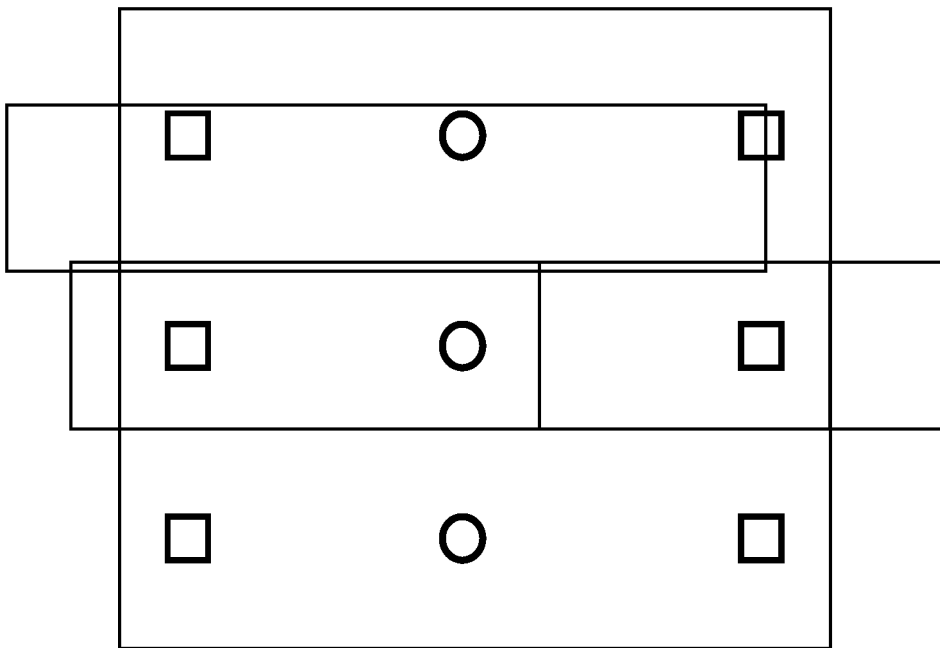


Figure 10

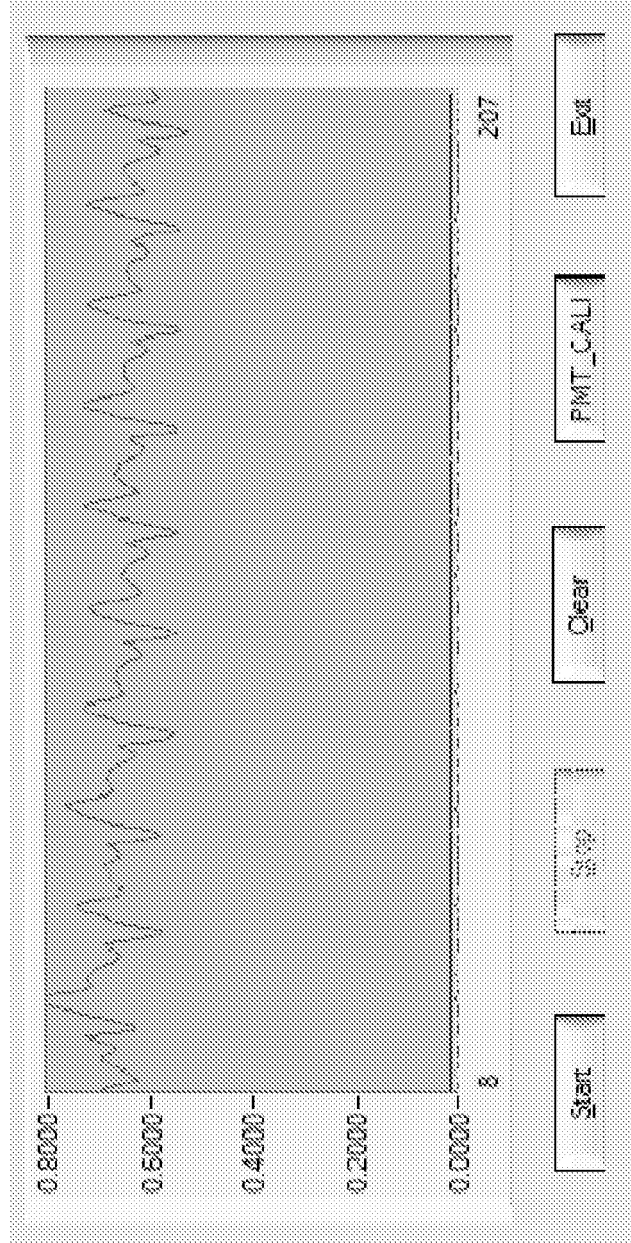


Figure 11

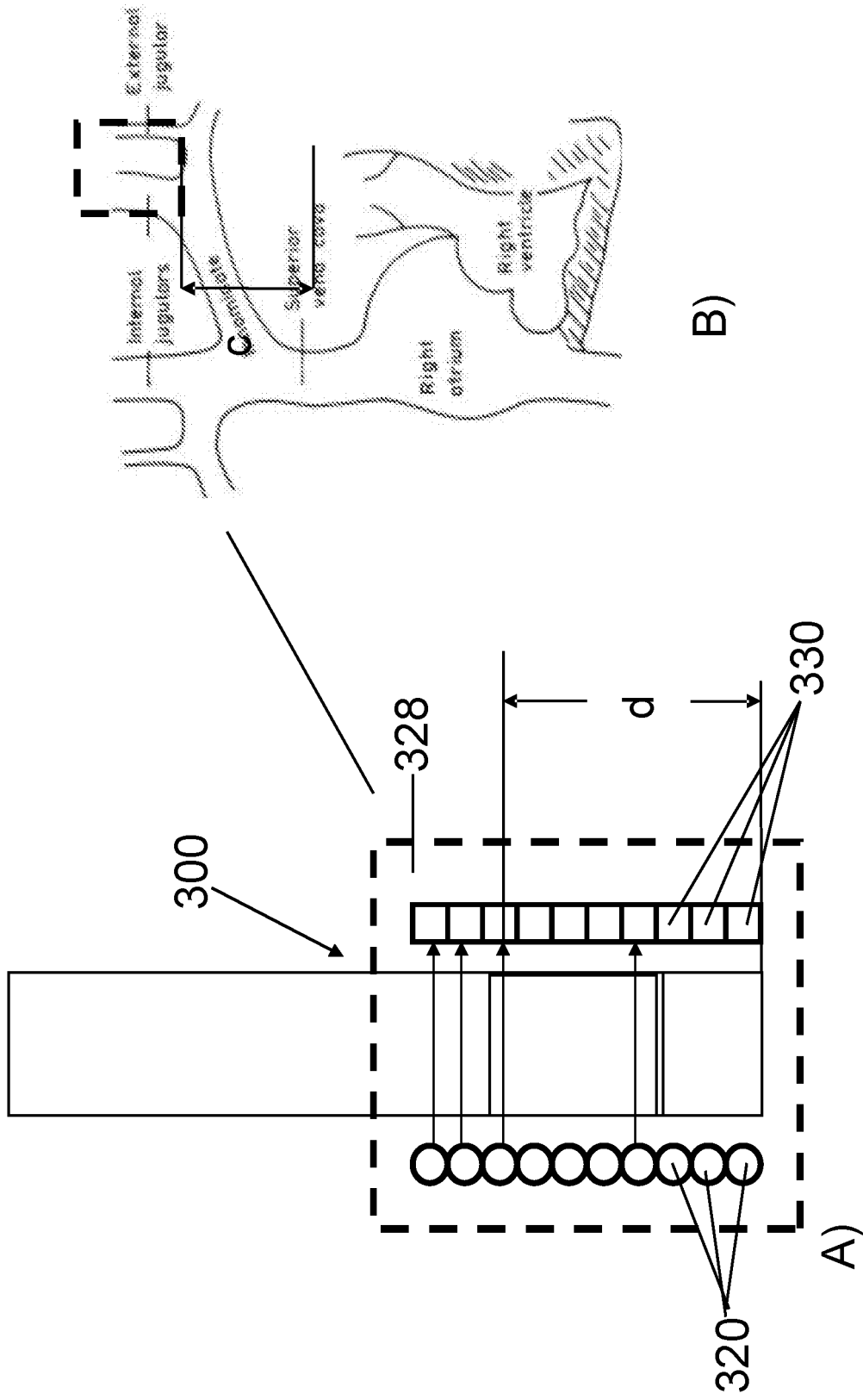


Figure 12

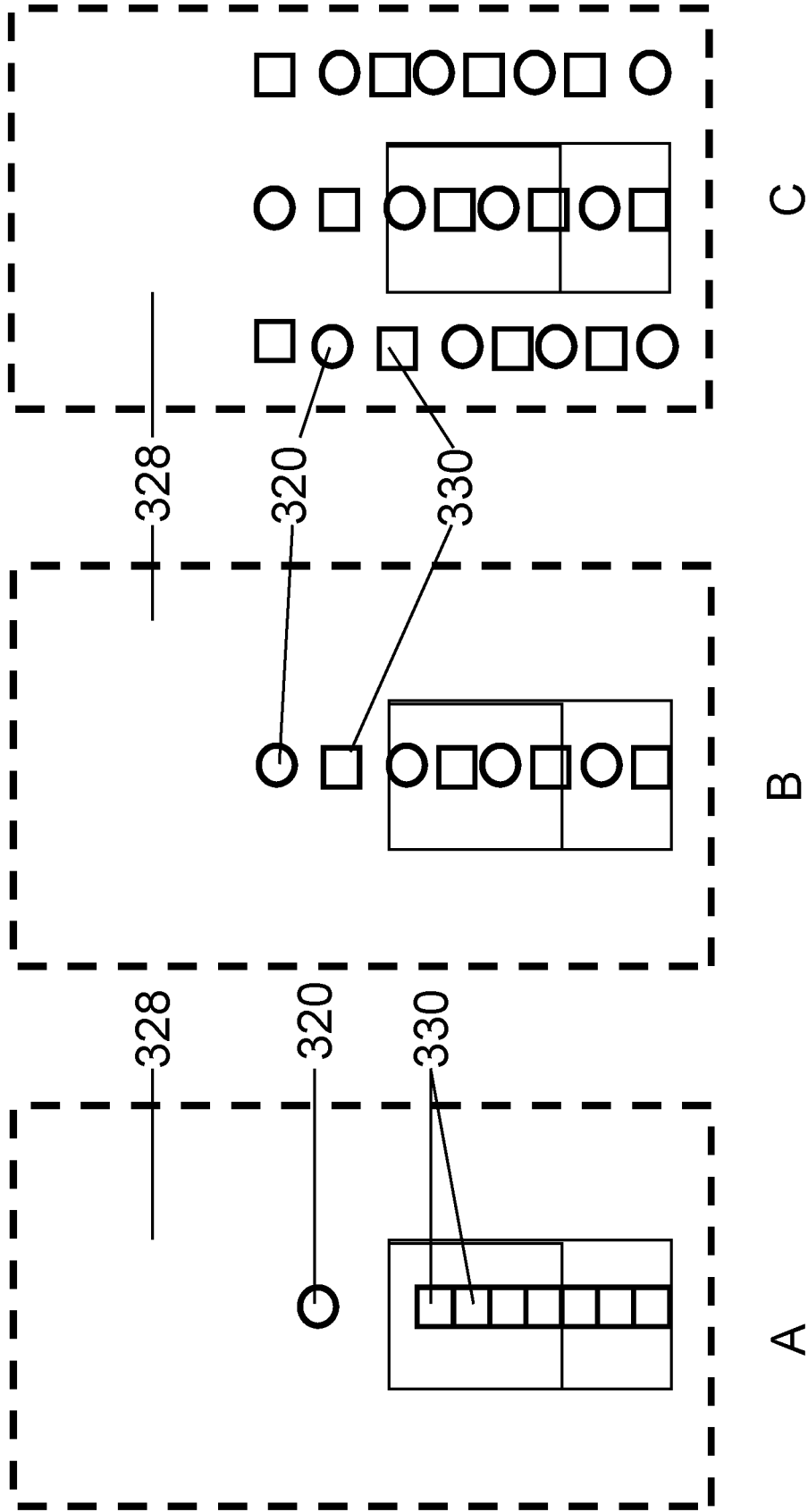
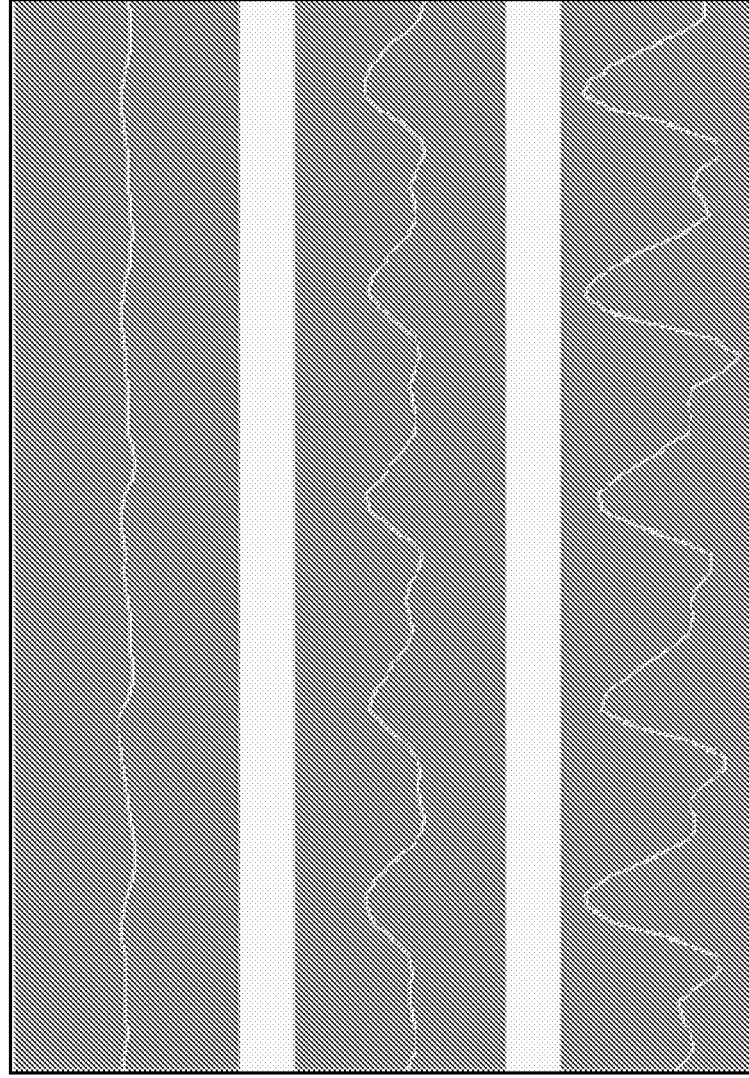


Figure 13



90 degree

45 degree

0 degree

Figure 14

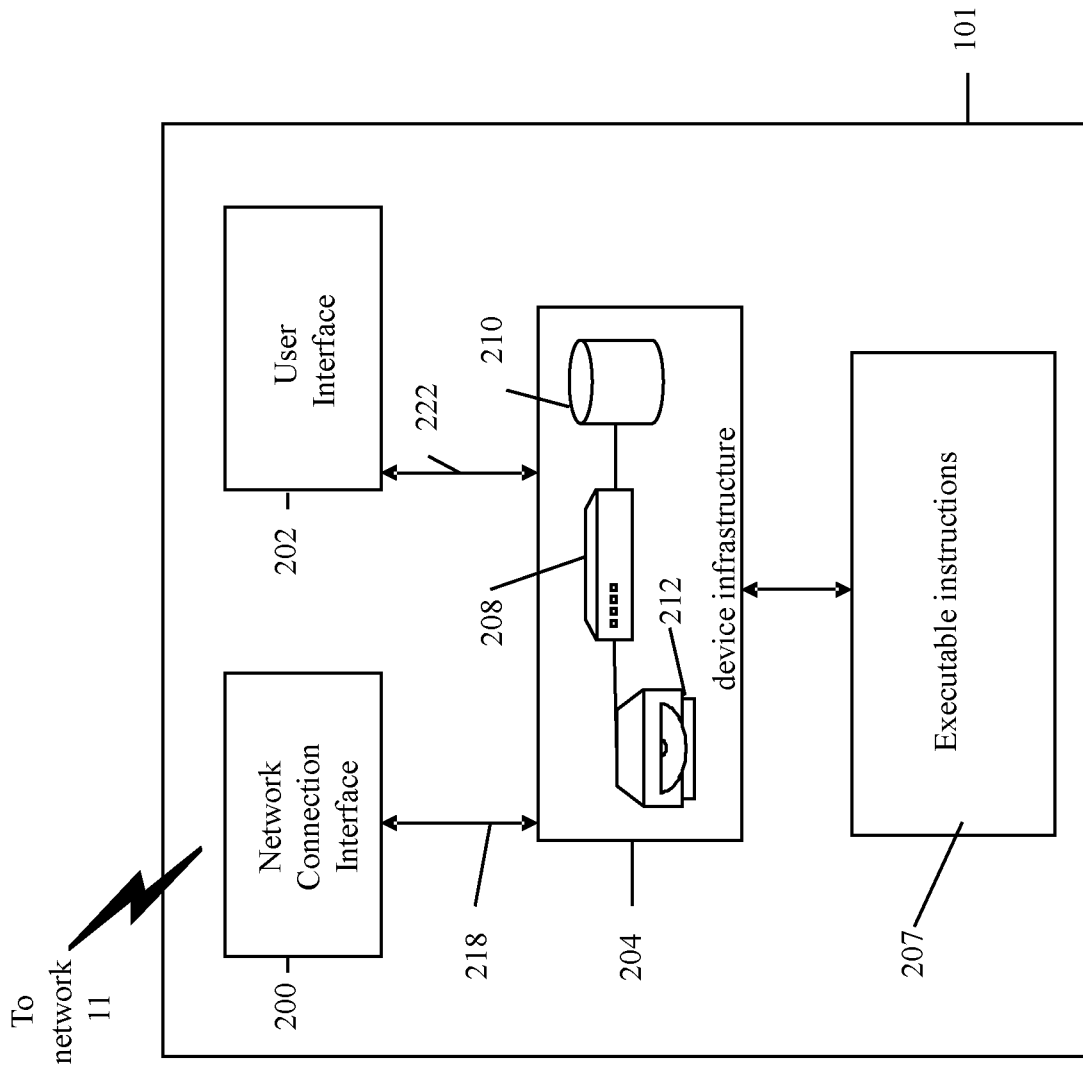


Figure 15

## REFERENCES CITED IN THE DESCRIPTION

This list of references cited by the applicant is for the reader's convenience only. It does not form part of the European patent document. Even though great care has been taken in compiling the references, errors or omissions cannot be excluded and the EPO disclaims all liability in this regard.

## Patent documents cited in the description

- US 2006224053 A [0015]
- WO 2006097910 A [0015]
- US 5788641 A [0015]

## Non-patent literature cited in the description

- **J.R.C. JANSEN.** Novel methods of invasive/non-invasive cardiac output monitoring. *Abstracts of the 7th annual meeting of the European Society for Intravenous Anesthesia*, 2004 [0005]
- Fundamentals of impedance cardiography. *IEEE Engineering in Medicine and Biology*, 1989, 35 [0010]
- **NEUMAN, M. R.** Pulse Oximetry: Physical Principles, Technical Realization and Present Limitations. @ *Adv. Exp. Med. Biol.*, 1987, vol. 220, 135-144 [0013]
- **SEVERINGHAUS, J. W.** History and Recent Developments in Pulse Oximetry. @ *Scan. J. Clin. and Lab. Investigations*, 1993, vol. 53, 105-111 [0013]
- **NAVEEN GREG et al.** Jugular Venous Pulse: An Appraisal. *Journal, Indian Academy of Clinical Medicine*, December 2000, vol. 1 (3) [0074]
- General Examination of the Patient, Hurst's. **O'ROURKE, R. A.** The Heart. 238-242 [0074]
- **CONWAY.** Clinical assessment of cardiac output. *Eur. Heart J.*, 1990, vol. 11, 148-150 [0074]
- Advances in non-invasive cardiac output monitoring. *Annals of Cardiac Anaesthesia*, 2002, vol. 5, 141-148 [0074]
- Thermodilution method for measuring cardiac output. *Europ. Heart J.*, 1990, vol. 11 (1), 17-20 [0074]
- The dye dilution method for measurement of cardiac output. *Europ. Heart J.*, 1990, vol. 11 (1), 6-12 [0074]
- **LEEuw ; BIRKENHAGER.** Some comments of the usefulness of measuring cardiac output by dye dilution. *Europ. Heart J.*, 1990, vol. 11 (1), 13-16 [0074]
- Continuous measurement of cardiac output by the Fick principle: Clinical validation in intensive care. *Crit Care Med*, 1992, vol. 20 (3), 360-365 [0074]
- **DOI et al.** Frequently repeated Fick cardiac output measurements during anesthesia. *J. Clin. Monit.*, 1990, vol. 6, 107-112 [0074]
- Measurement of cardiac output before and after cardiopulmonary bypass: Comparison among aortic transit-time ultrasound, thermodilution, and noninvasive partial CO<sub>2</sub> rebreathing. *J. Cardiothoracic. Vasc. Anesth.*, 2004, vol. 18 (5), 563-572 [0074]
- **NIELSSON et al.** Lack of agreement between thermodilution and CO<sub>2</sub>-rebreathing cardiac output. *Acta Anaesthesiol Scand*, 2001, vol. 45, 680 [0074]
- **SCHMIDLIN et al.** Transoesophageal echocardiography in cardiac and vascular surgery: implications and observer variability. *Brit. J. Anaesth.*, 2001, vol. 86 (4), 497-505 [0074]
- **MANNING et al.** Validity and reliability of diastolic pulse contour analysis (Windkessel model) in humans. *Hypertension*, May 2002, vol. 39 (5), 963-8 [0074]
- **LINTON.** Pulse contour analysis versus thermodilution in cardiac surgery. *Acta Anaesthesiol Scand*, 2002, vol. 46, 424 [0074]
- **JANSEN.** Estimation of changes in cardiac output from arterial blood pressure waveform in the upper limb. *Br J Anaesth*, 2001, vol. 86, 486 [0074]
- A comparison of cardiac output derived from the arterial pressure wave against thermodilution in cardiac surgery patients. *Br J Anaesth*, 2001, vol. 87, 212 [0074]
- **JANSEN et al.** An adequate strategy for the thermodilution technique in patients during mechanical ventilation. *Intensive Care Med*, 1990, vol. 16, 422 [0074]

专利名称(译)	测量心脏功能参数的方法和装置		
公开(公告)号	<a href="#">EP2120689B1</a>	公开(公告)日	2016-08-31
申请号	EP2008714585	申请日	2008-02-13
[标]申请(专利权)人(译)	米斯比尔生命科学公司		
当前申请(专利权)人(译)	MESPERE LIFESCIENCES INC.		
[标]发明人	CHENG XUEFENG		
发明人	CHENG, XUEFENG		
IPC分类号	A61B5/0215 A61B5/00 A61B5/02 A61B5/021 A61B5/024 A61B5/026 A61B5/1455 A61B6/00 A61B5/0205 A61B5/029		
CPC分类号	A61B5/021 A61B5/0205 A61B5/02116 A61B5/029 A61B5/1455 A61B5/14552 A61B5/4884 A61B5/6833 A61B2562/0233 A61B2562/043 A61B2562/046		
代理机构(译)	GIBSON, MARK		
优先权	11/707095 2007-02-16 US		
其他公开文献	EP2120689A4 EP2120689A1		
外部链接	<a href="#">Espacenet</a>		

摘要(译)

提供了一种用于非侵入地测量患者心脏血管的至少一个参数的装置。该装置包括至少一个发射400nm至1000nm波长范围的光的光源;至少一个光电探测器,适于接收由光源发射的光并基于所接收的光产生输出,其中所述光从患者的组织反射或透射通过患者的组织,所述光电探测器的输出与血液的参数相关联;和至少一个探针,用于促进光从光源传递到心脏血管附近的患者的外部组织部位和光电探测器接收光。还提供了利用该装置和/或系统监测/测量心脏参数的系统和方法。

$$P(t) \sim 1/S(t)$$