



(12) **EUROPEAN PATENT APPLICATION**

(43) Date of publication: **09.03.2005 Bulletin 2005/10** (51) Int Cl.⁷: **A61B 5/024**

(21) Application number: **04255322.2**

(22) Date of filing: **02.09.2004**

(84) Designated Contracting States:
AT BE BG CH CY CZ DE DK EE ES FI FR GB GR HU IE IT LI LU MC NL PL PT RO SE SI SK TR
 Designated Extension States:
AL HR LT LV MK

(30) Priority: **04.09.2003 KR 2003061944**

(71) Applicant: **Samsung Electronics Co., Ltd.**
Suwon-si, Gyeonggi-do (KR)

(72) Inventors:
 • **Yeo, Hyung-sok,**
c/o 583-903 Baekseol Maeul Kolon
Suwon-si, Gyeonggi-do (KR)
 • **Park, Jae-chan, c/o 307-605 Expo Apt.**
Daejeon-si (KR)

- **Shin, Kun-soo,**
c/o 110-117 Saetbyeol Maeul Life Ap
Seongnam-si, Gyeonggi-do (KR)
- **Kim, Kyung-ho, c/o 104-1604 Saereunggol Apt.**
Yongin-si, Gyeonggi-do (KR)
- **Lee, Jeong-hwan, c/o 114-1502 Byucksan Apt.**
Suwon-si, Gyeonggi-do (KR)
- **Kim, Youn-ho**
137-1704 Hwanggol Maeul Jugong 1-danj
Suwon-si, Gyeonggi-do (KR)

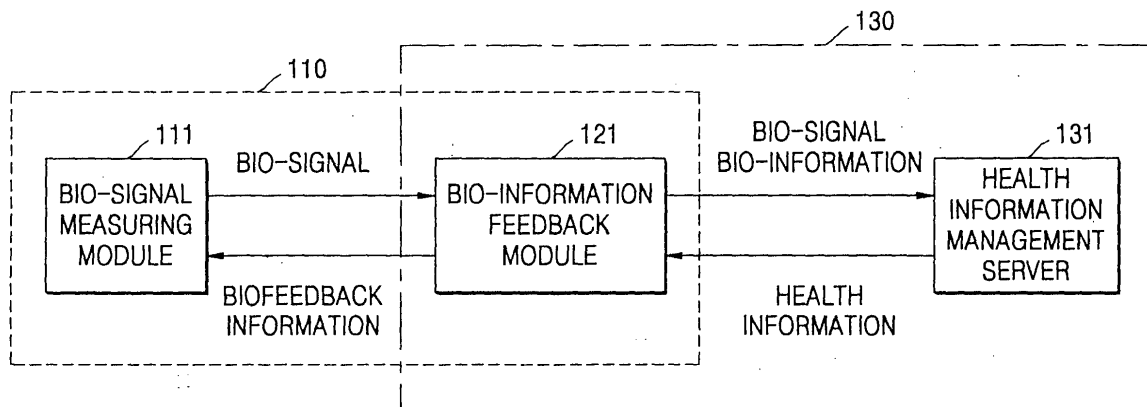
(74) Representative: **Greene, Simon Kenneth**
Elkington and Fife LLP,
Prospect House,
8 Pembroke Road
Sevenoaks, Kent TN13 1XR (GB)

(54) **Training control method and apparatus using biofeedback**

(57) A training control method and apparatus using biofeedback are provided. The training control apparatus using biofeedback, comprises a bio-signal measuring module measuring a bio-signal from a user and providing predetermined biofeedback information to the user; and a bio-information feedback module setting a target exercise zone and a target resting zone using the

bio-signal received from the bio-signal measuring module and user information, comparing the bio-signal with either of the target exercise zone and the target resting zone according to a training mode, and providing one of positive biofeedback information and negative biofeedback information in the selected training mode to the user according to a result of the comparison.

FIG. 1



Description

[0001] The present invention relates to a training control method and apparatus, and more particularly, to a method and apparatus for controlling exercise training and stability training using biofeedback.

[0002] Biofeedback is a technique of providing information on a change in a physiological state of a user's body in real time based on various bio-signals collected from the body and providing an appropriate signal to the user when the change in the physiological state reaches a target value, thereby allowing the user to learn self-control.

[0003] A heart rate (HR) is a cardiovascular index that is most prominently observed when people alternate exercise with rest. The HR can be collected using various methods. Usually, the HR is measured by counting the number of pulses per unit time using an electrocardiogram signal or a photo plethysmography (PPG) signal. The HR is the number of heart beats per minute and is expressed in beats per minute (BPM). An HR of a normal adult is about 60-90 BPM. The HR increases when people exercise, are excited, or run a fever and decreases when people rest, are mentally stable, or sleep.

[0004] Based on these characteristics, sports medicine applies various training techniques for effective self-control learning using a biofeedback technique in which a user's HR is measured and reported to the user and an appropriate signal is provided to the user when the user's HR reaches a predetermined target value.

[0005] It is known that effects of aerobic exercises such as walking, jogging, cycling, and swimming that develop endurance can be obtained when each aerobic exercise is continuously performed and controlled in its intensity such that a specific target HR is maintained. A target HR can be easily obtained using a Karvonen formula calculating a minimum target HR and a maximum target HR. Usually, in the sports medicine, a proper exercise zone is determined by setting the minimum target HR as a lower limit and the maximum target HR as an upper limit, and then people are instructed to continue exercise during a predetermined period of time such that an HR measured during the exercise remains within the proper exercise zone in order to maximize an effect of the exercise.

[0006] As described above, there are various conventional techniques for measuring an amount of exercise or for motivating a user to exercise. In the conventional techniques, usually, a maximum target HR and a minimum target HR are defined referring to a user's HRs, and the user is allowed to recognize a current exercise level through a display device or an alarm function so that the user can continue the exercise within a predetermined level range based on the maximum target HR and the minimum target HR. Examples of the conventional techniques are disclosed in Korean Patent Publication Nos. 2002-83004, 1999-63100, 2002-11730, 1998-702477, 2000-64072, and 2002-15907 and U.S.

Patent Nos. 5,740,812, 4,776,323, 5,577,510, and 6,345,197.

[0007] Matters that should not be ignored when a user checks his/her bio-information during exercise are as follows. Firstly, the user's freedom should be maximized during the exercise. Secondly, a procedure for recognizing a continuous change in bio-information should not disturb the user in the exercise. Thirdly, when biofeedback information is provided to the user to motivate him/her to continue exercise, a signal stimulating enough to motivate the user to continue the exercise should be effectively presented to the user. These matters should be also considered to lead the user to a rest.

[0008] However, according to the above-described conventional techniques, an HR measuring module is not convenient, thereby restricting a user's freedom. In addition, it is not easy for the user to recognize a change in bio-information during exercise, which may interrupt the user's continuous exercise. In particular, in many conventional sports medicine applications and cases using a sensor of a wireless HR monitor, the sensor is attached to the user's chest and a band should be tightened around the user's body to make the sensor being in close contact with the chest, otherwise reliable signals cannot be collected.

[0009] The present invention provides a method and apparatus by which a bio-signal is collected from a body of a user taking exercise and is analyzed in real time, and a result of the analysis and biofeedback information corresponding to a change level of the bio-signal are provided to the user, thereby allowing the user to recognize his/her biological change from the biofeedback information during the exercise and train to adjust intensity of the exercise to the biological change.

[0010] The present invention also provides a method and apparatus by which a bio-signal is collected from a body of a user taking a rest and is analyzed in real time, and a result of the analysis and biofeedback information corresponding to a change level of the bio-signal are provided to the user, thereby allowing the user to recognize his/her biological change from the biofeedback information during the rest and train to effectively reach a stable rest state.

[0011] The present invention also provides a method and apparatus by which a bio-signal is collected from a body of a user taking a rest or exercise and is analyzed in real time, a result of the analysis is stored in a separate data memory device, general items of health information related with the user's exercise and rest are continuously managed and provided, thereby promoting the user's health.

[0012] The present invention also provides a method and apparatus for maximizing non-restriction in a method and apparatus for collecting a bio-signal from a body of a user taking a rest or exercise and analyzing the bio-signal in real time, thereby effectively providing convenience to the user.

[0013] According to an aspect of the present inven-

tion, there is provided an exercise training control method using biofeedback, comprising: (a) setting a target exercise zone for a user based on a bio-signal from the user; and (b) comparing an index obtained from the bio-signal with of the target exercise zone in time units in an exercise training mode and providing one among positive biofeedback information, negative biofeedback information, and a warning message to the user according to a result of the comparison.

[0014] According to another aspect of the present invention, there is provided a rest training control method using biofeedback, comprising: (a) setting a target resting zone for a user based on a bio-signal from the user; and (b) comparing an index obtained from the bio-signal with of the target resting zone in time units in a rest training mode and providing one of positive biofeedback information and negative biofeedback information to the user according to a result of the comparison.

[0015] According to still another aspect of the present invention, there is provided a training control method using biofeedback, comprising: setting a target resting zone for a user based on a bio-signal from the user; (b) selecting either of an exercise training mode and a rest training mode; (c) comparing an index obtained from the bio-signal with of the target exercise zone in time units in the exercise training mode and providing one of a first positive biofeedback information and a first negative biofeedback information to the user according to a result of the comparison; and (d) comparing the index obtained from the bio-signal with of the target resting zone in time units in the rest training mode and providing one of a second positive biofeedback information and a second negative biofeedback information to the user according to a result of the comparison.

[0016] According to yet another aspect of the present invention, there is provided a training control apparatus using biofeedback, comprising: a bio-signal measuring module measuring a bio-signal from a user and providing predetermined biofeedback information to the user; and a bio-information feedback module setting a target exercise zone and a target resting zone using the bio-signal received from the bio-signal measuring module and user information, comparing the bio-signal with either of the target exercise zone and the target resting zone according to a training mode, and providing one of positive biofeedback information and negative biofeedback information in the selected training mode to the bio-signal measuring module according to a result of the comparison.

[0017] According to further aspect of the present invention, there is provided a health managing system using biofeedback information, comprising: a bio-signal measuring module for measuring a bio-signal from a user and providing predetermined biofeedback information to the user; a bio-information feedback module for setting a target exercise zone and a target resting zone using the bio-signal received from the bio-signal measuring module and user information, comparing the bio-

signal with either of the target exercise zone and the target resting zone according to a training mode, and providing one of positive biofeedback information and negative biofeedback information in the selected training mode to the bio-signal measuring module according to a result of the comparison; and a health information management server receiving the bio-signal and bio-information from the bio-information feedback module, periodically managing a result of analyzing the bio-signal and the bio-information as health information of the user, and transmitting the periodic health information to the bio-information feedback module so that the periodic health information is provided to the user.

[0018] The training control methods may be implemented by a program recorded in a computer-readable recording medium.

[0019] The above and other features and advantages of the present invention will become more apparent by describing in detail preferred embodiments thereof with reference to the attached drawings in which:

FIG. 1 is a block diagram of a training control apparatus according to an embodiment of the present invention;

FIG. 2 is a flowchart of a training control method according to an embodiment of the present invention;

FIG. 3 illustrates a target exercise zone and its corresponding biofeedback;

FIG. 4 illustrates a target resting zone and its corresponding biofeedback;

FIG. 5 is a detailed block diagram of a bio-signal measuring module shown in FIG. 1;

FIG. 6 illustrates an example of the bio-signal measuring module shown in FIG. 1;

FIG. 7 illustrates an example of a bio-signal measurer shown in FIG. 6;

FIG. 8 is a detailed block diagram of a bio-information feedback module shown in FIG. 1; and

FIG. 9 is a detailed block diagram of a bio-signal processing unit shown in FIG. 8.

[0020] Reference will now be made in detail to the embodiments of the present invention, examples of which are illustrated in the accompanying drawings, wherein like reference numerals refer to the like elements throughout. The embodiments are described below in order to explain the present invention by referring to the figures.

[0021] A training control method and apparatus according to the present invention are provided to allow a user exercising or resting to effectively reach a target exercise zone or a target resting zone through self-control using biofeedback. Accordingly, the training control apparatus that the user puts on during the rest or exercise needs to provide maximum convenience to the user, and a biofeedback algorithm for leading the user to the target exercise zone or the target resting zone needs

to be effectively implemented.

[0022] FIG. 1 is a block diagram of a training control apparatus using biofeedback according to an embodiment of the present invention. The training control apparatus includes a biofeedback unit 110 including a bio-signal measuring module 111 and a bio-information feedback module 121 and a health information management unit 130 including the bio-information feedback module 121 and a health information management server 131.

[0023] Referring to FIG. 1, the biofeedback unit 110 allows a user to train self-control using biofeedback so that the user can effectively exercise and rest. In the biofeedback unit 110, the bio-signal measuring module 111 may be implemented by a headset including a speaker, a photo plethysmography (PPG) sensor for counting a heart rate (HR), and a wireless transceiver so that both of measurement and feedback can be performed. The bio-information feedback module 121 counts the HR based on a bio-signal, i.e., a PPG signal, wirelessly transmitted from the bio-signal measuring module 111, drives a predetermined feedback algorithm shown in FIG. 2 based on the HR, and wirelessly transmits biofeedback information to the bio-signal measuring module 111. The bio-information feedback module 121 may be implemented by a mobile communication terminal (e.g., a cellular phone), a personal digital assistant (PDA) capable of wireless data communication, or a wristwatch-type information terminal. Data communication between the bio-signal measuring module 111 and the bio-information feedback module 121 is performed using local wireless communication such as spread spectrum, ZigBee, or a wireless personal area network (WPAN) but is not limited thereto.

[0024] The health information management unit 130 receives a user's bio-signal, continuously manages a user's bio-information based on the user's bio-signal and provides customized health information according to the user's bio-signal and bio-information to the bio-signal measuring module 111. In the health information management unit 130, the health information management server 131 may be installed at a data center or a base station. The health information management server 131 wirelessly receives the bio-signal and the bio-information from the bio-information feedback module 121, analyzes and manages health information periodically, for example, daily, weekly, or monthly, and transmits the health information to the bio-information feedback module 121 in response to the user's request or at a predetermined period. In the health information, a change in the bio-information is collected during the predetermined period, diagrammatized, and managed, thereby allowing the user to easily observe the periodical change in his/her bio-information and design a statistical exercise program suitable to the user according to the change. In addition, in the health information, relation between personal information including the user's age, sex, and height and the user's bio-information in-

cluding a weight, an HR, a respiratory rate, and a body temperature per measurement is managed to be used as a fundamental database for clinical study and other health management service. The health information may be transmitted from the health information management server 131 to the bio-information feedback module 121 in the form of a voice message, a text message, or e-mail but is not limited thereto.

[0025] FIG. 2 is a flowchart of a training control method using biofeedback according to an embodiment of the present invention. The training control method includes measuring an HR, determining a maximum target HR and a minimum target HR, setting a target exercise zone and a target resting zone, and determining a first positive biofeedback and a first negative biofeedback in an exercise training mode or determining a second positive biofeedback and a second negative biofeedback in a rest training mode according to a user's selection of the exercise training mode or the rest training mode.

[0026] Referring to FIG. 2, in operation 211, a user's bio-signal, e.g., a PPG signal, is measured using the bio-signal measuring module 111 and is wirelessly transmitted to the bio-information feedback module 121.

[0027] In operation 212, pulses of the PPG signal wirelessly transmitted from the bio-signal measuring module 111 are counted and converted into an HR, and an initial HR is determined. The initial HR is an average HR measured for, e.g., first 30 seconds while the user stands putting on the bio-signal measuring module 111 without taking exercise. Meanwhile, user's age data may be manually input to the bio-information feedback module 121 while the initial HR is measured after the user puts on the bio-signal measuring module 111 or before the user puts on the bio-signal measuring module 111.

[0028] In operation 213, a target exercise zone and a target resting zone are set based on user information corresponding to the user's age and the initial HR. For this operation, a maximum target HR and a minimum target HR are determined first. For example, according to the Karvonen formula, it may be defined that Minimum target HR=(220-Age-Initial HR)*0.6+ Initial HR and Maximum target HR=(220-Age-Initial HR)*0.75+ Initial HR.

[0029] Thereafter, the target exercise zone and the target resting zone are set based on the maximum target HR and the minimum target HR. The target exercise zone indicates an exercise zone in which the user's capacity for locomotion can be cultivated. Usually, when a normal adult continuously performs an exercise program for about 20 through 30 minutes within the target exercise zone, it is widely known that the capacity for locomotion can be effectively advanced. In an embodiment of the present invention, the target exercise zone is set to 90% of Maximum target HR \pm 10% and the target resting zone is set to 80% of Minimum target HR \pm 10%.

[0030] Since the target exercise zone and the target resting zone may be different depending on users' physical conditions, the user may adjust the target exercise zone and the target resting zone to his/her own physical conditions when they are set. In other words, the user is allowed to adjust an upper limit and a lower limit of the target exercise zone based on the maximum target HR to be suitable to his/her physical conditions. The user is also allowed to adjust an upper limit and a lower limit of the target resting zone based on the minimum target HR to be suitable to his/her physical conditions.

[0031] In operation 214, application conditions, major functions, and feedback information with respect to a positive biofeedback and a negative biofeedback are set based on the target exercise zone and the target resting zone. This operation will be described with reference to FIGS. 3 and 4.

[0032] Referring to FIG. 3, a zone below the lower limit of the target exercise zone, i.e., below 80% of the maximum target HR, is referred to as a "below target exercise zone". A zone exceeding the upper limit of the target exercise zone, i.e., exceeding 100% of the maximum target HR, is referred to as an "exceeding target exercise zone". In the exercise training mode, the first positive biofeedback and the first negative biofeedback may be determined based on the target exercise zone by the following two manners.

[0033] In the first manner, the first positive biofeedback is used when instant HRs with a slight deviation continuously remain within the target exercise zone for a predetermined period of time and motivates the user to perform the exercise to maintain his/her instant HRs within the target exercise zone. To implement the first positive biofeedback, a plurality of music files having rhythm similar to an average HR in the target exercise zone are fed to the user's auditory organ. The first negative biofeedback is used when instant HRs with a slight deviation continuously remain within the below target exercise zone for a predetermined period of time and motivates the user to perform the exercise to spontaneously raise an instant HR to the target exercise zone. To implement the first negative biofeedback, a plurality of music files having rhythms gradually progressing from a beat similar to an HR corresponding to the lower limit of the target exercise zone to a faster beat similar to an average HR in the target exercise zone are fed to the user's auditory organ. In addition, when instant HRs with a slight deviation continuously remain in the exceeding target exercise zone for a predetermined period of time, a voice message warning danger is provided to the user to stop him/her from exercising.

[0034] In the second manner, the first positive biofeedback is used when instant HRs with a slight deviation continuously remain within the below target exercise zone for a predetermined period of time in an initial stage of exercise and motivates the user to perform the exercise to spontaneously raise an instant HR to the target exercise zone. To implement the first positive bio-

feedback; a plurality of music files having rhythms gradually progressing from a beat similar to an HR corresponding to the lower limit of the target exercise zone to a faster beat similar to an average HR in the target exercise zone are fed to the user's auditory organ. The first negative biofeedback is used when an instant HR is lowered from the target exercise zone to the below target exercise zone during the exercise and thereafter, instant HRs with a slight deviation continuously remain within the below target exercise zone for a predetermined period of time in order to inform the user of a low intensity of the exercise. To implement the first negative biofeedback, a plurality of music files having rhythm of a slower beat than the averaged instant HR for the predetermined period of time are fed to the user's auditory organ. In addition, when instant HRs with a slight deviation continuously remain in the exceeding target exercise zone for a predetermined period of time, a voice message warning danger is provided to the user to stop him/her from exercising.

[0035] Referring to FIG. 4, a zone below the lower limit of the target resting zone, i.e., below 70% of the minimum target HR, is referred to as a "below target resting zone". A zone exceeding the upper limit of the target resting zone, i.e., exceeding 90% of the minimum target HR, is referred to as an "exceeding target resting zone". In the rest training mode, the second positive biofeedback and the second negative biofeedback may be determined based on the target resting zone by the following two manners.

[0036] In the first manner, the second positive biofeedback is used when instant HRs with a slight deviation continuously remain within the target resting zone for a predetermined period of time and leads the user to a stable rest in which the user's instant HRs remain within the target resting zone. To implement the second positive biofeedback, a plurality of music files having rhythm similar to an average HR in the target resting zone, i.e., 80% of the minimum target HR, are fed to the user's auditory organ. The second negative biofeedback is used when instant HRs with a slight deviation continuously remain within the exceeding target resting zone for a predetermined period of time and leads the user to spontaneously reach the target resting zone. To implement the second negative biofeedback, a plurality of music files having rhythms gradually progressing from a beat similar to an HR corresponding to the upper limit of the target resting zone to a slower beat similar to an average HR in the target resting zone are fed to the user's auditory organ.

[0037] In the second manner, the second positive biofeedback is used when instant HRs with a slight deviation continuously remain within the exceeding target resting zone for a predetermined period of time in an initial stage of resting and leads the user to spontaneously reach the target resting zone. To implement the second positive biofeedback, a plurality of music files having rhythms gradually progressing from a beat sim-

ilar to an HR corresponding to the upper limit of the target resting zone to a slower beat similar to an average HR in the target resting zone are fed to the user's auditory organ. The second negative biofeedback is used when an instant HR rises from the target resting zone to the exceeding target resting zone and informs the user of a low intensity of the rest. To implement the second negative biofeedback, a plurality of music files having rhythm of a faster beat than the averaged instant HR for the predetermined period of time are fed to the user's auditory organ. In addition, when an instant HR continuously remains in the target resting zone for a long time or comes to the below target resting zone, it is determined that the user satisfactorily rest, and biofeedback is stopped.

[0038] Referring back to FIG. 2, in operation 215, when the user selects either of the exercise training mode and the rest training mode, it is determined whether an instant HR remains within a target zone of the selected training mode, i.e., within either of the target exercise zone and the target resting zone, for a predetermined period of time, and it is determined which of the positive biofeedback and the negative biofeedback corresponds to determined instant HR conditions. Here, an instant HR is recorded every second and is compared with the lower and the upper limits of the target exercise zone or the target resting zone at predetermined time intervals.

[0039] In operation 216, when it is determined that a change in the instant HR corresponds to the positive biofeedback in the selected training mode as the result of the comparison, the positive biofeedback is determined and positive biofeedback information is fed to the user. In operation 217, when it is determined that the change in the instant HR corresponds to the negative biofeedback in the selected training mode as the result of the comparison, the negative biofeedback is determined and negative biofeedback information is fed to the user. The positive biofeedback information and the negative biofeedback information may be subdivided. In this case, a music file in a memory block is subdivided by means of predetermined beat units, for example, 5 beat units.

[0040] FIG. 5 is a detailed block diagram of the bio-signal measuring module 111 shown in FIG. 1. The bio-signal measuring module 111 measures a bio-signal from a user and provides biofeedback information received from the bio-information feedback module 121 to the user. The bio-signal measuring module 111 includes a bio-signal measurer 511 measuring a bio-signal, e.g., a PPG signal, a wireless bio-signal transmitter 512 wirelessly transmitting the bio-signal to the bio-information feedback module 121, a wireless biofeedback information receiver 513 wirelessly receiving biofeedback information from the bio-information feedback module 121, and a biofeedback information expression unit 514 providing the biofeedback information to the user. Although not shown, a power supply unit supplying a power need-

ed in the bio-signal measuring module 111 is also provided.

[0041] FIG. 6 shows an example of the bio-signal measuring module 111 implemented by a headset. Reference numerals 611 a and 611 b denote a light source and a light receiver, respectively, and correspond to the bio-signal measurer 511. Reference numerals 612 and 613 correspond to the wireless bio-signal transmitter 512 and the wireless biofeedback information receiver 513, respectively. Reference numeral 614 denotes a speaker corresponding to the biofeedback information expression unit 514. In detail, the wireless bio-signal transmitter 612 transmits a PPG signal measured using the light sources 611 a and the light receivers 611b to the bio-information feedback module 121. The wireless biofeedback information receiver 613 receives biofeedback information from the bio-information feedback module 121 and outputs it through the speakers 614. The bio-signal measurer 511 including the light sources 611a and the light receivers 611 b may be implemented by attaching a transmissive light sensor to an earlobe to minimize affect of motion artifact during exercise or rest and to maximize the user's convenience.

[0042] When the bio-signal measuring module 111 is implemented by a headset including a transmissive light sensor, music, i.e., biofeedback information, corresponding to a measured bio-signal such as a PPG signal can be provided to a user through a speaker of the headset. Alternatively, when the bio-signal measuring module 111 is implemented by a headset and a chest band, respiration may be measured using a strain gage attached to the chest band or body temperature may be measured using a thermocouple, and music that is biofeedback information corresponding to a result of the measurement may be provided to a user through a speaker of the headset. As another alternative, when the bio-signal measuring module 111 is implemented by a shoe and a headset, variation between a user's weight before exercise and the user's weight after the exercise may be measured using a pressure sensor installed at the shoe or the number of paces may be measured using a photo coupler and a vibration element, and music that is biofeedback information corresponding to the result of the measurement may be provided to the user through a speaker of the headset. Meanwhile, in all of the above-described implementations, in addition to the music, bio-information may be output in the form of a voice signal through the speaker of the headset at predetermined intervals, e.g., at intervals of 1 minute, during exercise or rest.

[0043] FIG. 7 illustrates an example of a bio-signal measurer 611 a and 611 b shown in FIG.6, in which the bio-signal measurer is implemented by a transmissive light sensor. The transmissive light sensor includes a light source 711 a and a light receiver 711 b and has a shape of a nipper that can be opened and closed when the transmissive light sensor is attached to the user's earlobe. The transmissive light sensor is installed at a

lower portion of a headset.

[0044] FIG. 8 is a detailed block diagram of the bio-information feedback module 121 shown in FIG. 1. The bio-information feedback module 121 includes a data receiving unit 810, a bio-signal processing unit 820, an expression unit 830, an information storage unit 840, and an information transmitting unit 850. Like the bio-signal measuring module 111, a power supply unit (not shown) supplying power needed in the bio-information feedback module 121 is also provided.

[0045] Referring to FIG. 8, the data receiving unit includes a bio-signal receiver 811 receiving a bio-signal, e.g., a PPG, respiration, body temperature, body weight variation, or a pace count, from the bio-signal measuring module 111; and a health information receiver 813 receiving health information from the health information management server 131.

[0046] The bio-signal processing unit 820 performs operations necessary to entirely control the bio-information feedback module 121 and particularly performs a series of operations on the bio-signal received from the bio-signal receiver 811 in time units. The bio-signal processing unit 820 selects biofeedback information corresponding to a result of the operations on the bio-signal and stores the selected biofeedback information in a biofeedback information storage section 843 included in the information storage unit 840. The bio-signal processing unit 820 includes a storage medium storing positive biofeedback information and negative biofeedback information based on the target exercise zone and positive biofeedback information and negative biofeedback information based on the target resting zone. Here, the positive biofeedback information and the negative biofeedback information are divided into a plurality of beat levels and a plurality of music files are included in each of the beat levels. The bio-signal processing unit 820 determines which of the positive biofeedback and the negative biofeedback in a training mode selected by a user corresponds to the result of the operations on the bio-signal and selects, as the biofeedback information, music files of at least one beat levels according to the instant HR. In addition, the bio-signal processing unit 820 stores a result of analyzing the bio-signal received from the bio-signal receiver 811, i.e., bio-information such as an HR, a respiratory rate, body temperature, or body weight variation, in a bio-signal/bio-information storage section 841 together with the bio-signal.

[0047] The expression unit 830 displays on a screen or outputs in the form of voice the operation result received from the bio-signal processing unit 820 and the health information received from the health information receiver 813. For example, the expression unit 830 may be implemented by a liquid crystal display (LCD) unit or a speaker.

[0048] The information storage unit 840 includes the bio-signal/bio-information storage section 841 storing the bio-signal received from the bio-signal measuring module 111 and the bio-information collected by per-

forming operations on the bio-signal and the biofeedback information storage section 843 storing the biofeedback information to be transmitted to the bio-signal measuring module 111. Here, the biofeedback information may be an auditory signal, e.g., music, defined according to a result of comparing an instant HR with a target HR zone for exercise training or rest training. Besides, the biofeedback information may include bio-information output in the form of a voice signal at predetermined intervals during exercise or rest.

[0049] The information transmitting unit 850 includes a bio-signal/bio-information transmitter 851 transmitting the bio-signal and the bio-information to the health information management server 131 and a biofeedback information transmitter 853 transmitting the biofeedback information to the bio-signal measuring module 111.

[0050] FIG. 9 is a detailed block diagram of the bio-signal processing unit 820 shown in FIG. 8. The bio-signal processing unit 820 includes a selection signal generator 910 including a positive/negative switch 911, a first address generator 913, and a second address generator 915; and a biofeedback information generator 920 including a first memory bank 921 and a second memory bank 923. If first and second memory banks 921 and 923 are integrated by one memory bank, the positive/negative switch 911 can be omitted and first and second address generators 913 and 915 can also be integrated by one address generator.

[0051] Referring to FIG. 9, in the selection signal generator 910, the positive/negative switch 911 sets a reference value, i.e., a target zone, according to a training mode selected by a user and compares the reference value with an instant HR in time units. In detail, when the exercise training mode is selected by the user, the reference value is set to the target exercise zone. When the rest training mode is selected, the reference value is set to the target resting zone. While continuously comparing the user's instant HR with the target zone, the positive/negative switch 911 determines the positive biofeedback information as the biofeedback information and applies an enable signal and beat levels of music files to be feedback to a user the first address generator 913 when the instant HR remains out of the target zone for a predetermined period of time, in order to lead the instant HR to the target zone. However, when the instant HR that has remained within the target zone remains out of the target zone for a predetermined period of time, the positive/negative switch 911 determines the negative biofeedback information as the biofeedback information and applies the enable signal and beat levels of music files to be feedback to a user the second address generator 915 in order to inform the user of the deviation from the target zone.

[0052] In another embodiment of the present invention, while continuously comparing the user's instant HR with the target zone, the positive/negative switch 911 may determine the positive biofeedback information as the biofeedback information and apply the enable signal

and beat levels of music files to be feedback to a user to the first address generator 913 when the instant HR remains within the target zone, in order to maintain the instant HR within the target zone. When the instant HR remains out of the target zone for a predetermined period of time, the positive/negative switch 911 may determine the negative biofeedback information as the biofeedback information and apply the enable signal and beat levels of music files to be feedback to a user to the second address generator 915 in order to lead the instant HR to the target zone.

[0053] The first and second address generators 913 and 915 operate in response to the enable signal and generate address signals, respectively, according to beat levels of music files to be feedback to a user, to select one sector or a plurality of sectors in each of the first and second memory banks. For example, when the positive biofeedback information is determined in the exercise training mode, memory sectors sequentially storing from a music file having a beat similar to the lower limit of the target exercise zone to a music file having a beat similar to an average HR in the target exercise zone are selected by the address signal. When the negative biofeedback information is determined in the exercise training mode, a memory sector storing music files having a slower beat than the instant HR is selected by the address signal. When the positive biofeedback information is determined in the rest training mode, memory sectors sequentially storing from a music file having a beat similar to the upper limit of the target resting zone to a music file having a beat similar to an average HR in the target resting zone are selected by the address signal. When the negative biofeedback information is determined in the rest training mode, a memory sector storing music files having a faster beat than the instant HR is selected by the address signal.

[0054] In another embodiment of the present invention, when the positive biofeedback information is determined in the exercise training mode, a memory sector storing music files having a beat similar to an average HR in the target exercise zone is selected by the address signal. When the negative biofeedback information is determined in the exercise training mode, memory sectors sequentially storing from a music file having a beat similar to the lower limit of the target exercise zone to a music file having a beat similar to an average HR in the target exercise zone are selected by the address signal. When the positive biofeedback information is determined in the rest training mode, a memory sector storing music files having a beat similar to an average HR in the target resting zone is selected by the address signal. When the negative biofeedback information is determined in the rest training mode, memory sectors sequentially storing from a music file having a beat similar to the upper limit of the target resting zone to a music file having a beat similar to an average HR in the target resting zone are selected by the address signal.

[0055] The first and second memory banks 921 and

923 store the positive biofeedback information and the negative biofeedback information, respectively and comprise a plurality of memory sectors corresponding to beat levels. In each of the memory sectors, a plurality of digital music files of identical beat levels is included. Addresses generated by each of the first and second address generators 913 and 915 are mapped to the memory sectors in each corresponding one of the first and second memory banks 921 and 923 in advance.

[0056] The number of addresses to be generated is one or more according to a type of biofeedback. First, the first manner for determining the first and second positive biofeedback and the first and second negative biofeedback as aforementioned is described. When it is determined that the first positive biofeedback information is fed in the exercise training mode, an address signal for designating a memory sector storing a music file having a beat similar to an average HR in the target exercise zone is repeatedly generated. Then, a plurality of music files are randomly read from the designated memory sector in the first memory bank 921. When it is determined that the first negative biofeedback information is fed in the exercise training mode, a plurality of address signals for designating memory sectors storing from a music file having a beat similar to the lower limit of the target exercise zone to a music file having a beat similar to an average HR in the target exercise zone are sequentially generated. Then, a music file is randomly selected from each of the designated memory sectors in the second memory bank 923 and the selected music files are sequentially read from in ascending order of beat. When it is determined that the second positive biofeedback information is fed in the rest training mode, an address signal for designating a memory sector storing a music file having a beat similar to an average HR in the target resting zone is repeatedly generated. Then, a plurality of music files are randomly read from the designated memory sector in the first memory bank 921. When it is determined that the second negative biofeedback information is fed in the rest training mode, a plurality of address signals for designating memory sectors storing from a music file having a beat similar to the upper limit of the target resting zone to a music file having a beat similar to an average HR in the target resting zone are sequentially generated. Then, a music file is randomly selected from each of the designated memory sectors in the second memory bank 923 and the selected music files are sequentially read from in descending order of beat.

[0057] Second, the second manner for determining the first and second positive biofeedback and the first and second negative biofeedback as aforementioned is described. When it is determined that the first positive biofeedback information is fed in the exercise training mode, a plurality of address signals for designating memory sectors storing from a music file having a beat similar to the lower limit of the target exercise zone to a music file having a beat similar to an average HR in the

target exercise zone are sequentially generated. Then, a music file is randomly selected from each of the designated memory sectors in the first memory bank 921 and the selected music files are sequentially read from in ascending order of beat. When it is determined that the first negative biofeedback information is fed in the exercise training mode, an address signal for designating a memory sector storing a music file having a slower beat than an instant HR is repeatedly generated. Then, a plurality of music files are randomly read from the designated memory sector in the second memory bank 923. When it is determined that the second positive biofeedback information is fed in the rest training mode, a plurality of address signals for designating memory sectors storing from a music file having a beat similar to the upper limit of the target resting zone to a music file having a beat similar to an average HR in the target resting zone are sequentially generated. Then, a music file is randomly selected from each of the designated memory sectors in the first memory bank 921 and the selected music files are sequentially read from in descending order of beat. When it is determined that the second negative biofeedback information is fed in the rest training mode, an address signal for designating a memory sector storing a music file having a faster beat than an instant HR is repeatedly generated. Then, a plurality of music files are randomly read from the designated memory sector in the second memory bank 923.

[0058] Determination of the positive biofeedback and the negative biofeedback in each training mode may be performed using other various methods than those described in the above-described embodiments. According to the methods of determining the positive biofeedback and the negative biofeedback, beat levels of music files provided as the positive or negative biofeedback information may be configured in various ways to lead a user's instant HR to the target exercise zone or the target resting zone.

[0059] The invention can also be embodied as computer readable codes on a computer readable recording medium. The computer readable recording medium is any data storage device that can store data which can be thereafter read by a computer system. Examples of the computer readable recording medium include read-only memory (ROM), random-access memory (RAM), CD-ROMs, magnetic tapes, floppy disks, optical data storage devices, and carrier waves (such as data transmission through the Internet). The computer readable recording medium can also be distributed over network coupled computer systems so that the computer readable code is stored and executed in a distributed fashion. Also, functional programs, codes, and code segments for accomplishing the present invention can be easily construed by programmers skilled in the art to which the present invention pertains.

[0060] As described above, according to the present invention, when a user's instant HR is lower than a lower limit of a target exercise zone during exercise, music

having beats faster than the user's instant HR are provided to the user so that the user can exercise to the music having the faster beats. As a result, the user is spontaneously motivated to exercise such that the user's HR increases. On the other hand, when the user's instant HR is higher than an upper limit of a target resting zone during a rest, music having beats slower than the user's instant HR are provided to the user. Since the user continuously hears the music having the beats slower than the instant HR, the user can be spontaneously led to a stable rest state.

[0061] In addition, according to the present invention, a bio-signal measuring module has a structure in which a transmissive light sensor that includes a light source and a light receiver and has a shape of a nipper that can be opened and closed when the transmissive light sensor is attached to the user's earlobe is installed at a lower portion of a headset so that PPG can be measured. Accordingly, a contact between the transmissive light sensor and the user's earlobe can be reliably maintained even while the user is exercising. As a result, a bio-signal can be measured with a high signal-to-noise ratio (SNR) even when motion artifact occurs.

[0062] Moreover, since health information is managed by different conditions such as users and periods based on bio-information obtained from a bio-signal measured from a user and is fed back to the user, the present invention can contribute to promoting the user's health.

[0063] While the present invention has been particularly shown and described with reference to exemplary embodiments thereof, it will be understood by those of ordinary skill in the art that various changes in form and details may be made therein without departing from the scope of the present invention as defined by the following claims.

Claims

1. A training control apparatus using biofeedback, comprising:

a bio-signal measuring module arranged to measure a bio-signal from a user and providing predetermined biofeedback information to the user; and

a bio-information feedback module arranged to set a target exercise zone and a target resting zone using the bio-signal received from the bio-signal measuring module and user information, to compare the bio-signal with either of the target exercise zone and the target resting zone according to a training mode, and to provide one of positive biofeedback information and negative biofeedback information in the selected training mode to the bio-signal measuring module according to a result of the comparison.

2. The training control apparatus of claim 1, wherein the bio-information feedback module includes a memory storing a plurality of music files of a different beat.
3. The training control apparatus of claim 1 or 2, wherein the bio-information feedback module provides a plurality of music files of an identical beat or a plurality of music files of a different beat to the user as the positive or negative biofeedback information according to an instant heart rate obtained from the bio-signal in an exercise training mode to lead the instant heart rate to the target exercise zone or to inform the user of the deviation from the target exercise zone.
4. The training control apparatus of claim 1 or 2, wherein the bio-information feedback module provides a plurality of music files of an identical beat or a plurality of music files of a different beat to the user as the positive or negative biofeedback information according to an instant heart rate obtained from the bio-signal in an resting training mode to lead the instant heart rate to the target resting zone or to inform the user of the deviation from the target resting zone.
5. The training control apparatus of any preceding claim, wherein the bio-signal measuring module is implemented by a headset comprising a speaker, a transmissive light sensor, and a wireless transceiver.
6. The training control apparatus of any of claims 1 to 4, wherein the bio-information feedback module is implemented by one among a mobile communication terminal, a personal digital assistant (PDA) capable of wireless data communication, and a wrist-watch-type information terminal.
7. A health managing system using biofeedback information, comprising:
 a training control apparatus according to an preceding claim; and
 a health information management server receiving the bio-signal and bio-information from the bio-information feedback module, periodically managing a result of analyzing the bio-signal and the bio-information as health information of the user, and transmitting the periodic health information to the bio-information feedback module so that the periodic health information is provided to the user.
8. The health managing system of claim 7, wherein the health information management server is installed at either of a data center and a base station.
9. The health managing system of claim 7 or 8, wherein the health information is transmitted from the health information management server to the bio-information feedback module in a form of one among a voice message, a text message, and e-mail.
10. A computer-readable recording medium for storing a program for executing a training control method using biofeedback, comprising:
 (a) setting a target resting zone for a user based on a bio-signal from the user;
 (b) selecting either of an exercise training mode and a rest training mode;
 (c) comparing an index obtained from the bio-signal with of the target exercise zone in time units in the exercise training mode and providing one of a first positive biofeedback information and a first negative biofeedback information to the user according to a result of the comparison; and
 (d) comparing the index obtained from the bio-signal with of the target resting zone in time units in the rest training mode and providing one of a second positive biofeedback information and a second negative biofeedback information to the user according to a result of the comparison.
11. An exercise training control method using biofeedback, comprising:
 (a) setting a target exercise zone for a user based on a bio-signal from the user; and
 (b) comparing an index obtained from the bio-signal with of the target exercise zone in time units in an exercise training mode and providing one among positive biofeedback information, negative biofeedback information, and a warning message to the user according to a result of the comparison.
12. The exercise training control method of claim 11, wherein the index is an instant heart rate of the user.
13. The exercise training control method of claim 11 or 12, wherein operation (a) comprises:
 calculating a maximum target heart rate using an initial heart rate of the user and user information; and
 setting the target exercise zone using the maximum target heart rate.
14. The exercise training control method of any of claims 11 to 13, wherein operation (b) comprises:

- comparing an initial heart rate of the user with the target exercise zone;
 when it is determined as a result of the comparison that the instant heart rate remains within the target exercise zone for longer than a first time, providing the positive biofeedback information to the user;
 when it is determined as the result of the comparison that the instant heart rate remains below the target exercise zone for longer than a second time, providing the negative biofeedback information to the user; and
 when it is determined as the result of the comparison that the instant heart rate is heightened above the target exercise zone, providing the warning message to the user.
- 15.** The exercise training control method of claim 14, wherein the positive biofeedback information comprises a plurality of music files of a beat similar to an average heart rate in the target exercise zone, and the negative biofeedback information comprises a plurality of music files of a beat similar to the lower limit of the target exercise zone through a beat similar to the average heart rate in the target exercise zone.
- 16.** The exercise training control method of any of claims 11 to 15, wherein operation (b) comprises:
- comparing an initial heart rate of the user with the target exercise zone;
 when it is determined as a result of the comparison that the instant heart rate remains below the target exercise zone for longer than a first time in an initial stage of exercise, providing the positive biofeedback information to the user;
 when it is determined as the result of the comparison that the instant heart rate is lowered below the target exercise zone for longer than a second time after remaining within the target exercise zone during the exercise, providing the negative biofeedback information to the user; and
 when it is determined as the result of the comparison that the instant heart rate is heightened above the target exercise zone, providing the warning message to the user.
- 17.** The exercise training control method of any of claims 11 to 16, wherein the positive biofeedback information comprises a plurality of music files of a beat similar to the lower limit of the target exercise zone through a beat similar to the average heart rate in the target exercise zone, and the negative biofeedback information comprises a plurality of music files of a slower beat than the instant heart rate.
- 18.** A rest training control method using biofeedback, comprising:
- (a) setting a target resting zone for a user based on a bio-signal from the user; and
 (b) comparing an index obtained from the bio-signal with of the target resting zone in time units in a rest training mode and providing one of positive biofeedback information and negative biofeedback information to the user according to a result of the comparison.
- 19.** The rest training control method of claim 18, wherein the index is an instant heart rate of the user.
- 20.** The rest training control method of claim 18 or 19, wherein operation (a) comprises:
- calculating a minimum target heart rate using an initial heart rate of the user and user information; and
 setting the target resting zone using the minimum target heart rate.
- 21.** The rest training control method of any of claims 18 to 20, wherein operation (b) comprises:
- comparing an initial heart rate of the user with the target resting zone;
 when it is determined as a result of the comparison that the instant heart rate remains within the target resting zone for longer than a first time, providing the positive biofeedback information to the user;
 when it is determined as the result of the comparison that the instant heart rate remains above the target resting zone for longer than a second time, providing the negative biofeedback information to the user; and
 when it is determined as the result of the comparison that the instant heart rate remains within the target resting zone for longer than a third time or is lowered below the target resting zone, stopping biofeedback.
- 22.** The rest training control method of claim 21, wherein the positive biofeedback information comprises a plurality of music files of a beat similar to an average heart rate in the target resting zone, and the negative biofeedback information comprises a plurality of music files of a beat similar to the upper limit of the target resting zone through a beat similar to the average heart rate in the target resting zone.
- 23.** The rest training control method of any of claims 18 to 20, wherein operation (b) comprises:
- comparing an initial heart rate of the user with

the target resting zone;
 when it is determined as a result of the comparison that the instant heart rate remains above the target resting zone for longer than a first predetermined time in an initial stage of resting, providing the positive biofeedback information to the user;

when it is determined as the result of the comparison that the instant heart rate is heightened above the target resting zone for longer than a second predetermined time after remaining within the target resting zone during the resting, providing the negative biofeedback information to the user; and

when it is determined as the result of the comparison that the instant heart rate remains within the target resting zone for longer than a third time or is lowered below the target resting zone, stopping biofeedback.

24. The rest training control method of claim 23, wherein the positive biofeedback information comprises a plurality of music files of a beat similar to the upper limit of the target resting zone through a beat similar to an average heart rate in the target resting zone, and the negative biofeedback information comprises a plurality of music files of a faster beat than the instant heart rate.

25. A training control method using biofeedback, comprising:

(a) setting a target resting zone for a user based on a bio-signal from the user;

(b) selecting either of an exercise training mode and a rest training mode;

(c) comparing an index obtained from the bio-signal with of the target exercise zone in time units in the exercise training mode and providing one of a first positive biofeedback information and a first negative biofeedback information to the user according to a result of the comparison; and

(d) comparing the index obtained from the bio-signal with of the target resting zone in time units in the rest training mode and providing one of a second positive biofeedback information and a second negative biofeedback information to the user according to a result of the comparison.

26. The training control method of claim 25, wherein the index is an instant heart rate of the user.

27. The training control method of claim 25, wherein operation (a) comprises:

calculating a minimum target heart rate and a

maximum target heart rate using an initial heart rate of the user and user information; and setting the target resting zone using the minimum target heart rate and setting the target exercise zone using the maximum target heart rate.

28. The training control method of claim 25, wherein operation (c) comprises:

comparing an initial heart rate of the user with the target exercise zone;

when it is determined as a result of the comparison that the instant heart rate remains within the target exercise zone for longer than a first time, providing the first positive biofeedback information to the user to maintain the instant heart rate within the target exercise zone;

when it is determined as the result of the comparison that the instant heart rate remains below the target exercise zone for longer than a second time, providing the first negative biofeedback information to the user to increase the instant heart rate to the target exercise zone; and

when it is determined as the result of the comparison that the instant heart rate is heightened above the target exercise zone, providing the warning message to the user.

29. The training control method of claim 28, wherein the first positive biofeedback information comprises a plurality of music files of an identical beat, and the first negative biofeedback information comprises a plurality of music files of a different beat.

30. The training control method of claim 25, wherein operation (d) comprises:

comparing an initial heart rate of the user with the target resting zone;

when it is determined as a result of the comparison that the instant heart rate remains within the target resting zone for longer than a first time, providing the second positive biofeedback information to the user;

when it is determined as the result of the comparison that the instant heart rate remains above the target resting zone for longer than a second time, providing the second negative biofeedback information to the user; and

when it is determined as the result of the comparison that the instant heart rate remains within the target resting zone for longer than a third time or is lowered below the target resting zone, stopping biofeedback.

31. The training control method of claim 30, wherein the

second positive biofeedback information comprises a plurality of music files of an identical beat, and the second negative biofeedback information comprises a plurality of music files of a different beat.

5

10

15

20

25

30

35

40

45

50

55

FIG. 1

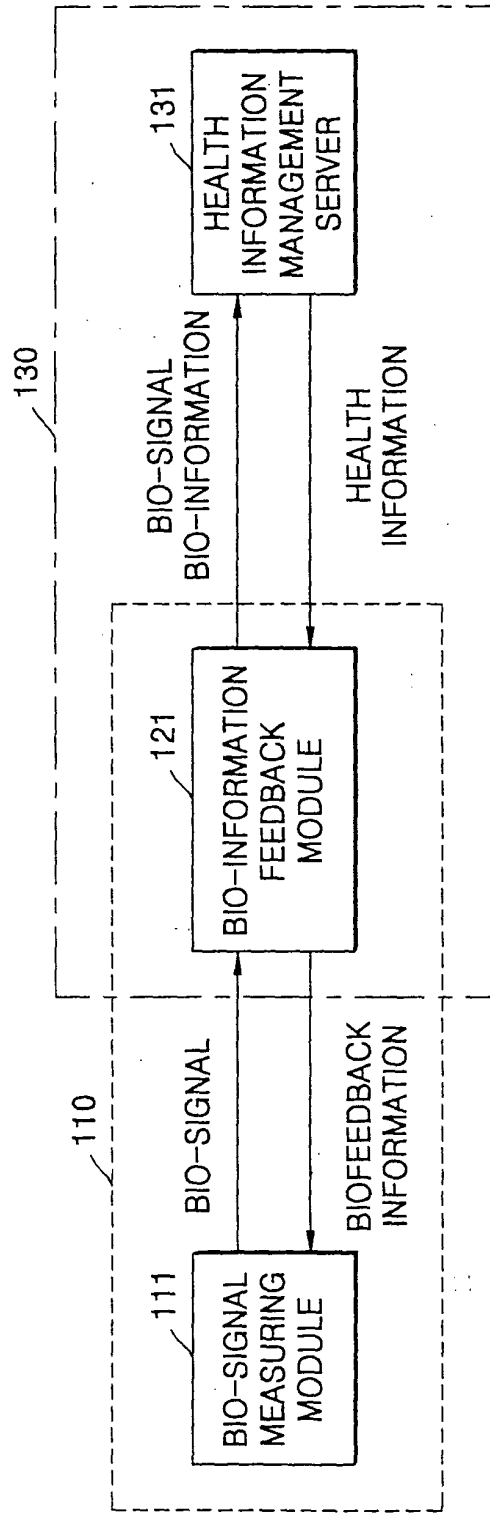


FIG. 2

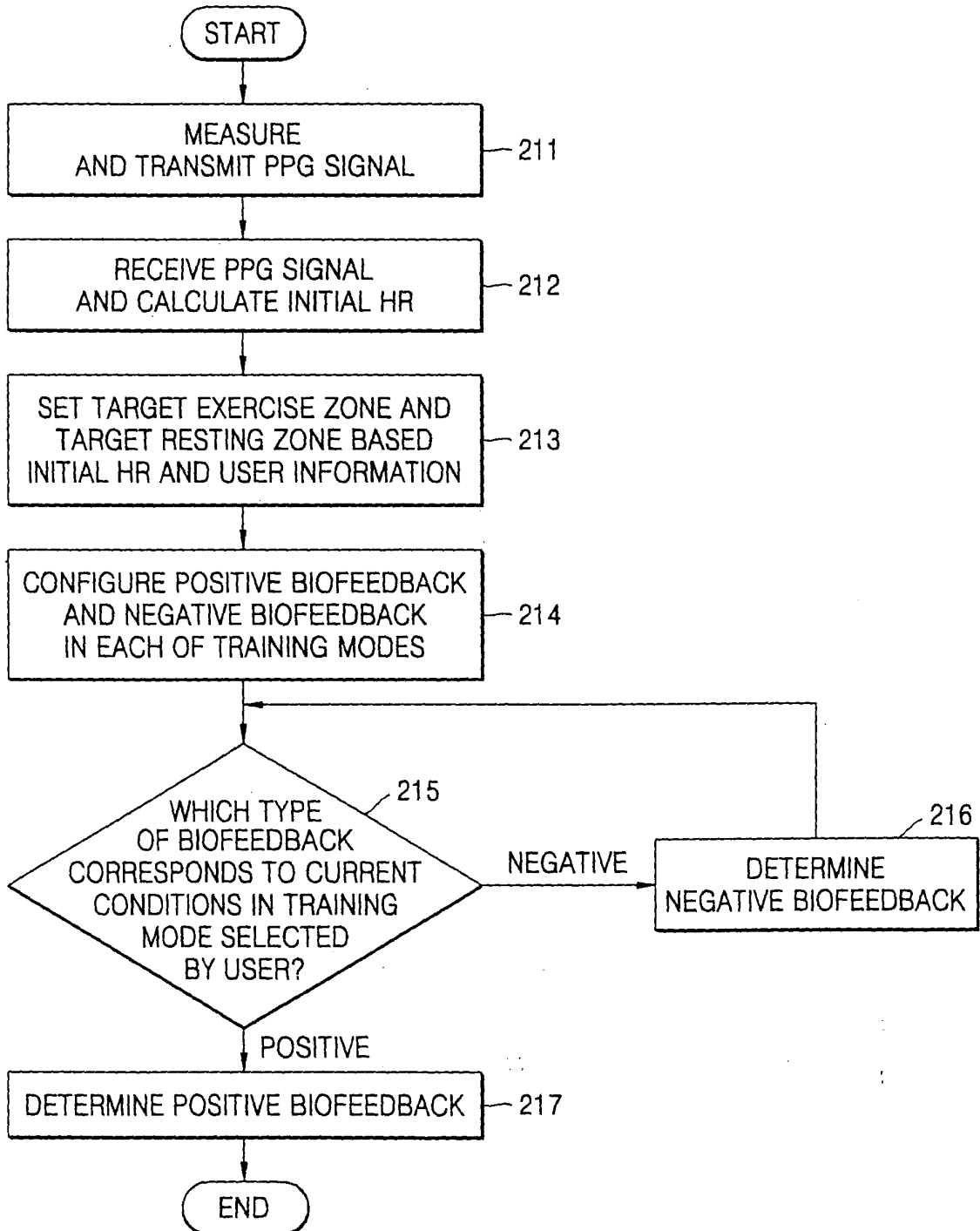


FIG. 3

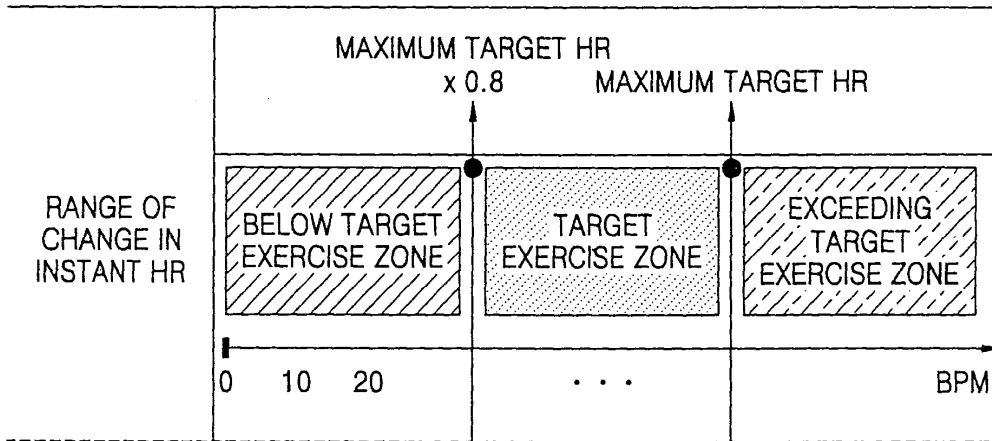


FIG. 4

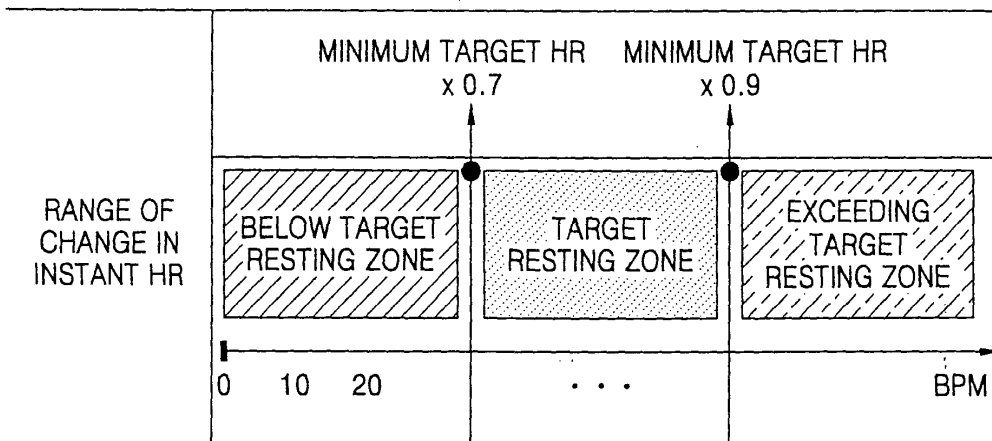


FIG. 5

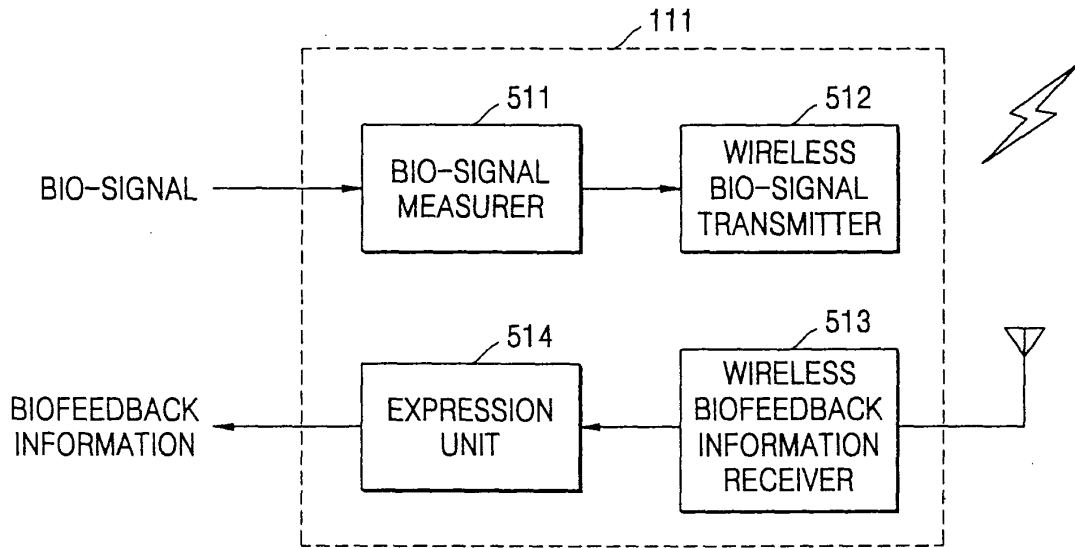


FIG. 6

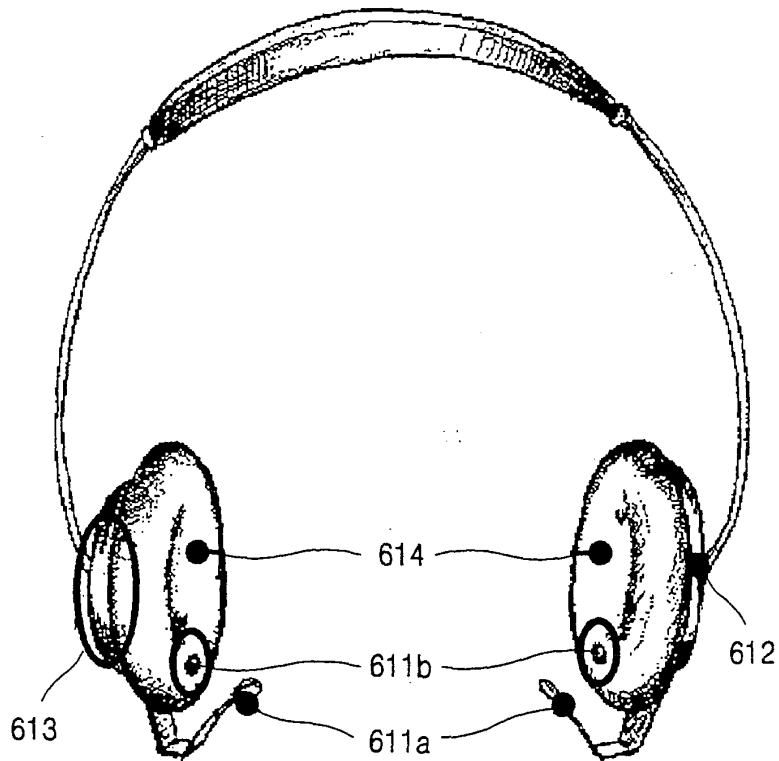


FIG. 7

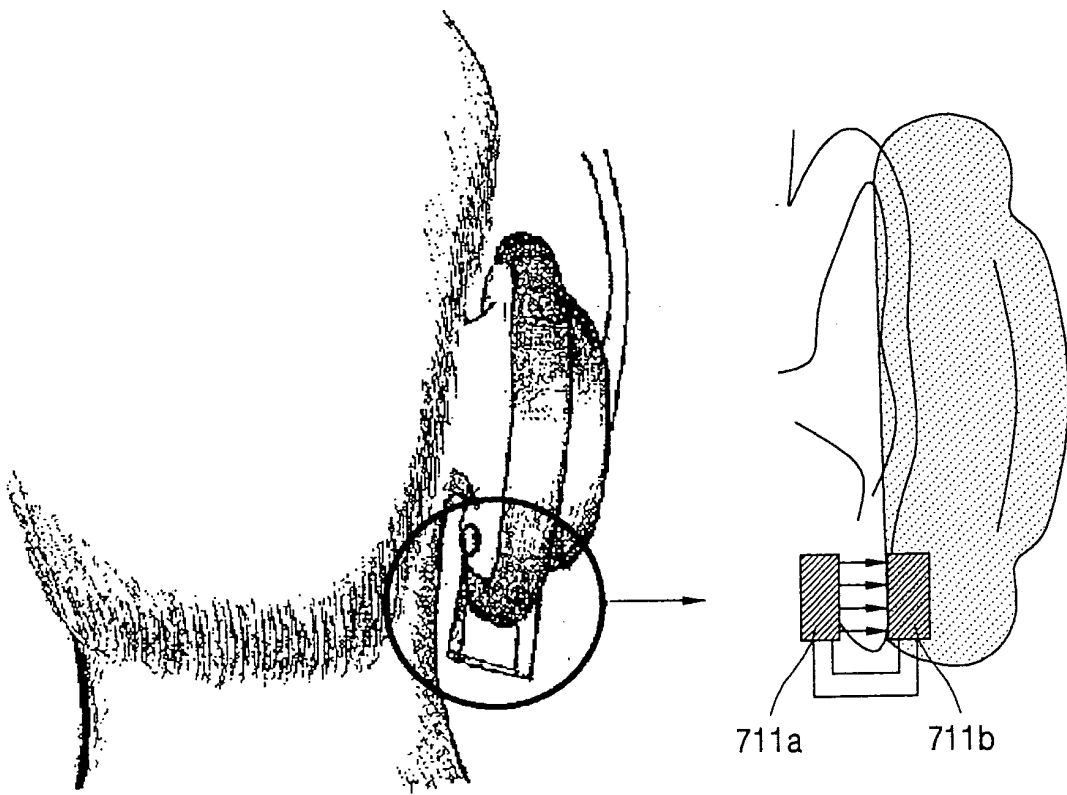


FIG. 8

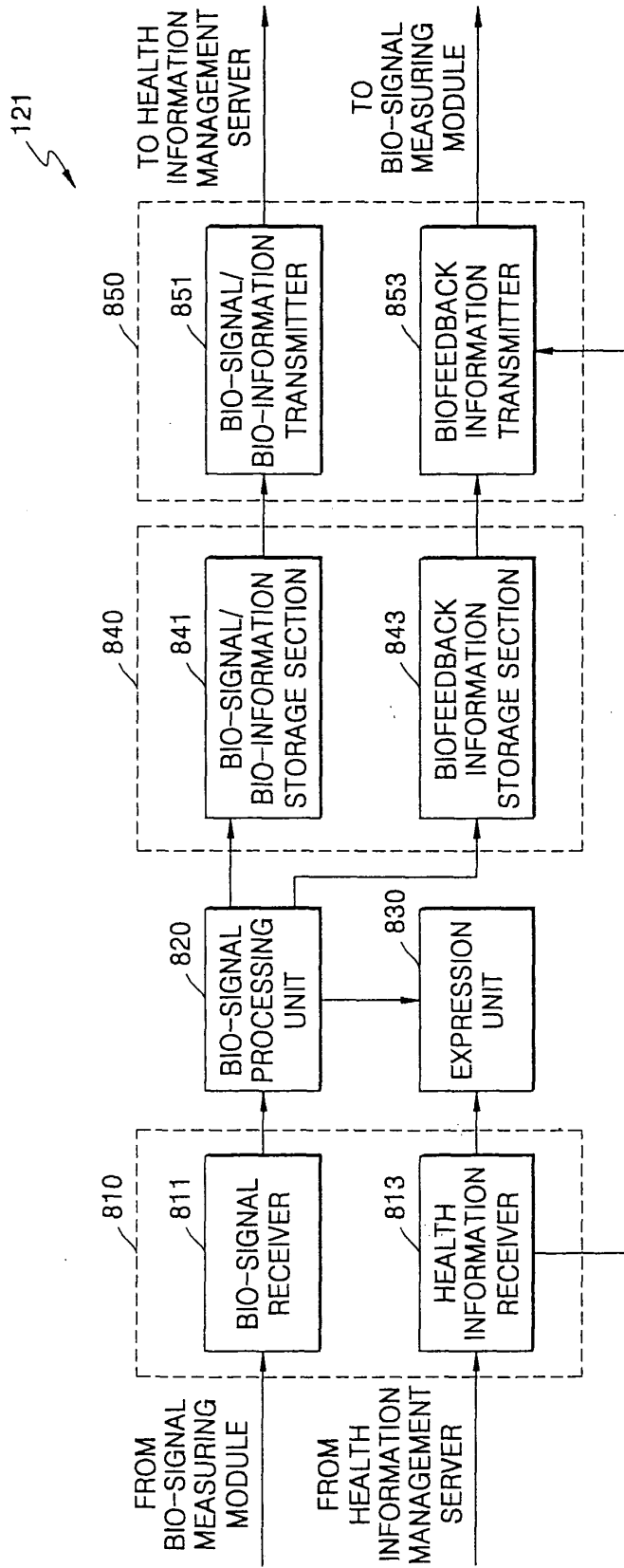
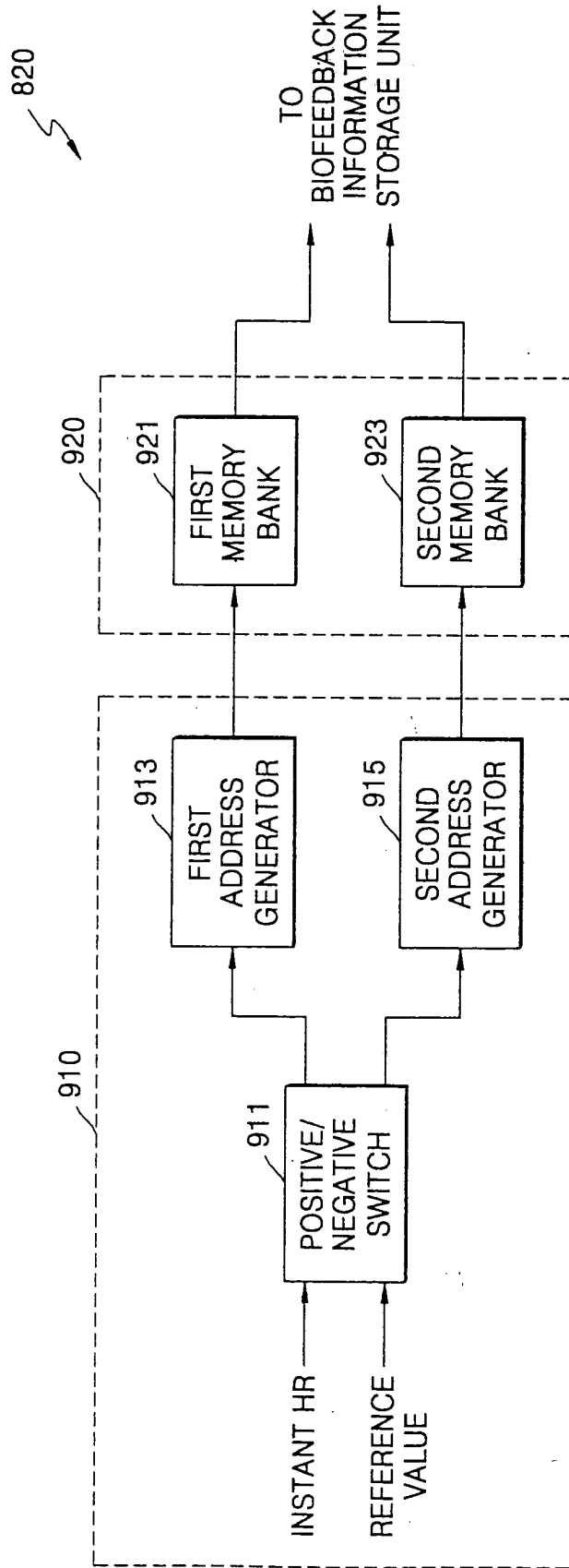


FIG. 9





European Patent Office

EUROPEAN SEARCH REPORT

Application Number
EP 04 25 5322

DOCUMENTS CONSIDERED TO BE RELEVANT			
Category	Citation of document with indication, where appropriate, of relevant passages	Relevant to claim	CLASSIFICATION OF THE APPLICATION (Int.Cl.7)
X	DE 42 28 091 A (RESCH HANS) 3 March 1994 (1994-03-03) * column 2, line 28 - line 65 * -----	1,10-13, 18-20, 25-27	A61B5/024
Y	NICOLAE S ET AL: "'CARDIOCOMANDOR' AN ELECTRONIC PORTABLE SCHEDULE APPARATUS USED BY TOP ATHLETES FOR CONDUCTING SELF INTERVAL TRAINING" INTERNATIONAL SYMPOSIUM ON BIOTELEMETRY, 1972, pages 173-175, XP000949042 * page 173 - page 174 * -----	1,10-12, 18,19, 25,26	
Y	US 6 554 776 B1 (KAEFERLEIN BERNHARD H ET AL) 29 April 2003 (2003-04-29) * column 2, line 9 - line 37 * -----	1,10-12, 18,19, 25,26	
A	US 6 443 614 B1 (READ JOHN ROBERT) 3 September 2002 (2002-09-03) * column 2, line 25 - line 53 * -----	1,6, 10-12, 18,19, 25,26	
A	US 6 026 335 A (ATLAS DAN) 15 February 2000 (2000-02-15) * column 1, line 38 - line 47 * ----- -/--	1,5,6, 10-14, 16, 18-21, 23, 25-28,30	A61B
The present search report has been drawn up for all claims			
Place of search The Hague		Date of completion of the search 2 December 2004	Examiner Knüpling, M
CATEGORY OF CITED DOCUMENTS X : particularly relevant if taken alone Y : particularly relevant if combined with another document of the same category A : technological background O : non-written disclosure P : intermediate document		T : theory or principle underlying the invention E : earlier patent document, but published on, or after the filing date D : document cited in the application L : document cited for other reasons & : member of the same patent family, corresponding document	

3

EPO FORM 1503 03.82 (P04C01)



European Patent Office

EUROPEAN SEARCH REPORT

Application Number
EP 04 25 5322

DOCUMENTS CONSIDERED TO BE RELEVANT			
Category	Citation of document with indication, where appropriate, of relevant passages	Relevant to claim	CLASSIFICATION OF THE APPLICATION (Int.Cl.7)
A	DE 199 55 720 A (SCHILLER WOLFGANG ; RUMMEL MARC (DE); HASSEINZADEH DOLKANI BORIS (DE)) 31 May 2001 (2001-05-31) * column 1, line 39 - line 52 * * column 2, line 12 - line 65 * -----	1-12,14,15,17-19,21-26,28-31	
A	WO 97/14357 A (HEALTHCARE TECHNOLOGY LTD ; MACKIE RONALD DAVID LESSELS (GB)) 24 April 1997 (1997-04-24) * page 11, line 12 - page 12, line 6 * * abstract * -----	1,5	
A	ITAMI Y ET AL: "Virtual aerobics system with accurate motion speed control" TRANSACTIONS OF THE INFORMATION PROCESSING SOCIETY OF JAPAN INF. PROCESS. SOC. JAPAN JAPAN, vol. 44, no. 2, February 2003 (2003-02), pages 478-485, XP008039765 ISSN: 0387-5806 * abstract * -----		TECHNICAL FIELDS SEARCHED (Int.Cl.7)
The present search report has been drawn up for all claims			
Place of search The Hague		Date of completion of the search 2 December 2004	Examiner Knüpling, M
<p>CATEGORY OF CITED DOCUMENTS</p> <p>X : particularly relevant if taken alone Y : particularly relevant if combined with another document of the same category A : technological background O : non-written disclosure P : intermediate document</p> <p>T : theory or principle underlying the invention E : earlier patent document, but published on, or after the filing date D : document cited in the application L : document cited for other reasons & : member of the same patent family, corresponding document</p>			

EPC FORM 1503 03 82 (P04/C01)

**ANNEX TO THE EUROPEAN SEARCH REPORT
ON EUROPEAN PATENT APPLICATION NO.**

EP 04 25 5322

This annex lists the patent family members relating to the patent documents cited in the above-mentioned European search report. The members are as contained in the European Patent Office EDP file on
The European Patent Office is in no way liable for these particulars which are merely given for the purpose of information.

02-12-2004

Patent document cited in search report		Publication date	Patent family member(s)	Publication date
DE 4228091	A	03-03-1994	DE 4228091 A1	03-03-1994
US 6554776	B1	29-04-2003	NONE	
US 6443614	B1	03-09-2002	NONE	
US 6026335	A	15-02-2000	NONE	
DE 19955720	A	31-05-2001	DE 19955720 A1	31-05-2001
			AT 261331 T	15-03-2004
			DE 50005587 D1	15-04-2004
			EP 1101511 A2	23-05-2001
			ES 2216801 T3	01-11-2004
			US 6716139 B1	06-04-2004
WO 9714357	A	24-04-1997	WO 9714357 A1	24-04-1997

EPO FORM P0469

For more details about this annex : see Official Journal of the European Patent Office, No. 12/82

专利名称(译)	使用生物反馈的训练控制方法和装置		
公开(公告)号	EP1512370A1	公开(公告)日	2005-03-09
申请号	EP2004255322	申请日	2004-09-02
[标]申请(专利权)人(译)	三星电子株式会社		
申请(专利权)人(译)	SAMSUNG ELECTRONICS CO. , LTD.		
当前申请(专利权)人(译)	SAMSUNG ELECTRONICS CO. , LTD.		
发明人	YEO, HYUNG-SOK, C/O 583-903 BAEKSEOL MAEUL KOLON PARK, JAE-CHAN, C/O 307-605 EXPO APT. SHIN, KUN-SOO, C/O 110-117 SAETBYEOL MAEUL LIFE AP KIM, KYUNG-HO, C/O 104-1604 SAEREUNGGOL APT. LEE, JEONG-HWAN, C/O 114-1502 BYUCKSAN APT. KIM, YOUN-HO 137-1704 HWANGGOL MAEUL JUGONG 1-DANJ		
IPC分类号	A63B24/00 A61B5/00 A61B5/024 A61B5/0245 A61H1/02 A63B69/00 A63B71/06		
CPC分类号	A63B69/00 A61B5/0002 A61B5/02427 A61B5/02438 A61B5/486 A61B5/6816 A63B24/00 A63B71/0686 A63B2071/0625 A63B2225/50 A63B2230/065		
优先权	1020030061944 2003-09-04 KR		
其他公开文献	EP1512370B1		
外部链接	Espacenet		

摘要(译)

提供了使用生物反馈的训练控制方法和装置。使用生物反馈的训练控制装置包括：生物信号测量模块，测量来自用户的生物信号，并向用户提供预定的生物反馈信息；以及生物信息反馈模块，其使用从生物信号测量模块接收的生物信号和用户信息设置目标锻炼区域和目标休息区域，将生物信号与目标锻炼区域和目标休息区域中的任一个进行比较以及根据比较的结果向用户提供所选择的训练模式中的正生物反馈信息和负生物反馈信息中的一个。

FIG. 1

