



(11) **EP 3 218 779 B1**

(12) **EUROPEAN PATENT SPECIFICATION**

(45) Date of publication and mention of the grant of the patent:  
**13.06.2018 Bulletin 2018/24**

(51) Int Cl.:  
**G05D 23/19 (2006.01) A47J 36/24 (2006.01)**  
**A61B 5/11 (2006.01) A61B 5/00 (2006.01)**

(21) Application number: **15785137.9**

(86) International application number:  
**PCT/EP2015/074915**

(22) Date of filing: **28.10.2015**

(87) International publication number:  
**WO 2016/074920 (19.05.2016 Gazette 2016/20)**

(54) **BEVERAGE AND FOOD TEMPERATURE REGULATION**

GETRÄNKE- UND LEBENSMITTELTEMPERATURREGULIERUNG

RÉGULATION DE LA TEMPÉRATURE DE BOISSONS ET D'ALIMENTS

(84) Designated Contracting States:  
**AL AT BE BG CH CY CZ DE DK EE ES FI FR GB GR HR HU IE IS IT LI LT LU LV MC MK MT NL NO PL PT RO RS SE SI SK SM TR**

- **VAN WIERINGEN, Arjan Teodor**  
**5656 AE Eindhoven (NL)**
- **SENDEN, Christian Marie Frans Jozef**  
**5656 AE Eindhoven (NL)**
- **AALDERS, Arnold**  
**5656 AE Eindhoven (NL)**

(30) Priority: **11.11.2014 EP 14192712**

(43) Date of publication of application:  
**20.09.2017 Bulletin 2017/38**

(74) Representative: **Roche, Denis**  
**Société Civile SPID**  
**33, rue de Verdun**  
**92150 Suresnes (FR)**

(73) Proprietor: **Koninklijke Philips N.V.**  
**5656 AE Eindhoven (NL)**

(72) Inventors:  
• **JANSSEN, Jozef Johannes Maria**  
**5656 AE Eindhoven (NL)**

(56) References cited:  
**WO-A1-2013/093686 US-A1- 2004 140 304**  
**US-A1- 2007 156 060 US-A1- 2014 058 256**  
**US-A1- 2014 085 093**

**EP 3 218 779 B1**

Note: Within nine months of the publication of the mention of the grant of the European patent in the European Patent Bulletin, any person may give notice to the European Patent Office of opposition to that patent, in accordance with the Implementing Regulations. Notice of opposition shall not be deemed to have been filed until the opposition fee has been paid. (Art. 99(1) European Patent Convention).

**Description**

## FIELD OF THE INVENTION

**[0001]** The present invention relates to beverage and food temperature regulation. More in particular, the present invention relates to a device and method for regulating the temperature of beverages, such as milk, or food, such as vegetables, so as to keep a beverage or food at a relatively low storage temperature and to later warm the beverage or food.

## BACKGROUND OF THE INVENTION

**[0002]** It is well known to keep a milk bottle for a baby in a refrigerator and to heat the milk bottle in a microwave oven when the baby wakes up. This known method requires two devices and also requires both the baby and the parent to wait until the milk has reached the proper temperature. As babies generally are not appreciative of waiting and are perfectly capable of making this known, this method is far from ideal.

**[0003]** United States Patent Application US 2004/0140304 discloses a device for both chilling and warming a baby bottle. This known device utilizes a thermoelectric module, also known as Peltier element, both for chilling and warming. A clock circuit can be set to an activation or target time to automatically switch the device from a chilling mode to a warming mode at the activation time. A buzzer may sound when the target time has arrived. The known device can also manually be switched into the warming mode.

**[0004]** This known device has the disadvantage that the activation time must be known in advance. If the known device has the bottle ready before the baby is awake, and the parent is woken up by the device's buzzer, then the baby has to be woken up and will not be amused. If, however, the baby has already woken up and made her hunger known before the target time, then the parent has to manually switch the device into the warming mode and wait for the bottle to be ready while the baby is crying, leaving both the parent and the baby not amused.

**[0005]** International Patent Application WO 2013/093686 discloses an apparatus for monitoring a sleeping person and arranged for estimating the moment of waking up of the sleeping person. In an embodiment, a bottle heater may be started before a baby is about to wake up. The chilling of a bottle is however not disclosed in WO 2013/093686. In other words, the known apparatus is incapable of chilling the bottle before it is to be heated. In addition, the known apparatus is incapable of reversing the heating process in case a "false alarm" is produced and the baby fails to wake up, in which case the bottle may need to be chilled again.

## SUMMARY OF THE INVENTION

**[0006]** It is an object of the present invention to solve these and other problems by providing a device and method for beverage and/or food temperature regulation which take user requirements into account, in particular the moment at which the recipient would like to receive their food or beverage, and which is not limited to heating alone.

**[0007]** Accordingly, the present invention provides a device for food and/or beverage temperature regulation, comprising a cooling unit for providing a cooling mode in which the food and/or beverage is cooled, a heating unit for providing a heating mode in which the food and/or beverage is heated and for providing a pre-heating mode in which the food and/or beverage is pre-heated, a memory unit for storing behavioral pattern data of the recipient, a prediction unit for predicting, using the behavioral pattern data, the future behavior of the recipient, and a control unit for controlling the cooling unit and the heating unit, wherein the control unit is arranged for:

- receiving at least one signal indicative of the current behavior of the recipient of the food and/or beverage,
- detecting a change in said current behavior, and
- activating the cooling mode or the heating mode in response to said detecting, and
- activating the pre-heating mode in response to the future behavior predicted by the prediction unit.

**[0008]** By switching between the modes in dependence on detecting a change in the behavior of the intended recipient of the food and/or beverage, the point in time at which the item is ready will be much better aligned with the desire of the recipient, that is, the consumer. As a result, the recipient will be more satisfied and the device will be used more efficiently as heating the food and/or beverage long before the moment of consumption may be avoided, for example. Avoiding prolonged heating not only saves energy, it also improves the quality of the food and/or beverage.

**[0009]** By activating the pre-heating mode in response to the future behavior predicted by the prediction unit, the point in time at which the item is ready will be even better aligned with the desire of the recipient since the heating mode will require less time as a result.

**[0010]** Detecting a change in the current behavior of the recipient can be carried out on the basis of at least one signal indicative of the behavior of the recipient of the food and/or beverage. These signals may be produced by sensor units, for example a microphone unit for providing acoustic signals (such as signals representing sound produced by the recipient), a radar unit and/or a camera unit for producing signals representing movement and/or the posture of the recipient, and a radar unit and/or a pressure sensor unit for producing signals representing vital signs of the recipient, such as the recipient's heartbeat and/or respiration rate. In the case of ba-

bies, for example, a moisture detection unit for producing signals representing moisture loss of the recipient may be advantageous. The sensor units are preferably located near the recipient, for example within a few meters, or placed on the recipient's body. Some sensors, such as pressure sensors for sensing movement and/or posture, or moisture sensors, may be placed in or on the recipient's bed or seat, possibly in addition to placement on or near the recipient's body.

**[0011]** By detecting a change in the behavior of the recipient of the food or beverage, it is possible to predict the recipient's behavior to a certain extent. For example, an increase in the recipient's movements is likely to indicate that the recipient is about to get up when lying down or seated, or wake up when asleep. In this way, it is possible to anticipate the desire for the consumption and even predict when the recipient will want their consumption.

**[0012]** The accuracy of the prediction can be improved by using historical data related to the recipient. To this end, the device of the present invention further comprises a memory unit for storing behavioral pattern data of the recipient and a prediction unit for predicting, using the behavioral pattern data, the future behavior of the recipient. The behavioral pattern data may be derived from received behavior signals and may then be stored. The behavioral pattern data may also be obtained from another device and then be stored in the device of the present invention.

**[0013]** Although the prediction unit may be used to predict a change in behavior and hence a desire to consume food and/or beverage without sensor input, it is preferred that the control unit is arranged for weighing signals using the behavior predicted by the prediction unit. That is, the behavior predicted on the basis of historical data, such as sleeping patterns, may be used to weigh signals representing e.g. movement. As a result, increased body movement will receive more weight, and will thus form a greater indication of the recipient's waking up, when this matches the historically predicted behavior at that point in time.

**[0014]** Although the invention has been explained above with reference to two modes, a heating mode and a cooling mode, the invention is not so limited and in an advantageous embodiment the heating unit is further arranged to provide a pre-heating mode, and wherein the control unit is arranged for activating the pre-heating mode in response to the behavior predicted by the prediction unit. Embodiments can also be envisaged which additionally, or alternatively, offer a pre-cooling mode. Some embodiments may provide an inactive mode in which the device neither heats (or pre-heats) nor cools (or pre-cools). In such embodiments, the device may switch between three (or five) modes: heating, inactive and cooling (or pre-heating, heating, inactive, pre-cooling and cooling). Accordingly, in embodiments of the invention the control unit may be arranged for de-activating the cooling mode or the heating mode in response to the

future behavior predicted by the prediction unit. It will be understood that activating one mode, for example the pre-heating mode, implies deactivating another mode, for example the cooling mode or inactive mode. It will further be understood that activating or de-activating a mode in response to the predicted future behavior implies that the activation or de-activation is only carried out if triggered by the predicted future behavior and may not be carried out if the predicted future behavior does not trigger an activation or deactivation. A trigger event in the predicted future behavior may, for example, be a habit of waking up at a certain time.

**[0015]** The present invention also provides a method for food and/or beverage temperature regulation using a cooling unit for providing a cooling mode in which the food and/or beverage is cooled and a heating unit for providing a heating mode in which the food and/or beverage is heated and for providing a pre-heating mode in which the food and/or beverage is pre-heated, the method comprising the steps of:

- storing behavioral pattern data of the recipient,
- predicting, using the behavioral pattern data, the future behavior of the recipient,
- receiving at least one signal indicative of the current behavior of the recipient of the food and/or beverage,
- detecting a change in said current behavior,
- activating the cooling mode or the heating mode in response to said detecting, and
- activating the pre-heating mode in response to the predicted future behavior.

**[0016]** The present invention additionally provides a software program product for causing a processor to carry out the method steps mentioned above. The software program product may be stored on a tangible carrier, such as a DVD or a USB stick. Alternatively, the software program product may be stored on a server from which it may be downloaded using the Internet. The software program product contains software instructions which can be carried out by the processor of a device, such as a server, a user device (for example a smartphone), and/or a monitoring device.

#### BRIEF DESCRIPTION OF THE DRAWINGS

**[0017]** The present invention will further be explained with reference to exemplary embodiments illustrated in the drawings, in which:

Fig. 1 schematically shows a merely exemplary embodiment of a device according to the present invention.

Fig. 2 schematically shows a merely exemplary embodiment of a device according to the present invention in more detail.

Fig. 3 schematically shows an exemplary embodiment of a control unit of the device of Fig. 2 in more

detail.

Fig. 4 schematically shows a flow diagram of an embodiment of a method according to the present invention.

Fig. 5 schematically shows a carrier containing a software program product according to the present invention.

#### DETAILED DESCRIPTION OF THE EMBODIMENTS

**[0018]** The merely exemplary device 10 according to the present invention shown in Fig. 1 is designed for cooling and warming bottles, such as milk bottles. To this end, the device 10 has a hollow interior into which a bottle, such as a milk bottle 20, can be inserted. The device 10 of Fig. 1 is shown to have a manual control knob 19 which may allow manually overriding any automatic controls and which may further allow setting desired temperatures. While the embodiment of Fig. 1 is designed for holding milk bottles for infants, other embodiments may be adapted to cool and warm other containers, such as food containers or larger bottles. Some embodiments may not have a hollow interior but may for example have a top surface that may be cooled and heated.

**[0019]** The functional components of an exemplary embodiment of a device 10 are shown in Fig. 2. The device illustrated in Fig. 2 comprises a combined cooling and heating unit 11, a control unit 12, an input/output unit 13, a prediction unit 14 and an associated memory unit 15. The cooling and heating unit 11 comprises a cooling unit 11A providing a cooling mode in which the food and/or beverage is cooled and a heating unit 11B for providing a heating mode in which the food and/or beverage is heated. In the embodiment shown, the cooling and heating unit 11 is constituted by a single combined unit which comprises a Peltier element. As is well known, Peltier elements (or thermoelectric elements) are capable of generating or removing heat, depending on the polarity of the applied voltage. Instead of a combined unit, however, separate heating and cooling units may also be used.

**[0020]** The control unit 12, which will later be explained in more detail with reference to Fig. 3, controls the heating and/or cooling of the heating and cooling unit 11, in response to signals received from sensor units 18A-18D. The control unit 12 is connected with an input/output (I/O) unit 13, which may comprise an antenna for wirelessly receiving signals from the sensor units.

**[0021]** In the embodiment shown, the device 10 also comprises a prediction unit 14 and an associated memory unit 15. The prediction unit 14 serves to predict the behavior of the recipient 30 based on previous behavior stored in the memory 15. That is, the memory 15 stores historical data with respect to the behavior of the recipient 30, for example the points in time at which the recipient 30 woke up during the past days, weeks or months. Additionally, or alternatively, the memory 15 may store for a plurality of moments per day (or other time unit) the

particular behavior of the recipient as determined from the signals received from the sensor units 18.

**[0022]** The prediction unit 14 is arranged for predicting, at a particular point in time, the behavior of the recipient 30, based upon the past behavior stored in the memory 15 and/or present behavior. The control unit 12 may then use this predicted behavior to weigh the information received from the sensor units. For example, if the information received from the sensor units (e.g. "increasing movement") matches the typical behavior at the particular point in time (e.g. "will normally wake up in about 5 minutes") then the controller can for example start warming a previously cooled bottle.

**[0023]** The sensor units 18 shown merely by way of non-limiting example in Fig. 2 comprise a microphone unit 18A for receiving sound produced by the recipient (or consumer) 30 of the food and/or beverage, a radar unit 18B for receiving movement and/or life sign information of the recipient 30, a camera 18C for receiving image information relating to movement and/or posture, and a pressure sensor 18D for receiving pressure information which may be indicative of movement and/or posture. Not all of these sensor units need be present, while in other embodiments further sensor units may be present, such as a moisture sensor unit. All sensor units are arranged for transmitting signals to the I/O unit 13 of the control unit 13, either wirelessly (using e.g. Bluetooth® or Wi-Fi) or via a suitable wired connection.

**[0024]** With regard to the radar unit 18B it is noted that for example United States Patent Application US 2014/0058256 discloses a radar apparatus for detecting vital signs of a subject. In particular, the radar apparatus is arranged for performing a radar measurement of a superficial artery structure so as to retrieve heart activity information. Such a radar apparatus may advantageously be used as a sensor unit in the present invention.

**[0025]** An exemplary embodiment of the control unit 12 is schematically illustrated in Fig. 3. The embodiment of Fig. 3 comprises a microprocessor 120 and an associated memory 121. It is noted that the processor memory 121 may be a separate memory from the prediction memory 15, but that in some embodiments both functions may share a common memory unit. The control unit 12 of Fig. 3 further comprises an (optional) audio filter unit 122 and/or an (optional) sound recognition unit 123. The audio filter unit 122 serves to filter the signal received from the microphone unit 18A so as to extract audio frequencies of interest. The sound recognition unit 123 serves to recognize sound, such as the sound of a baby crying. Both the audio filter unit 122 and the sound recognition unit 123 may be implemented in hardware, software or a combination of hardware and software.

**[0026]** The control unit 12 may comprise other components, such as an image recognition unit (not shown). Such units may also be implemented in hardware, software, or a combination. Suitable software programs may be stored in the memory 121 and be carried out by the processor 120.

**[0027]** The control unit 12 is arranged for detecting a change in the behavior of the intended recipient of the food and/or beverage on the basis of the received sensor signals and, optionally, also on the basis of stored behavioral data derived from previously received sensor signals. Detecting a change in one particular signal, such as a sound signal, may be sufficient for detecting a change in the behavior of the recipient, but preferably two or more signals are used as a basis for detecting behavioral change. Furthermore, the control unit 12 is arranged for switching between the cooling mode and the heating mode in response to said detecting a change in the behavior of the recipient.

**[0028]** An example of a method according to the present invention as may be carried out by the processor 120 is schematically illustrated in Fig. 4. The merely exemplary method 40 starts at step 41. In step 42, a behavior signal is received from one or more sensor units (18 in Fig. 2). In step 43, the relevant behavioral information may be stored as behavioral pattern data (in memory 15 illustrated in Fig. 2, for example). In step 44, this new behavioral information is compared with older behavioral information (which may be stored in memory 15 and may be retrieved in this step). In step 45, it is decided whether the new information indicates a change in behavior or not. If the new information is not significantly different from the old information, then it is decided that there is no change in behavior and the method resumes with step 42. However, if the new information is significantly different from the old information, then it may be decided that there is a change in behavior which indicates a desire to consume food and/or a beverage. As a result, in step 46 the mode is switched, typically from cooling mode to heating mode, but the reverse is also possible. After switching, the method may resume at step 42.

**[0029]** In some embodiments, the switching may not only be between heating and cooling, but may also involve a third or even fourth mode, such as pre-heating and/or pre-cooling. Pre-heating may be carried out in anticipation of heating, while pre-cooling may be used in anticipation of cooling, as indicated by sensor information and/or historical behavioral data. That is, when there are indications that the recipient is about to wake up, for example, but when those indications are not yet strong, a pre-heating mode may be activated. Similarly, when there are indications that the recipient is not about to wake up while the heating mode has already been activated, the pre-cooling mode may be activated. The pre-heating mode may involve active heating, or only the deactivation of cooling.

**[0030]** The recipient of the food and/or beverage, who may also be referred to as consumer, may be a baby, infant or patient. It will be understood that in the present invention a change in the behavior of the recipient, as derived from signals produced by suitable sensors, may cause the switching. In other words, on the basis of data collected by one or more sensors it is decided whether the behavior of the recipient has changed sufficiently to

change modes. It will be understood that different threshold values may be used for different types of behavior change, such as volume of sound produced or number of body movements per minute.

5 **[0031]** The beverages that may be used with the device of the present invention are not limited to milk, and certainly not baby milk, but may also include fruit juices, water, and soup. As baby milk should be kept at about 5°C and be consumed at about 35°C, baby milk should be heated before consumption. Other beverages or food, such as white wine, may be kept at room temperature but should be slightly chilled before consumption. Food leftovers which were previously heated for consumption should be chilled for later use. The step of switching between the cooling mode and the heating mode may therefore involve switching from the cooling mode to the heating mode or switching from the heating mode (or an inactive mode) to the cooling mode. As mentioned above, the switching may also involve an intermediate mode of pre-cooling or pre-heating.

10 **[0032]** The present invention utilizes signs indicative of the need for food or drink: sound, movement, vital signs, and/or sleep stage. In addition, the present invention may use stored behavioral data, such as previous feeding session times and optionally also previous feeding session volumes.

15 **[0033]** Although the present invention has been explained with reference to beverages, it is not so limited and can be also used for foodstuff, such as porridge or other baby food. Applications can be envisaged in which the device is sensitive to a certain spoken word, such as "breakfast!" or "milk!", and will start heating a previously prepared breakfast or beverage in response.

20 **[0034]** A software program product for causing a processor to carry out the method steps mentioned above is schematically illustrated in Fig. 5. The software program product may be stored on a tangible carrier 50, such as a DVD as illustrated, or a USB stick. Alternatively, the software program product may be stored on a server from which it may be downloaded using the Internet. The software program product contains software instructions which can be carried out by the processor 120 of the device so as to perform the method steps according to the present invention, in particular but not limited to receiving at least one signal indicative of the behavior of the recipient of the food and/or beverage, detecting a change in said behavior based on the at least one received signal, and switching between the cooling mode and the heating mode in response to said detecting.

25 **[0035]** It will be understood that the description of the invention given above is not intended to limit the invention in any way. Singular nouns and the articles "a" and "an" are of course not meant to exclude the possibility of plurals. Devices mentioned in this document, such as smartphones, may be replaced with their successors, even if these successors are not yet known at the time of writing. As is well established in the law of patents, the abstract should never be used to limit the scope of the claims,

and neither should reference numbers in the claims.

**[0036]** It will further be understood by those skilled in the art that the present invention is not limited to the embodiments mentioned above and that many additions and modifications are possible without departing for the scope of the invention as defined in the appending claims.

## Claims

1. A device (10) for food and/or beverage temperature regulation, comprising:
  - a cooling unit (11A) for providing a cooling mode in which the food and/or beverage is cooled,
  - a heating unit (11B) for providing a heating mode in which the food and/or beverage is heated and for providing a pre-heating mode in which the food and/or the beverage is pre-heated,
  - a memory unit (15) for storing behavioral pattern data of the recipient,
  - a prediction unit (14) for predicting, using the behavioral pattern data, the future behavior of the recipient, and
  - a control unit (12) for controlling the cooling unit and the heating unit, wherein the control unit is arranged for:
    - receiving at least one signal (S) indicative of the current behavior of the recipient (30) of the food and/or beverage,
    - detecting a change in said current behavior,
    - activating the cooling mode or the heating mode in response to said detecting, and
    - activating the pre-heating mode in response to the future behavior predicted by the prediction unit (14).
2. The device according to claim 1, wherein the at least one signal (S) comprises a sound signal representing sound produced by the recipient.
3. The device according to claim 1 or 2, wherein the at least one signal (S) comprises a movement and/or posture signal representing movement and/or posture of the recipient.
4. The device according to claim 1, 2 or 3, wherein the at least one signal (S) comprises a vital sign signal representing at least one vital sign of the recipient, such as the recipient's heartbeat and/or respiration rate.
5. The device according to any of the preceding claims, wherein the at least one signal (S) comprises a moisture signal representing moisture loss of the recipient.
6. The device according to any of the preceding claims, wherein the control unit (12) is arranged for weighing signals using the behavior predicted by the prediction unit (14).
7. The device according to any of the preceding claims, wherein the control unit (12) is further arranged to provide an inactive mode in response to the predicted future behavior of the recipient.
8. The device according to any of the preceding claims, wherein the control unit (12) is arranged for selectively responding to sound signals.
9. The device according to claim 8, wherein the control unit (12) comprises audio filters (122) and/or a sound recognition unit (123).
10. The device according to any of the preceding claims, wherein the cooling unit (11A) and the heating unit (11B) are together constituted by a single temperature regulation unit (11), which preferably comprises a Peltier element.
11. The device according to any of the preceding claims, further comprising at least one sensor unit (18) for producing signals indicative of the behavior of the recipient of the food and/or beverage, the sensor unit (18) and the control unit (12) preferably being connected wirelessly.
12. A method for food and/or beverage temperature regulation using a cooling unit (11A) for providing a cooling mode in which the food and/or beverage is cooled and a heating unit (11B) for providing a heating mode in which the food and/or beverage is heated and for providing a pre-heating mode in which the food and/or the beverage is pre-heated, the method comprising the steps of:
  - storing behavioral pattern data of the recipient,
  - predicting, using the behavioral pattern data, the future behavior of the recipient,
  - receiving at least one signal indicative of the current behavior of the recipient (30) of the food and/or beverage,
  - detecting a change in said current behavior, and
  - activating the cooling mode or the heating mode in response to said detecting, and
  - activating the pre-heating mode in response to the predicted future behavior.
13. The method according to claim 12, further comprising the step of providing an inactive mode in response to the predicted future behavior of the recipient.

14. A software program product for carrying out the method according to claim 12 or 13.

#### Patentansprüche

1. Vorrichtung (10) zur Lebensmittel- und/oder Getränketemperaturregelung, umfassend:

- eine Kühleinheit (11A) zum Bereitstellen eines Kühlmodus, in dem das Lebensmittel und/oder Getränk gekühlt werden,
- eine Heizeinheit (11B) zum Bereitstellen eines Heizmodus, in dem das Lebensmittel und/oder Getränk erwärmt werden, und zum Bereitstellen eines Vorwärmmodus, in dem das Lebensmittel und/oder das Getränk vorgewärmt werden,
- eine Speichereinheit (15) zum Speichern von Verhaltensmusterdaten des Empfängers,
- eine Vorhersageeinheit (14) zum Vorhersagen, unter Verwendung der Verhaltensmusterdaten, des zukünftigen Verhaltens des Empfängers, und
- eine Steuereinheit (12) zum Steuern der Kühleinheit und der Heizeinheit, wobei die Steuereinheit eingerichtet ist zum:
  - Empfangen mindestens eines Signals (S), welches das aktuelle Verhalten des Empfängers (30) des Lebensmittels und/oder Getränks anzeigt,
  - Erkennen einer Änderung des aktuellen Verhaltens,
  - Aktivieren des Kühlmodus oder des Heizmodus als Reaktion auf die Erkennung, und
  - Aktivieren des Vorheizmodus als Reaktion auf das zukünftige Verhalten, das von der Vorhersageeinheit (14) vorhergesagt wurde.

2. Vorrichtung nach Anspruch 1, wobei das mindestens eine Signal (S) ein Tonsignal umfasst, das den vom Empfänger erzeugten Ton darstellt.

3. Vorrichtung nach Anspruch 1 oder 2, wobei das mindestens eine Signal (S) ein Bewegungs- und/oder Haltungssignal umfasst, das die Bewegung und/oder die Haltung des Empfängers darstellt.

4. Vorrichtung nach Anspruch 1, 2 oder 3, wobei das mindestens eine Signal (S) ein Vitalzeichen-Signal umfasst, das mindestens ein Vitalzeichen des Empfängers darstellt, wie z. B. den Herzschlag und/oder die Atemfrequenz des Empfängers.

5. Vorrichtung nach einem der vorstehenden Ansprüche, wobei das mindestens eine Signal (S) ein Feuchtigkeitssignal umfasst, das den Feuchtigkeitsverlust des Empfängers darstellt.

6. Vorrichtung nach einem der vorstehenden Ansprüche, wobei die Steuereinheit (12) zum Gewichten von Signalen unter Verwendung des Verhaltens eingerichtet ist, das von der Vorhersageeinheit (14) vorhergesagt wurde.

7. Vorrichtung nach einem der vorstehenden Ansprüche, wobei die Steuereinheit (12) weiter eingerichtet ist, um als Reaktion auf das vorhergesagte zukünftige Verhalten des Empfängers einen inaktiven Modus bereitzustellen.

8. Vorrichtung nach einem der vorstehenden Ansprüche, wobei die Steuereinheit (12) eingerichtet ist, um selektiv auf Tonsignale zu reagieren.

9. Vorrichtung nach Anspruch 8, wobei die Steuereinheit (12) Audiofilter (122) und/oder eine Tonerkennungseinheit (123) umfasst.

10. Vorrichtung nach einem der vorstehenden Ansprüche, wobei die Kühleinheit (11A) und die Heizeinheit (11B) zusammen aus einer einzigen Temperaturregelungseinheit (11) bestehen, die vorzugsweise ein Peltier-Element umfasst.

11. Vorrichtung nach einem der vorstehenden Ansprüche, weiterhin umfassend mindestens eine Sensoreinheit (18) zum Erzeugen von Signalen, die das Verhalten des Lebensmittel- und/oder Getränkeempfängers angeben, wobei die Sensoreinheit (18) und die Steuereinheit (12) vorzugsweise drahtlos verbunden sind.

12. Verfahren zur Lebensmittel- und/oder Getränketemperaturregelung unter Verwendung einer Kühleinheit (11A) zur Bereitstellung eines Kühlmodus, in dem das Lebensmittel und/oder Getränk gekühlt werden, und einer Heizeinheit (11B) zur Bereitstellung eines Heizmodus, in dem das Lebensmittel und/oder Getränk erwärmt werden, und zur Bereitstellung eines Vorheizmodus, in dem das Lebensmittel und/oder das Getränk vorgewärmt werden, wobei das Verfahren die folgenden Schritte umfasst:

- Speichern von Verhaltensmusterdaten des Empfängers,
- Vorhersagen, unter Verwendung der Verhaltensmusterdaten, des zukünftigen Verhaltens des Empfängers,
- Empfangen mindestens eines Signals, welches das aktuelle Verhalten des Empfängers (30) des Lebensmittels und/oder Getränks anzeigt,
- Erkennen einer Änderung im aktuellen Verhalten, und
- Aktivieren des Kühlmodus oder des Heizmodus als Reaktion auf die Erkennung, und

- Aktivieren des Vorheizmodus als Reaktion auf das vorhergesagte zukünftige Verhalten.

13. Verfahren nach Anspruch 12, ferner umfassend den Schritt des Bereitstellens eines inaktiven Modus als Reaktion auf das vorhergesagte zukünftige Verhalten des Empfängers.

14. Softwareprodukt zur Ausführung des Verfahrens nach Anspruch 12 oder 13.

### Revendications

1. Dispositif (10) pour la régulation de température d'aliments et/ou de boissons, comprenant :

- une unité de refroidissement (11A) pour fournir un mode de refroidissement dans lequel l'aliment et/ou la boisson sont refroidis,
- une unité de chauffage (11B) pour fournir un mode de chauffage dans lequel l'aliment et/ou la boisson sont chauffés et pour fournir un mode de préchauffage dans lequel l'aliment et/ou la boisson sont préchauffés,
- une unité de mémoire (15) pour stocker des données de schéma comportemental du destinataire,
- une unité de prédiction (14) pour prédire, à l'aide des données de schéma comportemental, le comportement futur du destinataire, et
- une unité de commande (12) pour commander l'unité de refroidissement et l'unité de chauffage, dans lequel l'unité de commande est agencée pour :
  - recevoir au moins un signal (S) indicatif du comportement actuel du destinataire (30) de l'aliment et/ou de la boisson,
  - détecter un changement dans ledit comportement actuel,
  - activer le mode de refroidissement ou du mode de chauffage en réponse à ladite détection, et
  - activer le mode de préchauffage en réponse au comportement futur prédit par l'unité de prédiction (14).

2. Dispositif selon la revendication 1, dans lequel l'au moins un signal (S) comprend un signal sonore représentant le son produit par le destinataire.

3. Dispositif selon la revendication 1 ou 2, dans lequel l'au moins un signal (S) comprend un signal de mouvement et/ou de posture représentant le mouvement et/ou la posture du destinataire.

4. Dispositif selon la revendication 1, 2 ou 3, dans lequel l'au moins un signal (S) comprend un signal de signe vital représentant au moins un signe vital du

destinataire, tel que le rythme cardiaque et/ou la fréquence respiratoire du destinataire.

5. Dispositif selon l'une quelconque des revendications précédentes, dans lequel l'au moins un signal (S) comprend un signal d'hydratation représentant la perte d'hydratation du destinataire.

6. Dispositif selon l'une quelconque des revendications précédentes, dans lequel l'unité de commande (12) est agencée pour pondérer les signaux en utilisant le comportement prédit par l'unité de prédiction (14).

7. Dispositif selon l'une quelconque des revendications précédentes, dans lequel l'unité de commande (12) est agencée en outre pour fournir un mode inactif en réponse au comportement futur prédit du destinataire.

8. Dispositif selon l'une quelconque des revendications précédentes, dans lequel l'unité de commande (12) est agencée pour répondre de manière sélective aux signaux sonores.

9. Dispositif selon la revendication 8, dans lequel l'unité de commande (12) comprend des filtres audio (122) et/ou une unité de reconnaissance de sons (123).

10. Dispositif selon l'une quelconque des revendications précédentes, dans lequel l'unité de refroidissement (11A) et l'unité de chauffage (11B) sont constituées ensemble par une unité de régulation de température unique (11), qui comprend de préférence un élément à effet Peltier.

11. Dispositif selon l'une quelconque des revendications précédentes, comprenant en outre au moins une unité de détection (18) pour produire des signaux indicatifs du comportement du destinataire de l'aliment et/ou de la boisson, l'unité de détection (18) et l'unité de commande (12) étant de préférence connectées sans fil.

12. Procédé pour la régulation de température d'aliments et/ou de boissons à l'aide d'une unité de refroidissement (11A) pour fournir un mode de refroidissement dans lequel l'aliment et/ou la boisson sont refroidis et une unité de chauffage (11B) pour fournir un mode de chauffage dans lequel l'aliment et/ou la boisson sont chauffés et pour fournir un mode de préchauffage dans lequel l'aliment et/ou la boisson sont préchauffés, le procédé comprenant les étapes suivantes :

- le stockage de données de schéma comportemental du destinataire,
- la prédiction, à l'aide des données de schéma comportemental, du comportement futur du

destinataire,

- la réception d'au moins un signal indicatif du comportement actuel du destinataire (30) de l'aliment et/ou de la boisson,

- la détection d'un changement dans ledit comportement actuel, et 5

- l'activation du mode de refroidissement ou du mode de chauffage en réponse à ladite détection, et

- l'activation du mode de préchauffage en réponse au comportement futur prédit. 10

**13.** Procédé selon la revendication 12, comprenant en outre l'étape de fourniture d'un mode inactif en réponse au comportement futur prédit du destinataire. 15

**14.** Produit de programme logiciel pour réaliser le procédé selon la revendication 12 ou 13.

20

25

30

35

40

45

50

55

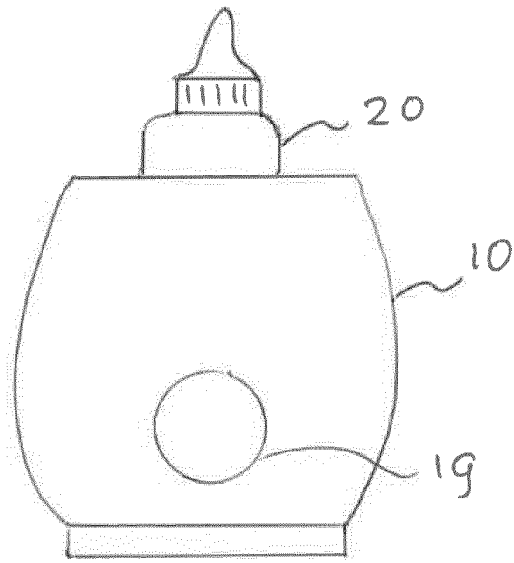


Fig. 1

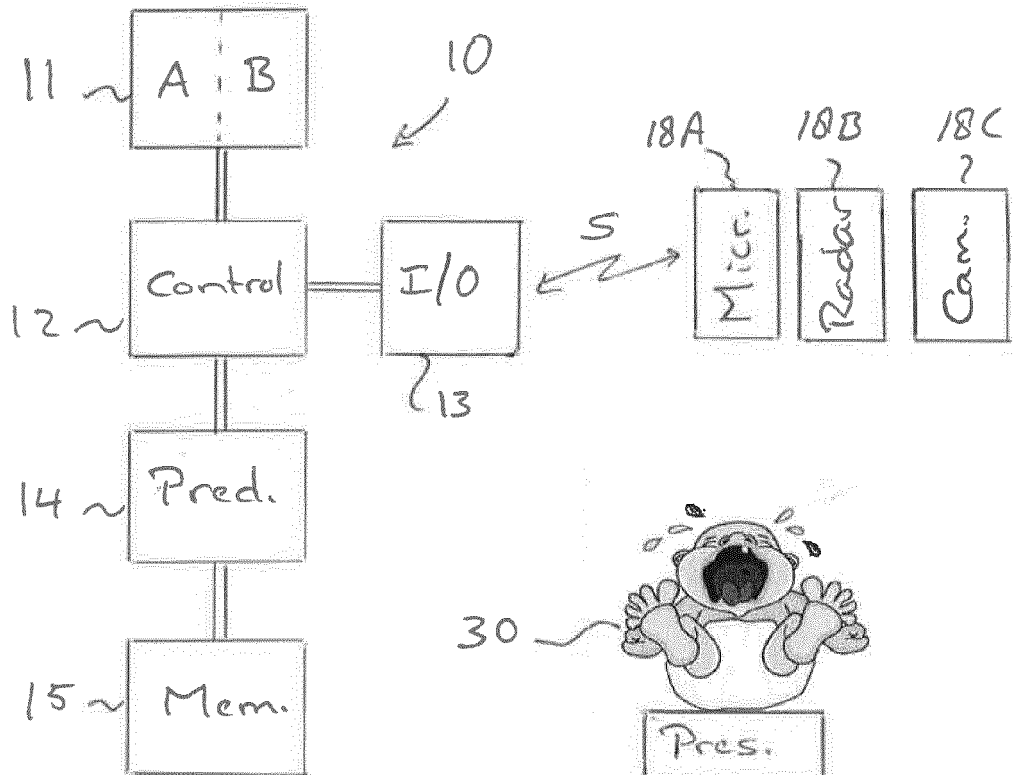


Fig. 2

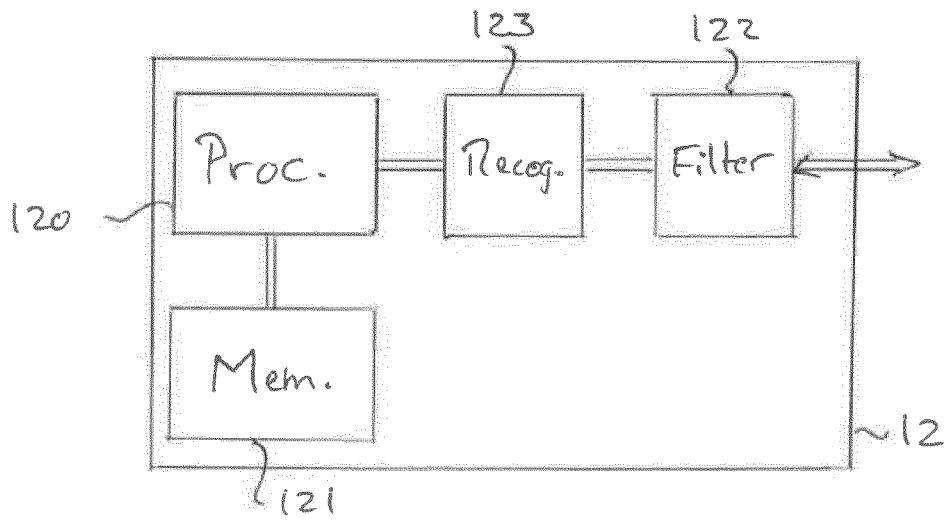


Fig. 3

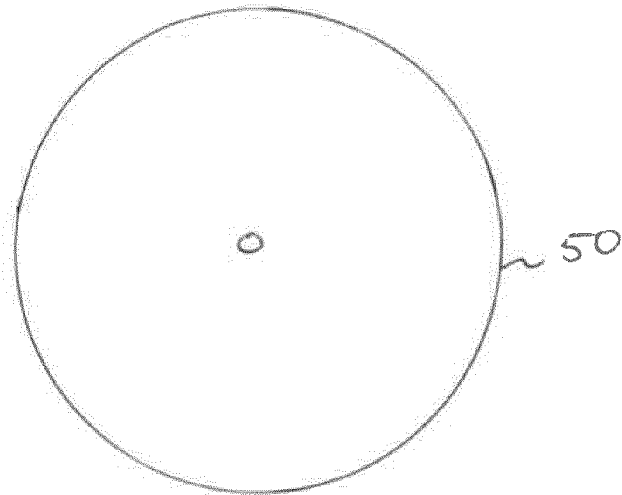


Fig. 5

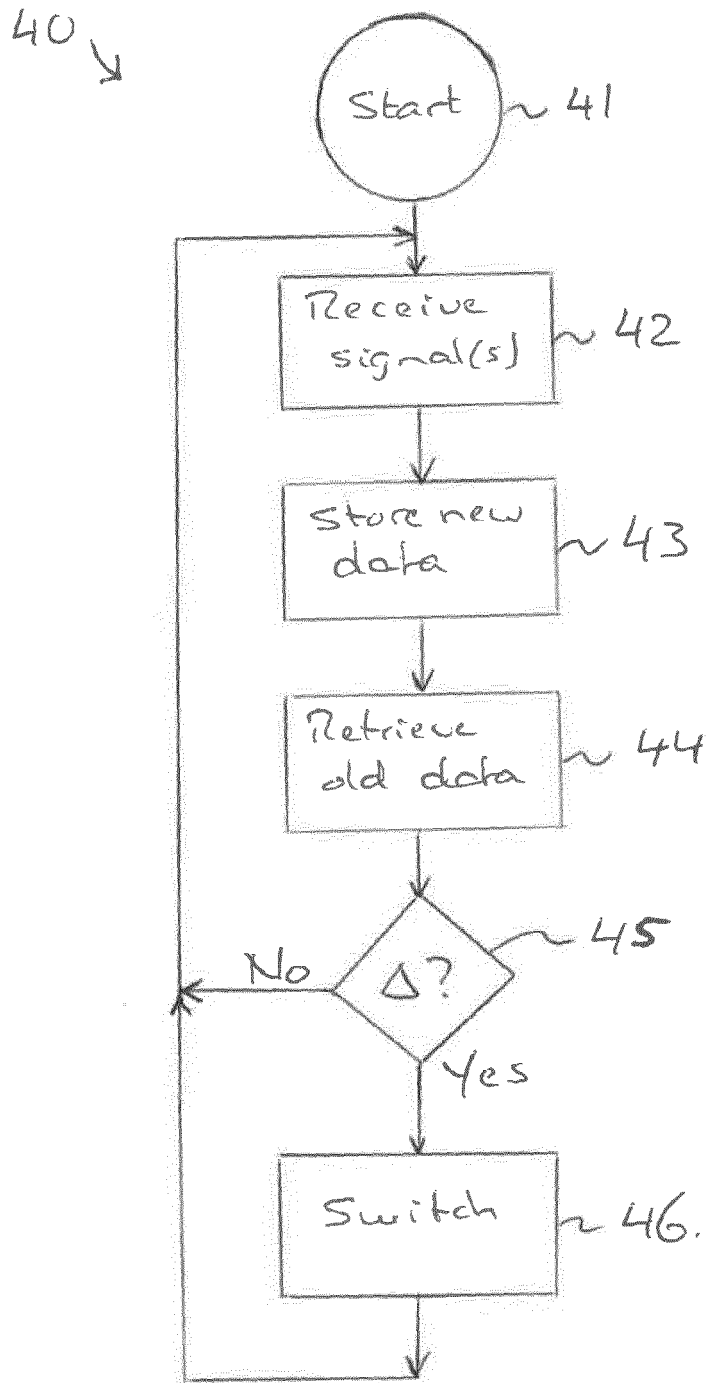


Fig. 4

**REFERENCES CITED IN THE DESCRIPTION**

*This list of references cited by the applicant is for the reader's convenience only. It does not form part of the European patent document. Even though great care has been taken in compiling the references, errors or omissions cannot be excluded and the EPO disclaims all liability in this regard.*

**Patent documents cited in the description**

- US 20040140304 A [0003]
- WO 2013093686 A [0005]
- US 20140058256 A [0024]

专利名称(译)	饮料和食品温度调节		
公开(公告)号	<a href="#">EP3218779B1</a>	公开(公告)日	2018-06-13
申请号	EP2015785137	申请日	2015-10-28
[标]申请(专利权)人(译)	皇家飞利浦电子股份有限公司		
申请(专利权)人(译)	皇家飞利浦N.V.		
当前申请(专利权)人(译)	皇家飞利浦N.V.		
[标]发明人	JANSSEN JOZEF JOHANNES MARIA VAN WIERINGEN ARJAN TEODOR SENDEN CHRISTIAN MARIE FRANS JOZEF AALDERS ARNOLD		
发明人	JANSSEN, JOZEF JOHANNES MARIA VAN WIERINGEN, ARJAN TEODOR SENDEN, CHRISTIAN MARIE FRANS JOZEF AALDERS, ARNOLD		
IPC分类号	G05D23/19 A47J36/24 A61B5/11 A61B5/00		
CPC分类号	A47J36/2411 G05D23/1917 G05D23/1919 A61B5/4809		
代理机构(译)	ROCHE , DENIS		
优先权	2014192712 2014-11-11 EP		
其他公开文献	EP3218779A1		
外部链接	<a href="#">Espacenet</a>		

摘要(译)

一种用于食品和/或饮料温度调节的装置 ( 10 )，包括用于提供冷却食物和/或饮料的冷却模式的冷却单元 ( 11A )，用于提供加热模式的加热单元 ( 11B )，其中食物和/或饮料被加热，食物和/或饮料被预热的预热模式，以及用于控制冷却单元和加热单元的控制单元 ( 12 )。控制单元 ( 12 ) 被布置用于响应于指示食物和/或饮料的接收者 ( 30 ) 的行为的变化的信号并且用于激活预热模式来激活冷却模式或加热模式。响应预测的行为。信号可以表示声音和/或运动，并且可以源自传感器单元 ( 18 )，例如麦克风单元和/或雷达单元。

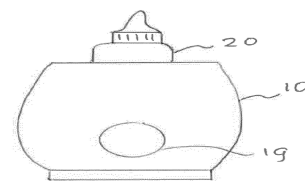


Fig. 1

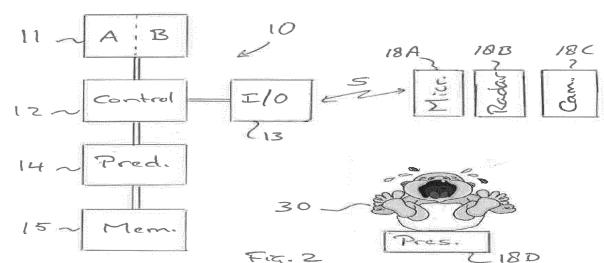


Fig. 2