

(19)



(11)

EP 2 698 112 B1

(12)

EUROPEAN PATENT SPECIFICATION

(45) Date of publication and mention of the grant of the patent:
06.03.2019 Bulletin 2019/10

(51) Int Cl.:
A61B 5/16 ^(2006.01) **A61B 5/024** ^(2006.01)
A61B 5/0452 ^(2006.01) **A61B 5/0205** ^(2006.01)
A61B 5/0456 ^(2006.01) **A61B 5/11** ^(2006.01)
G06K 9/00 ^(2006.01) **A61B 5/0245** ^(2006.01)
A61B 5/00 ^(2006.01)

(21) Application number: **13180194.6**

(22) Date of filing: **13.08.2013**

(54) **Real-time stress determination of an individual**

Echtzeitbelastungsbestimmung eines Individuums

Détermination de contraintes en temps réel d'un individu

(84) Designated Contracting States:
AL AT BE BG CH CY CZ DE DK EE ES FI FR GB GR HR HU IE IS IT LI LT LU LV MC MK MT NL NO PL PT RO RS SE SI SK SM TR

(74) Representative: **Zacco Sweden AB**
P.O. Box 5581
114 85 Stockholm (SE)

(30) Priority: **13.08.2012 IN MU23572012**

(56) References cited:
EP-A2- 2 196 138 **WO-A1-2004/016172**
US-A1- 2003 139 654 **US-A1- 2010 113 865**
US-A1- 2012 194 648

(43) Date of publication of application:
19.02.2014 Bulletin 2014/08

(73) Proprietor: **Tata Consultancy Services Limited**
400021 Mumbay (IN)

- **HEALEY J ET AL: "SmartCar: detecting driver stress", PATTERN RECOGNITION, 2000. PROCEEDINGS. 15TH INTERNATIONAL CONFERENCE ON SEPTEMBER 3-7, 2000; [PROCEEDINGS OF THE INTERNATIONAL CONFERENCE ON PATTERN RECOGNITION. (ICPR)], LOS ALAMITOS, CA, USA, IEEE COMPUT. SOC, US, vol. 4, 3 September 2000 (2000-09-03), pages 218-221, XP010533059, DOI: 10.1109/ICPR.2000.902898 ISBN: 978-0-7695-0750-7**

(72) Inventors:
 • **Jayaraman, Srinivasan**
560066 Bangalore (IN)
 • **Kumar, Kriti**
560066 Bangalore (IN)
 • **Purushothaman, Balamuralidhar**
560066 Bangalore (IN)

EP 2 698 112 B1

Note: Within nine months of the publication of the mention of the grant of the European patent in the European Patent Bulletin, any person may give notice to the European Patent Office of opposition to that patent, in accordance with the Implementing Regulations. Notice of opposition shall not be deemed to have been filed until the opposition fee has been paid. (Art. 99(1) European Patent Convention).

Description

TECHNICAL FIELD

[0001] The present subject matter, in general, relates to physiological data monitoring and, in particular, relates to determining stress levels in real time.

BACKGROUND

[0002] Physiological monitoring of an individual can be important in understanding an overall state of health of the individual. For example, it may be necessary to monitor physiological signals, such as electrocardiogram (ECG) signals, of an individual to ascertain a stress level of the individual. Solutions to monitor and measure the physiological signals include portable measurement devices, which can be coupled to a users outfit or body, to measure the physiological signals.

[0003] Current methods of physiological monitoring also include measuring the physiological signals over a duration of time, either by inducing stress among participants by making them undergo a stress test or perform a relaxation exercise, or directly from the body of the individual, for example, by electrodes, or sensors directly in contact with the skin of the individual, for obtaining an ECG plot. The plot is then further analyzed by a medical professional to decipher the state of health of the individual.

[0004] EP 21956138 relates to a system for stress training of a user in real time. Accordingly, a sensor device is placed on the body of the user. The sensor device is designed in the form of a chest strap, belt, top, or a watch. The sensor device measures data, such as heart rate, acceleration, and ECG. The sensor device sends the data to a signal processing means connected wirelessly with the sensor device. The signal processing means processes the data to calculate user chronic stress. The calculated user chronic stress is then provided to the user as feedback.

[0005] US 20120194648 relates to an apparatus for controlling video and/or audio (V/A) material in accordance with an emotional state of a user. V/A material refers to any of various visual and/or audio materials, such as a movie, computer game, audio track, image, and presentation. The apparatus includes a contact sensor to obtain physiological measurements about physiological parameters in the user's body. The contact sensor is a bracelet sensor worn by the user. The physiological parameters may include the user's electrical skin conductivity, skeletal muscle tension, heart rate, temperature, skin colour, and non-contact. The apparatus also includes a non-contact sensor, such as an imaging system that provides a series of conventional contrast colour images of user about user's facial micro-expressions. Based on the physiological measurements received from the contact sensor and the images received from the non-contact sensor, a processing unit determines an emo-

tional state of user using any known method of inferring an emotional state responsive to changes in status of human physiology. For example, when a high heart rate is detected, it may be inferred that the user is aroused, and or challenged. Similarly, certain micro expressions may indicate that user is frustrated or upset. Based on the determined emotional state of the user, suitable V/A material are played in front of the user.

[0006] US 20100113865 relates to a system for relaxation. The system includes electrodes which are worn by a user to measure the electrocardiogram (ECG) of the user in real time. The electrodes can be worn on wrists or ears of the user. The ECG is then processed by a processor to remove noise and analyze the ECG signal in time and frequency domains. Based on the analysis, the processor computes an index of stress. A multimedia device provides a real-time biofeedback to the user by communicating the index of stress together with a relaxation video to cause the user to relax.

[0007] US 20030139654 relates to an emotion recognition apparatus which enables perception of a user's emotional state by monitoring one or more physiological signals. The emotion recognition apparatus, hereinafter referred to as apparatus, includes a feature analyzer adapted to analyze features of the physiological signals acquired from a user and generate feature values. The physiological signals are obtained through a wrist watch worn by the user for a short period of 50 seconds. The apparatus further includes a subtractor adapted to obtain differences between the feature values generated by the feature analyzer and feature values used as a standard to perceive an emotional state of the user. An emotion classifier in the apparatus analyzes the differences obtained by the subtractor and classifies an emotion into a plurality of emotional categories so as to perceive an emotional category exhibiting the greatest intensity to be the emotional state of the user.

SUMMARY

[0008] This summary is provided to introduce concepts related to real-time stress determination, and the concepts are further described below in the detailed description. This summary is not intended to identify essential features of the claimed subject matter nor is it intended for use in determining or limiting the scope, but the scope of the present invention is defined by the attached claims.

[0009] The present subject matter relates to a computer implemented method for real time determination of stress levels of an individual. In one implementation, the method includes receiving at least one stream of physiological data from at least one primary sensor for a predetermined duration, and preprocessing the at least one stream of physiological data to extract physiological parameters, where the preprocessing includes performing a preliminary analysis on the at least one stream of physiological data. The method further includes determining a stress level of the individual based on at least the phys-

iological parameters, wherein the determining comprises performing a statistical analysis on the physiological parameters.

[0010] In one implementation the present subject matter relates to a stress determination system for determining the stress of an individual in real time. In one implementation, the stress determination system includes a processor, and a memory coupled to the processor. The memory includes an ECG sensing module configured to receive at least one stream of physiological data from at least one primary sensor for a duration of approximately one minute, an analysis module configured to preprocess the at least one stream of physiological data to extract physiological parameters, and determine a stress level of the individual based on at least the physiological parameters.

BRIEF DESCRIPTION OF THE DRAWINGS

[0011] The detailed description is described with reference to the accompanying figures. In the figures, the left-most digit(s) of a reference number identifies the figure in which the reference number first appears. The same numbers are used throughout the drawings to reference like features and components.

Fig. 1 illustrates a network environment implementing a stress determination system, in accordance with an embodiment of the present subject matter.

Fig. 2 illustrates a stress determination system for measuring stress values in real time, in accordance with an embodiment of the present subject matter.

Fig. 3a illustrates an output of physiological data from a primary sensor in the form of a graph, in accordance with an embodiment of the present subject matter.

Fig. 3b illustrates a plot for computation of duration between R-peaks from the physiological data, in accordance with an embodiment of the present subject matter.

Fig. 4 illustrates a method for determining stress levels of an individual, in accordance with an embodiment of the present subject matter.

DETAILED DESCRIPTION

[0012] Systems and methods for stress determination in real time are described therein. The systems and methods can be implemented in a variety of computing devices, such as laptops, desktops, workstations, tablet-PCs, smart phones, notebooks or portable computers, tablet computers, mainframe computers, mobile computing devices, entertainment devices, computing platforms, internet appliances and similar systems. However, a person skilled in the art will comprehend that the embodiment of the present subject matter are not limited to any particular computing system, architecture or application device, as it may be adapted to take advantage of new computing

system and platform as they become accessible.

[0013] Physiological monitoring includes monitoring various physiological functions of the human body to determine an overall status of health of an individual. For example, a pulse of the individual may be measured over a period of time to determine how an individual is feeling, i.e. agitated, happy, stressed, etc. In another example, an Electrocardiogram (ECG) may be used to determine a human heart condition. In this example, sensors of the ECG can be attached to the human body and an output thereof, such as an ECG waveform, can be analyzed to understand the overall health of the individual.

[0014] Other conventional solutions for physiological monitoring include ambulatory measurement devices, which can measure vital signs of the individual for further calculations and analysis. These devices can be tedious to use as they have to be attached to the human body, by means of wires, tethering harnesses, duct tape, adhesive etc. and subsequently detached from the human body. Furthermore, in some instances, a minor level of stress or anxiety can be induced in the individual even due to the fact that he is aware of being tethered to such a device.

[0015] Other conventional physiological monitoring solutions include measurement devices integrated into various types of apparel, or accessories that can be worn on the human body, where sensors or sensing modules can be integrated therein. These sensors record and store data, which can later be analyzed by a medical practitioner, or the like. These conventional solutions are time intensive methods where substantially long durations of time are required to measure the data, and subsequently analyze the various outputs of the sensors, to finally determine the overall status of the individual's health.

[0016] The present subject matter describes systems and methods for measuring stress levels in real time. In one implementation, the system can include primary sensors such as Electrocardiogram (ECG) sensors to capture physiological data, such as cardiac signals, from sensors disposed in the surroundings, such as a local environment of an individual. Examples of the local environment can include a work environment, such as an office or a manufacturing unit, inside the cabin of a car, on various client devices, in a room of the individual, etc. For example, the primary sensors can be positioned or deployed in a working environment of the individual to capture the physiological data from the individual. For this purpose, depending on the type of sensor, the primary sensors can be in direct or indirect contact with the individual. For example, a dry electrode type sensor can be positioned such that it measures the cardiac signals when in contact with the individual's skin, such as a laptop touchpad, chair handle and so on. In another example, a capacitive type sensor can be integrated within the client device, such as a laptop touchpad, chair, or a smartphone touchscreen. For example, the individual can be in the vicinity of a chair, which has an electrode integrated

in a backrest support on the lumbar region of the chair. In this case, the electrode can be configured to capture the cardiac signals.

[0017] In one implementation, the primary sensors can be provided in the form of a sensing unit that can be installed in the working environment of the individual, for example, desk, chair seat, steering wheel of vehicle, etc. In this manner, the individual need not be consciously aware of the presence of the sensors and can continue working according to his daily routine. Furthermore, in this way, an unbiased and accurate capture of the physiological data of the individual can be facilitated.

[0018] In one implementation, the system according to the present subject matter is configured to capture the cardiac signals in real time via the primary sensors for a predefined duration, for example of approximately one minute or more. This means that the cardiac signals of the individual can be captured by the primary sensors for approximately one minute before further calculations and analysis are carried out to determine a final stress level of the individual. In a further implementation, the primary sensors can be configured to capture more than one sample of physiological data for greater accuracy of stress determination.

[0019] In another implementation, supplementary to the cardiac signals captured by the ECG sensors, supplementary physiological data can be captured to aid in the determination of the final stress level. For example, secondary sensors from client devices, such as smart phones, laptops, and personal computers can be used to capture the supplementary physiological data. Examples of the supplementary physiological data include data from accelerometer sensors, barometer sensors, and webcam or camera sensors. Further information can be derived from the supplementary physiological data to aid and enhance the accuracy of the stress determination of the individual.

[0020] In the invention as claimed the supplementary physiological data is captured in addition to the cardiac signals based on a threshold time limit. Particularly, the threshold time limit is one minute, and only in case the cardiac signals from the primary signals are received for less than one minute, the supplementary physiological data are utilized for the stress determination process.

[0021] In one implementation, the physiological data captured by the primary sensors can be preprocessed. The preprocessing includes filtering to reduce noise, and in cases of where more than one data sample is captured from the primary sensors, the preprocessing can include comparative analysis with the subsequent readings to determine a deviation in the readings if any. In this manner, a possibility of error can be reduced, as well as the efficiency by which the final determination of stress is carried out can be increased. In one implementation, the preprocessing includes performing a preliminary analysis on the received physiological data. This preliminary analysis includes waveform analysis to detect R-peaks from the ECG sensor input, i.e. an ECG waveform, cal-

culating duration between subsequent R-peaks, frequency domain analysis, and time domain analysis to extract physiological parameters from the physiological data. The physiological parameters are indicative of a heart condition of the individual.

[0022] In one example, the preprocessing can be performed by a stress determination system, which for example, can be located in a plurality of locations, such as a remote server, or even the client device itself. In another example, the stress determination system can include the primary sensors, where the stress determination system can be configured to determine the stress level of the individual.

[0023] In one example, the stress determination system can be configured to query a database to verify if the individual is a first time user. If so, then the extracted physiological parameters can be stored in the database for easy accessibility and reference. For example, the individual may be passively assigned a reference ID, with which he will be identified and his profile updated, for every subsequent stress determination process.

[0024] In one implementation, the stress determination system utilizes the physiological parameters to determine the stress level of the individual. For example, the stress determination system can be configured to perform a statistical analysis on the physiological parameters based on a classifying technique, or matching technique to determine the stress level. In a further implementation, the stress determination system can be configured to utilize the supplementary physiological data along with the preprocessed data to determine the stress level. For example, the supplementary physiological data can be utilized only on fulfillment of a certain condition, such as in a case where the duration of time for capturing the physiological data is less than one minute. Therefore, in order to reinforce the stress determination process, or in order to enhance the accuracy of determination of the stress level, the stress determination system can be configured to also use the supplementary physiological data.

[0025] In one implementation, the stress determination system can be configured to forward the stress levels to a remote server for further study, or clinical analysis. In a further implementation, the stress determination system can transmit the stress levels to a display module for information of the individual. For example, in case the stress determination system is part of the client device, the stress determination system can transmit the stress levels to a display screen of the client device.

[0026] The stress determination system can be implemented in a plurality of configurations, which facilitates portability, real-time and time efficient determination of stress levels. Furthermore, as described above, the determination of stress can be facilitated in an accurate and passive manner, where physiological data as well as supplementary physiological data can be captured from the working environment of the individual without active intervention of, or participation by the individual.

[0027] These and other advantages of the present sub-

ject matter would be described in greater detail in conjunction with the following figures. While aspects of described systems and methods for stratified sampling of a database can be implemented in any number of different computing systems, environments, and/or configurations, the embodiments are described in the context of the following exemplary system(s).

[0028] Fig. 1 illustrates a network environment 100 implementing a stress determination system 102, according to an embodiment of the present subject matter. In the network environment 100, the stress determination system 102 is connected to a network 104. Furthermore, a database 106, and one or more client devices 108-1, 108-2...108-N, collectively referred to as client devices 108, are also connected to the network 104.

[0029] The stress determination system 102 can be implemented as any computing device connected to the network 104. In one example, the stress determination system 102 can be embodied integrally with the database 106. In one instance, the stress determination system 102 may be implemented as mainframe computers, workstations, personal computers, desktop computers, multiprocessor systems, laptops, network computers, minicomputers, servers and the like. In addition, the stress determination system 102 may include multiple servers to perform mirrored tasks for users, thereby relieving congestion or minimizing traffic.

[0030] Furthermore, the stress determination system 102 can be connected to the client devices 108 through the network 104. Examples of the client devices 108 include, but are not limited to personal computers, desktop computers, smart phones, PDAs, and laptops. Communication links between the client devices 108 and the stress determination system 102 are enabled through a desired form of connections, for example, via dial-up modem connections, cable links, digital subscriber lines (DSL), wireless or satellite links, or any other suitable form of communication. In one implementation, the stress determination system 102 can be provided internal to the client devices 108. In this manner, the functionality of the stress determination system 102 can be provided along with the functionality of the client devices 108.

[0031] Moreover, the network 104 may be a wireless network, a wired network, or a combination thereof. The network 104 can also be an individual network or a collection of many such individual networks interconnected with each other and functioning as a single large network, e.g., the internet or an intranet. The network 104 can be implemented as one of the different types of networks, such as intranet, local area network (LAN), wide area network (WAN), the internet and such. The network 104 may either be a dedicated network or a shared network, which represents an association of the different types of networks that use a variety of protocols, for example, Bluetooth, Hypertext Transfer Protocol (HTTP), Transmission Control Protocol/Internet Protocol (TCP/IP), etc., to communicate with each other. Further, the network 104 may include network devices, such as network

switches, hubs, routers, host bus adapters (HBAs), for providing a link between the stress determination system 102 and the client devices 108. The network devices within the network 104 may interact with the stress determination system 102 and the client devices 108 through communication links.

[0032] In one implementation, the stress determination system 102 includes an ECG sensing module 110 and an analysis module 112. In one implementation, the ECG sensing module 110 can be configured to receive signals from one or more primary sensors 114 that can be disposed in a work environment of an individual. For example, the primary sensors 114 can be disposed on a steering wheel of a car, a chair which the individual uses, a work desk, laptop, personal computer etc. In one implementation, the primary sensors 114 can then transmit physiological data, which includes ECG waveforms to the ECG sensing module 110 for further analysis thereof. In one example, the primary sensors 114 can be configured to capture the physiological data for duration of 1 minute or more. In this manner, the system functions in a time efficient manner and passive manner to determine the stress levels of the individual, thereby not requiring an active intervention or participation of the individual.

[0033] In one implementation, the analysis module 112 can be configured to obtain the physiological data received by the ECG sensing module 110 and preprocess the physiological data. The preprocessing is performed to enhance the quality of the physiological data for further analysis. Furthermore, the analysis module 112 can be configured to determine a stress level of the individual based on the preprocessed data. Moreover, based on certain conditions, the analysis module 112 can be configured to utilize supplementary physiological data to further increase the accuracy of the stress determination process. For example, as shown in fig. 1, the client devices 108 can be implemented with secondary sensors 116, which capture the supplementary physiological data from the working environment of the individual, and transmit the supplementary physiological data via the network 104, to the stress determination system 102. The supplementary physiological data can include but is not limited to accelerometer sensor data, barometer sensor data, webcam sensor data, and camera sensor data.

[0034] Furthermore, based on the preprocessed data and the supplementary physiological data, the stress determination system 102 can be configured to determine the stress level of the individual. For example, the analysis module 112 can be configured to perform a statistical analysis on the preprocessed data and the supplementary physiological data to determine the stress level. Further details regarding the stress determination are provided in the detailed description associated with fig. 2.

[0035] Fig. 2 illustrates the stress determination system 102, in accordance with an embodiment of the present subject matter. In said implementation, the stress determination system 102 includes one or more processor(s) 202, interface(s) 204, and a memory 206 coupled

to the processor 202. The processor 202 can be a single processing unit or a number of units, all of which could also include multiple computing units. The processor 202 may be implemented as one or more microprocessors, microcomputers, microcontrollers, digital signal processors, central processing units, state machines, logic circuitries, and/or any devices that manipulate signals based on operational instructions. Among other capabilities, the processor 202 is configured to fetch and execute computer-readable instructions and data stored in the memory 206.

[0036] The interfaces 204 may include a variety of software and hardware interfaces, for example, interface for peripheral device(s), such as a keyboard, a mouse, an external memory, and a printer. Further, the interfaces 204 may enable the stress determination system 102 to communicate with other computing devices, such as web servers and external data repositories in the communication network (not shown in the figure). The interfaces 204 may facilitate multiple communications within a wide variety of protocols and networks, such as a network, including wired networks, e.g., LAN, cable, etc., and wireless networks, e.g., WLAN, cellular, satellite, etc. The interfaces 204 may include one or more ports for connecting the stress determination system 102 to a number of computing devices.

[0037] The memory 206 may include any computer-readable medium known in the art including, for example, volatile memory, such as static random access memory (SRAM) and dynamic random access memory (DRAM), and/or non-volatile memory, such as read only memory (ROM), erasable programmable ROM, flash memories, hard disks, optical disks, and magnetic tapes. The memory 206 also includes module(s) 208 and data 210.

[0038] The module(s) 208 include routines, programs, objects, components, data structures, etc., which perform particular tasks or implement particular abstract data types. In one implementation, the module(s) 208 includes the ECG sensing module 110, the analysis module 112, and other module(s) 212. The other module(s) 212 may include programs or coded instructions that supplement applications and functions of the stress determination system 102.

[0039] On the other hand, the data 210, inter alia serves as a repository for storing data processed, received, and generated by one or more of the module(s) 208. The data 210 includes for example, ECG data 214, analysis data 216, and other data 218. The other data 218 includes data generated as a result of the execution of one or more modules in the module(s) 208.

[0040] In one implementation, the stress determination system 102 can be configured to determine the stress level of an individual from his work environment. For example, by utilizing physiological data captured by the primary sensors 114, and supplementary physiological data captured by secondary sensors 116, the stress determination system 102 can be configured to determine the stress level of the individual in real-time and forward in-

formation pertaining to the stress level for further clinical analysis and study. In this manner, the real-time stress determination facilitates a better understanding of day to day stress experienced by the individual, in everyday work conditions.

[0041] In one implementation, the primary sensors 114 can be ECG sensors that are configured to capture and transmit at least one stream of the physiological data, such as cardiac signals of the individual. The primary sensors 114 can be embodied as dry electrode type sensors, which can be positioned such that they capture the cardiac signals when in contact with the individual's skin. In another example, the primary sensors 114 can be embodied as capacitive type sensors, which can be integrated within one of the client devices 108, such as a laptop touchpad, or a smartphone touchscreen, where the primary sensors 114 capture the cardiac signals when the user is using said client devices 108. Therefore, when the individual is involved in the course of his routine work, the primary sensors 114 can be configured to capture the cardiac signals of the individual and transmit them to the ECG sensing module 110 of the stress determination system 102. In one example, the primary sensors 114 can be configured to capture a first stream of the physiological data for a predetermined duration, for example of one minute or more, and shortly afterwards, capture a second stream of the physiological data of the same duration. The first and the second streams of physiological data can be referred to collectively as simply the physiological data. The ECG sensing module 110 can be configured to receive the first and second streams of physiological data from the primary sensors 114 and store the physiological data in the ECG data 214.

[0042] In one example, the ECG sensing module 110 can be configured to query an external database, such as the database 106, to verify whether the physiological data corresponds to an already existing individual. For example, for a first time user, the ECG sensing module 110 can be configured to generate an ID number, and link said ID number to an individual profile in the database 106. Upon receiving further physiological data against an already existing ID number, the ECG sensing module 110 can be configured to update the individual profile linked with that ID number.

[0043] In one implementation, the analysis module 112 can be configured to fetch the first and the second streams of physiological data from the ECG data 214 or in certain cases from the database 106, for preprocessing. In one example, the analysis module 112 can be configured to filter the physiological data to reduce noise and enhance the quality of the physiological data for further processing. The physiological data can include ECG signals, and the analysis module 112 can be configured to detect R peaks in the ECG signals and the durations between subsequent R-peaks. Where there is more than one stream of physiological data, the analysis module 112 can be configured to compare the two waveforms thereof to determine a deviation if any. Furthermore, time

durations between subsequent R-peaks can also be determined in the preprocessing stage. The analysis module 112 can be configured to preprocess the physiological data to extract one or more physiological parameters, which can be utilized to determine the stress level.

[0044] In one implementation, during the preprocessing, the analysis module 112 can be configured to perform a preliminary analysis on the physiological data. The preliminary analysis can include a frequency domain analysis, or a time domain analysis to extract the physiological parameters. The frequency domain analysis can include transforming the waveform in a frequency domain and then performing a pattern recognition technique, and the time domain analysis can include transforming the waveform in a time domain, and performing root mean square calculations, and standard deviation computations. For example, the analysis module 112 can be configured to extract a Root Mean Square of Successive Differences (RMSSD) from the physiological data by performing a time domain transformation. In this manner, the physiological data can be preprocessed to extract the physiological parameters. Furthermore, the analysis module 112 can be configured to store the physiological parameters in the analysis data 216.

[0045] In one implementation, the analysis module 112 can be configured to determine the stress level of the individual based on the extracted physiological parameters, as well as supplementary physiological data. In one implementation, the supplementary physiological data is utilized for the stress determination based on a threshold time limit to aid and enhance the accuracy of the stress determination. In one example, the supplementary physiological data can be received from the secondary sensors 116 as disclosed earlier. The supplementary physiological data can include information pertaining to a body posture and facial expression of the individual during the time of capture of the physiological data by the primary sensors 114. The secondary sensors 116, as described earlier, can be embodied in any of the client devices 108. For example, a webcam affixed to a laptop can be utilized to scan the facial expression of the individual, and transmit information pertaining to the facial expression to the analysis module 112. The analysis module 112 can then compare the facial expression with reference expressions, and how the facial expression varies over time, to determine approximately how the individual was feeling, i.e., happy, frustrated, confused, indifferent, etc. Accordingly, weighing factors can be associated with the facial expressions, which correspondingly affect the overall stress level determination. In a similar manner, accelerometer sensor data from a secondary sensor 116, say in a smartphone can be utilized to gain relevant information pertaining to a body posture or movement of the individual. This can then further be transmitted as supplementary physiological data to the analysis module 112 for the stress determination.

[0046] In one example, the supplementary physiological data can be considered for the stress determination,

contingent on the threshold time limit. The threshold time limit, for example, can be configured as one minute, where in case less than one minute of physiological data is received from the primary sensors 114, the analysis module 112 can be configured to utilize the supplementary physiological data as well. In this manner, the stress determination process can be reinforced with additional data to determine a substantially accurate stress level of the individual.

[0047] In one implementation, based on the physiological parameters, and conditionally the supplementary physiological data, the analysis module 112 can be configured to determine the stress level of the individual. For example, depending on the physiological parameters extracted from the preprocessed data, such as Heart Rate Variability (HRV) information (root mean square of the squared difference of successive heart beats), the analysis module 112 can be configured to determine the stress level of the individual.

[0048] In one example, the analysis module 112 can be configured to fetch the physiological parameters from the analysis data 216 and perform a statistical analysis on the physiological parameters. The statistical analysis can be based on a classifier technique, and a matching technique. For example, the analysis module 112 can be configured to classify the various physiological parameters as a positive stress value, or a negative stress value. As in the example described earlier, for an RMSSD physiological parameter, the analysis module 112 can be configured to classify a negative slope as a positive stress value, and a negative slope as a negative stress value (meaning the individual is performing well).

[0049] In one example, the analysis module 112 can be configured to consider an initial reading or enrolled data as a baseline, or reference reading. Furthermore, the rest of the readings will be compared with the baseline reading to assess the deviation if any as a positive or negative stress value. For example, if the statistical value is $p < 0.05$, then it is counted as a significant result. Therefore, the successive reading is considered to be significantly different from the baseline reading.

[0050] In another example, the analysis module 112 can be configured as a moving probe or window to compare successive readings to a baseline window of 1 minute of physiological data. Depending on the difference between the moving window and the baseline window, the analysis module 112 can classify the readings as a positive stress value, or a negative stress value. A confidence interval of 95% is taken for this statistical analysis, so whenever the statistical value is $p < 0.05$ (corresponding to 95% confidence interval), a transition in the state of the stress levels of the individual is confirmed.

[0051] In yet another implementation, the analysis module 112 can be configured to derive positive or negative correlation coefficients based on a correlation between the moving window and the baseline window. Furthermore, based on the correlation coefficients, the analysis module 112 can be configured to detect a positive

or a negative stress value of the individual.

[0052] In a further implementation, the analysis module 112 can be configured to compare the analyzed physiological parameters with existing records in a database, such as the database 106, based on the reference ID number. Furthermore, a profile of an individual can also be identified based on their own ECG signals. In one example, the reference records can be used as a baseline, with which subsequent parameters can be compared. The analysis module 112 can then classify the deviations as a positive or negative stress, depending on the quantum of deviation thereof from the reference records.

[0053] In case the threshold time limit condition is triggered, the supplementary physiological data can also be utilized. In one implementation, the analysis module 112 can be configured to store the stress level in the analysis data 216, or the database 106. Furthermore, based on the verification of the ID numbers as described earlier, the stress level can be updated in the relevant user profile.

[0054] In one implementation, the analysis module 112 can be configured to trigger an application for relaxing the individuals based on an individual's stress level. In one example, the application can be a third party software application provided on the client devices 108. If a stress level of the individual is above a threshold value or critical value, the analysis module 112 can be configured to trigger said application. The application can be configured to display audio-visual media based on individual preference. For example, the audio-visual media can be a humorous image or video clip. In such a manner, the stress determination system 102 can be configured to reduce the stress levels of the individual.

[0055] Figs.3a and 3b illustrate stages of a working example of stress determination, in accordance with an embodiment of the present subject matter.

[0056] Fig.3a illustrates a stage of preprocessing, where an output of physiological data from the primary sensors 114 is preprocessed in accordance with an embodiment of the present subject matter. In said embodiment, the physiological data is in the form of an ECG waveform 300a. In the fig. 3a, amplitude is plotted on the Y-axis, and time is plotted on the X-axis. In one example, the ECG waveform 300a of mV signal can be amplified to voltage signal X (n).

[0057] In one embodiment, as disclosed earlier, at the preprocessing stage, the stress determination system 102 can be configured to detect R-peaks 302 in the ECG waveform 300a.

[0058] Fig.3b illustrates a further stage of preprocessing, where the duration between the R-peaks 302 is calculated. In one embodiment, the stress determination system 102 can be configured to calculate the duration between the subsequent R-peaks 302, as detected in fig. 3a. In this figure, a graph 300b is illustrated, where a number of R-R intervals are plotted over the X-axis, and amplitude of the wave is plotted over the Y-axis.

[0059] Table 1 below illustrates physiological parameters that are extracted from the preprocessing stage. For example, from the graph shown in fig. 3b, the stress determination system 102 can be configured to extract the following physiological parameters in order to determine the stress level of the individual.

Table 1

Parameters	1 min Interval
Mean RR	721.39±32.72
Mean HR	84.58±3.91
SDNN	49.55±5.92
RMSSD	55.62±8.55
NN50 Count	77.33±15.91
pNN50	0.2±0.04
HRV Index	17.05±1.93
VLF	227.17±35.43
LF	333.51±71.83
HF	475.4±121.45
Total Power	2729.16±583.11
LF/HF	0.77±0.11
LFnu	0.13±0.02
HFnu	0.18±0.01

[0060] In one implementation, the analysis module 112 can be configured to extract the physiological parameters based on a frequency domain analysis or a time domain analysis as described earlier. The analysis module 112 can further be configured to store the extracted physiological parameters in the analysis data 216, or an external database, such as the database 106.

[0061] Furthermore, once the physiological parameters are extracted, the analysis module 112 of the stress determination system 102 can be configured to determine the stress level, based on the statistical analysis. The statistical analysis includes a classifier technique, and a matching technique, as disclosed earlier.

[0062] Fig. 4 illustrates a method 400 for determining stress levels of an individual, according to one embodiment of the present subject matter. The method 400 may be implemented in a variety of computing systems in several different ways. For example, the method 400, described herein, may be implemented using the stress determination system 102, as described above.

[0063] The method 400, completely or partially, may be described in the general context of computer executable instructions. Generally, computer executable instructions can include routines, programs, objects, components, data structures, procedures, modules, functions, etc., that perform particular functions or implement particular abstract data types. A person skilled in the art will readily recognize that steps of the method can be performed by programmed computers. Herein, some embodiments are also intended to cover program storage devices, e.g., digital data storage media, which are ma-

chine or computer readable and encode machine-executable or computer-executable programs of instructions, wherein said instructions perform some or all of the steps of the described method 400.

[0064] The order in which the method 400 is described is not intended to be construed as a limitation, and any number of the described method blocks can be combined in any order to implement the method, or an alternative method. Additionally, individual blocks may be deleted from the method without departing from the scope as defined by the claims. Furthermore, the methods can be implemented in any suitable hardware, software, firmware, or combination thereof. It will be understood that even though the method 400 is described with reference to the stress determination system 102, the description may be extended to other systems as well.

[0065] At block 402, one or more streams of physiological data, such as cardiac signals, can be received from one or more primary sensors. As disclosed earlier, the primary sensors can be of a dry or capacitive type, and can be deployed in a workplace environment, or a client device, such as the client devices 108. The workplace environment of an individual can be an office desk, chair, steering wheel of vehicle, etc. Therefore, depending on the type of sensor, the sensor can measure and transmit the physiological data for further processing. In one example, more than one sample of the physiological data can be measured and transmitted. Furthermore, as disclosed earlier, an ECG sensing module 110 of a stress determination system 102 can be configured to receive the one or more streams of physiological data from the one or more primary sensors.

[0066] At block 404, the physiological data can be preprocessed to extract physiological parameters. The physiological parameters are parameters that are indicative of a heart rate of an individual and can be utilized to determine the stress level of the individual in real-time. As described previously, the preprocessing includes a preliminary analysis of the physiological data. In one example, the preliminary analysis includes filtering the physiological data to increase the quality of the data for further processing, detecting R-peaks in the at least one stream of physiological data, and calculating duration between subsequent R-peaks to extract the physiological parameters. The preliminary analysis also includes performing a frequency domain analysis and a time domain analysis on the physiological data. In one implementation, an analysis module 112 of a stress determination system 102 can be configured to extract the physiological parameters from the physiological data.

[0067] At block 406, the stress level can be determined from the physiological parameters and contingently on supplementary physiological data. The determination of stress includes performing a statistical analysis on the physiological parameters, where the statistical analysis includes a classifier technique, or a matching technique. Moreover, if the physiological data is received for less than one minute in the block 402, the supplementary

physiological data can be utilized to enhance the accuracy of the stress determination process. For example, information relating to the posture of the individual, and the facial expression of the individual can be part of the supplementary physiological data, and can be used in addition to the physiological data for the stress determination process. In one example, the analysis module 112 of the stress determination system 102 can be configured to determine the stress based on at least the physiological parameters using the classifier technique, or the matching technique. Once the stress levels are determined, the stress levels can be forwarded for further clinical analysis or study.

[0068] Although implementations of real-time stress determination of an individual have been described in language specific to structural features and/or methods, it is to be understood that the present subject matter is not necessarily limited to the specific features or methods described. Rather, the specific features and methods are disclosed as implementations for stratified sampling of a database.

Claims

1. A computer implemented method for real time determination of stress levels of an individual, the method comprising:

receiving at least one stream of physiological data from at least one primary sensor (114) for a predefined duration of approximately one minute, wherein the at least one primary sensor (114) is deployed in at least one of a workplace environment and a client device (108) of the individual, and wherein the at least one stream of physiological data from at least one primary sensor (114) comprises cardiac signals; preprocessing the at least one stream of physiological data to extract physiological parameters, wherein the preprocessing comprises performing a preliminary analysis on the at least one stream of physiological data; and determining a stress level of the individual based on the physiological parameters and supplementary physiological data received from one or more secondary sensors (116), wherein the supplementary physiological data includes information pertaining to a body posture and facial expression of the individual, wherein the determining comprises performing a statistical analysis on the physiological parameters and the supplementary physiological data, and wherein the supplementary physiological data is utilized only when a duration of receiving the at least one stream of physiological data from the at least one primary sensor (114) is less than the predefined duration.

2. The method as claimed in claim 1, wherein the primary sensor comprises one of an Electrocardiogram sensor, a dry electrode type sensor, and a capacitive type sensor.
3. The method as claimed in claim 1, wherein the preliminary analysis comprises:
- filtering the at least one stream of physiological data to reduce noise;
- detecting R-peaks in the at least one stream of physiological data; calculating duration between subsequent R-peaks; and
- extracting the physiological parameters from the duration between the R-peaks.
4. The method as claimed in claim 3, wherein the extracting further comprises performing one of a frequency domain analysis and a time domain analysis on the at least one stream of physiological data.
5. The method as claimed in claim 1, wherein the statistical analysis is based on at least one of a classifier technique, and a matching technique.
6. The method as claimed in claim 1, wherein the determining further comprises comparing the analyzed physiological parameters with existing records in a database, based on an individual reference identification number.
7. The method as claimed in claim 1 or 7, wherein the determining the further comprises comparing the analyzed physiological parameters with existing records in a database, based on a recorded ECG signal.
8. A stress determination system (102) for determining a stress level of an individual in real time, the stress determination system (102) comprising:
- a processor (202); and
- a memory (206) coupled to the processor (202), the memory (206) comprising:
- an ECG sensing module (110) configured to receive at least one stream of physiological data from at least one primary sensor (114) for a predefined duration of approximately one minute, wherein the at least one primary sensor (114) is deployed in at least one of a workplace environment and a client device (108) of the individual, and wherein the at least one stream of physiological data from at least one primary sensor (114) comprises cardiac signals;
- an analysis module (112) configured to:
- preprocess the at least one stream of physiological data to extract physiological parameters; and
- determine the stress level of the individual based on the physiological parameters and supplementary physiological data received from one or more secondary sensors (116), wherein the supplementary physiological data includes information pertaining to a body posture and facial expression of the individual, wherein the determining comprises performing a statistical analysis on the physiological parameters and the supplementary physiological data, and wherein the supplementary physiological data is utilized only when a duration of receiving the at least one stream of physiological data from the at least one primary sensor (114) is less than the predefined duration.
9. The stress determination system (102) as claimed in claim 8, wherein the analysis module (112) is further configured to compare the analyzed physiological parameters with existing records in a database, based on a reference identification number, in order to assess a deviation of the analyzed physiological parameters with the existing records.
10. The stress determination system (102) as claimed in claim 8, wherein the one or more secondary sensors (116) includes accelerometer sensors, barometer sensors, and camera sensors.
11. The stress determination system (102) as claimed in claim 8, wherein the analysis module (112) is configured to trigger an application to relax the individual based on the determined stress level, and wherein the application comprises audio-visual media personalized by the individual.
12. A non-transitory computer-readable medium having embodied thereon a computer program for executing a method comprising:
- receiving at least one stream of physiological data pertaining to an individual from at least one primary sensor (114) for a duration of approximately one minute, wherein the at least one primary sensor (114) is deployed in at least one of a workplace environment and a client device of the individual, and wherein the at least one stream of physiological data from at least one primary sensor (114) comprises cardiac signals; preprocessing the at least one stream of physiological data to extract physiological parameters, wherein the preprocessing comprises per-

forming a preliminary analysis on the at least one stream of physiological data; and determining a stress level of the individual based on the physiological parameters and a supplementary physiological data received from one or more secondary sensors (116), the supplementary physiological data includes information pertaining to a body posture and facial expression of the individual, wherein the determining comprises performing a statistical analysis on the physiological parameters and the supplementary physiological data, and wherein the supplementary physiological data is utilized only when a duration of receiving the at least one stream of physiological data from the at least one primary sensor (114) is less than the pre-defined duration.

Patentansprüche

1. Computerimplementiertes Verfahren für die Echtzeitbestimmung von Belastungsniveaus eines Individuums, welches Verfahren umfasst:

Empfangen mindestens eines Stroms physiologischer Daten von mindestens einem primären Sensor (114) für eine vorgegebene Dauer von etwa einer Minute, wobei der mindestens eine primäre Sensor (114) in mindestens einer von einer Arbeitsplatzumgebung und einer Client-Vorrichtung (108) des Individuums eingesetzt wird, und wobei der mindestens eine Strom physiologischer Daten von mindestens einem primären Sensor (114) Herzsignale umfasst; Vorverarbeitung des mindestens eines Stroms physiologischer Daten zum Extrahieren physiologischer Parameter, wobei die Vorverarbeitung das Durchführen einer vorläufigen Analyse des mindestens eines Stroms physiologischer Daten umfasst; und Bestimmen eines Belastungsniveaus des Individuums basierend auf den physiologischen Parametern und zusätzlichen, von einem oder mehreren sekundären Sensoren (116) empfangenen, physiologischen Daten, wobei die zusätzlichen physiologischen Daten Informationen bezüglich einer Körperhaltung und eines Gesichtsausdrucks des Individuums mit einschließen, wobei das Bestimmen das Ausführen einer statistischen Analyse der physiologischen Parameter und der zusätzlichen physiologischen Daten umfasst, und wobei die zusätzlichen physiologischen Daten nur verwendet werden, wenn eine Dauer des Empfangens des mindestens eines Stroms physiologischer Daten von dem mindestens einen primären Sensor (114) weniger als die vorgegebene Dauer ist.

2. Verfahren nach Anspruch 1, wobei der primäre Sensor einen eines Elektrokardiogrammsensors, eines Sensors vom Typ einer trockenen Elektrode und eines Sensors vom kapazitiven Typ umfasst.

3. Verfahren nach Anspruch 1, wobei die vorläufige Analyse umfasst:

Filtern des mindestens eines Stroms physiologischer Daten zur Verminderung von Geräusch; Detektieren von R-Peaks in dem mindestens einen Strom physiologischer Daten; Berechnen der Dauer zwischen aufeinanderfolgenden R-Peaks; und

Extrahieren der physiologischen Parameter von der Dauer zwischen den R-Peaks.

4. Verfahren nach Anspruch 3, wobei das Extrahieren ferner das Durchführen einer von einer Frequenzbereichsanalyse und einer Zeitbereichsanalyse des mindestens eines Stroms physiologischer Daten umfasst.

5. Verfahren nach Anspruch 1, wobei die statistische Analyse auf zumindest einer von einer Klassifizierungstechnik und einer Matching-Technik basiert.

6. Verfahren nach Anspruch 1, wobei das Bestimmen ferner das Vergleichen der analysierten physiologischen Parameter mit vorhandenen Aufzeichnungen in einer Datenbank basierend auf einer individuellen Referenzidentifikationsnummer umfasst.

7. Verfahren nach Anspruch 1, wobei das Bestimmen ferner das Vergleichen der analysierten physiologischen Parameter mit vorhandenen Aufzeichnungen in einer Datenbank basierend auf einem aufgezeichneten EKG-Signal umfasst.

8. Belastungsbestimmungssystem (102) zur Bestimmung eines Belastungsniveaus eines Individuums in Echtzeit, wobei das Belastungsbestimmungssystem (102) umfasst:

einen Prozessor (202); und einen mit dem Prozessor (202) gekoppelten Speicher (206), wobei der Speicher (206) umfasst:

ein EKG-Erfassungsmodul (110), das zum Empfangen mindestens eines Stroms physiologischer Daten von mindestens einem primären Sensor (114) für eine vorgegebene Dauer von etwa einer Minute ausgelegt ist, wobei der mindestens eine primäre Sensor (114) in mindestens einer von einer Arbeitsplatzumgebung und einer Client-Vorrichtung (108) des Individuums eingesetzt

wird, und wobei der mindestens eine Strom physiologischer Daten von mindestens einem primären Sensor (114) Herzsignale umfasst;
ein Analysemodul (112), das ausgelegt ist, um:

den mindestens einen Strom physiologischer Daten zu verarbeiten, um physiologische Parameter zu extrahieren; und
das Belastungsniveau des Individuums basierend auf den physiologischen Parametern und zusätzlichen, von einem oder mehreren sekundären Sensoren (116) empfangenen, physiologischen Daten zu bestimmen, wobei die zusätzlichen physiologischen Daten Informationen bezüglich einer Körperhaltung und eines Gesichtsausdrucks des Individuums mit einschließen, wobei das Bestimmen das Ausführen einer statistischen Analyse der physiologischen Parameter und der zusätzlichen physiologischen Daten umfasst, und wobei die zusätzlichen physiologischen Daten nur verwendet werden, wenn eine Dauer des Empfangens des mindestens eines Stroms physiologischer Daten von dem mindestens einen primären Sensor (114) weniger als die vorgegebene Dauer ist.

9. Belastungsbestimmungssystem (102) nach Anspruch 8, wobei das Analysemodul (112) ferner zum Vergleichen der analysierten physiologischen Parameter mit vorhandenen Aufzeichnungen in einer Datenbank basierend auf einer Referenzidentifikationsnummer ausgelegt ist, um eine Abweichung der analysierten physiologischen Parameter mit den vorhandenen Aufzeichnungen zu beurteilen.
10. Belastungsbestimmungssystem (102) nach Anspruch 8, wobei der eine oder mehrere sekundäre Sensoren (116) Beschleunigungsmessersensoren, Barometersensoren und Kamerasensoren umfassen.
11. Belastungsbestimmungssystem (102) nach Anspruch 8, wobei das Analysemodul (112) zur Auslösung einer Applikation zum Entspannen des Individuums basierend auf dem bestimmten Belastungsniveau ausgelegt ist, und wobei die Applikation vom Individuum personalisierte audiovisuelle Medien umfasst.
12. Nichtflüchtiges, computerlesbares Medium mit einem darauf gespeicherten Computerprogramm zum

Ausführen eines Verfahrens umfassend:

Empfangen mindestens eines Stroms physiologischer Daten bezüglich eines Individuums von mindestens einem primären Sensor (114) für eine Dauer von etwa einer Minute, wobei der mindestens eine primäre Sensor (114) in mindestens einer von einer Arbeitsplatzumgebung und einer Client-Vorrichtung des Individuums eingesetzt wird, und wobei der mindestens eine Strom physiologischer Daten von mindestens einem primären Sensor (114) Herzsignale umfasst;
Vorverarbeitung des mindestens eines Stroms physiologischer Daten zum Extrahieren physiologischer Parameter, wobei die Vorverarbeitung das Durchführen einer vorläufigen Analyse des mindestens eines Stroms physiologischer Daten umfasst; und
Bestimmen eines Belastungsniveaus des Individuums basierend auf den physiologischen Parametern und zusätzlichen, von einem oder mehreren sekundären Sensoren (116) empfangenen, physiologischen Daten, wobei die zusätzlichen physiologischen Daten Informationen bezüglich einer Körperhaltung und eines Gesichtsausdrucks des Individuums mit einschließen, wobei das Bestimmen das Ausführen einer statistischen Analyse der physiologischen Parameter und der zusätzlichen physiologischen Daten umfasst, und wobei die zusätzlichen physiologischen Daten nur verwendet werden, wenn eine Dauer des Empfangens des mindestens eines Stroms physiologischer Daten von dem mindestens einen primären Sensor (114) weniger als die vorgegebene Dauer ist.

Revendications

1. Procédé implémenté par ordinateur pour la détermination en temps réel de niveaux de contrainte d'un individu, le procédé comprenant :

la réception d'au moins un flux de données physiologiques provenant d'au moins un capteur primaire (114) pendant une durée prédéfinie d'environ une minute, l'au moins un capteur primaire (114) étant déployé dans l'au moins un parmi un environnement de lieu de travail et un dispositif client (108) de l'individu, et l'au moins un flux de données physiologiques provenant d'au moins un capteur primaire (114) comprenant des signaux cardiaques ;
le prétraitement de l'au moins un flux de données physiologiques pour extraire des paramètres physiologiques, le prétraitement comprenant la réalisation d'une analyse préliminaire sur l'au moins un flux de données physiologiques ;

- et
la détermination d'un niveau de contrainte de l'individu sur la base des paramètres physiologiques et des données physiologiques supplémentaires reçues d'un ou de plusieurs capteurs secondaires (116), les données physiologiques supplémentaires comprenant des informations relatives à une tenue de corps et une expression du visage de l'individu, la détermination comprenant la réalisation d'une analyse statistique sur les paramètres physiologiques et les données physiologiques supplémentaires, et les données physiologiques supplémentaires n'étant utilisées que si une durée de la réception de l'au moins un flux de données physiologiques provenant de l'au moins un capteur primaire (114) est inférieure à la durée prédéfinie.
2. Procédé selon la revendication 1, dans lequel le capteur primaire comprend un capteur parmi un capteur d'électrocardiogramme, un capteur de type électrode sèche et un capteur de type capacitif.
 3. Procédé selon la revendication 1, dans lequel l'analyse préliminaire comprend :
 - le filtrage de l'au moins un flux de données physiologiques afin de réduire le bruit ;
 - la détection de pics R dans l'au moins un flux de données physiologiques ; le calcul de la durée entre des pics R suivants ; et
 - l'extraction des paramètres physiologiques de la durée entre les pics R.
 4. Procédé selon la revendication 3, dans lequel l'extraction comprend en outre la réalisation d'une analyse parmi l'analyse de domaine fréquentiel et l'analyse de domaine temporel sur l'au moins un flux de données physiologiques.
 5. Procédé selon la revendication 1, dans lequel l'analyse statistique est basée sur au moins une technique parmi une technique de classification et une technique d'adaptation.
 6. Procédé selon la revendication 1, dans lequel la détermination comprend en outre la comparaison des paramètres physiologiques analysés avec des enregistrements existants dans une base de données, sur la base d'un numéro d'identification de référence individuel.
 7. Procédé selon la revendication 1, dans lequel la détermination comprend en outre la comparaison des paramètres physiologiques analysés avec des enregistrements existants dans une base de données, sur la base d'un signal ECG enregistré.
 8. Système de détermination de contrainte (102) pour déterminer un niveau de contrainte d'un individu en temps réel, le système de détermination de contrainte (102) comprenant :
 - un processeur (202) ; et
 - un dispositif de mémoire (206) couplé au processeur (202), le dispositif de mémoire (206) comprenant :
 - un module de détection ECG (110) configuré pour recevoir au moins un flux de données physiologiques provenant d'au moins un capteur primaire (114) pendant une durée prédéfinie d'environ une minute, l'au moins un capteur primaire (114) étant déployé dans l'au moins un environnement de lieu de travail et un dispositif client (108) de l'individu, et l'au moins un flux de données physiologiques provenant d'au moins un capteur primaire (114) comprenant des signaux cardiaques ;
 - un module d'analyse (112) configuré pour :
 - prétraiter au moins un flux de données physiologiques afin d'extraire des paramètres physiologiques ; et
 - déterminer un niveau de contrainte de l'individu sur la base des paramètres physiologiques et des données physiologiques supplémentaires reçues d'un ou de plusieurs capteurs secondaires (116), les données physiologiques supplémentaires comprenant des informations relatives à une tenue de corps et une expression du visage de l'individu, la détermination comprenant la réalisation d'une analyse statistique sur les paramètres physiologiques et les données physiologiques supplémentaires, et les données physiologiques supplémentaires n'étant utilisées que si une durée de la réception de l'au moins un flux de données physiologiques provenant de l'au moins un capteur primaire (114) est inférieure à la durée prédéfinie.
 9. Système de détermination de contrainte (102) selon la revendication 8, dans lequel le module d'analyse (112) est en outre configuré pour comparer les paramètres physiologiques analysés aux enregistrements existants dans une base de données, sur la base d'un numéro d'identification de référence, afin d'évaluer un écart des paramètres physiologiques analysés avec les enregistrements existants.
 10. Système de détermination de contrainte (102) selon

la revendication 8, dans lequel l'un ou plusieurs capteurs secondaires (116) comprennent des capteurs d'accéléromètre, des capteurs de baromètre et des capteurs de caméra.

5

11. Système de détermination de contrainte (102) selon la revendication 8, dans lequel le module d'analyse (112) est configuré pour déclencher une application afin de faire détendre l'individu sur la base du niveau de contrainte déterminé, et dans lequel l'application comprend un support audiovisuel personnalisé par l'individu.

10

12. Support lisible par ordinateur non transitoire ayant incorporé un programme d'ordinateur pour exécuter un procédé, comprenant :

15

la réception d'au moins un flux de données physiologiques relatives à un individu et provenant d'au moins un capteur primaire (114) pendant une durée prédéfinie d'environ une minute, l'au moins un capteur primaire (114) étant déployé dans l'au moins un parmi un environnement de lieu de travail et un dispositif client de l'individu, et l'au moins un flux de données physiologiques

20

provenant d'au moins un capteur primaire (114) comprenant des signaux cardiaques ;

25

le prétraitement de l'au moins un flux de données physiologiques pour extraire des paramètres physiologiques, le prétraitement comprenant la réalisation d'une analyse préliminaire sur l'au moins un flux de données physiologiques ; et

30

la détermination d'un niveau de contrainte de l'individu sur la base des paramètres physiologiques et des données physiologiques supplémentaires reçues d'un ou de plusieurs capteurs secondaires (116), les données physiologiques supplémentaires comprenant des informations relatives à une tenue de corps et une expression du visage de l'individu, la détermination comprenant la réalisation d'une analyse statistique sur les paramètres physiologiques et les données physiologiques supplémentaires, et les données physiologiques supplémentaires n'étant utilisées que si une durée de la réception de l'au moins un flux de données physiologiques provenant de l'au moins un capteur primaire (114) est inférieure à la durée prédéfinie.

35

40

45

50

55

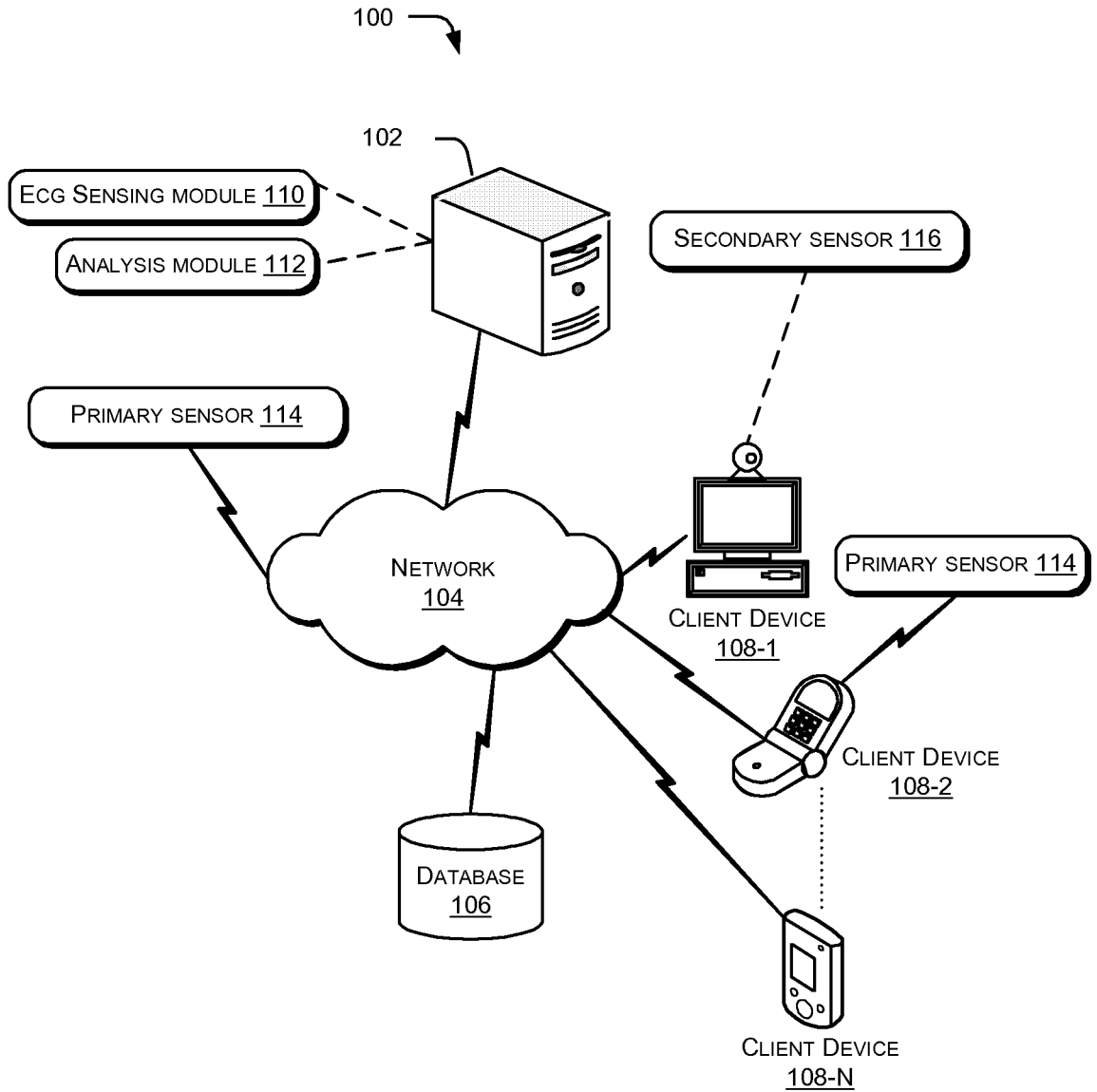


Fig. 1

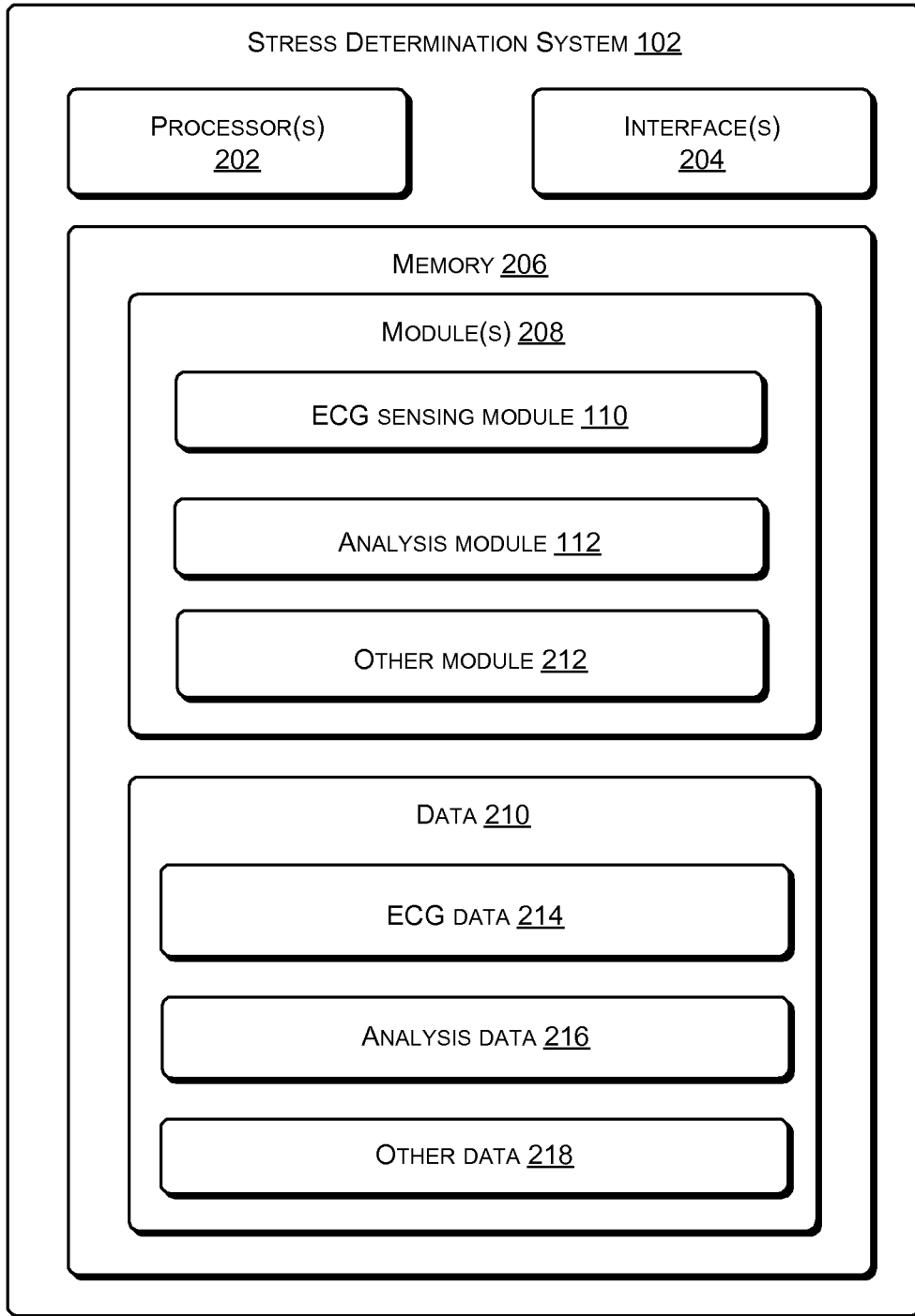


Fig. 2

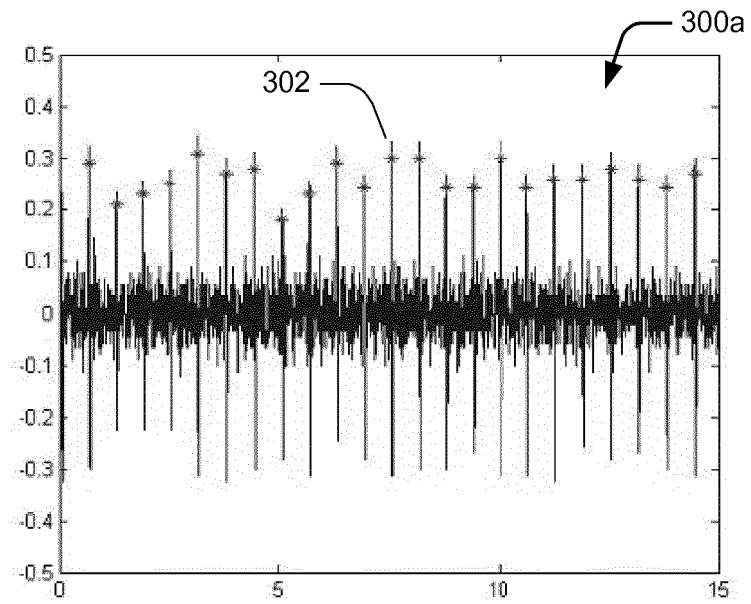


Fig. 3a

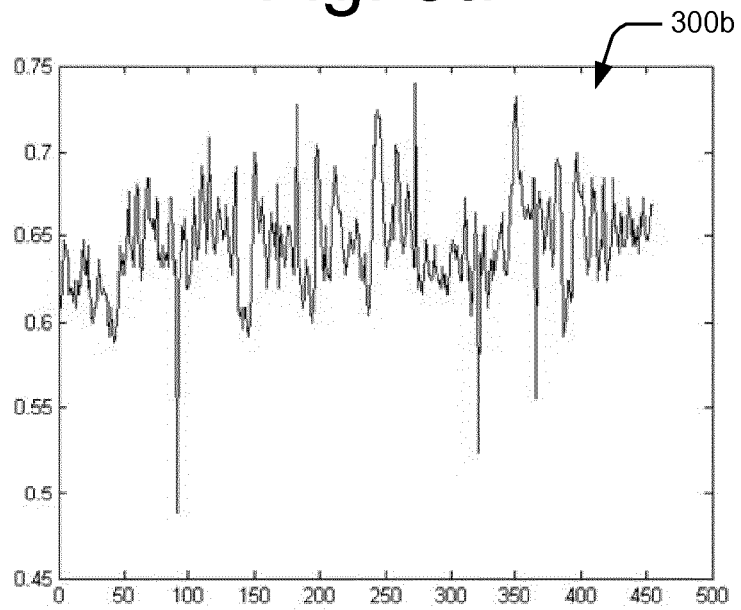


Fig. 3b

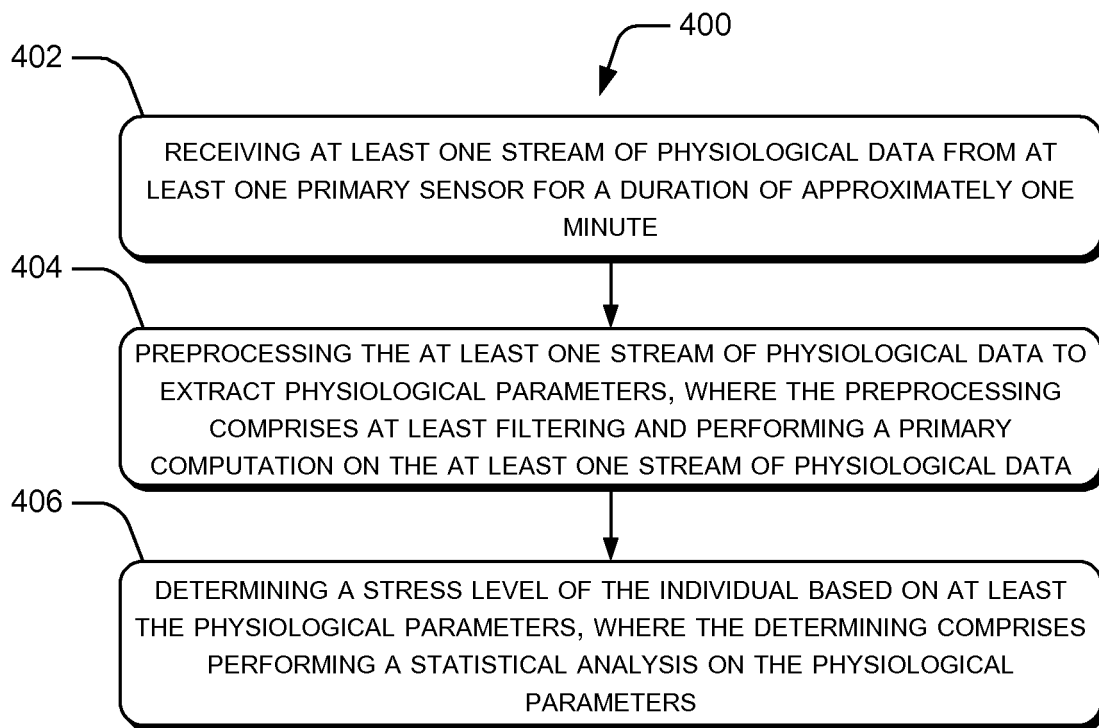


Fig. 4

REFERENCES CITED IN THE DESCRIPTION

This list of references cited by the applicant is for the reader's convenience only. It does not form part of the European patent document. Even though great care has been taken in compiling the references, errors or omissions cannot be excluded and the EPO disclaims all liability in this regard.

Patent documents cited in the description

- EP 21956138 A [0004]
- US 20120194648 A [0005]
- US 20100113865 A [0006]
- US 20030139654 A [0007]

专利名称(译)	确定个人的实时压力		
公开(公告)号	EP2698112B1	公开(公告)日	2019-03-06
申请号	EP2013180194	申请日	2013-08-13
申请(专利权)人(译)	塔塔咨询服务有限公司		
当前申请(专利权)人(译)	塔塔咨询服务有限公司		
[标]发明人	JAYARAMAN SRINIVASAN KUMAR KRITI PURUSHOTHAMAN BALAMURALIDHAR		
发明人	JAYARAMAN, SRINIVASAN KUMAR, KRITI PURUSHOTHAMAN, BALAMURALIDHAR		
IPC分类号	A61B5/16 A61B5/024 A61B5/0452 A61B5/0205 A61B5/0456 A61B5/11 G06K9/00 A61B5/0245 A61B5/00		
CPC分类号	A61B5/0006 A61B5/0077 A61B5/0205 A61B5/02405 A61B5/0245 A61B5/0456 A61B5/1116 A61B5/165 A61B5/486 A61B5/7253 A61B5/7264 A61B2503/24 A61B2576/00 G06K9/0053 G06K2009/00939 G16H30/40 G16H50/20		
优先权	2357MUM2012 2012-08-13 IN		
其他公开文献	EP2698112A1		
外部链接	Espacenet		

摘要(译)

本主题涉及用于实时确定个体的压力水平的计算机实现的方法。该方法包括从预定持续时间的至少一个主传感器接收至少一个生理数据流，并预处理至少一个生理数据流以提取生理参数，其中预处理包括对至少一个执行初步分析。生理数据流。该方法还包括至少基于生理参数确定个体的应激水平，其中该确定包括对生理参数进行统计分析。

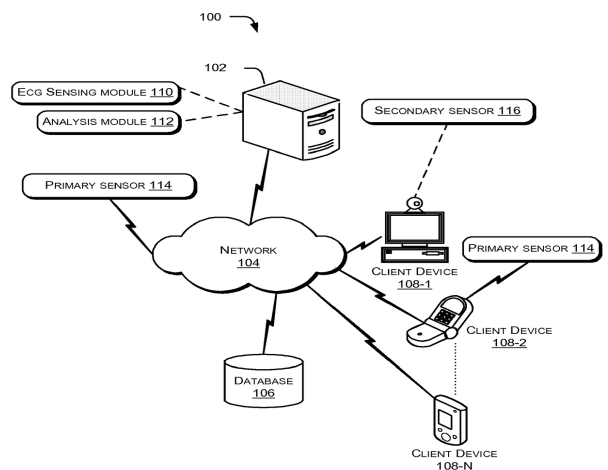


Fig. 1