

(19)



(11)

EP 2 627 242 B1

(12)

EUROPEAN PATENT SPECIFICATION

(45) Date of publication and mention of the grant of the patent:
04.12.2019 Bulletin 2019/49

(51) Int Cl.:
A61B 5/01 (2006.01) **G01K 1/00** (2006.01)
G01K 13/00 (2006.01) **A61B 5/00** (2006.01)
A61B 5/026 (2006.01)

(21) Application number: **10858471.5**

(86) International application number:
PCT/SE2010/051111

(22) Date of filing: **14.10.2010**

(87) International publication number:
WO 2012/050495 (19.04.2012 Gazette 2012/16)

(54) METHOD AND DEVICE FOR EXAMINING THE SURFACE TEMPERATURE OF A BODY PART

VERFAHREN UND VORRICHTUNG ZUR UNTERSUCHUNG DER OBERFLÄCHENTEMPERATUR EINES KÖRPERTEILS

PROCÉDÉ ET DISPOSITIF POUR EXAMINER LA TEMPÉRATURE DE SURFACE D'UNE PARTIE CORPORELLE

(84) Designated Contracting States:
AL AT BE BG CH CY CZ DE DK EE ES FI FR GB GR HR HU IE IS IT LI LT LU LV MC MK MT NL NO PL PT RO RS SE SI SK SM TR

- **ANDREA K. MURRAY ET AL:** "Noninvasive imaging techniques in the assessment of scleroderma spectrum disorders", **ARTHRITIS & RHEUMATISM**, vol. 61, no. 8, 15 August 2009 (2009-08-15), pages 1103-1111, XP055418785, US ISSN: 0004-3591, DOI: 10.1002/art.24645
- **HEJAZI S ET AL:** "Simultaneous acquisition of thermal and visible images in a scanning infrared camera", **OPTOMECHATRONIC MICRO/NANO DEVICES AND COMPONENTS III** : 8 - 10 OCTOBER 2007, LAUSANNE, SWITZERLAND; PROCEEDINGS OF SPIE, SPIE, BELLINGHAM, WASH, vol. 2020, 1 January 1993 (1993-01-01), pages 510-516, XP002428116, DOI: 10.1117/12.160571 ISBN: 978-1-62841-730-2
- **G. Schaefer ET AL:** "Automated Overlay of Infrared and Visual Medical Images : : " In: "User Centered Design for Medical Visualization : ", 1 January 2008 (2008-01-01), IGI Global, XP55418807, ISBN: 978-1-59904-779-9 pages 174-183, DOI: 10.4018/978-1-59904-777-5.ch008, * the whole document *

(43) Date of publication of application:
21.08.2013 Bulletin 2013/34

(73) Proprietor: **Performance In Cold AB**
972 38 Luleå (SE)

(72) Inventor: **LINNÉ, Anders**
S-972 38 Luleå (SE)

(74) Representative: **Zacco Sweden AB**
P.O. Box 5581
114 85 Stockholm (SE)

(56) References cited:
EP-A1- 0 885 587 **EP-A1- 1 212 977**
WO-A1-01/12067 **CN-A- 101 617 938**
GB-A- 2 203 835 **GB-A- 2 311 368**
JP-A- 2004 016 734 **JP-A- 2006 247 126**
US-A- 4 428 382 **US-A1- 2010 030 083**
US-A1- 2010 041 998

EP 2 627 242 B1

Note: Within nine months of the publication of the mention of the grant of the European patent in the European Patent Bulletin, any person may give notice to the European Patent Office of opposition to that patent, in accordance with the Implementing Regulations. Notice of opposition shall not be deemed to have been filed until the opposition fee has been paid. (Art. 99(1) European Patent Convention).

Description

FIELD OF INVENTION

5 **[0001]** The present invention relates to a method for examining the surface temperature of a body part which comprises a body surface divided into multiple measuring zones. The invention also relates to a device for examining the surface temperature of a body part and a computer program for carrying out the method and a memory medium.

BACKGROUND

10 **[0002]** Individual performance is particularly influenced by exterior circumstances such as cold climate. Parameters such as low surrounding temperature or vibrations impair the blood circulation to the outer parts of the body, making body parts colder.

15 **[0003]** Lack of or poor circulation can have serious consequences such as permanently damaged tissue and sensory loss. Poor circulation also affects the mental ability of an individual. In very severe cases non-existent blood circulation can lead to amputation or similar interventions.

20 **[0004]** The article "Noninvasive Imaging Techniques in the Assessment of Scleroderma Spectrum disorders" by Murray, published in Arthritis Rheumatism Vol. 61, No. 8, August 15, 2009, pp 1103-1111, relates to examining tissue to find systemic sclerosis, vascular dysfunction/damage such as Raynauds phenomenon, and to find a technique that can be used for this purpose. The article describes that Laser Doppler imaging and thermal imaging can be used to measure cutaneous blood vessel function.

SUMMARY OF INVENTION

25 **[0005]** One object of the invention is to provide a simple, standardized, fast, clear, reliable, precise and repeatable method for examination of the surface temperature of a body part. This aim is achieved by a method having method steps defined by claim 1. Another object of the invention is to provide a portable, easy to use system for examination of the surface temperature of a body part. This object is achieved by a system comprising the features defined by claim 8. Further, claim 11 defines an analogous computer program.

30 **[0006]** Further advantageous embodiments of the invention are defined by claims 2-7, 9, 10 and 12.

35 **[0007]** Infrared radiation is emitted by any object that has a temperature above -273°C and can be detected by a thermographic camera. A thermographic camera can thus detect the infrared radiation emitted from a body part and render the surface temperature of the photographed or filmed part of the body. The temperature of the surface of the object is represented on the resulting image or film by different colors, and depending on the camera's sensitivity, good resolution of the temperature variations can be obtained.

[0008] The surface temperature of a body part is considered to be an indication of how well the blood circulation in the body part functions.

[0009] One advantage of the invention is that a person can be helped to improve his/her performance at work or sports in cold climate.

40 **[0010]** The results of the examination shows how the examined body surface is influenced by being cooled down, and to which extent different areas of the body surface are affected. The results can be used for selecting and adaption of different body protections and helping facilities such as gloves, shoes, tools and other body protecting means.

45 **[0011]** Another advantage is that the results of the examination can be used for showing how a cold surrounding climate influences a body part and the blood circulation of the body part in a pedagogical manner. Thereby are persons also made aware of the risks and limitations related to work or other types of performance in cold climate.

50 **[0012]** The method according to the invention is unique since the surface temperature of the entire body surface of a body part and not just individual points are measured. For example, the surface temperature of the entire face is measured, a whole palm or the entire foot sole. Both the left and right body part (hand, foot, cheek, ear) can be examined simultaneously, thus an automatic reference between the right and left body part is received and by comparing the surface temperatures on corresponding surfaces deviations can be identified.

[0013] The method can be used for examining if the blood circulation is affected by a number of different parameters. Internal factors may consist of a food, such as food or drink, a drug or the like.

55 **[0014]** External parameters may include cold, heat, a vibrating device, acupuncture, light therapy or the like. In the example of the method below the body part is exposed to a refrigerant. The method has proven to be particularly good for detecting frost bites and vibration damages on the examined body part with this type of provocation. It is known that frost bites and vibration damages decreases the blood circulation.

[0015] In order to simplify and increase safety in the analysis, background information on previous problems like injuries, smoking habits, loss of sensation and other personal type of information is collected with a questionnaire in

advance of the examination. Answers from the questionnaire can be directly related to results from a measurement zone, thus underlying causes of discrepancies can be identified.

BRIEF DESCRIPTION OF DRAWINGS

5

[0016] Further objects and features of the present invention will appear from the following detailed description of some aspects of the invention, wherein some aspects will be described in more detail with reference to the accompanying drawings, in which:

- 10 **Fig. 1** shows a schematic view of a system according to the invention.
Fig. 2 shows a side view and a front view of the background screen shown in Fig. 1.
Fig. 3 shows a side view and a front view of a background screen.
Fig. 4 shows a schematic view of a system according to the invention and a side view and a front view of a background screen.
15 **Fig. 5** shows a detailed view of another embodiment of the background screen shown in Fig. 4.
Fig. 6 shows an example of a body surface.
Fig. 7 shows a graph of the recovery process for a body part examined with the method according to the invention.

20 **[0017]** The following description and the patent claims define several embodiments of the invention. All embodiments can be combined in a variety of ways while still achieving the advantages and benefits of the invention.

DETAILED DESCRIPTION

25 **[0018]** Fig. 1 shows a system 1 for examination of the surface temperature of a body part 2 which comprises a body surface 3 divided into a number of measuring zones according to the invention. The system is provided with means for carrying out the method according to the invention.

[0019] The system 1 comprises a thermographic camera 4 for photography and filming, a computer 5 that is connected to the thermographic camera, a background screen 6 for the body part and support pads 7 for the body part.

30 **[0020]** The background screen 6 comprises a flat panel 8 of background material which is intended to prevent body heat from other parts of the body of the person to influence the examination and the resulting measurements.

[0021] The background screen 6 comprises a front side 6.1 and a back side 6.2, an upper edge 6.3, a lower edge 6.4, a first side edge 6.5 and a second side edge 6.6, see Fig. 2.

35 **[0022]** The background screen 6 has at least one opening 9.1;10.1, or through hole, which has an entry channel 9.2;10.2 stretching from at least one side edge of the background screen to a placement space 9.3;10.3. The body part 2 is positioned next to the background screen by passing the body part through the entry channel 9.2;10.2 and positioning the body part within the placement space 9.3;10.3. The body part 2 which is going to be examined is thereby located on the front side 6.1 of the background screen, and other body parts of the person are located on the rear side 6.2 of the screen.

40 **[0023]** The background screen is provided a supporting legs 12 that can be placed on a table or a supporting stand 13 that can be placed on the floor.

[0024] The supporting legs 12 and the supporting stand 13 are provided with means for adjusting the height of the screen. The background screen can be tilted angularly to the front and rear to achieve an optimized and comfortable position for the person.

45 **[0025]** The size of the screen is adapted such that the body part is positioned well within the area limited by the edges of the screen.

[0026] The openings 9.1;10.1 and placement spaces 10.1;10.2 are arranged so that body part is exposed on the front side 6.1 of the background screen and within the area limited by the edges of the screen.

50 **[0027]** The screen comprises on or more adjacently positioned panels of radiant heat insulating material or a plastic sheet or another material with low thermal conductivity so that the background screen temperature does not influence the result of the examination.

[0028] Fig. 4 shows another background screen 6' that has a first opening 9.1' and a second opening 10.1'. The first and the second opening each have a channel 9.2';10.2' stretching from the lower edge of the background screen to the placement spaces 9.3';10.3'.

[0029] Fig. 5 shows a detailed view of another embodiment of the background screen shown in Fig. 4.

55 **[0030]** The background screen 6' is provided with means for cooling or heating the screen. The temperature of the screen can thereby be kept lower or higher than temperature of the body surface of the body part.

[0031] This has the advantage that the temperature of the background screen is controlled. It is important to avoid sources of errors in the examination. By controlling the temperature of the screen the influence of other heat sources,

like other body parts, on the examination and temperature measurements are lowered. This improves the results of the examination.

[0032] Preferably the temperature of the background screen is regulated so that the background is at least 2 degrees Celsius warmer or colder (+/- 2 °C) of the body surface throughout the whole examination process to allow and secure the scanning of a body parts measuring zone.

[0033] The background screen 6' comprises a front panel 14 and a rear panel 15. The material of the panels is for example a transparent plastic panel or similar material. The panels 14, 15 are arranged in parallel and with a distant between them such that a gap 16 is formed between the panels. The front and the rear panel are joined to each other along the outer edges of the panels, such that the gap forms a closed and sealed inner space 17. The background screen 6' has at least at least one inlet 19.1;19.2;19.3 to the inner space and at least one outlet 18 from the inner space to allow a cooling or heating medium, for example heated water or cold water, to flow through the space from the inlet to the outlet.

[0034] The front and the rear panel are also joined by distancing supports, ribs, 21 which are located within the inner space 17 to keep the front panel and the rear panel securely in place.

[0035] A pump 22 is connected by pipes to the inlet and to the outlet of the background screen. The pump circulates the medium through the inner space of the background screen. The medium can be provided by a closed container 26 connected to the pump. The container has means for providing that the medium is kept at the desired temperature, such as heating means or cooling means (not shown in figures). The screen is provided with thermocouples 23 to measure the temperature of the screen. The thermocouples are connected to a controlling unit 25 and the computer 5.

[0036] Another embodiment of the background screen comprises an electrically heated panel of a foil like material for heating the screen (not shown in the figures).

[0037] Another embodiment of the background screen comprises a cooling panel of a foil like material provided with heat exchanging means for cooling the screen (not shown in the figures).

[0038] The system comprises support pads 7 for the body part/s which is/are located on the rear side of the screen.

[0039] The support pads 7 can be designed as a bowl-shaped or cup-shaped supporting surface that a heel can rest in. When hands are examined, the palms of the hands are facing forwards, towards the thermographic camera. When a foot or a couple of feet are examined, the heels are resting in the cup-shaped support, positioning the soles of the feet forwards and towards the camera.

[0040] Hands and feet are placed in a high position (raised). This means that the hands are held at chest height. Preferably the person sits on a height adjustable chair.

[0041] When examining the feet, the person lays flat on his/her back with the legs aligned and straight and the feet are held such that the foot soles are facing the camera.

[0042] The use of background screen 6 with the support pads for a body part ensures that the same position for the body part is found and maintained throughout the examining period, both during the initial period and during the recovery period when digital photographing or filming with thermo graphic camera is carried out.

[0043] The system comprises a thermographic camera 4 for digital photography and filming of traditional and thermographic images and a computer 5 that is connected to the thermographic camera. The thermographic camera is used for digital photography and digital filming of traditional images and thermographic images.

[0044] By photographing of traditional images is meant conventional monochrome or color photography.

[0045] The thermographic camera 4 is directly connected to the computer which has a CPU, a monitor, a webcam and a memory device 24 for storing the information data collected during the examination procedure. A computer program is loaded into an internal memory of the computer. The computer program comprises the code parts of the computer program product for carrying out the method when it is executed on the computer. It is advantageous to provide the computer with means and programs for image processing. The computer and the webcam can be connected to Internet to allow other people which are not present, to study the examination procedure.

[0046] The computer program have means for locating and programming the scanning position for the body part to ensure that the same scanning position for the body part is located and scanned over the entire examination period, both at the initial period and during the recovery period when digital photographing and filming with thermographic camera are carried out. For example, means for image processing and image processing programs can be used for this.

[0047] All information data reported and/or executed by the computer and the computer program are stored in a database after the examination procedure is completed.

[0048] A traditional image and/or a thermographic image are digitally photographed by the thermographic camera and the image/s are transferred to the computer and the monitor. The images are then monitored, controlled and processed by the computer. The thermographic image reflects the variations of the surface temperature on the examined body part. The thermographic image shows the surface temperature in a very large number of points on the examined body part.

[0049] The thermographic image has a very high resolution, for example, one camera has a resolution equivalent to 640x480 pixels. One pixel shows the surface temperature on one picture point, scanning spot, on the surface of the body part. The surface temperature in a very large number of points on the body surface are thus individually examined

and measured at the same time.

[0050] The computer program comprises 1.2...n predefined body surface measuring zones hereafter referred to as M(1-n) for one or two hands, and one or two feet, one or two arms, one or two legs, a full face or part of a face, a neck, a back of neck, one or two ears, one or two cheeks.

[0051] The traditional image and/or the thermographic image of the scanned surface of the body part is/are displayed on the monitor, the computer screen.

[0052] The thermographic camera 4 comprises at least one predefined measuring zone M(1-n). The traditional image and/or the thermographic image of the surface of the body part is/are divided into the corresponding measuring zones M (1-n). For example, the image of each hand is divided into upto 34 zones, M (1,2 ... 34), namely fingertips (distal phalanges), upper intermediate fingers (intermediate phalanges), lower intermediate fingers (proximal phalanges), palms (metacarpals) and wrist (carpals). The fingertips are particularly vulnerable, thus the image of each fingertip are further divided into four measuring zones. Fig.6 shows a right hand with measuring zones M(1-34).

[0053] The computer program processes and saves the body surface temperature values measured by the thermographic camera and calculates the average temperatures and temperature anomalies from all measuring zones M (1-n) in each batch, also called scanning, which will be further described below.

[0054] The computer 5 also has a reporting program that illustrates the recovery process during and after the examination and measurement procedure.

[0055] The system is also provided with a database for storing the images, all measuring data and information such as room temperature, medium temperature, body temperature, heart rate and blood pressure and all the measured and calculated values for surface temperatures and instants of time, exposure periods, duration of recovering period etc.

[0056] At the setup of the system for examining a body part, the distance between the body part/s which are to be examined and the thermographic camera and the angle of the thermographic camera are adjusted. The body part/s are positioned in front of the background screen and within the area limited by the outer edges of the background screen.

[0057] After the adjusting operation, the thermographic camera scans the surface of the body part and transfers the information to the computer and the computer program. Thereafter is the body part photographed and/ or filmed by the camera.

[0058] Based on the first image, the measuring zones M (1-n) and their coordinates can be mutually positioned and adjusted manually by clicking and dragging with a mouse cursor on the computer screen.

[0059] Before the examination, the test person should be at rest at room temperature with a minimum of plus 20 ° C, at least 30 minutes. The individual must not smoke or snuff tobacco 4 hours before measurement since such activities lowers the body temperature 4 degrees on the fingertips and toes. During the resting period the test person should be fasting and not drink hot drinks, or sit with their hands together. Body parts that are going to be tested must be completely at rest. It is essential that the person does not put the body parts that are going to be examined on any cold or hot surfaces, to avoid error sources.

[0060] Measurement and documentation is carried out throughout the whole examination period which comprises an initial period from the time the first image is photographed, an exposure period and a recovery period that ends when a final image is photographed after recovery has occurred. In the description and the example of the method below temperature is indicated by T and time is indicated by t.

[0061] The method for examination of the surface temperature of a body part which comprises a body surface divided into a number of measuring zones comprises positioning of the body part in a system for examining a body part, wherein the system has a thermographic camera, and digitally photographing essentially the entire body surface that is directed towards the thermographic camera both as a traditional image and as a thermographic image during an initial period, exposing the body part to a refrigerant during a predetermined exposure time during an exposure period, repositioning the body part in the system for examining the body part, and digitally photographing the body surface as a traditional image, and filming the body surface as a thermographic film or repetitively digitally photographing the body surface as thermographic images during a recovery period.

[0062] The body surface temperature in a large number of picture points are thereby measured with the thermographic camera and indicated on the thermographic image.

[0063] The following is an embodiment of the method according to the invention:

The initial period

[0064] The body temperature is measured with an ear thermometer, heart rate and blood pressure measured with blood pressure measuring device, the surrounding room temperature is measured and recorded, the refrigerant temperature and the temperature of the background screen 6' are measured and recorded with the thermographic camera 4 and the temperature of the background screen is set and can be regulated to be maintained within +/- 2 degrees Celcius higher or lower temperature than the body parts that are examined throughout the whole examination period. The body parts which are going to be examined are positioned against the background screen 2 for the examination

EP 2 627 242 B1

and measuring by photographing. The camera with the computer and the computer program, the software, scans the body surface 3 and the measuring zones M(1..n) to have an initial thermographic image of the surface.

[0065] Also an initial traditional image is photographed by the camera. The initial traditional image, and the initial thermographic image of the initial surface temperature are recorded and stored in the computer memory device 24.

[0066] These images are superimposed on each other in the reporting program in the computer, and are used for illustrating the recovery process. The **initial** traditional image is particularly important as evidence of the initial state of the body surface and to avoid error sources.

[0067] The computer with the software calculates an initial average surface temperature referred to as T: initial M(1 ...n) for each measuring zone M. The average surface temperature is based on the thermographic image of the body surface showing the temperature in a large number of pixels within each measuring zone.

[0068] The computer with the software also calculates an initial average temperature referred to as T: initial for the total body surface comprising all measuring zones M (1-n).

[0069] The computer with the software also calculates a zone reference temperature referred to as T:zoneref (1-n) for each measuring zones M (1-n) as an average value of the surface temperature of the pixels in each measuring zones M (1-n) measured by thermographic camera.

[0070] Thereafter is the difference between the initial average temperature T:initial and the zone reference temperature T zoneref M(1-n) calculated for each measuring zone, the difference is referred to as T: initialdiff M(1-n).

$$T: \text{initialdiff } M(1-n) = T: \text{initial} - T \text{ zoneref } M(1-n)$$

[0071] The traditional initial image and the thermographic initial image, the coordinates of the measuring zones, the initial average temperature T: initial, zone reference temperature T: zoneref M(1-n), and the calculated difference T: initialdiff M(1-n) and measuring comments are recorded and stored in the memory device in a computer file with a unique name linked to the person and date.

Exposure period

[0072] During the exposure period is the part of the body exposed to a refrigerant during a predetermined exposure time. Immediately after the exposure time is finalized the time is started to be recorded.

[0073] The body part is exposed, cooled, with a refrigerant, in verifiable conditions for 30 seconds, 1 minute or 5 minutes. Cooling of the hands and feet occurs in any of the following harmless ways:

a) Water temperature +5 to +20 ° C, preferably 12-15 ° C, the hands are lowered down to the wrists under water for 30 seconds, feet are lowered so that the ankle bump go under water for 45 seconds (more surface cooling). Before dipping the hands into the water, plastic gloves can be placed on the hands they will removed of immediately after cooling. The hands can also be dipped in the water without plastic gloves and wiped (without rubbing) with a towel immediately after cooling. It is preferable to avoid the heating effect that can be cause by drying with a towel. Feet are lowered without protection into the water.

b) Cold rise bath (round grained rice) with a temperature of +5 to +20 ° C, preferably 12-15 ° C, hands or feet are immersed in the same manner as above.

c) snow (dry snow) hands or feet are immersed in the same manner as above.

[0074] If the face, ears, neck, throat should be examined, these are cooled by preferably a walk, in an ambience temperature of -5 ° C for 10-20 min minutes, for example, in a cold temperature environment with a cold factor of - 5 ° C.

[0075] A recovery period begins immediately after ending the exposure time, ie. immediately after the body part is removed from the refrigerant. In this example the recovery means that the tested body part naturally regains heat and returns to the original surface temperature of the body surface.

[0076] The body parts are repositioned in front and within the surface area of the background screen 6' in the same position as at the previous initial examination and photographing.

[0077] The computer program have means for locating and programming the scanning position, the measuring zone coordinates, for the body part to ensure that the same scanning position for the body part is located and scanned over the entire examination period, both at the initial period and during the recovery period when digital photographing and filming with thermographic camera are carried out.

[0078] A traditional image and/or a traditional film of the body surface is photographed or filmed with the thermographic

camera.

[0079] The traditional image is photographed to determine if a change in temperature is due to residual water on the skin. The resulting images or film provides a controlling tool for the thermographic camera measurements. A traditional still photography shall initially be made with a maximum one-minute intervals.

5 **[0080]** During the recovery period, ie from the recovery period begins immediately after exposure period has ended, the instants of time for the measurements (photographing and/or filming) progress is recorded. Hereafter the first instant of time is referred to as the starting time $t:cold = 0$, and the finishing instant of time is referred to as $t:end$, which is the instant of time when the measurements ends and the recovery period is finished.

10 **[0081]** The traditional and thermographic photographing with thermographic camera 4 is repeated with a certain frequency, at least every 30 seconds the first three minutes and then every other minute.

[0082] The recovery period is ended when filming with thermographic camera and the ongoing software processing of calculations and reporting program show that some, or all of the body surface, all measuring zones $M(1-n)$, have reached a predetermined final temperature $T:end$ based on a percentage of the initial average temperature $T:initial$. The recovery period can also be ended when a predetermined maximum recovery period has passed, where the recovery period is measured from the first photographing or filming with thermographic camera after the exposure period, for example 15 minutes.

[0083] The instant of time for each measurement, each traditional or thermographic image, is referred to as $t:image$ and is measured from the starting time $t:cold$. Also $t:image$ is recorded and saved in the memory device.

20 **[0084]** The measurement program in the computer is started when the recovery period begins. The body surface is photographed by the thermographic camera and the surface temperature is thereby measured. The resulting thermographic image shows the temperature of body surface.

[0085] The body surface is photographed, ie the surface temperature is measured, in the measuring zones $M(1-n)$ at least every two minutes, preferably every minute, preferably every 15 seconds or even every two seconds or every second. The thermographic images are recorded and stored in the memory device.

25 **[0086]** At the first photographing, directly after cooling, the computer with the software calculates an cold average surface temperature of the entire body surface, hereafter referred to as $T:cold$. In addition, a cold average surface temperature referred to as $T:zonecold M(1-n)$ for each measuring zone M is calculated.

[0087] The cold average surface temperatures are based on the thermographic image of the body surface showing the temperature in a large number of pixels within each measuring zone.

30 **[0088]** The cold average surface temperature $T:cold$ and the cold average surface temperature $T:zonecold M(1-n)$ are recorded and stored in the memory device 24.

[0089] When filming with the thermographic camera, the recovery process is recorded and documented and exact instants of time for each image, hereafter referred to as $t_p: M(1-n)$ are measured from the time $t:cold$.

35 **[0090]** At each instant of photographing and measuring, a recovery temperature hereafter referred to as $T:zonerecover M(1-n)$ is calculated for each measuring zones $M(1-n)$. The recovery temperature is calculated as an average value of the surface temperature of all picture points, pixels, in each measuring zones $M(1-n)$ measured by the thermo graphic camera.

[0091] The instants of time of the images, $t_p: M(1-n)$ and the recovery temperature $T:zonerecover M(1-n)$ are recorded and stored in the memory device 24.

40 **[0092]** Thereafter are the following differences are calculated:

1)

45
$$T:zonerecover M(1-n) - T:cold M(1-n) = T: recoverdiff (1-n) \quad (\text{temperature})$$

2)

50
$$t: cold - t: end = t:recoverdiff \quad (\text{time})$$

3)

55
$$T zonerecover M(1-n) - T:zoneref M(1-n) = T: zonediff M(1-n) \quad (\text{temperature})$$

4)

$$t_{p(1-n)} - t_{\text{cold}} = t_{\text{zonediff}} \quad (\text{time})$$

5 **[0093]** The calculated differences T:recoverdiff M(1-n), t: recoverdiff, T: zonediff M(1-n) and t: zondiff are recorded and stored in the memory device into one vector per measuring zones M (1-n) connected to the individual-specific data file.

[0094] All thermographic film footage, traditional and thermographic photos, measuring zones coordinates, the average temperature T: cold, the recovery temperature T: zonerecover M(1-n), the time $t_p(1-n)$, t: cool, t: end, t: image, in all measuring zones at all measurement occasions, and the calculated differences T recoverdiff M(1-n), t: recoverdiff in all measuring zones at all measurement occasions, and measurements comments are recorded and stored in the memory device into a computer file with unique name associated with the individual and date.

[0095] Audio recording of comments during the recovery period can also be recorded and saved. New measuring comments are possible to insert, after which the collected data to can be inserted to an already previously created file. The recovery process is displayed in graphs on the screen and the recovery period as numerical values per zone.

15 Analysis of results

[0096] For the simultaneous examination of the left and right body part, the differences T :initialdiff, T: recoverdiff M(1-n), T: zonediff M(1-n), t: recoverdiff and t: zonediff for the different body parts are calculated and stored in the memory device. Surface temperature deviations between left and right body and corresponding measuring zones, are calculated, recorded, compared and stored in the memory device. This comparison indicates if there are measuring zones with reduced blood circulation. The differences are individual, and only indicates variation between the left and the right corresponding body surfaces of a single person.

[0097] The subsequent analysis will determine the measuring zones where strong cooling effect is obtained or where the recovery process is slow. The recovery process can be observed and compared in each measuring zone can be compared with the total body surface of the examined body part, and also between adjacent measuring zones.

[0098] The recovery process can take several forms, such as linear or non linear. The collected information in the memory device such as saved temperature data and time data are processed and introduced into the reporting program for visualization in graphs and profiles like an individual profile curve on a graph.

[0099] Temperature data is converted to the profile data and plotted in a figure which illustrates the recovery process.

30 **[0100]** The areas indicated by the responses of the questionnaire recurs in the analysis automatically as possible problem areas.

[0101] The measuring zones corresponding to areas of the body part where the blood circulation has been affected by the cold-provocation can be further examined. Areas which appear to be sensitive and recovery time can be recorded and documented. The presented results only represent an intermediate result, and because there are individual differences between people, further studies need to be carried out to validate and confirm if there are any problems with the blood circulation in the indicated areas, measuring zones.

[0102] In the embodiment described above, a number of different operations and calculations are executed by the computer program on the computer in order to have results from the examination. Additional operations that the computer program performs when it is executed on the computer and reporting to the reporting program during the measurement period are for example the following:

[0103] With reference to Table 1 below the computer iterates the following program steps:

Initial Period

45 **[0104]** The difference between the surface temperature T: inital and the zone's average temperature T: zoneref M(1-n) is calculated during the initial period, registered and grouped in intervals of measuring zones with 0.01 degree difference, measuring zones with 0.1 degree difference, etc. Each measuring zones M (1-n) can be identified and correlated with the responses.

50 Directly after cooling and during the recovery period

[0105] The difference between the total surface average temperature T:cold and the measuring zones average temperature T: zonecold M(1-n) are calculated and recorded and grouped in intervals of zones with 0.01 degree difference, zones with 0.1 degree difference, etc. Each measuring zones M(1-n) can be identified and correlated with the answers from the questionnaire. Comparison is also done with results from the initial period.

After recovery

[0106] The differences between the surface temperature T_{end} , and the measuring zones average recovery temperature $T_{zonerecover M(1-n)}$ are calculated continuously during the recovery period and recorded and grouped in intervals of zones with 0.01 degree difference, zone with 0.1 degree difference, etc. Each measuring zones $M(1-n)$ can be identified and correlated with the responses. Comparison is also done with results from the initial period and immediately after cooling. Time for recovery per zone is also calculated.

Table 1. T = temperature, t = time

Values	Measurments Initial	Measurments Directly after cooling	Measurments after recovery	Time for recovery
Measuring zone temperature	$T_{zoneref M(1-n)}$	$T_{zonecold M(1-n)}$	$T_{zonerecover M(1-n)}$	$t_p M(1-n)$
The average temperature of the whole surface	$T_{initial}$	T_{cold}	T_{end}	$t_{diff} = t_{end} - t_{cold}$
Differences average temperature versus measuring zone temperature	$T_{initial} - T_{zoneref M(1-n)}$	$T_{cold M(1-n)} - T_{zoneref M(1-n)}$	$T_{diff M(1-n)} = T_{end} - T_{zonerecover M(1-n)}$	$t_{diff} = t_{end} - t_{cold}$

[0107] The time for recovery of the cooled body part to regain the reference temperature is recorded, and if it is straight-line or according to other processes, see Figure 7. This figure shows a recovery process for an individual measuring zone T_{zone} and recovery process for the entire surface $T_{surface}$. The curve for T_{zone} indicates that the body part has been more affected by the cold- provocation than the rest of the examined body surface. This is an indication that the particular measuring zone should be further examined to verify if the body part has an injury in this measuring zone, for example a freezing injury, which affects the blood circulation.

[0108] The present invention should not be limited to the description above and the drawings but can be changed and modified in a variety of ways within the framework of the subsequent patent claims.

Claims

1. Method for examination of a surface temperature of a first body part and a second body part, each body part comprising a body surface, and each body surface is divided into a number of measuring zones M for examination wherein:

during an initial period positioning of each body part in a system for examining a said each body part, wherein the system has a thermographic camera (4) and a background screen (6,6'), whereby said each body part is positioned in a placement space (9.3;10.3) of the background screen such that the body surface of each body part under examination faces the thermographic camera, and the body parts which are going to be examined are located on the front side of the background screen, and other parts of the person are located on the rear side of the background screen, and digitally photographing essentially the entire body surface that is directed towards the thermographic camera both as a traditional image and as a thermographic image, the traditional image being a monochrome or color photography of the body surface of each body part, during the initial period, taking an initial digital traditional image of the body surfaces with the thermographic camera;

during an exposure period exposing said each body part to a refrigerant during a predetermined exposure time, during a recovery period, repositioning each body part in the background screen of the system for examining the body part such that the body surface under examination faces the thermographic camera, and digitally photographing the body surface of each body part as a traditional image, and filming the body surface of each body part as a thermographic film or repetitively digitally photographing the body surface of each body part as thermographic images with the thermographic camera,

keeping the background screen at a temperature which is different from the surface temperature of each body

part under examination by at least two degrees Celsius,
 analysing the recovery process of the surface temperature in the measuring zones of the body surfaces of each
 body part, wherein the recovery process is based on the surface temperature within respective measuring zone
 measured by the thermographic camera during the initial period and the recovery period,
 5 and analysing deviations between the surface temperature in corresponding measuring zones of the body
 surfaces of each body parts,
 or deviations between the recovery process of the surface temperature in each measuring zone and the whole
 body surface of which the measuring zone is part of.

10 **2. Method according to claim 1 characterized in:**

storing of all photographed images and films in a memory device,
 starting to record the time immediately after the exposure time is finalized,
 begin the recovery period after ending the exposure time,
 15 recording and storing the instant of time for each photographed image and/or film sequence,
 calculating a zone reference temperature for each measuring zone,
 calculating an initial average temperature for all measuring zones,
 repetitively calculating a recovery temperature for each measuring zone,
 wherein the recovery temperature is based on the surface temperature within respective measuring zone meas-
 20 ured by the thermographic camera,
 recording and storing the recovery temperature for each measuring zone and the instant of time of the respective
 thermographic image in the memory device,
 calculating a difference between the recovery temperature and the zone reference temperature for each meas-
 uring zone and recording and storing the calculated difference in the memory device;
 25 ending the recovery period when all measuring zones have reached a predetermined final temperature based
 on the initial average temperature, or when a predetermined maximum recovery period has passed, wherein
 the recovery period is measured from the first photographing or filming with thermographic camera after the
 body part has been exposed for a refrigerant medium, recording and storing the duration of the recovery period
 of each measuring zone to reach the predetermined final temperature in the memory device.

30 **3. Method according to claim 2 characterized in** selecting the body part from the following; one or two hands, one or
 two feet, one or two arms, one or two legs, a full face or part of a face, a neck, a back of neck, one or two ear, one
 or two cheeks.

35 **4. Method according to claim 2 or 3, characterized in** calculating the zone reference temperature and recovery tem-
 perature based on the average surface temperature variations in a measuring zone measured by the thermographic
 camera.

40 **5. Method according to any of claims 2 -4 characterized in** calculating the differences in initial average temperature,
 zone reference temperature, recovery temperature and recovery period between the left and the right body part and
 the respective corresponding measuring zones, comparing, recording and storing the calculated differences in the
 memory device.

45 **6. Method according to any of the previous claims characterized in** displaying an individual profile curve on a graph
 based on the temperature data and time data stored in the memory device.

50 **7. Method according to any of the previous claims characteized in** that photographing the body part and the measuring
 of the surface temperature variations in the measuring zones M (1-n) takes place at least every two minutes,
 preferably every minute, more preferably every 15 seconds or even as frequent as every two seconds or every second.

55 **8. System for examination of a surface temperature of a first body part and a second body part (2), each body part**
 comprising a body surface (3), and each body surface is divided into a number of measuring zones M for examination,
 the system carrying out the method according to any of the previous claims and comprising a thermographic camera
 (4) for digital photography and filming of traditional and thermographic images, wherein the traditional image is a
 monochrome or color photography image, a computer (5) connected to the thermographic camera and a background
 screen (6;6') for the body parts wherein the thermographic camera (4) comprises at least one predefined measuring
 zone M(1-n), that the background screen (6;6') has at least one opening (9.1;10.1;9.1':10.1') that has an entry
 channel (9.2;10.2;9.2';10.2') stretching from at least one edge (6.3;6.4;6.5;6.6) of the background screen to a place-

ment space (9.3;10.3;9.3';10.3') so that each body part can be passed through the entry channel and positioned within the placement space, such that the body surface of each body part under examination faces the thermographic camera, and the body parts which are going to be examined are located on a front side of the background screen, and other parts of the person are located on a rear side of the background screen,

that the background screen is provided with means for cooling or heating the background screen such that the background screen is kept at a temperature which is different from the surface temperature of each body part under examination by at least two degrees Celsius,

that the computer (5) comprises a computer program which have means for locating and programming the scanning position for the body surface of each body part to ensure that the same scanning position for the body surface of each body part is located and scanned over the entire examination period, both at an initial period and during a recovery period when digital photographing and filming with the thermographic camera (4) are carried out.

9. System according to claim 8 **characterized in that** the background screen (6') comprises a front panel (14) and a rear panel (15), the panels are arranged in parallel and with a distant between them such that a gap (16) is formed between the panels,

that the panels are joined to each other along the respective outer edges, such that the gap(16) forms a closed and sealed inner space (17),

that background screen (6') has at least one inlet (19.1;19.2;19.3) to the inner space and at least one outlet (18) from the inner space to allow a cooling or heating medium to flow through the space from the inlet to the outlet.

10. System according to claim 8 **characterized in that** the means for heating the background screen comprises an electrically heated panel.

11. Computer program that is loaded into an internal memory of a computer, comprising the code parts of the computer program product for causing the system of claim 8 to execute the steps according to the method of any of claims 1-7.

12. A computer-readable memory medium having stored thereon the computer program of claim 11.

Patentansprüche

1. Verfahren zur Untersuchung einer Oberflächentemperatur eines ersten Körperteils und eines zweiten Körperteils, wobei jeder Körperteil eine Körperoberfläche umfasst, und jede Körperoberfläche in eine Anzahl von Messzonen zur Untersuchung unterteilt ist, wobei:

während einer Einleitungsdauer, Positionieren jedes Körperteils in einem System zur Untersuchung des jeden Körperteils, wobei das System eine Wärmebildkamera (4) und einen Hintergrundschirm (6,6') aufweist, wobei der jede Körperteil in einem Anordnungsraum (9.3;10.3) des Hintergrundschirms derart positioniert ist, dass während der Untersuchung die Körperoberfläche jedes Körperteils der Wärmebildkamera zugewandt ist, und die zu untersuchenden Körperteile an der Vorderseite des Hintergrundschirms angeordnet sind, und andere Teile der Person an der Hinterseite des Hintergrundschirms angeordnet sind, und digitales Fotografieren im Wesentlichen der gesamten Körperoberfläche, die auf die Wärmebildkamera hin gerichtet ist, sowohl als herkömmliches Bild und als Wärmebild, wobei das herkömmliche Bild eine Monochrom- oder Farbfotografie der Körperoberfläche jedes Körperteils,

während der Einleitungsdauer, Aufnahme eines einleitenden digitalen herkömmlichen Bildes der Körperoberflächen mit der Wärmebildkamera;

während einer Expositionsdauer, Exponieren des jeden Körperteils einem Kältemittel während einer vorgegebenen Expositionszeit,

während einer Erholungsdauer, Neupositionieren jedes Körperteils in dem Hintergrundschirm des Systems zur Untersuchung des Körperteils derart, dass die Körperoberfläche während der Untersuchung der Wärmebildkamera zugewandt ist, und

digitales Fotografieren der Körperoberfläche jedes Körperteils als herkömmliches Bild, und Filmen der Körperoberfläche jedes Körperteils als thermographischer Film oder wiederholtes digitales Fotografieren der Körperoberfläche als Wärmebilder mit der Wärmebildkamera,

Aufbewahren des Hintergrundschirms bei einer Temperatur, die sich während der Untersuchung um mindestens zwei Grad Celsius von der Oberflächentemperatur jedes Körperteils unterscheidet,

Analysieren des Erholungsprozesses der Oberflächentemperatur in den Messzonen der Körperoberflächen

jedes Körperteils, wobei der Erholungsprozess auf der Oberflächentemperatur innerhalb der jeweiligen Messzone basiert, die durch die Wärmebildkamera während der Einleitungsdauer und der Erholungsdauer gemessen wird,
 und Analysieren von Abweichungen zwischen der Oberflächentemperatur in entsprechenden Messzonen der Körperoberflächen der jeden Körperteile,
 oder Abweichungen zwischen dem Erholungsprozess der Oberflächentemperatur in jeder Messzone und der gesamten Körperoberfläche, von der die Messzone einen Teil bildet.

2. Verfahren nach Anspruch 1, **gekennzeichnet durch**:

Speichern aller fotografierten Bilder und Filme in einer Speichervorrichtung,
 Beginnen mit einem Aufzeichnen der Zeit unmittelbar nach Ablauf der Expositionszeit,
 Beginnen mit der Erholungsdauer nach Ablauf der Expositionszeit,
 Aufzeichnen und Speichern des Augenblicks für jedes fotografierte Bild und/oder jede fotografierte Filmsequenz,
 Berechnen einer Referenzzonentemperatur für jede Messzone,
 Berechnen einer durchschnittlichen Einleitungstemperatur für alle Messzonen, wiederholtes Berechnen einer Erholungstemperatur für jede Messzone, wobei die Erholungstemperatur auf der Oberflächentemperatur innerhalb der jeweiligen Messzone basiert, die durch die Wärmebildkamera gemessen wurde,
 Aufzeichnen und Speichern der Erholungstemperatur für jede Messzone und des Augenblicks des jeweiligen Wärmebildes in der Speichervorrichtung,
 Berechnen einer Differenz zwischen der Erholungstemperatur und der Referenzzonentemperatur für jede Messzone und Aufzeichnen und Speichern der berechneten Differenz in der Speichervorrichtung;
 Beenden der Erholungsdauer, wenn alle Messzonen eine vorgegebene Endtemperatur basierend auf der durchschnittlichen Einleitungstemperatur erreicht haben, oder wenn eine vorgegebene maximale Erholungsdauer abgelaufen ist, wobei die Erholungsdauer ab dem ersten Fotografieren oder Filmen mit Wärmebildkamera gemessen wird, nachdem der Körperteil einem Kältemittel ausgesetzt worden ist, Aufzeichnen und Speichern der Dauer der Erholungsdauer jeder Messzone, um die vorgegebene Endtemperatur in der Speichervorrichtung zu erreichen.

3. Verfahren nach Anspruch 2, **gekennzeichnet durch** Auswählen des Körperteils aus den Folgenden; eine Hand oder zwei Hände, ein Fuß oder zwei Füße, ein Bein oder zwei Beine, ein gesamtes Gesicht oder ein Teil eines Gesichts, ein Hals, ein Genick, ein Ohr oder zwei Ohre, eine Wange oder zwei Wangen.

4. Verfahren nach Anspruch 2 oder 3, **gekennzeichnet durch** Berechnen der Referenzzonentemperatur und Erholungstemperatur basierend auf den durchschnittlichen Oberflächentemperaturschwankungen in einer Messzone, die durch die Wärmebildkamera gemessen wurden.

5. Verfahren nach einem der Ansprüche 2-4, **gekennzeichnet durch** Berechnen der Differenzen der durchschnittlichen Einleitungstemperatur, der Erholungstemperatur und der Erholungsdauer zwischen dem linken und dem rechten Körperteil und den jeweiligen entsprechenden Messzonen, Vergleichen, Aufzeichnen und Speichern der berechneten Differenzen in der Speichervorrichtung.

6. Verfahren nach einem der vorgehenden Ansprüche, **gekennzeichnet durch** Anzeigen einer individuellen Profilkurve auf einer Grafik basierend auf den in der Speichervorrichtung gespeicherten Temperaturdaten und Zeitdaten.

7. Verfahren nach einem der vorgehenden Ansprüche, **dadurch gekennzeichnet, dass** das Fotografieren des Körperteils und das Messen der Oberflächentemperaturschwankungen in den Messzonen M (1-n) zumindest alle zwei Minuten, bevorzugt jede Minute, eher bevorzugt alle 15 Sekunden oder sogar so häufig wie alle zwei Sekunden oder jede Sekunde, stattfinden.

8. System zur Untersuchung einer Oberflächentemperatur eines ersten Körperteils und eines zweiten Körperteils (2), wobei jeder Körperteil eine Körperoberfläche (3) umfasst, und jede Körperoberfläche in eine Anzahl von Messzonen M zur Untersuchung unterteilt ist, wobei das System das Verfahren nach einem der vorgehenden Ansprüche ausführt und eine Wärmebildkamera (4) für digitales Fotografieren und Filmen von herkömmlichen Bildern und Wärmebildern umfasst, wobei das herkömmliche Bild eine Monochrom- oder Farbfotografie ist, wobei ein Computer (5) mit der Wärmebildkamera und einem Hintergrundschirm (6;6') für die Körperteile verbunden ist, wobei die Wärmebildkamera (4) zumindest eine vorgegebene Messzone M(1-n) umfasst, und der Hintergrundschirm (6;6') zumindest eine Öffnung (9.1; 10.1,9.1':10.1'), aufweist, die einen Eingangskanal (9.2;10.2;9.2';10.2') aufweist,

der sich von zumindest einer Kante (6.3;6.4;6.5;6.6) des Hintergrundschrims bis zu einem Anordnungsraum (9.3;10.3;9.3';10.3') derart erstreckt, dass jeder Körperteil durch den Eingangskanal geführt und innerhalb des Anordnungsraums positioniert werden kann, so dass die Körperoberfläche jedes Körperteils während der Untersuchung der Wärmebildkamera zugewandt ist, und die zu untersuchenden Körperteile an einer Vorderseite des Hintergrundschrims angeordnet sind, und andere Teile der Person an einer Hinterseite des Hintergrundschrims angeordnet sind,

dass der Hintergrundschirm mit Mitteln zum Kühlen oder Erwärmen des Hintergrundschrims derart versehen ist, dass der Hintergrundschirm bei einer Temperatur gehalten wird, die sich von der Oberflächentemperatur jedes Körperteils während der Untersuchung um zumindest zwei Grad Celsius unterscheidet,

dass der Computer (5) ein Computerprogramm umfasst, das ein Mittel zum Anordnen und Programmieren der Abtastungsposition für die Körperoberfläche jedes Körperteils aufweist, um zu sichern, dass dieselbe Abtastungsposition für die Körperoberfläche jedes Körperteils über die gesamte Untersuchungsdauer angeordnet und abgetastet wird, sowohl bei einer Einleitungsdauer als auch während einer Erholungsdauer, wenn digitales Fotografieren und Filmen mit der Wärmebildkamera (4) durchgeführt werden.

9. System nach Anspruch 8, dadurch gekennzeichnet, dass

der Hintergrundschirm (6') eine Vorderwand (14) und eine Hinterwand (15) umfasst, wobei die Wände parallel und in einem Abstand zwischen ihnen derart angeordnet sind, dass ein Spalt (16) zwischen den Wänden gebildet ist, dass die Wände entlang der jeweiligen Außenkanten miteinander verbunden sind, so dass der Spalt (16) einen geschlossenen und versiegelten Innenraum (17) bildet,

dass der Hintergrundschirm (6') mindestens einen Eingang (19.1;19.2;19.3) zum Innenraum und mindestens einen Ausgang (18) von dem Innenraum aufweist, um zu ermöglichen, dass ein Kühl- oder Heizmedium durch den Raum vom Eingang bis zum Ausgang strömen kann.

10. System nach Anspruch 8, dadurch gekennzeichnet, dass das Mittel zum Heizen des Hintergrundschrims eine elektrisch beheizbare Platte umfasst.

11. Computerprogramm, dass in einem inneren Speicher eines Computers geladen ist, umfassend die Codeteile des Computerprogrammproduktes, um das System nach Anspruch 8 dazu zu veranlassen, die Schritte nach dem Verfahren nach einem der Ansprüche 1-7 auszuführen.

12. Computerlesbares Medium, auf dem das Computerprogramm nach Anspruch 11 gespeichert ist.

Revendications

1. Procédé d'examen d'une température de surface d'une première partie de corps et une deuxième partie de corps, chaque partie de corps comprenant une surface du corps, et chaque surface de corps étant divisée en plusieurs zones de mesure M pour l'examen dans lequel :

pendant une période initiale, le positionnement de chaque partie de corps dans un système pour examiner chaque dite partie du corps, le système comprenant une caméra thermographique (4) et un écran d'arrière-plan (6,6'), chaque dite partie de corps étant positionnée dans l'espace de placement (9.3;10.3) de l'écran d'arrière-plan si bien que la surface de corps de chaque partie de corps lors de l'examen fait face à la caméra thermographique, et les parties de corps à examiner sont situées sur le côté avant de l'écran d'arrière-plan, et d'autres parties de la personne sont situées sur le côté arrière de l'écran d'arrière-plan, et la photographie numérique essentiellement de toute la surface du corps qui est dirigée vers la caméra thermographique à la fois sous forme d'image traditionnelle et sous forme d'image thermographique, l'image traditionnelle étant une photographie monochrome ou une photographie en couleurs de la surface de corps de chaque partie de corps, pendant la période initiale, la prise d'une image traditionnelle numérique initiale des surfaces de corps avec la caméra thermographique ;

pendant une période d'exposition, l'exposition de chaque dite partie du corps à un réfrigérant pendant une durée d'exposition prédéterminée,

pendant une période de récupération, le repositionnement de chaque partie de corps dans l'écran d'arrière-plan du système pour examiner la partie de corps si bien que la surface de corps sous l'examen fait face à la caméra thermographique, et

la photographie numérique de la surface de corps de chaque partie de corps en tant qu'image traditionnelle,

EP 2 627 242 B1

et filmer la surface du corps de chaque partie de corps en tant que film thermographique ou photographier de manière répétée la surface du corps de chaque partie de corps sous forme d'images thermographiques avec la caméra thermographique,

le fait de maintenir l'écran d'arrière-plan à une température différente de la température de surface de chaque partie de corps lors de l'examen d'au moins deux degrés Celsius,

l'analyse du procédé de récupération de la température de surface dans les zones de mesure des surfaces de corps de chaque partie de corps, le procédé de récupération étant basé sur la température de surface dans la zone de mesure respective mesurée par la caméra thermographique pendant la période initiale et la période de récupération,

et l'analyse de déviations entre la température de surface dans des zones de mesure correspondantes des surfaces de corps de chaque partie de corps, ou de déviations entre le procédé de récupération de la température de surface dans chaque zone de mesure et toute la surface de corps dont la zone de mesure fait partie.

2. Procédé selon la revendication 1, **caractérisé par** les étapes consistant à :

stocker toutes les images et tous les films photographiés dans un dispositif de mémoire, démarrer l'enregistrement de l'heure immédiatement après la fin du temps d'exposition, en commençant la période de récupération après avoir fini le temps d'exposition,

enregistrer et stocker l'instant pour chaque image photographiée et / ou séquence de film,

calculer une température de référence de zone pour chaque zone de mesure,

calculer une température moyenne initiale pour toutes les zones de mesure,

calculer répétitivement une température de récupération pour chaque zone de mesure, la température de récupération étant basée sur la température de surface dans la zone de mesure respective mesurée par la caméra thermographique,

enregistrer et stocker la température de récupération pour chaque zone de mesure et l'instant de l'image thermographique respective dans le dispositif de mémoire,

calculer une différence entre la température de récupération et la température de référence de zone pour chaque zone de mesure et enregistrer et stocker la différence calculée dans le dispositif de mémoire ;

mettre fin à la période de récupération lorsque toutes les zones de mesure ont atteint une température finale prédéterminée sur la base de la température moyenne initiale, ou lorsqu'une période de récupération maximale prédéterminée s'est écoulée, la période de récupération étant mesurée à partir de la première photographie ou du premier tournage avec une caméra thermographique après la partie du corps a été exposée à un fluide réfrigérant, enregistrer et stocker la durée de la période de récupération de chaque zone de mesure pour atteindre la température finale prédéterminée dans le dispositif de mémoire.

3. Procédé selon la revendication 2, **caractérisé en ce que** la partie du corps est sélectionnée parmi les parties suivantes ; une ou deux mains, un ou deux pieds, un ou deux bras, une ou deux jambes, un visage entier ou une partie de visage, un cou, une nuque, une ou deux oreilles, un ou deux joues.

4. Procédé selon la revendication 2 ou 3, **caractérisé en ce que** la température de référence de la zone et la température de récupération de la zone sont calculées sur la base des variations moyennes de la température de surface dans une zone de mesure mesurée par la caméra thermographique.

5. Procédé selon l'une quelconque des revendications 2 à 4, **caractérisé par** l'étape consistant à :

calculer les différences de température moyenne initiale, de température de référence de zone, de température de récupération et de période de récupération entre les parties du corps gauche et droite et les zones de mesure correspondantes respectives,

comparer, enregistrer et stocker les différences calculées dans le dispositif de mémoire.

6. Procédé selon l'une quelconque des revendications précédentes, **caractérisé par** l'étape consistant à afficher une courbe de profil individuelle sur un graphique en fonction des données de température et des données temporelles stockées dans le dispositif de mémoire.

7. Procédé selon l'une quelconque des revendications précédentes, **caractérisé en ce que** la photographie de la partie de corps et la mesure des variations de température de surface dans les zones de mesure M(1-n) ont lieu au moins toutes les deux minutes, de préférence toutes les minutes, de préférence toutes les 15 secondes ou même aussi souvent que toutes les deux secondes ou toutes les secondes.

- 5 8. Système d'examen d'une température de surface d'une première partie du corps et d'une deuxième partie du corps (2), chaque partie de corps comprenant une surface de corps (3), et chaque surface de corps étant divisée en plusieurs zones de mesure M pour l'examen, le système mettant en œuvre le procédé selon l'une quelconque des revendications précédentes et comprenant une caméra thermographique (4) pour la photographie numérique et le tournage d'images thermographiques et traditionnelles, l'image traditionnelle étant une photographie monochrome ou une photographie en couleurs, un ordinateur (5) connecté à la caméra thermographique et un écran d'arrière-plan (6;6') pour les parties de corps dans lequel la caméra thermographique (4) comprend au moins une zone de mesure prédéfinie M(1-n), que l'écran d'arrière-plan (6;6') présente au moins une ouverture (9.1;10.1;9.1':10.1) dotée d'un canal d'entrée (9.2;10.2;9.2':10.2') qui s'étend d'au moins un bord (6.3;6.4;6.5;6.6) de l'écran d'arrière-plan vers un espace de placement (9.3;10.3;9.3';10.3') si bien que chaque partie de corps peut être passée à travers le canal d'entrée et positionnée dans l'espace de placement, si bien que la surface de corps de chaque partie de corps lors de l'examen fait face à la caméra thermographique, et les parties de corps à examiner sont situées sur le côté avant de l'écran d'arrière-plan, et d'autres parties de la personne sont situées sur le côté arrière de l'écran d'arrière-plan, que l'écran d'arrière-plan est pourvu de moyens pour refroidir ou chauffer l'écran d'arrière-plan si bien que l'écran d'arrière-plan est maintenu à une température différente de la température de surface de chaque partie de corps lors de l'examen d'au moins deux degrés Celsius, que l'ordinateur (5) comprend un programme d'ordinateur doté de moyens pour localiser et programmer la position de balayage pour la surface de corps de chaque partie de corps permettant de garantir que la même position de balayage pour la surface de corps de chaque partie du corps soit localisée et balayée sur toute la période d'examen, à la fois pendant une période initiale et pendant une période de récupération lorsque la photographie numérique et le tournage avec la caméra thermographique (4) sont réalisés.
- 10
- 15
- 20
- 25 9. Système selon la revendication 8, **caractérisé en ce que** l'écran d'arrière-plan (6') comprend un panneau avant (14) et un panneau arrière (15), les panneaux étant disposés en parallèle et distants l'un de l'autre de telle sorte qu'un intervalle (16) soit formé entre les panneaux, les panneaux sont reliés les uns aux autres le long des bords extérieurs respectifs, de telle sorte que l'intervalle (16) forme un espace intérieur fermé et étanche (17), l'écran d'arrière-plan (6') présente au moins une entrée (19.1;19.2;19.3) dans l'espace intérieur et au moins une sortie (18) de l'espace intérieur pour permettre à un fluide de refroidissement ou de chauffage de circuler dans cet espace, de l'entrée à la sortie.
- 30
- 35 10. Système selon la revendication 8, **caractérisé en ce que** le moyen pour chauffer l'écran d'arrière-plan comprend un panneau chauffé électriquement.
- 40 11. Programme informatique qui est chargé dans une mémoire interne d'un ordinateur, comprenant les parties de code du produit programme d'ordinateur pour amener le système de la revendication 8 à mettre en œuvre les étapes selon le procédé selon l'une quelconque des revendications 1 à 7.
- 45
- 50 12. Support de mémoire lisible par ordinateur ayant stocké en son sein le programme informatique selon la revendication 11.
- 55

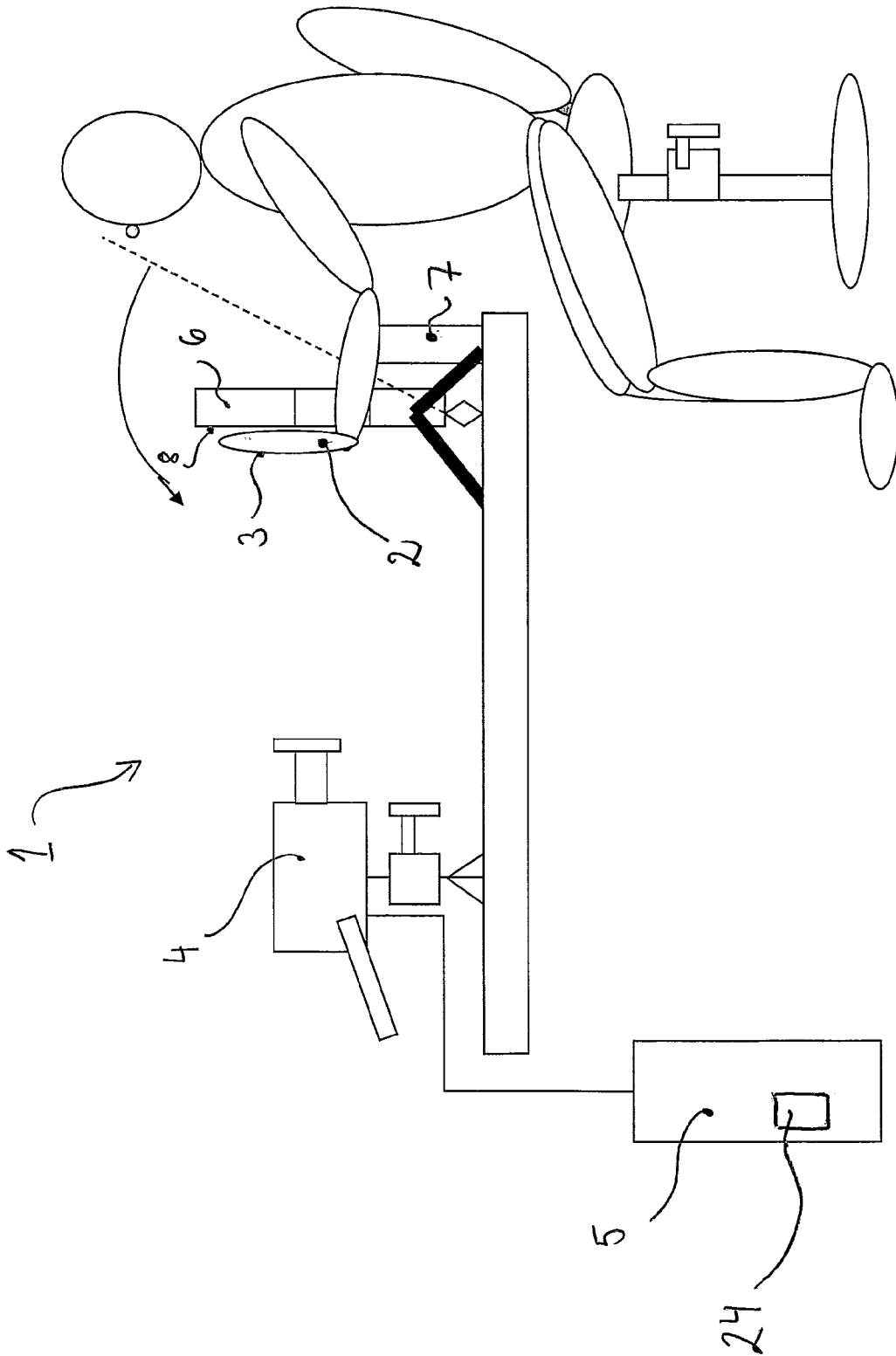


Fig. 1

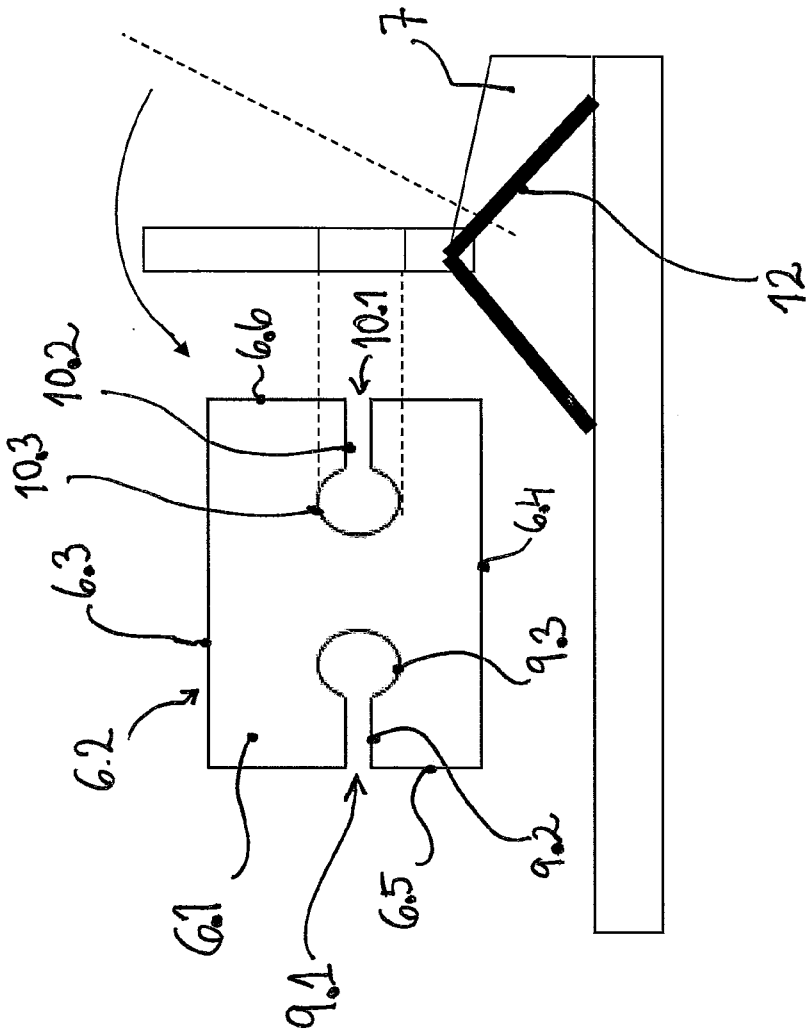
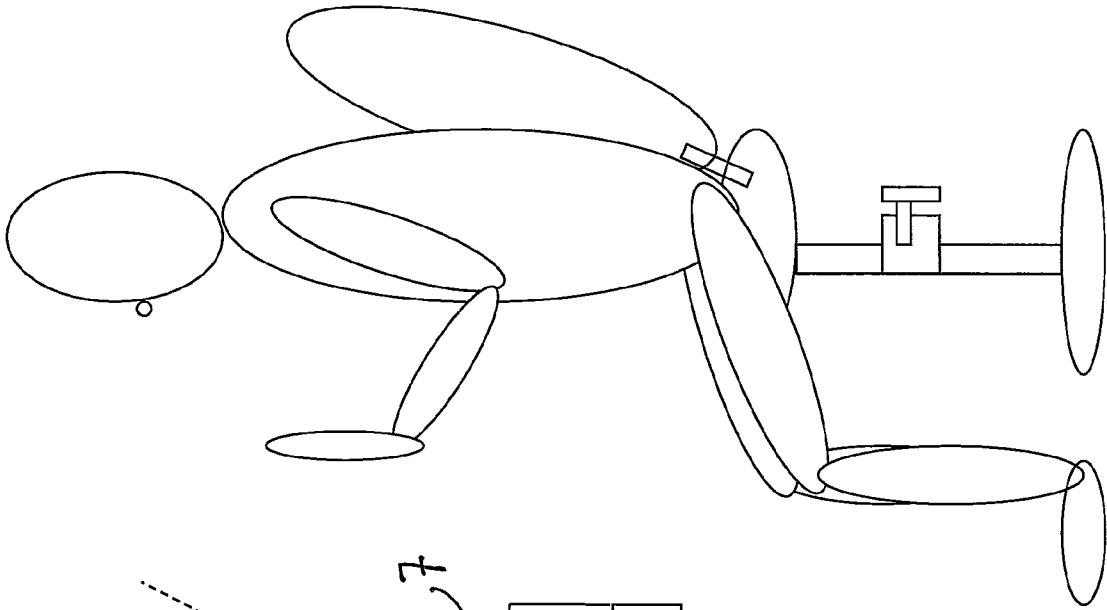


Fig. 2

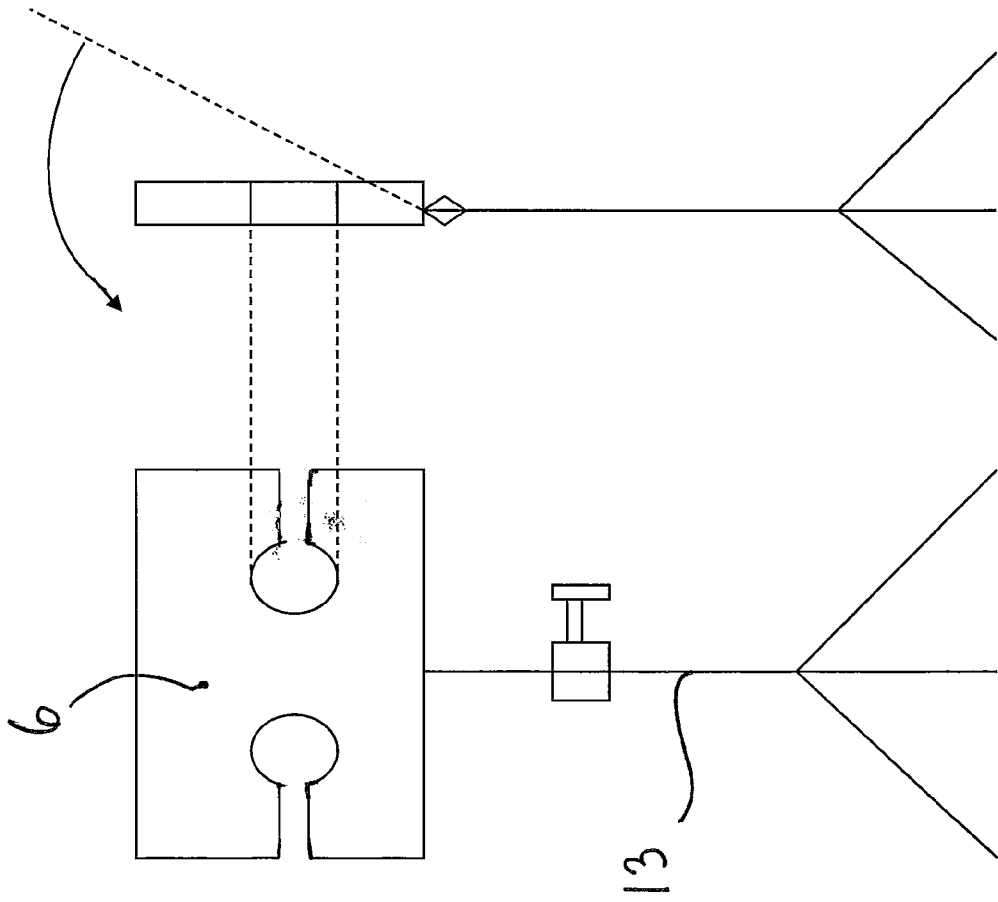


Fig. 3

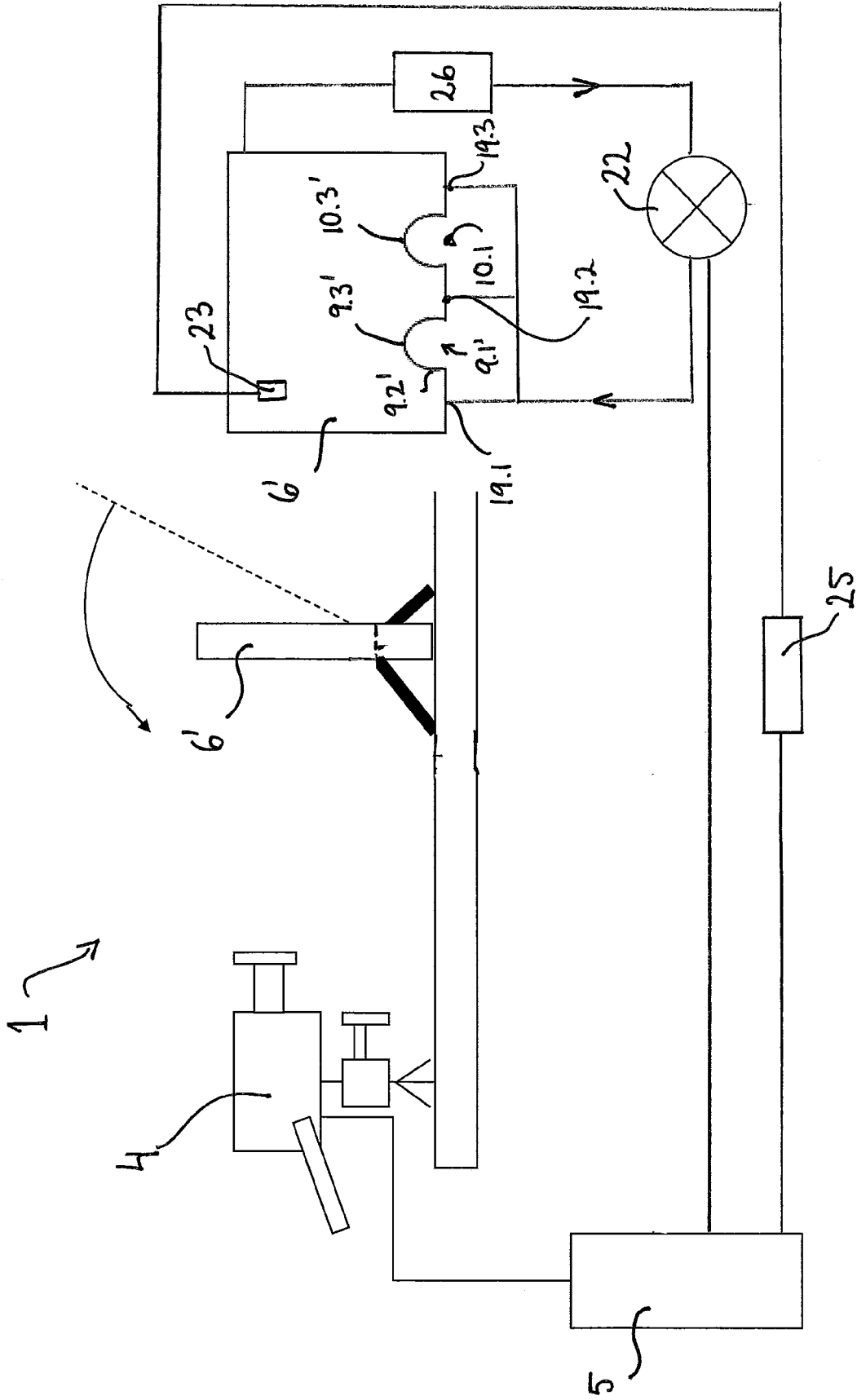


Fig 4

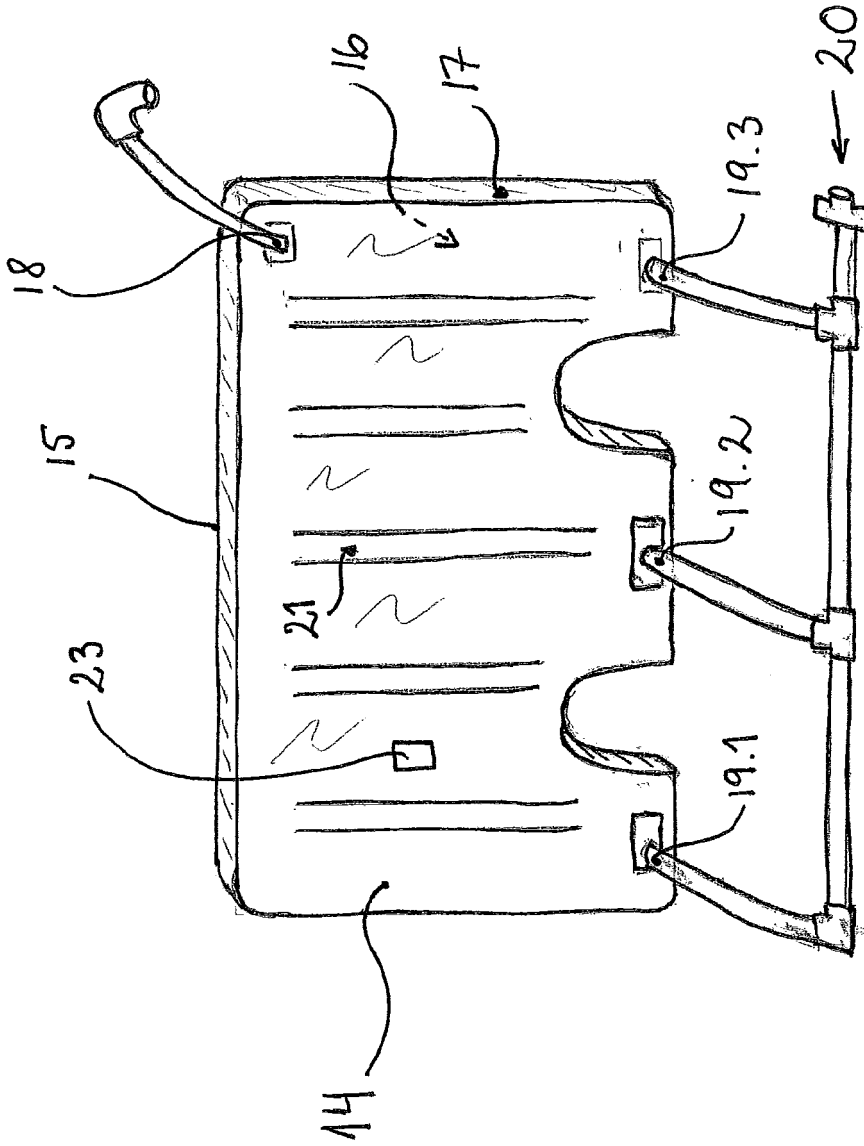


Fig. 5

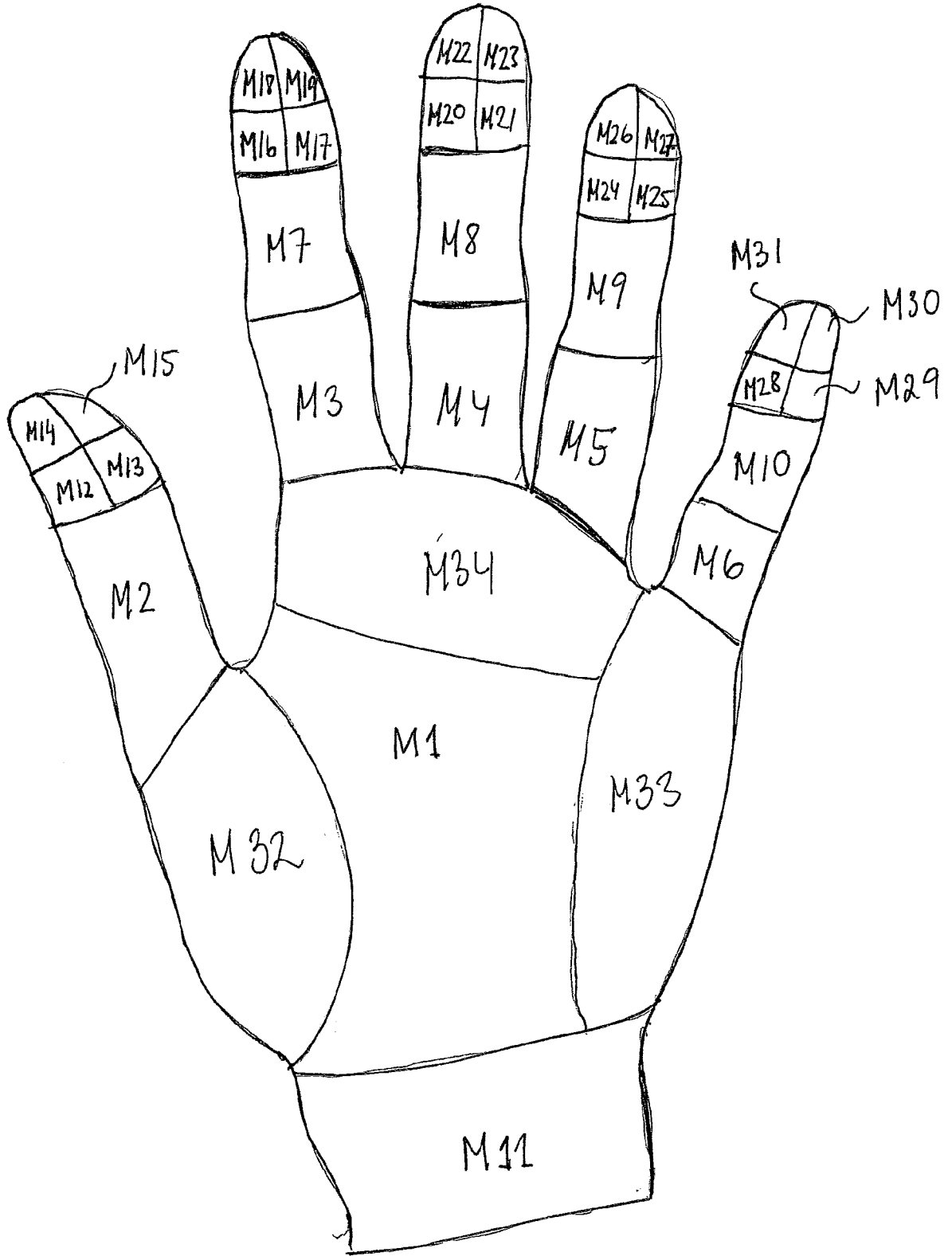


Fig. 6

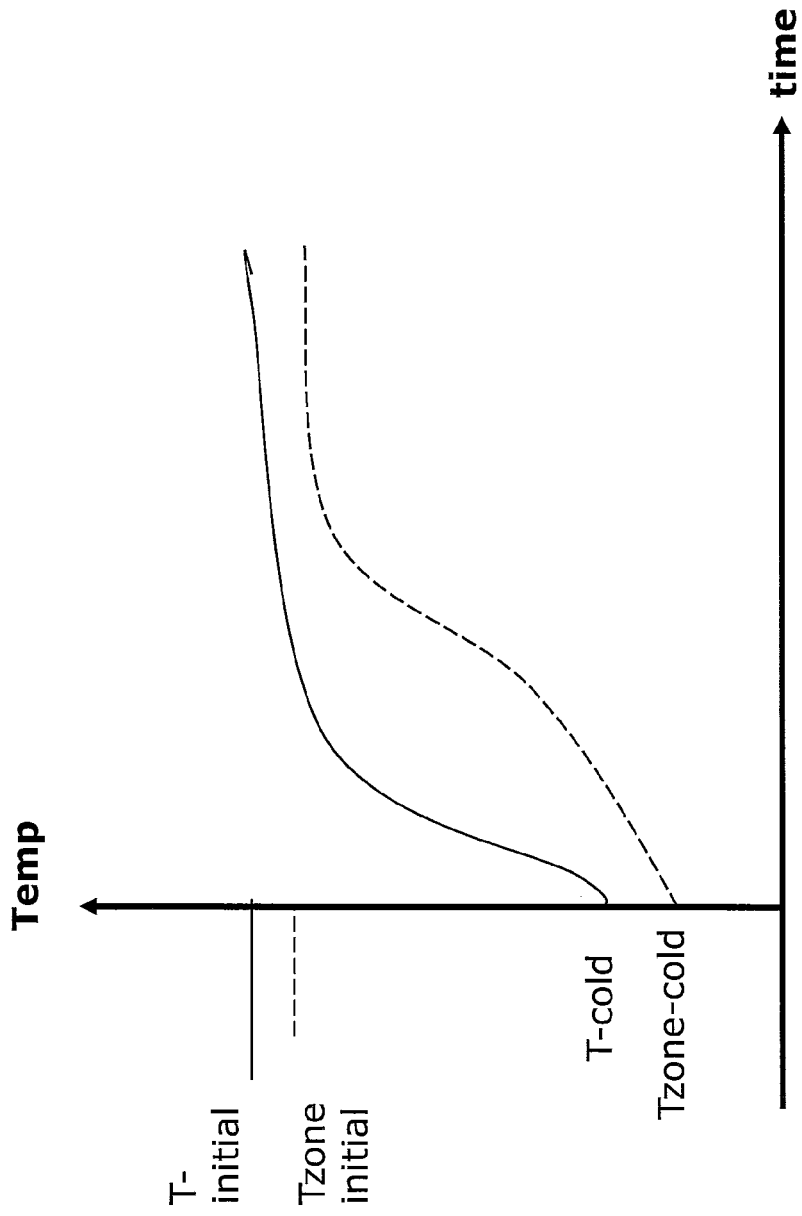


Fig. 7

REFERENCES CITED IN THE DESCRIPTION

This list of references cited by the applicant is for the reader's convenience only. It does not form part of the European patent document. Even though great care has been taken in compiling the references, errors or omissions cannot be excluded and the EPO disclaims all liability in this regard.

Non-patent literature cited in the description

- **MURRAY.** Noninvasive Imaging Techniques in the Assessment of Scleroderma Spectrum disorders. *Arthritis Rheumatism*, 15 August 2009, vol. 61 (8), 1103-1111 [0004]

专利名称(译)	检查车身零件表面温度的方法和装置		
公开(公告)号	EP2627242B1	公开(公告)日	2019-12-04
申请号	EP2010858471	申请日	2010-10-14
申请(专利权)人(译)	在性能AB冷		
当前申请(专利权)人(译)	在性能AB冷		
[标]发明人	LINNE ANDERS		
发明人	LINNÉ, ANDERS		
IPC分类号	A61B5/01 G01K1/00 G01K13/00 A61B5/00 A61B5/026		
CPC分类号	A61B5/01 A61B5/0261 A61B5/0075 A61B5/0077 A61B5/015 A61B5/70		
其他公开文献	EP2627242A4 EP2627242A1		
外部链接	Espacenet		

摘要(译)

身体部位的血液循环可能会受到各种因素的影响，例如烧伤，振动，吸烟，药物，身体活动，粘连，医疗，针灸，光疗，环境温度，扭伤和骨折等受伤，疾病和各种因素。食品。由于这种因素，本发明涉及一种用于检查身体部位的表面温度的方法。根据本发明的方法包括：初始阶段，其中身体部位被放置在背景屏幕中并用热像仪照相；暴露时期，其中身体部位暴露于制冷剂达预定的暴露时间；恢复期，其中。将哪个身体部位重新放置在背景屏幕中，并用热像仪照相或拍摄。本发明还涉及一种根据该方法检查身体部位的表面温度的系统。该设备包括连接到计算机的热像仪和背景屏幕，可以查找和扫描身体部位。身体部位的血液循环可能会受到各种因素的影响，例如烧伤，振动，吸烟，药物，身体活动，粘连，医疗，针灸，光疗，环境温度，扭伤和骨折等受伤，疾病和各种因素。食品。由于这种因素，本发明涉及一种用于检查身体部位的表面温度的方法。根据本发明的方法包括：初始阶段，其中身体部位被放置在背景屏幕中并用热像仪照相；暴露时期，其中身体部位暴露于制冷剂达预定的暴露时间；恢复期，其中。将哪个身体部位重新放置在背景屏幕中，并用热像仪照相或拍摄。本发明还涉及一种根据该方法检查身体部位的表面温度的系统。该设备包括连接到计算机的热像仪和背景屏幕，可以查找和扫描身体部位。

