

(19) World Intellectual Property Organization
International Bureau



(43) International Publication Date
8 September 2006 (08.09.2006)

PCT

(10) International Publication Number
WO 2006/094215 A1

- (51) International Patent Classification:
A61B 5/00 (2006.01) A61B 5/1455 (2006.01)
- (21) International Application Number:
PCT/US2006/007668
- (22) International Filing Date: 2 March 2006 (02.03.2006)
- (25) Filing Language: English
- (26) Publication Language: English
- (30) Priority Data:
11/072,682 3 March 2005 (03.03.2005) US
- (71) Applicant (for all designated States except US): NELL-COR PURITAN BENNETT INCORPORATED [US/US]; 4280 Hacienda Drive, Pleasanton, California 94588 (US).
- (72) Inventor; and
- (75) Inventor/Applicant (for US only): BAKER, Clark, R., Jr. [US/US]; 18493 Magee Way, Casro Valley, California 94546 (US).
- (74) Agent: SLAYDEN, Bruce, W., II; BAKER BOTTS L.L.P., 1500 San Jacinto Center, 98 San Jacinto Blvd., Austin, Texas 78701 (US).

- (81) Designated States (unless otherwise indicated, for every kind of national protection available): AE, AG, AL, AM, AT, AU, AZ, BA, BB, BG, BR, BW, BY, BZ, CA, CH, CN, CO, CR, CU, CZ, DE, DK, DM, DZ, EC, EE, EG, ES, FI, GB, GD, GE, GH, GM, HR, HU, ID, IL, IN, IS, JP, KE, KG, KM, KN, KP, KR, KZ, LC, LK, LR, LS, LT, LU, LV, LY, MA, MD, MG, MK, MN, MW, MX, MZ, NA, NG, NI, NO, NZ, OM, PG, PH, PL, PT, RO, RU, SC, SD, SE, SG, SK, SL, SM, SY, TJ, TM, TN, TR, TT, TZ, UA, UG, US, UZ, VC, VN, YU, ZA, ZM, ZW.
- (84) Designated States (unless otherwise indicated, for every kind of regional protection available): ARIPO (BW, GH, GM, KE, LS, MW, MZ, NA, SD, SL, SZ, TZ, UG, ZM, ZW), Eurasian (AM, AZ, BY, KG, KZ, MD, RU, TJ, TM), European (AT, BE, BG, CH, CY, CZ, DE, DK, EE, ES, FI, FR, GB, GR, HU, IE, IS, IT, LT, LU, LV, MC, NL, PL, PT, RO, SE, SI, SK, TR), OAPI (BF, BJ, CF, CG, CI, CM, GA, GN, GQ, GW, ML, MR, NE, SN, TD, TG).

Declarations under Rule 4.17:

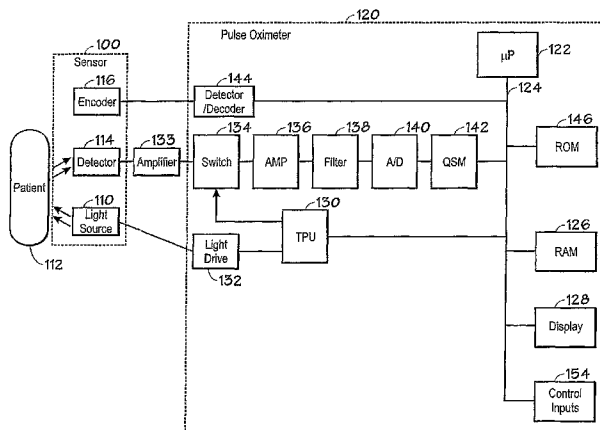
- as to applicant's entitlement to apply for and be granted a patent (Rule 4.17(ii))
- as to the applicant's entitlement to claim the priority of the earlier application (Rule 4.17(iii))

Published:

- with international search report

[Continued on next page]

(54) Title: METHOD FOR ENHANCING PULSE OXIMETRY CALCULATIONS IN THE PRESENCE OF CORRELATED ARTIFACTS



(57) Abstract: A method for determining a physiological parameter in the presence of correlated artifact, including obtaining two digital waveforms, x and y, the waveforms being representative of the absorption of two wavelengths of electromagnetic energy received from a blood-perfused tissue, and where each of the waveforms has a component corresponding to a plethysmographic waveform and a component corresponding to the correlated artifact; calculating several weighted difference waveforms of the form $x - R \cdot y$, where R is a multiplier, by varying R over a range; evaluating the several weighted difference waveforms using a shape characteristic of the weighted difference waveform; identifying a weighted difference waveform most closely representative of and one most different from the plethysmographic waveform; determining a pleth-based physiological parameter using the waveform most closely representative of the plethysmographic waveform; determining at least one artifact-based physiological parameter using the waveform most different from the plethysmographic waveform; and rejecting other possible candidate values for the pleth-based physiological parameter using the artifact-based physiological parameter.

WO 2006/094215 A1



-
- *before the expiration of the time limit for amending the claims and to be republished in the event of receipt of amendments*
- For two-letter codes and other abbreviations, refer to the "Guidance Notes on Codes and Abbreviations" appearing at the beginning of each regular issue of the PCT Gazette.*

METHOD FOR ENHANCING PULSE OXIMETRY CALCULATIONS IN THE PRESENCE OF CORRELATED ARTIFACTS

BACKGROUND OF THE INVENTION

The present invention relates in general to pulse oximetry, and in particular to
5 the processing of signals generated by a pulse oximeter.

A pulse oximeter is typically used to measure various blood characteristics including the blood oxygen saturation of hemoglobin in arterial blood and the pulse rate of the patient. Measurement of these characteristics has been accomplished by use of a non-invasive sensor that passes light through a portion of a patient's blood perfused tissue and
10 photo-electrically senses the absorption and scattering of light in such tissue. The amount of light absorbed and scattered is then used to estimate the amount of blood constituent in the tissue using various algorithms known in the art. The "pulse" in pulse oximetry comes from the time varying amount of arterial blood in the tissue during a cardiac cycle. The signal processed from the sensed optical measurement is the familiar plethysmographic waveform,
15 which corresponds with the cyclic attenuation of optical energy through a portion of a patient's blood perfused tissue.

Various physiological and/or external factors can adversely impact the accuracy and/or the reliability of physiological parameters that are estimated by a pulse oximeter. These undesirable factors are sometimes referred to as artifacts. Artifacts in
20 general and correlated artifacts in particular can be caused by motion, respiratory artifact, or electronic interference. Correlated artifact is an artifact that perturbs more than one of the signals that are provided by an oximeter sensor, and where the perturbations are largely correlated between those signals.

It is desirable for a pulse oximetry system to be able to perform its calculations
25 in the presence of correlated artifacts.

BRIEF SUMMARY OF THE INVENTION

The present invention provides a pulse oximeter that has the capability of performing calculations in the presence of correlated artifacts. The embodiments of the present invention provide a method of combining the correlated artifacts from multiple

signals so as to cancel or reduce the amplitude of the artifact in the combined signal, wherein the weights for the combining are determined by evaluation of pulse shape characteristics in the combined signal.

In one aspect, the present invention provides a method for determining a physiological parameter in the presence of correlated artifact. The method includes obtaining two digital waveforms, x and y , the waveforms being representative of the absorption of two wavelengths of electromagnetic energy received from a blood-perfused tissue, and where each of the waveforms has a component corresponding to a plethysmographic waveform and a component corresponding to the correlated artifact; calculating several weighted difference waveforms of the form $x - R \cdot y$, where R is a multiplier, by varying R over a range; evaluating the several weighted difference waveforms using a shape characteristic of the weighted difference waveform; identifying a weighted difference waveform most closely representative of the plethysmographic waveform; identifying a weighted difference waveform most different from the plethysmographic waveform; determining a pleth-based physiological parameter using the waveform most closely representative of the plethysmographic waveform; determining at least one artifact-based physiological parameter using the waveform most different from the plethysmographic waveform; and rejecting other possible candidate values for the pleth-based physiological parameter using the artifact-based physiological parameter.

For a fuller understanding of the nature and advantages of the embodiments of the present invention, reference should be made to the following detailed description taken in conjunction with the accompanying drawings.

BRIEF DESCRIPTION OF THE DRAWINGS

Fig. 1 is a block diagram of an exemplary oximeter.

Fig. 2 is a block diagram of the signal processing architecture of a pulse oximeter in accordance with one embodiment of the present invention.

Fig. 3 is a block diagram of the signal processing architecture of a pulse oximeter in accordance with one embodiment of the present invention for performing calculations in the presence of correlated artifacts.

Fig. 4 is an exemplary graph of IR and Red plethysmograph at a saturation of approximately 94 percent, shown corrupted with a sinusoidal artifacts of equal magnitudes in both channels, which artifacts would yield a saturation of approximately 80 percent.

Fig. 5 is an exemplary graph of skewness of the weighted difference signal.

5 Fig. 6 is an exemplary FFT graph of IR and Red plethysmograph, reflecting a pulse rate of approximately 85 beats per minutes ("BPM"), with harmonics, and a 115 BPM sinusoid.

Fig. 7 is an exemplary frequency domain histogram of saturation (vs. pulse rate) values obtainable by one of multiple methods. The histogram reflects two potential saturation estimates, one at approximately 80 percent (artifact) and the other at 95 percent (pulse).
10

DETAILED DESCRIPTION OF THE INVENTION

The methods and systems in accordance with the embodiments of the present invention are directed towards enhancing pulse oximetry calculations in the presence of correlated artifact(s). The invention is particularly applicable to and will be explained by reference to measurements of oxygen saturation of hemoglobin in arterial blood and pulse or heart rate, as in pulse oximeter monitors and pulse oximetry sensors.
15

A typical pulse oximeter measures two physiological parameters, percent oxygen saturation of arterial blood hemoglobin (SpO_2 or sat) and pulse rate. Oxygen saturation can be estimated using various techniques. In one common technique, the photocurrent generated by the photo-detector is conditioned and processed to determine the ratio of modulation ratios (ratio of ratios) of the red to infrared (IR) signals. This modulation ratio has been observed to correlate well to arterial oxygen saturation. Pulse oximeters and sensors may be empirically calibrated by measuring the modulation ratio over a range of in vivo measured arterial oxygen saturations (SaO_2) on a set of patients, healthy volunteers, or animals. The observed correlation is used in an inverse manner to estimate blood oxygen saturation (SpO_2) based on the measured value of modulation ratios of a patient. The estimation of oxygen saturation using modulation ratios is described in U.S. Patent No. 5,853,364, entitled "METHOD AND APPARATUS FOR ESTIMATING
25

PHYSIOLOGICAL PARAMETERS USING MODEL-BASED ADAPTIVE FILTERING,” issued December 29, 1998, and U.S. Patent No. 4,911,167, entitled “METHOD AND APPARATUS FOR DETECTING OPTICAL PULSES,” issued March 27, 1990, which are both herein incorporated by reference in their entirety for all purposes. The relationship
5 between oxygen saturation and modulation ratio is described, for example, in U.S. Patent No. 5,645,059, entitled “MEDICAL SENSOR WITH MODULATED ENCODING SCHEME,” issued July 8, 1997, which is herein incorporated by reference in its entirety for all purposes. Most pulse oximeters extract the plethysmographic signal having first determined saturation or pulse rate, both of which are susceptible to interference.

10 Fig. 1 is a block diagram of one embodiment of a pulse oximeter that may be configured to implement the embodiments of the present invention. Light from light source 110 passes into a blood perfused tissue 112, and is scattered and detected by photodetector 114. A sensor 100 containing the light source and photodetector may also contain an encoder 116 which provides signals indicative of the wavelength of light source 110 to allow the
15 oximeter to select appropriate calibration coefficients for calculating oxygen saturation. Encoder 116 may, for instance, be a resistor.

Sensor 100 is connected to a pulse oximeter 120. The oximeter includes a microprocessor 122 connected to an internal bus 124. Also connected to the bus are a RAM memory 126 and a display 128. A time processing unit (TPU) 130 provides timing control
20 signals to light drive circuitry 132 which controls when light source 110 is illuminated, and if multiple light sources are used, the multiplexed timing for the different light sources. TPU 130 also controls the gating-in of signals from photodetector 114 through an amplifier 133 and a switching circuit 134. These signals are sampled at the proper time, depending upon which of multiple light sources is illuminated, if multiple light sources are used. The
25 received signal is passed through an amplifier 136, a low pass filter 138, and an analog-to-digital converter 140. The digital data is then stored in a queued serial module (QSM) 142, for later downloading to RAM 126 as QSM 142 fills up. In one embodiment, there may be multiple parallel paths of separate amplifier, filter and A/D converters for multiple light wavelengths or spectra received.

Based on the value of the received signals corresponding to the light received by photodetector 114, microprocessor 122 will calculate the oxygen saturation using various algorithms. These algorithms require coefficients, which may be empirically determined, corresponding to, for example, the wavelengths of light used. These are stored in a ROM 5 146. In a two-wavelength system, the particular set of coefficients chosen for any pair of wavelength spectra is determined by the value indicated by encoder 116 corresponding to a particular light source in a particular sensor 100. In one embodiment, multiple resistor values may be assigned to select different sets of coefficients. In another embodiment, the same resistors are used to select from among the coefficients appropriate for an infrared source 10 paired with either a near red source or far red source. The selection between whether the near red or far red set will be chosen can be selected with a control input from control inputs 154. Control inputs 154 may be, for instance, a switch on the pulse oximeter, a keyboard, or a port providing instructions from a remote host computer. Furthermore, any number of methods or algorithms may be used to determine a patient's pulse rate, oxygen saturation or any other 15 desired physiological parameter.

The brief description of an exemplary pulse oximeter set forth above, serves as a basis for describing the methods for enhancing pulse oximetry calculation in the presence of correlated artifact, which are described below.

The embodiments of the present invention may be implemented as a part of a 20 larger signal processing system used to process optical signals for the purposes of operating a pulse oximeter. Such a signal processing system is shown in Fig. 2, which is a block diagram 200 of a signal processing architecture of a pulse oximeter in accordance with one embodiment of the present invention. The signal processing architecture 200 in accordance with the embodiments of the present invention may be implemented as a software algorithm 25 that is executed by a processor of a pulse oximeter. In addition to calculating oxygen saturation and pulse rate, the system 200 measures various signal metrics that are used to determine filter weighting coefficients. Signal metrics are things that indicate if a pulse is likely a plethysmograph or noise. Signal metrics may be related to, for example, frequency (is it in the range of a human heart rate), shape (is it shaped like a cardiac pulse), rise time, etc. The system shown in Fig. 2 calculates both the oxygen saturation, and the pulse rate, as 30

well as detecting venous pulsation and sensor off and lost pulse conditions, which are described separately below.

I. Oxygen Saturation Calculation

5 Block 202 represents the operation of the Signal Conditioning block. The digitized red and IR signals or waveforms are received and are conditioned in this block by: (1) taking the 1st derivative to get rid of baseline shift, (2) low pass filtering with fixed coefficients, and (3) dividing by a DC value to preserve the ratio. The function of the Signal Conditioning subsystem is to emphasize the higher frequencies that occur in the human
10 plethysmograph and to attenuate low frequencies in which motion artifact is usually concentrated. The Signal Conditioning subsystem selects its filter coefficients (wide or narrow band) based on hardware characteristics identified during initialization. Inputs to block 202 are digitized red and IR signals, and its outputs are pre-processed red and IR signals.

15 Block 204 represents the operation of the Pulse Identification and Qualification block. The low pass filtered digitized red and IR signals are provided to this block to identify pulses, and qualify them as likely arterial pulses. This is done using a pre-trained neural network, and is primarily done on the IR signal. The pulse is identified by examining its amplitude, shape and frequency. An input to this block is the average pulse
20 period from block 208. This function changes the upfront qualification using the pulse rate. The output of block 204 indicates the degree of arrhythmia and individual pulse quality. Inputs to block 204 are: (1) pre-processed red and IR signals, (2) Average pulse period, and (3) lowpass waveforms from the low pass filter. Outputs from block 204 include: (1) degree of arrhythmia, (2) pulse amplitude variations, (3) individual pulse quality, (4) pulse beep
25 notification, and (5) qualified pulse periods and age.

 Block 206 is used to compute signal quality metrics. This block (block 206) determines the pulse shape (*e.g.*, derivative skew), period variability, pulse amplitude and variability, Ratio of Ratios variability, and frequency content relative to pulse rate. Inputs to block 206 include: (1) raw digitized red and IR signals, (2) degree of arrhythmia, individual

pulse quality, pulse amplitude variation, (3) pre-processed red and IR signals, and (4) average pulse period. Outputs from block 206 include: (1) lowpass and ensemble averaging filter weights, (2) metrics for sensor off detector, (3) normalized pre-processed waveforms, and (4) percent modulation.

5 Block 208 computes average pulse periods. This block (block 208) calculates the average pulse period from the pulses received. Inputs to block 208 include: qualified pulse periods and age. An output from block 208 includes the average pulse period.

 Block 210 represents the functioning of the lowpass filter and ensemble averaging subsystem. Block 210 low pass filters and ensemble averages normalized and
10 preprocessed waveforms processed by block 206. The weights for the low pass filter are determined by the Signal Metrics block 206. The signal is also ensemble averaged (this attenuates frequencies other than those of interest near the pulse rate and its harmonics), with the ensemble averaging filter weights also determined by Signal Metrics block 206. Less
15 weight is assigned if the signal is flagged as degraded. More weight is assigned if the signal is flagged as arrhythmic because ensemble-averaging is not appropriate during arrhythmia. Red and IR waveforms are processed separately, but with the same filtering weights. The filtering is delayed (*e.g.*, approximately one second) to allow the signal metrics to be calculated first.

 The filters use continuously variable weights. If samples are not to be
20 ensemble-averaged, then the weighting for the previous filtered samples is set to zero in the weighted average, and the new samples are still processed through the signal processing algorithm. This block tracks the age of the signal and/or the accumulated amount of filtering (*e.g.*, sum of response times and delays in processing). Too old a result will be flagged, if good pulses haven't been detected for a while. The inputs to block 210 include: (1)
25 normalized pre-processed red and IR signals, (2) average pulse period, (3) low pass filter weights and ensemble averaging filter weights, (4) ECG triggers, if available, and (5) IR fundamental, for zero-crossing triggers. Outputs from block 210 include: (1) filtered red and IR signals, and (2) age.

 Block 212 represents operations that estimate the ratio-of-ratios variance for
30 the filtered waveforms and calculate averaging weights. The variable weighting for the filter

is controlled by the ratio-of-ratios variance. The effect of this variable-weight filtering is that the ratio-of-ratios changes slowly as artifact increases and changes quickly as artifact decreases. The subsystem has two response modes, including fast and normal modes. For example, filtering in the fast mode targets an age metric of 3 seconds, and the target age may be 5 seconds in the normal mode. In the fast mode, the minimum weighting of the current value is clipped at a higher level. In other words, a low weight is assigned to the newest ratio-of-ratios calculation if there is noise present, and a high weight if no noise is present. The inputs to block 212 include: (1) filtered red and IR signals and age, (2) calibration coefficients, and (3) response mode (*e.g.*, user speed settings). Outputs from block 212 include an averaging weight for ratio-of-ratios calculation. The averaging weight is used as an input to block 214 along with filtered IR and Red waveforms to calculate averaged ratio of ratios and age.

Block 216 represents operations that calculate oxygen saturation. Saturation is calculated using an algorithm with the calibration coefficients and averaged ratio of ratios. Inputs to block 116 include: (1) Averaged Ratio-of-Ratios, and (2) calibration coefficients. An output from block 216 is the oxygen saturation value.

II. Pulse Rate Calculation

Block 218 low pass filters and ensemble averages the signal(s) conditioned by block 202, for the pulse rate identification. The weights for the low pass filter are determined by the Signal Metrics block 206. The signal is also ensemble averaged (this attenuates frequencies other than those of interest near the pulse rate and its harmonics), with the ensemble averaging filter weights also determined by Signal Metrics block 206. Less weight is assigned if the signal is flagged as degraded. More weight is assigned if the signal is flagged as arrhythmic because ensemble-averaging is not appropriate during arrhythmia. Red and IR are processed separately, but with the same filtering weights. The filtering is delayed (*e.g.*, approximately one second) to allow the signal metrics to be calculated first.

The filters use continuously variable weights. If samples are not to be ensemble-averaged, then the weighting for the previous filtered samples is set to zero in the weighted average, and the new samples are still processed through the signal processing

algorithm. This block (block 218) tracks the age of the signal and/or the accumulated amount of filtering (sum of response times and delays in processing). Too old a result will be flagged (if good pulses haven't been detected for awhile). Inputs to block 218 include: (1) pre-processed red and IR signals, (2) average pulse period, (3) lowpass filter weights and ensemble averaging filter weights, (4) ECG triggers, if available, and (5) IR fundamental, for zero-crossing triggers. Outputs from block 218 include: (1) filtered red and IR signals and (2) age.

Block 220, or the Filtered Pulse Identification and Qualification block, calculates the pulse periods from the filtered waveforms, and its results are used only when a pulse is disqualified by block 204. Inputs to block 220 include: (1) filtered red and IR signals and age, (2) average pulse period, (3) front end ID or noise floor, (4) and the kind or type of sensor that is used to detect the IR and Red energies. Output from block 220 includes qualified pulse periods and age.

Block 222, or the Average Pulse Periods and Calculate Pulse Rate block, calculates the pulse rate and average pulse period. This block (block 222) receives qualified pulse periods and age as inputs and provides (1) average pulse period and (2) pulse rate as outputs.

III. Venous Pulsation

Block 224, or the Detect Venous Pulsation block receives as inputs the pre-processed red and IR signals and age from Block 202, and pulse rate and provides an indication of venous pulsation as an output. Block 224 also provides an IR fundamental waveform in the time domain using a single-tooth comb filter which is output to the Ensemble Averaging filters (*e.g.*, block 210 and 218). Inputs to block 224 include: (1) filtered red and IR signals and age and (2) pulse rate. Outputs from block 224 include: an indication of venous pulsation and IR fundamental. In one embodiment, block 224 measures the "openness" of an IR-Red Lissajous plot to determine the whether a flag (*e.g.*, Venous_Pulsation) should be set. The output flag (*e.g.*, Venous_Pulsation) is updated periodically (*e.g.*, every second). In addition, the IR fundamental waveform is output to the Ensemble Averaging filters.

IV. Sensor Off

Block 226, or the Detect Sensor-Off and Loss of Pulse Amplitude block, uses a pre-trained neural net to determine whether the sensor is off the surface of the blood-perfused tissue, for example, of a patient. The inputs to the neural net are metrics that quantify several aspects of the behavior of the IR and Red values over the last several seconds. Samples are ignored by many of the system 200's subsystems while the signal state is either not indicative of a pulse being present, or indicative that a sensor is not on a monitoring site (*e.g.*, Pulse Present, Disconnect, Pulse Lost, Sensor May be Off, and Sensor Off). Inputs to block 226 include: (1) signal quality metrics, and (2) the oximeter's LED brightness, amplifier gain, and (3) an ID indicating the oximeter's hardware configuration. Outputs from block 226 include a signal state including sensor-off indication.

In the architecture 200 described above, the function of block 226, Pulse lost and Pulse Search indications, may be derived using information from several parts of the signal processing architecture. In addition, the signal processing architecture will not use the received IR and red waveforms to compute oxygen saturation or pulse rate if a valid sensor is not connected, or if the Sensor-Off or Loss of Pulse Amplitude are detected by the signal processing architecture.

The brief description of an embodiment of a pulse oximeter signal processing architecture in accordance with the present invention, set forth above, serves as a basis for describing the enhanced pulse oximetry calculations in the presence of correlated artifact(s), as is generally depicted by blocks 216 and 222 above.

Fig. 3 is a block diagram 300 of the signal processing architecture of a pulse oximeter in accordance with one embodiment of the present invention for performing enhanced saturation and/or pulse rate calculations in the presence of correlated artifacts. It should be realized that the operations depicted by the diagram 300 need not be carried out in the order shown in Fig. 3. A person skilled in the art of pulse oximetry signal processing will realize that the operations of Fig. 3 may be carried out in any order, or that steps may be combined, or even skipped. These various permutations of the operation in accordance with the diagram of Fig. 3 are also within the scope of the present methodology. In general, the block diagram 300 shows that in block 302, two digitized waveforms X and Y are received.

In block 304, the two waveforms are combined to form a weighted difference waveform having the form $X-R*Y$, where R is a multiplier. The value of R is varied and thus a series of weighted difference waveforms are formed. In block 306, the combined waveforms are evaluated using a characteristic of the pulse shape. For example, one such pulse shape characteristic is the skew of the combined waveform. In blocks 308 and 310, the combined waveform most closely representative of a plethysmograph and the waveform least representative of a plethysmograph are identified. Having identified these two waveforms (i.e., most and least representative), the most representative waveform is used to determine pulse rate and/or oxygen saturation (block 312). Also, the least representative waveform may optionally be used to determine an artifact-based pulse rate and/or oxygen saturation (block 314), and the artifact-based estimates of pulse rate and/or oxygen saturation may optionally be used to disregard other possible estimates of pulse rate and/or oxygen saturation (block 316).

The operation of diagram 300 is described in further detail below. The method for enhancing saturation and/or pulse rate calculation in the presence of correlated artifact, includes the following steps, namely:

1. Calculating two or more digital waveforms, where the two waveforms correspond to the absorption of two or more wavelengths of electromagnetic energy received from a pulsatile tissue bed;
2. Filtering the waveforms to emphasize one or more characteristic of the pulse shape that differentiates the waveform from correlated artifact. For example, applying a first difference filter to a normal or typical human plethysmograph produces a filtered waveform with a skewness between -1 and -2 in most subjects, whereas applying the same filter to a motion artifact signal produces a filtered waveform with a near-zero skewness.
3. Calculating multiple weighted differences between the filtered waveforms, X and Y, of the form $X- R*Y$.
4. Varying R over a range such that some value of R results in a weighted difference waveform that minimizes the correlated artifact.

5. Calculating the skewness or other shape characteristic of the weighted difference waveforms over an appropriate time interval (e.g., at least one pulse period).

6. Selecting the value of R that produces a weighted difference waveform having a shape that is least characteristic of a pulse. This waveform most closely resembles the artifact.

7. Calculating a saturation value using the waveform of "6" above.

8. Using the saturation value of "7" above for selecting from among multiple saturation estimates calculated by other saturation calculation algorithms.

9. Calculating saturation from the two or more filtered waveforms, but excluding those components contained in the weighted difference waveform having a shape that is least characteristic of a pulse. The exclusion operation may be performed in various ways. For example, the strongest one or more frequencies contained in the least characteristic weighted difference waveform may be the excluded frequencies. Alternatively, the least characteristic waveform (i.e. per "6" above) may be canceled from the two or more filtered waveforms using a cancellation filter.

10. Selecting the weighted difference waveform of "6" above having a skew that is most characteristic of a pulse.

11. Using the weighted difference waveform of "10" above to calculate a pulse rate.

12. Calculating oxygen saturation using the waveform of "10" above and using only those components of the waveform used for calculating the pulse rate. For example, the useful components may be isolated in a manner similar to the exclusion operation of "9" above.

13. Calculating the skewness or other shape characteristic of the weighted difference waveforms over an appropriate time interval (e.g., at least one pulse period), wherein the total absolute difference in skewness between multiple consecutive values over a selected range of R is used as a measure of the complexity of the pulse

oximetry signal, where overly complex signals are rejected as unsuitable for oxygen saturation and/or pulse rate calculation.

14. Combining "13" above, and wherein the measure of complexity is applied to other metrics, such as for example, energy, corresponding to the selected range of R, where overly complex signals are rejected as unsuitable for oxygen saturation and/or pulse rate calculation.

The operation of the enhanced signal processing in accordance with the embodiments of the present invention, which is generally described in conjunction with Fig. 3 above, is further described below in conjunction with Figs. 4-7.

10 Fig. 4 is an exemplary graph of IR and Red plethysmograph at a saturation of approximately 94 percent, shown corrupted with sinusoidal artifacts of equal magnitudes in both channels, which artifacts would yield a saturation of approximately 80 percent.

Fig. 5 is an exemplary graph of skewness of the weighted difference signal.

15 Fig. 6 is an exemplary FFT graph of IR and Red plethysmograph, reflecting a pulse rate of approximately 85 beats per minutes ("BPM"), with harmonics, and a 115 BPM sinusoid.

Fig. 7 is an exemplary frequency domain histogram of saturation (vs. pulse rate) values obtainable by one of multiple methods. The histogram reflects two potential saturation estimates, one at approximately 80 percent (artifact) and the other at 95 percent (pulse).

20 In Fig. 5, the weighted difference waveform (Red - R*IR) having a skewness least-characteristic of a pulse (i.e. zero skewness) occurs for R of approximately 0.7, or a saturation value of approximately 92 percent, which corresponds with the saturation estimate that is made using the method of step 7 above. In step 8, this value of R is used to select the saturation value of 94 percent from the saturation histogram of Fig. 7, and not the possible saturation value of 80 percent (from the saturation histogram of Fig. 7). Using the complexity metrics described in step 13 (i.e., the skewness graph of Fig. 5) and step 14 (for the saturation histogram of Fig. 7) both indicate that the IR and Red waveforms are suitable for pulse oximetry calculations, containing only two primary components, of which only one has a characteristic pulse shape.

30

In Fig. 5, the weighted difference waveform (Red - R*IR) having a skewness most-characteristic of a pulse (i.e., a very non-zero skewness) occurs for R of approximately 0.1, which resulting weighted difference waveform is the inversion of the plethysmograph, and no artifact. This most characteristic waveform may be used to reliably calculate pulse rate in "11," above. In addition, a filter may be used to extract the components of the most-characteristic waveform from the two or more waveforms of "2" above, for use in saturation calculation per "12" above.

In some embodiments of the present invention, pulse shape metrics other than the skewness may be used for the processing of the waveforms. These other metrics include various signal quality metrics described above in conjunction with Block 206 of Fig. 2. In particular, other pulse shape metrics may include: the pulse shape (*e.g.*, derivative skew), period variability, pulse amplitude and variability, Ratio of Ratios variability, and frequency content relative to pulse rate, degree of arrhythmia, individual pulse quality, pulse amplitude variation, the degree of similarity or correlation between the two waveforms, the degree of motion artifact by obtaining a ratio of a current pulse amplitude to the long-term average pulse amplitude of said signals, a ratio of a current pulse amplitude to the previous pulse amplitude, and a ratio of a current pulse period to that of an average pulse period. In addition, other pulse shape metrics such as, the "MIN-MAX-MIN" and the "PATH LENGTH" pulse shape indicators, may also be used.

The "MIN-MAX-MIN" indicator provides for a measure of the arterial pulse shape. The arterial pulse referred to herein is caused by a cardiac cycle commonly referred to a heartbeat. During a typical cardiac cycle, blood pressure rises from a minimum value (MIN) at diastole to a maximum (MAX) at systole. The "MIN-MAX-MIN" indicator is a ratio represented by a fraction having the time it takes the pulse to go from a MAX to a MIN as the numerator and having the time it takes the pulse to go from a MIN to a MAX as the denominator. This indicator provides an indication of the ratio of fall to rise times of arterial pulse. A fundamental fact of human physiology is that in a typical arterial pulse, it takes a shorter time to go from the diastole to systole (MIN to MAX) than it does to go from systole to diastole (MAX to MIN). Recognizing this fundamental physiological aspect, then if the "MIN-MAX-MIN" indicator shows that for a pulse, the rise time is bigger than the fall time,

then this indicates that the sensor's light is being modulated by other than an arterial pulse. The inventor herein has identified that when a pulse's rise time is bigger than its fall time, the light is not modulated by pulsation of evenly distributed arterial blood, but it is most likely that the observed pulse-like phenomenon is due to throbbing of underlying large blood vessels or physical movement of the sensor. It is known that either of these mechanisms may cause large errors in the calibration of the resulting oxygen saturation estimate. Therefore, by analyzing the shape of the arterial pulse, the "MIN-MAX-MIN" indicator determines whether the light modulation is due to a pulsation, or evenly distributed arterial blood, or other phenomenon such as motion.

The "PATH LENGTH" indicator is also indicative of the pulse shape. This indicator provides for a measure of the frequency content of the pulse waveform relative to the pulse rate. While many algorithms may be used to compute "PATH LENGTH," one equation that may be used to compute it is as follows:

$$PathLength = \frac{\sum_{i=0}^{i=Samples\ in\ Pulse-1} |IR_{t-i} - IR_{t-i-1}|}{Pulse_Max - Pulse_Min}$$

High values of this metric indicate that a high proportion of the energy in the pulse is at frequencies higher than the pulse rate. High frequency components in the arterial pulse shape are an indication that light is being modulated by other than arterial pulsations. These high frequency components are also most likely to be caused by movement of the sensor. As described above, it is known that physical movement is a source of error when estimating blood oxygen saturation in pulse oximeters. Therefore, the "PATH LENGTH" indicator, is also a motion and/or pulse shape indicator, which is used to infer that signals that have high frequency components often lead to inaccurate estimates of pulse rate and/or blood oxygen saturation.

Accordingly, as will be understood by those of skill in the art, the present invention which is related to enhancing pulse oximetry calculations in the presence of correlated artifact(s), may be embodied in other specific forms without departing from the essential characteristics thereof. For example, while some aspects of the present embodiments have been described in the time-domain, frequency-based methods are equally

relevant to the embodiments of the present invention. Accordingly, the foregoing disclosure is intended to be illustrative, but not limiting, of the scope of the invention, which is set forth in the following claims.

WHAT IS CLAIMED IS:

1. In an oximeter, a method for determining a physiological parameter in the presence of correlated artifact, comprising:

obtaining two digital waveforms, x and y , said waveforms being representative
5 of the absorption of two wavelengths of electromagnetic energy received from a blood-perfused tissue, and wherein each of said waveforms comprises a component corresponding to a plethysmographic waveform and a component corresponding to the correlated artifact;

calculating a plurality of weighted difference waveforms of the form $x - R*y$,
wherein R is a multiplier, by varying R over a range;

10 evaluating said plurality of weighted difference waveforms using a shape characteristic of said weighted difference waveform;

identifying a weighted difference waveform most closely representative of
said plethysmographic waveform, using said evaluating;

15 identifying a weighted difference waveform most different from said plethysmographic waveform, using said evaluating;

determining a pleth-based physiological parameter using said waveform most
closely representative of said plethysmographic waveform;

determining at least one artifact-based physiological parameter using said
waveform most different from said plethysmographic waveform; and

20 rejecting other possible candidate values for said pleth-based physiological parameter using said artifact-based physiological parameter.

2. The method of claim 1 further comprising, prior to said calculating a
plurality of weighted difference waveforms, processing said waveforms to emphasize at least
one characteristic of a plethysmographic pulse shape that is different from a characteristic of
25 the correlated artifact.

3. The method of claim 1 wherein said physiological parameter is a pulse
rate.

4. The method of claim 1 wherein said physiological parameter is an
oxygen saturation value.

5. The method of claim 1 wherein said other candidates for said pleth-based physiological parameter are determined by other means.

6. The method of claim 1 wherein said evaluating comprises evaluating said weighted difference waveforms over a time interval encompassing at least one pulse
5 period.

7. The method of claim 1 wherein said rejecting is performed in a frequency domain.

8. The method of claim 7 wherein said rejecting comprises excluding the strongest one or more frequencies contained in said waveform most different from said
10 plethysmographic waveform.

9. The method of claim 1 wherein said shape characteristic comprises a measure of the complexity of said digital signals.

10. The method of claim 1 wherein said shape characteristic comprises a measure of the skew of said weighted difference waveforms.

11. The method of claim 1 wherein said shape characteristic is a parameter
15 selected from the group consisting of a measure of the degree of arrhythmia of said waveforms, a measure of the degree of similarity or correlation between said first and second electromagnetic radiation signals, a measure of the degree of motion artifact by obtaining a ratio of a current pulse amplitude to the long-term average pulse amplitude of said
20 waveforms, a ratio of a current pulse amplitude to the previous pulse amplitude of said waveforms, and a ratio of a current pulse period to that of an average pulse period of said waveforms.

12. The method of claim 1 wherein said shape characteristic comprises a measure of the kurtosis of said weighted difference waveforms.

13. The method of claim 1 wherein said shape characteristic comprises a
25 measure of the total absolute change between waveform samples, normalized by a pulse amplitude.

14. The method of claim 1 wherein said shape characteristic comprises a measure of the dicrotic notch.

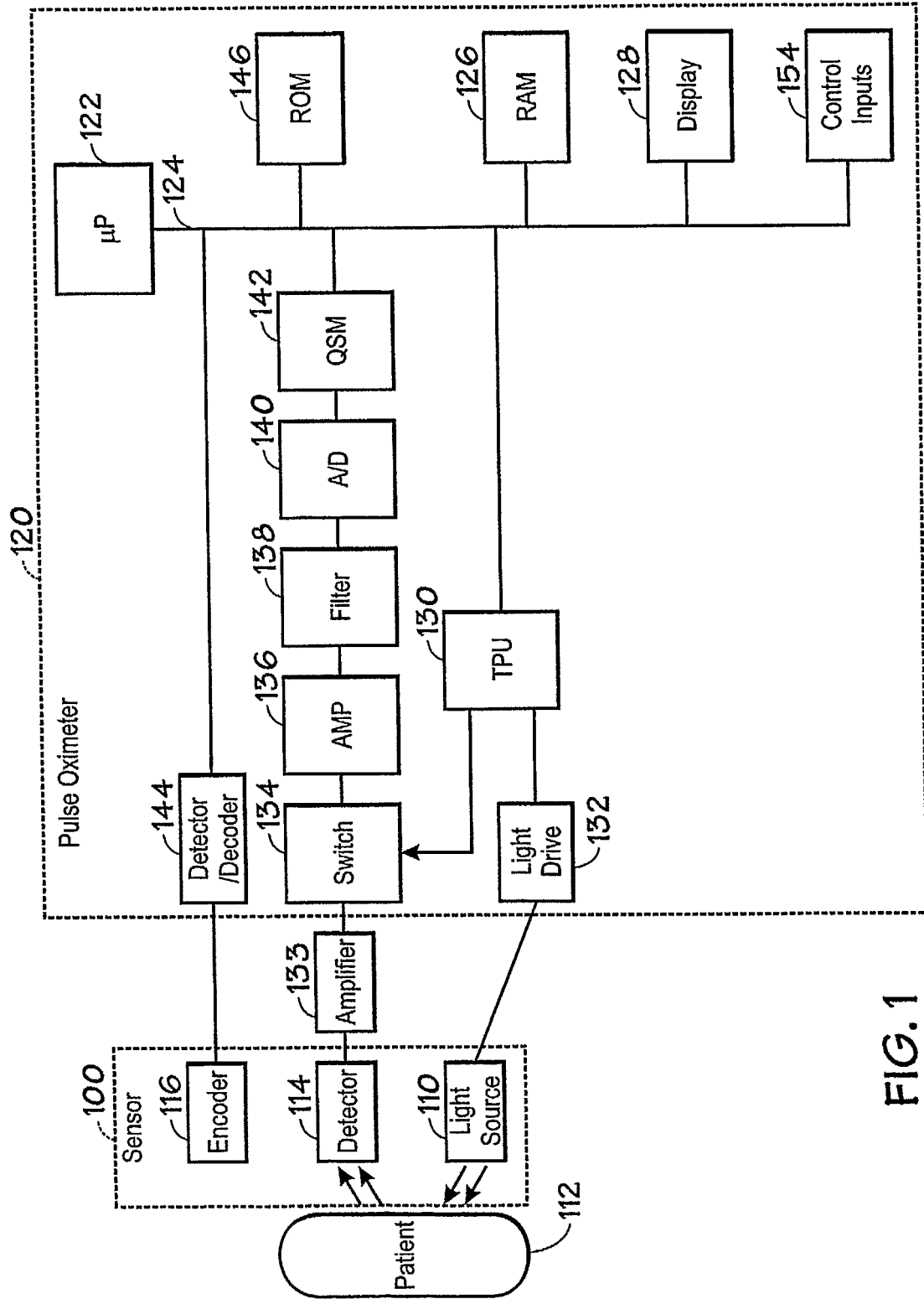


FIG. 1

2/5

200 →

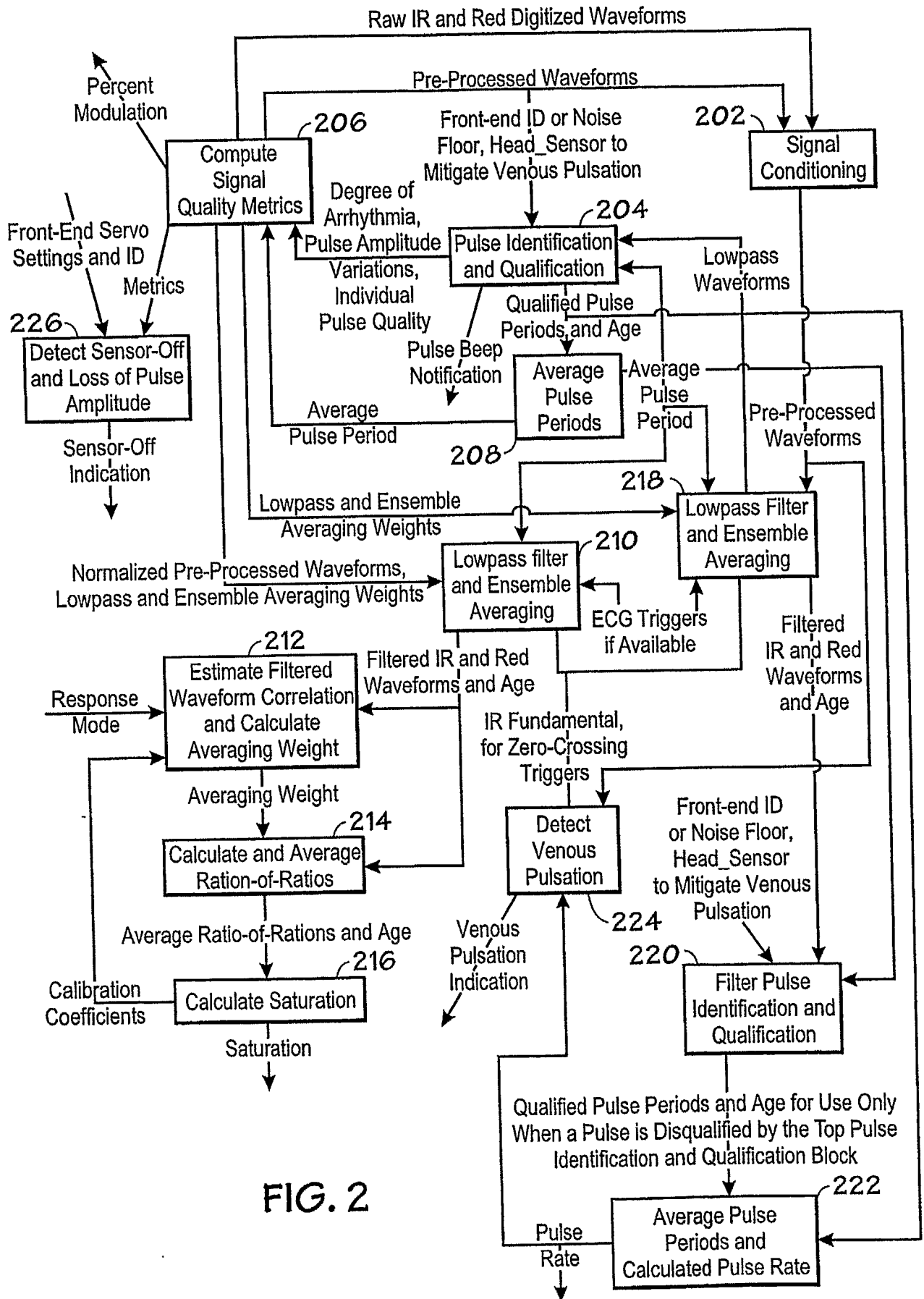


FIG. 2

3/5

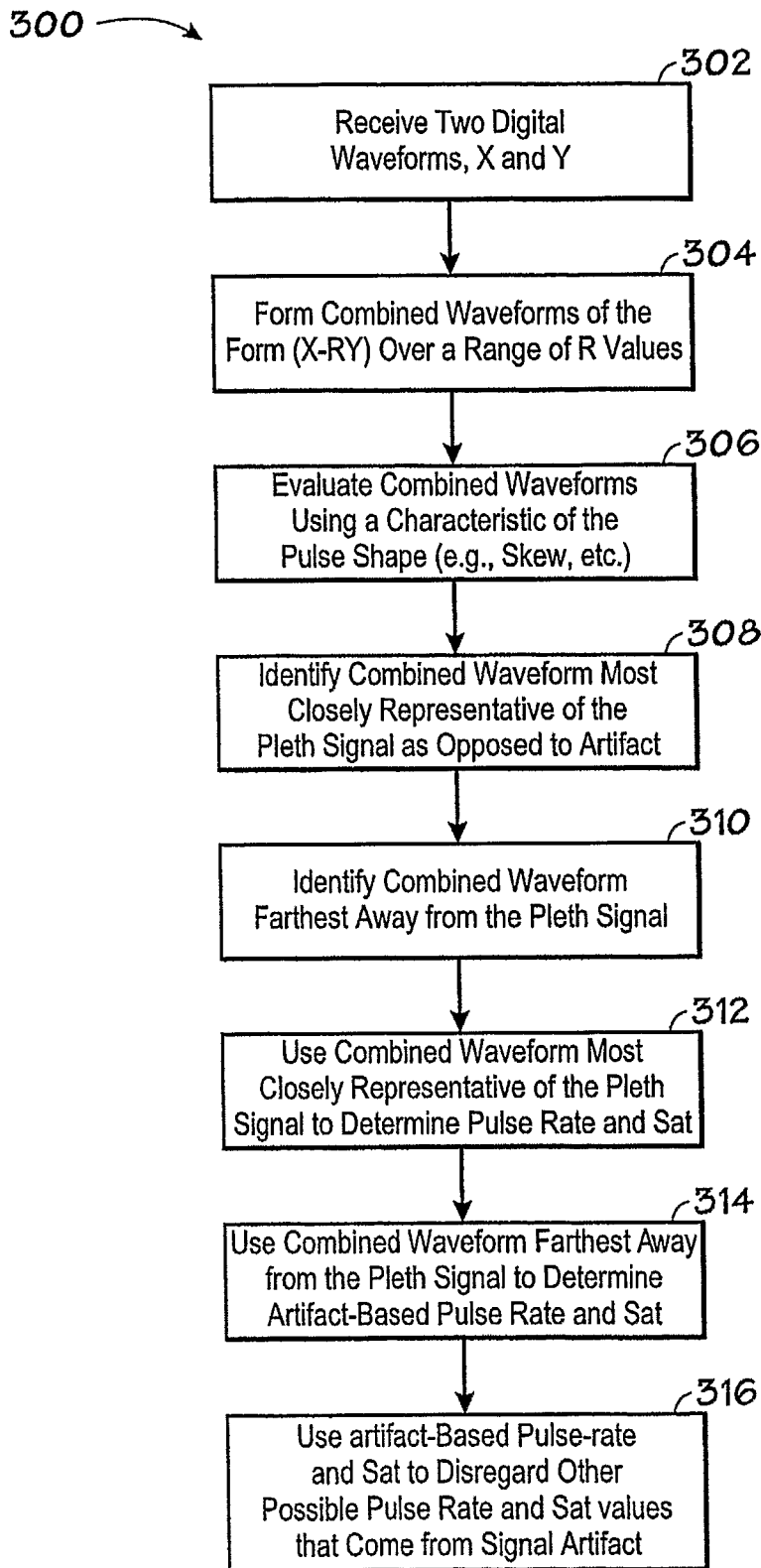


FIG. 3

4/5

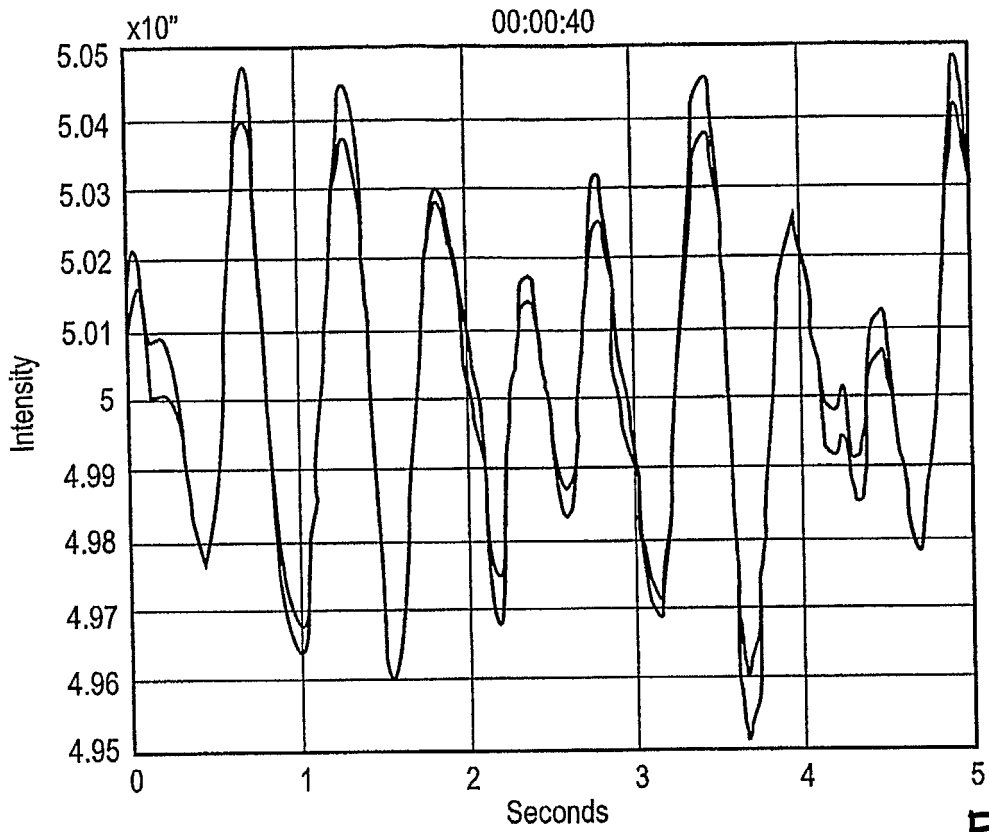


FIG. 4

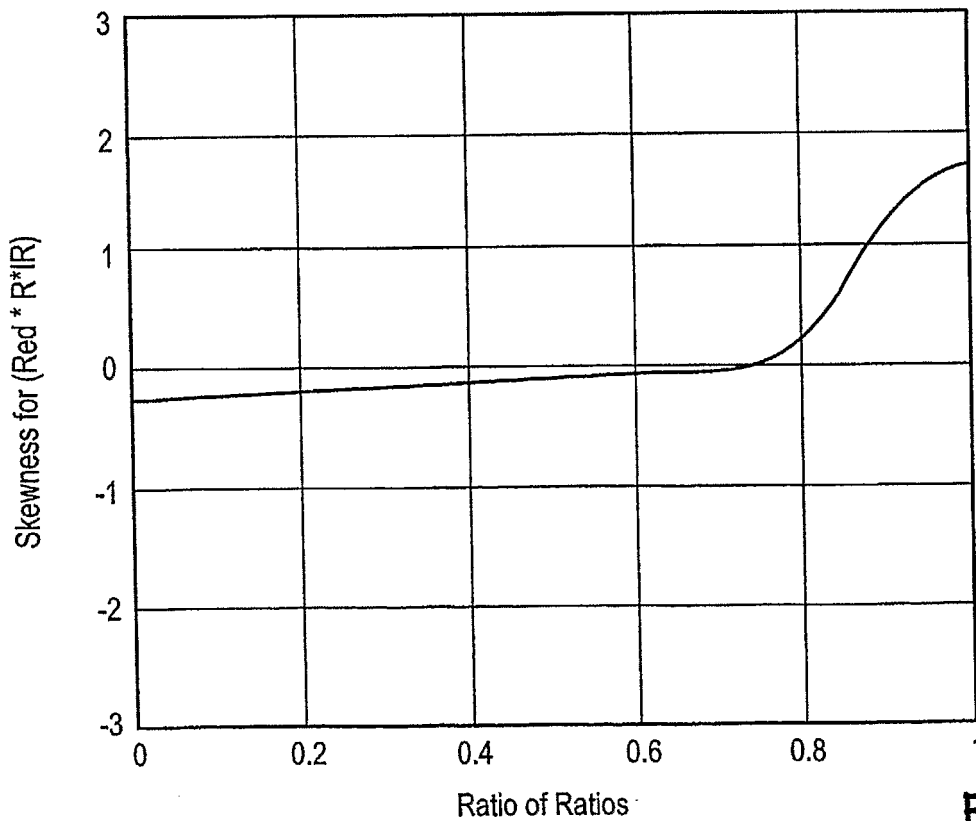


FIG. 5

5/5

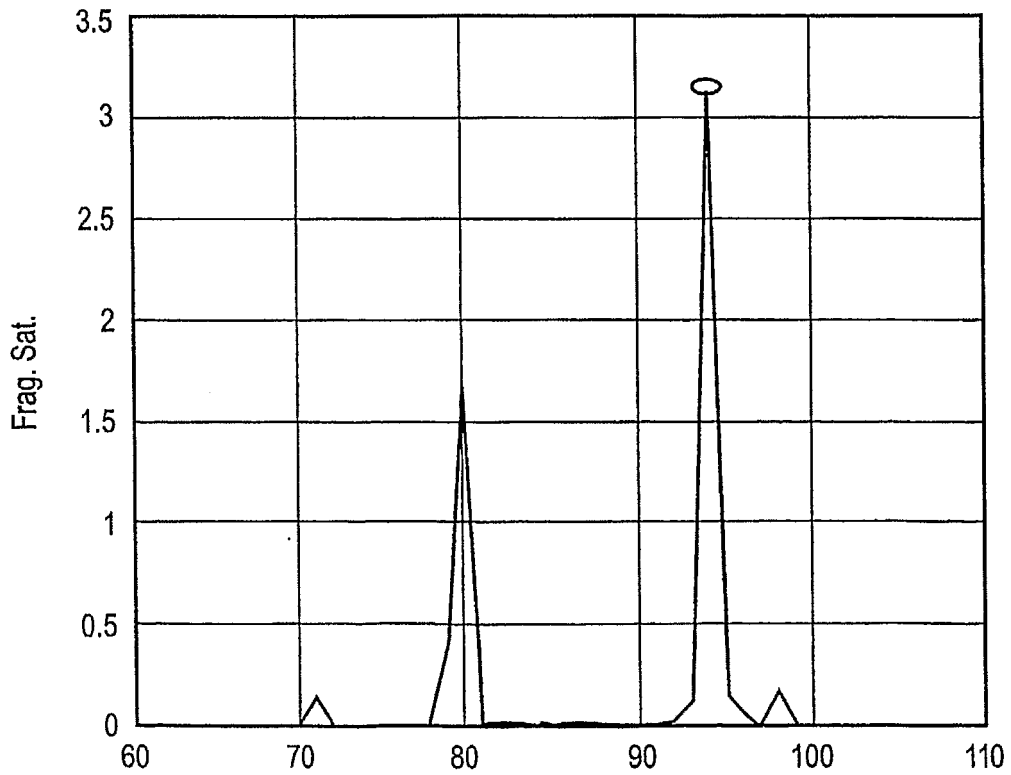
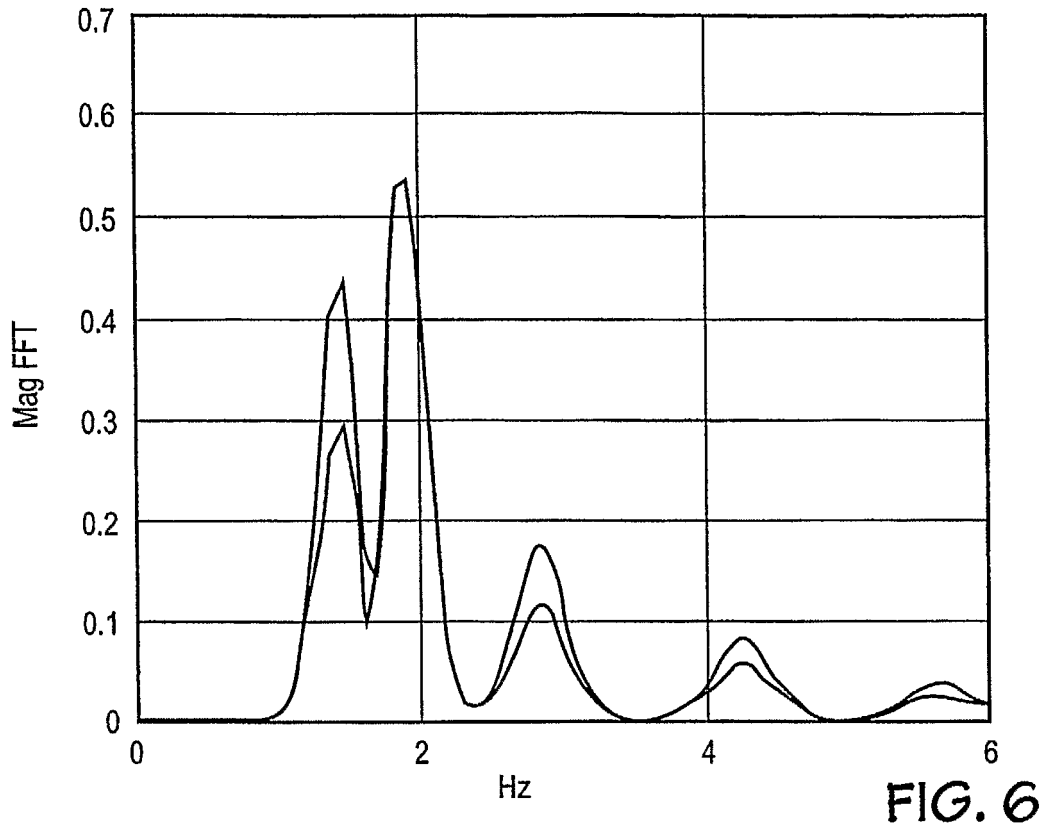


FIG 7

INTERNATIONAL SEARCH REPORT

International application No
PCT/US2006/007668

A. CLASSIFICATION OF SUBJECT MATTER INV. A61B5/00 A61B5/1455		
According to International Patent Classification (IPC) or to both national classification and IPC		
B. FIELDS SEARCHED Minimum documentation searched (classification system followed by classification symbols) A61B		
Documentation searched other than minimum documentation to the extent that such documents are included in the fields searched		
Electronic data base consulted during the international search (name of data base and, where practical, search terms used) EPO-Internal, INSPEC		
C. DOCUMENTS CONSIDERED TO BE RELEVANT		
Category*	Citation of document, with indication, where appropriate, of the relevant passages	Relevant to claim No.
A	US 2003/097049 A1 (DIAB MOHAMED KHEIR ET AL) 22 May 2003 (2003-05-22) paragraphs [0061] - [0066]	1-4
A	US 5 853 364 A (BAKER, JR. ET AL) 29 December 1998 (1998-12-29) cited in the application the whole document	1
<input type="checkbox"/> Further documents are listed in the continuation of Box C. <input checked="" type="checkbox"/> See patent family annex.		
* Special categories of cited documents : *A* document defining the general state of the art which is not considered to be of particular relevance *E* earlier document but published on or after the international filing date *L* document which may throw doubts on priority claim(s) or which is cited to establish the publication date of another citation or other special reason (as specified) *O* document referring to an oral disclosure, use, exhibition or other means *P* document published prior to the international filing date but later than the priority date claimed *T* later document published after the international filing date or priority date and not in conflict with the application but cited to understand the principle or theory underlying the invention *X* document of particular relevance; the claimed invention cannot be considered novel or cannot be considered to involve an inventive step when the document is taken alone *Y* document of particular relevance; the claimed invention cannot be considered to involve an inventive step when the document is combined with one or more other such documents, such combination being obvious to a person skilled in the art. *&* document member of the same patent family		
Date of the actual completion of the international search <p align="center">22 June 2006</p>		Date of mailing of the international search report <p align="center">04/07/2006</p>
Name and mailing address of the ISA/ European Patent Office, P.B. 5818 Patentlaan 2 NL - 2280 HV Rijswijk Tel. (+31-70) 340-2040, Tx. 31 651 epo nl, Fax: (+31-70) 340-3016		Authorized officer <p align="center">Manschot, J</p>

INTERNATIONAL SEARCH REPORT

Information on patent family members

International application No
PCT/US2006/007668

Patent document cited in search report	Publication date	Patent family member(s)	Publication date
US 2003097049	A1	22-05-2003	NONE
US 5853364	A	29-12-1998	NONE

专利名称(译)	在存在相关伪像的情况下增强脉搏血氧测量计算的方法		
公开(公告)号	EP1919351A1	公开(公告)日	2008-05-14
申请号	EP2006736913	申请日	2006-03-02
[标]申请(专利权)人(译)	内尔科尔普里坦贝内特公司		
申请(专利权)人(译)	NELLCOR PURITAN BENNETT INCORPORATED		
当前申请(专利权)人(译)	NELLCOR PURITAN BENNETT INCORPORATED		
[标]发明人	BAKER CLARK R JR		
发明人	BAKER, CLARK, R., JR.		
IPC分类号	A61B5/00 A61B5/1455		
CPC分类号	A61B5/14551 A61B5/0205 A61B5/02416 A61B5/7207 A61B5/7214		
代理机构(译)	GRUBERT , ANDREAS		
优先权	11/072682 2005-03-03 US		
外部链接	Espacenet		

摘要(译)

一种用于在存在相关伪像的情况下确定生理参数的方法，包括获得两个数字波形x和y，所述波形表示从血液灌注组织接收的两个波长的电磁能的吸收，并且其中每个波形具有与体积描记波形对应的分量和与相关伪像对应的分量。通过在一个范围内改变R来计算形式 $x-R \cdot y$ 的几个加权差分波形，其中R是乘数；使用加权差分波形的形状特征评估几个加权差分波形；识别最接近代表和与体积描记波形最不同的加权差异波形；使用最接近代表体积描记波形的波形确定基于体积的生理参数；使用与体积描记波形最不同的波形确定至少一个基于伪影的生理参数；并且使用基于伪影的生理参数拒绝基于体积的生理参数的其他可能的候选值。