



(11) **EP 2 818 111 A1**

(12) **EUROPEAN PATENT APPLICATION**  
published in accordance with Art. 153(4) EPC

(43) Date of publication:  
**31.12.2014 Bulletin 2015/01**

(51) Int Cl.:  
**A61B 5/16 (2006.01) A61B 5/08 (2006.01)**  
**A61B 5/00 (2006.01)**

(21) Application number: **12869198.7**

(86) International application number:  
**PCT/JP2012/054661**

(22) Date of filing: **24.02.2012**

(87) International publication number:  
**WO 2013/125048 (29.08.2013 Gazette 2013/35)**

(84) Designated Contracting States:  
**AL AT BE BG CH CY CZ DE DK EE ES FI FR GB GR HR HU IE IS IT LI LT LU LV MC MK MT NL NO PL PT RO RS SE SI SK SM TR**  
Designated Extension States:  
**BA ME**

- **OKAMURA, Hiroki**  
Toyota-shi  
Aichi 471-8571 (JP)
- **KIKUCHI, Hirokazu**  
Toyota-shi  
Aichi 471-8571 (JP)

(71) Applicant: **Toyota Jidosha Kabushiki Kaisha**  
Toyota-shi, Aichi 471-8571 (JP)

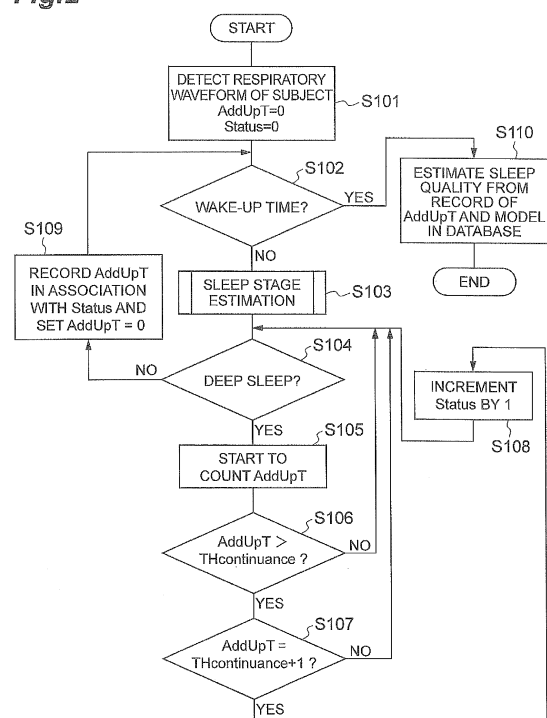
(74) Representative: **Albutt, Anthony John**  
D Young & Co LLP  
120 Holborn  
London EC1N 2DY (GB)

(72) Inventors:  
• **SHIGETO, Kazuhide**  
Toyota-shi  
Aichi 471-8571 (JP)

(54) **SLEEP QUALITY ESTIMATION DEVICE, SLEEP QUALITY ESTIMATION METHOD AND PROGRAM FOR SLEEP QUALITY ESTIMATION**

(57) In a sleep quality estimation device, a respiration sensor detects the respiratory waveform of a subject. A sleep stage estimation unit estimates the sleep stage of the subject during sleep based on the respiratory waveform detected by the respiration sensor. In a sleep rhythm model database 16, models associated with the appearance probability of  $\delta$ -wave for the sleep stage during sleep are recorded. A sleep quality estimation unit estimates the appearance time of  $\delta$ -wave of the subject during sleep based on the sleep stage of the subject estimated by the sleep stage estimation unit and the models associated with the appearance probability of  $\delta$ -wave for the sleep stage recorded in the sleep rhythm model database, and estimates the sleep quality of the subject based on the appearance time of  $\delta$ -wave. For this reason, it is possible to estimate the sleep quality of the subject with higher precision based on the appearance time of  $\delta$ -wave more closely related to the sleep quality.

Fig.2



EP 2 818 111 A1

**Description****Technical Field**

5 **[0001]** An embodiment of the present invention relates to a sleep quality estimation device, a sleep quality estimation method, and a program for sleep quality estimation, and in particular, to a sleep quality estimation device and a sleep quality estimation method which estimate the sleep quality of a subject from a physiological index of the subject.

**Background Art**

10 **[0002]** A method which simply estimates the sleep quality during sleep has been suggested in, for example, Patent Literature 1 or the like. In the method of Patent Literature 1, a sleep state is estimated from a physiological index. In the method of Patent Literature 1, the rhythm of sleep of a subject is estimated from the appearance probability of a specific sleep stage per unit time. In the method of Patent Literature 1, the sleep quality, such as "sleep rhythm", "head relaxation", and "quick falling asleep", is estimated using the rhythm of sleep of the subject. A sleep stage II and subsequent stages become SWS (deep sleep), and the sleep quality is estimated from the appearance probability of SWS. In the method of Patent Literature 1, for example, when an evaluation element is "head relaxation", a period during which the appearance ratio of SWS increases from 0% after going to bed, the appearance ratio of SWS exceeds a predetermined threshold level S1, such as 40%, and becomes 0% again, and then, the appearance ratio of SWS increases becomes one cycle. In the method of Patent Literature 1, an evaluation point is calculated according to the total of the appearance ratio of SWS within one cycle for every cycle, and the sum of the evaluation points of the respective cycles becomes the evaluation of "head relaxation".

**Citation List**

25

**Patent Literature**

**[0003]** [Patent Literature 1] Japanese Unexamined Patent Application Publication No. 2004-358235

**Summary of Invention**

30

**Technical Problem**

35 **[0004]** The technique of Patent Literature 1 evaluates the sleep quality based on the appearance ratio of deep sleep during sleep and the accumulated appearance time. However, if the sleep quality of the subject is evaluated by this method, there may be a large error from the actual quality of sleep of the subject. For this reason, various improvements are required.

40 **[0005]** An embodiment of the invention has been accomplished in consideration of the above-described problem, and an object of the invention is to provide a sleep quality estimation device, a sleep quality estimation method, and a program for sleep quality estimation capable of estimating the sleep quality of a subject with higher precision.

**Solution to Problem**

45 **[0006]** A sleep quality estimation device according to an embodiment of the invention includes a physiological index detection unit which detects a physiological index of a subject, a sleep depth estimation unit which estimates the depth of sleep of the subject during sleep based on the index detected by the physiological index detection unit, and a sleep quality estimation unit which estimates the appearance time of  $\delta$ -wave of the subject during sleep from the depth of sleep of the subject during sleep estimated by the sleep depth estimation unit and estimates the sleep quality of the subject based on the appearance time of  $\delta$ -wave.

50 **[0007]** With this configuration, in the sleep quality estimation device, the physiological index detection unit detects the physiological index of the subject. The sleep depth estimation unit estimates the depth of sleep of the subject during sleep based on the index detected by the physiological index detection unit. The sleep quality estimation unit estimates the appearance time of  $\delta$ -wave of the subject during sleep from the depth of sleep of the subject during sleep estimated by the sleep depth estimation unit and estimates the sleep quality of the subject based on the appearance time of  $\delta$ -wave. For this reason, it is possible to estimate the sleep quality of the subject with higher precision based on the appearance time of  $\delta$ -wave more closely related to the sleep quality compared to a method which simply accumulates a deep sleep time zone to estimate the sleep quality.

55 **[0008]** In this case, the physiological index detection unit may detect the respiration of the subject as the physiological

index of the subject.

**[0009]** With this configuration, the physiological index detection unit detects the respiration of the subject as the physiological index of the subject. Since the respiration can be detected in a noncontact state with the skin of the subject, unlike brain wave or heartbeat, it becomes possible to improve the convenience of the subject or to simplify the configuration of the device.

**[0010]** A sleep quality estimation device according to another embodiment of the invention includes a sleep depth information acquisition unit which acquires time series information relating to the depth of sleep of a subject during sleep, and a sleep quality estimation unit which estimates the appearance time of  $\delta$ -wave of the subject during sleep from the depth of sleep of the subject during sleep according to the time series information acquired by the sleep depth information acquisition unit and estimates the sleep quality of the subject based on the appearance time of  $\delta$ -wave.

**[0011]** With this configuration, the sleep depth information acquisition unit acquires the time series information relating to the depth of sleep of the subject during sleep, and the sleep quality estimation unit estimates the appearance time of  $\delta$ -wave of the subject during sleep from the depth of sleep of the subject during sleep according to the time series information acquired by the sleep depth information acquisition unit and estimates the sleep quality of the subject based on the appearance time of  $\delta$ -wave. For this reason, even if the physiological index of the subject is not necessarily measured by the device itself or the depth of sleep of the subject is not necessarily estimated, it is possible to estimate the sleep quality of the subject.

**[0012]** The sleep quality estimation device may further include a database in which models associated with the appearance probability of  $\delta$ -wave for the depth of sleep during sleep are recorded, and the sleep quality estimation unit may estimate the appearance time of  $\delta$ -wave of the subject during sleep based on the depth of sleep of the subject during sleep and the models associated with the appearance probability of  $\delta$ -wave for the depth of sleep during sleep recorded in the database and may estimate the sleep quality of the subject based on the appearance time of  $\delta$ -wave.

**[0013]** With this configuration, the sleep quality estimation unit estimates the appearance time of  $\delta$ -wave of the subject during sleep based on the depth of sleep of the subject during sleep and the models associated with the appearance probability of  $\delta$ -wave for the depth of sleep during sleep recorded in the database and estimates the sleep quality of the subject based on the appearance time of  $\delta$ -wave. For this reason, it is possible to estimate the appearance time of  $\delta$ -wave with higher precision using the models and to estimate the sleep quality of the subject with higher precision.

**[0014]** In this case, the models recorded in the database may be associated with the appearance probability of  $\delta$ -wave for a stay time when the depth of sleep of each sleep cycle from non-REM sleep to REM sleep stays with a value deeper than a predetermined value, and the sleep quality estimation unit may estimate the stay time of each sleep cycle from the depth of sleep of the subject during sleep and may estimate the appearance time of  $\delta$ -wave of the subject during sleep based on the stay time and the models associated with the appearance probability of  $\delta$ -wave for the stay time of each sleep cycle.

**[0015]** With this configuration, the models recorded in the database are associated with the appearance probability of  $\delta$ -wave for a stay time when the depth of sleep of each sleep cycle from non-REM sleep to REM sleep stays with a value deeper than a predetermined value, and the sleep quality estimation unit estimates the stay time of each sleep cycle from the depth of sleep of the subject during sleep and estimates the appearance time of  $\delta$ -wave of the subject during sleep based on the stay time and the models associated with the appearance probability of  $\delta$ -wave for the stay time of each sleep cycle. There is the stay time when the depth of sleep stays with a deep value for each sleep cycle from non-REM sleep to REM sleep, and the appearance probability of  $\delta$ -wave for the stay time differs for each sleep cycle. For this reason, the appearance time of  $\delta$ -wave is estimated based on the models associated with the appearance probability of  $\delta$ -wave for the stay time of each sleep cycle, whereby it is possible to estimate the appearance time of  $\delta$ -wave and to estimate the sleep quality of the subject with higher precision.

**[0016]** In this case, in the models recorded in the database, the longer the elapsed time during sleep is, the lower the appearance probability of  $\delta$ -wave for the stay time may be set.

**[0017]** In human sleep, as the elapsed time during sleep is long, the appearance probability of  $\delta$ -wave for the stay time decreases. For this reason, a model in which, the longer the elapsed time during sleep is, the lower the appearance probability of  $\delta$ -wave for the stay time is set is used, whereby it is possible to estimate the sleep quality with higher precision by a model more conforming to reality.

**[0018]** A sleep quality estimation method according to still another embodiment of the invention includes a physiological index detection step of detecting a physiological index of a subject, a sleep depth estimation step of estimating the depth of sleep of the subject during sleep based on the index detected in the physiological index detection step, and a sleep quality estimation step of estimating the appearance time of  $\delta$ -wave of the subject during sleep from the depth of sleep of the subject during sleep estimated in the sleep depth estimation step and estimating the sleep quality of the subject based on the appearance time of  $\delta$ -wave.

**[0019]** In this case, in the physiological index detection step, the respiration of the subject may be detected as the physiological index of the subject.

**[0020]** A sleep quality estimation method according to still another embodiment of the invention includes a sleep depth

information acquisition step of acquiring time series information relating to the depth of sleep of a subject during sleep, and a sleep quality estimation step of estimating the appearance time of  $\delta$ -wave of the subject during sleep from the depth of sleep of the subject during sleep according to the time series information acquired in the sleep depth information acquisition step and estimating the sleep quality of the subject based on the appearance time of  $\delta$ -wave.

5 [0021] In the sleep quality estimation step, the appearance time of  $\delta$ -wave of the subject during sleep may be estimated based on the depth of sleep of the subject during sleep and the models associated with the appearance probability of  $\delta$ -wave for the depth of sleep during sleep recorded in a database and the sleep quality of the subject may be estimated based on the appearance time of  $\delta$ -wave.

10 [0022] In this case, the models recorded in the database may be associated with the appearance probability of  $\delta$ -wave for a stay time when the depth of sleep of each sleep cycle from non-REM sleep to REM sleep stays with a value deeper than a predetermined value, and in the sleep quality estimation step, the stay time of each sleep cycle may be estimated from the depth of sleep of the subject during sleep and the appearance time of  $\delta$ -wave of the subject during sleep may be estimated based on the models associated with the appearance probability of  $\delta$ -wave for the stay time of each sleep cycle.

15 [0023] In this case, in the models recorded in the database, the longer the elapsed time during sleep is, the lower the appearance probability of  $\delta$ -wave for the stay time may be set.

[0024] According to still another embodiment of the invention, there is provided a program for sleep quality estimation which causes a computer to execute a sleep depth information acquisition step of acquiring time series information relating to the depth of sleep of a subject during sleep, and a sleep quality estimation step of estimating the appearance time of  $\delta$ -wave of the subject during sleep from the depth of sleep of the subject during sleep according to the time series information acquired in the sleep depth information acquisition step and estimating the sleep quality of the subject based on the appearance time of  $\delta$ -wave.

20 [0025] In this case, the sleep quality estimation step may cause the computer to estimate the appearance time of  $\delta$ -wave of the subject during sleep based on the depth of sleep of the subject during sleep and the models associated with the appearance probability of  $\delta$ -wave for the depth of sleep during sleep recorded in a database and may cause the computer to estimate the sleep quality of the subject based on the appearance time of  $\delta$ -wave.

25 [0026] In this case, the models recorded in the database may be associated with the appearance probability of  $\delta$ -wave for a stay time when the depth of sleep of each sleep cycle from non-REM sleep to REM sleep stays with a value deeper than a predetermined value, and the sleep quality estimation step may cause the computer to estimate the stay time of each sleep cycle from the depth of sleep of the subject during sleep and may cause the computer to estimate the appearance time of  $\delta$ -wave of the subject during sleep based on the models associated with the appearance probability of  $\delta$ -wave for the stay time of each sleep cycle.

30 [0027] In this case, in the models recorded in the database, the longer the elapsed time during sleep is, the lower the appearance probability of  $\delta$ -wave for the stay time may be set.

### 35 Advantageous Effects of Invention

[0028] With the sleep quality estimation device, the sleep quality estimation method, and the program for sleep quality estimation according to the embodiment of the invention, it is possible to estimate the sleep quality of the subject with higher precision.

### Brief Description of Drawings

#### 45 [0029]

Fig. 1 is a block diagram showing the configuration of a sleep quality estimation device according to an embodiment.

Fig. 2 is a flowchart showing the operation of the sleep quality estimation device according to the embodiment.

Fig. 3 is a graph showing a general cycle of transition of sleep stages in a night.

Fig. 4 is a diagram showing a respiratory waveform measured by a respiration sensor.

50 Fig. 5 is a diagram showing a result of sampling the time of each wavelength of the respiratory waveform of the Fig. 4.

Fig. 6 is a diagram showing a method of estimating a sleep stage based a variable relating to a respiratory waveform using a support vector machine.

Fig. 7 is a graph showing a sleep stage estimated from a measured value by the respiration sensor.

55 Fig. 8 is a table showing the appearance probability of  $\delta$ -wave in a standard sleep rhythm model.

### Description of Embodiments

[0030] Hereinafter, an embodiment of the invention will be described in detail referring to the drawings. A sleep quality

estimation device of this embodiment is a device which is mounted in a vehicle to estimate the sleep quality of a driver after a nap and is provided in a lodging facility, in a medical institution, or at home to estimate the sleep quality of a subject. As shown in Fig. 1, a sleep quality estimation device 10 of this embodiment includes a respiration sensor 12, a sleep stage estimation unit 14, a sleep rhythm model database 16, and a sleep quality estimation unit 18.

**[0031]** The respiration sensor 12 is constituted by a piezoelectric element or the like. The respiration sensor 12 is mounted on clothing, such as a trousers belt of the subject. The respiration sensor 12 detects respiratory waveform, which is the operation of a chest or an abdomen of the subject, as one of physiological indexes of the subject. In addition to the respiration of the subject, as the physiological index of the subject, brain wave, heartbeat, or other body motions may be detected. However, the respiration of the subject is superior in that the respiration can be detected in a noncontact state with the skin of the subject without brining sensors, such as multiple electrodes, into contact with the skin of the subject.

**[0032]** The sleep stage estimation unit 14 is constituted by a computer including a CPU (Central Processing Unit), a ROM (Read Only Memory), a RAM (Random Access Memory), and the like as hardware. The function of the sleep stage estimation unit 14 is realized by the computer executing processing described below by a program for sleep quality estimation of this embodiment. The sleep stage estimation unit 14 estimates the sleep stage of the subject based on the respiratory waveform of the subject detected by the respiration sensor 12 using a method described below. The sleep stage estimation unit 14 estimates the sleep stage of the subject among sleep stages I to IV. However, the sleep stage of the subject estimated by the sleep stage estimation unit 14 is not necessarily strict. The precision of the sleep stage of the subject estimated by sleep stage estimation unit 14 may be such an extent that the time when the sleep stage of the subject stays in a stage deeper than the sleep stage II, in which  $\delta$ -wave appears for each sleep cycle from non-REM sleep to REM sleep can be recognized.

**[0033]** The sleep rhythm model database 16 is realized by hardware, such as a HDD (Hard Disk Drive), in which information is recorded. As described below, the sleep rhythm model database 16 records standard models which define the appearance probability of  $\delta$ -wave for a stay time when a sleep stage of each sleep cycle from non-REM sleep to REM sleep stays with a value (minimum value) deeper than a predetermined value in the standard statistics of an unspecified number of subjects. In this embodiment, in order to estimate the sleep quality specialized for a specific subject, in the sleep rhythm model database 16, the appearance probability of  $\delta$ -wave for the stay time when a sleep stage of each sleep cycle of the specific subject stays with a value deeper than a predetermined value may be defined based on measured values accumulated for the specific subject.

**[0034]** The sleep quality estimation unit 18 is constituted by a computer including a CPU, a ROM, a RAM, and the like as hardware. The function of the sleep quality estimation unit 18 is realized by the computer executing processing described below by the program for sleep quality estimation of this embodiment. As described below, the sleep quality estimation unit 18 estimates the stay time which is the time for staying in a stage deeper than the sleep stage II of each sleep cycle from the sleep stage of the subject during sleep estimated by the sleep stage estimation unit 14. The sleep quality estimation unit 18 estimates the appearance time of  $\delta$ -wave of the subject during sleep based on the estimated stay time and the models associated with the appearance probability of  $\delta$ -wave for the stay time of each sleep cycle recorded in the sleep rhythm model database 16 and estimates the sleep quality of the subject based on the accumulated time of the appearance time of  $\delta$ -wave.

**[0035]** Hereinafter, the operation of the sleep quality estimation device 10 of this embodiment will be described. As shown in Fig. 2, the sleep quality estimation unit 18 of the sleep quality estimation device 10 resets, to 0, AddUpT which is the stay time in a sleep stage deeper than the sleep stage II and Status which is the total number of turns of the cycle of deep sleep, and detects the respiratory waveform of the subject (S101). The sleep quality estimation unit 18 performs determination about whether or not the wake-up time of the subject is reached (S102). When the wake-up time is not reached (S102), the sleep stage estimation unit 14 of the sleep quality estimation device 10 estimates the sleep stage of the subject (S103).

**[0036]** As shown in Fig. 3, in general, the sleep stage during sleep reaches a stage deeper than sleep stage II about at the time  $t_0$  after going to bed. In this case, sleep is non-REM sleep. Then, after the stay time of deep sleep of the sleep stage IV has elapsed, the sleep stage reaches a time zone of light sleep of REM sleep. A period of about 90 minutes from non-REM sleep to REM sleep is referred to as a sleep cycle or an ultradian cycle. Thereafter, REM sleep, the stay time of deep sleep, and non-REM sleep are repeated in the same cycle of about 90 minutes. The sleep stage becomes gradually light and reaches wake-up.

**[0037]** In this embodiment, the respiration sensor 12 detects a respiratory waveform B shown in Fig. 4. The wavelength of the respiratory waveform B has variation as shown at  $t_1$  to  $t_n$  of Figs. 4 and 5. The sleep stage estimation unit 14 plots variables X1 and X2 as a predetermined feature amount for the respiratory waveform B on a vector plane shown in Fig. 6 and estimates the sleep state of the subject by a learning model, such as a support vector machine. The calibration of the learning model may be performed by statistical values obtained by brain wave or the like. The number of variables X1 and X2 may be equal to or greater than three and may be used in a three-dimensional or more vector space.

**[0038]** As the variables X1 and X2 and the like which are the feature amount of the respiratory waveform B, for example,

fluctuation in the wavelength t1 to tn for 60 seconds of the respiratory waveform B, the centroid of the wavelength t1 to tn, the mean of the wavelengths t1 to tn, and the standard deviation of the wavelengths t1 to tn, or fluctuation in the amplitude for 60 seconds of the respiratory waveform B, the centroid of the amplitude, the mean of the amplitude, and the standard deviation of the amplitude may be taken.

5 **[0039]** As the variables X1 and X2 and the like which are the feature amount of the respiratory waveform B, a respiration centroid frequency may be used. This is a value of a frequency component between 0.15 Hz to 0.5 Hz within the respiratory waveform B, and if the respiration centroid frequency becomes a small value from a large value, this represents that the sleep stage becomes a deep stage from a light stage.

10 **[0040]** The cycle of respiration is 0.15 Hz to 0.5 Hz. That is, single respiration is performed for 6 to 2 seconds. Accordingly, when estimating the feature amount of the respiratory waveform B, such as the respiration centroid frequency, since it is not necessary to perform estimation operation with further resolution, estimation operation of the feature amount of the respiratory waveform B may be performed within this range. In this embodiment, estimation operation for the feature amount of the respiratory waveform B is performed for every 10 seconds, every 20 seconds, every 30 seconds, and every 60 seconds. For example, when an estimated value is output at an interval of 30 seconds, the results estimated for every 10 seconds become an estimation result according to the principle of majority rule, thereby increasing precision. For example, when the estimation results for every 10 seconds are divided into A, A, and B, as an estimated value which is output at an interval of 30 seconds, the estimated value "A" is output according to the principle of majority rule.

15 **[0041]** As shown in Table 1, for example, the sleep stage estimation unit 14 may set 8 variables which are the mean value of various feature amounts for the respiratory waveform B or 13 variables with the dispersion of various feature amounts of the respiratory waveform B, and may estimate the sleep stage of the subject by a support vector machine in an 8-dimensional vector space or a 13-dimensional vector space of these variables.

[Table 1]

25

Mean	Dispersion	Feature Amount	Note	Awake	→ Change	Deep Sleep
(1)	(9)	Respiration Centroid Frequency	0.15 to 0.5 Hz	Large		Small
(2)	(10)	Inspiratory Volume	Peak Value: R(max)	Large		Small
(3)		Inspiratory Volume	Fluctuation Coefficient	Large		Small
(4)		Inspiratory Volume	Change Rate	Large		Small
(5)	(11)	Expiratory Volume/Inspiratory Volume (I/E) $\sum v2(t)r2(t)/\sum v1(t)r1(t)$	Cell Respiration (Activity) Ventilatory Volume	Large		Small
(6)	(12)	Respiration Rate		Large		Small
(7)	(13)	Respiration Time	Inter-Peak Time Time for 0.8R(max)	Short		Long
(8)		Respiration Time	Change Rate	Large		Small

30

35

40

45 **[0042]** Returning to Fig. 2, when the sleep stage of the subject estimated by the sleep stage estimation unit 14 is deeper sleep than the sleep stage II (S104), the sleep quality estimation unit 18 counts AddUpT (S105). Until AddUpT which is the stay time of the deep sleep stage becomes longer than THContinuance which is set to about 90 minutes of the sleep cycle (S106), the sleep quality estimation unit 18 continues to count AddUpT (S104, S105). When AddUpT becomes longer than a value obtained by incrementing THContinuance by 1 (S107), the sleep quality estimation unit 18 increments Status, which is the total number of turns of the cycle of deep sleep, by 1 (S108).

50 **[0043]** As shown in Figs. 3 and 7, in general, when the sleep cycle is too long, the sleep stage becomes light. For this reason, the sleep stage estimation unit 14 determines that the subject is not deep sleeping (S104). The sleep quality estimation unit 18 records AddUpT, which is the stay time in the deep sleep stage, in association with Status, which is the total number of turns of the cycle of deep sleep, and resets AddUpT to 0. In this way, until the wake-up time is reached (S102), the processing of S102 to S109 is executed for each sleep cycle. When the wake-up time is reached (S102), the sleep quality estimation unit 18 estimates the sleep quality of the subject based on the record of AddUpT, which is the stay time in the deep sleep stage, and the models recorded in the sleep rhythm model database 16 (S110).

55 **[0044]** The sleep quality depends on the accumulated appearance time of 5-wave which appears in the region of deep

sleep. In regard to the accumulated appearance time of  $\delta$ -wave during sleep, in general, the total time every day is substantially a constant value regardless of the number of naps. If a day elapses, the accumulated appearance time of  $\delta$ -wave for the day returns to the same constant value regardless of the condition of the previous day. It is considered that the sleep quality can be estimated by the accumulated appearance time of  $\delta$ -wave during sleep. Since an ultradian rhythm which is a human biorhythm has one cycle of about 90 minutes, it may be assumed that the appearance probability of  $\delta$ -wave fluctuates for the time staying in the deep sleep stage for each sleep cycle.

**[0045]** As shown in Fig. 7, it is assumed that the stay time AddUpT of deep sleep stages (sleep stages deeper than the sleep stage II) of sleep cycles C1 to C4 are  $t_1$  to  $t_3$ . It is known that  $\delta$ -wave appears for the stay time  $t_1$  to  $t_3$  of the deep sleep stages. As shown in Fig. 8, in the sleep rhythm model database, the appearance probability of  $\delta$ -wave of an unspecified number of people for the stay time  $t_1$  to  $t_3$  correspond to the sleep cycles (cycle) C1 to C4. Accordingly, the sleep quality estimation unit 18 totals the accumulated appearance time of  $\delta$ -wave for each sleep cycle by Expression (1) to estimate sleep quality Q. However, in Expression (1), p is an arbitrary integer (gain).

[Equation 1]

$$Q = p \times \frac{t_1}{90} \times S_1 + p \times \frac{t_2}{90} \times S_2 + \dots + p \times \frac{t_n}{90} \times S_n \quad \dots (1)$$

$$Q = \frac{p}{90} \sum_{i=1}^n t_i \times S_i, \text{ however, } \sum S_i = 1$$

**[0046]** In the method described in Patent Literature 1, the sleep stage is estimated, the appearance ratio of the sleep stage for an arbitrary unit time is calculated, and the ultradian rhythm of the human is estimated from the appearance ratio. For this reason, since a running mean is calculated by a predetermined threshold value, it is estimated to be excessively "deep sleep", it is often out of the concept that the sleep quality is determined by the appearance time of  $\delta$ -wave.

**[0047]** According to this embodiment, in the sleep quality estimation device 10, the respiration sensor 12 detects the respiratory waveform of the subject. The sleep stage estimation unit 14 estimates the sleep stage of the subject during sleep based on the respiratory waveform detected by the respiration sensor 12. The sleep rhythm model database 16 records the models associated with the appearance probability of  $\delta$ -wave for the sleep stage during sleep. The sleep quality estimation unit 18 estimates the appearance time of  $\delta$ -wave of the subject during sleep based on the sleep stage of the subject during sleep estimated by the sleep stage estimation unit 14 and the models associated with the appearance probability of  $\delta$ -wave for the sleep stage during sleep recorded in the sleep rhythm model database 16 and estimates the sleep quality of the subject based on the appearance time of  $\delta$ -wave. For this reason, it is possible to estimate the sleep quality of the subject with higher precision based on the appearance time of  $\delta$ -wave more closely related to the sleep quality compared to a method which simply accumulates a deep sleep time zone to estimate the sleep quality.

**[0048]** According to this embodiment, the models recorded in the sleep rhythm model database 16 are associated with the appearance probability of  $\delta$ -wave for the stay time when the sleep stage of each sleep cycle from non-REM sleep to REM sleep stays with a value deeper than the sleep stage II, and the sleep quality estimation unit 18 estimates the stay time of each sleep cycle from the sleep stage of the subject during sleep estimated by the sleep stage estimation unit 14 and estimates the appearance time of  $\delta$ -wave of the subject during sleep based on the stay time and the models associated with the appearance probability of  $\delta$ -wave for the stay time of each sleep cycle. There is the stay time when the sleep stage stays with a deep value for each sleep cycle from non-REM sleep to REM sleep, and the appearance probability of  $\delta$ -wave for the stay time differs for each sleep cycle. For this reason, the appearance time of  $\delta$ -wave of the subject during sleep is estimated based on the models associated with the appearance probability of  $\delta$ -wave for the stay time of each sleep cycle, whereby it is possible to estimate the appearance time of  $\delta$ -wave and to estimate the sleep quality of the subject with higher precision.

**[0049]** According to this embodiment, the respiration sensor 12 detects the respiratory waveform of the subject as the physiological index of the subject. Since the respiratory waveform can be detected in a noncontact state with the skin of the subject, unlike brain wave or heartbeat, it becomes possible to improve the convenience of the subject or to simplify the configuration of the device.

**[0050]** The invention is not limited to the above-described embodiment, and various modifications may be made. For example, in the above-described embodiment, description has been provided focusing on a mode in which the respiration sensor 12, the sleep stage estimation unit 14, the sleep rhythm model database 16, and the sleep quality estimation unit 18 are constituted as the integrated sleep quality estimation device 10. However, the embodiment of the invention also includes a mode in which the physiological index of the subject, such as the respiratory waveform, is measured once and recorded, the sleep stage of the subject is estimated from the respiratory waveform by a separate computer, and the sleep quality of the subject is estimated from the sleep stage and the models in the above-described manner.

5 **[0051]** Alternatively, the sleep quality estimation device 10 itself may not include the respiration sensor 12, the sleep stage estimation unit 14 may not estimate the sleep stage, and time series information relating to the sleep stage of the subject during sleep shown in Fig. 3 acquired outside the sleep quality estimation device 10 may be merely acquired. In this case, as in the above-described embodiment, the sleep quality estimation unit 18 can estimate the appearance time of  $\delta$ -wave during sleep of the subject from the time series information of the sleep stage and can estimate the sleep quality of the subject based on the appearance time of  $\delta$ -wave.

### Industrial Applicability

10 **[0052]** According to the sleep quality estimation device, the sleep quality estimation method, and the program for sleep quality estimation of the embodiment of the invention, it is possible to estimate sleep quality of the subject with higher precision.

### Reference Signs List

#### 15 **[0053]**

10: sleep quality estimation device  
 12: respiration sensor  
 20 14: sleep stage estimation unit  
 16: sleep rhythm model database  
 18: sleep quality estimation unit

### 25 **Claims**

1. A sleep quality estimation device comprising:

30 a physiological index detection unit which detects a physiological index of a subject;  
 a sleep depth estimation unit which estimates the depth of sleep of the subject during sleep based on the index detected by the physiological index detection unit; and  
 a sleep quality estimation unit which estimates the appearance time of  $\delta$ -wave of the subject during sleep from the depth of sleep of the subject during sleep estimated by the sleep depth estimation unit and estimates the sleep quality of the subject based on the appearance time of  $\delta$ -wave.

35 2. The sleep quality estimation device according to claim 1, wherein the physiological index detection unit detects the respiration of the subject as the physiological index of the subject.

40 3. A sleep quality estimation device comprising:

45 a sleep depth information acquisition unit which acquires time series information relating to the depth of sleep of a subject during sleep; and  
 a sleep quality estimation unit which estimates the appearance time of  $\delta$ -wave of the subject during sleep from the depth of sleep of the subject during sleep according to the time series information acquired by the sleep depth information acquisition unit and estimates the sleep quality of the subject based on the appearance time of  $\delta$ -wave.

50 4. The sleep quality estimation device according to any one of claims 1 to 3, further comprising:

55 a database in which models associated with the appearance probability of  $\delta$ -wave for the depth of sleep during sleep are recorded, wherein the sleep quality estimation unit estimates the appearance time of  $\delta$ -wave of the subject during sleep based on the depth of sleep of the subject during sleep and the models associated with the appearance probability of  $\delta$ -wave for the depth of sleep during sleep recorded in the database and estimates the sleep quality of the subject based on the appearance time of  $\delta$ -wave.

5. The sleep quality estimation device according to claim 4,

wherein the models recorded in the database are associated with the appearance probability of  $\delta$ -wave for a stay time when the depth of sleep of each sleep cycle from non-REM sleep to REM sleep stays with a value deeper than a predetermined value, and

the sleep quality estimation unit estimates the stay time of each sleep cycle from the depth of sleep of the subject during sleep and estimates the appearance time of  $\delta$ -wave of the subject during sleep based on the stay time and the models associated with the appearance probability of  $\delta$ -wave for the stay time of each sleep cycle.

6. The sleep quality estimation device according to claim 5, wherein, in the models recorded in the database, the longer the elapsed time during sleep is, the lower the appearance probability of  $\delta$ -wave for the stay time is set.

7. A sleep quality estimation method comprising:

a physiological index detection step of detecting a physiological index of a subject;  
a sleep depth estimation step of estimating the depth of sleep of the subject during sleep based on the index detected in the physiological index detection step; and  
a sleep quality estimation step of estimating the appearance time of  $\delta$ -wave of the subject during sleep from the depth of sleep of the subject during sleep estimated in the sleep depth estimation step and estimating the sleep quality of the subject based on the appearance time of  $\delta$ -wave.

8. The sleep quality estimation method according to claim 7, wherein, in the physiological index detection step, the respiration of the subject is detected as the physiological index of the subject.

9. A sleep quality estimation method comprising:

a sleep depth information acquisition step of acquiring time series information relating to the depth of sleep of a subject during sleep; and  
a sleep quality estimation step of estimating the appearance time of  $\delta$ -wave of the subject during sleep from the depth of sleep of the subject during sleep according to the time series information acquired in the sleep depth information acquisition step and estimating the sleep quality of the subject based on the appearance time of  $\delta$ -wave.

10. The sleep quality estimation method according to any one of claims 7 to 9, wherein, in the sleep quality estimation step, the appearance time of  $\delta$ -wave of the subject during sleep is estimated based on the depth of sleep of the subject during sleep and the models associated with the appearance probability of  $\delta$ -wave for the depth of sleep during sleep recorded in a database and the sleep quality of the subject is estimated based on the appearance time of  $\delta$ -wave.

11. The sleep quality estimation method according to claim 10, wherein the models recorded in the database are associated with the appearance probability of  $\delta$ -wave for a stay time when the depth of sleep of each sleep cycle from non-REM sleep to REM sleep stays with a value deeper than a predetermined value, and in the sleep quality estimation step, the stay time of each sleep cycle is estimated from the depth of sleep of the subject during sleep and the appearance time of  $\delta$ -wave of the subject during sleep is estimated based on the models associated with the appearance probability of  $\delta$ -wave for the stay time of each sleep cycle.

12. The sleep quality estimation method according to claim 11, wherein, in the models recorded in the database, the longer the elapsed time during sleep is, the lower the appearance probability of  $\delta$ -wave for the stay time is set.

13. A program for sleep quality estimation which causes a computer to execute:

a sleep depth information acquisition step of acquiring time series information relating to the depth of sleep of a subject during sleep; and  
a sleep quality estimation step of estimating the appearance time of  $\delta$ -wave of the subject during sleep from the depth of sleep of the subject during sleep according to the time series information acquired in the sleep depth information acquisition step and estimating the sleep quality of the subject based on the appearance time

of  $\delta$ -wave.

5 14. The program for sleep quality estimation according to claim 13,  
wherein the sleep quality estimation step causes the computer to estimate the appearance time of  $\delta$ -wave of the  
subject during sleep based on the depth of sleep of the subject during sleep and the models associated with the  
appearance probability of  $\delta$ -wave for the depth of sleep during sleep recorded in a database and causes the computer  
to estimate the sleep quality of the subject based on the appearance time of  $\delta$ -wave.

10 15. The program for sleep quality estimation according to claim 14,  
wherein the models recorded in the database are associated with the appearance probability of  $\delta$ -wave for a stay  
time when the depth of sleep of each sleep cycle from non-REM sleep to REM sleep stays with a value deeper than  
a predetermined value, and  
the sleep quality estimation step causes the computer to estimate the stay time of each sleep cycle from the depth  
of sleep of the subject during sleep and causes the computer to estimate the appearance time of  $\delta$ -wave of the  
15 subject during sleep based on the models associated with the appearance probability of  $\delta$ -wave for the stay time of  
each sleep cycle.

20 16. The program for sleep quality estimation according to claim 15,  
wherein, in the models recorded in the database, the longer the elapsed time during sleep is, the lower the appearance  
probability of  $\delta$ -wave for the stay time is set.

25

30

35

40

45

50

55

*Fig. 1*

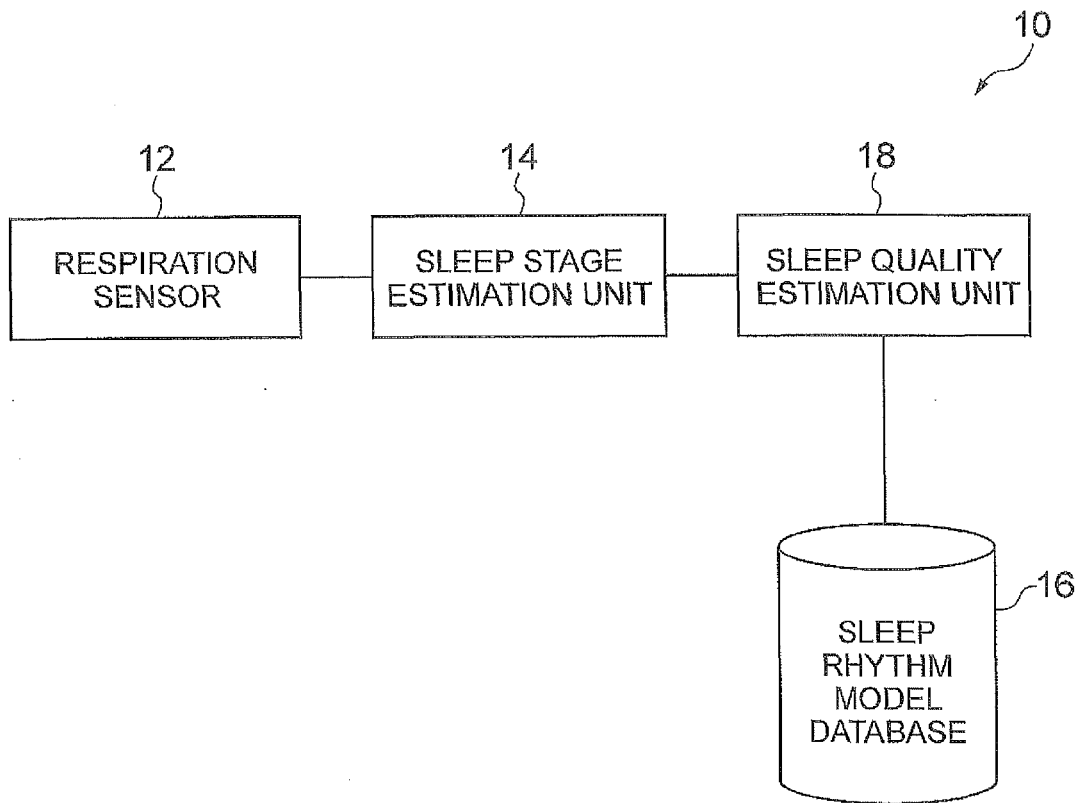
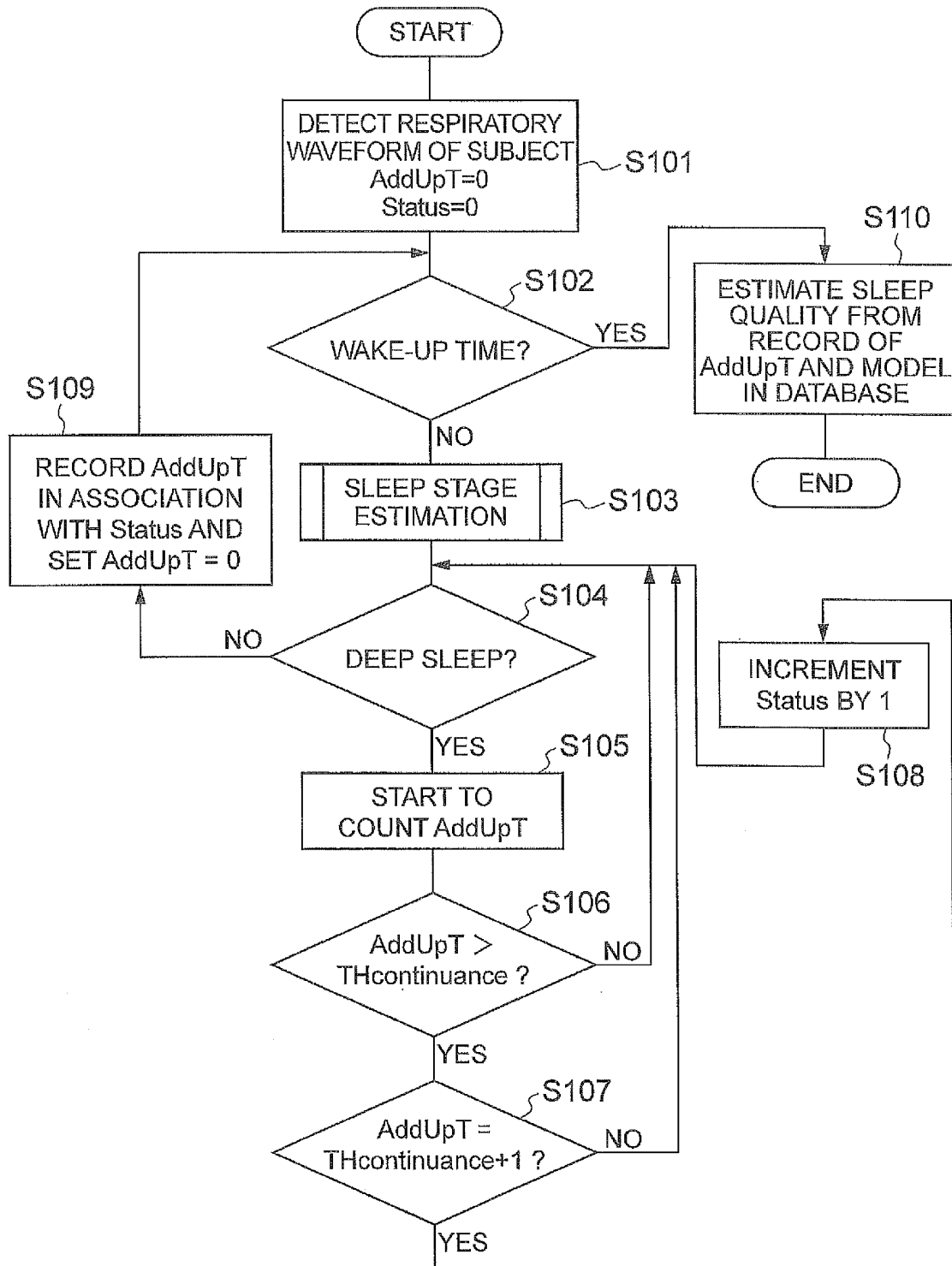
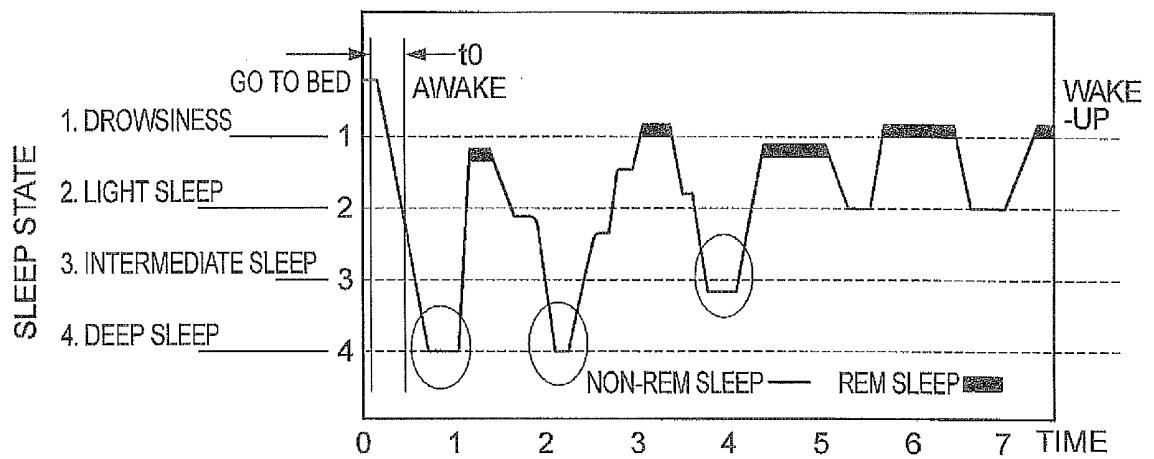


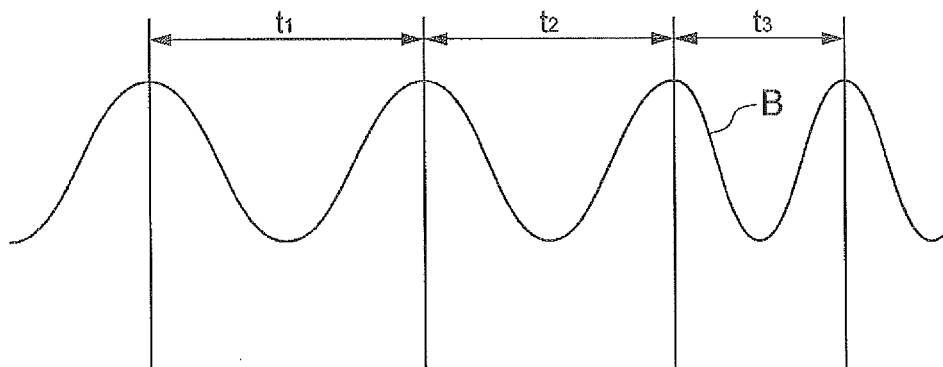
Fig.2



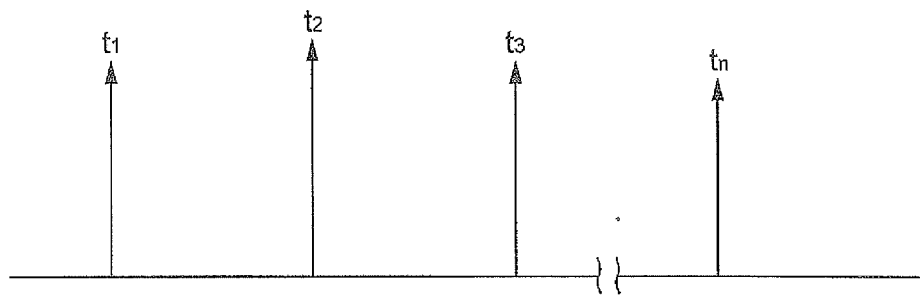
**Fig.3**



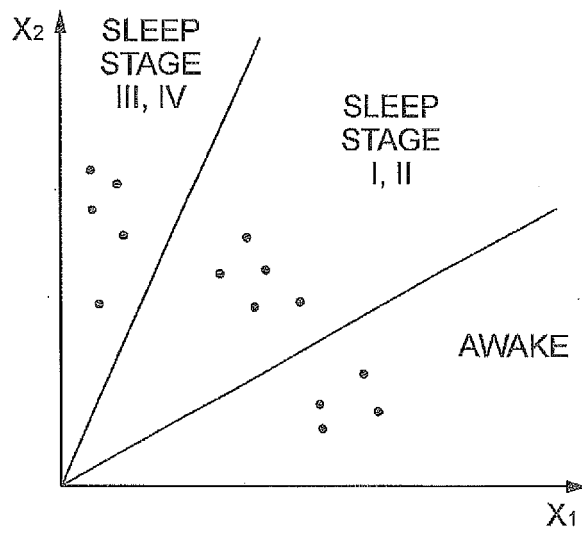
*Fig.4*



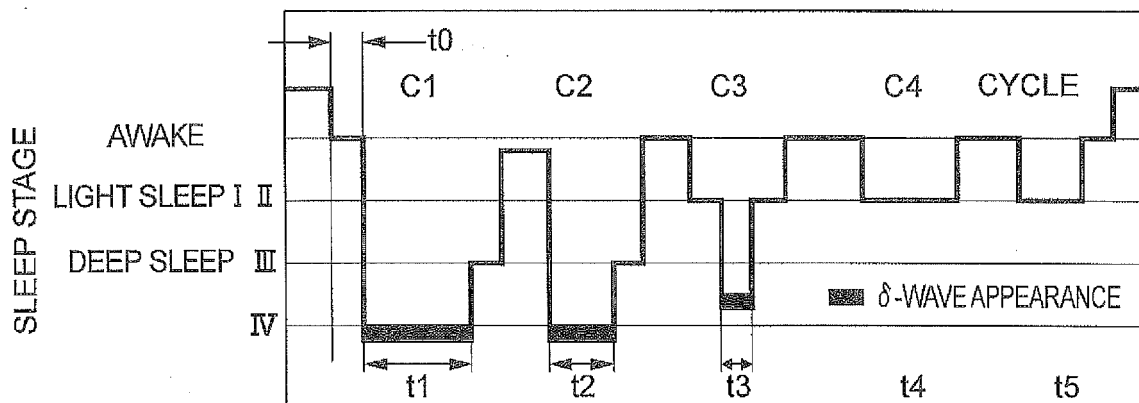
*Fig.5*



*Fig.6*



*Fig. 7*



**Fig.8**

CYCLE (CYCLE)	C1	C2	C3	C4
TIME (MINUTE)	90 MINUTES	180 MINUTES	270 MINUTES	360 MINUTES
STANDARD	S1	S2	S3	S4
$\delta$ -WAVE APPEARANCE PROBABILITY IN MODEL (%)	65	20	10	5

## INTERNATIONAL SEARCH REPORT

International application No.

PCT/JP2012/054661

A. CLASSIFICATION OF SUBJECT MATTER A61B5/16(2006.01)i, A61B5/08(2006.01)i		
According to International Patent Classification (IPC) or to both national classification and IPC		
B. FIELDS SEARCHED		
Minimum documentation searched (classification system followed by classification symbols) A61B5/16, A61B5/08		
Documentation searched other than minimum documentation to the extent that such documents are included in the fields searched Jitsuyo Shinan Koho 1922-1996 Jitsuyo Shinan Toroku Koho 1996-2012 Kokai Jitsuyo Shinan Koho 1971-2012 Toroku Jitsuyo Shinan Koho 1994-2012		
Electronic data base consulted during the international search (name of data base and, where practicable, search terms used)		
C. DOCUMENTS CONSIDERED TO BE RELEVANT		
Category*	Citation of document, with indication, where appropriate, of the relevant passages	Relevant to claim No.
A	JP 2011-83564 A (Kabushiki Kaisha Sleep System Kenkyusho), 28 April 2011 (28.04.2011), paragraphs [0029], [0039] (Family: none)	1-16
A	JP 2011-83474 A (Toyota Motor Corp.), 28 April 2011 (28.04.2011), paragraphs [0061] to [0076] (Family: none)	1-16
A	JP 2009-297474 A (Kabushiki Kaisha Sleep System Kenkyusho), 24 December 2009 (24.12.2009), paragraphs [0041] to [0048] (Family: none)	1-16
<input type="checkbox"/> Further documents are listed in the continuation of Box C. <input type="checkbox"/> See patent family annex.		
* Special categories of cited documents: "A" document defining the general state of the art which is not considered to be of particular relevance "E" earlier application or patent but published on or after the international filing date "L" document which may throw doubts on priority claim(s) or which is cited to establish the publication date of another citation or other special reason (as specified) "O" document referring to an oral disclosure, use, exhibition or other means "P" document published prior to the international filing date but later than the priority date claimed "T" later document published after the international filing date or priority date and not in conflict with the application but cited to understand the principle or theory underlying the invention "X" document of particular relevance; the claimed invention cannot be considered novel or cannot be considered to involve an inventive step when the document is taken alone "Y" document of particular relevance; the claimed invention cannot be considered to involve an inventive step when the document is combined with one or more other such documents, such combination being obvious to a person skilled in the art "&" document member of the same patent family		
Date of the actual completion of the international search 10 May, 2012 (10.05.12)		Date of mailing of the international search report 22 May, 2012 (22.05.12)
Name and mailing address of the ISA/ Japanese Patent Office		Authorized officer
Facsimile No.		Telephone No.

Form PCT/ISA/210 (second sheet) (July 2009)

**REFERENCES CITED IN THE DESCRIPTION**

*This list of references cited by the applicant is for the reader's convenience only. It does not form part of the European patent document. Even though great care has been taken in compiling the references, errors or omissions cannot be excluded and the EPO disclaims all liability in this regard.*

**Patent documents cited in the description**

- JP 2004358235 A [0003]

专利名称(译)	睡眠质量估计装置，睡眠质量估计方法和睡眠质量估计程序		
公开(公告)号	<a href="#">EP2818111A1</a>	公开(公告)日	2014-12-31
申请号	EP2012869198	申请日	2012-02-24
[标]申请(专利权)人(译)	丰田自动车株式会社		
申请(专利权)人(译)	丰田JIDOSHA株式会社		
当前申请(专利权)人(译)	丰田JIDOSHA株式会社		
[标]发明人	SHIGETO KAZUHIDE OKAMURA HIROKI KIKUCHI HIROKAZU		
发明人	SHIGETO, KAZUHIDE OKAMURA, HIROKI KIKUCHI, HIROKAZU		
IPC分类号	A61B5/16 A61B5/08 A61B5/00		
CPC分类号	A61B5/0816 A61B5/1135 A61B5/4812 A61B5/4815 A61B5/7264 A61B2503/22 G16H50/20 A61B5/7278 G06F19/00		
其他公开文献	EP2818111B1 EP2818111A4		
外部链接	<a href="#">Espacenet</a>		

摘要(译)

在睡眠质量估计装置中，呼吸传感器检测对象的呼吸波形。睡眠阶段估计单元基于呼吸传感器检测到的呼吸波形来估计睡眠期间受试者的睡眠阶段。在睡眠节奏模型数据库16中，记录与睡眠期间睡眠阶段的δ波的出现概率相关联的模型。睡眠质量估计单元基于由睡眠阶段估计单元估计的对象的睡眠阶段和相关联的模型来估计睡眠期间受试者的δ波的出现时间。在睡眠节律模型数据库中记录睡眠阶段的δ波出现概率，并根据δ波的出现时间估计受试者的睡眠质量。因此，可以基于与睡眠质量更密切相关的δ波的出现时间以更高的精度估计对象的睡眠质量。

Fig.2

