



(11) **EP 1 897 490 B1**

(12) **EUROPEAN PATENT SPECIFICATION**

(45) Date of publication and mention of the grant of the patent:
16.11.2016 Bulletin 2016/46

(51) Int Cl.:
A61B 5/042 ^(2006.01) **A61B 5/0408** ^(2006.01)
A61B 5/053 ^(2006.01) **A61B 5/00** ^(2006.01)
A61B 18/00 ^(2006.01)

(21) Application number: **07253530.5**

(22) Date of filing: **05.09.2007**

(54) **Correlation of cardiac electrical maps with body surface measurements**

Korrelation zwischen elektrischem kardialem Mapping und Körperoberflächenmessungen

Corrélation de cartes électriques cardiaques avec des mesures de la surface corporelle

(84) Designated Contracting States:
AT BE BG CH CY CZ DE DK EE ES FI FR GB GR HU IE IS IT LI LT LU LV MC MT NL PL PT RO SE SI SK TR

(30) Priority: **06.09.2006 US 824680 P**
28.08.2007 US 845973

(43) Date of publication of application:
12.03.2008 Bulletin 2008/11

(73) Proprietor: **Biosense Webster, Inc.**
Diamond Bar, CA 91765 (US)

(72) Inventors:
• **Schwartz, Yitzhack**
Haifa 34606 (IL)
• **Bar-Tal, Meir**
Zichron Ya'acov 30900 (IL)
• **Porath, Joshua**
Haifa 34463 (IL)

(74) Representative: **Tunstall, Christopher Stephen et al**
Carpmaels & Ransford LLP
One Southampton Row
London WC1B 5HA (GB)

(56) References cited:
WO-A-99/05962 US-A1- 2008 161 669

- **PUURTINEN H G ET AL: "Application of lead field theory and computerized thorax modeling for the ECG inverse problem" PROCEEDINGS OF THE 23RD. ANNUAL INTERNATIONAL CONFERENCE OF THE IEEE ENGINEERING IN MEDICINE AND BIOLOGY SOCIETY. 2001 CONFERENCE PROCEEDINGS. (EMBS). INSTANBUL, TURKEY, OCT. 25 - 28, 2001; [ANNUAL INTERNATIONAL CONFERENCE OF THE IEEE ENGINEERING IN, vol. 1, 25 October 2001 (2001-10-25), pages 363-366, XP010593375 ISBN: 978-0-7803-7211-5**
- **BARBARA J MESSINGER-RAPPORT ET AL: "The Inverse Problem in Electrocardiography: A Model Study of the Effects of Geometry and Conductivity Parameters on the Reconstruction of Epicardial Potentials" IEEE TRANSACTIONS ON BIOMEDICAL ENGINEERING, IEEE SERVICE CENTER, PISCATAWAY, NJ, US, vol. BME-19, no. 7, 1 July 1986 (1986-07-01), pages 667-676, XP011173973 ISSN: 0018-9294**
- **GULRAJANIRM: "THE FORWARD AND INVERSE PROBLEMS OF ELECTROCARDIOGRAPHY" IEEE ENGINEERING IN MEDICINE AND BIOLOGY MAGAZINE, IEEE SERVICE CENTER, PISCATAWAY, NJ, US, vol. 17, no. 5, 1 September 1998 (1998-09-01), pages 84-101,122, XP000779560 ISSN: 0739-5175**
- **GEERTJAN HUIKAMP* ET AL: "A New Method for Myocardial Activation Imaging" IEEE TRANSACTIONS ON BIOMEDICAL ENGINEERING, IEEE SERVICE CENTER, PISCATAWAY, NJ, US, vol. 44, no. 6, 1 June 1997 (1997-06-01), XP011006383 ISSN: 0018-9294**

Note: Within nine months of the publication of the mention of the grant of the European patent in the European Patent Bulletin, any person may give notice to the European Patent Office of opposition to that patent, in accordance with the Implementing Regulations. Notice of opposition shall not be deemed to have been filed until the opposition fee has been paid. (Art. 99(1) European Patent Convention).

EP 1 897 490 B1

Description**BACKGROUND OF THE INVENTION**5 **Field of the Invention**

[0001] This invention relates to evaluation and treatment of cardiac arrhythmias. More particularly, this invention relates to improvements in electrical mapping of the heart for use in evaluation of cardiac arrhythmias and ablative therapy thereof.

10 **Description of the Related Art**

[0002] Methods are known for noninvasive mapping of electrical potentials in the heart based on body surface electrocardiographic (ECG) techniques. These methods combine 3-dimensional imaging with the ECG data in order to generate 3-dimensional maps of the electrical potentials on the epicardial surface, and on the endocardial surface, as well.

15 **[0003]** The document Modre et al., Atrial Noninvasive Activation Mapping of Paced Rhythm Data, J. Cardiovasc. Electrophysiology 14:712-719 (July 2003), describes a surface heart model activation time (AT) imaging approach, based on magnetic resonance imaging (MRI) and ECG mapping data. Both endocardial and epicardial surfaces might be mapped in this way. The AT pattern was compared to a CARTO™ map of atrial potentials. External anatomic markers were used to couple the CARTO data to the MRI coordinate system, by moving the catheter tip to marker locations at
20 the body surface after internal mapping. It is proposed that AT imaging within the atria may be useful for noninvasive imaging of atrial activity in patients with focal arrhythmias.

SUMMARY OF THE INVENTION

25 **[0004]** In embodiments of the present invention, electrical maps of the heart are acquired by two modalities: one relatively more invasive and the other less invasive. In one embodiment, the more invasive map is an endocardial map acquired using a catheter mapping system. A plurality of less invasive maps may be acquired non-invasively, based on a body surface ECG. Alternatively or additionally, the less invasive maps may be acquired using an epicardial contact probe, such as a catheter inserted through the chest wall into the pericardium. The less invasive maps typically show
30 electrical potentials on the epicardium, although they may also show endocardial potentials, as described in the above-noted document Modre et al. Less invasive maps are based on data acquired outside the heart, in which epicardial electrical potentials are primarily of interest, although they may incidentally include endocardial information.

[0005] The features of the endocardial and epicardial electrical maps may be registered with one another, using anatomical landmarks and/or electrical features of the maps. The purpose of registration is to establish a correspondence or correlation between the electrical features of the two maps. Once the correlation has been established, it is possible
35 to apply an electrical transform function to subsequent, repeat epicardial maps to generate new versions of the endocardial map without necessarily repeating the invasive endocardial mapping procedure.

[0006] Aspects of the invention produce a patient-specific spatiotemporal map of endocardial electric potentials using a small number of endocardial measurements and a relatively large number of ECG channels, the latter obtained as a
40 body surface potential map. In addition, spatiotemporal epicardial maps can be estimated.

[0007] For example, the method of the present invention may be used to follow up on ablation treatment of arrhythmias by non-invasive or pericardial approaches. After the treatment, it may be sufficient to repeat the acquisition of the epicardial map in order to determine whether the treatment was successful. The changes that are observed in the epicardial map may be projected onto the endocardial map in order to validate the treatment results.

45 **[0008]** The methods of the present invention may also be used in correlating endocardial and epicardial maps of other properties of the heart that can be measured and mapped in a similar fashion.

[0009] An embodiment of the invention provides a method for generating an electrical map of a heart of a living subject, which is carried out by inserting a probe, such as a catheter into a chamber of the heart. The probe has at least one electrode and may be provided with a first location sensor. Electrical signals are emitted from the at least one electrode
50 from at least one transmission point within the heart, and received at least one receiving point. Typically, there are multiple transmitting points and receiving points. The receiving points may be internal or external to the subject. The method is further carried out by locating the receiving points relative to the transmission points, and calculating a functional relationship, such as a linear matrix relationship, between the emitted electrical signals and the received electrical signals. The calculation may be performed by determining a measured lead field matrix that defines a linear matrix relationship
55 between the emitted electrical signals and the received electrical signals, and by calculating an inverted lead field matrix from the measured lead field matrix. Alternatively, the inverted lead field matrix can be determined without explicitly calculating measured lead field matrix. The method is further carried out by receiving electrophysiological signals at the same or other receiving points, and applying the inverted lead field matrix to the electrophysiological signals to obtain

an endocardial electrical map.

[0010] In one aspect of the method the receiving points are located relative to the transmission points by associating the receiving points with a second location sensor, and reading the first location sensor and the second location sensor to determine differences therebetween.

5 [0011] According to still another aspect of the method, the catheter has at least two electrodes the electrical signals are emitted from different subsets of the electrodes. The emitted signals may be time or frequency multiplexed.

[0012] According to yet another aspect of the method, the electrode is a unipolar electrode Alternatively, the electrode may be bipolar.

10 [0013] In an aspect of the method impedances are determined between the receiving points and subsets of the transmission points.

[0014] In another aspect of the method signals are received from electrical dipoles that are generated among the subsets of the transmission points.

[0015] In still another aspect of the method emitting electrical signals, receiving the emitted electrical signals, determining a measured lead field matrix, and calculating an inverted lead field matrix are performed with respect to a predetermined phase of a respiratory cycle of the subject.

15 [0016] In a further aspect of the method emitting electrical signals, receiving the emitted electrical signals, determining a measured lead field matrix, and calculating an inverted lead field matrix are performed with respect to a predetermined phase of a cardiac cycle of the subject.

20 [0017] One aspect of the method includes acquiring a thoracic anatomic image, using the anatomic image to prepare a finite element model of the thorax and adjusting parameters of the finite element model to conform the calculated lead field matrix to the measured lead field matrix.

[0018] Yet another aspect of the method inverted lead field matrix is calculated by regularizing the measured lead field matrix. Regularization is achieved by removing a null space of the inverted lead field matrix.

25 [0019] Other aspects of the invention provide apparatus for carrying out the method.

BRIEF DESCRIPTION OF THE DRAWINGS

30 [0020] For a better understanding of the present invention, reference is made to the detailed description of the invention, by way of example, which is to be read in conjunction with the following drawings, wherein like elements are given like reference numerals, and wherein:

Fig. 1 is a high level diagram of a system for correlating a plurality of electrical cardiac maps, which is constructed and operative in accordance with a disclosed embodiment of the invention;

Fig. 2 is a plan view of the distal end of a catheter for use in the system shown in Fig. 1;

35 Fig. 3 is an illustration of a system for correlating endocardial and epicardial electrical maps, which is constructed and operative in accordance with an alternate embodiment of the invention;

Fig. 4 is a simplified sectional view of a thorax showing a torso vest, and electrodes distributed about the thorax, in accordance with a disclosed embodiment of the invention;

40 Fig. 5 is a schematic diagram illustrating details of the torso vest shown in Fig. 4, in accordance with a disclosed embodiment of the invention;

Fig. 6 is a flow chart of a method for correlating endocardial and epicardial maps, in accordance with an alternate embodiment of the invention;

45 Fig. 7 is a schematic diagram illustrating aspects of a method of correlating endocardial and epicardial electrical maps, in accordance with a disclosed embodiment of the invention;

Fig. 8 is a diagram illustrating a technique for solving a forward matrix problem in accordance with a disclosed embodiment of the invention;

Fig. 9 is a flow chart of a method for determining a lead field matrix by signal injection in accordance with a disclosed embodiment of the invention; and

50 Fig. 10 is a functional block diagram of a method for developing a 3-dimensional patient-specific cardiac electroanatomic model in accordance with a disclosed embodiment of the invention.

DETAILED DESCRIPTION OF THE INVENTION

55 [0021] In the following description, numerous specific details are set forth in order to provide a thorough understanding of the present invention. It will be apparent to one skilled in the art, however, that the present invention may be practiced without these specific details. In other instances, well-known circuits, control logic, and the details of computer program instructions for conventional algorithms and processes have not been shown in detail in order not to obscure the present invention unnecessarily.

Embodiment 1

[0022] Turning now to the drawings, reference is initially made to Fig. 1, which is an illustration of a system 20, which is constructed and operative in accordance with a disclosed embodiment of the invention. The system 20 is used in determining the position of a probe or catheter 22, used for the acquisition of anatomic and electrical data, and for tissue ablation using the catheter 22. During acquisition of an endocardial electrical map, the catheter 22 is placed into chambers of a heart 24 of a subject 26 using a known intravascular approach. For obtaining an epicardial electrical map, the catheter 22 may be percutaneously inserted into the pericardial cavity that surrounds the heart 24. Alternatively, the epicardial electrical map may be obtained non-invasively, as described below in further detail. Exemplary methods and devices for cardiac mapping are described in U.S. Pat. Nos. 5,471,982, 5,391,199, 6,226,542, 6,301,496, and 6,892,091, and in PCT patent publications WO94/06349, WO96/05768 and WO97/24981. U.S. Pat. No. 5,391,199, for example, describes a catheter including both electrodes for sensing cardiac electrical activity and miniature coils for determining the position of the catheter relative to an externally-applied magnetic field. Using this catheter, data can be collected from a set of sampled points within a short period of time by determining the electrical activity at a plurality of locations and determining the spatial coordinates of the locations.

[0023] Reference is now made to Fig. 2, which is a plan view of a distal end 44 of an embodiment of the catheter 22 (Fig. 1). The distal end 44 includes an electrode 46 at its tip 48 for measuring the electrical properties of the heart tissue. The electrode 46 may be a unipolar or bipolar electrode. The electrode 46 is also useful for sending electrical signals to the heart for diagnostic purposes, e.g., for pace mapping, and/or for therapeutic purposes, e.g., for ablating defective cardiac tissue. The distal end 44 of the catheter 22 optionally includes an array 52 of non-contact electrodes 54 for measuring far field electrical signals. The array 52 is a linear array in that the non-contact electrodes 54 are linearly arranged along the longitudinal axis of the distal end 44. The distal end 44 of the catheter 22 further includes at least one location sensor 56 that generates signals used to determine at least the position of the catheter within the body. In some embodiments orientation of the catheter within the body also be determined. The location sensor 56 is preferably adjacent to the tip 48. This embodiment of the catheter 22 is described in further detail in the above-noted U.S. Patent No. 6,892,091.

[0024] Referring again to Fig. 1, the electrodes and transducers of the distal end 44 of the catheter 22 are connected by a cable 58 through the insertion tube of the catheter 22 to a control processor 28 (Fig. 1), which controls other elements of the system 20, including a signal generator 29 for transmitting signal to the catheter 22, an image processor 21, and an EKG processor 27. The control processor 28 is shown for convenience as a single unit. However, it may be realized as a plurality of processing facilities for performing the diverse processing tasks described herein. The control processor 28 determines position coordinates of the catheter 22 relative to specific landmarks or features of the heart 24. The control processor 28 drives a display 40, which shows the catheter position inside the body and displays functional maps generated by the system. The control processor 28 also drives the ablation transducers that are located generally at the tip of the catheter 22. The catheter 22 is used in generating anatomic images or an endocardial electrical map. Additionally, the electrodes on the catheter may be used for ablation. The system 20 can be the CARTO™ XP EP Navigation and Ablation System, available from Biosense Webster, Inc., 3333 Diamond Canyon Road, Diamond Bar, CA 91765, U.S.A., suitably modified to embody certain features of the invention that are disclosed in further detail hereinbelow.

[0025] In some embodiments of the invention, epicardial electrical maps can be obtained noninvasively, using multiple body surface electrodes 31, of which three are shown representatively, it being known in the art that when using the noninvasive technique, much larger arrays of electrodes are typically required in order to obtain accurate epicardial electrical maps. The electrodes 31 may conveniently be mounted in multi-electrode chest panels as described in any of the following documents: Ransbury et al., U.S. Patent Application Publication No. 2004/0015194; Sippensgroenewegen, U.S. Patent Application Publication No. 2001/0056289; Ramanathan et al., in Noninvasive Electrocardiographic Imaging for Cardiac Electrophysiology and Arrhythmia, Nature Medicine, published on the Internet; and the above-noted document Modre et al. The electrodes 31 are connected to the control processor 28 by a cable 33, and linked to the EKG processor 27.

[0026] The electrodes 31 can alternatively be positioned internally within the subject. For example they could be esophageal leads or electrodes disposed, temporarily or permanently, within areas such as the coronary sinus or epicardium.

[0027] The above noted intrapericardial technique can be used to generate an epicardial electrical map. This method is still less invasive than the above-described intravascular catheterization technique for obtaining endocardial electrical maps. The technique employs an epicardial contact probe as the catheter 22, which is inserted through the chest wall into the pericardium, using known introduction techniques.

[0028] In either case, the epicardial electrical map typically shows the potentials on the epicardium, although it may also show endocardial potentials. Nevertheless, the term "epicardial electrical map" is employed herein, as the data of primary interest are obtained from outside the heart.

[0029] Using the image processor 21, which is linked with the display 40, the features of the endocardial and epicardial electrical maps are registered with one another, based on anatomical landmarks and/or electrical features of the maps.

The purpose of this registration is to establish a transformation function, also referred to herein as a transform, between the electrical features of the two maps. Once the transform has been established, subsequently obtained epicardial electrical maps can be transformed into new versions of the endocardial electrical map. In some embodiments, the transform can be effected by a simple visual projection of the epicardial electrical map onto the endocardial electrical map. Alternatively, a mathematical transform may be applied to the new epicardial electrical maps in order to create new versions of the endocardial electrical map.

[0030] Suitable registration techniques used in one embodiment are disclosed in U.S. Patent No. 6,650,927, of common assignee herewith. The technique is briefly described:

[0031] The epicardial electrical map and the endocardial electrical map can be 3-dimensional maps. Registration of these maps can be performed using the methods disclosed in Application No. 11/215,435, entitled "Segmentation and Registration of Multimodal Images using Physiological Data", of common assignee herewith.

Embodiment 2

[0032] Reference is now made to Fig. 3, which is an illustration of a system 106, which is constructed and operative in accordance with an embodiment of the invention. The system 106 is similar to the system 20 (Fig. 1). However the subject 26 is now clothed in a torso vest 108 that has a plurality of electrodes 110, typically between about 125 and 250 electrodes, which are disposed within the torso vest 108 to provide measurements of electrical potentials over the anterior, posterior and lateral aspects of the torso of the subject 26. The electrodes 110 are connected via leads 112 and the cable 33 to the control processor 28. The control processor 28 is modified for receiving and processing data from the torso vest 108.

[0033] The control processor 28 now contains electrical circuitry for impedance detection, as described in U.S. Patent Application 11/030,934, filed January 7, 2005, which is assigned to the assignee of the present patent application. The system is modified to generate, based on impedance measurements between a small number of endocardial points and the electrodes 110, a functional relationship therebetween. In one embodiment, this relationship is a linear multidimensional matrix of coefficients, referred to herein as a lead field matrix. The inverse of the matrix is then estimated, for example, as described in U.S. Patent Application Publication No. 2003/0120163 (Yoram Rudy et al.). In this disclosure, the inverse matrix corresponds to epicardial electrical potentials. In the system 106, however, the inverse of the matrix corresponds to a map of endocardial conductances, which is an advance over prior techniques. In the past, it has not been possible to reliably evaluate the transfer function between external measurements and endocardial potentials. This is because the electrical field traverses fibromuscular tissue within the myocardium. As noted above, the amount and orientation of such tissue varies among individuals. Alternatively, in some embodiments of the system 106, the lead field matrix and its inverse may relate to a map based on epicardial conductances. Inversion of the lead field matrix is discussed in further detail below.

[0034] It is possible to use only one endocardial point. The receiving point or points can be internal or external to the subject. For example one or more esophageal leads coronary sinus electrodes, epicardial, or even intra-myocardial electrodes can be used as receiving points.

[0035] Reference is now made to Fig. 4, which is a simplified sectional view of a thorax 114 showing the torso vest 108, and the electrodes 110 distributed about the thorax, in accordance with a disclosed embodiment of the invention. Fig. 4 also shows a right atrium 116, and includes three endocardial points 118, 120, 122. As explained below, impedance measurements are made between catheter electrodes positioned at the endocardial points 118, 120, 122 and the electrodes 110. In some applications, impedances are also measured between epicardially positioned electrodes (not shown in Fig. 4) and the electrodes 110.

[0036] Reference is now made to Fig. 5, which is a schematic diagram illustrating details of the torso vest 108 (Fig. 3), in accordance with a disclosed embodiment of the invention. The torso vest 108 is constructed to include distributed stress points 124, which may coincide with the electrodes 110. However, such a coincidence is a matter of convenience, and is not essential. The stress points 124 are connected by flexible splines 126, having predetermined degrees of freedom. The splines 126 cause the torso vest 108 to closely conform to the geometry of the thorax 114 (Fig. 4). The torso vest 108 includes at least one location sensor 128, which is a reference point in a coordinate system that includes the electrodes 110. The use of such a location sensor is taught with reference to a locating system in commonly assigned U.S. Patent Application Publication No. 2004/0068178. The location sensor 128 enables the positions of the electrodes 110 to be tracked during a medical procedure and to be related to intracardiac electrodes by difference computations. The location sensor 128 is not essential, so long as the electrodes 110 can be located relative to the endocardial points.

[0037] Reference is now made to Fig. 6, which is a flow chart of a method for correlating endocardial and epicardial maps, in accordance with an alternate embodiment of the invention. The sequence of many of the process steps described in Fig. 6 is exemplary, and can be altered, as will be apparent to those skilled in the art.

[0038] At initial step 130 the subject is clothed in the torso vest 108, and connected to the control processor 28 (Fig. 3). A body surface epicardial electrical map is acquired as described in the above-noted U.S. Patent Application Publi-

cation No. 2003/0120163.

[0039] At step 132, the heart is catheterized, and a limited impedance map is acquired, again using the electrodes 110 on the torso vest 108 (Fig. 3). Typically, a small number of points, such as the endocardial points 118, 120, 122 (Fig. 4) are used to acquire the limited impedance map.

[0040] At step 134, an anatomic image of the heart is obtained. This can be preacquired, or obtained during the same session at which initial step 130 and step 132 are performed. Indeed, the acquisition of the anatomic image can optionally be obtained in near realtime, using known techniques, e.g., ultrasound imaging, if a patient wears a "vest" of body surface electrodes during computed tomographic (CT), myocardial perfusion SPECT. However, the impedance data acquired as described above may often be sufficient to develop a general body model, and to further evolve a patient-specific model from a general body model.

[0041] At step 136, applying the matrix solution techniques described in the above-noted U.S. Patent Application Publication No. 2003/0120163, conductances between the endocardial points 118, 120, 122 and each of the electrodes 110 (Fig. 3) are determined at different points in the cardiac cycle to generate the impedance map.

[0042] At step 138, the maps produced in initial step 130 and step 132 are combined and registered with the anatomic image obtained in step 134. This step transforms the body surface maps into a detailed combined endocardial map.

[0043] Step 140 is optional. In some applications, it is important to obtain segmental information regarding a cardiac chamber. In step 140, the maps are segmented to produce one or more regional maps. Image processing techniques for segmenting images and producing segmental data are well known in the art, and any suitable method may be employed for this step.

[0044] At step 142 ablative therapy on the heart is carried out conventionally. Then, at step 144 ablation is verified by obtaining a new detailed endocardial map by iterating the mappings and processing described in initial step 130 and steps 132, 136, 138. Techniques for assessing ablation are known, and are described, e.g., in commonly assigned Application No. 11/357,512, entitled "Lesion Assessment by Pacing".

[0045] At final step 146, at one or more times subsequent to the procedure detailed above, a new body surface epicardial electrical map is obtained as described in initial step 130. Then, using the same anatomic image and limited impedance maps that were obtained in steps 132, 134, one or more new combined endocardial maps are generated, for long term monitoring. The new maps can optionally be segmented, as noted above. While the electrodes of the vest will generally not coincide with their positions when the first electrical map was prepared, the procedure is nevertheless effective, so long as the relative positions of the vest electrodes with respect to the endocardial points can be determined.

General Operation

[0046] Reference is now made to Fig. 7, which is a schematic diagram illustrating further implementation details of the method described with reference to Fig. 6, in accordance with a disclosed embodiment of the invention. A sectional view of the thorax of a subject 148 is shown, encloded in a multi-electrode chest panel 150 having electrodes 152. An intracardiac catheter 154 is in place within a cardiac chamber 156. The catheter 154 has a location sensor 158 and a plurality of electrodes 160. A generator 162 stimulates the electrodes 160. Signals are detected in the electrodes 152 and conducted to a receiver 164. A processor 166 linked to the receiver 164 then determines conductances between the chamber 156 and the electrodes 152 and produces a limited endocardial conductance map. It will be appreciated that relatively few electrodes 160, and hence relatively few intracardiac points are used to obtain the conductance or impedance measurements compared to the number of electrodes 152.

[0047] A matrix relationship can now be established between the signals emitted from points 168 on the endocardial surface of the chamber 156 and signals received by the electrodes 152. The precise respective locations of the points 168 are determined with reference to the location sensor 158 during the catheterization procedure. By inverting the matrix, using the various techniques disclosed below and in the above-noted document Rudy *et al.*, it is possible to calculate potentials within the chamber 156 at the points 168, once the signals at the electrodes 152 are known. By performing this calculation at different times during the cardiac cycle and the respiratory cycle, and again, after withdrawal of the catheter, a time-varying endocardial electrical map of the chamber 156 can be generated. This map can be regenerated in future sessions simply by measuring electrical signals in the multi-electrode chest panel and applying them as coefficients of the same adjusted matrix, and repeating the matrix inversion, or applying them directly to the previously inverted matrix.

[0048] This method thus involves an integration of information from the tip of the catheter. First, measured endocardial potentials are added to elements of the lead field matrix, sometimes referred to as a "measured lead field matrix". Second, the lead field matrix is updated using impedance measurements taken between the tip of the catheter and the electrodes of the vest. As the catheter is moved, its position being tracked continuously, more measurements are accumulated both for the endocardial potential and for the lead field matrix. These measurements are used to progressively improve inverse solutions for the lead field matrix.

[0049] Establishing a reliable linear matrix relationship between the signals emitted from points 168 on the endocardial

surface of the chamber 156 and signals received by the electrodes 152 is essential to obtain a competent endocardial (or epicardial) electrical map that can be regenerated from time to time and compared with previous instances. This problem, known as the "inverse problem", is known to be complicated in the sense that a spatial ambiguity inherently exists. In the past, mathematical procedures that were applied to endocardial potentials tended to produce poor image resolution. While solving the inverse problem using epicardial potentials delivers reasonable results, application to the endocardium leads to smeared out images. The problem is further complicated by the fibrous structure of the cardiac muscle, which varies among patients. Dealing with this requires a tensor-impedance model, which cannot easily be estimated from the MRI or CT scans.

The Forward Problem

[0050] The "forward problem" is the process of finding electric potentials in a medium with given electric and dielectric characteristics (conductivities) for a given distribution of electrical sources. This problem leads to a linear matrix equation with a unique solution:

$$\mathbf{A} \cdot \mathbf{x} = \mathbf{b} \quad (1),$$

where A is the transfer matrix (lead field matrix), are current sources or endocardial and epicardial potentials or transmembrane potentials, and is an array of electric potentials measured at the body surface vest, i.e., a body surface potential map.

Model based Approach

[0051] In one approach, general human tissue conductivities and segmentation of the MR/CT model are characterized. The lead field matrix is calculated using a Finite Element Method (FEM) solver. A mechanical or electrical model has some freedom to represent the key factors (\mathbf{p}) that affect the matrix A, i.e.,

$$\mathbf{A} = \mathbf{A}(\mathbf{p}) \quad (2).$$

[0052] The key factors (\mathbf{p}) can be the geometrical position or size of organs and the proportion of various tissues within the field of observation. Conductivities of organs and tissues differ among individual patients. For example, fiber direction affects the direction of the conductivity tensor in the myocardium. The model is improved and made patient-specific by characterizing these differences, which are reflected in the lead field matrix.

[0053] Measurements made by the injected signals are used to optimize the key factors (\mathbf{p}), so that the FEM solution becomes:

$$\hat{\mathbf{p}} = \arg \underset{\mathbf{p}}{\text{Min}} \sum \left\| \mathbf{b}_c^{\mathbf{r}} - \mathbf{Z}_r^{\mathbf{r}}(\mathbf{p}) \mathbf{v}_r^{\mathbf{r}} \right\|^2 \quad (3).$$

where: $\mathbf{v}_r^{\mathbf{r}}$ is the current injected into the catheter, placed at position \mathbf{r} (in the reference coordinate system, grounded at that time). $\mathbf{Z}_r^{\mathbf{r}}(\mathbf{p})$ is the impedance matrix calculated by the FEM solver for the point sources \mathbf{p} . For a set of

mechanical or electrical model parameters (\mathbf{p}), the values $\mathbf{b}_c^{\mathbf{r}}$ are a vector indicating the measured voltages in the set of receiving locations. The measurements may be impedance measurements. Alternatively, they may be measurements of the lead field matrix based on signals from electrical dipoles. Such dipoles may be generated by establishing a voltage

difference between two adjacent electrodes in a catheter. A dipole can be directed in the three orthogonal directions if the electrodes are suitably arranged.

[0054] Optimizations for measured impedance ($\overset{\mathbf{1}}{Z}$) are given by Equation 4.

$$\hat{p} = \arg \text{Min} \sum \left\| \overset{\mathbf{r}}{Z}_{\text{measured}} - \overset{\mathbf{r}}{Z}_{\text{calculated}}(\overset{\mathbf{r}}{p}) \right\|^2 \quad (4).$$

[0055] Choices for the set of parameters ($\overset{\mathbf{1}}{p}$) include organ size, conductivity, fiber direction, and anisotropy ratio.

Known optimization search algorithms can be used to determine values for the set of parameters ($\overset{\mathbf{1}}{p}$), e.g., genetic algorithms, simulated annealing, and neural networks, or hybrids thereof. Examples of such optimizations are disclosed in D. Farina, O. Skipa, C. Kaltwasser, O. Dössel, and W. R. Bauer, "Optimization-based reconstruction of depolarization of the heart," Proc. Computers in Cardiology, Chicago, USA, 2004, 31, 129-132.

[0056] Dipole generated potentials act the same as a monovoltage source when applied to the lead field matrix. In some cases, it is more convenient to describe cardiac electrical activity as a set of dipoles spread over the myocardium in which intensity and directional parameters vary over the cardiac cycle.

[0057] Using the set of parameters ($\overset{\mathbf{1}}{p}$), one can calibrate the FEM model in order to represent the patient's anatomy accurately. Generating a signal from inside the heart gives important information concerning the myocardial properties, namely correctness of assumptions on fiber direction. The signal can reveal other diagnostic information as well. Ischemic, scar and stent-related tissue may have significant deviations from normal conductivity. An added benefit of this approach is a visual map of myocardial impedance, which may itself have diagnostic value. Additionally or alternatively, the catheter may be placed epicardially, and the method of signal injection applied to epicardial leads. When the procedure is performed in this manner, it is possible to generate epicardial electrical maps of the heart based on external readings. The discussion that follows is directed to endocardial maps, but is applicable, *mutatis mutandis*, to epicardial map generation. If desired, the principles disclosed herein can be applied to establish transform matrices relating epicardial potentials to endocardial signals.

[0058] Alternatively, current can be injected through two neighboring intracardiac electrodes, thus mimicking a current dipole. In this way, some matrix elements of the lead field matrix A can be measured directly. This procedure can be used to update the original lead field matrix, or it can be used to construct the lead field matrix A without any MRI or CT data set. In either case, a body surface potential map (BSPM) is generated using signals using injected currents instead of current dipoles arising from bioelectric sources.

[0059] The mathematical solution to the inverse problem is degraded by respiration. This can be minimized by gating data collection at one point in the respiratory cycle, e.g., end expiration. However, it may be desirable to data throughout the respiratory cycle, and constructing a respiration dependent lead field matrix that is corrected for the phase of the respiratory cycle. The quality of the solution to the inverse problem improves considerably when this is done.

[0060] The inventors have discovered how to overcome technical difficulties inherent in the matrix inversion. By injecting signals in different combinations, typically in a relatively few sources located in the cardiac chamber, and measuring the signals at receiving points, the lead field matrix can be determined accurately, column-by-column. The calculation is iterated using as many different combinations of intracardiac electrodes as there are unknown coefficients in the matrix. Of course, the number of coefficients depends on the numbers of intracardiac sources and external leads.

[0061] If a multi-electrode catheter, e.g., the PEN-TARAY™ High-Density Mapping Catheter, available from Biosense Webster, Inc., is used, endocardial potentials are measured at many points while the catheter is stationary. This allows the torso vest measurements to be rapidly completed.

[0062] Reference is now made to Fig. 8, which is a diagram illustrating a technique for developing a forward matrix in accordance with a disclosed embodiment of the invention. Equation 1 is illustrated in a matrix form 182 in the upper portion of Fig. 8. An electrical signal is injected, using two or more sources inside a chamber of heart 184, e.g., electrodes 160 (Fig. 7). As illustrated in the lower portion of the Fig. 8, this signal is represented as a vector 186, corresponding to vector 188 in the upper portion of the figure. A plurality of impedance measurements, represented as vector 190 and corresponding to vector 192 in the upper portion of the figure, are taken between the sources and a plurality of external leads on torso 194, e.g., electrodes 152 (Fig. 7). This allows one column 196 of lead field matrix 198 to be established. In the example of Fig. 8, the column 196 is the leftmost column 200 of the lead field matrix 198. By iteratively changing the location of the source signals or, in the case of a multi-element mapping catheter, varying the combination of source signals, a matrix equation is created and solved. At the same time, the coefficients of the lead field matrix 198 are determined with great accuracy, noise being swamped out by the relatively large magnitude of the injected signals.

[0063] Reference is now made to Fig. 9, which is a flow chart illustrating the above-described method for determining a measured lead field matrix by signal injection in accordance with a disclosed embodiment of the invention. At initial step 202 the patient is prepared by applying a torso vest and inserting a cardiac mapping catheter linked to a location processor, e.g., the system 106 (Fig. 3). It is desirable that the mapping catheter has multiple electrodes. This expedites the procedure as sufficient sources can be used without excessive navigation of the catheter within the heart. The number of measurements required to be taken in order to determine the lead field matrix is recorded.

[0064] Next, at step 204 a combination of at least two intracardiac source leads is chosen. The locations of these sources with respect to reference features of the cardiac anatomy are known accurately by virtue of the location processing facilities of the system 106.

[0065] It is also possible to employ unipolar leads in step 204, with appropriate adjustment in the computation of the lead field matrix as will be apparent to those skilled in the art.

[0066] Next, at step 206 an electrical signal is injected using the current source leads to create an electrical dipole. Suitable values for this signal are 1-10 mA at 1-100 kHz. The signals may be constant voltage or constant current signals.

[0067] Next, at step 208 impedance measurements are recorded between the source leads chosen in step 206 and each of the leads of the torso vest. Impedances may be measured using the teachings of commonly assigned U.S. Patent Application Publication No. 2007/0060832, entitled "Detection of Skin Impedance". In embodiments employing electrical dipoles, the dipole position and orientation are determined at the torso vest leads.

[0068] Control now proceeds to decision step 210, where it is determined if more measurements are required. If the determination at decision step 210 is affirmative, then control returns to step 204 to select another source.

[0069] If the determination at decision step 210 is negative, then control proceeds to final step 212. The matrix equation is solved and the lead field matrix values reported.

[0070] As noted above the measurements described in Fig. 8 and Fig. 9 are gated with respect to the respiratory cycle. In addition, they are gated with respect to the cardiac cycle. By repeating the measurements at different points in the cycles, a time-varying patient-specific set of lead field matrices can be obtained at any desired spatiotemporal resolution.

[0071] It will be recalled from consideration of the finite element model that parameter optimization is necessary. After performing final step 212, and once a reliable lead field matrix is available, the optimization algorithm can be applied to

establish the parameters ($\hat{\mathbf{p}}$) in Equation 3 in conformity with the actual lead field matrix with greatly reduced modeling errors in the resulting patient-specific finite element model. The solution of the inverse problem can then be developed with far greater confidence. Ultimately, near-perfect images depicting the electrophysiology in a patient's heart can be produced from a few initial intracardiac measurements without artifacts caused by the respiratory cycle. These "4-D" images can be repeated from time to time, for example to evaluate therapy. It should be noted that the receiving points in subsequent sessions need not be identical to those in the original session, only that their relative locations with respect to the original transmission points or original receiving points be identifiable, for example by reference coordinates. Application of inverted lead field matrix to the new receiving points remains valid.

Embodiment 3

[0072]

$$\hat{\mathbf{p}} = \arg \operatorname{Min}_{\bar{\mathbf{p}}} \sum \left\| \mathbf{Z}_{\bar{\mathbf{r}}}^{-1}(\bar{\mathbf{p}}) \bar{\mathbf{b}}_c - \mathbf{v}_{\bar{\mathbf{r}}} \right\|^2 \quad (5).$$

[0073] The notation in Equation 5 is the same as for Equation 4. The model-based optimization techniques described by Equation 4, are now applied to directly determine the inverted lead field matrix $\hat{\mathbf{b}}_c$ without explicitly calculating the lead field matrix itself.

Embodiment 4

[0074] Reference is now made to Fig. 10, which is a functional block diagram of a method for developing a 3-dimensional patient-specific cardiac electroanatomic model in accordance with a disclosed embodiment of the invention. The functional diagram can be implemented by specialization of the system 106 (Fig. 3) and employing the techniques and apparatus disclosed above with reference to Embodiments 1, 2, 3, and using the method described with reference to Fig. 9.

[0075] Initially a 3-dimensional anatomical patient model 214 is prepared in functional group 216 using conventional

3-dimensional anatomic imaging modalities, This is similar to step 134 (Fig. 6), but usually extends to the thoracic organs and tissues beyond the heart itself. Functional group 218 develops a matrix of electrical signals having known coordinates in the subject's body, which is merged in functional block 219 with the model 214.

[0076] In functional group 220 An electroanatomical map is generated during cardiac catheterization as described in Embodiment 1. This map may be obtained using the CARTO XP EP Navigation and Ablation System, available from Biosense Webster Inc., 3333 Diamond Canyon Road Diamond Bar, CA 91765.

[0077] During the catheterization, in functional group 222 the method described with reference to Fig. 9 is applied. A measured impedance array is computed in functional block 224. The array is applied in block 226. This array is used to improve the model 214 of functional block 226, and thus contributes to a model 228. The model 228 is then used to solve the inverse problem and optimize FEM parameters (Equations 3, 4, 5) in functional block 230. Typically, the inverse problem, described below, may be solved initially in block 230, prior to the contribution of data via functional group 222, and initial electroanatomical images are produced in functional block 232. In the initial solution, a preliminary set of electroanatomic images of endocardial potentials and optionally epicardial potentials may be developed in functional block 232. Subsequently, after including the benefits of functional group 222, improved images are generated in functional block 234. Another effect of the data provided by functional group 222 is the computation of a lead field matrix in functional block 236. This may be iteratively compared to the matrix measured in functional block 224 and applied to improve the FEM using the optimization algorithm for solving Equations 3, 4, 5.

[0078] The system operation described in Fig. 10 can be used to determine the dependency of the lead field matrix on motion during cardiac cycle $cc(t)$ by determining respiratory parameters $r(t)$. The technique ultimately speeds up catheterization procedures, improves the diagnosis of arrhythmias and infarctions, and improves the outcome of cardiac interventional therapies.

The Inverse Problem

[0079] A major objective, using the method and systems described in Fig. 6 and Fig. 7, is calculation of electrical sources in the endocardium based on a few endocardial potentials and many body surface measurements, which is known as the "inverse problem". In Equation 1, the vector of measured signals ($\overset{1}{b}$) is known. As noted above, the lead field matrix A may be calculated by solving several forward calculations using MRI or CT scans of the patient. Then the vector $\overset{1}{x}$, describing the sources, is to be determined from:

$$A^{-1} \cdot \overset{1}{b} = \overset{1}{x} \quad (6) .$$

[0080] Mathematically, it is necessary to find the inverse A^{-1} of the lead field matrix A. Unfortunately this problem is ill-posed. The matrix A has a non-vanishing null-space, i.e., different vectors $\overset{1}{x}$ can be found, that belong to this null-space and lead to potentials $\overset{1}{b}$ smaller than noise. Every linear combination of a vector $\overset{1}{x}$ with vectors out of the null-space leads to the same potentials $\overset{1}{b}$ and is therefore a solution of Equation 1. Moreover, the coefficients of the matrix A bear some uncertainty due to the unknown individual conductivities.

Solution by Regularization

[0081] Regularization is a well-described approach to the inverse problem in which the null space of the inversion is discarded. The most commonly used method is Tikhonov regularization with a Tikhonov new factor of zero that selects the solution with the smallest norm (smallest possible source).

[0082] There are two major factors that improve the quality of inversion when the lead field matrix is determined according to the methods described above. First, the signal-to-noise ratio is improved due to the magnitude of the injected signal. ECG transmembrane potentials are on the order of 10mV and relatively short in duration, while the generated signal is on the order of volts and much longer in duration. Thus, averaging techniques can be used to further improve the signal-to-noise ratio. Improvements of two orders of magnitude are easily achieved. This allows less energetic eigenvalues to participate meaningfully in the solution, and ultimately improves reliability of the endocardial potentials observed. Second, the quality of the matrix improves as larger numbers of intracardiac sources are employed. To this end, the use of a multi-element mapping catheter is desirable and a torso vest having large numbers of receiving

electrodes.

[0083] It will be appreciated by persons skilled in the art that the present invention is not limited to what has been particularly shown and described hereinabove. Rather, the scope of the present invention includes both combinations and sub-combinations of the various features described hereinabove, as well as variations and modifications thereof that are not in the prior art, which would occur to persons skilled in the art upon reading the foregoing description.

Claims

1. A system (106) for generating an electrical map of a heart of a living subject, comprising:

a probe (154) configured for insertion into a chamber of the heart, said probe having at least one first electrode (160), the first electrode configured to emit electrical signals, the location of the at least one electrode when emitting within the heart being a transmission point;

a torso vest (150) configured to be located at a thorax (114) of the subject, the torso vest having a plurality of second electrodes (152) thereon; the second electrodes configured so as to receive said emitted electrical signals at at least one second electrode;

means (152) for determining a location of said at least one second electrode relative to said at least one transmission point;

means (152) for determining a functional relationship between said emitted electrical signals and said received electrical signals as a measured inverted lead field matrix based on impedance between the at least one first electrode and the at least one second electrode at different times during a cardiac cycle and a respiratory cycle;

means (152) for receiving electrophysiological signals from second electrodes other than the at least one second electrode; and

means for applying said functional relationship to said electrophysiological signals, and for obtaining a time varying endocardial electrical map.

2. The system according to claim 1, further comprising:

means for acquiring an anatomic image of a thorax (114) of said subject;

means for preparing a finite element model of said thorax having parameters using said anatomic image, said finite element model having a calculated inverted lead field matrix and adjusting said parameters to conform said calculated inverted lead field matrix to said measured inverted lead field matrix.

3. The system according to claim 1, wherein said at least one second electrode is external to said subject.

4. The system according to claim 1, wherein said probe (154) has at least two electrodes (160) and emitting electrical signals is performed by time multiplexing said electrical signals using different subsets of said electrodes.

5. The system according to claim 1, wherein said probe (154) has at least two electrodes (160) and emitting electrical signals is performed by frequency multiplexing said electrical signals using different subsets of said electrodes.

6. The system according to claim 1, wherein said electrode (160) is a unipolar electrode.

7. The system according to claim 1, wherein said electrode (160) is a bipolar electrode.

8. The system according to claim 1, wherein emitting electrical signals, receiving said emitted electrical signals, and determining a functional relationship are performed with respect to a predetermined phase of a respiratory cycle of said subject.

9. The system according to claim 1, wherein emitting electrical signals, receiving said emitted electrical signals, and determining a functional relationship, are performed with respect to a predetermined phase of a cardiac cycle of said subject.

10. The system according to claim 1, wherein the probe (154) comprises a first location sensor (158).

11. The system according to claim 10, wherein said means (152) for determining a location comprises:

means for associating said at least one second electrode with a second location sensor (128) and reading said first location sensor (158) and said second location sensor (128) to determine a difference therebetween.

5 12. The system according to claim 10, wherein emitting electrical signals, receiving said emitted electrical signals, and determining a functional relationship are performed with respect to a predetermined phase of a respiratory cycle of said subject.

10 13. The system according to claim 10, wherein emitting electrical signals, receiving said emitted electrical signals, and determining a functional relationship are performed with respect to a predetermined phase of a cardiac cycle of said subject.

14. The system according to claim 1, further comprising:

15 an imaging device (40);
a signal generator (29); and
a processor linked (124) to:

20 the torso vest (150) for clothing said subject, said torso vest further comprising a first position sensor (128),
said imaging device;
said signal generator; and to the probe

wherein said processor (154) comprises:

25 the means for determining a location which is arranged to read said first position sensor to locate the at least one first electrode with respect to said second electrodes;

means to cause said signal generator to transmit electrical signals sequentially to the at least one first electrode, the electrode arrangeable to sequentially emit said electrical signals from different transmission points in said heart, wherein said emitted electrical signals are transferred to said processor via said second electrodes as received electrical signals;

30 the means for determining which is arranged to determine the functional relationship; and
the means for applying, and
means (21) for displaying said endocardial electrical map on said imaging device (40).

35 15. The system according to claim 14, wherein said probe (154) has at least two (160) electrodes and said signal generator (29) is operative to produce said emitted electrical signals by sequentially conveying said electrical signals to different subsets of said electrodes (160).

40 16. The system according to claim 14, wherein the means for determining is operative to determine said measured lead field matrix at a predetermined phase of a respiratory cycle of said subject.

17. The system according to claim 14, wherein the means to determine is operative to determine said measured lead field matrix at a predetermined phase of a cardiac cycle of said subject.

45 18. The system according to claim 14, wherein said processor (154) is operative to accept an anatomic image of a thorax (114) of said subject, and to using said anatomic image to prepare a finite element model of said thorax having parameters, said finite element model having a calculated lead field matrix, and to adjust said parameters to conform said calculated lead field matrix to said measured lead field matrix.

50 **Patentansprüche**

1. System (106) zum Erzeugen einer elektrischen Darstellung eines Herzens eines lebenden Subjekts, umfassend:

55 eine Sonde (154), ausgelegt zum Einfügen in eine Kammer des Herzens, wobei die Sonde mindestens eine erste Elektrode (160) aufweist, wobei die erste Elektrode ausgelegt ist zum Aussenden elektrischer Signale, wobei der Ort der mindestens einen Elektrode beim Aussenden im Herzen ein Übertragungspunkt ist;
eine Torsoweste (150), die dafür ausgelegt ist, an einem Thorax (114) des Subjekts angeordnet zu werden, wobei die Torsoweste mehrere zweite Elektroden (152) darauf aufweist; wobei die zweiten Elektroden so aus-

gelegt sind, dass sie die ausgesendeten elektrischen Signale an mindestens einer zweiten Elektrode empfangen;

Mittel (152) zum Bestimmen eines Orts der mindestens einen zweiten Elektrode relativ zu dem mindestens einen Übertragungspunkt;

5 Mittel (152) zum Bestimmen einer funktionalen Beziehung zwischen den ausgesendeten elektrischen Signalen und den empfangenen elektrischen Signalen als eine gemessene invertierte Lead-Field-Matrix auf der Basis von Impedanz zwischen der mindestens einen ersten Elektrode und der mindestens einen zweiten Elektrode zu verschiedenen Zeiten während eines Herzzyklus und eines Atmungszyklus;

10 Mittel (152) zum Empfangen elektrophysiologischer Signale von anderen zweiten Elektroden als der mindestens einen zweiten Elektrode; und

Mittel zum Anwenden der funktionalen Beziehung auf die elektrophysiologischen Signale und zum Erhalten einer zeitveränderlichen endokardialen elektrischen Darstellung.

2. System nach Anspruch 1, ferner umfassend:

15 Mittel zum Beschaffen eines anatomischen Bildes eines Thorax (114) des Subjekts;
Mittel zum Erstellen eines Finite-Element-Modells des Thorax, das Parameter aufweist, unter Verwendung des anatomischen Bildes, wobei das Finite-Element-Modell eine berechnete invertierte Lead-Field-Matrix aufweist, und Justieren der Parameter, um die berechnete invertierte Lead-Field-Matrix mit der gemessenen invertierten Lead-Field-Matrix zu konformieren.

3. System nach Anspruch 1, wobei sich die mindestens eine zweite Elektrode außerhalb des Subjekts befindet.

25 4. System nach Anspruch 1, wobei die Sonde (154) mindestens zwei Elektroden (160) aufweist und das Aussenden elektrischer Signale durch Zeitmultiplexen der elektrischen Signale unter Verwendung verschiedener Teilmengen der Elektroden durchgeführt wird.

30 5. System nach Anspruch 1, wobei die Sonde (154) mindestens zwei Elektroden (160) aufweist und das Aussenden elektrischer Signale durch Frequenzmultiplexen der elektrischen Signale unter Verwendung verschiedener Teilmengen der Elektroden durchgeführt wird.

6. System nach Anspruch 1, wobei die Elektrode (160) eine unipolare Elektrode ist.

35 7. System nach Anspruch 1, wobei die Elektrode (160) eine bipolare Elektrode ist.

8. System nach Anspruch 1, wobei das Aussenden elektrischer Signale, das Empfangen der ausgesendeten elektrischen Signale und das Bestimmen einer funktionalen Beziehung mit Bezug auf eine vorbestimmte Phase eines Atmungszyklus des Subjekts durchgeführt werden.

40 9. System nach Anspruch 1, wobei das Aussenden elektrischer Signale, das Empfangen der ausgesendeten elektrischen Signale und das Bestimmen einer funktionalen Beziehung mit Bezug auf eine vorbestimmte Phase eines Herzzyklus des Subjekts durchgeführt werden.

10. System nach Anspruch 1, wobei die Sonde (154) einen ersten Ortssensor (158) umfasst.

45 11. System nach Anspruch 10, wobei die Mittel (152) zum Bestimmen eines Orts Folgendes umfassen:

50 Mittel zum Assoziieren der mindestens einen zweiten Elektrode mit einem zweiten Ortssensor (128) und Lesen des ersten Ortssensors (158) und des zweiten Ortssensors (128), um eine Differenz zwischen ihnen zu bestimmen.

55 12. System nach Anspruch 10, wobei das Aussenden elektrischer Signale, das Empfangen der ausgesendeten elektrischen Signale und das Bestimmen einer funktionalen Beziehung mit Bezug auf eine vorbestimmte Phase eines Atmungszyklus des Subjekts durchgeführt werden.

13. System nach Anspruch 10, wobei das Aussenden elektrischer Signale, das Empfangen der ausgesendeten elektrischen Signale und das Bestimmen einer funktionalen Beziehung mit Bezug auf eine vorbestimmte Phase eines Herzzyklus des Subjekts durchgeführt werden.

14. System nach Anspruch 1, ferner umfassend:

eine Bildgebungsvorrichtung (40);
einen Signalgenerator (29); und
einen Prozessor, verbunden (124) mit

der Torsoweste (150) zum Bekleiden des Subjekts, wobei die Torsoweste ferner einen ersten Positionssensor (128) umfasst,

der Bildgebungsvorrichtung;
dem Signalgenerator; und der Sonde,
wobei der Prozessor (154) Folgendes umfasst;

die Mittel zum Bestimmen eines Orts, die ausgelegt sind zum Lesen des ersten Positionssensors, um die mindestens eine erste Elektrode mit Bezug auf die zweiten Elektroden zu finden;

Mittel zum Bewirken, dass der Signalgenerator sequentiell elektrische Signale zu der mindestens einen ersten Elektrode sendet, wobei die Elektrode auslegbar ist zum sequentiellen Aussenden der elektrischen Signale von verschiedenen Übertragungspunkten in dem Herz, wobei die ausgesendeten elektrischen Signale über die zweiten Elektroden als empfangene elektrische Signale zum Prozessor übermittelt werden;

die Mittel zum Bestimmen, die ausgelegt sind zum Bestimmen der funktionalen Beziehung; und
die Mittel zum Anwenden und

Mittel (21) zum Anzeigen der endokardialen elektrischen Darstellung auf der Bildgebungsvorrichtung (40).

15. System nach Anspruch 14, wobei die Sonde (154) mindestens zwei (160) Elektroden aufweist und der Signalgenerator (29) wirkt zum Produzieren der ausgesendeten elektrischen Signale durch sequentielles Leiten der elektrischen Signale zu verschiedenen Teilmengen der Elektroden (160).

16. System nach Anspruch 14, wobei die Mittel zum Bestimmen wirken zum Bestimmen der gemessenen Lead-Field-Matrix in einer vorbestimmten Phase eines Atmungszyklus des Subjekts.

17. System nach Anspruch 14, wobei die Mittel zum Bestimmen wirken zum Bestimmen der gemessenen Lead-Field-Matrix in einer vorbestimmten Phase eines Herzzyklus des Subjekts.

18. System nach Anspruch 14, wobei der Prozessor (154) wirkt zum Annehmen eines anatomischen Bildes eines Thorax (114) des Subjekts und zum Verwenden des anatomischen Bildes zum Erstellen eines Finite-Element-Modells des Thorax, das Parameter aufweist, wobei das Finite-Element-Modell eine berechnete Lead-Field-Matrix aufweist, und zum Justieren der Parameter, um die berechnete Lead-Field-Matrix mit der gemessenen Lead-Field-Matrix zu konformieren.

Revendications

1. Système (106) pour générer une carte électrique du coeur d'un sujet vivant, comprenant :

une sonde (154) configurée pour être insérée dans une chambre du coeur, ladite sonde ayant au moins une première électrode (160), la première électrode étant configurée pour émettre des signaux électriques, l'emplacement de l'au moins une électrode, lorsqu'elle émet à l'intérieur du coeur, étant un point de transmission ;
un gilet de torse (150) configuré pour être situé au niveau du thorax (114) du sujet, le gilet de torse ayant une pluralité de deuxièmes électrodes (152) sur celui-ci ; les deuxièmes électrodes étant configurées de façon à recevoir lesdits signaux électriques émis au niveau d'au moins une deuxième électrode ;

des moyens (152) pour déterminer l'emplacement d'au moins l'une dite électrode par rapport audit au moins un point de transmission ;

des moyens (152) pour déterminer une relation fonctionnelle entre lesdits signaux électriques émis et lesdits signaux électriques reçus sous la forme d'une matrice de champ conducteur inversé mesurée sur la base de l'impédance entre l'au moins une première électrode et l'au moins une deuxième électrode à des moments différents durant un cycle cardiaque et un cycle respiratoire ;

des moyens (152) pour recevoir des signaux électrophysiologiques à partir de deuxièmes électrodes autres que l'au moins une deuxième électrode ; et

des moyens pour appliquer ladite relation fonctionnelle auxdits signaux électrophysiologiques, et pour obtenir une

carte électrique endocardique variant avec le temps.

2. Système selon la revendication 1, comprenant en outre :

5 des moyens pour acquérir une image anatomique du thorax (114) dudit sujet ;
des moyens pour préparer un modèle d'éléments finis dudit thorax ayant des paramètres utilisant ladite image anatomique, ledit modèle d'éléments finis ayant une matrice de champ conducteur inversé calculée, et pour ajuster lesdits paramètres afin de conformer ladite matrice de champ conducteur inversé calculée à ladite matrice de champ conducteur inversé mesurée.

10 3. Système selon la revendication 1, dans lequel ladite au moins une deuxième électrode est à l'extérieur dudit sujet.

15 4. Système selon la revendication 1, dans lequel ladite sonde (154) a au moins deux électrodes (160) et l'émission de signaux électriques est effectuée par multiplexage dans le temps desdits signaux électriques utilisant différents sous-ensembles desdites électrodes.

20 5. Système selon la revendication 1, dans lequel ladite sonde (154) a au moins deux électrodes (160) et l'émission de signaux électriques est effectuée par multiplexage en fréquence desdits signaux électriques utilisant différents sous-ensembles desdites électrodes.

6. Système selon la revendication 1, dans lequel ladite électrode (160) est une électrode unipolaire.

7. Système selon la revendication 1, dans lequel ladite électrode (160) est une électrode bipolaire.

25 8. Système selon la revendication 1, dans lequel l'émission de signaux électriques, la réception desdits signaux électriques émis, et la détermination d'une relation fonctionnelle sont effectuées par rapport à une phase prédéterminée d'un cycle respiratoire dudit sujet.

30 9. Système selon la revendication 1, dans lequel l'émission de signaux électriques, la réception desdits signaux électriques émis, et la détermination d'une relation fonctionnelle sont effectuées par rapport à une phase prédéterminée d'un cycle cardiaque dudit sujet.

10. Système selon la revendication 1, dans lequel la sonde (154) comprend un premier capteur d'emplacement (158).

35 11. Système selon la revendication 10, dans lequel lesdits moyens (152) pour déterminer un emplacement comprennent :
des moyens pour associer ladite au moins une deuxième électrode avec un deuxième capteur d'emplacement (128) et lire ledit premier capteur d'emplacement (158) et ledit deuxième capteur d'emplacement (128) pour déterminer une différence entre eux.

40 12. Système selon la revendication 10, dans lequel l'émission de signaux électriques, la réception desdits signaux électriques émis, et la détermination d'une relation fonctionnelle sont effectuées par rapport à une phase prédéterminée d'un cycle respiratoire dudit sujet.

45 13. Système selon la revendication 10, dans lequel l'émission de signaux électriques, la réception desdits signaux électriques émis, et la détermination d'une relation fonctionnelle sont effectuées par rapport à une phase prédéterminée d'un cycle cardiaque dudit sujet.

50 14. Système selon la revendication 1, comprenant en outre :

un dispositif d'imagerie (40) ;
un générateur de signaux (29) ; et
un processeur lié (124) à :

55 le gilet de torse (150) pour habiller ledit sujet, ledit gilet de torse comprenant en outre un premier capteur de position (128),
ledit dispositif d'imagerie ;
ledit générateur de signaux ; et à la sonde

dans lequel ledit processeur (154) comprend :

les moyens pour déterminer une position qui sont agencés pour lire ledit premier capteur de position afin de localiser l'au moins une première électrode par rapport auxdites deuxièmes électrodes ;

des moyens pour provoquer la transmission de signaux électriques en séquence, par ledit générateur de signaux, vers l'au moins une première électrode, l'électrode pouvant être agencée pour émettre en séquence lesdits signaux électriques provenant de différents points de transmission dans ledit coeur, lesdits signaux électriques émis étant transférés audit processeur via lesdites deuxièmes électrodes sous la forme de signaux électriques reçus ;

les moyens pour déterminer ce qui est agencé pour déterminer la relation fonctionnelle ; et
les moyens d'application, et

des moyens (21) pour afficher ladite carte électrique endocardique sur ledit dispositif d'imagerie (40).

15. Système selon la revendication 14, dans lequel ladite sonde (154) a au moins deux (160) électrodes et ledit générateur de signaux (29) est opérationnel pour produire lesdits signaux électriques émis en convoyant en séquence lesdits signaux électriques vers différents sous-ensembles desdites électrodes (160).

16. Système selon la revendication 14, dans lequel les moyens de détermination sont opérationnels pour déterminer ladite matrice de champ conducteur mesurée lors d'une phase prédéterminée d'un cycle respiratoire dudit sujet.

17. Système selon la revendication 14, dans lequel les moyens de détermination sont opérationnels pour déterminer ladite matrice de champ conducteur mesurée lors d'une phase prédéterminée d'un cycle cardiaque dudit sujet.

18. Système selon la revendication 14, dans lequel ledit processeur (154) est opérationnel pour accepter une image anatomique du thorax (114) dudit sujet, et pour utiliser ladite image anatomique pour préparer un modèle d'éléments finis dudit thorax ayant certains paramètres, ledit modèle d'éléments finis ayant une matrice de champ conducteur calculée, et pour ajuster lesdits paramètres afin de conformer ladite matrice de champ conducteur calculée à ladite matrice de champ conducteur mesurée.

FIG. 1

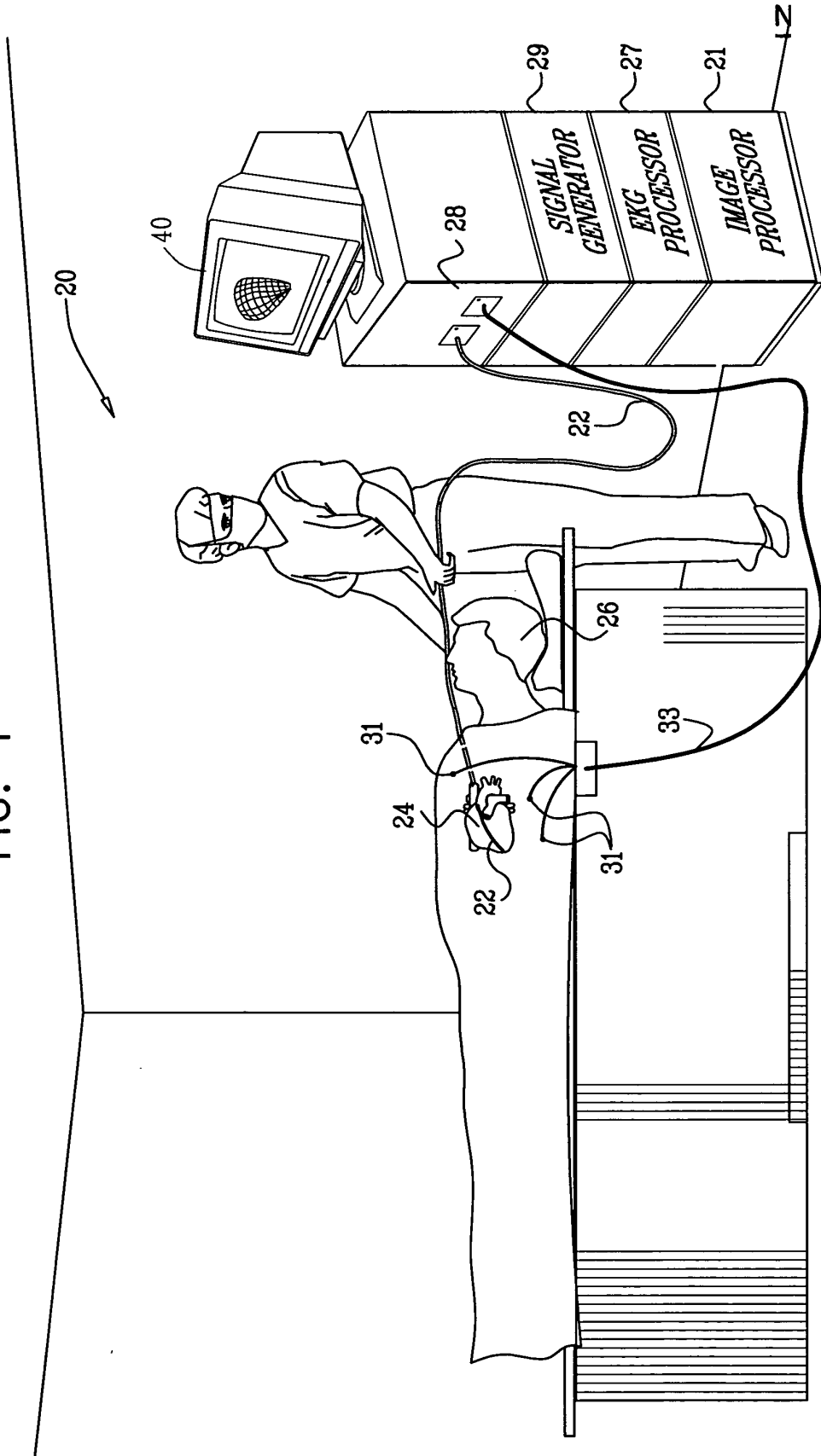
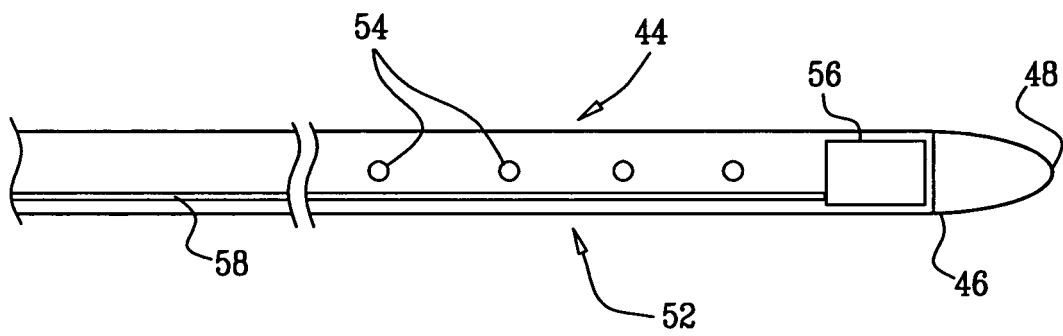


FIG. 2



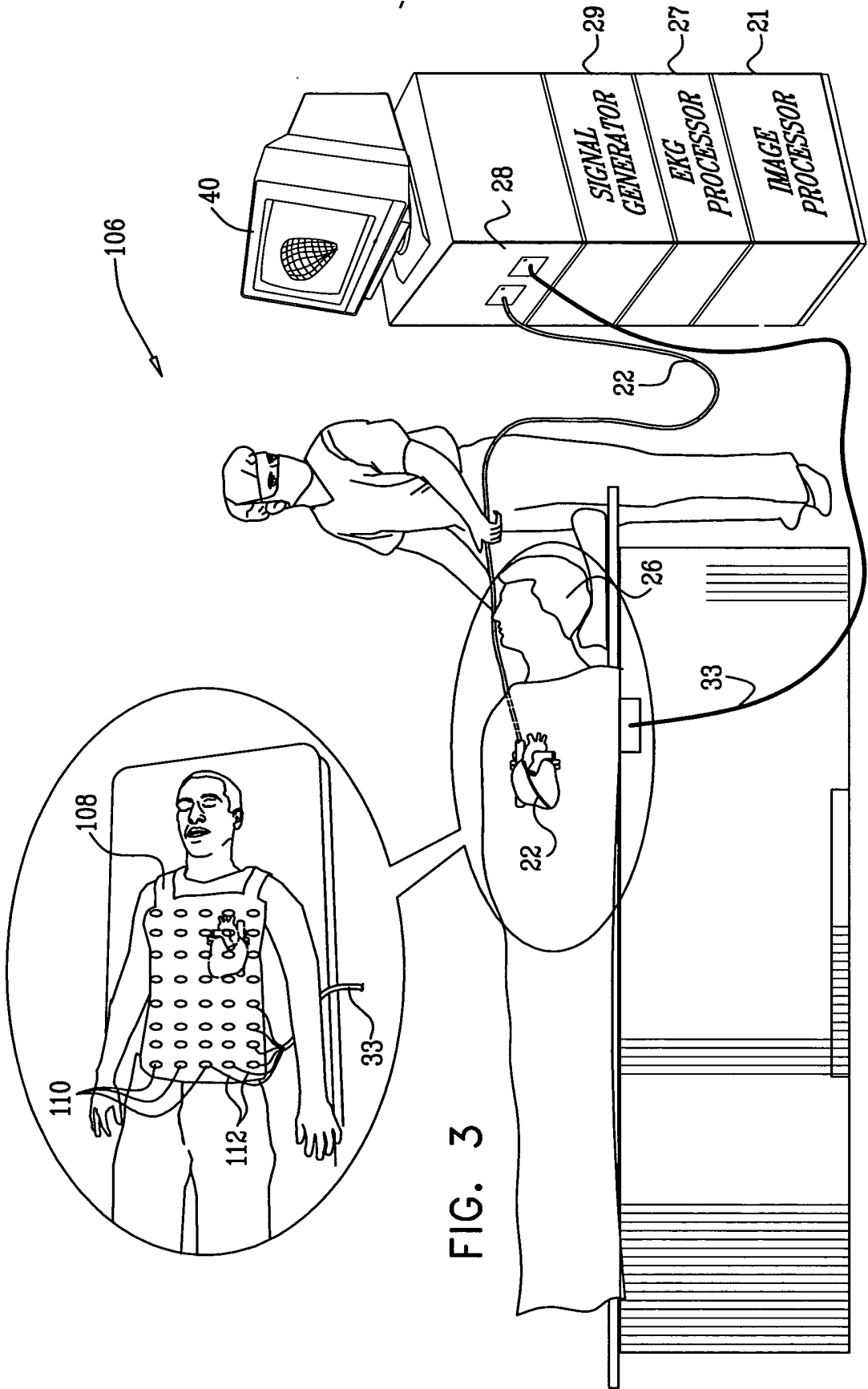


FIG. 3

FIG. 4

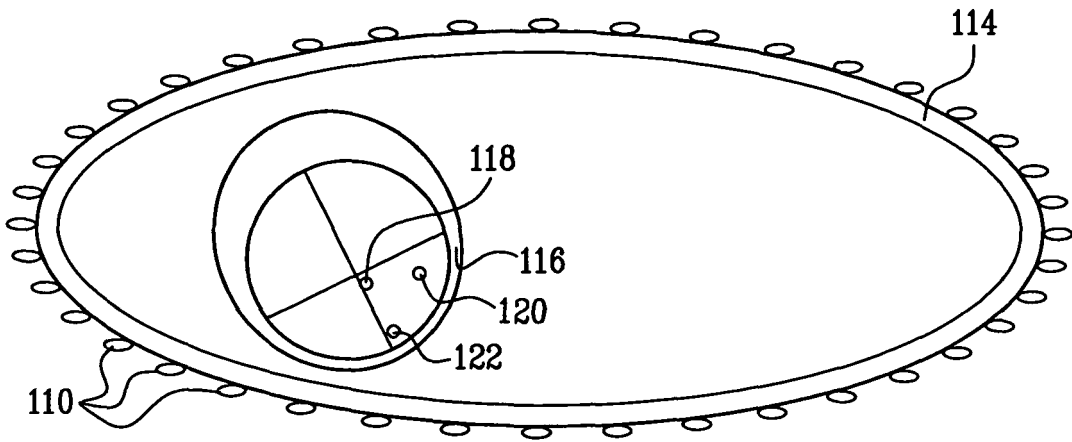


FIG. 5

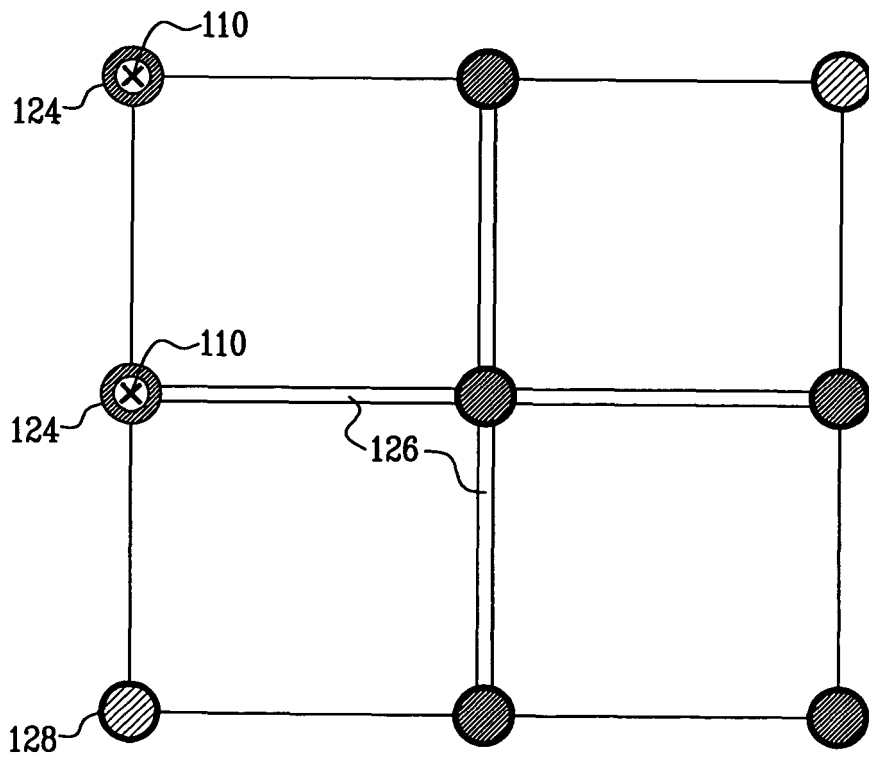


FIG. 6

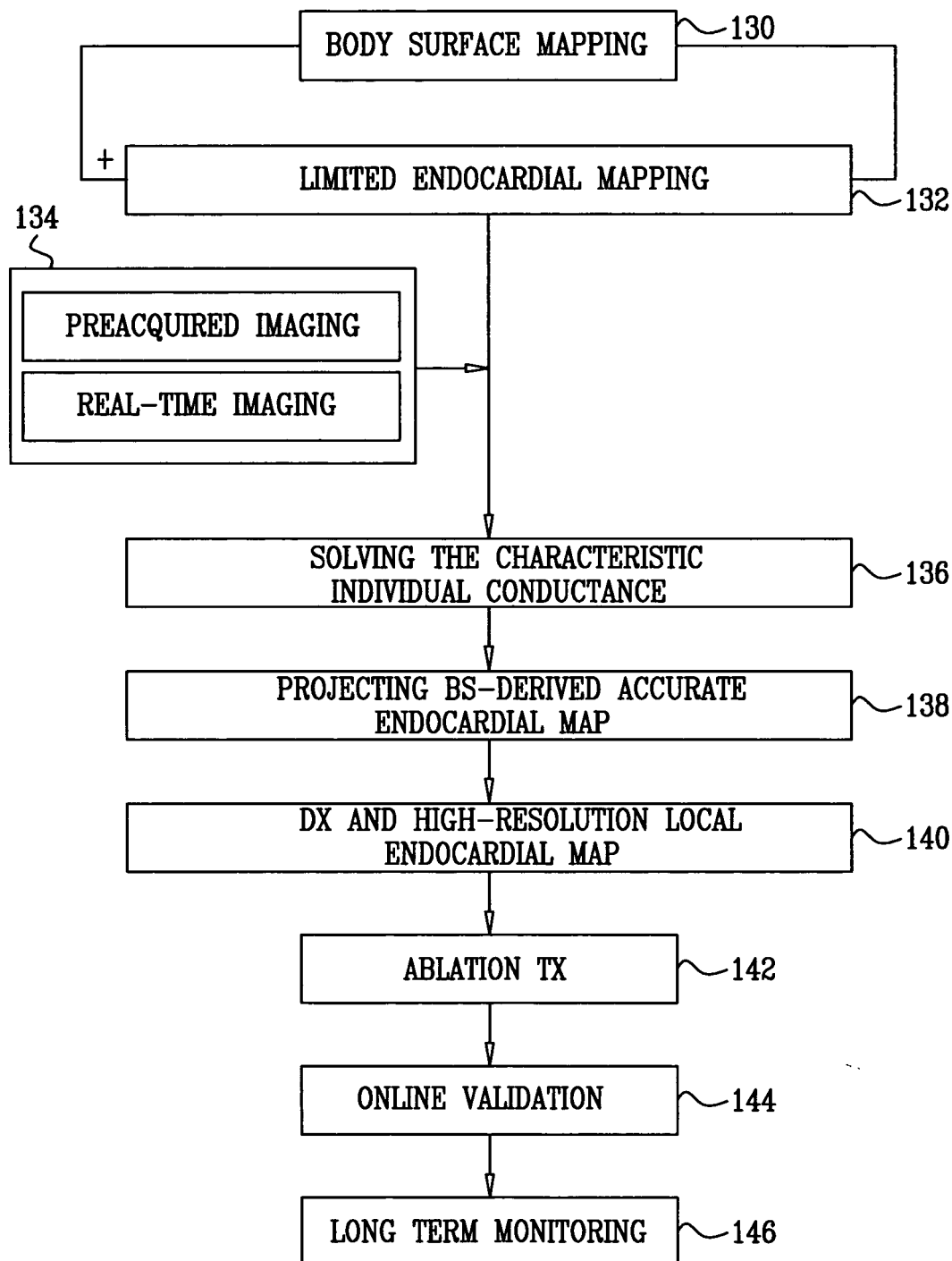


FIG. 7

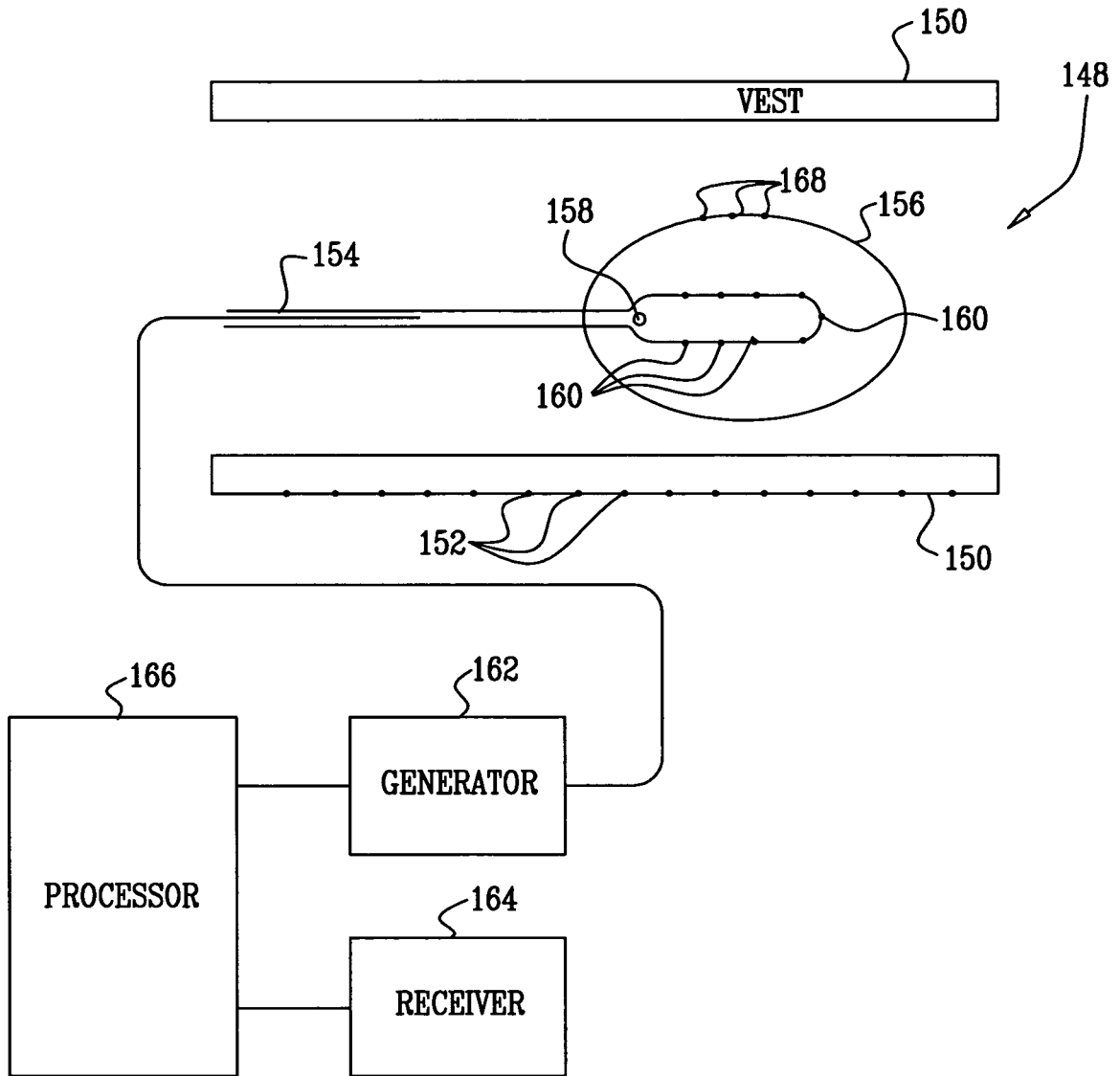


FIG. 8

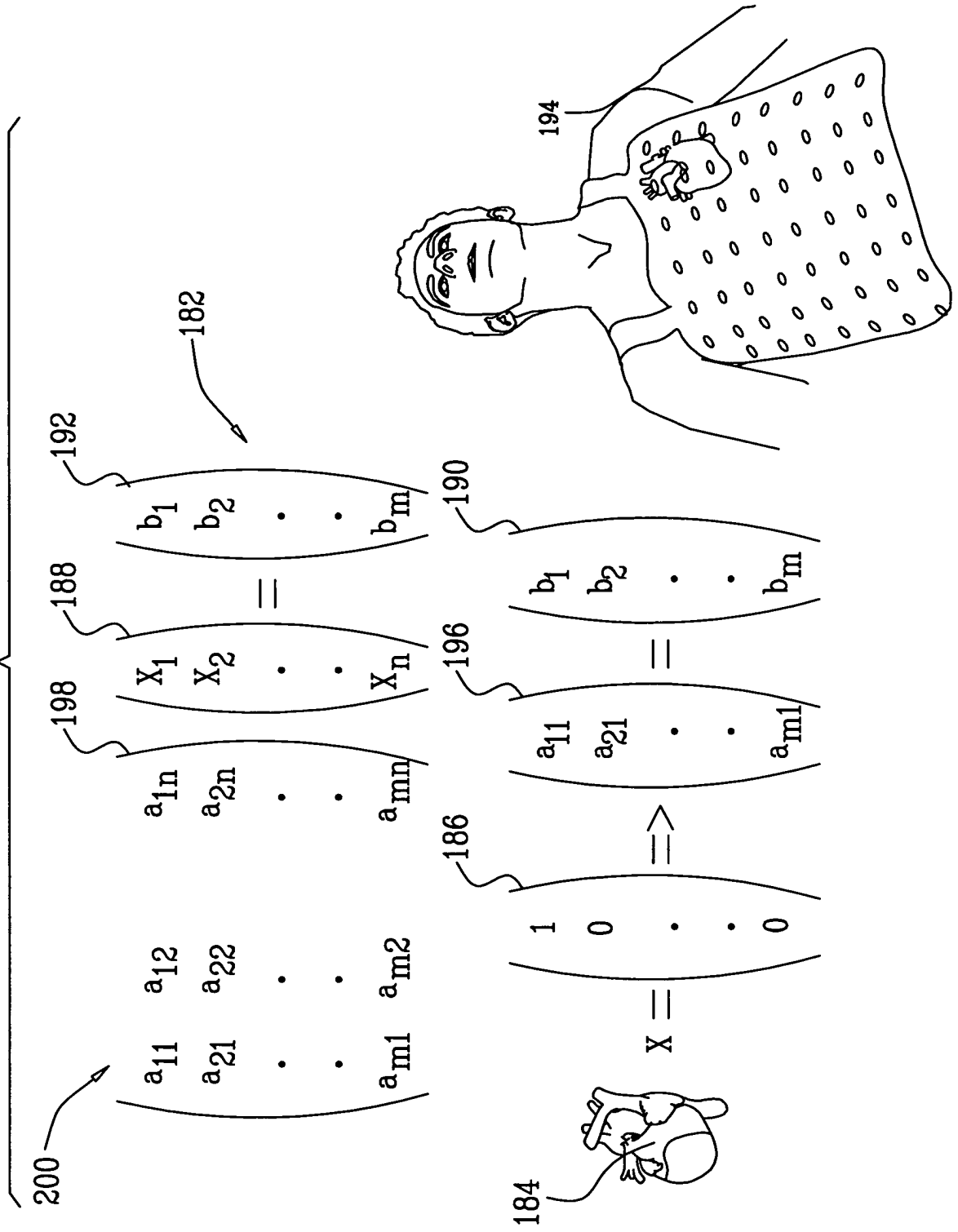


FIG. 9

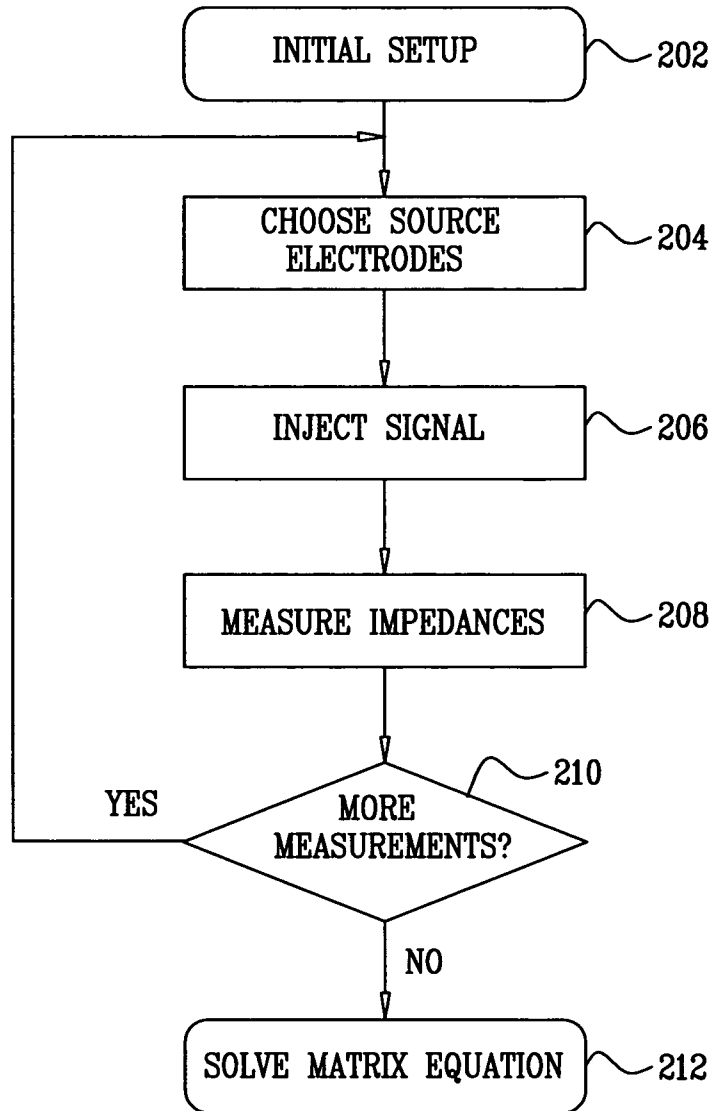
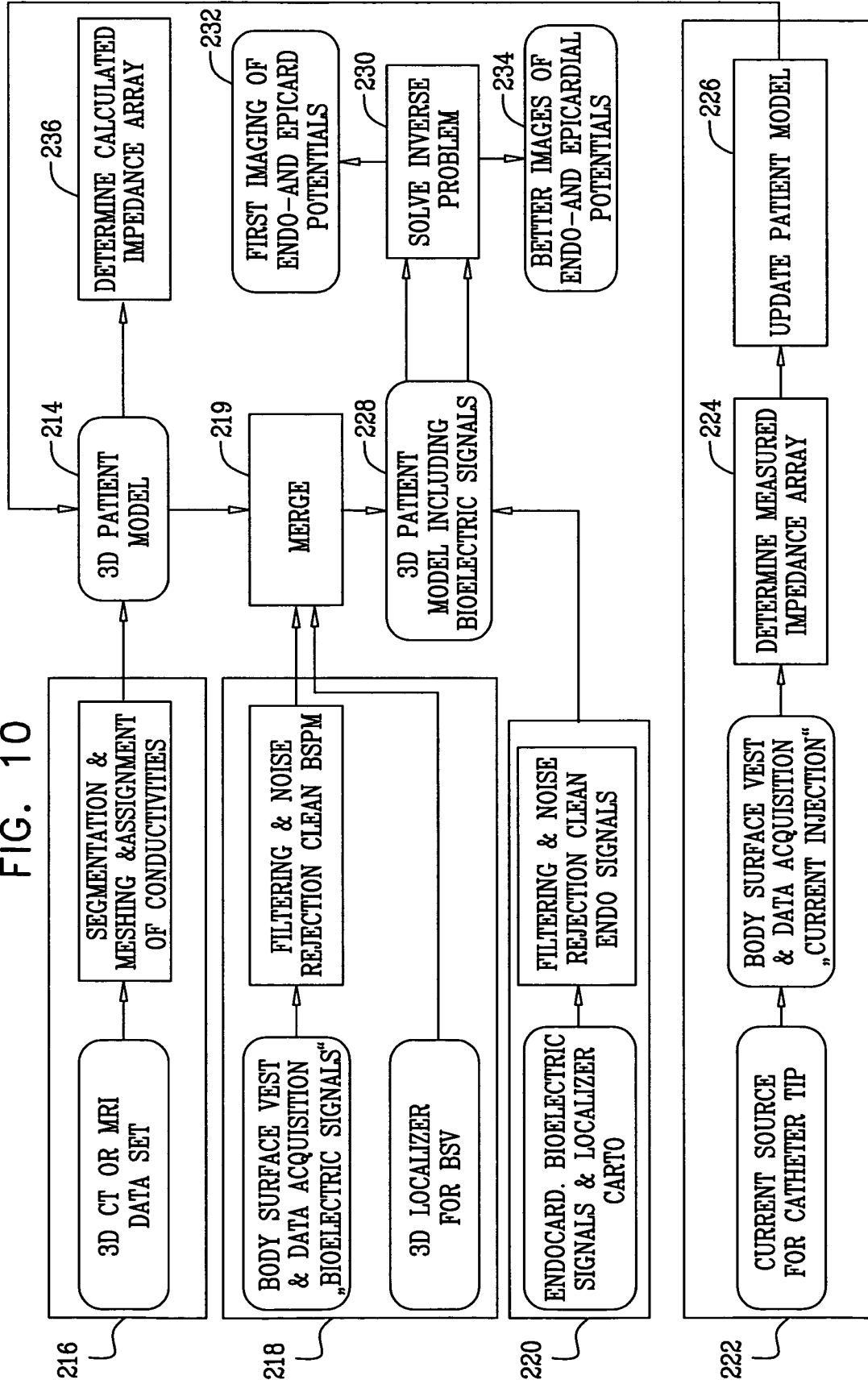


FIG. 10



REFERENCES CITED IN THE DESCRIPTION

This list of references cited by the applicant is for the reader's convenience only. It does not form part of the European patent document. Even though great care has been taken in compiling the references, errors or omissions cannot be excluded and the EPO disclaims all liability in this regard.

Patent documents cited in the description

- US 5471982 A [0022]
- US 5391199 A [0022]
- US 6226542 B [0022]
- US 6301496 B [0022]
- US 6892091 B [0022] [0023]
- WO 9406349 PCT [0022]
- WO 9605768 A [0022]
- WO 9724981 A [0022]
- US 20040015194 A, Ransbury [0025]
- US 20010056289 A, Sippensgroenewegen [0025]
- US 6650927 B [0030]
- US 11215435 B [0031]
- US 03093405 A [0033]
- US 20030120163 A, Yoram Rudy [0033] [0038] [0041]
- US 20040068178 A [0036]
- WO 11357512 A [0044]
- US 20070060832 A [0067]

Non-patent literature cited in the description

- **MODRE et al.** Atrial Noninvasive Activation Mapping of Paced Rhythm Data. *J. Cardiovasc. Electrophysiology*, July 2003, vol. 14, 712-719 [0003]
- **RAMANATHAN et al.** Noninvasive Electrocardiographic Imaging for Cardiac Electrophysiology and Arrhythmia. *Nature Medicine* [0025]
- **D. FARINA ; O. SKIPA ; C. KALTWASSER ; O. DÖSSEL ; W. R. BAUER.** Optimization-based reconstruction of depolarization of the heart. *Proc. Computers in Cardiology*, 2004, vol. 31, 129-132 [0055]

专利名称(译)	心电图与体表测量的相关性		
公开(公告)号	EP1897490B1	公开(公告)日	2016-11-16
申请号	EP2007253530	申请日	2007-09-05
[标]申请(专利权)人(译)	韦伯斯特生物官能公司		
申请(专利权)人(译)	生物传感韦伯斯特, INC.		
当前申请(专利权)人(译)	生物传感韦伯斯特, INC.		
[标]发明人	SCHWARTZ YITZHACK BAR TAL MEIR PORATH JOSHUA		
发明人	SCHWARTZ, YITZHACK BAR-TAL, MEIR PORATH, JOSHUA		
IPC分类号	A61B5/042 A61B5/0408 A61B5/053 A61B5/00 A61B18/00		
CPC分类号	A61B5/04085 A61B5/0422 A61B5/0538 A61B5/6805 A61B2018/00839		
优先权	60/824680 2006-09-06 US 11/845973 2007-08-28 US		
其他公开文献	EP1897490A3 EP1897490A2		
外部链接	Espacenet		

摘要(译)

通过使用多电极胸板构建少量心内膜点和大量外部接收点之间的矩阵关系来获得可靠的心内膜图。矩阵的反转产生允许构建心内膜图的信息。使用多电极胸板无创地获得随后的图，将新的电信号应用于矩阵关系，并再次反转矩阵以产生新的心内膜电图。

$$A \cdot x = b \quad (1)$$