



(11) **EP 1 601 287 B1**

(12) **EUROPEAN PATENT SPECIFICATION**

(45) Date of publication and mention of the grant of the patent:  
**19.12.2012 Bulletin 2012/51**

(21) Application number: **04700084.9**

(22) Date of filing: **02.01.2004**

(51) Int Cl.:  
**A61B 5/024 (2006.01)**

(86) International application number:  
**PCT/US2004/000027**

(87) International publication number:  
**WO 2004/080300 (23.09.2004 Gazette 2004/39)**

(54) **Assessment of a decrease in blood volume using cardiovascular waveforms**

Bestimmung der Abnahme des Blutvolumens unter Benutzung kardiovaskulärer Wellenformen

Evaluation d'une réduction du volume sanguin sur la base de l'analyse de signaux cardiovasculaires

(84) Designated Contracting States:  
**AT BE BG CH CY CZ DE DK EE ES FI FR GB GR HU IE IT LI LU MC NL PT RO SE SI SK TR**

(30) Priority: **12.03.2003 US 454048 P**  
**25.04.2003 US 465609 P**

(43) Date of publication of application:  
**07.12.2005 Bulletin 2005/49**

(60) Divisional application:  
**11179769.2 / 2 392 257**

(73) Proprietor: **Yale University**  
**New Haven, CT 06520-8079 (US)**

(72) Inventors:  
• **SHELLEY, Kirk, H.**  
**New Haven, CT 06515 (US)**  
• **SILVERMAN, David, G.**  
**West Redding, CT 06896 (US)**  
• **SHELLEY, Adam, J.**  
**New Haven, CT 06515 (US)**  
• **STOUT, Robert, G.**  
**Madison, CT 06443 (US)**

(74) Representative: **Haley, Stephen et al**  
**Gill Jennings & Every LLP**  
**The Broadgate Tower**  
**20 Primrose Street**  
**London EC2A 2ES (GB)**

(56) References cited:  
**DE-A1- 19 650 738 US-A- 4 860 759**  
**US-A- 5 865 756**

- **SHAMIR M ET AL: "PULSE OXIMETRY PLETHYSMOGRAPHIC WAVEFORM DURING CHANGES IN BLOOD VOLUME" BRITISH JOURNAL OF ANAESTHESIA, BJM PUBLISHING GROUP, LONDON, GB, vol. 82, no. 2, 1 February 1999 (1999-02-01), pages 178-181, XP001088470 ISSN: 0007-0912**
- **DATABASE BIOSIS [Online] BIOSCIENCES INFORMATION SERVICE, PHILADELPHIA, PA, US; December 2002 (2002-12), GOLPARVAR MOHAMMAD ET AL: "Evaluating the relationship between arterial blood pressure changes and indices of pulse oximetric plethysmography." XP002532296 Database accession no. PREV200300057911 & ANESTHESIA AND ANALGESIA, vol. 95, no. 6, December 2002 (2002-12), pages 1686-1690, ISSN: 0003-2999**
- **MURRAY W B ET AL: "The peripheral pulse Wave: Information Overlooked" JOURNAL OF CLINICAL MONITORING,, vol. 12, no. 5, 1 January 1996 (1996-01-01), pages 365-377, XP009104503 ISSN: 0748-1977**

Note: Within nine months of the publication of the mention of the grant of the European patent in the European Patent Bulletin, any person may give notice to the European Patent Office of opposition to that patent, in accordance with the Implementing Regulations. Notice of opposition shall not be deemed to have been filed until the opposition fee has been paid. (Art. 99(1) European Patent Convention).

**EP 1 601 287 B1**

**Description**

## 1. Field of the Invention

**[0001]** The invention relates to a method and a system for studying and utilizing flow waveforms in the peripheral vasculature. In particular, the invention relates to a method and a system for assessing decrease in blood volume by analyzing photoelectric plethysmographic waveforms of the pulse oximeter.

## 2. Description of the Prior Art

**[0002]** There is growing evidence that invasive monitors of volume status, such as the pulmonary artery catheter, may be a source of unacceptably frequent complications. Dalen J & Bone R, Is it time to pull the pulmonary artery catheter?, JAMA 1996; 276:916-14; Connors A, Speroff T & Dawson N, The effectiveness of right heart catheterization in the initial care of critically ill patients, JAMA 1996; 276:889-97. The potential loss of this important monitor from routine peri-operative care necessitates the search for another means of monitoring a patient's blood volume status.

**[0003]** It has been known for quite some time that ventilation, and especially positive pressure ventilation, can have a significant impact on the cardiovascular system. Courmand A, Motley H, Werko L & Richards D, Physiological studies of the effect of intermittent pressure breathing on cardiac output in mm, Am J Physiol 1948; 152:162-73; Morgan B, Crawford W & Guntheroth W, The hemodynamic effects of changes in blood volume during intermittent pressure ventilation, Anesthesiology 1969; 30:297-305. The first formal studies of the effect of ventilator induced changes on the arterial pressure were done in the early 1980's. Coyle J, Teplick R, Long M & Davison J, Respiratory variations in systemic arterial pressure as an indicator of volume status, Anesthesiology 1983; 59:A53; Jardin F, Farcot J, Gueret P et al., Cyclic changes in arterial pulse during respiratory support, Circulation 1983; 68:266-74. This was soon followed by the intensive investigations of Azriel Perel. He coined the term "systolic pressure variation" to describe this phenomenon. Along with various co-investigators, his research has encompassed over twenty articles and abstracts on the topic. From this significant body of work, based on both animal and human data, a number of conclusions have been drawn.

**[0004]** The degree of systolic pressure variation is a sensitive indicator of hypovolemia. Perel A, Pizov R & Cotev S, Systolic blood pressure variation is a sensitive indicator of hypovolemia in ventilated dogs subjected to graded hemorrhage, Anesthesiology 1987; 67:498-502. This variation is significantly better than heart rate, central venous pressure and mean systemic blood pressure in predicting the degree of hemorrhage which has occurred. Perel A, Pizov R & Cotev S, Systolic blood pressure variation is a sensitive indicator of hypovolemia in ventilated dogs subjected to graded hemorrhage, Anesthesiology 1987; 67:498-502; Pizov R, Ya'ari Y & Perel A, Systolic pressure variation is greater during hemorrhage than during sodium nitroprusside-induced hypotension in ventilated dogs, Anesthesia & Analgesia 1988; 67:170-4. Chest wall compliance and tidal volume can influence systolic pressure variation. Szold A, Pizov R, Segal E & Perel A, The effect of tidal volume and intravascular volume state on systolic pressure variation in ventilated dogs, Intensive Care Medicine 1989; 15:368-71. Changes in systolic pressure variation correspond closely to changes in cardiac output. Ornstein E, Eidelman L, Drenger B et al., Systolic pressure variation predicts the response to acute blood loss, Journal of Clinical Anesthesia 1998; 10:137-40; Pizov R, Segal E, Kaplan L et al., The use of systolic pressure variation in hemodynamic monitoring during deliberate hypotension in spine surgery, Journal of Clinical Anesthesia 1990; 2:96-100.

**[0005]** Systolic pressure variation can be divided into two distinct components;  $\Delta_{up}$ , which reflects an inspiratory augmentation of the cardiac output, and  $\Delta_{down}$ , which reflects a reduction in cardiac output due to a decrease in venous return. Perel A, Cardiovascular assessment by pressure waveform analysis, ASA Annual Refresher Course Lecture 1991:264. The unique value in systolic pressure variation lies in its ability to reflect the volume responsiveness of the left ventricle. Perel A, Cardiovascular assessment by pressure waveform analysis, ASA Annual Refresher Course Lecture 1991:264. In recent years, with the increased availability of the pulse oximeter waveform, similar observations have been made with this monitoring system. Partridge BL, Use of pulse oximetry as a noninvasive indicator of intravascular volume status, Journal of Clinical Monitoring 1987; 3:263-8; Lherm T, Chevalier T, Troche G et al., Correlation between plethysmography curve variation ( $d_{pleth}$ ) and pulmonary capillary wedge pressure ( $p_{pwp}$ ) in mechanically ventilated patients, British Journal of Anaesthesia 1995; Suppl. 1:41; Shamir M, Eidelman LA et al., Pulse oximetry plethysmographic waveform during changes in blood volume, British Journal Of Anaesthesia 82(2): 178-81 (1999). To date though, there has been remarkably little work done to document or quantify this phenomenon. Limitations of the aforementioned include:

- 1) Lack of a method of continuous measurement of the phenomenon.
- 2) Reliance on positive pressure and mechanical ventilation; and the requirement of ventilator maneuvers such as periods of apnea.
- 3) Lack of recognition of the venous contribution to the plethysmographic signal.
- 4) The lack of algorithms resistant to artifacts.

**[0006]** The pulse oximeter has rapidly become one of the most commonly used patient monitoring systems both in and out of the operating room. This popularity is undoubtedly due to the pulse oximeter's ability to monitor both arterial oxygen saturation as well as basic cardiac function (i.e. heart rhythm) non-invasively. In addition, it is remarkably easy to use and comfortable for the patient. The present invention attempts to expand upon the known usefulness of the pulse oximeter.

**[0007]** Pulse oximetry is a simple non-invasive method of monitoring the percentage of hemoglobin (Hb) which is saturated with oxygen. The pulse oximeter consists of a probe attached to the patient's finger or ear lobe, which is linked to a computerized unit. The unit displays the percentage of Hb saturated with oxygen together with an audible signal for each pulse beat, a calculated heart rate and in some models, a graphical display of the blood flow past the probe. Audible alarms that can be programmed by the user are provided. A source of light originates from the probe at two wavelengths (e.g., 650nm and 805nm). The light is partly absorbed by hemoglobin, by amounts which differ depending on whether it is saturated with oxygen. By calculating the absorption at the two wavelengths the processor can compute the proportion of hemoglobin which is oxygenated. The oximeter is dependent on a pulsatile flow and produces a graph of the quality of flow. Where flow is compromised (e.g. by hypovolemia or vasoconstriction), the pulse oximeter may be unable to function. The computer within the oximeter is capable of distinguishing pulsatile flow from other more static signals (such as tissue or venous signals) to display only the arterial flow. Fearnley SJ, Pulse Oximetry, Practical Procedures, Issue 5 (1995) Article 2.

**[0008]** In the process of determining oxygen saturation, the pulse oximeter functions as a photoelectric plethysmograph. In this role, it non-invasively measures minute changes in the blood volume of a vascular bed (e.g., finger, ear or forehead). The photoelectric plethysmograph is not a new invention. Hertzman AB, The Blood Supply of Various Areas Estimated By the Photoelectric Plethysmograph, Am. J. Physiol. 1938; 124:328-40. While the plethysmograph has been examined previously as a potential anesthesia monitoring device, remarkably little research has been done on this ubiquitous signal. Dorlas JC & Nijboer JA, Photo-electric plethysmography as a monitoring device in anaesthesia. Application and interpretation, British Journal Of Anaesthesia 1985; 57:524-30.

**[0009]** It is important to understand that the typical pulse oximeter waveform presented to the clinician is a highly filtered and processed signal. It is normal practice for equipment manufacturers to use both auto-centering and auto-gain routines on the displayed waveforms so as to minimize variations in the displayed signal. Despite this fact, the pulse oximeter waveform is still rich in information regarding the physiology of the patient. It contains a complex mixture of the influences of arterial, venous, autonomic and respiratory systems on the peripheral circulation. Key to the successful interpretation of this waveform is the ability to separate it into fundamental components.

**[0010]** Harmonic analysis (Fourier analysis) is one method of studying waveforms. It allows for the extraction of underlying signals that contribute to a complex waveform. A similar method has been used previously, with the pulse oximeter and photoelectric plethysmograph to improve the accuracy of the oxygen saturation measurement and to monitor tissue perfusion. Rusch TL, Sankar R & Scharf JE, Signal processing methods for pulse oximetry, Computers In Biology And Medicine 1996; 26:143-59; Stack BJr, Futran ND, Shohet MJ & Scharf JE, Spectral analysis of photoplethysmograms from radial forearm free flaps, Laryngoscope 1998; 108:1329-33.

**[0011]** In addition, it is previously known that photoelectric plethysmograph can be used to non-invasively measure minute changes in light absorption of living tissue. Hertzman, AB, The Blood Supply of Various Areas Estimated By the photoelectric Plethysmograph, Am. J. Physiol. 124: 328-340 (1938). Rhythmic fluctuations in this signal are normally attributed to the cardiac pulse bringing more blood into the region being analyzed (i.e., finger, ear or forehead). This fluctuation of the plethysmographic signal is commonly referred to as the AC (arterial) component. The strength of the AC component can be modulated by a variety of factors. These factors would include stroke volume and vascular tone.

**[0012]** In addition to the cardiac pulse, there is a nonpulsatile (or weakly pulsatile) component of the plethysmography signal commonly referred to as the DC component. The DC component is the product of the light absorption by nonpulsatile tissue. This would include fat, bone, muscle and venous blood.

**[0013]** Fluctuations in the photoelectric plethysmograph due to respiration/ventilation can also be detected. Johansson A & Oberg PA, Estimation of respiratory volumes from the photoplethysmographic signal. Part I: Experimental results, Medical And Biological Engineering And Computing 37(1): 42-7 (1999). These fluctuations have been used in the past in an attempt to estimate the degree of relative blood volume of patients undergoing surgery. Partridge BL, Use of pulse oximetry as a noninvasive indicator of intravascular volume status, Journal of Clinical Monitoring 3(4): 263-8 (1987); Shamir M, Eidelman LA et al., Pulse oximetry plethysmographic wave form during changes in blood volume, British Journal Of Anaesthesia 82(2): 178-81 (1999). Up until the development of the present invention, there has been a lack of recognition that respiratory signal modulates both the AC and DC components of the photo-plethysmograph.

**[0014]** With the foregoing in mind, it is apparent that a need exists for an improved method for efficiently and non-invasively monitoring the blood volume of a subject. The present invention attempts to achieve this goal by expanding upon the functionality of the pulse oximeter to provide a reliable, convenient and non-invasive mechanism for monitoring blood loss. In addition, the present invention provides a new method and a new system for extracting and utilizing information contained in a pulse oximeter waveform and other means of monitoring flow or pressure waveforms in the

peripheral vasculature.

**[0015]** In a first aspect, the invention consists in a system for assessing a decrease in blood volume within a subject, comprising:

5 a probe adapted for retrieving cardiovascular waveforms of a subject; and  
a processor associated with the probe for analyzing a retrieved cardiovascular waveform, the processor including means for detecting a decrease in blood volume of the subject by analyzing the cardiovascular waveform, wherein the analyzing includes:

10 generating a first trace of the per heart-beat maximums of the cardiovascular waveform, which is representative of the systolic pressure upon the cardiovascular waveform;  
generating a second trace of the per heart-beat minimums of the cardiovascular waveform, which is representative of the diastolic pressure upon the cardiovascular waveform; and  
15 comparing the respective first trace and the second trace to generate an indication of a decrease in blood volume within the subject.

**[0016]** In a further aspect, the invention consists in a method for assessing a decrease in blood volume within a subject, comprising:

20 generating a cardiovascular waveform representing physiological characteristics of a subject; and  
detecting a decrease in blood volume of the subject by analyzing the cardiovascular waveform using a processor wherein the step of analyzing includes:

25 generating a first trace of the per heart-beat maximums of the cardiovascular waveform, which is representative of the systolic pressure upon the cardiovascular waveform;  
generating a second trace of the per heart-beat minimums of the cardiovascular waveform, which is representative of the diastolic pressure upon the cardiovascular waveform; and  
30 comparing the respective first trace and the second trace to generate an indication of a decrease in blood volume within the subject.

**[0017]** Other objects and advantages of the present invention will become apparent from the following detailed description when viewed in conjunction with the accompanying drawings, which set forth certain embodiments of the invention.

35 BRIEF DESCRIPTION OF THE DRAWINGS

**[0018]**

40 Figures 1a and 1b respectively show a baseline pulse oximeter waveform (Figure 1a) vs. a pulse oximeter waveform exhibiting an acute blood loss effect (Figure 1b).

Figures 2a, 2b and 2c demonstrate the isolation of the local maximum and local minimum traces and their comparison during the different phases of blood loss.

45 Figures 3a and 3b are detailed displays of the local maximum and local minimum traces demonstrating the phase shift with continued blood loss (solid lines = local maximums, broken lines = local minimums) with the upper graph (Figure 3a) representing venous impact and the lower graph (Figure 3b) representing arterial impact.

Figures 4a and 4b present idealized representations of pure venous signal (Figure 4a) and pure arterial signal (Figure 4b) extracted from the pulse oximeter waveform.

50 Figures 5a and 5b show respective displays of extracted local minimum and local maximum traces overlaid on the original pulse oximeter waveform. The upper graph (Figure 5a) demonstrates moderate blood loss effect (venous effect) and lower graph (Figure 5b) demonstrates significant blood loss effect (arterial effect).

Figures 6a and 6b show the transformation of a pulse oximeter waveform of a subject with normal blood volume via joint time-frequency analysis.

Figures 7a and 7b show the transformation of a pulse oximeter waveform of a subject with a moderate loss of blood volume via joint time-frequency analysis.

55 Figures 8a and 8b show the transformation of a pulse oximeter waveform of a subject with an acute loss of blood volume via joint time-frequency analysis.

Figures 9a, 9b and 9c respectively show the joint time-frequency analysis of a pulse oximeter waveform of a subject over time, a detailed view of the joint time-frequency analysis with blood loss of approximately 100 cc and a detailed

view of the joint time-frequency analysis with blood loss in excess of 900 cc.

Figure 10 is a chart of testing performed in association with the present invention. The chart shows the fluctuation in the pulse oximeter waveform (RVI) related to intraoperative bleeding (EBL) and peak airway pressure (PAW).

Figures 11a and 11b respectively show the joint time-frequency analysis and EKG of a subject with arrhythmia.

Figures 12a and 12b respectively show joint time-frequency analysis and airway pressure.

Figure 13 demonstrates the construction of a joint time-frequency analysis from a pulse oximeter (photoelectric plethysmograph) waveform. The graphs also demonstrate the manner in which cardiac pulse rates and respiratory rates may be extracted from the analysis.

Figure 14 is a perspective view of a pulse oximeter that maybe employed in association with the present invention.

Figure 15 is a schematic of convention circuitry utilized in conjunction with pulse oximeters.

Figure 16 is an exploded schematic of a positive pressure device for use with the present invention.

Figure 17 is a reflective plethysmographic signal from three different sites (finger, ear, and forehead) from a supine patient.

Figure 18 are graphs showing the application of pressure to the forehead probe that obliterates the low pressure (venous or DC) component. This causes the tracing to more closely resemble the arterial tracing generated by an intra-arterial catheter.

## DESCRIPTION OF THE PREFERRED EMBODIMENTS

**[0019]** The detailed embodiments of the present invention are disclosed herein. It should be understood, however, that the disclosed embodiments are merely exemplary of the invention, which may be embodied in various forms. Therefore, the details disclosed herein are not to be interpreted as limiting, but merely as the basis for the claims and as a basis for teaching one skilled in the art how to make and/or use the invention.

**[0020]** With reference to Figures 1 to 5, and in accordance with a first embodiment of the present invention, a method for assessing blood volume through the analysis of a cardiovascular waveform, in particular, a pulse oximeter waveform, is disclosed. As the following disclosure will clearly demonstrate, the present invention monitors relative blood volume or effective blood volume. As such, the present method is preferably applied in analyzing blood volume responsiveness (that is, whether a patient needs to be given blood or other fluid).

**[0021]** In accordance with a preferred embodiment of the present invention, blood volume within a subject is monitored by using a pulse oximeter, or photoelectric plethysmograph, to first generate a pulse oximeter waveform representing physiological characteristics of a subject. The pulse oximeter waveform may also be considered a photoelectric plethysmographic waveform representing ventilation fluctuation of the subject. Those skilled in the art will understand that a photoelectric plethysmograph is a device used to estimate blood flow in a region of the body using photoelectric measurement techniques. In addition, those skilled in the art will understand that the present invention is described with reference to pulse oximeters, although other devices capable of measuring ventilation changes might be utilized in accordance with the present invention. For example, the concepts underlying the present invention could be utilized in conjunction with a strain gauge plethysmograph.

**[0022]** Analysis is achieved by generating a first trace of the local, that is, per heart-beat, maximums of the pulse oximeter waveform, which is representative of the systolic activities upon the blood volume, and generating a second trace of the local, that is, per heart-beat, minimums of the pulse oximeter waveform, which is representative of the diastolic activities upon the waveform (see Figures 2a, 2b, 2c, 3a, 3b, 5a and 5c). Thereafter, the amplitude and phase shift of the respective first trace and the second trace are compared to generate an estimate of blood volume within the subject.

**[0023]** Briefly, the first trace and the second trace are generated by recording the local maximums and local minimums of the pulse oximeter waveform during ventilation by the subject. In practice, a determination that the first trace and the second trace are in-phase with low amplitude is indicative of no blood loss, while the degree of phase shift and amplitude increase are indicative of increased blood loss.

**[0024]** This method of analyzing pulse oximeter, or photoelectric plethysmographic, waveforms allows for the separation of the venous and arterial contributions to the waveform. For example, during the time of moderate blood loss (or, more specifically moderate hypovolemia), the amplitudes of both the first trace of the local maximums and the second trace of the local minimums will increase proportionally to the degree of blood loss (see Figures 2b, 3a and 5a). For purposes of this discussion, this may be referred to as a "venous" response because it has a significant impact on the nonpulsatile component. With continued blood loss, the impact focuses upon the arterial system and the first and second traces go out of phase with oscillations of the local minimum traces occurring earlier than the oscillations of the local maximum traces (see Figures 2c, 3b and 5b). Analysis of these traces is done in such a way that the waveform may be used to determine a patient's effective blood volume, or more accurately, volume responsiveness.

**[0025]** The difference between the venous response and the arterial response is shown in Figures 4a and 4b. In particular, Figures 4a and 4b respectively represent the venous component and the arterial component of the waveform

shown in Figure 1b; that is, the venous and arterial components of an individual who has lost a substantial amount of blood. The venous component as shown in Figure 4a is derived by adding the peaks and troughs of the waveform and dividing the sum by two. Reference to Figure 4a demonstrates the shift in venous blood taking place during ventilation. With regard to Figure 4b, the arterial component is derived by subtracting the troughs from the peaks and dividing the remainder by two. Figure 4b demonstrates that the loss of blood in the individual is so great that the individual is missing heartbeats.

**[0026]** This method of analysis distinguishes between the impact of ventilation on the arterial, pulsatile component (AC) (see Figures 2c, 3b, 4b and 5b) and the venous, nonpulsatile component (DC) (see Figure 2b, 3a, 4a and 5a) of the photoelectric plethysmograph. This is accomplished by creating first and second traces respectively based upon the local maximums and local minimums of the pulse oximeter waveform during ventilation by the subject. The first trace is generated based upon the local maximums (systolic) of the waveform and the second trace is generated based upon the local minimums (diastolic) of the waveform. The first and second traces are then superimposed and compared in regards to their amplitude and phase shift. As the amplitude and the phase shift of the two traces increase, the blood loss of the subject is known to be increasing. -

**[0027]** In a normal patient, who has not suffered blood volume loss, the amplitudes of the local maximum and local minimum traces, first and second traces respectively, will be of relatively low amplitude and in-phase (see Figures 1a and 2a). During the time of "venous" loss, the amplitudes of both the local maximum and local minimum traces will increase positively related to the degree of blood loss (see Figures 2b, 3a and 5a). In fact, the amplitudes will continue to increase as the blood loss begins affecting the arterial system.

**[0028]** With continued blood volume loss, the two traces will go out of phase with the local minimum trace occurring earlier than the local maximum trace (see Figures 2c, 3b and 5b). The phase shift is not apparent until the blood loss begins affecting the arterial system. The degree of phase shift is proportional to the degree of impact the blood loss is having on cardiac output with each breath. If the local maximum trace occurs earlier than the local minimum trace this would indicate the patient is having ventilation augmentation of their cardiac output, a phenomenon that can occur with congestive heart failure.

**[0029]** These two measurements, the amplitude and phase shift of the local maximum and local minimum traces, taken together give an index of volume responsiveness of the patient. If the amplitudes are increased and phase shift has occurred, increasing the patient's blood volume through transfusion should increase the total cardiac output of the patient.

**[0030]** An additional measurement of the non-pulsatile component can be made by taking an average between the local maximum and local minimum. The degree of fluctuation of the average during a respiratory cycle corresponds inversely to pre-load (venous) volume; that is, the greater degree of fluctuation the lower the effective venous blood volume. An additional measurement of the pulsatile component (arterial) can be made by taking the difference between the local maximum and local minimum. The degree of fluctuation of the difference during a respiratory cycle corresponds directly degree of compromise of cardiac stroke volume due to low blood volume. The phase relationship between these two resulting waveforms can be used to determine the degree of ventilatory augmentation vs. dampening of the cardiac stroke volume.

**[0031]** The ability to mathematically separate the impact of ventilation on the arterial, (pulsatile component) and venous, (nonpulsatile component) allows one to assess the relative blood volume in two different regions of the vascular system (arterial and venous). The venous system blood volume is commonly referred to as the "pre-load". The pre-load directly impacts the amount of blood available to the heart before each contraction. The arterial system blood volume is commonly referred to as the "after-load". The after-load is a direct product of the cardiac output of the heart (stroke volume X heart rate). The sensitivity of this method can be increased by simultaneously measuring the airway pressure.

**[0032]** The present invention provides a method and system for separating the impact of ventilation on the arterial and venous systems. This method is safe (compared to pulmonary artery catheters), noninvasive (compared to the use of dyes or radioactive isotopes), inexpensive (compared to TEE (transesophageal echocardiogram), requires no expertise for its use (unlike TEE) and no calibration is required. The clinician is presented with easy-to-understand numeric and a graphic display.

**[0033]** As those skilled in the art will certainly appreciate, it is desirable to provide clinicians with a warning regarding venous impact and an "alarm" when the blood loss has reach a quantity where it is affecting the arterial system. With this in mind, it is contemplated a display will provide the clinician with a basic numeric representation of blood loss and a waveform for a more studied evaluation of the patient's blood volume situation. The inclusion of a waveform with the basic numeric representation will provide the clinician with a way of evaluating the quality of the basic number provided.

**[0034]** It is contemplated in accordance with a preferred embodiment that the invention may act as a dual level blood volume monitoring system. The venous component can act as part of an "early warning" system regarding the patient's blood volume status. As such, the present method would be employed in detecting the reduction in blood volume during the period of time that the body can still compensate. This is during a period of time the blood loss has not impacted yet on the cardiac stroke volume.

**[0035]** With further blood loss, the arterial component is impacted. This "alarm" phase would indicate that cardiac function is now being compromised by the loss of blood volume. Blood volume replacement therapy could then be guided by this dual level system.

5 **[0036]** As discussed above, the separation of the venous and arterial components is accomplished by recording the location of local maximums and local minimums of the predetermined pulse oximeter waveform during ventilation. A trace of the local maximums and a trace of the local minimums can then be superimposed and compared for relative amplitude and phase shift. Blood loss is determined as a function of amplitude and phase shift in the manner described above.

10 **[0037]** With regard to Figures 6 to 12, and in accordance with a comparative example to the present invention, another method for assessing blood volume through the analysis of a cardiovascular waveform, in particular, a pulse oximeter waveform, is disclosed. In accordance with this example, blood volume within a subject is monitored by first generating a pulse oximeter waveform representing physiological characteristics of a subject. The pulse oximeter waveform is generally a photoelectric plethysmographic waveform representing ventilation fluctuation of the subject. Thereafter, blood volume of the subject is determined by analyzing the pulse oximeter waveform or alternative means of monitoring cardiovascular waveforms.

15 **[0038]** Analysis is achieved by applying harmonic analysis to the pulse oximeter waveform, extracting a frequency signal created by ventilation, most commonly positive pressure ventilation, and applying the extracted frequency signal in determining blood volume of the subject. In accordance with a preferred example, the harmonic analysis is Fourier analysis, more particularly, joint time-frequency analysis. As those skilled in the art will certainly appreciate, joint time-frequency analysis is a common signal analysis tool utilized in studying frequency changes over time. In accordance with a preferred example, a short-time Fourier transform is employed, although other types of joint time-frequency analysis maybe employed. In addition, the extraction of the frequency signal is achieved using a peak detection algorithm in the frequency range of ventilation.

20 **[0039]** As mentioned in the Background of the Invention, in the process of determining oxygen saturation, the pulse oximeter functions as a photoelectric plethysmograph. By analyzing how the frequency spectrum of the pulse oximeter waveform changes over time, new clinically relevant features can be extracted.

25 **[0040]** Referring to Figures 6a and 6b, a pulse oximeter waveform is shown with an associated frequency spectrum generated based upon joint time-frequency analysis which breaks down the complex signals of the pulse oximeter waveform into its underlying sine and cosine waves. The signals shown in Figures 6a and 6b are representative of a patient before any blood loss. In particular, Figure 6b shows the minimal respiratory signal that results from fluctuation in the venous system, while the signal at approximately 1 Hz results from the patient's base heart rate. Figure 6b shows that, for the given gray scale, there is no detectable signal at the respiratory frequency (between 0.15 and 0.20 Hz).

30 **[0041]** Referring to Figures 7a and 7b, the signals generated for a subject encountering moderate blood loss only affecting the venous system (pre-load) are shown. Figure 7b shows an increase in the signal from the respiratory frequency (such that it is now detectable, indicative of the change in blood volume affecting the shifting of venous blood during ventilation).

35 **[0042]** Now referring to Figures 8a and 8b, the signals generated for a subject encountering acute blood loss are shown. With reference to Figure 8b, please note the different frequency spectrums of the joint time-frequency analysis as compared with that of the analysis shown in Figure 6b. Figure 8b shows an increase in the signal from the respiratory frequency indicative of the change in blood volume affecting the shifting of venous blood during ventilation and the development of secondary harmonics about the base heart rate signal (or cardiac pulse harmonic) resulting from the increased blood loss affecting the arterial system (stroke volume) of the subject.

40 **[0043]** The effects of increased blood loss are further demonstrated with reference to Figures 9a, 9b and 9c. Specifically, Figure 9a is the joint time-frequency analysis of a pulse oximeter waveform of a subject as continued blood loss is encountered. As is shown in Figure 9b, the joint time-frequency analysis reveals changes in the strength of the signal at the respiratory frequency with the development of harmonics when there is a blood loss of approximately 300cc (indicative of changes in the venous component). This emergence of the respiratory band is similar to that shown in Figure 7b.

45 **[0044]** The joint time-frequency analysis of the pulse oximeter waveform produces secondary harmonics surrounding the cardiac pulse harmonic, or primary harmonic, at a continuous blood loss of greater than 900 cc (indicative of changes in the arterial component). The development of similar secondary harmonics about the cardiac pulse harmonic of approximately 1 Hz is similarly shown in Figure 8b.

50 **[0045]** As a result of these differing changes the pulse oximeter waveform, which are discerned via the application of joint time-frequency analysis, arterial and venous components of blood volume maybe ascertained from the joint time-frequency analysis of the pulse oximeter waveform. Specifically, by monitoring shifts in the frequency baseline as manifested in the joint time-frequency analysis of the pulse oximeter waveform, one is able to monitor venous blood volume in accordance with the present comparative example (see Figure 9b). The impact on cardiac output may be monitored by noting the development of secondary harmonics surrounding the cardiac pulse harmonic (see Figure 9c). Such

secondary harmonics are not present in a normal person, but might be present in a dehydrated individual although a medical practitioner would certainly be capable of determining whether the noted secondary harmonics are a result of blood loss or dehydration.

**[0046]** The result of the application of the present analysis technique to 8 patients is shown in Figure 10.

**[0047]** The concepts underlying the present comparative example were tested upon thirty patients undergoing abdominal surgery by collecting their pulse oximeter waveforms, airway pressure and exhaled CO<sub>2</sub> waveforms (50 Hz). The pulse oximeter waveforms were analyzed with a short-time Fourier transform using a moving 4096 point Hanning window of 82 seconds duration. The frequency signal created by positive pressure ventilation was extracted using a peak detection algorithm in the frequency range of ventilation (0.08-0.4 Hz = 5-24 breaths/minute). The respiratory rate derived in this manner was compared to the respiratory rate as determined by CO<sub>2</sub> detection. In total, 52 hours of telemetry data were analyzed. The respiratory rate measured from the pulse oximeter waveform in accordance with the present joint time-frequency analysis was found to have a 0.87 linear correlation when compared to CO<sub>2</sub> detection and airway pressure change. The signal strength increased in the presence of blood loss.

**[0048]** Despite the success of the present method as tested through comparison with CO<sub>2</sub> detection, it was found that cardiac arrhythmia (i.e. atrial fibrillation & frequent premature atrial and ventricular contractions) proved to be the primary cause of failure of this technique. As shown in Figures 11a and 11b, an irregular heart rhythm created a highly distinctive signal when joint time-frequency analysis was applied to the pulse oximeter waveform.

**[0049]** More particularly, 30 patients undergoing abdominal hysterectomy under general anesthesia had their pulse oximeter waveform, airway pressure and CO<sub>2</sub> waveform collected. As a part of their anesthetic, all patients were intubated after an induction with propofol and vecuronium. Anesthesia was maintained with nitrous oxide (60%-70%) and isoflurane (1%-2%). The ventilator was set to a tidal volume of 10cc/kg at an inspiratory to expiratory (I:E) ratio of 1:2. During the surgery, estimated blood loss was closely followed and recorded, as well as replacement fluid given to the patient. Three times during the surgical procedure the ventilator was adjusted. This adjustment consisted of increasing the tidal volume until the peak pressure airway pressure was increased above baseline by 10 cm H<sub>2</sub>O (to maximum of 35 cm H<sub>2</sub>O). This higher setting was maintained for 5 mins and then returned to baseline.

**[0050]** The data were collected using a computer acquisition system consisting of a 16-bit A-to-D PC card (DAQCard AI-16XE-50, National Instruments, Austin, TX) sampling at 50Hz. BioBench (Version 1.0, National Instruments, Austin, TX) was the software used for the acquisition process. Waveform analysis was accomplished with Igor Pro (Version 3.14, WaveMetrics, Inc. Lake Oswego, OR).

**[0051]** The pulse oximeter waveform was collected with a clinical pulse oximeter (OxiPleth Model 520A, Novametrics, Wallingford, CT) using a standard finger probe. The pulse oximeter had its auto-gain function disabled. The pulse oximeter waveform collected consists of the AC portion of inverted infrared signal (approximate 940nm). The airway pressure and CO<sub>2</sub> were obtained from an Ohmeda RGM gas monitor (model 5250, Datex-Ohmeda, Madison WI).

**[0052]** The pulse oximeter waveform was analyzed with a short-time Fourier transform using a moving 4096 point Hanning window of 82 seconds duration. The frequency signal created by positive pressure ventilation was extracted using a peak detection algorithm in the frequency range of ventilation (0.08-0.4 Hz). The respiratory rate was derived in this manner and was confirmed by to the respiratory rate as detected by CO<sub>2</sub> production. This was used as the gold standard for comparison purposes.

**[0053]** More particularly, and in accordance with a preferred embodiment of the present comparative example, the joint time-frequency analysis of the pulse oximeter waveform is created in the following manner. The pulse oximeter waveform is converted to a numeric series by analog to digital conversion with sampling of the continuous pulse oximeter output at a rate of 50 Hz. The sampled waveform is collected into a digital buffer, presently 4096 points - 82 seconds. A windowing function is used on the data in the digital buffer (presently Hanning window is used in accordance with a preferred embodiment of the present comparative example). The windowing function is designed to minimize the effect of the finite range of the sample set.

**[0054]** A Fourier transform is then performed on the data set in the digital buffer. The data are expanded in a logarithmic fashion. The logarithmic expansion, an optimal step, is done to compensate for the otherwise overwhelming signal strength for the heart rhythm. The result is transferred to a display buffer. The digital buffer then accepted new data from the pulse oximeter on a first-in, first-out basis. The amount of new data added is determined by respiratory rate measured up to that point. Specifically, the amount of data associated with the time of one breath is added to buffer. This new data was then analyzed by the method outlined in accordance with the "windowing function" step and the Fourier analysis step described above.

**[0055]** The resulting data are then plotted with Y axis-frequency & X axis-time. A number of different techniques can be used to display the results (false color, grayscale, "waterfall" or as a surface plot).

**[0056]** In total, 52 hours of telemetry data were analyzed. The respiratory rate measured from the pulse oximeter waveform had a 0.89 linear correlation (Pearson coefficient of correlation) when compared to CO<sub>2</sub> detection as a method of detecting ventilation. Further analysis was done using the method described by Bland and Altman. Bland JM & Altman DG, A note on the use of the intraclass correlation coefficient in the evaluation of agreement between two methods of

measurement, Computers In Biology And Medicine 1990; 20: 337-40. The differences between each pair of values obtained using the two different methods were plotted as the Y-axis, whereas the averages of the each pair of values obtained using the two different methods were plotted as the X-axis. The mean (bias), standard deviation (SD) [as a measure of precision], and the upper and lower limits of agreement were calculated. The bias was 0.03 breath/min, SD was 0.557 breath/min and the upper and lower limits of agreement were 1.145 and -1.083 breath/min respectively.

**[0057]** As mentioned above, review of the data generated after joint time-frequency analysis revealed that the presence of cardiac arrhythmia (i.e. atrial-fibrillation & frequent PVC/PAC) proved to be the primary cause of failure of the present methodology.

**[0058]** Analysis of the data generated as a result of the joint time-frequency analysis revealed two factors that appeared to influence the strength of the respiratory signal contained in the pulse oximeter waveform; 1) the airway pressure (see Figures 12a and 12b) and 2) the blood volume status of the patient (see Figures 9a, 9b and 9c). For any given patient, higher airway pressures resulted in a stronger respiratory signal ( $p < 0.01$  using paired student T-test). In addition, it was observed that as significant blood loss ( $> 300\text{cc}$  EBL) occurred during a surgical procedure (seen in 8 cases), the respiratory signal would increase strength to only return to baseline as fluid replacement was given. The present method of harmonic analysis also appears to be useful in detecting spontaneous ventilation occurring at the end of the procedures (see Figures 12a and 12b).

**[0059]** Further and with reference to Figure 13, there were a number of features noted in the joint time-frequency analysis of pulse oximeter that, while not formally studied, were nevertheless interesting. The pulse rate is given by the frequency of the primary harmonic, or cardiac pulse harmonic (i.e.,  $1.13\text{ Hz} = 68\text{ beats/min}$ ). The thickness of the primary harmonic band of the joint time-frequency analysis corresponds to the heart rate variability (narrow ~ low heart rate variability; wide ~ high heart rate variability).

**[0060]** Ventilation was observed to have two distinct impacts on the pulse oximeter waveform as seen through joint time-frequency analysis. The most commonly seen was a shift of the baseline with each breath. The baseline of the pulse oximeter waveform is often considered to reflect the DC component of the pulse oximeter waveform. Shifts in the baseline are felt to be associated with changes in the venous bed (non pulsatile blood). Dorlas JC & Nijboer JA, Photoelectric plethysmography as a monitoring device in anaesthesia, Application and interpretation, British Journal Of Anaesthesia 1985; 57: 524-30. This type of DC modulation was observed in all studied patients during both periods of controlled and spontaneous ventilation. As such, by monitoring shifts in the baseline as manifested in the joint time-frequency analysis, one is able to monitor venous blood volume accordance with the present comparative example (see Figure 9b).

**[0061]** The less commonly seen phenomenon was a change of the amplitudes of the pulse beats (AC component or arterial pulsatile component) with each breath in the joint time-frequency analysis. This type of AC modulation has been associated with hypovolemic states. Shamir M, Eidelman LA, Floman Y et al., Pulse oximetry plethysmographic waveform during changes in blood volume, British Journal Of Anaesthesia 1999; 82: 178-81; Partridge BL, Use of pulse oximetry as  $\alpha$  noninvasive indicator of intravascular volume status, Journal of Clinical Monitoring 1987; 3: 263-8. In accordance with the present comparative example, it has been noted that recurrent changes in the amplitude of the pulse beat are manifested on the joint time-frequency analysis as secondary harmonics surrounding the cardiac pulse harmonic. The distance between the secondary harmonics and the cardiac pulse harmonic is proportionally linked to the respiratory rate. These secondary harmonics were present in all patients (eight) who had more than a 300cc blood loss. As such, and in accordance with the present comparative example, the arterial blood volume may be monitored by noting secondary harmonics surrounding the cardiac pulse harmonic of the joint time-frequency analysis (see Figure 9c).

**[0062]** Joint time-frequency analysis allows for the extraction of the underlying frequencies that make up a signal and to observe how these underlying waveforms change over time. In the case of the pulse oximeter, the plethysmographic waveform that is displayed is a highly processed and filtered signal but is still rich in physiologic information. As would be expected, the cardiac pulse waveform is the predominant signal present in pulse oximeter signal. The respiratory component, when present, can be subtle and difficult to monitor using conventional display methods. When the same waveform is displayed in the frequency domain (i.e., using joint time-frequency analysis), the respiratory effect is easy to follow. The two most common reasons for inaccurate readings appeared to be motion artifact and irregular heartbeats.

**[0063]** In practice, joint time-frequency analysis of the pulse oximeter waveform offers a variety of advantages. In particular, it provides for isolation of the respiratory induced changes of the pulse oximeter, which may be related to intra-vascular blood volume. It also allows for separation of the venous and arterial components (AC & DC) of respiratory variability, allowing for a unique detailed analysis of the impact of blood volume on cardiac function (pre-load vs. after-load effects). Joint time-frequency analysis also provides a method to determine respiratory rate (both controlled and spontaneous) (see Figure 13 wherein minor peaks of the frequency spectrum are due to respiration), detecting spontaneous breathing patterns, detecting irregularity of heart rate, allowing for the determination of heart rate and estimating heart rate variability by the examination of the width of the primary cardiac pulse harmonic. The analysis also provides a method of displaying a large volume of pulse oximeter waveform information in a small area. (Three or more hours of data collection easily fits on one page). In addition, the present method is resistant to isolated artifacts.

5 [0064] In implementing the present comparative example, it is contemplated various limitations maybe encountered and various concepts are ripe for further consideration. Specifically, the following clinical conditions may either preclude the use of this technique or greater limit its applicability: cardiac arrhythmia such as atrial fibrillation or frequent premature ventricular beats; (which causes a beat to beat variation in the pulse waveform amplitude); excessive ventilator tidal volumes or reduced chest wall compliance would have to be taken into account; or in conditions of low cardiac output (EF <30%) the potential exists for augmentation of the ventricular output ( $\Delta up$ ).

10 [0065] The present invention provides for the development of an algorithm that generates an easily understood and clinically relevant numeric index of respiratory variability. Such an index could then be used to non invasively monitor the fluid status of patients undergoing surgical procedures. This development is part of a larger on-going project to better understand and utilize the pulse oximeter waveform. It is hoped that from this work the next generation of pulse oximeters will be designed to improve clinical monitoring. These improvements could allow for the non-invasive monitoring of volume status, vascular tone and tissue oxygen extraction.

15 [0066] The present invention is adapted for use with a variety of traditional pulse oximeters, whether employing disposable probes or reusable probes, as well as other related ventilation measuring devices. With reference to Figures 14 and 15, an example of a pulse oximeter that may be utilized in accordance with the present invention is disclosed.

20 [0067] Referring to Figures 14 and 15, a pulse oximeter 10 is generally composed of a probe 12 adapted for positioning over a patient's finger (or at an alternative site such as the forehead or ear) and a central processor 14 with a display 30 coupled to the probe 12 for receiving and displaying information retrieved by the probe 12. With regard to underlying electrical circuitry, and as described in U.S. Patent No. 6,496,711, the circuitry for a generic pulse oximeter 10 is disclosed . The pulse oximeter 10 has a photodiode 16 for detecting an optical signal 18 reflected from or transmitted through a volume of intravascular blood (not shown) illuminated by one or more light emitting diodes (LEDs, not shown). The LEDs emit electromagnetic radiation at a constant intensity; however, an optical signal 18 with a time-varying intensity is transmitted through or reflected back from the intravascular blood for each of the wavelengths. The photodiode 16 generates a low-level current proportional to the Intensity of the electromagnetic radiation received by the photodiode 16. The current is converted to a voltage by a current to voltage converter 20, which may be an operational amplifier in a current to voltage (transimpedance) configuration.

25 [0068] The signal is then filtered with a filter stage 22 to remove unwanted frequency components, such as any 60 Hz noise generated by fluorescent lighting. The filtered signal is then amplified with an amplifier 24 and the amplified signal is sampled and held by a sample and hold 26 while the signal is digitized with a high-resolution (12-bit or higher) analog to digital converter (ADC) 28.

30 [0069] The digitized signal is then latched by the central processor 14 from the ADC 28. The central processor 14 then calculates a coefficient for the oxygen saturation value from the digitized signal and determines the final saturation value by reading the saturation value for the calculated coefficient from a look-up table stored in memory. The final saturation value is displayed on a display 30.

35 [0070] The methods and systems employed in accordance with the present invention are equally applicable to both mechanically ventilated individuals and spontaneously ventilating individuals. As such, the concepts underlying the present invention equally apply to mechanically ventilated subject under positive pressure, spontaneously ventilating subjects, spontaneously ventilating subjects with positive expiratory pressure and spontaneous ventilating subjects with inspiratory pressure.

40 [0071] However, it is contemplated the waveforms produced by those subjects that are mechanically ventilated exhibit more pronounced variations then those produced by subjects that are spontaneously breathing. This distinction is believed to result from the effect the positive pressure of mechanical ventilation has upon blood pressure and blood flow within a subject. As such, it maybe advantageous when monitoring spontaneously ventilating subjects to increase the positive pressure associated with breathing such that the waveforms associated therewith exhibit relevant variations witch the same clarity found in mechanically ventilated subjects.

45 [0072] More specifically, while in most cases clinicians and investigators monitoring ventilation simply are interested in the rate and/or depth of respiration, the intrathoracic pressure generated by ventilatory effort is of greater importance when one is assessing the effects of ventilation on peripheral blood flow in accordance with the present invention. This effect, which occurs in synchrony with positive pressure ventilation due to a mechanical ventilator, is termed the "ventilator effect". The periodic oscillations in ventilatory pressure cause synchronous oscillations in continuous waveforms of peripheral blood pressure and peripheral blood flow. Specifically, the periodic delivery of positive pressure by the ventilator impedes the return of blood to the heart and hence causes a transient decrease in the arterial pressure and peripheral flow that may be measured by a device such as a plethysmograph or laser Doppler flow meter.

50 [0073] The degree of oscillatory dampening is determined by: a) the amount of positive pressure that is generated by the ventilator; and b) the patient's relative volume status. The former is commonly measured by the means of positive pressure mechanical ventilation in an intubated patient but, prior to the present disclosure, was not readily attainable during spontaneous (non-mechanical) ventilation, as would be the case in a nonintubated patient. The latter is dependent on the overall fullness of the patient's heart and blood vessels ("volume status"), volume generated with each heartbeat

(stroke volume), and the vascular tone. These factors interact such that when a patient is vasodilated or relatively hypovolemic, there is a greater effect of ventilation on peripheral blood pressure and flow.

[0074] With reference to Figure 16, the present positive pressure device has been developed for spontaneously breathing subjects. The device is designed to measure the pressure associated with each breath of ventilation, measure the pressure generated by a prolonged inhalation or exhalation (e.g., Valsalva maneuver), and provide an adjustable resistance so as to enable us to increase or decrease airway pressure in the spontaneously breathing, nonintubated patient, whether that patient be breathing totally on his/he own, or breathing spontaneously in response to a prompt such as a metronome tone.

[0075] The device includes a one-way valve 32 and, a connector with side 34 attached via a stopcock 35 to an electronic pressure transducer 36 and/or an aneroid meter (not shown) for recording and viewing pressure. The device further includes an adaptor 38 for attaching a syringe 40 with occludable holes to provide variable expiratory resistance and a breathing filter 42 through which a subject breathes while holding it in his/her mouth.

[0076] The aforementioned system for delivering positive pressure may be packaged separately or integrated with monitors of oscillatory cardiovascular signals (e.g., pulse oximeter). This would enable monitoring of the rate, depth, and pressure of ventilation. The integrated device also could contain a means to prompt a spontaneously breathing patient to breathe at a fixed rate, e.g., a metronome; this would be critical so that one could then determine if the oscillations in the waveform are associated with the ventilatory signal. Additionally, it may be incorporated with a means to monitor rate and depth of respiration by measuring chest and/or abdominal excursion.

[0077] In addition to adding positive pressure to those subjects spontaneously ventilating, it has been found that the constant breathing rate of mechanically ventilating subjects produces better waveforms for the purposes of the present invention since the natural variations associated with spontaneous breathing add an additional variable to the process of analyzing the waveforms to determine blood loss. As such, it is contemplated that it may be desirable to associate a spontaneously ventilating subjects breathing rate with a metronome. The breathing rate may also be controlled through the squeezing of a ventilation bag. This will produce a more consistent breathing rate, resulting in more easily analyzed waveforms.

[0078] It is further contemplated that the waveforms generated in accordance with the present invention maybe analyzed with reference to the pulse wave amplitude, (i.e. normalized) respiratory oscillations, etc. so as to normalize the resulting waveforms in an effort to produce more consistent results from subject to subject and monitoring device to monitoring device.

[0079] It is still further contemplated ventilation induced changes in a cardiovascular waveform may be monitored in the context of an irregular rate of respiration. The process includes identifying each respiration and then determining the maximum and minimum of the cardiovascular signal for each respiratory interval.

[0080] Especially in the context of spontaneous ventilation with varied intervals between breaths, one may use a respiratory channel as the timing channel for assessment of cardiovascular waveform. For example, for each breath-to-breath interval, one could record the following from the pulse oximeter signal:

- overall mean
- peak value for signal within the given breath-to-breath interval
- trough value for signal within the given breath-to-breath interval
- peak minus trough value for signal within the given breath-to-breath interval
- min for each heart beat (diastole of given pulse) within the given breath-to-breath interval
- max for each heart beat (systole of given pulse) within the given breath-to-breath interval
- max minus min for each heart (amplitude of given pulse) within the given breath-to-breath interval

[0081] This could be performed for a single breath or for multiple breaths so as to enable assessment of an extended interval such as was used for the aforementioned Fourier transformation.

[0082] Using the data illustrated in Figures 2a-2c, we obtain the following approximate values for the approximately 8 breaths obtained in a 50 second interval (2000 points/82 points/sec.

Parameter Being Averaged Over 50-sec Interval	Baseline	500cc EBL	1500cc EBL
50-sec Average for Individual Pulses:			
Systole of pulses	2.0	2.0	2.35
Diastole of pulses	-2.0	-2.2	-2.3
Amplitude of pulses	4.0	4.2	4.65

EP 1 601 287 B1

(continued)

50-sec Average for Per-Breath Values:				
5	Peak per-breath values of entire waveform	2.1	2.7	3.0
	Trough per-breath values of entire waveform	-1.85	-2.55	-3.2
	Difference between peak and trough per-breath values of entire waveform	3.95	5.25	6.2
10	Peak per-breath values of arterial portion of waveform	2.1	2.7	3.0
	Trough per-breath values of arterial portion of waveform	2.0	2.1	1.8
	Difference between peak and tough per-breath values of arterial portion of waveform	4.1	4.8	5.8
15	Peak per-breath values of venous portion of waveform	-1.95	-2.15	-2.15
	Trough per-breath values of venous portion of waveform	-2.1	-2.55	-3.0
	Difference between peak and tough per-breath values of venous portion of waveform	4.05	4.70	5.15
20	Largest per-breath pulse amplitude	4.0	4.5	5.0
	Smallest per-breath pulse amplitude	3.8	3.8	4.0
	Difference between Largest per-breath and smallest per-breath pulse amplitudes	0.2	0.7	1.0
25	Highest per-breath height of dicrotic notch	-0.8	-1.3	-1.0
	Lowest per-breath height of dicrotic notch	-1.3	-2.2	-2.2
	Difference between highest per-breath and lowest per-breath heights of dicrotic notch	0.5	0.9	1.2

30 **[0083]** It should be noted that, in addition to assessment of power at different frequencies the phase angle between the different measurements (e.g., graphic delineation of local mins vs local mixes) and changes in the different measurements may be determined as per published work described in Podgoreanu MV, Stout RG, El-Moalem E, Silverman DG, Syndronous rhyhmical vasomotion in the buman cuataneous microvasculature during nonpulsatile cardiopulmonary by-  
 35 pass, Anesthesiology 2002; 97:1110-1116, which adapted the technique for determining phase angle described by Bernardi L, et al., Syndromous and baroreceptor-sensitive oscillations in skin microcirculation: evidence for central central autonomic control, Am J Physio11997; 273: H1867-1878.

**[0084]** The aforementioned means to identify and segregate the arterial and venous components of a cardiovascular waveform such as the plethysmographic waveform of a pulse oximeter, enable one to selectively monitor the arterial or  
 40 venous component of that waveform with respect to flow (or pressure). They also enable one to select the time of the determination of a measurement such as oxygen saturation so as to isolate arterial oxygenation from venous oxygenation.

**[0085]** In addition, the delineation of the arterial and venous components enables one to modify the actual plethysmographic tracing by a means such as application of pressure to the monitoring probe to a degree that obliterates the  
 45 low pressure (venous or DC) component. This would cause the tracing to more closely resemble the arterial tracing generated by an intra-arterial catheter. This sequence of steps is illustrated in Figures 17 and 18.

**[0086]** It should further be appreciated that the described methods may include the additional step of monitoring the rate of respiration. This may further include integrating the respiratory signal into a data collection system which also  
 50 collects input from a cardiovascular signal, identifying one or more breath-to-breath intervals, using the breath-to-breath intervals as the "timing channel" for assessment of the cardiovascular waveform and determining the magnitude and change of the cardiovascular waveform for the given breath or breaths.

**[0087]** The indices which may be measured are systole, diastole, and/or amplitude of one or more individual pulses. More specifically, the indices monitored include one or more of the following indices determined for one or more intervals:  
 55 peak per-breath values of entire waveform, trough per-breath values of entire waveform, difference between peak and trough per-breath values of entire waveform, peak per-breath values of arterial portion of waveform; trough per-breath values of arterial portion of waveform; difference between peak and tough per-breath values of arterial portion of waveform; peak per- breath values of venous portion of waveform, trough per-breath values of venous portion of waveform, difference between peak and tough per-breath values of venous portion of waveform, largest per-breath pulse amplitude, smallest per-breath pulse amplitude, difference between largest per-breath and smallest per-breath pulse amplitudes,

highest per-breath height of dicrotic notch, lowest per-breath height of dicrotic notch, and difference between highest per-breath and lowest per-breath heights of dicrotic notch.

[0088] The method and system of the present invention may also be utilized where there is positive inspiratory and/or expiratory pressure during ventilation, and wherein the amount of positive pressure is quantified and adjustable. The method and system may also provide that the change in the cardiovascular monitor attributed to respiration is normalized to (e.g., expressed as a percentage of) the inspiratory or expiratory pressure and the variation in the cardiovascular monitor attributed to ventilation is normalized to the amplitude of the individual pulse beats.

[0089] In addition, the present method and system may also provide that outputs of different monitoring devices obtained from one or more monitoring sites are compared. In this instance the devices may both be pulse oximeters, or one or more of the devices may be an alternative continuous measure of blood flow (e.g., laser Doppler flow meter) or a continuous measure of blood pressure.

[0090] In practicing the present method and system it is contemplated that pressure may be applied to a monitoring device such as an oximeter probe to eliminate the venous component of the tracing and the pressure to eliminate the venous component is quantified so that the venous pressure maybe measured. In addition, the present method and system provides that oxygen saturation maybe determined independently for the arterial and venous phases.

### Claims

1. A system for assessing a decrease in blood volume within a subject, comprising:

a probe (12) adapted for retrieving cardiovascular waveforms of a subject; and  
 a processor (14) associated with the probe for analyzing a retrieved cardiovascular waveform, the processor including means for detecting a decrease in blood volume of the subject by analyzing the cardiovascular waveform, wherein the analyzing includes:

generating a first trace of the per heart-beat maximums of the cardiovascular waveform, which is representative of the systolic pressure upon the cardiovascular waveform;  
 generating a second trace of the per heart-beat minimums of the cardiovascular waveform, which is representative of the diastolic pressure upon the cardiovascular waveform; and  
 comparing the respective first trace and the second trace to generate an indication of a decrease in blood volume within the subject.

2. The system according to claim 1, wherein the probe (12) is a pulse oximeter probe and the cardiovascular waveform is a pulse oximeter waveform representing effective blood volume.

3. The system according to claim 1, wherein the comparing includes comparing the amplitude and phase shift of the respective first trace and the second trace to generate the indication of the decrease in blood volume within the subject.

4. The system according to claim 2, wherein the first trace and the second trace are generated by respectively recording the per heart-beat maximums and per heart-beat minimums of the pulse oximeter waveform during ventilation by the subject.

5. The system according to claim 1, wherein the indication of the decrease in blood volume is an amplitude of the first trace and an amplitude of the second trace, wherein an increase in the amplitude of the first trace and an increase in the amplitude of the second trace is indicative of the decrease in blood volume.

6. The system according to claim 1, wherein the comparing includes comparing the phase of the respective first trace and the second trace to generate the indication of the decrease in blood volume within the subject, wherein an increase of phase shift is indicative of the decrease in blood volume.

7. The system according to claim 1, wherein the comparing includes taking a difference between the per heart beat minimums and the per heart beat maximums as an indicator of an affect upon the arterial system.

8. The system according to claim 7, wherein the analyzing the cardiovascular waveform further includes calculating a degree of fluctuation of the difference during a respiratory cycle, wherein the greater the degree of fluctuation of the difference during a respiratory cycle the lower the effective arterial blood volume.

9. The system according to claim 1, wherein the comparing includes taking an average between the per heart-beat minimums and the per heart-beat maximums as an indicator of an affect upon the venous system.

5 10. The system according to claim 9, wherein the analyzing the cardiovascular waveform further includes calculating a degree of fluctuation of the average during a respiratory cycle, wherein the greater the degree of fluctuation of the average during a respiratory cycle the lower the effective venous blood volume.

10 11. The system according to claim 1, wherein the comparing includes taking each of a difference between the per heart beat minimums and the per heart beat maximums as an indicator of an affect upon the arterial system and an average between the per heart-beat minimums and the per heart-beat maximums as an indicator of an affect upon the venous system, wherein the analyzing the cardiovascular waveform further includes determining a phase relationship between a first waveform resulting from fluctuations of the difference and a second waveform resulting from fluctuations of the average and using the phase relationship to determine a degree of ventilatory augmentation as compared to dampening of the cardiac stroke volume.

15 12. The system according to claim 1, wherein the comparing includes studying the phase shift between the first trace and the second trace to determine a degree of ventilatory augmentation as compared to dampening of cardiac output.

20 13. The system according to claim 1, wherein the system further comprises a metronome adapted for synchronizing subject ventilation.

14. A method for assessing a decrease in blood volume within a subject, comprising:

25 generating a cardiovascular waveform representing physiological characteristics of a subject; and detecting a decrease in blood volume of the subject by analyzing the cardiovascular waveform using a processor (14), wherein the step of analyzing includes:

30 generating a first trace of the per heart-beat maximums of the cardiovascular waveform, which is representative of the systolic pressure upon the cardiovascular waveform; generating a second trace of the per heart-beat minimums of the cardiovascular waveform, which is representative of the diastolic pressure upon the cardiovascular waveform; and comparing the respective first trace and the second trace to generate an indication of a decrease in blood volume within the subject.

35

## Patentansprüche

1. System zur Bestimmung der Abnahme des Blutvolumens eines Patienten, das Folgendes umfasst:

40 eine Sonde (12), die so adaptiert wurde, dass sie die kardiovaskulären Wellenformen eines Patienten abrufft, und einen Prozessor (14), der mit der Sonde zur Analyse einer abgerufenen kardiovaskulären Wellenform assoziiert wird, wobei der Prozessor Mittel zur Erfassung einer Abnahme des Blutvolumens des Patienten beinhaltet, indem er die kardiovaskuläre Wellenform analysiert, wobei die Analyse Folgendes beinhaltet:

45 Generieren einer ersten Spur der Höchstwerte pro Herzschlag der kardiovaskulären Wellenform, die für den systolischen Druck auf der kardiovaskulären Wellenform repräsentativ ist, Generieren einer zweiten Spur der Tiefstwerte pro Herzschlag der kardiovaskulären Wellenform, die für den diastolischen Druck auf der kardiovaskulären Wellenform repräsentativ ist, Vergleichen der entsprechenden ersten Spur und der zweiten Spur zum Generieren einer Anzeige der Abnahme des Blutvolumens des Patienten.

50

2. System nach Anspruch 1, wobei die Sonde (12) eine Pulsoximetersonde, und die kardiovaskuläre Wellenform eine Pulsoximeterwellenform ist, die das effektive Blutvolumen repräsentiert.

55 3. System nach Anspruch 1, wobei der Vergleich das Vergleichen der Amplitude und der Phasenverschiebung der entsprechenden ersten Spur und der zweiten Spur zum Generieren der Anzeige der Abnahme des Blutvolumens des Patienten beinhaltet.

## EP 1 601 287 B1

4. System nach Anspruch 2, wobei die erste Spur und die zweite Spur durch eine entsprechende Aufzeichnung der Höchstwerte pro Herzschlag und der Tiefstwerte pro Herzschlag der Pulsoximeterwellenform während der Ventilation des Patienten generieren.
5. System nach Anspruch 1, wobei die Anzeige der Abnahme des Blutvolumens eine Amplitude der ersten Spur und eine Amplitude der zweiten Spur ist, wobei eine Erhöhung der Amplitude der ersten Spur und eine Erhöhung der Amplitude der zweiten Spur für die Abnahme des Blutvolumens indikativ ist.
6. System nach Anspruch 1, wobei der Vergleich das Vergleichen der Phase der entsprechenden ersten Spur und der zweiten Spur zum Generieren der Anzeige der Abnahme des Blutvolumens des Patienten beinhaltet, wobei eine Zunahme der Phasenverschiebung von der Abnahme des Blutvolumens indikativ ist.
7. System nach Anspruch 1, wobei der Vergleich einen Unterschied zwischen den Tiefstwerten pro Herzschlag und den Höchstwerten pro Herzschlag als Indikator für eine Auswirkung auf das arterielle System ist.
8. System nach Anspruch 7, wobei die Analyse der kardiovaskulären Wellenform ferner die Kalkulationen eines Grades der Schwankung des Unterschiedes während eines Atemzyklus berechnet, wobei je größer der Grad der Schwankung des Unterschiedes während eines Atemzyklus ist, desto niedriger ist das effektive arterielle Blutvolumen.
9. System nach Anspruch 1, wobei der Vergleich einen Durchschnitt zwischen den Tiefstwerten pro Herzschlag und den Höchstwerten pro Herzschlag als Indikator für eine Auswirkung auf das venöse System ist.
10. System nach Anspruch 9, wobei die Analyse der kardiovaskulären Wellenform ferner die Kalkulation eines Grades der Schwankung des Durchschnitts während eines Atemzyklus berechnet, wobei je größer der Grad der Schwankung des Durchschnitts während eines Atemzyklus ist, desto niedriger ist das effektive venöse Blutvolumen.
11. System nach Anspruch 1, wobei der Vergleich jede der Differenzen zwischen den Tiefstwerten pro Herzschlag und den Höchstwerten pro Herzschlag als Indikator für eine Auswirkung auf das arterielle System und einen Durchschnitt zwischen den Tiefstwerten pro Herzschlag und den Höchstwerten pro Herzschlag als Indikator für eine Auswirkung auf das venöse System ist, wobei die Analyse der kardiovaskulären Wellenform ferner die Bestimmung einer Phasenbeziehung zwischen einer ersten Wellenform ist, die von Schwankungen des Unterschiedes resultiert und einer zweiten Wellenform, die von Schwankungen des Durchschnitts resultiert, und unter Verwendung der Phasenbeziehung einen Grad an Beatmungszunahme im Vergleich zum Dämpfen des kardialen Herzschlagvolumens bestimmt.
12. System nach Anspruch 1, wobei der Vergleich das Studieren der Phasenverschiebung zwischen der ersten Spur und der zweiten Spur beinhaltet, um einen Grad an Beatmungszunahme zu bestimmen, wie im Vergleich zum Dämpfen der Herzleistung.
13. System nach Anspruch 1, wobei das System ferner ein Metronom umfasst, das zur Synchronisierung der Beatmung des Patienten adaptiert wurde.
14. Verfahren zur Bestimmung der Abnahme des Blutvolumens eines Patienten, das Folgendes umfasst:
  - Generieren einer kardiovaskulären Wellenform, die physiologische Eigenschaften eines Patienten darstellt, und Erfassung einer Abnahme des Blutvolumens des Patienten durch Analyse der kardiovaskulären Wellenform unter Benutzung eines Prozessors (14), wobei der Schritt der Analyse Folgendes beinhaltet:
    - Generieren einer ersten Spur der Höchstwerte pro Herzschlag der kardiovaskulären Wellenform, die für den systolischen Druck auf die kardiovaskuläre Wellenform repräsentativ ist.
    - Generieren einer zweiten Spur der Tiefstwerte pro Herzschlag der kardiovaskulären Wellenform, die für den diastolischen Druck auf die kardiovaskuläre Wellenform repräsentativ ist,
    - Vergleichen der entsprechenden ersten Spur und der zweiten Spur zum Generieren einer Anzeige der Abnahme des Blutvolumens des Patienten.

### Revendications

1. Système pour évaluer une réduction du volume sanguin chez un sujet, comprenant :

## EP 1 601 287 B1

une sonde (12) adaptée de manière à extraire les signaux cardiovasculaires d'un sujet ; et un processeur (14) associé à la sonde pour analyser un signal cardiovasculaire extrait, le processeur incluant un moyen de détection d'une réduction du volume sanguin du sujet sur la base de l'analyse du signal cardiovasculaire, dans lequel l'analyse inclut les étapes qui consistent à :

- 5
- généraler un premier tracé des maximums par pulsation cardiaque du signal cardiovasculaire, qui est représentatif de la pression systolique sur la base du signal cardiovasculaire ;  
généraler un second tracé des minimums par pulsation cardiaque des signaux cardiovasculaires, qui est représentatif de la pression diastolique sur la base du signal cardiovasculaire ; et  
10 comparer le premier tracé respectif et le second tracé pour généraler une indication d'une réduction du volume sanguin chez le sujet.
2. Système selon la revendication 1, dans lequel la sonde (12) est une sonde d'oxymètre de pouls et le signal cardiovasculaire est un signal d'oxymètre de pouls représentant le volume sanguin utile.
- 15
3. Système selon la revendication 1, dans lequel la comparaison comprend l'étape qui consiste à comparer l'amplitude et le déphasage du premier tracé respectif et le second tracé pour généraler l'indication de la réduction du volume sanguin chez le sujet.
- 20
4. Système selon la revendication 2, dans lequel le premier tracé et le second tracé sont généralés en enregistrant respectivement les maximums par pulsation cardiaque et les minimums par pulsation cardiaque du signal cardiovasculaire de l'oxymètre de pouls durant la ventilation par le sujet.
- 25
5. Système selon la revendication 1, dans lequel l'indication de la réduction du volume sanguin est une amplitude du premier tracé et une amplitude du second tracé, dans lequel une augmentation de l'amplitude du premier tracé et une augmentation de l'amplitude du second tracé est indicatrice de la réduction du volume sanguin.
- 30
6. Système selon la revendication 1, dans lequel la comparaison inclut la comparaison de la phase du premier tracé respectif et le second tracé en vue de généraler l'indication de la réduction du volume sanguin chez le sujet, dans lequel une augmentation du déphasage est indicatif de la réduction du volume sanguin.
- 35
7. Système selon la revendication 1, dans lequel la comparaison inclut la considération qu'une différence entre les minimums par pulsation cardiaque et les maximums par pulsation cardiaque est un indicateur d'un effet sur le système artériel.
- 40
8. Système selon la revendication 7, dans lequel l'analyse du signal cardiovasculaire inclut, en outre, le calcul d'un degré de fluctuation de la différence durant un cycle respiratoire, dans lequel plus le degré de fluctuation de la différence durant un cycle respiratoire est élevé, plus le volume sanguin artériel utile est faible.
- 45
9. Système selon la revendication 1, dans lequel la comparaison inclut la considération qu'une moyenne entre les minimums par pulsation cardiaque et les maximums par pulsation cardiaque est un indicateur d'un effet sur le système veineux.
- 50
10. Système selon la revendication 9, dans lequel l'analyse du signal cardiovasculaire inclut, en outre, le calcul d'un degré de fluctuation de la moyenne durant un cycle respiratoire, dans lequel plus le degré de fluctuation de la moyenne durant un cycle respiratoire est élevé, plus le volume sanguin veineux utile est faible.
- 55
11. Système selon la revendication 1, dans lequel la comparaison inclut la considération que chaque différence entre les minimums par pulsation cardiaque et les maximums par pulsation cardiaque est un indicateur d'un effet sur le système artériel et une moyenne entre les minimums par pulsation cardiaque et les maximums par pulsation cardiaque est un indicateur d'un effet sur le système veineux, dans lequel l'analyse du signal cardiovasculaire inclut, en outre, la détermination d'un rapport de phase entre un premier signal cardiovasculaire résultant des fluctuations de la différence et un second signal cardiovasculaire résultant des fluctuations de la moyenne et utilisant le rapport de phase pour déterminer un degré d'augmentation ventilatoire, par comparaison à l'amortissement du volume systolique cardiaque.
12. Système selon la revendication 1, dans lequel la comparaison inclut l'étude du déphasage entre le premier tracé et le second tracé afin de déterminer un degré d'augmentation ventilatoire, par comparaison à l'amortissement du

débit cardiaque.

5 13. Système selon la revendication 1, dans lequel le système comprend, en outre, un métronome adapté de manière à synchroniser la ventilation du sujet.

14. Méthode d'évaluation d'une réduction du volume sanguin chez un sujet, comprenant les étapes qui consistent à :

10 générer un signal cardiovasculaire représentant les caractéristiques physiologiques d'un sujet ; et détecter une réduction du volume sanguin d'un sujet en analysant le signal cardiovasculaire en utilisant un processeur (14), dans laquelle l'étape d'analyse inclut les étapes qui consistent à :

15 générer un premier tracé des maximums par pulsation cardiaque du signal cardiovasculaire, qui est représentatif de la pression systolique sur la base des signaux cardiovasculaires ;

générer un second tracé des minimums par pulsation cardiaque des signaux cardiovasculaires, qui est représentatif de la pression diastolique sur la base du signal cardiovasculaires ; et

comparer le premier tracé respectif et le second tracé pour générer une indication d'une réduction du volume sanguin chez un sujet.

20

25

30

35

40

45

50

55

FIG.1a

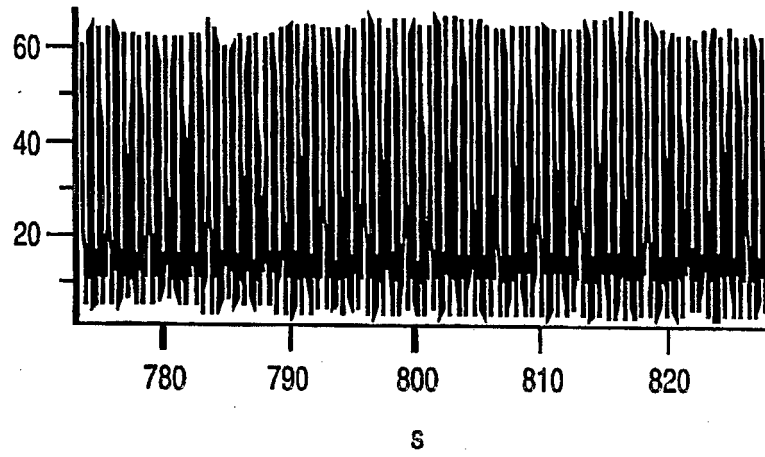
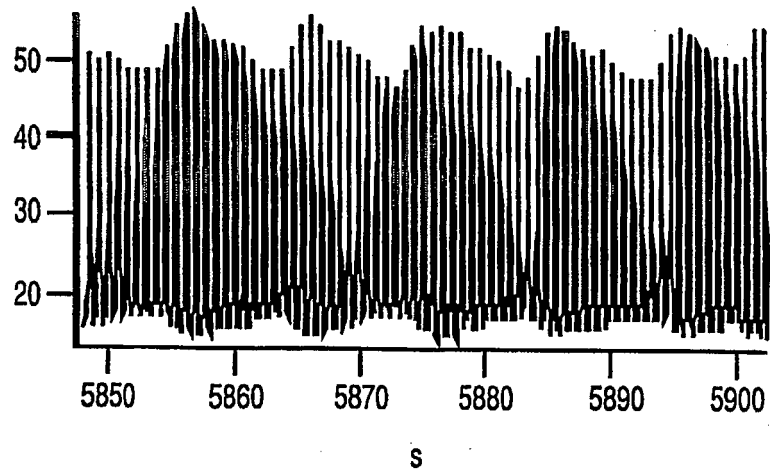
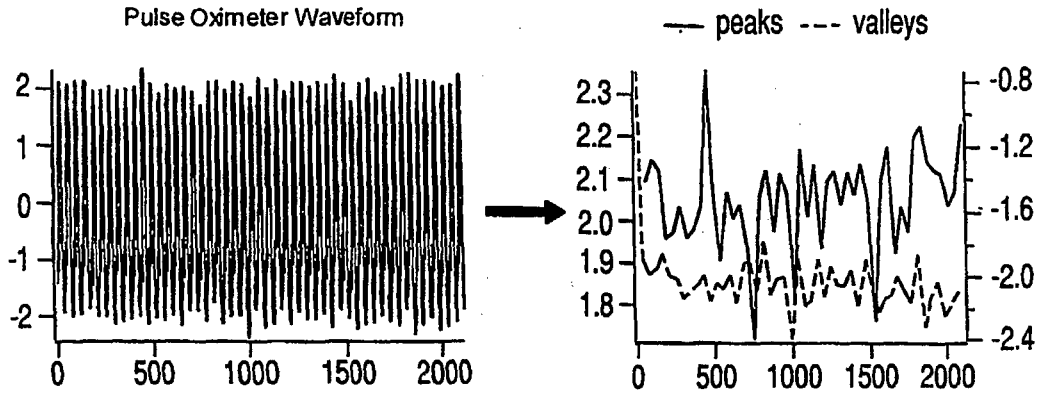


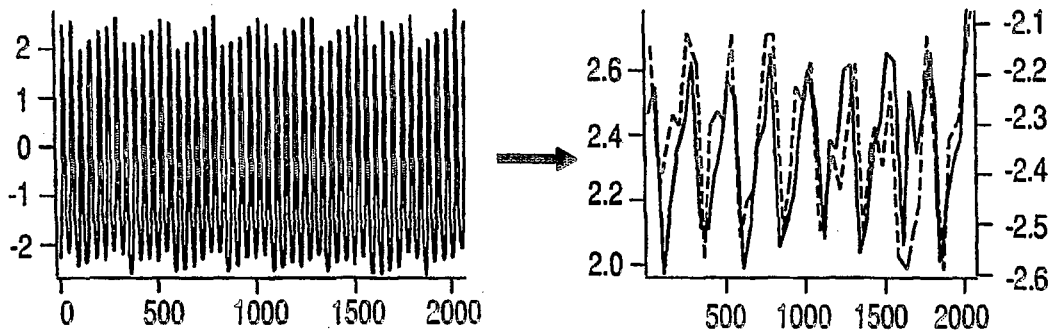
FIG.1b



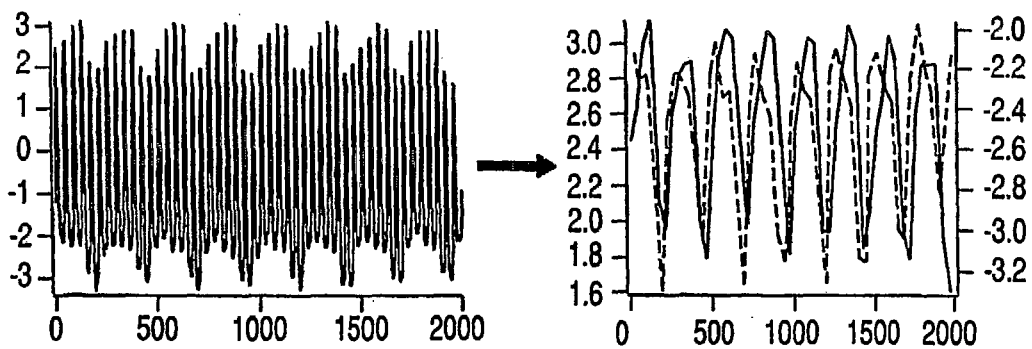
# Isolation of Peaks and Valleys



**FIG. 2a**  
Baseline



**FIG. 2b**  
500cc Blood Loss



**FIG. 2c**  
1500cc Blood Loss

FIG.3a

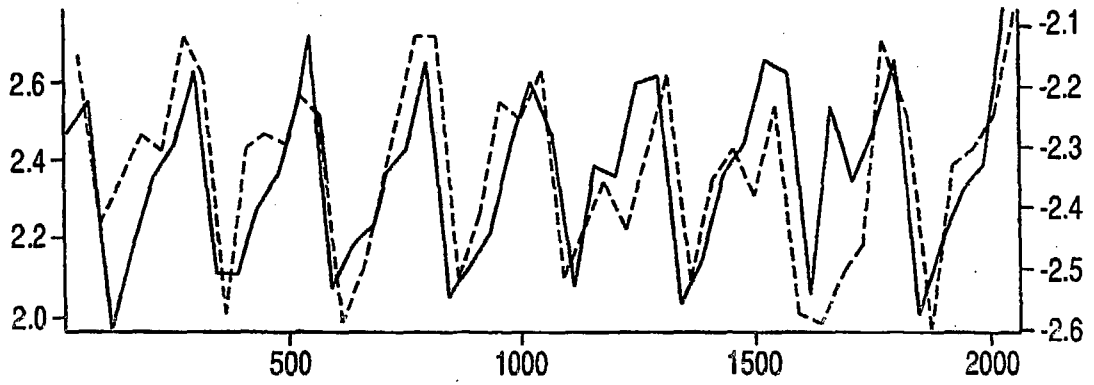


FIG.3b

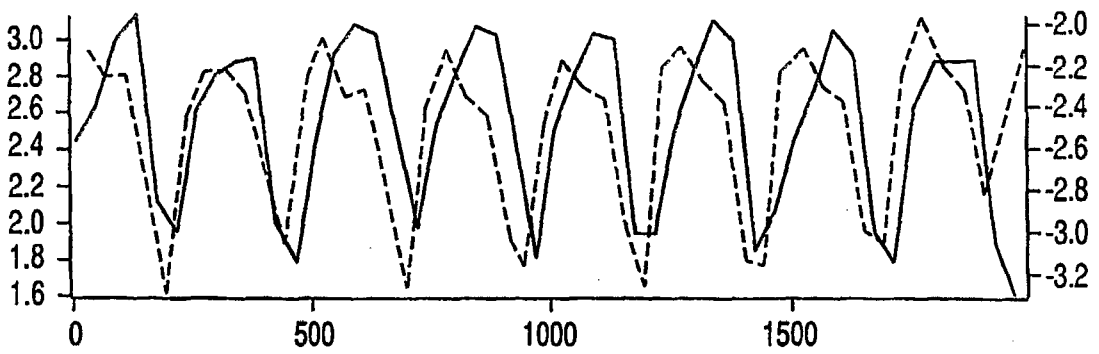


FIG.4a

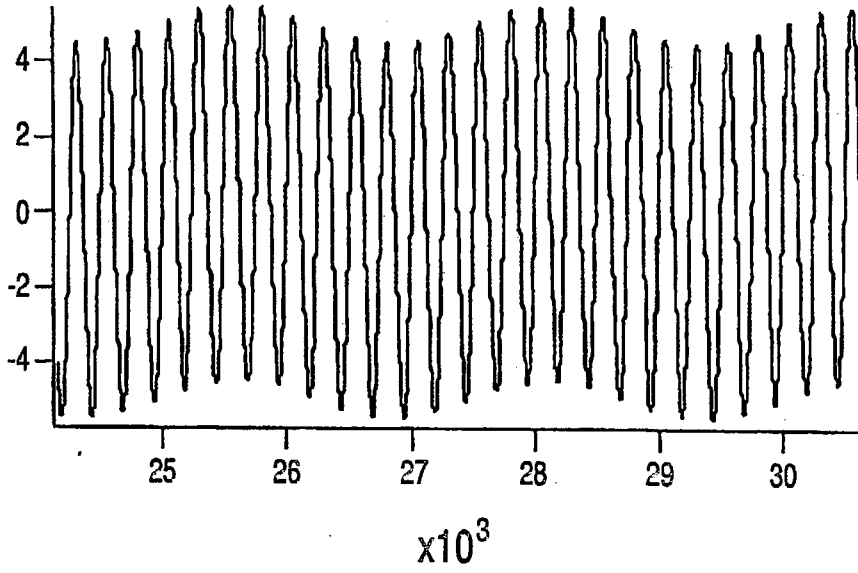


FIG.4b

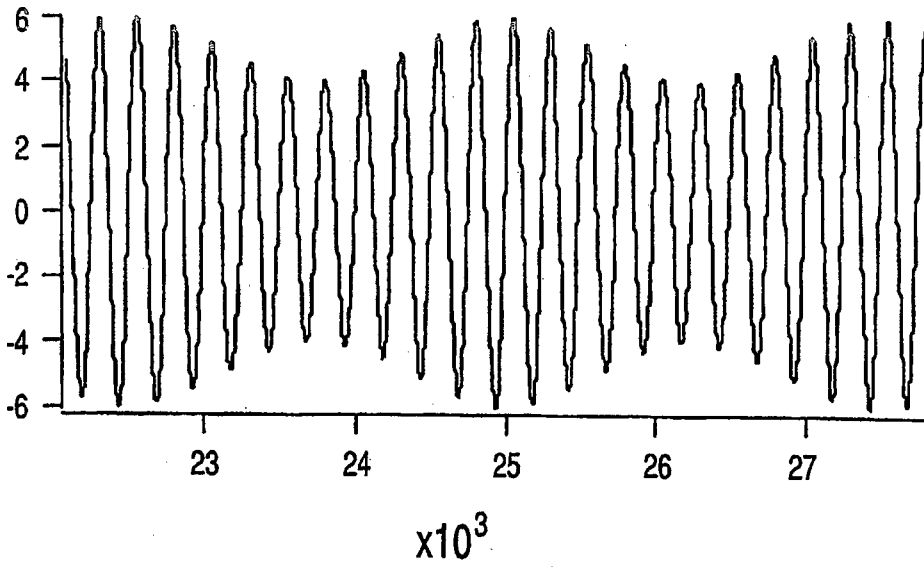


FIG.5a

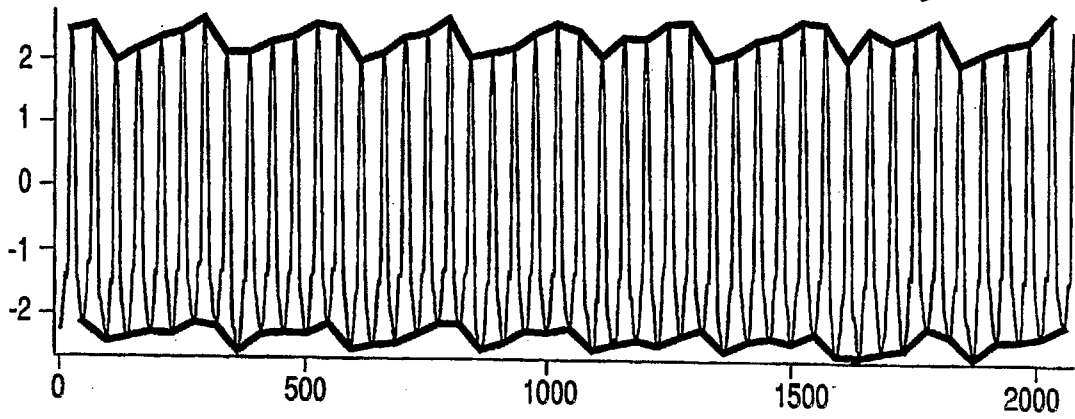
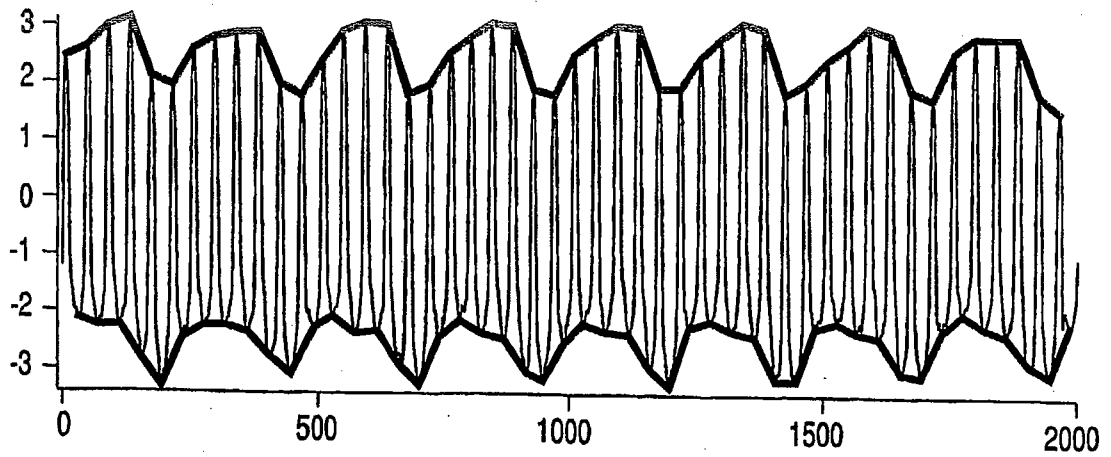
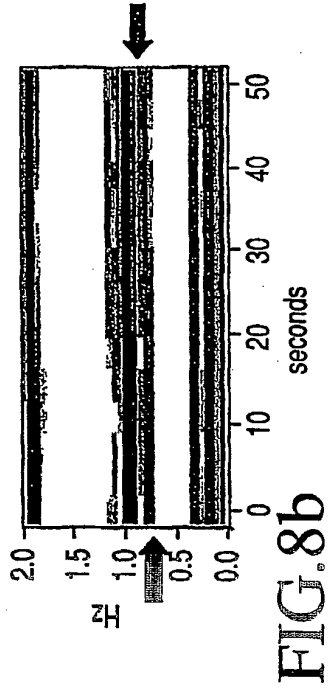
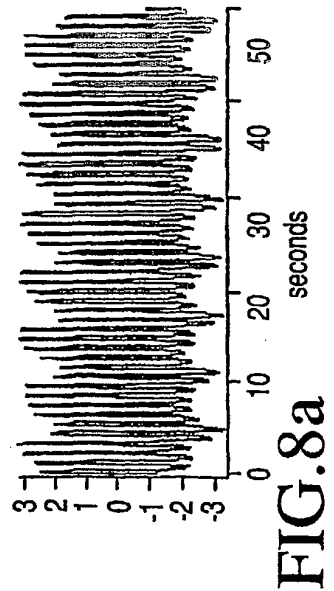
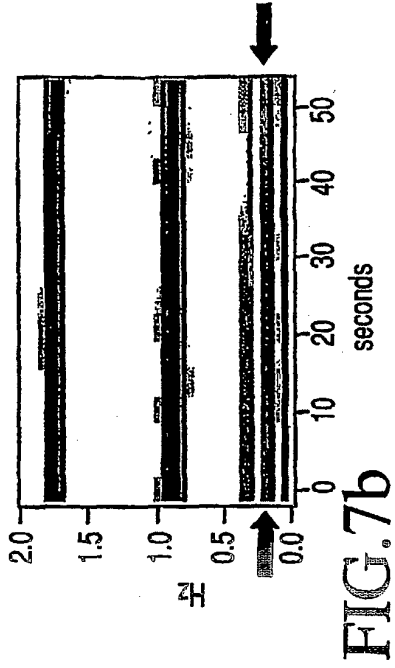
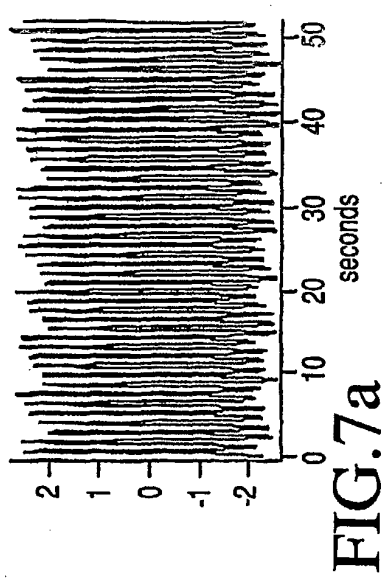
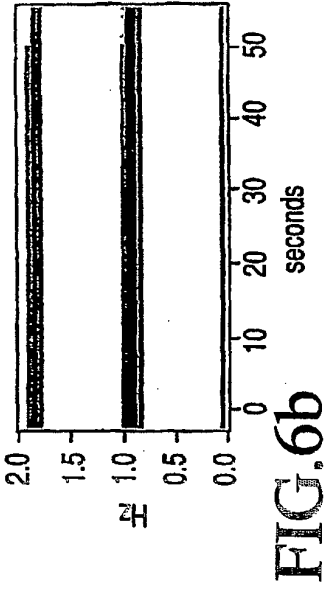
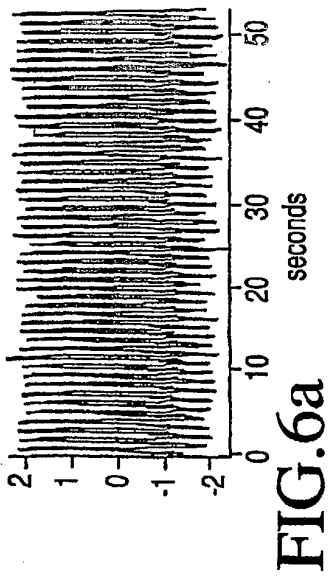


FIG.5b





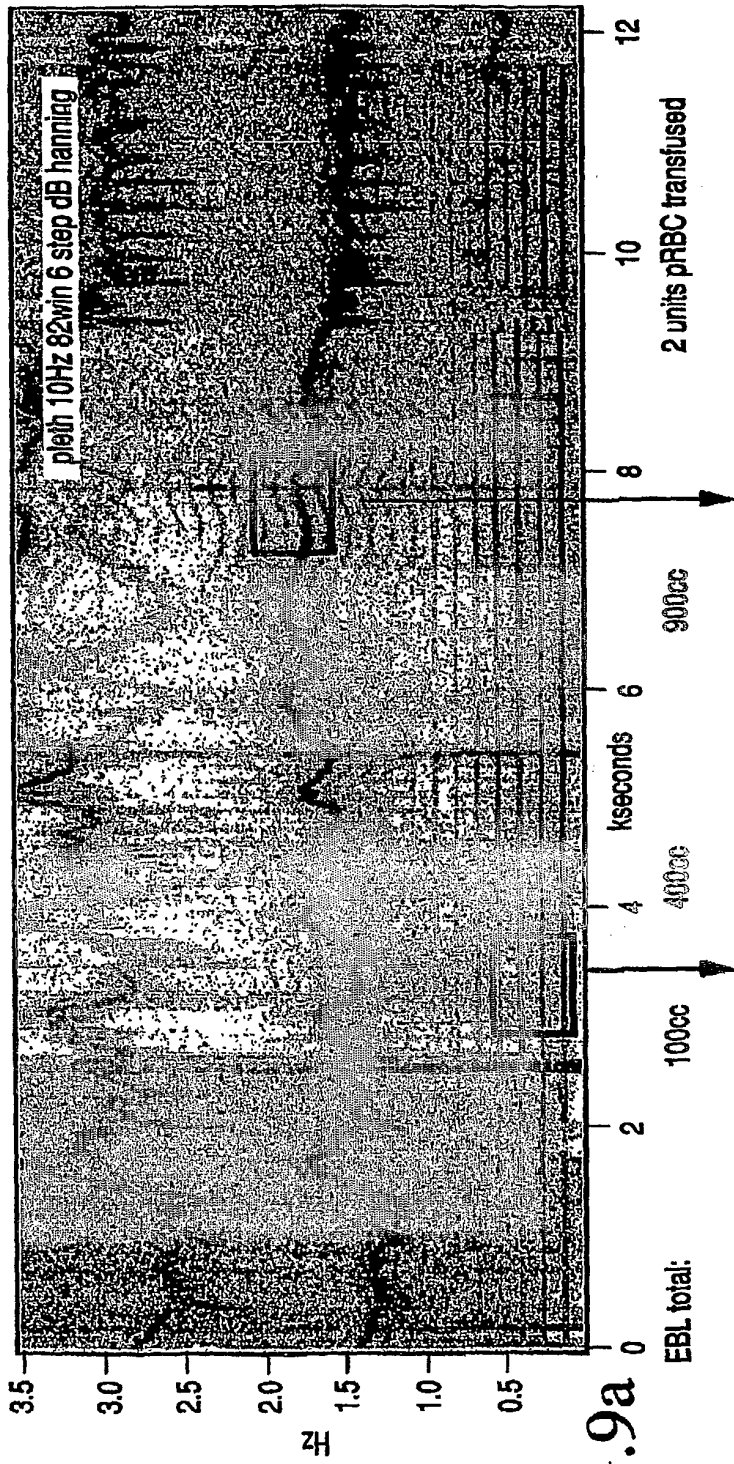


FIG.9a

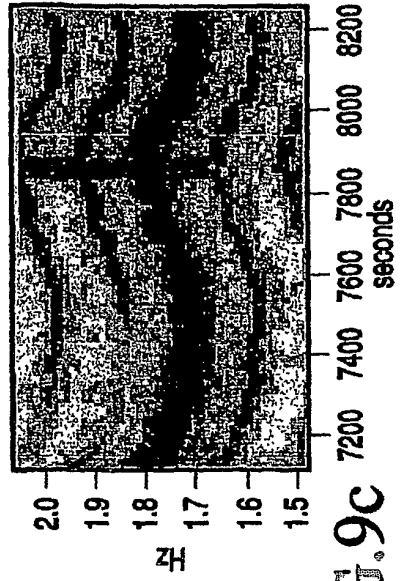


FIG.9c

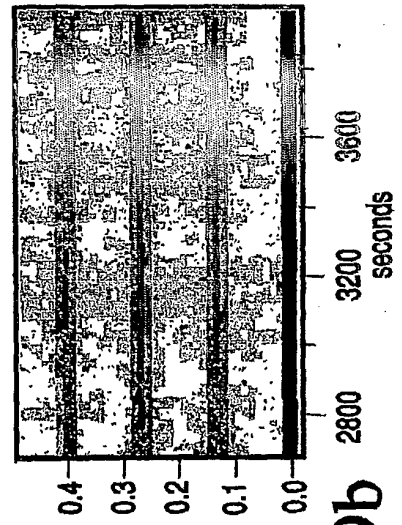
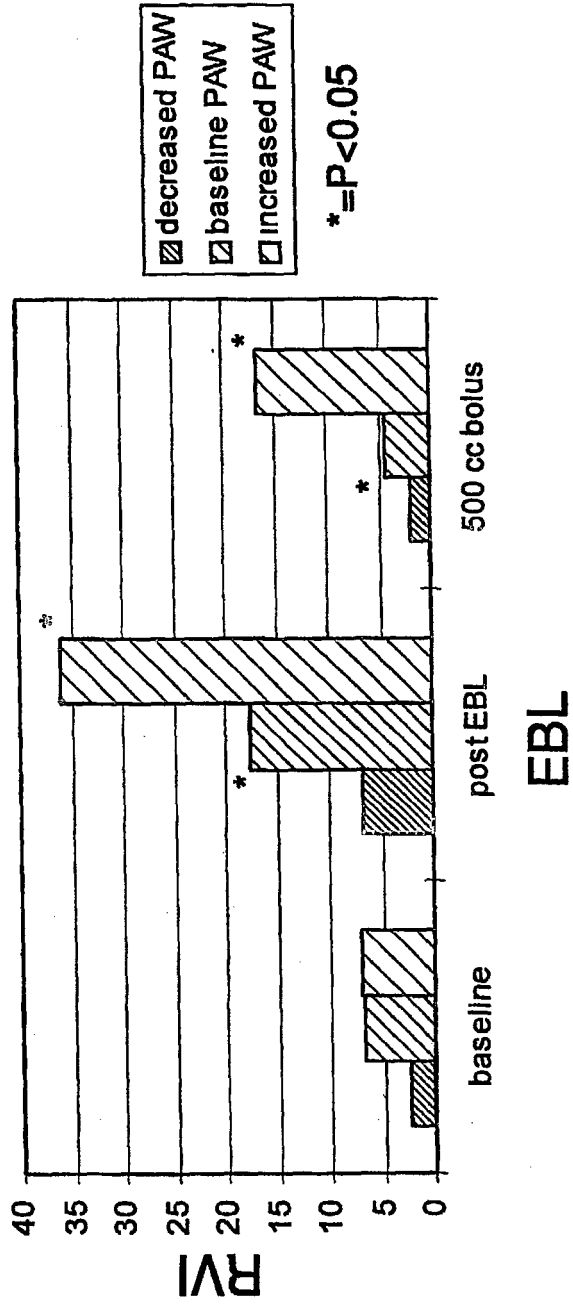
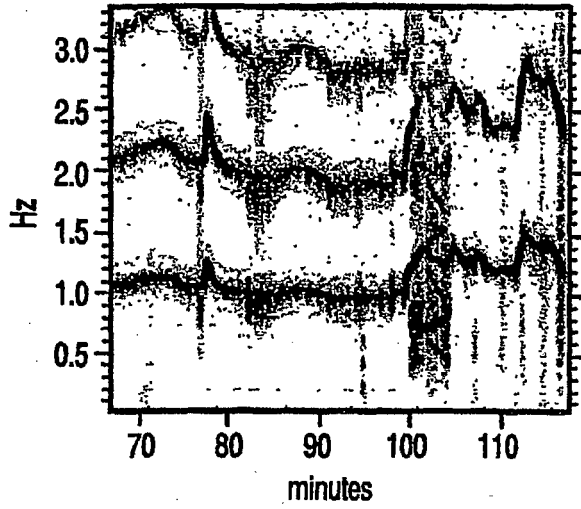


FIG.9b

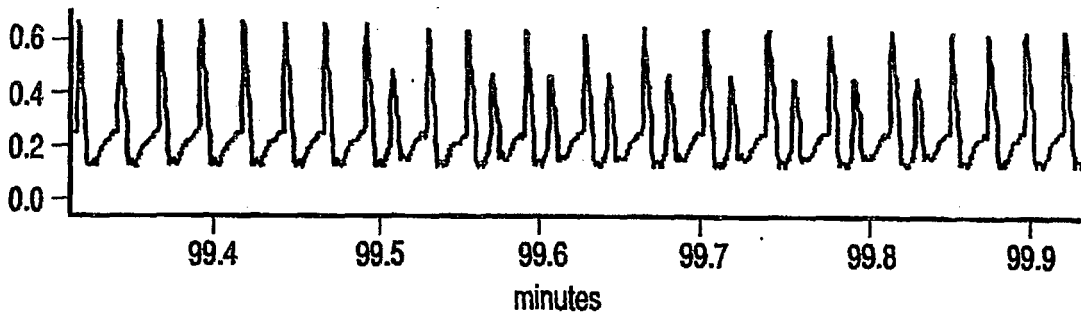
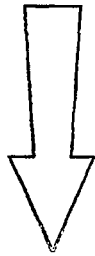
FIG.10

8 Patients with EBL > 300 cc





**FIG.11a**



**FIG.11b**

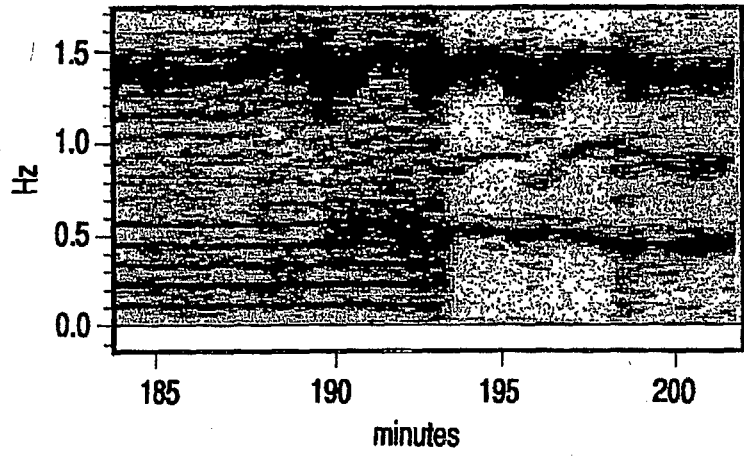


FIG.12a

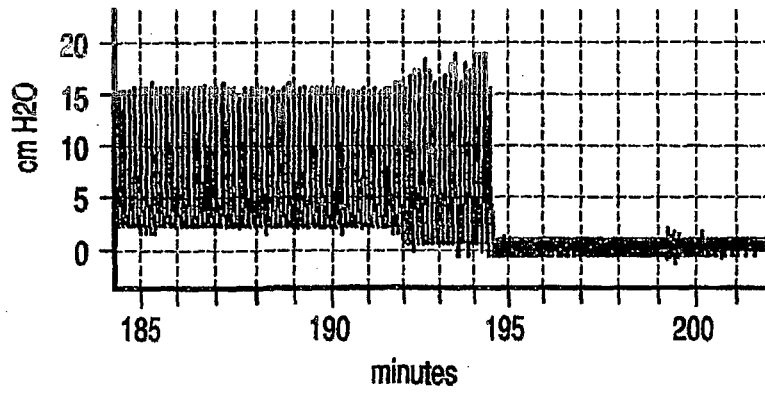
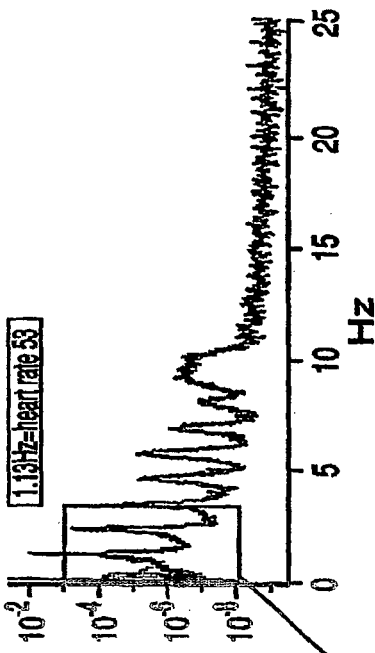
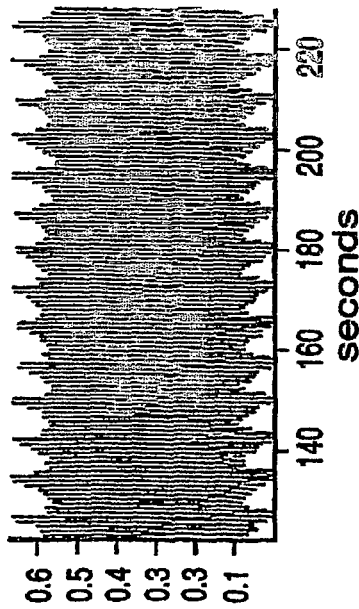


FIG.12b



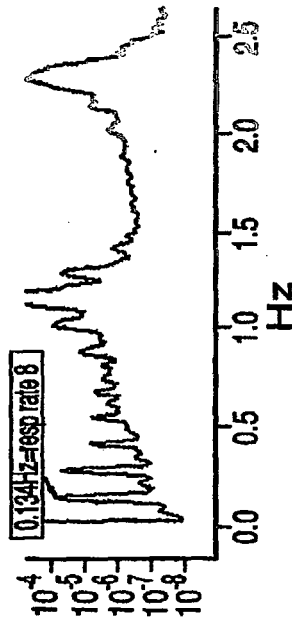
**FIG. 13B**

Fourier Transformation of FIG. 13A. Major peaks due to cardiac pulse. Minor peaks due to respiration.



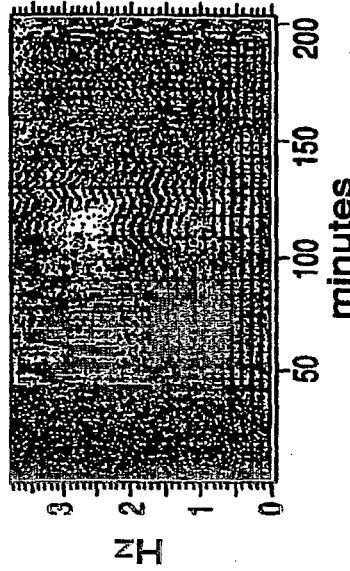
**FIG. 13A**

Pleth after 300 cc EBL at High PAW



**FIG. 13C**

Detail of FIG. 13B showing effect of ventilation on FT.



**FIG. 13D**

Joint Time Frequency Analysis showing how the same FT changes with time.

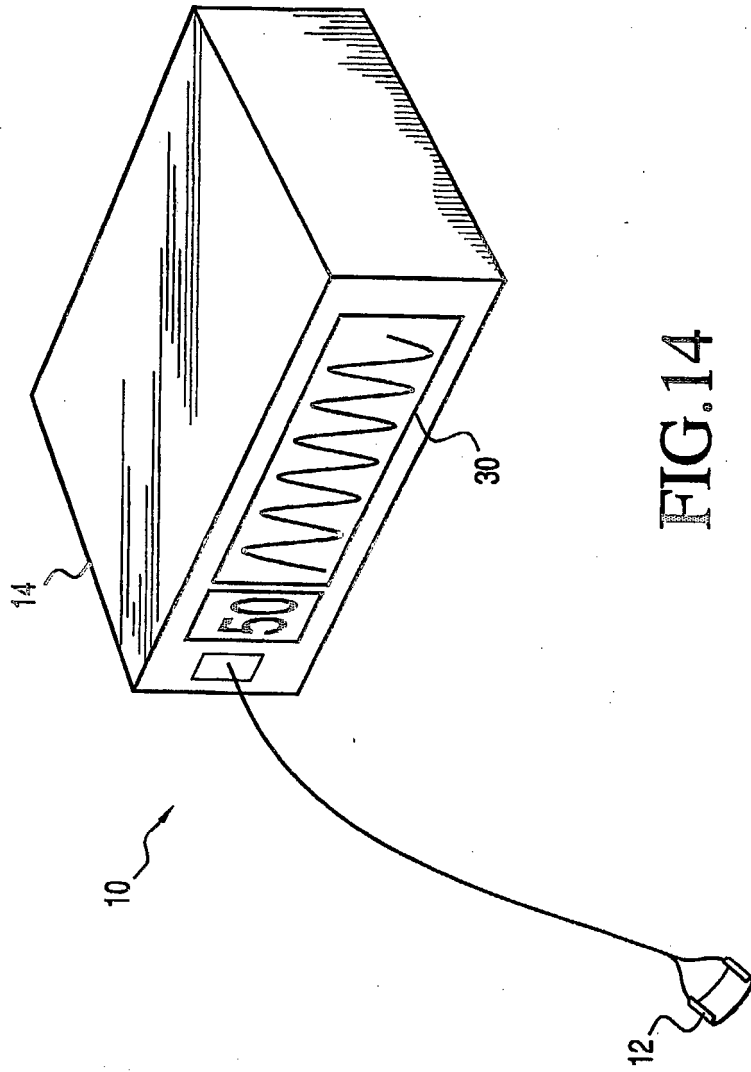


FIG.14

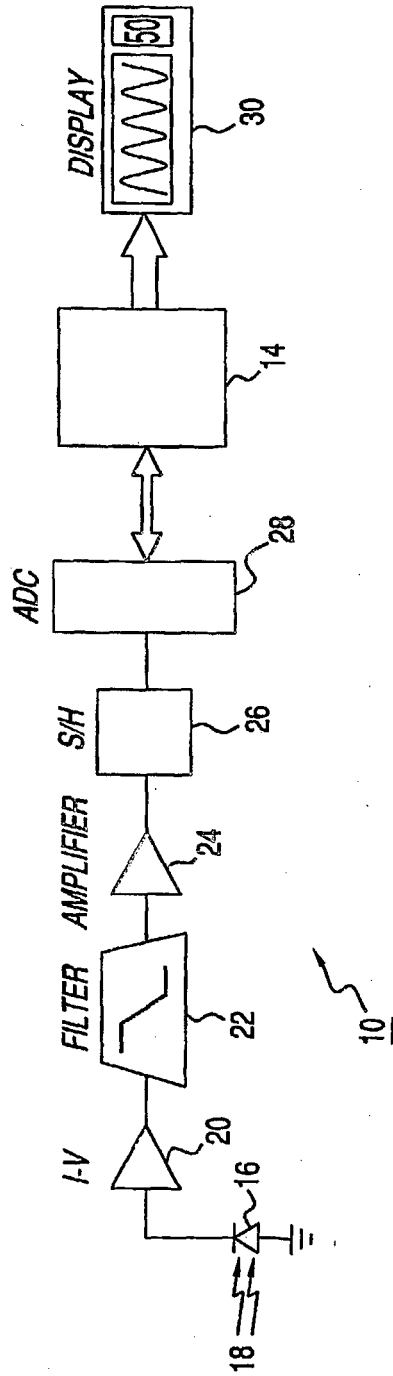
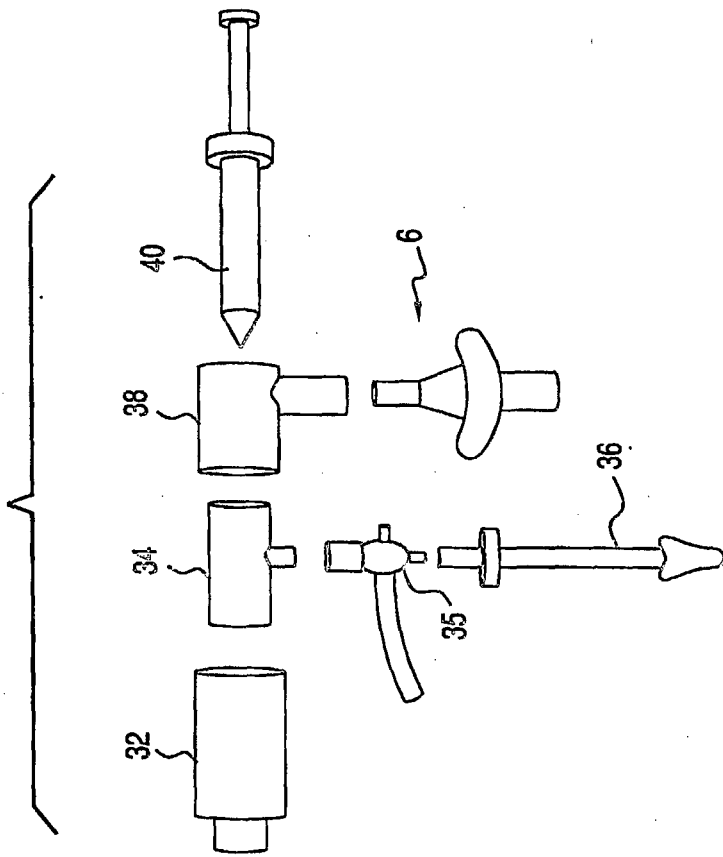


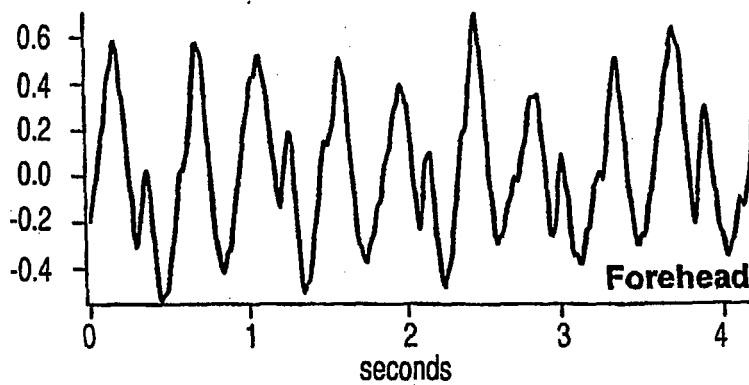
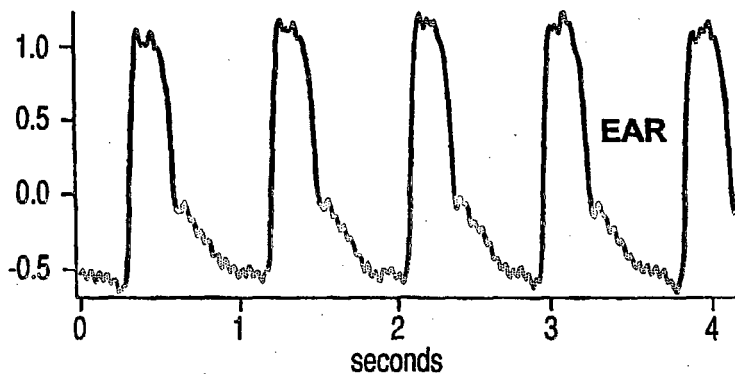
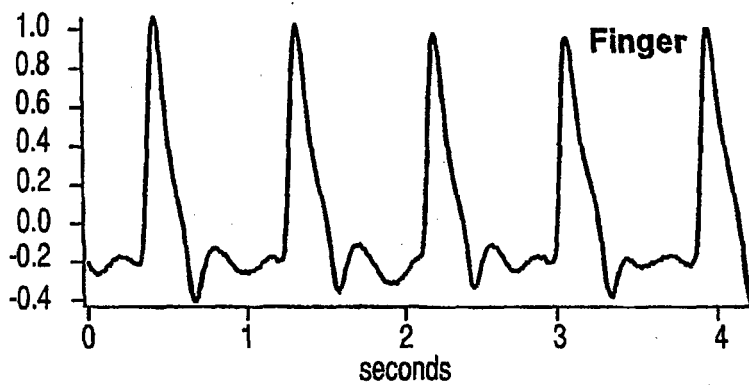
FIG. 15

FIG.16



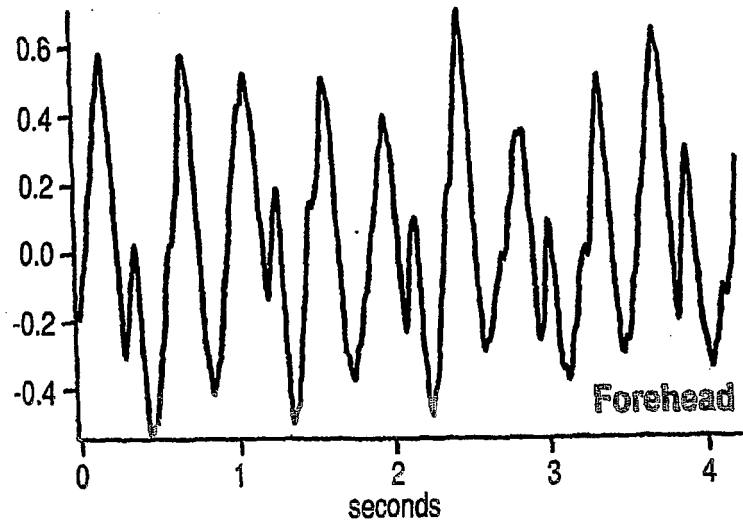
# FIG. 17

Reflective plethysmographic signal from three different sites (finger, ear, and forehead) from a supine patient.

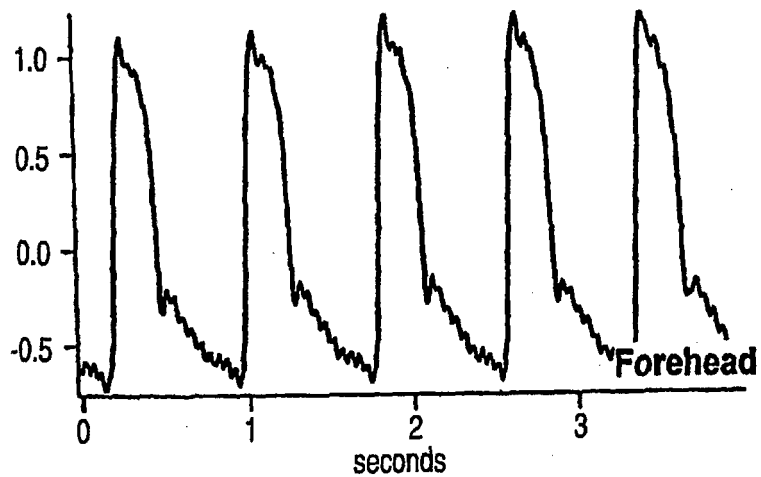


# FIG. 18

The application of pressure to the forehead probe that obliterates the low pressure (venous or DC) component. This causes the tracing to more closely resemble the arterial tracing generated by an intra-arterial catheter.



**Pressure dressing applied**



## REFERENCES CITED IN THE DESCRIPTION

This list of references cited by the applicant is for the reader's convenience only. It does not form part of the European patent document. Even though great care has been taken in compiling the references, errors or omissions cannot be excluded and the EPO disclaims all liability in this regard.

## Patent documents cited in the description

- US 6496711 B [0067]

## Non-patent literature cited in the description

- **DALEN J ; BONE R.** Is it time to pull the pulmonary artery catheter?. *JAMA*, 1996, vol. 276, 916-14 [0002]
- **CONNORS A ; SPEROFF T ; DAWSON N.** The effectiveness of right heart catheterization in the initial care of critically ill patients. *JAMA*, 1996, vol. 276, 889-97 [0002]
- **COURNAND A ; MOTLEY H ; WERKO L ; RICHARDS D.** Physiological studies of the effect of intermittent pressure breathing on cardiac output in man. *Am J Physiol*, 1948, vol. 152, 162-73 [0003]
- **MORGAN B ; CRAWFORD W ; GUNTHEROTH W.** The hemodynamic effects of changes in blood volume during intermittent pressure ventilation. *Anesthesiology*, 1969, vol. 30, 297-305 [0003]
- **COYLE J ; TEPLICK R ; LONG M ; DAVISON J.** Respiratory variations in systemic arterial pressure as an indicator of volume status. *Anesthesiology*, 1983, vol. 59, A53 [0003]
- **JARDIN F ; FARCOT J ; GUERET P et al.** Cyclic changes in arterial pulse during respiratory support. *Circulation*, 1983, vol. 68, 266-74 [0003]
- **PEREL A ; PIZOV R ; COTEV S.** Systolic blood pressure variation is a sensitive indicator of hypovolemia in ventilated dogs subjected to graded hemorrhage. *Anesthesiology*, 1987, vol. 67, 498-502 [0004]
- **PEREL A ; PIZOV R ; COTEV S.** Systolic blood pressure variation is a sensitive indicator of hypovolemia in ventilated dogs subjected to graded hemorrhage. *Anesthesiology*, 1987, vol. 67, 498-502 [0004]
- **PIZOV R ; YA'ARI Y ; PEREL A.** Systolic pressure variation is greater during hemorrhage than during sodium nitroprusside-induced hypotension in ventilated dogs. *Anesthesia & Analgesia*, 1988, vol. 67, 170-4 [0004]
- **SZOLD A ; PIZOV R ; SEGAL E ; PEREL A.** The effect of tidal volume and intravascular volume state on systolic pressure variation in ventilated dogs. *Intensive Care Medicine*, 1989, vol. 15, 368-71 [0004]
- **ORNSTEIN E ; EIDELMAN L ; DRENGER B et al.** Systolic pressure variation predicts the response to acute blood loss. *Journal of Clinical Anesthesia*, 1998, vol. 10, 137-40 [0004]
- **PIZOV R ; SEGAL E ; KAPLAN L et al.** The use of systolic pressure variation in hemodynamic monitoring during deliberate hypotension in spine surgery. *Journal of Clinical Anesthesia*, 1990, vol. 2, 96-100 [0004]
- **PEREL A.** Cardiovascular assessment by pressure waveform analysis. *ASA Annual Refresher Course Lecture*, 1991, 264 [0005]
- **PEREL A.** Cardiovascular assessment by pressure waveform analysis. *ASA Annual Refresher Course Lecture*, 1991, 264 [0005]
- **PARTRIDGE BL.** Use of pulse oximetry as a noninvasive indicator of intravascular volume status. *Journal of Clinical Monitoring*, 1987, vol. 3, 263-8 [0005]
- **LHERM T ; CHEVALIER T ; TROCHE G et al.** Correlation between plethysmography curve variation (dpleth) and pulmonary capillary wedge pressure (poup) in mechanically ventilated patients. *British Journal of Anaesthesia*, 1995, vol. 1, 41 [0005]
- **SHAMIR M ; EIDELMAN LA et al.** Pulse oximetry plethysmographic waveform during changes in blood volume. *British Journal Of Anaesthesia*, 1999, vol. 82 (2), 178-81 [0005]
- **FEARNLEY SJ.** *Pulse Oximetry, Practical Procedures*, 1995, 5 [0007]
- **HERTZMAN AB.** The Blood Supply of Various Areas Estimated By the Photoelectric Plethysmograph. *Am. J. Physiol.*, 1938, vol. 124, 328-40 [0008]
- **DORLAS JC ; NIJBOER JA.** Photo-electric plethysmography as a monitoring device in anaesthesia. Application and interpretation. *British Journal Of Anaesthesia*, 1985, vol. 57, 524-30 [0008]
- **RUSCH TL ; SANKAR R ; SCHARF JE.** Signal processing methods for pulse oximetry. *Computers. Biology And Medicine*, 1996, vol. 26, 143-59 [0010]
- **STACK BJR ; FUTRAN ND ; SHOHET MJ ; SCHARF JE.** Spectral analysis of photoplethysmograms from radial forearm free flaps. *Laryngoscope*, 1998, vol. 108, 1329-33 [0010]
- **HERTZMAN, AB.** The Blood Supply of Various Skin Areas as Estimated By the photoelectric Plethysmograph. *Am. J. Physiol.*, 1938, vol. 124, 328-340 [0011]

- **JOHANSSON A ; OBERG PA.** Estimation of respiratory volumes from the photoplethysmographic signal. Part I: Experimental results. *Medical And Biological Engineering And Computing*, 1999, vol. 37 (1), 42-7 [0013]
- **PARTRIDGE BL.** Use of pulse oximetry as a . non-invasive indicator of intravascular volume status. *Journal of Clinical Monitoring*, 1987, vol. 3 (4), 263-8 [0013]
- **SHAMIR M ; EIDELMAN LA et al.** Pulse oximetry plethysmographic wave form during changes in blood volume. *British Journal Of Anaesthesia*, 1999, vol. 82 (2), 178-81 [0013]
- **BLAND ; ALTMAN ; BLAND JM ; ALTMAN DG.** A note on the use of the intraclass correlation coefficient in the evaluation of agreement between two methods of measurement, Computers. *Biology And Medicine*, 1990, vol. 20, 337-40 [0056]
- **DORLAS JC ; NIJBOER JA.** Photoelectric plethysmography as a monitoring device in anaesthesia, Application and interpretation. *British Journal Of Anaesthesia*, 1985, vol. 57, 524-30 [0060]
- **SHAMIR M ; EIDELMAN LA ; FLOMAN Y et al.** Pulse oximetry plethysmographic waveform during changes in blood volume. *British Journal Of Anaesthesia*, 1999, vol. 82, 178-81 [0061]
- **PARTRIDGE BL.** Use of pulse oximetry as  $\alpha$  noninvasive indicator of intravascular volume status. *Journal of Clinical Monitoring*, 1987, vol. 3, 263-8 [0061]
- **PODGOREANU MV ; STOUT RG ; EL-MOALEME ; SILVERMAN DG.** Syndronous rhyhmical vasomotion in the buman cuatneous microvasculature during nonpulsatile cardiopulmonary bypass. *Anesthesiology*, 2002, vol. 97, 1110-1116 [0083]
- **BERNARDI L et al.** Syndromous and baroreceptor-sensitive oscillations in skin microcirculation: evidence for central central autonomic control. *Am J Physiol*, 1997, vol. 273, H1867-1878 [0083]

专利名称(译)	使用心血管波形评估血容量的减少		
公开(公告)号	<a href="#">EP1601287B1</a>	公开(公告)日	2012-12-19
申请号	EP2004700084	申请日	2004-01-02
[标]申请(专利权)人(译)	耶鲁大学		
申请(专利权)人(译)	耶鲁大学		
当前申请(专利权)人(译)	耶鲁大学		
[标]发明人	SHELLEY KIRK H SILVERMAN DAVID G SHELLEY ADAM J STOUT ROBERT G		
发明人	SHELLEY, KIRK, H. SILVERMAN, DAVID, G. SHELLEY, ADAM, J. STOUT, ROBERT, G.		
IPC分类号	A61B5/024 A61B5/00 A61B5/02		
CPC分类号	A61B5/14551 A61B5/0059 A61B5/0205 A61B5/02416 A61B5/026 A61B5/1455 A61B5/7282 A61B5/7405 A61B5/742 A61B5/746 G16H10/40 G16H40/63 Y02A90/26		
代理机构(译)	哈利, STEPHEN		
优先权	60/465609 2003-04-25 US 60/454048 2003-03-12 US		
其他公开文献	EP1601287A4 EP1601287A1		
外部链接	<a href="#">Espacenet</a>		

摘要(译)

用于评估受试者体内血液体积的方法和系统包括产生表示受试者的生理特征的心血管波形，并通过分析心血管波形来确定受试者的血量。分析步骤包括产生心血管波形的每心跳最大值的第一迹线，其表示心血管信号上的收缩压，产生心血管波形的每心跳最小值的第二迹线，其中表示心血管信号的舒张压，并比较相应的第一迹线和第二迹线以产生对象内相对血容量的估计值。根据分析谐波分析的另一方法，将谐波分析应用于心血管波形，提取由通气产生的频率信号，并应用提取的频率信号确定受试者的血容量。

FIG. 1 a

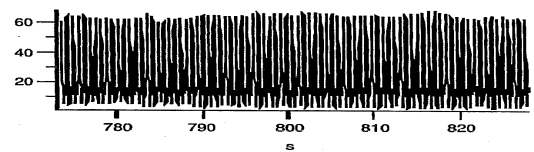


FIG. 1 b

