

(19)



(11)

EP 1 643 911 B1

(12)

EUROPEAN PATENT SPECIFICATION

(45) Date of publication and mention of the grant of the patent:
06.04.2016 Bulletin 2016/14

(51) Int Cl.:
A61B 6/00 (2006.01) **A61B 90/00** (2016.01)
G06F 19/00 (2011.01) **A61B 5/00** (2006.01)
A61B 8/00 (2006.01) **A61B 17/00** (2006.01)

(21) Application number: **04756376.2**

(86) International application number:
PCT/US2004/020909

(22) Date of filing: **30.06.2004**

(87) International publication number:
WO 2005/004721 (20.01.2005 Gazette 2005/03)

(54) CARDIAC IMAGING SYSTEM FOR PLANNING SURGERY

HERZBILDGEBUNGSSYSTEM ZUR CHIRURGIEPLANUNG

SYSTEME D'IMAGERIE CARDIAQUE POUR LA PLANIFICATION D'UNE INTERVENTION CHIRURGICALE

(84) Designated Contracting States:
DE NL

- **LAUNAY, Laurent**
F- 78470 Saint Remy les chevreuse (FR)
- **VASS, Melissa**
Milwaukee, WI 53202 (US)

(30) Priority: **01.07.2003 US 484012 P**
11.03.2004 US 708564

(43) Date of publication of application:
12.04.2006 Bulletin 2006/15

(74) Representative: **Bedford, Grant Richard et al**
GPO Europe
GE International Inc.
The Ark
201 Talgarth Road
Hammersmith
London W6 8BJ (GB)

(73) Proprietor: **GENERAL ELECTRIC COMPANY**
Schenectady, NY 12345 (US)

- (72) Inventors:
- **OKERLUND, Darin, Robert**
Muskego, WI 53150 (US)
 - **SRA, Jasbir**
Pewaukee, WI 53072 (US)

(56) References cited:
EP-A- 1 182 619 **EP-A- 1 321 101**
WO-A-91/07726 **US-A1- 2003 097 219**
US-A1- 2003 187 358

EP 1 643 911 B1

Note: Within nine months of the publication of the mention of the grant of the European patent in the European Patent Bulletin, any person may give notice to the European Patent Office of opposition to that patent, in accordance with the Implementing Regulations. Notice of opposition shall not be deemed to have been filed until the opposition fee has been paid. (Art. 99(1) European Patent Convention).

Description

[0001] The present disclosure relates generally to cardiac surgical bypass systems and, more particularly, to a cardiac imaging system for planning minimally invasive direct coronary artery bypass surgery (MIDCAB).

[0002] According to American Heart Association statistics, over 500,000 coronary artery bypass grafts (CABGs) are performed every year in the United States alone. In coronary artery disease, the arteries that bring blood to the heart muscle (i.e., the coronary arteries) become clogged by plaque, which is a buildup of fat. During CABG surgery, the blood is rerouted around the clogged arteries in order to improve blood flow and oxygen to the heart. A healthy blood vessel, such as the left internal mammary, is detached from the chest wall and is thereafter used to circumvent the blocked area. Alternatively, a segment of vein from the leg can also be used for the CABG. One end of the vessel/vein is sewn onto the aorta (the large artery leaving the heart), while the other end is attached or "grafted" to the coronary artery beyond (or past or distal to) the blocked area. Patients may undergo multiple bypasses at the same time.

[0003] Cardiopulmonary bypass using a heart-lung machine is typically used to stop the movement of the heart at the time of the CABG procedure. Although CABG is the treatment of choice in many cases (and is one of the most common surgical procedures performed today), there are several potential complications from this surgery, as well as from the cardiopulmonary bypass technique required during the CABG procedure. In a recent study published in the New England Journal of Medicine, 53 percent of patients had diminished mental acuity at the time of discharge from the hospital after a CABG procedure. In addition to the prolonged hospital stay and the possible need for transfusions, sternal wound infection at the site of the incision can occur in 1 to 4 percent of patients and carries a mortality (death) rate of about 25 percent. Furthermore, as many as 8 percent of patients may develop kidney dysfunction as a result of the CABG procedure.

[0004] As a result of the above described problems associated with CABG, minimally invasive direct coronary artery bypass (MIDCAB) surgery has been used as an alternative in some patients, wherein the MIDCAB procedure does not require reliance on the heart-lung machine. In MIDCAB surgery, a 10-12 cm access incision is made in the patient's chest, after which several different instruments are used to stabilize the heart at the time of surgery. The surgeon then connects a graft to the diseased coronary arteries while the heart is beating without artificial support. Due to the nature of the operation, grafting (the attaching of the vessels) must be done under the surgeon's direct vision and the coronary artery that is to be bypassed must lie directly beneath the incision (surgical opening). Consequently, this procedure is currently used in only a limited number of patients, and only if it is known that just one or two of the arteries require a bypass.

[0005] Although it is estimated that over 30 percent of patients who need CABG may be suitable candidates for MIDCAB surgery, presently the procedure is performed in only 10 percent of patients because of this unknown factor. There is, therefore, a distinct need for an improved system and method to make this procedure more effective and easier to perform.

[0006] EP 1 182 619 describes a method and apparatus for three-dimensional image rendering of body organs.

[0007] US 2003/0187358 relates to a method, system and computer product for cardiac interventional procedure planning.

[0008] Various aspects and embodiments of the present invention are defined in the appended claims.

[0009] Referring to the exemplary drawings wherein like elements are numbered alike in the several Figures:

Figure 1 is a schematic diagram of a medical imaging system, such as a computed tomography (CT) system, suitable for planning minimally invasive direct coronary artery bypass (MIDCAB), in accordance with an embodiment of the invention;

Figure 2 is a flow diagram of a method for planning minimally invasive direct coronary artery bypass (MIDCAB), in accordance with a further embodiment ;

Figure 3 is an exemplary CT image of the chest and heart, on which distance and angles may be measured for MIDCAB planning; and

Figure 4 is a cardiac CT image showing necrosed LV due to myocardial infarction.

[0010] Disclosed herein is a cardiac imaging system and method for planning minimally invasive direct coronary artery bypass surgery (MIDCAB), so as to enable a practitioner (e.g., electrophysiologist, cardiologist, surgeon) to plan in advance the approach to take for the procedure. With more detailed 3D and navigator (interior) views, a geometric representation of the coronary arteries and the left ventricle (LV) is obtained with an imaging modality such as CT, magnetic resonance imaging or ultrasound. The practitioner can then identify the orientation, size, anomalies, and extent of blockage in the coronary arteries to be targeted for MIDCAB. Using this information, a more exact approach can be taken for the MIDCAB, with incisions made at the most appropriate sites, allowing for more areas to be targeted and, at the same time, allowing for smaller incisions.

[0011] Although the exemplary embodiments illustrated hereinafter are described in the context of a computed tomography (CT) imaging system, it will be appreciated that other imaging systems known in the art (e.g., magnetic resonance, ultrasound, 3D fluoroscopy) are also contemplated with regard to planning MIDCAB.

[0012] Referring now to Figure 1, there is shown an overview of an exemplary cardiac computed tomography (CT) system 100 with support for cardiac imaging. Again, it should be understood that the cardiac CT system 100 is presented by way of example only, since other imaging systems known in the art (e.g., magnetic resonance, ultrasound, 3D fluoroscopy) may also be used in an embodiment of the present invention. A scanner portion 102 of the system 100 includes an EKG monitor 104 that outputs R-peak events into a scanner 106 through a scanner interface board 108. A suitable example of scanner interface board 108 is a Gantry interface board, and can be used to couple an EKG system to the scanner. The cardiac CT subsystem defined by scanner portion 102 utilizes EKG-gated acquisition or image reconstruction capabilities to image the heart (and more specifically the coronary arteries and left ventricle) free of motion in its diastolic phase, as well as in multiple phases of systole and early diastole.

[0013] Data are outputted from the scanner portion 102 into a subsystem 110 that includes software for performing data acquisition, data control and image generation. In addition, data that is outputted from the scanner 106, including R-peak time stamps, is stored in an acquisition database 112. Acquisition is performed according to one or more acquisition protocols that are optimized for imaging the heart and specifically the coronaries and LV in diastole and multiple phases in systole and early diastole. Image generation is performed using one or more optimized 3D protocols for automated image segmentation of the CT image dataset for identifying the orientation, size and any anomalies of the coronary arteries. The 3D protocols are further optimized to generate navigator (interior) views of the coronaries to assess the size and extent of the lesions therein.

[0014] The image data stream 114 is sent to an operator console 116. The data used by software at the operator console 116 for exam prescription and visualization is stored in an image database 118, along with the data from the image data stream 114. Display screens 120 are provided to the operator of the exam prescription and visualization processes. The image data may be archived, put on film or sent over a network 122 to a workstation 124 for analysis and review, including 3D post processing. The post processing software depicted in the workstation 124 includes one or more optimized 3D protocols and short axis protocols from an automated image segmentation of the CT image dataset for the LV anatomy, movement of LV walls during systole (i.e., LV contractility), epicardial fat location, location of viable tissue, blood vessels and their branches and orientation.

[0015] The 3D protocols and short axis protocols of the post processing software enable the software to provide views of the LV, including blood vessels, branches and slow motion cine of the LV, particularly the posterolateral wall or other areas of the LV. These special views and video (cine) clips may be saved into a 3D rendering of ventricle files 126 and LV short axis images 128 for use

by the practitioner for interventional planning and procedure. The post processing software also provides for the export of detailed 3D models 130 of the thoracic wall and ventricle surfaces. The 3D models 130 (which may be implemented through color coding, contouring, movie views, etc.) may be viewed on display screen 132 associated with workstation 124 and are configured to include geometric markers inserted into the volume at landmarks of interest such that the thoracic wall and the LV are visualized in a translucent fashion with the opaque geometric landmarks.

[0016] In addition, the 3D models 130 may be exported in any of several formats, including but not limited to: a wire mesh geometric model, a set of contours, a segmented volume of binary images, and a DICOM (Digital Imaging and Communications in Medicine) object using the radiation therapy (RT) DICOM object standard or similar object. Other formats known in the art can also be used to store and export the 3D models 130.

[0017] Referring now to Figure 2, there is shown a flow diagram 200 illustrating a method for MIDCAB planning, in accordance with a further embodiment.

[0018] Beginning at block 202, a volume of data is initially acquired on the cardiac CT system, using a protocol that is preferably optimized for the coronaries and LV regions of the heart. A continuous sequence of consecutive images is collected from a volume of a patient's data, in which a shorter scanning time using faster scanners and synchronization of the CT scanning with the QRS (peak) on the ECG (Electrocardiogram) signal will reduce motion artifacts (e.g. blurring, shadowing, streaking) in a beating organ like the heart. The ability to collect a volume of data with a short acquisition time allows reconstruction of images that have more precise depictions of anatomical landmarks, making them easier to understand.

[0019] At block 204, the image dataset is segmented with post-processing software using a 3D protocol and short axis protocols optimized for MIDCAB. Automated or semi-automated procedures may be employed, where appropriate, with or without queues from the operator. This operation can be performed on short axis reformatted cardiac images for each phase and slice location to obtain the displacement profile, or on multiphase, long axis reformatted cardiac images.

[0020] Then, as shown in block 206, the coronary arteries and LV are visualized using 3D surface and/or volume rendering to create 3D models thereof that provide certain quantitative features of the coronaries and the ventricles such as contour, position, orientation, dimensions of the coronaries and the ventricles and, additionally, the function and the areas of scarred tissue of the ventricles. As shown in block 208, the orientation, size and extent of the lesions in the coronary arteries targeted for MIDCAB are identified. In this manner, the size and contour of the vessels as well as the size and extent of the lesions are measured and determined, as shown in block 210.

[0021] For example, Figure 3 illustrates an exemplary CT image of the chest and heart and their spatial relationship therebetween. Exact distances and angles may be measured in 3D for planning MIDCAB and, in addition, such information may also be used to generate thickness graphs or plots, as well as 3D geometric visualization for quick analysis. This information can contribute significantly to identification and isolation of the optimal path through the chest wall.

[0022] Referring again to Figure 2, method 200 proceeds to block 212 for identification of anatomical landmarks over the thoracic wall, coronary arteries and ventricles. At block 214, explicit geometric markers are then inserted into the volume at landmarks of interest, wherein the markers may be visualized in a translucent fashion using 3D surface and/or volume rendering so as not to obscure the image. An example of such a visualization is presented in Figure 4, which illustrates a cardiac CT image showing a necrosed LV due to myocardial infarction. The specific images (e.g., Dicom images, video clips, films, etc.) are saved as desired for subsequent reference during the MIDCAB. As shown in block 216 of Figure 2, the saved views are then exported and registered with the computer workstation of the interventional system. After the registered images are imported, they may be visualized over the interventional system by the practitioner, as seen in block 218.

[0023] In addition to the registering markers, the workstation of the interventional system may also be configured to register the instruments used for the specific MIDCAB procedure, as shown in block 220. Finally, the actual MIDCAB surgery is performed at block 222.

[0024] It will be appreciated that automatic techniques may be employed to perform any of the above steps by using one or more of the several computer-assisted detection, localization and visualization methods available. Such steps may include, for example, quantitative analysis of defects, localized contractility profile (LV wall movement), and identification of blood vessels using the continuity of same intensity levels. Moreover, these methods could be either completely automatic when the procedure and the organ of interest is specified or partly interactive with input from the user.

[0025] It will further be appreciated that through the use of the above described method and system embodiments, the planning of MIDCAB is improved in that the imaging information generated and registered allows for an appropriately tailored approach to the interventional procedure. In choosing the appropriate approach, the duration of the procedure itself is reduced and any unnecessary procedures are also eliminated. More particularly, a detailed 3D geometric and axial representation of the coronary arteries and LV increases the precision of the MIDCAB procedure. The identification of necrosed myocardium, if any, enables the practitioner to avoid such areas and determine an exact location of the incision is determined in advance before the surgery is performed.

[0026] The above described planning process thus re-

duces the amount of time required to perform the MIDCAB. Moreover, the identification of appropriate locations increases the efficacy of treatment and can reduce the risk of complications. After the procedure is completed, the data can be archived, read and processed in the form of CD-ROMs, floppy diskettes, hard drives or any other mediums used for this purpose as in the acquisition and transportation stages. Thus, the computer and the medium also become an apparatus for the purposes of the present invention.

[0027] While the invention has been described with reference to a preferred embodiment, it will be understood by those skilled in the art that various changes may be made and equivalents may be substituted for elements thereof without departing from the scope of the invention. In addition, many modifications may be made to adapt a particular situation or material to the teachings of the invention without departing from the essential scope thereof. Therefore, it is intended that the invention not be limited to the particular embodiment disclosed as the best mode contemplated for carrying out this invention, but that the invention will include all embodiments falling within the scope of the appended claims.

Claims

1. A system (100) for planning minimally invasive direct coronary artery bypass (MIDCAB) for a patient, comprising:

a medical imaging system for generating acquisition data;

an image generation subsystem (110) for receiving said acquisition data and generating one or more images of the coronary arteries and the left ventricle of the patient using one or more optimized 3D protocols for automated image segmentation of a CT image dataset for identifying the orientation, size and any anomalies of the coronary arteries and left ventricle, said 3D protocols being further optimized to generate navigator views of the coronary arteries to assess the size and extent of the lesions therein;

an operator console (116) for identifying one or more anatomical landmarks on said one or more images and an associated display screen (120, 132) for viewing said one or more images;

a workstation (124) including post processing software including one or more optimized 3D protocols and short axis protocols using the automated image segmentation of the CT image dataset for the left ventricle anatomy, movement of left ventricle walls during systole, epicardial fat location, location of viable tissue, blood vessels and their branches and orientation;

said post processing software being configured to export 3D models of the thoracic wall and ven-

tricle surfaces in order to register saved views of said 3D models (130) using a workstation of an interventional system; and wherein said interventional system is configured for visualizing one or more of said registered saved views therewith, quantifying distance and location information for a cardiac point of interest, and identifying an incision location and path for MIDCAB based on said quantified distance and location information for said cardiac point of interest.

2. The system (100) of claim 1, wherein said subsystem (110) is EKG gated.

Patentansprüche

1. System (100) zum Planen eines minimal-invasiven direkten Koronararterienbypass (MIDCAB) für einen Patienten, umfassend:

ein medizinisches Bildgebungssystem zum Erstellen von Erfassungsdaten;

ein Bilderzeugungssystem (110) zum Empfangen der Erfassungsdaten und Erzeugen von einem oder mehr Bildern der Koronararterien und der linken Herzkammer des Patienten unter Benutzung von einem oder mehr optimierten 3D-Protokollen für automatisierte Bildsegmentierung eines CT-Bilddatensatzes zum Identifizieren der Ausrichtung, Größe und jeglicher Anomalien der Koronararterien und der linken Herzkammer, wobei die 3D-Protokolle ferner zum Erstellen von Navigatoransichten der Koronararterien zum Beurteilen der Größe und des Ausmaßes der Schäden daran optimiert sind;

eine Bedienungskonsole (116) zum Identifizieren von einem oder mehr anatomischen Orientierungspunkten auf dem einen oder mehr Bildern und einen zugeordneten Anzeigeschirm (120, 132) zum Anzeigen des einen oder mehr Bilder;

eine Arbeitsstation (124), die Nachbehandlungssoftware enthält, welche ein oder mehr optimierte 3D-Protokolle und Kurzachsenprotokolle unter Benutzung der automatisierten Bildsegmentierung des CT-Bilddatensatzes für die Anatomie der linken Herzkammer, Bewegung der Wände der linken Herzkammer während Systole, epikardiale Fettverortung, Verortung von brauchbarem Gewebe, Blutgefäßen und ihren Verzweigungen und Ausrichtung enthält;

wobei die Nachbehandlungssoftware zum Exportieren von 3D-Modellen der Brustwand und Herzkammerflächen konfiguriert ist, um gespeicherte Ansichten der 3D-Modelle (130) unter

Benutzung einer Arbeitsstation eines Interventionssystems zu registrieren; und wobei das Interventionssystem zum Visualisieren von einer oder mehr der registrierten gespeicherten Ansichten damit, Quantifizieren von Entfernungs- und Verortungsinformation für einen kardialen Interessensfokus und Identifizieren einer Inzisionsstelle und eines Inzisionswegs für MIDCAB auf Grundlage der quantifizierten Entfernungs- und Verortungsinformation für den kardialen Interessensfokus konfiguriert ist.

2. System (100) nach Anspruch 1, wobei das Nebensystem (110) EKG-torgesteuert ist.

Revendications

1. Système (100) de planification d'un pontage des artères coronaires direct invasif au minimum (MIDCAB) pour un patient, comprenant :

un système d'imagerie médicale pour générer des données d'acquisition ;

un sous-système de génération d'images (110) pour recevoir lesdites données d'acquisition et générer une ou plus d'images des artères coronaires et du ventricule gauche du patient en utilisant un ou plus de protocoles 3D optimisés pour une segmentation d'image automatisée d'un ensemble de données d'image CT afin d'identifier l'orientation, la taille et des anomalies quelconques des artères coronaires et du ventricule gauche, lesdits protocoles 3D étant en outre optimisés pour générer des vues de navigateur des artères coronaires afin d'évaluer la taille et l'étendue des lésions qui s'y trouvent ; une console d'opérateur (116) pour identifier un ou plus de repères anatomiques sur lesdites une ou plus d'images et un écran d'affichage associé (120, 132) pour observer lesdites une ou plus d'images ;

un poste de travail (124) comprenant un logiciel de post-traitement comportant un ou plus de protocoles 3D optimisés et de protocoles à axe court en utilisant la segmentation d'image automatisée de l'ensemble de données d'images CT pour l'anatomie du ventricule gauche, le mouvement des parois du ventricule gauche au cours de la systole, l'emplacement des graisses épicaudiales, l'emplacement des tissus viables, des vaisseaux sanguins, de leurs embranchements et de leur orientation ;

ledit logiciel de post-traitement étant configuré pour exporter des modèles 3D de surfaces de la paroi thoracique et des ventricules afin d'enregistrer des vues sauvegardées desdits modè-

les 3D (130) en utilisant un poste de travail d'un système d'intervention ; et dans lequel ledit système d'intervention est configuré pour visualiser une ou plus desdites vues enregistrées sauvegardées avec celui-ci, quantifier des informations de distance et d'emplacement pour un point d'intérêt cardiaque et identifier un emplacement et un trajet d'incision pour la MIDCAB sur la base desdites informations de distance et d'emplacement quantifiées pour ledit point d'intérêt cardiaque.

5

10

2. Système (100) selon la revendication 1, dans lequel ledit sous-système (110) est contrôlé par un système électrocardiographique (ECG).

15

20

25

30

35

40

45

50

55

FIG. 1

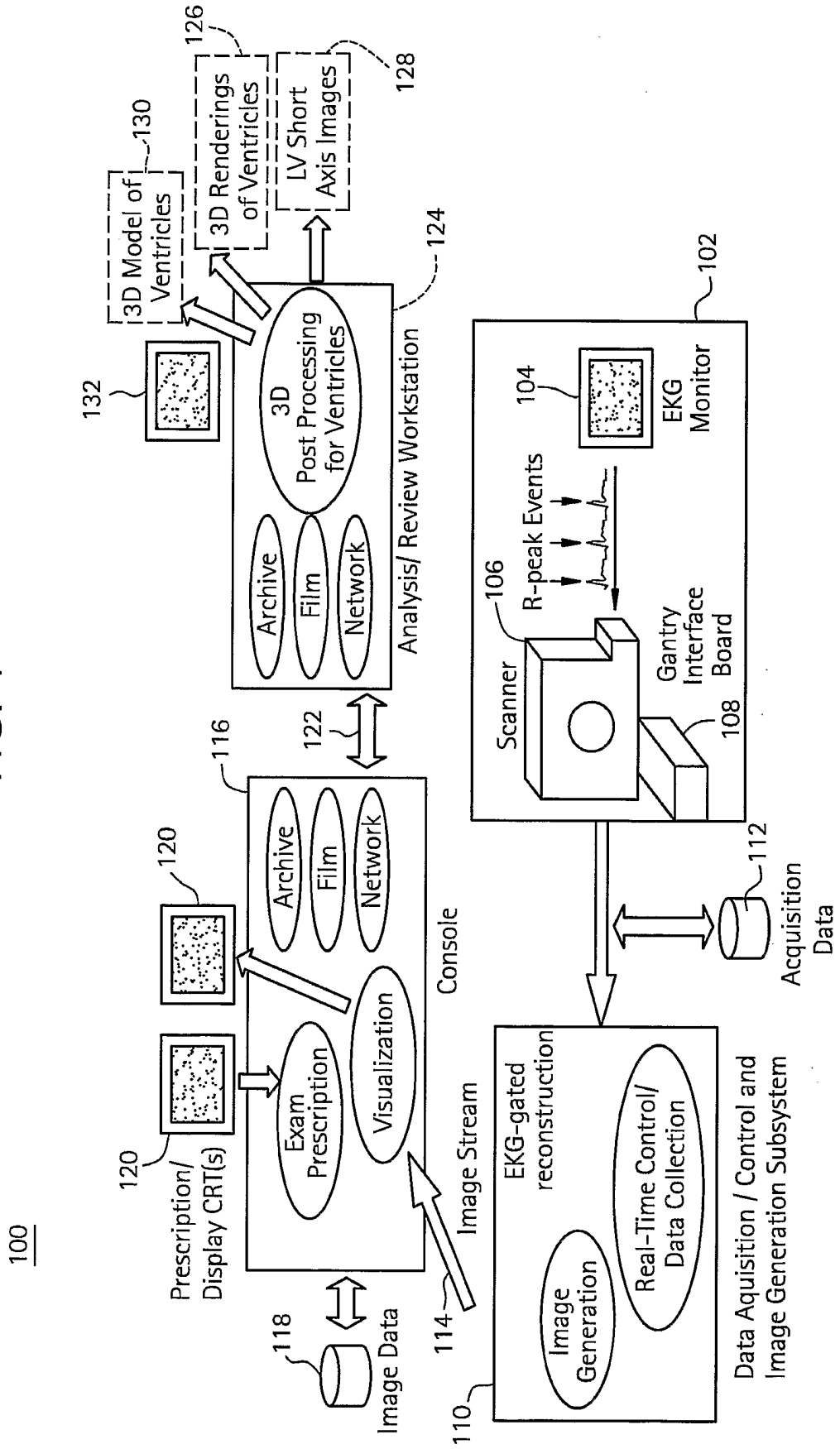


FIG. 2

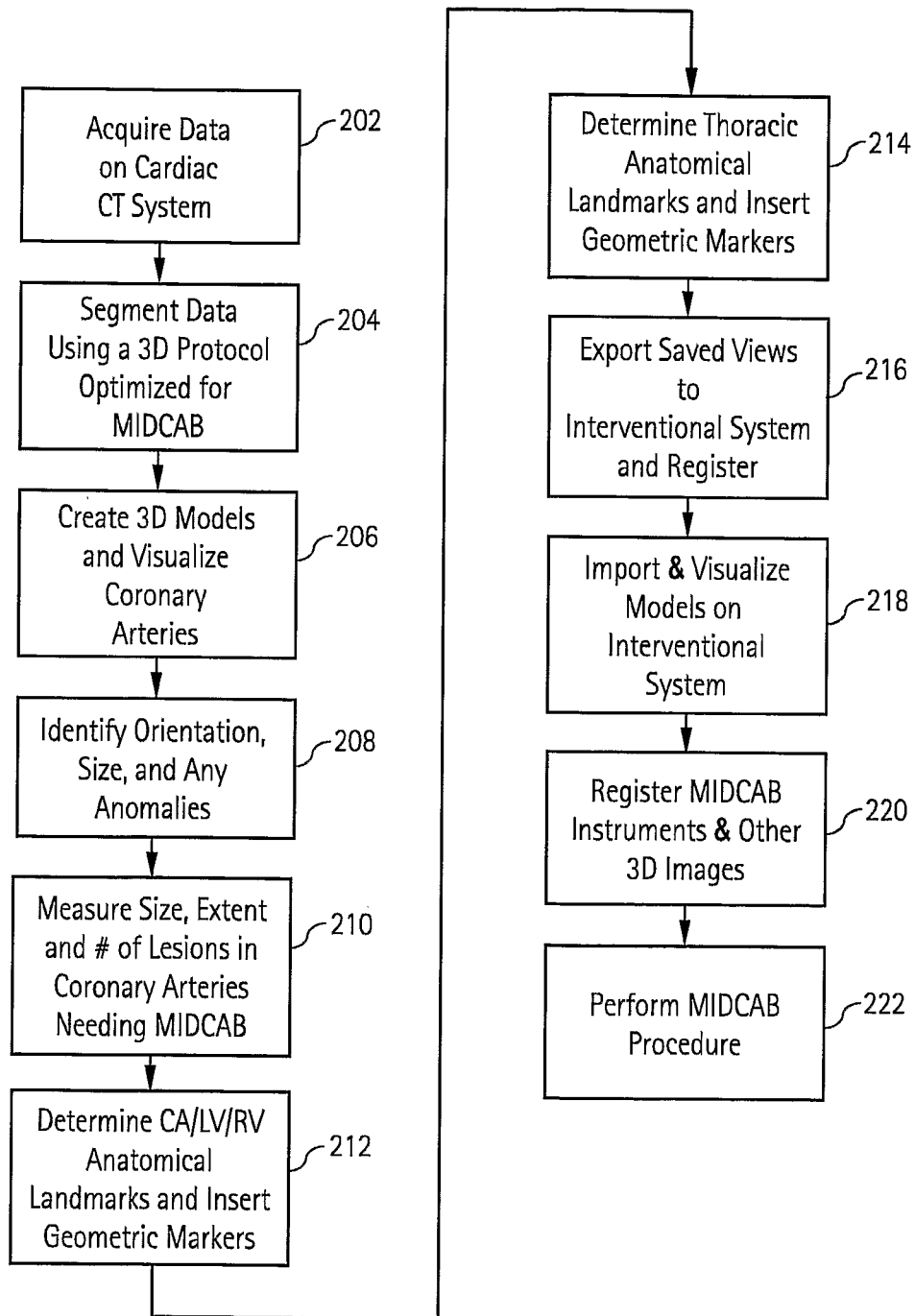


FIG. 3

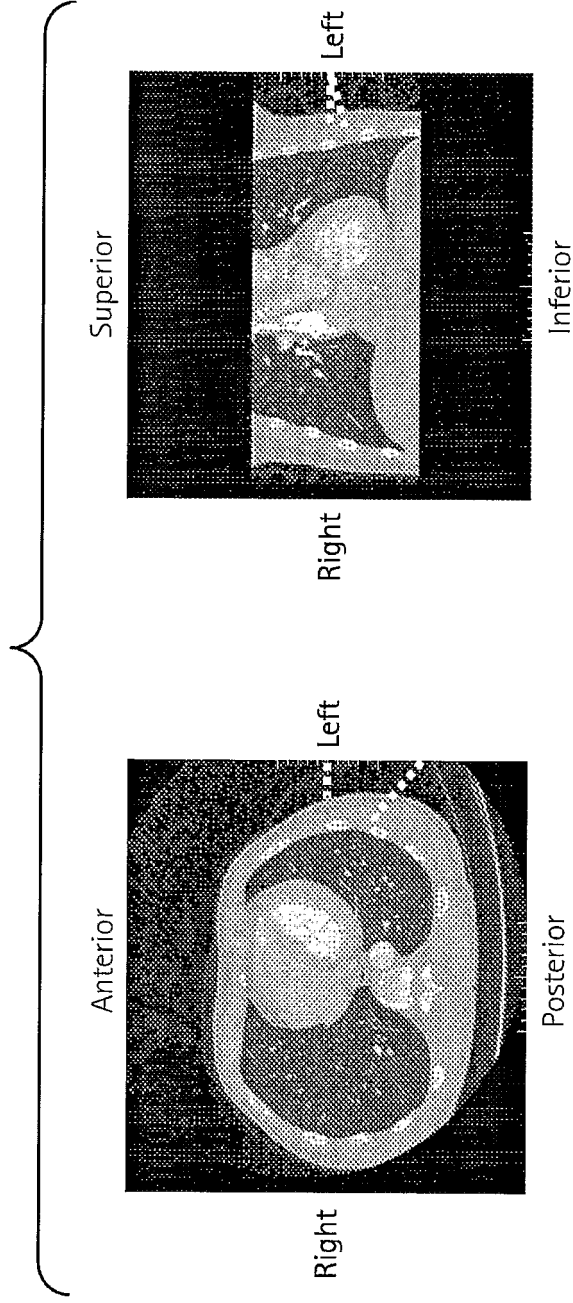
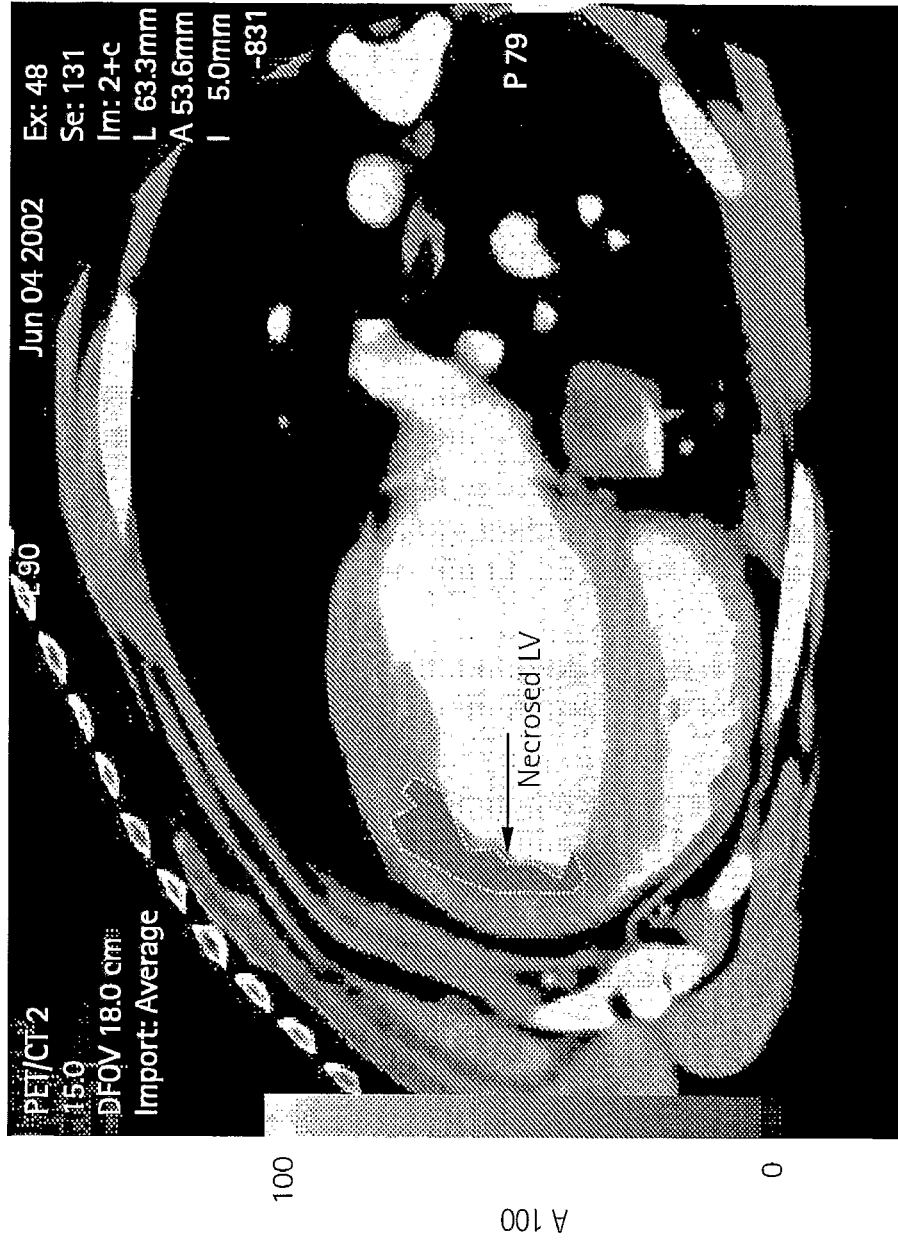


FIG. 4



REFERENCES CITED IN THE DESCRIPTION

This list of references cited by the applicant is for the reader's convenience only. It does not form part of the European patent document. Even though great care has been taken in compiling the references, errors or omissions cannot be excluded and the EPO disclaims all liability in this regard.

Patent documents cited in the description

- EP 1182619 A [0006]
- US 20030187358 A [0007]

专利名称(译)	用于计划手术的心脏成像系统		
公开(公告)号	EP1643911B1	公开(公告)日	2016-04-06
申请号	EP2004756376	申请日	2004-06-30
[标]申请(专利权)人(译)	通用电气公司		
申请(专利权)人(译)	通用电气公司		
当前申请(专利权)人(译)	通用电气公司		
[标]发明人	OKERLUND DARIN ROBERT SRA JASBIR LAUNAY LAURENT VASS MELISSA		
发明人	OKERLUND, DARIN, ROBERT SRA, JASBIR LAUNAY, LAURENT VASS, MELISSA		
IPC分类号	A61B6/00 A61B90/00 G06F19/00 A61B5/00 A61B8/00 A61B17/00 A61B19/00		
CPC分类号	A61B6/563 A61B5/7285 A61B6/504 A61B6/541 A61B8/543 A61B8/565 A61B34/10 A61B90/36 A61B2017/00243 G16H50/50		
优先权	10/708564 2004-03-11 US 60/484012 2003-07-01 US		
其他公开文献	EP1643911A1		
外部链接	Espacenet		

摘要(译)

用于为患者规划微创直接冠状动脉旁路 (MIDCAB) 的方法 (200) 包括从医学成像系统获得采集数据, 以及生成冠状动脉和一个或多个感兴趣的心腔的3D模型 (130)。在3D模型上识别一个或多个解剖标志 (130), 并且在介入系统上登记3D模型 (130) 的保存视图。使用介入系统可视化一个或多个已注册的已保存视图。

FIG. 1

