



(12) **EUROPEAN PATENT APPLICATION**

(43) Date of publication: **17.04.2002 Bulletin 2002/16** (51) Int Cl.⁷: **A61B 5/00**

(21) Application number: **01308591.5**

(22) Date of filing: **08.10.2001**

(84) Designated Contracting States:
**AT BE CH CY DE DK ES FI FR GB GR IE IT LI LU
MC NL PT SE TR**
Designated Extension States:
AL LT LV MK RO SI

(72) Inventors:
• **Brinsfield, James W.**
Mequon, Wisconsin 53097 (US)
• **Hutchinson, George M.**
Brookfield, Wisconsin 53045 (US)

(30) Priority: **12.10.2000 US 689374**

(74) Representative: **Goode, Ian Roy**
GE LONDON PATENT OPERATION,
Essex House,
12/13 Essex Street
London WC2R 3AA (GB)

(71) Applicant: **GE Medical Systems Information
Technologies, Inc.**
Milwaukee, Wisconsin 53223-3293 (US)

(54) **Mobile clinical information system**

(57) A wireless bi-directional portable patient monitor (56) incorporated into a mobile clinical information management system (44) is disclosed. The portable patient monitor (56) includes a communications interface (92) to receive patient data (48) from a wireless local area network (WLAN) within a medical care facility (39) and transmit care parameters (64) as needed to the wireless network (WLAN) in response. The portable patient monitor (56) includes a processor (70) connected to the communications interface (92) to process (98) the patient data (48) and the care parameters (64). A display (88) is connected to the processor (70) to display the processed patient data to the health care provider (58).

The monitor (56) includes an input device (86) connected to the processor (70) to allow a change in the care parameters (64) by the health care provider (58). The portable patient monitor (56) is also configured to allow wireless transport on the health care provider (58) for extended periods. The mobile clinical information management system (41) includes a number of bedside patient monitors to connect to the patients (62) and transmit the patient data (48). The system (41) also includes the wireless network coupled to the bedside patient monitors and the portable patient monitors (56) to improve efficiencies in the delivery of health care in the medical care facility (39).

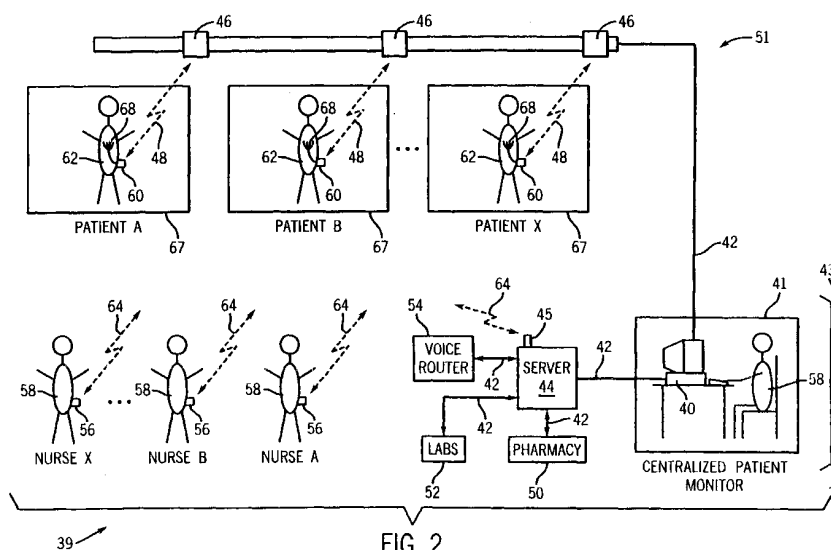
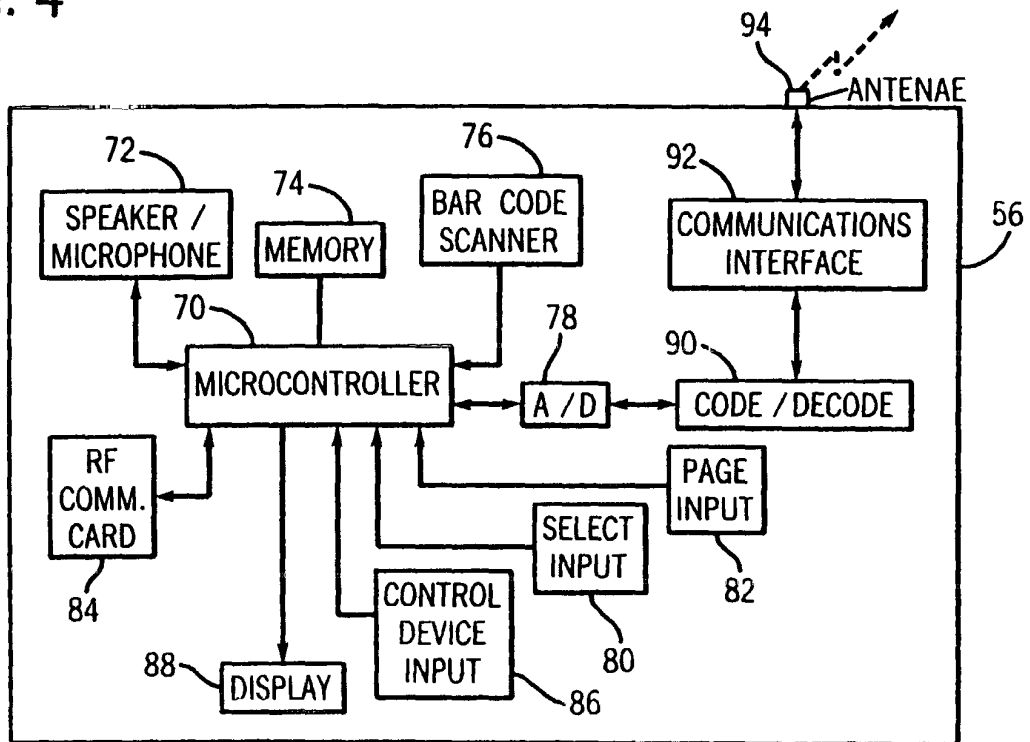


FIG. 2

FIG. 4



Description

[0001] The present invention pertains to clinical information systems and more specifically, to a two-way, wireless clinical patient information monitoring system and a portable patient monitor.

[0002] Clinical patient monitoring systems generally consist of individual patient monitoring terminals connected to a centralized monitoring system staffed by a nurse or clinician. The centralized character of these systems allows a small number of caregivers to monitor a large number of patients. The patient monitor terminals typically stationed in the patients' rooms register activity such as heart rate, ECG, respiratory patterns, and other pertinent signs. In addition, drug infusion devices stationed by the patient deliver regulated dosages as prescribed and programmed by doctors and nurses. For bedside monitoring, these devices work adequately. However, patient mobility is hindered and becomes a hazard when transporting the bulky, inelegant bedside patient monitoring systems.

[0003] Another drawback of present clinical patient monitoring systems is that, while providing increased efficiency compared to earlier methods, nurses and other caregivers are still very dependent upon the information displayed at the patient's bedside. At the central nurses' station the monitoring system registers alarms and notifies health care providers when attention is required for a particular patient. However, without proceeding to the patient's room, a caregiver cannot discern the nature or seriousness of the alert. Some more recent systems have incorporated remote patient monitoring through the use of laptop computers, but that has not eliminated the necessity of accessing the bedside equipment manually to adjust alarm parameters or change drug administration. An added burden placed upon the health care provider by using laptop systems is the cumbersome nature of carrying a laptop throughout the day. For example, placing the laptops on rolling carts eliminates the physical burden of carrying the device, but simultaneously eliminates the flexible nature of the mobile system initially envisioned.

[0004] Further inhibiting healthcare dispensation and endangering patient welfare is the risk of incorrect drug and dosage administration. Within existing systems, patient data such as prescription information and test results are not readily available in a real time format to on-the-scene health care providers. This problem creates the need for a solution that decreases the likelihood that a health care provider could deliver an erroneous prescription or dosage. A real time connection between prescribed data on file and the delivered quantity, in addition to test results from labs, would considerably enhance the quality and efficiency of the health care provided.

[0005] There is therefore a need for a two-way clinical patient information system. Addressing additional needs such as real time patient information, pharmaco-

logical data, and lab results, a two-way system would furnish caregivers with an effectual manner to deliver health care. For instance, a two-way patient monitoring device could permit a nurse to monitor real time patient vital signs, as well as change care parameters such as alarm status, all from a remote location. therefore saving time and energy. Scanning and comparing patient bar codes with prescription bar codes would prevent drug mishandling, and access to recent lab results would reduce the time needed for care decisions. Combining two-way communications ability with a wireless patient monitoring system answers the need for comprehensive, efficient, and accurate health care administration.

[0006] The present invention provides a system and method of offering two-way, remote, mobile clinical care to patients within a health care facility by health care providers utilizing portable patient monitoring devices of a clinical patient information management system that solves the aforementioned problems.

[0007] In accordance with one aspect of the present invention, a wireless, bi-directional, portable patient monitoring device for integration with patient monitoring systems interfaces to receive, process, display, and allow for changes in patient care parameters. A communication interface of the device transmits and receives patient data from a wireless local area network (WLAN) within a medical facility. A processor connected to the communication interface processes patient data and parameters, displays the data in human discernable form on the device display, and implements changes in care parameters.

[0008] In accordance with another aspect of the invention, a wireless clinical information management system decentralizes patient monitoring by networking information and health care devices through an Ethernet. These devices include life support systems such as ventilators and infusion pumps, along with pharmacy databases, laboratory reports, central patient monitors, telemetry devices, and portable patient monitoring devices. The clinical information management system further involves wireless characteristics through a plurality of wireless LAN access points coupled to a server that process patient telemetry data and PPM instructions.

[0009] In accordance with yet another aspect of the present invention, a computer program is provided that resides in the memory of the portable patient monitor, causing the processor to remotely scan a WLAN to find any patient alarms, sound an alarm if the patient alarm occurs, and allow user silencing of the alarm at the portable patient monitor and/or at a bedside monitor. The program also displays patient data in real time. The computer program can further cause the processor to periodically check battery charge and display a warning if the rechargeable battery charge is low. The computer program also allows user adjustment of alarm parameter violation limits, relay patient admission and discharge information to the WLAN, and to process audio data from a health care provider to a recorded medical

history of a patient.

[0010] The portable patient monitor can include a personal data assistant (PDA) that optionally provides PDA functions to a health care provider. A few of the PDA functions accessible to the health care provider consist of a scheduler, reminders, to-do lists, and other PDA functions. The system can optionally include a speaker and microphone voice module, wherein the processor is programmed to process data to permit voice-over-internet protocol (IP) transfer. Also helpful, the program can permit alarm silencing of a bedside monitor, bedside admitting and discharging of patients, and adjustment of alarm parameter violation limits.

[0011] Various other features, objects and advantages of the present invention will be made apparent from the following detailed description and the drawings, in which:

Fig. 1 is a schematic diagram of a prior art one-way wireless clinical information management system.

Fig. 2 is a schematic diagram of a bi-directional, wireless clinical information management system according to the present invention.

Fig. 3 is a block diagram of a network connecting the clinical information management system of Fig. 2.

Fig. 4 is a block diagram of a portable patient monitoring device in accordance with present invention.

Fig. 5 is a flow chart of a process and software in accordance with the present invention.

[0012] Fig. 1 is a prior art clinical information management system 36 that relays telemetry signals 20, such as patient vital signs and waveforms, from a plurality of patients 18 in patient rooms 34 to a plurality of mobile health care providers 28, for use in a health care facility 38. A centralized patient monitor (CPM) 32 includes a computer 10 staffed by a health care provider 29 in the vicinity of a central monitoring point such as a nurses' station 33. The CPM 32 is connected via a communications link 12 to a series of telemetry receivers 14 for each of a plurality of patient telemetry transmitters 16. The telemetry transmitters 16 are carried by patients 18 and send a one-way, wireless signal 20 to the receivers 14 from ECG leads 15. The receivers 14 then relay the signals 20 to the CMP 32. The CPM 32 is also connected via a communications link 22 to a server 24 that stores and relays data. The server 24 relays signals 26 to the mobile health care providers 28 who carry a receiving device 30 to display the signal information 26.

[0013] For instance, if an irregularity initiates an alarm sequence on a bedside patient monitor (not shown), the roaming health care provider 28 can be notified regardless of his or her position in the hospital, or other such

health care facilities 38. In addition, the patient 18 gains the ability to move freely by use of a wireless link between the patient telemetry transmitter 26 and cumbersome stationary bedside monitoring systems. Although this system increases patients' 18 and attendants' 28 roaming capability, it retains rigid one-way communication abilities and on-site patient care requirements.

[0014] Fig. 2 is a block diagram of the present invention. A clinical patient information management system 51 according to the present invention includes a centralized patient monitor CPM 41 connected by a communications link 42 to a server 44 to store and retrieve patient data from patients 62 in patient rooms 67. The CPM 41 also is linked to a plurality of telemetry receivers 46 to relay telemetry transmitter signals 48 through the common network 42. The CPM 41 optionally includes a computer terminal 40 operated by a health care provider 58 within a central location such as a central nurses' station 43 in a health care facility 39. However, with implementation of the present invention, as will become apparent, the health care provider 58, positioned at nurses' station 43, can be eliminated since the mobile health care providers 58 will now have the data and control previously reserved for the nurse in the centralized patient monitor 41. The server 44 is connected peripherally to hospital labs 52, a pharmacy 50, a voice router 54, and to a number of portable patient monitoring devices (PPMs) 56 by a wireless local area network (WLAN). Simultaneously, the server 44 can access real time data from labs 52 and the pharmacy 50, and can transmit such data to the PPMs 56, keeping the health care providers 58 updated at remote locations. The server 44 can also convey signals from the CPM 41 to the PPMs 46. Such signals can include current patient data, ECG waveforms, and alarm signals.

[0015] The PPMs 56 are carried by the mobile health care providers 56 and are connected by bi-directional, wireless communication 64 to the server 44. WLAN access points 45 are connected to the server 44 to relay signals 64 between the server 44 and the plurality of PPMs 56. WLAN access points 45 include commercially available two-way modem technology transmitters/receivers and antennas that preferably operate on an industry standard protocol. PPMs 56, positioned on mobile health care providers 58, receive signals 64 from the WLAN access points 45 and display them in clear, comprehensive, and user-friendly form. The two-way wireless signals 64 are transmitted between the server 44 via the WLAN 45 and the health care providers 58 to enhance the caregivers' mobility.

[0016] Wireless patient telemetry transmitters/receivers (i.e., transceivers) 60 are carried by patients 62 and accord patients 62 with a degree of freedom and flexibility to accelerate their recovery. While vital sign signals 48 that are captured by the ECG leads 68 are normally displayed on stationary bedside monitoring equipment, with wireless telemetry transceivers 60, patients 62, can get exercise while ECG leads 68 monitor vital signs and

send the signals 48 to the PPMs 56. This allows health care providers 58 to maneuver and obtain the clinical information without bulky monitoring systems.

[0017] Fig. 3 shows a block diagram of the infrastructure for a clinical patient information monitoring system 51 connected through a network, such as an Ethernet 42. In a preferred embodiment, the network 42 is a GE Marquette Unity™ Ethernet network available from GE Medical Systems Information Technologies, Inc. The network 42 utilizes IEEE 802.3 standard Ethernet protocols and IEEE 802.11 WLAN as an extension of the wired system to network devices such as ventilators 57, infusion pumps 55, bedside patient monitoring systems 53, telemetry systems 46, and other hospital information systems in a comprehensive, efficient manner. The network 42 allows multiple devices connected to the network to operate in synchronization with each other while distributing patient information among the various hospital information systems. The pharmacy 50, labs 52, WLAN access points 45, the CPM 41, server 44, and portable patient monitors 56 comprise various hospital information systems.

[0018] In a preferred embodiment of the invention, life-sustaining devices such as ventilation systems 57 and infusion pumps 55, along with bedside monitors 53, are networked through network 42 to communicate with server 44 and CPM 41. Pharmacy 50 and labs 52 information systems provide data to health care providers 58 through the server 44, WLAN access points 45, patient telemetry systems 46, and the portable patient monitors 56 over the network 42. Optionally, a wireless patient bedside monitor 69 can operate within the clinical information management system 51. In that case, the signals 64 are also transmitted over the WLAN access points 45 to the wireless bedside monitor 69.

[0019] Other networked systems within the facility can interface with the clinical patient information monitoring system 51 through the use of standard based networking. Critical reports and diagnostic analysis prepared in various regions of the facility are available as they are completed by direct interfaces between the clinical patient information monitoring system and the decentralized diagnostic locations. The clinical patient information management system 51 also provides a decentralized, wireless, real-time monitoring capability for infusion pumps 55, ventilators 57, and other potentially non-networked machines such as the bedside monitors 53, the wireless bedside monitors 69, etc.

[0020] In a preferred embodiment, the wireless patient telemetry transceivers 60 transmit data 48 to the telemetry receivers 46 that then relays the information to appropriate appendages of the network 42. Such appendages include the PPM remote terminals 56. Any required modification in patient care parameters by a health care provider 58 can be relayed back to the patient through the network 42 to control patient care by using the PPMs 56. In response to patient status, a two-way wireless connection 64 between the server 44 and

the PPMs 56 allow the health care provider 58 to adjust patient care parameters and/or to modify alarms. The health care provider 58 has the advantage in this system of the ability to send and receive information across the two-way wireless connection 64. For example, the health care provider 58 is able to compare dosage instructions on prescription medicine from the pharmacy 50, adjust alarm parameters, communicate through a voice module 72, and monitor real-time patient information such as ECG waveforms. The two-way wireless remote nature of the system 51 provides the health care provider 58 with a way to achieve more accurate and efficient care.

[0021] Fig. 4 is a block diagram of a PPM remote terminal 56 according to the present invention. The PPM 56, in general, has a size and shape that allows health care providers to carry it for extended periods of time. At the hardware level of a preferred embodiment, the PPM is based on a Personal Data Assistant (PDA) platform. The PDA provides a direct interface to the user with the various functions of the clinical information management system, in addition to personal efficiency functions such as a calendar, to-do lists, reminders, e-mail, and other such functions. The PPM is also designed to record voice reports to enable immediate recodation of patient events. Preferably, the invention could support dictation functions to record patient medical events. In one embodiment of the invention, the PDA can be adapted from a commercially available device, such as Symbol Technologies SPT 1700. The device can be based on the Palm Computing® platform, the Windows CE® platforms, or any other comparable or similar platform. Windows CE® is a registered trademark of Microsoft Corp.

[0022] In the preferred embodiment, the PPM 56 includes a microcontroller 70 connected to a speaker/microphone voice module 72 to receive and transmit voice data. A memory unit 74 is preferably a combination of ROM and RAM, wherein the ROM is used for static data, such as computer programs, and the RAM is used for dynamic data, such as the ECG signals received from the patient 62. A bar code scanner 76 is provided to read bar codes, such as those used to identify patients and those used on reports and pharmaceutical products. An A/D converter 78 converts analog to digital data for processing by the microcontroller 70, and conversely converts the digital data from the microcontroller to analog form which is then supplied to encoder 90 to code and decode the analog data for transmission through the communications interface 92 and an antenna 94. An input select key 80 is provided to select which particular menu is to be displayed on display 88. A control device input 86 is used to navigate through each of the menus that are displayed. Page input 82 is provided to acknowledge a page to a particular health care provider. An RF communications card 84 is connected to the microcontroller 70 which can include an industry standard PCMCIA card for RF communication. These components, in

the aggregate, achieve functions that enable the health care provider to administer efficient and accurate care.

[0023] More specifically, the microcontroller 70 is programmed to receive and process patient data, display the data, and receive and transmit care parameters via the ancillary devices connected to the microcontroller 70. The microcontroller 70 is programmed to receive and transmit patient data in conjunction with the PPM communication interface 92. Some of the data contained includes bar code data that the microcontroller 70 is programmed to receive from the bar code scanner 76. The microcontroller 70 is also programmed to receive and transmit audio data from a speaker/microphone module 72, and to display information through the display 88 of the PPM 56. The health care provider 58, by utilizing attributes of the PPM 56, can input selections that the microcontroller 70 is programmed to receive.

[0024] The multiple functions of the PPM 56 include devices that interface with the microcontroller 70, and utilize capabilities of the clinical patient information system 51. Audio data received and transmitted by the microcontroller 70 from the audio module 72 is possible through "voice over IP" protocols that support transmitting compressed voice data over an Ethernet. The Ethernet network 42, in conjunction with the PPM 56, supports telephony and paging functions anywhere within the coverage area. No additional RF infrastructure is required to attain telephony or paging services. This solution eliminates the need for a health care provider 58 to carry multiple devices throughout the day such as mobile phones and/or pagers. Additionally, the use of a single RF protocol reduces the likelihood of interference from other wireless systems.

[0025] Automated data entry and retrieval via an integrated bar-code scanner 76 further involves multiple aspects of the clinical information management system 51. Information encoded on patient wristbands and pharmaceutical barcodes is acquired by the bar code scanner 76 and processed by the microcontroller 70. The microcontroller 70 compares the corresponding data from a centralized database maintained by the pharmacy 50, and standing doctors' orders contained in the patient record, for prescription and dosage accuracy.

[0026] In a typical preferred embodiment of this invention the microcontroller 70 is programmed to interact with components of the PPM 56 to allow the health care provider 58 to communicate on a two-way basis with other segments of the clinical information management system 51. The preferred implementation sequence of the present invention is expressed by the flow chart of Fig. 5.

[0027] At the start 100 of the software sequence of the PPM 56 the battery charge is checked at 102. In accordance with the invention, a setup procedure request is initiated 104 if the battery charge is sufficient for operation. If desired at this point, the health care provider can access alarm-warning parameters and define warnings 106, advisories 108, and messages 110. If not de-

sired 112, the routine commences scanning the network 114.

[0028] Initially, the scanning purpose is to check the validity of the network connection 116. The next scan is of the patients on the system 118. The health care provider is primarily concerned with current alarm flags that would require instant attention. If there are alarms 120, 122, the PPM will sound an audio alarm 124 through the audio module, and patient information is displayed 126. If there are no alarms 120, 128, then the health care provider enters a subroutine to monitor specific patients 130. After entering a patient ID 132, the subroutine joins with the main routine to display pertinent information, such as patient ID, ECG data, vital signs, and alarm type at 126. The health care provider can then decide to change any of the patient parameters 134, including turning alarms off.

[0029] During specific patient monitoring, the health care provider can scan barcode IDs that are then compared by the microcontroller with information gleaned from hospital lab and pharmacy data. This data is compared in real time with the earliest data available. In the background, the microcontroller is programmed to periodically check the battery charge 136. There are several stages of alert for the battery charge, ranging from 30-minute charge warnings, to urgent five-minute warnings. The health care provider can power down the PPM 138, 140 at the end of a shift which then automatically triggers a save function for all the data 142, and the sequence ends at 144. If the battery charge is sufficient for continued use and the health care provider desires continued use 138, 146, patient scanning and monitoring continues until the device is powered down 138, 140.

[0030] As previously discussed, the portable patient monitor (PPM) is preferably packaged within a housing that is transportable on a health care provider for extended periods.

[0031] Preferably, the PPM has an approximate length of 7" (17.8 cm), a width of approximately 3.75" (7 5 cm) and a thickness of approximately 1.0" (2.54 cm).

[0032] For completeness, various aspects of the invention are set out in the following numbered clauses:

1. A wireless bi-directional portable patient monitor (56) comprising:

communication interface (92) to receive patient data (64) from a wireless local area network (WLAN) within a medical care facility (39) and transmit care parameters (64) as needed to the WLAN in response thereto;
a processor (70) connected to the communication interface (92) to process the patient data (64) and the care parameters (64).

a display (88) connected to the processor (70) to display the processed patient data (64) in human discernable form; and

- an input device (86) connected to the processor (70) to allow a change in the care parameters (64) by a health care provider (58).
2. The portable patient monitor (56) of clause 1 wherein the processor (70) decodes (90) the patient data (64) to process and display (88) the patient data (64) and encodes (90) the care parameters (64) to transmit the care parameters (64) to the WLAN.
3. The portable patient monitor (56) of clause 1 wherein the portable patient monitor (56) is a primary monitoring device.
4. The portable patient monitor (56) of clause 1 wherein the processor (70) processes the patient data (64) to display ECG and vital sign data (48) for a selected patient (62).
5. The portable patient monitor (56) of clause 1 wherein the communication interface (92) is compatible with an existing WLAN.
6. The portable patient monitor (56) of clause 1 wherein the portable patient monitor (56) is packaged within a housing that is transportable on a health care provider (58) for extended periods.
7. The portable patient monitor (56) of clause 6 having a length of approximately 7" (17.8 cm), a width of approximately 3.75" (9.5 cm), and a thickness of approximately 1.0" (2.54 cm).
8. The portable patient monitor (56) of clause 1 wherein the processor (70) is programmed to allow alarm silencing (126) of a bedside monitor (53, 69), and admit and discharge patients (62).
9. The portable patient monitor (56) of clause 1 wherein the processor (70) is programmed to allow adjustment (134) of alarm parameter violation limits.
10. The portable patient monitor (56) of clause 1 further comprising a speaker (72) and microphone (72), and wherein the processor (70) is programmed to process data (64) to permit voice-over-internet protocol (IP) transfer (54).
11. The portable patient monitor (56) of clause 1 further comprising a bar code scanning module (76) and a bar code scanner (76), and wherein the processor (70) is programmed to receive and compare patient data (64) with data obtainable from a centralized database (50) that includes pharmaceutical and patient bar codes to ensure dosage accuracy, and doctor orders.
12. The portable patient monitor (56) of clause 1 wherein the processor (70) is further programmed to interface with non-proprietary networked systems (63).
13. The portable patient monitor (56) of clause 12 wherein the processor (70) is further programmed to interface with infusion pumps (55) and ventilators (57).
14. The portable patient monitor (56) of clause 1 wherein the processor (70) is further programmed to receive patient reports and diagnostic analyses prepared at other locations in the medical care facility (39) to provide the health care provider (58) with the patient reports and diagnostic analyses in real time.
15. The portable patient monitor (56) of clause 1 further comprising a PDA module to provide PDA functions (80) to the health care providers (58).
16. The portable patient monitor of clause 15 wherein the PDA functions (80) include a scheduler, reminders, to-do lists, and other PDA functions.
17. The portable patient monitor (56) of clause 1 further comprising a microphone (72) and a digital audio recorder module (54) to input (42) a record of patient medical events by the health care provider (58).
18. A mobile clinical information management system (42) to decentralize patient monitoring comprising:
- a portable patient monitor (56) having a processor (70) connected to a communication interface (92) to receive and process patient data (48) and to process and transmit care parameters (64), a display (88) to display the patient data (48), and an input device to change (134) the patient care parameters (64), the portable patient monitor (56) having a configuration to allow wireless transport on a health care provider (58) for extended periods;
 - a plurality of bedside patient monitors (53, 69) to connect to a plurality of patients (62) and transmit patient data (48);
 - a WLAN coupled to the plurality of bedside patient monitors (53, 69) and the portable patient monitor (56).
19. The system (41) of clause 18 further comprising a plurality of portable patient monitors (56), each portable patient monitor (56) assigned to a given number of patients (62).

20. The system (41) of clause 18 wherein the processor further:

decodes (90) the patient data (48) to process and display (88) the patient data (48) and encodes (90) the care parameters (64) to transmit the care parameters (64) to the WLAN; and processes (78) the patient data (48) to display ECG and vital sign data for a selected patient (62) on the portable patient monitor (56). 5 10

21. The system (41) of clause 18 wherein the portable patient monitor (56) is a primary monitoring device and wherein a communication interface (92) of the portable patient monitor (56) is compatible with an existing WLAN. 15

22. The system (41) of clause 18 wherein portable patient monitor (56) has a length of approximately 7" (17.8 cm), a width of approximately 3.75" (9.5 cm), and a thickness of approximately 1.0" (2.54 cm). 20

23. The system (41) of clause 18 further comprising a speaker (72) and microphone (72), and wherein the processor (70) is programmed to: 25

allow alarm silencing (126) of a bedside monitor (53, 69); admit and discharge patients (62); adjust alarm parameter violation limits (134); and process data (78) to permit voice-over-internet protocol (IP) transfer (42). 30 35

24. The system (41) of clause 18 further comprising: a bar code scanning module (76) and a bar code scanner (76) and wherein the processor (70) is programmed to receive patient data (48) encoded in a patient wristband, and to compare patient data (48) with data obtainable from pharmaceutical bar codes (50) and a centralized database (50) to check dosage accuracy and compliance with doctor orders; 40

wherein the processor (70) is further programmed to interface (92) with infusion pumps (55) and ventilators (57), and to receive patient reports and diagnostic analyses prepared at remote locations in the medical care facility (39) to provide the health care provider (58) with the patient reports and diagnostic analyses in real time. 45 50

25. The system (41) of clause 18 wherein the portable patient monitor (56) includes a PDA module (80) having PDA functions that include a scheduler, reminders, and to-do lists, and further comprises a microphone (72) and a digital audio recorder (54) module to record an audio input (42) by the health 55

care provider (58) into the microphone (70) and record patient medical events.

26. A computer program (100) residing in memory (74) of a portable patient monitor (56) to cause a processor (70) to:

remotely interface (92) to a WLAN to acquire any patient alarms (120); sound an alarm (124) if a patient alarm occurs (122); allow user silencing (126) of the alarm at the portable patient monitor (56) and at a bedside monitor (53, 69); and display patient data (48). 15

27. The computer program (100) of clause 26 wherein the computer program (100) further causes the processor (70) to:

periodically check (136) a recharged battery charge; and display a warning (136) if the rechargeable battery charge is low. 20 25

28. The computer program (100) of clause 26 wherein the computer program (100) further causes the processor (70) to allow user adjustment (134) of alarm parameter violation limits. 30

29. The computer program (100) of clause 26 wherein the computer program (100) further causes the processor (70) to relay (90) patient admission and discharge information to the WLAN. 35

30. The computer program (100) of clause 26 wherein the computer program (100) further causes the processor (70) to process audio data (84) from a health care provider (58) to record medical history of a patient (62). 40

31. The computer program (100) of clause 26 wherein the computer program (100) further causes the processor (70) to scan a bar code (76) from a patient ID and compare data (48) obtained therefrom with data on the patient (62) from a main patient database (50) to ensure proper medical treatment. 45

Claims

1. A wireless bi-directional portable patient monitor (56) comprising:

communication interface (92) to receive patient data (64) from a wireless local area network (WLAN) within a medical care facility (39) and 55

transmit care parameters (64) as needed to the WLAN in response thereto;
a processor (70) connected to the communication interface (92) to process the patient data (64) and the care parameters (64).

- 5
- a display (88) connected to the processor (70) to display the processed patient data (64) in human discernable form; and
an input device (86) connected to the processor (70) to allow a change in the care parameters (64) by a health care provider (58).
- 10
2. The portable patient monitor (56) of claim 1 wherein the processor (70) decodes (90) the patient data (64) to process and display (88) the patient data (64) and encodes (90) the care parameters (64) to transmit the care parameters (64) to the WLAN.
- 15
3. The portable patient monitor (56) of claim 1 wherein the processor (70) processes the patient data (64) to display ECG and vital sign data (48) for a selected patient (62).
- 20
4. The portable patient monitor (56) of claim 1 wherein the portable patient monitor (56) is packaged within a housing that is transportable on a health care provider (58) for extended periods.
- 25
5. The portable patient monitor (56) of claim 1 wherein the processor (70) is programmed to allow adjustment (134) of alarm parameter violation limits.
- 30
6. The portable patient monitor (56) of claim 1 further comprising a bar code scanning module (76) and a bar code scanner (76), and wherein the processor (70) is programmed to receive and compare patient data (64) with data obtainable from a centralized database (50) that includes pharmaceutical and patient bar codes to ensure dosage accuracy, and doctor orders.
- 35
- 40
7. A mobile clinical information management system (42) to decentralize patient monitoring comprising:
- 45
- a portable patient monitor (56) having a processor (70) connected to a communication interface (92) to receive and process patient data (48) and to process and transmit care parameters (64), a display (88) to display the patient data (48), and an input device to change (134) the patient care parameters (64), the portable patient monitor (56) having a configuration to allow wireless transport on a health care provider (58) for extended periods;
- 50
- a plurality of bedside patient monitors (53, 69) to connect to a plurality of patients (62) and
- 55

transmit patient data (48);
a WLAN coupled to the plurality of bedside patient monitors (53, 69) and the portable patient monitor (56).

8. The system (41) of claim 7 further comprising a plurality of portable patient monitors (56), each portable patient monitor (56) assigned to a given number of patients (62).
9. The system (41) of claim 7 wherein the processor further:
- decodes (90) the patient data (48) to process and display (88) the patient data (48) and encodes (90) the care parameters (64) to transmit the care parameters (64) to the WLAN; and processes (78) the patient data (48) to display ECG and vital sign data for a selected patient (62) on the portable patient monitor (56).
10. A computer program (100) residing in memory (74) of a portable patient monitor (56) to cause a processor (70) to:
- remotely interface (92) to a WLAN to acquire any patient alarms (120);
sound an alarm (124) if a patient alarm occurs (122);
allow user silencing (126) of the alarm at the portable patient monitor (56) and at a bedside monitor (53, 69); and
display patient data (48).

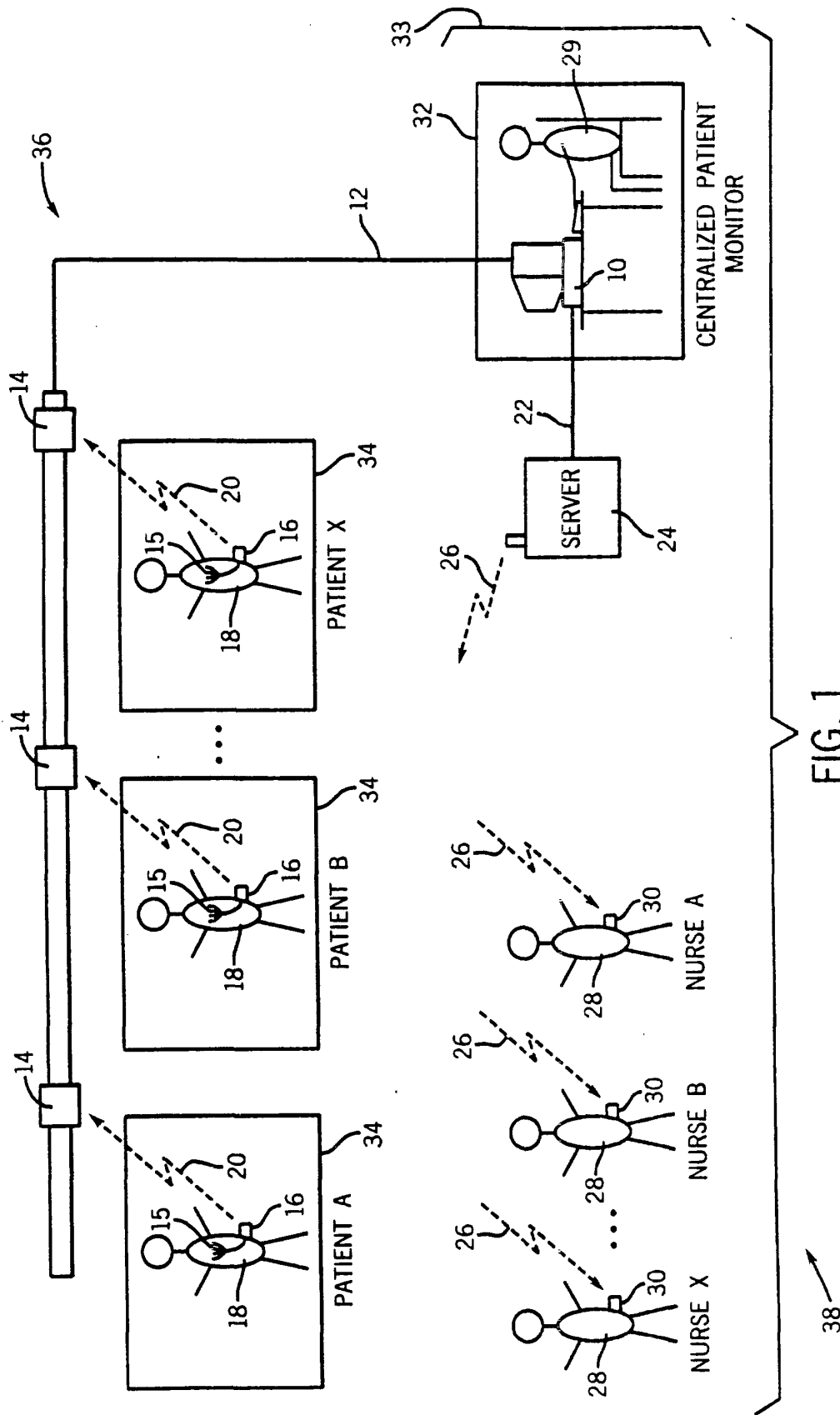


FIG. 1
PRIOR ART

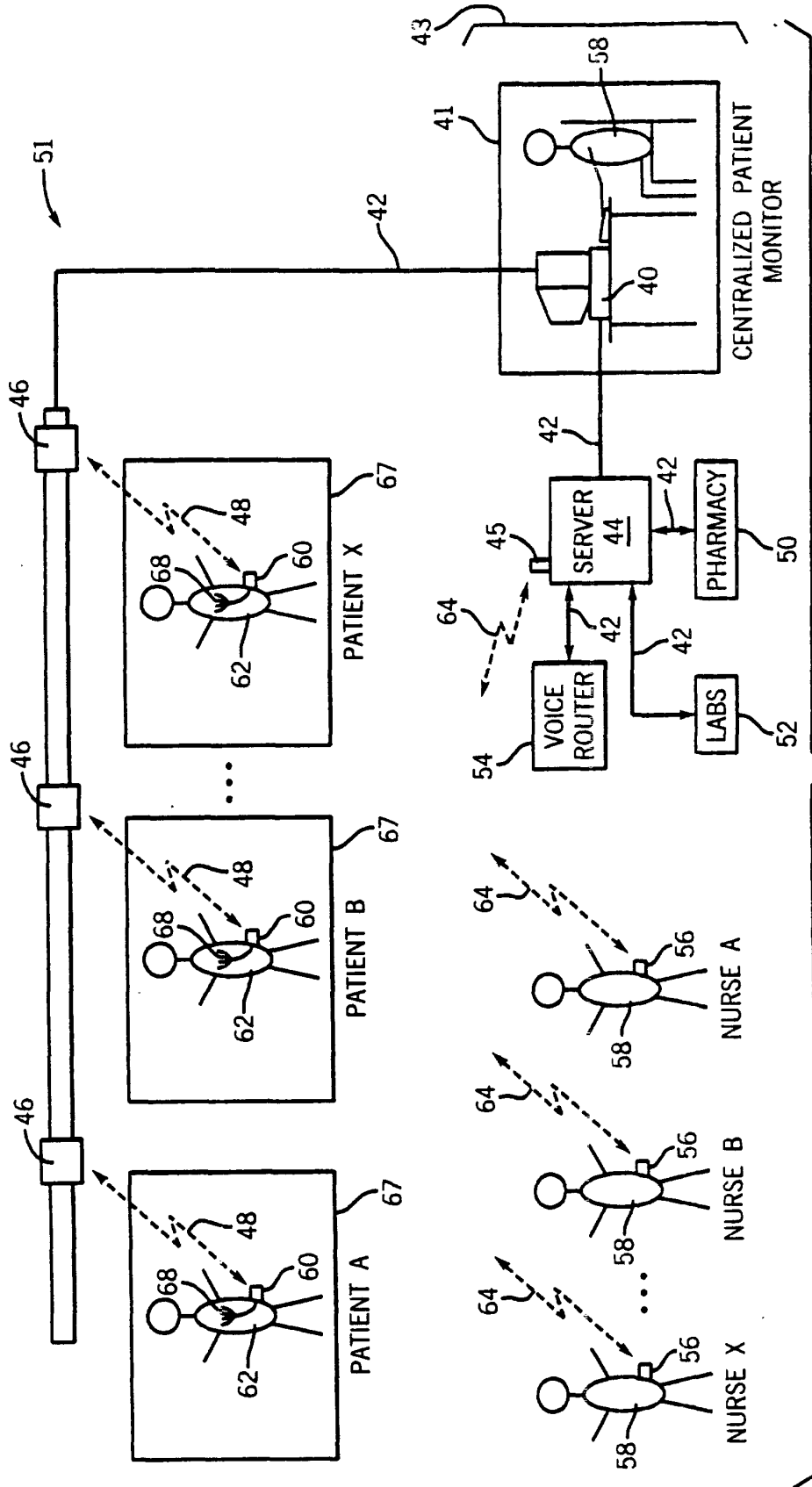


FIG. 2

39

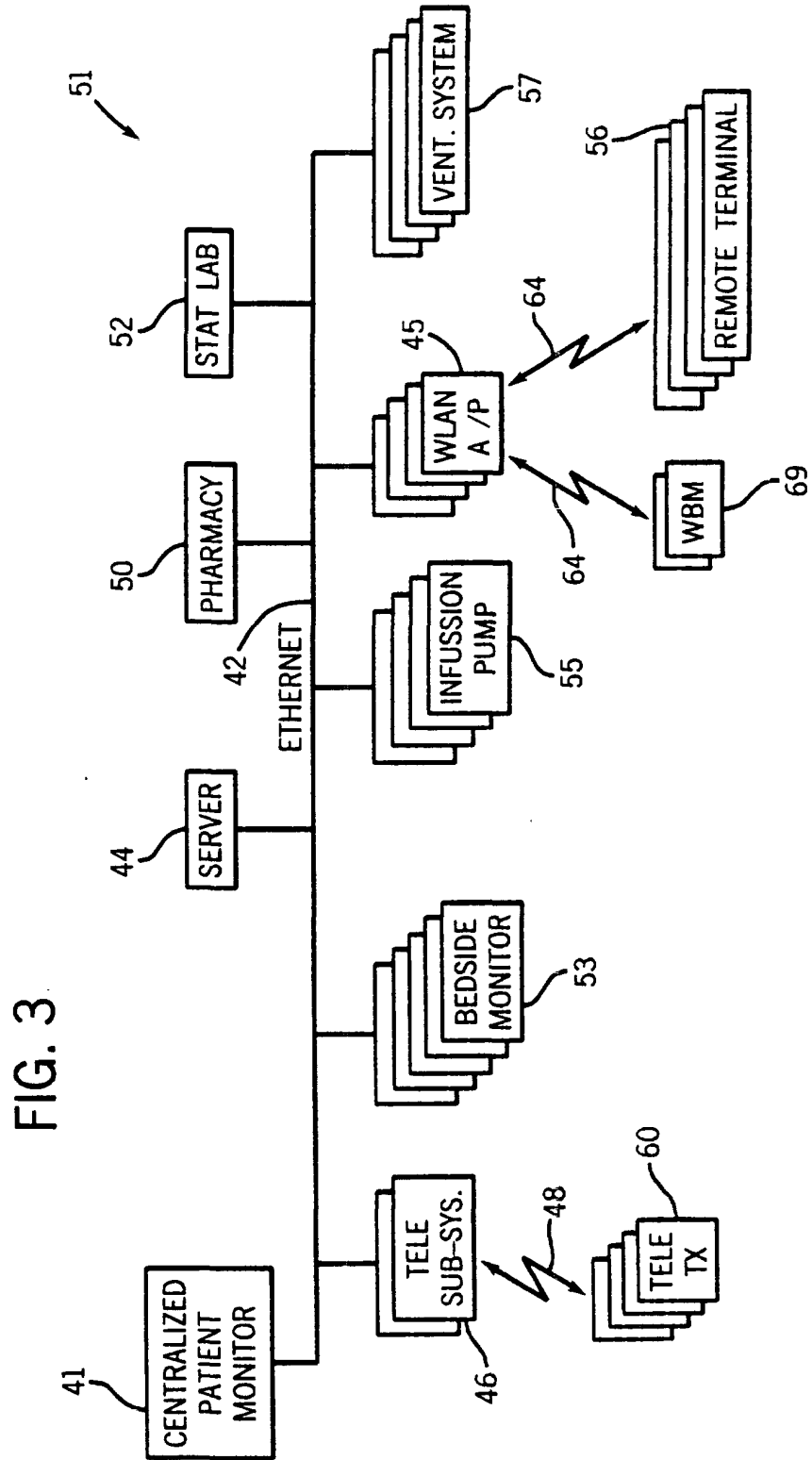
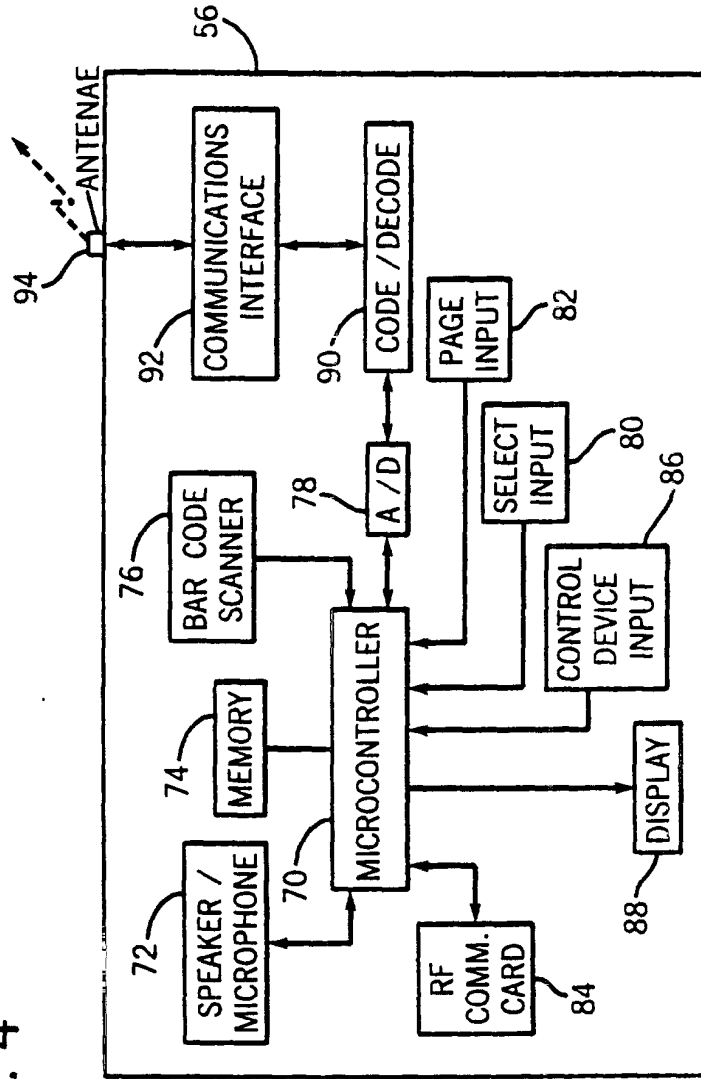


FIG. 4



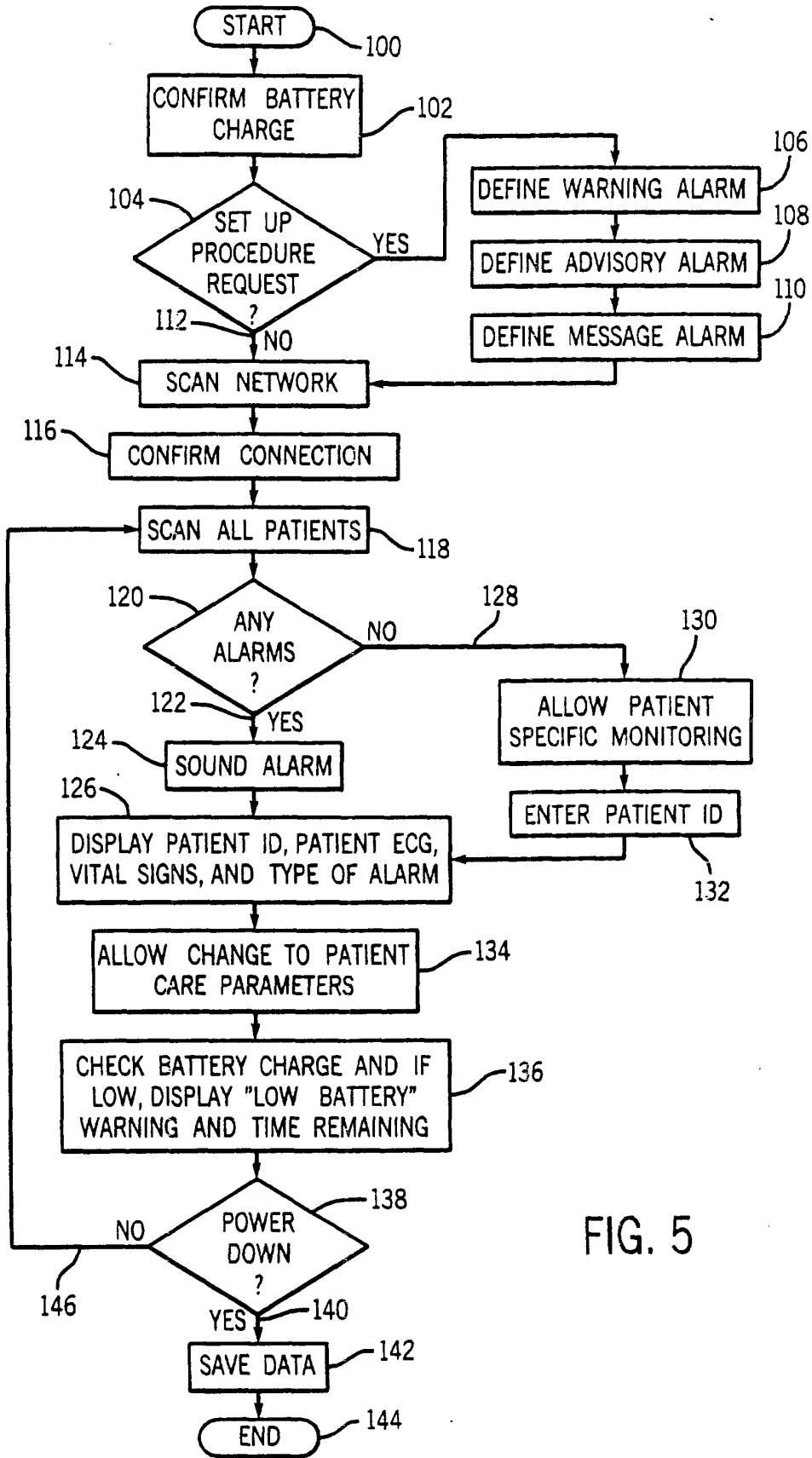


FIG. 5



DOCUMENTS CONSIDERED TO BE RELEVANT			
Category	Citation of document with indication, where appropriate, of relevant passages	Relevant to claim	CLASSIFICATION OF THE APPLICATION (Int.Cl.7)
X	US 5 687 717 A (ALDRICH ANTHONY J ET AL) 18 November 1997 (1997-11-18) * column 3, line 18 - line 41 * * column 5, line 16 - line 49 * * column 5, line 61 - line 67 *	1-5,7-10	A61B5/00
Y	* column 11, line 39 - line 53 * * column 12, line 47 - line 49 *	6	
Y	US 4 916 441 A (GOMBRICH PETER P) 10 April 1990 (1990-04-10) * column 4, line 38 - line 50 * * column 5, line 34 - line 50 * * column 6, line 23 - line 35 * * column 6, line 59 - line 65 * * column 10, line 38 - column 11, line 27 *	6	
A	* column 13, line 5 - line 7 *	1,2,4,7-10	
X	US 6 057 758 A (DEMPSEY MICHAEL K ET AL) 2 May 2000 (2000-05-02) * column 2, line 21 - line 24 * * column 5, line 39 - line 49 * * column 7, line 19 - line 33 * * column 7, line 48 - line 62 * * column 7, line 63 - column 8, line 7 * * column 9, line 37 - line 43 *	10	
A		1-4,6-9	TECHNICAL FIELDS SEARCHED (Int.Cl.7) A61B
The present search report has been drawn up for all claims			
Place of search THE HAGUE		Date of completion of the search 22 January 2002	Examiner Knüpling, M
CATEGORY OF CITED DOCUMENTS X : particularly relevant if taken alone Y : particularly relevant if combined with another document of the same category A : technological background O : non-written disclosure P : intermediate document		T : theory or principle underlying the invention E : earlier patent document, but published on, or after the filing date D : document cited in the application L : document cited for other reasons & : member of the same patent family, corresponding document	

EPO FORM 1503 03 92 (P04G01)

**ANNEX TO THE EUROPEAN SEARCH REPORT
ON EUROPEAN PATENT APPLICATION NO.**

EP 01 30 8591

This annex lists the patent family members relating to the patent documents cited in the above-mentioned European search report. The members are as contained in the European Patent Office EDP file on The European Patent Office is in no way liable for these particulars which are merely given for the purpose of information.

22-01-2002

Patent document cited in search report	Publication date	Patent family member(s)	Publication date
US 5687717 A	18-11-1997	NONE	
US 4916441 A	10-04-1990	NONE	
US 6057758 A	02-05-2000	NONE	

EPO FORM P0459

For more details about this annex : see Official Journal of the European Patent Office, No. 12/82

专利名称(译)	移动临床信息系统		
公开(公告)号	EP1197178A1	公开(公告)日	2002-04-17
申请号	EP2001308591	申请日	2001-10-08
[标]申请(专利权)人(译)	GE医疗系统信息技术公司		
申请(专利权)人(译)	GE医疗系统信息技术股份有限公司.		
当前申请(专利权)人(译)	GE医疗系统信息技术股份有限公司.		
[标]发明人	BRINSFIELD JAMES W HUTCHINSON GEORGE M		
发明人	BRINSFIELD, JAMES W. HUTCHINSON, GEORGE M.		
IPC分类号	A61B5/00		
CPC分类号	A61B5/002 G06F19/3418 G06Q50/24 G16H20/17 G16H20/40 G16H40/67		
优先权	09/689374 2000-10-12 US		
其他公开文献	EP1197178B1		
外部链接	Espacenet		

摘要(译)

公开了一种结合到移动临床信息管理系统 (44) 中的无线双向便携式患者监测器 (56)。便携式患者监测器 (56) 包括通信接口 (92)，用于从医疗机构 (39) 内的无线局域网 (WLAN) 接收患者数据 (48)，并根据需要向无线传输护理参数 (64)。网络 (WLAN) 作为回应。便携式患者监测器 (56) 包括连接到通信接口 (92) 的处理器 (70)，以处理 (98) 患者数据 (48) 和护理参数 (64)。显示器 (88) 连接到处理器 (70)，以将处理后的患者数据显示给医疗保健提供者 (58)。监视器 (56) 包括连接到处理器 (70) 的输入设备 (86)，以允许医疗保健提供者 (58) 改变护理参数 (64)。便携式患者监测器 (56) 还被配置为允许医疗保健提供者 (58) 上的无线传输延长时间。移动临床信息管理系统 (41) 包括多个床边患者监视器以连接到患者 (62) 并发送患者数据 (48)。系统 (41) 还包括耦合到床边患者监视器和便携式患者监视器 (56) 的无线网络，以提高医疗机构中的医疗保健服务的效率。(39)。

