



(12) **EUROPEAN PATENT APPLICATION**

(43) Date of publication: **03.07.2002 Bulletin 2002/27** (51) Int Cl.⁷: **A61B 5/04, A61B 5/0452**

(21) Application number: **01310515.0**

(22) Date of filing: **17.12.2001**

(84) Designated Contracting States:
**AT BE CH CY DE DK ES FI FR GB GR IE IT LI LU
MC NL PT SE TR**
Designated Extension States:
AL LT LV MK RO SI

(72) Inventor: **Rowlandson, G. Ian**
Milwaukee, Wisconsin 53217 (US)

(74) Representative: **Goode, Ian Roy**
GE LONDON PATENT OPERATION,
Essex House,
12/13 Essex Street
London WC2R 3AA (GB)

(30) Priority: **29.12.2000 US 751024**

(71) Applicant: **GE Medical Systems Information
Technologies, Inc.**
Milwaukee, Wisconsin 53223-3293 (US)

(54) **System and method for detecting new left branch bundle block for accelerating treatment of acute myocardial infarction**

(57) A system and a method for automatically detecting a new left bundle branch block (LBBB) in an ECG series (4) and then issuing an alert for the purpose of accelerating treatment for acute myocardial infarction. A serial comparison program is used to compare each current ECG with a previous ECG for the same patient. Diagnostic statements, measurements and waveforms are compared and based on the comparisons, the system is able to automatically determine that the patient has a new LBBB. The system then automatically determines whether the patient belongs to the category of pa-

tients having a high probability of acute myocardial infarction. If acute myocardial infarction is suspected, the system generates a diagnostic statement stating that the new left bundle branch block may be due to acute myocardial infarction. The current ECG exhibiting a new LBBB is then identified with a special tag and sent to a central database server (2). The special tag enables the central database server to perform special routing of that record, e.g., via facsimile (10) or digital pager (6), to alert on-call medical personnel to the need for immediate treatment.

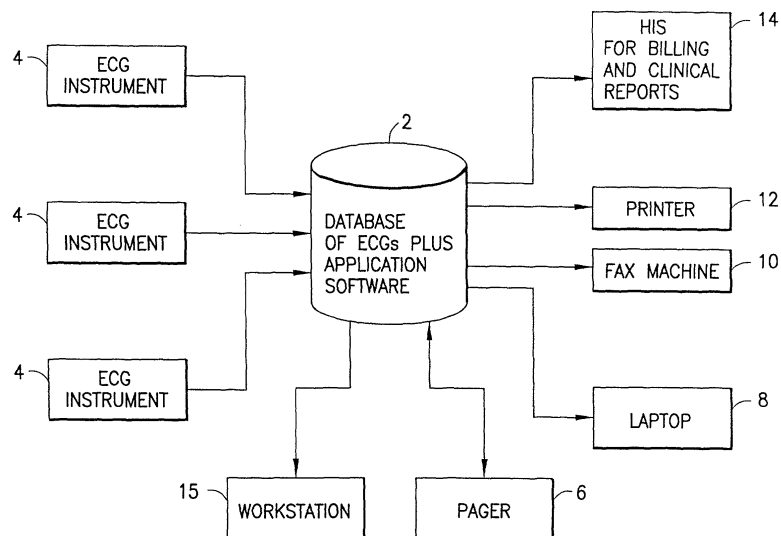


FIG. 1

Description

[0001] This invention relates to the acquisition, analysis and routing electrocardiograms (ECGs) and other physiological data. In particular, the invention relates to automated monitoring of acquired ECGs to detect characteristics indicating a specific cardiovascular condition requiring accelerated treatment.

[0002] In hospitals or other health-care settings, it is frequently necessary to observe critical physiological conditions of a patient, including cardiovascular conditions. Cardiovascular condition data is obtained from sensors applied to a patient, or by imaging and sensing devices. Further, cardiovascular data may be data reported by a cardiologist based on review of a patient or a patient's monitor or image data. Hospitals or health-care centers often have hundreds or even thousands of sensor and metering devices and hundreds or even thousands of cardiac patients that require monitoring periodically over a lifetime. This data may be stored in a database for archival functions and later retrieval.

[0003] A known ECG management system, the MUSE® (Marquette Universal System for Electrocardiography) system of GE Marquette Medical Systems, Inc., is a software-based product that runs on off-the-shelf hardware. In particular, this ECG management system comprises a database of ECGs plus applications software. The MUSE® system receives ECG data from a multiplicity of instruments via a plurality of networks, analyzes that ECG data using various programs such as a serial comparison program, generates reports containing the results of the analysis, and then routes those reports to various systems and peripheral devices. In particular, the MUSE® system has automatic report routing which can send reports to multiple devices, including a facsimile machine as well as a digital pager.

[0004] In the known system, each ECG received by the MUSE® system has been analyzed by the instrument which acquired the ECG. Each instrument incorporates ECG analysis programs such as 12SL® from GE Marquette Medical Systems, Inc., which is a computer program for analyzing simultaneously acquired 12-lead ECGs. The 12SL® program makes precise measurements of recorded cardiac signals, and then provides an interpretation of the ECG waveforms using ECG interpretation criteria for both rhythm and morphology. This generates diagnostic statements. The ECG information stored by MUSE® system contains waveforms, measurements and diagnostic statement. The serial comparison program uses all of these. It can also re-measure the waveforms and recalculate measurements and criteria. The serial comparison program can do this on both the current and previous ECG.

[0005] A program's accuracy is directly dependent upon the quality of the signal it acquires. In 1979, Marquette introduced an electrocardiograph that simultaneously acquired all of the leads from the 12-lead electrocardiogram. Prior to this time, all commercially available

electrocardiographs could only acquire 3 leads at a time. Simultaneous recording was adopted so that the computer could use all signals from all 12 leads to properly detect and classify each QRS complex. The program also applies digital filters which remove power line noise and baseline sway.

[0006] Computer measurement of features within the QRS complex is very susceptible to artifact. In addition to filtering, there is another method of eliminating noise from the QRS complex: signal averaging. Instead of analyzing a single QRS complex, the Marquette 12SL® program generates a median complex. That is, it aligns in time, all of the QRS complexes of the same shape; it then generates a representative complex from the median voltages that are found at each successive sample time. This is more complicated than an average, but the method results in a cleaner signal since it disregards outliers.

[0007] All ECG computer programs are composed of two parts: one which measures the waveforms, the other which does the interpretation based on these measurements. The main task of the measurement section is to find the location of the major reference points (that is, the onsets and offsets of the P, QRS and T complexes). Consistent with the signal processing portion of the 12SL® program, the onsets and offsets of the major waves are delineated by an analysis of the slopes in all 12 simultaneous leads. That is, QRS duration is measured from the earliest onset in any lead to the latest deflection in any lead. Similarly, the QT interval is measured from the earliest detection of depolarization in any lead to the latest detection of re-polarization in any lead.

[0008] After the onsets and offsets of the P, QRS, and T complexes have been demarcated, the waves within each complex are measured according to published standards. These amplitudes and durations result in a measurement matrix containing more than 1600 values. This is then passed to the criteria portion of the 12SL® program so that it can generate an interpretation, including diagnostic statements referenced via a statement library.

[0009] The MUSE® system stores ECGs in such a fashion that they can be re-analyzed by the 12SL® program. That is, the fidelity of the stored ECG is such that it can be used as if it were freshly acquired from the patient.

[0010] Computerized electrocardiography has resulted in two practical advantages for the overreading physician. First, the computer serves as an additional expert opinion. Second, it is possible for cardiologists to overread computer-analyzed tracings in half the time required for conventional, non-analyzed ECGs. Therefore, the computer is not only used to efficiently record, store, transmit, and present the ECG - it is also used to assist the physician in overreading the ECG.

[0011] Marquette's serial comparison program helps reduce the number of unnecessary admissions to coronary care units (CCUs) by speeding the evaluation of

"questionable" or "borderline" ECGs. The program, which runs on the MUSE® system, compares a patient's current ECG with previous ECGs. The technique of comparing the current ECG to the previous ECG of a patient is termed serial electrocardiography. Serial electrocardiography is used to identify changes in the patient's electrocardiogram. The Marquette serial comparison program was developed to use statements, ECG measurements and waveform comparison techniques to maximize performance and accuracy in the detection of clinically significant changes in rhythm, P, QRS, ST and T waves. The Marquette MUSE® system, which stores ECGs with physician-edited interpretations to both individual ECGs and serial comparisons, in tandem with the serial comparison program, allows for accurate and expedient processing of a patient's ECG data. It completes the comparison within minutes, and returns the report while the patient is still in the emergency room.

[0012] Serial comparison saves time and money by promptly providing diagnostically useful information that helps reduce unneeded CCU admissions.

[0013] Serial comparison can provide a quick evaluation of many difficult-to-interpret ECG features, including the borderline Q waves of possible myocardial infarction, the mild ST segment elevation of possible myocardial injury and moderate ST segment elevation with Q-wave evidence of myocardial infarction, which may be persistent change resulting from old infarction. The precise, computerized comparison helps the physician to determine whether the patient has experienced an infarction, whether it is old or new, or whether the ECG reflects a variation that is normal for that patient.

[0014] Serial comparison is extremely quick and easy to use. The ECG in question is transmitted from the acquiring electrocardiograph to the MUSE® system using an automatic request for serial comparison of the patient's current and past ECGs. (The MUSE® system automatically stores a patient's successive ECGs.) Within minutes, the physician receives a serial comparison report, including previous ECGs, so that the physician can make his/her own visual comparisons.

[0015] It is normal to have significant day-to-day variation in the ECG waveform, and an ECG management system must be able to discriminate between normal and clinically significant variations. Certain clinical conditions can only be reliably detected via a serial analysis. The serial comparison program can detect a new left bundle branch block (LBBB) in an ECG series. It does this based on the ECG interpretation as well as direct comparison of the waveforms.

[0016] Acute myocardial infarction (a heart attack) is the leading cause of death in the United States of America. Acute myocardial infarction is often detected through serial change. The pertinent clinical changes in the ECG waveform include a small change in the so-called ST segment and a small new Q wave. These changes in the ECG waveform are typical of the evolu-

tion of acute myocardial infarction and must be detected in the face of normal variation.

[0017] Treatment via thrombolytic therapy (involving dissolution of a thrombus in an artery or the heart) is now indicated if a patient has a new LBBB in the presence of symptoms associated with acute myocardial infarction. The outcome for a patient with this clinical scenario is excellent, even superior to an acute myocardial infarction that only exhibits ST elevation. But time-to-treatment is critical during acute myocardial infarction. This cardiovascular change must be quickly identified and treatment must be immediately applied. There is little benefit in applying treatment when the elapsed time from the onset of chest pain to treatment exceeds 6 hours.

[0018] There is a need for a system and a method for providing early detection of a new LBBB in an ECG waveform in the presence of symptoms associated with acute myocardial infarction.

[0019] The present invention is directed to a system and a method for automatically detecting a new left bundle branch block (LBBB) in an ECG series and then issuing an alert for the purpose of accelerating treatment for acute myocardial infarction.

[0020] In accordance with the preferred embodiments, a serial comparison program is used to compare each current ECG record with a previous ECG record for the same patient. First, the diagnostic statements for the two ECG records are compared. If both ECG records exhibit LBBB, then no change is stated, i.e., the detected LBBB is not new. However, if only the current ECG record includes a diagnostic statement indicating LBBB, then the algorithm proceeds to the next step. In this next step, measurements related to LBBB criteria are compared. If changes of a predetermined percentage are not present, then no change is stated. If changes of a predetermined percentage are present, then the algorithm compares the ECG waveforms for the current and previous ECG records using cross correlation. If the change in the current waveform is less than a predetermined percentage, e.g., less than 25%, then no change is stated. Conversely, if the change in the current ECG waveform, compared to the previous ECG waveform, is greater than 25%, then a change will be stated.

[0021] The system then automatically determines whether the patient belongs to the category comprising patients identified to have a high probability of acute myocardial infarction. If acute myocardial infarction is suspected, the system generates a diagnostic statement stating that the new left bundle branch block may be due to acute myocardial infarction. The current ECG record exhibiting a new LBBB is then identified with a special tag and sent to a central database server. The special tag enables the central database server to perform special routing of that record, e.g., via facsimile or digital pager, to alert on-call medical personnel to the need for immediate treatment.

[0022] In accordance with one preferred embodiment

of the invention, a method for monitoring a patient for the presence of a new left bundle branch block comprises the steps of acquiring current and previous electrocardiogram records at different times for a particular patient; determining that the patient has a new left bundle branch block based on an automated comparison of data in the current and previous electrocardiogram records; automatically detecting that the patient belongs to a category of patients having a high probability of acute myocardial infarction; and automatically generating a diagnostic statement stating that the new left bundle branch block may be due to acute myocardial infarction.

[0023] In accordance with a further preferred embodiment of the invention, a method for monitoring a patient for the presence of a new left bundle branch block comprises the steps of acquiring current and previous electrocardiogram records at different times for a particular patient; determining that the patient has a new left bundle branch block based on an automated comparison of data in the current and previous electrocardiogram records; automatically detecting that the patient belongs to a category of patients having a high probability of acute myocardial infarction; and automatically tagging said current electrocardiogram record with a special tag.

[0024] In accordance with another preferred embodiment of the invention, a system for monitoring a patient for the presence of a new left bundle branch block comprises: memory for storing a previous electrocardiogram record; an instrument for acquiring a current electrocardiogram record at a time which is later than the time when the previous electrocardiogram record was acquired; and a computer programmed to perform the following steps: determining whether a new left bundle branch block is present in a patient based on a comparison of data in the current and previous electrocardiogram records; detecting whether the patient belongs to a category comprising patients having a high probability of acute myocardial infarction, this detecting step being performed if a determination has been made that a new left bundle branch block is present; and generating a diagnostic statement stating that the new left bundle branch block may be due to acute myocardial infarction, this generating step being performed if patient is in the aforementioned high-risk category.

[0025] In accordance with a further preferred embodiment of the invention, a system for monitoring a patient for the presence of a new left bundle branch block comprises: memory for storing a previous electrocardiogram record; an instrument for acquiring a current electrocardiogram record at a time which is later than the time when the previous electrocardiogram record was acquired; and a computer programmed to perform the following steps: determining whether a new left bundle branch block is present in a patient based on a comparison of data in the current and previous electrocardiogram records; detecting whether the patient belongs to a category comprising patients having a high probability

of acute myocardial infarction, this detecting step being performed if a determination has been made that a new left bundle branch block is present; and tagging the current electrocardiogram record with a special tag, this tagging step being performed if patient is in the aforementioned high-risk category.

[0026] In accordance with another preferred embodiment of the invention, a system for monitoring the condition of patients in a coronary care unit, emergency department or chest pain clinic comprises a local area network, a plurality of bedside monitors connected to the local area network, a computer connected to the bedside monitors via the local area network, and a central database containing electrocardiogram records which are accessible to the computer. Each of the bedside monitors comprises a plurality of leads coupled to a respective patient. The computer is programmed to perform the following steps: receiving from the central database a previous electrocardiogram record for a patient in the coronary care unit, emergency department or chest pain clinic; receiving a current electrocardiogram record for that same patient from one of the bedside monitors via the local area network; determining that a new left bundle branch block is present in the patient based on a comparison of data in the current and previous electrocardiogram records; and generating an alert that the new left bundle branch block may be due to acute myocardial infarction.

[0027] In accordance with another preferred embodiment of the invention, a method of treating a patient suspected to have acute myocardial infarction, comprising the following steps: admitting a patient to a coronary care unit, emergency department or chest pain clinic; monitoring that patient to acquire a current electrocardiogram record; receiving from a central database a previous electrocardiogram record for that patient; determining that the patient has new left bundle branch block based on a comparison of data in the current and previous electrocardiogram records; generating an alert that the new left bundle branch block may be due to acute myocardial infarction; and treating the patient in response to the alert.

[0028] Embodiments of the invention will now be described in greater detail, by way of example, with reference to the accompanying drawings, in which:

FIG. 1 is a block diagram showing a cardiovascular information system for acquiring, analyzing and routings ECGs.

FIG. 2 is a flowchart showing a step performed by a serial comparison program incorporated in the cardiovascular information system shown in FIG. 1.

FIGS. 3 and 4 are graphs showing conventional ECG nomenclature.

FIG. 5 is a schematic showing a typical sequence

of ECG waveforms during evolution of an acute myocardial infarction.

FIG. 6 is a flowchart showing the serial comparison process.

FIG. 7 is a schematic comparing a normal ECG waveform with an LBBB ECG waveform.

FIG. 8 is a flowchart showing a serial comparison process in accordance with the preferred embodiment of the invention.

FIG. 9 is a block diagram showing a cardiovascular information network having a satellite system for detecting changes in ECGs acquired by bedside patient monitors in accordance with the preferred embodiment of the invention.

[0029] Referring to FIG. 1, the MUSE® ECG management system 2 comprises a database of ECGs and applications software. The software is executed by a conventional server which communicates with a TCP/IP network. The ECGs are stored in a suitable storage medium which is accessible by the server. Any other suitable computer hardware may be used. The MUSE® system 2 receives ECG data from a multiplicity of instruments 4 via a plurality of networks, analyzes that ECG data using various programs such as the serial comparison program, generates reports containing the results of the analysis, and then routes those reports to various systems and peripheral devices. In particular, the MUSE® system has automatic report routing which can send reports to a digital pager 6, a laptop computer 8 (via e-mail), a fax machine 10, a printer 12, a hospital information system 14 for billing and clinical reports, a workstation 15, and other servers on the local area network to which the MUSE® system is connected.

[0030] The applications software of the MUSE® system 2 comprises the previously described serial comparison program 18 (see FIG. 2). The current ECG 16 for a particular patient is acquired by the MUSE® system 2. This newly acquired ECG launches the serial comparison program 18. The serial comparison program 18 retrieves the record for the previous ECG 20 for the particular patient and renders it for comparison with the record for the current ECG for that same patient.

[0031] The shape of a typical ECG waveform is shown in FIG. 3. The standard nomenclature identifies a P wave, a QRS complex, a T wave, and a U wave. The interval from the onset of the QRS complex to the end of the T wave is referred to as the QT interval. In FIG. 3, the ST segment is shown at the same height as the isoelectric baseline preceding the onset of the QRS complex. In contrast, FIG. 4 shows the ST segment elevated relative to the isoelectric baseline, in this example, by 5 mm. The serial comparison program detects any change in the ST segment elevation, as well as the

appearance of a new Q wave. These are not normal variations, but rather are treated as indicative of possible acute myocardial infarction (AMI). The evolution of AMI is depicted in FIG. 5, with a small change in ST segment elevation being indicated by reference numeral 22 and a small new Q wave being indicated by reference numeral 24.

[0032] The algorithm performed by the serial comparison program is shown in FIG. 6. In step 26, the dominant rhythms (sinus, ventricular, etc.) are compared using diagnostic statements contained in the current and previous electrocardiogram records. Rhythm modifiers are compared only if the dominant rhythm has not changed. The diagnostic statements are used to detect major changes (step 28) in rhythm that would result in a change in the QRS complex. If a major (i.e., clinically significant) change in rhythm has occurred, the change is stated (step 40) and then the computer exits the serial comparison program (step 42). If no major change in rhythm has occurred, then the QRS complexes for the respective electrocardiograms are compared using statements, measurements and waveform analysis (step 30) for the purpose of detecting conduction and infarction. Changes in the axis and voltage (amplitude) are also detected. Based on the comparison, the serial comparison program determines a change indicative of infarction has occurred (step 32). If "Yes", then the change is stated (step 40). If "No", the standard ST/T analysis using waveforms is performed (step 34). The ST/T analysis looks for the presence/absence of acute myocardial infarction or ischemia. For example, the ST/T analysis looks for an increase in elevation of the ST segment in the waveform for the current electrocardiogram. If the criteria for detection of infarction are met, the change is stated (step 40). If the criteria for detection of infarction are not met, then a statement that no change has occurred is generated in the serial comparison report.

[0033] An example of a waveform acquired from the V5 lead and having a normal QRS complex is depicted on the left-hand side of FIG. 7. An example of a waveform acquired from the V5 lead and having a QRS complex typical for a left bundle branch block is depicted on the right-hand side of FIG. 7.

[0034] In accordance with the preferred embodiments of the invention, the current ECG indicates that a patient is suspected of or has a high probability of acute myocardial infarction. The system can be configured such that all ECGs acquired from a certain location (such as an emergency department chest pain clinic) can be treated as "suspect acute myocardial infarction". Alternatively, patient symptoms or the reason for testing can be directly entered into the ECG record at the electrocardiograph cart. The serial comparison program then senses the "suspect acute myocardial infarction" status of the current ECG record and implements new code within the QRS analysis module.

[0035] The QRS analysis module of the serial com-

parison program is modified as shown in FIG. 8. In accordance with the preferred embodiments, each current ECG record is compared with a previous ECG record for the same patient (step 48). First, the diagnostic statements for the two ECG records are compared. If both ECGs exhibit LBBB, then no change is stated in the serial comparison report (step 62), i.e., the detected LBBB is not new. However, if only the current ECG record includes a diagnostic statement indicating LBBB, then the algorithm proceeds to the next step. In step 50, measurements related to LBBB criteria are compared. If changes of a predetermined percentage are not present, then no change is stated (step 62). If changes of a predetermined percentage are present, then the algorithm compares the ECG waveforms using cross correlation (step 52). If the change in the current waveform is less than a predetermined percentage, e.g., less than 25%, then no change is stated (step 62). Conversely, if the change in the current ECG waveform, compared to the previous ECG waveform, is greater than 25%, then a determination is made (step 54) that the change will be stated in the serial comparison report.

[0036] The system then automatically determines whether the patient belongs to the category comprising patients identified to have a high probability of acute myocardial infarction (step 56). If acute myocardial infarction is not suspected, the system generates a diagnostic statement stating the change (step 64) in the serial comparison report. Alternatively, if acute myocardial infarction is suspected, the system generates a diagnostic statement (step 58) stating that the new left bundle branch block may be due to acute myocardial infarction. The diagnostic statement may further instruct the reader to "Rule out acute MI. Consider acute re-perfusion therapy". The current ECG record exhibiting a new LBBB is then identified with a special tag (step 60) and sent to a central database server of the MUSE® system. The MUSE® system then uses this special tag to perform special routing of the current ECG record, e.g., via facsimile or digital pager, to alert on-call medical personnel to the need for immediate treatment.

[0037] FIG. 9 generally depicts one possible configuration for an integrated system installed in a hospital or other health care facility. The MUSE® ECG management system 2 communicates with other departments and stations in the hospital via a TCP/IP network 78. For the purpose of illustration, FIG. 9 shows a cardiac catheterization lab 66, a physician overread workstation 68, a stress lab 70, a heart station 72, and a Holter lab 74, all of which are well known in the art. It is also known in the art to provide a satellite system 76 which communicates with the MUSE® system 2 via the TCP/IP network 78. The satellite system 76 typically comprises a computer programmed to receive and analyze ECG records transmitted from a plurality of bedside monitors 80 via a real-time local area network 82. The bedside monitors 80 continuously monitor patients. The patients are typically located in a coronary care unit, emergency depart-

ment or chest pain clinic. The satellite system 76 acquires 12-lead ECGs every minute from the monitors and trends the results. If measurements change above a predetermined threshold, an alert is generated. The acquired ECG records are sent by the satellite system 76 to the MUSE® system via the network 78. The MUSE® system also receives a final report of trends from the satellite system. The MUSE® system generates reports and sends those reports to other devices and systems. Conventional routing software uses several identifiers for routing reports, such as location, report status, and normal/abnormal.

[0038] In accordance with the preferred embodiment of the invention, the computer of the satellite system 76 is programmed to perform serial analysis on the ECG records continuously acquired from the bedside monitors 80. The previous ECG records for monitored patients are retrieved from the central ECG database of the MUSE® system 2.

[0039] In accordance with one preferred embodiment, the computer of the satellite system is programmed to request and receive a previous electrocardiogram record for each patient from the central database; receive the current electrocardiogram record for each patient from a respective bedside monitors; and determine whether a new left bundle branch block is present in each patient based on a comparison of data in the current and previous electrocardiogram records. The details of the determining step are shown in FIG. 8 and will not be described again. If it is determined that a new LBBB is present for any patient, the computer generates a diagnostic statement or an alert indicating that that the new left bundle branch block may be due to acute myocardial infarction. In response to the alert, expedited treatment for acute myocardial infarction can be provided.

[0040] In accordance with a further aspect of the invention, a specific routing tag is added to the current ECG record based on the automated diagnosis of a new LBBB. The satellite system 76 then sends the current ECG record to the MUSE® system via the network 78. The special routing tag in the transmitted current ECG record enables the MUSE® system to perform special routing of the current ECG record.

[0041] As used in the claims, the terms "current" and "previous" are used to refer to electrocardiogram records which were acquired at different times, the "current" electrocardiogram record being acquired at a time subsequent to the time when the "previous" electrocardiogram record was acquired.

[0042] For the sake of good order, various features of the invention are set out in the following clauses:-

1. A method for monitoring a patient for the presence of a new left bundle branch block, comprising the steps of:

acquiring current and previous electrocardio-

gram records at different times for a particular patient;

determining that a new left bundle branch block is present in said particular patient based on an automated comparison of data in said current and previous electrocardiogram records;

automatically detecting that said particular patient belongs to a category of patients comprising patients identified to have a high probability of acute myocardial infarction; and

automatically generating a diagnostic statement stating that the new left bundle branch block may be due to acute myocardial infarction.

2. The method as recited in clause 1, further comprising the step of automatically tagging said current electrocardiogram record with a special tag.

3. The method as recited in clause 1, wherein said tagging step is performed by a satellite system connected to a network, further comprising the step of sending said specially tagged current electrocardiogram record to a central database via said network.

4. The method as recited in clause 1, wherein said automated comparison comprises the steps of determining that said current electrocardiogram record comprises a diagnostic statement indicating the presence of a left bundle branch block and determining that said previous electrocardiogram record does not comprise a diagnostic statement indicating the presence of a left bundle branch block.

5. The method as recited in clause 4, wherein said automated comparison further comprises the steps of:

computing a percentage change in a measurement relating to a left bundle branch block criterion in said current and previous electrocardiogram records; and

determining that said percentage change exceeds a first predetermined threshold.

6. The method as recited in clause 5, wherein said automated comparison further comprises the steps of:

computing a correlation value for respective waveforms in said current and previous electrocardiogram records using cross correlation; and

determining that said correlation value exceeds a second predetermined threshold.

7. A method for monitoring a patient for the presence of a new left bundle branch block, comprising the steps of:

acquiring current and previous electrocardiogram records at different times for a particular patient;

determining that a new left bundle branch block is present in said particular patient based on an automated comparison of data in said current and previous electrocardiogram records;

automatically detecting that said particular patient belongs to a category of patients comprising patients identified to have a high probability of acute myocardial infarction; and

automatically tagging said current electrocardiogram record with a special tag.

8. The method as recited in clause 7, wherein said tagging step is performed by a satellite system connected to a network, further comprising the step of sending said specially tagged current electrocardiogram record to a central database via said network.

9. A system for monitoring a patient for the presence of a new left bundle branch block, comprising:

means (80) for acquiring current and previous electro-cardiogram records at different times for a particular patient;

means (76) for determining whether a new left bundle branch block is present in said particular patient based on a comparison of data in said current and previous electrocardiogram records;

means (76) for detecting whether said particular patient belongs to a category of patients comprising patients identified to have a high probability of acute myocardial infarction, said detecting means being operative if said determining means have determined that a new left bundle branch block is present; and

means (76) for generating a diagnostic statement stating that the new left bundle branch block may be due to acute myocardial infarction, said generating means being operative if said detecting means have detected that said particular patient belongs to said category.

10. The system as recited in clause 9, further comprising means (76) for tagging said current electrocardiogram record with a special tag if said detecting means have detected that said particular patient belongs to said category.

11. The system as recited in clause 10, further comprising a network (78) and a central database (2) connected to said network, wherein said determining means, said detecting means, said generating means and said tagging means comprise programming executed by a computer (76) connected to said network, said programming further comprising a routine for sending said specially tagged current electrocardiogram record from said computer to said central database via said network.

12. The system as recited in clause 9, wherein said determining means comprise a computer programmed to determine which of said current and previous electrocardiogram records contain a diagnostic statement indicating the presence of a left bundle branch block.

13. The system as recited in clause 12, wherein said determining means further comprise said computer programmed to perform the following steps if said current electrocardiogram record contained a statement indicating the presence of a left bundle branch block and said previous electrocardiogram record did not contain a statement indicating the presence of a left bundle branch block:

computing a percentage change in a measurement relating to a left bundle branch block criterion in said current and previous electrocardiogram records; and

comparing said percentage change to a first predetermined threshold.

14. The system as recited in clause 13, wherein said determining means further comprise said computer programmed to perform the following steps if said percentage change exceeded said first predetermined threshold:

computing a correlation value for respective waveforms in said current and previous electrocardiogram records using cross correlation; and

comparing said correlation value to a second predetermined threshold.

15. The system as recited in clause 14, wherein said detecting means comprise said computer programmed to detect whether said particular patient

is suspected to have suffered acute myocardial infarction if said correlation value exceeded said second predetermined threshold.

16. The system as recited in clause 9, wherein said detecting means detect that said particular patient belongs to said category by recognizing that said current electrocardiogram was acquired from a hospital unit for patients suspected to have acute myocardial infarction.

17. The system as recited in clause 9, wherein said detecting means detect an indicator included in said current electrocardiogram, said indicator identifying a symptom indicative of suspected acute myocardial infarction.

18. A system for monitoring a patient for the presence of a new left bundle branch block, comprising:

memory (2) for storing a previous electrocardiogram record;

an instrument (80) for acquiring a current electrocardiogram record at a time which is later than the time when said previous electrocardiogram record was acquired; and

a computer (76) programmed to perform the following steps:

determining whether a new left bundle branch block is present in said particular patient based on a comparison of data in said current and previous electrocardiogram records;

detecting whether said particular patient belongs to a category of patients comprising patients identified to have a high probability of acute myocardial infarction, said detecting step being performed if a determination has been made that a new left bundle branch block is present; and

generating a diagnostic statement stating that the new left bundle branch block may be due to acute myocardial infarction, said generating step being performed if membership of said particular patient in said category has been detected.

19. The system as recited in clause 18, wherein said instrument comprises a bedside monitor in a coronary care unit, emergency department or chest pain clinic, further comprising a local area network connecting said computer to said bedside monitor.

20. The system as recited in clause 18, wherein said computer is further programmed to tag said current electrocardiogram record with a special tag if said detecting step has detected that said particular patient belongs to said category.

5

21. The system as recited in clause 20, further comprising a central database (2) and a network (78) connecting said computer to said central database, wherein said computer is further programmed to send said specially tagged current electrocardiogram record to said central database via said network.

10

22. The system as recited in clause 18, wherein said determining step comprises the step of determining which of said current and previous electrocardiogram records contain a diagnostic statement indicating the presence of a left bundle branch block.

15

20

23. The system as recited in clause 22, wherein said determining step further comprises the following steps, which are performed if said current electrocardiogram record contained a statement indicating the presence of a left bundle branch block and said previous electrocardiogram record did not contain a statement indicating the presence of a left bundle branch block:

25

computing a percentage change in a measurement relating to a left bundle branch block criterion in said current and previous electrocardiogram records; and

30

comparing said percentage change to a first predetermined threshold.

35

24. The system as recited in clause 23, wherein said determining step further comprises the following steps, which are performed if said percentage change exceeded said first predetermined threshold:

40

computing a correlation value for respective waveforms in said current and previous electrocardiogram records using cross correlation; and

45

comparing said correlation value to a second predetermined threshold.

50

25. A system for monitoring a patient for the presence of a new left bundle branch block, comprising:

memory (2) for storing a previous electrocardiogram record;

55

an instrument (80) for acquiring a current elec-

tro-cardiogram record at a time which is later than the time when said previous electrocardiogram record was acquired; and

a computer (76) programmed to perform the following steps:

determining whether a new left bundle branch block is present in said particular patient based on a comparison of data in said current and previous electrocardiogram records;

detecting whether said particular patient belongs to a category of patients comprising patients identified to have a high probability of acute myocardial infarction, said detecting step being performed if a determination has been made that a new left bundle branch block is present; and

tagging said current electrocardiogram record with a special tag if said detecting step has detected that said particular patient belongs to said category.

26. The system as recited in clause 25, further comprising a central database (2) and a network (78) connecting said computer to said central database, wherein said computer is further programmed to send said specially tagged current electrocardiogram record to said central database via said network.

27. A system for monitoring the condition of patients in a coronary care unit, emergency department or chest pain clinic, comprising a local area network (82), a plurality of bedside monitors (80) connected to said local area network, a computer (76) connected to said bedside monitors via said local area network, and a central database (2) containing electrocardiogram records which are accessible to said computer, each of said bedside monitors comprising a plurality of leads coupled to a respective patient, and said computer being programmed to perform the following steps:

receiving from said central database a previous electrocardiogram record for a patient in said coronary care unit, emergency department or chest pain clinic;

receiving a current electrocardiogram record for said patient from one of said plurality of bedside monitors via said local area network;

determining that a new left bundle branch block is present in said patient based on a compari-

son of data in said current and previous electrocardiogram records; and

generating an alert that the new left bundle branch block may be due to acute myocardial infarction.

28. A method of treating a patient suspected to have acute myocardial infarction, comprising the following steps:

admitting said patient to a coronary care unit, emergency department or chest pain clinic;

monitoring the patient to acquire a current electrocardiogram record;

receiving from a central database a previous electrocardiogram record for said patient;

determining that a new left bundle branch block is present in said patient based on a comparison of data in said current and previous electrocardiogram records;

generating an alert that the new left bundle branch block may be due to acute myocardial infarction; and

treating said patient in response to said alert.

29. The method as recited in clause 28, wherein said treatment step comprises thrombolytic therapy.

Claims

1. A method for monitoring a patient for the presence of a new left bundle branch block, comprising the steps of:

acquiring current and previous electrocardiogram records at different times for a particular patient;

determining that a new left bundle branch block is present in said particular patient based on an automated comparison of data in said current and previous electrocardiogram records;

automatically detecting that said particular patient belongs to a category of patients comprising patients identified to have a high probability of acute myocardial infarction; and

automatically generating a diagnostic statement stating that the new left bundle branch block may be due to acute myocardial infarction.

tion.

2. The method as recited in claim 1, further comprising the step of automatically tagging said current electrocardiogram record with a special tag.

3. A method for monitoring a patient for the presence of a new left bundle branch block, comprising the steps of:

acquiring current and previous electrocardiogram records at different times for a particular patient;

determining that a new left bundle branch block is present in said particular patient based on an automated comparison of data in said current and previous electrocardiogram records;

automatically detecting that said particular patient belongs to a category of patients comprising patients identified to have a high probability of acute myocardial infarction; and

automatically tagging said current electrocardiogram record with a special tag.

4. A system for monitoring a patient for the presence of a new left bundle branch block, comprising:

means (80) for acquiring current and previous electro-cardiogram records at different times for a particular patient;

means (76) for determining whether a new left bundle branch block is present in said particular patient based on a comparison of data in said current and previous electrocardiogram records;

means (76) for detecting whether said particular patient belongs to a category of patients comprising patients identified to have a high probability of acute myocardial infarction, said detecting means being operative if said determining means have determined that a new left bundle branch block is present; and

means (76) for generating a diagnostic statement stating that the new left bundle branch block may be due to acute myocardial infarction, said generating means being operative if said detecting means have detected that said particular patient belongs to said category.

5. The system as recited in claim 4, further comprising means (76) for tagging said current electrocardiogram record with a special tag if said detecting

means have detected that said particular patient belongs to said category.

6. A system for monitoring a patient for the presence of a new left bundle branch block, comprising:

memory (2) for storing a previous electrocardiogram record;

an instrument (80) for acquiring a current electrocardiogram record at a time which is later than the time when said previous electrocardiogram record was acquired; and

a computer (76) programmed to perform the following steps:

determining whether a new left bundle branch block is present in said particular patient based on a comparison of data in said current and previous electrocardiogram records;

detecting whether said particular patient belongs to a category of patients comprising patients identified to have a high probability of acute myocardial infarction, said detecting step being performed if a determination has been made that a new left bundle branch block is present; and

generating a diagnostic statement stating that the new left bundle branch block may be due to acute myocardial infarction, said generating step being performed if membership of said particular patient in said category has been detected.

7. The system as recited in claim 6, wherein said determining step further comprises the following steps, which are performed if said current electrocardiogram record contained a statement indicating the presence of a left bundle branch block and said previous electrocardiogram record did not contain a statement indicating the presence of a left bundle branch block:

computing a percentage change in a measurement relating to a left bundle branch block criterion in said current and previous electrocardiogram records; and

comparing said percentage change to a first predetermined threshold.

8. A system for monitoring a patient for the presence of a new left bundle branch block, comprising:

memory (2) for storing a previous electrocardiogram record;

an instrument (80) for acquiring a current electrocardiogram record at a time which is later than the time when said previous electrocardiogram record was acquired; and

a computer (76) programmed to perform the following steps:

determining whether a new left bundle branch block is present in said particular patient based on a comparison of data in said current and previous electrocardiogram records;

detecting whether said particular patient belongs to a category of patients comprising patients identified to have a high probability of acute myocardial infarction, said detecting step being performed if a determination has been made that a new left bundle branch block is present; and

tagging said current electrocardiogram record with a special tag if said detecting step has detected that said particular patient belongs to said category.

9. A system for monitoring the condition of patients in a coronary care unit, emergency department or chest pain clinic, comprising a local area network (82), a plurality of bedside monitors (80) connected to said local area network, a computer (76) connected to said bedside monitors via said local area network, and a central database (2) containing electrocardiogram records which are accessible to said computer, each of said bedside monitors comprising a plurality of leads coupled to a respective patient, and said computer being programmed to perform the following steps:

receiving from said central database a previous electrocardiogram record for a patient in said coronary care unit, emergency department or chest pain clinic;

receiving a current electrocardiogram record for said patient from one of said plurality of bedside monitors via said local area network;

determining that a new left bundle branch block is present in said patient based on a comparison of data in said current and previous electrocardiogram records; and

generating an alert that the new left bundle

branch block may be due to acute myocardial infarction.

10. A method of treating a patient suspected to have acute myocardial infarction, comprising the following steps: 5

admitting said patient to a coronary care unit, emergency department or chest pain clinic; 10

monitoring the patient to acquire a current electrocardiogram record;

receiving from a central database a previous electrocardiogram record for said patient; 15

determining that a new left bundle branch block is present in said patient based on a comparison of data in said current and previous electrocardiogram records; 20

generating an alert that the new left bundle branch block may be due to acute myocardial infarction; and 25

treating said patient in response to said alert.

30

35

40

45

50

55

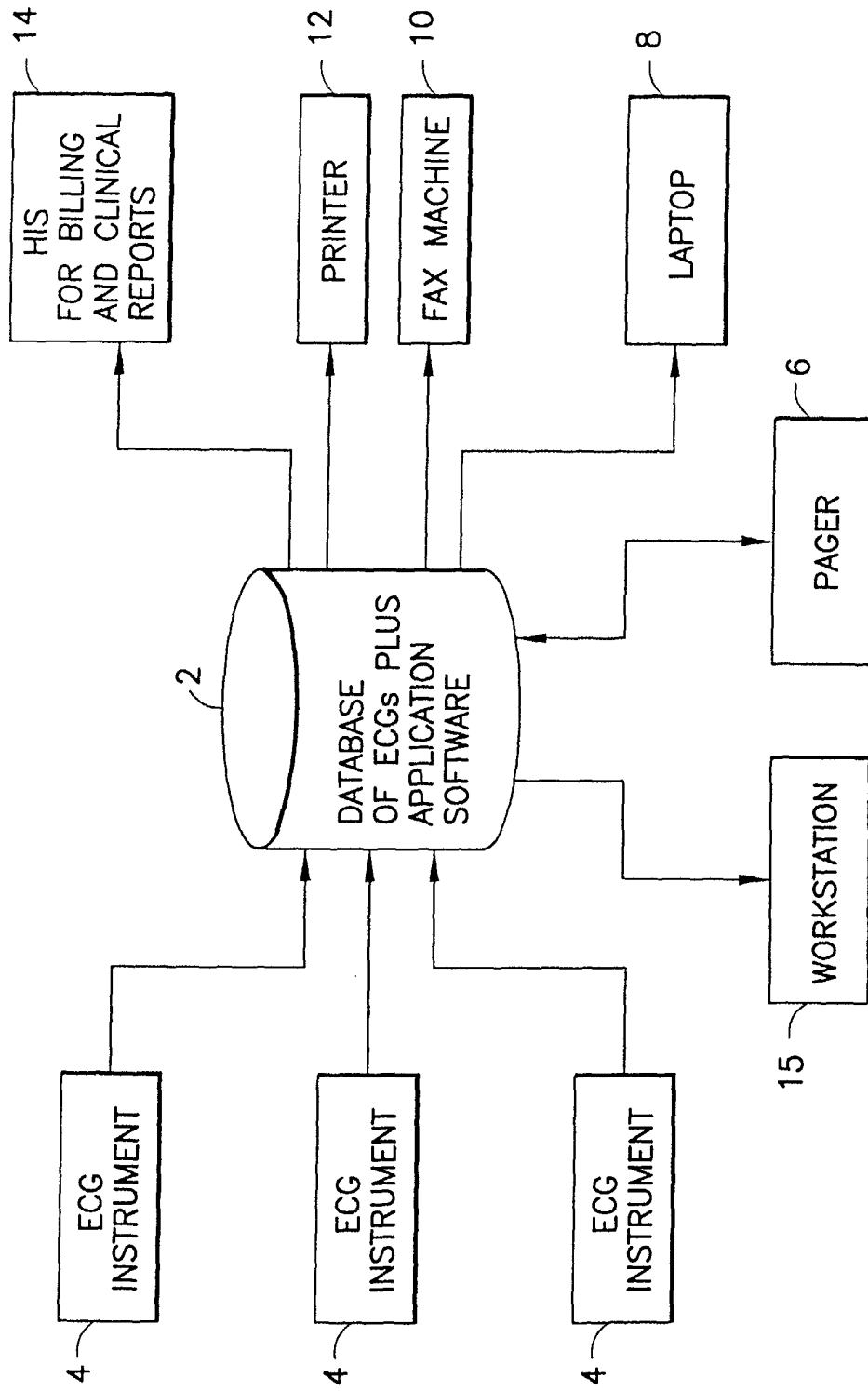


FIG.1

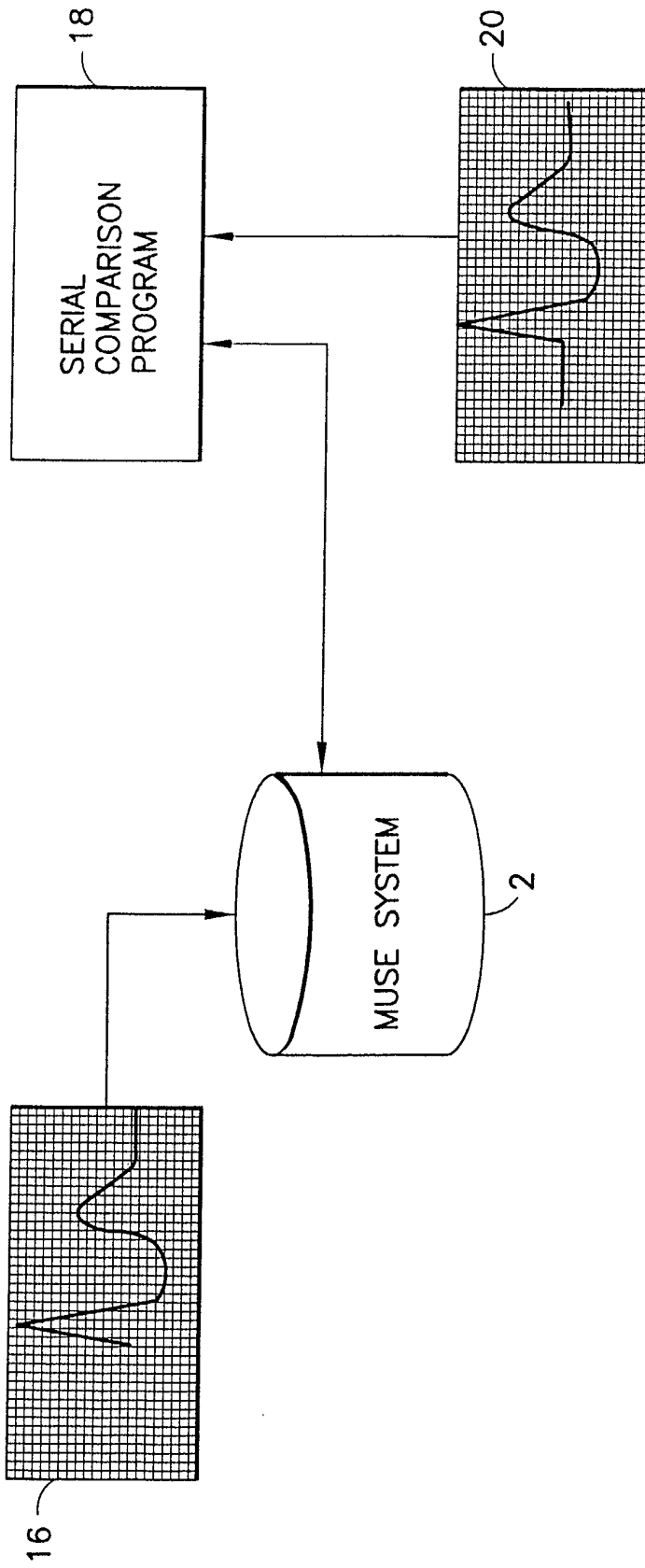


FIG.2

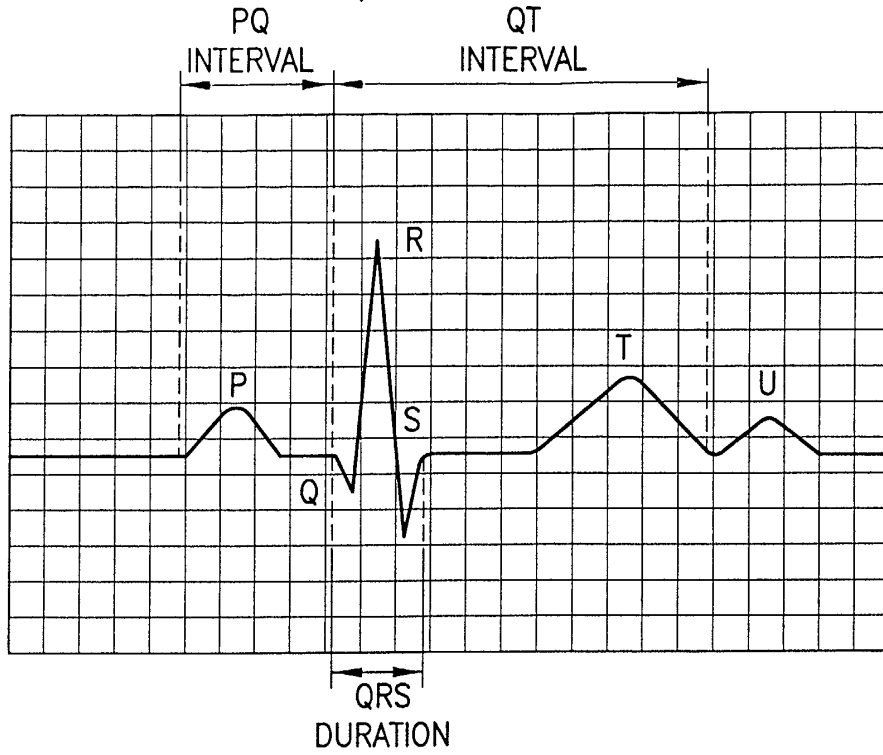
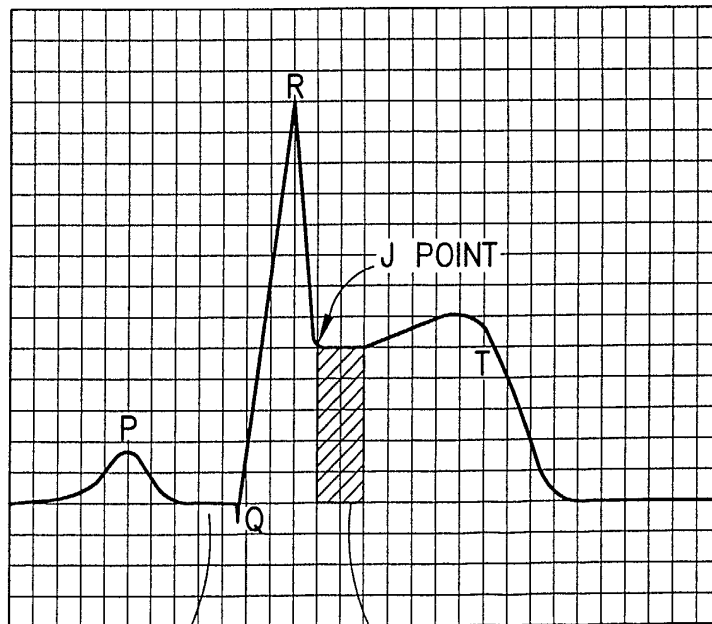


FIG.3



ISOELECTRIC BASELINE
FOR COMPARISON
OF ST LEVEL

5mm ST SEGMENT
ELEVATION

FIG.4

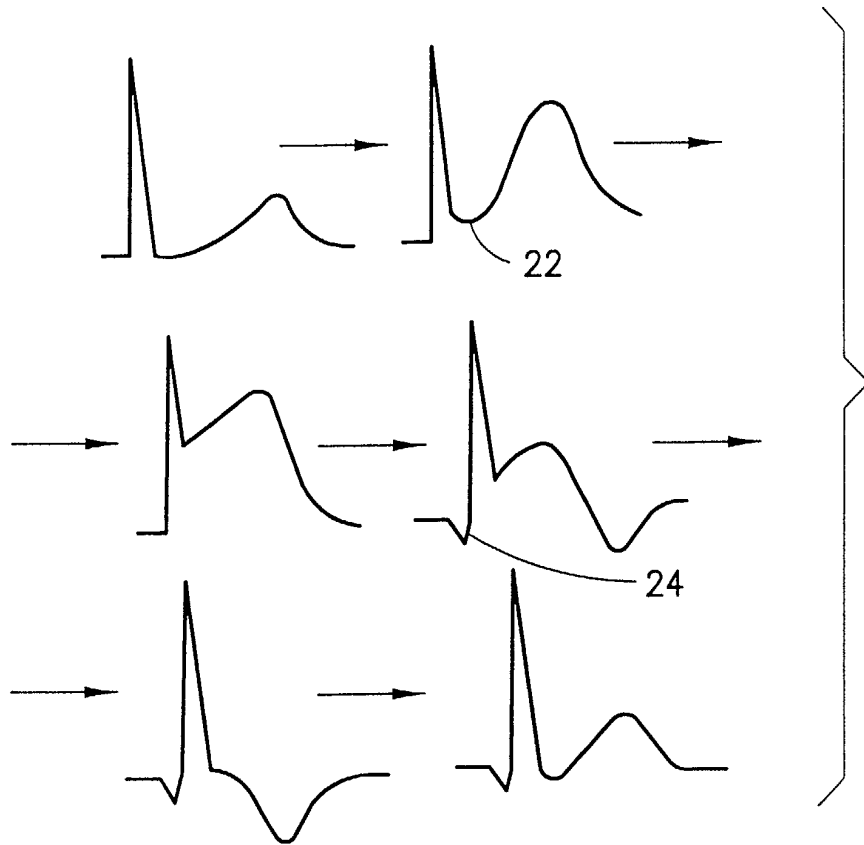


FIG.5

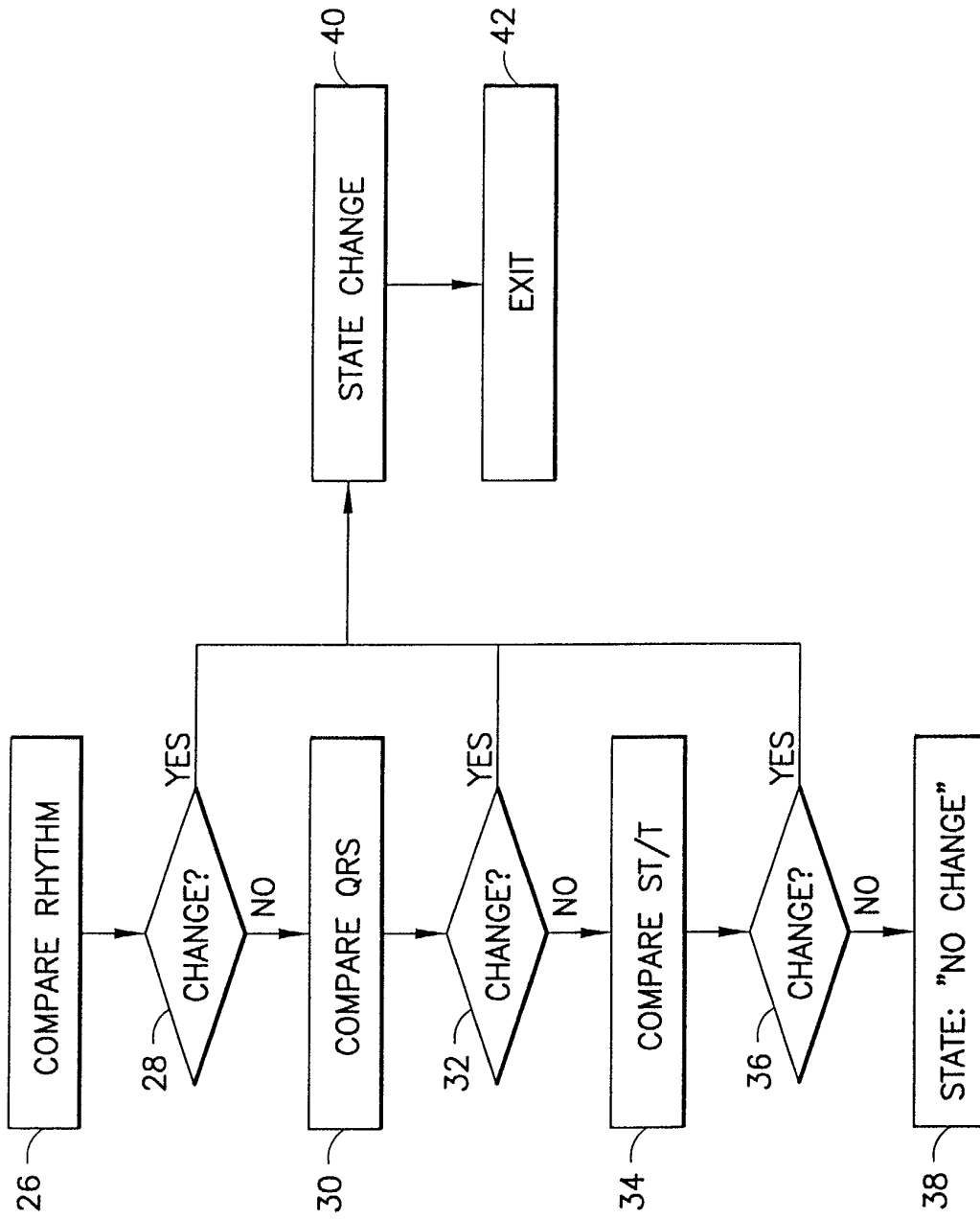
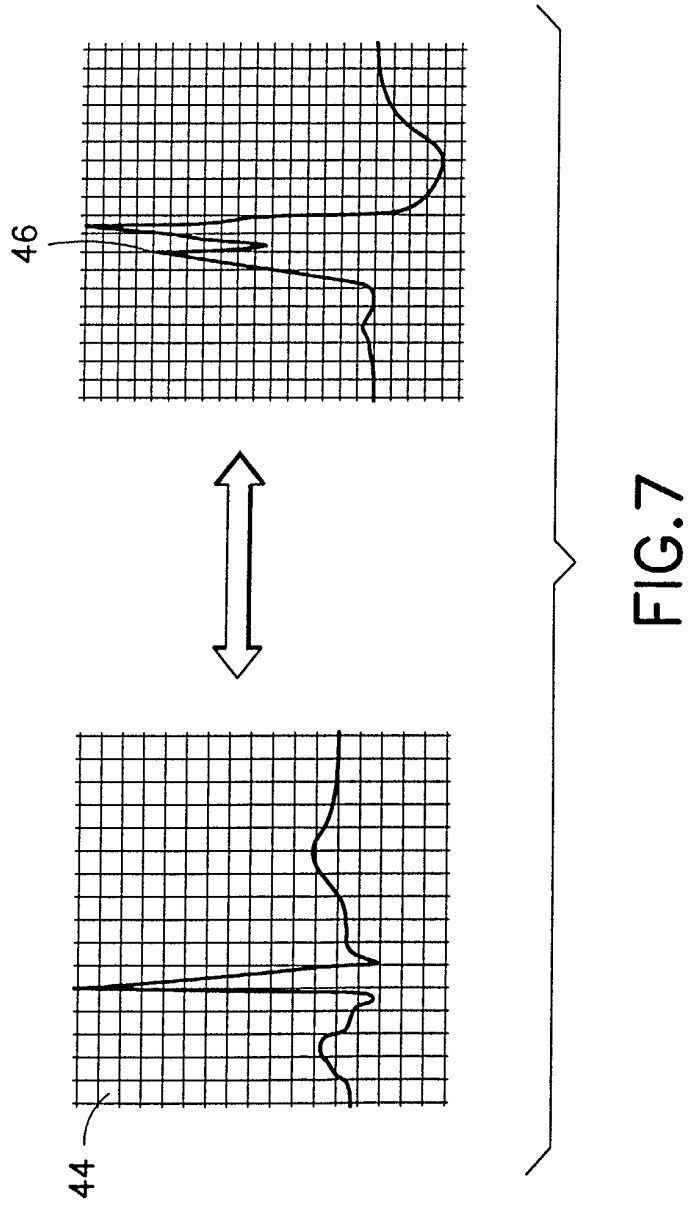


FIG. 6



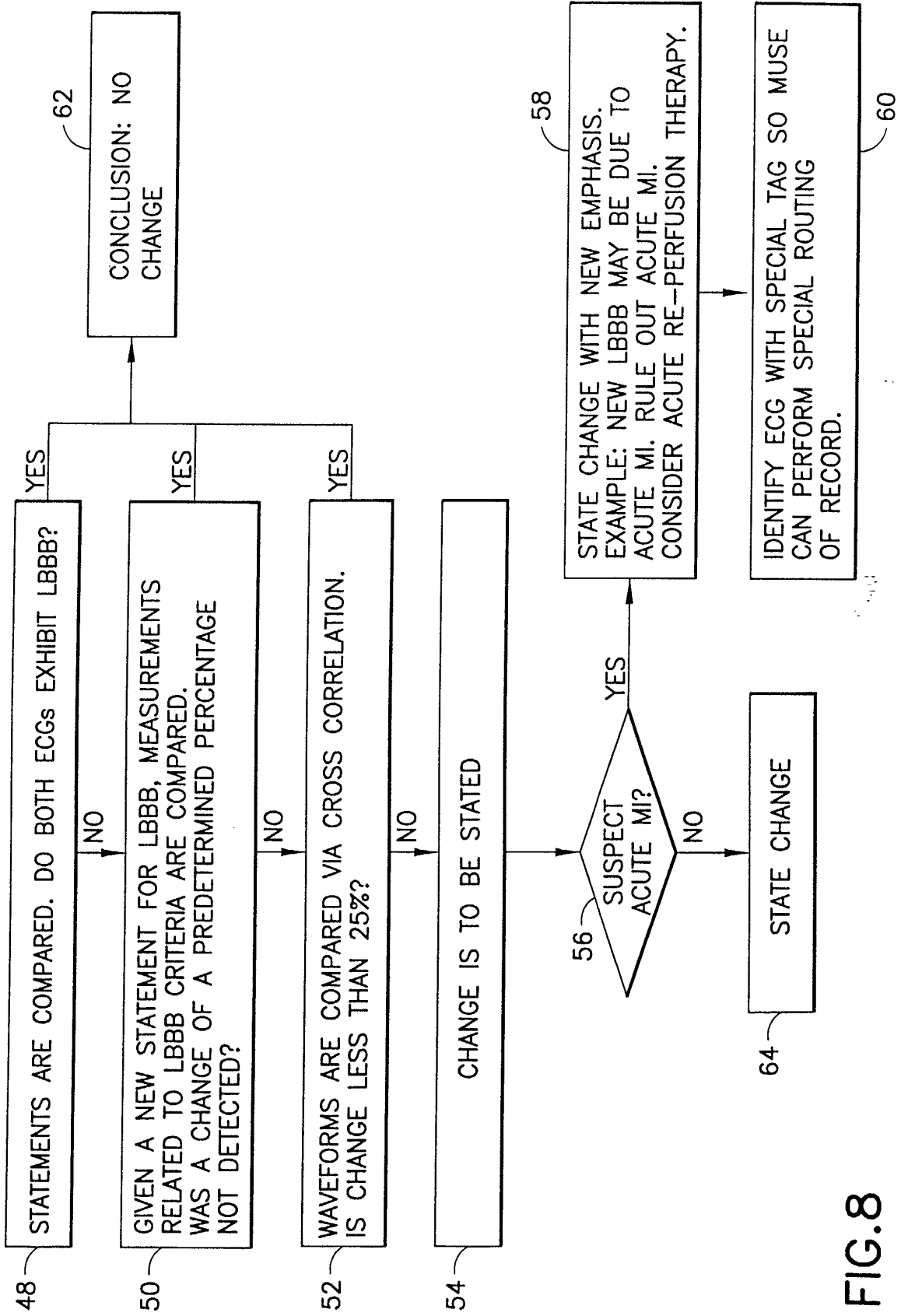


FIG.8

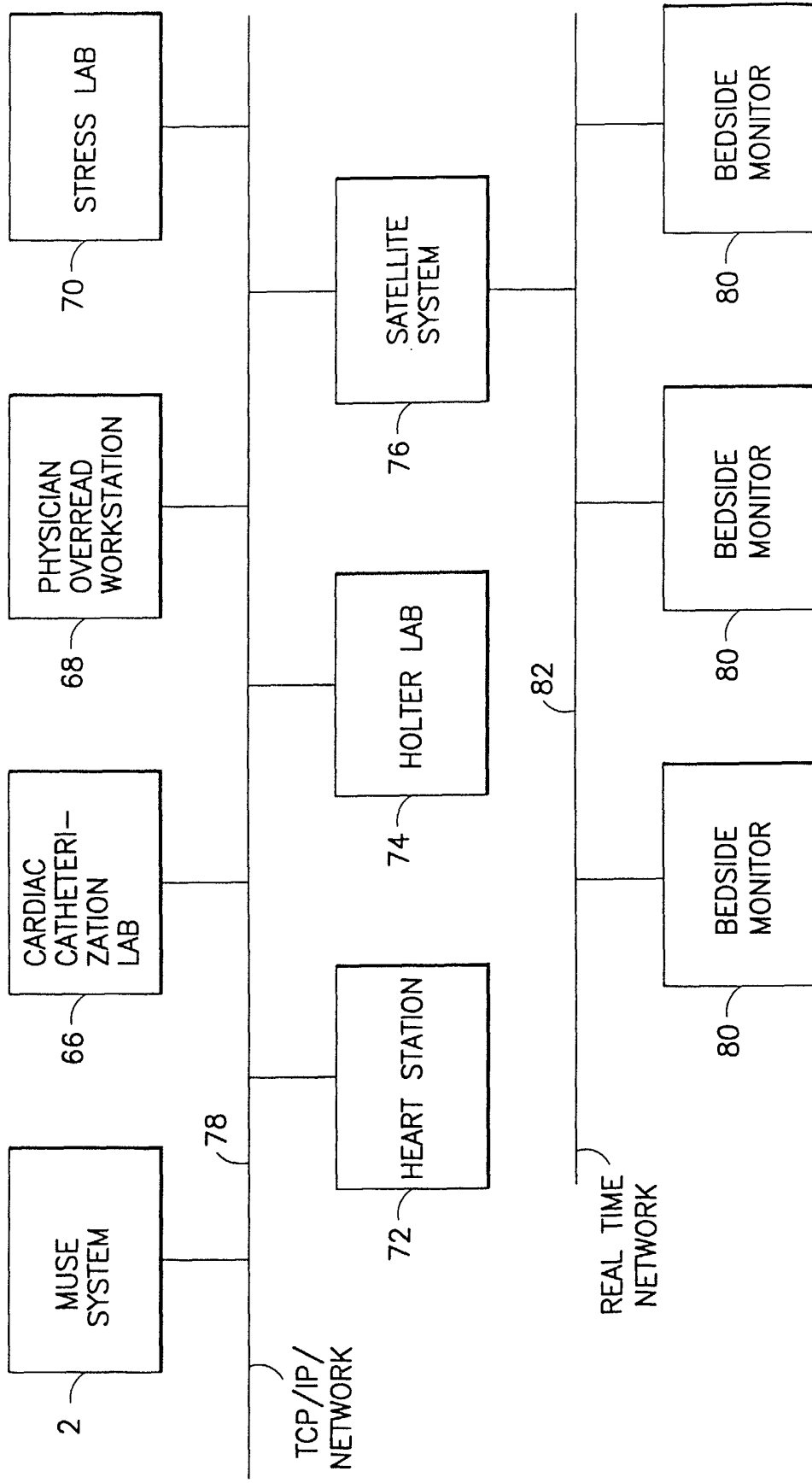


FIG.9

专利名称(译)	用于检测新的左分支束阻滞以加速急性心肌梗塞的治疗的系统和方法		
公开(公告)号	EP1219236A2	公开(公告)日	2002-07-03
申请号	EP2001310515	申请日	2001-12-17
[标]申请(专利权)人(译)	GE医疗系统信息技术公司		
申请(专利权)人(译)	GE医疗系统信息技术股份有限公司.		
当前申请(专利权)人(译)	GE医疗系统信息技术股份有限公司.		
[标]发明人	ROWLANDSON G IAN		
发明人	ROWLANDSON, G. IAN		
IPC分类号	A61B5/00 A61B5/0452 G06F17/00 A61B5/04		
CPC分类号	A61B5/0006 A61B5/0452		
优先权	09/751024 2000-12-29 US		
其他公开文献	EP1219236A3		
外部链接	Espacenet		

摘要(译)

一种系统和方法，用于在ECG系列（4）中自动检测新的左束支传导阻滞（LBBB），然后发出警报以加速急性心肌梗塞的治疗。串行比较程序用于将每个当前ECG与同一患者的先前ECG进行比较。比较诊断报告，测量和波形，并根据比较，系统能够自动确定患者是否有新的LBBB。然后，系统自动确定患者是否属于具有高概率急性心肌梗塞的患者类别。如果怀疑是急性心肌梗塞，系统会生成一个诊断声明，说明新的左束支传导阻滞可能是由于急性心肌梗死。然后用特殊标签识别呈现新LBBB的当前ECG并将其发送到中央数据库服务器（2）。特殊标签使中央数据库服务器能够通过传真（10）或数字寻呼机（6）执行该记录的特殊路由，以警告随叫随到的医务人员需要立即治疗。

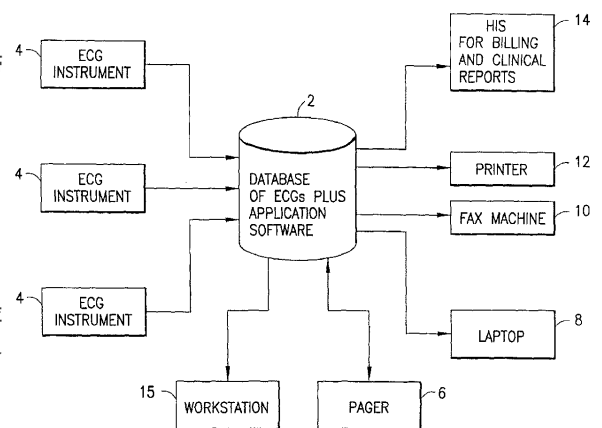


FIG.1