



(11) **EP 3 072 441 A1**

(12) **EUROPEAN PATENT APPLICATION**

(43) Date of publication:  
**28.09.2016 Bulletin 2016/39**

(51) Int Cl.:  
**A61B 5/00 (2006.01)** **A61B 5/021 (2006.01)**  
**A61B 5/024 (2006.01)** **A61B 5/1455 (2006.01)**

(21) Application number: **16158751.4**

(22) Date of filing: **04.03.2016**

(84) Designated Contracting States:  
**AL AT BE BG CH CY CZ DE DK EE ES FI FR GB GR HR HU IE IS IT LI LT LU LV MC MK MT NL NO PL PT RO RS SE SI SK SM TR**  
 Designated Extension States:  
**BA ME**  
 Designated Validation States:  
**MA MD**

- **KYOUNG, Jisoo**  
**16678 Gyeonggi-do (KR)**
- **RIABKO, Maksim Vladimirovich**  
**16678 Gyeonggi-do (KR)**
- **YOON, Youngzoon**  
**16678 Gyeonggi-do (KR)**
- **LANTSOV, Alexey Dmitrievich**  
**16678 Gyeonggi-do (KR)**
- **ROH, Younggeun**  
**16678 Gyeonggi-do (KR)**
- **LEE, Jaesoong**  
**16678 Gyeonggi-do (KR)**

(30) Priority: **06.03.2015 KR 20150031967**

(71) Applicant: **Samsung Electronics Co., Ltd.**  
**Gyeonggi-do 16677 (KR)**

(72) Inventors:  
 • **BAIK, Chanwook**  
**16678 Gyeonggi-do (KR)**

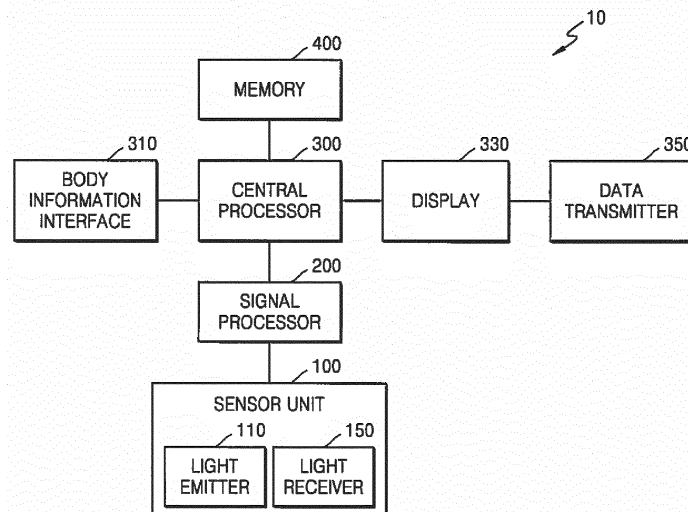
(74) Representative: **Grünecker Patent- und Rechtsanwälte PartG mbB**  
**Leopoldstraße 4**  
**80802 München (DE)**

(54) **APPARATUS FOR AND METHOD OF MEASURING BLOOD PRESSURE**

(57) An apparatus for and a method of measuring blood pressure are provided. The apparatus includes a sensor configured to radiate light to a body part, and detect a light signal that is changed due to the body part.

The apparatus further includes a signal processor configured to determine a bio signal based on the light signal; and a central processing unit configured to determine a blood pressure based on the bio signal.

**FIG. 1**



**EP 3 072 441 A1**

## Description

### BACKGROUND

#### 1. Field

**[0001]** Apparatuses and methods consistent with exemplary embodiments relate to apparatuses for and methods of measuring blood pressure.

#### 2. Description of the Related Art

**[0002]** Blood pressure is used as a measure of health. Sphygmomanometers are devices for measuring blood pressure and are commonly used in medical institutions and at home. In the case of a cuff-type sphygmomanometer, a systolic blood pressure and a diastolic blood pressure are measured by placing a cuff around a body part through which arterial blood flows, inflating the cuff until the artery is occluded, and then slowly releasing the pressure in the cuff. However, the cuff-type sphygmomanometer causes inconvenience to a user due to the applied pressure, and is inconvenient to carry to continuously monitor a change in the blood pressure of a person in real time for a long time. Accordingly, much research on cuffless sphygmomanometers for measuring blood pressure has been made.

### SUMMARY

**[0003]** Exemplary embodiments address at least the above problems and/or disadvantages and other disadvantages not described above. Also, the exemplary embodiments are not required to overcome the disadvantages described above, and may not overcome any of the problems described above.

**[0004]** Exemplary embodiments provide apparatuses for and methods of measuring blood pressure based on a light signal via a cuffless structure. The blood pressure may be continuously monitored for a long time.

**[0005]** According to an aspect of an exemplary embodiment, there is provided an apparatus configured to measure blood pressure, the apparatus including a sensor configured to radiate light to a body part, and detect a light signal that is changed due to the body part. The apparatus further includes a signal processor configured to determine a bio signal based on the light signal, and a central processing unit configured to determine a blood pressure based on the bio signal and a blood pressure estimation algorithm.

**[0006]** The signal processor may be further configured to extract a cycle of the light signal, and sample data from the cycle of the light signal at equidistant time intervals or based on a user input.

**[0007]** The signal processor may be further configured to compare power spectrums within a frequency range of bio signals that are determined based on channels, and select a channel having a maximum power spectrum

from the channels.

**[0008]** The signal processor may be further configured to, in response to the signal processor selecting the channel having the maximum power spectrum or using a single channel, select a part of a bio signal that corresponds to the selected channel or the single channel, in which a power spectrum value within the frequency range is greater than a value, as a valid part of the bio signal.

**[0009]** The apparatus may further include a display configured to display the blood pressure.

**[0010]** The apparatus may further include a memory configured to store the blood pressure estimation algorithm.

**[0011]** The sensor may include a light emitter configured to radiate the light to the body part, and a light receiver configured to detect the light signal that is changed due to the body part. The light receiver may include a photodiode or an image sensor, and the light emitter may include a laser diode or a light emitting diode.

**[0012]** The sensor may include a light emitter configured to radiate the light to the body part, and a light receiver configured to detect the light signal that is changed due to the body part, the light emitter may include a laser diode, and the central processing unit may be further configured to determine the blood pressure based on the bio signal in response to the sensor being spaced apart from a skin of an examinee.

**[0013]** The bio signal may be periodically obtained at predetermined time intervals.

**[0014]** The central processing unit may be further configured to determine the blood pressure based on the bio signal and one among a linear regression analysis algorithm, a multiple regression analysis algorithm, and a non-linear regression analysis algorithm.

**[0015]** The central processing unit may be further configured to determine the blood pressure based on the bio signal and one among an artificial neural network algorithm, a k-nearest neighbor algorithm, a Bayesian network algorithm, a support vector machine algorithm, and a recurrent neural network algorithm.

**[0016]** The central processing unit may be further configured to correct the blood pressure based on a blood pressure that is determined by another device.

**[0017]** The apparatus may further include a body information interface configured to receive body information of at least one among an age, a gender, a weight, and a height of an examinee, and the central processing unit may be further configured to determine the blood pressure based on the bio signal and the body information.

**[0018]** The apparatus may be portable, and may be implemented in one among a wrist watch, a mobile smart phone, a tablet computer, an earphone, a headset, and glasses.

**[0019]** The apparatus may be implemented in a wrist watch, and the sensor may be positioned on a back of a main body or a strap of the wrist watch.

**[0020]** According to an aspect of another exemplary

embodiment, there is provided a method of measuring blood pressure, the method including radiating light to a body part, detecting a light signal that is changed due to the body part, and determining a bio signal based on the light signal. The method further includes correcting the bio signal, extracting feature points from the corrected bio signal, and combining a matrix of a blood pressure estimation algorithm with the feature points to determine a blood pressure.

**[0021]** The extracting may include determining a maximum point of the corrected bio signal and a minimum point adjacent to the maximum point, and extracting the feature points from the corrected bio signal at equidistant time intervals or based on a user input.

**[0022]** The matrix of the blood pressure estimation algorithm may be determined by learning the blood pressure estimation algorithm such that the blood pressure that is determined by inputting the feature points in the blood pressure estimation algorithm is closer to an actual blood pressure.

**[0023]** The blood pressure estimation algorithm may be one among an artificial neural network algorithm, a k-nearest neighbor algorithm, a Bayesian network algorithm, a support vector machine algorithm, and a recurrent neural network algorithm.

**[0024]** The correcting may include correcting a baseline of a sequence of the bio signal, and removing high frequency noise from the corrected sequence.

#### BRIEF DESCRIPTION OF THE DRAWINGS

**[0025]** The above and/or other aspects will be more apparent by describing exemplary embodiments with reference to the accompanying drawings in which:

FIG. 1 is a block diagram of a blood pressure measuring apparatus according to an exemplary embodiment;

FIGS. 2 through 5 are layouts of a light emitting device and a light receiving device of a sensor according to exemplary embodiments;

FIG. 6 is a flowchart of an operation of a blood pressure measuring apparatus according to an exemplary embodiment;

FIG. 7 is a diagram illustrating a process of estimating blood pressure via a blood pressure estimation algorithm according to an exemplary embodiment;

FIGS. 8 through 10 are perspective views of portable devices, each including a blood pressure measuring apparatus according to exemplary embodiments;

FIG. 11 is a graph of a waveform when a sensor of a light emitting diode-photo diode (LED-PD) combination radiates light toward a finger and detects a change in a blood stream as a signal change of light according to an exemplary embodiment;

FIGS. 12 through 14 are graphs of waveforms when a sensor of an LED-PD combination radiates light toward a radial artery, to above a wrist, and to a fin-

ger, respectively, and detects a change in a blood stream as a signal change of light according to exemplary embodiments;

FIG. 15A is a graph of a measured pulse waveform according to an exemplary embodiment, and FIG. 15B is a graph of parameters that may be extracted from one cycle of the waveform of FIG. 15A;

FIG. 16 is a diagram illustrating an artificial neural network (ANN) algorithm according to an exemplary embodiment;

FIG. 17 is a diagram illustrating a linear regression analysis algorithm according to an exemplary embodiment;

FIG. 18 is a diagram illustrating a data learning process in an ANN algorithm used by a blood pressure measuring apparatus according to an exemplary embodiment;

FIG. 19 is a diagram illustrating a process of calculating blood pressure values by using a stored hidden layer matrix after extracting feature points via an ANN algorithm according to an exemplary embodiment; and

FIGS. 20A through 20C are diagram illustrating a process of collecting and predicting data that may be used during the data learning process of FIG. 18 according to exemplary embodiments.

#### DETAILED DESCRIPTION OF THE EXEMPLARY EMBODIMENTS

**[0026]** Exemplary embodiments are described in greater detail herein with reference to the accompanying drawings.

**[0027]** In the following description, like drawing reference numerals are used for like elements, even in different drawings. The matters defined in the description, such as detailed construction and elements, are provided to assist in a comprehensive understanding of the exemplary embodiments. However, it is apparent that the exemplary embodiments can be practiced without those specifically defined matters. Also, well-known functions or constructions are not described in detail because they would obscure the description with unnecessary detail.

**[0028]** It will be understood that although the terms "first," "second," etc. may be used herein to describe various elements, these elements should not be limited by these terms. These elements are only used to distinguish one element from another.

**[0029]** In addition, the terms such as "unit," "-er (-or)," and "module" described in the specification refer to an element for performing at least one function or operation, and may be implemented in hardware, software, or the combination of hardware and software.

**[0030]** FIG. 1 is a block diagram of a blood pressure measuring apparatus 10 according to an exemplary embodiment.

**[0031]** Referring to FIG. 1, the blood pressure measuring apparatus 10 includes a sensor 100, a signal proc-

essor 200 that obtains a bio signal from a signal detected from the sensor 100, a memory 400 that stores a blood pressure estimation algorithm, and a central processing unit 300 that calculates blood pressure based on the obtained bio signal by using the blood pressure estimation algorithm. The blood pressure measuring apparatus 10 further includes a display 330 that displays the calculated blood pressure, a body information interface 310 that inputs body information to increase the accuracy of calculating the blood pressure, and a data transmitter 350 that transmits information about the calculated blood pressure to another device.

**[0032]** The sensor 100 radiates light towards an examined body part, and detects a signal change in the light that is caused by the examined body part. The sensor 100 includes a light emitter 110 and a light receiver 150. The light emitter 110 may include at least one light emitting device, and the light receiver 150 may include at least one light receiving device.

**[0033]** The light emitting device may be a light emitting diode (LED) or a laser diode (LD). The light receiving device may include a photodiode or an image sensor, for example, a CMOS image sensor (CIS). A phototransistor (PTTr) may be used as the light receiving device. The light receiving device may be configured to sense a signal change according to a blood stream change of light scattered or reflected from the examined body, i.e., skin of an examinee or a blood vessel.

**[0034]** FIGS. 2 through 5 are layouts of a light emitting device 111 and a light receiving device 151 of the sensor 100 according to exemplary embodiments. A case where the light emitting device 111 and the light receiving device 151 are disposed on a same substrate 101 will now be described with reference to FIGS. 2 through 5 as examples.

**[0035]** Referring to FIGS. 2 through 4, the light emitting device 111 is disposed in a center of the sensor 100, and the light receiver 150 includes a plurality of light emitting devices 151 surrounding the light emitting device 111.

**[0036]** In another example, referring to FIG. 5, the sensor 100 has a structure in which an array of a plurality of light emitting devices 111 and an array of the plurality of light receiving devices 151 are disposed in parallel. In this regard, the array of the plurality of light emitting devices 111 is disposed in the center of the sensor 100, and the array of the plurality of light receiving devices 151 is disposed along at least one side of the array of the plurality of light emitting devices 111. FIG. 5 illustrates an example in which arrays of the plurality of light receiving devices 151 are respectively disposed along two sides of the array of the plurality of light emitting devices 111.

**[0037]** As shown in FIGS. 2 through 5, when the light emitting device 111 is disposed in the center of the sensor 100 and the light emitting devices 151 are disposed around the light emitting device 111, a light receiving amount of light scattered or reflected from an examined body part, for example, a skin surface of an examinee or

a blood vessel, may increase. The light emitting device 111 and the plurality of light receiving devices 151 that configure the sensor 100 are not limited to those shown in FIGS. 2 through 5, and may have various layouts. For example, at least one of the light emitting devices 151 may be disposed in the center of the sensor 100, and one or more light emitting devices 111 may be disposed around the at least one of the light emitting devices 151.

**[0038]** Meanwhile, when a laser diode is used as the light emitting device 111 of the light emitter 110, due to the directional property of a laser beam emitted by the laser diode, a signal may be measured although the sensor 100 is spaced apart from the skin surface of the examinee. Thus, when a laser diode is used as the light emitting device 111, and the blood pressure measuring apparatus 10 is implemented as a wristwatch-type device, a device having a structure in which the sensor 100 is placed on the back side of a main body and the signal is measured from the wrist or the back of a hand, may be implemented. The wristwatch-type device includes a main body and a strip being worn on the wrist. An adherence of the strip to the wrist may be better than an adherence of the main body to the wrist. The main body of the wristwatch-type device may be spaced apart from a skin surface of the wrist. When a laser diode is provided as the light emitting device 111 and the sensor 100 is placed on the back side of the main body, the blood pressure may be measured irrespective of a state of wearing the device, i.e., a contact state or a non-contact state with respect to the wrist.

**[0039]** In this regard, when an LED is used as the light emitting device 111, according to the spread characteristics of light emitted by the LED, an operation of measuring the blood pressure may be performed by more tightly closing the sensor 100 to the skin of the examinee than in the case when a laser diode is used as the light emitting device 111. However, when an LED is used as the light emitting device 111, the blood pressure may be measured even when the sensor 100 and the skin surface of the examinee are spaced apart from each other within a range in which a signal is detectable.

**[0040]** Referring again to FIG. 1, the signal processor 200 obtains a bio signal from the signal detected from the sensor 100, and removes a signal change component of light due to external illumination or an external environment. The signal processor 200 analyzes an intensity change of the signal detected from the sensor 100 on a time basis. The bio signal may be obtained by analyzing a fluctuation of a light signal corresponding to a capacity change of a blood vessel (for example, a blood vessel on a finger, an upper side of a wrist or a radial artery on a lower side of the wrist) of the examined body. In this regard, the obtained bio signal may be a photoplethysmogram (PPG) signal converted based on a correlation of the analyzed fluctuation of the light signal and the capacity change. A digital to analogue converter (DAC) or an ADC may be applied as the signal processor 200.

**[0041]** The signal processor 200 may include a wave-

form extracting unit that, for example, extracts in real time one cycle of a waveform of a signal that is input, and a data extracting unit that samples data at equivalent time intervals or by using a user-defined method from one cycle of the waveform. The signal processor 200 may further include a waveform selecting unit.

**[0042]** The signal processor 200 may be configured to obtain the bio signal from each of a plurality of channels. The signal processor 200 may compare power spectrums within a previously set frequency range (for example, about 0.66 Hz - about 3 Hz) with respect to a waveform of a bio signal obtained from each of the plurality of channels, and select a channel having a largest power spectrum. As another example, the signal processor 200 may be configured to use a single channel. According to use of the selected channel or the single channel, the waveform selecting unit may select a waveform part of the bio signal in which a power spectrum value within a predetermined frequency range is greater than a previously set value as a valid waveform part.

**[0043]** The memory 400 may store a blood pressure estimation algorithm. The memory 400 may store a program for processing and controlling the signal processor 200 and the central processing unit 300, and may also store data that is input/output. That is, the memory 400 may store measurement results of the sensor 100 or a bio signal obtained by the signal processor 200 via signal processing. The memory 400 may be configured to store a bio signal obtained in real time in a buffer memory, and may be configured to call the blood pressure estimation algorithm and calculate a blood pressure.

**[0044]** The memory 400 may include at least one type of storage medium among, for example, a flash memory type, a hard disk type, a multimedia card micro type, card type memory (for example, SD or XD memory, etc.), Random Access Memory (RAM), Static Random Access Memory (SRAM), Read-Only Memory (ROM), Electrically Erasable Programmable Read-Only Memory (EEPROM), Programmable Read-Only Memory (PROM), magnetic memory, a magnetic disk, and an optical disk.

**[0045]** The central processing unit 300 controls an operation of the sensor 100, and calculates blood pressure from the measured signal by using the blood pressure estimation algorithm. That is, the central processing unit 300 calculates blood pressure from the bio signal obtained by processing the signal measured by the sensor 100 in the signal processor 200 by using the blood pressure estimation algorithm. The central processing unit 300 may control the memory 400, the display 330, the signal processor 200, the body information interface 310, etc.

**[0046]** The central processing unit 300 may analyze various feature points of the bio signal by analyzing a waveform characteristic of the bio signal, for example, a PPG pulse wave signal. The central processing unit 300 may also estimate blood pressure values by combining data of the analyzed feature points and a matrix of the blood pressure estimation algorithm. In this regard, the

blood pressure values estimated by the central processing unit 300 may include a systolic blood pressure (SBP), a diastolic blood pressure (DBP), a heart rate (HR), etc.

**[0047]** The blood pressure values calculated by the central processing unit 300 may be displayed on the display 330. The display 330 may be configured to display the SBP and the DBP, and may be configured to display the HR.

**[0048]** The body information interface 310 may be configured to input at least one piece of body information among an age, a gender, a weight, and a height of the examinee to increase accuracy of calculating the blood pressure. The central processing unit 300 may operate to estimate the blood pressure for each of the body information input through the body information interface 310. In this regard, when the blood pressure estimation algorithm is configured to collect data of a randomly extracted population, the blood pressure measuring apparatus 10 may be configured by omitting the body information interface 310.

**[0049]** The data transmitter 350 transmits a result analyzed by the central processing unit 300 to an external different device. The blood pressure values calculated and estimated by the central processing unit 300 may be output through the display 330. The data transmitter 350 may transmit the blood pressure values and a heart rate value to an external device such as a smart phone or a computer by using, for example, a communication protocol such as Bluetooth. The data transmitter 350 may be used to connect devices or connect a device to a clinic to allow the clinic to provide various services.

**[0050]** In this regard, the external device may be not only the smart phone or the computer but also, for example, medical equipment that uses information of an analyzed blood pressure, a printer that prints a resultant, or a display apparatus that displays an analysis result. In addition, the external device may be various devices such as a tablet PC, a personal digital assistant (PDA), a laptop, PC, and another mobile or non-mobile computing apparatus.

**[0051]** The data transmitter 350 may be connected to the external device by wire or wirelessly. For example, the data transmitter 350 may be configured to communicate with the external device by using various communication methods such as Bluetooth communication, Bluetooth Low Energy (BLE) communication, Near Field Communication, WLAN (WiFi) communication, Zigbee communication, infrared Data Association (IrDA) communication, WFD (Wi-Fi Direct) communication, ultra wideband (UWB) communication, Ant+ communication, etc.

**[0052]** Meanwhile, the blood pressure measuring apparatus 10 may further include a user interface. The user interface may be for an interface of the user and/or the external device, and may include an input unit and an output unit. In this regard, although the user is an individual of which blood pressure is to be measured, i.e., an examinee, the user may also be a person, such as a

medical expert, who may use the blood pressure measuring apparatus 10. Thus, the term "user" may have wider range than that of the term "examinee." The user interface may be used to input information for operating the blood pressure measuring apparatus 10, and output an analyzed result. The user interface may include, for example, a button, a connector, a keypad, a display, etc., and may further include an element such as a sound output unit or a vibration motor.

**[0053]** The blood pressure measuring apparatus 10 may be configured to be mobile as a wearable device, a mobile phone, for example, a mobile smart phone, or a tablet device. That is, the blood pressure measuring apparatus 10 may be mounted in a wearable device, a mobile phone, for example, a mobile smart phone, or a tablet device. The blood pressure measuring apparatus 10 may be configured as a device to be put on a finger to measure the blood pressure, for example, a device of a finger tongs type.

**[0054]** For example, the blood pressure measuring apparatus 10 may be implemented in a device that may be worn on the examinee, i.e., in the wearable device. In this regard, the wearable device may be implemented in a wrist watch type, a bracelet type, and a wrist band type, and may be additionally implemented in various types such as a ring type, a glasses type, an earphone type, a headset type, or a hair band type. Some elements of the blood pressure measuring apparatus 10, for example, the sensor 100 and the signal processor 200, may be implemented in a type that may be worn by the examinee.

**[0055]** The blood pressure measuring apparatus 10 may be used as a device for estimating the blood pressure of the examinee and measuring a heart rate of the examinee by being applied instead of a sensor of a wrist watch type wearable device that measures the heart rate only, for example, by using the back of the main body (corresponding to a watch in a wrist watch). The blood pressure measuring apparatus 10 may be used as the device for estimating the blood pressure of the examinee and measuring the heart rate of the examinee by being applied to a smart phone that uses a light emitting device and a CIS.

**[0056]** FIG. 6 is a flowchart of an operation of the blood pressure measuring apparatus 10 according to an exemplary embodiment.

**[0057]** Referring to FIG. 6, the light emitter 110 of the sensor 100 radiates light to skin by contacting or approaching a body part of an examinee, for example, a finger, a wrist, etc. (operation S100). In this regard, the light receiver 150 receives light reflected or scattered from the body part (operation S200), and the signal processor 200 measures a waveform by changing an intensity of the received light into a current or voltage (operation S300).

**[0058]** The signal processor 200 or the central processing unit 300 determines whether a signal of the measured waveform is present or the waveform is suitable (operation S400). If the waveform is a waveform

including a heart rate, operation S500 is performed. If not, operation S200 of receiving the reflected or scattered light is again performed.

**[0059]** The central processing unit 300 estimates blood pressure values using the measured waveform and a blood pressure estimation algorithm (operation S500). The display 330 displays the estimated blood pressure values and the heart rate (operation S600). In the operation of estimating the blood pressure values, a blood pressure value that is measured by another device may be input in the blood pressure estimation algorithm. In this case, the blood pressure estimation algorithm may correct the blood pressure values by using the blood pressure value that is measured by the other device.

**[0060]** The blood pressure measuring apparatus 10 according to the exemplary embodiment described above may read a change in a blood stream in a finger or an upper or lower side (a radial artery) of a wrist, as an intensity change in light, may estimate maximum and minimum points of the blood pressure, i.e., a SBP and a DBP, by applying the blood pressure estimation algorithm, and may also estimate an HR.

**[0061]** FIG. 7 is a diagram illustrating a process of estimating blood pressure via a blood pressure estimation algorithm according to an exemplary embodiment.

**[0062]** Referring to FIG. 7(a), a bio signal is obtained by radiating light to an examined body and detecting a signal change of light by the examined body. In this regard, a baseline with respect to the obtained bio signal is analyzed. The graph of FIG. 7(a) shows an example of measuring the bio signal for 4 seconds. The bio signal may be obtained a plurality of number of times at a time distance, for example, a predetermined time distance, for processing data. As shown in the graph of the bio signal of FIG. 7(a), the baseline may not be constant. FIG. 7(a) shows an example of drawing a primary function in which the baseline increases over time. The baseline may be in a secondary function, a tertiary function, or a function having a plurality of inflection points. In this regard, the baseline may be a line connecting, for example, intermediate points of a maximum point and a minimum point, of each cycle waveform of the bio signal.

**[0063]** When the baseline is drawn in the primary, secondary, or tertiary function by analyzing the baseline described above, a bio signal may be obtained as shown in FIG. 7(b) by correcting the baseline.

**[0064]** Next, referring to FIG. 7(c), when a bio signal includes high frequency HF noise, the high frequency HF noise may be removed by processing the bio signal using, for example, a smoothing function or filter. In this regard, when the bio signal does not include the high frequency HF noise, high frequency HF noise removing processing, such as processing using the smoothing function or the filter, may be omitted.

**[0065]** Next, a maximum point Max and a minimum point Min of each cycle waveform of the bio signal from which the high frequency HF noise is removed are analyzed as shown in FIG. 7(d), and feature points are ex-

tracted as shown in FIG. 7(e). The feature points of each cycle waveform may be extracted at equivalent or equidistant time intervals or may be extracted by determining a point from which the feature points are to be extracted by using a user-defined method.

**[0066]** When data of the extracted feature points is combined with a blood pressure estimation algorithm, as shown in FIG. 7(f), a blood pressure estimation value calculation results may be obtained. The blood pressure estimation value calculation result of FIG. 7(f) is obtained by using a bio signal obtained for 4 seconds for each calculation.

**[0067]** As shown in the blood pressure estimation value calculation result of FIG. 7(f), a SBP and a DBP may be estimated and a HR estimation value may be obtained through the process described above.

**[0068]** The blood pressure measuring apparatus 10 according to the exemplary embodiment may estimate a blood pressure, and measure a HR, by being applied to various existing devices that only measure the HR using light.

**[0069]** FIGS. 8 through 10 are perspective views of portable devices 500, 700, and 1000, each including the blood pressure measuring apparatus 10 according to exemplary embodiments. FIG. 8 illustrates an example of the wrist watch type device 500 in which the sensor 100 is installed in the back of a main body MB, light is radiated to the back of an arm or a hand, a change in a blood stream is detected as a signal change of light, and no sensor is installed in a strap ST. FIG. 9 illustrates an example of the wrist watch type device 700 in which the sensor 100 is provided in the strap ST, light is radiated to a radial artery, and a change in a blood stream flowing in the radial artery is detected as a signal change of light. FIG. 10 illustrates an example of the smart phone 1000 in which an image sensor 1100, i.e., a CIS, and a light source 1200 are provided on the back of the smart phone 1000, and are used to detect a change in a blood stream flowing in a finger as a signal change of light. The image sensor 1100 and the light source 1200 provided on the back of the smart phone 1000 may be respectively used as the light emitting device 111 of the light emitter 110 and the light receiving device 151 of the light receiver 150 of the blood pressure measuring apparatus 10.

**[0070]** FIG. 11 is a graph of a waveform when a sensor of a light emitting diode-photo diode (LED-PD) combination radiates light to a finger and detects a change in a blood stream as a signal change of light according to an exemplary embodiment. FIGS. 12 through 14 are graphs of waveforms when a sensor of a laser diode-photo diode (LD-PD) combination radiates light to a radial artery, to above a wrist, and to a finger, respectively, and detects a change in a blood stream as a signal change of light according to exemplary embodiments.

**[0071]** As seen from a comparison of FIG. 11 and FIGS. 12 through 14, when not only a LED but also a laser diode is used as the light emitting device 111 of the light emitter 110, a signal indicating the change in the

blood stream may be measured. When the laser diode is used, even though the sensor 100 is placed above the wrist, the signal indicating the change in the blood stream may also be measured. When the light emitting device 111 suitable for the light emitter 110 is selected, the signal indicating the change in the blood stream may be measured not only at the finger or the radial artery but also above the wrist, and the signal may be analyzed to estimate a value of a HR and calculate an estimation value of a blood pressure value. In addition, when the light emitting device 111 suitable for the light emitter 110 is selected, the signal indicating the change in the blood stream may be measured without a limitation to a position of a body part, and the signal may be analyzed to calculate estimation values of the blood pressure values and the HR value.

**[0072]** The blood pressure measuring apparatus 10 according to the exemplary embodiment described above may use one of a linear regression analysis, a multiple regression analysis, a non-linear regression analysis as a blood pressure estimation algorithm to calculate the blood pressure estimation value by using a plurality of pieces of feature point data extracted with respect to each cycle waveform of a bio signal. As the blood pressure estimation algorithm, one of machine learning algorithms, for example, an artificial neural network (ANN) algorithm, a K-nearest neighbor (KNN) algorithm, a Bayesian network algorithm, a support vector machine (SVM) algorithm, and a recurrent neural network algorithm may be used. In this regard, the machine learning algorithm may perform prediction based on an already determined attribute through training data, for example, may predict a blood pressure by training a pulse waveform.

**[0073]** For example, the ANN algorithm is used to perform calculation with already learned data. The learned data may be stored in the memory 400 in a hidden layer matrix, the stored hidden layer matrix and newly measured data may be combined during an actual measurement, and a desired blood pressure estimation value may be calculated.

**[0074]** Although the blood pressure measuring apparatus 10 may not use the body information interface 310 according to circumstances, a learned matrix may be used as data collected from a population for each body feature rather than data collected from a randomly extracted population to more accurately calculate the blood pressure estimation value. Estimated data may be output on the display 330. The data transmitter 350 may transmit the blood pressure values and the HR value to a smart phone or a computer by using a communication protocol such as Bluetooth. The data transmitter 350 may be used to connect devices or connect a device to a clinic to allow the clinic to provide various services.

**[0075]** FIG. 15A is a graph of a measured pulse waveform according to an exemplary embodiment, and FIG. 15B is a graph of parameters that may be extracted from one cycle of the waveform of FIG. 15A.

**[0076]** Referring to FIGS. 15A and 15B, a waveform corresponding to one cycle of a pulse waveform is extracted, and parameters, for example,  $t_1$ ,  $t_2$ ,  $t_3$ , etc., that may be estimated to be related to a blood pressure are extracted. The waveform of FIGS. 15A and 15B may correspond to, for example, a PPG pulse.

**[0077]** Referring to FIG. 15B,  $t_1$  denotes a systolic up-stroke time,  $t_2$  denotes a diastolic time, and  $t_3$  denotes a width of a waveform in a predetermined location.  $t_3$  data may be obtained in a plurality of locations. Data of a width during a systolic time and a width during the diastolic time in the predetermined location or in the plurality of locations may be obtained as the  $t_3$  data.

**[0078]** As described above, the parameters relating to the blood pressure may be extracted from the pulse waveform, and may be used to estimate a blood pressure value.

**[0079]** FIG. 16 is a diagram illustrating an ANN algorithm according to an exemplary embodiment.

**[0080]** Referring to FIG. 16, a plurality of hidden layers, for example, two layers, which are hidden between a maximum point and a minimum point of blood pressure values corresponding to values of feature points of a bio signal obtained as described above, may be set in an input layer of the ANN algorithm. The values of the feature points and blood pressure values may be used to form a network such as a neural network. In such structure, a pattern may be learned by repetitively using various pieces of data extracted from the population, and the blood pressure values for a new input may be estimated by calling a learned hidden layer matrix. FIG. 16 illustrates the example of the ANN algorithm configured to form a hidden layer matrix structure through machine learning to output  $y_1$  (SBP) and  $y_2$  (DBP) in an output layer by corresponding extracted various pieces of feature point data  $x_1, x_2, \dots, x_N$  that are input in an input layer to hidden layers, for example, Hidden Layer 1 and Hidden Layer 2. When the ANN algorithm is configured as shown in FIG. 16, output data may be estimated by using a learned hidden layer matrix with respect to arbitrarily input data.

**[0081]** FIG. 17 is a diagram illustrating a linear regression analysis algorithm according to an exemplary embodiment.

**[0082]** When the linear regression analysis algorithm is applied as shown in FIG. 17, coefficient values of a linear relation equation between extracted feature point data and blood pressure values are calculated by analyzing the linear relation equation using a plurality of pieces of data. The calculated coefficient values may be used to calculate a linear relation equation, and a blood pressure value with respect to a new input feature may be estimated by using the linear relation equation. FIG. 17 illustrates a result of estimating SBP and DBP values with a diastolic time  $t_2$  of a pulse waveform as a horizontal axis. The extracted parameters may be used to calculate the linear relation equation between the parameters and the blood pressure. For example, a linear relation equation of the SBP may be obtained as  $\text{Sys BP} = a_1 t_2 + b_1$ ,

and a linear relation equation of the DBP may be obtained as  $\text{Dia BP} = a_2 t_2 + b_2$ . In this regard,  $a_1$ ,  $b_1$ ,  $a_2$ , and  $b_2$  are calculated fitting parameters. As another example, a linear relation equation of the blood pressure may be obtained as  $\text{BP} = a_1 t_1 + a_2 t_2 + a_3 t_3 \dots + C$ . The linear relation equation may be used to estimate a blood pressure value with respect to a new input.

**[0083]** A case where the ANN algorithm is applied as a blood pressure estimation algorithm applied to the blood pressure measuring apparatus 10 according to an exemplary embodiment will be described below.

**[0084]** When the ANN algorithm is applied as the blood pressure estimation algorithm, a data learning process is firstly performed. During the data learning process, a hidden layer matrix is calculated by applying feature points extracted with respect to a bio signal to the ANN algorithm and then is stored in the memory 400. Thereafter, when a blood pressure is actually measured, the feature points with respect to a bio signal are extracted, and blood pressure values, for example, a SBP, a DBP, and a HR, are calculated by using a combination of data of the feature points and the hidden layer matrix stored in the memory 400.

**[0085]** FIG. 18 is a diagram illustrating a data learning process of an ANN algorithm used by the blood pressure measuring apparatus 10 according to an exemplary embodiment.

**[0086]** Referring to FIG. 18, light is radiated to an examined body part, and a bio signal sequence obtained by detecting a signal change in light due to the examined body part is input (operation P1100). An input bio signal is data obtained for a predetermined period of time, for example, for 4 seconds, and from which a baseline is corrected and high frequency HF noise is removed through processing the bio signal by using, for example, a smoothing function or a filter. An approximate HR estimation value may be determined by performing fast Fourier transform (FFT) on the bio signal sequence (operation P1200), and a maximum point of each cardiac cycle waveform and a minimum point adjacent to the maximum point are analyzed (operations P1300 and P1400). Thereafter, one cardiac cycle waveform is extracted from the bio signal sequence (operation P1500), and a plurality of feature points for the cardiac cycle waveform are extracted at equidistant intervals or by using a user-defined method (operation S1600). The extracted feature points are used to extract a hidden layer matrix and blood pressure values corresponding to the hidden layer matrix (operation S1700), and a result of a learned hidden layer matrix is stored in the memory 400 (operation P1800).

**[0087]** FIG. 19 is a diagram illustrating a process of calculating blood pressure values by using a stored hidden layer matrix after extracting feature points via an ANN algorithm according to an exemplary embodiment.

**[0088]** Referring to FIG. 19, the process of estimating and calculating blood pressure (BP) values may be largely divided into a process (first operation) of extracting

feature points from a bio signal and a process (second operation) of calculating the blood pressure values as a product between data of the extracted feature points and a stored hidden layer matrix obtained through a data learning process, for example, of the ANN algorithm.

**[0089]** To extract the data of feature points from the bio signal, light is radiated towards an examined body part, and a bio signal sequence obtained by detecting a signal change in light due to the examined body part is input (operation P2000). An input bio signal is data obtained for a predetermined period of time, for example, for 4 seconds, and from which a baseline is corrected and high frequency HF noise is removed by processing the bio signal using, for example, a smoothing function or a filter. An approximate HR estimation value is determined by performing FFT on the bio signal sequence (operation P2100), and a maximum point of each cardiac cycle waveform and a minimum point adjacent to the maximum point is analyzed (operations P2200 and P2300). Thereafter, one cardiac cycle waveform is extracted from the bio signal sequence (operation P2400), and a plurality of feature points are extracted for the cardiac cycle waveform at equidistant intervals or by using a user-defined method, for example, extracting the plurality of feature points at non-equidistant intervals (operation S2500).

**[0090]** The blood pressure values may be calculated by using data of the extracted feature points and a hidden layer matrix stored in the memory 400. The blood pressure values may be obtained from, for example, as a product between the hidden layer matrix and a vector formed as the data of the feature points. In this regard, the blood pressure values obtained as a result of calculation may include a SBP, a DBP, and a HR. The measured blood pressure and the HR may be displayed on the display 330 and/or may be output to an external device.

**[0091]** FIGS. 20A through 20C are diagrams illustrating a process of collecting and predicting data that may be used during a data learning process of FIG. 18 according to exemplary embodiments.

**[0092]** For example, as shown in FIG. 20A, a hidden layer matrix may be obtained by collecting and learning data by utilizing a randomly extracted population, and blood pressure values of a subject that is not included in the population may be estimated. As another example, as shown in FIG. 20B, to more accurately estimate blood pressure values, a hidden layer matrix may be obtained by classifying populations according to body features, and collecting and learning data according to the classified populations. The blood pressure values may be estimated by using data according to the classified populations corresponding to body features of subjects that are not included in these populations. As another example, as shown in FIG. 20C, a hidden layer matrix may be obtained a plurality of number of times by collecting and learning data according to individuals according to circumstances when individuals take a rest, work out, or

are sick during 24 hours of a day. The hidden layer matrix may be used to estimate the blood pressure values according to individuals.

**[0093]** As described with reference to FIG. 7, when a baseline of the collected data by using the blood pressure estimation algorithm above moves, the baseline is corrected by using a primary, secondary, or tertiary function, and when high frequency HF noise is present, the data is processed using, for example, a smoothing function, to remove the noise. Thereafter, one cycle is subdivided to determine minimum and maximum values for each cycle and extract feature points for each cycle. In this regard, equidistant intervals or a user-defined method is used to extract the feature points. Data of the extracted feature points may be applied to the blood pressure estimation algorithm to calculate and estimate the blood pressure values and a HR value.

**[0094]** As described above, according to the above exemplary embodiments, the blood pressure may be measured based on an optical signal, and thus the apparatus for and method of measuring the blood pressure may be implemented via a cuffless structure. The blood pressure values may be estimated and calculated by using feature point data of a bio signal in a blood pressure estimation algorithm, and thus, the blood pressure may be continuously monitored for a long time and the apparatus may be implemented in a wearable device or portable device.

**[0095]** In addition, the exemplary embodiments may also be implemented through computer-readable code and/or instructions on a medium, e.g., a non-transitory computer-readable medium, to control at least one processing element to implement any above-described embodiments. The medium may correspond to any medium or media which may serve as a storage and/or perform transmission of the computer-readable code.

**[0096]** The computer-readable code may be recorded and/or transferred on a medium in a variety of ways, and examples of the medium include recording media, such as magnetic storage media (e.g., ROM, floppy disks, hard disks, etc.) and optical recording media (e.g., compact disc read only memories (CD-ROMs) or digital versatile discs (DVDs)), and transmission media such as Internet transmission media. Thus, the medium may have a structure suitable for storing or carrying a signal or information, such as a device carrying a bitstream according to one or more exemplary embodiments. The medium may also be on a distributed network, so that the computer-readable code is stored and/or transferred on the medium and executed in a distributed fashion. Furthermore, the processing element may include a processor or a computer processor, and the processing element may be distributed and/or included in a single device.

**[0097]** The foregoing exemplary embodiments and advantages are merely exemplary and are not to be construed as limiting. The present teaching can be readily applied to other types of apparatuses. Also, the description of the exemplary embodiments is intended to be illustrative, and not to limit the scope of the claims, and

many alternatives, modifications, and variations will be apparent to those skilled in the art.

### Claims

1. An apparatus configured to measure blood pressure, the apparatus comprising:

a sensor configured to radiate light to a body part, and detect a light signal that is changed due to the body part;  
a signal processor configured to determine a bio signal based on the light signal; and  
a central processing unit configured to determine a blood pressure based on the bio signal and a blood pressure estimation algorithm.

2. The apparatus of claim 1, wherein the signal processor is further configured to extract a cycle of the light signal; and sample data from the cycle of the light signal at equidistant time intervals or based on a user input, or

wherein the signal processor is further configured to compare power spectrums within a frequency range of bio signals that are determined based on channels; and select a channel having a maximum power spectrum from the channels.

3. The apparatus of claim 2, wherein, the signal processor is further configured to, in response to the signal processor selecting the channel having the maximum power spectrum or using a single channel, select a part of a bio signal that corresponds to the selected channel or the single channel, in which a power spectrum value within the frequency range is greater than a value, as a valid part of the bio signal.

4. The apparatus of one of claims 1 to 3, further comprising a display configured to display the blood pressure.

5. The apparatus of one of claims 1 to 4, further comprising a memory configured to store the blood pressure estimation algorithm and information of the bio signal.

6. The apparatus of one of claims 1 to 5, wherein the sensor comprises a light emitter configured to radiate the light to the body part, and a light receiver configured to detect the light signal that is changed due to the body part, the light receiver comprises a photodiode or an image sensor, and the light emitter comprises a laser diode or a light emitting diode, or wherein the sensor comprises a light emitter configured to radiate the light to the body part, and a light receiver configured to detect the light signal that is changed due to the body part, the light emitter com-

prises a laser diode, and the central processing unit is further configured to determine the blood pressure based on the bio signal in response to the sensor being spaced apart from a skin of an examinee.

7. The apparatus of one of claims 1 to 6, wherein the bio signal is periodically obtained at predetermined time intervals.

8. The apparatus of one of claims 1 to 7, wherein the central processing unit is further configured to determine the blood pressure based on the bio signal and one among a linear regression analysis algorithm, a multiple regression analysis algorithm, and a non-linear regression analysis algorithm, or wherein the central processing unit is further configured to determine the blood pressure based on the bio signal and one among an artificial neural network algorithm, a k-nearest neighbor algorithm, a Bayesian network algorithm, a support vector machine algorithm, and a recurrent neural network algorithm, or wherein the central processing unit is further configured to correct the blood pressure based on a blood pressure that is determined by another device.

9. The apparatus of one of claims 1 to 8, further comprising a body information interface configured to receive body information of at least one among an age, a gender, a weight, and a height of an examinee, wherein the central processing unit is further configured to determine the blood pressure based on the bio signal and the body information.

10. The apparatus of one of claims 1 to 9, wherein the apparatus is portable, and is implemented in one among a wrist watch, a mobile smart phone, a tablet computer, an earphone, a headset, and glasses, wherein if the apparatus is implemented in a wrist watch, the sensor is positioned on a back of a main body or a strap of the wrist watch.

11. A method of measuring blood pressure, the method comprising:

radiating light to a body part;  
detecting a light signal that is changed due to the body part;  
determining a bio signal based on the light signal;  
correcting the bio signal;  
extracting feature points from the corrected bio signal; and  
combining a matrix of a blood pressure estimation algorithm with the feature points to determine a blood pressure.

12. The method of claim 11, wherein the extracting com-

prises:

determining a maximum point of the corrected  
bio signal and a minimum point adjacent to the  
maximum point; and 5  
extracting the feature points from the corrected  
bio signal at equidistant time intervals or based  
on a user input.

**13.** The method of claim 11 or 12, wherein the matrix of 10  
the blood pressure estimation algorithm is deter-  
mined by learning the blood pressure estimation al-  
gorithm such that the blood pressure that is deter-  
mined by inputting the feature points in the blood  
pressure estimation algorithm is closer to an actual 15  
blood pressure.

**14.** The method of one of claims 11 to 13, wherein the  
blood pressure estimation algorithm is one among 20  
an artificial neural network algorithm, a k-nearest  
neighbor algorithm, a Bayesian network algorithm,  
a support vector machine algorithm, and a recurrent  
neural network algorithm.

**15.** The method of one of claims 11 to 14, wherein the 25  
correcting comprises:

correcting a baseline of a sequence of the bio  
signal; and  
removing high frequency noise from the correct- 30  
ed sequence.

35

40

45

50

55

FIG. 1

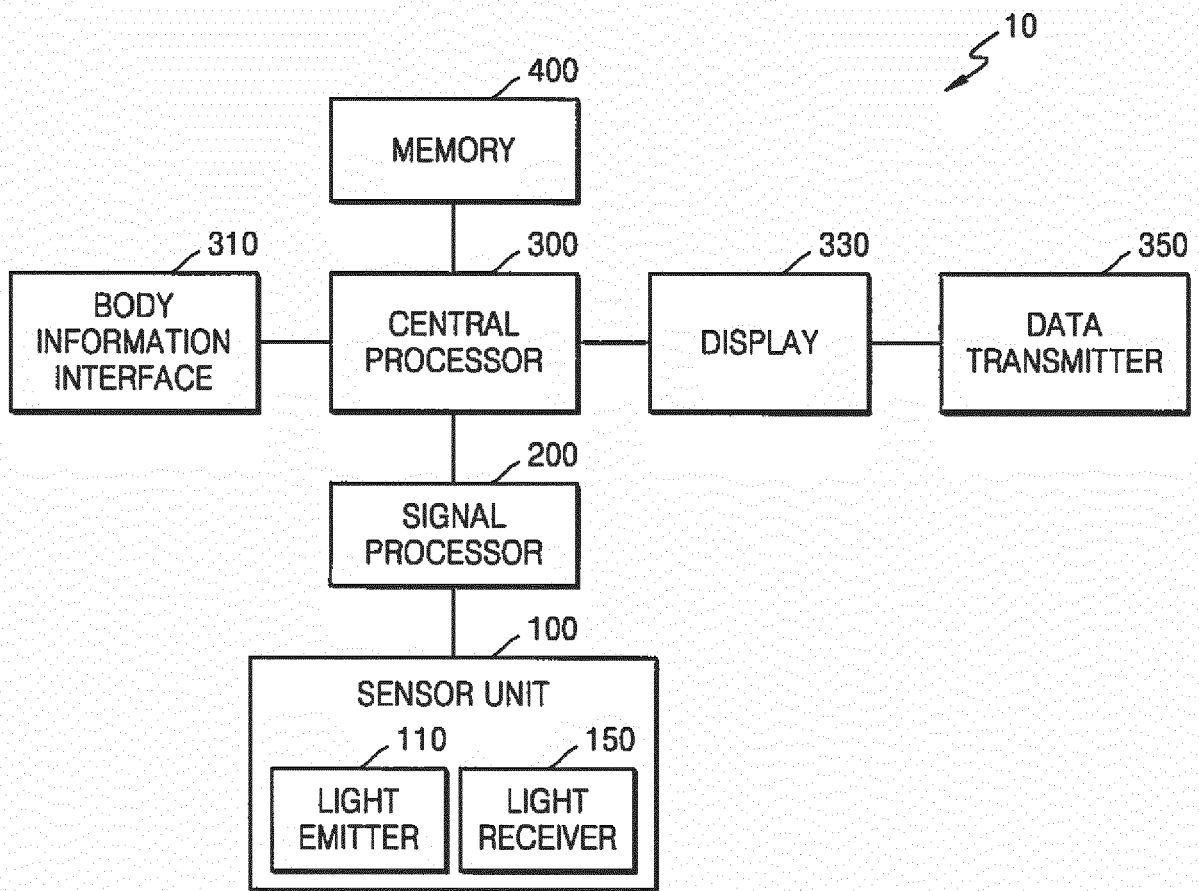


FIG. 2

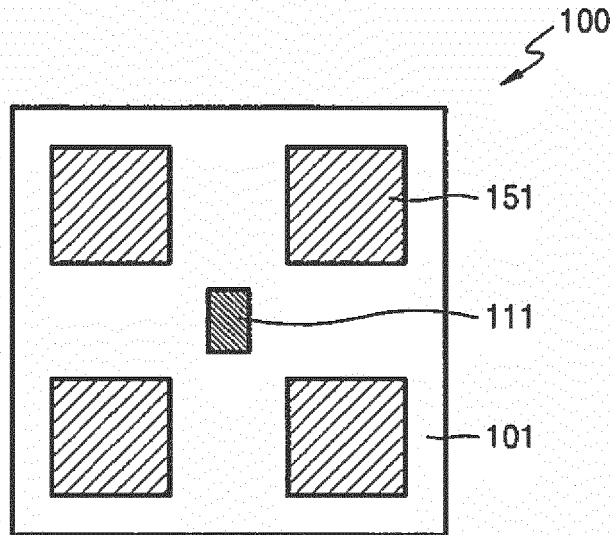


FIG. 3

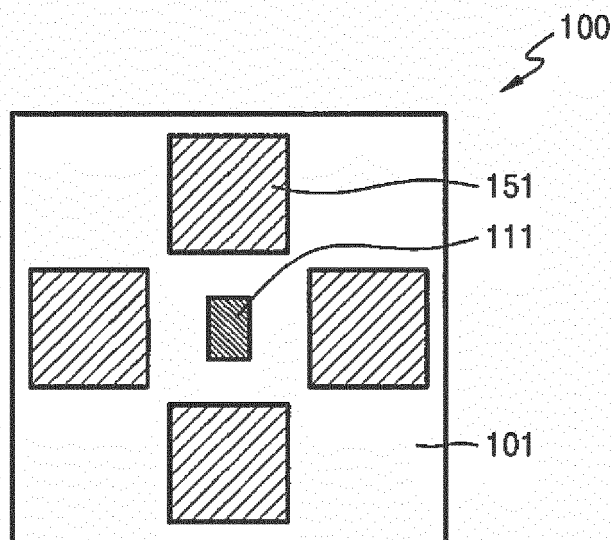


FIG. 4

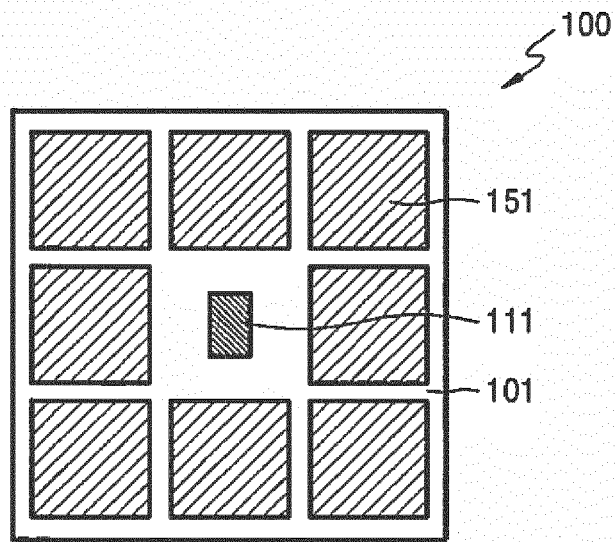


FIG. 5

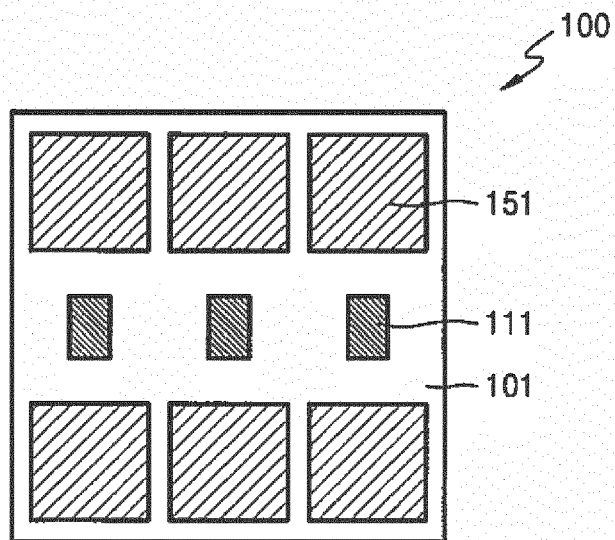


FIG. 6

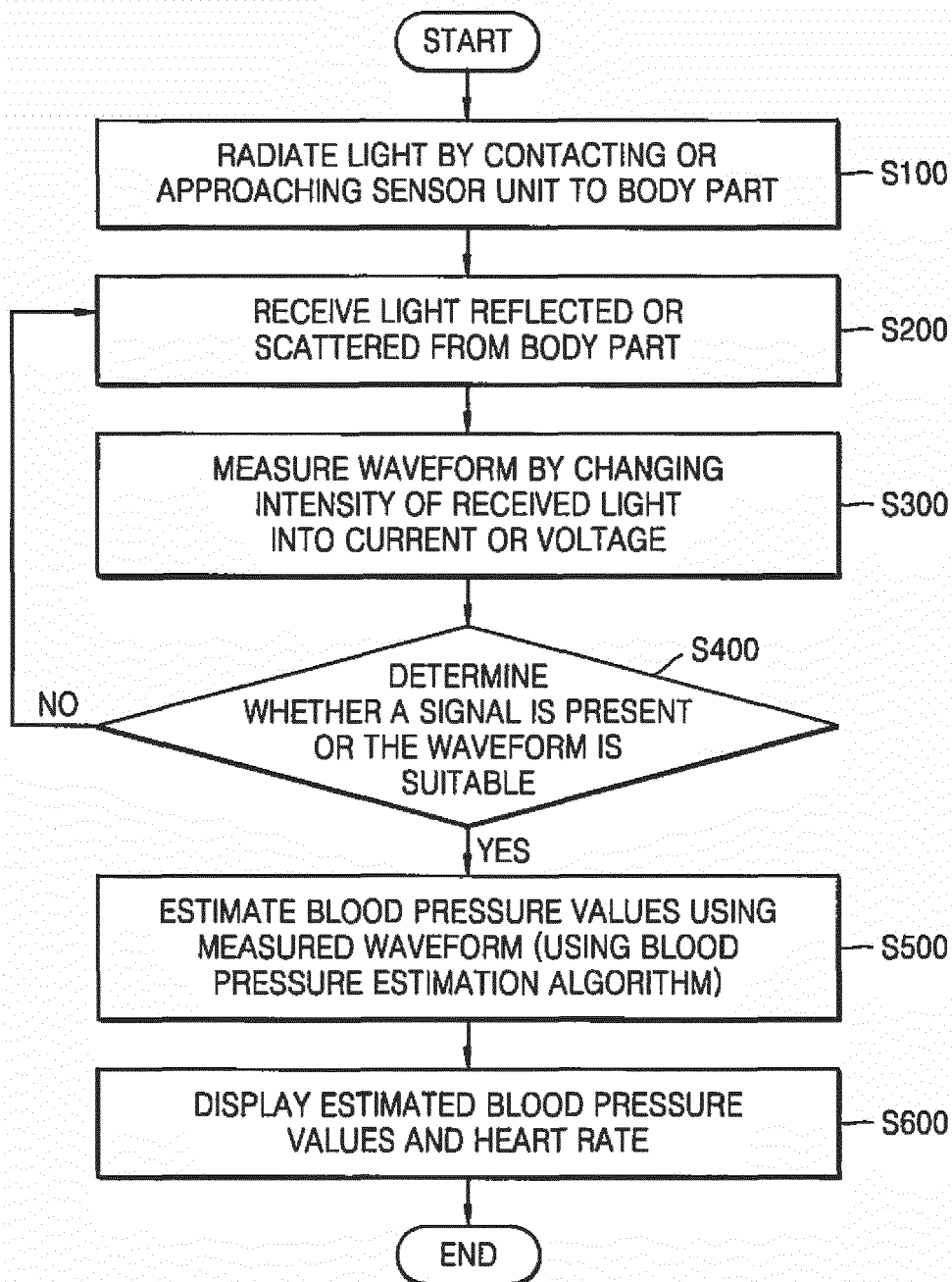


FIG. 7

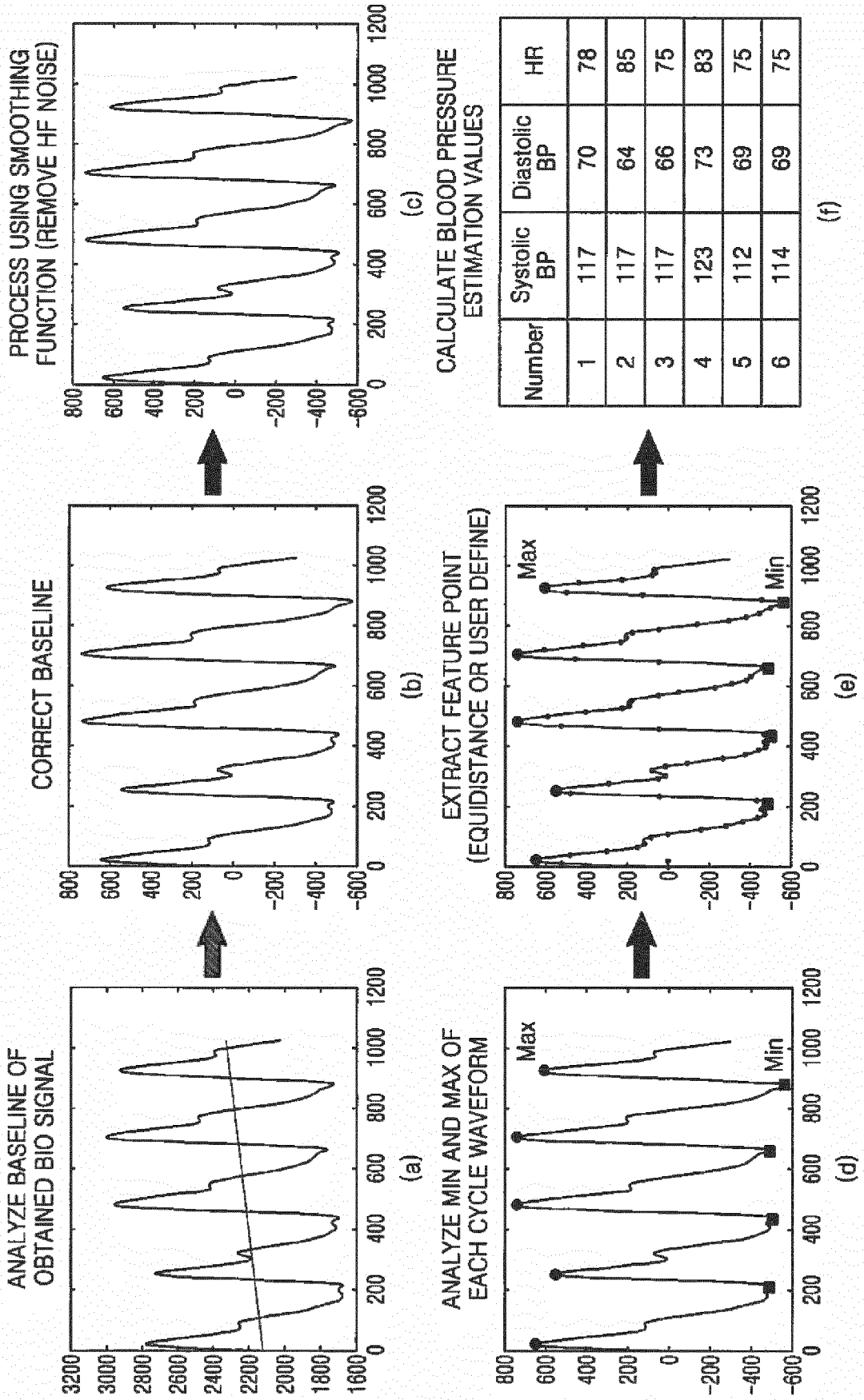


FIG. 8

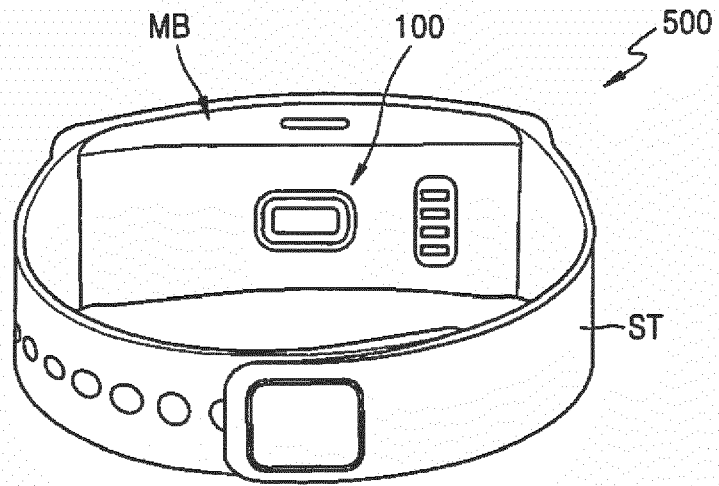


FIG. 9

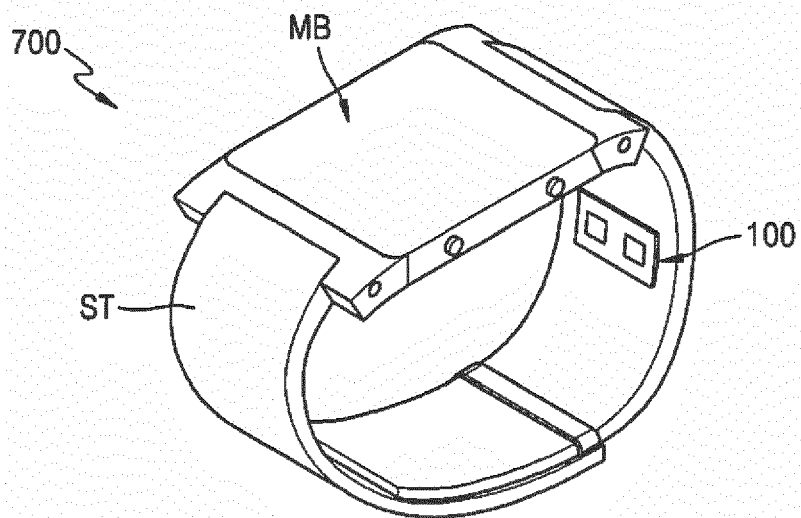


FIG. 10

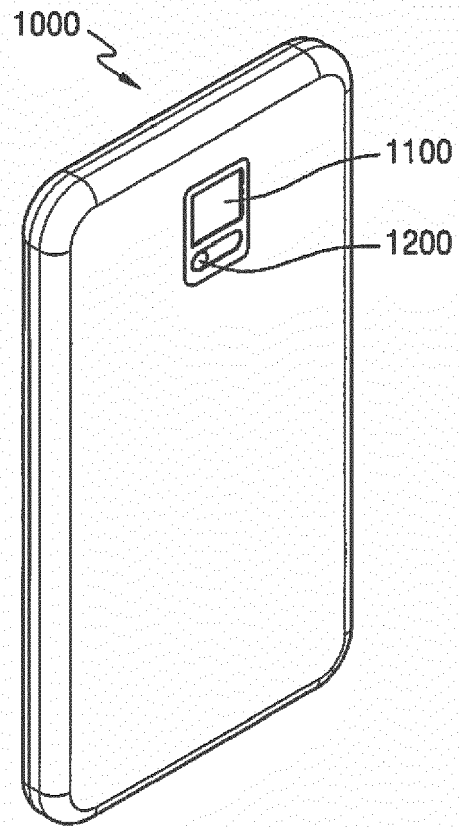


FIG. 11

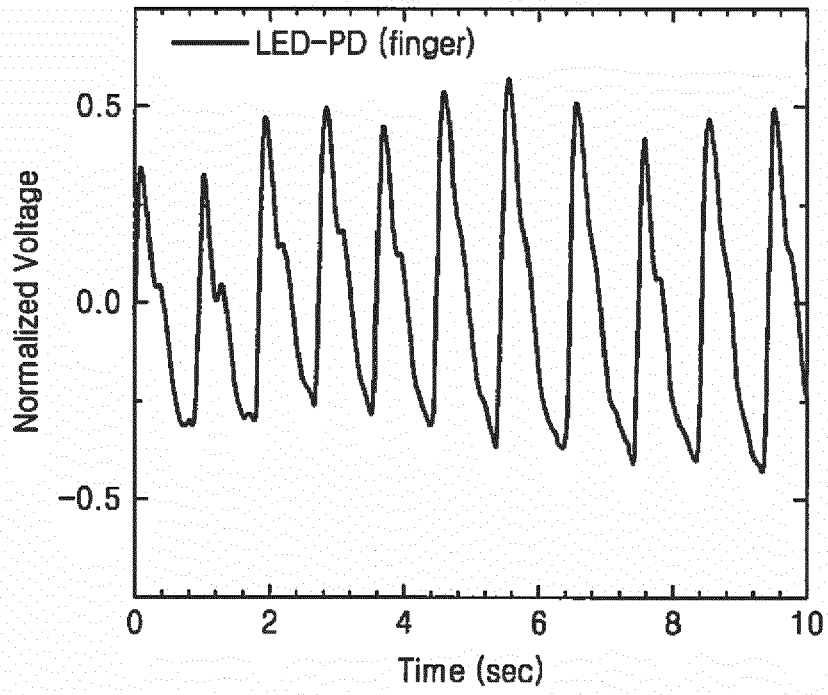


FIG. 12

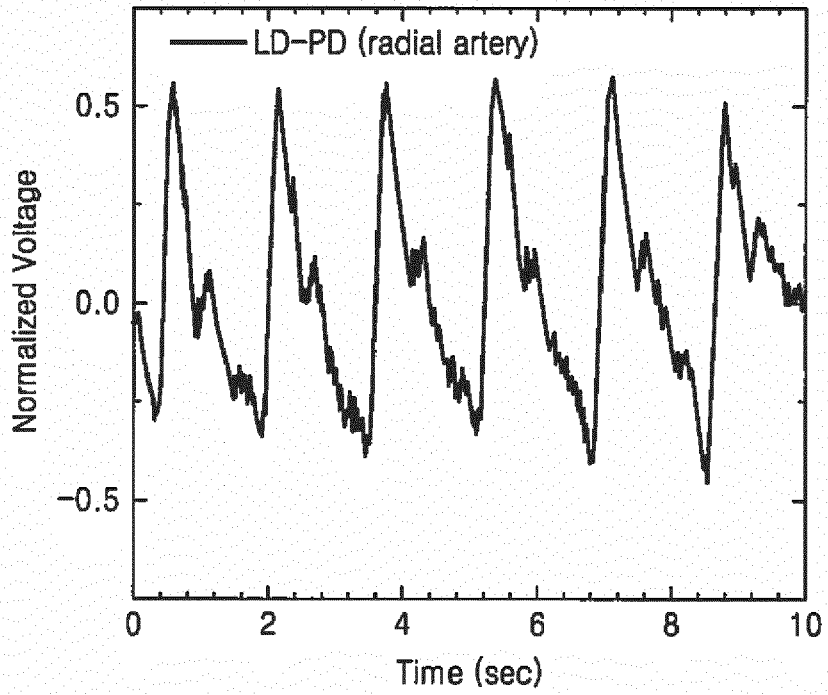


FIG. 13

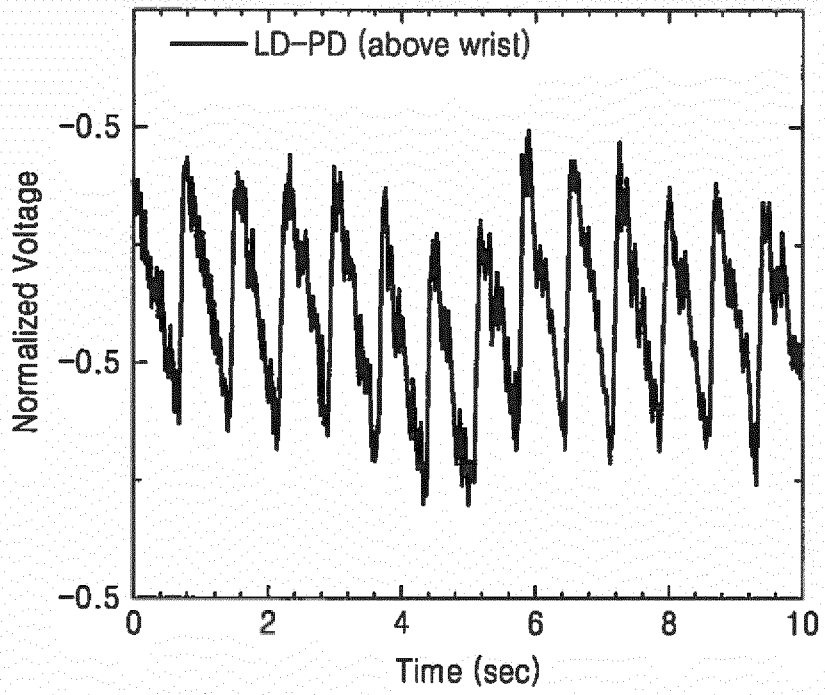


FIG. 14

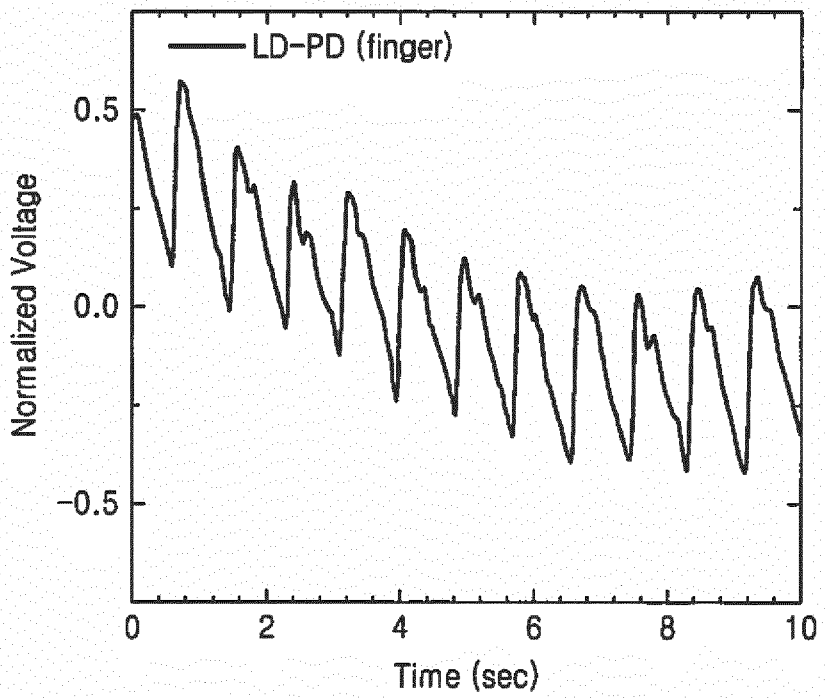


FIG. 15A

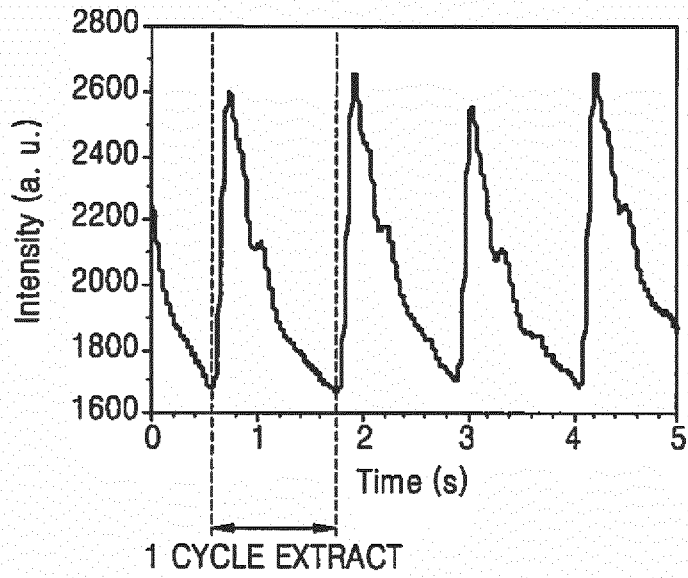


FIG. 15B

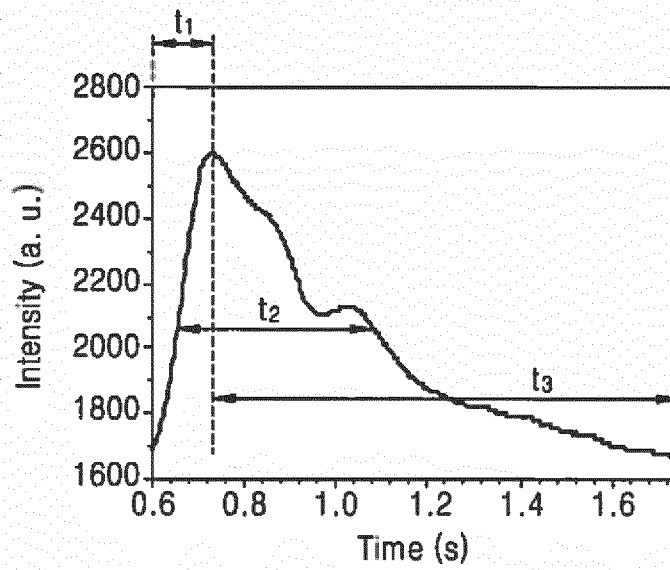


FIG. 16

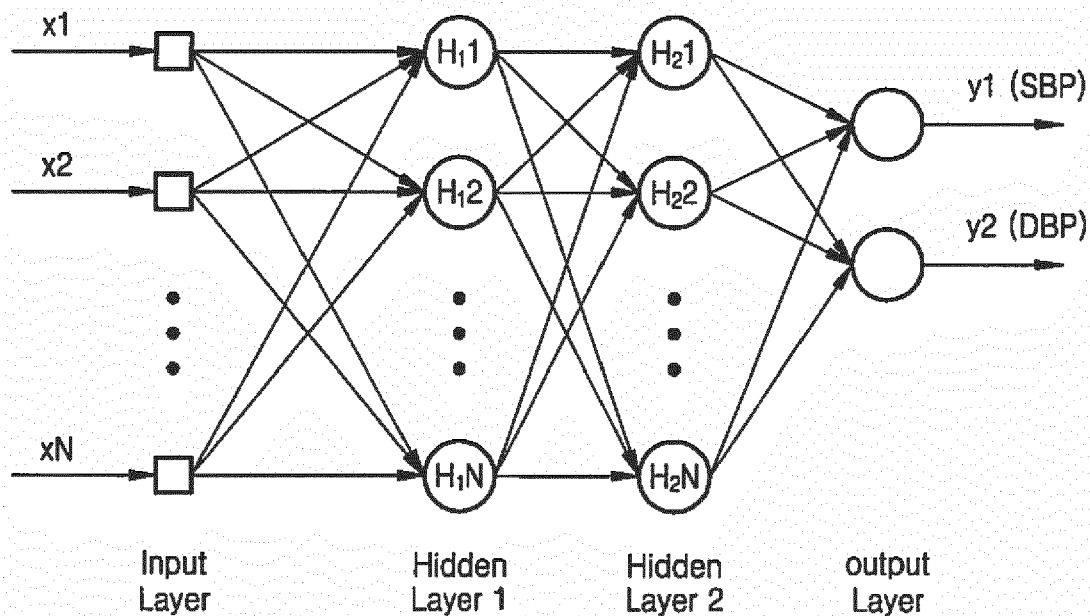


FIG. 17

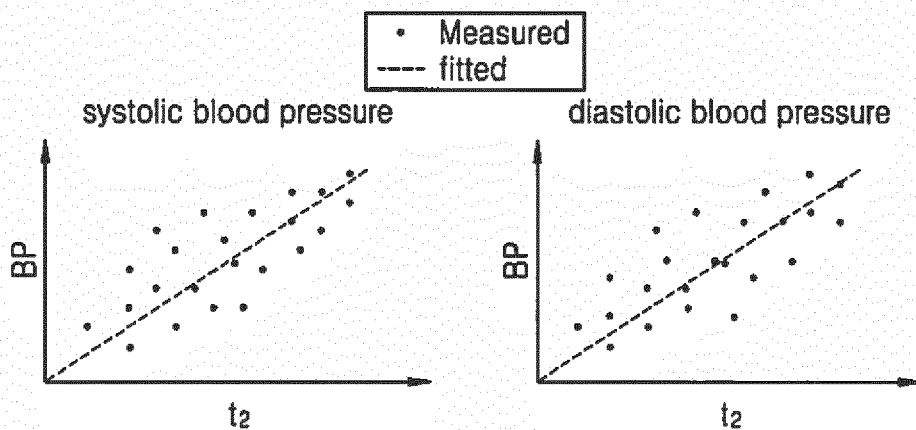


FIG. 18

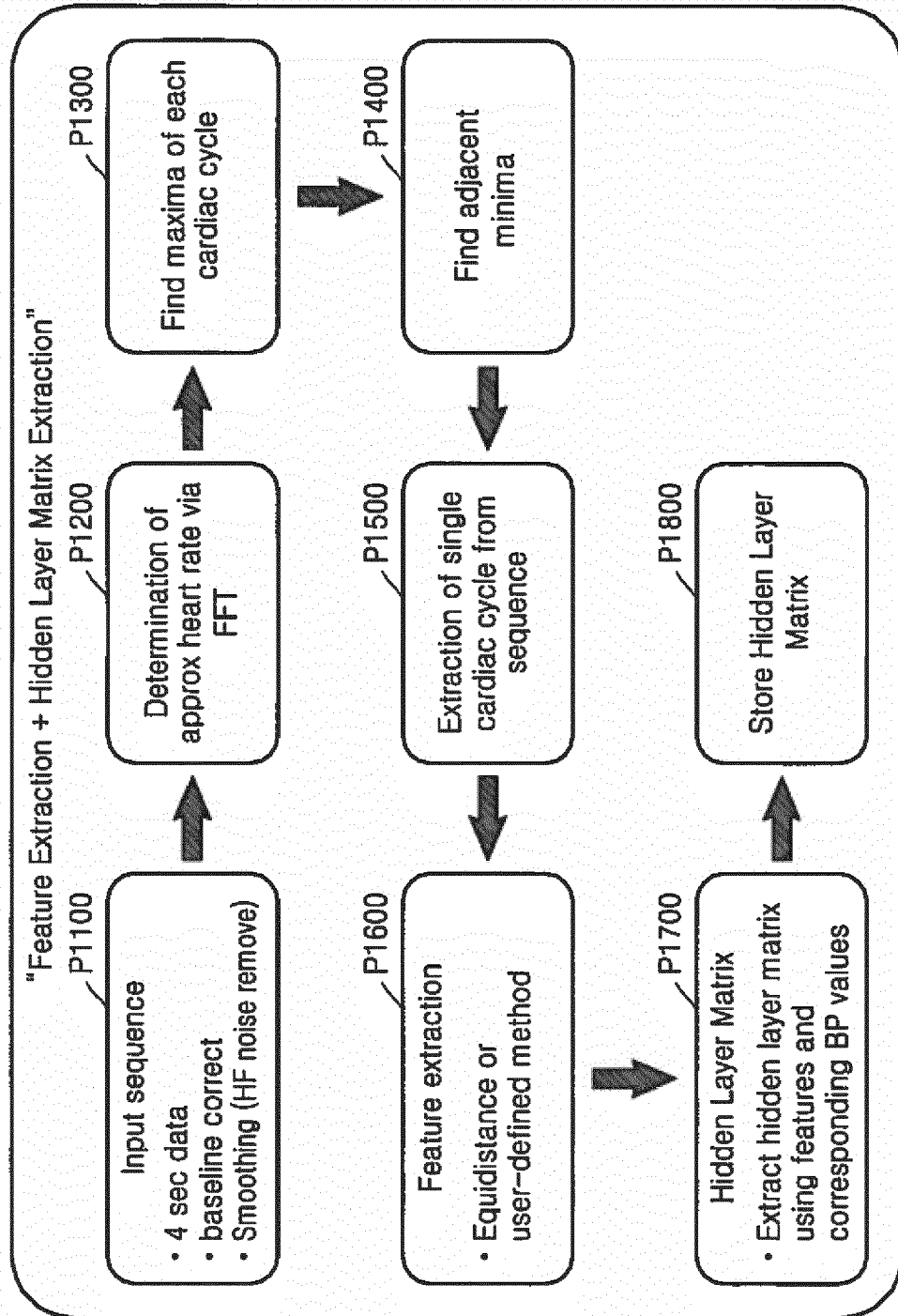


FIG. 19

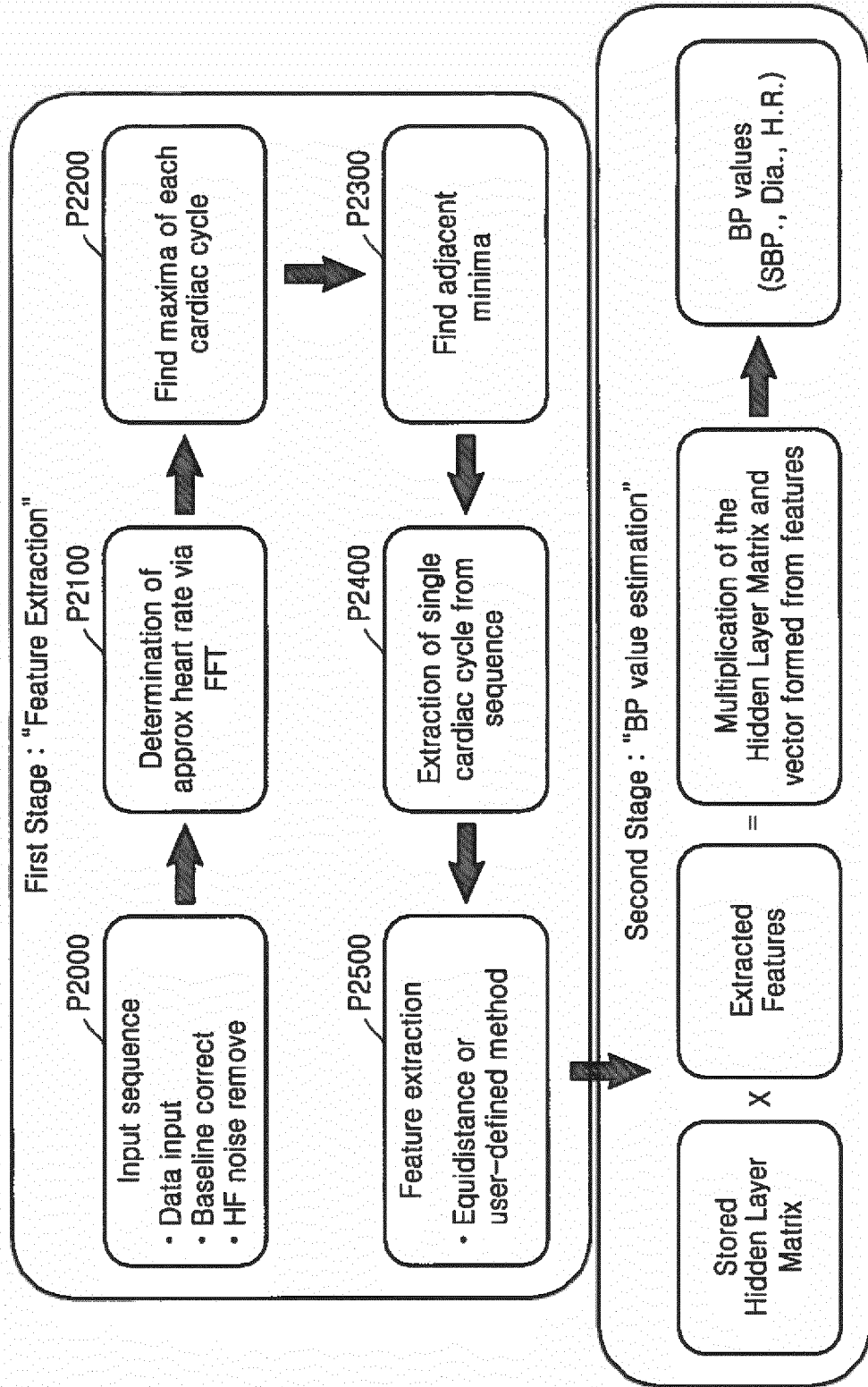


FIG. 20A

RANDOMLY EXTRACTED POPULATION

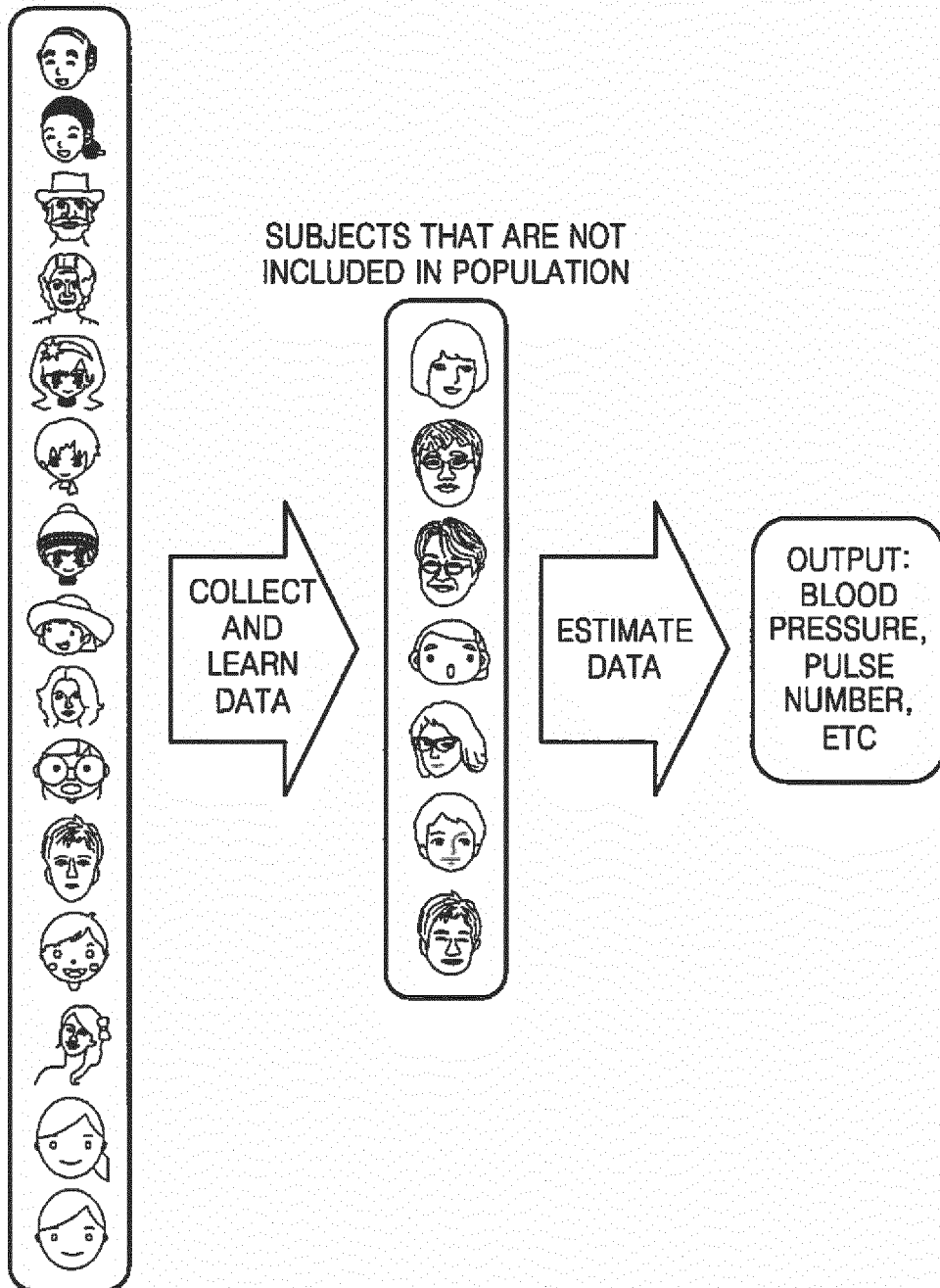


FIG. 20B

CLASSIFY POPULATIONS ACCORDING TO FEATURES

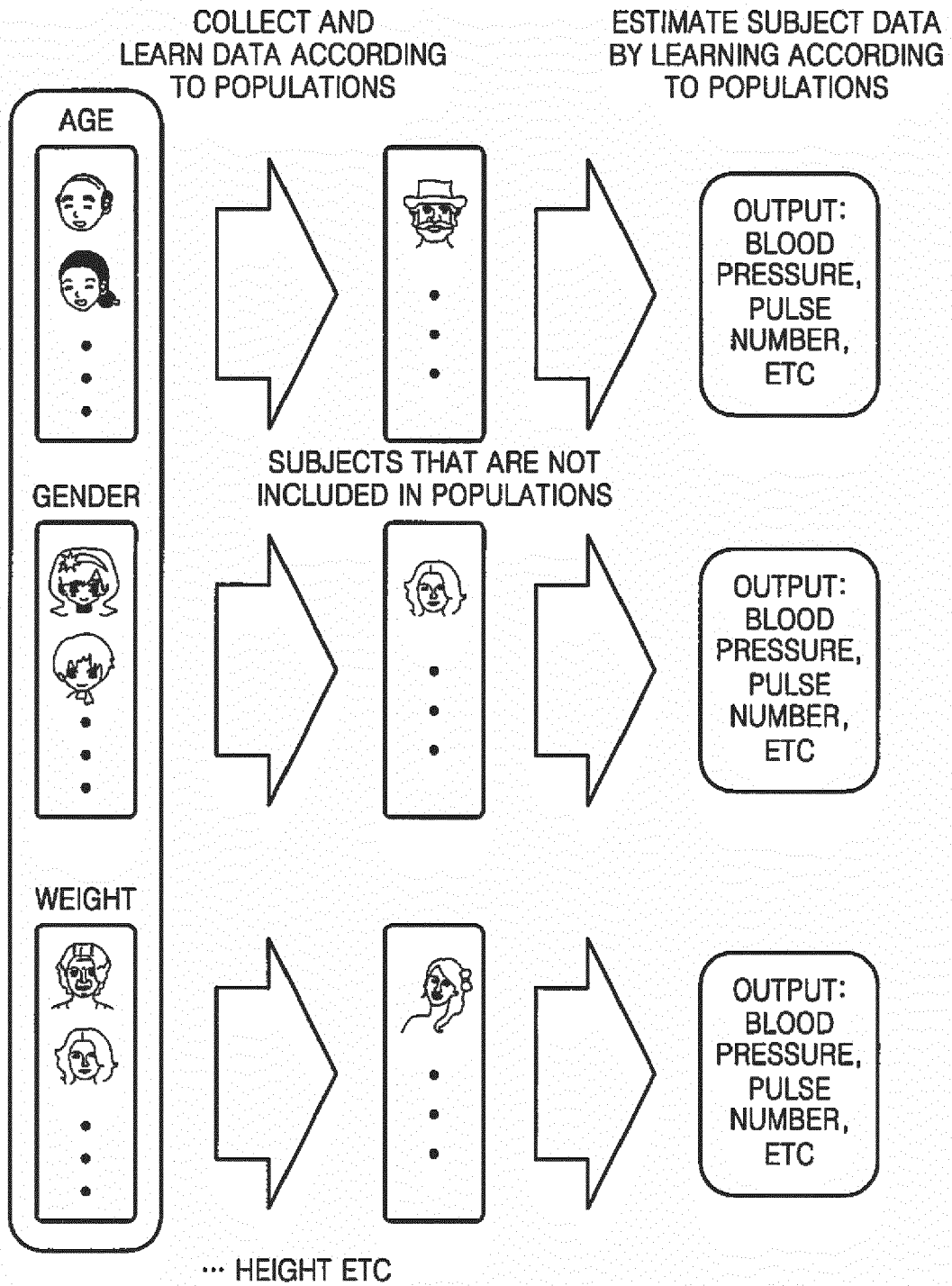
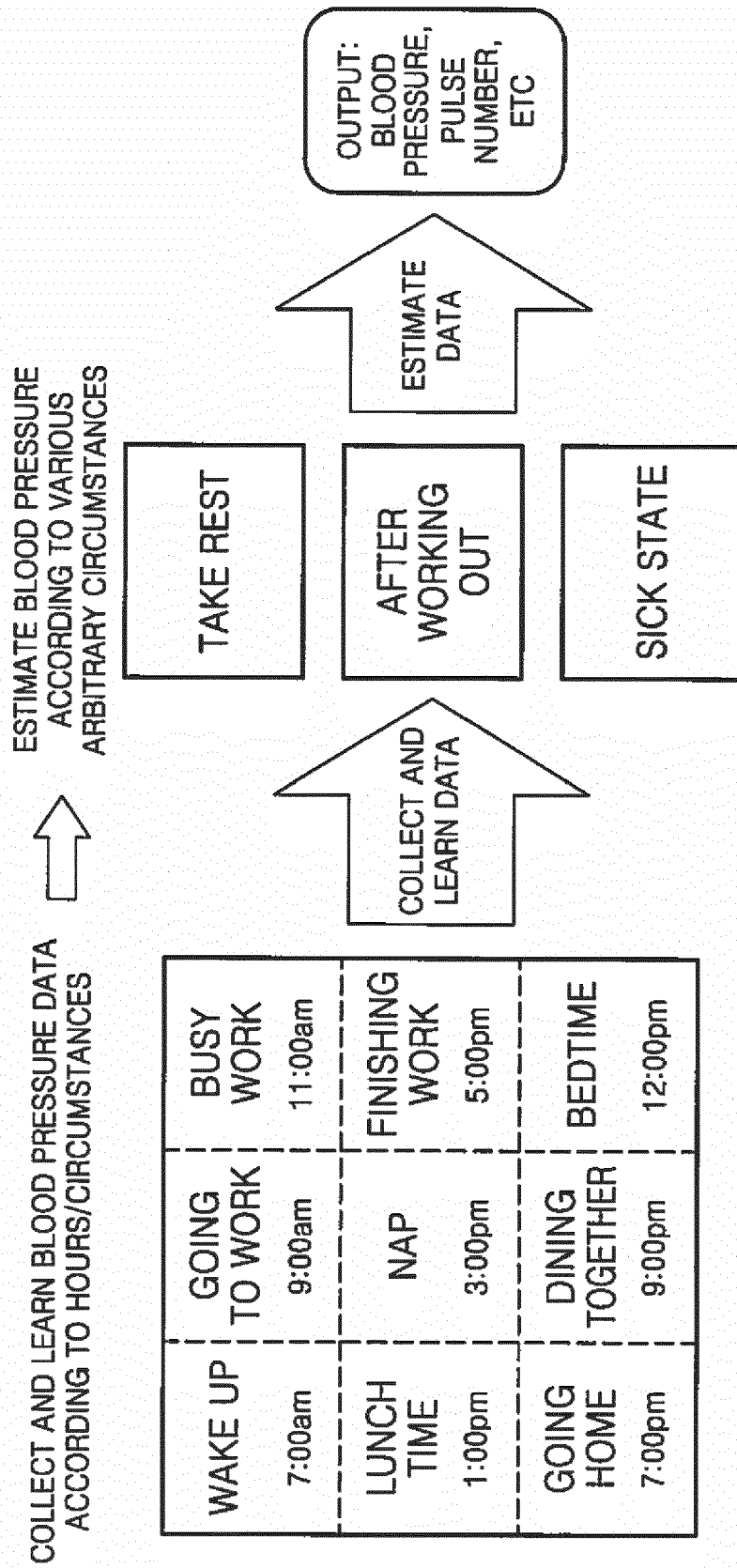


FIG. 20C





EUROPEAN SEARCH REPORT

Application Number  
EP 16 15 8751

5

10

15

20

25

30

35

40

45

50

55

DOCUMENTS CONSIDERED TO BE RELEVANT			
Category	Citation of document with indication, where appropriate, of relevant passages	Relevant to claim	CLASSIFICATION OF THE APPLICATION (IPC)
X	US 2008/228089 A1 (CHO JAE-GEOL [KR] ET AL) 18 September 2008 (2008-09-18)  * abstract * * paragraphs [0010] - [0012], [0030], [0039], [0047] - [0051] * -----	1,4-8, 10-12, 14,15	INV. A61B5/00 A61B5/021  ADD. A61B5/024 A61B5/1455
X	ENRIC MONTE-MORENO: "Non-invasive estimate of blood glucose and blood pressure from a photoplethysmograph by means of machine learning techniques", ARTIFICIAL INTELLIGENCE IN MEDICINE, vol. 53, no. 2, 1 October 2011 (2011-10-01), pages 127-138, XP055013563, ISSN: 0933-3657, DOI: 10.1016/j.artmed.2011.05.001 * abstract * * page 128, left-hand column, line 5 - page 130, line 28 * * page 134, right-hand column, line 20 - page 136, left-hand column, line 6 * -----	1-3, 6-11,13, 14	TECHNICAL FIELDS SEARCHED (IPC)  A61B
X	US 2009/326393 A1 (SETHI RAKESH [CA] ET AL) 31 December 2009 (2009-12-31) * paragraphs [0021], [0024], [0035] - [0040] * -----	1,4-6, 9-11,15	
X	US 2007/265533 A1 (TRAN BAO [US]) 15 November 2007 (2007-11-15) * paragraphs [0222], [0226], [0229], [0274] * -----	1,4-6, 8-11,14	
The present search report has been drawn up for all claims			
Place of search <b>The Hague</b>		Date of completion of the search <b>24 August 2016</b>	Examiner <b>Kowalczyk, Szczepan</b>
CATEGORY OF CITED DOCUMENTS X : particularly relevant if taken alone Y : particularly relevant if combined with another document of the same category A : technological background O : non-written disclosure P : intermediate document		T : theory or principle underlying the invention E : earlier patent document, but published on, or after the filing date D : document cited in the application L : document cited for other reasons ..... & : member of the same patent family, corresponding document	

EPO FORM 1503 03.02 (P04C01)

ANNEX TO THE EUROPEAN SEARCH REPORT  
ON EUROPEAN PATENT APPLICATION NO.

EP 16 15 8751

5

This annex lists the patent family members relating to the patent documents cited in the above-mentioned European search report. The members are as contained in the European Patent Office EDP file on  
The European Patent Office is in no way liable for these particulars which are merely given for the purpose of information.

24-08-2016

10

Patent document cited in search report	Publication date	Patent family member(s)	Publication date
US 2008228089 A1	18-09-2008	CN 101264011 A	17-09-2008
		EP 1970000 A2	17-09-2008
		KR 20080083505 A	18-09-2008
		US 2008228089 A1	18-09-2008
-----			
US 2009326393 A1	31-12-2009	US 2009326393 A1	31-12-2009
		US 2013253341 A1	26-09-2013
		WO 2010001234 A1	07-01-2010
-----			
US 2007265533 A1	15-11-2007	US 2007265533 A1	15-11-2007
		US 2009227877 A1	10-09-2009
		US 2012095357 A1	19-04-2012
		US 2012245464 A1	27-09-2012
		US 2013197322 A1	01-08-2013
-----			

15

20

25

30

35

40

45

50

55

EPO FORM P0459

For more details about this annex : see Official Journal of the European Patent Office, No. 12/82

专利名称(译)	用于测量血压的装置和方法		
公开(公告)号	<a href="#">EP3072441A1</a>	公开(公告)日	2016-09-28
申请号	EP2016158751	申请日	2016-03-04
[标]申请(专利权)人(译)	三星电子株式会社		
申请(专利权)人(译)	SAMSUNG ELECTRONICS CO. , LTD.		
当前申请(专利权)人(译)	SAMSUNG ELECTRONICS CO. , LTD.		
[标]发明人	BAIK CHANWOOK KYOUNG JISOO RIABKO MAKSIM VLADIMIROVICH YOON YOUNGZOOK LANTSOV ALEXEY DMITRIEVICH ROH YOUNGGEUN LEE JAESOONG		
发明人	BAIK, CHANWOOK KYOUNG, JISOO RIABKO, MAKSIM VLADIMIROVICH YOON, YOUNGZOOK LANTSOV, ALEXEY DMITRIEVICH ROH, YOUNGGEUN LEE, JAESOONG		
IPC分类号	A61B5/00 A61B5/021 A61B5/024 A61B5/1455		
优先权	1020150031967 2015-03-06 KR		
外部链接	<a href="#">Espacenet</a>		

摘要(译)

提供了一种装置和测量血压的方法。该装置包括被配置为光辐射到身体部分，并检测因身体部分改变光信号的传感器。该装置还包括配置成基于所述光信号的生物信号的信号处理器;和一个中央处理单元，被配置来基于所述生物信号的血压。

FIG. 1

