

(19)



(11)

EP 2 348 973 B1

(12)

EUROPEAN PATENT SPECIFICATION

(45) Date of publication and mention of the grant of the patent:
13.04.2016 Bulletin 2016/15

(51) Int Cl.:
A61B 5/00 ^(2006.01) **A61B 5/1455** ^(2006.01)
A61B 5/021 ^(2006.01)

(21) Application number: **09786263.5**

(86) International application number:
PCT/IB2009/006893

(22) Date of filing: **17.09.2009**

(87) International publication number:
WO 2010/038118 (08.04.2010 Gazette 2010/14)

(54) **SYSTEM AND METHOD FOR RECALIBRATING A NON-INVASIVE BLOOD PRESSURE MONITORING SYSTEM**

SYSTEM UND VERFAHREN ZUR REKALIBRIERUNG EINES NICHTINVASIVEN BLUTDRUCK-ÜBERWACHUNGSSYSTEMS

SYSTÈME ET PROCÉDÉ POUR RÉÉTALONNER UN SYSTÈME DE SURVEILLANCE NON INVASIVE DE LA TENSION ARTÉRIELLE

(84) Designated Contracting States:
AT BE BG CH CY CZ DE DK EE ES FI FR GB GR HR HU IE IS IT LI LT LU LV MC MK MT NL NO PL PT RO SE SI SK SM TR

- **ADDISON, Paul, Stanley**
Edinburgh EH10 6UR (GB)
- **WATSON, James, Nicholas**
Fife KY11 8LE (GB)

(30) Priority: **30.09.2008 US 242858**

(74) Representative: **Hargreaves, Timothy Edward et al**
Marks & Clerk LLP
Atholl Exchange
6 Canning Street
Edinburgh EH3 8EG (GB)

(43) Date of publication of application:
03.08.2011 Bulletin 2011/31

(73) Proprietor: **Nellcor Puritan Bennett Ireland**
Mervue
Galway (IE)

(56) References cited:
EP-A1- 1 782 728 **US-A- 5 533 511**
US-A1- 2003 135 124 **US-A1- 2003 167 012**
US-A1- 2004 073 121 **US-B1- 6 616 613**

(72) Inventors:
• **BAKER, Clark, R., Jr.**
Newman
CA 95360 (US)

EP 2 348 973 B1

Note: Within nine months of the publication of the mention of the grant of the European patent in the European Patent Bulletin, any person may give notice to the European Patent Office of opposition to that patent, in accordance with the Implementing Regulations. Notice of opposition shall not be deemed to have been filed until the opposition fee has been paid. (Art. 99(1) European Patent Convention).

Description

5 [0001] EP 1 782 728 describes an apparatus and method for measuring an induced perturbation to determine a physiological parameter. US 2004/0073121 describes a non-invasive apparatus for measuring drug hepatotoxicity. US 2003/0167012 describes a blood pressure monitoring system in which a non-blood pressure monitor periodically provides a reference blood pressure measurement that is used to calibrate derivation of blood pressure based on pulse transit time.

Summary

10 [0002] The present disclosure relates to blood pressure monitoring and, more particularly, the present disclosure relates to systems and methods for recalibrating a non-invasive blood pressure monitor.

15 [0003] In some embodiments, a patient's blood pressure may be measured using a continuous non-invasive blood pressure (CNIBP) monitoring system, which may include at least one pulse oximeter. An oximeter may include a light sensor that is placed at a site on a patient, typically a fingertip, toe, forehead or earlobe, or in the case of a neonate, across a foot. The oximeter may pass light using a light source through blood perfused tissue and photoelectrically sense the absorption of light in the tissue. For example, the oximeter may measure the intensity of light that is received at the light sensor as a function of time. A signal representing light intensity versus time or a mathematical manipulation of this signal (e.g., a scaled version thereof, a log taken thereof, a scaled version of a log taken thereof etc.) may be referred to as the photoplethysmograph (PPG) signal. In addition, the term "PPG signal," as used herein, may also refer to an absorption signal (i.e., representing the amount of light absorbed by the tissue) or any suitable mathematical manipulation thereof. The light intensity or the amount of light absorbed may then be used to calculate the amount of the blood constituent (e.g., oxyhemoglobin) being measured as well as the pulse rate and when each individual pulse occurs.

20 [0004] Multiple PPG signals may be detected using probes or sensors positioned at different points in a patient's body. For example, a first probe or sensor may be attached to the patient's ear while a second probe or sensor may be attached to the patient's finger or toe. A differential pulse transit time (DPTT) may be measured between PPG signals that can be used to compute blood pressure measurements on a continuous or periodic basis. Chen et al U.S. Pat. No. 6,599,251, issued July 29, 2003, which is hereby incorporated by reference herein in its entirety, discloses some techniques for continuous and non-invasive blood pressure monitoring using two probes or sensors that may be used in conjunction with the present disclosure.

25 [0005] In some embodiments, blood pressure may be computed with the use of only a single sensor or probe. In such scenarios, a time between two characteristic points of a PPG signal detected by the single sensor or probe may be measured and used in place of a DPTT to compute a patient's blood pressure. Characteristic points may be, for example, turning points in the 1st, 2nd, 3rd, or other derivative of a PPG signal. Further details on using a single probe or sensor to compute blood pressure are described in co-pending, commonly assigned U.S. Patent Application No. 12/242,238 filed 30 September 2008, entitled "Systems and Methods for Non-Invasive Blood Pressure Monitoring" (Attorney Docket No. H-RM-01205 (COV-11)), which is hereby incorporated by reference herein in its entirety.

30 [0006] In other embodiments, blood pressure may be computed based on the area under at least a portion of a detected PPG signal. Techniques for using area measurements to compute blood pressure are provided in co-pending, commonly assigned U.S. Patent Application No. 12/242,867 filed 30 September 2008, entitled "Systems and Methods for Non-Invasive Blood Pressure Determination" (Attorney Docket No. H-RM-01206 (COV-13)), which is hereby incorporated by reference herein in its entirety.

35 [0007] The DPTT and area measurements may vary not only with a patient's blood pressure, but also with the patient's arterial compliance (vasotone), which in turn may vary in response to a variety of factors. In order to account for the effect of the patient's vasotone in computing blood pressure measurements, a CNIBP measuring system may perform an initial calibration using a reference blood pressure measurement (e.g., using a cuff wrapped around a patient's arm). This initial calibration may be used to set values for constants or parameters in one or more equations relating the DPTT to a desired blood pressure measurement. After initial calibration is performed, recalibration of the CNIBP system may be required periodically (e.g., every 30 minutes or any other suitable interval) or in response to events that may indicate a change to the vasotone of the arteries connecting the patient's heart to any of the sensor sites. For example, events that may indicate a need for a recalibration may include administration of certain drugs (e.g., vasoactive drugs such as anesthetics), certain surgical procedures or steps that may cause pain or otherwise aggravate the patient, or changes in the elevation of the sensor sites relative to the blood pressure cuff.

40 [0008] CNIBP systems may determine that the system needs to be recalibrated in several ways. One way to determine such a need is through the use of indirect data. For instance, the system may detect certain changes in the computed blood pressure (e.g., measurements falling outside of a pre-determined range or deviating a certain amount from a running average) or variations in the shape of measured PPG waveforms (e.g., as measured by the rise-to-fall time of the waveform or the relative amplitude of the dicrotic notch) that indicate that a recalibration is needed. However, relying solely or primarily on indirect recalibration events may have several drawbacks. For example, a significant amount of

time may elapse between the occurrence of a change in vasotone and the detection of that change, which may cause inaccuracies in CNIBP measurements and may, in certain cases, trigger false CNIBP alarms. Additionally, the detection of indirect recalibration events may require unnecessary cuff inflations, which may interrupt the CNIBP measurements, and disturb the patient unnecessarily (e.g., by awakening a sleeping patient).

5 **[0009]** In some embodiments, a CNIBP measuring system may be recalibrated in response to direct events instead of, or in addition to, indirect events indicating a detected or expected change in vasotone. As an example, a direct event may reflect patient data stored in a hospital information system that contains real-time information about the patient. Such data may include, for instance, manual entries of drug administration or other procedures. The data may be automatically generated (e.g., by scanning a drug vial using a barcode or radio-frequency identification reader to determine the identity of a drug and when it will be administered to a patient, or by storing data from surgical equipment such as cutting and pounding devices). Such data may be updated in real-time, in appropriate intervals, or a combination thereof. As another example, the CNIBP measuring system may detect changes in the elevation of one or more sensors that may require recalibration. Techniques for determining such changes in elevation are disclosed in pending Baker, Jr. et al. U.S. Publication No. US 2006/0253016, filed November 18, 2005, which is hereby incorporated by reference herein in its entirety. A CNIBP measuring system may rely on indirect recalibration events, direct recalibration events, or a suitable combination thereof. In some embodiments, the system may be manually configured to use a certain subset of available indirect and direct events.

10 **[0010]** A recalibration event may automatically trigger a recalibration sequence. Recalibration may be performed, in some embodiments, by measuring a patient's blood pressure (or a reference blood pressure) and then measuring the corresponding elapsed time between PPG signals or within a single PPG signal, or area under a PPG signal, detected using appropriately placed sensors or probes. Updated or refined values for one or more constants or parameters used in the blood pressure measurement determination may then be computed based at least in part on the recalibration. These updated or refined constant or parameter values may then be used to determine the patient's blood pressure until the next recalibration sequence is performed (or for some predetermined length of time).

15 **[0011]** In some embodiments, a direct recalibration event may indicate when the desired recalibration should be performed. For instance, the time required for a drug to take effect may vary based on factors such as the type of drug in question, the drug's mode of action, and how the drug is delivered. Therefore, the CNIBP measuring system may schedule recalibration based on such factors. As an example, recalibration may be scheduled for a time when the drug's effect on the patient is nearly complete. As another example, recalibration may be scheduled to occur several times at preset intervals (e.g., for drugs that are expected to exert a significant but prolonged effect on a patient's vasotone).

Brief Description of the Drawings

20 **[0012]** The above and other features of the present disclosure, its nature and various advantages will be more apparent upon consideration of the following detailed description, taken in conjunction with the accompanying drawings in which:

- FIG. 1** shows an illustrative CNIBP monitoring system in accordance with some embodiments;
- FIG. 2** is a block diagram of the illustrative CNIBP monitoring system of **FIG. 1** coupled to a patient in accordance with some embodiments;
- 40 **FIG. 3** is a block diagram of an illustrative signal processing system in accordance with some embodiments;
- FIG. 4** shows an illustrative PPG signal in accordance with some embodiments; and
- FIG. 5** shows an illustrative process for measuring blood pressure in accordance with some embodiments.

45 **Detailed Description**

[0013] Some CNIBP monitoring techniques may utilize two probes or sensors positioned at two different locations on a subject's body. The elapsed time, T , between the arrivals of corresponding points of a pulse signal at the two locations may then be determined using signals obtained by the two probes or sensors. The estimated blood pressure, p , may then be related to the elapsed time, T , by

$$p = a + b \cdot \ln(T) \tag{1}$$

50 where a and b are constants that may be dependent upon the nature of the subject and the nature of the signal detecting devices. Other suitable equations using an elapsed time between corresponding points of a pulse signal may also be used to derive an estimated blood pressure measurement. In some embodiments, a single probe or sensor may be used, in which case the variable T in equation (1) would represent the time between two characteristic points within a

single detected PPG signal. In still other embodiments, the area under at least part of a detected PPG signal may be used to compute blood pressure instead of time.

5 [0014] The values of constants a and b may be determined by way of an initial calibration that uses a reference blood pressure measurement taken from the patient (e.g., using a blood pressure cuff). These constants may be adjusted during blood pressure measurement periodically or in response to recalibration events. As discussed in more detail below, according to some embodiments, recalibration events may be based at least in part on indirect data, direct data, any other suitable factor (e.g., a manual request for recalibration), or any suitable combination thereof. Indirect data may include, for example, blood pressure measurements or characteristics of PPG waveforms. Direct data may include, for example, drug administration data, medical procedure data, medical equipment data, other data received from a hospital information system, data indicative of the elevation of either or both PPG probes or sensors, or any suitable combination thereof. In some embodiments, direct recalibration data may include information that facilitates proper scheduling of system recalibration.

10 [0015] FIG. 1 is a perspective view of an embodiment of a CNIBP monitoring system 10 that may also be used to perform pulse oximetry. System 10 may include sensors 12 and 13 and a monitor 14. Sensor 12 may include an emitter 16 for emitting light at one or more wavelengths into a patient's tissue. A detector 18 may also be provided in sensor 12 for detecting the light originally from emitter 16 that emanates from the patient's tissue after passing through the tissue. Similarly, sensor 13 may include an emitter 17 and a detector 19, which may operate in a fashion similar to that of emitter 16 and detector 18, respectively

15 [0016] Sensors 12 and 13 may be attached to different locations of a patient's body in order to measure values for time T in equation (1) above and thereby facilitate measurement of the patient's blood pressure. As an example, sensor 12 may be attached to the patient's finger, while sensor 13 may be attached to the patient's ear. It will be appreciated that other sensor locations may be used, as appropriate, and in some embodiments, only a single sensor or probe may be used.

20 [0017] According to an embodiment, emitter 16 and detector 18 may be on opposite sides of a digit such as a finger or toe, in which case the light that is emanating from the tissue has passed completely through the digit. In an embodiment, detector 18 (e.g., a reflective sensor) may be positioned anywhere a strong pulsatile flow may be detected (e.g., over arteries in the neck, wrist, thigh, ankle, ear, or any other suitable location). In an embodiment, emitter 16 and detector 18 may be arranged so that light from emitter 16 penetrates the tissue and is reflected by the tissue into detector 18, such as a sensor designed to obtain pulse oximetry or CNIBP data from a patient's forehead.

25 [0018] Similarly, according to an embodiment, emitter 17 and 19 may be on opposite sides of an ear (e.g., positioned on opposite sides of a patient's earlobe). In an embodiment, emitter 17 and detector 19 may be arranged so that light from emitter 17 penetrates the tissue and is reflected by the tissue into detector 19, such as a sensor designed to obtain pulse oximetry or CNIBP data from a patient's forehead.

30 [0019] According to another embodiment, system 10 may include a plurality of sensors forming a sensor array in lieu of either or both of sensors 12 and 13. Each of the sensors of the sensor array may be a complementary metal oxide semiconductor (CMOS) sensor. Alternatively, each sensor of the array may be charged coupled device (CCD) sensor. In another embodiment, the sensor array may be made up of a combination of CMOS and CCD sensors. The CCD sensor may comprise a photoactive region and a transmission region for receiving and transmitting data whereas the CMOS sensor may be made up of an integrated circuit having an array of pixel sensors. Each pixel may have a photo-detector and an active amplifier.

35 [0020] In an embodiment, the sensors or sensor array may be connected to and draw its power from monitor 14 as shown. In another embodiment, the sensors may be wirelessly connected to monitor 14 and may each include its own battery or similar power supply (not shown). Monitor 14 may be configured to calculate physiological parameters (e.g., blood pressure) based at least in part on data received from sensors 12 and 13 relating to light emission and detection. In an alternative embodiment, the calculations may be performed on the monitoring device itself and the result of the light intensity reading may be passed to monitor 14. Further, monitor 14 may include a display 20 configured to display the physiological parameters or other information about the system. In the embodiment shown, monitor 14 may also include a speaker 22 to provide an audible sound that may be used in various other embodiments, such as for example, sounding an audible alarm in the event that a patient's physiological parameters are not within a predefined normal range.

40 [0021] In an embodiment, sensors 12 and 13 may be communicatively coupled to monitor 14 via cables 24 and 25, respectively. However, in other embodiments, a wireless transmission device (not shown) or the like may be used instead of or in addition to either or both of cables 24 and 25.

45 [0022] In the illustrated embodiment, system 10 may also include a multi-parameter patient monitor 26. The monitor may be cathode ray tube type, a flat panel display (as shown) such as a liquid crystal display (LCD) or a plasma display, or any other type of monitor now known or later developed. Multi-parameter patient monitor 26 may be configured to calculate physiological parameters and to provide a display 28 for information from monitor 14 and from other medical monitoring devices or systems (not shown). For example, multi-parameter patient monitor 26 may be configured to display an estimate of a patient's blood pressure from monitor 14, blood oxygen saturation generated by monitor 14

(referred to as an "SpO₂" measurement), and pulse rate information from monitor **14**.

[0023] Monitor **14** may be communicatively coupled to multi-parameter patient monitor **26** via a cable **32** or **34** that is coupled to a sensor input port or a digital communications port, respectively and/or may communicate wirelessly (not shown). In addition, monitor **14** and/or multi-parameter patient monitor **26** may be coupled to a network to enable the sharing of information with servers or other workstations (not shown). Monitor **14** may be powered by a battery (not shown) or by a conventional power source such as a wall outlet.

[0024] Calibration device **80**, which may be powered by monitor **14**, a battery, or by a conventional power source such as a wall outlet, may include any suitable blood pressure calibration device. For example, calibration device **80** may take the form of any invasive or non-invasive blood pressure monitoring or measuring system used to generate reference blood pressure measurements for use in calibrating the CNIBP monitoring techniques described herein. Such calibration devices may include, for example, an aneroid or mercury sphygmomanometer and occluding cuff, a pressure sensor inserted directly into a suitable artery of a patient, or any other device or mechanism used to sense, measure, determine, or derive a reference blood pressure measurement. In some embodiments, calibration device **80** may include a manual input device (not shown) used by an operator to manually input reference blood pressure measurements obtained from some other source (e.g., an external invasive or non-invasive blood pressure measurement system).

[0025] Calibration device **80** may also access reference blood pressure measurements stored in memory (e.g., RAM, ROM, or a storage device). For example, in some embodiments, calibration device **80** may access reference blood pressure measurements from a relational database stored within calibration device **80**, monitor **14**, or multi-parameter patient monitor **26**. As described in more detail below, the reference blood pressure measurements generated or accessed by calibration device **80** may be updated in real-time, resulting in a continuous source of reference blood pressure measurements for use in continuous or periodic calibration. Alternatively, reference blood pressure measurements generated or accessed by calibration device **80** may be updated periodically, and calibration may be performed on the same periodic cycle. In the depicted embodiments, calibration device **80** is connected to monitor **14** via cable **82**. In other embodiments, calibration device **80** may be a stand-alone device that may be in wireless communication with monitor **14**. In still other embodiments, calibration device **80** is completely integrated within monitor **14**.

[0026] Recalibration of monitor **14** may be triggered at any suitable times. For example, monitor **14** may be configured to perform recalibration on a periodic basis (e.g., once every 30 minutes or any other appropriate time interval). Monitor **14** may also perform recalibration in response to indirect recalibration triggers. For example, monitor **14** may receive blood pressure measurements, amplitude measurements of PPG waveforms, any other suitable information, or any suitable combination thereof and determine that recalibration is necessary in response to certain changes in such measurements.

[0027] In some embodiments, monitor **14** may alternatively or additionally initiate recalibration in response to indirect recalibration triggers. Such triggers may be based at least in part on data received from hospital information system **86**, which may be coupled to monitor **14** through cable **84**, through a wired network (not shown), wirelessly, or through any other suitable means. Hospital information system **86** may include a central or distributed database, data input and output terminals, primary and backup storage, or any other suitable components. Hospital information system **86** may be adapted to store patient data and transmit this data to monitor **14** in order to facilitate the making of recalibration decisions. For example, hospital information system **86** may store and transmit data relating to anticipated drug administrations or medical procedures for a patient that could affect a patient's vasotone and therefore require recalibration. Such data may include the identity of the drug or procedure, the expected start and end time of the administration or procedure, drug dosage, method of drug action and delivery, any other suitable information, or any suitable combination thereof. In some embodiments, the data may be used by monitor **14** in order to schedule one or more recalibrations. For instance, it may be desirable for a recalibration to occur when a drug has mostly or completely taken effect. As another example, drugs that have relatively significant but relatively gradual effects on vasotone may require several recalibrations.

[0028] In some embodiments, monitor **14** may, additionally or alternatively, receive and utilize direct recalibration events from sources other than hospital information system **86**. For example, either or both of sensors **12** and **13** may transmit information about their position (e.g., elevation relative to a blood pressure cuff) to monitor **14**. Monitor **14** may then use this direct data to trigger a recalibration when the elevation of either or both of sensors **12** and **13** changes more than a certain amount, as measured relative to a predefined threshold, a moving average, or any other suitable metric. It will be appreciated that other types of direct information and other information sources may be used, and the disclosure is not limited in this respect.

[0029] FIG. 2 is a block diagram of a CNIBP monitoring system, such as system **10** of FIG. 1, which may be coupled to a patient **40** in accordance with an embodiment. Certain illustrative components of sensors **12** and **13** and monitor **14** are illustrated in FIG. 2. Because sensors **12** and **13** may include similar components and functionality, only sensor **12** will be discussed in detail for ease of illustration. It will be understood that any of the concepts, components, and operation discussed in connection with sensor **12** may be applied to sensor **13** as well (e.g., emitter **16** and detector **18** of sensor **12** may be similar to emitter **17** and detector **19** of sensor **13**). Similarly, it will be understood that, as discussed

in connection with FIG. 1, certain embodiments may use only a single sensor or probe, instead of a plurality of sensors or probes as illustrated in FIG. 2.

5 [0030] Sensor 12 may include emitter 16, detector 18, and encoder 42. In the embodiment shown, emitter 16 may be configured to emit at least one wavelength of light (e.g., RED or IR) into a patient's tissue 40. For calculating SpO₂, emitter 16 may include a RED light emitting light source such as RED light emitting diode (LED) 44 and an IR light emitting light source such as IR LED 46 for emitting light into the patient's tissue 40. In other embodiments, emitter 16 may include a light emitting light source of a wavelength other than RED or IR. In one embodiment, the RED wavelength may be between about 600 nm and about 700 nm, and the IR wavelength may be between about 800 nm and about 1000 nm. In embodiments where a sensor array is used in place of single sensor, each sensor may be configured to emit a single wavelength. For example, a first sensor emits only a RED light while a second only emits an IR light.

10 [0031] It will be understood that, as used herein, the term "light" may refer to energy produced by radiative sources and may include one or more of ultrasound, radio, microwave, millimeter wave, infrared, visible, ultraviolet, gamma ray or X-ray electromagnetic radiation. As used herein, light may also include any wavelength within the radio, microwave, infrared, visible, ultraviolet, or X-ray spectra, and that any suitable wavelength of electromagnetic radiation may be appropriate for use with the present techniques. Detector 18 may be chosen to be specifically sensitive to the chosen targeted energy spectrum of the emitter 16.

15 [0032] In an embodiment, detector 18 may be configured to detect the intensity of light at the emitted wavelengths (or any other suitable wavelength). Alternatively, each sensor in the array may be configured to detect an intensity of a single wavelength. In operation, light may enter detector 18 after passing through the patient's tissue 40. Detector 18 may convert the intensity of the received light into an electrical signal. The light intensity is directly related to the absorbance and/or reflectance of light in the tissue 40. That is, when more light at a certain wavelength is absorbed or reflected, less light of that wavelength is received from the tissue by the detector 18. After converting the received light to an electrical signal, detector 18 may send the signal to monitor 14, where physiological parameters may be calculated based on the absorption of one or more of the RED and IR (or other suitable) wavelengths in the patient's tissue 40.

20 [0033] In an embodiment, encoder 42 may contain information about sensor 12, such as what type of sensor it is (e.g., whether the sensor is intended for placement on a forehead or digit) and the wavelength or wavelengths of light emitted by emitter 16. This information may be used by monitor 14 to select appropriate algorithms, lookup tables and/or calibration coefficients stored in monitor 14 for calculating the patient's physiological parameters.

25 [0034] Encoder 42 may contain information specific to patient 40, such as, for example, the patient's age, weight, and diagnosis. This information may allow monitor 14 to determine, for example, patient-specific threshold ranges in which the patient's physiological parameter measurements should fall and to enable or disable additional physiological parameter algorithms. Encoder 42 may, for instance, be a coded resistor which stores values corresponding to the type of sensor 12 or the type of each sensor in the sensor array, the wavelength or wavelengths of light emitted by emitter 16 on each sensor of the sensor array, and/or the patient's characteristics. In another embodiment, encoder 42 may include a memory on which one or more of the following information may be stored for communication to monitor 14: the type of the sensor 12; the wavelength or wavelengths of light emitted by emitter 16; the particular wavelength each sensor in the sensor array is monitoring; a signal threshold for each sensor in the sensor array; any other suitable information; or any combination thereof.

30 [0035] In an embodiment, signals from detector 18 and encoder 42 may be transmitted to monitor 14. In the embodiment shown, monitor 14 may include a general-purpose microprocessor 48 connected to an internal bus 50. Microprocessor 48 may be adapted to execute software, which may include an operating system and one or more applications, as part of performing the functions described herein. Also connected to bus 50 may be a read-only memory (ROM) 52, a random access memory (RAM) 54, user inputs 56, display 20, and speaker 22.

35 [0036] RAM 54 and ROM 52 are illustrated by way of example, and not limitation. Any suitable computer-readable media may be used in the system for data storage. Computer-readable media are capable of storing information that can be interpreted by microprocessor 48. This information may be data or may take the form of computer-executable instructions, such as software applications, that cause the microprocessor to perform certain functions and/or computer-implemented methods. Depending on the embodiment, such computer-readable media may include computer storage media and communication media. Computer storage media may include volatile and non-volatile, removable and non-removable media implemented in any method or technology for storage of information such as computer-readable instructions, data structures, program modules or other data. Computer storage media may include, but is not limited to, RAM, ROM, EPROM, EEPROM, flash memory or other solid state memory technology, CD-ROM, DVD, or other optical storage, magnetic cassettes, magnetic tape, magnetic disk storage or other magnetic storage devices, or any other medium which can be used to store the desired information and which can be accessed by components of the system.

40 [0037] In the embodiment shown, a time processing unit (TPU) 58 may provide timing control signals to a light drive circuitry 60, which may control when emitter 16 is illuminated and multiplexed timing for the RED LED 44 and the IR LED 46. TPU 58 may also control the gating-in of signals from detector 18 through an amplifier 62 and a switching circuit

64. These signals are sampled at the proper time, depending upon which light source is illuminated. The received signal from detector **18** may be passed through an amplifier **66**, a low pass filter **68**, and an analog-to-digital converter **70**. The digital data may then be stored in a queued serial module (QSM) **72** (or buffer) for later downloading to RAM **54** as QSM **72** fills up. In one embodiment, there may be multiple separate parallel paths having amplifier **66**, filter **68**, and A/D converter **70** for multiple light wavelengths or spectra received.

[0038] In an embodiment, microprocessor **48** may determine the patient's physiological parameters, such as blood pressure, SpO₂, and pulse rate, using various algorithms and/or look-up tables based on the value of the received signals and/or data corresponding to the light received by detector **18**. Signals corresponding to information about patient **40**, and particularly about the intensity of light emanating from a patient's tissue over time, may be transmitted from encoder **42** to a decoder **74**. These signals may include, for example, encoded information relating to patient characteristics. Decoder **74** may translate these signals to enable the microprocessor to determine the thresholds based on algorithms or look-up tables stored in ROM **52**. User inputs **56** may be used to enter information about the patient, such as age, weight, height, diagnosis, medications, treatments, and so forth. In an embodiment, display **20** may exhibit a list of values which may generally apply to the patient, such as, for example, age ranges or medication families, which the user may select using user inputs **56**.

[0039] The optical signal through the tissue can be degraded by noise, among other sources. One source of noise is ambient light that reaches the light detector. Another source of noise is electromagnetic coupling from other electronic instruments. Movement of the patient also introduces noise and affects the signal. For example, the contact between the detector and the skin, or the emitter and the skin, can be temporarily disrupted when movement causes either to move away from the skin. In addition, because blood is a fluid, it responds differently than the surrounding tissue to inertial effects, thus resulting in momentary changes in volume at the point to which the sensor or probe is attached.

[0040] Noise (e.g., from patient movement) can degrade a CNIBP or pulse oximetry signal relied upon by a physician, without the physician's awareness. This is especially true if the monitoring of the patient is remote, the motion is too small to be observed, or the doctor is watching the instrument or other parts of the patient, and not the sensor site. Processing CNIBP or pulse oximetry (i.e., PPG) signals may involve operations that reduce the amount of noise present in the signals or otherwise identify noise components in order to prevent them from affecting measurements of physiological parameters derived from the PPG signals.

[0041] In some embodiments, microprocessor **48** may be operable to receive data relating to detected PPG signals, computed blood pressure measurements, sensor elevation, or any other suitable data for use in determining whether monitor **14** should be recalibrated. For example, microprocessor **48** may receive reference blood pressure measurements from calibration device **80**, which may be coupled to microprocessor **48** through bus **50**. Additionally, microprocessor **48** may receive patient data from hospital information system **86** through bus **50** that may indicate a need for recalibration, such as data relating to expected drug administrations, medical procedures, or medical equipment.

[0042] Upon receiving data from calibration device **80**, hospital information system **86**, or any other suitable source, microprocessor **48** may decide whether a recalibration is appropriate and, if so, perform such recalibration. Recalibration may include, for example, computing values for constants or parameters of equations used in determining a patient's blood pressure using the received data, then transmitting the computed constants or parameters to ROM **52**, RAM **54**, or both for storage.

[0043] FIG. 3 is an illustrative processing system **300** in accordance with an embodiment. In this embodiment, input signal generator **310** generates an input signal **316**. As illustrated, input signal generator **310** may include oximeter **320** (or similar device) coupled to sensor **318**, which may provide as input signal **316** a PPG signal. It will be understood that input signal generator **310** may include any suitable signal source, signal generating data, signal generating equipment, or any combination thereof to produce signal **316**. Additionally, input signal generator **310** may in some embodiments include more than one sensor **318**.

[0044] In this embodiment, signal **316** may be coupled to processor **312**. Processor **312** may be any suitable software, firmware, and/or hardware, and/or combinations thereof for processing signal **316**. For example, processor **312** may include one or more hardware processors (e.g., integrated circuits), one or more software modules, computer-readable media such as memory, firmware, or any combination thereof. Processor **312** may, for example, be a computer or may be one or more chips (i.e., integrated circuits). Processor **312** may perform some or all of the calculations associated with the blood pressure monitoring methods of the present disclosure. For example, processor **312** may determine the time difference, T , between any two chosen characteristic points of a PPG signal obtained from input signal generator **310**. As another example, if input signal generator contains more than one sensor **318**, processor **312** may determine the time difference, T , required for a PPG signal to travel from one sensor **318** to another. Processor **312** may also be configured to apply equation (1) (or any other blood pressure equation using an elapsed time value) and compute estimated blood pressure measurements on a continuous or periodic basis. Processor **312** may also perform any suitable signal processing of signal **316** to filter signal **316**, such as any suitable band-pass filtering, adaptive filtering, closed-loop filtering, and/or any other suitable filtering, and/or any combination thereof. For example, signal **316** may be filtered one or more times prior to or after identifying characteristic points in signal **316**.

[0045] Processor **312** may be coupled to one or more memory devices (not shown) or incorporate one or more memory devices such as any suitable volatile memory device (e.g., RAM, registers, etc.), non-volatile memory device (e.g., ROM, EPROM, magnetic storage device, optical storage device, flash memory, etc.), or both. Processor **312** may be coupled to calibration device **322** that may generate or receive as input reference blood pressure measurements for use in calibrating CNIBP calculations. Processor **312** may additionally be coupled to hospital information system **324**, which may store and transmit direct information indicative of a need for recalibration, such as information relating to scheduled drug administrations, medical procedures, medical equipment, or any suitable combination thereof. Processor **312** may perform initial calibration, recalibration, or both of the CNIBP measuring system, using information received from input signal generator **310**, calibration device **322**, hospital information system **324**, or any other suitable device.

[0046] Processor **312** may be coupled to output **314**. Output **314** may be any suitable output device such as, for example, one or more medical devices (e.g., a medical monitor that displays various physiological parameters, a medical alarm, or any other suitable medical device that either displays physiological parameters or uses the output of processor **212** as an input), one or more display devices (e.g., monitor, PDA, mobile phone, any other suitable display device, or any combination thereof), one or more audio devices, one or more memory devices (e.g., hard disk drive, flash memory, RAM, optical disk, any other suitable memory device, or any combination thereof), one or more printing devices, any other suitable output device, or any combination thereof.

[0047] It will be understood that system **300** may be incorporated into system **10** (FIGS. 1 and 2) in which, for example, input signal generator **310** may be implemented as parts of sensor **12** and monitor **14** and processor **312** may be implemented as part of monitor **14**. In some embodiments, portions of system **300** may be configured to be portable. For example, all or a part of system **300** may be embedded in a small, compact object carried with or attached to the patient (e.g., a watch (or other piece of jewelry) or cellular telephone). In such embodiments, a wireless transceiver (not shown) may also be included in system **300** to enable wireless communication with other components of system **10**. As such, system **10** may be part of a fully portable and continuous blood pressure monitoring solution.

[0048] According to the present disclosure, reliable blood pressure measurements may be derived substantially continuously from PPG signals by recalibrating parts of the CNIBP system in response to direct recalibration events, indirect recalibration events, or both. These direct and indirect recalibration events may be detected and triggered from any suitable source, as discussed above, including a hospital information system, one or more sensors or probes attached to a patient's body, or one or more processors or memories that output data derived from the sensors or probes. The present disclosure may be applied to measuring systolic blood pressure, diastolic blood pressure, or both systolic and diastolic blood pressure on an on-going, continuous, or periodic basis.

[0049] According to the present disclosure, reliable blood pressure measurements may be derived from a PPG signal obtained from a single sensor or probe, or from multiple PPG signals obtained from multiple sensors or probes. In some embodiments, the constants a and b in equation (1) above may be determined by performing a calibration. The calibration may involve taking a reference blood pressure reading to obtain a reference blood pressure P_0 , measuring the elapsed time T_0 corresponding to the reference blood pressure, and then determining values for both of the constants a and b from the reference blood pressure and elapsed time measurement. Calibration may be performed at any suitable time (e.g., once initially after monitoring begins) or on any suitable schedule (e.g., a periodic or event-driven schedule).

[0050] In some embodiments, the calibration may include performing calculations mathematically equivalent to

$$a = c_1 + \frac{c_2(P_0 - c_1)}{\ln(T_0) + c_2} \quad (2)$$

and

$$b = \frac{P_0 - c_1}{\ln(T_0) + c_2} \quad (3)$$

to obtain values for the constants a and b , where c_1 and c_2 are predetermined constants that may be determined, for example, based on empirical data.

[0051] In other embodiments, determining the plurality of constant parameters in the multi-parameter equation (1) may include performing calculations mathematically equivalent to

$$a = P_0 - (c_3 T_0 + c_4) \ln(T_0) \quad (4)$$

and

$$b = c_3 T_0 + c_4 \quad (5)$$

where a and b are first and second parameters and c_3 and c_4 are predetermined constants that may be determined, for example, based on empirical data.

[0052] In some embodiments, the multi-parameter equation (1) may include a non-linear function which is monotonically decreasing and concave upward in a manner specified by the constant parameters.

[0053] FIG. 4 shows illustrative PPG signal 400. As described above, in some embodiments PPG signal 400 may be generated by a pulse oximeter or similar device positioned at any suitable location of a subject's body. Additionally, PPG signal 400 may be generated at each of a plurality of locations of a subject's body, with at least one probe or sensor attached to each location. The time T that it takes for PPG signal 400 to travel from one location to another location (e.g., from a patient's ear to the patient's finger or toe) may then be measured and used to derive a blood pressure measurement for the patient using a calibrated version of equation (1) or using any other relationship, such as lookup tables and the like. Time T may be measured, for example, by determining the difference between how long it takes for a given characteristic point, observed in the PPG signal at the first sensor or probe location, to appear in the PPG signal at the second sensor or probe location.

[0054] In some embodiments, PPG signal 400 may be generated using only a single sensor or probe attached to the subject's body. In such a scenario, the time difference, T , may correspond to the time it takes the pulse wave to travel a predetermined distance (e.g., a distance from the sensor or probe to a reflection point and back to the sensor or probe). Characteristic points in the PPG signal may include the time between various peaks in the PPG signal and/or in some derivative of the PPG signal. For example, in some embodiments, the time difference, T , may be calculated between (1) the maximum peak of the PPG signal in the time domain and the second peak in the 2nd derivative of the PPG signal (the first 2nd derivative peak may be close to the maximum peak in the time domain) and/or (2) peaks in the 2nd derivative of the PPG signal. Any other suitable time difference between any suitable characteristic points in the PPG signal (e.g., PPG signal 400) or any derivative of the PPG signal may be used as T in other embodiments.

[0055] In some embodiments, the time difference between the adjacent peaks in the PPG signal, the time difference between the adjacent valleys in the PPG signal, or the time difference between any combination of peaks and valleys, can be used as the time difference T . As such, adjacent peaks and/or adjacent valleys in the PPG signal (or in any derivative thereof) may also be considered characteristic points. In some embodiments, these time differences may be divided by the actual or estimated heart rate to normalize the time differences. In some embodiments, the resulting time difference values between two peaks may be used to determine the systolic blood pressure, and the resulting time difference values between two valleys may be used to determine the diastolic blood pressure.

[0056] Characteristic points in a PPG signal (e.g., PPG signal 400) may be identified in a number of ways. For example, in some embodiments, the turning points of 1st, 2nd, 3rd (or any other) derivative of the PPG signal are used as characteristic points. Additionally or alternatively, points of inflection in the PPG signal (or any suitable derivative thereof) may also be used as characteristic points of the PPG signal.

[0057] In some embodiments, blood pressure may be determined by, for example, measuring the area under a pulse or a portion of the pulse in the PPG signal (e.g., PPG signal 400). These measurements may be correlated with empirical blood pressure data (corresponding to previous blood pressure measurements of the patient or one or more other patients) to determine the blood pressure. In some implementations, the blood pressure may be determined by looking up the area measurement values in a table, which may be stored in a memory, to obtain corresponding blood pressures. Alternatively, the blood pressure may be determined by using any suitable blood pressure-area mapping equation which is generated based on blood pressure and area measurements associated with one or more patients. For example, measured samples may be plotted in a graph that maps blood pressure to area. The graph may be analyzed to generate a linear-best-fit-line approximation, non-linear best fit line approximation or other suitable approximation from which to derive an equation that may be used to determine blood pressure by providing an area measurement.

[0058] FIG. 5 shows illustrative process 500 for determining blood pressure. At step 502, one or more PPG signals may be detected from a patient. For example, monitor 14 (FIGS. 1 and 2) may be used to detect one or more PPG signals from patient 40 (FIG. 2) using either or both of sensors 12 and 13 (FIGS. 1 and 2).

[0059] At step 504, in accordance with some embodiments, it may be determined whether a direct recalibration event has been detected. This determination may be performed in monitor 14 (FIGS. 1 and 2), in calibration device 80 (FIGS. 1 and 2), or in some combination thereof. For example, monitor 14 (FIGS. 1 and 2) may detect a direct recalibration event in response to receiving patient data from hospital information system 86 (FIGS. 1 and 2). Such data may include, for instance, manual entries of drug administration, medical procedures, or medical equipment data for the patient in question. The data may, additionally or alternatively, be automatically generated (e.g., by scanning a drug vial using a

barcode or radio-frequency identification reader to determine the identify of a drug and when it will be administered to a patient, or by storing data from surgical equipment such as cutting and pounding devices). Other suitable data may be used to trigger direct recalibration events, and the present disclosure is not limited in this respect. Such data may be updated in real-time, in appropriate intervals, or a combination thereof. As another example, monitor 14 (FIGS. 1 and 2) may detect changes in the elevation of one or more sensors such as sensors 12 and 13 (FIGS. 1 and 2) (e.g., relative to a blood pressure cuff) that may require recalibration.

[0060] If a direct recalibration event is detected at step 504, process 500 may proceed to step 507. At step 507, recalibration may be scheduled based at least in part upon data received in step 504. For instance, if at step 504 it is determined that a certain drug will be administered to a patient at a particular time, monitor 14 (FIGS. 1 and 2) or calibration device 80 (FIGS. 1 and 2) may determine how long the drug will take to complete its effect upon the patient's vasotone. Such timing information may be transferred from hospital information system 86 (FIGS. 1 and 2), accessed from a memory such as ROM 52 or RAM 54 (FIG. 2), computed based on pre-existing relationships, or determined in any other suitable manner. Recalibration may then be scheduled for an appropriate time based at least in part on this timing information. For example, recalibration may be scheduled for a time when the drug's effect is nearly complete or has already been completed. As another example, multiple recalibrations may be scheduled if a drug is expected to exert a significant but gradual effect on the patient's vasotone. The scheduling may be based at least in part on the identity of the drug, the drug's rate of administration, how the drug is delivered, any other suitable factors, or any suitable combination thereof. Process 500 may then proceed to step 508.

[0061] On the other hand, if a direct recalibration event is not detected at step 504, process 500 may proceed to step 506. At step 506, it may be determined whether an indirect recalibration event has been detected. This determination may be performed in monitor 14 (FIGS. 1 and 2), in calibration device 80 (FIGS. 1 and 2), or in some combination thereof. For example, monitor 14 (FIGS. 1 and 2) may detect blood pressure readings reflecting certain changes (e.g., measurements falling outside of a pre-determined range or a certain amount past a running average) that indicate a need for recalibration. As another example, PPG signals measured by either or both of sensors 12 and 13 (FIGS. 1 and 2) and processed by monitor 14 (FIGS. 1 and 2) may show certain variations (e.g., in the rise-to-fall time of the waveform or the relative amplitude of the dicrotic notch) that may trigger a recalibration. If an indirect recalibration event is not detected at step 506, process 500 may proceed to step 512. Otherwise, process 500 may proceed to step 508.

[0062] If recalibration has been signaled, at step 508 one or more reference blood pressure measurements may be accessed. For example, calibration device 80 (FIGS. 1 and 2) may continuously or periodically generate reference blood pressure measurements for use in calibration. These reference blood pressure measurements may be derived from any suitable invasive or non-invasive blood pressure monitoring technique (e.g., using a blood pressure cuff). The measurements may also be accessed from any suitable storage device, or the measurements may be manually inputted by an operator (e.g., if read from an external monitoring or measurement device).

[0063] After the reference blood pressure measurement or measurements are accessed, recalibration may be performed at step 510. For example, one or more of constants a and b of equation (1) above may be updated. Constants a and b may be computed using equations (2) and (3), equations (4) and (5), or any other suitable relationships. Additionally, any other suitable constants or parameters (of any other suitable blood pressure equation) may be updated in other embodiments.

[0064] At step 512, a PPG signal time difference may be determined. For example, if sensor 13 (FIGS. 1 and 2) is attached to a first location on a patient's body (e.g., an ear) and sensor 12 (FIGS. 1 and 2) is attached to a second location on the patient's body (e.g., a finger or toe), microprocessor 48 in monitor 14 (FIG. 2) may compute the time it takes for a given PPG signal, or at least one characteristic point in the PPG signal, to travel from one sensor to the other. The time difference may be used as time difference T in equation (1), or in any other suitable fashion. The measured time difference may be determined by averaging a series of recorded time differences over a given time period or in any other suitable way. As another example, a time difference between characteristic points of a single PPG signal may be measured instead (e.g., in embodiments using only a single probe or sensor). In still other embodiments, step 512 may be replaced by a step in which an area of at least one portion of a PPG signal is measured.

[0065] Finally, at step 514, a blood pressure measurement may be determined based, at least in part, on the time difference determined at step 512. For example, equation (1) above (or any other blood pressure equation using an elapsed time between the arrivals of corresponding points of a pulse signal) may be used to compute estimated blood pressure measurements. In some embodiments, data other than the time difference between PPG signals may be used (e.g., time difference between characteristic points in a single PPG signal or area under at least a portion of a PPG signal), in which case any appropriate relationship may be used to compute blood pressure measurements based on the particular data obtained. After a blood pressure measurement is determined at step 514, process 500 may return to step 502 and detect a new PPG signal (or access a new segment of a running PPG signal). As such, process 500 may generate blood pressure measurements continuously, with appropriate recalibrations as needed, based at least in part on the determinations in steps 504 and 506.

[0066] After blood pressure measurements are determined, the measurements may be outputted, stored, or displayed

in any suitable fashion. For example, multi-parameter patient monitor 26 (FIG. 1) may display a patient's blood pressure on display 28 (FIG. 1). Additionally or alternatively, the measurements may be saved to memory or a storage device (e.g., ROM 52 or RAM 54 of monitor 14 (FIG. 2)) for later analysis or as a log of a patient's medical history.

[0067] In practice, one or more steps shown in process 500 may be combined with other steps, performed in any suitable order, performed in parallel (e.g., simultaneously or substantially simultaneously), or removed. For example, although method 500 has been illustrated in an iterative fashion, it will be understood that the arrival of a direct or indirect recalibration event may trigger substantially instantaneous recalibration, even if process 500 has not yet reached step 504 or step 506.

[0068] The foregoing is merely illustrative of the principles of this disclosure and various modifications can be made by those skilled in the art without departing from the scope of the disclosure. The above described embodiments are presented for purposes of illustration and not of limitation. The present disclosure also can take many forms other than those explicitly described herein. Accordingly, it is emphasized that the disclosure is not limited to the explicitly disclosed methods, systems, and apparatuses, but is intended to include variations to and modifications thereof which are within the scope of the following claims.

Claims

1. A method for monitoring blood pressure, the method comprising:

receiving, from a hospital information system (324), data corresponding to a patient, wherein the data comprises drug administration data relating to a drug administration that may affect the patient's arterial compliance; determining, based at least in part on the received drug administration data, whether a blood pressure monitoring system (10) needs to be recalibrated;

recalibrating the blood pressure monitoring system (10) if it is determined, based at least in part on the received drug administration data, that the blood pressure monitoring system (10) needs to be recalibrated; and computing at least one blood pressure measurement of the patient using the recalibrated blood pressure monitoring system (10).

2. The method of claim 1 wherein receiving the data corresponding to the patient comprises receiving data selected from the group consisting of: medical procedure data, and medical equipment data.

3. The method of claim 1 further comprising:

determining an identifier corresponding to a drug to be administered to the patient based at least in part on a scan of a tag corresponding to the drug; and storing the identifier in the hospital information system (324) as part of the data corresponding to the patient.

4. The method of claim 1 wherein computing the at least one blood pressure measurement comprises:

detecting a first photoplethysmograph (PPG) signal; detecting a second PPG signal; measuring a time difference between the first and second generating the at least one blood pressure measurement based at least in part on the measured time difference.

5. The method of claim 4 wherein determining whether the blood pressure monitoring system (10) needs to be recalibrated is further based at least in part on an item selected from the group comprising: the computed at least one blood pressure measurement and at least one characteristic of the first and second PPG signals.

6. The method of claim 1 wherein determining whether the blood pressure monitoring system (10) needs to be recalibrated comprises scheduling a recalibration in response to determining that the blood pressure monitoring system (10) needs to be recalibrated, and optionally:-

the data received from the hospital information system (324) is indicative of a drug to be administered to the patient; and scheduling the recalibration is based at least in part on at least one characteristic of the drug to be administered.

7. The method of claim 1 wherein recalibrating the blood pressure monitoring system (10) comprises:

accessing a reference blood pressure measurement; and
computing at least one mathematical constant based on the accessed reference blood pressure measurement,
wherein computing the at least one blood pressure measurement is based at least in part on the computed at
least one mathematical constant.

5

8. A blood pressure monitoring system (10) comprising:

a hospital information system (324) operable to store data corresponding to a patient; and
a processor (312) coupled to the hospital information system (324), operable to:

10

receive the data from the hospital information system (324) wherein the data comprises drug administration
data relating to a drug administration that may affect the patient's arterial compliance;
determine, based at least in part on the received drug administration data, whether the blood pressure
monitoring system (10) needs to be recalibrated;
recalibrate the blood pressure monitoring system if it is determined, based at least in part on the received
drug administration data, that the blood pressure monitoring system (10) needs to be recalibrated; and
compute at least one blood pressure measurement of the patient using the recalibrated blood pressure
monitoring system (10).

15

9. The blood pressure monitoring system of claim 8 wherein the hospital information system (324) is further operable
to receive data selected from the group consisting of: medical procedure data, and medical equipment data.

20

10. The system of claim 8 wherein the hospital information system (324) is further operable to:

determine an identifier corresponding to a drug to be administered to the patient based at least in part on a
scan of a tag corresponding to the drug; and
store the identifier as part of the data corresponding to the patient.

25

11. The blood pressure monitoring system (10) of claim 8 further comprising:

30

a first sensor (12) operable to detect a first photoplethysmograph (PPG) signal; and
a second sensor (13) operable to detect a second PPG signal, wherein the processor (312) is further operable to:

measure a time difference between the first and second PPG signals; and
generate the at least one blood pressure measurement based at least in part on the measured time differ-
ence, wherein optionally:-

35

the hospital information system (324) is further operable to determine whether the blood pressure monitoring system
(10) needs to be recalibrated based at least in part on an item selected from the group comprising: the computed
at least one blood pressure measurement and at least one characteristic of the first and second PPG signals

40

12. The blood pressure monitoring system (10) of claim 8 wherein the processor (312) is further operable to schedule
a recalibration in response to determining that the blood pressure monitoring system (10) needs to be recalibrated,
and optionally:-

45

the hospital information system (324) is further operable to store data indicative of a drug to be administered
to the patient; and
the processor (312) is further operable to schedule the recalibration based at least in part on at least one
characteristic of the drug to be administered.

50

13. The blood pressure monitoring system (10) of claim 8 wherein the processor (312) is further operable to:

access a reference blood pressure measurement;
compute at least one mathematical constant based on the accessed reference blood pressure measurement; and
compute the at least one blood pressure measurement based at least in part on the at least one mathematical
constant.

55

14. Computer-readable medium for use in determining blood pressure, the computer-readable medium having computer

program instructions recorded thereon for:

5 receiving, from a hospital information system (324), data corresponding to a patient wherein the data comprises drug administration data relating to a drug administration that may affect the patient's arterial compliance;
determining, based at least in part on the received drug administration data, whether a blood pressure monitoring system (10) needs to be recalibrated;
recalibrating the blood pressure monitoring system (10) if it is determined, based at least in part on the received drug administration data, that the blood pressure monitoring system (10) needs to be recalibrated; and
10 computing at least one blood pressure measurement of the patient using the recalibrated blood pressure monitoring system (10).

15 **15.** The computer-readable medium of claim 14, the computer-readable medium having further computer program instructions recorded thereon for at least one of:-

receiving data selected from the group consisting of: medical procedure data, and medical equipment data; and scheduling a recalibration that is determined to be necessary, wherein optionally:-

the computer-readable medium has further computer program instructions recorded thereon for:

20 receiving from the hospital information system (324) data indicative of a drug to be administered to the patient; and
scheduling the recalibration based at least in part on at least one characteristic of the drug to be administered.

25 Patentansprüche

1. Verfahren zum Überwachen des Blutdrucks, wobei das Verfahren umfasst:

30 Empfangen von Daten, die einem Patienten entsprechen, von einem Krankenhausinformationssystem (324), wobei die Daten Arzneimittelverabreichungsdaten in Bezug auf eine Arzneimittelverabreichung umfassen, die die arterielle Compliance des Patienten beeinflussen kann;
Bestimmen, ob ein Blutdruck-Überwachungssystem (10) recalibriert werden muss, zumindest teilweise auf Basis der empfangenen Arzneimittelverabreichungsdaten;
35 Recalibrieren des Blutdruck-Überwachungssystems (10), wenn zumindest teilweise auf Basis der empfangenen Arzneimittelverabreichungsdaten bestimmt wird, dass das Blutdrucküberwachungssystem (10) recalibriert werden muss; und
Berechnen zumindest einer Blutdruckmessung des Patienten unter Verwendung des recalibrierten Blutdrucküberwachungssystems (10).

40 **2.** Verfahren nach Anspruch 1, wobei das Empfangen der Daten, die dem Patienten entsprechen, das Empfangen von Daten umfasst, die aus der Gruppe ausgewählt sind, bestehend aus Daten zu medizinischen Verfahrensweisen und Daten zu medizinischen Gerätschaften.

45 **3.** Verfahren nach Anspruch 1, das des Weiteren umfasst:

Bestimmen eines Identifikators, der einem an den Patienten zu verabreichenden Arzneimittel entspricht, zumindest teilweise auf Basis eines Scans einer Kennzeichnung, die dem Arzneimittel entspricht; und
Speichern des Identifikators im Krankenhausinformationssystem (324) als Teil der Daten, die dem Patienten entsprechen.

50 **4.** Verfahren nach Anspruch 1, wobei das Berechnen der zumindest einen Blutdruckmessung umfasst:

55 Erfassen eines ersten Photoplethysmographen-(PPG-)Signals;
Erfassen eines zweiten PPG-Signals;
Messen eines Zeitunterschieds zwischen dem ersten und dem zweiten PPG-Signal;
und
Erstellen der zumindest einen Blutdruckmessung zumindest teilweise auf Basis des gemessenen Zeitunter-

schieds.

5 5. Verfahren nach Anspruch 4, wobei das Bestimmen, ob das Blutdruck-Überwachungssystem (10) rekali-
10 briert werden muss, des Weiteren zumindest teilweise auf einem Element basiert, das aus der Gruppe ausgewählt ist, umfassend
die berechnete zumindest eine Blutdruckmessung und zumindest ein Charakteristikum des ersten und des zweiten
PPG-Signals.

10 6. Verfahren nach Anspruch 1, wobei das Bestimmen, ob das Blutdruck-Überwachungssystem (10) rekali-
briert werden muss, das zeitliche Planen einer Rekalibrierung in Reaktion darauf, dass bestimmt wird, dass das Blutdrucküber-
wachungssystem (10) rekali-
briert werden muss, umfasst und wobei optional:

15 die vom Krankenhausinformationssystem (324) empfangenen Daten für ein Arzneimittel indikativ sind, das es
an den Patienten zu verabreichen gilt; und
das zeitliche Planen der Rekalibrierung zumindest teilweise auf zumindest einem Charakteristikum des zu
verabreichenden Arzneimittels basiert.

7. Verfahren nach Anspruch 1, wobei das Rekalibrieren des Blutdrucküberwachungssystems (10) umfasst:

20 Zugreifen auf eine Referenz-Blutdruckmessung; und
Berechnen zumindest einer mathematischen Konstante auf Basis der zugegriffenen Referenz-Blutdruckmes-
sung, wobei das Berechnen der zumindest einen Blutdruckmessung zumindest teilweise auf der berechneten
zumindest einen mathematischen Konstante basiert.

25 8. Blutdruck-Überwachungssystem (10), das umfasst:

ein Krankenhausinformationssystem (324), das so betreibbar ist, dass es Daten speichert, die einem Patienten
entsprechen; und
einen Prozessor (312), der mit dem Krankenhausinformationssystem (324) verbunden und betreibbar ist zum:

30 Empfangen der Daten vom Krankenhausinformationssystem (324), wobei die Daten Arzneimittelverabrei-
chungsdaten in Bezug auf eine Arzneimittelverabreichung umfassen, die die arterielle Compliance des
Patienten beeinflussen kann;
Bestimmen, ob ein Blutdruck-Überwachungssystem (10) rekali-
briert werden muss, zumindest teilweise auf
Basis der empfangenen Arzneimittelverabreichungsdaten;
35 Rekalibrieren des Blutdruck-Überwachungssystems, wenn zumindest teilweise auf Basis der empfangenen
Arzneimittelverabreichungsdaten bestimmt wird, dass das Blutdrucküberwachungssystem (10) rekali-
briert werden muss; und
Berechnen zumindest einer Blutdruckmessung des Patienten unter Verwendung des rekali-
brierten Blut-
drucküberwachungssystems (10).

40 9. Blutdruck-Überwachungssystem nach Anspruch 8, wobei das Krankenhausinformationssystem (324) des Weiteren
so betreibbar ist, dass es Daten empfängt, die aus der Gruppe ausgewählt sind, bestehend aus Daten zu medizi-
nischen Verfahrensweisen und Daten zu medizinischen Gerätschaften.

45 10. System nach Anspruch 8, wobei das Krankenhausinformationssystem (324) des Weiteren betreibbar ist zum:

Bestimmen eines Identifikators, der einem an den Patienten zu verabreichenden Arzneimittel entspricht, zu-
mindest teilweise auf Basis eines Scans einer Kennzeichnung, die dem Arzneimittel entspricht; und
Speichern eines Identifikators als Teil der Daten, die dem Patienten entsprechen.

50 11. Blutdruck-Überwachungssystem (10) nach Anspruch 8, das des Weiteren umfasst:

einen ersten Sensor (12), der so betreibbar ist, dass er ein erstes Photoplethysmographen-(PPG-)Signal erfasst;
und
55 einen zweiten Sensor (13), der so betreibbar ist, dass er ein zweites PPG-Signal umfasst, wobei der Prozessor
(312) des Weiteren betreibbar ist zum:

Messen eines Zeitunterschieds zwischen dem ersten und dem zweiten PPG-Signal;

und

Erstellen der zumindest einen Blutdruckmessung zumindest teilweise auf Basis des gemessenen Zeitunterschieds, wobei optional:-

5

das Krankenhausinformationssystem (324) des Weiteren so betreibbar ist, dass es zumindest teilweise auf Basis eines Elements, das aus der Gruppe ausgewählt ist, umfassend die berechnete zumindest eine Blutdruckmessung und zumindest ein Charakteristikum des ersten und des zweiten PPG-Signals, bestimmt, ob das Blutdruck-Überwachungssystem (10) rekali-

10

- 12.** Blutdruck-Überwachungssystem (10) nach Anspruch 8, wobei der Prozessor (312) des Weiteren so betreibbar ist, dass er eine Rekalibrierung in Reaktion darauf, dass bestimmt wird, dass das Blutdrucküberwachungssystem (10) rekali-

15

briert werden muss, zeitlich plant und wobei optional:
das Krankenhausinformationssystem (324) des Weiteren so betreibbar ist, dass es Daten speichert, die für ein Arzneimittel indikativ sind, das es an den Patienten zu verabreichen gilt; und
der Prozessor (312) des Weiteren so betreibbar ist, dass er die Rekalibrierung zumindest teilweise auf Basis zumindest eines Charakteristikums des zu verabreichenden Arzneimittels zeitlich plant.

20

- 13.** Blutdruck-Überwachungssystem (10) nach Anspruch 8, wobei der Prozessor (312) des Weiteren betreibbar ist zum:

Zugreifen auf eine Referenz-Blutdruckmessung;
Berechnen zumindest einer mathematischen Konstante auf Basis der zugegriffenen Referenz-Blutdruckmessung; und
Berechnen der zumindest einen Blutdruckmessung zumindest teilweise auf Basis der zumindest einen mathematischen Konstante.

25

- 14.** Computerlesbares Medium zur Verwendung bei der Bestimmung des Blutdrucks, wobei auf dem computerlesbaren Medium Computerprogrammanweisungen gespeichert sind zum:

30

Empfangen von Daten, die einem Patienten entsprechen, von einem Krankenhausinformationssystem (324), wobei die Daten Arzneimittelverabreichungsdaten in Bezug auf eine Arzneimittelverabreichung umfassen, die die arterielle Compliance des Patienten beeinflussen kann;
Bestimmen, ob ein Blutdruck-Überwachungssystem (10) rekali-

35

briert werden muss, zumindest teilweise auf Basis der empfangenen Arzneimittelverabreichungsdaten;
Rekalibrieren des Blutdruck-Überwachungssystems (10), wenn zumindest teilweise auf Basis der empfangenen Arzneimittelverabreichungsdaten bestimmt wird, dass das Blutdrucküberwachungssystem (10) rekali-

40

briert werden muss; und
Berechnen zumindest einer Blutdruckmessung des Patienten unter Verwendung des rekali-

- 15.** Computerlesbares Medium nach Anspruch 14, wobei auf dem computerlesbaren Medium weitere Computerprogrammanweisungen gespeichert sind, für zumindest eines von:

45

Empfangen von Daten, die aus der Gruppe ausgewählt sind, bestehend aus Daten zu medizinischen Verfahrensweisen und Daten zu medizinischen Gerätschaften; und
zeitlichem Planen einer Rekalibrierung, die als erforderlich bestimmt wurde, wobei optional:

auf dem computerlesbaren Medium weitere Computerprogrammanweisungen gespeichert sind zum:

50

Empfangen von Daten, die für ein Arzneimittel indikativ sind, das es an den Patienten zu verabreichen gilt, vom Krankenhausinformationssystem (324); und
zeitlichen Planen der Rekalibrierung zumindest teilweise auf Basis zumindest eines Charakteristikums des zu verabreichenden Arzneimittels.

55

Revendications

1. Procédé de surveillance de la tension artérielle, le procédé comprenant les étapes ci-dessous consistant à :

5 recevoir, en provenance d'un système d'information hospitalier (324), des données correspondant à un patient, dans lequel les données comportent des données d'administration de médicaments relatives à une administration de médicaments qui peut affecter l'élastance artérielle du patient ;
 déterminer, sur la base, au moins en partie, des données d'administration de médicaments reçues, si un système de surveillance de tension artérielle (10) doit être réétalonné ;
 10 réétalonner le système de surveillance de tension artérielle (10) s'il est déterminé, sur la base, au moins en partie, des données d'administration de médicaments reçues, que le système de surveillance de tension artérielle (10) doit être réétalonné ; et
 calculer au moins une mesure de tension artérielle du patient en utilisant le système de surveillance de tension artérielle réétalonné (10).

15
 2. Procédé selon la revendication 1, dans lequel l'étape de réception des données correspondant au patient consiste à recevoir des données sélectionnées à partir du groupe comportant : des données d'acte médical, et des données d'équipement médical.

20 3. Procédé selon la revendication 1, comprenant en outre les étapes ci-dessous consistant à :
 déterminer un identifiant correspondant à un médicament devant être administré au patient, sur la base, au moins en partie, d'un balayage d'une étiquette correspondant au médicament ; et
 stocker l'identifiant dans le système d'information hospitalier (324), dans le cadre des données correspondant
 25 au patient.

4. Procédé selon la revendication 1, dans lequel l'étape de calcul de ladite au moins une mesure de tension artérielle comprend les étapes ci-dessous consistant à :
 30 détecter un premier signal de pléthysmographe optique (PPG) ;
 détecter un second signal PPG ;
 mesurer une différence de temps entre les premier et second signaux PPG ; et
 générer ladite au moins une mesure de tension artérielle sur la base, au moins en partie, de la différence de temps mesurée.

35 5. Procédé selon la revendication 4, dans lequel l'étape consistant à déterminer si le système de surveillance de tension artérielle (10) doit être réétalonné, est en outre basée, au moins en partie, sur un élément sélectionné à partir du groupe comportant : ladite au moins une mesure de tension artérielle calculée et au moins une caractéristique des premier et second signaux PPG.

40 6. Procédé selon la revendication 1, dans lequel l'étape consistant à déterminer si le système de surveillance de tension artérielle (10) doit être réétalonné comporte l'étape consistant à planifier un réétalonnage en réponse à la détermination selon laquelle le système de surveillance de tension artérielle (10) doit être réétalonné, et facultativement :

45 selon laquelle les données reçues en provenance du système d'information hospitalier (324) sont indicatives d'un médicament devant être administré au patient ; et
 dans lequel l'étape consistant à planifier le réétalonnage est basée, au moins en partie, sur au moins une caractéristique du médicament devant être administré.

50 7. Procédé selon la revendication 1, dans lequel l'étape consistant à réétalonner le système de surveillance de tension artérielle (10) comprend les étapes ci-dessous consistant à :

55 accéder à une mesure de tension artérielle de référence ; et
 calculer au moins une constante mathématique sur la base de la mesure de tension artérielle de référence accédée, dans lequel l'étape de calcul de ladite au moins une mesure de tension artérielle est basée, au moins en partie, sur ladite au moins une constante mathématique calculée.

EP 2 348 973 B1

8. Système de surveillance de tension artérielle (10), comprenant :

un système d'information hospitalier (324) exploitable de manière à stocker des données correspondant à un patient ; et

un processeur (312) couplé au système d'information hospitalier (324), exploitable de manière à :

recevoir les données en provenance du système d'information hospitalier (324), dans lequel les données comportent des données d'administration de médicaments relatives à une administration de médicaments qui peut affecter l'élastance artérielle du patient ;

déterminer, sur la base, au moins en partie, des données d'administration de médicaments reçues, si le système de surveillance de tension artérielle (10) doit être réétalonné ;

réétalonner le système de surveillance de tension artérielle s'il est déterminé, sur la base, au moins en partie, des données d'administration de médicaments reçues, que le système de surveillance de tension artérielle (10) doit être réétalonné ; et

calculer au moins une mesure de tension artérielle du patient en utilisant le système de surveillance de tension artérielle réétalonné (10).

9. Système de surveillance de tension artérielle selon la revendication 8, dans lequel le système d'information hospitalier (324) est en outre exploitable de manière à recevoir des données sélectionnées dans le groupe comportant : des données d'acte médical, et des données d'équipement médical.

10. Système selon la revendication 8, dans lequel le système d'information hospitalier (324) est en outre exploitable de manière à :

déterminer un identifiant correspondant à un médicament devant être administré au patient, sur la base, au moins en partie, d'un balayage d'une étiquette correspondant au médicament ; et stocker l'identifiant dans le cadre des données correspondant au patient.

11. Système de surveillance de tension artérielle (10) selon la revendication 8, comprenant en outre :

un premier capteur (12) exploitable de manière à détecter un premier signal de pléthysmographe optique (PPG) ; et

un second capteur (13) exploitable de manière à détecter un second signal PPG, dans lequel le processeur (312) est en outre exploitable de manière à :

mesurer une différence de temps entre les premier et second signaux PPG ; et

générer ladite au moins une mesure de tension artérielle sur la base, au moins en partie, de la différence de temps mesurée, dans lequel, facultativement :

le système d'information hospitalier (324) est en outre exploitable de manière à déterminer si le système de surveillance de tension artérielle (10) doit être réétalonné, sur la base, au moins en partie, d'un élément sélectionné à partir du groupe comprenant : ladite au moins une mesure de tension artérielle calculée et au moins une caractéristique des premier et second signaux PPG.

12. Système de surveillance de tension artérielle (10) selon la revendication 8, dans lequel le processeur (312) est en outre exploitable de manière à planifier un réétalonnage en réponse à la détermination selon laquelle le système de surveillance de tension artérielle (10) doit être réétalonné, et facultativement dans lequel :

le système d'information hospitalier (324) est en outre exploitable de manière à stocker des données indicatives d'un médicament devant être administré au patient ; et

le processeur (312) est en outre exploitable de manière à planifier le réétalonnage sur la base, au moins en partie, d'au moins une caractéristique du médicament devant être administré.

13. Système de surveillance de tension artérielle (10) selon la revendication 8, dans lequel le processeur (312) est en outre exploitable de manière à :

accéder à une mesure de tension artérielle de référence ;

EP 2 348 973 B1

calculer au moins une constante mathématique sur la base de la mesure de tension artérielle de référence
accédée ; et
calculer ladite au moins une mesure de tension artérielle sur la base, au moins en partie, de ladite au moins
une constante mathématique.

5

14. Support lisible par ordinateur destiné à être utilisé dans le cadre de la détermination d'une tension artérielle, le support lisible par ordinateur présentant des instructions de programme informatique enregistrées sur celui-ci pour :

10

recevoir, en provenance d'un système d'information hospitalier (324), des données correspondant à un patient, dans lequel les données comportent des données d'administration de médicaments relatives à une administration de médicaments qui peut affecter l'élastance artérielle du patient ;

déterminer, sur la base, au moins en partie, des données d'administration de médicaments reçues, si un système de surveillance de tension artérielle (10) doit être réétalonné ;

15

réétalonner le système de surveillance de tension artérielle (10) s'il est déterminé, sur la base, au moins en partie, des données d'administration de médicaments reçues, que le système de surveillance de tension artérielle (10) doit être réétalonné ; et

calculer au moins une mesure de tension artérielle du patient en utilisant le système de surveillance de tension artérielle réétalonné (10).

20

15. Support lisible par ordinateur selon la revendication 14, dans lequel le support lisible par ordinateur comporte en outre des instructions de programme informatique enregistrées sur celui-ci pour au moins l'une parmi les étapes ci-dessous consistant à :

25

recevoir des données sélectionnées à partir du groupe comportant : des données d'acte médical, et des données d'équipement médical ; et

planifier un réétalonnage qui est déterminé comme étant nécessaire, dans lequel, facultativement :

30

le support lisible par ordinateur présente des instructions de programme informatique enregistrées sur celui-ci pour :

recevoir, en provenance du système d'information hospitalier (324), des données indicatives d'un médicament devant être administré au patient ; et

planifier le réétalonnage sur la base, au moins en partie, d'au moins une caractéristique du médicament devant être administré.

35

40

45

50

55

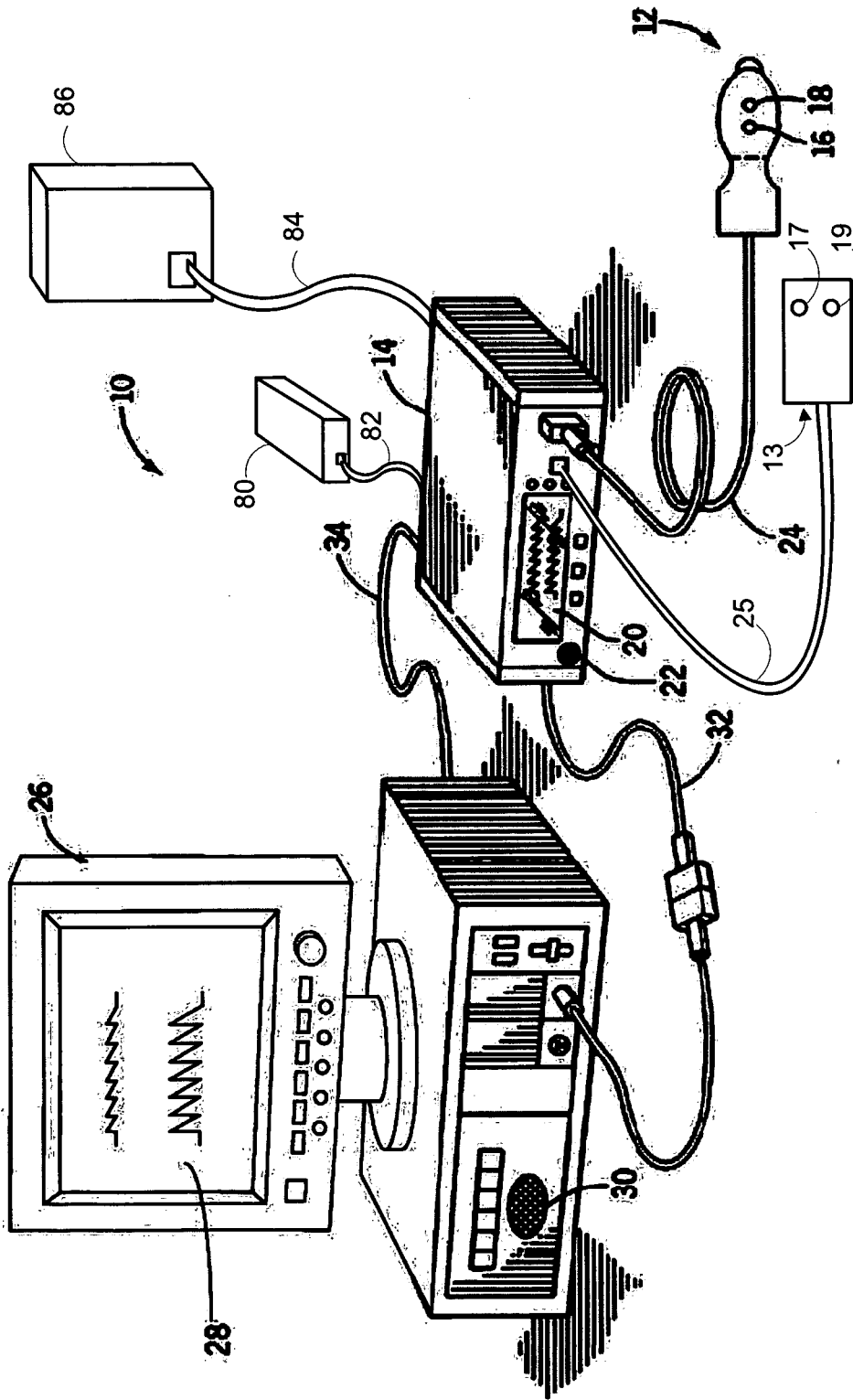


FIG. 1

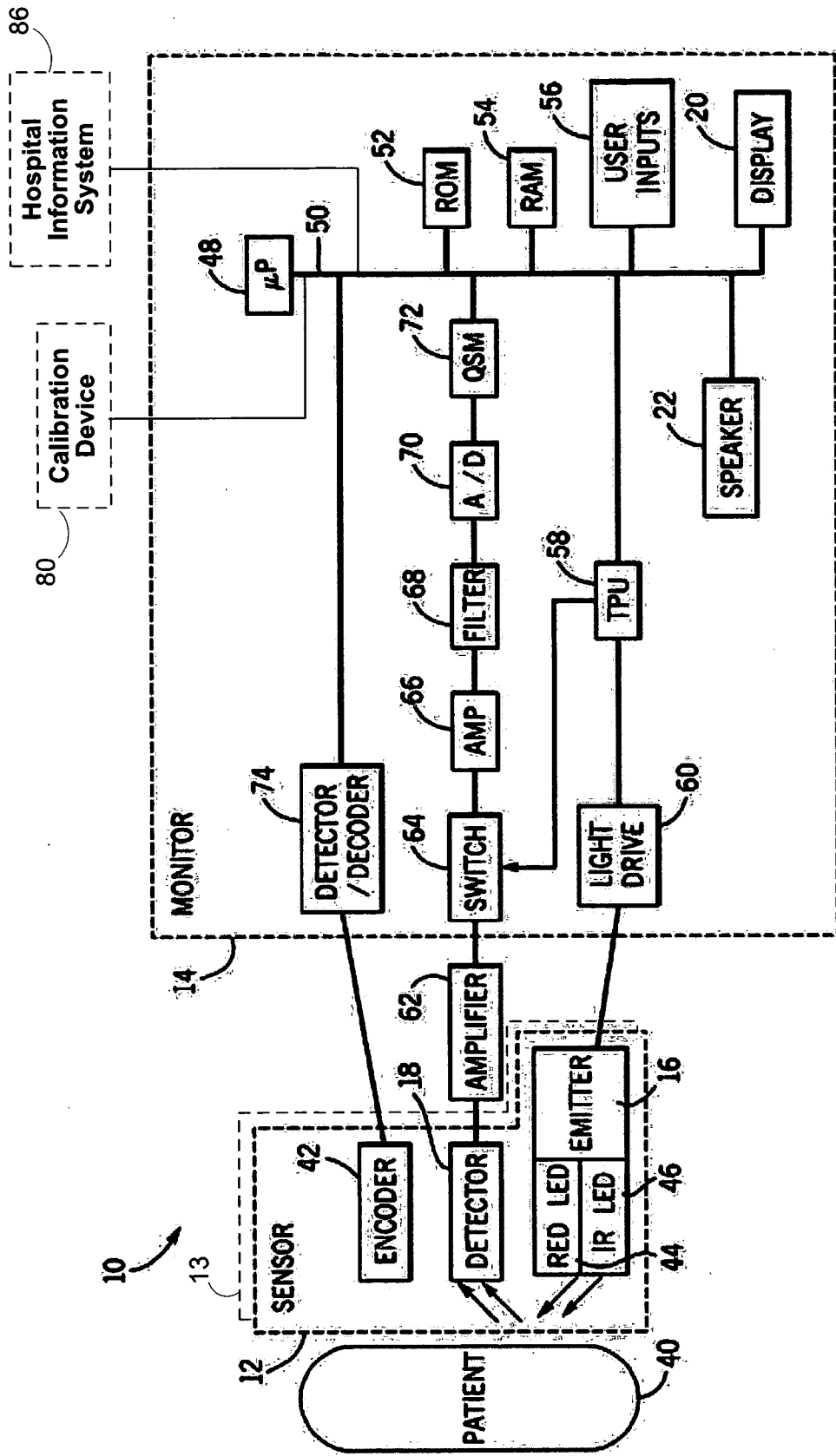


FIG. 2

300

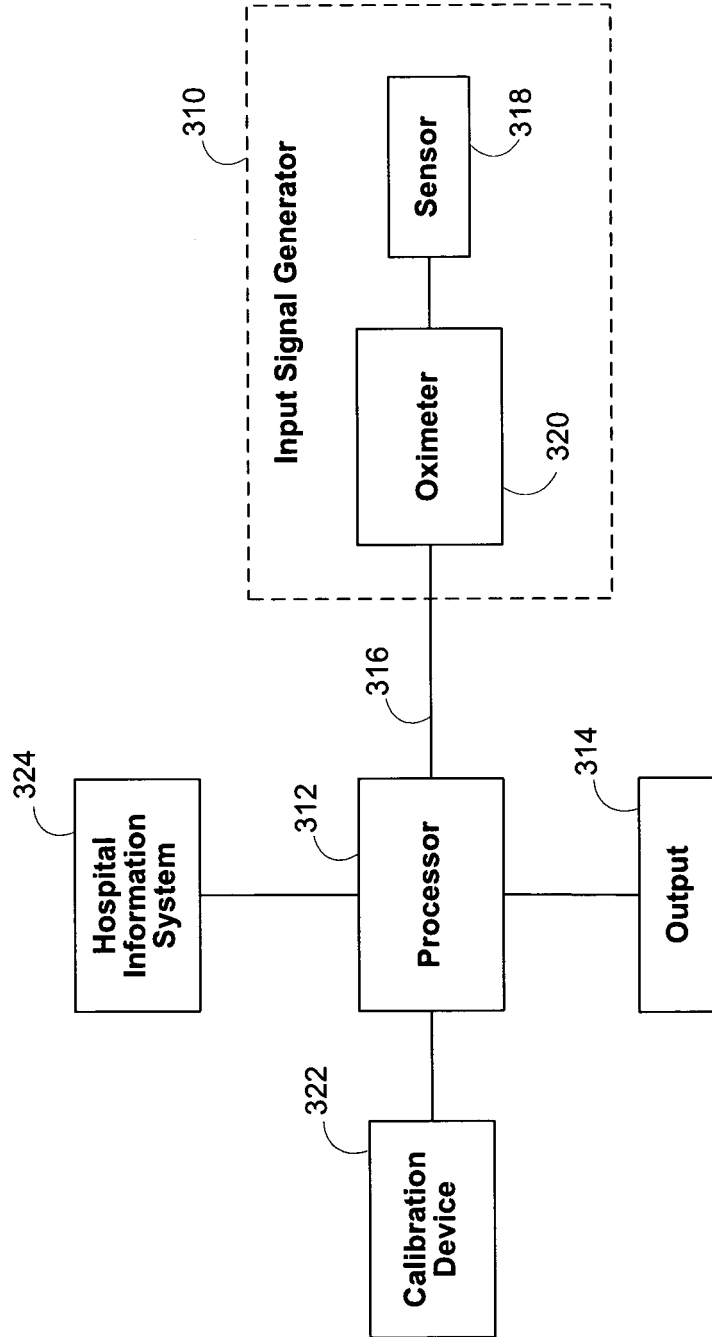


FIG. 3

400

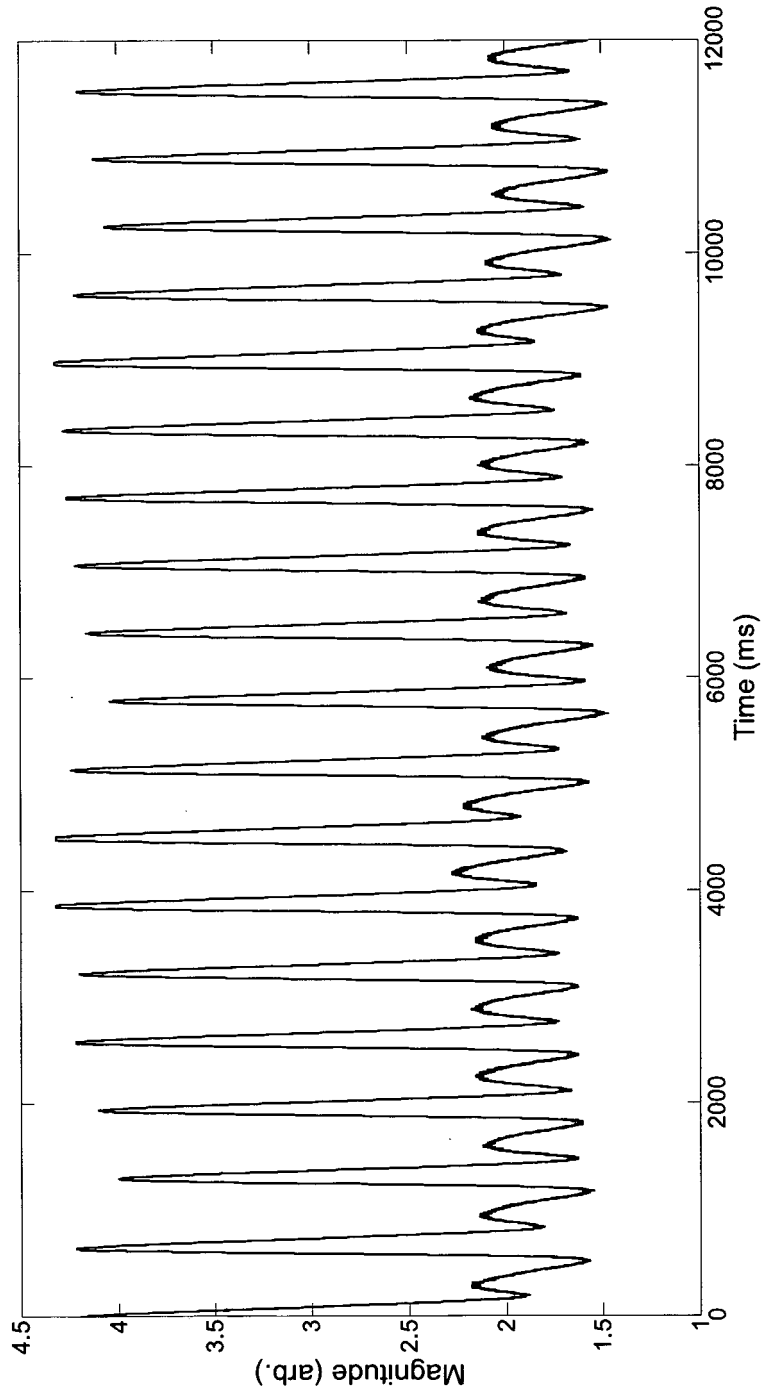


FIG. 4

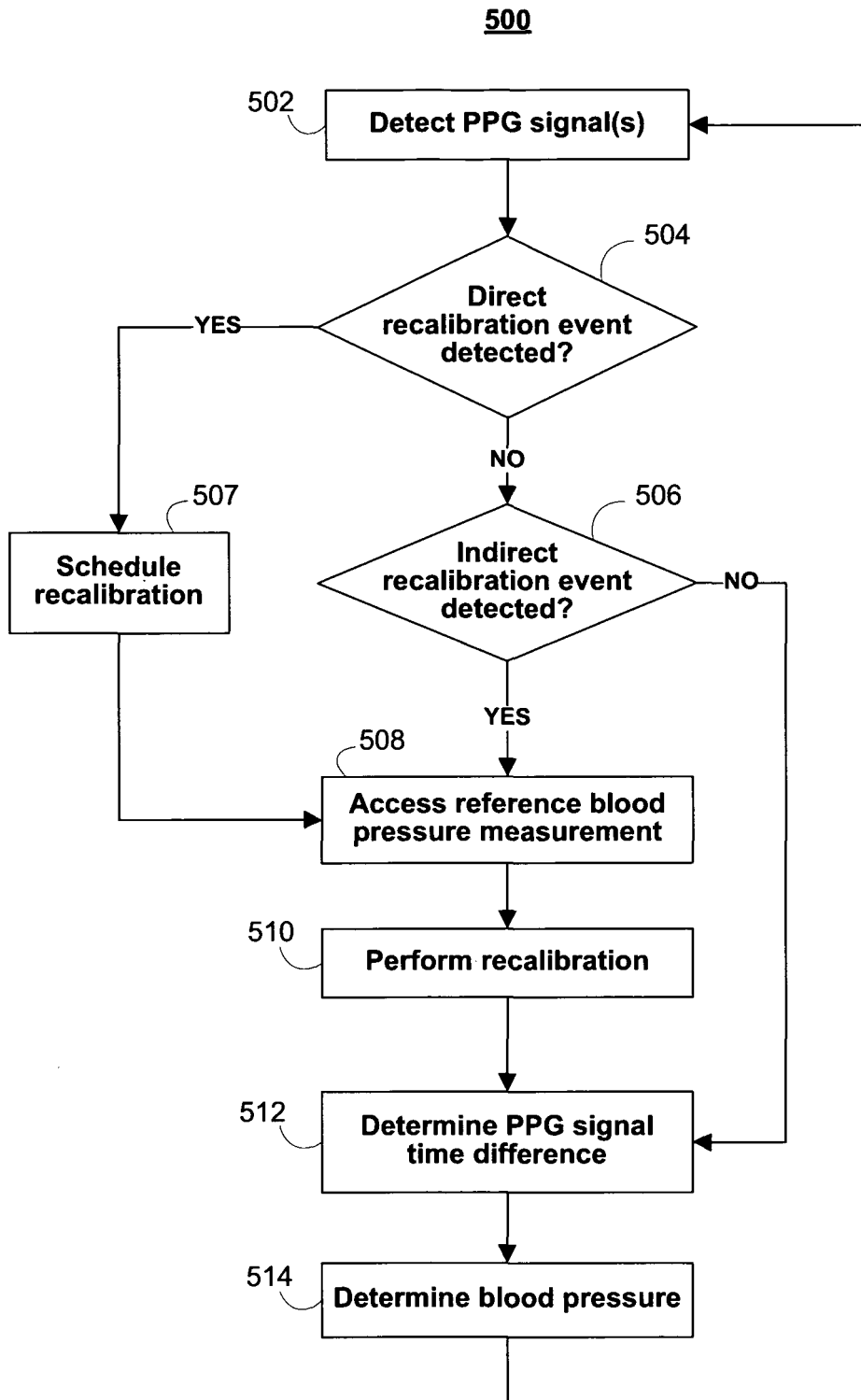


FIG. 5

REFERENCES CITED IN THE DESCRIPTION

This list of references cited by the applicant is for the reader's convenience only. It does not form part of the European patent document. Even though great care has been taken in compiling the references, errors or omissions cannot be excluded and the EPO disclaims all liability in this regard.

Patent documents cited in the description

- EP 1782728 A [0001]
- US 20040073121 A [0001]
- US 20030167012 A [0001]
- US 6599251 B, Chen [0004]
- US 24223808 A [0005]
- US 24286708 A [0006]
- US US20060253016 A, Baker, Jr. [0009]

专利名称(译)	用于重新校准无创血压监测系统的系统和方法		
公开(公告)号	EP2348973B1	公开(公告)日	2016-04-13
申请号	EP2009786263	申请日	2009-09-17
[标]申请(专利权)人(译)	NELLCOR PURITAN BENNETT爱尔兰		
申请(专利权)人(译)	NELLCOR PURITAN BENNETT爱尔兰		
当前申请(专利权)人(译)	NELLCOR PURITAN BENNETT爱尔兰		
[标]发明人	BAKER CLARK R JR ADDISON PAUL STANLEY WATSON JAMES NICHOLAS		
发明人	BAKER, CLARK, R., JR. ADDISON, PAUL, STANLEY WATSON, JAMES, NICHOLAS		
IPC分类号	A61B5/00 A61B5/1455 A61B5/021		
CPC分类号	A61B5/021 A61B5/02125 A61B5/022 A61B5/02225 A61B5/1455 A61B5/7239 A61B2560/0223 G16H15/00 G16H40/40 G16H40/63		
优先权	12/242858 2008-09-30 US		
其他公开文献	EP2348973A1		
外部链接	Espacenet		

摘要(译)

公开了用于无创血压监测的技术。可以从医院信息系统接收对应于患者的数据。数据可包括例如药物管理数据，医疗程序数据，医疗设备数据或其组合。是否需要重新校准血压监测系统可以至少部分地基于所接收的数据来确定。如果确定需要重新校准血压监测系统，则可以执行重新校准，并且可以使用重新校准的血压监测系统计算患者的至少一个血压测量值。

