

(19)



(11)

EP 2 036 486 A1

(12)

EUROPEAN PATENT APPLICATION

(43) Date of publication:

18.03.2009 Bulletin 2009/12

(51) Int Cl.:

A61B 5/00 (2006.01)

A61H 1/00 (2006.01)

(21) Application number: **07116315.8**

(22) Date of filing: **13.09.2007**

(84) Designated Contracting States:

AT BE BG CH CY CZ DE DK EE ES FI FR GB GR HU IE IS IT LI LT LU LV MC MT NL PL PT RO SE SI SK TR

Designated Extension States:

AL BA HR MK RS

(71) Applicant: **Hocoma AG**

8604 Volketswil (CH)

(72) Inventors:

- **Colombo, Gery**
8610 Uster (CH)

- **Schreier, Reinhard**
8406 Winterthur (CH)
- **Riener, Robert**
8602 Wangen (CH)
- **Wieser, Martin**
8050 Zürich (CH)
- **Fisler, Jonas**
5430 Wettingen (CH)

(74) Representative: **Liebetanz, Michael**

Isler & Pedrazzini AG
Gotthardstrasse 53
Postfach 1772
8027 Zürich (CH)

(54) **Rehabilitation system for neurological disorders**

(57) A rehabilitation system for neurological disorders, especially for the rehabilitation of patients (30) being in a vegetative state or minimal conscious state, comprises at least two sensors (20) adapted to measure two different physiological values of the patient and a stimulation generator (50). Initially predefined target signals determined and based on parameters relating to the injury are generated and, during a rehabilitation session,

compared with the measurement signals to drive the stimulation generators (50) delivering sensory stimulation to the patient as feedback. The controlling processor (10, 40, 41) is adapted to change the predefined target signals during a rehabilitation session based on the development or changes of the measurement signals of the different physiological values, to enable a faster and better improvement of the alertness of the patient.

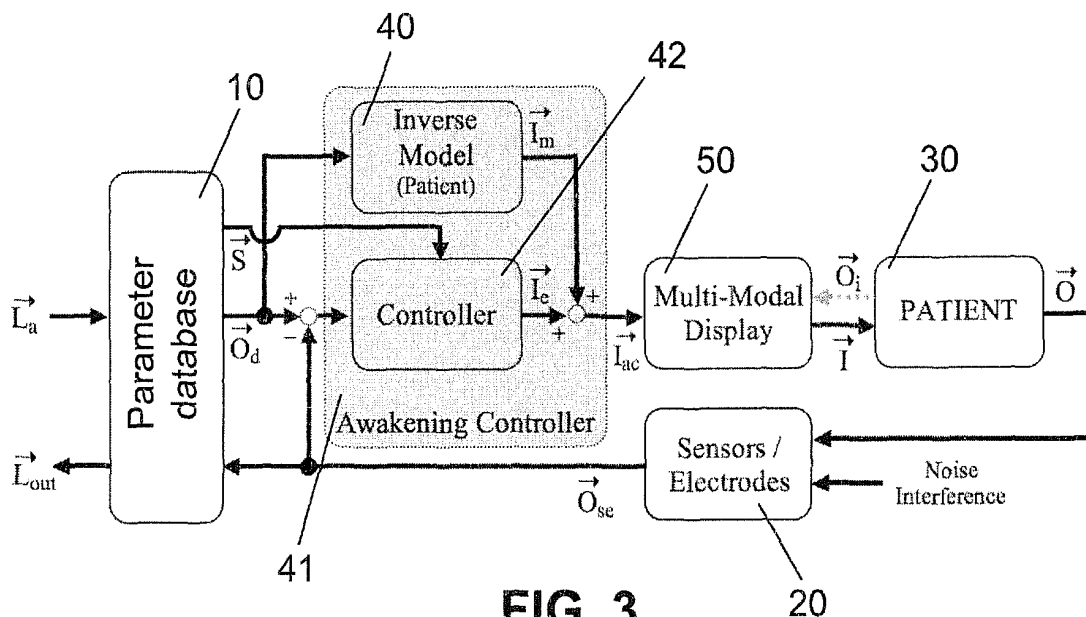


FIG. 3

EP 2 036 486 A1

DescriptionField of the invention

5 **[0001]** The invention relates to a rehabilitation system for neurological disorders, especially a system for the rehabilitation of patients being in a vegetative state or minimal conscious state.

Background of the invention

10 **[0002]** WO 01/36051 describes a motor learning system for rehabilitation of neurological disorders and especially to orthopaedic limb injuries. Said device comprises an insole or pad including a pressure sensor and/or force sensor to measure the weight force applied to at least two monitored locations of at least one limb of a patient. The sensors are connected to a computer processor making a comparison of the determined weight values against a predefined target weight distribution. Said target weight distribution is based on parameters unique to the patient and the injury. The
15 processor is adapted to drive a stimulator delivering closed-loop sensory stimulation as feedback to encourage the patient to distribute said weight more evenly. The sensory stimulation can comprise visual and/or audio effects as well as mechanical vibrations.

[0003] Such a device is adapted to be used by a patient being able to actively follow the program defined through application of said target parameters and which patient decides about his actions. The aim of the device is to help a
20 patient to find the equal weight distribution. Based on static inputs as e.g. gender and biomechanical properties of the fixation of the injury and quasi-static inputs as e.g. time post-injury and weight a initial rehabilitation program is generated, including e.g. bandwidth range and frequency of the walking patient. During the session the patient receives said feedback information to improve his performance. After completing a session the data set of acquired information is compared to the predefined success criteria and the initial rehabilitation program is adapted to better suit the needs of the patient for
25 a following session.

[0004] Said system is not suitable for patients in a vegetative state or minimal conscious state.

[0005] Furthermore the known device initially generates predefined target signals determined and based on input parameters and then delivers - during a rehabilitation session - sensory stimulation to the patient as feedback based on
30 a comparison of the measurement signals with target signals. Only after one completed rehabilitation session the predefined target signals for a subsequent rehabilitation session are adapted following the result of the completed rehabilitation session.

Summary of the invention

35 **[0006]** It is therefore an object of the present invention to provide a rehabilitation system for neurological disorders, especially for patients being in a vegetative state or minimal conscious state.

[0007] It is a further object of the invention to provide a rehabilitation system allowing an improvement of the alertness and awareness of such patients.

[0008] Furthermore, it is an object of the invention to provide a system detecting and quantifying the state of alertness
40 to optimize the awakening process in such vegetative and minimal conscious patients.

[0009] The invention is based on the insight that the adoption of the sensory answer of the system has preferably to be adapted during a session.

[0010] Furthermore the invention uses preferably at least two different physiological parameters and two different physiological signals retrieved by sensors to control the output of preferably at least two different displays.

45 **[0011]** Furthermore it has been found that physiological reactions of patients being in a vegetative state or minimal conscious state are distributed in different time frames; the awakening process can be optimized taking into account different closed-loop controllers.

[0012] It is advantageous that during a rehabilitation session, the system can hop to a different "initial" parameter set. For this a time interval is defined and the change of the initial measurement signals to the current measurement signals
50 is compared to said improvement threshold value or vector. If the improvement does not reach a predefined threshold value or vector the one or more of the stimulation generators delivering sensory stimulation to the patient as feedback are reset to follow new predefined target signals.

Short description of the drawings

55 **[0013]** The invention is now described with reference to the enclosed drawings.

Fig. 1 shows a rehabilitation device according to a first embodiment of the invention using an open-loop/feedforward

control.

- Fig. 2 shows a rehabilitation device according to a second embodiment of the invention using a feedback control.
- Fig. 3 shows a rehabilitation device according to a third embodiment of the invention using a combination of feed-forward and feedback control.
- 5 Fig. 4 shows a rehabilitation device according to a fourth embodiment of the invention using the combined control strategy according to Fig. 3 with safety extension.
- Fig. 5 shows a rehabilitation device according to a fifth embodiment of the invention using the combined control strategy according to Fig. 3 with additional input for the model.
- Fig. 6 shows a rehabilitation device according to a sixth embodiment of the invention using the combined control strategy according to Fig. 3 with additional adaptive extension input for the model and the controller.
- 10 Fig. 7 shows a rehabilitation device according to a seventh embodiment of the invention using the combined control strategy according to Fig. 3 with additional adaptive extension input for the interpreter computer unit.
- Fig. 8 shows a rehabilitation device according to an eighth embodiment of the invention using the control strategy according to Fig. 1 using a direct model with additional adaptive input.
- 15 Fig. 9 shows the heart rate as sensor input over time at various angles as display of a system according to the invention at two frequencies.
- Fig. 10 shows the mean blood pressure as sensor input over time at various angles as display of a system according to the invention at two frequencies.
- Fig. 11 shows pulse transit time (PTT) scaled and the inverted PTT values as sensor input.
- 20 Fig. 12 shows an EEG frequency power spectrum during an intervention using a system according to the invention.
- Fig. 13 shows two P300 graphs of a patient at the CPz-electrode of a 10-20 EEG system during an intervention using a system according to the invention.
- Fig. 14 shows that during an experiment, while the inclination angle as display value changes from 0° to 75°, the average heart rate as output signal changes from 62.5 to 76 bpm.
- 25 Fig. 15 shows the experiment with a desired heart rate of 72 bpm whereas the tilting angle α_{tilt} is modified by means of a P controller according to Fig. 3.

Detailed description of preferred embodiments

30 **[0014]** Fig. 1 to 8 show rehabilitation devices encompassing - inter alia - different controller strategies. Similar features in all embodiments receive the same reference signs and are usually only described in detail in the first described embodiment in which they appear.

[0015] Fig. 1 shows a rehabilitation device according to a first embodiment of the invention using an open-loop/feedforward control.

35 **[0016]** The rehabilitation device comprises an interpreter computer unit 10 named parameter database in Fig. 1. This unit 10 comprises input and output facilities. The arrow \vec{L}_a relates to a vector called 'level of alertness' which is to be defined as a set of parameters. The same set of parameters describes the 'actual level of alertness' \vec{L}_{out} , i.e. comprising the same vector elements. These elements are physiological quantities. Such physiological quantities can be chosen from the group encompassing e.g. EEG signals and Evoked Potentials, EMG signals, heart rate, systolic and diastolic blood pressure, respiration frequency, skin conductance, oxygen saturation, body temperature, etc..

40 **[0017]** These physiological quantities are measurement signals which can be acquired through sensors 20, which are applied to a patient 30. Additionally, of course, the sensors 20 also receive noise and interference signals, which preferably are filtered at least in the computer 10. The signals \vec{O}_{se} will be acquired by means of sensors and electrodes 20 to measure non-electrical and bioelectrical physiological signals, respectively.

45 **[0018]** The database of parameters of computer 10 can also be called to be an interpreter, since this database is filled and identified on the basis of objective parameters retrieved through experimental investigations, and subjective fixation of alertness conditions based on literature reviews and knowledge of experienced medical doctors. Hence, the reference vector with predicted values \vec{O}_p will be the input to an inverse dynamic model 40 describing the physiological processes of the patient. The model 40 determines the required input signals \vec{I}_m fed to the display devices 50 (feedforward loop). Moreover the interpreter computer 10 sends signals \vec{S} to drive display modes and switch on/off display devices. The control can be described as an array to image the input vector onto a selected output vector.

50 **[0019]** Models 40 are known from the prior art, e.g. Timischl, S. "A Global Model for the Cardiovascular and Respiratory System" published as PhD thesis, Karl-Franzens University of Graz, August 1998. Another model is focused on the analysis of slow dynamical variations of long term neurophysiological parameters like the partial oxygen pressure of brain tissue or the cerebral blood flow, disclosed by Jung et al. "A mathematical model of cerebral circulation and oxygen supply".

55 **[0020]** Some solutions for different display devices 50 are shown in the following table.

Display device	Example
leg or arm movement generator	a stepper like dis- closed in WO00/61059
tilting board/bench for body verticalisation	a tilting table like disclosed in WO00/61059
graphical display	a monitor
acoustic display	loud speakers, head-phones
tactile stimulator	a vibrator unit
olfactory display	Via odour vaporization
heat or cold display	IR lamp for heating or peltier element for cooling

[0021] The patient will show a physiological output \vec{O} on the display 50 and can react with an interaction \vec{O}_i to the display 50. Such an interaction can be a reflex or a change of a subconscious physiological condition. Such a change can occur fast (in seconds) as in case of the heart rate or slowly (in minutes) as in case of some EEG patterns.

[0022] It is advantageous that during a rehabilitation session, the system can hop to a different 'initial' parameter set, i.e. to apply different stimulation values or simply different stimulation, i.e. it is possible to initially use an acoustic display and after several minutes the acoustic display is changed or replaced by or added to a graphical display. For this a time interval is defined and the change of the initial measurement signals to the current measurement signals is compared to said improvement threshold value or vector. If the improvement does not reach a predefined threshold value or vector within the responses, e.g. eye movement, heart rate change etc., the one or more of the stimulation generators delivering sensory stimulation to the patient as feedback are reset to follow new predefined target signals. Usually the same already applied sensors 20 are continuously acquiring the same measurement signals.

[0023] Fig. 2 shows a rehabilitation device according to a second embodiment of the invention using a feedback control. The system uses identical units 10, 20, 30, 40 and 50. The inverse model of the patient of Fig. 1 is adapted to become the so called awakening controller 42. In the feedback loop recorded signals \vec{O}_{se} will be compared to the reference values \vec{O}_d and the error fed into the (awakening) controller 42. The controller 42 then determines the required input signals \vec{I}_{ac} inducted to the display devices 50.

[0024] Fig. 3 shows a rehabilitation device according to a third embodiment of the invention using a combination of feedforward and feedback control. Therefore the awakening controller unit 41 comprises beside the inverse model 40 the controller 42 from Fig. 2. The predicted error vector \vec{I}_e is calculated by controller 42 which receives the input signals as in Fig. 2.

[0025] Additional to the separated control strategies as mentioned in connection with Fig. 1 and Fig. 2 the predicted error vector \vec{I}_e and the output \vec{I}_m of the inverse human model 41 will sum up and define the input \vec{I}_{ac} to the multi-modal display 50. The display 50 will expose the patient to the defined sensory modalities \vec{I} .

[0026] Fig. 4 shows a rehabilitation device according to a fourth embodiment of the invention using the combined control strategy according to Fig. 3 with safety extension.

[0027] The physiological values retrieved by the sensors 20 will be checked via a monitoring device 60. Defined thresholds will influence the actuation and drive of the display 50 (e.g. movement generator, tilting board, acoustic display) in a safe mode. E.g. after detecting a heart rate as physiological value detected by one of the sensors 20 being over the threshold value, the inclination angle s_α of a tilting board will decrease for some degrees or back to zero.

[0028] Fig. 5 shows a rehabilitation device according to a fifth embodiment of the invention using the combined control strategy according to Fig. 3 with additional input 21 for the model 40. Additional to the controller 42 the inverse dynamic model 40 will get a feedback of the real measured physiological values through line 21. The information will be used to adjust \vec{I}_m individually to the situation of the treated patient.

[0029] Although Fig. 5 does not show a safety extension unit 60, it is clear that the different descriptions of different embodiments in connection with Fig. 1 to 8 and their application and actual use in connection with Fig. 9 to 15 does not mean, that they have to be seen isolated one-by-one, but that the invention also comprises the combination of the features shown, i.e. someone skilled in the art will apply a safety extension 60 as disclosed in connection with Fig. 4 to a device according to one of Fig. 1, 2 or 5 and subsequent Fig. as well as the additional feedback line 21 can also be incorporated in various embodiments, as for example in embodiments according to Fig. 1, 3 or 4.

[0030] Fig. 6 shows a rehabilitation device according to a sixth embodiment of the invention using the combined control strategy according to Fig. 3 with additional adaptive extension input 22 for the model 40 and the controller 41.

[0031] The main difference to the previous control strategies is the adaptive part 22, 23. By means of the recorded signals \vec{O}_{se} the two parts of the awakening controller 41, i.e. the inverse model 40 and controller 42 will be adapted during the training with signal paths 22 and 23, respectively. This relates to a direct sensor input into the inverse model

40 and the controller 42 additionally to the feedback with inclusion of parameters based on and stored in the parameter database unit 10.

[0032] Fig. 7 shows a rehabilitation device according to a seventh embodiment of the invention using the combined control strategy according to Fig. 3 with additional adaptive extension input 24 for the interpreter computer unit 10. Here the adjustment will be driven by the error between the defined level of alertness \vec{L}_a and the actual level of alertness \vec{L}_{out} .

[0033] Fig. 8 shows a rehabilitation device according to an eighth embodiment of the invention using the control strategy according to Fig. 1 using a direct model 70 with additional adaptive input paths 25 and 26 for the direct model 70 and the indirect model 40, respectively. In the model adaptive control strategy the inverse dynamic model 40 delivers the predicted input values for the multi-modal display 50 and the direct dynamic model 70 of the patient 30. The direct and the inverse dynamic model are identical except that they are 'reversed' with respect to each other. In this approach, the direct dynamic model is an 'observer' of the reaction to the exposed stimuli. The error between the physiological output signals \vec{O}_m predicted by the direct dynamic model and the recorded outcome \vec{O}_{se} will drive the adaptation mechanism 80 issuing the signals on the paths 25 and 26. In this respect the direct feedback come in addition to the input of the database 10 in a way similar to the embodiment according to Fig. 6.

[0034] Someone skilled in the art will note that different solutions can be chosen to build the controllers 10, 42 as well as controllers 40 and 70. Some examples will now be disclosed to illustrate the possibilities without limiting the scope of the invention. The examples are:

- (1) P, PI, PD or PID controller
- (2) Direct Pole Placement
- (3) Model Predictive Controller
- (4) Adaptive controller
- (5) Intelligent controller
- (6) Non-Linear Control Systems

[0035] A proportional-integral-derivative controller (PID controller) attempts to correct the error between measured process variables \vec{O}_{se} and desired setpoints \vec{O}_d . By calculating and then outputting a corrective action the process can be adjusted accordingly, based upon three parameters (proportional, integral and derivative values). If $\vec{I}_e(t)$ is the control signal sent to the display and $\vec{O}_{err}(t) = \vec{O}_{se}(t) - \vec{O}_d(t)$, a PID controller has the general form

$$\vec{I}_e(t) = \vec{K}_p \vec{O}_{err}(t) + \vec{K}_i \int \vec{O}_{err}(t) dt + \vec{K}_d \frac{d\vec{O}_{err}(t)}{dt}$$

K_p , K_i and K_d are vectors for the proportional, integral and derivative term, respectively. Stability can often be ensured using only the proportional term. The integral term permits the rejection of a step disturbance and the derivative term is used to provide damping or shaping of the response.

[0036] Here one can also think about only using one or two modes to provide the appropriate system control. The controller will be called a PI, PD, P or I controller in absence of respective control actions.

[0037] Direct pole placement can be performed mathematically using a state space representation of the open-loop system and calculating a feedback matrix assigning poles in the desired positions, in view of the fact that the system to handle is a multi-input multi-output (MIMO) system.

[0038] Model predictive controllers (MPC) rely on dynamic models of the process, most often linear empirical models obtained by system identification. The models are used to predict the behaviour of the dependent variables $\vec{I}_e(t)$ of a dynamical system with respect to changes in the process independent vectors \vec{O}_{se} and \vec{O}_d .

[0039] The model predictive controller uses the models and current plant measurements to calculate future moves in the independent variables that will result in operation that honours all independent and dependent variables constraints.

[0040] The MPC is a multivariable control algorithm that uses (1) an internal dynamic model of the process, (2) a history of past control moves (3) an optimization cost function over the prediction horizon, to calculate the optimum control moves. One example for the cost function can be to minimize the absolute value of the error \vec{O}_{err} .

[0041] Adaptive control uses on-line identification of the process parameters, or modification of controller gains, thereby obtaining strong robustness properties.

[0042] Using this approach in combination with a PID controller, the values for \vec{K}_p , \vec{K}_i and \vec{K}_d will be updated by the identification. The structure of the controller itself will keep the same.

[0043] Intelligent control uses various computing approaches like Fuzzy Logic, Bayesian probability, support vector machines or artificial neural networks to control the dynamic system.

[0044] A fuzzy control system is a control system based on Fuzzy Logic - a mathematical system that analyzes

analogue input values (often rough or "fuzzy" qualitative information) in terms of logical variables that take on continuous values between 0 and 1. As an example you can think about the change of the heart rate. The heart rate can be static, slightly increased or decreased, medium increased or decreased and so on. All the input variables in a fuzzy control system are in general mapped into by sets of membership functions, also known as 'fuzzy sets', the basic requirement for the controller.

[0045] Support vector machines (SVMs) are a set of related supervised learning methods used for classification and regression. They belong to a family of generalized linear classifiers. A special property of SVMs is that they simultaneously minimize the empirical classification error and maximize the geometric margin; hence they are also known as maximum margin classifiers. The input vectors are $\vec{O}_{se}(t)$ and $\vec{O}_d(t)$ but also derivations, integrations or correlations between single signals like galvanic skin response and body temperature or heart rate and oxygen saturation. All vectors that belong to the same state of alertness built a set of data points. Support vector machines map all input vectors (different sets of data points) to a higher dimensional space where a maximal separating hyperplane is constructed. So the nearest distance between a point in one separated hyperplane and a point in the other separated hyperplane is maximized and this is the basic idea of the controller. SVMs are well known in recognition of speech, objects and gesture - here they are used to recognize the state of alertness.

[0046] An artificial neural network (ANN) is an interconnected group of artificial neurons that uses a mathematical model or computational model for information processing based on a connectionist approach to computation. ANN is an adaptive system that changes its structure based on external or internal information that flows through the network. The input vectors are again $\vec{O}_{se}(t)$ and $\vec{O}_d(t)$ and derived signals. The output vector of the controller is $\vec{I}_e(t)$. The word 'network' in the term 'artificial neural network' arises because the function $f(x)$ is defined as a composition of other functions $g_i(x)$, which can further be defined as a composition of other functions. This can conveniently be represented as a network structure, with arrows depicting the dependencies between variables. For example the heart rate is a function of blood pressure and the galvanic skin response signal. But the blood pressure itself is also a function of the galvanic skin response signal, the resistance of the vessels and the respiration frequency. This is only the beginning of the whole network and a widely used type of composition is the nonlinear weighted sum. A lot of experimental data is required to train and validate the ANN controller: a subset of data will be used to train (teach) an 'empty' ANN and adapt its characteristics to optimally control the plant (patient) via the parameters of $\vec{I}_e(t)$. Another subset of data is used to validate (test) the controller.

[0047] Vegetative and minimal conscious state patients can show a behaviour with strong non-linear dynamics. In control theory it is sometimes possible to linearize such classes of systems and apply linear techniques: in our case with patients it is possible to devise control strategies of non-linear systems, especially the 'intelligent control strategies' can be combined with non-linear parts.

[0048] In general the models (indirect model, inverse model or direct model) are based on mathematical principles like artificial neural network, Fuzzy Logic or numerical approaches. Dynamic models are required as components within the control strategies in order to predict, observe, interpret, or control the behaviour of the plant (patient).

[0049] Kappel F. and Peer, R.O. proposed "A mathematical model for fundamental regulation processes in the cardiovascular system" in Journal of Mathematical Biology, 6:611-631, 1993. The article presented a mathematical model for the fundamental processes of the cardiovascular system. Further work on modelling was reported by Timischl (see above), who included also a respiratory model. Both models use a closed-loop feedback system regulating the cardiovascular system with optimal control theory.

[0050] As an example, based on this model an extension was derived to describe some specific cardiovascular relationships while using a stepper like disclosed in a device as disclosed WO00/61059. The inclination angle s_α and the stepping frequencies s_{ste} for performing the stepping patterns was chosen as an input of the model. The output includes heart rate (f_{HR}) and mean blood pressure (p_m). A non-linear model with linear, exponential and sigmoid-functions as well as 2nd order differential equations was used. The identification of the model was done with a least-square algorithm. The output of the model as well as the measured output of a healthy person is shown in Fig. 9 and 10.

[0051] Fig. 9 shows the heart rate over time at various angles at two frequencies using a system according to an embodiment of the invention as seen in Fig. 3 or 4. The output value is the heart rate; the triggers are ongoing in time: Trigger 1: Start leg drives 0.4Hz, Trigger 2: Tilt to 20°, Trigger 3: Tilt to 55°, Trigger 4: Tilt to 75°, Trigger 5: Stop leg movement, Trigger 6: Tilt to 0°.

[0052] Fig. 10 shows the mean blood pressure over time at various angles at two frequencies using a system according to an embodiment of the invention as seen in Fig. 3 or 4. The output value is the blood pressure; the triggers are ongoing in time: Trigger 1: Start leg drives 0.4Hz, Trigger 2: Tilt to 20°, Trigger 3: Tilt to 55°, Trigger 4: Tilt to 75°, Trigger 5: Stop leg movement, Trigger 6: Tilt to 0°.

[0053] After initial 5 minutes (300 seconds) laying in supine position, the stepping drives are switched on ($s_{ste} = 0.4\text{Hz}$). A clear increase of around 9 bpm can be seen that decreases back to the baseline within the next couple of minutes. This cardiac response has been modelled because of the reflexes that are triggered through passive leg movement. At $t = 600\text{s}$, the inclination angle s_α changes from 0° to 20°. The heart rate increases slightly. The large change in heart

rate happens at the tilt from 20° to 55° (t = 1230s). The change to 75° again induces just a slight increase in heart rate (t = 1860s). Both of these reactions coincide with the model. At t = 2490s, when the leg drives are turned off, a clear increase in heart rate is detectable. This is included in the model because the passive leg movement supports the venous return. When stopping the leg movement this support ends and the heart must maintain a sufficient blood circulation. After returning to 0° tilting angle, the cardiac rate drops.

[0054] Inspecting the blood pressure measurements, it can be seen that blood pressure stays almost constant. At the positions, where a large change in heart rate occurs (t = 300s, 1230s, 2490s) no significant change in blood pressure can be seen. The parameters for peripheral resistance of the blood vessels of the model have been identified to have an almost constant blood pressure during the experiment. Because the heart rate increases, the peripheral resistance must decrease, otherwise the blood pressure would rise.

[0055] Fig. 11 shows pulse transit time (PTT) 91 and the inverted PTT values 92, blood pressure in [mmHg] and relative gradient of the PTT values for the same environment as explained in connection with Fig. 9 and 10; Trigger 1: Start of 0.8Hz active stepping, Trigger 2: Tilt to 75°, Trigger 3: Stop movement, Trigger 4: Tilt to 0°.

[0056] An alternative blood pressure determination is the time between the heart contraction (recorded with the ECG) and the arrival of the pulse wave at the extremity (detected with a piezo pulse sensor), the pulse transit time (PTT). The PTT is the time of the pulse wave propagating between two different sites in the arterial system. It is known from the art that the speed of the pulse wave is directly proportional to the blood pressure. Hence, if the blood pressure rises the arterial walls become stiffer and PTT decreases, and conversely, when blood pressure falls, vascular tone decreases and PTT increases. Therefore Fig. 11 shows the pulse transit times 91 and the inverted pulse transit times 92, being mirrored at approximately 70 mm HG.

[0057] In Fig. 11 a clear change in blood pressure can be seen. PTT decreases as the subject starts to move the legs actively. In upright posture and still in active movement, PTT stays constant and rises to a higher constant level when stopping the leg activity. After the return to 0° PTT decreases again.

[0058] This example of a model with 2 inputs and 2 outputs shows that it is possible to predict the outcome quite satisfactory. The evaluation with real data in figure 3.3 seems to be sufficient for the use in the awakening controller because the system is only based on discrete states of alertness.

[0059] Fig. 12 shows an EEG frequency power spectrum during the intervention using a system according to Fig. 3. Additional to the cardiovascular relationship the changes in the EEG data can be verified and modelled. In Fig. 12 the distribution of the power spectrum vs. the frequency is shown. During a training (30 minutes) using a device as disclosed in WO00/61059 with a minimal conscious state patient the distribution of the power spectrum is changing. Comparing the power spectrum of the first 15 minutes to the last 15 minutes there is a shift of the distribution to lower frequencies (from the beta to the alpha frequency band).

[0060] This information (out of the EEG signal) is also used by the controller. The main difference to other signals like ECG is the time delay. The calculation of the distribution of the power spectrum will take a few minutes while the response of the heart rate can be analyzed after a few seconds. The controller always tries to minimize the error between the real data and the desired ones. For the heart rate this process will take place every 10 seconds whereas for the EEG-signals it will take place every 3 minutes. This enables the system to work in two different time frames. The controller is adapted to control with quick response times based on a first measurement signal acquired based on a fast physiological signal as well as take into consideration slow changes of a slow physiological signal. In this respect a fast physiological signal is a signal allowing response times of seconds to under one minute, preferably under 30 seconds, whereas a slow physiological signal is a signal necessitating response times of at least one, preferably two minutes.

[0061] Compared to an electric circuit, the interpreter computer unit 10 is the 'logic'-part of the whole concept. Here the different stages of the 'levels of awareness' \vec{I}_a are determined.

[0062] Today, the state-of-the-art are clinical scores like Glasgow Coma Scale (GCS), Early Functional Abilities (EFA) and JFK Coma Recovery Scale - revised (JFC CRS-r). These three scores and other clinical scores are based on different functional assessment scales for auditory, visual, motor, communication and/or arousal behaviour. The general problem is the lack of a quantitative description for different levels of awareness. The clinical scores are a rough classification as well as only a qualitative way for the rating among patients.

[0063] On the one hand the interpreter computer unit and database 10 is based on the state-of-the-art or - in other words - the qualitative description of the patient's state of alertness/awareness. The experience and knowledge of the medical doctors about the behaviour of the patients as well as the knowledge represented in the literature form the basic fundament of the database. On the other hand all the acquired physiological data is used to get a supplemental quantitative description of the states of alertness. Hildebrandt et al reported in "Heart Rate Variability under Sensorial Stimulation as a Prognostic Parameter for the Functional Outcome of Severe Head Injury" in *Akt Neurologie* 2000; 27, 22-28; about the dependencies between the level of alertness and the heart rate variability, ECG in general and the EMG signals respectively. For this interpreter additional signals and interconnections are used.

[0064] One possible example to describe the processing of the brain in a quantitative way is the P300. The P300 is a neural evoked potential component of the electroencephalogram (EEG). This event-related potential appears as a

positive deflection of the EEG voltage at approximately 300ms and is supposed to follow unexpected auditory stimuli. Latency and amplitude of the P300 signal can be used as an indicator for the state of alertness. A short latency is equivalent for a fast brain processing and, thus, for a high level of alertness. Due to the distinct variability among the subjects normalized parameters are helpful. The area between the normal graph and the deflection one (figure 4.1) is used as one solution for that normalization issue.

[0065] Fig. 13 shows two P300 graphs of a patient at the CPz-electrode of a 10-20 EEG system. Additionally, from the artefact-compensated EEG data subparameters can be extracted such as frequency band ratios. All the subparameters are fitted together in a set of weighted parameters. This affirms the statement about the level of alertness as mentioned above.

[0066] Using a variety of different relationships, the interpreter unit 10 decides which choice of input signals may lead to different levels of alertness. Thus, the interpreter unit 10 chooses a special subset of input signals or parameters, which are probably 'good' for an individual patient in the sense that they lead to an output of the sensors relating to a higher level of alertness.

[0067] The advantage of the system according to the invention is the fact, that there is of course not only one optimal set of parameters for the vector of input parameters. There are a number of such subsets which all allow to reach 'local maxima' in the resulting measured multi-dimensional vector signal, in the sense that each sensor contributes one scalar value to the vector signal or that a subset of sensors contributes a subset of scalar values to the resulting vector signal representing an awareness level. For example the combination of a higher heart rate with characteristic galvanic skin response and a drift of the distribution of the brain activity towards the alpha frequency band is an expression for a high level of alertness shown in a three-dimensional vector.

[0068] In a first control step the input for the awakening controller tries to reach exactly this set of parameters by using the appropriate stimuli via the vector \vec{S} and the multi-modal display 50 respectively, as shown in the drawings relating to the embodiments in Fig. 1 to 8. If this strategy will not achieve a predefined satisfactory result, the set of parameters will be changed. In the next step the combination of a higher heart rate with characteristic galvanic skin response and a higher oxygen saturation should be reached. This second set of parameter stands also for a high level of alertness - the next 'local maximum'. All these stages and the corresponding sets of parameters as well as threshold of the decision relating to the choice of target vector \vec{S} are part of the interpreter unit 10.

[0069] The signal vector displaying a higher 'state of alertness' can be composed from a subset of the following single signals:

- ECG: increasing of the LF/HF-ratio (LF: low frequency; HF: high frequency) and increasing of the heart rate variability may leads to an increase of the state of alertness
- EEG: decrease of the time delay and increase of the amplitude of late Event-Related Potentials (like P300), increase of the power within the frequency bands (theta, alpha) and a decreasing of the amount of 'slow wave activity' (delta frequency band: 0.25 - 4 Hz) will in the most cases lead to a higher state of alertness
- Respiration frequency: an increase of the frequency and an increase of the power within the high frequency bands (by means of a power spectrum analysis) may leads to an increase of the state of alertness
- EMG: patients with a higher state of alertness show an increase of muscle activity at the forehead
- Galvanic Skin Response (GSR): a rapid increase of the GSR signal may leads to an increase of the state of alertness

[0070] The set of parameters of the interpreter computer unit 10 can use the direct correlation between some of the signals:

- increasing of the heart rate is correlated with a rapid increase of the galvanic skin response and/or increase of respiratory frequency and/or increase of O₂ saturation which can be a sign for a higher state of alertness
- increasing of event-related eye movements (events) correlated with an increase of respiratory frequency and/or increase of galvanic skin response and/or rapid increase of the heart rate variability can lead to a higher state of alertness
- event-related eye movement: an increase of directed eye movements correlated with events (e.g. external stimuli and also events in the room like 'walking/moving of the investigator') will in most cases lead to a higher state of alertness
- increasing of body temperature correlated with a decrease of 'slow wave activity' in the EEG power spectrum may lead to a higher state of alertness
- eye movement correlated with an increasing EEG power spectrum within the gamma band should lead to a higher state of alertness

[0071] During the intervention, i.e. while taking signals of the sensors 20 i.e. during measurement:

- a global decreasing of galvanic skin response during the intervention can lead to a higher state of alertness
- changing of respiratory patterns: patients with a higher state of alertness show regular recurrent respiratory patterns
- patients with a higher state of alertness should show an increasing of O₂ saturation during the training.

5 [0072] An additional experiment was done with a healthy subject. The control strategy relates to an embodiment with the combination of the feedforward and feedback control as in Fig. 3, wherein only the heart rate (HR) will be controlled by means of the inverse model and a P controller. The chosen display is the inclination angle for a device as disclosed in WO00/61059.

10 [0073] First the individual range of the heart rate (HR) was determined. After laying 5 minutes in supine position, the inclination angle changes from 0° to 75°. For a baseline measurement the whole duration is 15 minutes and the stepping frequency has a constant value of 0.4Hz. For this subject the averaged 'low' heart rate is 62.5 bpm (beats per minute) and the 'high' one is 76 bpm at an inclination angle of 0° and 75°, respectively. These values are necessary to obtain the maximal range of the HR (related to the tilting angle) as well as to identify the dynamic inverse model 40.

15 [0074] Fig. 14 shows that during the experiment, while the inclination angle changes from 0° to 75°, the average heart rate (shown as flat line 101) changes from 62.5 to 76 bpm; the stepping frequency is a constant value of 0.4Hz during the whole experiment.

[0075] The investigator chooses a HR of 72 bpm (in the range of the low and high HR) as the desired one (HR_d). The desired value is the input of an inverse dynamic model describing the physiological process of the HR. The model determines the required angle α_m and as a result the device is tilting the subject to this angle. The recorded signal (HR_{se}) is acquired by means of ECG electrodes. In the feedback loop HR_{se} is compared to the reference value HR_d and the error fed into the P controller. The controller determines the required angle α_e and provokes a modification of the tilting angle α_{tilt} .

20 [0076] As shown in Fig. 15 the regulation of the HR (by means of the tilting angle) turns out satisfactory. While during the first minutes the over- und undershoots 102 are quite obvious, the actual HR swings into the desired value 103 in the second part of the experiment. Furthermore the angle α_e (which modifies the tilting angle α_{tilt}) 104 decreases during the examination.

List of reference signs

- 30 [0077]
- 10 interpreter computer unit
 - 20 sensor
 - 21 additional input
 - 35 22 adaptation extension input path
 - 23 adaptive part path
 - 24 additional adaptive extension input
 - 25 path
 - 26 path
 - 40 30 patient
 - 40 inverse model
 - 41 awakening controller
 - 42 controller
 - 50 display
 - 45 60 safety-monitoring unit
 - 70 direct model
 - 80 adaptation mechanism
 - 91 pulse transit time
 - 92 inverted pulse transit time
 - 50 101 heart rate (shown as flat line)
 - 102 over- und undershoots of heart rate
 - 103 desired value of heart rate
 - 104 angle of inclination

55 **Claims**

1. Rehabilitation system for neurological disorders, especially for the rehabilitation of patients (30) being in a vegetative

state or minimal conscious state, comprising at least two sensors (20) adapted to measure two different physiological values of the patient, a memory comprising parameters unique to the patient and the injury, at least one stimulation generator (50) and a computer processor (10, 40, 41), wherein the memory is connected to the computer processor for delivering said parameters, wherein the sensors (20) are connected to said computer processor for delivering measurement signals, wherein the computer processor is adapted to

- initially generate predefined target signals determined and based on said parameters,
- during a rehabilitation session, compare said measurement signals with said target signals and drive one or more of the stimulation generators (50) delivering sensory stimulation to the patient as feedback,

characterized in that the processor (10, 40, 41) is adapted to change the predefined target signals during a rehabilitation session based on the development or changes of the measurement signals of the different physiological values.

2. System according to claim 1, **characterized in that** at least two sensors (20) are selected to acquire measurement signals of physiological values within different time frames.
3. System according to claim 2, **characterized in that** different closed-loop controllers are provided for each signal within a different time frame.
4. System according to claim 3, **characterized in that** different closed-loop controllers are provided for each signal within a different time frame, preferably that one controller will use a time frame being larger than one minute, whereas another controller will use a time frame being shorter than one minute.
5. System according to claim 3 or 4, **characterized in that** one sensor is adapted to acquire the heart rate of a patient and that one other sensor is adapted to acquire an EEG signal.
6. System according to the preamble of claim 1 or according to one of claims 1 to 6, **characterized in that** the said target signals are arranged as a target vector signal, that the at least two measurement signals are arranged as a measured vector signal and that the measured vector signal is compared with the target vector signal to control and drive at least two stimulation generators (50) delivering different sensory stimulation to the patient as feedback.
7. System according to claim 6, that the said the comparison result of the vector signals is mapped through use of a control array onto a control vector signal to drive the at least two stimulation generators (50).
8. System according to one of claims 1 to 7, **characterized in that** the stimulation generator (50) are chosen from the group encompassing an leg or arm movement generator, a tilting board/bench for body verticalisation, a graphical display, an acoustic display, a tactile stimulator or vibrator, an olfactory display, a source of heat or a source of cold.
9. System according to one of claims 1 to 8, **characterized in that** the sensors (20) are chosen from the group defining physiological quantities encompassing EEG signals and Evoked Potentials, EMG signals, heart rate, systolic and diastolic blood pressure, respiration frequency, skin conductance, oxygen saturation, or body temperature.
10. System according to one of claims 1 to 9, **characterized in that** a time interval and a improvement threshold value or vector are defined for a rehabilitation session, wherein at the end of such a time interval the change of the initial measurement signals to the current measurement signals and/or the difference of the current measurement signals with existing target signals is compared to said improvement threshold value or vector and if the improvement does not reach the threshold value or vector the one or more of the stimulation generators delivering sensory stimulation to the patient as feedback are set to follow new predefined target signals.

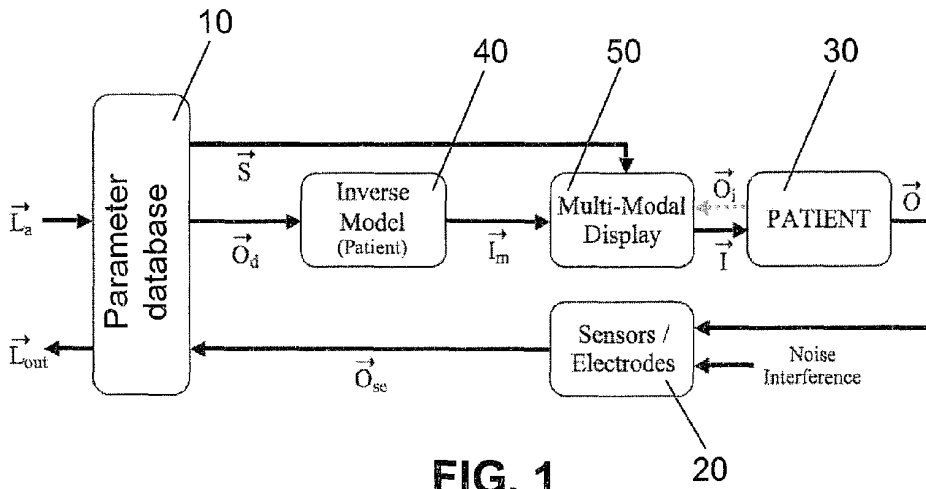


FIG. 1

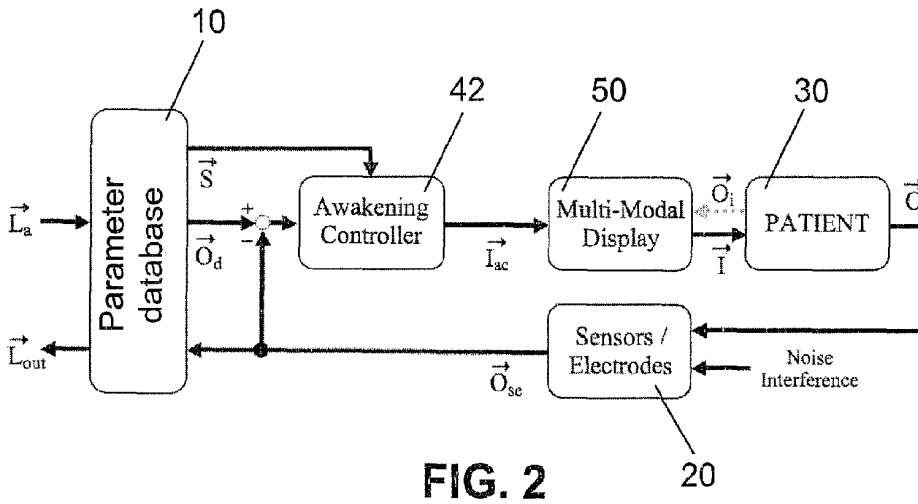


FIG. 2

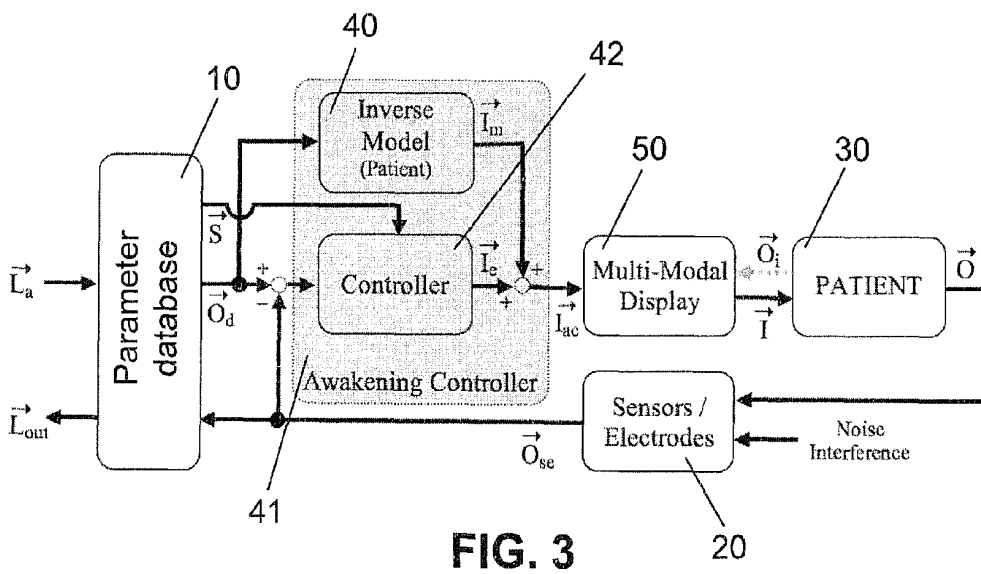


FIG. 3

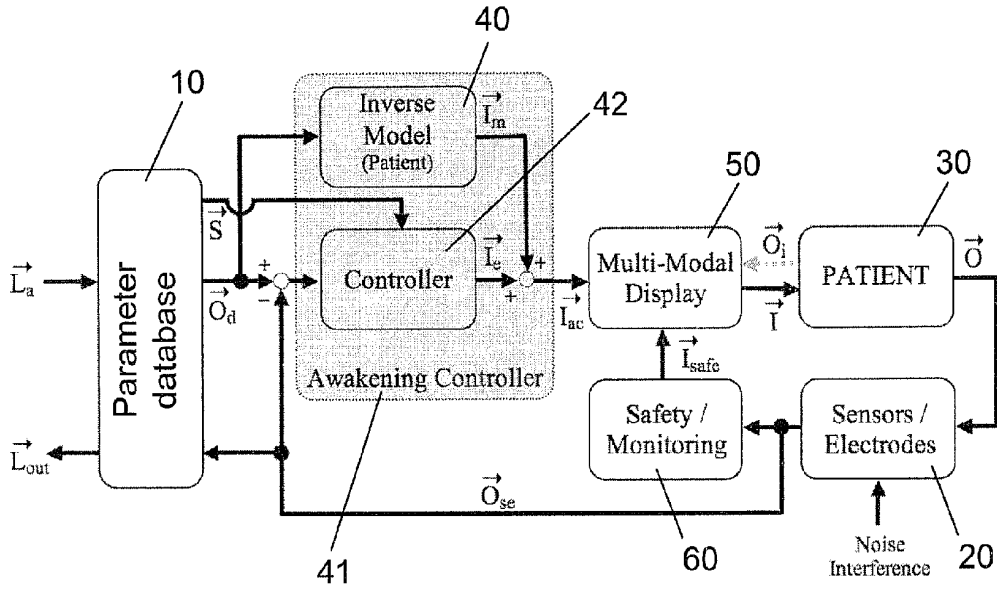


FIG. 4

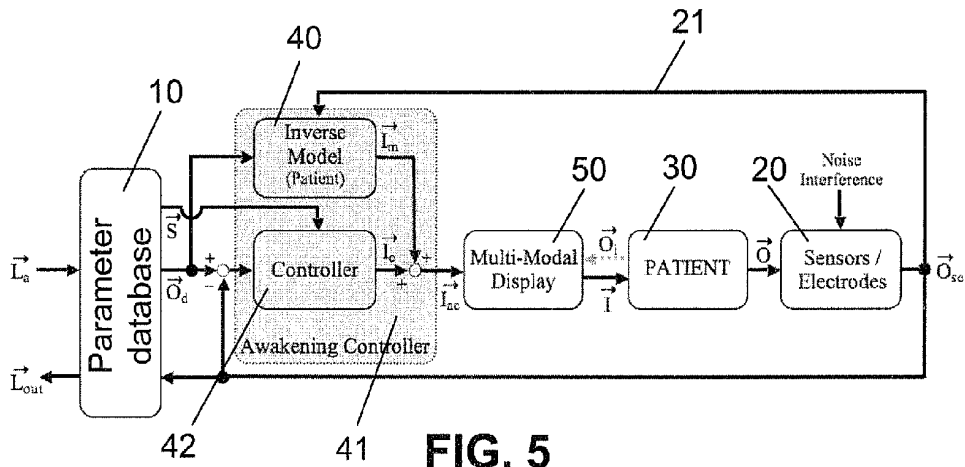


FIG. 5

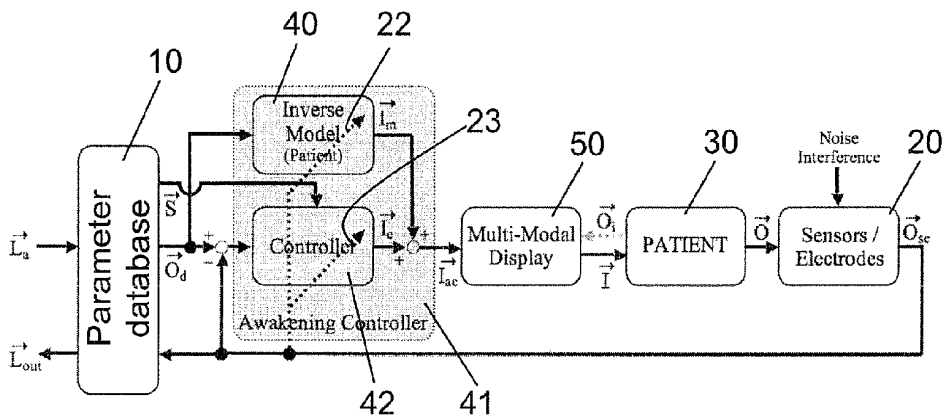


FIG. 6

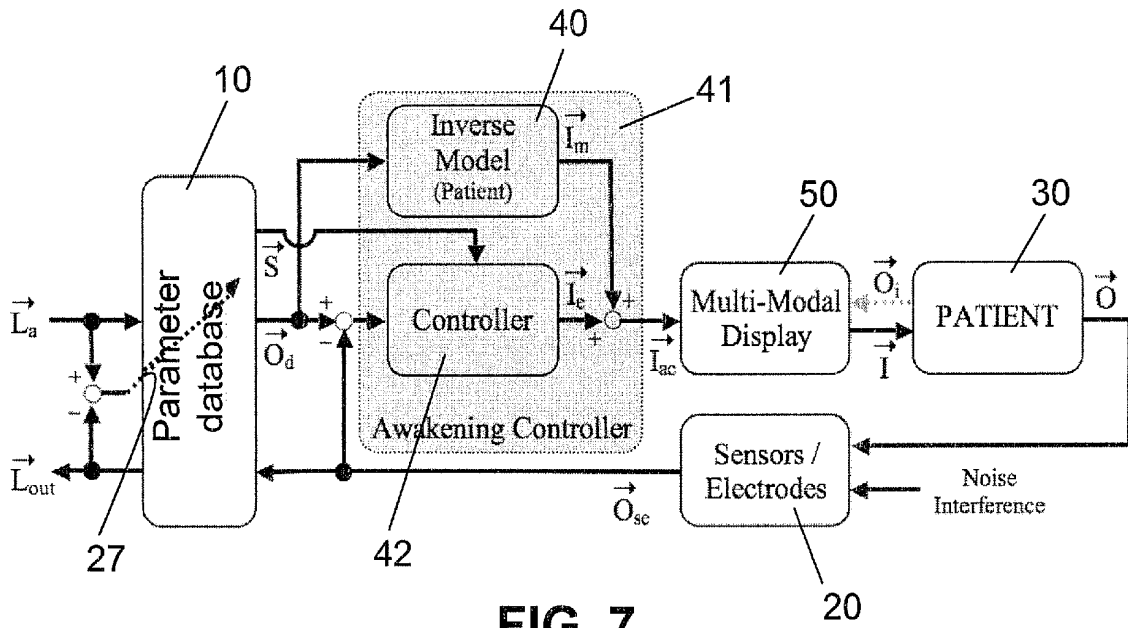


FIG. 7

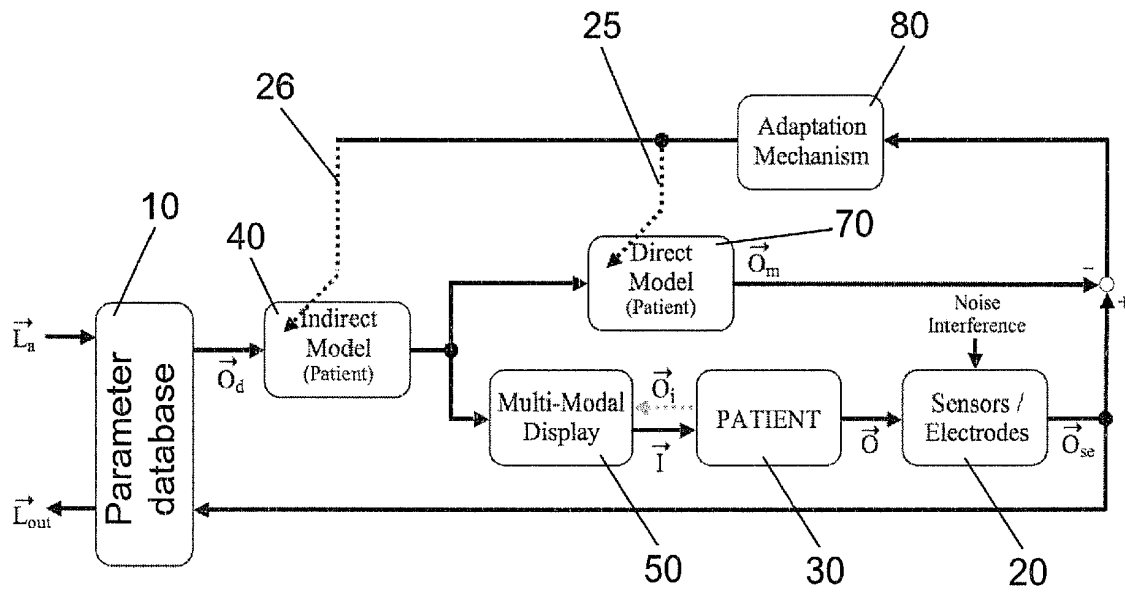


FIG. 8

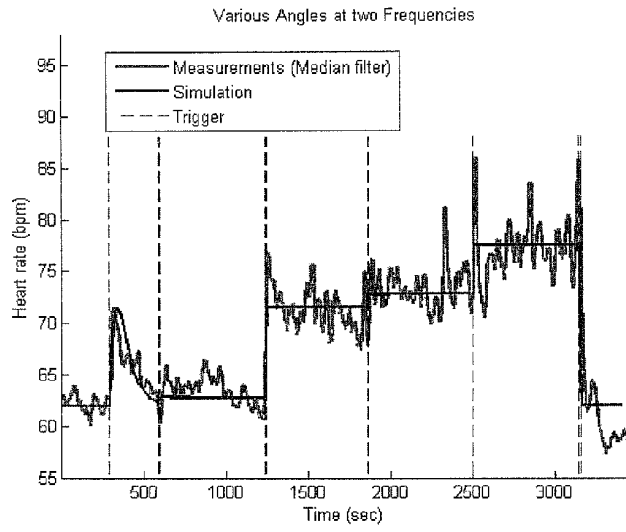


FIG. 9

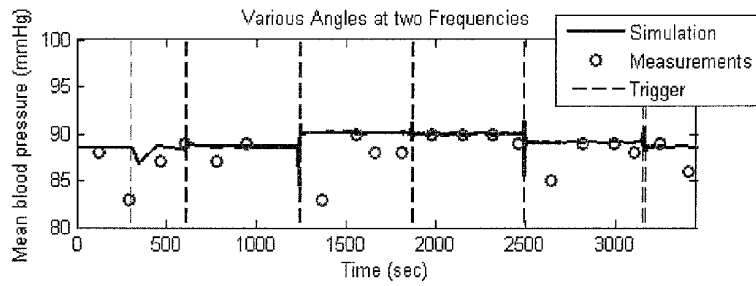


FIG. 10

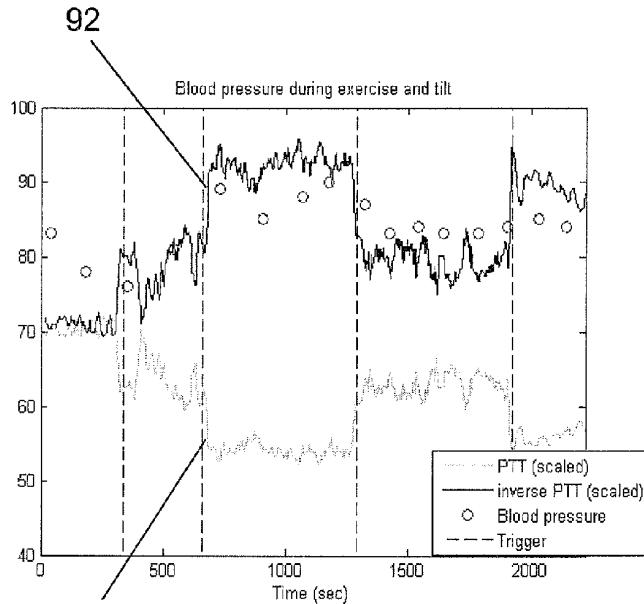


FIG. 11

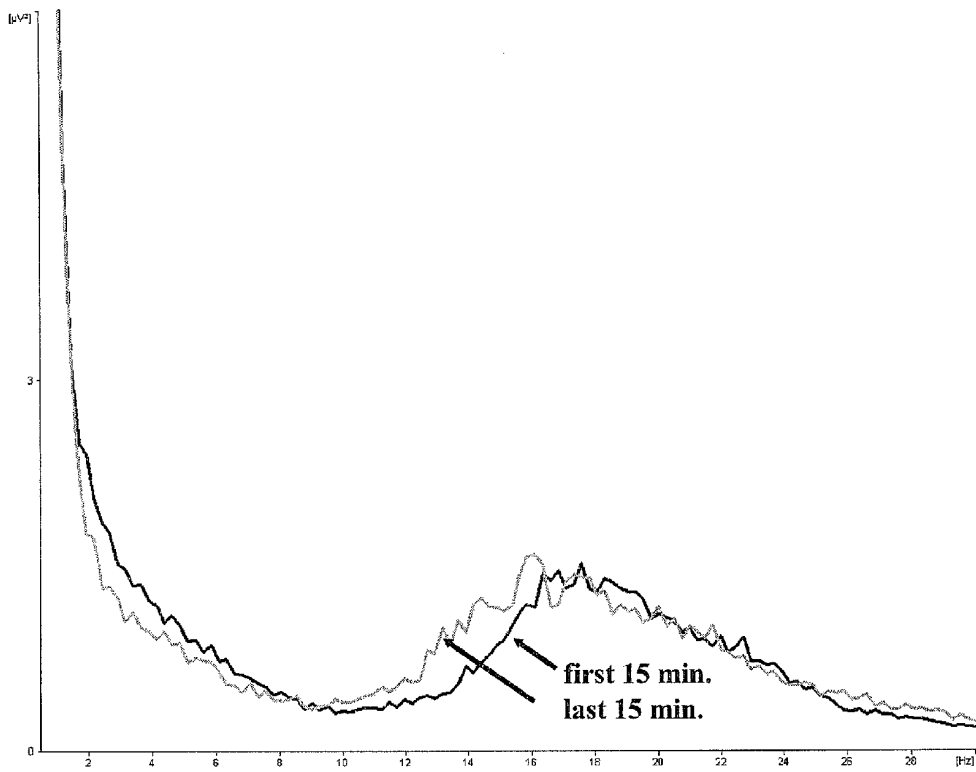


FIG. 12

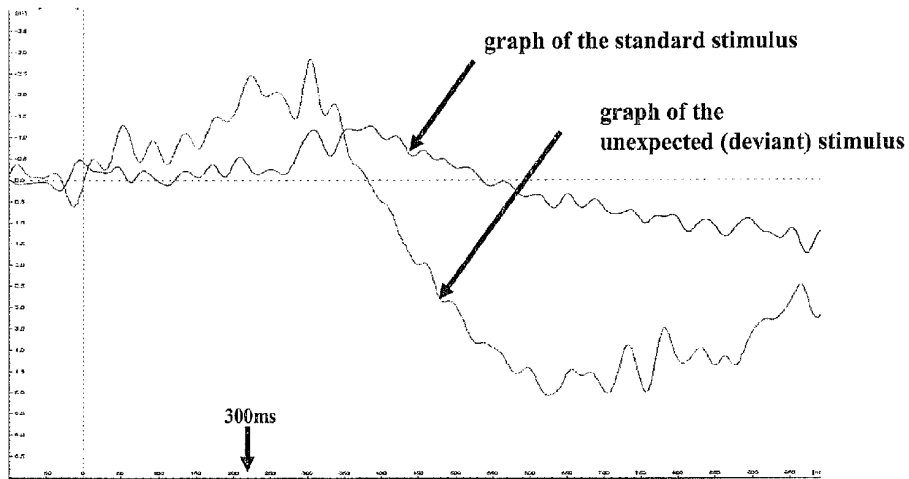


FIG. 13

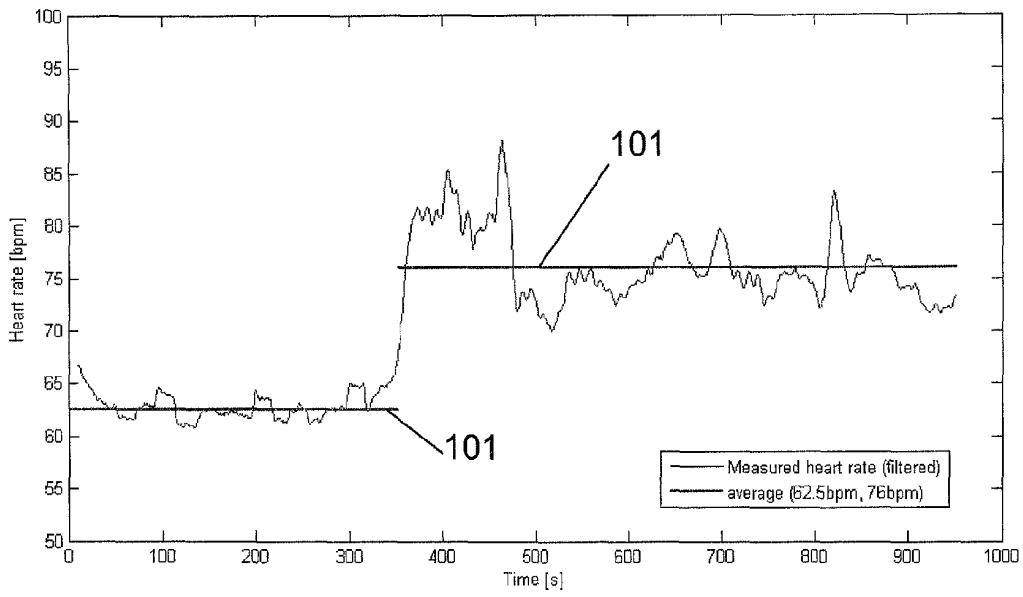


FIG. 14

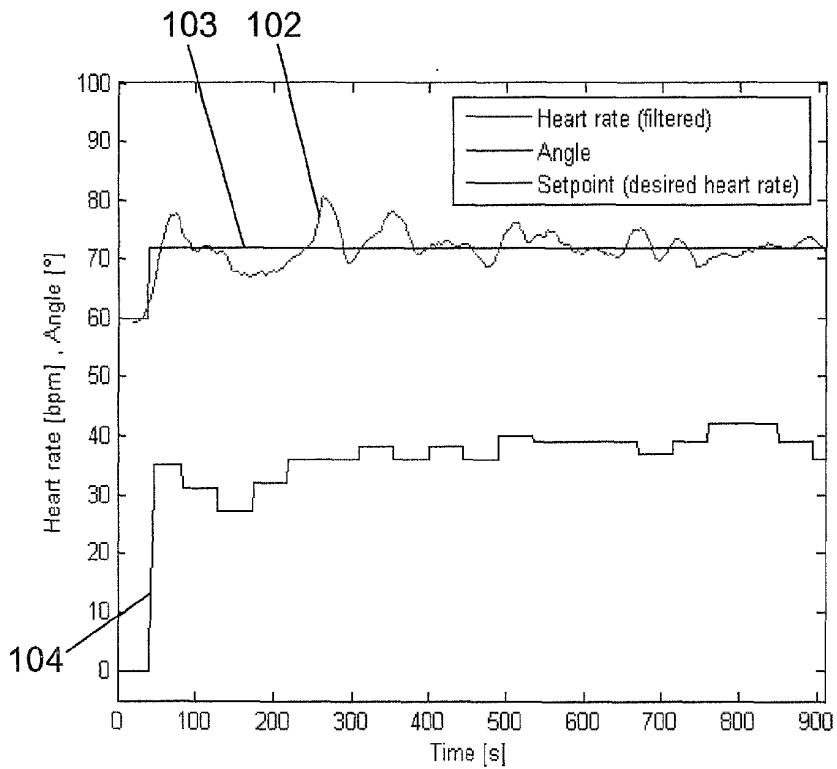


FIG. 15



DOCUMENTS CONSIDERED TO BE RELEVANT			
Category	Citation of document with indication, where appropriate, of relevant passages	Relevant to claim	CLASSIFICATION OF THE APPLICATION (IPC)
X	WO 2006/074029 A (CYBERKINETICS NEUROTECHNOLOGY [US]; FLAHERTY CHRISTOPHER J [US]; SERRU) 13 July 2006 (2006-07-13) * paragraphs [0002] - [0008], [0024] - [0029], [0038] - [0041], [0066] - [0068], [0081], [0082], [0085], [0095], [0101], [0104]; figures 1-4 * -----	1,8-10	INV. A61B5/00 A61H1/00
A	WO 2006/021952 A (REABILITY INC; EINAV OMER [IL]; KORENMAN ERNESTO [IL]; FARAN SAMUEL [I]) 2 March 2006 (2006-03-02) * page 12, line 29 - page 14, line 4 * * page 23, line 8 - page 24, line 31 * * page 27, lines 12-26 * * page 30, line 18 - page 31, line 7 * * page 33, lines 15-20 * * figure 6a * -----	1-10	TECHNICAL FIELDS SEARCHED (IPC) A61B A61H
A	AU 636 287 B2 (NEUROSONICS, INC) 29 April 1993 (1993-04-29) * page 6A, lines 15-32 * * page 8, line 27 - page 9, line 4 * * page 15, lines 15-36 * * page 37, lines 3-36; figure 1 * -----	1-10	
A	WO 2005/105203 A (REABILITY INC [BG]; EINAV OMER [IL]; KORENMAN ERNESTO [IL]) 10 November 2005 (2005-11-10) * page 7, line 21 - page 11, line 6 * * page 15, line 18 - page 16, line 15 * * figures 1,4 * -----	1-10	
The present search report has been drawn up for all claims			
Place of search Berlin		Date of completion of the search 18 January 2008	Examiner Pohjamo, Terhi
<p>CATEGORY OF CITED DOCUMENTS</p> <p>X : particularly relevant if taken alone Y : particularly relevant if combined with another document of the same category A : technological background O : non-written disclosure P : intermediate document</p> <p>T : theory or principle underlying the invention E : earlier patent document, but published on, or after the filing date D : document cited in the application L : document cited for other reasons & : member of the same patent family, corresponding document</p>			

EPO FORM 1503 03.02 (P04C01)

**ANNEX TO THE EUROPEAN SEARCH REPORT
ON EUROPEAN PATENT APPLICATION NO.**

EP 07 11 6315

This annex lists the patent family members relating to the patent documents cited in the above-mentioned European search report. The members are as contained in the European Patent Office EDP file on
The European Patent Office is in no way liable for these particulars which are merely given for the purpose of information.

18-01-2008

Patent document cited in search report	Publication date	Patent family member(s)	Publication date
WO 2006074029 A	13-07-2006	US 2006149338 A1 US 2006206167 A1	06-07-2006 14-09-2006
WO 2006021952 A	02-03-2006	CA 2584612 A1 EP 1838270 A2	02-03-2006 03-10-2007
AU 636287 B2	29-04-1993	AU 2303988 A	23-03-1990
WO 2005105203 A	10-11-2005	NONE	

REFERENCES CITED IN THE DESCRIPTION

This list of references cited by the applicant is for the reader's convenience only. It does not form part of the European patent document. Even though great care has been taken in compiling the references, errors or omissions cannot be excluded and the EPO disclaims all liability in this regard.

Patent documents cited in the description

- WO 0136051 A [0002]
- WO 0061059 A [0050] [0059] [0072]

Non-patent literature cited in the description

- **KAPPEL F. ; PEER, R.O.** A mathematical model for fundamental regulation processes in the cardiovascular system. *Journal of Mathematical Biology*, 1993, vol. 6, 611-631 [0049]
- **HILDEBRANDT et al.** Heart Rate Variability under Sensorial Stimulation as a Prognostic Parameter for the Functional Outcome of Severe Head Injury. *Akt Neurologie*, 2000, vol. 27, 22-28 [0063]

专利名称(译)	神经系统疾病的康复系统		
公开(公告)号	EP2036486A1	公开(公告)日	2009-03-18
申请号	EP2007116315	申请日	2007-09-13
[标]申请(专利权)人(译)	浩康股份公司		
申请(专利权)人(译)	HOCOMA AG		
当前申请(专利权)人(译)	HOCOMA AG		
[标]发明人	COLOMBO GERY SCHREIER REINHARD RIENER ROBERT WIESER MARTIN FISLER JONAS		
发明人	COLOMBO, GERY SCHREIER, REINHARD RIENER, ROBERT WIESER, MARTIN FISLER, JONAS		
IPC分类号	A61B5/00 A61H1/00 A61B5/0482		
CPC分类号	A61H1/00 A61B5/0482 A61B5/486 A61H2230/08		
其他公开文献	EP2036486B1		
外部链接	Espacenet		

摘要(译)

用于神经障碍的康复系统，特别是用于处于植物人状态或最小意识状态的患者（30）的康复，包括至少两个适于测量患者的两个不同生理值的传感器（20）和刺激发生器（50）。最初生成预定义的目标信号并且基于与伤害相关的参数被生成，并且在康复期间，与测量信号相比较，以驱动刺激发生器（50）作为反馈向患者传递感觉刺激。控制处理器（10,40,41）适于在康复期间基于不同生理值的测量信号的发展或变化来改变预定目标信号，以使得能够更快和更好地改善警报的警觉性。患者。

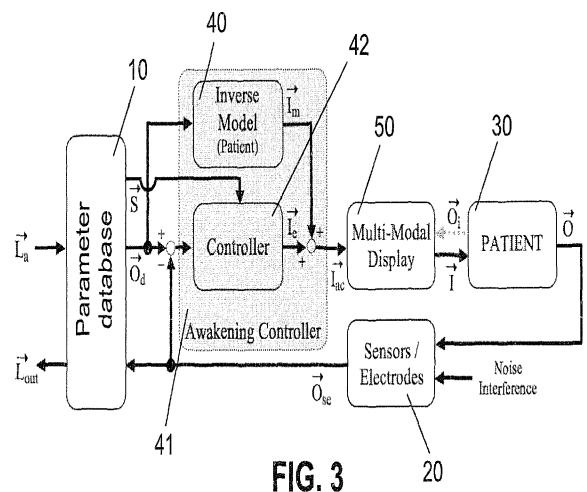


FIG. 3