



(11) **EP 1 992 280 A1**

(12) **EUROPEAN PATENT APPLICATION**
published in accordance with Art. 158(3) EPC

(43) Date of publication:
19.11.2008 Bulletin 2008/47

(51) Int Cl.:
A61B 5/0205 (2006.01)

(21) Application number: **07714244.6**

(86) International application number:
PCT/JP2007/052714

(22) Date of filing: **15.02.2007**

(87) International publication number:
WO 2007/099775 (07.09.2007 Gazette 2007/36)

(84) Designated Contracting States:
DE ES FR GB IT NL

- **SAWANOI, Yukiya**
Kyoto-shi, Kyoto 6150084 (JP)
- **SHIRASAKI, Osamu**
Kyoto-shi, Kyoto 6150084 (JP)
- **KARIO, Kazuomi**
Shimotsuke-shi, Tochigi 3290498 (JP)

(30) Priority: **01.03.2006 JP 2006054916**

- (71) Applicants:
- **Omron Healthcare Co., Ltd.**
Kyoto 615-0084 (JP)
 - **Jichi Medical University**
Tochigi, 3290498 (JP)

(74) Representative: **Wilhelms · Kilian & Partner**
Patentanwälte
Eduard-Schmid-Strasse 2
81541 München (DE)

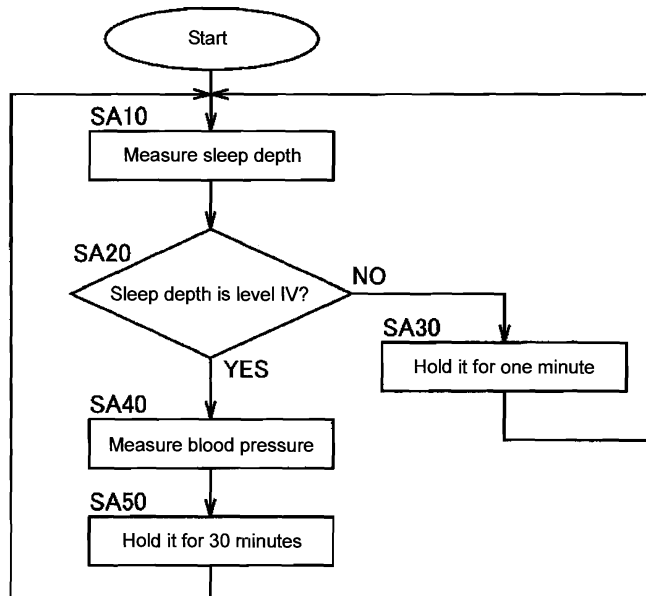
- (72) Inventors:
- **TAKAHASHI, Akihisa**
Kyoto-shi, Kyoto 6150084 (JP)

(54) **BLOOD PRESSURE MEASURING INSTRUMENT**

(57) A control unit (10) determines a level of sleep of a subject on the basis of biological information measured by a biological information measuring unit (30), and the control unit (10) starts blood pressure measurement of

the subject when determining that the determined level of sleep satisfies a predetermined condition. The control unit (10) stores result of the blood pressure measurement in a memory (11).

Fig. 4



EP 1 992 280 A1

Description

TECHNICAL FIELD

5 **[0001]** The present invention relates to a blood-pressure measuring apparatus, and particularly to a blood-pressure measuring apparatus for measuring a blood pressure during sleep.

BACKGROUND ART

10 **[0002]** Conventionally, it is believed that a blood pressure value is one of the most important indexes on health management, and the management of the blood pressure value is treated as important. Furthermore, recent researches show that a blood pressure measured during nighttime becomes an important index for management of a cardiovascular risk.

15 **[0003]** From such standpoints, various techniques of measuring the nighttime blood pressure have been disclosed. For example, Patent Document 1 (Japanese Unexamined Patent Publication No. 2001-70260) discloses a technique in which, in an electronic blood-pressure meter, a clock time at which the blood pressure is measured is previously set, and the blood pressure is measured at the set clock time.

20 **[0004]** In addition, Patent Document 2 (Japanese Unexamined Patent Publication No. 8-131408) discloses a technique of measuring the blood pressure as a trigger that the subject becomes in a sleep state. Specifically, in a sleep health management system disclosed in Patent Document 2, a determination whether or not body motion exists is made based on a signal obtained from a vibration sensor attached to bedclothes, the determination that the subject is in the sleep state is made when the body motion is not recognized for a predetermined time, and the blood pressure is measured as the trigger of the determination that the subject is in the sleep state.

25 [Patent Document 1] Japanese Unexamined Patent Publication No. 2001-70260

[Patent Document 2] Japanese Unexamined Patent Publication No. 8-131408

DISCLOSURE OF THE INVENTION

30 PROBLEMS TO BE SOLVED BY THE INVENTION

[0005] However, in the technique disclosed in Patent Document 1, it is necessary to change the clock time set in accordance with the sleep clock time of the subject, and therefore unfortunately the operation becomes troublesome.

35 **[0006]** Even in the same subject, as shown in Fig. 18, the measured blood pressure value varies largely depending on the physical state and/or mental state during the measurement. Similarly it is thought that the fluctuation is generated depending on a sleep state (sleep depth) of the subject during the blood pressure measurement. Fig. 18 generally shows daily fluctuations in systolic blood pressure value and diastolic blood pressure value of a human. The region hatched in Fig. 18 means a period of sleep time.

40 **[0007]** Therefore, the measurement of the blood pressure value based on the sleep state of the subject is thought to be important.

[0008] In the technique disclosed in Patent Document 2, when the body motion of the subject is not observed for the predetermined time, it is recognized that the subject is in the sleep state, and the blood pressure is measured. Therefore, although it is not necessary for the subject to change the measurement clock time set in accordance with the sleep clock time, unfortunately the sleep state of the subject is not kept constant during the measurement. That is, in the technique disclosed in Patent Document 2, it is thought that the blood pressure value is measured irrespective of the sleep depth of the subject as long as the subject is asleep.

45 **[0009]** The present invention has been devised in view of the above circumstances, and it is an object of the present invention to provide a blood-pressure measuring apparatus which measures the blood pressure value on the basis of the sleep depth of the subject.

50

MEANS FOR SOLVING THE PROBLEMS

55 **[0010]** In accordance with an aspect of the present invention, a blood-pressure measuring apparatus includes a blood-pressure measuring unit which measures a blood pressure value of a subject; a level determination unit which determines a level of sleep of the subject; a storage unit in which information for specifying a condition for the determined level of sleep is stored; a judgment unit which judges whether or not the determined level of sleep satisfies the condition specified by the information stored in the storage unit; a blood-pressure measuring start unit which causes the blood-pressure measuring unit to start blood pressure measurement when the judgment unit judges that the determined level of sleep

satisfies the condition; and a blood pressure value storage unit in which the blood pressure value of the subject measured by the blood-pressure measuring unit is stored in response to an instruction of the blood-pressure measuring start unit.

[0011] In the blood-pressure measuring apparatus according to the aspect of the present invention, preferably the blood-pressure measuring apparatus is connected to a biological information measuring unit which measures biological information on the subject, and the level determination unit determines the level of sleep of the subject based on the measurement result of the biological information measuring unit.

[0012] In the blood-pressure measuring apparatus according to the aspect of the present invention, preferably the biological information measuring unit measures a pulse of the subject, and the level determination unit determines the level of sleep of the subject based on a change in pulse wave period measured by the biological information measuring unit.

[0013] In the blood-pressure measuring apparatus according to the aspect of the present invention, preferably the biological information measuring unit measures a body temperature of the subject, and the level determination unit determines the level of sleep of the subject based on a change in body temperature measured by the biological information measuring unit.

[0014] In the blood-pressure measuring apparatus according to the aspect of the present invention, preferably the judgment unit judges that the condition is satisfied when a depth of the determined level of sleep reaches the deepest level in levels which can be determined by the level determination unit.

[0015] In the blood-pressure measuring apparatus according to the aspect of the present invention, preferably the judgment unit judges that the condition is satisfied when a depth of the determined level of sleep is changed from the second shallowest level to the shallowest level in levels which can be determined by the level determination unit.

[0016] In the blood-pressure measuring apparatus according to the aspect of the present invention, preferably the level determination unit determines the level of sleep at constant time intervals, and the judgment unit judges that the condition is satisfied when the level of sleep determined by the level determination unit is changed larger than a specific change amount with respect to the level of sleep previously determined by the level determination unit.

EFFECT OF THE INVENTION

[0017] According to the present invention, the level of sleep of the subject is determined, and the blood pressure value is stored when the determined level of sleep satisfies the predetermined condition.

[0018] Therefore, the blood pressure value is stored as the measurement value when the sleep depth of the subject satisfies the predetermined condition.

[0019] Therefore, the blood pressure value can be measured based on the sleep depth of the subject during non-REM (non-Rapid Eye Movement) sleep, uprising or the like suitable to the measurement of the blood pressure value. Because the subject is mentally settled during the non-REM sleep, it is expected that the health condition of the subject appears prominently. As shown in Fig. 18, because generally the blood pressure value of the subject is rapidly increased during the uprising, it is thought that the uprising is suitable to measurement of the blood pressure value in order to estimate a health management risk.

BRIEF DESCRIPTION OF THE DRAWINGS

[0020]

Fig. 1 is a schematic view showing a blood-pressure measuring apparatus according to a first embodiment of the present invention.

Fig. 2 is a schematic diagram showing a hardware configuration of the blood-pressure measuring apparatus of Fig. 1.

Fig. 3 shows an example of a temporal change in pulse measured based on data supplied from a pressure sensor of the blood-pressure measuring apparatus of Fig. 1.

Fig. 4 is a flowchart showing a process for measuring a blood pressure value of a subject in the blood-pressure measuring apparatus of Fig. 1.

Fig. 5 is a diagram for explaining a time the blood pressure value is measured and stored in the process of Fig. 4.

Fig. 6 is a flowchart showing a process performed to measure the blood pressure value of the subject in a blood-pressure measuring apparatus according to a second embodiment of the present invention.

Fig. 7 is a diagram for explaining a time the blood pressure value is measured and stored in the process of Fig. 6.

Fig. 8 is a flowchart showing a process performed to measure the blood pressure value of the subject in a blood-pressure measuring apparatus according to a third embodiment of the present invention.

Fig. 9 is a diagram for explaining a time the blood pressure value is measured and stored in the process of Fig. 8.

Fig. 10 is a flowchart showing a process performed to measure the blood pressure value of the subject in a blood-pressure measuring apparatus according to a fourth embodiment of the present invention.

Fig. 11 is a diagram for explaining a time the blood pressure value is measured and stored in the process of Fig. 10.

Fig. 12 is a schematic view showing a blood-pressure measuring apparatus according to a fifth embodiment of the present invention.

Fig. 13 is a schematic diagram showing a hardware configuration of the blood-pressure measuring apparatus of Fig. 12.

5 Fig. 14 is a diagram showing an example of a change in body temperature of the subject as sleeping hours advances, which is measured in the blood-pressure measuring apparatus of Fig. 12.

Fig. 15 is a schematic view showing a blood-pressure measuring apparatus according to a sixth embodiment of the present invention.

Fig. 16 is an enlarged view showing an eye mask of Fig. 15.

10 Fig. 17 is a schematic diagram showing a hardware configuration of the blood-pressure measuring apparatus 1 of Fig. 15.

Fig. 18 is a diagram generally showing daily fluctuations in systolic blood pressure value and diastolic blood pressure value of a human.

15 DESCRIPTION OF REFERENCE NUMERALS

[0021] 1 blood-pressure measuring apparatus, 2 cuff, 3 tube, 4 display device, 5 operation unit, 6 timer, 10 CPU, 11 memory, 12 A/D converter, 13 amplifier, 14 pump driving circuit, 15 valve driving circuit, 20 inflatable bladder, 30 biological information measuring unit, 31 pressure sensor, 32 pump, 33 valve.

20

BEST MODES FOR CARRYING OUT THE INVENTION

[0022] A blood-pressure measuring apparatus according to an exemplary embodiment of the present invention will be described below with reference to the drawings.

25

[First Embodiment]

[0023] Fig. 1 is a schematic view showing a blood-pressure measuring apparatus according to a first embodiment of the present invention.

30

[0024] A blood-pressure measuring apparatus 1 includes a cuff 2, and the blood pressure of the subject is measured while the cuff 2 is wound around an arm A of the subject.

[0025] The blood-pressure measuring apparatus 1 includes a display device 4 and an operation unit 5 in a front surface thereof. The operation unit 5 includes a plurality of operation buttons. The blood-pressure measuring apparatus 1 includes a tube 3 which connects a built-in pump (pump 32 described later) and the cuff 2. The cuff 2 accommodates an inflatable bladder therein as described later.

35

[0026] Fig. 2 is a schematic diagram showing a hardware configuration of the blood-pressure measuring apparatus 1. In addition to the display device 4 and the operation unit 5, the blood-pressure measuring apparatus 1 includes CPU (Central Processing Unit) 10 which wholly controls an operation of the blood-pressure measuring apparatus 1, a memory 11 in which various pieces of information are stored, a timer 6, and a biological information measuring unit 30.

40

[0027] In addition to the cuff 2 and the tube 3, the biological information measuring unit 30 includes a pressure sensor 31 which measures a pressure of an inflatable bladder 20, an amplifier 13 which is connected to the pressure sensor 31, an A/D (Analog/Digital) conversion unit 12 which converts analog data supplied from the pressure sensor 31 through the amplifier 13 into digital data and supplies the digital data to CPU 10, a pump 32 which supplies air into the inflatable bladder 20, a pump driving circuit 14 which drives the pump 32, a valve 33 which opens and closes a connection portion between the tube 3 and the pump 32, and a valve driving circuit 15 which drives the valve 33.

45

[0028] In the blood-pressure measuring apparatus 1, data supplied from the pressure sensor 31 is fed into CPU 10 through the A/D converter 12, CPU 10 controls the operation of the pump 32 through the pump driving circuit 14, and CPU 10 controls the opening and closing of the valve 33 through the valve driving circuit 15.

[0029] In addition to the measurement of the blood pressure value of the subject, the blood-pressure measuring apparatus 1 can measure the pulse of the subject on the basis of the data supplied from the pressure sensor 31 by filling the inflatable bladder 20 with air having a pressure as low as about 20 to about 30 mmHg.

50

[0030] Fig. 3 shows an example of the pulse which is measured based on the data supplied from the pressure sensor 31. The data shown in Fig. 3 corresponds to data which is supplied from the A/D converter 12 while the inflatable bladder 20 is filled with the air having a proper pressure as described above.

55

[0031] Referring to Fig. 3, peaks PA to PD of the pulse are shown. In the blood-pressure measuring apparatus 1, CPU 10 detects the plurality of peaks by continuously measuring the pulses to some extent, and CPU 10 obtains a pulse wave period of a predetermined period (time during which the pulses are continuously measured to some extent) by computing an average value of time intervals between peaks adjacent to each other. It is thought that the number of

peaks used to compute the average value is appropriately set.

[0032] In the blood-pressure measuring apparatus 1, the pulse of the subject is measured during sleep, the pulse wave period is computed based on the pulse measurement result, and the blood pressure value of the subject is measured when the change in pulse wave period (for example, a ratio of the computed pulse wave period to the pulse wave period immediately after the sleep) satisfies a predetermined condition.

[0033] Specifically, in the blood-pressure measuring apparatus 1, the pulse wave period immediately after the sleep of the subject is computed, and the blood pressure value of the subject is measured during the sleep of the subject. Therefore, the process shown in Fig. 4 is performed. The pulse wave period immediately after the sleep shall mean a pulse wave period computed as follows: A switch is provided in the blood-pressure measuring apparatus 1, the switch is turned on when the subject starts the sleep, and the pulse wave period is computed after a predetermined time (for example, 5 to 10 minutes) elapses since the switch is turned on. The computed pulse wave period immediately after the sleep is stored in the memory 11.

[0034] Referring to Fig. 4, in step SA10, CPU 10 measures a sleep depth (level of sleep) of the subject, and the process proceeds to step SA20. The sleep depth measurement in step SA10 includes the following processes.

[0035]

- (1) The pulse of the subject is measured in a predetermined period.
 - (2) The pulse wave period is computed based on the pulse measurement result of the subject in the predetermined period.
 - (3) The sleep depth is determined by utilizing the change in pulse wave period computed.
- A correspondence relationship between the pulse wave period and the sleep depth shown in Table 1 is referred to when the sleep depth is determined based on the change in pulse wave period. In Table 1, the letter CA designates a pulse wave period immediately after sleep stored in the memory 11, and the letter CP designates a pulse wave period computed at that time. For example, the correspondence relationship shown in Table 1 is previously stored in the memory 11.

[0036]

[Table 1]

Sleep depth	Condition for pulse wave period CP
REM	$CP \leq CA \times 1.05$
Non-REM I	$CA \times 1.05 < CP \leq CA \times 1.10$
Non-REM II	$CA \times 1.10 < CP \leq CA \times 1.15$
Non-REM III	$CA \times 1.15 < CP \leq CA \times 1.20$
Non-REM IV	$CA \times 1.20 < CP \leq CA \times 1.25$

[0037] As can be seen from Table 1, in the first embodiment, the sleep depth is defined by five stages according to the CP value. The five stages include REM (Rapid Eye Movement), non-REM I, non-REM II, non-REM III, and non-REM IV. In the description, non-REM I is deeper than REM in the sleep depth, non-REM II is deeper than non-REM I in the sleep depth, non-REM III is deeper than non-REM II in the sleep depth, and non-REM IV is deeper than non-REM III in the sleep depth.

[0038] In step SA20, CPU 10 determines whether or not the sleep depth measured (determined) in step SA10 is the sleep depth IV. The process proceeds to step SA40 when the determination is affirmative, and the process proceeds to step SA30 when the determination is not affirmative.

[0039] In step SA30, CPU 10 holds it for one minute, and the process returns to step SA10.

[0040] In step SA40, because the sleep depth is the sleep depth IV, CPU 10 makes a transition to a routine for starting the blood pressure measurement, CPU 10 starts the blood pressure measurement of the subject, and CPU 10 stores the measurement result in the memory 11. Then, the process proceeds to step SA50. In the blood-pressure measuring apparatus 1, when the blood pressure value is measured, the inflatable bladder 20 is filled with air having a pressure higher than that of the pulse measurement, and the pressure change is detected by the pressure sensor 31. In step SA40, preferably the sleep depth during the measurement and the measurement clock time are also stored in the memory 11 while correlated with the measurement result.

[0041] In step SA50, CPU 10 holds it for 30 minutes, and the process returns to step SA10. CPU 10 holds it for 30 minutes in step SA50, which allows the measurement of the blood pressure to be avoided until the next peak of the

sleep depth comes since the blood pressure is measured at the peak (deepest sleep depth) of the sleep depth. That is, the plurality of blood pressure measurements can be avoided at the peak of the same sleep depth.

[0042] In the first embodiment, the sleep depth is determined based on the change in pulse wave period of the subject, the blood pressure measurement of the subject is started when the sleep depth becomes the deepest (deepest sleep, that is, deepest peak), and the measured blood pressure is recorded. Therefore, the blood pressure value can be measured when the subject is thought to be most settled mentally.

[0043] It is assumed that the condition at which sleep depth the blood pressure measurement is started is stored in the memory 11. That is, in the first embodiment, information of "sleep depth IV" is stored in a predetermined area of the memory 11. In step SA20, actually CPU 10 determines whether or not the sleep depth at that time satisfies the condition stored in the area of the memory 11. The process proceeds to step SA40 when the sleep depth satisfies the condition, and the process proceeds to step SA30 when the sleep depth does not satisfy the condition.

[0044] Fig. 5 shows a general mode of the change in sleep depth. Fig. 5 is a diagram for explaining the time the blood pressure value is measured and stored in step SA40 of the process shown in Fig. 4. In Fig. 5, a vertical axis indicates the sleep depth (non-REM is abbreviated to "N"), and a horizontal axis indicates a time elapsed from the sleep start. In Fig. 5, the measured sleep depth is shown by a thick line.

[0045] The sleep depth is changed so as to return to REM after becoming deeper from REM to non-REM IV, and the change is observed on a substantially periodic basis. Generally the period of the sleep depth ranges from 60 minutes to 90 minutes.

[0046] In the process of Fig. 4, the blood pressure measurement is started under the condition that the sleep depth becomes non-REM IV, and the blood pressure value is recorded. It is said that the blood pressure value is measured at the time the measurement values (thick lines) of the sleep depth shown in Fig. 5 enter circles P1 and P2.

[0047] In the process of Fig. 4, because the blood pressure value is measured when the sleep depth becomes the maximum value (maximum value in depth, that is, the locally deepest peak of the sleep), the blood pressure value is measured under the condition that the sleep depth becomes non-REM IV. That is, it is assumed that the time the sleep depth reaches non-REM IV is the time the sleep depth becomes the deepest peak, and the blood pressure value is measured.

[Second Embodiment]

[0048] A blood-pressure measuring apparatus 1 according to a second embodiment of the present invention has a hardware configuration similar to that of the blood-pressure measuring apparatus 1 of the first embodiment.

[0049] The blood-pressure measuring apparatus 1 of the second embodiment differs from the blood-pressure measuring apparatus 1 of the first embodiment in contents of the process performed to measure the blood pressure of the subject. The process performed to measure the blood pressure value by the blood-pressure measuring apparatus 1 of the second embodiment will be described below with reference to a flowchart of Fig. 6.

[0050] In step SB10, similarly to step SA10, CPU 10 measures the sleep depth of the subject, and the process proceeds to step SB20.

[0051] In step SB20, CPU 10 determines whether or not a rate of change (α) of the sleep depth measured (determined) in the last step SB10 to the sleep depth measured (determined) in the second last step SB10 has a positive value. The rate of change α becomes the positive value when the sleep depth measured in the last step SB10 is shifted shallower than the sleep depth measured in the second last step SB10. The process proceeds to step SB40 when the rate of change α is positive, and the process proceeds to step SB30 when the rate of change α is not positive.

[0052] In step SB30, CPU 10 holds it for one minute, and the process returns to step SB10.

[0053] In step SB40, CPU 10 measures the blood pressure value of the subject, the measurement result is stored in the memory 11, and the process proceeds to step SB50. At this point, preferably the sleep depth during the measurement and the measurement clock time are also stored while correlated with the measurement result.

[0054] In step SB50, CPU 10 holds it for 30 minutes, and the process returns to step SB10.

[0055] In the second embodiment, the sleep depth is determined based on the change in pulse wave period of the subject, and the blood pressure of the subject is measured when the determined sleep depth is changed shallower than the previously-determined sleep depth.

[0056] It is assumed that the condition at which sleep depth the blood pressure measurement is started is stored in the memory 11. That is, in the second embodiment, for example, a value of "0" is stored in a predetermined area of the memory 11. In step SB20, actually CPU 10 compares the rate of change (α) at that time to a value stored in the area. The process proceeds to step SB40 when the rate of change (α) at that time is more than the value stored in the area, and the process proceeds to step SB30 when the rate of change (α) at that time is not more than the value stored in the area.

[0057] Fig. 7 is a diagram for explaining the time the blood pressure value is measured and stored in step SB40 of the process of Fig. 6. In Fig. 7, similarly to Fig. 5, the vertical axis indicates the sleep depth, and the horizontal axis indicates the time elapsed from the sleep start. In Fig. 7, the measured sleep depth is shown by the thick line.

[0058] The sleep depth is changed so as to return to REM after becoming deeper from REM to non-REM IV, and the change is observed on the substantially periodic basis. Generally the period of the sleep depth ranges from 60 minutes to 90 minutes.

5 [0059] In the process of Fig. 6, it is said that the blood pressure value is measured when the determined sleep depth is changed shallower than the previously-determined sleep depth, that is, at the time the measurement values (thick lines) of the sleep depth shown in Fig. 7 enter circles P3 and P4.

10 [0060] In the process of Fig. 6, because the blood pressure value is measured when the sleep depth becomes the maximum value (maximum value in depth, that is, the locally deepest peak of the sleep), the blood pressure value is measured under the condition that the determined sleep depth is changed shallower than the previously-determined sleep depth. That is, it is assumed that the time the sleep depth is changed to shallower than the previously-determined sleep depth is the time the sleep depth becomes the maximum value, the measurement of the blood pressure value is started, and the measured blood pressure value is recorded.

[Third Embodiment]

15 [0061] A blood-pressure measuring apparatus 1 according to a third embodiment of the present invention has a hardware configuration similar to that of the blood-pressure measuring apparatus 1 of the first embodiment.

20 [0062] The blood-pressure measuring apparatus 1 of the third embodiment differs from the blood-pressure measuring apparatus 1 of the first embodiment in contents of the process performed to measure the blood pressure of the subject. The process performed to measure the blood pressure value by the blood-pressure measuring apparatus 1 of the third embodiment will be described below with reference to a flowchart of Fig. 8.

[0063] In step SC10, similarly to step SA10, CPU 10 measures the sleep depth of the subject, and the process proceeds to step SC20.

25 [0064] In step SC20, CPU 10 determines whether or not the sleep depth measured (determined) in the second last step SC10 is non-REM I while the sleep depth measured (determined) in the last step SC10 is REM. The process proceeds to step SC40 when the determination is affirmative, and the process proceeds to step SC30 when the determination is not affirmative.

[0065] In step SC30, CPU 10 holds it for one minute, and the process returns to step SC10.

30 [0066] In step SC40, CPU 10 measures the blood pressure value of the subject, the measurement result is stored in the memory 11, and the process proceeds to step SC50. At this point, preferably the sleep depth during the measurement and the measurement clock time are also stored while correlated with the measurement result.

[0067] In step SC50, CPU 10 holds it for 30 minutes, and the process returns to step SC10.

35 [0068] In the third embodiment, the sleep depth is determined based on the change in pulse wave period of the subject, and the blood pressure of the subject is measured when the determined sleep depth is REM which is changed from non-REM I.

40 [0069] It is assumed that the condition at which sleep depth the blood pressure measurement is started is stored in the memory 11. That is, in the third embodiment, for example, information indicating a pattern of the change in sleep depth, specifically information indicating a pattern of the sleep depth changed from non-REM I to REM is stored in a predetermined area of the memory 11. In step SC20, actually CPU 10 compares the pattern of the change in sleep depth at that time (patterns of the sleep depth determined in the last step SC10 and the sleep depth determined in the second last step SC10) to the pattern stored in the area. The process proceeds to step SC40 when the patterns are matched with each other, and the process proceeds to step SC30 when the patterns differ from each other.

45 [0070] Fig. 9 is a diagram for explaining the time the blood pressure value is measured and stored in step SC40 of the process of Fig. 8. In Fig. 9, similarly to Fig. 5, the vertical axis indicates the sleep depth, and the horizontal axis indicates the time elapsed from the sleep start. In Fig. 9, the measured sleep depth is shown by the thick line. In Fig. 9, the sleep depth is changed so as to return to REM after becoming deeper from REM to non-REM IV, and the change is observed on the substantially periodic basis. Generally the period of the sleep depth ranges from 60 minutes to 90 minutes.

50 [0071] In the process of Fig. 8, it is said that the blood pressure value is measured when the currently-determined sleep depth is REM while the previously-determined sleep depth is non-REM I, that is, at the time the measurement values (thick lines) of the sleep depth shown in Fig. 9 enter a circle P5.

55 [0072] In the process of Fig. 8, because the blood pressure value is measured when the sleep depth becomes the minimum value (minimum value in depth, that is, the locally shallowest peak of the sleep), the blood pressure value measurement is started under the condition that the sleep depth is changed from non-REM I to REM, and the measured blood pressure value is recorded. That is, it is assumed that the time the sleep depth is changed from non-REM I to REM is the time the sleep depth becomes the minimum value, and the blood pressure value is measured.

[Fourth Embodiment]

[0073] A blood-pressure measuring apparatus 1 according to a fourth embodiment of the present invention has a hardware configuration similar to that of the blood-pressure measuring apparatus 1 of the first embodiment.

[0074] The blood-pressure measuring apparatus 1 of the fourth embodiment differs from the blood-pressure measuring apparatus 1 of the first embodiment in contents of the process performed to measure the blood pressure of the subject. The process performed to measure the blood pressure value by the blood-pressure measuring apparatus 1 of the fourth embodiment will be described below with reference to a flowchart of Fig. 10.

[0075] In step SD10, similarly to step SA10, CPU 10 measures the sleep depth of the subject, and the process proceeds to step SD20.

[0076] In step SD20, CPU 10 determines whether or not the sleep depth measured (determined) in the last step SD10 is non-REM IV. The process proceeds to step SD30 when the determination is affirmative, and the process proceeds to step SD50 when the determination is not affirmative.

[0077] In step SD30, similarly to step SA40, CPU 10 measures the blood pressure value of the subject, the measurement result is stored in the memory 11, and the process proceeds to step SD40.

[0078] In step SD40, CPU 10 holds it for 30 minutes, and the process returns to step SD10.

[0079] In step SD50, CPU 10 determines whether or not the sleep depth measured in the last step SD10 is changed shallower by at least two stages from the sleep depth measured in the second last step SD10, for example, the sleep depth measured in the last step SD10 is changed from non-REM II to REM or from non-REM III to non-REM I. The process proceeds to step SD30 when the determination is affirmative, and the process proceeds to step SD60 when the determination is not affirmative.

[0080] In step SD60, CPU 10 holds it for one minute, and the process returns to step SD10.

[0081] In the fourth embodiment, the sleep depth is determined based on the change in pulse wave period of the subject, and the blood pressure of the subject is measured and the measured blood pressure value is recorded when the determined sleep depth is non-REM IV or when the determined sleep depth is rapidly changed shallower (changed shallower by at least two stages from the previously-measured sleep depth).

[0082] It is assumed that the condition at which sleep depth the blood pressure measurement is started is stored in the memory 11. That is, in the fourth embodiment, information indicating that the determined sleep depth is non-REM IV or the determined sleep depth is changed shallower by at least two stages from the previous measurement sleep depth is stored in a predetermined area of the memory 11. In steps SD20 and SD30, actually CPU 10 determines whether or not the sleep depth state at that time satisfies the condition defined by the information stored in the area. The process proceeds to step SD40 when the condition is satisfied, and the process proceeds to step SD60 when the condition is not satisfied.

[0083] Fig. 11 is a diagram for explaining the time the blood pressure value is measured and stored in step SD30 of the process of Fig. 10. In Fig. 11, similarly to Fig. 5, the vertical axis indicates the sleep depth, and the horizontal axis indicates the time elapsed from the sleep start. In Fig. 11, the measured sleep depth is shown by the thick line. In Fig. 11, the sleep depth is changed so as to return to REM after becoming deeper from REM to non-REM IV, and the change is observed on the substantially periodic basis. Generally the period of the sleep depth ranges from 60 minutes to 90 minutes.

[0084] In the process of Fig. 10, it is said that the blood pressure value is measured when the sleep depth is non-REM IV and when the currently-determined sleep depth is shifted shallower by at least two stages from the previously-determined sleep depth, that is, at the time the measurement values (thick lines) of the sleep depth shown in Fig. 11 enter circles P6 to P9.

[0085] In the process of Fig. 10, because CPU 10 holds it for 30 minutes in step SD40, the sleep depth is thought to be shifted shallower by at least two stages in 30 minutes when CPU 10 determines that the sleep depth is shifted shallower by at least two stages from the previously-determined sleep depth in step SD 50. The case where the subject is in an apneic state can be cited as a specific example of the case where the sleep depth is rapidly changed shallower.

[0086] In the process of Fig. 10, the blood pressure value may be detected when the sleep depth is shifted deeper by at least a predetermined stage.

[Fifth Embodiment]

[0087] Fig. 12 is a schematic view showing a blood-pressure measuring apparatus according to a fifth embodiment of the present invention.

[0088] The fifth embodiment differs from the first to fourth embodiments in that the biological information on the subject measured to determine the sleep depth is changed. The change of the fifth embodiment will mainly be described below.

[0089] Referring to Fig. 12, compared with the blood-pressure measuring apparatus 1 of the first to fourth embodiments, a blood-pressure measuring apparatus 1 of the fifth embodiment further includes a body temperature sensor 6 for

measuring a body temperature which is of the biological information on the subject. The body temperature sensor 6 is provided in the cuff 2, and the body temperature sensor 6 is located on the side where the cuff 2 abuts on the arm A of the subject. The body temperature sensor 6 may be formed independently of the cuff 2.

[0090] Fig. 13 is a schematic diagram showing a hardware configuration of the blood-pressure measuring apparatus 1 of Fig. 12. Compared with the blood-pressure measuring apparatus 1 of the first to fourth embodiments, the blood-pressure measuring apparatus 1 of the fifth embodiment includes the body temperature sensor 6 and an A/D converter 61. The A/D converter 61 converts the data concerning the body temperature of the subject detected by the body temperature sensor 6 into the digital data, and the A/D converter 61 transmits the digital data to CPU 10.

[0091] In the fifth embodiment, for example, as shown in Table 2, information (for example a table) in which a change in body temperature value of the subject and the sleep depth are correlated with each other is stored in the memory 11. Specifically, in the information, a range of a body temperature value T measured is defined by the five stages of REM to non-REM IV.

[0092]

[Table 2]

Sleep depth	Condition for body temperature T
REM	Body temperature immediately after sleep $-0.3^{\circ}\text{C} \leq T$
Non-REM I	Body temperature immediately after sleep $-0.6^{\circ}\text{C} < T \leq$ Body temperature immediately after sleep -0.3°C
Non-REM II	Body temperature immediately after sleep $-0.9^{\circ}\text{C} < T \leq$ Body temperature immediately after sleep -0.6°C
Non-REM III	Body temperature immediately after sleep $-1.2^{\circ}\text{C} < T \leq$ Body temperature immediately after sleep -0.9°C
Non-REM IV	Body temperature immediately after sleep $-1.5^{\circ}\text{C} < T \leq$ Body temperature immediately after sleep -1.2°C

[0093] Fig. 14 is a diagram showing an example of the change in body temperature of the subject as sleeping hours advance, which is measured in the blood-pressure measuring apparatus 1 of the fifth embodiment.

[0094] As can be seen from Fig. 14, although the body temperature is lowered as a whole as the sleeping hours advance, the body temperature repeatedly goes up and down in a local predetermined period. A region of the body temperature at which the sleep depth is set to non-REM IV is hatched in Fig. 14.

[0095] The fifth embodiment differs from the first to fourth embodiments only in that the biological information measured to determine the sleep depth is changed. That is, the control content in which the determined sleep depth is utilized is similar to those of the first to fourth embodiments.

[Sixth Embodiment]

[0096] Fig. 15 is a schematic view showing a blood-pressure measuring apparatus according to a sixth embodiment of the present invention.

[0097] The sixth embodiment differs from the first to fourth embodiments in that the biological information on the subject measured to determine the sleep depth is changed. The change of the sixth embodiment will mainly be described below.

[0098] Referring to Fig. 15, compared with the blood-pressure measuring apparatus 1 of the first to fourth embodiments, a blood-pressure measuring apparatus 1 of the sixth embodiment further includes an eye mask 8 for measuring movement of the eye which is of the biological information on the subject. The eye mask 8 is attached to a head H of the subject.

[0099] Fig. 16 is an enlarged view showing the eye mask 8. The eye mask 8 includes a belt 80 which fixes the eye mask 8 to the head H of the subject and a plate-like portion 81. A right-eye infrared sensor 80A and a left-eye infrared sensor 80B are provided in the plate-like portion 81. The right-eye infrared sensor 80A and the left-eye infrared sensor 80B are infrared sensors corresponding to the right eye and the left eye of the subject respectively. A converter 82 which converts outputs of the infrared sensors into the pieces of digital data is provided between the eye mask 8 and a main body of the blood-pressure measuring apparatus 1.

[0100] Fig. 17 is a schematic diagram showing a hardware configuration of the blood-pressure measuring apparatus 1 of Fig. 15. Compared with the blood-pressure measuring apparatus 1 of the first to fourth embodiments, the blood-pressure measuring apparatus 1 of the sixth embodiment includes the right-eye infrared sensor 80A and left-eye infrared

sensor 80B and A/D converters 801 and 802. The A/D converters 801 and 802 convert the outputs of the right-eye infrared sensor 80A and left-eye infrared sensor 80B into the pieces of digital data. The A/D converters 801 and 802 are included in the converter 82.

[0101] In the sixth embodiment, the right-eye infrared sensor 80A and left-eye infrared sensor 80B detect the movement modes of the eyes, and the sleep depth of the subject is determined based on the detected movement modes.

[0102] The sixth embodiment differs from the first to fourth embodiments only in that the biological information measured to determine the sleep depth is changed. That is, the control content in which the determined sleep depth is utilized is similar to those of the first to fourth embodiments.

[Other Modifications]

[0103] Some methods of determining the sleep depth are described in the embodiments of the present invention. In the present invention, the sleep depth may be determined by other methods different from the above-described methods.

[0104] For other methods, examples of the biological information on the subject include a brain wave, an electrocardiogram, a muscle potential, the body motion, and a breathing cycle.

[0105] In the embodiments, the blood pressure value of the subject is measured when the sleep depth satisfies the predetermined condition. Alternatively, a switch is provided in the blood-pressure measuring apparatus 1, the switch is turned on immediately before the subject is asleep, and the blood-pressure measuring apparatus 1 may measure the blood pressure under the condition that a predetermined time (for example, one hour, one and a half hours, and two hours) elapsed since the switch is turned on. It is thought that the blood pressure can be measured by performing the blood pressure measurement in the above-described way, when the subject is daily in the sleep state.

[0106] The embodiments are described only by way of example, and it is to be understood that the present invention is not limited to the embodiments. The scope of the present invention is shown by not the embodiments but only claims, and it is intended that meanings equivalent to claims and all the modifications and changes within the scope of the present invention are included. Each of the embodiments is intended to be realized by a combination of the embodiments as much as possible.

INDUSTRIAL APPLICABILITY

[0107] According to the present invention, the level of sleep of the subject is determined, and the blood pressure value is stored when the determined level of sleep satisfies the predetermined condition. Therefore, the blood pressure value is stored as the measurement value when the sleep depth of the subject satisfies the predetermined condition. Accordingly, the blood pressure value can be measured based on the sleep depth of the subject during the non-REM (non-Rapid Eye Movement) sleep or the uprising suitable to the measurement of the blood pressure value.

Claims

1. A blood-pressure measuring apparatus comprising:

- a blood-pressure measuring unit (10,20,31,13,12) which measures a blood pressure value of a subject;
- a level determination unit (10) which determines a level of sleep of the subject;
- a storage unit (11) in which information for specifying a condition for the determined level of sleep is stored;
- a judgment unit (10) which judges whether or not the determined level of sleep satisfies the condition specified by the information stored in the storage unit;
- a blood-pressure measuring start unit (10) which causes the blood-pressure measuring unit to start blood pressure measurement when the judgment unit judges that the determined level of sleep satisfies the condition; and
- a blood pressure value storage unit (11) in which the blood pressure value of the subject measured by the blood-pressure measuring unit is stored in response to an instruction of the blood-pressure measuring start unit.

2. The blood-pressure measuring apparatus according to claim 1, wherein the blood-pressure measuring apparatus is connected to a biological information measuring unit (30) which measures biological information on the subject, and the level determination unit determines the level of sleep of the subject based on the measurement result of the biological information measuring unit.

3. The blood-pressure measuring apparatus according to claim 2, wherein the biological information measuring unit measures a pulse of the subject, and

the level determination unit determines the level of sleep of the subject based on a change in pulse wave period measured by the biological information measuring unit.

- 5
4. The blood-pressure measuring apparatus according to claim 2, wherein the biological information measuring unit measures a body temperature of the subject, and the level determination unit determines the level of sleep of the subject based on a change in body temperature measured by the biological information measuring unit.
- 10
5. The blood-pressure measuring apparatus according to any one of claims 1 to 4, wherein the judgment unit judges that the condition is satisfied when a depth of the determined level of sleep reaches the deepest level in levels which can be determined by the level determination unit.
- 15
6. The blood-pressure measuring apparatus according to any one of claims 1 to 4, wherein the judgment unit judges that the condition is satisfied when a depth of the determined level of sleep is changed from the second shallowest level to the shallowest level in levels which can be determined by the level determination unit.
- 20
7. The blood-pressure measuring apparatus according to any one of claims 1 to 4, wherein the level determination unit determines the level of sleep at constant time intervals, and the judgment unit judges that the condition is satisfied when the level of sleep determined by the level determination unit is changed larger than a specific change amount with respect to the level of sleep previously determined by the level determination unit.
- 25
- 30
- 35
- 40
- 45
- 50
- 55

Fig. 1

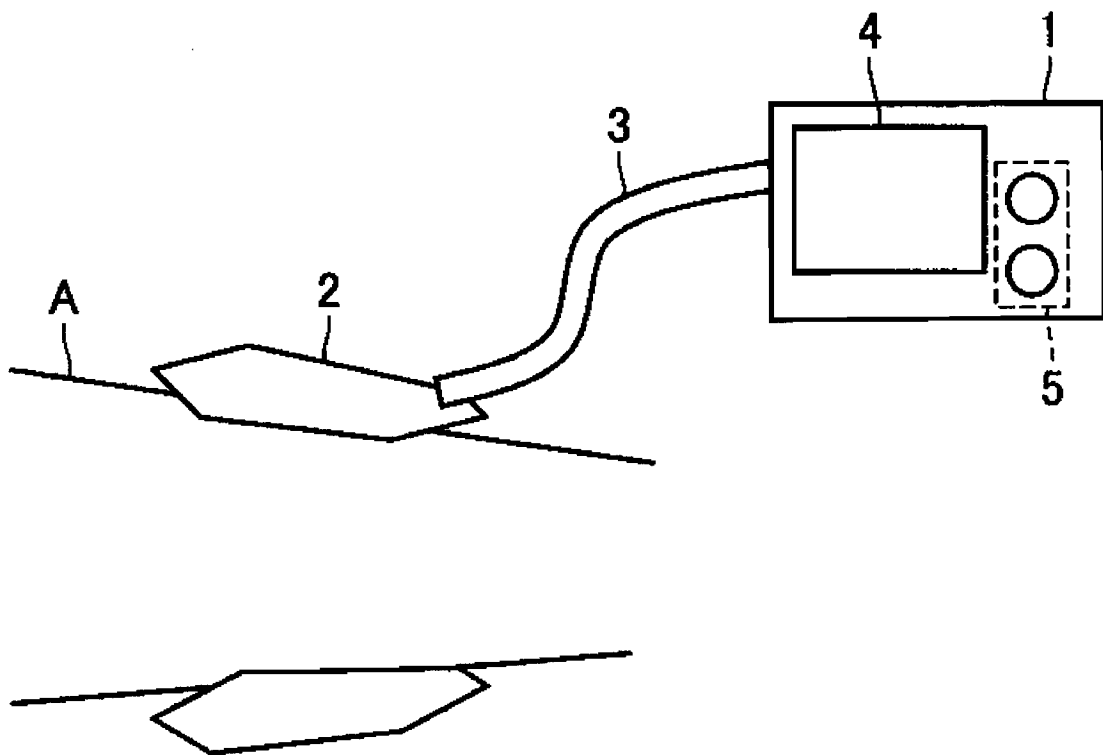


Fig. 2

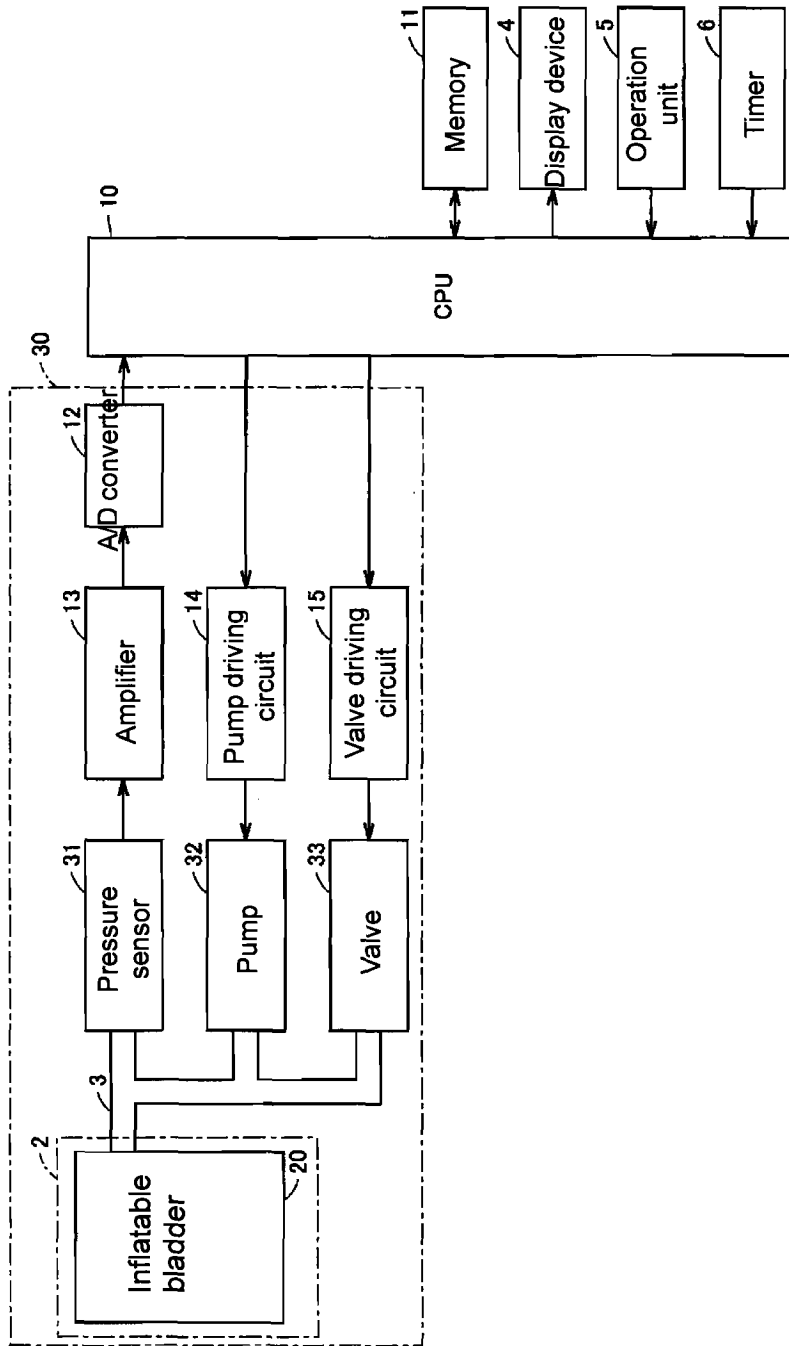


Fig. 3

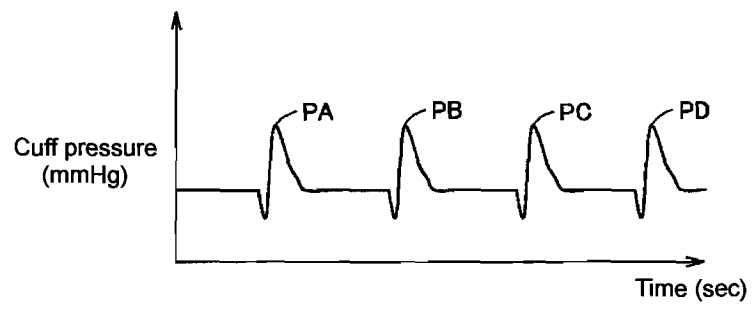
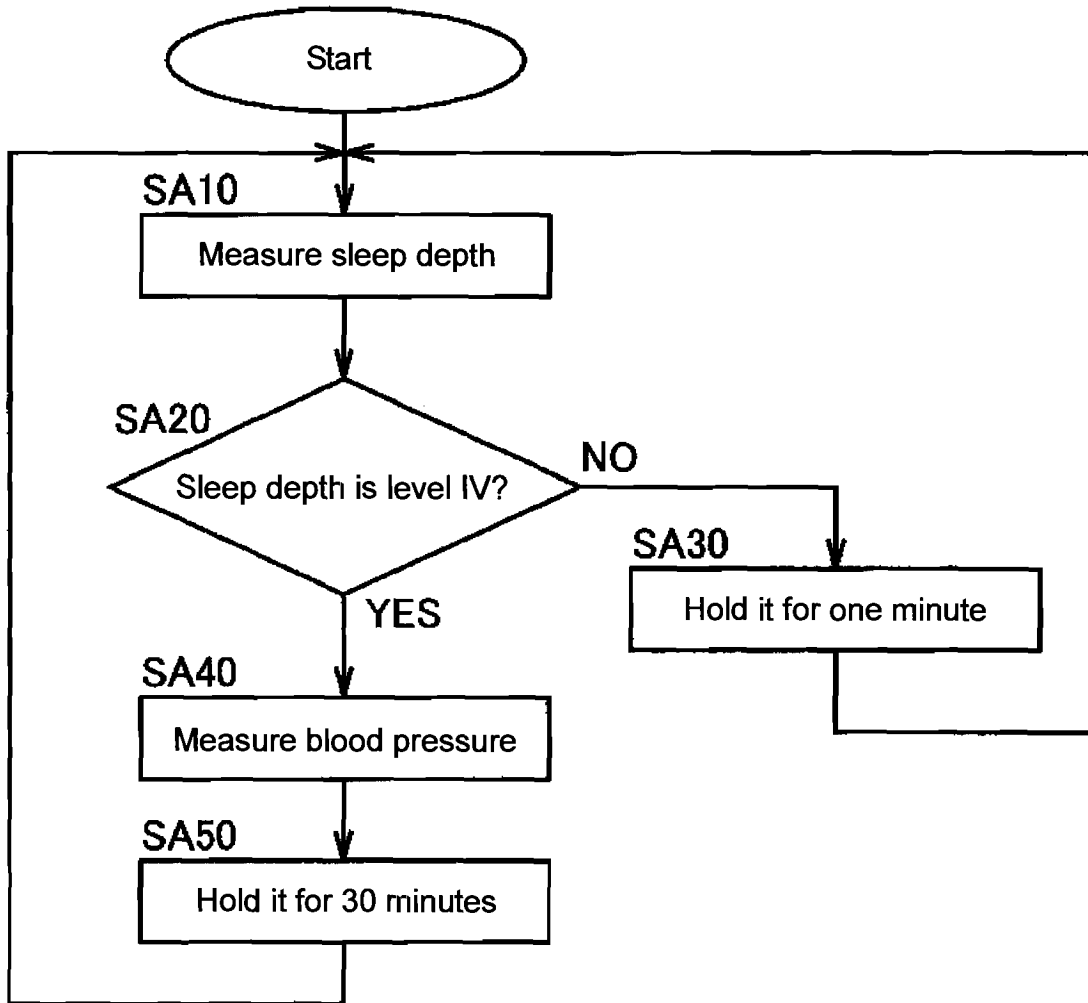


Fig. 4



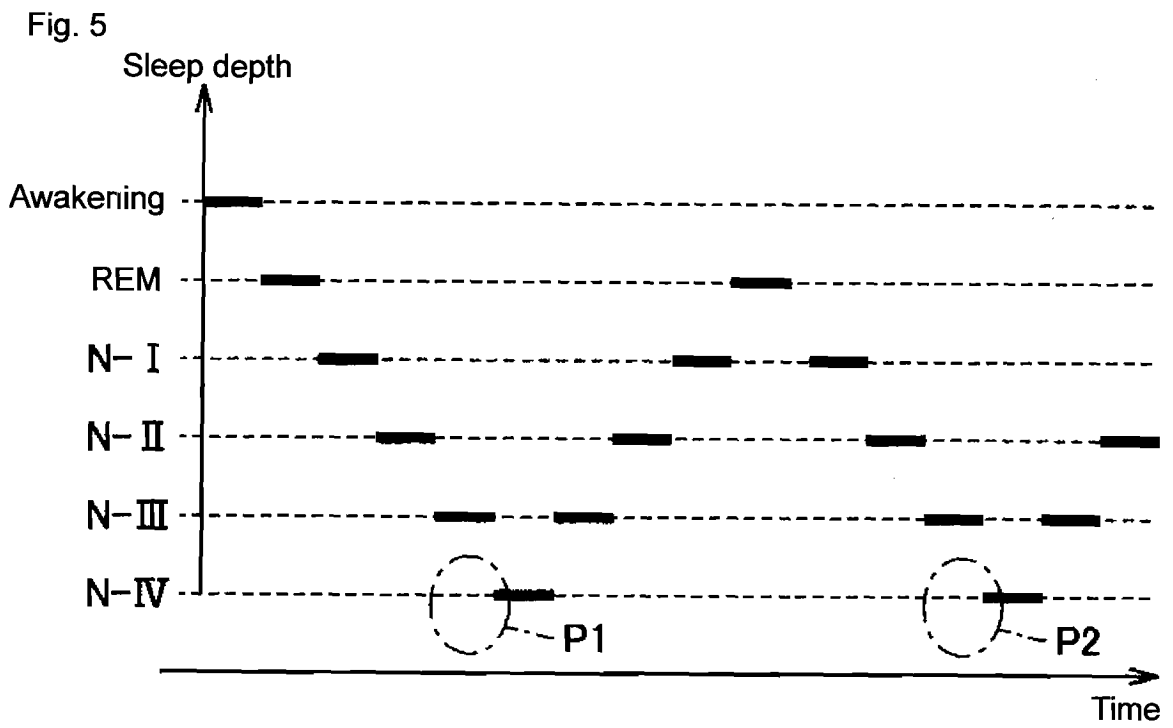


Fig. 6

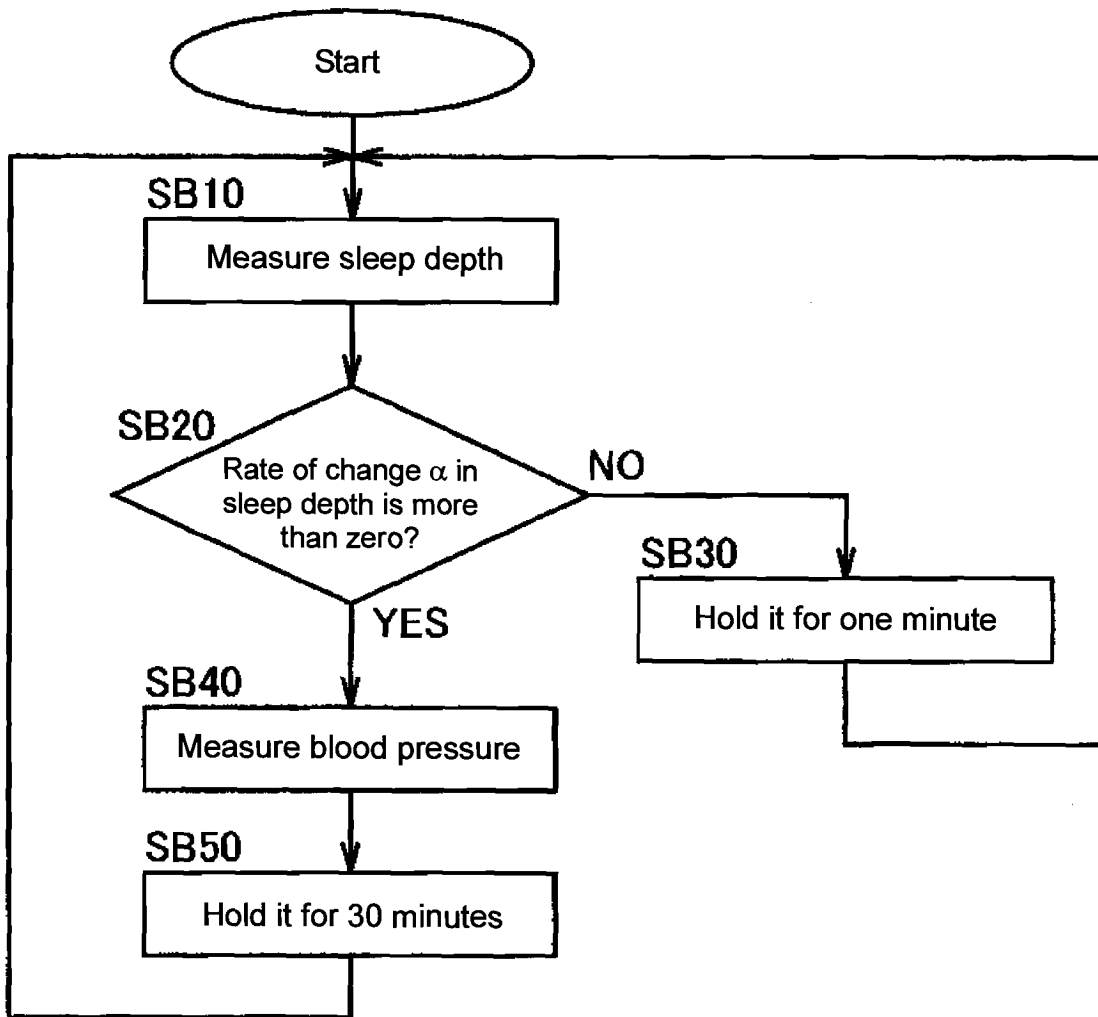


Fig. 7

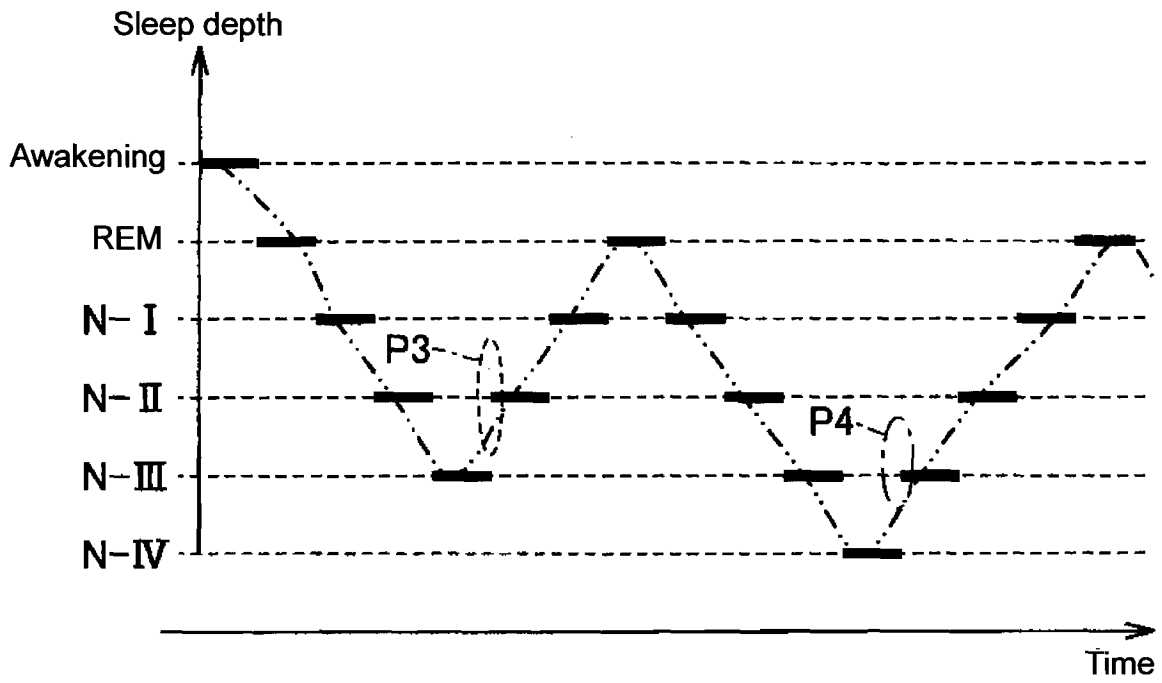


Fig. 8

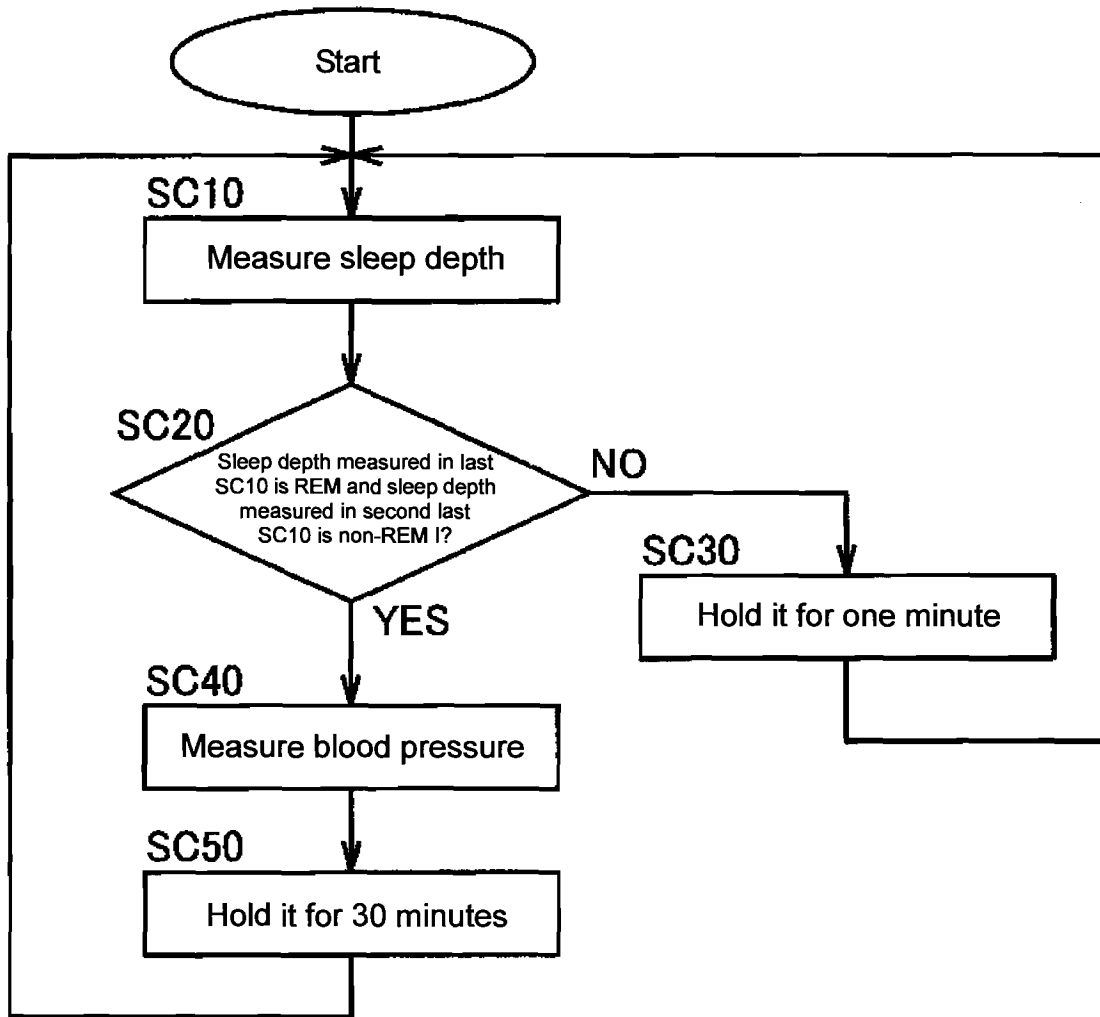


Fig. 10

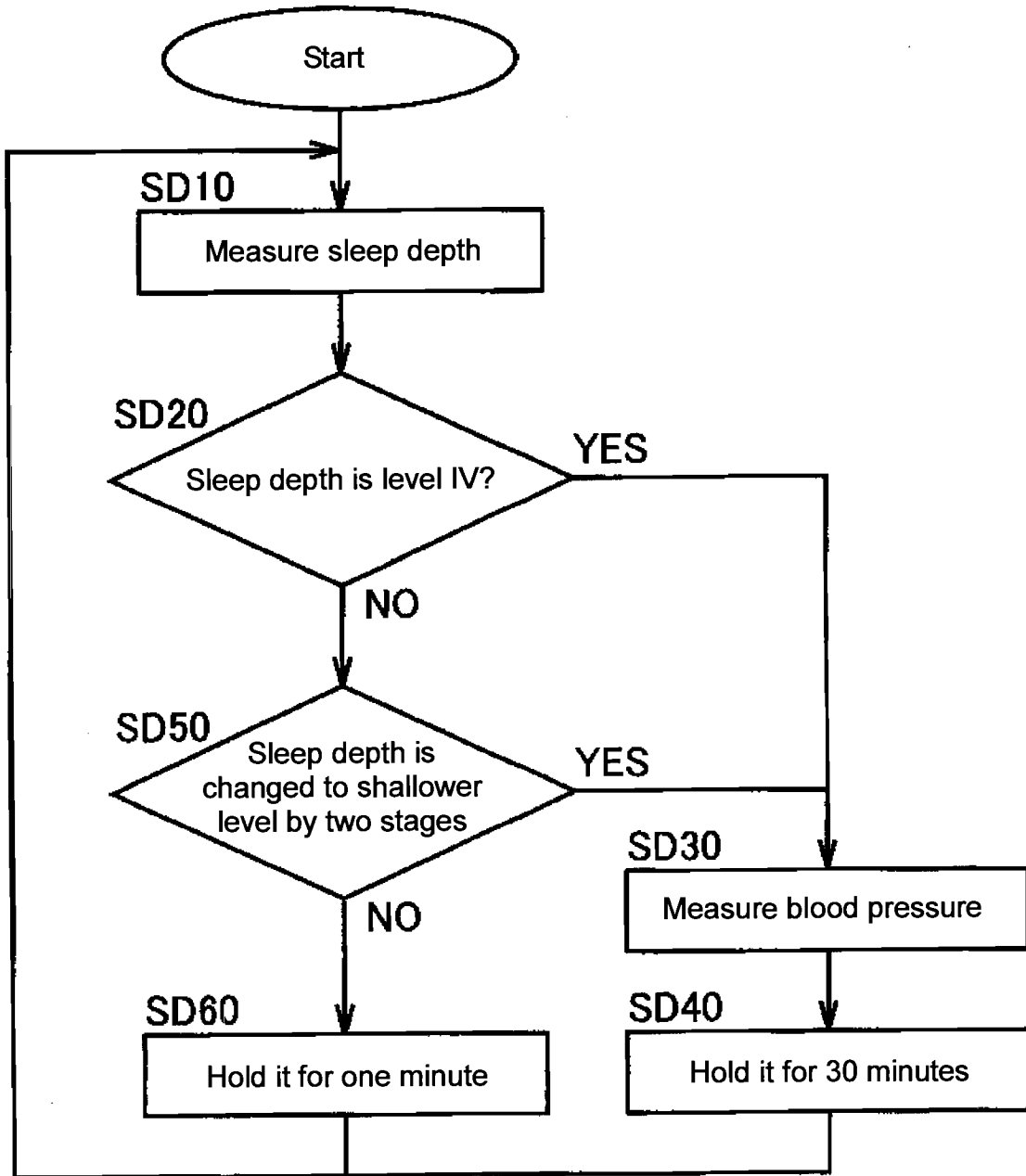


Fig. 11

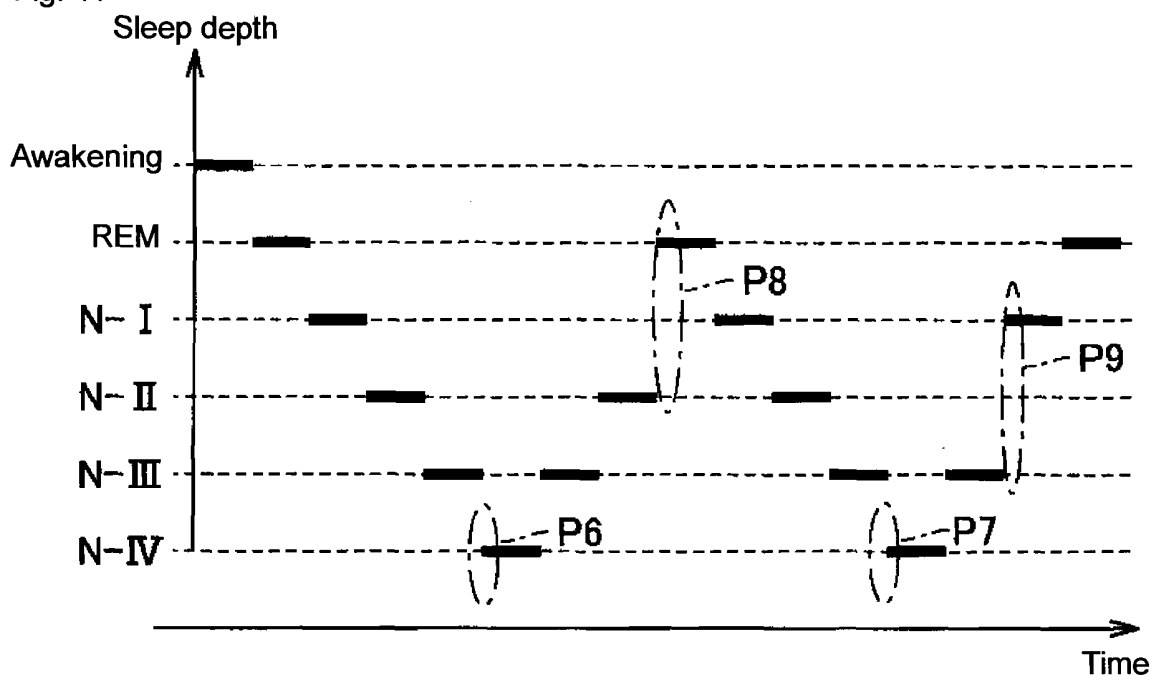
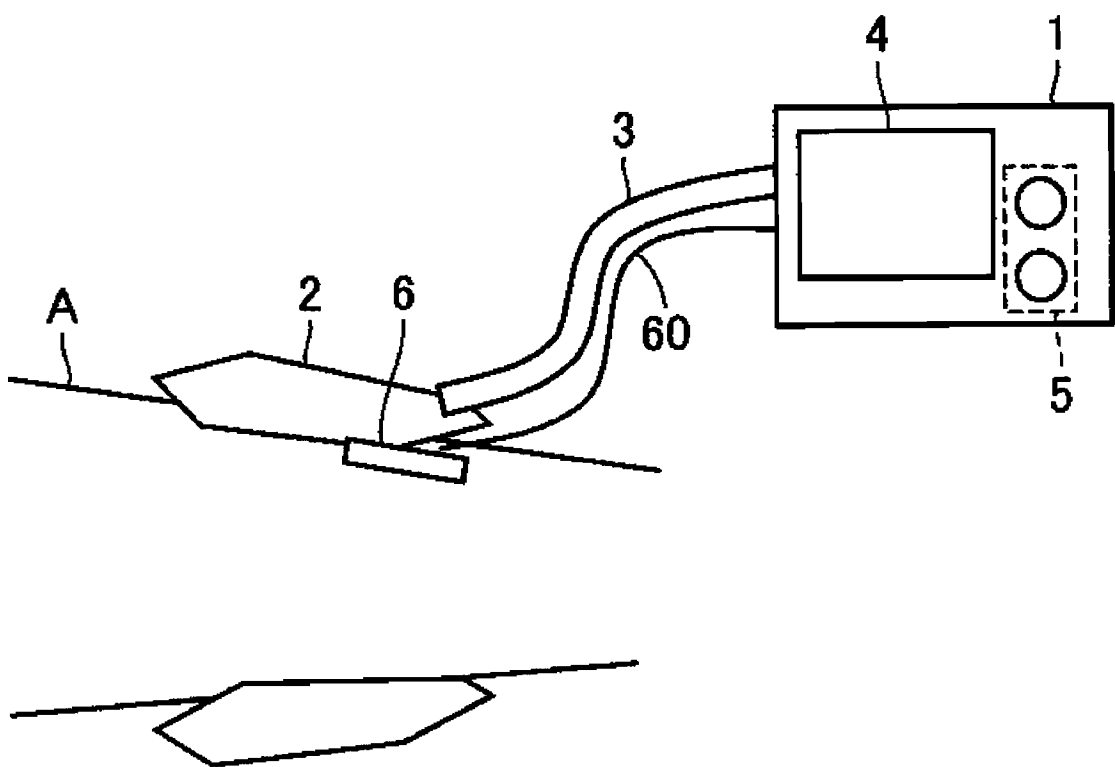


Fig. 12



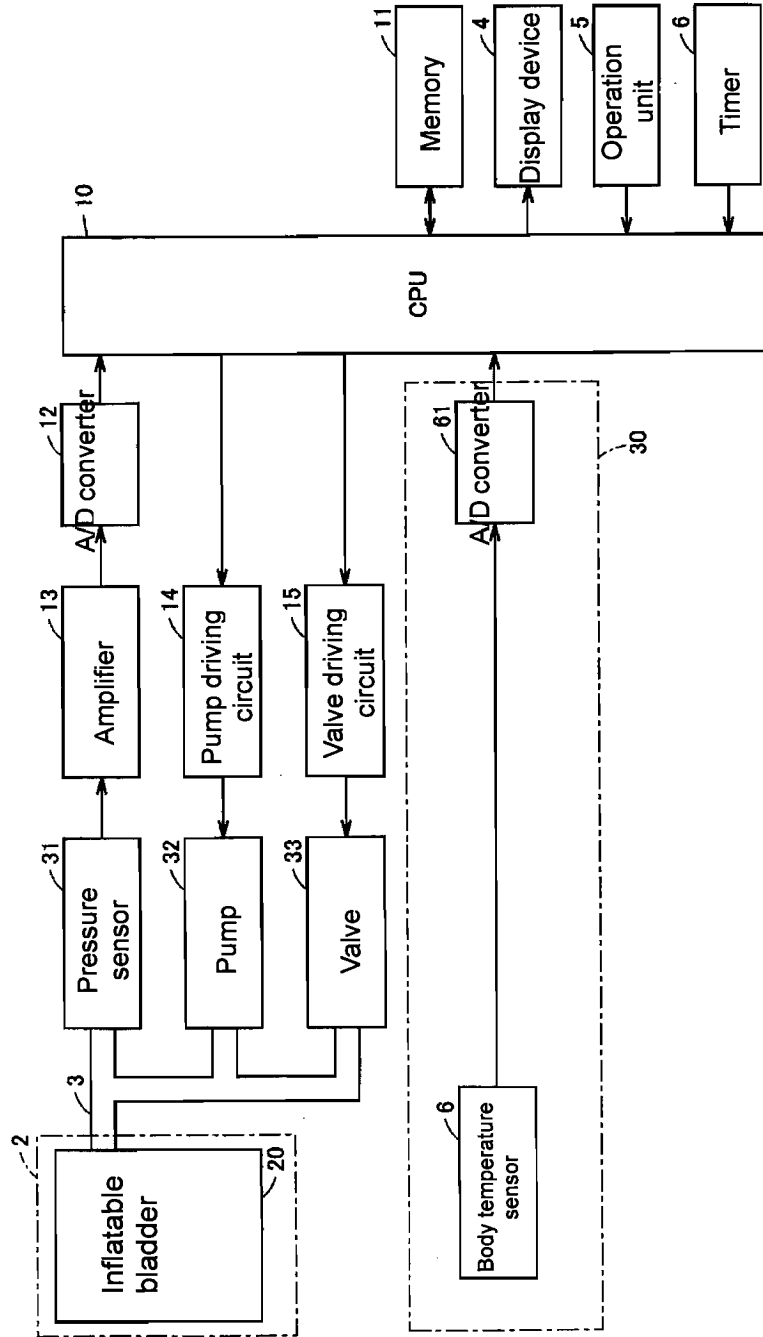


Fig. 13

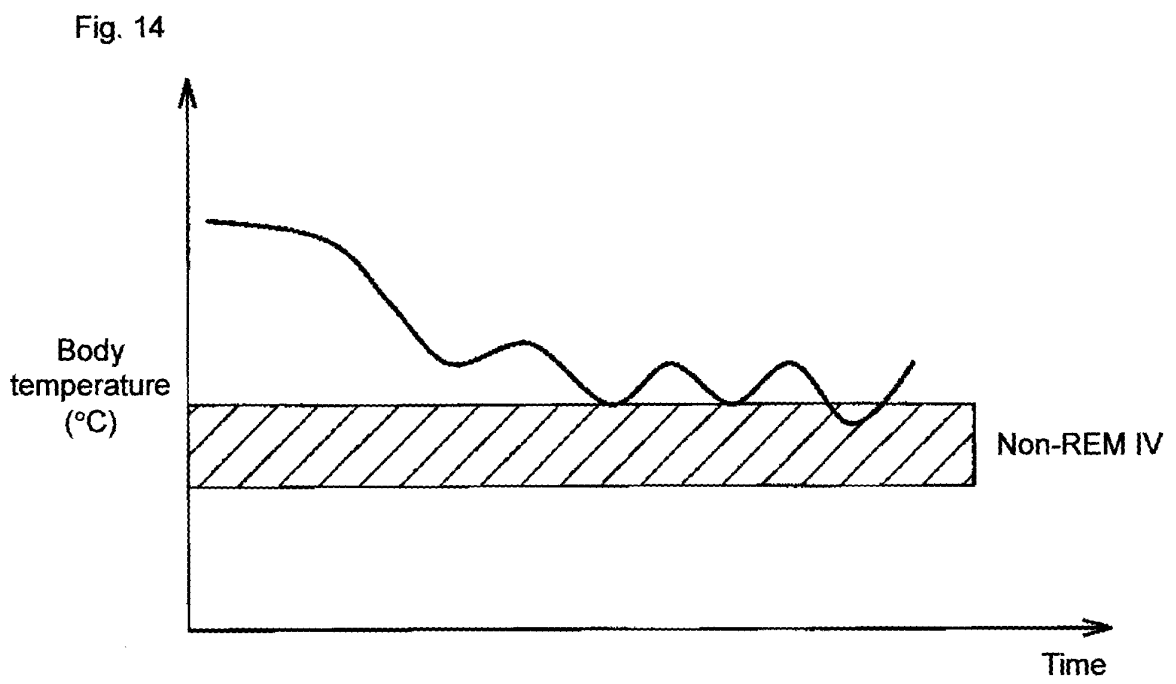


Fig. 15

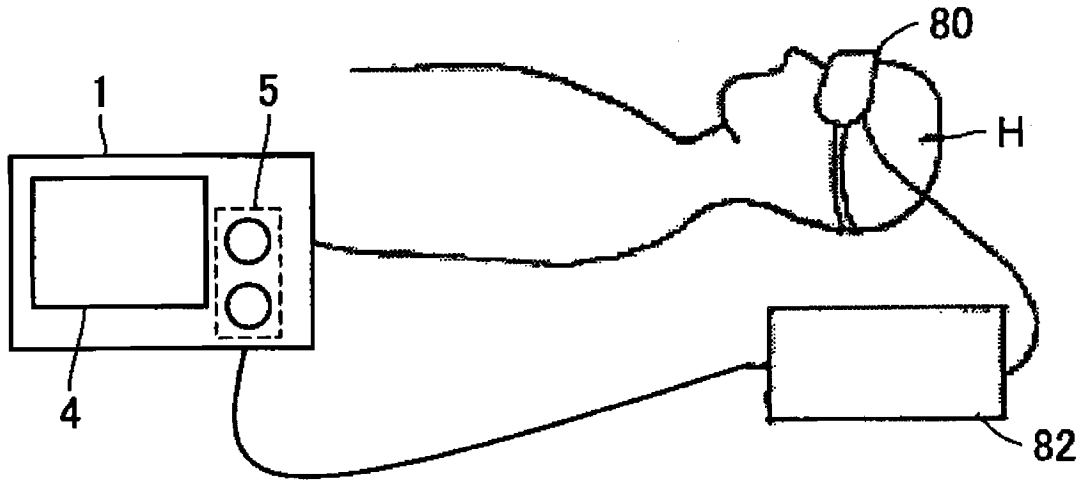


Fig. 16

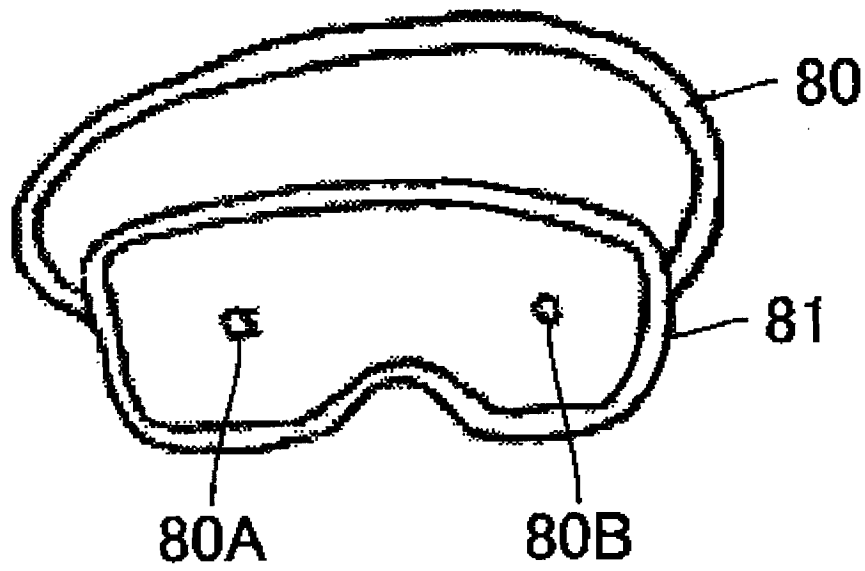
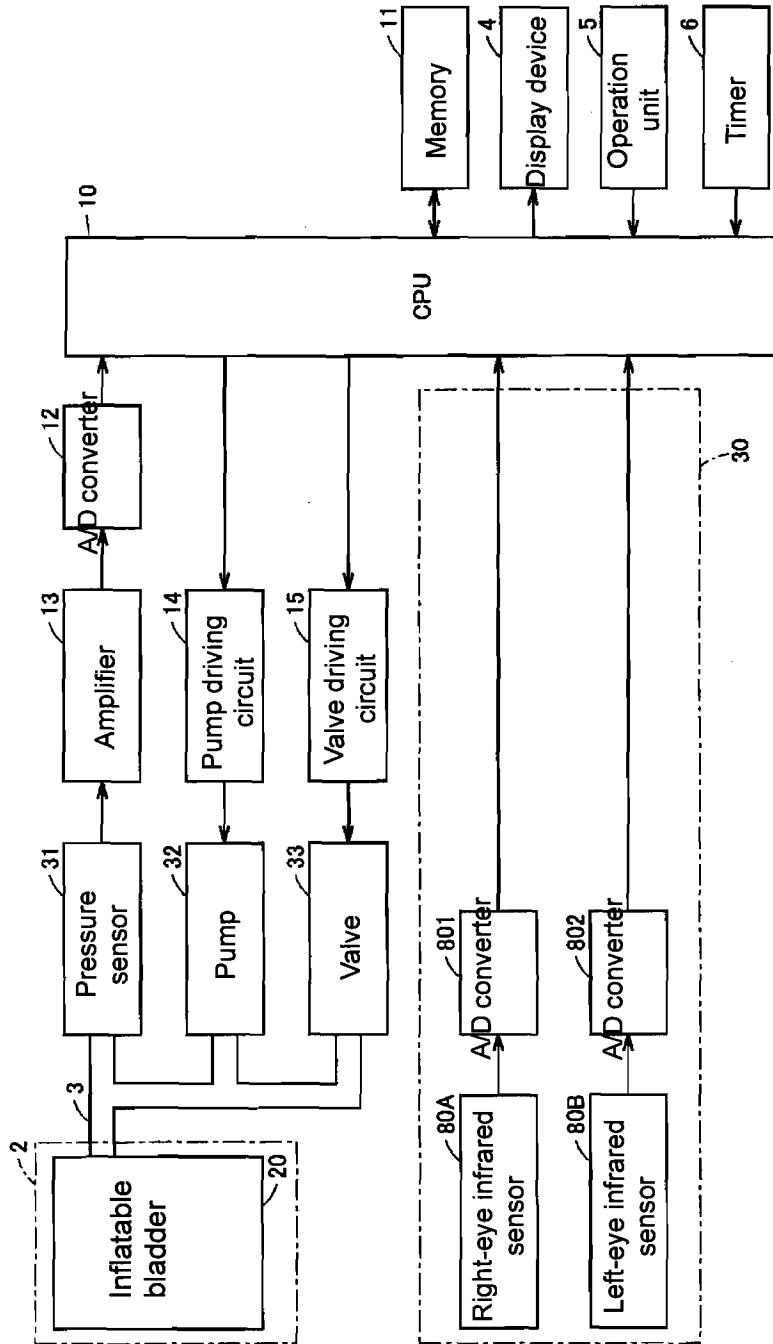


Fig. 17



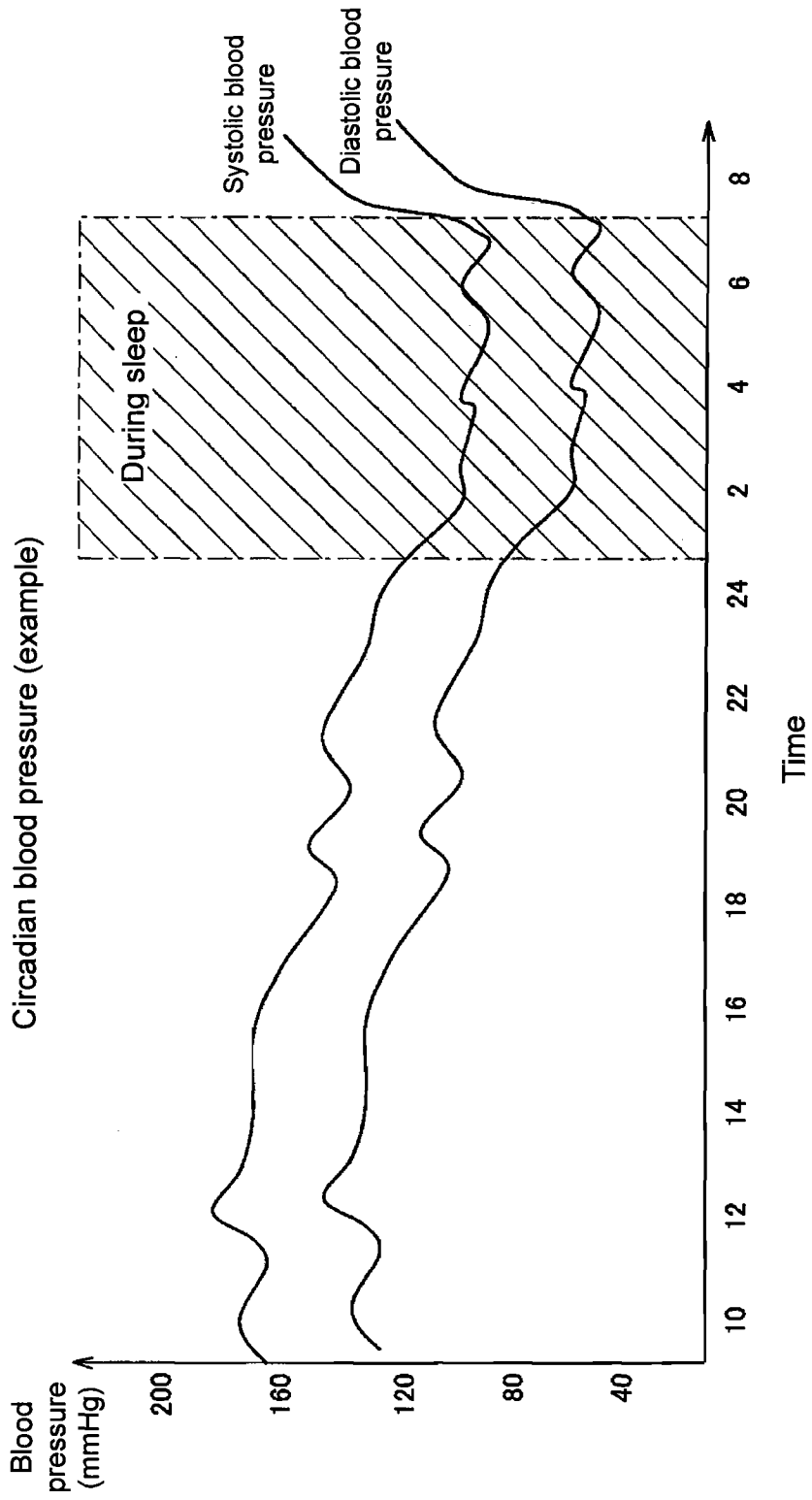


Fig. 18

INTERNATIONAL SEARCH REPORT

International application No.

PCT/JP2007/052714

A. CLASSIFICATION OF SUBJECT MATTER A61B5/0205 (2006.01) i		
According to International Patent Classification (IPC) or to both national classification and IPC		
B. FIELDS SEARCHED		
Minimum documentation searched (classification system followed by classification symbols) A61B5/0205		
Documentation searched other than minimum documentation to the extent that such documents are included in the fields searched Jitsuyo Shinan Koho 1922-1996 Jitsuyo Shinan Toroku Koho 1996-2007 Kokai Jitsuyo Shinan Koho 1971-2007 Toroku Jitsuyo Shinan Koho 1994-2007		
Electronic data base consulted during the international search (name of data base and, where practicable, search terms used)		
C. DOCUMENTS CONSIDERED TO BE RELEVANT		
Category*	Citation of document, with indication, where appropriate, of the relevant passages	Relevant to claim No.
P, X	JP 2006-102260 A (Nippon Telegraph And Telephone Corp., Terumo Corp.), 20 April, 2006 (20.04.06), Full text; all drawings (Family: none)	1, 2, 5
Y A	JP 2005-237472 A (Nanami KARIO, Omron Healthcare Co., Ltd.), 08 September, 2005 (08.09.05), Full text; all drawings (Family: none)	1-3 4-7
Y A	JP 63-284611 A (Matsushita Electric Works, Ltd.), 21 November, 1988 (21.11.88), Full text; all drawings (Family: none)	1-3 4-7
<input checked="" type="checkbox"/> Further documents are listed in the continuation of Box C. <input type="checkbox"/> See patent family annex.		
* Special categories of cited documents: "A" document defining the general state of the art which is not considered to be of particular relevance "E" earlier application or patent but published on or after the international filing date "L" document which may throw doubts on priority claim(s) or which is cited to establish the publication date of another citation or other special reason (as specified) "O" document referring to an oral disclosure, use, exhibition or other means "P" document published prior to the international filing date but later than the priority date claimed	"T" later document published after the international filing date or priority date and not in conflict with the application but cited to understand the principle or theory underlying the invention "X" document of particular relevance; the claimed invention cannot be considered novel or cannot be considered to involve an inventive step when the document is taken alone "Y" document of particular relevance; the claimed invention cannot be considered to involve an inventive step when the document is combined with one or more other such documents, such combination being obvious to a person skilled in the art "&" document member of the same patent family	
Date of the actual completion of the international search 02 March, 2007 (02.03.07)	Date of mailing of the international search report 13 March, 2007 (13.03.07)	
Name and mailing address of the ISA/ Japanese Patent Office	Authorized officer	
Facsimile No.	Telephone No.	

Form PCT/ISA/210 (second sheet) (April 2005)

INTERNATIONAL SEARCH REPORT

International application No.
PCT/JP2007/052714

C (Continuation). DOCUMENTS CONSIDERED TO BE RELEVANT		
Category*	Citation of document, with indication, where appropriate, of the relevant passages	Relevant to claim No.
A	JP 2000-215 A (Arata NEMOTO), 07 January, 2000 (07.01.00), Full text; all drawings (Family: none)	1-7
A	JP 8-131408 A (Matsushita Electric Industrial Co., Ltd.), 28 May, 1996 (28.05.96), Full text; all drawings (Family: none)	1-7

Form PCT/ISA/210 (continuation of second sheet) (April 2005)

REFERENCES CITED IN THE DESCRIPTION

This list of references cited by the applicant is for the reader's convenience only. It does not form part of the European patent document. Even though great care has been taken in compiling the references, errors or omissions cannot be excluded and the EPO disclaims all liability in this regard.

Patent documents cited in the description

- JP 2001070260 A [0003] [0004]
- JP 8131408 A [0004] [0004]

专利名称(译)	血压测量仪		
公开(公告)号	EP1992280A4	公开(公告)日	2010-12-29
申请号	EP2007714244	申请日	2007-02-15
[标]申请(专利权)人(译)	欧姆龙健康医疗事业株式会社 忌吃医学院		
申请(专利权)人(译)	欧姆龙保健CO., LTD. 忌吃医科大学学报		
当前申请(专利权)人(译)	欧姆龙保健CO., LTD. 忌吃医科大学学报		
[标]发明人	TAKAHASHI AKIHISA SAWANOI YUKIYA SHIRASAKI OSAMU KARIO KAZUOMI		
发明人	TAKAHASHI, AKIHISA SAWANOI, YUKIYA SHIRASAKI, OSAMU KARIO, KAZUOMI		
IPC分类号	A61B5/0205 A61B5/00 A61B5/022 A61B5/024		
CPC分类号	A61B5/022 A61B5/0205 A61B5/02422 A61B5/4812		
优先权	2006054916 2006-03-01 JP		
其他公开文献	EP1992280B1 EP1992280A1		
外部链接	Espacenet		

摘要(译)

控制单元 (10) 基于由生物信息测量单元 (30) 测量的生物信息确定对象的睡眠水平, 并且当确定所确定的时, 控制单元 (10) 开始对象的血压测量。睡眠水平满足预定条件。控制单元 (10) 将血压测量结果存储在存储器 (11) 中。