



(11) **EP 1 854 401 B1**

(12) **EUROPEAN PATENT SPECIFICATION**

(45) Date of publication and mention of the grant of the patent:
15.07.2009 Bulletin 2009/29

(51) Int Cl.:
A61B 5/00^(2006.01) A61B 5/026^(2006.01)

(21) Application number: **07016759.8**

(22) Date of filing: **30.01.2006**

(54) **Apparatus and method for measuring transit time of oxygen in blood**

Vorrichtung und Verfahren zum Messen der Durchgangszeit des Sauerstoffes im Blut

Appareil et méthode pour mesurer le temps de passage de l'oxygène dans le sang

(84) Designated Contracting States:
AT BE BG CH CY CZ DE DK EE ES FI FR GB GR HU IE IS IT LI LT LU LV MC NL PL PT RO SE SI SK TR

(30) Priority: **30.03.2005 JP 2005097080**
28.01.2005 JP 2005021087

(43) Date of publication of application:
14.11.2007 Bulletin 2007/46

(62) Document number(s) of the earlier application(s) in accordance with Art. 76 EPC:
06001881.9 / 1 685 796

(73) Proprietor: **Nihon Kohden Corporation**
Shinjuku-ku
Tokyo (JP)

(72) Inventors:
• **Kobayashi, Naoki**
Tokyo (JP)
• **Kubota, Hiroshi**
Tokyo (JP)

(74) Representative: **Grünecker, Kinkeldey, Stockmair & Schwanhäusser**
Anwaltssozietät
Leopoldstrasse 4
80802 München (DE)

(56) References cited:
EP-A- 0 502 270 US-A- 4 223 680
US-A1- 2003 109 772 US-B1- 6 577 884

EP 1 854 401 B1

Note: Within nine months of the publication of the mention of the grant of the European patent in the European Patent Bulletin, any person may give notice to the European Patent Office of opposition to that patent, in accordance with the Implementing Regulations. Notice of opposition shall not be deemed to have been filed until the opposition fee has been paid. (Art. 99(1) European Patent Convention).

Description

BACKGROUND OF THE INVENTION

[0001] The present invention relates to an apparatus and a method for measuring a transit time of oxygen in blood, which serves as an index of an ability of blood flow for delivering oxygen (transit time of oxygen) with regard to various organs in a living body, as a change in an oxygen concentration in blood with a non-invasive manner.

[0002] Conventionally, a cardiac output has been an important parameter serving as an index of an oxygen conveying ability to various organs in a living body. For measurement of the cardiac output, a method of inserting a catheter to the heart, thereby measuring the cardiac output in accordance with a thermodilution method, is generally known. However, since cold water must be injected into the living body, the thermodilution method involves a problem of significant invasion of the living body, and is expensive as well.

[0003] For example, Japanese Patent No. JP-A-5 300 888 discloses a cardiac output measuring device for measuring a cardiac output by injecting dye into a vein of a living body. More specifically, the cardiac output measuring device is configured so as to obtain a cardiac output by the following procedure. A prescribed amount of dye is injected into a vein at a portion of a living body; and the dye, which has arrived at an artery at another portion of the living body, is detected. A time T_a (a mean transit time) denoting a time elapsed between completion of the dye injection and a start of detection of the arrived dye, and a time T_p denoting a time elapsed before the detected dye concentration reaches its peak concentration are measured, thereby attaining measurement of a cardiac output.

[0004] As illustrated in Figs. 12A and 12B, the mean transit time of blood flow is known to be a parameter having good correlation with cardiac output. More specifically, Fig. 12A shows a relationship between the mean transit time (sec) and a cardiac index ($1/\text{min}/\text{m}^2$); and Fig. 12B shows a relationship between corrected mean transit time (sec/M) corrected by a height (M) and a cardiac index ($1/\text{min}/\text{m}^2$). As is apparent from these relationships, the mean transit time is proportional to the cardiac index. Therefore, the mean transit time of the blood flow can be employed as a parameter serving as an index of circulation of the blood flow, as in the case of cardiac output. Meanwhile, the transit time and the cardiac output have a good correlation in spite of being independent parameters of different dimensions. Accordingly, one can expect that, when the transit time of the blood flow can be measured easily, non-invasively, continuously, and at low cost, from a medical viewpoint the transit time can serve as a useful parameter for circulation monitoring in lieu of the cardiac output.

[0005] In addition, the above-mentioned measurement of the transit time of the blood flow serves, as an

index of not only cardiac output, but also of the peripheral circulation of the blood flow. For instance, Figs. 13A and 13B show results of measurement in a case where sensors are attached to a nasal wing and to a fingertip of a subject whose peripheral blood vessel is constricted after cardiac surgery, in which arrival times of ICG (indocyanine green) at the sensors are measured simultaneously in accordance with the above dye dilution method.

[0006] More specifically, as shown in Fig. 13A, a mean transit time from injection of dye into the right atrium to arrival of the same at the nasal wing is about 30 seconds. Meanwhile, as shown in Fig. 13B, a mean transit time elapsed before arrival at the fingertip is about 160 seconds. As described above, a transit time to a fingertip is dominated by a time elapsed before arrival at the fingertip from the aorta, and this sometimes takes a significantly long time during a period of constriction of the peripheral blood vessel. Accordingly, as is apparent, when a blood vessel is clogged due to arteriosclerosis, or the like, the blood flow is reduced, thereby delaying the transit time thereof. However, the above measurement method of injecting dye into a vessel for measuring such a transit time involves a problem of requiring invasion of a living tissue, as well as being unable to carrying out continuous measurement.

[0007] On the other hand, low-invasive measurement methods that have been put into practice include a pulse dye dilution method, an impedance method, a transesophageal ultrasonic Doppler method, and a CO_2 Fick method. However, the pulse dye dilution method has a problem of requiring injection of dye into a vein, and being unable to carrying out continuous measurement. The impedance method has a problem of deteriorated accuracy when a subject is connected with a variety of electrodes and/or infusion lines. The transesophageal ultrasonic Doppler method requires insertion of an esophageal probe, thereby involving a problem of allowing measurement only under anesthesia. Measurement in accordance with the CO_2 Fick method can be made only with an intubated patient, thereby posing a problem of deteriorated accuracy during a period that the cardiac output is changing.

[0008] Document US-B-6 577 884 discloses a method and an apparatus according to the preambles of claims 1 and 5.

SUMMARY OF THE INVENTION

[0009] It is therefore an object of the invention to provide an apparatus and a method for measuring a transit time of oxygen in blood, capable of readily and continuously measuring a transit time of blood flow as a bioparameter, which serves as an index for determination of an ability of blood flow for delivering oxygen (transit time of oxygen) to various organs in a living body, as a change in an oxygen concentration in blood with a non-invasive manner, and at low cost.

[0010] The invention is defined in claims 1 and 5.

[0011] When an amount of inspired oxygen is caused to change through a fractional concentration of oxygen in inspired gas FIO_2 , the arterial oxygen saturation SpO_2 changes. Currently, the arterial oxygen saturation SpO_2 can generally be readily measured by a pulse oximeter. When the FIO_2 is taken as an input, and arterial oxygen saturation SpO_2 is taken as an output, a positive correlation is found between the input and the output. More specifically, at a high FIO_2 , the arterial oxygen saturation SpO_2 is high; and at a low FIO_2 , the arterial oxygen saturation SpO_2 is low. When, for instance, a stepwise signal (of FIO_2) is input, a response signal (of arterial oxygen saturation SpO_2) including a certain delay time is output. By measuring this delay time, there can be obtained a transit time of oxygen through: oxygen inhalation → the lung → the heart → the aorta → the peripheral measurement positions.

[0012] A condition of oxygen delivery to each of the prescribed positions can be ascertained on the basis of oxygen concentrations in blood obtained with use of the sensors. For instance, when, as a result of measurement of a transit time of the blood flow in right and left lower limbs, the transit time of one side is found to be long, reduction of blood flow can be detected. Hence, cases where blood flow is deteriorated by development of thrombus or atheroma can also be detected on the basis of the transit time.

BRIEF DESCRIPTION OF THE DRAWINGS

[0013] The above objects and advantages of the present invention will become more apparent by describing in detail preferred exemplary embodiments thereof with reference to the accompanying drawings, wherein:

Fig. 1 is a schematic view for explaining how to measure a transit time of oxygen in blood according to the invention;

Figs. 2 and 3 are waveform diagrams for explaining how to measure a transit time of oxygen in blood according to the invention;

Fig. 4 is block diagram illustrating a measuring apparatus according to a first embodiment of the invention;

Fig. 5 is a flowchart illustrating a measurement performed in the measuring apparatus of Fig. 4;

Figs. 6A and 6B are graphs each showing change with time of arterial oxygen saturation measured by the measuring apparatus of Fig. 4;

Fig. 6C is a graph showing a cross-correlation coefficient between two waveforms shown in Fig. 6B;

Fig. 7 is block diagram illustrating a measuring apparatus according to a second embodiment of the invention;

Fig. 8 is a flowchart illustrating a measurement performed in the measuring apparatus of Fig. 7;

Fig. 9 is block diagram illustrating a measuring apparatus according to a third embodiment of the in-

vention;

Fig. 10 is a flowchart illustrating a measurement performed in the measuring apparatus of Fig. 9;

Figs. 11A and 11B are graphs each showing changes with time of attenuation ratios respectively measured by the measuring apparatus of Fig. 9 in response to oxygen inhalation;

Figs. 12A and 12B show relationships between a cardiac index and a mean transit time measured in accordance with a dye dilution method; and

Figs. 13A and 13B show relationship of arrival time of ICG (indocyanine green) measured in accordance with the dye dilution method.

15 DETAILED DESCRIPTION OF THE EMBODIMENTS

[0014] Embodiments of the invention will be described in detail with reference to the accompanying drawings.

[0015] In Fig. 1, reference numeral 10 denotes a pulse oximeter for measuring arterial oxygen saturation SpO_2 at a plurality of prescribed positions of a living body. The apparatus includes light absorption sensors which are to be connected to the pulse oximeter 10, and which are constituted of a first sensor 12 disposed on a nasal wing; a second sensor 14 disposed on a fingertip; and a third sensor 16 disposed on a toe, each of which belongs to the living body. In addition, an oxygen cylinder 20 is disposed in a mouth of the living body.

[0016] Meanwhile, for measurement of the arterial oxygen saturation SpO_2 , the sensors are configured as follows. Each of the sensors has a photo emitter and a photo detector, and is configured to sandwich a measurement position of the living body therebetween. Two light-emitting diodes, having light-emitting wavelengths of 660 nm and 940 nm, are used as the photo emitter. The light-emitting diodes are set so as to emit light alternately. A photo diode is used as the photo detector. Thus, light is emitted from the photo emitter, passes through the measurement position of the living body, and arrives at the photo detector. The intensity of the thus-arrived light is converted into current by the photo diode; is further converted into voltage in the pulse oximeter; and is separated into transmitted-light signals of the respective wavelengths. Thereafter, pulse wave components of the light absorption are extracted from the two transmitted-light signals. A ratio of amplitudes of the pulse wave components; that is, an attenuation ratio Φ is calculated; and the ratio is converted into oxygen saturation, thereby obtaining arterial oxygen saturation SpO_2 .

[0017] Fig. 2 illustrates change with time of the attenuation ratios Φ or the arterial oxygen saturation SpO_2 in a case where, e.g., the fractional concentration of oxygen in inspired gas FIO_2 is changed by causing oxygen to be inhaled with use of the oxygen cylinder 20 in measurement of arterial oxygen saturation SpO_2 at the respective positions of the living body in the system configuration illustrated in Fig. 1. The attenuation ratios Φ or the arterial oxygen saturation SpO_2 are detected and measured by

the first through third sensors 12, 14, and 16 disposed at the respective positions of the living body.

[0018] More specifically, as is apparent in Fig. 2, a time T_{nose} , T_{finger} , T_{foot} elapsed between a point in time when the FIO_2 of the living body is caused to change and a point in time when the arterial oxygen saturation $SpO_{2,nose}$, $SpO_{2,finger}$, $SpO_{2,foot}$ increases at each of the measurement positions; that is, a transit time during which oxygen is transported along the blood flow, can be determined. In this case, the rising edges of the arterial oxygen saturation appear in the nasal wing, the fingertip of a hand, and the toe, in this order. In particular, since the blood flow in the head is maintained even in a situation where the peripheral blood vessels such as those in the hands and feet are contracted and the blood flow is reduced, the transit time in the nasal wing (head) exhibits good correlation with cardiac output. By changing the FIO_2 so as to form rectangular waves as shown in Fig. 3, continuous determination of the transit time can be attained.

[0019] Fig. 4 shows a measuring apparatus according to a first embodiment of the invention. Light absorption sensors S_1, S_2, \dots, S_n and measuring sections M_1, M_2, \dots, M_n for obtaining the attenuation ratios Φ or the arterial oxygen saturation SpO_2 are respectively connected to measurement positions constituted of a toe of the right foot "Foot-R" of a subject, a left toe "Foot-L," and a finger of the left hand "Finger-L." Furthermore, a transit time measuring section 30 and a display (recorder) 32 are respectively connected to the sensors via the respective measuring sections M_1, M_2, \dots, M_n .

[0020] In this embodiment, as illustrated in Fig. 5, the light absorption sensors S_1, S_2, \dots, S_n are respectively attached to the respective measurement positions of the subject (step S11), and attenuation ratios Φ of the arterial blood or the arterial oxygen saturation SpO_2 at the respective measurement positions are measured by the respective measuring sections M_1, M_2, \dots, M_n (step S12). Here, an amount of oxygen inspired by the subject is caused to change by deep breathing or breath-holding (step S13). Hence, the transit time measuring section 30 can calculate a difference in transit time between the respective positions on the basis of waveforms of the attenuation ratios Φ of the arterial blood or the arterial oxygen saturation SpO_2 at the respective the measuring sections M_1, M_2, \dots, M_n (step S14). Meanwhile, the thus-measured difference in transit time is displayed and/or recorded in the display (recorder) 32 as required.

[0021] Fig. 6A shows a result of measurement, measured by the transit time measuring apparatus of the present embodiment, of the attenuation ratio Φ of the arterial blood at the right toe "Foot-R" and that of the left toe "Foot-L" of a subject in a case where the subject performs deep breathing five times, and thereafter maintains a predetermined breath-holding state. Fig. 6B shows a result of the same measurement as above in a case where a right femoral region of the subject is pressed with a pressure of 120 mmHg.

[0022] According to the results of the measurements, when a difference in transit time is taken at points in time when the maximum values are respectively indicated, the transit time pertaining to the right foot has a delay (29 seconds). Hence, an abnormality with regard to the blood vessel in the right foot can be detected. Alternatively, as another method, a difference in transit time can be taken by calculating a cross-correlation coefficient between Φ or SpO_2 measured at two positions, and taking a point in time when the cross-correlation coefficient attains the maximum value as the difference in transit time. Fig. 6C shows the cross-correlation coefficient between two waveforms shown in Fig. 6B.

[0023] Fig. 7 shows a measuring apparatus according to a second embodiment of the invention. Components similar to those in the first embodiment will be designated by the same reference characters and repetitive explanations for those will be omitted.

[0024] In this embodiment, the light absorption sensors S_1, S_2, \dots, S_n and the measuring sections M_1, M_2, \dots, M_n for obtaining the attenuation ratios Φ or the arterial oxygen saturation SpO_2 are respectively connected to measurement positions constituted of a brow, the fingertip, and the toe, each of which belongs to the living body. Furthermore, a flow sensor 22 is disposed in the mouth of the subject for measurement of a respiratory flow or a respiratory volume at the time of deep breathing or breath-holding.

[0025] In this embodiment, as illustrated in Fig. 8, the light absorption sensors S_1, S_2, \dots, S_n are respectively attached to the respective measurement positions of the subject (step S21), and attenuation ratios Φ of the arterial blood or arterial oxygen saturation SpO_2 at the respective measurement positions are measured by the respective measuring sections M_1, M_2, \dots, M_n (step S22). Here, the FIO_2 of the subject is caused to change by deep breathing or breath-holding, and, in conjunction therewith, the respiratory flow or the respiratory volume of the subject in this case is measured with use of the flow sensor 22 (step S23). Thereafter, a point in time when the FIO_2 is caused to change is detected.

[0026] In conjunction therewith, there is performed setting of an analysis time for measurement of a time elapsed before a change in the attenuation ratio Φ of the arterial blood or the arterial oxygen saturation SpO_2 to be measured by the respective measuring sections M_1, M_2, \dots, M_n ; in particular, a time elapsed before a rising edge thereof. Put another way, an analysis time for measurement of a transit time of oxygen in blood to be measured by the transit time measuring section 30 is set (step S24). In conjunction therewith, the transit time is measured within the range of the thus-set analysis time (step S25, step S26). Meanwhile, the thus-measured transit time is displayed and/or recorded on the display (recorder) 32 as required.

[0027] Accordingly, it is possible to measure a cross-correlation coefficient between the respiratory flow or the respiratory volume, and the attenuation ratios Φ of the

arterial blood or the arterial oxygen saturation SpO_2 measured at the respective positions, so that a time when the cross-correlation coefficient attains the maximum value is taken as the transit time. Furthermore, the thus-obtained transit time serves as an index of central circulation, which has a correlation with cardiac output.

[0028] Fig. 9 shows a measuring apparatus according to a third embodiment of the invention. Components similar to those in the first embodiment will be designated by the same reference characters and repetitive explanations for those will be omitted.

[0029] In this embodiment, there is provided a switching valve 24 capable of adjusting a mixing ratio between oxygen gas from the oxygen cylinder 20 and the air to be supplied to the mouth of the subject. In addition, a sensor 26 for fractional concentration of oxygen in inspired gas to detect current FIO_2 is provided.

[0030] In this embodiment, as illustrated in Fig. 10, the light absorption sensors S1, S2, ... Sn are respectively attached to the respective measurement positions of the subject (step S31), and attenuation ratios Φ of the arterial blood or arterial oxygen saturation SpO_2 at the respective measurement positions are measured by the respective measuring sections M1, M2, ... Mn (step S32). Here, a measurement interval for the respective measuring sections M1, M2, ... Mn is set (step S33). A determination is made as to a time for fixed-time measurement in accordance with the measurement interval having been set in advance (step S34). The switching valve 24 is switched so as to adapt to an inspiration of the subject. The subject is caused to inhale 100% oxygen for only one breath, thereby causing the FIO_2 to change (step S35). Thereafter, the point in time when the FIO_2 is caused to change is detected. In conjunction therewith, there is performed measurement of a time elapsed before a change in the attenuation ratios Φ of the arterial blood or the arterial oxygen saturation SpO_2 measured at the respective measuring sections M1, M2, ... Mn; in particular, a time elapsed before a rising edge. Put another way, a transit time of oxygen in blood is measured by the transit time measuring section 30 (step S36). In conjunction therewith, the transit time is measured within the range of the measurement time having been set in advance (step S37). Meanwhile, the thus-measured transit time is displayed and/or recorded in the display (recorder) 32 as required.

[0031] Fig. 11A shows a correlation, measured by the transit time measuring apparatus of the present embodiment, between the attenuation Φ ratio of the arterial blood at each of the measurement positions and a transit time thereof in a case where the FIO_2 of the subject is caused to change. Fig. 11B shows, for the sake of clarifying measurement of the transit time, a correlation between differential values in the attenuation ratios Φ of the arterial blood and the transit time, wherein the differential values are calculated with respect to a prescribed threshold value. Meanwhile, the transit time measuring apparatus of the present embodiment can perform intermittent

measurement of the transit time at five-minute intervals when the FIO_2 of the subject is caused to change by switching inhalation of regular air to inhalation of 100% oxygen gas O_2 for about ten seconds at a rate of once per five minutes such that the change of the FIO_2 forms rectangular waves.

[0032] In this case, the switching valve 24 can be switched either automatically or manually. When the intermittent measurement is implemented, a transit time can be measured without complicating respiration management for a patient.

[0033] Although the present invention has been shown and described with reference to specific preferred embodiments, various changes and modifications will be apparent to those skilled in the art from the teachings herein. Such changes and modifications as are obvious are deemed to come within the scope of the invention as defined in the appended claims.

Claims

1. A method for measuring a transit time difference of oxygen in blood, comprising:

attaching a plurality of sensors (S1, S2,...Sn; 12, 14, 16) to prescribed positions on a subject, each of the sensors being adapted to detect a light absorption of arterial blood at one of the prescribed positions;

calculating an oxygen saturation of the arterial blood at each of the prescribed positions, based on the detected light absorption detected by each of the sensors (S1, S2,...Sn; 12, 14, 16);
varying an amount of oxygen inspired into the subject;

detecting a change in the calculated oxygen saturation at each of the prescribed positions; **characterized by**

obtaining a cross-correlation coefficient between attenuation rates or oxygen saturations measured by the sensors (S1, S2,...Sn; 12, 14, 16);

determining a difference between time periods measured at the prescribed positions, based on a time point at which the cross-correlation coefficient becomes maximum; and

outputting the determined difference as the transit time difference.

2. The measuring method as set forth in claim 1, wherein the inspired amount of oxygen is varied by causing the subject to perform at least one of a deep breathing and a breath hold.
3. The measuring method as set forth in claim 1, wherein the inspired amount of oxygen is varied by varying a concentration of oxygen to be inspired.

4. The measuring method as set forth in claim 1, wherein the oxygen saturation is obtained by a pulse oximeter (10).
5. An apparatus for measuring a transit time difference of oxygen in blood, comprising:
- a plurality of sensors (S1, S2,...Sn; 12, 14, 16), adapted to be attached to prescribed positions on a subject, each of the sensors being operable to detect a light absorption of arterial blood at one of the prescribed positions;
- a first calculator, operable to calculate an oxygen saturation of the arterial blood at each of the prescribed positions, based on the detected light absorption;
- a first detector, operable to detect a change in the calculated oxygen saturation at each of the prescribed positions when an amount of oxygen inspired into the subject is varied; **characterized by**
- a second calculator, operable to obtain a cross-correlation coefficient between attenuation rates or oxygen saturations measured by the sensors (S1, S2,...Sn; 12, 14, 16); and
- a third calculator, operable to determine a time period based on a time point at which the cross-correlation coefficient becomes maximum, as the transit time difference.
6. The measuring apparatus as set forth in claim 5, wherein the first detector is a flow sensor (22) adapted to detect that the inspired amount of oxygen is varied.
7. The measuring apparatus as set forth in claim 5, further comprising a valve (24) operable to vary a concentration of oxygen to be inspired.
8. The measuring apparatus as set forth in claim 5, wherein the oxygen saturation is obtained by a pulse oximeter (10).

Patentansprüche

1. Verfahren zum Messen einer Übergangszeitdifferenz von Sauerstoff in Blut, umfassend:
- Anbringen einer Mehrzahl von Sensoren (S1, S2, ..., Sn; 12, 14, 16) an vorgeschriebenen Positionen an einem Untersuchungsobjekt, wobei jeder der Sensoren dafür ausgelegt ist, eine Lichtabsorption von arteriellem Blut an einer der vorgeschriebenen Positionen zu erfassen;
- Berechnen einer Sauerstoffsättigung des arteriellen Blutes an jeder der vorgeschriebenen Positionen auf Grundlage der erfassten Lichtab-

sorption aus der Erfassung durch jeden der Sensoren (S1, S2, ..., Sn; 12, 14, 16);
 Variieren einer Menge des in das Untersuchungsobjekt eingeleiteten Sauerstoffes;
 Erfassen einer Änderung der berechneten Sauerstoffsättigung an jeder der vorgeschriebenen Positionen;

gekennzeichnet durch

Ermitteln eines Kreuzkorrelationskoeffizienten zwischen Dämpfungsraten oder Sauerstoffsättigungen aus der Messung **durch** die Sensoren (S1, S2, ..., Sn; 12, 14, 16);
 Bestimmen einer Differenz zwischen Zeitperioden aus der Messung an den vorgeschriebenen Positionen auf Grundlage eines Zeitpunktes, zu dem der Kreuzkorrelationskoeffizient maximal wird; und
 Ausgeben der bestimmten Differenz als Übergangszeitdifferenz.

2. Messverfahren nach Anspruch 1, wobei die eingeleitete Menge von Sauerstoff variiert wird, indem bewirkt wird, dass das Untersuchungsobjekt wenigstens eines von einem tiefen Atmen und einem Atemanhalten ausführt.
3. Messverfahren nach Anspruch 1, wobei die eingeleitete Menge von Sauerstoff durch Variieren einer Konzentration des einzuleitenden Sauerstoffes variiert wird.
4. Messverfahren nach Anspruch 1, wobei die Sauerstoffsättigung durch ein Pulsoximeter (10) ermittelt wird.
5. Vorrichtung zum Messen einer Übergangszeitdifferenz von Sauerstoff in Blut, umfassend:

eine Mehrzahl von Sensoren (S1, S2, ..., Sn; 12, 14, 16), die dafür ausgelegt sind, an vorgeschriebenen Positionen an einem Untersuchungsobjekt angebracht zu werden, wobei jeder der Sensoren dafür betrieben werden kann, eine Lichtabsorption von arteriellem Blut an einer der vorgeschriebenen Positionen zu erfassen;

einem ersten Berechner, der dafür betrieben werden kann, eine Sauerstoffsättigung des arteriellen Blutes an jeder der vorgeschriebenen Positionen auf Grundlage der erfassten Lichtabsorption zu berechnen;

einen ersten Detektor, der dafür betrieben werden kann, eine Änderung der berechneten Sauerstoffsättigung an jeder der vorgeschriebenen Positionen zu erfassen, wenn eine Menge des in das Untersuchungsobjekt eingeleiteten Sauerstoffes variiert wird;

gekennzeichnet durch

- einen zweiten Berechner, der dafür betrieben werden kann, einen Kreuzkorrelationskoeffizienten zwischen Dämpfungsraten oder Sauerstoffsättigungen aus der Messung **durch** die Sensoren (S1, S2, ..., Sn; 12, 14, 16) zu ermitteln; und
- einen dritten Berechner, der dafür betrieben werden kann, eine Zeitperiode auf Grundlage eines Zeitpunktes, zu dem der Kreuzkorrelationskoeffizient maximal wird, als Übergangszeitdifferenz zu bestimmen.
6. Messverfahren nach Anspruch 5, wobei der erste Detektor ein Strömungssensor (22) ist, der dafür ausgelegt ist zu erfassen, dass die eingeleitete Menge von Sauerstoff variiert wird.
7. Messvorrichtung nach Anspruch 5, des Weiteren umfassend ein Ventil (24), das dafür betrieben werden kann, eine Konzentration des einzuleitenden Sauerstoffes zu variieren.
8. Messvorrichtung nach Anspruch 5, wobei die Sauerstoffsättigung durch ein Pulsoximeter (10) ermittelt wird.

Revendications

1. Procédé de mesure d'une différence de temps de transit de l'oxygène dans le sang, comportant :
- la fixation d'une multiplicité de capteurs (S1, S2, ... Sn ; 12, 14, 16) dans des positions prescrites sur un sujet, chacun des capteurs étant prévu pour détecter une absorption de lumière de sang artériel dans une des positions prescrites ;
- le calcul d'une saturation en oxygène du sang artériel dans chacune des positions prescrites, sur la base de l'absorption de lumière détectée qui est détectée par chacun des capteurs (S1, S2, ... Sn ; 12, 14, 16) ;
- la modification d'une quantité d'oxygène inspirée dans le sujet ;
- la détection d'un changement dans la saturation en oxygène calculée dans chacune des positions prescrites ;
- caractérisé par**
- l'obtention d'un coefficient de corrélation croisée entre des taux d'atténuation ou des saturations en oxygène mesurés par les capteurs (S1, S2, ... Sn ; 12, 14, 16) ;
- la détermination d'une différence entre des périodes de temps mesurées dans les positions prescrites, sur la base d'un instant où le coefficient de corrélation croisée devient maximum ;
- et

la sortie de la différence déterminée comme différence de temps de transit.

2. Procédé de mesure selon la revendication 1, selon lequel la quantité d'oxygène inspirée est modifiée en amenant le sujet à réaliser au moins une respiration profonde ou une retenue de respiration.
3. Procédé de mesure selon la revendication 1, selon lequel la quantité d'oxygène inspirée est modifiée en modifiant une concentration en oxygène devant être inspiré.
4. Procédé de mesure selon la revendication 1, selon lequel la saturation en oxygène est obtenue par un oxymètre de pouls (10).
5. Appareil destiné à mesurer une différence de temps de transit de l'oxygène dans le sang, comportant :
- une multiplicité de capteurs (S1, S2, ... Sn ; 12, 14, 16), prévus pour être fixés dans des positions prescrites sur un sujet, chacun des capteurs pouvant fonctionner afin de détecter une absorption de lumière de sang artériel dans une des positions prescrites ;
- un premier calculateur, pouvant fonctionner afin de calculer une saturation en oxygène du sang artériel dans chacune des positions prescrites, sur la base de l'absorption de lumière détectée ;
- un premier détecteur, pouvant fonctionner afin de détecter un changement de la saturation en oxygène calculée dans chacune des positions prescrites quand une quantité d'oxygène inspiré dans le sujet est modifiée ;
- un deuxième calculateur, pouvant fonctionner afin d'obtenir un coefficient de corrélation croisée entre des taux d'atténuation ou des saturations en oxygène mesurés par les capteurs (S1, S2, ... Sn ; 12, 14, 16) ; et
- un troisième calculateur, pouvant fonctionner afin de déterminer une durée sur la base d'un instant où le coefficient de corrélation croisée devient maximum, comme différence de temps de transit.
6. Dispositif de mesure selon la revendication 5, dans lequel le premier détecteur est un capteur de débit (22) prévu pour détecter que la quantité d'oxygène inspirée est modifiée.
7. Dispositif de mesure selon la revendication 5, comportant en outre une soupape (24) pouvant fonctionner afin de modifier une concentration en oxygène devant être inspiré.
8. Dispositif de mesure selon la revendication 5, dans lequel la saturation en oxygène est obtenue grâce

un oxymètre de pouls (10).

5

10

15

20

25

30

35

40

45

50

55

8

FIG. 1

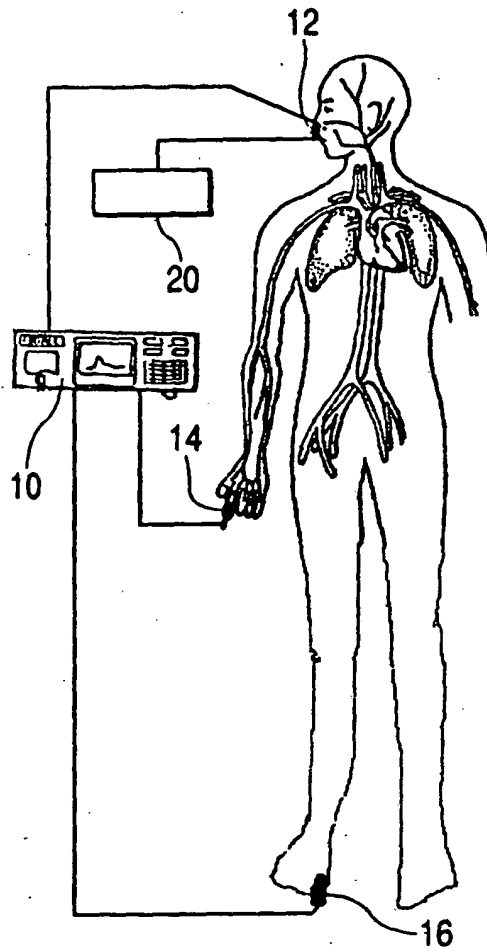


FIG. 2

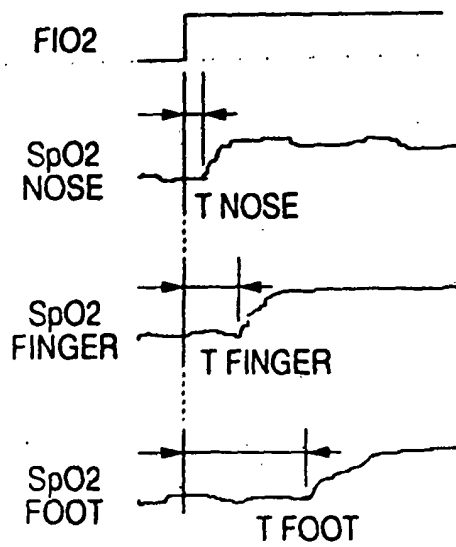


FIG. 3

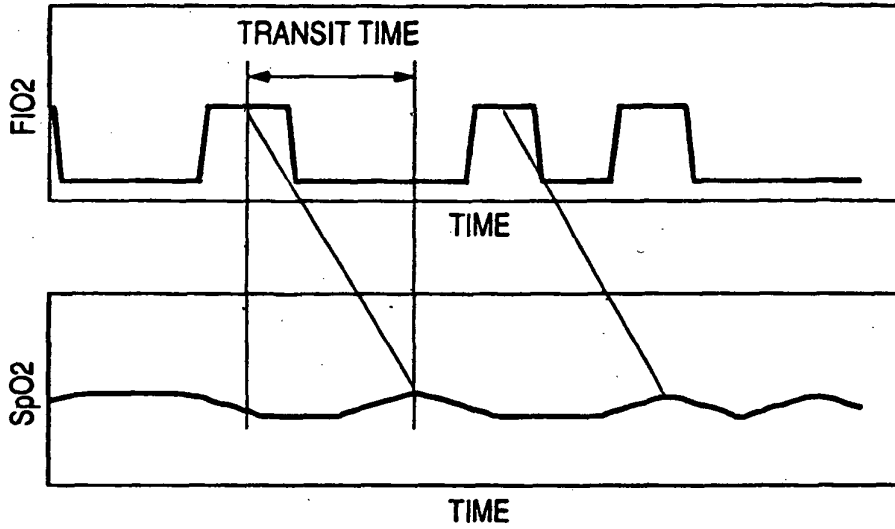


FIG. 4

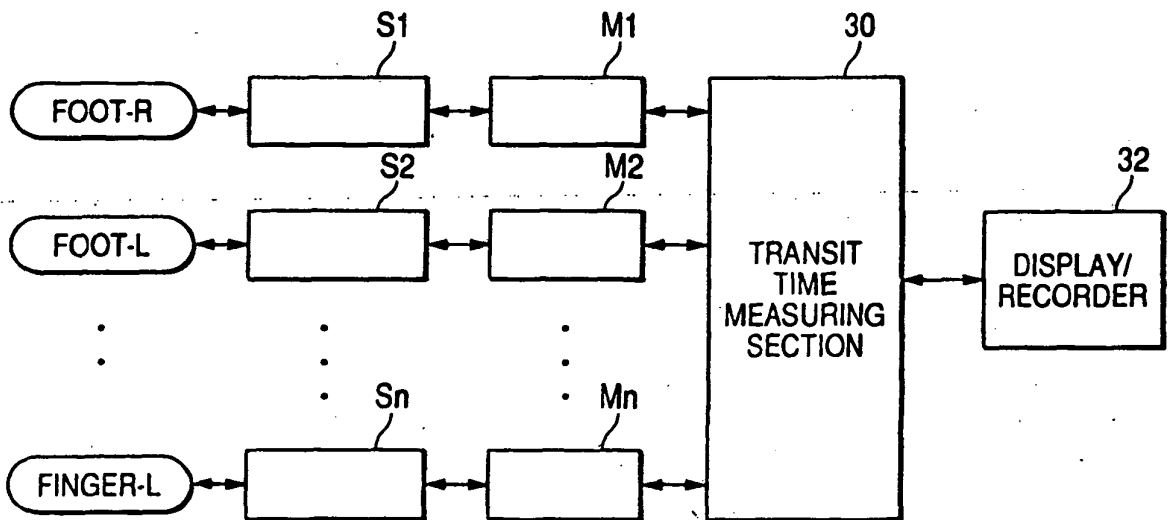


FIG. 5

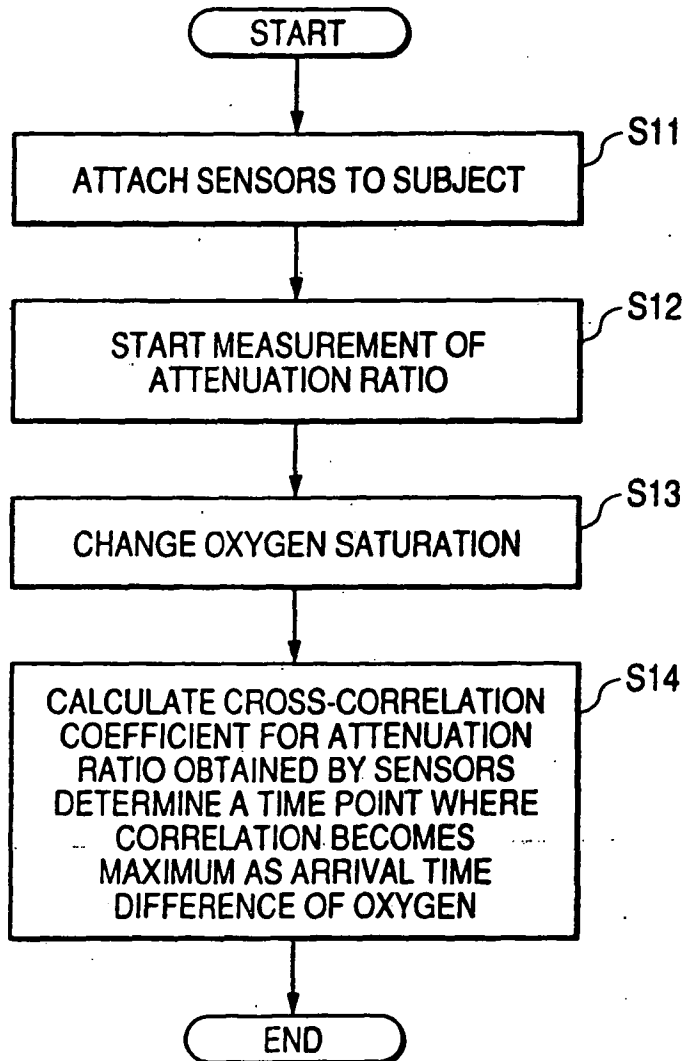


FIG. 6A

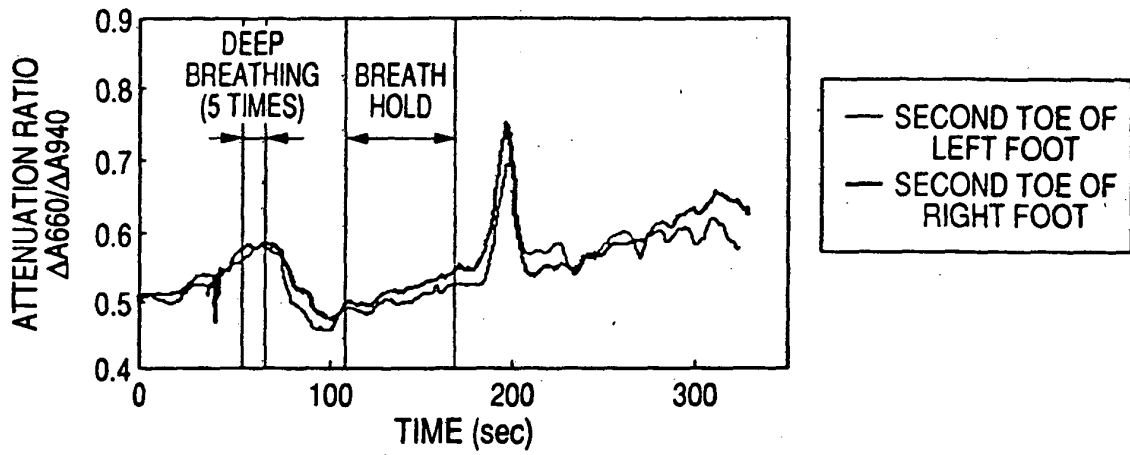


FIG. 6B

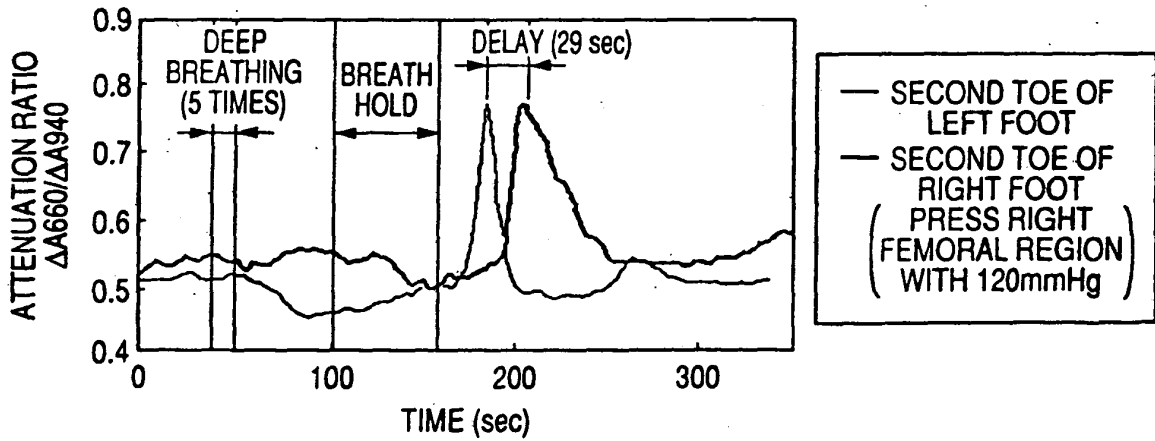


FIG. 6C

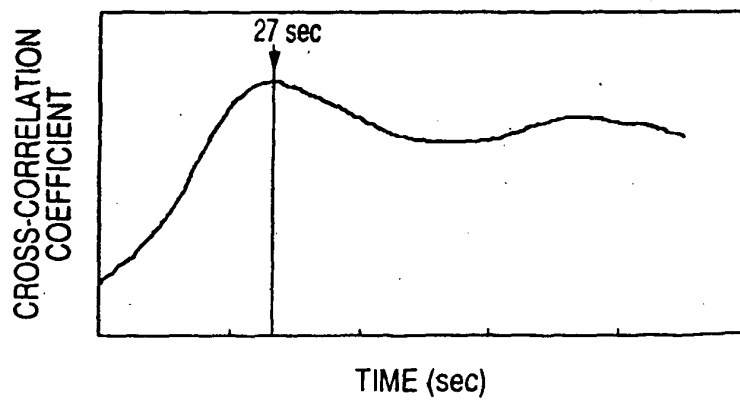


FIG. 7

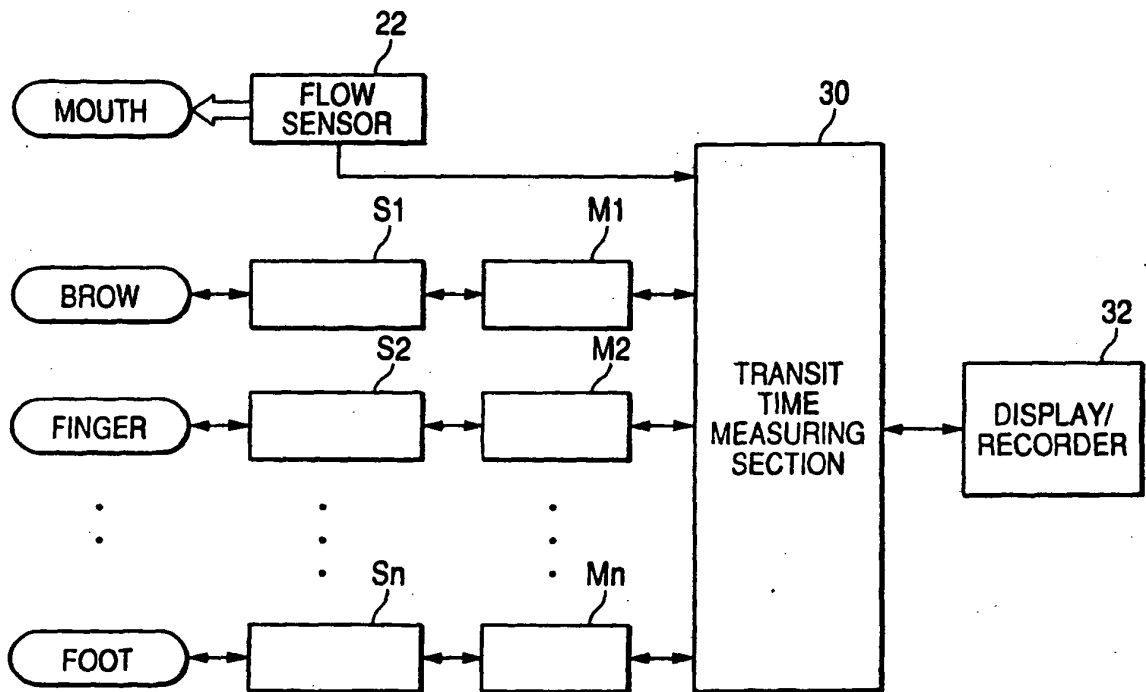


FIG. 8

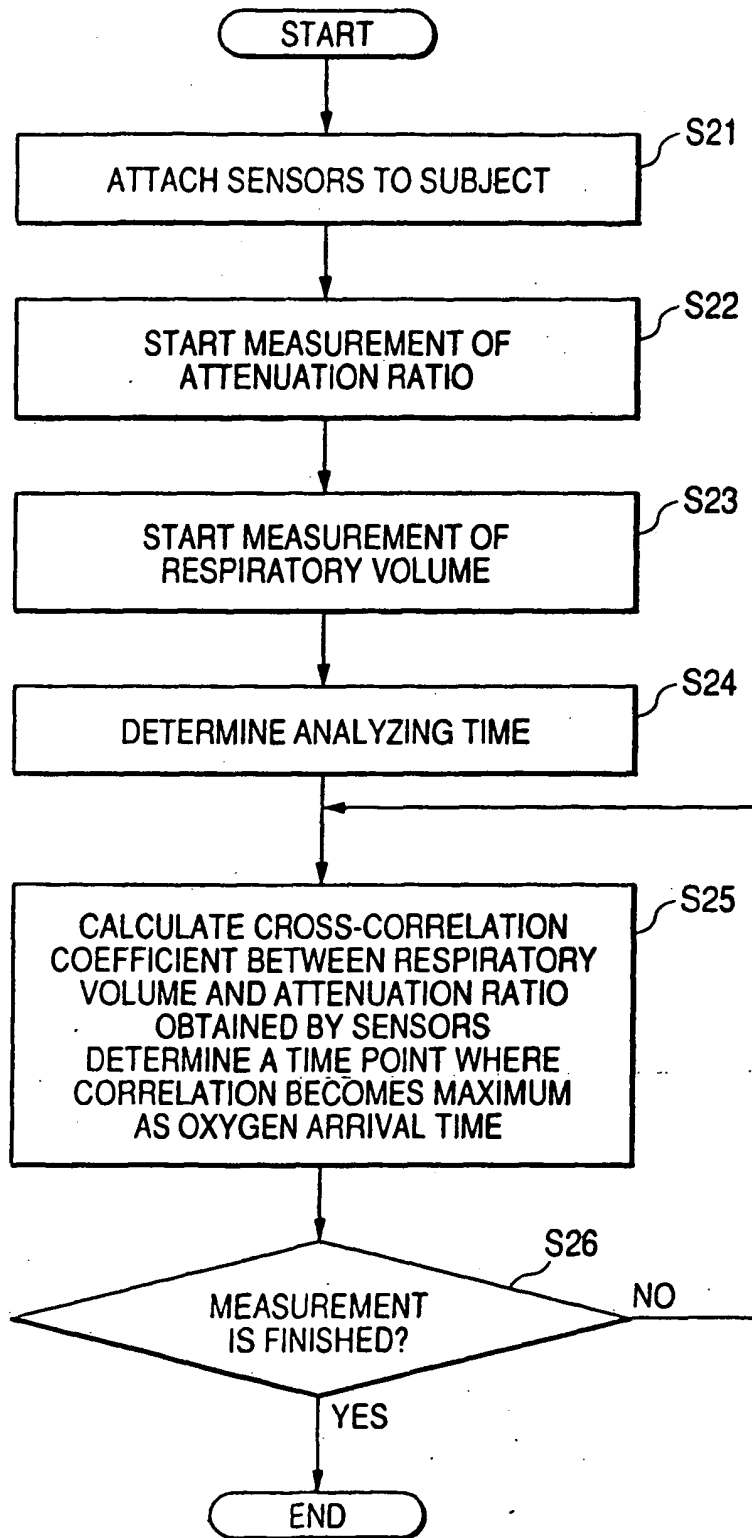


FIG. 9

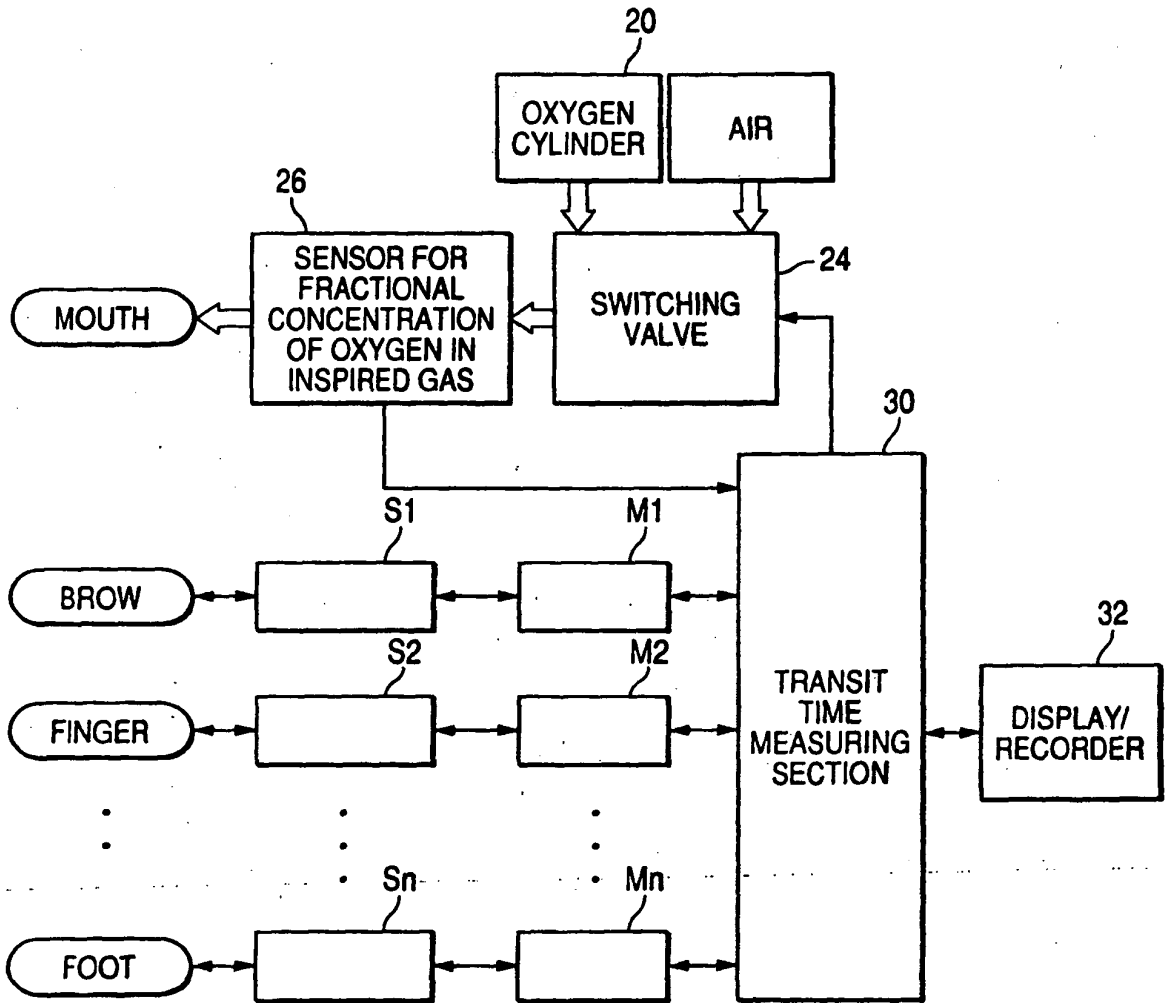


FIG. 10

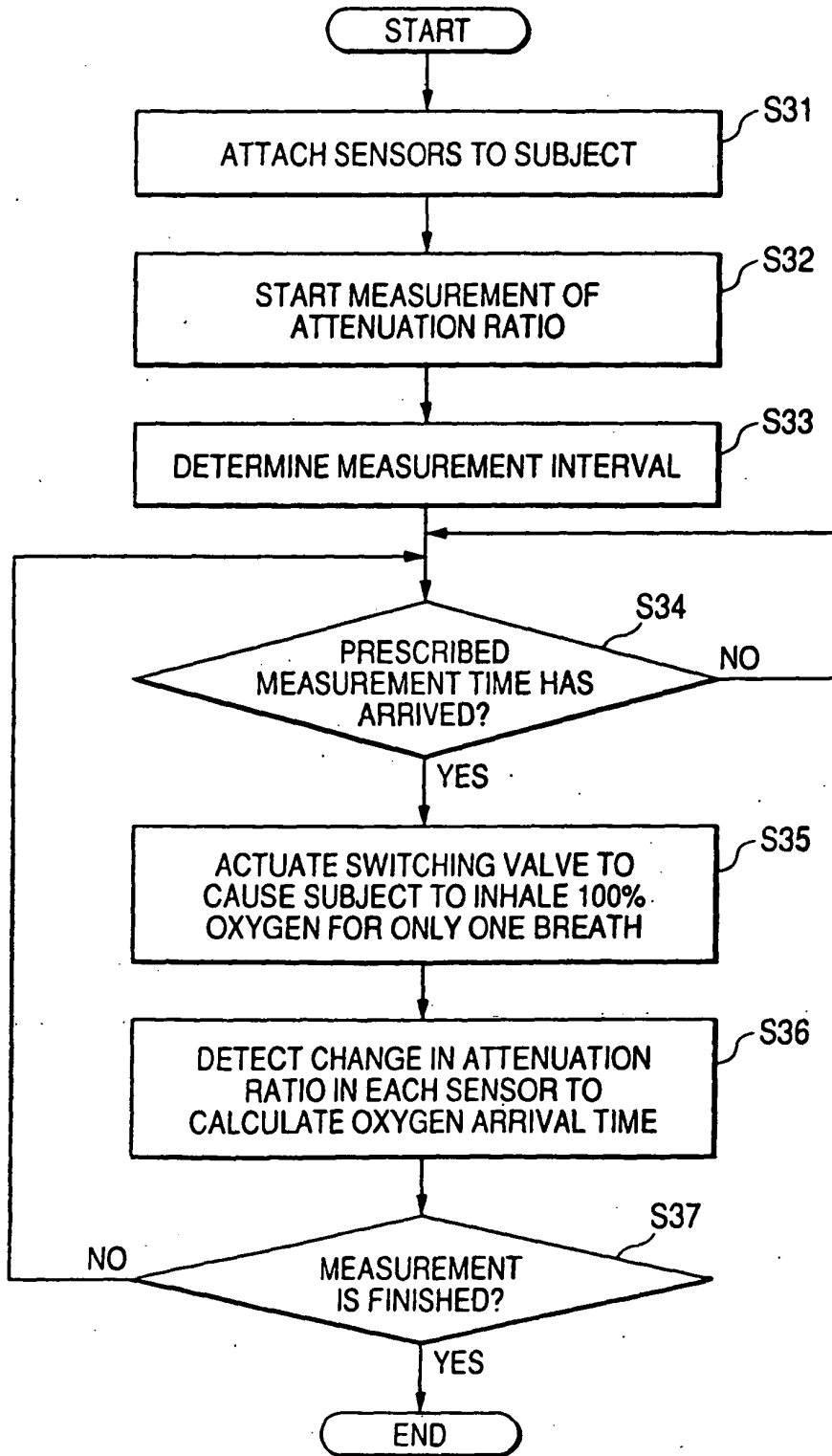


FIG. 11A

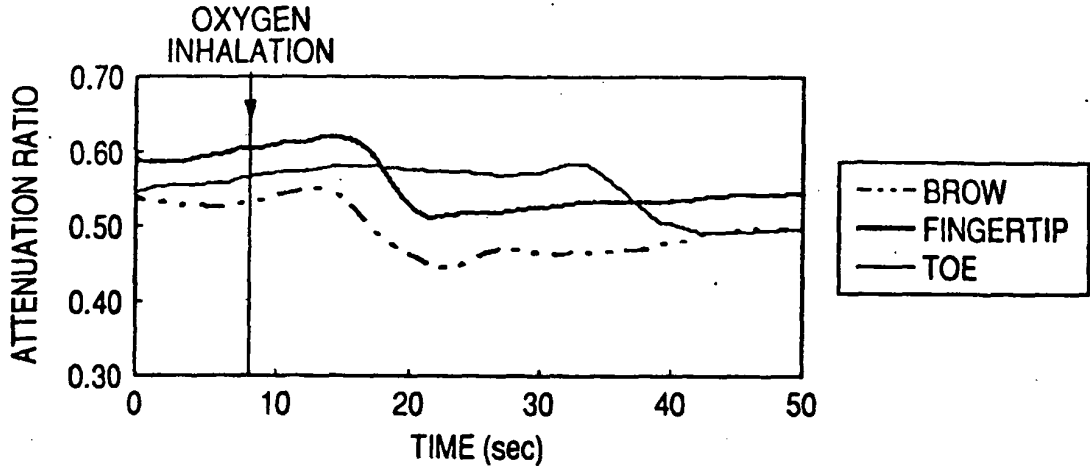


FIG. 11B

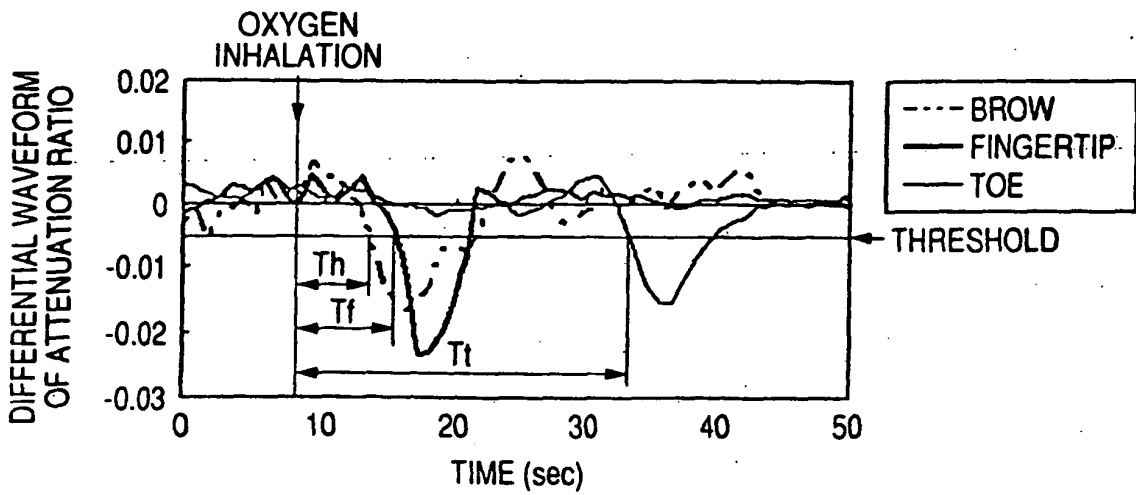


FIG. 12A

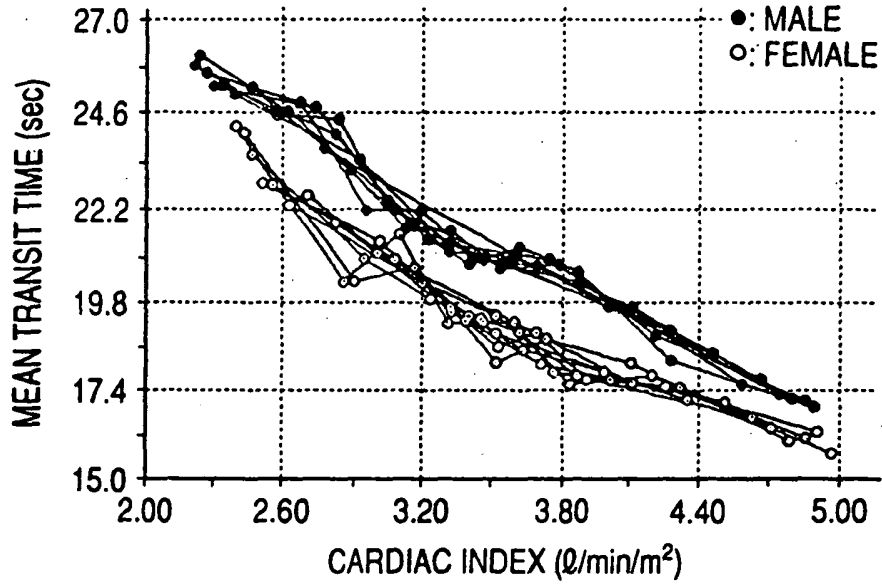


FIG. 12B

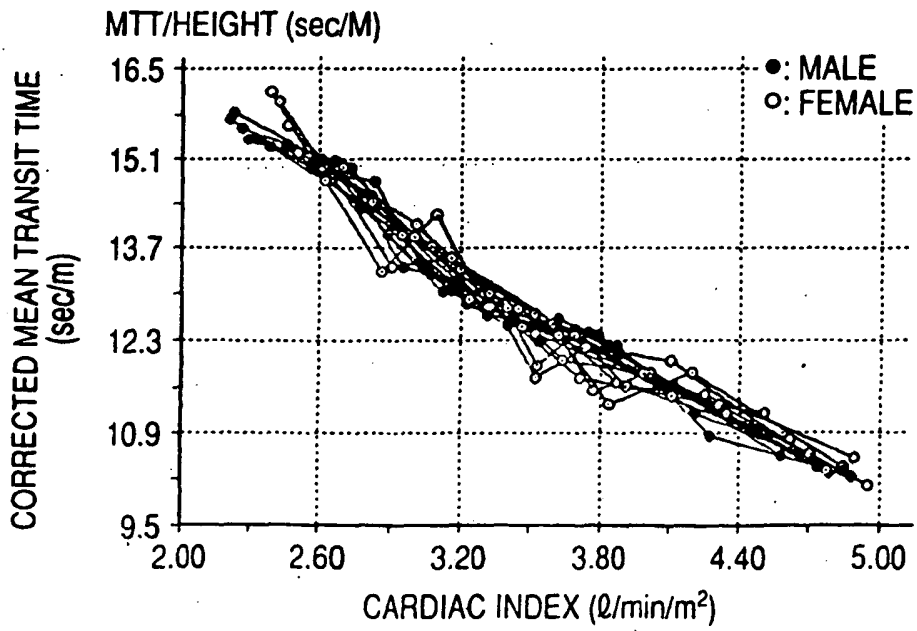
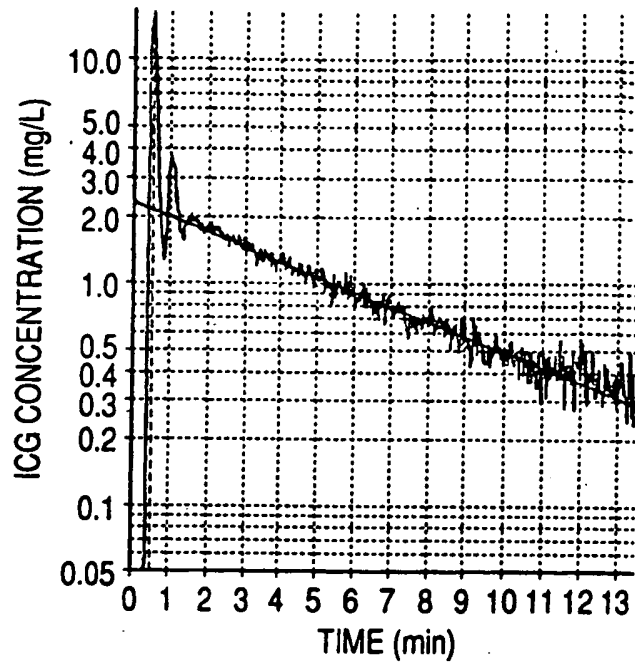
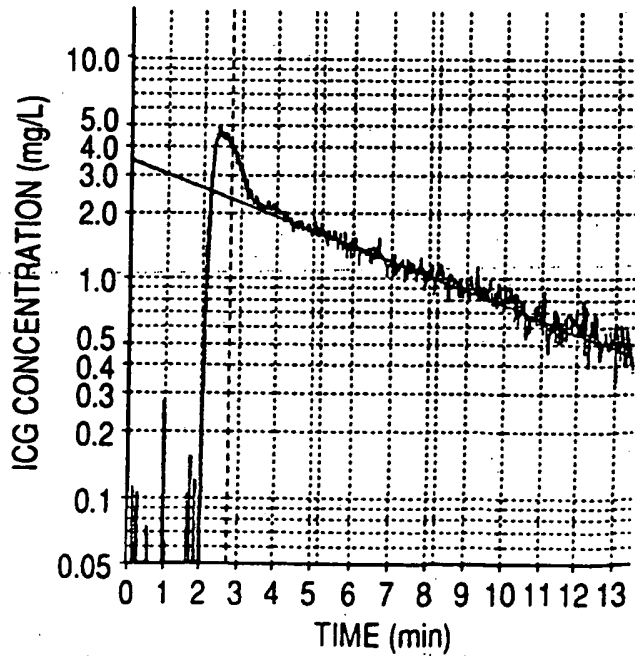


FIG. 13A



NASAL WING
TRANSIT TIME : 30 sec

FIG. 13B



FINGERTIP
TRANSIT TIME : 160 sec

REFERENCES CITED IN THE DESCRIPTION

This list of references cited by the applicant is for the reader's convenience only. It does not form part of the European patent document. Even though great care has been taken in compiling the references, errors or omissions cannot be excluded and the EPO disclaims all liability in this regard.

Patent documents cited in the description

- JP 5300888 A [0003]
- US 6577884 B [0008]

专利名称(译)	用于测量血液中氧气通过时间的装置和方法		
公开(公告)号	EP1854401B1	公开(公告)日	2009-07-15
申请号	EP2007016759	申请日	2006-01-30
[标]申请(专利权)人(译)	日本光电工业株式会社		
申请(专利权)人(译)	日本光电公司		
当前申请(专利权)人(译)	日本光电公司		
[标]发明人	KOBAYASHI NAOKI KUBOTA HIROSHI		
发明人	KOBAYASHI, NAOKI KUBOTA, HIROSHI		
IPC分类号	A61B5/00 A61B5/026		
CPC分类号	A61B5/14551 A61B5/0059 A61B5/0261		
优先权	2005097080 2005-03-30 JP 2005021087 2005-01-28 JP		
其他公开文献	EP1854401A1		
外部链接	Espacenet		

摘要(译)

为了测量血液中氧气的传输时间，将至少一个传感器连接到受试者上的至少一个指定位置。传感器适于检测在规定位置处的动脉血的光吸收。基于检测到的光吸收计算在规定位置的动脉血的氧饱和度。吸入受试者的氧气量在参考时间点变化。检测在规定位置处计算的氧饱和度的变化。测量从参考时间点到氧饱和度变化的时间点的时间段。

FIG. 1

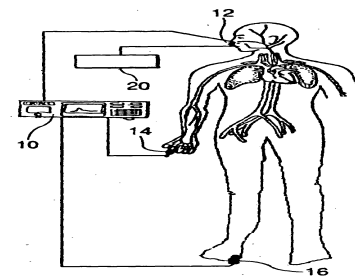


FIG. 2

