



(12) **EUROPEAN PATENT APPLICATION**

(43) Date of publication:
17.09.2003 Bulletin 2003/38

(51) Int Cl.⁷: **A61B 5/00, A61B 5/024**

(21) Application number: **03251571.0**

(22) Date of filing: **14.03.2003**

(84) Designated Contracting States:
**AT BE BG CH CY CZ DE DK EE ES FI FR GB GR
 HU IE IT LI LU MC NL PT RO SE SI SK TR**
 Designated Extension States:
AL LT LV MK

- **Jeon, Kye-jin**
Suwon-City, Kyungki-do (KR)
- **Lee, Jong-youn**
Kiheung-eub, Yongin-city, Kyungki-do (KR)
- **Park, Kun-kook**
Kiheung-eub, Yongin-city, Kyungki-do (KR)
- **Kim, Su-jin**
Suseong-gu, Daejon (KR)
- **Jwa, Hoon-jong**
Gangbuk-gu, Seoul (KR)

(30) Priority: **16.03.2002 KR 2002014277**

(71) Applicant: **SAMSUNG ELECTRONICS CO., LTD.**
Suwon-City, Kyungki-do (KR)

(74) Representative: **Greene, Simon Kenneth**
Elkington and Fife,
Prospect House,
8 Pembroke Road
Sevenoaks, Kent TN13 1XR (GB)

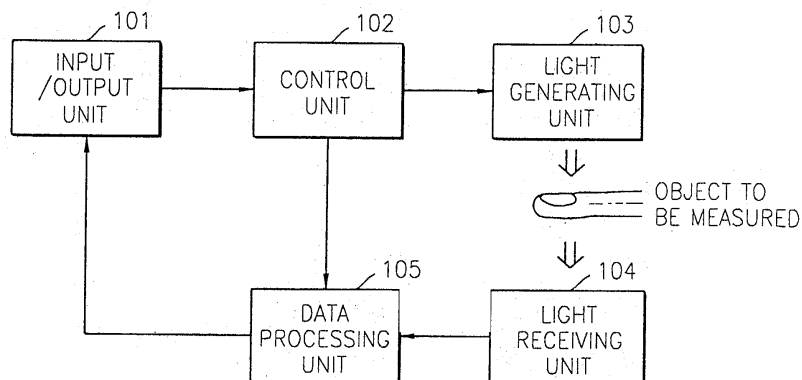
(72) Inventors:
 • **Yoon, Gil-won**
Seongdong-gu, Seoul (KR)
 • **Kim, Hong-sig, 180 Geumgok-dong**
Bundang-gu, Seongnam-City, Kyungki-do (KR)

(54) **Diagnostic method and apparatus using light**

(57) A diagnosis method and apparatus for measuring blood hemoglobin concentration, oxygen saturation, pulse rate, respiration rate, and degree of aging of blood vessels using light are provided. The diagnosis apparatus using light includes: an input/output unit which receives a command for measurement from a user and provides information on the result of a measurement to the user; a control unit which receives the command for measurement from the input/output unit and generates a control signal; a light generating unit which generates at least two light beams for measurement according to

the control signal; a light receiving unit which receives the light beams transmitted through an object that is subject to measurement and converts the received light beams into electrical signals; and a data processing unit which processes the electrical signals received from the light receiving unit and outputs information on the result of a predetermined measurement. Multiple parameters, including hemoglobin concentration, oxygen saturation, pulse rate, respiration rate, and degree of aging of blood vessels, can be noninvasively measured using the diagnosis apparatus.

FIG. 1



Description

[0001] The present invention relates to a method of operation and apparatus using light. The apparatus may be used for measuring blood hemoglobin concentration, oxygen saturation, pulse rate, respiration rate, and degree of aging of blood vessels using light.

[0002] Hemoglobin in red blood cells responsible for oxygen supply to the human body is essential for the normal function of every body cell. A reduced supply of oxygen to the body restricts the intercellular energy metabolism in tissues, and a lack of oxygen for a prolonged period results in death. Hemoglobin content is used as a measure of anemia and is measured to qualify blood donors and to determine the volume of blood that can be taken from blood donors.

[0003] There is a need for real-time monitoring of patient's condition from measuring hemoglobin concentration, oxygen saturation, pulse rate, respiration rate, and degree of aging of blood vessels, especially in patients bleeding as the results of traffic accident and in patients who need surgical operation. Also, there is a need for introducing a convenient method that enables to check frequently biological conditions of children, the growing youth, females, and pregnant by measuring such parameters.

[0004] Conventionally, hemoglobin concentration is measured in a medical institute for therapeutic or prophylactic purposes through chemical analysis using blood drawn from the body. The measurements of pulse rate, respiration rate, or degree of aging of blood vessels are conducted only by physicians. Therefore, a convenient method enabling the general public to personally measure those parameters at home is required.

[0005] According to the aspect of the present invention, there is provided a diagnosis apparatus using light, comprising: an input/output unit which receives a command for measurement from a user and provides information on the result of measurement to the user; a control unit which receives the command for measurement from the input/output unit and generates a control signal; a light generating unit which generates at least two light beams for measurement according to the control signal; a light receiving unit which receives the light beams transmitted through an object that is subject to measurement and converts the received light beams into electrical signals; and a data processing unit which processes the electrical signals received from the light receiving unit and outputs information on the result of a predetermined measurement.

[0006] The light generating unit may comprise: a digital-to-analog converter which receives the control signal from the control unit and converts the received control signal into an analog signal; a light emitting diode driver which drives a light emitting diode to generate the light beams according to the analog signal; and a light radiator which radiates the generated light beams onto the object.

[0007] The light receiving unit may comprise: a photodetector which detects the intensities of the light beams transmitted through the object and converts the detected light beam intensities into electrical signals; a low-pass filter which filters off a high frequency component of the electrical signals representing the intensity of the light beams received from the photodetector; an analog-to-digital converter which converts the analog electrical signals representing the intensity of the light beams, from which the high-frequency component has been removed, into digital signals.

[0008] The data processing unit may comprise: a ratio calculation portion which receives the electrical signals representing the intensity of the light beams received by the light receiving unit and calculates, for each wavelength of the light beams used, a ratio of the intensity of the light received by the light receiving unit with respect to the initial intensity of the light radiated from the light generating unit; and a hemoglobin concentration and oxygen saturation calculation portion which calculates a hemoglobin concentration value using the ratio calculated by the ratio calculation portion based on a correlation between light intensity variations and hemoglobin concentrations and calculates an oxygen saturation value using the calculated hemoglobin concentration value.

[0009] In one embodiment, the data processing unit receives the electrical signals representing the intensity of the light beams output from the light receiving unit, extracts a pulse wave signal having a frequency corresponding to an average pulse rate per minute for humans from the received electrical signals, and calculates a pulse rate based on an average time interval between peaks detected from the extracted pulse wave signal.

[0010] The data processing unit may receive the electrical signals representing the intensity of the light beams output from the light receiving unit, extracts a respiration signal having a frequency corresponding to an average respiration rate per minute for humans from the received electrical signals, and calculates a respiration rate based on an average time interval between peaks detected from the extracted respiration signal.

[0011] The data processing unit may receive the electrical signals representing the intensity of the light beams output from the light receiving unit, extracts a first pulse wave signal having a frequency corresponding to an average pulse rate per minute for humans from the received electrical signals, differentiates the extracted first pulse wave signal into a second pulse wave signal to detect inflection points therefrom, calculates a diagnostic index for the degree of aging of blood vessels using the values of the inflection points, and determines a degree of aging of blood vessels using the calculated diagnostic index, based on a correlation between the degrees of aging of blood vessels and diagnostic indices therefor.

[0012] According to another aspect of the present in-

vention, there is provided a method of operation using light, comprising: (a) receiving a command for measurement from a user; (b) generating a control signal according to the received command for measurement; (c) generating at least two light beams for measurement according to the control signal; (d) radiating the light beams onto an object that is subject to measurement, detecting the intensities of the light beams transmitted through the object, and converting the detected intensities of the light beams into electrical signals; and (e) processing the electrical signals to obtain information on the result of a predetermined measurement.

[0013] In a method according to the present invention, step (c) may comprise: (c1) receiving the control signal and converting the received control signal into an analog signal; (c2) generating the at least two light beams according to the analog signal; and (c3) radiating the generated light beams onto the object. Step (d) may comprise: (d1) detecting the intensities of the light beams transmitted through the object and converting the detected light beam intensities into the electrical signals; (d2) filtering off a high frequency component of the electrical signals representing the intensity of the transmitted light beams; and (d3) converting the analog electrical signals representing the intensity of the light beams, from which the high-frequency component has been removed, into digital electrical signals.

[0014] Step (e) may comprise: (e1) calculating, for each wavelength of the light beams used, a ratio of the intensity of the light beam received in step (d) with respect to the initial intensity of the light radiated in step (c); (e2) calculating a hemoglobin concentration value using the ratio calculated in step (e1) based on a correlation between light intensity variations and hemoglobin concentrations and calculating an oxygen saturation value using the calculated hemoglobin concentration value.

[0015] Alternatively or additionally, step (e) may comprise: extracting a pulse wave signal having a frequency corresponding to an average pulse rate per minute for humans from the electrical signals obtained in step (d); and calculating a pulse rate based on an average time interval between peaks detected from the extracted pulse wave signal.

[0016] Alternatively or additionally, step (e) may comprise: extracting a respiration signal having a frequency corresponding to an average respiration rate per minute for humans from the electrical signals obtained in step (d); and calculating a respiration rate based on an average time interval between peaks detected from the extracted respiration signal.

[0017] Alternatively or additionally, step (e) may comprise: extracting a first pulse wave signal having a frequency corresponding to an average pulse rate per minute for humans from the electrical signals obtained in step (d); differentiating the extracted first pulse wave signal into a second pulse wave signal to detect inflection points therefrom; calculating a diagnostic index for

the degree of aging of blood vessels using the values of the inflection points; and determining a degree of aging of blood vessels using the calculated diagnostic index, based on a correlation between the degrees of aging of blood vessels and diagnostic indices therefor.

[0018] A method according to the present invention may further comprise providing the result of the predetermined measurement to the user.

[0019] The above and other features and advantages of the present invention will become more apparent by describing in detail exemplary embodiments thereof with reference to the attached drawings in which:

FIG. 1 is a block diagram illustrating the overall configuration of a diagnosis apparatus using light, according to an embodiment of the present invention; FIG. 2 is a detailed block diagram of a light generating unit of FIG. 1;

FIG. 3 is a detailed block diagram of a light receiving unit of FIG. 1;

FIG. 4 is a detailed block diagram of a data processing unit of FIG. 1;

FIG. 5 is an example of a pulse wave measured in accordance with the present invention;

FIG. 6 shows graphs of quantitative diagnostic indices for the degree of aging of blood vessels, which are applied in the present invention;

FIG. 7 is a flowchart illustrating a diagnosis method using light, according to an embodiment of the present invention;

FIG. 8 is a flowchart illustrating a method for measuring hemoglobin concentration and oxygen saturation in step 705 of FIG. 7;

FIG. 9 is a flowchart illustrating a method for calculating pulse rate in step 706 of FIG. 7;

FIG. 10 is a flowchart illustrating a method for calculating respiration rate in step 706 of FIG. 7; and

FIG. 11 is a flowchart illustrating a method for calculating degree of aging of blood vessels in step 707 of FIG. 7.

[0020] Embodiments of a method of operation and diagnosis apparatus will be described with reference to the appended drawings.

[0021] FIG. 1 shows the overall configuration of a diagnosis apparatus using light, according to an embodiment of the present invention. The diagnosis apparatus of FIG. 1 includes an input/output unit 101, a control unit 102, a light generating unit 103, a light receiving unit 104, and a data processing unit 105.

[0022] The input/output unit 101 receives from a user a parameter to be measured, such as blood hemoglobin concentration, oxygen saturation, pulse rate, respiration rate, degree of aging of blood vessels (also simply referred to as "DOA" below), and informs the user of information on the result of a measurement on the input parameter. The input/output unit 101 may use a button, a mouse, a keyboard, etc. as an input device and may

use a computer monitor, a liquid crystal display (LCD), or other displays as an output device providing information on the result of a measurement to the user. Alternatively, information on the result of a measurement may be transmitted via, for example, an RS232 port to an external personal computer (PC), a personal digital assistant (PDA), etc.

[0023] The control unit 102 receives a command to measure a predetermined parameter from the input/output unit 101 and transmits information on the parameter to the light generating unit 103, the light receiving unit 104, and the data processing unit 105. The control unit 102 also checks the operation of each unit of the diagnosis apparatus.

[0024] The light generating unit 103 generates at least two light beams having predetermined wavelengths for measurement according to the information on the parameter received from the control unit 102. A detailed configuration of the light generating unit 103 is shown in FIG. 2. Referring to FIG. 2, the light generating unit 103 may include a digital-to-analog converter (DAC) 201 which converts a digital control signal received from the control unit 102 into an analog signal, a light emitting diode (LED) driver 202 which receives the analog control signal and drives an LED which generates the at least two light beams having predetermined wavelengths, and a light radiator 203 which externally radiates the at least two light beams onto an object to be measured.

[0025] The light receiving unit 104 measures the intensities of the light beams transmitted through the object, among the light beams emitted from the light generating unit 103, and converts the light beams to electrical signals. The configuration of the light receiving unit 104 is shown in detail in FIG. 3. Referring to FIG. 3, the light receiving unit 104 includes a photodetector 301 which detects the intensities of the light beams transmitted through the object and converts them to electrical signals, a low-pass filter (LPF) 302 which filters off a high frequency component of the electrical signals received from the photodetector 301, and an analog-to-digital converter (ADC) 303 which converts the analog electrical signals from which the high-frequency component has been removed by the LPF 302 into digital signals.

[0026] The data processing unit 105 receives the electrical signals representing the intensity of the received light beams from the light receiving unit 104 and processes the received electrical signals to provide information on the result of a measurement on the input parameter, such as blood hemoglobin concentration, oxygen saturation, pulse rate, respiration rate, and degree of aging of blood vessels. The configuration of the data processing unit 105 is shown in detail in FIG. 4.

[0027] Referring to FIG. 4, the data processing unit 105 includes a data storage portion 406, a ratio calculation portion 401, a hemoglobin concentration and oxygen saturation calculation portion 402, a pulse rate calculation portion 403, a respiration rate calculation por-

tion 404, and a DOA calculation portion 405. These elements provide the following functions.

[0028] The ratio calculation portion 401 receives the digital intensity signals for the received light beams output from the light receiving unit 104 and, for each of the light beams, calculates a ratio of the intensity of the light received by the light receiving unit 104 with respect to the initial intensity of the light radiated from the light generating unit 103 onto the object used.

[0029] The hemoglobin concentration and oxygen saturation calculation portion 402 calculates a hemoglobin concentration value using the ratio calculated by the ratio calculation portion 401, based on a correlation between light intensity variations and hemoglobin concentrations, and calculates an oxygen saturation value using the calculated hemoglobin concentration value. The same method as disclosed in Korean Patent Application No. 2001-21124 corresponding to publication US 2003/009090 by the same applicant, Samsung Electronics, is applied to measure hemoglobin concentration and oxygen saturation in the present invention. Therefore, the specification of the preceding application can be referred to for detailed information. Only a method for calculating oxygen saturation following the calculation of hemoglobin concentration is briefly described below. Oxygen saturation, which is expressed as a percentage of the concentration of oxyhemoglobin bound to oxygen with respect to total hemoglobin concentration, is measured to quantify the amount of oxygen saturated in blood for the normal function of body cells. To measure oxygen saturation, red light and infra red light are transmitted through biological tissues, the absorbance for each wavelength of the radiated lights is measured using pulses of arterial blood, and a ratio of the measured absorbances is calculated as the oxygen saturation. Most of the light radiated on the human body is absorbed by bones, tissues, etc., which are not involved in pulsing, via predetermined travelling paths, and only 1-2% of the light radiated is absorbed by arterial blood which induces pulses. By measuring the intensity of the light transmitted through the body, the light absorbencies of the pulsing components and the non-pulsing components for each wavelength of the radiated light beams can be calculated, which will give the light absorbance of hemoglobin present in the arterial blood. As a result, the oxygen saturation of hemoglobin can be determined from the absorbance ratio between the two wavelengths of light.

[0030] The pulse rate calculation portion 403 receives the digital signals corresponding to the intensities of the received light beams from the light receiving unit 104, extracts a pulse wave signal having a frequency corresponding to an average pulse rate per minute for humans from the received digital signal, and calculates a pulse rate per minute based on an average time interval between peaks detected from the extracted pulse wave signal. The method for calculating the pulse rate per minute according to the present invention will be de-

scribed in greater detail.

[0031] In particular, the pulse rate calculation portion 403 receives the digital signals corresponding to the intensities of the light beams sequentially transmitted through a predetermined body site to be measured, i.e., a finger, and extracts only a pulse wave signal having a frequency in accordance with an average pulse rate for humans from the received signals using, for example, software such as a filtering program. Differentiation is performed on the pulse wave signal passed through a filter, and inflection points at which the slope changes from positive to negative are detected from the differentiated pulse wave signal. When an inflection point has a value greater than a predetermined threshold value, the inflection point is stored as a peak. An average time interval between detected peaks is calculated, and the number of peaks in a 60 second interval is calculated based on the average time interval as a pulse rate.

[0032] A received signal as described above can be classified into pulse waves, velocity pulse waves, or acceleration pulse waves according to the signal processing technique applied to the received signal. In general, pulse waves refer to the original waveform of body pulses and are used to characterize the original body pulses. However, the original body pulses have too smooth a waveform for variations to be detected. To compensate for this drawback, the original body waves are differentiated for clinical applications. These differential body waves are called "velocity pulse waves". Velocity pulse waves are used to analyze variations in the waveform of the original body waves. Velocity pulse waves, i.e., differential pulse waves, are used in currently available pulse wave detectors. However, how the original body waves vary cannot be fully analyzed with velocity pulse waves. For this reason, velocity pulse waves are further differentiated into "acceleration pulse waves" for clinical uses. Recent advances in the medical engineering field, especially in the diagnosis of circulator system disorders, have put greater weight on electrocardiograms, photocardigrams, cardiac catheterizations, etc. Although various experiments have been conducted on pulse waves, the consequence of pulse waves as a diagnostic index tends to be underestimated due to the simple pulse waveform and its nature of being susceptible to a number of factors. Pulse waves are considered to be significant only to some extent in a limited number of peripheral vascular diseases. However, based on the possibility of measuring cardiac failure by the palpation of the radial artery, research on pulse waves as a measure of cardiac reserve or cardiac insufficiency has been conducted. Measuring cardiac failure by the palpation of the radial artery is based on the fact that certain kinds of cardiac disorders lead to a typical alternation in the pulse waveform resulting from abnormal hemokinetic behaviours. In addition, pulse waves can be used as a diagnostic index for vascular diseases, such as arterial occlusive disorders, alterations in vascular elasticity, etc.

[0033] An example of a pulse wave is illustrated in FIG. 5. Referring to FIG. 5, a waveform indicated by reference numeral 501 and "PTG" corresponds to an original body pulse wave, and a waveform indicated by reference numeral 502 and "SDPTG" corresponds to an acceleration pulse wave generated by differentiating the waveform 501 twice.

[0034] The respiration rate calculation portion 404 receives the digital signals corresponding to the intensities of the received light beams from the light receiving unit 104, extracts a respiration signal having a frequency in accordance with the average respiration rate per minute for humans, and determines a respiration rate based on an average time interval between peaks detected from the extracted respiration signal.

[0035] The method for calculating the respiration rate per minute will be described in detail. A respiration signal having a frequency in accordance with the average respiration rate for humans is extracted from a pulse wave signal using a bandpass filter. This bandpass filter used may be implemented using software.

[0036] Normal adults breathe 10-20 times a minute in a stable state and up to about 45 times a minute when exercising. Therefore, the respiration signal has a relatively low frequency of about 0.1-0.5 Hz with respect to the pulse wave signal and can be separated from the pulse wave signal using an appropriate bandpass filter. Inflection points at which the slope changes from positive to negative are detected from the separated respiration signal that has passed a digital filter. Since one inflection point corresponds to one breath, the respiration rate per minute can be calculated by counting the number of inflection points in a 60 second interval.

[0037] The DOA calculation portion 405 receives the digital signals corresponding to the intensities of the received light beams, extracts a first pulse wave signal having a frequency in accordance with the average pulse rate for humans, differentiates the extracted first pulse wave signal into a second pulse wave signal to detect inflection points therefrom, calculates a diagnostic index for the degree of aging of blood vessels using the values of the inflection points, and determines a degree of aging of blood vessels for a subject using the calculated diagnostic index, based on a correlation between the degrees of aging of blood vessels and diagnostic indices therefor.

[0038] The method for calculating a degree of aging of blood vessels according to the present invention will be described in detail. Referring to FIG. 5, in the acceleration pulse waveform 502, "a" and "d" denote the start and end points of systolic contraction, respectively, and "e" denotes diastolic contraction. Value ratios at particular inflection points in the acceleration waveform, including d/a , b/a , c/a , e/a , $(b-d-c-e)/a$, etc., can be used as quantitative diagnostic indices for the degree of aging of blood vessels. FIG. 6 shows graphs showing correlations of the diagnostic indices with age. The index b/a is linearly proportional to age. The index d/a tends to

be inversely proportional to age.

[0039] The data storage portion 406 stores the calculated results output from the hemoglobin concentration and oxygen saturation calculation portion 402, the pulse rate calculation portion 403, the respiration rate calculation portion 404, and the DOA calculation portion 405 and outputs a calculated result according to a control signal of the control unit 102.

[0040] FIG. 7 is a flowchart illustrating a diagnostic method using light, according to an embodiment of the present invention. Initially, at least one parameter to be measured, including blood hemoglobin concentration, oxygen saturation, pulse rate, respiration rate, and degree of aging of blood vessels, is received from a user (step 701). Next, an LED generating light required to measure a desired parameter is driven to generate at least two light beams having different wavelengths (step 702). The generated light beams are radiated onto a subject's body part, for example, a finger of the subject (step 703). The light beams transmitted through the subject are received for intensity measurement (step 704), and the measured intensities of the light beams are converted into electrical signals. The electrical signals are used to calculate the parameter to be measured that is input by the user.

[0041] By using the methods described above, hemoglobin concentration and oxygen saturation (step 705), pulse rate and respiration rate (step 706), and degree of aging of blood vessels (step 707) are calculated. Next, the calculated results are stored or are provided to the user (step 708).

[0042] FIG. 8 is a flowchart illustrating a method for calculating hemoglobin concentration and oxygen saturation in step 705 of FIG. 7. Initially, at least two wavelengths thought to be isobestic are selected from a region of wavelengths in which the extinction coefficient for water is smaller than that for hemoglobin (step 804). Next, light beams having the selected wavelengths are sequentially radiated onto a predetermined site of the subject's body (step 802). The light beams transmitted through the predetermined site of the subject's body are received at one body site using one photodetector and converted into electrical signals (step 803). The light attenuation variation for each wavelength is calculated using the electrical signals (step 804), at least one ratio between the calculated light attenuation variations is calculated (step 805), and hemoglobin concentration is calculated using the calculated light attenuation variation ratio (step 806). Next, oxygen saturation is calculated using the calculated hemoglobin concentration (step 807).

[0043] FIG. 9 is a flowchart illustrating a method for calculating pulse rate in step 706 of FIG. 7. Pulse wave data collected for a predetermined period is filtered through a bandpass filter to obtain a pulse wave signal (step 901). The filtered pulse wave signal is differentiated (step 902). Inflection points at which the slope changes from positive to negative are detected from the dif-

ferentiated pulse wave signal (step 903). The value of each of the inflection points is compared with a predetermined threshold value. If the value of an inflection point is greater than the predetermined threshold value, the inflection point is stored as a peak (step 904). An average time interval between the detected peaks is calculated (step 905), the number of peaks in a 60 second interval is calculated based on the average time interval between peaks, and the result is set as a pulse rate (step 906).

[0044] FIG. 10 is a flowchart illustrating a method for calculating the respiration rate in step 706 of FIG. 7. Pulse wave data collected for a predetermined period is filtered through a bandpass filter to obtain a respiration signal (step 1001). The filtered respiration signal is differentiated (step 1002). Inflection points at which the slope changes from positive to negative are detected from the differentiated respiration signal (step 1003). The value of each of the inflection points is compared with a predetermined threshold value. If the value of an inflection point is greater than the predetermined threshold value, the inflection point is stored as a peak (step 1004). An average time interval between the detected peaks is calculated (step 1005), the number of peaks in a 60 second interval is calculated based on the average time interval between peaks, and the result is set as a respiration rate (step 1006).

[0045] FIG. 11 is a flowchart illustrating a method for measuring the degree of aging of blood vessels in step 707 of FIG. 7. Initially, pulse wave data collected for a predetermined period is filtered through a bandpass filter to obtain a pulse wave signal (step 1101). The filtered pulse wave signal is differentiated twice into an acceleration pulse wave signal (step 1102). Inflection points at which the slope changes from positive to negative are detected from the accelerated pulse wave signal (step 1103). Next, the degree of aging of blood vessels is calculated based on the values of the inflection points.

[0046] Light beams used in the present invention for measurement are selected from a region of wavelengths in which the extinction coefficient for water is smaller than that of hemoglobin, i.e., from wavelengths no longer than 1300 nm. At least two isobestic wavelengths having the same extinction coefficient for any forms of hemoglobin, i.e., irrespective of whether hemoglobin is in oxidized or reduced form, are selected from that wavelength range. Accordingly, light beams having a wavelength of 422 nm, 453 nm, 499 nm, 529 nm, 546 nm, 569 nm, 584 nm, 805 nm, or 1300 nm can be used in the present invention.

[0047] The above embodiments of the present invention may be embodied in a general purpose digital computer by running a program from a computer readable medium, which includes but is not limited to storage media such as magnetic storage media (e.g., ROM's, floppy disks, hard disks, etc.), optically readable media (e.g., CD-ROMs, DVDs, etc.), and carrier waves (e.g., transmissions over the Internet).

[0048] The present invention effects measurements of hemoglobin concentration, oxygen saturation, pulse rate, respiration rate, and degree of aging of blood vessels using the same apparatus in a non-invasive manner. A diagnosis apparatus using light, according to the present invention, is convenient to carry and use and enables simultaneous real-time monitoring of hemoglobin concentration, oxygen saturation, pulse rate, and respiration rate.

[0049] A diagnosis apparatus using light, according to the present invention, can measure multiple parameters including hemoglobin concentration, oxygen saturation, pulse rate, respiration rate, and degree of aging of blood vessels, without withdrawing blood, and is very convenient to use compared to conventional apparatuses that measure the parameters of interest separately. The ability to measure at least the five parameters listed above using one apparatus is cost effective.

[0050] According to the present invention, since only one photodetector is used, measurements can be achieved with a higher degree of accuracy. Measurements of such parameters of interest are less affected by body tissues excluding blood vessels. With the installation of a communication device in a diagnosis apparatus according to the present invention, the result of a measurement performed at home can be directly transmitted to a hospital via the Internet. Therefore, there is no inconvenience of going to a hospital for a checkup. A patient can be directly informed at home of his/her state of health from a doctor.

[0051] While the present invention has been particularly shown and described with reference to exemplary embodiments thereof, it will be understood by those of ordinary skill in the art that various changes in form and details may be made therein without departing from the spirit and scope of the present invention as defined by the following claims.

Claims

1. A diagnosis apparatus using light, comprising:

an input/output unit which receives a command for measurement from a user and provides information on the result of a measurement to the user;

a control unit which receives the command for measurement from the input/output unit and generates a control signal;

a light generating unit which generates at least two light beams for measurement according to the control signal;

a light receiving unit which receives the light beams transmitted through an object that is subject to measurement and converts the received light beams into electrical signals; and
a data processing unit which processes the

electrical signals received from the light receiving unit and outputs information on the result of a predetermined measurement.

2. The diagnosis apparatus of claim 1, wherein the light generating unit comprises:

a digital-to-analog converter which receives the control signal from the control unit and converts the received control signal into an analog signal;

a light emitting diode driver which drives a light emitting diode to generate the light beams according to the analog signal; and

a light radiator which radiates the generated light beams onto the object.

3. The diagnosis apparatus of claim 1 or 2, wherein the light receiving unit comprises:

a photodetector which detects the intensities of the light beams transmitted through the object and converts the detected light beam intensities into electrical signals;

a low-pass filter which filters off a high frequency component of the electrical signals representing the intensity of the light beams received from the photodetector;

an analog-to-digital converter which converts the analog electrical signals representing the intensity of the light beams, from which the high-frequency component has been removed, into digital signals.

4. The diagnosis apparatus of any preceding claim, wherein the data processing unit comprises:

a ratio calculation portion which receives the electrical signals representing the intensity of the light beams received by the light receiving unit and calculates, for each wavelength of the light beams used, a ratio of the intensity of the light received by the light receiving unit with respect to the initial intensity of the light radiated from the light generating unit; and
a hemoglobin concentration and oxygen saturation calculation portion which calculates a hemoglobin concentration value using the ratio calculated by the ratio calculation portion based on a correlation between light intensity variations and hemoglobin concentrations and calculates an oxygen saturation value using the calculated hemoglobin concentration value.

5. The diagnosis apparatus of any preceding claim, wherein the data processing unit receives the electrical signals representing the intensity of the light beams output from the light receiving unit, extracts

a pulse wave signal having a frequency corresponding to an average pulse rate per minute for humans from the received electrical signals, and calculates a pulse rate based on an average time interval between peaks detected from the extracted pulse wave signal.

6. The diagnosis apparatus of any preceding claim, wherein the data processing unit receives the electrical signals representing the intensity of the light beams output from the light receiving unit, extracts a respiration signal having a frequency corresponding to an average respiration rate per minute for humans from the received electrical signals, and calculates a respiration rate based on an average time interval between peaks detected from the extracted respiration signal.

7. The diagnosis apparatus of any preceding claim, wherein the data processing unit receives the electrical signals representing the intensity of the light beams output from the light receiving unit, extracts a first pulse wave signal having a frequency corresponding to an average pulse rate per minute for humans from the received electrical signals, differentiates the extracted first pulse wave signal into a second pulse wave signal to detect inflection points therefrom, calculates a diagnostic index for the degree of aging of blood vessels using the values of the inflection points, and determines a degree of aging of blood vessels using the calculated diagnostic index, based on a correlation between the degrees of aging of blood vessels and diagnostic indices therefor.

8. A method of operation using light, comprising:

- (a) receiving a command for measurement from a user;
- (b) generating a control signal according to the received command for measurement;
- (c) generating at least two light beams for measurement according to the control signal;
- (d) radiating the light beams onto an object that is subject to measurement, detecting the intensities of the light beams transmitted through the object, and converting the detected intensities of the light beams into electrical signals; and
- (e) processing the electrical signals to obtain information on the result of a predetermined measurement.

9. The method of claim 8, wherein step (c) comprises:

- (c1) receiving the control signal and converting the received control signal into an analog signal;
- (c2) generating the at least two light beams ac-

ording to the analog signal; and
(c3) radiating the generated light beams onto the object.

5 10. The method of claim 8 or 9, wherein step (d) comprises:

- (d1) detecting the intensities of the light beams transmitted through the object and converting the detected light beam intensities into the electrical signals;
- (d2) filtering off a high frequency component of the electrical signals representing the intensity of the transmitted light beams; and
- (d3) converting the analog electrical signals representing the intensity of the light beams, from which the high-frequency component has been removed, into digital electrical signals.

20 11. The method of any of claims 8 to 10, wherein step (e) comprises:

- (e1) calculating, for each wavelength of the light beams used, a ratio of the intensity of the light beam received in step (d) with respect to the initial intensity of the light radiated in step (c), for (e2) calculating a hemoglobin concentration value using the ratio calculated in step (e1) based on a correlation between light intensity variations and hemoglobin concentrations and calculating an oxygen saturation value using the calculated hemoglobin concentration value.

35 12. The method of any of claims 8 to 11, wherein step (e) comprises:

- extracting a pulse wave signal having a frequency corresponding to an average pulse rate per minute for humans from the electrical signals obtained in step (d), for calculating a pulse rate based on an average time interval between peaks detected from the extracted pulse wave signal.

45 13. The method of any of claims 8 to 12, wherein step (e) comprises:

- extracting a respiration signal having a frequency corresponding to an average respiration rate per minute for humans from the electrical signals obtained in step (d), for calculating a respiration rate based on an average time interval between peaks detected from the extracted respiration signal.

55 14. The method of any of claims 8 to 12, wherein step (e) comprises:

extracting a first pulse wave signal having a frequency corresponding to an average pulse rate per minute for humans from the electrical signals obtained in step (d);

differentiating the extracted first pulse wave signal into a second pulse wave signal to detect inflection points therefrom; and

calculating a diagnostic index for the degree of aging of blood vessels using the values of the inflection points, for determining a degree of aging of blood vessels using the calculated diagnostic index, based on a correlation between the degrees of aging of blood vessels and diagnostic indices therefor.

15. The method of any of claims 8 to 14, further comprising providing the result of the predetermined measurement to the user.

16. A computer readable medium having embodied thereon a computer program for the method according to any one of claims 8 through 15.

25

30

35

40

45

50

55

FIG. 1

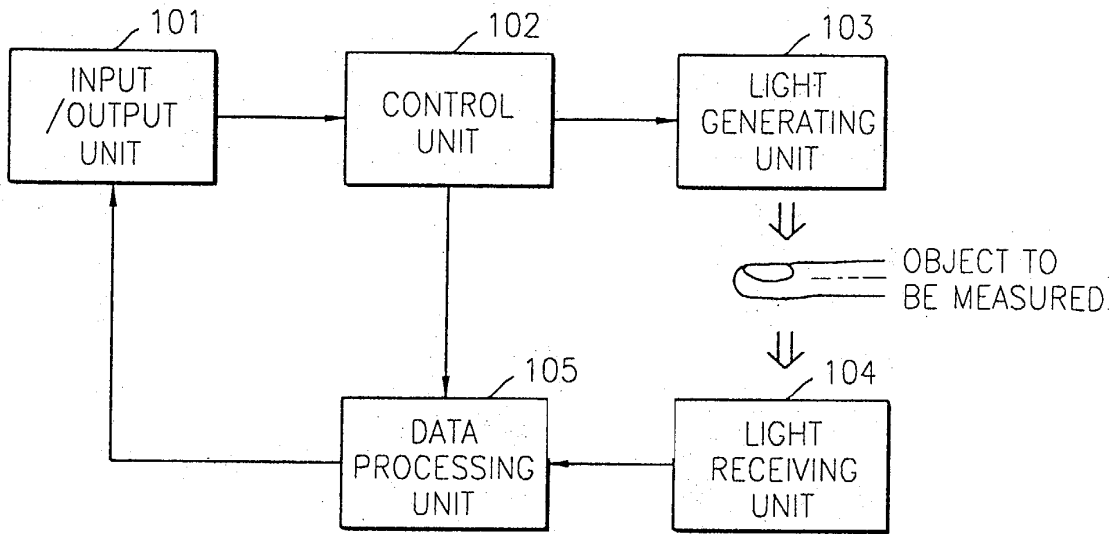


FIG. 2

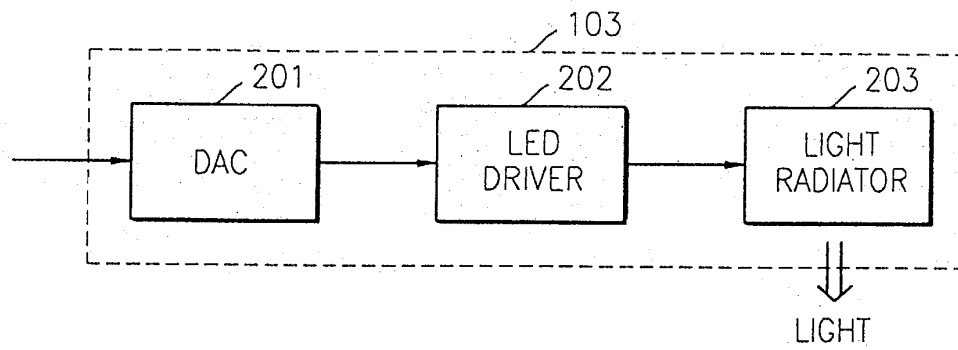


FIG. 3

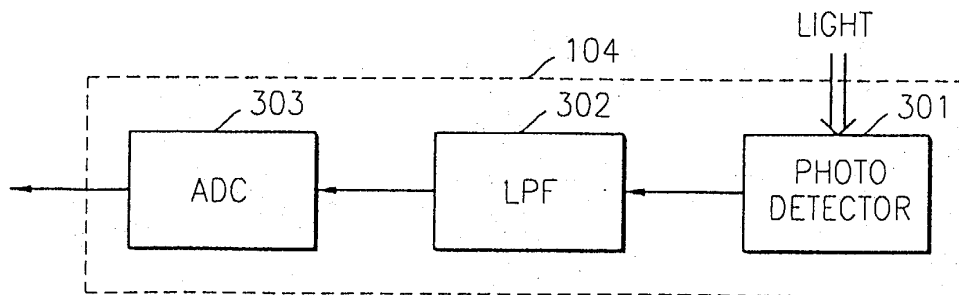


FIG. 4

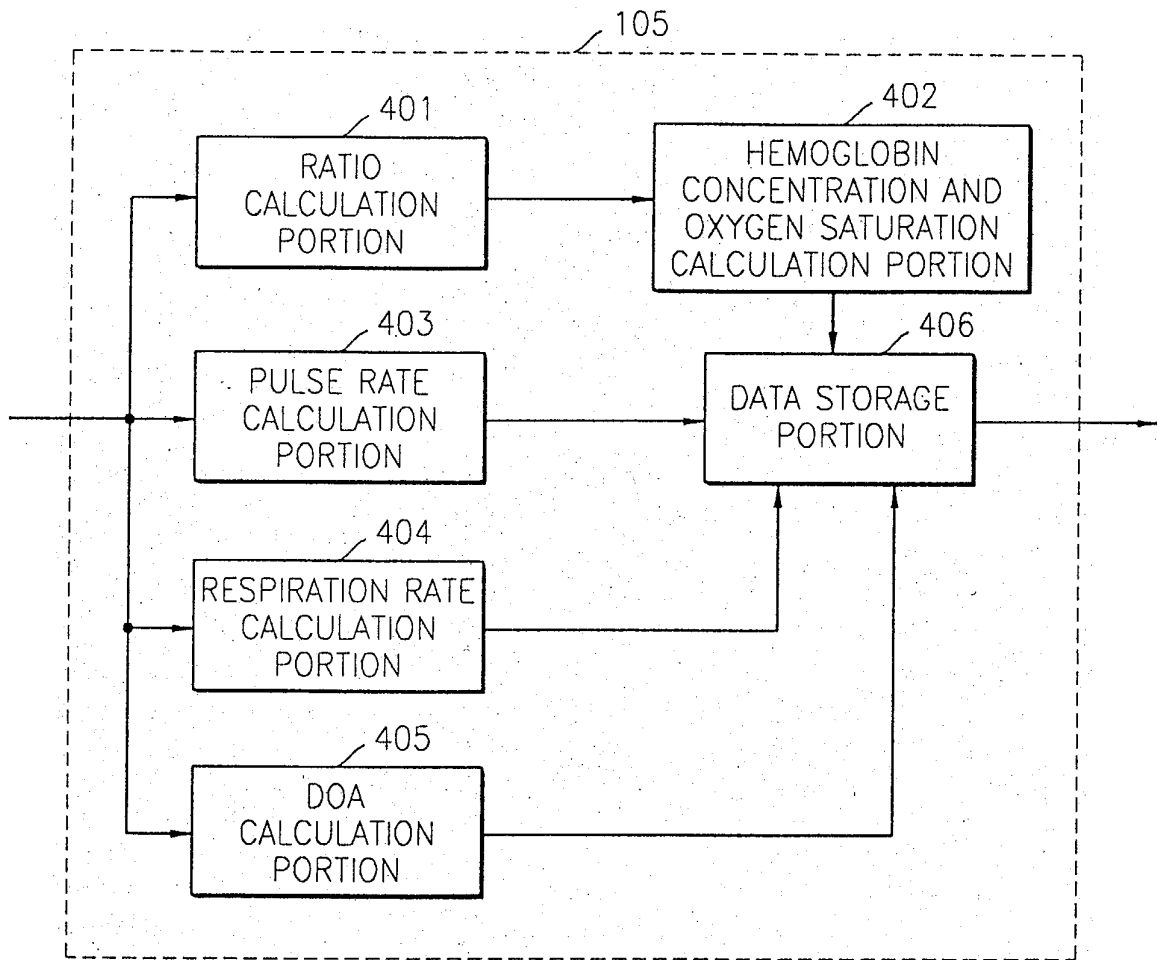


FIG. 5

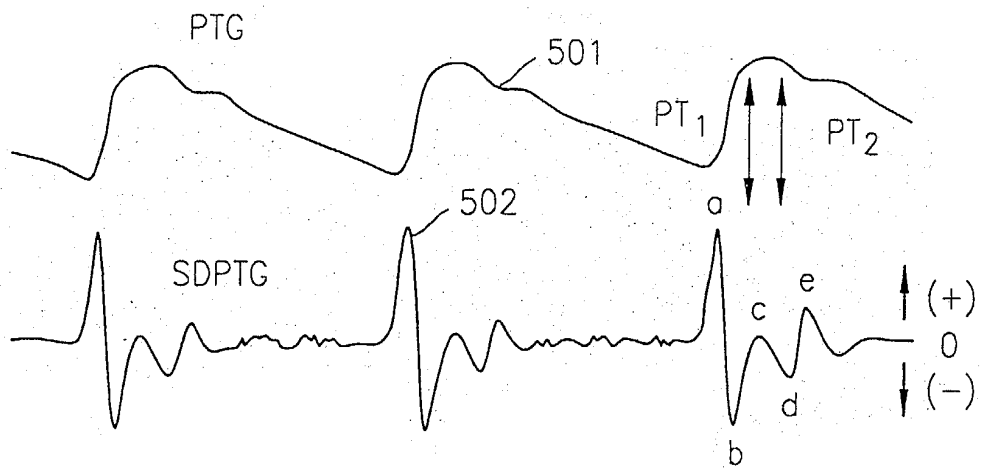


FIG. 6

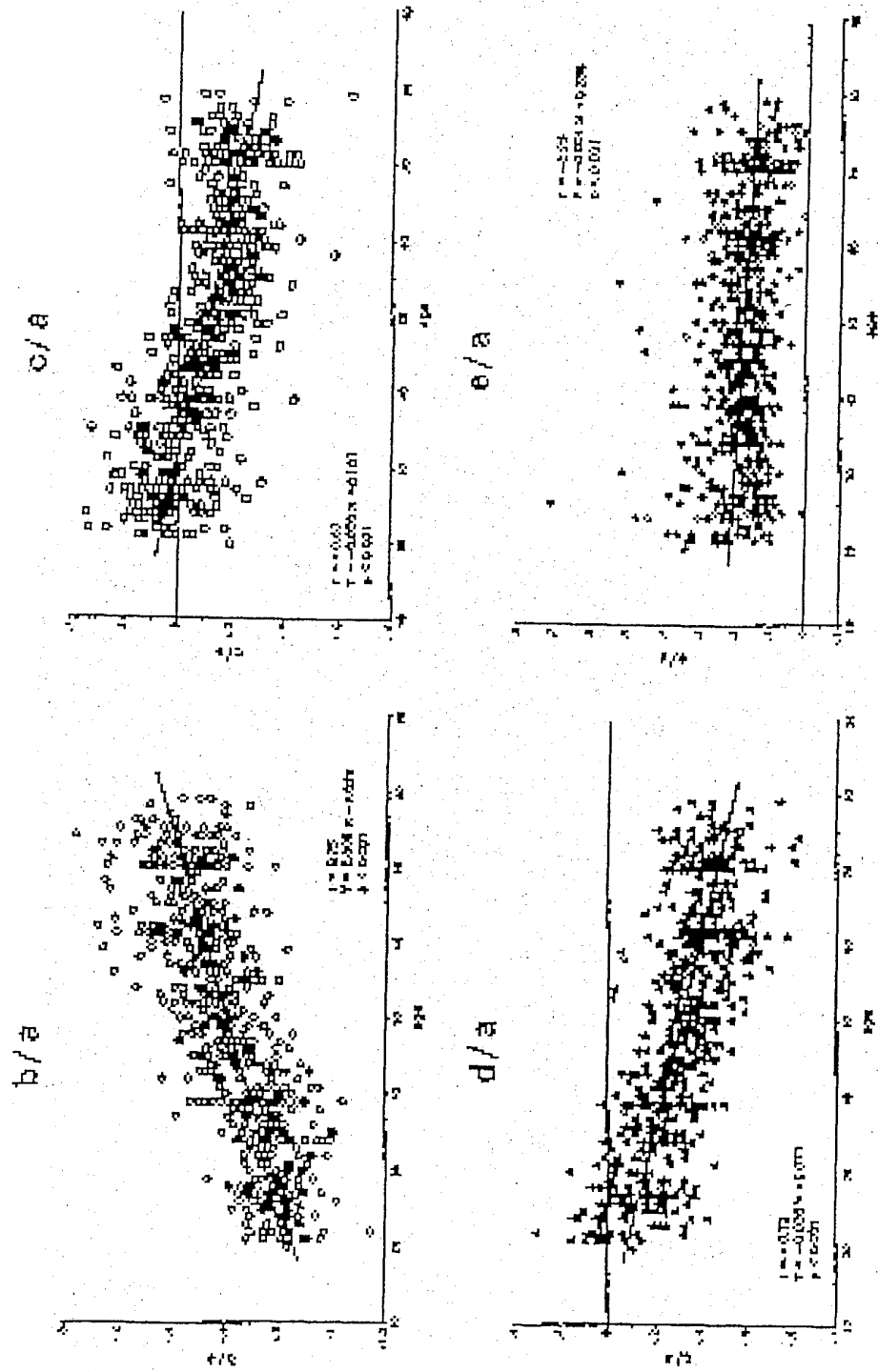


FIG. 7

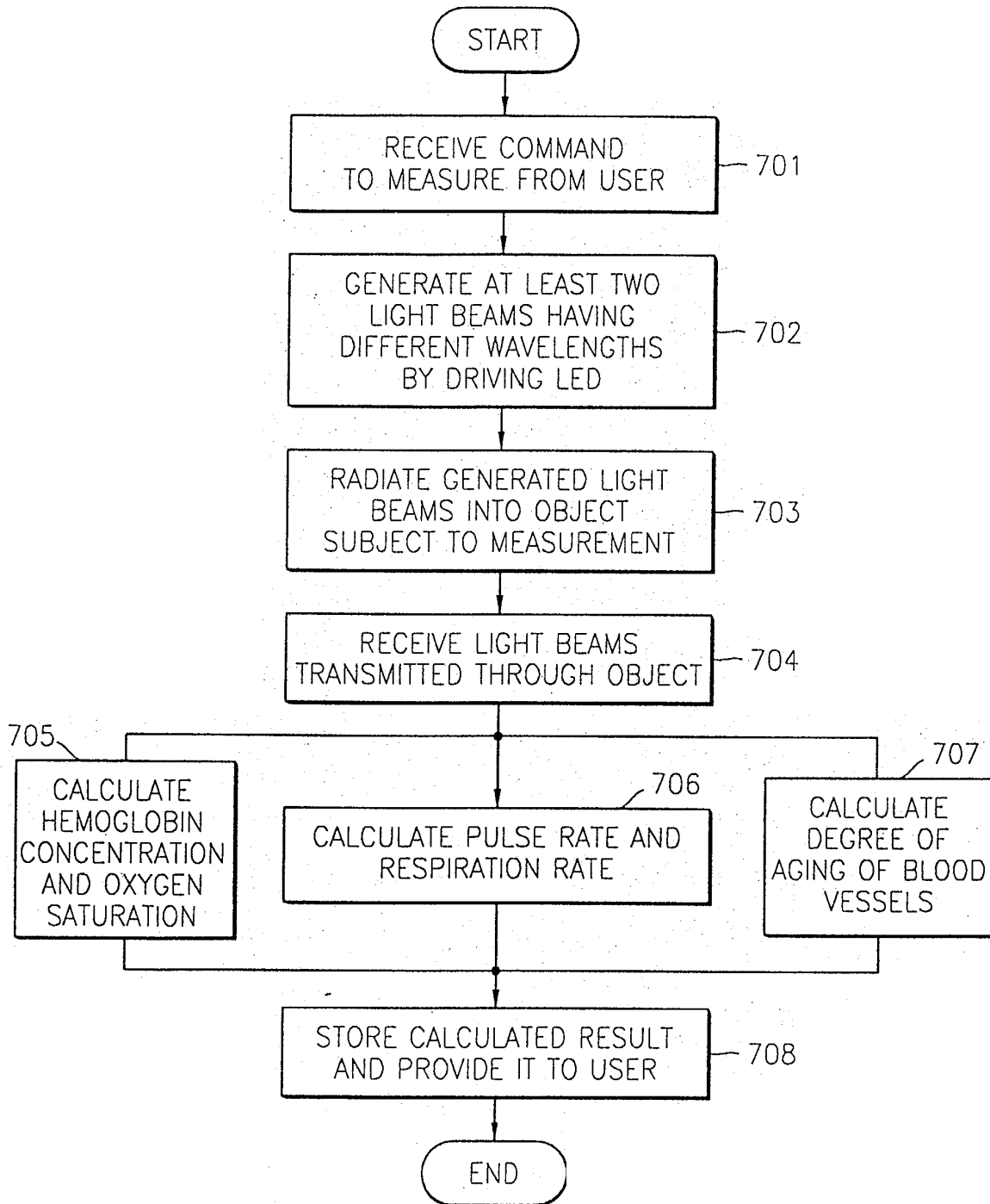


FIG. 8

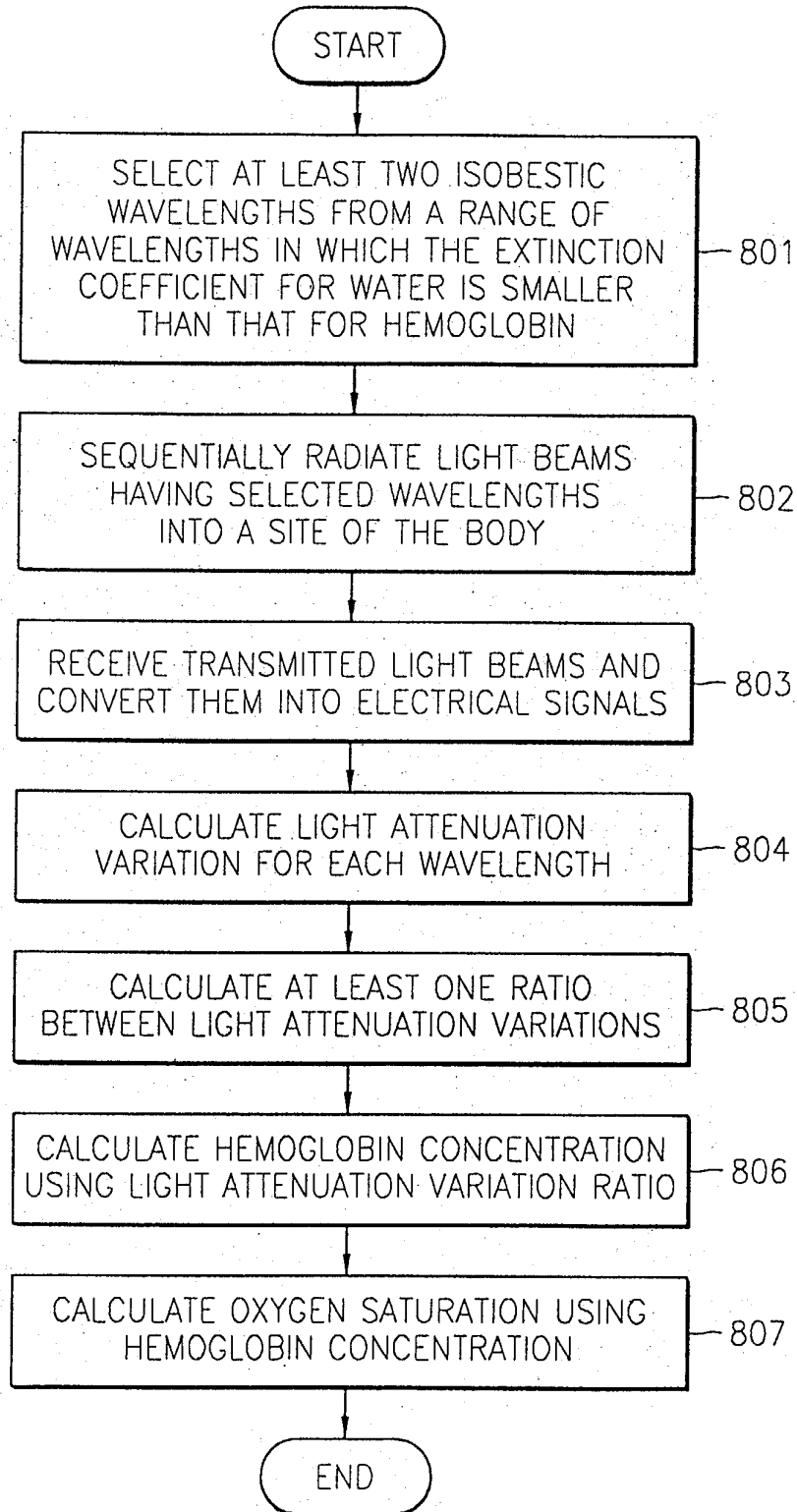


FIG. 9

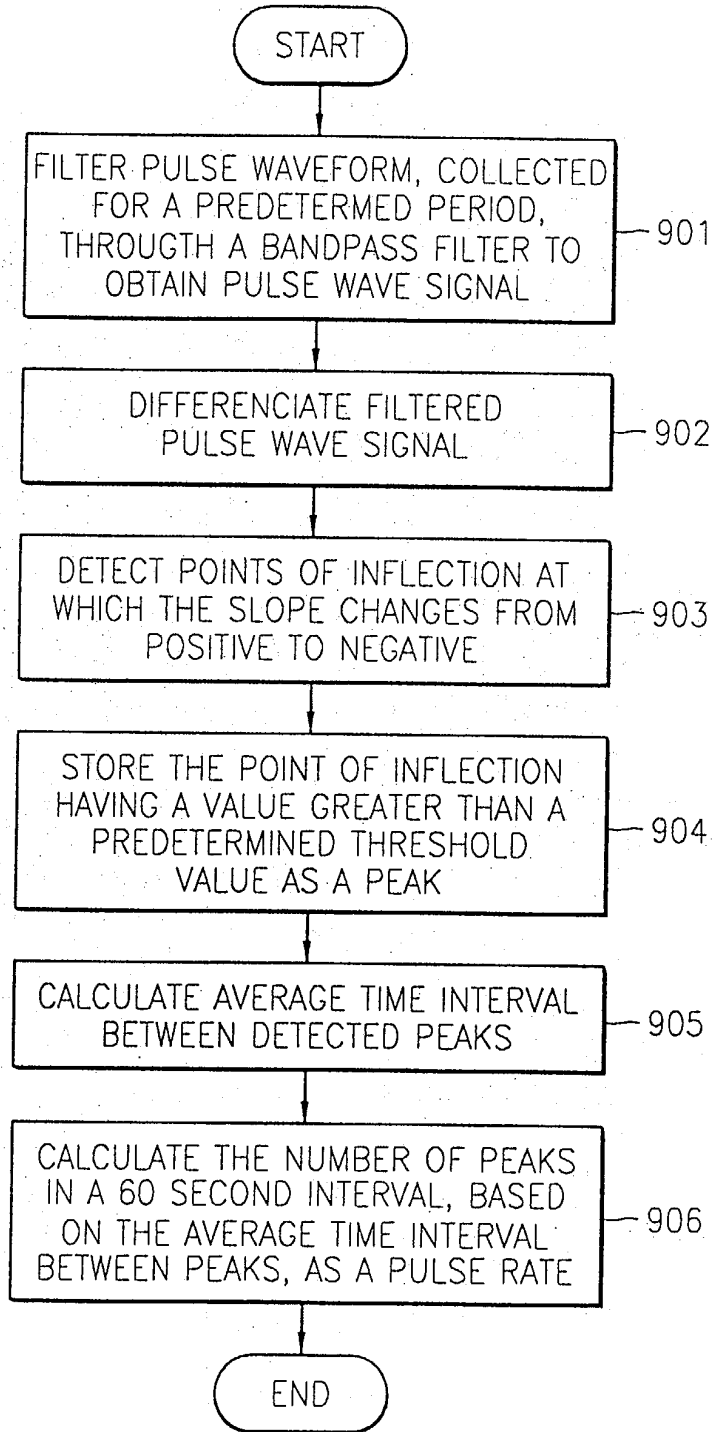


FIG. 10

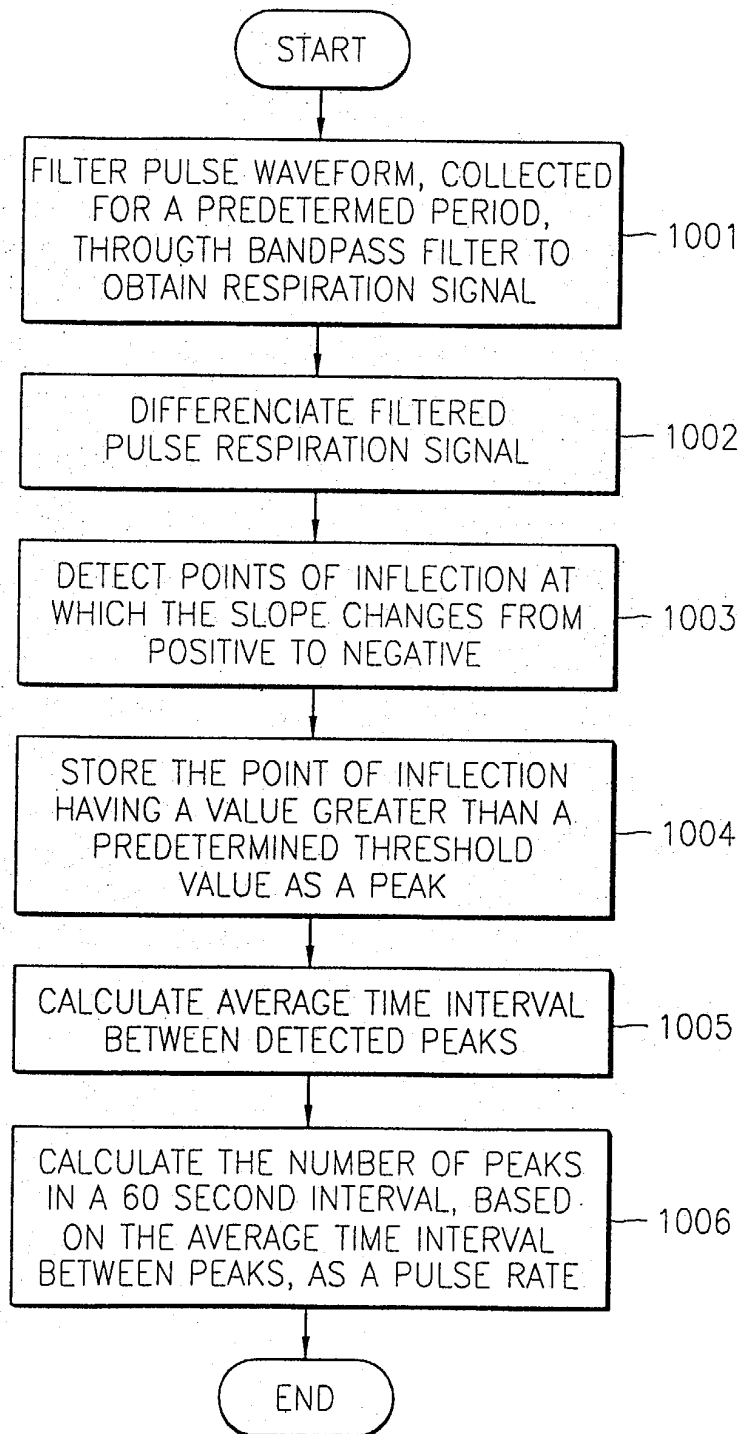
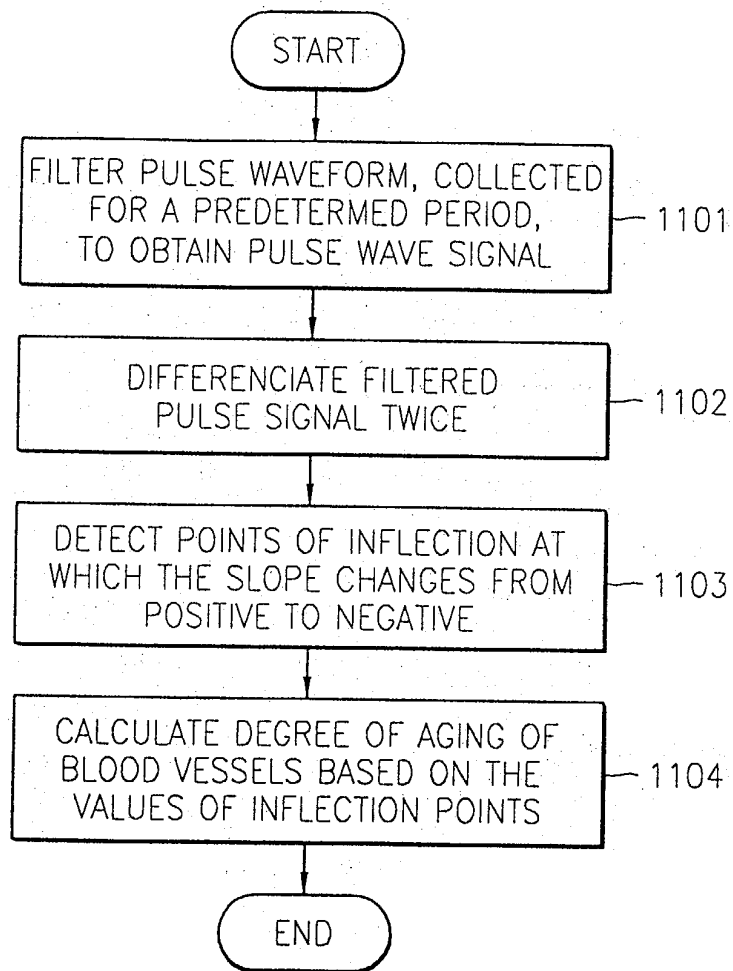


FIG. 11



专利名称(译)	使用光的诊断方法和设备		
公开(公告)号	EP1344488A2	公开(公告)日	2003-09-17
申请号	EP2003251571	申请日	2003-03-14
[标]申请(专利权)人(译)	三星电子株式会社		
申请(专利权)人(译)	SAMSUNG ELECTRONICS CO. , LTD.		
当前申请(专利权)人(译)	SAMSUNG ELECTRONICS CO. , LTD.		
[标]发明人	YOON GIL WON KIM HONG SIG 180 GEUMGOK DONG JEON KYE JIN LEE JONG YOUN PARK KUN KOOK KIM SU JIN JWA HOON JONG		
发明人	YOON, GIL-WON KIM, HONG-SIG, 180 GEUMGOK-DONG JEON, KYE-JIN LEE, JONG-YOUN PARK, KUN-KOOK KIM, SU-JIN JWA, HOON-JONG		
IPC分类号	A61B5/0245 A61B5/00 A61B5/02 A61B5/0205 A61B5/024 A61B5/08 A61B5/145 A61B5/1455 G01N21/31		
CPC分类号	A61B5/02007 A61B5/02416 A61B5/0816 A61B5/14551 A61B5/7239 G01N21/31		
优先权	1020020014277 2002-03-16 KR		
其他公开文献	EP1344488A3		
外部链接	Espacenet		

摘要(译)

提供了一种使用光来测量血液血红蛋白浓度，氧饱和度，脉率，呼吸速率和血管老化程度的诊断方法和装置。使用光的诊断装置包括：输入/输出单元，其从用户接收测量的命令，并向用户提供关于测量结果的信息；控制单元，其从所述输入/输出单元接收测量命令并产生控制信号；光产生单元，根据所述控制信号产生用于测量的至少两个光束；光接收单元，接收透射通过待测量对象的光束，并将接收的光束转换为电信号；以及数据处理单元，其处理从光接收单元接收的电信号，并输出关于预定测量的结果的信息。可以使用诊断装置非侵入性地测量多个参数，包括血红蛋白浓度，氧饱和度，脉率，呼吸速率和血管的老化程度。

FIG. 1

