

( $n = 5, 15$ ;  $R^1, R^2$  가  $1, 1, n$ ,  $R^1$  ;  $Ar^i$  1,4- ) .

OLED, , - , .

(G) (B) OLED (OLED) 가 LCD 가 (R),

가 OLED , OLED " (HTL) 2 , " (ETL) 가 가 , ( ) , Frenkel 가 ( ) .

OLED

OLED

가

2

가

가,

OLED

가

가

OLED

OLED

3

OLED

OLED

OLE

D

가,

OLED

OLED

가

가

가

가

(PPP)

PPP  
PPP

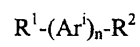
가

가

가

가

:

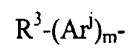


Ar, n 5 15 ; i 1 n, R<sup>1</sup> ;  
; R<sup>1</sup> R<sup>2</sup> R<sup>1</sup> R<sup>2</sup> 가

; , Ar<sup>i</sup> 1,4-

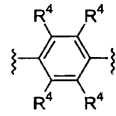
R<sup>1</sup> R<sup>2</sup>

가



, m 1 5 ; j 1 m , R3 Ar<sup>i</sup>

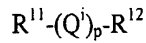
a) 가 1,4 - ,



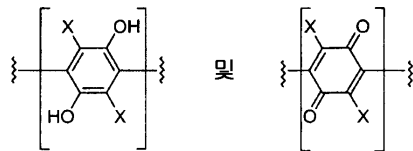
( , R<sup>4</sup> H, (C<sub>1</sub> - C<sub>12</sub>) , (C<sub>1</sub> - C<sub>12</sub>) , (C<sub>1</sub> - C<sub>12</sub>) , (C<sub>1</sub> - C<sub>12</sub>) ),

b) 1,4 - , 1,4 - , 9,10 - , 5,6,7,8 - - 1,4 - , 9,9',10,10' - (C<sub>1</sub> - C<sub>12</sub>) - 9,10 - - 1,4 - , 9,9',10,10' - - 9,10 - - 1,4 - , 9,9', 10,10' - (C<sub>1</sub> - C<sub>12</sub>) - 9,10 - - 2,6 - , 9,9',10,10' - - 9,10 - - 1,4 - 2가 ;)

R<sup>3</sup> H, (C<sub>1</sub> - C<sub>12</sub>) , (C<sub>1</sub> - C<sub>12</sub>) , (C<sub>1</sub> - C<sub>12</sub>) , (C<sub>1</sub> - C<sub>12</sub>) , (C<sub>1</sub> - C<sub>12</sub>) , (C<sub>1</sub> - C<sub>12</sub>) ,

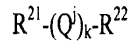


( , R<sup>11</sup> R<sup>12</sup> H, (C<sub>1</sub> - C<sub>12</sub>) , (C<sub>1</sub> - C<sub>12</sub>) , (C<sub>1</sub> - C<sub>12</sub>) , (C<sub>1</sub> - C<sub>12</sub>) , (C<sub>1</sub> - C<sub>12</sub>) ) ; p 5 200 ; i 1 p , Q R<sup>1</sup> ) : Q<sup>i</sup>



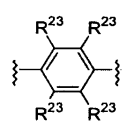
( , X H, (C<sub>1</sub> - C<sub>12</sub>) , (C<sub>1</sub> - C<sub>12</sub>) , (C<sub>1</sub> - C<sub>12</sub>) , (C<sub>1</sub> - C<sub>12</sub>) , (C<sub>1</sub> - C<sub>12</sub>) ) .

가 , 50:50 가 , 가 .  
 , ,  
 , 가 :



,  $R^{21}$   $R^{22}$  H,  $(C_1 - C_{12})$  ,  $(C_1 - C_{12})$  ,  $(C_1 - C_{12})$   
 ; ; ; k 2 20 ; j 1 k , Q  $R^{21}$   
 ;  $Q^j$  - n 1 15 ; i 1 n ; m 1 5 ; j  
 1 m ;  $Ar^i$   $Ar^i$  ;  $Ar^j$  :

a) 가 1,4 - :

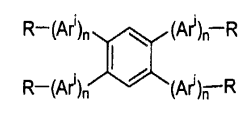


( ,  $R^{23}$  H,  $(C_1 - C_{12})$  ,  $(C_1 - C_{12})$  ,  $(C_1 - C_{12})$  ,  
 , 4  $R^{23}$  2 ,  $(C_1 - C_{12})$  ,  $(C_1 - C_{12})$  , ) ,

b) 1,4 - , 1,4 - , 9,10 - , 5,6,7,8 - - 1,4 - , 9,9',10,10' - (C  
 1 -  $C_{12}$ ) - 9,10 - - 1,4 - , 9,9',10,10' - - 9,10 - - 1,4 - , 9,9',  
 10,10' - ( $C_1 - C_{12}$ ) - 9,10 - - 2,6 - , 9,9',10,10' - - 9,10 -  
 - 1,4 - 2가 ).

,  $Q^1, Q^3, Q^5$   $Q^5$  - ,  $Q^2, Q^4, Q^6$   $Q^6$  가  
 ,  $Q^1, Q^3, Q^5, Q^7$  가 ,  $Q^2, Q^4, Q^6$  -

, 가 :

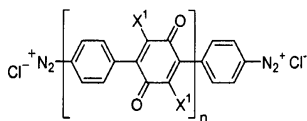


( , R (C<sub>1</sub> - C<sub>12</sub>) , (C<sub>1</sub> - C<sub>12</sub>) ,  
 ; n 3 8 ; i 1 n , 4  
 Ar ; Ar<sup>i</sup>  
 ; , Ar<sup>i</sup> 1,4 - .

, , OLED :

(a) ; 3,6 -

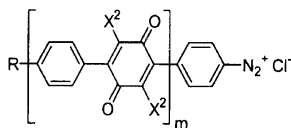
(b) ; OLED 가



( , X<sup>1</sup> , n 0 4 ) ;

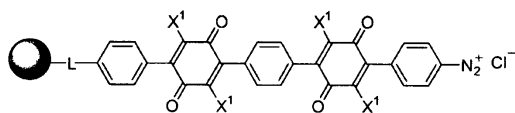
(c) (a) (b) 2 70 ;

(d) 가 (c) .



( , X<sup>2</sup> , R H, (C<sub>1</sub> - C<sub>12</sub>) , (C<sub>1</sub> - C<sub>12</sub>)  
 , (C<sub>1</sub> - C<sub>12</sub>) , (C<sub>1</sub> - C<sub>12</sub>) ,  
 (C<sub>1</sub> - C<sub>12</sub>) ; m 0 4 ).

, 가 OLED :



, L ; X<sup>1</sup> (C<sub>1</sub> - C<sub>12</sub>) , (C<sub>1</sub> - C<sub>12</sub>) , (C<sub>1</sub> - C<sub>12</sub>)  
 (C<sub>1</sub> - C<sub>12</sub>) , (C<sub>1</sub> - C<sub>12</sub>) .





( )<sup>0</sup> (2N+1) OR', =O, =NR', =N-OR',  
 NR'R'', -SR', SiR'R''R''', -OC(O)R', -C(O)R',<sub>2</sub>RCOCONR'R'', -OC(O)NR'R'', NR''C(O)R', NR' -  
 C(O)NR''R''', -NR''C(O), -NH-C(NH<sub>2</sub>)-NH, -NR'C(NH<sub>2</sub>)=NH, -NH-C(NH<sub>2</sub>)-NR', -S(O)R', S(O<sub>2</sub>)  
 R', -S(O)<sub>2</sub>NR'R'', -CN -NO<sub>2</sub>, N  
 N<sup>2</sup> 2N+1  
 R', R'' R'''  
 (C<sub>1</sub>-C<sub>4</sub>)  
 5-, 6-, 7  
 R'' 1- 4-  
 (CF<sub>3</sub> CH<sub>2</sub>CF<sub>3</sub>) (C(O)CH<sub>3</sub>, -C(O)CF<sub>3</sub>, -C(O)CH<sub>2</sub>O  
 CH<sub>3</sub>)  
 0,1, 2 가

OR', -OC(O)R', -NR'R'', -SR', -R', -CN, -NO-CO<sub>2</sub>R', -CONR'R'', -C(O)R', -OC(O)NR'R'',  
 -NR''C(O)R', -NR''C(O)R', -NR''C(O)NR''R''', -NH-C(NH<sub>2</sub>)=NH, -NR'C(NH<sub>2</sub>)=NH, -NH-C(NH<sub>2</sub>)=N  
 R', -S(O)R', -S(O)<sub>2</sub>R', -S(O)<sub>2</sub>NR'R'', -N-CH(Ph)<sub>2</sub>, (C<sub>1</sub>-C<sub>4</sub>) (C<sub>1</sub>-C<sub>4</sub>)  
 ; R', R'' R'''  
 )-(C<sub>1</sub>-C<sub>4</sub>) ( ) -(C<sub>1</sub>-C<sub>4</sub>)  
 (O), (N), (S) (Si)

p- (PHP)

OEL

OEL

( Koch, U.S. 4,288,147 ). Koch

1  
1 -

가 (2,5- -1,4- )

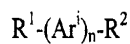
1,4-

" " 가

( )

가

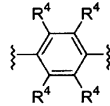
1





b) 2, 1,4-, , 1,4-, , 9,10-, , 5,6,7,8- - 1,4-, , 9,9' 1  
 0,10' - (C<sub>1</sub> - C<sub>12</sub>) - 9,10- - 1,4- , 9,9' 10,10' - - 9,10-  
 - 1,4- , 9,9' 10,10' - (C<sub>1</sub> - C<sub>12</sub>) - 9,10- - 2,6- , 9,9' 10,10' - 9,1  
 0 - - 1,4- , R<sup>3</sup> H, (C<sub>1</sub> - C<sub>12</sub>) ,  
 (C<sub>1</sub> - C<sub>12</sub>) , (C<sub>1</sub> - C<sub>12</sub>) , (C<sub>1</sub> - C<sub>12</sub>) ,

, R<sup>3</sup> Ar<sup>j</sup> (Ar<sup>j</sup>)<sub>n</sub>  
 가 Ar<sup>j</sup> , Ar<sup>j</sup> ;

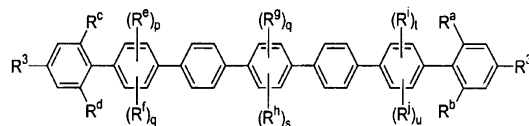


가 1,4- , R<sup>4</sup> 4 R<sup>4</sup> 2  
 (C<sub>1</sub> - C<sub>12</sub>) (C<sub>1</sub> - C<sub>12</sub>) , H,  
 (C<sub>1</sub> - C<sub>12</sub>) , (C<sub>1</sub> - C<sub>12</sub>) ,  
 (C<sub>1</sub> - C<sub>12</sub>) , R<sup>4</sup> 2

, m 1 3 , Ar<sup>j</sup> 1,4- , 1,4- , 9,10- ,  
 5,6,7,8- - 1,4- , 9,9' 10,10' - (C<sub>1</sub> - C<sub>12</sub>) - 9,10- - 1,4- , 9,  
 9' 10,10' - - 9,10- - 1,4- , 9,9' 10,10' - (C<sub>1</sub> - C<sub>12</sub>) - 9,10-  
 - 2,6- , 9,9' 10,10' - - 9,10- - 1,4-  
 9,10- , m 1 2 , Ar<sup>j</sup> 1,4- , 1,4-

, R<sup>3</sup> (C<sub>1</sub> - C<sub>12</sub>) , (C<sub>1</sub> - C<sub>12</sub>) ,  
 (C<sub>1</sub> - C<sub>12</sub>) , 2가(C<sub>1</sub> - C<sub>12</sub>) ,

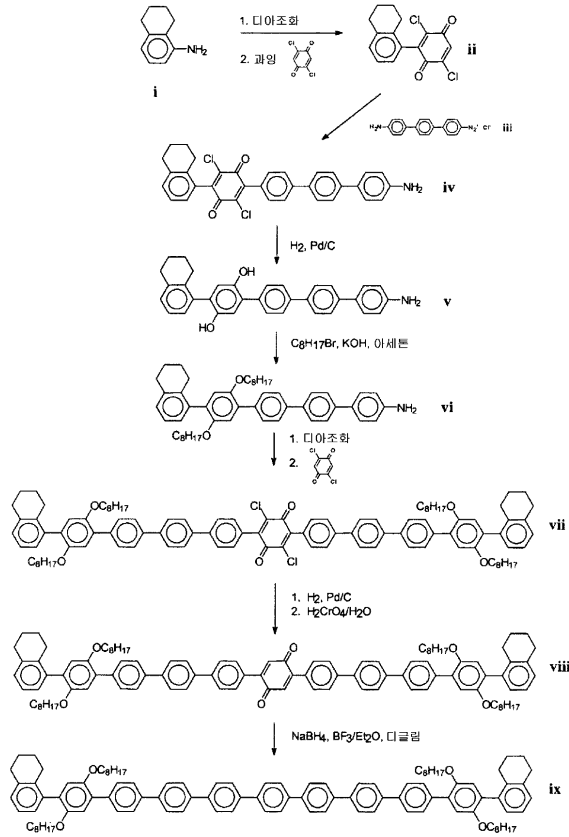
2



가 , R<sup>a</sup>, R<sup>b</sup>, R<sup>c</sup> R<sup>d</sup> (C<sub>1</sub> - C<sub>12</sub>)  
 R<sup>f</sup>, R<sup>g</sup>, R<sup>h</sup>, R<sup>i</sup> R<sup>j</sup> ; p, q, r, s, t u 0 2 ; R<sup>c</sup>,  
 ; R<sup>c</sup>, R<sup>f</sup>, R<sup>g</sup>, R<sup>h</sup>, R<sup>i</sup> R<sup>j</sup> ; R<sup>a</sup>, R<sup>b</sup>, R<sup>c</sup> R<sup>d</sup>가  
 ; p,q,r,s,t u 1

1

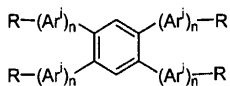
1



1 5,6,7,8 - - 1 - i (Aldrich Chemical Co., Milwaukee, Wisconsin, USA)  
 - 1,4 - i 2,5 -  
 iii ii (Lancaster Synthesis, Inc) ii 4,4' - - p - 4  
 , KOH 가 iv , vi  
 가 2,5 - - 1,4 - 가 , vii . vii 0.5  
 viii ix viii

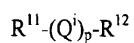
( ) - 가  
 1 - 11 . ,

3



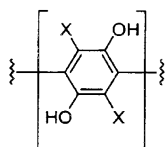
가  
 $(C_1 - C_{12})$ , R ; n 3 8  $(C_1 - C_{12})$ , A  
 $Ar^i$ ,  $Ar^i$  가 1,4- 가  
 $Ar^2$ , n 3 4, 1,4- , 3 4 . 가  $Ar^1$   $Ar^3$  1,4-  
 6 , .

4

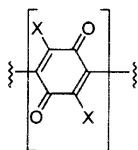


가  
 $(C_1 - C_{12})$ ,  $R^{11}$   $R^{12}$  H,  $(C_1 - C_{12})$ ,  
 $(C_1 - C_{12})$ , ; p 5 200 ; i 1 p Q R  
 1 ;  $Q^i$

4a



4b



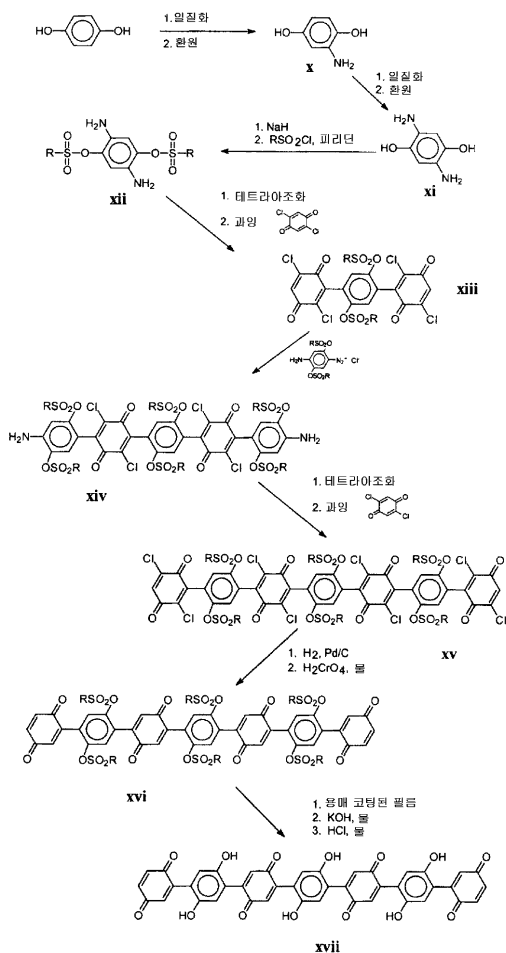
2) , (C<sub>1</sub> - C<sub>12</sub>) , X (C<sub>1</sub> - C<sub>12</sub>) H, (C<sub>1</sub> - C<sub>1</sub>)  
 C<sub>1</sub> - C<sub>12</sub> ) , (C<sub>1</sub> - C<sub>12</sub>) , (

가 , 50:50 , 2 가 , 2 , 1 , 2

가 ) , 가

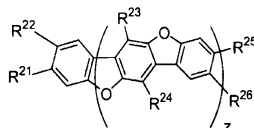
2 가 , 2 /

x x xi  
 ( ) xii 2 가( ) 2,  
 5- -1,4- xiii xiv , xiv , xiv ( )  
 - ) xiii xiv , xv 2,5- -1,4- . xv  
 xvi ( , ) , / xvi xvii (HC  
 l ) .



5

5



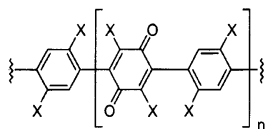
(C<sub>1</sub> - C<sub>12</sub>) z 2 7

(C<sub>1</sub> - C<sub>12</sub>) R<sup>21</sup>, R<sup>22</sup>, R<sup>23</sup>, R<sup>24</sup>, R<sup>25</sup>, R<sup>26</sup> H,

R<sup>25</sup> H, R<sup>22</sup> R<sup>25</sup> H, z 2 4, R<sup>22</sup>  
 7 8

5a

5a



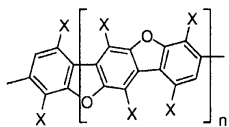
가

가

X  
UV

5b

5b

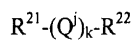


가

가

6

6

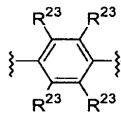


2) R<sup>21</sup>, R<sup>22</sup> H, (C<sub>1</sub>-C<sub>12</sub>), (C<sub>1</sub>-C<sub>12</sub>), (C<sub>1</sub>-C<sub>12</sub>), (C<sub>1</sub>-C<sub>12</sub>), (C<sub>1</sub>-C<sub>12</sub>), (C<sub>1</sub>-C<sub>12</sub>)  
 (C<sub>1</sub>-C<sub>12</sub>), (C<sub>1</sub>-C<sub>12</sub>), (C<sub>1</sub>-C<sub>12</sub>), (C<sub>1</sub>-C<sub>12</sub>), (C<sub>1</sub>-C<sub>12</sub>), (C<sub>1</sub>-C<sub>12</sub>)  
 Q R<sup>21</sup>; Q<sup>j</sup> - ; j 1 k

-(Ar<sup>i</sup>)<sub>n</sub> 및 -(Ar<sup>j</sup>)<sub>m</sub>

n 5 15 ; m 1 5 ; Ar<sup>i</sup> Ar<sup>j</sup> ; Ar<sup>j</sup>

a) 1,4 - :

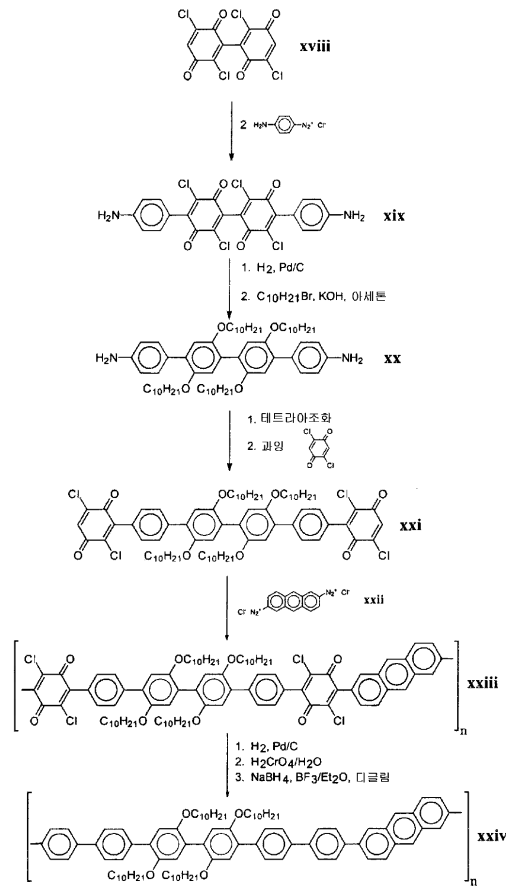


R<sup>23</sup> H, (C<sub>1</sub> - C<sub>12</sub>) , (C<sub>1</sub> - C<sub>12</sub>) ,  
 (C<sub>1</sub> - C<sub>12</sub>) , (C<sub>1</sub> - C<sub>12</sub>) , (C<sub>1</sub> - C<sub>12</sub>) ,  
 C<sub>12</sub>) , (C<sub>1</sub> - C<sub>12</sub>) 4 R<sup>23</sup> (C<sub>1</sub> - C<sub>12</sub>) ,  
 12) (C<sub>1</sub> - C<sub>12</sub>) , (C<sub>1</sub> - C

b) 1,4 - , 1,4 - , 9,10 - , 5,6,7,8 - -1,4 - , 9,9',10,10' - (  
 C<sub>1</sub> - C<sub>12</sub>) -9,10 - -1,4 - , 9,9', 10,10' - -9,10 - -1,4 - , 9,9',  
 10,10' - (C<sub>1</sub> - C<sub>12</sub>) -9,10 - -2,6 - , 9,9',10,10' - -9,10 -  
 -1,4 - 가 .

, Q<sup>1</sup>, Q<sup>3</sup>, Q<sup>5</sup> Q<sup>2</sup>, Q<sup>4</sup>, Q<sup>6</sup>  
 , Q<sup>1</sup>, Q<sup>3</sup>, Q<sup>5</sup>, Q<sup>7</sup> Q<sup>2</sup>, Q<sup>4</sup> Q<sup>6</sup>  
 6 - Q<sup>2</sup>, Q<sup>4</sup> Q

3 가 .  
 3



3 xviii(Koch, 4,288,147 ) 가  
 4 - xviii xix , ( )  
 xx  
 2,5 - - 1,4 - xxi . 2,6 - ( ) xxii xxi  
 xxiii . xxii ,  
 2,6 - 가  
 .(Lubs, Chemistry of Synthetic Dyes and Pigments, Kreiger Publishing,p.353; Houben - Weyl, VII - 1,  
 p.244; Bapat , Tetrahedron Lett. 1(5):15(1960) ) . xxiii xxiv  
 3 / / .

2 - - -  
 3 4 가 -  
 5 가 -  
 6 " " -  
 7 8  
 1 -  
 9 -  
 10 11

1 (Aldrich Chemical Co., Milwaukee, Wisconsin, USA) (xxv) 2,5- -1,4-  
 (xxvii) xxvi xxviii OEL (xxvi)  
 가 xxviii가 가 2,5- -1,4- xxix  
 .가 ( )  
 O- xxviii xxix OR  
 (Zollinger, DIAZO CHEMISTRY, VOL 1, AROMATIC AND HETEROAROMATIC COMPOUNDS, Wiley(1994) ).

가 , 2,5- -1,4- 2,  
 5- -1,4- xxxi , 가 ( 2 ).  
 1 , 2,5- -1,4- 2,5- -1,4-  
 xxxii

, 1 2 - ( 3 )  
 4 )

3 , 2,5,2',5' - (xxxiii, Koch, 4,288,147 ) 2 가  
 xxvii xxxiv xxxiv xxxvi 가 xxxvi  
 (xxxv) , 가 xxxvi  
 i .

4 ,  
 xxxix ,가 xxxviii 가 xxvi  
 xxxix xl .

가 가 5 (Aldrich Chemical Co.) xli  
 . 2 xliii . xliii 2,5- xlii  
 . xlv xlv xlv - 1,4- xliii  
 i 가 xlvii . xlv . xlv

2- 5- ( 6 ) 6 , 1,4- 1,4-  
 가 ( xlviii) , xlix 4  
 xlix 가 1 .

( 7 ) . ( , li) lii  
 , li  
 1,4- , UV 2,5- , ( - 2,5- - p- , liii)  
 liv , UV . liii  
 lv

OEL

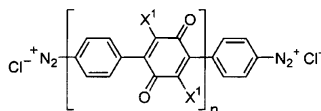
가 ,

9 ( , li) ( , United Chemical Tec  
 hnologies, Bristol, Pennsylvania 4 - (4 - ) , lvii  
 (lviii) 2,5- - 1,4- lix  
 , 2,5- - 1,4- ( lx) lix  
 lxiii ( lxii . lxii  
 lxiv . 1 - 8 )

OLED

(a) - 3,6- - ;

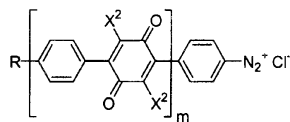
(b) - :



X<sup>1</sup> ; n 0 4 ; OLED

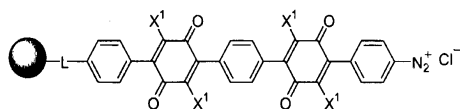
(c) (a) (b) 2 70 ;

(d) (c) OLED  
:



X<sup>2</sup> , R H, , ,  
, , ,  
; m 0 3 .

OLED 가 :



, L ; ; X<sup>1</sup> , , , ,

, - OLED

, /

(a) -

6 - 50 ,

가

( )

(

)

가

OLED

OLED



가 10( ) 11( ) (RGB)

10 , 2,5 - -1,4 - 5 - -1 - THP - lxxv

lxxvi

lxxvii

lxxviii

가 lxxix

lxxxi

THP

UV

lxxii

( )

11 ) THF 8 - -1 - lxxiii

4 - (Aldrich Chemical Co.) lxxiv

2,5 - -1,4 - lxxv

가 lxxvi

가 lxxvii

THF lxxix

UV ( )

lxxx

UV

가

가

(57)

1.

가 :

$$R^1-(Ar^i)_n-R^2$$

( , n 5 15 ;

i 1 n , R<sup>1</sup> ;

Ar ;

R<sup>1</sup> R<sup>2</sup> R<sup>1</sup> R<sup>2</sup>가 ;

, Ar<sup>i</sup> 1,4 - ).

2.

1, n, 5, 9 .

3.

1, Ar<sup>i</sup>, 1, 4 가

4.

1, Ar<sup>i</sup>, 1, 4 가 ; Ar<sup>i</sup>

5.

4, 2,6-, 2,7-, 2,6-, 2,6-

6.

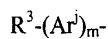
1, n, 7, Ar<sup>3</sup>, Ar<sup>5</sup>, 2,6-

7.

1, n, 7, Ar<sup>4</sup>, Ar<sup>i</sup> 가

8.

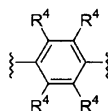
1, R<sup>1</sup>, R<sup>2</sup> 가 :



(, m, 1, 5 ;

Ar<sup>j</sup> :

a) 가 1,4- :





10 , 50:50 .

12.

10 , 가 , 가  
가 .

13.

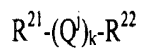
10 , 가 .

14.

10 , 가 .

15.

가 :



,  $R^{21}$   $R^{22}$  H,  $(C_1 - C_{12})$  ,  $(C_1 - C_{12})$  ,  $(C_1 - C_{12})$  ,  $(C_1 - C_{12})$  ;

k 2 20 ;

j 1 k , Q  $R^{21}$  ;

$Q^j$  - 가 ,  $-(Ar^i)_n -$   $-(Ar^j)_m -$  ;

$-(Ar^i)_n$  및  $-(Ar^j)_m$

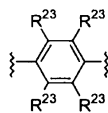
( , n 1 15 ;

m 1 5 ;

$Ar^i$   $Ar^i$  ;

$Ar^j$  :

a) 가 1,4- :





21.

OLED

,

:

(a)

;

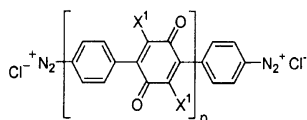
3,6 -

(b)

가

;

OLED



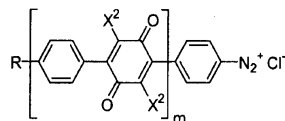
( , X<sup>1</sup> , n 0 4 );

(c) (a) (b) 2 70 ;

(d) 가

(c)

OLED



( , X<sup>2</sup> ,

R H, (C<sub>1</sub> - C<sub>12</sub>) , (C<sub>1</sub> - C<sub>12</sub>) , (C<sub>1</sub> - C<sub>1</sub>)  
 2) , (C<sub>1</sub> - C<sub>12</sub>) , (C<sub>1</sub> - C<sub>12</sub>) ;

m 0 3 ).

22.

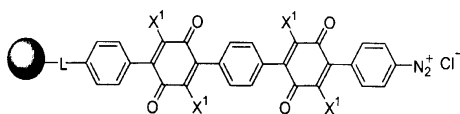
21

,

가

OLED

:



( , L ;

;

X<sup>1</sup> , , , , , ) .

23.

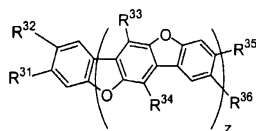
21 , , , , ,

24.

21 OLED .

25.

가 :



( , z 2 7 ;

R<sup>31</sup> , R<sup>32</sup> , R<sup>33</sup> , R<sup>34</sup> , R<sup>35</sup> , R<sup>36</sup> H, (C<sub>1</sub> - C<sub>12</sub> ) , (C<sub>1</sub> - C<sub>12</sub> )  
).

26.

25 , R<sup>32</sup> R<sup>35</sup> H .

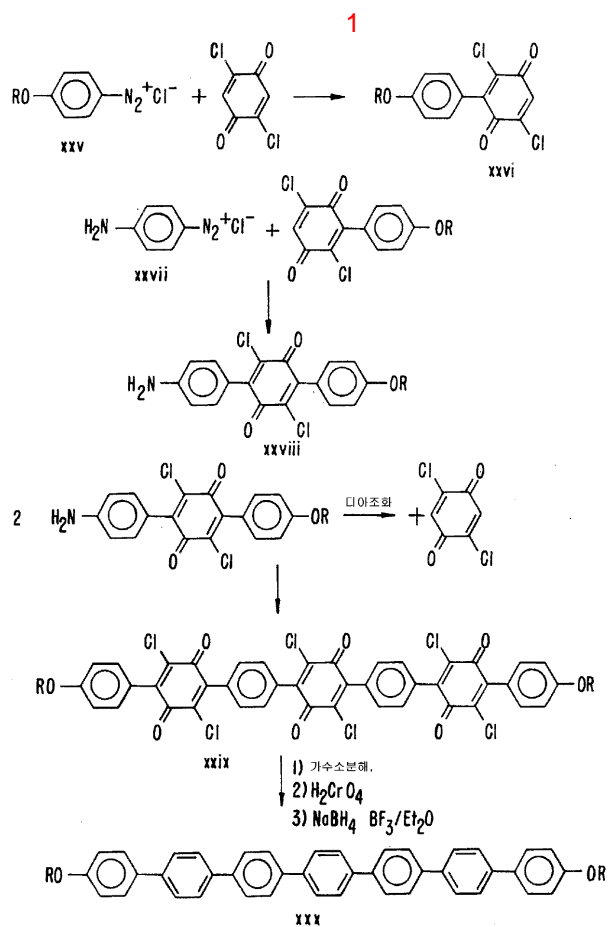
27.

25 , z 2 4 ; R<sup>32</sup> R<sup>35</sup> H

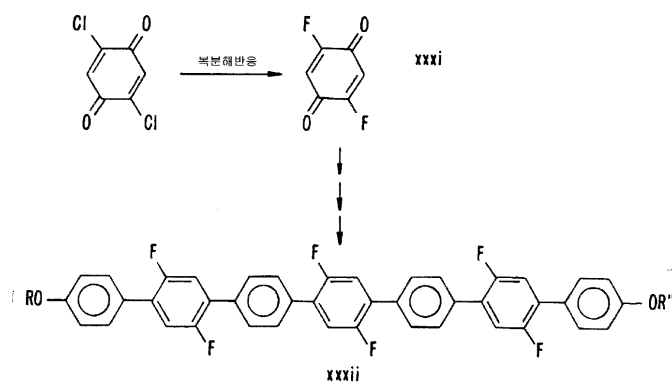
28.

, 가 1 -

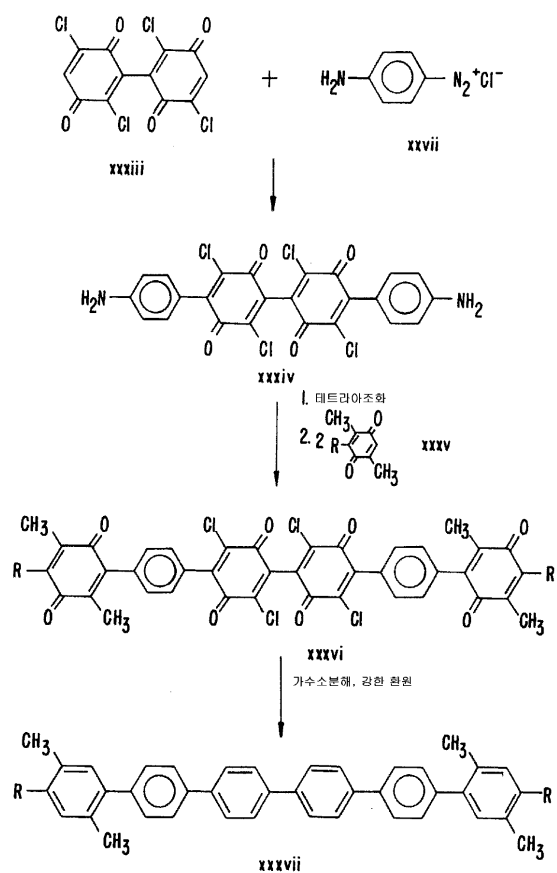
29.



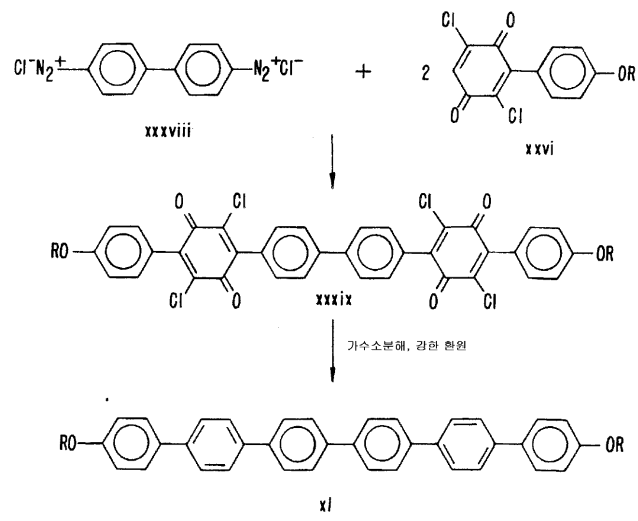
2



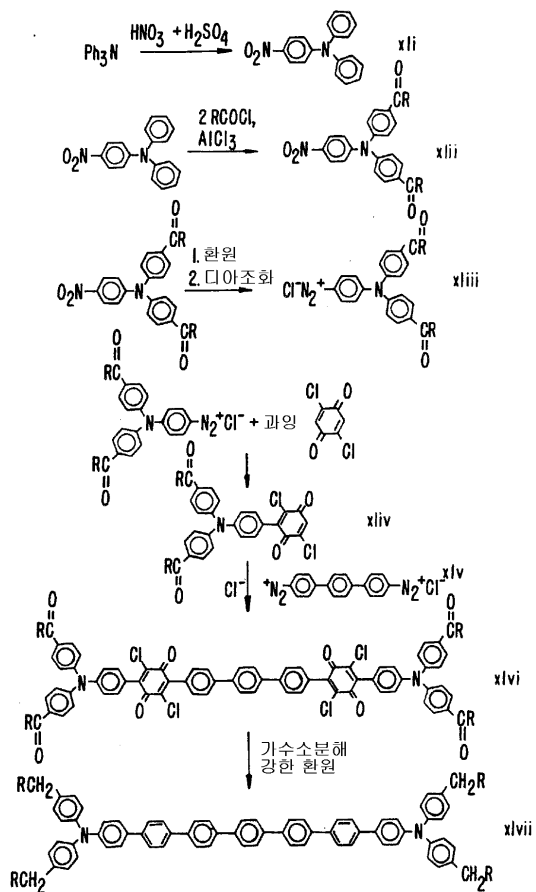
3



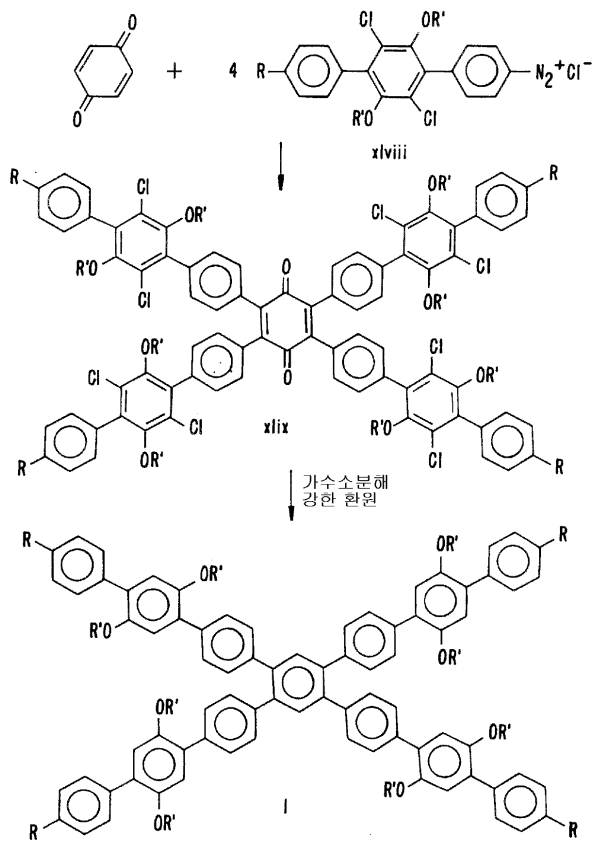
4



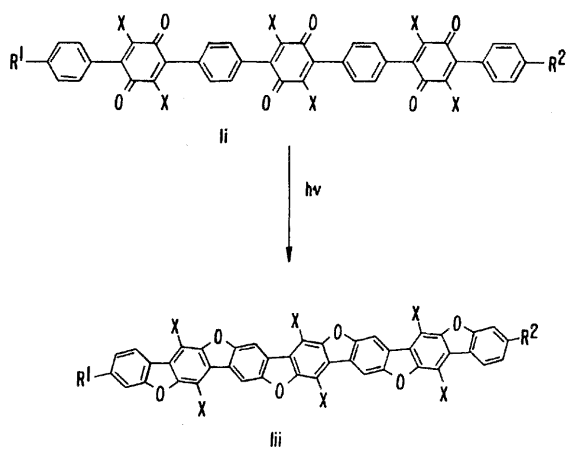
5



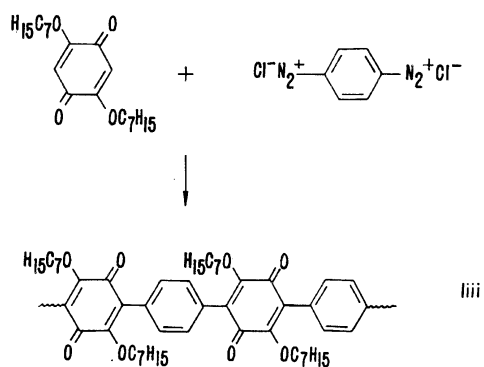
6



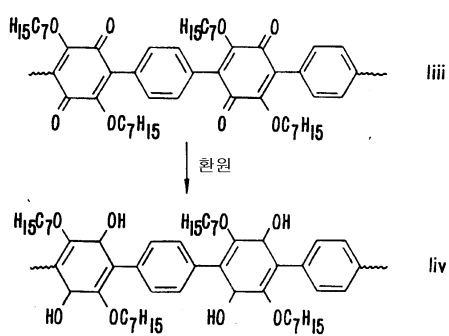
7



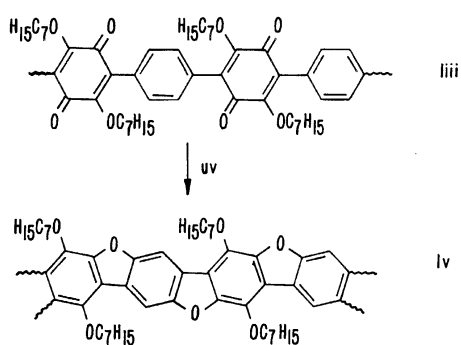
## 8a



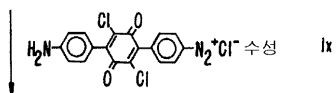
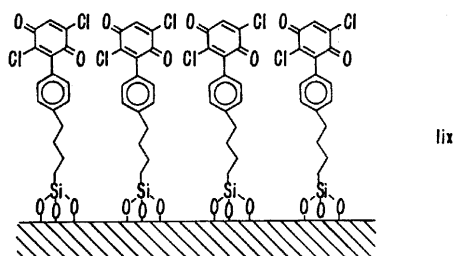
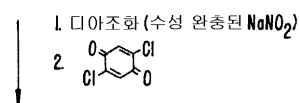
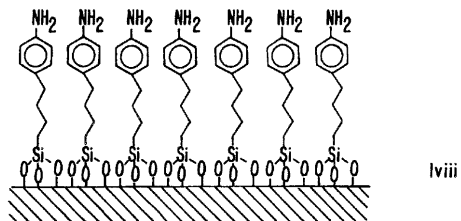
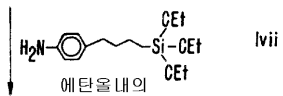
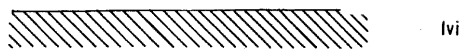
## 8b



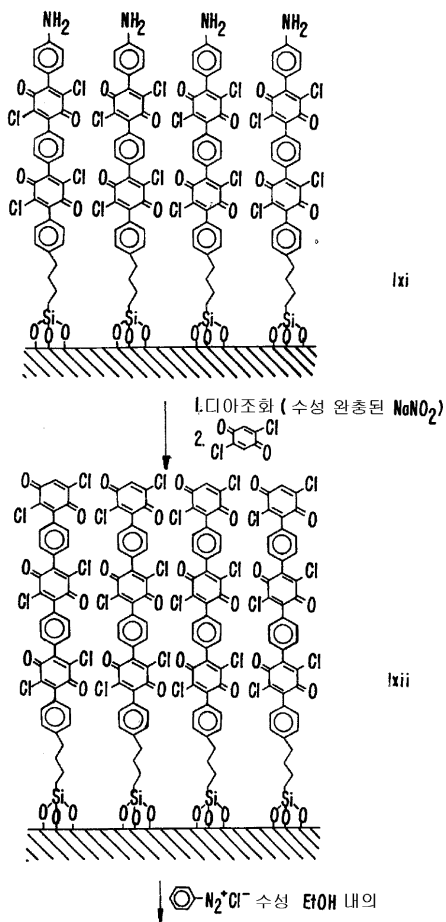
## 8c



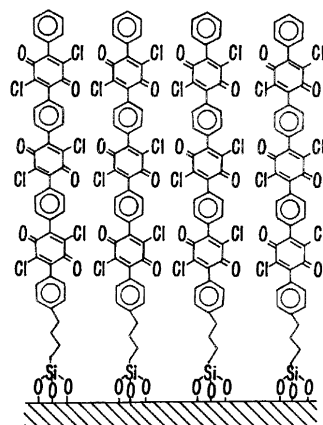
9a



9b

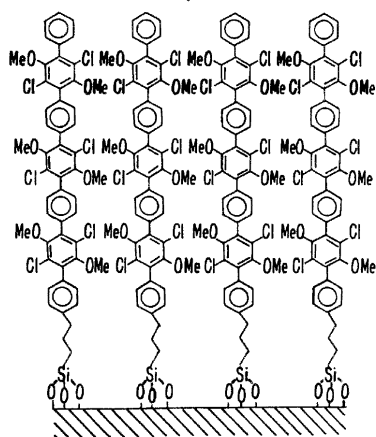


9c



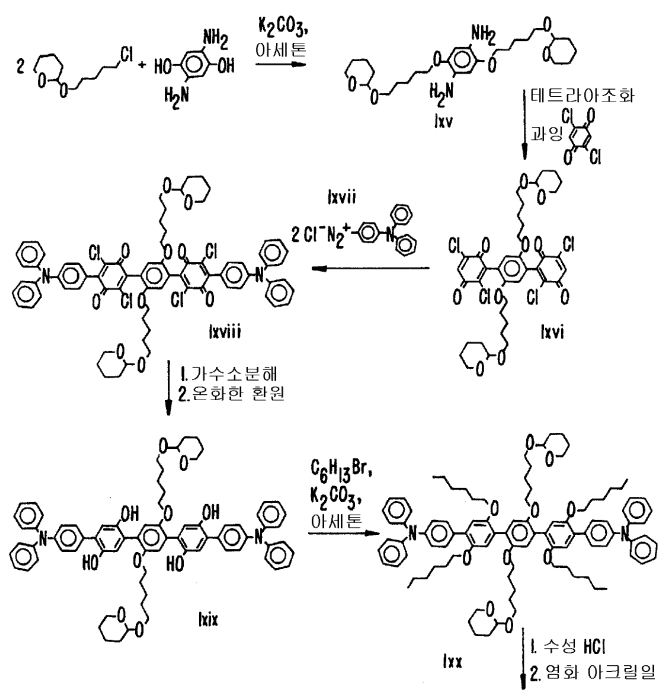
Ixiii

환원, 메틸화

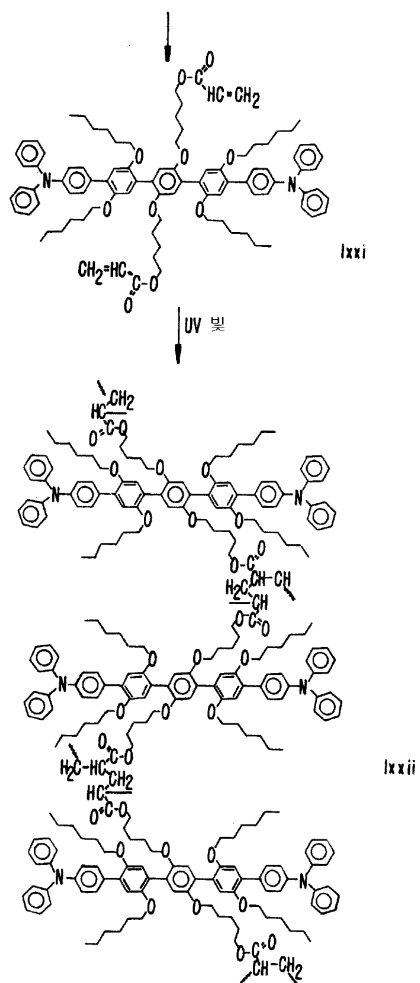


Ixiv

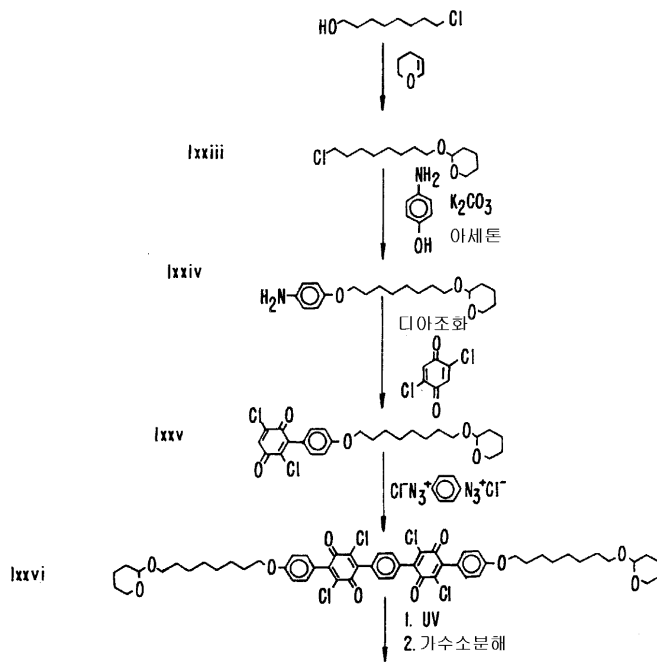
10a



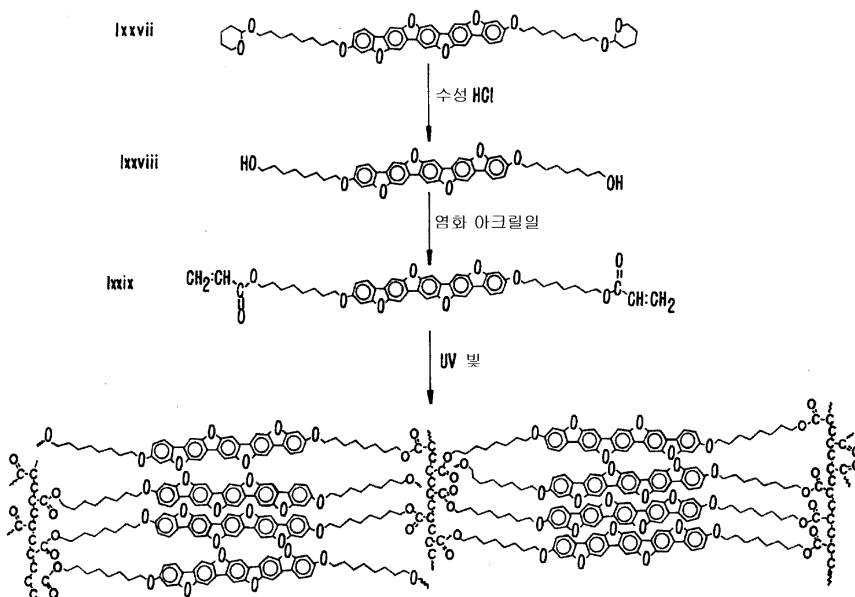
10b



11a



11b



专利名称(译)	通过季铵芳基化制备的低聚物和聚合物OLED材料		
公开(公告)号	<a href="#">KR1020020023953A</a>	公开(公告)日	2002-03-29
申请号	KR1020017015900	申请日	2001-04-10
[标]申请(专利权)人(译)	霍尼韦尔国际公司		
申请(专利权)人(译)	허니웰인터내셔널인코포레이티드		
[标]发明人	KOCH GEORGE 코치조지씨		
发明人	코치조지씨.		
IPC分类号	H01L51/50 C07C15/14 C07C43/205 C07C43/21 C07C43/225 C07C50/30 C07C211/54 C07D493/22 C08G61/10 C08G61/12 C09K11/06 C07C15/00		
CPC分类号	C08G61/10 C08G61/125		
代理人(译)	郑周金 Jeongsamyong Bakjonghyeok		
优先权	60/195902 2000-04-10 US		
其他公开文献	KR100763818B1		
外部链接	<a href="#">Espacenet</a>		

摘要(译)

提供具有以下通式的OLED材料：R<sup>1</sup>- ( Ari )<sub>n</sub>-R<sup>2</sup>其中下标n是5-15的整数；上标i是1到n的整数，表示R<sup>1</sup>下游的位置；每个Ari是取代或未取代的芳基；R<sup>1</sup>和R<sup>2</sup>各自是相对于其中R<sup>1</sup>和R<sup>2</sup>为氢的相应化合物的溶解度，增加对苯撑化合物在非极性有机溶剂中的溶解度的取代基；条件是Ari基团以1,4-对苯撑的方式连接在一起。©KIPO & WIPO 2007

