



(19)

(12)

(KR)
(B1)

(45)
(11)
(24)

2010 04 20
10-0953654
2010 04 12

(51) Int. Cl.

(73)

HD5B 33/02 (2006. 01) *HD5B 33/04* (2006. 01)

24

HD1L 51/50 (2006. 01)

(21) 10-2008-0061125

(72)

(22) 2008 06 26

2008 06 26

508

(65) 10-2010-0001275

(43) 2010 01 06

508

$$(56) \quad \left(\begin{array}{c} \text{[...]} \end{array} \right)$$
$$(74)$$

US20050285520 A1*

US20050155704 A1

JP17017333 A

JP17293946 A

*

: 13

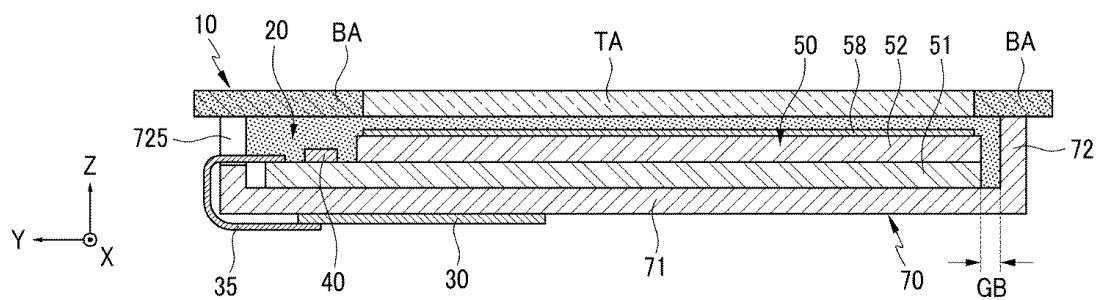
$$\vdots$$

(54)

(57)

1 , 1 ; 2 , 1
; 2
(cover window); 2
1 .

100



(72)

993-5 101

508

508

1

1 , 1

2 , 1

;

2

,

(cover

window);

2

1

2

1 ,

,

3

1 ,

4

1 ,

5

1 4 ,

1

,

1

2

6

5 ,

1

2

,

1

2

7

6 ,

200

8

1 ,

1

2 ,

1

;

;

;

2

;

2

1

;

.

9

8 ,

,

.

10

8 ,

,

.

11

8 ,

,

1

1

2

,

1

2

.

12

11 ,

1

2

.

13

11 ,

200

.

[0002]

(organic light emitting display)
 (Organic Light Emitting Diode)
 (exciton)

[0003]

[0004]

[0005]

[0006]

[0007]

[0008]

[0009]

[0010]

[0011]

[0012]

2 2 , 1 1 , 1 ;
 window; 2 1 (cover

[0013]

[0014]

[0015]

[0016]

1 , 1 2

[0017] 1 2 ,
1 2 .

[0018] 200 .

[0019] , 1 , 1
2 , 1
;
; 2
; 2
1 ;
.

[0020] ,

[0021] ,

[0022] 1
, , 1 2
, 1 2
.

[0023] 1 2
.

[0024] 200 .

[0025] ,

[0026] ,

[0027] ,

[0028] ,

[0029] ,

[0030] ,

[0031] ,

[0032] ,

[0033] ,
" " ,
" " " " " "

- [0034] 1 (100) . , 2 1
(100) . , 3 2 - , 4
2 - .
- [0035] 1 2 , (100) (50) (cover
window) (10), (20) . , (100) (70),
(30), (35) .
- [0036] (50) 1 (51), 2 (52), (40) . 1 (51)
(DA) (NA) . 2 (52) 1 (51) 1 (51)
(DA) . 1 (51) 2 (52) 2 (52) (
) . (40) 1 (51) (NA) (mount) . ,
(40) 1 (51) 2 (52) . , 2
(52) (40) .
- [0037] 1 (51) (DA) (matrix) (5 6) .
, 1 (51) (DA) (NA)
() () . , 1 (51) (NA)
() . (40) 1 (51) (NA) ()
. , 1 (51) (40) () (
) () .
- [0038] 2 (52) 1 (51) 1 (51) ,
. (50) 2 (52)
(58) (3) . (58) ,
.
- [0039] (40) (chip on glass; COG) 1 (51) (NA) .
- [0040] (70) (50) (70) (71) (72)
(71) (50) 1 (51) . ,
(50) 1 (51) (71) (70) (72) (71)
1 (51) 2 (52) . (72) 1 (51) 2
(52) (GB) . (GB) 200
.
- [0041] , (70) (35) 1 (51) (NA) 1 (51)
(NA) (72) (725) .
- [0042] (70) . , (70)
, , , , , , ,
. (deep drawing)
(71) (72) (70) .
(72) .
- [0043] (30) () ,
(36) . (flexible printed circuit board) (35) 1 (51)
(NA) (30) . (35) (30)
(50) . (30)
(35) (40) 1 (51) () .
- [0044] 3 , (35) (30) (70)
.
- [0045] (10) 2 (52) (40) , (50)
. , (10) (50)
. (10) .

- [0046] , 3 , (10) 1 (51) (NA)
(50) (BA) , (50) (TA)
 , (BA) (DA) (NA) , (TA) (D
A) . (BA) , (50)
- [0047] , (10) (BA) ,
(100)
- [0048] (20)
(20) (10) (70)
- [0049] 3 4 , (20) 2 (52) (10) 1 (51)
(NA) (10) , (20) (70) (71) 1
(51) 2 (52)
- [0050] , (20) (50) (10) (10)
(50) , (50) (70) (72)
(70) (50) (70) (10)
- [0051] , (20) (40) 1 (51) (NA)
(40) (NA)
(50) 1 (51) (NA) , ,
- [0052] , (20) (50) (70) (10)
(50)
(100) , (5)
0) , (100) (50)
- [0053] , (50)
.
- [0054] , (20) , , ,
(50) (20)
, (20) (70) (72)
(50) (GB) 200
- [0055] , (20) (10) , (20) 2 (52)
(10) , (20) (10)
(20)
(10) , (10) 2 (52)
(10)
- [0056] , , (100) , (40)
(50)
- [0057] , (100) (50)
- [0058] , (50) , (10) (70) (20)
, (40) 1 (51) (NA) (20)
, (50) (20)
- [0059] , (10) (20) , (100)

- [0060] , 5 6 , (50) .
- [0061] (50) . 5 6 ,
 (L1) (T1, T2, C1) . 1 (51)
 , 1 (51) (511) , (511) (T1, T2, C1)
 (L1) .
- [0062] (L1) (544) (545) (546) .
 2 (T1, T2) (C1) .
 (T1) (T2) .
- [0063] (T1) (SL1) (DL1) , (SL1)
 (DL1) (T2) .
 (C1) (T1) (VDD) , (T1)
 (VDD) .
- [0064] (T2) (VDD) (C1) (C1)
 (I_{LED}) (L1) , (L1)
 (I_{LED}) . (T2) (533) (532)
 (531) , (L1) (544) (T2) (532)
 .
- [0065] 2 (52) (L1) (T1, T2, C1) 1 (51) .
- [0066] , 7 9 1 (100) .
- [0067] , (50) , (50) (70) .
 (50) (70) .
- [0068] , 7 , (10) , (25) ,
 (25) (10) . 7 , (10) (BA) TA
 , , (10)
- [0069] , 8 , (25) 2 (52) (40)
 (10) (10) (50) , (10) (BA) 1
 (10) (NA) (1) 2 (52) .
- [0070] , 8 , (10) (50) ,
 (10) (25) (50) , (1
 0) (50) .
- [0071] , (10) (50) (25)
 (50) .
- [0072] , (10) (25) 2 (52) (10) , 1 (51)
 (NA) (10) , (70) (72) (50)
 (25) .
- [0073] , 9 , (25) (20) , (25)
 .
 (U) , (U)
- [0074] , 9 (U) (10) (25) ,
 . , (U) (70) (10)
 . (U) (optic fiber)

[0075] , (100)

[0076] , (50), (10) (70) (20)
 , (40) 1 (51) (NA) (20)
 , (50) (20)

[0077] , (10) (20) , (100)

[0078] ,

[0079] , (DA)
 (10) (50)

1

[0080]			
	(luminance) [cd/m ²]	180	206
	@ 10,000 lux	1.74	2.45
	@ 10,000	5.3%	14.5%
	[%]	91.8%	91.8%
	[%]	7.44%	4.35%

[0081] 1 ,

[0082] ,

[0083] 1

[0084] 2 1

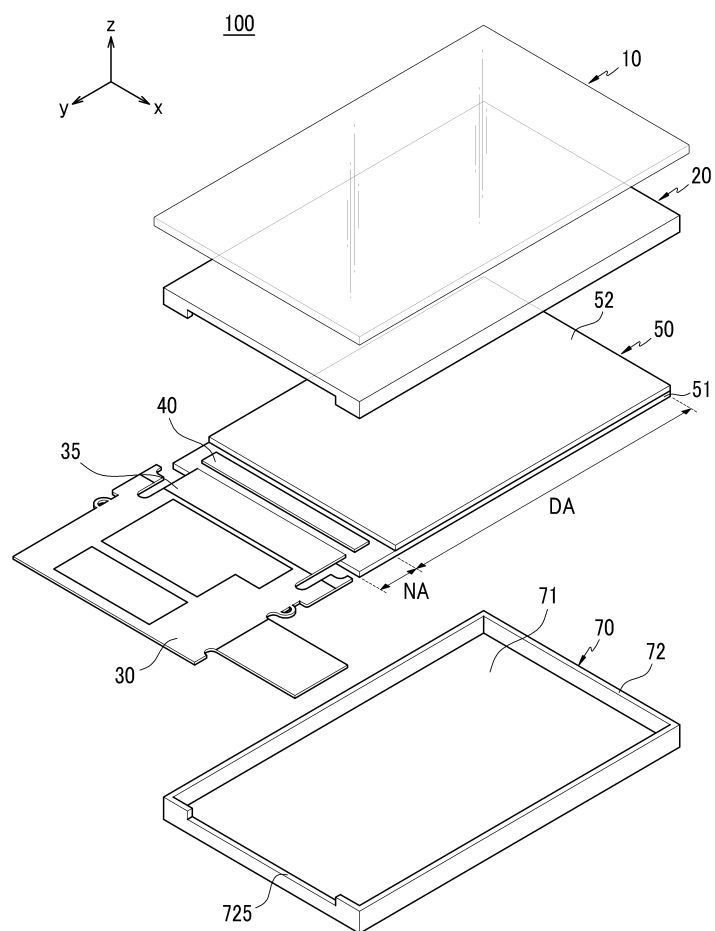
[0085] 3 2 -

[0086] 4 2 -

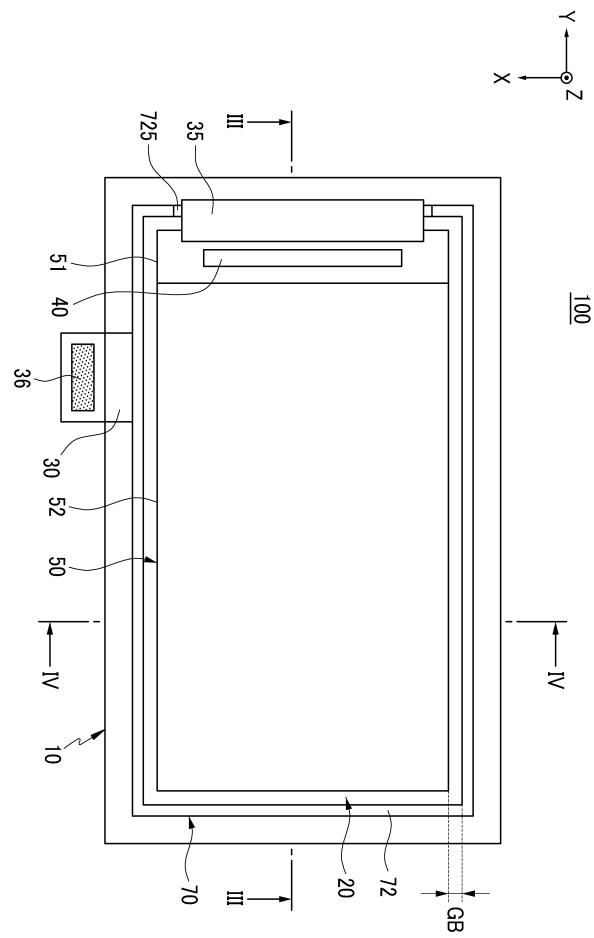
[0087] 5 1

[0088] 6 1

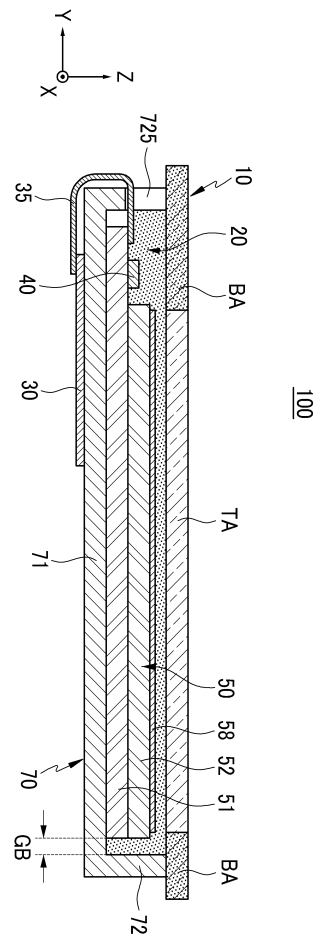
[0089] 7 9 1

1

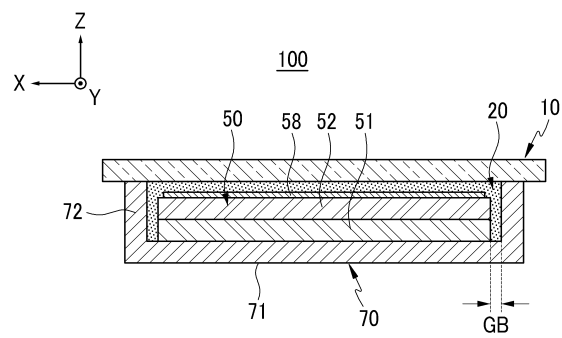
2



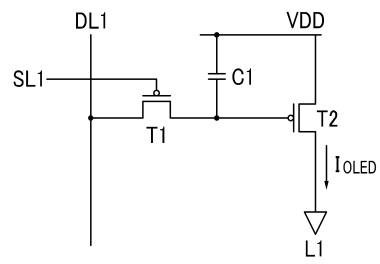
3



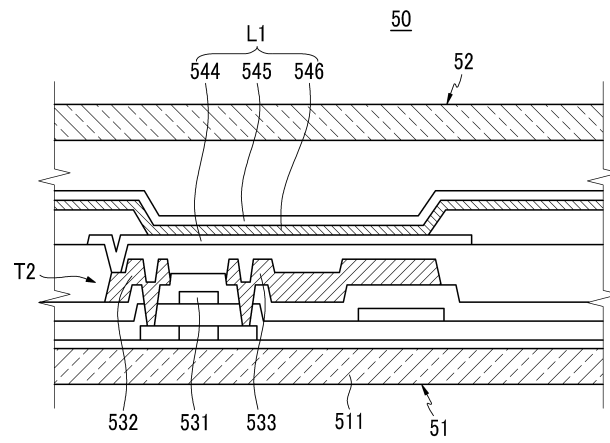
4



5



6



7

