



(11)

EP 2 669 351 A1

(12) **EUROPEAN PATENT APPLICATION**

(43) Date of publication:
04.12.2013 Bulletin 2013/49

(51) Int Cl.:
C09K 11/06 ^(2006.01) **H01L 51/50** ^(2006.01)
C07C 211/61 ^(2006.01)

(21) Application number: **13180597.0**

(22) Date of filing: **19.05.2010**

(84) Designated Contracting States:
AL AT BE BG CH CY CZ DE DK EE ES FI FR GB GR HR HU IE IS IT LI LT LU LV MC MK MT NL NO PL PT RO SE SI SK SM TR

- **Rostovtsev, Vsevolod Swarthmore, PA 19081 (US)**
- **Merlo, Jeffrey A. Wilmington, DE 19810 (US)**
- **Gao, Weiyong Landenberg, PA 19350 (US)**

(30) Priority: **19.05.2009 US 179405 P**

(62) Document number(s) of the earlier application(s) in accordance with Art. 76 EPC:
10778311.0 / 2 432 849

(74) Representative: **Hoffmann, Benjamin Dehns St. Bride's House 10 Salisbury Square London EC4Y 8JD (GB)**

(71) Applicant: **E. I. du Pont de Nemours and Company Wilmington, DE 19898 (US)**

Remarks:

This application was filed on 15-08-2013 as a divisional application to the application mentioned under INID code 62.

- (72) Inventors:
- **Wu, Weishi Landenberg, PA 19350 (US)**
 - **Herron, Norman Newark, DE 19711 (US)**

(54) **Chrysene compounds for luminescent applications**

(57) This invention relates to chrysene compounds that are useful in electroluminescent applications. It also relates to electronic devices in which the active layer includes such a chrysene compound.

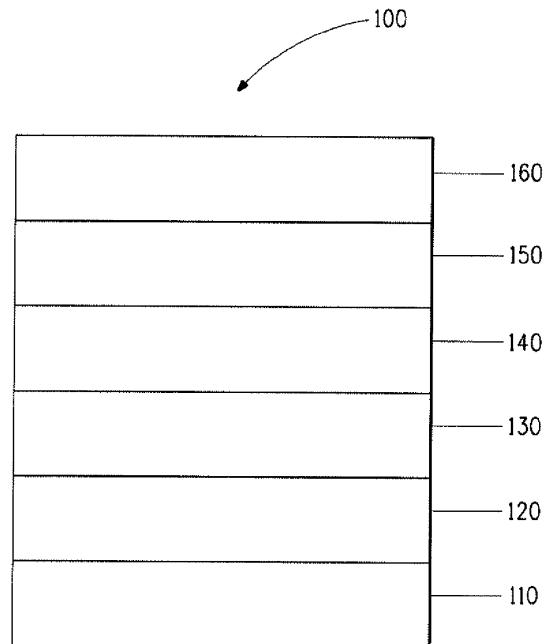


FIG. 1

EP 2 669 351 A1

DescriptionRELATED APPLICATION

5 **[0001]** This application claims priority under 35 U.S.C. § 119(e) from Provisional Application No. 61/179,405 filed May 19, 2009 which is incorporated by reference in its entirety.

BACKGROUND10 Field of the Disclosure

[0002] This invention relates to electroluminescent chrysene compounds. It also relates to electronic devices in which the active layer includes such a chrysene compound.

15 Description of the Related Art

[0003] Organic electronic devices that emit light, such as light-emitting diodes that make up displays, are present in many different kinds of electronic equipment. In all such devices, an organic active layer is sandwiched between two electrical contact layers. At least one of the electrical contact layers is light-transmitting so that light can pass through the electrical contact layer. The organic active layer emits light through the light-transmitting electrical contact layer upon application of electricity across the electrical contact layers.

20 **[0004]** It is well known to use organic electroluminescent compounds as the active component in light-emitting diodes. Simple organic molecules such as anthracene, thiaziazole derivatives, and coumarin derivatives are known to show electroluminescence. Semiconductive conjugated polymers have also been used as electroluminescent components, as has been disclosed in, for example, U.S. Patent 5,247,190, U.S. Patent 5,408, 109, and Published European Patent Application 443 861.

25 **[0005]** However, there is a continuing need for electroluminescent compounds.

SUMMARY

30

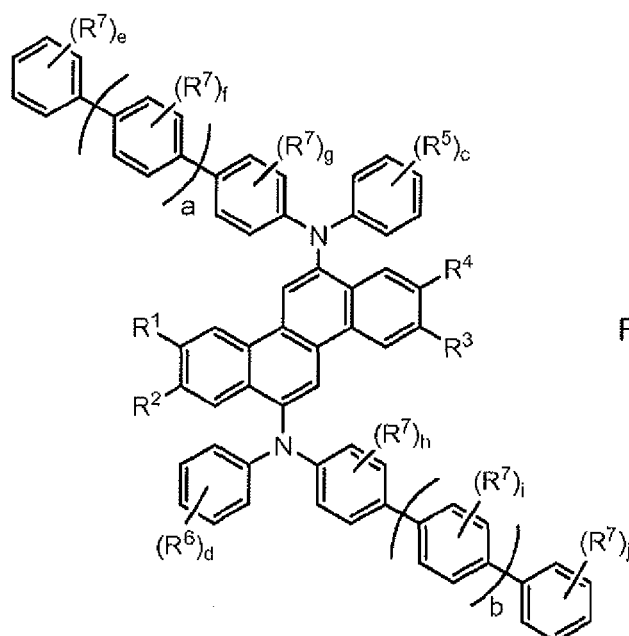
[0006] There is provided a compound having Formula I:

35

40

45

50



Formula I

55 wherein:

R¹, R², R³ and R⁴ are the same or different and are selected from the group consisting of H, D, and alkyl, where R¹ and R² groups or R³ and R⁴ groups may be joined together to form a 5- or 6- membered aliphatic ring;

R⁵ and R⁶ are the same or different and are selected from the group consisting of D, alkyl groups, silyl groups, m-phenyl, o-phenyl, p-phenyl, m-N-carbazolyl, and p-N-carbazolyl;

R⁷ is the same or different at each occurrence and is selected from the group consisting of D, alkyl groups, silyl groups, phenyl, and biphenyl, or two adjacent R⁷ groups can join together to form a naphthyl or fluorenyl group;

a and b are the same or different and are an integer from 0-10;

c and d are the same or different and are an integer from 1-5;

f, g, h, and i, are the same or different at each occurrence and are an integer from 0-4; and

e and j are the same or different at each occurrence and are an integer from 0-5.

[0007] There is also provided an electronic device comprising an active layer comprising the compound of Formula I.

BRIEF DESCRIPTION OF THE DRAWINGS

[0008] Embodiments are illustrated in the accompanying figures to improve understanding of concepts as presented herein.

FIG. 1 includes an illustration of one example of an organic electronic device.

FIG. 2 includes a graph of relative device lifetimes.

[0009] Skilled artisans appreciate that objects in the figures are illustrated for simplicity and clarity and have not necessarily been drawn to scale. For example, the dimensions of some of the objects in the figures may be exaggerated relative to other objects to help to improve understanding of embodiments.

DETAILED DESCRIPTION

[0010] Many aspects and embodiments are disclosed herein and are exemplary and not limiting. After reading this specification, skilled artisans appreciate that other aspects and embodiments are possible without departing from the scope of the invention.

[0011] Other features and benefits of any one or more of the embodiments will be apparent from the following detailed description, and from the claims. The detailed description first addresses Definitions and Clarification of Terms followed by the Chrysene Compound, the Electronic Device, and finally Examples.

1. Definitions and Clarification of Terms

[0012] Before addressing details of embodiments described below, some terms are defined or clarified.

[0013] As used herein, the term "aliphatic ring" is intended to mean a cyclic group that does not have delocalized pi electrons. In some embodiments, the aliphatic ring has no unsaturation. In some embodiments, the ring has one double or triple bond.

[0014] The term "alkyl" is intended to mean a group derived from an aliphatic hydrocarbon having one point of attachment, and includes a linear, a branched, or a cyclic group. The term is intended to include heteroalkyls. The term "hydrocarbon alkyl" refers to an alkyl group having no heteroatoms. In some embodiments, an alkyl group has from 1-20 carbon atoms.

[0015] The term "aryl" is intended to mean a group derived from an aromatic hydrocarbon having one point of attachment. The term includes groups which have a single ring and those which have multiple rings which can be joined by a single bond or fused together. The term is intended to include heteroaryls. The term "arylene" is intended to mean a group derived from an aromatic hydrocarbon having two points of attachment. In some embodiments, an aryl group has from 3-60 carbon atoms.

[0016] The term "blue" refers to radiation that has an emission maximum at a wavelength in a range of approximately 400-500 nm.

[0017] The term "branched alkyl" refers to an alkyl group having at least one secondary or tertiary carbon. The term "secondary alkyl" refers to a branched alkyl group having a secondary carbon atom. The term "tertiary alkyl" refers to a branched alkyl group having a tertiary carbon atom. In some embodiments, the branched alkyl group is attached via a secondary or tertiary carbon.

[0018] The term "compound" is intended to mean an electrically uncharged substance made up of molecules that further consist of atoms, wherein the atoms cannot be separated by physical means. The phrase "adjacent to," when used to refer to layers in a device, does not necessarily mean that one layer is immediately next to another layer. On the other hand, the phrase "adjacent R groups," is used to refer to R groups that are next to each other in a chemical

formula (i.e., R groups that are on atoms joined by a bond). The term "photoactive" refers to any material that exhibits electroluminescence and/or photosensitivity.

[0019] The term "green" refers to radiation that has an emission maximum at a wavelength in a range of approximately 500-600 nm.

[0020] The prefix "hetero" indicates that one or more carbon atoms have been replaced with a different atom. In some embodiments, the different atom is N, O, or S.

[0021] The term "layer" is used interchangeably with the term "film" and refers to a coating covering a desired area. The term is not limited by size. The area can be as large as an entire device or as small as a specific functional area such as the actual visual display, or as small as a single sub-pixel. Layers and films can be formed by any conventional deposition technique, including vapor deposition, liquid deposition (continuous and discontinuous techniques), and thermal transfer. Continuous deposition techniques, include but are not limited to, spin coating, gravure coating, curtain coating, dip coating, slot-die coating, spray coating, and continuous nozzle coating. Discontinuous deposition techniques include, but are not limited to, ink jet printing, gravure printing, and screen printing.

[0022] The term "organic electronic device" or sometimes just "electronic device" is intended to mean a device including one or more organic semiconductor layers or materials.

[0023] The term "siloxane" refers to the group $(RO)_3Si-$, where R is H, D, C1-20 alkyl, or fluoroalkyl.

[0024] The term "silyl" refers to the group R_3Si- , where R is H, D, C1-20 alkyl, fluoroalkyl, or aryl. In some embodiments, one or more carbons in an R alkyl group are replaced with Si. In some embodiments, the silyl groups are $(hexyl)_2Si(CH_3)CH_2CH_2Si(CH_3)_2-$ and $[CF_3(CF_2)_6CH_2CH_2]_2Si(CH_3)-$.

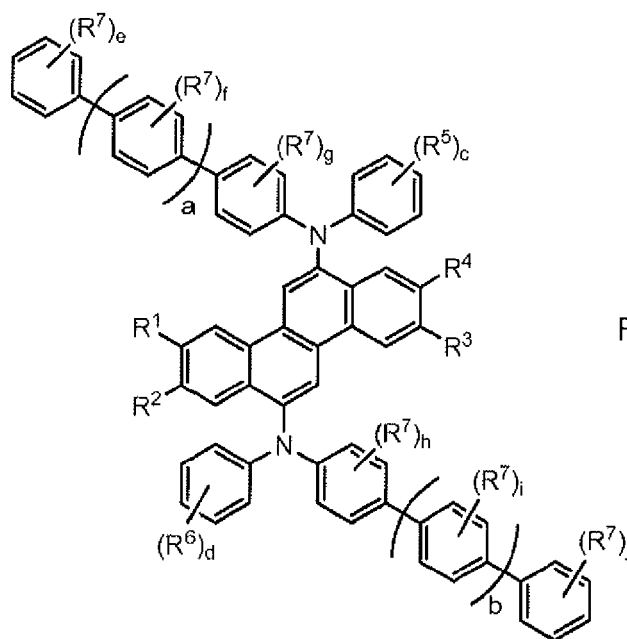
[0025] All groups can be substituted or unsubstituted unless otherwise indicated. In some embodiments, the substituents are selected from the group consisting of D, halide, alkyl, alkoxy, silyl, siloxane, aryl, and cyano.

[0026] Unless otherwise defined, all technical and scientific terms used herein have the same meaning as commonly understood by one of ordinary skill in the art to which this invention belongs. Although methods and materials similar or equivalent to those described herein can be used in the practice or testing of the present invention, suitable methods and materials are described below. All publications, patent applications, patents, and other references mentioned herein are incorporated by reference in their entirety. In case of conflict, the present specification, including definitions, will control. In addition, the materials, methods, and examples are illustrative only and not intended to be limiting.

[0027] The IUPAC numbering system is used throughout, where the groups from the Periodic Table are numbered from left to right as 1-18 (CRC Handbook of Chemistry and Physics, 81st Edition, 2000).

2. Chrysene Compound

[0028] One aspect of the present invention is a composition of Formula I:



wherein:

EP 2 669 351 A1

R¹, R², R³ and R⁴ are the same or different and are selected from the group consisting of H, D, and alkyl, where R¹ and R² groups or R³ and R⁴ groups may be joined together to form a 5- or 6-membered aliphatic ring;

R⁵ and R⁶ are the same or different and are selected from the group consisting of D, alkyl groups, silyl groups, m-phenyl, o-phenyl, p-phenyl, m-N-carbazolyl, and p-N-carbazolyl;

5 R⁷ is the same or different at each occurrence and is selected from the group consisting of D, alkyl groups, silyl groups, phenyl, and biphenyl, or two adjacent R⁷ groups can join together to form a naphthyl or fluorenyl group;

a and b are the same or different and are an integer from 0-10;

c and d are the same or different and are an integer from 1-5;

10 f, g, h, and i, are the same or different at each occurrence and are an integer from 0-4; and

e and j are the same or different at each occurrence and are an integer from 0-5.

[0029] In some embodiments, the compound is capable of blue or green emission.

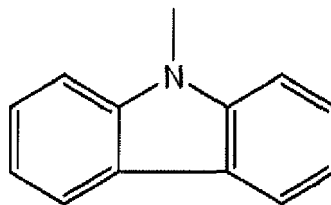
15 **[0030]** In some embodiments, R¹ through R⁴ are hydrocarbon alkyl groups. In some embodiments R¹ is a branched hydrocarbon alkyl group and R² through R⁴ are H. In some embodiments, the branched hydrocarbon alkyl group has from 3-8 carbon atoms. In some embodiments, the branched hydrocarbon alkyl group is a secondary alkyl selected from the group consisting of isopropyl and 2-butyl. In some embodiments, the branched hydrocarbon alkyl group is a tertiary alkyl selected from the group consisting of t-butyl and 2-(2-methyl)-butyl.

20 **[0031]** In some embodiments, R¹ and R² taken together and R³ and R⁴ taken together form a 5- or 6-membered aliphatic ring. In some embodiments, the aliphatic ring is selected from the group consisting of cyclohexyl and cyclopentyl. In some embodiments, the aliphatic ring has one or more alkyl substituents. In some embodiments, R¹ and R² taken together form a 5- or 6-membered aliphatic ring and R³ and R⁴ are H.

[0032] In some embodiments, each of R¹ through R⁴ is H.

25 **[0033]** In some embodiments, R⁵ and R⁶ are straight chain or branched alkyl groups. In some embodiments, R⁵ and R⁶ are straight chain or branched hydrocarbon alkyl groups. In some embodiments, R⁵ and R⁶ are hydrocarbon alkyl groups having 1-6 carbon atoms. In some embodiments, c = d = 1, and R⁵ and R⁶ are at the 4-position. In some embodiments, c = d = 2, and R⁵ and R⁶ are at the 2- and 4-positions.

30 **[0034]** In some embodiments, R⁵ and R⁶ are aromatic groups selected from the group consisting of o-phenyl, m-phenyl, p-phenyl, m-N-carbazolyl, and p-N-carbazolyl groups. By m-N-carbazolyl is meant the group



40 attached to the 3 position of the phenyl ring of the target molecule. By p-N-carbazolyl is meant the above group attached to the 4 position of the phenyl ring of the target molecule. The aromatic groups may further be substituted with D, alkyl, silyl, or phenyl groups.

[0035] In some embodiments, R⁷ is a hydrocarbon alkyl group having 1-10 carbon atoms. In some embodiments, at least one of e through j is greater than 0. In some embodiments, e = f = g = h = i = j = 0.

[0036] In some embodiments, a and b are 1-3. In some embodiments, a = b. In some embodiments, a = b = 1-3.

45 **[0037]** In some embodiments, the chrysene compound is selected from compounds E1 through E28:

50

55

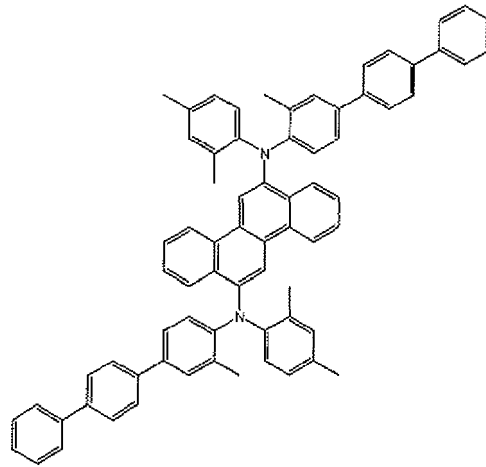
E1:

5

10

15

20



$C_{27}H_{30}N_2$
 Exact Mass: 390.46
 Mol. Wt.: 391.24
 C, 90.01; H, 6.15; N, 2.94

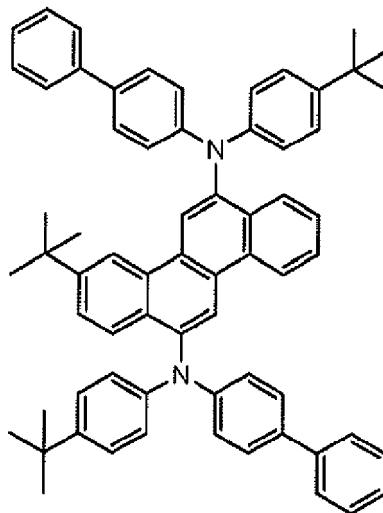
E2:

25

30

35

40

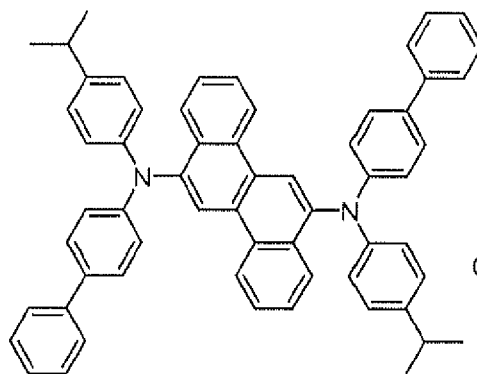


45

E3:

50

55



$C_{60}H_{50}N_2$
 Exact Mass: 798.40
 Mol. Wt.: 799.05
 C, 90.19; H, 6.31; N, 3.51

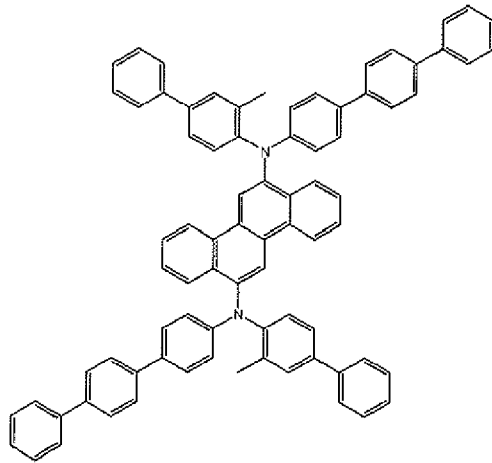
E4:

5

10

15

20



$C_{38}H_{30}N_2$
 Exact Mass: 1046.46
 Mol. Wt.: 1047.33
 C, 81.74; H, 5.58; N, 2.69

E5 :

25

30

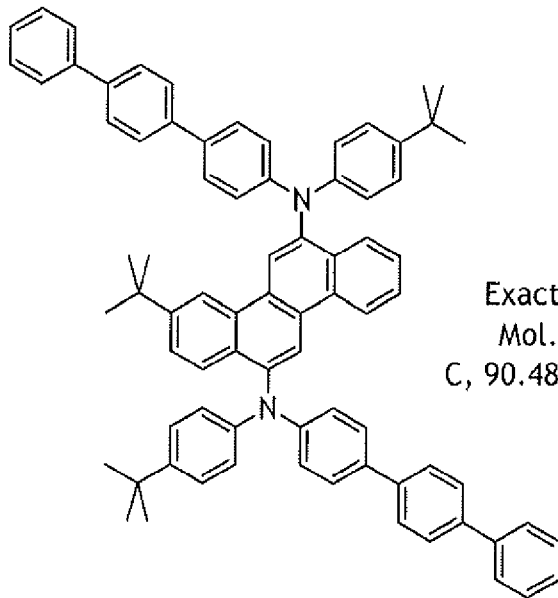
35

40

45

50

55



$C_{78}H_{70}N_2$
 Exact Mass: 1034.55
 Mol. Wt.: 1035.40
 C, 90.48; H, 6.81; N, 2.71

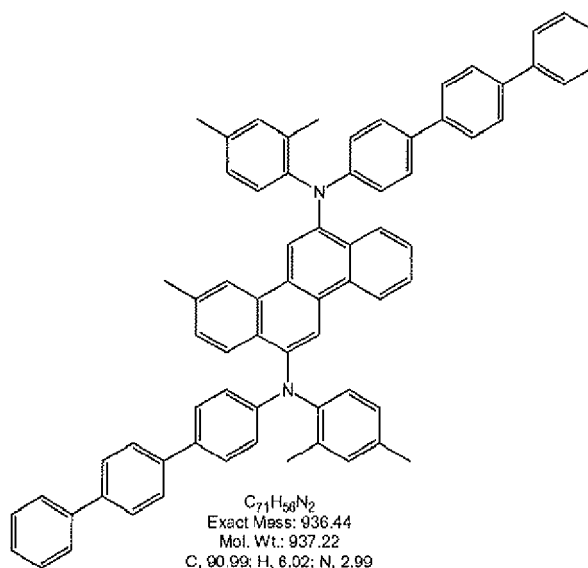
E6:

5

10

15

20



E7:

25

30

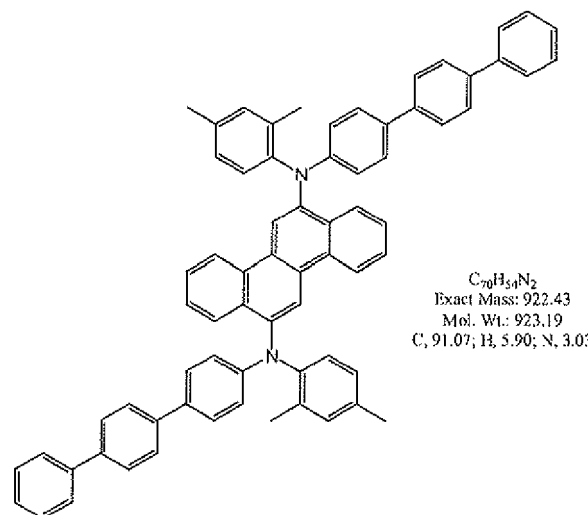
35

40

45

50

55

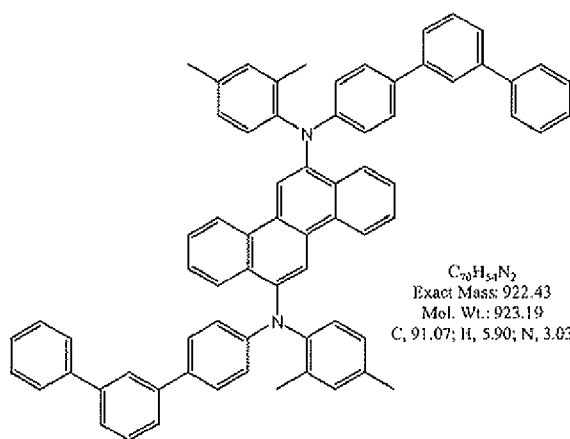


E8:

5

10

15



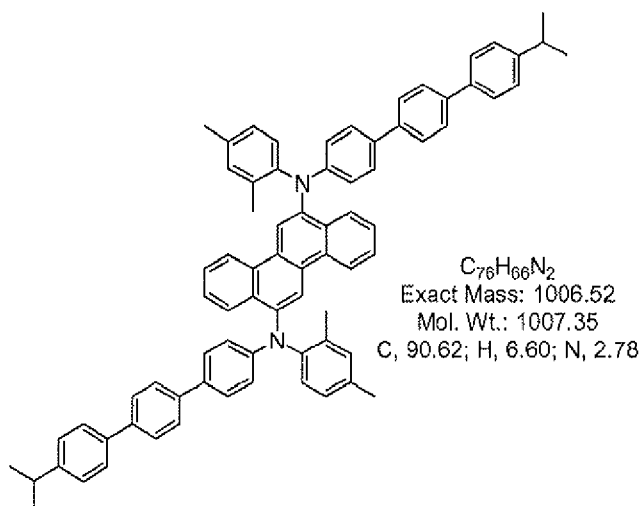
E9:

20

25

30

35



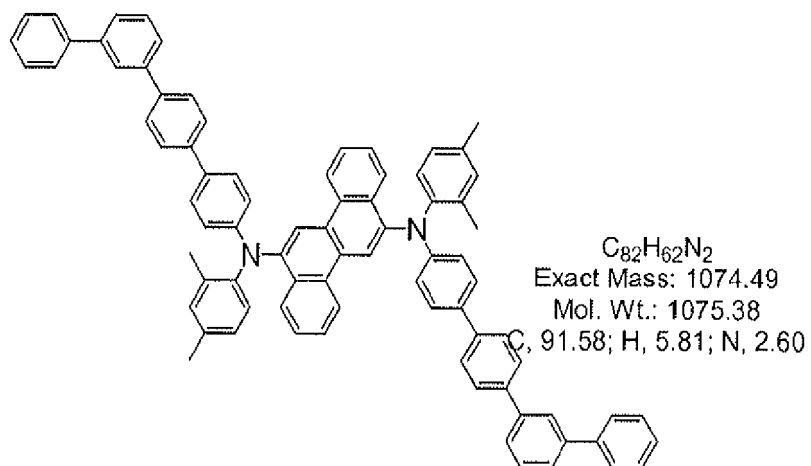
E10:

40

45

50

55



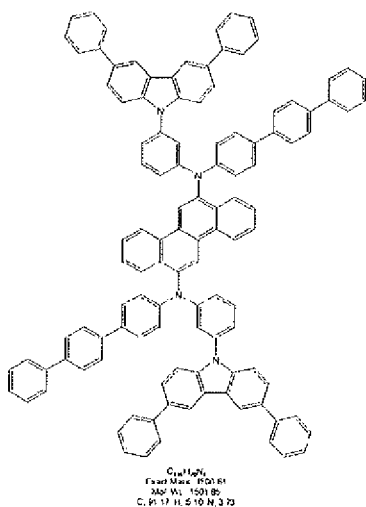
E11:

5

10

15

20



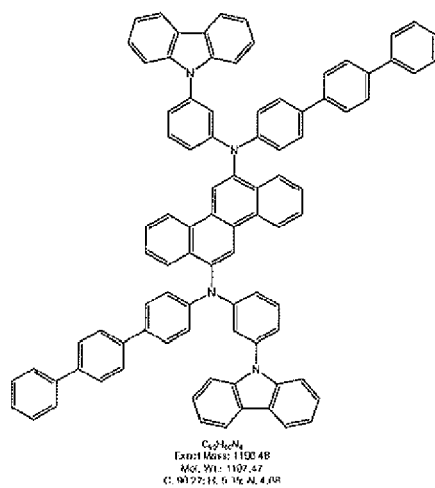
E12:

25

30

35

40

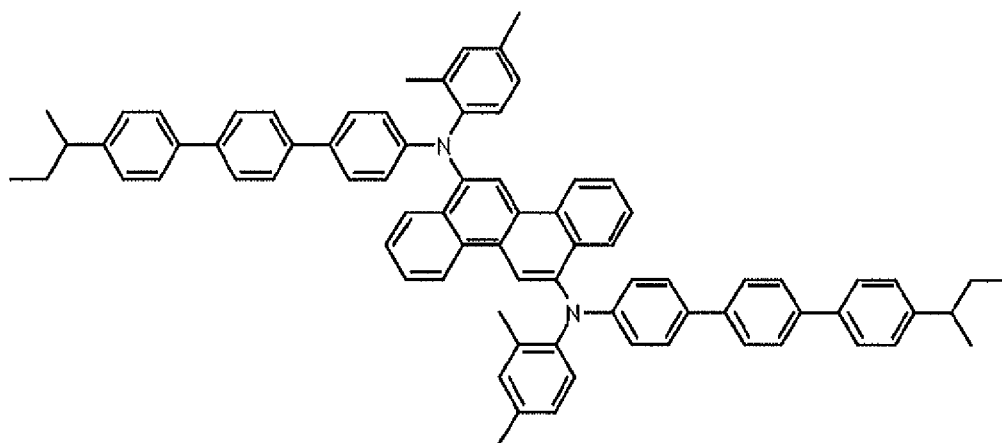


E13:

45

50

55



E14:

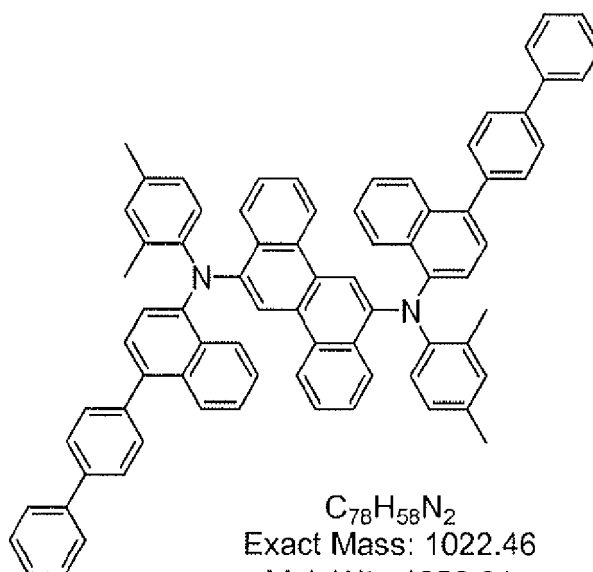
5

10

15

20

25



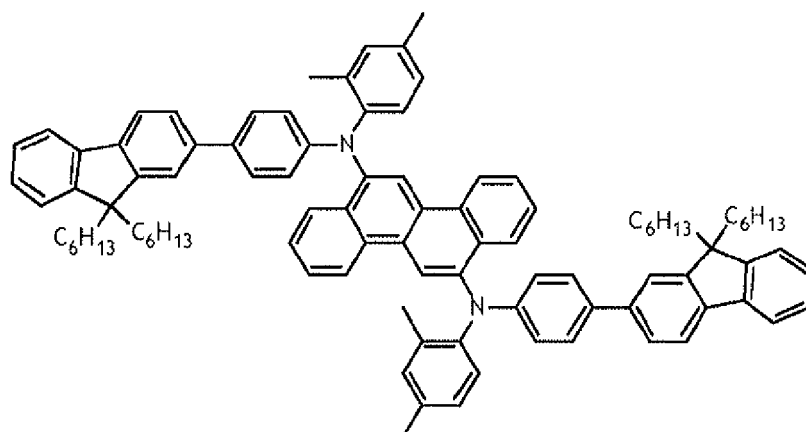
$C_{78}H_{58}N_2$
 Exact Mass: 1022.46
 Mol. Wt.: 1023.31
 C, 91.55; H, 5.71; N, 2.74

E15:

30

35

40



E16:

45

50

55

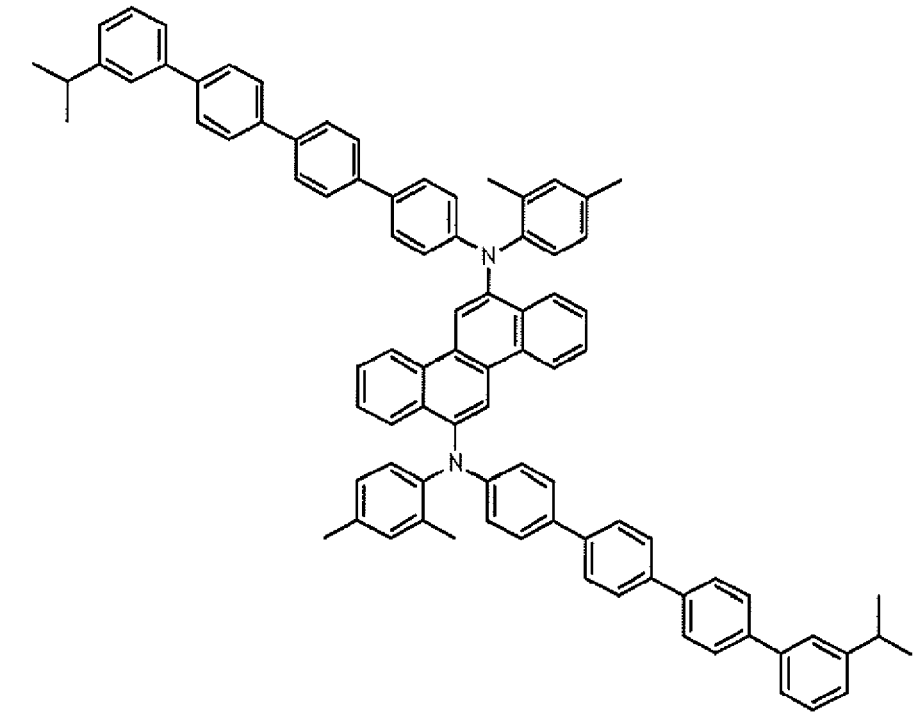
5

10

15

20

25



30

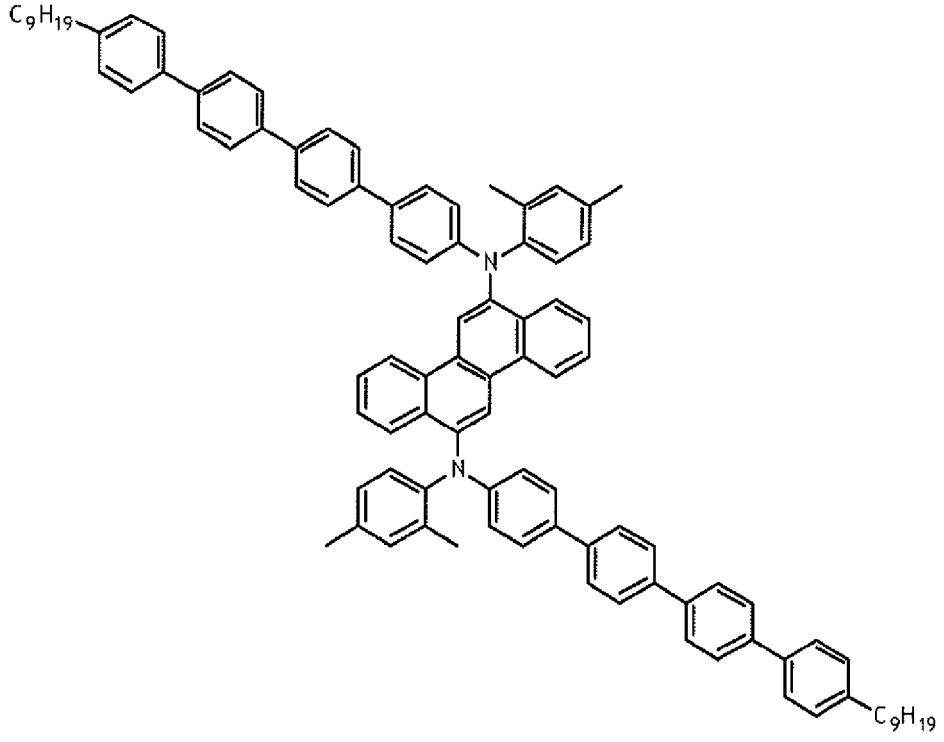
35

40

45

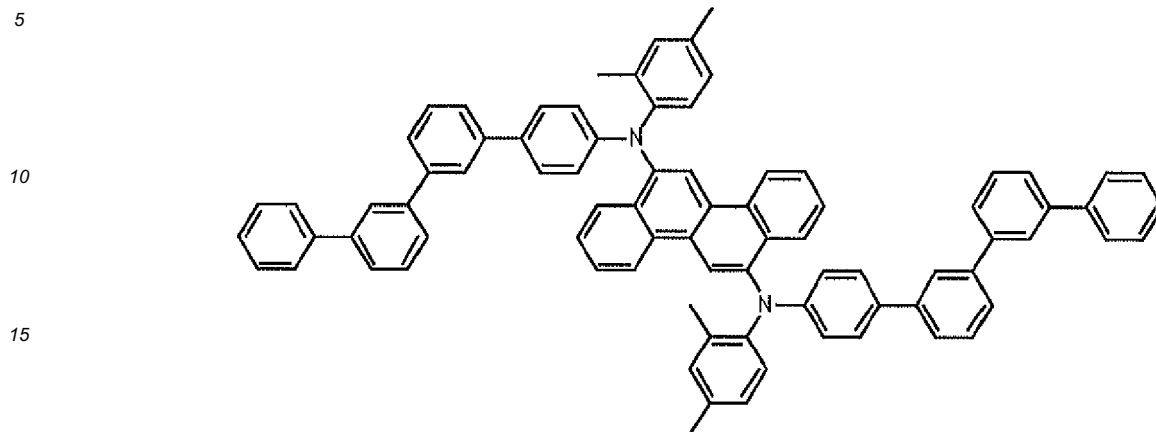
50

E17:

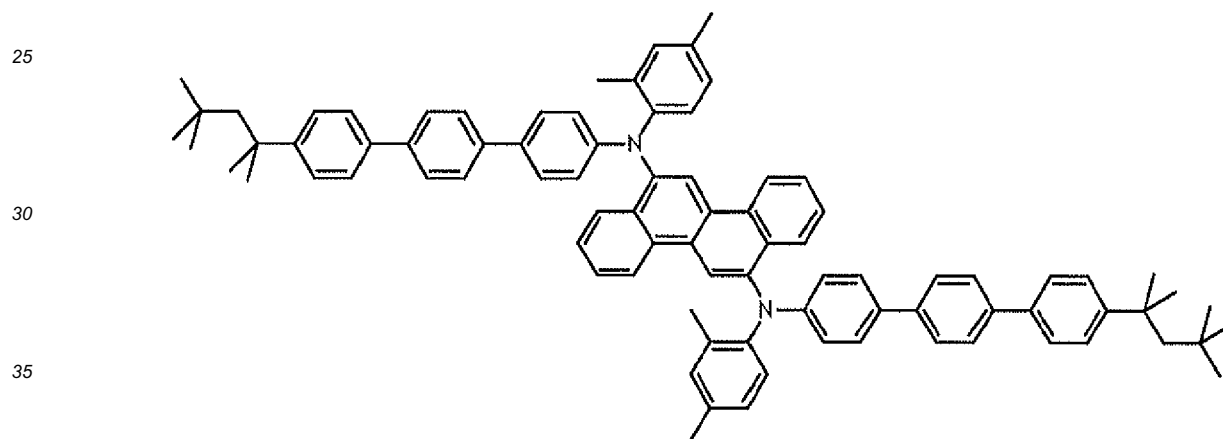


55

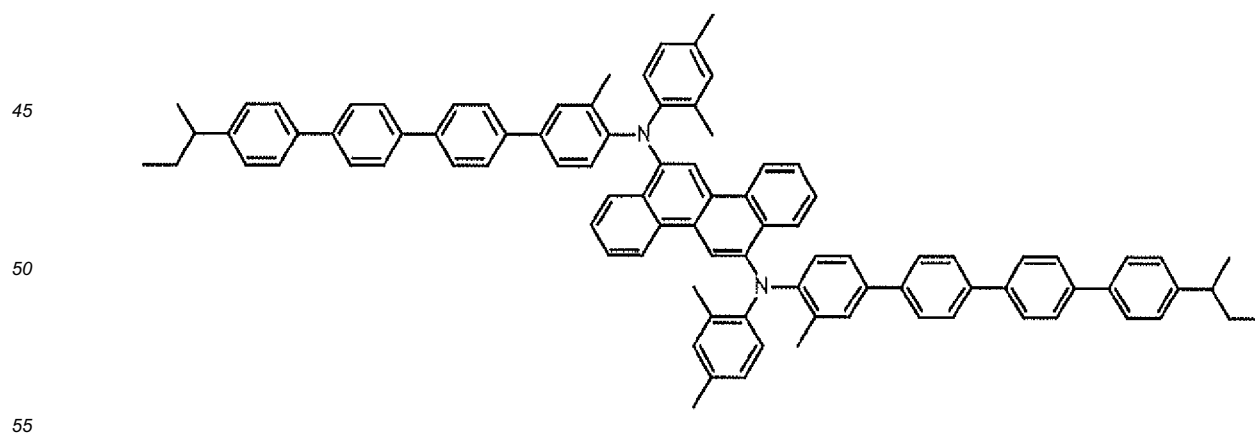
E18:



E19:



E20:

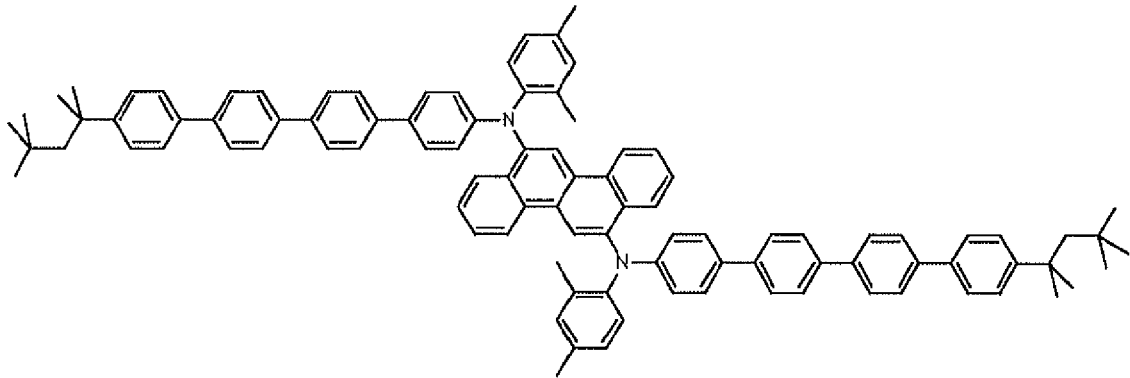


E24:

5

10

15



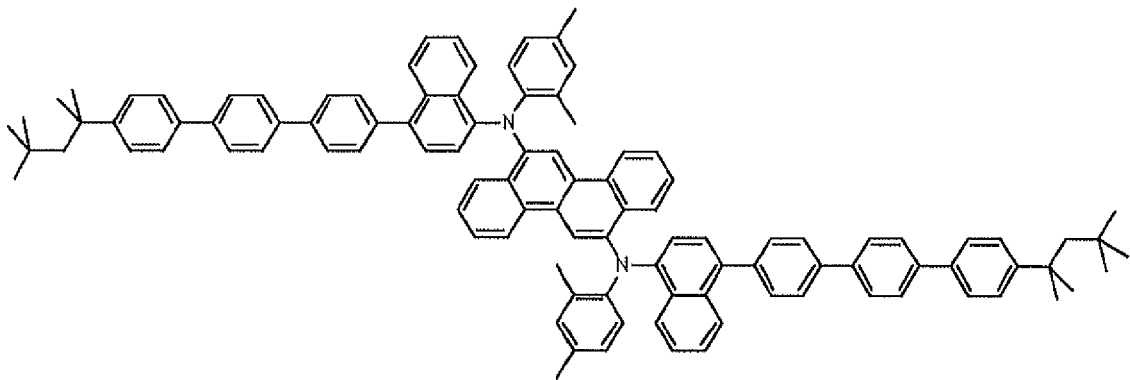
E25:

20

25

30

35



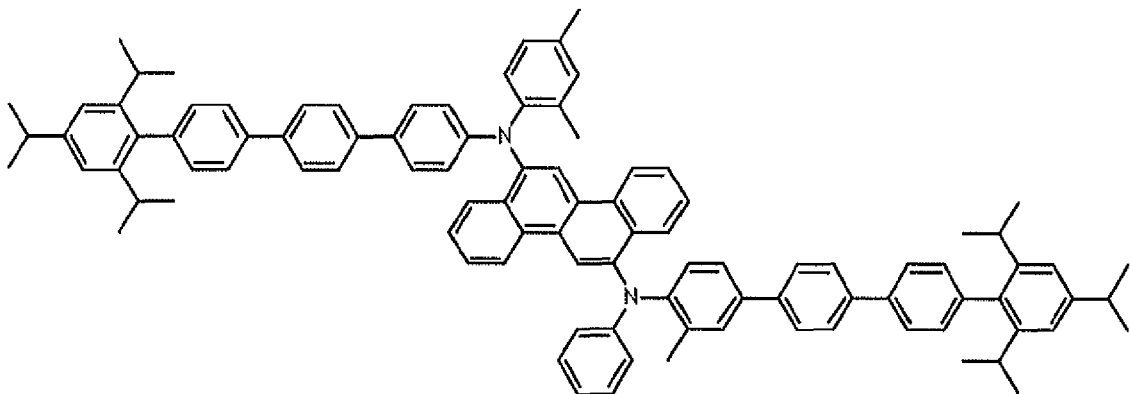
E26:

40

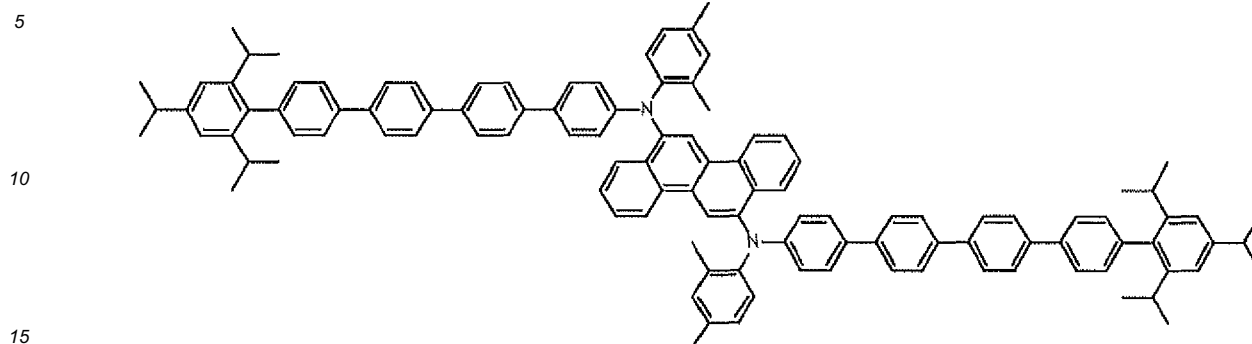
45

50

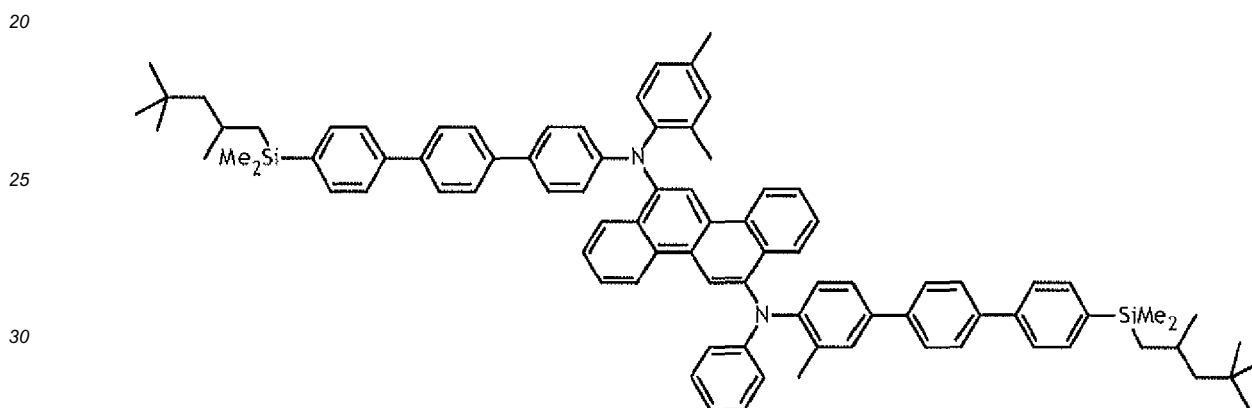
55



E27:



E28:



35 **[0038]** The new chrysenes can be prepared by known coupling and substitution reactions. Exemplary preparations are given in the Examples.

[0039] The chrysene compounds described herein can be formed into films using liquid deposition techniques. Thin films of these materials dispersed in a host matrix exhibit good to excellent photoluminescent properties and blue or green emission.

40 **[0040]** The chrysene compounds described herein have diarylamine substituents with at least one oligo-phenyl group. The oligo-phenyl group can be biphenyl, terphenyl, quaterphenyl, and above. Surprisingly and unexpectedly, these compounds have greatly improved properties when compared to chrysene compounds having only single phenyl groups on the diarylamine substituents. Electronic devices including an active layer with the chrysene compounds described herein, have greatly improved lifetimes. It has been discovered that the lifetime increases with the number of repeat units on the nitrogen substituent. In addition, the lifetime increases are achieved in combination with high quantum efficiency and good color.

45

3. Electronic Device

50 **[0041]** Organic electronic devices that may benefit from having one or more layers comprising the blue luminescent materials described herein include, but are not limited to: (1) devices that convert electrical energy into radiation (e.g., a light-emitting diode, light emitting diode display, or diode laser); (2) devices that detect signals through electronics processes (e.g., photodetectors, photoconductive cells, photoresistors, photoswitches, phototransistors, phototubes, IR detectors); (3) devices that convert radiation into electrical energy, (e.g., a photovoltaic device or solar cell); and (4) devices that include one or more electronic components that include one or more organic semi-conductor layers (e.g., a transistor or diode).

55 **[0042]** One illustration of an organic electronic device structure is shown in Figure 1. The device 100 has a first electrical contact layer, an anode layer 110 and a second electrical contact layer, a cathode layer 160, and a photoactive layer 140 between them. Adjacent to the anode is a buffer layer 120. Adjacent to the buffer layer is a hole transport layer 130,

comprising hole transport material. Adjacent to the cathode may be an electron transport layer 150, comprising an electron transport material. As an option, devices may use one or more additional hole injection or hole transport layers (not shown) next to the anode 110 and/or one or more additional electron injection or electron transport layers (not shown) next to the cathode 160.

5 **[0043]** Layers 120 through 150 are individually and collectively referred to as the active layers.

[0044] In one embodiment, the different layers have the following range of thicknesses: anode 110, 500-5000 Å, in one embodiment 1000-2000 Å; buffer layer 120, 50-2000 Å, in one embodiment 200-1000 Å; hole transport layer 130, 50-2000 Å, in one embodiment 200-1000 Å; photoactive layer 140, 10-2000 Å, in one embodiment 100-1000 Å; layer 150, 50-2000 Å, in one embodiment 100-1000 Å; cathode 160, 200-10000 Å, in one embodiment 300-5000 Å. The location of the electron-hole recombination zone in the device, and thus the emission spectrum of the device, can be affected by the relative thickness of each layer. The desired ratio of layer thicknesses will depend on the exact nature of the materials used.

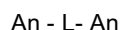
10 **[0045]** Depending upon the application of the device 100, the photoactive layer 140 can be a light-emitting layer that is activated by an applied voltage (such as in a light-emitting diode or light-emitting electrochemical cell), or a layer of material that responds to radiant energy and generates a signal with or without an applied bias voltage (such as in a photodetector). Examples of photodetectors include photoconductive cells, photoresistors, photoswitches, phototransistors, and phototubes, and photovoltaic cells, as these terms are described in Markus, John, Electronics and Nucleonics Dictionary, 470 and 476 (McGraw-Hill, Inc. 1966).

20 a. Photoactive layer

[0046] The chrysene compounds of Formula I are useful as photoactive materials in layer 140. The compounds can be used alone, or in combination with a host material.

[0047] In some embodiments, the host is a bis-condensed cyclic aromatic compound.

25 **[0048]** In some embodiments, the host is an anthracene derivative compound. In some embodiments the compound has the formula:



30 where:

An is an anthracene moiety;
L is a divalent connecting group.

35 **[0049]** In some embodiments of this formula, L is a single bond, -O-, -S-, -N(R)-, or an aromatic group. In some embodiments, An is a mono- or diphenylanthryl moiety.

[0050] In some embodiments, the host has the formula:



40

where:

An is an anthracene or deuterated anthracene moiety;
A is the same or different at each occurrence and is an aromatic group.

45

[0051] In some embodiments, the A groups are attached at the 9- and 10-positions of the anthracene moiety. In some embodiments, A is selected from the group consisting naphthyl, naphthylphenylene, and naphthylphenylene. In some embodiments the compound is symmetrical and in some embodiments the compound is non-symmetrical.

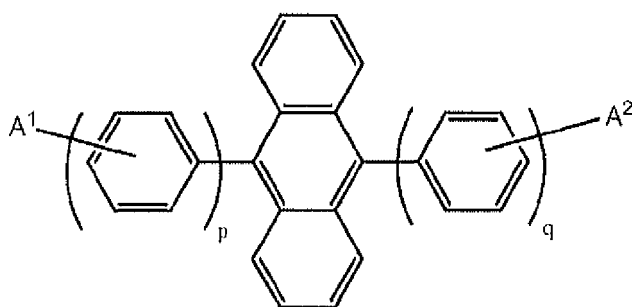
[0052] In some embodiments, the host has the formula:

50

55

5

10



where:

15

A¹ and A² are the same or different at each occurrence and are selected from the group consisting of H, D, an aromatic group, and an alkenyl group, or A may represent one or more fused aromatic rings; p and q are the same or different and are an integer from 0-3.

20

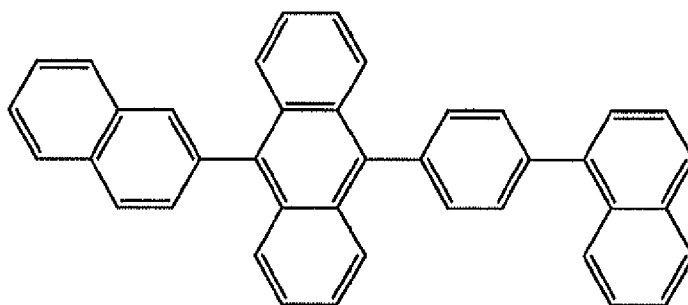
[0053] In some embodiments, the anthracene derivative is non-symmetrical. In some embodiments, p = 2 and q = 1. In some embodiments, at least one of A¹ and A² is a naphthyl group.

[0054] In some embodiments, the host is selected from the group consisting of

H1

25

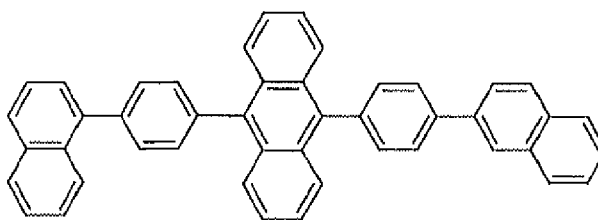
30



35

H2

40



45

and combinations thereof.

[0055] The chrysene compounds of Formula I, in addition to being useful as emissive dopants in the photoactive layer, can also act as charge carrying hosts for other emissive dopants in the photoactive layer 140.

b. Other Device Layers

50

[0056] The other layers in the device can be made of any materials that are known to be useful in such layers.

55

[0057] The anode 110, is an electrode that is particularly efficient for injecting positive charge carriers. It can be made of, for example, materials containing a metal, mixed metal, alloy, metal oxide or mixed-metal oxide, or it can be a conducting polymer, or mixtures thereof. Suitable metals include the Group 11 metals, the metals in Groups 4-6, and the Group 8-10 transition metals. If the anode is to be light-transmitting, mixed-metal oxides of Groups 12, 13 and 14 metals, such as indium-tin-oxide, are generally used. The anode 110 can also comprise an organic material such as polyaniline as described in "Flexible light-emitting diodes made from soluble conducting polymer," Nature vol. 357, pp 477-479 (11 June 1992). At least one of the anode and cathode is desirably at least partially transparent to allow the

generated light to be observed.

[0058] The buffer layer 120 comprises buffer material and may have one or more functions in an organic electronic device, including but not limited to, planarization of the underlying layer, charge transport and/or charge injection properties, scavenging of impurities such as oxygen or metal ions, and other aspects to facilitate or to improve the performance of the organic electronic device. Buffer materials may be polymers, oligomers, or small molecules. They may be vapour deposited or deposited from liquids which may be in the form of solutions, dispersions, suspensions, emulsions, colloidal mixtures, or other compositions.

[0059] The buffer layer can be formed with polymeric materials, such as polyaniline (PANI) or polyethylenedioxythiophene (PEDOT), which are often doped with protonic acids. The protonic acids can be, for example, poly(styrenesulfonic acid), poly(2-acrylamido-2-methyl-1-propanesulfonic acid), and the like.

[0060] The buffer layer can comprise charge transfer compounds, and the like, such as copper phthalocyanine and the tetrathiafulvalene-tetracyanoquinodimethane system (TTF-TCNQ).

[0061] In some embodiments, the buffer layer comprises at least one electrically conductive polymer and at least one fluorinated acid polymer. Such materials have been described in, for example, published U.S. patent applications 2004-0102577, 2004-0127637, and 2005/205860

[0062] Examples of hole transport materials for layer 130 have been summarized for example, in Kirk-Othmer Encyclopedia of Chemical Technology, Fourth Edition, Vol. 18, p. 837-860, 1996, by Y. Wang. Both hole transporting molecules and polymers can be used. Commonly used hole transporting molecules are: N,N'-diphenyl-N,N'-bis(3-methylphenyl)-[1,1'-biphenyl]-4,4'-diamine (TPD), 1,1-bis[(di-4-tolylamino) phenyl]cyclohexane (TAPC), N,N'-bis(4-methylphenyl)-N,N'-bis(4-ethylphenyl)-[1,1'-(3,3'-dimethyl)biphenyl]-4,4'-diamine (ETPD), tetrakis(3-methylphenyl)-N,N,N',N'-2,5-phenylenediamine (PDA), a-phenyl-4-N,N-diphenylaminostyrene (TPS), p-(diethylamino)benzaldehyde diphenylhydrazone (DEH), triphenylamine (TPA), bis[4-(N,N-diethylamino)-2-methylphenyl](4-methylphenyl)methane (MPMP), 1-phenyl-3-[p-(diethylamino)styryl]-5-[p-(diethylamino)phenyl] pyrazoline (PPR or DEASP), 1,2-trans-bis(9H-carbazol-9-yl)cyclobutane (DCZB), N,N,N',N'-tetrakis(4-methylphenyl)-(1,1'-biphenyl)-4,4'-diamine (TTB), N,N'-bis(naphthalen-1-yl)-N,N'-bis-(phenyl)benzidine (α -NPB), and porphyrinic compounds, such as copper phthalocyanine. Commonly used hole transporting polymers are polyvinylcarbazole, (phenylmethyl)-polysilane, and polyaniline. It is also possible to obtain hole transporting polymers by doping hole transporting molecules such as those mentioned above into polymers such as polystyrene and polycarbonate. In some cases, triarylamine polymers are used, especially triarylamine-fluorene copolymers. In some cases, the polymers and copolymers are crosslinkable.

[0063] Examples of additional electron transport materials which can be used in layer 150 include metal chelated oxinoid compounds, such as tris(8-hydroxyquinolato)aluminum (Alq₃); bis(2-methyl-8-quinolinolato)(para-phenyl-phenolato)aluminum(III) (BAIQ); and azole compounds such as 2-(4-biphenyl)-5-(4-t-butylphenyl)-1,3,4-oxadiazole (PBD) and 3-(4-biphenyl)-4-phenyl-5-(4-t-butylphenyl)-1,2,4-triazole (TAZ), and 1,3,5-tri(phenyl-2-benzimidazole)benzene (TPBI); quinoxaline derivatives such as 2,3-bis(4-fluorophenyl)quinoxaline; phenanthroline derivatives such as 9,10-diphenylphenanthroline (DPA) and 2,9-dimethyl-4,7-diphenyl-1,10-phenanthroline (DDPA); and mixtures thereof. Layer 150 can function both to facilitate electron transport, and also serve as a buffer layer or confinement layer to prevent quenching of the exciton at layer interfaces. Preferably, this layer promotes electron mobility and reduces exciton quenching.

[0064] The cathode 160, is an electrode that is particularly efficient for injecting electrons or negative charge carriers. The cathode can be any metal or nonmetal having a lower work function than the anode. Materials for the cathode can be selected from alkali metals of Group 1 (e.g., Li, Cs), the Group 2 (alkaline earth) metals, the Group 12 metals, including the rare earth elements and lanthanides, and the actinides. Materials such as aluminum, indium, calcium, barium, samarium and magnesium, as well as combinations, can be used. Li-containing organometallic compounds, LiF, and Li₂O can also be deposited between the organic layer and the cathode layer to lower the operating voltage.

[0065] It is known to have other layers in organic electronic devices. For example, there can be a layer (not shown) between the anode 110 and buffer layer 120 to control the amount of positive charge injected and/or to provide band-gap matching of the layers, or to function as a protective layer. Layers that are known in the art can be used, such as copper phthalocyanine, silicon oxy-nitride, fluorocarbons, silanes, or an ultra-thin layer of a metal, such as Pt. Alternatively, some or all of anode layer 110, active layers 120, 130, 140, and 150, or cathode layer 160, can be surface-treated to increase charge carrier transport efficiency. The choice of materials for each of the component layers is preferably determined by balancing the positive and negative charges in the emitter layer to provide a device with high electroluminescence efficiency.

[0066] It is understood that each functional layer can be made up of more than one layer.

[0067] The device can be prepared by a variety of techniques, including sequential vapor deposition of the individual layers on a suitable substrate. Substrates such as glass, plastics, and metals can be used. Conventional vapor deposition techniques can be used, such as thermal evaporation, chemical vapor deposition, and the like. Alternatively, the organic layers can be applied from solutions or dispersions in suitable solvents, using conventional coating or printing techniques, including but not limited to spin-coating, dip-coating, roll-to-roll techniques, ink-jet printing, screenprinting, gravure

printing and the like.

[0068] The present invention also relates to an electronic device comprising at least one active layer positioned between two electrical contact layers, wherein the at least one active layer of the device includes the chrysene compound of Formula 1. Devices frequently have additional hole transport and electron transport layers.

[0069] To achieve a high efficiency LED, the HOMO (highest occupied molecular orbital) of the hole transport material desirably aligns with the work function of the anode, and the LUMO (lowest un-occupied molecular orbital) of the electron transport material desirably aligns with the work function of the cathode. Chemical compatibility and sublimation temperature of the materials are also important considerations in selecting the electron and hole transport materials.

[0070] It is understood that the efficiency of devices made with the chrysene compounds described herein, can be further improved by optimizing the other layers in the device. For example, more efficient cathodes such as Ca, Ba or LiF can be used. Shaped substrates and novel hole transport materials that result in a reduction in operating voltage or increase quantum efficiency are also applicable. Additional layers can also be added to tailor the energy levels of the various layers and facilitate electroluminescence.

[0071] The chrysene compounds of the invention often are fluorescent and photoluminescent and can be useful in applications other than OLEDs, such as oxygen sensitive indicators and as fluorescence indicators in bioassays.

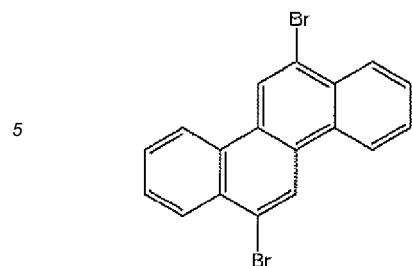
EXAMPLES

[0072] The following examples illustrate certain features and advantages of the present invention. They are intended to be illustrative of the invention, but not limiting. All percentages are by weight, unless otherwise indicated.

Synthesis Example 1

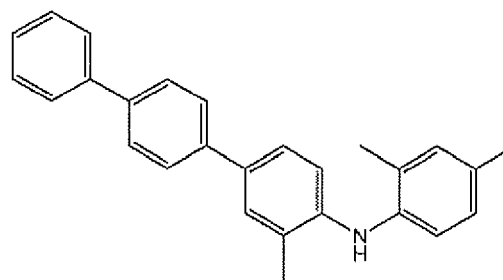
[0073] This example illustrates the preparation of Compound E1.

[0074] Take 0.39g of the dibromochrysene (1 mmol) in glove box and add 0.75g (2.1 mmol) sec-amine and 0.22g t-BuONa (2.2 mmol) with 10mL toluene. Add 0.15g Pd₂DBA₃ (tris(dibenzylideneacetone) dipalladium(0), 0.15 mmol), 0.06g P(t-Bu)₃ (0.30 mmol). Mix and heat in glove box in mantle at 110°C under nitrogen for 1hr. Solution immediately is dark purple but on reaching ~80°C it is dark purple brown with noticeable blue luminescence. Warm at ~RT overnight. Cool and work up by column chromatography eluting with toluene. Product is pale yellow and quite soluble. The blue luminescent material elutes from the column as a pale yellow solution. Evaporate to low volume and add methanol to ppt yellow solid with blue PL in ~0.5g yield. TLC shows single blue spot running at the solvent front in toluene. Material is very soluble in toluene

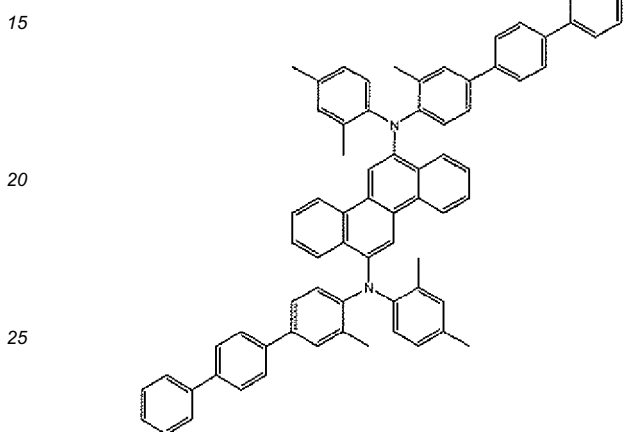


10
 $C_{18}H_{10}Br_2$
 Exact Mass: 383.91
 Mol. Wt.: 386.08
 C, 56.00; H, 2.61; Br, 41.39

Product:



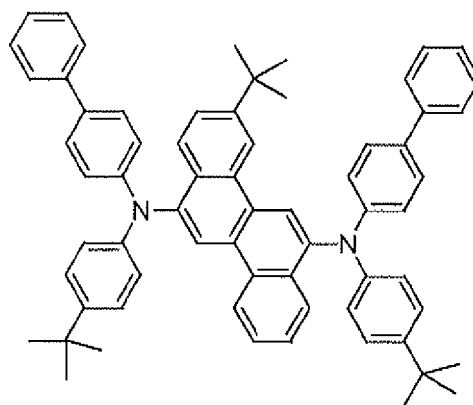
$C_{27}H_{25}N$
 Exact Mass: 363.20
 Mol. Wt.: 363.49
 C, 89.21; H, 6.93; N, 3.85



30
 $C_{77}H_{58}N_2$
 Exact Mass: 950.40
 Mol. Wt.: 951.74
 C, 90.91; H, 6.16; N, 2.94

Synthesis Example 2

35
[0075] This example illustrates the preparation of Compound E2, N^6,N^{12} -di(biphenyl-4-yl)-3-*tert*-butyl- N^6,N^{12} -bis(4-*tert*-butylphenyl)chrysene-6,12-diamine.



50

55
[0076] In a drybox, 3-*tert*-butyl-6,12-dibromochrysene (1.8 g, 4.07 mmol) and *N*-(4-*tert*-butylphenyl)biphenyl-4-amine (2.58 g, 8.55 mmol) were combined in a thick-walled glass tube and dissolved in 20 ml of dry toluene. Tris(*tert*-butyl)phosphine (0.0148 g, 0.073 mmol) and tris(dibenzylideneacetone) dipalladium(0) (0.0335 g, 0.0366 mmol) were dissolved in 10 ml of dry toluene and stirred for 10 minutes. The catalyst solution was added to the reaction mixture, stirred for 10 minutes and followed by sodium *tert*-butoxide (0.782 g, 8.14 mmol) and 20 ml of dry toluene. After another 10 minutes, the reaction flask was brought out of the drybox, attached to a nitrogen line and stirred at 80 °C overnight. Next day, reaction mixture was cooled to room temperature and filtered through a 4 inch plug of silica gel and one inch of celite, washing with one liter of chloroform and 300 ml of dichloromethane. Removal of volatiles under reduced pressure gave

EP 2 669 351 A1

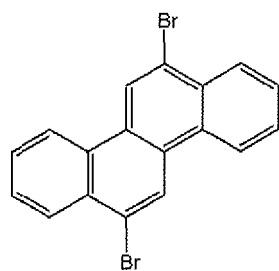
a yellow solid. The crude product was purified further by silica gel column chromatography using a gradient of dichloromethane in hexanes (10 % to 15 %). Removal of volatiles yielded 3.25 g (90.5 %) of product as a yellow solid. ^1H NMR (CD_2Cl_2): δ 1.22 (s, 9H), 1.23 (s, 9H), 1.31 (s, 9H), 7.04-7.56 (m, 29 H), 8.00 (d, 1 H, $J = 8.8$ Hz), 8.07 (dd, 1 H, $J = 1.1, 8.3$ Hz), 8.44 (d, 1 H, $J = 1.8$ Hz), 8.51 (s, 1 H), 8.53 (s, 1 H), 8.54 (d, 1 H, $J = 8.3$ Hz).

5

Synthesis Example 3

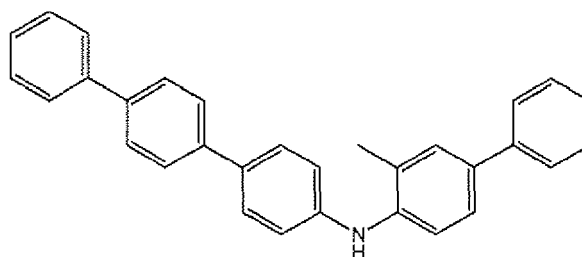
[0077] This example illustrates the preparation of Compound E4. Take 0.39g of the dibromochrysene (1 mmol) in glove box and add 0.88g (2.1 mmol) sec-amine (100555-201) and 0.22g t-BuONa (2.2 mmol) with 10mL toluene. Add 0.15g Pd_2DBA_3 (0.15 mmol), 0.06g $\text{P}(\text{t-Bu})_3$ (0.30 mmol) dissolved in xylenes. Mix and heat in glove box in mantle at 110°C under nitrogen for 1hr. Solution immediately is dark purple but on reaching $\sim 80^\circ\text{C}$ it is dark yellow brown with noticeable blue luminescence. Warm at $\sim 80^\circ\text{C}$ overnight. Cool and work up by column chromatography eluting with toluene. Product is pale yellow and poorly soluble. The blue luminescent material elutes from the column as a pale yellow solution. Evaporate to low volume and add methanol to precipitate yellow solid with blue PL in $\sim 0.3\text{g}$ yield. Material is modestly soluble in toluene.

15

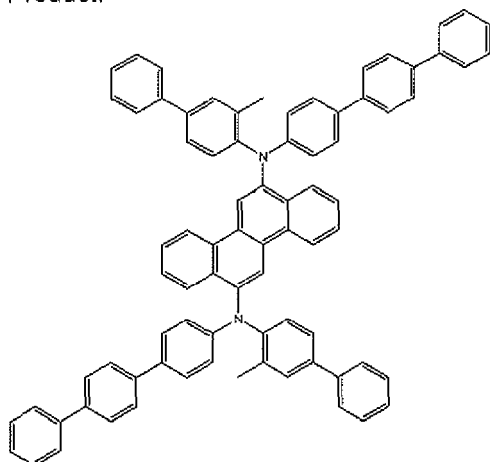


$\text{C}_{18}\text{H}_{10}\text{Br}_2$
Exact Mass: 383.91
Mol. Wt.: 386.08
C, 56.00; H, 2.61; Br, 41.39

Product:



$\text{C}_{31}\text{H}_{25}\text{N}$
Exact Mass: 411.20
Mol. Wt.: 411.54
C, 90.47; H, 6.12; N, 3.40



$\text{C}_{62}\text{H}_{44}\text{N}_2$
Exact Mass: 1040.46
Mol. Wt.: 1047.33
C, 91.74; H, 5.58; N, 2.67

30

Synthesis Example 4

[0078] This example illustrates the preparation of Compound E5.

[0079] In a drybox, $\text{Pd}_2(\text{dba})_3$ (10.4 mg, 11.4 μmol) and $\text{P}(\text{tert-Bu})_3$ (4.6 mg, 22.8 μmol) were dissolved in 3 ml of dry toluene and set aside for five minutes. 6,12-Dibromochrysene (504 mg, 1.14 mmol) and N-(4-tert-butylphenyl)-4,4'-terphenylamine (860 mg, 2.28 mmol) were combined in the reaction flask and dissolved in dry toluene (25 ml). Pre-formed catalyst solution was added next, reaction mixture was stirred for three minutes, followed by the addition of sodium *tert*-butoxide (224 mg, 2.33 mmol). Reaction was stirred at 100°C for 16 hours. Reaction mixture was filtered through a plug of silica and Celite. The silica/Celite plug was washed with 300 ml of CH_2Cl_2 . Filtrates were combined and evaporated to dryness using rotary evaporator. The crude product was purified by column chromatography twice. First, on alumina column with 20% CH_2Cl_2 in hexanes to get rid of unreacted diarylamine and, second, on silica gel

50

55

EP 2 669 351 A1

(silica gel 60, 230-400 mesh from EMD, 15% CH₂Cl₂ in hexanes, monitored by TLC, same solvent system, R_f(product) = 0.09, R_f(impurity) = 0.18). Yield 450 mg (38%) of yellow solid. Analysis by ¹H NMR indicated that the product was Compound E5.

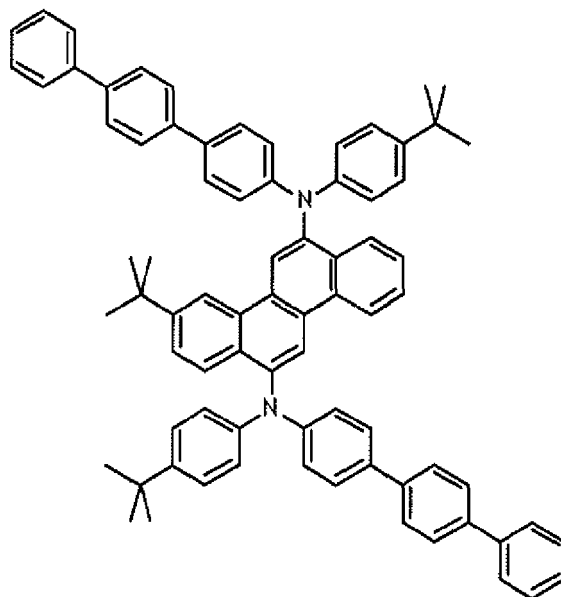
5

10

15

20

25



Synthesis Example 5

[0080] This example illustrates the preparation of Compound E6.

30

[0081] Take 0.39g of the 6,12-dibromo-3-methylchrysene (1 mmol) in glove box and add 0.75g (2.1 mmol) sec-amine and 0.22g t-BuONa (2.2 mmol) with 10mL toluene. Add 0.15g Pd₂DBA₃ (0.15 mmol), 0.06g P(t-Bu)₃ (0.30 mmol) dissolved in toluene. Mix and heat in glove box in mantle at 80°C under nitrogen for 1 hr. Solution immediately is dark purple but on reaching ~80 °C it is dark yellow brown with noticeable blue luminescence. Cool and work up by column chromatography eluting with toluene. Product is pale yellow and nicely soluble. The blue luminescent material elutes from the column as a pale yellow solution. Evaporate to low volume and add methanol to ppt yellow solid with blue PL in ~0.5 g yield. TLC shows single blue spot running at the solvent front in toluene. Material is soluble in toluene.

35

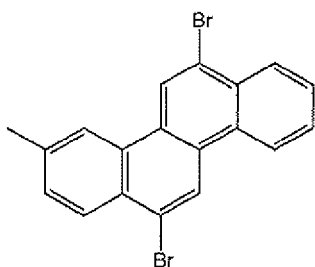
40

45

50

55

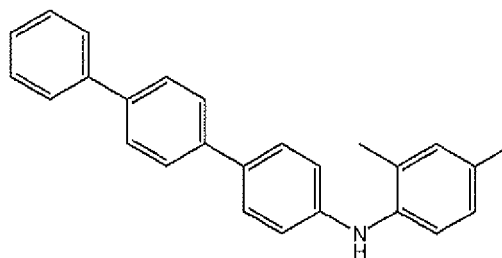
5



$C_{19}H_{12}Br_2$
 Exact Mass: 397.93
 Mol. Wt.: 400.11
 C, 57.04; H, 3.02; Br, 39.94

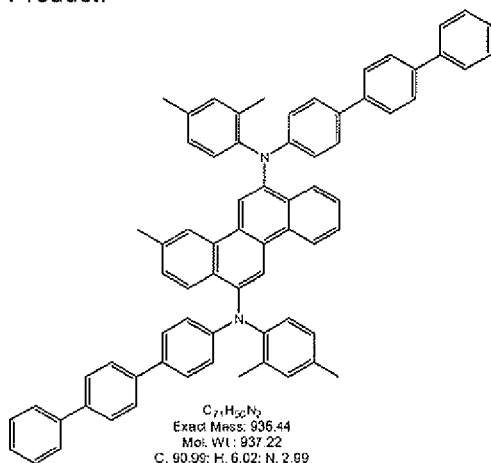
Product:

10



$C_{20}H_{23}N$
 Exact Mass: 349.18
 Mol. Wt.: 349.47
 C, 89.36; H, 6.63; N, 4.01

15



$C_{27}H_{25}N$
 Exact Mass: 936.44
 Mol. Wt.: 937.22
 C, 90.99; H, 6.02; N, 2.99

20

25

30 Synthesis Example 6

[0082] This example illustrates the preparation of Compound E7.

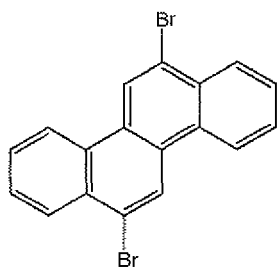
[0083] Take 0.39 g of the 6, 12-dibromochrysene (1 mmol) in glove box and add 0.75 g (2.1 mmol) sec-amine and 0.22g t-BuONa (2.2 mmol) with 10mL toluene. Add 0.15g Pd₂DBA₃ (0.15 mmol), 0.06g P(t-Bu)₃ (0.30 mmol) dissolved in xylenes. Mix and heat in glove box in mantle at 110°C under nitrogen for 1 hr. Solution immediately is dark purple but on reaching ~80°C it is dark yellow brown with noticeable blue luminescence. Warm at ~80°C overnight. Cool and work up by column chromatography eluting with toluene. Product is pale yellow and poorly soluble. The blue luminescent material elutes from the column as a pale yellow solution. Evaporate to low volume and add methanol to ppt yellow solid with blue PL in ~0.5g yield. TLC shows single blue spot running at the solvent front in toluene. Material is modestly soluble in toluene.

45

50

55

5

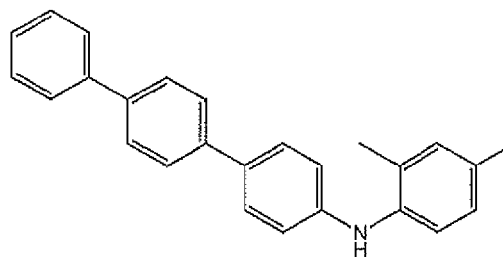


10

$C_{18}H_{10}Br_2$
 Exact Mass: 383.91
 Mol. Wt.: 386.08
 C, 56.00; H, 2.61; Br, 41.39

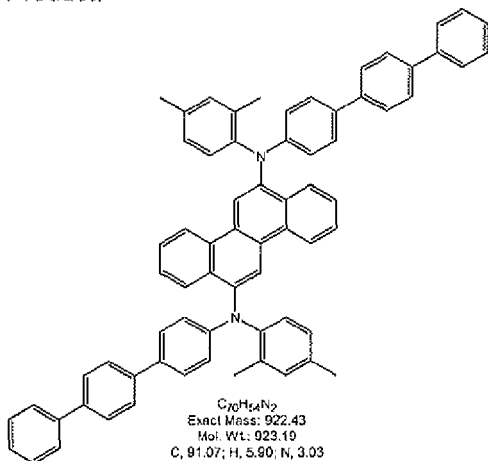
Product:

15



$C_{26}H_{23}N$
 Exact Mass: 349.18
 Mol. Wt.: 349.47
 C, 89.36; H, 6.63; N, 4.01

20



25

$C_{70}H_{44}N_2$
 Exact Mass: 922.43
 Mol. Wt.: 923.19
 C, 91.07; H, 5.90; N, 3.03

30

Synthesis Example 7

[0084] This example illustrates the preparation of Compound E8.

35

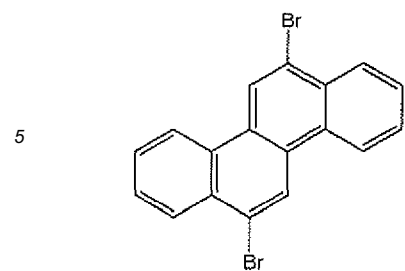
[0085] Take 0.39 g of the 6, 12-dibromochrysene (1 mmol) in glove box and add 0.75 g (2.1 mmol) sec-amine and 0.22 g t-BuONa (2.2 mmol) with 10mL toluene. Add 0.15g Pd₂DBA₃ (0.15 mmol), 0.06g P(t-Bu)₃ (0.30 mmol) dissolved in toluene. Mix and heat in glove box in mantle at 110°C under nitrogen for 1 hr. Solution immediately is dark purple but on reaching ~80°C it is dark yellow brown with noticeable blue luminescence. Warm at ~80°C overnight. Cool and work up by column chromatography eluting with toluene. Product is pale yellow and quite soluble. The blue luminescent material elutes from the column as a pale yellowgreen solution. Evaporate to low volume and add methanol to ppt yellow solid with blue PL in ~0.5 g yield. TLC shows single blue spot running at the solvent front in toluene. Material is very

40

45

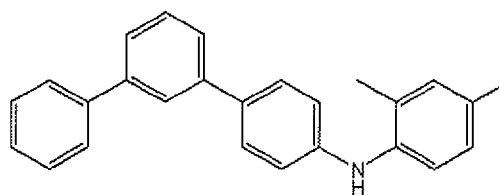
50

55

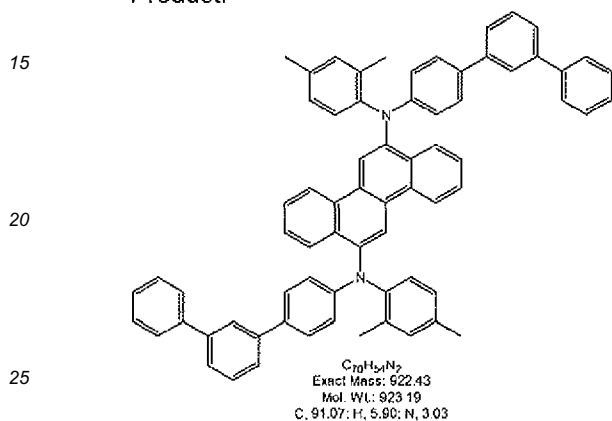


10
 $C_{10}H_{10}Br_2$
 Exact Mass: 383.91
 Mol. Wt.: 386.08
 C, 56.00; H, 2.61; Br, 41.39

Product:

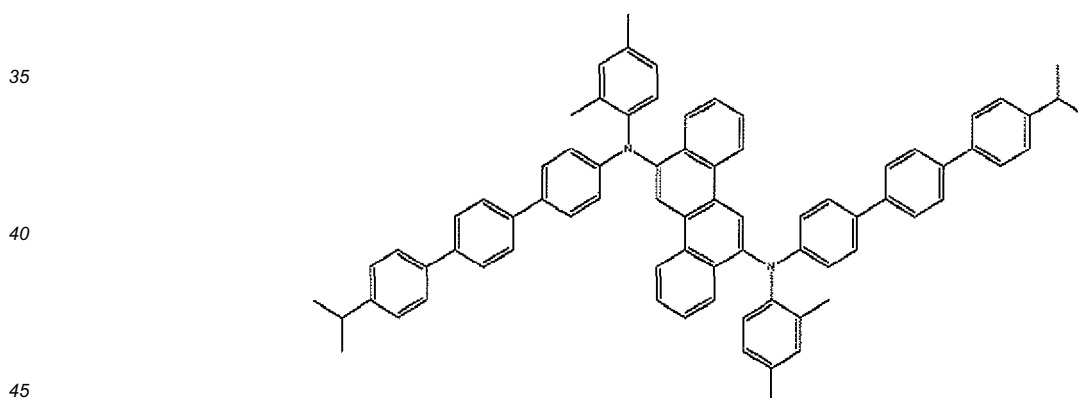


$C_{26}H_{23}N$
 Exact Mass: 349.18
 Mol. Wt.: 349.47
 C, 89.36; H, 6.63; N, 4.01



Synthesis Example 8

30 **[0086]** This example illustrates the preparation of Compound E9, N6,N12-bis(2,4-dimethylphenyl)-N6,N12-bis(4'-isopropylterphenyl-4-yl)chrysene-6,12-diamine



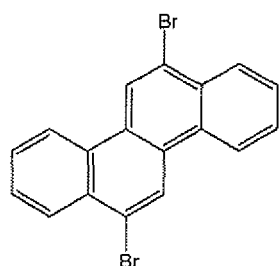
[0087] In a drybox, 6,12-dibromochrysene (0.54 g, 1.38 mmol), N-(2,4-dimethylphenyl)-N-(4'-isopropylterphenyl-4-yl) amine (1.11 g, 2.82 mmol), tris(*tert*-butyl)phosphine (0.028 g, 0.14 mmol) and tris(dibenzylideneacetone) dipalladium (0) (0.063 g, 0.069 mmol) were combined in round bottom flask and dissolved in 20 ml of dry toluene. The solution was stirred for a minute and followed by sodium *tert*-butoxide (0.29 g, 3.03 mmol) and 10 ml of dry toluene. A heating mantle was added and the reaction heated to 60°C for 3 days. The reaction mixture was then cooled to room temperature and filtered through a 1 inch plug of silica gel and one inch of celite, washing with toluene (500 mL). Removal of volatiles under reduced pressure gave a yellow solid. The crude product was purified further by silica gel column chromatography using a gradient of chloroform in hexanes (0 % to 40 %). Recrystallization from DCM and acetonitrile yielded 0.540 g (40%) of product as a yellow solid. 1H NMR ($CDCl_3$) is consistent with structure.

50

55

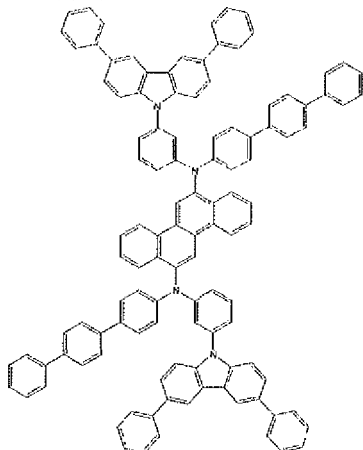
Synthesis Example 9

[0088] This example illustrates the preparation of Compound E11. Take 0.386g of 6, 12-dibromochrysene (1.0 mmol) in glove box and add 1.35g (2.1 mmol) sec-amine and 0.22g t-BuONa (2.2 mmol) with 10mL xylene. Add 0.15g Pd₂DBA₃ (0.15 mmol), 0.06g P(t-Bu)₃ (0.30 mmol) dissolved in xylenes. Mix and heat in glove box in mantle at 110°C under nitrogen for 1 hr. Solution immediately is dark purple but on reaching ~80°C it is light yellow brown with noticeable blue luminescence. Warm at ~80°C for 1hr. Cool and work up by removing from glove box and filter through a α -alumina plug eluting with DCM. Product is pale yellow and poorly soluble in toluene. Chromatograph eluting with toluene/DCM. The blue luminescent material elutes from the column as a pale yellow solution. Evaporate to low volume and add methanol to ppt yellow solid with blue PL in ~0.5g yield. Material is poorly soluble in toluene

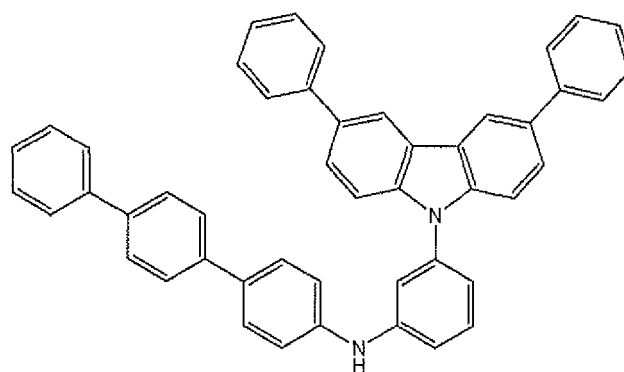


C₁₈H₁₀Br₂
Exact Mass: 383.91
Mol. Wt.: 386.08
C, 56.00; H, 2.61; Br, 41.39

Product:



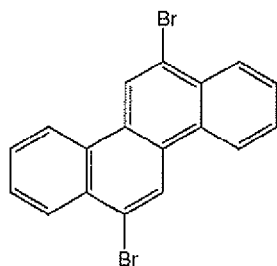
C₄₈H₃₄N₂
Exact Mass: 638.27
Mol. Wt.: 638.80
C, 90.25; H, 5.36; N, 4.39



C₄₈H₃₄N₂
Exact Mass: 638.27
Mol. Wt.: 638.80
C, 90.25; H, 5.36; N, 4.39

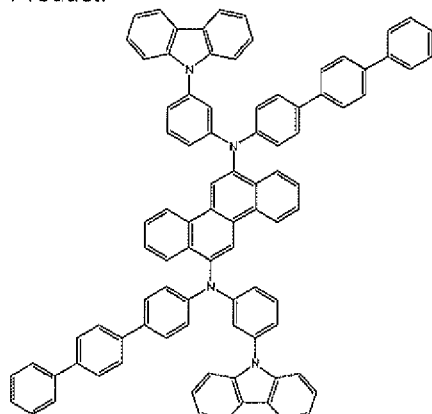
Synthesis Example 10

[0089] This example illustrates the preparation of Compound E12. Take 0.39g of 6,12-dibromochrysene (1 mmol) in glove box and add 1.00g (2.1 mmol) sec-amine (100555-202) and 0.22g t-BuONa (2.2 mmol) with 10mL xylenes. Add 0.15g Pd₂DBA₃ (0.15 mmol), 0.06g P(t-Bu)₃ (0.30 mmol) dissolved in xylenes. Mix and heat in glove box in mantle at 110°C under nitrogen for 1hr. Solution immediately is dark purple but on reaching ~80°C it is dark yellow brown with noticeable blue luminescence. Cool and work up by column chromatography eluting with DCM. Product is pale yellow and very poorly soluble. The blue luminescent material elutes from the column as a pale yellow solution. Evaporate to low volume and add methanol to ppt pale yellow solid with blue PL in ~0.3g yield. Material is poorly soluble in toluene.

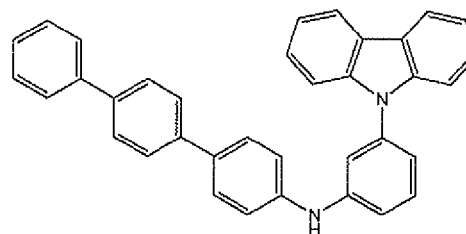


$C_{18}H_{10}Br_2$
 Exact Mass: 383.91
 Mol. Wt.: 386.08
 C, 56.00; H, 2.61; Br, 41.39

Product:



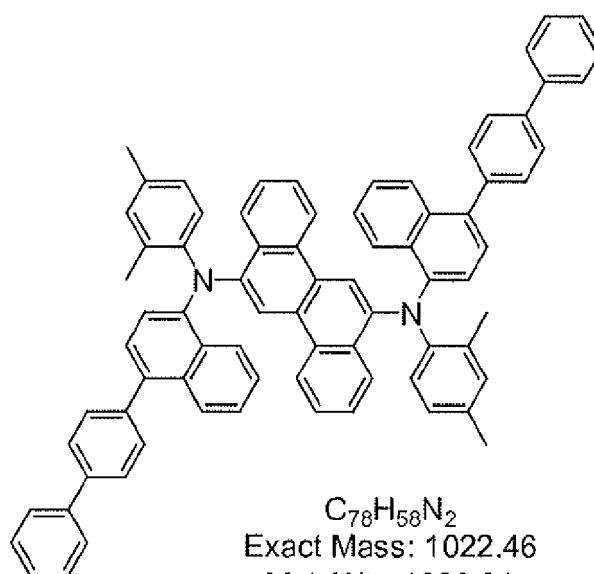
$C_{57}H_{42}N_2$
 Exact Mass: 776.40
 Mol. Wt.: 778.47
 C, 85.27; H, 5.39; N, 4.08



$C_{36}H_{26}N_2$
 Exact Mass: 486.21
 Mol. Wt.: 488.61
 C, 88.86; H, 5.39; N, 5.76

Synthesis Example 11

[0090] This example illustrates the preparation of Compound E14, N₆,N₁₂-bis(4-(biphenyl-4-yl)naphthalen-1-yl)-N₆,N₁₂-bis(2,4-dimethylphenyl)chrysene-6,12-diamine.



$C_{78}H_{58}N_2$
 Exact Mass: 1022.46
 Mol. Wt.: 1023.31
 C, 91.55; H, 5.71; N, 2.74

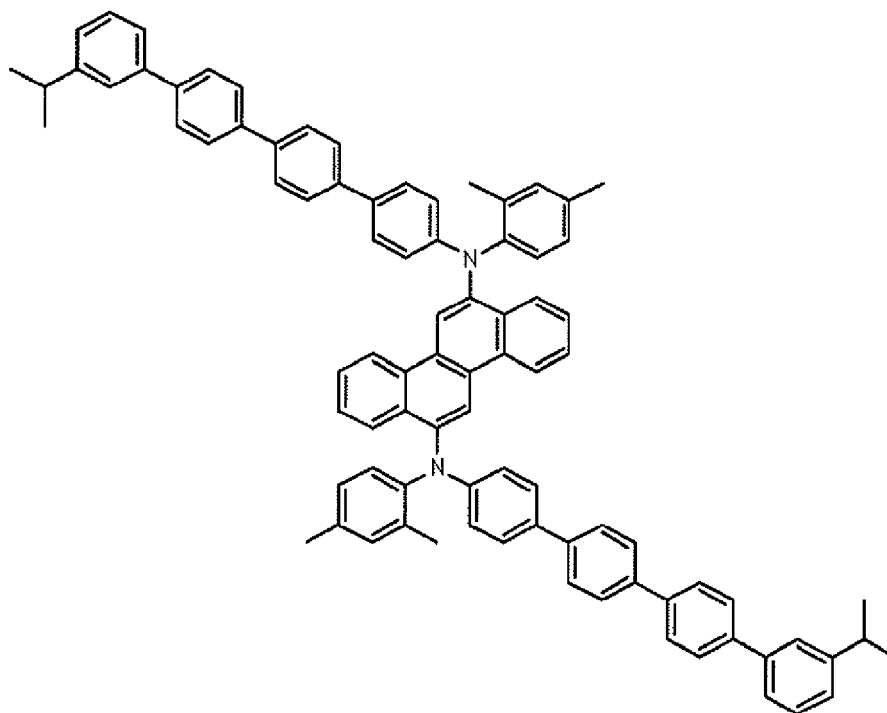
[0091] In a drybox, 6,12-dibromochrysene (0.39 g, 1.01 mmol), N-(2,4-dimethylphenyl)-N-(4-(biphenyl-4-yl)naphthalen-1-yl)amine (0.84 g, 2.11 mmol), tris(*tert*-butyl)phosphine (0.061 g, 0.303 mmol) and tris(dibenzylideneacetone) di-

EP 2 669 351 A1

palladium(0) (0.138 g, 0.151 mmol) were combined in round bottom flask and dissolved in 25 ml of dry toluene. The solution was stirred for a minute and followed by sodium *tert*-butoxide (0.21 g, 2.22 mmol) and 10 ml of dry toluene. A heating mantle was added and the reaction heated to 60°C for 3 days. The reaction mixture was then cooled to room temperature and filtered through a 1 inch plug of silica gel and one inch of celite, washing with toluene (500 mL). Removal of volatiles under reduced pressure gave a yellow solid. The crude product was purified further by silica gel column chromatography using a gradient of chloroform in hexanes (0 % to 50 %). Recrystallization from DCM and acetonitrile yielded 0.170 g (20%) of product as a yellow solid. ¹H NMR (CDCl₃) is consistent with structure.

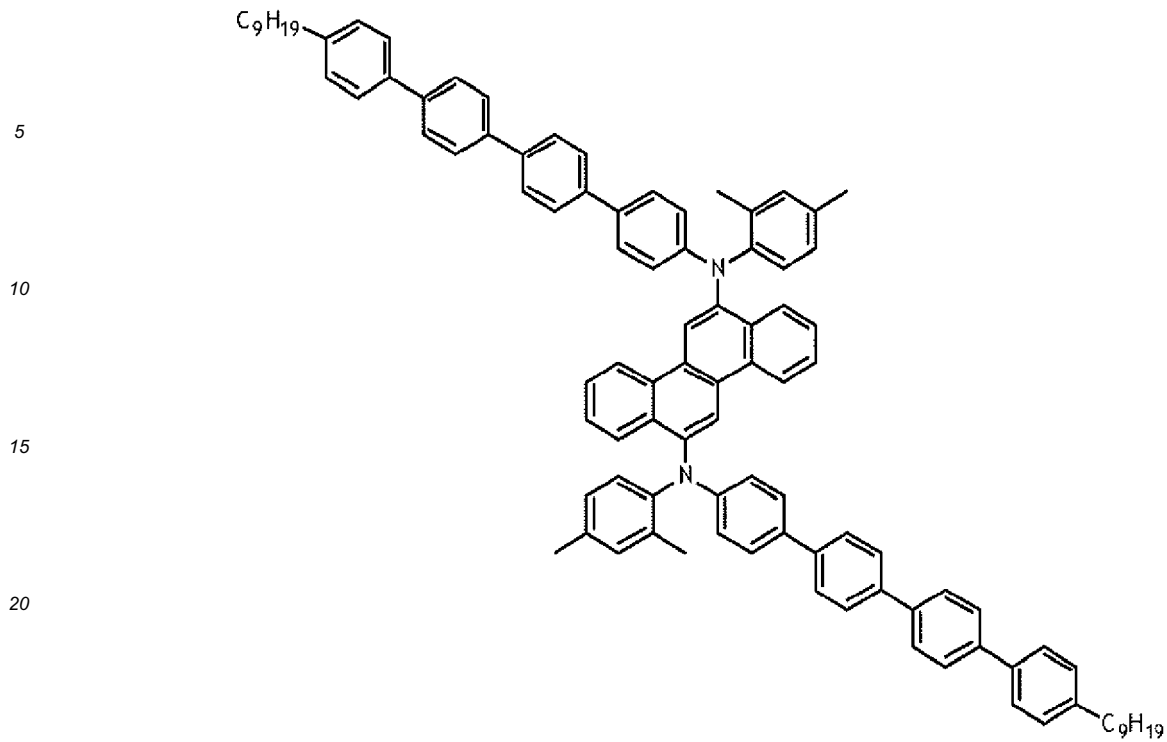
Synthesis Example 12

[0092] This example illustrates the preparation of Compound E16. In drybox, a round-bottom flask was charged with 6,12-dibromochrysene (220 mg, 1.0 eq), N-(2,4-dimethylphenyl)-3''-iso-propyl-4,4',4''-quaterphenylamine (570 mg, 2.02 eq), Pd₂(dba)₃ (11 mg, 0.02 eq), P(*tert*-Bu)₃ (10 mg, 0.08 eq), sodium *tert*-butoxide (174 mg, 3.0 eq) and *m*-xylene (15 mL). Reaction mixture was heated at 120 °C for 16 hours. Color of the mixture turned from reddish to yellowish. Progress of the amination was monitored by LC and reaction was stopped after all bromide was consumed. Solution was concentrated via rotoevaporation and washed on a frit with water followed by diethyl ether. The remaining solid was dried under high vacuum. Crude product was purified by column chromatography on a CombiFlash® silica gel column with CHCl₃/hexane gradient, 0-40%. The purest product fraction was collected and concentrated to give 170 mg of product after precipitation with MeOH. LC Purity is 99.99 %. Analysis by ¹H NMR indicated that the product was Compound E16.

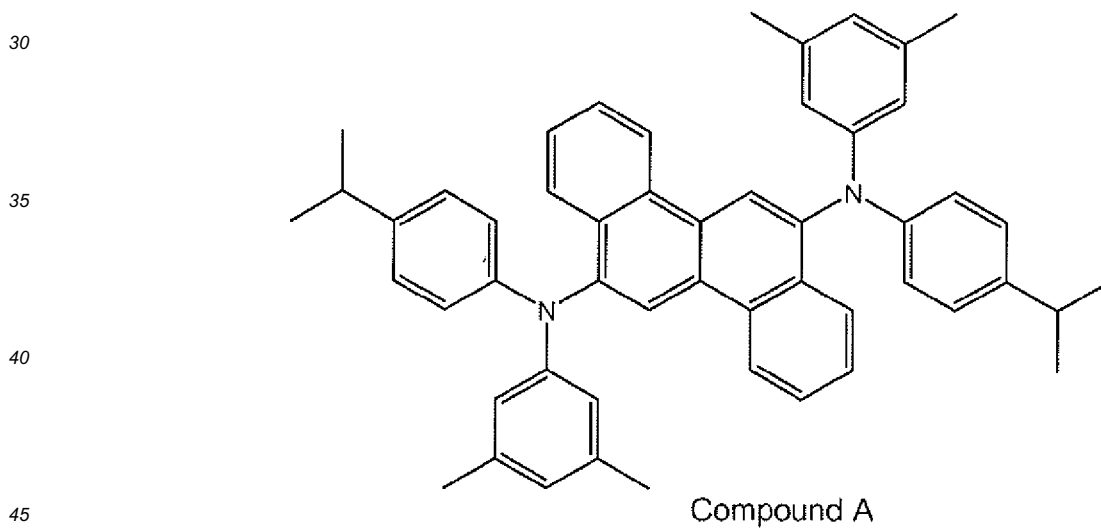


Synthesis Example 13

[0093] This example illustrates the preparation of Compound E17. In drybox, a round-bottom flask was charged with 6,12-dibromochrysene (215 mg, 1.0 eq), N-(2,4-dimethylphenyl)-4''-n-nonyl-4,4',4''-quaterphenylamine (651 mg, 2.02 eq), Pd₂(dba)₃ (11 mg, 0.02 eq), P(*tert*-Bu)₃ (9 mg, 0.08 eq), sodium *tert*-butoxide (168 mg, 3.0 eq) and *m*-xylene (10 mL). Reaction mixture was heated at 130 °C for 16 hours. Color of the mixture turned from reddish to greenish. Progress of the amination was monitored by LC and reaction was stopped after all bromide was consumed. Solution was concentrated via rotoevaporation. Crude product was purified by column chromatography on a Biotage silica gel column with CH₂Cl₂/hexane gradient, 5-40%, followed by another column with CHCl₃/hexane, gradient 5-40%. The purest fractions were further purified by re-precipitation from CH₂Cl₂ with CH₃CN at low temperatures. The resulting solid was filtered off to give 240 mg of product. Analysis by ¹H NMR indicated that the product was Compound E17.



[0094] Compounds E3, E10, E13, E15, E18-E28 and comparative Compound A were made using synthetic techniques analogous to those described above.



Additional Materials:

[0095]

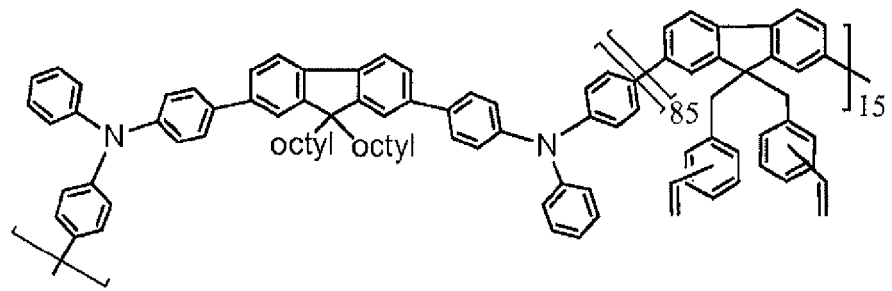
50

55

P1

5

10

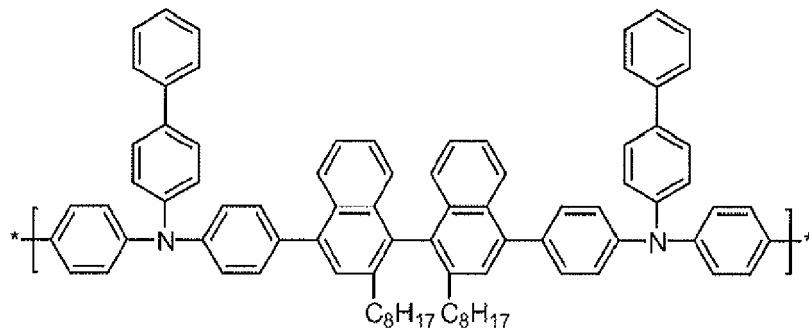


P2

15

20

25

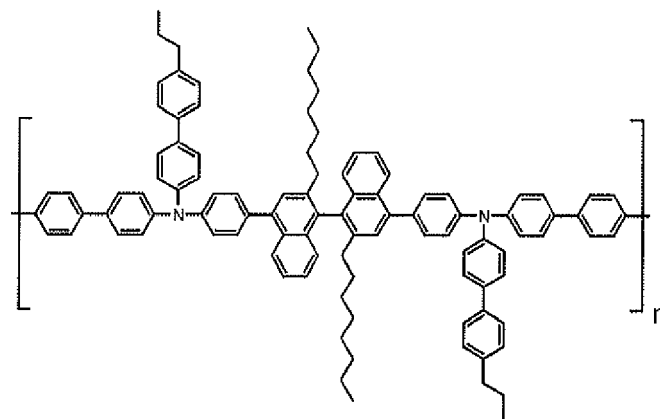


P3

30

35

40

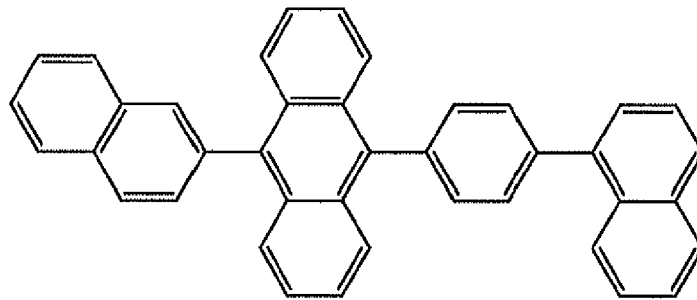


45

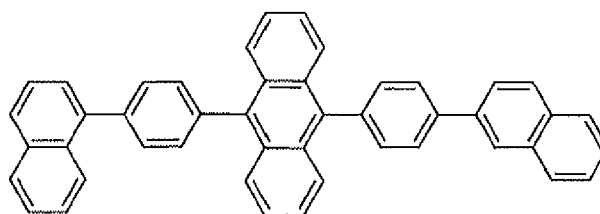
H1

50

55



H2



Device Examples 1-2 and Comparative A

[0096] These examples demonstrate the fabrication and performance of a device having a first structure. The following materials were used:

Indium Tin Oxide (ITO): 50 nm

buffer layer = Buffer 1 (25 nm), which is an aqueous dispersion of an electrically conductive polymer and a polymeric fluorinated sulfonic acid. Such materials have been described in, for example, published U.S. patent applications US 2004/0102577, US 2004/0127637, and US 2005/0205860.

hole transport layer = polymer P1 (20 nm)

photoactive layer = 13:1 host H2:dopant (48 nm)

electron transport layer = a metal quinolate derivative (20 nm)

cathode = LiF/Al (0.5/100 nm)

[0097] OLED devices were fabricated by a combination of solution processing and thermal evaporation techniques. Patterned indium tin oxide (ITO) coated glass substrates from Thin Film Devices, Inc were used. These ITO substrates are based on Corning 1737 glass coated with ITO having a sheet resistance of 30 ohms/square and 80% light transmission. The patterned ITO substrates were cleaned ultrasonically in aqueous detergent solution and rinsed with distilled water. The patterned ITO was subsequently cleaned ultrasonically in acetone, rinsed with isopropanol, and dried in a stream of nitrogen.

[0098] Immediately before device fabrication the cleaned, patterned ITO substrates were treated with UV ozone for 10 minutes. Immediately after cooling, an aqueous dispersion of Buffer 1 was spin-coated over the ITO surface and heated to remove solvent. After cooling, the substrates were then spin-coated with a solution of a hole transport material, and then heated to remove solvent. After cooling the substrates were spin-coated with the emissive layer solution, and heated to remove solvent. The substrates were masked and placed in a vacuum chamber. The electron transport layer was deposited by thermal evaporation, followed by a layer of LiF. Masks were then changed in vacuo and a layer of Al was deposited by thermal evaporation. The chamber was vented, and the devices were encapsulated using a glass lid, dessicant, and UV curable epoxy. The different structures are summarized in Table 1.

[0099] The OLED samples were characterized by measuring their (1) current-voltage (I-V) curves, (2) electroluminescence radiance versus voltage, and (3) electroluminescence spectra versus voltage. All three measurements were performed at the same time and controlled by a computer. The current efficiency of the device at a certain voltage is determined by dividing the electroluminescence radiance of the LED by the current density needed to run the device. The unit is a cd/A. The power efficiency is the current efficiency divided by the operating voltage. The unit is lm/W. The device data is given in Table 2.

[0100] The following dopants were used:

Device Example 1: E2

Device Example 2: E3

Comparative Example A: Compound A

Device Examples 3-5 and Comparative B

[0101] These examples show the performance of a device made with a second structure having a different host material and a different cathode material.

[0102] The devices were made using the procedure of Device Example 1, except that the host was H1, and the cathode was CsF/Al (0.7/100nm).

[0103] The following dopants were used:

Device Example 3: E5
 Device Example 4: E6
 Device Example 5: E7
 Comparative Example B: Compound A

Device Examples 6-9 and Comparative C

[0104] These examples show the performance of a device made with a third structure having a different hole transport layer.

[0105] The devices were made using the procedure of Device Example 3, except that the hole transport layer was P2.

[0106] The following dopants were used:

Device Example 6: E6
 Device Example 7: E7
 Device Example 8: E8
 Device Example 9: E9
 Comparative Example C: Compound A

Device Examples 10-11 and Comparative D

[0107] These examples show the performance of a device made with a fourth structure having different layer thicknesses and a different hole transport layer.

[0108] A device was made using the procedure of Device Example 3, except that the buffer layer = Buffer 1 had a thickness of 50 nm, the hole transport layer was P3, the photoactive layer had a thickness of 40 nm, and the electron transport layer had a thickness of 10 nm.

[0109] The dopants used were:

Device Example 10: E9
 Device Example 11: E10
 Comparative Example D: Compound A

TABLE 1. Device Structure

Structure	Buffer	HTL	PL	ETL	Cathode
First	25 nm	P1 20 nm	host = H2 48 nm	20 nm	LiF/Al 0.5/100 nm
Second	25 nm	P1 20 nm	host = H1 48 nm	20 nm	CsF/Al 0.7/100 nm
Third	25 nm	P2 20 nm	host = H1 48 nm	20 nm	CsF/Al 0.7/100 nm
Fourth	50 nm	P3 20 nm	host = H1 40 nm	10 nm	CsF/Al 0.7/100 nm
Buffer layer = Buffer 1 for all HTL = hole transport layer PL = photoactive layer ETL = electron transport layer, which is the same metal quinolate compound for all					

TABLE 2. Device Performance

Device Example	Structure	Dopant	CE [cd/A]	Voltage (V)	CIE [x]	CIE [y]	Lum. ½ Life [h]
1	First	E2	4.5	5.2	0.137	0.154	7560
2	First	E3	4.5	5.3	0.134	0.155	9200

(continued)

Device Example	Structure	Dopant	CE [cd/A]	Voltage (V)	CIE [x]	CIE [y]	Lum. ½ Life [h]
Comp. A	First	Cmpd. A	4.9	5.2	0.136	0.143	4800
3	Second	E5	5.4	4.6	0.135	0.162	6250
4	Second	E6	5.3	4.6	0.136	0.148	6550
5	Second	E7	5.3	4.6	0.136	0.154	4770
Comp. B	Second	Cmpd. A	4.9	4.7	0.138	0.134	2700
6	Third	E6	6.2	4.7	0.137	0.141	12450
7	Third	E7	6.4	4.7	0.136	0.147	15640
8	Third	E8	6.0	4.8	0.138	0.136	11680
9	Third	E9	6.3	4.7	0.136	0.145	14100
Comp. C	Third	Cmpd. A	6.1	4.8	0.139	0.134	6600
10	Fourth	E9	6.0	4.4	0.134	0.128	13950
11	Fourth	E10	5.6	4.4	0.134	0.125	12230
Comp. D	Fourth	Cmpd. A	5.9	4.5	0.136	0.115	6000
* All data @ 1000 nits, CE = current efficiency; CIE _x and CIE _y are the x and y color coordinates according to the C.I.E, chromaticity scale (Commission Internationale de L'Eclairage, 1931). Lum. ½ Life is defined as the time in hours for a device to reach one-half the initial luminance.							

[0110] As can be seen in Fig. 2, the relative lifetime of devices made with the chrysene dopants having Formula I are significantly better than comparative Compound A. The relative lifetime increases dramatically as a and b increase. Relative lifetime is defined as (Lum ½ Life of Example X)/(Lum ½ Life of Comparative Example Y) where Comparative Example Y is the comparative example with the same device structure and materials (other than the dopant). For example, the relative lifetime for Example 1 would be (Lum ½ Life of Example 1)/(Lum ½ Life of Comparative Example A) = 7560 h/4800 h = 1.58. The relative lifetime for Example 11 would be (Lum. ½ Life of Example 11) divided by (Lum. ½ Life of Comparative Example D) = 12230 h/6000 h = 2.04. It is unexpected that increasing the number of linearly attached phenyl groups on the nitrogen going from biphenyl, to terphenyl, to quaterphenyl and above, should have this effect.

[0111] Note that not all of the activities described above in the general description or the examples are required, that a portion of a specific activity may not be required, and that one or more further activities may be performed in addition to those described. Still further, the order in which activities are listed are not necessarily the order in which they are performed.

[0112] In the foregoing specification, the concepts have been described with reference to specific embodiments. However, one of ordinary skill in the art appreciates that various modifications and changes can be made without departing from the scope of the invention as set forth in the claims below. Accordingly, the specification and figures are to be regarded in an illustrative rather than a restrictive sense, and all such modifications are intended to be included within the scope of invention.

[0113] Benefits, other advantages, and solutions to problems have been described above with regard to specific embodiments. However, the benefits, advantages, solutions to problems, and any feature(s) that may cause any benefit, advantage, or solution to occur or become more pronounced are not to be construed as a critical, required, or essential feature of any or all the claims.

[0114] It is to be appreciated that certain features are, for clarity, described herein in the context of separate embodiments, may also be provided in combination in a single embodiment. Conversely, various features that are, for brevity, described in the context of a single embodiment, may also be provided separately or in any subcombination. Further, reference to values stated in ranges include each and every value within that range.

Claims

1. A compound having Formula I:

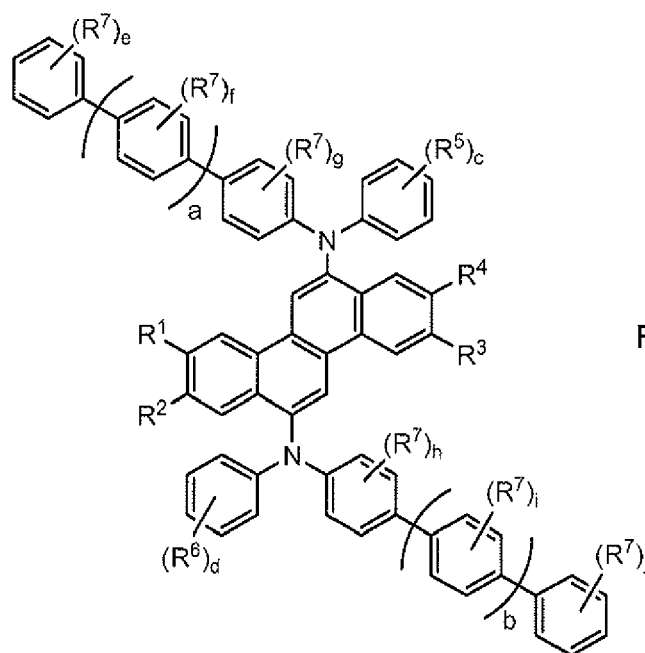
5

10

15

20

25



Formula I

wherein:

30

R¹, R², R³ and R⁴ are D, where R¹ and R² groups or R³ and R⁴ groups may be joined together to form a 5- or 6-membered aliphatic ring;

R⁵ and R⁶ are the same or different and are selected from the group consisting of D, alkyl groups, silyl groups, m-phenyl, o-phenyl, p-phenyl, m-carbazolyl, and p-carbazolyl;

35

R⁷ is the same or different at each occurrence and is selected from the group consisting of D, alkyl groups, silyl groups, phenyl, and biphenyl, or two adjacent R⁷ groups can join together to form a naphthyl or fluorenyl group;

a and b are the same or different and are an integer from 0-10;

c and d are the same or different and are an integer from 1-5;

f, g, h, and i, are the same or different at each occurrence and are an integer from 0-4; and

e and j are the same or different at each occurrence and are an integer from 0-5.

40

2. The compound of claim 1, wherein each of R¹ through R⁴ is D.

3. The compound of claim 1 or claim 2, wherein R⁵ and R⁶ are hydrocarbon alkyl groups having 1-6 carbon atoms.

45

4. The compound of any preceding claim, wherein c = d = 1 or 2.

5. The compound of any preceding claim, wherein R⁵ and R⁶ are aromatic groups selected from the group consisting of o-phenyl, m-phenyl, and m-carbazolyl groups.

50

6. The compound of any preceding claim, wherein R⁷ is a hydrocarbon alkyl group having 1-10 carbon atoms.

7. The compound of any preceding claim, wherein at least one of a through j is greater than 0.

8. The compound of any of claims 1-5, wherein e = f = g = h = i = j = 0.

55

9. The compound of any preceding claim, wherein a = b, preferably wherein a = b = 1-3.

10. The compound of any of claims 1-8, wherein a and b are 1-3.

11. The compound of any preceding claim, wherein said compound comprises diarylamine substituents with at least one oligo-group selected from biphenyl, terphenyl and quaterphenyl.

5 12. An organic electronic device comprising a first electrical contact layer, a second electrical contact layer, and at least one active layer therebetween, wherein the active layer comprises a compound according to any preceding claim having Formula I as defined in any preceding claim.

10 13. The device of claim 12, wherein the active layer is a photoactive layer and further comprises a host material, preferably further comprising a buffer layer between the first electrical contact layer and the active layer, and more preferably wherein the buffer layer comprises at least one electrically conductive polymer and at least one fluorinated acid polymer.

15

20

25

30

35

40

45

50

55

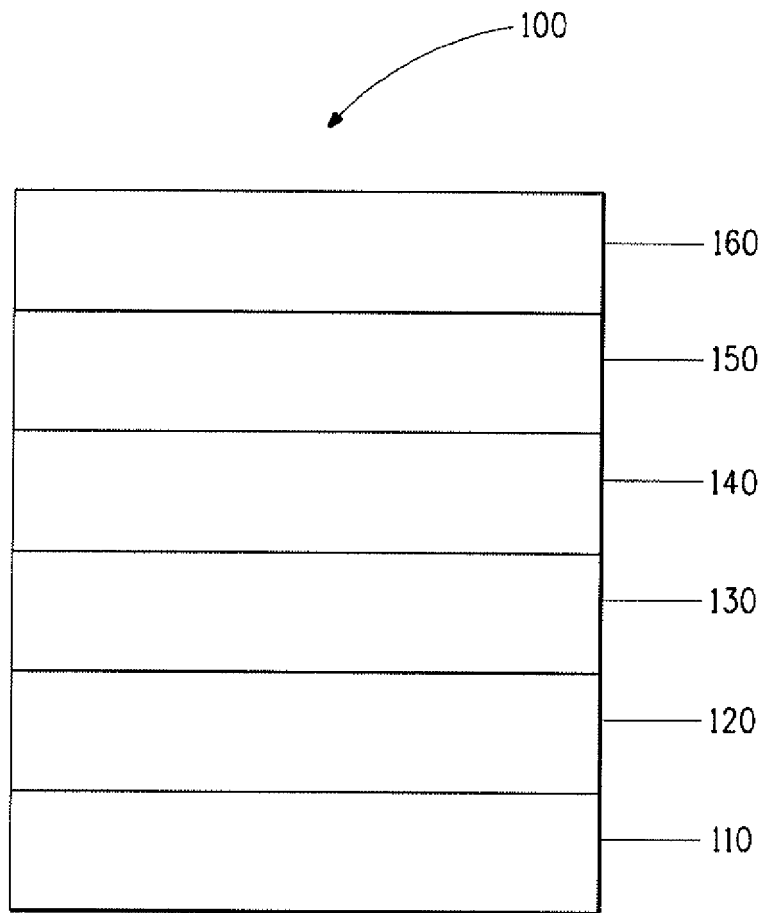


FIG. 1



EUROPEAN SEARCH REPORT

Application Number
EP 13 18 0597

DOCUMENTS CONSIDERED TO BE RELEVANT			
Category	Citation of document with indication, where appropriate, of relevant passages	Relevant to claim	CLASSIFICATION OF THE APPLICATION (IPC)
A	US 2008/303425 A1 (ROSTOVTSEV VSEVOLOD [US] ET AL) 11 December 2008 (2008-12-11) * compounds E5, E9 * * paragraph [0045] * * examples 5,9,16,21 * * the whole document * -----	1-13	INV. C09K11/06 H01L51/50 C07C211/61
X	US 2006/210830 A1 (FUNAHASHI MASAKAZU [JP] ET AL) 21 September 2006 (2006-09-21) * compounds D28, D-30 * * especially claim 9; claims 1-15 * * page 8 * * the whole document * -----	1-13	
X	WO 2007/108666 A1 (LG CHEMICAL LTD [KR]; JANG HYE-YOUNG [KR]; LEE JAE-CHOL [KR]; PARK JIN) 27 September 2007 (2007-09-27) * compounds 162,165, 17 * * pages 23,24 * * claims 4-11 * * the whole document * -----	1-13	TECHNICAL FIELDS SEARCHED (IPC)
X	US 2006/194074 A1 (FUNAHASHI MASAKAZU [JP]) 31 August 2006 (2006-08-31) * compounds D29,D34,D49,D54 * * paragraph [0051] * * claims 1-11 * * the whole document * -----	1-13	C09K H01L C07C
A	US 2006/152146 A1 (FUNAHASHI MASAKAZU [JP]) 13 July 2006 (2006-07-13) * page 11; compound 41 * * the whole document * * page 24; compound 125 * -----	1-13	
		-/--	
The present search report has been drawn up for all claims			
Place of search The Hague		Date of completion of the search 30 October 2013	Examiner Ziegler, Jan
CATEGORY OF CITED DOCUMENTS X : particularly relevant if taken alone Y : particularly relevant if combined with another document of the same category A : technological background O : non-written disclosure P : intermediate document		T : theory or principle underlying the invention E : earlier patent document, but published on, or after the filing date D : document cited in the application L : document cited for other reasons ----- & : member of the same patent family, corresponding document	

EPO FORM 1503 03.02 (P04C01)



EUROPEAN SEARCH REPORT

Application Number
EP 13 18 0597

DOCUMENTS CONSIDERED TO BE RELEVANT			
Category	Citation of document with indication, where appropriate, of relevant passages	Relevant to claim	CLASSIFICATION OF THE APPLICATION (IPC)
A	US 2006/033421 A1 (MATSUURA MASAhide [JP] ET AL) 16 February 2006 (2006-02-16) * compound EM113 * * claim 1 *	1-13	
A	----- US 2008/102311 A1 (FUNAHASHI MASAKAZU [JP]) 1 May 2008 (2008-05-01) * page 11; compounds D-2-3 * * page 12; compounds D-2-6 *	1-13	
X	----- US 2005/064233 A1 (MATSUURA MASAhide [JP] ET AL) 24 March 2005 (2005-03-24) * compound EM113 *	1-13	
			TECHNICAL FIELDS SEARCHED (IPC)
The present search report has been drawn up for all claims			
Place of search The Hague		Date of completion of the search 30 October 2013	Examiner Ziegler, Jan
CATEGORY OF CITED DOCUMENTS X : particularly relevant if taken alone Y : particularly relevant if combined with another document of the same category A : technological background O : non-written disclosure P : intermediate document		T : theory or principle underlying the invention E : earlier patent document, but published on, or after the filing date D : document cited in the application L : document cited for other reasons & : member of the same patent family, corresponding document	

1
EPO FORM 1503 03.02 (P04C01)

ANNEX TO THE EUROPEAN SEARCH REPORT
ON EUROPEAN PATENT APPLICATION NO.

EP 13 18 0597

This annex lists the patent family members relating to the patent documents cited in the above-mentioned European search report. The members are as contained in the European Patent Office EDP file on
The European Patent Office is in no way liable for these particulars which are merely given for the purpose of information.

30-10-2013

Patent document cited in search report	Publication date	Patent family member(s)	Publication date
US 2008303425 A1	11-12-2008	CN 101679209 A	24-03-2010
		EP 2152662 A1	17-02-2010
		JP 2010529027 A	26-08-2010
		KR 20100025544 A	09-03-2010
		TW 200914405 A	01-04-2009
		US 2008303425 A1	11-12-2008
		WO 2008147721 A1	04-12-2008
US 2006210830 A1	21-09-2006	CN 101142169 A	12-03-2008
		EP 1860096 A1	28-11-2007
		JP 4263700 B2	13-05-2009
		JP 2006256979 A	28-09-2006
		KR 20070110362 A	16-11-2007
		TW I376404 B	11-11-2012
		US 2006210830 A1	21-09-2006
		US 2011034733 A1	10-02-2011
WO 2006098080 A1	21-09-2006		
WO 2007108666 A1	27-09-2007	CN 101405255 A	08-04-2009
		EP 1996540 A1	03-12-2008
		JP 5165671 B2	21-03-2013
		JP 2009530371 A	27-08-2009
		KR 20070096917 A	02-10-2007
		KR 20080071969 A	05-08-2008
		US 2009134781 A1	28-05-2009
		WO 2007108666 A1	27-09-2007
US 2006194074 A1	31-08-2006	CN 101115708 A	30-01-2008
		EP 1847525 A1	24-10-2007
		JP 4308294 B2	05-08-2009
		KR 20070101306 A	16-10-2007
		TW I354658 B	21-12-2011
		US 2006194074 A1	31-08-2006
		WO 2006082705 A1	10-08-2006
US 2006152146 A1	13-07-2006	EP 1792893 A1	06-06-2007
		JP 4832304 B2	07-12-2011
		KR 20070050393 A	15-05-2007
		US 2006152146 A1	13-07-2006
		US 2008268283 A1	30-10-2008
		US 2009189522 A1	30-07-2009
		WO 2006025273 A1	09-03-2006
US 2006033421 A1	16-02-2006	AT 471972 T	15-07-2010
		AT 529494 T	15-11-2011
		CN 1668719 A	14-09-2005

EPO FORM P0459

For more details about this annex : see Official Journal of the European Patent Office, No. 12/82

ANNEX TO THE EUROPEAN SEARCH REPORT
ON EUROPEAN PATENT APPLICATION NO.

EP 13 18 0597

This annex lists the patent family members relating to the patent documents cited in the above-mentioned European search report. The members are as contained in the European Patent Office EDP file on
The European Patent Office is in no way liable for these particulars which are merely given for the purpose of information.

30-10-2013

Patent document cited in search report	Publication date	Patent family member(s)	Publication date	
		CN 1842234 A	04-10-2006	
		CN 101068041 A	07-11-2007	
		EP 1541657 A1	15-06-2005	
		EP 2199361 A2	23-06-2010	
		EP 2295519 A1	16-03-2011	
		JP 4221050 B2	12-02-2009	
		JP 4260744 B2	30-04-2009	
		JP 5215966 B2	19-06-2013	
		JP 2008205491 A	04-09-2008	
		JP 2008291263 A	04-12-2008	
		JP 2010062572 A	18-03-2010	
		JP 2012019229 A	26-01-2012	
		KR 20050019907 A	03-03-2005	
		KR 20090111355 A	26-10-2009	
		KR 20090111356 A	26-10-2009	
		KR 20110047278 A	06-05-2011	
		KR 20120118051 A	25-10-2012	
		TW 1278248 B	01-04-2007	
		US 2005064233 A1	24-03-2005	
		US 2006033421 A1	16-02-2006	
		US 2007237984 A1	11-10-2007	
		US 2010270913 A1	28-10-2010	
		US 2010277061 A1	04-11-2010	
		US 2013069523 A1	21-03-2013	
		WO 2004018588 A1	04-03-2004	

US 2008102311	A1	01-05-2008	KR 20090035693 A	10-04-2009
			TW 200831636 A	01-08-2008
			US 2008102311 A1	01-05-2008
			WO 2008016018 A1	07-02-2008

US 2005064233	A1	24-03-2005	AT 471972 T	15-07-2010
			AT 529494 T	15-11-2011
			CN 1668719 A	14-09-2005
			CN 1842234 A	04-10-2006
			CN 101068041 A	07-11-2007
			EP 1541657 A1	15-06-2005
			EP 2199361 A2	23-06-2010
			EP 2295519 A1	16-03-2011
			JP 4221050 B2	12-02-2009
			JP 4260744 B2	30-04-2009
			JP 5215966 B2	19-06-2013
			JP 2008205491 A	04-09-2008
			JP 2008291263 A	04-12-2008
			JP 2010062572 A	18-03-2010
			JP 2012019229 A	26-01-2012

EPO FORM P0459

For more details about this annex : see Official Journal of the European Patent Office, No. 12/82

**ANNEX TO THE EUROPEAN SEARCH REPORT
ON EUROPEAN PATENT APPLICATION NO.**

EP 13 18 0597

This annex lists the patent family members relating to the patent documents cited in the above-mentioned European search report. The members are as contained in the European Patent Office EDP file on
The European Patent Office is in no way liable for these particulars which are merely given for the purpose of information.

30-10-2013

Patent document cited in search report	Publication date	Patent family member(s)	Publication date
		KR 20050019907 A	03-03-2005
		KR 20090111355 A	26-10-2009
		KR 20090111356 A	26-10-2009
		KR 20110047278 A	06-05-2011
		KR 20120118051 A	25-10-2012
		TW 1278248 B	01-04-2007
		US 2005064233 A1	24-03-2005
		US 2006033421 A1	16-02-2006
		US 2007237984 A1	11-10-2007
		US 2010270913 A1	28-10-2010
		US 2010277061 A1	04-11-2010
		US 2013069523 A1	21-03-2013
		WO 2004018588 A1	04-03-2004

REFERENCES CITED IN THE DESCRIPTION

This list of references cited by the applicant is for the reader's convenience only. It does not form part of the European patent document. Even though great care has been taken in compiling the references, errors or omissions cannot be excluded and the EPO disclaims all liability in this regard.

Patent documents cited in the description

- US 61179405 B [0001]
- US 5247190 A [0004]
- US 5408 A [0004]
- US 109 A [0004]
- EP 443861 A [0004]
- US 20040102577 A [0061] [0096]
- US 20040127637 A [0061] [0096]
- US 2005205860 A [0061]
- US 20050205860 A [0096]

Non-patent literature cited in the description

- CRC Handbook of Chemistry and Physics. 2000 [0027]
- **MARKUS ; JOHN.** Electronics and Nucleonics Dictionary. McGraw-Hill, Inc, 1966, 470, 476 [0045]
- Flexible light-emitting diodes made from soluble conducting polymer. *Nature*, 11 June 1992, vol. 357, 477-479 [0057]
- **Y. WANG.** Kirk-Othmer Encyclopedia of Chemical Technology. 1996, vol. 18, 837-860 [0062]

专利名称(译)	用于发光应用的Chrysene化合物		
公开(公告)号	EP2669351A1	公开(公告)日	2013-12-04
申请号	EP2013180597	申请日	2010-05-19
[标]申请(专利权)人(译)	纳幕尔杜邦公司		
申请(专利权)人(译)	E·I·杜邦和公司		
当前申请(专利权)人(译)	E·I·杜邦和公司		
[标]发明人	WU WEISHI HERRON NORMAN ROSTOVTSEV VSEVOLOD MERLO JEFFREY A GAO WEIYING		
发明人	WU, WEISHI HERRON, NORMAN ROSTOVTSEV, VSEVOLOD MERLO, JEFFREY A. GAO, WEIYING		
IPC分类号	C09K11/06 H01L51/50 C07C211/61		
CPC分类号	C09K11/06 C07C211/61 C07C2603/48 C07D209/86 C09B57/00 C09B57/001 C09B57/008 C09K2211/1007 C09K2211/1014 H01L51/0054 H01L51/006		
代理机构(译)	霍夫曼BENJAMIN		
审查员(译)	齐格勒JAN		
优先权	61/179405 2009-05-19 US		
外部链接	Espacenet		

摘要(译)

本发明涉及可用于电致发光应用的chrysene化合物。它还涉及其中活性层包含这种化合物的电子器件。

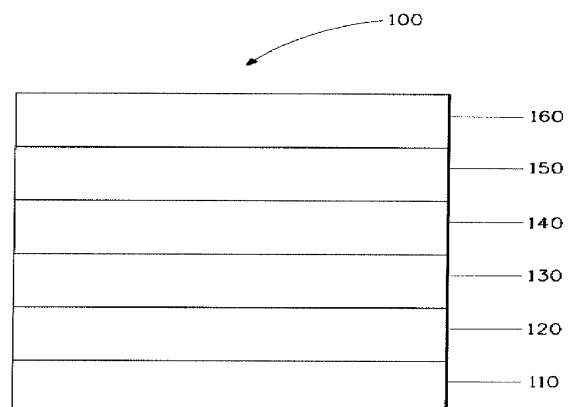


FIG. 1