



(11) **EP 2 432 849 B1**

(12) **EUROPEAN PATENT SPECIFICATION**

(45) Date of publication and mention of the grant of the patent:
25.02.2015 Bulletin 2015/09

(51) Int Cl.:
C09K 11/06 ^(2006.01) **H01L 51/50** ^(2006.01)
C07C 211/61 ^(2006.01)

(21) Application number: **10778311.0**

(86) International application number:
PCT/US2010/035364

(22) Date of filing: **19.05.2010**

(87) International publication number:
WO 2010/135403 (25.11.2010 Gazette 2010/47)

(54) **CHRYSENE COMPOUNDS FOR LUMINESCENT APPLICATIONS**

CHRYSENVERBINDUNGEN FÜR LEUCHTANWENDUNGEN

COMPOSÉS DE CHRYSÈNE POUR APPLICATIONS LUMINESCENTES

(84) Designated Contracting States:
AL AT BE BG CH CY CZ DE DK EE ES FI FR GB GR HR HU IE IS IT LI LT LU LV MC MK MT NL NO PL PT RO SE SI SK SM TR

(30) Priority: **19.05.2009 US 179405 P**

(43) Date of publication of application:
28.03.2012 Bulletin 2012/13

(60) Divisional application:
13180597.0 / 2 669 351
13180598.8 / 2 671 936
13180599.6 / 2 674 469

(73) Proprietor: **E. I. du Pont de Nemours and Company**
Wilmington, DE 19898 (US)

(72) Inventors:
• **WU, Weishi**
Landenberg
Pennsylvania 19350 (US)
• **HERRON, Norman**
Newark
Delaware 19711 (US)

- **ROSTOVTSEV, Vsevolod**
Swarthmore
Pennsylvania 19081 (US)
- **MERLO, Jeffrey, A.**
Wilmington
Delaware 19810 (US)
- **GAO, Weiyang**
Landenberg
Pennsylvania 19350 (US)

(74) Representative: **Hoffmann, Benjamin**
Dehns
St. Bride's House
10 Salisbury Square
London EC4Y 8JD (GB)

(56) References cited:
WO-A1-2007/108666 **WO-A1-2007/108666**
WO-A2-2010/059837 **WO-A2-2010/099534**
US-A1- 2006 033 421 **US-A1- 2006 033 421**
US-A1- 2006 152 146 **US-A1- 2006 152 146**
US-A1- 2006 194 074 **US-A1- 2006 194 074**
US-A1- 2006 210 830 **US-A1- 2006 210 830**
US-A1- 2008 102 311 **US-A1- 2008 303 425**
US-A1- 2008 303 425

EP 2 432 849 B1

Note: Within nine months of the publication of the mention of the grant of the European patent in the European Patent Bulletin, any person may give notice to the European Patent Office of opposition to that patent, in accordance with the Implementing Regulations. Notice of opposition shall not be deemed to have been filed until the opposition fee has been paid. (Art. 99(1) European Patent Convention).

DescriptionBACKGROUND5 Field of the Disclosure

[0001] This invention relates to electroluminescent chrysene compounds. It also relates to electronic devices in which the active layer includes such a chrysene compound.

10 Description of the Related Art

[0002] Organic electronic devices that emit light, such as light-emitting diodes that make up displays, are present in many different kinds of electronic equipment. In all such devices, an organic active layer is sandwiched between two electrical contact layers. At least one of the electrical contact layers is light-transmitting so that light can pass through the electrical contact layer. The organic active layer emits light through the light-transmitting electrical contact layer upon application of electricity across the electrical contact layers.

[0003] It is well known to use organic electroluminescent compounds as the active component in light-emitting diodes. Simple organic molecules such as anthracene, thiadiazole derivatives, and coumarin derivatives are known to show electroluminescence. Semiconductive conjugated polymers have also been used as electroluminescent components, as has been disclosed in, for example, U.S. Patent 5,247,190, U.S. Patent 5,408,109, and Published European Patent Application 443 861.

[0004] US 2008/303425 disclose chrysene compounds that are useful in electroluminescent applications and are capable of blue emission.

[0005] US 2006/210830 discloses aromatic amine derivatives for use in OLEDs.

25 **[0006]** WO 2007/108666 discloses novel diamine derivatives for use in OLEDs.

[0007] US 2006/0194074 discloses aromatic amine derivatives for use in organic EL devices.

[0008] US 2006/0152146 and EP 1561794 discloses aromatic amine derivatives having a chrysene structure and their use in organic EL devices.

[0009] However, there is a continuing need for electroluminescent compounds.

30

SUMMARY

[0010] There is provided a compound selected from E18 through E27, as shown below:

35

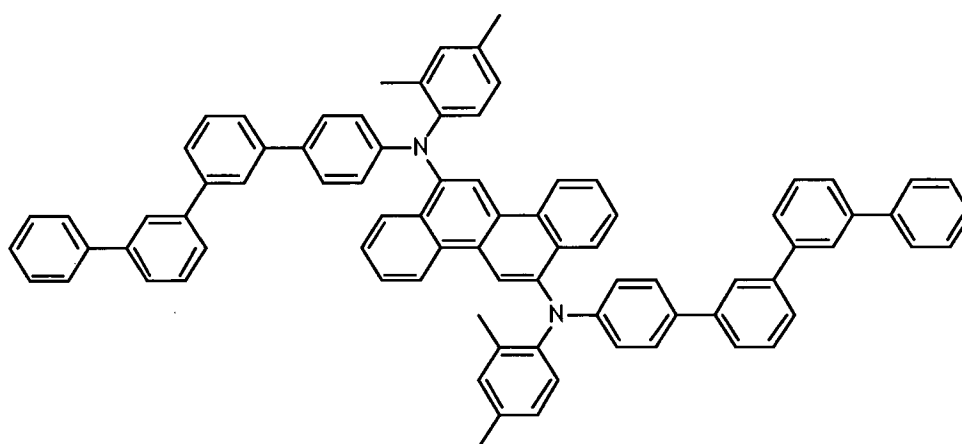
E18:

40

45

50

55



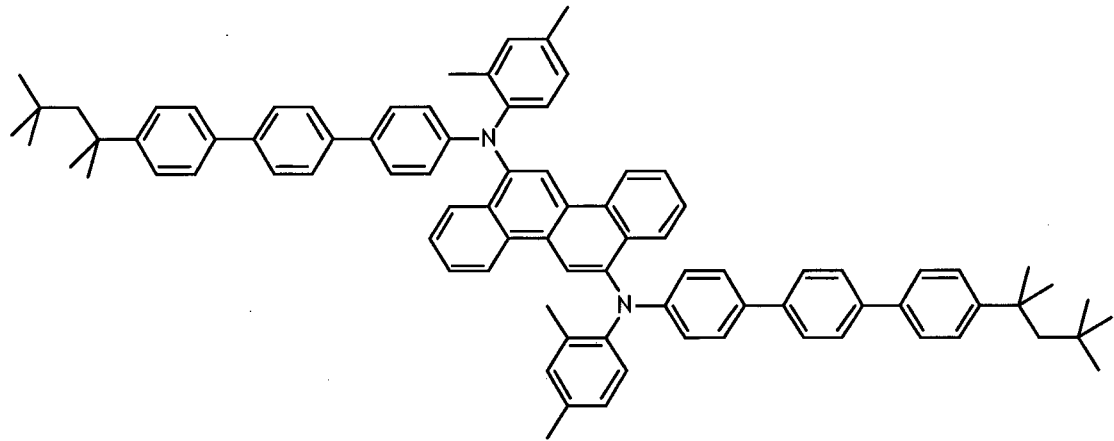
E19:

5

10

15

20

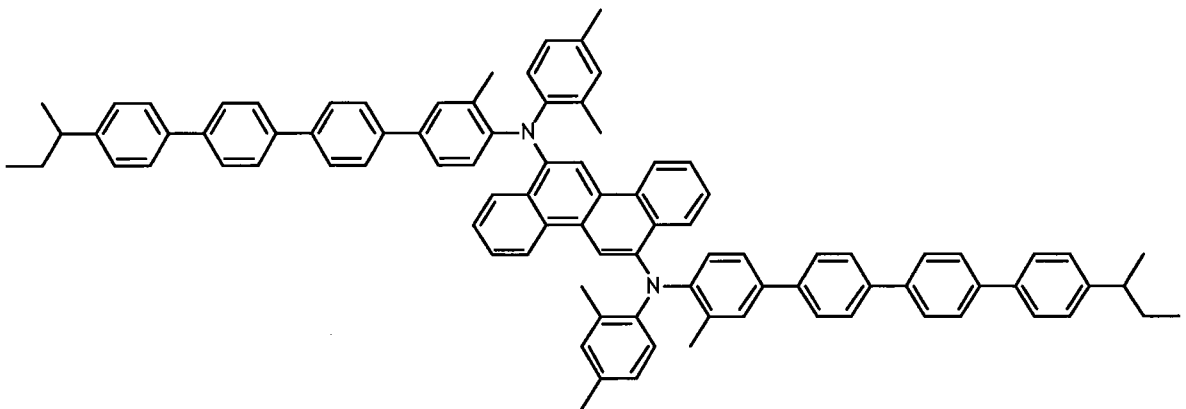


E20:

25

30

35



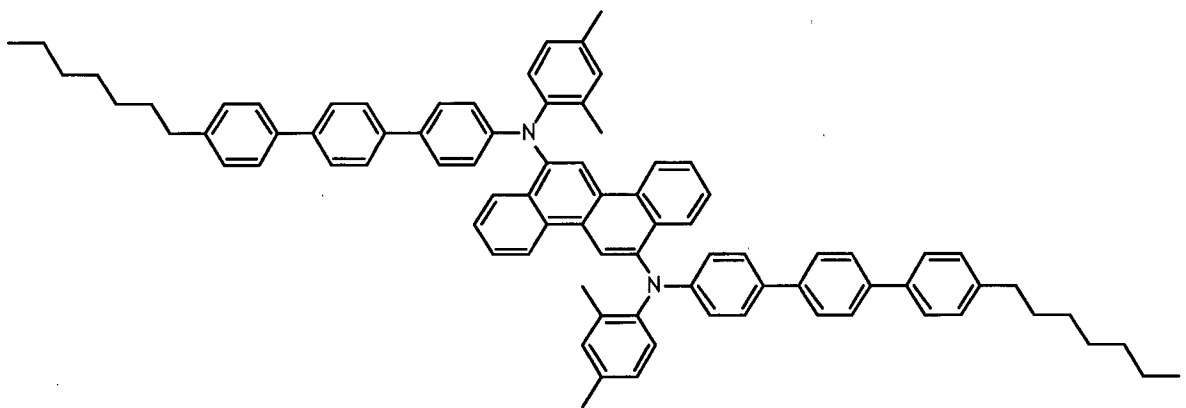
E21:

40

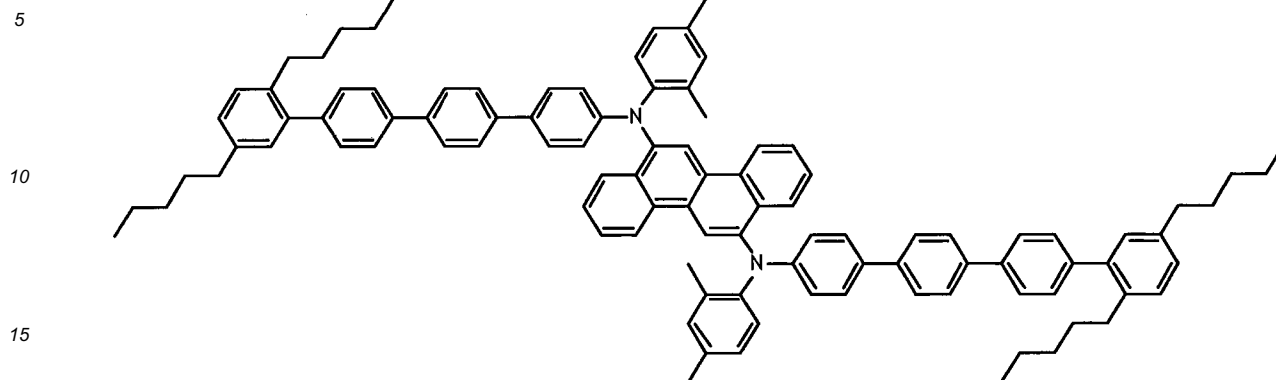
45

50

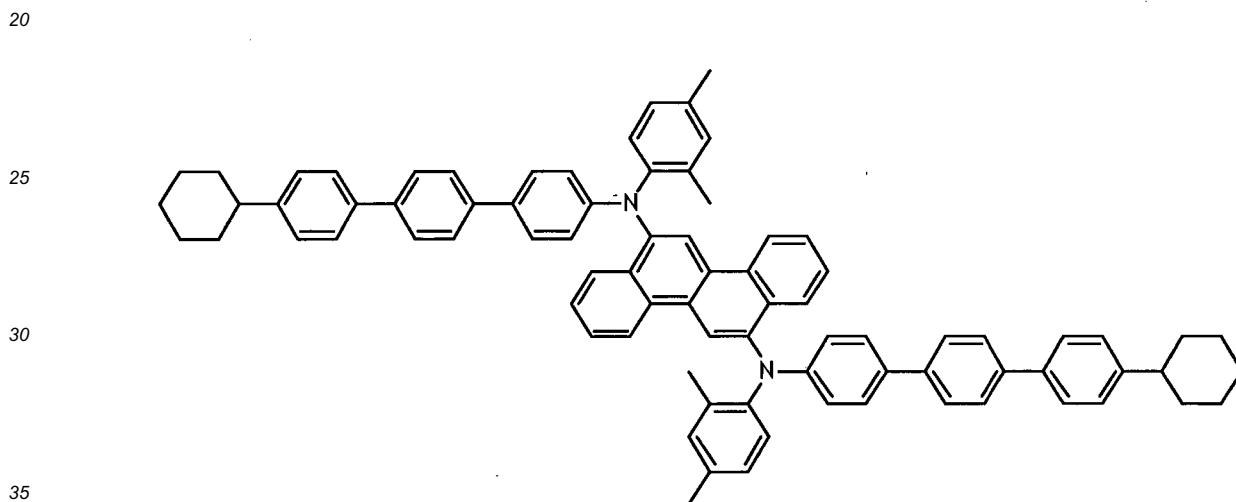
55



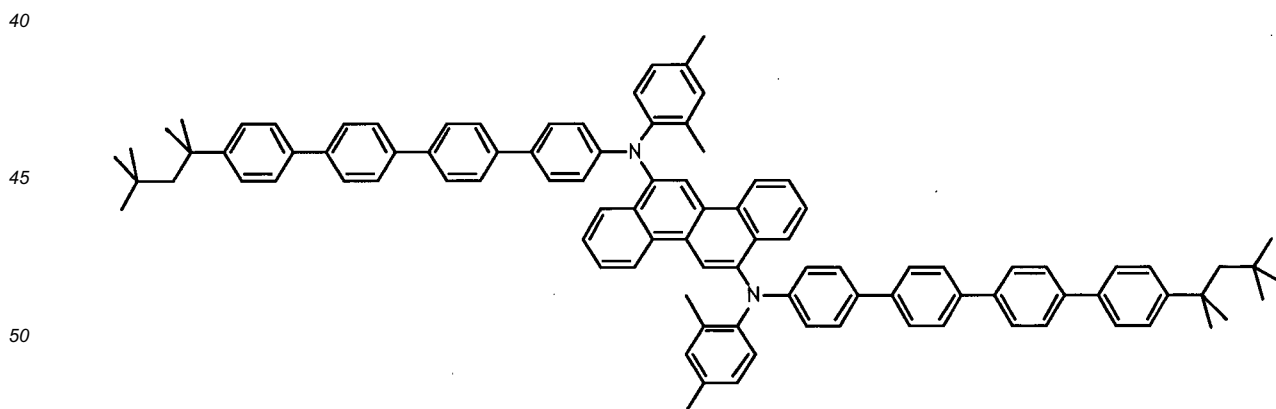
E22:



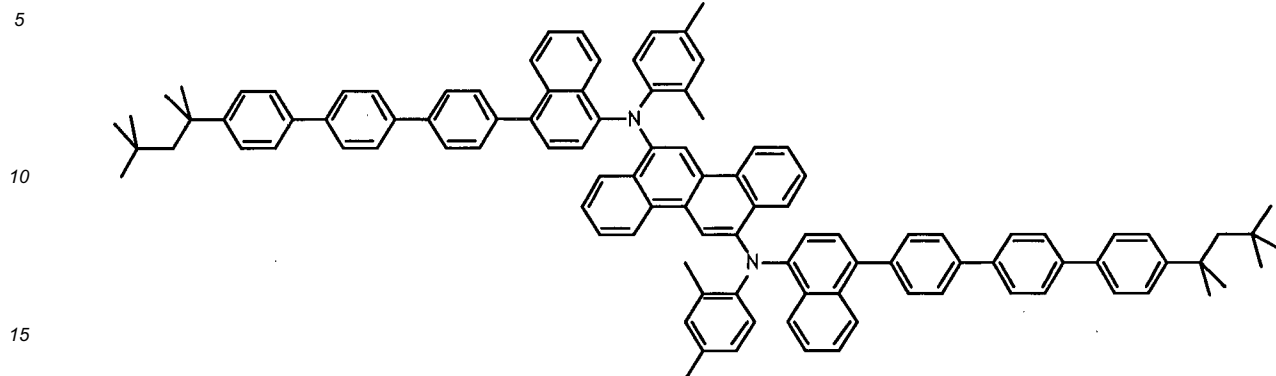
E23:



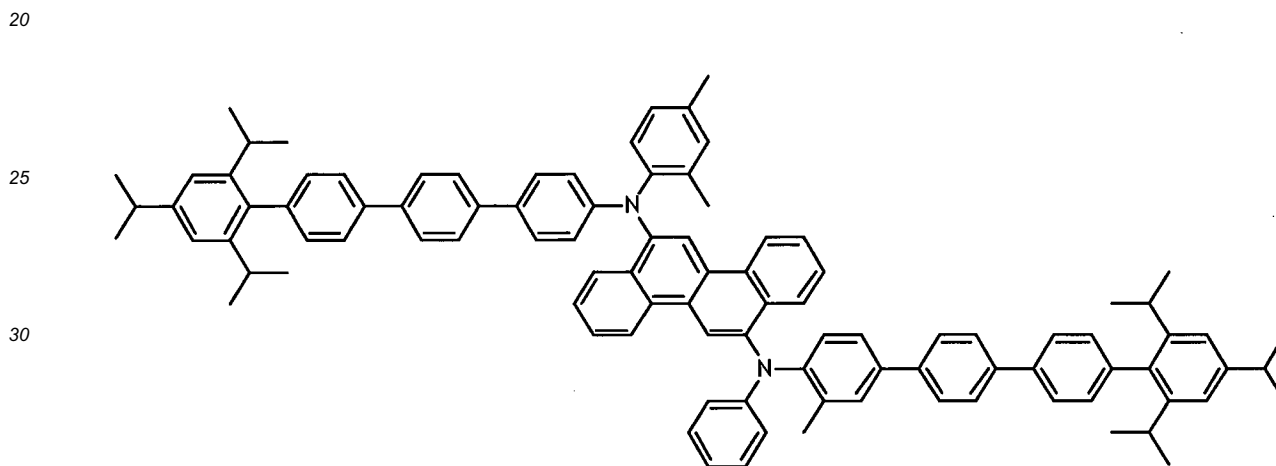
E24:



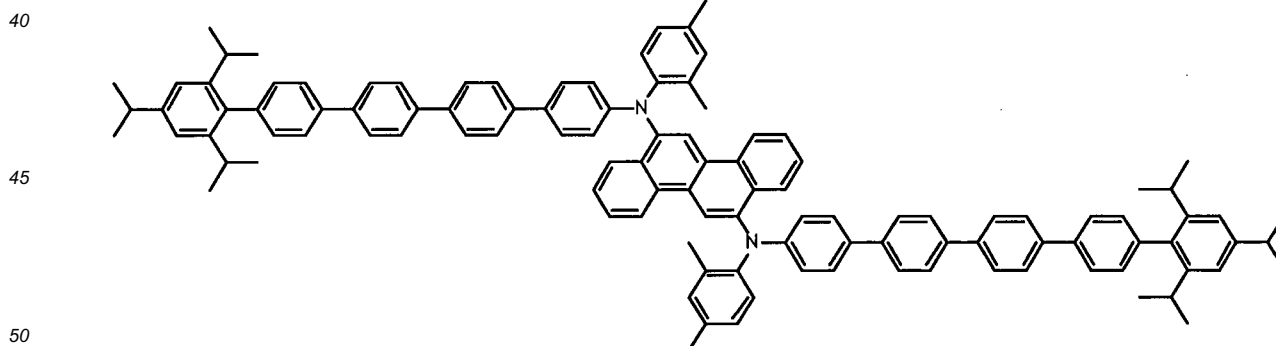
E25:



E26:



E27:



[0011] There is also provided an electronic device comprising an active layer comprising a compound of the invention.

BRIEF DESCRIPTION OF THE DRAWINGS

[0012] Embodiments are illustrated in the accompanying figures to improve understanding of concepts as presented herein.

FIG. 1 includes an illustration of one example of an organic electronic device.

FIG. 2 includes a graph of relative device lifetimes.

5 [0013] Skilled artisans appreciate that objects in the figures are illustrated for simplicity and clarity and have not necessarily been drawn to scale. For example, the dimensions of some of the objects in the figures may be exaggerated relative to other objects to help to improve understanding of embodiments.

DETAILED DESCRIPTION

10 [0014] Many aspects and embodiments are disclosed herein and are exemplary and not limiting. After reading this specification, skilled artisans appreciate that other aspects and embodiments are possible without departing from the scope of the invention.

15 [0015] Other features and benefits of any one or more of the embodiments will be apparent from the following detailed description, and from the claims. The detailed description first addresses Definitions and Clarification of Terms followed by the Chrysene Compound, the Electronic Device, and finally Examples.

1. Definitions and Clarification of Terms

[0016] Before addressing details of embodiments described below, some terms are defined or clarified.

20 [0017] The term "blue" refers to radiation that has an emission maximum at a wavelength in a range of approximately 400-500 nm.

[0018] The term "compound" is intended to mean an electrically uncharged substance made up of molecules that further consist of atoms, wherein the atoms cannot be separated by physical means. The phrase "adjacent to," when used to refer to layers in a device, does not necessarily mean that one layer is immediately next to another layer. The term "photoactive" refers to any material that exhibits electroluminescence and/or photosensitivity.

25 [0019] The term "green" refers to radiation that has an emission maximum at a wavelength in a range of approximately 500-600 nm.

[0020] The term "layer" is used interchangeably with the term "film" and refers to a coating covering a desired area. The term is not limited by size. The area can be as large as an entire device or as small as a specific functional area such as the actual visual display, or as small as a single sub-pixel. Layers and films can be formed by any conventional deposition technique, including vapor deposition, liquid deposition (continuous and discontinuous techniques), and thermal transfer. Continuous deposition techniques, include but are not limited to, spin coating, gravure coating, curtain coating, dip coating, slot-die coating, spray coating, and continuous nozzle coating. Discontinuous deposition techniques include, but are not limited to, ink jet printing, gravure printing, and screen printing.

35 [0021] The term "organic electronic device" or sometimes just "electronic device" is intended to mean a device including one or more organic semiconductor layers or materials.

[0022] Unless otherwise defined, all technical and scientific terms used herein have the same meaning as commonly understood by one of ordinary skill in the art to which this invention belongs. Although methods and materials similar or equivalent to those described herein can be used in the practice or testing of the present invention, suitable methods and materials are described below. In case of conflict, the present specification, including definitions, will control. In addition, the materials, methods, and examples are illustrative only and not intended to be limiting.

40 [0023] The IUPAC numbering system is used throughout, where the groups from the Periodic Table are numbered from left to right as 1-18 (CRC Handbook of Chemistry and Physics, 81st Edition, 2000).

2. Chrysene Compound

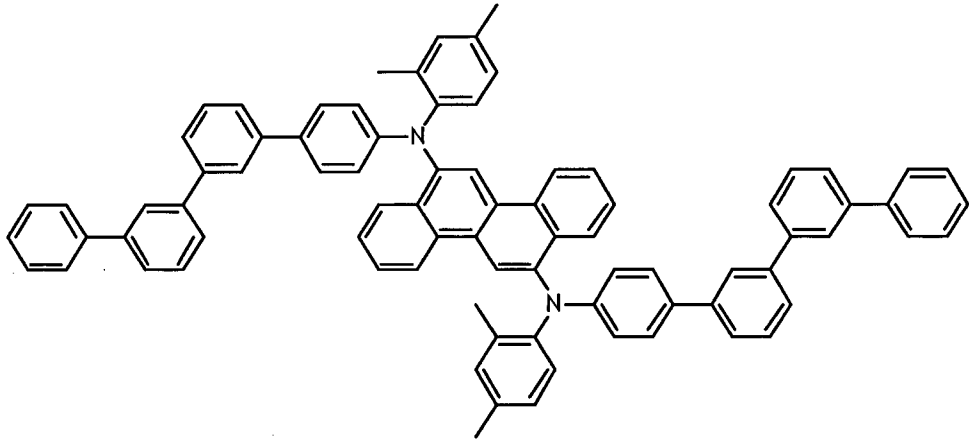
45 [0024] In one embodiment there is provided a chrysene compound selected from compounds E18 through E27:

50 E18:

5

10

15



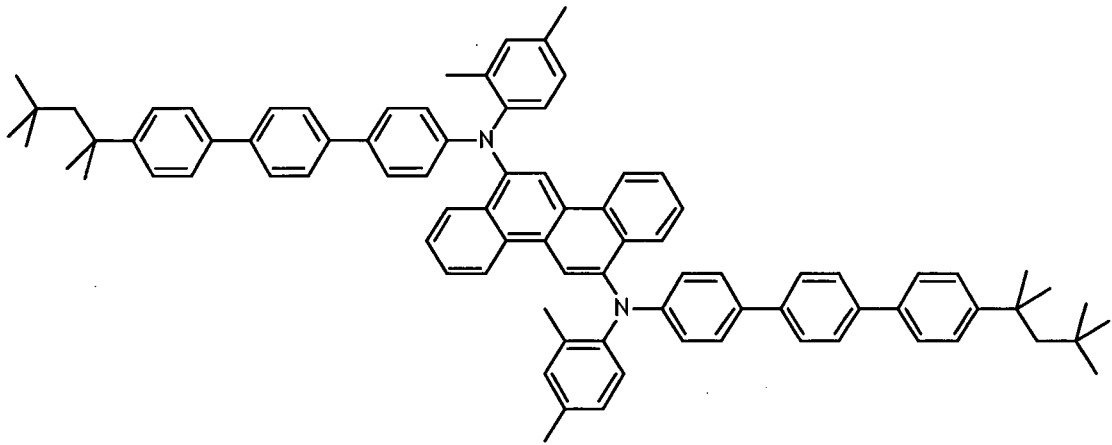
E19:

20

25

30

35



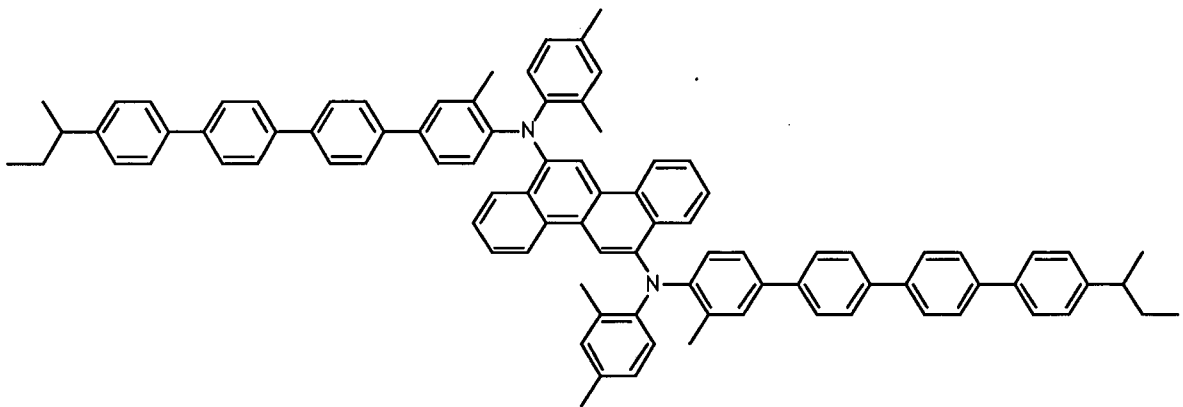
E20:

40

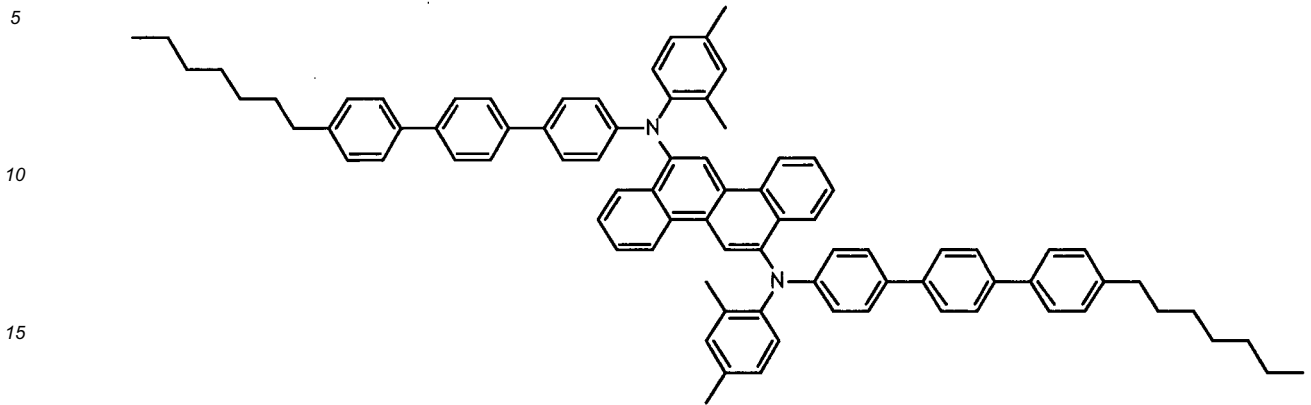
45

50

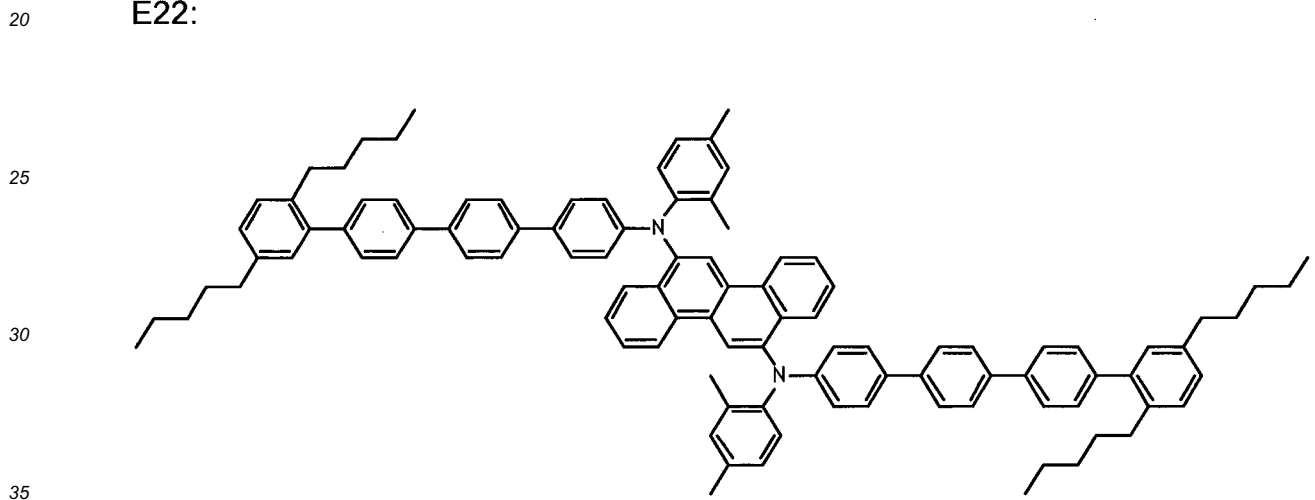
55



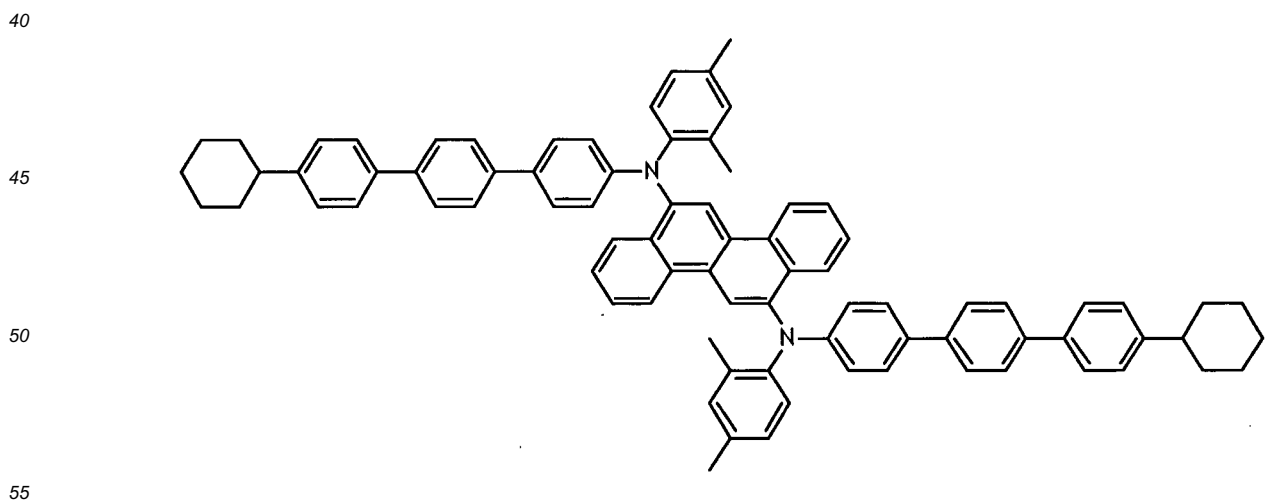
E21



E22:



E23:

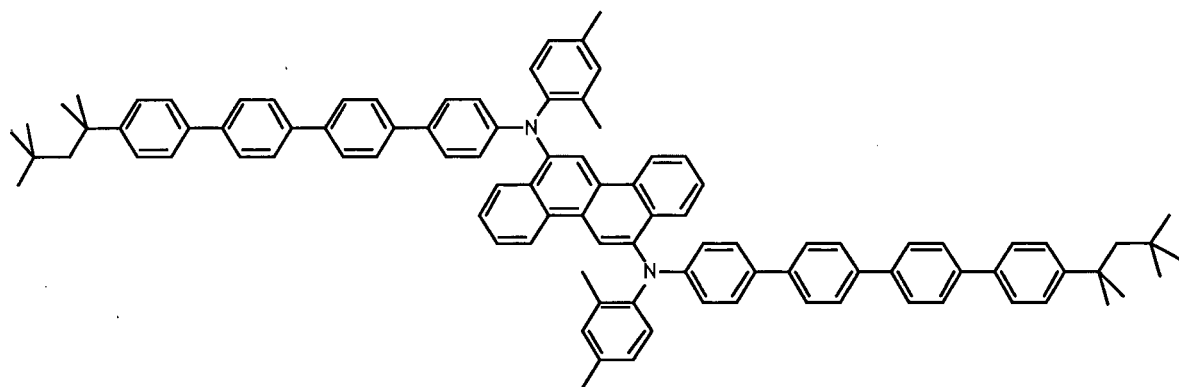


E24:

5

10

15



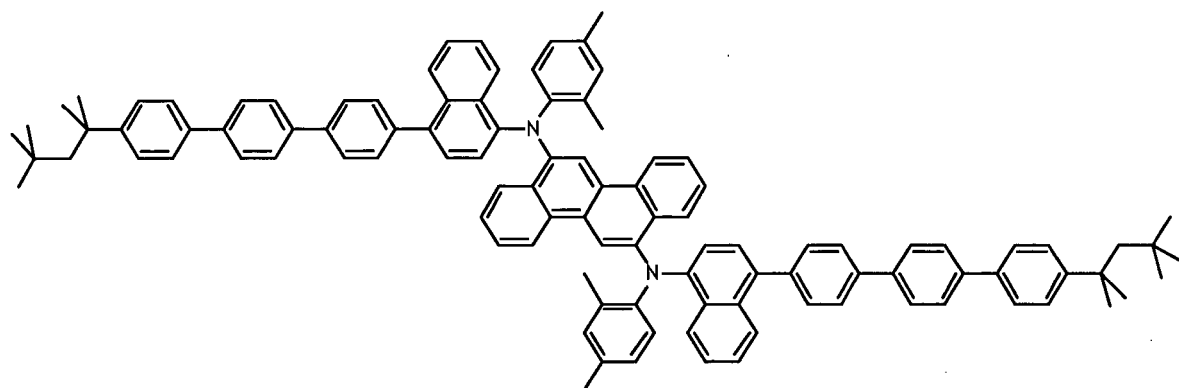
E25:

20

25

30

35



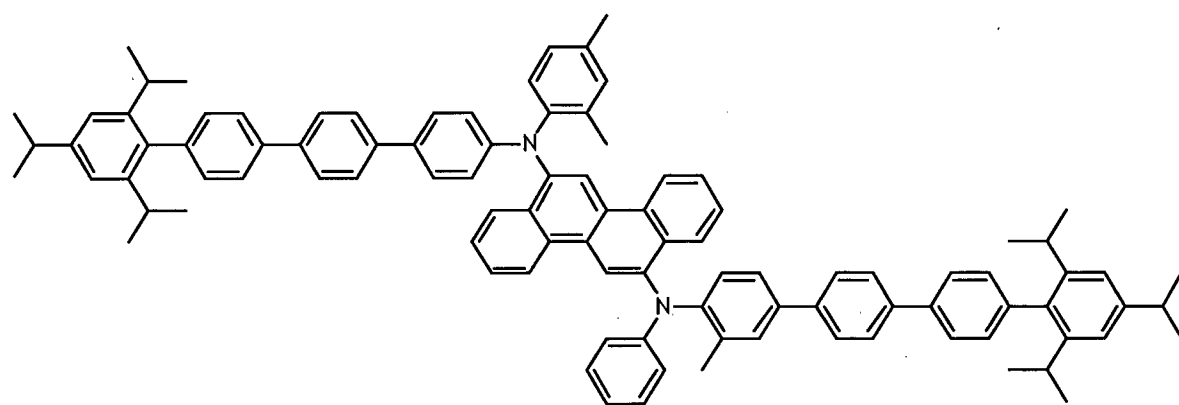
E26:

40

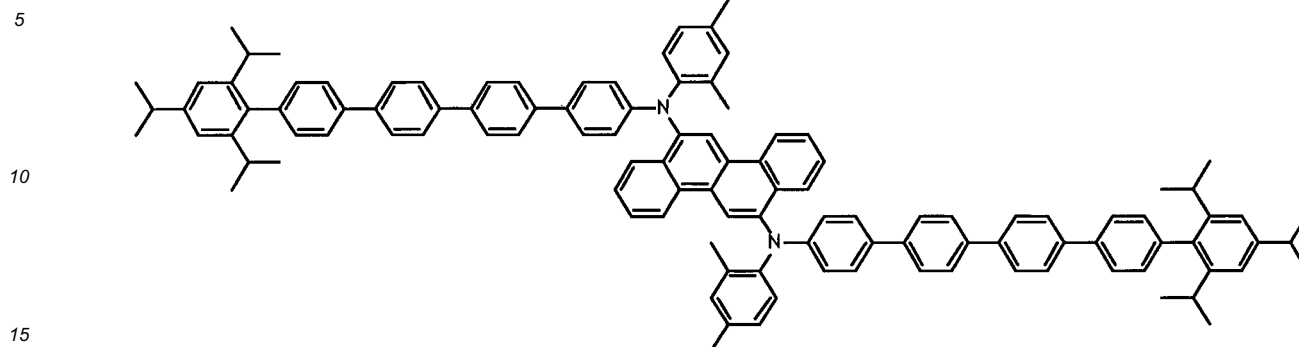
45

50

55



E27:



In some embodiments, the compound is capable of blue or green emission.

[0025] The new chrysenes can be prepared by known coupling and substitution reactions. Exemplary preparations are given in the Examples.

[0026] The chrysenes compounds described herein can be formed into films using liquid deposition techniques. Thin films of these materials dispersed in a host matrix exhibit good to excellent photoluminescent properties and blue or green emission.

[0027] The chrysenes compounds described herein have diarylamine substituents with at least one oligo-phenyl group. The oligo-phenyl group can be biphenyl, terphenyl, quaterphenyl, and above. Surprisingly and unexpectedly, these compounds have greatly improved properties when compared to chrysenes compounds having only single phenyl groups on the diarylamine substituents. Electronic devices including an active layer with the chrysenes compounds described herein, have greatly improved lifetimes. It has been discovered that the lifetime increases with the number of repeat units on the nitrogen substituent. In addition, the lifetime increases are achieved in combination with high quantum efficiency and good color.

3. Electronic Device

[0028] Organic electronic devices that may benefit from having one or more layers comprising the blue luminescent materials described herein include, but are not limited to: (1) devices that convert electrical energy into radiation (e.g., a light-emitting diode, light emitting diode display, or diode laser); (2) devices that detect signals through electronics processes (e.g., photodetectors, photoconductive cells, photoresistors, photoswitches, phototransistors, phototubes, IR detectors); (3) devices that convert radiation into electrical energy, (e.g., a photovoltaic device or solar cell); and (4) devices that include one or more electronic components that include one or more organic semi-conductor layers (e.g., a transistor or diode).

[0029] One illustration of an organic electronic device structure is shown in Figure 1. The device 100 has a first electrical contact layer, an anode layer 110 and a second electrical contact layer, a cathode layer 160, and a photoactive layer 140 between them. Adjacent to the anode is a buffer layer 120. Adjacent to the buffer layer is a hole transport layer 130, comprising hole transport material. Adjacent to the cathode may be an electron transport layer 150, comprising an electron transport material. As an option, devices may use one or more additional hole injection or hole transport layers (not shown) next to the anode 110 and/or one or more additional electron injection or electron transport layers (not shown) next to the cathode 160.

[0030] Layers 120 through 150 are individually and collectively referred to as the active layers.

[0031] In one embodiment, the different layers have the following range of thicknesses: anode 110, 500-5000 Å, in one embodiment 1000-2000 Å; buffer layer 120, 50-2000 Å, in one embodiment 200-1000 Å; hole transport layer 130, 50-2000 Å, in one embodiment 200-1000 Å; photoactive layer 140, 10-2000 Å, in one embodiment 100-1000 Å; layer 150, 50-2000 Å, in one embodiment 100-1000 Å; cathode 160, 200-10000 Å, in one embodiment 300-5000 Å. The location of the electron-hole recombination zone in the device, and thus the emission spectrum of the device, can be affected by the relative thickness of each layer. The desired ratio of layer thicknesses will depend on the exact nature of the materials used.

[0032] Depending upon the application of the device 100, the photoactive layer 140 can be a light-emitting layer that is activated by an applied voltage (such as in a light-emitting diode or light-emitting electrochemical cell), or a layer of material that responds to radiant energy and generates a signal with or without an applied bias voltage (such as in a photodetector). Examples of photodetectors include photoconductive cells, photoresistors, photoswitches, phototran-

sistors, and phototubes, and photovoltaic cells, as these terms are described in Markus, John, *Electronics and Nucleonics Dictionary*, 470 and 476 (McGraw-Hill, Inc. 1966).

a. Photoactive layer

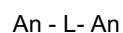
5

[0033] The chrysene compounds of the invention are useful as photoactive materials in layer 140. The compounds can be used alone, or in combination with a host material.

[0034] In some embodiments, the host is a bis-condensed cyclic aromatic compound.

[0035] In some embodiments, the host is an anthracene derivative compound. In some embodiments the compound

has the formula:



where:

15

An is an anthracene moiety;
L is a divalent connecting group.

[0036] In some embodiments of this formula, L is a single bond, -O-, -S-, -N(R)-, or an aromatic group. In some embodiments, An is a mono- or diphenylanthryl moiety.

[0037] In some embodiments, the host has the formula:



where:

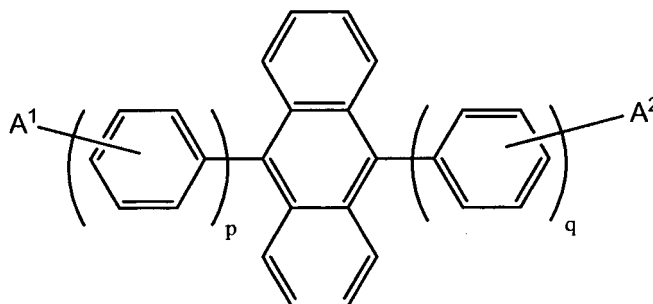
25

An is an anthracene or deuterated anthracene moiety;
A is the same or different at each occurrence and is an aromatic group.

[0038] In some embodiments, the A groups are attached at the 9- and 10-positions of the anthracene moiety. In some embodiments, A is selected from the group consisting naphthyl, naphthylphenylene, and naphthylphenylene. In some embodiments the compound is symmetrical and in some embodiments the compound is non-symmetrical.

[0039] In some embodiments, the host has the formula:

35



40

45

where:

A¹ and A² are the same or different at each occurrence and are selected from the group consisting of H, D, an aromatic group, and an alkenyl group, or A may represent one or more fused aromatic rings;

p and q are the same or different and are an integer from 0-3.

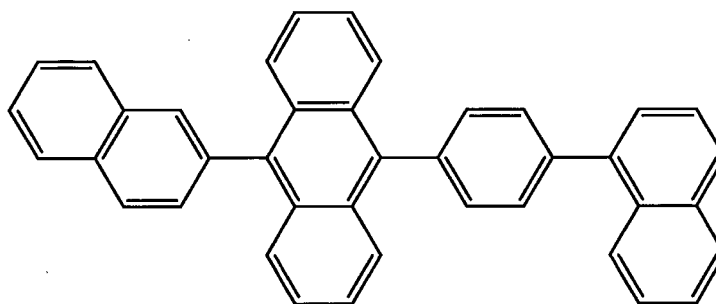
50

[0040] In some embodiments, the anthracene derivative is non-symmetrical. In some embodiments, p = 2 and q = 1. In some embodiments, at least one of A¹ and A² is a naphthyl group.

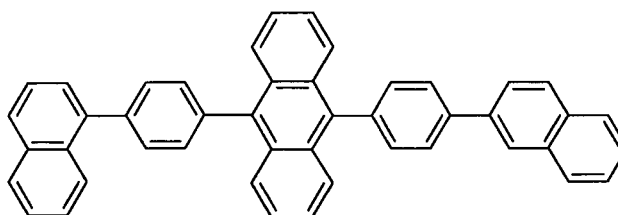
[0041] In some embodiments, the host is selected from the group consisting of

55

H1



H2



and combinations thereof.

[0042] The chrysene compounds of the invention, in addition to being useful as emissive dopants in the photoactive layer, can also act as charge carrying hosts for other emissive dopants in the photoactive layer 140.

b. Other Device Layers

[0043] The other layers in the device can be made of any materials that are known to be useful in such layers.

[0044] The anode 110, is an electrode that is particularly efficient for injecting positive charge carriers. It can be made of, for example, materials containing a metal, mixed metal, alloy, metal oxide or mixed-metal oxide, or it can be a conducting polymer, or mixtures thereof. Suitable metals include the Group 11 metals, the metals in Groups 4-6, and the Group 8-10 transition metals. If the anode is to be light-transmitting, mixed-metal oxides of Groups 12, 13 and 14 metals, such as indium-tin-oxide, are generally used. The anode 110 can also comprise an organic material such as polyaniline as described in "Flexible light-emitting diodes made from soluble conducting polymer," Nature vol. 357, pp 477-479 (11 June 1992). At least one of the anode and cathode is desirably at least partially transparent to allow the generated light to be observed.

[0045] The buffer layer 120 comprises buffer material and may have one or more functions in an organic electronic device, including but not limited to, planarization of the underlying layer, charge transport and/or charge injection properties, scavenging of impurities such as oxygen or metal ions, and other aspects to facilitate or to improve the performance of the organic electronic device. Buffer materials may be polymers, oligomers, or small molecules. They may be vapour deposited or deposited from liquids which may be in the form of solutions, dispersions, suspensions, emulsions, colloidal mixtures, or other compositions.

[0046] The buffer layer can be formed with polymeric materials, such as polyaniline (PANI) or polyethylenedioxythiophene (PEDOT), which are often doped with protonic acids. The protonic acids can be, for example, poly(styrenesulfonic acid), poly(2-acrylamido-2-methyl-1-propanesulfonic acid), and the like.

[0047] The buffer layer can comprise charge transfer compounds, and the like, such as copper phthalocyanine and the tetrathiafulvalene-tetracyanoquinodimethane system (TTF-TCNQ).

[0048] In some embodiments, the buffer layer comprises at least one electrically conductive polymer and at least one fluorinated acid polymer. Such materials have been described in, for example, published U.S. patent applications 2004-0102577, 2004-0127637, and 2005/205860

[0049] Examples of hole transport materials for layer 130 have been summarized for example, in Kirk-Othmer Encyclopedia of Chemical Technology, Fourth Edition, Vol. 18, p. 837-860, 1996, by Y. Wang. Both hole transporting molecules and polymers can be used. Commonly used hole transporting molecules are: N,N'-diphenyl-N,N'-bis(3-methylphenyl)-[1,1'-biphenyl]-4,4'-diamine (TPD), 1,1-bis[(di-4-tolylamino) phenyl]cyclohexane (TAPC), N,N'-bis(4-methylphenyl)-N,N'-bis(4-ethylphenyl)-[1,1'-(3,3'-dimethyl)biphenyl]-4,4'-diamine (ETPD), tetrakis-(3-methylphenyl)-N,N,N',N'-2,5-phenylenediamine (PDA), a-phenyl-4-N,N-diphenylaminostyrene (TPS), p-(diethylamino)benzaldehyde diphenylhy-

drazone (DEH), triphenylamine (TPA), bis[4-(N,N-diethylamino)-2-methylphenyl](4-methylphenyl)methane (MPMP), 1-phenyl-3-[p-(diethylamino)styryl]-5-[p-(diethylamino)phenyl] pyrazoline (PPR or DEASP), 1,2-trans-bis(9H-carbazol-9-yl)cyclobutane (DCZB), N,N,N',N'-tetrakis(4-methylphenyl)-(1,1'-biphenyl)-4,4'-diarnine (TTB), N,N'-bis(naphthalen-1-yl)-N,N'-bis-(phenyl)benzidine (α -NPB), and porphyrinic compounds, such as copper phthalocyanine. Commonly used hole transporting polymers are polyvinylcarbazole, (phenylmethyl)-polysilane, and polyaniline. It is also possible to obtain hole transporting polymers by doping hole transporting molecules such as those mentioned above into polymers such as polystyrene and polycarbonate. In some cases, triarylamine polymers are used, especially triarylamine-fluorene copolymers. In some cases, the polymers and copolymers are crosslinkable.

[0050] Examples of additional electron transport materials which can be used in layer 150 include metal chelated oxinoid compounds, such as tris(8-hydroxyquinolato)aluminum (Alq₃); bis(2-methyl-8-quinolinolato)(para-phenyl-phenolato)aluminum(III) (BAIQ); and azole compounds such as 2-(4-biphenyl)-5-(4-t-butylphenyl)-1,3,4-oxadiazole (PBD) and 3-(4-biphenyl)-4-phenyl-5-(4-t-butylphenyl)-1,2,4-triazole (TAZ), and 1,3,5-tri(phenyl-2-benzimidazole)benzene (TPBI); quinoxaline derivatives such as 2,3-bis(4-fluorophenyl)quinoxaline; phenanthroline derivatives such as 9,10-diphenylphenanthroline (DPA) and 2,9-dimethyl-4,7-diphenyl-1,10-phenanthroline (DDPA); and mixtures thereof. Layer 150 can function both to facilitate electron transport, and also serve as a buffer layer or confinement layer to prevent quenching of the exciton at layer interfaces. Preferably, this layer promotes electron mobility and reduces exciton quenching.

[0051] The cathode 160, is an electrode that is particularly efficient for injecting electrons or negative charge carriers. The cathode can be any metal or nonmetal having a lower work function than the anode. Materials for the cathode can be selected from alkali metals of Group 1 (e.g., Li, Cs), the Group 2 (alkaline earth) metals, the Group 12 metals, including the rare earth elements and lanthanides, and the actinides. Materials such as aluminum, indium, calcium, barium, samarium and magnesium, as well as combinations, can be used. Li-containing organometallic compounds, LiF, and Li₂O can also be deposited between the organic layer and the cathode layer to lower the operating voltage.

[0052] It is known to have other layers in organic electronic devices. For example, there can be a layer (not shown) between the anode 110 and buffer layer 120 to control the amount of positive charge injected and/or to provide band-gap matching of the layers, or to function as a protective layer. Layers that are known in the art can be used, such as copper phthalocyanine, silicon oxy-nitride, fluorocarbons, silanes, or an ultra-thin layer of a metal, such as Pt. Alternatively, some or all of anode layer 110, active layers 120, 130, 140, and 150, or cathode layer 160, can be surface-treated to increase charge carrier transport efficiency. The choice of materials for each of the component layers is preferably determined by balancing the positive and negative charges in the emitter layer to provide a device with high electroluminescence efficiency.

[0053] It is understood that each functional layer can be made up of more than one layer.

[0054] The device can be prepared by a variety of techniques, including sequential vapor deposition of the individual layers on a suitable substrate. Substrates such as glass, plastics, and metals can be used. Conventional vapor deposition techniques can be used, such as thermal evaporation, chemical vapor deposition, and the like. Alternatively, the organic layers can be applied from solutions or dispersions in suitable solvents, using conventional coating or printing techniques, including but not limited to spin-coating, dip-coating, roll-to-roll techniques, ink-jet printing, screenprinting, gravure printing and the like.

[0055] The present invention also relates to an electronic device comprising at least one active layer positioned between two electrical contact layers, wherein the at least one active layer of the device includes the chrysene compound of the invention. Devices frequently have additional hole transport and electron transport layers.

[0056] To achieve a high efficiency LED, the HOMO (highest occupied molecular orbital) of the hole transport material desirably aligns with the work function of the anode, and the LUMO (lowest un-occupied molecular orbital) of the electron transport material desirably aligns with the work function of the cathode. Chemical compatibility and sublimation temperature of the materials are also important considerations in selecting the electron and hole transport materials.

[0057] It is understood that the efficiency of devices made with the chrysene compounds described herein, can be further improved by optimizing the other layers in the device. For example, more efficient cathodes such as Ca, Ba or LiF can be used. Shaped substrates and novel hole transport materials that result in a reduction in operating voltage or increase quantum efficiency are also applicable. Additional layers can also be added to tailor the energy levels of the various layers and facilitate electroluminescence.

[0058] The chrysene compounds of the invention often are fluorescent and photoluminescent and can be useful in applications other than OLEDs, such as oxygen sensitive indicators and as fluorescence indicators in bioassays.

EXAMPLES

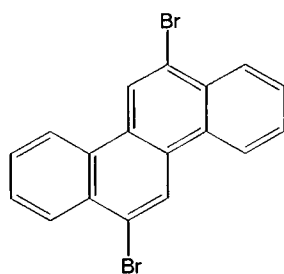
[0059] The following examples illustrate certain features and advantages of the present invention. They are intended to be illustrative of the invention, but not limiting. All percentages are by weight, unless otherwise indicated.

EP 2 432 849 B1

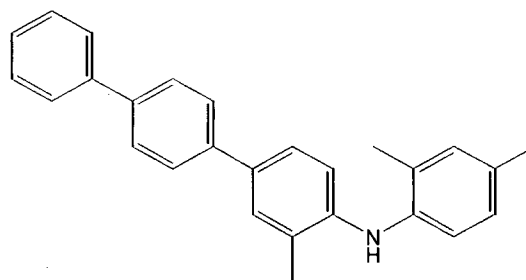
Synthesis Example 1 (Reference only)

[0060] This example illustrates the preparation of Compound E1.

Take 0.39g of the dibromochrysene (1 mmol) in glove box and add 0.75g (2.1 mmol) sec-amine and 0.22g t-BuONa (2.2 mmol) with 10mL toluene. Add 0.15g Pd₂DBA₃ (tris(dibenzylideneacetone) dipalladium(0), 0.15 mmol), 0.06g P(t-Bu)₃ (0.30 mmol). Mix and heat in glove box in mantle at 110 °C under nitrogen for 1hr. Solution immediately is dark purple but on reaching ~80°C it is dark purple brown with noticeable blue luminescence. Warm at ~RT overnight. Cool and work up by column chromatography eluting with toluene. Product is pale yellow and quite soluble. The blue luminescent material elutes from the column as a pale yellow solution. Evaporate to low volume and add methanol to ppt yellow solid with blue PL in ~0.5g yield. TLC shows single blue spot running at the solvent front in toluene. Material is very soluble in toluene



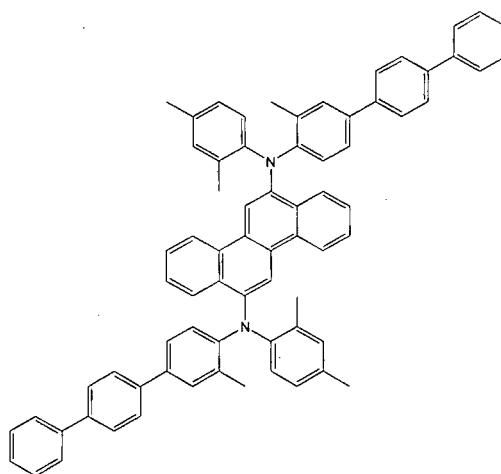
C₁₈H₁₀Br₂
Exact Mass: 383.91
Mol. Wt.: 386.08
C, 56.00; H, 2.61; Br, 41.39



C₂₇H₂₅N
Exact Mass: 363.20
Mol. Wt.: 363.49
C, 89.21; H, 6.93; N, 3.85

Product:

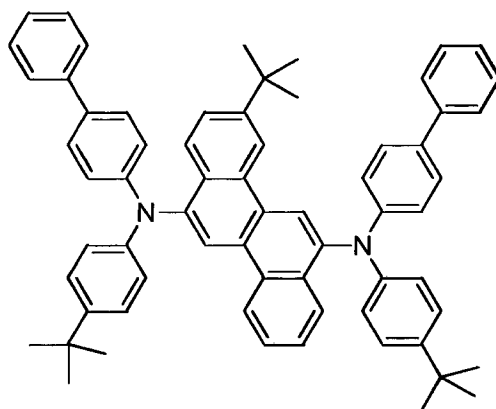
[0061]



C₇₇H₅₈N₂
Exact Mass: 950.46
Mol. Wt.: 951.24
C, 90.91; H, 6.15; N, 2.94

Synthesis Example 2 (Reference only)

[0062] This example illustrates the preparation of Compound E2, N⁶,N¹²-di(biphenyl-4-yl)-3-*tert*-butyl-N⁶,N¹²-bis(4-*tert*-butylphenyl)chrysene-6,12-diamine.

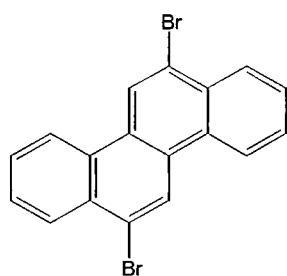


[0063] In a drybox, 3-*tert*-butyl-6,12-dibromochrysene (1.8 g, 4.07 mmol) and *N*-(4-*tert*-butylphenyl)biphenyl-4-amine (2.58 g, 8.55 mmol) were combined in a thick-walled glass tube and dissolved in 20 ml of dry toluene. Tris(*tert*-butyl)phosphine (0.0148 g, 0.073 mmol) and tris(dibenzylideneacetone) dipalladium(0) (0.0335 g, 0.0366 mmol) were dissolved in 10 ml of dry toluene and stirred for 10 minutes. The catalyst solution was added to the reaction mixture, stirred for 10 minutes and followed by sodium *tert*-butoxide (0.782 g, 8.14 mmol) and 20 ml of dry toluene. After another 10 minutes, the reaction flask was brought out of the drybox, attached to a nitrogen line and stirred at 80 °C overnight. Next day, reaction mixture was cooled to room temperature and filtered through a 4 inch plug of silica gel and one inch of celite, washing with one liter of chloroform and 300 ml of dichloromethane. Removal of volatiles under reduced pressure gave a yellow solid. The crude product was purified further by silica gel column chromatography using a gradient of dichloromethane in hexanes (10 % to 15 %). Removal of volatiles yielded 3.25 g (90.5 %) of product as a yellow solid. ¹H NMR (CD₂Cl₂): δ 1.22 (s, 9H), 1.23 (s, 9H), 1.31 (s, 9H), 7.04-7.56 (m, 29 H), 8.00 (d, 1 H, J = 8.8 Hz), 8.07 (dd, 1 H, J = 1.1, 8.3 Hz), 8.44 (d, 1 H, J = 1.8 Hz), 8.51 (s, 1 H), 8.53 (s, 1 H), 8.54 (d, 1 H, J = 8.3 Hz).

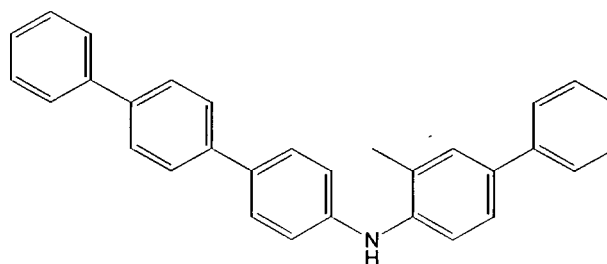
Synthesis Example 3 (Reference only)

[0064] This example illustrates the preparation of Compound E4.

Take 0.39g of the dibromochrysene (1 mmol) in glove box and add 0.88g (2.1 mmol) sec-amine (100555-201) and 0.22g *t*-BuONa (2.2 mmol) with 10mL toluene. Add 0.15g Pd₂DBA₃ (0.15 mmol), 0.06g P(*t*-Bu)₃ (0.30 mmol) dissolved in xylenes. Mix and heat in glove box in mantle at 110°C under nitrogen for 1hr. Solution immediately is dark purple but on reaching ~80°C it is dark yellow brown with noticeable blue luminescence. Warm at ~80°C overnight. Cool and work up by column chromatography eluting with toluene. Product is pale yellow and poorly soluble. The blue luminescent material elutes from the column as a pale yellow solution. Evaporate to low volume and add methanol to precipitate yellow solid with blue PL in ~0.3g yield. Material is modestly soluble in toluene.



C₁₈H₁₀Br₂
Exact Mass: 383.91
Mol. Wt.: 386.08
C, 56.00; H, 2.61; Br, 41.39



C₃₁H₂₅N
Exact Mass: 411.20
Mol. Wt.: 411.54
C, 90.47; H, 6.12; N, 3.40

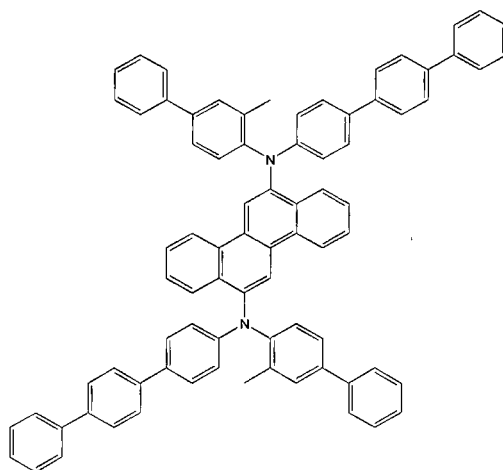
Product:

[0065]

5

10

15



$C_{36}H_{30}N_2$
 Exact Mass: 1046.46
 Mol. Wt.: 1047.33
 C, 91.74; H, 5.58; N, 2.67

20 Synthesis Example 4 (Reference only)

[0066] This example illustrates the preparation of Compound E5.

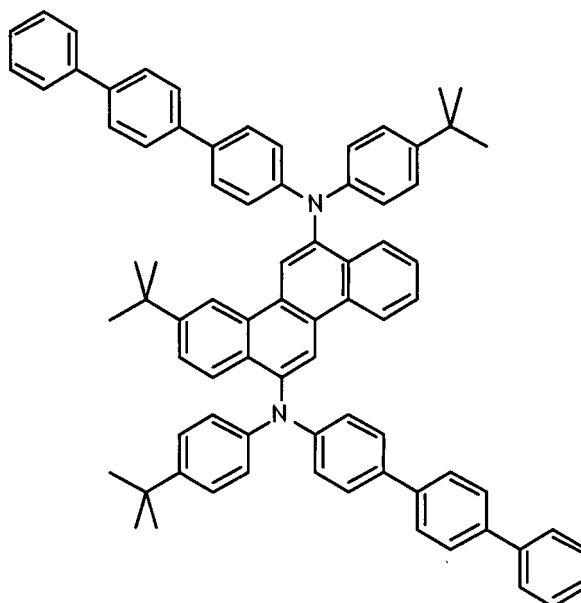
In a drybox, $Pd_2(dba)_3$ (10.4 mg, 11.4 μ mol) and $P(tert-Bu)_3$ (4.6 mg, 22.8 μ mol) were dissolved in 3 ml of dry toluene and set aside for five minutes. 6,12-Dibromochrysene (504 mg, 1.14 mmol) and N-(4-*tert*-butylphenyl)-4,4' terphenylamine (860 mg, 2.28 mmol) were combined in the reaction flask and dissolved in dry toluene (25 ml). Pre-formed catalyst solution was added next, reaction mixture was stirred for three minutes, followed by the addition of sodium *tert*-butoxide (224 mg, 2.33 mmol). Reaction was stirred at 100 °C for 16 hours. Reaction mixture was filtered through a plug of silica and Celite. The silica/Celite plug was washed with 300 ml of CH_2Cl_2 . Filtrates were combined and evaporated to dryness using rotary evaporator. The crude product was purified by column chromatography twice. First, on alumina column with 20% CH_2Cl_2 in hexanes to get rid of unreacted diarylamine and, second, on silica gel (silica gel 60, 230-400 mesh from EMD, 15% CH_2Cl_2 in hexanes, monitored by TLC, same solvent system, R_f (product)=0.09, R_f (impurity)=0.18). Yield 450 mg (38%) of yellow solid. Analysis by 1H NMR indicated that the product was Compound E5.

35

40

45

50



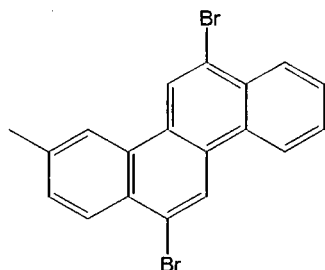
55 Synthesis Example 5 (Reference only)

[0067] This example illustrates the preparation of Compound E6.

Take 0.39g of the 6,12-dibromo-3-methylchrysene (1 mmol) in glove box and add 0.75g (2.1 mmol) sec-amine and 0.22g

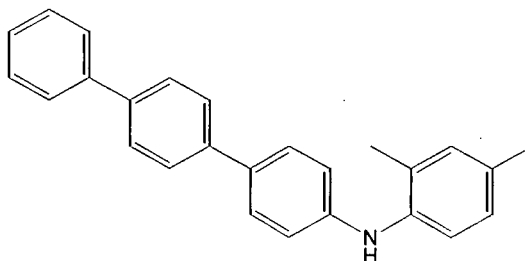
EP 2 432 849 B1

t-BuONa (2.2 mmol) with 10mL toluene. Add 0.15g Pd₂DBA₃ (0.15 mmol), 0.06g P(t-Bu)₃ (0.30 mmol) dissolved in toluene. Mix and heat in glove box in mantle at 80 °C under nitrogen for 1 hr. Solution immediately is dark purple but on reaching ~80 °C it is dark yellow brown with noticeable blue luminescence. Cool and work up by column chromatography eluting with toluene. Product is pale yellow and nicely soluble. The blue luminescent material elutes from the column as a pale yellow solution. Evaporate to low volume and add methanol to ppt yellow solid with blue PL in ~0.5 g yield. TLC shows single blue spot running at the solvent front in toluene. Material is soluble in toluene.

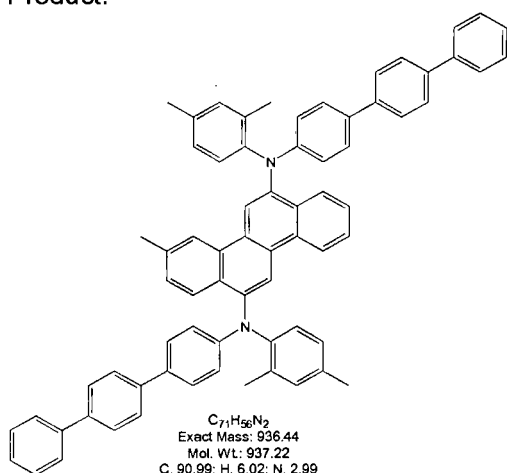


C₁₉H₁₂Br₂
 Exact Mass: 397.93
 Mol. Wt.: 400.11
 C, 57.04; H, 3.02; Br, 39.94

Product:



C₂₆H₂₃N
 Exact Mass: 349.18
 Mol. Wt.: 349.47
 C, 89.36; H, 6.63; N, 4.01

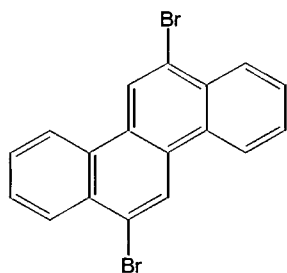


C₇₁H₅₆N₂
 Exact Mass: 936.44
 Mol. Wt.: 937.22
 C, 90.99; H, 6.02; N, 2.99

Synthesis Example 6 (Reference only)

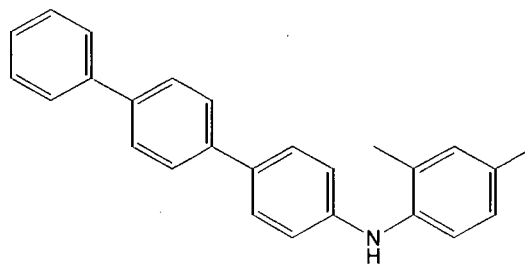
[0068] This example illustrates the preparation of Compound E7.

Take 0.39 g of the 6,12-dibromochrysene (1 mmol) in glove box and add 0.75 g (2.1 mmol) sec-amine and 0.22g t-BuONa (2.2 mmol) with 10mL toluene. Add 0.15g Pd₂DBA₃ (0.15 mmol), 0.06g P(t-Bu)₃ (0.30 mmol) dissolved in xylenes. Mix and heat in glove box in mantle at 110°C under nitrogen for 1hr. Solution immediately is dark purple but on reaching ~80°C it is dark yellow brown with noticeable blue luminescence. Warm at ~80°C overnight. Cool and work up by column chromatography eluting with toluene. Product is pale yellow and poorly soluble. The blue luminescent material elutes from the column as a pale yellow solution. Evaporate to low volume and add methanol to ppt yellow solid with blue PL in ~0.5g yield. TLC shows single blue spot running at the solvent front in toluene. Material is modestly soluble in toluene.

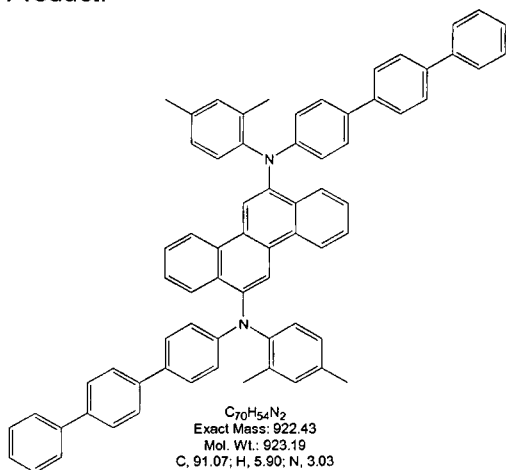


$C_{18}H_{10}Br_2$
 Exact Mass: 383.91
 Mol. Wt.: 386.08
 C, 56.00; H, 2.61; Br, 41.39

Product:



$C_{26}H_{23}N$
 Exact Mass: 349.18
 Mol. Wt.: 349.47
 C, 89.36; H, 6.63; N, 4.01

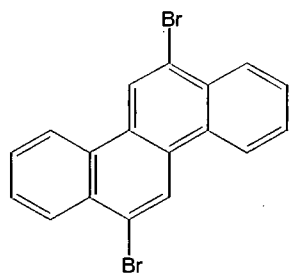


$C_{70}H_{54}N_2$
 Exact Mass: 922.43
 Mol. Wt.: 923.19
 C, 91.07; H, 5.90; N, 3.03

Synthesis Example 7 (Reference only)

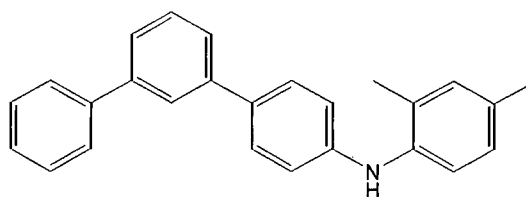
[0069] This example illustrates the preparation of Compound E8.

Take 0.39 g of the 6,12-dibromochrysene (1 mmol) in glove box and add 0.75 g (2.1 mmol) sec-amine and 0.22 g t-BuONa (2.2 mmol) with 10mL toluene. Add 0.15g Pd₂DBA3 (0.15 mmol), 0.06g P(t-Bu)₃ (0.30 mmol) dissolved in toluene. Mix and heat in glove box in mantle at 110°C under nitrogen for 1hr. Solution immediately is dark purple but on reaching ~80°C it is dark yellow brown with noticeable blue luminescence. Warm at ~80°C overnight. Cool and work up by column chromatography eluting with toluene. Product is pale yellow and quite soluble. The blue luminescent material elutes from the column as a pale yellowgreen solution. Evaporate to low volume and add methanol to ppt yellow solid with blue PL in ~0.5 g yield. TLC shows single blue spot running at the solvent front in toluene. Material is very soluble in toluene.

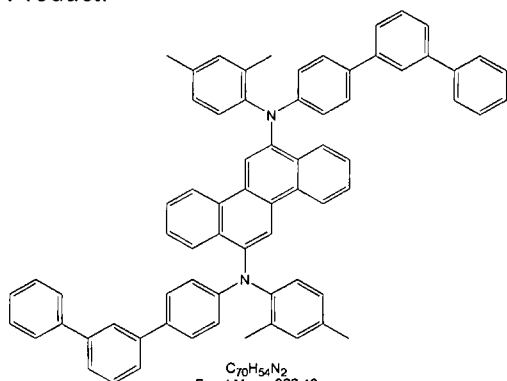


$C_{18}H_{10}Br_2$
 Exact Mass: 383.91
 Mol. Wt.: 386.08
 C, 56.00; H, 2.61; Br, 41.39

Product:



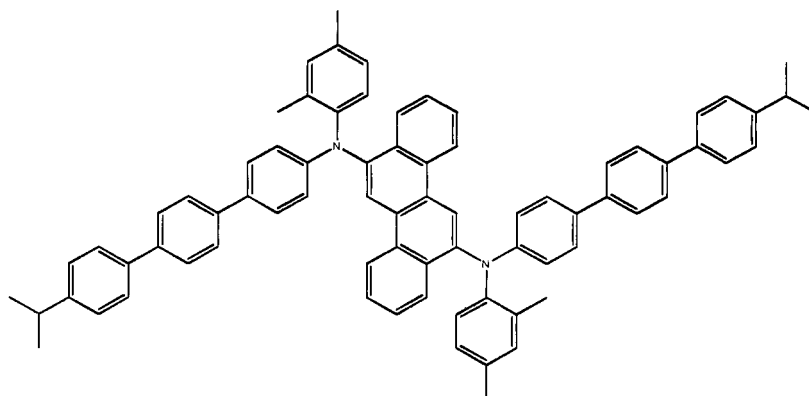
$C_{26}H_{23}N$
 Exact Mass: 349.18
 Mol. Wt.: 349.47
 C, 89.36; H, 6.63; N, 4.01



$C_{70}H_{54}N_2$
 Exact Mass: 922.43
 Mol. Wt.: 923.19
 C, 91.07; H, 5.90; N, 3.03

Synthesis Example 8 (Reference only)

[0070] This example illustrates the preparation of Compound E9, N6,N12-bis(2,4-dimethylphenyl)-N6,N12-bis(4'-isopropylterphenyl-4-yl)chrysenes-6,12-diamine



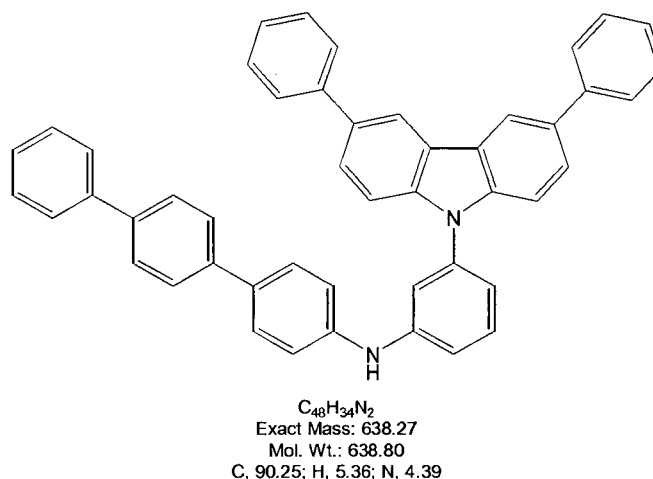
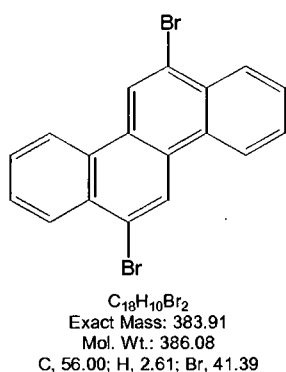
In a drybox, 6,12-dibromochrysenes (0.54 g, 1.38 mmol), N-(2,4-dimethylphenyl)-N-(4'-isopropylterphenyl-4-yl)amine (1.11 g, 2.82 mmol), tris(*tert*-butyl)phosphine (0.028 g, 0.14 mmol) and tris(dibenzylideneacetone) dipalladium(0) (0.063 g, 0.069 mmol) were combined in round bottom flask and dissolved in 20 ml of dry toluene. The solution was stirred for a minute and followed by sodium *tert*-butoxide (0.29 g, 3.03 mmol) and 10 ml of dry toluene. A heating mantle was added and the reaction heated to 60°C for 3 days. The reaction mixture was then cooled to room temperature and filtered through a 1 inch plug of silica gel and one inch of celite, washing with toluene (500 mL). Removal of volatiles under reduced pressure gave a yellow solid. The crude product was purified further by silica gel column chromatography using a gradient of chloroform in hexanes (0 % to 40 %). Recrystallization from DCM and acetonitrile yielded 0.540 g (40%) of product as a yellow solid. 1H NMR ($CDCl_3$) is consistent with structure.

EP 2 432 849 B1

Synthesis Example 9 (Reference only)

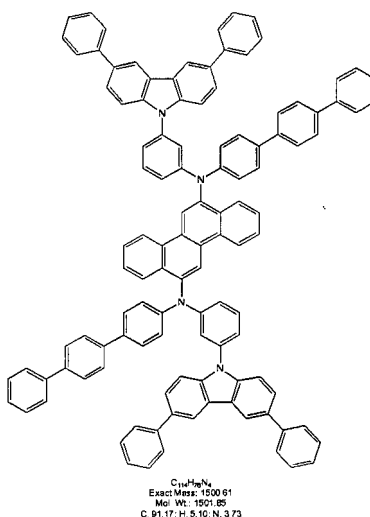
[0071] This example illustrates the preparation of Compound E11.

Take 0.386g of 6,12-dibromochrysene (1.0 mmol) in glove box and add 1.35g (2.1 mmol) sec-amine and 0.22g t-BuONa (2.2 mmol) with 10mL xylene. Add 0.15g Pd₂DBA₃ (0.15 mmol), 0.06g P(t-Bu)₃ (0.30 mmol) dissolved in xylenes. Mix and heat in glove box in mantle at 110°C under nitrogen for 1hr. Solution immediately is dark purple but on reaching ~80°C it is light yellow brown with noticeable blue luminescence. Warm at ~80°C for 1hr. Cool and work up by removing from glove box and filter through a a-alumina plug eluting with DCM. Product is pale yellow and poorly soluble in toluene. Chromatograph eluting with toluene/DCM. The blue luminescent material elutes from the column as a pale yellow solution. Evaporate to low volume and add methanol to ppt yellow solid with blue PL in ~0.5g yield. Material is poorly soluble in toluene



Product:

[0072]



Synthesis Example 10 (Reference only)

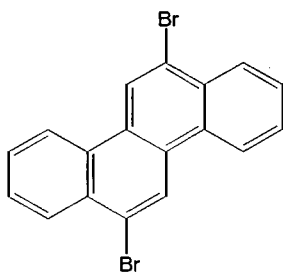
[0073] This example illustrates the preparation of Compound E12.

Take 0.39g of 6,12-dibromochrysene (1 mmol) in glove box and add 1.00g (2.1 mmol) sec-amine (100555-202) and 0.22g t-BuONa (2.2 mmol) with 10mL xylenes. Add 0.15g Pd₂DBA₃ (0.15 mmol), 0.06g P(t-Bu)₃ (0.30 mmol) dissolved in xylenes. Mix and heat in glove box in mantle at 110°C under nitrogen for 1 hr. Solution immediately is dark purple but on reaching ~80°C it is dark yellow brown with noticeable blue luminescence. Cool and work up by column chromatography

EP 2 432 849 B1

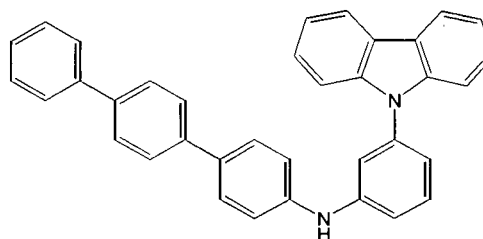
eluting with DCM. Product is pale yellow and very poorly soluble. The blue luminescent material elutes from the column as a pale yellow solution. Evaporate to low volume and add methanol to ppt pale yellow solid with blue PL in ~0.3g yield. Material is poorly soluble in toluene.

5



$C_{18}H_{10}Br_2$
Exact Mass: 383.91
Mol. Wt.: 386.08
C, 56.00; H, 2.61; Br, 41.39

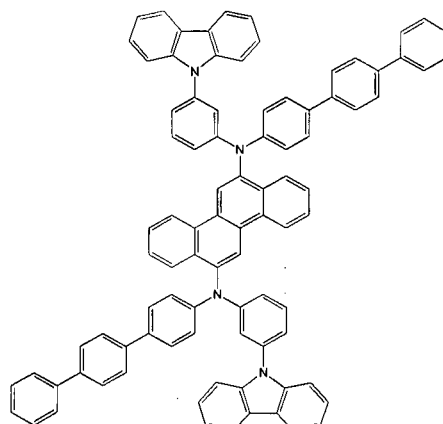
15



$C_{36}H_{26}N_2$
Exact Mass: 486.21
Mol. Wt.: 486.61
C, 88.86; H, 5.39; N, 5.76

Product:

20 **[0074]**



$C_{52}H_{40}N_2$
Exact Mass: 1196.48
Mol. Wt.: 1197.47
C, 90.27; H, 5.05; N, 4.68

35

Synthesis Example 11 (Reference only)

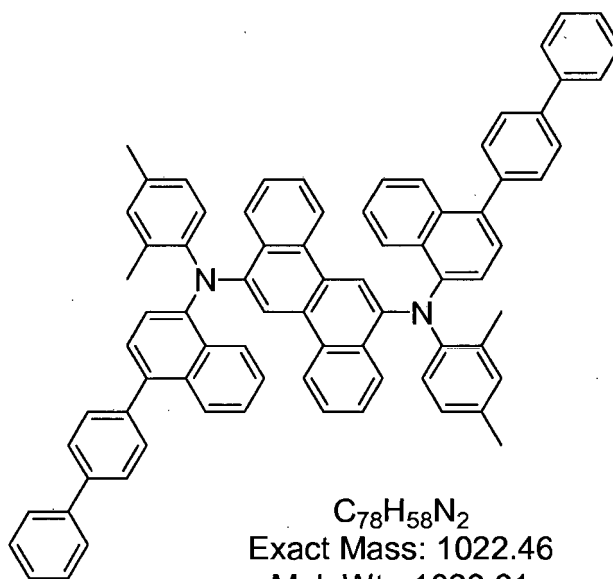
40

[0075] This example illustrates the preparation of Compound E14, N6,N12-bis(4-(biphenyl-4-yl)naphthalen-1-yl)-N6,N12-bis(2,4-dimethylphenyl)chrysene-6,12-diamine.

45

50

55



[0076] In a drybox, 6,12-dibromochrysene (0.39 g, 1.01 mmol), N-(2,4-dimethylphenyl)-N-(4-(biphenyl-4-yl)naphthalen-1-yl)amine (0.84 g, 2.11 mmol), tris(*tert*-butyl)phosphine (0.061 g, 0.303 mmol) and tris(dibenzylideneacetone) dipalladium(0) (0.138 g, 0.151 mmol) were combined in round bottom flask and dissolved in 25 ml of dry toluene. The solution was stirred for a minute and followed by sodium *tert*-butoxide (0.21 g, 2.22 mmol) and 10 ml of dry toluene. A heating mantle was added and the reaction heated to 60°C for 3 days. The reaction mixture was then cooled to room temperature and filtered through a 1 inch plug of silica gel and one inch of celite, washing with toluene (500 mL). Removal of volatiles under reduced pressure gave a yellow solid. The crude product was purified further by silica gel column chromatography using a gradient of chloroform in hexanes (0 % to 50 %). Recrystallization from DCM and acetonitrile yielded 0.170 g (20%) of product as a yellow solid. ¹H NMR (CDCl₃) is consistent with structure.

Synthesis Example 12 (Reference only)

[0077] This example illustrates the preparation of Compound E16.

In drybox, a round-bottom flask was charged with 6,12-dibromochrysene (220 mg, 1.0 eq), N-(2,4-dimethylphenyl)-3'''-iso-propyl-4,4',4''-quaterphenylamine (570 mg, 2.02 eq), Pd₂(dba)₃ (11 mg, 0.02 eq), P(*tert*-Bu)₃ (10 mg, 0.08 eq), sodium *tert*-butoxide (174 mg, 3.0 eq) and *m*-xylene (15 mL). Reaction mixture was heated at 120 °C for 16 hours. Color of the mixture turned from reddish to yellowish. Progress of the amination was monitored by LC and reaction was stopped after all bromide was consumed. Solution was concentrated *via* rotoevaporation and washed on a frit with water followed by diethyl ether. The remaining solid was dried under high vacuum. Crude product was purified by column chromatography on a CombiFlash® silica gel column with CHCl₃/hexane gradient, 0-40%. The purest product fraction was collected and concentrated to give 170 mg of product after precipitation with MeOH. LC Purity is 99.99 %. Analysis by ¹H NMR indicated that the product was Compound E16.

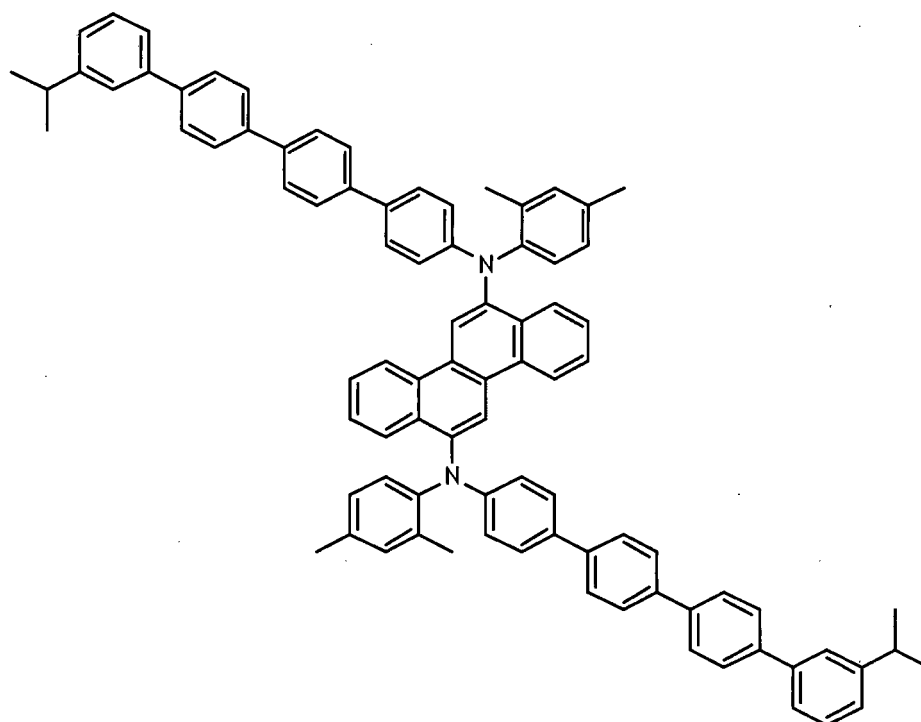
5

10

15

20

25



Synthesis Example 13 (Reference only)

[0078] This example illustrates the preparation of Compound E17.

30

In drybox, a round-bottom flask was charged with 6,12-dibromochrysene (215 mg, 1.0 eq), N-(2,4-dimethylphenyl)-4''-nonyl-4,4',4'''-quaterphenylamine (651 mg, 2.02 eq), Pd₂(dba)₃ (11 mg, 0.02 eq), P(*tert*-Bu)₃ (9 mg, 0.08 eq), sodium *tert*-butoxide (168 mg, 3.0 eq) and *m*-xylene (10 mL). Reaction mixture was heated at 130 °C for 16 hours. Color of the mixture turned from reddish to greenish. Progress of the amination was monitored by LC and reaction was stopped after all bromide was consumed. Solution was concentrated *via* rotoevaporation. Crude product was purified by column chromatography on a Biotage silica gel column with CH₂Cl₂/hexane gradient, 5-40%, followed by another column with CHCl₃/hexane, gradient 5-40%.

35

The purest fractions were further purified by re-precipitation from CH₂Cl₂ with CH₃CN at low temperatures. The resulting solid was filtered off to give 240 mg of product. Analysis by ¹H NMR indicated that the product was Compound E17.

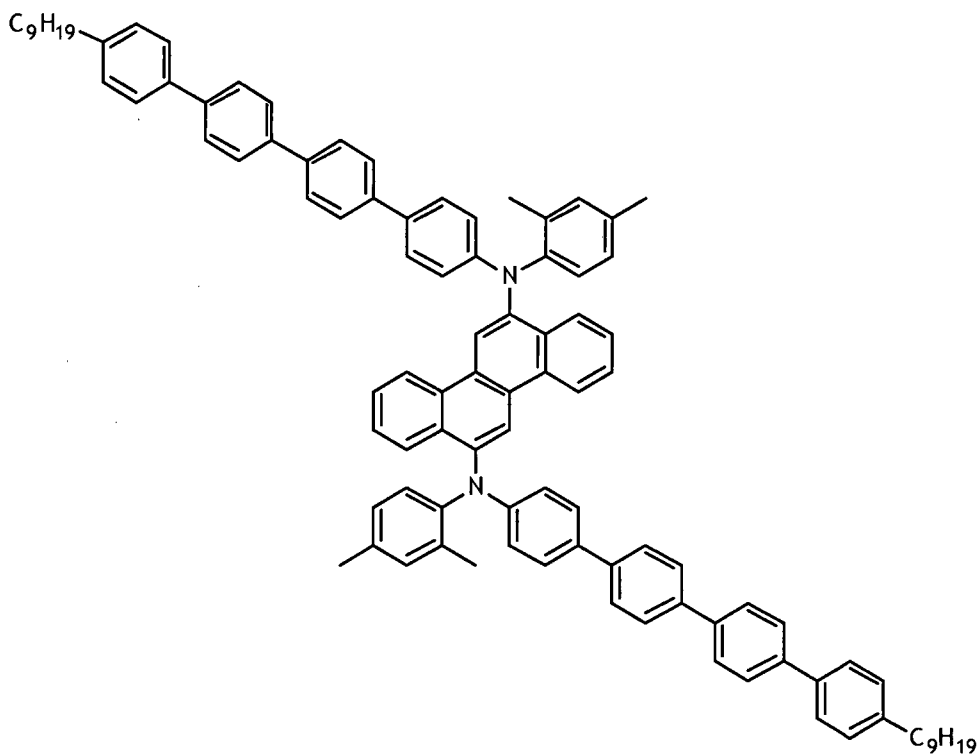
40

45

50

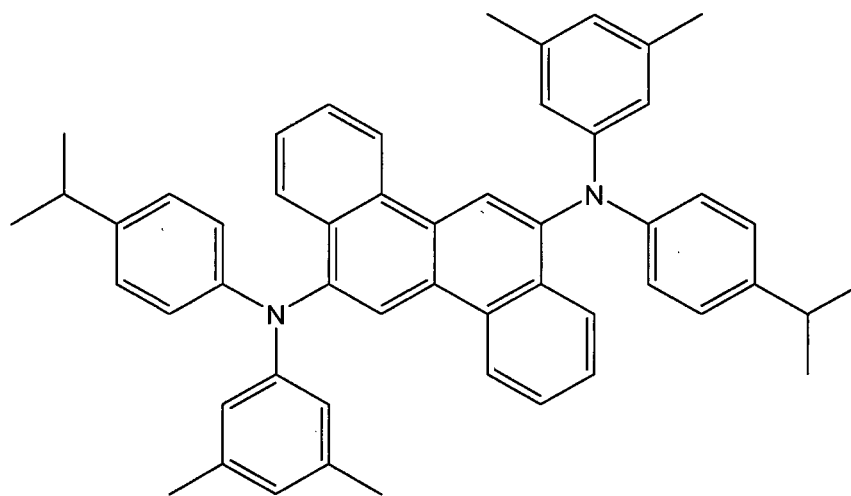
55

5
10
15
20
25



[0079] Compounds E3*, E10*, E13*, E15*, E18-E27, E28* and comparative Compound A were made using synthetic techniques analogous to those described above. (*Reference only, not claimed)

30
35
40
45



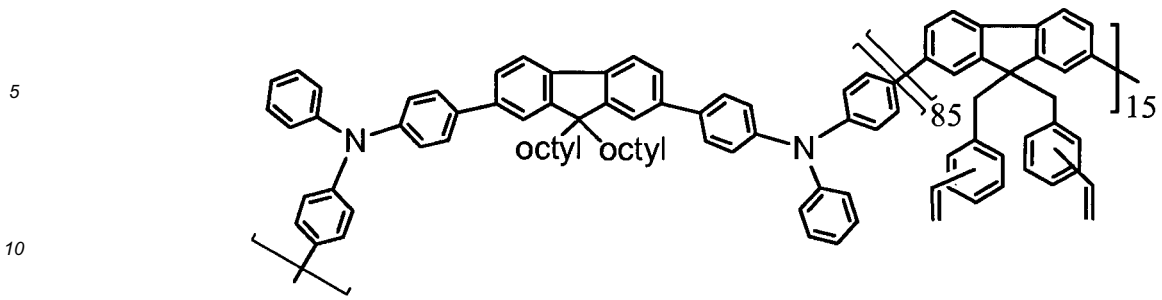
Compound A

Additional Materials:

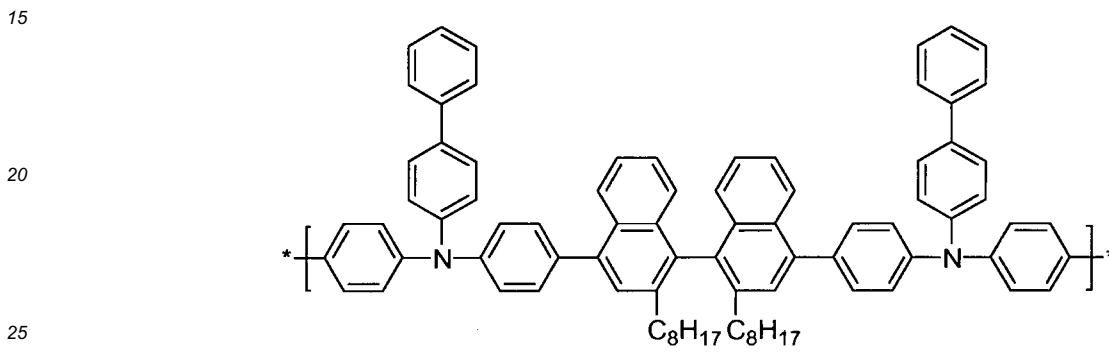
[0080]

50
55

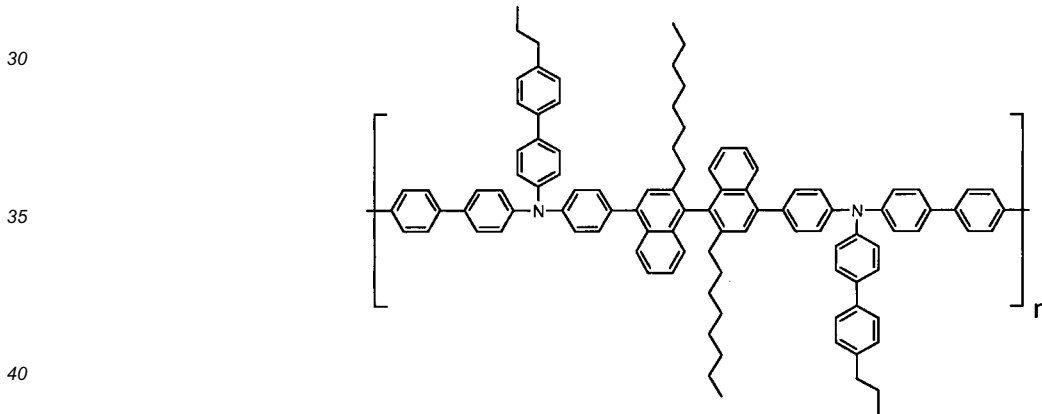
P1



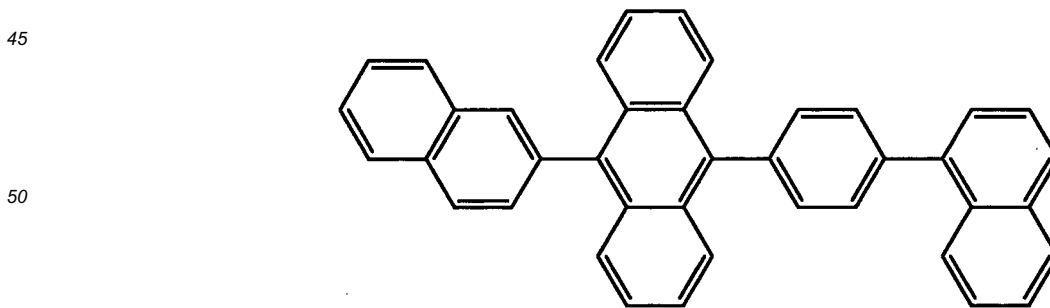
P2



P3

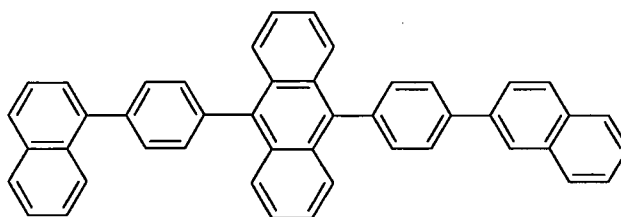


H1



55

H2

Device Examples 1-2 and Comparative A

[0081] These examples demonstrate the fabrication and performance of a device having a first structure. The following materials were used:

Indium Tin Oxide (ITO): 50 nm

buffer layer = Buffer 1 (25 nm), which is an aqueous dispersion of an electrically conductive polymer and a polymeric fluorinated sulfonic acid. Such materials have been described in, for example, published U.S. patent applications US 2004/0102577, US 2004/0127637, and US 2005/0205860.

hole transport layer = polymer P1 (20 nm)

photoactive layer = 13:1 host H2:dopant (48 nm)

electron transport layer = a metal quinolate derivative (20 nm)

cathode = LiF/Al (0.5/100 nm)

[0082] OLED devices were fabricated by a combination of solution processing and thermal evaporation techniques. Patterned indium tin oxide (ITO) coated glass substrates from Thin Film Devices, Inc were used. These ITO substrates are based on Corning 1737 glass coated with ITO having a sheet resistance of 30 ohms/square and 80% light transmission. The patterned ITO substrates were cleaned ultrasonically in aqueous detergent solution and rinsed with distilled water. The patterned ITO was subsequently cleaned ultrasonically in acetone, rinsed with isopropanol, and dried in a stream of nitrogen.

[0083] Immediately before device fabrication the cleaned, patterned ITO substrates were treated with UV ozone for 10 minutes. Immediately after cooling, an aqueous dispersion of Buffer 1 was spin-coated over the ITO surface and heated to remove solvent. After cooling, the substrates were then spin-coated with a solution of a hole transport material, and then heated to remove solvent. After cooling the substrates were spin-coated with the emissive layer solution, and heated to remove solvent. The substrates were masked and placed in a vacuum chamber. The electron transport layer was deposited by thermal evaporation, followed by a layer of LiF. Masks were then changed in vacuo and a layer of Al was deposited by thermal evaporation. The chamber was vented, and the devices were encapsulated using a glass lid, dessicant, and UV curable epoxy. The different structures are summarized in Table 1.

[0084] The OLED samples were characterized by measuring their (1) current-voltage (I-V) curves, (2) electroluminescence radiance versus voltage, and (3) electroluminescence spectra versus voltage. All three measurements were performed at the same time and controlled by a computer. The current efficiency of the device at a certain voltage is determined by dividing the electroluminescence radiance of the LED by the current density needed to run the device. The unit is a cd/A. The power efficiency is the current efficiency divided by the operating voltage. The unit is lm/W. The device data is given in Table 2.

[0085] The following dopants were used:

Device Example 1*: E2

Device Example 2*: E3

Comparative Example A: Compound A

* not claimed

Device Examples 3-5 and Comparative B

[0086] These examples show the performance of a device made with a second structure having a different host material and a different cathode material.

[0087] The devices were made using the procedure of Device Example 1, except that the host was H1, and the cathode was CsF/Al (0.7/100nm).

[0088] The following dopants were used:

Device Example 3*: E5
 Device Example 4*: E6
 Device Example 5*: E7
 Comparative Example B: Compound A
 * not claimed

Device Examples 6-9 and Comparative C

[0089] These examples show the performance of a device made with a third structure having a different hole transport layer.

[0090] The devices were made using the procedure of Device Example 3, except that the hole transport layer was P2.

[0091] The following dopants were used:

Device Example 6*: E6
 Device Example 7*: E7
 Device Example 8*: E8
 Device Example 9*: E9
 Comparative Example C: Compound A
 * not claimed

Device Examples 10-11 and Comparative D

[0092] These examples show the performance of a device made with a fourth structure having different layer thicknesses and a different hole transport layer.

[0093] A device was made using the procedure of Device Example 3, except that the buffer layer = Buffer 1 had a thickness of 50 nm, the hole transport layer was P3, the photoactive layer had a thickness of 40 nm, and the electron transport layer had a thickness of 10 nm.

[0094] The dopants used were:

Device Example 10*: E9
 Device Example 11*: E10
 Comparative Example D: Compound A
 * not claimed

TABLE 1. Device Structure

Structure	Buffer	HTL	PL	ETL	Cathode
First	25 nm	P1 20 nm	host = H2 48 nm	20 nm	LiF/Al 0.5/100 nm
Second	25 nm	P1 20 nm	host = H1 48 nm	20 nm	CsF/Al 0.7/100 nm
Third	25 nm	P2 20 nm	host = H1 48 nm	20 nm	CsF/Al 0.7/100 nm
Fourth	50 nm	P3 20 nm	host = H1 40 nm	10 nm	CsF/Al 0.7/100 nm
Buffer layer = Buffer 1 for all HTL = hole transport layer PL = photoactive layer ETL = electron transport layer, which is the same metal quinolate compound for all					

TABLE 2. Device Performance

Device Example	Structure	Dopant	CE [cd/A]	Voltage (V)	CIE [x]	CIE [y]	Lum. ½ Life [h]
1**	First	E2	4.5	5.2	0.137	0.154	7560
2**	First	E3	4.5	5.3	0.134	0.155	9200
Comp. A	First	Cmpd. A	4.9	5.2	0.136	0.143	4800

(continued)

Device Example	Structure	Dopant	CE [cd/A]	Voltage (V)	CIE [x]	CIE [y]	Lum. ½ Life [h]
3**	Second	E5	5.4	4.6	0.135	0.162	6250
4**	Second	E6	5.3	4.6	0.136	0.148	6550
5**	Second	E7	5.3	4.6	0.136	0.154	4770
Comp. B	Second	Cmpd. A	4.9	4.7	0.138	0.134	2700
6**	Third	E6	6.2	4.7	0.137	0.141	12450
7**	Third	E7	6.4	4.7	0.136	0.147	15640
8**	Third	E8	6.0	4.8	0.138	0.136	11680
9**	Third	E9	6.3	4.7	0.136	0.145	14100
Comp. C	Third	Cmpd. A	6.1	4.8	0.139	0.134	6600
10**	Fourth	E9	6.0	4.4	0.134	0.128	13950
11**	Fourth	E10	5.6	4.4	0.134	0.125	12230
Comp. D	Fourth	Cmpd. A	5.9	4.5	0.136	0.115	6000
* All data @ 1000 nits, CE = current efficiency; CIE _x and CIE _y are the x and y color coordinates according to the C.I.E. chromaticity scale (Commission Internationale de L'Eclairage, 1931). Lum. ½ Life is defined as the time in hours for a device to reach one-half the initial luminance. ** Reference only, not claimed							

[0095] As can be seen in Fig. 2, the relative lifetime of devices made with the chrysene dopants of the invention are significantly better than comparative Compound A. The relative lifetime increases dramatically as a and b increase. Relative lifetime is defined as (Lum ½ Life of Example X)/(Lum ½ Life of Comparative Example Y) where Comparative Example Y is the comparative example with the same device structure and materials (other than the dopant). For example, the relative lifetime for Reference Example 1 would be (Lum ½ Life of Example 1)/(Lum ½ Life of Comparative Example A) = 7560 h/4800 h = 1.58. The relative lifetime for Reference Example 11 would be (Lum. ½ Life of Example 11) divided by (Lum. ½ Life of Comparative Example D) = 12230 h/6000 h = 2.04. It is unexpected that increasing the number of linearly attached phenyl groups on the nitrogen going from biphenyl, to terphenyl, to quaterphenyl and above, should have this effect.

Claims

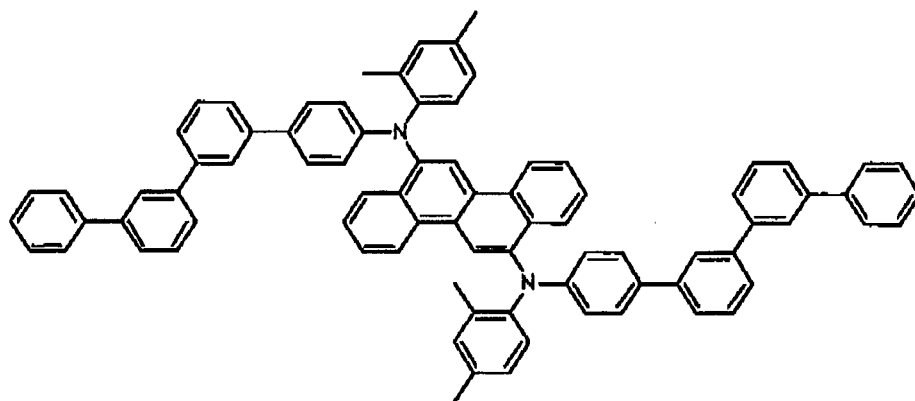
1. A compound selected from E18 through E27, as shown below:

E18:

5

10

15



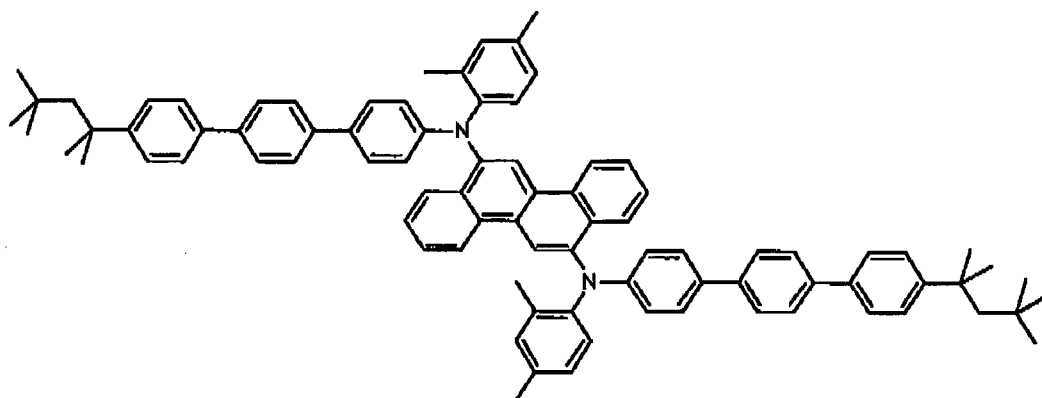
20

E19:

25

30

35

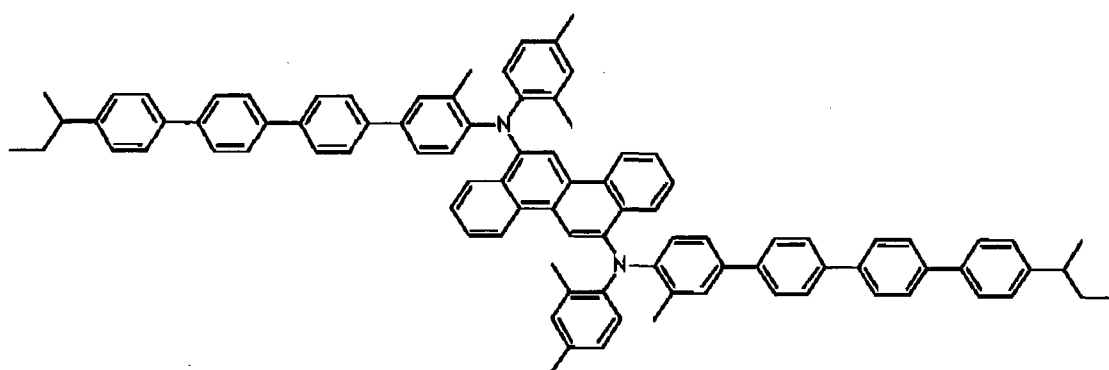


E20:

40

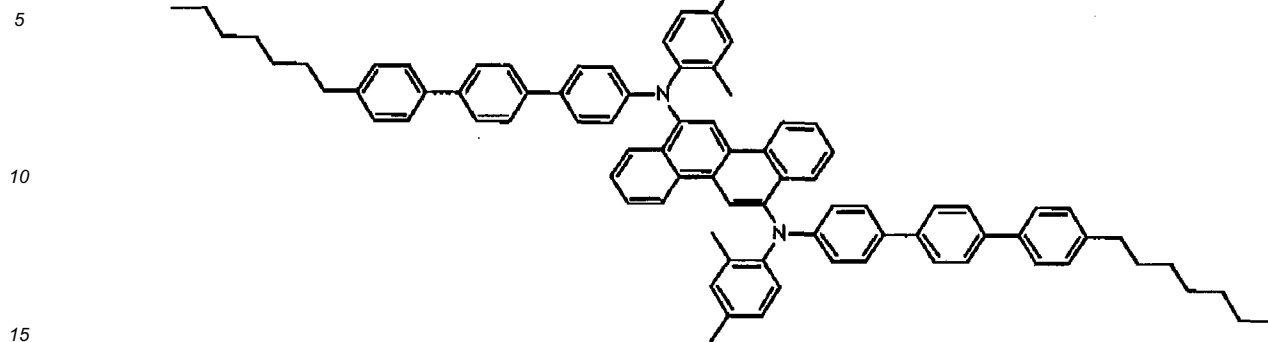
45

50

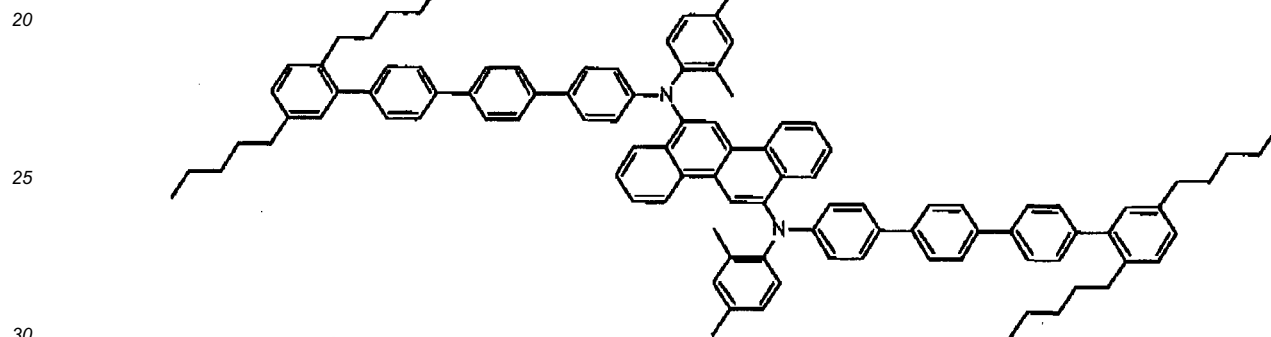


55

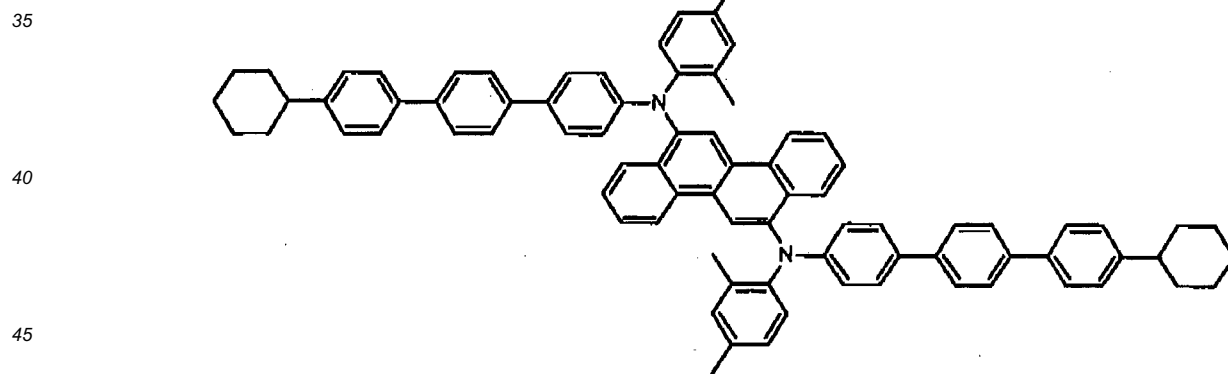
E21:



E22:



E23:



50

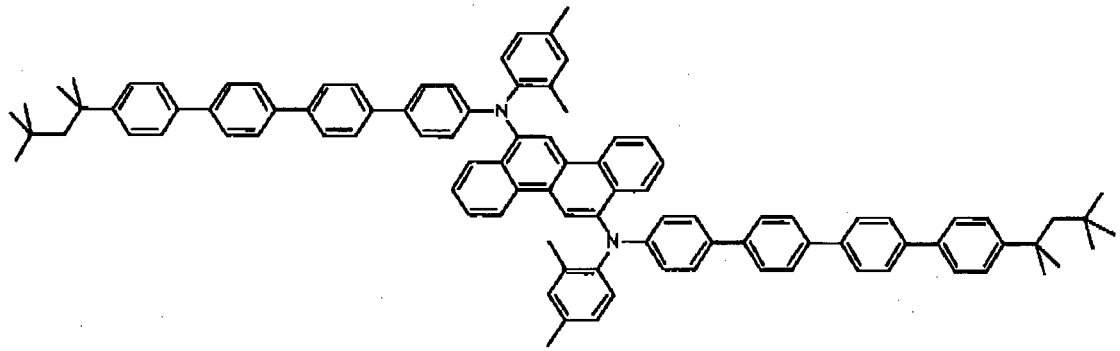
55

E24:

5

10

15

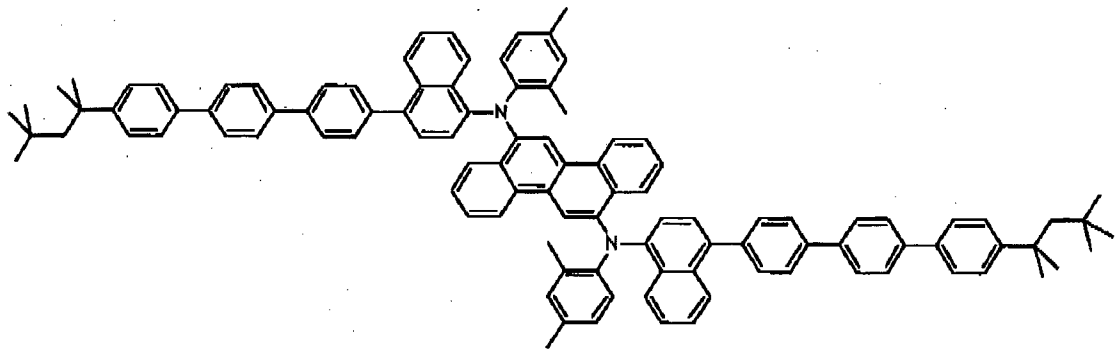


E25:

20

25

30



35

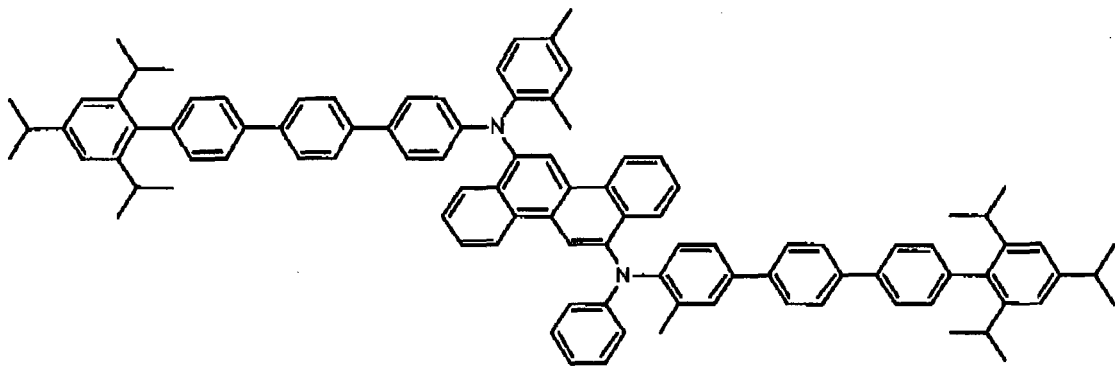
E26:

40

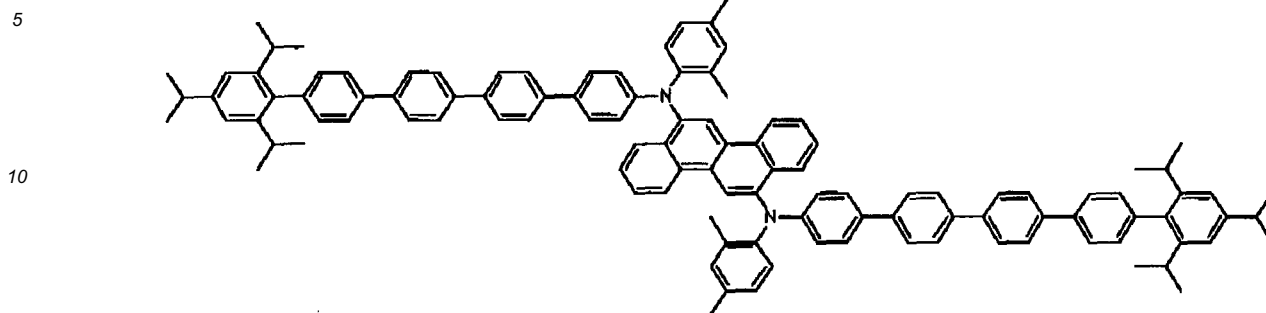
45

50

55



E27:



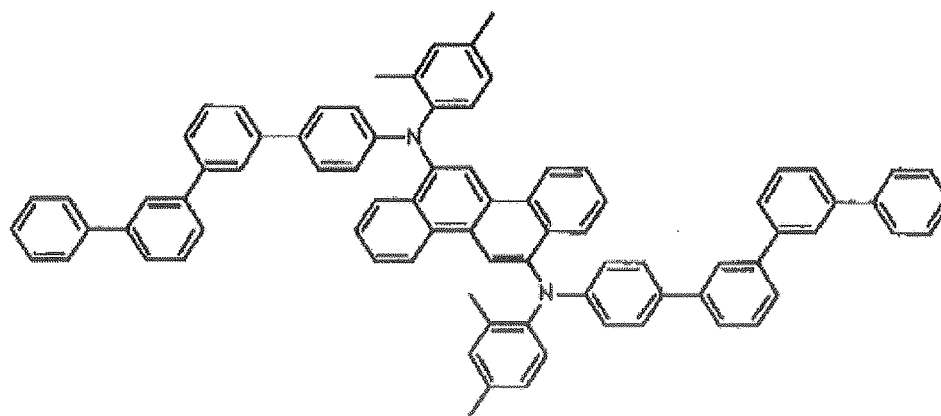
2. An organic electronic device comprising a first electrical contact layer, a second electrical contact layer, and at least one active layer therebetween, wherein the active layer comprises a compound according to claim 1.

3. The device of claim 2, wherein the active layer is a photoactive layer and further comprises a host material, preferably further comprising a buffer layer between the first electrical contact layer and the active layer, and more preferably wherein the buffer layer comprises at least one electrically conductive polymer and at least one fluorinated acid polymer.

Patentansprüche

1. Verbindung, ausgewählt aus E18 bis E27, wie nachfolgend gezeigt:

E18:

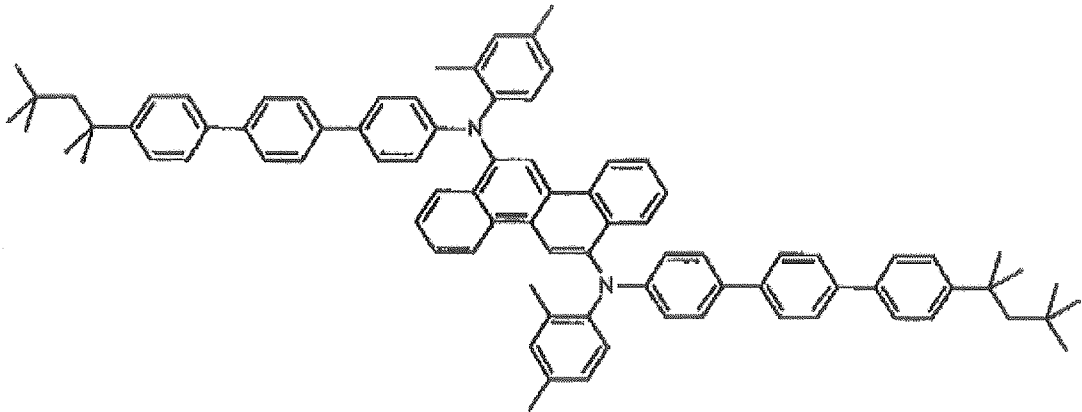


E19:

5

10

15

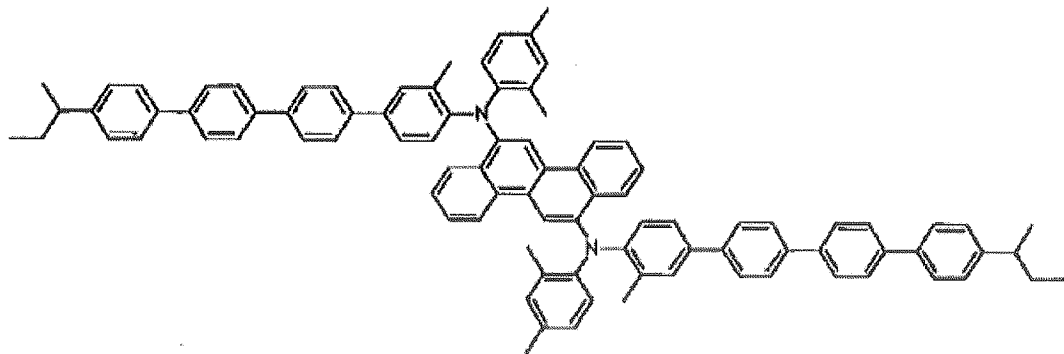


20

E20:

25

30



35

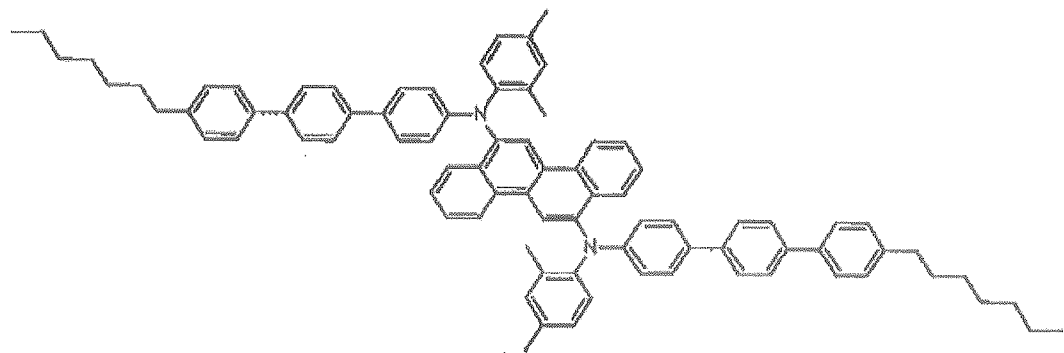
E21:

40

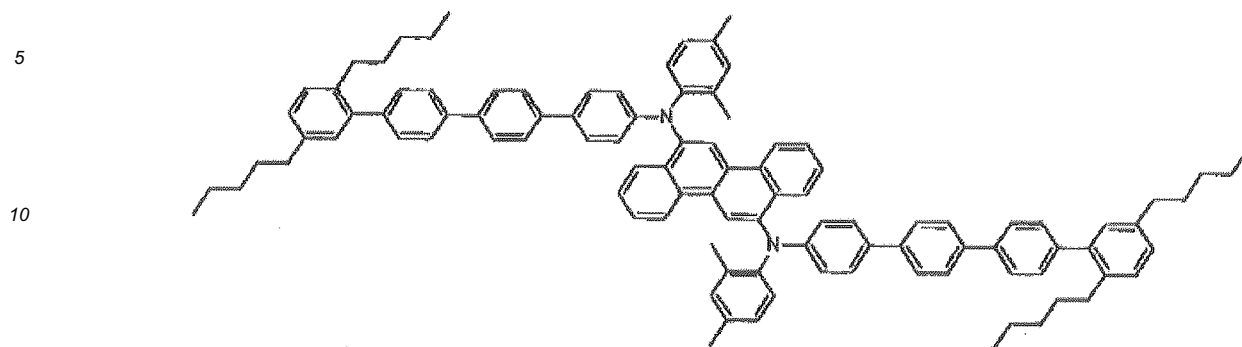
45

50

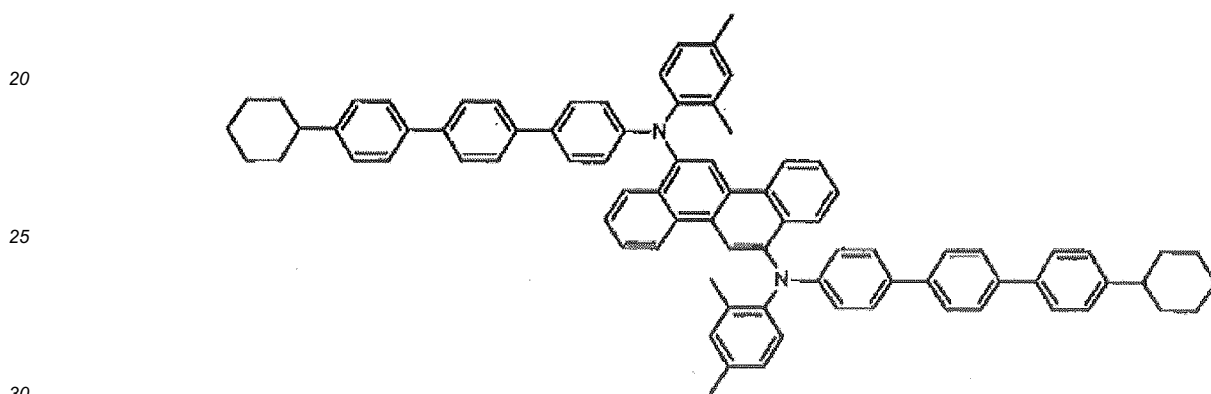
55



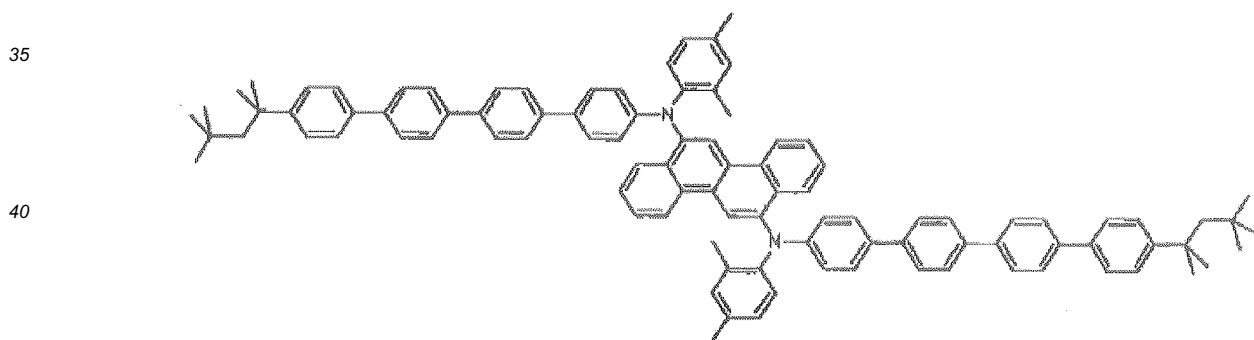
E22:



E23:



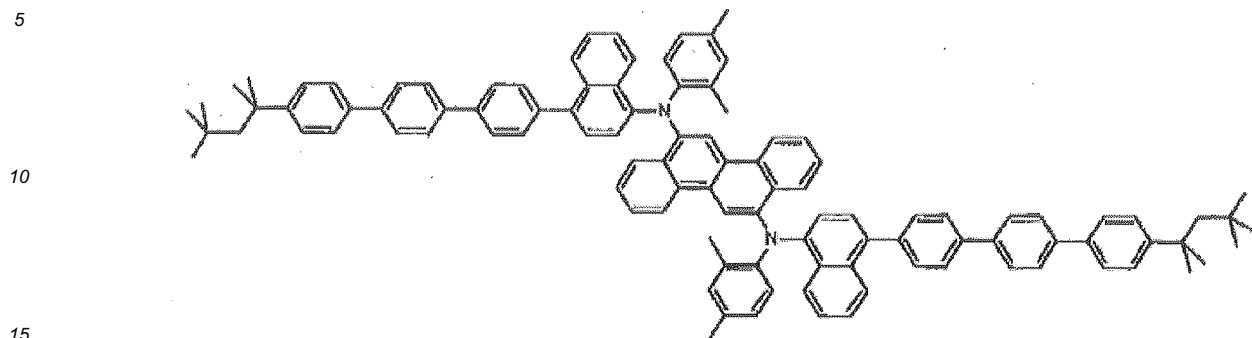
E24:



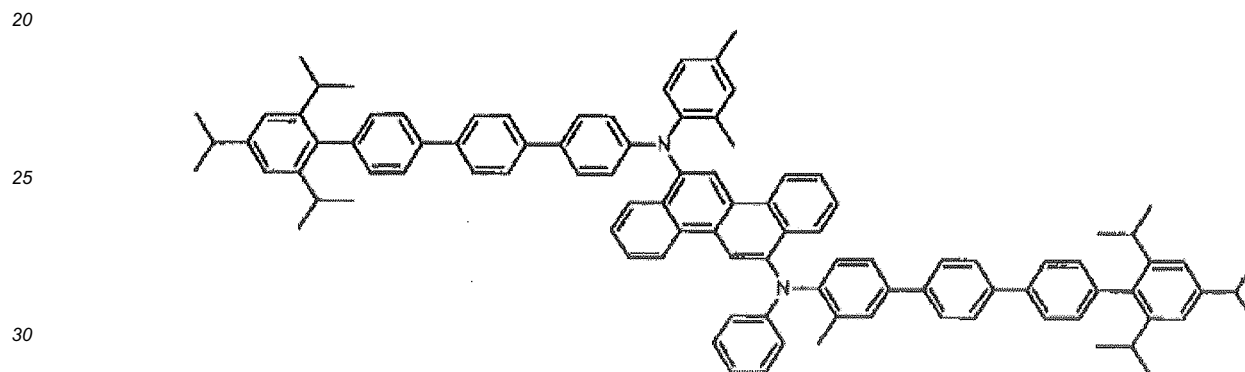
50

55

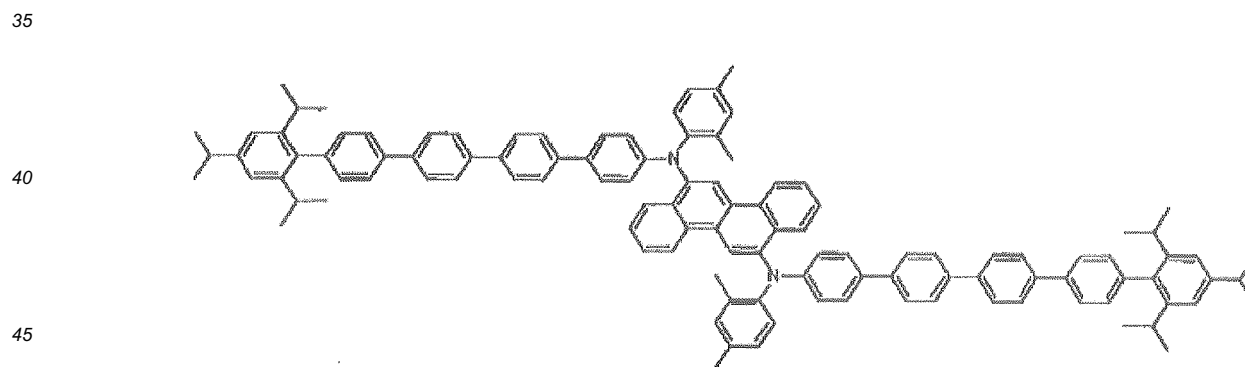
E25:



E26:



E27:



2. Organische elektronische Vorrichtung umfassend eine erste elektrische Kontaktschicht, eine zweite elektrische Kontaktschicht und mindestens eine aktive Schicht dazwischen, wobei die aktive Schicht eine Verbindung nach Anspruch 1 umfasst.
3. Vorrichtung nach Anspruch 2, wobei die aktive Schicht eine photoaktive Schicht ist und ferner ein Wirtsmaterial umfasst, vorzugsweise ferner umfassend eine Pufferschicht zwischen der ersten elektrischen Kontaktschicht und der aktiven Schicht, und wobei noch bevorzugter die Pufferschicht mindestens ein elektrisch leitfähiges Polymer und mindestens ein fluoriertes Säurepolymer umfasst.

Revendications

1. Composé sélectionné parmi E18 à E27 tels que montrés ci-dessous:

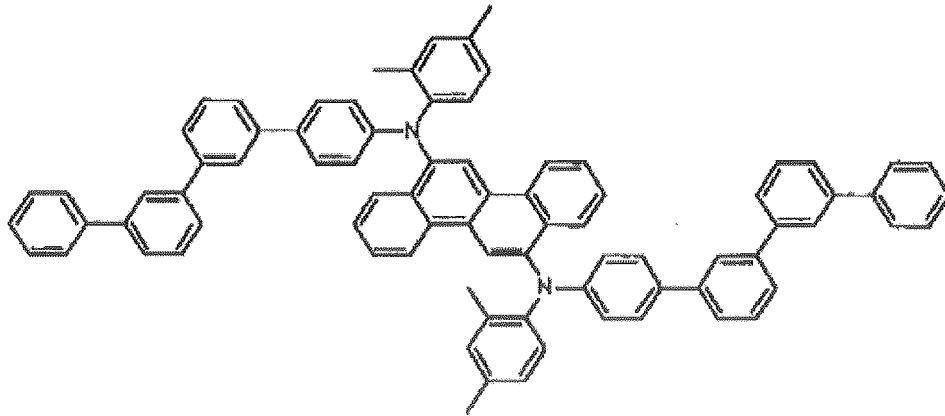
5

E18:

10

15

20



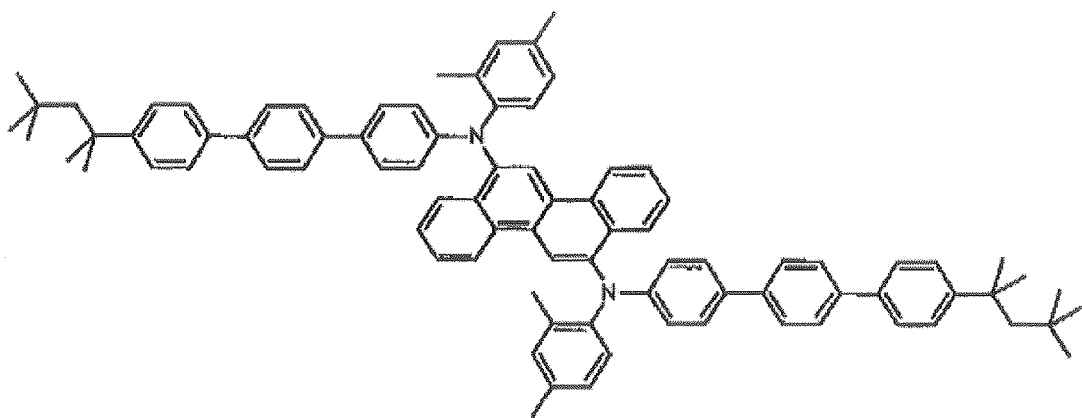
E19:

25

30

35

40

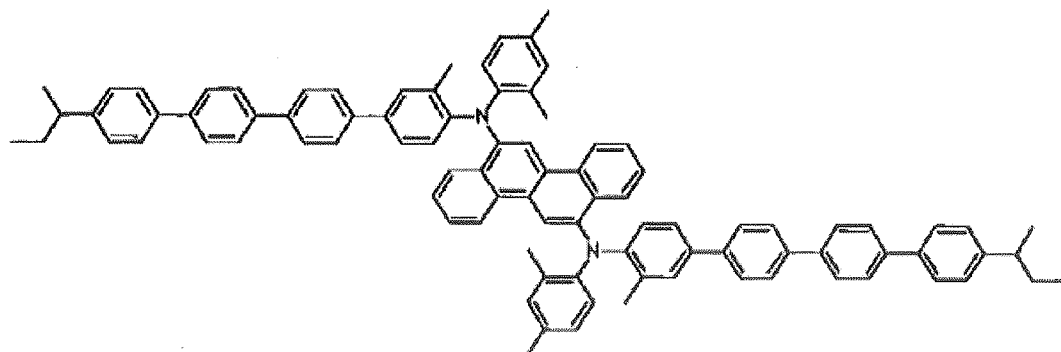


E20:

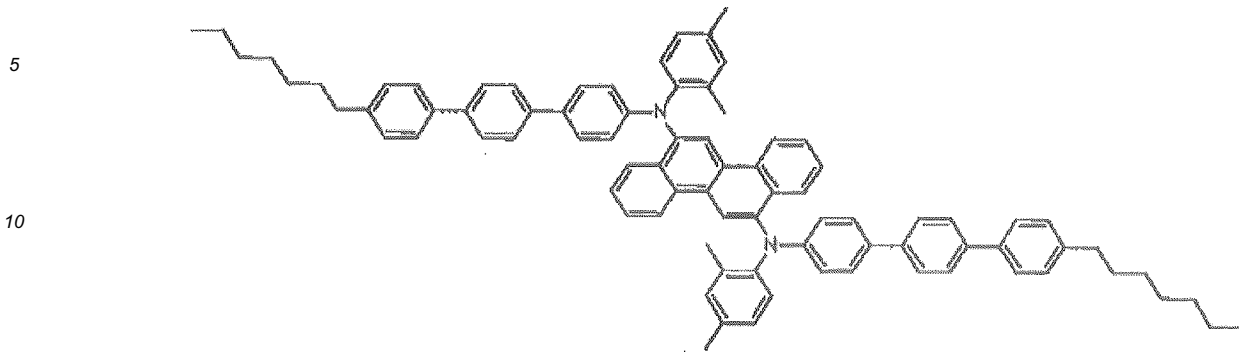
45

50

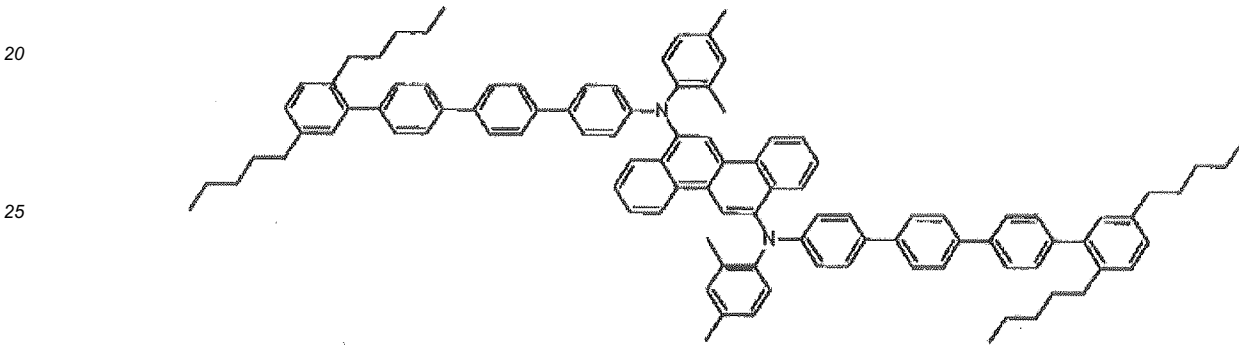
55



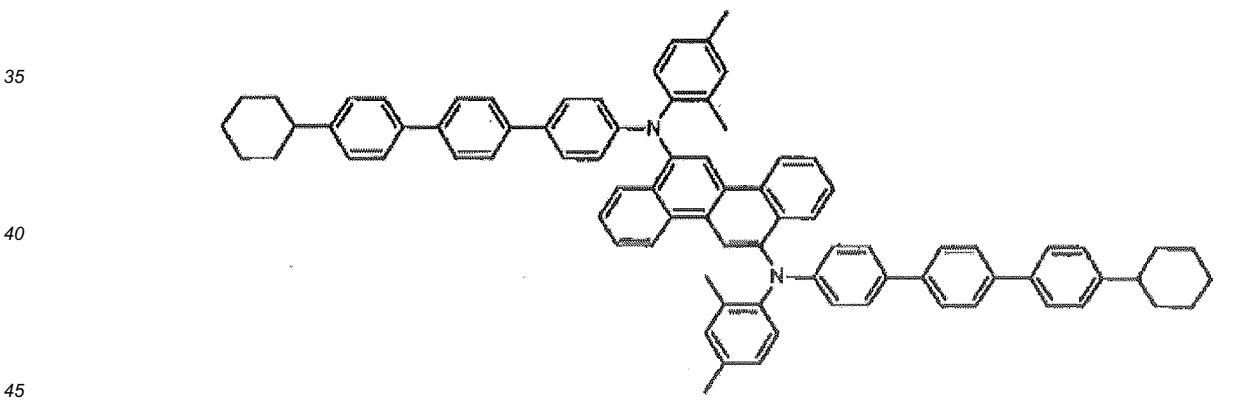
E21:



E22:



E23:



50

55

E24:

5

10

15

E25:

20

25

30

E26:

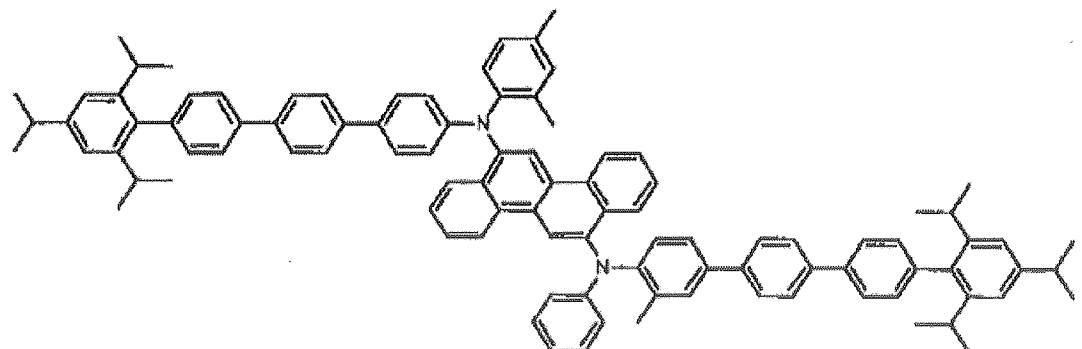
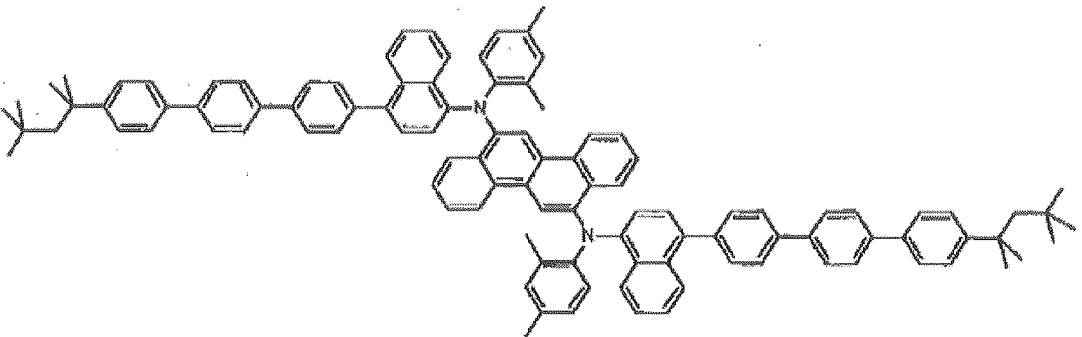
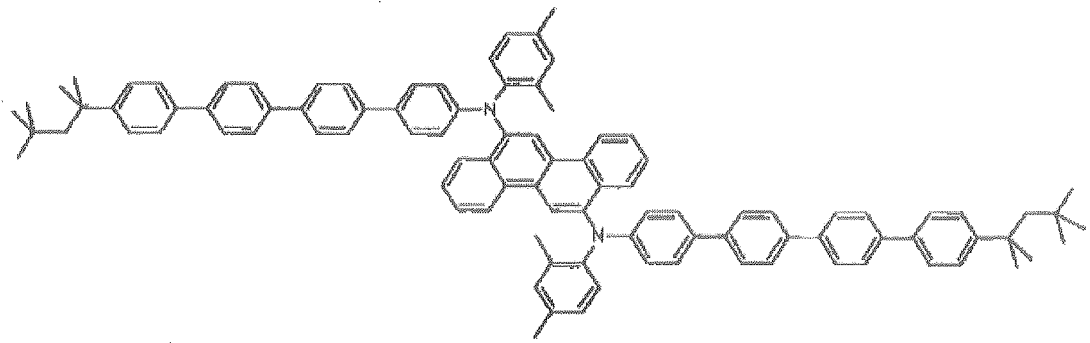
35

40

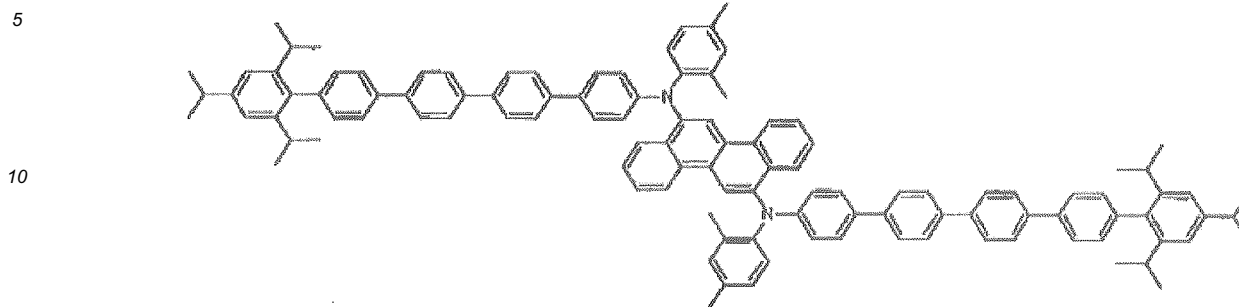
45

50

55



E27:



20

2. Dispositif organique électronique comprenant une première couche de contact électrique, une deuxième couche de contact électrique et au moins une couche active entre celles-ci, la couche active comprenant un composé selon la revendication 1.

25

30

3. Dispositif selon la revendication 2, dans lequel la couche active est une couche photoactive et comprend en outre un matériau hôte, comprenant en outre de préférence une couche tampon entre la première couche de contact électrique et la couche active, et plus préférablement dans lequel la couche tampon comprend au moins un polymère électriquement conducteur et au moins un polymère d'acide fluoré.

25

30

35

40

45

50

55

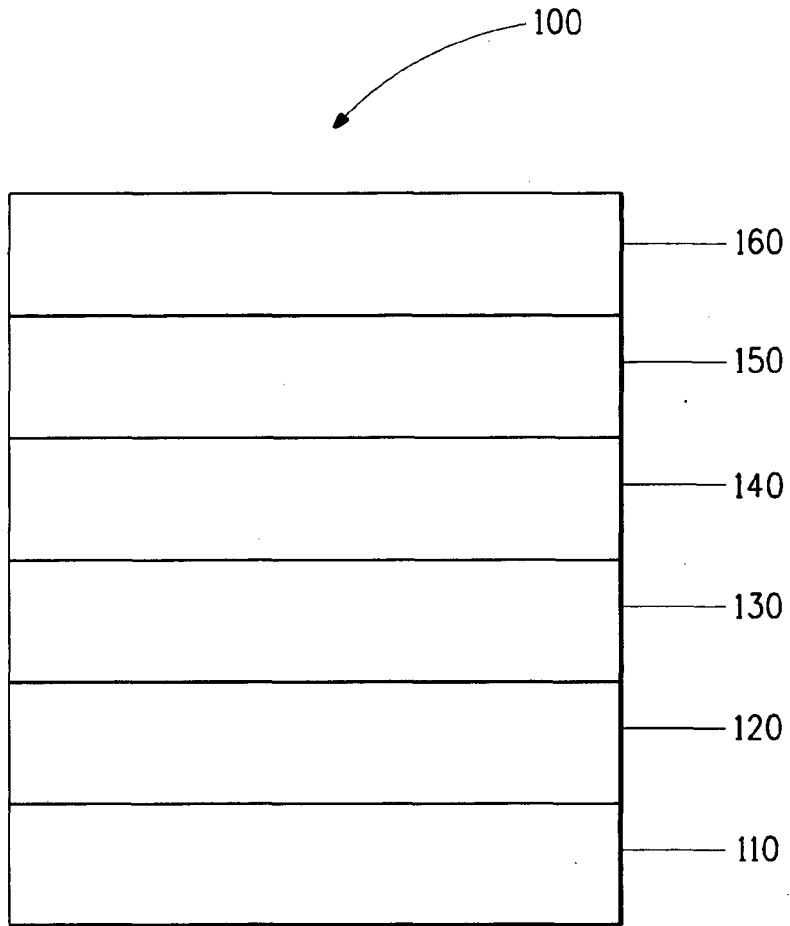


FIG. 1

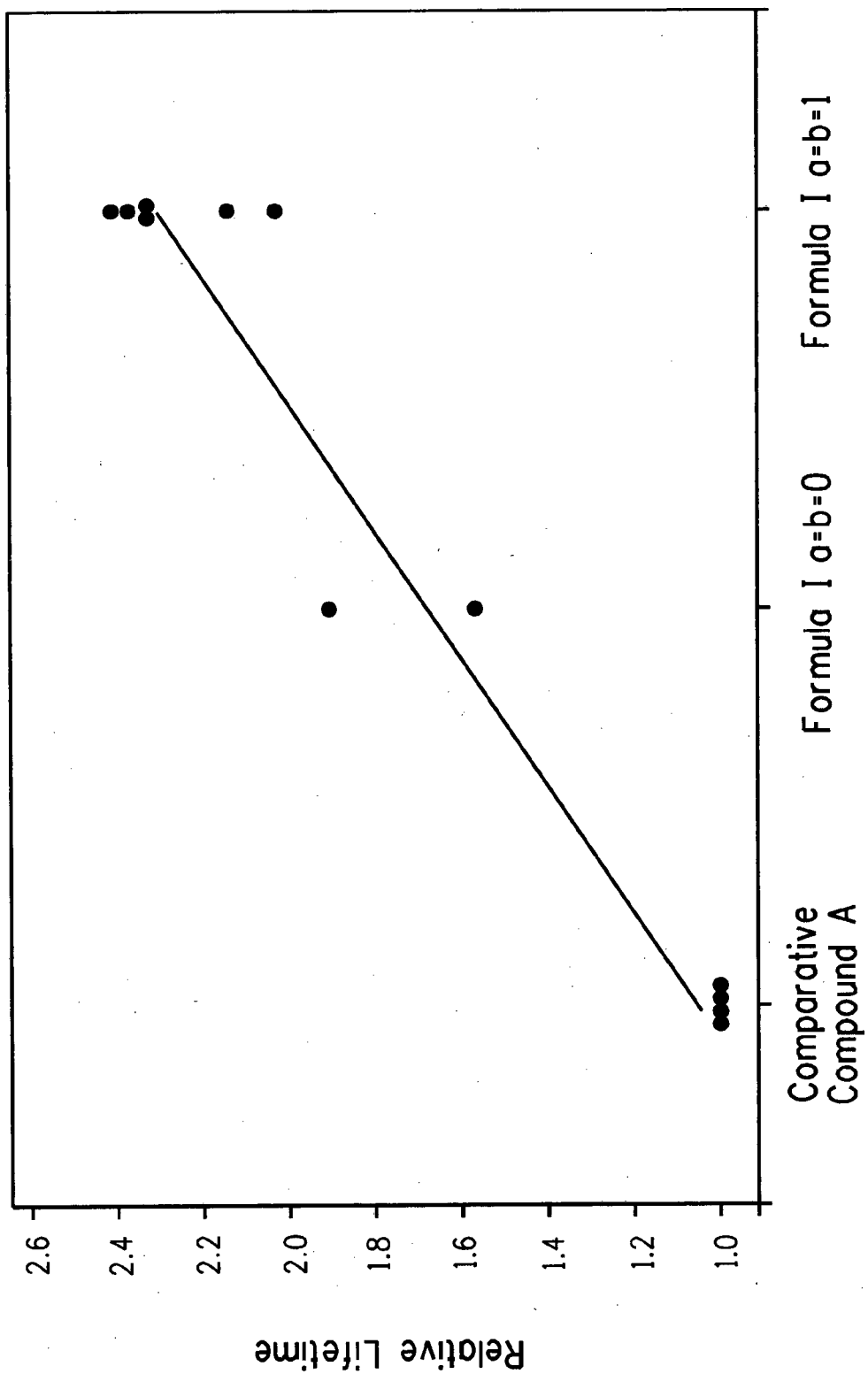


FIG. 2

REFERENCES CITED IN THE DESCRIPTION

This list of references cited by the applicant is for the reader's convenience only. It does not form part of the European patent document. Even though great care has been taken in compiling the references, errors or omissions cannot be excluded and the EPO disclaims all liability in this regard.

Patent documents cited in the description

- US 5247190 A [0003]
- US 5408109 A [0003]
- EP 443861 A [0003]
- US 2008303425 A [0004]
- US 2006210830 A [0005]
- WO 2007108666 A [0006]
- US 20060194074 A [0007]
- US 20060152146 A [0008]
- EP 1561794 A [0008]
- US 20040102577 A [0048] [0081]
- US 20040127637 A [0048] [0081]
- US 2005205860 A [0048]
- US 20050205860 A [0081]

Non-patent literature cited in the description

- CRC Handbook of Chemistry and Physics. 2000 [0023]
- Flexible light-emitting diodes made from soluble conducting polymer. *Nature*, 11 June 1992, vol. 357, 477-479 [0044]
- **Y. WANG.** Kirk-Othmer Encyclopedia of Chemical Technology. 1996, vol. 18, 837-860 [0049]

专利名称(译)	用于发光应用的Chrysene化合物		
公开(公告)号	EP2432849A4	公开(公告)日	2012-12-26
申请号	EP2010778311	申请日	2010-05-19
[标]申请(专利权)人(译)	纳幕尔杜邦公司		
申请(专利权)人(译)	E·I·杜邦和公司		
当前申请(专利权)人(译)	E·I·杜邦和公司		
[标]发明人	WU WEISHI HERRON NORMAN ROSTOVTSEV VSEVOLOD MERLO JEFFREY A GAO WEIYING		
发明人	WU, WEISHI HERRON, NORMAN ROSTOVTSEV, VSEVOLOD MERLO, JEFFREY, A. GAO, WEIYING		
IPC分类号	C09K11/06 H01L51/50 C07C211/61		
CPC分类号	C09K11/06 C07C211/61 C07C2603/48 C07D209/86 C09B57/00 C09B57/001 C09B57/008 C09K2211/1007 C09K2211/1014 H01L51/0054 H01L51/006		
代理机构(译)	霍夫曼BENJAMIN		
优先权	61/179405 2009-05-19 US		
其他公开文献	EP2432849B1 EP2432849A2		
外部链接	Espacenet		

摘要(译)

本发明涉及可用于电致发光应用的chrysene化合物。它还涉及其中活性层包含这种化合物的电子器件。