



(11) **EP 2 351 011 B1**

(12) **EUROPEAN PATENT SPECIFICATION**

(45) Date of publication and mention of the grant of the patent:
24.04.2019 Bulletin 2019/17

(21) Application number: **09744808.8**

(22) Date of filing: **26.10.2009**

(51) Int Cl.:
G09G 3/32 (2016.01)

(86) International application number:
PCT/US2009/005801

(87) International publication number:
WO 2010/056272 (20.05.2010 Gazette 2010/20)

(54) **TONESCALE COMPRESSION FOR ELECTROLUMINESCENT DISPLAY**

TONSKALAKOMPRIMIERUNG FÜR EIN ELEKTROLUMINESZENZDISPLAY

COMPRESSION D'ÉCHELLE DE NUANCES POUR UN DISPOSITIF D'AFFICHAGE ÉLECTROLUMINESCENT

(84) Designated Contracting States:
AT BE BG CH CY CZ DE DK EE ES FI FR GB GR HR HU IE IS IT LI LT LU LV MC MK MT NL NO PL PT RO SE SI SK SM TR

(30) Priority: **14.11.2008 US 271355**

(43) Date of publication of application:
03.08.2011 Bulletin 2011/31

(73) Proprietor: **Global OLED Technology LLC**
Herndon, VA 20171 (US)

(72) Inventors:
• **MILLER, Michael, Eugene**
Rochester
New York 14650-2201 (US)

• **WHITE, Christopher, Jason**
Rochester
New York 14650-2201 (US)

(74) Representative: **Wibbelmann, Jobst et al**
Wuesthoff & Wuesthoff
Patentanwälte PartG mbB
Schweigerstrasse 2
81541 München (DE)

(56) References cited:
US-A1- 2002 057 234 US-A1- 2008 106 491
US-B1- 6 313 878

EP 2 351 011 B1

Note: Within nine months of the publication of the mention of the grant of the European patent in the European Patent Bulletin, any person may give notice to the European Patent Office of opposition to that patent, in accordance with the Implementing Regulations. Notice of opposition shall not be deemed to have been filed until the opposition fee has been paid. (Art. 99(1) European Patent Convention).

Description**FIELD OF THE INVENTION**

5 [0001] The present invention relates to electroluminescent display systems. Particularly, the present invention provides a method for dimming an electroluminescent display while maintaining shadow detail.

BACKGROUND OF THE INVENTION

10 [0002] Many display devices exist within the market today. Among the displays that are available are thin-film, coated, electroluminescent (EL) displays, such as organic light-emitting diode (OLED) displays. These displays can be driven using an active matrix or passive matrix back plane. Regardless of the technology that is applied, these display devices are typically integrated into a system that involves a controller for receiving an input image signal, converting the input image signal to an electronic drive signal and supplying the electronic drive signal to the electroluminescent display device which drives an array of emitters to produce light in response to the drive signal.

15 [0003] Unfortunately, as these emitters convert current to light they typically degrade and this degradation is a function of the current that is provided to each emitter. As such, the emitters that receive the most current degrade at a faster rate than emitters that receive less current. As the emitters degrade, they produce less light as a function of current. Therefore each emitter will likely have a different amount of degradation and this difference in degradation results in differences in luminance when the emitters are driven with the same current to produce a uniform image. As a result, inadvertent patterns are created when the display is turned on due to this difference in luminance uniformity. These patterns can be distracting and cause the display to be perceived by the end user as low in quality or, under extreme conditions, unusable.

20 [0004] Fortunately, in many applications, such as when displaying motion video, the image content is constantly changing and the current to every emitter is varied as a function of the image content. Therefore, the amount of current is relatively balanced across the emitters of the display over time and the differences in degradation and hence differences in luminance when displaying a uniform image is balanced, making this problem a non-issue. In the event that the video is paused or a single static image is displayed, the quality of the display can be degraded because the pattern of currents across the display are stationary with respect to the array of emitters.

25 [0005] This problem is not unique to OLED but instead arises in all known emissive displays, including CRTs and plasma displays, and can be exhibited by non-emissive displays, such as liquid crystal displays. One method that has been demonstrated to reduce this problem in the prior art is to detect the presence of a static image and reduce the peak luminance and therefore the current through each emissive display element in the display.

30 [0006] As an example of prior art for reducing the peak luminance, Asmus et al. in U.S. Patent No. 4,338,623, discusses a CRT display which includes a circuit for detecting a static image and a circuit for protecting the display by decreasing the brightness of the displayed image by decreasing the voltage at the cathode of the CRT. While this method satisfies the requirement that it will reduce the image stick artifact, the method provides a very rapid change in luminance, which will be quite noticeable to the user and by controlling the analog circuit in this fashion, there is little control of the appearance of the image after its luminance is reduced.

35 [0007] Similarly Jankowiak in U.S. Patent No. 6,313,878, discusses a system which sums the red, green, and blue component signals in an input digital signal to detect the presence of a static image and then produces an analog signal to adjust a video gain on the display to reduce the luminance of the display in response to a static image. Once again, the method permits static images to be dimmed, however, by changing the gain value, there is little ability to control the appearance of the final image after its luminance is reduced.

40 [0008] Holtslag in U.S. Patent No. 6,856,328, discusses detecting static regions in an image and reducing the intensity of only these areas in the image. Holtslag also discusses reducing the light intensity in a stepwise fashion to reduce the visibility of the change in luminance of the display. However, Holtslag does not describe a method for decreasing the light intensity and presumably reduces all of the intensities by a constant ratio to reduce intensity.

45 [0009] Ekin in WO 2006/103629, acknowledges that by simply dimming the display using methods, such as described by Asmus, Jankowiak or Holtslag, important image data can become invisible to the user. Ekin proposes a very complex solution to this problem that involves performing object detection to detect individual objects in a scene, calculating the contrast between the luminance of these objects and then reducing the luminance of these objects in a way as to maintain at least a minimum contrast between these objects in the scene. Unfortunately, the implementation of algorithms for object detection within a display driver is prohibitively expensive and does not provide a practical solution to maintaining the quality of the image as the luminance of the display is reduced to avoid image stick. Further, such methods are very difficult to employ in natural images, which have nearly continuous tonal levels and it is impossible to maintain adequate contrast between every tonal level such that the difference in tonal levels are visible.

50 [0010] Document US 2002/0057234 concerns a method and an apparatus for driving a self-emitting panel. The panel

is driven based on intensity-reduced data which is obtained by applying intensity reduction processing on each frame of the image frame data to be displayed.

[0011] Document US 2008/0106491 A1 concerns a method and an apparatus for compensating the uniformity of an electroluminescent display device.

[0012] Sony has recently marketed an OLED television referred to as the XEL-I. This display detects the presence of a static image and dims the display in the presence of a static image. While this dimming is performed very slowly so that the user is not aware that it is occurring, the images constantly lose shadow detail as the image is dimmed. Photometric assessment of this display shows that dimming such that the luminance is reduced by a constant ratio for all luminance values.

[0013] It is desirable to provide a method of dimming an EL display in a way that the user is unaware of the fact that the image is being dimmed. To accomplish this goal, it is important that as the image is dimmed in a way that information is not lost as the image is dimmed.

SUMMARY OF THE INVENTION

[0014] It is therefore an object of the present invention to dim an EL display while maintaining shadow detail. This is achieved by a method for controlling an electroluminescent display to produce an image for display that has reduced luminance to reduce burn-in on the display while maintaining visible contrast, comprising the features of claim 1.

[0015] The present invention provides a low cost method for manipulating the luminance of a display without reducing the detail within a shadow range of the displayed images. This method permits the luminance of a display to be manipulated over a large range without a significant loss in image quality, enabling more rapid and larger dimming changes. By dimming EL displays in this way, the likelihood of image stick and power is reduced. The present invention recognizes that information is lost when dimming displays to reduce image stick because the function relating input to output luminance is typically linear while the human eye responds to light as a logarithmic detector.

BRIEF DESCRIPTION OF THE DRAWINGS

[0016]

FIG. 1 is a flow chart showing the steps of a method of the present invention;
 FIG. 2 is a schematic diagram of a system useful in practicing the present invention;
 FIG. 3 is a graph showing a first and a second distribution of luminance values according to an embodiment of the present invention;
 FIG. 4 is a graph showing the ratio of the second distribution to the first distribution shown in FIG. 3;
 FIG. 5 is a flow chart showing the steps of an image processing method of the present invention;
 FIG. 6 is a flow chart showing a method for calculating a peak frame luminance value;
 FIG. 7 is a graph showing a family of contrast functions for transforming the input image signal to produce an image on a display as a function of aim intensity value;
 FIG. 8A is a graph showing a two-part contrast function according to an embodiment of the present invention; and
 FIG. 8B is a graph showing a portion of a contrast functions according to the present invention compared to a prior art method.

DETAILED DESCRIPTION OF THE INVENTION

[0017] The need is met by providing a method for controlling an electroluminescent (EL) display system to produce an image for display that has reduced luminance to reduce burn-in on the display while maintaining visible contrast. This method includes the steps shown in FIG. 1. As shown in FIG. 1, an EL display including a plurality of EL emitters is provided 2 for emitting at least one color of light, the luminance of the light produced by each EL emitter being responsive to a respective drive signal. A respective input image signal is received 4 for each EL emitter. The input image signal is transformed 6 to a plurality of drive signals that that have a reduced peak frame luminance but maintain contrast in the displayed image to reduce burn-in by adjusting the drive signals to have reduced luminance provided by each pixel with the luminance decrease in a shadow range of the input image signals being less than the luminance decrease in a non-shadow range of the input image signals. For example, the shadow range can include input image signals at or below 5% of a maximum input image signal, and the non-shadow range can include input image signals above 5% of the maximum input image signal. This drive signal is then provided 8 to drive the display to provide an image with a reduced peak frame luminance but in which the luminance of the shadow range of the image is reduced less than the luminance of the non-shadow range.

[0018] This method can be enabled in a display system for receiving an input image signal and producing drive signals

to control the display to produce an image with reduced luminance wherein the drive signals for EL emitters with a low input image signal, representing a shadow range in an image, reduced such that the luminance decrease for these EL emitters is less than the luminance decrease for high input image signals, representing the non-shadow range in the image.

[0019] Referring to FIG. 2, an EL display system can include an EL display 12, which has an array of EL emitters such as 14R, 14G, 14B, and 14W for producing light in response to a drive signal. This array of emitters can include pixels 16 which are formed from repeating patterns of EL emitters for producing different colors of light. For example, this array of EL emitters can include repeating patterns of red 14R, green 14G, blue 14B and white 14W EL emitters, wherein each combination of these EL emitters are capable of forming a color image. The array of EL emitters can alternatively include individual EL emitters which all produce the same color of light or any number of differently colored EL emitters for producing different colors of light. The EL display system can further include a controller 18. The controller 18 receives an input image signal 20 for each EL emitter processes the input image signal 20, and provides a drive signal 22 to the EL emitters 14R, 14G, 14B, 14W of the EL display 12.

[0020] In response to drive signal 22, the EL display 12 produces a lower luminance than it does in response the input image signal 20. The luminance decrease in the shadow range is less than the luminance decrease in the non-shadow range.

[0021] Referring to FIG. 3, there is shown an example of the input-output relationship of the controller, hereinafter referred to as a "contrast function." The abscissa represents input image signal values from 0 to 500. The ordinate represents the luminance provided by the EL display 12 in response to the drive signal 22. As shown, the EL display 12 is assumed to be capable of providing a maximum display luminance of 500 cd/m². For example, when the controller 18 does not apply a transformation to the input image signal 20, their input-output relationship is linear contrast function 32.

[0022] Within the context of the present invention, a "frame" refers to a single input image signal for each subpixel, permitting update all of the drive signals necessary to provide a single refresh of the EL elements on the EL display 12, and to the corresponding drive signals. Each frame is displayed with a corresponding peak frame luminance value. This peak frame luminance value can represent the luminance produced by a display driven with a drive signal value corresponding to a maximum input image signal value. For linear contrast function 32, the peak frame luminance value 36 is 500 cd/m². In this example, point 36 is also the maximum display luminance value: the maximum luminance the display can produce, as configured and under selected conditions. The present invention reduces the peak frame luminance value below the maximum display luminance value while maintaining shadow detail, so the peak frame luminance value is always less than or equal to the maximum display luminance value.

[0023] According to the present invention, the controller 18 processes the input image signals 20 for a frame to produce drive signals 22 having a reduced peak frame luminance value. For example, contrast function 34 has a peak frame luminance value 38 of 250 cd/m², which is lower than the peak frame luminance value 36 (500 cd/m²) of linear contrast function 32.

[0024] According to the present invention, when the display luminance is decreased by changing the contrast function (e.g. from 32 to 34), the luminance is decreased less in the shadow range than in the non-shadow range. In FIG. 3, a demarcation line 30 separates the shadow range of the input image signal values from the non-shadow range of the input image signal values. The input image signal 20 values at or below the demarcation line 30 (in the shadow range) are transformed such that they are reduced by a first proportion, and the input image signal 20 values above the demarcation line 30 (in the non-shadow range) are reduced by a second, smaller proportion.

[0025] FIG. 4 shows a proportion 42 that is obtained by dividing the contrast function 34 in FIG. 3 by the linear contrast function 32, with the y-axis of this figure representing the proportion 42 and the x-axis of this figure representing the input image signal value of the first frame. As shown, this proportion is near 0.65 for very low input image signal values and decreases to near 0.5 for large input image signal values. This proportion 42 follows a nonlinear curve with the largest proportions occurring for input image signal values of 10% or less of the entire luminance range. By using a larger proportion 42 for smaller input image signal values (and, correspondingly, lower display luminance values) than for larger input image signal values (and, correspondingly, larger display luminance values), the luminance is reduced less in the shadow range (i.e., the range having a low relative luminance) of resulting images than in the non-shadow range. If the human eye responded linearly to this change in luminance, the shadow range of the image would appear brighter and the remainder of the image would be reduced in contrast. However, because the human eye is a logarithmic detector, this method maintains the shadow detail in an image that would otherwise be lost while maintaining acceptable contrast throughout the remainder of the image.

[0026] The present invention displayed images rendered using a contrast functions 32 and 34 on an OLED display and determined that the use of a variable proportion as a function of luminance value wherein the proportion is higher for low luminance values than for high luminance values results in an image with superior image quality and clearer shadow detail than is obtained using a fixed proportion. This experiment also demonstrates, however, that if the proportion is too large or if values are increased for more moderate display luminance values, the image loses apparent contrast and objects, especially faces, lose perceived color saturation. Therefore, it is preferable to define the shadow range to include input image signal values corresponding to display luminance values $\leq 20\%$ of the peak frame luminance, and

more preferably $\leq 10\%$ of the peak frame luminance.

[0027] Referring to FIG. 5, according to one embodiment of the present invention, the controller 18 can receive 52 an input image signal 20 having a defined maximum intensity value. The controller 18 determines 54 a peak frame luminance value. The controller 18 then determines 56 a contrast function, a transform mapping the input image signal to a drive signal as a function of the peak frame luminance value. The controller then applies 58 the contrast function to the input image signal to obtain an output image signal. The controller then provides 60 a drive signal 22 to the display that is based upon the output image signal. The contrast function can be a nonlinear function for reducing the input image signal corresponding to display luminance values of 0.2 times the peak frame luminance value by a first proportion and reducing the input image signal corresponding to display luminance values less than 0.05 times the peak frame luminance value by at least a second proportion, which is larger than the first proportion.

[0028] The peak frame luminance value can be determined 54 in a number of ways and can be dependent upon a number of factors. For example, a peak frame luminance value can be determined based upon an estimate of the current required to present an input image signal 20. That is, the current required to present the input image signal 20 with no reduction in peak frame luminance can be estimated and if this required current is too high, the peak frame luminance value can be decreased. One method for performing such a manipulation has been described in U.S. Patent Application Publication No. 12007/0146252. In another method for determining 54 the peak frame luminance value, this value can be computed based upon the response from a thermometer that provides an estimate of the temperature of the display. This method could decrease the peak frame luminance value in response to rapidly-increasing or high temperature values.

[0029] The peak frame luminance value can preferably be determined based upon the time that a static image is presented on the display 12. The peak frame luminance value can alternatively be determined based upon a combination of two or more of the factors mentioned previously or other additional factors.

[0030] To provide a specific example, the controller 18 can determine 54 the peak frame luminance value based upon the time that a static image is presented on the display by applying the steps shown in the flow chart of FIG. 6. As shown in FIG. 6, the input image signal 20 is converted 72 into linear intensity values, for example using a nonlinear scaling and a matrix rotation according to a display standard such as ITU-R BT.709.

[0031] The average linear intensity value will then be computed 74 for each frame of data in the input image signal. The average linear intensity value is compared to an average linear intensity value for a previous frame in the input image signal. Through this comparison, it will be determined 76 if the image is static. If there is very little change (typically less than 1% change) in the average intensity value between the previous and present frame of data, a static image can be assumed. If the image is determined to be static, the time that the image has been static is incremented 78.

[0032] A peak frame luminance value is then calculated 80. This peak frame luminance value will typically be dependent upon the status of the counter that was incremented during step 78. This peak frame luminance value can be determined based upon the following equations:

$$L_f = L_d \times A(f) \quad (\text{Eq. 1})$$

$$A(f) = \begin{cases} M & \text{for } f < i \\ M * ((1 - h_s)k_s^{(f-i)} + h_s) & \text{for } f \geq i \text{ and } f \leq F_s \\ M * ((A(F_s) - h_t)k_t^{((f-i)-(F_s+1))} + h_t)_s & \text{for } f > F_s \end{cases} \quad (\text{Eq. 2})$$

[0033] In Eq. 1, L_f is the peak frame luminance (e.g. 38 of FIG. 3). L_d is the maximum display luminance value (e.g. 36). $A(f)$ is a proportion of maximum luminance which is ≥ 0 and ≤ 1 . In Eq. 2, M is a selected maximum proportion, for example 1. The value i is the time that was incremented in step 78. This value is typically incremented as each frame of data is input and therefore this value will typically indicate the number of static frames since the last motion frame was detected in the input image signal value. In practice, this equation implements a function that permits the maximum peak frame luminance to be held constant for i frames after a static image is displayed. The maximum peak frame luminance is then decreased as an exponential function of the additional time up until F_s . Once F_s is achieved, the maximum peak frame luminance is decreased as the function of a second exponential function. The values k_s and k_t represent constants between 0 and 1, which control the sharpness of the each of the two exponential functions. The values h_s and h_t represent the minimum value that each of the exponential values can attain.

[0034] For a typical OLED having a peak luminance of around 200 cd/m², the values in Table 1, were found to create desired behavior from an experimental display system.

Table 1

| Parameter | Values for Display with 60Hz Update Rate |
|-----------|--|
| k_s | 0.9985 |
| k_t | 0.9997 |
| h_s | 0.8 |
| h_t | 0.4 |
| F_s | 10800 |

[0035] Returning to the discussion of FIG. 6, if a static image is not determined to exist, the average computed in step 74 for a frame is compared to the average for a previous frame to determine 82 if the image is dynamic (or undergoing motion). If the difference is not sufficiently large (i.e. not greater than e.g. 1%), the image is not found to be dynamic. Under this condition, the timer can maintain a constant value or be incremented. If the image is determined 82 to be dynamic, the time can be reset 84 to zero and the peak frame luminance value calculated 80 to reset the proportion of maximum luminance to its maximum value, for example 1. By calculating 80 the peak frame luminance value in FIG. 6, the peak frame luminance value in FIG. 5 is determined 54.

[0036] A contrast function is then determined 56. This contrast function will ideally be continuous and smooth as a function of both input image intensity value and the peak frame luminance value. This function could be implemented by transforming the input image signal that was received 52 into a logarithmic space, performing a linear manipulation and converting from the logarithmic space to linear intensity. By performing such a manipulation, the contrast function will provide a nonlinear function for reducing the input image signal for input image signal values larger than 0.2 times the maximum intensity value by a first proportion and reducing the input image signal for input image signal values less than 0.05 times the maximum intensity value by at least a second proportion, which is larger than the first. This method will provide the desired function, but is generally expensive to implement in an FPGA or ASIC. An alternative would be to form a family of power functions with each power function corresponding to different aim intensity. However, this approach can again be expensive to implement within an FPGA or ASIC.

[0037] Referring to FIG. 8A, a less expensive approach is to use a two-part curve that includes both a portion of a parabolic function, providing a nonlinear transform for low code values, and a linear transform for higher code values. Such a function can enable the EL emitters of the display to produce a peak frame luminance value wherein the contrast function is linear for luminance values greater than 20% of the peak frame luminance value and nonlinear for values less than 5% of the peak frame luminance value. As such, the contrast function includes a first and second sub-function. The first sub-function 91 is used to transform input image signals in the shadow range and the second sub-function 92 is used to transform input image signals in the non-shadow range. Therefore, the first sub-function is a quadratic polynomial and the second sub-function can be linear.

[0038] Such two-part functions are generally not desirable for such contrast functions since any discontinuity between the two sub-functions can result in significant imaging artifacts, such as contouring. However, these two sub-functions can be combined since the parabolic function provides a large number of instantaneous slopes. If the line is tangent to the parabola, e.g. at tangent point 93, the instantaneous slope of the parabola at the connection point will match the slope of the line, avoiding any discontinuity. In this case both the contrast function and its first derivative are continuous.

[0039] The step of determining 54 peak frame luminance value can provide a proportion of the maximum luminance. This proportion will decrease over time when a static image is displayed and can be any value between 1 and a proportion greater than zero. This proportion defines the peak frame luminance value by defining the drive signal at an input image intensity value of 1, defining one point on the linear portion of the function (denoted as x_1, y_1). This point provides the maximum output image intensity value.

[0040] In the current transform, the parabolic portion of the tone scale will be constrained to intersect the origin of the desired transform relating input image intensity to output image intensity and is constrained to provide positive output image intensity values in response to positive input intensity values. This constraint limits the parabola to equations of the form:

$$Y_{\text{parab}} = ax^2 + bx . \quad (\text{Eq. 3})$$

[0041] Applicants have determined parabolas of this form provide visually-acceptable contrast function. With these constraints and having known values for a and b, it is possible to determine the slope of the linear portion, the coordinates of the tangent point and an offset for the linear portion. Having this function, all parameters for a contrast function

composed of a parabolic sub-function and a linear sub-function can be computed. However, these parameters are not fixed but instead must be varied as a function of the peak frame luminance value to permit the display to be dimmed smoothly among peak frame luminance values while varying the shape of the contrast function as a function of the peak frame luminance value. A range of parameter values can be stored in a lookup table (LUT), or computed. The use of these functions for a and b permit relatively significant changes in the perceived luminance of the shadow range to be provided without losing saturation or contrast within areas of an image containing flesh.

[0042] FIG. 7 shows a linear contrast function 100 and a family of nonlinear contrast functions 102, 104, 106, 108, 110 that can be generated for peak frame luminance values of 1.0, 0.8, 0.6, 0.5, 0.4 and 0.2 respectively, where the maximum display luminance value is 1.0. Note that these contrast functions can appear to be very near linear. However, they actually include two sub-functions, including a parabolic sub-function for low input image intensity values and a linear sub-function for the remainder of the input image intensity values. Therefore, these contrast functions diverge from linear for proportions of maximum luminance less than 1 and for low code values where the human eye is most sensitive to changes in luminance.

[0043] FIG. 8B shows a portion of the contrast function 106 corresponding to a proportion of the maximum luminance equal to 0.5, represented as a solid line. A portion of a linear transform 114 as known in the prior art for y_1 equal to 0.5 is also shown. Note that these two curves diverge from each other for low input image intensity values as the nonlinear contrast function 106, permitting the output image intensity values to be increased more rapidly than can be achieved for a linear function with the same proportion of maximum luminance. The use of this nonlinear contrast function permits shadow detail to be maintained in the image as the peak frame luminance value is reduced.

[0044] Referring back to FIG. 5, once the contrast function is determined 56, this contrast function can be applied 58 to the input image signal to create a transformed image signal. This transformed image signal can then be modified using a relationship from linear intensity to display code value to create a drive signal, which can be provided 60 to the drive the display.

[0045] An attribute of this nonlinear transform is that the instantaneous slope at low input image intensity values can become larger than for the original image. This change can result in two potential artifacts. In areas of images having gradients in which the luminance varies slowly as a function of distance in the resulting image, false contour lines can be introduced. To avoid this artifact, the transform can be applied at a bit depth that is larger than the bit depth of the display and then reduced to a lower bit depth using techniques, such as blue noise dithering which introduces a low contrast, spatially varying, pattern to hide the presence of these contour lines. Therefore, the method of the present invention can further include dithering the drive signals in the shadow range.

[0046] A second possible outcome of this increase in the instantaneous slope is to increase the visibility of noise in the shadow range of images. To avoid this artifact, the input image signal can be divided by filtering techniques known in the image-processing art into a high and a low spatial frequency image with the low frequency image having a maximum spatial frequency on the order of 4 cycles per degree of visual angle. The nonlinear transform can be applied 58 to only the low spatial frequency image and the more traditional linear transform can be applied to the high spatial frequency image. By performing this manipulation, the shadow detail can be enhanced in the low spatial frequencies of the images where this manipulation has the most visible impact without substantially increasing the instantaneous slope of the high spatial frequency components of the image, which typically contain unwanted image noise.

[0047] In a preferred embodiment, the invention is employed in a display that includes Organic Light Emitting Diodes (OLEDs) which are composed of small molecule or polymeric OLEDs as disclosed in but not limited to U.S. Patent No. 4,769,292, by Tang et al., and U.S. Patent No. 5,061,569, by VanSlyke et al. Many combinations and variations of organic light emitting materials can be used to fabricate such a display. Referring to FIG. 2, EL emitters 14R, 14G, 14B and 14W can be OLED emitters, EL pixel 16 can be an OLED pixel, and EL display 12 can be an OLED display.

[0048] The input image signals and drive signals can be linear or nonlinear, scaled in various ways as commonly known in the art. The input image signals can be encoded according to the sRGB standard, IEC 61966-2-1. The drive signals can be voltages, currents, or times (e.g. in a pulse-width modulation "digital drive" system).

PARTS LIST

[0049]

- 2 provide EL display step
- 4 receive input image signal step
- 6 transform input image signal step
- 8 provide drive signal to drive display step
- 12 EL display
- 14R red emitter
- 14G green emitter

| | | |
|----|-----|---------------------------------------|
| | 14B | blue emitter |
| | 14W | white emitter |
| | 16 | pixel |
| | 18 | controller |
| 5 | 20 | input image signal |
| | 22 | drive signal |
| | 30 | demarcation line |
| | 32 | linear contrast function |
| | 34 | contrast function |
| 10 | 36 | maximum display luminance value |
| | 38 | peak frame luminance value |
| | 42 | proportion |
| | 52 | receiving input image signal step |
| | 54 | determine peak frame luminance step |
| 15 | 56 | determine contrast function step |
| | 58 | apply contrast function |
| | 60 | provide drive signal step |
| | 72 | convert to linear intensity step |
| | 74 | compute average linear intensity step |
| 20 | 76 | determine static image step |
| | 78 | increment time step |
| | 80 | calculate peak frame luminance step |
| | 82 | determine dynamic image step |
| | 84 | reset time step |
| 25 | 91 | first sub-function |
| | 92 | second sub-function |
| | 93 | tangent point |
| | 100 | linear contrast function |
| | 102 | contrast function |
| 30 | 104 | contrast function |
| | 106 | contrast function |
| | 108 | contrast function |
| | 110 | contrast function |
| | 114 | linear transform |
| 35 | | |

Claims

1. A method for controlling an electroluminescent display to produce an image for display that has reduced luminance to reduce burn-in on the display while maintaining visible contrast, comprising:

- (a) providing (2) the electroluminescent, EL, display comprising a plurality of EL emitters, the luminance of the light produced by each EL emitter being responsive to a respective drive signal;
- (b) receiving (4, 52) a respective input image signal for each EL emitter; and
- (c) transforming (6) the input image signals to a plurality of drive signals that have a reduced peak frame luminance value but maintains contrast in the displayed image to reduce burn-in by adjusting the drive signals to have reduced luminance provided by each pixel with the luminance decrease in a shadow range being less than the luminance decrease in a non-shadow range, wherein the shadow range includes lower input image signals corresponding to a lower luminance than the non-shadow range, wherein step (c) includes:

- determining whether the image is static or dynamic based on a comparison of average intensity values of consecutive data frames, and
 - determining (54) a peak frame luminance value, when the image is static based on a time the static image is presented on the display, by holding a peak frame luminance constant for i frames after the static image is displayed, reducing the peak frame luminance by a first exponential function until a time F_s , and, once F_s is achieved, reducing the peak frame luminance by a second exponential function,
 - determining (56) a contrast function which is a transform mapping the input image signals to the drive

signals as a function of the peak frame luminance value,
 wherein the contrast function is applied (58) to the input image signals to obtain output image signals based
 on which the drive signals are provided (8, 60) to the display for the emitters to produce the reduced peak
 frame luminance value, and
 wherein a relationship between the input image signal and the luminance provided by the display is linear
 for luminance values greater than 20% of the peak frame luminance value and nonlinear for values less
 than 5% of the peak frame luminance value.

2. The method according to claim 1, further including dithering the drive signals values in the shadow range.

3. The method according to claim 1, wherein step (c) further includes:

(i) dividing the input image signal into a high and a low spatial frequency image;

(ii) applying the contrast function to the low spatial frequency image; and

(iii) applying a linear transform to the high spatial frequency image.

4. The method according to claim 3, wherein the low frequency image has a spatial frequency of ≤ 4 cycles per degree of visual angle.

5. The method according to claim 1, wherein the EL display is an organic light-emitting diode, OLED, display, and wherein each EL emitter is an OLED emitter.

Patentansprüche

1. Verfahren zum Steuern einer elektrolumineszenten Anzeige, um ein Bild zur Anzeige zu erzeugen, das eine verminderte Luminanz aufweist, um ein Einbrennen auf der Anzeige zu verringern, während ein sichtbarer Kontrast aufrechterhalten wird, umfassend:

(a) Bereitstellen (2) der elektrolumineszenten, EL, Anzeige, die eine Mehrzahl von EL-Sendern umfasst, wobei die Luminanz des von jedem EL-Sender erzeugten Lichts auf ein jeweiliges Ansteuersignal reagiert;

(b) Empfangen (4, 52) eines jeweiligen Eingangsbildsignals für jeden EL-Sender; und

(c) Umwandeln (6) der Eingangsbildsignale in eine Mehrzahl von Ansteuersignalen, die einen verringerten Spitzenbildluminanzwert aufweist, aber einen Kontrast in dem angezeigten Bild beibehält, um das Einbrennen durch Einstellen der Ansteuersignale verringert, um eine verringerte Luminanz aufzuweisen, die von jedem Pixel bereitgestellt wird, wobei die Verringerung der Luminanz in einem Schattenbereich geringer ist als die Verringerung der Luminanz in einem Nicht-Schattenbereich, wobei der Schattenbereich geringere Eingangsbildsignale beinhaltet, die einer geringeren Luminanz als dem Nicht-Schattenbereich entsprechen, wobei Schritt (c) beinhaltet:

Bestimmen, ob das Bild statisch oder dynamisch ist, basierend auf einem Vergleich von durchschnittlichen Intensitätswerten aufeinanderfolgender Datenrahmen, und

Bestimmen (54) eines Spitzenbildluminanzwerts, wenn das Bild statisch ist, basierend auf einem Zeitpunkt, an dem das statische Bild auf der Anzeige dargestellt wird, durch Konstanthalten einer Spitzenluminanz über i Bilder, nachdem das statische Bild angezeigt wird, Verringern der Spitzenbildluminanz um eine erste Exponentialfunktion bis zu einem Zeitpunkt F_s , und nachdem F_s erreicht ist, Verringern der Spitzenbildluminanz um eine zweite Exponentialfunktion,

Bestimmen (56) einer Kontrastfunktion, die eine Transformation ist, die die Eingangsbildsignale den Ansteuersignalen in Abhängigkeit von dem Spitzenbildluminanzwert zuordnet,

wobei die Kontrastfunktion auf die Eingangsbildwerte angewendet wird (58), um Ausgangsbildsignale basierend darauf zu erhalten, welche Ansteuersignale der Anzeige bereitgestellt werden (8, 60), um den verringerten Spitzenbildluminanzwert zu erzeugen, und

wobei eine Beziehung zwischen dem Eingangsbildsignal und der Luminanz, die von der Anzeige bereitgestellt wird, für Luminanzwerte größer als 20% des Spitzenbildluminanzwerts linear ist und für Werte geringer als 5% des Spitzenbildluminanzwerts nichtlinear ist.

2. Verfahren nach Anspruch 1, ferner Dithering der Ansteuersignalwerte in dem Schattenbereich beinhaltend.

3. Verfahren nach Anspruch 1, wobei Schritt (c) ferner beinhaltet:

- (i) Unterteilen des Eingangsbildsignals in ein Bild mit hoher räumlicher Frequenz und ein Bild mit niedriger räumlicher Frequenz;
- (ii) Anwenden der Kontrastfunktion auf das Bild mit niedriger räumlicher Frequenz; und
- (iii) Anwenden einer linearen Transformation auf das Bild mit hoher räumlicher Frequenz.

4. Verfahren nach Anspruch 3, wobei das Bild mit niedriger räumlicher Frequenz eine räumliche Frequenz von ≤ 4 Zyklen pro Grad des Sehwinkels aufweist.

5. Verfahren nach Anspruch 1, wobei die EL-Anzeige eine organische Licht emittierende Diode, OLED, Anzeige ist und wobei jeder EL-Sender ein OLED-Sender ist.

Revendications

1. Procédé de commande d'un dispositif d'affichage électroluminescent pour produire une image pour un affichage qui a une luminance réduite pour réduire l'image rémanente sur le dispositif d'affichage tout en maintenant un contraste visible, comprenant :

- (a) fournir (2) le dispositif d'affichage électroluminescent, EL, comprenant une pluralité d'émetteurs EL, la luminance de la lumière produite par chaque émetteur EL étant sensible à un signal de pilotage respectif ;
- (b) recevoir (4, 52) un signal d'image d'entrée respectif pour chaque émetteur EL ; et
- (c) transformer (6) les signaux d'image d'entrée en une pluralité de signaux de pilotage qui ont une valeur de luminance de trame de pic réduite mais maintiennent un contraste dans l'image affichée pour réduire l'image rémanente par ajustement des signaux de pilotage pour avoir une luminance réduite fournie par chaque pixel avec la diminution de luminance dans une plage d'ombre qui est inférieure à la diminution de luminance dans une plage non d'ombre, la plage d'ombre comprenant des signaux d'image d'entrée inférieurs correspondant à une luminance inférieure par rapport à la plage non d'ombre,

l'étape (c) comprenant :

- déterminer si l'image est statique ou dynamique sur la base d'une comparaison de valeurs d'intensité moyennes de trames de données consécutives, et
- déterminer (54) une valeur de luminance de trame de pic, lorsque l'image est statique, sur la base d'un instant auquel l'image statique est présentée sur le dispositif d'affichage, par maintien d'une luminance de trame de pic constante pendant i trames après que l'image statique est affichée, réduction de la luminance de trame de pic par une première fonction exponentielle jusqu'à un instant F_s , et, une fois que F_s est atteint, réduction de la luminance de trame de pic par une seconde fonction exponentielle,
- déterminer (56) une fonction de contraste qui est une transformée mappant les signaux d'image d'entrée aux signaux de pilotage en fonction de la valeur de luminance de trame de pic, la fonction de contraste étant appliquée (58) aux signaux d'image d'entrée pour obtenir des signaux d'image de sortie sur la base desquels les signaux de pilotage sont fournis (8, 60) au dispositif d'affichage pour que les émetteurs produisent la valeur de luminance de trame de pic réduite, et
- une relation entre le signal d'image d'entrée et la luminance fournie par le dispositif d'affichage étant linéaire pour des valeurs de luminance supérieures à 20 % de la valeur de luminance de trame de pic et non linéaire pour des valeurs inférieures à 5 % de la valeur de luminance de trame de pic.

2. Procédé selon la revendication 1, comprenant en outre la juxtaposition des valeurs de signaux de pilotage dans la plage d'ombre.

3. Procédé selon la revendication 1, dans lequel l'étape (c) comprend en outre :

- (i) diviser le signal d'image d'entrée en une image à haute fréquence spatiale et en une image à basse fréquence spatiale ;
- (ii) appliquer la fonction de contraste à l'image à basse fréquence spatiale ; et
- (iii) appliquer une transformée linéaire à l'image à haute fréquence spatiale.

EP 2 351 011 B1

4. Procédé selon la revendication 3, dans lequel l'image basse fréquence a une fréquence spatiale de ≤ 4 cycles par degré d'angle visuel.
5. Procédé selon la revendication 1, dans lequel le dispositif d'affichage EL est un dispositif d'affichage à diode électroluminescente organique, DELO, et dans lequel chaque émetteur EL est un émetteur DELO.

5

10

15

20

25

30

35

40

45

50

55

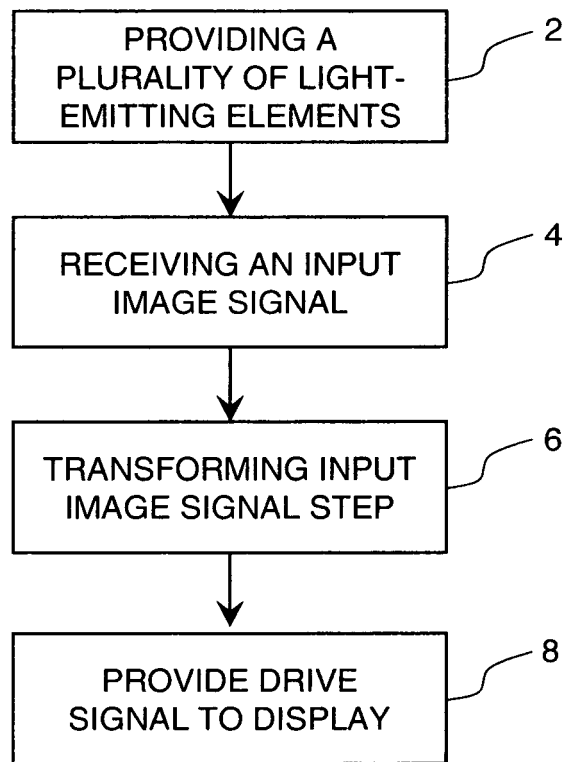


FIG. 1

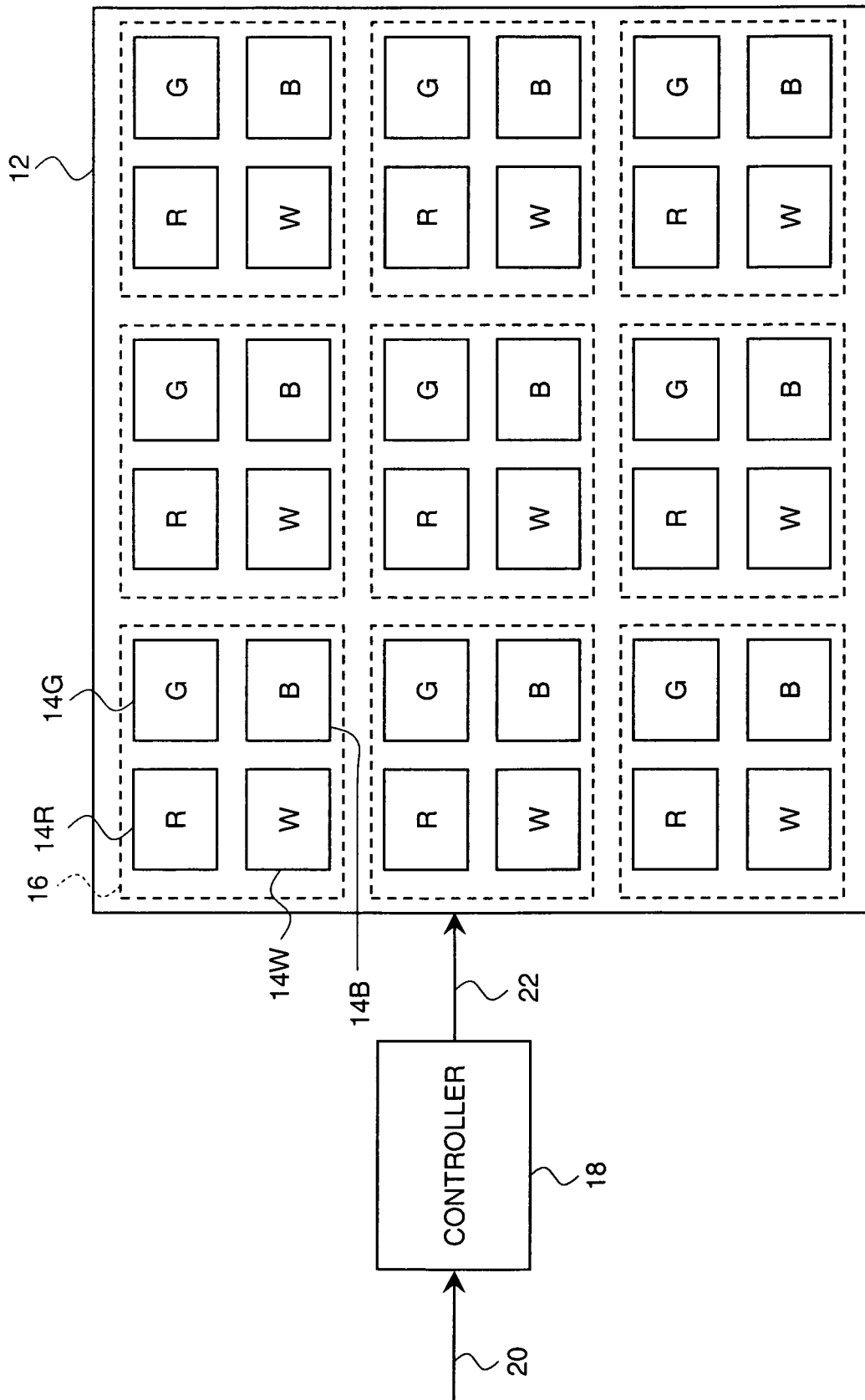


FIG. 2

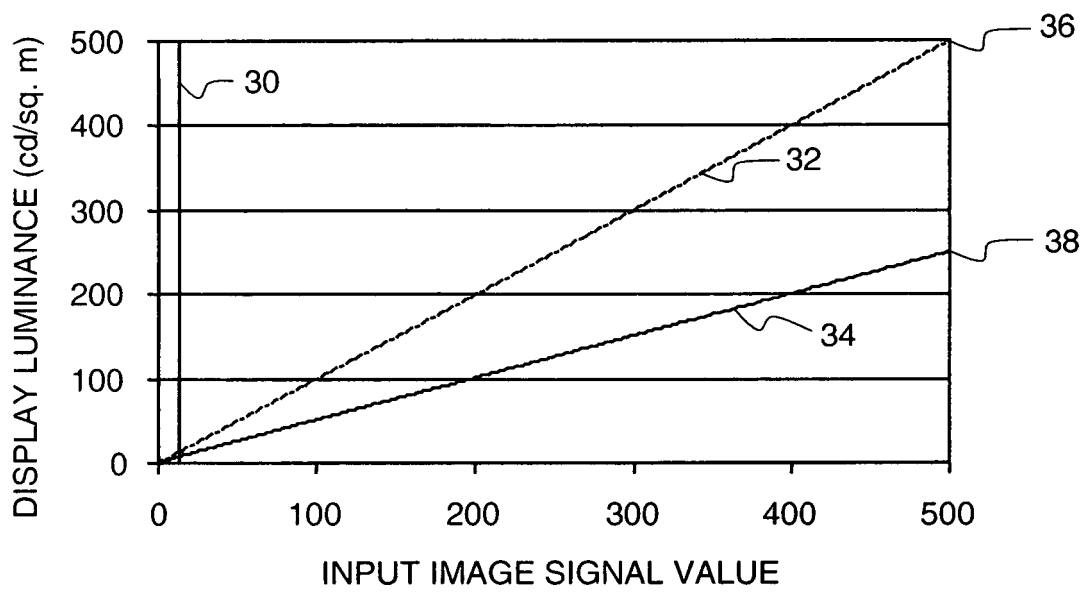


FIG. 3

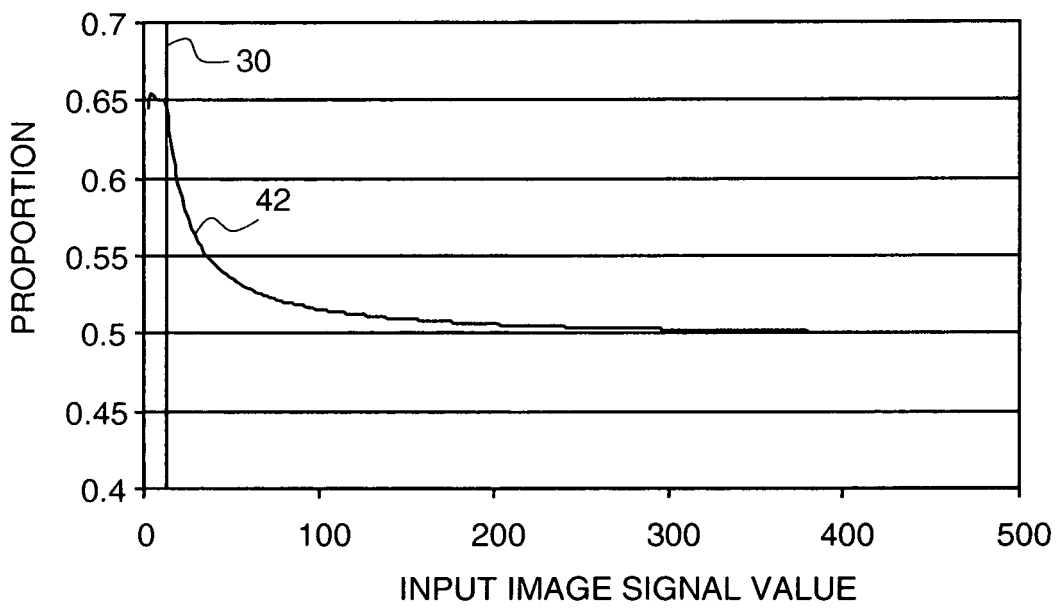


FIG. 4

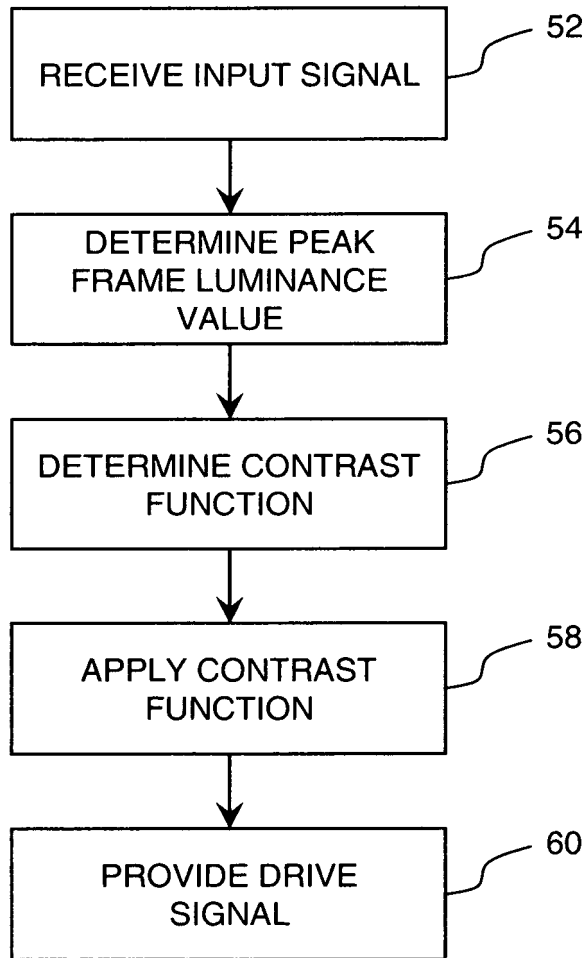


FIG. 5

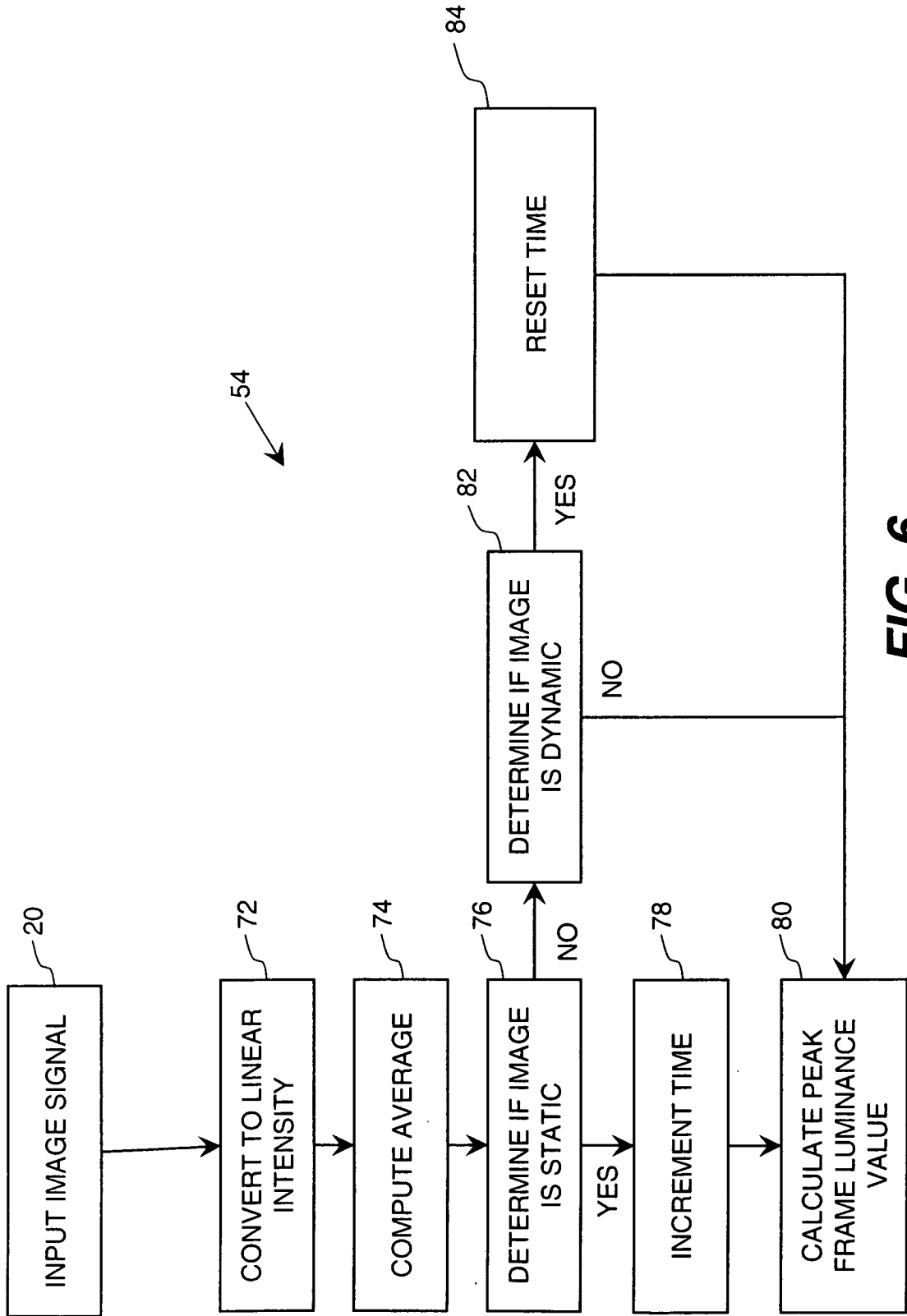


FIG. 6

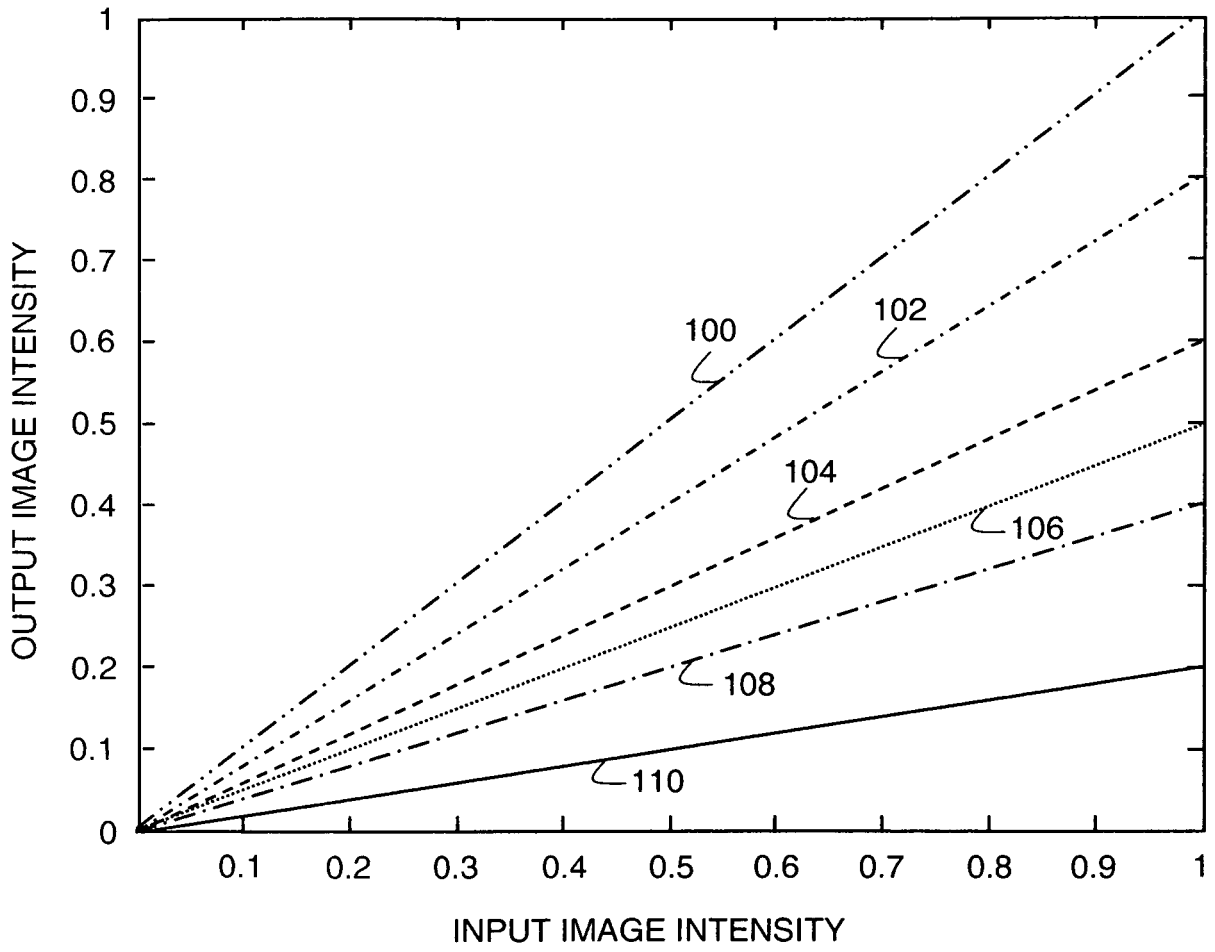


FIG. 7

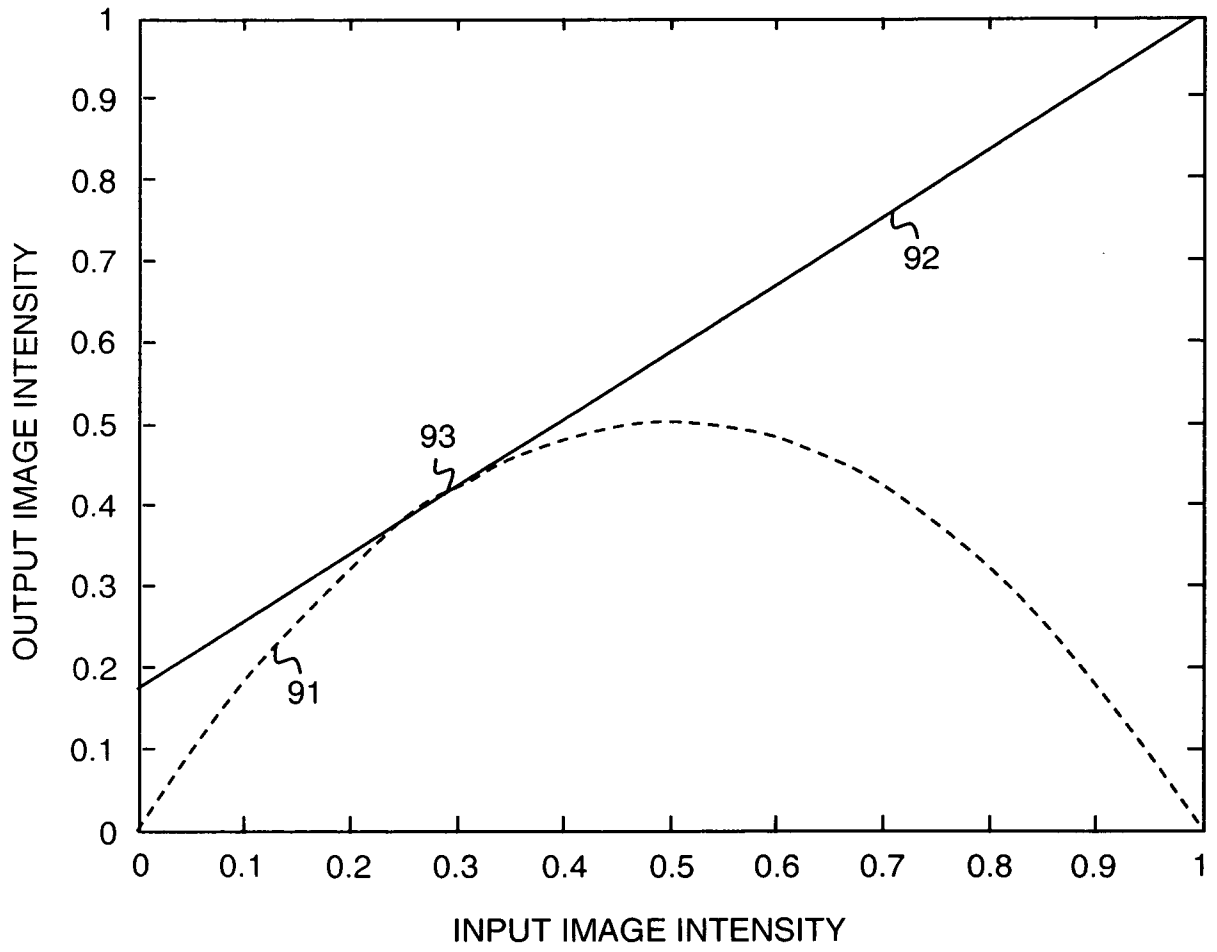


FIG. 8A

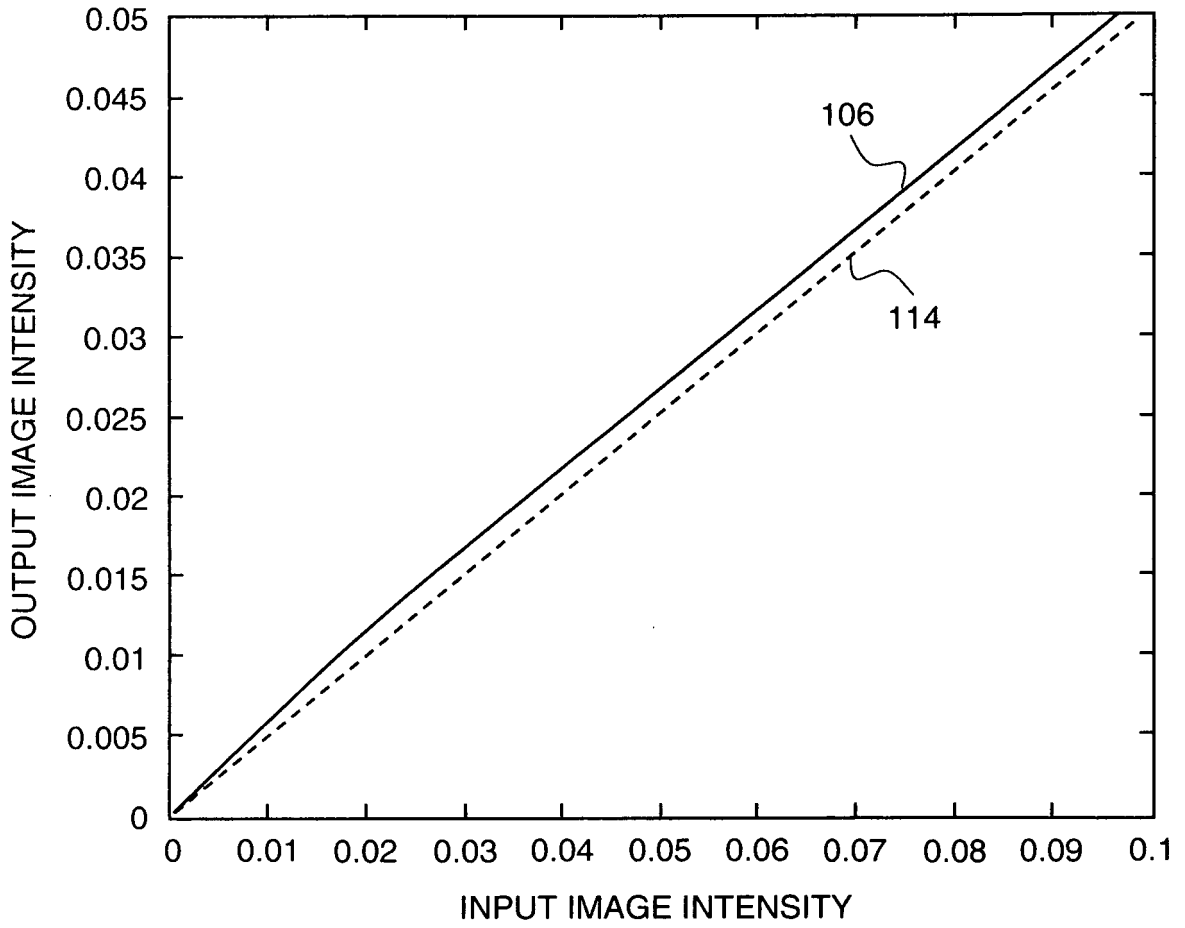


FIG.8B

REFERENCES CITED IN THE DESCRIPTION

This list of references cited by the applicant is for the reader's convenience only. It does not form part of the European patent document. Even though great care has been taken in compiling the references, errors or omissions cannot be excluded and the EPO disclaims all liability in this regard.

Patent documents cited in the description

- US 4338 A [0006]
- US 623 A [0006]
- US 6313878 B [0007]
- US 6856328 B [0008]
- WO 2006103629 A [0009]
- US 20020057234 A [0010]
- US 20080106491 A1 [0011]
- US 120070146252 A [0028]
- US 4769292 A, Tang [0047]
- US 5061569 A, VanSlyke [0047]

| | | | |
|----------------|--|---------|------------|
| 专利名称(译) | 用于电致发光显示器的色调压缩 | | |
| 公开(公告)号 | EP2351011A1 | 公开(公告)日 | 2011-08-03 |
| 申请号 | EP2009744808 | 申请日 | 2009-10-26 |
| [标]申请(专利权)人(译) | 全球OLED TECH | | |
| 申请(专利权)人(译) | 全球OLED科技有限责任公司 | | |
| 当前申请(专利权)人(译) | 全球OLED科技有限责任公司 | | |
| [标]发明人 | MILLER MICHAEL EUGENE WHITE CHRISTOPHER JASON | | |
| 发明人 | MILLER, MICHAEL, EUGENE WHITE, CHRISTOPHER, JASON | | |
| IPC分类号 | G09G3/32 | | |
| CPC分类号 | G09G3/3208 G09G2320/0238 G09G2320/0271 G09G2320/046 G09G2320/066 G09G2340/0428 | | |
| 优先权 | 12/271355 2008-11-14 US | | |
| 其他公开文献 | EP2351011B1 | | |
| 外部链接 | Espacenet | | |

摘要(译)

一种控制电致发光显示器以产生显示图像的方法，该图像具有降低的亮度以减少显示器上的老化同时保持可见对比度，包括提供具有多个EL发光器的电致发光 (EL) 显示器，光的亮度由每个EL发射器产生的响应于相应的驱动信号;接收每个EL发射器的相应输入图像信号;将输入图像信号转换为多个驱动信号，这些驱动信号具有降低的峰值帧亮度值，但保持显示图像中的对比度，以通过调整驱动信号减少老化，使每个像素提供的亮度降低，亮度降低阴影范围小于非阴影范围内的亮度减小。