



(11) **EP 1 135 804 B1**

(12) **EUROPEAN PATENT SPECIFICATION**

(45) Date of publication and mention
of the grant of the patent:
20.12.2017 Bulletin 2017/51

(21) Application number: **00960385.3**

(22) Date of filing: **02.08.2000**

(51) Int Cl.:
G09G 3/3233 ^(2016.01) **H01L 27/32** ^(2006.01)

(86) International application number:
PCT/EP2000/007520

(87) International publication number:
WO 2001/015232 (01.03.2001 Gazette 2001/09)

(54) **ACTIVE MATRIX ELECTROLUMINESCENT DISPLAY DEVICE**
ELEKTROLUMINISZANZANZEIGE MIT AKTIVER MATRIX
DISPOSITIF D’AFFICHAGE ELECTROLUMINESCENT A MATRICE ACTIVE

(84) Designated Contracting States:
DE FR GB NL

(30) Priority: **19.08.1999 GB 9919536**

(43) Date of publication of application:
26.09.2001 Bulletin 2001/39

(73) Proprietor: **Koninklijke Philips N.V.**
5656 AE Eindhoven (NL)

(72) Inventor: **HUNTER, Iain, M.**
NL-5656 AA Eindhoven (NL)

(74) Representative: **Damen, Daniel Martijn et al**
Philips Intellectual Property & Standards
High Tech Campus 5
5656 AE Eindhoven (NL)

(56) References cited:
EP-A- 0 180 642 EP-A- 0 845 812
EP-A- 0 923 067 WO-A-99/40559
WO-A-99/65012

- **PATENT ABSTRACTS OF JAPAN** vol. 013, no. 567
(M-908), 15 December 1989 (1989-12-15) & JP 01
238962 A (NIPPON SHEET GLASS CO), 25
September 1989 (1989-09-25)

Note: Within nine months of the publication of the mention of the grant of the European patent in the European Patent Bulletin, any person may give notice to the European Patent Office of opposition to that patent, in accordance with the Implementing Regulations. Notice of opposition shall not be deemed to have been filed until the opposition fee has been paid. (Art. 99(1) European Patent Convention).

Description

[0001] This invention relates to active matrix electroluminescent display devices comprising an array of electroluminescent display pixels. More particularly, the invention concerns an active matrix electroluminescent display device comprising an array of display pixels each comprising an electroluminescent display element and a driving device for controlling the current through the display element based on a drive signal applied to the pixel during an address period and stored as a voltage on a storage capacitance connected to the driving device.

[0002] Matrix display devices employing electroluminescent, light-emitting, display elements are well known. The display elements may comprise organic thin film electroluminescent elements, for example using polymer materials, or else light emitting diodes (LEDs) using traditional III-V semiconductor compounds. Recent developments in organic electroluminescent materials, particularly polymer materials, have demonstrated their ability to be used practically for video display devices. These materials typically comprise one or more layers of an electroluminescent material, for example a semiconducting conjugated polymer, sandwiched between a pair of electrodes, one of which is transparent and the other of which is of a material suitable for injecting holes or electrons into the polymer layer. The polymer material can be fabricated using a CVD process, or simply by printing or a spin coating technique using a solution of a soluble conjugated polymer.

[0003] Organic electroluminescent materials exhibit diode-like I-V properties, so that they are capable of providing both a display function and a switching function, and can therefore be used in passive type displays.

[0004] However, the invention is concerned with active matrix display devices, with each pixel comprising a display element and a switching device for controlling the current through the display elements. Examples of an active matrix electroluminescent display are described in EP-A-0653741 and EP-A0717446. Unlike active matrix liquid crystal display devices in which the display elements are capacitive and therefore take virtually no current and allow a drive signal voltage to be stored on the capacitance for the whole field period, the electroluminescent display elements need to continuously pass current to generate light. A driving device of a pixel, usually comprising a TFT (thin film transistor), is responsible for controlling the current through the display element. The brightness of the display element is proportional to the current flowing through it. During an address period for a pixel, a drive (data) signal in the form of a voltage or current signal determining the required output from the display element is applied to the pixel and stored as a corresponding voltage level on a storage capacitance which is connected to, and controls the operation of, the current controlling drive device with the voltage stored on the capacitance serving to maintain operation of the switching device in supplying current through the display

element during the period, corresponding to a field period, until the pixel is addressed again.

[0005] A problem with known organic electroluminescent materials, particularly polymer materials, is that they suffer ageing effects whereby the light output for a given drive current is reduced over a period of time of operation. While in certain applications such ageing effects may not be critical, the consequences in a pixellated display can be serious as any slight variations in light output from pixels can easily be perceived by a viewer.

[0006] EP 0 923 067 discloses a current driven display device, in which an optical feedback is provided in each pixel to compensate for pixel degradation. It is an object of the present invention to provide an active matrix electroluminescent display device in which this problem is overcome at least to an extent.

[0007] According to the present invention there is provided an active matrix electroluminescent display device as claimed in claim 1. Thus, by means of the electro-optic adjustment means, the stored signal voltage for determining the light output level of the display element in the drive (display) period following addressing is adjusted according to the light output characteristic of the display element, providing a feedback variable, whereby the drive level set on the pixel can compensate for the effects of ageing of the display elements so that a desired light output level from a display element for a given applied drive signal is substantially maintained regardless of possible variations in the drive current level / light output level characteristics of individual display elements in the array.

[0008] In the case where the drive device of a pixel comprises a TFT (thin film transistor) as is usual in active matrix electroluminescent display devices, the invention offers a further important advantage. The drive current for a display element is determined by the voltage applied to the gate of the TFT, corresponding to the voltage stored in the capacitance. This drive current therefore depends strongly on the characteristics of the TFT and variations in the threshold voltage, mobility and dimensions of the individual TFTs of pixels over the array, for example due to manufacturing processes, can produce unwanted variations in the display element currents and hence light levels produced, leading to non-uniformity in the display output. The effect of the electro-optic adjustment means in controlling the stored voltage signal will also compensate for such variations in TFT characteristics.

[0009] Although the invention is particularly beneficial in devices using polymer LED materials, it can of course be applied to advantage in any electroluminescent device in which the electroluminescent material similarly suffers ageing effects resulting in lower light output levels for a given drive current over a period of time of operation.

[0010] Preferably the electro-optic means is adapted to regulate a current flowing in the pixel during the address period according to an applied data signal upon which current the voltage stored on the capacitance following the address period is dependent. According to the

present invention the electro-optic means comprises a photoelectric device connected to the storage capacitance via a switch device, for example another TFT, which is arranged to be closed during the address period so as to connect the photoelectric device in parallel with the storage capacitance during the address period. During the driving period, the device is effectively disconnected from the storage capacitance and plays no part in the operation of the pixel. In the address period, and with the data signal comprising a current signal, the device serves to shunt current from the capacitance in dependence upon the display element's light output until an equilibrium state is reached and the capacitance voltage, and the gate voltage of the drive TFT, stabilises.

[0011] The photoelectric device preferably comprises a photodiode, although a photoresistor or phototransistor could alternatively be employed.

[0012] An embodiment of an active matrix electroluminescent display device in accordance with the present invention will now be described, by way of example, with reference to the accompanying drawings, in which:-

Figure 1 is a simplified schematic diagram of a known active matrix electroluminescent display device comprising an array of pixels;

Figure 2 shows the equivalent circuit of a few typical pixels of the known active matrix electroluminescent display device of Figure 1; and

Figure 3 shows the equivalent circuit of a few typical pixels in an embodiment of active matrix electroluminescent display device according to the invention.

[0013] The Figures are merely schematic. The same reference numbers are used throughout the Figures to denote the same or similar parts.

[0014] Referring to Figure 1, the active matrix electroluminescent display device comprises a panel having a row and column matrix array of regularly-spaced pixels, denoted by the blocks 10, each comprising an electroluminescent display element and an associated driving device controlling the current through the display element, and which are located at the intersections between crossing sets of row (selection) and column (data) address conductors, or lines, 12 and 14. Only a few pixels are shown here for simplicity. The pixels 10 are addressed via the sets of address conductors by a peripheral drive circuit comprising a row, scanning, driver circuit 16 and a column, data, driver circuit 18 connected to the ends of the respective sets.

[0015] Each row of pixels is addressed in turn by means of a selection signal applied by the circuit 16 to the relevant row conductor 12 so as to load the pixels of the row with respective drive signals, determining their individual display outputs, according to the respective data signals supplied in parallel by the circuit 18 to the column conductors. As each row is addressed, the appropriate data signals are supplied by the circuit 18 in appropriate synchronisation.

[0016] Figure 2 illustrates the circuit of a few, typical, pixels in this known device. In this particular device, the data signals comprise voltage signals. Each pixel, 10, includes a light emitting organic electroluminescent display element 20, represented here as a diode element (LED), and comprising a pair of electrodes between which one or more active layers of organic electroluminescent material is sandwiched. In this particular embodiment the material comprises a polymer LED material, although other organic electroluminescent materials, such as low molecular weight materials, could be used. The display elements of the array are carried together with the associated active matrix circuitry on one side of an insulating support. Either the cathodes or the anodes of the display elements are formed of transparent conductive material. The support is of transparent material such as glass and the electrodes of the individual display elements 20 closest to the substrate can consist of a transparent conductive material such as ITO so that light generated by the electroluminescent layer is transmitted through these electrodes and the support so as to be visible to a viewer at the other side of the support. Alternatively, the light output could be viewed from above the panel and the display element anodes in this case would comprise parts of a continuous ITO layer constituting a supply line common to all display elements in the array. The cathodes of the display elements comprise a metal having a low work-function such as calcium or magnesium silver alloy. Examples of suitable organic conjugated polymer materials which can be used are described in WO 96/36959. Examples of other, low molecular weight, organic materials are described in EP-A-0717446, which also describes examples of the construction and operation of an active matrix electroluminescent device and whose disclosure in these respects is incorporated herein by reference.

[0017] Each pixel 10 includes a drive device in the form of a TFT 22 which controls the operation of the display element 20 based on an analogue data signal voltage applied to the pixel. The signal voltage for a pixel is supplied via a column conductor 14 which is shared between a respective column of pixels. The column conductor 14 is coupled to the gate of the current-controlling drive transistor 22 through an address TFT 26. The gates for the address TFTs 26 of a row of pixels are coupled together to a common row conductor 12.

[0018] Each row of pixels 10 also shares a common voltage supply line 30, usually provided as a continuous electrode common to all pixels, and a respective common current line 32. The display element 20 and the drive device 22 are connected in series between the voltage supply line 30 and the common current line 32, which is at a positive potential with respect to the supply line 30 and acts as a current source for the current flowing through the display element 20. The current flowing through the display element 20 is controlled by the switching device 22 and is a function of the gate voltage on the transistor 22, which is dependent upon a stored control

signal determined by the data signal supplied to the column conductor 14.

[0019] A row of pixels is selected by the row driver circuit 16 applying a selection pulse to the row conductor 12 which switches on the address TFTs 26 for the respective row of pixels. A voltage level derived from the video information is applied to the column conductor 14 by the driver circuit 18 and is transferred by the address TFT 26 to the gate of the drive transistor 22. During the periods when a row of pixels is not being addressed via the row conductor 12 the address transistor 26 is turned off, but the voltage on the gate of the drive transistor 22 is maintained by a pixel storage capacitor 36 which is connected between the gate of the drive transistor 22 and the common current line 32. The voltage between the gate of the drive transistor 22 and the common current line 32 determines the current passing through the display element 20 of the pixel 10. Thus, the current flowing through the display element is a function of the gate-source voltage of the drive transistor 22 (the source of the transistor 22 being connected to the common current line 32, and the drain of the transistor 22 being connected to the display element 20). This current in turn controls the light output level (grey-scale) of the pixel.

[0020] The switching transistor 22 is arranged to operate in saturation, so that the gate-source voltage governs the current flowing through the transistor, irrespective of the drain-source voltage. Consequently, slight variations of the drain voltage do not affect the current flowing through the display element 20. The voltage on the voltage supply line 30 is therefore not critical to the correct operation of the pixels.

[0021] Each row of pixels is addressed in turn in this manner in respective row address periods so as to load the pixels of each row in sequence with their drive signals and set the pixels to provide desired display outputs for the drive (field) period until they are next addressed.

[0022] With this known pixel circuit, it will be appreciated that the voltage stored on the capacitor 36 is substantially determined by the applied data signal voltage and that as this voltage in turn controls the drive transistor 22 and the current through the display element 20 then the resulting light output level of the display element at any time will be dependent on the then existing current/light output level characteristic of the display element. The electroluminescent material of the display element can suffer degradation over a period time of operation leading to ageing effects which result in a reduction of the light output level for a given drive current level. Those pixels which have, therefore, been driven longer (or harder) will exhibit reduced brightness and cause display non-uniformities. With polymer LED materials the effects of such ageing can be significant.

[0023] In the present invention, the drive signal stored in a pixel during the addressing phase is automatically adjusted through electro-optical means in the pixel, acting as a feedback arrangement, according to the light emission characteristic of the display element so as to

compensate at least to some extent for such ageing effects and ensure that the required light output level of the display element is produced following addressing.

[0024] Referring to Figure 3, there is shown the equivalent circuit of a pixel in an embodiment of display device according to the invention and intended to overcome, at least to some extent, the problem of ageing. In each pixel 10 the display element 20 is again connected in series with the drive transistor 22 between the current line 32 and a voltage supply line 30, here shown constituted by a common electrode layer shared by all the pixels, and the gate and source of address transistor 26 are connected to the associated row and column conductors 12 and 14 respectively. Also the storage capacitor 36 is again connected between the gate of the drive transistor 22 and the current line 32.

[0025] The pixel further includes an additional switch device 40, again in the form of a TFT, which is connected between the address TFT 26 and the node between the storage capacitor 36 and the gate of the drive transistor 22 with its gate terminal connected to the same row conductor 12 as the gate of the address TFT 26 so as to be operated simultaneously with that TFT by the application of a (gating) pulse selection signal applied to the row conductor 12.

[0026] A photodiode 45 is connected between the current line 32 associated with the pixel and the node between the TFTs 26 and 40. The pixel is constructed in such a way that the photodiode 45 is exposed to light emitted by the display element 20 of the pixel. The purpose of such optical coupling between these components will become apparent from the following description of the operation of this pixel.

[0027] In this device, the data signals applied to the pixels via the column conductors 14 comprise analogue current signals rather than voltage signals. Active matrix electroluminescent devices using current rather than voltage data signals are known, an example of such being described in WO99/65012 (PHB 34253).

[0028] As with the known pixel circuit, this pixel circuit has two states, an addressing state in which the pixel is set to the desired display output condition and a driving state in which the display element is thereafter driven according to the set condition until the pixel is again addressed in the subsequent field. In the addressing state, the row driver circuit 16 applies a selection pulse signal to the row conductor 12 in a respective row address period which turns on the TFTs 26 and 40. The capacitor 36 is assumed here for example to be fully discharged at this time. In the addressing phase, a current is sunk in the associated column conductor 14 according to the applied data signal. The charge path is from the current line 32 through the storage capacitor 36 and the photodiode 45 in parallel. As the photodiode is reversed biased it has a high impedance in this initial period. Consequently, the storage capacitor 36 starts to charge through the TFTs 26 and 40 and the voltage between the source and gate of the drive TFT 22 increases. When the threshold

level of the TFT 22 is reached the TFT 22 begins to conduct resulting in a current flow through the display element 20 and generation of light thereby to produce a display output. Some of the light emitted by the conducting display element 20 falls upon the photodiode 45, as a result the appropriate physical arrangement of these two components with respect to each other, which causes the photodiode 45 to start to conduct a photocurrent. The extent of photocurrent is proportional to the light level (quantity of photons/second) received thereby even though it is reverse biased. The photodiode 45 then shunts current from the capacitor 36. After a short time, still within the row address period, an equilibrium state is achieved in which the current being sunk by the column conductor 14 is all shunted by the photodiode alone and the gate voltage of the drive TFT 22 stabilises. Thus, the light from the display element 20 is used as a feedback variable, via the photodiode 45, in the setting of the pixel during addressing.

[0029] The pixel circuit is then switched to its drive state by the turning off of the TFTs 26 and 40, upon termination of the row selection pulse, to isolate electrically the node between the gate of the TFT 22 and the storage capacitor 36 from the photodiode 45 and column conductor 14. The capacitor 36 now acts to store the gate-source voltage of the TFT 22 as an adjusted drive signal level determining the current drive level of the display element in the drive (display) phase until the pixel is next addressed. This results in a steady current flowing through the display element 20 throughout this drive period. As light from the display element is used as a feedback variable in the setting of the pixel, the light output (photons) per second during the drive phase is fixed according to a desired output light level, and is proportional to the input current.

[0030] By using the light output from the display element in this manner during addressing, the setting of the pixel is made dependent on the instantaneous light output generating characteristic of the associated display element and the drive signal voltage stored on the capacitor 36, and the consequential level of current through the display element determined by the TFT 22, is automatically adjusted accordingly so as to compensate for the effects of ageing in the display element. If the light output level for a given drive current in a display element is reduced due to ageing, then the adjusted stored drive signal will cause the display element to be driven at a appropriately higher current level to maintain the desired display effect.

[0031] If the capacitor is charged at the start of the addressing phase rather than being fully discharged, and the addressing current (data signal) is zero, the photocurrent in the photodiode 45 will discharge the capacitor 36 until there is no light output from the display element 20 during this phase, and no light would be emitted in the driving phase.

[0032] Besides compensating for such effects, the pixel circuit is also effective to compensate automatically

for variations in the operational characteristics of the TFTs 22 of different pixels in the array resulting, for example, from variations in their threshold voltages, dimensions, and mobilities due to the nature of the thin film fabrication processes used to form the TFTs. As a result, further improvement in the uniformity of light output from the display elements over the array is achieved.

[0033] The TFTs used in the above embodiment of pixel circuit all comprise p-channel MOS TFTs. However, n-channel MOS TFTs could be used instead, with the polarity of the display element 20 and photodiode 45, and the applied drive voltages being reversed. Preferably, polysilicon TFTs are used, although alternatively amorphous silicon TFTs could be employed.

[0034] The photodiode 45 may be replaced by a phototransistor (diode-connected) or possibly a photoresistor or other suitable photo-electric device.

[0035] Although the photodiode 45 is arranged so that it is exposed to light emitted by the display element 20, it is preferably shielded from ambient light falling on the device so that it is responsive in operation solely to light from the display element.

[0036] While the current lines in the above embodiment extend in the row direction and are shared by respective rows of pixels, they may instead extend in the column direction with each current line then being shared by a respective column of pixels.

[0037] In summary, therefore, there has been disclosed an active matrix electroluminescent display device which comprises an array of display pixels which each include a current-driven electroluminescent display element connected to a driving device controlling the current flowing through the display element in a drive period according to a voltage stored on a capacitance determined by a data signal applied in a preceding address period. In order to compensate for ageing effects in the display element, electro-optic means are included in the pixel for adjusting the voltage stored on the capacitance in dependence on light output of its display element during the address period.

Claims

1. An active matrix electroluminescent display device comprising an array of display pixels with each pixel comprising:
 - an electroluminescent display element (20) and a driving device (22) for controlling the current through the display element based on a drive signal applied to the pixel during an address period,
 - a storage capacitance (36) connected to the driving device, the display pixel being adapted to store the applied drive signal as a voltage on the storage capacitance,

characterised in that each pixel includes electro-optic adjustment means (45) which is responsive to light produced by the display element (20) during the address period and arranged to adjust in the address period the voltage signal stored on the capacitance in the address period in accordance with the light output level of the display element (20), wherein the electro-optic means (45) comprises a photoelectric device adapted to shunt an electrical current flowing through the storage capacitance (36) during addressing according to the display element light output, and wherein the electro-optic device (45) is connected to the storage capacitance (36) via a switch device (40) which is adapted, during a pixel address period, to connect the electro-optic device (45) in parallel with the storage capacitance (36).

2. An active matrix electroluminescent display device according to Claim 1, **characterised in that** the electro-optic means (45) is adapted to regulate a current flowing in the pixel during the address period according to an applied data signal upon which current the voltage stored on the capacitance following the address period is dependent.
3. An active matrix electroluminescent display device according to Claim 1 or 2, **characterised in that** the electro-optic device (45) comprises a photodiode.
4. An active matrix electroluminescent display device according to anyone of the preceding claims, **characterised in that** the driving device (22) comprises a thin film transistor.

Patentansprüche

1. Elektrolumineszenzanzeigevorrichtung mit aktiver Matrix, eine Anordnung von Anzeigepixeln umfassend, wobei jedes Pixel umfasst:
 - ein elektrolumineszentes Anzeigeelement (20) und eine Ansteuervorrichtung (22) zur Steuerung des Stroms durch das Anzeigeelement basierend auf einem Ansteuerungssignal, das während einer Adressenperiode auf das Pixel angewendet wird,
 - einen Speicherkondensator (36), der mit der Ansteuervorrichtung verbunden ist, wobei das Anzeigepixel ausgeführt ist, um das angewendete Ansteuerungssignal als eine Spannung im Speicherkondensator zu speichern,

dadurch gekennzeichnet, dass jedes Pixel elektrooptische Anpassungsmittel (45) enthält, die auf Licht reagieren, das durch das Anzeigeelement (20) während der Adressenperiode erzeugt wird, und angeordnet ist, um in der Adressenperiode das Span-

nungssignal anzupassen, das in der Adressenperiode im Kondensator entsprechend dem Lichtausgabenniveau des Anzeigeelements (20) gespeichert wird, wobei die elektrooptischen Mittel (45) eine fotoelektrische Vorrichtung umfassen, die ausgeführt ist, um einen elektrischen Strom zu brücken, der während der Adressierung entsprechend der Lichtausgabe des Anzeigeelements durch den Speicherkondensator (36) strömt, und wobei die elektrooptische Vorrichtung (45) über eine Schaltervorrichtung (40) mit dem Speicherkondensator (36) verbunden ist, die ausgeführt ist, um während einer Pixel-Adressenperiode die elektrooptische Vorrichtung (45) parallel mit dem Speicherkondensator (36) zu verbinden.

2. Elektrolumineszenzanzeigevorrichtung mit aktiver Matrix nach Anspruch 1, **dadurch gekennzeichnet, dass** die elektrooptischen Mittel (45) ausgeführt sind, um einen Strom zu regulieren, der während der Adressenperiode entsprechend einem angewendeten Datensignal in dem Pixel strömt, über welchem Strom die in dem Kondensator gespeicherte Spannung nach der Adressperiode abhängig ist.
3. Elektrolumineszenzanzeigevorrichtung mit aktiver Matrix nach Anspruch 1 oder 2, **dadurch gekennzeichnet, dass** die elektrooptische Vorrichtung (45) eine Fotodiode umfasst.
4. Elektrolumineszenzanzeigevorrichtung mit aktiver Matrix nach einem der vorstehenden Ansprüche, **dadurch gekennzeichnet, dass** die eine Ansteuervorrichtung (22) einen Dünnschichttransistor umfasst.

Revendications

1. Dispositif d'affichage électroluminescent à matrice active comprenant une disposition de pixels d'affichage, chaque pixel comprenant :
 - un élément d'affichage électroluminescent (20) et un dispositif d'entraînement (22) pour commander le courant à travers l'élément d'affichage sur la base d'un signal de commande appliqué au pixel au cours d'une période d'adressage,
 - un condensateur de stockage (36) connecté au dispositif d'entraînement, le pixel d'affichage étant à même de stocker le signal de commande appliqué en tant que tension sur le condensateur de stockage,

caractérisé en ce que chaque pixel comprend un moyen d'ajustement électro-optique (45) qui est sensible à la lumière produite par l'élément d'affichage (20) au cours de la période d'adressage et agencé

pour ajuster dans la période d'adressage le signal de tension stocké sur le condensateur dans la période d'adressage selon le niveau de sortie de lumière de l'élément d'affichage (20), dans lequel le moyen électro-optique (45) comprend un dispositif photoélectrique qui est à même de shunter un courant électrique s'écoulant à travers le condensateur de stockage (36) au cours de l'adressage selon la sortie lumineuse de l'élément d'affichage et dans lequel le dispositif électro-optique (45) est connecté au condensateur de stockage (36) via un dispositif de commutation (40) qui est à même, au cours d'une période d'adressage de pixels, de connecter le dispositif électro-optique (45) en parallèle avec le condensateur de stockage (36).

2. Dispositif d'affichage électroluminescent à matrice active selon la revendication 1, **caractérisé en ce que** le moyen électro-optique (45) est à même de réguler un courant s'écoulant dans le pixel au cours de la période d'adressage selon un signal de données appliqué duquel courant la tension stockée sur le condensateur à la suite de la période d'adressage dépend.
3. Dispositif d'affichage électroluminescent à matrice active selon la revendication 1 ou 2, **caractérisé en ce que** le dispositif électro-optique (45) comprend une photodiode.
4. Dispositif d'affichage électroluminescent à matrice active selon l'une quelconque des revendications précédentes, **caractérisé en ce que** le dispositif d'entraînement (22) comprend un transistor à couche mince.

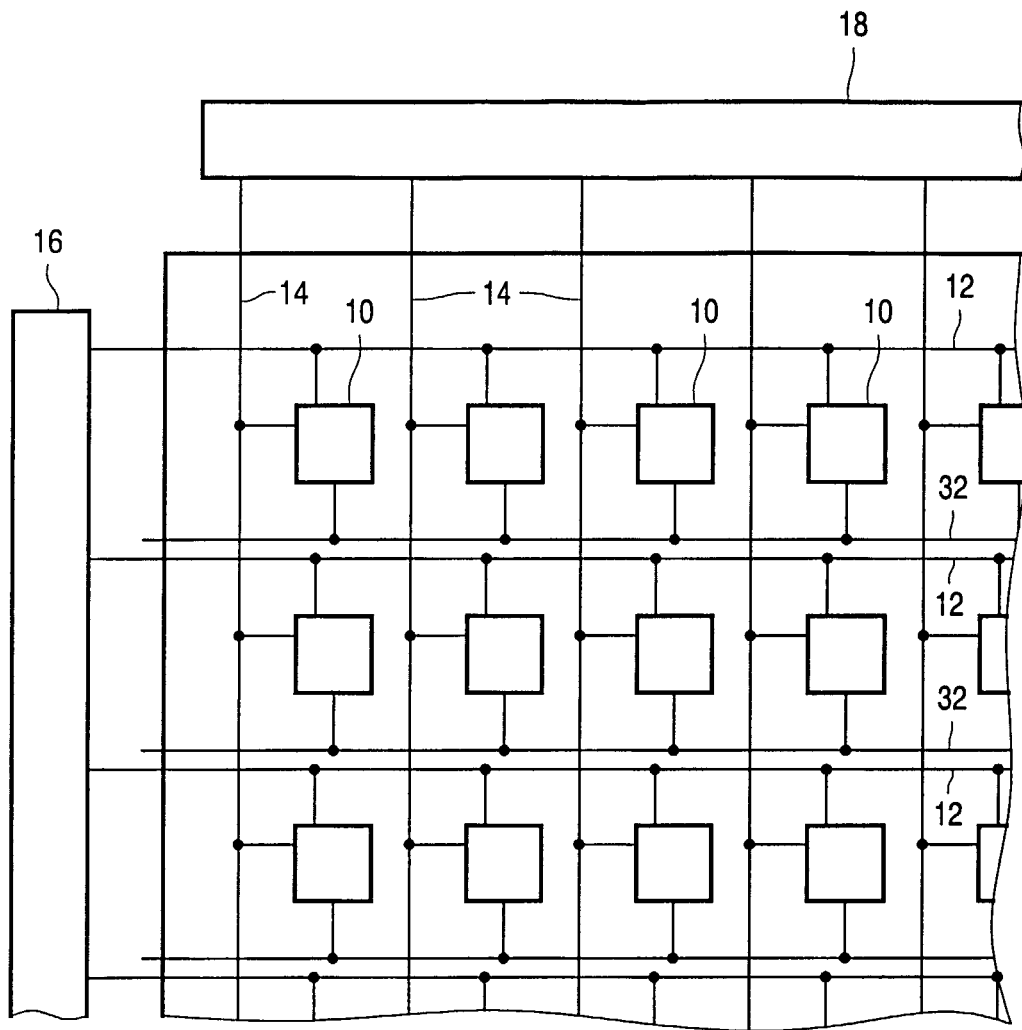


FIG. 1

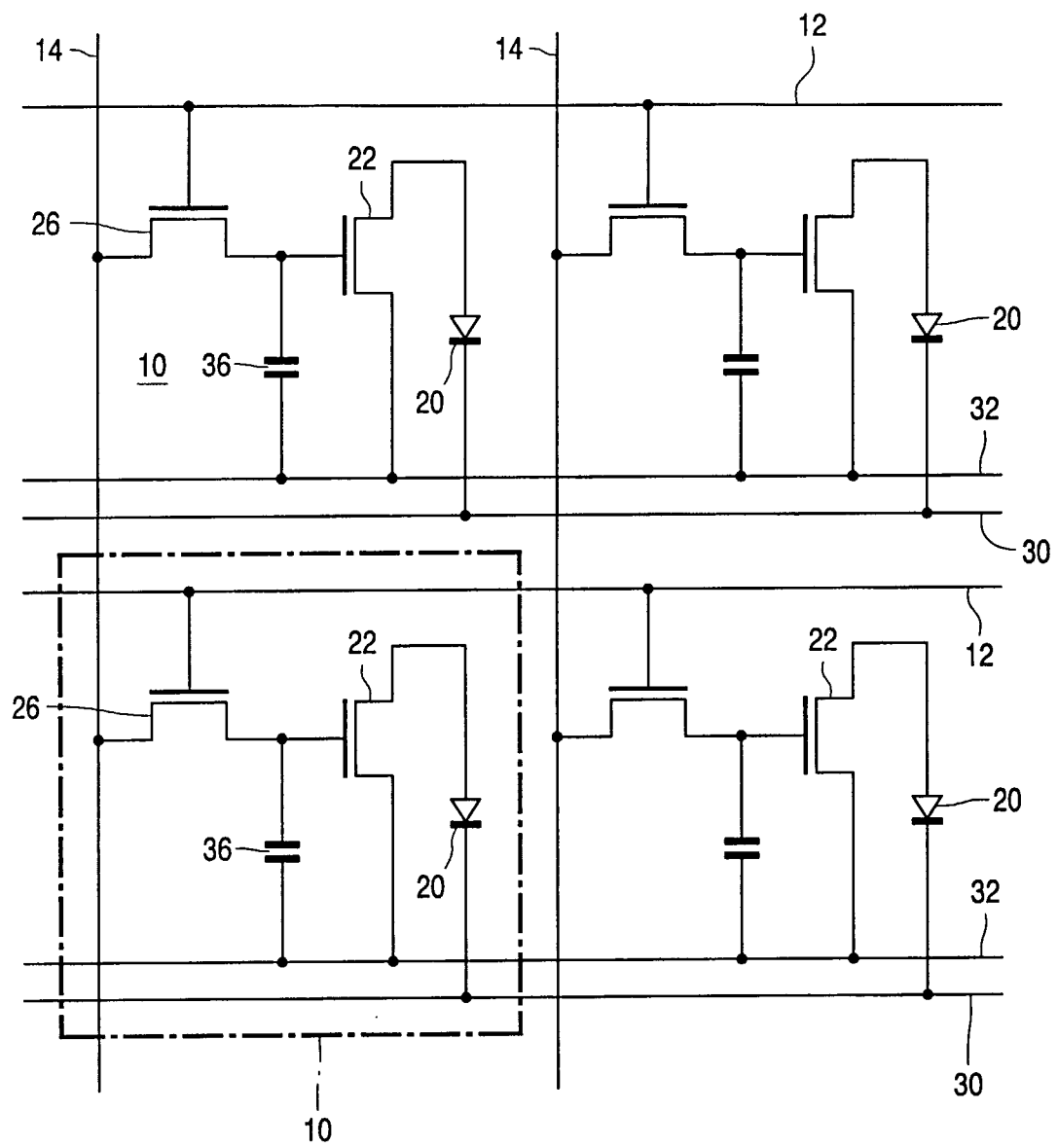


FIG. 2

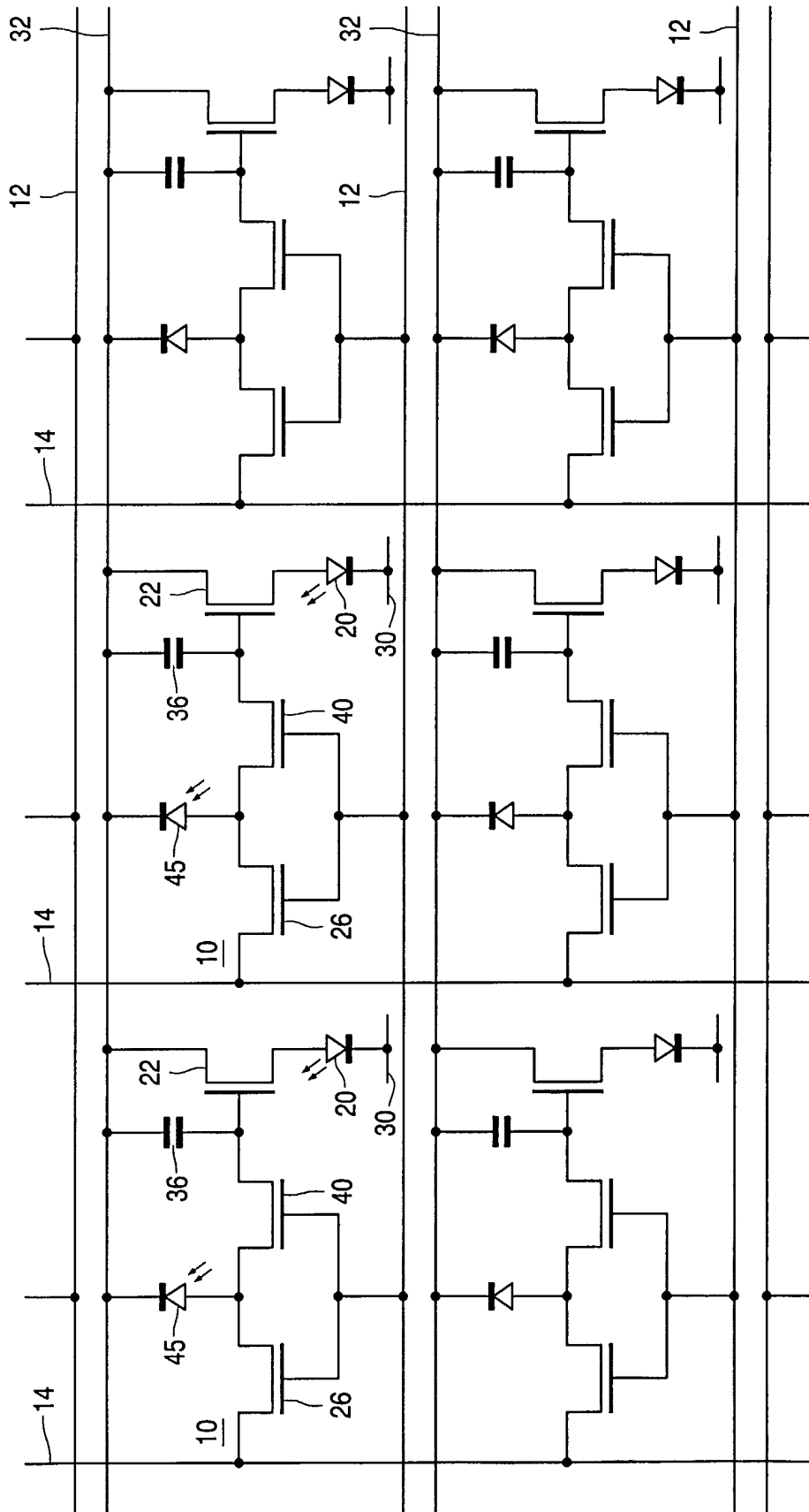


FIG. 3

REFERENCES CITED IN THE DESCRIPTION

This list of references cited by the applicant is for the reader's convenience only. It does not form part of the European patent document. Even though great care has been taken in compiling the references, errors or omissions cannot be excluded and the EPO disclaims all liability in this regard.

Patent documents cited in the description

- EP 0653741 A [0004]
- EP 717446 A0 [0004]
- EP 0923067 A [0006]
- WO 9636959 A [0016]
- EP 0717446 A [0016]
- WO 9965012 A [0027]

| | | | |
|----------------|---|---------|------------|
| 专利名称(译) | 有源矩阵电致发光显示装置 | | |
| 公开(公告)号 | EP1135804A1 | 公开(公告)日 | 2001-09-26 |
| 申请号 | EP2000960385 | 申请日 | 2000-08-02 |
| [标]申请(专利权)人(译) | 皇家飞利浦电子股份有限公司 | | |
| 申请(专利权)人(译) | 皇家飞利浦电子N.V. | | |
| 当前申请(专利权)人(译) | 皇家飞利浦电子N.V. | | |
| [标]发明人 | HUNTER IAIN M | | |
| 发明人 | HUNTER, IAIN, M. | | |
| IPC分类号 | H01L51/50 G09F9/30 G09G3/20 G09G3/30 G09G3/32 H01L27/32 H01L27/00 | | |
| CPC分类号 | G09G3/32 G09G3/3233 G09G2300/0809 G09G2300/0819 G09G2300/0842 G09G2300/088 G09G2320/043 G09G2320/045 G09G2360/148 H01L27/3269 | | |
| 优先权 | 1999019536 1999-08-19 GB | | |
| 其他公开文献 | EP1135804B1 | | |
| 外部链接 | Espacenet | | |

摘要(译)

一种有源矩阵电致发光显示装置，包括显示像素阵列（10），每个显示像素包括电流驱动的电致发光显示元件（20），其连接到驱动装置（22），驱动装置控制在驱动周期中流过显示元件的电流。存储在电容（36）上的电压，由在前一个寻址周期中施加的数据信号确定。为了补偿显示元件中的老化效应，电光器件（45,40）包括在像素中，用于在寻址周期期间根据其显示元件的光输出调节存储在电容上的电压。