



Europäisches Patentamt
European Patent Office
Office européen des brevets



(11) **EP 1 536 473 A1**

(12) **EUROPEAN PATENT APPLICATION**

(43) Date of publication: **01.06.2005 Bulletin 2005/22** (51) Int Cl.⁷: **H01L 27/00**

(21) Application number: **04090474.0**

(22) Date of filing: **29.11.2004**

(84) Designated Contracting States:
**AT BE BG CH CY CZ DE DK EE ES FI FR GB GR
HU IE IS IT LI LU MC NL PL PT RO SE SI SK TR**
Designated Extension States:
AL HR LT LV MK YU

(30) Priority: **29.11.2003 KR 2003086154**

(71) Applicant: **Samsung SDI Co., Ltd.
Suwon-si, Gyeonggi-do (KR)**

(72) Inventors:
• **Kim, Mu-Hyun, c/o Samsung SDI Co., Ltd.
Suwon-si Gyeonggi-do (KR)**
• **Kim, Kyong-Do, c/o Samsung SDI Co., Ltd.
Suwon-si Gyeonggi-do (KR)**

(74) Representative:
**Hengelhaupt, Jürgen, Dipl.-Ing. et al
Anwaltskanzlei
Gulde Hengelhaupt Ziebig & Schneider
Wallstrasse 58/59
10179 Berlin (DE)**

(54) **Organic electroluminescent display device and method for manufacturing the same**

(57) The invention is directed to an improved organic electroluminescent device. In one embodiment, the OLED includes a thin film transistor formed in a non-emission region on an insulating substrate that also includes source and drain electrodes. The OLED further includes a lower electrode formed in an emission region on the insulating substrate and connected to one electrode of the source/drain electrodes through a contact

hole. The OLED yet further includes an organic emission layer formed in the emission region on the lower electrode, and an upper electrode formed on the organic emission layer, wherein the lower electrode has a surface with its corners rounded off. The lower electrode acts as a pixel electrode. Having its surface with corners rounded off prevents short-induced defects.

EP 1 536 473 A1

Description

CROSS-REFERENCE TO RELATED APPLICATION

[0001] This application claims priority of Korean Patent Application No. 2003-86154, filed November 29, 2003, which is hereby incorporated by reference.

BACKGROUND OF THE INVENTION

1. Field of the Invention

[0002] The present invention relates to an organic electroluminescent display device and method for manufacturing the same. More particularly, the invention is directed to an organic electroluminescent display device and method for fabricating the same, in which corners of a lower (pixel) electrode are rounded off, thereby preventing contamination caused by outgassing and short-induced defects.

2. Description of the Related Art

[0003] With the development of active matrix organic light emitting devices (AMOLED) into flat panel display devices using organic electroluminescence devices (OLEDs) and with application of AMOLEDs to mobile phones, great reduction in thickness, size and fabricating cost have been achieved.

[0004] FIG. 1A shows a planar structure of a conventional AMOLED having two transistors and a capacitor. FIG. 1B is a cross-sectional view taken along the line I-I of FIG. 1A.

[0005] Referring to FIG. 1B, the conventional AMOLED includes an emission region 110 and a non emission region 130. In the emission region 110, a lower electrode 131 (e.g., a pixel electrode), an organic emission layer 132 and an upper electrode 133 are formed. In the non-emission region 130 two thin film transistors (TFTs) and a capacitor are formed.

[0006] A buffer layer 140 is formed on a transparent insulating substrate 100 such as a glass substrate, and an amorphous silicon layer is deposited on the buffer layer to form a semiconductor layer 111. The semiconductor layer 111 is formed by performing a crystallization process after patterning the deposited amorphous silicon layer. Then, a gate insulating layer 150 is formed on the entire surface of the substrate. Thereafter, a metallic material for a gate electrode is deposited and patterned on the gate insulating layer 150 to form a gate 112 on the semiconductor layer 111. Additionally, a capacitor lower electrode 122 is simultaneously formed at this time. Upon formation of the gate 112 and the capacitor lower electrode 122, a gate line 102 of FIG. 1A is also formed.

[0007] Thereafter, source/drain regions 113 and 114 are formed by ion implantation of, for example, P or N type impurities, into the semiconductor layer 111.

[0008] Next, an interlayer insulating layer 160 is formed on the entire surface of the substrate. Then the interlayer insulating layer 160 and the gate insulating layer 150 are etched to expose portions of the source/drain regions 113 and 114, thereby forming contact holes 161 and 162 for source/drain electrodes.

[0009] Then, after a metallic material for the source/drain electrodes is deposited on the interlayer insulating layer 160, the source/drain electrodes 115 and 116 are formed to contact with the source/drain regions 113 and 114 through the contact holes 161 and 162. Then a capacitor upper electrode 126 is formed which extends from any one electrode, for example, the source electrode 115, of the source/drain electrodes 115 and 116; at the same time, a data line 104 and a power line 106 of FIG. 1A are also formed.

[0010] Thereafter, a passivation layer 170 is formed on the interlayer insulating layer 160. The passivation layer 170 is etched as to expose a portion of the other electrode, for example, the drain electrode 116, of the source/drain electrodes 115 and 116, thus forming a contact hole 171 for a pixel electrode.

[0011] Then, a transparent conductive layer is deposited on the passivation layer 170 and is patterned to form the lower electrode 131 contacting with the source electrode 115 through the contact hole 171 for pixel electrode in the emission region 130.

[0012] After an insulating layer 180 is formed on the passivation layer 170, an opening 181 is formed to expose the lower electrode 131. An organic emission layer 132 is formed on a planarization layer 180 including the opening 181, and an upper electrode 133 is formed thereon.

[0013] In the conventional OLED, although the insulating layer 180 is similar to a pixel definition layer (PDL) defining the emission region, the PDL is commonly formed of an organic layer. However, a problem arises in that the organic emission layer 132 becomes contaminated due to outgassing. To address this problem, an organic light emitting display device may be formed without such pixel definition layer. However, another problem often experienced in conventional OLEDs formed without pixel definition layers is short-induced defects that generate a dark spot in their corresponding pixels.

[0014] For example, FIG. 2A shows an embodiment of the planar structure of an organic light emitting display device without a pixel definition layer, and FIG. 2B is a cross-sectional view taken along the line II-II of FIG. 2A.

[0015] A method for manufacturing the organic light emitting display device without such pixel definition layer is now explained with reference to FIGS. 2A and 2B.

[0016] Referring to FIGS. 2A and 2B, a thin film transistor and a capacitor are formed on a non emission region 220 in the same manner and structure as illustrated in FIGS. 1A and 1B. Then, a lower electrode 261 is formed by depositing a transparent conductive layer in the emission region on the entire surface of a substrate

so as to contact source/drain electrodes formed in the non-emission region through a contact hole 255b for pixel electrode and patterning the same.

[0017] Now, steps for forming the lower electrode 261 are illustrated through FIGS. 2C to 2E. FIG. 2C is a perspective view showing the steps for forming the lower electrode 261, FIG. 2D is a plan view of the lower electrode 261, and FIG. 2E is a cross-sectional view taken along the line III-III of FIG. 2D.

[0018] Referring to FIGS. 2C to 2E, comers of upper and lower portions of the lower electrode 261 are formed in an angle shape. As shown in FIG. 2E, a length L2 of the lower portion of the lower electrode 261 is formed longer than a length L1 of the upper portion of the lower electrode 261. That is, the lower electrode 261 has a side slanted at a tapered angle.

[0019] An organic emission layer 262 is formed on the lower electrode 261. Then an upper electrode 263 made a metallic material is formed on the organic emission layer.

[0020] Upon the formation of the organic emission layer 262 on the lower electrode 261, a step is formed. However, in use, a short-induced defect may be generated due to an open edge phenomenon. Thus, in the case where the upper and lower portions of the transparent conductive layer are angled, the organic emission layer 262 often deteriorates at its comer portion to expose the lower electrode 261.

[0021] To address this problem, embodiments of the invention provide a lower pixel electrode having rounded comers.

[0022] Illustratively, FIG. 2F shows an enlarged view of an emission region upon the generation of a short-induced defect.

SUMMARY OF THE INVENTION

[0023] The present invention is directed to an improved organic electroluminescent display device that has no pixel definition layer. Embodiments of the present invention also provide a method for fabricating the same, which prevents outgassing and short-induced defects by forming a lower (e.g. pixel) electrode having comers that are rounded off.

[0024] In one embodiment, an organic electroluminescent display device includes a thin film transistor formed in a non-emission region on an insulating substrate, which includes source/drain electrodes. The OLED further includes a lower electrode formed in an emission region on the insulating substrate and connected to one electrode of the source/drain electrodes through a contact hole. It also includes an organic emission layer formed in the emission region on the lower electrode, and an upper electrode formed on the organic emission layer, wherein the lower electrode has a surface with its comers rounded off.

[0025] In one embodiment, the lower electrode has an upper surface having a center of radius of curvature is

at its comers so that the radius of curvature is zero. The lower surface of the lower electrode has a center of radius of curvature at a point on the same axis as an axis perpendicular to a plane on which the center of radius of curvature of the upper surface is positioned so that the radius of curvature is larger than zero. In this manner, curvature is formed at all four comers of the upper and lower surfaces, respectively. In one embodiment, the upper electrode is a cathode electrode and the lower electrode is an anode electrode.

[0026] Another aspect of the present invention provides a method for manufacturing an organic electroluminescent display device. A thin film transistor having source/drain electrodes is formed in a non-emission region on an insulating substrate. A lower electrode is formed in an emission region on the insulating substrate and connected to one electrode of the source/drain electrodes through a contact hole. An organic emission layer is formed in the emission region on the lower electrode.

An upper electrode is formed on the organic emission layer, wherein the comers of the lower electrode are rounded off.

[0027] The lower electrode has an upper surface whose surface has a rectangular shape in which the center of the radius of curvature is at its comers so that the radius of curvature is zero. The lower electrode also has a lower surface in which the center of the radius of curvature is at a point on the same axis as the center of the radius of curvature of the upper surface so that the radius of curvature of the lower surface is larger than zero, wherein curvature is formed at all four comers of the upper and lower surfaces, respectively.

[0028] The lower electrode has an upper surface whose surface is formed rounded and having the center of the radius of curvature at any point thereon, and a lower surface in which the center of the radius of curvature is at a point on the same axis as the center of the radius of curvature of the upper surface so that the radius of curvature of the lower surface is larger than that of the upper surface, wherein curvature is formed at all four comers of the upper and lower surfaces, respectively.

BRIEF DESCRIPTION OF THE DRAWINGS

[0029] FIG. 1A shows a planar structure of a conventional AMOLED;

[0030] FIG. 1B is a cross-sectional view taken along the line I-I of FIG. 1A;

[0031] FIG. 2A shows a planar structure of another conventional organic electroluminescent display device;

[0032] FIG. 2B is a cross-sectional view taken along the line II-II of FIG. 2A;

[0033] FIG. 2C is a perspective view showing steps for forming the lower electrode of FIG. 2A;

[0034] FIG. 2D is a plan view of the lower electrode of FIG. 2C;

[0035] FIG. 2E is a cross-sectional view taken along the line III-III of FIG. 2D;

[0036] FIG. 2F is an enlarged photograph of the emission region upon generation of the short-induced defect;

[0037] FIG. 3A shows a planar structure of an organic electroluminescent display device according to a first embodiment of the present invention;

[0038] FIG. 3B is a cross-sectional view taken along the line IV-IV of FIG. 3A;

[0039] FIG. 3C is a perspective view showing steps for forming the lower electrode of FIG. 3A;

[0040] FIG. 3D is a plan view of the lower electrode of FIG. 3C;

[0041] FIG. 3E is a cross-sectional view taken along the line V-V of FIG. 3D;

[0042] FIG. 4A shows a planar structure of an organic electroluminescent display device according to a second embodiment of the present invention;

[0043] FIG. 4B is a perspective view showing steps for forming the lower electrode of FIG. 4A;

[0044] FIG. 4C is a plan view of the lower electrode of FIG. 4A; and

[0045] FIG. 4D is a cross-sectional view taken along the line VII-VII of FIG. 4C.

DETAILED DESCRIPTION OF THE INVENTION

[0046] The present invention will now be described more fully hereinafter with reference to the accompanying drawings, in which preferred embodiments of the invention are shown. This invention may, however, be embodied in different forms and should not be construed as limited to the embodiments set forth herein. Rather, these embodiments are provided so that this disclosure will be thorough and complete, and will fully convey the scope of the invention to those skilled in the art. Like numbers refer to like elements throughout the specification.

[0047] FIG. 3A shows a planar structure of an active matrix organic electroluminescent display device (AMOLED) according to a first embodiment of the present invention. The AMOLED of FIG. 3A illustrates a device consisting of two transistors and a capacitor.

[0048] FIG. 3B shows a cross-sectional view taken along the line IV-IV of FIG. 3A.

[0049] Referring to FIG. 3B, in an AMOLED formed according to one embodiment of the present invention, a buffer layer 340 is formed on a transparent insulating substrate 300, such as a glass substrate. The substrate includes a non-emission region 310 and an emission region 330. Then, an amorphous silicon layer is deposited on the buffer layer 340 to form a semiconductor layer 311. The semiconductor layer 311 is formed by performing a crystallization process after patterning the amorphous silicon layer. Then, a gate insulating layer 350 is formed on the entire surface of the substrate, and a metallic material for a gate electrode is deposited and patterned on the gate insulating layer 350 to form a gate

312 over the semiconductor layer 311. A capacitor lower electrode 322 is simultaneously formed at this time. Now, upon the formation of the gate 312 and the capacitor lower electrode 322, a gate line 302 of FIG. 3A is also formed.

[0050] Thereafter, source/drain regions 313 and 314 are formed by ion implantation of, for example, P or N type impurities, into the semiconductor layer 311.

[0051] Next, an interlayer insulating layer 360 is formed on the entire surface of the substrate, and the interlayer insulating layer 360 and the gate insulating layer 350 are etched to expose a portion of the source/drain regions 313 and 314. Thereby, contact holes 361 and 362 for source/drain electrodes are formed.

[0052] Then, after a metallic material for the source/drain electrodes is deposited on the interlayer insulating layer 360, the source/drain electrodes 315 and 316 are formed to contact with the source/drain regions 313 and 314 through the contact holes 361 and 362. Here, a capacitor upper electrode 326 is formed which extends from any one electrode, for example, the drain electrode 316, of the source/drain electrodes 315 and 316. At the same time, a data line 304 and a power line 306 of FIG. 3A are also formed.

[0053] Thereafter, a passivation layer 370 is formed on the interlayer insulating layer 360. The passivation layer 370 is etched to expose a portion of the other electrode, for example, the drain electrode 316, of the source/drain electrodes 315 and 316, thus forming a contact hole 371 for a pixel electrode.

[0054] Then, a transparent conductive layer is deposited on the passivation layer 370 in an emission region 330, and is patterned to form a lower electrode 331 contacting with the drain electrode 316 through the contact hole 371 for the pixel electrode.

[0055] Now, steps for forming the lower electrode 331 of FIG. 3A are illustrated through FIGS. 3C to 3E.

[0056] FIG. 3C is a perspective view showing a whole shape of the lower electrode 331, FIG. 3D is a plan view of the lower electrode 331, and FIG. 3E is a cross-sectional view taken along the line V-V of FIG. 3D.

[0057] As shown in FIGS. 3C to 3E, it can be understood that the upper surface 331a of the lower electrode 331 has a rectangular shape, and a lower surface 331b of the lower electrode 331 has rounded corners, so that the lower electrode 331 is tapered.

[0058] This can be expressed as following equation.

$$\ell_{31} = 0, \ell_{32} > 0$$

[0059] Here, ℓ_{31} is the radius of curvature of the upper surface 331a, and ℓ_{32} is the radius of curvature of the lower surface 331b. The lower electrode 331 has the upper surface 331a in which the center of the radius of curvature ℓ_{31} is at its corners so that the radius of curvature is zero. Meanwhile, the center of the radius of curvature ℓ_{32} of the lower surface 331b is located at a

point on the same axis as an axis perpendicular to a plane on which the center of the radius of curvature of the upper surface 331a is positioned so that the radius of curvature ℓ_{32} is larger than zero. Thus, upper surface 331a has four angled comers and the lower surface 331b has four rounded comers. Accordingly, since the four comers of the lower electrode 331 are not angled, an open edge defect due to cut-off of the organic emission layer 332 can be prevented even after the organic emission layer 332 is deposited.

[0060] Next, an organic emission layer 332 is formed on the passivation layer 370 including the lower electrode 331. Thereafter, an upper electrode 333 made of a metallic material is formed thereon, thereby creating the active matrix organic electroluminescent display device.

[0061] In the embodiment just described, the lower electrode acts as an anode electrode and the upper electrode acts as a cathode electrode.

[0062] FIG. 4A shows a planar structure of an active matrix organic electroluminescent display device (AMOLED) according to a second embodiment of the present invention. The AMOLED of FIG. 4A illustrates a device having two transistors and a capacitor.

[0063] A cross-sectional view taken along the line VI-VI of FIG. 4B illustrates structure similar to that shown in FIG. 3B. Additionally, a method of manufacturing the second embodiment of the present invention will be easily understood by a person skilled in the art with reference to the above description given with regard to the first embodiment. Thus, FIG. 4A need not be described in detail.

[0064] However, the steps of an exemplary method for forming the lower electrode 431 of FIG. 4A are explained with reference to FIGS. 4B to 4D.

[0065] FIG. 4B is a perspective view showing a whole shape of the lower electrode 431, FIG. 4C is a plan view of the lower electrode 431, and FIG. 4D is a cross-sectional view taken along the line VII-VII of FIG. 4C.

[0066] Upon the formation of the lower electrode 431, shown in FIG. 4C, four comers of an inner portion of an upper surface 431a are rounded on a plane, four comers of an outer portion of a lower surface 431b are rounded. As shown in FIG. 4D, the lower electrode is formed to be tapered so that the lower surface 431b is formed wider than upper surface 431a.

[0067] This can be expressed as following equation.

$$\ell_{42} > 0, \ell_{41} > 0$$

[0068] Here, ℓ_{41} is the radius of curvature of the upper surface 431a of the lower electrode 431, and ℓ_{42} is the radius of curvature of the lower surface 431b of the lower electrode 431.

[0069] The lower electrode 431 has the upper surface 431a whose four comers each have curvature and the center of the curvature is positioned on the upper sur-

face 431a. The center of the radius of curvature ℓ_{42} of the lower surface 431b is at a point on the same axis as an axis perpendicular to a plane including the center of the radius of curvature ℓ_{41} of the upper surface 431a, wherein the radius of curvature ℓ_{42} of the lower surface 431b is larger than that of the upper surface 431a., and the four comers of the lower surface 431b are also rounded. Thus, four comers of the upper surface 431a and the lower surface 431b as well of the lower electrode are rounded, so that an open edge defect due to cut-off of the organic emission layer (see 332 of FIG. 3B) is further prevented even after the organic emission layer is deposited.

[0070] The upper electrode (see 333 of FIG. 3B) is formed on the organic emission layer (332 of FIG. 3B) to supply a common power source.

[0071] In this embodiment, the lower electrode 431 is an anode electrode and the upper electrode formed on the organic emission layer is a cathode electrode.

[0072] Although several embodiments of the present invention have been described above, curvature of the lower electrode may also be provided at a side portion so that a shape of the surface of the lower electrode forms an oval or circular shape.

[0073] According to the embodiment of the present invention as described above, in manufacturing an AMOLED having no pixel definition layer, the lower electrode is formed of a transparent metallic material and has the comers of its upper and lower surfaces rounded off, to prevent outgassing and short-induced defects. Such a configuration improves luminosity and increases the life of the organic electroluminescent display device.

[0074] Although preferred embodiments of the present invention have been described for illustrative purposes, those skilled in the art will appreciate that various modifications, additions and substitutions are possible, without departing from the scope and spirit of the invention as disclosed in the accompanying claims.

Claims

1. An organic electroluminescent display device, comprising:

a thin film transistor formed in a non-emission region on an insulating substrate and having source and drain electrodes;

a lower electrode formed in an emission region on the insulating substrate and connected to one electrode of the source and drain electrodes through a contact hole;

an organic emission layer formed in the emission region on the lower electrode; and

an upper electrode formed on the organic emission layer,

wherein the lower electrode has a surface

with its comers rounded off.

2. The organic electroluminescent display device as claimed in claim 1, wherein the lower electrode has an upper surface in which a center of radius of curvature is at its comers so that the radius of curvature is zero, and a lower surface in which the center of radius of curvature is at a point on the same axis as an axis perpendicular to a plane on which the center of radius of curvature of the upper surface is positioned so that the radius of curvature is larger than zero.
3. The organic electroluminescent display device as claimed in claim 2, wherein curvature is formed at all four comers of the upper and lower surfaces, respectively.
4. The organic electroluminescent display device as claimed in claim 1, wherein the lower electrode has an upper surface whose comers have curvature whose center is positioned on the upper surface, and a lower surface in which the center of the radius of curvature is at a point on the same axis as an axis perpendicular to a plane including the center of the radius of curvature of the upper surface, wherein the radius of curvature of the lower surface is larger than that of the upper surface.
5. The organic electroluminescent display device as claimed in claim 4, wherein curvature is formed at all four comers of the upper and lower surfaces, respectively.
6. The organic electroluminescent display device as claimed in claim 1, wherein the upper electrode acts as a cathode electrode and the lower electrode acts as an anode electrode.
7. A method for manufacturing an organic electroluminescent display device, the method comprising the steps of:
 - forming a thin film transistor having source/drain electrodes in a non-emission region on an insulating substrate;
 - forming a lower electrode in an emission region on the insulating substrate to be connected to one electrode of the source/drain electrodes through a contact hole;
 - forming an organic emission layer in the emission region on the lower electrode; and
 - forming a cathode electrode on the organic emission layer,

wherein the lower electrode have rounded comers.
8. The method as claimed in claim 7, wherein the lower electrode has an upper surface whose surface is formed rectangular in which the center of the radius of curvature is at its comers so that the radius of curvature is zero, and a lower surface in which the center of the radius of curvature is at a point on the same axis as the center of the radius of curvature of the upper surface so that the radius of curvature of the lower surface is larger than zero.
9. The method as claimed in claim 8, wherein curvature is formed at all four comers of the upper and lower surfaces, respectively.
10. The method as claimed in claim 7, wherein the lower electrode has an upper surface whose surface is formed rounded and having the center of the radius of curvature at any point thereon, and a lower surface in which the center of the radius of curvature is at a point on the same axis as the center of the radius of curvature of the upper surface so that the radius of curvature of the lower surface is larger than that of the upper surface.
11. The method as claimed in claim 10, wherein curvature is formed at all four comers of the upper and lower surfaces, respectively.

FIG. 1A

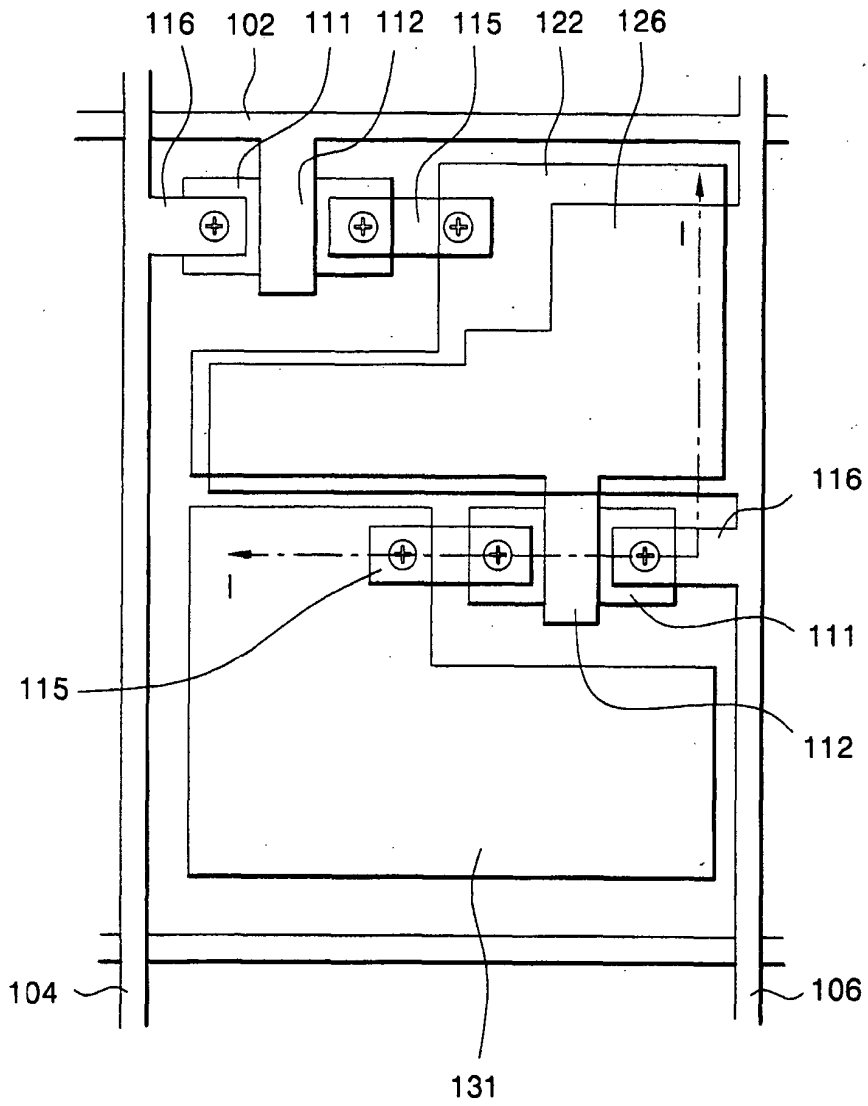


FIG. 2A

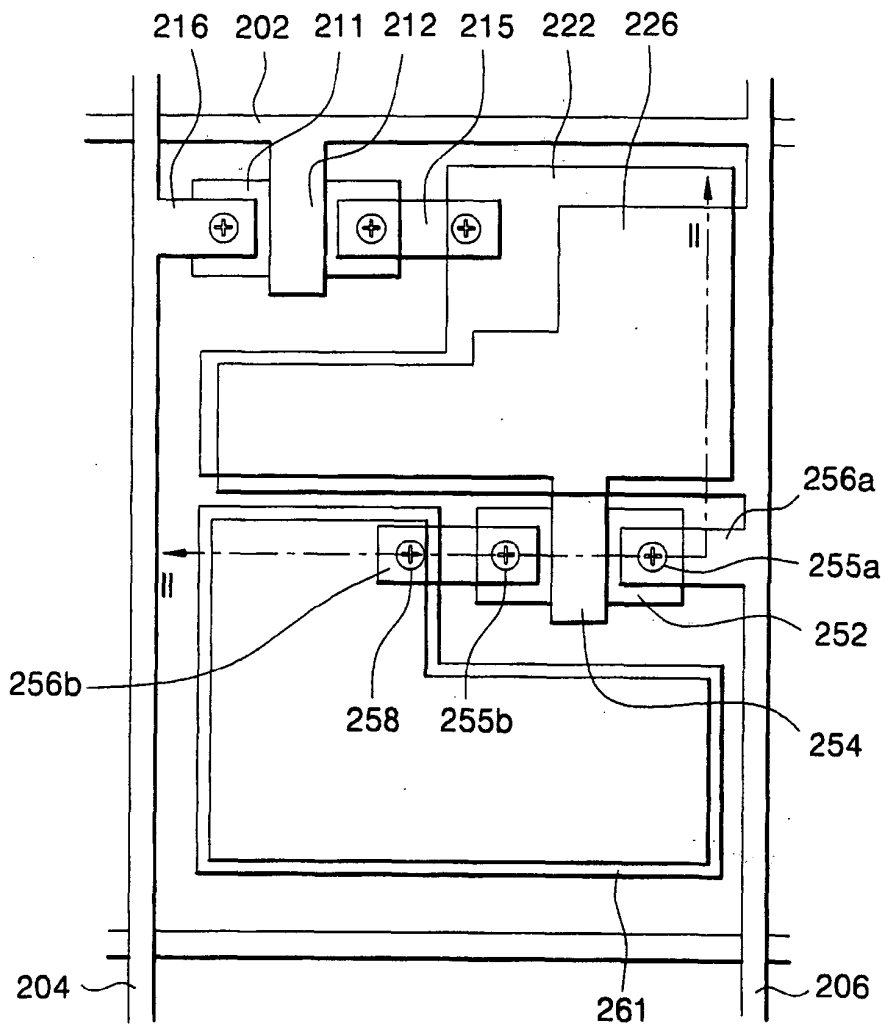


FIG. 2B

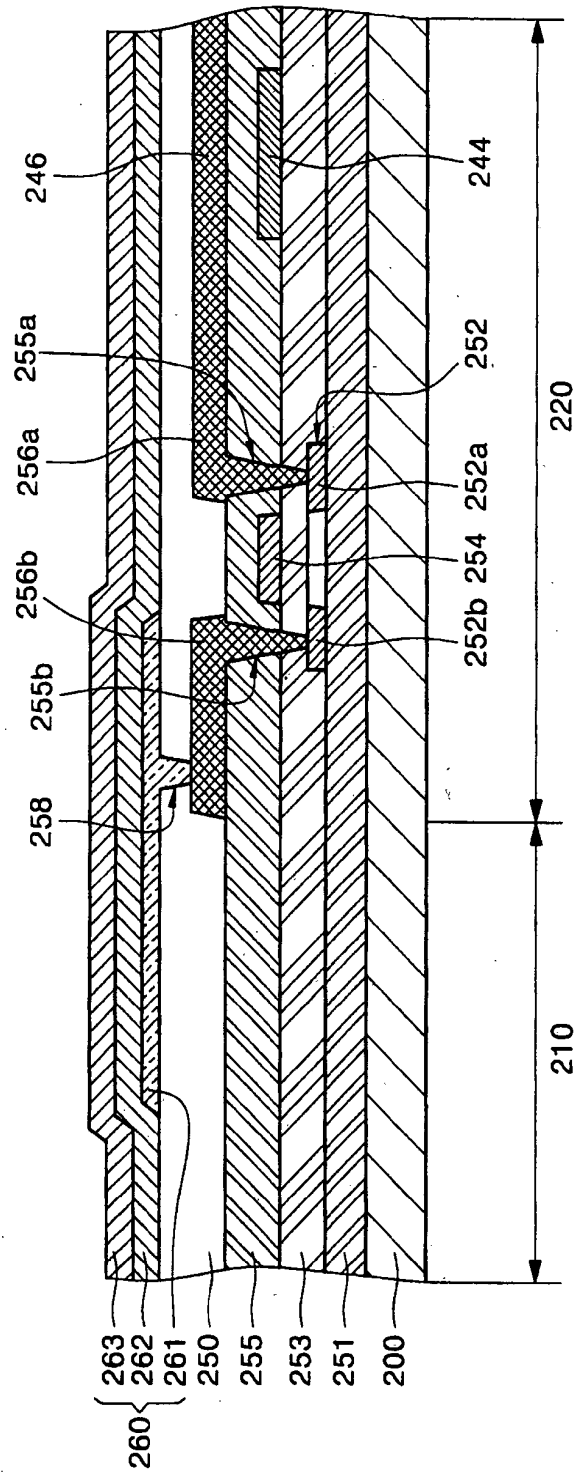


FIG. 2C

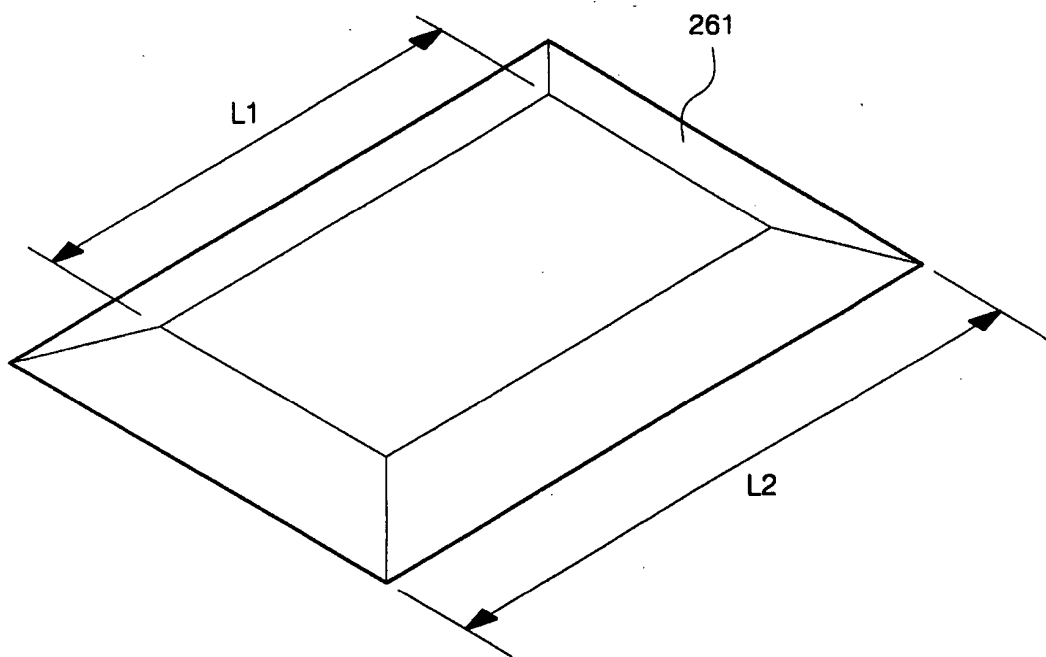


FIG. 2D

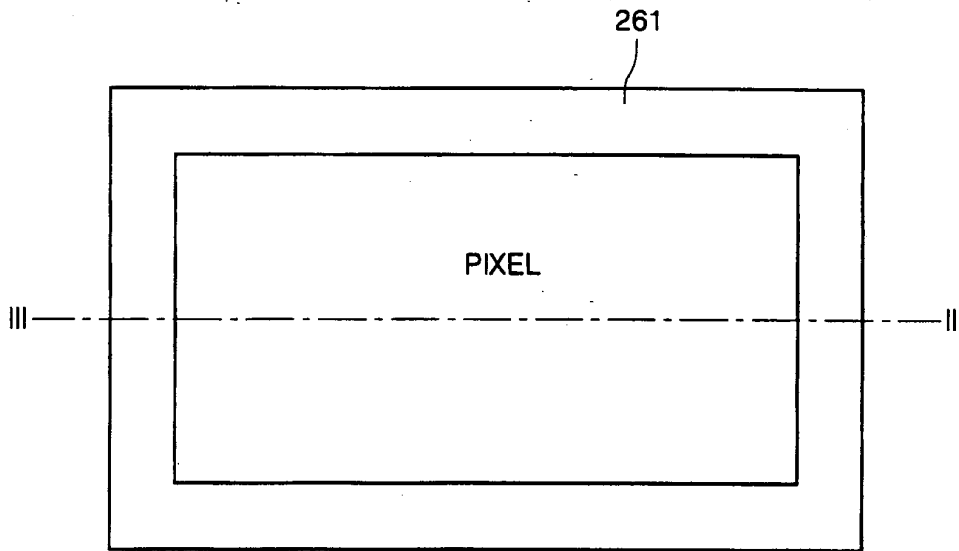


FIG. 2E

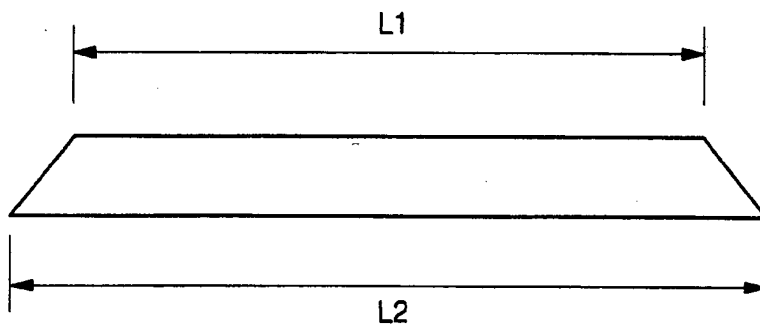


FIG. 2F

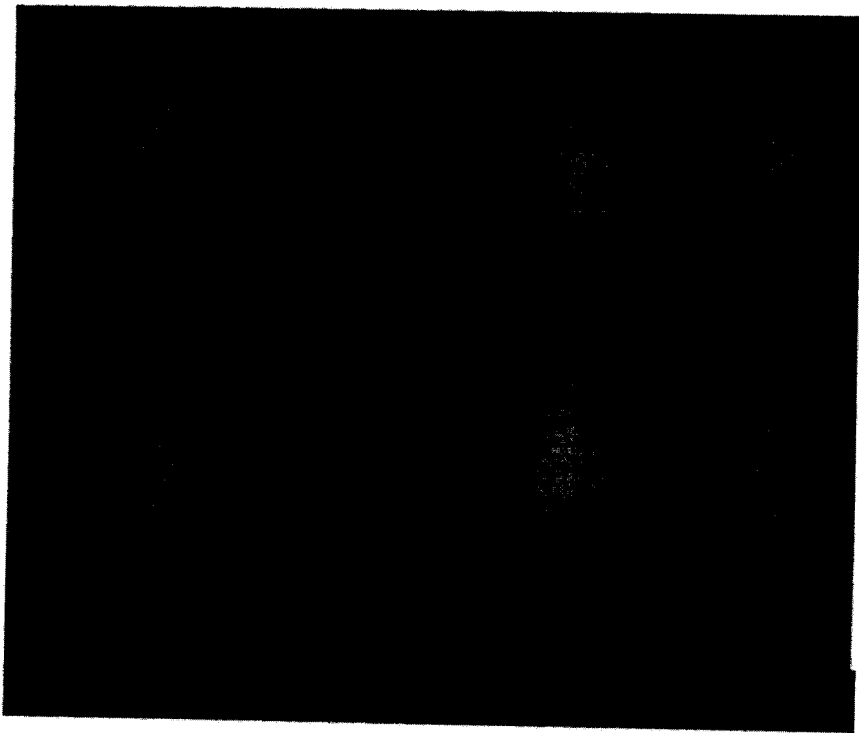


FIG. 3B

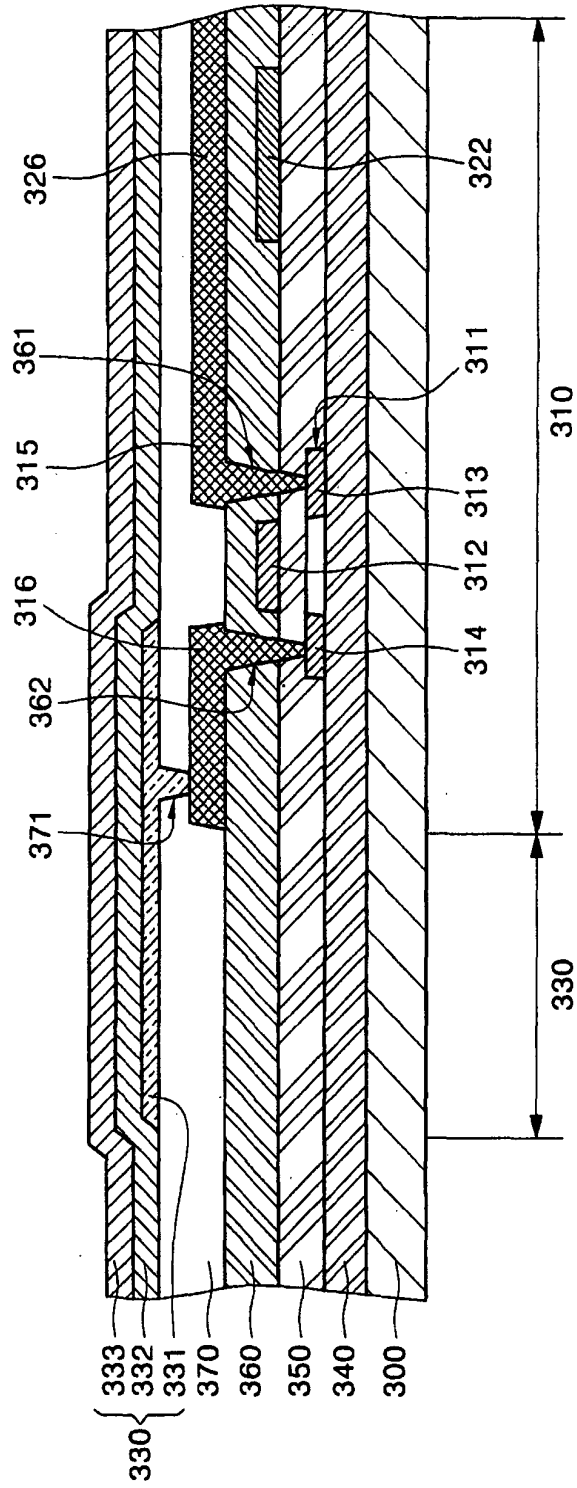


FIG. 3C

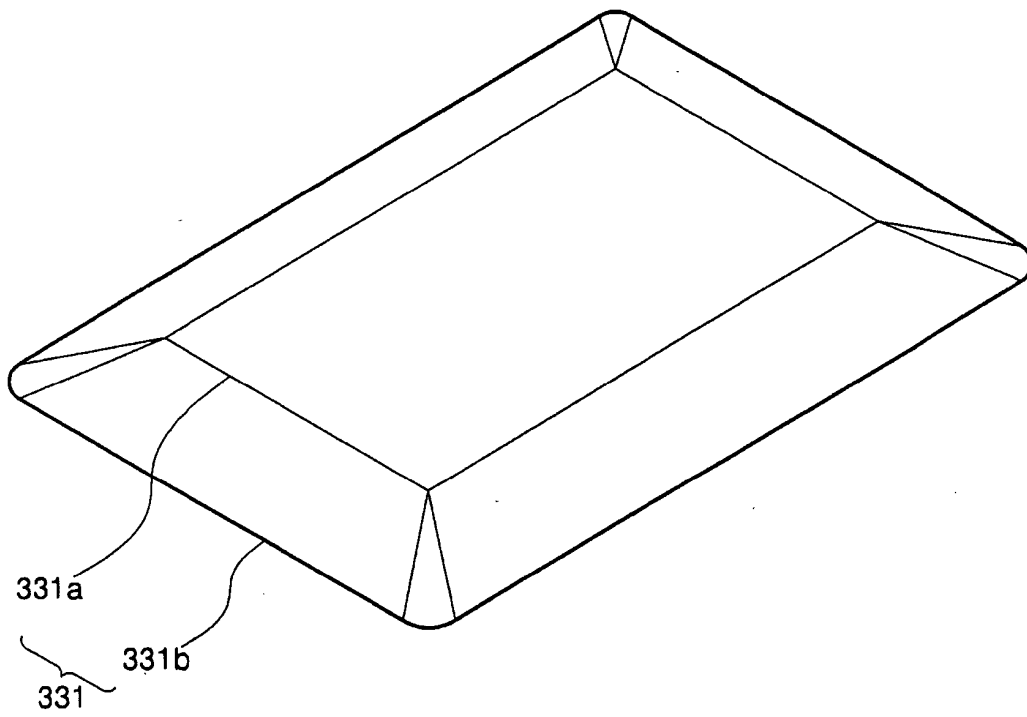


FIG. 3D

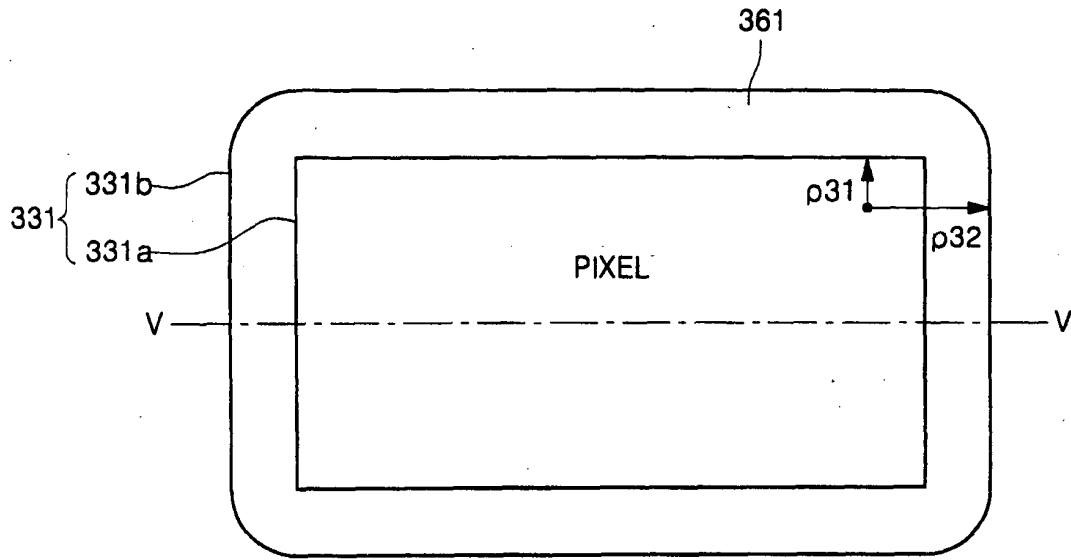


FIG. 3E

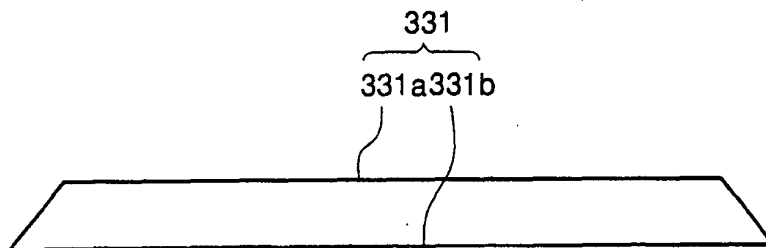


FIG. 4A

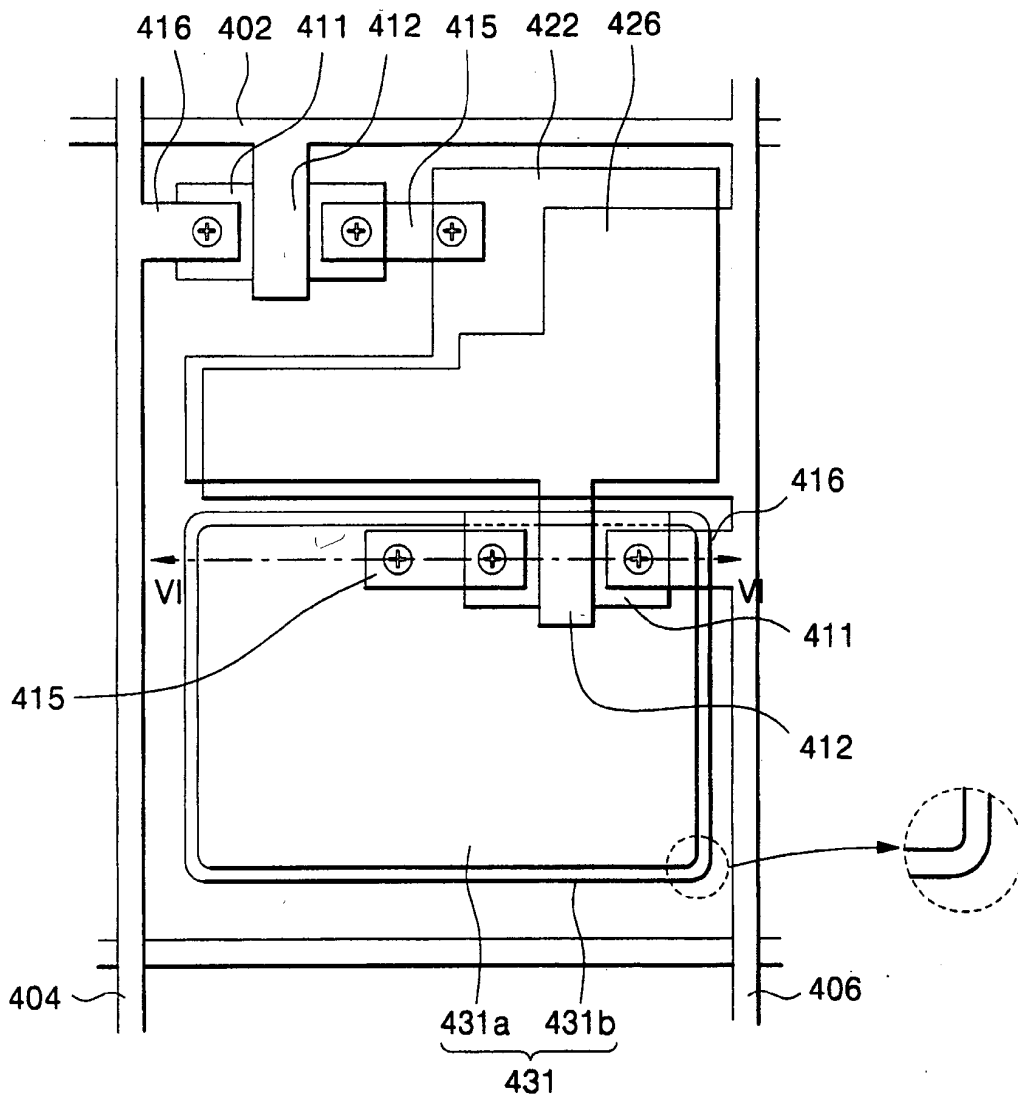


FIG. 4B

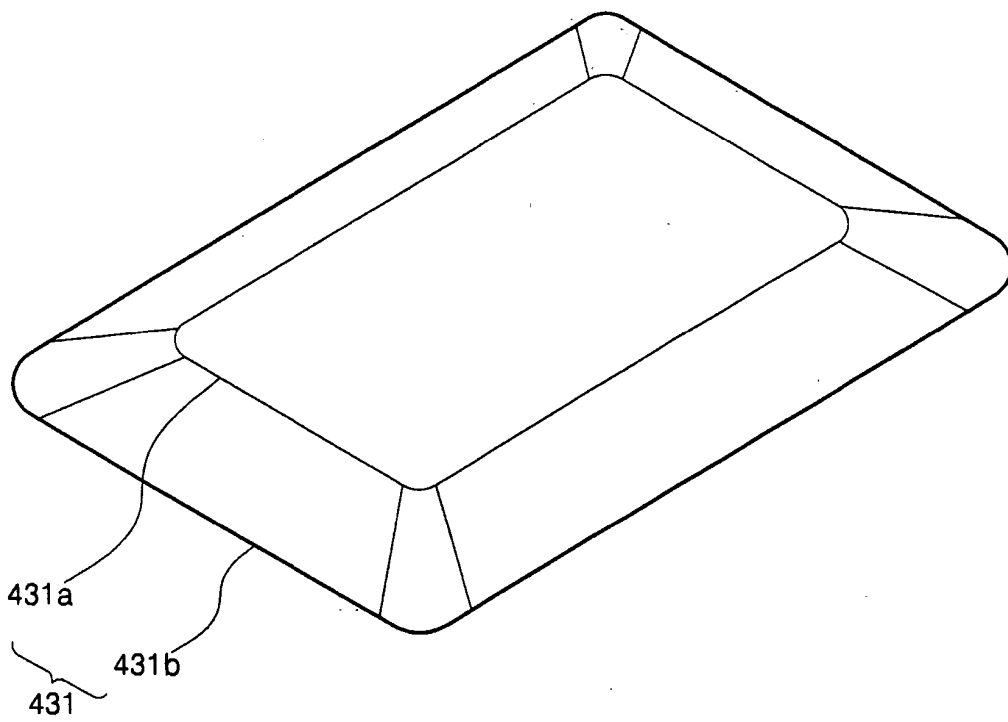


FIG. 4C

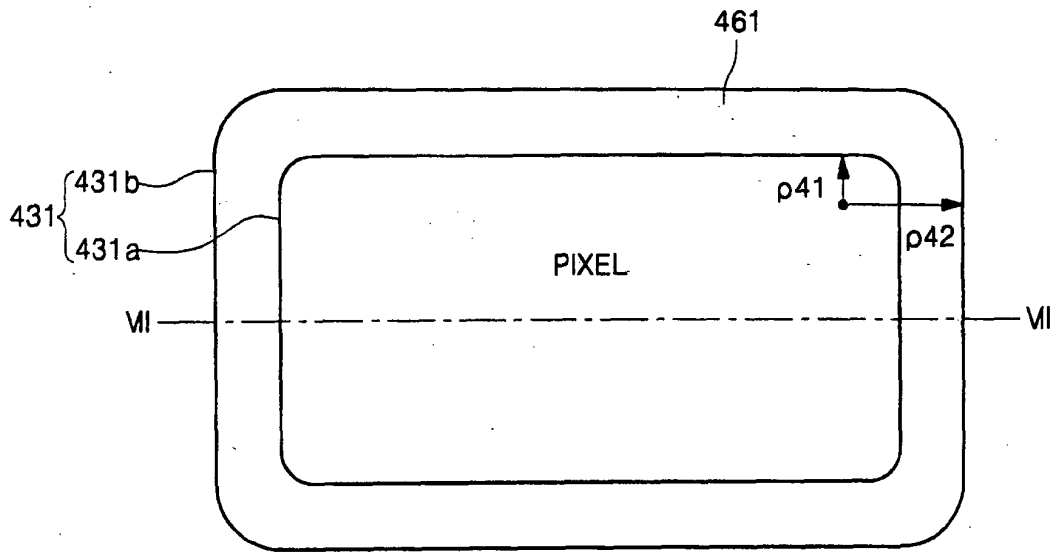
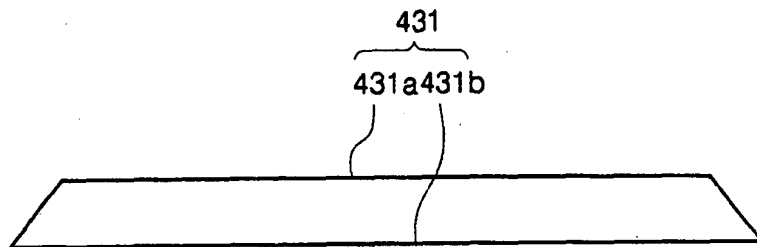


FIG. 4D





DOCUMENTS CONSIDERED TO BE RELEVANT			
Category	Citation of document with indication, where appropriate, of relevant passages	Relevant to claim	CLASSIFICATION OF THE APPLICATION (Int.Cl.7)
X	EP 1 333 497 A (SEIKO EPSON CORPORATION) 6 August 2003 (2003-08-06) * page 4, paragraph 39 * * figure 2 *	1,6,7	H01L27/00
Y	----- EP 0 907 304 A (IDEMITSU KOSAN COMPANY LIMITED) 7 April 1999 (1999-04-07)	1,6,7	
A	* paragraphs [0006], [0020], [0021], [0032] - [0035], [0097], [0098] *	2-5,8-11	
Y	PATENT ABSTRACTS OF JAPAN vol. 015, no. 295 (E-1094), 26 July 1991 (1991-07-26) -& JP 03 105893 A (FUJI ELECTRIC CO LTD), 2 May 1991 (1991-05-02)	1,6,7	
A	* abstract *	2-5,8-11	
A	----- US 2003/203527 A1 (BAE SUNG-JOON ET AL) 30 October 2003 (2003-10-30) * abstract; figures *	1,7	TECHNICAL FIELDS SEARCHED (Int.Cl.7)
A	----- PATENT ABSTRACTS OF JAPAN vol. 2003, no. 05, 12 May 2003 (2003-05-12) -& JP 2003 022035 A (SHARP CORP), 24 January 2003 (2003-01-24) * abstract *	1,7	H01L
The present search report has been drawn up for all claims			
Place of search The Hague		Date of completion of the search 2 February 2005	Examiner De Laere, A
CATEGORY OF CITED DOCUMENTS X : particularly relevant if taken alone Y : particularly relevant if combined with another document of the same category A : technological background O : non-written disclosure P : intermediate document		T : theory or principle underlying the invention E : earlier patent document, but published on, or after the filing date D : document cited in the application L : document cited for other reasons & : member of the same patent family, corresponding document	

1 EPO FORM 1503 03.02 (P04C01)

**ANNEX TO THE EUROPEAN SEARCH REPORT
ON EUROPEAN PATENT APPLICATION NO.**

EP 04 09 0474

This annex lists the patent family members relating to the patent documents cited in the above-mentioned European search report. The members are as contained in the European Patent Office EDP file on
The European Patent Office is in no way liable for these particulars which are merely given for the purpose of information.

02-02-2005

Patent document cited in search report		Publication date	Patent family member(s)	Publication date
EP 1333497	A	06-08-2003	JP 2003316296 A	07-11-2003
			CN 1435804 A	13-08-2003
			EP 1333497 A2	06-08-2003
			JP 2003323138 A	14-11-2003
			US 2003214042 A1	20-11-2003

EP 0907304	A	07-04-1999	DE 69716906 D1	12-12-2002
			DE 69716906 T2	20-03-2003
			EP 0907304 A1	07-04-1999
			JP 3224396 B2	29-10-2001
			US 6280861 B1	28-08-2001
			WO 9746054 A1	04-12-1997

JP 03105893	A	02-05-1991	NONE	

US 2003203527	A1	30-10-2003	KR 2000074991 A	15-12-2000
			US 2003062523 A1	03-04-2003

JP 2003022035	A	24-01-2003	NONE	

EPO FORM P0459

For more details about this annex : see Official Journal of the European Patent Office, No. 12/82

专利名称(译)	有机电致发光显示装置及其制造方法		
公开(公告)号	EP1536473A1	公开(公告)日	2005-06-01
申请号	EP2004090474	申请日	2004-11-29
[标]申请(专利权)人(译)	三星斯笛爱股份有限公司		
申请(专利权)人(译)	三星SDI CO. , LTD.		
当前申请(专利权)人(译)	三星移动显示器有限公司.		
发明人	KIM, MU-HYUN, C/O SAMSUNG SDI CO., LTD. KIM, KYONG-DO, C/O SAMSUNG SDI CO., LTD.		
IPC分类号	H01L27/32 H05B33/26 H01L51/50 H01L51/52 H05B33/10 H01L27/00		
CPC分类号	H01L27/3244 H01L51/5209		
优先权	1020030086154 2003-11-29 KR		
其他公开文献	EP1536473B1		
外部链接	Espacenet		

摘要(译)

本发明涉及一种改进的有机电致发光器件。在一个实施例中，OLED包括在还包括源电极和漏电极的绝缘基板上的非发射区域中形成的薄膜晶体管。OLED还包括形成在绝缘基板上的发射区中并通过接触孔连接到源/漏电极的一个电极的下电极。OLED还包括形成在下电极上的发射区域中的有机发射层和形成在有机发射层上的上电极，其中下电极具有圆角的表面。下电极用作像素电极。使其具有圆角的表面防止短期引起的缺陷。

