

(19)



Europäisches Patentamt

European Patent Office

Office européen des brevets



(11)

EP 1 139 326 B1

(12)

EUROPEAN PATENT SPECIFICATION

(45) Date of publication and mention
of the grant of the patent:

16.03.2005 Bulletin 2005/11

(51) Int Cl.⁷: **G09G 3/32**, G09G 3/30

(21) Application number: **01302926.9**

(22) Date of filing: **28.03.2001**

(54) **Active matrix electroluminescent display device**

Elektrolumineszenzanzeige mit aktiver Matrix

Dispositif d'affichage électroluminescent à matrice active

(84) Designated Contracting States:

DE FI FR GB

(30) Priority: **28.03.2000 JP 2000088213**

(43) Date of publication of application:

04.10.2001 Bulletin 2001/40

(73) Proprietor: **Sanyo Electric Co., Ltd.**

Moriguchi-shi, Osaka (JP)

(72) Inventor: **Komiya, Naoaki**

Ogaki-shi, Gifu (JP)

(74) Representative:

Cross, Rupert Edward Blount et al

BOULT WADE TENNANT,

Verulam Gardens

70 Gray's Inn Road

London WC1X 8BT (GB)

(56) References cited:

WO-A-99/65012

US-A- 5 952 789

US-A- 6 011 529

US-A- 6 034 659

- **BECK D R ET AL: "P-37: AMEL POWER CONSIDERATIONS" 1997 SID INTERNATIONAL SYMPOSIUM DIGEST OF TECHNICAL PAPERS. BOSTON, MAY 13 - 15, 1997, SID INTERNATIONAL SYMPOSIUM DIGEST OF TECHNICAL PAPERS, SANTA ANA, SID, US, vol. 28, 13 May 1997 (1997-05-13), pages 615-618, XP000722774 ISSN: 0097-966X**

Note: Within nine months from the publication of the mention of the grant of the European patent, any person may give notice to the European Patent Office of opposition to the European patent granted. Notice of opposition shall be filed in a written reasoned statement. It shall not be deemed to have been filed until the opposition fee has been paid. (Art. 99(1) European Patent Convention).

EP 1 139 326 B1

Description

BACKGROUND OF THE INVENTION

1. Field of the Invention

[0001] The present invention relates to a display device comprising a thin film transistor (hereinafter referred to as a "TFT") for controlling a current to be supplied to a light emissive element.

2. Description of the Related Arts

[0002] In recent years, electroluminescence (hereinafter referred to as "EL") display devices using an EL element have been attracting attention as possible replacements for CRTs and LCDs.

[0003] In addition, an EL display device provided with a thin film transistor functioning as a switching element for driving the EL element has been researched and developed.

[0004] Fig. 1 is an equivalent circuit diagram of an EL display device according to a related art.

[0005] Referring to Fig. 1, an EL display panel includes, on an insulating substrate 10, a plurality of scan signal lines 81 connected to a vertical driver 80 for supplying a scan signal, and a plurality of data lines 91 receiving a data signal Sig on a data input line 92 when sampling transistors SP1, ..., SPk, SPk+1, ..., SPn are turned on in accordance with the timing of a sampling pulse output from a horizontal driver 90 for supplying the data signal. Near each intersection between these lines 81 and 91, a switching TFT 30 connected to these lines 81 and 91, an element driving TFT 40 connected to the switching TFT 30, and an organic EL element 60 for emitting light by receiving a current from an element driving power source line 100 in accordance with a voltage applied to a gate of the element driving TFT 40 are disposed.

[0006] A storage capacitor 70 is provided between the TFTs 30 and 40, having one electrode 71 connected to a source 11s of the TFT 30, and the other electrode 72 receiving a potential common to all display pixels 200.

[0007] The horizontal driver 90 receives a timing signal and the like, such as a horizontal start pulse STH, while the vertical driver 80 receives a timing signal and the like, such as a vertical start pulse.

[0008] The drivers 80 and 90 also receive driving voltages Vvdd and Hvdd, respectively, for driving these drivers. Each of the driving voltages Hvdd and Vvdd drives a shift register forming one of the drivers.

[0009] The sampling pulses are sequentially output from the horizontal driver 90 based on the start signal, and the sampling transistors SP are turned on in response to the sampling pulse, whereby a data signal Vdata1 on the data input line 92 is supplied to the data signal line 91. A gate signal is applied from the gate signal line 81 to a gate 13 of the first TFT 30, thereby turning

on the first TFT 30. As a result, a drain signal is supplied to a source 11s of the TFT 30, and a voltage Vdata2 obtained at this point in time is applied to a gate 43 of the second TFT 40, thereby turning on the second TFT 40 and causing a current to flow from the element driving power source line 100 to the EL element 60 in accordance with a gate voltage Vdata2, such that light is emitted from the EL element 60.

[0010] A power source circuit 300 for generating the driving voltages Vvdd and Hvdd for driving the drivers 80 and 90, and an element driving power source Pvdd shown in Fig. 1 will next be described.

[0011] Fig. 2 is a block diagram of the power source circuit according to a related art.

[0012] Referring to Fig. 2, the power source circuit 300 includes a driver driving voltage generation circuit 320 for generating the driving voltages Hvdd and Vvdd for driving the drivers 80 and 90, and an element driving voltage generation circuit 330 for generating the element driving voltage Pvdd. The driving voltage generation circuits 320 and 330 are each formed by a DC/DC converter for converting a voltage of a power source 310, say, converting a voltage of 15V to a voltage of 12V.

[0013] The voltages of the driving voltage generation circuits 320 and 330 are provided to the drivers 80 and 90 and the element driving power source line 100.

[0014] In conventional EL display devices, however, when the display device is turned off after use, within the power source circuit 300, the flow of power is only suspended to the power source 310 and the circuits 320 and 330. When the voltage Vdata2 applied to the gate of the second TFT 40 falls before the element driving voltage Pvdd, a large amount of current may instantly flow to the EL element 60 from the power source line 100, even though control by the second TFT 40 is not possible. When this occurs, degradation of an emissive layer 66 of the organic EL element 60 may result.

[0015] WO-A-9965012 discloses an electroluminescent display device having vertical and horizontal drivers for supplying scan and data signals respectively to intersecting gate signal lines and data signal lines. A switching element is connected at each intersection between the signal lines. An emissive element is connected to each switching element and derives power from a power source line.

SUMMARY OF THE INVENTION

[0016] The present invention has been conceived in view of the above-described problems, and an object thereof is to provide a display device capable of preventing degradation of an emissive layer as would otherwise be caused by excessive and instantaneous emission of light from an EL element when the display device is turned off.

[0017] According to the present invention, a display device comprises a display panel having a vertical driver for supplying a scan signal to a plurality of gate signal

lines; a horizontal driver for supplying a data signal to a plurality of data signal lines crossing said plurality of gate signal lines; a switching element connected to the gate signal line and said data signal line at an intersection between these signal lines; an emissive element connected to said switching element; and an element driving power source line for supplying electric power to said emissive element; characterized in that the display device further comprises a sequential circuit for stopping supply of electric power to said element driving power source line before stopping supply of electric power for driving said vertical and horizontal drivers.

[0018] Preferably, the switching element is composed of first and second thin film transistors, the first thin film transistor has a first region of an active layer connected to said data signal line, a gate connected to said gate signal line, and a second region of the active layer connected to a gate of the second thin film transistor, and the second thin film transistor has a first region of an active layer connected to said element driving power source line, and a second region of the active layer connected to one electrode of said emissive element.

[0019] Preferably also, the sequence circuit includes first and second transistors; first and second resistors; and a third resistor connecting said first and second transistors, said first transistor has an emitter connected to said first resistor which is connected to an element driving power source generation circuit which supplies electric power to said element driving power source line, a base connected to a power source, and a collector connected to ground, and said second transistor has an emitter connected to said second resistor which is connected to a driver driving power source generation circuit which supplies electric power for driving said vertical and horizontal drivers, a base connected to said third resistor, which is connected to the emitter of said first transistor, and to the other electrode of a capacitor whose one electrode is connected to ground, and a collector connected to ground.

[0020] The emissive element is preferably an electroluminescence element.

[0021] With the present invention, a display device capable of preventing degradation of an emissive element which would otherwise be caused by a large amount of current instantly flowing to the emissive element when the display device is turned off can be provided.

BRIEF DESCRIPTION OF THE DRAWINGS

[0022]

Fig. 1 is a circuit diagram of an EL display device.

Fig. 2 illustrates a configuration of a power source circuit of a display device according to a related art.

Fig. 3 is a diagram of a driving circuit of a display device embodying the present invention.

Fig. 4 schematically illustrates a planar structure of a display pixel portion of an EL display device em-

bodiment the present invention.

Fig. 5A is a cross-sectional view of the EL display device taken along the line A-A in Fig. 4.

Fig. 5B is a cross-sectional view of the EL display device taken along the line B-B in Fig. 4.

DESCRIPTION OF THE PREFERRED EMBODIMENTS

[0023] A display device embodying the present invention will next be described.

[0024] Fig. 3 illustrates a configuration of a power source circuit of the display device.

[0025] Referring to Fig. 3, a power source circuit 300 includes a driver driving voltage generation circuit 322 connected to a power source 310 and generating a voltage for driving a vertical driver 80 and a horizontal driver 90, an element driving voltage generation circuit 332 connected to the power source 310 and driving an emissive element, and a sequential circuit 350.

[0026] The sequential circuit 350 includes first and second transistors Q1 and Q2, resistors R1, R2, and R3, and a capacitor C1. The first and second transistors Q1 and Q2 are, in this example, both PNP transistors.

[0027] The first transistor Q1 has an emitter connected to the first resistor R1 which is connected to the element driving power source generation circuit 332, a base connected to the power source 310, and a collector connected to ground.

[0028] The second transistor Q2 has an emitter connected to the second resistor R2 which is connected to the driver driving voltage generation circuit 322 for driving the horizontal and vertical drivers, a base connected to the emitter of the first transistor Q1 through the third resistor R3 and to the capacitor C1 provided between the transistor Q2 and the ground, and a collector connected to ground.

[0029] When the display device is turned on and the voltage is supplied to the display device from the power source, the voltages V_{vdd} and H_{vdd} are supplied from the power source circuit 300 shown in Fig. 3 to the drivers 80 and 90 described in connection with Fig. 1, thereby driving the drivers 80 and 90 and applying the voltage P_{vdd} for driving the element to the element driving power source line 100. For example, the voltage of the power source 310 may be 20V, the driver driving voltages H_{vdd} and V_{vdd}, 15V, and the element driving voltage P_{vdd}, 12V.

[0030] The drivers 80 and 90 driven in the above-described manner receive signals required to present a display, such as start pulses STH, STV, and the like.

[0031] The sampling transistors SP1, ..., SP_k, SP_{k+1}, ..., SP_n are sequentially turned on in accordance with the sampling pulse based on the start pulse STH, whereby the data signal V_{data1} on the data input line 92 is supplied to each of the data signal lines 91. Meanwhile, a gate signal is supplied from the gate signal line 81 to the gate 13 of the first TFT 30 based on the start pulse STV, thereby turning on the first TFT 30. As

a result, the data - signal is supplied to the source 11s of the TFT 30, and the voltage Vdata2 obtained at this point in time is applied to the gate 43 of the second TFT 40, thereby turning on the gate of the second TFT 40, causing a current at the element driving power source line 100 to flow into the EL element 60 in accordance with the voltage Vdata2, so that light is emitted from the EL element 60.

[0032] Operation of the power source circuit 300 when the display device is turned on will next be described with reference to Fig. 3.

[0033] When the device is turned on, the power source 310 is first switched on, and the generated power source voltage is supplied to the element driving voltage generation circuit 332, the driver driving voltage generation circuit 322, and the base of the first transistor Q1.

[0034] When the voltage is thus supplied to the element driving voltage generation circuit 332, the element driving voltage Pvdd is generated and supplied to the element driving power source line 100.

[0035] Meanwhile, when the voltage is thus supplied to the driver driving voltage generation circuit 322, the driver driving voltages Vvdd and Hvdd are generated and supplied to the drivers 80 and 90.

[0036] The first transistor Q1 will not be turned on when the power source 310 is turned on because it is a PNP transistor as described above.

[0037] Therefore, when the power source 310 is turned on, the element driving voltage Pvdd is supplied to the element driving power source line 100 from the element driving voltage generation circuit 332, and the driver driving voltages Vvdd and Hvdd are generated by the driver driving voltage generation circuit 322, and supplied to the drivers 80 and 90.

[0038] Operation of the power source circuit 300 when the display device is turned off will next be described with reference to Fig. 3.

[0039] When the device is turned off, the power source 310 is first switched off, and the element driving voltage generation circuit 332 and the driver driving voltage generation circuit 322 are turned off.

[0040] When the power source 310 is switched off, the base of the first transistor Q1 assumes a "Low" voltage and the first transistor Q1 is turned on. As a result, the current applied to the element driving power source line 100 in accordance with the element driving voltage Pvdd flows to ground through the resistor R1 and the emitter and the collector of the first transistor Q1. The timing after the operation of the transistor Q1 at which the element driving power source voltage Pvdd is decreased may be controlled to as desired by adjusting a time constant determined by the resistor R1 and a capacitor C2.

[0041] When the first transistor Q1 is turned on by turning off the power source 310, the emitter potential of the transistor Q1 is decreased, and a "Low" potential is applied to the base of the second transistor Q2 connected to this emitter through the resistor R3, thereby turning on the second transistor Q2. As a result, a cur-

rent flows to ground from the power source line for supplying the power source voltages Vvdd and Hvdd to the drivers 80 and 90 through the resistor R2 and the emitter and collector of the second transistor Q2. The timing after the operation of the transistor Q2 at which the driver power source voltages Vvdd and Hvdd is decreased may be controlled to as desired by adjusting a time constant determined by the resistor R2 and a capacitor C3.

[0042] Thus, when the power source 310 is switched off, first the first transistor Q1 and then the second transistor Q2 are turned on. More specifically, by first turning on the first transistor Q1, the electric charge applied to the element driving power source line 100 flows to ground through the first transistor Q1. When a period as determined by the resistor R3, the capacitor C1, or the like has elapsed after the first transistor Q1 is turned on, the second transistor is turned on and the electric charge applied to the drivers 80 and 90 flows to ground through the second transistor Q2.

[0043] Thus, supply of the element driving voltage Pvdd is first halted, and thereafter supply of the driver driving voltages Hvdd and Vvdd is stopped. Therefore, supply of the voltage to the element driving power source line 100 can be stopped before stopping application of the voltage to the gate 43 of the second TFT 40.

[0044] An organic EL display device provided with TFTs for switching and driving the element will be described. Fig. 4 is a plan view illustrating a portion near a display pixel, Fig. 5A is a cross sectional view taken along the line A-A in Fig. 4, and Fig. 5B is a cross sectional view taken along the line B-B in Fig. 4. Components common to the respective figures are labeled with the same reference characters and numerals.

[0045] Referring to Fig. 4, the display pixel is formed in a region surrounded by the gate signal lines 81 and the data lines 91. Near an intersection between these lines, the first TFT 30 for switching is disposed. The source 11s of the TFT 30 functions as a capacitor electrode 55 forming a capacitor with a storage capacitor electrode line 54 described below, and is connected to the gate 43 of the second TFT 40 for driving the EL element. The second TFT has a source 41s connected to an anode 61R of the organic EL element 60 and a drain 41d connected to the driving power source line 100 which functions as a current source for supplying a current to the organic EL element 60.

[0046] A storage capacitor electrode line 54 is disposed near the TFTs in parallel to the gate signal line 81. The storage capacitor electrode line 54 is formed of chromium or the like, and forms a capacitor with the capacitor electrode 55 connected to the source 11s of the TFT 30 through a gate insulating film 12 to store electric charges. The storage capacitor is provided for holding the voltage applied to the gate voltage 43 of the second TFT 40.

[0047] Referring to Fig. 5A and Fig. 5B, the organic EL display device is formed by providing the TFTs and the organic EL element stacked in a proper order on a

substrate 10 formed of a material such as glass or synthetic resin, or of a conductive or semiconductor material.

[0048] The first TFT 30 functioning as a switching TFT will first be described.

[0049] As shown in Fig. 5A, on an insulating substrate 10 formed of quartz glass, non-alkaline glass, or the like, a non-amorphous silicon film (a-Si film) is formed through CVD or the like and irradiated with laser beams to form a polycrystalline silicon film (p-Si film) 11 functioning as an active layer. The gate insulating film 12 is disposed on the p-Si film 11. On this film are formed the element driving power source line 100, the storage capacitor line 54, and the scan signal line 81 functioning as a gate electrode 13 formed of a refractory metal, such as chromium (Cr), molybdenum (Mo), or the like.

[0050] On the gate insulating film 12, over its entire surface, are layered the gate electrode 13, the element driving power source line 100, and the storage capacitor electrode line 54, an interlayer insulating film 14 composed of an SiO₂ film, an SiN film, and an SiO₂ film, in that order. A drain electrode 15 formed by filling a metal, such as Al, in a contact hole provided corresponding to the drain 11d, is disposed. The data line 91 functions as the drain electrode 15. Further, a planarization insulating film 16 is formed of an organic resin over the entire surface for planarizing the surface.

[0051] The second TFT 40 used for driving the organic EL element will next be described.

[0052] As shown in Fig. 5B, on the substrate 10 are formed an active layer 41 of a p-si film formed simultaneously with the active layer of the first TFT 30, the gate insulating film 12, and the gate electrode 43 of a refractory metal such as Cr or Mo, in that order. At the active layer 41, a channel 41c is provided, and a source 41s and the drain 41d are formed on both sides of the channel 41c. The interlayer insulating film 14 composed of an SiO₂ film, an SiN film, and an SiO₂ film, stacked in that order, is formed over the entire surface including the active layer 41 and the gate insulating film 12. The element driving power source line 100 is disposed connected to the driving power source (Pvdd) by filling a metal, such as Al, in a contact hole provided corresponding to the drain 41d. The planarization insulating film 16 is further provided over the entire surface. A contact hole is formed at a position of the planarization insulating film 16 corresponding to the source 41s. A transparent electrode of ITO (indium tin oxide), i.e. the anode 61 of the organic EL element, is formed on the planarization insulating film 16, making a contact with the source 41s through this contact hole.

[0053] The organic EL element 60 includes the anode 61 formed of a transparent electrode, such as ITO, an emissive element layer 66 described below, and a cathode 67 formed of magnesium-indium alloy, or the like, stacked in that order. The emissive element layer 66 may include, for example, a first hole transport layer 62 formed of MTDATA(4,4,4-tris(3-methylphenylphe-

nylamino) triphenylamine), a second hole transport layer 63 of TPD (N, N-diphenyl-N, N-di(3-methylphenyl)-1,1-biphenyl-4,4-diamine), an emissive layer 64 of Beq₂ (bis(10-hydroxybenzo[h]quinolinato)beryllium) including quinacridone derivatives, and an electron transport layer 65 of Beq₂ or the like. It should be noted that an insulating layer 68 is formed for preventing a short circuit between an edge of the anode 61 and the cathode 67. The organic EL element 60 has an exemplary configuration as described above, and this element 60 substantially forms the display pixel (emissive region).

[0054] In the organic EL element, holes and electrons injected from the anode and the cathode, respectively, are recombined in the emissive layer, thereby exciting organic molecules contained in the emissive layer and generating excitons. Light is released from the emissive layer during the process in which the excitons deactivate, and this release of light from the transparent anode through the transparent insulating substrate and to the outside can be observed.

[0055] According to the preferred embodiment of the present invention, in the display device having the organic EL element 60 as described above, the element driving power source voltage Pvdd for supplying a current to the EL element 60 through the second TFT 40 is first controlled to be turned off when the device is turned off. Accordingly, the current to flow through each organic EL element 60 is first stopped while the second TFT 40 is ON, and then the driver power source is turned off, thereby turning off the first and second TFTs 30 and 40.

[0056] By turning off the display device in the above-described order, the flowing of a large current to the organic EL element 60, especially to the emissive element layer 66, when the device is turned off can be prevented, thereby preventing degradation of the emissive element layer 66, and, therefore, of the organic EL element 60.

[0057] While in the above description the timing for starting the supply of the power source voltages Vvdd and Hvdd to the drivers is substantially the same as the timing for starting the supply of the power source voltage Pvdd to the element driving power source line when the device is turned on, the present invention is not limited to such a configuration, and the sequence circuit 350 may provide the power source voltage Pvdd to the element driving power source line after first supplying the power source voltages to the drivers.

Claims

1. A display device (10,300), comprising

a display panel (10) having
a vertical driver (80) for supplying a scan signal to a plurality of gate signal lines (81);
a horizontal driver (90) for supplying a data signal to a plurality of data signal lines (91) cross-

ing said plurality of gate signal lines (81);
 a switching elements (30, 40) connected to one
 of said plurality of gate signal lines (81) and to
 one of said plurality of data signal lines (91) at
 an intersection between these signal lines;
 an emissive element (60) connected to said
 switching element ; and
 an element driving power source line (100) for
 supplying electric power to said emissive ele-
 ment (60);

characterized in that the display device fur-
 ther comprises

a sequential circuit (350) for stopping supply of
 electric power to said element driving power
 source line (100) before stopping supply of
 electric power for driving said vertical and hor-
 izontal drivers (80,90).

2. The display device according to claim 1, wherein
 said switching element is composed of first (30) and
 second (40) thin film transistors, the first thin film
 transistor (30) having a first region (11d) of an active
 layer connected to said data signal line (91), a gate
 (13) connected to said gate signal line (81), and a
 second region of the active layer connected to a
 gate (43) of the second thin film transistor (40) , and
 said second thin film transistor (40) having a first
 region (41d) of an active layer connected to said el-
 15
 20
 25
 30
 35
 40
 45
 50
 55
 60
 65
 70
 75
 80
 85
 90
 95
 100
 105
 110
 115
 120
 125
 130
 135
 140
 145
 150
 155
 160
 165
 170
 175
 180
 185
 190
 195
 200
 205
 210
 215
 220
 225
 230
 235
 240
 245
 250
 255
 260
 265
 270
 275
 280
 285
 290
 295
 300
 305
 310
 315
 320
 325
 330
 335
 340
 345
 350
 355
 360
 365
 370
 375
 380
 385
 390
 395
 400
 405
 410
 415
 420
 425
 430
 435
 440
 445
 450
 455
 460
 465
 470
 475
 480
 485
 490
 495
 500
 505
 510
 515
 520
 525
 530
 535
 540
 545
 550
 555
 560
 565
 570
 575
 580
 585
 590
 595
 600
 605
 610
 615
 620
 625
 630
 635
 640
 645
 650
 655
 660
 665
 670
 675
 680
 685
 690
 695
 700
 705
 710
 715
 720
 725
 730
 735
 740
 745
 750
 755
 760
 765
 770
 775
 780
 785
 790
 795
 800
 805
 810
 815
 820
 825
 830
 835
 840
 845
 850
 855
 860
 865
 870
 875
 880
 885
 890
 895
 900
 905
 910
 915
 920
 925
 930
 935
 940
 945
 950
 955
 960
 965
 970
 975
 980
 985
 990
 995

3. The display device according to claim 1 or 2, where-
 in said sequence circuit includes first and second
 transistors (Q1,Q2), first and second resistors
 (R1,R2), and a third resistor (R3) connecting said
 first and second transistors;

said first transistor (Q1) has an emitter conn-
 40
 45
 50
 55
 60
 65
 70
 75
 80
 85
 90
 95
 100
 105
 110
 115
 120
 125
 130
 135
 140
 145
 150
 155
 160
 165
 170
 175
 180
 185
 190
 195
 200
 205
 210
 215
 220
 225
 230
 235
 240
 245
 250
 255
 260
 265
 270
 275
 280
 285
 290
 295
 300
 305
 310
 315
 320
 325
 330
 335
 340
 345
 350
 355
 360
 365
 370
 375
 380
 385
 390
 395
 400
 405
 410
 415
 420
 425
 430
 435
 440
 445
 450
 455
 460
 465
 470
 475
 480
 485
 490
 495
 500
 505
 510
 515
 520
 525
 530
 535
 540
 545
 550
 555
 560
 565
 570
 575
 580
 585
 590
 595
 600
 605
 610
 615
 620
 625
 630
 635
 640
 645
 650
 655
 660
 665
 670
 675
 680
 685
 690
 695
 700
 705
 710
 715
 720
 725
 730
 735
 740
 745
 750
 755
 760
 765
 770
 775
 780
 785
 790
 795
 800
 805
 810
 815
 820
 825
 830
 835
 840
 845
 850
 855
 860
 865
 870
 875
 880
 885
 890
 895
 900
 905
 910
 915
 920
 925
 930
 935
 940
 945
 950
 955
 960
 965
 970
 975
 980
 985
 990
 995

said second transistor (Q2) has an emitter
 connected to said second resistor (R2) which is
 connected to a driver driving power source gener-
 ation circuit (322) which supplies electric power for
 driving said vertical and horizontal drivers (80,90),
 a base connected to said third resistor (R3), which
 is connected to the emitter of said first transistor
 (Q1) , and to the other electrode of a capacitor (C1)
 whose one electrode is connected to ground, and a
 collector connected to ground.

4. The display device according any one of claims 1-3,

wherein said emissive element is an electrolumi-
 nescence element.

5 Patentansprüche

1. Anzeigevorrichtung (10, 300), umfassend:

eine Anzeigetafel (10), mit
 einem Vertikaltreiber (80) zum Zuführen eines
 Abtastsignals zu mehreren Gate-Signalleitun-
 gen (81);
 einem Horizontaltreiber (90) zum Zuführen ei-
 nes Datensignals zu mehreren Datensignallei-
 tungen (91), die die mehreren Gate-Signallei-
 tungen (81) kreuzen;
 einem Schaltelement (30, 40), das mit einer der
 mehreren Gate-Signalleitungen (81) und mit ei-
 ner der mehreren Datensignalleitungen (91) an
 einem Schnittpunkt zwischen diesen Signallei-
 tungen verbunden ist;
 einem Emissionselement (60), das mit dem
 Schaltelement verbunden ist; und
 einer Elementansteuerungs-Stromversor-
 gungsleitung (100) zum Zuführen von elektri-
 schem Strom zum Emissionselement (60);

dadurch gekennzeichnet, dass die Anzei-
 gevorrichtung ferner umfasst:

eine sequenzielle Schaltung (350) zum Stop-
 pen der Zufuhr von elektrischem Strom zu der
 Elementansteuerungs-Stromversorgungslei-
 tung (100) vor dem Stoppen der Zufuhr von
 elektrischem Strom zur Ansteuerung der Verti-
 kal- und Horizontaltreiber (80, 90).

2. Anzeigevorrichtung nach Anspruch 1, bei der das
 Schaltelement erste (30) und zweite (40) Dünnschichttransistoren umfasst, wobei der erste Dünnschichttransistor (30) einen ersten Bereich (11d) einer aktiven Schicht, der mit der Datensignalleitung (91) verbunden ist, ein Gate (13), das mit der Gate-Signalleitung (81) verbunden ist, und einen zweiten Bereich der aktiven Schicht, der mit einem Gate (43) des zweiten Dünnschichttransistors (40) verbunden ist, aufweist, wobei der zweite Dünnschichttransistor (40) einen ersten Bereich (41d) einer aktiven Schicht, der mit der Elementansteuerungs-Stromversorgungsleitung (100) verbunden ist, und einen zweiten Bereich (41s) der aktiven Schicht, der mit einer Elektrode des Emissionselements verbunden ist, aufweist.
3. Anzeigevorrichtung nach Anspruch 1 oder 2, bei der die Sequenzschaltung erste und zweite Transistoren (Q1, Q2), erste und zweite Widerstände (R1, R2) und einen dritten Widerstand (R3), der die er-

sten und zweiten Transistoren verbindet, enthält; wobei

der erste Transistor (Q1) einen Emitter, der mit dem ersten Widerstand (R1) verbunden ist, welcher mit einer Elementansteuerungs-Stromquellenversorgungserzeugungsschaltung (332) verbunden ist, die elektrischen Strom der Elementansteuerungs-Stromversorgungsleitung (100) zuführt, eine mit einer Stromquelle (310) verbundene Basis und einen mit Masse verbundenen Kollektor aufweist; und

der zweite Transistor (Q2) einen Emitter, der mit dem zweiten Widerstand (R2) verbunden ist, welcher mit einer Treiberansteuerung-Stromversorgungserzeugungsschaltung (322) verbunden ist, die elektrischen Strom zum Ansteuern der Vertikal- und Horizontaltreiber (80, 90) zuführt, eine Basis, die mit dem dritten Widerstand (R3) verbunden ist, der mit dem Emitter des ersten Transistors (Q1) und mit der anderen Elektrode eines Kondensators (C1), dessen eine Elektrode mit Masse verbunden ist, verbunden ist, und einen mit Masse verbundenen Kollektor aufweist.

4. Anzeigevorrichtung nach irgendeinem der Ansprüche 1 bis 3, bei der das Emissionselement ein Elektrolumineszenzelement ist.

Revendications

1. Dispositif d'affichage (10, 300), comprenant

un panneau d'affichage (10) ayant
un circuit d'attaque vertical (80) pour délivrer un signal de balayage à une pluralité de lignes de signal de grille (81) ;
un circuit d'attaque horizontal (90) pour délivrer un signal de données à une pluralité de lignes de signal de données (91) coupant ladite pluralité de lignes de signal de grille (81) ;
un élément de commutation (30, 40) relié à l'une de ladite pluralité de lignes de signal de grille (81) et à l'une de ladite pluralité des lignes de signal de données (91) à une intersection entre ces lignes de signal ;
un élément d'émission (60) relié audit élément de commutation ; et
une ligne de source d'énergie d'attaque d'élément (100) pour délivrer l'énergie électrique audit élément d'émission (60) ;

caractérisé en ce que le dispositif d'affichage comprend en outre

un circuit séquentiel (350) pour arrêter la fourniture de l'énergie électrique à ladite ligne de source d'énergie d'attaque d'élément (100) avant d'arrêter la fourniture de l'énergie électrique pour attaquer

lesdits circuits d'attaque vertical et horizontal (80, 90).

2. Dispositif d'affichage selon la revendication 1, dans lequel ledit élément de commutation est constitué de premier (30) et second (40) transistors à couches minces, le premier transistor à couches minces (30) ayant une première région (11d) d'une couche active connectée à ladite ligne de signal de données (91), une grille (13) connectée à ladite ligne de signal de grille (81), et une seconde région de la couche active connectée à une grille (43) du second transistor à couches minces (40), et ledit second transistor à couches minces (40) ayant une première région (41d) d'une couche active connectée à ladite ligne de source d'énergie d'attaque d'éléments (100) et une seconde région (41s) de la couche active connectée à une électrode dudit élément d'émission.

3. Dispositif d'affichage selon la revendication 1 ou 2, dans lequel ledit circuit séquentiel inclut des premier et second transistors (Q1, Q2), des première et seconde résistances (R1, R2), et une troisième résistance (R3) connectant lesdits premier et second transistors ;

ledit premier transistor (Q1) a un émetteur connecté à ladite première résistance (R1) qui est connectée à un circuit de génération de source d'énergie d'attaque d'élément (332) qui délivre l'énergie électrique à ladite ligne de source d'énergie d'attaque d'élément (100), une base connectée à une source d'énergie (310), et un collecteur connecté à la masse ; et

ledit second transistor (Q2) a un émetteur connecté à ladite seconde résistance (R2) qui est connectée à un circuit de génération de source d'énergie d'attaque de circuit d'attaque (322) qui délivre l'énergie électrique pour attaquer lesdits circuits d'attaque vertical et horizontal (80, 90), une base connectée à ladite troisième résistance (R3), laquelle est connectée à l'émetteur dudit premier transistor (Q1), et à l'autre électrode d'un condensateur (C1) dont une électrode est connectée à la masse, et un collecteur connecté à la masse.

4. Dispositif d'affichage selon l'une quelconque des revendications 1 à 3, dans lequel ledit élément d'émission est un élément électroluminescent.

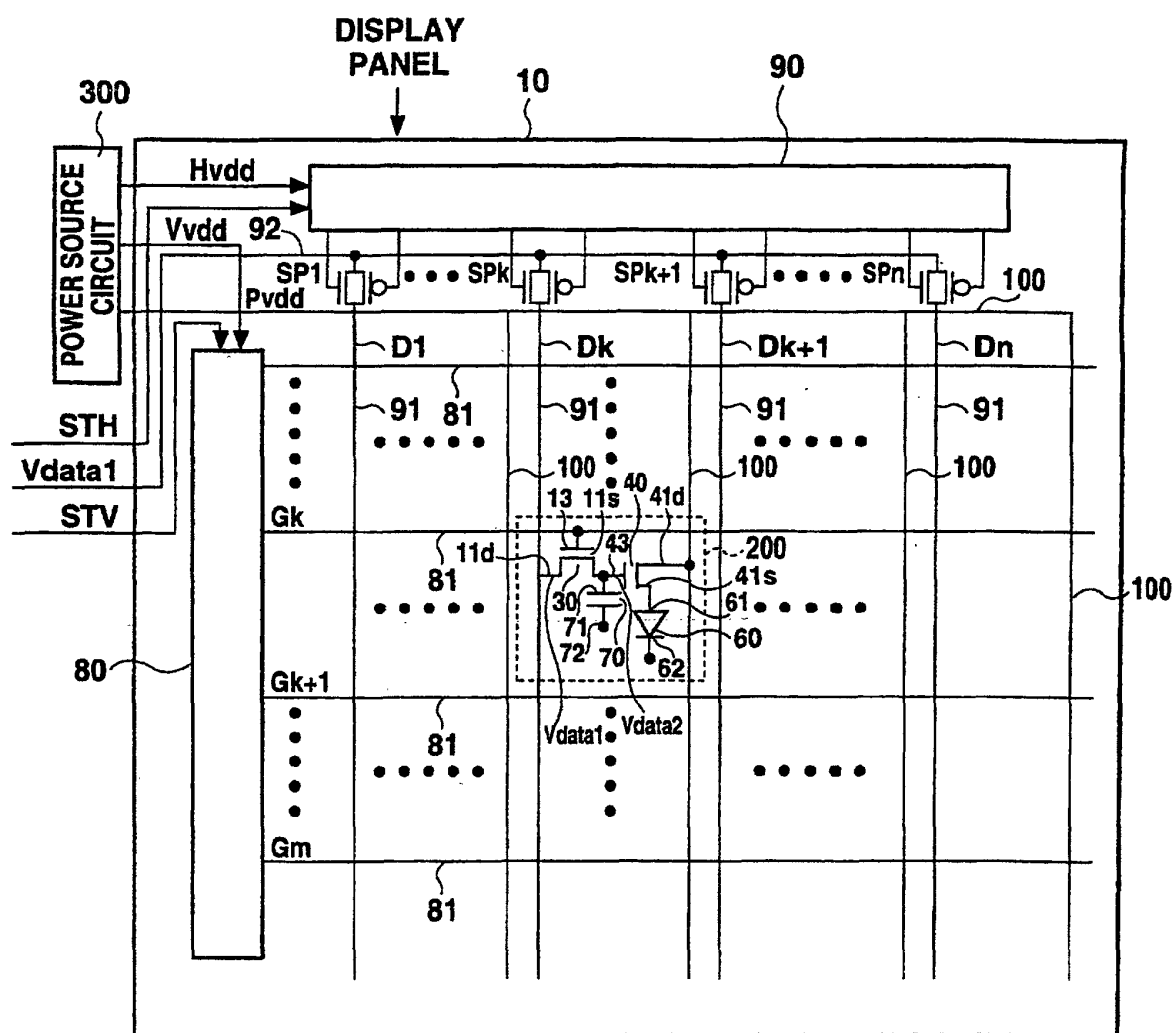


Fig. 1

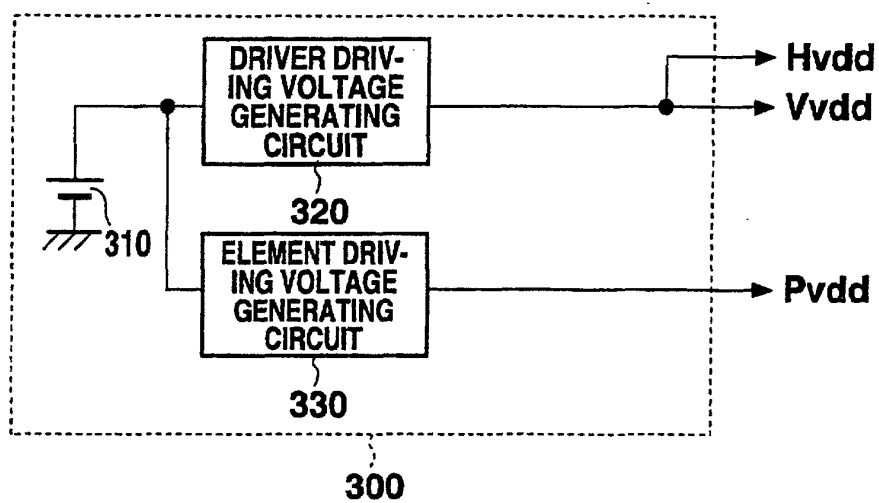


Fig. 2

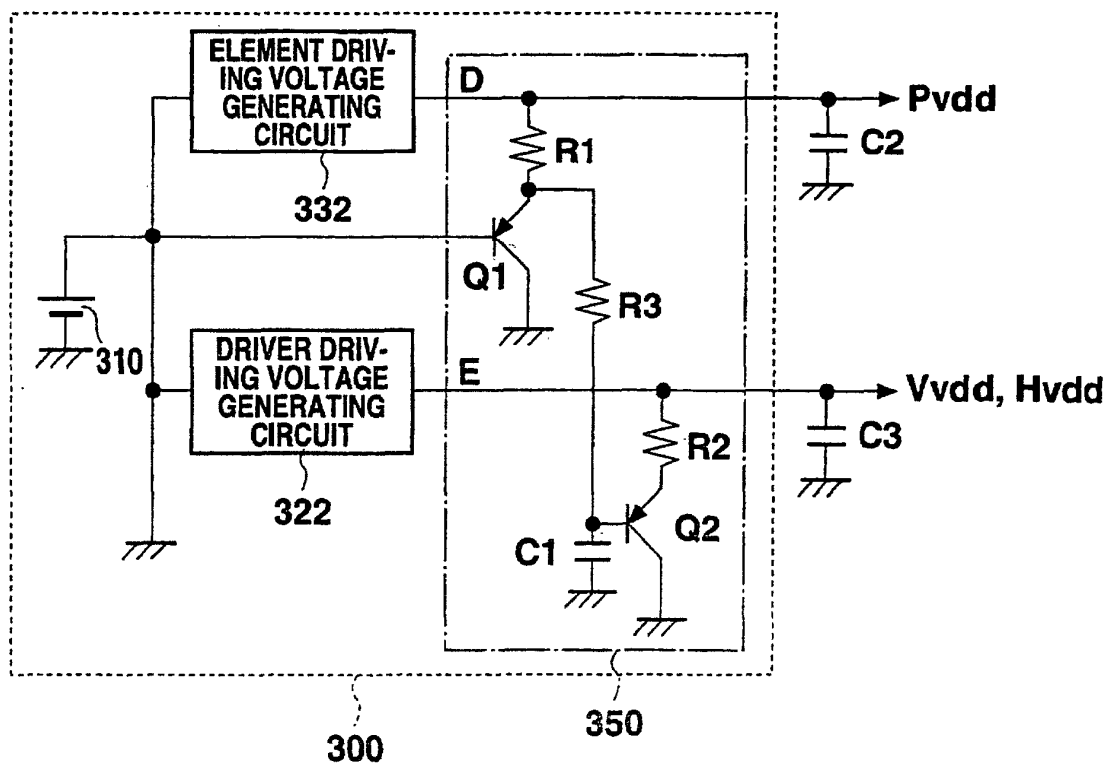


Fig. 3

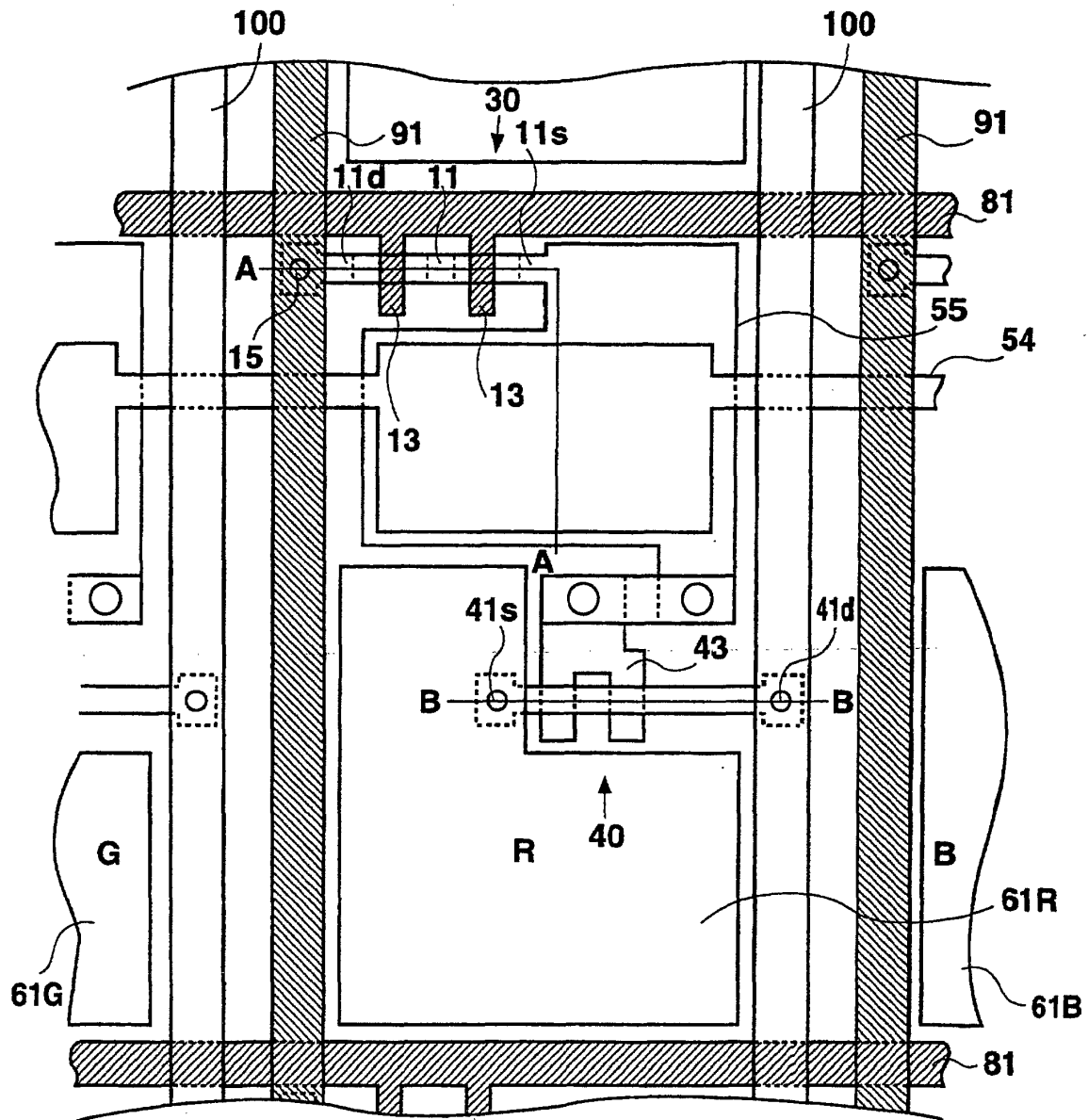


Fig. 4

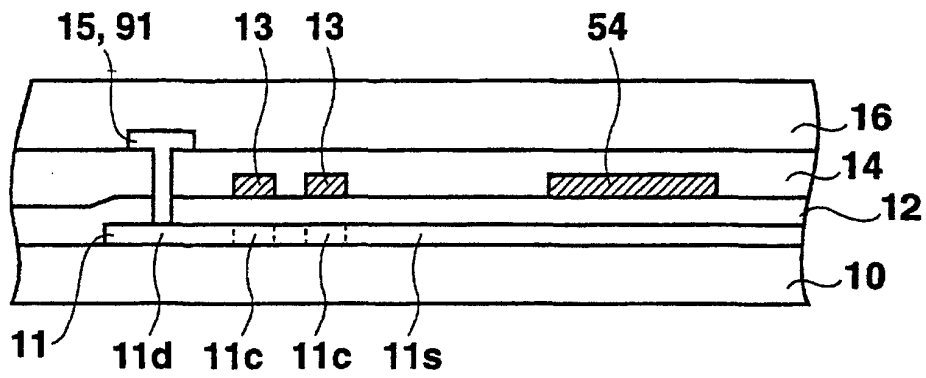


Fig. 5A

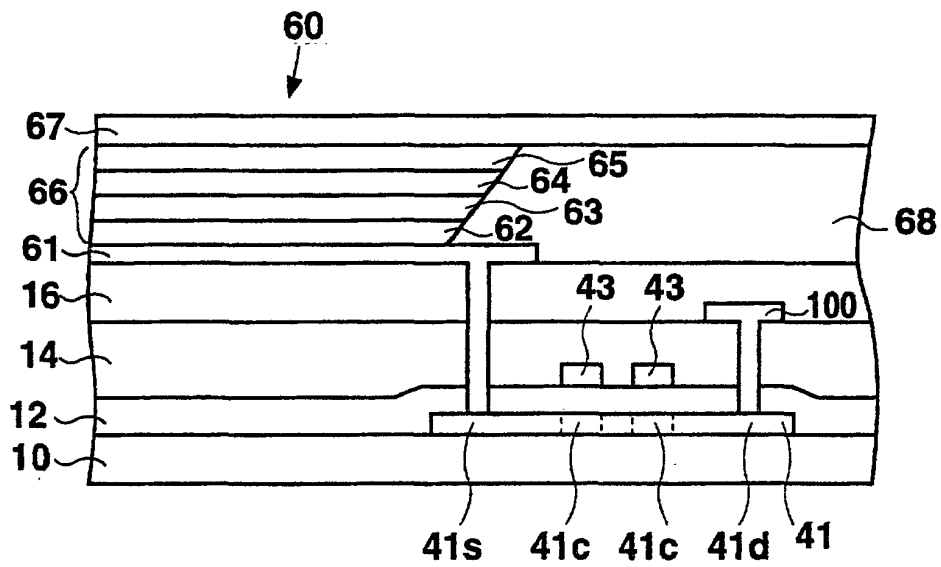


Fig. 5B

专利名称(译)	有源矩阵电致发光显示装置		
公开(公告)号	EP1139326B1	公开(公告)日	2005-03-16
申请号	EP2001302926	申请日	2001-03-28
[标]申请(专利权)人(译)	三洋电机株式会社		
申请(专利权)人(译)	SANYO ELECTRIC CO. , LTD.		
当前申请(专利权)人(译)	SANYO ELECTRIC CO. , LTD.		
[标]发明人	KOMIYA NAOAKI		
发明人	KOMIYA, NAOAKI		
IPC分类号	G09G3/22 G09G3/30 G09G3/32 H01L27/32 H01L29/78 H01L31/12 H05B33/08		
CPC分类号	G09G3/3233 G09G2300/0842 G09G2320/046 G09G2330/02 H01L27/3244		
优先权	2000088213 2000-03-28 JP		
其他公开文献	EP1139326A2 EP1139326A3		
外部链接	Espacenet		

摘要(译)

在显示装置中，对于每个像素，包括用于控制元件的有机EL元件（60）和TFT（30,40），提供时序电路（350），用于停止向驱动器提供电源电压Vvdd和Hvdd（80,90）用于驱动TFT（30,40），当设备关闭时，在停止向有机EL元件（60）提供电源电压Pvdd之后控制每个有机EL元件（60）。

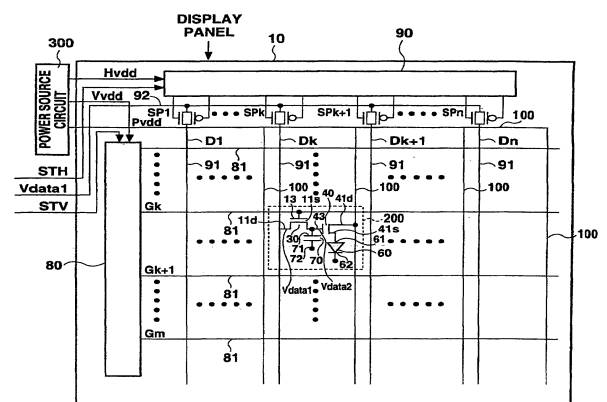


Fig. 1