



(12) **EUROPEAN PATENT APPLICATION**

(43) Date of publication:
22.03.2017 Bulletin 2017/12

(51) Int Cl.:
H01L 27/32^(2006.01) H01L 51/50^(2006.01)

(21) Application number: **16190565.8**

(22) Date of filing: **01.10.2009**

(84) Designated Contracting States:
AT BE BG CH CY CZ DE DK EE ES FI FR GB GR HR HU IE IS IT LI LT LU LV MC MK MT NL NO PL PT RO SE SI SK SM TR

(30) Priority: **01.10.2008 US 101757 P**

(62) Document number(s) of the earlier application(s) in accordance with Art. 76 EPC:
09793233.9 / 2 347 445

(71) Applicant: **Universal Display Corporation**
Ewing, NJ 08618 (US)

(72) Inventors:
• **HACK, Michael**
Ewing, NJ 08618 (US)

- **BROWN, Julie, J.**
Ewing, NJ 08618 (US)
- **WEAVER, Michael S.**
Ewing, NJ 08618 (US)
- **D'ANDRADE, Brian Wendell**
Ewing, NJ 08618 (US)

(74) Representative: **Hansen, Norbert**
Maiwald Patentanwalts GmbH
Elisenhof
Elisenstraße 3
80335 München (DE)

Remarks:

This application was filed on 26-09-2016 as a divisional application to the application mentioned under INID code 62.

(54) **NOVEL OLED DISPLAY ARCHITECTURE**

(57) The present invention is directed to a device comprising a first organic light emitting device that emits light having a peak wavelength in the visible spectrum of 600 - 700 nm, further comprising a first emissive layer having a first emissive material, wherein the first emissive material is phosphorescent; a second organic light emitting device that emits light having a peak wavelength in the visible spectrum of 500 - 600 nm, further comprising a second emissive layer having a second emissive material, wherein the second emissive material is phosphorescent; a third organic light emitting device that emits light having a peak wavelength in the visible spectrum of 400 - 500 nm, further comprising a third emissive layer having a third emissive material, wherein the third emissive material is phosphorescent; and a fourth organic light emitting device that emits light having a peak wavelength in the visible spectrum of 400 to 500 nm, further comprising a fourth emissive layer having a fourth emissive material, wherein the fourth emissive material is phosphorescent; wherein the peak wavelength in the visible spectrum of light emitted by the fourth organic light emitting device is at least 4 nm less than the peak wavelength in the visible spectrum of light emitted by the third organic light emitting device.

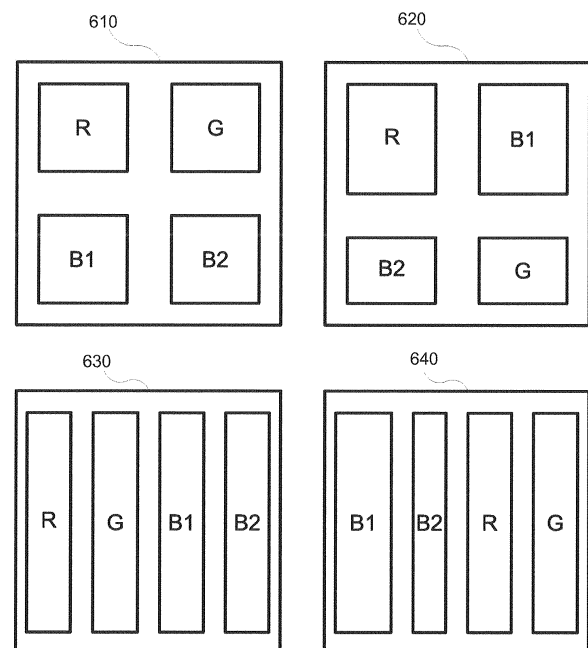


FIGURE 6

Description

FIELD OF THE INVENTION

[0001] The present invention relates to organic light emitting devices, and more specifically to the use of both light and deep blue organic light emitting devices to render color.

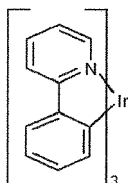
BACKGROUND

[0002] Opto-electronic devices that make use of organic materials are becoming increasingly desirable for a number of reasons. Many of the materials used to make such devices are relatively inexpensive, so organic opto-electronic devices have the potential for cost advantages over inorganic devices. In addition, the inherent properties of organic materials, such as their flexibility, may make them well suited for particular applications such as fabrication on a flexible substrate. Examples of organic opto-electronic devices include organic light emitting devices (OLEDs), organic phototransistors, organic photovoltaic cells, and organic photodetectors. For OLEDs, the organic materials may have performance advantages over conventional materials. For example, the wavelength at which an organic emissive layer emits light may generally be readily tuned with appropriate dopants.

[0003] OLEDs make use of thin organic films that emit light when voltage is applied across the device. OLEDs are becoming an increasingly interesting technology for use in applications such as flat panel displays, illumination, and backlighting. Several OLED materials and configurations are described in U.S. Pat. Nos. 5,844,363, 6,303,238, and 5,707,745.

[0004] One application for phosphorescent emissive molecules is a full color display. Industry standards for such a display call for pixels adapted to emit particular colors, referred to as "saturated" colors. In particular, these standards call for saturated red, green, and blue pixels. Color may be measured using CIE coordinates, which are well known to the art.

[0005] One example of a green emissive molecule is tris(2-phenylpyridine) iridium, denoted Ir(ppy)₃, which has the structure of Formula I:



[0006] In this, and later figures herein, we depict the dative bond from nitrogen to metal (here, Ir) as a straight line.

[0007] As used herein, the term "organic" includes polymeric materials as well as small molecule organic materials that may be used to fabricate organic opto-electronic devices. "Small molecule" refers to any organic material that is not a polymer, and "small molecules" may actually be quite large. Small molecules may include repeat units in some circumstances. For example, using a long chain alkyl group as a substituent does not remove a molecule from the "small molecule" class. Small molecules may also be incorporated into polymers, for example as a pendent group on a polymer backbone or as a part of the backbone. Small molecules may also serve as the core moiety of a dendrimer, which consists of a series of chemical shells built on the core moiety. The core moiety of a dendrimer may be a fluorescent or phosphorescent small molecule emitter. A dendrimer may be a "small molecule," and it is believed that all dendrimers currently used in the field of OLEDs are small molecules.

[0008] As used herein, "top" means furthest away from the substrate, while "bottom" means closest to the substrate. Where a first layer is described as "disposed over" a second layer, the first layer is disposed further away from substrate. There may be other layers between the first and second layer, unless it is specified that the first layer is "in contact with" the second layer. For example, a cathode may be described as "disposed over" an anode, even though there are various organic layers in between.

[0009] As used herein, "solution processible" means capable of being dissolved, dispersed, or transported in and/or deposited from a liquid medium, either in solution or suspension form.

[0010] A ligand may be referred to as "photoactive" when it is believed that the ligand directly contributes to the photoactive properties of an emissive material. A ligand may be referred to as "ancillary" when it is believed that the ligand does not contribute to the photoactive properties of an emissive material, although an ancillary ligand may alter the properties of a photoactive ligand.

[0011] As used herein, and as would be generally understood by one skilled in the art, a first "Highest Occupied Molecular Orbital" (HOMO) or "Lowest Unoccupied Molecular Orbital" (LUMO) energy level is "greater than" or "higher than" a second HOMO or LUMO energy level if the first energy level is closer to the vacuum energy level. Since ionization potentials (IP) are measured as a negative energy relative to a vacuum level, a higher HOMO energy level corresponds to an IP having a smaller absolute value (an IP that is less negative). Similarly, a higher LUMO energy level corresponds to an electron affinity (EA) having a smaller absolute value

[0012] (an EA that is less negative). On a conventional energy level diagram, with the vacuum level at the top, the LUMO energy level of a material is higher than the HOMO energy level of the same material. A "higher" HOMO or LUMO energy level appears closer to the top of such a diagram than a "lower" HOMO or LUMO energy level.

[0013] As used herein, and as would be generally understood by one skilled in the art, a first work function is "greater than" or "higher than" a second work function if the first work function has a higher absolute value. Because work functions are generally measured as negative numbers relative to vacuum level, this means that a "higher" work function is more negative. On a conventional energy level diagram, with the vacuum level at the top, a "higher" work function is illustrated as further away from the vacuum level in the downward direction. Thus, the definitions of HOMO and LUMO energy levels follow a different convention than work functions.

[0014] More details on OLEDs, and the definitions described above, can be found in US Pat. No. 7,279,704.

SUMMARY OF THE INVENTION

[0015] A device that may be used as a multi-color pixel is provided. The device has a first organic light emitting device, a second organic light emitting device, a third organic light emitting device, and a fourth organic light emitting device. The device may be a pixel of a display having four sub-pixels.

[0016] The first organic light emitting device emits red light, the second organic light emitting device emits green light, the third organic light emitting device emits light blue light, and the fourth organic light emitting device emits deep blue light. The peak emissive wavelength of the third and fourth devices differ by at least 4 nm. As used herein, "red" means having a peak wavelength in the visible spectrum of 600 - 700 nm, "green" means having a peak wavelength in the visible spectrum of 500 - 600 nm, "light blue" means having a peak wavelength in the visible spectrum of 470 - 500 nm, and "deep blue" means having a peak wavelength in the visible spectrum of 400 - 470 nm.

[0017] The first, second and third organic light emitting devices each have an emissive layer that includes a phosphorescent organic material that emits light when an appropriate voltage is applied across the device. The fourth organic light emitting device has an emissive layer that includes an organic emissive material, which may be phosphorescent or fluorescent, that emits light when an appropriate voltage is applied across the device.

[0018] The first, second, third and fourth organic light emitting devices may have the same surface area, or may have different surface areas. The first, second, third and fourth organic light emitting devices may be arranged in a quad pattern, in a row, or in some other pattern.

[0019] The device may be operated to emit light having a desired CIE coordinate by using at most three of the four devices for any particular CIE coordinate. Use of the deep blue device may be significantly reduced compared to a display having only red, green and deep blue devices.

[0020] The device may be a consumer product.

BRIEF DESCRIPTION OF THE DRAWINGS

[0021]

FIG. 1 shows an organic light emitting device.

FIG. 2 shows an inverted organic light emitting device that does not have a separate electron transport layer.

FIG. 3 shows a rendition of the 1931 CIE chromaticity diagram.

FIG. 4 shows a rendition of the 1931 CIE chromaticity diagram that also shows color gamuts.

FIG. 5 shows CIE coordinates for various devices.

FIG. 6 shows various configurations for a pixel having four sub-pixels.

DETAILED DESCRIPTION

[0022] Generally, an OLED comprises at least one organic layer disposed between and electrically connected to an anode and a cathode. When a current is applied, the anode injects holes and the cathode injects electrons into the organic layer(s). The injected holes and electrons each migrate toward the oppositely charged electrode. When an electron and hole localize on the same molecule, an "exciton," which is a localized electron-hole pair having an excited energy state, is formed. Light is emitted when the exciton relaxes via a photoemissive mechanism. In some cases, the exciton may be localized on an excimer or an exciplex. Non-radiative mechanisms, such as thermal relaxation, may also occur, but are generally considered undesirable.

[0023] The initial OLEDs used emissive molecules that emitted light from their singlet states ("fluorescence") as disclosed, for example, in U.S. Pat. No. 4,769,292. Fluorescent emission generally occurs in a time frame of less than 10 nanoseconds.

[0024] More recently, OLEDs having emissive materials that emit light from triplet states ("phosphorescence") have been demonstrated. Baldo et al., "Highly Efficient Phosphorescent Emission from Organic Electroluminescent Devices," *Nature*, vol. 395, 151-154, 1998; ("Baldo-I") and Baldo et al., "Very high-efficiency green organic light-emitting devices based on electrophosphorescence," *Appl. Phys. Lett.*, vol. 75, No. 3, 4-6 (1999) ("Baldo-II"). Phosphorescence is described in more detail in US Pat. No. 7,279,704 at cols. 5-6.

[0025] FIG. 1 shows an organic light emitting device 100. The figures are not necessarily drawn to scale. Device 100 may include a substrate 110, an anode 115, a hole injection layer 120, a hole transport layer 125, an electron blocking layer 130, an emissive layer 135, a hole blocking layer 140, an electron transport layer 145, an electron injection layer 150, a protective layer 155, and a cathode 160. Cathode 160 is a compound cathode having a first conductive layer 162 and a second conductive layer 164. Device 100 may be fabricated by depositing the layers described, in order. The properties and functions of these various layers, as well as example materials, are described in more detail in US 7,279,704 at cols. 6-10.

[0026] More examples for each of these layers are available. For example, a flexible and transparent substrate-anode combination is disclosed in U.S. Pat. No. 5,844,363. An example of a p-doped hole transport layer is m-MTDATA doped with F.sub.4-TCNQ at a molar ratio of 50:1, as disclosed in U.S. Patent Application Publication No. 2003/0230980. Examples of emissive and host materials are disclosed in U.S. Pat. No. 6,303,238 to Thompson et al.. An example of an n-doped electron transport layer is BPhen doped with Li at a molar ratio of 1:1, as disclosed in U.S. Patent Application Publication No. 2003/0230980. U.S. Pat. Nos. 5,703,436 and 5,707,745, disclose examples of cathodes including compound cathodes having a thin layer of metal such as Mg: Ag with an overlying transparent, electrically-conductive, sputter-deposited ITO layer. The theory and use of blocking layers is described in more detail in U.S. Pat. No. 6,097,147 and U.S. Patent Application Publication No. 2003/0230980. Examples of injection layers are provided in U.S. Patent Application Publication No. 2004/0174116. A description of protective layers may be found in U.S. Patent Application Publication No. 2004/0174116.

[0027] FIG. 2 shows an inverted OLED 200. The device includes a substrate 210, a cathode 215, an emissive layer 220, a hole transport layer 225, and an anode 230. Device 200 may be fabricated by depositing the layers described, in order. Because the most common OLED configuration has a cathode disposed over the anode, and device 200 has cathode 215 disposed under anode 230, device 200 may be referred to as an "inverted" OLED. Materials similar to those described with respect to device 100 may be used in the corresponding layers of device 200. FIG. 2 provides one example of how some layers may be omitted from the structure of device 100.

[0028] The simple layered structure illustrated in FIGS. 1 and 2 is provided by way of non-limiting example, and it is understood that embodiments of the invention may be used in connection with a wide variety of other structures. The specific materials and structures described are exemplary in nature, and other materials and structures may be used. Functional OLEDs may be achieved by combining the various layers described in different ways, or layers may be omitted entirely, based on design, performance, and cost factors. Other layers not specifically described may also be included. Materials other than those specifically described may be used. Although many of the examples provided herein describe various layers as comprising a single material, it is understood that combinations of materials, such as a mixture of host and dopant, or more generally a mixture, may be used. Also, the layers may have various sublayers. The names given to the various layers herein are not intended to be strictly limiting. For example, in device 200, hole transport layer 225 transports holes and injects holes into emissive layer 220, and may be described as a hole transport layer or a hole injection layer. In one embodiment, an OLED may be described as having an "organic layer" disposed between a cathode and an anode. This organic layer may comprise a single layer, or may further comprise multiple layers of different organic materials as described, for example, with respect to FIGS. 1 and 2.

[0029] Structures and materials not specifically described may also be used, such as OLEDs comprised of polymeric materials (PLEDs) such as disclosed in U.S. Pat. No. 5,247,190 to Friend et al.. By way of further example, OLEDs having a single organic layer may be used. OLEDs may be stacked, for example as described in U.S. Pat. No. 5,707,745 to Forrest et al. The OLED structure may deviate from the simple layered structure illustrated in FIGS. 1 and 2. For

example, the substrate may include an angled reflective surface to improve out-coupling, such as a mesa structure as described in U.S. Pat. No. 6,091,195 to Forrest et al., and/or a pit structure as described in U.S. Pat. No. 5,834,893 to Bulovic et al.

[0030] Unless otherwise specified, any of the layers of the various embodiments may be deposited by any suitable method. For the organic layers, preferred methods include thermal evaporation, ink-jet, such as described in U.S. Pat. Nos. 6,013,982 and 6,087,196, organic vapor phase deposition (OVPD), such as described in U.S. Pat. No. 6,337,102 to Forrest et al., and deposition by organic vapor jet printing (OVJP), such as described in U.S. patent application Ser. No. 10/233,470. Other suitable deposition methods include spin coating and other solution based processes. Solution based processes are preferably carried out in nitrogen or an inert atmosphere. For the other layers, preferred methods include thermal evaporation. Preferred patterning methods include deposition through a mask, cold welding such as described in U.S. Pat. Nos. 6,294,398 and 6,468,819, and patterning associated with some of the deposition methods such as ink-jet and OVJD. Other methods may also be used. The materials to be deposited may be modified to make them compatible with a particular deposition method. For example, substituents such as alkyl and aryl groups, branched or unbranched, and preferably containing at least 3 carbons, may be used in small molecules to enhance their ability to undergo solution processing. Substituents having 20 carbons or more may be used, and 3-20 carbons is a preferred range. Materials with asymmetric structures may have better solution processibility than those having symmetric structures, because asymmetric materials may have a lower tendency to recrystallize. Dendrimer substituents may be used to enhance the ability of small molecules to undergo solution processing.

[0031] Devices fabricated in accordance with embodiments of the invention may be incorporated into a wide variety of consumer products, including flat panel displays, computer monitors, televisions, billboards, lights for interior or exterior illumination and/or signalling, heads up displays, fully transparent displays, flexible displays, laser printers, telephones, cell phones, personal digital assistants (PDAs), laptop computers, digital cameras, camcorders, viewfinders, micro-displays, vehicles, a large area wall, theatre or stadium screen, or a sign. Various control mechanisms may be used to control devices fabricated in accordance with the present invention, including passive matrix and active matrix. Many of the devices are intended for use in a temperature range comfortable to humans, such as 18 degrees C. to 30 degrees C, and more preferably at room temperature (20-25 degrees C).

[0032] The materials and structures described herein may have applications in devices other than OLEDs. For example, other optoelectronic devices such as organic solar cells and organic photodetectors may employ the materials and structures. More generally, organic devices, such as organic transistors, may employ the materials and structures.

[0033] The terms halo, halogen, alkyl, cycloalkyl, alkenyl, alkynyl, arylkyl, heterocyclic group, aryl, aromatic group, and heteroaryl are known to the art, and are defined in US 7,279,704 at cols. 31-32.

[0034] One application for phosphorescent emissive molecules is a full color display, preferably an active matrix OLED (AMOLED) display. One factor that currently limits AMOLED display lifetime and power consumption is the lack of a commercial blue phosphorescent OLED with saturated CIE coordinates.

[0035] FIG. 3 shows the 1931 CIE chromaticity diagram, developed in 1931 by the International Commission on Illumination, usually known as the CIE for its French name Commission Internationale de l'Eclairage. Any color can be described by its x and y coordinates on this diagram. A "saturated" color, in the strictest sense, is a color having a point spectrum, which falls on the CIE diagram along the U-shaped curve running from blue through green to red. The numbers along this curve refer to the wavelength of the point spectrum. Lasers emit light having a point spectrum.

[0036] FIG. 4 shows another rendition of the 1931 chromaticity diagram, which also shows several color "gamuts." A color gamut is a set of colors that may be rendered by a particular display or other means of rendering color. In general, any given light emitting device has an emission spectrum with a particular CIE coordinate. Emission from two devices can be combined in various intensities to render color having a CIE coordinate anywhere on the line between the CIE coordinates of the two devices. Emission from three devices can be combined in various intensities to render color having a CIE coordinate anywhere in the triangle defined by the respective coordinates of the three devices on the CIE diagram. The three points of each of the triangles in FIG. 4 represent industry standard CIE coordinates for displays. For example, the three points of the triangle labelled "NTSC / PAL / SECAM / HDTV gamut" represent the colors of red, green and blue (RGB) called for in the sub-pixels of a display that complies with the standards listed. A pixel having sub-pixels that emit the RGB colors called for can render any color inside the triangle by adjusting the intensity of emission from each subpixel.

[0037] A full color display using phosphorescent OLEDs is desirable for many reasons, including the theoretical high efficiency of such devices, cost advantages, and device flexibility. While the industry has achieved red and green phosphorescent devices that have high efficiency and long lifetimes suitable for use in displays, there may still be issues with blue phosphorescent devices, and particularly blue phosphorescent devices that have the CIE coordinates called for by industry standards such as HDTV and NTSC. The CIE coordinates called for by NTSC standards are: red (0.67, 0.33); green (0.21, 0.72); blue (0.14, 0.08). There are devices having suitable lifetime and efficiency properties that are close to the blue called for by industry standards, but far enough from the standard blue that the display fabricated with such devices instead of the standard blue would have noticeable shortcomings in rendering blues. The blue called for industry

standards is a "deep" blue as defined below, and the colors emitted by efficient and long-lived blue phosphorescent devices are generally "light" blues as defined below.

[0038] A display is provided which allows for the use of highly efficient and long-lived phosphorescent devices, including red, green and light blue phosphorescent devices, while still allowing for the rendition of colors that include a deep blue component. This is achieved by using a quad pixel, i.e., a pixel with four devices. Three of the devices are highly efficient and long-lived phosphorescent devices, emitting red, green and light blue light, respectively. The fourth device emits deep blue light, and may be less efficient or less long lived than the other devices. However, because many colors can be rendered without using the fourth device, its use can be limited such that the overall lifetime and efficiency of the display does not suffer much from its inclusion.

[0039] A device is provided. The device has a first organic light emitting device, a second organic light emitting device, a third organic light emitting device, and a fourth organic light emitting device. The device may be a pixel of a display having four sub-pixels. A preferred use of the device is in an active matrix organic light emitting display, which is a type of device where the shortcomings of deep blue OLEDs are currently a limiting factor.

[0040] The first organic light emitting device emits red light, the second organic light emitting device emits green light, the third organic light emitting device emits light blue light, and the fourth organic light emitting device emits deep blue light. The peak emissive wavelength of the third and fourth devices differ by at least 4 nm. As used herein, "red" means having a peak wavelength in the visible spectrum of 600 - 700 nm, "green" means having a peak wavelength in the visible spectrum of 500 - 600 nm, "light blue" means having a peak wavelength in the visible spectrum of 470 - 500 nm, and "deep blue" means having a peak wavelength in the visible spectrum of 400 - 470 nm. Preferred ranges include a peak wavelength in the visible spectrum of 610 - 640 nm for red and 510 - 550 nm for green.

[0041] To add more specificity to the wavelength-based definitions, "light blue" may be further defined, in addition to having a peak wavelength in the visible spectrum of 470 - 500 nm that is at least 4 nm greater than that of a deep blue OLED in the same device, as preferably having a CIE x-coordinate less than 0.2 and a CIE y-coordinate less than 0.5, and "deep blue" may be further defined, in addition to having a peak wavelength in the visible spectrum of 400 - 470 nm, as preferably having a CIE y-coordinate less than 0.15 and preferably less than 0.1, and the difference between the two may be further defined such that the CIE coordinates of light emitted by the third organic light emitting device and the CIE coordinates of light emitted by the fourth organic light emitting device are sufficiently different that the difference in the CIE x-coordinates plus the difference in the CIE y-coordinates is at least 0.01. As defined herein, the peak wavelength is the primary characteristic that defines light and deep blue, and the CIE coordinates are preferred.

[0042] More generally, "light blue" may mean having a peak wavelength in the visible spectrum of 400 - 500 nm, and "deep blue" may mean having a peak wavelength in the visible spectrum of 400 - 500 nm, and at least 4 nm less than the peak wavelength of the light blue.

[0043] In another embodiment, "light blue" may mean having a CIE y coordinate less than 0.25, and "deep blue" may mean having a CIE y coordinate at least 0.02 less than that of "light blue."

[0044] In another embodiment, the definitions for light and deep blue provided herein may be combined to reach a narrower definition. For example, any of the CIE definitions may be combined with any of the wavelength definitions. The reason for the various definitions is that wavelengths and CIE coordinates have different strengths and weaknesses when it comes to measuring color. For example, lower wavelengths normally correspond to deeper blue. But a very narrow spectrum having a peak at 472 nm may be considered "deep blue" when compared to another spectrum having a peak at 471 nm, but a significant tail in the spectrum at higher wavelengths. This scenario is best described using CIE coordinates. It is expected that, in view of available materials for OLEDs, that the wavelength-based definitions are well-suited for most situations. In any event, embodiments of the invention include two different blue pixels, however the difference in blue is measured.

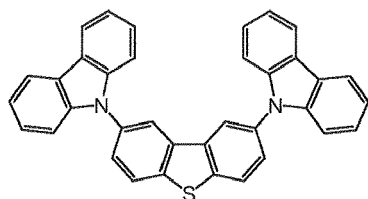
[0045] The first, second and third organic light emitting devices each have an emissive layer that includes a phosphorescent organic material that emits light when an appropriate voltage is applied across the device. The fourth organic light emitting device has an emissive layer that includes an organic emissive material, which may be phosphorescent or fluorescent, that emits light when an appropriate voltage is applied across the device.

[0046] "Red" and "green" phosphorescent devices having lifetimes and efficiencies suitable for use in a commercial display are well known and readily achievable, including devices that emit light sufficiently close to the various industry standard reds and greens for use in a display. Examples of such devices are provided in M. S. Weaver, V. Adamovich, B. D'Andrade, B. Ma, R. Kwong, and J. J. Brown, Proceedings of the International Display Manufacturing Conference, pp. 328-331 (2007); see also B. D'Andrade, M. S. Weaver, P. B. MacKenzie, H. Yamamoto, J. J. Brown, N. C. Giebink, S. R. Forrest and M. E. Thompson, Society for Information Display Digest of Technical Papers 34, 2, pp.712-715 (2008).

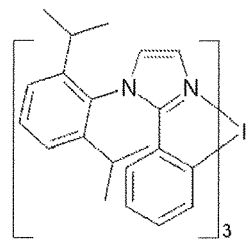
[0047] "Light blue" phosphorescent devices having desirable lifetime and efficiency properties are also readily achievable. Such devices may be used in displays without adversely affecting the lifetime or efficiency of the display. However, a display relying on a light blue device may not be able to properly render colors requiring a deep blue component. An example of a suitable light blue device has the structure:

ITO (80nm)/Compound C (30nm)/NPD (10nm)/Compound A: Emitter A (30nm:20%) / Compound A (5nm) / LG201 (30nm)/LiF(1 nm)/Al (100nm)

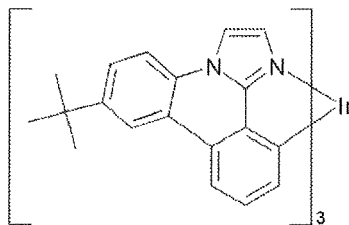
LG201 is available from LG Chem Ltd. of Korea.



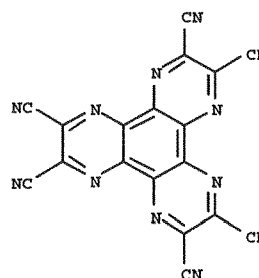
Compound A



Emitter A



Emitter B



Compound C

[0048] Such a device has been measured to have a lifetime of 6.3khrs from initial luminance 1000nits at constant dc current to 50% of initial luminance, 1931 CIE coordinates of CIE (0.176, 0.377), and a peak emission wavelength of 476 nm in the visible spectrum.

[0049] "Deep blue" devices are also readily achievable, but not necessarily having the lifetime and efficiency properties desired for a display suitable for consumer use. One way to achieve a deep blue device is by using a fluorescent emissive material that emits deep blue, but does not have the high efficiency of a phosphorescent device. An example of a deep blue fluorescent device is provided in Masakazu Funahashi et al., Society for Information Display Digest of Technical Papers 47. 3, pp.709-711 (2008). Funahashi discloses a deep blue fluorescent device having CIE coordinates of (0.140, 0.133) and a peak wavelength of 460 nm. Another way is to use a phosphorescent device having a phosphorescent emissive material that emits light blue, and to adjust the spectrum of light emitted by the device through the use of filters or microcavities. Filters or microcavities can be used to achieve a deep blue device, as described in Baek-woon Lee, Young In Hwang, Hae-yeon Lee and Chi Woo Kim and Young-gu Ju Society for Information Display Digest of Technical Papers 68.4, pp.1050-1053 (2008), but there may be an associated decrease in device efficiency. Indeed, the same emitter may be used to fabricate a light blue and a deep blue device, due to microcavity differences. Another way is to use available deep blue phosphorescent emissive materials, such as described in United States Patent Publication 2005-0258433 and for compounds shown at pages 7-14. However, such devices may have lifetime issues. An example of a suitable deep blue device using a phosphorescent emitter has the structure:

ITO (80nm)/Compound C(30nm)/NPD (10nm)/Compound A : Emitter B (30nm:9%)/Compound A (5nm) / Alq3 (30nm)/LiF(1nm)/Al (100nm)

[0050] Such a device has been measured to have a lifetime of 600 hrs from initial luminance 1000nits at constant dc current to 50% of initial luminance, 1931 CIE coordinates of CIE: (0.148, 0.191), and a peak emissive wavelength of 462 nm.

[0051] The difference in the performance of available deep blue and light blue devices may be significant. For example, a deep blue device may have good efficiency, but a lifetime that is less than 50% or less than 25% of that of a light blue device. Such a difference in lifetime may describe many deep blue phosphorescent devices. A standard way to measure lifetime is LT_{50} at an initial luminance of 1000nits, i.e., the time required for the light output of a device to fall by 50%

when run at a constant current that results in an initial luminance of 1000nits. Or, a deep blue device may have a good lifetime, but an efficiency that is less than 80% or less than 40% of that of a light blue device. Such a difference in efficiency may describe many fluorescent deep blue devices, or deep blue devices obtained by color-shifting the emission from a light blue phosphorescent emitter, for example by using microcavities.

[0052] A device or pixel having four organic light emitting devices, one red, one green, one light blue and one deep blue, may be used to render any color inside the shape defined by the CIE coordinates of the light emitted by the devices on a CIE chromaticity diagram. FIG. 5 illustrates this point. FIG. 5 should be considered with reference to the CIE diagrams of FIGS. 3 and 4, but the actual CIE diagram is not shown in FIG. 5 to make the illustration clearer. In FIG. 5, point 511 represents the CIE coordinates of a red device, point 512 represents the CIE coordinates of a green device, point 513 represents the CIE coordinates of a light blue device, and point 514 represents the CIE coordinates of a deep blue device. The pixel may be used to render any color inside the triangle defined by points 511, 512 and 514. If the CIE coordinates of points 511, 512 and 514 correspond to, or at least encircle, the CIE coordinates of devices called for by a standard gamut - such as the corners of the triangles in FIG. 4 - the device may be used to render any color in that gamut.

[0053] However, because there is also a light blue device that emits light having CIE coordinates represented by point 513, many of the colors inside the triangle defined by points 511, 512 and 514 can be rendered without using the deep blue device. Specifically, any color inside the triangle defined by points 511, 512 and 513 may be rendered without using the deep blue device. The deep blue device would only be needed for colors inside the triangle defined by points 511, 513 and 514, or inside the triangle defined by points 512, 513 and 514. Depending upon the color content of the images in question, only minimal use of the deep blue device may be needed. In addition, for colors where the deep blue device is needed, i.e., for colors inside the triangle defined by points 511, 513 and 514, or inside the triangle defined by points 512, 513 and 514, the contribution needed from the deep blue device may be much less when the light blue device is being used, because, for many of these colors, much of the blue contribution can come from the light blue device. For example, for a color having a CIE coordinate much closer to point 513 than any of the other points, most or all of the contribution would come from the light blue device. In a comparable pixel without a light blue device, most or all of the contribution would come from the deep blue device, which is closest to point 513.

[0054] Although FIG. 5 shows a "light blue" device having CIE coordinates 513 that are inside the triangle defined by the CIE coordinates 511, 512 and 514 of the red, green and deep blue devices, respectively, the light blue device may have CIE coordinates that fall outside of said triangle. For example, CIE coordinates for a light blue device may fall to the left of the line between coordinates 512 and 514, and still meet the definition of "light blue" included herein.

[0055] A preferred way to operate a device having a red, green, light blue and deep blue device, or first, second, third and fourth devices, respectively, as described herein is to render a color by using only the devices that define the smallest triangle in CIE space that include the color. Thus, points 511, 512 and 513 define a first triangle 521 in the CIE space; points 511, 513 and 514 define a second triangle 522 in the CIE space; and points 512, 513 and 514 define a third triangle 523 in the CIE space. If a desired color has CIE coordinates falling within the first triangle, only the first, second and third devices, but not the fourth device, are used to render the color. If a desired color has CIE coordinates falling within the second triangle, only the first, third and fourth devices, but not the second device, are used to render the color. If a desired color has CIE coordinates falling within the third triangle, only the second, third and fourth devices, but not the first device, are used to render the color.

[0056] Such a device could be operated in other ways as well. For example, light having the CIE coordinates of the light blue device may be achieved by using a combination of the deep blue device, the red device and the green device, and such light could be used in whole or in part to replace the contribution of the light blue device. However, such use would not achieve the purpose of minimizing use of the deep blue device.

[0057] Algorithms have been developed in conjunction with RGBW (red, green, blue, white) devices that may be used to map a RGB color to an RGBW color. Similar algorithms may be used to map an RGB color to RG B1 B2. Such algorithms, and RGBW devices generally, are disclosed in A. Arnold, T. K. Hatwar, M. Hettel, P. Kane, M. Miller, M. Murdoch, J. Spindler, S. V. Slyke, Proc. Asia Display (2004); J. P. Spindler, T. K. Hatwar, M. E. Miller, A. D. Arnold, M. J. Murdoch, P. J. Lane, J. E. Ludwicki and S. V. Slyke, SID 2005 International Symposium Technical Digest 36, 1, pp. 36-39 (2005) ("Spindler"); Du- Zen Peng, Hsiang-Lun, Hsu and Ryuji Nishikawa. Information Display 23, 2, pp 12-18 (2007) ("Peng"); B-W. Lee, Y. I. Hwang, H-Y, Lee and C. H. Kim, SID 2008 International Symposium Technical Digest 39, 2, pp. 1050-1053 (2008). RGBW displays are significantly different from those disclosed herein because they still need a good deep blue device. Moreover, there is teaching that the "fourth" or white device of an RGBW display should have particular "white" CIE coordinates, see Spindler at 37 and Peng at 13.

[0058] A device having four different organic light emitting devices, each emitting a different color, may have a number of different configurations. FIG. 6 illustrates some of these configurations. In FIG. 6, R is a red-emitting device, G is a green-emitting device, B1 is a light blue emitting device, and B2 is a deep blue emitting device.

[0059] Configuration 610 shows a quad configuration, where the four organic light emitting devices making up the overall device or multicolor pixel are arranged in a two by two array. Each of the individual organic light emitting devices

in configuration 610 has the same surface area. In a quad pattern, each pixel could use two gate lines and two data lines.

[0060] Configuration 620 shows a quad configuration where some of the devices have surface areas different from the others. It may be desirable to use different surface areas for a variety of reasons. For example, a device having a larger area may be run at a lower current than a similar device with a smaller area to emit the same amount of light. The lower current may increase device lifetime. Thus, using a relatively larger device is one way to compensate for devices having a lower expected lifetime.

[0061] Configuration 630 shows equally sized devices arranged in a row, and configuration 640 shows devices arranged in a row where some of the devices have different areas. Patterns other than those specifically illustrated may be used.

[0066] Other configurations may be used. For example, a stacked OLED with four separately controllable emissive layers, or two stacked OLEDs each with two separately controllable emissive layers, may be used to achieve four subpixels that can each emit a different color of light.

[0062] Various types of OLEDs may be used to implement various configurations, including transparent OLEDs and flexible OLEDs.

[0063] Displays with devices having four sub-pixels, in any of the various configurations illustrated and in other configurations, may be fabricated and patterned using any of a number of conventional techniques. Examples include shadow mask, laser induced thermal imaging (LITI), ink-jet printing, organic vapor jet printing (OVJP), or other OLED patterning technology. An extra masking or patterning step may be needed for the emissive layer of the fourth device, which may increase fabrication time. The material cost may also be somewhat higher than for a conventional display. These additional costs would be offset by improved display performance.

[0064] A single pixel may incorporate more than the four sub-pixels disclosed herein, possibly with more than four discrete colors. However, due to manufacturing concerns, four sub-pixels per pixel is preferred.

[0065] It is understood that the various embodiments described herein are by way of example only, and are not intended to limit the scope of the invention. For example, many of the materials and structures described herein may be substituted with other materials and structures without deviating from the spirit of the invention. The present invention as claimed may therefore includes variations from the particular examples and preferred embodiments described herein, as will be apparent to one of skill in the art. It is understood that various theories as to why the invention works are not intended to be limiting.

[0066] In the following paragraphs devices and methods of operating devices are described:

Paragraph 1:

A device, comprising: a first organic light emitting device that emits light having a peak wavelength in the visible spectrum of 600 - 700 nm, further comprising a first emissive layer having a first emissive material, wherein the first emissive material is phosphorescent; a second organic light emitting device that emits light having a peak wavelength in the visible spectrum of 500 - 600 nm, further comprising a second emissive layer having a second emissive material, wherein the second emissive material is phosphorescent; a third organic light emitting device that emits light having a peak wavelength in the visible spectrum of 400 - 500 nm, further comprising a third emissive layer having a third emissive material, wherein the third emissive material is phosphorescent; and a fourth organic light emitting device that emits light having a peak wavelength in the visible spectrum of 400 to 500 nm, further comprising a fourth emissive layer having a fourth emissive material; wherein the peak wavelength in the visible spectrum of light emitted by the fourth organic light emitting device is at least 4 nm less than the peak wavelength in the visible spectrum of light emitted by the third organic light emitting device.

Paragraph 2:

The device of paragraph 1, wherein the third organic light emitting device emits light having a peak wavelength in the visible spectrum of 470 - 500 nm; and the fourth organic light emitting device emits light having a peak wavelength in the visible spectrum of 400 to 470 nm.

Paragraph 3:

The device of paragraph 2, wherein: the third organic light emitting device emits light having a CIE x-coordinate less than 0.2 and a CIE y-coordinate less than 0.5, and the fourth the organic light emitting device emits light having a CIE y-coordinate less than 0.15.

Paragraph 4:

The device of paragraph 3, wherein the CIE coordinates of light emitted by the third organic light emitting device

and the CIE coordinates of light emitted by the fourth organic light emitting device are sufficiently different that the difference in the CIE x-coordinates plus the difference in the CIE y-coordinates is at least > 0.01 .

Paragraph 5:

The device of paragraph 2, wherein the fourth emissive material is fluorescent.

Paragraph 6:

The device of paragraph 2, wherein the fourth emissive material is phosphorescent.

Paragraph 7:

The device of paragraph 2, wherein each of the first, second, third and fourth organic light emitting devices have the same surface area.

Paragraph 8:

The device of paragraph 2, wherein at least one of the first, second, third and fourth organic light emitting devices has a surface area different from another of the first, second, third and fourth organic light emitting devices.

Paragraph 9:

The device of paragraph 2, wherein the device is part of a full color display.

Paragraph 10:

The device of paragraph 2, wherein the first, second, third and fourth organic light emitting devices are arranged in a quad pattern.

Paragraph 11:

The device of paragraph 2, wherein the first, second, third and fourth organic light emitting devices are arranged in a row.

Paragraph 12:

The device of paragraph 2, wherein the emissive material of the third and fourth organic light emitting devices is the same material, and the fourth organic light emitting device includes a microcavity.

Paragraph 13:

The device of paragraph 1, wherein the device is a consumer product.

Paragraph 14:

A device, comprising: a first organic light emitting device that emits light having a peak wavelength in the visible spectrum of 600 - 700 nm, further comprising a first emissive layer having a first emissive material, wherein the first emissive material is phosphorescent; a second organic light emitting device that emits light having a peak wavelength in the visible spectrum of 500 - 600 nm, further comprising a second emissive layer having a second emissive material, wherein the second emissive material is phosphorescent; a third organic light emitting device that emits light having a CIE y coordinate less than 0.25, further comprising a third emissive layer having a third emissive material, wherein the third emissive material is phosphorescent; and a fourth organic light emitting device that emits light having a CIE y coordinate at least 0.02 less than that of light emitted by the third organic light emitting device, further comprising a fourth emissive layer having a fourth emissive material.

Paragraph 15:

A method of operating a device having first, second, third and fourth organic light emitting devices such that the device emits light having a desired CIE coordinate, wherein the first organic light emitting device emits light having a peak wavelength in the visible spectrum of 600 - 700 nm, and further comprises a first emissive layer having a first emissive material, wherein the first emissive material is phosphorescent; the second organic light emitting device that emits light having a peak wavelength in the visible spectrum of 500 - 600 nm, and further comprises a second emissive layer having a second emissive material, wherein the second emissive material is phosphorescent; the third organic light emitting device that emits light having a peak wavelength in the visible spectrum of 400 - 500 nm, and further comprises a third emissive layer having a third emissive material, wherein the third emissive material is phosphorescent; the fourth organic light emitting device that emits light having a peak wavelength in the visible spectrum of 400 to 500 nm, and further comprises a fourth emissive layer having a fourth emissive material; the peak wavelength in the visible spectrum of light emitted by the fourth organic light emitting device is at least 4 nm less than the peak wavelength in the visible spectrum of light emitted by the third organic light emitting device; the CIE coordinates of light emitted by the first, second and third devices define a first triangle in the CIE space; the CIE coordinates of light emitted by the first, third and fourth devices define a second triangle in the CIE space; the CIE coordinates of light emitted by the second, third and fourth devices define a third triangle in the CIE space; the method comprising: emitting light from the first, second and third devices, but not the fourth device, to achieve emission of light with the desired CIE coordinates, if the desired CIE coordinates fall within the first triangle; emitting light from the first, third and fourth devices, but not the second device, to achieve emission of light with the desired CIE coordinates, if the desired CIE coordinates fall within the second triangle; emitting light from the second, third and fourth devices, but not the first device, to achieve emission of light with the desired CIE coordinates, if the desired CIE coordinates fall within the third triangle.

Paragraph 16:

The method of paragraph 15, wherein the third organic light emitting device emits light having a peak wavelength in the visible spectrum of 470 - 500 nm; and the fourth organic light emitting device emits light having a peak wavelength in the visible spectrum of 400 to 470 nm.

Claims

1. Device comprising:

a first organic light emitting device that emits light having a peak wavelength in the visible spectrum of 600 - 700 nm, further comprising a first emissive layer having a first emissive material, wherein the first emissive material is phosphorescent;
 a second organic light emitting device that emits light having a peak wavelength in the visible spectrum of 500 - 600 nm, further comprising a second emissive layer having a second emissive material, wherein the second emissive material is phosphorescent;
 a third organic light emitting device that emits light having a peak wavelength in the visible spectrum of 400 - 500 nm, further comprising a third emissive layer having a third emissive material, wherein the third emissive material is phosphorescent; and
 a fourth organic light emitting device that emits light having a peak wavelength in the visible spectrum of 400 to 500 nm, further comprising a fourth emissive layer having a fourth emissive material, wherein the fourth emissive material is phosphorescent;

wherein the peak wavelength in the visible spectrum of light emitted by the fourth organic light emitting device is at least 4 nm less than the peak wavelength in the visible spectrum of light emitted by the third organic light emitting device.

2. Device according to claim 1, wherein the third organic light emitting device emits light having a peak wavelength in the visible spectrum of 470 - 500 nm and the fourth organic light emitting device emits light having a peak wavelength in the visible spectrum of 400 to 470 nm.

3. Device according to claim 1 or 2, wherein the third organic light emitting device emits light having a CIE x-coordinate less than 0.2 and a CIE y-coordinate less than 0.5, and the fourth the organic light emitting device emits light having a CIE y-coordinate less than 0.15.

4. Device according to any one of the preceding claims, wherein the CIE coordinates of light emitted by the third organic light emitting device and the CIE coordinates of light emitted by the fourth organic light emitting device are sufficiently different that the difference in the CIE x-coordinates plus the difference in the CIE y-coordinates is at least > 0.01 .
5. Device according to any one of the preceding claims, wherein the first, second, third and fourth organic light emitting devices have the same surface area or have different surface areas.
6. Device according to any one of the preceding claims, wherein each of the first, second, third and fourth organic light emitting devices have the same surface area.
7. Device according to any one of the preceding claims, wherein at least one of the first, second, third and fourth organic light emitting devices has a surface area different from another of the first, second, third and fourth organic light emitting devices.
8. Device according to any one of the preceding claims, wherein the device is part of a full color display.
9. Device according to any one of the preceding claims, wherein the first, second, third and fourth organic light emitting devices are arranged in a quad pattern.
10. Device according to any one of the preceding claims, wherein the first, second, third and fourth organic light emitting devices are arranged in a row.
11. Device according to any one of the preceding claims, wherein the emissive material of the third and fourth organic light emitting devices is the same material, and the fourth organic light emitting device includes a microcavity.
12. Device according to any one of the preceding claims, wherein the device is a consumer product.
13. Device comprising:
 - a first organic light emitting device that emits light having a peak wavelength in the visible spectrum of 600 - 700 nm, further comprising a first emissive layer having a first emissive material, wherein the first emissive material is phosphorescent;
 - a second organic light emitting device that emits light having a peak wavelength in the visible spectrum of 500 - 600 nm, further comprising a second emissive layer having a second emissive material, wherein the second emissive material is phosphorescent;
 - a third organic light emitting device that emits light having a CIE y coordinate less than 0.25, further comprising a third emissive layer having a third emissive material, wherein the third emissive material is phosphorescent;
 - and a fourth organic light emitting device that emits light having a CIE y coordinate at least 0.02 less than that of light emitted by the third organic light emitting device, further comprising a fourth emissive layer having a fourth emissive material, wherein the fourth emissive material is phosphorescent.
14. Method of operating a device having first, second, third and fourth organic light emitting devices such that the device emits light having a desired CIE coordinate;
 - wherein the first organic light emitting device emits light having a peak wavelength in the visible spectrum of 600 - 700 nm, and further comprises a first emissive layer having a first emissive material, wherein the first emissive material is phosphorescent;
 - the second organic light emitting device that emits light having a peak wavelength in the visible spectrum of 500 - 600 nm, and further comprises a second emissive layer having a second emissive material, wherein the second emissive material is phosphorescent;
 - the third organic light emitting device that emits light having a peak wavelength in the visible spectrum of 400 - 500 nm, and further comprises a third emissive layer having a third emissive material, wherein the third emissive material is phosphorescent;
 - the fourth organic light emitting device that emits light having a peak wavelength in the visible spectrum of 400 to 500 nm, and further comprises a fourth emissive layer having a fourth emissive material, wherein the fourth emissive material is phosphorescent;
 - the peak wavelength in the visible spectrum of light emitted by the fourth organic light emitting device is at least 4 nm less than the peak wavelength in the visible spectrum of light emitted by the third organic light emitting device;
 - the CIE coordinates of light emitted by the first, second and third devices define a first triangle in the CIE space;

the CIE coordinates of light emitted by the first, third and fourth devices define a second triangle in the CIE space;
the CIE coordinates of light emitted by the second, third and fourth devices define a third triangle in the CIE space;
the method comprising:

5 emitting light from the first, second and third devices, but not the fourth device, to achieve emission of light with
the desired CIE coordinates, if the desired CIE coordinates fall within the first triangle;
emitting light from the first, third and fourth devices, but not the second device, to achieve emission of light with
the desired CIE coordinates, if the desired CIE coordinates fall within the second triangle;
10 emitting light from the second, third and fourth devices, but not the first device, to achieve emission of light with
the desired CIE coordinates, if the desired CIE coordinates fall within the third triangle.

15 **15.** Method according to claim 14, wherein the third organic light emitting device emits light having a peak wavelength
in the visible spectrum of 470 - 500 nm; and the fourth organic light emitting device emits light having a peak
wavelength in the visible spectrum of 400 to 470 nm.

15

20

25

30

35

40

45

50

55

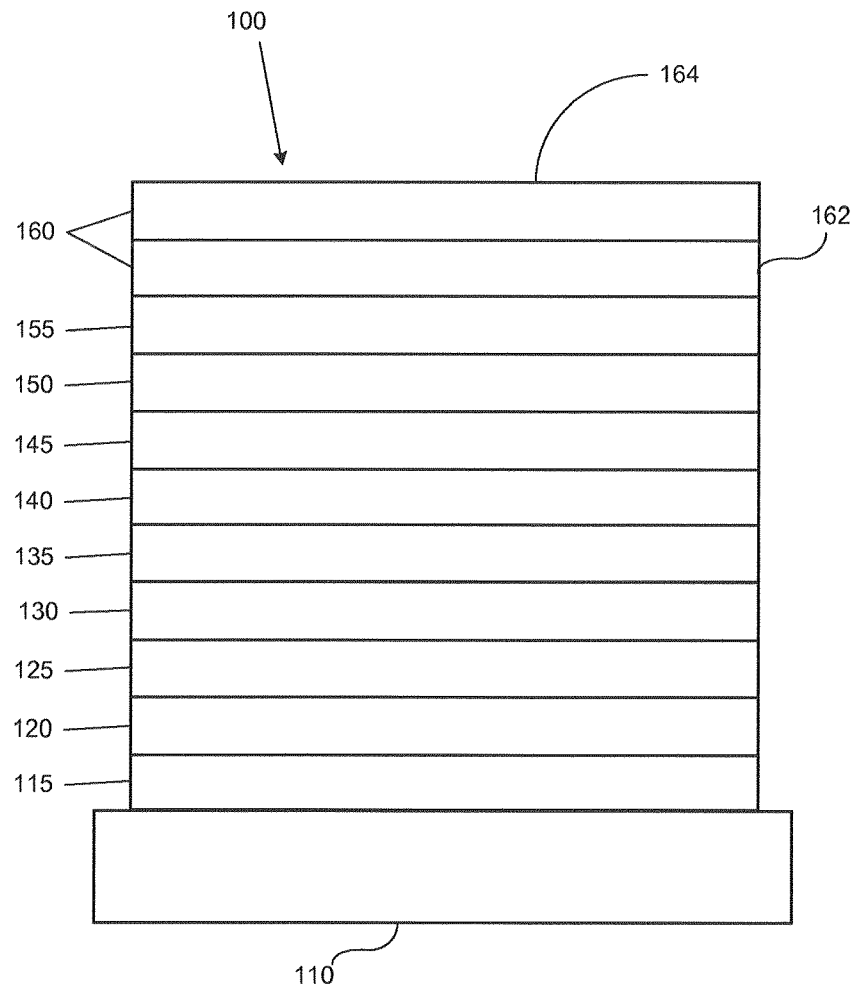


FIGURE 1

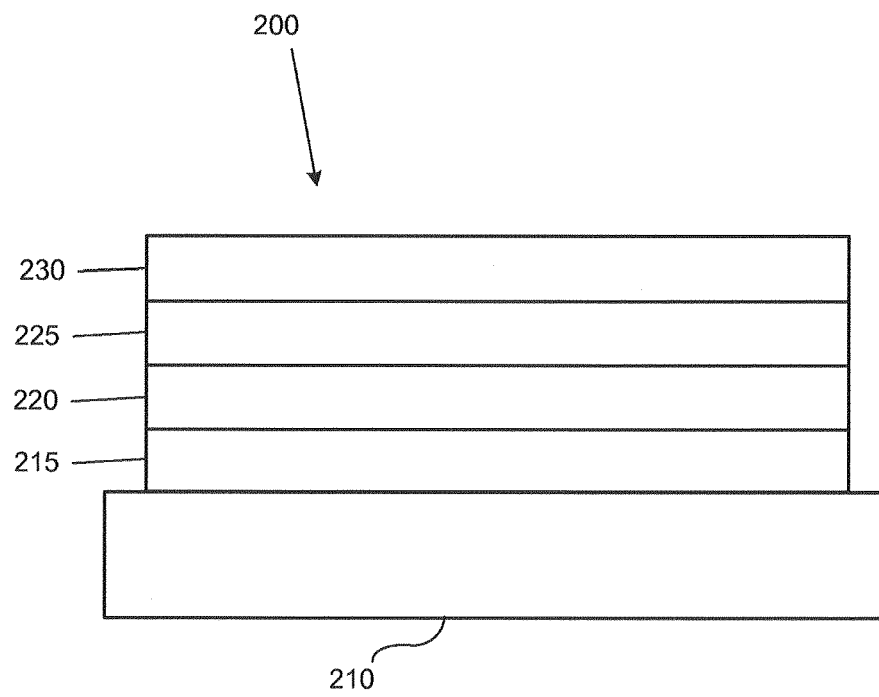


FIGURE 2

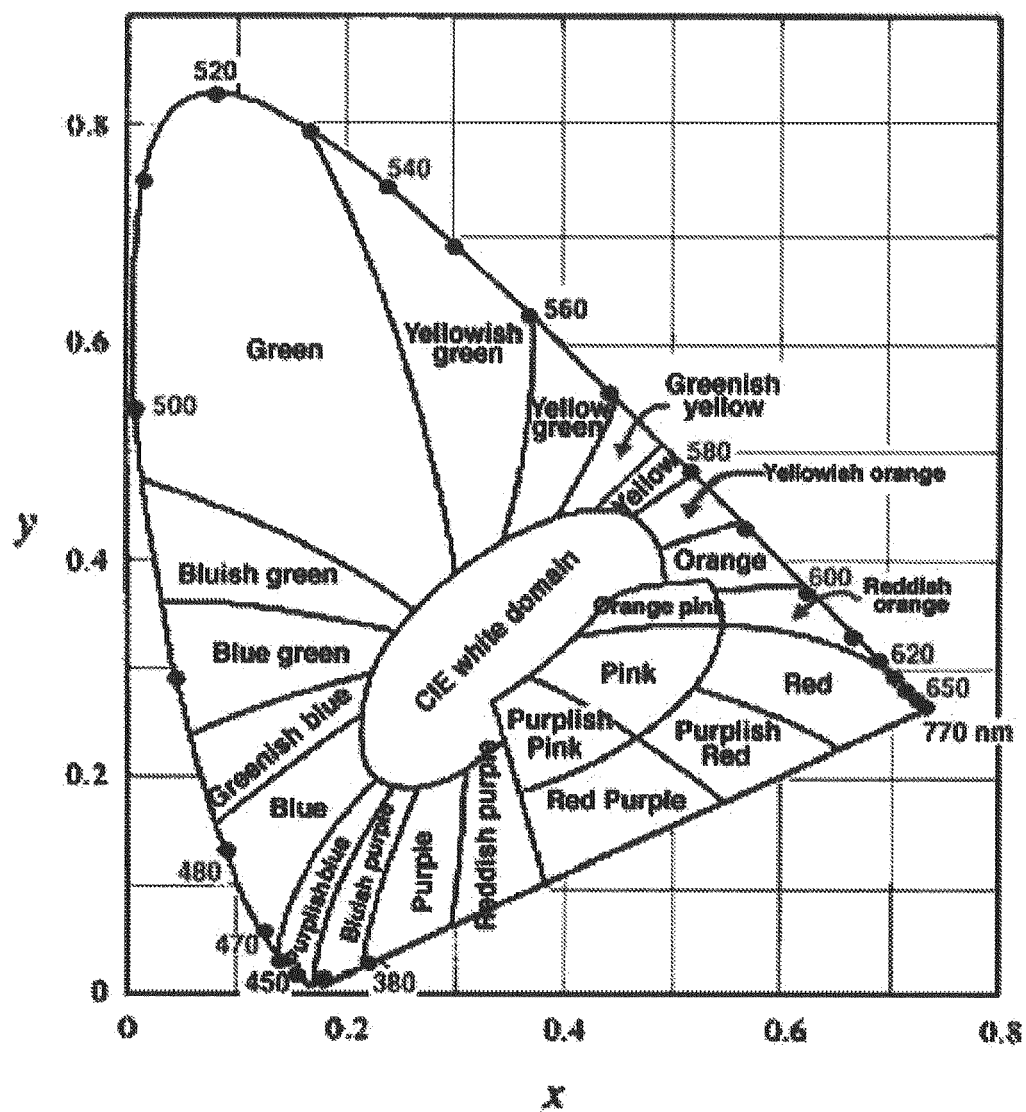


FIGURE 3

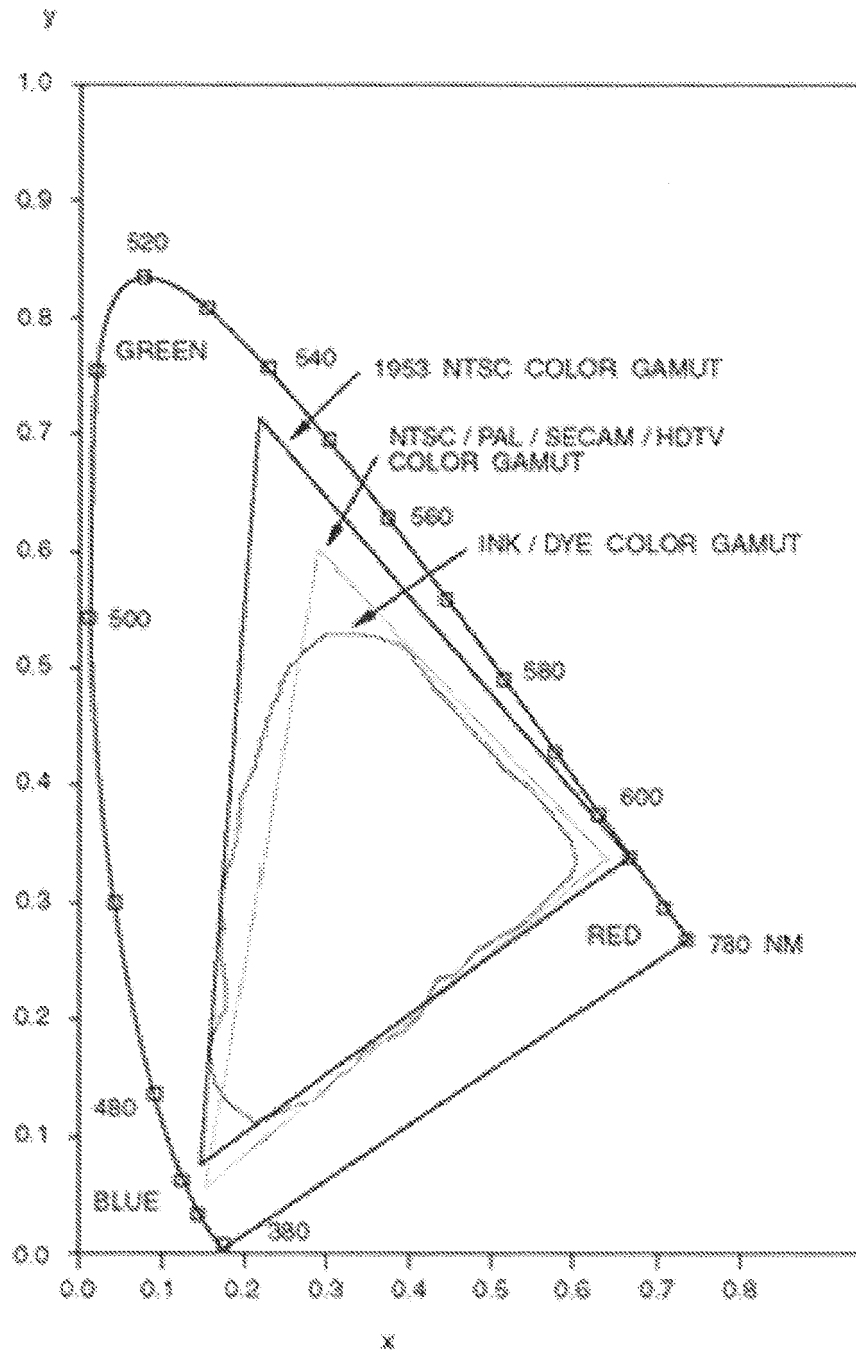


FIGURE 4

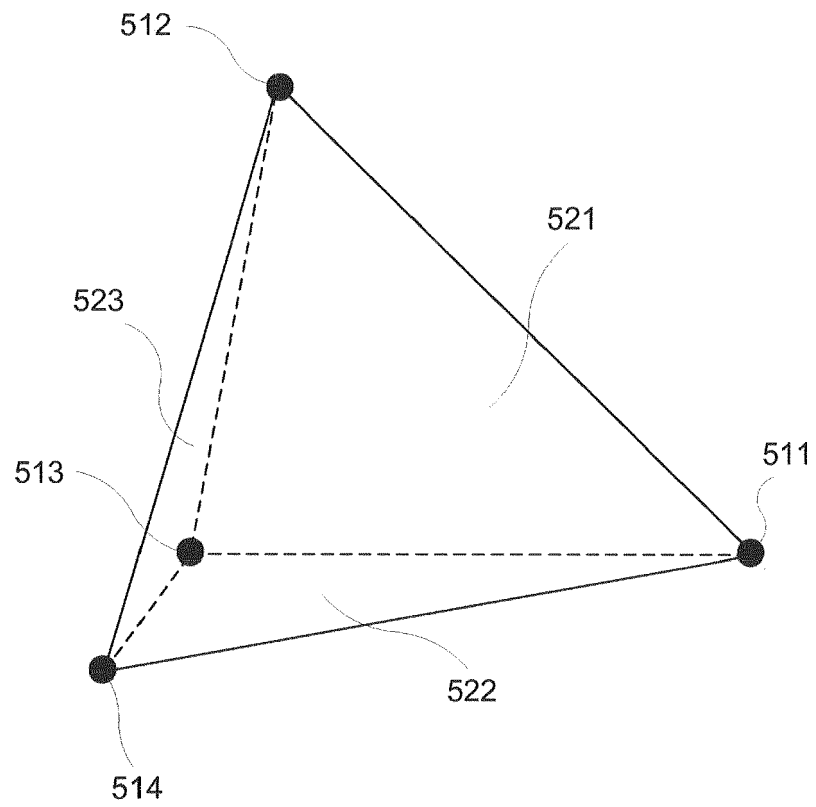


FIGURE 5

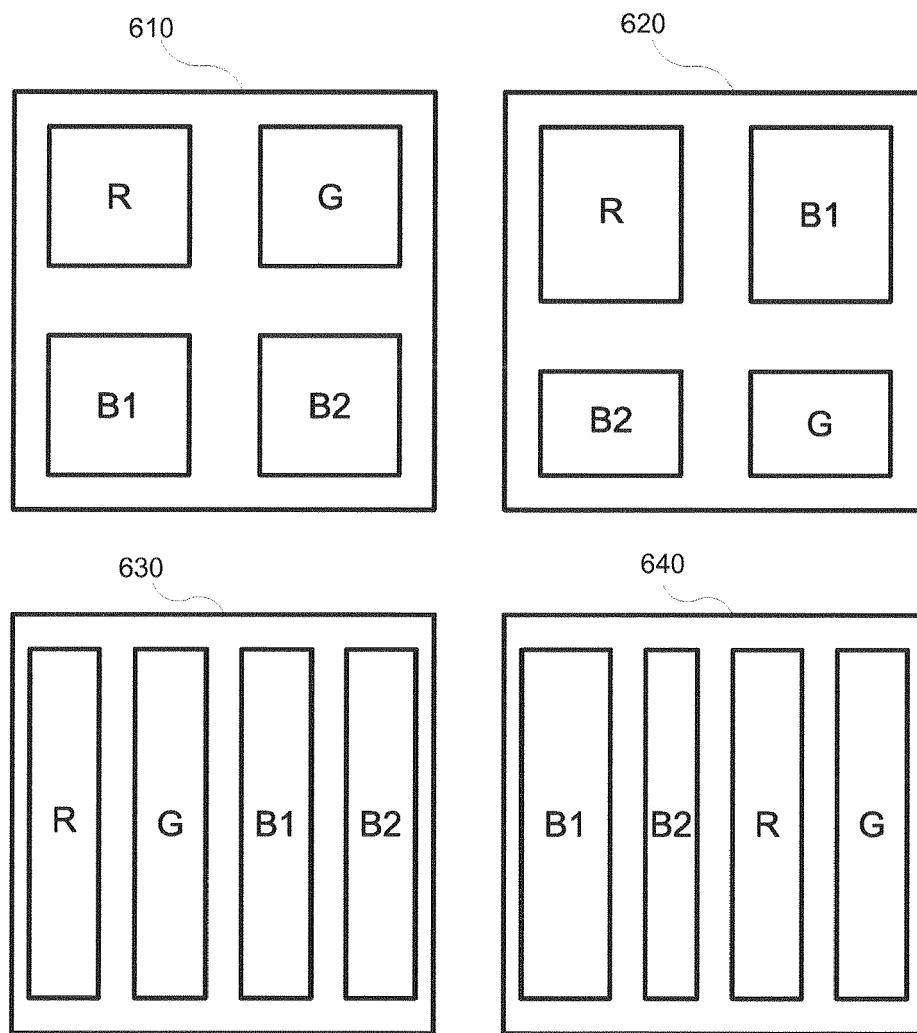


FIGURE 6



EUROPEAN SEARCH REPORT

Application Number
EP 16 19 0565

5

10

15

20

25

30

35

40

45

1

50

55

EPO FORM 1503 03.02 (P04C01)

DOCUMENTS CONSIDERED TO BE RELEVANT			
Category	Citation of document with indication, where appropriate, of relevant passages	Relevant to claim	CLASSIFICATION OF THE APPLICATION (IPC)
X	US 2005/225232 A1 (BOROSON MICHAEL L [US] ET AL) 13 October 2005 (2005-10-13) * paragraphs [0009], [0026], [0027], [0029], [0030], [0032], [0034], [0041], [0082], [0083], [0115] *	1-12,14,15	INV. H01L27/32 H01L51/50
Y	US 2006/172455 A1 (WINTERS DUSTIN L [US] ET AL) 3 August 2006 (2006-08-03) * paragraphs [0021], [0023], [0025] - [0028], [0085], [0091], [0092]; figure 4 *	1-15	
Y	US 2008/224968 A1 (KASHIWABARA MITSUHIRO [JP]) 18 September 2008 (2008-09-18) * figures 2,4a,4b * * paragraphs [0011], [0012], [0077], [0085], [0086], [0102], [0104], [0111], [0125], [0126] *	1-15	
Y	US 2003/042848 A1 (PARK JAE-YONG [KR] ET AL) 6 March 2003 (2003-03-06) * paragraphs [0010], [0011], [0044], [0051]; figures 7,10 *	1-15	TECHNICAL FIELDS SEARCHED (IPC) H01L H05B
Y	JP 2007 122033 A (SEMICONDUCTOR ENERGY LAB) 17 May 2007 (2007-05-17) * abstract * * paragraphs [0001], [0081], [0089], [0126] - [0131] * * figures 2,10,11,16-19 *	1-10,12,13	
Y	US 2007/236135 A1 (FUKUDA KOICHI [JP] ET AL) 11 October 2007 (2007-10-11) * paragraphs [0021], [0022], [0024] - [0026] *	1-10,12,13	
The present search report has been drawn up for all claims			
Place of search The Hague		Date of completion of the search 8 February 2017	Examiner Faou, Marylène
CATEGORY OF CITED DOCUMENTS X : particularly relevant if taken alone Y : particularly relevant if combined with another document of the same category A : technological background O : non-written disclosure P : intermediate document T : theory or principle underlying the invention E : earlier patent document, but published on, or after the filing date D : document cited in the application L : document cited for other reasons & : member of the same patent family, corresponding document			

**ANNEX TO THE EUROPEAN SEARCH REPORT
ON EUROPEAN PATENT APPLICATION NO.**

EP 16 19 0565

5

This annex lists the patent family members relating to the patent documents cited in the above-mentioned European search report.
The members are as contained in the European Patent Office EDP file on
The European Patent Office is in no way liable for these particulars which are merely given for the purpose of information.

08-02-2017

10

Patent document cited in search report	Publication date	Patent family member(s)	Publication date
US 2005225232 A1	13-10-2005	TW 200605721 A	01-02-2006
		US 2005225232 A1	13-10-2005
		WO 2005101541 A1	27-10-2005
US 2006172455 A1	03-08-2006	NONE	
US 2008224968 A1	18-09-2008	CN 101267701 A	17-09-2008
		JP 2008225179 A	25-09-2008
		US 2008224968 A1	18-09-2008
US 2003042848 A1	06-03-2003	CN 1407837 A	02-04-2003
		JP 2003077665 A	14-03-2003
		JP 2008147691 A	26-06-2008
		KR 20030020034 A	08-03-2003
		US 2003042848 A1	06-03-2003
JP 2007122033 A	17-05-2007	NONE	
US 2007236135 A1	11-10-2007	JP 2007300075 A	15-11-2007
		US 2007236135 A1	11-10-2007

15

20

25

30

35

40

45

50

55

EPO FORM P0459

For more details about this annex : see Official Journal of the European Patent Office, No. 12/82

REFERENCES CITED IN THE DESCRIPTION

This list of references cited by the applicant is for the reader's convenience only. It does not form part of the European patent document. Even though great care has been taken in compiling the references, errors or omissions cannot be excluded and the EPO disclaims all liability in this regard.

Patent documents cited in the description

- US 5844363 A [0003] [0026]
- US 6303238 B [0003] [0026]
- US 5707745 A [0003] [0026] [0029]
- US 7279704 B [0014] [0024] [0025] [0033]
- US 4769292 A [0023]
- US 20030230980 A [0026]
- US 5703436 A [0026]
- US 6097147 A [0026]
- US 20040174116 A [0026]
- US 5247190 A, Friend [0029]
- US 6091195 A, Forrest [0029]
- US 5834893 A, Bulovic [0029]
- US 6013982 A [0030]
- US 6087196 A [0030]
- US 6337102 B, Forrest [0030]
- US 233470 A [0030]
- US 6294398 B [0030]
- US 6468819 B [0030]
- US 20050258433 A [0049]

Non-patent literature cited in the description

- **BALDO et al.** Highly Efficient Phosphorescent Emission from Organic Electroluminescent Devices. *Nature*, 1998, vol. 395, 151-154 [0024]
- **BALDO et al.** Very high-efficiency green organic light-emitting devices based on electrophosphorescence. *Appl. Phys. Lett.*, 1999, vol. 75 (3), 4-6 [0024]
- **M. S. WEAVER ; V. ADAMOVICH ; B. D'ANDRADE ; B. MA ; R. KWONG ; J. J. BROWN.** *Proceedings of the International Display Manufacturing Conference*, 2007, 328-331 [0046]
- **B. D'ANDRADE ; M. S. WEAVER ; P. B. MACKENZIE ; H. YAMAMOTO ; J. J. BROWN ; N. C. GIEBINK ; S. R. FORREST ; M. E. THOMPSON.** *Society for Information Display Digest of Technical Papers*, 2008, vol. 34 (2), 712-715 [0046]
- **MASAKAZU FUNAHASHI et al.** *Society for Information Display Digest of Technical Papers*, 2008, vol. 47 (3), 709-711 [0049]
- **BAEK-WOON LEE ; YOUNG IN HWANG ; HAE-YEON LEE ; CHI WOO KIM ; YOUNG-GU JU.** *Society for Information Display Digest of Technical Papers*, 2008, vol. 68 (4), 1050-1053 [0049]
- **A. ARNOLD ; T. K. HATWAR ; M. HETTEL ; P. KANE ; M. MILLER ; M. MURDOCH ; J. SPINDLER ; S. V. SLYKE.** *Proc. Asia Display*, 2004 [0057]
- **J. P. SPINDLER ; T. K. HATWAR ; M. E. MILLER ; A. D. ARNOLD ; M. J. MURDOCH ; P. J. LANE ; J. E. LUDWICKI ; S. V. SLYKE.** *SID 2005 International Symposium Technical Digest*, 2005, vol. 36 (1), 36-39 [0057]
- **DU- ZEN PENG ; HSIANG-LUN ; HSU ; RYUJI NISHIKAWA.** *Information Display*, 2007, vol. 23 (2), 12-18 [0057]
- **B-W. LEE ; Y. I. HWANG ; H-Y, LEE ; C. H. KIM.** *SID 2008 International Symposium Technical Digest*, 2008, vol. 39 (2), 1050-1053 [0057]

专利名称(译)	新型OLED显示器架构		
公开(公告)号	EP3144972A1	公开(公告)日	2017-03-22
申请号	EP2016190565	申请日	2009-10-01
[标]申请(专利权)人(译)	环球展览公司		
申请(专利权)人(译)	通用显示器公司		
当前申请(专利权)人(译)	通用显示器公司		
[标]发明人	HACK MICHAEL BROWN JULIE J WEAVER MICHAEL S DANDRADE BRIAN WENDELL		
发明人	HACK, MICHAEL BROWN, JULIE, J. WEAVER, MICHAEL S. D'ANDRADE, BRIAN WENDELL		
IPC分类号	H01L27/32 H01L51/50		
CPC分类号	H01L27/3213 H01L27/3216 H01L51/5016 C09K2211/185		
代理机构(译)	汉森NORBERT		
优先权	61/101757 2008-10-01 US PCT/US2009/059202 2009-10-01 WO		
其他公开文献	EP3144972B1		
外部链接	Espacenet		

摘要(译)

本发明涉及一种包括发射具有600-700nm的可见光谱中的峰值波长的光的第一有机发光器件的装置，还包括具有第一发射材料的第一发射层，其中第一发射材料是磷光;第二有机发光器件，其发射具有500-600nm的可见光谱中的峰值波长的光，还包括具有第二发射材料的第二发射层，其中所述第二发光材料是磷光的;第三有机发光器件，其发射在可见光中具有峰值波长的光光谱400-500nm，还包括具有第三发射材料的第三发射层，其中第三发射材料是磷光的;以及第四有机发光器件，其发射具有400-500nm的可见光谱中的峰值波长的光，还包括具有第四发射材料的第四发射层，其中所述第四发射材料是磷光的;其中由所述第四有机发光器件发射的光的可见光谱中的峰值波长比由所述第三有机发光器件发射的光的可见光谱中的峰值波长小至少4nm设备。

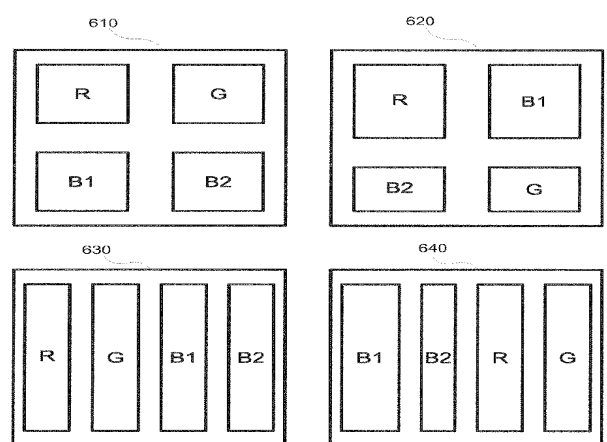


FIGURE 6