



(11) **EP 1 554 764 B1**

(12) **EUROPEAN PATENT SPECIFICATION**

(45) Date of publication and mention of the grant of the patent:
24.05.2017 Bulletin 2017/21

(21) Application number: **03793994.9**

(22) Date of filing: **22.08.2003**

(51) Int Cl.:
H01L 27/32^(2006.01)

(86) International application number:
PCT/IB2003/003818

(87) International publication number:
WO 2004/023575 (18.03.2004 Gazette 2004/12)

(54) **ELECTROLUMINESCENT DISPLAY DEVICE**

ELEKTROLUMINESZENTE ANZEIGEVORRICHTUNG

DISPOSITIF D’AFFICHAGE ELECTROLUMINESCENT

(84) Designated Contracting States:
AT BE BG CH CY CZ DE DK EE ES FI FR GB GR HU IE IT LI LU MC NL PT RO SE SI SK TR

(30) Priority: **05.09.2002 GB 0220613**

(43) Date of publication of application:
20.07.2005 Bulletin 2005/29

(73) Proprietor: **Koninklijke Philips N.V.**
5656 AE Eindhoven (NL)

(72) Inventor: **YOUNG, Nigel, D.**
Redhill, Surrey RH1 5HA (GB)

(74) Representative: **Damen, Daniel Martijn et al**
Philips Intellectual Property & Standards
High Tech Campus 5
5656 AE Eindhoven (NL)

(56) References cited:
EP-A- 0 891 122 EP-A- 1 107 335

- **PATENT ABSTRACTS OF JAPAN vol. 2002, no. 09, 4 September 2002 (2002-09-04) & JP 2002 156633 A (STANLEY ELECTRIC CO LTD), 31 May 2002 (2002-05-31)**

EP 1 554 764 B1

Note: Within nine months of the publication of the mention of the grant of the European patent in the European Patent Bulletin, any person may give notice to the European Patent Office of opposition to that patent, in accordance with the Implementing Regulations. Notice of opposition shall not be deemed to have been filed until the opposition fee has been paid. (Art. 99(1) European Patent Convention).

Description

[0001] This invention relates to electroluminescent display devices, particularly active matrix display devices having thin film switching transistors associated with each pixel.

[0002] Matrix display devices employing electroluminescent, light-emitting, display elements are well known. The display elements may comprise organic thin film electroluminescent elements, for example using polymer materials, or else light emitting diodes (LEDs) using traditional III-V semiconductor compounds. Recent developments in organic electroluminescent materials, particularly polymer materials, have demonstrated their ability to be used practically for video display devices. These materials typically comprise one or more layers of a semiconducting conjugated polymer sandwiched between a pair of electrodes, one of which is transparent and the other of which is of a material suitable for injecting holes or electrons into the polymer layer. The polymer material can be fabricated using a PVD process, or simply by a spin coating technique using a solution of a soluble conjugated polymer. Ink-jet printing may also be used. Organic electroluminescent materials exhibit diode-like I-V properties, so that they are capable of providing both a display function and a switching function, and can therefore be used in passive type displays. Alternatively, these materials may be used for active matrix display devices, with each pixel comprising a display element and a switching device for controlling the current through the display element.

[0003] Display devices of this type have current-addressed display elements, so that a conventional, analogue drive scheme involves supplying a controllable current to the display element. It is known to provide a current source transistor as part of the pixel configuration, with the gate voltage supplied to the current source transistor determining the current through the display element. A storage capacitor holds the gate voltage after the addressing phase.

[0004] Figure 1 shows a known pixel circuit for an active matrix addressed electroluminescent display device. The display device comprises a panel having a row and column matrix array of regularly-spaced pixels, denoted by the blocks 1 and comprising electroluminescent display elements 2 together with associated switching means, located at the intersections between crossing sets of row (selection) and column (data) address conductors 4 and 6. Only a few pixels are shown in the Figure for simplicity. In practice there may be several hundred or more rows and columns of pixels. The pixels 1 are addressed via the sets of row and column address conductors by a peripheral drive circuit comprising a row, scanning, driver circuit 8 and a column, data, driver circuit 9 connected to the ends of the respective sets of conductors.

[0005] The electroluminescent display element 2 comprises an organic light emitting diode, represented here

as a diode element (LED) and comprising a pair of electrodes between which one or more active layers of organic electroluminescent material is sandwiched. The display elements of the array are carried together with the associated active matrix circuitry on one side of an insulating support. Either the cathodes or the anodes of the display elements are formed of transparent conductive material. For downward emitting arrangements, the support is of transparent material such as glass and the electrodes of the display elements 2 closest to the substrate may consist of a transparent conductive material such as ITO so that light generated by the electroluminescent layer is transmitted through these electrodes and the support so as to be visible to a viewer at the other side of the support. Typically, the thickness of the organic electroluminescent material layer is between 100 nm and 200nm. Typical examples of suitable organic electroluminescent materials which can be used for the elements 2 are known and described in EP-A-0 717446. Conjugated polymer materials as described in WO96/36959 can also be used.

[0006] For upward emitting arrangements, the substrate can be opaque or coloured.

[0007] Figure 2 shows in simplified schematic form a known pixel and drive circuitry arrangement for providing voltage-addressed operation. Each pixel 1 comprises the EL display element 2 and associated driver circuitry. The driver circuitry has an address transistor 16 which is turned on by a row address pulse on the row conductor 4. When the address transistor 16 is turned on, a voltage on the column conductor 6 can pass to the remainder of the pixel. In particular, the address transistor 16 supplies the column conductor voltage to a current source 20, which comprises a drive transistor 22 and a storage capacitor 24. The column voltage is provided to the gate of the drive transistor 22, and the gate is held at this voltage by the storage capacitor 24 even after the row address pulse has ended. The drive transistor 22 draws a current from the power supply line 26.

[0008] The drive transistor 22 in this circuit is implemented as a PMOS TFT, so that the storage capacitor 24 holds the gate-source voltage fixed. This results in a fixed source-drain current through the transistor, which therefore provides the desired current source operation of the pixel.

[0009] The above basic pixel circuit is a voltage-addressed pixel, and there are also current-addressed pixels which sample a drive current. However, all pixel configurations require current to be supplied to each pixel.

[0010] In a conventional pixel configuration, the power supply line 26 is a row conductor, and is typically long and narrow. The displays are typically backward-emitting, through the substrate carrying the active matrix circuitry. This is the preferred arrangement because the desired cathode material of the EL display element is opaque, so that the emission is from the anode side of the EL diode. This desired cathode material is a metal of low work function, such as calcium or barium, for the

ability to inject electrons with low applied voltages. These low work function metals are also reactive, so that it is not desirable to place them against the active matrix circuitry, as the required patterning is then difficult.

[0011] Metal row conductors are formed, and for backward emitting displays they need to occupy the space between display areas, as they are opaque. For example, in a 12.5cm (diameter) display, which is suitable for portable products, the row conductor may be approximately 11 cm long and 20 μ m wide. For a typical metal sheet resistance of 0.2 Ω /square, this gives a line resistance for a metal row conductor of 1.1 k Ω . A bright pixel may draw around 8 μ A, and the current drawn is distributed along the row. A row of 1920 pixels (640 x 3 colours) can experience a voltage drop of around 9 volts. This can be reduced by a factor of 4 by drawing current from both ends of the row, and further still by improvements in efficiency of the EL materials. Nevertheless significant voltage drops are still present. This problem is worsened for larger displays, even if the total line resistance can be kept the same. This is because there are more pixels per row, or alternatively larger pixels if the resolution is the same. The voltage variations along the power supply line alter the gatesource voltage on the drive transistors, and thereby affect the brightness of the display, in particular causing dimming in the center of the display (assuming the rows are sourced from both ends). Furthermore, as the currents drawn by the pixels in the row are image-dependent, it is difficult to correct the pixel drive levels by data correction techniques.

[0012] ITO is used to form the common electrode in conventional displays, and has a typical sheet resistance of 20 Ω /square. This increased sheet resistance makes ITO unsuitable for row conductors.

[0013] EP 0891122 A1 discloses an organic EL device which comprises a hole injecting electrode, an electron injecting electrode, and at least one organic layer located between both the electrodes. The hole injecting electrode comprises a transparent electrode at a light emitting area, and a metal electrode located at a portion other than the light emitting area and having a sheet resistance of 1 Ω /square or lower.

[0014] JP2002156633 A discloses a liquid crystal display device with illumination. The transparent electrode of the surface light emitting element is provided with an auxiliary electrode consisting of a low resistance electrode to improve the uniformity of light emission in the sheet. The auxiliary electrode is formed in the region among a plurality of pixel electrodes and/or in the peripheral region of the liquid crystal display device so that almost no auxiliary electrode is present in the position which is in the display region when the light emitting element is attached as the back light source to the back face of the liquid crystal display device, and that the auxiliary electrode is disposed in the region except for the pixel electrodes but giving no direct influence on display.

[0015] EP 1107335 A2 discloses an organic EL display device comprising a pair of electrodes and at least one

organic layer interposed between the electrodes. At least one of the electrodes comprises an indium oxide-containing transparent electrode at a site corresponding to a light emitting area. A metal electrode is provided at a site other than the site corresponding to the light emitting area, where the metal electrode is connected to the transparent electrode. The metal electrode contains as a main component Ag, Cu or Ag-Cu and as a subordinate component one or two or more metal elements selected from the group consisting of at least Rh, Pd, In, Pt and Au

[0016] According to the invention, there is provided an active matrix electroluminescent display device comprising an array of display pixels, each pixel comprising:

an electroluminescent display element; and active matrix circuitry including a drive transistor for driving a current through the display element, wherein the drive transistor and the display element are connected in series between a power line for supplying or drawing a controllable current to or from the display element and a common potential line, and wherein the power line and the common potential line each comprise a sheet electrode shared between all pixels of the array.

[0017] In this arrangement, sheet electrodes are used both for the current supply to the EL display element and the current sink. The power supply line is thus a shared sheet electrode instead of the conventional row electrode. This reduces considerably the line resistance. For example, if the aspect ratio of the sheet electrode power line is 1:1 (square) the line resistance is simply equal to the resistance per square of the material, for example 0.2 Ω typically for metals. If the sheet is connected around the entire periphery, the line resistance is lower.

[0018] The device comprises a substrate, and the active matrix circuitry may overlie the substrate with an electroluminescent layer overlying the active matrix circuitry.

[0019] The display may be backward emitting through the substrate, so that conventional materials may be used in the manufacture of the device. The power line may then comprise a substantially transparent electrically conductive sheet (for example ITO) between the substrate and the active matrix circuitry. This provides a transparent layer, and the thickness can be selected to provide the desired resistance.

[0020] In this embodiment, an insulating layer is provided between the substantially transparent electrically conductive sheet and the active matrix circuitry, with contact portions provided through the insulating layer. This provides the contact from the power line (sheet) to each pixel.

[0021] The display may instead be upward emitting away from the substrate, and materials have been developed which enable the EL display element cathode to overlie the active matrix circuitry, with light output from the anode away from the substrate. In this case, the power line comprises a metal sheet between the substrate

and the active matrix circuitry.

[0022] In this case, the common potential line needs to be transparent, and thus may comprise an ITO layer forming the anodes of the EL display elements, and overlying the electroluminescent layer.

[0023] In another example, the display may instead be upward emitting away from the substrate, and with emission through the cathode. Cathode designs have been implemented which combine the required electrical properties with suitable optical transparency. In this case, the cathodes can form the common potential line.

[0024] For example, the cathode may comprise a substantially optically transparent conducting layer of a first thickness, and a second layer of a second, smaller thickness, and which comprises a low work function metal.

[0025] In these examples, one of the common potential line and the power supply line needs to be transparent (as they are on opposite sides of the EL material layer), and this will normally result in the use of ITO. This has a high resistance and it would be preferable to provide metallic electrodes for both current carrying lines.

[0026] Therefore, in another example, a second metal layer is provided between the substrate and the active matrix layer, isolated from the first metal layer, and wherein the second metal layer is connected to the common potential line. In this way, the common potential line and the power supply line are connected to metal sheet layers.

[0027] The common potential line may comprise a substantially transparent electrically conductive layer (e.g. ITO) forming the anodes or cathodes of the EL display elements (in the latter case, a low work function metal is combined with the ITO layer), and overlying the electroluminescent layer, and the second metal layer contacts the common potential line with contact portions extending through the active matrix circuitry. These contact portions also extend through openings in the metal sheet.

[0028] The invention will now be described by way of example with reference to the accompanying drawings, in which:

Figure 1 shows a known EL display device;

Figure 2 is a simplified schematic diagram of a known pixel circuit for current-addressing the EL display pixel;

Figure 3 shows a simplified schematic diagram of a pixel circuit of the invention;

Figure 4 shows a first example of display device according to the invention;

Figure 5 shows a second example of display device according to the invention;

Figure 6 shows a third example of display device according to the invention;

Figure 7 shows a fourth example of display device according to the invention; and

Figure 8 shows a fifth example of display device according to the invention.

[0029] It should be noted that these figures are diagrammatic and not drawn to scale. Relative dimensions and proportions of parts of these figures have been shown exaggerated or reduced in size, for the sake of clarity and convenience in the drawings.

[0030] The invention provides a display in which the current is supplied and drained using substantially continuous sheets of conductive material. As shown schematically in Figure 3, the power supply line 26 is a sheet electrode, and it is shared between all pixels of the display. The term "line" will continue to be used, although of course the conductor is a rectangular sheet. This power supply line is typically provided with a fixed voltage, for example 8 Volts.

[0031] The invention can be applied to any pixel design, not only the basic voltage-addressed pixel configuration of Figure 3. Indeed, any pixel which draws current from a power line can be modified to take advantage of the invention. There are many other types of pixel configuration, for example including additional circuit elements for aging compensation or for threshold voltage compensation, and there are also numerous current-addressed pixel designs. These all require current to be provided to the display elements of the pixels and can thereby benefit from the invention. These pixels may use NMOS, PMOS or CMOS technologies.

[0032] Figure 4 shows a first example of display device according to the invention.

[0033] The device comprises a substrate 30, active matrix circuitry 32 and an electroluminescent (EL) layer 34 over the active matrix circuitry 32. The substrate is typically glass. The active matrix circuitry is shown schematically as it may take various forms, as discussed above. The display is backward emitting through the substrate as shown by arrows 36, and the common potential line (the earth connection in Figure 3) is provided by a metal cathode layer 38 overlying the EL layer 34. The anodes of the individual pixels are defined by ITO pixel electrodes 40 which in practice form part of the active matrix circuitry 32.

[0034] The power supply line 26 is implemented as an ITO sheet 42 beneath the active matrix circuitry 32, in particular between the substrate 30 and the active matrix circuitry 32. This provides a transparent layer, and the thickness can be selected to provide the desired resistance. Furthermore, additional metal conductor portions may be provided outside the pixel areas to reduce the resistance further.

[0035] An insulating layer 44 is provided between the ITO sheet 42 and the active matrix circuitry, with contact portions 46 provided through the insulating layer 44. This provides the contact from the ITO power line to each pixel. The insulating layer can be any suitable transparent material, but is preferably silicon oxide or silicon nitride. The contact portions 46 are typically metallic contacts.

[0036] The display may instead be upward emitting away from the substrate, and materials have been developed which enable the EL display element cathode to

overlie the active matrix circuitry despite the low work function metal within the cathode layer. In this case, the light output from the anode is away from the substrate. Upward emitting arrangements can be made with higher aperture and also do not suffer transmission loss through the supporting substrate. Figure 5 shows an implementation of the invention for an upwardly emitting display. The same reference numerals are used as in Figure 4 for the same components.

[0037] In this case, the common potential line 38 is a transparent ITO layer and forms the anodes of the EL display elements. In this case, the pixel electrodes 40 can be metallic. The power supply line is in this case implemented as a metallic sheet conductor 42, again with contact portions 46 through an insulating layer 44 making contact with the individual pixel circuits of the active matrix circuitry 32.

[0038] In these two examples, one of the common potential line 38 and the power supply line 42 needs to be transparent, as they are on opposite sides of the EL material layer 34. The use of ITO results still in a high resistance, even if the resistance is reduced by providing a metallic overlay outside the pixel areas. The sheet conductors, both the power supply line and the common potential line, have to carry the currents from all pixels, rather than from only a row of pixels. The benefit of the reduction in resistance can be considered to be W/S where W is the row line width and S is the row spacing. In other words, for each row, the row conductor width is effectively increased from the previous row width to the full spacing between adjacent rows. This ratio may typically be around 0.2. Therefore, a benefit is only obtained if the materials needed for the shared conductor have resistance no worse than 5 times the metal resistance previously used for the metal row conductors.

[0039] In practice the use of ITO limits the benefit of the examples of Figures 4 and 5.

[0040] Figure 6 shows a modification to the example of Figure 5, and the same reference numerals are again used for the same components. A second metal layer 50 is provided between the substrate 30 and the active matrix layer 32, isolated from the first metal layer 42 (which is the power supply line). The second metal layer 50 is connected to the ITO common potential line 38 overlying the EL material layer 34. In this way, the ITO common potential line is connected at each pixel location (or at least at regular intervals) to a metal sheet layer. The power supply line is also formed by a metal conductor 42 as in the example of Figure 5.

[0041] The second metal layer 50 is provided over the substrate 30 and a first insulator layer 52 overlies the second metal layer 50. The metal sheet 42 of the power supply line 26 overlies the first insulator layer 52. A second insulating layer 44 (corresponding to the insulating layer 44 in Figure 5) is provided between the metal sheet 42 and the active matrix circuitry 32, with the contact portions 46 through the second insulating layer 44.

[0042] The connections between the second metal lay-

er 50 and the ITO common potential line 38 comprise contacts 60 extending through openings 62 in the metal sheet 42 and through the active matrix circuitry 32. The two metal sheets 42,50 should be as thick as possible and of as low resistivity metal as possible. The dielectric spacers (the insulating layers) are high integrity material. The contacts 60 may be metal only with a patterned contact pad beneath or above the ITO layer 38, as it is easier to pattern these contacts from metal rather than from ITO.

[0043] In the examples above, the light emitting display elements have opaque cathodes, and the light emission is from the anode side of the display element.

[0044] There are also pixel designs which enable transparent (or at least semitransparent) cathodes to be formed. This then enables an upward emitting structure to be formed while still avoiding patterning of the cathode. Figure 7 shows one application of the invention to this type of pixel design.

[0045] In Figure 7, the same reference numerals are used as in Figure 5 to denote the same components. The anode overlies the active matrix substrate, and is again formed from an ITO pixel electrode 70. ITO is still used as the anode material even though there is no need for the anode to be transparent, because ITO has the required electronic properties (in particular for the injection of holes) as well as deposition properties. A metal pixel electrode 72 lies beneath the ITO layer 70 and acts as a reflector so that (substantially) all light emission is upwardly, away from the substrate.

[0046] The cathode is formed from an ITO support 74 beneath which a thin layer 76 of the desired cathode material is formed. Again, this cathode material includes a low work function metal such as calcium or barium. However, the thickness is reduced to a level where the cathode is at least partially transparent, for example 50% transparent. Patterning of the cathode material is still avoided.

[0047] The example of Figure 6, in which the resistance of the transparent top electrode is reduced, can also be modified to use a transparent cathode variation, as shown in Figure 8.

[0048] In Figure 8, the same reference numerals are used as in Figures 6 and 7 to denote the same components.

[0049] The anode again overlies the active matrix substrate, and again has an ITO part 70 and a metal part 72. The cathode is again formed from an ITO support 74 and a thin layer 76 of the desired cathode material is formed.

[0050] There will be a number of possible materials for the conducting layer used to implement the invention. Where it is required to be transparent, ITO is an obvious candidate. Other transparent conductive layers have however been proposed. Where it can be opaque, the layer may be any suitable metal layer, which may be formed as a foil or may be deposited by more conventional techniques.

[0051] The specific choice of materials to be used within the device structure has not been discussed in detail

in this application, as the implementation of the invention will be routine for those skilled in the art. Indeed, the layers used conventionally in the manufacture of EL display devices can be employed, and the invention essentially requires row conductors to be replaced by a continuous layer (possibly with vias) and with interconnections provided to individual pixels. The detailed processing steps will not therefore be discussed in detail.

[0052] Difficulties may arise in stepping the ITO layer 38 of Figure 6 through deep contact vias to the underlying metal. A strap contact may be used in this example, namely an additional metal layer above the ITO which passes through the via to the underlying metal electrode. The strap metal may be in contact with the ITO or separated from it by an insulator.

[0053] In the upward emitting examples of Figures 5 to 8, the substrate 30 may be a metal substrate which can then additionally function as one of the sheet metal contacts (for example avoiding the need for additional layers to define the contacts 42 or 50).

[0054] Various other modifications will be apparent to those skilled in the art.

Claims

1. An active matrix electroluminescent display device comprising an array of display pixels, each pixel comprising:

an electroluminescent display element (2); and active matrix circuitry including a drive transistor (22) for driving a current through the display element (2), wherein the drive transistor (22) and the display element (2) are connected in series between a power line (26) for supplying or drawing a controllable current to or from the display element (2) and a common potential line, and **characterized in that** the power line (26) and the common potential line (38, 74, 76) each comprise a sheet electrode shared between all pixels of the array.

2. The device of claim 1, comprising a substrate (30), the active matrix circuitry overlying the substrate and an electroluminescent layer (34) overlying the active matrix circuitry.
3. The device of claim 2, wherein the display is backward emitting through the substrate (30), and wherein the power line (26) comprises a substantially transparent electrically conductive sheet (42) between the substrate (30) and the active matrix circuitry.
4. The device of claim 3, wherein an insulating layer (44) is provided between the substantially transparent electrically conductive sheet (42) and the active matrix circuitry, contact portions (46) being provided

through the insulating layer (44).

5. The device of claim 2, wherein the display is upward emitting away from the substrate.
6. The device of claim 5, wherein the power line (26) comprises a metal sheet (42) between the substrate (30) and the active matrix circuitry.
7. The device of claim 6, further comprising a second metal layer (50) between the substrate (30) and the active matrix layer, isolated from the first metal layer (42), and wherein the second metal layer is connected to the common potential line (38).
8. The device of claim 7, wherein the common potential line comprises a substantially transparent electrically conductive layer (38) forming the anodes of the electroluminescent display elements, and overlying the electroluminescent layer (34), and wherein the second metal layer (50) contacts the common potential line with contact portions (60) extending through the active matrix circuitry.
9. The device of claim 7, wherein the common potential line comprises a substantially transparent electrically conductive layer (74) and a metal layer (74) forming cathodes of the electroluminescent display elements, and overlying the electroluminescent layer (34), and wherein the second metal layer (50) contacts the common potential line with contact portions (60) extending through the active matrix circuitry.
10. The device of claim 8 or 9, wherein the second metal layer (50) overlies the substrate (30), a first insulator layer (52) overlies the second metal layer, and the metal sheet (42) overlies the first insulator layer (52).
11. The device of claim 10, wherein a second insulating layer (44) is provided between the metal sheet (42) and the active matrix circuitry, contact portions being provided through the second insulating layer (44).
12. The device of claim 10 or 11, wherein contact portions which connect the second metal layer (50) to the common potential line (38; 74, 76) extend through openings in the metal sheet (42).
13. The device of claim 6, wherein the common potential line comprises an ITO layer forming the anodes of the electroluminescent display elements, and overlying the electroluminescent layer (34).
14. The device of claim 13, wherein an insulating layer (44) is provided between the metal sheet (42) and the active matrix circuitry, contact portions (46) being provided through the insulating layer.

15. The device of claim 5, wherein the substrate comprises a metal sheet which forms the power line (26).
16. The device of claim 9, wherein the electroluminescent display element anodes are adjacent the substrate (30) and the light emission is through the cathodes.
17. The device of claim 16, wherein the cathodes form the common potential line (74,76).
18. The device of any preceding claim, wherein the active matrix circuitry further comprises, for each pixel, an address transistor (16) connected between a data signal line (6) and an input to the pixel.
19. The device of claim 18, wherein the active matrix circuitry further comprises, for each pixel, a storage capacitor (24) connected between the power line (26) and the gate of the drive transistor (22).

Patentansprüche

1. Elektrolumineszierende Aktiv-Matrix-Anzeigevorrichtung, mit einem Array von Anzeigepixeln, wobei jedes Pixel umfasst:
- ein elektrolumineszierendes Anzeigeelement (2); sowie
- eine Aktiv-Matrix-Schaltung mit einem Treibertransistor (22) zum Antreiben eines Stroms durch das Anzeigeelement (2), wobei der Treibertransistor (22) und das Anzeigeelement (2) zwischen einer Netzleitung (26) zum Zuführen eines steuerbaren Stroms zu dem Anzeigeelement (2) oder Entnehmen desselben von diesem und einer gemeinsamen Potentialleitung in Reihe geschaltet sind, und **dadurch gekennzeichnet, dass** die Netzleitung (26) und die gemeinsame Potentialleitung (38, 74, 76) jeweils eine Flächenelektrode umfassen, die zwischen allen Pixeln des Arrays gemeinsam genutzt wird.
2. Vorrichtung nach Anspruch 1, mit einem Substrat (30), der über dem Substrat liegenden Aktiv-Matrix-Schaltung und einer über der Aktiv-Matrix-Schaltung liegenden elektrolumineszierenden Schicht (34).
3. Vorrichtung nach Anspruch 2, wobei die Anzeige durch das Substrat (30) rückwärts emittierend ist, und wobei die Netzleitung (26) eine im Wesentlichen transparente, elektrisch leitende Folie (42) zwischen dem Substrat (30) und der Aktiv-Matrix-Schaltung umfasst.
4. Vorrichtung nach Anspruch 3, wobei eine Isolations-

schicht (44) zwischen der im Wesentlichen transparenten, elektrisch leitenden Folie (42) und der Aktiv-Matrix-Schaltung vorgesehen ist, wobei Kontaktabschnitte (46) durch die Isolationschicht (44) vorgesehen sind.

5. Vorrichtung nach Anspruch 2, wobei die Anzeige von dem Substrat weg aufwärts emittierend ist.
6. Vorrichtung nach Anspruch 5, wobei die Netzleitung (26) eine Metallfolie (42) zwischen dem Substrat (30) und der Aktiv-Matrix-Schaltung umfasst.
7. Vorrichtung nach Anspruch 6, die weiterhin eine zweite Metallschicht (50) zwischen dem Substrat (30) und der Aktivmatrixschicht umfasst, die von der ersten Metallschicht (42) isoliert ist, und wobei die zweite Metallschicht mit der gemeinsamen Potentialleitung (38) verbunden ist.
8. Vorrichtung nach Anspruch 7, wobei die gemeinsame Potentialleitung eine im Wesentlichen transparente, elektrisch leitende Schicht (38) umfasst, welche die Anoden der elektrolumineszierenden Anzeigeelemente bildet und über der elektrolumineszierenden Schicht (34) liegt, und wobei die zweite Metallschicht (50) die gemeinsame Potentialleitung mit Kontaktabschnitten (60), die sich durch die Aktiv-Matrix-Schaltung erstrecken, kontaktiert.
9. Vorrichtung nach Anspruch 7, wobei die gemeinsame Potentialleitung eine im Wesentlichen transparente, elektrisch leitende Schicht (74) und eine Metallschicht (74) umfasst, welche die Kathoden der elektrolumineszierenden Anzeigeelemente bilden und über der elektrolumineszierenden Schicht (34) liegen, und wobei die zweite Metallschicht (50) die gemeinsame Potentialleitung mit Kontaktabschnitten (60), die sich durch die Aktiv-Matrix-Schaltung erstrecken, kontaktiert.
10. Vorrichtung nach Anspruch 8 oder 9, wobei die zweite Metallschicht (50) über dem Substrat (30) liegt, eine erste Isolatorschicht (52) über der zweiten Metallschicht liegt und die Metallfolie (42) über der ersten Isolatorschicht (52) liegt.
11. Vorrichtung nach Anspruch 10, wobei eine zweite Isolationschicht (44) zwischen der Metallfolie (42) und der Aktiv-Matrix-Schaltung vorgesehen ist, wobei Kontaktabschnitte durch die zweite Isolationschicht (44) vorgesehen sind.
12. Vorrichtung nach Anspruch 10 oder 11, wobei Kontaktabschnitte, welche die zweite Metallschicht (50) mit der gemeinsamen Potentialleitung (38; 74, 76) verbinden, sich durch Öffnungen in der Metallfolie (42) erstrecken.

13. Vorrichtung nach Anspruch 6, wobei die gemeinsame Potentialleitung eine ITO-Schicht umfasst, welche die Anoden der elektrolumineszierenden Anzeigeelemente bildet und über der elektrolumineszierenden Schicht (34) liegt.
14. Vorrichtung nach Anspruch 13, wobei eine Isolationsschicht (44) zwischen der Metallfolie (42) und der Aktiv-Matrix-Schaltung vorgesehen ist, wobei Kontaktabschnitte (46) durch die Isolationsschicht vorgesehen sind.
15. Vorrichtung nach Anspruch 5, wobei das Substrat eine Metallfolie umfasst, welche die Netzleitung (26) bildet.
16. Vorrichtung nach Anspruch 9, wobei die Anoden des elektrolumineszierenden Anzeigeelements in Angrenzung an das Substrat (30) angeordnet sind und die Lichtemission durch die Kathoden erfolgt.
17. Vorrichtung nach Anspruch 16, wobei die Kathoden die gemeinsame Potentialleitung (74, 76) bilden.
18. Vorrichtung nach einem der vorangegangenen Ansprüche, wobei die Aktiv-Matrix-Schaltung weiterhin für jedes Pixel einen Adressentransistor (16) umfasst, der zwischen einer Datensignalleitung (6) und einem Eingang zu dem Pixel geschaltet ist.
19. Vorrichtung nach Anspruch 18, wobei die Aktiv-Matrix-Schaltung weiterhin für jedes Pixel einen Speicherkondensator (24) umfasst, der zwischen der Netzleitung (26) und dem Gate des Treibertransistors (22) geschaltet ist.

Revendications

1. Dispositif d'affichage électroluminescent à matrice active comprenant un réseau de pixels d'affichage, chaque pixel comprenant :
- un élément d'affichage électroluminescent (2) ;
et
une circuiterie de matrice active incluant un transistor d'excitation (22) pour faire passer un courant à travers l'élément d'affichage (2), dans lequel le transistor d'excitation (22) et l'élément d'affichage (2) sont connectés en série entre une ligne électrique (26) pour fournir ou soustraire un courant pouvant être commandé à ou de l'élément d'affichage (2) et une ligne de potentiel commune, et
- caractérisé en ce que**
la ligne électrique (26) et la ligne de potentiel commune (38, 74, 76) comprennent chacune une électrode en feuille partagée entre tous les

pixels du réseau.

2. Dispositif selon la revendication 1, comprenant un substrat (30), la circuiterie de matrice active recouvrant le substrat et une couche électroluminescente (34) recouvrant la circuiterie de matrice active.
3. Dispositif selon la revendication 2, dans lequel le dispositif d'affichage est émetteur vers l'arrière à travers le substrat (30), et dans lequel la ligne électrique (26) comprend une feuille électriquement conductrice sensiblement transparente (42) entre le substrat (30) et la circuiterie de matrice active.
4. Dispositif selon la revendication 3, dans lequel une couche isolante (44) est prévue entre la feuille électriquement conductrice sensiblement transparente (42) et la circuiterie de matrice active, des portions de contact (46) étant prévues à travers la couche isolante (44).
5. Dispositif selon la revendication 2, dans lequel le dispositif d'affichage est émetteur vers le haut à l'opposé du substrat.
6. Dispositif selon la revendication 5, dans lequel la ligne électrique (26) comprend une feuille de métal (42) entre le substrat (30) et la circuiterie de matrice active.
7. Dispositif selon la revendication 6, comprenant en outre une seconde couche de métal (50) entre le substrat (30) et la couche de matrice active, isolée de la première couche de métal (42), et dans lequel la seconde couche de métal est connectée à la ligne de potentiel commune (38).
8. Dispositif selon la revendication 7, dans lequel la ligne de potentiel commune comprend une couche électriquement conductrice sensiblement transparente (38) formant les anodes des éléments d'affichage électroluminescents, et recouvrant la couche électroluminescente (34), et dans lequel la seconde couche de métal (50) entre en contact avec la ligne de potentiel commune avec des portions de contact (60) s'étendant à travers la circuiterie de matrice active.
9. Dispositif selon la revendication 7, dans lequel la ligne de potentiel commune comprend une couche électriquement conductrice sensiblement transparente (74) et une couche de métal (74) formant des cathodes des éléments d'affichage électroluminescents, et recouvrant la couche électroluminescente (34), et dans lequel la seconde couche de métal (50) entre en contact avec la ligne de potentiel commune avec des portions de contact (60) s'étendant à travers la circuiterie de matrice active.

10. Dispositif selon la revendication 8 ou 9, dans lequel la seconde couche de métal (50) recouvre le substrat (30), une première couche isolante (52) recouvre la seconde couche de métal, et la feuille de métal (42) recouvre la première couche isolante (52). 5
11. Dispositif selon la revendication 10, dans lequel une seconde couche isolante (44) est prévue entre la feuille de métal (42) et la circuiterie de matrice active, des portions de contact étant prévues à travers la seconde couche isolante (44). 10
12. Dispositif selon la revendication 10 ou 11, dans lequel des portions de contact qui connectent la seconde couche de métal (50) à la ligne de potentiel commune (38; 74, 76) s'étendent à travers des ouvertures dans la feuille de métal (42). 15
13. Dispositif selon la revendication 6, dans lequel la ligne de potentiel commune comprend une couche d'ITO formant les anodes des éléments d'affichage électroluminescents, et recouvrant la couche électroluminescente (34). 20
14. Dispositif selon la revendication 13, dans lequel une couche isolante (44) est prévue entre la feuille de métal (42) et la circuiterie de matrice active, des portions de contact (46) étant prévues à travers la couche isolante. 25
30
15. Dispositif selon la revendication 5, dans lequel le substrat comprend une feuille de métal qui forme la ligne électrique (26).
16. Dispositif selon la revendication 9, dans lequel les anodes d'élément d'affichage électroluminescent sont adjacentes au substrat (30) et l'émission de lumière est à travers les cathodes. 35
17. Dispositif selon la revendication 16, dans lequel les cathodes forment la ligne de potentiel commune (74, 76). 40
18. Dispositif selon une quelconque revendication, dans lequel la circuiterie de matrice active comprend en outre, pour chaque pixel, un transistor d'adresse (16) connecté entre une ligne de signal de données (6) et une entrée du pixel. 45
19. Dispositif selon la revendication 18, dans lequel la circuiterie de matrice active comprend en outre, pour chaque pixel, un condensateur de stockage (24) connecté entre la ligne électrique (26) et la porte du transistor d'excitation (22). 50
55

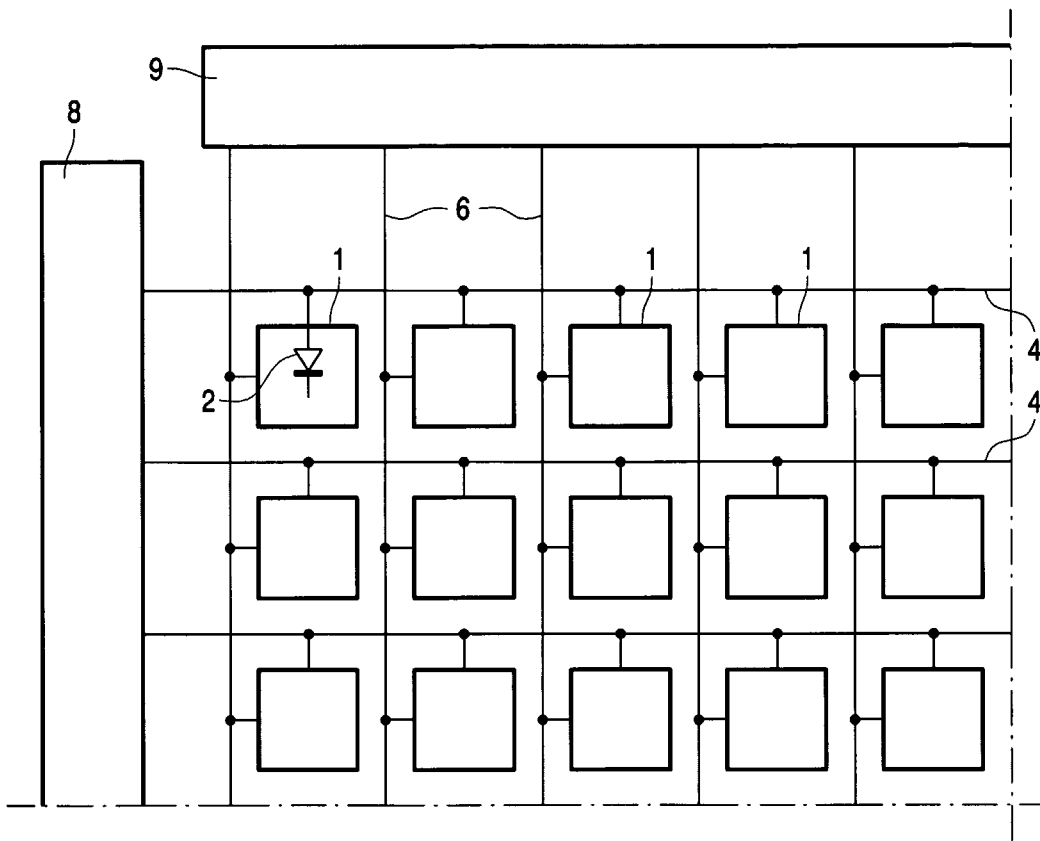


FIG. 1 PRIOR ART

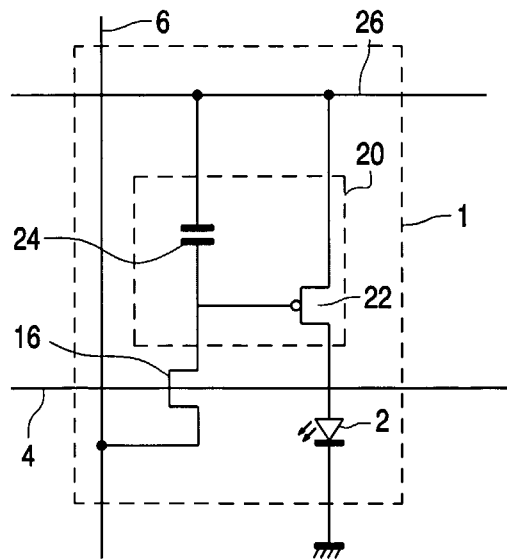


FIG. 2 PRIOR ART

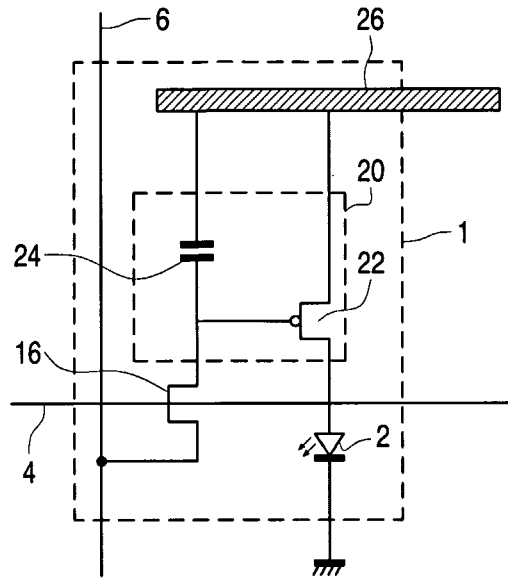


FIG.3

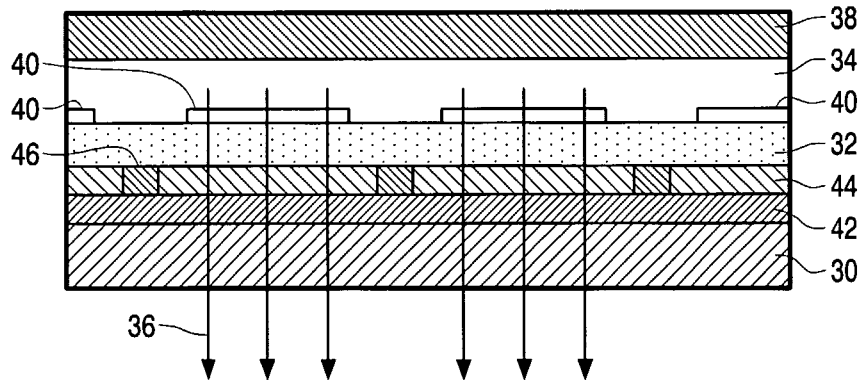


FIG.4

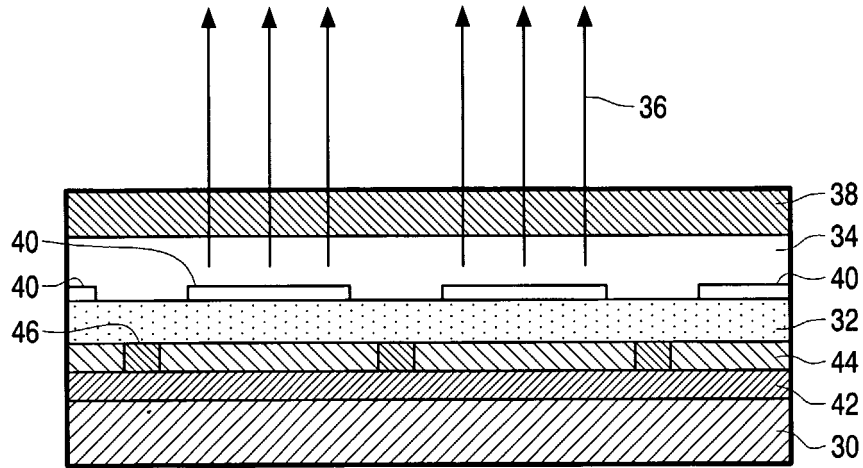


FIG.5

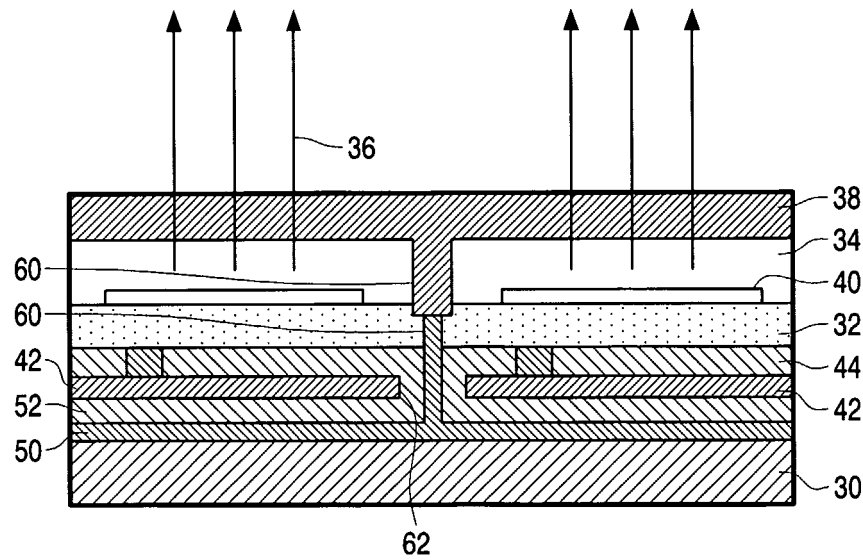


FIG.6

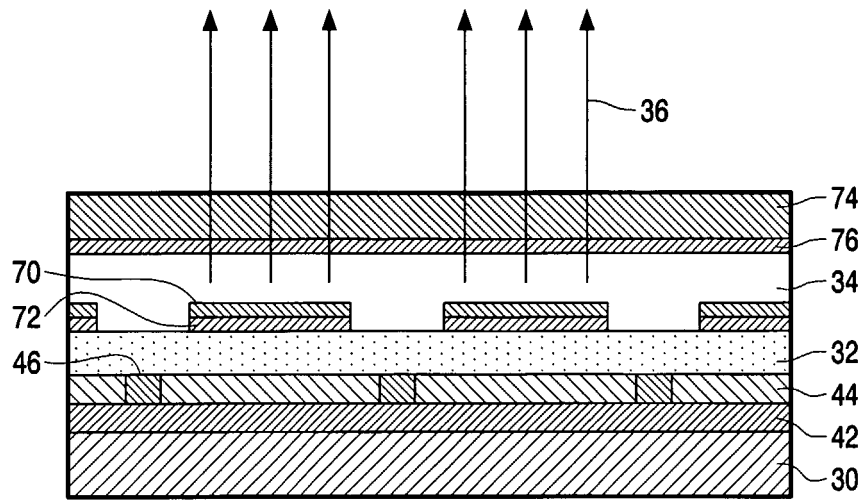


FIG.7

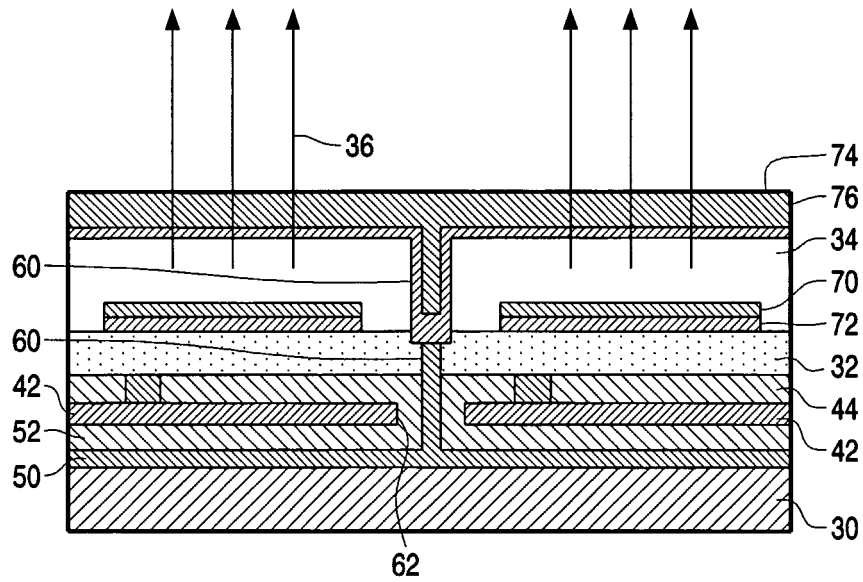


FIG.8

REFERENCES CITED IN THE DESCRIPTION

This list of references cited by the applicant is for the reader's convenience only. It does not form part of the European patent document. Even though great care has been taken in compiling the references, errors or omissions cannot be excluded and the EPO disclaims all liability in this regard.

Patent documents cited in the description

- EP 0717446 A [0005]
- WO 9636959 A [0005]
- EP 0891122 A1 [0013]
- JP 2002156633 A [0014]
- EP 1107335 A2 [0015]

专利名称(译)	电致发光显示装置		
公开(公告)号	EP1554764B1	公开(公告)日	2017-05-24
申请号	EP2003793994	申请日	2003-08-22
[标]申请(专利权)人(译)	皇家飞利浦电子股份有限公司		
申请(专利权)人(译)	皇家飞利浦电子N.V.		
当前申请(专利权)人(译)	皇家飞利浦N.V.		
[标]发明人	YOUNG NIGEL D		
发明人	YOUNG, NIGEL, D.		
IPC分类号	H01L27/32 H01L51/50 G09F9/30 H01L51/00 H01L51/40 H05B33/26 H05B33/28		
CPC分类号	H01L27/3279 H01L51/0021 H01L51/5212 H01L51/5228 H01L2251/5315 H05B33/28		
代理机构(译)	DAMEN , DANIEL马亭		
优先权	2002020613 2002-09-05 GB		
其他公开文献	EP1554764A1		
外部链接	Espacenet		

摘要(译)

在具有像素阵列的有源矩阵电致发光显示装置中，每个像素中的驱动晶体管（22）和电致发光显示元件（2）串联连接在电源线（26）之间，用于向或者提供可控电流或者将可控电流提供给或者来自显示元件和公共电位线。电源线（26）和公共电位线各自包括在阵列的所有像素之间共享的片状电极。在这种布置中，片状电极既用于向EL显示元件和电流吸收器的电流供应。这大大降低了线路电阻。

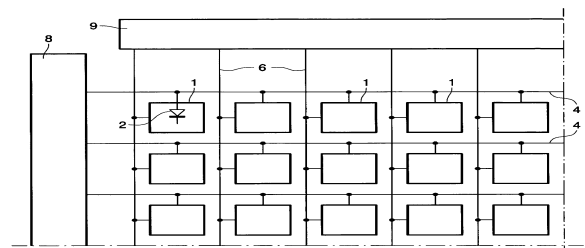


FIG.1 PRIOR ART

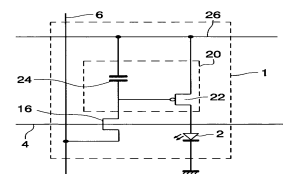


FIG.2 PRIOR ART