



(12) **EUROPEAN PATENT APPLICATION**

(43) Date of publication: **30.07.2008 Bulletin 2008/31** (51) Int Cl.: **H05B 33/08 (2006.01) H02M 3/158 (2006.01)**

(21) Application number: **08150486.2**

(22) Date of filing: **22.01.2008**

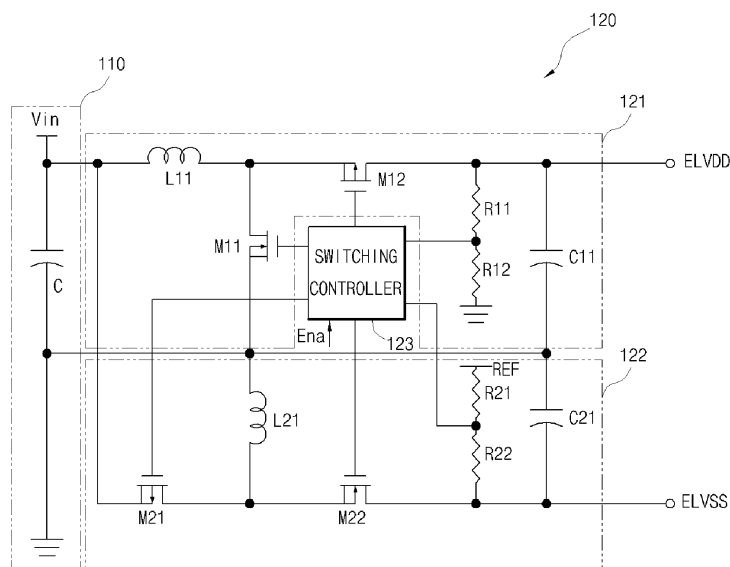
<p>(84) Designated Contracting States: AT BE BG CH CY CZ DE DK EE ES FI FR GB GR HR HU IE IS IT LI LT LU LV MC MT NL NO PL PT RO SE SI SK TR Designated Extension States: AL BA MK RS</p> <p>(30) Priority: 22.01.2007 KR 20070006545</p> <p>(71) Applicant: Samsung SDI Co., Ltd. Suwon-si Gyeonggi-do (KR)</p>	<p>(72) Inventor: Park, Sungcheon Yongin-si, Gyeonggi-do (KR)</p> <p>(74) Representative: Hengelhaupt, Jürgen et al Anwaltskanzlei Gulde Hengelhaupt Ziebig & Schneider Wallstrasse 58/59 10179 Berlin (DE)</p>
--	---

(54) **Organic light emitting display having DC-DC converter**

(57) An organic light emitting display having a DC-DC converter with freewheel diodes replaced by switches integrated into a switching controller. This way, power consumption is reduced by truly shutting down a current path when the DC-DC converter does not operate, and the size and weight of the DC-DC converter may be reduced. One embodiment of the DC-DC converter has a boost converter with a first switch coupled to a power

supplier and a second switch, functioning as a freewheel diode, coupled to an organic light emitting display panel, and an inverter with a third switch coupled to the power supplier and a fourth switch, functioning as a freewheel diode, coupled to the organic light emitting display panel. A switching controller is coupled to the boost converter and the inverter. The second and fourth switches, which function as the freewheel diodes, are integrated into the switching controller.

FIG. 4



Description**BACKGROUND OF THE INVENTION****1. Field of the Invention**

[0001] The present invention relates to a DC-DC converter for an organic light emitting display and an organic light emitting display having such a DC-DC converter.

2. Description of the Related Art

[0002] DC-DC converters are generally used to convert a direct current (DC) voltage of a power supplier to have an appropriate voltage for electronic equipment such as a mobile phone, a personal digital assistant (PDA), a portable multimedia player (PMP), an MP3 player, a digital camera, or a camcorder.

[0003] When an organic light emitting display is used as a display for the electronic equipment, the DC-DC converter should concurrently supply a positive power voltage and a negative power voltage to the organic light emitting display.

[0004] To this end, the DC-DC converter may include a boost converter that outputs a positive power voltage and an inverter that outputs a negative power voltage. Both the boost converter and the inverter may include an inductor, a switch, a freewheel diode, and a capacitor. And, the DC-DC converter may include a switching controller for controlling each switch of the boost converter and the inverter. As described above, the DC-DC converter that outputs two output voltages is generally called a dual output converter. Further, the switching controller may be integrated into one semiconductor chip.

[0005] As described above, the DC-DC converter including the boost converter and the inverter generally has two freewheel diodes for circulating energy. Each freewheel diode is electrically coupled outside the switching controller, which is integrated in one semiconductor chip, and causes a voltage drop of approximately 0.4 to 0.7V. Therefore, there is a problem in that the power consumption is high and the overall size and the weight of the DC-DC converter is increased.

[0006] Further, since the above-described freewheel diodes are coupled in the power supply direction, that is, the forward direction, the power of the power supply may be continuously supplied to the organic light emitting display even when the switching controller does not operate. In other words, the conventional DC-DC converter cannot be truly shut down due to the freewheel diode. Therefore, the power of the power supplier is continuously supplied to the organic light emitting display even when the DC-DC converter or the switching controller does not operate. Accordingly, there are problems in that the power of the power supplier is consumed and the organic light emitting display deteriorates.

SUMMARY OF THE INVENTION

[0007] Accordingly, a first aspect of the invention provides a DC-DC converter for an organic light emitting display, the DC-DC converter having a first voltage converter. The first voltage converter comprises a first inductor, a first switch, a second switch, and a switching controller. The first inductor and the first switch are series-connected between a first power supply voltage input and a second power supply voltage input. The second switch has a first electrode connected to a first common node between the first inductor and the first switch and a second electrode connected to a first output terminal. The switching controller has an enable input, a first control output connected to a control electrode of the first switch, and a second control output connected to a control electrode of the second switch. The switching controller is adapted to provide first and second control signals to the first switch and the second switch, respectively, in response to an enable signal received at the enable input to thereby control an on-time and an off-time of the first switch and the second switch.

[0008] Preferably, the first voltage converter further comprises a first voltage divider connected between the first output terminal and a first reference voltage input and adapted to provide a feedback voltage to a control input of the switching controller.

[0009] The first voltage converter may further comprise a first capacitor having a first terminal connected to the first output terminal and a second terminal connected to the second power supply voltage input.

[0010] The first inductor may have a first terminal connected to the first power supply voltage input and the first switch may have one of a first and a second electrode connected to the second power supply voltage input. In this case, the first voltage converter is a boost converter.

[0011] Alternatively, the first inductor may have a first terminal connected to the second power supply voltage input and the first switch may have one of a first and a second electrode connected to the first power supply voltage input. In this case, the first voltage converter is an inverter.

[0012] The first switch may be of a different polarity type than the second switch, e.g. the first switch may be an NMOS transistor and the second switch a PMOS transistor or vice versa.

[0013] The DC-DC converter may further comprise a second voltage converter comprising a second inductor, a third switch, and a fourth switch. The second inductor and the third switch are series-connected between the first power supply voltage input and the second power supply voltage input. The fourth switch has a first electrode connected to a second common node between the second inductor and the third switch and a second electrode connected to a second output terminal. A third control output of the switching controller is connected to a control electrode of the third switch, and a fourth control output of the switching controller is connected to a control electrode of the fourth switch. The switching controller is adapted to provide third and fourth control signals to the third switch and the fourth switch, respectively, in response to the enable signal received at the enable input to thereby control an on-time and an off-time of the third switch and the fourth switch. If the first inductor has one terminal connected to the first power supply voltage input, the second inductor has one terminal connected to the second power supply voltage input, and the second inductor has one terminal connected to the first power supply voltage input else. I.e., if the first voltage converter is a boost converter, the second voltage converter is an inverter and vice versa.

[0014] In this case, the third switch may be of the same polarity type as the second switch and the fourth switch may be of the same polarity type as the first switch.

[0015] A second aspect of the invention provides an organic light emitting display having a power supplier, a DC-DC converter, a scan driver, a data driver, and an organic light emitting display panel. The DC-DC converter is a DC-DC converter according to the first aspect of the invention.

BRIEF DESCRIPTION OF THE DRAWINGS

[0016] Fig. 1 is a block diagram illustrating an organic light emitting display having a DC-DC converter according to an exemplary embodiment of the invention;

[0017] Fig. 2a is a circuit diagram and Fig. 2b is a timing diagram illustrating an example of circuitry and operation of a pixel region of the organic light emitting display;

[0018] Fig. 3 is a cross sectional view illustrating an organic light emitting diode in the pixel region of the organic light emitting display;

[0019] Fig. 4 is a circuit diagram illustrating an exemplary embodiment of the DC-DC converter;

[0020] Fig. 5 is a block diagram illustrating an exemplary embodiment of the structure of a switching controller of the DC-DC converter;

[0021] Fig. 6 is a graph illustrating the state in which a first switch and a second switch of a boost converter and a third switch and a fourth switch of an inverter included in the DC-DC converter are turned on;

[0022] Figs. 7a to 7d are circuit diagrams illustrating the operation of an exemplary embodiment of the DC-DC converter;

[0023] Fig. 8 is a circuit diagram illustrating another operation of an exemplary embodiment of the DC-DC converter; and

[0024] Figs. 9a and 9b are graphs illustrating waveforms of a positive power voltage and a negative power voltage output from an exemplary embodiment of the DC-DC converter.

DETAILED DESCRIPTION OF EMBODIMENTS

[0025] Fig. 1 is a block diagram illustrating an organic light emitting display having a DC-DC converter according to an embodiment of the invention.

[0026] As illustrated in Fig. 1, an organic light emitting display 100 includes a power supplier 110, a DC-DC converter 120, a scan driver 130, a data driver 140, a light-emission driver 150, and an organic light emitting display panel 160.

[0027] The power supplier 110 may be a battery that supplies a DC power supply or a rectification device that converts an AC power supply into a DC power supply and outputs the converted DC power supply. However, the invention is not limited to these kinds of power supplier 110.

[0028] The DC-DC converter 120 may be electrically coupled between the power supplier 110 and the organic light emitting display panel 160. Here, for the convenience of description, the positive power voltage is denoted by the same reference symbol as that of the positive power voltage line (ELVDD) and the negative power voltage is denoted by the same reference symbol as that of the negative power voltage line (ELVSS). The DC-DC converter 120 converts the power supply received from the power supplier 110 into a positive power voltage (ELVDD) and a negative power voltage (ELVSS), which are used to drive the organic light emitting display 100, and provides the converted positive power voltage (ELVDD) and the negative power voltage (ELVSS) to the organic light emitting display 100. To this end, the DC-DC converter 120 may be electrically coupled to the organic light emitting display 100 through a positive power voltage line (ELVDD) and a negative power voltage line (ELVSS). In particular, the DC-DC converter 120 supplies the positive power voltage (ELVDD) to the organic light emitting display panel 160 through the positive power voltage line (ELVDD). Further, the DC-DC converter 120 supplies the negative power voltage (ELVSS) to the organic light emitting display panel 160 through the negative power voltage line (ELVSS).

[0029] The DC-DC converter 120 may further include an enable terminal (Ena). The DC-DC converter 120 operates

when an enable signal is input through the enable terminal (Ena). The DC-DC converter 120 does not operate when a disable signal is input through the enable terminal (Ena). That is, when the disable signal is input through the enable terminal (Ena), little or no power is supplied from the power supplier 110 to the organic light emitting display panel 160 through the DC-DC converter 120. In other words, when the disable signal is input through the enable terminal (Ena), the DC-DC converter 120 is truly shut down.

[0030] The scan driver 130 may be electrically coupled to the organic light emitting display panel 160. That is, the scan driver 130 may be electrically coupled to the organic light emitting display panel 160 through a plurality of scan lines (S1, ..., Sn). In particular, the scan driver 130 sequentially supplies scan signals to the organic light emitting display panel 160 through the plurality of scan lines.

[0031] The data driver 140 may be electrically coupled to the organic light emitting display panel 160. That is, the data driver 140 may be electrically coupled to the organic light emitting display panel 160 through a plurality of data lines (D1,...,Dm). In particular, the data driver 140 sequentially supplies data signals to the organic light emitting display panel 160 through the plurality of data lines.

[0032] The light-emission driver 150 may be electrically coupled to the organic light emitting display panel 160. That is, the light-emission driver 150 may be electrically coupled to the organic light emitting display panel 160 through a plurality of emission lines (E1,...,En). In particular, the light-emission driver 150 sequentially supplies emission signals to the organic light emitting display panel 160 through the plurality of emission lines.

[0033] In the organic light emitting display panel 160, the plurality of scan lines (S1,...,Sn) and the plurality of emission lines (E1,...,En) are arranged to extend in a row direction, the plurality of data lines (D1,...,Dm) are arranged to extend in a column direction, and a plurality of pixel circuits 161 may be formed in regions defined by the scan lines (S1,...,Sn), the emission lines (E1,...,En), and the data lines (D1,...,Dm). In particular, the pixel circuit 161 may be formed in a region defined by two scan lines (or emission lines) that are adjacent to each other and two data lines that are adjacent to each other.

[0034] On the other hand, the scan driver 130, the data driver 140, the light-emission driver 150, and the organic light emitting display panel 160, which are illustrated in Fig. 1, may be formed on one substrate. In particular, the drivers may be formed on one substrate in the form of an integrated circuit. And, the drivers may be formed on the same layer as a layer on which the scan lines (S1,...,Sn), the data lines (D1,...,Dm), the emission lines (E1,...,En), and transistors (not illustrated) of the pixel circuit are formed. The drivers may be formed on a separate, different substrate (not illustrated) from the above-described substrate and the different substrate may be electrically coupled to the above-described substrate. Further, the drivers may be formed on any one of a flexible printed circuit (FPC), a tape carrier package (TCP), a tape automatic bonding (TAB), a chip on glass (COG), or a substantially equivalent material thereof, which is electrically coupled to the substrate, but the invention is not limited thereto. That is, the shape or position of the driver is not limited to the described embodiments.

[0035] Fig. 2a is a circuit diagram and Fig. 2b is a timing diagram illustrating an example of circuitry and operation of a pixel circuit of the organic light emitting display.

[0036] Here, one example of the pixel circuit is described so as to aid in understanding the invention, but the invention is not limited thereto. That is, the DC-DC converter according to this embodiment of the invention may be applied to pixel circuits of all organic light emitting displays which have been known until now or will be known in the future in addition to the pixel circuits illustrated in the drawings.

[0037] As illustrated in Fig. 2a, the pixel circuit 161 includes a scan line (Sn) used to supply a scan signal, a data line (Dm) used to supply a data signal, an auto zero line (An) used to supply an auto zero signal, an emission line (En) used to supply an emission signal, a positive power voltage line (ELVDD) used to supply a positive power voltage, a negative power voltage line (ELVSS) used to supply a negative power voltage, a driving transistor (DT), first and second switches (ST1 and ST2), an emission transistor (ET), first and second capacitors (C1 and C2), and an organic light emitting diode (OLED).

[0038] Here, the positive power voltage line (ELVDD) and the negative power voltage line (ELVSS) may be electrically coupled to the DC-DC converter 120, the scan line (Sn) may be electrically coupled to the scan driver 130, the data line (Dm) may be electrically coupled to the data driver 140, and the emission line (En) may be electrically coupled to the light emission driver 150. Further, the auto zero line (An) may be electrically coupled to the light emission driver 150 or electrically coupled to a separate driving unit.

[0039] In the pixel circuit, when an auto zero signal is supplied at a low level on the auto zero line (An) to a control electrode of the first switch (ST1), the first switch (ST1) is turned on. Next, when an emission signal at a high level is supplied to the control electrode of the emission transistor (ET) from the emission line (En), the emission transistor (ET) is turned off. Thereafter, the driving transistor (DT) is coupled to function as a diode and a threshold voltage of the driving transistor (DT) is stored in the first capacitor (C1). When the auto zero signal An becomes a high level and a scan signal is supplied at a low level to a control electrode of the second switch (ST2) from the scan line (Sn), the second switch (ST2) is turned on. Thereafter, a data voltage corresponding to a grayscale level to be displayed is applied to the second capacitor (C2) from the data line (Dm). Accordingly, a data voltage in which the threshold voltage is compensated by a

coupling ratio between the first capacitor (C1) and the second capacitor (C2) is applied to a control electrode of the driving transistor (DT). Continuously, when an emission signal (En) is supplied at a low level from the emission line (En) to a control electrode of the emission transistor (ET), the emission transistor (ET) is turned on. Accordingly, currents supplied from the first power voltage line (ELVDD) flow into the organic light emitting diode (OLED) through the driving transistor (DT), which functions as a current source managed by the data voltage.

[0040] Fig. 3 is a cross sectional view illustrating an example of an organic light emitting diode in the pixel region of the organic light emitting display.

[0041] As illustrated in Fig. 3, an anode and a cathode are formed on opposite sides of the organic light emitting diode (OLED). The organic light emitting diode (OLED) may include a light emitting layer (EML) in which electrons are combined with holes, thereby forming excitons and emitting light. The OLED may also include an electron transport layer (ETL) in which electrons are transported, and a hole transport layer (HTL) in which holes are transported. Further, the organic light emitting diode (OLED) may include an electron injecting layer (EIL) on one side of the electron transport layer (ETL) to inject electrons and a hole injection layer (HIL) on one side of the hole transport layer (HTL) to inject holes. Furthermore, in a case of a phosphorescent organic light emitting diode (as opposed to a fluorescent organic light emitting diode), a hole blocking layer (HBL) may be selectively formed between the light emitting layer (EML) and the electron transport layer (ETL) and an electron blocking layer (EBL) may be selectively formed between the light emitting layer (EML) and the hole transport layer (HTL).

[0042] Fig. 4 is a circuit diagram illustrating an exemplary embodiment of the DC-DC converter.

[0043] As illustrated in Fig. 4, the DC-DC converter 120 includes a boost converter 121, an inverter 122, and a switching controller 123. The DC-DC converter 120 may also include only one of the boost converter 121 and the inverter 122 depending on the voltage levels to be generated from an input voltage. A power supplier 110 provides a DC power supply to the DC-DC converter 120. A reference symbol (ELVDD) denotes a positive power voltage, and a reference symbol (ELVSS) denotes a negative power voltage.

[0044] The boost converter 121 includes a first inductor L11 electrically coupled to the power supplier 110, a first switch M11 electrically coupled to the first inductor L11, a second switch M12 electrically coupled to the first inductor L11 and the first switch M11, first and second resistors R11 and R12 electrically coupled to the second switch M12, and a first capacitor C11 electrically coupled to the second switch M12.

[0045] Here, the first switch M11 may be an N-channel field-effect transistor and the second switch M12 may be a P-channel field-effect transistor but the invention is not limited thereto. For example, the first switch M11 may be a P-channel field-effect transistor and the second switch M12 may be an N-channel field-effect transistor. The voltage conversion is most efficient when the second switch M12 is turned off when the first switch M11 is turned on and when the first switch M11 is turned off when the second switch M12 is turned on. Furthermore, stress on the second switch M12 caused by the free-wheeling voltage produced by the current through the inductor L11 being shut off is reduced.

[0046] The inverter 122 includes a third switch M21 electrically coupled to the power supplier 110, a second inductor L21 electrically coupled between the first switch M11 and the third switch M21, a fourth switch M22 electrically coupled between the third switch M21 and the second inductor L21, third and fourth resistors R21 and R22 electrically coupled to the fourth switch M22, and a second capacitor C21 electrically coupled to the fourth switch M22.

[0047] In the present embodiment, the third switch M21 is a P-channel field-effect transistor and the fourth switch M22 is an N-channel field-effect transistor, but the invention is not limited thereto. For example, the third switch M21 may be an N-channel field-effect transistor and the fourth switch M22 may be a P-channel field-effect transistor. As before, the voltage conversion is most efficient when the third switch M21 is turned on when the fourth switch M22 is turned off and when the third switch M21 is turned off when the fourth switch M22 is turned on. Furthermore, stress on the fourth switch M22 caused by the free-wheeling voltage produced by the current through the inductor L21 being shut off is reduced.

[0048] In addition, when the first switch M11 of the boost converter 121 is turned on, the third switch M21 of the inverter 122 is turned off and when the first switch M11 of the boost converter 121 is turned off, the third switch M21 of the inverter 122 is turned on. However, it is also possible that the boost converter 121 and the inverter 122 operate independently from each other.

[0049] The switching controller 123 controls the first switch M11 and the second switch M12 of the boost converter 121. Further, the switching controller 123 controls the third switch M21 and the fourth switch M22 of the inverter 122. In addition, an enable terminal (Ena) is electrically coupled to the switching controller 123. An enable signal is input to the enable terminal (Ena) to operate the switching controller 123 or a disable signal is input to the enable terminal Ena to stop the operation of the switching controller 123.

[0050] In one embodiment, the first switch M11 and the second switch M12 of the boost converter 121 and the third switch M21 and the fourth switch M22 of the inverter 122 may be integrated with the switching controller 123. That is, even though the first to fourth switches M11 to M22 are illustrated outside the switching converter in Fig. 4, the first to fourth switches M11 to M22 may be substantially integrated inside the switching controller 123. Therefore, according to the present embodiment of the invention, the size and weight of the overall DC-DC converter 120 may be considerably reduced.

[0051] In addition, a positive power voltage (ELVDD) is output through the boost converter 121 and a negative power voltage (ELVSS) is output through the inverter 122. The positive power voltage (ELVDD) and the negative power voltage (ELVSS) are supplied to the above-described organic light emitting display panel.

[0052] Fig. 5 is a block diagram illustrating the structure of a switching controller of an embodiment of the DC-DC converter.

[0053] As illustrated in Fig. 5, the switching controller 123 includes a first comparator 123a, a second comparator 123b, a control logic unit 123c, a first driver 123d, and a second driver 123e.

[0054] An enable terminal (Ena) is electrically coupled to the control logic unit 123c so as to input an enable signal or a disable signal from outside.

[0055] The first comparator 123a is electrically coupled to a node between the first resistor R11 and the second resistor R12 of the boost converter 121. Therefore, a voltage divided by the first resistor R11 and the second resistor R12 is applied to the first comparator 123a. Accordingly, the first comparator 123a outputs a control signal to the control logic unit 123c so as to keep a first positive power voltage (ELVDD) to be substantially constant. Therefore, the control logic unit 123c outputs a control signal, which may be predetermined, to be electrically coupled to the first driver 123d. Further, switching frequencies of the first and second switches M11 and M12, which may be integrated with the switching controller 123 appropriately change, thereby enabling the substantially constant positive power voltage (ELVDD).

[0056] The second comparator 123b is electrically coupled to a node between the third resistor R21 and the fourth resistor R22 of the inverter 122. Therefore, a voltage divided by the third resistor R21 and the fourth resistor R22 is applied to the second comparator 123b. Accordingly, the second comparator 123b outputs a control signal to the control logic unit 123c so as to keep a negative power voltage (ELVSS) to be substantially constant. Therefore, the control logic unit 123c outputs a control signal, which may be predetermined, to be electrically coupled to the second driver 123e. Further, switching frequencies of the third and fourth switches M21 and M22, which may be integrated with the switching controller 123 appropriately change, thereby enabling the substantially constant negative power voltage (ELVSS).

[0057] Further, according to an embodiment of the present invention, when the enable signal is input through the enable terminal (Ena), the control logic unit 123c outputs control signals including an operation command to the first driver 123d and the second driver 123e so as to operate the first switch M11, the second switch M12, the third switch M21, and the fourth switch M22. However, when the disable signal is input through the enable terminal (Ena), the control logic unit 123c outputs control signals including an operation stop command to the first driver 123d and the second driver 123e so as not to operate the first switch M11, the second switch M12, the third switch M21, and the fourth switch M22. In particular, because the second switch M12 and the fourth switch M22 are turned off, the power supply is not provided to the organic light emitting display panel. That is, the DC-DC converter is truly shut off.

[0058] Fig. 6 is a graph illustrating the states in which the first switch and the second switch of the boost converter and the third switch and the fourth switch of the inverter included in the DC-DC converter are turned on.

[0059] As illustrated in Fig. 6, in the DC-DC converter, when the first switch M11 of the boost converter is turned on, the second switch M12 is turned off. Meanwhile, when the first switch M11 is turned off, the second switch M12 is turned on.

[0060] Further, when the third switch M21 of the inverter is turned on, the fourth switch M22 is turned off and when the third switch M21 is turned off, the fourth switch M22 is turned on.

[0061] On the other hand, as illustrated in Fig. 6, in the DC-DC converter, when the first switch M11 of the boost converter is turned on, the third switch M21 of the inverter 122 is turned off and when the first switch M11 of the boost converter is turned off, the third switch M21 of the inverter 122 is turned on. As mentioned before, it is also possible that the boost converter 121 and the inverter 122 operate independently from each other.

[0062] Figs. 7a to 7d are circuit diagrams illustrating the operation of the DC-DC converter.

[0063] In practice, the boost converter 121 and the inverter 122 operate concurrently. However, for the convenience of the description, the operation of the boost converter 121 will be described separately from the operation of the inverter 122.

[0064] First, as illustrated in Fig. 7a, the switching controller 123 provides a signal at a high level to the first switch M11 and the second switch M12 of the boost converter 121. This way, the first switch M11 of the boost converter 121 is turned on and the second switch M12 of the boost converter 121 is turned off.

[0065] Therefore, a circuit loop through the first inductor L11 and the first switch M11 of the boost converter 121 is closed, as illustrated by the arrow in Fig. 7a. Accordingly, the power supply provided from the power supplier 110 is induced to the first inductor L11. That is, energy provided from the power supplier 110 is stored in the first inductor L11. At this time, the switching controller 123 adjusts a duty cycle with respect to the first switch M11 of the boost converter 121 so as to adjust the voltage drop across the first inductor L11. That is, a level of a voltage to be induced across the first inductor L11 varies depending on a period of time at which the first switch M11 is turned on.

[0066] Next, as illustrated in Fig. 7b, the switching controller 123 provides a signal at a low level to the first switch M11 and the second switch M12 of the boost converter 121. This way, the first switch M11 of the boost converter 121 is turned off and the second switch M12 of the boost converter 121 is turned on.

[0067] Therefore, the input voltage modified by the voltage drop across the first inductor L11 of the boost converter

121 is applied to the first capacitor C11 through the second switch M12. That is, the positive power voltage is charged in the first capacitor C11. Furthermore, the second switch M12 and the first capacitor C11 output a positive power voltage (ELVDD) to the organic light emitting display panel.

[0068] Turning now to the operation of the inverter 122, as illustrated in Fig. 7c, the switching controller 123 provides a signal at a low level to the third switch M21 and the fourth switch M22 of the inverter 122. This way, the third switch M21 of the inverter 122 is turned on and the fourth switch M22 of the inverter 122 is turned off.

[0069] Therefore, a circuit loop through the third switch M21 and the second inductor L21 of the inverter 122 is closed, as illustrated by the arrow in Fig. 7c. Accordingly, the power supply provided from the power supplier 110 is induced to the second inductor L21. That is, energy provided from the power supplier 110 is stored in the second inductor L21. At this time, the switching controller 123 adjusts a duty cycle with respect to the third switch M21 of the inverter 122 so as to adjust the voltage drop across the second inductor L21. That is, a level of a voltage to be induced across the second inductor L21 varies depending on a period of time at which the third switch M21 is turned on.

[0070] As illustrated in Fig. 7d, the switching controller 123 provides a signal at a high level to the third switch M21 and the fourth switch M22 of the inverter 122. This way, the third switch M21 of the inverter 122 is turned off and the fourth switch M22 of the inverter 122 is turned on.

[0071] Therefore, as a current through the second inductor L21 decreases, a voltage across the second inductor L21 of the inverter 122 is inverted and applied to the second capacitor C21 through the fourth switch M22. That is, the voltage across the second inductor L21 is inverted and charged in the second capacitor C21. Furthermore, the fourth switch M22 and the second capacitor C21 output a negative power voltage (ELVSS) to the organic light emitting display panel.

[0072] Fig. 8 is a circuit diagram illustrating another operation of the DC-DC converter.

[0073] As illustrated in Fig. 8, a disable signal may be input to the enable terminal Ena, which is electrically coupled to the switching controller 123. For example, in order to completely stop the operation of the organic light emitting display 100, a disable signal may be input to the enable terminal (Ena). Thereafter, the switching controller 123 outputs a signal at a high level to the second switch M12 of the boost converter 121 and outputs a signal at a low level to the fourth switch M22 of the inverter 122. Accordingly, the second switch M12 of the boost converter 121 and the fourth switch M22 of the inverter 122 are turned off.

[0074] Therefore, the power supply provided from the power supplier 110 is not provided to the organic light emitting display panel through the second switch M12 and the fourth switch M22. In other words, the DC-DC converter is truly shut down. Accordingly, it is possible to reduce the overall power consumption of the organic light emitting display and to decrease the deterioration of the organic light emitting display.

[0075] Figs. 9a to 9b are graphs illustrating waveforms of a positive power voltage and a negative power voltage output from the DC-DC converter. Here, Fig. 9a shows a waveform of the voltage input to the second switch M12 when no first capacitor C11 is present, and Fig. 9b shows a waveform of the voltage input to the fourth switch M22 when no second capacitor C21 is present. When smoothing is performed by the first and second capacitors C11, C21, the positive power voltage (ELVDD) to be applied to the organic light emitting display panel is an approximately smooth direct current voltage because the voltage supplied during the "M11 off"-phases is stored in the first capacitor C11 such that the output voltage of the boost converter 121 rises to the desired value ELVDD and the negative power voltage (ELVSS) is an approximately smooth direct current voltage because the voltage supplied during the "M21-off"-phases is stored in the second capacitor C21 such that the output voltage of the inverter 122 sinks to the desired value ELVSS.

[0076] First, as illustrated in Fig. 9a, when the first switch M11 of the boost converter 121 is turned off, the positive power voltage (ELVDD) stored in the first inductor L11 is output. Here, the positive power voltage (ELVDD) may be obtained by using the following Equation 1.

Equation 1

$$(ELVDD)=V_{in}/(1-D)$$

[0077] Here, reference symbol V_{in} denotes an input voltage applied from the power supplier 110 and reference symbol D denotes the duty cycle.

[0078] Next, as illustrated in Fig. 9b, when the third switch M21 of the inverter 122 is turned off, the negative power voltage (ELVSS) stored in the second inductor L21 is output. Here, the negative power voltage (ELVSS) may be obtained by using following Equation 2.

Equation 2

$$(ELVSS)=(D*V_{in})/(1-D)$$

[0079] As described above, the negative power voltage (ELVSS) is determined by using Equation 2. In particular, in the range of $D > 0.5$, the absolute value of the negative power voltage (ELVSS) is larger than the input voltage V_{in} and in the range of $D < 0.5$, the absolute value of the negative power voltage (ELVSS) is smaller than the input voltage V_{in} . In an exemplary embodiment according to the invention, the P-channel transistor is adopted in the inverter 122 and the duty cycle is controlled to be larger than 0.5. Therefore, the negative power voltage (ELVSS) having an absolute value larger than the input value is output. In other words, if it is assumed that a desired negative power voltage (ELVSS) is approximately -6V, the inverter 122 raises an input voltage from approximately 3V to 6V, inverts the input voltage into the negative power voltage (ELVSS), and outputs the inverted voltage.

[0080] Therefore, according to this embodiment of the invention, the freewheel diode from a conventional DC-DC converter may be replaced with a switch having a low voltage drop. Therefore, it is possible to provide a DC-DC converter having lower power consumption.

[0081] Further, according to an embodiment of the invention, it is possible to supply a light-weight and small size DC-DC converter by integrating the freewheel diode with a switching controller while replacing the freewheel diode with the switch.

[0082] Further, according to an embodiment of the invention, it is possible to supply a DC-DC converter which is truly shut down by using a switch in a boost converter and a switch in an inverter, which function as the freewheel diode, to be turned off when the switching controller does not operate.

Claims

1. A DC-DC converter (120) for an organic light emitting display, having a first voltage converter (121, 122) comprising:

a first inductor (L11, L21) and a first switch (M11, M21) series-connected between a first power supply voltage input and a second power supply voltage input;
a second switch (M12, M22) having a first electrode connected to a first common node between the first inductor (L11, L21) and the first switch (M11, M21) and a second electrode connected to a first output terminal (ELVDD, ELVSS); and
a switching controller (123) having an enable input (Ena), a first control output connected to a control electrode of the first switch (M11, M21), and a second control output connected to a control electrode of the second switch (M12, M22),

wherein the switching controller (123) is adapted to provide first and second control signals to the first switch (M11, M21) and the second switch (M12, M22), respectively, in response to an enable signal received at the enable input (Ena) to thereby control an on-time and an off-time of the first switch (M11, M21) and the second switch (M12, M22).

2. The DC-DC converter (120) of claim 1, wherein the first voltage converter (121, 122) further comprises a first voltage divider (R11, R12; R21, R22) connected between the first output terminal (ELVDD, ELVSS) and a first reference voltage input and adapted to provide a feedback voltage to a control input of the switching controller (123).

3. The DC-DC converter (120) of one of claims 1 or 2, wherein the first voltage converter (121, 122) further comprises a first capacitor (C11, C21) having a first terminal connected to the first output terminal (ELVDD, ELVSS) and a second terminal connected to the second power supply voltage input.

4. The DC-DC converter (120) of one of the preceding claims, wherein the first inductor (L11) has a first terminal connected to the first power supply voltage input and wherein the first switch (M11) has one of a first and a second electrode connected to the second power supply voltage input.

5. The DC-DC converter (120) of one of the claims 1 through 3, wherein the first inductor (L21) has a first terminal connected to the second power supply voltage input and wherein the first switch (M21) has one of a first and a second electrode connected to the first power supply voltage input.

6. The DC-DC converter (120) of one of the preceding claims, wherein the first switch (M11, M21) is of a different polarity type than the second switch (M12, M22).

7. The DC-DC converter (120) of one of the preceding claims, further comprising a second voltage converter (121, 122) comprising:

a second inductor (L11, L21) and a third switch (M11, M21) series-connected between the first power supply voltage input and the second power supply voltage input;

a fourth switch (M12, M22) having a first electrode connected to a second common node between the second inductor (L11, L21) and the third switch (M11, M21) and a second electrode connected to a second output terminal (ELVDD, ELVSS),

wherein a third control output of the switching controller (123) is connected to a control electrode of the third switch (M11, M21), and a fourth control output of the switching controller (123) is connected to a control electrode of the fourth switch (M12, M22),

wherein the switching controller (123) is adapted to provide third and fourth control signals to the third switch (M11, M21) and the fourth switch (M12, M22), respectively, in response to the enable signal received at the enable input (Ena) to thereby control an on-time and an off-time of the third switch (M11, M21) and the fourth switch (M12, M22), and wherein, if the first inductor (L11, L21) has one terminal connected to the first power supply voltage input, the second inductor (L11, L21) has one terminal connected to the second power supply voltage input, and wherein the second inductor (L11, L21) has one terminal connected to the first power supply voltage input else.

8. The DC-DC converter (120) of claims 6 and 7, wherein the third switch (M11, M21) is of the same polarity type as the second switch (M12, M22) and wherein the fourth switch (M12, M22) is of the same polarity type as the first switch (M11, M21).

9. An organic light emitting display having a power supplier, a DC-DC converter, a scan driver, a data driver, and an organic light emitting display panel, **characterised in that** the DC-DC converter is a DC-DC converter according to one of the preceding claims.

FIG. 1

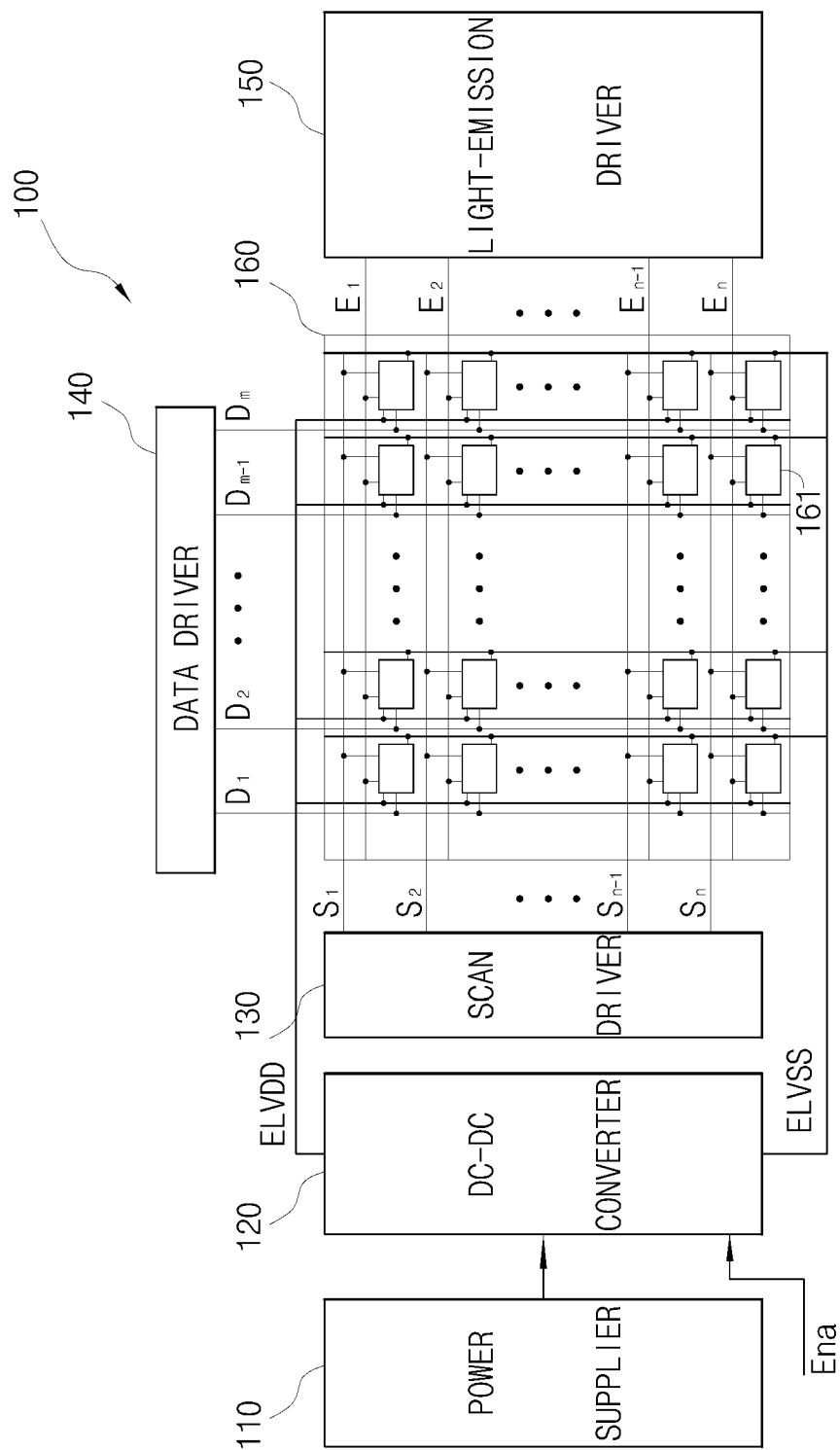


FIG. 2a

Related Art

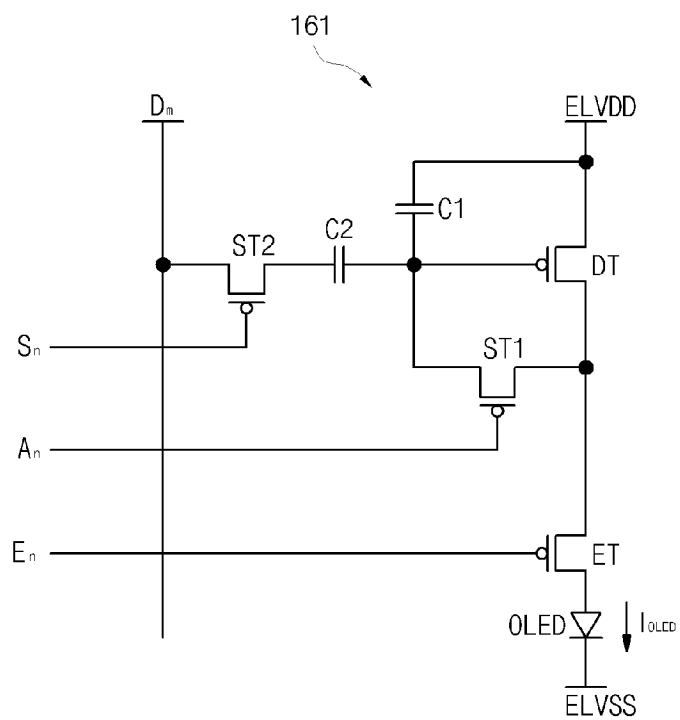


FIG. 2b

Related Art

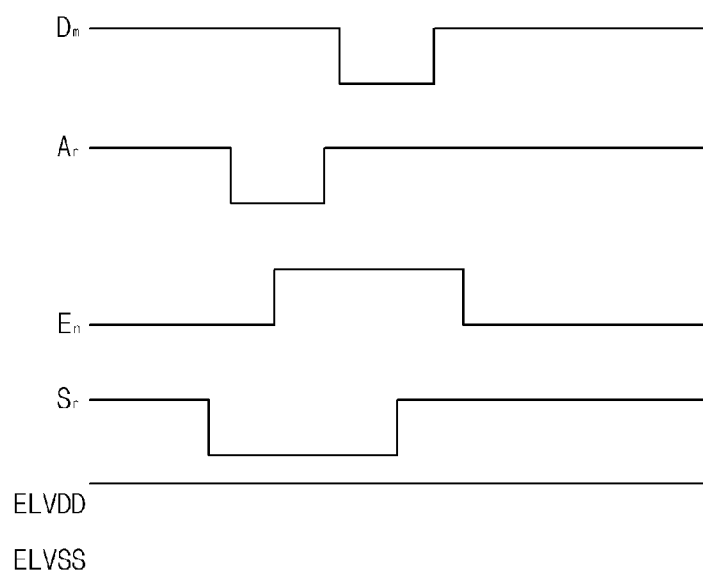


FIG. 3

Related Art

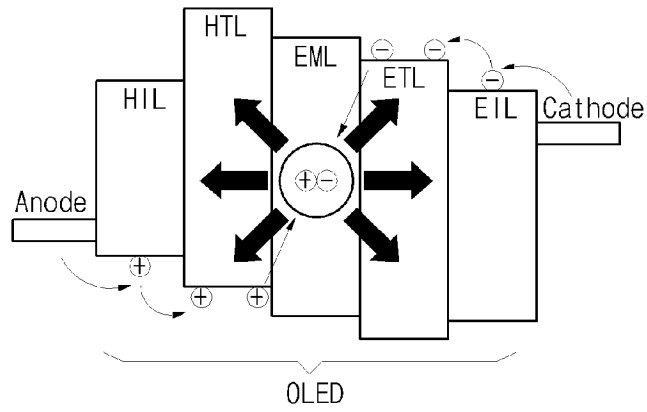


FIG. 4

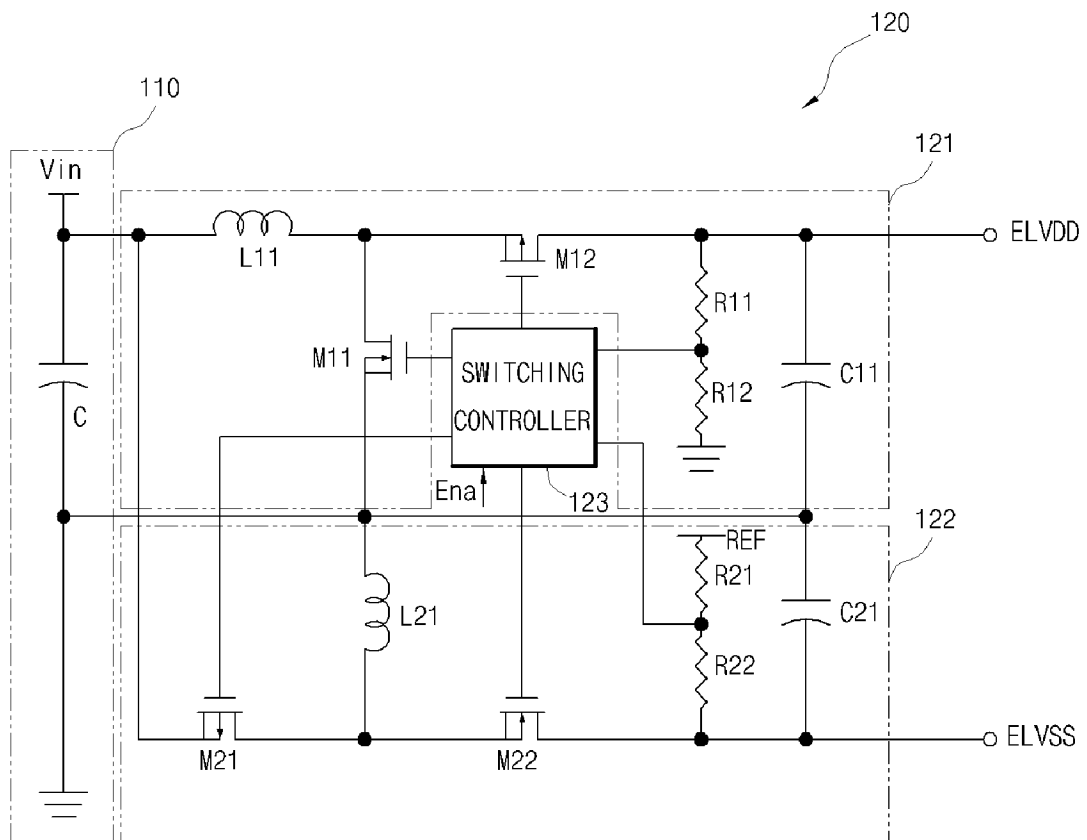


FIG. 5

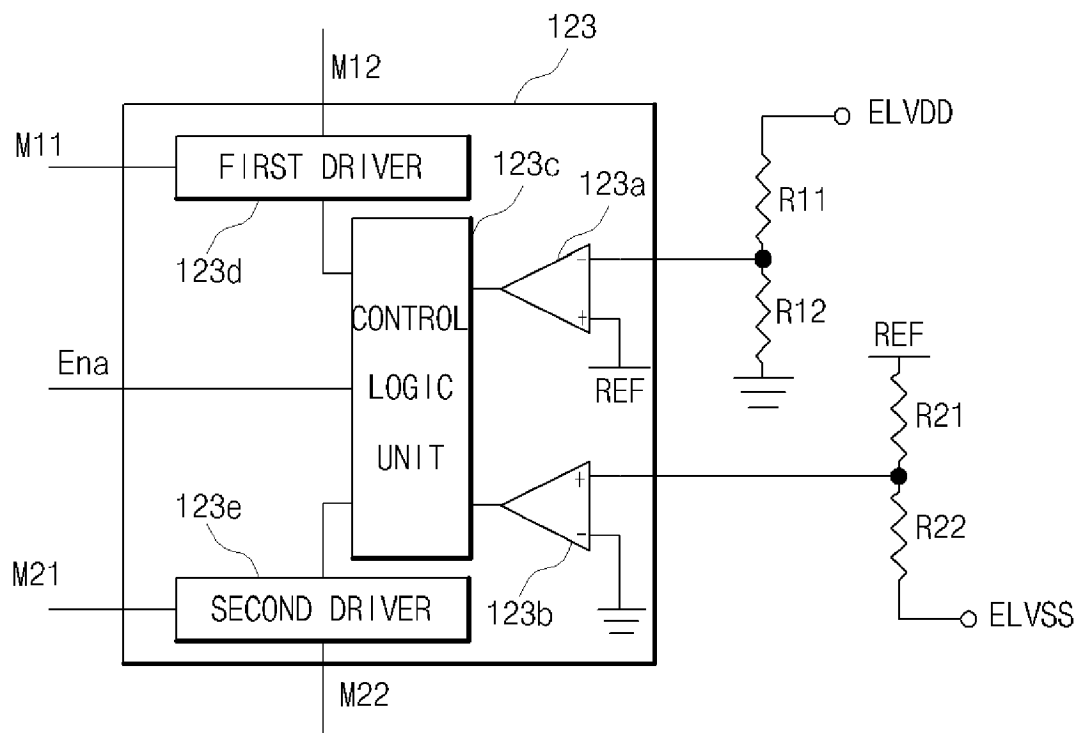


FIG. 6

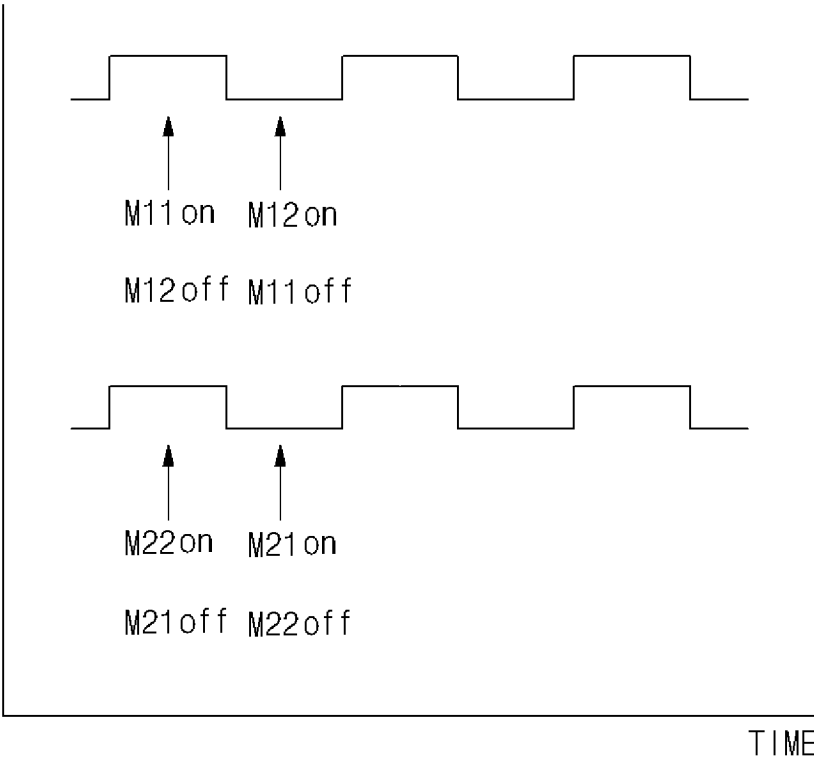


FIG. 7a

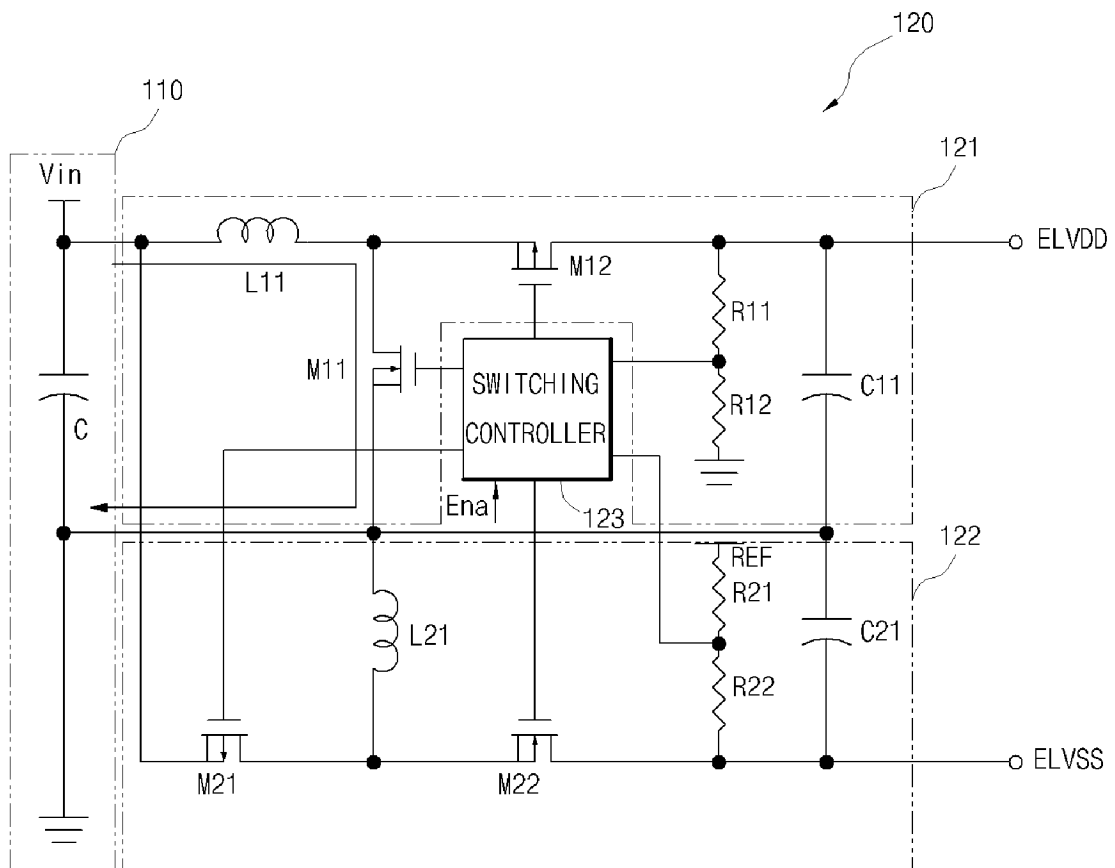


FIG. 7b

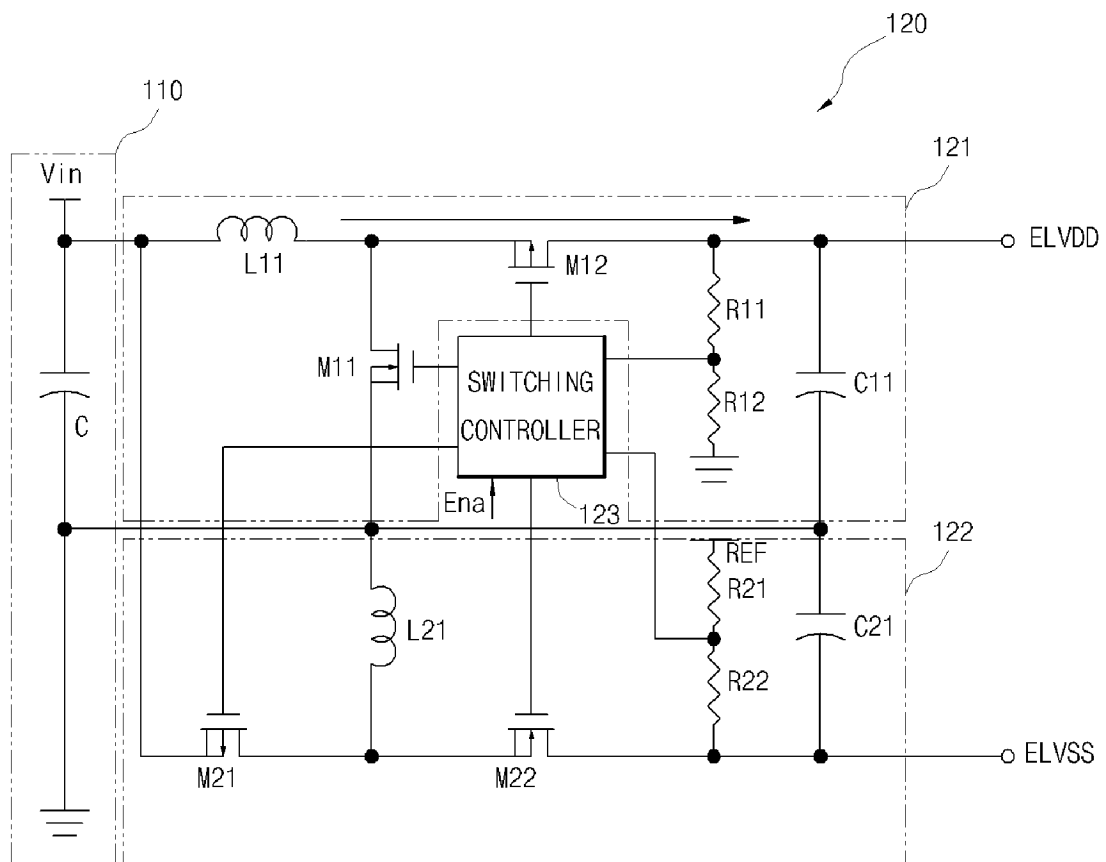


FIG. 7c

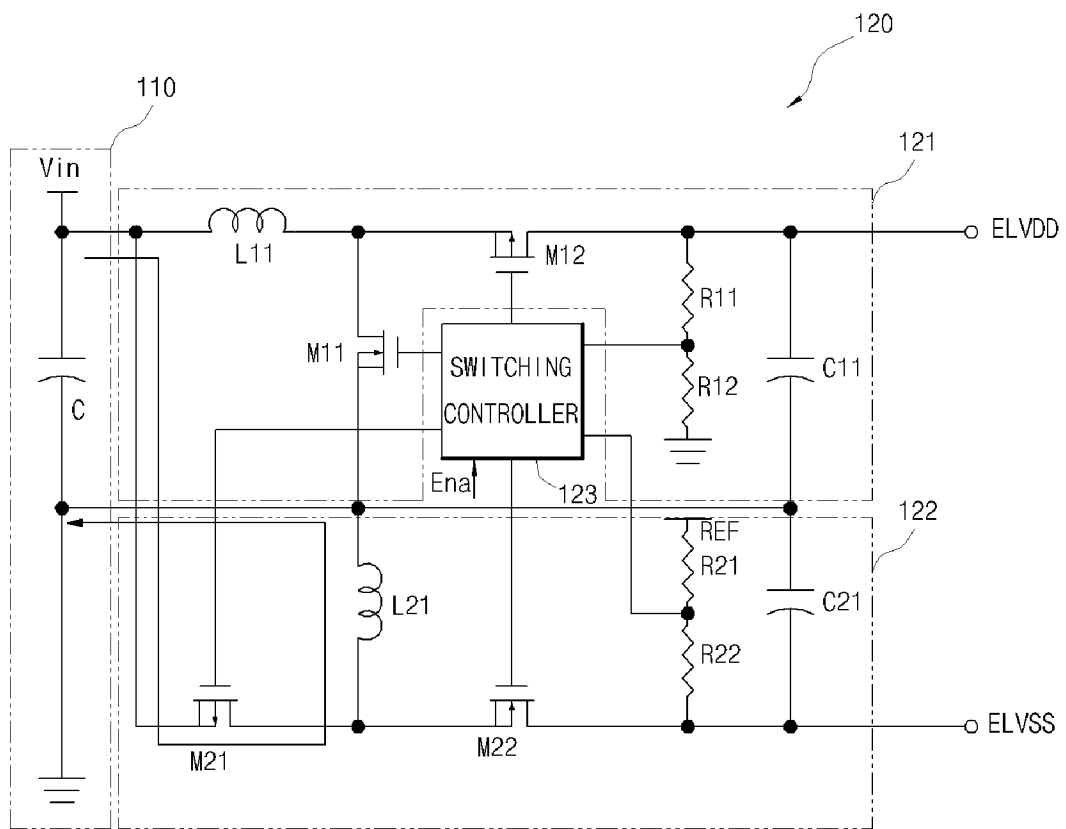


FIG. 7d

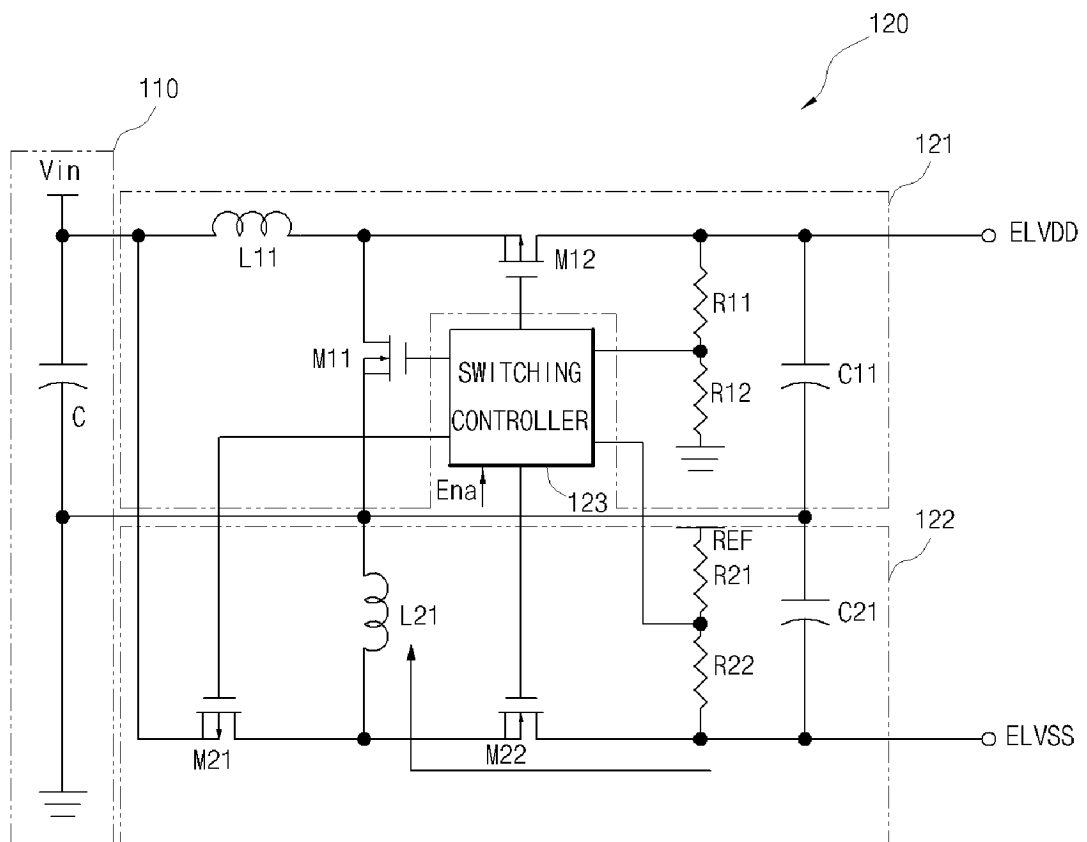


FIG. 8

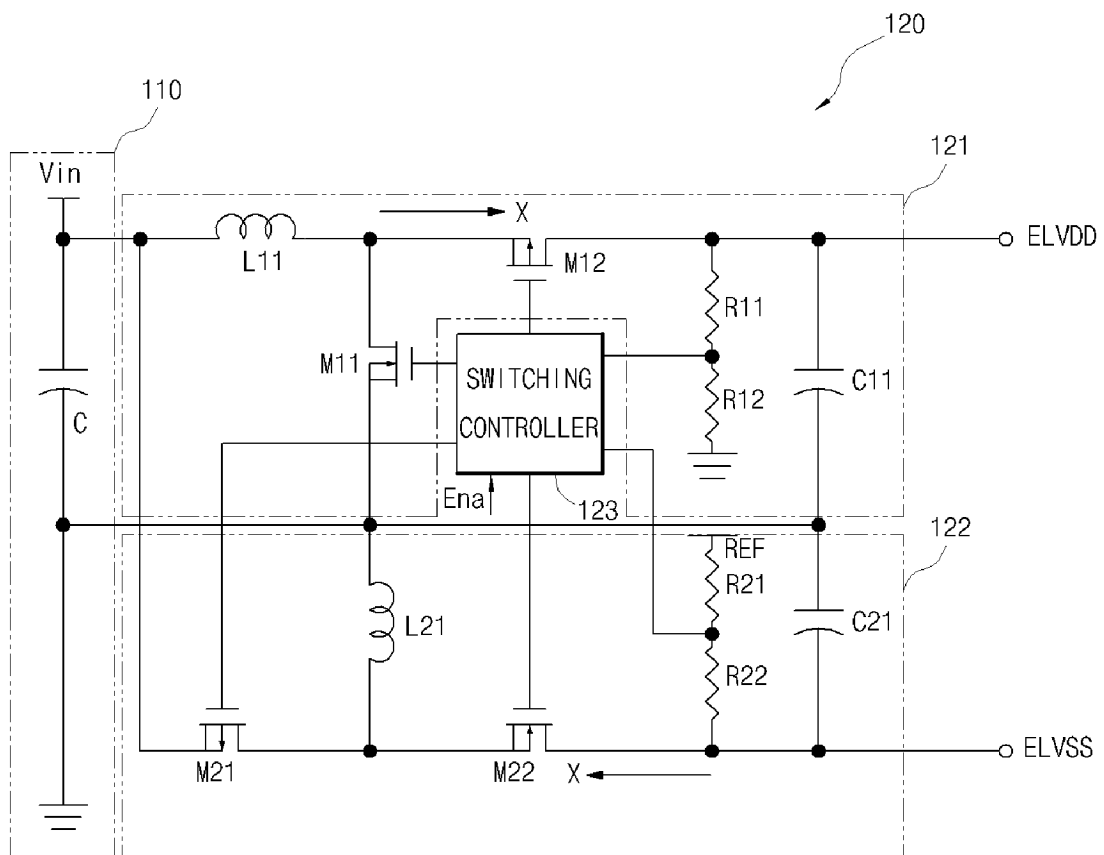


FIG. 9a

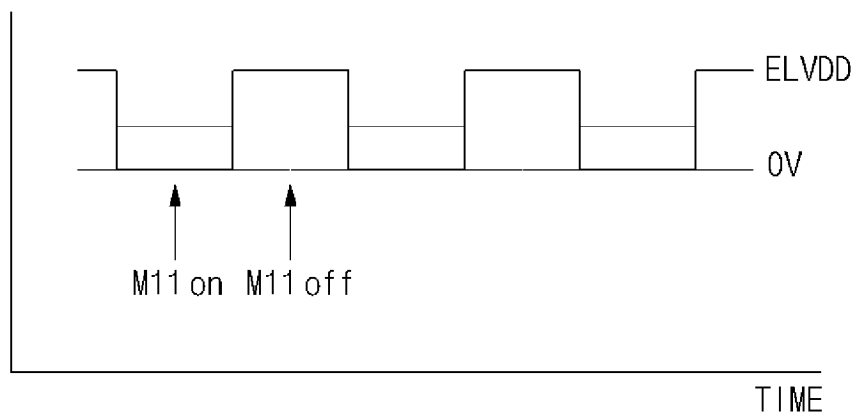
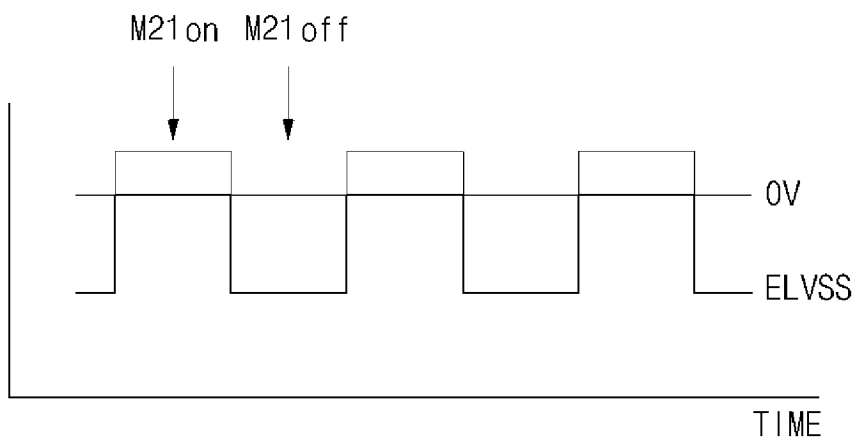


FIG. 9b





European Patent
Office

EUROPEAN SEARCH REPORT

Application Number
EP 08 15 0486

DOCUMENTS CONSIDERED TO BE RELEVANT			
Category	Citation of document with indication, where appropriate, of relevant passages	Relevant to claim	CLASSIFICATION OF THE APPLICATION (IPC)
X	US 2006/097707 A1 (INOSHITA RYOUSUKE [JP] ET AL) 11 May 2006 (2006-05-11) * paragraphs [0100] - [0124] * * figures 10-18 *	1-9	INV. H05B33/08 H02M3/158
A	EP 1 365 632 A (WINTEST CORP [JP]) 26 November 2003 (2003-11-26) * the whole document *	9	
A	US 5 412 308 A (BROWN PRESTON D [US]) 2 May 1995 (1995-05-02) * figures 1-4 *	1-9	
A	US 2003/090245 A1 (SHENAI KRISHNA [US] ET AL) 15 May 2003 (2003-05-15) * the whole document *	1-9	
A	US 4 736 151 A (DISHNER BRYAN W [US]) 5 April 1988 (1988-04-05) * the whole document *	1-9	
			TECHNICAL FIELDS SEARCHED (IPC)
			H05B H02M G09G
The present search report has been drawn up for all claims			
Place of search		Date of completion of the search	Examiner
The Hague		24 April 2008	João Carlos Silva
<p>CATEGORY OF CITED DOCUMENTS</p> <p>X : particularly relevant if taken alone Y : particularly relevant if combined with another document of the same category A : technological background O : non-written disclosure P : intermediate document</p> <p>T : theory or principle underlying the invention E : earlier patent document, but published on, or after the filing date D : document cited in the application L : document cited for other reasons</p> <p>& : member of the same patent family, corresponding document</p>			

1
EPO FORM 1503 03.82 (P04C01)

**ANNEX TO THE EUROPEAN SEARCH REPORT
ON EUROPEAN PATENT APPLICATION NO.**

EP 08 15 0486

This annex lists the patent family members relating to the patent documents cited in the above-mentioned European search report. The members are as contained in the European Patent Office EDP file on
The European Patent Office is in no way liable for these particulars which are merely given for the purpose of information.

24-04-2008

Patent document cited in search report		Publication date	Patent family member(s)	Publication date
US 2006097707	A1	11-05-2006	JP 2006136125 A	25-05-2006
EP 1365632	A	26-11-2003	DE 60308748 T2	31-10-2007
			JP 3527726 B2	17-05-2004
			JP 2003337546 A	28-11-2003
			TW 266559 B	11-11-2006
			US 2004008053 A1	15-01-2004
US 5412308	A	02-05-1995	NONE	
US 2003090245	A1	15-05-2003	NONE	
US 4736151	A	05-04-1988	FR 2609848 A1	22-07-1988
			GB 2207565 A	01-02-1989
			JP 63190554 A	08-08-1988

专利名称(译)	具有DC-DC转换器的有机发光显示器		
公开(公告)号	EP1951005A1	公开(公告)日	2008-07-30
申请号	EP2008150486	申请日	2008-01-22
[标]申请(专利权)人(译)	三星斯笛爱股份有限公司		
申请(专利权)人(译)	三星SDI CO. , LTD.		
当前申请(专利权)人(译)	三星SDI CO. , LTD.		
[标]发明人	PARK SUNGCHEON		
发明人	PARK, SUNGCHEON		
IPC分类号	H05B33/08 H02M3/158		
CPC分类号	H02M3/158 H02M2001/009 H05B45/60 Y02B20/36		
代理机构(译)	hengelhaupt , Jürgen		
优先权	1020070006545 2007-01-22 KR		
其他公开文献	EP1951005B1		
外部链接	Espacenet		

摘要(译)

一种有机发光显示器，具有DC-DC转换器，其具有由集成在开关控制器中的开关代替的续流二极管。这样，当DC-DC转换器不工作时，通过真正地关闭电流路径来降低功耗，并且可以减小DC-DC转换器的尺寸和重量。DC-DC转换器的一个实施例具有升压转换器，其具有耦合到电源的第一开关和用作续流二极管的第二开关，其耦合到有机发光显示面板，以及具有耦合到第三开关的第三开关的逆变器。电源和第四开关，用作续流二极管，耦合到有机发光显示板。开关控制器耦合到升压转换器和逆变器。用作续流二极管的第二和第四开关集成在开关控制器中。

FIG. 4

