

(19)



(11)

**EP 1 865 486 A3**

(12)

**EUROPEAN PATENT APPLICATION**

(88) Date of publication A3:  
**28.04.2010 Bulletin 2010/17**

(51) Int Cl.:  
**G09G 3/32<sup>(2006.01)</sup> G09G 3/20<sup>(2006.01)</sup>**

(43) Date of publication A2:  
**12.12.2007 Bulletin 2007/50**

(21) Application number: **07251605.7**

(22) Date of filing: **16.04.2007**

(84) Designated Contracting States:  
**AT BE BG CH CY CZ DE DK EE ES FI FR GB GR HU IE IS IT LI LT LU LV MC MT NL PL PT RO SE SI SK TR**  
Designated Extension States:  
**AL BA HR MK RS**

(72) Inventor: **Kim, Hong Kwon,**  
**c/o Samsung SDI Co. Ltd.**  
**Yongin-si,**  
**Gyeonggi-do (KR)**

(30) Priority: **05.06.2006 KR 20060050485**

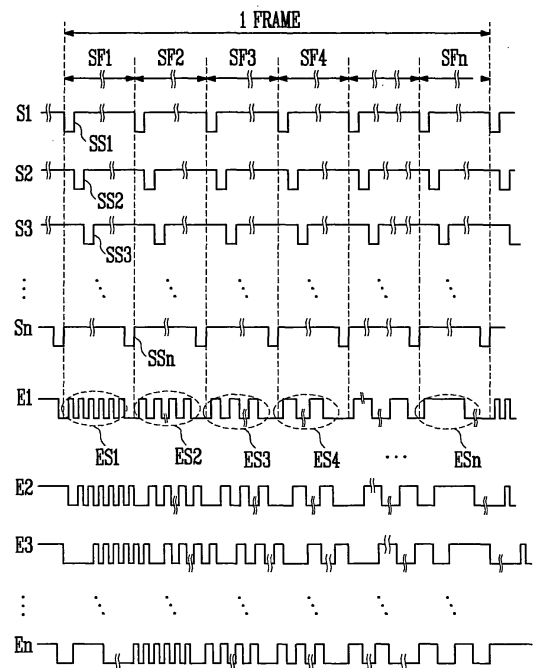
(74) Representative: **Mounteney, Simon James**  
**Marks & Clerk LLP**  
**90 Long Acre**  
**London**  
**WC2E 9RA (GB)**

(71) Applicant: **Samsung Mobile Display Co., Ltd.**  
**Suwon-si**  
**Gyeonggi-do (KR)**

(54) **Organic electroluminescence display and driving method thereof**

(57) Disclosed are an organic electroluminescence display having simple configurations of a pixel circuit and a driving circuit by using a frequency characteristic of an organic electroluminescence device to display a grey level, and a driving method thereof. The present invention provides an organic electroluminescence display including a plurality of scan lines for transmitting a scan signal; a plurality of data lines for transmitting a digital data signal; a plurality of emission control lines for transmitting an emission control signal; and a plurality of pixels defined by a plurality of power supply lines for supplying a power supply, wherein the scan signal is transmitted to a plurality of subframes, and the emission control signal have different frequencies in a plurality of the subframes, and a driving method thereof

**FIG. 6**



**EP 1 865 486 A3**



EUROPEAN SEARCH REPORT

Application Number  
EP 07 25 1605

DOCUMENTS CONSIDERED TO BE RELEVANT			
Category	Citation of document with indication, where appropriate, of relevant passages	Relevant to claim	CLASSIFICATION OF THE APPLICATION (IPC)
X	US 2006/092107 A1 (KIM HONG K [KR] KIM HONG KWON [KR]) 4 May 2006 (2006-05-04) * paragraphs [0003], [0040] - [0045], [0068] - [0095] * * figures 2,9,10 *	1-14	INV. G09G3/32 G09G3/20
X	US 2006/061529 A1 (KIM HONG K [KR]) 23 March 2006 (2006-03-23) * paragraphs [0003], [0041] - [0047], [0065] - [0084] * * figures 2,7-10 *	1-14	
X	US 2006/092148 A1 (OZAWA TOKURO [JP] ET AL) 4 May 2006 (2006-05-04) * paragraphs [0003], [0004], [0042] - [0050], [0090] - [0095] * * figures 1,2,3,8,19 *	1-3,5-9, 11-14	
X	US 6 008 588 A (FUJII HIROYUKI [JP]) 28 December 1999 (1999-12-28) * column 9, line 1 - column 10, line 13 * * column 15, line 9 - column 16, line 34 * * figures 1,2,3,10 *	8	
			TECHNICAL FIELDS SEARCHED (IPC)
			G09G
The present search report has been drawn up for all claims			
Place of search		Date of completion of the search	Examiner
The Hague		10 March 2010	Ladiray, Olivier
CATEGORY OF CITED DOCUMENTS		T : theory or principle underlying the invention E : earlier patent document, but published on, or after the filing date D : document cited in the application L : document cited for other reasons ..... & : member of the same patent family, corresponding document	
X : particularly relevant if taken alone Y : particularly relevant if combined with another document of the same category A : technological background O : non-written disclosure P : intermediate document			

3  
EPO FORM 1503 03.82 (F04C01)

ANNEX TO THE EUROPEAN SEARCH REPORT  
ON EUROPEAN PATENT APPLICATION NO.

EP 07 25 1605

This annex lists the patent family members relating to the patent documents cited in the above-mentioned European search report. The members are as contained in the European Patent Office EDP file on  
The European Patent Office is in no way liable for these particulars which are merely given for the purpose of information.

10-03-2010

Patent document cited in search report	Publication date	Patent family member(s)	Publication date
US 2006092107 A1	04-05-2006	KR 20060032826 A	18-04-2006
US 2006061529 A1	23-03-2006	CN 1770246 A	10-05-2006
		JP 2006085141 A	30-03-2006
		KR 20060025283 A	21-03-2006
US 2006092148 A1	04-05-2006	JP 4186961 B2	26-11-2008
		JP 2006154730 A	15-06-2006
US 6008588 A	28-12-1999	DE 69730671 D1	21-10-2004
		DE 69730671 T2	22-09-2005
		EP 0843504 A2	20-05-1998
		JP 10199674 A	31-07-1998

专利名称(译)	有机电致发光显示器及其驱动方法		
公开(公告)号	<a href="#">EP1865486A3</a>	公开(公告)日	2010-04-28
申请号	EP2007251605	申请日	2007-04-16
[标]申请(专利权)人(译)	三星斯笛爱股份有限公司		
申请(专利权)人(译)	三星SDI CO. , LTD.		
当前申请(专利权)人(译)	三星DISPLAY CO. , LTD.		
发明人	KIM, HONG KWON, C/O SAMSUNG SDI CO. LTD.		
IPC分类号	G09G3/32 G09G3/20		
CPC分类号	G09G3/3258 G09G3/2007 G09G3/2025 G09G2300/0842 G09G2300/0861 G09G2320/0233		
优先权	1020060050485 2006-06-05 KR		
其他公开文献	EP1865486A2		
外部链接	<a href="#">Espacenet</a>		

摘要(译)

公开了一种有机电致发光显示器及其驱动方法，该有机电致发光显示器具有通过使用有机电致发光器件的频率特性来显示灰度级的像素电路和驱动电路的简单配置。本发明提供一种有机电致发光显示器，包括用于传输扫描信号的多条扫描线；多条数据线，用于传输数字数据信号；多个发射控制线，用于发射发射控制信号；多个像素由用于提供电源的多个电源线限定，其中扫描信号被发送到多个子帧，并且发射控制信号在多个子帧中具有不同的频率，以及驱动方法其

FIG. 6

