

(19)



(11)

EP 2 099 018 A1

(12)

EUROPEAN PATENT APPLICATION

(43) Date of publication:
09.09.2009 Bulletin 2009/37

(51) Int Cl.:
G09G 3/32^(2006.01)

(21) Application number: **09154276.1**

(22) Date of filing: **04.03.2009**

(84) Designated Contracting States:
AT BE BG CH CY CZ DE DK EE ES FI FR GB GR HR HU IE IS IT LI LT LU LV MC MK MT NL NO PL PT RO SE SI SK TR
Designated Extension States:
AL BA RS

- **Kim, Mi-Hae**
Gyeonggi-do (KR)
- **Eom, Ki-Myeong**
Gyeonggi-do (KR)
- **Jeong, Jin-Tae**
Gyeonggi-do (KR)

(30) Priority: **04.03.2008 KR 20080020021**

(74) Representative: **Gulde Hengelhaupt Ziebig & Schneider**
Patentanwälte - Rechtsanwälte
Wallstrasse 58/59
10179 Berlin (DE)

(71) Applicant: **Samsung Mobile Display Co., Ltd.**
Suwon-si
Gyeonggi-do (KR)

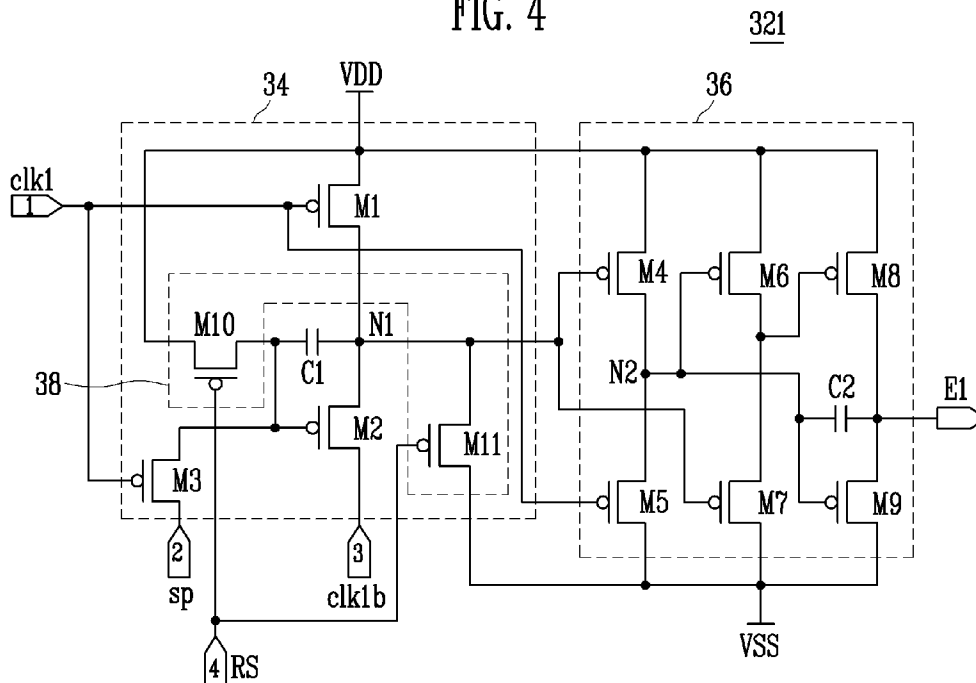
(72) Inventors:
• **Jeong, Seon**
Gyeonggi-do (KR)

(54) **Emission driver and organic light emitting display using the same**

(57) An organic light emitting display which prevents unnecessary illumination of the organic light emitting diodes is disclosed. The display has an emission driver

which globally turns off all of the pixels during an initialization period, and allows normal operation during other times.

FIG. 4



EP 2 099 018 A1

Description

CROSS-REFERENCE TO RELATED APPLICATIONS

[0001] This application claims the benefit of Korean Patent Application No. 10-2008-0020021, filed on March 4, 2008, in the Korean Intellectual Property Office, the entire content of which is incorporated herein by reference.

BACKGROUND

Field

[0002] The field relates to an emission driver and an organic light emitting display using the same, and more particularly to an emission driver and an organic light emitting display using the same for supplying a light emitting control signal to a light emitting control line.

Description of the Related Technology

[0003] Recently, various flat panel displays of reduced weight and volume, which are unfavorable in a cathode ray tube, have been developed. The flat panel display can take the form of, for example, a liquid crystal display, a field emission display, a plasma display panel and an organic light emitting display, etc.

[0004] The organic light emitting display displays an image using an organic light emitting diode (OLED) generating light by recombination of electrons and holes. The organic light emitting display has quick response speed and is driven with low power consumption. A general organic light emitting display supplies current corresponding to data signals to an organic light emitting diode using driving transistors formed in pixels to allow the organic light emitting diode to generate light.

[0005] Such a conventional organic light emitting display includes a data driver that supplies data signals to data lines, a scan driver that sequentially supplies scan signals to scan lines, an emission driver that supplies light emitting signals to light emitting control lines, and a pixel unit that includes a plurality of pixels coupled to the data lines, the scan lines, and the light emitting lines.

[0006] The pixels included in the pixel unit are selected, when the scan signals are supplied to the scan lines, to be supplied with the data signals from the data lines. The pixels supplied with the data signals illuminate, while generating light having a predetermined brightness corresponding to the data signals. Herein, the light emitting time of the pixels is controlled by the light emitting control signals supplied from the light emitting control lines. In general, the light emitting control signals are supplied while the data signals are supplied to the pixels, to set the pixels as a non-light emitting state.

[0007] Herein, in order for the organic light emitting display to be stably driven, the light emitting control signals should be supplied for an initial driving period before

the pixels of the pixel unit normally emits light to set the pixels as a non-light emitting state. However, an output of a conventional emission driver is set as an unknown state during an initial driving period thereof. In other words, during the initial driving period, the light emitting control signals are supplied to some light emitting control lines, and the light emitting control signals are not supplied to the other light emitting control lines. Herein, light emitting is generated in some pixels coupled to the light emitting control lines not supplied with the light emitting control signals, and a problem arises that quality is, accordingly, deteriorated.

SUMMARY OF CERTAIN INVENTIVE ASPECTS

[0008] An organic light emitting display is disclosed which prevents unnecessary illumination of the organic light emitting diodes. The display has an emission driver which globally turns off all of the pixels during an initialization period, and allows normal operation during other times. According to one aspect of the invention, an emission driver including a plurality of stages each coupled to one of a plurality of light emitting control lines is disclosed. Each stage comprises an input unit configured to supply one of a first signal and a second signal to a first node, an output unit configured to output voltage at a first level when the second signal is input to the first node and to output voltage at a second level when the first signal is input to the first node and an initial driving controller that supplies the second signal to the first node during an initial driving period. Preferably the first level is a voltage level higher than the voltage of the second level. Preferably the input unit comprises: a first transistor coupled between a third power supply and a first node, wherein the first transistor has a gate electrode coupled to a first input terminal; a second transistor coupled between the first node and a third input terminal; a first capacitor coupled between a gate electrode of the second transistor and a first electrode of the second transistor; and a third transistor coupled between the gate electrode of the second transistor and a second input terminal and having a gate electrode coupled to the first input terminal. Preferably the first input terminal is supplied with a first clock signal, and the third input terminal is input with an inverted first clock signal. Preferably the second input terminal is input with an output signal or a starting signal of a previous stage. Preferably the initial driving controller comprises: a tenth transistor coupled between a gate electrode of the second transistor and the third power supply and having a gate electrode coupled to a fourth power supply; and an eleventh transistor coupled between the first node and a fourth power supply and having a gate electrode coupled to the fourth input terminal, wherein the fourth power supply is at a lower voltage than the third power supply. Preferably the fourth input terminal is supplied with an initial control signal so that the tenth transistor and the eleventh transistor can be turned on during the initial driving period. Preferably the initial

driving controller supplies the voltage of the fourth power supply to the first node during the initial driving period. Preferably the output unit comprises: a fourth transistor, a sixth transistor and an eighth transistor each coupled to the third power supply, the third power supply being at a high level; a fifth transistor between the fourth power supply and the fourth transistor, wherein the fourth power supply has a lower voltage than the third power supply; a seventh transistor between the fourth power supply and the sixth transistor; a ninth transistor between the fourth power supply and the eighth transistor; and a second capacitor between a gate electrode of the ninth transistor and a first electrode of the ninth transistor. Preferably each stage comprises only a single type of transistor.

[0009] According to one aspect of the invention, an organic light emitting display is disclosed. The display includes a pixel unit including a plurality of pixels positioned near intersection portions of light emitting control lines, scan lines, and data lines, a scan driver configured to drive the scan lines, a data driver configured to drive the data lines, and an emission driver including a plurality of stages coupled to the light emitting control lines in order to drive the light emitting control lines. Each stage includes an input unit configured to supply one of a first signal and a second signal to a first node, an output unit configured to output a light emitting control signal at a first level when the second signal is input to the first node and to output the light emitting control signal at a second level when the first signal is input to the first node, and an initial driving controller configured to supply the second signal to the first node during an initial driving period. Preferably the first level is a voltage level higher than the voltage of the second level. Preferably the input unit comprises: a first transistor coupled between a third power supply and a first node and having a gate electrode coupled to a first input terminal; a second transistor coupled between the first node and a third input terminal; a first capacitor coupled between a gate electrode of the second transistor and a first electrode thereof; and a third transistor coupled between the gate electrode of the second transistor and a second input terminal and having a gate electrode coupled to the first input terminal. Preferably the first input terminal is supplied with a first clock signal, and the third input terminal is input with an inverted first clock signal. Preferably the second input terminal is input with an output signal or a starting signal of a previous stage. Preferably the initial driving controller comprises: a tenth transistor coupled between a gate electrode of the second transistor and the third power supply and having a gate electrode coupled to a fourth power supply; and an eleventh transistor coupled between the first node and a fourth power supply and having a gate electrode coupled to the fourth input terminal, wherein the fourth power supply has a lower voltage than that of the third power supply. Preferably the fourth input terminal is supplied with an initial control signal so that the tenth transistor and the eleventh transistor can be turned on during the initial driving period. Preferably the initial

driving controller is configured to supply the voltage of the fourth power supply to the first node during the initial driving period. Preferably the output unit comprises: a fourth transistor, a sixth transistor and an eighth transistor each coupled to the third power supply; a fifth transistor between the fourth power supply and the fourth transistor; a seventh transistor between the fourth power supply and the sixth transistor; a ninth transistor between the fourth power supply and the eighth transistor; and a second capacitor formed between a gate electrode of the ninth transistor and a first electrode thereof, wherein the fourth power supply has a voltage higher than the third power supply. Preferably each stage comprises only a single type of transistor.

BRIEF DESCRIPTION OF THE DRAWINGS

[0010] The accompanying drawings, together with the specification illustrate exemplary embodiments, and, together with the description, serve to explain certain inventive principles.

[0011] FIG. 1 illustrates an organic light emitting display according to an embodiment;

[0012] FIG. 2 illustrates the emission driver of FIG. 1;

[0013] FIG. 3 is a waveform view showing a normal driving process of a stage of an emission driver;

[0014] FIG. 4 is a circuit view showing a stage of FIG. 2 in detail;

[0015] FIGS. 5a to 5d are circuit views showing an operation process of a stage by the waveform view of FIG. 3;

[0016] FIG. 6 is a waveform view showing an initial control signal supplied during an initial driving period; and

[0017] FIG. 7 is a circuit view showing an operation process of a stage by the waveform view of FIG. 6.

DETAILED DESCRIPTION OF CERTAIN INVENTIVE EMBODIMENTS

[0018] Hereinafter, certain exemplary embodiments will be described with reference to the accompany drawings. Herein, when a first element is described as being coupled to a second element, the first element may be not only directed coupled to the second element but may be also be indirectly coupled to the second element via a third element. Further, some of the elements that are not essential to the complete understanding of the invention are omitted for clarity. Also, like reference numerals generally refer to like elements throughout.

[0019] Hereinafter, embodiments which can be carried out by those skilled in the art, will be described with reference to the accompanying FIGS. 1 to 7.

[0020] FIG. 1 illustrates an organic light emitting display according to one embodiment. In FIG. 1, although a scan driver 10 and an emission driver 30 are illustrated as separated from each other, the emission driver 30 may be included in the scan driver 10.

[0021] Referring to FIG. 1, the organic light emitting display includes: a pixel unit 40 including a plurality of

pixels coupled to scan lines S1 to Sn, data lines D1 to Dm, and light emitting control lines E1 to En, a scan driver 10 that drives the scan lines S1 to Sn, a data driver 20 that drives the data lines D1 to Dm, an emission driver 30 that drives the light emitting control lines E1 to En, and a timing controller 60 that controls the scan driver 10, the data driver 20, and the emission driver 30.

[0022] The scan driver 10 sequentially supplies scan signals to the scan lines S1 to Sn, while being controlled by the timing controller 60. As a result, pixels 50 coupled to the scan lines S1 to Sn are sequentially selected.

[0023] The data driver 10 supplies data signals to the data lines D1 to Dm, while being controlled by the timing controller 60. The data driver 20 supplies the data signals to the data lines D1 to Dm while the scan signals are supplied. As a result, the data signals are supplied to the selected pixels 50 by the scan signals, and the pixels 50 each are charged with voltage corresponding to the data signals supplied thereto.

[0024] The emission driver 30 sequentially supplies light emitting control signals to the light emitting control lines E1 to En, while being controlled by the timing controller 60. For example, the emission driver 30 supplies the light emitting control signals so that the pixels 50 do not emit light during the period that the data signals are being supplied to each pixel 50. The emission driver 30 supplies the light emitting control signals to the light emitting control lines E1 to En during an initial driving period that power is supplied to the emission driver 30, to set the pixels 50 to a non-light-emitting state. If the pixels are set to a non-light-emitting state during the initial driving period, the deterioration of display quality due to abnormal light emitting can be prevented.

[0025] The pixel unit 40 includes a plurality of pixels 50 arranged in a matrix. The respective pixels 50 supply current corresponding to the data signals to a second power supply ELVSS from a first power supply ELVDD via an organic light emitting diode (not shown) to generate light having a brightness corresponding to the current. Pixels 50 are set as a non-light-emitting state when the light emitting signals are supplied thereto.

[0026] FIG. 2 is a schematic view showing the emission driver of FIG. 1.

[0027] Referring to FIG. 2, an emission driver 30 of the present invention includes stages 321, 322, ... coupled to respective light emitting control signals E1 to En. The respective stages 321, 322, ... are driven by two clock signals.

[0028] Timing controller 60 supplies four clock signals Clk1, Clk1b, Clk2, and Clk2b and starting signals SP to the emission driver 30. The first clock signal Clk1 and the inverted first clock signal Clk1b are supplied to odd stages 321, 323, 325 ..., and the second clock signal Clk2 and the inverted second clock signal Clk2b are supplied to even stages 322, 324, The starting signals SP are supplied to the first stage 321 and the second stage 322. Herein, as shown in FIG. 3, the first clock signal Clk1 and the second clock signal Clk2 have the same period and

are supplied to be overlapped by 1/4 periods at their high levels (or low levels).

[0029] An output of an i^{th} (i is a natural number) stage 32i is supplied to an $i+2^{\text{nd}}$ stage 32i+2 via an inverter IN.

5 For example, the output of a first stage 321 is supplied to the third stage 323 via the inverter IN, and the output of the third stage 323 is supplied to the fifth stage 325 via the inverter IN. Accordingly, the odd stages 323, 325, ... are supplied with the output of odd stages. The
10 output of the second stage 322 is supplied to the fourth stage 324 via the inverter IN, and the output of the fourth stage 324 is supplied to the sixth stage via the inverter IN. Accordingly, the even stages 324, ... are supplied with the output of even stages.

15 **[0030]** FIG. 4 illustrates an embodiment of a circuit for the respective stages. For convenience, a first stage 321 coupled to a first clock signal Clk1 and an inverted first clock signal Clk1b will be described in FIG. 4.

[0031] Referring to FIG. 4, a first stage 321 includes
20 an input unit 34 that supplies any of a first signal and a second signal according to clock signals Clk1 and Clk1b and starting signals SP, an output unit 36 that controls whether light emitting control signals are generated or not according to the first signal or the second signal supplied from the input unit 34, and an initial driving controller
25 38 that controls the light emitting signals to be supplyable during an initial driving period.

[0032] The input unit 34 includes a first transistor M1
30 coupled to a third power supply VDD and a first input terminal, a third transistor M3 coupled to the first input terminal and a second input terminal, a second transistor M2 coupled to the third transistor M3 and a third input terminal, and a first capacitor C1 coupled between a gate electrode of the second transistor M2 and a first electrode
35 (source electrode) thereof.

[0033] A first electrode of the first transistor M1 is coupled to the third power supply VDD and a gate electrode thereof is coupled to the first input terminal. Herein, the first input terminal is a terminal supplied with the first clock signal clk1. A second electrode (drain electrode) of the first transistor M1 is coupled to a first node N1. The first transistor M1 is turned on when the first clock signal Clk1 is at a low level, to supply voltage of the third power supply VDD to the first node N1.

45 **[0034]** A first electrode of the second transistor M2 is coupled to the first node N1, and a second electrode thereof is coupled to the third input terminal. Herein, the third input terminal is supplied with the inverted first clock signal clk1b. A gate electrode of the second transistor M2 is coupled to a first electrode of the third transistor M3. As described above, the second transistor M2 is turned on or turned off according to the voltage charged in the first capacitor C1.

50 **[0035]** The first electrode of the third transistor M3 is coupled to the gate electrode of the second transistor M2, and a second electrode thereof is coupled to the second input terminal. The second input terminal is supplied with the starting signals SP or light emitting control

signals inverted from a previous stage. A gate electrode of the third transistor M3 is coupled to the first input terminal. The third transistor M3 is turned on when the first clock signal Clk1 is at a low level.

[0036] The first capacitor C1 is coupled to the gate electrode of the second transistor M2 and the first electrode thereof. The first capacitor C1 is charged with voltage, which can turn on the second transistor M2 when the third transistor M3 is turned on and the starting signals SP are supplied to the second input terminal. It is not charged with voltage otherwise.

[0037] The output unit 36 outputs the light emitting signals (high level) in the case where the second signals (low level) are supplied to the first node N1, and it does not output the light emitting signals in other case (that is, when the first signal (high level) is supplied to the first node N1).

[0038] To this end, the output unit 36 includes a fourth transistor M4 coupled to the third power supply VDD, a sixth transistor M6, an eighth transistor M8, a fifth transistor M5 coupled to a fourth power supply VSS, a seventh transistor M7, a ninth transistor M9, and a second capacitor C2 coupled between a gate electrode of the ninth transistor M9 and a first electrode thereof.

[0039] A first electrode of the fourth transistor M4 is coupled to the third power supply VDD, and a second electrode thereof is coupled to the second node N2. A gate electrode of the fourth transistor M4 is coupled to the first node N1.

[0040] A first electrode of the fifth transistor M5 is coupled to the second node N2, and a second electrode thereof is coupled to the fourth power supply VSS. A gate electrode of the fifth transistor M5 is coupled to the first input terminal.

[0041] A first electrode of the sixth transistor M6 is coupled to the third power supply VDD, and a second electrode thereof is coupled to a first electrode of the seventh transistor M7. A gate electrode of the sixth transistor M6 is coupled to the second node N2.

[0042] The first electrode of the seventh transistor M7 is coupled to the second electrode of the sixth transistor M6, and a second electrode thereof is coupled to the fourth power supply VSS. A gate electrode of the seventh transistor M7 is coupled to the first node N1.

[0043] A first electrode of the eighth transistor M8 is coupled to the third power supply VDD, and a second electrode thereof is coupled to the light emitting control line E1. A gate electrode of the eighth transistor M8 is coupled to the second electrode of the sixth transistor M6.

[0044] A first electrode of the ninth transistor M9 is coupled to the light emitting control line E1, and a second electrode thereof is coupled to the fourth power supply VSS. The gate electrode of the ninth transistor M9 is coupled to the second node N2.

[0045] The second capacitor C2 is coupled between the gate electrode of the ninth transistor M9 and the first electrode thereof. The second capacitor C2 controls a turn-on and a turn-off of the ninth transistor M9.

[0046] The initial driving controller 38 controls the light emitting control signals to be supplied to the light emitting control line E1 during an initial driving period. The initial driving controller 38 is driven during the initial driving period and not driven during a normal driving period that the pixels 50 are driven. The initial driving controller 38 includes a tenth transistor M10 and an eleventh transistor M11.

[0047] A first electrode of the tenth transistor M10 is coupled to the third power supply VDD, and a second electrode thereof is coupled to the gate electrode of the second transistor M2. A gate electrode of the tenth transistor M10 is coupled to a fourth input terminal input with initial control signals RS (active low level signal). The tenth transistor M10 is turned on when the initial control signals RS are supplied, and is turned off when the initial control signals RS are not supplied. In this embodiment, the input unit 34, the output unit 36, and the initial driving controller 38 use only the same type of transistors, pMOS transistors. In other embodiments other transistors may be used, or multiple types may be used.

[0048] A first electrode of the eleventh transistor M11 is coupled to the first node N1, and a second electrode thereof is coupled to the fourth power supply VSS. A gate electrode of the eleventh transistor M11 is coupled to the fourth input terminal. The eleventh transistor M11 is turned on when the initial control signals are supplied, and is turned off when the initial control signals are not supplied.

[0049] FIG. 3 is a waveform view showing a normal driving process of a stage during a normal driving period. During the normal driving period, the tenth transistor M10 and the eleventh transistor M11 maintain in a turn-off state.

[0050] With reference to FIGS. 3 and 4, first a clock signal Clk1 is set as a low level and an inverted first clock signal Clkb1 is set as a high level during a first period T1. In this case, as shown in FIG. 5a, a first transistor M1 and a third transistor M3 are turned on by the first clock signal Clk1.

[0051] Because the first transistor M1 is on, the voltage of a first node N1 rises to the voltage of a third power supply VDD. Accordingly, the voltage of a first signal (high level) is applied to the first node N1. Because the third transistor M3 is turned on, the gate electrode voltage of the second transistor M2 falls to a low level because of the starting signal SP supplied during the first period T1. In this case, the first capacitor C1 is charged with a voltage of a difference between the voltage of the third power supply VDD applied to the first node N1 and the low level voltage applied to a gate electrode of a second transistor M2.

[0052] Because the second transistor M2 is turned on, the voltage of the inverted first clock signal Clkb is supplied to the first node N1. Herein, a voltage level of the inverted first clock signal Clkb is set as a high level. For example, the high level voltage of the inverted first clock signal Clkb may be set to be the same as the voltage of

the third power supply VDD. Then, even when the first transistor M1 and the second transistor M2 are simultaneously turned on, the voltage of the first node N1 can be stably maintained at the same high level.

[0053] When the voltage of the first signal is applied to the first node N1, a fourth transistor M4 and a seventh transistor M7 are turned off. Meanwhile, although the first clock signal Clk1 maintains a low level, a fifth transistor M5 maintains a turn-off state because of the voltage stored in a second capacitor C2. (The charging process of voltage in the second capacitor C2 will be described later.) The second capacitor C2 is charged with voltage of more than $VDD-(VSS+|V_{th5}|)$. Therefore, voltage of a first electrode of the fifth transistor M5 is less than $|V_{th5}|$ higher than the voltage of the first clock signal Clk1 and accordingly, the fifth transistor M5 maintains a turn-off state.

[0054] The sixth transistor M6 is turned on by voltage applied to a second node N2 (that is, voltage because of the second capacitor C2), as shown in FIG. 5b. When the sixth transistor M6 is turned on, the voltage of the third power supply VDD is supplied to the gate electrode of the eighth transistor M8. Accordingly, the eighth transistor M8 is off.

[0055] The ninth transistor M9 maintains a turn-on state because of the voltage charged in the second capacitor C2 and accordingly, the light emitting control line E maintains output voltage of a fourth power supply VSS. Herein, the second capacitor C2 is charged with voltage of more than $VDD-(VSS+|V_{th5}|)$ so that voltage of the light emitting control line E is pulled-down to the voltage of the fourth power supply VSS.

[0056] Thereafter, during a second period T2, the first clock signal Clk1 is set as a high level and the inverted clock signal Clklb is set as a low level.

[0057] Because the first clock signal Clk1 is set as a high level, the first transistor M1, the third transistor M3, and the fifth transistor M5 are turned off, as shown in FIG. 5c. The second transistor M2 is still on because of the voltage charged in the first capacitor C1 during a previous period. Because the second transistor M2 is on, the voltage of the first node N1 falls to a level of the inverted first clock signal Clklb (for example, the fourth power supply VSS), that is, a low level.

[0058] Because the voltage of a second signal (low level) is applied to the first node N1, the fourth transistor M4 and the seventh transistor M7 are turned on. Because the fourth transistor M4 is turned on, the voltage of the second node N2 rises to the voltage of the third power supply VDD. As a result, the sixth transistor M6 and the ninth transistor M9 are turned off. Because the seventh transistor M7 is on, the voltage of the gate electrode of the eighth transistor M8 falls to the voltage of the fourth power supply VSS so that the eighth transistor M8 is turned on. Because the eighth transistor M8 is on, the voltage of the third power supply VDD is supplied to the light emitting control line E1. Accordingly, during the second period T2, the light emitting control signals are sup-

plied to the light emitting control line E1. During the second period T2, the voltage of the third power supply VDD is supplied across the second capacitor C2 so that the second capacitor C2 is not charged with voltage.

[0059] During a third period T3, the first clock signal Clk1 is set as a low level, and the inverted first clock signal Clklb is set as a high level.

[0060] Accordingly, during the third period T3, the first transistor M1, the third transistor M3, and the fifth transistor M5 are turned on by the first clock signal Clk1, as shown in FIG. 5d. Because the first transistor M1 is turned on, the voltage of the first node N1 rises to the voltage of the third power supply VDD. In other words, the voltage of the first signal (high level) is applied to the first node N1.

[0061] Because the third transistor M3 is turned on, and the starting signals SP maintains voltage at high level (for example, the voltage of the third power supply VDD), the second transistor M2 is off. The voltage at both terminals of the first capacitor C1 are the voltage of the third power supply VDD so that the first capacitor C1 is not charged. In this embodiment, the first capacitor C1 is charged with a predetermined voltage only in the period where the starting signals SP are set as a low level, and is not charged with voltage otherwise.

[0062] The second transistor M2 is turned off, the voltage of the first signal is applied to the first node N1, and the inverted first clock signal Clklb maintains a high level. Therefore, although the first node N1 maintains the voltage of the first signal, current is prevented from flowing via the second transistor M2 and power consumption is therefore reduced.

[0063] When the fifth transistor M5 is on, the voltage of the second node N2 is pulled down to voltage of $VSS+|V_{th5}|$. ($|V_{th5}|$ is threshold voltage of the fifth transistor M5). After the voltage of the second node N2 is pulled-down to the voltage of $VSS+|V_{th5}|$, the fifth transistor M5 is switched into a turn-off state. Accordingly, the second capacitor C2 is charged with the voltage of more than of $VDD-(VSS+|V_{th5}|)$ because of the voltage of $VSS+|V_{th5}|$ applied to the second node N2 and the third power VDD applied to the light emitting control line E1.

[0064] The fourth transistor M4 and the seventh transistor M7 are turned off by the voltage of the first signal applied to the first node N1, and the sixth transistor M6 and the ninth transistor M9 are turned on by the voltage charged in the second capacitor C2.

[0065] Because the sixth transistor is turned on, the voltage of the third power supply VDD is applied to the gate electrode of the eighth transistor M8 so that the eighth transistor M8 is turned off. Because the ninth transistor M9 is on, the voltage of the light emitting control line D1, maintaining a high state during the second period T2, falls to the voltage of the fourth power supply VSS. At this time, the fifth transistor is set as a turn-off state (accordingly, N2 is in a floating state) so that the voltage charged in the second capacitor C2 is maintained and accordingly, the voltage of the light emitting control line E1 is pulled down to the voltage of the fourth power supply

VSS.

[0066] Thereafter, the voltage of only the first signal (high level) is applied to the first node N1 before the starting signals SP are supplied again. In other words, the first capacitor C1 is not charged with voltage before the starting signals SP are supplied again, and accordingly the second transistor M2 maintains a turn-off state. As a result, the ninth transistor M9 supplies the voltage of the fourth power supply VSS to the light emitting control line E1 during the remainder of the frame period, because of the voltage charged in the second capacitor C2.

[0067] FIG. 6 illustrates an initial control signal supplied during an initial driving period.

[0068] Referring to FIG. 6, an initial control signal RS (low level) is supplied during an initial driving period and the initial control signal RS is not supplied during a normal driving period.

[0069] Because the initial control signal RS is supplied during the initial driving period, the tenth transistor M10 and the eleventh transistor M11 are turned on, as shown in FIG. 7. Because the tenth transistor M10 is on, the voltage of a third power supply VDD is supplied to the gate electrode of the second transistor M2 and accordingly, the second transistor M2 is turned off.

[0070] Because the eleventh transistor M11 is on, the voltage of the fourth power supply VSS is supplied to the first node N1. In other words, a second signal is supplied to the first node N1. Because the second signal is supplied to the first node N1, the fourth transistor M4 and the seventh transistor M7 are turned on.

[0071] Because the fourth transistor M4 is turned on, the voltage of the third power supply VDD is supplied to a second node N2 so that a sixth transistor M6 is turned off. Because the seventh transistor M7 is turned on, the voltage of the fourth power supply VSS is supplied to the gate electrode of the eighth transistor M8 so that the eighth transistor M8 is turned on. Because the eighth transistor M8 is turned on, the voltage of the third power supply VDD is supplied to the light emitting control line E1.

[0072] As described above, during the initial driving period, the initial driving controller 38 is controlled to supply the light emitting control signals to the all light emitting control lines E1 to En. Then, light emitting of the pixels 50 during the initial driving period can be prevented, making it possible to improve display quality.

[0073] While the certain exemplary embodiments have been described, it is to be understood that the invention is not limited to the disclosed embodiments, but, on the contrary, is intended to cover various modifications and equivalent arrangements.

Claims

1. An emission driver (30) comprising:

a plurality of stages (321, 322, 323, 324, 325) each coupled to one of a plurality of light emitting

control lines (E1, E2, En), wherein each stage (321) comprises:

an input unit (34) configured to supply one of a first signal and a second signal to a first node (N1);

an output unit (36) configured to output a voltage at a first level when the second signal is input to the first node (N1) and configured to output a voltage at a second level when the first signal is input to the first node (N1);

and

an initial driving controller (38) configured to supply the second signal to the first node (N1) during an initial driving period.

2. The emission driver as claimed in claim 1, wherein the first level is a voltage level higher than the voltage of the second level.

3. The emission driver according to one of the preceding claims, wherein the input unit (34) comprises:

a first transistor (M1) coupled between a third power supply (VDD) and a first node (N1), wherein the first transistor (M1) has a gate electrode coupled to a first input terminal (1);

a second transistor (M2) coupled between the first node (N1) and a third input terminal (3);

a first capacitor (C1) coupled between a gate electrode of the second transistor (M2) and a first electrode of the second transistor (M2); and a third transistor (M3) coupled between the gate electrode of the second transistor (M2) and a second input terminal (2) and having a gate electrode coupled to the first input terminal (1).

4. The emission driver as claimed in claim 3, wherein the first input terminal (1) is supplied with a first clock signal (clk1), and the third input terminal (3) is supplied with an inverted first clock signal (clk1b).

5. The emission driver according to one of claims 3 and 4, wherein the second input terminal (2) is supplied with an output signal or a starting signal (sp) of a previous stage.

6. The emission driver according to one of the preceding claims, wherein the initial driving controller (38) comprises:

a tenth transistor (M10) coupled between a gate electrode of the second transistor (M2) and the third power supply (VDD) and having a gate electrode coupled to a fourth input terminal (4); and

an eleventh transistor (M11) coupled between

the first node (N1) and a fourth power supply (VSS) and having a gate electrode coupled to the fourth input terminal (4), wherein the fourth power supply (VSS) is at a lower voltage than the third power supply (VDD).

5

7. The emission driver as claimed in claim 6, wherein the fourth input terminal (4) is supplied with an initial control signal so that the tenth transistor (M10) and the eleventh transistor (M11) can be turned on during the initial driving period.

10

8. The emission driver according to one of claims 6 and 7, wherein the initial driving controller (38) is adapted to supply the voltage of the fourth power supply (4) to the first node (N1) during the initial driving period.

15

9. The emission driver according to one of the preceding claims, wherein the output unit (36) comprises:

20

a fourth transistor (M4), a sixth transistor (m6) and an eighth transistor (m8) each coupled to the third power supply (VDD), the third power supply being at a high level;

a fifth transistor (M5) coupled between the fourth power supply (VSS) and the fourth transistor (M4), wherein the fourth power supply (VSS) has a lower voltage than the third power supply (VDD);

25

a seventh transistor (M7) coupled between the fourth power supply (VSS) and the sixth transistor (M6);

30

a ninth transistor (M9) coupled between the fourth power supply (VSS) and the eighth transistor (M8); and

35

a second capacitor (C2) coupled between a gate electrode of the ninth transistor (M9) and a first electrode of the ninth transistor (M9).

10. The emission driver according to one of the preceding claims, wherein the each stage (321, 322, 323, 324, 325) comprises only a single type of transistor.

40

11. An organic light emitting display, comprising:

45

a pixel unit (40) including a plurality of pixels (50) positioned adjacent to intersection portions of light emitting control lines (E1, E2, En), scan lines (S1, S2, Sn), and data lines (D1, D2, Dm);

a scan driver (10) configured to drive the scan lines (S1, S2, Sn);

50

a data driver (20) configured to drive the data lines (D1, D2, Dm); and

an emission driver (30) according to one of the preceding claims.

55

FIG. 1

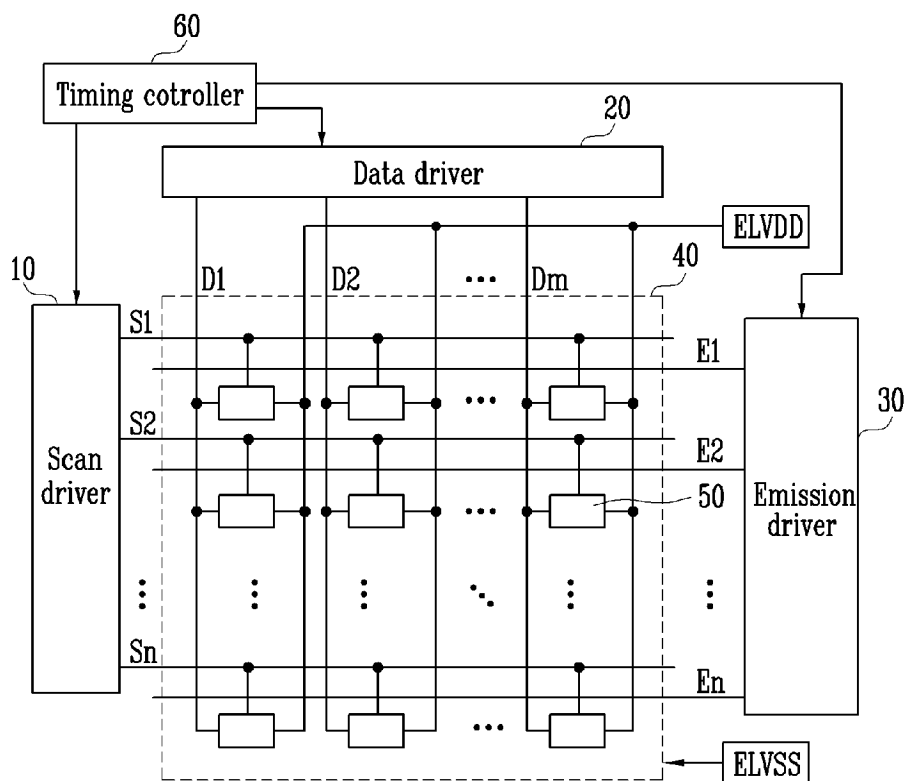


FIG. 2

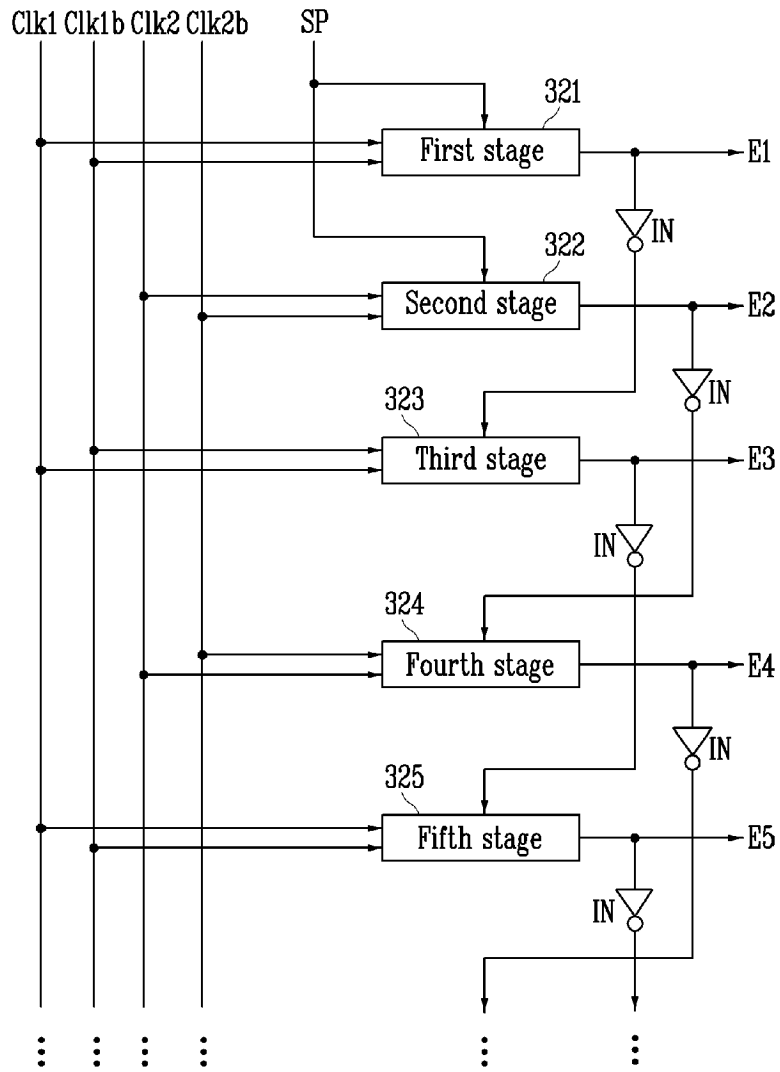


FIG. 3

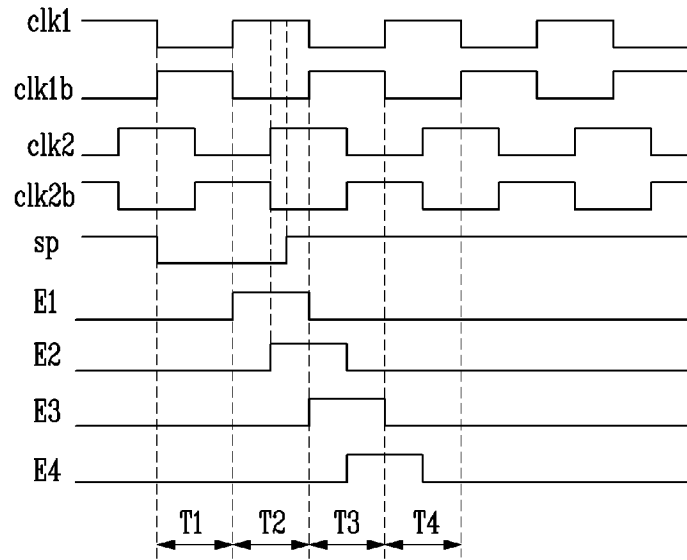


FIG. 4

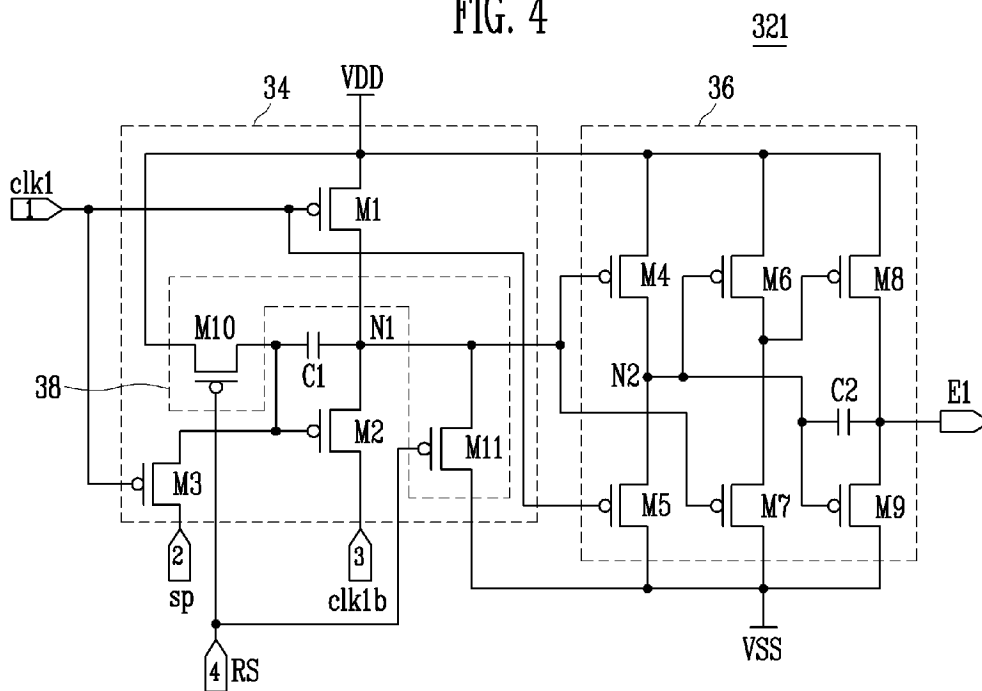


FIG. 5C

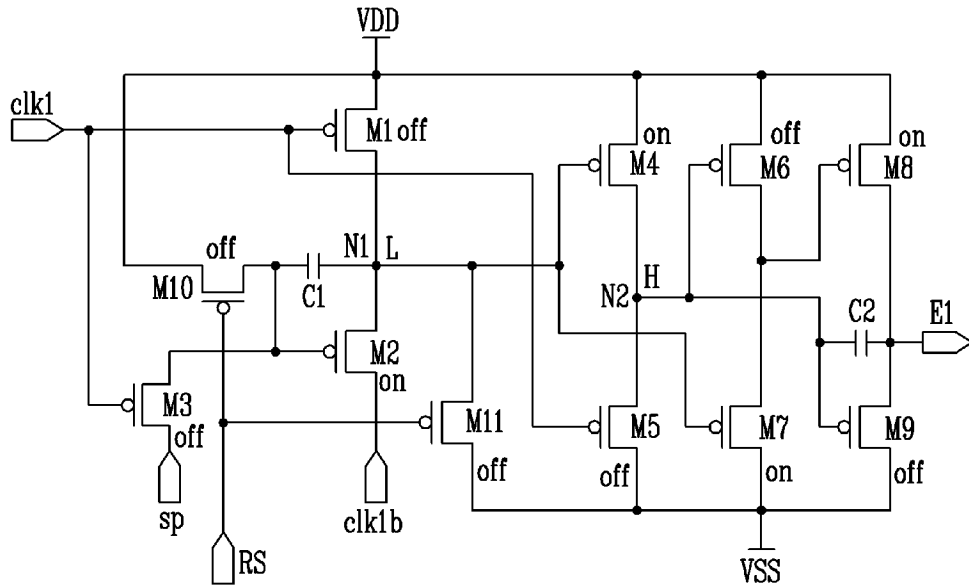


FIG. 5D

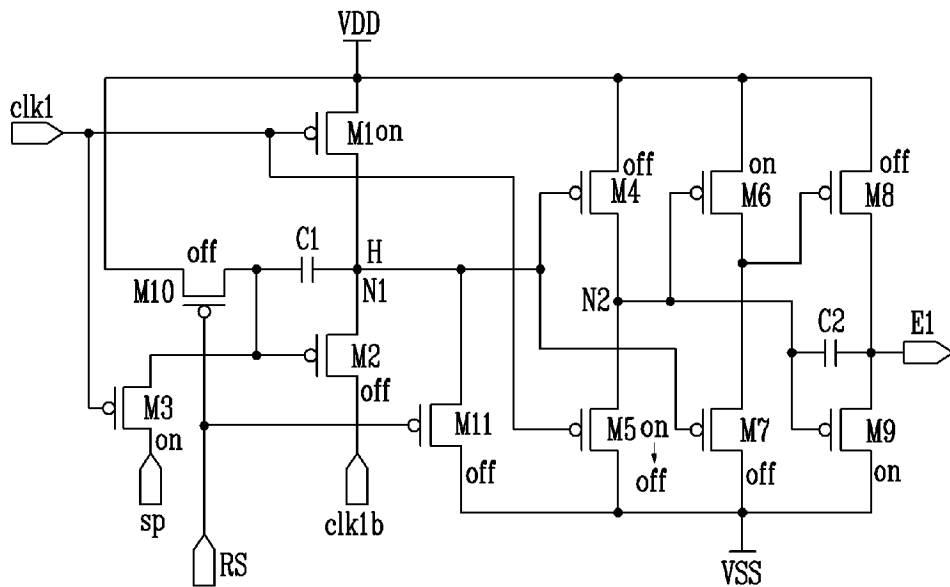


FIG. 6

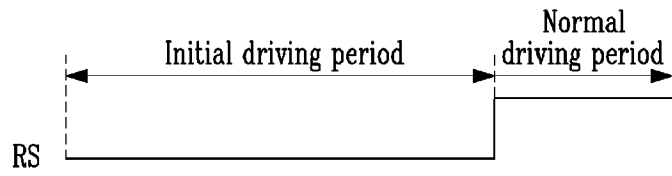
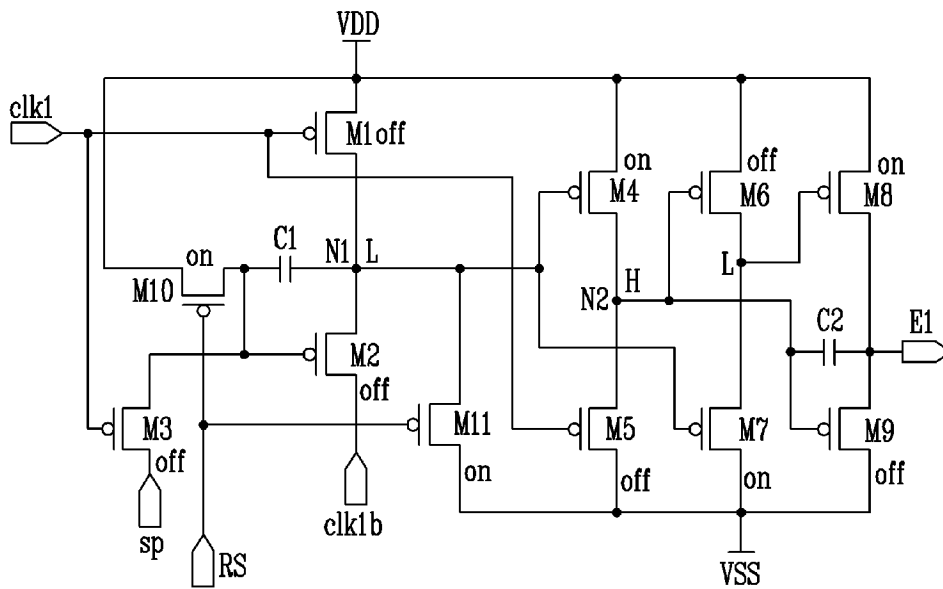


FIG. 7





EUROPEAN SEARCH REPORT

Application Number
EP 09 15 4276

DOCUMENTS CONSIDERED TO BE RELEVANT			
Category	Citation of document with indication, where appropriate, of relevant passages	Relevant to claim	CLASSIFICATION OF THE APPLICATION (IPC)
X	EP 1 763 003 A (SAMSUNG SDI CO LTD [KR] SAMSUNG MOBILE DISPLAY CO LTD [KR]) 14 March 2007 (2007-03-14) * the whole document * -----	1-11	INV. G09G3/32
X	US 2007/046608 A1 (CHUNG BO-YONG [KR]) 1 March 2007 (2007-03-01) * the whole document * -----	1-11	
A	US 5 454 018 A (HOPKINS THOMAS L R [US]) 26 September 1995 (1995-09-26) * column 1, line 11 - line 37 * -----	6-8	
A	WO 2007/013010 A (KONINKL PHILIPS ELECTRONICS NV [NL]; COLLINS PAUL [GB]; DEANE STEVEN C) 1 February 2007 (2007-02-01) * page 8, line 30 - line 31; figure 1 * -----	6-8	
The present search report has been drawn up for all claims			TECHNICAL FIELDS SEARCHED (IPC)
			G09G G11C
Place of search		Date of completion of the search	Examiner
Munich		16 April 2009	Gartlan, Michael
CATEGORY OF CITED DOCUMENTS			
X : particularly relevant if taken alone Y : particularly relevant if combined with another document of the same category A : technological background O : non-written disclosure P : intermediate document		T : theory or principle underlying the invention E : earlier patent document, but published on, or after the filing date D : document cited in the application L : document cited for other reasons ----- & : member of the same patent family, corresponding document	

3
EPO FORM 1503 03.82 (P04C01)

**ANNEX TO THE EUROPEAN SEARCH REPORT
ON EUROPEAN PATENT APPLICATION NO.**

EP 09 15 4276

This annex lists the patent family members relating to the patent documents cited in the above-mentioned European search report. The members are as contained in the European Patent Office EDP file on The European Patent Office is in no way liable for these particulars which are merely given for the purpose of information.

16-04-2009

Patent document cited in search report		Publication date	Patent family member(s)	Publication date
EP 1763003	A	14-03-2007	US 2007063933 A1	22-03-2007

US 2007046608	A1	01-03-2007	NONE	

US 5454018	A	26-09-1995	NONE	

WO 2007013010	A	01-02-2007	CN 101228590 A	23-07-2008
			JP 2009503758 T	29-01-2009
			US 2008198961 A1	21-08-2008

EPO FORM P0459

For more details about this annex : see Official Journal of the European Patent Office, No. 12/82

REFERENCES CITED IN THE DESCRIPTION

This list of references cited by the applicant is for the reader's convenience only. It does not form part of the European patent document. Even though great care has been taken in compiling the references, errors or omissions cannot be excluded and the EPO disclaims all liability in this regard.

Patent documents cited in the description

- KR 1020080020021 [0001]

专利名称(译)	发射驱动器和使用其的有机发光显示器		
公开(公告)号	EP2099018A1	公开(公告)日	2009-09-09
申请号	EP2009154276	申请日	2009-03-04
[标]申请(专利权)人(译)	三星显示有限公司		
申请(专利权)人(译)	三星移动显示器有限公司.		
当前申请(专利权)人(译)	三星移动显示器有限公司.		
[标]发明人	JEONG SEON KIM MI HAE EOM KI MYEONG JEONG JIN TAE		
发明人	JEONG, SEON KIM, MI-HAE EOM, KI-MYEONG JEONG, JIN-TAE		
IPC分类号	G09G3/32		
CPC分类号	G09G3/3266 G09G2300/0861 G09G2310/0245 G09G2310/0286 G09G2310/063 G09G2330/026 G11C19/184		
优先权	1020080020021 2008-03-04 KR		
其他公开文献	EP2099018B1		
外部链接	Espacenet		

摘要(译)

公开了一种防止有机发光二极管的不必要照射的有机发光显示器。显示器具有发射驱动器，其在初始化时段期间全局关闭所有像素，并且允许在其他时间期间的正常操作。

