



(12) **EUROPEAN PATENT APPLICATION**

(43) Date of publication: **08.10.2008 Bulletin 2008/41** (51) Int Cl.: **G09G 3/32^(2006.01)**

(21) Application number: **08251322.7**

(22) Date of filing: **04.04.2008**

(84) Designated Contracting States:
AT BE BG CH CY CZ DE DK EE ES FI FR GB GR HR HU IE IS IT LI LT LU LV MC MT NL NO PL PT RO SE SI SK TR
 Designated Extension States:
AL BA MK RS

(72) Inventors:
 • **Lee, Duk-Jin**
Yongin-si, Gyeonggi-do (KR)
 • **Lee, Jeong-No**
Yongin-si, Gyeonggi-do (KR)

(30) Priority: **06.04.2007 KR 20070034288**

(74) Representative: **Mounteney, Simon James**
Marks & Clerk
90 Long Acre
London
WC2E 9RA (GB)

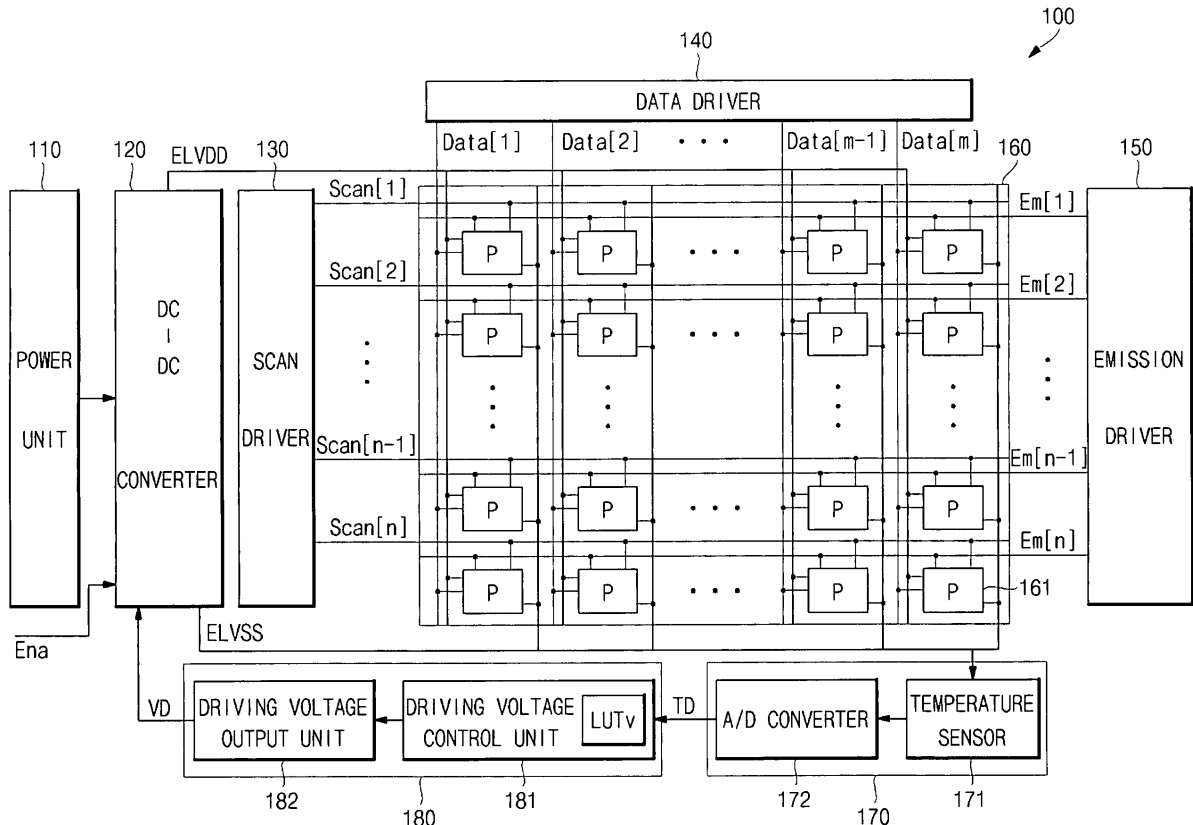
(71) Applicant: **Samsung SDI Co., Ltd.**
Yongin-si, Gyeonggi-do (KR)

(54) **Organic light emitting display and driving method thereof**

(57) A display comprises a temperature detecting unit that detects a temperature of the display, a driving voltage determining unit that determines a driving voltage for a light emitting element in the display according to the

detected temperature, a DC/DC converter that provides the driving voltage, and a variable resistance element that adjusts the driving voltage provided to the light emitting element.

FIG.1



Description

BACKGROUND OF THE INVENTION

5 1. Field of the Invention

[0001] Embodiments relate to an organic light emitting display and a driving method thereof. More particularly, embodiments relate to an organic light emitting display and a driving method thereof in which a driving voltage is adjusted in accordance with temperature.

10

2. Description of the Related Art

[0002] A display may provide operating and driving voltages to a light emitting element, e.g., an organic light emitting diode (OLED), in order to emit light from the light emitting element. The driving voltages may provide power for emitting light from the light emitting element. The operating voltages may correspond to data signals and may control one or more driving transistors that regulate the connection of the driving voltages to the light emitting element.

15

[0003] Operational characteristics of the light emitting element, e.g., the amount of light emitted therefrom, may be temperature dependent. In order to maintain such operational characteristics constant, the driving voltage may be increased to offset the effects of reduced temperatures. However, maintaining an increased driving voltage when temperatures are not reduced may result in unnecessary power consumption.

20

SUMMARY OF THE INVENTION

[0004] Embodiments are therefore directed to an organic light emitting display and a driving method thereof which substantially overcome one or more of the problems due to limitations and disadvantages of the related art.

25

[0005] It is therefore a feature of embodiments to provide an organic light emitting display and a driving method thereof that adjust a driving voltage in accordance with temperature.

[0006] At least one of the above and other features and advantages of the present invention may be broadly realized by providing an organic light emitting display, including a temperature detecting unit that detects a temperature of the organic light emitting display, a driving voltage determining unit that determines a driving voltage for a light emitting element in the organic light emitting display according to the detected temperature, a DC/DC converter that provides the driving voltage, and a variable resistance element that adjusts the driving voltage provided to the light emitting element. More particularly, according to a first aspect of the present invention there is provided an organic light emitting display, comprising: an organic light emitting display panel; a temperature detecting unit for detecting the temperature of the organic light emitting display panel; a driving voltage determining unit for outputting voltage data by calculating the driving voltage of the organic light emitting display panel on the basis of the temperature data detected from the temperature detecting unit; and a DC/DC converter comprising a variable resistance determining unit for determining variable resistance on the basis of the voltage data outputted from the driving voltage determining unit and for supplying the driving voltage corresponding to the variable resistance to the organic light emitting display panel.

30

35

[0007] The temperature detecting unit may detect at least one of a temperature of an organic light emitting display panel in the organic light emitting display and an ambient temperature. The temperature detecting unit may include a temperature sensor and an A/D converter that converts an output of the temperature sensor into a digital temperature signal, the digital temperature signal extracting corresponding data from a look-up table. The corresponding data may be voltage data that extracts resistance data from a resistance look-up table, and the resistance data may control the variable resistance element. The corresponding data may be resistance data, and the resistance data may control the variable resistance element. The variable resistance element may include a plurality of resistors, the resistors may be coupled to respective transistors, and the corresponding data may control the transistors.

40

45

[0008] The DC/DC converter may provide a first driving voltage and a second driving voltage to the light emitting element, and the driving voltage determining unit may determine at least one of the first and second driving voltages according to the detected temperature. The second driving voltage may be lower than the first driving voltage, and the driving voltage determining unit may determine the second driving voltage according to the detected temperature.

50

[0009] The DC/DC converter may include a boost converter, an inverter, and a switching control unit coupled to the boost converter and the inverter. The variable resistance element may adjust a voltage provided to the switching control unit. The DC/DC converter may be coupled to first and second voltage dividers, the first voltage divider being coupled to a first power line and the second voltage divider being coupled to a second power line, and the variable resistance element may be included in the second voltage divider.

55

[0010] The DC/DC converter may provide a first driving voltage to the light emitting element on the first power line, the DC/DC converter may provide a second driving voltage to the light emitting element on the second power line, and

the driving voltage determining unit may determine at least one of the first and second driving voltages according to the detected temperature. The second driving voltage may be lower than the first driving voltage, and the driving voltage determining unit may determine the second driving voltage according to the detected temperature.

[0011] At least one of the above and other features and advantages of the present invention may also be broadly realized by providing a method of driving an organic light emitting display, including detecting a temperature of the display, determining a driving voltage for a light emitting element in the organic light emitting display according to the detected temperature, and controlling a variable resistance in a DC/DC converter to adjust the driving voltage provided to the light emitting element. More particularly, according to a second aspect of the present invention there is provided a driving method of the organic light emitting display, comprising: detecting temperature of the organic light emitting display panel; determining the driving voltage according to the temperature data detected from the step of detecting temperature; determining variable resistance included in a DC/DC converter according to the voltage data determined from the step of determining driving voltage; and supplying the driving voltage corresponding to the variable resistance determined from the step of determining variable resistance to the organic light emitting display panel.

[0012] Detecting the temperature of the display may include detecting at least one of a temperature of an organic light emitting display panel in the organic light emitting display and an ambient temperature. The temperature of the display may be detected using a temperature sensor, and the method may further include converting an output of the temperature sensor to a digital temperature signal, and extracting data from a look-up table based on the digital temperature signal. The data extracted from the look-up table may be voltage data, and the method may further include extracting resistance data from a resistance look-up table based on the voltage data, and controlling the variable resistance using the resistance data. The data extracted from the look-up table may be resistance data, and the method may further include controlling the variable resistance using the resistance data.

[0013] The DC/DC converter may provide a first driving voltage and a second driving voltage to the light emitting element, and at least one of the first and second driving voltages may be determined according to the detected temperature. The second driving voltage may be lower than the first driving voltage, and the second driving voltage may be determined according to the detected temperature. The DC/DC converter may include a boost converter, an inverter, and a switching control unit coupled to the boost converter and the inverter, and the method may further include controlling the variable resistance to adjust a voltage provided to the switching control unit.

[0014] The DC/DC converter may be coupled to first and second voltage dividers, the first voltage divider being coupled to a first power line and the second voltage divider being coupled to a second power line, and the method may further include adjusting the variable resistance to adjust a voltage output by the second voltage divider. The DC/DC converter may provide a first driving voltage to the light emitting element on the first power line, the DC/DC converter may provide a second driving voltage to the light emitting element on the second power line, and at least one of the first and second driving voltages may be determined according to the detected temperature. The second driving voltage may be lower than the first driving voltage, and the second driving voltage may be determined according to the detected temperature.

BRIEF DESCRIPTION OF THE DRAWINGS

[0015] The above and other features and advantages will become more apparent to those of ordinary skill in the art by describing in detail example embodiments with reference to the attached drawings, in which:

[0016] FIG. 1 illustrates a block diagram of an organic light emitting display according to an example embodiment;

[0017] FIG. 2 illustrates a schematic diagram of a pixel circuit according to an example embodiment;

[0018] FIG. 3 illustrates a voltage characteristic of an OLED varying in accordance with temperature;

[0019] FIG. 4 illustrates a schematic diagram of a DC/DC converter according to an example embodiment;

[0020] FIG. 5 illustrates a schematic diagram of a variable resistance determining unit in the DC/DC converter of FIG. 4;

[0021] FIG. 6 illustrates a block diagram of a switching control unit in the DC/DC converter of FIG. 4;

[0022] FIG. 7 illustrates a flow chart of a driving method for driving an organic light emitting display according to an example embodiment; and

[0023] FIG. 8 illustrates details of the driving method of FIG. 7.

DETAILED DESCRIPTION OF PREFERRED EMBODIMENTS OF THE INVENTION

[0024] Example embodiments will now be described more fully hereinafter by way of example and with reference to the accompanying drawings; however, they may be embodied in different forms and should not be construed as limited to the embodiments set forth herein. Rather, these preferred embodiments are provided so that this disclosure will be thorough and complete, and will fully convey the invention to those skilled in the art.

[0025] In the figures, the dimensions of layers and regions may be exaggerated for clarity of illustration. It will also be understood that when a layer or element is referred to as being "on" another layer or substrate, it can be directly on the other layer or substrate, or intervening layers may also be present. Further, it will be understood that when a layer is

referred to as being "under" another layer, it can be directly under, and one or more intervening layers may also be present. In addition, it will also be understood that when a layer is referred to as being "between" two layers, it can be the only layer between the two layers, or one or more intervening layers may also be present.

5 [0026] Similarly, where an element is described as being coupled to a second element, the element may be directly coupled to second element, or may be indirectly coupled to second element via one or more other elements. Further, where an element is described as being coupled to a second element, it will be understood that the elements may be electrically coupled, e.g., in the case of transistors, capacitors, power sources, nodes, etc. Where two or more elements are described as being coupled to a node, the elements may be directly coupled to the node, or may be coupled via conductive features to which the node is common. Thus, where embodiments are described or illustrated as having two or more elements that are coupled at a common point, it will be appreciated that the elements may be coupled at respective points on a conductive feature that extends between the respective points. Like reference numerals refer to like elements throughout.

10 [0027] Referring to FIG. 1, an organic light emitting display 100 according to an example embodiment may include a power unit 110, a DC/DC converter 120, a scan driver 130, a data driver 140, an emission driver 150, an organic light emitting display panel 160, a temperature detecting unit 170, and a driving voltage determining unit 180. The organic light emitting display panel 160 may include one or more light emitting elements, e.g., OLEDs. The DC/DC converter 120 may include a variable resistance determining unit 126 (described in detail below in connection with FIG. 4) that changes resistance in accordance with voltage data output from the driving voltage determining unit 180. An enable terminal Ena (shown in FIG. 4) may be provided in the DC/DC converter 120. The DC/DC converter 120 may be activated or inactivated depending on whether an enable signal or disable signal, respectively, is input through the enable terminal Ena.

15 [0028] The power unit 110 may be, e.g., a battery supplying direct current power, or a rectifier converting alternating current power into direct current power, etc. The DC/DC converter 120 may be coupled between the power unit 110 and the organic light emitting display panel 160. The DC/DC converter 120 may convert power from the power unit 110 into a first voltage ELVDD and a second voltage ELVSS, and may supply the first and second voltages ELVDD, ELVSS to the organic light emitting display 100. In an implementation, the first voltage ELVDD may be a positive voltage and the second voltage ELVSS may be a negative voltage.

20 [0029] The resistance of the variable resistance determining unit 126 may be changed in accordance with voltage data VD output from the driving voltage determining unit 180, as will be described in more detail below. The DC/DC converter 120 may control the voltage level of the second voltage ELVSS according to the resistor(s) selected by the variable resistance determining unit 126.

25 [0030] Voltage data VD output from the driving voltage determining unit 180 may be changed in accordance with temperature data TD output from the temperature detecting unit 170, as will be described in more detail below. The DC/DC converter 120 may control the output voltage, e.g., the second voltage ELVSS, by changing a variable resistance in accordance with the temperature of the organic light emitting display panel 160 and/or the surrounding, i.e., ambient, temperature.

30 [0031] The scan driver 130 may be coupled to the organic light emitting display panel 160. The scan driver 130 may be coupled to the organic light emitting display panel 160 via a plurality of scan lines Scan[1] to Scan[n]. The scan driver 130 may supply scan signals to the organic light emitting display panel 160 via the scan lines Scan[1] to Scan[n] in sequence.

35 [0032] The data driver 140 may be coupled to the organic light emitting display panel 160. The data driver 140 may be coupled to the organic light emitting display panel 160 via a plurality of data lines Data[1] to Data[m]. The data driver 140 may supply data signals to the organic light emitting display panel 160 via the data lines Data[1] to Data[m].

40 [0033] The emission driver 150 may be coupled to the organic light emitting display panel 160 via a plurality of emission lines Em[1] to Em[n]. The emission driver 150 may supply emission signals to the organic light emitting display panel 160 via the emission lines Em[1] to Em[n] in sequence.

45 [0034] The scan driver 130, the data driver 140, the emission driver 150, and the organic light emitting display panel 160 may be formed on one substrate, e.g., as one or more integrated circuits. The drivers 130, 140, and 150 may be formed in the same layer in which the scan lines Scan[1] to Scan[n], the data lines Data[1] to Data[m], the emission lines Em[1] to Em[n], and the transistors of the pixel circuit 161 are formed. In another implementation, the drivers 130, 140, and 150 may be formed separately and coupled via conductive members to corresponding portions of the display 100. The drivers 130, 140, and 150 may be implemented as, e.g., flexible printed circuits (FPCs), tape carrier packages (TCPs), tape automatic bonding (TAB) arrangements, chip on glass (COG) arrangements, etc.

50 [0035] The organic light emitting display panel 160 may include pixel circuits 161. The pixel circuits 161 may be coupled to respective scan lines Scan[1] to Scan[n] and emission lines Em[1] to Em[n]. The scan lines Scan[1] to Scan[n] and the emission lines Em[1] to Em[n] may be arranged in a row direction. The pixel circuits 161 may also be coupled to respective data lines Data[1] to Data[m]. The data lines Data[1] to Data[m] may be arranged in a column direction. Each pixel circuit 161 may be formed where corresponding ones of the scan lines Scan[1] to Scan[n] and the data lines Data

[1] to Data[m] cross.

[0036] FIG. 2 illustrates a schematic diagram of a pixel circuit according to an example embodiment. Referring to FIG. 2, each pixel circuit 161 may include an OLED, a driving transistor Sd for supplying a driving current to the OLED, a storage capacitor Cst, a first switching transistor Sw1 and a second switching transistor Sw2. The OLED may include an anode which may be coupled to the driving transistor Sd, e.g., via the second switching transistor Sw2, and a cathode which may be coupled to the second voltage ELVSS. The OLED may generate light, e.g., red (R) color, green (G) color, or blue (B) color light, the luminance of which may be controlled in accordance with the driving current supplied from the driving transistor Sd.

[0037] The driving transistor Sd may include a first electrode (source or drain) coupled to the first voltage ELVDD, a second electrode (source or drain) coupled to the anode of the OLED, e.g., via the second switching transistor Sw2, and a control electrode (gate electrode), which may be activated in accordance with a data signal supplied from a data line Data[j] (where j is from 1 to m, inclusive). The driving transistor Sd may transfer the driving current, corresponding to the data signal supplied from the data line Data[j], to the OLED.

[0038] The storage capacitor Cst may have a first electrode coupled to the control electrode of the driving transistor Sd, and a second electrode coupled to the first voltage ELVDD and the first electrode (source or drain) of the driving transistor Sd. The storage capacitor Cst may store a voltage between the first electrode (source or drain) and the control electrode (gate electrode) of the driving transistor Sd, and may store a charge used to control the driving transistor Sd for emission of light by the OLED.

[0039] The first switching transistor Sw1 may include a first electrode (source or drain) coupled to the data line Data[j], a second electrode (source or drain) coupled to the driving transistor Sd, and a control electrode (gate electrode) coupled to a scan line Scan[i] (where i is from 1 to n, inclusive). The first switching transistor Sw1 may supply the data signal from the data line Data[j] to the storage capacitor Cst.

[0040] The second switching transistor Sw2 may include a first electrode (source or drain) coupled to the second electrode (drain or source) of the driving transistor Sd, and a second electrode (drain or source) coupled to the anode of the OLED. The control electrode of the second switching transistor Sw2 may be coupled to an emission line Em[i] (where i is from 1 to n, inclusive). The second switching transistor Sw2 may control the emission time of the organic light emitting display panel 160 by controlling the driving current flowing from the driving transistor Sd to the organic light emitting display panel 160 in accordance with the emission signal supplied through the emission line Em[i].

[0041] The organic light emitting display panel 160 may be driven by the first voltage ELVDD and the second voltage ELVSS supplied from the DC/DC converter 120. The driving voltage, i.e., the difference between the first voltage ELVDD and the second voltage ELVSS, supplied to the organic light emitting display panel 160 may be set in accordance with the temperature data TD provided by the temperature detecting unit 170. The driving voltage may be set to have different driving voltage margins in accordance with the temperature data TD.

[0042] As shown in FIG. 1, the temperature detecting unit 170 may include a temperature sensor 171 and an A/D converter 172. The temperature sensor 171 may be formed inside or outside of the organic light emitting display panel 160. The temperature sensor 171 may detect the temperature of the organic light emitting display panel 160 and/or the surroundings thereof. The temperature sensor 171 may generate the temperature data TD and may transfer it to the driving voltage determining unit 180.

[0043] The A/D converter 172 may be provided for converting an analog signal into a digital signal when the temperature data TD output by the temperature sensor 171 is an analog signal. Digitized temperature data TD produced by the A/D converter 172 may be transferred to the driving voltage determining unit 180.

[0044] The driving voltage determining unit 180 may include a driving voltage control unit 181 and a driving voltage output unit 182. The driving voltage control unit 181 may calculate a driving voltage in accordance with the temperature data TD output from the temperature detecting unit 170 and may control the driving voltage output unit 182 accordingly. The driving voltage control unit 181 may include a look-up table LUTv in which values of the voltage data VD corresponding to values of the temperature data TD may be stored.

[0045] FIG. 3 illustrates a voltage characteristic of an OLED in accordance with temperature. Referring to FIG. 3, in an implementation, the required driving voltage may have higher voltage levels as the temperature is reduced, i.e., the required driving voltage may be increased according to the reduced temperature.

[0046] The voltage data VD stored in the driving voltage look-up table LUTv may be determined on the basis of the voltage characteristics of the OLEDs. For example, the driving voltage may be different depending on the color of light emitted by the OLED. Referring to FIG. 3, in an implementation, the driving voltage of the OLED may increase in accordance with the emission color, in the order of blue (B), red (R), and green (G). The green (G) color may require the highest driving voltage and may be set as a standard.

[0047] The driving voltage look-up table LUTv may store values of the temperature data TD and corresponding values of the voltage data VD, e.g., as in Table 1 below. In Table 1, TD1 to TD3 represent values of the temperature data TD output from the temperature detecting unit 170. TD1 may represent a temperature of 15°C, TD2 may represent a temperature of -5°C, and TD3 may represent a temperature of -30°C. VD may represent the voltage data VD corre-

sponding to the respective temperature data TD1 to TD3. The units for the voltage data VD may be, e.g., volts (V).

Table 1

	TD1	TD2	TD3
VD	-4	-5	-6

[0048] It is noted that the values in Table 1 are merely examples, which correspond to the graph in FIG. 3. The driving voltage look-up table LUT_v may include more or less than three temperature values. Further, the driving voltage look-up table LUT_v may be implemented in ways other than in Table 1, e.g., the driving voltage look-up table LUT_v may be implemented as a numerical formula corresponding to a graph such as that illustrated in FIG. 3, etc. In another implementation (not shown), the temperature values may be used to look up resistance values directly, as described below.

[0049] As shown in FIG. 1, the driving voltage output unit 182 of the driving voltage determining unit 180 may output the voltage data VD determined from data supplied by the driving voltage control unit 181, to the DC/DC converter 120. The DC/DC converter 120 may control the voltage supplied to the organic light emitting display panel 160 according to the voltage data VD.

[0050] FIG. 4 illustrates a schematic diagram of the DC/DC converter 120 according to an example embodiment. Referring to FIG. 4, the DC/DC converter 120 may operate as a switched mode power supply, and may include a boost converter 121, an inverter 122, a switching control unit 123, a first feedback voltage divider 124, and a second feedback voltage divider 125. The switching control unit 123 may be coupled to the boost converter 121 and the inverter 122. The second feedback voltage divider 125 may include a variable resistance determining unit 126 for changing the second voltage ELVSS. The DC/DC converter 120 may supply the first voltage ELVDD to the organic light emitting display panel 160 over a first voltage line V1, and may supply the second voltage ELVSS to the organic light emitting display panel 160 over a second voltage line V2.

[0051] The boost converter 121 may include a first switching transistor M11 coupled to the power unit 110 via a first inductive element L11, and a first diode D11 coupled between the first switching transistor M11 and the first voltage line V1. The first switching transistor M11 has a first electrode which may be coupled to a node that is common to the first inductive element L11 and the first diode D11. The boost converter 121 may further include a first storage capacitor C11 having a first electrode coupled to a node that is common to the first diode D11 and the first voltage line V1.

[0052] The boost converter 121 may be coupled to the first feedback voltage divider 124, which may be used to control the first voltage ELVDD output on the first voltage line V1 within a specific level. The first feedback voltage divider 124 may include a first resistor R1 and a second resistor R2 serially connected to an output terminal. The output terminal may be connected to a node that is common to the first voltage line V1 and the first diode D11. A first point P1 that is common to the first and second resistors R1, R2 may be coupled to the switching control unit 123, as described in more detail below.

[0053] The inverter 122 may include a second switching transistor M21 coupled to the power unit 110, and a second diode D12 coupled between the second switching transistor M21 and the second voltage line V2. A second inductive element L21 may be coupled to a node that is common to the second switching transistor M21 and the second diode D21. A second storage capacitor C21 has a first electrode which may be coupled to a node that is common to the second diode D21 and the second voltage line V2. Second electrodes of the first storage capacitor C11 and second storage capacitor C21 may be connected to a node common to the second electrodes of the first switching transistor M11 and the second inductive element L21, the node being connected to an output terminal of the power unit 110.

[0054] The inverter 122 may be coupled to the second feedback voltage divider 125, which may be used to control the second voltage ELVSS output on the second voltage line V2 within a specific level. The second voltage ELVSS output on the second voltage line V2 may be changed in accordance with resistor data selected from the variable resistance determining unit 126 in the second feedback voltage divider 125.

[0055] The second feedback voltage divider 125 may include a third resistor R3 and a variable resistance element R_v serially connected to an output terminal. The output terminal may be connected to a node that is common to the second diode D21 and the second voltage line V2. A second point P2 that is common to the third resistor R3 and the variable resistance element R_v may be coupled to the switching control unit 123, as described in more detail below. The variable resistance element R_v produces a resistance determined by the driving voltage VD from the driving voltage determining unit 180.

[0056] FIG. 5 illustrates a schematic diagram of the variable resistance determining unit 126 in the DC/DC converter of FIG. 4. Referring to FIG. 5, the resistance of the variable resistance element R_v in the second feedback voltage divider 125 may correspond to that of one or more resistors R_{v1} to R_{v_r}, which may be connected in parallel, which are selected by the variable resistance determining unit 126.

[0057] The variable resistance determining unit 126 may include a variable resistance circuit unit 126a and a variable

resistance control unit 126b. The variable resistance control unit 126b may include a variable resistance look-up table LUTr in which resistance data RD corresponding to values of the voltage data VD are stored.

[0058] The variable resistance circuit unit 126a may include the resistors Rv1 to Rvr, as a well as respective resistor control switching transistors MR1 to MRr coupled to and controlling the resistors Rv1 to Rvr. The resistors Rv1 to Rvr may have different resistance values. The number of resistors Rv1 to Rvr may correspond to the number of values of the resistance data RD provided by the variable resistance control unit 126b, although the number of resistors may be different in other implementations.

[0059] Each of the resistor control switching transistors MR1 to MRr may have a first electrode coupled to a respective one of the resistors Rv1 to Rvr, and a second electrode may be coupled to the third resistor R3 of the inverter 122 via the second point P2. Control electrodes of the resistor control switching transistors MR1 to MRr may be coupled to respective outputs of the variable resistance control unit 126b. The resistor control switching transistors MR1 to MRr may be turned on or off according to control signals transmitted from the variable resistance control unit 126b.

[0060] The variable resistance control unit 126b may select at least one resistor from the plurality of resistors Rv1 to Rvr. For example, the first resistor control switching transistor MR1 may be turned on to couple the first resistor Rv1 to the third resistor R3, and thus control the second voltage ELVSS output by the inverter 122. In an implementation, the resistor control switching transistors MR1 to MRr may be n-type MOSFETs. In another implementation, the resistor control switching transistors MR1 to MRr may be p-type MOSFETs or other elements suitable for controlling the resistors Rv1 to Rvr.

[0061] The variable resistance control unit 126b may select at least one of the plurality of resistors Rv1 to Rvr of the variable resistance circuit unit 126a according to the voltage data VD. The variable resistance control unit 126b may include the variable resistance look-up table LUTr in which resistance data RD corresponding to values of the voltage data VD may be stored. The value of the voltage data VD output from the driving voltage determining unit 180 may be used for indexing into the variable resistance look-up table LUTr to obtain the corresponding value of the resistance data RD.

[0062] The resistance data RD stored in the variable resistance look-up table LUTr may be determined with reference to Formula 1 and Formula 2. Formula 1 represents the voltage divided by the third resistor R3 and the variable resistance element Rv of the second feedback voltage divider 125. Formula 2 represents the voltage that may be output by the inverter 122, i.e., the second voltage ELVSS.

$$\frac{R3}{Rv} = \frac{(V_{FBI} - V_{OUT})}{(V_{REF} - V_{FBI})} \quad \text{(Formula 1)}$$

$$V_{OUT} = -1.25 \times \frac{R3}{Rv} \quad \text{(Formula 2)}$$

[0063] In Formula 1, V_{REF} may be a reference voltage supplied from the switching control unit 123, and V_{OUT} may be the output voltage of the inverter 122. The voltage V_{FBI} may correspond to a feedback voltage, used to determine the desired output voltage between V_{REF} and V_{OUT}, at the second point P2 between the third resistor R3 and the variable resistance element Rv.

[0064] In an implementation, the reference voltage V_{REF} of the inverter 122 may be supplied from the DC/DC converter 120 and may be set to have a voltage level of, e.g., about -1.25 V. The feedback voltage V_{FBI} may be set to have a voltage level of, e.g., about 0 V. Therefore, the output voltage V_{OUT} of the inverter 122 may be described by Formula 2.

[0065] The variable resistance look-up table LUTr may store values of the voltage data VD and corresponding values of the resistance data RD, as shown by the examples in Table 2 below. In Table 2, VD1 to VD3 may be the voltage data output from the driving voltage determining unit 180. VD1 may represent -4 V, VD2 may represent -5 V and VD3 may represent -6 V. RD represents the resistance data RD according to the respective voltage data VD1 to VD 3, and may be in units of kΩ. The example values in Table 2 correspond to a resistance of the third resistor R3 of 200 kΩ.

Table 2

	VD1	VD2	VD3
RD	63	50	42

[0066] Referring to FIG. 5, the variable resistance control unit 126b may transmit control signals for turning on the resistor control switching transistors MR1 to MRr, which are coupled to corresponding resistors Rv1 to Rvr. Various subsets of the resistors Rv1 to Rvr may be coupled between V_{REF} and P2 by activating one or more of the resistor control switching transistors MR1 to MRr thereby determining the resistance of the variable resistance element Rv.

[0067] Based on the variable resistance element Rv, the DC/DC converter 120 may provide the second voltage ELVSS, i.e., the voltage output on the second power line V2, to the organic light emitting display panel 160. In particular, the DC/DC converter 120 may transfer the feedback voltage V_{FBI} , which may be provided as a voltage output from the voltage divider formed by the third resistor R3 and the variable resistance element Rv, to the switching control unit 123.

[0068] FIG. 6 illustrates a block diagram of a switching control unit in the DC/DC converter of FIG. 4. Referring to FIG. 6, the switching control unit 123 may include a first comparator 123a, a second comparator 123b, a control logic unit CL, a booster control logic unit BCL, and an inverter control logic unit ICL.

[0069] The first comparator 123a may be coupled to the contact point P1 that is common to the first resistor R1 and the second resistor R2 of the boost converter 121. The voltage of the first contact point P1 may be input to the first comparator 123a, and the first comparator 123a may output a control signal for maintaining the first voltage ELVDD to the control logic unit CL. The control logic unit CL may be coupled to the booster control logic unit BCL, and may control the first switching transistor M11. The booster control logic unit BCL may be coupled to the control electrode of the first switching transistor M11, i.e., the booster control logic unit BCL may be coupled to the third contact point P3. The level of the first voltage ELVDD may be controlled by changing the switching frequency of the first switching transistor M11.

[0070] The second comparator 123b may be coupled to the second contact point P2, i.e., at a point common to the third resistor R3 and the variable resistance element Rv. The voltage at the second contact point P2 may be input to the second comparator 123b so that the second comparator 123b may output a control signal for maintaining the second voltage ELVSS to the control logic unit CL. The control logic unit CL may be coupled to the inverter control logic unit ICL, and may control the second switching transistor M21. The inverter control logic unit ICL may be coupled to the control electrode of the second switching transistor M21, i.e., the inverter control logic unit ICL may be coupled to the fourth contact point P4.

[0071] Referring to FIGS. 4 and 6, the switching control unit 123 may compare the feedback voltage provided by the voltage divider of the second feedback voltage divider 126 with the reference voltage V_{REF} , and may supply a control signal to the second switching transistor M21 based on the comparison. The DC/DC converter 120 may control the second switching transistor M21 so as to control the level of the second voltage ELVSS supplied to the second power line V2. In an implementation, the DC/DC converter 120 may control a switching frequency of the second switching transistor M21. The resistance of the variable resistance element Rv coupled to the second comparator 123b may be changed in accordance with the temperature. Thus, the inverter 122 may control the second voltage ELVSS in accordance with the variable resistance element Rv.

[0072] The control logic unit CL may be coupled to the enable terminal Ena, to which an external enable/disable signal may be provided. When an enable signal is input to the enable terminal Ena, the first and second switching transistors M11, M21 may be activated, respectively. The control logic unit CL may output the appropriate control signals to command operation of the booster control logic unit BCL and the inverter control logic unit ICL. When a disable signal is input to the enable terminal Ena, the first and second switching transistors M11, M21 may be turned off. The control logic unit CL may output the appropriate control signals to stop operation of the booster control logic unit BCL and the inverter control logic unit ICL, which may prevent power from being supplied to the organic light emitting display panel 160.

[0073] FIG. 7 illustrates a flow chart of a driving method for driving an organic light emitting display according to an example embodiment, and FIG. 8 illustrates details of the driving method of FIG. 7. Referring to FIGS. 7 and 8, the method may include a temperature detecting operation S100, a driving voltage determining operation S200, a variable resistance determining operation S300, and a driving voltage supplying operation S400.

[0074] The operation of detecting temperature S100 may include operations of detecting temperature S110 and analog-to-digital (A/D) conversion of the detected temperature S120. The operation of detecting temperature S110 may include detecting the temperature of the organic light emitting display panel 160 and/or an ambient temperature. For an analog temperature signal, the operation of A/D conversion S120 may convert the signal into a digital signal using the A/D converter 172, and may transfer the digital signal to the driving voltage determining unit 180.

[0075] The operation of determining the driving voltage S200 may include an operation of calculating the driving voltage S210 and an operation of outputting the driving voltage S220. The operation of calculating the driving voltage S210 may be performed in the driving voltage control unit 181. The operation of calculating the driving voltage S210 may determine the voltage data VD to be output on the basis of the temperature data TD input from the driving voltage control unit 181. The voltage data VD may be stored in the driving voltage look-up table LUTv included in the driving voltage control unit 181. The driving voltage look-up table LUTv may store voltage data VD having values as shown, for example, in Table 1.

[0076] The operation of outputting the driving voltage S220 may output the value calculated from the driving voltage control unit 181 or the value corresponding to the driving voltage look-up table LUTv. The output voltage data VD may

be transferred to the variable resistance determining unit 126 of the DC/DC converter 120.

[0077] The operation of determining variable resistance S300 may include an operation of calculating the variable resistance S310 and an operation of selecting the variable resistance S320. The operation of calculating the variable resistance S310 may be performed in the variable resistance control unit 126b of the variable resistance determining unit 126. The operation of calculating the variable resistance S310 may calculate the resistance data RD corresponding to the received voltage data VD.

[0078] The variable resistance control unit 126b may include the variable resistance look-up table LUTr in which the resistance data RD is stored. For example, the variable resistance look-up table LUTr may store the resistance data RD as shown in Table 2. The variable resistance control unit 126b may turn on and off the resistor control switching transistors MR1 to MRr, which select corresponding resistors Rv1 to Rvr, in accordance with the resistance data RD.

[0079] The operation of selecting the variable resistance S320 may be performed in the variable resistance circuit unit 126a. The operation of selecting the variable resistance S320 may select the desired resistance of the variable resistance element Rv by controlling the connections of the resistors Rv1 to Rvr, which may be connected in parallel. In an implementation, in the voltage divider that includes the third resistor R3 and the variable resistance element Rv, at least one resistor switching transistor MR1 to MRr may be turned on in accordance with the control signal supplied from the variable resistance control unit 126b.

[0080] The operation of supplying the driving voltage S400 may supply the first voltage ELVDD and the second voltage ELVSS to the organic light emitting display panel 160. In particular, the DC/DC converter 120 may transfer a feedback voltage, altered in accordance with the third resistor R3 and the variable resistance element Rv, to the switching control unit 123. The switching control unit 123 may supply a control signal to the switching transistor M21 after comparing the feedback voltage with the reference voltage. Therefore, the DC/DC converter 120 may control the level of the second voltage ELVSS supplied to the second power line V2 in accordance with the switching frequency of the second switching transistor M21.

[0081] The first voltage ELVDD may be the output voltage of the boost converter 121. Referring again to FIG. 2, the first voltage ELVDD may be supplied to the first electrode (source or drain) of the driving transistor Sd. The first voltage ELVDD may have a positive polarity. The second voltage ELVSS may be the output voltage of the inverter 122. The second voltage ELVSS may be the voltage supplied to the cathode of the OLED. The second voltage ELVSS may have a negative polarity. The level of the second voltage ELVSS may be adjusted in accordance with temperature, as described above in connection with operations S100 to S400.

[0082] As described above, example embodiments may allow power consumption of an organic light emitting display to be reduced by providing a driving voltage adjusted in accordance with a sensed temperature of the organic light emitting display panel and/or the surroundings thereof. The driving voltage may be controlled by changing the resistance of a variable resistance element. Controlling the driving voltage may include determining the temperature and calculating the driving voltage based on the temperature. Power consumption may be reduced by regulating a DC/DC converter to reduce the driving voltage at room temperature. Additionally, reducing the driving voltage may improve the efficiency of the DC/DC converter, since high current flow through the DC/DC converter may be inefficient. Thus, embodiments may provide for increased efficiency by controlling the driving voltage output by the DC/DC converter.

[0083] Exemplary embodiments have been disclosed herein, and although specific terms are employed, they are used and are to be interpreted in a generic and descriptive sense only and not for purpose of limitation.

Claims

1. An organic light emitting display, comprising:

an organic light emitting display panel;
 a temperature detecting unit for detecting the temperature of the organic light emitting display panel;
 a driving voltage determining unit for outputting voltage data by calculating the driving voltage of the organic light emitting display panel on the basis of the temperature data detected from the temperature detecting unit; and
 a DC/DC converter comprising a variable resistance determining unit for determining variable resistance on the basis of the voltage data outputted from the driving voltage determining unit and for supplying the driving voltage corresponding to the variable resistance to the organic light emitting display panel.

2. The organic light emitting display as claimed in claim 1, wherein the temperature detecting unit comprises a temperature sensor for detecting the temperature of the organic light emitting display panel; and an A/D converter for converting the output of the temperature sensor into a digital signal.

3. The organic light emitting display as claimed in any one of the preceding claims, wherein the driving voltage deter-

mining unit comprises a driving voltage control unit for calculating the driving voltage in accordance with the temperature data; and a driving voltage output unit for outputting the voltage data calculated from the driving voltage control unit.

- 5 **4.** The organic light emitting display as claimed in claim 3, wherein the driving voltage control unit comprises a look-up table in which the voltage data calculated in accordance with the temperature data is stored.
- 10 **5.** The organic light emitting display as claimed in any one of the preceding claims, wherein the variable resistance determining unit includes a variable resistance circuit unit comprising a multitude of resistors and a multitude of resistor control switching transistors which are electrically connected to the resistors, respectively.
- 15 **6.** The organic light emitting display as claimed in claim 5, wherein the variable resistance determining unit comprises a variable resistance control unit for selecting the resistors by controlling the resistor control switching transistors.
- 20 **7.** The organic light emitting display as claimed in claim 6, wherein the variable resistance control unit comprises a look-up table in which variable resistance data corresponding to the voltage data is stored.
- 25 **8.** The organic light emitting display as claimed in any one of the preceding claims, wherein the DC/DC converter further comprises a boost converter for supplying a first voltage to the organic light emitting display panel; and an inverter for supplying a second voltage to the organic light emitting display panel.
- 30 **9.** The organic light emitting display as claimed in claim 8, wherein the DC/DC converter further comprises a switching control unit which is electrically connected with the boost converter and the inverter.
- 35 **10.** The organic light emitting display as claimed in claim 9, wherein the DC/DC converter comprises a first resistor and a second resistor, which are serially connected to an output terminal of the boost converter and a contact point connected to the first resistor and the second resistor is electrically connected with the switching control unit.
- 40 **11.** The organic light emitting display as claimed in claim 10, wherein the switching control unit comprises a first comparator electrically connected with the contact point at which the first and second resistors are connected.
- 45 **12.** The organic light emitting display as claimed in claim 9, wherein the DC/DC converter comprises a third resistor of which one terminal is electrically connected with the variable resistance circuit unit and the other terminal is electrically connected with the output terminal of the inverter.
- 50 **13.** The organic light emitting display as claimed in claim 12, wherein the resistor control switching transistor comprises a first electrode electrically connected with the resistors of the variable resistance circuit unit; and a second electrode electrically connected with the third resistor.
- 55 **14.** The organic light emitting display as claimed in claim 12, wherein the switching control unit comprises a second comparator electrically connected with the contact point at which the resistors of the variable resistance circuit unit and the third resistor are connected.
- 60 **15.** The organic light emitting display as claimed in claim 14, wherein the voltage level of the second voltage is determined by the resistors of the variable resistance circuit unit.
- 65 **16.** The organic light emitting display as claimed in claim 15, wherein the voltage level of the second voltage is lower than that of the first voltage.
- 70 **17.** A driving method of the organic light emitting display, comprising:
 detecting temperature of the organic light emitting display panel;
 determining the driving voltage according to the temperature data detected from the step of detecting temperature;
 determining variable resistance included in a DC/DC converter according to the voltage data determined from the step of determining driving voltage; and
 supplying the driving voltage corresponding to the variable resistance determined from the step of determining variable resistance to the organic light emitting display panel.

18. The driving method of the organic light emitting display as claimed in claim 17, wherein the step of detecting temperature comprises an A/D converting step for converting the output of a temperature sensor into a digital signal after detecting the temperature of the organic light emitting display panel through the temperature sensor.
- 5 19. The driving method of the organic light emitting display as claimed in any one of claims 17 or 18, wherein the step of determining driving voltage comprises a step of calculating the driving voltage according to the temperature data detected from the step of detecting temperature; and a step of outputting driving voltage comprising outputting the calculated voltage data.
- 10 20. The driving method of the organic light emitting display as claimed in claim 19, wherein the step of determining driving voltage uses a look-up table in which the voltage data calculated in accordance with the temperature data is stored.
- 15 21. The driving method of the organic light emitting display as claimed in any one of claims 17 to 20, wherein the step of determining variable resistance comprises a step of calculating the variable resistance through a variable resistance circuit unit included in the DC/DC converter.
- 20 22. The driving method of the organic light emitting display as claimed in claim 21, wherein the step of calculating variable resistance uses a look-up table in which the variable resistance data corresponding to the voltage data is stored.
- 25 23. The driving method of the organic light emitting display as claimed in claim 22, wherein the step of determining variable resistance comprises a step of selecting according to the variable resistance data one or more resistors from a multitude of resistors, each resistor being electrically connected to one of a multitude of resistance control switching transistors, the step of selecting further comprising selectively turning on the control switching transistor connected to the selected one or more resistors, to connect the selected one or more resistors to the output of the variable resistance circuit unit.
- 30 24. The driving method of the organic light emitting display as claimed in claim 23, wherein the step of supplying driving voltage supplies a first voltage to the organic light emitting display panel through a boost converter included in the DC/DC converter, and supplies a second voltage to the organic light emitting display panel through an inverter included in the DC/DC converter.
- 35 25. The driving method of the organic light emitting display as claimed in claim 24, wherein the DC/DC converter comprises a fixed resistor of which one terminal is electrically connected to the output terminal of the inverter and the other terminal is electrically connected to the resistors of the variable resistance circuit unit, and the voltage level of the second voltage is determined by the resistors of the variable resistance circuit unit and the fixed resistor.
- 40 26. The driving method of the organic light emitting display as claimed in claim 25, wherein the voltage level of the second voltage is lower than that of the first voltage.

45

50

55

FIG.1

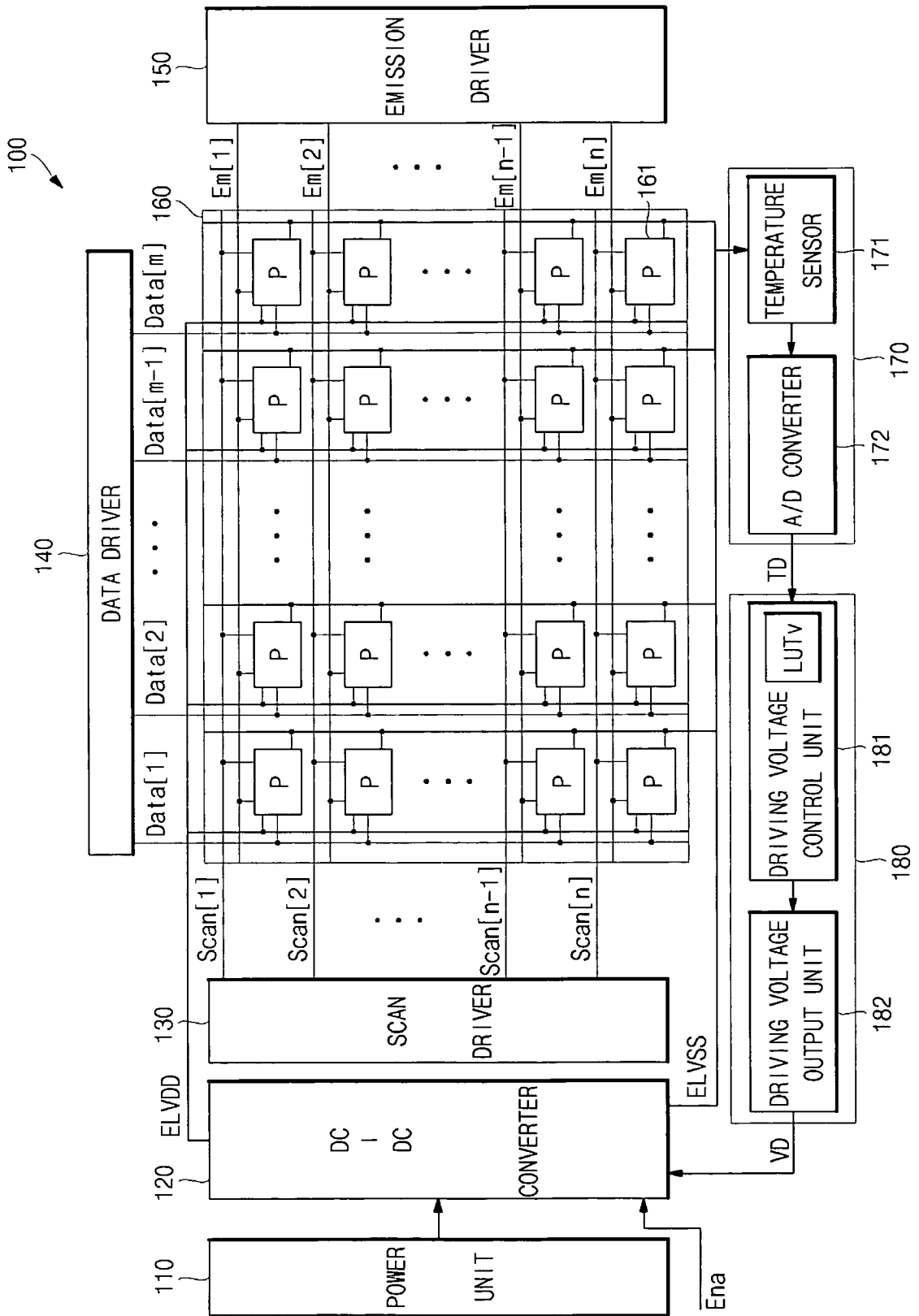


FIG.2

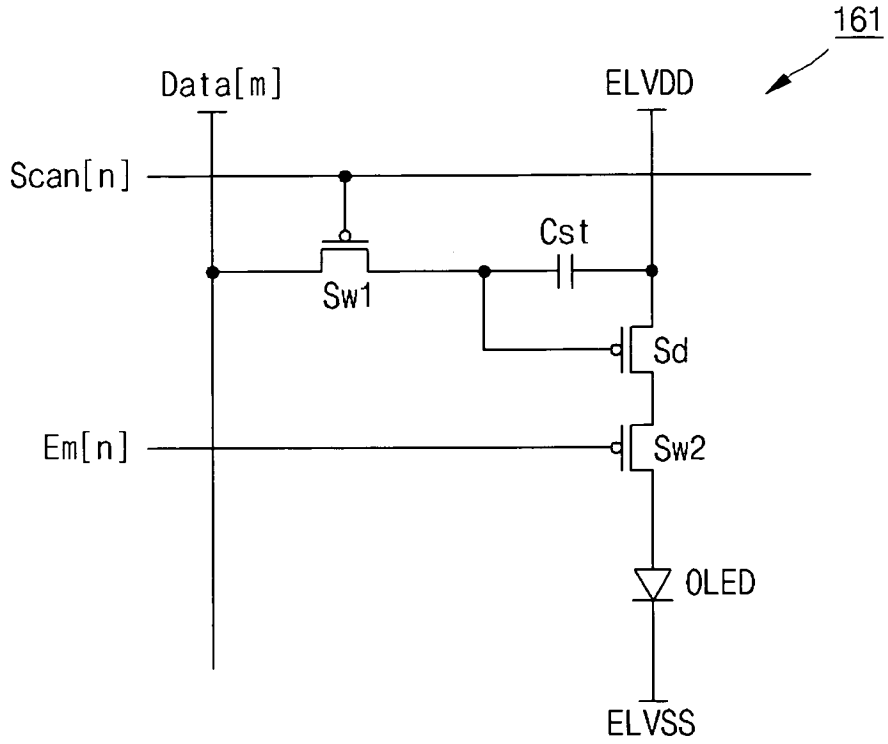


FIG.3

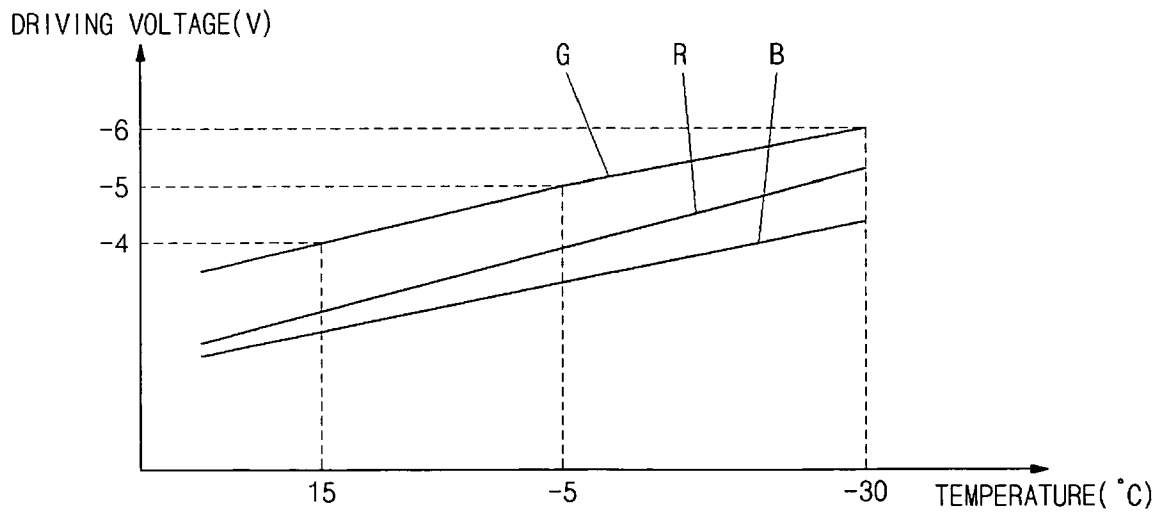


FIG. 4

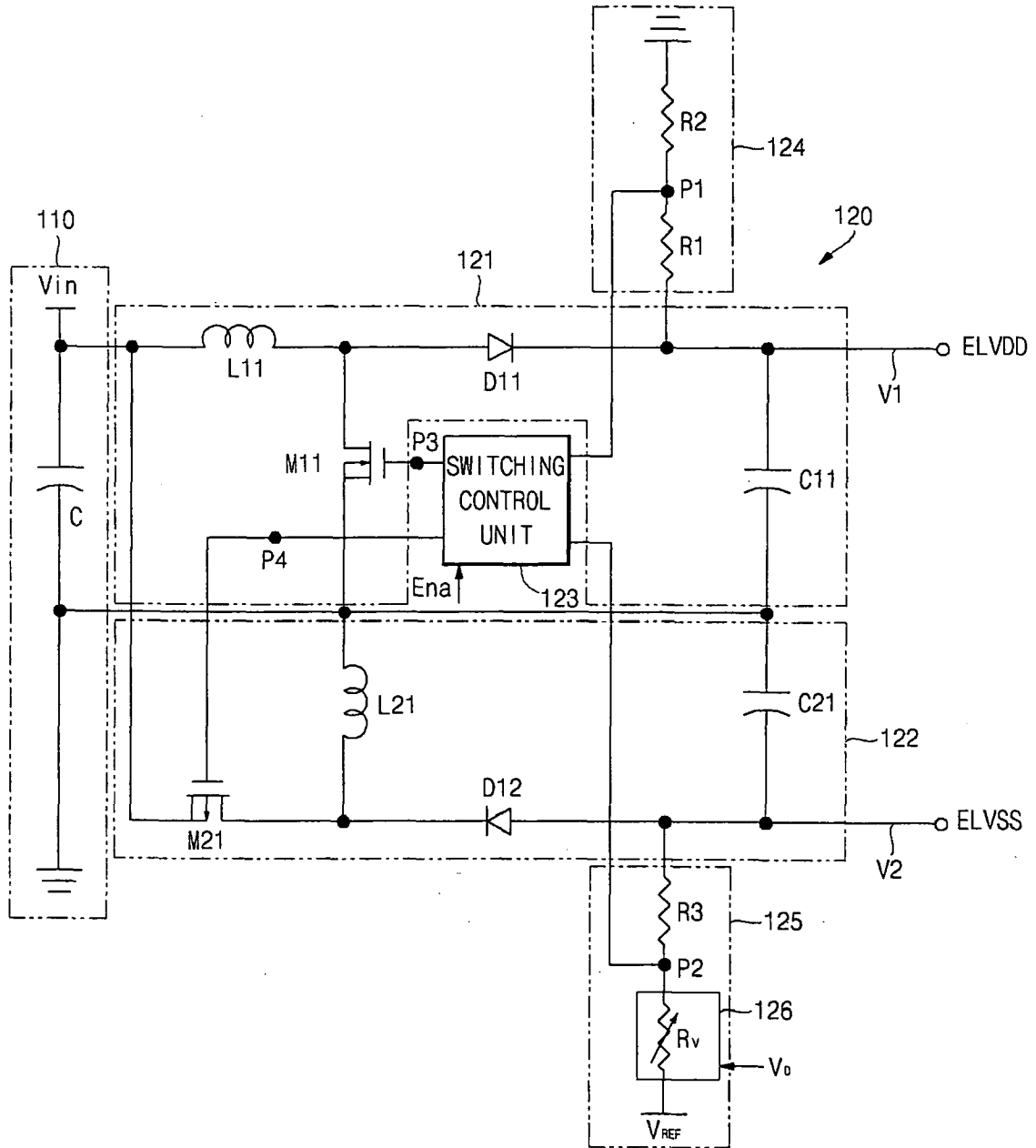


FIG. 5

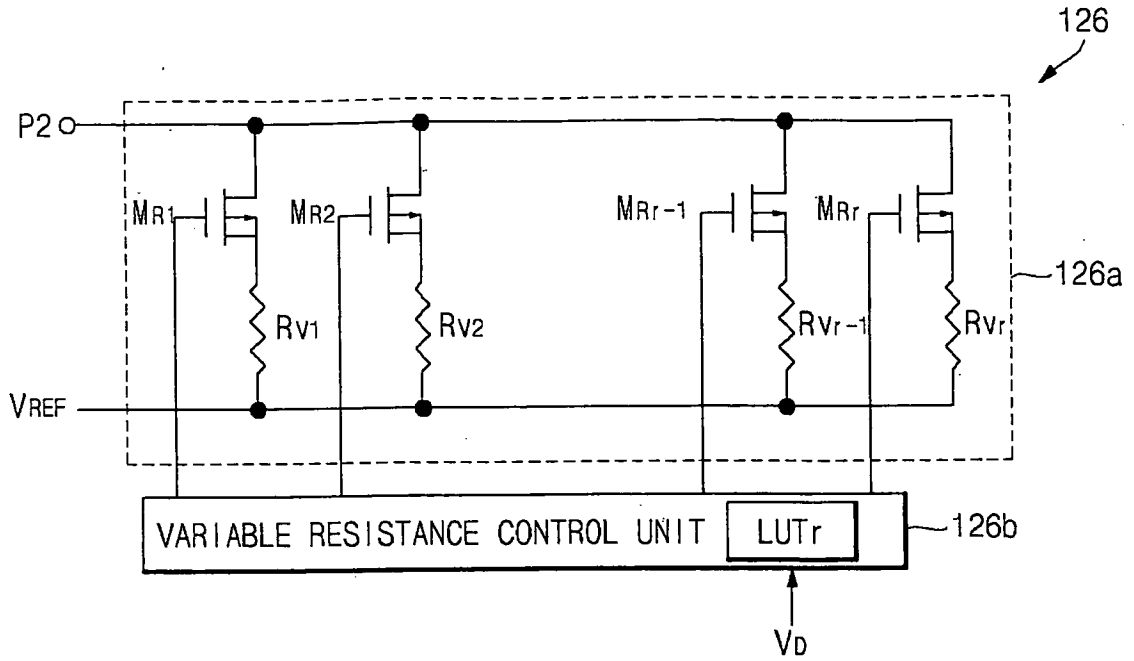


FIG. 6

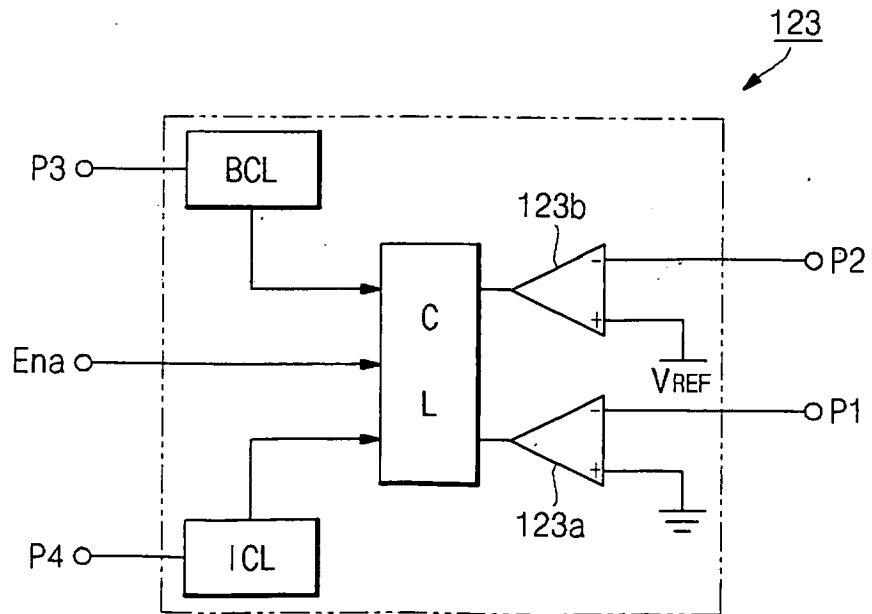


FIG.7

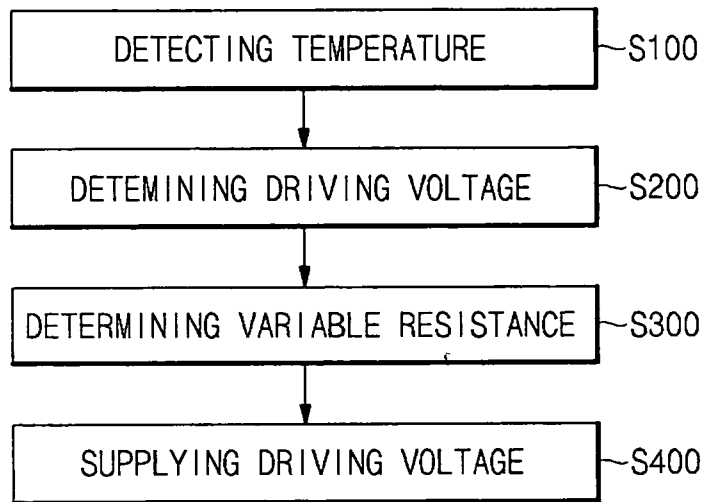
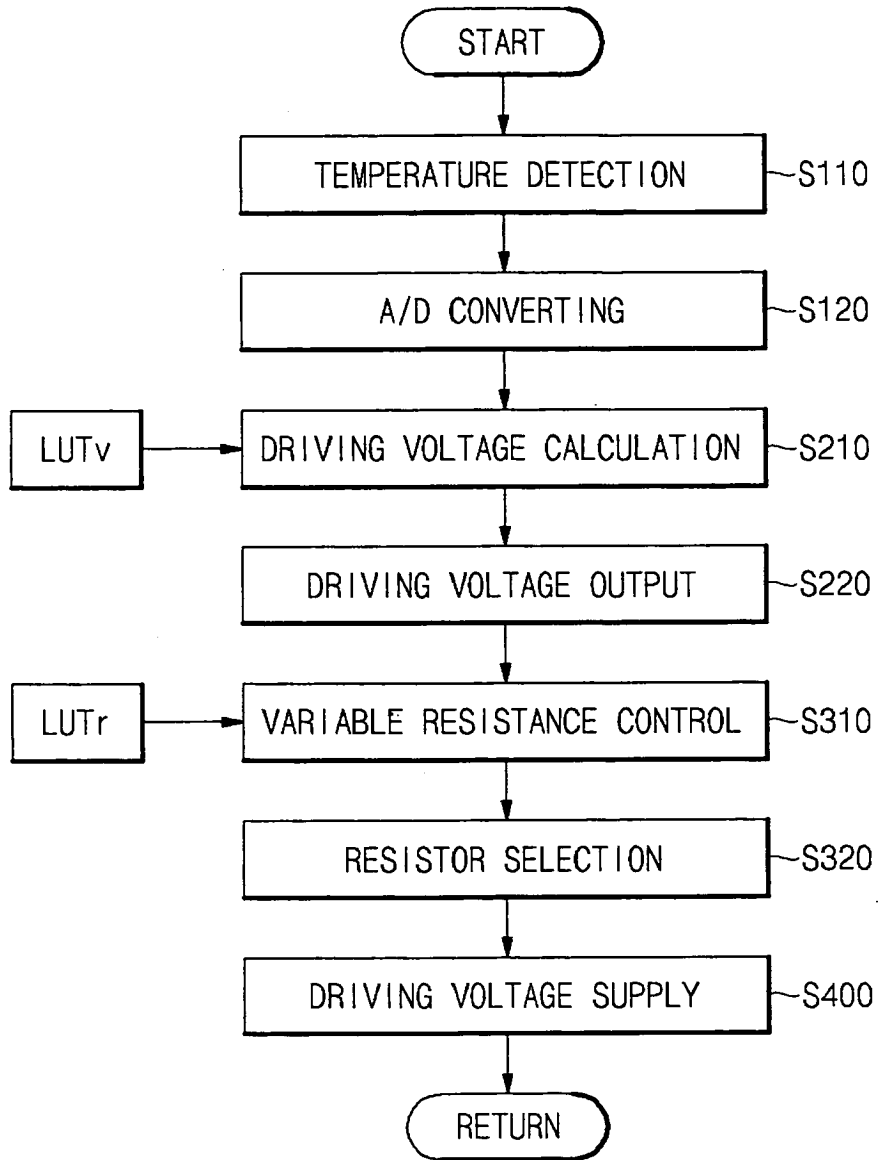


FIG.8



专利名称(译)	有机发光显示器及其驱动方法		
公开(公告)号	EP1978506A2	公开(公告)日	2008-10-08
申请号	EP2008251322	申请日	2008-04-04
[标]申请(专利权)人(译)	三星斯笛爱股份有限公司		
申请(专利权)人(译)	三星SDI CO. , LTD.		
当前申请(专利权)人(译)	三星DISPLAY CO. , LTD.		
[标]发明人	LEE DUK JIN LEE JEONG NO		
发明人	LEE, DUK-JIN LEE, JEONG-NO		
IPC分类号	G09G3/32		
CPC分类号	G09G3/3233 G09G2300/0842 G09G2320/041 G09G2330/02 G09G2330/021 G09G2330/028		
优先权	1020070034288 2007-04-06 KR		
其他公开文献	EP1978506A3		
外部链接	Espacenet		

摘要(译)

显示器包括：温度检测单元，检测显示器的温度；驱动电压确定单元，根据检测到的温度确定显示器中的发光元件的驱动电压；DC / DC转换器，提供驱动电压，以及可变电阻元件，其调节提供给发光元件的驱动电压。

